

"AFTER THE GAME
... GO **Jerry's**!!"

KENTUCKY • vs • FLORIDA STATE



EXCLUSIVELY
Dawahare's
 • LEXINGTON
 • WHITESBURG
 • PIKEVILLE
 • HAZARD
 • NEON
 • CORBIN

Gardenside Plaza



PLENTY FREE PARKING

STORE HOURS—10 a.m. 'til 9 p.m.
Monday thru Saturday

First National Charge
30 Day Charge—
6 Month Revolving Charge



Also available at Dawahare's
WILDCAT BOOSTER TIES
 Pure Silk

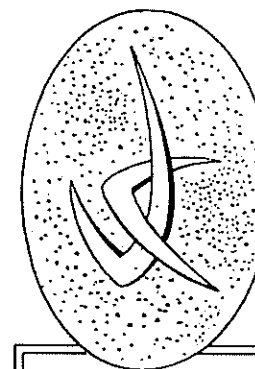
THIS IS THE PATHWAY TO THE STARS

UNIVERSITY of KENTUCKY

centennial salute

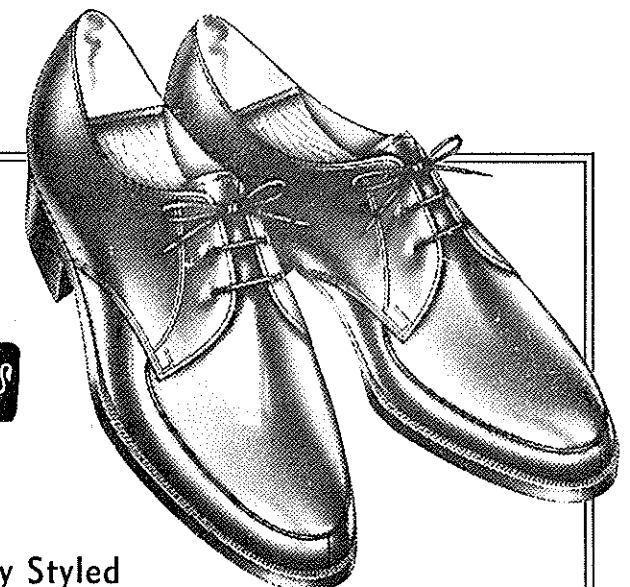
For 100 years the University of Kentucky has made vast contributions to the rapid growth and progress of the great Commonwealth of Kentucky, and we at Purcell's would like to extend our congratulations during this, their Centennial Year.

The University of Kentucky is the Alma Mater for thousands of graduates and former students who are now residing in Kentucky, and we are very proud and happy to offer this special salute for her one hundred years of dedicated service.



The "WILDCAT"

by **WINTHROP**
 SHOES FOR MEN



Smartly Styled
OXFORDS or SLIP-ONS

995
 pair

- ★ Black Leather
- ★ Men's Sizes: 6½ to 12
- ★ Wildcat Juniors: 3½ To 6
- ★ B-C-D Widths

Shoe Center
Second Floor

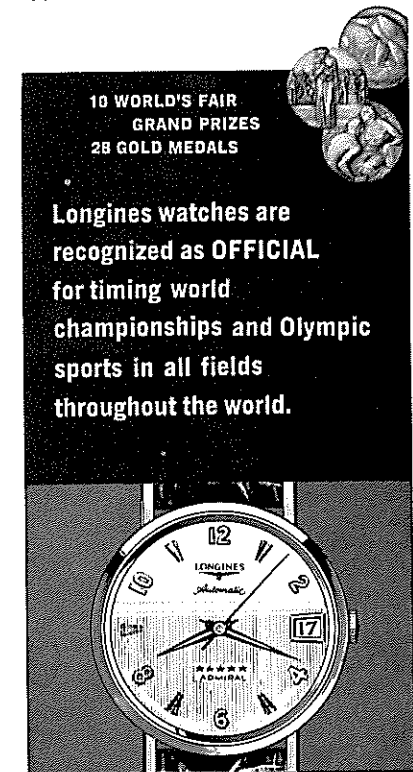
Purcell's

CENTRAL KENTUCKY'S SMARTEST STORE SINCE 1887

OFFICIAL WATCH FOR THIS GAME

★ ★ ★ ★ ★ ★ ★ ★

LONGINES
THE WORLD'S
MOST HONORED
WATCH



Longines 5-Star Admiral Automatic with Calendar, All-Proof®, sweep-second, 14K gold strap-\$185.00

The Longines Credo

Every Longines watch, whatever its type, for whatever its use, today, as for almost a century, is manufactured to be the finest of its kind and worthy in every respect to be called The World's Most Honored Watch

LONGINES-WITTMANER WATCH CO.
MONTREAL • NEW YORK • GENEVA
Maker of Watches of the Highest Character Since 1867

OFFICIAL UK FOOTBALL PROGRAM

CONTENTS

	Page
Game Story	5
Governor Breathitt	6
Physical Fitness	8
President Oswald	9
Athletics At Kentucky	11
Athletics Director Shively	12
Varsity Schedule	14
Kentucky Player Pictures	15, 22, 26, 30, 34, 38, 44
Head Coach Bradshaw	16
Coaching Staff	18
Florida State Player Pictures	20, 41
Songs of UK	24
Florida State Roster	28
Lineups	Center Spread
Kentucky Roster	29
Florida State Administration	33
An American Characteristic	40
What Opponents Are Doing	42
Freshman Schedule and Results	42
Meet the Kittens	43
Boosting The Wildcats	46
Cheerleaders	47
Preview of Coming Attractions	47
Band	49
Wildcat Coaches—Athletics Staff	50
U.K. Wood Center	52
Kentucky Basketball	54

OFFICIAL 1965 SOUVENIR FOOTBALL PROGRAM

Published by U.K. Athletics Association
Bernie A. Shively, Director of Athletics
Edited by Ken Kuhn
Director of Sports Information

Represented for National Advertising by
Spencer Advertising, Inc.
271 Madison Avenue, New York, N. Y.

Wildcat Gridiron News

KENTUCKY vs. FLORIDA STATE

Kentucky 6, Florida State 48.
That's where tonight's battle of Seminoles and Wildcats begins. That was the almost unbelievable outcome of the fourth meeting in a young series which took place in Tallahassee one year ago. The Wildcats, like elephants, sport long memories and the 1964 score will be uppermost in mind as they take the field tonight in search of revenge over FSU and a new lease on life—national-rating-wise.

Ironically, the game shapes up with a strange parallel. Kentucky is faced with the assignment of gaining revenge of its own in the manner that surprisingly-potent Auburn did last week. In a turnabout from the Wildcats' feat of spoiling their national image in 1964 with a 20-0 upset, the Plainsmen slapped Kentucky with a 23-18 squeaker decision at Auburn one week ago.

The Wildcats (2-1) can recomp a large measure of lost prestige, if not their exact sixth place ranking in the national polls, by polishing off the tricky Seminoles (1-1) in this grudge match on Stoll Field tonight marking UK's second venture outside the Southeastern Conference.

A year ago, fat and sassy Kentucky ran into an ambush in Seminole country. Young and eager Florida State was in no mood to respect UK's perfect, 3-0 record (a win over Detroit and back-to-back upsets of Ole Miss and Auburn that rocked the grid world). With much aid from the excellent combo of Steve Tensi to Fred Biletnikoff and other underrated hands, the Seminoles rolled to three touchdowns in the opening quarter. Kentucky never recovered its balance and the resulting setback proved the worst endured by the UKats in 20 years.

Coach Charlie Bradshaw's never-say-die warriors, on the strength of the way they battled back heroically against vengeful Auburn, likely will rate the nod as a slight favorite over the troubled Seminoles.

SEIPLE SEES DAYLIGHT—Kentucky's "man of the hour," tailback Larry Seiple (32), finds running room through the Ole Miss defense during a critical stage of the thrill-packed battle on Stoll Field two weeks ago. This run was typical of the red-haired junior's ambling that netted 159 yards for the Wildcat cause in a 16-7 victory featured by his production of two touchdowns. On this jaunt, Seiple eludes would-be Mississippi tacklers Rocky Fleming (81) and Tommy Luke (35).

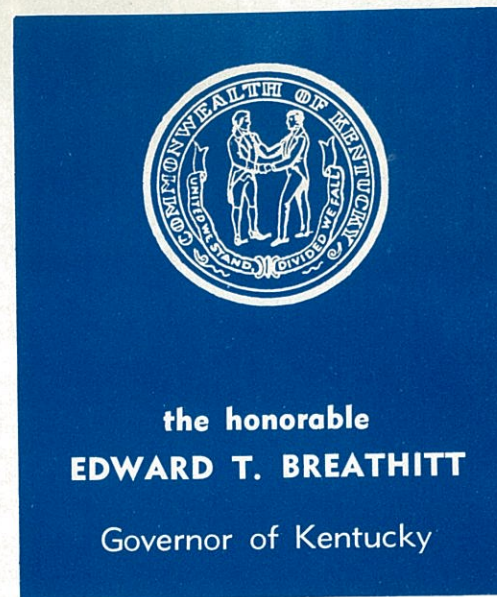


Just as likely, however, the experts are underselling ambitious Florida State and overemphasizing the UK revenge motive. Even without the services of the main standouts who engineered the '64 shellacking, the Seminoles are classed as dangerous to deal with. Still around to give the UK offense trouble are such key operatives as middle guard Jack Shinholser, linebacker Bill McDowell and tackle Frank Pennie. Offensive threats are halfback Phil Spooner and quarterback Ed Pritchett, both seniors. For its part, Kentucky may be forced to stifle a measure of its burning desire to go all out for revenge. On tap following the Seminoles is powerful Louisiana State, another Tiger band and one thirsting for victories that will get them back into SEC contention.

While the game tonight will not count in the league standings, Kentucky can be counted on to demonstrate its right to be regarded as a continuing contender. The Wildcats were storming back from the brink of a Florida State-type humiliation last week against determined Auburn. Down by 17-0 in the third period, UK rode the strong right arm of Rick Norton to three long touchdowns. Only missed gambles (necessitated by an Auburn field goal in the second quarter) for two-point conversions cost them come-from-behind victory.

UK will be gunning for its third win in a challenging season. Prior to the Auburn setback, the 'Cats trimmed Missouri, 7-0, and performed flawlessly to down Ole Miss, 16-7. Florida State dropped a narrow, 7-3 decision to TCU in its opener and last week nudged Baylor, 9-7 to get into the win column.

The Kentucky-Florida State series, begun in 1960 at Tallahassee with a 23-0 Wildcat win, stands 2-1-1 in favor of the Blue Grass eleven. The upset last year gave FSU its only points in the four meetings. The tie came as the result of a scoreless standoff in Lexington in 1962.



Alumnus Governor Boosts Wildcat Gridders . . .

Edward T. Breathitt, at 40, is the nation's second youngest Governor. A Hopkinsville attorney, he continues a family record of distinguished public service that dates back to pre-Civil War days when an ancestor, John Breathitt, served as the state's chief executive.

Governor Breathitt, who in his capacity as Governor, also serves as chairman of the University of Kentucky Board of Trustees, began his career as a lawyer and public servant immediately upon graduation from the University of Kentucky College of Law in 1950. At the age of 27, he was elected to the State House of Representatives. Later he was State Personnel Commissioner and a member of the State Public Service Commission before being elected to Kentucky's highest office in 1963.

While a student at the University of Kentucky, where he also obtained a degree in Commerce, he proved his capacity for leadership. While there, he was president of Lamp and Cross, senior men's honorary, and ODK, men's leadership and scholarship honorary fraternity.

His distinguished background also includes three years in the Army Air Force during World War II and the state presidency of the Young Democratic Clubs of Kentucky.

A native of Hopkinsville, he is married to the former Frances Holleman of Mayfield. They have four children—Mary Fran, who is 15; Linda, 14; Susan, 8; and Edward III, who is 6.

Governor Breathitt continues to be one of the most enthusiastic boosters of his Alma Mater and its football team.



PENNY EDWARDS—“MISS TIPARILLO”

What does she mean “cigars...cigarettes...Tiparillos”?

You'll be hearing that chant more and more—now that Tiparillos have arrived. And arrived they have. In all the right places. With all the right people.

The new Tiparillo has a neat, trim shape. It looks young and debonair. And its pearly, pliable tip pays more than lip service to your smoking pleasure.

And never before such mildness! The most careful blending of choicest imported tobaccos has seen to that. So, too, has the exclusive, veinless Ultra Cigar Wrapper* that burns so evenly and smoothly it insures complete mildness.

You can even see the mildness. The

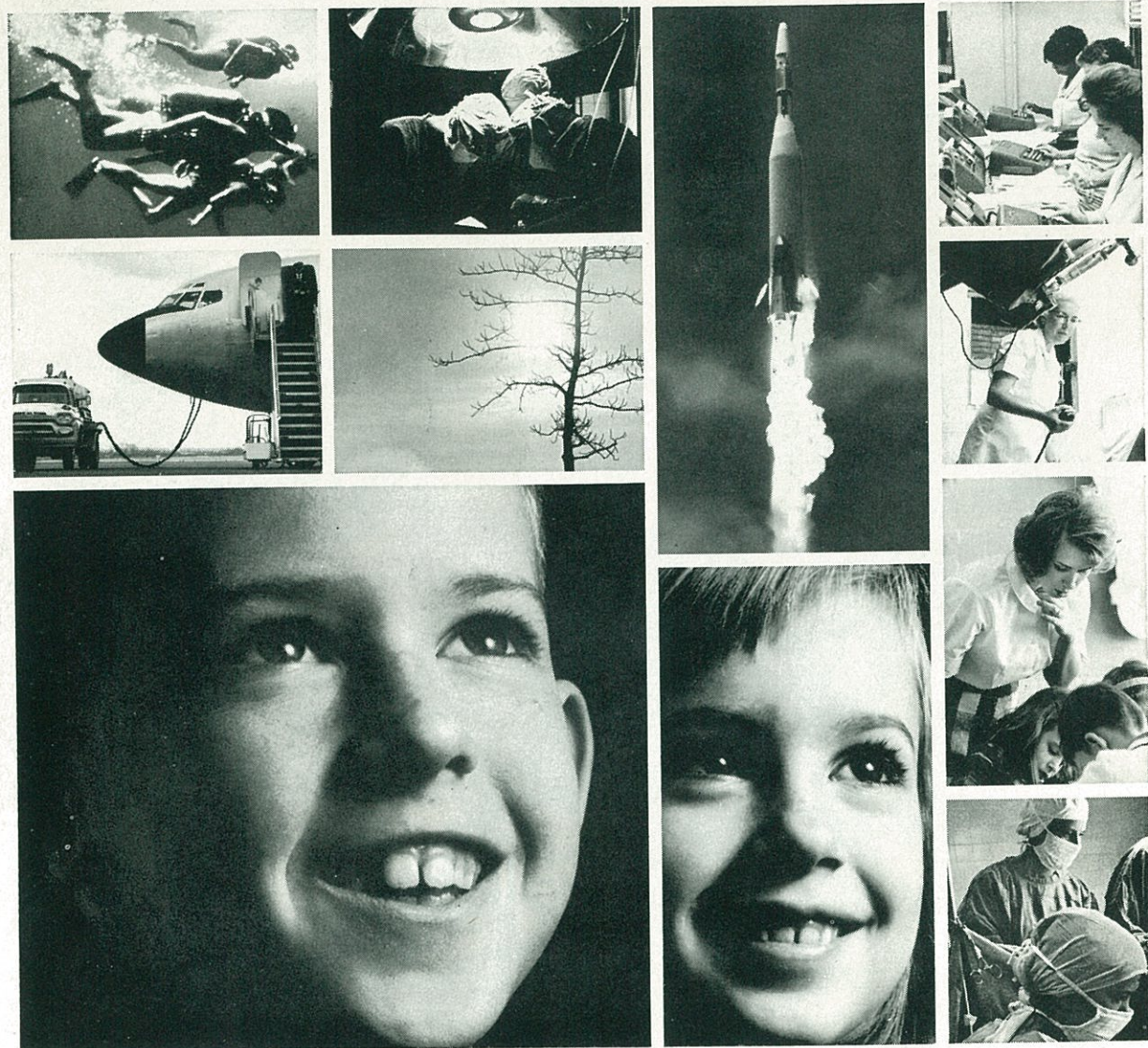
surprisingly whiter ash is visible evidence. Smoker's proof. Here is flavor you don't have to inhale to enjoy.

“Cigars . . . cigarettes . . . ?” Who knows, maybe someday it will be just “Tiparillos!”

Why don't you ask for one today?

*T.M. GENERAL CIGAR CO.

Tiparillos are on sale at this stadium.



Our children pioneers?

Take a thoughtful look into the future. This much is clear: Whether today's youngster moves out onto the frontiers of space or the ocean depths; whether he helps push to new horizons of medicine, law, farming or international relations, the future belongs to the fit. The future belongs to those vigorous enough to live it, and shape it!

Medical authorities put it this way: "It is a tragic waste to highly educate the minds of our children, and neglect the physical conditioning that can help them participate in the future to the full extent of their abilities."

Warnings like this have sparked

action. The President's Council on Physical Fitness has developed programs that any school can initiate, regardless of limitations in facilities or budget. We're making progress. Yet even today, less than half our school children get the daily minimum of vigorous exercise they need for adequate physical development.

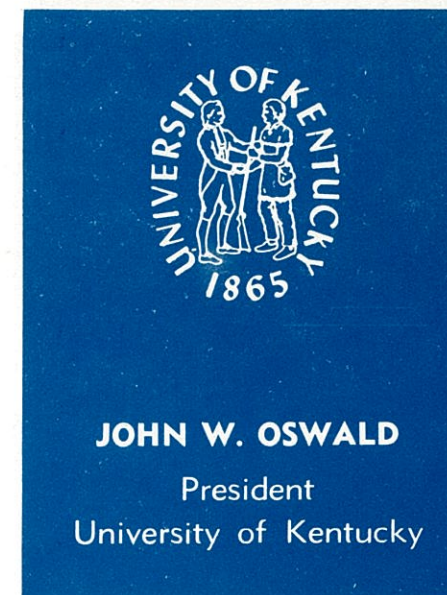
How about **your** schools? Are they providing for physical fitness as part of the sound education your children need to carve out their share of the future? You parents can help see that they do. Write: The President's Council on Physical Fitness, Washington, D.C., for information.



**PRESIDENT'S
COUNCIL ON
PHYSICAL
FITNESS**



Published as a public service in cooperation with The Advertising Council



University's President Knows Value of An Athletic Program . . .

If ever an educational administrator was well-equipped to guide one of the nation's foremost and growing universities, that person is Dr. John Wieland Oswald.

The background of this 48-year-old educator, who took a firm grip on the presidential reins of Kentucky's state university two years ago, almost uniquely qualifies him for leadership of an outstanding institution now heading toward its second century.

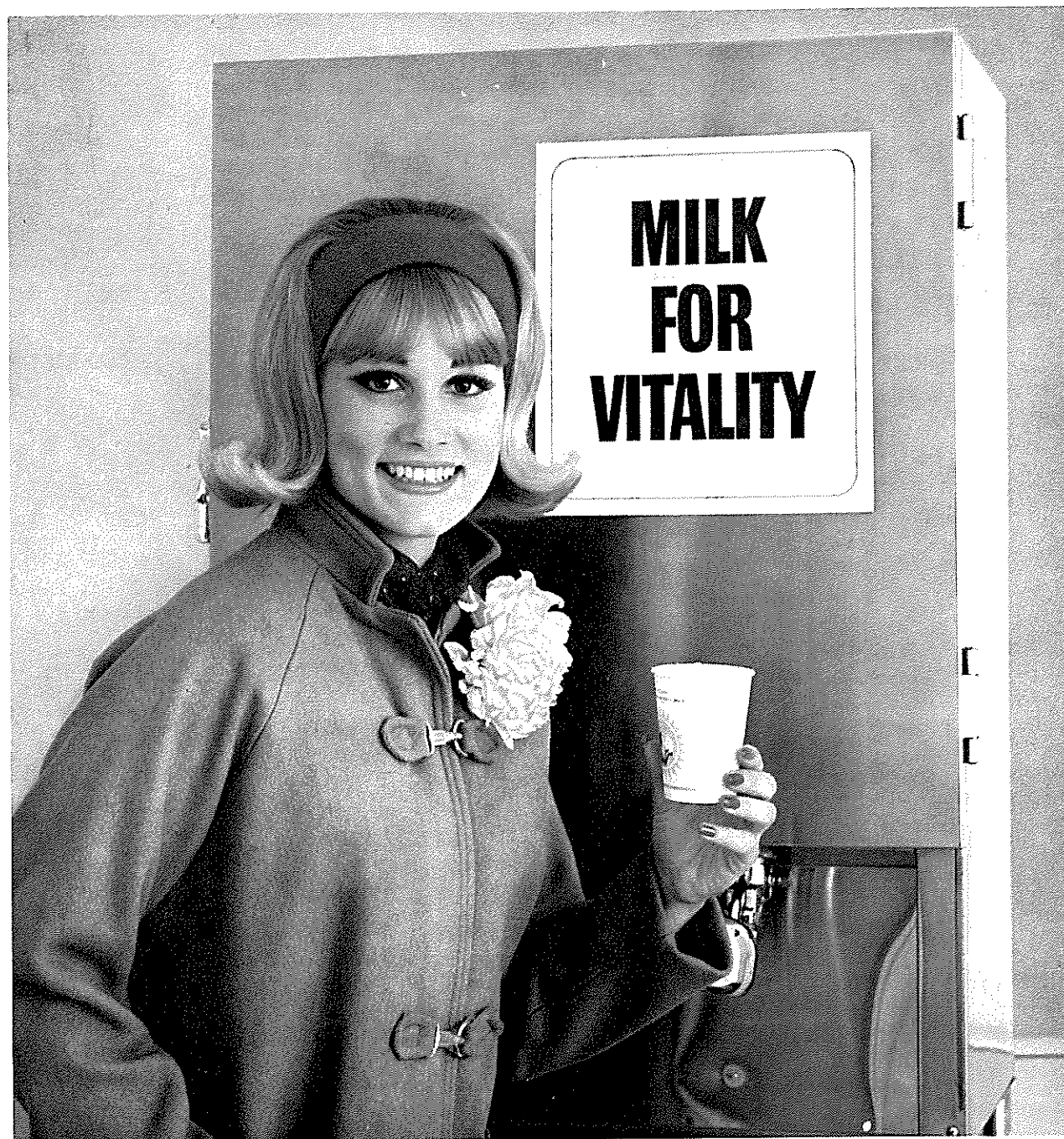
Dr. Oswald not only is well-steeped in the educational field—having been a Phi Beta Kappa during undergraduate days at De Pauw University and advancing through the ranks to a highly-respected administrative position at University of California—but also values an unusual athletic experience that now proves most helpful. During his collegiate career at De Pauw, he played guard on the football team for three years and later, at California's Davis campus, tried his hand at coaching (by avocation) for a brief period.

Thus, well acquainted with athletics at all levels, the University of Kentucky's sixth chief executive is a staunch supporter of the school's athletic teams and advocates a fair-minded approach that lends proper emphasis to the athletic program. UK athletics flourish within the proper perspective as an equal part of the total university.

Dr. Oswald moved to UK at the start of the 1963-64 school year from a position as vice president for administration at the University of California at Barkley, the institution from which he gained a Ph.D. degree in plant pathology in 1942.

The Minnesota native served during World War II in the Navy, taking part in 50 missions in the Mediterranean as a PT boat skipper and later as a divisional commander.

In 1962, he was named to the Sports Illustrated Silver Anniversary All-America team, composed of former football players who have achieved prominence in their chosen professions.



HALF TIME-ANYTIME-MAKE IT MILK!

Busy football weekends call for extra energy. And that calls for a refreshing glass of milk. Milk is nature's vitality drink... that helps you stay in peak condition, sees you through the busiest fall days.

Half time; snacktime, anytime—when you take a break, make it milk. Keep up with the fun with milk's vitality!



a message from dairy farmer members of
american dairy association

— Athletics at Kentucky —



Overall policy supervision of one of the nation's top athletic programs is vested in the Athletic Association Board of Directors pictured above. Surrounding Dr. John Oswald (seated center), University President and chairman of the board, are, from the left, Douglas Parrish, Dr. Ralph Angelucci, Athletic Director Bernie Shively and Dr. Douglas Schwartz. Standing (left to right) are directors Dr. Aubrey Brown, Winston Miller, Dr. A. D. Kirwan, Prof. William Tollman, Vice President Robert Johnson, Floyd Wright, Dr. D. V. Terrell and James B. Allen. Absent when this picture was taken were Dr. W. L. Matthews, Dr. Thomas Clark, Dr. Lyman Ginger, Dr. Loren Carlson, and Dr. John Douglas.

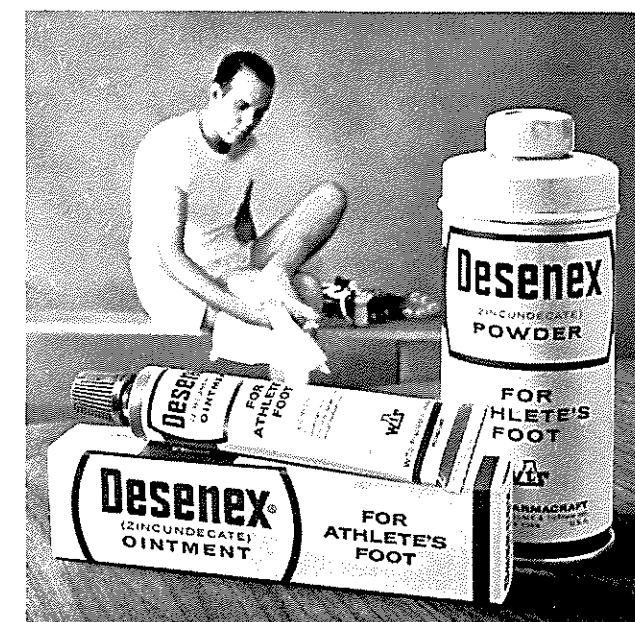
How do athletes handle athlete's foot?

They follow their trainers' advice and use Desenex[®] for prevention and treatment

It's excellent protection against itching, cracking and irritation of Athlete's Foot. Helps prevent spreading, too. No wonder Desenex is the Athlete's Foot treatment most widely used by college football trainers.

We know you don't have a trainer to keep you on your toes. But that's no reason to suffer from Athlete's Foot. Start using Desenex yourself. Avoid Athlete's Foot problems with Desenex Powder or new, cooling Desenex Aerosol—and for treatment use Desenex Ointment. Desenex is guaranteed to work or your money back.

WTS-PHARMACRAFT, Rochester, N.Y. 14603





BERNIE A. SHIVELY

Director of Athletics
University of Kentucky

Bernie Shively — A Man Of Many Talents . . .

University of Kentucky is able to boast proudly of having one of the nation's most harmonious and well-balanced athletic programs—September to June activity in 10 different sports featuring more than 500 athletes in action before audiences that exceed a half million persons and involving use of facilities valued at several million dollars.

Supervising the steady growth and balanced development of one of the top intercollegiate athletic programs in the country today is a tall, silver-haired, former gridiron All-American known familiarly to thousands of UK sport fans as "Shive."

He is, by name, Bernie A. Shively. In his position as Kentucky's Director of Athletics since 1938, this gentleman of many talents has been largely responsible for guiding the University to increasing prominence in the athletic world.

In addition to a fair-minded policy direction that has resulted in "big time" stature for the school's athletic teams, Shively during his 27-year tenure has directly supervised major expansions in the physical plant designed to keep

pace with the growing patronage by a sports-minded public. Among these have been the doubling of the seating capacity of Stoll Field, construction of a four-million-dollar coliseum and preparation of a spacious sports center to provide top facilities for spring sports teams and football practice.

Shively's first claim to fame came during undergraduate days at University of Illinois as he achieved All-America recognition as a guard on the 1926 grid team made famous by teammate Red Grange. The future UK Athletic Director also won the Big 10 heavyweight wrestling title and lettered in track.

Following graduation in 1927, he accepted a position at UK as a line coach in football to start a long-time association. In the days since, he has served as head football coach for one year (1945), track and baseball coach and headed the physical education department.

Shively also has found time to be active in civic and alumni affairs and has attained national prominence for his chairmanship of the NCAA's University Division Basketball Tournament Committee.

He gives 'first string' service . . .

THE FRIENDLY MAN WITH THE BETTER BRAND --

your Good Neighbor Ashland Oil Dealer. Always accommodating. Willing to take time to perform whatever special service you may need. Willing to give more of himself—and his services—because he takes pleasure in pleasing you. *This is the friendly man of Ashland Oil.*

Meet him. And try his top quality Ashland Oil products. You'll see why more and more Kentuckians are driving in at the Ashland Oil Sign . . . whenever they need services or products.



ASHLAND OIL & REFINING COMPANY
Ashland, Kentucky

Now In Lexington...

ONE OF THE SOUTH'S *Finest* Motels



110 Luxurious Rooms • Cocktail Lounge
Banquet & Meeting Rooms • Two Dining Rooms
Swimming Pool & Patio • Dancing Nightly



Imperial House Motel

U.S. 68 Waller Ave. at Harrodsburg Road
Phone 255-2540 for Reservations



1965 KENTUCKY FOOTBALL SCHEDULE AND RESULTS

Date	Opponent	Site	UK	Opp.	Date	Opponent	Site
Sept. 18	Missouri (A)	7	0	Oct. 23	*Georgia	Lexington
Sept. 25	*Mississippi (H)	16	7	Oct. 30	West Virginia (HC)	Lexington
Oct. 2	Auburn (A)	18	23	Nov. 6	Vanderbilt	Nashville
Oct. 9	*Florida State	Lexington			Nov. 13	*Houston	Houston
Oct. 16	*Louisiana State	Baton Rouge			Nov. 20	Tennessee (K-Day)	Lexington

* Night game

SOUTHLAND SPORT SHOP

Distributors of

Riddell, Spanjian, Hyde, Rawlings, Wilson, and Spalding Sporting Goods
Adidas Track Shoes *Cramer Products*

Plenty of Free Parking Space

Gene Stokley — In The Southland Shopping Center — Dick Wallace
P.O. BOX 8251 PHONE 277-3977

Lexington's Largest and Finest!



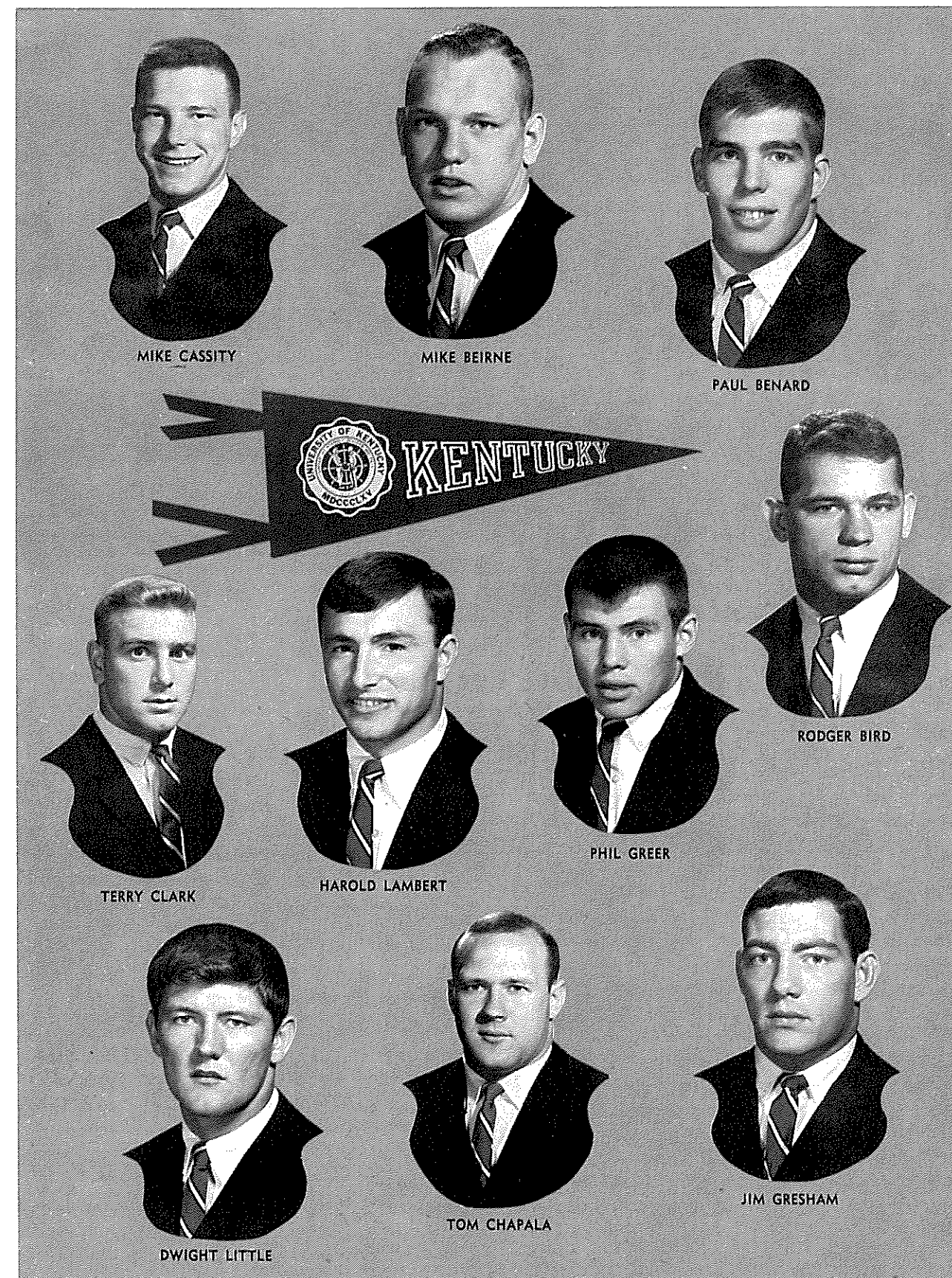
Kentucky's Convention
Headquarters
120 E. Main St.
Downtown Lexington, Ky.
Phone 255-3210

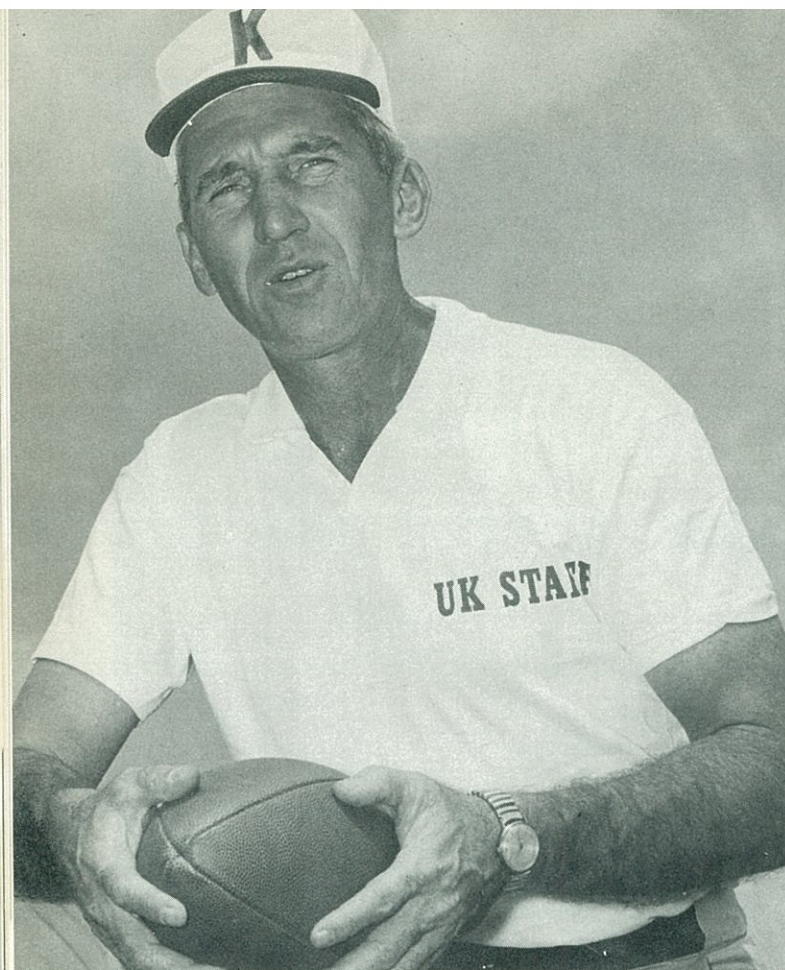
FEATURING

Le Deauville
RESTAURANT
and LOUNGE

- FREE PARKING
- BEVERAGE & FREE ICE MACHINE
ON EACH GUEST FLOOR
- 100% AIR CONDITIONED
- TV IN ALL ROOMS
- ALL ROOMS REMODELED
AND REDECORATED
- COFFEE SHOP AND DINING ROOM
WITH ECONOMICAL PRICES

PHOENIX HOTEL





CHARLIE BRADSHAW
Head Football Coach
University of Kentucky

Wildcat Coach Has Qualities For Success . . .

After three hectic seasons of rebuilding Kentucky's shattered gridiron foundation, Head Coach Charlie Bradshaw this season stands on the threshold of success—and, perhaps even more importantly, vindication.

With success should come a vote of confidence for the youthful former Wildcat who has unselfishly given of himself totally in the great effort to put his alma mater back on the football map where it last was located in the bowl era of the fifties.

Although the victim of undeserved criticism on occasion by the uninformed, Charlie Bradshaw has worked dilligently and confidently with a positive approach that convinced players, school administrators and other close followers that a winning team could be fashioned only through dedication to hard work. He preached a "gospel" that success in any endeavor—football or business—does not come easy or just by wishing. And he set himself up as an example, never demanding more of anyone than of himself.

The 40-year-old Alabama native believes in the direct way of doing things, emphasizing what

it takes to win rather than the mistakes that can cost victory. He is the personification of qualities of inner fortitude, quiet demeanor, serious determination, ability, confidence and integrity.

Bradshaw's football philosophy was influenced by nine years in an assistant coach capacity at UK and Alabama. He began playing football at Sidney Lanier High in hometown Montgomery, Ala., and entered UK on a grid grant in 1942. He saw no action that year and withdrew to enter the Marine Corps. Returning in 1946, he became a regular Wildcat end.

After being ruled ineligible by the SEC Commissioner in 1949, Bradshaw began his coaching career. He was a student assistant under UK Coach Paul Bryant that season and then returned to Lanier in 1950. In 1954, he was at Kentucky again as an aide on Blanton Collier's staff and stayed until 1959 when he took a position on the Bryant staff at Alabama.

Bradshaw finally "came back home" once more when he was hired as Head Football Coach on Jan. 10, 1962.

WLEX TV
COLORFUL 18



**UofK
FOOTBALL**

Sun. at 10 PM

with Head Coach Bradshaw

Showing films of each game.

Sponsored by MR. WIGGS DISCOUNT DEPARTMENT STORE

Plus Daily Sports Reports

SATURDAY AFTERNOONS

**NCAA COLLEGE
FOOTBALL**

9 Games in Color

SUNDAY AFTERNOONS

**NFL
FOOTBALL**

Featuring the Cleveland Browns
3 Games in Color

MR. WIGGS
DISCOUNT DEPARTMENT STORE



ON NEW CIRCLE ROAD BETWEEN RICHMOND ROAD AND WINCHESTER ROAD. NEAR LIBERTY PIKE

Presents

KENTUCKY FOOTBALL

With

HEAD COACH CHARLIE BRADSHAW

Every Sunday from 10:00 to 11:00 p.m. on Channel 18



Kneeling (left to right): Offense Coach Homer Rice, Head Coach Charlie Bradshaw, and Defense Coach Bob Ford. Standing: Trainer Ralph Berlin, Ralph Hawkins, Joe Moss, Charley Pell, George Boone, Leeman Bennett, graduate assistant Wally English, Ray Callahan, George Sengel, student assistant Phil Pickett, and Phil Owen.

Wildcat Coaching Staff

University of Kentucky's coaching staff represents a composite picture of youth plus well-rounded coaching experience. Statistics on Coach Bradshaw's ten aides provide an average look of only 32 years of age but a background of experience averaging eight and one-half years in the profession.

HOMER RICE (Centre '51)—Entered collegiate field in 1962 after nine championship seasons and seven undefeated campaigns during 11 years in Kentucky-Tennessee high schools . . . Aggregate record 101-9-7 for period . . . Won seven "Coach of the Year" awards . . . Little RII-America QB at Centre . . . The 38-year-old native of Ft. Thomas is charged with making UK's offensive operations go.

BOB FORD (Memphis State '55)—A youthful veteran of coaching experience at four major southern schools (Memphis State, Georgia, Alabama and Kentucky), Ford is chief aide in charge of defensive operations for the Wildcats . . . During service days, he helped coach an Army team in Korea to the Far East championship.

GEORGE SENDEL (Kentucky '48)—Louisvillian Sengel's career as a Wildcat wingman overlapped that of Coach Bradshaw by a couple of years and his former teammate asked Sengel to stay on the staff he had joined in 1961 . . . The 43-year-old Air Force vet had nine years of coaching in schoolboy ranks in Florida and Kentucky prior to becoming UK end coach.

GEORGE BOONE (Kentucky '61)—One of the most determined players ever at UK, Boone started out on his own but soon won scholarship aid and became outstanding tackle . . . The 27-year-old Louisvillian stayed on staff in part-time role after completing eligibility in 1960, became regular coach following year and retained by Bradshaw as a line assistant.

RALPH HAWKINS (Maryland '57)—One of the most valuable coaches on the staff, Hawkins has background of collegiate and professional play plus coaching experience in both schoolboy and college ranks . . . The 30-year-old bachelor was at Maryland before joining New York Titans . . . Coached high school ball in D.C. and served as backfield assistant at SMU.

RAY CALLAHAN (Kentucky '56)—No stranger in state grid circles, Callahan is a former Kentucky back and guard from Lebanon who enjoyed a highly-successful coaching career in prep ranks following graduation . . . Prior to joining Bradshaw staff in 1963, he assisted at Versailles and Manual High and guided Danville to state AA title.

PHIL OWEN (Georgetown '53)—Like five other current Wildcat assistants, Owen entered collegiate coaching ranks by making Kentucky his first stop . . . Joined Bradshaw staff in 1964 after successful, nine-year tenure at Mt. Sterling High . . . He directs talented frosh team this season.

LEEMAN BENNETT (Kentucky '61)—Back on the Bradshaw staff after two-year hitch of Army duty, Bennett is a former Wildcat quarterback and a promising young coach . . . Started as graduate assistant on Blanton Collier's UK staff in 1961, made full-fledged aide by Bradshaw in 1962.

CHARLEY PELL (Alabama '63)—Entering his first season on the Kentucky staff, Pell enjoys the confidence of his new boss stemming from a three-year player and coach relationship while both were at Alabama . . . Works with the defensive interior line.

JOE MOSS (Virginia Tech '62)—Newest aide on Coach Bradshaw's staff, Moss reported from football-famed Staunton Military Academy where he served for three seasons . . . He was an All-Southern tackle at Virginia Tech under ex-Wildcat Jerry Claiborne.

RALPH BERLIN (Iowa State '62)—This 29-year-old Marine Corps veteran serves as head football trainer for the Wildcats . . . He's a veteran of five years in training field.

Follow the WILDCATS

IN '65

STANDARD
OIL

RADIO

NETWORK

WVLK

Lexington

WCMI

Ashland

WBGN

Bwl'g Green

WCTT

Corbin

WINN

Louisville

WIEL

E. Town

WFKY

Frankfort

WHIR

Danville

WOMI

Owensboro

WHOP

Hpk'ville

WKIC

Hazard

WFTM

Maysville

WDXR

Paducah

WMLF

Pineville

WPKE

Pikeville


WKAY

Glasgow




YOUNG HO!
GO CHEVRON!

WVLK — The Originating STATION for all
U.K. FOOTBALL on the Standard Oil Sports Network



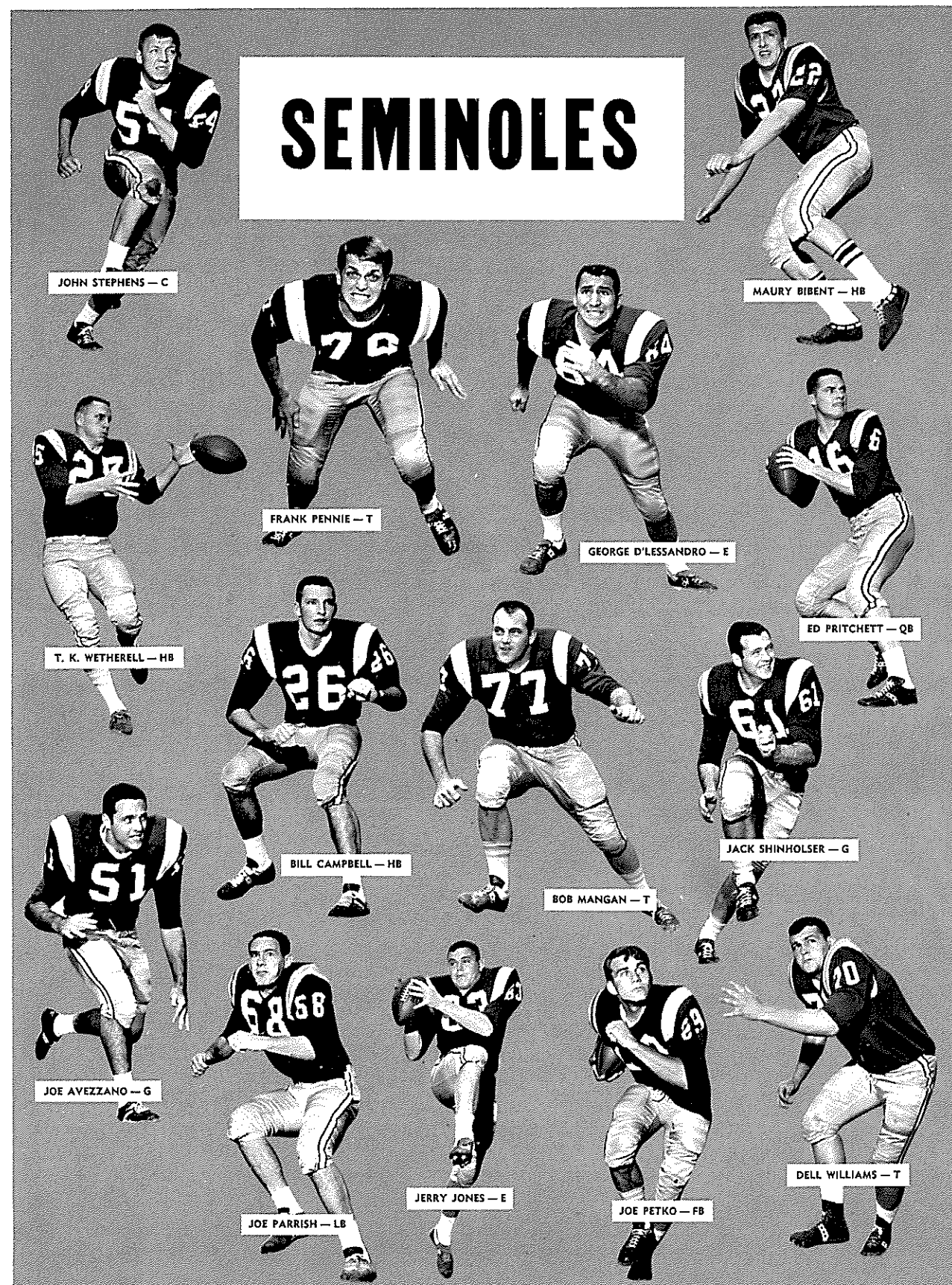
with
CLAUDE SULLIVAN



Play by Play at
Home and Away

WVLK — CBS



DIAL 590
FOR 24 HOUR A DAY RADIO



Dinkler Campbell House Inn

Nothing matches the Dinkler Campbell House Inn for fun or food. The superb cuisine of the Cotillion Room (winner of the coveted Holiday Magazine excellence award for several years) will make your stay a memorable experience. Here you will find a happy blending of traditional Kentucky hospitality and every modern convenience; luxurious suites and rooms, beautiful Dining Room, Cocktail Lounge with sparkling entertainment, Exercise and Massage Room, Gift Shop, Dress Shop, Barber Shop and Beauty Salon. Adjacent to Par Three Golf Course and Driving Range. May we have the pleasure of serving you soon?

Harrodsburg Road • Lexington, Kentucky
Phone 254-8490
Paul Cordet • General Manager

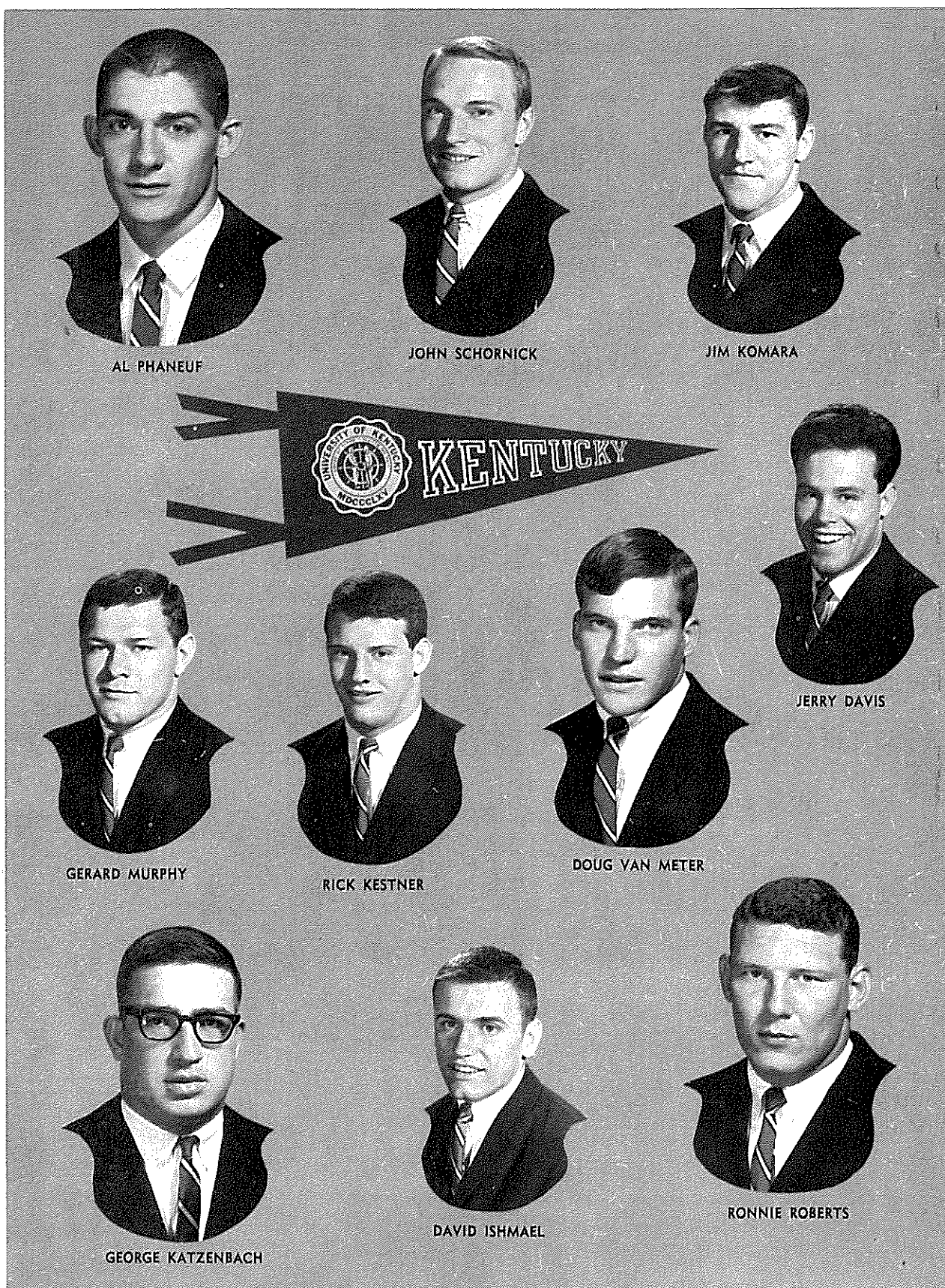
 DINKLER HOTEL CORPORATION • Carling Dinkler, Jr., President
A wholly-owned subsidiary of Transcontinental Investing Corporation 

DeBoor

Laundry Dry Cleaning
Rug Cleaning Storage

★ ★ ★ ★ ★ ★ ★ ★ ★ ★
KEEP FREEDOM
IN YOUR FUTURE
WITH
U. S. SAVINGS BONDS
★ ★ ★ ★ ★ ★ ★ ★ ★ ★





AL PHANEUF

JOHN SCHORNICK

JIM KOMARA

JERRY DAVIS

DOUG VAN METER

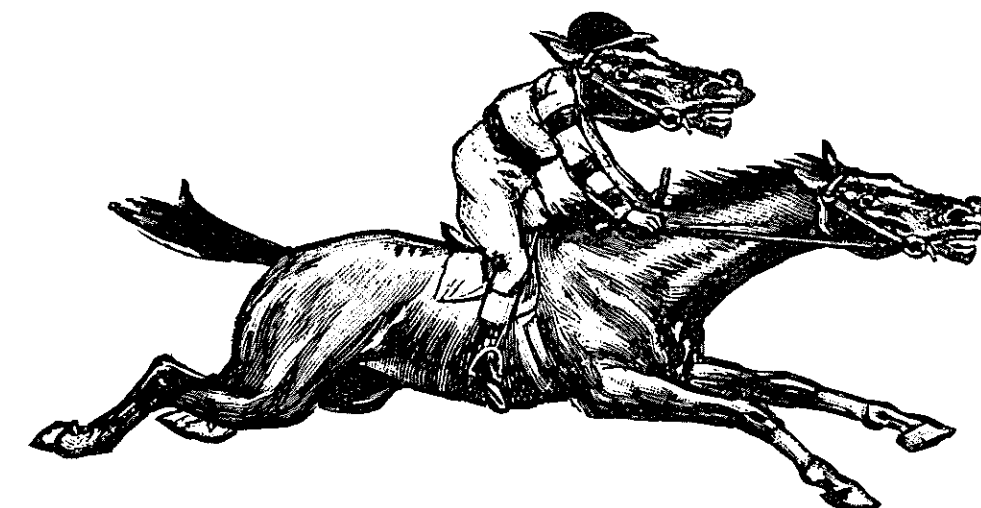
RICK KESTNER

GERARD MURPHY

GEORGE KATZENBACH

DAVID ISHMAEL

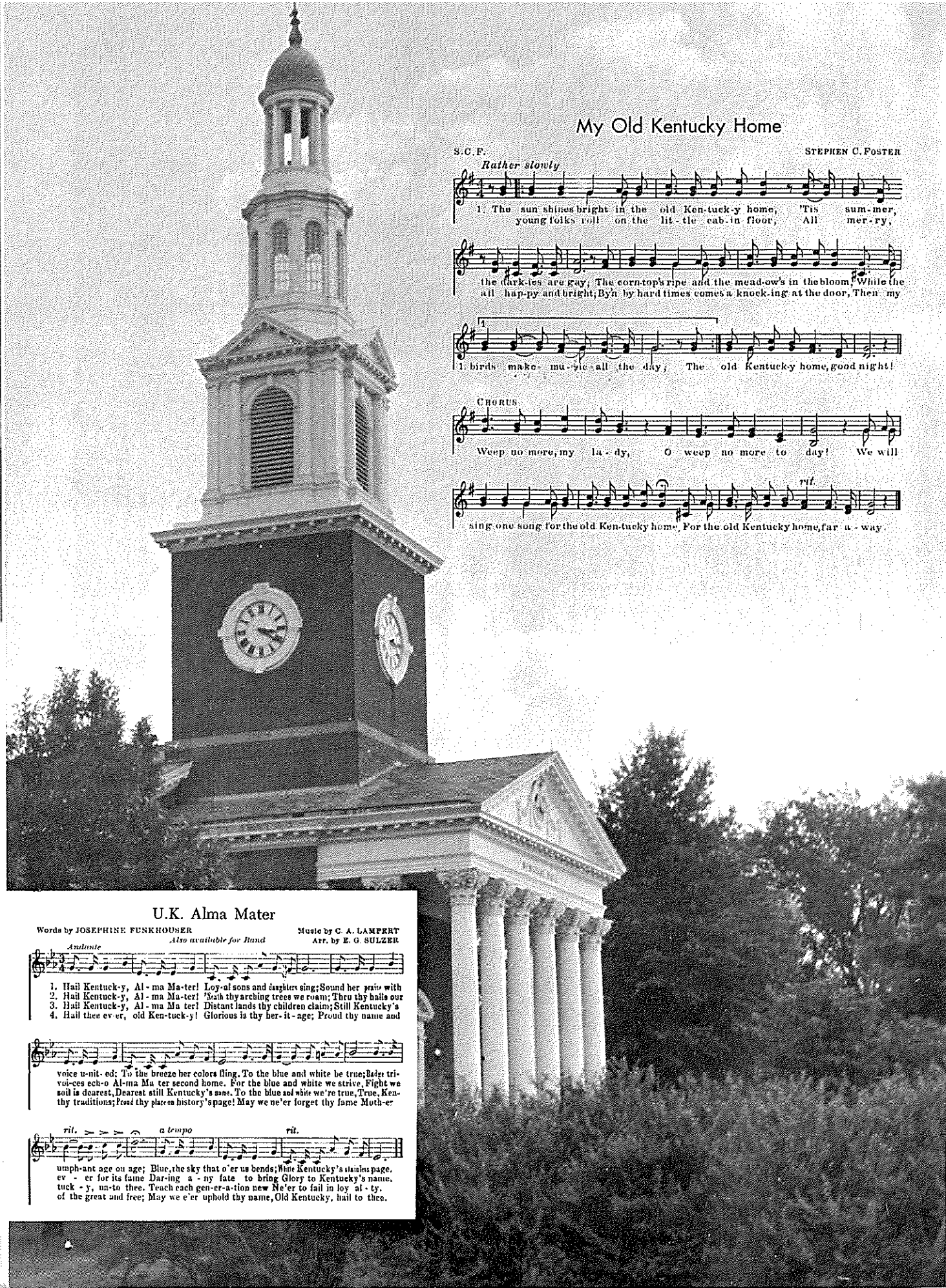
RONNIE ROBERTS



'H-A-S has really **EXPERT** Sports Coverage—Every Season!

- **WHAS Sports Director Cawood Ledford calls the entire U. of K. Football Schedule**
Co-sponsored by Your Friendly SINCLAIR DEALER, and EAST KENTUCKY Rural Electric Co-operatives.
- **"Football Warm-up"**
Ten minutes before game time, SUMMERS-HERRMANN Ford of Louisville presents Cawood Ledford with opponents' records, histories and rivalries.
- **S.E.C. Football**
11 major Southeastern Conference games.
- **Thoroughbred Racing**
The Feature Race of the day every day the spring and fall meetings at Keeneland and Churchill Downs . . . including the Kentucky Derby.
- **U. of K. Basketball**
Play-by-play of more than 70 college and high school games, including N.C.A.A. tournaments, the K.H.S.B.T. and every U. of K. game.
- **All Year—Daily Sports Programs 7 Times Daily**
Scores and Special Events reported throughout the day as they happen.

 **HAS 840 Radio**
HAPPINESS IS A DAY WITH WHAS RADIO



My Old Kentucky Home

S.C.F.

STEPHEN C. FOSTER

Rather slowly

1. The sun shines bright in the old Ken-tuck-y home, 'Tis sum-mer,
young folks roll on the lit-tle cab-in floor, All mer-ry,

the dark-ies are gay, The corn-top's ripe and the mead-ow's in the bloom, While the
all hap-py and bright, By'n by hard times comes a knock-ing at the door, Then my

1. birds make mu-sic all the day, The old Kentucky home, good night!

CHORUS

Weep no more, my la-dy, O weep no more to day! We will

sing one song for the old Ken-tuck-y home, For the old Kentucky home, far a-way.

U.K. Alma Mater

Words by JOSEPHINE FUNKHOUSER

Music by C. A. LAMPERT

Also available for Band

Arr. by E. G. SULZER

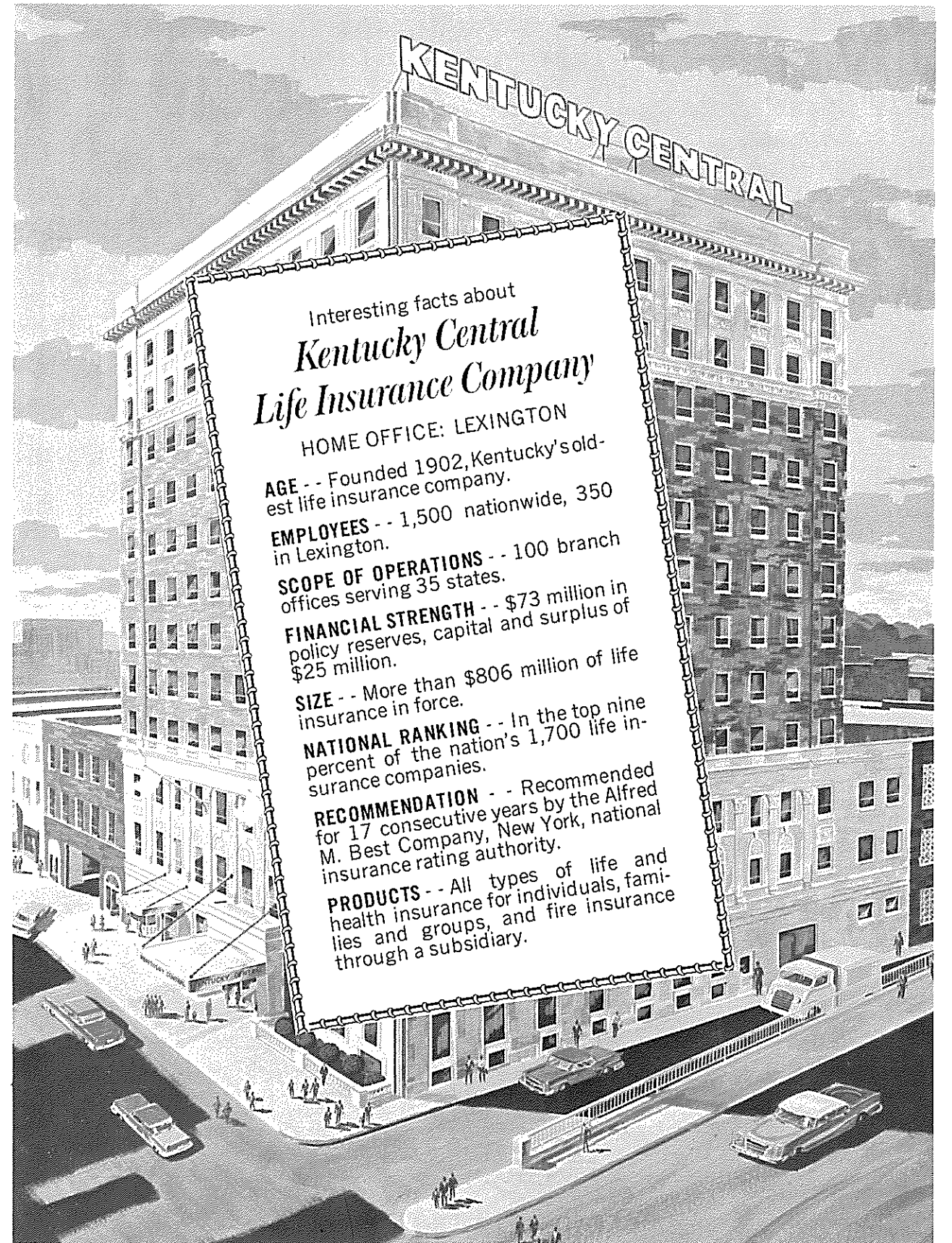
Andante

1. Hail Kentuck-y, Al-ma Ma-ter! Loy-al sons and daugh-ters sing; Sound her praise with
2. Hail Kentuck-y, Al-ma Ma-ter! 'Neath thy arching trees we roam; Thru thy halls our
3. Hail Kentuck-y, Al-ma Ma-ter! Distant lands thy children claim; Still Kentucky's
4. Hail thee ev-er, old Ken-tuck-y! Glorious is thy her-it-age; Proud thy name and

voice u-nit-ed; To the breeze her colors fling, To the blue and white be true; Bate tri-
voices ech-o Al-ma Ma-ter second home. For the blue and white we strive, Fight we
soil is dearest, Dearest still Kentucky's name. To the blue and white we're true, True, Ken-
thy traditions; Pledge thy place in history's page! May we ne'er forget thy name, Mother-

rit. *a tempo* *rit.*

trump-et and on age; Blue, the sky that o'er us bends; Here Kentucky's starry page,
ev-er for its fame; Daring a my fate, to bring glory to Kentucky's name,
tuck-y, un-to thee, Teach each gen-er-a-tion new No'er to fail in loy-al-ty,
of the great and free; May we e'er uphold thy name, Old Kentucky, hail to thee.



Interesting facts about Kentucky Central Life Insurance Company

HOME OFFICE: LEXINGTON

AGE -- Founded 1902, Kentucky's oldest life insurance company.

EMPLOYEES -- 1,500 nationwide, 350 in Lexington.

SCOPE OF OPERATIONS -- 100 branch offices serving 35 states.

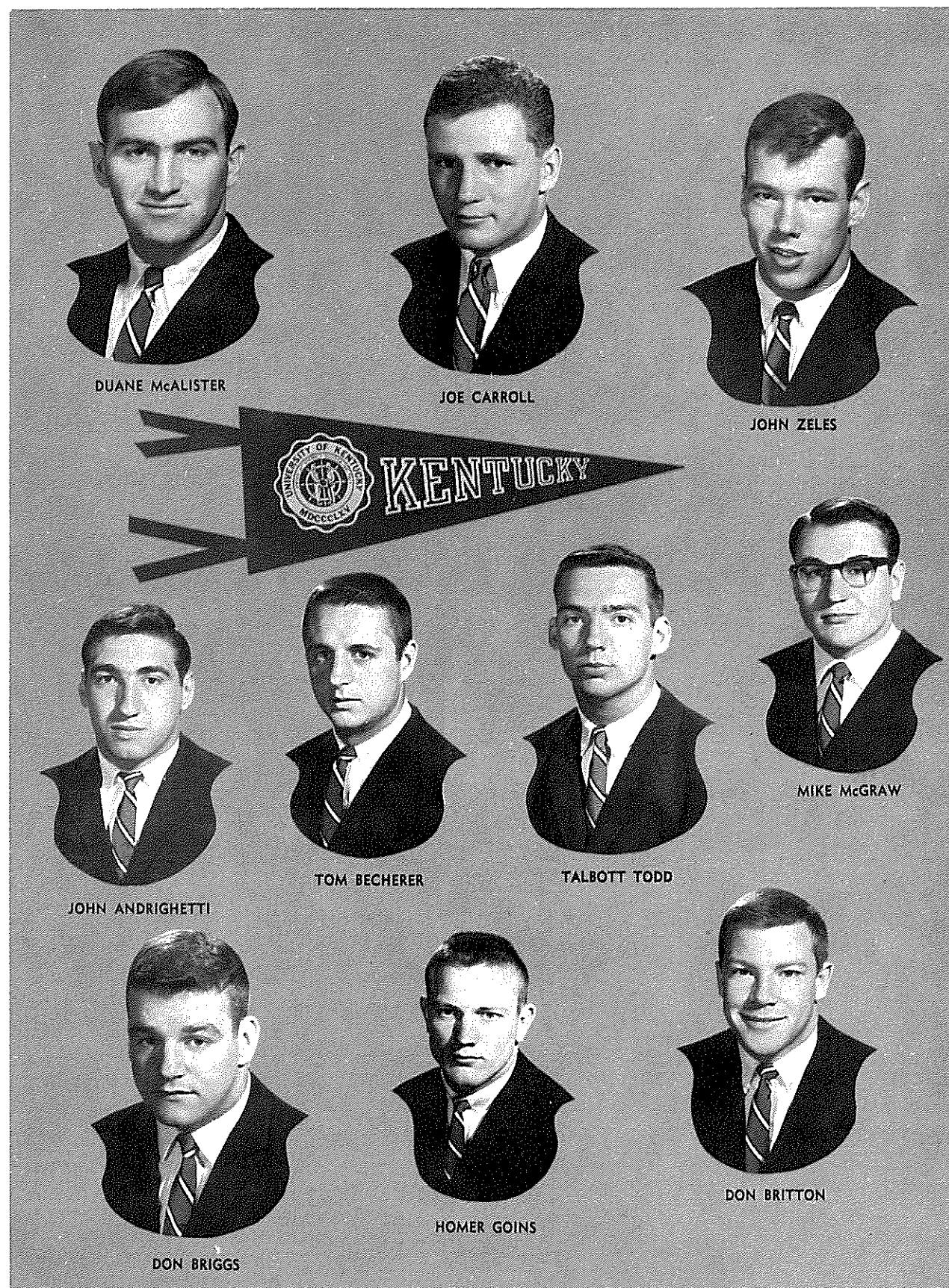
FINANCIAL STRENGTH -- \$73 million in policy reserves, capital and surplus of \$25 million.

SIZE -- More than \$806 million of life insurance in force.

NATIONAL RANKING -- In the top nine percent of the nation's 1,700 life insurance companies.

RECOMMENDATION -- Recommended for 17 consecutive years by the Alfred M. Best Company, New York, national insurance rating authority.

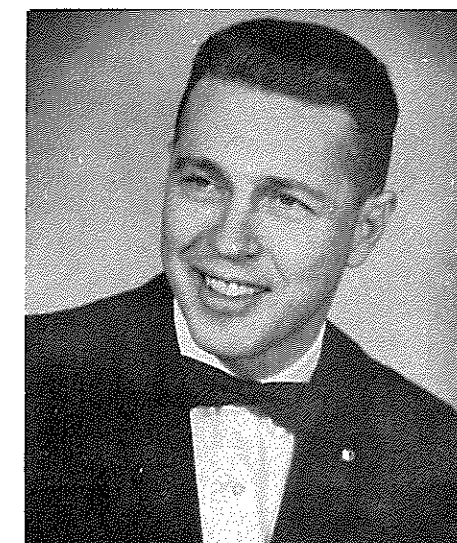
PRODUCTS -- All types of life and health insurance for individuals, families and groups, and fire insurance through a subsidiary.



WBLG QUALITY SPORTS U.K. FOOTBALL

BILL SORRELL

Play-by-Play
Announcing
of All Games



GEORGE CONLEY

Color and comment on
the broadcasts of all home games

BROADCASTS OF ALL U.K. GAMES PRESENTED BY

**IMPERIAL
SERVICE STATIONS**

**PEPSI-COLA
BOTTLING CO.**

**TRANSYLVANIA
PRINTING CO.**

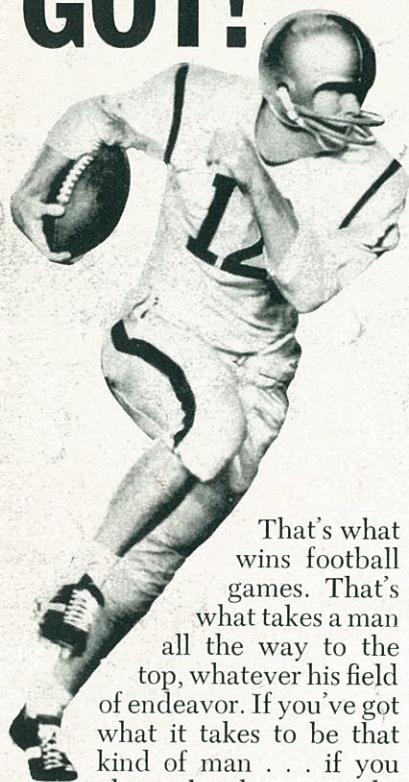
**PARKETTE
DRIVE-INS**



WBLG

the Blue Grass station • dial 1300

GIVE IT EVERY- THING YOU'VE GOT!



That's what wins football games. That's what takes a man all the way to the top, whatever his field of endeavor. If you've got what it takes to be that kind of man . . . if you have the chance to take ROTC, make what you've got count. Go for an Army commission. That way, come commencement, you'll have two good things going for you: your college degree, and the gold bars that mark you a leader of men . . . tested, trained, trusted.

GET IN— STAY IN ARMY ROTC!

FLORIDA STATE UNIVERSITY ROSTER

No.	Name	Class	Pos.	Age	Ht.	Wt.	Hometown
11	Kim Hammond, Soph., QB			21	6-1	185	Melbourne, Fla.
12	Tony Gero, Jr., QB			21	5-10	186	Madison, N. J.
14	*Jim Massey, Sr., DB			22	5-11	175	Cairo, Ga.
15	*Pat Conway, Jr., DB			20	5-10	180	Miami, Fla.
16	*Ed Pritchett, Sr., QB			24	6-2	181	Decatur, Ga.
17	Marty Kolbus, Soph., QB			19	6-2	185	E. Chicago, Ind.
21	Donovan Jones, Jr., HB			20	6-1	196	Lakeland, Fla.
22	*Maury Bibent, Sr., DB			23	6-0	193	Cincinnati, O.
23	*Wayne Giardino, Jr., FB			22	5-10	192	West Palm Beach, Fla.
24	Elton Revell, Jr., HB			21	6-0	174	Tallahassee, Fla.
26	Bill Campbell, Jr., DB			20	5-9	177	Tampa, Fla.
27	*Phil Spooner, Sr., HB			22	5-11	185	Fort Myers, Fla.
28	T. K. Wetherell, Soph., HB			20	5-10	185	Daytona Beach, Fla.
29	*Joe Petko, Sr., FB			22	5-9	194	Shaker Heights, O.
30	Bill Moremen, Soph., HB			20	5-11	181	Daytona Beach, Fla.
31	Bill Cox, Soph., HB			19	6-1	178	Atlanta, Ga.
32	Bill Richardson, Soph., DB			20	6-0	189	Jesup, Ga.
33	Butch Riser, Soph., DB			20	6-0	181	Sanford, Fla.
34	Frank Loner, Soph., PK			19	5-9	196	Thomasville, Ga.
35	John Hosack, Jr., HB			20	5-10	194	Miami, Fla.
40	Mike Blatt, Soph., LB			19	5-11	202	Key West, Fla.
41	Bob Menendez, Jr., DB			20	5-10	194	Key West, Fla.
42	Alan LaMarche, Soph., DB			20	5-11	187	Hollywood, Fla.
43	*Howard Ehler, Sr., DB			21	5-10	195	Tavares, Fla.
44	Jim Mankins, Jr., HB			21	6-2	221	King City, Calif.
51	*Joe Avezzano, Sr., OG			22	6-2	229	Miami, Fla.
52	*Wayne McDuffie, Jr., C			21	6-2	208	Hawkinsville, Ga.
53	*David Pitts, Jr., MG			21	5-9	202	Blountstown, Fla.
54	*John Stephens, Jr., C			20	6-1	201	Tallahassee, Fla.
55	Bob Ulrich, Soph., C			19	6-2	198	Toronto, Ohio
60	Larry Williamson, Jr., OG			20	5-11	209	Macon, Ga.
61	*Jack Shinholser, Sr., MG			23	6-1	210	Tampa, Fla.
62	*Howard Lurie, Sr., LB			21	6-0	201	Northridge, Calif.
63	*Bill McDowell, Sr., LB			21	6-1	208	Tallahassee, Fla.
64	Dave Braggins, Jr., OT			20	6-2	223	Lake Wales, Fla.
65	David Hall, Jr., OG			21	5-11	208	Panama City, Fla.
66	Carlie McNeil, Soph., OG			19	6-1	195	Macon, Ga.
67	Mike Bugar, Soph., DT			19	6-1	204	Youngstown, O.
68	*Joe Parrish, Sr., LB			23	6-1	194	Auburndale, Fla.
69	Edwin Pope, Jr., OG			21	6-1	208	Waycross, Ga.
70	*Del Williams, Jr., OT			20	6-2	230	Live Oak, Fla.
71	Ken Johnson, Soph., OT			21	6-2	224	Jacksonville, Fla.
73	Larry Kissam, Jr., OT			20	6-0	223	Inglewood, Calif.
74	Jay Mac Matthews, Jr., DT			21	6-1	218	Chiefland, Fla.
75	Rommy Vistart, Soph., DT			20	6-3	270	Colquitt, Ga.
76	Donnie Eilers, Soph., OT			19	6-3	219	Marietta, Ga.
77	*Bob Mangan, Sr., OT			23	6-1	229	Atlanta, Ga.
78	Charles Pennie, Jr., DT			20	6-4	230	Hollywood, Fla.
79	*Frank Pennie, Sr., DT			22	6-4	240	Hollywood, Fla.
80	Stan Croley, Soph., DE			20	6-2	192	Dade City, Fla.
81	H. T. Waller, Soph., DE			20	6-1	186	Vernon, Fla.
82	Jack Fenwick, Soph., OE			19	6-4	214	Cincinnati, O.
83	Thurston Taylor, Soph., OT			19	6-2	216	College Park, Ga.
84	*George D'Alessandro, Sr., DE			22	5-11	202	Fort Myers, Fla.
85	Pete Roberts, Soph., PK			20	5-11	200	Gainesville, Fla.
86	Buddy Blankenship, Jr., OE			21	6-3	200	Atlanta, Ga.
87	*Terry Garvin, Sr., DE			22	5-11	205	Pensacola, Fla.
88	Jerry Jones, Soph., OE			20	6-1	185	Jesup, Ga.
89	*Max Wettstein, Sr., OE			21	6-3	214	Leesburg, Fla.

* Lettermen.

*STEP
OUT FRONT
IN '66 ... in a Rocket Action Olds!*



442 Swinging new kind of sports car excitement!

400-cubic-inch V-8, 4-barrel carb, twin pipes: Buckle up and have yourself a ball! This is the 350-hp 4-4-2. With heavy-duty suspension, built to K.O. the roughest roads. Front and rear stabilizers to take the "bend" out of curves, the bind out of corners. And under it all—pavement-biting red-line tires! But the swinging-est thing about Olds 4-4-2 is its surprisingly modest price! **LOOK TO OLDS FOR THE NEW!**



things go
better
with
Coke
TRADE-MARK ®

- OFFENSE**
- 88 JERRY JONES LE
 - 70 DEL WILLIAMS LT
 - 69 EDWIN POPE LG
 - 54 JOHN STEPHENS C
 - 51 JOE AVEZZANO RG
 - 77 BOB MANGAN RT
 - 89 MAX WETTSTEIN RE
 - 16 ED PRITCHETT QB
 - 27 PHIL SPOONER LH
 - 28 T. K. WETHERELL RH
 - 23 WAYNE GIARDINO FB

- | | |
|------------------|-------------------|
| 11 Hammond, QB | 28 Wetherell, HB |
| 12 Gero, QB | 29 Petko, FB |
| 14 Massey, DB | 30 Moremen, HB |
| 15 Conway, DB | 31 Cox, HB |
| 16 Pritchett, QB | 32 Richardson, DB |
| 17 Kolbus, QB | 33 Riser, DB |
| 21 D. Jones, HB | 34 Loner, PK |
| 22 Bibent, DB | 35 Hosack, HB |
| 23 Giardino, FB | 40 Blatt, LB |
| 24 Revell, HB | 41 Menendez, DB |
| 26 Campbell, DB | 42 LaMarche, DB |
| 27 Spooner, HB | 43 Ehler, DB |

- OFFENSE**
- 80 RICK KESTNER WE
 - 71 DOUG DAVIS LT
 - 68 GERARD MURPHY LG
 - 54 CALVIN WITHROW C
 - 63 RICH TUCCI RG
 - 73 SAM BALL RT
 - 84 JOHN ANDRIGHETTI RE
 - 11 RICK NORTON QB
 - 21 RODGER BIRD TB
 - 32 LARRY SEIPLE WB
 - 47 FRANK ANTONINI FB

- | | |
|------------------|------------------|
| 11 Norton, QB | 34 Phaneuf, WB |
| 12 Walz, QB | 35 Todd, DHB |
| 14 Beadles, S-QB | 36 Carroll, DHB |
| 20 Vaughn, DHB | 38 Windsor, E-WB |
| 21 Bird, TB | 40 McGraw, LB-FB |
| 23 Goins, TB | 41 Britton, FB |
| 24 Lambert, DHB | 42 Van Note, LB |
| 25 J. Davis, DHB | 45 Swart, LB-DE |
| 30 Becherer, DHB | 46 Danko, LB-FB |
| 32 Seiple, WB | 47 Antonini, FB |
| | 50 Miles, LB-C |

Referee Johnny Cook
Field Judge William Pritchard

Florida State

(Seminoles)

PROBABLE STARTING LINEUP

THE SEMINOLE SQUAD

- | | |
|-------------------|------------------|
| 44 Mankins, HB | 66 McNeil, OG |
| 51 Avezzano, OG | 67 Bugar, DT |
| 52 McDuffie, C | 68 Parrish, LB |
| 53 Pitts, MG | 69 Pope, OG |
| 54 Stephens, C | 70 Williams, OT |
| 55 Urich, C | 71 Johnson, OT |
| 60 Williamson, OG | 73 Kissam, OT |
| 61 Shinholser, MG | 74 Matthews, DT |
| 62 Lurie, LB | 75 Vistart, DT |
| 63 McDowell, LB | 76 Ellers, OT |
| 64 Braggins, OT | 77 Mangan, OT |
| 65 Hall, OG | 78 C. Pennie, DT |

- DEFENSE**
- 84 GEORGE D'ALESSANDRO LE
 - 79 FRANK PENNIE LT
 - 61 JACK SHINHOLSER MG
 - 78 CHARLES PENNIE RT
 - 87 TERRY GARVIN RE
 - 63 BILL McDOWELL LB
 - 68 JOE PARRISH LB
 - 43 HOWARD EHLEH CB
 - 22 MAURY BIBENT CB
 - 15 PAT CONWAY Saf
 - 26 BILL CAMPBELL Saf

- 79 F. Pennie, DT
- 80 Croley, DE
- 81 Waller, DE
- 82 Fenwick, OE
- 83 Taylor, OT
- 84 D'Alessandro, DE
- 85 Roberts, PK
- 86 Blankenship, OE
- 87 Garvin, DE
- 88 J. Jones, OE
- 89 Wettstein, OE

Kentucky

(Wildcats)

PROBABLE STARTING LINEUP

THE WILDCAT SQUAD

- | | |
|-----------------------|---------------------|
| 51 Beirne, LB-C | 67 Schornick, G |
| 52 Chapala, C | 68 Murphy, G |
| 53 Strzalkowski, LB-C | 69 Curling, G-LB |
| 54 Withrow, C | 70 Benard, T-DG |
| 55 Roberts, C | 71 D. Davis, T |
| 60 Stanko, DT-G | 72 Briggs, DG |
| 62 Clark, G | 73 Ball, T |
| 63 Tucci, G | 74 Drinnen, T |
| 64 Peters, G | 75 Keyes, DG |
| 65 Gresham, DT-G | 76 Little, T |
| | 77 Manzonelli, DG-T |

- DEFENSE**
- 89 RICH MACHEL LE
 - 46 DON DANKO LB
 - 77 TONY MANZONELLI LG
 - 69 KERRY CURLING LB
 - 40 MIKE MCGRAW LB
 - 60 ED STANKO RG
 - 83 JIM KOMARA LB
 - 87 DOUG VAN METER RE
 - 30 TOM BECHERER LH
 - 14 TERRY BEADLES SAF
 - 25 JERRY DAVIS RH

- 78 Mullins, T
- 79 Katzenbach, G
- 80 Kestner, E
- 81 Anderson, DE
- 82 Spanish, E
- 83 Komara, DE
- 84 Andrighetti, E
- 86 Smith, E
- 87 Van Meter, DE
- 88 Cassity, DE
- 89 Machel, DE

— Officials —
Umpire Harold Johnson
Back Judge Paul Hicks

Linesman David Scobey
ECO Dick McNabb



things go
better
with
Coke
TRADE-MARK ®

In 1963, we called Riviera "America's bid for a great new international classic car."

If imitation is any sign, we were pretty good prophets.



There are a lot of rough copies of Riviera on the road these days. (Even some of the cars made across the seas are straining to look like our Riviera.) And it flatters us. It seems our prediction has come true. Riviera is America's great international classic car. And it also seems to us that you would greatly prefer to own an original, not a counterfeit. Mainly because if you do settle for one of the imitations, you'll be nagged by doubts. "Wouldn't Riviera's Super Turbine transmission do a better job of easing me through that traffic jam?" "Would Riviera's plush bucket seats and squishy carpets and eye-soothing instrument panel make me feel more relaxed after a long trip?" "Would Riviera's incredible suspension and steering do a better job on that tight corner?" There is only one way to forestall these bothersome thoughts. Ask yourself first—"Wouldn't I really rather have America's one and only international classic car?"

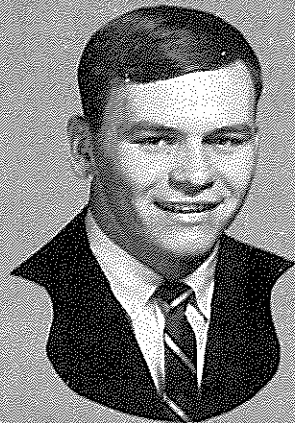
Wouldn't you really rather have a Buick?

UNIVERSITY OF KENTUCKY ROSTER

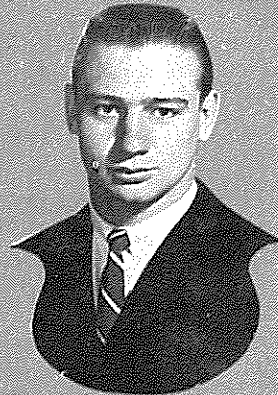
No.	Name	Pos.	Class	Age	Ht.	Wt.	Hometown (High School)	High School Coach
11	*Rick Norton, QB		Sr.	21	6-1	196	Louisville, Ky. (Flaget)	Paulie Miller
12	Roger Walz, QB		Jr.	21	5-10	167	Ft. Thomas, Ky. (Highlands)	Homer Rice
14	Terry Beadles, S-QB		Soph.	19	5-11	190	Fulton, Ky. (Fulton)	Francis McCann
20	Charles Vaughn, DHB		Soph.	19	5-9	168	Campbellsville, Ky. (Campbellsville)	Vincent Hancock
21	*Rodger Bird, TB		Sr.	22	5-11	201	Corbin, Ky. (Corbin)	Carl Oakley
23	Homer Goins, TB		Soph.	21	5-11	183	Evarts, Ky. (Evarts)	Charles Hunter
24	Harold Lambert, DHB		Soph.	19	6-0	192	Baton Rouge, La. (Redemptorist)	Vince Gonzales
25	Jerry Davis, DHB		Jr.	21	5-10	176	Fairborn, Ohio (Fairborn)	Lloyd Williams
30	*Tom Becherer, DHB		Sr.	21	5-10	169	Canton, Ohio (Central Catholic)	John McVay
32	*Larry Seiple, WB		Jr.	20	5-11	199	Allentown, Pa. (William Allen)	L. Perry Scott
34	Al Phaneuf, WB		Soph.	21	6-0	180	Montreal, Quebec (Rosemount)	Brain Ash
35	*Talbot Todd, DHB		Sr.	20	6-1	197	Richmond, Ky. (Madison)	Roy Kidd
36	Joe Carroll, DHB		Soph.	20	5-9	178	Sharon Hill, Pa. (Msgr. Bonner)	Al Postus
38	Bob Windsor, E-WB		Jr.	22	6-4	212	Silver Spring, Md. (Montgomery J.C.)	Lou Chacos
40	*Mike McGraw, LB-FB		Jr.	20	5-11	195	Ft. Thomas, Ky. (Highlands)	Owen Hauck
41	Don Britton, FB		Soph.	21	5-10	195	Broomall, Pa. (Marple-Newton)	Lou Bander
42	Jeff Van Note, LB		Soph.	19	6-1	210	Anchorage, Ky. (Bardstown-St. Joseph's)	Dick Blocker
45	*Jim Swart, LB-DE		Jr.	20	6-2	219	Louisville, Ky. (Seneca)	Ron Cain
46	*Don Danko, LB-FB		Jr.	20	5-11	205	Pocohontas, Va. (Bluefield-Graham)	L. H. Bradley
47	*Frank Antonini, FB		Jr.	21	5-11	210	Ambridge, Pa. (Ambridge)	Andy Radi
50	*Jim Miles, LB-C		Sr.	21	6-0	195	Finley, Ky. (Bardstown-St. Joseph's)	Dick Blocker
51	Mike Beirne, LB-C		Soph.	20	6-1	206	McKeesport, Pa. (McKeesport)	Harold Weisle
52	Tom Chapala, C		Sr.	22	5-11	198	Ambridge, Pa. (Ambridge)	Mike Sebastian
53	Ed Strzalkowski, LB-C		Soph.	18	5-11	182	Dearborn, Mich. (Salesian)	Frank Buford
54	*Calvin Withrow, C		Jr.	20	6-0	205	Kettering, Ohio (Fairmont)	Pete Ankney
55	Ronnie Roberts, C		Soph.	19	6-3	215	Louisville, Ky. (Manual)	Tom Harper
60	*Ed Stanko, DT-G		Sr.	21	6-1	199	McKeesport, Pa. (McKeesport)	Harold Weigle
61	Rodger Hart, G-LB		Soph.	20	5-9	179	Albertsville, Ala. (Albertville)	Bob Beasley
62	*Terry Clark, G		Sr.	21	6-0	203	Owensboro, Ky. (Canton, O.-Cen. Catholic)	John McVey
63	*Rich Tucci, G		Sr.	20	6-1	223	Youngwood, Pa. (Hempfield Area)	William Abraham
64	Fred Peters, G		Soph.	20	6-4	205	Miami, Fla. (Edison)	Haywood Fowle
65	Jim Gresham, DT-G		Soph.	19	6-0	213	Jeffersonville, Ind. (Jeffersonville)	William Bolton
67	John Schornick, G		Sr.	21	6-0	201	Ebensburg, Pa. (Cent. Cambria)	Carl Hartman
68	*Gerard Murphy, G		Sr.	20	5-11	201	Latrobe, Pa. (Latrobe)	Charles Findley
69	Kerry Curling, G-LB		Soph.	19	5-10	195	Princeton, Ky. (Caldwell County)	Fred Clayton
70	Paul Benard, T-DG		Soph.	18	6-3	225	Catlettsburg, Ky. (Catlettsburg)	Gene Foster
71	*Doug Davis, T		Sr.	21	6-4	240	Centerburg, Ohio (Centerburg)	Dick King
72	Don Briggs, T		Soph.	21	5-11	203	Bethesda, Md. (Washington-St. John's)	Bob Hayes
73	*Sam Ball, T		Sr.	21	6-4	240	Henderson, Ky. (Henderson County)	Mojo Hollowell
74	Dennis Drinnen, T		Soph.	18	6-1	215	Loveland, Ohio (Loveland)	Stan McCoy
75	*Howard Keyes, DG		Sr.	21	5-10	200	Altoona, Pa. (Altoona)	Earl Strohm
76	Dwight Little, T		Soph.	19	6-3	215	Marion, Ky. (Crittenden County)	Bill Huff
77	*Tony Manzonelli, DG-T		Sr.	20	6-0	231	Pittsburgh, Pa. (S. Hills Catholic)	Bernard Powers
78	*Basil Mullins, T		Jr.	21	6-4	211	Paintsville, Ky. (Paintsville)	Walter Brugh
79	George Katzenbach, G		Soph.	19	6-1	226	Philadelphia, Pa. (Roxborough)	Fred Houser
80	*Rick Kestner, E		Sr.	20	6-1	200	Stone, Ky. (Belfry)	Al Vipperman
81	Tom Anderson, DE		Soph.	21	6-0	170	Birmingham, Ala. (Ramsay)	Byron Smith
82	*Dan Spanish, E		Jr.	20	5-10	185	New Castle, Pa. (New Castle)	Lindy Laurd
83	*Jim Komara, DE		Sr.	23	6-0	195	Conneautville, Pa. (Conneaut Valley)	George Komara
84	*John Andrighetti, E		Sr.	21	6-0	199	Grapeville, Pa. (Hempfield Area)	William Abraham
86	*J. D. Smith, E		Jr.	20	6-1	199	Mayfield, Ky. (Mayfield)	Virgil Raines
87	Doug Van Meter, DE		Soph.	19	6-0	191	Owensboro, Ky. (Catholic)	Don Netoskie
88	Mike Cassity, DE		Soph.	20	6-2	195	Xenia, Ohio (Xenia)	Tom Stephenson
89	*Rich Machel, DE		Jr.	20	6-1	198	Pittsburgh, Pa. (S. Hills Catholic)	Beirnil Powers
	Kenny Cox, DG-T		Soph.	19	6-1	212	Corbin, Ky. (Corbin)	Ledger Howard
	Phil Greer, E		Soph.	18	6-2	191	Burdine, Ky. (Jenkins)	Raymond Ricketts
	Eddie Ingram, G		Soph.	19	5-10	185	Dyersburg, Tenn. (Dyersburg)	John Galley
	David Ishmael, DE		Soph.	20	6-1	180	Mt. Sterling, Ky. (Mt. Sterling)	Phil Owen
	Duane McAlister, DG		Soph.	19	5-11	187	Fulton, Ky. (Fulton)	Francis McCann
	George McClellan, DE		Soph.	22	5-10	183	Bristol, Tenn. (Tennessee)	Clayton Powers
	Wesley Nails, DT-G		Soph.	19	6-2	212	Loyall, Ky. (Loyall)	Charles Davis
	Tommy Sauer, E		Soph.	18	5-11	178	Owensboro, Ky. (Davies County)	George Claiborne
	John Zeles, E		Soph.	18	6-2	192	Phoenixville, Pa. (Phoenixville)	Paul Tomko

* Lettermen.

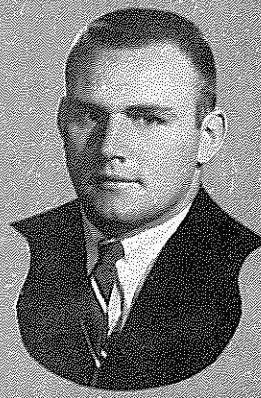
"OFFICIAL WATCH FOR THIS GAME — LONGINES — THE WORLD'S MOST HONORED WATCH"



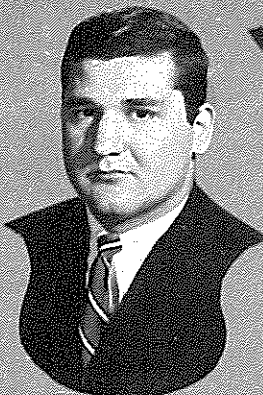
WESLEY NAILS



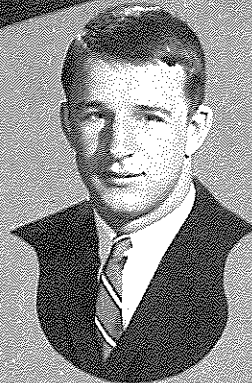
CALVIN WITHROW



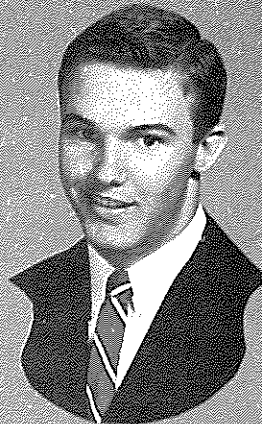
DOUG DAVIS



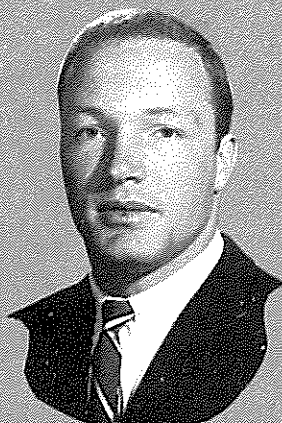
TONY MANZONELLI



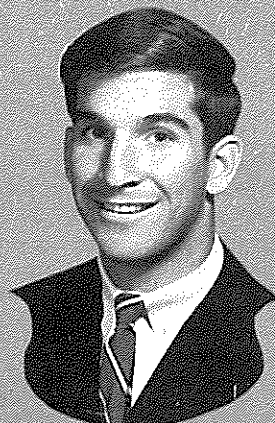
RICK NORTON



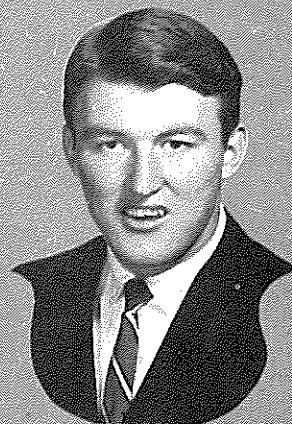
TERRY BEADLES



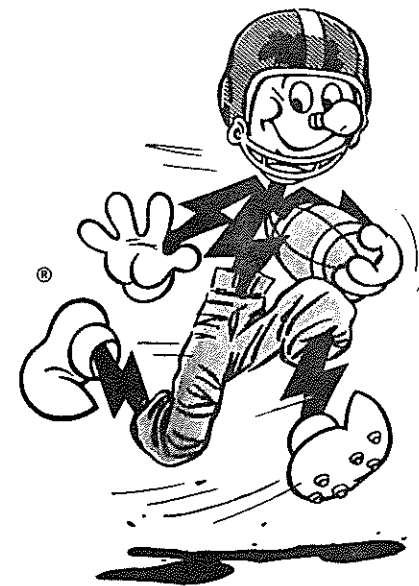
GEORGE McCLELLAN



FRED PETERS



CHARLES VAUGHN



LET'S GO!

GO!

GO!

GO!

ALL ELECTRIC

KU

SYMBOL
of
SERVICE

You meet the happiest people in an All-Electric home!

KENTUCKY UTILITIES COMPANY

CONGRATULATIONS SIR!

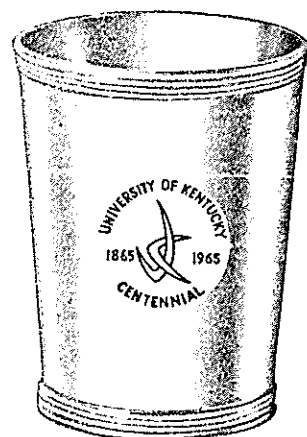
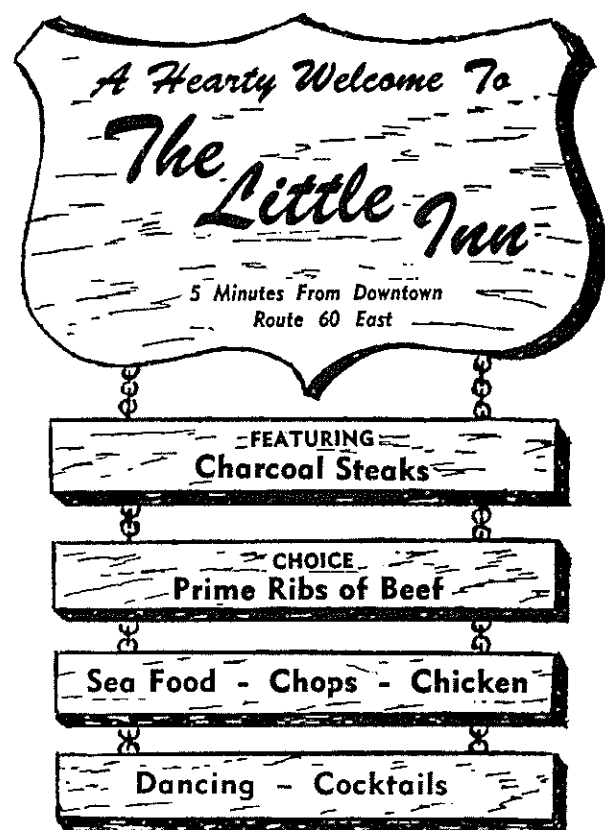
DID YOU KNOW THAT YOU & THE MEN YOU SEE AROUND YOU ARE AMONG THE BEST DRESSED MEN IN THIS WHOLE U.S.A.?

IT'S A FACT! HERETOFORE, THOSE FAST HORSES & BEAUTIFUL WOMEN HAVE STOLEN THE SHOW, BUT MAYBE THEY ARE THE STRIKING PROOF OF WHAT OUR MANUFACTURERS TELL US:

THE BLUE GRASS GENTLEMAN IS A MOST DISCRIMINATING FELLOW!

AND WE FEEL HONORED TO HAVE DRESSED SO MANY DISCRIMINATING GENTLEMEN FOR SUCH A LONG WHILE.





Centennial Julep Cup — \$16.95

Centennial charms, lighters, tie tacs, key chains also available.

No Excise Tax
FARMER'S JEWELRY
Established in Chevy Chase Village Since 1950
821 Euclid Ave. Phone 266-6241

We at HUNT'S are pleased to supply to the University of Kentucky Athletics Association merchandise manufactured by the following firms:

Adidas—Track Shoes

Bike Web Company—Trainer's Supplies

Brunswick—Football Uniforms and Equipment for Football, Baseball, and all Sports

Cramer Chemical Company—Trainer's Supplies

Fair Play Scoreboard Company—Football Scoreboard and Basketball Scoreboard

Hillerich and Bradsby Company—Louisville Slugger Bats

Johnson and Johnson—Trainer's Tape

King O'Shea Company—Basketball Uniforms

Powers Mfg. Company—Award Jackets

John T. Riddell, Inc.—Football Helmets and Shoes

A. G. Spalding & Bros.—Footballs and Basketballs

Spanjian of Pasadena—Football and Baseball Uniforms

Sports Equipment Co.—SECO Athletic Supplies

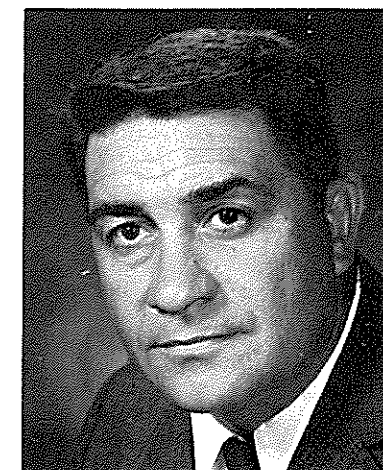
We are grateful to the above manufacturers who sponsor this ad.

HUNT'S ATHLETIC GOODS CO., INC.
"We Ship The Day You Buy"
MAYFIELD, KENTUCKY

Florida State University



BILL PETERSON
Coach

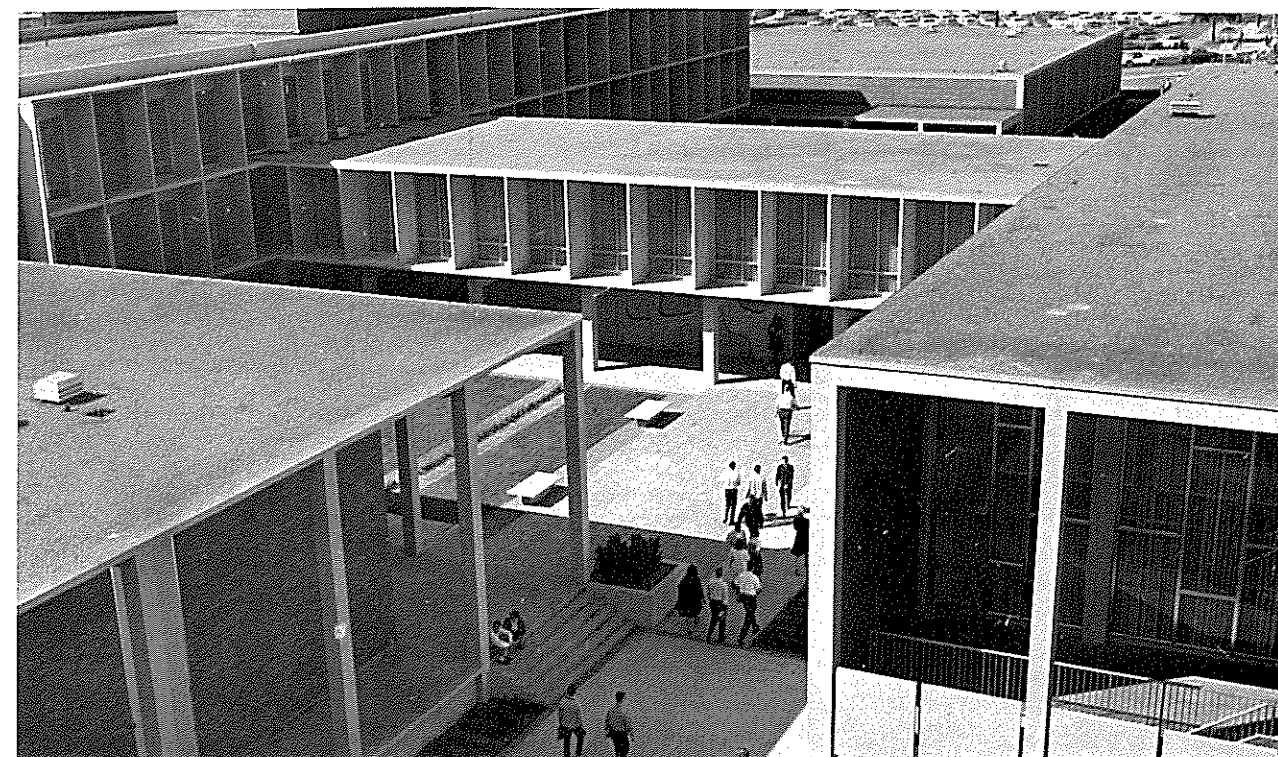


VAUGHN MANCHA
Athletic Director



DR. JOHN E. CHAMPION
President

UNIVERSITY UNION



KENNY COX

JIM MILES

RODGER HART

ED STRZALKOWSKI

DON DANKO

SAM BALL

BASIL MULLINS

RICH MACHEL

EDDIE INGRAM

KERRY CURLING

Springs Motel

2020 South Broadway PHONE 277-5751 Lexington, Kentucky

SING ALONG WITH DOROTHY ROWAN AT THE PIANO BAR
IN THE "NEPTUNE LOUNGE"

Dine in the Elegant Setting of "THE POMPEI ROOM"
until 11:30 on Game Nights

Entertainment nightly—9:00-1:00 Cocktail hour—4:00-6:00

Kennedy Book Store

U.K. Shirts — Pennants — Decals
Textbooks — School Supplies

MILLER WELCH

CHARLES LEAR

CARPENTER-WARREN

INSURANCE AGENCY
Since 1927

137 N. Upper St. PHONE 252-4155 Lexington, Ky.

ALL FORMS
OF INSURANCE

DONALD ROSE

Open
Mondays
and
Fridays
'Til 9

Phone or Write
Sally Stewart
Personal Shopper
252-2210

R

"No Order Too Small"

R

Sageser Drugs

R

"Ask Your Doctor"

R

Second National Bank & Trust Co.

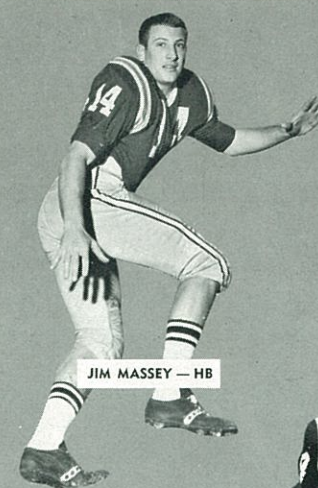
123 Cheapside, Lexington, Ky.

BRANCH BANK LOCATIONS:

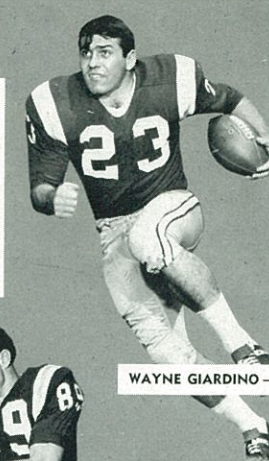
2225 Nicholasville Road, 286 New Circle Road N.W., 1718 Alexandria Drive

REMEMBER: *Safety Is Our Inherent Way,
Saving Is Your Touchdown Play.***Lexington Insurance
Agency, Inc.**Kentucky Central Building
Lexington, Ky.
Phone: 254-6257

SEMINOLES



JIM MASSEY — HB



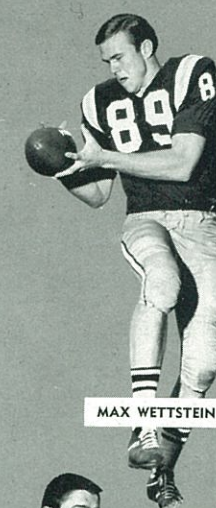
WAYNE GIARDINO — F



DAVE BRAGGINS — T



HOWARD EHLER — HB



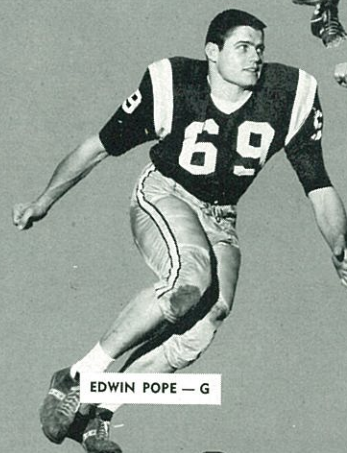
MAX WETTSTEIN — E



DONOVAN JONES — HB



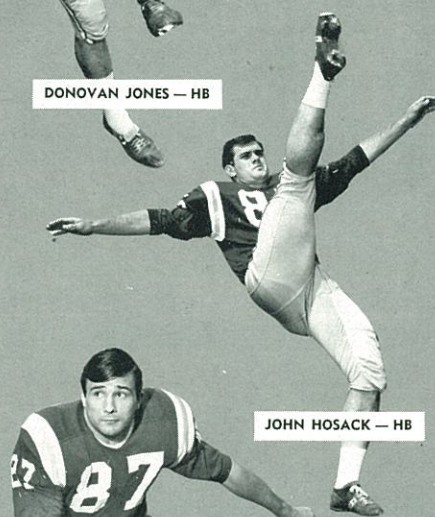
BILL McDOWELL — HB



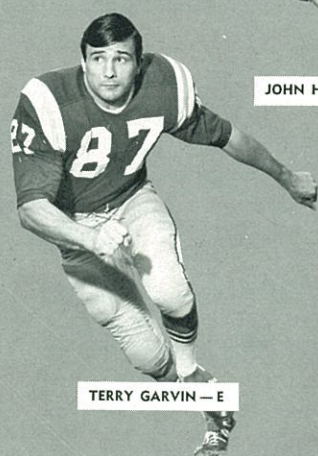
EDWIN POPE — G



PHIL SPOONER — HB



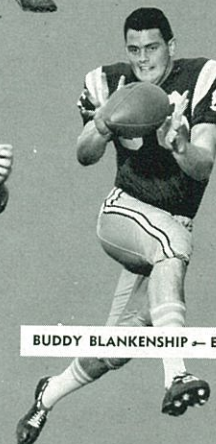
JOHN HOSACK — HB



TERRY GARVIN — E



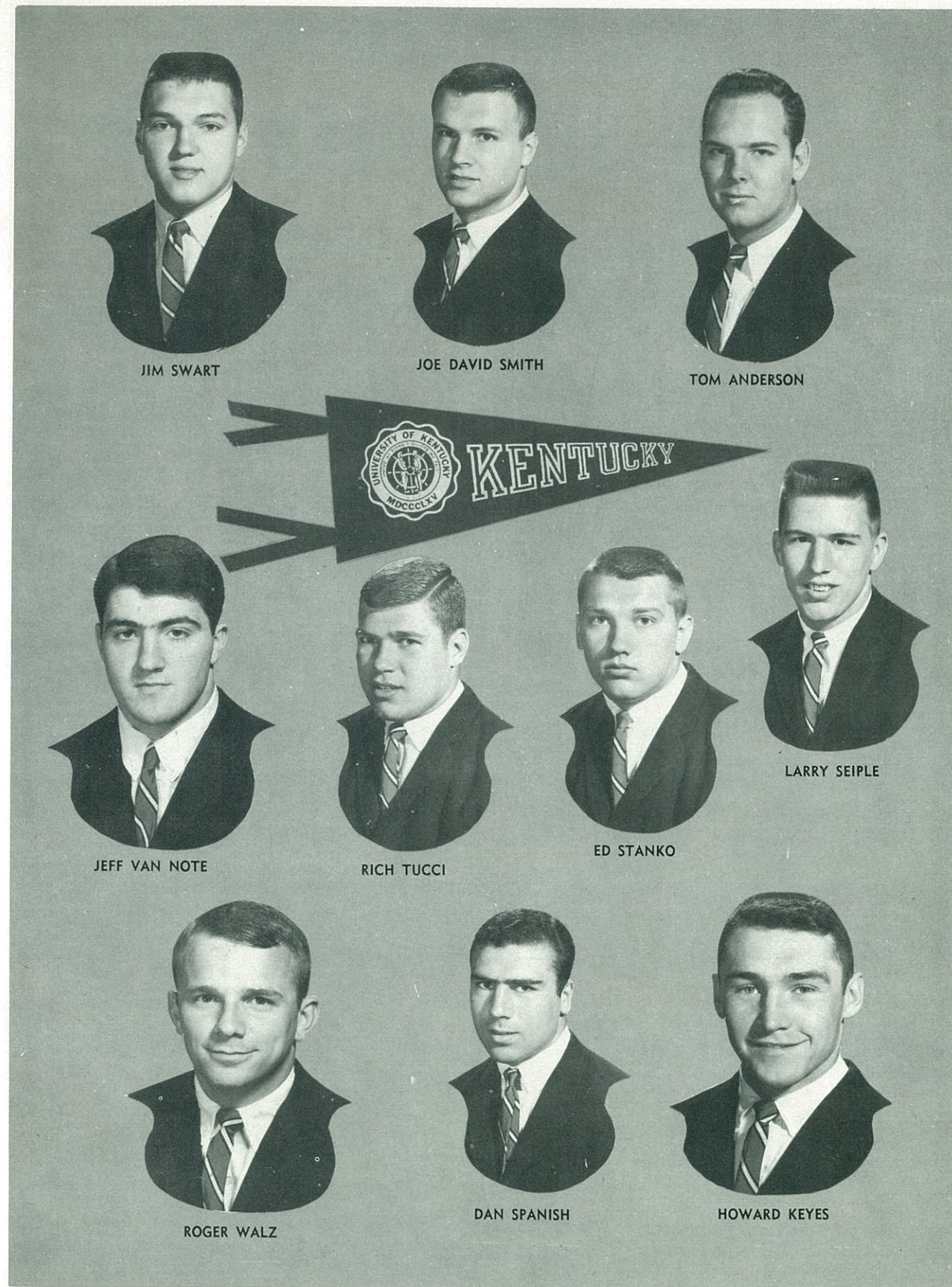
CHARLES PENNIE — T



BUDDY BLANKENSHIP — E



JIM MANKINS — HB



NEW and "USED" BOOK CENTER ON CAMPUS
In The
STUDENT CENTER

University Book Store

Many New Items Now In Stock

★ UK Glassware

★ UK Sweatshirts

★ UK Pennants

OPEN AFTER DAY GAMES UNTIL 6 P.M.

PHONE 277-5211

10 MOTEL UNITS

WELCH'S MOTEL AND RESTAURANT

Famous for Italian Spaghetti

Lawrence W. Welch
Owner-Manager

1915 Nicholasville Road
Lexington, Kentucky

Turf Catering Co.

"SERVING STOLL FIELD AND MEMORIAL COLISEUM"

DELICIOUS HOT DOGS — COLD DRINKS — POPCORN
PEANUTS — CIGARETTES — CANDY
YOUR PATRONAGE KINDLY SOLICITED

An American Characteristic

by FRED RUSSELL
The Nashville Banner



One of college football's best friends is FRED RUSSELL, sports editor of the Nashville Banner. His "Sidelines" column is well written and widely read.

COLLEGE football has been described as "the element of American life most characteristic of our nationality." Another season reinforces the validity of this distinction.

The game appeals to the emotions like no other form of athletic competition. Spectators at college games, setting new overall attendance records every year, revel in exercising the deep-rooted passions of joy, courage, sympathy, sorrow, rivalry, risk, sense of fairness and loyalty.

College football crowds aren't there just to admire the skill of some passer or the cleverness of a runner or the accuracy of a place-kicker or punter. They are there wanting to see their team win.

Thrilling touchdown plays are fine, like getting the end piece of the cake with the thick icing. But the overwhelming majority of college game-goers would rather see their team win, even if it's 2-0 in a dogged defensive struggle, than to witness a dozen exciting scoring plays during a game which their team loses.

Can you think of a more hollow attraction than an *exhibition* contest between two college football squads?

The feel of the crowd is a standard fixture at college games. From September through November there are just ten such occasions, full of color and flavor, for the release of our competitive impulses. And so often in college football the anticipation is exceeded by the realization.

Most of the college players on the field are whamming and slamming for the sheer joy of proving themselves to themselves. Ernest Thompson Seton once said: "Manhood is the first law of education." Of course football is just one of many opportunities available in the quest for manhood, but the competitive flame in the clash of spirited, cohesive forces is the rouser that attracts throngs to America's college stadiums.

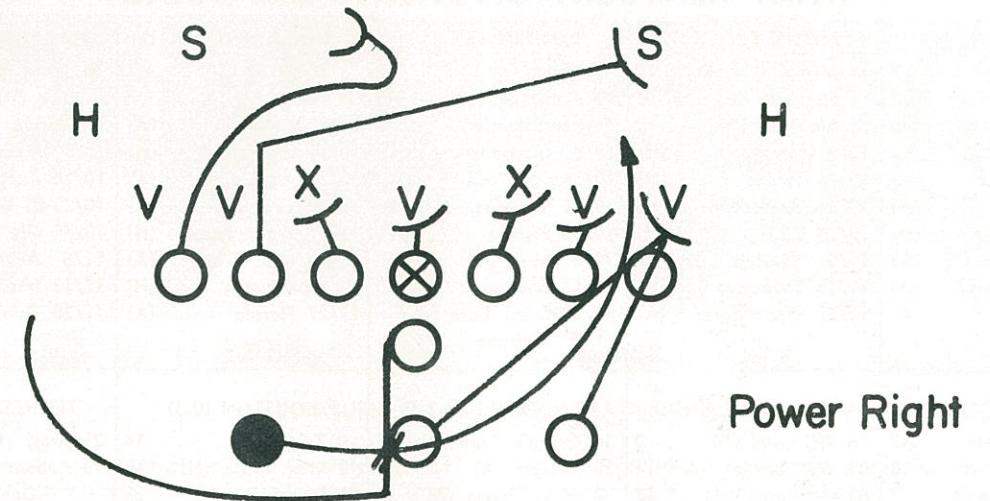
Imperfection itself, among young athletes of 18 to 22, is part of college football's crowd appeal. Nothing in sports can be duller than perfection. The human experience of errors in action provides one of the world's liveliest shows. Somehow, the happiness reaped by players in the arena who withstand and overcome these mistakes often spills over into the crowd.

Many spectators are embraced by the camaraderie of college football. It can be felt by anybody. It was responsible for the following bit of nonsense:

A jovial fellow sitting 'way up in Row 65 got to his feet time and again and yelled, "Hey! Gus! Look here, Gus!"

Whereupon, down in Row 20 a man would rise, look up and wave. This friendly exchange went on interminably, until finally the man down in Row 20 shouted back to the greeter and advised him to stay in his seat and look at the game. "And besides," he finished, "my name's not Gus."

In the college football atmosphere are preserved some of the delights that go with life. "We have plenty of grim things facing us," said President Harlan Hatcher of University of Michigan. "We need the relief we find in sports. It's not only necessary to survive, but to live with some positive sense of joy and fulfillment."



In addition to everything else at his command, the coach operates on up-to-the-minute scouting reports.

DO YOU?



SECURITIES INCORPORATED

MEMBER: Midwest Stock Exchange

In Lexington:
Call 255-3656
200 East Main

J. Dan Chandler
Ken Hart
James R. Spence

In Louisville:
Call 584-8368
Kentucky Home Life Bldg.

William C. Ballantine
George T. Breathitt
Eugene H. (Gene) Fontaine
James Kimmel
Berwyn (Tom) Moore, Jr.
Ray Schmitt
Arvil Short

WHAT KENTUCKY OPPONENTS ARE DOING

MISSOURI (2-1)		MISSISSIPPI (1-2)		AUBURN (1-1-1)		FLORIDA STATE (1-1)		LOUISIANA STATE (2-1)	
0 Kentucky (H)	7	34 Memphis St. (A)	14	8 Baylor (H)	14	3 TCU (A)	7	10 Texas A&M (H)	0
13 Okla. State (A)	0	7 Kentucky (A)	16	13 Tennessee (A)	13	9 Baylor (H)	7	42 Rice (H)	14
17 Minnesota (A)	6	16 Alabama (N)	17	23 Kentucky (H)	18	10/9 Kentucky (A)	7	7 Florida (A)	14
10/9 Kansas St. (H)	(H)	10/9 Florida (H)	(H)	10/9 Chattanooga (H)	(H)	10/16 Georgia (H)	(H)	10/9 Miami (A)	(A)
10/16 U.C.L.A. (H)	(H)	10/16 Tulane (N)	(N)	10/16 Ga. Tech (A)	(A)	10/23 Alabama (A)	(A)	10/16 Kentucky (H)	(H)
10/23 Iowa St. (A)	(A)	10/23 Vanderbilt (H)	(H)	10/23 So. Miss. (H)	(H)	10/30 VPI (H)	(H)	10/23 S. Carolina (H)	(H)
10/30 Nebraska (H)	(H)	10/30 L.S.U. (N)	(N)	10/30 Florida (H)	(H)	11/6 Wake Forest (H)	(H)	10/30 Ole Miss (N)	(N)
11/6 Colorado (A)	(A)	11/6 Houston (A)	(A)	11/6 Miss. St. (N)	(N)	11/13 N.C. State (A)	(A)	11/6 Alabama (H)	(H)
11/13 Oklahoma (H)	(H)	11/13 Tennessee (N)	(N)	11/13 Georgia (A)	(A)	11/20 Houston (H)	(H)	11/13 Miss. State (H)	(H)
11/20 Kansas (A)	(A)	11/27 Miss. State (A)	(A)	11/20 Open Date		11/27 Florida (A)	(A)	11/20 Tulane (H)	(H)
				11/27 Alabama (N)	(N)				
GEORGIA (3-0)		WEST VIRGINIA (3-0)		VANDERBILT (0-2-1)		HOUSTON (0-3)		TENNESSEE (1-0-1)	
18 Alabama (H)	17	56 Richmond (H)	0	10 Georgia Tech (H)	10	0 Tulsa (H)	14	21 Army (H)	0
24 Vanderbilt (H)	10	34 Wm. & Mary (A)	14	10 Georgia (A)	24	0 Miss. State (H)	36	13 Auburn (H)	13
15 Michigan (A)	7	63 Pittsburgh (H)	48	0 Wake Forest (A)	7	21 Cincinnati (H)	6	(Open Date)	
10/9 Clemson (H)	(H)	10/9 The Citadel (A)	(A)	10/9 Alabama (H)	(H)	(Open Date)		10/9 S. Carolina (H)	(H)
10/16 FSU (A)	(A)	10/16 Virginia (A)	(A)	10/16 VPI (H)	(H)	10/9 Texas A&M (A)	(A)	10/16 Alabama (A)	(A)
10/23 Kentucky (A)	(A)	10/23 Penn State (A)	(A)	10/23 Mississippi (A)	(A)	10/16 Miami (A)	(A)	10/23 Houston (H)	(H)
10/30 N. Carolina (A)	(A)	10/30 Kentucky (A)	(A)	10/30 Tulane (A)	(A)	10/23 Tennessee (A)	(A)	10/30 Open Date	
11/6 Florida (N)	(N)	11/6 Va. Tech (H)	(H)	11/6 Kentucky (H)	(H)	10/30 Chattanooga (H)	(H)	11/6 Ga. Tech (H)	(H)
11/13 Auburn (H)	(H)	11/13 Syracuse (H)	(H)	11/13 Miami (H)	(H)	11/6 Mississippi (H)	(H)	11/13 Mississippi (N)	(N)
11/20 Open Date		11/20 Geo. Wash. (H)	(H)	11/20 Open Date		11/13 Kentucky (H)	(H)	11/20 Kentucky (A)	(A)
11/27 Ga. Tech (A)	(A)			11/27 Tennessee (A)	(A)	11/20 Florida State (A)	(A)	11/27 Vanderbilt (H)	(H)
								12/4 UCLA (N)	(N)



Two Locations
To Serve You Better

**MARLOWE
TIRE CO., INC.**

851 North Broadway
Phone 252-1786

And Now Also At

707 Lane Allen Road
Lafayette Shopping Center
Phone 278-3406

GENERAL ELECTRIC APPLIANCES

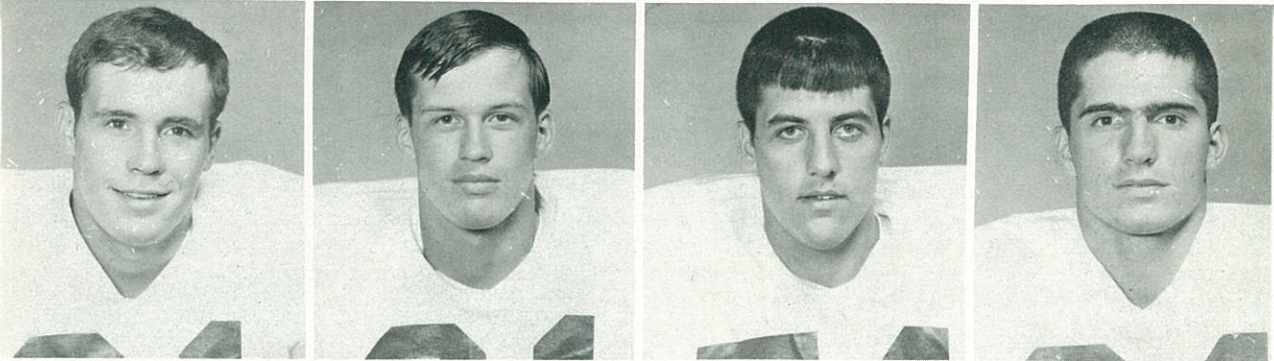
1965 FRESHMAN SCHEDULE
AND RESULTS

Date	Opponent	Site	UK	Opp.
Oct. 2	Vanderbilt Frosh (A)....		7	0
Oct. 15	Va. Tech Frosh	Home		
Oct. 21	Cincinnati Frosh	Away		
Nov. 1	Tennessee Frosh	Home		
(Dollars for Scholars Benefit Game)				

1964 RESULTS
(Won 4, Lost 0)

21	Vanderbilt Frosh (H)	0
20	Xavier Frosh (A)	7
36	Cincinnati Frosh (H)	7
22	Tennessee Frosh (A)	14
99		28

MEET THE "KITTENS" . . .



BELL BLACKBURN CARTWRIGHT CHACOS

BOB BELL—A nephew of Kentucky's State Commissioner of Parks, Robert Bell, this young fullback candidate hails from the backyard of Vandy's Commodores . . . Bob prepped at Nashville West High School as a fullback and linebacker and picked up numerous personal honors, including most valuable player on his team and first team All-Conference (AAA) selection by league coaches . . . Also team captain.

CHARLES BLACKBURN—Coached in prep school at Staunton Military Academy by current UK assistant Joe Moss, this husky Buckeye native figures big in the freshman end picture for 1965 . . . Charles was an all-around sports standout in high school at Westerville, Ohio, near Columbus, attaining honors in football, basketball, and baseball.

BILL CARTWRIGHT—One of only two offensive center candidates on the 1965 contingent of Kittens, Cartwright comes to the University from football-conscious Caldwell County High School in Princeton, Ky. . . . The versatile youth performed at six different positions for the Tigers—missing only quarterback—and achieved first unit All-State honor . . . Also participated in the East-West Game.

DONNIE CHACOS—Almost equally outstanding wherever he is stationed, Chacos looks like "a real comer" at offensive end or wingback in the opinion of his Kentucky coaches . . . May even double at defensive safety . . . Prepped at St. John's High in the nation's capital and won recognition as an All-Metropolitan player . . . Also honorable mention on many schoolboy All-America teams . . . Set numerous school records for pass receiving . . . Native of Bethesda, Md.

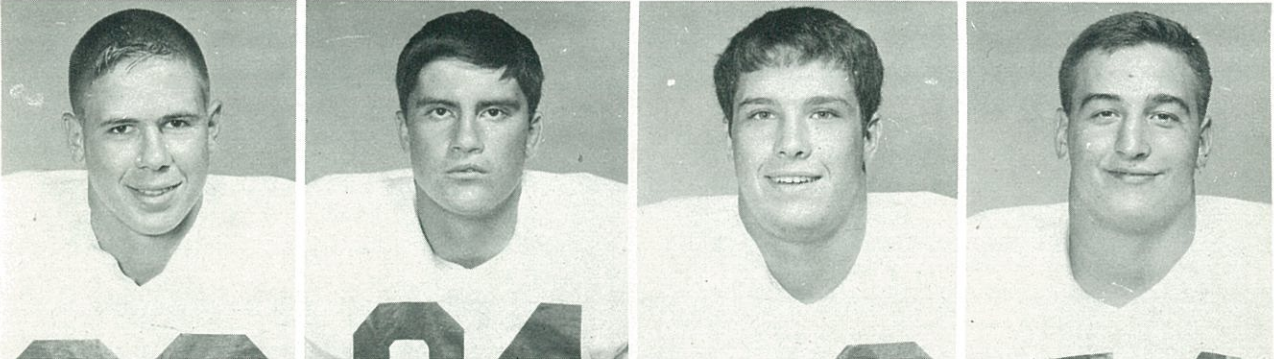
DAVID CHILDRÉ—This six-foot, 189-pound chunk of football meanness got tagged with the nickname "Poison" during

ing his high school career at Henderson County High and it is becoming increasingly evident why . . . Childre is tough, aggressive, and talented as a guard and already is being tabbed as another Sam Ball (outstanding varsity tackle from the same school) . . . David was only the second boy in school history to letter in four sports.

RODNEY CLOYD—Although he achieved only honorable mention when All-State honors were passed out, Cloyd is considered a "sleeper" who could make it big in collegiate football at his home state university . . . The Anderson County High product has potential SEC-calibre talent as a quarterback, good size at 6-0 and 187, good speed and a good head on his shoulders as evidenced by a B plus grade.

TOM FERGUSON—A veteran of six years' experience as a quarterback at Blazer High School in Ashland, Ferguson is expected to come along fast in collegiate training and fulfill an important role as a 1966 varsityman . . . The 5-11, 180-pound former Tomcat set a record at his school as he tossed 11 touchdown passes in one season . . . Gained 972 yards on 170 carries and had a career point accumulation of 240 . . . Second team All-State.

BOB FRIEBERT—Operated as an end, tackle, guard and linebacker while attending Bishop David High in Louisville . . . As a collegiate rookie, Friebert is being groomed as a tackle . . . Coaches offer opinion that Friebert could develop into a dependable Southeastern Conference lineman with seasoning . . . Shows fine talent potential to go along with 6-3, 210-pound size . . . Looked particularly good in high school as offensive and defensive end . . . averaged 12 yards a catch as a senior receiver.



CHILDRÉ CLOYD FERGUSON FRIEBERT



BOB WINDSOR



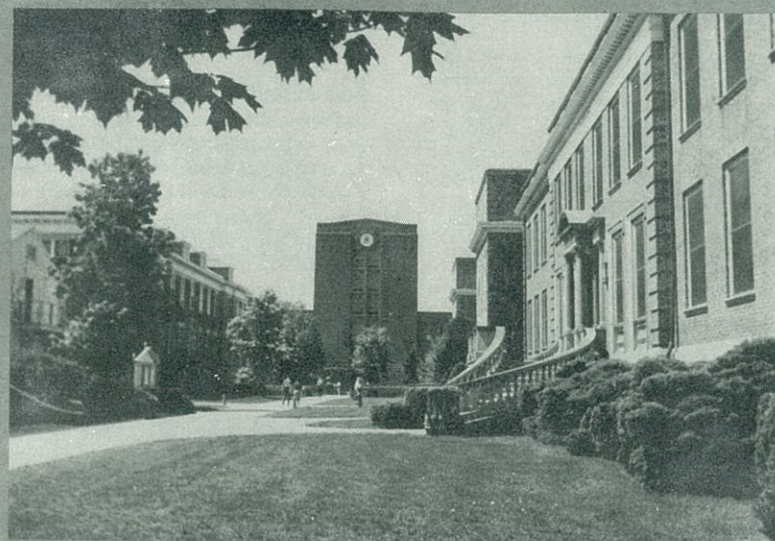
FRANK ANTONINI



TOMMY SAUER



DENNIS DRINNEN



HOWARD Johnson's Motor Lodge



Nicholasville Road, U.S. 27, 2 Mi. So. of
Downtown

Phone 277-1191, Lexington, Kentucky

LANDMARK FOR SLEEPY AMERICANS

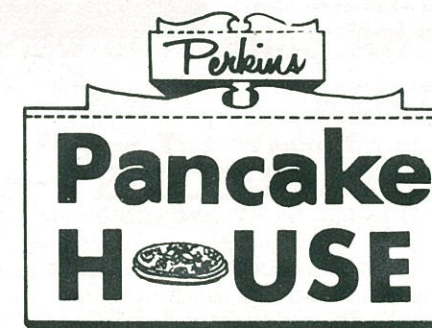
LEXINGTON PHOTO ENGRAVING CO.

223 W. Short
Tel. 255-5015

If your **GOAL** is
"Fast Production — Fine Reproduction"
for your printing needs,
RUSH to left **GOAL** for letterpress plates,
or
RUSH to right **GOAL** for offset plates.
Let us **TACKLE** your plate-making to **END**
your problems. **PASS** them to our **CENTER**
and you will **GUARD** against a **KICK** in the
final **RUN**.

LEXINGTON PHOTO LITH INC.

1600 N. Lime
Tel. 299-1378



- 28 Different Varieties of Pancakes & Waffles
- Businessman's Luncheon Mon. thru Friday
- Steaks, Chops, Chicken, Seafood Also Available
- Dine In An Early American Atmosphere
- Special Family Nights & Childrens Portions
- Informal, Friendly Service
- Private Dining Room For Parties Clubs, Banquets, Etc.

BILL ELLIS — Manager

DIAL — 254-7835

Located On U.S. 27 At S. Lime and Rose Sts.
Across From U. of Ky. Medical Center

"Stop in Whenever Your Appetite
Craves a Treat"

BALL HOMES INC.

*Homes of Distinction
At a Moderate Price*

254-7777

1316 Versailles Road, Lexington



LEXINGTON QUARTERBACK CLUB—One of the most active and helpful organizations working unselfishly in support of University of Kentucky's football program is the 400-member Lexington Quarterback Club represented ably by the Board of Directors pictured above. Guided by current President Jay Waters (insert left) and Athletic Coordinator Bill Faulkner (insert right), the group of vitally interested Lexington and Central Kentucky businessmen performs many functions in aid of the school and the coaching staff, including that of greeting visiting prospects and making their stay in the Blue Grass a memorable occasion. The club meets weekly during the season for luncheon at which game films are shown and narrated by Head Coach Charlie Bradshaw.



— Boosting the Wildcats to Success —

That old axiom which suggests an army travels on its stomach never had a more appropriate twist than it gets in the modern day world of sports.

Equally popular as a truism is the statement that declares successful athletic teams are "boosted" to the top—a reference to the all-important help within the strict bounds of official rules given by various interested organizations such as the one pictured on this page.

University of Kentucky athletic officials—Director of Athletics Bernie Shively and members of the coaching staffs—as well as the young men who are either team members or prospec-

tive Wildcats sincerely appreciate the public-spirited assistance given in particular by the Lexington Quarterback Club, UK Committee of the Chamber of Commerce, K-Men's Association and the Lexington Salesmen's Club.

The makeup of these groups includes businessmen and private citizens of the University community who voluntarily donate of their valuable time and effort on a year-around basis to promote and handle many non-coaching assignments ranging from the actual selling of tickets to making the high-type athletes feel that they have a home away from home while playing for the Wildcats.

KENTUCKY CHEERLEADERS



FRONT ROW (left to right)—Nancy Coffman, Bonnie Breault, Suzanne Huffines. **BACK ROW**—Patty Lane, Steve Potts, Suzanne Oney, Mary Frances Wright, Paula Choote, Larry Roberts, Suzanne Zeigler, Candy Johnson, Jean Allen Lankford, Tom Sweet. Absent from picture—Winnie Jo Perry, Stan Craig, Mike Gordon.

Preview of Coming Attractions KENTUCKY vs. GEORGIA Playing Two Weeks From Tonight On Stoll Field

FACTS ABOUT THE BULLDOGS

COACH—Vince Dooley (Won 7, Lost 3, Tied 1)

1964 Record—Won 7, Lost 3, Tied 1)

Last Year's Score—Georgia 21, Kentucky 7

Series—Bulldogs lead, 12-4-2

Chief Losses—HB Fred Barber, HB Don Porterfield, FB Leon Armbruster, FB Frank Lankewicz, LB LeRoy Dukes, E Barry Wilson, HB Wayne Swinford, T Jim Wilson, T Ray Rissmiller, and Punter Mack Faircloth.

Top Returnees—OE Pat Hodgson, QB Preston Ridlehuber, OHB Bob Taylor, DHB Doug McFalls, DHB Joe Burson, all seniors; DG Dick Phillips, DT George Patton, DE Jerry Varnado, and QB-Safety Lynn Hughes, all juniors.

Sophs to Watch—T Edgar Chandler, QB Kirby Moore, LB Jiggy Smaha.

Outlook—Second year Coach Vince Dooley has the classic problem that accompanies success—what to do for an encore. In his first season last fall, he took Georgia to a 6-3-1 season slate and then a Sun Bowl victory. Now, many key operatives are gone—like All-America tackle Jim Wilson, fullback Leon Armbruster, and wingback Don Porterfield. Taking up the slack, say the experts, will be the improvement of Ridlehuber and some classy sophs plus a tremendous gain in mental attitude. Manning one end of a passing attack that is due to be used more extensively will be senior Pat Hodgson, the leading SEC receiver two years back. Dooley says Ridlehuber has improved as a passer. Georgia is picked to wind up in the second division—7th to 9th—after engineering biggest surprise in SEC last year—jumping from 9th prediction to second place tie, but don't bet on it. The Bulldogs growled menacingly in an astonishing upset of National Champion Alabama in this season's opener.

TICKETS for this outstanding attraction between the Wildcats and the Bulldogs may be purchased at the UK Athletic Ticket Office in Memorial Coliseum or ordered by mail. Prices are \$5.00 for reserved stadium seats and \$3.50 for bleacher seats.

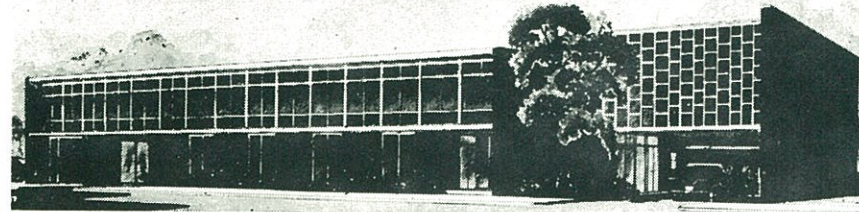


**COACH
VINCE DOOLEY**



PAT HODGSON—E

The Downtowner Motor Hotel



LEXINGTON'S FINEST — 155 ROOMS — RESTAURANT — COCKTAIL LOUNGE — CONFERENCE ROOMS
PARK AT YOUR FRONT DOOR — TV — HI-FI — RADIO — PHONES — SWIMMING POOL
347 EAST MAIN — JUST EAST OF ROSE

Hargett Construction Co.

INCORPORATED

General Contractors

Phone 252-2992

998 New Circle Rd., N.E. Lexington, Ky.

Borden's

ICE CREAM

Throughout
Central Kentucky



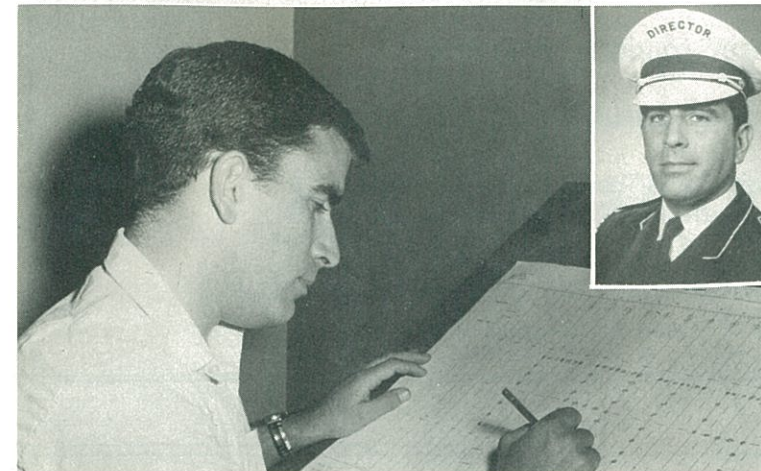
576 E. Third St. — Phone 254-2855

Two Big, Modern Stores To Shop In

BEN SNYDER

DOWNTOWN • EASTLAND SHOPPING CENTER

Open a Ben Snyder Charge Account for Fast, Easy Shopping



Band Director Phil Miller spends many hours at the drawing board mapping out precision drills for the entertainment of UK football fans.

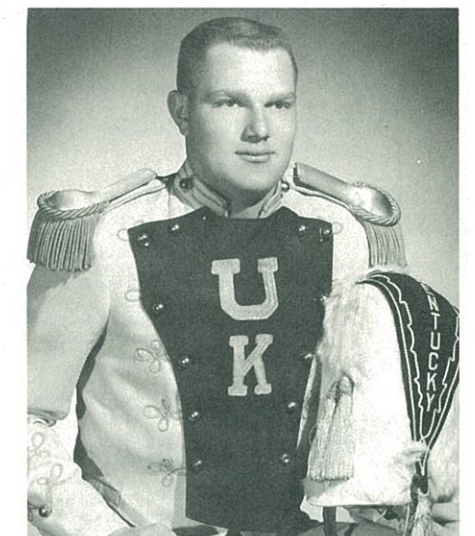
The Marching 100

The halftime show put on by University of Kentucky's 100-piece marching band tonight reflects many man hours of planning and practice—about as much preparation as the football Wildcats undergo—and is a tribute to Phil Miller, one of the foremost young band directors on the national collegiate scene.

With college football audiences becoming more sophisticated each year, better planned geometric patterns of motion and varied music must be practiced to interest the fans. Kentucky bandmen must memorize three pages of instructions and explanations before practice even begins in the fall for the football game halftime shows. Director Miller and his assistants put in about three hours of planning for every hour of field rehearsal. Six hours of practice go into each week's show.

The UK band is supported by a \$10,000 annual grant from the Athletics Association which is used mainly to finance scholarships for the musicians.

Drum major of the 1965 marching band is big Jim Mahan, a junior from Lexington who could be mistaken for a football player.



"IRRESISTIBLE" Your Home in Modern, Provincial
or Early American, by . . .



Established
1893

ROBERTS
Furniture Company

• Open Monday Night
to 9 . . . for Your
Shopping Pleasure!

425 W. MAIN • FREE PARKING AT SIDE DOOR

Lexington Yellow Cab Co.

Inc.

ALL
RADIO CABS

Dial **252-2230**

ALL
RADIO CABS

RALPH BERLIN
FB Trainer



BUSTER BROWN
FB Equip. Mgr.



C. W. BRUNER
Fields Supt.



HARVEY HODGES
Ticket Mgr.



BOB JOHNSON
Track



KEN KUHN
Information Dir.



WILDCAT HEAD COACHES AND ATHLETICS STAFF



HEBERT LARGE
Rifle



WYNN PAUL
Swimming



ADOLPH RUPP
Basketball



JOE SHANNON
Baseball



DICK VIMONT
Tennis



HUMSEY YESSIN
Golf

BECKER

5 Convenient Locations

Main Plant — S. Limestone and Euclid Avenue
4th Street and N. Broadway Walton and Aurora Avenue S. Limestone and Vine Southland Shopping Center

NOBODY can Launder a Shirt like BECKER

Claude McGaughey, Jr., President — U.K. Grad — Class '48

Flying Somewhere?

Contact . . .

All-American Tours Inc.

(Lexington's largest travel agency—established 1932)

Phoenix Hotel — Telephone 255-6780

. . . Where you get information on ALL
airlines by one call or visit. There is no
service charge.

— ALSO —

We have an attractive program of tours
and cruises to all parts of the world.

You're Always Welcome At . . .

Begley's

WALGREEN AGENCY DRUG STORES

IN LEXINGTON

- ★ 69 Eastland Shopping Center
- ★ Northland Shopping Center
- ★ 878 East High Street
- ★ 404 Southland Drive
- ★ 1743 Alexandria Drive

SERVING THE BEST
IN
DRUG STORE NEEDS
SINCE 1921

16 DRUG STORES IN KENTUCKY

FRENCH
SHRINER

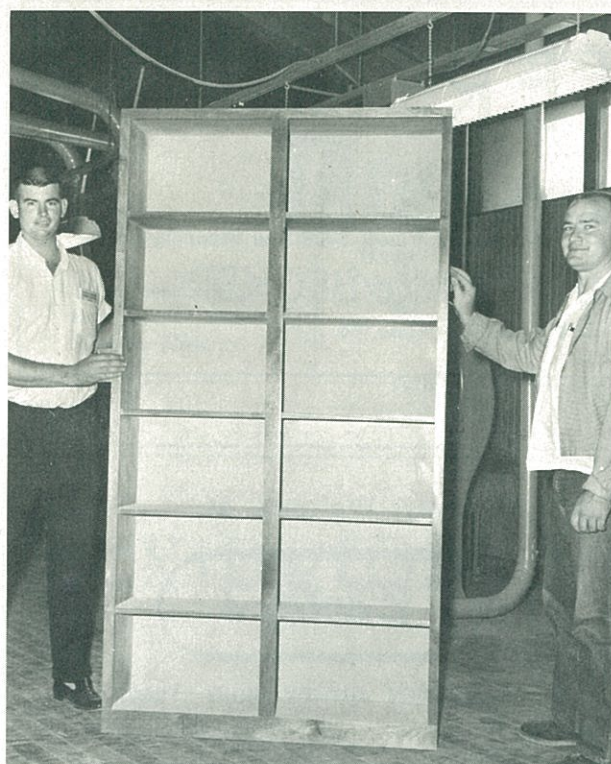
Outstanding...
COMFORT,
QUALITY
& STYLE

SHOES FOR MEN

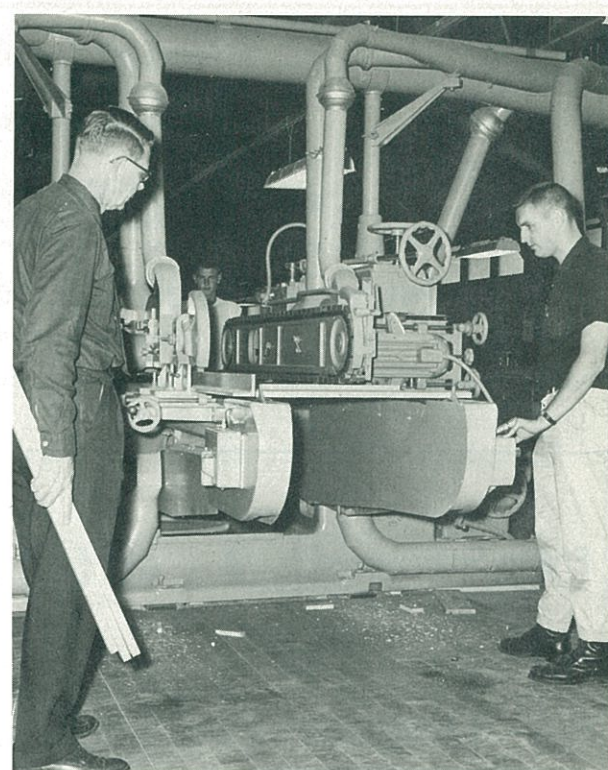
BAYNHAM'S

135 East Main Street





A finished product from the school at Quicksand, which is in Breathitt County. This bookcase was built by students in a class on "Assembly and Finishing." John E. Ford is superintendent of the forestry school.



When great-grandfather built his cabin, he didn't need a double end tenoner, such as this one operated by students at the Forestry and Wood Technician School, but then he didn't live in the specialized 1960's.

Wood Center Provides Two-Year Course

"To restore jobs that once were and disappeared and to create jobs where none existed."

With these words, William L. Batt, Jr., administrator of the Area Redevelopment Administration, helped dedicate the University of Kentucky's Wood Utilization Center at Quicksand in October, 1963.

The first class in the Forestry and Wood Technician School at the Center had enrolled in September of that year.

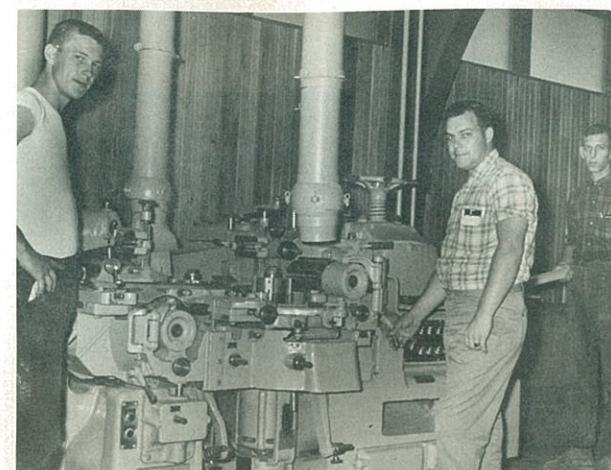
What began as a nine-months' course of study to develop potential leadership in wood use and for-

estry related industries, soon was expanded into a two-year terminal course of study.

The first year, students are desk-bound on campus to such subjects as botany, physics, mathematics, engineering, English and commerce.

Second year students spend most of their time in the forest, the sawmill or the shop; putting into practice subject matter learned and developing various associated skills.

Here we see them at work.



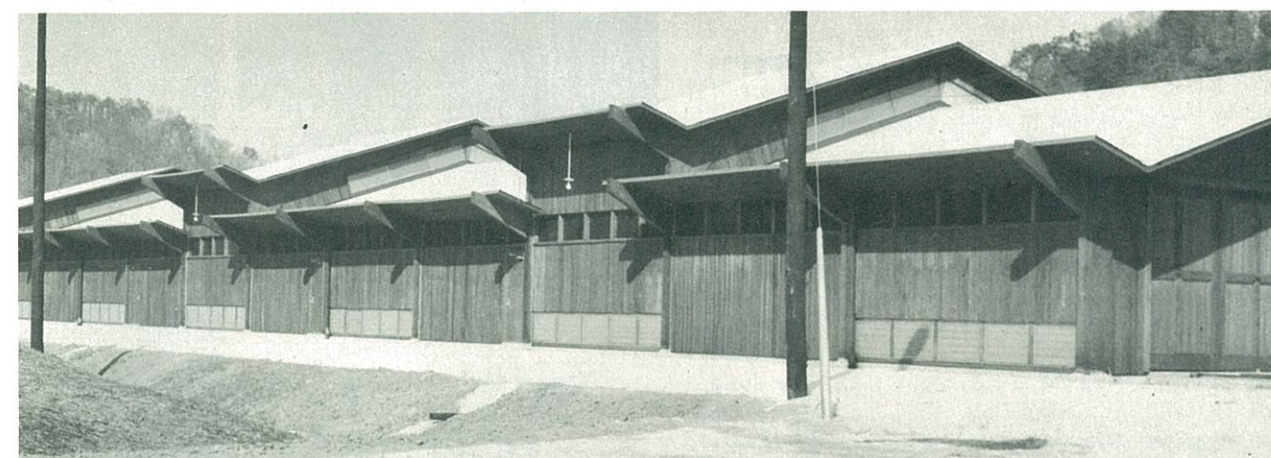
Another intricate machine students learn to operate is this molder. Students have experienced little difficulty in finding jobs as forestry aides or in industry concerned with manufactured products of wood.



It's still a question of knowing quality. Students in a lumber-grading class learn to spot defects and separate lumber into different categories. They learn to scale fresh-cut timber to determine lumber footage.



Some trees must be culled to make room for stronger ones. Students must know the good from the bad, and eliminate the bad, as they are preparing to do here. Students at the Center engage in actual logging practice.



The Wood-Use Demonstration Center at Quicksand, already a valuable resource to the timber industry of Eastern Kentucky. The facility is be-

lieved to represent the first establishment of its kind in the United States.

KENTUCKY BASKETBALL—1965-66



Baron Adolph Rupp, maker of champions and All-Americans, shows off the quartet of stars on whose talented shoulders will rest a major portion of the burden of producing a banner season in 1965-66. The group of lettermen, all double-figure scorers a year ago, are (from left to right) most valuable player Pat Riley (6-3 junior forward), Tommy Kron (6-5 senior guard-forward), leading scorer Louis Dampier (6-0 junior guard) and Larry Conley (6-3 senior forward). Joining this band in a bid for an unprecedented 22nd Southeastern Conference title and new national honors will be juniors Gene Stewart and Brad Bounds along with the bevy of sophomores pictured below.

UNIVERSITY OF KENTUCKY BASKETBALL SCHEDULE — 1965-66

1965

Dec. 1 (Wed.)	Hardin-Simmons	Lexington
Dec. 4 (Sat.)	Virginia	Charlottesville
Dec. 8 (Wed.)	Illinois	Champaign
Dec. 11 (Sat.)	Northwestern	Lexington
Dec. 17-18 (Fri. & Sat.)	UKIT (Air Force, California, Indiana and Kentucky)	Lexington

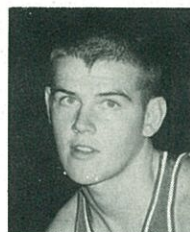
Dec. 22 (Wed.)	Texas Tech	Lubbock
Dec. 29 (Wed.)	Notre Dame	Louisville

1966

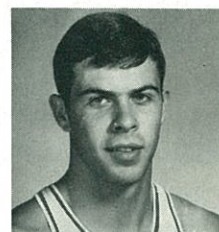
Jan. 3 (Mon.)	St. Louis	Lexington
Jan. 8 (Sat.)	Florida	Gainesville
Jan. 10 (Mon.)	Georgia	Athens
Jan. 15 (Sat.)	Vanderbilt	Lexington
Jan. 24 (Mon.)	Louisiana State	Lexington
Jan. 29 (Sat.)	Auburn	Lexington
Jan. 31 (Mon.)	Alabama	Lexington
Feb. 2 (Wed.)	Vanderbilt	Nashville
Feb. 5 (Sat.)	Georgia	Lexington
Feb. 7 (Mon.)	Florida	Lexington
Feb. 12 (Sat.)	Auburn	Auburn
Feb. 14 (Mon.)	Alabama	Tuscaloosa
Feb. 19 (Sat.)	Mississippi State	State College
Feb. 21 (Mon.)	Mississippi	University
Feb. 26 (Sat.)	Tennessee	Lexington
Mar. 5 (Sat.)	Tennessee	Knoxville
Mar. 7 (Mon.)	Tulane	Lexington



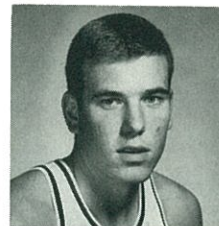
CLIFF
BERGER



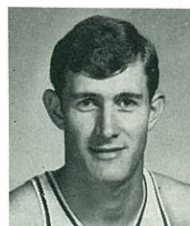
STEVE
CLEVINGER



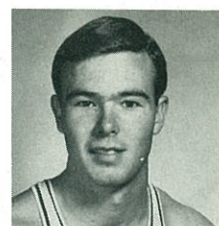
GARY
GAMBLE



THAD
JARACZ

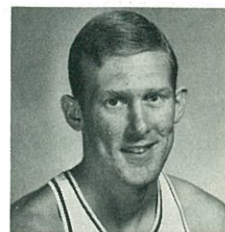


JIM
LE MASTER



TOMMY
PORTER

SOPH HOPEFULS



BOB
TALLENT

Places of Interest To Visit In Lexington:

Henry Clay Home Big Red Mile
Hunt Morgan House Horse Farms
Keeneland Race Course

And

WENNEKERS

153-155 East Main Street

Where Sports Celebrities Make Their
Headquarters

Save Money on Nationally Advertised Shoes

Prices You Can Afford

LEXINGTON'S NEWEST INDUSTRY

Designers and Manufacturers
Of Engineered Systems For
The Fluid Power Industry

WABCO

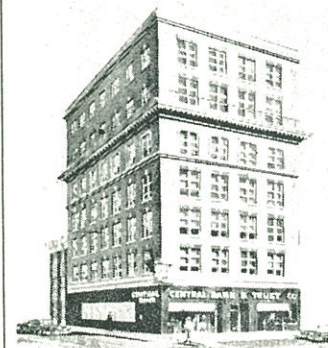


INDUSTRIAL PRODUCTS DIVISION

WESTINGHOUSE AIR BRAKE CO. / LEXINGTON, KENTUCKY

A Good Place To Work

A sure winner for convenient banking



Lexington's
Only
Downtown
Drive-In
Banking

Open 7:30-6 p.m.
Sat. 7:30-Noon

4% NEW CAR LOANS • 4 1/2% SAVINGS INTEREST

Central
BANK & TRUST CO.
CORNER SHORT & UPPER - MEMBER F.D.I.C.

Dixie Bell Dairy Company

"The Largest and Only Locally
Owned Dairy Serving
Central Kentucky"

★ ★ ★

315 North Limestone Street
LEXINGTON, KY.