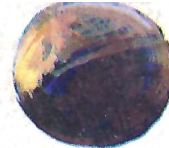


**DOAK S. CAMPBELL STADIUM
TALLAHASSEE, FLORIDA**



**OFFICIAL
PROGRAM
50c**

FLORIDA STATE vs. GEORGIA

OCTOBER 16, 1965



Albrett



LOOK FOR ME
WHEREVER YOU GO

Jerry's
RESTAURANTS

Scalp'em Seminoles



FSU FOOTBALL . . . 1965

TABLE OF CONTENTS

Guest Column	4	Seminole Network	25
University Features	5, 6, 7	Stadium Information	27
Athletic Committee	8	Cheerleaders, School Songs	29
Seminole Football Family	9	Seminole Boosters, Inc.	30
Tonight's Teams, A Statistical Comparison	10	Officials' Signals	31
FSU All Time Records	11	Opponent's Pictures	33, 34, 35
1965 Schedule Analysis	12	The Marching Chiefs	36
FSU Player Photos	13, 15, 16, 17	Rosters, Depth Charts	Flip Card
Starting Lineups, Officials	20, 21	Florida State University Basketball Schedule	39
Penalties	23		

*Compliments and
Best Wishes from*



**YOUR APPLIANCE
HEADQUARTERS
611 N. Monroe St.**

OFFICIAL WATCH FOR THIS GAME

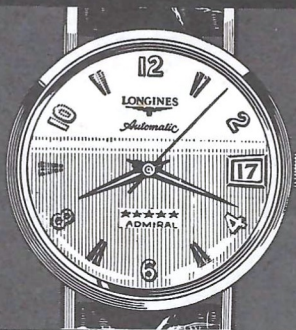


LONGINES THE WORLD'S MOST HONORED WATCH

10 WORLD'S FAIR
GRAND PRIZES
28 GOLD MEDALS



Longines watches are recognized as OFFICIAL for timing world championships and Olympic sports in all fields throughout the world.



Longines 5-Star Admiral Automatic with Calendar, All-Proof®, sweep-second, 14K gold strap—\$185.00

The Longines Credo

Every Longines watch, whatever its type, for whatever its use, today, as for almost a century, is manufactured to be the finest of its kind and worthy in every respect to be called **The World's Most Honored Watch**

LONGINES-WITTMAYER WATCH CO.
MONTREAL • NEW YORK • GENEVA
Maker of Watches of the Highest Character Since 1867

The View From Above

By **BILL BUNKER**
Sports Information Director
Florida State University



The football used in last week's Florida State-Kentucky game was thrown into the air 66 times, as FSU's Ed Pritchett and Kentucky's Rick Norton staged one of the young season's most exciting aerial dogfights.

Tonight's game will feature Florida State's passing against one of the nation's stingiest ball-control teams—Georgia's undefeated Bulldogs.

Coach Vince Dooley's team was a consensus pick for the Southeastern Conference's second division by the pre-season experts, but Dooley is a fellow who flaunts the odds. With the season four weeks old, the Bulldogs are the team to beat in the SEC, and rank among the top five nationally.

For the second straight week the Seminoles meet a team bent on revenge. Georgia fell to a last quarter passing blitz by Steve Tensi and Fred Biletnikoff last season to lose a 17-14 game which most Bulldog partisans feel they should have won. It was one of the three losses suffered by Georgia enroute to a 6-3-1 season, followed by a 7-0 victory over Texas Tech in El Paso's Sun Bowl.

This season, the Bulldogs shocked the nation with an opening victory over Alabama, and thus far have counted Vanderbilt, Michigan and Clemson among their victims. They'll be out to break a three-game losing streak against Florida State, although Georgia leads the series five games to three.

Dooley, an ex-Auburn quarterback who was voted Coach of The Year in the SEC last year, believes in a strong running game. Georgia has thrown only 35 times in four games, whereas Florida State has attempted 94 passes in three games.

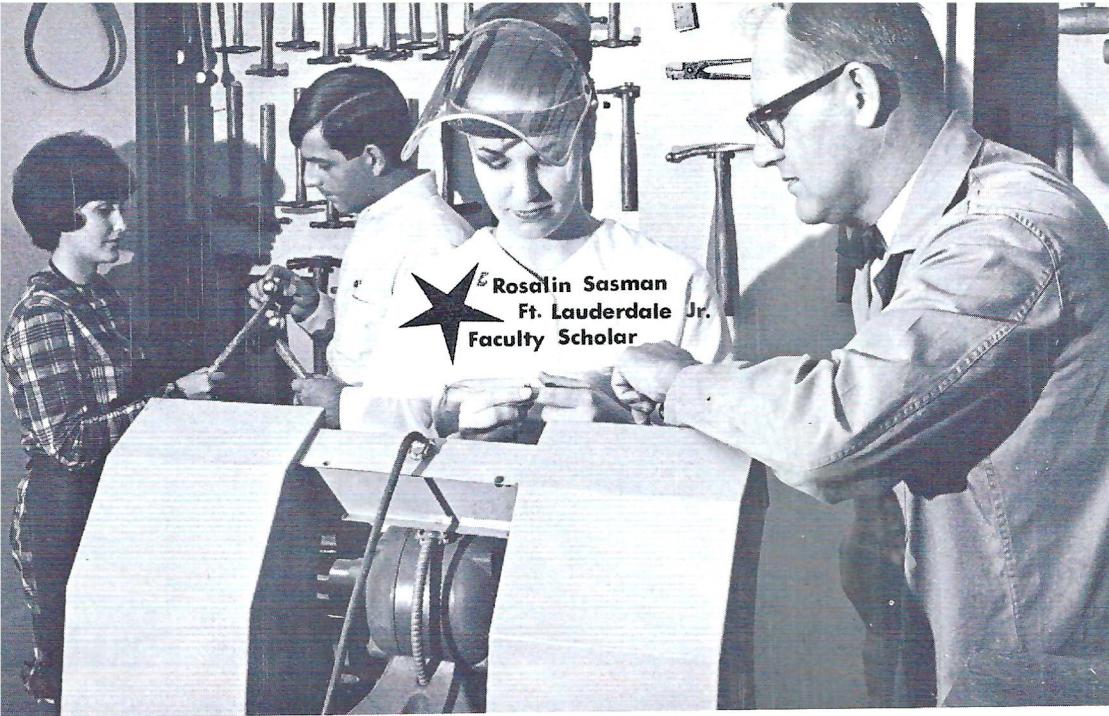
Florida State discovered an offensive punch against Kentucky last week, and Pritchett's passing should test the Bulldog secondary. Georgia's defense is one of the nation's toughest, and has been responsible for six Bulldog touchdowns so far this season.

Although Florida State's defenders were caught short by Norton's great passing last week, the Seminoles still figure to be tough against the running game which forms the heart of Georgia's offense.

Halfback Bob Taylor, fullback Ronnie Jenkins and quarterback Preston Riddlehuber have accounted for 533 yards along the surface this year.

Both teams have good receivers. Georgia's Pat Hodgson has caught five passes for 93 yards and two touchdowns; FSU's Max Wettstein and Jerry Jones have each hauled in eight.

Although neither team can afford to look ahead, both face formidable tests next Saturday. Georgia makes the trip to Lexington for a date with Kentucky, and Florida State will be Bear Bryant's guest at Alabama's homecoming.



Rosalin Sasman
Ft. Lauderdale Jr.
Faculty Scholar

YOUR SEAL OF ASSISTANCE... IS GROWING



The FSU Foundation

The story of Florida State's phenomenal growth in the past decade is self-evident in the structural relief of the campus today, and in the size of its enrollment—13,188 students this Fall vs. 6,415 students in 1955. Not as readily apparent, however, is another growth story—the story of increasing external financial assistance to this dynamic public university, through the FSU Foundation, Inc., since its organization in 1960.



Raymond San Anton
Miami Freshman
Alumni Scholar



Charles Ausley
Attorney
Tallahassee



Braden Ball
Publisher
Pensacola



Floyd Bowen
Road Board Chmn.
Tallahassee





John Champion
President
FSU Foundation



J. J. Daniel
Business Executive
Jacksonville



Philip Fleming
VP Treasurer
FSU Foundation



Richard Gardner
Attorney
Quincy



Joe K. Hays
Business Executive
Winter Haven



Mrs. Louis Hill
Secretary
FSU Foundation



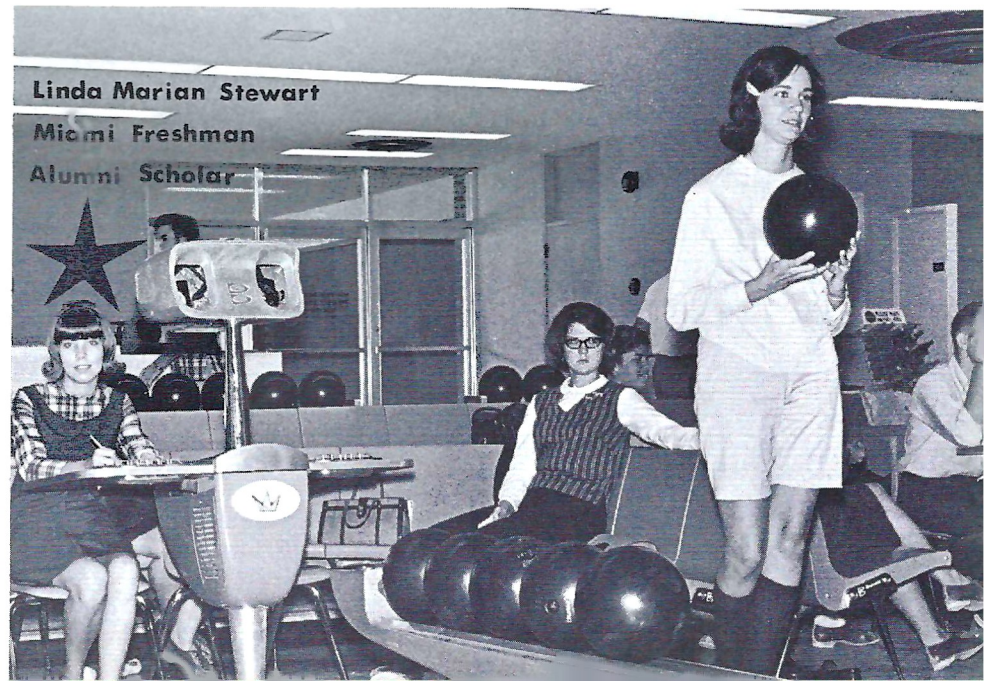
Funds Created By Alumni And

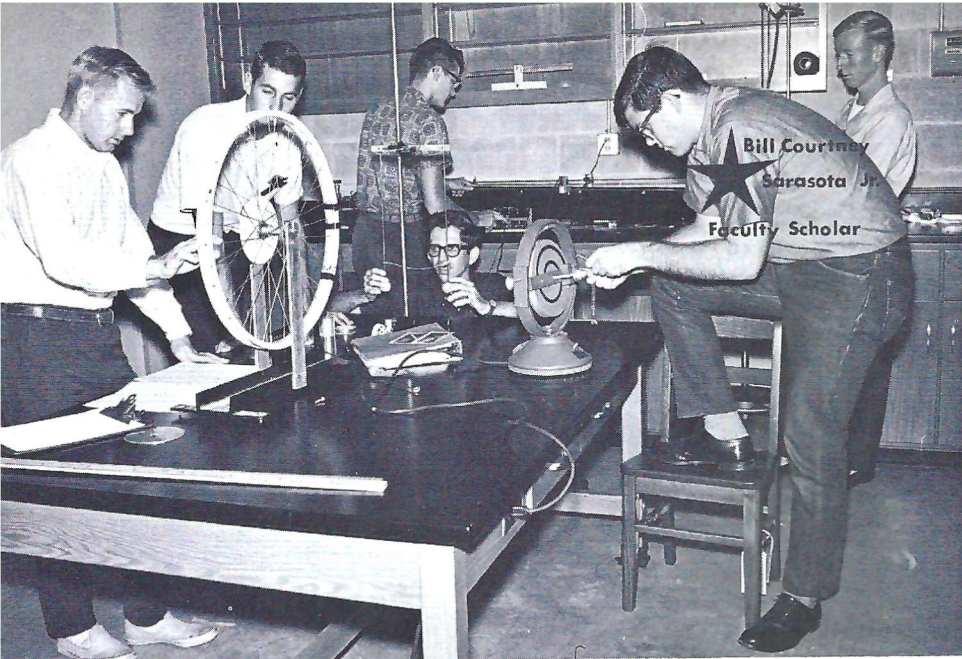
Formal fund-raising campaigns by the FSU Alumni Association and grass-roots efforts similar to those begun by FSU faculty themselves are but two of many sources of scholarship funds for which the FSU Foundation seeks continuing support.

Building FSU's Endowment

Pictured on these three pages are the 15 men and women who are guiding, as Trustees, this Foundation's growth. Also shown in their classroom situations are six of the hundreds of students who are benefiting from one or more scholarship funds channeled through the FSU Foundation by many sources, both individual and collective.

Assistance to FSU students last year totaled more than \$1.4 million in scholarships, loans and fellowships derived from combined contributions of faculty, alumni, educational foundations, businesses, federal matching fund programs and private bequests.





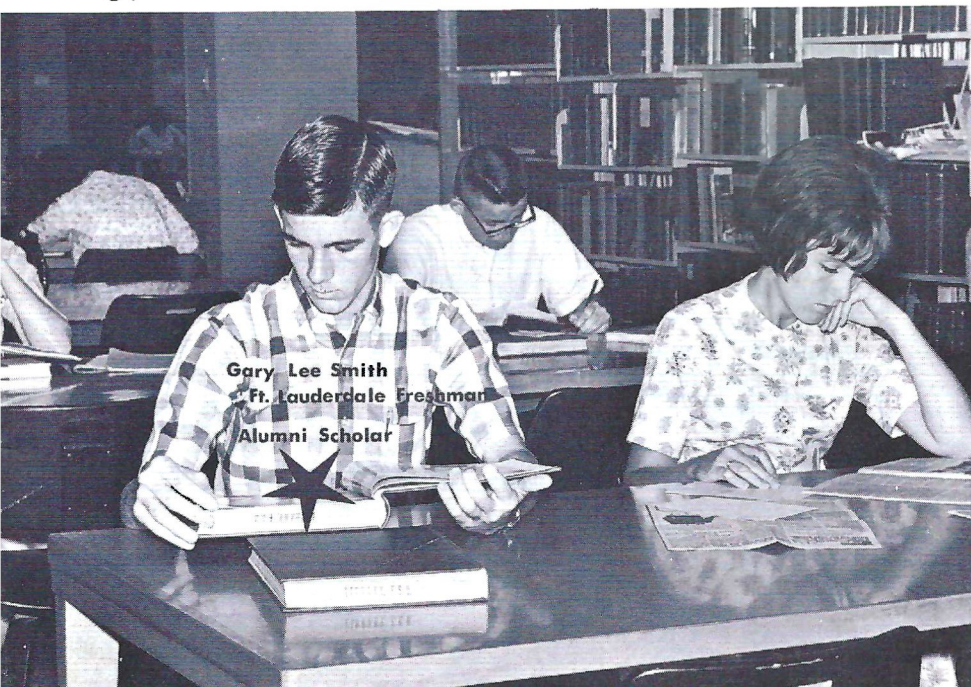
Faculty Groups Aid Students

Such support made possible 780 direct scholarships last year to bright young scholars needing financial help to go to college, with 23 coming directly from Faculty Fund contributions. More than 4,000 student loans and 118 fellowships were also made.

For EXCELLENCE

Since its formation, the Foundation's principal working assets have been reaching upward toward \$1.5 million in bequests, and its assistance to the University (from all sources) now exceeds \$1 million per year. The existence of such funds permits the University to undertake, in many instances, programs of exceptional quality which would otherwise be marginal if limited to the use of public appropriations.

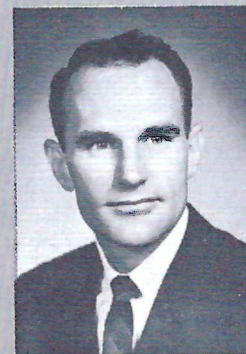
Why not add your support to FSU's endowment for excellence? Help FSU stamp its instruction with the seal of quality, by sending your contributions to the FSU Foundation, 200 Wescott, FSU.



Lindsey Hopkins
Business Executive
Miami



John G. McKay Jr.
Attorney
Miami



Charles Mixon Jr.
Alumni President
Tampa Attorney



Mrs. F. D. Moor
Alumni Leader
Tallahassee

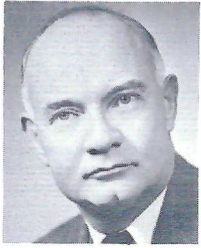


Hon. B. K. Roberts
Supreme Court
Tallahassee

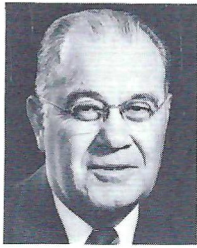


Godfrey Smith
Banking Executive
Tallahassee

FLORIDA STATE'S ATHLETIC COMMITTEE



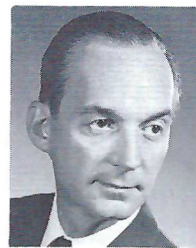
Mode L. Stone,
Chairman
Dean, School of
Education



Coyle E. Moore
Dean, School of
Social Welfare



Elston Roady
Professor,
Government



Thomas Wright
Assoc. Professor,
Music



Claude Flory
Professor, English



Robert Earnest
Professor, Business



Mary Alexander
Assoc. Professor,
Physical Education
and Recreation



J. M. Plant
Assoc. Professor,
Engineering Science

GO-GO SEMINOLES

CHICK-N-TREAT

TAKE OUT BOXES

Located Two Blocks

From Stadium

1342 Jackson Bluff Rd.—224-4425

MIDYETTE-MOOR

Insurance Agency

"Ask Those We Serve"

Complete Insurance and Bond Service

PHONE 222-3456



MIDYETTE-MOOR BUILDING
TALLAHASSEE, FLORIDA

SAYS

SCALP 'EM SEMINOLES!



Payne Midyette
Frank Moor
Ed Clark
Winslow Sullivan
Bob Dickinson
Paul Lewis
Payne Midyette, Jr.

Bill Moor
Bill Franklin
Glenn Sears
Dick Wall
Don Northcut
Rex Sikes
Mike Lee

BENNETT'S DRUG STORE

- Prescriptions
- Cameras
- Sundries
- Gifts
- Fountain
- Cafe
- Cosmetics
- Drugs

MEET ME AT BENNETT'S

BEFORE AND AFTER THE GAME!

Corner Monroe and College Streets

Phone 222-8980 — 222-4450

DON JAMES
First Assistant
Defensive Chief



BOB HARBISON
Defensive Line



NEIL SCHMIDT
Defensive Ends,
Linebackers



KEN MacLEAN
Head Recruiter



BILL CRUTCHFIELD
Offensive Chief



DON POWELL
Offensive Line



BOBBY BOWDEN
Receivers



BILL PROCTOR
Freshman



BILL PETERSON
Head Football Coach

THE SEMINOLE FOOTBALL FAMILY

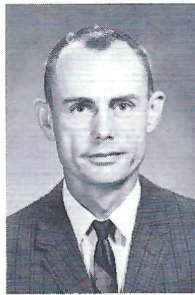
RONALD MELTON
Business
Manager



JEFF SAVAGE
Academic
Advisor



CLAUDE THIGPEN
Ticket Manager



BILL BUNKER
Sports
Information



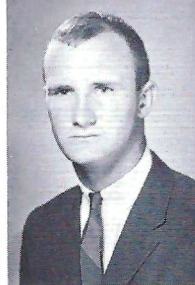
VAUGHN MANCHA
Director of Athletics



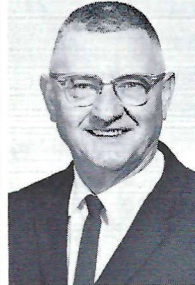
DR. R. P. JOHNSON
Team Physician



DON FAULS
Head Trainer

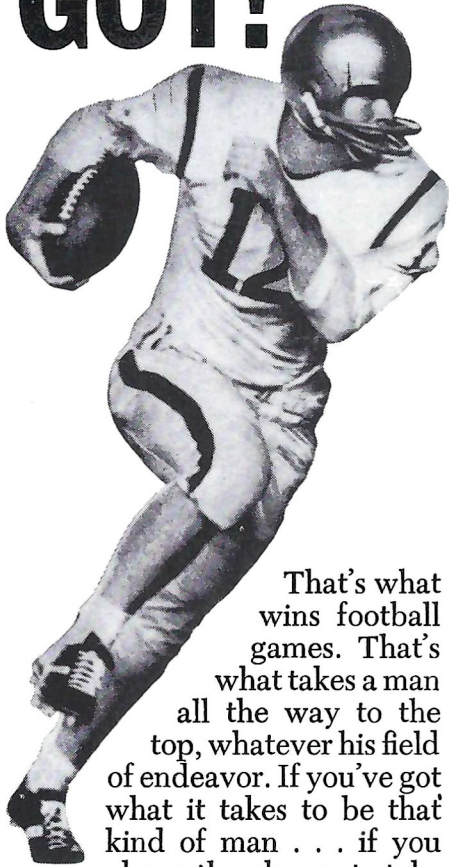


PHIL CALLICUTT
Trainer



TILLMAN DIXON
Equipment
Manager

GIVE IT EVERY-THING YOU'VE GOT!



That's what wins football games. That's what takes a man all the way to the top, whatever his field of endeavor. If you've got what it takes to be that kind of man . . . if you have the chance to take ROTC, make what you've got count. Go for an Army commission. That way, come commencement, you'll have two good things going for you: your college degree, and the gold bars that mark you a leader of men . . . tested, trained, trusted.

GET IN—STAY IN ARMY ROTC!

TONIGHT'S TEAMS A Statistical Comparison

FLORIDA STATE Results (1-2)		
3	TCU	7
9	Baylor	7
24	Kentucky	26
<hr/>		<hr/>
36		40

GEORGIA Results (4-0)		
18	Alabama	17
24	Vanderbilt	10
15	Michigan	7
23	Clemson	9
<hr/>		<hr/>
80		43

TEAM STATISTICS

35	First Downs	50
244	Yards Rushing	694
485	Yards Passing	278
739	Total Offense	975
96	Passes Attempted	35
42	Passes Completed	15
5	Passes Had Intercepted	5
21	Punts	24
38.7	Punting Average	37.9

INDIVIDUAL LEADERS

Rushing

Name	Times	Yards	Avg.	Name	Times	Yards	Avg.
Giardino	30	85	2.8	Taylor	53	252	4.9
Spooner	27	53	2.0	Jenkins	35	145	4.2
Petko	11	40	3.6	Ridlehuber	35	136	3.3

Passing

Name	Att.	Comp.	Yards	TD	Name	Att.	Comp.	Yards	TD
Pritchett	94	41	475	2	Ridlehuber	22	8	112	2
Gero	1	1	10	0	Moore	13	7	166	1

Pass Receiving

Name	Caught	Yards	TD	Name	Caught	Yards	TD
Wettstein	8	116	1	Hodgson	5	93	2
J. Jones	8	95	0	Wheeler	3	30	0
Giardino	7	51	0	Richter	3	35	0
Wetherell	6	107	1				

Punting

Name	No.	Avg.	Name	No.	Avg.
Hosack	21	38.7	Ridlehuber	12	37.2
			Moore	10	39.6

Scoring

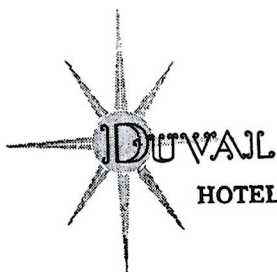
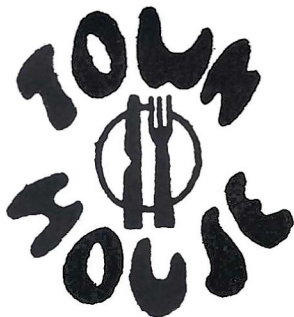
Name	TD	FG	PAT	Total	Name	TD	FG	PAT	Total
Wetherell	2	0	0	12	Etter	0	6	6	24
Roberts	0	3	3	12	Hodgson	2	0	1	14
Pritchett	1	0	0	6					
Wettstein	1	0	0	6					

The Vogue

TALLAHASSEE, FLORIDA

TRAVELING
DESSERT TRAYS

FAMOUS
TOWN HOUSE
ROAST
PRIME RIB
OF BEEF



HOTEL • TALLAHASSEE, FLORIDA

ALL TIME FLORIDA STATE RECORDS

SINGLE GAME

Individual

- TOUCHDOWNS SCORED**—4 by Fred Biletnikoff vs. Oklahoma, Gator Bowl, 1965
- LONGEST TOUCHDOWN RUN FROM SCRIMMAGE**—80 yards by Fred Pickard vs. Virginia Tech, 1957
- LONGEST TOUCHDOWN PASS**—80 yards, Nelson Italiano to Eddie Gray vs. Newberry, 1950
- LONGEST TOUCHDOWN RUN ANY SITUATION**—99 yards by Ted Hewitt vs. Stetson, 1948 and Fred Biletnikoff vs. Miami, 1963 (interception return)
- LONGEST TOUCHDOWN PLAY**—100 yards by Bill Moreman and T. K. Wetherell (lateral on kickoff return) vs. Kentucky, 1965
- LONGEST RUN FROM SCRIMMAGE WITHOUT SCORING**—76 yards by Roy Thompson vs. Stetson, 1951
- LONGEST INTERCEPTION RETURN**—99 yards by Ted Hewitt vs. Stetson, 1948 and Fred Biletnikoff vs. Miami, 1963
- LONGEST PUNT RETURN**—80 yards by Billy Odom vs. Stetson, 1954
- LONGEST KICKOFF RETURN**—89 yards by Billy Odom vs. Va. Tech, 1955
- LONGEST PUNT**—84 yards by Tommy Brown vs. Tampa, 1950
- LONGEST FIELD GOAL**—44 yards by Les Murdock vs. Virginia Tech, 1963
- TIMES RUSHING**—29 by Fred Pickard vs. Georgia, 1949
- YARDS RUSHING**—161 by Buddy Strauss vs. Mississippi College, 1949
- PASSES ATTEMPTED**—39 by Steve Tensi vs. Virginia Tech, 1964
- PASSES COMPLETED**—23 by Steve Tensi vs. Oklahoma, Gator Bowl, 1965
- YARDS PASSING**—313 by Joe Majors vs. Tampa, 1959
- TOUCHDOWN PASSES**—5 by Steve Tensi vs. Oklahoma, Gator Bowl, 1965
- TOTAL OFFENSE**—369 yards by Joe Majors vs. Tampa, 1959 (56 rush, 313 pass)
- PASSES CAUGHT**—13 by Fred Biletnikoff vs. Oklahoma, Gator Bowl, 1965
- YARDS RECEIVING PASSES**—192 by Fred Biletnikoff vs. Oklahoma, Gator Bowl, 1965
- TOUCHDOWN PASSES CAUGHT**—4 by Fred Biletnikoff vs. Oklahoma, Gator Bowl, 1965
- PASSES INTERCEPTED**—3 by Tommy Brown vs. Stetson, 1950; and Georgia Tech, 1952; Lee Corso vs. Georgia, 1954; and Bud Whitehead vs. Virginia Tech, 1959
- FIELD GOALS**—3 by Les Murdock vs. Florida, 1964.
- PUNTS**—11 by John Hosack vs. Baylor, 1965 (40.8 average)

TEAM

- POINTS SCORED**—74 vs. Whiting Field, 1949
- MARGIN OF VICTORY**—74-0 vs. Whiting Field, 1949
- MARGIN OF DEFEAT**—0-42 vs. Georgia, 1959
- YARDS RUSHING**—383 vs. Abilene Christian, 1957
- YARDS PASSING**—355 vs. Villanova, 1954
- TOTAL OFFENSE**—526 vs. Furman, 1962 (277 rush, 239 pass)
- PASSES ATTEMPTED**—40 vs. Virginia Tech, 1964
- PASSES COMPLETED**—23 vs. Oklahoma, Gator Bowl, 1965
- PASSES INTERCEPTED**—7 vs. Virginia Tech, 1959
- PUNTS**—11 vs. Baylor, 1965

SEMINOLES ON THE WARPATH

An Analysis of Florida State's 1965 Schedule

TEXAS CHRISTIAN

An inconsistent offense and a 47-yard TCU march in the third quarter gave the Horned Frogs an upset 7-3 victory in the season's opener. The Seminoles won in almost every statistical category, but a 23 yard field goal by Pete Roberts in the second period was the extent of FSU's scoring. Time ran out with the ball on TCU's four yard line.

AT FORT WORTH, Sept. 25 7:30 p.m.

BAYLOR

A 59-yard pass from Ed Pritchett to T. K. Wetherell gave Florida State a last-quarter touchdown and a 9-7 victory over Baylor in the Seminoles' home opener. Pete Roberts put FSU ahead with a field goal in the first quarter, but Baylor's strong passing game came back to score and lead 7-3 until the Seminoles struck. The game marked a top defensive effort for FSU.

AT TALLAHASSEE, Oct. 2 8:00 p.m.

KENTUCKY

Kentucky's Wildcats edged Florida State 26-24 in one of the most exciting games to be played this season. A 100 yard kickoff return by sophomores Bill Moreman and T. K. Wetherell highlighted Florida State's first real offensive show of the season, but Kentucky's great passer Rick Norton brought the Wildcats from behind three times to win the game. Ed Pritchett passed for one touchdown and ran for another for the Seminoles.

AT LEXINGTON, Oct. 9 8:00 p.m.

GEORGIA

One of the nation's top teams comes to Campbell Stadium tonight in a game which promises to be the highlight of FSU's home schedule. Georgia's Vince Dooley was SEC "Coach of the Year" last fall, and the Bulldogs have taken up where they left off in the Sun Bowl. Alabama, Vanderbilt, Michigan and Clemson have felt the 'Dogs' bite so far this season.

AT TALLAHASSEE, Oct. 16 8:00 p.m.

CHARTING FSU'S FUTURE FOES

ALABAMA (3-1)

*Bama		Opp.
17	Georgia	18
27	Tulane	0
17	Mississippi	16
22	Vanderbilt	7

Today: Tennessee at Knoxville.

AT TUSCALOOSA, Oct. 23, 1:30 p.m. CST.

WAKE FOREST (1-3)

Wake Forest		Opp.
3	Virginia Tech	12
11	N. C. State	13
7	Vanderbilt	0
7	Maryland	10

Today: South Carolina at Columbia.

AT TALLAHASSEE, Nov. 6, 2 p.m. HOMECOMING.

HOUSTON (1-3)

Houston		Opp.
0	Tulsa	14
0	Mississippi State	36
21	Cincinnati	6
7	Texas A&M	10

Today: Miami at Miami.

AT TALLAHASSEE, Nov. 20, 8 p.m.

VIRGINIA TECH (4-0)

VPI		Opp.
12	Wake Forest	3
25	Richmond	7
9	Wm. and Mary	7
17	George Washington	12

Today: Vanderbilt at Nashville.

AT TALLAHASSEE, Oct. 30, 8 p.m.

N. C. STATE (1-3)

N. C. State		Opp.
7	Clemson	21
13	Wake Forest	11
7	South Carolina	13
10	North Carolina	7

Today: Florida at Gainesville.

AT RALEIGH, Nov. 13, 1:30 p.m.

FLORIDA (3-1)

Florida		Opp.
24	Northwestern	14
13	Mississippi State	18
14	LSU	7
17	Mississippi	0

Today: N. C. State at Gainesville.

AT GAINESVILLE, Nov. 27, 2 p.m.

SOUTHERNAIRE MOTEL & SKYLINE MOTOR LODGE



Quality people always seek
quality accommodations



OPEN TILL 2 AM
FRI. & SAT.

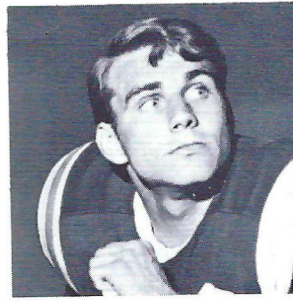
LIVE ENTERTAINMENT

Talem
lounge coffee shop

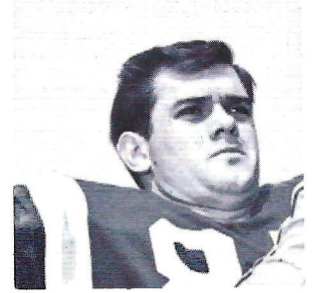
506 S. WOODWARD
1 BLOCK FROM STADIUM



Bob Mangan



Joe Petko



John Hosack

Introducing...the FLORIDA STATE UNIVERSITY 65 SEMINOLES



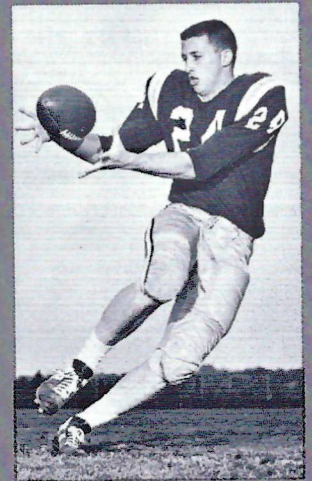
Bill Campbell



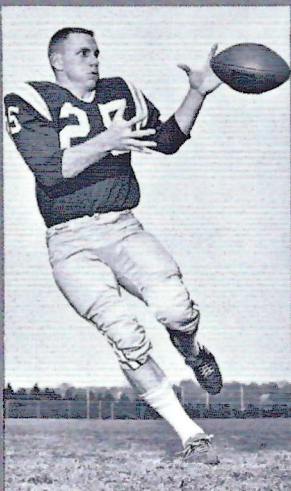
Jack Shinholser



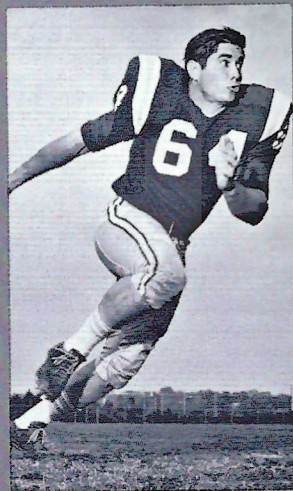
Phil Spooner



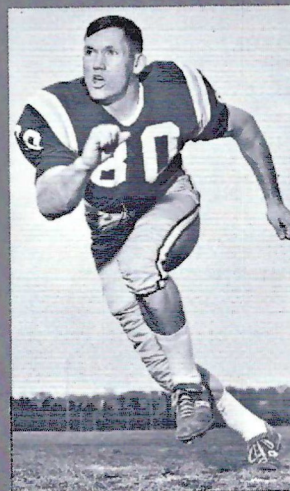
Elton Revell



T. K. Wetherell



Dave Braggins



H. T. Waller



Jay Matthews

Learn to Fly at
G. C. Shuler
Seminole Flying Service, Inc.

Municipal Airport

Phone 222-3121

Tallahassee, Fla.

- **STUDENT CLUBS**
- **AIRPLANE RIDES**
- **FLIGHT INSTRUCTION**
- **AERIAL PHOTOGRAPHY**
- **CHARTER FLIGHTS**
- **AIRCRAFT RENTAL**

FLY the best—A New Cessna

"Look up—a new CESSNA will be overhead"

**The
Association
of
Tallahassee Banks**

Lewis State Bank

The Peoples Bank

Industrial Savings Bank

Parkway National Bank

The Tallahassee Bank & Trust Co.

Capital City First National Bank

All Members of F.D.I.C.

Before Or After

Game

CHICKEN IN THE ROUGH
COPYRIGHT 1937 BY SEVERAL OSBORN

QUAKER HOUSE



RESTAURANT

*Dining Room
and Curb Service*

Tennessee Street

Next to Lafayette Motel

Collins furniture co.
INCORPORATED

1117 THOMASVILLE ROAD

PH. 222-1415

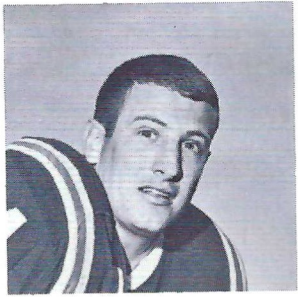
TALQUIN INN

on

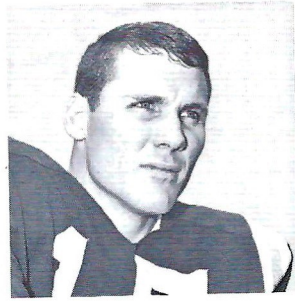
RESTAURANT ROW

Open 5:00 p.m. - 12:30 a.m.

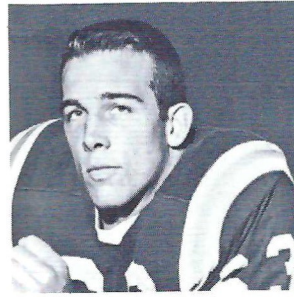
Closed Sundays



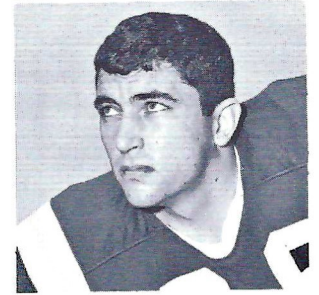
Jim Massey



Pat Conway



Bill McDowell



Thurston Taylor

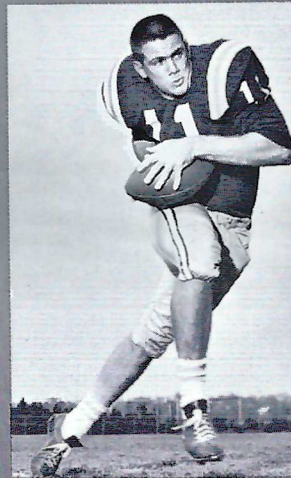
FLORIDA STATE UNIVERSITY 65 SEMINOLES



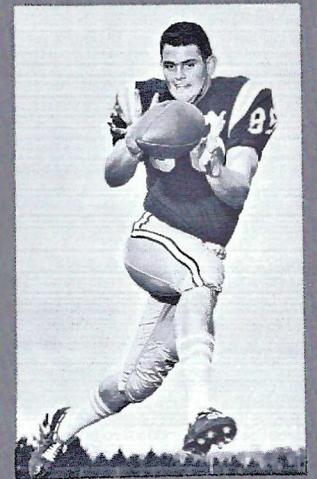
Joe Avezzano



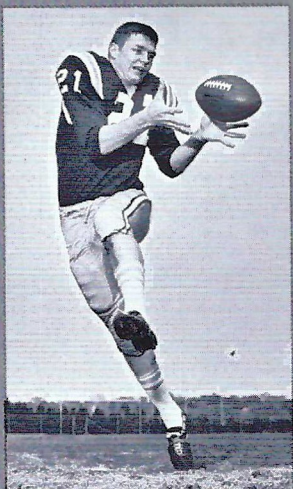
Stan Croley



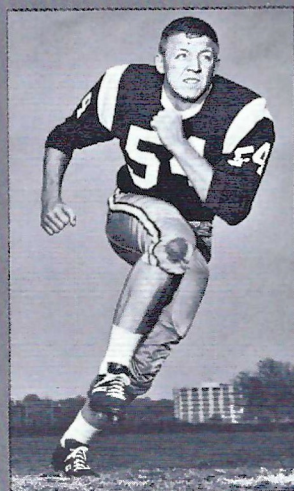
Kim Hammond



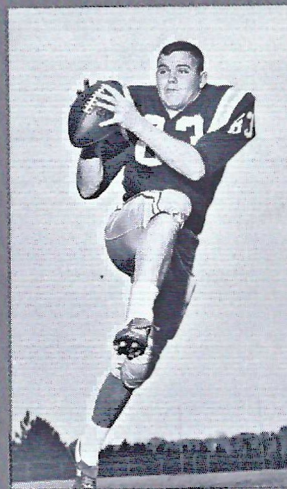
Buddy Blonkship



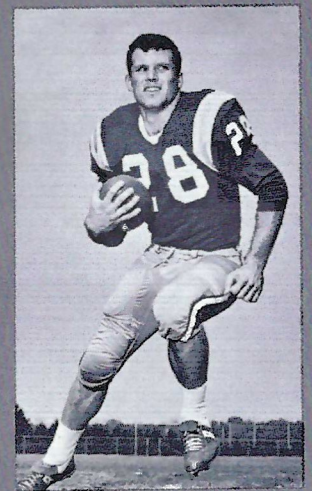
Bill Cox



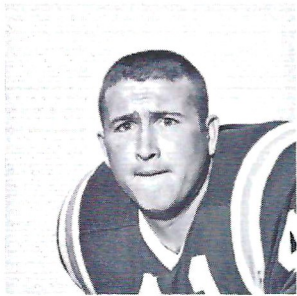
John Stephens



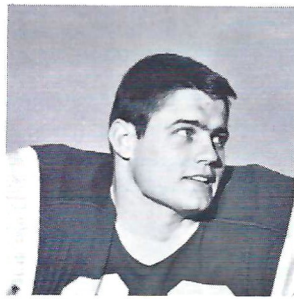
Jerry Jones



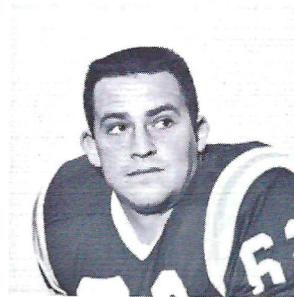
Bill Moreman



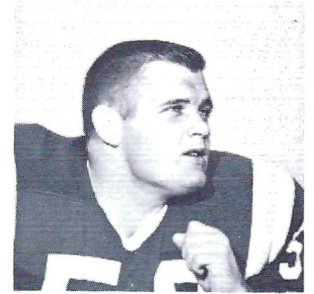
Bob Menendez



Edwin Pope

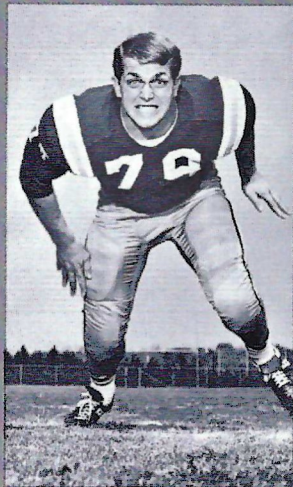


Howard Lurie



David Pitts

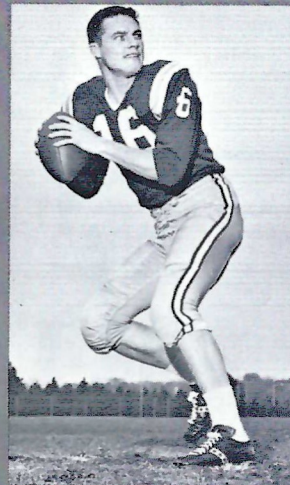
the FLORIDA STATE UNIV



Frank Pennie



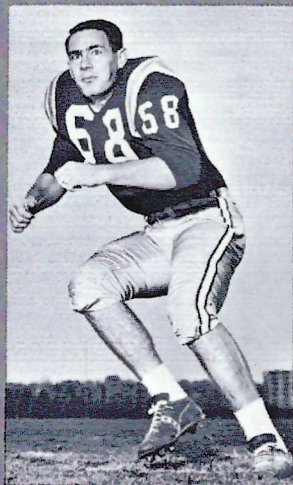
Donovan Jones



Ed Pritchett



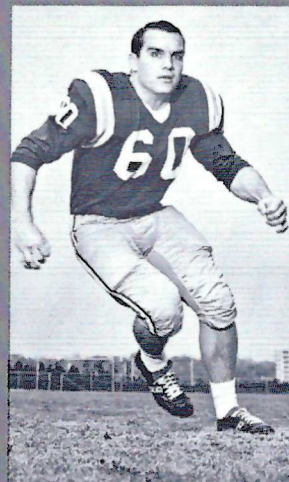
Bill Richardson



Joe Parrish



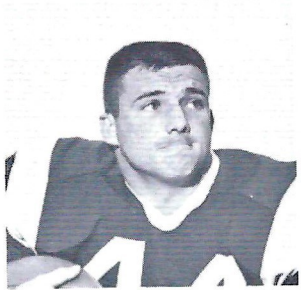
Howard Ehler



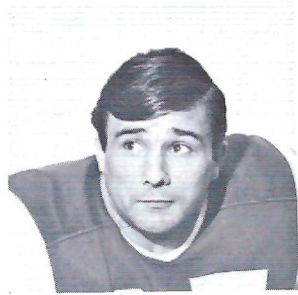
Larry Williamson



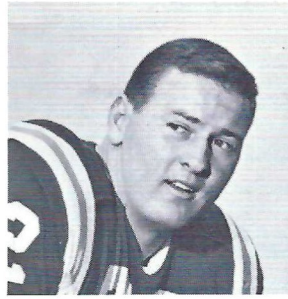
Wayne Giardino



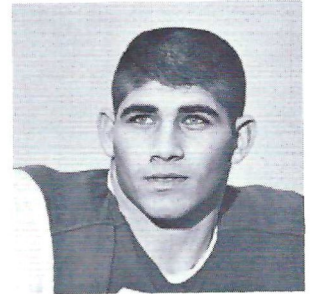
Jim Mankins



Terry Garvin



Wayne McDuffie



Mike Blatt

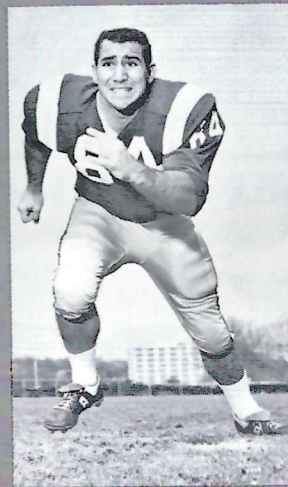
UNIVERSITY 1965 SEMINOLES



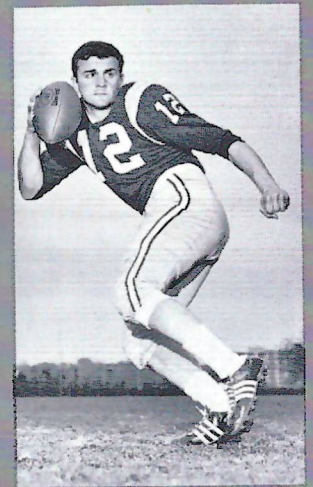
Charles Pennie



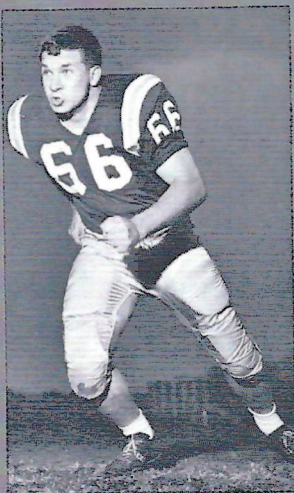
Maury Bibent



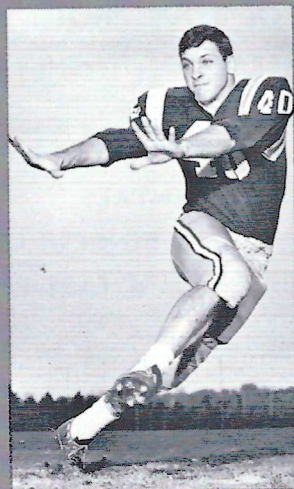
George D'Alessandro



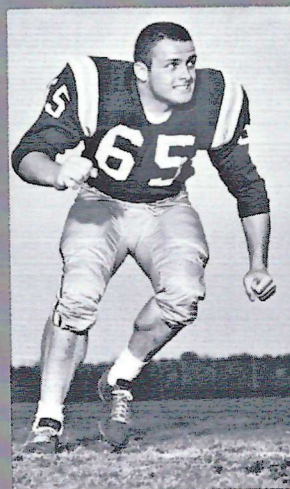
Tony Gero



Carl McNeil



James Riser



Dave Hall



Max Wettstein



SPURGEON CAMP

*"Let's Be
#1
In 1965"*



**SOUTHERN
ELECTRIC INC.**

5-Store Purchasing Power

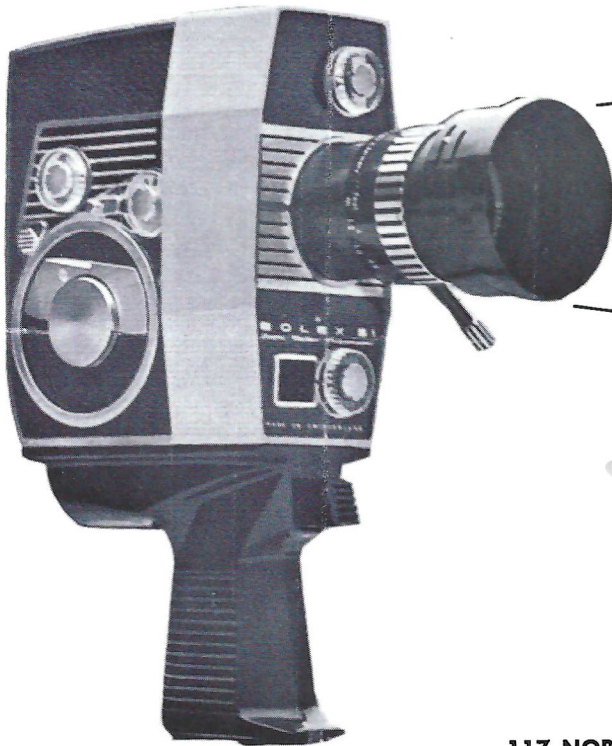
Saves You Money on G-E Appliances!

Tallahassee Downtown and Capital Plaza	Perry, Fla. 115 E. Green St. on the Square	Valdosta, Ga. 117 W. Central	Albany, Ga. 225 W. Ogle- thorpe St.
--	--	---------------------------------	---



**WHERE YOU
WILL FIND
YOUR FRIENDS**

701 W. JEFFERSON
South Gate F.S.U.



FOCUS ON

**TALLAHASSEE
CAMERA
CENTER, INC.**

FOR ALL OF YOUR PHOTO NEEDS

- CAMERAS
- FILM
- ACCESSORIES
- RENTALS
- BINOCULARS
- FAST PHOTO FINISHING

117 NORTH MONROE ST.

PH. 222-8771

"ACROSS FROM THE FLORIDA THEATER"



Introducing the tuned car. 1966 Buick.

What makes a car a car is styling, performance, ride and handling. Only when they're all tuned together is the car a Buick. Like this '66 Riviera Gran Sport.

Every last thing that goes into a Buick—suspension, body mounts, shock absorbers—not only has to work, it has to work with everything else. That's tuning.

Tuning is what we do more of (and care more about) than anybody we know of. And then we go out and test it in more places, too. On roads like the ones you'll be driving on. Why we do it will be obvious when you take your first ride. The tuned car rides and handles as handsomely as it looks. (Tuning may be hard to explain. But it's easy to notice.)

What the tuned car will do for you. And your family. For a start, the new Riviera

will comfort you. You'll see that when you slip into the Riviera's new bench seats. Space for six. If you like buckets, they're available, with a reclining arrangement for the right-front passenger. And we have another comforting option available: a new notch-back seat that converts from bench to semi-bucket.

Choosing the tuned car. Visit your Buick dealer. Every Buick you see is the tuned car. Riviera, the new international classic. Riviera Gran Sport. *Every '66 Buick.*

And with a choice like that, how in the world can you go wrong?

Wouldn't you really rather have a Buick?



things go
better
with
Coke
TRADE-MARK ®

OFFENSE
 88 JERRY JONES LE
 70 DEL WILLIAMS LT
 69 EDWIN POPE LG
 54 JOHN STEPHENS C
 73 LARRY KISSAM RG
 77 BOB MANGAN RT
 83 THURSTON TAYLOR RE
 16 ED PRITCHETT QB
 29 JOE PETKO LH
 28 T. K. WETHERELL RH
 23 WAYNE GIARDINO FB

*Fla
S*

Probable St

FLORIDA S

11 Hammond, QB	27 Spooner, HB	43 Ehler
12 Gero, QB	28 Wetherell, HB	44 Man
14 Massey, DB	29 Petko, FB	51 Avez
15 Conway, DB	30 Moreman, HB	52 McD
16 Pritchett, QB	31 Mercer, HB	53 Pitts
17 Kolbus, QB	32 Richardson, DB	54 Steph
21 Jones, E	33 Riser, DB	55 Urich
22 Bibent, DB	35 Hosack, HB	60 Willi
23 Giardino, FB	40 Blatt, LB	61 Shinh
24 Revell, HB	41 Menendez, DB	62 Lurie
26 Campbell, DB	42 LaMarche, DB	63 McD

OFFENSE
 80 FRANK RICHTER LE
 75 KEN PILLSBURY LT
 67 HAROLD STEELY LG
 51 KEN DAVIS C
 64 JIMMY DENNEY RG
 71 EDGAR CHANDLER RT
 87 PAT HODGSON RE
 12 P. RIDLEHUBER QB
 24 BOB TAYLOR TB
 41 MARVIN HURST FB
 35 BILL McWHORTER RHB

Geo

Probable St

GEORGIA BUL

10 Gaines, QB	25 Wood, LH	48 Neuhr
11 Etter, PK	26 Bray, RH	50 Philli
12 Ridlehuber, QB	27 Layfield, LH	51 Davis
14 Moore, QB	28 Cooper, LH	52 Smith
15 Dickens, LB-S	32 McWhorter, RH	53 Davis
16 Hughes, QB	34 Wheeler, L-RH	54 Banks
17 Burson, QB	35 Mosher, RH	58 Lawha
18 Swinford, QB	36 Crawford, PK	60 Denna
19 Stewart, QB	37 McFalls, RH	61 Brant
20 Sellers, LH	41 Hurst, FB	63 Osbol
22 Cloer, QB	42 Demos, FB	64 Denna
24 Taylor, LH	44 Jenkins, FB	65 Whid

OFFIC

Referee—Charles W. Bowen, Ft. Lauderdale, Fla.
 Umpire—Charles H. Brown, Jr., Atlanta, Georgia
 Linesman—Ed Copeland, Norcross, Ga.

ida
rte

ng Lineup

TE SQUAD

64	Braggins, T	78	C. Pennie, DT
65	McLean, G	79	F. Pennie, DT
67	Bugar, DT	80	Croley, DE
68	Parrish, LB	81	Waller, DE
69	Pope, G	83	Taylor, T
70	Williams, T	84	D'Alessandro, DE
73	Kissam, T	85	Roberts, PK
74	Matthews, DT	86	Blankenship, E
75	Vistart, DT	87	Garvin, DE
76	Ellers, T	88	Jones, E.
77	Mangan, T	89	Wettstein, E

gia

ing Lineup

DOGS SQUAD

66	Kasay, RG	78	Montesinos, RT
67	Steely, LG	79	Arkwright, RT
68	Cooley, LG	80	Richter, LE
69	Bishop, LG	81	Ingle, LE
70	Smaha, LB	84	Tootle, LE
71	Chandler, RT	85	Kohn, RE
72	Jonke, LT	86	Adams, RE
73	Evans, RT	87	Hodgson, RE
74	Harber, RT	88	Varnado, LE
75	Pillsbury, LT	89	Creech, LE
76	Patton, LT		
77	Hayes, LT		

ALS

Judge—Jack Langford, Atlanta, Ga.
Judge—Paul V. Hicks, Memphis, Tenn.
co.—C. E. Schroll, Montgomery, Ala.

DEFENSE

86	BUD BLANKENSHIP	RE
79	FRANK PENNIE	RT
61	JACK SHINHOLSER	MG
78	CHARLES PENNIE	LT
87	TERRY GARVIN	LE
68	JOE PARRISH	LB
63	BILL McDOWELL	LB
43	HOWARD EHLER	CB
22	MAURY BIBENT	CB
15	PAT CONWAY	LS
26	BILL CAMPBELL	RS

DEFENSE

84	JERRY VARNADO	LE
76	GEORGE PATTON	LT
68	JIMMY COOLEY	LG
50	DICKIE PHILLIPS	RG
73	VANCE EVANS	RT
85	LARRY KOHN	RE
48	STEVE NEUHAUS	LB
20	TERRY SELLERS	LS
16	LYNN HUGHES	S
17	JOE BURSON	RS
58	TOMMY LAWHORNE	LB



things go
better
with
Coke

TRADE-MARK ®

*STEP
OUT FRONT
IN '66 ... in a Rocket Action Olds!*



442 Swinging new kind of sports car excitement!



400-cubic-inch V-8, 4-barrel carb, twin pipes: Buckle up and have yourself a ball! This is the 350-hp 4-4-2. With heavy-duty suspension, built to K.O. the roughest roads. Front and rear stabilizers to take the "bend" out of curves, the bind out of corners. And under it all—pavement-biting red-line tires! But the swinging-est thing about Olds 4-4-2 is its surprisingly modest price! **LOOK TO OLDS FOR THE NEW!**

Oldsmobile Division • General Motors Corp.

PENALTIES

- 1. OFFSIDE** by either team; Violation of scrimmage or free kick formation; Encroachment on neutral zone—Loss of Five Yards.
- 2. ILLEGAL PROCEDURE, POSITION OR SUBSTITUTION**—Putting ball in play before Referee signals "Ready-for-play"; Failure to complete substitution before play starts; Player out of bounds when scrimmage begins; Failure to maintain proper alignment of offensive team when ball is snapped; False start or simulating start of a play; Taking more than two steps after Fair Catch is made; Player on line receiving snap—Loss of Five Yards.
- 3. ILLEGAL MOTION**—Offensive player illegally in motion when ball is snapped—Loss of Five Yards.
- 4. ILLEGAL SHIFT**—Failure to stop one full second following shift—Loss of Fifteen Yards.
- 5. ILLEGAL RETURN** of substitute not previously disqualified—Loss of Fifteen Yards.
- 6. ILLEGAL DELAY OF GAME**; Taking more than four times out during either half (except for replacement of injured player)—Loss of Five Yards. Team not ready to play at start of either half—Loss of Fifteen Yards.
- 7. PERSONAL FOUL** — Tackling or blocking defensive player who has made fair catch; Piling on; Hurdling; Grasping face mask of opponent; Tackling player out of bounds, or running into player obviously out of play; Striking an opponent with fist, forearm, elbow or locked hands; Kicking or kneeing—Loss of Fifteen Yards (Flagrant offenders will be disqualified.)
- 8. CLIPPING**—Loss of Fifteen Yards.
- 9. ROUGHING THE KICKER** or holder—Loss of Fifteen Yards.
- 10. UNSPORTSMANLIKE CONDUCT**—Violation of rules during intermission; Illegal return of suspended player; Coaching from sidelines; Invalid signal for Fair Catch; Persons illegally on field—Loss of Fifteen Yards. (Flagrant offenders will be disqualified.)
- 11. ILLEGAL USE OF HANDS AND ARMS** by offensive or defensive player; Defensive holding—Loss of Fifteen Yards.
- 12. INTENTIONAL GROUNDING** of forward pass—Loss of Five Yards Plus Loss of Down.
- 13. ILLEGALLY PASSING OR HANDING BALL FORWARD**—Loss of Five Yards Plus Loss of Down.
- 14. FORWARD PASS OR KICK CATCHING INTERFERENCE**—Interference with opportunity of player of receiving team to catch a kick—Loss of Fifteen Yards. Interference by member of offensive team with defensive player making pass interception—Loss of Fifteen Yards Plus Loss of Down. Interference by defensive team on forward pass—Passing Team's Ball at Spot of Foul and First Down.
- 15. INELIGIBLE RECEIVER DOWN-FIELD ON PASS**—Loss of Fifteen Yards.
- 16. BALL ILLEGALLY TOUCHED, KICKED OR BATTED**—Forward pass being touched by ineligible receiver beyond the line of scrimmage—Loss of Fifteen Yards from Spot of Preceding Down and Loss of a Down. Eligible pass receiver who goes out of bounds and later touches a forward pass—Loss of Down. Illegal touching of kicked ball within opponent's ten yard line—Touchback.
- 17. PENALTY DECLINED**; Incomplete forward pass; No play or no score.
- 18. CRAWLING** by runner—Loss of Five Yards. Interlocked Interference—Loss of Fifteen Yards.

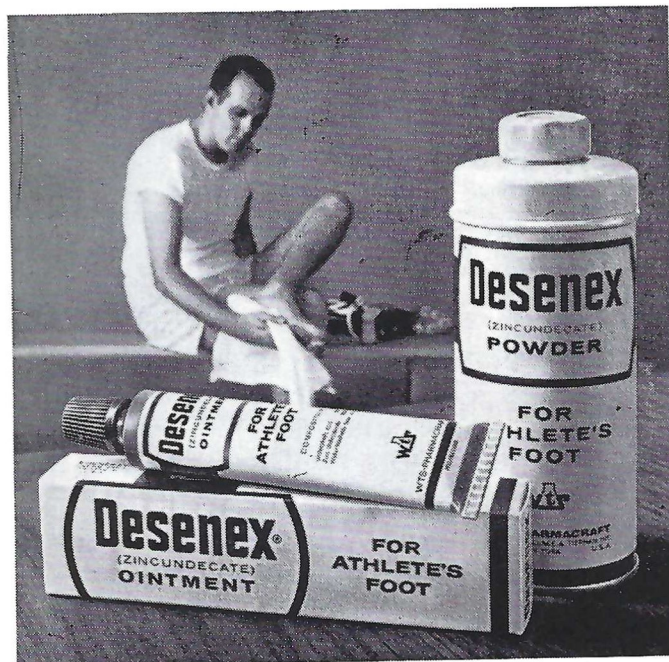
How do athletes handle athlete's foot?

They follow their trainers' advice and use Desenex® for prevention and treatment

It's excellent protection against itching, cracking and irritation of Athlete's Foot. Helps prevent spreading, too. No wonder Desenex is the Athlete's Foot treatment most widely used by college football trainers.

We know you don't have a trainer to keep you on your toes. But that's no reason to suffer from Athlete's Foot. Start using Desenex yourself. Avoid Athlete's Foot problems with Desenex Powder or new, cooling Desenex Aerosol—and for treatment use Desenex Ointment. Desenex is guaranteed to work or your money back.

WTS-PHARMACRAFT, Rochester, N.Y. 14603



First choice of those who appreciate
the finest in foods and service!
Open Breakfast, Lunch and Dinner

BRUCE BISHOP'S 1921 W. Tennessee

THE
FOUNTAIN
RESTAURANT

GOOD LUCK SEMINOLES!
VARSITY THEATRE

1833 W. Tennessee
Phone 224-8636

NEXT TO THE FOUNTAIN RESTAURANT

BOWLING'S GREAT

the Perfect date

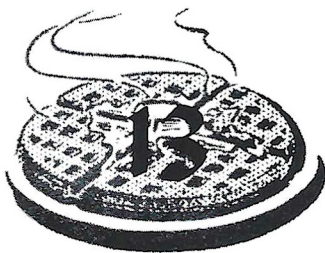
AFTER THE GAME
MEET YOUR FRIENDS
AT THE

Parkway Bowl

COFFEE SHOP

1230 Apalachee Parkway
TALLAHASSEE, FLORIDA

And Enjoy



WAFFLE VARIETIES
With Your Favorite Beverage
or Rich Creamy Hot Chocolate



HAV-A-TAMPA
JEWEL

The s-m-o-o-t-h
cigar with the
built-in mouthpiece

ALL NATURAL-LEAF
FINE TOBACCO . . .
TOPS IN TASTE AND
SMOKING PLEASURE

Ask for the
Brand Name

HAV-A-TAMPA
CIGAR

Distributed by **Eli Witt Tobacco & Candy Co.**
Tallahassee, Florida

QUALITY CLEANERS

215 W. COLLEGE AVE.—DIAL 222-5097

ONE DAY SERVICE

PICK-UP and DELIVERY

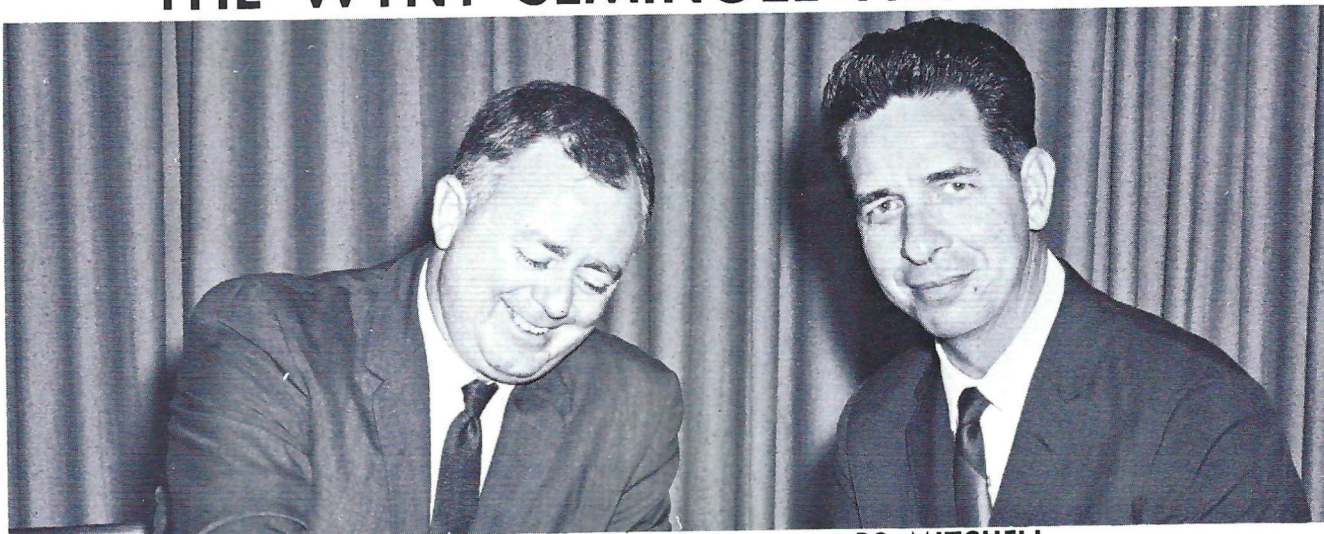
Quality Laundry Work

Fluff Dry Service

EXPERT TAILORING and ALTERATIONS

ZIPPERS REPAIRED

THE WTNT SEMINOLE NETWORK



HARRY HUGHEY

BO MITCHELL

Popular Bo Mitchell returns to the Seminole microphone for the third straight season, bringing play-by-play action to every corner of the Sunshine State.

The energetic Mitchell, an ex-naval aviator with more than 16 years broadcasting experience, is vice-president and station manager of station WCOA, Pensacola.

His partner at the mike this season is Harry Hughey, a former Florida State football player. A veteran radio man, Hughey handles pre-game, half-time and time-out commentary.

Originating station for the network is WTNT, Tallahassee.

THE SEMINOLE NETWORK

WCOA Pensacola
 WZEP Defuniak Springs
 WPCF Panama City
 WTOT Marianna
 WTNT Tallahassee
 WDSR Lake City
 WPRY Perry
 WJAX Jacksonville
 WGGG Gainesville
 WMOP Ocala
 WKIS Orlando
 WLAK Lakeland
 WDAE Tampa

WSPB Sarasota
 WMYR Fort Myers
 WGBS Miami
 WTRK West Palm Beach
 WLBE Leesburg
 WCNH Quincy
 WFTW Fort Walton Beach
 WMAF Madison
 WFOY St. Augustine
 WYDE Birmingham, Ala.
 WPAX Thomasville, Ga.
 WSB Atlanta, Ga.

Follow the SEMINOLES

IN '65

**STANDARD
OIL**

RADIO

NETWORK

WJAX
Jacksonville

WGBS
Miami

WDAE
Tampa

WTNT
Tallahassee

WCOA
Pensacola

WKIS
Orlando



**YOUNG HO!
GO CHEVRON!**

*We
like
the
state
we're
in...*



In 1953, we of
The Prudential established
our South-Central Regional
Home Office in Florida. From
this location we are able
to provide fast, efficient
life insurance service
to the people of Florida
and our 10-state area.

We are proud to be
a part of the growth and
progress here in Florida,
and the past 12 years have
been busy and rewarding
ones for us. We salute
Florida State University
for its efforts in preparing
our youth today for the
opportunities of tomorrow.



THE PRUDENTIAL
INSURANCE COMPANY OF AMERICA

SOUTH-CENTRAL HOME OFFICE
JACKSONVILLE, FLORIDA

STADIUM INFORMATION

Rest Rooms—Located on concourse and on ground level on both east and west sides.

First Aid—Located in southwest corner of stadium. Registered nurse on duty.

Lost and Found: Items may be claimed or turned in at the ticket booth next to the press box elevator, west side.

Public Telephones: Located ground level, west side.

Public Address: No special announcements are made over the stadium public address system except in cases of emergency.

Field Regulations: No spectators are allowed on the field, either during or after the game. Please leave the stadium by ramp and section exits rather than field level exits.

Drive Carefully—Your cooperation with law enforcement officers will help speed the flow of traffic away from the stadium.

Patronize Stadium

CONCESSIONS

Located beneath the stands on each side of stadium

COLD DRINKS	small 15¢	large 25¢
HOT COFFEE	15¢	
SANDWICHES	30¢	
HOT DOGS	25¢	
PEANUTS	15¢	
POP CORN	15¢	
CIGARETTES	40¢	

SOUVENIR ITEMS - PENNANTS - BADGES

SUN VISORS - ASPIRIN

Please pay no more than

ESTABLISHED PRICES

**"WE FEED BOTH
SEMINOLES AND
GATORS"**

**GARCIA'S
320 E. Tennessee**

Go Injun's

Pike's Studio

FOREMOST

ICE CREAM

PHONE • 224-7136

**SUNSHINE STATE
DAIRYMEN'S COOP.**

PHONE • 222-5303

COMPLIMENTS
OF
TALLAHASSEE AUTOMOBILE
DEALERS ASSOCIATION

ALFORD CHEVROLET COMPANY
CAPITAL LINCOLN & MERCURY, INC.

CAPITAL PLYMOUTH, INC.

BOB DRAKE DODGE, INC.

KEY RAMBLER, INC.

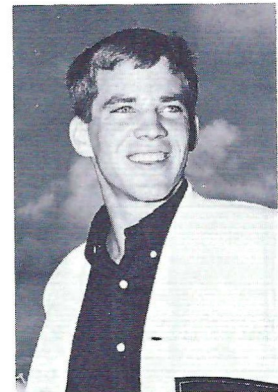
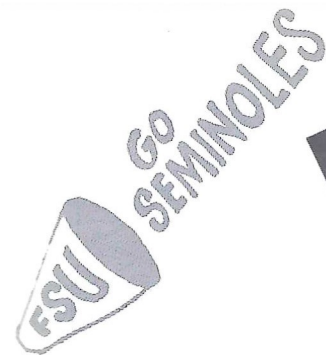
KINNEBREW MOTORS, INC.

MINGLEDORF MOTORS, INC.

PALMER-HARRELL BUICK COMPANY

PROCTOR & PROCTOR, INC.

TALLAHASSEE MOTORS, INC.



SEMINOLE CHEERLEADERS

The 1965 Seminole Cheerleader Squad takes its signals from Head Cheerleader Toni Beals (above center), a winsome junior from St. Augustine. Shown to her left is a newcomer to the squad, sophomore Joyce Howser of West Palm Beach; and to her right, Peggy Thompson, a junior from Ormond Beach. Senior member of the team is Elbert Lambert (at right) of Tallahassee. Sophomore Dave Deutsch (at left) of Palatka, is another seasoned member of the squad.

THE ALMA MATER

High o'er the towering pines our voices swell
Praising these Gothic spires we love so well;
Here sons and daughters stand . . .
Faithful and True, Hailing our Alma Mater
F . . . S . . . U . . .

FSU FIGHT SONG*

We're going to FIGHT, FIGHT, FIGHT,
for FSU
We're going to scalp 'em Seminoles . . .
We're going to WIN, WIN, WIN, WIN,
WIN this game . . . and roll on down and
make those goals!
For FSU is on the warpath now, and at the
battle's end she's great . . .
So FIGHT, FIGHT, FIGHT, FIGHT for
victory
Our Seminoles of Florida State . . .
F-L-O-R-I-D-A S-T-A-T-E
FLORIDA STATE! (3 times)

THE FLORIDA STATE VICTORY MARCH*

Onward to victory, Seminoles, GO! FORWARD MARCH, we must move out together and . . .
FORWARD MARCH, it's always marching weather when thousands strong, we swing along.
All in step for VIC . . . TO . . . RY. Our F-S-U and all our loyal Seminoles, ON-WARD
GO . . . To conquer all our savage foes . . . won't be long . . . we can't go wrong . . . we
will crush the EN . . . E . . . MY . . . So SCALP'EM . . . SCALP'EM . . . SCALP'EM . . .
It's a case of do or die . . .
Strike the fatal thrust, we'll be victorious; with terrible tenacity we can, we will, we must!

FORWARD MARCH, we'll ride the swelling battle tide
FORWARD MARCH, we'll face the future side by side
With our might, we'll FIGHT, FIGHT, FIGHT!
And we'll win our VIC-TO-RY.
. . . For Florida State University.

* Written by Thomas G. Wright, Associate Professor Music at Florida State University.

University Union

"Serving the entire University Community"

- | | | |
|--------------|----------------------|----------------|
| Lounges | Color Television | Bicycle Rental |
| Food Service | Faculty-Staff Lounge | Swimming Pool |
| Barber Shop | Games Check-Out | Art Exhibits |
| Beauty Salon | Union Store | Ticket Office |
| Bowling | Bookstore | Billiards |

CAMPUS INFORMATION CALL 3317

BE A BOOSTER

Seminole Boosters are people like yourself:



All kinds
of guys.

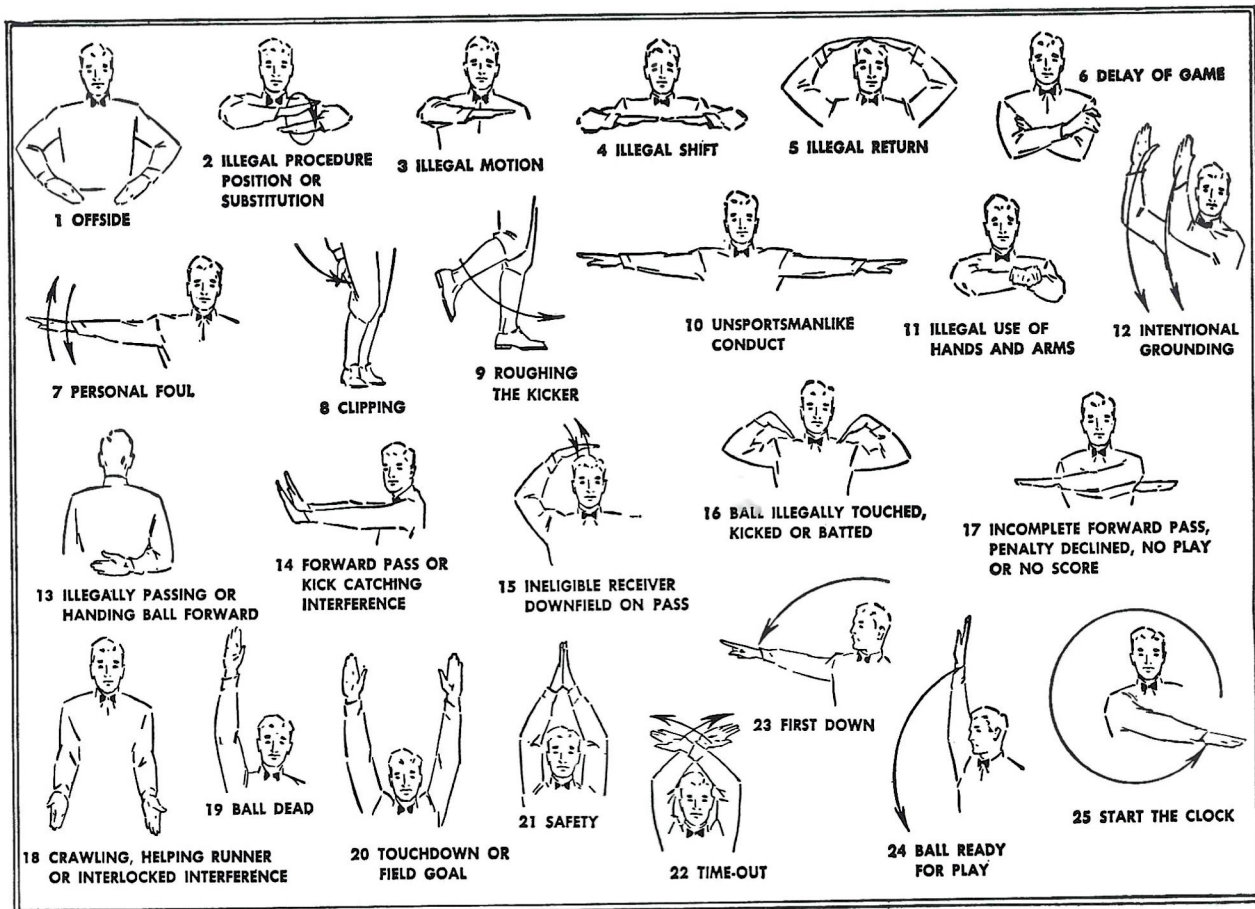


And even housewives.
Boosters help recruit
Florida State football teams.

BE A BOOSTER

And park real close to your seats, the best in the stadium.
Share the pride of a winning football team. Membership
only costs \$15 for an individual, or \$30 for a business firm.

For information: contact Seminole Boosters Inc. 222-0995.



OWNED AND OPERATED BY FRANK, RICHARD & RAYMOND CHASE

Skyline Restaurant

1 Mile West of City Limits

U. S. Highways 90 and 20

OPEN 6 A.M. TO 11 P.M.

TALLAHASSEE, FLORIDA

"Serving Good Food for Fine People"

Private Rooms and Banquet Facilities



PENNY EDWARDS—"MISS TIPARILLO"

What does she mean "cigars...cigarettes...Tiparillos"?

You'll be hearing that chant more and more—now that Tiparillos have arrived. And arrived they have. In all the right places. With all the right people.

The new Tiparillo has a neat, trim shape. It looks young and debonair. And its pearly, pliable tip pays more than lip service to your smoking pleasure.

And never before such mildness! The most careful blending of choicest imported tobaccos has seen to that. So, too, has the exclusive, veinless Ultra Cigar Wrapper* that burns so evenly and smoothly it insures complete mildness.

You can even see the mildness. The

surprisingly whiter ash is visible evidence. Smoker's proof. Here is flavor you don't have to inhale to enjoy.

"Cigars . . . cigarettes . . . ?" Who knows, maybe someday it will be just "Tiparillos!"

Why don't you ask for one today?

*T.M. GENERAL CIGAR CO.

Tiparillos are on sale at this stadium.



Georgia's New \$3,000,000 Coliseum



DR. O. C. ADERHOLD
President

GEORGIA FACTS:

Location: Athens, Ga.
 Enrollment: 11,800.
 Nickname: Bulldogs.
 Colors: Red and Black.
 Stadium: Sanford (50,000).
 Conference: Southeastern.
 Band: Dixie Redcoats.

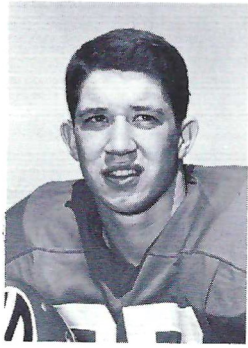


VINCE DOOLEY
Head Coach

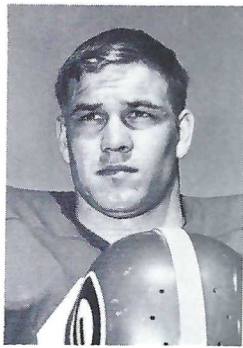


JOEL EAVES
Athletic Director

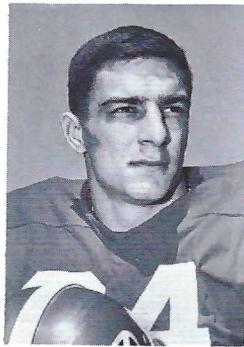
PAT HODGSON



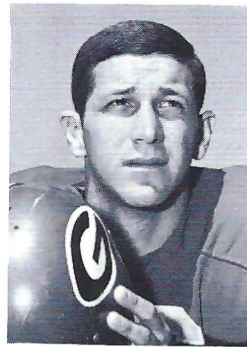
MARVIN HURST



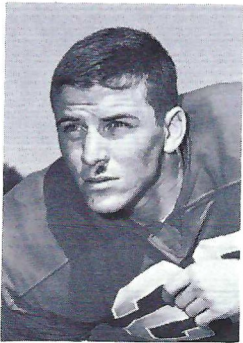
RANDY WHEELER



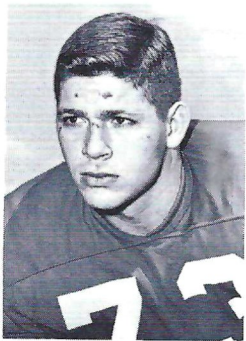
LYNN HUGHES



KEN PILLSBURY

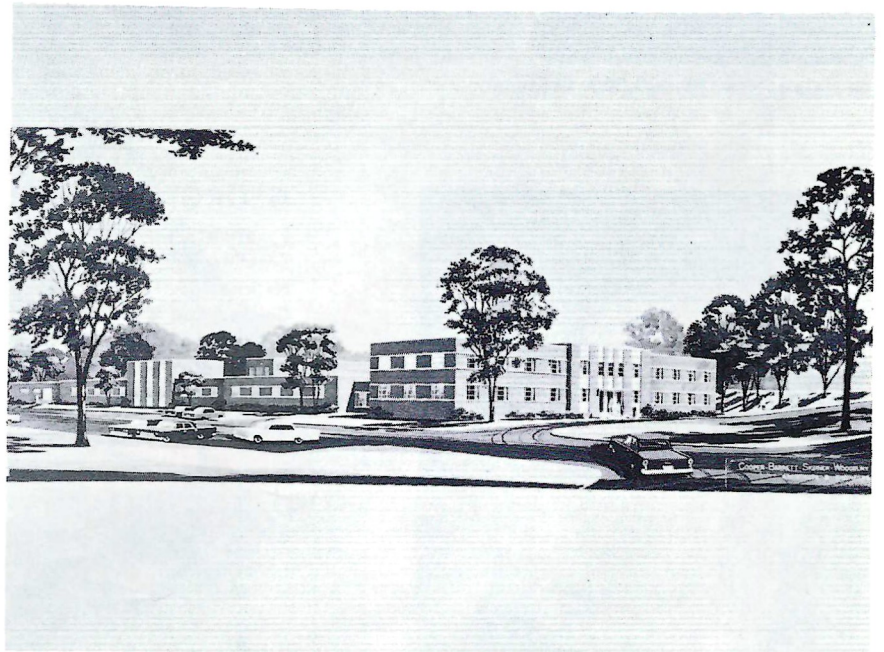


TERRY SELLERS

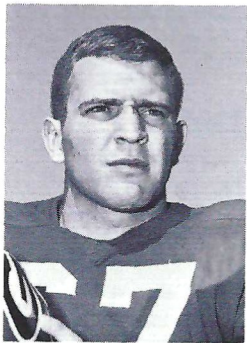


VANCE EVANS

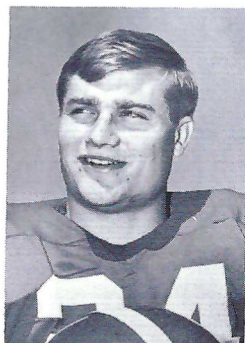
**B
U
L
L
D
O
G
S**



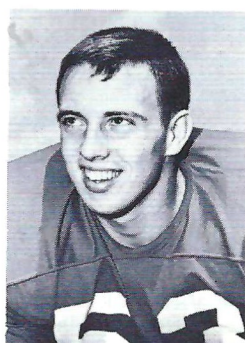
Georgia's New Agricultural Engineering School



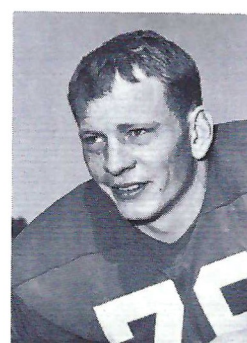
HAROLD STEELY



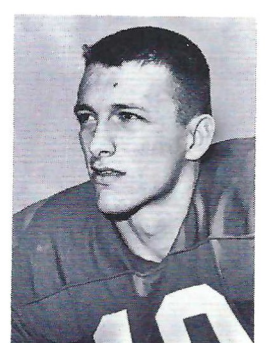
BOB TAYLOR



JIMMY COOLEY

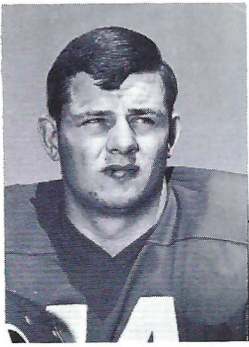


GEORGE PATTON

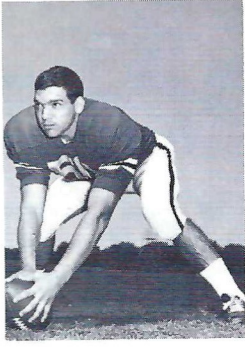


KIRBY MOORE

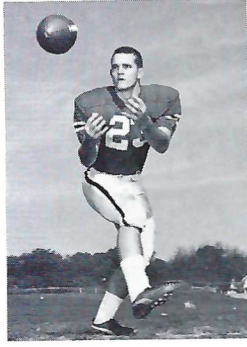
RONALD JENKINS



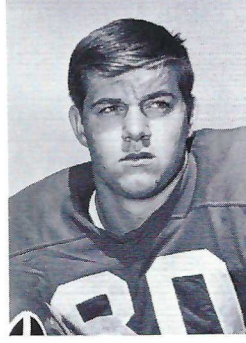
DICKIE PHILLIPS



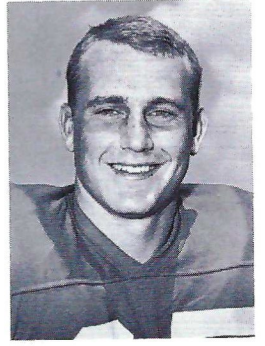
TOM LAWHORNE



FRANK RICHTER

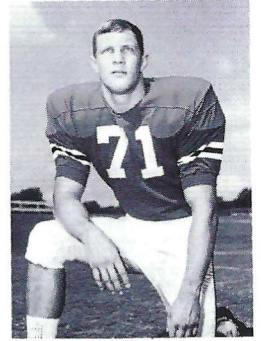


LARRY KOHN

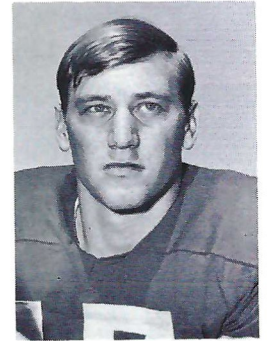


Georgia's Beautiful Science Center

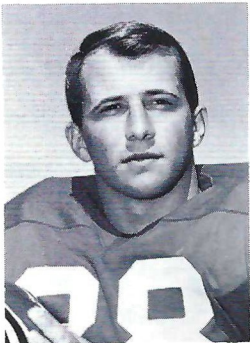
**B
U
L
L
D
O
G
S**



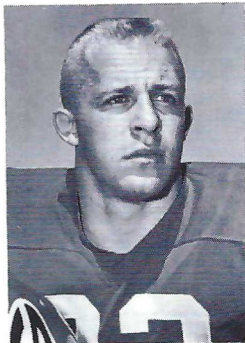
EDGAR CHANDLER



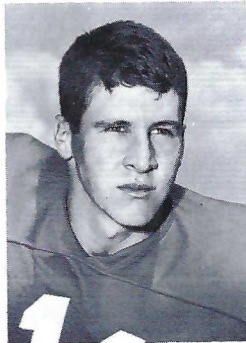
JOE BURSON



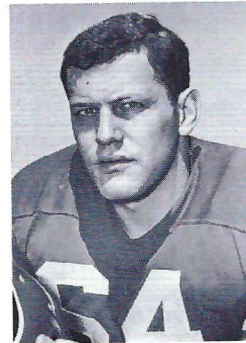
JERRY VARNADO



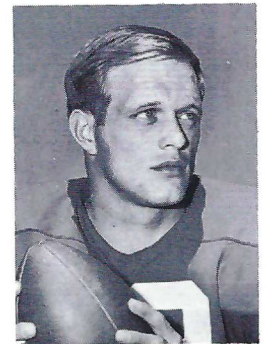
BILL McWHORTER



BOB ETTER



JIMMY DENNEY



PRESTON RIDLEHUBER



THE SEMINOLE
"TWINS"

Bookie Reynolds & Jerry Williams

PETER AND THE WOLF

MUSIC AT HALF TIME

October 16, 1965

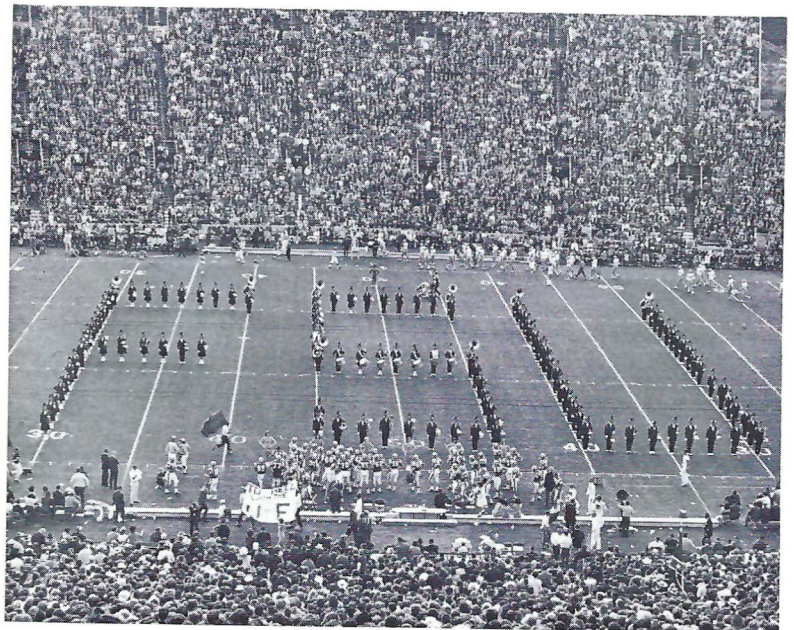
THE MARCHING CHIEFS



Robert T. Braunagel, Director
Clifford K. Madsen, Associate Director
Charles Carter, Asst. Dir. & Arranger










Camp Kirkland, Drum Major
Paulette Gergen, Head Majorette
"Cookie" Winchester, Baton Artist



A MUSICAL TALE, TOLD IN BAND FORMATIONS

(Based on Prokofieff's "Peter & The Wolf")

Early one morning Peter opened the gate and went into the meadow. On the branch of a tree sat a  ; and along came a  . Then a  came waddling through the gate—and wandered into the pond. Hearing the wolf, in her excitement the duck jumped out of the pond . . . and ran . . . and ran . . . until the wolf caught up with her and in one gulp swallowed the  . Grandfather was angry at Peter for not staying inside the  , but little boys are not afraid of wolves and Peter wanted to catch the wolf himself. Peter climbed the  and carefully lowered the lasso while the bird distracted the wolf and caught the wolf by the tail. The hunters came to help Peter but he had already caught the wolf and led the 

FLORIDA STATE'S 1965 VARSITY FOOTBALL ROSTER

No.	Name	Pos.	Class	Age	Ht.	Wt.	Hometown
11	Kim Hammond	QB	Soph.	21	6-1	185	Melbourne
12	Tony Gero	QB	Jr.	21	5-10	186	Madison, N. J.
14	Jim Massey**	DB	Sr.	22	5-11	175	Cairo, Ga.
15	Pat Conway*	DB	Jr.	20	5-10	180	Miami
16	Ed Pritchett**	QB	Sr.	24	6-2	181	Decatur, Ga.
17	Marty Kolbus	QB	Soph.	19	6-2	185	East Chicago, Ind.
21	Monovan Jones	OE	Jr.	20	6-1	196	Lakeland
22	Maury Bibent**	DB	Sr.	23	6-0	193	Cincinnati, O.
23	Wayne Giardino*	FB	Jr.	22	5-10	192	West Palm Beach
24	Elton Revell	HB	Jr.	21	6-0	174	Tallahassee
26	Bill Campbell	DB	Jr.	20	5-9	177	Tampa
27	Phil Spooner**	HB	Sr.	22	5-11	185	Fort Meyers
28	T. K. Wetherell	HB	Soph.	20	5-10	185	Daytona Beach
29	Joe Petko**	FB	Sr.	22	5-9	194	Shaker Heights, O.
30	Bill Moremen	HB	Soph.	20	5-11	181	Daytona Beach
31	Ron Mercer	HB	Soph.	20	5-11	190	Densmore
32	Bill Richardson	DB	Soph.	20	6-0	189	Jesup, Ga.
33	Butch Riser	DB	Soph.	20	6-0	181	Sanford
34	Frank Loner	PK	Soph.	20	6-0	195	Thomasville, Ga.
35	John Hosack	HB	Jr.	20	5-10	194	Miami
40	Mike Blatt	LB	Soph.	19	5-11	202	Key West
41	Bob Menendez	DB	Jr.	20	5-10	194	Key West
42	Alan LaMarche	DB	Soph.	20	5-11	190	Hollywood
43	Howard Ehler**	DB	Sr.	21	5-10	195	Tavares
44	Jim Mankins	HB	Jr.	21	6-2	221	King City, Calif.
51	Joe Avezzano**	OG	Sr.	22	6-2	229	Miami
52	Wayne McDuffie*	C	Jr.	21	6-2	208	Hawkinsville, Ga.
53	David Pitts*	MG	Jr.	21	5-9	202	Blountstown
54	John Stephens*	C	Jr.	20	6-1	201	Tallahassee
55	Bob Urich	C	Soph.	19	6-2	198	Toronto, O.
60	Larry Williamson	OG	Jr.	20	5-11	215	Macon, Ga.
61	Jack Shinholser**	MG	Sr.	23	6-1	217	Tampa
62	Howard Lurie*	LB	Sr.	21	6-0	201	Northridge, Calif.
63	Bill McDowell**	LB	Jr.	21	6-1	208	Tallahassee
64	Dave Braggins	Jr.	20	6-2	223	Lake Wales	
65	Richard McLean	OG	Soph.	19	6-0	186	Holly Hill
67	Mike Bugar	DT	Soph.	19	6-1	204	Youngstown, O.
68	Joe Parrish**	LB	Sr.	23	6-1	194	Auburndale
69	Edwin Pope	OG	Jr.	21	6-1	208	Waycross, Ga.
70	Del Williams*	OT	Jr.	20	6-2	230	Live Oak
73	Larry Kissam	OT	Jr.	20	6-0	223	Inglewood, Calif.
74	Jay Mac Matthews	DT	Jr.	21	6-1	229	Chiefland
75	Rommy Vistart	DT	Soph.	20	6-3	270	Colquitt, Ga.
76	Donnie Ellers	OT	Soph.	19	6-3	234	Bessemer, Ala.
77	Bob Mangan**	OT	Sr.	23	6-1	229	Atlanta, Ga.
78	Charles Pennie	DT	Jr.	20	6-4	240	Hollywood
79	Frank Pennie**	DT	Sr.	22	6-4	252	Hollywood
80	Stan Croley	DE	Soph.	20	6-2	192	Dade City
81	H. T. Waller	DE	Soph.	20	6-1	186	Vernon
83	Thurston Taylor	OT	Soph.	19	6-2	216	College Park, Ga.
84	George D'Alessandro**	DE	Sr.	22	5-11	202	Fort Meyers
85	Pete Roberts	PK	Soph.	20	5-11	200	Gainesville
86	Buddy Blankenship	OE	Jr.	21	6-3	200	Atlanta, Ga.
87	Terry Garvin*	DE	Sr.	22	5-11	205	Pensacola
88	Jerry Jones	OE	Soph.	20	6-1	185	Jesup, Ga.
89	Max Wettstein**	OE	Sr.	21	6-3	214	Leesburg

NOTE: * Denotes letters won.

1965 GEORGIA FOOTBALL ROSTER

No.	Name	Pos.	Class	Age	Ht.	Wt.	Hometown
10	Pete Gaines	QB	Soph.	20	6-1	175	Macon
11	Bobby Etter*	PK	Jr.	20	5-11	150	Chattanooga, Tenn.
12	Preston Riddlehuber**	QB	Sr.	22	6-2	193	Gainesville
14	Kirby Moore	QB	Soph.	20	5-11	178	Dothan, Ala.
15	Pete Dickens**	LB-S	Sr.	22	6-1	180	Athens
16	Lynn Hughes*	QBd	Jr.	21	5-11	170	Atlanta
17	Joe Burson**	QBd	Sr.	22	6-0	186	Newnan
18	Lynn Swinford	QBd	Soph.	20	5-11	171	Munford, Ala.
19	Mark Stewart	QB	Soph.	19	6-1	179	Charleston, W. Va.
20	Terry Sellers	LHd	Soph.	21	5-11	176	Headland, Ala.
22	Billy Cloer	QBd	Jr.	21	5-10	157	Washington
24	Bob Taylor**	LH	Sr.	21	5-10	195	LaGrange
25	Kenny Wood	LH	Soph.	19	5-11	175	Dallas, Tex.
26	Ralph Bray	RH	Jr.	21	5-8	179	Athens
27	Jimmy Layfield	LHd	Soph.	19	6-0	190	Millsboro, Del.
28	David Cooper	LHd	Soph.	19	5-7	160	Avondale
32	Bill McWhorter	RH	Soph.	20	5-9	182	Buckhead
34	Randy Wheeler	L-RH	Jr.	22	6-0	191	Macon
35	Stu Mosher	RH	Soph.	19	5-11	183	Jacksonville, Fla.
36	Stan Crawford*	PK	Jr.	20	5-10	182	LaGrange
37	Doug McFalls**	RHd	Sr.	24	6-2	179	Rome
41	Marvin Hurst**	FB	Sr.	21	5-11	198	Waycross
42	George Demos	FB	Soph.	19	6-0	210	Hartford, Conn.
44	Ronald Jenkins	FB	Soph.	19	6-0	217	Glennville
48	Steve Neuhaus	LB	Jr.	21	6-0	190	Augusta
50	Dickie Phillips*	RG	Jr.	20	6-0	209	Chattanooga, Tenn.
51	Ken Davis**	C	Sr.	22	6-0	215	Commerce
52	Jack Smith	C	Jr.	21	6-0	198	Huntsville, Ala.
53	Jack Davis	C	Jr.	21	5-11	197	College Park
54	Rick Bankston	LB	Soph.	18	5-10	190	Atlanta
58	Tommy Lawhorne	LB	Soph.	19	6-1	200	Sylvester
60	Anthony Dennard*	RG	Jr.	20	5-9	199	Gordon
61	Wayne Brantley**	LG	Sr.	21	5-11	202	Vidalia
63	Terry Osbolt	LT	Soph.	19	6-1	216	Thomaston
64	Jimmy Denney*	RG	Sr.	22	6-0	190	Newnan
65	Ken Whiddon	LG	Jr.	23	5-10	185	Waycross
66	John Kasay	RG	Jr.	20	5-11	206	Johnstown, Pa.
67	Harold Steely*	LG	Sr.	21	6-1	196	Anniston, Ala.
68	Jimmy Cooley*	LG	Jr.	20	6-0	195	Avondale
69	Don Bishop	LGD	Soph.	19	6-2	212	Birmingham, Ala.
70	Jiggy Smaha	LB	Soph.	19	6-4	225	Macon
71	Edgar Chandler	RT	Soph.	19	6-4	204	Cedartown
72	Gerard Jonke	LT	Soph.	20	6-3	235	Stow, Ohio
73	Vance Evans**	RT	Sr.	21	6-1	214	Tuscumbia, Ala.
74	Bill Harber	RT	Soph.	20	6-1	203	Atlanta
75	Ken Pillsbury*	LT	Jr.	21	6-3	239	Jacksonville, Fla.
76	George Patton*	LT	Jr.	21	6-3	210	Tuscumbia, Ala.
77	Donald Hayes	LT	Soph.	20	6-1	223	Adel
78	John Montesinos	RT	Soph.	19	6-4	209	College Park
79	Chuck Arkwright	RT	Soph.	23	6-3	245	Ellwood City, Pa.
80	Frank Richter*	LE	Jr.	21	6-2	210	Cairo
81	Wayne Ingle	LE	Soph.	19	6-3	209	Conyers
84	Marvin Tottle	LE	Soph.	21	6-2	191	Childersburg, Ala.
85	Larry Kohn	RE	Soph.	20	6-2	189	Greenville, S. C.
86	Gary Adams	RE	Soph.	20	6-1	178	Tifton
87	Pat Hodgson**	RE	Sr.	21	6-1	198	Atlanta
88	Jerry Varnado*	LE	Jr.	21	5-11	187	Valdosta
89	Glenn Creech*	LE	Sr.	21	6-2	188	Claxton

* Denotes letters won.

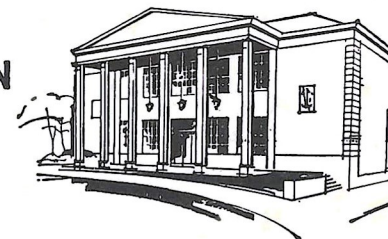
Tallahassee Federal

440 N. Monroe Street * Tallahassee, Florida

HOURS: Monday-Thursday, 8:30 a.m. to 3 p.m.—Friday, 8:30 a.m. to 6 p.m.

SAVINGS AND LOAN ASSOCIATION

TELEPHONE 224-2161



FLORIDA STATE

OFFENSE

LE 88 Jerry Jones	21 Donovan Jones
LT 70 Del Williams	75 Rommy Vistart
LG 69 Edwin Pope	65 Richard McLean
C 54 John Stephens	55 Bob Urich
RG 73 Larry Kissam	60 Larry Williamson
RT 77 Bob Mangan	64 David Braggins
RE 83 Thurston Taylor	86 Buddy Blankenship
QB 16 Ed Pritchett	11 Kim Hammond
LH 29 Joe Petko	27 Phil Spooner
RH 28 T. K. Wetherell	24 Elton Revell
FB 23 Wayne Giardino	44 Jim Mankins

DEFENSE

LE 87 Terry Garvin	80 Stan Croley
LT 78 Charles Pennie	74 Jay Mac Matthews
MG 61 Jack Shinholser	66 Carlie McNeil
RT 79 Frank Pennie	53 David Pitts
RE 84 Geo. D'Alessandro	81 H. T. Waller
LB 63 Bill McDowell	40 Mike Blatt
LB 68 Joe Parrish	62 Howard Lurie
CB 22 Maury Bibent	41 Bob Menendez
CB 43 Howard Ehler	32 Bill Richardson
S 26 Bill Campbell	33 Butch Riser
S 15 Pat Conway	14 Jim Massey

CAPTAINS

84 George D'Alessandro 89 Max Wettstein
63 Bill McDowell

SPECIALISTS

Punters: 35 John Hosack, 16 Ed Pritchett
Placements: 85 Pete Roberts, 34 Frank Loner

GEORGIA

OFFENSE

LE 80 Frank Richter	89 Glenn Creech
LT 75 Ken Pillsbury	77 Don Hayes
LG 67 Harold Steely	61 Wayne Brantley
C 51 Ken Davis	53 Jack Davis
RG 64 Jimmy Denney	66 John Kasay
RT 71 Edgar Chandler	79 Chuck Arkwright
RE 87 Pat Hodgson	81 Wayne Ingle
QB 12 P. Ridlehuber	14 Kirby Moore
TB 24 Bob Taylor	34 Randy Wheeler
FB 41 Marvin Hurst	44 Ronnie Jenkins
RHB 32 Bill McWhorter	35 Stu Mosher

DEFENSE


LE 88 Jerry Varnado	84 Marvin Tootle
LT 76 George Patton	63 Terry Osbolt
LG 68 Jimmy Cooley	60 Anthony Dennard
RG 50 Dickie Phillips	65 Ken Whiddon
RT 73 Vance Evans	70 Jiggy Smaha
RE 85 Larry Kohn	86 Gary Adams
LB 48 Steve Neuhaus	15 Pete Dickens
LB 58 Tommy Lawhorne	54 Rick Bankston
LS 20 Terry Sellers	28 David Cooper
S 16 Lynn Hughes	18 Lynn Swinford
RS 17 Joe Burson	22 Billy Cloer

CAPTAINS

16 Lynn Hughes
24 Bob Taylor

SPECIALISTS

Punters: 14 Kirby Moore, 12 P. Ridlehuber
Placements: 11 Bob Etter, 36 Stan Crawford, 70 Jiggy Smaha



TALLAHASSEE FEDERAL SAVINGS & LOAN ASSOCIATION



GO TO

McDONALD'S

FOR A

PURE BEEF HAMBURGER

Right off the Grill on a Plump Toasted Bun

TRIPLE THICK SHAKE

M'M'M' Creamy Luscious to the Very Last Drop

GOLDEN BROWN FRENCH FRIES

Piping Hot and Done to a Crisp Perfection

Home of America's Favorite Hamburger
More Than a Billion Sold

LOOK FOR THE GOLDEN ARCHES

McDONALD'S

1701 W. TENNESSEE ST.
CORNER WHITEHALL



**FLORIDA STATE
UNIVERSITY
1965 - 1966 BASKETBALL
SCHEDULE**

J. K. (BUD) KENNEDY
Head Basketball Coach

<u>DATE</u>	<u>OPPONENT</u>	<u>SITE</u>
Dec. 1	Lamar Tech	Tallahassee
Dec. 2	Valdosta	Tallahassee
Dec. 6	Tampa	Tallahassee
Dec. 8	Florida	Gainesville
Dec. 16	North Carolina	Chapel Hill, N.C.
Dec. 18	U. of California (Santa Barbara)	Tallahassee
Dec. 20-21	Tampa Invitational Tournament	Tampa
Dec. 27	Auburn	Pensacola
Jan. 3	Georgia	Athens, Ga.
Jan. 7	Miami	Tallahassee
Jan. 10	Loyola (New Orleans)	Tallahassee
Jan. 15	Memphis State	Tallahassee
Jan. 18	Florida	Tallahassee
Jan. 24	Jacksonville	Jacksonville
Jan. 31	Georgia Tech	Tallahassee
Feb. 5	Memphis State	Memphis, Tenn.
Feb. 7	Loyola (New Orleans)	New Orleans, La.
Feb. 10	Jacksonville	Tallahassee
Feb. 14	Georgia Tech	Atlanta, Ga.
Feb. 19	Howard	Tallahassee
Feb. 24	Florida Southern	Tallahassee
Feb. 26	Tampa	Tampa
Feb. 28	Miami	Miami
Mar. 5	Georgia	Tallahassee

**HERTZ WEEKEND
SPECIAL**

ONLY \$10⁹⁵ and 11c
a mile

Rent a new Chevrolet or other fine car from Friday afternoon to 9 A.M. Monday. This special rate includes everything: insurance and gas. And only Hertz offers Certified Service, your guarantee of complete rental satisfaction.



let Hertz put you in the driver's seat!



TALLAHASSEE

Duval Hotel

222-1686



HALF TIME-ANYTIME-MAKE IT MILK!

Busy football weekends call for extra energy. And that calls for a refreshing glass of milk. Milk is nature's vitality drink... that helps you stay in peak condition, sees you through the busiest fall days.

Half time; snacktime, anytime—when you take a break, make it milk. Keep up with the fun with milk's vitality!



a message from dairy farmer members of
american dairy association