



HALF TIME-ANYTIME-MAKE IT MILK!

Busy football weekends call for extra energy. And that calls for a refreshing glass of milk. Milk is nature's vitality drink... that helps you stay in peak condition, sees you through the busiest fall days.

Half time; snacktime, anytime—when you take a break, make it milk. Keep up with the fun with milk's vitality!



a message from dairy farmer members of
american dairy association



ALABAMA VS FLA. STATE

HOMEcoming—1965 October 23
DENNY STADIUM Tuscaloosa, Ala.

In this issue! "MY DAD"
— About Amos Alonzo Stagg,
by Dr. Paul Stagg

OFFICIAL
PROGRAM

50¢



DR. FRANK A. ROSE
President, University of Alabama

OFFICE OF THE
PRESIDENT

UNIVERSITY OF ALABAMA
UNIVERSITY, ALABAMA

PRESIDENT'S MESSAGE

The University of Alabama is committed to excellence in all things. We believe that there is no substitute for victory, whether it is on the gridiron, in the classroom, or in the laboratory. We believe that success comes from knowledge combined with dedication and determination.

A good university studies and plans, and uses all of its resources to achieve and maintain the highest academic goals. Excellence and competence must be our driving ambition. To this end, we have brought together the most dedicated faculty the University has ever assembled, and with our emphasis upon higher admission and retention standards, the students themselves are responding by raising their academic achievement each successive year.

Six years ago we embarked upon a ten-year \$42 million Greater Development Program to provide new academic, health, research, and residence facilities necessary for the institution's growth. That program is now nearly completed, and this summer we began a new ten-year \$75 million expansion program designed to keep pace with the University's ever-increasing responsibilities to the citizens of the state and nation. Funds for this expansion are available through the recent state bond issue, federal matching funds, federal agency gifts, and debt retirement loans.

We hope that from all of our activities your confidence in your University increases and that you will continue to lend us your splendid support in all of our endeavors.

On behalf of the trustees, the administration, the faculty, and the students, I extend to all of you a warm and hearty welcome.

Cordially yours,
Frank A. Rose
Frank A. Rose
President

TIDE GRIDIRON NEWS

OFFICIAL SOUVENIR FOOTBALL PROGRAM OF THE UNIVERSITY OF ALABAMA



SPECIAL IN THIS ISSUE

★ TODAY'S GAME:	Comments by Andy Morris on Florida State and Homecoming	3
★ MY DAD:	The Grand Old Man of football, Amos Alonzo Stagg, by Dr. Paul Stagg	5
★ PAUL BRYANT:	Builder of Champions. Read the complete history of this great coach, his records and his stars	6-7
★ UNIVERSITY THEATRE:	University boasts outstanding program for patrons of the arts this year	26
★ ALABAMA ROSTER:	Names, numbers, statistics on all the Crimson Tide players	28

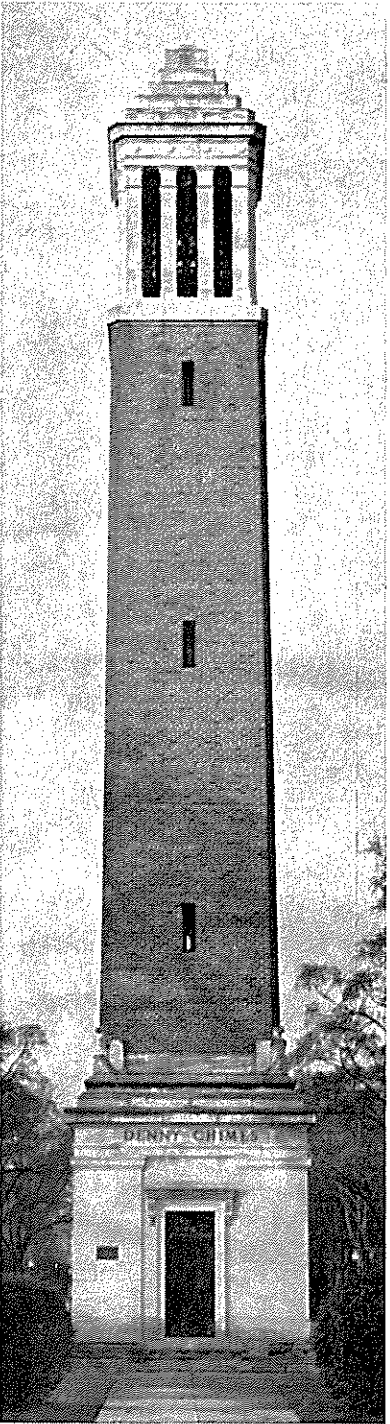
ALABAMA vs. FLORIDA STATE

★ FLORIDA STATE ROSTER:	Names, numbers, statistics on all the Seminoles	33
★ BABY PICTURES:	Test your photo skill by trying to identify the Alabama players as they looked in boyhood	35
★ JIM LAUGHEAD:	The zaniest sports photographer in the nation. Read Charley Thornton's amusing sketch on the man who takes the Tide's pictures	38-39
★ ACADEMIC STARS:	Alabama's football players gain recognition for their classroom work	53
★ GREAT GAMES:	Paul Atkinson takes us back to 1947 and Tiger Stadium at Baton Rouge to review Charlie Conerly vs Y. A. Tittle	57
★ BASKETBALL:	Take a look at the Crimson Tide schedule, roster and a brief sketch on the upcoming basketball season	59

CO-EDITORS: Charley Thornton and Andy Morris

EDITORIAL ASSISTANT: Wayne Atcheson

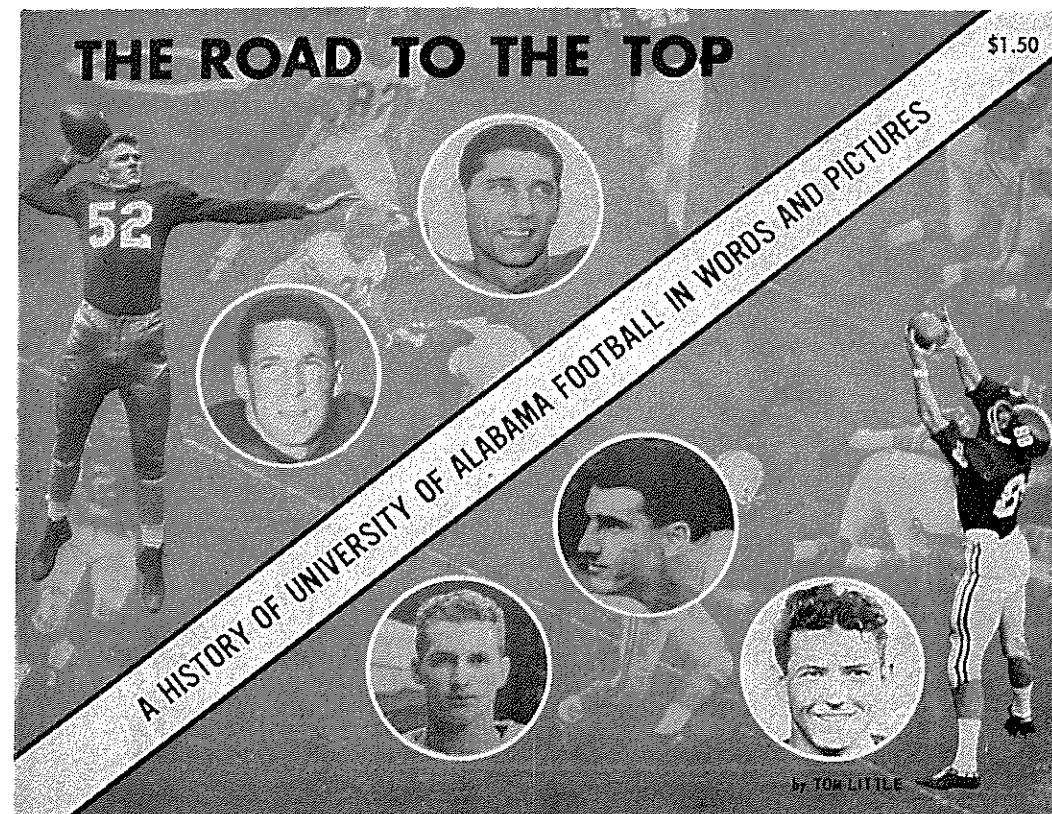
Printed by WEATHERFORD PRINTING CO., Inc., Tuscaloosa, Ala.



Denny Chimes



The Book Every Alabama Football Fan Will Treasure!



92 PAGES OF FACTS AND PHOTOS

- ★ Photographs Of Outstanding Alabama Football Teams From 1892 To 1964
- ★ Pictures Of Crimson Tide Stars From Auxford Burks To Joe Namath
- ★ Newspaper Accounts Of Great Alabama Football Victories
- ★ Action Photographs Of Alabama Grid Games—Old And New
- ★ An Abbreviated History Of Every Tide Football Season
- ★ A Roster Of Alabama Greats For Your Own All-Time Team

SPONSORED BY THE ALABAMA JUNIOR CHAMBER OF COMMERCE

To Order One Of These Outstanding Alabama Football Histories,
Send \$1.50 To

THE ROAD TO THE TOP
ALABAMA JUNIOR CHAMBER OF COMMERCE

State Project Chairman
P. O. Box 4201
Montgomery, Alabama

Or Contact Any Member Of Your Local Jaycee Chapter

BUY ONE TODAY!

Welcome Back Alumni Hope You Brought Tranquilizers

Today's Game

By *ANDY MORRIS*
Assitant Sports Publicity Director
University of Alabama

HOMEcoming, the annual attraction that lends a bit of nostalgia to the magnetic splendor of collegiate football, is the special treat in store for Alabama fans today.

Alabama's Crimson Tide will find a formidable challenge in Florida State University, but will assemble in Denny Stadium for the 2 P.M. kickoff with an extra emotional thrust that only the spirit of Homecoming can provide.

That indefinable spirit may be just the tonic that Coach Paul Bryant's dedicated Tiders need. The young, eager Tidesmen have improved tremendously since the season was initiated and even last week's 7-7 deadlock with Tennessee produced new stars.

Slender sophomore quarterback Kenny Stabler emerged as a perfect running complement to senior Steve Sloan's passing. Stabler, tagged with the nickname "Snake" since his prep days at Foley, picked up 82 yards in a beautiful exhibition of the option play.

Dennis Homan, a speed merchant from Muscle Shoals, grabbed three key passes for 65 yards and looked like a bright prospect at flanker.

Steve Bowman continued to impress as a block-busting runner at fullback, gaining 67 yards against the

Vols, and Sloan completed 13 of 18 passes for 205 yards.

Homecoming fans can expect to see a combustible brand of football played by their heroes in Crimson and White. Alabama's relentless will to win has been the basis for one of the most exciting football seasons' in Tide history and the format is not expected to change suddenly.

What it lacks in pure talent and ability, the Tide makes up for with dogged determination and a dazzling style that few teams in the land can equal.

The only restraint that Alabama honors is actual game termination and only then can Tide boosters determine an absolute outcome.

Tradition, which weighs heaviest at Homecoming, has nurtured a proud Crimson Tide in 1965, one that sparkles with the advent of each new challenge and appears increasingly capable as the season progresses.

Each game on the Tide schedule has been a key one thus far, and that aspect won't change for today's encounter with Florida State.

The Seminoles are typically gifted individually and only collectively have they lacked the cohesiveness to become a truly great football team. They come into today's game with a 2-2 record but will be up against a Bama team charged with the delivery of a venerable mission—HOMEcoming VICTORY.

★ ★ ★ ★ ★

Special halftime ceremonies today will include the presentation of the National Football Hall of Fame award to A. T. S. (Pooley) Hubert by Coach Hank Crisp. Hubert was an All-American back from 1922 to 1925 for the Crimson Tide and was elected to the Hall of Fame earlier this year.

SOUTHEASTERN CONFERENCE STANDINGS

Team	OVERALL					SEC				
	W	L	T	Pct.	Pts	Opp	W	L	T	Pct.
Georgia	4	1	0	.800	83	53	3	0	0	1.000
Mississippi State	4	1	0	.800	142	62	1	0	0	1.000
Alabama	3	1	1	.700	90	48	3	1	1	.700
Florida	4	1	0	.800	96	45	2	1	0	.667
LSU	4	1	0	.800	126	76	1	1	0	.500
Tennessee	2	0	2	.750	65	23	1	0	2	.667
Kentucky	3	2	0	.600	88	92	1	2	0	.333
Auburn	2	2	1	.500	88	75	1	0	1	.750
Ole Miss	2	3	0	.400	81	71	1	3	0	.250
Tulane	1	4	0	.200	44	101	0	2	0	.000
Vanderbilt	1	3	1	.300	48	73	0	2	0	.000

THIS WEEK'S GAMES

ALABAMA VS. FLORIDA STATE IN TUSCALOOSA

Auburn vs. Southern Mississippi in Auburn
Kentucky vs. Georgia in Lexington
Tennessee vs. Houston in Knoxville

LSU vs. South Carolina in Baton Rouge
Ole Miss vs. Vanderbilt in Oxford
Mississippi State vs. Tulane in New Orleans

THIS WEEK'S

FOUR COLOR

COVER FEATURES

ALABAMA'S

SENIORS



Crushed Stone/Slag/Lightweight Shale/Sand and Gravel/Industrial Sand/Ready-Mixed Concrete/Plant-Mix/Signs and Stamping

Teamwork is important in making a football team a winner. And teamwork is just as important when it comes to helping Alabama progress. You can be sure Vulcan's Birmingham Slag Division plants in Birmingham, Montgomery, Huntsville, Tusculmbia, Russellville, Parkwood and Gadsden will be on the team supplying the quality construction materials and on-schedule service that it takes to help keep our state on the move. Go with a winner!

VULCAN MATERIALS COMPANY

Birmingham Slag Division, Birmingham, Alabama

My Dad

by DR. PAUL STAGG
University of the Pacific



The Grand Old Man of football, Amos Alonzo Stagg, was a living legend in his time. He spent more than 70 years coaching football and making his students better citizens. His coaching methods were years ahead of his time. No one ever had a better sense of fair play. His story is told by the man who knew him best—his son, Dr. Paul Stagg, athletic director at University of the Pacific.

MY DAD, Amos Alonzo Stagg, was born in 1862 and died in March of this year at 102 years of age. His life spanned the complete history of football, which was first played on an intercollegiate basis in 1869. I believe his first contact with the game of football was at Yale, where he played two years on the team at end, being selected on Walter Camp's All-American Team in 1889.

As a student, my Dad planned to prepare himself for the ministry; however, during his days at Yale an incident occurred which made him believe that he was not a good enough speaker. At that point he decided to dedicate his life to the teaching of young men on the athletic field. For seventy years, first at the University of Chicago, then at the College of

the Pacific, at Susquehanna University, and finally at Stockton College, he fulfilled his dedication as a teacher and coach. He retired from football coaching at the age of 98.

As a member of the NCAA Football Rules Committee for 61 years, he had a part in molding the rules. In the early 1900's the game had fallen into disrepute due to the inability of the old football rules committee to change the rules and open up the game from the heavy line play prevalent at that time. The Western Athletic Conference (Big Ten), with Chicago as a member, threatened to make its own football rules, appointing a committee, with my Dad as chairman, to draw up a set of rules for the conference. This prompted the large Eastern universities, which made up the old football rules committee in 1904, to invite my Dad to be the first Western representative of that committee. Although the big change in the football rules occurred after the NCAA came into the picture in 1906, it is interesting to note that a surprising number of the changes proposed by my Dad's "Big Ten Committee" were written into the rules in the next few years. From that time on my Dad was very active on the rules committee and I would judge, made a real contribution.

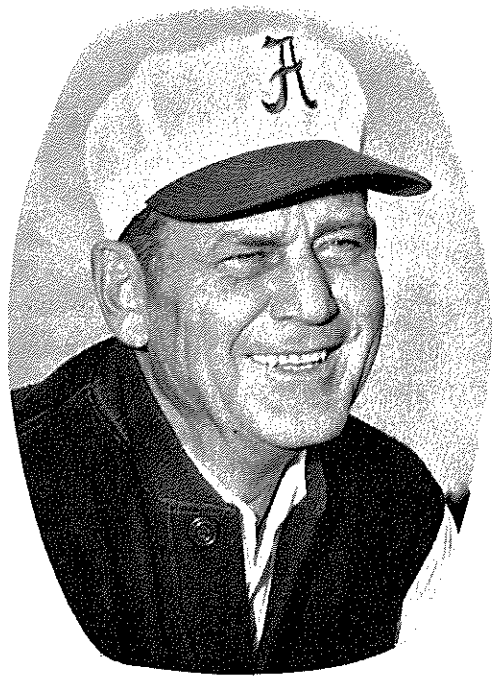
As a coach, Amos Alonzo Stagg was a very creative individual. Through my 28 years of college coaching, we corresponded a great deal, passing football plays back and forth among my brother, my Dad and myself. I found my Dad was always developing new formations and plays from those formations. In fact, a number of formations which later became popular were used by my Dad at an earlier date. In 1890, while attending Springfield College in Massachusetts as a player-coach, he developed a new formation by dropping his ends back off the line into a double wingback formation. The double wingback formation was used very extensively

many years later. The shift, which was later called the Notre Dame shift, was used by the University of Chicago under my Dad in 1904. Army's "Lonesome End" formation (a single flanker who never entered the huddle), which received wide acceptance as something new in football in the 1950's, was used by my Dad at the College of the Pacific in 1933 or 1934. I borrowed it from my Dad and used it when I was coaching at Moravian College in Pennsylvania in 1935.

One of my Dad's inventions which is used very extensively today is the spread punt formation. He started using it at Chicago in 1918. It took about 25 years to become popular but is now used for punting by nearly all major college teams in essentially its original form.

My Dad has always been a strong advocate of the passing game, using spreads of all kinds. Single flankers, double flankers, man in motion, and pedinger plays have been in his repertoire of plays for years, and he made many contributions to the development of this type play.

Although he had some fine teams and a good record as a coach; even though he made many contributions to the rules and to the play itself; even though he coached longer than any man coached and may ever coach, I believe perhaps his contribution to the game goes deeper. Perhaps it has been his steadfast belief in amateur sport, in football and in the youth of our nation. It may have been his forthright honesty and sense of fair play which once caused him in his early years of coaching to go out on the football field and object to a penalty on the opponent. It could have been his example of clean living and his expectation that his players would live up to the best standards. Whatever it was, the hundreds of letters written to him which I have read in the last couple of years indicate that he has become a symbol of the best in the coaching profession.



PAUL BRYANT:

There are those who say, without reservation, that Paul (Bear) Bryant is the nation's greatest football coach. It should be noted that we aren't just speaking of Alabama fans, either, but rather his fellow coaches and the men who know what it takes to make a great coach.

In 20 years as a head coach, Bryant has compiled a mighty record of 151 victories, 50 losses and 13 ties. His seven-year mark as head coach of the Crimson Tide of Alabama has seen his teams win 60, loss 11 and battle to five ties.

Alabama has been to a post-season bowl game six straight years, winning three, losing two and tying one. The Tide also has been nationally ranked in the top ten in the two wire service polls for six straight years—something no other school in the country has accomplished. Bryant also has seen his 1961 and 1964 teams acclaimed national champions.

He grew up on a farm outside of Fordyce, Arkansas, and went to school at Fordyce high school, where he was an all-state tackle. Coach Hank Crisp recruited him for Alabama, where he became a regular end as a sophomore. Bryant likes to refer to himself as the "other end" on the famed Crimson Tide teams which featured the immortal Don Hutson at left end.

Bryant was president of the "A" Club at Bama and also was elected president of his sophomore, junior and senior classes in the College of Education—showing his leadership ability long before the outside world had ever heard of him.

After his playing days, Bryant remained on the Tide staff as an assistant coach under the famed Frank Thomas from 1936 to 1940. He then joined Red Sanders' staff at Vanderbilt for two seasons, before World War II came along, but he was one of the first in line when the call went out to America's young men to fight the enemy and help protect this nation's future.

He attained the rank of Lieutenant Commander in the Navy during the war, serving from 1941 to 1945. While still filling out his Naval career, he accepted the head coaching job at the University of Maryland, and although he had just three weeks to get his first team ready, he coached the Terrapins to a fine 6-2-1 record in his first try as a head coach.

Kentucky needed a winner about that time and hired Bryant to rebuild the down-trodden grid fortunes at Lexington. He did this, too, in a hurry, and in eight years as head coach of the Wildcats, his teams won 60, lost 23 and tied five, going to bowl games four times and capturing the only Southeastern Conference championship Kentucky has even won in football.

It was on to Texas A & M in 1954 to try and restore Aggie prestige. His first team went 1-9, the only losing season he has ever known, but this was corrected in a hurry and he wound up with a 25-14-2 record in four seasons, including a Southwest Conference title and one bowl trip.

Alabama asked him to be its head coach late in 1957 and he accepted the challenge, since he had always had a hunger to return to his Alma Mater. The record book speaks loudly since he returned for the 1958 season. Never has Alabama's football prestige been higher.

A BUILDER OF CHAMPIONS

Every honor that can be bestowed upon a football coach has come Bryant's way. He has been honored by his fellow coaches as the coach of the year. He has won two national championships. He currently is a trustee of the American Football Coaches Association and the Pop Warner Hall of Fame. He also has a wall



... The "Other End"

full of citations and awards from various civic, philanthropic and professional groups.

Life has been good to Paul W. Bryant, not because he waited or went after the many laurels that have been given him, but because he was a dedicated man and knew the meaning of work and sacrifice. Now at the peak of his career, there seems no reason why he or the University of Alabama shouldn't continue to prosper by doing the thing he most dearly loves—win football games.

CHARTING THOSE 20 YEARS OF BRILLIANCE . . .

MARYLAND ERA			1950			1955			1960		
1945			(11-1)			(7-2-1)			(8-1-2)		
60	Guilford	6	25	North Texas St	0	0	UCLA	21	21	Georgia	6
21	Richmond	6	14	LSU	0	23	LSU	0	6	Tulane	6
22	Merchant MA	0	27	Mississippi	0	21	Houston	0	21	Vanderbilt	0
13	Virginia Poly	21	41	Dayton	0	27	Nebraska	0	7	Tennessee	20
14	West Virginia	13	28	Cincinnati	7	19	TCU	16	14	Houston	0
38	Wm. & Mary	33	28	Villanova	7	19	Baylor	7	7	Miss. State	0
19	VMI	0	40	Georgia Tech	14	7	Arkansas	7	51	Furman	0
19	Virginia	13	83	Florida	6	13	SMU	2	16	Georgia Tech	15
19	South Carolina	13	0	Mississippi State	21	20	Rice	12	34	Tampa	6
				North Dakota U.	0	6	Texas	21	3	Auburn	0
				Tennessee	7				3	Bluebonnet Bowl	
										Texas	3
KENTUCKY ERA			1951			1956			1961		
(8 years, 60-23-5)			(8-4)			(9-0-1)			(11-0-0)		
20	Mississippi	7	72	Tennessee Tech	13	40	Villanova	0	32	Georgia	6
26	Cincinnati	7	6	Texas	7	14	Texas Tech	6	9	LSU	0
70	Xavier	0	17	Mississippi	21	7	Houston	7	35	Vanderbilt	0
13	Georgia	28	7	Georgia Tech	13	19	TCU	14	26	N. C. State	7
10	Vanderbilt	7	27	Miss. State	0	27	Baylor	13	6	Tennessee	3
7	Alabama	21	35	Villanova	13	33	Arkansas	0	17	Houston	0
39	Michigan State	14	14	Florida	6	21	SMU	0	24	Miss. State	0
35	Marquette	0	32	Miami	0	34	Rice	7	66	Richmond	0
13	West Virginia	0	37	Tulane	0		Texas	21	34	Georgia Tech	0
0	Tennessee	7	47	Geo. Washington	13					Auburn	0
				Tennessee	28					Sugar Bowl	
										Arkansas	3
1947			1952			1957			1962		
(8-3)			(5-4-2)			(8-3-0)			(10-1-0)		
7	Mississippi	14		Villanova	25	14	Maryland	13	0	Georgia	0
20	Cincinnati	0		Mississippi	13	7	Texas Tech	0	35	LSU	6
20	Xavier	7		Texas A&M	7	19	Missouri	6	44	Tulane	6
26	Georgia	0	6	LSU	34	6	Houston	6	17	Vanderbilt	7
14	Vanderbilt	0	13	Miss. State	27	7	TCU	0	14	Houston	3
7	Michigan State	0	10	Cincinnati	6	0	Baylor	0	27	Tennessee	7
0	Alabama	13	7	Miami	0	0	Arkansas	6	35	Tulsa	6
15	West Virginia	6	14	Tulane	6		SMU	6	20	Miss. State	0
36	Evansville	0	14	Clemson	14		Rice	7	38	Georgia Tech	7
6	Tennessee	13	29	Tennessee	14		Texas	9	6	Auburn	0
				Florida	27		Gator Bowl	3	38	Orange Bowl	
										Oklahoma	0
1948			1953			1958			1963		
(5-3-2)			(7-2-1)			(5-4-1)			(9-2-0)		
48	Xavier	7		Texas A&M	7	3	LSU	13	32	Georgia	7
7	Mississippi	20	6	Mississippi	22	0	Vanderbilt	0	28	Tulane	0
12	Georgia	35	6	Florida	13	29	Houston	6	21	Vanderbilt	6
7	Vanderbilt	26	26	LSU	6	7	Furman	6	21	Florida	6
25	Marquette	0	6	Miss. State	13	9	Tennessee	14	0	Tennessee	10
28	Cincinnati	7	35	Villanova	0	12	Miss. State	7	20	Houston	13
13	Villanova	13	19	Rice	13	7	Georgia	0	27	Miss. State	19
34	Florida	15	19	Vanderbilt	14	17	Tulane	13	8	Auburn Tech	11
0	Tennessee	0	40	Memphis State	7	14	Georgia Tech	8	17	Miami	10
25	Miami	5	19	Tennessee	21	8	Memphis State	0	12	Sugar Bowl	12
							Auburn	14	0	Mississippi	7
1949			TEXAS A&M ERA			1959			1964		
(9-3)			(4 years, 25-14-2)			(7-2-2)			(10-1-0)		
71	Southern Miss.	7		Georgia	3	3	Georgia	17	31	Georgia	3
19	LSU	0		Houston	7	3	Tulane	0	36	Tulane	6
47	Mississippi	0		Vanderbilt	7	24	Vanderbilt	0	24	Vanderbilt	0
25	Georgia	0	9	Texas Tech	41	7	N. C. State	0	0	N. C. State	0
44	The Citadel	0	6	Oklahoma State	14	13	Tennessee	0	21	Tennessee	8
7	SMU	20	6	Georgia	0	7	Miss. State	0	17	Florida	14
14	Cincinnati	7	7	Houston	10	10	Tulane	7	23	Miss. State	6
21	Xavier	7	20	TCU	21	19	Georgia Tech	7	17	LSU	9
36	Florida	0	7	Baylor	20	9	Memphis State	7	24	Georgia Tech	7
0	Tennessee	6	7	Arkansas	14	14	Auburn	0	21	Auburn	14
21	Miami	6	3	SMU	6	10				Orange Bowl	
				Rice	29		Liberty Bowl				
13	Santa Clara	21	13	Texas	22	0	Penn State	7	17	Texas	21

DOWN THE PATH WITH BRYANT . . .

Won 151, Lost 50, Tied 13

Year	School	W	L	T
1945	Maryland	6	2	1
1946	Kentucky	7	3	0
1947	Kentucky	8	3	0
1948	Kentucky	5	3	2
1949	Kentucky	9	3	0
1950	Kentucky	11	1	0
1951	Kentucky	8	4	0
1952	Kentucky	5	4	2
1953	Kentucky	7	2	1
1954	Texas A & M	1	9	0
1955	Texas A & M	7	2	1
1956	Texas A & M	9	0	1
1957	Texas A & M	8	3	0
1958	Alabama	5	4	1
1959	Alabama	7	2	2
1960	Alabama	8	1	2
1961	Alabama	*11	0	0
1962	Alabama	10	1	0
1963	Alabama	9	2	0
1964	Alabama	*10	1	0

*National Championship

... HIS ALL-AMERICANS

KENTUCKY:

T Bob Gain, 1949-50 E-HB Steve Meilinger, 1952-53
QB Babe Parilli, 1950-51 G Ray Correll, 1953
C Doug Moseley, 1951

TEXAS A & M:

FB Jack Pardee, 1956 T Charles Krueger, 1956-57
G Dennis Goehring, 1956 HB John Crow, 1957

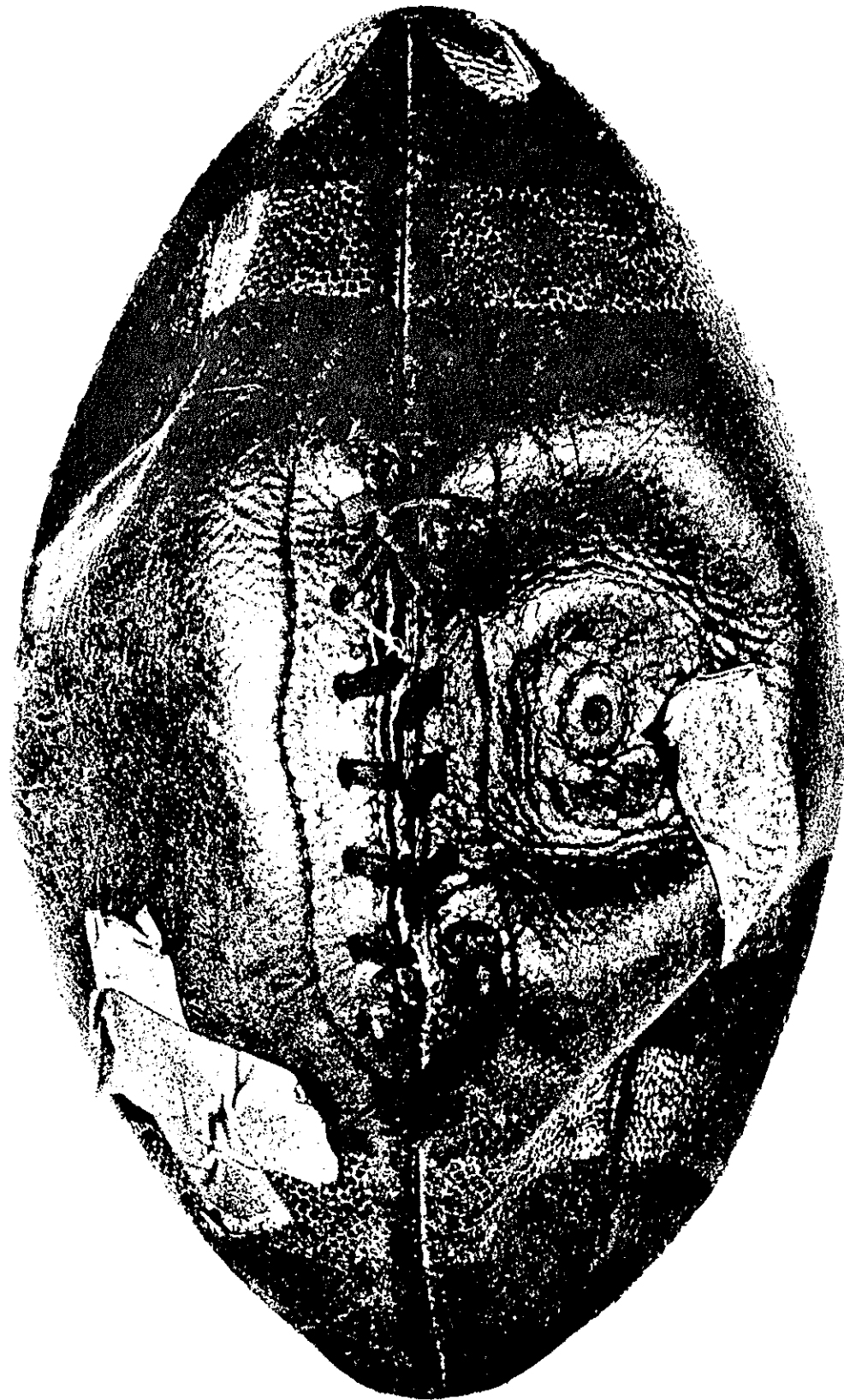
ALABAMA:

QB Pat Trammell, 1961 G Wayne Freeman, 1964
C Lee Roy Jordan, 1961-62 HB David Ray, 1964
T Billy Neighbors, 1961 QB Joe Namath, 1964
T Dan Kearley, 1964

SINCE BRYANT CAME TO BAMA — TIDE HAS BEEN LEADER

(RECORDS OF SEC TEAMS SINCE 1958)

School	W	L	T	School	W	L	T
1. ALABAMA	57	9	4	7. Tennessee	34	32	4
2. Mississippi	56	8	4	8. Kentucky	30	35	5
3. L. S. U.	55	12	3	9. Mississippi State	27	36	3
4. Auburn	51	17	2	10. Vanderbilt	20	42	8
5. Florida	42	24	4	11. Tulane	15	52	3
6. Georgia	35	30	5				



An engine with worn spark plugs is like an old football—
it still works, but there's not much kick left in it.

AUTOLITE

PRODUCTS OF *Ford*

SPARK PLUGS • BATTERIES • IGNITION AND CARBURETION PARTS • SHOCK ABSORBERS

Friday

LUMBER COMPANY

For All Your

BUILDING MATERIAL NEEDS

P. O. Box 244

Tuscaloosa, Alabama

Phone 758-2834

TANNER BROS.

Wholesale

FRUITS AND VEGETABLES

PHONE 758-2891

758-0121

758-7803

2312 Fourth Street

Tuscaloosa, Alabama

DRUID DRUG, Inc.

431 University Avenue

CENTRAL DRUG CO.

2315 Broad Street

MEDICAL CENTER APOTH.

10th Street East

LELAND DRUG, Inc.

Leland Shopping Center

"Tuscaloosa's Finest Drug Stores"

"BACK BAMA"

STUDENTS, SPECTATORS!

Make **Sportsmanship** a Part of Your Game
Equipment

NOISE is a serious problem at many intercollegiate football games, and on some occasions in the past has prevented the Quarterback's signals from being heard. Such a situation may be interpreted as "interference" with the conduct of the game, and penalized. We seek your assistance in preventing excessive noise, which could cause a penalty against your team.

Should unusual noise develop, the Referee will call "Time-Out" and instruct the Defensive Captain to request QUIET, which he will do by moving toward the noise area with both arms and hands raised. If necessary, the Offensive Captain will make the same request on the opposite side of the field. We shall appreciate your respect for Sportsmanship in remaining **quiet** at this time.

In all Southeastern Conference games the Referee is authorized to inflict a penalty based on noise developments. Please cooperate. Don't help to draw a penalty against your team.

CHEER TO HELP, NOT TO HURT

'65 **A** '66

CRIMSON TIDE
EDUCATIONAL AND ATHLETIC SCHOLARSHIP
PRESENTED BY

Andresen & Company Birmingham, Alabama	Little Giant Food Store Northport, Alabama	Baggett Transportation Co. Birmingham, Alabama	Abston Coal Co. Brookwood, Alabama	Jitney Jungle Tuscaloosa, Alabama
Curtis Concrete Products, Inc. Norman Hibbard Tuscaloosa, Alabama	Jimmy Hinton Tuscaloosa, Alabama	T. A. McGahey, Jr. Columbus, Mississippi	City National Bank Tuscaloosa, Alabama	Ward W. McFarland Tuscaloosa, Alabama
Perry Creamery Tuscaloosa, Alabama	Vulcan Materials Co. Birmingham Slag Division Birmingham, Alabama	Belcher Lumber Co. W. A. Belcher Birmingham, Alabama	The Ingall's Iron Works Co., Inc. Birmingham, Alabama	Blount Bros. Construction Co. Winton Blount Montgomery, Alabama
Cowles Horton, Jr. Sheffield, Alabama	W. P. Arrington Ernest E. Armstrong Montgomery, Alabama	Gifco, Inc. T. G. Jordan Gadsden, Alabama	Julian A. Watters, III Lavaca, Alabama	Padgett & Walker Construction Co., Inc. Homewood, Alabama
Herb Hannah Dixie Poultry Supply Albertville, Alabama	Hugo Friedman Tuscaloosa, Alabama	David Warner Foundations H. D. Warner Tuscaloosa, Alabama	Gulf States Paper Corp. Jack Warner Tuscaloosa, Alabama	Capital Cherokeet Frank McGough Montgomery, Alabama
Sunny-K-Aero Corp. Birmingham, Alabama	Ellis Taylor Jasper, Alabama	Grover Burchfield, Jr. Tuscaloosa, Alabama	Winn-Dixie Stores, Inc. Tine W. Davis Montgomery, Alabama	Louis Whitfield Alaga Syrup Co. W. A. Pickle Co. Montgomery, Alabama
R. Julian Lackey Birmingham, Alabama	Thomas E. McMillan Brewton, Alabama	First National Bank Tuscaloosa, Alabama	Dr. Ellis Porch Arab, Alabama	Dr. Frank Stitt, Sr. Cullman, Alabama
Ben C. Paden Scholarship Bessemer, Alabama	Waters Theatre Co. J. R. Waters Birmingham, Alabama	C. C. Huxford, Jr. Brewton, Alabama	Dr. Otis Jordan Tuscaloosa, Alabama Sharpe's, Inc. Tuscaloosa, Alabama	Royal Crown Bottling Co. Clarke "Babe" Pearce Jim Pearce Raymond C. Case Tuscaloosa, Alabama
Joe Rumore Birmingham, Alabama	Ben R. Goltzman & Co., Inc. Montgomery, Alabama	Northington Laundry Tuscaloosa, Alabama	Marshall Durbin & Co., Inc. Birmingham, Alabama	H. A. "Doc" House Gadsden, Alabama Gri Cashio Birmingham, Alabama
Herb Sadler Birmingham, Alabama	Golden Flake, Inc. Birmingham, Alabama	Warren G. Merrin Birmingham, Alabama	W. Bruce White Birmingham, Alabama	Dr. Reese M. Holifield Demopolis, Alabama
Ted Cook Motors, Inc. Birmingham, Alabama	Veitch Machine Co., Inc. Birmingham, Alabama	Jasper Coca Cola Bottling Co. George Davis Jasper, Alabama	A Friend of The University	Dr. Robert D. Williamson Linden, Alabama
Industrial Safety Supply Co. Edward W. Langston Birmingham, Alabama	Russell Lewis Florence, Alabama Dr. D. D. Cox Sheffield, Alabama	Mrs. Stratton's Salads, Inc. James J. Stratton Birmingham, Alabama	Tru-Ade & Bubble Up Birmingham, Alabama	Winston McCall Birmingham, Alabama Dan McCall Mobile, Alabama

THE FOLLOWING HAVE QUALIFIED FOR
EDUCATIONAL AND ATHLETIC
SCHOLARSHIPS
1965-66

FOOTBALL

STEVE DAVIS, Sophomore	Pre-Medicine
STEVE SLOAN, Senior	Education
FRANK CANTERBURY, Junior	Commerce
DENNIS HOMAN, Sophomore	Education
MELVIN BRUNSON, Sophomore	Pre-Law
DAVID RAY, Senior	Commerce
JACKIE SHERRILL, Senior	Commerce
TOMMY TOLLESON, Senior	Commerce
JOHN WILLIAMS, Junior	Commerce
RAY PERKINS, Junior	Education
TERRY KILLGORE, Sophomore	Education
TOM SOMERVILLE, Sophomore	Education
PAUL CRANE, Senior	Commerce
LEE BURKHART, Sophomore	Engineering
RAY OWENS, Sophomore	Commerce
NORTON BOND, Sophomore	Pre-Law

BASKETBALL

ERNIE HOUCK, Junior	Engineering
ROBERT HICKEY, Senior	Commerce
RAY TOUCHSTONE, Sophomore	Commerce

BASEBALL

RICHARD TOWERS, Senior	Chemistry
GEORGE JOHNSON, Junior	Education

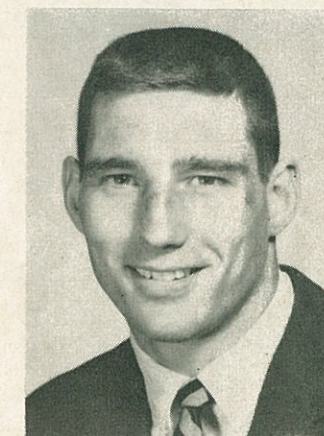
TRACK

WALTER McQUEEN, Senior	Pre-Medicine
WILLIAM MASON, Sophomore	Education
HOWARD MULLIS, Sophomore	Commerce

Other athletes who have qualified will be announced at a later date.



Steve Sloan



Paul Crane



David Ray



Walter McQueen

Harry Pritchett

Marlin Moore

"Roll Tide"

PRITCHETT-MOORE, Inc.

Real Estate

Insurance

520 Queen City Avenue

Tel. 758-4441

Compliments of

**N. C. MORGAN
CONSTRUCTION CO.**

Industrial — Commercial

and

General Construction

1925 Queen City Avenue

Tuscaloosa, Alabama

Phone 752-3501



IT'S BIG — YES YOU'LL
FIND THE ALLOWANCE
ON YOUR PRESENT CAR
AT

STANSELL PONTIAC-
CADILLAC
IS REALLY BIG!

PONTIAC :- CADILLAC :- TEMPEST

THINK

STANSELL

FIRST

TOPS IN

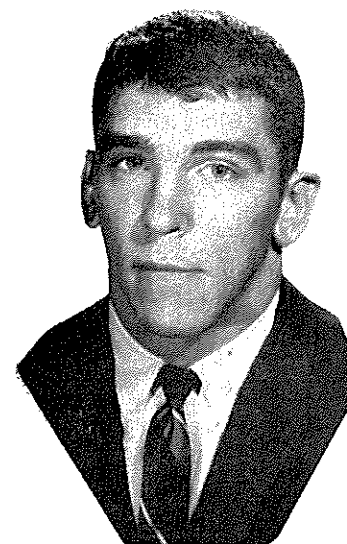
SERVICE — QUALITY — SALES

STANSELL

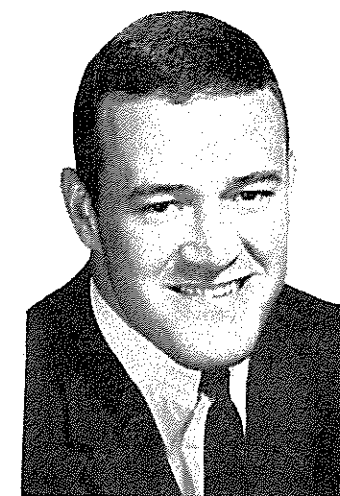
PONTIAC - CADILLAC, Inc.

Queen City & 15th Street

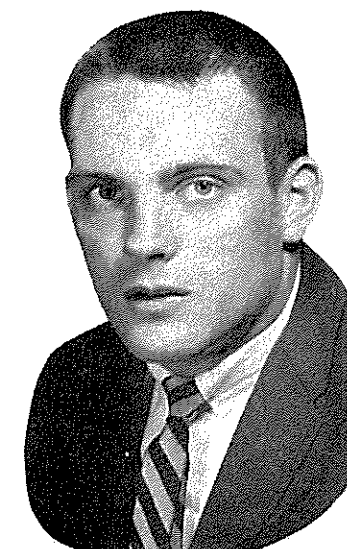
Phone 752-5564



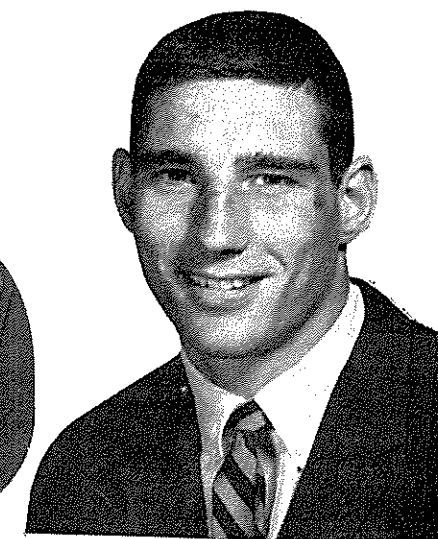
Tim Bates



Lynn Strickland

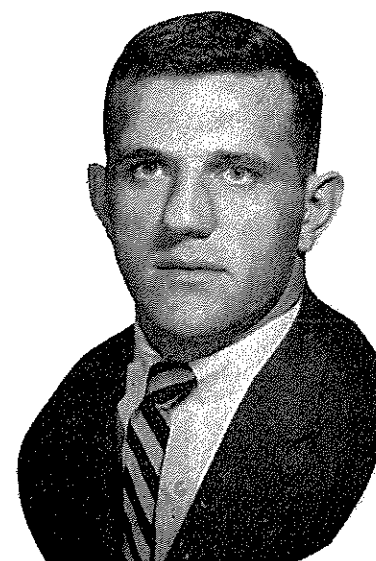


David Ray

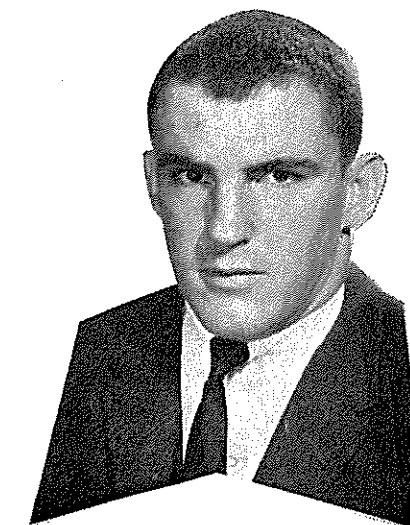


Paul Crane

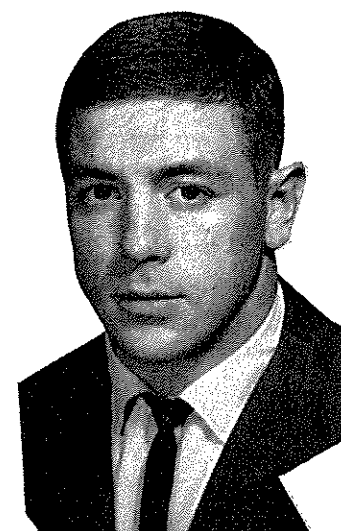
TIDE SENIORS



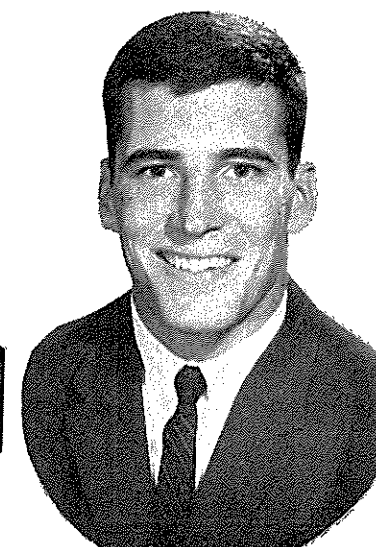
Jackie Sherrill



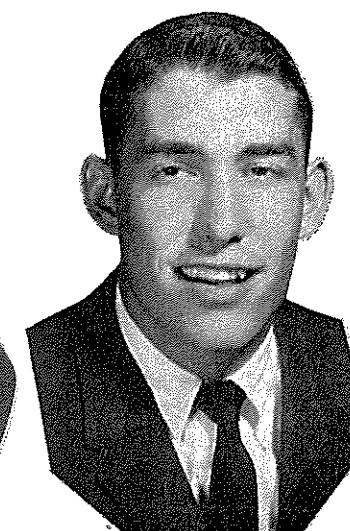
Ben McLeod



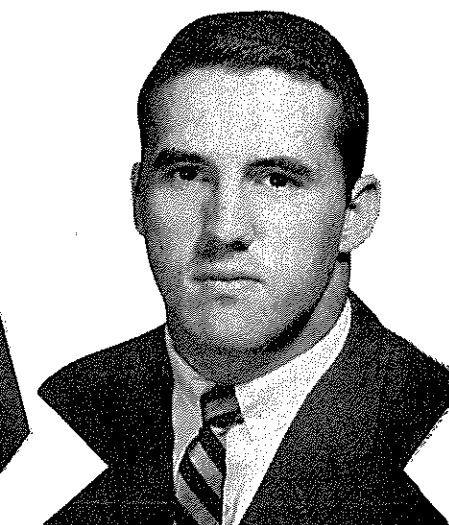
Creed Gilmer



Tommy Tolleson



Steve Sloan



Steve Bowman

COMPLETE!

ENJOYMENT

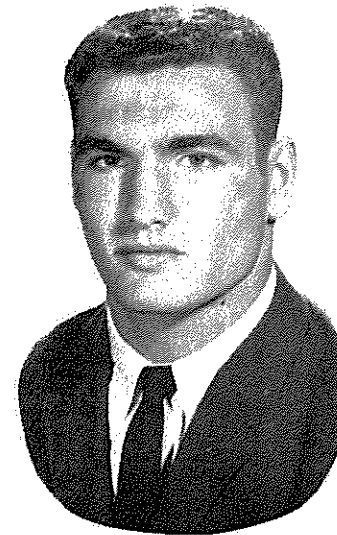
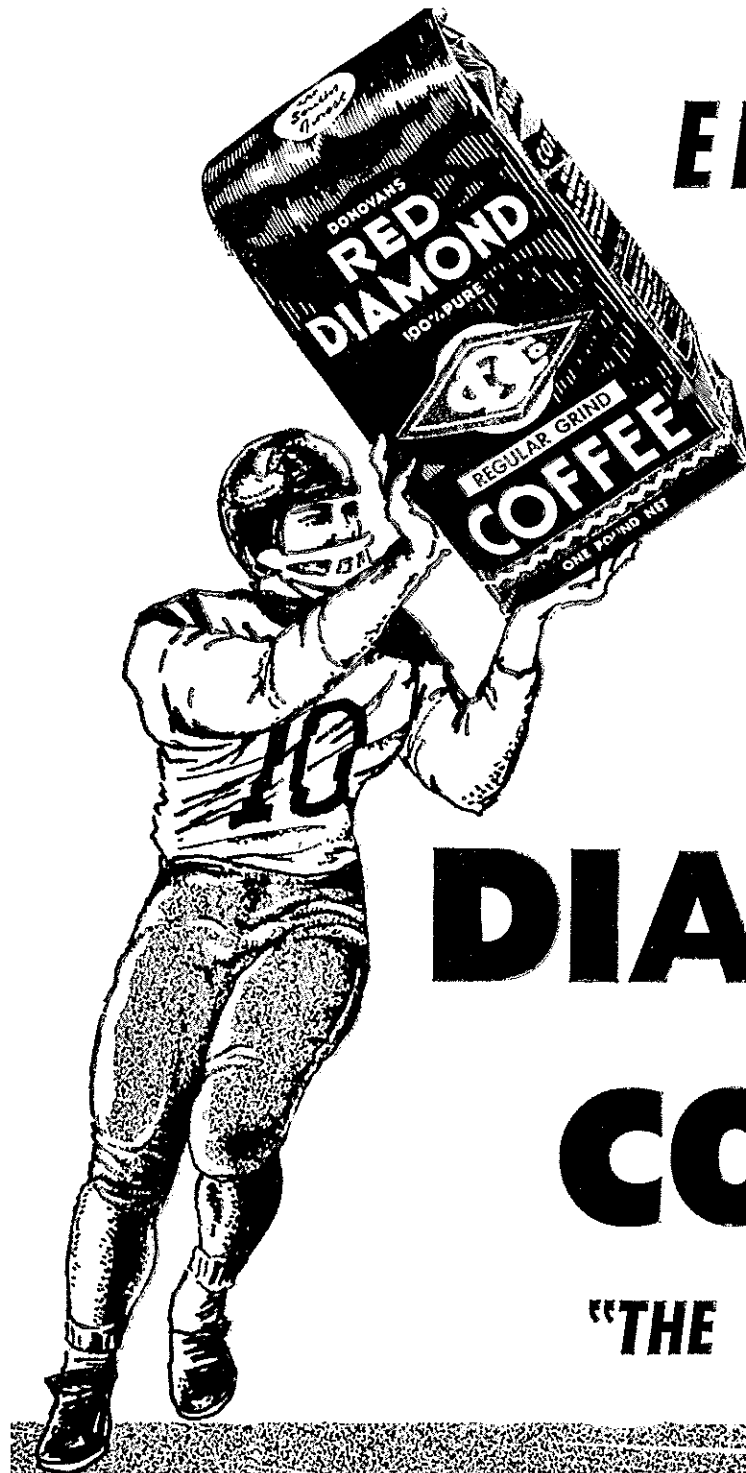
With

RED

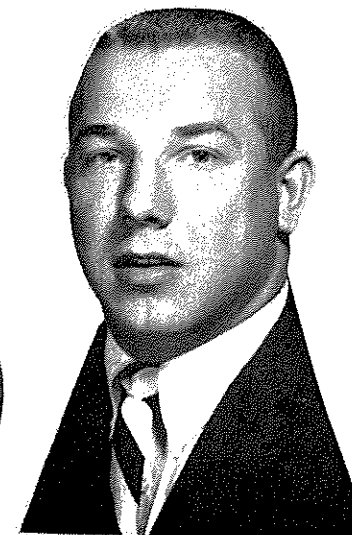
DIAMOND

COFFEE

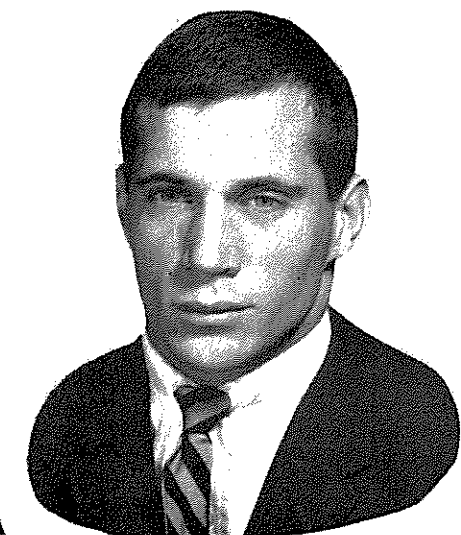
"THE SOUTH'S FINEST"



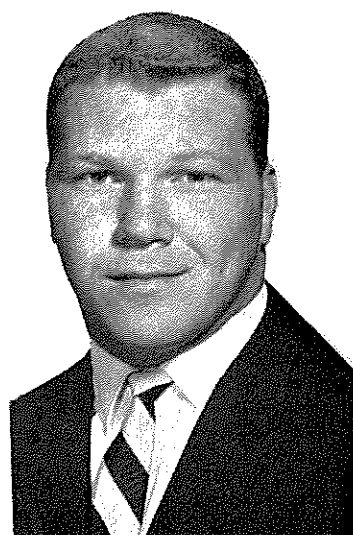
Cecil Dowdy



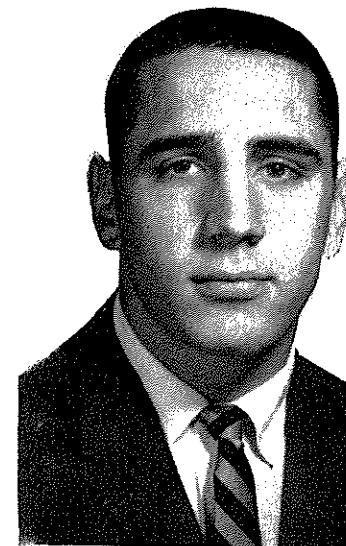
Jerry Duncan



Wayne Cook

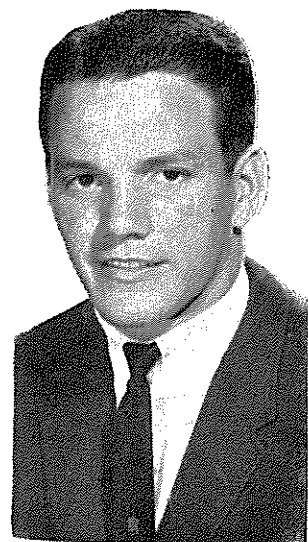


Jimmy Fuller

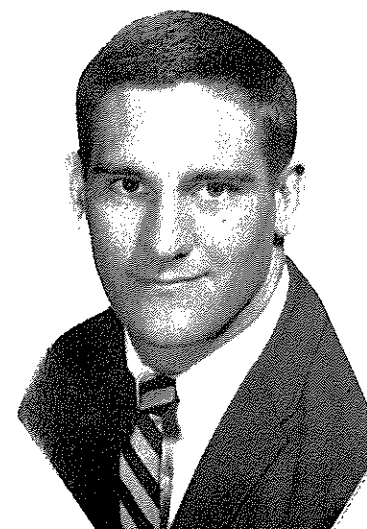


Richard Cole

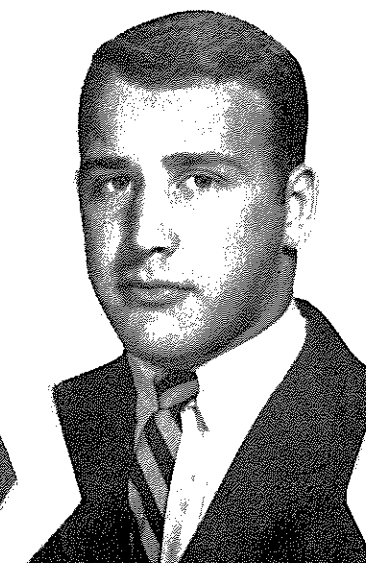
TIDE JUNIORS



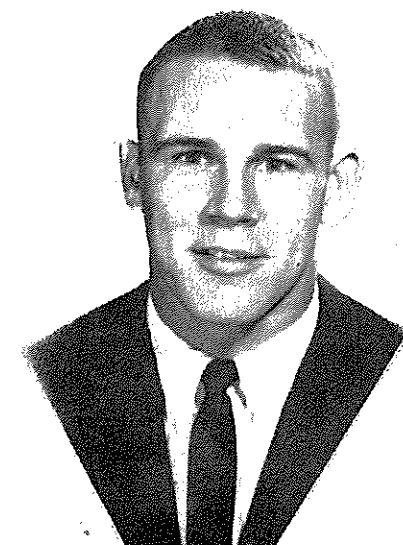
Dickey Bean



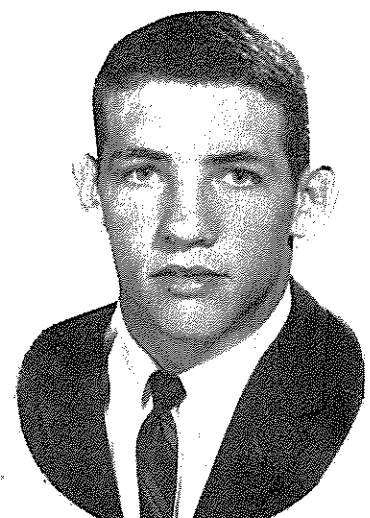
Frank Canterbury



Jimmy Chambers



Jimmy Carroll



John Calvert

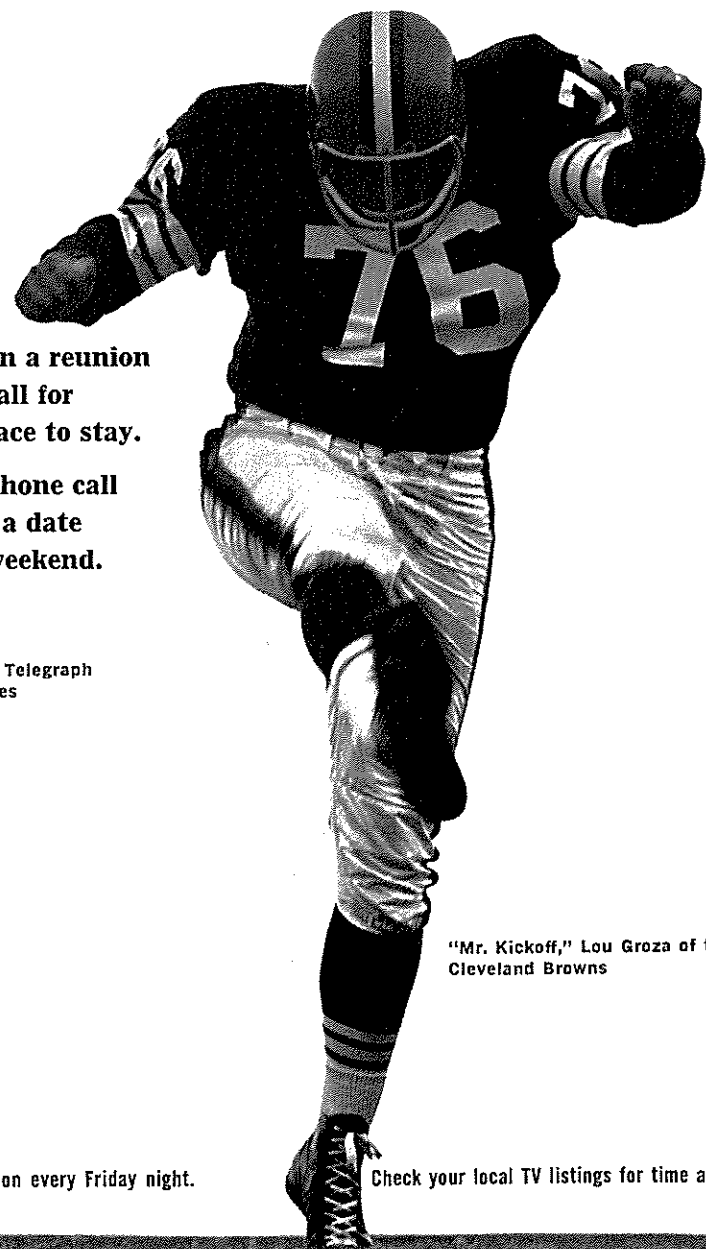
**KICK OFF
YOUR NEXT
FOOTBALL WEEKEND
WITH A
LONG DISTANCE
CALL**

Telephone old classmates to plan a reunion
at the next game. Then call for
reservations at your favorite place to stay.

P.S. For undergrads, too, a phone call
is the easy way to arrange a date
and settle details for a big weekend.



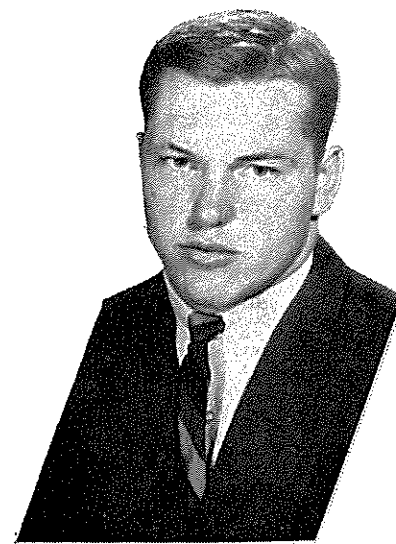
Bell System
American Telephone and Telegraph
and Associated Companies



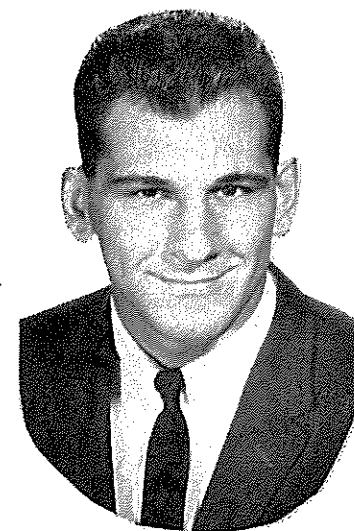
"Mr. Kickoff," Lou Groza of the
Cleveland Browns

Be sure to watch the new college comedy series, Hank. It's on every Friday night.

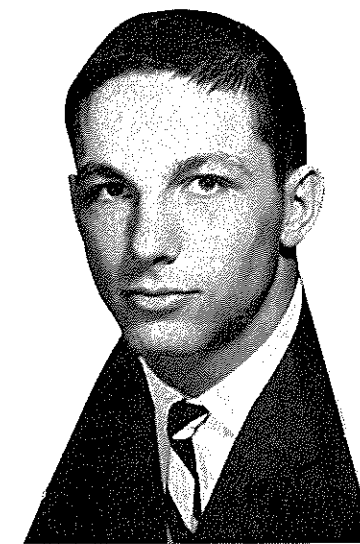
Check your local TV listings for time and station.



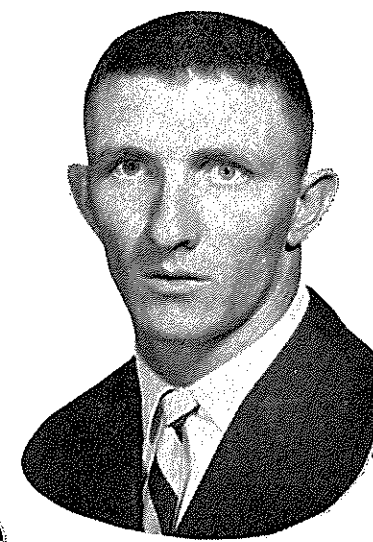
Byrd Williams



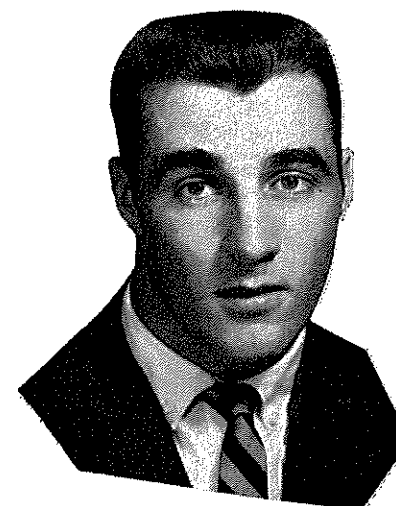
Chris Vagotis



Wayne Trimble

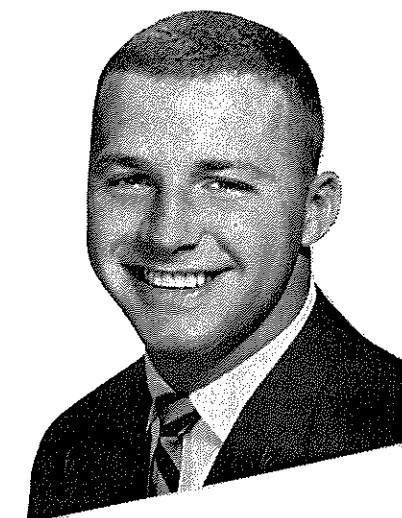


Ray Perkins

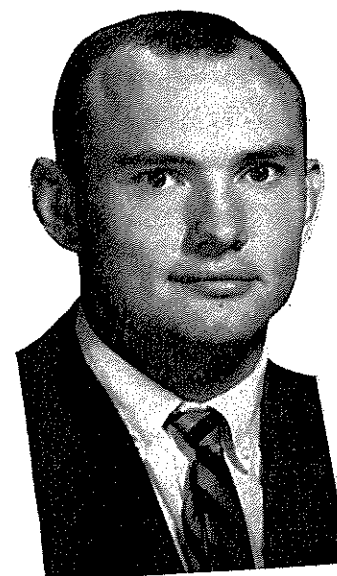


Vernon Newbill

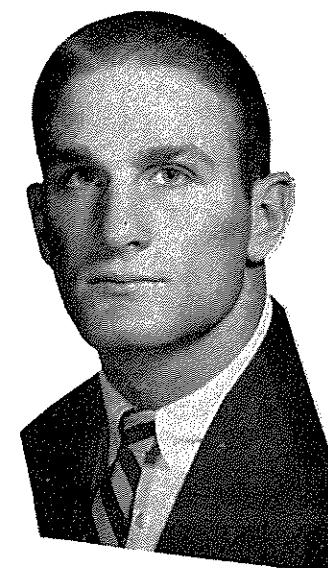
TIDE JUNIORS



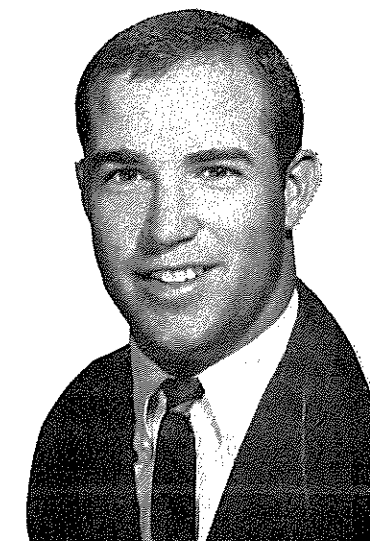
Johnny Sullivan



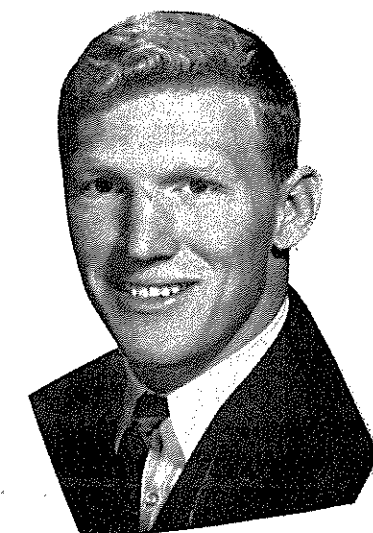
Harold Moore



Leslie Kelley



John Mosley

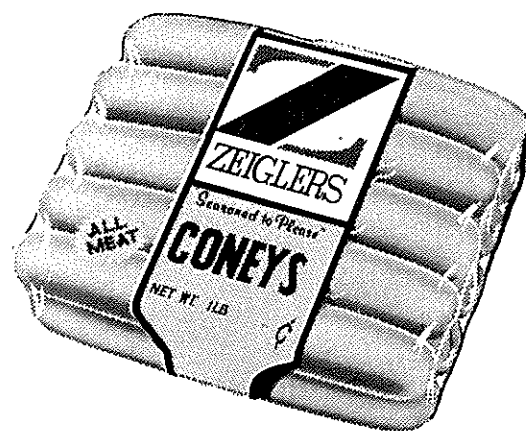


William Hobson



after the game

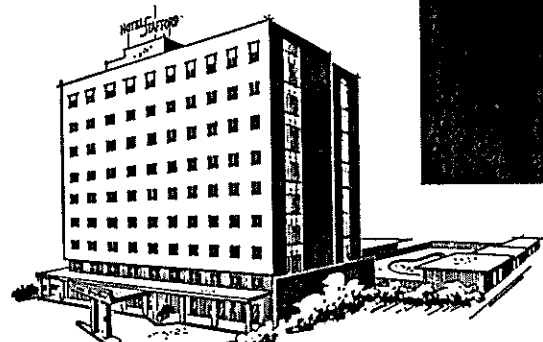
enjoy
ZEIGLER'S
Seasoned to Please
CONEYS



R. L. ZEIGLER, Inc TUSCALOOSA

*In Tuscaloosa
it's the Stafford*

ALABAMA'S FINEST AND FRIENDLIEST
**AIR CONDITIONED THROUGHOUT
**MUZAK **RADIO **TELEVISION
Direct Guest Dialing Telephones
**Swimming Pool **Health Club
Privileges**
Complete Convention Facilities
Telephone 752-8121 TWX 205-460-1671
TUSCALOOSA, ALABAMA
• FREE PARKING



The **Stafford**
MOTOR HOTEL TUSCALOOSA, ALA.
UNDER THE DIRECTION OF AMERICAN HOTELS CORPORATION

**MRS. STRATTON'S
SALADS**

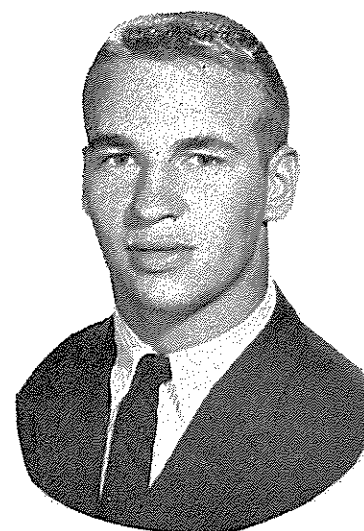
Alabama's Only U. S. Government
Inspected Salad Plant



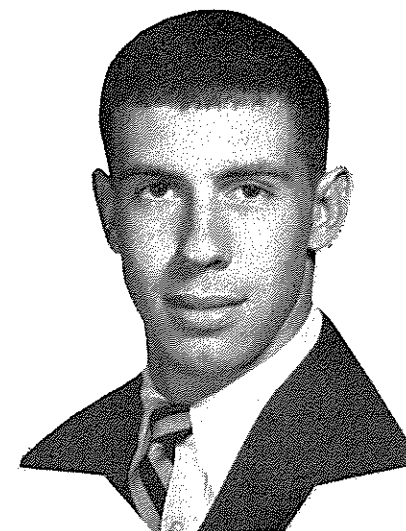
J. J. Stratton
President

Irene Stratton
Treasurer

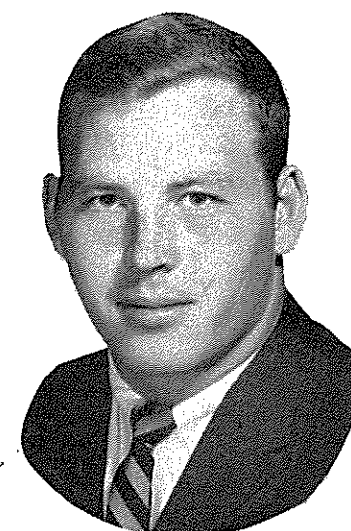
824 19th Street — Ensley, Alabama



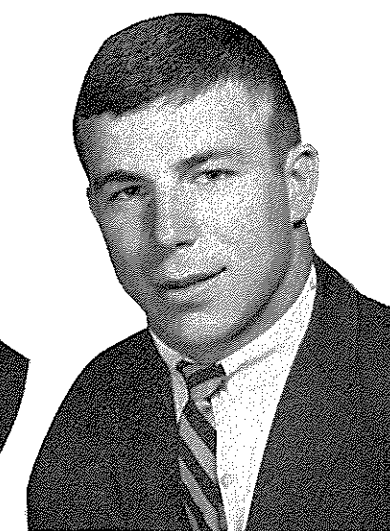
Jimmy Israel



Norton Bond

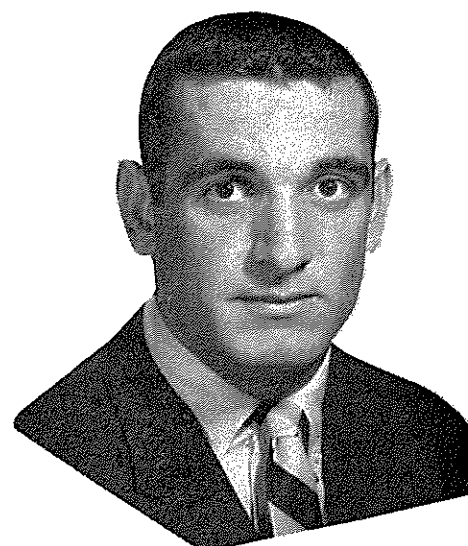


Louis Thompson

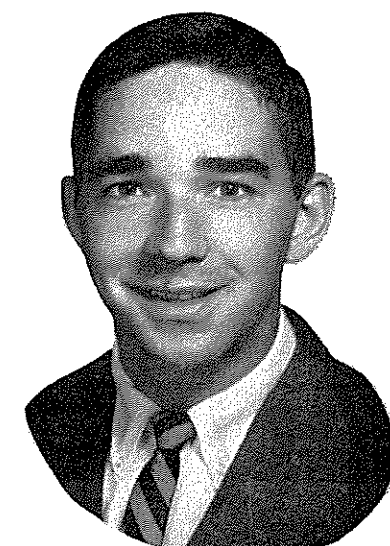


David Chatwood

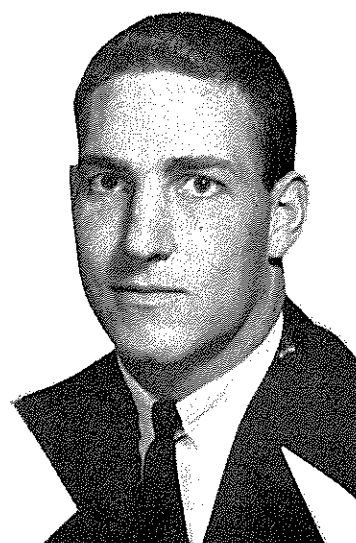
TIDE SOPHS



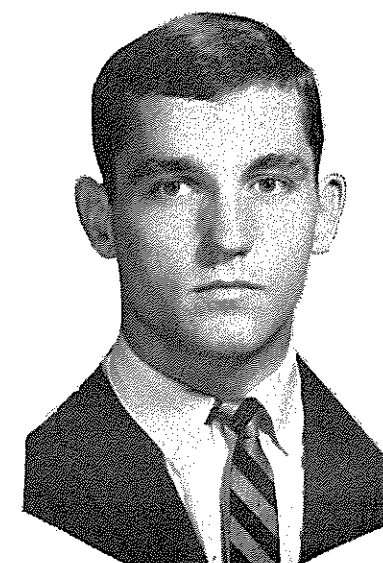
Dennis Homan



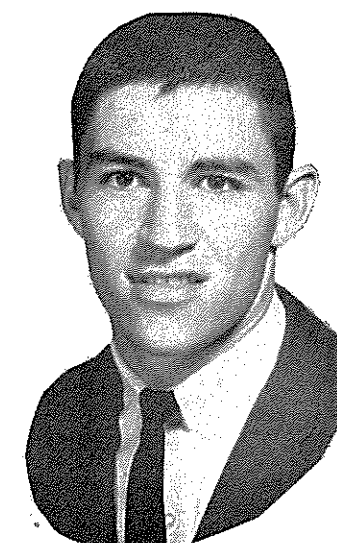
Spud Davis



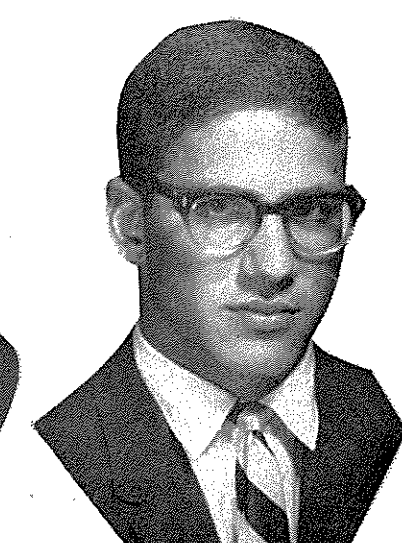
David Bedwell



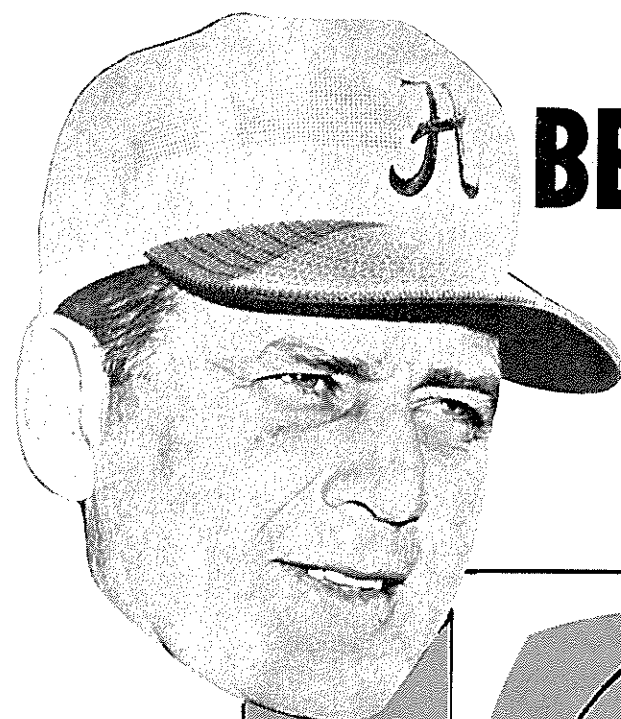
Dicky Thompson



Bobby Johns

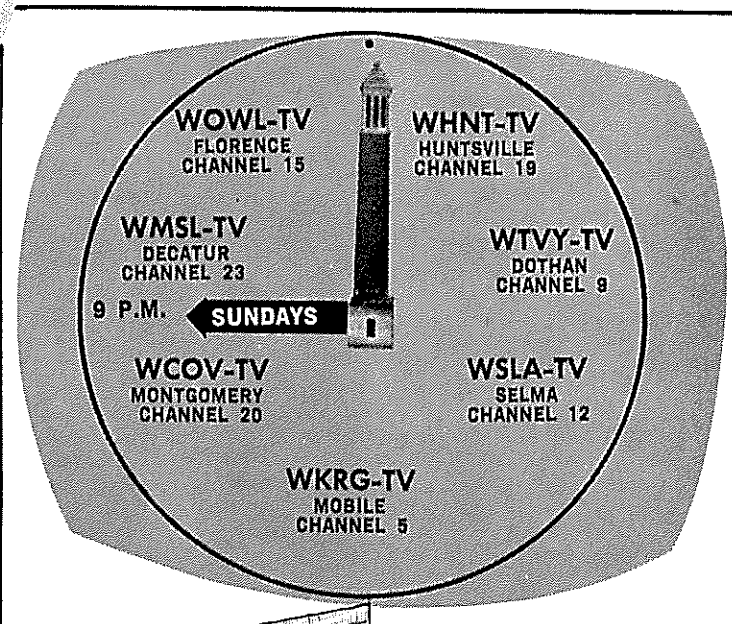


Steve Davis



SEE AND HEAR
THE
**BEAR BRYANT
SHOW
SUNDAYS**

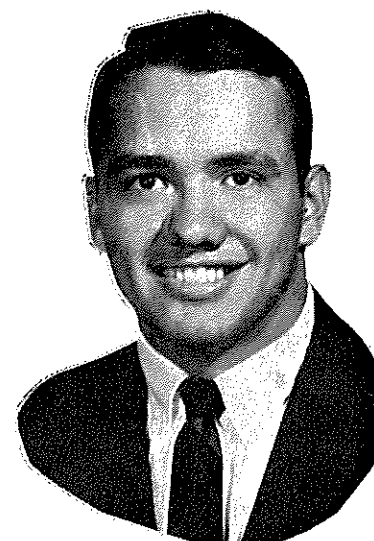
4-5 P.M.
SUNDAY
WAPI-TV
BIRMINGHAM
CHANNEL 13



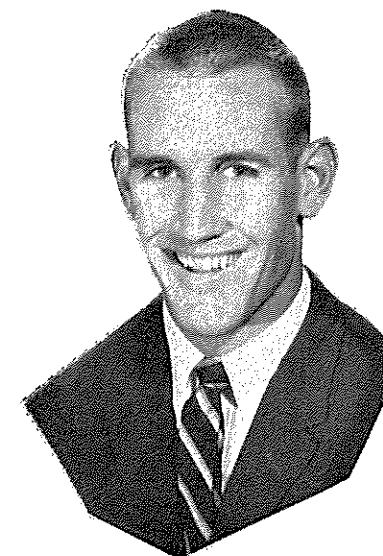
Brought to you by
THE GREAT PAIR
**Coke and
GOLDEN FLAKE
POTATO CHIPS**



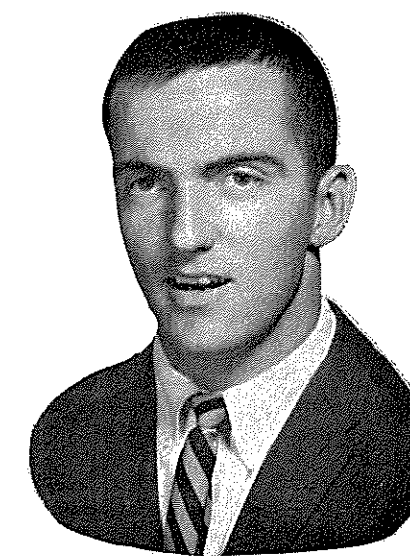
COPYRIGHT © 1962, THE COCA-COLA COMPANY. "COCA-COLA" AND "COKE" ARE REGISTERED TRADE-MARKS.



Bobby Cannon

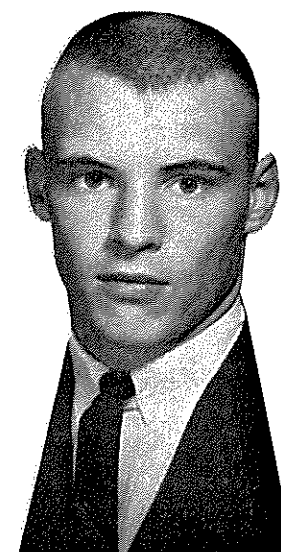


John Reitz

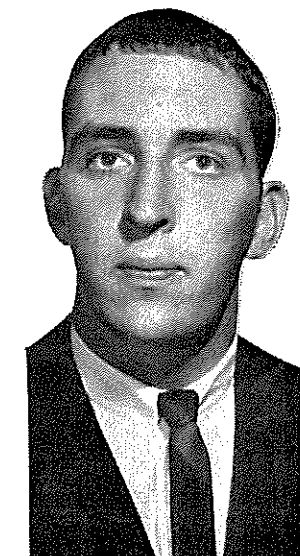


Stan Moss

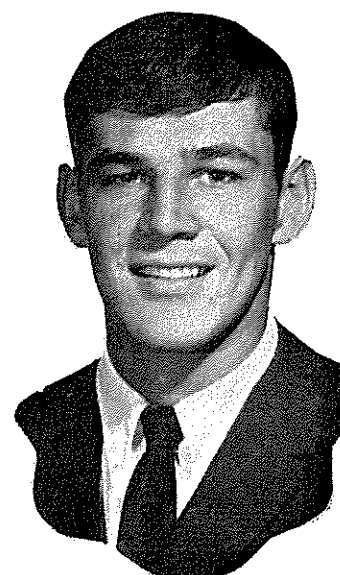
**TIDE
SOPHS**



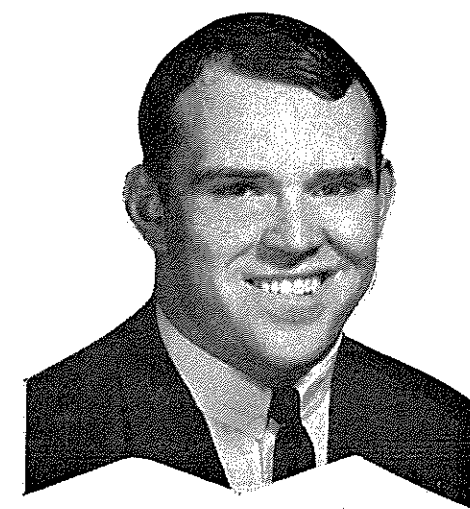
Eddie Propst



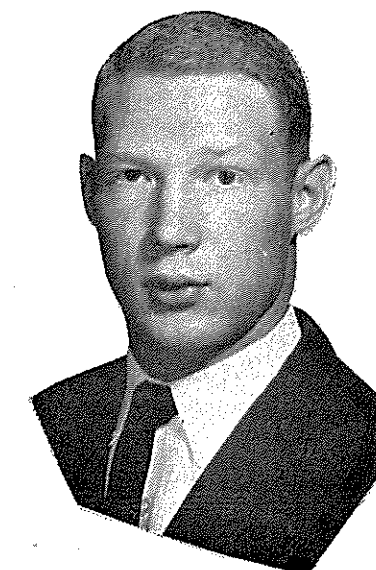
Lee Burkart



Charles Harris



Barry Willoughby



Ray Owens

These Huntsville Merchants Support THE TIDE

DUNN & COMPANY

45 Traylor Island

James M. Dunn, Jr.

F. K. NOOJIN

SAYS

"ROLL TIDE"

Compliments of

M. B. SPRAGINS

H. H. WALGREEN DRUGS

TERRY HUTCHENS BUILDING

AN ANONYMOUS

BAMA BOOSTER

G. W. JONES & SONS

307 FRANKLIN, S.E.

THRASHER OIL COMPANY

Your SHELL Distributor

Tom G. Thrasher

THE FRANK BROTHERS AT

ROSE JEWELRY CO.

DOWNTOWN — 121 Washington

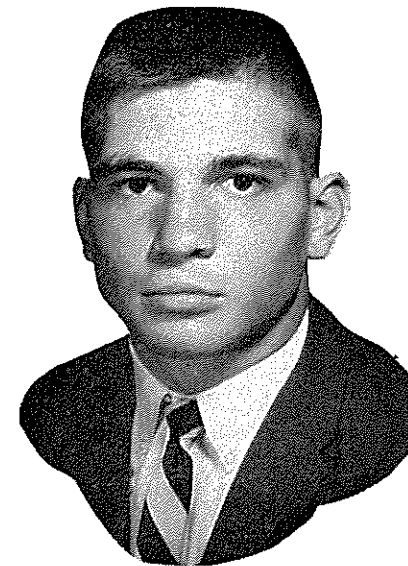
DIAMONDS — JEWELRY — GIFTS

KINGS INN RESTAURANT

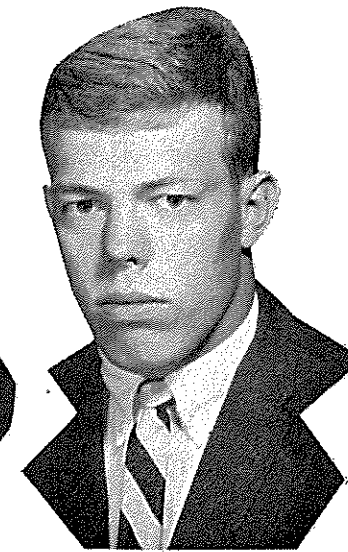
Jim Clements, Manager

W. L. HALSEY GROCERY CO.

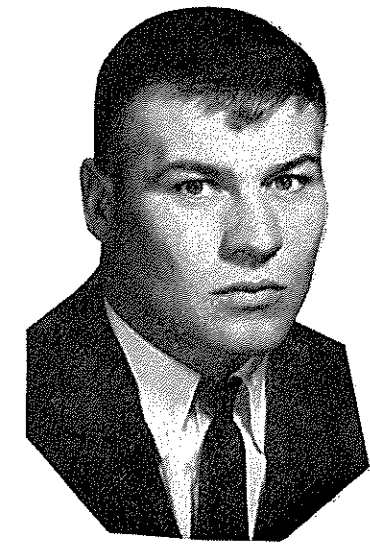
HUNTSVILLE



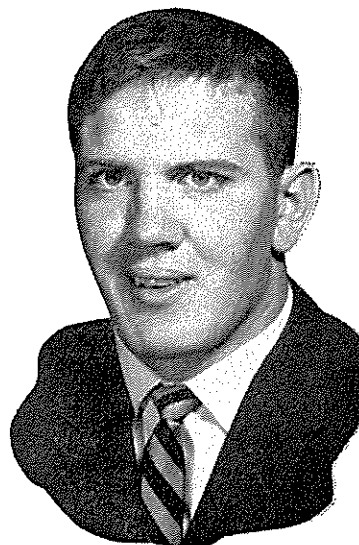
Terry Killgore



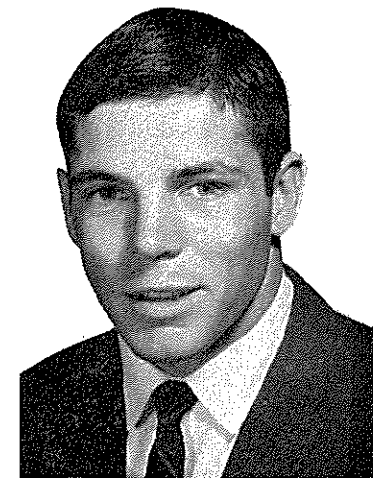
Allen (Bunk) Harpole



Nathan Rustin

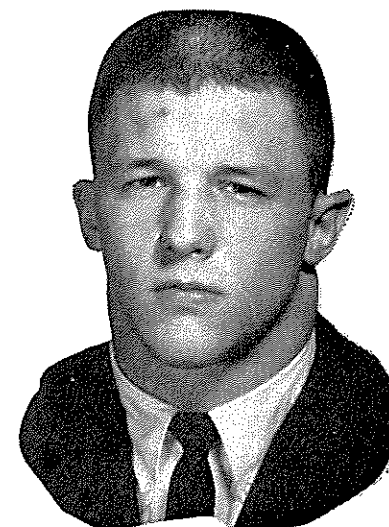


John (Brownie) Sides

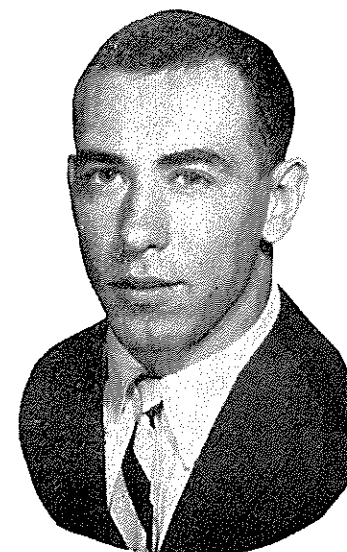


Herbie Phelps

TIDE SOPHS



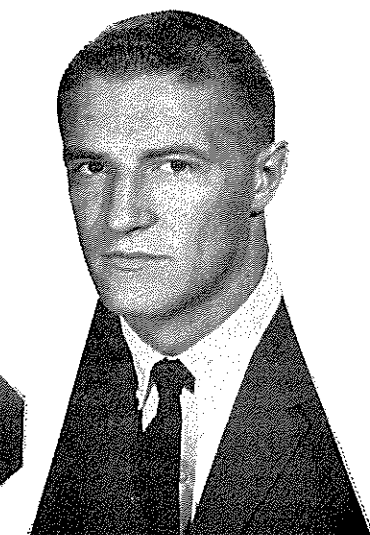
Tom Somerville



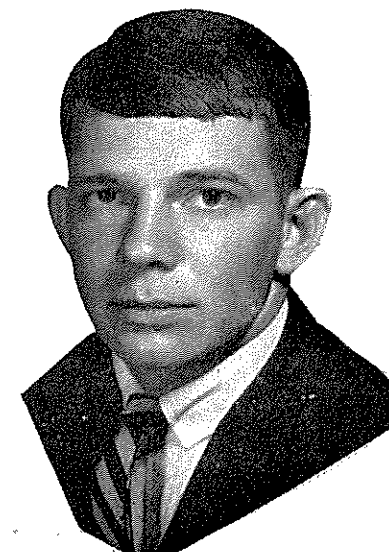
Gene Raburn



Don Shankles



Frank Whaley



Kenny Stabler

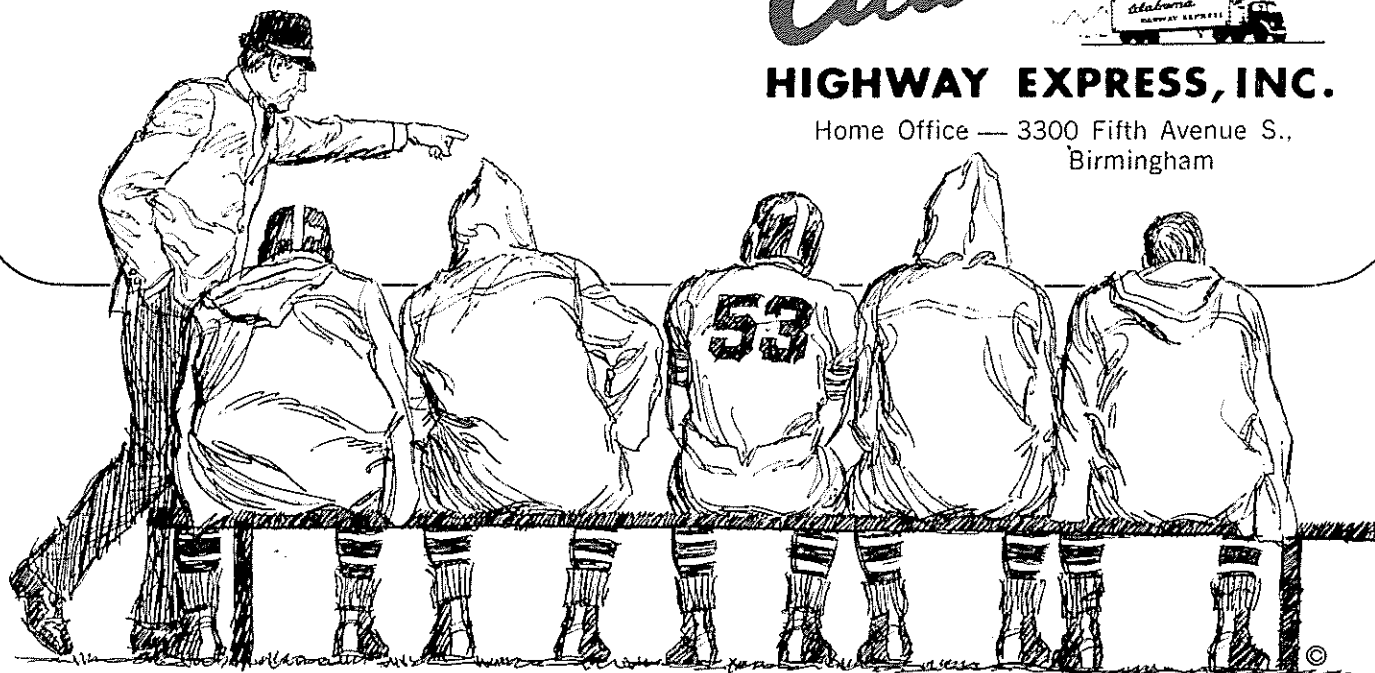
IT'S THE STRENGTH ON THE BENCH THAT WINS GAMES!

At Alabama Highway it's the experienced people behind the driver that keep your freight flowing on time. LTL and truckload...on schedule from Florida and the Gulf to the Great Lakes.

Alabama

HIGHWAY EXPRESS, INC.

Home Office — 3300 Fifth Avenue S.,
Birmingham

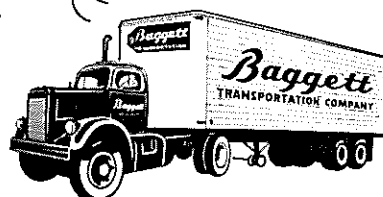


football has
come a long way
since the old days

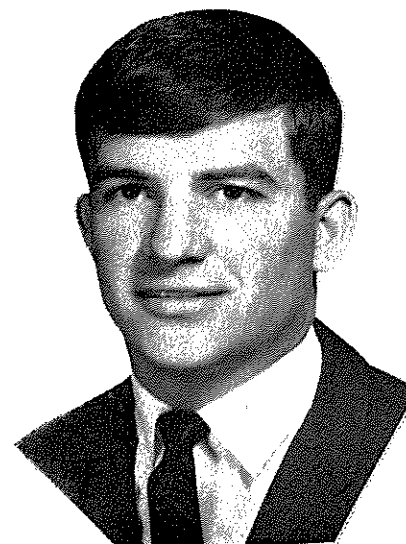
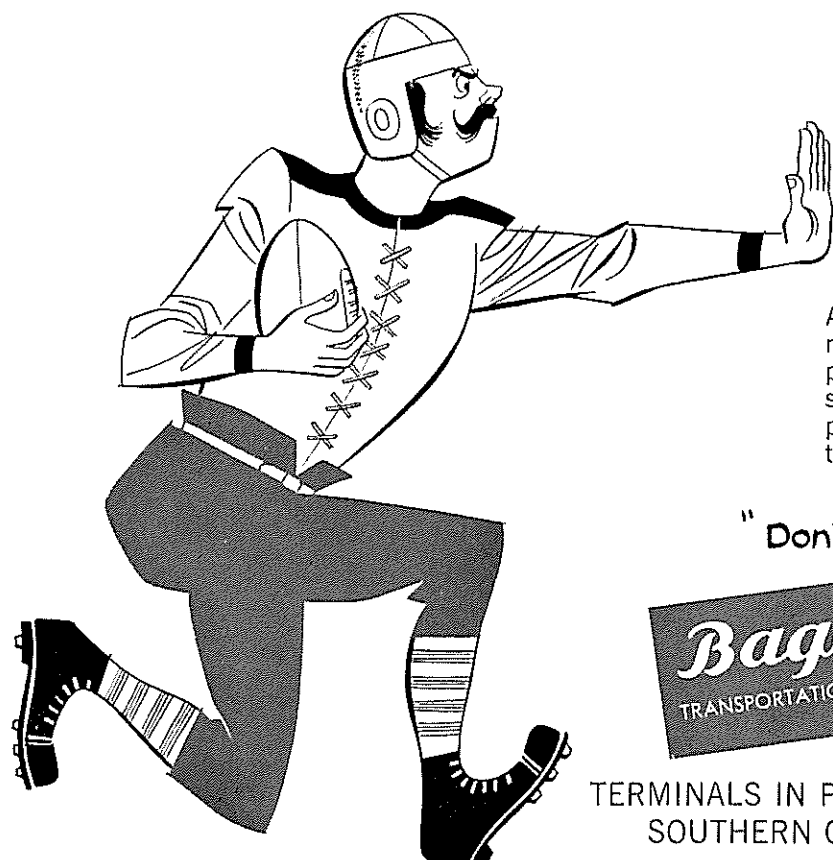
And so has Baggett. Modern methods and newest equipment plus skills learned from experience over the years all contribute to better service for you . . . add to this the desire to please and you have the Baggett Story. Next time talk to a Baggett representative.

"Don't mark it rush, just tag it"

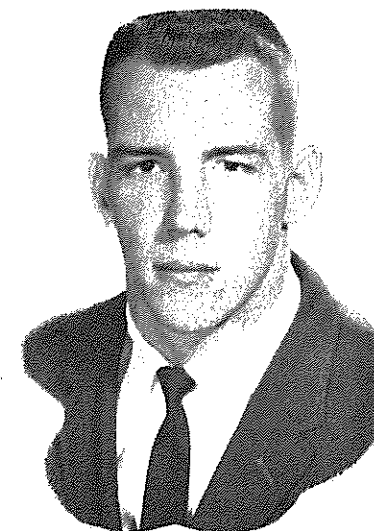
Baggett
TRANSPORTATION COMPANY



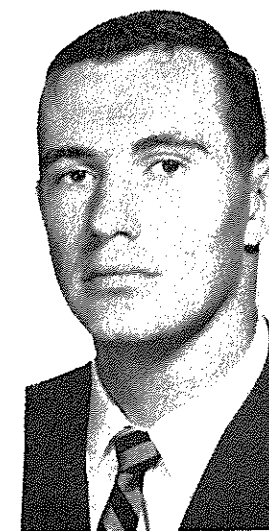
TERMINALS IN PRINCIPAL
SOUTHERN CITIES



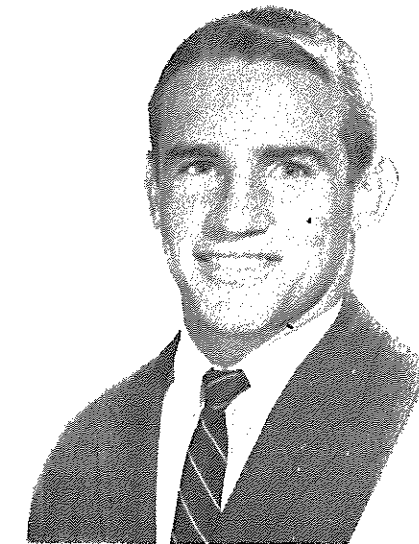
Melvin Brunson



Billy Johnson

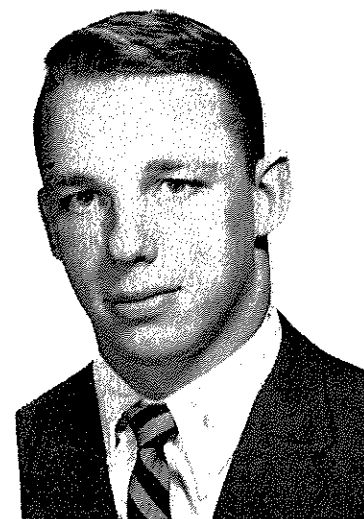


Fran Collins

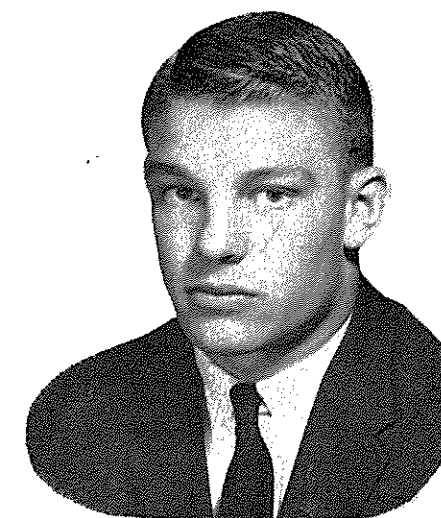


Bruce Stephens

TIDE SOPHS



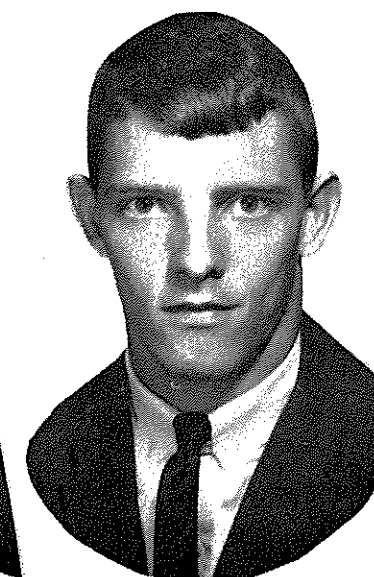
T. J. Morris



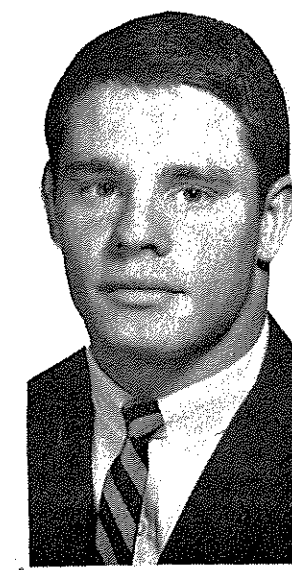
Willie Stewart



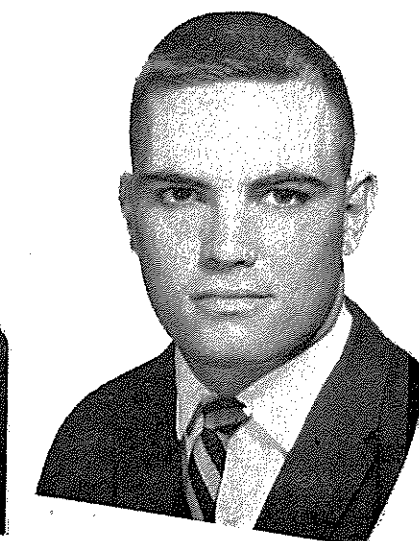
Kent Busbee



Richard Brewer



Billy Scroggins



Art Sullivan

UNIVERSITY BOASTS OUTSTANDING PROGRAM FOR PATRONS OF THE ARTS THIS YEAR

In the 1965-66 season the University of Alabama campus is a mecca for patrons of the arts throughout Alabama. Nearly 100 separate events are being presented, the performers including such giants as Pulitzer Prize-winning author Robert Penn Warren; Louise Nevelson, the United States' foremost sculptress; and Birgit Nilsson, internationally renowned diva of the Metropolitan Opera.

The University's own performing arts groups will be responsible for many sparkling performances: four plays by the University Theatre, 26 recitals and concerts by music department faculty and student ensembles; two score individual student recitals; several art exhibitions of student and faculty work.

Dr. Wilbur Rowand, chairman of the U. of A. Concert and Lecture Series that draws its audience from all parts of the state, says, "In professional music circles, the University is known as one of the important performing centers in the South. Ours is one of the largest and most successful college concert series in this region. In total number of events presented, the University is unsurpassed by any other institution in Alabama."

A high point of the season will be the mid-year Festival of Arts presented by the University of Alabama Student Government Association-Tuscaloosa Fine Arts Council, a unique example of joint college-community efforts in the arts field.

Dr. John F. Burnum, Tuscaloosa, is chairman of the Council. Zach Higgs as SGA president is U. of A. coordinator of the Festival. On February 15-27, it will bring to the campus

opera authority Boris Goldovsky, Mr. Warren and Miss Nevelson in lectures; actor Hal Holbrook in his famous impersonation-monologue "Mark Twain Tonight;" and a concert by the University Symphony Orchestra with outstanding soloists chosen from senior music students.

A show of Miss Nevelson's works will be on exhibit during this period. Literary and art contests for students are part of the Festival, with art entries also being on exhibition.

The Student Government Association again will present a series of distinguished national figures speaking on topics of current interest. It will host a top-ranking U.S. Senator in a lecture in the fall. "Emphasis '66" is the name of a two-day S.G.A. program planned for spring in which leading political figures and student body presidents of universities throughout the country will discuss the student's role in a Democratic society.

The U. of A. Concert and Lecture Series will bring to Tuscaloosa these outstanding artists: Miss Nilsson, hailed as the greatest operatic and recital soprano of our age; the Robert Shaw Chorale and Orchestra; the Budapest Children's Choir on its North American debut; Arthur Fiedler and the Buffalo Philharmonic in a Pops Concert; pianist Ronald Turini, the only pupil for several years of the great Horowitz; the New York Pro Musica with its chamber program of pre-18th century music; Broadway and Hollywood character actor Hans Conried in the comedy "Absence of a Cello;" Mr. Goldovsky; poet-editor John Ciardi in a lecture; and a special Christmas program by the University Choral Union with guest soloists.

University Theater plays, under the direction of Dr. Marion Gallaway, are to be: "The Private Ear, the Public Eye;" "Look Homeward, Angel;" "The Coop;" and a musicalization of "Captain Jenks of the Horsemarines."

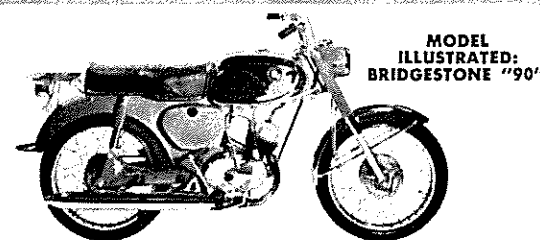
The University Cinema Society, a cooperative venture presenting classic films from around the world, has slated 16 showings ranging from the Frenchfilm "Un Chien Andalou" by Salvador Dali (1928) to "Gone are the Days" U.S.A., 1963).

New to the annual schedule of musical events of the Capstone music department this year is a four part Historical Recital Series, presenting sonatas from the great periods of this form. Performing will be piano faculty members Roy McAllister, Joyce Strong, Amanda Penick, and Douglas Ashley. The Cadec Quartet, the U. of A. quartet-in-residence known throughout the country, will present three concerts on campus. Members of the chamber ensemble are Emil Raab, Henry Barrett, Michael Gattozzi, and Margaret Christy.

Faculty recitals will be given by violist Henry Barrett, violinists Emil Raab and Michael Gattozzi, pianist Douglas Ashley and soprano Jean Belmont, mezzo-soprano Sylvia Debenport, and organist Warren Hutton.

The annual Southeastern Composers' Forum of new music which draws performers and composers from ten or more states, will be a spring event. Other presentations include a Collegium Musicum of early music, orchestra, band and choral group concerts, a recital by the Contemporary Music Society, an Opera Workshop production, and competition festivals for high school musicians.

GO BRIDGESTONE
FOR FUN! PERFORMANCE! ECONOMY!



10 NEW '66 MODELS! 50 CC THRU 175 CC

Want proof that they're tops in performance? See the Bridgestone dealer nearest you and take a test ride on the model of your choice!

EASY TO BUY!

LOW DOWN PAYMENT • BUDGET TERMS

DISTRIBUTOR

JOE H.

BRADU
AND ASSOCIATES

3rd AVENUE at 31st STREET, SO.
BIRMINGHAM, ALA.

MOON WINX LODGE

3410 BIRMINGHAM HWY.
TUSCALOOSA, ALA.

Phone 553-1520

TWX 205-460-1661

AAA AMERICAN EXPRESS

"WHERE THE CRIMSON TIDE STAYS"



FRESH SEAFOOD & CHARCOAL STEAKS

SERVING BREAKFAST, LUNCHEON

AND DINNER

Open 6:00 A.M. Close 10:00 P.M. Daily

Phone 553-1912

ROLL, TIDE, ROLL!



15th Street at Hackberry Lane

Tuscaloosa, Alabama

CURTIS CONCRETE PRODUCTS, Inc.

3112 Fifteenth Street P. O. Box 922 TUSCALOOSA, ALABAMA

Your Complete Concrete Products

CALL 758-8383



ALABAMA NUMERICAL ROSTER 1965

No.	Name	Pos.	Class	Lts.	Age	Hgt.	Wgt.	Hometown
11	Jimmy Israel	QB	Soph	0	19	6-0	184	Haleyville
12	Kenny Stabler	QB	Soph	0	19	6-2	178	Foley
14	Steve Sloan	QB	Senior	2	21	6-0	185	Cleveland, Tenn.
15	William Hobson	QB	Junior	0	21	6-3	196	Greensboro
16	Eddie Propst	DHB	Soph	0	19	5-11	173	Birmingham
17	Steve Davis	Kicker	Soph	0	19	6-1	186	Columbus, Ga.
20	Wayne Trimble	LH	Junior	1	20	6-3	203	Cullman
21	Richard Brewer	LE	Soph	0	19	5-10	158	Sylacauga
24	John Mosley	RH	Junior	1	20	5-10	181	Thomaston
25	Dennis Homan	LH	Soph	0	19	6-0	180	Muscle Shoals
28	Frank Canterbury	DHB	Junior	1	20	5-11	172	Birmingham
30	Steve Bowman	FB	Senior	2	20	5-11	195	Pascagoula, Miss.
31	Kent Busbee	FB	Soph	0	20	6-1	181	Meridian, Miss.
32	Leslie Kelley	LH	Junior	1	20	6-2	209	Vinemont
35	Gene Raburn	FB	Soph	0	22	5-11	179	Jasper
36	Jackie Sherrill	LB	Senior	2	21	6-1	195	Biloxi, Miss.
37	Bobby Johns	DHB	Soph	0	19	6-1	177	Birmingham
40	David Ray	RH	Senior	1	21	6-0	186	Phenix City
41	John Reitz	DHB	Soph	0	21	6-2	184	Morristown, Tenn.
42	Harold Moore	FB	Junior	0	21	6-2	202	Chattanooga, Tenn.
44	Dicky Thompson	LH	Soph	0	20	5-11	173	Thomasville, Ga.
45	Dickey Bean	DHB	Junior	0	21	6-1	176	Childersburg
50	Stan Moss	LB	Soph	0	19	6-1	196	Birmingham
51	John Calvert	LB	Junior	0	20	5-11	186	Cullman
52	Terry Killgore	C	Soph	0	19	6-2	201	Annandale, Va.
53	Jimmy Carroll	C	Junior	0	21	6-0	193	Enterprise
54	Paul Crane	C-LB	Senior	2	21	6-2	191	Prichard
56	Tim Bates	LB	Senior	1	21	6-1	195	Tarrant City
60	Tom Somerville	LG	Soph	0	19	5-9	188	Memphis, Tenn.
61	Byrd Williams	LG	Junior	0	20	5-11	190	Decatur
62	Jerry Duncan	LT	Junior	0	21	5-11	195	Sparta, N. C.
63	Ben McLeod	DE	Senior	0	21	5-11	187	Pensacola, Fla.
64	Willie Stewart	LB	Soph	0	19	6-0	187	Jackson, Miss.
65	Dudley Kerr	K	Junior	0	20	5-11	185	Reform
66	John Sullivan	RG	Junior	1	20	6-0	192	Nashville, Tenn.
68	Bruce Stephens	LG	Soph	0	20	5-10	184	Thomasville
69	Allen Harpole	LG	Soph	0	18	6-0	190	Columbus, Miss.
70	Cecil Dowdy	RT	Junior	1	20	6-0	204	Cherokee
71	Billy Johnson	RG	Soph	0	20	6-0	187	Selma
72	Lynn Strickland	LT	Senior	0	21	6-0	195	Alexander City
73	Jimmy Fuller	LT	Junior	1	20	6-0	211	Fairfield
74	Nathan Rustin	RT	Soph	0	20	6-2	214	Phenix City
75	Spud Davis	RT	Soph	0	19	6-4	217	Talladega
76	John Sides	LT	Soph	0	19	6-2	216	Tuskegee
78	Louis Thompson	LT	Soph	0	20	6-2	215	Lebanon, Tenn.
79	Richard Cole	RT	Junior	0	20	6-0	196	Crossville
80	Frank Whaley	LE	Soph	0	20	6-4	198	Lineville
81	Creed Gilmer	RE	Senior	1	21	6-0	178	Birmingham
82	Charles Harris	LE	Soph	0	19	6-4	199	Mobile
83	Wayne Cook	RE	Junior	1	20	6-1	194	Montgomery
84	Vernon Newbill	LE	Junior	0	21	6-0	186	Mobile
85	Don Shankles	RE	Soph	0	20	6-1	186	Fort Payne
86	Tommy Tolleson	LE	Senior	2	22	6-2	184	Talladega
87	David Bedwell	Rover	Soph	0	19	6-0	172	Cedar Bluff
88	Ray Perkins	LE	Junior	1	23	6-0	179	Petal, Miss.



"OFFICIAL WATCH FOR THIS GAME — LONGINES — THE WORLD'S MOST HONORED WATCH"



STEP
OUT FRONT
IN '66... in a Rocket Action Olds!



442 Swinging new kind of sports car excitement!



400-cubic-inch V-8, 4-barrel carb, twin pipes: Buckle up and have yourself a ball! This is the 350-hp 4-4-2. With heavy-duty suspension, built to K.O. the roughest roads. Front and rear stabilizers to take the "bend" out of curves, the bind out of corners. And under it all—pavement-biting red-line tires! But the swinging-est thing about Olds 4-4-2 is its surprisingly modest price! **LOOK TO OLDS FOR THE NEW!**

Oldsmobile Division • General Motors Corp.



Introducing the tuned car. 1966 Buick.

What makes a car a car is styling, performance, ride and handling. Only when they're all tuned together is the car a Buick. Like this '66 Riviera Gran Sport.

Every last thing that goes into a Buick—suspension, body mounts, shock absorbers—not only has to work, it has to work with everything else. That's tuning.

Tuning is what we do more of (and care more about) than anybody we know of. And then we go out and test it in more places, too. On roads like the ones you'll be driving on. Why we do it will be obvious when you take your first ride. The tuned car rides and handles as handsomely as it looks. (Tuning may be hard to explain. But it's easy to notice.)

What the tuned car will do for you. And your family. For a start, the new Riviera

will comfort you. You'll see that when you slip into the Riviera's new bench seats. Space for six. If you like buckets, they're available, with a reclining arrangement for the right-front passenger. And we have another comforting option available: a new notch-back seat that converts from bench to semi-bucket.

Choosing the tuned car. Visit your Buick dealer. Every Buick you see is the tuned car. Riviera, the new international classic. Riviera Gran Sport. Every '66 Buick.

And with a choice like that, how in the world can you go wrong? Wouldn't you really rather have a Buick?

CURTIS CONCRETE PRODUCTS, Inc.

3112 Fifteenth Street P. O. Box 922 TUSCALOOSA, ALABAMA

Your Complete Concrete Products

CALL 758-8383



FLA. STATE NUMERICAL ROSTER 1965

No.	Name	Pos.	Class	Lts.	Age	Hgt.	Wgt.	Hometown
11	Kim Hammond	QB	Soph	0	21	6-1	185	Melbourne, Fla.
12	Tony Gero	QB	Junior	0	21	5-10	186	Madison, N.J.
14	Jim Massey	DB	Senior	2	22	5-11	175	Cairo, Ga.
15	Pat Conway	DB	Junior	1	20	5-10	180	Miami, Fla.
16	Ed Pritchett	QB	Senior	2	24	6-2	181	Decatur, Ga.
17	Marty Kolbus	QB	Soph	0	19	6-2	185	E. Chicago, Ind.
21	Donovan Jones	HB	Junior	0	20	6-1	196	Lakeland, Fla.
22	Maury Bibent	DB	Senior	2	23	6-0	193	Cincinnati, Ohio
23	Wayne Giardino	FB	Junior	1	22	5-10	192	West Palm Bch, Fla.
24	Elton Revell	HB	Junior	0	21	6-0	174	Tallahassee, Fla.
26	Bill Campbell	DB	Junior	0	20	5-9	177	Tampa, Fla.
27	Phil Spooner	HB	Senior	2	22	5-11	185	Fort Myers, Fla.
28	T. K. Wetherell	HB	Soph	0	20	5-10	185	Daytona Beach, Fla.
29	Joe Petko	FB	Senior	2	22	5-9	194	Shaker Heights, O.
30	Bill Moreman	HB	Soph	0	20	5-11	181	Daytona Beach, Fla.
31	Bill Cox	HB	Soph	0	19	6-1	178	Atlanta, Ga.
32	Bill Richardson	DB	Soph	0	20	6-0	189	Jesup, Ga.
33	Butch Riser	DB	Soph	0	20	6-0	181	Sanford, Fla.
34	Frank Loner	PK	Soph	0	19	5-9	196	Thomasville, Ga.
35	John Hosack	HB	Junior	0	20	5-10	194	Miami, Fla.
40	Mike Blatt	LB	Soph	0	19	5-11	202	Key West, Fla.
41	Bob Menendez	DB	Junior	0	20	5-10	194	Key West, Fla.
42	Alan LaMarche	DB	Soph	0	20	5-11	187	Hollywood, Fla.
43	Howard Ehler	DB	Senior	2	21	5-10	195	Tavares, Fla.
44	Jim Mankins	HB	Junior	0	21	6-2	221	King City, Calif.
51	Joe Avezzano	OG	Senior	2	22	6-2	229	Miami, Fla.
52	Wayne McDuffie	C	Junior	1	21	6-2	208	Hawkinsville, Ga.
53	David Pitts	MG	Junior	1	21	5-9	202	Blountstown, Fla.
54	John Stephens	C	Junior	1	20	6-1	201	Tallahassee, Fla.
55	Bob Urich	C	Soph	0	19	6-2	198	Toronto, Ohio
60	Larry Williamson	OG	Junior	0	20	5-11	209	Macon, Ga.
61	Jack Shinholser	MG	Senior	2	23	6-1	210	Tampa, Fla.
62	Howard Lurie	LB	Senior	1	21	6-0	201	Northridge, Calif.
63	Bill McDowell	LB	Senior	2	21	6-1	208	Tallahassee, Fla.
64	Dave Braggins	OT	Junior	0	20	6-2	223	Lake Wales, Fla.
65	David Hall	OG	Junior	0	21	5-11	208	Panama City, Fla.
66	Carlie McNeil	OG	Soph	0	19	6-1	195	Macon, Ga.
67	Mike Bugar	DT	Soph	0	19	6-1	204	Youngstown, Ohio
68	Joe Parrish	LB	Senior	2	23	6-1	194	Auburndale, Fla.
69	Edwin Pope	OG	Junior	0	21	6-1	208	Waycross, Ga.
70	Del Williams	OT	Junior	1	20	6-2	230	Live Oak, Fla.
71	Ken Johnson	OT	Soph	0	21	6-2	224	Jacksonville, Fla.
73	Larry Kissam	OT	Junior	0	20	6-0	223	Inglewood, Calif.
74	Jay Mac Matthews	DT	Junior	0	21	6-1	218	Chiefland, Fla.
75	Rommy Vistart	DT	Soph	0	20	6-3	270	Colquitt, Ga.
76	Donnie Ellers	OT	Soph	0	19	6-3	219	Marietta, Ga.
77	Bob Mangan	OT	Senior	2	23	6-1	229	Atlanta, Ga.
78	Charles Pennie	DT	Junior	0	20	6-4	230	Hollywood, Fla.
79	Frank Pennie	DT	Senior	2	22	6-4	240	Hollywood, Fla.
80	Stan Croley	DE	Soph	0	20	6-2	192	Dade City, Fla.
81	H. T. Waller	DE	Soph	0	20	6-1	186	Vernon, Fla.
82	Jack Fenwick	OE	Soph	0	19	6-4	214	Cincinnati, Ohio
83	Thurston Taylor	OT	Soph	0	19	6-2	216	College Park, Ga.
84	George D'Alessandro	DE	Senior	2	22	5-11	202	Fort Meyers, Fla.
85	Pete Roberts	PK	Soph	0	20	5-11	200	Gainesville, Fla.
86	Buddy Blankenship	OE	Junior	0	21	6-3	200	Atlanta, Ga.
87	Terry Garvin	DE	Senior	1	22	5-11	205	Pensacola, Fla.
88	Jerry Jones	OE	Soph	0	20	6-1	185	Jesup, Ga.
89	Max Wettstein	OE	Senior	2	21	6-3	214	Leesburg, Fla.



"OFFICIAL WATCH FOR THIS GAME — LONGINES — THE WORLD'S MOST HONORED WATCH"



things go
better
with
Coke
TRADE-MARK ®

things go
better
with
Coke
TRADE-MARK ®

Alabama

Probable Starting Lineup

- ALABAMA OFFENSE**
86 Tommy Tolleson LE
62 Jerry Duncan LT
51 John Calvert LG
54 Paul Crane C
73 Jimmy Fuller RG
70 Cecil Dowdy RT
83 Wayne Cook RE
14 Steve Sloan QB
32 Leslie Kelley LH
20 Wayne Trimble RH
30 Steve Bowman FB

- ALABAMA DEFENSE**
80 Frank Whaley LE
66 John Sullivan LT
60 Tom Somerville MG
79 Richard Cole RT
81 Creed Gilmer RE
36 Jackie Sherrill LB
56 Tim Bates LB
40 David Ray RH
24 John Mosley LH
28 Frank Canterbury . . . RH
12 Kenny Stabler Safety

THE CRIMSON TIDE SQUAD

- | | | | | |
|--------------------|-----------------|-------------------|-----------------|-----------------|
| 11 Israel, QB | 30 Bowman, FB | 50 Moss, LB | 65 Kerr, K | 78 Thompson, LT |
| 12 Stabler, QB | 31 Busbee, FB | 51 Calvert, LB | 66 Sullivan, RG | 79 Cole, RT |
| 14 Sloan, QB | 32 Kelley, LH | 52 Killgore, C | 68 Stephens, LG | 80 Whaley, LE |
| 15 Hobson, QB | 35 Raburn, FB | 53 Carroll, C | 69 Harpole, LG | 81 Gilmer, RE |
| 16 Propst, DHB | 36 Sherrill, LB | 54 Crane, C | 70 Dowdy, RT | 82 Harris, LE |
| 17 Davis, K | 37 Johns, DHB | 56 Bates, LB | 71 Johnson, RG | 83 Cook, RE |
| 20 Trimble, LH | 40 Ray, RH | 60 Somerville, LG | 72 Morris, MG | 84 Newbill, LE |
| 21 Brewer, E | 41 Reitz, DHB | 61 Williams, LG | 73 Fuller, LT | 85 Shankles, RE |
| 24 Mosley, RH | 42 Moore, FB | 62 Duncan, LT | 74 Rustin, RT | 86 Tolleson, LE |
| 25 Homan, LH | 44 Thompson, LH | 63 McLeod, DE | 75 Davis, RT | 87 Bedwell, R |
| 28 Canterbury, DHB | 45 Bean, DHB | 64 Stewart, LB | 76 Sides, LT | 88 Perkins, LE |



Fla. State

Probable Starting Lineup

- FLORIDA STATE OFFENSE**
86 Bud Blankenship LE
70 Del Williams LT
69 Edwin Pope LG
54 John Stephens C
51 Joe Avezano RG
77 Bob Mangan RT
89 Max Wettstein RE
16 Ed Pritchett QB
27 Phil Spooner LH
28 T. K. Wetherell RH
23 Wayne Giardino FB

- FLORIDA STATE DEFENSE**
87 Terry Garvin RE
78 Charle Pennie RT
61 Jack Shinholser MG
79 Frank Pennie LT
84 Geo. D'Alessandro . . . LE
63 Bill McDowell LB
68 Joe Parrish LB
43 Howard Ehler CB
22 Maury Bibent CB
15 Pat Conway S
26 Bill Campbell S

THE FLORIDA STATE SEMINOLE ROSTER

- | | | | |
|------------------|-------------------|-------------------|---------------------|
| 11 Hammond, QB | 30 Moreman, HB | 55 Urich, C | 77 Mangan, T |
| 12 Gero, QB | 31 Cox, HB | 60 Williamson, G | 78 C. Pennie, DT |
| 14 Massey, DB | 32 Richardson, DB | 61 Shinholser, MG | 79 F. Pennie, DT |
| 15 Conway, DB | 33 Riser, DB | 62 Lurie, LB | 80 Croley, DE |
| 16 Pritchett, QB | 35 Hosack, HB | 63 McDowell, LB | 81 Waller, DE |
| 17 Kolbus, QB | 40 Blatt, LB | 64 Braggins, T | 83 Taylor, T |
| 21 Jones, E | 41 Menendez, DB | 67 Bugar, DT | 84 D'Alessandro, DE |
| 22 Bibent, DB | 42 LaMarche, DB | 68 Parrish, LB | 85 Roberts, PK |
| 23 Giardino, FB | 43 Ehler, DB | 69 Pope, G | 86 Blankenship, E |
| 24 Revell, HB | 44 Mankins, HB | 70 Williams, T | 87 Garvin, DE |
| 26 Campbell, DB | 51 Avezano, G | 73 Kissam, T | 88 Jones, E |
| 27 Spooner, HB | 52 McDuffie, C | 74 Matthews, DT | 89 Wettstein, E |
| 28 Wetherell, HB | 53 Pitts, MG | 75 Vistart, DT | |
| 29 Petko, FB | 54 Stephens, C | 76 Ellers, T | |

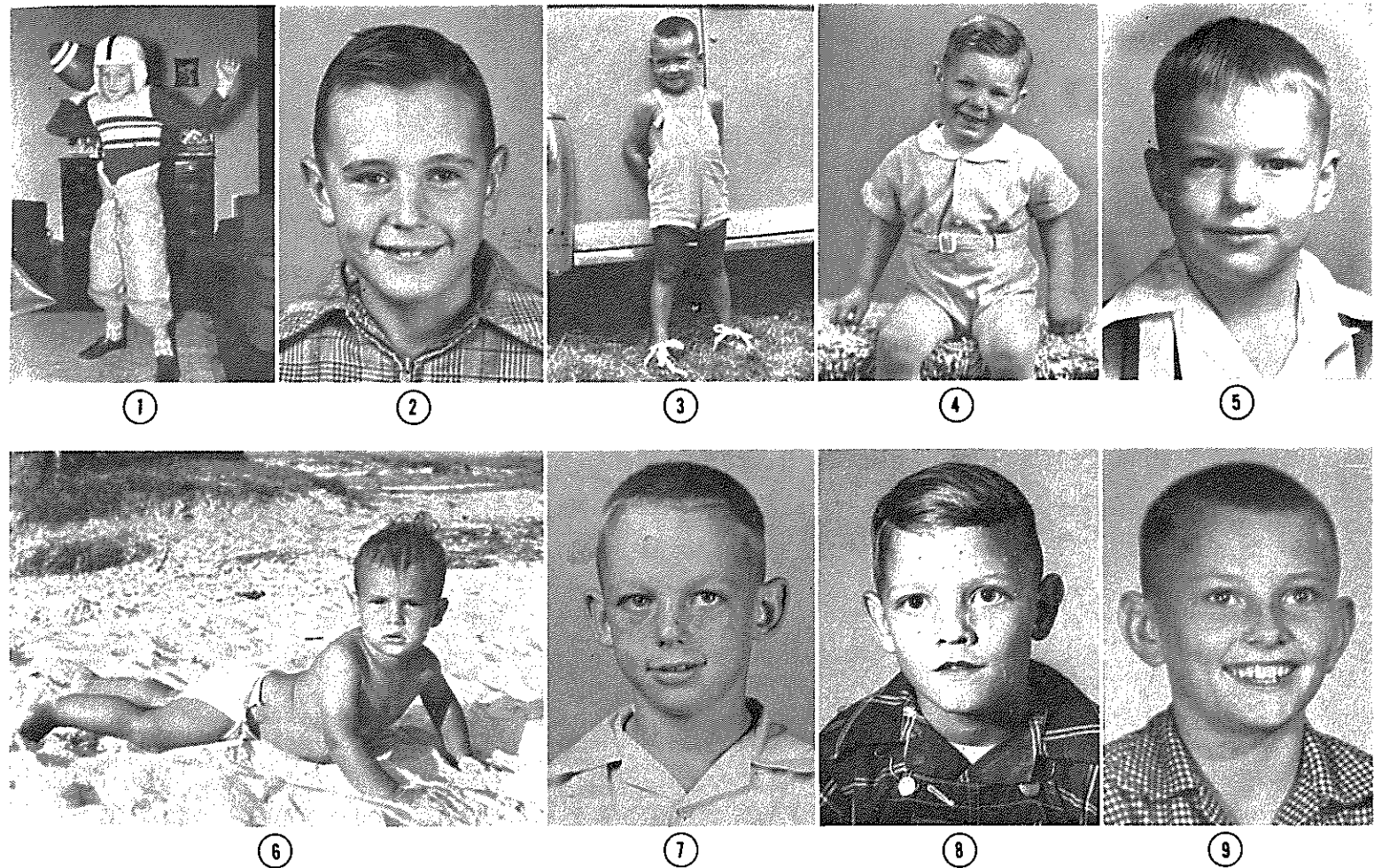
— OFFICIALS —

- Referee—R. P. Williams
Field Judge—Paul Sprayberry
Umpire—Harvey Hardy
Back Judge—John O'Neill
Linesman—Harry Sharp
Clock Operator—Jimmy Harper



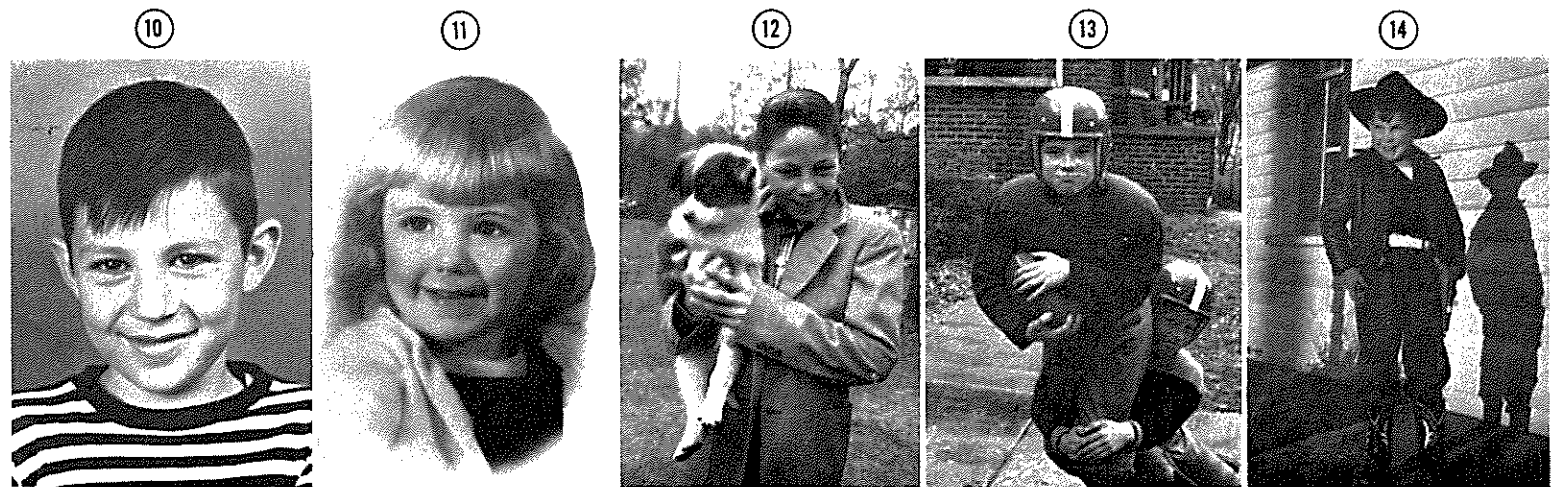
You look good with a Robt. Burns Cigarillo

Here's flavor you don't have to inhale to enjoy.
 A short smoke when time is precious. Long
 enough to satisfy. Ideal for the man on the move.
 Smoke it. You'll look good with it.
 Robt. Burns Cigarillo . . . for the "mover."
 Cigarillos are on sale at this stadium.



TEST YOUR PHOTO SKILL: FROM BOYHOOD TO TIDESMEN

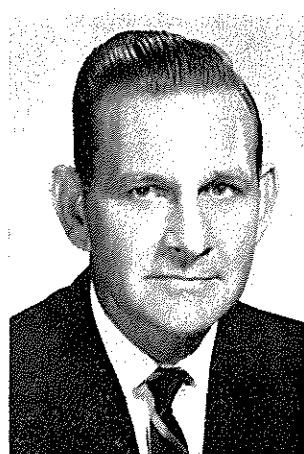
(IDENTITY AT BOTTOM OF PAGE)



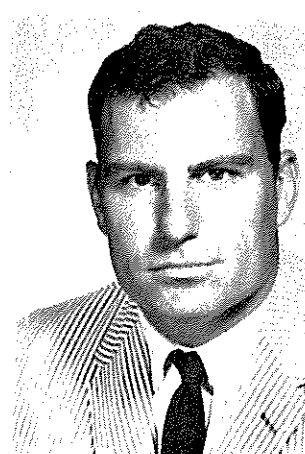
- | | | | | | | | | | | | | | |
|-------------------|--------------|----------------|----------------|----------------|------------------|-----------------|----------------|----------------|------------------|------------------|----------------|-----------------|-----------------|
| 13 Tommy Tolleson | 14 Tim Bates | 9 Harold Moore | 10 Bobby Johns | 11 Kent Busbee | 12 Wayne Trimble | 5 Byrd Williams | 6 Steve Bowman | 7 T. J. Morris | 8 Richard Brewer | 1 Tom Somerville | 2 Fran Collins | 3 Terry Kilgore | 4 Herbie Phelps |
|-------------------|--------------|----------------|----------------|----------------|------------------|-----------------|----------------|----------------|------------------|------------------|----------------|-----------------|-----------------|



Carney Laslie
Assistant Athletic
Director



Sam Bailey
Assistant Head
Coach



H. L. Schnellenberger
Assistant Coach

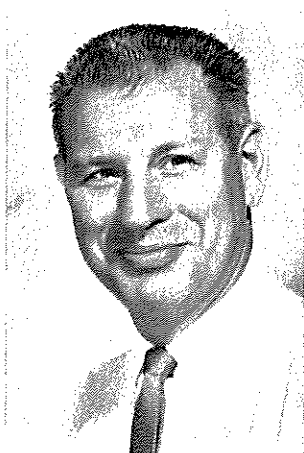


Ken Meyer
Assistant Coach

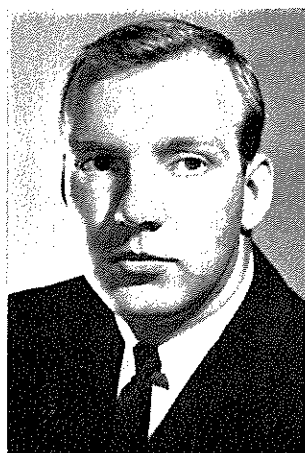
ALABAMA ASSISTANT COACHES



Richard Williamson
Assistant Coach



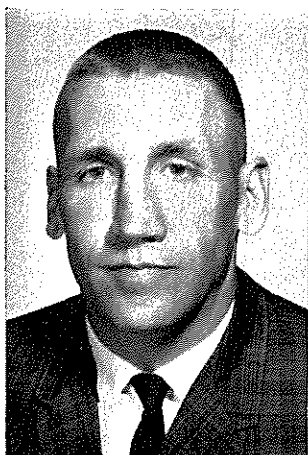
Ralph Genito
Assistant Coach



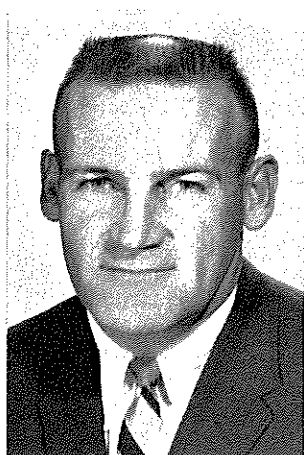
Mal Moore
Assistant Coach



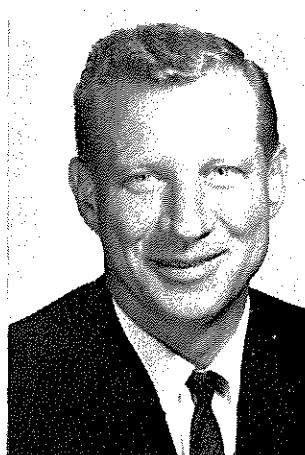
Pat Dye
Assistant Coach



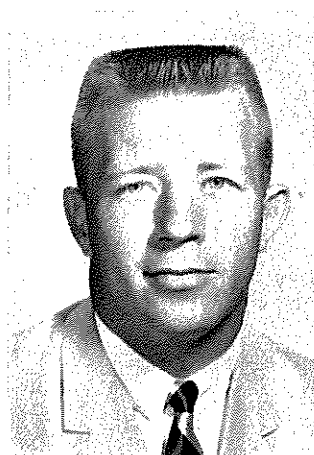
Ken Donahue
Assistant Coach



Dude Hennessey
Assistant Coach



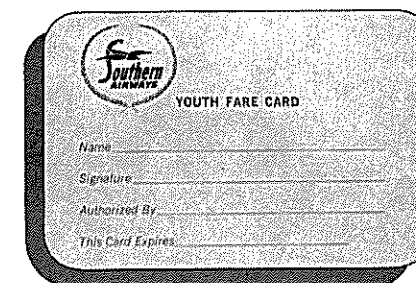
Clem Gryska
Freshman Coach



Jimmy Sharpe
Assistant Coach



If you're 21 or under you can
Save 40% on Southern Airways
with this little old card.



P.S....and Reservations Confirmed in Advance too.

Route of the aristocrats
fly Southern
GOOD CONNECTIONS...ALL DIRECTIONS

Meet Jim Laughead: WORLD'S NUTTIEST (AND BEST) SPORTS PHOTOGRAPHER

"a-huckin' & a-buckin'"

By Charley Thornton
Sports Publicity Director



A MASTER AT WORK

If you saw him dressed in his "game clothes" but away from work, you would swear that Jim Laughead had just jumped off the last freight into town.

Just take a close look at the picture on the left. Nothing like it, is there??

His faded blue overalls flapping from a pair of limp suspenders, his battered red vest with the names of universities embroidered on it, and the crumpled hat that is as shapeless as an oyster make up his attire when he is at work taking pictures of some 74 college and professional teams from West Point, N. Y., to Tucson, Ariz.

James F. Laughead (pronounced lawhead) is his square title, but he is "Father Laughead" to thousands, "the Mad Hatter" to others and to the players he shoots, he is "old a'huckin' and a'buckin'."

This colorful character from Dallas, Texas, spends over six months of each year taking pictures of athletic teams. While he once needed the money, it is now more of a hobby than anything else, since he has a lucrative portrait and commercial business in Dallas. He resides in a large Texas mansion that someone once described as the only house they had seen that had a den in one of the bathrooms.

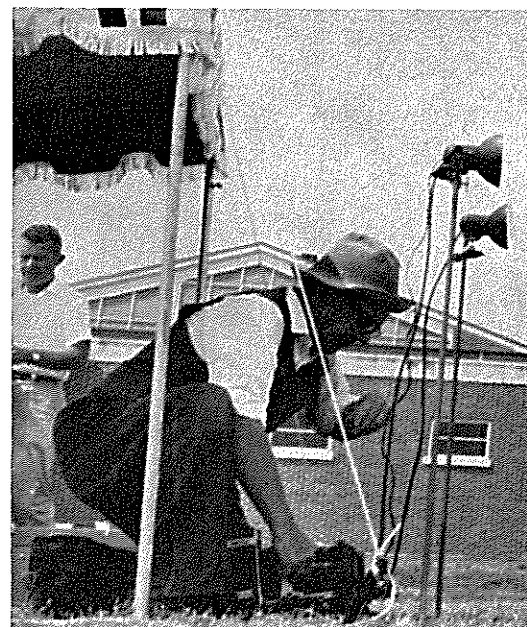
He travels with his son-in-law, Jim Bradley, and they take great pride in their work.

"I know most of this stuff is a bromide," Laughead admits, "but I've tried to come up with new poses. The newspapers like the old stuff, so who am I to tell them what to use?"

Jim Laughead is the master of the photographic cliché,—of the leaping stiff-arm, the I-despise-you scowl, the halfback crossover that looks like a ballet step, the wild dive that has knocked the breath out of hundreds of linemen.

There is a madness to Laughead's method, but the madness is calculated. His costume, his jokes, his insults, his attitudes are part of an act that has been so well received that Laughead has adopted it into his personality and now no longer has to act.

"They all think I'm nuts," he says, "so what do I care? I get their pictures."



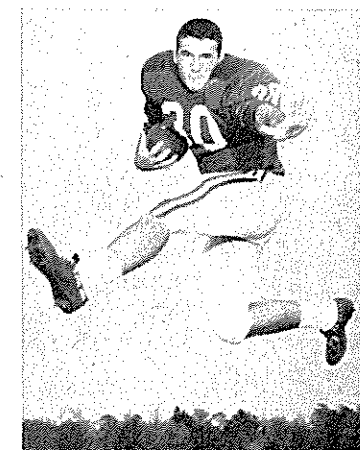
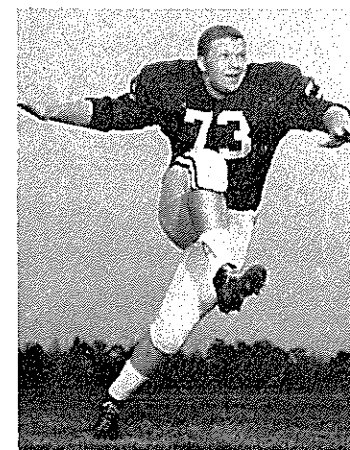
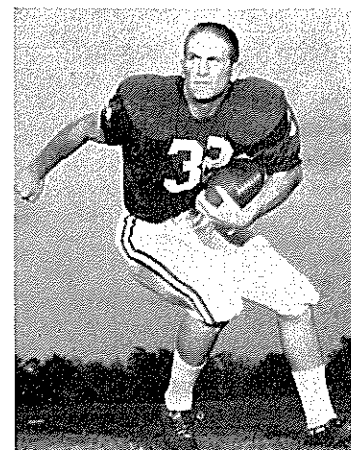
AT WORK UNDER HIS TENT

The Laughead technique is more like a traveling circus. Each spring when Laughead and Bradley arrive to shoot the Alabama pictures, they drive up in a station wagon stuffed with equipment. Bradley always drives, with Laughead sitting on the right puffing on an expensive cigar, dressed in his overalls, vest and hat, and with a thermos of ice water between his knees.

It takes about an hour for them to unload and get set up to shoot pictures. First, there is the tent to set up (see picture at top left). Then the lights, cameras (at least six or eight), flags, chalk for the lines, and various other gimmicks of his trade.

The players love Laughead. His favorite line is "a-huckin' and a-buckin'" which he shouts repeatedly as he goes through the exaggerated poses he wants the players to do. This phrase has been picked up from coast-to-coast and always brings laughter from anyone who has "been took" by the master.

A Sample of Some of The Famed Laughead Poses



His Pictures Are Seen On The Sports Pages More Than Any Photographer In The World

His hat, though, is THE thing.

"I paid \$1.95 for this hat when I moved to Texas from Ohio as a wire-service photographer in 1936," he recalls. "I was making a lousy \$42.50 a week then. But it wasn't so bad for a kid who had grown up in Detroit cleaning Ty Cobb's dog kennels for free tickets to the Tiger games and who made a D in photography at Ohio State.

"Somebody told me I had to have a hat like this if I was going to live in Texas. Now I'm afraid to have it cleaned and blocked or it will fall apart.

"Once I left it in a restaurant in North Carolina and drove back 65 miles to get it. I never wear a hat in normal human life, but the players expect me to wear it when I take their pictures. I tried to give it up one year. When I got to Ole Miss the players went on strike until I got it again. You should have heard them give that Rebel Yell when I got the hat out of the car!"

Laughead's routine is to introduce himself to every player he shoots. And he is amazing on remembering names.

"Who's been walking on your face, son?" Laughead joked with one Alabama player last spring.

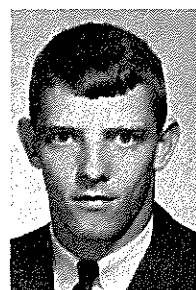
"A little bit of everybody," the Tidesman explained.

Laughead asked the player if he was a running back and the player said he guessed he was.

"Well, we'll try to make you look like one, son, no matter what Coach Bryant thinks you are," he laughed, grabbing a football and starting his insane dance, weaving and hopping, with his red vest flapping and his hat falling off.

"A-huckin' and a-buckin,' son, a-huckin' and a-buckin'."

SYLACAUGA PROUDLY SUPPORTS THE TIDE



RICHARD BREWER
of Sylacauga

LANE GROCERY CO.

T. R. Lane '24

SYLACAUGA CASH STORE

Sylacauga's Finest Department Store
Since 1911

The Leon Archer Agency

Leon Archer '28
Sam Wright '62

W. L. JESSUP OIL CO.

Distributor American Oil Products

Brown Insurance Agency, Inc.

"General Insurance"

GOLDBERG BROTHERS

Morris and Max Goldberg

THE FIRST NATIONAL BANK

"Friendly Banking Since 1901"

Dixie Color Printing Co.

Joseph T. Clinton

Sylacauga Wholesale Grocery Co., Inc.

J. S. Pitts '19
Wm. S. Edwards '51

Floyd and Beasley Transfers Co.

Sycamore, Alabama

Moretti-Harrah Marble Co.

America's Most Beautiful
White Marble

BUSINESS SERVICE, Inc.

Al T. Gaut LLB '36

SEARS, ROEBUCK AND CO.

Harry Winning and Employees

CITY NATIONAL BANK

"Your Full Service Bank"

Sylacauga Motor Car Co.

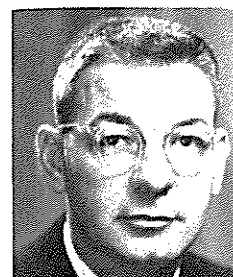
"Chevrolet-Oldsmobile"

R. L. Rumsey Lumber Co.

"Wholesale and Retail"

Florida State

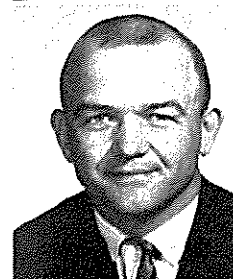
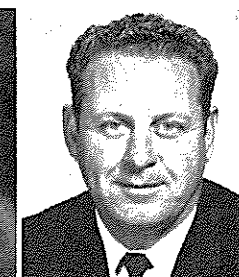
RONALD MELTON
Athletic
Business Manager



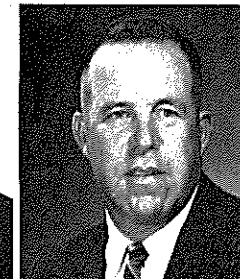
VAUGHN MANCHA
Athletic Director



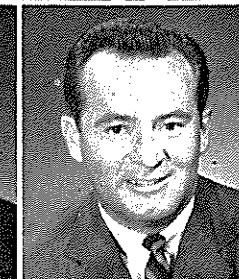
BOB HARBISON
Assistant Coach



DON POWELL
Assistant Coach

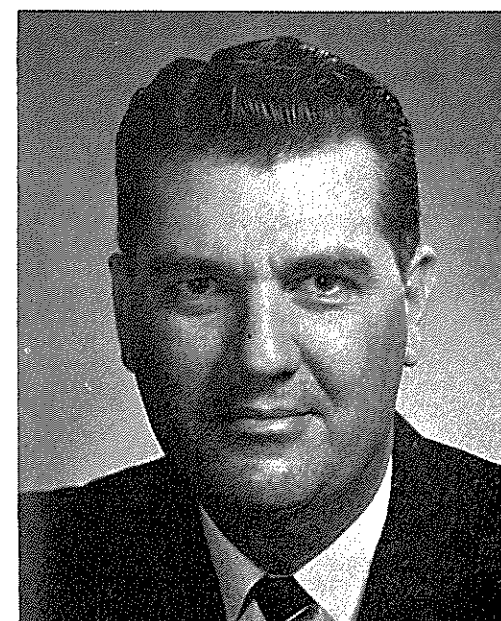


KEN MacLEAN
Recruiter



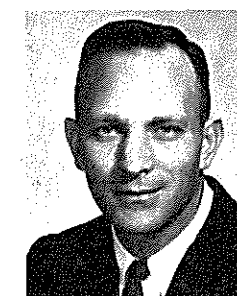
DON JAMES
Assistant Coach

DR. JOHN E. CHAMPION
President

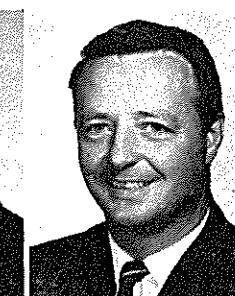


BILL PETERSON
Head Coach

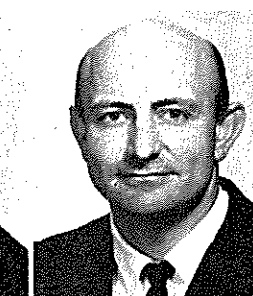
BILL PROCTOR
Assistant Coach



BOB BOWDEN
Assistant Coach



BILL CRUTCHFIELD
Assistant Coach



NEIL SCHMIDT
Assistant Coach



BILL BUNKER
Sports Publicity
Director

Seminole

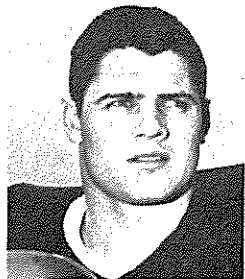
Florida State



JOE PETKO
Shaker Heights, O.



JACK SHINHOLSER
Tampa



ED POPE
Waycross, Ga.



ELTON REVELL
Tallahassee



JOHN STEPHENS
Tallahassee



BILL RICHARDSON
Jessup, Ga.



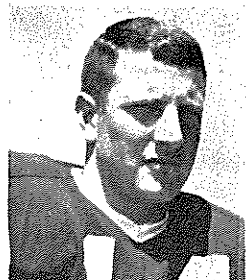
PHIL SPOONER
Ft. Meyers



THURSTON TAYLOR
College Park, Ga.



ED PRITCHETT
Decatur, Ga.



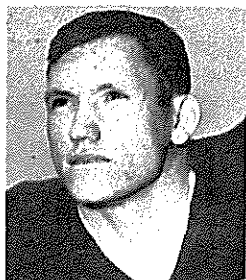
JIM MASSEY
Cairo, Ga.



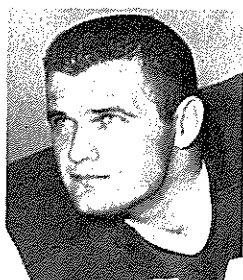
JOE AVEZZANO
Miami



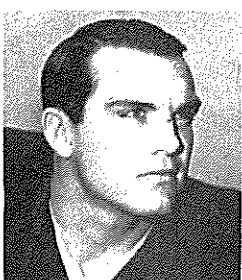
MAX WETTSTEIN
Leesburg



H. T. WALLER
Vernon



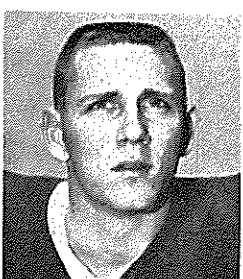
DAVID PITTS
Blountstown



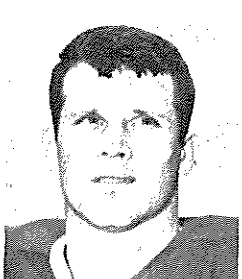
LARRY WILLIAMSON
Macon, Ga.



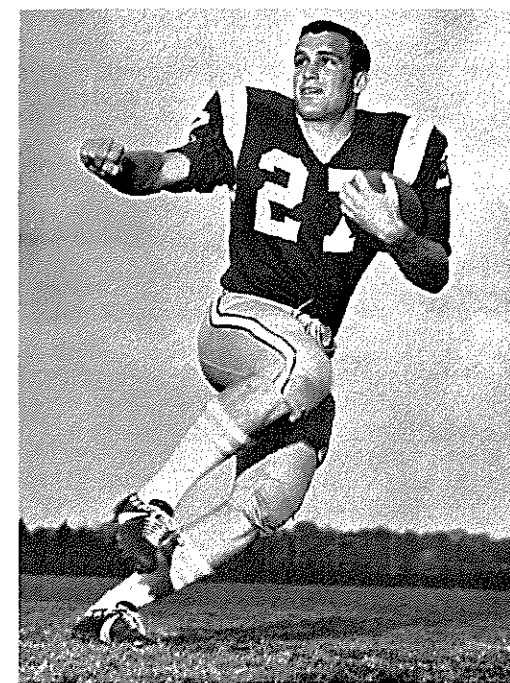
DEL WILLIAMS
Live Oak



T. K. WETHERELL
Daytona Beach



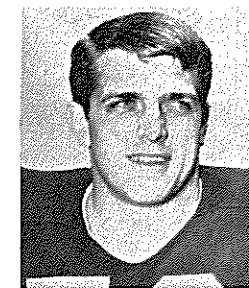
BILL MOREMAN
Daytona Beach



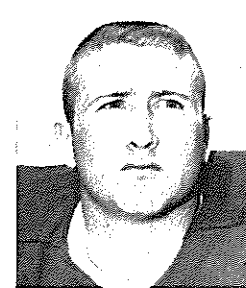
PHIL SPOONER
Ft. Meyers



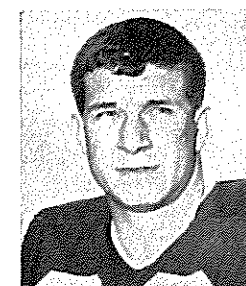
JAY MATTHEWS
Chiefland



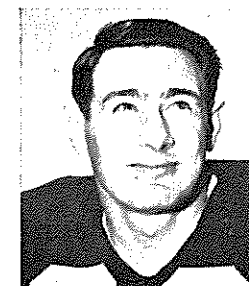
FRANK PENNIE
Hollywood



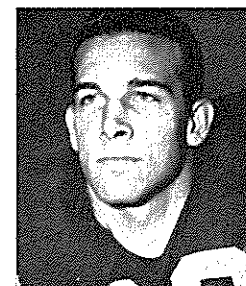
BOB MENENDEZ
Key West



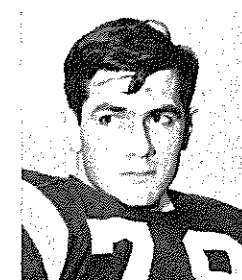
CARL MCNEIL
Macon, Ga.



JOE PARRISH
Auburndale



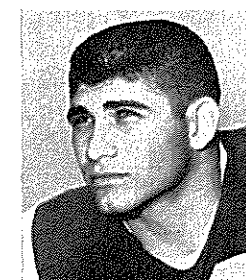
BILL McDOWELL
Tallahassee



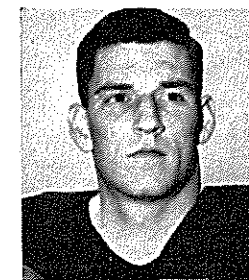
CHARLES PENNIE
Hollywood



BUDDY BLAKENSHIP
Atlanta, Ga.



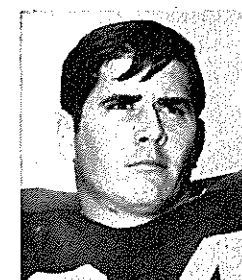
MIKE BLATT
Key West



STAN CROLEY
Dade City



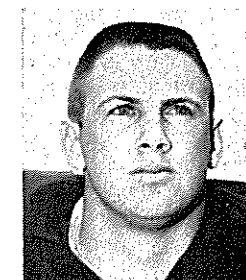
PAT CONWAY
Miami



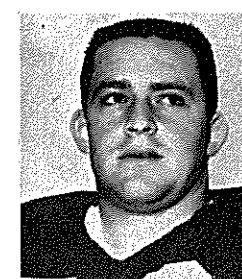
DAVE BRAGGINS
Lake Wales



TERRY GARVIN
Pensacola



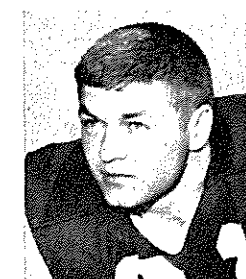
KIM HAMMOND
Melbourne



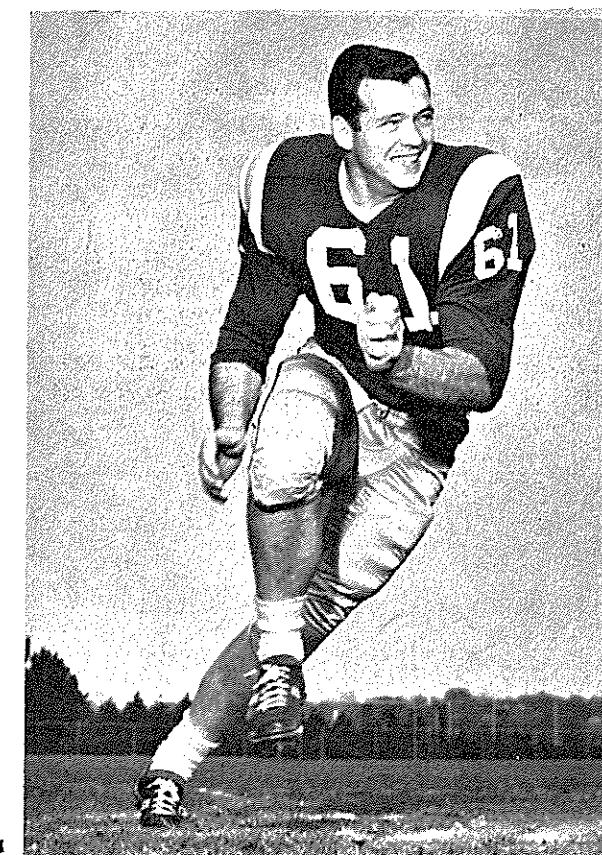
HOWARD LURIE
Northridge, Calif.



GEORGE D'ALESSANDRO
Fort Meyers



BILL COX
Atlanta, Ga.



JACK SHINHOLSER, Tampa

BILL McDOWELL, Tallahassee

See your Standard Oil dealer for the
finest in products and service

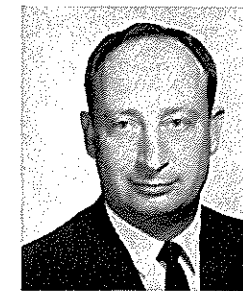


Where we take better care
of your car . . .

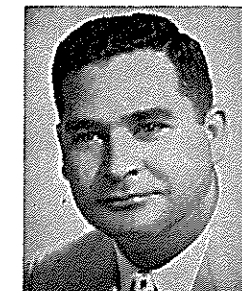
THESE ALSO SERVE THE TIDE



Hayden Riley
Basketball Coach



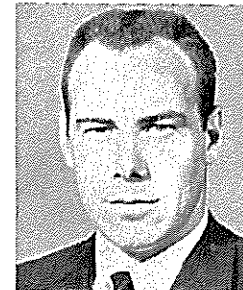
Jim Goostree
Athletic Trainer



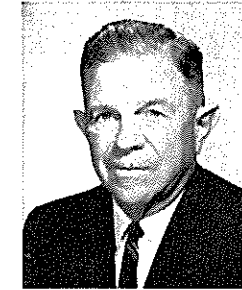
B. W. Whittington
Business Manager



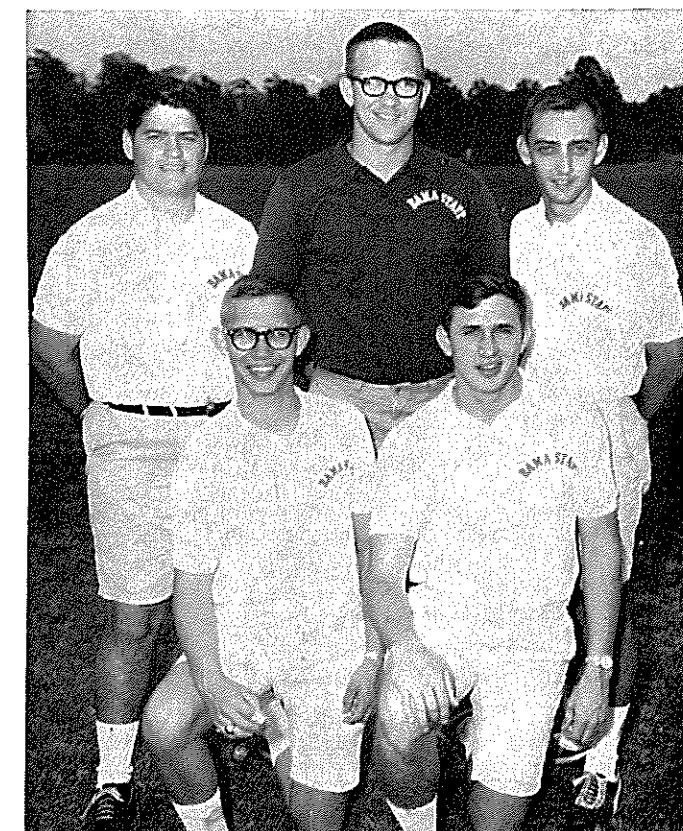
Grover Niles
Academic
Counselor



Gary White
Dorm Director



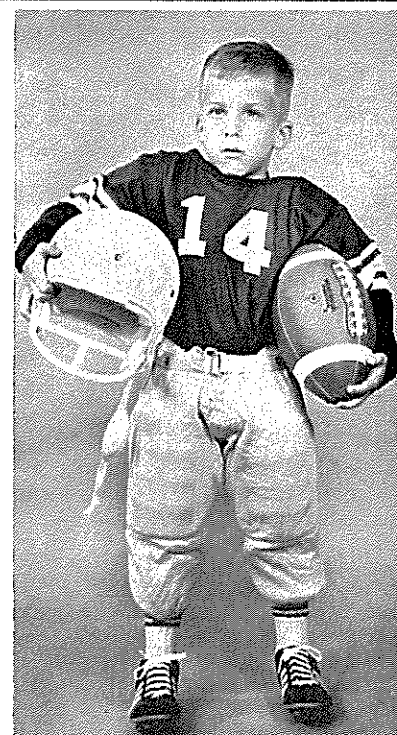
Joe Sewell
Baseball Coach



TIDE MANAGERS: Kneeling, left to right: Dick Coates of Mobile and Parks Jacobs of Talladega. Back row, left to right: Joe Bross of Columbus, Ga., Jerry Glover of Attalla, and Henry Lyda of Panama City, Fla.

Fred Sington
**SPECIAL SAFETY DESIGNED
YOUTH FOOTBALL EQUIPMENT
Special Priced**

SECO FOOTBALL SHOES safety molded cleats.....	\$8.95	Wilson FOOTBALL HELMET safety face bar.....	\$10.95
SPOTBILT FOOTBALL SHOES safety molded cleats.....	\$4.95	All-American shockguard FOOTBALL SHOULDER PADS..	\$4.95
FRED SINGTON Football Shoes safety molded cleats—one piece..	\$7.95	Cantilever pads FOOTBALL SHOULDER PADS..	\$5.95
FOOTBALL PANTS pads included—nylon and cotton—washable	\$6.95	Ensolite padding FOOTBALL SHOULDER PADS..	\$9.95
All-American plastic Fred Sington FOOTBALL HELMET safety face bars.....	\$6.98	ATHLETIC SUPPORTERS.....	\$1.00
Wilson FOOTBALL HELMET safety face bar.....	\$8.95	CUSHION ATHLETIC SOX... Pr.	.60
		Alabama Style JERSEY	\$4.95 Ea.

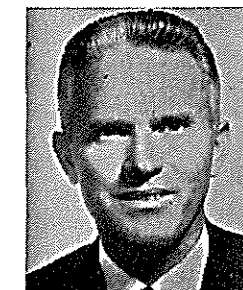


LEONARD SINGTON, JR.
ALABAMA — 1977

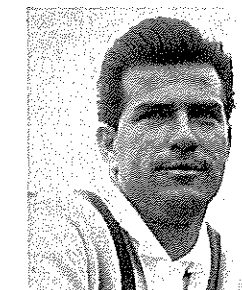
Fred Sington
Downtown — Homewood — Huntsville — Gadsden
MAIL ORDERS PROMPTLY FILLED



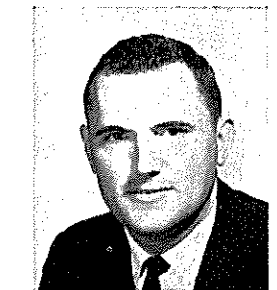
Smokey Harper
Film Librarian



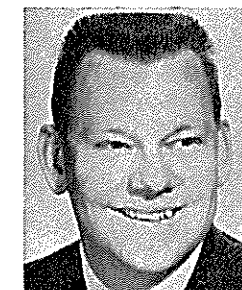
John Foster
Swimming Coach



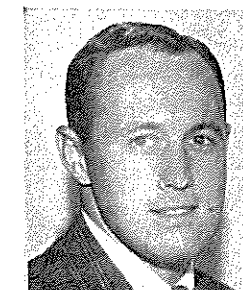
Jackie Maness
Golf Coach



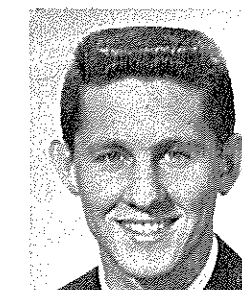
Winfrey Sanderson
Assistant
Basketball Coach



Charley Thornton
Sports
Publicity Director



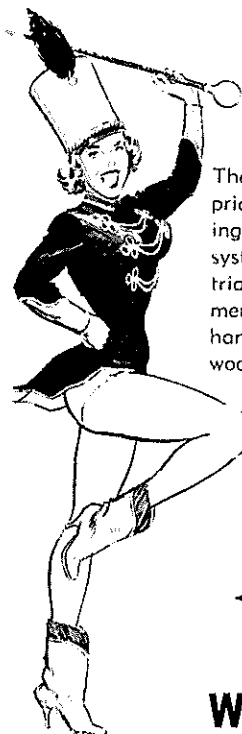
Andy Morris
Assistant Sports
Publicity Director



Wayne Atcheson
Student Assistant
Publicity Director



JOIN THE PARADE TO QUALITY . . .



WHEN PURCHASING
FOREST PRODUCTS

The Belco diamond is stamped with pride on flooring, yard lumber, molding, preassembled trusses and roof systems, roof decking, timbers, industrial, end matched and furniture dimensions, plywood, mop and broom handles, poles, posts, prefinished plywood paneling.

TREATED MATERIALS
BELCO WOOD GUARD,
PENTA, PENTA WR



W. E. Belcher Lumber Co.

Centreville, Alabama, 926-2111

You Can Depend On
Russell Southern

ATHLETIC UNIFORMS

RUSSELL SOUTHERN CO.

Division of Russell Mills

ALEXANDER CITY, ALABAMA

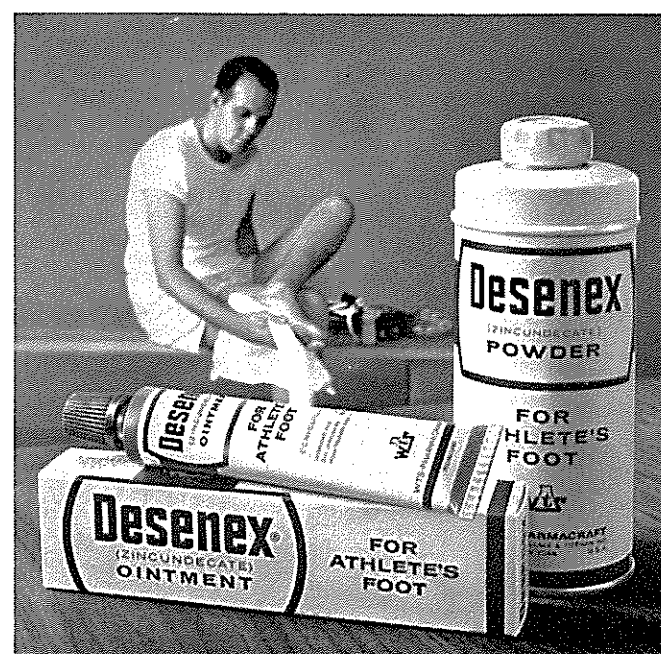
How do athletes handle athlete's foot?

They follow their trainers' advice and
use **Desenex®** for prevention and treatment

It's excellent protection against itching, cracking and irritation of Athlete's Foot. Helps prevent spreading, too. No wonder Desenex is the Athlete's Foot treatment most widely used by college football trainers.

We know you don't have a trainer to keep you on your toes. But that's no reason to suffer from Athlete's Foot. Start using Desenex yourself. Avoid Athlete's Foot problems with Desenex Powder or new, cooling Desenex Aerosol—and for treatment use Desenex Ointment. Desenex is guaranteed to work or your money back.

WTS-PHARMACRAFT, Rochester, N.Y. 14603



UNIVERSITY OF ALABAMA DEVELOPMENT

Building for Greatness

NEW \$75 MILLION EXPANSION PROGRAM

A new ten-year program to expand its physical facilities and libraries at Tuscaloosa, Birmingham, Huntsville, and the several University Centers was announced by President Rose in May. This follows the now nearly completed \$42,000,000 Development Program begun in 1960, and will provide capital structures at Tuscaloosa and at the Centers valued at \$43.2 million. At the Birmingham Medical Center, new construction totaling \$31.3 million will be completed by 1975. Total expansion will then accommodate 15,000 students at the Tuscaloosa campus, 6,000 at the Birmingham campus, and 5,000 at the campus in Huntsville.

University of Alabama Main Campus —Tuscaloosa



Work has begun on the construction of the new Athletic Facility and Assembly Hall, long known as the Field House. It will have a seating capacity of 15,000 persons around a central arena and will be the fifth largest collegiate facility of its kind in the nation.

The Hall will provide long needed, multiple purpose facilities for the educational, cultural, and recreational programs of the total University. It will be used for graduation exercises, convocations comprising the entire faculty and student body, concerts and plays, student government sponsored programs, social events, and a wide variety of athletic contests and tournaments.

The building will also house the offices of the Athletic Director and coaching staff. Ample space will be provided for basketball and handball courts, gymnasium, and dressing rooms. For theater, music, and related presentations, a large, portable stage will be utilized. The most modern facilities will be available for news media, with press box, camera decks, projection room, and radio and television broadcasting capabilities.

University of Alabama — Birmingham



MEDICAL CENTER. The new psychiatric unit of the University Hospital, a \$4 million, 100-bed wing for the treatment of mental patients is rising steadily, with occupancy scheduled for mid-year, 1966. Construction has also begun on a four-story building bridging 19th Street, South, and linking the Veteran's Administration Hospital with the University's Health Sciences Research Building, to which a \$1.2 million seven-story extension will be added beginning this fall.

University of Alabama — Huntsville



The \$750,000 community campaign conducted by citizens of Huntsville and adjoining areas to provide additional classroom and library facilities for the University of Alabama was highly successful. Supplemented by a federal grant, funds totalling \$1.3 million will make possible the new Graduate Studies Building, for which construction is programmed this fall.

ONE HOUR "MARTINIZING"

the most in Dry Cleaning
NO EXTRA CHARGE

and it stays
pressed longer!

In LELAND SHOPPING CENTER and in DRUID GARDENS SHOPPING CENTER
only two cleaners open SATURDAY 'til 4:00 operated by Northington Laundry, Inc.

NORTHINGTON LAUNDRY, Inc.

with convenient branches throughout Tuscaloosa
MAIN PLANT — NORTHINGTON CAMPUS

Pick-Up
&
Delivery

Main Plant.....752-5546
2201 Seventh Street (Downtown).....759-1665
1131 University Avenue.....752-1323
805 Tenth Street.....758-6867
SOLO WASH—Hargrove Road.....752-6201
Norge Village (Back of Sears).....752-8605
2725 Bridge Avenue (Northport).....752-0200

Discount
for
Cash & Carry

1-HOUR DRY CLEANING 3-HOUR LAUNDRY

A MARTINIZED GARMENT

is

Cleaner and Brighter

Odorless

Sanitary



as advertised in
L I F E

THE

LITTLE COOK-KEE
"EAT 'N THAT'S NOT BEAT 'N"

414 23rd Avenue

1917 Broad

Backs The Crimson Tide



DRAKE PRINTERS

• Phone 758-7575

•

1925 - 6th STREET

•

Quality Printing — Reasonable Prices

Crimson Tide Football Records

Total Games Played—627 in 70 seasons
Games Won—421
Games Lost—168
Games Tied—38
Winning Percentage—.702
Undefeated and untied teams—

1897, won 1, lost 0; 6 points to 0.
1925, won 10, lost 0; 297 points to 26.
1930, won 10, lost 0; 271 points to 13.
1934, won 10, lost 0; 316 points to 45.
1945, won 10, lost 0; 430 points to 80.
1961, won 11, lost 0; 297 points to 25.

Undefeated and once tied teams—

1926, won 9, lost 0, tied 1; 249 points to 27.
1936, won 8, lost 0, tied 1; 168 points to 35.

Longest undefeated string—20 games, 1924-26.
19 games, 1961-62.

Longest winning streak—26 games, 1960-62.
24 games, 1924-27.

Longest losing streak—20 games, 1954-56.

Most consecutive teams held scoreless—
7 teams, 1908-09.
7 teams, 1925.

TEAM SEASON

Most victories—11 by 1961 team.
Most losses—10 by 1955 team.
Most points scored—396 by 1945 team.
Most total offense—4578 by 1950 team.
Most yards rushing—3007 by 1950 team.
Most yards passing—1608 by 1962 team.
Most passes attempted—187 by 1950 team.
Most passes completed—109 by 1964 team.
Most touchdown passes—18 by 1950 team.
Most passes intercepted—24 by 1952 team.
Most passes had intercepted—19 by 1956 team.

INDIVIDUAL SEASON

Leading rusher—Bobby Marlow, 950 yards in 11 games in 1952.
Leading scorer—Cotton Clark, 92 points in 10 games in 1962.
Most passes attempted—Harry Gilmer, 160, 1946.
Most passes completed—Joe Namath, 76, 1962.
Most yards gained passing—Joe Namath, 1192, 1962.
Most touchdown passes—Joe Namath, 13, 1962.
Harry Gilmer, 13, 1945.
Most passes caught—Al Lary, 35, 1950.
Most yardage on passes caught—Al Lary, 756, 1950.
Most touchdown passes caught—Al Lary, 10, 1950.
Most touchdowns—Cotton Clark, 14, 1962.
Most extra points—Hugh Morrow, 46, 1945.
Most punts—Jimmy Nelson, 66, 1941.
Best punting average—Charley Boswell, 43.2, 1939.

TEAM GAME

Most total offense—616 yards by 1961 team against Richmond.
Most yards rushing—572 yards by 1945 team against Kentucky.
Most yards passing—330 yards by 1961 team against Richmond.
Most passes attempted—39 passes by 1946 team against Tennessee.
Most passes completed—21 by 1950 team against Mississippi Southern.
Most touchdown passes—7 by 1950 team against Mississippi Southern.

Most points scored—110 by 1922 team against Marion Institute.
Most points scored in SEC game—71 by 1945 team against Vanderbilt.
Most first downs—26 by 1950 team against Miss. Southern.
26 by 1961 team against Richmond.

INDIVIDUAL GAME

Leading rusher—Bobby Marlow, 233 yards against Auburn in 1951.
Leading passer—Joe Namath, 205 yards on 10 completions in 19 attempts against Miami in 1962.
Leading scorer—Bobby Marlow, 24 points against Georgia Tech in 1950.
Most passes caught—Tommy Tolleson, 8, against N. C. State in 1964.
Most yardage on passes caught—
Ken MacAfee, 162 yards against Villanova in 1951.
Longest kickoff return—
Jim Burkett, 100 yards, against Duquesne in 1949.
Gary Martin, 100 yard, against Miami in 1963.
Ray Ogden, 100 yards, against Auburn in 1964.
Longest punt return—
Herschel Mosley, 92 yards against Howard in 1937.
Harry Gilmer, 92 yards, against L.S.U. in 1947.
Longest touchdown run from scrimmage—
Harry Gilmer, 95 yards, against Kentucky in 1945.
Longest scoring pass play—
Albert Elmore to Bobby Luna, 87 yards against Tulsa in 1954.
Longest runback of interception for score—
Corky Tharp, 96 yards, against Tennessee in 1954.
Longest punt—
Dixie Howell, 89 yards, against Tennessee in 1933.

CAREER RECORDS

Leading rusher—Bobby Marlow, 2560 yards, from 1950-52.
Pass attempts—Joe Namath, 428, from 1962-64.
Pass completions—Joe Namath, 237, from 1962-64.
Yards passing—Joe Namath, 3054, from 1962-64.
Touchdown passes—Joe Namath, 28, from 1962-64.
Most passes had intercepted—Ed Salem, 27, from 1947-50.
Most total offense—Harry Gilmer, 4567, from 1944-47.
Most passes caught—Al Lary, 60, from 1948-50.
Highest punting average—Butch Avinger, 40.4, from 1948-50.
Most points—Bobby Marlow, 180, from 1950-52.
Most field goals—Tim Davis, 22, from 1961-63.

FOOTBALL HALL OF FAME MEMBERS

1951—Frank Thomas, coach (1931-46)
1951—Don Hutson, end (1932-34)
1955—Wallace Wade, coach (1923-30)
1955—Fred Sington, tackle (1928-30)
1956—Don Whitmire, tackle (1941-42)
1957—Johnny Mack Brown, halfback (1923-25)
1964—Pooley Hubert, quarterback (1922-25)

SILVER ANNIVERSARY ALL-AMERICANS BY SPORTS ILLUSTRATED

1959—Don Hutson, end (1932-34)
1960—Paul W. Bryant, end (1933-35)
1961—Young Boozer, halfback (1934-36)
1962—James Tipton, tackle (1936-37)
1964—Charley Boswell, back (1937-39)

tune in the

ALABAMA

FOOTBALL GAMES ON RADIO

presented by your



TEXACO DEALER

...the best friend your car will ever have

YOUR SPORTCASTERS ARE **JOHN FORNEY** • **STAN SIEGAL**

WTBC AM and FM—Tuscaloosa
Originating station

WKRK—Mobile
WOWL—Florence
WHHY—Montgomery

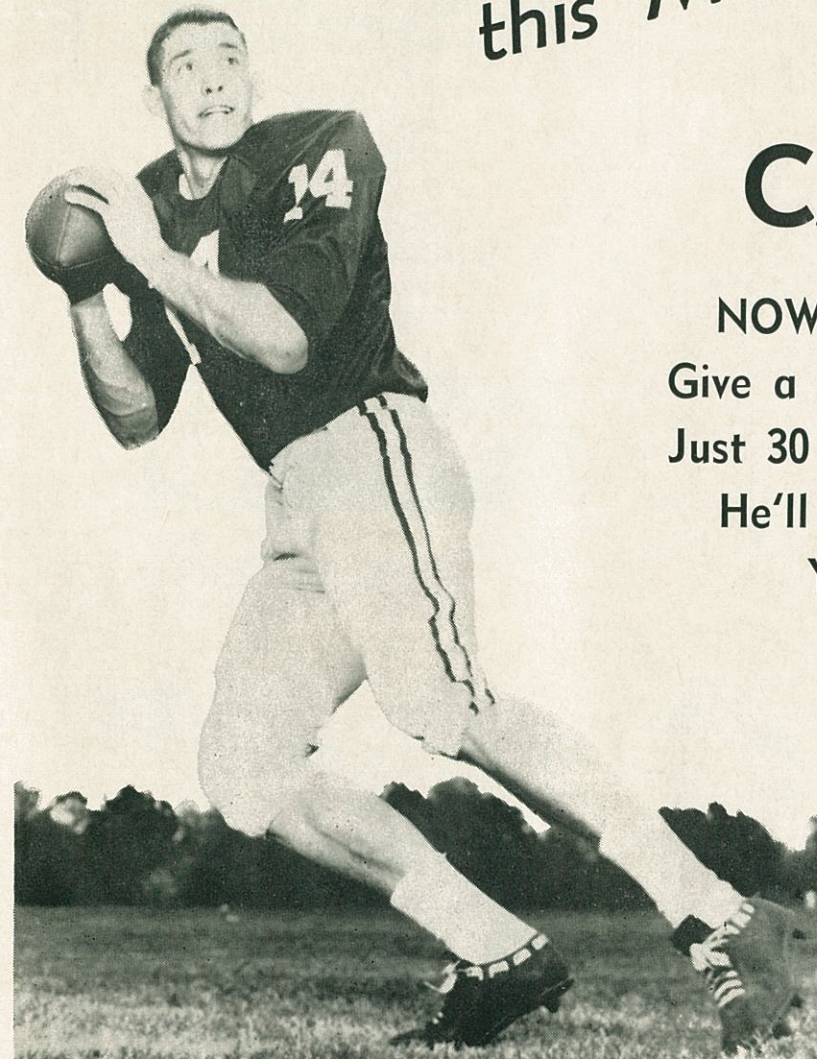
WGAD—Gadsden
WBRC—Birmingham
WPNX—Phenix City



THESE WILL LEAD THE YELLS FOR TIDE

There's nothing like the excitement at a college football game and responsible for a lot of the enthusiasm are these Alabama cheerleaders. From left to right, sophomore Lucia Adams of Orlando, Fla.; sophomore Ronnie Sorrells of Birmingham, senior Karen McQuillen of Birmingham, senior Mickey Grigsby of Gadsden, junior Carol Self of Phenix City, senior Bubba Brewton of Mobile, sophomore Donna Davenport of Huntsville and senior Bucky Wood of Birmingham.

this Man Can't Wait ---



CAN YOU?

NOW is the time for action!!
Give a Mutual Savings Life Agent
Just 30 minutes of your time - - -
He'll be glad to tell you why
YOU CAN'T WAIT



The Company with a Heart

MUTUAL SAVINGS *Life* INSURANCE COMPANY

Since 1927

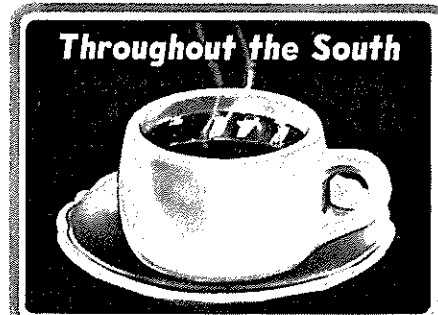
REDUS C. COLLIER, President
HOME OFFICE: Decatur, Alabama
HOME SERVICE OFFICES:
79 Locations in 5 States

COMPARE NEW Batter Whipped *Sunbeam*



HARDIN'S BAKERY, Inc.

Tuscaloosa, Alabama



BIRMINGHAM

2014 Second Avenue, North

MOBILE

Highway 90 West
and
Downtown Mobile (GM&O Building)

MONTGOMERY

150 Lee Street

TUSCALOOSA

University Avenue at 12th Avenue



Tide's Academic Stars Gain Recognition

During the past 10 years, the University of Alabama is proud of the fact that 12 of its outstanding football players have gained acclaim as being Academic stand-outs as well as stars on the grid-iron.

Each season the Southeastern Conference selects its All-Academic team from the league schools. To qualify for nomination, players must have a B or better average in the classroom, as well as be a starter on the field.

Alabama's first-team selections during the past 10 years have been: End Curtis Lynch, 1955; tackle Dave Sington, 1958; guard Don Cochran, 1959; back Leon Fuller, 1960; end Tommy Brooker, 1961; quarterback Pat Trammell, 1961; end Bill Battle, 1962; center Gaylon McCollough, 1963 and 1964; kicking specialist Tim Davis, 1963; quarterback Steve Sloan, 1964; fullback Steve Bow-

man, 1964, and tackle Ron Durby, 1964.

McCollough, in addition to being named two years to the All-SEC academic stars, was also named first team Academic All-American center in 1964 to further add luster to the name of Crimson Tide athletes past, present and future.

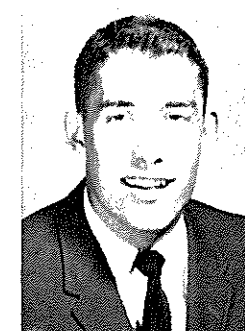
The Southeastern Conference All-Academic team was first

started in 1954. Since that time 125 student-athletes, including 14 of them elected twice and three who have been honored three years in a row, have been awarded for athletic and scholastic proficiency.

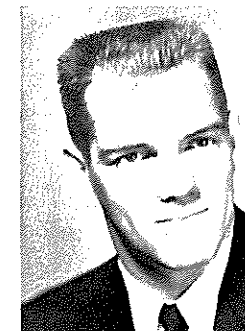
Alabama is also proud of the fact that five of its 1965 players have been nominated for the All-SEC scholar team. They are quarterback Steve Sloan, tackle Lynnwood Strickland, halfback Dennis Homan, halfback Dickey Bean and punter Steve Davis.

The Tide also is pleased that sports publicity director Charley Thornton is chairman of CoSIDA'S (College Sports Information Directors of America) Academic All-American selection committee.

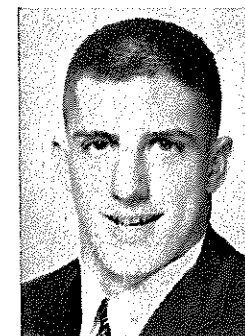
Pictured below are the 12 Alabama players who have gained first team recognition as SEC Academic All-Conference players.



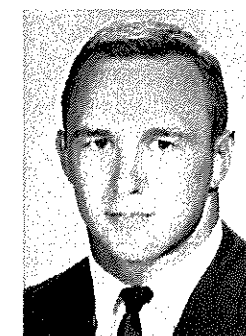
STEVE SLOAN



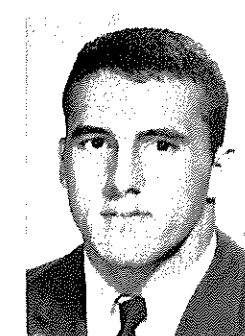
CURTIS LYNCH



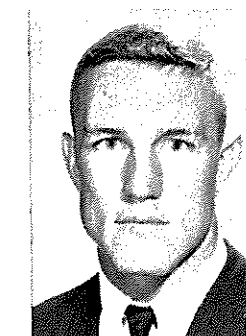
DAVE SINGTON



RON DURBY



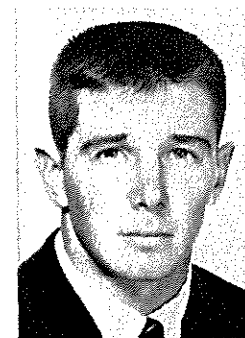
STEVE BOWMAN



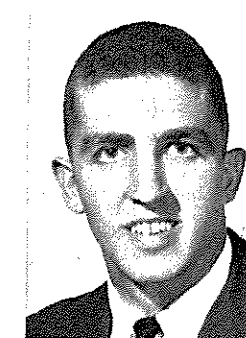
GAYLON McCOLLOUGH



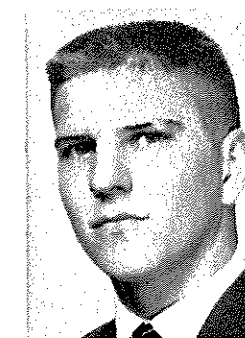
DON COCHRAN



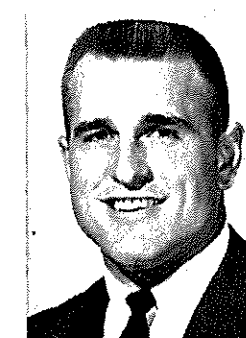
LEON FULLER



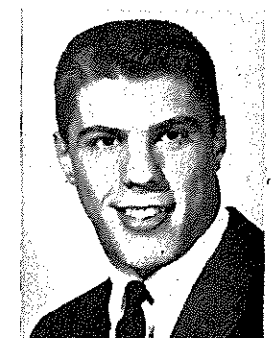
TIM DAVIS



PAT TRAMMELL



TOMMY BROOKER



BILL BATTLE

SHARPE'S

INSTITUTIONAL SERVICE

WHOLESALE SEAFOODS AND MEATS

FROZEN FOODS — CANNED GOODS

2624 18th Street — Tuscaloosa

Phone 758-3351

"If It Swims — We Have It"



"Home of Fine Cars"

Guaranteed New and Used

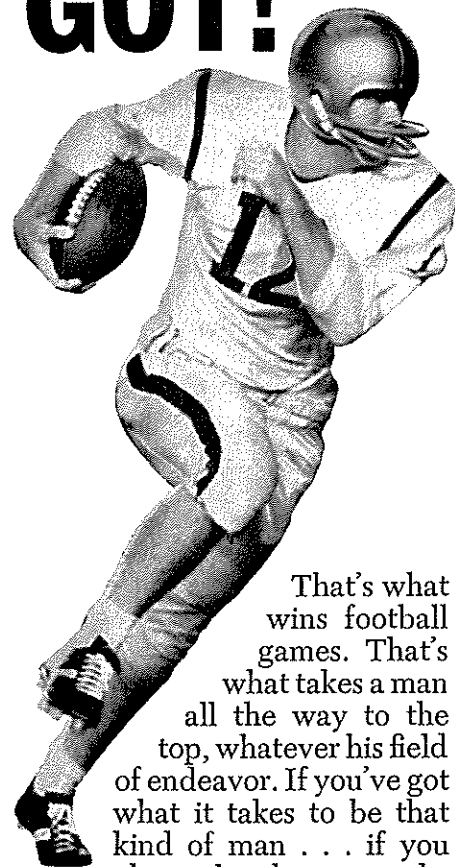
Cars

Bank Financing

2331 9th Street, East

553-4476

GIVE IT EVERY- THING YOU'VE GOT!



That's what wins football games. That's what takes a man all the way to the top, whatever his field of endeavor. If you've got what it takes to be that kind of man . . . if you have the chance to take ROTC, make what you've got count. Go for an Army commission. That way, come commencement, you'll have two good things going for you: your college degree, and the gold bars that mark you a leader of men . . . tested, trained, trusted.

GET IN— STAY IN ARMY ROTC!

University of Alabama 1965 Football Schedule

GEORGIA	SEPT. 18
TULANE (N)	SEPT. 25
MISSISSIPPI (N)	OCT. 2
VANDERBILT (N)	OCT. 9
TENNESSEE	OCT. 16
FLORIDA STATE (HC)	OCT. 23
MISSISSIPPI STATE (N)	OCT. 30
L. S. U.	NOV. 6
SOUTH CAROLINA	NOV. 13
AUBURN	NOV. 27

COMPLIMENTS
OF A
RED - HOT
"Roll Tide"
FAN

SONGS

FIGHT ALABAMA

Fight, Alabama, never yield
We've got to break right through that line
And take that ball on down that field.
We want a touchdown sure this time.
Fight, fight your best, we'll do the rest;
We've got to show them 'Bama's right
Downhearted never, we'll fight forever;
Fight, Alabama, fight, fight, fight!

SONG OF THE CRIMSON TIDE

We are loyal to you Crimson Tide
And we'll back ev'ry move that you make.
Alabama we all praise and pride
For we share the glory that you take.
We will fight, fight like men of old.
Circle ends hard and then for a goal.
Whether lose or win,
We are backing our men!
We are loyal to you,
Crimson Tide!

YELLS

ALABAMA

A-L-A-B-Aaa-M-A
A-L-A-B-Aaa-M-A
A-L-A-B-Aaa-M-A
Alabama!
Alabama!
Alabama!

LOCOMOTIVE

(Silent 1-2-3)
A-L-A-B-A-M-A
Repeat.
Repeat faster,
Alabama! Alabama! Alabama!

YEA CRIMSON

Yea-A-A, Crimson
Yea-A-A, White
Yea-A-A-A, 'Bama
Fight! Fight! Fight!

ROLL ON, CRIMSON TIDE

Roll on-n-n-n-n Crimson Tide
Roll on-n-n-n-n Crimson Tide
Roll - - Tide - - Roll

BAMA

B-A-M-A
B-A-M-A
B-A-M-A

OFFICIAL WATCH FOR THIS GAME

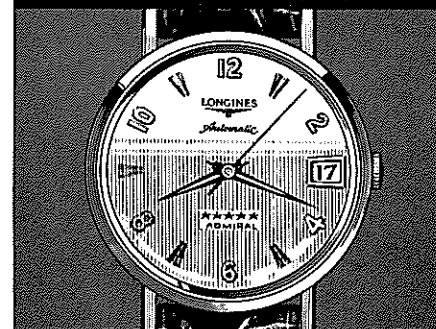
★ ★ ★ ★ ★ ★ ★

LONGINES

THE WORLD'S
MOST HONORED
WATCH

10 WORLD'S FAIR
GRAND PRIZES
28 GOLD MEDALS

Longines watches are
recognized as OFFICIAL
for timing world
championships and Olympic
sports in all fields
throughout the world.



Longines 5-Star Admiral Automatic with Calendar,
All-Proof®, sweep-second, 14K gold strap—\$185.00

The Longines Credo

Every Longines watch,
whatever its type, for whatever
its use, today, as for almost
a century, is manufactured to
be the finest of its kind and
worthy in every respect to be called
The World's Most Honored Watch

LONGINES-WITTMAYER WATCH CO.

MONTREAL • NEW YORK • GENEVA
Maker of Watches of the Highest Character Since 1867



Capstone

INSTITUTIONAL FOODS
SERVING RESTAURANTS,
SORORITY, FRATERNITY HOUSES
AND SCHOOLS

Tuscaloosa
Seafood
Company

3308 - 7th Street

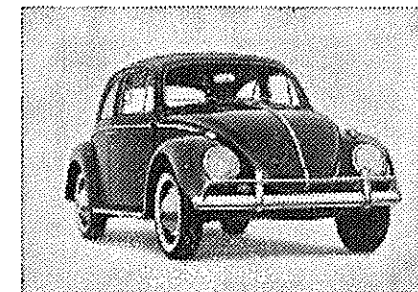
758-8638



DAHLKE BROTHERS

2800 - 9th Street

Tuscaloosa, Alabama



Authorized Dealer

NEW and USED CARS

Commercial Printing Since 1892

WEATHERFORD

PRINTING COMPANY, INC.



TUSCALOOSA, ALABAMA

P. O. Box 372

Phone 752-1511

When You Visit The Capstone Make THE UNIVERSITY SUPPLY STORE Your Headquarters

Self-Service New & Used Textbooks Supplies
College Pennants College Jewelry Jewelry Novelties Stickers

★

The University Supply Store is owned and operated by the University for the Convenience of its Students, Faculty and Alumni. We invite you to use its facilities when on the campus.

★

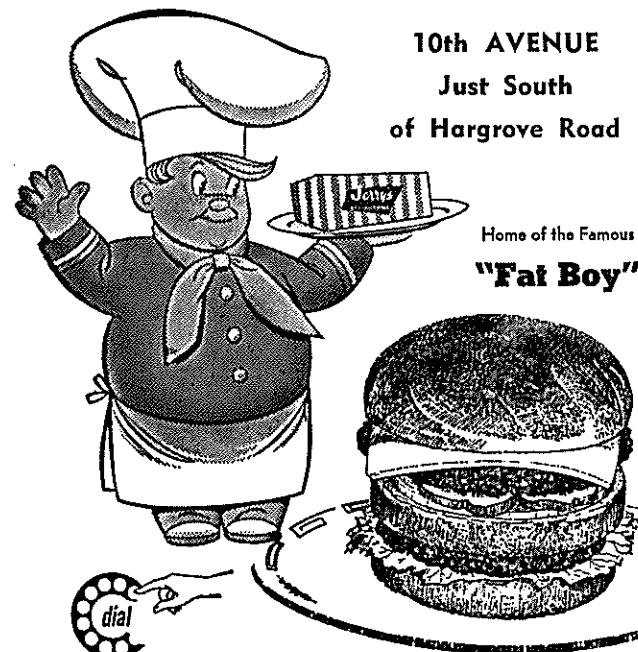
59 Years of Service To
ALABAMA STUDENTS, FACULTY and ALUMNI

★

THE UNIVERSITY SUPPLY STORE
Owned and Operated by University of Alabama
Union Building

Jerry's DRIVE-IN RESTAURANT

10th AVENUE
Just South
of Hargrove Road

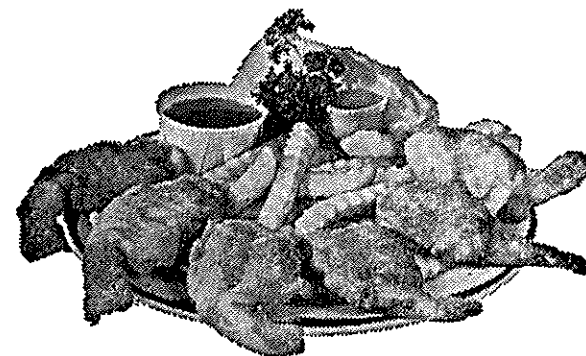


Home of the Famous
"Fat Boy"

FOR Jerry's PROMPT ATTENTION
TO CARRY-OUT ORDERS

THERE'S A Jerry's NEAR YOU
35 LOCATIONS IN 7 STATES.

DINING ROOM OR CURB CANOPIES



SHRIMP DINNERS

CHICKEN BOXES
FISH BOXES
SCALLOPS
SEA FOOD DELIGHT

To Go

GREAT GAMES OF THE PAST

OLE MISS 20, LOUISIANA STATE 18

By Paul Atkinson

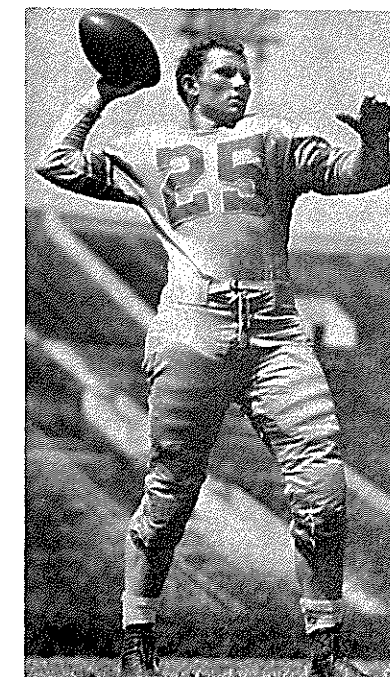
Charlie Conerly vs. Y. A. Tittle.

Those magic names brought out a packed house of 46,000 at Baton Rouge's Tiger Stadium in 1947, and they didn't disappoint.

Ole Miss was heading for its finest season since 1941 under a new head coach named Johnny Vaught. The Rebels had turned in a 2-7 report card in 1946.

The Rebels weren't worrying about a bowl bid, for they had already signed with the Delta Bowl in Memphis, Tenn. before the season started. That bowl bid in hand, Conerly's passing and Barney Poole's pass catching had caught the fancy of Dixie football fans.

Tittle, later to be united with Conerly on the New York football Giants, pulled one of the Southeastern Conference's most unusual plays in the second quarter. After Ole Miss had taken a 13-6 lead, Tittle intercepted a Conerly pass at his own 20 and seemed in the clear at the LSU 38.



Y. A. Tittle as a Bengal Tiger

But Tittle's belt broke, his pants plunged around his thighs. Tittle held the ball in one hand and grasped desperately at his pants. Reb tacklers overtook him, averting a sure touchdown.

LSU took the lead first on Rip Collins' one-yard plunge, but Holley Heard missed the extra point, an omen of misses to come.

Collins' short kick set up Ole Miss in the second quarter. Conerly fired to end Bill Stribling for 20, then rammed it over from the two. Bobby Oswalt's first of two extra points—later to be the difference—was good for a 7-6 edge.

Bobby Wilson intercepted a Tittle pass and ran it back 23 yards to the Tiger 12 late in the half. Conerly threw for five, ran for five and then two for the touchdown.

Conerly and Collins highlighted the third quarter with 65 and 58-yard quick kicks. But Al Heroman, Tittle, Bill Schroll and Ray Coates revved up the Tigers in the fourth quarter. Coates scooted in from the five and it was 13-12, Ole Miss.

Conerly took that one back, slashing 26 yards for a touchdown. Now it was 20-12, Ole Miss.

LSU boomed for its last touchdown on runs of 14 and 18 by Collins and Tittle and a razzle-dazzle payoff play. Tittle pitched out wide to Coates, who hit Joe Leach with a 25-yard touchdown pass. The kick was no good—again—and LSU was a 20-18 loser.

The summary:

Ole Miss	0	13	0	7—20
LSU	6	0	0	12—18

LSU—Collins, 1 run; OM—Conerly, 2 run (Oswalt kick); OM—Conerly, 2 run; LSU—Collins, 5 run; OM—Conerly, 26 run (Oswalt kick); LSU—Leach, 25 pass from Coates.

Compliments of

"Z" BUDA'S PHARMACY
 225 NINTH STREET, EAST
 (Professional Center)

Phone 759-1501

8:30 A.M. - 7:00 P.M.
 MONDAY - SATURDAY

★

PRESCRIPTIONS
SICK ROOM SUPPLIES

★

BILL WISE, PHARMACIST
 Residence Phone 752-8730

Holiday Inn

of Tuscaloosa

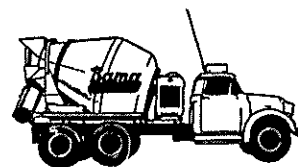
U. S. HIGHWAY 82 BY-PASS

PHONE 759-2511

Tuscaloosa, Alabama

"Ready Mix Concrete"

Bama CONCRETE PRODUCTS CO.

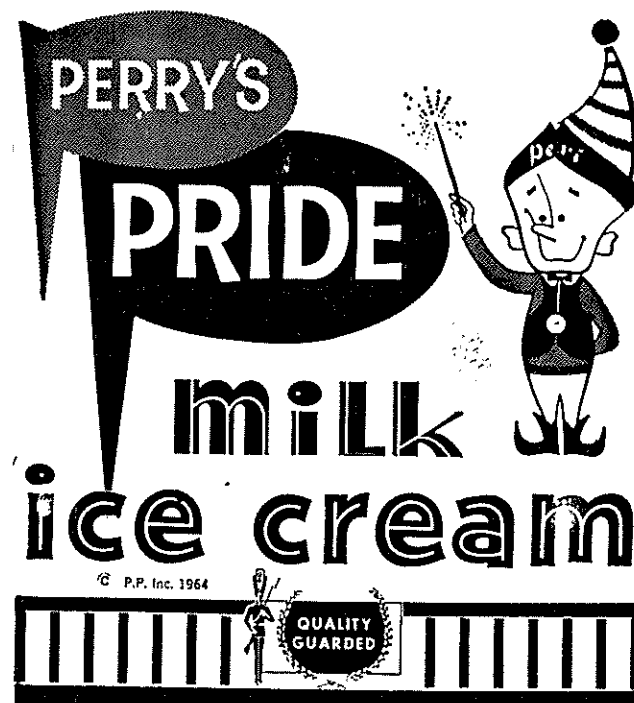


1211 - 15th Street

Tuscaloosa

Phone 758-6622

MORE PEP and DRIVE with...



TELEPHONE: 758-5516

Alabama Basketball

Alabama's surprising basketball team turned in a sparkling 17-9 record in 1964-65 under the astute guidance of coaches Hayden Riley and Winfrey Sanderson and will be seeking to field another strong team in 1965-66.

Five lettermen are back, plus some promising sophomores. The veterans back are guard Ken Moses of Morristown, Tenn., guard Robert Hickey of Pellville, Ky., center Harry Hammonds of Tuscaloosa, forward Gene Schumacher of Sigel, Ill., and forward Johnny Smith of Guntersville.

The schedule is another good one, with tournament trips to the Virginia Tech Invitational and the Gator Bowl Classic. Last year the Tide won the VPI championship and was third in the Charlotte Classic.

Best news on the basketball front, however, is that the new 15,000 seat field house is under construction and should be ready by January of 1967. The new facilities will give Bama the nation's third largest on-campus field house in America and certainly the finest in the South.

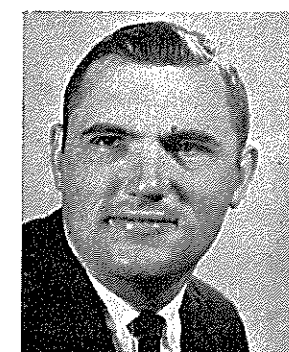
THE TIDE ROSTER

Name—Position	Hgt.	Class	Hometown
**Ken Moses, G	6-1	Senior	Morristown, Tenn.
Mike Nordholz, G	6-1	Soph	Marietta, Ga.
Jerry Ludwig, G	6-1	Soph	Effingham, Ill.
**Robert Hickey, G	6-3	Senior	Pellville, Ky.
Billy Lowe, G	6-1	Soph	Huntsville
*Johnny Smith, G-F	6-4	Senior	Guntersville
*Harry Hammonds, C	6-5	Senior	Tuscaloosa
**Gene Schumacher, F	6-5	Senior	Sigel, Ill.
Tom Jones, F	6-5	Soph	Valley Head
Guy Turner, F-G	6-3	Soph	Harrisburg, Ill.
Ray Touchstone, F	6-5	Soph	Ft. Walton Bch. Fla.
Tom Coleman, C	6-5	Soph	Anna, Ill.
Joe McDaniel, C	6-6	Soph	Paris, Ill.
Ernie Houck, F	6-7	Junior	Tuscaloosa
Bobby McNabb, C	6-8	Soph	Englewood, Tenn

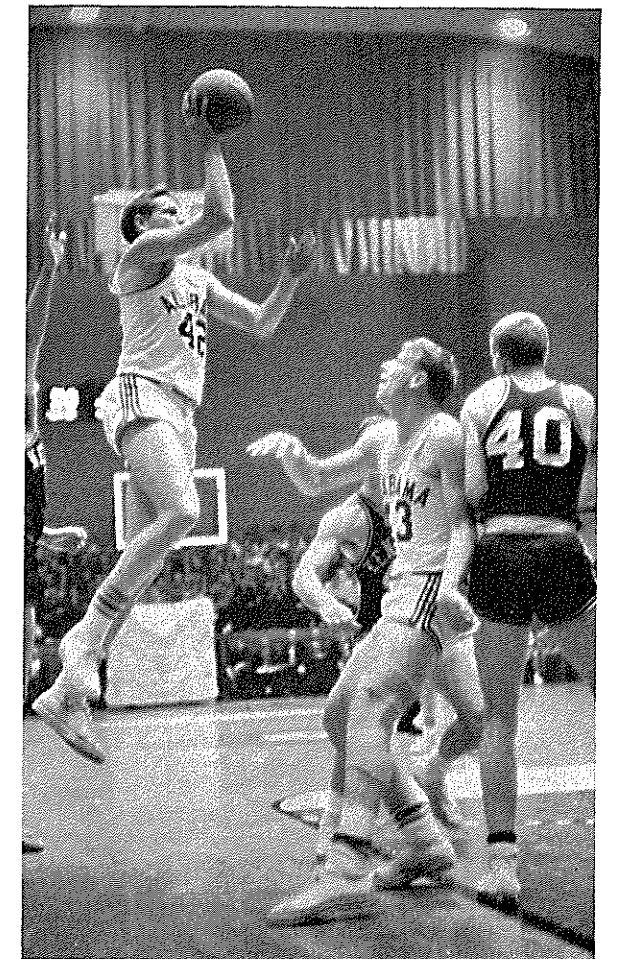
* Number of Letters



Hayden Riley
Head Coach



Winfrey Sanderson
Assistant Coach



1965-66 SCHEDULE

Date	Opponent	Site
Dec. 1	Southern Mississippi	Tuscaloosa
Dec. 4	Rice University	Tuscaloosa
Dec. 6	Howard College	Tuscaloosa
Dec. 11	Southern Mississippi	Hattiesburg
Dec. 13	Jacksonville University	Tuscaloosa
Dec. 17-18	Virginia Tech	Blacksburg
Dec. 29-30	Gator Bowl	Jacksonville
Jan. 3	Florida (SEC)	Gainesville
Jan. 8	Stetson University	Tuscaloosa
Jan. 12	Georgia (SEC)	Tuscaloosa
Jan. 22	Auburn (SEC)	Montgomery(#)
Jan. 25	Mississippi State (SEC)	Starkville
Jan. 29	Tennessee (SEC)	Knoxville
Jan. 31	Kentucky (SEC)	Lexington
Feb. 5	Tulane (SEC)	Tuscaloosa
Feb. 7	Louisiana State (SEC)	Tuscaloosa
Feb. 9	Mississippi (SEC)	Oxford
Feb. 12	Vanderbilt (SEC)	Tuscaloosa
Feb. 14	Kentucky (SEC)	Tuscaloosa
Feb. 19	Louisiana State (SEC)	Baton Rouge
Feb. 21	Tulane (SEC)	New Orleans
Feb. 26	Mississippi State (SEC)	Tuscaloosa
Feb. 28	Mississippi (SEC)	Tuscaloosa
March 5	Auburn (SEC)	Montgomery

*VPI Field—Massachusetts, Clemson, Virginia Tech, Alabama.

**Gator Bowl—Alabama vs Penn State, Florida vs DePaul (#)—Alabama's home game

Olon Belcher Lbr. Co., Inc.

Brent, Alabama

Quality Lumber Manufactured
in Modern Electric Mill
Let us appraise your
Standing Timber

Belcher Truck & Tractor Co.

Centreville, Alabama

International Trucks
Farmall Tractors
Industrial Tractors

Since 1912



Tuscaloosa's Finest Store
for
Men and Boys

ALLEN AND Jemison COMPANY

SINCE 1883

* * * * *

HARDWARE

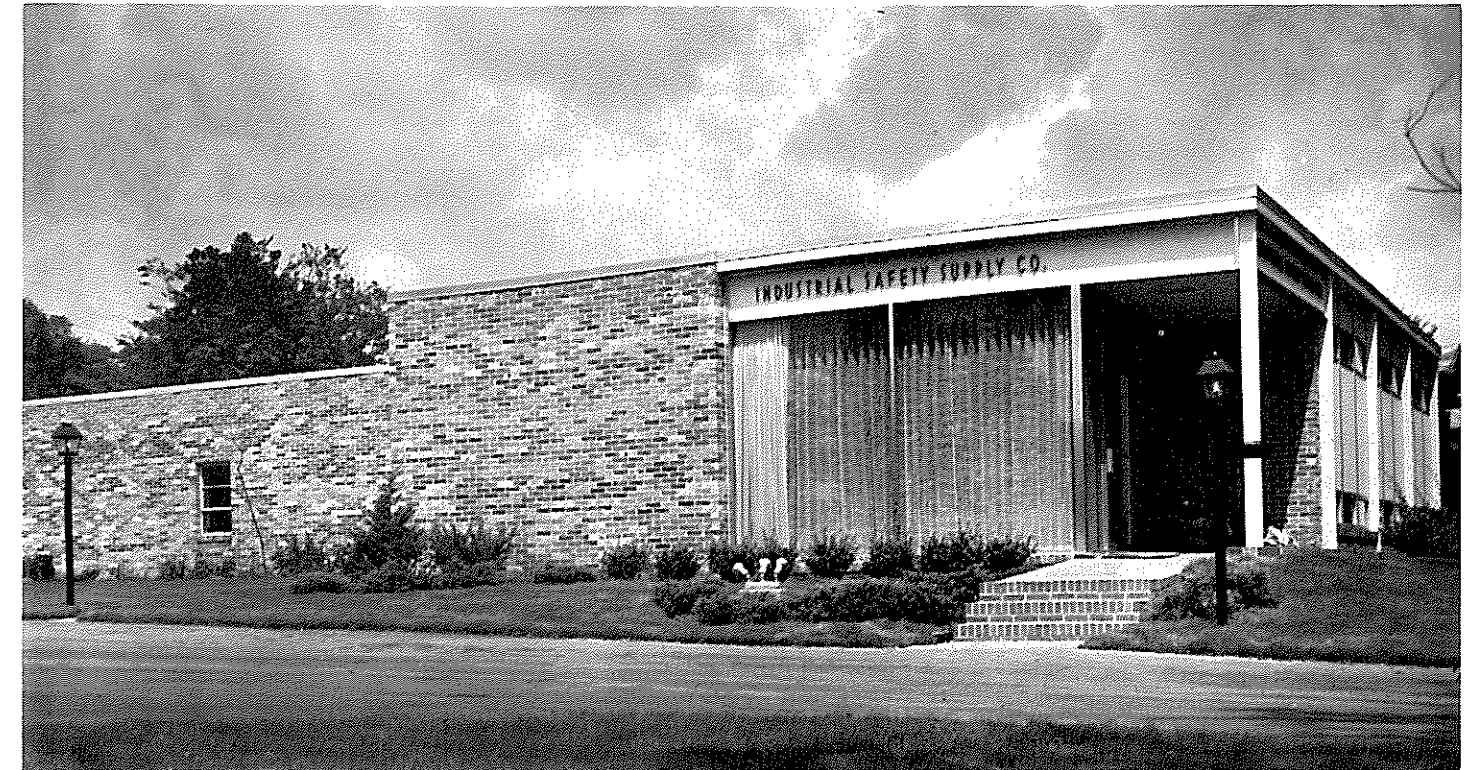
* * * * *

Sporting Goods

* * * * *

Telephone 758-2781

Black Friedman & Winston
Downtown Tuscaloosa



INDUSTRIAL SAFETY SUPPLY COMPANY

2404 33rd Avenue, North

P. O. Box 681

Birmingham, Alabama

Phone 324-1502-3

Ed W. Langston, President

"First In Safety — Safety First"