



FLORIDA STATE

VS

VIRGINIA TECH

OCTOBER 30, 1965

DAD'S DAY

**OFFICIAL
PROGRAM**

50c

DOAK S. CAMPBELL STADIUM

Tallahassee, Florida



LOOK FOR ME
WHEREVER YOU GO

Jerry's
RESTAURANTS

Scalp'em Seminoles



FSU FOOTBALL . . . 1965

TABLE OF CONTENTS

Guest Column	4	Seminole Network	25
University Features	5, 6, 7	Stadium Information	27
Athletic Committee	8	Cheerleaders, School Songs	29
Seminole Football Family	9	Seminole Boosters, Inc.	30
Tonight's Teams, A Statistical Comparison	10	Officials' Signals	31
FSU All Time Records	11	Opponent's Pictures	33, 34, 35
1965 Schedule Analysis	12	The Marching Chiefs	36
FSU Player Photos	13, 15, 16, 17	Rosters, Depth Charts	Flip Card
Starting Lineups, Officials	20, 21	Florida State University Basketball Schedule	39
Penalties	23		

*Compliments and
Best Wishes from*



**YOUR APPLIANCE
HEADQUARTERS**
611 N. Monroe St.

OFFICIAL WATCH FOR THIS GAME

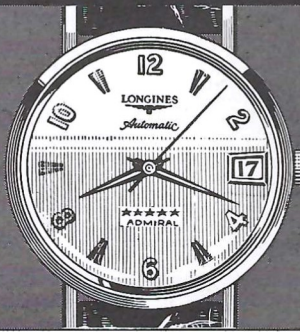


LONGINES THE WORLD'S MOST HONORED WATCH

10 WORLD'S FAIR
GRAND PRIZES
28 GOLD MEDALS



Longines watches are
recognized as OFFICIAL
for timing world
championships and Olympic
sports in all fields
throughout the world.



Longines 5-Star Admiral Automatic with Calendar,
All-Proof®, sweep-second, 14K gold strap-\$185.00

The Longines Credo

Every Longines watch,
whatever its type, for whatever
its use, today, as for almost
a century, is manufactured to
be the finest of its kind and
worthy in every respect to be called
The World's Most Honored Watch

LONGINES-WITTMAYER WATCH CO.
MONTREAL • NEW YORK • GENEVA
Maker of Watches of the Highest Character Since 1867

Tonight's Game

By **BILL BUNKER**
Sports Information Director
Florida State University



During the past few years, Florida State football teams have earned a reputation as giant-killers, and many coaches in the Southeast have revenge on their minds in preparing for a meeting with the Seminoles.

Tonight the situation is reversed. Virginia Tech has long been a thorn in Seminole sides. The Gobblers of Jerry Claiborne handed Florida State its only loss last season, and were the last football team to defeat the Seminoles in Tallahassee.

VPI accomplished this feat in 1963, a 31-23 victory which goes down as one of the wildest football games ever played here.

The Seminoles will have trouble gaining vengeance this year. Virginia Tech rides into town with a 5-1 record, including a 22-14 victory over strong Virginia last week. As with all Claiborne teams, this one has a fine quarterback, some tough linemen, and a knack for coming up with the unexpected.

The Florida State-Virginia Tech rivalry goes back ten years. Seminoles and Gobblers have met every year since 1955 except 1960. The two have never failed to come up with gridiron excitement.

No less than seven single game records are in the Florida State book against VPI. Several more passing marks were set last year in Blacksburg, but were subsequently erased by Steve Tensi and Fred Biletnikoff in the Gator Bowl.

In 1955, the first meeting, Billy Odom returned a kickoff 89 yards against the Gobblers, still the longest kickoff return by an individual in FSU history. The score that first year was VPI 24, FSU 20.

Fred Pickard, the all-time Seminole rushing leader, dashed 80 yards in 1957, the longest touchdown run from scrimmage. FSU won that one, 20-7.

The Seminoles picked off seven VPI passes in 1959. Bud Whitehead captured three of them in a 7-6 Seminole victory.

Les Murdock's 44 yard field goal in 1963 is the longest ever kicked by a Seminole.

And Steve Tensi put the ball in the air 39 times last season. Ed Pritchett added another for a team total of 40, a record which is liable to stand for awhile.

The Gobblers lost All America Bob Schweickert, a fellow who seemed to have a special talent for doing well against the Seminoles. However, they have Bobby Owens, a senior who is cast in the Schweickert mold.

Also, VPI considers Florida State its biggest game during any football season, even more so now that the Gobblers have dropped Southern Conference affiliation and joined the independent ranks.

Florida State will attempt to recover from a loss at Alabama last weekend, while the Gobblers are fresh from a decisive victory over state rival Virginia. Vanderbilt is the only team to take the measure of Virginia Tech this season, that by a 21-10 score.

An FSU victory in this tenth meeting would even the series at five games apiece.

Florida State . . .

Headquarters
For Fine Arts
In Florida

November 17-20, 1965
"DR. FAUSTUS"

University Theatre



University Artist Series

COMING EVENTS

Metropolitan Opera
National Company

Rossini's "Cinderella"
Floyd's "Susannah"

January 24-25, 1965



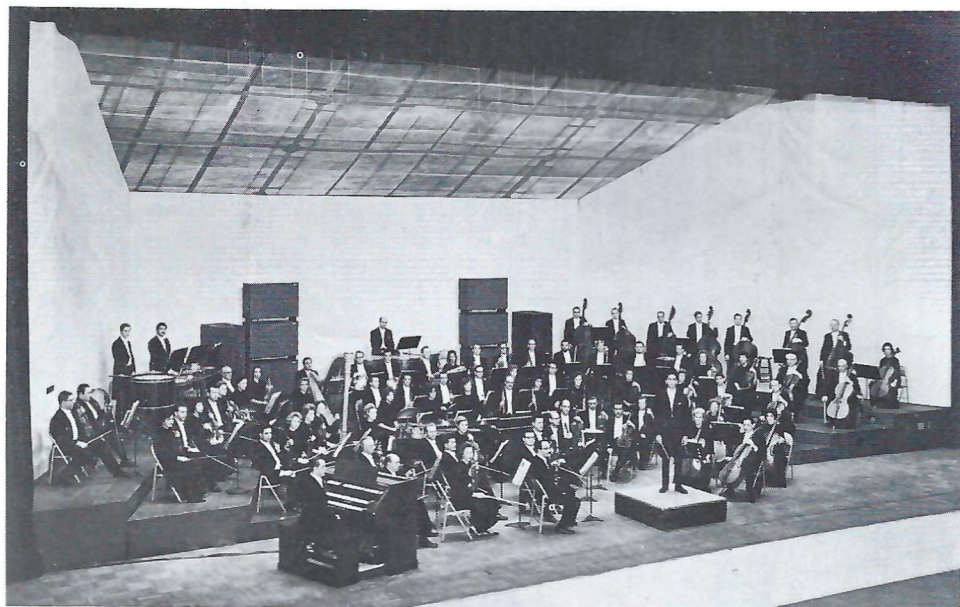
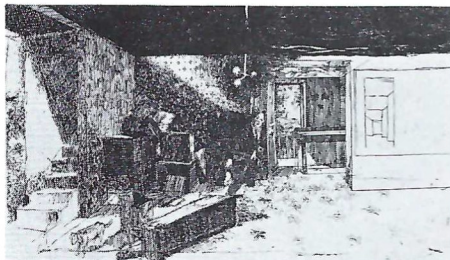
RECENT EVENTS

Harkness Ballet & Marcel Marceau

COMING EVENTS

New Orleans Philharmonic
Symphony Orchestra

November 22-23, 1965



University Gallery

CURRENT EXHIBITS

Etchings by Robert Birmelin
Photographs by Van Deren Coke
and Henry Holmes Smith

October 25 — November 15, 1965

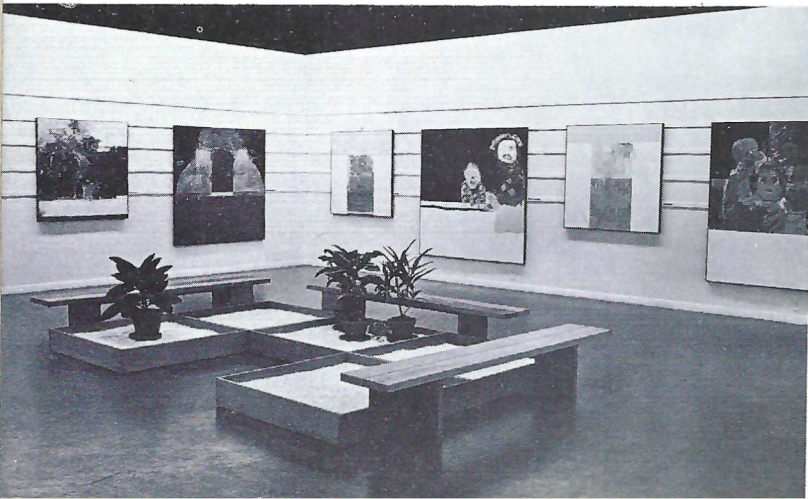
GALLERY HOURS — FREE ADMISSION

(Suwannee Hall)

Weekdays — 10 a.m. - 4 p.m.

Saturdays — 11 a.m. - 2 p.m.

Sundays — 1 p.m. - 4 p.m.





State Opera Association
and the
State Symphony
of Florida

VERDI'S "A MASKED BALL"
November 12 & 13, 1965
—STATE OPERA—



—THE SYMPHONY SEASON—

December 9, 1965:
Handel's "CONCERTO FOR HARP"
and Dvorak's "CONCERTO FOR CELLO"
April 3, 1966: Verdi's "REQUIEM MASS"

**ANNUAL
ASOLO
THEATRE
FESTIVAL**

July 7 — August 27
1966
In Sarasota

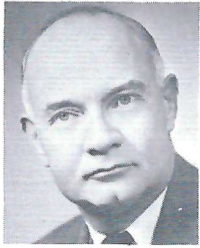
State Theatre

Shakespeare's
"MUCH ADO ABOUT NOTHING"
Bolt's
"A MAN FOR ALL SEASONS"

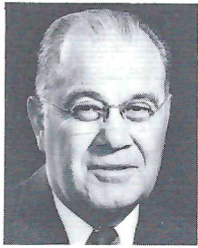
Moliere's
"THE MISER"
Sophocles'
"OEDIPUS"



FLORIDA STATE'S ATHLETIC COMMITTEE



Mode L. Stone,
Chairman
Dean, School of
Education



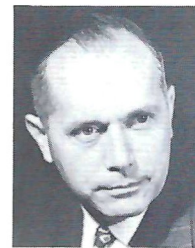
Coyle E. Moore
Dean, School of
Social Welfare



Elston Roady
Professor,
Government



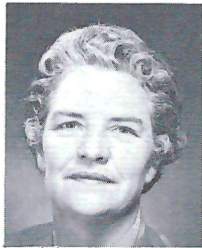
Thomas Wright
Assoc. Professor,
Music



Claude Flory
Professor, English



Robert Earnest
Professor, Business



Mary Alexander
Assoc. Professor,
Physical Education
and Recreation



J. M. Plant
Assoc. Professor,
Engineering Science

GO-GO SEMINOLES

CHICK-N-TREAT

TAKE OUT BOXES

Located Two Blocks

From Stadium

1342 Jackson Bluff Rd.—224-4425

MIDYETTE-MOOR

Insurance Agency

"Ask Those We Serve"

Complete Insurance and Bond Service

PHONE 222-3456



**MIDYETTE-MOOR BUILDING
TALLAHASSEE, FLORIDA**

SAYS

SCALP 'EM SEMINOLES!



Payne Midyette
Frank Moor
Ed Clark
Winslow Sullivan
Bob Dickinson
Paul Lewis
Payne Midyette, Jr.

Bill Moor
Bill Franklin
Glenn Sears
Dick Wall
Don Northcut
Rex Sikes
Mike Lee

**BENNETT'S
DRUG STORE**

- Prescriptions
- Cameras
- Sundries
- Gifts
- Fountain
- Cafe
- Cosmetics
- Drugs

MEET ME AT BENNETT'S

BEFORE AND AFTER THE GAME!

Corner Monroe and College Streets

Phone 222-8980 — 222-4450

DON JAMES
First Assistant
Defensive Chief



BOB HARBISON
Defensive Line



NEIL SCHMIDT
Defensive Ends,
Linebackers



KEN MacLEAN
Head Recruiter



BILL CRUTCHFIELD
Offensive Chief



DON POWELL
Offensive Line



BOBBY BOWDEN
Receivers



BILL PROCTOR
Freshman



BILL PETERSON
Head Football Coach

THE SEMINOLE FOOTBALL FAMILY

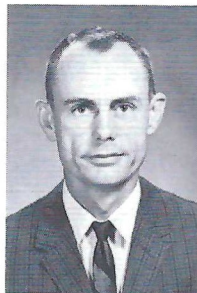
RONALD MELTON
Business
Manager



JEFF SAVAGE
Academic
Advisor



CLAUDE THIGPEN
Ticket Manager



BILL BUNKER
Sports
Information



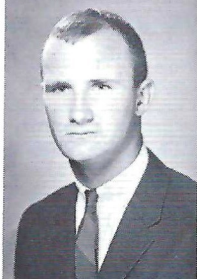
VAUGHN MANCHA
Director of Athletics



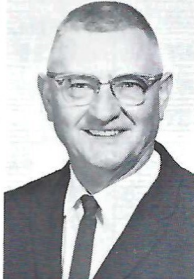
DR. R. P. JOHNSON
Team Physician



DON FAULS
Head Trainer

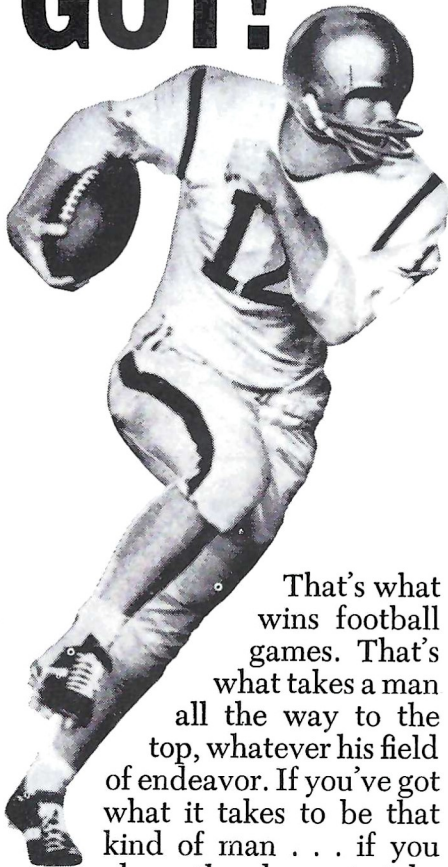


PHIL CALLICUTT
Trainer



TILLMAN DIXON
Equipment
Manager

GIVE IT EVERY-THING YOU'VE GOT!



That's what wins football games. That's what takes a man all the way to the top, whatever his field of endeavor. If you've got what it takes to be that kind of man . . . if you have the chance to take ROTC, make what you've got count. Go for an Army commission. That way, come commencement, you'll have two good things going for you: your college degree, and the gold bars that mark you a leader of men . . . tested, trained, trusted.

GET IN—STAY IN ARMY ROTC!

TONIGHT'S TEAMS A Statistical Comparison

FLORIDA STATE Results (2-3)		
3	TCU	7
9	Baylor	7
24	Kentucky	26
10	Georgia	3
0	Alabama	21
46		64

VIRGINIA TECH Results (5-1)		
12	Wake Forest	3
25	Richmond	7
9	William & Mary	7
17	George Washington	12
10	Vanderbilt	21
22	Virginia	14
95		64

TEAM STATISTICS

65	First Downs	90
540	Yards Rushing	1018
672	Yards Passing	629
144	Passes Attempted	84
59	Passes Completed	45
9	Passes Had Intercepted	7
2	Fumbles Lost	9
35	Punts	34
38.0	Punting Average	39.0

INDIVIDUAL LEADERS

Rushing

Name	Att.	Yards	Avg.	Name	Att.	Yards	Avg.
Giardino	50	163	3.3	Francisco	55	285	5.0
Pritchett	35	107	3.1	Longerbeam	50	243	4.8
Mankins	22	89	4.0	Owens	91	233	2.5
Moreman	11	82	7.5				

Passing

Name	Att.	Comp.	Yards	TD	Name	Att.	Comp.	Yards	TD
Pritchett	142	58	662	2	Owens	75	40	584	3

Pass Receiving

Name	Caught	Yards	TD	Name	Caught	Yards	TD
J. Jones	15	176	0	Fisher	22	277	1
Wetherell	9	135	1	Barefoot	8	92	0
Wettstein	8	116	1	Francisco	4	60	0
Giardino	8	53	0	Groom	3	121	2

Punting

Name	No.	Avg.	Name	No.	Avg.
Hosack	35	38.0	Fisher	32	40.8

Scoring

Name	TD	FG	PAT	TP	Name	TD	FG	PAT	TP
Roberts	0	4	4	16	Owens	4	0	0	24
Wetherell	2	0	0	12	Utin	0	5	8	23
					Groom	2		1	14

The Vogue

TALLAHASSEE, FLORIDA

TRAVELING
DESSERT TRAYS

FAMOUS
TOWN HOUSE
ROAST
PRIME RIB
OF BEEF



ALL TIME FLORIDA STATE RECORDS

SINGLE GAME

Individual

- TOUCHDOWNS SCORED**—4 by Fred Biletnikoff vs. Oklahoma, Gator Bowl, 1965
- LONGEST TOUCHDOWN RUN FROM SCRIMMAGE**—80 yards by Fred Pickard vs. Virginia Tech, 1957
- LONGEST TOUCHDOWN PASS**—80 yards, Nelson Italiano to Eddie Gray vs. Newberry, 1950
- LONGEST TOUCHDOWN RUN ANY SITUATION**—99 yards by Ted Hewitt vs. Stetson, 1948 and Fred Biletnikoff vs. Miami, 1963 (interception return)
- LONGEST TOUCHDOWN PLAY**—100 yards by Bill Moreman and T. K. Wetherell (lateral on kickoff return) vs. Kentucky, 1965
- LONGEST RUN FROM SCRIMMAGE WITHOUT SCORING**—76 yards by Roy Thompson vs. Stetson, 1951
- LONGEST INTERCEPTION RETURN**—99 yards by Ted Hewitt vs. Stetson, 1948 and Fred Biletnikoff vs. Miami, 1963
- LONGEST PUNT RETURN**—80 yards by Billy Odom vs. Stetson, 1954
- LONGEST KICKOFF RETURN**—89 yards by Billy Odom vs. Va. Tech, 1955
- LONGEST PUNT**—84 yards by Tommy Brown vs. Tampa, 1950
- LONGEST FIELD GOAL**—44 yards by Les Murdock vs. Virginia Tech, 1963
- TIMES RUSHING**—29 by Fred Pickard vs. Georgia, 1949
- YARDS RUSHING**—161 by Buddy Strauss vs. Mississippi College, 1949
- PASSES ATTEMPTED**—39 by Steve Tensi vs. Virginia Tech, 1964
- PASSES COMPLETED**—23 by Steve Tensi vs. Oklahoma, Gator Bowl, 1965
- YARDS PASSING**—313 by Joe Majors vs. Tampa, 1959
- TOUCHDOWN PASSES**—5 by Steve Tensi vs. Oklahoma, Gator Bowl, 1965
- TOTAL OFFENSE**—369 yards by Joe Majors vs. Tampa, 1959 (56 rush, 313 pass)
- PASSES CAUGHT**—13 by Fred Biletnikoff vs. Oklahoma, Gator Bowl, 1965
- YARDS RECEIVING PASSES**—192 by Fred Biletnikoff vs. Oklahoma, Gator Bowl, 1965
- TOUCHDOWN PASSES CAUGHT**—4 by Fred Biletnikoff vs. Oklahoma, Gator Bowl, 1965
- PASSES INTERCEPTED**—3 by Tommy Brown vs. Stetson, 1950; and Georgia Tech, 1952; Lee Corso vs. Georgia, 1954; and Bud Whitehead vs. Virginia Tech, 1959
- FIELD GOALS**—3 by Les Murdock vs. Florida, 1964.
- PUNTS**—11 by John Hosack vs. Baylor, 1965 (40.8 average)

TEAM

- POINTS SCORED**—74 vs. Whiting Field, 1949
- MARGIN OF VICTORY**—74-0 vs. Whiting Field, 1949
- MARGIN OF DEFEAT**—0-42 vs. Georgia, 1959
- YARDS RUSHING**—383 vs. Abilene Christian, 1957
- YARDS PASSING**—355 vs. Villanova, 1954
- TOTAL OFFENSE**—526 vs. Furman, 1962 (277 rush, 239 pass)
- PASSES ATTEMPTED**—40 vs. Virginia Tech, 1964
- PASSES COMPLETED**—23 vs. Oklahoma, Gator Bowl, 1965
- PASSES INTERCEPTED**—7 vs. Virginia Tech, 1959
- PUNTS**—11 vs. Baylor, 1965

SEMINOLES ON THE WARPATH

An Analysis of Florida State's 1965 Schedule

TEXAS CHRISTIAN

An inconsistent offense and a 47-yard TCU march in the third quarter gave the Horned Frogs an upset 7-3 victory in the season's opener.

BAYLOR

A 59-yard pass from Ed Pritchett to T. K. Wetherell gave Florida State a last-quarter touchdown and a 9-7 victory over Baylor in the Seminoles' home opener. Pete Roberts put FSU ahead with a field goal in the first quarter.

KENTUCKY

Kentucky's Wildcats edged Florida State 26-24 in one of the most exciting games to be played this season. A 100 yard kickoff return by sophomores Bill Moreman and T. K. Wetherell highlighted Florida State's first real offensive show of the season, but Kentucky's great passer Rick Norton brought the Wildcats from behind three times to win the game.

GEORGIA

A last-quarter scoring punch by Florida State dropped fifth-ranked Georgia by a 10-3 score out of the undefeated ranks in one of the hardest-hitting games ever played in Campbell Stadium. The Seminole defense halted Georgia's running attack, allowing the Bulldogs past midfield only once.

ALABAMA

It was a happy homecoming for the Crimson Tide. Alabama defeated FSU 21-0 in the first meeting between the two teams.

CHARTING FSU'S FUTURE FOES

N. C. STATE (2-4)

N. C. State	Opp.
7	Clemson 21
13	Wake Forest 11
7	South Carolina 13
10	North Carolina 7
6	Florida 28
29	Maryland 7

TODAY: Virginia at Charlottesville.

AT RALEIGH, Nov. 13, 1:30 p.m.

FLORIDA (4-1)

Florida	Opp.
24	Northwestern 14
13	Mississippi State 18
14	LSU 7
17	Mississippi 0
28	N. C. State 6

TODAY: Auburn at Auburn.

AT GAINESVILLE, Nov. 27, 2 p.m.

WAKE FOREST (2-4)

Wake Forest	Opp.
3	Virginia Tech 12
11	N. C. State 13
7	Vanderbilt 0
7	Maryland 10
7	South Carolina 38
12	North Carolina 10

TODAY: Clemson at Clemson.

AT TALLAHASSEE, Nov. 6, 2 p.m. HOMECOMING.

HOUSTON (1-5)

Houston	Opp.
0	Tulsa 14
0	Mississippi State 36
21	Cincinnati 6
7	Texas A&M 10
12	Miami 44
8	Tennessee 17

TONIGHT: Chattanooga at Houston.

AT TALLAHASSEE, Nov. 20, 8 p.m.

SOUTHERNAIRE MOTEL & SKYLINE MOTOR LODGE



Quality people always seek quality accommodations



OPEN TILL 2 AM
FRI. & SAT.

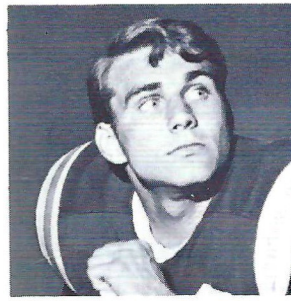
LIVE ENTERTAINMENT

Talem
lounge coffee shop

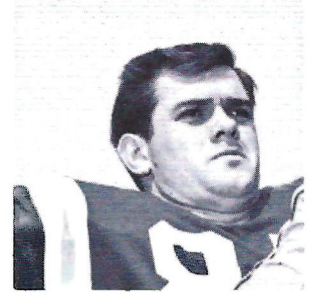
506 S. WOODWARD
1 BLOCK FROM STADIUM



Bob Mangan



Joe Petko



John Hosack

Introducing...the FLORIDA STATE UNIVERSITY 65 SEMINOLES



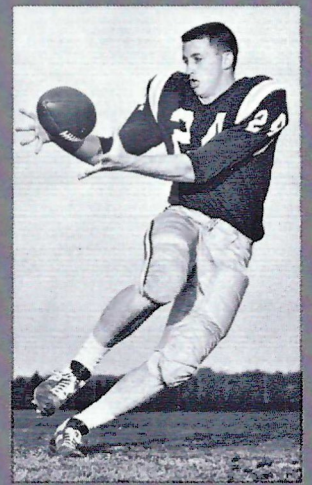
Bill Campbell



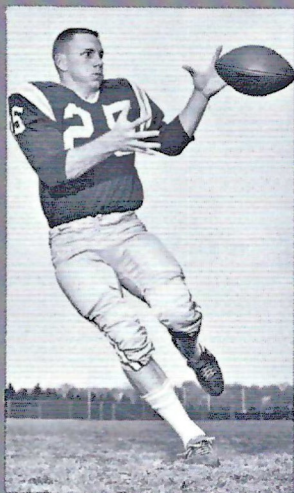
Jack Shinholser



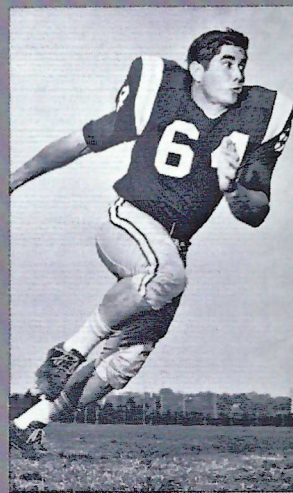
Phil Spooner



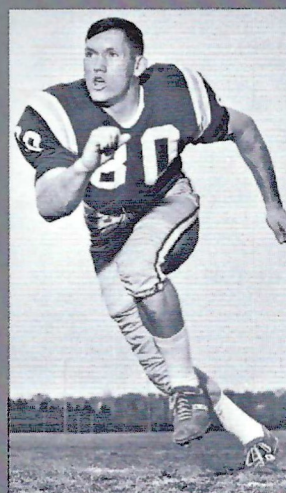
Elton Revell



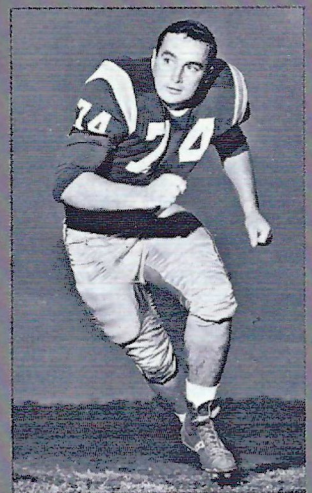
T. K. Wetherell



Dave Braggins



H. T. Waller



Jay Matthews

Learn to Fly at
G. C. Shuler
Seminole Flying Service, Inc.

Municipal Airport

Phone 222-3121

Tallahassee, Fla.

- **STUDENT CLUBS**
- **AIRPLANE RIDES**
- **FLIGHT INSTRUCTION**
- **AERIAL PHOTOGRAPHY**
- **CHARTER FLIGHTS**
- **AIRCRAFT RENTAL**

FLY the best—A New Cessna

"Look up—a new CESSNA will be overhead"

**Before Or After
Game**

CHICKEN IN THE ROUGH
COPYRIGHT 1937 BY BEVERLY OSBORN

QUAKER HOUSE



RESTAURANT

*Dining Room
and Curb Service*

Tennessee Street

Next to Lafayette Motel

**The
Association
of**

Tallahassee Banks

Lewis State Bank

The Peoples Bank

Industrial Savings Bank

Parkway National Bank

The Tallahassee Bank & Trust Co.

Capital City First National Bank

All Members of F.D.I.C.



1117 THOMASVILLE ROAD
PH. 222-1415

TALQUIN INN

on

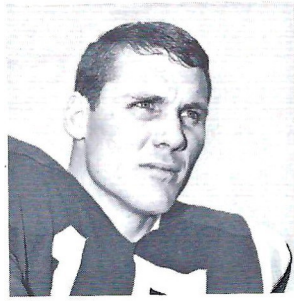
RESTAURANT ROW

Open 5:00 p.m. - 12:30 a.m.

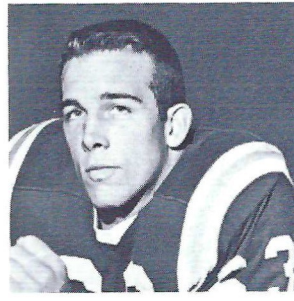
Closed Sundays



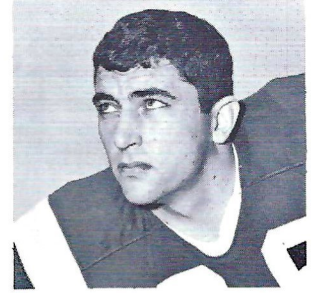
Jim Massey



Pat Conway



Bill McDowell



Thurston Taylor

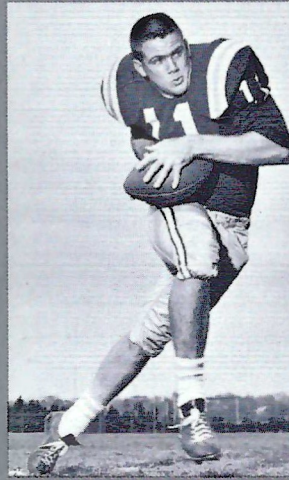
FLORIDA STATE UNIVERSITY 65 SEMINOLES



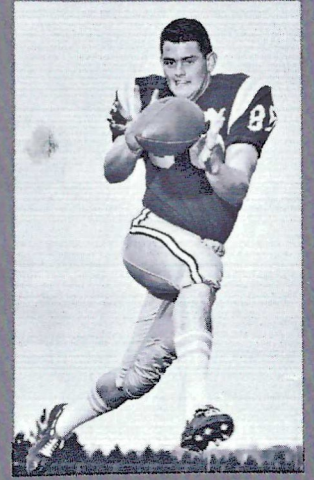
Joe Avezzano



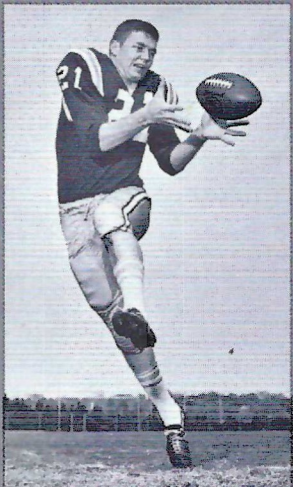
Stan Croley



Kim Hammond



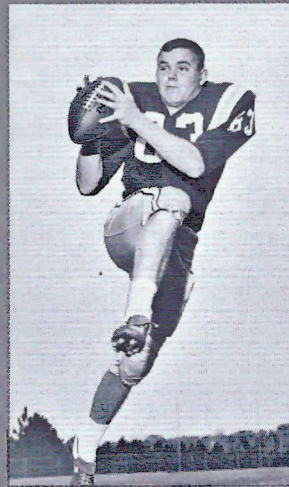
Buddy Blankenship



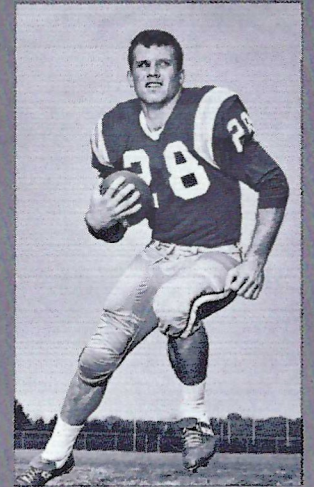
Bill Cox



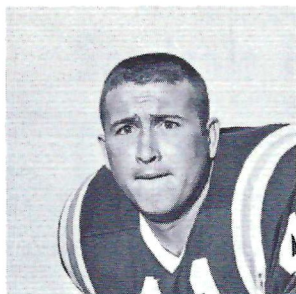
John Stephens



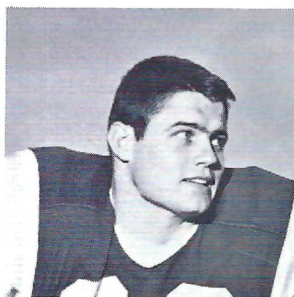
Jerry Jones



Bill Moreman



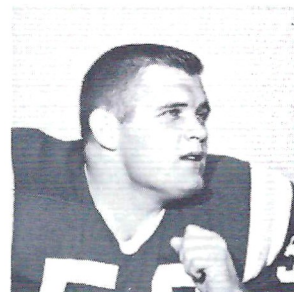
Bob Menendez



Edwin Pope



Howard Lurie



David Pitts

the FLORIDA STATE UNIV



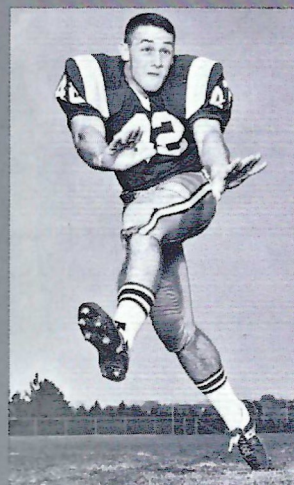
Frank Pennie



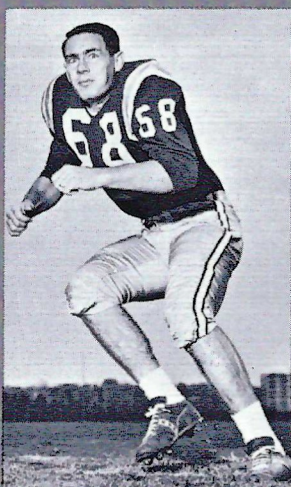
Donovan Jones



Ed Pritchett



Bill Richardson



Joe Parrish



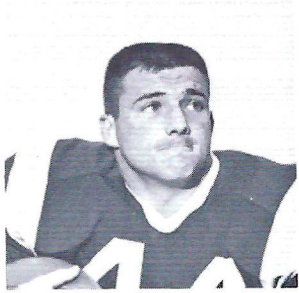
Howard Ehler



Larry Williamson



Wayne Giardino



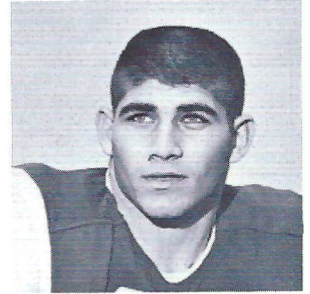
Jim Mankins



Terry Garvin

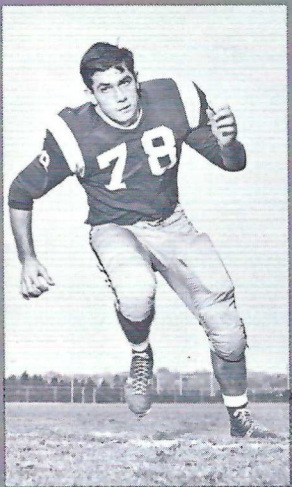


Wayne McDuffie

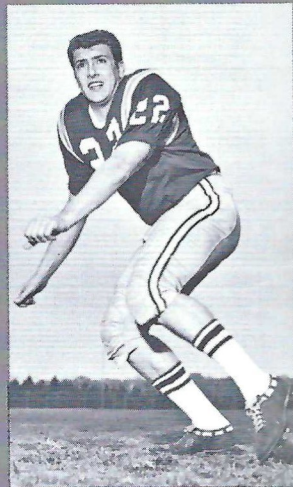


Mike Blatt

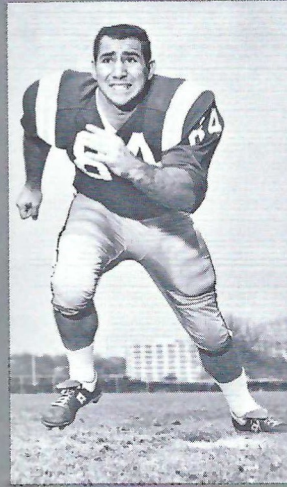
UNIVERSITY 1965 SEMINOLEES



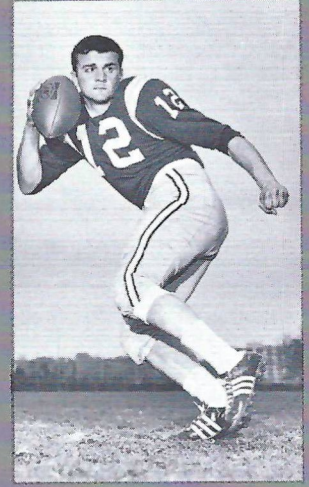
Charles Pennie



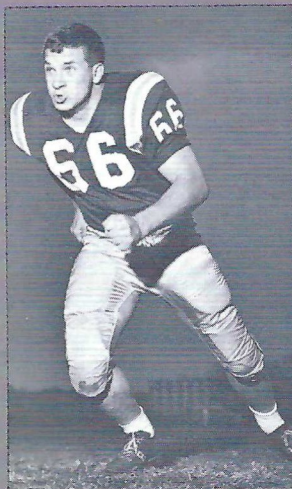
Maury Bibent



George D'Alessandro



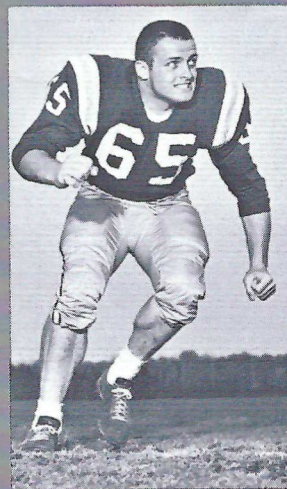
Tony Gero



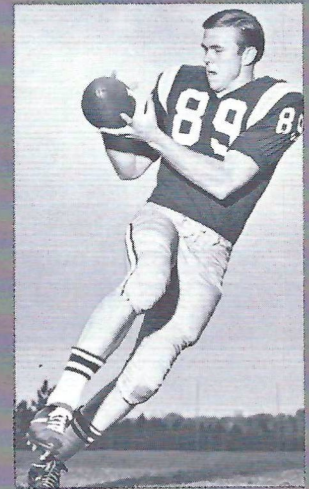
Carl McNeil



James Riser



Dave Hall



Max Wettstein



*"Let's Be
#1
In 1965"*

SPURGEON CAMP

★
**NOBODY...
BUT NOBODY
UNDERSELLS.** ★

**SOUTHERN
ELECTRIC INC.**

5-Store Purchasing Power

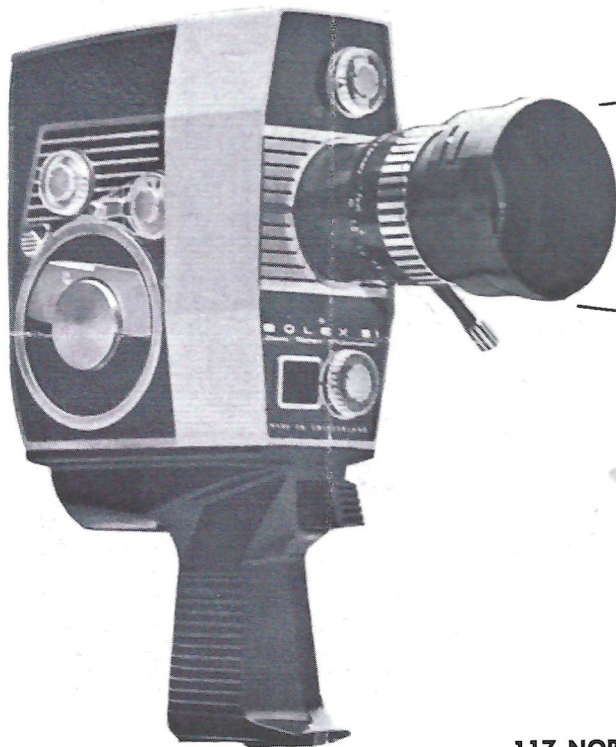
Saves You Money on G-E Appliances!

Tallahassee Downtown and Capital Plaza	Perry, Fla. 115 E. Green St. on the Square	Valdosta, Ga. 117 W. Central	Albany, Ga. 225 W. Ogle- thorpe St.
-----------------------------------------------------	---------------------------------------------------------	----------------------------------------	--------------------------------------------------



**WHERE YOU
WILL FIND
YOUR FRIENDS**

701 W. JEFFERSON
South Gate F.S.U.



FOCUS ON

**TALLAHASSEE
CAMERA
CENTER, INC.**

FOR ALL OF YOUR PHOTO NEEDS

- CAMERAS
- FILM
- ACCESSORIES
- RENTALS
- BINOCULARS
- FAST PHOTO FINISHING

117 NORTH MONROE ST.

PH. 222-8771

"ACROSS FROM THE FLORIDA THEATER"

*STEP
OUT FRONT
IN '66 ... in a Rocket Action Olds!*



442 Swinging new kind of sports car excitement!



400-cubic-inch V-8, 4-barrel carb, twin pipes: Buckle up and have yourself a ball! This is the 350-hp 4-4-2. With heavy-duty suspension, built to K.O. the roughest roads. Front and rear stabilizers to take the "bend" out of curves, the bind out of corners. And under it all—pavement-biting red-line tires! But the swinging-est thing about Olds 4-4-2 is its surprisingly modest price! **LOOK TO OLDS FOR THE NEW!**

Oldsmobile Division • General Motors Corp.



things go
better
with
Coke
TRADE-MARK ®

- OFFENSE**
- 88 JERRY JONES LE
 - 70 DEL WILLIAMS LT
 - 69 EDWIN POPE LG
 - 54 JOHN STEPHENS C
 - 73 LARRY KISSAM RG
 - 64 DAVID BRAGGINS RT
 - 89 MAX WETTSTEIN RE
 - 16 ED PRITCHETT QB
 - 30 BILL MOREMAN LH
 - 28 T. K. WETHERELL RH
 - 23 WAYNE GIARDINO FB

- FLORIDA S**
- | | | |
|------------------|-------------------|----------|
| 11 Hammond, QB | 27 Spooner, HB | 43 Ehle |
| 12 Gero, QB | 28 Wetherell, HB | 44 Man |
| 14 Massey, DB | 29 Petko, FB | 51 Ave |
| 15 Conway, DB | 30 Moreman, HB | 52 McD |
| 16 Pritchett, QB | 31 Mercer, HB | 53 Pitts |
| 17 Kolbus, QB | 32 Richardson, DB | 54 Step |
| 21 Jones, E | 33 Riser, DB | 55 Uric |
| 22 Bibent, DB | 35 Hosack, HB | 60 Will |
| 23 Giardino, FB | 40 Blatt, LB | 61 Shin |
| 24 Revell, HB | 41 Menendez, DB | 62 Luri |
| 26 Campbell, DB | 42 LaMarche, DB | 63 McD |

- OFFENSE**
- 87 GENE FISHER LE
 - 63 RON McGUIGAN LT
 - 65 JOHN SHEEHY LG
 - 50 LES HANLY C
 - 61 BOB GRIFFITH RG
 - 74 DONNIE BRUCE RT
 - 81 KEN BAREFOOT RE
 - 11 BOBBY OWENS QB
 - 20 DICKIE LONGERBEAM TB
 - 40 TOMMY GROOM WB
 - 33 SAL GARCIA FB

- VPI GOBE**
- | | | |
|-------------------|------------------|----------|
| 10 Loria, HB | 27 Rash, QB | 45 Wre |
| 11 Owens, QB | 31 Edwards, LB | 50 Han |
| 12 Cobb, QB | 32 Barfield, FB | 51 Daw |
| 13 Stafford, QB | 33 Garcia, FB | 52 Mill |
| 14 Skinner, QB | 34 Messamore, FB | 53 Farn |
| 20 Longerbeam, HB | 40 Groom, WB | 61 Griff |
| 22 Francisco, HB | 41 Culpepper, LB | 63 McC |
| 23 Utin, PK | 43 Richards, HB | 65 Shee |
| 25 Fife, HB | 44 Bulheller, HB | 66 Sau |

OFF

Referee—Charles W. Bowen, Ft. Lauderdale, Fla.
 Umpire—Charles H. Brown, Jr., Atlanta, Georgia
 Linesman—Ed Copeland, Norcross, Ga.

*Fla
S*

Probable S

FLORIDA S

43 Ehle
44 Man
51 Ave
52 McD
53 Pitts
54 Step
55 Uric
60 Will
61 Shin
62 Luri
63 McD

*Viro
7*

Probable S

VPI GOBE

45 Wre
50 Han
51 Daw
52 Mill
53 Farn
61 Griff
63 McC
65 Shee
66 Sau

OFF

ida
ate

ing Lineup

TE SQUAD

B	64	Braggins, T	78	C. Pennie, DT
s, HB	65	McLean, G	79	F. Pennie, DT
no, G	67	Bugar, DT	80	Croley, DE
ie, C	68	Parrish, LB	81	Waller, DE
G	69	Pope, G	83	Taylor, T
s, C	70	Williams, T	84	D'Alessandro, DE
	73	Kissam, T	85	Roberts, PK
son, G	74	Matthews, DT	86	Blankenship, E
ser, MG	75	Vistart, DT	87	Garvin, DE
B	76	Ellers, T	88	Jones, E
ell, LB	77	Mangan, T	89	Wettstein, E

inia
ch

ing Lineup

RS SQUAD

LB	67	Thacker, T	81	Barefoot, E
C	68	Dedo, G	83	Raible, E
y, C	70	Aguilar, T	85	Kegley, E
C	72	Bowling, T	86	Foussekis, E
G	73	Haynes, T	87	Fisher, E
G	74	Bruce, T	88	Mooney, E
an, G	75	Johnson, T		
G	77	Woody, T		
rs, G	80	Shipley, E		

ALS

F. Judge—Jack Langford, Atlanta, Ga.
B. Judge—Paul V. Hicks, Memphis, Tenn.
Eco.—C. E. Schroll, Montgomery, Ala.

DEFENSE

86	BUD BLANKENSHIP	RE
79	FRANK PENNIE	RT
61	JACK SHINHOLSER	MG
78	CHARLES PENNIE	LT
87	TERRY GARVIN	LE
68	JOE PARRISH	LB
63	BILL McDOWELL	LB
43	HOWARD EHLE	CB
22	MAURY BIBENT	CB
15	PAT CONWAY	LS
14	JIM MASSEY	RS

DEFENSE

86	GEORGE FOUSSEKIS	LE
77	SANDS WOODY	LT
66	MIKE SAUNDERS	LG
41	C. CULPEPPER	LB
67	DON THACKER	RG
72	ANDY BOWLING	RT
88	DAN MOONEY	RE
31	BILLY EDWARDS	LB
27	WAYNE RASH	LH
43	JIMMY RICHARDS	RH
10	FRANK LORIA	S



things go
better
with
Coke
TRADE-MARK ®



Introducing the tuned car. 1966 Buick.

What makes a car a car is styling, performance, ride and handling. Only when they're all tuned together is the car a Buick. Like this '66 Riviera Gran Sport.

Every last thing that goes into a Buick—suspension, body mounts, shock absorbers—not only has to work, it has to work with everything else. That's tuning.

Tuning is what we do more of (and care more about) than anybody we know of. And then we go out and test it in more places, too. On roads like the ones you'll be driving on. Why we do it will be obvious when you take your first ride. The tuned car rides and handles as handsomely as it looks. (Tuning may be hard to explain. But it's easy to notice.)

What the tuned car will do for you. And your family. For a start, the new Riviera

will comfort you. You'll see that when you slip into the Riviera's new bench seats. Space for six. If you like buckets, they're available, with a reclining arrangement for the right-front passenger. And we have another comforting option available: a new notch-back seat that converts from bench to semi-bucket.

Choosing the tuned car. Visit your Buick dealer. Every Buick you see is the tuned car. Riviera, the new international classic. Riviera Gran Sport. *Every '66 Buick.*

And with a choice like that, how in the world can you go wrong?

Wouldn't you really rather have a Buick?

PENALTIES

- 1. OFFSIDE** by either team; Violation of scrimmage or free kick formation; Encroachment on neutral zone—Loss of Five Yards.
- 2. ILLEGAL PROCEDURE, POSITION OR SUBSTITUTION**—Putting ball in play before Referee signals "Ready-for-play"; Failure to complete substitution before play starts; Player out of bounds when scrimmage begins; Failure to maintain proper alignment of offensive team when ball is snapped; False start or simulating start of a play; Taking more than two steps after Fair Catch is made; Player on line receiving snap—Loss of Five Yards.
- 3. ILLEGAL MOTION**—Offensive player illegally in motion when ball is snapped—Loss of Five Yards.
- 4. ILLEGAL SHIFT**—Failure to stop one full second following shift—Loss of Fifteen Yards.
- 5. ILLEGAL RETURN** of substitute not previously disqualified—Loss of Fifteen Yards.
- 6. ILLEGAL DELAY OF GAME**; Taking more than four times out during either half (except for replacement of injured player)—Loss of Five Yards. Team not ready to play at start of either half—Loss of Fifteen Yards.
- 7. PERSONAL FOUL**—Tackling or blocking defensive player who has made fair catch; Piling on; Hurdling; Grasping face mask of opponent; Tackling player out of bounds, or running into player obviously out of play; Striking an opponent with fist, forearm, elbow or locked hands; Kicking or kneeing—Loss of Fifteen Yards (Flagrant offenders will be disqualified.)
- 8. CLIPPING**—Loss of Fifteen Yards.
- 9. ROUGHING THE KICKER** or holder—Loss of Fifteen Yards.
- 10. UNSPORTSMANLIKE CONDUCT**—Violation of rules during intermission; Illegal return of suspended player; Coaching from sidelines; Invalid signal for Fair Catch; Persons illegally on field—Loss of Fifteen Yards. (Flagrant offenders will be disqualified.)
- 11. ILLEGAL USE OF HANDS AND ARMS** by offensive or defensive player; Defensive holding—Loss of Fifteen Yards.
- 12. INTENTIONAL GROUNDING** of forward pass—Loss of Five Yards Plus Loss of Down.
- 13. ILLEGALLY PASSING OR HANDING BALL FORWARD**—Loss of Five Yards Plus Loss of Down.
- 14. FORWARD PASS OR KICK CATCHING INTERFERENCE**—Interference with opportunity of player of receiving team to catch a kick—Loss of Fifteen Yards. Interference by member of offensive team with defensive player making pass interception—Loss of Fifteen Yards Plus Loss of Down. Interference by defensive team on forward pass—Passing Team's Ball at Spot of Foul and First Down.
- 15. INELIGIBLE RECEIVER DOWNFIELD ON PASS**—Loss of Fifteen Yards.
- 16. BALL ILLEGALLY TOUCHED, KICKED OR BATTED**—Forward pass being touched by ineligible receiver beyond the line of scrimmage—Loss of Fifteen Yards from Spot of Preceding Down and Loss of a Down. Eligible pass receiver who goes out of bounds and later touches a forward pass—Loss of Down. Illegal touching of kicked ball within opponent's ten yard line—Touchback.
- 17. PENALTY DECLINED**; Incomplete forward pass; No play or no score.
- 18. CRAWLING** by runner—Loss of Five Yards. Interlocked Interference—Loss of Fifteen Yards.

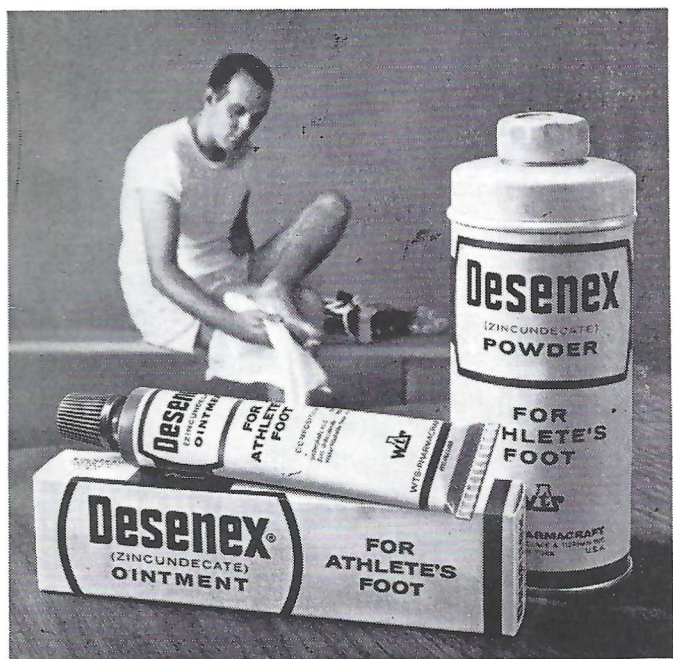
How do athletes handle athlete's foot?

They follow their trainers' advice and use Desenex® for prevention and treatment

It's excellent protection against itching, cracking and irritation of Athlete's Foot. Helps prevent spreading, too. No wonder Desenex is the Athlete's Foot treatment most widely used by college football trainers.

We know you don't have a trainer to keep you on your toes. But that's no reason to suffer from Athlete's Foot. Start using Desenex yourself. Avoid Athlete's Foot problems with Desenex Powder or new, cooling Desenex Aerosol—and for treatment use Desenex Ointment. Desenex is guaranteed to work or your money back.

WTS-PHARMACRAFT, Rochester, N.Y. 14603



*First choice of those who appreciate
the finest in foods and service!
Open Breakfast, Lunch and Dinner*

BRUCE BISHOP'S 1921 W. Tennessee

THE
FOUNTAIN
RESTAURANT

GOOD LUCK SEMINOLES!

VARSITY THEATRE

1833 W. Tennessee

Phone 224-8636

NEXT TO THE FOUNTAIN RESTAURANT

BOWLING'S GREAT

the Perfect date

**AFTER THE GAME
MEET YOUR FRIENDS
AT THE**

Parkway Bowl

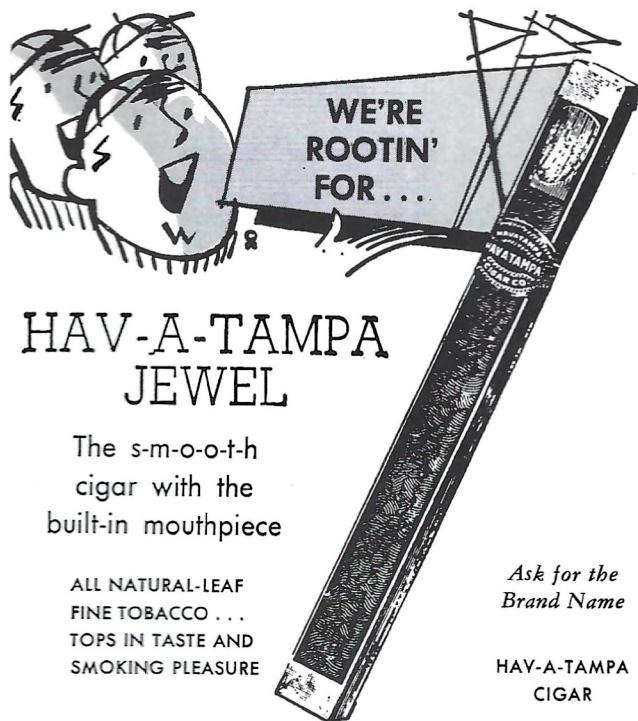
COFFEE SHOP

1230 Apalachee Parkway
TALLAHASSEE, FLORIDA

And Enjoy



WAFFLE VARIETIES
With Your Favorite Beverage
or Rich Creamy Hot Chocolate



**HAV-A-TAMPA
JEWEL**

The s-m-o-o-t-h
cigar with the
built-in mouthpiece

ALL NATURAL-LEAF
FINE TOBACCO . . .
TOPS IN TASTE AND
SMOKING PLEASURE

*Ask for the
Brand Name*

HAV-A-TAMPA
CIGAR

Distributed by **Eli Witt Tobacco & Candy Co.**
Tallahassee, Florida

QUALITY CLEANERS

215 W. COLLEGE AVE.—DIAL 222-5097

ONE DAY SERVICE

PICK-UP and DELIVERY

Quality Laundry Work

Fluff Dry Service

EXPERT TAILORING and ALTERATIONS

ZIPPERS REPAIRED

THE WTNT SEMINOLE NETWORK



HARRY HUGHEY

BO MITCHELL

Popular Bo Mitchell returns to the Seminole microphone for the third straight season, bringing play-by-play action to every corner of the Sunshine State.

The energetic Mitchell, an ex-naval aviator with more than 16 years broadcasting experience, is vice-president and station manager of station WCOA, Pensacola.

His partner at the mike this season is Harry Hughey, a former Florida State football player. A veteran radio man, Hughey handles pre-game, half-time and time-out commentary.

Originating station for the network is WTNT, Tallahassee.

THE SEMINOLE NETWORK

- | | |
|-----------------------|------------------------|
| WCOA Pensacola | WSPB Sarasota |
| WZEP Defuniak Springs | WMYR Fort Myers |
| WPCF Panama City | WGBS Miami |
| WTOT Marianna | WTRK West Palm Beach |
| WTNT Tallahassee | WLBE Leesburg |
| WDSR Lake City | WCNH Quincy |
| WPRY Perry | WFTW Fort Walton Beach |
| WJAX Jacksonville | WMAF Madison |
| WGGG Gainesville | WFOY St. Augustine |
| WMOP Ocala | WYDE Birmingham, Ala. |
| WKIS Orlando | WPAX Thomasville, Ga. |
| WLAK Lakeland | WSB Atlanta, Ga. |
| WDAE Tampa | |

Follow the SEMINOLES

IN '65

**STANDARD
OIL**

RADIO

NETWORK

WJAX
Jacksonville

WGBS
Miami

WDAE
Tampa

WTNT
Tallahassee

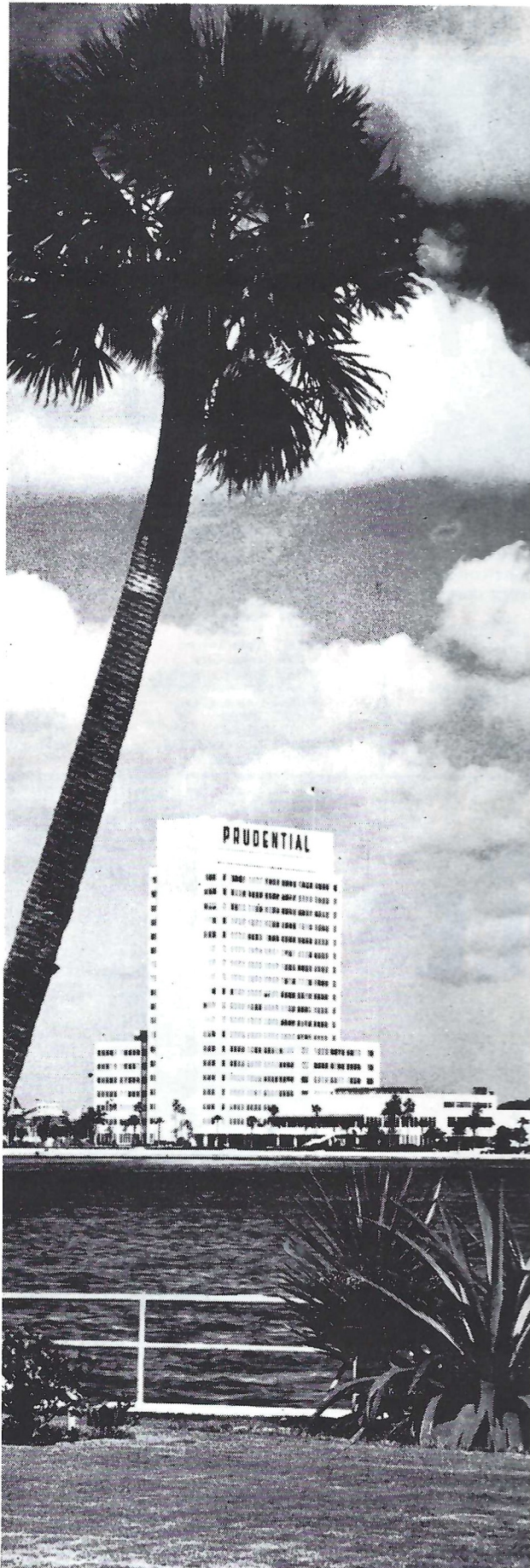
WCOA
Pensacola

WKIS
Orlando



**YOUNG HO!
GO CHEVRON!**

*We
like
the
state
we're
in...*



In 1953, we of
The Prudential established
our South-Central Regional
Home Office in Florida. From
this location we are able
to provide fast, efficient
life insurance service
to the people of Florida
and our 10-state area.

We are proud to be
a part of the growth and
progress here in Florida,
and the past 12 years have
been busy and rewarding
ones for us. We salute
Florida State University
for its efforts in preparing
our youth today for the
opportunities of tomorrow.



THE PRUDENTIAL
INSURANCE COMPANY OF AMERICA

SOUTH-CENTRAL HOME OFFICE
JACKSONVILLE, FLORIDA

STADIUM INFORMATION

Rest Rooms—Located on concourse and on ground level on both east and west sides.

First Aid—Located in southwest corner of stadium. Registered nurse on duty.

Lost and Found: Items may be claimed or turned in at the ticket booth next to the press box elevator, west side.

Public Telephones: Located ground level, west side.

Public Address: No special announcements are made over the stadium public address system except in cases of emergency.

Field Regulations: No spectators are allowed on the field, either during or after the game. Please leave the stadium by ramp and section exits rather than field level exits.

Drive Carefully—Your cooperation with law enforcement officers will help speed the flow of traffic away from the stadium.

**"WE FEED BOTH
SEMINOLES AND
GATORS"**

**GARCIA'S
320 E. Tennessee**

Go Injun's

Pike's Studio

Patronize Stadium

CONCESSIONS

Located beneath the stands on each side of stadium

- COLD DRINKS small 15¢ large 25¢
- HOT COFFEE 15¢
- SANDWICHES 30¢
- HOT DOGS 25¢
- PEANUTS 15¢
- POP CORN 15¢
- CIGARETTES 40¢

SOUVENIR ITEMS - PENNANTS - BADGES

SUN VISORS - ASPIRIN

Please pay no more than

ESTABLISHED PRICES

FOREMOST

ICE CREAM

PHONE • 224-7136

**SUNSHINE STATE
DAIRYMEN'S COOP.**

PHONE • 222-5303

COMPLIMENTS
OF
TALLAHASSEE AUTOMOBILE
DEALERS ASSOCIATION

ALFORD CHEVROLET COMPANY
CAPITAL LINCOLN & MERCURY, INC.

CAPITAL PLYMOUTH, INC.

BOB DRAKE DODGE, INC.

KEY RAMBLER, INC.

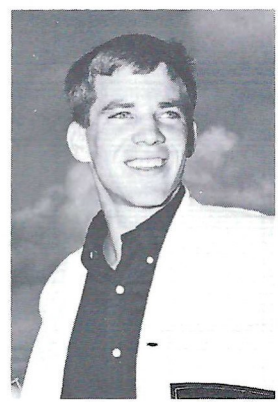
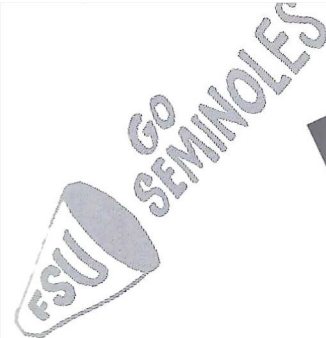
KINNEBREW MOTORS, INC.

MINGLEDORF MOTORS, INC.

PALMER-HARRELL BUICK COMPANY

PROCTOR & PROCTOR, INC.

TALLAHASSEE MOTORS, INC.



SEMINOLE CHEERLEADERS

The 1965 Seminole Cheerleader Squad takes its signals from Head Cheerleader Toni Beals (above center), a winsome junior from St. Augustine. Shown to her left is a newcomer to the squad, sophomore Joyce Howser of West Palm Beach; and to her right, Peggy Thompson, a junior from Ormond Beach. Senior member of the team is Elbert Lambert (at right) of Tallahassee. Sophomore Dave Deutsch (at left) of Palatka, is another seasoned member of the squad.

THE ALMA MATER

High o'er the towering pines our voices swell
Praising these Gothic spires we love so well;
Here sons and daughters stand . . .
Faithful and True, Hailing our Alma Mater
F . . . S . . . U . . .

FSU FIGHT SONG*

We're going to FIGHT, FIGHT, FIGHT,
for FSU
We're going to scalp 'em Seminoles . . .
We're going to WIN, WIN, WIN, WIN,
WIN this game . . . and roll on down and
make those goals!
For FSU is on the warpath now, and at the
battle's end she's great . . .
So FIGHT, FIGHT, FIGHT, FIGHT for
victory
Our Seminoles of Florida State . . .
F-L-O-R-I-D-A S-T-A-T-E
FLORIDA STATE! (3 times)

THE FLORIDA STATE VICTORY MARCH*

Onward to victory, Seminoles, GO! FORWARD MARCH, we must move out together and . . .
FORWARD MARCH, it's always marching weather when thousands strong, we swing along.
All in step for VIC . . . TO . . . RY. Our F-S-U and all our loyal Seminoles, ON-WARD
GO . . . To conquer all our savage foes . . . won't be long . . . we can't go wrong . . . we
will crush the EN . . . E . . . MY . . . So SCALP'EM . . . SCALP'EM . . . SCALP'EM . . .
It's a case of do or die . . .
Strike the fatal thrust, we'll be victorious; with terrible tenacity we can, we will, we must!

FORWARD MARCH, we'll ride the swelling battle tide
FORWARD MARCH, we'll face the future side by side
With our might, we'll FIGHT, FIGHT, FIGHT!
And we'll win our VIC-TO-RY.
. . . For Florida State University.

* Written by Thomas G. Wright, Associate Professor Music at Florida State University.

University Union

"Serving the entire University Community"

- | | | |
|--------------|----------------------|----------------|
| Lounges | Color Television | Bicycle Rental |
| Food Service | Faculty-Staff Lounge | Swimming Pool |
| Barber Shop | Games Check-Out | Art Exhibits |
| Beauty Salon | Union Store | Ticket Office |
| Bowling | Bookstore | Billiards |

CAMPUS INFORMATION CALL 3317

BE A BOOSTER

Seminole Boosters are people like yourself:



All kinds
of guys.

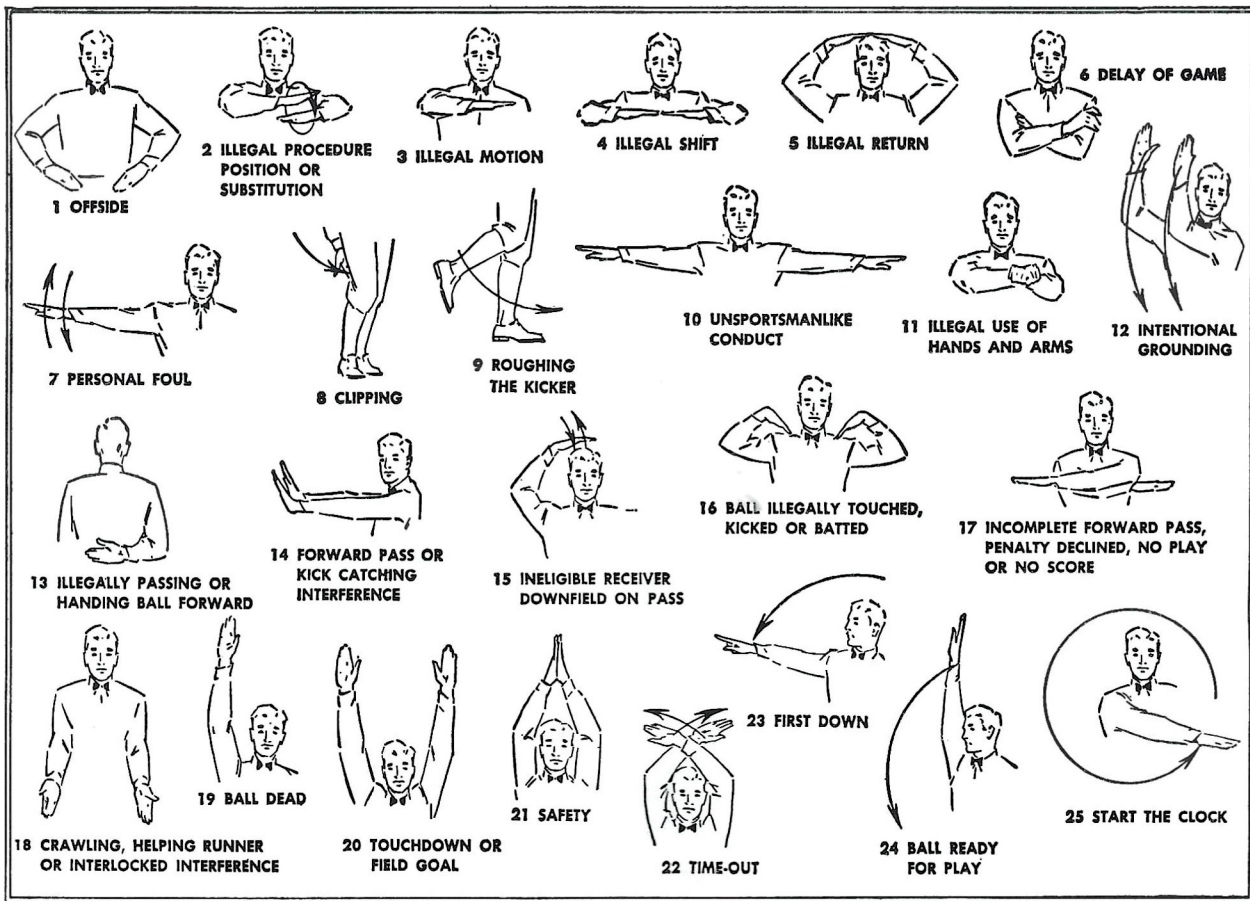


And even housewives.
Boosters help recruit
Florida State football teams.

BE A BOOSTER

And park real close to your seats, the best in the stadium.
Share the pride of a winning football team. Membership
only costs \$15 for an individual, or \$30 for a business firm.

For information: contact Seminole Boosters Inc. 222-0995.



OWNED AND OPERATED BY FRANK, RICHARD & RAYMOND CHASE

Skyline Restaurant

1 Mile West of City Limits

U. S. Highways 90 and 20

OPEN 6 A.M. TO 11 P.M.

TALLAHASSEE, FLORIDA

"Serving Good Food for Fine People"

Private Rooms and Banquet Facilities



PENNY EDWARDS—"MISS TIPARILLO"

What does she mean "cigars...cigarettes...Tiparillos"?

You'll be hearing that chant more and more—now that Tiparillos have arrived. And arrived they have. In all the right places. With all the right people.

The new Tiparillo has a neat, trim shape. It looks young and debonair. And its pearly, pliable tip pays more than lip service to your smoking pleasure.

And never before such mildness! The most careful blending of choicest imported tobaccos has seen to that. So, too, has the exclusive, veinless Ultra Cigar Wrapper* that burns so evenly and smoothly it insures complete mildness.

You can even see the mildness. The

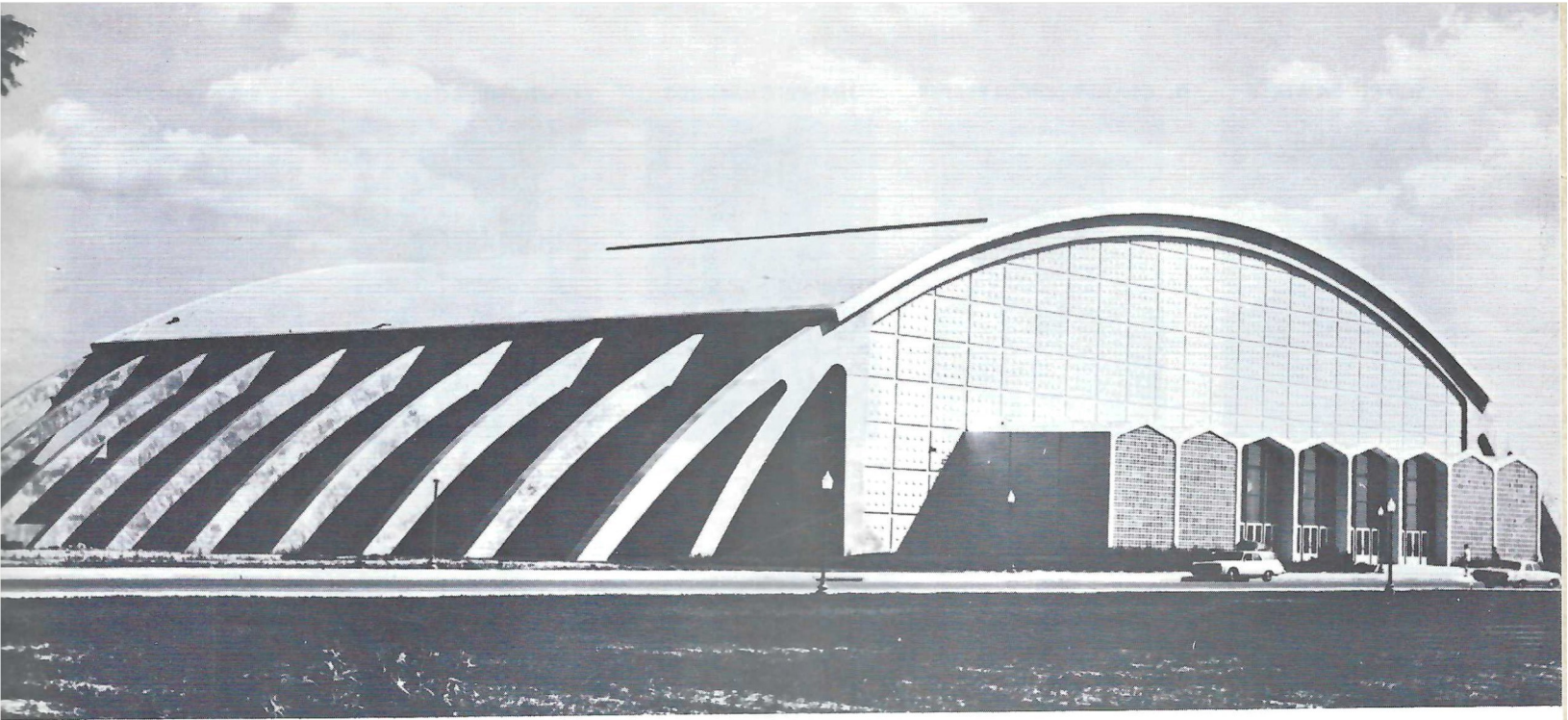
surprisingly whiter ash is visible evidence. Smoker's proof. Here is flavor you don't have to inhale to enjoy.

"Cigars . . . cigarettes . . . ?" Who knows, maybe someday it will be just "Tiparillos!"

Why don't you ask for one today?

*T. M. GENERAL CIGAR CO.

Tiparillos are on sale at this stadium.



VIRGINIA TECH COLISEUM

V.P.I. FACTS:

Location: Blacksburg, Va.
Enrollment: 7,000.
Nickname: Gobblers.
Colors: Orange and Maroon.
Stadium: Lane (35,000).
Conference: Independent.
Band: Highty Tighties.



DR. T. MARSHALL HAHN

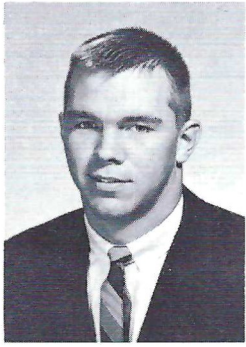


JERRY CLAIBORNE

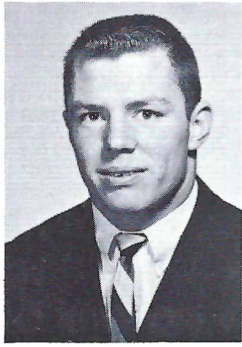


FRANK MOSELEY

SCOTT DAWSON



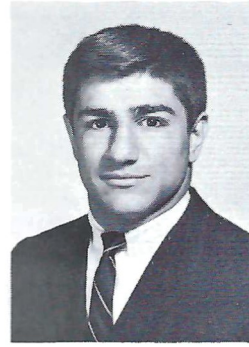
B. CLARENCE CULPEPPER



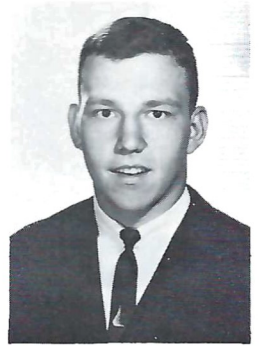
JIMMY RICHARDS



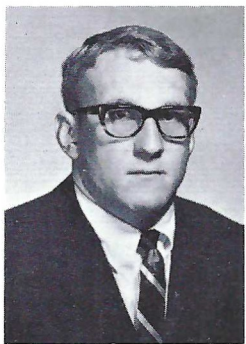
FRANK LORIA



BOB GRIFFITH

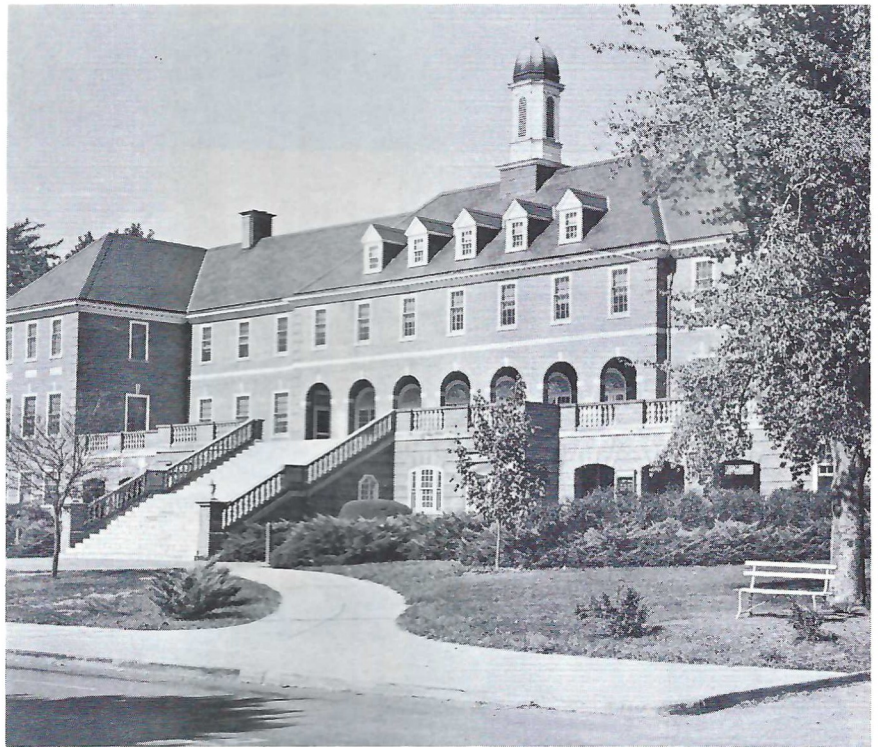


DICKIE LONGERBEAM

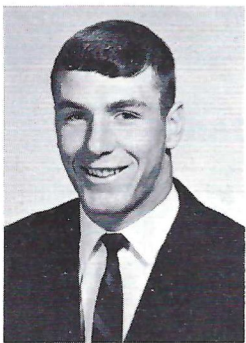


DON THACKER

**G
O
B
B
L
E
R
S**



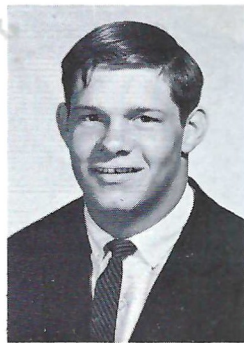
VIRGINIA TECH STUDENT ACTIVITIES BUILDING (S. A. B.)



DAN MOONEY



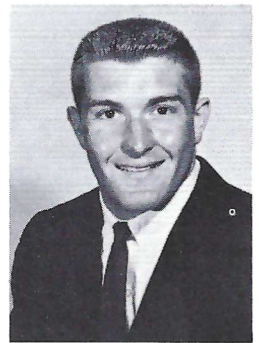
MILT MILLER



JEFF HAYNES

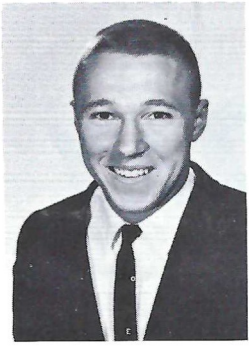


BILLY EDWARDS

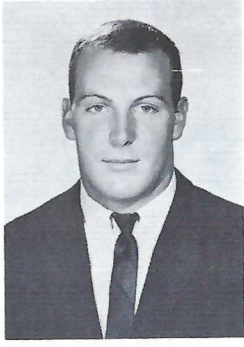


CLAUDE MESSAMORE

EDDIE BULHELLER



TOMMY FRANCISCO



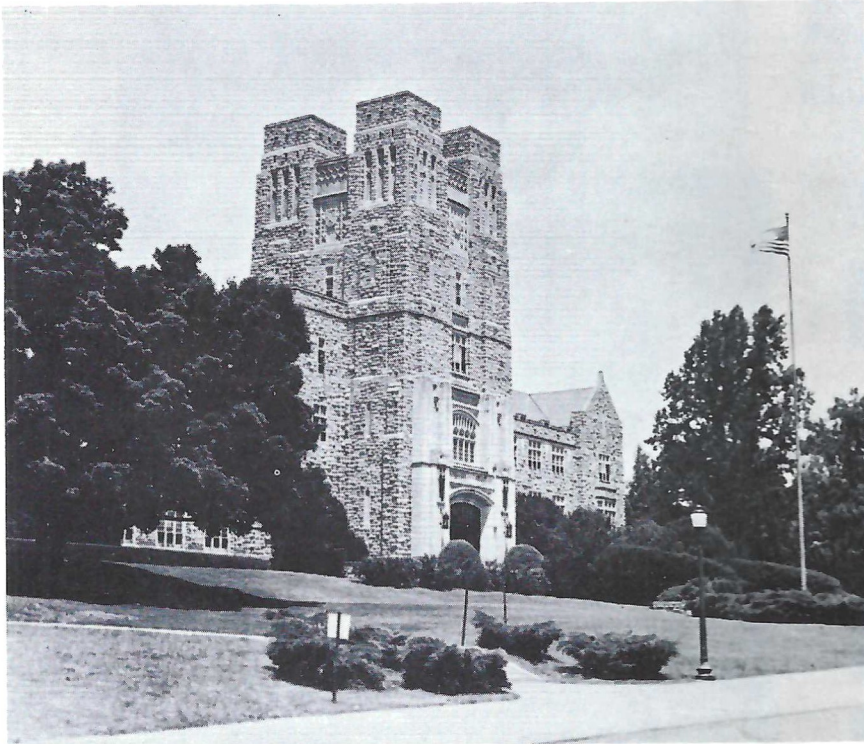
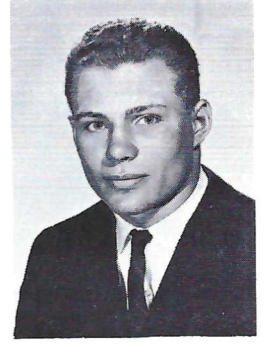
TOMMY GROOM



SAL GARCIA

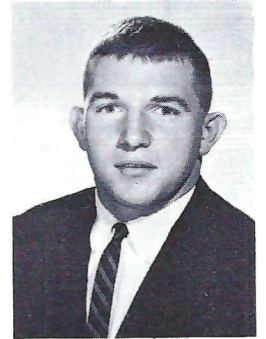


ERICK JOHNSON

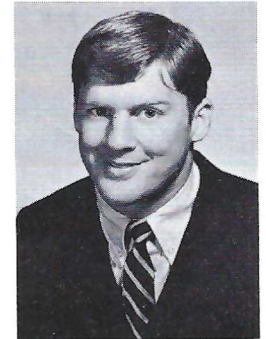


BURRUSS HALL — Virginia Tech

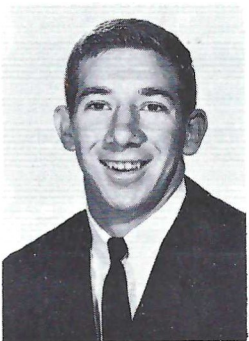
**G
O
B
B
L
E
R
S**



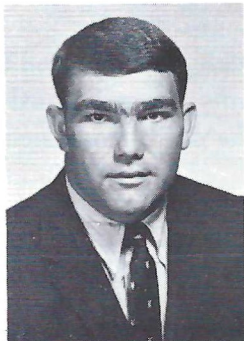
RON McGUIGAN



JOHN RAIBLE



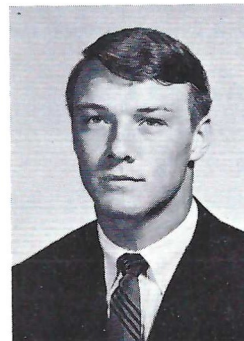
TOMMY STAFFORD



SANDS WOODY



GENE FISHER



KEN BAREFOOT



JAY BARFIELD



**THE SEMINOLE
"TWINS"**

Bookie Reynolds & Jerry Williams

DAD'S DAY SALUTE

MUSIC AT HALF TIME

October 30, 1965

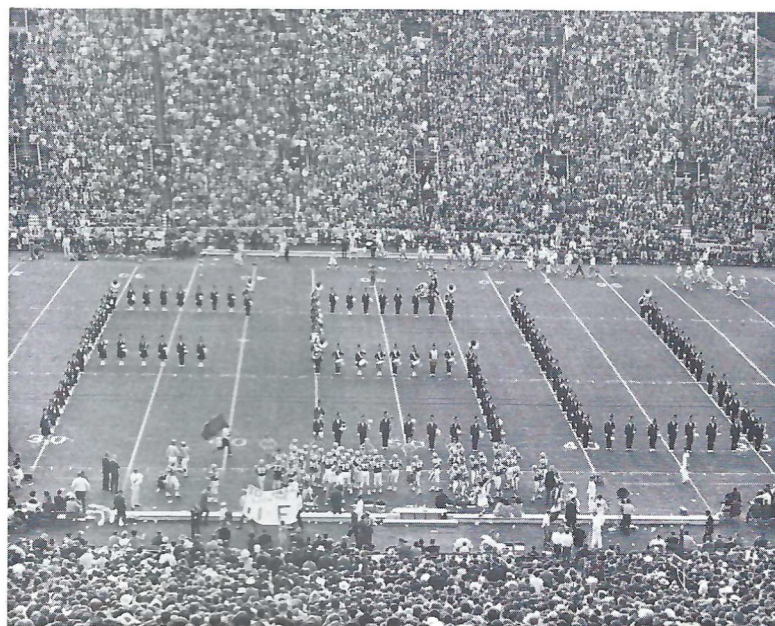
THE MARCHING CHIEFS



Robert T. Braunagel, Director
Clifford K. Madsen, Associate Director
Charles Carter, Asst. Dir. & Arranger



Camp Kirkland, Drum Major
Paulette Gergen, Head Majorette
"Cookie" Winchester, Baton Artist



MUSIC

WHAT'S THE MATTER WITH FATHER
AULD LANG SYNE
ROCKING CHAIR
IN MY MERRY OLDSMOBILE
THE MAGNIFICENT SEVEN
SMOKE GETS IN YOUR EYES
DOUBLE MINT . . . DOUBLE MINT
ANOTHER CUP OF COFFEE
COCKTAILS FOR TWO
BUBBLES IN THE WINE
DADDY
ALL THE THINGS YOU ARE

FORMATIONS

COMPANY FRONT—Band moves downfield in a salute to all Dads.
ROCKING CHAIR—(Watch it rock!) Comforts of days gone by.
SPORTS CAR—Replaces the relaxed transportation of old.
CIGARETTES & PACKAGE—Dads trade smoking for chewing gum.
COFFEE POT & CUPS—Formation "pours a cup of coffee" and transforms cups into cocktail glasses.
STEREO SET—Band plays Lawrence Welk's theme song and then switches to modern arrangement of "Daddy."
D-A-D—Introduction of fathers of Seminole football team.

FLORIDA STATE

OFFENSE

LE 88 Jerry Jones	21 Donovan Jones
LT 70 Del Williams	76 Donnie Ellers
LG 69 Edwin Pope	60 Larry Williamson
C 54 John Stephens	55 Bob Urich
RG 73 Larry Kissam	51 Joe Avezzano
RT 64 David Braggins	77 Bob Mangan
RE 89 Max Wettstein	83 Thurston Taylor
QB 16 Ed Pritchett	11 Kim Hammond
LH 30 Bill Moreman	29 Joe Petko
RH 28 T. K. Wetherell	24 Elton Revell
FB 23 Wayne Giardino	44 Jim Mankins

DEFENSE

LE 87 Terry Garvin	80 Stan Croley
LT 78 Charles Pennie	74 Jay Mac Matthews
MG 61 Jack Shinholser	66 Carlie McNeil
RT 79 Frank Pennie	53 David Pitts
RE 84 Geo. D'Alessandro	81 H. T. Waller
LB 63 Bill McDowell	40 Mike Blatt
LB 68 Joe Parrish	62 Howard Lurie
CB 22 Maury Bibent	41 Bob Menendez
CB 43 Howard Ehler	32 Bill Richardson
S 26 Bill Campbell	33 Butch Riser
S 14 Jim Massey	15 Pat Conway

CAPTAINS

84 George D'Alessandro 89 Max Wettstein
63 Bill McDowell

SPECIALISTS

Punters: 35 John Hosack, 16 Ed Pritchett
Placements: 85 Pete Roberts, 34 Frank Loner

VIRGINIA TECH

OFFENSE

LE 87 Gene Fisher	85 Bill Kegley
LT 63 Ron McGuigan	75 Erick Johnson
LG 65 John Sheehy	63 Ron McGuigan
C 50 Les Hanly	52 Milt Miller
RG 61 Bob Griffith	68 Damon Dedo
RT 74 Donnie Bruce	68 Damon Dedo
RE 81 Ken Barefoot	80 John Shipley
QB 11 Bobby Owens	13 Tommy Stafford
TB 20 Dickie Longerbeam	22 Tommy Francisco
W 40 Tommy Groom	44 Eddie Bulheller
FB 33 Sal Garcia	34 Claude Messamore

DEFENSE


LE 86 George Foussekis	88 Dan Mooney
LT 77 Sands Woody	73 Jeff Haynes
LG 66 Mike Saunders	61 Bob Griffith
CLB 41 Clarence Culpepper	72 Andy Bowling
G 67 Don Thacker	61 Bob Griffith
T 72 Andy Bowling	73 Jeff Haynes
RE 88 Dan Mooney	83 John Raible
LB 31 Billy Edwards	45 Pete Wrenn
H 27 Wayne Rash	14 Bill Skinner
RH 43 Jimmy Richards	20 Dickie Longerbeam
S 10 Frank Loria	27 Wayne Rash

CAPTAINS

All Seniors

SPECIALISTS

Punters: 87 Gene Fisher
Placements: 23 John Utin



FEDERAL HOME LOAN
MEMBER
BANK SY

TALLAHASSEE FEDERAL
SAVINGS & LOAN
ASSOCIATION

FLORIDA STATE'S 1965 VARSITY FOOTBALL ROSTER

No.	Name	Pos.	Class	Age	Ht.	Wt.	Hometown
11	Kim Hammond	QB	Soph.	21	6-1	185	Melbourne
12	Tony Gero	QB	Jr.	21	5-10	186	Madison, N. J.
14	Jim Massey**	DB	Sr.	22	5-11	175	Cairo, Ga.
15	Pat Conway*	DB	Jr.	20	5-10	180	Miami
16	Ed Pritchett**	QB	Sr.	24	6-2	181	Decatur, Ga.
17	Marty Kolbus	QB	Soph.	19	6-2	185	East Chicago, Ind.
21	Donovan Jones	OE	Jr.	20	6-1	196	Lakeland
22	Maury Bibent**	DB	Sr.	23	6-0	193	Cincinnati, O.
23	Wayne Giardino*	FB	Jr.	22	5-10	192	West Palm Beach
24	Elton Revell	HB	Jr.	21	6-0	174	Tallahassee
26	Bill Campbell	DB	Jr.	20	5-9	177	Tampa
27	Phil Spooner**	HB	Sr.	22	5-11	185	Fort Meyers
28	T. K. Wetherell	HB	Soph.	20	5-10	185	Daytona Beach
29	Joe Petko**	FB	Sr.	22	5-9	194	Shaker Heights, O.
30	Bill Moremen	HB	Soph.	20	5-11	181	Daytona Beach
31	Ron Mercer	HB	Soph.	20	5-11	190	Densmore
32	Bill Richardson	DB	Soph.	20	6-0	189	Jesup, Ga.
33	Butch Riser	DB	Soph.	20	6-0	181	Sanford
34	Frank Loner	PK	Soph.	20	6-0	195	Thomasville, Ga.
35	John Hosack	HB	Jr.	20	5-10	194	Miami
40	Mike Blatt	LB	Soph.	19	5-11	202	Key West
41	Bob Menendez	DB	Jr.	20	5-10	194	Key West
42	Alan LaMarche	DB	Soph.	20	5-11	190	Hollywood
43	Howard Ehler**	DB	Sr.	21	5-10	195	Tavares
44	Jim Mankins	HB	Jr.	21	6-2	221	King City, Calif.
51	Joe Avezzano**	OG	Sr.	22	6-2	229	Miami
52	Wayne McDuffie*	C	Jr.	21	6-2	208	Hawkinsville, Ga.
53	David Pitts*	MG	Jr.	21	5-9	202	Blountstown
54	John Stephens*	C	Jr.	20	6-1	201	Tallahassee
55	Bob Urich	C	Soph.	19	6-2	198	Toronto, O.
60	Larry Williamson	OG	Jr.	20	5-11	215	Macon, Ga.
61	Jack Shinholser**	MG	Sr.	23	6-1	217	Tampa
62	Howard Lurie*	LB	Sr.	21	6-0	201	Northridge, Calif.
63	Bill McDowell**	LB	Sr.	21	6-1	208	Tallahassee
64	Dave Braggins	OT	Jr.	20	6-2	223	Lake Wales
65	Richard McLean	OG	Soph.	19	6-0	186	Holly Hill
67	Mike Bugar	DT	Soph.	19	6-1	204	Youngstown, O.
68	Joe Parrish**	LB	Sr.	23	6-1	194	Auburndale
69	Edwin Pope	OG	Jr.	21	6-1	208	Waycross, Ga.
70	Del Williams*	OT	Jr.	20	6-2	230	Live Oak
73	Larry Kisser	OT	Jr.	20	6-0	223	Inglewood, Calif.
74	Jay Mac Matthews	DT	Jr.	21	6-1	229	Chieffland
75	Rommy Vistart	DT	Soph.	20	6-3	270	Colquitt, Ga.
76	Donnie Eilers	OT	Soph.	19	6-3	234	Bessemer, Ala.
77	Bob Mangan**	OT	Sr.	23	6-1	229	Atlanta, Ga.
78	Charles Pennie	DT	Jr.	20	6-4	240	Hollywood
79	Frank Pennie**	DT	Sr.	22	6-4	252	Hollywood
80	Stan Croley	DE	Soph.	20	6-2	192	Dade City
81	H. T. Waller	DE	Soph.	20	6-1	186	Vernon
83	Thurston Taylor	OT	Soph.	19	6-2	216	College Park, Ga.
84	George D'Alessandro**	DE	Sr.	22	5-11	202	Fort Meyers
85	Pete Roberts	PK	Soph.	20	5-11	200	Gainesville
86	Buddy Blankenship	OE	Jr.	21	6-3	200	Atlanta, Ga.
87	Terry Garvin*	DE	Sr.	22	5-11	205	Pensacola
88	Jerry Jones	OE	Soph.	20	6-1	185	Jesup, Ga.
89	Max Wettstein**	OE	Sr.	21	6-3	214	Leesburg

NOTE: * Denotes letters won.

VIRGINIA TECH'S 1965 FOOTBALL ROSTER

No.	Name	Pos.	Class	Age	Ht.	Wt.	Hometown
10	Frank Loria	HB	Soph.	18	5-9	175	Clarksburg, W. Va.
11	Bobby Owens	QB	Sr.	21	5-11	175	Richmond
12	Fred Cobb	QB	Jr.	22	5-11½	182	Suffolk
13	Tommy Stafford	QB	Jr.	20	6-0½	183	Birmingham, Ala.
14	Bill Skinner	QB	Soph.	19	6-2	173	Williamsburg
20	Dickie Longerbeam	HB	Soph.	20	6-0	183	Berryville
22	Tommy Francisco	TB	Jr.	20	6-1	186	Damascus
23	John Utin	PK	Soph.	23	5-9	150	Oxford, England
25	Rusty Fife	HB	Soph.	21	5-10	168	Bluefield
27	Wayne Rash	QB	Soph.	20	5-10½	176	Richmond
31	Billy Edwards	LB	Sr.	21	6-1½	205	Orange
32	Jay Barfield	FB	Jr.	21	5-9	185	Orlando, Fla.
33	Sal Garcia	FB	Jr.	21	5-10	185	Brooklyn, N. Y.
34	Claude Messamore	FB	Sr.	21	5-10	187	Knoxville, Tenn.
40	Tommy Groom	WB	Jr.	20	6-0	185	St. Albans, W. Va.
41	Clarence Culpepper	LB	Soph.	19	6-0	184	Birmingham, Ala.
43	Jimmy Richards	HB	Soph.	19	6-1½	175	Charlotte, N. C.
44	Eddie Bulheller	HB	Jr.	20	6-1	188	Richmond
45	Pete Wrenn	LB	Soph.	21	6-0	200	Vienna
50	Les Hanly	C	Sr.	22	5-10½	198	Waycross, Ga.
51	Scott Dawson	C	Soph.	19	6-2½	200	Ft. Walton, Fla.
52	Milt Miller	C	Soph.	20	5-11	194	Louisville, Ky.
53	Dave Farmer	G	Jr.	20	5-11½	196	Greenville, Ohio
61	Bob Griffith	G	Soph.	21	5-11	194	Louisville, Ky.
63	Ron McGuigan	G	Jr.	20	6-0	192	North Wales, Pa.
65	John Sheehy	G	Sr.	23	5-11	196	New York, N. Y.
66	Mike Saunders	G	Sr.	21	6-0	205	Lynchburg
67	Don Thacker	T	Soph.	19	6-0	204	Charlottesville
68	Damon Dedo	G	Soph.	18	5-11½	199	Riffton, Pa.
70	Art Aguilar	T	Soph.	19	5-11½	204	Springfield
72	Andy Bowling	LB	Jr.	20	6-3	215	Lynchburg
73	Jeff Haynes	G	Soph.	18	6-1	213	Princeton, W. Va.
74	Donnie Bruce	T	Jr.	20	6-4	215	Fairlawn
75	Erick Johnson	T	Jr.	20	5-11	196	Barrington, Pa.
77	Sands Woody	T	Jr.	20	5-11½	203	Roanoke
80	John Shipley	E	Sr.	22	6-2½	202	Kingsport, Tenn.
81	Ken Barefoot	E	Soph.	20	6-5	220	Chesapeake
83	John Raible	E	Jr.	21	6-0½	194	Louisville, Ky.
85	Bill Kegley	E	Jr.	21	5-11½	185	Rand, W. Va.
86	George Foussekis	E	Soph.	20	5-10½	195	Charlottesville
87	Gene Fisher	E	Soph.	19	6-3½	210	Winchester
88	Dan Mooney	E	Soph.	20	6-2	190	Annadale

SAVINGS AND LOAN ASSOCIATION

HOURS: Monday-Thursday, 8:30 a.m. to 3 p.m.—Friday, 9:30 a.m. to 6 p.m.

440 N. Monroe Street * Tallahassee, Florida

TELEPHONE 224-2161



GO TO

McDONALD'S

FOR A

PURE BEEF HAMBURGER

Right off the Grill on a Plump Toasted Bun

TRIPLE THICK SHAKE

M'M'M' Creamy Luscious to the Very Last Drop

GOLDEN BROWN FRENCH FRIES

Piping Hot and Done to a Crisp Perfection

Home of America's Favorite Hamburger
More Than a Billion Sold

LOOK FOR THE GOLDEN ARCHES

McDONALD'S

1701 W. TENNESSEE ST.
CORNER WHITEHALL



**FLORIDA STATE
UNIVERSITY
1965 - 1966 BASKETBALL
SCHEDULE**

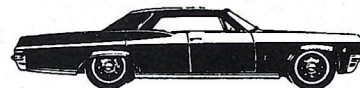
J. K. (BUD) KENNEDY
Head Basketball Coach

DATE	OPPONENT	SITE
Dec. 1	Lamar Tech	Tallahassee
Dec. 2	Valdosta	Tallahassee
Dec. 6	Tampa	Tallahassee
Dec. 8	Florida	Gainesville
Dec. 16	North Carolina	Chapel Hill, N.C.
Dec. 18	U. of California (Santa Barbara)	Tallahassee
Dec. 20-21	Tampa Invitational Tournament	Tampa
Dec. 27	Auburn	Pensacola
Jan. 3	Georgia	Athens, Ga.
Jan. 7	Miami	Tallahassee
Jan. 10	Loyola (New Orleans)	Tallahassee
Jan. 15	Memphis State	Tallahassee
Jan. 18	Florida	Tallahassee
Jan. 24	Jacksonville	Jacksonville
Jan. 31	Georgia Tech	Tallahassee
Feb. 5	Memphis State	Memphis, Tenn.
Feb. 7	Loyola (New Orleans)	New Orleans, La.
Feb. 10	Jacksonville	Tallahassee
Feb. 14	Georgia Tech	Atlanta, Ga.
Feb. 19	Howard	Tallahassee
Feb. 24	Florida Southern	Tallahassee
Feb. 26	Tampa	Tampa
Feb. 28	Miami	Miami
Mar. 5	Georgia	Tallahassee

**HERTZ WEEKEND
SPECIAL**

ONLY \$10⁹⁵ and 11c
a mile

Rent a new Chevrolet or other fine car from Friday afternoon to 9 A.M. Monday. This special rate includes everything: insurance and gas. And only Hertz offers Certified Service, your guarantee of complete rental satisfaction.



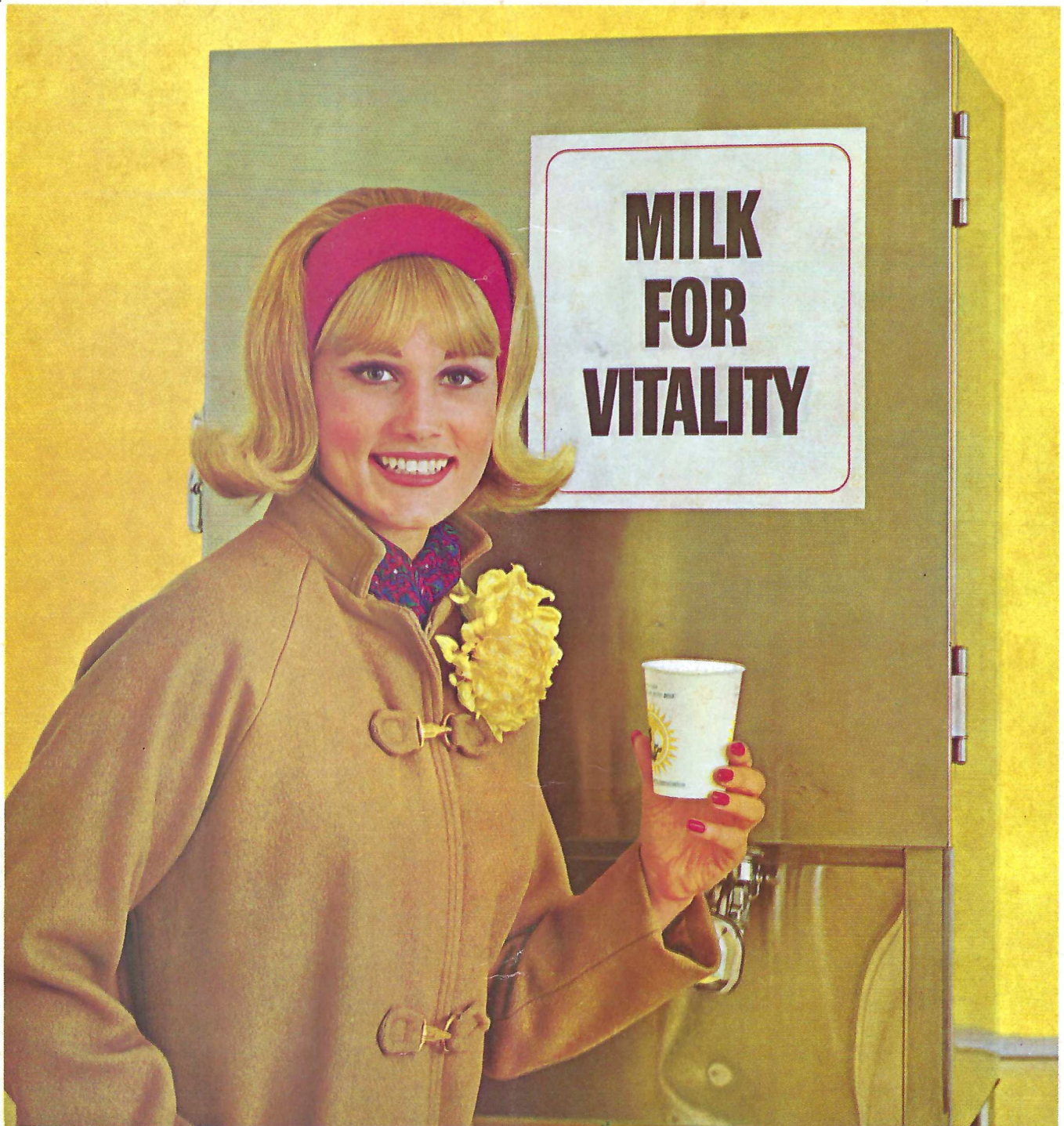
let Hertz put you in the driver's seat!



TALLAHASSEE

Duval Hotel

222-1686



HALF TIME-ANYTIME-MAKE IT MILK!

Busy football weekends call for extra energy. And that calls for a refreshing glass of milk. Milk is nature's vitality drink . . . that helps you stay in peak condition, sees you through the busiest fall days.

Half time; snacktime, anytime—when you take a break, make it milk. Keep up with the fun with milk's vitality!



a message from dairy farmer members of
american dairy association