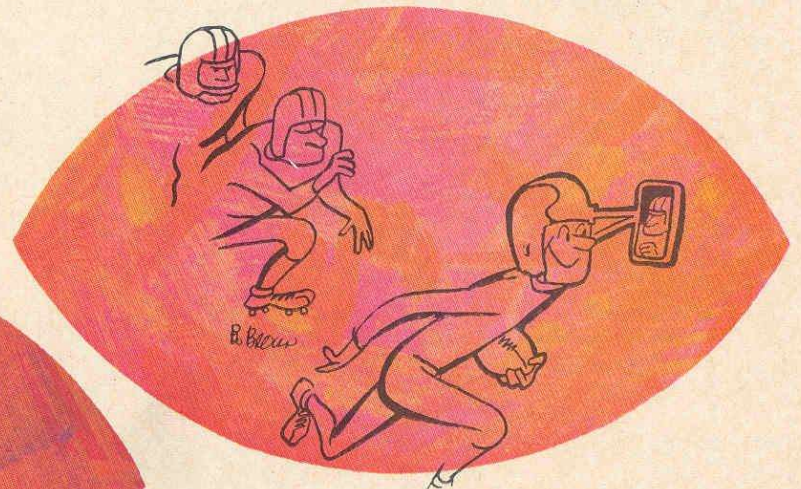
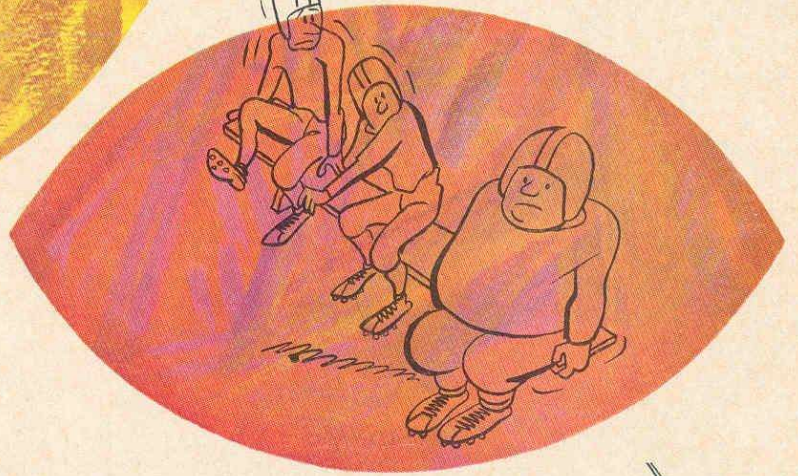


**OFFICIAL PROGRAM**

**50c**



**FLORIDA STATE**  
**VS**  
**WAKE FOREST**  
**HOMECOMING, 1965**





LOOK FOR ME  
WHEREVER YOU GO

**Jerry's**  
**RESTAURANTS**

*Scalp'em Seminoles*





# FSU FOOTBALL . . . 1965

## TABLE OF CONTENTS

Guest Column .....	4	Seminole Network .....	25
University Features .....	5, 6, 7	Stadium Information .....	27
Athletic Committee .....	8	Cheerleaders, School Songs .....	29
Seminole Football Family .....	9	Seminole Boosters, Inc. ....	30
Tonight's Teams, A Statistical Comparison .....	10	Officials' Signals .....	31
FSU All Time Records .....	11	Opponent's Pictures .....	33, 34, 35
1965 Schedule Analysis .....	12	The Marching Chiefs .....	36
FSU Player Photos .....	13, 15, 16, 17	Rosters, Depth Charts .....	Flip Card
Starting Lineups, Officials .....	20, 21	Florida State University Basketball Schedule .....	39
Penalties .....	23		

*Compliments and  
Best Wishes from*



**YOUR APPLIANCE  
HEADQUARTERS**  
611 N. Monroe St.



# OFFICIAL WATCH FOR THIS GAME

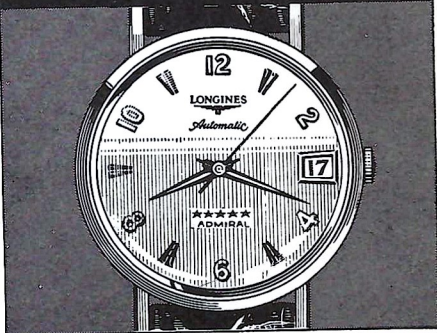


## LONGINES THE WORLD'S MOST HONORED WATCH

10 WORLD'S FAIR  
GRAND PRIZES  
28 GOLD MEDALS



Longines watches are  
recognized as **OFFICIAL**  
for timing world  
championships and Olympic  
sports in all fields  
throughout the world.



Longines 5-Star Admiral Automatic with Calendar,  
All-Proof®, sweep-second, 14K gold strap-\$185.00

### *The Longines Credo*

Every Longines watch,  
whatever its type, for whatever  
its use, today, as for almost  
a century, is manufactured to  
be the finest of its kind and  
worthy in every respect to be called  
The World's Most Honored Watch

**LONGINES-WITTMAYER WATCH CO.**  
MONTREAL • NEW YORK • GENEVA  
Maker of Watches of the Highest Character Since 1867

## Today's Game

By **BILL BUNKER**

Sports Information Director  
Florida State University



Winston-Salem, N.C. was designated an All America City in 1964. Among other things it is the home of Wake Forest College, and the resurgent Demon Deacons of Coach Bill Tate.

The stature of Wake Forest today is vastly different than that of the 1963 Deacons, the last team to face Florida State. The Seminoles handed Wake Forest a 35-0 defeat, loss number 14 in an 18 game losing streak.

University of Illinois graduate Tate took over in 1964, along with Athletic Director Gene Hooks, and the Deacon image immediately began to rise. Tate brought home a 5-5 season last year, was in the running for the Atlantic Coast Conference title until the season's final week, and received a unanimous vote as ACC "Coach of the Year."

So far this season, Wake Forest has won two games while losing five. The record is an inaccurate yardstick by which to measure the ability of the team facing Florida State this afternoon. The two Deacon victories were big ones—Vanderbilt and North Carolina, and Tate's personnel is better than several teams the Seminoles have played this season.

Wake Forest can be expected to show quite a few offensive formations today. The Deacons have two quarterbacks who can throw, and a pair of impressive receivers in end Ken Henry and halfback Joe Carazo. You can expect to see a disciplined, well-coached football team.

Florida State and Wake Forest are old friends, although the two schools most heated rivalry has been on the baseball diamond rather than the football field. Year in and year out you can figure FSU and Wake Forest to meet in Gastonia, N.C. to decide which team will represent District III in the College World Series.

This will be the sixth football meeting of the two schools. Florida State has won three, lost one and one game ended in a tie.

Wake Forest has brought some great football players to Campbell Stadium since the series began in 1956. That first meeting was Homecoming nine years ago. Those of you who were there can never forget the Deacons' All America fullback Bill Barnes who scored both Wake Forest touchdowns and gained 83 yards in the mud to tie the Seminoles 14-14.

Another rainy hair-raiser came in 1958 when FSU quarterback Joe Majors took a safety with 34 seconds left to preserve a 27-24 victory.

Lanky Norman Snead's passes brought the Deacons back from a 21-10 halftime disadvantage to make it close in that one.

And in 1963, fullback Brian Piccolo appeared for Wake Forest. Although FSU won easily, Piccolo showed the form that was to gain him national rushing and scoring honors in 1964.

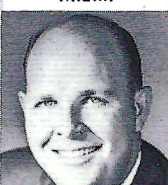
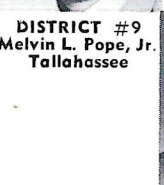
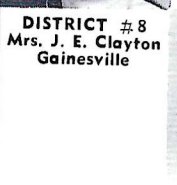
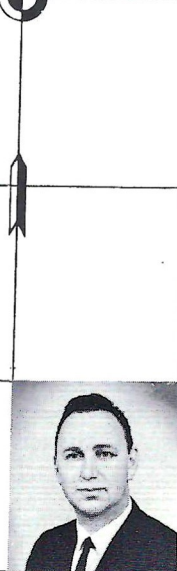
Wake Forest has always brought a good football team to Tallahassee for Homecoming, and today's should be no exception.

Meanwhile, Coach Bill Peterson and the Seminoles, along with the entire athletic department of Florida State University, welcome alumni, students, friends and fans to Homecoming, 1965.



# AN ATLAS of FSU Alumni Activities

## BOARD OF DIRECTORS



**DISTRICT #1**  
Mrs. J. D. Cline  
Tampa

**DISTRICT #2**  
Robert F. Waits  
Jacksonville

**DISTRICT #3**  
James R. Crabtree  
Pensacola

**DISTRICT #4**  
Donald Stone  
Coral Gables

**DISTRICT #5**  
Wm. S. Byers  
Orlando

**DISTRICT #6**  
Robert P. Foley  
W. Palm Bch.

**DISTRICT #7**  
Fred Mansfield  
Sarasota

**OUT-OF-STATE**  
F. D. Jordan, Jr.  
Decatur, Ga.

**AT-LARGE**  
David Kennedy  
Miami

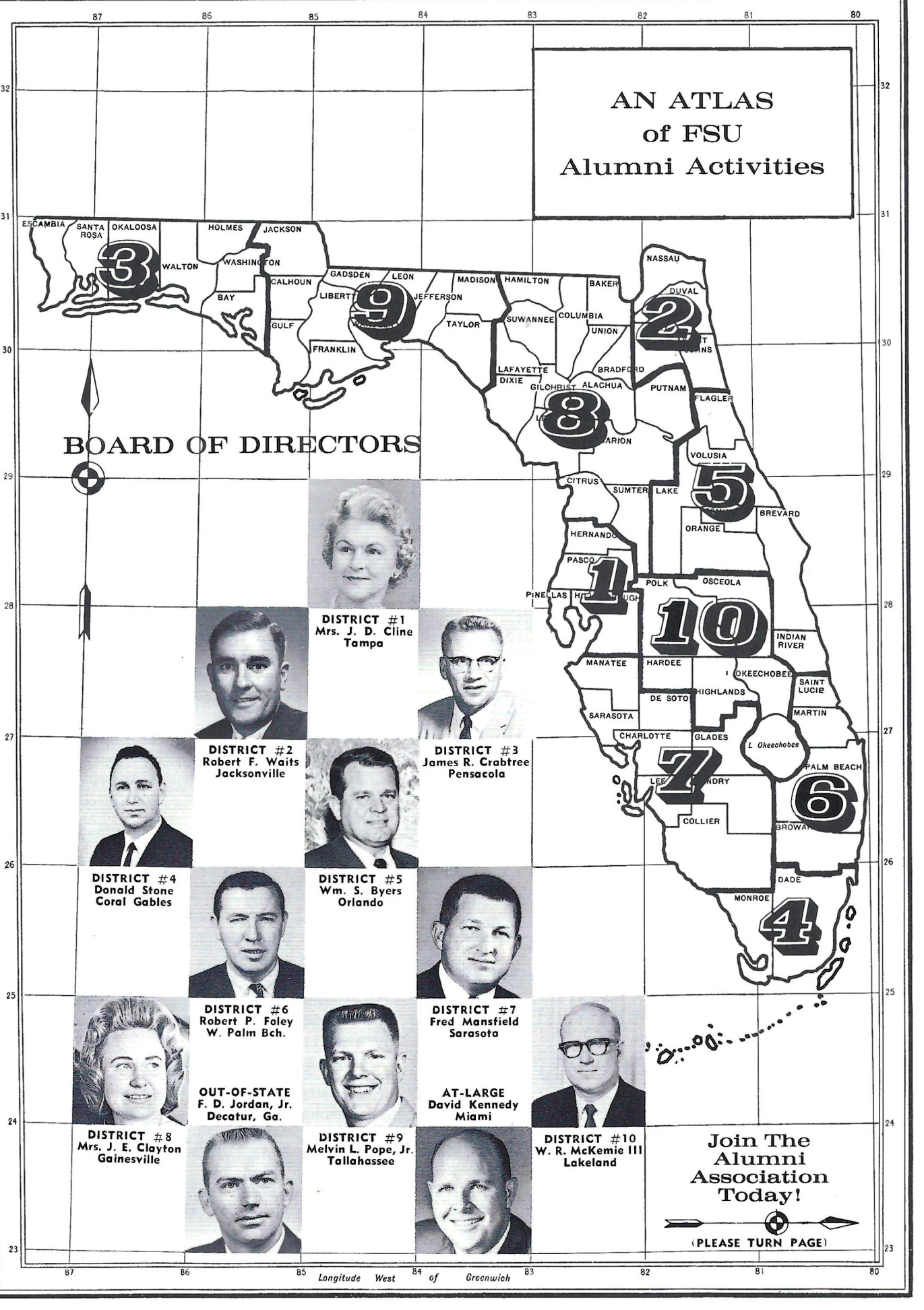
**DISTRICT #8**  
Mrs. J. E. Clayton  
Gainesville

**DISTRICT #9**  
Melvin L. Pope, Jr.  
Tallahassee

**DISTRICT #10**  
W. R. McKemie III  
Lakeland

**Join The  
Alumni  
Association  
Today!**

(PLEASE TURN PAGE)





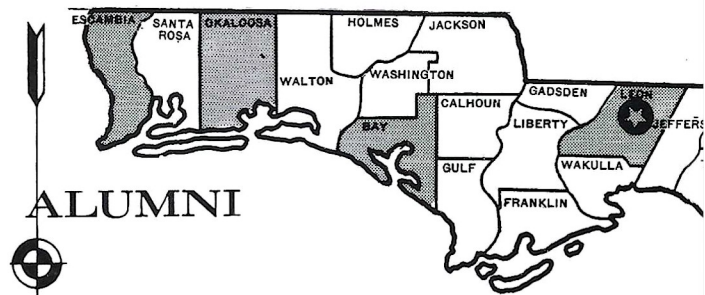
# LONGITUDE and LATITUDE



# GOALS OF ALUMNI SERVICE

Florida State's 6,000 active Alumni Association members need YOUR help in meeting their goal of 1,000 new members for 1965, and YOUR ACTIVE SUPPORT in fulfilling present and future objectives and responsibilities to the University. Among the programs supported, planned or endorsed by the Alumni Association are the following:

- Student Scholarships
- Student Loans
- Alumni Employment
- Local Alumni Clubs
- Homecoming Activities
- Class Reunions
- Legislative Programs
- Publications
- Seminole Boosters
- Recruiting Honors Students
- Seminars For Alumni
- FSU Library Support
- Seminole Tipoff Clubs
- Recruiting Student Athletes
- Continuing Education Program



## ALUMNI CLUB PRESIDENTS

Alachua County	Mrs. James E. Clayton
Bay County	Jimmy Patronis
Brevard County	Ernest P. LaRoche
Broward County	I. Coleman Davis
Dade County	David Kennedy
Duval County	Michael Conner Copps
Escambia County	Joseph F. Marques, Jr.
Hillsborough County	Joseph F. Osborne
Indian River County	Tom Martin
Lee County	Tom Garcia
Leon County	William O. Cullom
Marion County	Mrs. Carroll F. Brown
Okaloosa County	L. Bernarr Kelly
Orange County	Edward Tracy Harrison
Polk County	(Wm.) Bill McKemie III
Greater Palm Beaches	Jerry John Jacobs
Putnam County	Dr. Fred Griffin
Seminole County	Alfred Louis Davis
St. Johns County	Fred Brinkhoff
Greater St. Petersburg	Thomas H. Gregory
Sarasota	James J. Heagerty
Volusia (Halifax Area)	H. Radford Bishop
Greater Atlanta Area	J. P. "Buddy" Bryant
Birmingham, Ala.	Charles Oliver Gentry
Detroit, Mich.	Matthew J. Sullivan
Greater New Orleans	William R. Graham
Houston, Tex.	Mrs. James F. Enyeart
Washington, D. C. Area	Mrs. D. R. Matthews
Greater New York Area	Jacques W. F. Allen



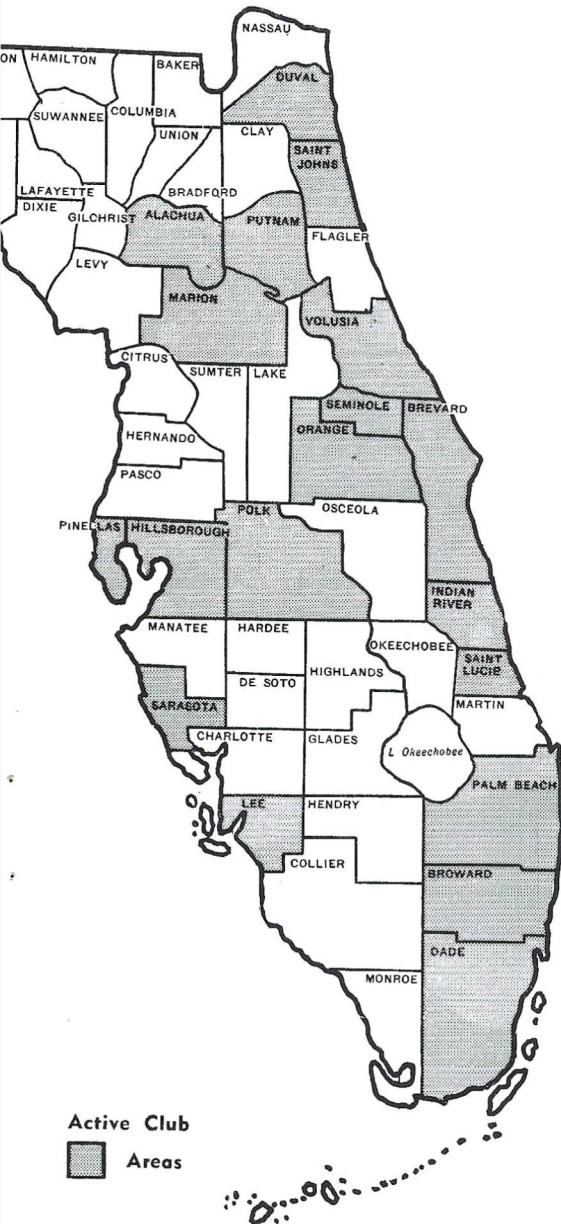
# Florida State University ALUMNI ASSOCIATION



## 1965 OFFICERS



<b>PRESIDENT</b> Chas. F. Mixon, Jr. Tampa		<b>PRESIDENT-Elect</b> Harry W. Massey Palm Beach	
		<b>SECRETARY</b> Mrs. R. Chase II Sanford	
		<b>TREASURER</b> Gordon D. Gaster Daytona Beach	
<b>PAST PRESIDENT</b> Edward M. Eissey W. Palm Bch.		<b>DIRECTOR</b> Thomas A. Waits Tallahassee	



### Honor Class of 1915

**Mrs. F. D. Warren**  
President



## REUNION CLASS PRESIDENTS

- 1965 – Julian Proctor  
Tallahassee
- 1954 – Milton Carothers  
Covington, Va.
- 1953 – Robert C. Ryals, Jr.  
Tallahassee
- 1952 – Mrs. U. H. Parrish, Jr.  
nee: Alice Davidson  
South Miami
- 1951 – Mrs. Robert W. Wright  
nee: Jean Sayer  
Savannah, N. Y.

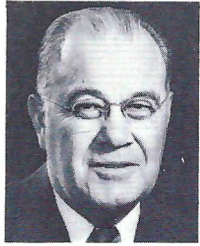
- 1935 – Mrs. Howard Cone, Jr.  
nee: Jennie Rae Nall  
Douglaston, N. Y.
- 1934 – Mrs. R. W. Haskell, Jr.  
nee: Carleen Vinal  
St. Petersburg
- 1933 – Mrs. Herchel A. Auxier  
nee: Lucy Pope  
Vero Beach
- 1932 – Mrs. Walter Miltzer  
nee: Sarah Newman  
Lincoln, Neb.



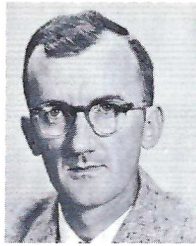
# FLORIDA STATE'S ATHLETIC COMMITTEE



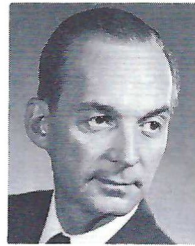
**Mode L. Stone,**  
Chairman  
Dean, School of  
Education



**Coyle E. Moore**  
Dean, School of  
Social Welfare



**Elston Roady**  
Professor,  
Government



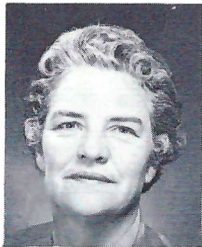
**Thomas Wright**  
Assoc. Professor,  
Music



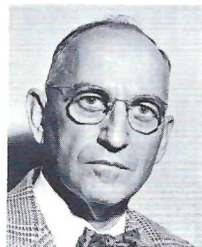
**Claude Flory**  
Professor, English



**Robert Earnest**  
Professor, Business



**Mary Alexander**  
Assoc. Professor,  
Physical Education  
and Recreation



**J. M. Plant**  
Assoc. Professor,  
Engineering Science

## MIDYETTE-MOOR Insurance Agency

"Ask Those We Serve"

Complete Insurance and Bond Service

PHONE 222-3456



MIDYETTE-MOOR BUILDING  
TALLAHASSEE, FLORIDA

SAYS

SCALP 'EM SEMINOLES!



Payne Midyette  
Frank Moor  
Ed Clark  
Winslow Sullivan  
Bob Dickinson  
Paul Lewis  
Payne Midyette, Jr.

Bill Moor  
Bill Franklin  
Glenn Sears  
Dick Wall  
Don Northcut  
Rex Sikes  
Mike Lee

## SEMINOLES

# CHICK-N-TREAT TAKE OUT BOXES

Located Two Blocks  
From Stadium

1342 Jackson Bluff Rd.—224-4425

## BENNETT'S DRUG STORE

- Prescriptions
- Cameras
- Sundries
- Gifts
- Fountain
- Cafe
- Cosmetics
- Drugs

MEET ME AT BENNETT'S

BEFORE AND AFTER THE GAME!

Corner Monroe and College Streets

Phone 222-8980 — 222-4450



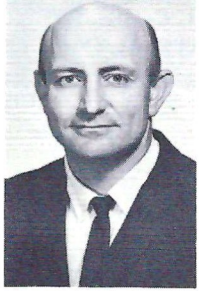
**DON JAMES**  
First Assistant  
Defensive Chief



**NEIL SCHMIDT**  
Defensive Ends,  
Linebackers



**KEN MacLEAN**  
Head Recruiter



**BILL CRUTCHFIELD**  
Offensive Chief



**DON POWELL**  
Offensive Line



**BOBBY BOWDEN**  
Receivers



**BILL PROCTOR**  
Freshman



**BILL PETERSON**  
Head Football Coach

# THE SEMINOLE FOOTBALL FAMILY

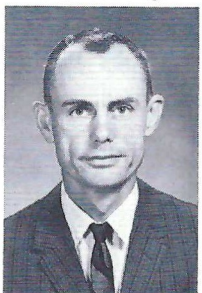
**RONALD MELTON**  
Business  
Manager



**JEFF SAVAGE**  
Academic  
Advisor



**CLAUDE THIGPEN**  
Ticket Manager



**BILL BUNKER**  
Sports  
Information



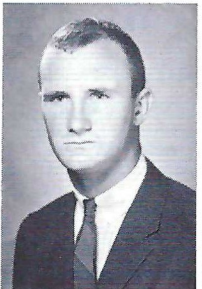
**VAUGHN MANCHA**  
Director of Athletics



**DR. R. P. JOHNSON**  
Team Physician



**DON FAULS**  
Head Trainer



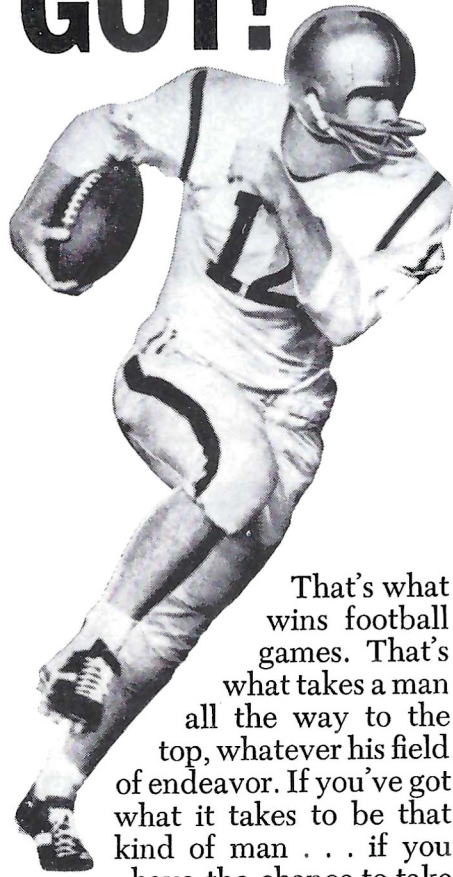
**PHIL CALLICUTT**  
Trainer



**TILLMAN DIXON**  
Equipment  
Manager



# GIVE IT EVERY-THING YOU'VE GOT!



That's what wins football games. That's what takes a man all the way to the top, whatever his field of endeavor. If you've got what it takes to be that kind of man . . . if you have the chance to take ROTC, make what you've got count. Go for an Army commission. That way, come commencement, you'll have two good things going for you: your college degree, and the gold bars that mark you a leader of men . . . tested, trained, trusted.

# GET IN—STAY IN ARMY ROTC!

## TODAY'S COMMIT

### A Statistical Commitment



Claude Flory

FLORIDA STATE Results (3-3)		
3	TCU	7
9	Baylor	7
24	Kentucky	26
10	Georgia	3
0	Alabama	21
7	VPI	6
<hr/>		<hr/>
53		70

WAKE FOREST Results (2-5)		
	VPI	12
	N. C. State	13
	Vanderbilt	0
	Maryland	10
	S. Carolina	38
	N. Carolina	10
	Clemson	26
<hr/>		<hr/>
		109

#### TEAM STATISTICS

81	First Downs	94
769	Yards Rushing	803
709	Yards Passing	843
154	Passes Attempted	158
64	Passes Completed	73
11	Passes Had Intercepted	11
4	Fumbles Lost	5
39	Punts	55
38.3	Punting Average	31.7

#### INDIVIDUAL LEADERS

##### Rushing

Name	Att.	Yards	Avg.	Name	Att.	Yards	Avg.
Giardino	53	174	3.3	Heck	120	399	3.3
Mankins	42	170	4.0	Carazo	51	177	3.5
Pritchett	42	166	4.0	Golightly	29	120	4.1
Moreman	24	164	6.8				

##### Passing

Name	Att.	Comp.	Yards	TD	Name	Att.	Comp.	Yards	TD
Pritchett	152	63	699	2	Hauswald	90	39	439	1
					Wilson	67	33	378	3

##### Pass Receiving

Name	Caught	Yards	TD	Name	Caught	Yards	TD
J. Jones	16	189	0	Carazo	27	286	0
Wetherell	10	143	1	Henry	25	301	2
Giardino	9	52	0	Kelly	7	58	1
Wettstein	8	116	1	Dixon	3	70	1

##### Punting

Name	No.	Avg.	Name	No.	Avg.
Hosack	39	38.3	Shillinglaw	33	34.0
			Wilson	19	32.8

##### Scoring

Name	TD	FG	PAT	TP	Name	TD	FG	PAT	TP
Roberts	0	4	5	17	McKinney	0	4	4	16
Wetherell	2	0	0	12	Kelly	2	0	0	12
Moreman	2	0	0	12	Henry	2	0	0	12

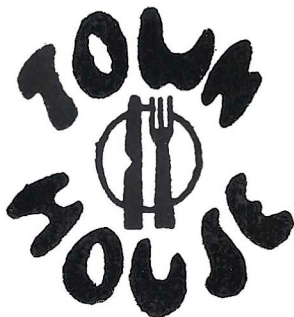


# The Vogue

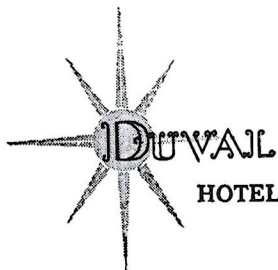
TALLAHASSEE, FLORIDA

TRAVELING  
DESSERT TRAYS

FAMOUS  
TOWN HOUSE  
ROAST  
PRIME RIB  
OF BEEF



LE ROC



HOTEL • TALLAHASSEE, FLORIDA

## ALL TIME FLORIDA STATE RECORDS

### SINGLE GAME

#### Individual

- TOUCHDOWNS SCORED—4 by Fred Biletnikoff vs. Oklahoma, Gator Bowl, 1965
- LONGEST TOUCHDOWN RUN FROM SCRIMMAGE—80 yards by Fred Pickard vs. Virginia Tech, 1957
- LONGEST TOUCHDOWN PASS—80 yards, Nelson Italiano to Eddie Gray vs. Newberry, 1950
- LONGEST TOUCHDOWN RUN ANY SITUATION—99 yards by Ted Hewitt vs. Stetson, 1948 and Fred Biletnikoff vs. Miami, 1963 (interception return)
- LONGEST TOUCHDOWN PLAY—100 yards by Bill Moreman and T. K. Wetherell (lateral on kickoff return) vs. Kentucky, 1965
- LONGEST RUN FROM SCRIMMAGE WITHOUT SCORING—76 yards by Roy Thompson vs. Stetson, 1951
- LONGEST INTERCEPTION RETURN—99 yards by Ted Hewitt vs. Stetson, 1948 and Fred Biletnikoff vs. Miami, 1963
- LONGEST PUNT RETURN—80 yards by Billy Odom vs. Stetson, 1954
- LONGEST KICKOFF RETURN—89 yards by Billy Odom vs. Va. Tech, 1955
- LONGEST PUNT—84 yards by Tommy Brown vs. Tampa, 1950
- LONGEST FIELD GOAL—44 yards by Les Murdock vs. Virginia Tech, 1963
- TIMES RUSHING—29 by Fred Pickard vs. Georgia, 1949
- YARDS RUSHING—161 by Buddy Strauss vs. Mississippi College, 1949
- PASSES ATTEMPTED—39 by Steve Tensi vs. Virginia Tech, 1964
- PASSES COMPLETED—23 by Steve Tensi vs. Oklahoma, Gator Bowl, 1965
- YARDS PASSING—313 by Joe Majors vs. Tampa, 1959
- TOUCHDOWN PASSES—5 by Steve Tensi vs. Oklahoma, Gator Bowl, 1965
- TOTAL OFFENSE—369 yards by Joe Majors vs. Tampa, 1959 (56 rush, 313 pass)
- PASSES CAUGHT—13 by Fred Biletnikoff vs. Oklahoma, Gator Bowl, 1965
- YARDS RECEIVING PASSES—192 by Fred Biletnikoff vs. Oklahoma, Gator Bowl, 1965
- TOUCHDOWN PASSES CAUGHT—4 by Fred Biletnikoff vs. Oklahoma, Gator Bowl, 1965
- PASSES INTERCEPTED—3 by Tommy Brown vs. Stetson, 1950; and Georgia Tech, 1952; Lee Corso vs. Georgia, 1954; and Bud Whitehead vs. Virginia Tech, 1959
- FIELD GOALS—3 by Les Murdock vs. Florida, 1964.
- PUNTS—11 by John Hosack vs. Baylor, 1965 (40.8 average)

#### TEAM

- POINTS SCORED—74 vs. Whiting Field, 1949
- MARGIN OF VICTORY—74-0 vs. Whiting Field, 1949
- MARGIN OF DEFEAT—0-42 vs. Georgia, 1959
- YARDS RUSHING—383 vs. Abilene Christian, 1957
- YARDS PASSING—355 vs. Villanova, 1954
- TOTAL OFFENSE—526 vs. Furman, 1962 (277 rush, 239 pass)
- PASSES ATTEMPTED—40 vs. Virginia Tech, 1964
- PASSES COMPLETED—23 vs. Oklahoma, Gator Bowl, 1965
- PASSES INTERCEPTED—7 vs. Virginia Tech, 1959
- PUNTS—11 vs. Baylor, 1965



## SEMINOLES ON THE WARPATH

Record: Won 3, Lost 3

Date	Opponent	FSU	Opp.
Sept. 25	Texas Christian at Fort Worth	3	7
Oct. 2	Baylor at Tallahassee	9	7
Oct. 9	Kentucky at Lexington	24	26
Oct. 16	Georgia at Tallahassee	10	3
Oct. 23	Alabama at Tuscaloosa	0	21
Oct. 30	Virginia Tech at Tallahassee	7	6
Nov. 6	Wake Forest at Tallahassee (Homecoming)		
Nov. 13	N. C. State at Raleigh		
Nov. 20	Houston at Tallahassee		
Nov. 27	Florida at Gainesville		

## SOUTHERNAIRE MOTEL & SKYLINE MOTOR LODGE



Quality people always seek  
quality accommodations

# PLEASE!

**CONSUMPTION OF ALCOHOLIC  
BEVERAGES IS PROHIBITED  
ON UNIVERSITY PROPERTY**

University regulations, and those of the State Board of Regents prohibit the consumption of alcoholic beverages on any part of the campus of Florida State University.

Please cooperate and abide by these regulations. Enjoy the game in the true spirit under which collegiate athletic contests are held, and be mindful of the rights of others.



OPEN TILL 2 AM  
FRI. & SAT.

LIVE ENTERTAINMENT

**Talem**  
lounge coffee shop

506 S. WOODWARD  
1 BLOCK FROM STADIUM

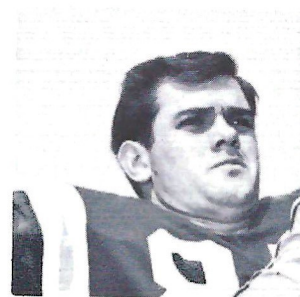




**Bob Mangan**



**Joe Petko**



**John Hosack**

# Introducing...the FLORIDA STATE UNIVERSITY 65 SEMINOLES



**Bill Campbell**



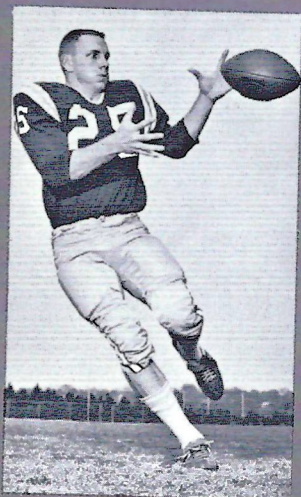
**Jack Shinholser**



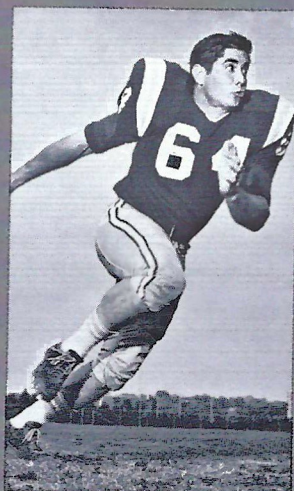
**Phil Spooner**



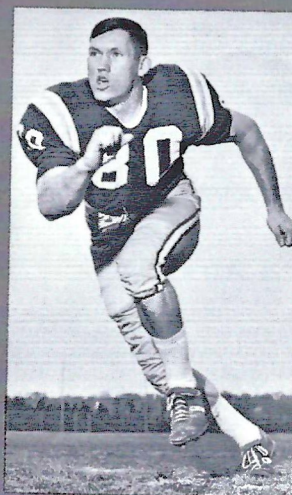
**Elton Revell**



**T. K. Wetherell**



**Dave Braggins**



**H. T. Waller**



**Jay Matthews**



*Learn to Fly at*  
G. C. Shuler  
**Seminole Flying Service, Inc.**

**Municipal Airport**

Phone 222-3121

Tallahassee, Fla.

- **STUDENT CLUBS**
- **AIRPLANE RIDES**
- **FLIGHT INSTRUCTION**
- **AERIAL PHOTOGRAPHY**
- **CHARTER FLIGHTS**
- **AIRCRAFT RENTAL**

**FLY the best—A New Cessna**

**"Look up—a new CESSNA will be overhead"**

**Before Or After  
Game**

**CHICKEN IN THE ROUGH**  
COPYRIGHT 1937 BY BEVERLY OSBORN

**QUAKER HOUSE**



**RESTAURANT**

*Dining Room  
and Curb Service*

Tennessee Street  
Next to Lafayette Motel

**The  
Association  
of  
Tallahassee Banks**

Lewis State Bank  
The Peoples Bank  
Industrial Savings Bank  
Parkway National Bank  
The Tallahassee Bank & Trust Co.  
Capital City First National Bank

**All Members of F.D.I.C.**



**furniture co.**  
INCORPORATED

THOMASVILLE ROAD  
PH. 222-1415

**TALQUIN INN**

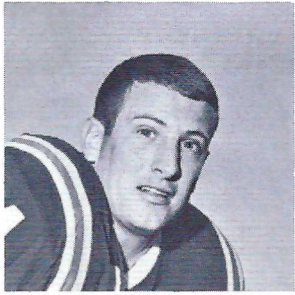
on

**RESTAURANT ROW**

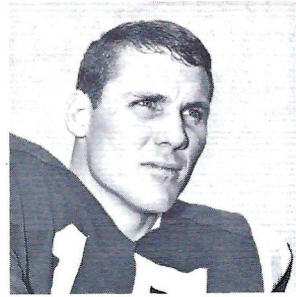
**Open 5:00 p.m. - 12:30 a.m.**

**Closed Sundays**

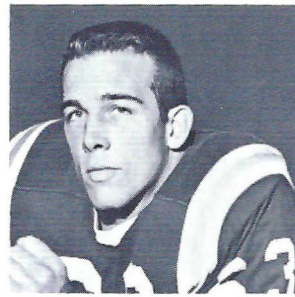




**Jim Massey**



**Pat Conway**



**Bill McDowell**

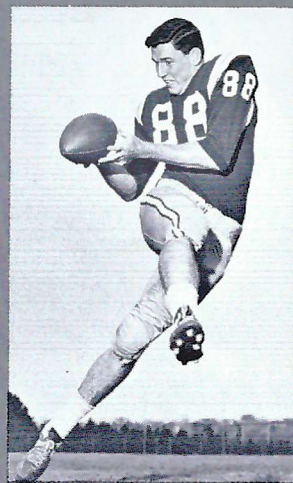


**Thurston Taylor**

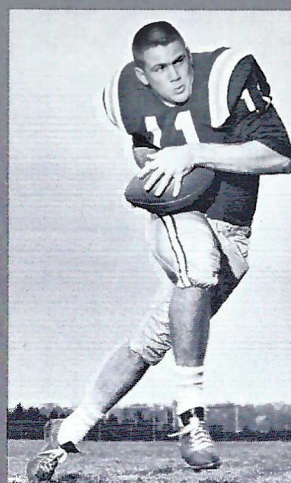
# FLORIDA STATE UNIVERSITY 65 SEMINOLES



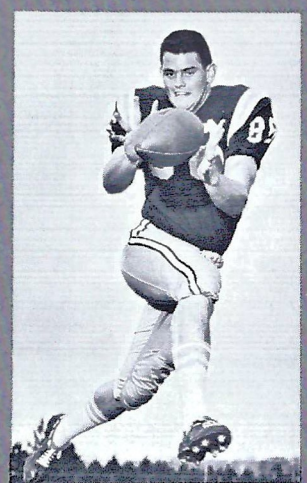
**Joe Avezzano**



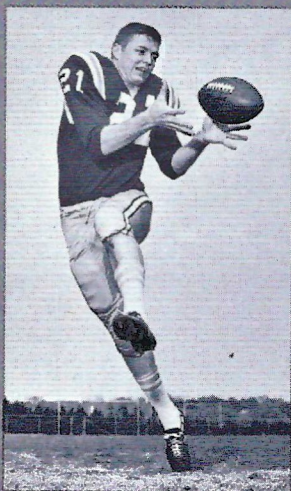
**Stan Croley**



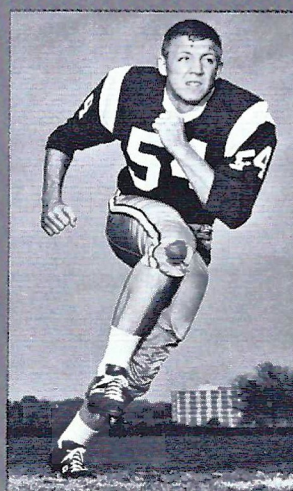
**Kim Hammond**



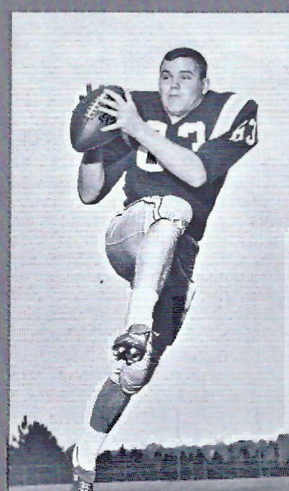
**Buddy Blankenship**



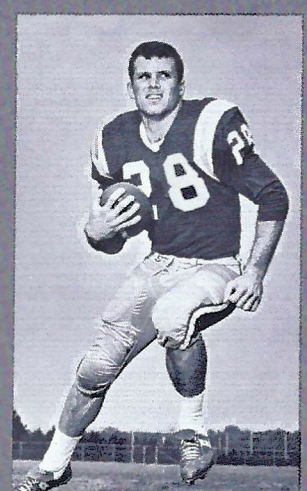
**Bill Cox**



**John Stephens**

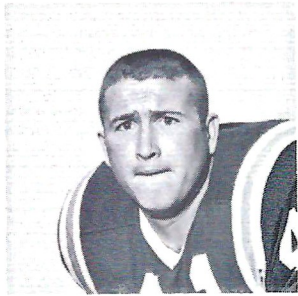


**Jerry Jones**

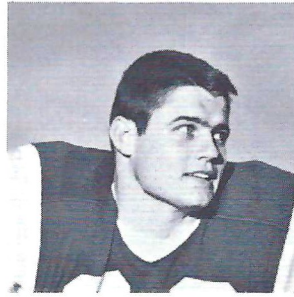


**Bill Moreman**

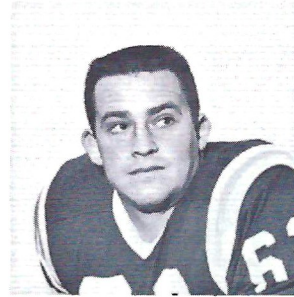




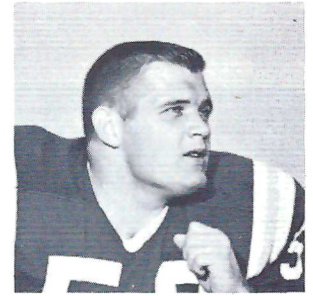
**Bob Menendez**



**Edwin Pope**

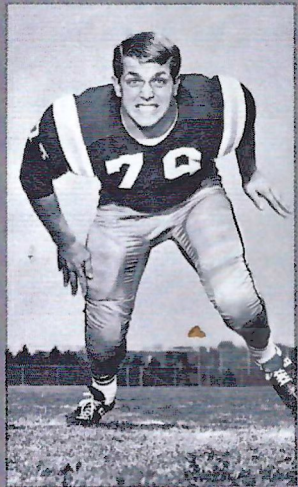


**Howard Lurie**



**David Pitts**

# the FLORIDA STATE UNIV



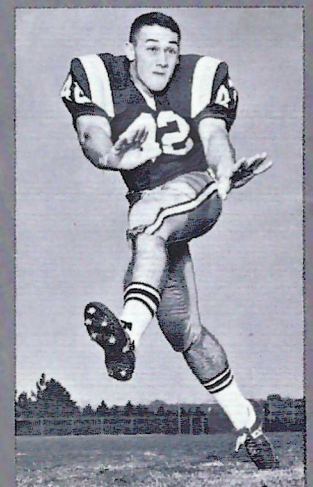
**Frank Pennie**



**Donovan Jones**



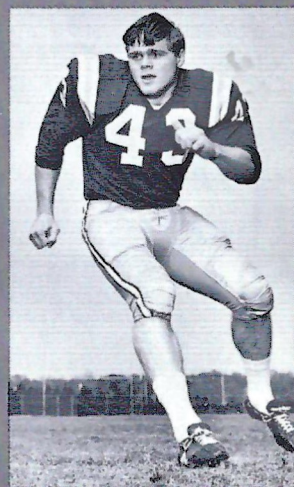
**Ed Pritchett**



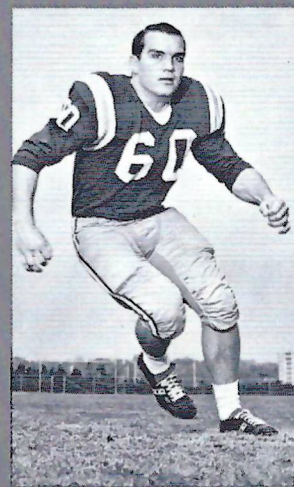
**Bill Richardson**



**Joe Parrish**



**Howard Ehler**

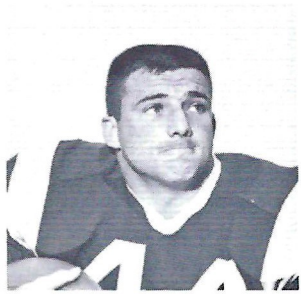


**Larry Williamson**

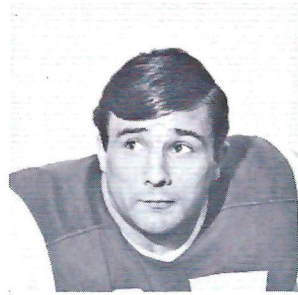


**Wayne Giardino**

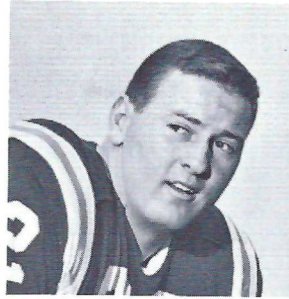




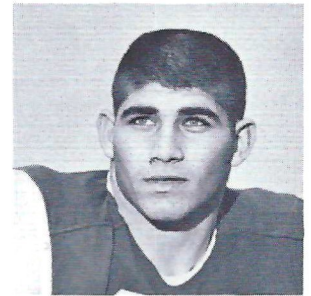
Jim Mankins



Terry Garvin



Wayne McDuffie



Mike Blatt

# UNIVERSITY 1965 SEMINOLES



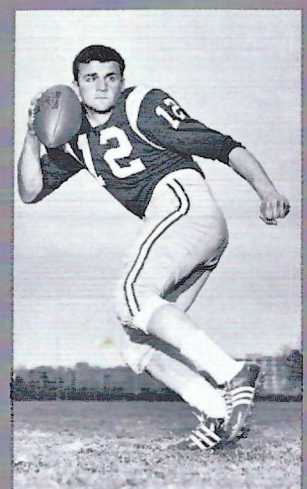
Charles Pennie



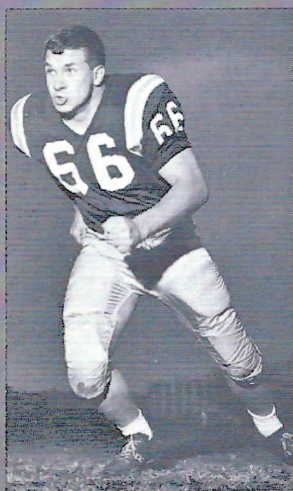
Maury Bibent



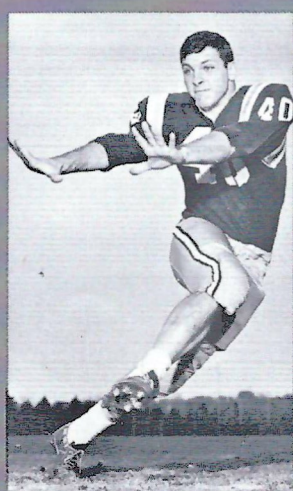
George D'Alessandro



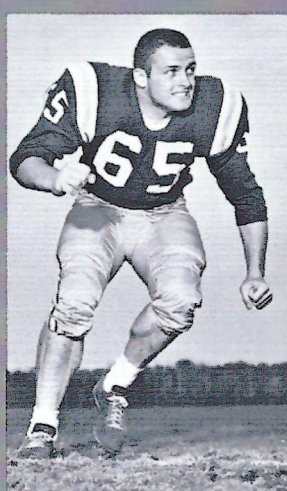
Tony Gero



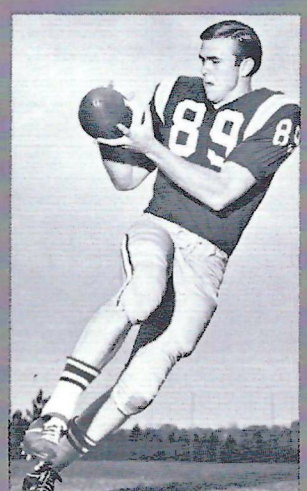
Carl McNeil



James Riser



Dave Hall



Max Wettstein





SPURGEON CAMP

*"Let's Be  
#1  
In 1965"*



**SOUTHERN  
ELECTRIC INC.**

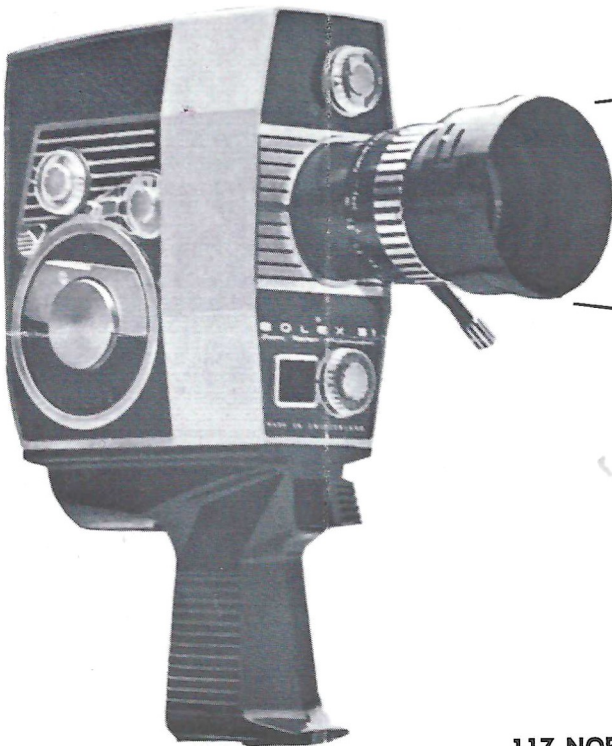
**5-Store Purchasing Power  
Saves You Money on G-E Appliances!**

<b>Tallahassee</b> Downtown and Capital Plaza	<b>Perry, Fla.</b> 115 E. Green St. on the Square	<b>Valdosta, Ga.</b> 117 W. Central	<b>Albany, Ga.</b> 225 W. Ogle- thorpe St.
---	---	--	--



**WHERE YOU  
WILL FIND  
YOUR FRIENDS**

701 W. JEFFERSON  
South Gate F.S.U.



FOCUS ON

**TALLAHASSEE  
CAMERA  
CENTER, INC.**

**FOR ALL OF YOUR PHOTO NEEDS**

- CAMERAS
- FILM
- ACCESSORIES
- RENTALS
- BINOCULARS
- FAST PHOTO FINISHING

117 NORTH MONROE ST.

PH. 222-8771

"ACROSS FROM THE FLORIDA THEATER"



*STEP  
OUT FRONT  
IN '66 ... in a Rocket Action Olds!*



**442** Swinging new kind of sports car excitement!



400-cubic-inch V-8, 4-barrel carb, twin pipes: Buckle up and have yourself a ball! This is the 350-hp 4-4-2. With heavy-duty suspension, built to K.O. the roughest roads. Front and rear stabilizers to take the "bend" out of curves, the bind out of corners. And under it all—pavement-biting red-line tires! But the swinging-est thing about Olds 4-4-2 is its surprisingly modest price! **LOOK TO OLDS FOR THE NEW!**

Oldsmobile Division • General Motors Corp.





things go  
better  
with  
**Coke**  
TRADE-MARK ®

**OFFENSE**

- 88 JERRY JONES ..... LE
- 70 DEL WILLIAMS ..... LT
- 69 EDWIN POPE ..... LG
- 54 JOHN STEPHENS ..... C
- 73 LARRY KISSAM ..... RG
- 64 DAVID BRAGGINS ..... RT
- 89 MAX WETTSTEIN ..... RE
- 16 ED PRITCHETT ..... QB
- 30 BILL MOREMAN ..... LH
- 28 T. K. WETHERELL ..... RH
- 44 JIM MANKINS ..... FB

- 11 Hammond, QB
- 12 Gero, QB
- 14 Massey, DB
- 15 Conway, DB
- 16 Pritchett, QB
- 17 Kolbus, QB
- 21 D. Jones, E
- 22 Bibent, DB
- 23 Giardino, FB
- 24 Revell, HB
- 26 Campbell, DB
- 27 Spooner, HB
- 28 Wetherell, HB
- 29 Petko, FB
- 30 Moreman, HB
- 31 Mercer, HB
- 32 Richardson, DB
- 33 Riser, DB
- 35 Hosack, HB
- 40 Blatt, LB
- 41 Menendez, DB
- 42 LaMarche, DB
- 43 Ehler, DB
- 44 Mankins, HB

**OFFENSE**

- 80 KEN HENRY ..... LE
- 71 JIM BEAUDOIN ..... LT
- 60 LYNN NESBITT ..... LG
- 51 BOB OPLINGER ..... C
- 61 DON HENSLEY ..... RG
- 76 TOMMY BRAWLEY ..... RT
- 85 TOM STUETZER ..... SE
- 12 JON WILSON ..... QB
- 24 DOUG GOLIGHTLY ..... LH
- 20 JOE CARAZO ..... RH
- 34 ANDY HECK ..... FB

- 10 Hauswald, QB
- 12 Wilson, QB
- 14 Cheatwood, QB
- 20 Carazo, RHB
- 22 Dixon, RHB
- 24 Golightly, LHB
- 30 Berra, FB
- 32 McKinney, FB
- 34 Heck, FB
- 35 Smith, FB
- 36 Marks, LB
- 40 Harper, LHB
- 41 Baker, RHB
- 42 Arrington, LHB
- 43 Kelly, LHB
- 44 Davis, LHB
- 50 B. Williams, LB
- 51 Oplinger, C
- 52 Penn, C
- 53 Gholson, C

Referee—W. C. Clary, Winston-Salem, N. C.  
 Umpire—Charles H. Brown, Atlanta, Ga.  
 Linesman—Paul Wood, Lexington, N. C.

*Fla  
St*

Probable St

**FLORIDA S**

- 51 Avez
- 52 McD
- 53 Pitts,
- 54 Steph
- 55 Ulrich
- 60 Willia
- 61 Shinh
- 62 Lurie
- 63 McD
- 64 Bragg
- 65 McLe
- 66 McNe

*W  
Fo*

Probable St

**WAKE FOR**

- 54 Ander
- 55 Hall
- 60 Nesb
- 61 Hensl
- 62 Perre
- 63 Dunca
- 64 Hobb
- 65 Coler
- 66 McM
- 67 Sasse

**OFFIC**



ida  
 rte  
 ng Lineup

DEFENSE		
87	TERRY GARVIN	LE
78	CHARLES PENNIE	LT
61	JACK SHINHOLSER	MG
79	FRANK PENNIE	RT
84	G. D'ALESSANDRO	RE
63	BILL McDOWELL	LB
68	JOE PARRISH	LB
22	MAURY BIBENT	CB
43	HOWARD EHLER	CB
26	BILL CAMPBELL	S
15	PAT CONWAY	S

E SQUAD

67	Bugar, DT	81	Waller, DE
68	Parrish, LB	83	Taylor, T
69	Pope, G	84	D'Alessandro, DE
70	Williams, T	85	Roberts, PK
73	Kissam, T	86	Blankenship, E
74	Matthews, DT	87	Garvin, DE
75	Vistart, DT	88	J. Jones, E
76	Ellers, T	89	Wettstein, E
77	Mangan, T		
78	C. Pennie, DT		
79	F. Pennie, DT		
80	Croley, DE		

ke  
 est

DEFENSE		
80	KEN HENRY	LE
65	EARL COLEMAN	LT
71	JIM BEAUDOIN	LG
70	JOHN SNOW	RG
66	DON McMURRY	RT
85	TOM STUETZER	RE
60	LYNN NESBITT	LB
50	BO WILLIAMS	LB
41	CARLTON BAKER	LH
20	JOE CARAZO	RH
40	ANDY HARPER	S

g Lineup  
 SQUAD

68	Hessler, LG	79	Cox, LT
70	Snow, RT	80	Henry, WE
71	Beaudoin, LT	82	Sepic, WE
72	Ferezan, RT	83	Decker, SE
73	J. Williams, RT	84	Shillinglaw, WE
74	Graves, LT	85	Stuetzer, SE
75	Anderson, RT	86	Slone, SE
76	Brawley, RT	87	Wiest, WE
77	Grant, LT	88	Brookshire, SE
78	Welch, LT		

udge—Jack Langford, Atlanta, Ga.  
 udge—Charles W. Erdmann, New Orleans, La.  
 —Joe De Lany, Atlanta, Ga.



things go  
 better  
 with  
**Coke**  
 TRADE-MARK ®





## Introducing the tuned car. 1966 Buick.

*What makes a car a car is styling, performance, ride and handling. Only when they're all tuned together is the car a Buick. Like this '66 Riviera Gran Sport.*

Every last thing that goes into a Buick — suspension, body mounts, shock absorbers—not only has to work, it has to work with everything else. That's tuning.

**Tuning is what we do more of** (and care more about) than anybody we know of. And then we go out and test it in more places, too. On roads like the ones you'll be driving on. Why we do it will be obvious when you take your first ride. The tuned car rides and handles as handsomely as it looks. (Tuning may be hard to explain. But it's easy to notice.)

**What the tuned car will do for you. And your family.** For a start, the new Riviera

will comfort you. You'll see that when you slip into the Riviera's new bench seats. Space for six. If you like buckets, they're available, with a reclining arrangement for the right-front passenger. And we have another comforting option available: a new notch-back seat that converts from bench to semi-bucket.

**Choosing the tuned car.** Visit your Buick dealer. Every Buick you see is the tuned car. Riviera, the new international classic. Riviera Gran Sport. *Every '66 Buick.*

And with a choice like that, how in the world can you go wrong?

**Wouldn't you really rather have a Buick?**



# PENALTIES

1. **OFFSIDE** by either team; Violation of scrimmage or free kick formation; Encroachment on neutral zone—Loss of Five Yards.
2. **ILLEGAL PROCEDURE, POSITION OR SUBSTITUTION**—Putting ball in play before Referee signals "Ready-for-play"; Failure to complete substitution before play starts; Player out of bounds when scrimmage begins; Failure to maintain proper alignment of offensive team when ball is snapped; False start or simulating start of a play; Taking more than two steps after Fair Catch is made; Player on line receiving snap—Loss of Five Yards.
3. **ILLEGAL MOTION**—Offensive player illegally in motion when ball is snapped—Loss of Five Yards.
4. **ILLEGAL SHIFT**—Failure to stop one full second following shift—Loss of Fifteen Yards.
5. **ILLEGAL RETURN** of substitute not previously disqualified—Loss of Fifteen Yards.
6. **ILLEGAL DELAY OF GAME**; Taking more than four times out during either half (except for replacement of injured player)—Loss of Five Yards. Team not ready to play at start of either half—Loss of Fifteen Yards.
7. **PERSONAL FOUL**—Tackling or blocking defensive player who has made fair catch; Piling on; Hurdling; Grasping face mask of opponent; Tackling player out of bounds, or running into player obviously out of play; Striking an opponent with fist, forearm, elbow or locked hands; Kicking or kneeling—Loss of Fifteen Yards (Flagrant offenders will be disqualified.)
8. **CLIPPING**—Loss of Fifteen Yards.
9. **ROUGHING THE KICKER** or holder—Loss of Fifteen Yards.
10. **UNSPORTSMANLIKE CONDUCT**—Violation of rules during intermission; Illegal return of suspended player; Coaching from sidelines; Invalid signal for Fair Catch; Persons illegally on field—Loss of Fifteen Yards. (Flagrant offenders will be disqualified.)
11. **ILLEGAL USE OF HANDS AND ARMS** by offensive or defensive player; Defensive holding—Loss of Fifteen Yards.
12. **INTENTIONAL GROUNDING** of forward pass—Loss of Five Yards Plus Loss of Down.
13. **ILLEGALLY PASSING OR HANDING BALL FORWARD**—Loss of Five Yards Plus Loss of Down.
14. **FORWARD PASS OR KICK CATCHING INTERFERENCE**—Interference with opportunity of player of receiving team to catch a kick—Loss of Fifteen Yards. Interference by member of offensive team with defensive player making pass interception—Loss of Fifteen Yards Plus Loss of Down. Interference by defensive team on forward pass—Passing Team's Ball at Spot of Foul and First Down.
15. **INELIGIBLE RECEIVER DOWN-FIELD ON PASS**—Loss of Fifteen Yards.
16. **BALL ILLEGALLY TOUCHED, KICKED OR BATTED**—Forward pass being touched by ineligible receiver beyond the line of scrimmage—Loss of Fifteen Yards from Spot of Preceding Down and Loss of a Down. Eligible pass receiver who goes out of bounds and later touches a forward pass—Loss of Down. Illegal touching of kicked ball within opponent's ten yard line—Touchback.
17. **PENALTY DECLINED**; Incomplete forward pass; No play or no score.
18. **CRAWLING** by runner—Loss of Five Yards. Interlocked interference—Loss of Fifteen Yards.

---

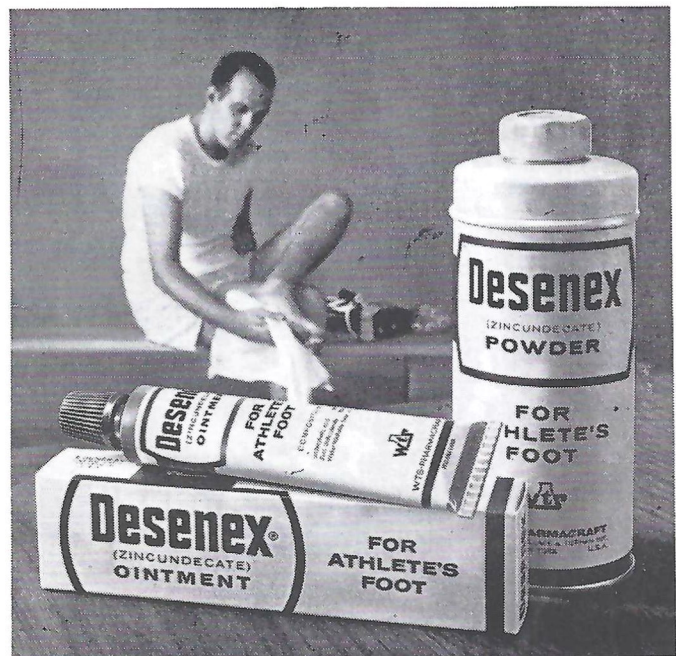
## How do athletes handle athlete's foot?

**They follow their trainers' advice and use Desenex® for prevention and treatment**

It's excellent protection against itching, cracking and irritation of Athlete's Foot. Helps prevent spreading, too. No wonder Desenex is the Athlete's Foot treatment most widely used by college football trainers.

We know you don't have a trainer to keep you on your toes. But that's no reason to suffer from Athlete's Foot. Start using Desenex yourself. Avoid Athlete's Foot problems with Desenex Powder or new, cooling Desenex Aerosol—and for treatment use Desenex Ointment. Desenex is guaranteed to work or your money back.

**WTS-PHARMACRAFT, Rochester, N.Y. 14603**





First choice of those who appreciate  
the finest in foods and service!  
Open Breakfast, Lunch and Dinner

BRUCE BISHOP'S 1921 W. Tennessee

THE  
FOUNTAIN  
RESTAURANT

GOOD LUCK SEMINOLES!

VARSITY THEATRE

1833 W. Tennessee  
Phone 224-8636

NEXT TO THE FOUNTAIN RESTAURANT

BOWLING'S GREAT

the Perfect date

AFTER THE GAME  
MEET YOUR FRIENDS

AT THE

*Parkway Bowl*

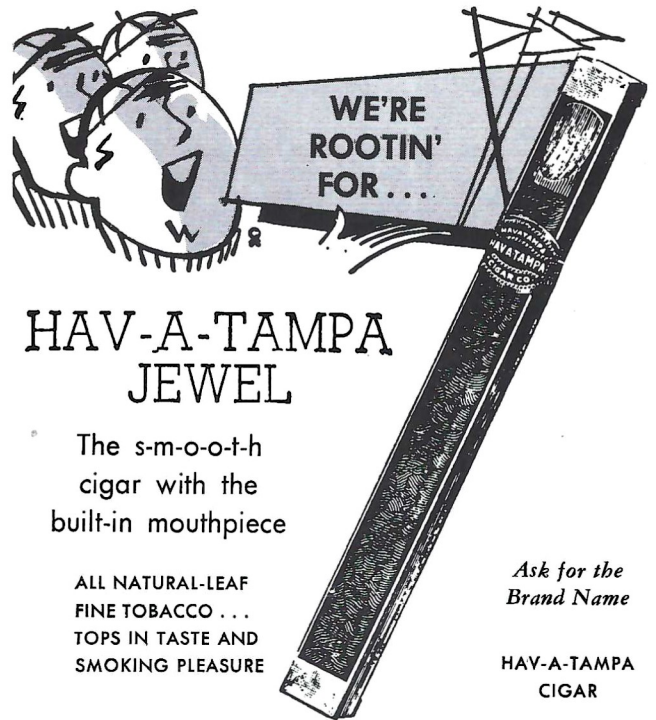
COFFEE SHOP

1230 Apalachee Parkway  
TALLAHASSEE, FLORIDA

And Enjoy



WAFFLE VARIETIES  
With Your Favorite Beverage  
or Rich Creamy Hot Chocolate



HAV-A-TAMPA  
JEWEL

The s-m-o-o-t-h  
cigar with the  
built-in mouthpiece

ALL NATURAL-LEAF  
FINE TOBACCO . . .  
TOPS IN TASTE AND  
SMOKING PLEASURE

Ask for the  
Brand Name

HAV-A-TAMPA  
CIGAR

Distributed by Eli Witt Tobacco & Candy Co.  
Tallahassee, Florida

QUALITY CLEANERS

215 W. COLLEGE AVE.—DIAL 222-5097

ONE DAY SERVICE

PICK-UP and DELIVERY

Quality Laundry Work

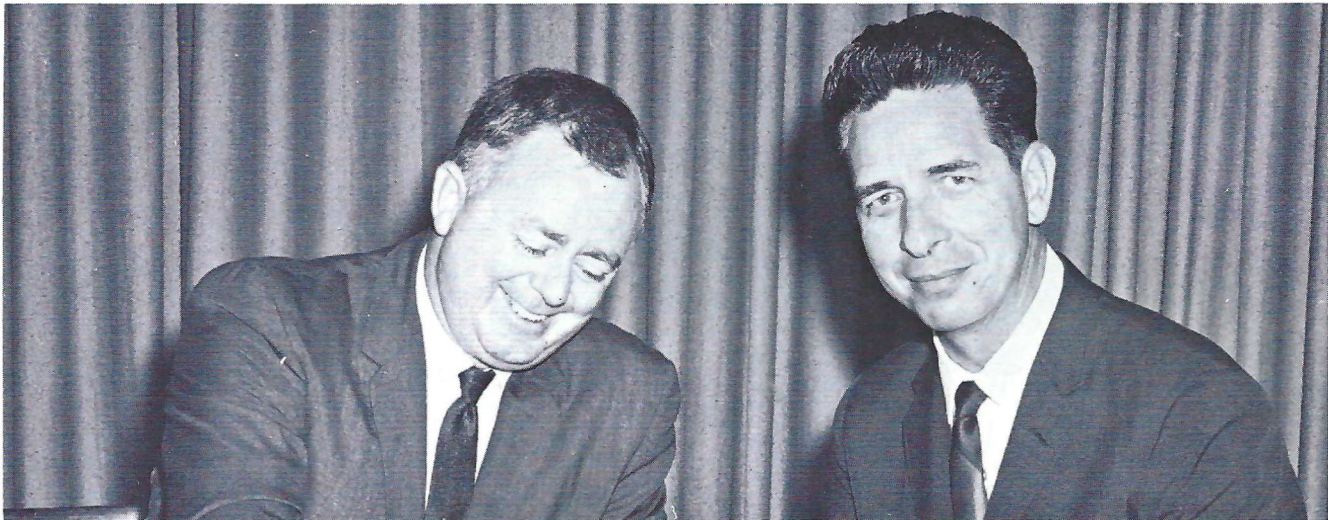
Fluff Dry Service

EXPERT TAILORING and ALTERATIONS

ZIPPERS REPAIRED



# THE WTNT SEMINOLE NETWORK



**HARRY HUGHEY**

**BO MITCHELL**

Popular Bo Mitchell returns to the Seminole microphone for the third straight season, bringing play-by-play action to every corner of the Sunshine State.

The energetic Mitchell, an ex-naval aviator with more than 16 years broadcasting experience, is vice-president and station manager of station WCOA, Pensacola.

His partner at the mike this season is Harry Hughey, a former Florida State football player. A veteran radio man, Hughey handles pre-game, half-time and time-out commentary.

Originating station for the network is WTNT, Tallahassee.

## THE SEMINOLE NETWORK

- |                       |                        |
|-----------------------|------------------------|
| WCOA Pensacola        | WSPB Sarasota          |
| WZEP Defuniak Springs | WMYR Fort Myers        |
| WPCF Panama City      | WGBS Miami             |
| WTOT Marianna         | WTRK West Palm Beach   |
| WTNT Tallahassee      | WLBE Leesburg          |
| WDSR Lake City        | WCNH Quincy            |
| WPRY Perry            | WFTW Fort Walton Beach |
| WJAX Jacksonville     | WMAF Madison           |
| WGGG Gainesville      | WFOY St. Augustine     |
| WMOP Ocala            | WYDE Birmingham, Ala.  |
| WKIS Orlando          | WPAX Thomasville, Ga.  |
| WLAK Lakeland         | WSB Atlanta, Ga.       |
| WDAE Tampa            |                        |

# Follow the SEMINOLES

IN '65

**STANDARD  
OIL**

**RADIO NETWORK**

**WJAX**  
Jacksonville

**WGBS**  
Miami

**WDAF**  
Tampange

**WTNT**  
Tallahassee

**WCOA**  
Pensacola

**WKI**  
Orla



Bicycle Rental

Swimming Pool

Art Exhibits

Ticket Office

Billiards

**ATION CALL 3317**



*We  
like  
the  
state  
we're  
in...*



**WAFFLE VARIETIES**  
With Your Favorite Beverage  
or Rich Creamy Hot Chocolate

In 1953, we of  
The Prudential established  
our South-Central Regional  
Home Office in Florida. From  
this location we are able  
to provide fast, efficient  
life insurance service  
to the people of Florida  
and our 10-state area.

We are proud to be  
a part of the growth and  
progress here in Florida,  
and the past 12 years have  
been busy and rewarding  
ones for us. We salute  
Florida State University  
for its efforts in preparing  
our youth today for the  
opportunities of tomorrow.



**THE PRUDENTIAL**  
INSURANCE COMPANY OF AMERICA

SOUTH-CENTRAL HOME OFFICE  
JACKSONVILLE, FLORIDA



**STADIUM INFORMATION**

**Rest Rooms**—Located on concourse and on ground level on both east and west sides.

**First Aid**—Located in southwest corner of stadium. Registered nurse on duty.

**Lost and Found:** Items may be claimed or turned in at the ticket booth next to the press box elevator, west side.

**Public Telephones:** Located ground level, west side.

**Public Address:** No special announcements are made over the stadium public address system except in cases of emergency.

**Field Regulations:** No spectators are allowed on the field, either during or after the game. Please leave the stadium by ramp and section exits rather than field level exits.

**Drive Carefully**—Your cooperation with law enforcement officers will help speed the flow of traffic away from the stadium.

**"WE FEED BOTH  
SEMINOLES AND  
GATORS"**

**GARCIA'S**  
320 E. Tennessee

*Go Injun's*

*Pike's Studio*

*Patronize Stadium*

**CONCESSIONS**

Located beneath the stands on each side of stadium

<b>COLD DRINKS</b> .....	small 15¢	large 25¢
<b>HOT COFFEE</b> .....	15¢	
<b>SANDWICHES</b> .....	30¢	
<b>HOT DOGS</b> .....	25¢	
<b>PEANUTS</b> .....	15¢	
<b>POP CORN</b> .....	15¢	
<b>CIGARETTES</b> .....	15¢	

*SOUVENIR ITEMS - PENNANTS - BADGES*

*SUN VISORS - ASPIRIN*

*Please pay no more than*

**ESTABLISHED PRICES**

**FOREMOST**

**ICE CREAM**

**PHONE • 224-7136**

*the entire University Community"*

**Bicycle Rental**

**Swimming Pool**

**Art Exhibits**

**Ticket Office**

**Billiards**

**STATION CALL 3317**



---

COMPLIMENTS  
OF  
TALLAHASSEE AUTOMOBILE  
DEALERS ASSOCIATION

ALFORD CHEVROLET COMPANY  
CAPITAL LINCOLN & MERCURY, INC.

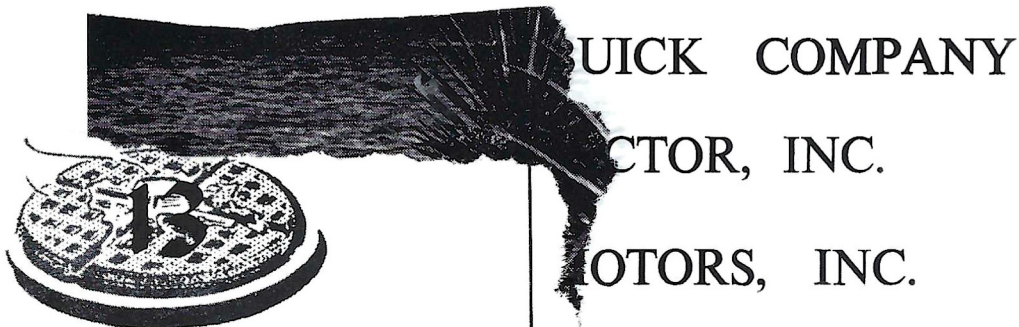
CAPITAL PLYMOUTH, INC.

BOB DRAKE DODGE, INC.

KEY RAMBLER, INC.

KINNEBREW MOTORS, INC.

MINGLEDORF MOTORS, INC.



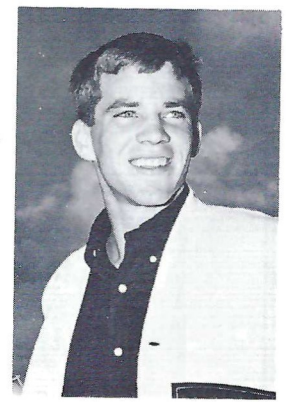
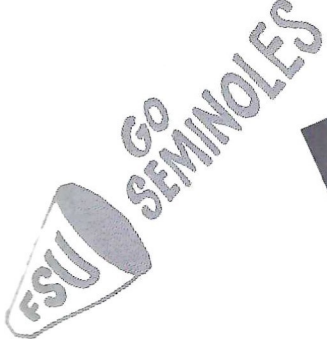
WAFFLE VARIETIES  
With Your Favorite Beverage  
or Rich Creamy Hot Chocolate

BUICK COMPANY

CTOR, INC.

MOTORS, INC.





## SEMINOLE CHEERLEADERS

The 1965 Seminole Cheerleader Squad takes its signals from Head Cheerleader Toni Beals (*above center*), a winsome junior from St. Augustine. Shown to her left is a newcomer to the squad, sophomore Joyce Howser of West Palm Beach; and to her right, Peggy Thompson, a junior from Ormond Beach. Senior member of the team is Elbert Lambert (*at right*) of Tallahassee. Sophomore Dave Deutsch (*at left*) of Palatka, is another seasoned member of the squad.

### THE ALMA MATER

High o'er the towering pines our voices swell  
 Praising these Gothic spires we love so well;  
 Here sons and daughters stand . . .  
 Faithful and True, Hailing our Alma Mater  
 F . . . S . . . U . . .

### FSU FIGHT SONG\*

We're going to FIGHT, FIGHT, FIGHT,  
 for FSU  
 We're going to scalp 'em Seminoles . . .  
 We're going to WIN, WIN, WIN, WIN,  
 WIN this game . . . and roll on down and  
 make those goals!  
 For FSU is on the warpath now, and at the  
 battle's end she's great . . .  
 So FIGHT, FIGHT, FIGHT, FIGHT for  
 victory  
 Our Seminoles of Florida State . . .  
 F-L-O-R-I-D-A S-T-A-T-E  
 FLORIDA STATE! (3 times)

### THE FLORIDA STATE VICTORY MARCH\*

Onward to victory, Seminoles, GO! FORWARD MARCH, we must move out together and . . .  
 FORWARD MARCH, it's always marching weather when thousands strong, we swing along.  
 All in step for VIC . . . TO . . . RY. Our F-S-U and all our loyal Seminoles, ON-WARD  
 GO . . . To conquer all our savage foes . . . won't be long . . . we can't go wrong . . . we  
 will crush the EN . . . E . . . MY . . . So SCALP'EM . . . SCALP'EM . . . SCALP'EM . . .  
 It's a case of do or die . . .  
 Strike the fatal thrust, we'll be victorious; with terrible tenacity we can, we will, we must!

FORWARD MARCH, we'll ride the swelling battle tide  
 FORWARD MARCH, we'll face the future side by side  
 With our might, we'll FIGHT, FIGHT, FIGHT!  
 And we'll win our VIC-TO-RY.  
 . . . For Florida State University.

\* Written by Thomas G. Wright, Associate Professor Music at Florida State University.

# University Union . . . . .

*"Serving the entire University Community"*

Lounges

Food Service

Barber Shop

Beauty Salon

Bowling

Color Television

Faculty-Staff Lounge

Games Check-Out

Union Store

Bookstore

Bicycle Rental

Swimming Pool

Art Exhibits

Ticket Office

Billiards

**CAMPUS INFORMATION CALL 3317**



# BE A BOOSTER

Seminole Boosters are people like yourself:



All kinds  
of guys.



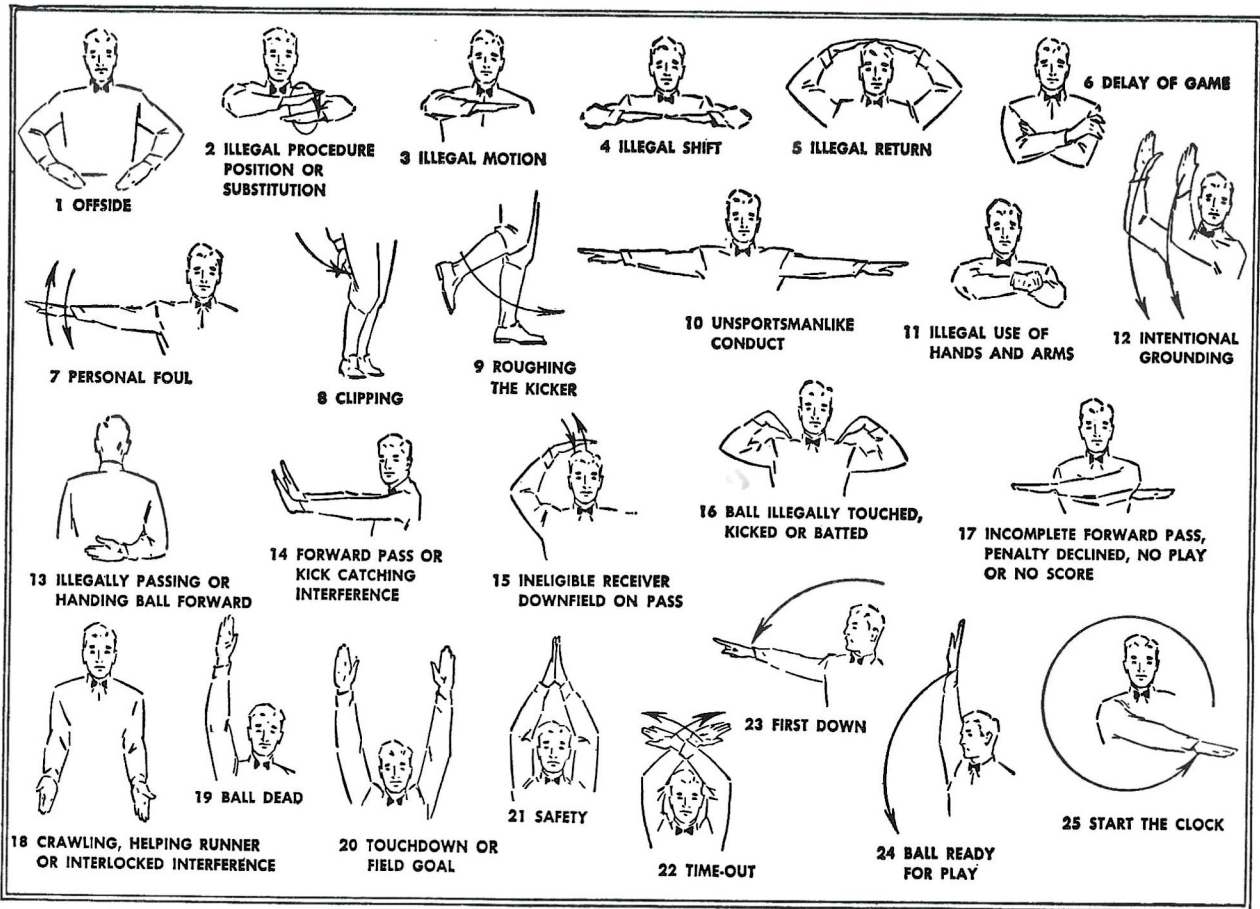
And even housewives.  
Boosters help recruit  
Florida State football teams.

# BE A BOOSTER

And park real close to your seats, the best in the stadium.  
Share the pride of a winning football team. Membership  
only costs \$15 for an individual, or \$30 for a business firm.

*For information: contact Seminole Boosters Inc. 222-0995.*





OWNED AND OPERATED BY FRANK, RICHARD & RAYMOND CHASE

# *Skyline Restaurant*

1 Mile West of City Limits

U. S. Highways 90 and 20

OPEN 6 A.M. TO 11 P.M.

TALLAHASSEE, FLORIDA

*"Serving Good Food for Fine People"*

Private Rooms and Banquet Facilities





PENNY EDWARDS—"MISS TIPARILLO"

## What does she mean "cigars...cigarettes...Tiparillos"?

You'll be hearing that chant more and more—now that Tiparillos have arrived. And arrived they have. In all the right places. With all the right people.

The new Tiparillo has a neat, trim shape. It looks young and debonair. And its pearly, pliable tip pays more than lip service to your smoking pleasure.

And never before such mildness! The most careful blending of choicest imported tobaccos has seen to that. So, too, has the exclusive, veinless Ultra Cigar Wrapper\* that burns so evenly and smoothly it insures complete mildness.

You can even see the mildness. The

surprisingly whiter ash is visible evidence. Smoker's proof. Here is flavor you don't have to inhale to enjoy.

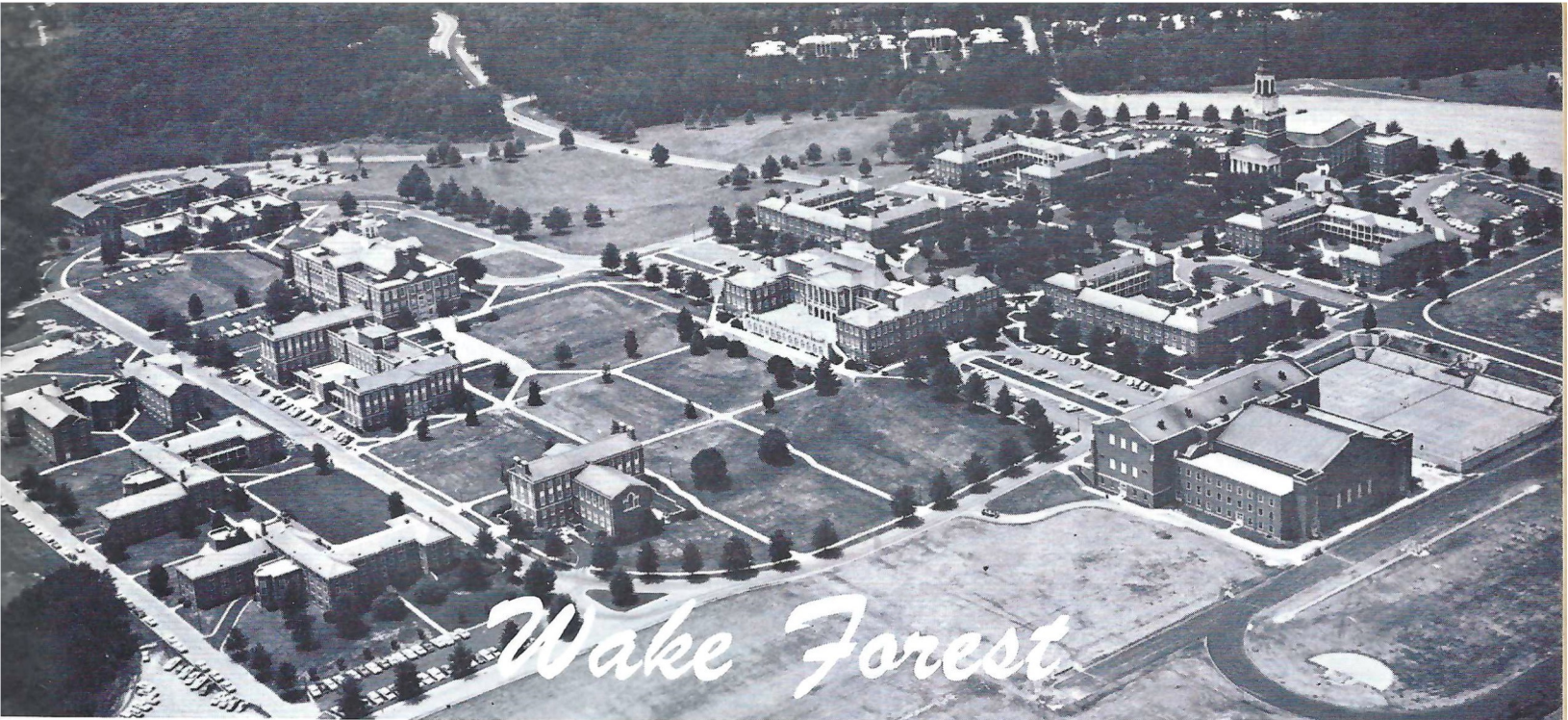
"Cigars . . . cigarettes . . . ?" Who knows, maybe someday it will be just "Tiparillos!"

Why don't you ask for one today?

\*T.M. GENERAL CIGAR CO.

**Tiparillos are on sale at this stadium.**





**AERIAL VIEW OF WAKE FOREST COLLEGE CAMPUS**

**WAKE FOREST FACTS:**

**Location:** Winston-Salem, N. C.  
**Enrollment:** 5,000  
**Nick Name:** Demon Deacons  
**Colors:** Old Gold and Black  
**Stadium:** Bowman Gray (16,841)  
**Conference:** Atlantic Coast



**DR. HAROLD W. TRIBBLE**  
President



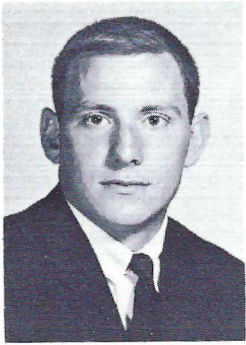
**BILL TATE**  
Head Football Coach



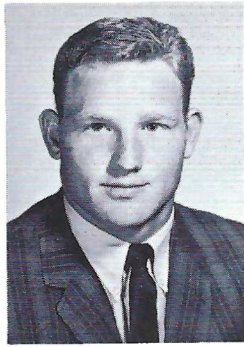
**DR. GENE HOOKS**  
Athletic Director



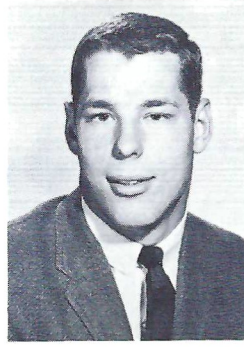
RAY SLONE



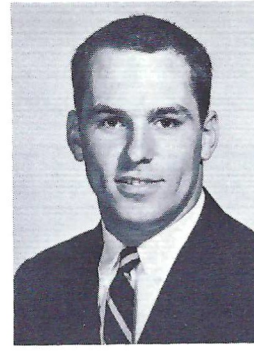
BOB OPLINGER



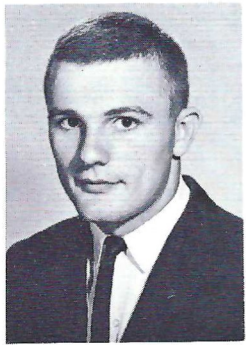
LYNN NESBITT



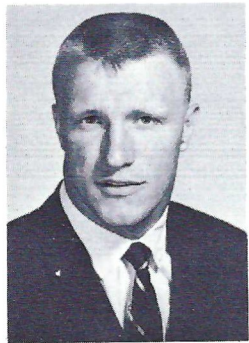
RON SHILLINGLAW



ANDY HECK



JOE SEPIC

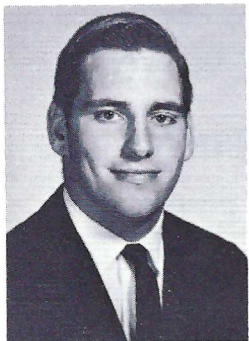


JOHN SNOW

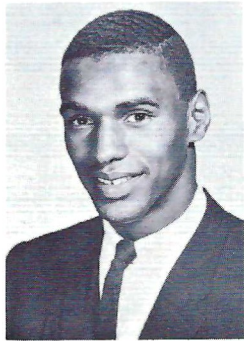
**D  
E  
A  
C  
O  
N  
S**



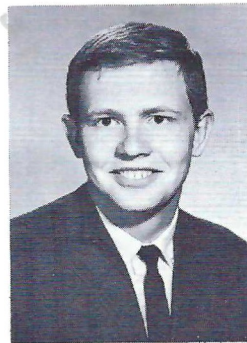
Z. SMITH REYNOLDS LIBRARY—WAKE FOREST COLLEGE



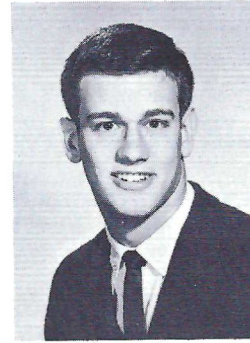
JIM BEAUDOIN



KEN HENRY



JON WILSON



DON McMURRY



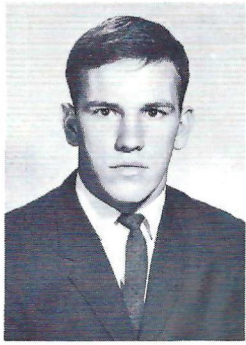
MIKE KELLY



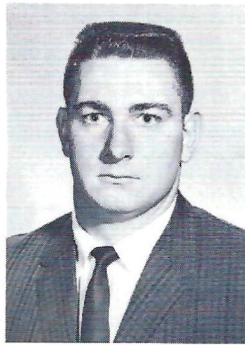
**DOUG GOLIGHTLY**



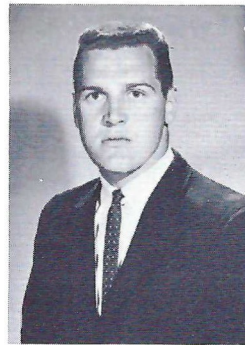
**JOE CARAZO**



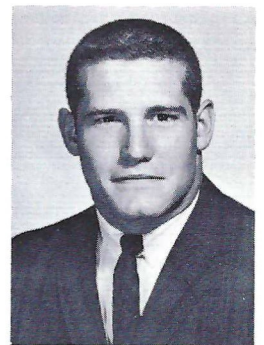
**TOMMY BRAWLEY**



**JOE BERRA**

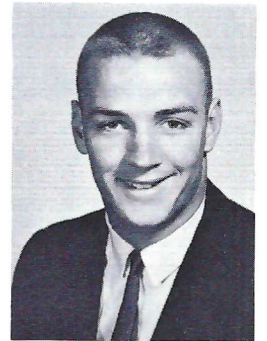


**EDDIE McKINNEY**

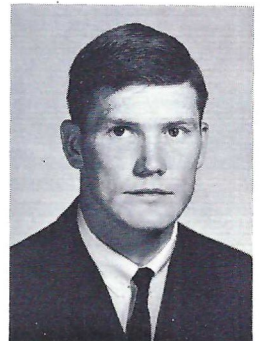


**WAIT CHAPEL—WAKE FOREST COLLEGE**

**D  
E  
A  
C  
O  
N  
S**



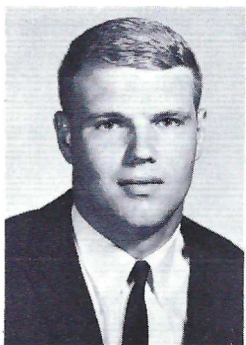
**DICK HESSLER**



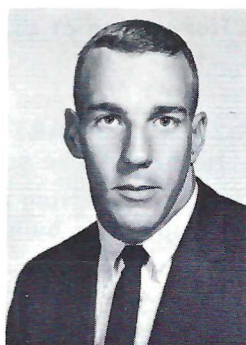
**JIMMY DIXON**



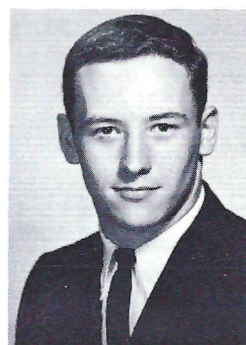
**BILL MARKS**



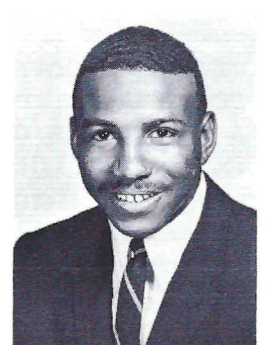
**DICK PENN**



**BO WILLIAMS**



**DAVID SMITH**



**ROBERT GRANT**





THE SEMINOLE  
"TWINS"

Bookie Reynolds & Jerry Williams

# THE NEW GREETS THE OLD FOR GARNET AND GOLD

## MUSIC AT HALF TIME

November 6, 1965

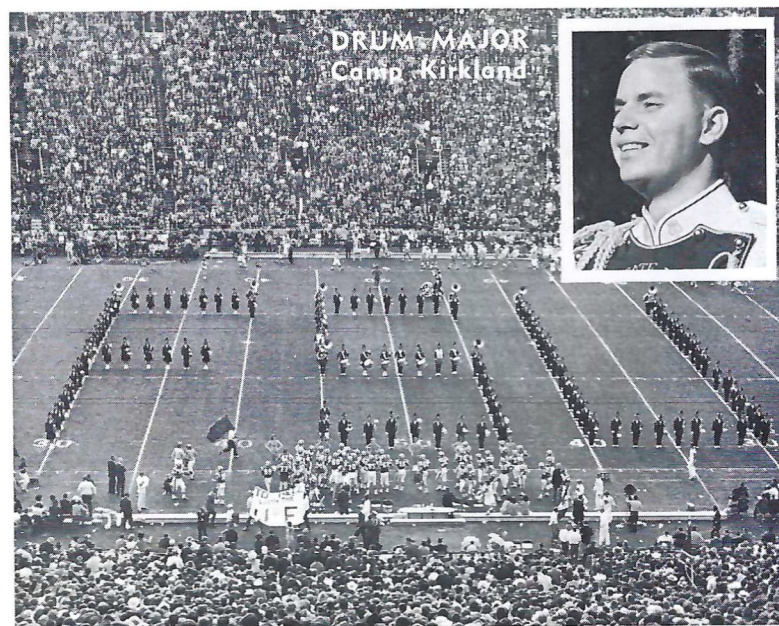
### THE MARCHING CHIEFS



Robert T. Braunagel, Director  
Clifford K. Madsen, Associate Director  
Charles Carter, Asst. Dir. & Arranger



Camp Kirkland, Drum Major  
Paulette Gergen, Head Majorette  
"Cookie" Winchester, Baton Artist



DRUM MAJOR  
Camp Kirkland

### MUSIC

DIXIE  
TELESCOPE MUSIC  
PIANO SCALES  
RACHMANINOFF'S  
CONCERTO #2  
A WONDERFUL GUY  
IF I LOVED YOU  
HEIGH HO, HEIGH HO  
STEAM SHOVEL MUSIC  
THAT'S WHERE MY MONEY GOES  
THREE COINS IN A FOUNTAIN  
  
CROWN IMPERIAL

### FORMATIONS

COMPANY FRONT — The Chiefs form a telescope to look back into our history, as the "new greets the old."  
PIANO — Honors one of the oldest schools on the campus—Music.  
  
BOW, ARROW AND HEART — Love is as old as every alumnus, yet as new as every freshman. The band gives Cupid some help.  
STEAM SHOVEL — Getting ready for the "new," the Chiefs form a steam shovel to help FSU's building program.  
COINS AND FOUNTAIN — Homecoming's Honor Class of 1915 gave Westcott Fountain to FSU, with the Class of 1917's help. Chiefs urge alumni to support new growth by tossing three coins in the fountain!  
CROWN — Salute and presentation of the 1965 Homecoming Queen and her court.



**FLORIDA STATE**

**OFFENSE**

LE 88 Jerry Jones	21 Donovan Jones
LT 70 Del Williams	76 Donnie Ellers
LG 69 Edwin Pope	60 Larry Williamson
C 54 John Stephens	55 Bob Urich
RG 73 Larry Kissam	51 Joe Avezzano
RT 64 David Braggins	77 Bob Mangan
RE 89 Max Wettstein	83 Thurston Taylor
QB 16 Ed Pritchett	11 Kim Hammond
LH 30 Bill Moreman	27 Phil Spooner
RH 28 T. K. Wetherell	24 Elton Revell
FB 44 Jim Mankins	23 Wayne Giardino

**DEFENSE**

LE 87 Terry Garvin	80 Stan Croley
LT 78 Charles Pennie	74 Jay Mac Matthews
MG 61 Jack Shinholser	66 Carlie McNeil
RT 79 Frank Pennie	67 Mike Bugar
RE 84 Geo. D'Alessandro	81 H. T. Waller
LB 63 Bill McDowell	40 Mike Blatt
LB 68 Joe Parrish	62 Howard Lurie
CB 22 Maury Bibent	41 Bob Menendez
CB 43 Howard Ehler	32 Bill Richardson
S 26 Bill Campbell	33 Butch Riser
S 15 Pat Conway	42 Alan LaMarche

**CAPTAINS**

84 George D'Alessandro 89 Max Wettstein  
63 Bill McDowell

**SPECIALISTS**

**Punters:** 35 John Hosack, 16 Ed Pritchett  
**Placements:** 85 Pete Roberts, 34 Frank Loner

**WAKE FOREST**

**OFFENSE**

LE 80 Ken Henry	82 Joe Sepic
LT 71 Jim Beaudoin	77 Robert Grant
LG 60 Lynn Nesbitt	65 Earl Coleman
C 51 Bob Oplinger	52 Dick Penn
RG 61 Don Hensley	66 Don McMurry
RT 76 Tommy Brawley	70 John Snow
SE 85 Tom Stuetzer	86 Ray Slone
QB 12 Jon Wilson	10 Ken Hauswald
LH 24 Doug Golightly	43 Mike Kelly
RH 20 Joe Carazo	22 Jimm Dixon
FB 34 Andy Heck	35 David Smith

**DEFENSE**

LE 80 Ken Henry	82 Joe Sepic
LT 65 Earl Coleman	68 Dick Hessler
LG 71 Jim Beaudoin	77 Robert Grant
RG 70 John Snow	76 Tommy Brawley
RT 66 Don McMurry	61 Don Hensley
RE 85 Tom Stuetzer	86 Ray Slone
LB 60 Lynn Nesbitt	64 Jim Hobbs
LB 50 Bo Williams	51 Bob Oplinger
LH 41 Carlton Baker	43 Mike Kelly
RH 20 Joe Carazo	22 Jimmy Dixon
S 40 Andy Harper	41 Carlton Baker

**CAPTAINS**

**GAME CAPTAINS**

**SPECIALISTS**

**Punters:** 84 Ron Shillinglaw, 12 Jon Wilson

**Placements:** 32 Eddie McKinney, 68 Richard Hessler



**TALLAHASSEE FEDERAL  
SAVINGS & LOAN  
ASSOCIATION**



## FLORIDA STATE'S 1965 VARSITY FOOTBALL ROSTER

No.	Name	Pos.	Class	Age	Ht.	Wt.	Hometown
11	Kim Hammond	QB	Soph.	21	6-1	185	Melbourne
12	Tony Gero	QB	Jr.	21	5-10	186	Madison, N. J.
14	Jim Massey**	DB	Sr.	22	5-11	175	Cairo, Ga.
15	Pat Conway*	DB	Jr.	20	5-10	180	Miami
16	Ed Pritchett**	QB	Sr.	24	6-2	181	Decatur, Ga.
17	Marty Kolbus	QB	Soph.	19	6-2	185	East Chicago, Ind.
21	Donovan Jones	OE	Jr.	20	6-1	196	Lakeland
22	Maury Bibent**	DB	Sr.	23	6-0	193	Cincinnati, O.
23	Wayne Giardino*	FB	Jr.	22	5-10	192	West Palm Beach
24	Elton Revell	HB	Jr.	21	6-0	174	Tallahassee
26	Bill Campbell	DB	Jr.	20	5-9	177	Tampa
27	Phil Spooner**	HB	Sr.	22	5-11	185	Fort Meyers
28	T. K. Wetherell	HB	Soph.	20	5-10	185	Daytona Beach
29	Joe Petko**	FB	Sr.	22	5-9	194	Shaker Heights, O.
30	Bill Moremen	HB	Soph.	20	5-11	181	Daytona Beach
31	Ron Mercer	HB	Soph.	20	5-11	190	Densmore
32	Bill Richardson	DB	Soph.	20	6-0	189	Jesup, Ga.
33	Butch Riser	DB	Soph.	20	6-0	181	Sanford
34	Frank Lonor	PK	Soph.	20	6-0	195	Thomasville, Ga.
35	John Hosack	HB	Jr.	20	5-10	194	Miami
40	Mike Blatt	LB	Soph.	19	5-11	202	Key West
41	Bob Menendez	DB	Jr.	20	5-10	194	Key West
42	Alan LaMarche	DB	Soph.	20	5-11	190	Hollywood
43	Howard Ehler**	DB	Sr.	21	5-10	195	Tavares
44	Jim Mankins	HB	Jr.	21	6-2	221	King City, Calif.
51	Joe Avezzano**	OG	Sr.	22	6-2	229	Miami
52	Wayne McDuffie*	C	Jr.	21	6-2	208	Hawkinsville, Ga.
53	David Pitts*	MG	Jr.	21	5-9	202	Blountstown
54	John Stephens*	C	Jr.	20	6-1	201	Tallahassee
55	Bob Urich	C	Soph.	19	6-2	198	Toronto, O.
60	Larry Williamson	OG	Jr.	20	5-11	215	Macon, Ga.
61	Jack Shinholser**	MG	Sr.	23	6-1	217	Tampa
62	Howard Lurie*	LB	Sr.	21	6-0	201	Northridge, Calif.
63	Bill McDowell**	LB	Sr.	21	6-1	208	Tallahassee
64	Dave Braggins	OT	Jr.	20	6-2	223	Lake Wales
65	Richard McLean	OG	Soph.	19	6-0	186	Holly Hill
66	Carlie McNeil	MG	Soph.	19	6-1	195	Macon, Ga.
67	Mike Bugar	DT	Soph.	19	6-1	204	Youngstown, O.
68	Joe Parrish**	LB	Sr.	23	6-1	194	Auburndale
69	Edwin Pope	OG	Jr.	21	6-1	208	Waycross, Ga.
70	Del Williams*	OT	Jr.	20	6-2	230	Live Oak
73	Larry Kissam	OT	Jr.	20	6-0	223	Inglewood, Calif.
74	Jay Mac Matthews	DT	Jr.	21	6-1	229	Chieffland
75	Rommy Vistart	DT	Soph.	20	6-3	270	Colquitt, Ga.
76	Donnie Eilers	OT	Soph.	19	6-3	234	Bessemer, Ala.
77	Bob Mangan**	OT	Sr.	23	6-1	229	Atlanta, Ga.
78	Charles Pennie	DT	Jr.	20	6-4	240	Hollywood
79	Frank Pennie**	DT	Sr.	22	6-4	252	Hollywood
80	Stan Croley	DE	Soph.	20	6-2	192	Dade City
81	H. T. Waller	DE	Soph.	20	6-1	186	Vernon
83	Thurston Taylor	OT	Soph.	19	6-2	216	College Park, Ga.
84	George D'Alessandro**	DE	Sr.	22	5-11	202	Fort Meyers
85	Pete Roberts	PK	Soph.	20	5-11	200	Gainesville
86	Buddy Blankenship	OE	Jr.	21	6-3	200	Atlanta, Ga.
87	Terry Garvin*	DE	Sr.	22	5-11	205	Pensacola
88	Jerry Jones	OE	Soph.	20	6-1	185	Jesup, Ga.
89	Max Wettstein**	OE	Sr.	21	6-3	214	Leesburg

(Astrisks Denote Number of Letters Won)

## 1965 WAKE FOREST FOOTBALL ROSTER

No.	Name	Pos.	Class	Age	Ht.	Wt.	Hometown
10	Ken Hauswald	QB	Jr.	19	6-1	190	Clark, N. J.
12	Jon Wilson	QB	Jr.	20	6-1	178	Milwaukee, Wis.
14	Phil Cheatwood	QB	Soph.	19	6-2	190	Charlotte, N. C.
20	Joe Carazo**	RHB	Sr.	22	5-10	175	Palmerton, Pa.
22	Jimmy Dixon	RHB	Jr.	20	6-1	186	Warsaw, N.C.
24	Doug Golightly**	LHB	Sr.	21	5-9	180	Morganton, N. C.
30	Joe Berra**	FB	Sr.	21	6-2	199	Trevorton, Pa.
32	Eddie McKinney	FB	Sr.	21	5-7	177	Winston-Salem, N. C.
34	Andy Heck	FB	Jr.	21	5-9	178	North Bergen, N. J.
35	David Smith	FB	Soph.	18	6-0	193	Atlanta, Ga.
36	Bill Marks**	LB	Sr.	22	6-2	208	Florence, Ala.
40	Andy Harper	LHB	Jr.	20	5-10	175	Hialeah, Fla.
41	Carlton Baker	LHB	Soph.	19	5-11	165	Jacksonville, Fla.
42	Eddie Arrington	LHB	Soph.	19	5-10	150	Winston-Salem, N. C.
43	Mike Kelly**	LHB	Sr.	22	5-11	197	Kingsport, Tenn.
44	Don Davis**	LHB	Soph.	19	5-10	173	Perrine, Fla.
50	Bo Williams	LB	Sr.	21	5-9	180	New Bern, N. C.
51	Bob Oplinger*	C	Jr.	20	6-1	210	Northhampton, Pa.
52	Dick Penn*	C	Jr.	20	6-2	203	Miami, Fla.
53	Claude Gholson	C	Jr.	20	6-0	215	Jackson, Miss.
54	Runo Anderson	C	Soph.	19	6-0	202	LaGrange, Ill.
55	David Hall	C	Jr.	21	6-1	180	St. Albans, W. Va.
60	Lynn Nesbitt*	LG	Jr.	20	6-0	213	Berkeley Hgts. N. J.
61	Don Hensley	LG	Soph.	18	5-11	190	Winston-Salem, N. C.
62	Bob Perretz	RG	Soph.	19	5-11	200	Park Forest, Ill.
63	Lewis Duncan*	LT	Sr.	21	5-11	202	Haw River, N. C.
64	Jim Hobbs	LG	Jr.	20	6-1	195	Harrisburg, Pa.
65	Earl Coleman*	LG	Sr.	21	5-10	186	Gastonia, N. C.
66	Don McMurry*	RG	Jr.	19	6-3	185	Jefferson City, Mo.
67	Mike Sasser	RG	Soph.	18	5-10	195	Goldboro, N. C.
68	Richard Hessler	RG	Soph.	18	5-11	180	Ft. Lauderdale, Fla.
70	John Snow*	RT	Jr.	19	6-4	201	Murphy, N. C.
71	Jim Beaudoin*	LT	Sr.	23	6-0	206	Hubbard, Ohio
72	Dan Ferezan	RT	Jr.	19	6-3	210	Aliquippa, Pa.
73	Jim Williams	RT	Soph.	19	6-2	218	Plymouth, N. C.
74	Bill Graves	LT	Soph.	18	6-2	208	Murphy, N. C.
75	Stan Anderson	RT	Soph.	19	6-1	200	Decatur, Ga.
76	Tommy Brawley**	RT	Sr.	22	6-0	222	Mooresville, N. C.
77	Robert Grant	LT	Soph.	18	6-2	210	Jacksonville, N. C.
78	Ed Welch	LT	Soph.	19	6-2	212	Winston-Salem, N. C.
79	Leland Cox	LT	Sr.	21	6-6	230	Rockingham, N. C.
80	Kenneth Henry	WE	Soph.	19	6-2	180	Greensboro, N. C.
81	Jimmy Dixon	WE	Jr.	20	6-1	186	Warsaw, N. C.
82	Joe Sepic*	WE	Jr.	20	6-1	188	York Run, Pa.
83	Richard Decker	SE	Soph.	19	6-2	200	Atlanta, Ga.
84	Ron Shillinglaw	WE	Sr.	21	6-0	183	Blacksburg, S. C.
85	Tom Stuetzer	SE	Soph.	19	5-11	175	Wakefield, Mass.
86	Ray Stone*	SE	Jr.	22	6-0	196	Roanoke, Va.
87	Forest Wiest	WE	Jr.	19	5-11	185	Shippensburg, Pa.
88	Homer Brookshire	WE	Soph.	19	6-4	180	Wilkesboro, N. C.

00

### SAVINGS AND LOAN ASSOCIATION

440 N. Monroe Street \* Tallahassee, Florida

HOURS: Monday-Thursday, 8:30 a.m. to 3 p.m.— Friday, 8:30 a.m. to 6 p.m.

TELEPHONE 224-2161





GO TO

**McDONALD'S**

FOR A

**PURE BEEF HAMBURGER**

Right off the Grill on a Plump Toasted Bun

**TRIPLE THICK SHAKE**

M'M'M' Creamy Luscious to the Very Last Drop

**GOLDEN BROWN FRENCH FRIES**

Piping Hot and Done to a Crisp Perfection

Home of America's Favorite Hamburger  
More Than a Billion Sold

LOOK FOR THE GOLDEN ARCHES

**McDONALD'S**

1701 W. TENNESSEE ST.  
CORNER WHITEHALL



**FLORIDA STATE  
UNIVERSITY  
1965 - 1966 BASKETBALL  
SCHEDULE**

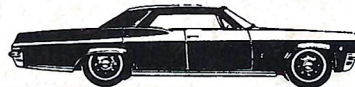
**J. K. (BUD) KENNEDY**  
Head Basketball Coach

DATE	OPPONENT	SITE
Dec. 1	Lamar Tech	Tallahassee
Dec. 2	Valdosta	Tallahassee
Dec. 6	Tampa	Tallahassee
Dec. 8	Florida	Gainesville
Dec. 16	North Carolina	Chapel Hill, N.C.
Dec. 18	U. of California (Santa Barbara)	Tallahassee
Dec. 20-21	Tampa Invitational Tournament	Tampa
Dec. 27	Auburn	Pensacola
Jan. 3	Georgia	Athens, Ga.
Jan. 7	Miami	Tallahassee
Jan. 10	Loyola (New Orleans)	Tallahassee
Jan. 15	Memphis State	Tallahassee
Jan. 18	Florida	Tallahassee
Jan. 24	Jacksonville	Jacksonville
Jan. 31	Georgia Tech	Tallahassee
Feb. 5	Memphis State	Memphis, Tenn.
Feb. 7	Loyola (New Orleans)	New Orleans, La.
Feb. 10	Jacksonville	Tallahassee
Feb. 14	Georgia Tech	Atlanta, Ga.
Feb. 19	Howard	Tallahassee
Feb. 24	Florida Southern	Tallahassee
Feb. 26	Tampa	Tampa
Feb. 28	Miami	Miami
Mar. 5	Georgia	Tallahassee

**HERTZ WEEKEND  
SPECIAL**

ONLY \$10<sup>95</sup> and 11c  
a mile

Rent a new Chevrolet or other fine car from Friday afternoon to 9 A.M. Monday. This special rate includes everything: insurance and gas. And only Hertz offers Certified Service, your guarantee of complete rental satisfaction.



Let Hertz put you in the driver's seat!

**HERTZ**  
RENT A CAR

TALLAHASSEE

Duval Hotel

222-1686





## HALF TIME-ANYTIME-MAKE IT MILK!

Busy football weekends call for extra energy. And that calls for a refreshing glass of milk. Milk is nature's vitality drink . . . that helps you stay in peak condition, sees you through the busiest fall days.

Half time, snacktime, anytime—when you take a break, make it milk. Keep up with the fun with milk's vitality!



a message from dairy farmer members of  
**american dairy association**