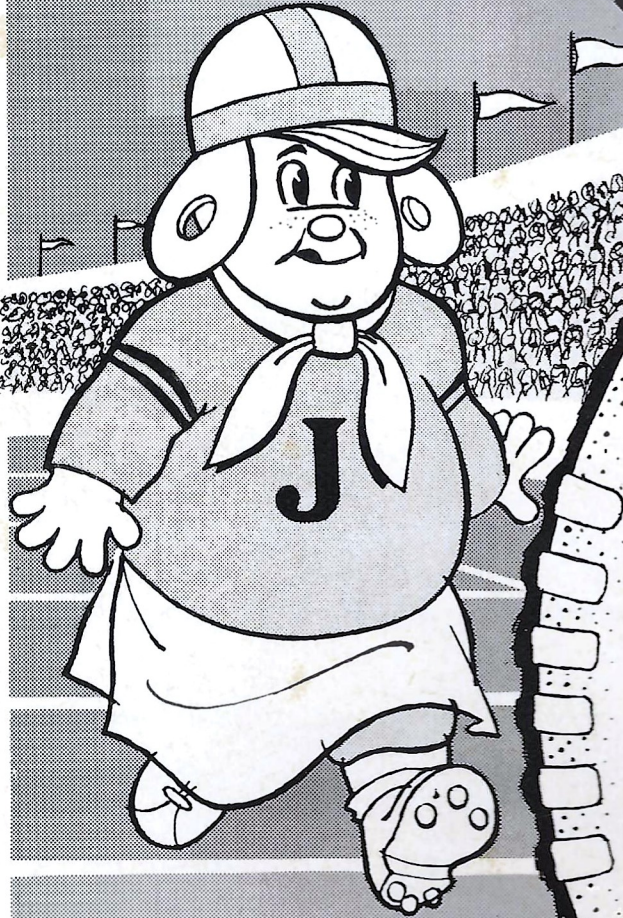


AFTER THE GAME GO...

Jerry's



*Beautiful
Dining Room*



*Convenient
Curb Service*



*Prompt Carry-Out
Orders*



**445 W. Tennessee St.
Tallahassee
224-5104**

Florida State University . . .

In This Issue . . .

Tonight's Game	4
University Features	5
Seminole Football Family	9
Statistics	10
FSU All Time Records	11
Athletic Committee	12
Football Fashions	13
State Officials	14
FSU News Briefs	15
Guest Column	8
FSU Player Photos	17
Officials' Signals	22
Starting Lineups	24
Penalties	27
FSU's First Football Season	36
Freshman Squad, Roster	31
Seminole Boosters, Inc.	28
Seminole Radio Network	35
Stadium Information	37
Cheerleaders	33
Tonight's Opponents	41
The Marching Chiefs	44
Rosters, Depth Charts	45
FSU Cross Country	36

FOOTBALL



1966

SEMINOLES ON THE WARPATH

Date	Opponent	Site	Time
Sept. 17	Houston	Tallahassee	8:00 p.m. EST
Sept. 24	Miami	Miami	8:00 p.m. EST
Oct. 1	Open Date		
Oct. 8	Florida	Tallahassee	2:00 p.m. EST
Oct. 15	Texas Tech	Lubbock	7:30 p.m. CST
Oct. 22	Mississippi State	Tallahassee	8:00 p.m. EST
Oct. 29	Virginia Tech	Blacksburg	2:00 p.m. EST
Nov. 5	South Carolina	Columbia	2:00 p.m. EST
Nov. 12	Syracuse	Syracuse	1:30 p.m. EST
*Nov. 19	Wake Forest	Tallahassee	2:00 p.m. EST
Nov. 26	Maryland	Tallahassee	8:00 p.m. EST

* (Homecoming)

*Compliments and
Best Wishes from*



**YOUR APPLIANCE
HEADQUARTERS**
611 N. Monroe St.

OFFICIAL WATCH FOR THIS GAME

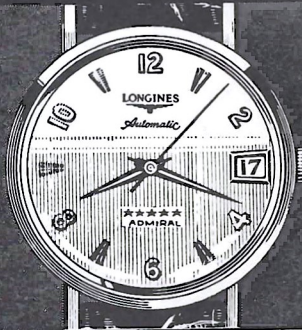


LONGINES THE WORLD'S MOST HONORED WATCH

10 WORLD'S FAIR
GRAND PRIZES
28 GOLD MEDALS



Longines watches are
recognized as OFFICIAL
for timing world
championships and Olympic
sports in all fields
throughout the world.



Longines 5-Star Admiral Automatic with Calendar,
All-Proof®, sweep-second, 14K gold strap-\$185.00

The Longines Credo

Every Longines watch,
whatever its type, for whatever
its use, today, as for almost
a century, is manufactured to
be the finest of its kind and
worthy in every respect to be called
The World's Most Honored Watch

LONGINES-WITTTNAUER WATCH CO.
MONTREAL • NEW YORK • GENEVA
Maker of Watches of the Highest Character Since 1867

Tonight's Game

By **BILL BUNKER**

Sports Information Director
Florida State University



Bill Bunker has resigned as Florida State's Sports Information Director to assume a position with the Florida Development Commission. He will be replaced by St. Petersburg Times sports writer Lonnie Burt who is expected to begin his new duties soon.

Houston has been a most frustrating word in the Seminole vocabulary for the past six years.

Florida State has never beaten Houston. The series record stands at 3-0-2, with both tie games coming in the last two meetings.

Despite the record, the Cougars have probably been one of Florida State's most underrated opponents as far as Seminole fans are concerned. How this reasoning developed is hard to say since Houston began intercollegiate football a year prior to Florida State's entrance, played a major college schedule several years before the Seminoles, has had the twin advantages of a booming metropolitan area in which to be located and the tremendous wealth of the Texas high school football talent pool from which to recruit.

This year the situation is reversed. Houston's credentials are undeniable, and Florida State's young Seminoles begin their 20th football season as underdogs.

Last year's 16-16 tie slightly scarred a proud Seminole record upon which the Cougars had already placed two blemishes. Beginning with the 1960 season, the Seminoles have lost only seven football games here in Doak Campbell Stadium. Two of those losses have come from tonight's opponent.

This year's Houston team has seven returning starters on offense and an equal number on defense. Two of the Cougars who will see action tonight are old enemies, and these same two rank among the greatest stars ever to play for Houston.

Quarterback Bo Burris set seven school passing and four total offense records in a losing season last year. Halfback Dick Post has gained 1158 yards rushing in two seasons and ranks third among Houston's all-time career leaders with a year left to play.

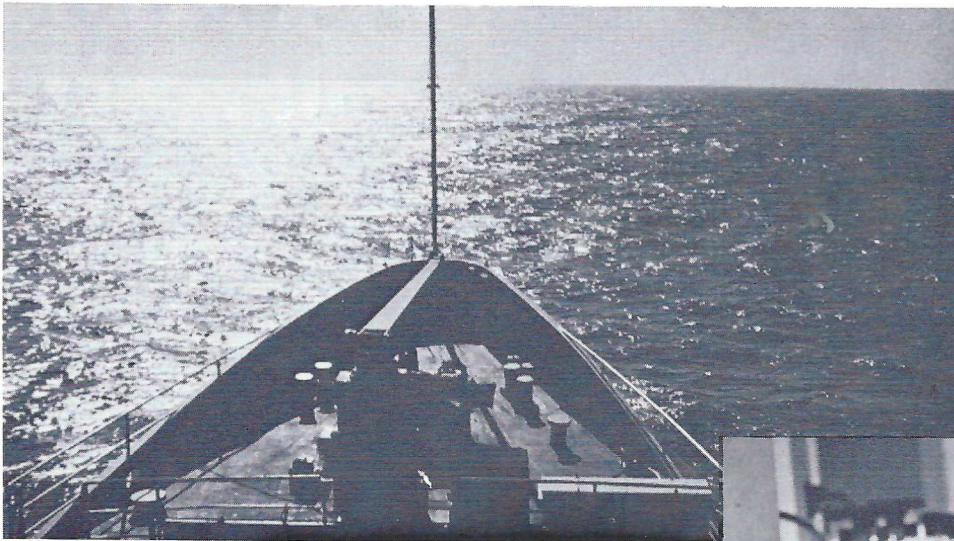
There's also Warren McVea who returned a kickoff 92 yards for a touchdown in this stadium last year. Other top targets for Burris passes are Ken Hebert and Tom Beer, both legitimately outstanding football players.

Florida State will go into tonight's opener with a green defense. Sophomores will man the deep secondary where McVea and Hebert are wont to ramble, and untried linebackers will attempt to stop the thrusts of Post.

Offensively the Seminoles are hopeful with a veteran line, powerful runners, excellent receivers and three promising, if unblooded, quarterbacks.

Last year's home finale was the most exciting game played in Campbell Stadium all year. Tonight's renewal of a tough rivalry promises to be no different.

FSU Quarterbacks Inner-Space Efforts



A 10-year plan for a coordinated program of oceanography, marine technology and related sciences for the State of Florida has designated Florida State University for a unique role of leadership in the decade ahead.

The plan would authorize FSU to take the lead for the next 10 years in the academic program leading to the Ph.D. in classical oceanography. The proposal was drafted by the Florida Inter-Institutional Committee on Oceanography.

 **PROBING
THE
SECRETS
OF THE SEA**

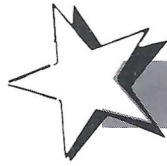


While Cape Kennedy furnishes a site for the spectacular exploration of outer space, Florida also is proving to be an ideal platform for the conquest of inner space—the extensive oceans.

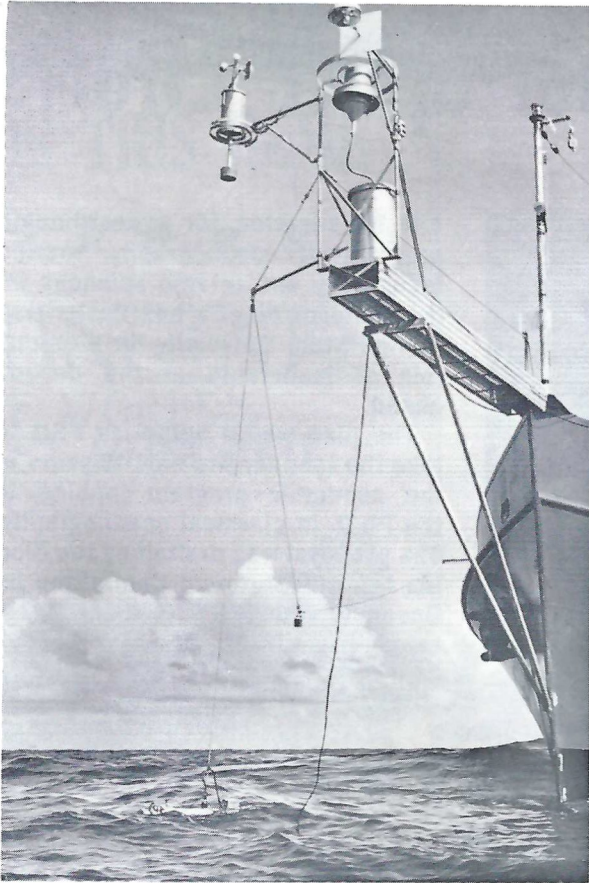
Florida State University's Oceanographic Institute—now in its 17th year of operation—is in the process of building a major sea-launch site from which the secrets of the salt seas will be explored and studied. FSU has dredged a 12-foot deep harbor and three-mile channel at Turkey Point, just 45 miles south of Tallahassee on the Gulf of Mexico. The harbor will accommodate ocean-going vessels used in oceanic explorations.

The Turkey Point facility will replace the present marine laboratory at Alligator Harbor which is hampered by low elevation, a shallow harbor and limited space for expansion.

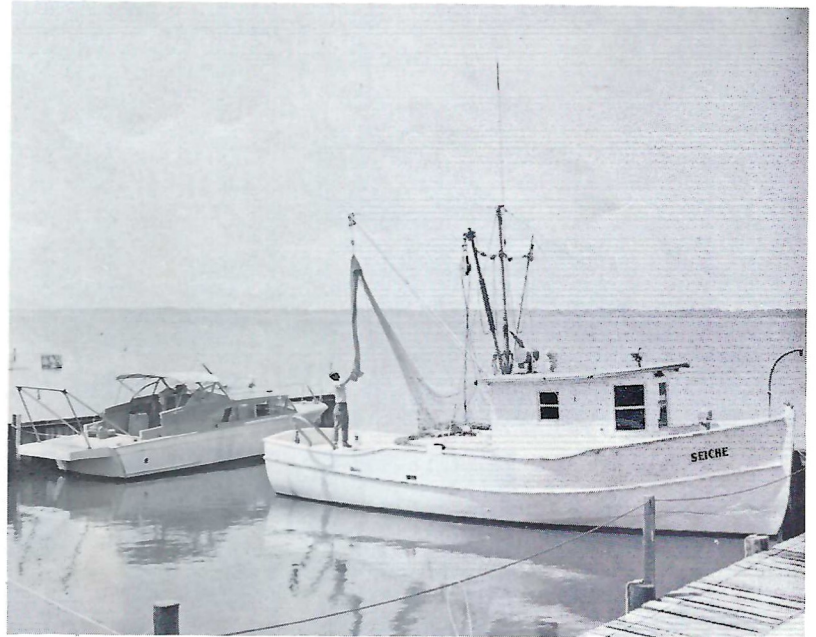
(Continued on next page)



FROM THE SEA...



Air-Sea interaction measurements (above) provide valuable information to oceanographers. At right, FSU's smaller vessels in safe harbor.



(Continued from page 5)

The Institute has received a \$349,000 grant from the National Science Foundation; and, with state funds, a total of \$700,000 is expected to be invested in the initial stages of development at Turkey Point. Located on a 77-acre site, the new facility will include a marine railway, laboratories, scientific shops, dormitories, and other supporting units, according to Dr. Carl Oppenheimer, director of the Institute.

Established in 1949, the oceanographic program now offers master of science and doctor of philosophy degrees. In addition to laboratories on the campus and at Alligator Point, FSU's Institute maintains three boats for shelf study, and several smaller craft.

The Marine Laboratory serves primarily as a biological field station for Florida State University faculty and students, as well as for other universities throughout the country. Research and instructional programs have been carried on in such fields as Red Tide phenomena, general marine biology, shell fish biology (particularly helpful to the vast state seafood industry), primary productivity of artificial reefs and many others.

Dr. Oppenheimer pointed out that Florida, because of its long coastline, has a unique geographical advantage in this widening field.



The nearby Gulf of Mexico yields a rich variety of marine life to oceanographic researchers. Analysis and measurements of clam growth (see photos on page 7) rates are related to mankind's need to improve the sea's productivity.

To FSU's Marine Laboratories



Alligator Harbor, above, will be replaced by Turkey Point Facilities.

"The ocean is capable of producing at least 100 billion tons of food a year for the world," he said. Aquaculture and other methods of "farming" the seas point to methods of making this capability a reality.

Dr. Oppenheimer cites other benefits which are possible as exploration of the oceans is intensified:

World-Wide Communications — For example, a research team managed to transmit sounds through the oceans.

Pollution Control—To nullify the adverse effect of man's activity.

Disease-Researchers have long been puzzled by the fact that sea life is strangely unaffected by cancer.

Minerals — Diamonds are being mined from the ocean floors off the coast of Africa, and an estimated 400 billion barrels of oil exist under continental shelves.

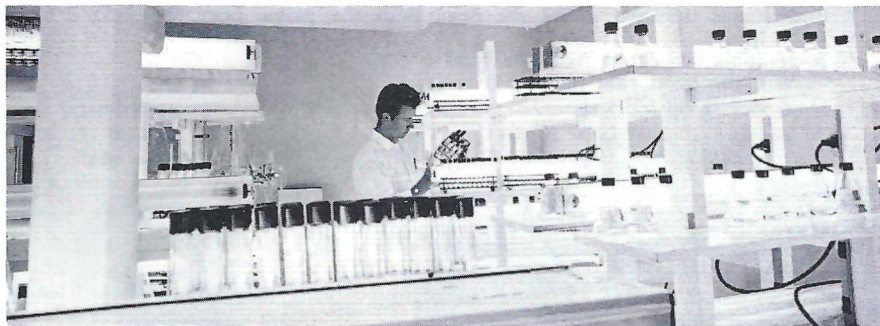
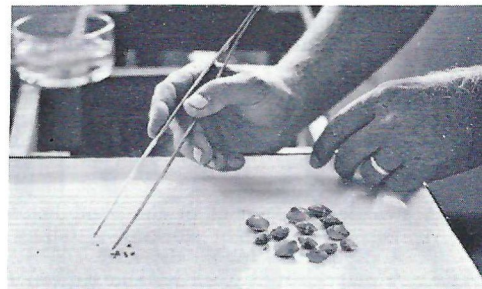
Weather Control—Cloud seeding and other techniques may provide Florida with hurricane-free seasons.

"Despite the vast potential the ocean holds for man, we actually know more about certain features of the near surface of the moon than we do about the bottom of oceans," Dr. Oppenheimer pointed out. "The ocean covers 71 per cent of the earth's surface and yet we have mapped only 3 per cent of the ocean floor," he said. "The future of man not only points to the stars but also to the earth's inner space, the oceans.

"FSU is expanding its graduate teaching and basic research programs as rapidly as possible to provide trained personnel so urgently needed for the rapidly growing fields of marine science and technology."



**RED
TIDE
RESEARCH**



Mysteries of the deep held in Marine Lab test tubes at Florida State.



**FUTURE
SEAFOOD
RESOURCES**



It's Official... Almost



By Norm Froscher
Jacksonville Journal

In the first of a series of entertaining guest columns by Florida sports writers who cover the Seminoles regularly, Norm Froscher of the Jacksonville Journal invites fans to match wits with the officials of tonight's game and provides a handy reference guide to what may be happening when the whistle blows.

Within the next hour, Florida State and Houston will launch their 1966 football campaigns.

Many words have been written of the strengths and weaknesses of both clubs, what to look for in such an such a situation, but the true football fan will also know what each of those cute little signals given by the officials mean. The officials are those guys in the black and white shirts whose duties are like that of a baseball umpire.

The football official, however, has many more signals to give than a man behind the plate, so let's quickly test your knowledge of some of the more common signals.

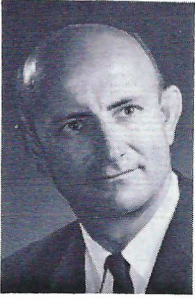
Give yourself one point for each correct answer, two points for each guess and three points for all others.

1. A swinging movement of the hand behind the right knee signals:
A. The official's right stocking is falling down ().
B. A player was hit on the knee ().
C. A player's right sock is falling down ().
D. None of the above ().
2. Both hands upraised above the head with the palms open signifies:
A. Help! ().
B. It's time for a tune from the band ().
C. Will the band stop playing ().
D. A and B but not C ().
3. A red handkerchief (flag) thrown on the ground means:
A. Somebody did something they shouldn't ().
B. There's a sandy spot on the field ().
C. There's a red alert for all National Guardsmen ().
D. Officials' time out ().
4. A loud buzzer (the horn) sounds and immediately play stops and the teams head for the dressing rooms. This is:
A. Time for a TV commercial ().
B. A short circuit in the public address system ().
C. A short circuit in the buzzer ().
D. All of the above ().
5. A patting of the head with the right hand by an official indicates:
A. He wants to say something ().
B. He needs a cap ().
C. He wants to be excused ().
D. His watch has stopped ().
6. One hand held above the head with the palm out means:
A. The official has spotted somebody he knows ().
B. He wants to be excused ().
C. He forgot what he wanted to signal ().
D. A first down ().

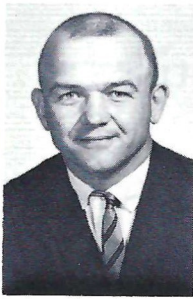
Now, for the correct officials' signals, and what they mean, please turn to page 22. We'd like to be excused to watch the game.

G
O
S
E
M
I
N
O
L
E
S

BILL CRUTCHFIELD
First Assistant
Offensive Chief



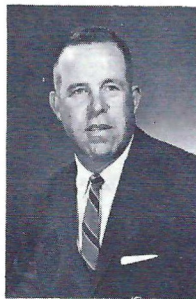
DON POWELL
Offensive Line



DON BREAUX
Receivers



KEN MacLEAN
Head Recruiter



BOB HARBISON
Defensive Chief



NEIL SCHMIDT
Defensive Backs



GARY WYANT
Linebackers



BOBBY JACKSON
Defensive Ends



BILL PETERSON
Head Football Coach



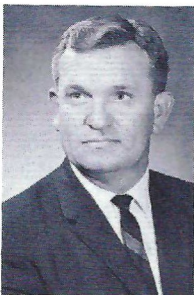
GENE McDOWELL
Freshmen

THE SEMINOLE FOOTBALL FAMILY

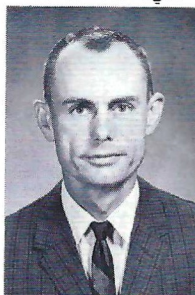
RONALD MELTON
Business Manager



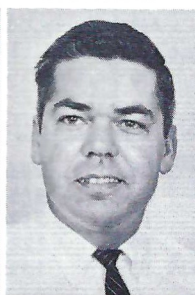
JEFF SAVAGE
Academic
Advisor



CLAUDE THIGPEN
Ticket Manager



LONNIE BURT
Sports
Information



VAUGHN MANCHA
Director of Athletics



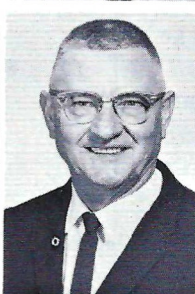
DR. RICHARD SHAARA
Team Physician



DON FAULS
Head Trainer



ROY DON WILSON
Trainer



TILLMAN DIXON
Equipment
Manager



W. H. Davis (left), Alcoa's General Manager—Industrial Relations, says: "We've found that Army ROTC graduates with active duty experience as officers possess better than average initiative, foresight, and responsibility. These are qualities we rate very highly, and we gladly pay a premium to get them."

Why did Alcoa hire Rod Wilson?

Because Alcoa needs men to fill key positions—men capable of moving to the top; men who seek and measure up to responsibility. Rod Wilson is that kind of man. An Army ROTC Distinguished Military Graduate at Colorado State University, Rod won an officer's commission in the Regular Army along with his degree. Forty-four months of active duty, including 16 months overseas as an artillery commander, earned Rod Wilson 24-carat credentials as a leader, a man schooled in the demanding disciplines of command, the kind of man Alcoa looks for.

If you're this kind of man, prove it to yourself, and to the companies like Alcoa who are looking for you. How? Get in Army ROTC. Stay with Army ROTC, all the way to success.

ARMY ROTC

TONIGHT'S TEAMS

1965 Statistics

FLORIDA STATE Results (4-5-1)			HOUSTON Results (4-5-1)		
3	TCU	7	0	Tulsa	14
9	Baylor	7	0	Miss. State	36
24	Kentucky	26	21	Cincinnati	6
10	Georgia	3	7	Texas A&M	10
0	Alabama	21	12	Miami	44
7	Virginia Tech	6	8	Tennessee	17
35	Wake Forest	0	40	Chattanooga	7
0	N. C. State	3	17	Mississippi	3
16	Houston	16	38	Kentucky	21
17	Florida	30	16	Florida State	16
<hr/>			<hr/>		
121		119	159		174

TEAM STATISTICS

141	First Downs	130
1396	Yards Rushing	1071
1296	Yards Passing	1582
2692	Total Offense	2653
256	Passes Attempted	227
114	Passes Completed	108
15	Passes Had Intercepted	11
5	Fumbles Lost	19
61	Punts	75
39.6	Punting Average	40.6

INDIVIDUAL LEADERS

Rushing

Name	Att.	Yds.	Avg.	Name	Att.	Yds.	Avg.
Mankins	85	336	4.0	Post	156	630	4.0
*Spooner	76	323	4.3	*Thompson	52	214	4.1
Moreman	49	249	5.1	McVea	38	114	3.0

Passing

Name	Att.	Comp.	Yds.	TD	Name	Att.	Comp.	Yds.	TD
*Pritchett	247	110	1225	5	Burris	175	81	1256	12
Hammond	6	2	44	0	Woodall	52	27	336	2

Pass Receiving

Name	Cgt.	Yds.	TD	Name	Cgt.	Yds.	TD
*Wettstein	24	365	3	Hebert	24	359	4
Wetherell	19	234	1	Beer	21	325	2
J. Jones	19	223	1	*M. Spratt	20	367	4
*Blankenship	15	163	0	McVea	17	341	4

Scoring

Name	TD	FG	PAT	TP	Name	TD	FG	PAT	TP
Roberts	0	7	10	31	Hebert	4	3	13**	47
*Wettstein	3	0	0	18	McVea	5	0	0	30
Moreman	2	0	0	12	*M. Spratt	4	0	1**	26
*Pritchett	2	0	0	12	Post	3	0	0	18
*Spooner	2	0	0	12	Beer	2	0	1**	14
Wetherell	2	0	0	12					
*Players not returning for 1966									

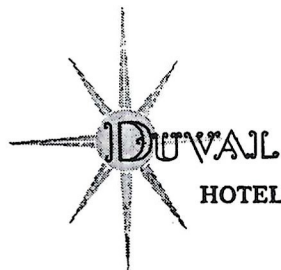
** Caught passes for two-point conversion

The Vogue

TALLAHASSEE, FLORIDA

TRAVELING
DESSERT TRAYS

FAMOUS
TOWN HOUSE
ROAST
PRIME RIB
OF BEEF



HOTEL • TALLAHASSEE, FLORIDA

ALL TIME FLORIDA STATE RECORDS

SINGLE GAME

Individual

- TOUCHDOWNS SCORED**—4 by Fred Biletnikoff vs. Oklahoma, Gator Bowl, 1965
- LONGEST TOUCHDOWN RUN FROM SCRIMMAGE**—81 yards by Fred Pickard vs. Virginia Tech, 1957
- LONGEST TOUCHDOWN PASS**—80 yards, Nelson Italiano to Eddie Gray vs. Newberry, 1950
- LONGEST TOUCHDOWN RUN ANY SITUATION**—99 yards by Ted Hewitt vs. Stetson, 1948 and Fred Biletnikoff vs. Miami, 1963 (interception return)
- LONGEST TOUCHDOWN PLAY**—100 yards by Bill Moreman and T. K. Wetherell (lateral on kickoff return) vs. Kentucky, 1965
- LONGEST RUN FROM SCRIMMAGE WITHOUT SCORING**—76 yards by Roy Thompson vs. Stetson, 1951
- LONGEST INTERCEPTION RETURN**—99 yards by Ted Hewitt vs. Stetson, 1948 and Fred Biletnikoff vs. Miami, 1963
- LONGEST PUNT RETURN**—80 yards by Billy Odom vs. Stetson, 1954
- LONGEST KICKOFF RETURN**—89 yards by Billy Odom vs. Va. Tech, 1955
- LONGEST PUNT**—84 yards by Tommy Brown vs. Tampa, 1950
- LONGEST FIELD GOAL**—44 yards by Les Murdock vs. Virginia Tech, 1963
- TIMES RUSHING**—29 by Fred Pickard vs. Georgia, 1949
- YARDS RUSHING**—161 by Buddy Strauss vs. Mississippi College, 1949
- PASSES ATTEMPTED**—39 by Steve Tensi vs. Virginia Tech, 1964
- PASSES COMPLETED**—23 by Steve Tensi vs. Oklahoma, Gator Bowl, 1965
- YARDS PASSING**—313 by Joe Majors vs. Tampa, 1959
- TOUCHDOWN PASSES**—5 by Steve Tensi vs. Oklahoma, Gator Bowl, 1965
- TOTAL OFFENSE**—369 yards by Joe Majors vs. Tampa, 1959 (56 rush, 313 pass)
- PASSES CAUGHT**—13 by Fred Biletnikoff vs. Oklahoma, Gator Bowl, 1965
- YARDS RECEIVING PASSES**—192 by Fred Biletnikoff vs. Oklahoma, Gator Bowl, 1965
- TOUCHDOWN PASSES CAUGHT**—4 by Fred Biletnikoff vs. Oklahoma, Gator Bowl, 1965
- PASSES INTERCEPTED**—3 by Tommy Brown vs. Stetson, 1950; and Georgia Tech, 1952; Lee Corso vs. Georgia, 1954; and Bud Whitehead vs. Virginia Tech, 1959
- FIELD GOALS**—3 by Les Murdock vs. Florida, 1964.
- PUNTS**—11 by John Hosack vs. Baylor, 1965 (40.8 average)

TEAM

- POINTS SCORED**—74 vs. Whiting Field, 1949
- MARGIN OF VICTORY**—74-0 vs. Whiting Field, 1949
- MARGIN OF DEFEAT**—0-42 vs. Georgia, 1959
- YARDS RUSHING**—383 vs. Abilene Christian, 1957
- YARDS PASSING**—355 vs. Villanova, 1954
- TOTAL OFFENSE**—526 vs. Furman, 1962 (277 rush, 239 pass)
- PASSES ATTEMPTED**—40 vs. Virginia Tech, 1964
- PASSES COMPLETED**—23 vs. Oklahoma, Gator Bowl, 1965
- PASSES INTERCEPTED**—7 vs. Virginia Tech, 1959
- PUNTS**—11 vs. Baylor, 1965

FLORIDA STATE'S ATHLETIC COMMITTEE



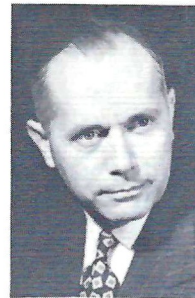
Robert Earnest
Chairman
Professor, Business



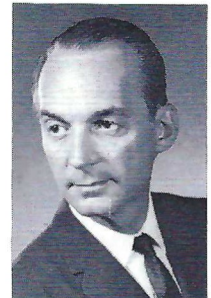
Mode L. Stone
Dean, School of
Education



Coyle E. Moore
Dean, School of
Social Welfare



Claude Flory
Professor, English



Thomas Wright
Professor, Music



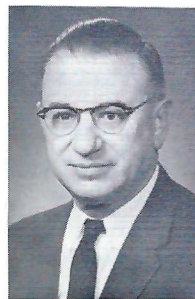
Elston Roady
Professor,
Government



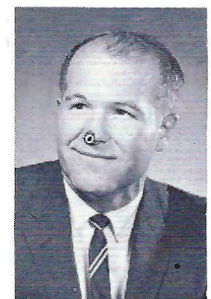
J. M. Plant
Assoc. Professor
Engineering Science



Mary Alexander
Assoc. Professor
Physical Education
and Recreation



Mason Ladd
Dean, College
of Law



John Carey
Dean of Students

MIDYETTE-MOOR Insurance Agency

"Ask Those We Serve"

Complete Insurance and Bond Service

PHONE 222-3456



MIDYETTE-MOOR BUILDING
TALLAHASSEE, FLORIDA

SAYS

SCALP 'EM SEMINOLES!



Payne Midyette
Frank Moor
Ed Clark
Winslow Sullivan
Bob Dickinson
Paul Lewis
Payne Midyette, Jr.

Bill Moor
Bill Franklin
Glenn Sears
Dick Wall
Don Northcut
Rex Sikes
Mike Lee

BENNETT'S DISCOUNT DRUG STORE

- Prescriptions
- Cameras
- Sundries
- Gifts
- Fountain
- Cafe
- Cosmetics
- Drugs

MEET ME AT BENNETT'S

BEFORE AND AFTER THE GAME!

Corner Monroe and College Streets

Phone 222-8980 — 222-4450

Football Fashions

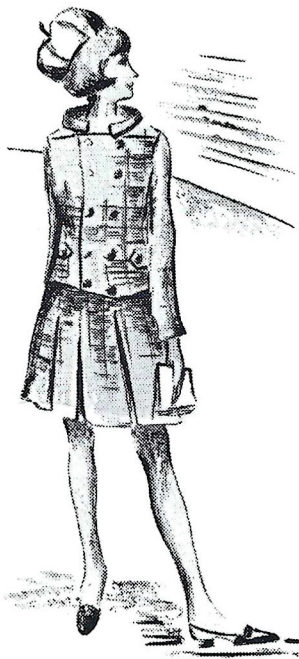
by MALINDA WIESNER

Fashion Editor, Des Moines (Ia.) Register

FASHION is on a kick for the football season.

Designers have scored with fashions made just for the game whether you're cheering beneath the southern sun or huddling in the stands up north.

It's the fabric that keeps you comfortable no matter where you follow the team.



For Southern games you find light-weight fabrics. Cotton and synthetic materials remain fresh for the festivities. Sheer wool is increasing in popularity too.

Knits make a hit whether you are the home team or visitor. They pack and ride with ease and turn out ready to go and fresh for the occasion. Cool knits include those of cotton or acetate. Textured wool knits are full of imagination. There are ribs, checks, herringbones, and tweeds. Also rated tops are the suedes. Now found more soft and supple, they can be styled into complete suits, coats or just used for trims.

Weather turns colder and you will choose heavier fabrics. This fall note double faced wools adding warmth without bulk and weight. Designers have turned to flat-faced fabrics like gabardine leaving the fuzzy mohair in the backfield.

Being pleated and flared, skirts are in motion and move into the stands with ease. Panels, godets, wrap-arounds all add walking room. Fullness flares from the natural waistline, lowered waist or just above the knees.

Topping skirts and dresses will be jackets and coats. Suit jackets are

often short if the skirt is pleated at the waist. Longer tunic styles will end where the skirt fullness begins. Dresses with matching coats make versatile combinations—ready for the game and subsequent celebrations.

Warm-weather wraps include the all-weather coats—they are handsome enough to make you laugh at a cloudy day. Nearly any fabric can be treated to resist the rain so corduroy, faille, wool and silk will join vinyl slickers on the bleachers.

A poncho makes a sporting accessory. Some are hooded or high colored. Try a co-ordinating plaid or textured knit over a tailored dress.

Coats of double-faced wool may be reversible with a contrasting color turning out on the notched collar. In order to fit over full skirts, coats take on a flared shape. Some reach near tent proportions flaring from the shoulders and have wide sleeves. Keeping a slim look at the bodice and sleeves, some flare from a slightly raised waistline.

Collars include wide rims standing high to muffle the neck. Some roll out into a hood for the chilliest climates.

Furs are popular in all parts of the country—even the southern evenings cool off enough in autumn to make them appropriate.

Mink goes casual with double-breasted closings and notched collars. Or try a fun fur for the festivities. Just about any animal found in the woods could turn up at the game. Fox might be disguised in "spank" red and raccoon will be updated. Coats are even lined in fur, some being reversible.

Fashion needs to be co-ordinated but you don't have to buy everything matching—it makes the game more exciting to call your own plays. Your gray all-weather coat will go with a brown suit. Then blend the two with a scarf hat of brown and gray paisley. The print may have gold accents you can pick up in an alligator bag. Brown shoes and creamy white gloves complete the ensemble.

Color knows no season—especially this year. Stands will be full of classic camel and bronze with olive accents. But the aster family joins the team too, from pale pink to rich purple and blue. Other surprises include navy—no longer just for spring. It will even be seen with white or deep red trim. Other colors making their bid are rusty oranges and berry reds.

Ensembles feature tri-color combinations. A coat dress may have a blue skirt topped in brown banded in the middle with creamy white. Outfits such as these are fun to accessorize as it is a natural to pick up more than one color in the accessories.

Accessories offer a chance to play a game of color and textures with

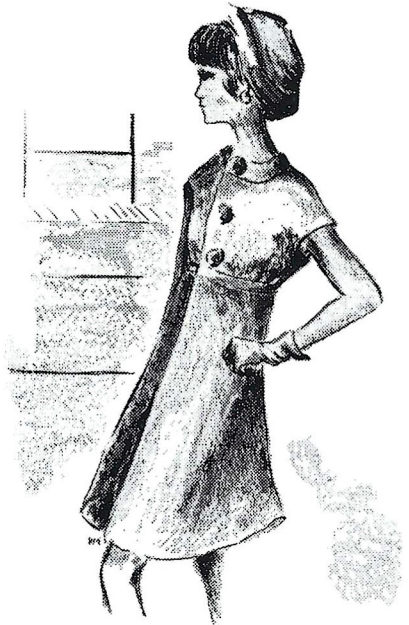
your ensemble. Shoes of textured leathers, alligator and even wool are in the footnotes.

Shoes should be comfortable and designers have obliged with low sturdy heels and rounded toes. You're climbing, walking and on and off your feet for the duration so treat them kindly. Shed your spikes in favor of a new sporting pair. Trims will include buckles, straps, lacing and tailored bows. There will be straps, toe-less and heel-less styles for variety. Keep in mind boots—not as clumsy as other seasons—for cold stadiums.

Handbags are smaller so let the men tote their own thermos of coffee—you won't have room. Like shoes there is a distinctive array of colors and materials.

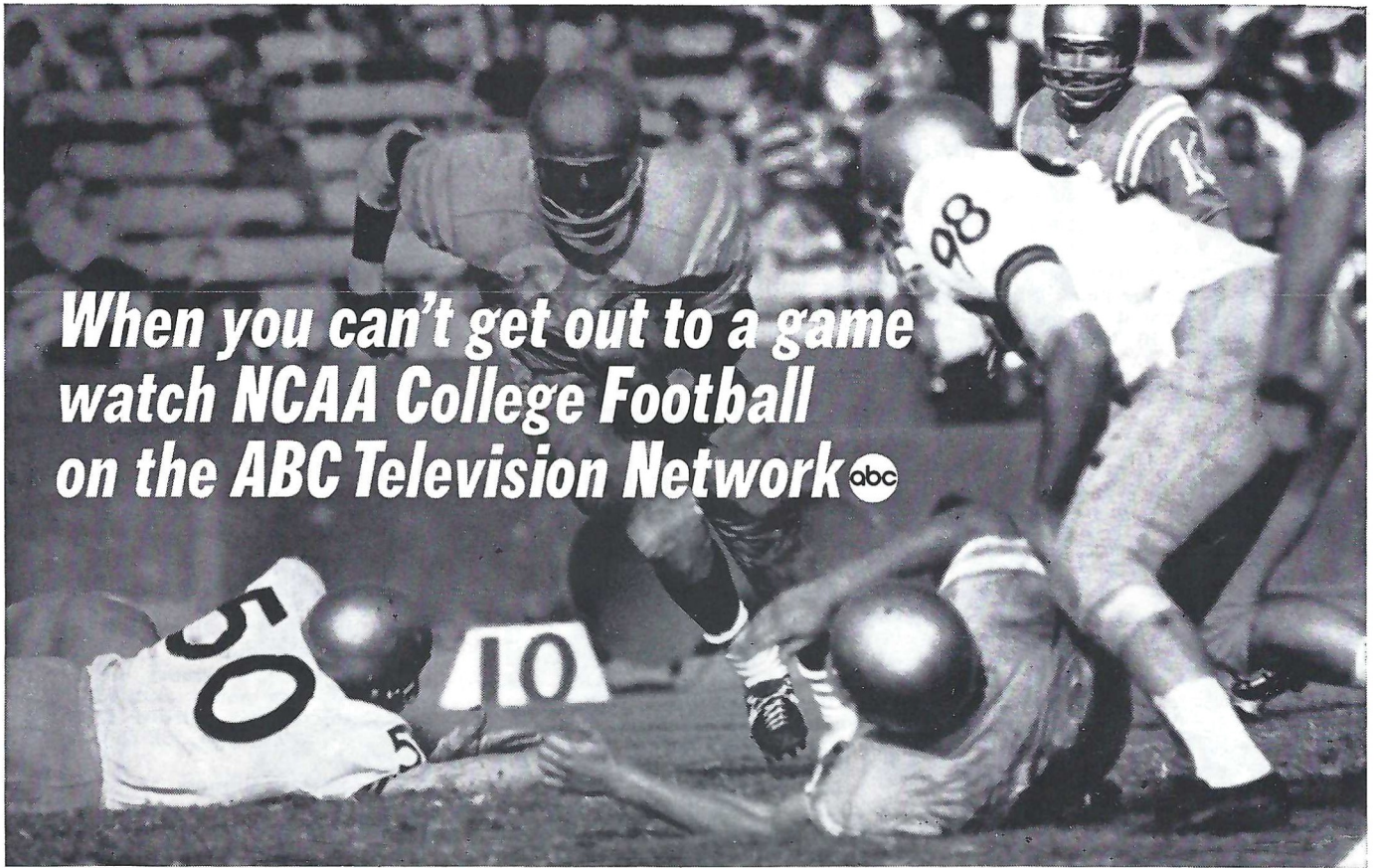
Topping the accessory field are hats. They are small and fit down over the new sleek hairdos. They are decorative and do the job of keeping ears warm.

Appropriate helmets are done in crushable felt. There are also berets, beanies, hoods and caps that are styled in soft fabrics. Even fall's small brimmed roller can be packed with ease.



If an especially bright future is forecast for the team and you will be headed for a southern bowl game, knits are suggested. Chances are weather will be sunny. A sleeveless knit will be appropriate with a co-ordinating jacket or coat. It can be dressed up or down as the occasion demands.

Do take time out to think of your wardrobe when backing the team. You shouldn't punt—be prepared.



**When you can't get out to a game
watch NCAA College Football
on the ABC Television Network abc**

See Florida State vs. Virginia Tech from Blacksburg, Va. over the ABC television network, Oct. 29, 1966

Campus Headlines and Coming Events

Florida State University activities were featured during the past few weeks in at least four national magazines.

Time magazine featured a report on Florida State's pioneering efforts in placing students in small groups, or clusters, to provide a small college atmosphere within a larger university.

Look magazine featured a four-page spread on Florida State's Flying High Circus.

The Saturday Evening Post printed an article authored by Michael J. Shaara, assistant professor of English.

And the *Saturday Review* featured a report on Florida State University's Asolo Theatre Festival in Sarasota.



TONIGHT

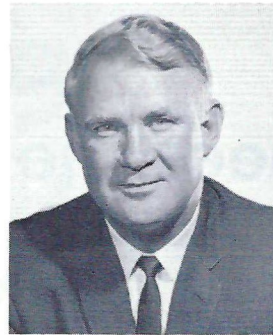
- 10 p.m.—Victory Dance, with "The Velvets;" Union Ballrooms.
MONDAY, SEPTEMBER 19
- 10 a.m.—Formal opening of Florida State's Computer-Assisted Instruction Center, located in the basement of Tully Gym.
- 1:30-4:30 p.m.—CAI Symposium, Moore Auditorium, with guest speakers from IBM and leading educators in this field.
TUESDAY, SEPTEMBER 20
- 8:15 p.m.—Piano Concert, Westcott Auditorium, Edward Kilenyi.
SATURDAY, SEPTEMBER 24
- 8 p.m.—Football game at Miami; FSU vs. Miami at Coral Gables.
- 8 p.m.—Scoreboard Dance, with "The Bitter Ends;" Union Ballrooms.
SATURDAY, OCTOBER 1
- 8:15 p.m.—Opera Guild Production: "Fantastiks," Opperman Hall.
(From Oct. 1 to Oct. 6, at 8:15 p.m.; at 2:30 p.m. Oct. 2)
TUESDAY, OCTOBER 4
- 7 p.m.—Open Forum. Robert Short, Author of "The Gospel According to Peanuts," reviews his book in Moore Auditorium
FRIDAY, OCTOBER 7
- 7:30 p.m.—Joint Glee Club Concert, Men's Glee Clubs from the University of Florida and Florida State; Westcott Auditorium.
SATURDAY, OCTOBER 8
- 11 a.m.—FSU & UF Alumni Barbecue. 2 p.m.—FSU vs. UF (Football).



Haydon Burns*
Governor



Tom Adams*
Secretary of State



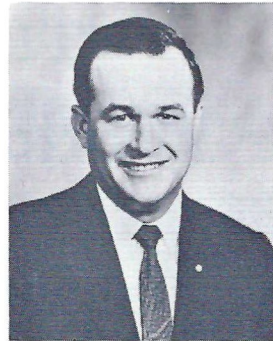
Earl Faircloth*
Attorney General



Broward Williams*
Treasurer



Floyd T. Christian*
Supt. of Public Instr.



Doyle Conner
Comm. of Agriculture



Fred O. Dickinson, Jr.
Comptroller

State Officials

*Indicates membership on the State Board of Education.



BOARD OF REGENTS—STATE UNIVERSITY SYSTEM

Left to right, front row: Wayne C. McCall, D.D.S., vice chairman, Ocala; Chester H. Ferguson, chairman, Tampa; Mrs. E. D. Pearce, Coral Gables; and John C. Pace, Pensacola. **Left to right, back row:** Clifton G. Dyson, W. Palm Beach; Woodrow J. Darden, Titusville; Louis C. Murray, M.D., Orlando; Clarence L. Menser, D. Litt., Vero Beach; Henry Kramer, Jacksonville; and J. Broward Culpepper, Ed.D.

"You meet the nicest people on a

H O N D A

World's largest seller"

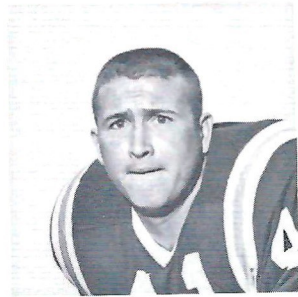


HONDA OF TALLAHASSEE

At the Underpass on West Tennessee



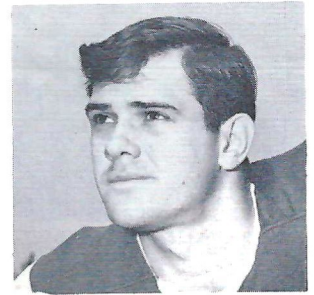
John Stephens



Bob Menendez



Wayne Giardino

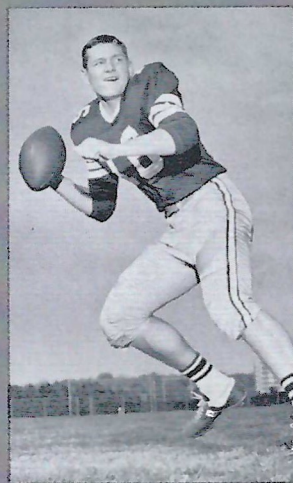


John Hosack

FLORIDA STATE UNIVERSITY 66 SEMINOLES



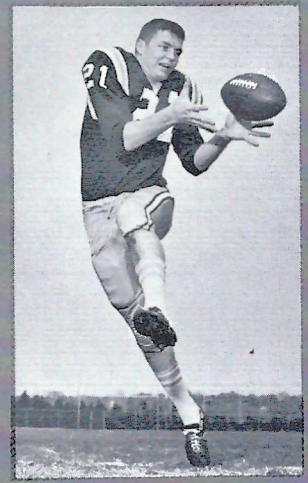
Bill Campbell



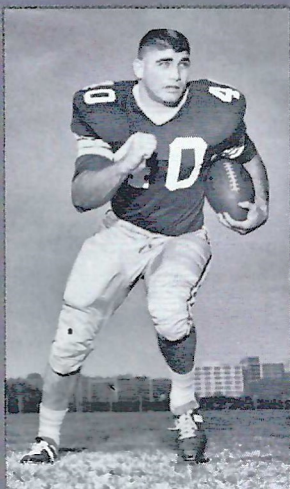
Gary Pajcic



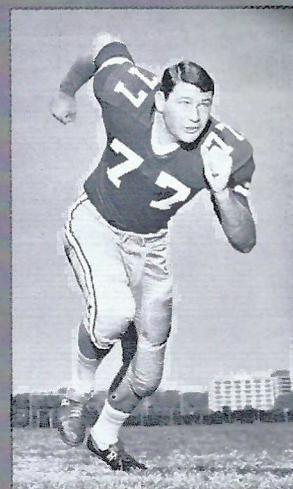
David Braggins



Bill Cox



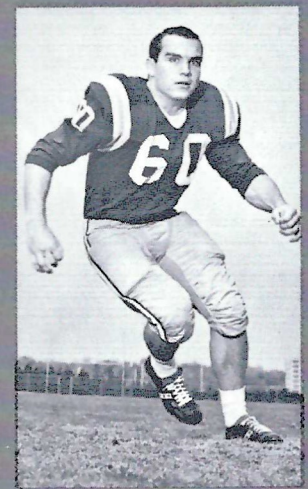
Mike Blatt



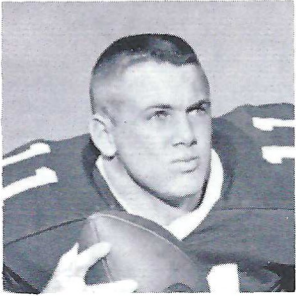
Jeff Curchin



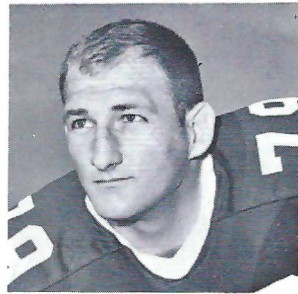
Ron Sellers



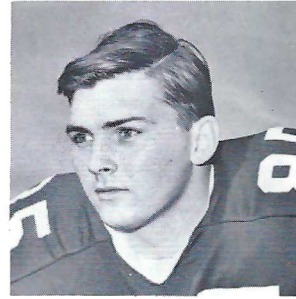
Larry Williamson



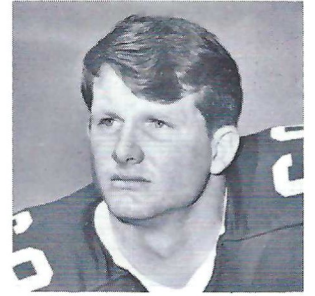
Kim Hammond



Frank Vohun

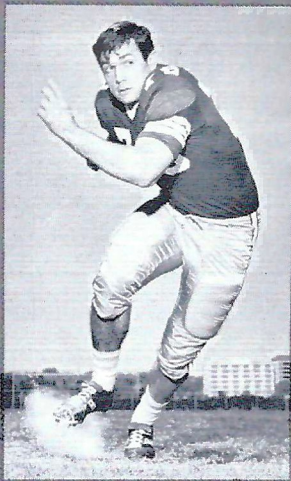


Doug Gurr

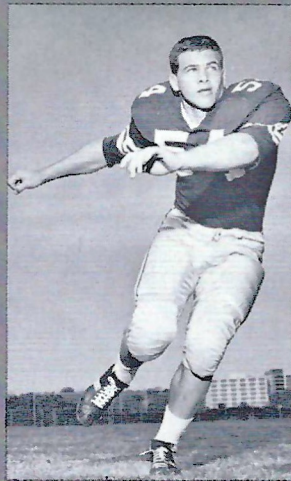


Jeff Chapman

the FLORIDA STATE UNIV



Charles Pennie



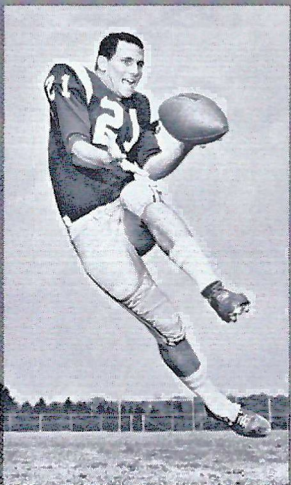
Billy Loe Janes



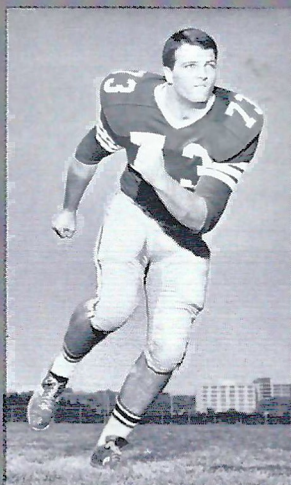
Larry Green



Larry Penedleton



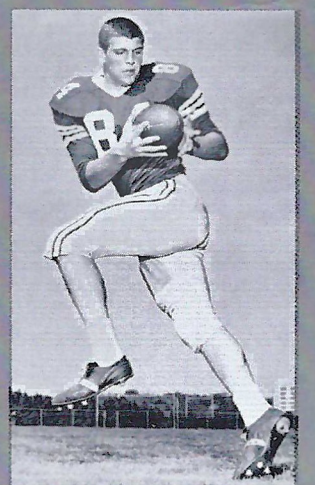
Donovan Jones



Larry Kissam



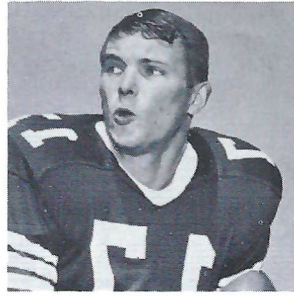
James Riser



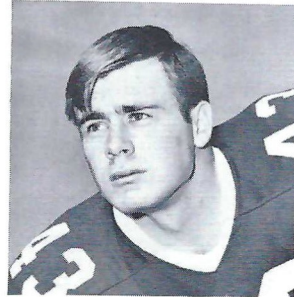
Chip Glass



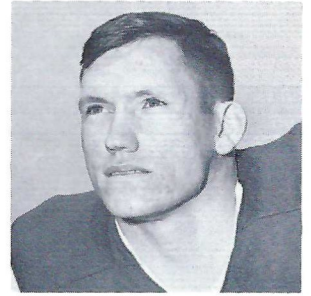
Edwin Pope



Marty Kolbus



Howell Montgomery

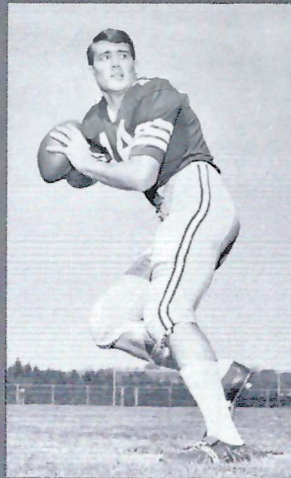


H. T. Waller

UNIVERSITY 1966 SEMINOLES



Lane Fenner



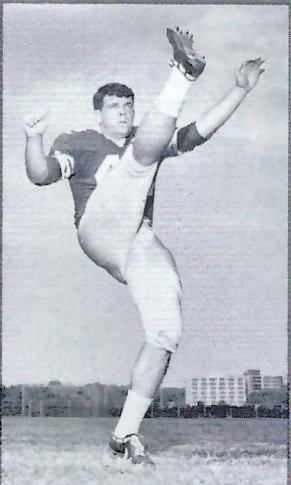
Bill Cappleman



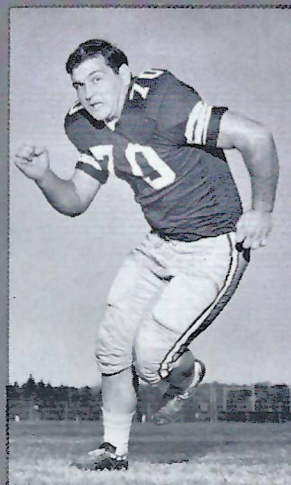
Bill Richardson



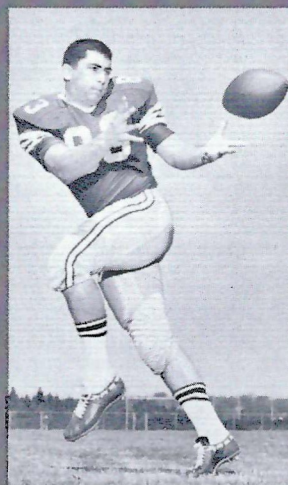
Pat Conway



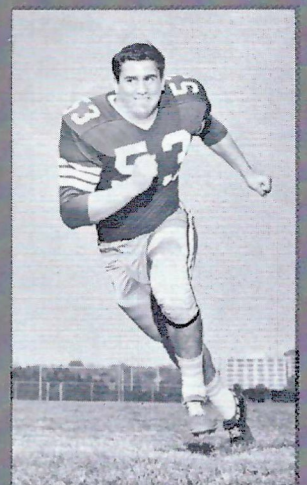
Pete Roberts



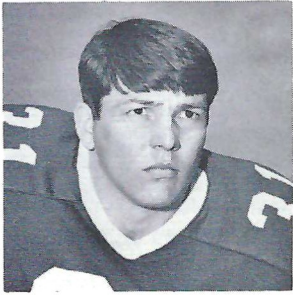
Del Williams



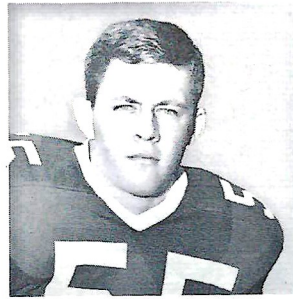
Thurston Taylor



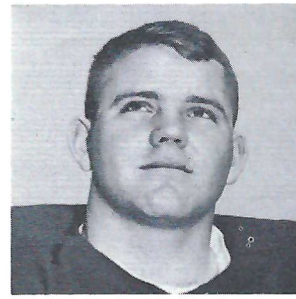
Harvey Zion



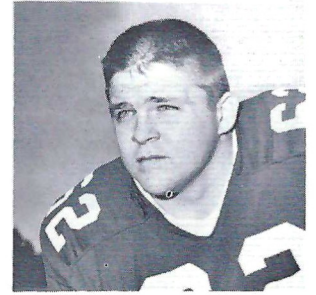
John Hurst



Ken Hart



Jerry Jones



Dan Douglas

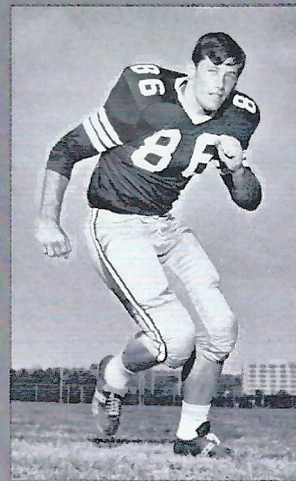
FLORIDA STATE UNIVERSITY 66 SEMINOLES



Jim Mankins



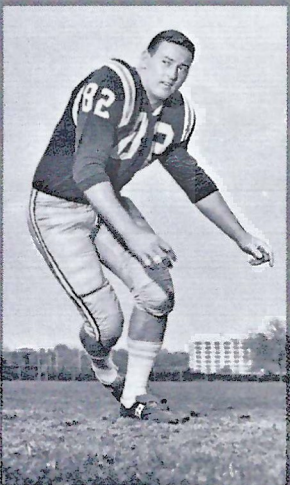
Jay Mac Matthews



Billy Rhodes



T. K. Wetherell



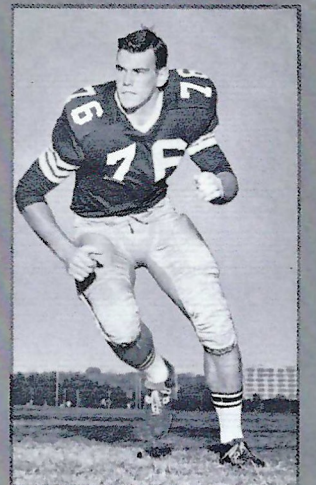
Wayne McDuffie



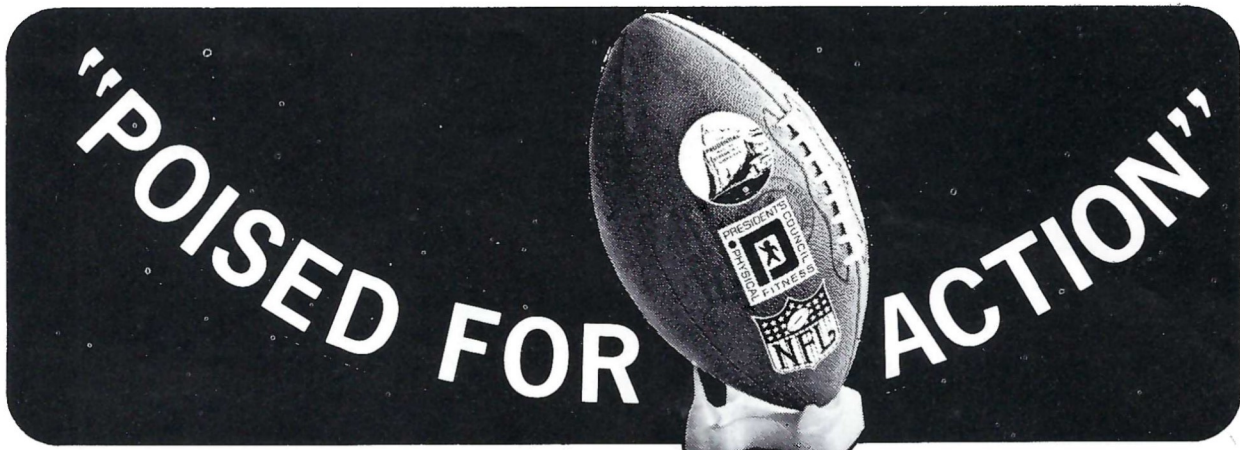
Dale McCullers



Bill Moreman



Jack Fenwick



Football and Fitness Film Now Available!

This brand-new, exciting 28-minute color film captures the thrills of professional football. It shows 13 N.F.L. stars in action, in some of their biggest moments of play last year. In addition, the 16 mm. sound film depicts these same players in "how-we-do-it" demonstrations of these plays, as well as their own favorite methods of staying in peak physical shape.

The film and an accompanying 36-page booklet outlines football-oriented plays, exercises, fundamentals and skills.

The film, sponsored by Prudential in cooperation with the President's Council on Physical Fitness and the National Football League, is available for free loan. It will make a terrific program for your civic club, youth group or physical education class.

For information, contact your local Prudential office. Or write Public Relations Dept., The Prudential Insurance Co. of America, P. O. Box 4579, Jacksonville, Florida 32201.



THE PRUDENTIAL INSURANCE COMPANY OF AMERICA
SOUTH-CENTRAL HOME OFFICE • JACKSONVILLE, FLORIDA

Collins furniture co.
INCORPORATED

1117 THOMASVILLE ROAD
PH. 222-1415

TALQUIN INN

West Tennessee Street

Open Daily 5:00 p.m.

Closed Sundays

Learn to Fly at
G. C. Shuler
Seminole Flying Service, Inc.

Municipal Airport

Phone 222-3121

Tallahassee, Fla.

- STUDENT CLUBS
- AIRPLANE RIDES
- FLIGHT INSTRUCTION
- AERIAL PHOTOGRAPHY
- CHARTER FLIGHTS
- AIRCRAFT RENTAL

FLY the best—A New Cessna

"Look up—a new CESSNA will be overhead"

Go Seminoles

OWNED AND OPERATED BY FRANK, RICHARD & RAYMOND CHASE

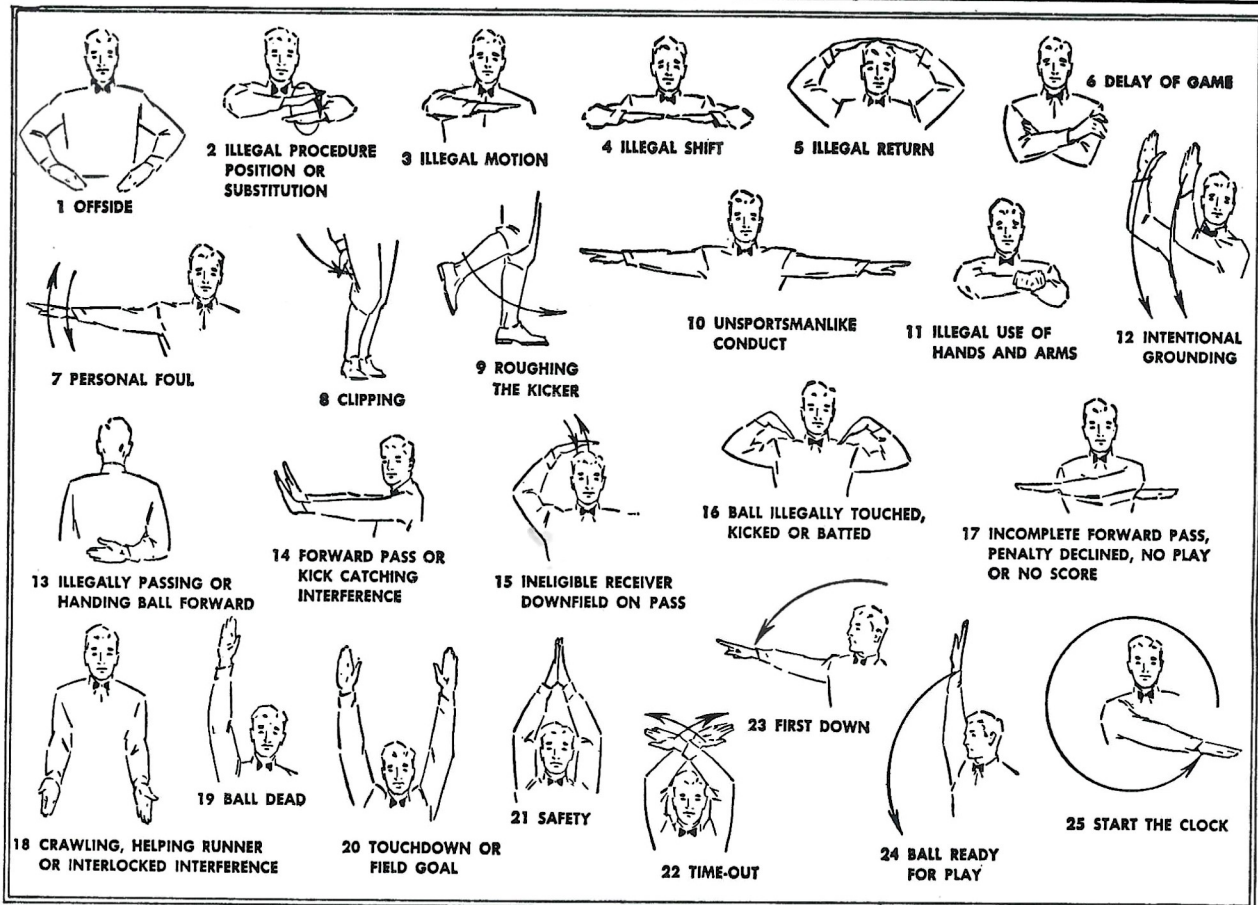


2220 W. TENNESSEE ST.
TALLAHASSEE, FLORIDA

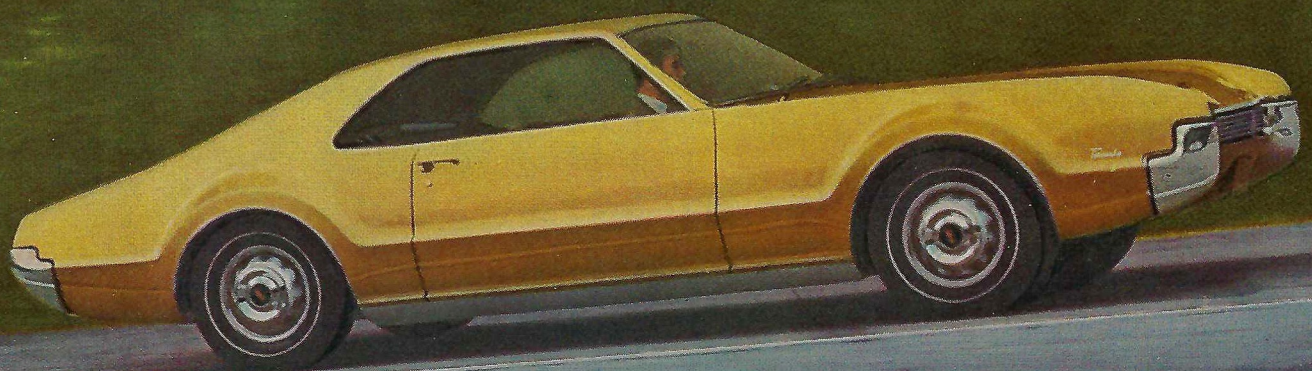
"Serving Good Food for Fine People"

Private Rooms and Banquet Facilities

FOR RESERVATIONS CALL: 599-9460 — 224-9546



*STEP
OUT FRONT
IN '66 ... in a Rocket Action Olds!*



Ho-hum driving is out...Toronado's in!



Find yourself stealing a wistful glance at that sleek Toronado in the next lane? Or peeking enviously into some lucky stranger's Toronado in the parking lot? Don't be shy. Step right up and talk Toronado with a Toronado owner. And when his boundless enthusiasm starts to get to you, remember this: Next man to talk to is your Olds Dealer. He's got one priced right for you...right now! **LOOK TO OLDS FOR THE NEW!**

Oldsmobile Division - General Motors Corp.



things go
better
with
Coke
TRADE-MARK®

FOR THE TASTE

OFFENSE

- 82 TOM BEER TE
- 70 BILL CLOUD LT
- 67 RICH STOTTER LG
- 55 BARRY SIDES C
- 72 BILL PICKENS RG
- 78 CHARLIE FOWLER RT
- 23 KEN HEBERT SE
- 16 BO BURRIS QB
- 26 DICK POST HB
- 35 GEORGE NORDGREN FB
- 42 WARREN McVEA FL

DEFENSE

- 87 WAYNE McDUFFIE LE
- 78 CHARLES PENNIE LT
- 23 WAYNE GIARDINO LB
- 68 LARRY PENDLETON MG
- 65 DALE McCULLERS LB
- 74 JAY MAC MATTHEWS RT
- 89 BOB MENENDEZ RE
- 33 BUTCH RISER CB
- 26 BILL CAMPBELL CB
- 17 MARTY KOLBUS S
- 43 HOWELL MONTGOMERY S

Houston

DEFENSE

- 88 ROYCE BERRY LE
- 77 DICK GEORGE LT
- 71 PAUL OTIS RT
- 81 CARL CUNNINGHAM RE
- 53 GREG BREZINA LB
- 51 SKIPPY SPRUILL LB
- 90 LARRY SATCHER LB
- 44 TOM PACIOREK S
- 33 BILL HOLLON HB
- 24 DICK SPRATT HB
- 17 GUS HOLLOWOM S

FSU

OFFENSE

- 27 BILL COX SE
- 76 JACK FENWICK LT
- 60 LARRY WILLIAMSON LG
- 54 JOHN STEPHENS C
- 70 DEL WILLIAMS RG
- 73 LARRY KISSAM RT
- 83 THURSTON TAYLOR TE
- 11 KIM HAMMOND QB
- 30 BILL MOREMAN LH
- 44 JIM MANKINS FB
- 34 RON SELLERS FL

HOUSTON SQUAD

- 11 Woodall, QB
- 14 Barbour, LB
- 16 Burris, QB
- 17 Hollomon, S
- 20 Berger, DB
- 22 Bean, FL
- 23 Hebert, SE
- 24 Spratt, DB
- 25 Simpson, DB
- 26 Post, HB
- 27 Phillips, LB
- 31 Matthews, FL
- 32 Williams, FB
- 33 Hollon, S
- 35 Nordgren, FB
- 37 Peacock, DB
- 41 Johnston, FB
- 42 McVea, FL
- 43 Shires, S
- 44 Paciorek, S
- 45 Woodring, S
- 46 Gipson, HB
- 51 Spruill, LB
- 53 Brezina, LB
- 55 Sides, C
- 60 Larson, DT
- 62 Pryor, C
- 64 Perez, OG
- 65 Gardner, LB
- 67 Stotter, OG
- 68 Smith, OG
- 70 Cloud, OT
- 71 Otis, DT
- 72 Pickens, OT
- 73 Schneider, OG
- 74 Thompson, DT
- 76 Odom, OT
- 77 George, DT
- 78 Fowler, OT
- 81 Cunningham, DE
- 82 Beer, OE
- 83 Daulong, OE
- 86 Dyer, DE
- 88 Royce, DE
- 89 Caraway, DE
- 90 Satcher, LB

FLORIDA STATE SQUAD

- 11 Hammond, QB
- 12 Burkhardt, QB
- 14 Cappleman, QB
- 15 Conway, DB
- 16 Pajcic, QB
- 17 Kolbus, DB
- 18 Burton, DB
- 19 Roberts, K
- 20 Green, HB
- 21 Jones, FL
- 22 Eason, DB
- 23 Giardino, LB
- 24 Sumner, DB
- 26 Campbell, DB
- 27 Cox, OE
- 28 Wetherell, OE
- 29 Hurst, HB
- 30 Moreman, HB
- 31 Gunter, HB
- 33 Riser, DB
- 34 Sellers, FL
- 35 Hosack, K
- 40 Blatt, FB
- 41 Crowe, FL
- 43 Montgomery, DB
- 44 Mankins, FB
- 47 Benson, LB
- 50 Janes, MG
- 51 Richardson, C
- 52 Zion, MG
- 54 Stephens, C
- 59 Loner, MG
- 60 Williamson, OG
- 61 Elliott, OG
- 62 Douglas, OG
- 64 Braggins, DT
- 65 McCullers, LB
- 66 Hart, OG
- 68 Pendleton, MG
- 69 Pope, OG
- 70 Williams, OG
- 73 Kissam, OT
- 74 Matthews, DT
- 75 Rhodes, OT
- 76 Fenwick, OT
- 77 Curchin, OT
- 78 Pennie, DT
- 79 Vohun, DT
- 80 Gurr, DE
- 81 Waller, DE
- 83 Taylor, OE
- 84 Glass, OE
- 87 McDuffie, DE
- 88 Jones, LB
- 89 Menendez, DE

— Officials —

- Referee.....R. P. (Pete) Williams (Miami)
- Umpire.....Ralph Foster (Okla.)
- Head Linesman.....David Scobey (Tenn.)
- Field Judge.....Dan Watson (Texas)
- Back Judge.....Dick Pace (Maitland)
- Electric Clock Operator..W. H. (Bill) Henderson (Ala.)



"COCA-COLA" AND "COKE" ARE REGISTERED TRADE-MARKS WHICH IDENTIFY ONLY THE PRODUCT OF THE COCA-COLA COMPANY. PRINTED IN U.S.A.

YOU NEVER GET TIRED OF





Buick Riviera. Made in U.S.A.

What makes a car a car is styling, performance, ride and handling. Only when they're all tuned together is the car a Buick. Like this 1966 Riviera Gran Sport.

If there are two things the romantic Italians love, one of them is automobiles. Dashing, dramatic automobiles.

Now, some people think Italy has a monopoly on the red-blooded cars that make hearts beat faster and the adrenalin flow.

But those people have another think coming.

The tuned car is here. *Con brio.*

Where the tuned car comes from. Well, from the sunny slopes of far-off Flint, Michigan, if you want to be precise. But really it comes from the hearts of people who dearly love a great road machine.

The tuned car is a blend of styling, performance, ride and handling—all working together in harmony. It means the Riviera lives up to its looks, and that's going some. Under the hood, you have a 340-hp Wild-

cat V-8. The exhilaration it turns out is harnessed to the road via a suspension that gives you thorough control, yet a firmly comfortable ride.

We confess that we give the Riviera more than a little foreign flair, when it comes to designing it. So we exuberantly tune in Latin fire and grace.

But we never forget American practicality. And so the Riviera offers you a choice of bucket seating or six-passenger bench seating. (Or, for that matter, a combination: a new notch-back seat that converts into semi-buckets is available.)

Help keep America safe. When you first see the '66 Riviera, you might be forgiven for overlooking certain added attractions. Such as all the *safety* equipment that comes standard: seat belts front and rear; shatter-resistant inside mirror; out-

side rearview mirror; padded dash and sun visors; dual-speed wipers and washers; backup lights. (Which make seeing where you're going easier, even when you're going where you've been.) We overlook nothing to make your driving more pleasant. Nothing at all.

Drive the tuned car. And be glad Flint is in your country. The way to wangle an introduction to the tuned car is simply to visit your nearby Buick dealer.

You'll quickly discover that this '66 Riviera is as sleek and dramatic as any Roman chariot could possibly be. At the same time, you'll be pleased to know that it continues the Buick tradition of comfort and solid dependability.

And besides that, all the labels are in English.

Wouldn't you really rather have a Buick?

1966 Buick. The tuned car.



BUICK MOTOR DIVISION

PENALTIES

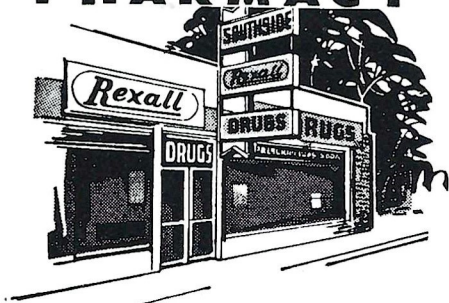
1. **OFFSIDE** by either team; Violation of scrimmage or free kick formation; Encroachment on neutral zone—Loss of Five Yards.
2. **ILLEGAL PROCEDURE, POSITION OR SUBSTITUTION**—Putting ball in play before Referee signals "Ready-for-play"; Failure to complete substitution before play starts; Player out of bounds when scrimmage begins; Failure to maintain proper alignment of offensive team when ball is snapped; False start or simulating start of a play; Taking more than two steps after Fair Catch is made; Player on line receiving snap—Loss of Five Yards.
3. **ILLEGAL MOTION**—Offensive player illegally in motion when ball is snapped—Loss of Five Yards.
4. **ILLEGAL SHIFT**—Failure to stop one full second following shift—Loss of Fifteen Yards.
5. **ILLEGAL RETURN** of substitute not previously disqualified—Loss of Fifteen Yards.
6. **ILLEGAL DELAY OF GAME**; Taking more than four times out during either half (except for replacement of injured player)—Loss of Five Yards. Team not ready to play at start of either half—Loss of Fifteen Yards.
7. **PERSONAL FOUL** — Tackling or blocking defensive player who has made fair catch; Piling on; Hurdling; Grasping face mask of opponent; Tackling player out of bounds, or running into player obviously out of play; Striking an opponent with fist, forearm, elbow or locked hands; Kicking or kneeling—Loss of Fifteen Yards (Flagrant offenders will be disqualified.)
8. **CLIPPING**—Loss of Fifteen Yards.
9. **ROUGHING THE KICKER** or holder—Loss of Fifteen Yards.
10. **UNSPORTSMANLIKE CONDUCT**—Violation of rules during intermission; Illegal return of suspended player; Coaching from sidelines; Invalid signal for Fair Catch; Persons illegally on field—Loss of Fifteen Yards. (Flagrant offenders will be disqualified.)
11. **ILLEGAL USE OF HANDS AND ARMS** by offensive or defensive player; Defensive holding—Loss of Fifteen Yards.
12. **INTENTIONAL GROUNDING** of forward pass—Loss of Five Yards Plus Loss of Down.
13. **ILLEGALLY PASSING OR HANDING BALL FORWARD**—Loss of Five Yards Plus Loss of Down.
14. **FORWARD PASS OR KICK CATCHING INTERFERENCE**—Interference with opportunity of player of receiving team to catch a kick—Loss of Fifteen Yards. Interference by member of offensive team with defensive player making pass interception—Loss of Fifteen Yards Plus Loss of Down. Interference by defensive team on forward pass—Passing Team's Ball at Spot of Foul and First Down.
15. **INELIGIBLE RECEIVER DOWNFIELD ON PASS**—Loss of Fifteen Yards.
16. **BALL ILLEGALLY TOUCHED, KICKED OR BATTED**—Forward pass being touched by ineligible receiver beyond the line of scrimmage—Loss of Fifteen Yards from Spot of Preceding Down and Loss of a Down. Eligible pass receiver who goes out of bounds and later touches a forward pass—Loss of Down. Illegal touching of kicked ball within opponent's ten yard line—Touchback.
17. **PENALTY DECLINED**; Incomplete forward pass; No play or no score.
18. **CRAWLING** by runner—Loss of Five Yards. Interlocked Interference—Loss of Fifteen Yards.

PRESCRIPTIONS

- COSMETICS
- GREETING CARDS
- TOYS
- FILMS & CAMERAS

224-9031

SOUTHSIDE
Rexall
PHARMACY



1549 S. MONROE



"BUDDY STEWART"
WE BILL THE BANK
"WORKING FOR BETTER
COMMUNITY HEALTH"
HAVE YOUR DOCTOR CALL US

NO CHARGE FOR
DELIVERY SERVICE

CITY WIDE AND
SURROUNDING AREAS

- VITAMINS
- CANDY
- GIFTS
- HOSPITAL SUPPLIES

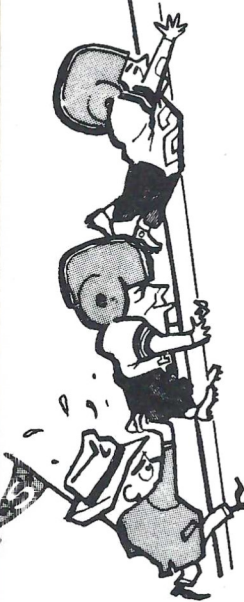
224-5011

UNIVERSITY
Rexall
PHARMACY



W. TENN & HIGH RD.

SEMINOLE BOOSTERS, INCORPORATED



SEMINOLE BOOSTER-66
TALLAHASSEE, FLORIDA

FLORIDA STATE UNIVERSITY

POW WOW with PETE
BY BILL PETERSEN
Head Football Coach
Florida State University

SEMINOLE BOOSTER NEWS

When a football program moves from the minor leagues to the major leagues, one of the problems involved is the traffic problem. This is the case with the Seminole football program. The Seminole football program has advanced to the major leagues and the traffic problem has become a major one. The Seminole football program has advanced to the major leagues and the traffic problem has become a major one. The Seminole football program has advanced to the major leagues and the traffic problem has become a major one.

THE GRANDSTAND COACH

It should be pointed out that Seminole Boosters should plan to be seated in Campbell stadium by 7:00 p. m. for at least one hour prior to kick off in order to be parked in your seat and on hand for the pre-game ceremonies. Sign in to come early for the pre-game ceremonies.

SEMINOLE BOOSTERS, INC.
1966 FOOTBALL MEMBERSHIP CARD

ACTIVE BOOSTER

SEMINOLE BOOSTERS, INC.
1966 FOOTBALL MEMBERSHIP CARD

SEMINOLE BOOSTERS, INC.
1966 FOOTBALL MEMBERSHIP CARD

FOR A BIGGER AND BETTER FLORIDA STATE UNIVERSITY



SEMINOLE BOOSTERS, INC. BOARD OF DIRECTORS 1966

Seated, left to right: Weldon G. Starry, Director; Hank Mannheimer, Secretary; W. S. "Bill" Lee, President; Herschel Williams, Treasurer; and Dr. Ed Haskell, Jr., Immediate Past President.

Standing, left to right: Rainey Cawthon, Director; Louis Hill, Director; Tom Feamster, Jr., Director; Godfrey Smith, Director; J. T. Williams, Jr., Director; Theo Proctor, Jr., Director; William I. DuBey, Director; Wayne Cook, Director; Dr. Laurence Chalmers, Director; and Dan Wright, Director.

Not present when picture was taken were: T. A. Waits, Executive Director; J. Edwin White, President-Elect; Guy McKenzie, Director; Dr. Francis H. Watt, Director; F. W. "Bill" Carraway, Jr., Director; and Robert B. Drake, Director.

Seminole Boosters, Inc. is an organization devoted entirely to the support of the Florida State University athletic program with emphasis on football.

Membership in the Boosters—the group numbers approximately 1,400—is open to anyone with a sincere interest in the University's athletic progress. Minimum contribution for an individual membership is \$15. A business membership costs \$30.

Contributions are administered in accordance with NCAA regulations and in conjunction with the Florida State Department of Intercollegiate Athletics.

Boosters receive a colorful automobile license plate which can be used for admission to special reserved parking lot at the stadium, a membership card, a weekly fall publication, "The Grandstand Coach," and certain priorities on season and single game football tickets.

SEMINOLE BOOSTERS, INCORPORATED FLORIDA STATE UNIVERSITY TALLAHASSEE, FLORIDA 32306

My 1966 gift is:

Check attached for \$ _____

Pledge to pay \$ _____ Bill me for \$ _____
(TOTAL AMT.) (PAYMENTS)

MONTHLY QUARTERLY OTHER _____ (SPECIFY)

MEMBERSHIP: Individual - \$15 minimum
Business - \$30 minimum



ARE YOU AN F.S.U. ALUMNUS? Yes No

Make check payable to Seminole Boosters, Inc.
Mail To: 114 Longmire Alumni Bldg., FSU
TALLAHASSEE, Florida 32306



(PLEASE CORRECT ANY ERRORS IN YOUR ADDRESS)

NAME _____

ADDRESS _____

CITY, STATE _____

ZIP _____

SOLICITOR'S SIGNATURE _____ CONTRIBUTOR'S SIGNATURE _____ DATE _____



WHERE YOU
WILL FIND
YOUR FRIENDS

701 W. JEFFERSON
South Gate F.S.U.

QUALITY CLEANERS

215 W. COLLEGE AVE.—DIAL 222-5097

ONE DAY SERVICE

PICK-UP and DELIVERY

Quality Laundry Work

Fluff Dry Service

EXPERT TAILORING and ALTERATIONS

ZIPPERS REPAIRED



SPURGEON CAMP

*"Let's Be
#1
In 1966"*



*
*The cigar for men...
that ladies love*

HAV-A-TAMPA
JEWELS

WITH EXCLUSIVE BIRCHWOOD TIP

2 for 15c

or new Push-Pak of five 36c
(Plus state and local taxes, if any)

FROM HAVATAMPA—TAMPA'S LARGEST MANUFACTURER OF FINE CIGARS

Distributed by **Eli Witt Tobacco & Candy Co.**

Tallahassee, Florida

★
NOBODY...
BUT NOBODY
UNDERSELLS.
★

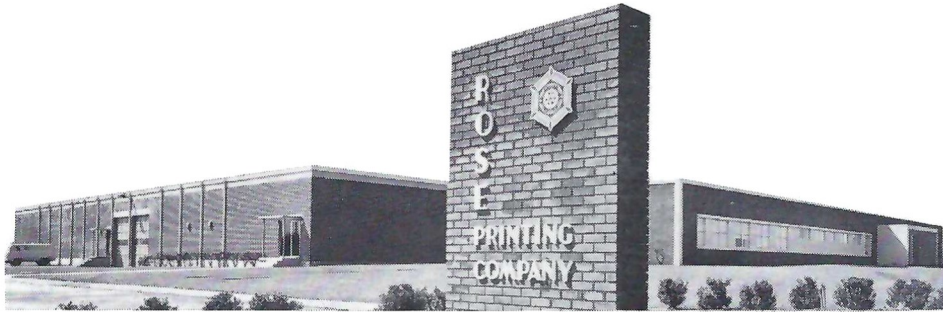
**SOUTHERN
ELECTRIC INC.**



FLORIDA STATE'S 1966 FRESHMAN SQUAD

No.	Name	Pos.	Ht.	Wt.	Hometown	No.	Name	Pos.	Ht.	Wt.	Hometown
14	Doug Mitchell	QB	6-0	185	Williston	70	Terry Fisher	T	6-3	235	North Miami
15	Bobby Burt	E	6-0	185	Cairo, Ga.	71	Bill Lee	C	6-3	220	Chipley
16	Tommy Warren	QB	5-11	175	Coral Gables	73	Keith Kleinbach	T	6-3	230	Green Lane, Pa.
20	Phil Abraira	FL	6-0	180	Ft. Lauderdale	75	Tom White	T	6-1	240	West Palm Beach
21	Randy Hodges	HB	5-10	170	Tallahassee	78	Floyd Ratliff	FB	6-4	195	Jesup, Ga.
22	Mike Gray	E	6-3	180	Sanford	79	Duke Johnston	T	6-1	210	Ft. Lauderdale
27	Barry Wenhold	HB	5-10	190	Souderton, Pa.	80	Bob Eschelman	E	6-2	215	Coral Gables
28	Bill Donohoe	HB	6-0	180	North Miami	81	Jimmy Tyson	E	5-11	187	Pahokee
29	Bob Flynn	QB	6-0	190	Akron, O.	82	Jim Rust	T	6-3	200	Ft. Lauderdale
40	Ed Gibson	FB	5-10	195	Orlando	88	Lamar Munroe	HB	6-1	175	Quincy
41	Bill Cheshire	QB	6-0	180	Jesup, Ga.	89	Rick Anderson	QB	6-3	190	Winter Haven
42	Ron Montford	FB	6-0	195	Blountstown		Robert Webb	QB	6-1	185	St. Augustine
43	Bay Gruber	QB	6-1	175	Ft. Myers		Cecil Presnell	C	5-10	180	Miami
44	Mike Page	HB	5-10	170	Winter Haven		Skipper Babb	DB	5-11	165	Umatilla
52	Bill Hughes	C	6-1	205	Cocoa		Jimmy Bird	DB	5-10	155	Bronson
54	Pete Rupp	FL	5-10	180	Evansville, Ind.						
55	Ed Chereshoff	HB	5-10	180	Pembroke Pine						
60	Barry Rice	HB	6-1	185	Fernandina Beach						
63	David Worrall	LB	5-10	160	Fort Walton Beach						
64	Stan Walker	T	6-2	205	Tallahassee						
65	Dick Johnson	G	6-1	180	Miami Springs						
67	Paul Fuder	C	6-2	190	Marianna						
68	Jim Bracken	T	6-2	215	Canton, O.						
69	Beryl Rice	HB	6-0	180	Fernandina Beach						

1966 FRESHMAN FOOTBALL SCHEDULE			
DATE	OPPONENT	SITE	TIME
Sept. 24	Miami	Sarasota	8:15 p.m.
Oct. 15	Florida	Gainesville	2:00 p.m.
Oct. 29	Southern Mississippi	Tallahassee	8:00 p.m.
Nov. 12	Georgia Tech	Moultrie, Georgia	8:00 p.m.



ROSE PRINTING COMPANY, INC.

TALLAHASSEE, WASHINGTON, NEW YORK AND CHICAGO

Your University Union



is more than a beautiful complex of buildings — it is an organization of a Union Board — Committees comprised of over 200 students — a professional staff — and YOU! It is an organization designed to serve you — the students, faculty, staff and members of the Alumni Association — with

PROGRAMS ★ SERVICES ★ FACILITIES

Beginning its third year and already an FSU campus tradition

**Activities Night — Union Birthday Party — President's Ball
Madrigal Christmas Dinners**

Operated entirely without the use of any state tax funds

FOR ALL CAMPUS INFORMATION

CALL THE UNION

599-3317



SEMINOLE CHEERLEADERS

Left to right: Dixie Wilcoxin, Jacksonville; Bruce Turner, Jacksonville; Judy Holman, Albany, Ga.; Doug Traxler, Boca Raton; Head Cheerleader Toni Beals, Sumter, S. C.; John Mullins, Tallahassee; Peggy Thompson, Ormond Beach; Bill Abney, Jacksonville; Doreen Brown, Manassas Park, Va.; Dave Deutsch, Palatka.

THE ALMA MATER

High o'er the towering pines our
 voices swell
 Praising these Gothic spires we love
 so well;
 Here sons and daughters stand . . .
 Faithful and True, Hailing our Alma
 Mater
 F . . . S . . . U . . .

FSU FIGHT SONG*

We're going to FIGHT, FIGHT,
 FIGHT for FSU
 We're going to scalp 'em Seminoles.
 We're going to WIN, WIN, WIN,
 WIN, WIN this game . . . and
 roll on down and make those
 goals!
 For FSU is on the warpath now, and
 and at the battle's end she's
 great . . .
 So FIGHT, FIGHT, FIGHT, FIGHT
 for victory
 Our Seminoles of Florida State . . .
 F-L-O-R-I-D-A S-T-A-T-E
 FLORIDA STATE (3 times)

THE FLORIDA STATE VICTORY MARCH*

Onward to victory, Seminoles, GO! FORWARD MARCH, we must move
 out together and . . . FORWARD MARCH, it's always marching weather
 when thousands strong, we swing along. All in step for VIC . . . TO . . . RY.
 Our F-S-U and all our loyal Seminoles, ON-WARD GO . . . To conquer all
 our savage foes . . . won't be long . . . we can't go wrong . . . we will crush
 the EN . . . E . . . MY . . . So SCALP'EM . . . SCALP'EM . . . SCALP'EM
 . . . it's a case of do or die . . .

Strike the fatal thrust, we'll be victorious; with terrible tenacity we can,
 we will, we must!

FORWARD MARCH, we'll ride the swelling battle tide
 FORWARD MARCH, we'll face the future side by side
 With our might, we'll FIGHT, FIGHT, FIGHT!
 . . . For Florida State University.

*Written by Thomas G. Wright,
 Professor of Music at Florida State University.

YOUNG HO! GO CHEVRON!



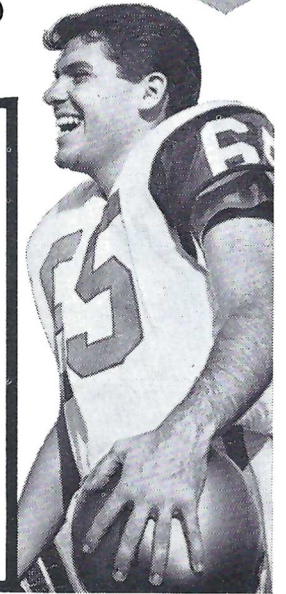
Follow the SEMINOLES in '66

ON
THE



RADIO
NETWORK

<p>WTNT Tallahassee</p> <p>WGBS Miami</p> <p>WCOA Pensacola</p>	<p>WJAX Jacksonville</p> <p>WKIS Orlando</p> <p>WDAE Tampa</p>
--	---



**Enjoy a Treat
after the Game!**



Frisch's
BIG BOY

●
**OPEN 7 a.m. To 12 Midnight
'TIL 2 a.m. Friday & Saturday**

●
**Diningroom & In-Car Service
Plenty of Easy Parking**

●
For CARRY-OUT Orders Telephone 224-1246

RESTAURANT
1175 WEST TENNESSEE STREET
TALLAHASSEE

THE SEMINOLE FOOTBALL NETWORK

Popular Bo Mitchell returns to the Seminole microphone for the fourth straight season, bringing play-by-play action to every corner of the Sunshine State.

The energetic Mitchell, an ex-naval aviator with more than 17 years broadcasting experience, is vice-president and station manager of station WCOA, Pensacola.

His partner at the mike this season will be Bud Kaatz, a native of Ohio who was formerly color man for the University of Michigan Football Network and play by play announcer for Ohio University and Marietta College. Kaatz will handle pre-game, halftime and time out commentary on the Seminoles.

Originating station for the Seminole Network is WTNT, Tallahassee. The network consisted of 29 stations in Georgia and Florida.



Bo Mitchell



Bud Kaatz

THE SEMINOLE NETWORK

WCOA Pensacola	WPCF Panama City
WTNT Tallahassee	WROD Daytona Beach
WJAX Jacksonville	WSPB Sarasota
WKIS Orlando	WTOT Marianna
WDAE Tampa	WZET Defuniak Springs
WGBS Miami	WTTB Vero Beach
WARN Ft. Pierce	WPAX Thomasville, Ga.
WDSR Lake City	WINK Fr. Myers
WEBY Milton	WTRR Sanford
WFOY St. Augustine	WPRY Perry
WGGG Gainesville	WFTW Ft. Walton Beach
WTRK West Palm Beach	WMAF Madison
WLAK Lakeland	WMGA Moultrie, Ga.
WLCO Eustis	WSIR Winter Haven
WMOP Ocala	WCNH Quincy

BOWLING'S GREAT

the Perfect date

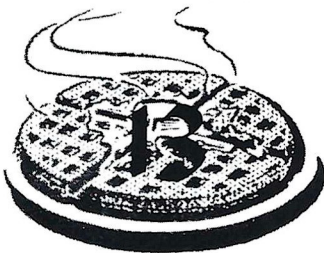
**AFTER THE GAME
MEET YOUR FRIENDS
AT THE**

Parkway Bowl

COFFEE SHOP

1230 Apalachee Parkway
TALLAHASSEE, FLORIDA

And Enjoy



WAFFLE VARIETIES

With Your Favorite Beverage
or Rich Creamy Hot Chocolate

GOOD LUCK SEMINOLES!

VARSITY THEATRE

1833 W. Tennessee

Phone 224-8636

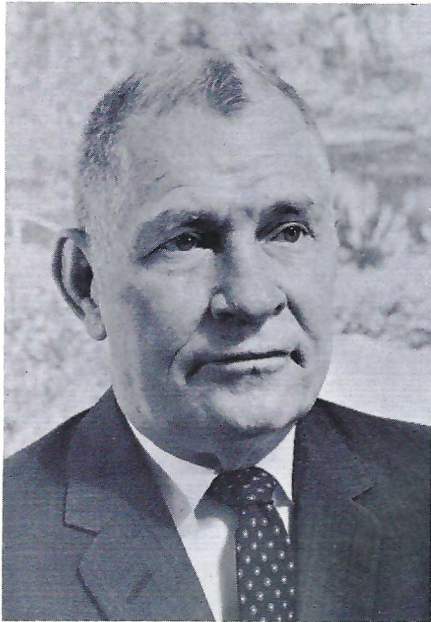
PLEASE!

**CONSUMPTION OF ALCOHOLIC
BEVERAGES IS PROHIBITED
ON UNIVERSITY PROPERTY**

University regulations, and those of the State Board of Regents prohibit the consumption of alcoholic beverages on any part of the campus of Florida State University.

Please cooperate and abide by these regulations. Enjoy the game in the true spirit under which collegiate athletic contests are held, and be mindful of the rights of others.

Things Were Different in '47



By **ED WILLIAMSON**
Former Head Football Coach
Florida State University

As Florida State begins its 20th season of intercollegiate football, we begin a nostalgic series of articles written by former Seminole coaches. Tonight, Ed Williamson, Florida State's first head football coach, gives his impressions of that initial year. Williamson is now Director of Health and Physical Education for the State Department of Education.

Some will contend that football really started at Florida State University in the early 1900's rather than in 1947. Actually, there was a football team at Florida State College located in Tallahassee that won the state title in 1904. This may have been the forerunner of what is now Florida State University. On the other hand, for forty-three years prior to 1947 the institution was a girl's school and was known as Florida State College for Women. There is no record of there having been a women's football team at Florida State College for Women so at least the 1947 team marked the reinstatement of football at the Tallahassee institution after a lapse of forty-three years.

At the close of World War II and with the advent of the G.I. Bill of Rights there were more applications for admission to the University of Florida than could be accommodated on the campus at Gainesville. As an emergency measure, arrangements were made to house 500 of these applicants at an old air base in Tallahassee and allow them to attend classes at Florida State College for Women. The male students

were registered in what was called the Tallahassee Branch of the University of Florida. When this branch of the University of Florida was opened no thought was given to having an interscholastic athletic program during the first year. Stress was to be placed on intramural sports and I was employed as intramural director. Although original plans did not anticipate interscholastic athletics, in order to satisfy student needs abbreviated schedules in basketball, tennis, and swimming were developed and teams in these activities were fielded during this period.

In the spring of 1947, the state legislature passed a law that made both the University of Florida and Florida State College for Women co-educational. The name of Florida State College for Women was changed to Florida State University.

Early in the summer of 1947, university officials began to explore the possibility of developing an interscholastic athletic program at Florida State University. The first step was to create a department of physical education in the school of education. The faculty of the department of physical education would then serve as coaches of the various sports. A search was immediately started for a head of the department of physical education and for a football coach. Since I was already on the scene, I actively engaged in the search for the football coach since this would be the first interscholastic activity to be started. Many potential candidates were brought to the campus and interviewed, but all were rejected primarily because the search was centered on individuals who had a Master's and preferably a Doctor's degree so that they could also fulfill their responsibility as the faculty of the new department of physical education. Because of the pressure of time and the necessity of making plans for the coming football season efforts were abandoned to try to locate the coach with the qualifications sought, and I was drafted to fill this new position.

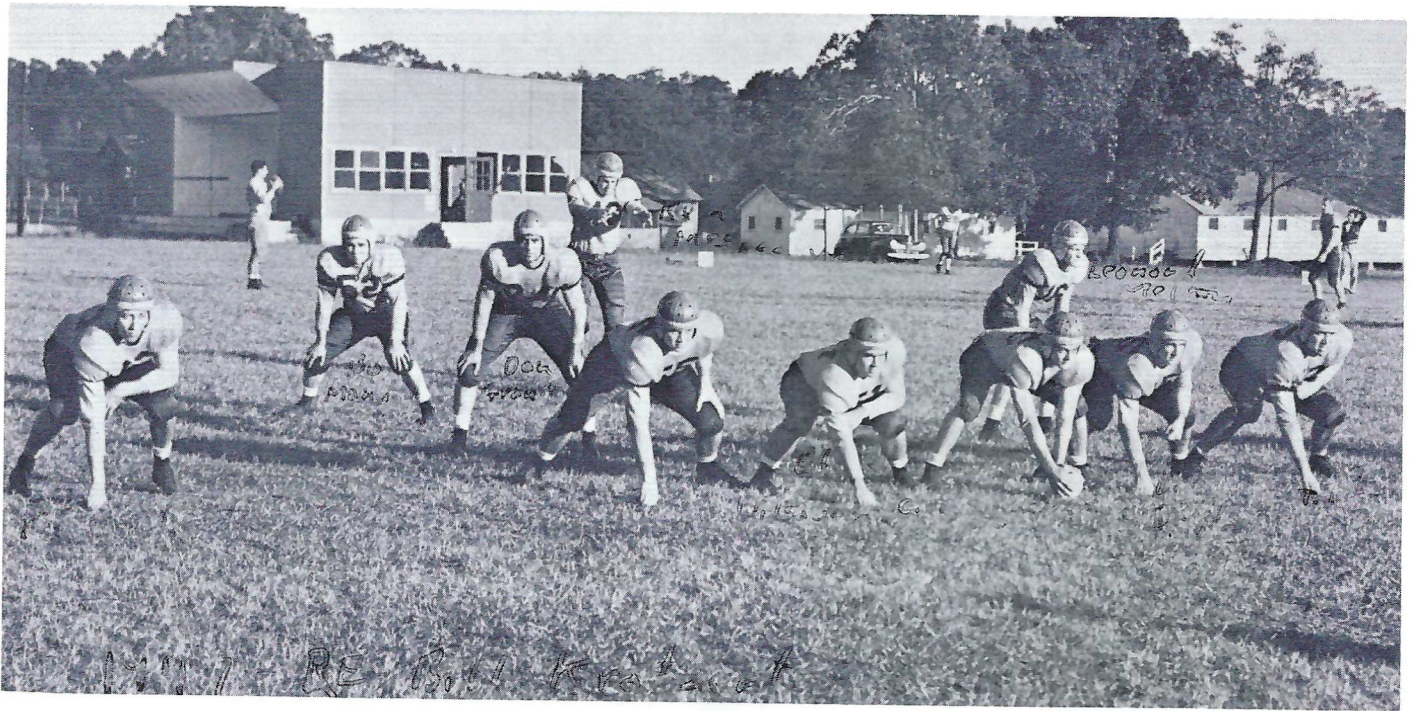
When this decision was made no equipment had been ordered, no schedule had been made, the University had no stadium, there was no field house, no assistant had been named and many other details had not been attended to. It should be recalled that this was right after the War and athletic equipment was scarce, but through diligent efforts, a minimum amount of equipment was ordered and delivery promised to

the opening of school. I procured an NCAA Football Guide which lists all the schedules of universities and colleges and began to look for open dates of teams in the area. After an exhausting search a five game schedule was arranged. We would begin with Stetson University on October 18, and follow three weeks later with a game against Cumberland University in Lebanon, Tennessee. Troy State Teachers College, Tennessee Tech, and Jacksonville (Alabama) State Teachers College made up the remainder of the schedule. By the middle of September, the physical education department staff consisted of four people: Dr. Howard Danford was head of the department, I was head football coach, Jack Haskin, assistant football coach, and Dr. Donald Loucks, director of intramural sports and later basketball coach. As mentioned before, these individuals were not only coaches but members of the faculty of the department of physical education. They were paid as instructors in physical education and coaching was an extra load. An interesting comparison might be made with the salary of the first football coach which was \$4200 with that of a head coach today. The coaches in 1947 also carried a full teaching load in the department of physical education.

Male students began to arrive on campus around the middle of September and the first practice was held September 20. Almost one-hundred strangers reported for opening drill on that date. Within two weeks the squad had been reduced to forty-five men, either through voluntary drop outs or cuts by the coaches.

None of these players were on scholarship, there was no training table and many were unable to afford the quality or quantity of food needed for the vigorous activity of football. Nevertheless, most of them stuck with it and it can truly be said this was a group of players that were playing for the love of the game and for no other reward. This spirit somewhat compensated for inexperience and a lack of spring training.

The first game was played in the old centennial field against the University of Stetson on Saturday, October 18. Stetson had played two games prior to the one that was to be the beginning of F.S.U. football. They were definitely listed as the favorites, not only because of experience but also because of weight and speed. Much to the



WHAT'S THIS . . . TEN-MAN FOOTBALL?

Things weren't quite that bad when the Seminoles fielded their first football team in 1947, but it's obvious that photography as well as football has improved at Florida State since that time. The lensman who snapped this picture missed end Jim Costello of Miami, who was split wide to the left, although his shadow is evident. The rest of the lineup pictured here in an early practice session is as follows: RE-Bill Kratzert, Tallahassee; RT-Bob Browning, Madison; RG-Ed Dilsaver, St. Augustine; C-Joe Crona, Pensacola; LG-Bill Quigley, Panama City; LT-Dick Williams, Orlando; QB-Don Grant, Perry; FB-Bo Manuel, Newberry; TB-Ken MacLean, Quincy; WB-Leonard Melton, Tallahassee.

amazement of the seven thousand football fans, seeing their first intercollegiate game to be played by the new Tallahassee institution, Florida State University led by a score of 6-0 at the half. This was the result of a pass thrown by Don Grant to Charles McMillan in the end zone.

The day following the game, Fred Pettijohn, then sports editor for the Tallahassee Democrat, filed a list of football firsts compiled by Florida State University. Excerpts from this article are reproduced as follows:

"This is a sports writers report to the far-flung football future.

"It's written particularly for the intraspace sports series of the supersonic 1970's and '80's, who some day are going to dig back through the files in search of information on the "old gaffers" who played in Florida State University's first football game against Stetson back in 1947!

"The honor of handling the first F.S.U. play and receiving the first kick off went to Don Grant of Perry. He took Stetson's kick on his own three and returned to the thirty-one.

"The first running play from scrimmage was by Wyatt 'Red' Parish, Chipley, right half-back who broke over his own right tackle and moved from the thirty-one to the forty-nine yard line almost breaking into the clear for a score. Parish also racked up the initial FSU first down on the play.

"Don Grant threw the first FSU pass

and had it intercepted when Byron Brasington grabbed the oval on the Stetson 33.

"Jim Costello made the first FSU tackle. Grant's pass was intended for him and when Brasington plucked it out of the air in front of him, he promptly flopped the Hatter safety man on the Stetson 35. Gerry 'Bo' Manuel, Newberry, who came in as full-back to replace Jack Watson, Pensacola, after the ninth play was the first substitute.

"The Garnet and Gold's first goal line stand was put up midway in the first period when they rose up to halt the Hatters in their tracks. After the green and white gridders had first and goal from the 8 yard stripe FSU took over on the 4½.

"Leonard Gilberg former Leon High Lion star, got off the first FSU punt. The big tackle kicking from the end zone booted out to his own 38 yard line.

"Chris Banakas, big Pensacola flankman, recovered the first fumble for his team when he dropped on a bad pass from a center that got away from Hinkley of Stetson on the FSU 39 yard line.

"Philip Rountree, Chipley, left-half and one of the student body presidents, hit full-back Ken MacLean, Quincy, with the first completed pass in FSU's brief history early in the second period.

"Harry Hughey, tiny Pensacola quarterback, made the first punt return taking Brasington's boot on his own 48 and moving over into Stetson territory on the 47.

"Ralph Chaudron, Pensacola tail-back, made the first pass interception when he nabbed Brasington's stray toss on the three and ran it out to the 11.

"FSU's first lateral went from Charles McMillan, Quincy, to Chris Banakas on the Stetson 41, and Banakas battled his way down to the enemy 24.

"Charles McMillan scored the first FSU touchdown with a leaping miracle catch in the end corner of the southern end zone."

Readers will recognize many of the names listed in this series of firsts as FSU's supporters today. The final score of the Stetson game was 14-6 in favor of Stetson. The next game, three weeks later with Cumberland, in Lebanon, played in the rain, was the second loss for FSU—this time by a score of 6-0. Troy State College defeated the Seminoles 36-6, Tennessee Tech won by a score of 27-0, and in the final game of the season, the undefeated, untied Jacksonville State Teachers managed to eke out a 7-0 decision over the Seminoles. This game marked the end of the first football season. Although according to the scores it was an all losing season, according to the assessment of many, it was a winner all the way for a band of ex-G.I.'s.

Enduring hardships that present football players and coaches cannot imagine, they started a pattern on which tradition is built and which has led to a great athletic future of the Florida State University.

1966 CROSS COUNTRY SCHEDULE

Date	Opponent	Place
Sept. 24	*Pensacola Athletic Club	Tallahassee
Oct. 1	South Florida	Tampa
Oct. 8	*Florida	Tallahassee
Oct. 15	Georgia Tech	Atlanta
Oct. 22	Calloway Gardens Invitational	Pine Mt., Ga.
Oct. 28	Auburn	Auburn
Nov. 4	Regional N.C.A.A.	Pine Mt., Ga.
Nov. 12	*Miami	Tallahassee
Nov. 19	*South Florida	Tallahassee
Nov. 26	*Florida Collegiate Championships	Miami

*Freshmen will also compete



THE 1966 FLORIDA STATE CROSS-COUNTRY TEAM: Front Row; left to right: Bob Thomas, Baltimore, Md.; Ken Watkinson, Tampa; Bill Smith, Pittsburgh, Pa.; Craig Kavka, Plainfield, N. J. Second Row: Coach Mike Long; Sid Merchant, Melbourne; Charlie Vickers, Orlando; Marc Williamson, Raleigh, N. C.; Tommy Rickards, Ft. Myers; Joe Henderson, Port Washington, N. Y. Not Pictured: Joe Rooney, Fort Lauderdale.

COMPLIMENTS OF TALLAHASSEE AUTOMOBILE DEALERS ASSOCIATION

ALFORD CHEVROLET COMPANY
CAPITAL LINCOLN & MERCURY, INC.
CAPITAL PLYMOUTH, INC.
COURTESY OLDSMOBILE, INC.
BOB DRAKE DODGE, INC.

KINNEBREW MOTORS, INC.
MINGLEDORFF MOTORS, INC.
PALMER-HARRELL BUICK COMPANY
PROCTOR & PROCTOR, INC.
TALLAHASSEE MOTORS, INC.

STADIUM INFORMATION

Rest Rooms—Located on concourse and on ground level on both east and west sides.

First Aid—Located in southwest corner of stadium. Registered nurse on duty.

Lost and Found: Items may be claimed or turned in at the ticket booth next to the press box elevator, west side.

Public Telephones: Located ground level, west side.

Public Address: No special announcements are made over the stadium public address system except in cases of emergency.

Field Regulations: No spectators are allowed on the field, either during or after the game. Please leave the stadium by ramp and section exits rather than field level exits.

Drive Carefully—Your cooperation with law enforcement officers will help speed the flow of traffic away from the stadium.

Patronize Stadium

CONCESSIONS

Located beneath the stands on each side of stadium

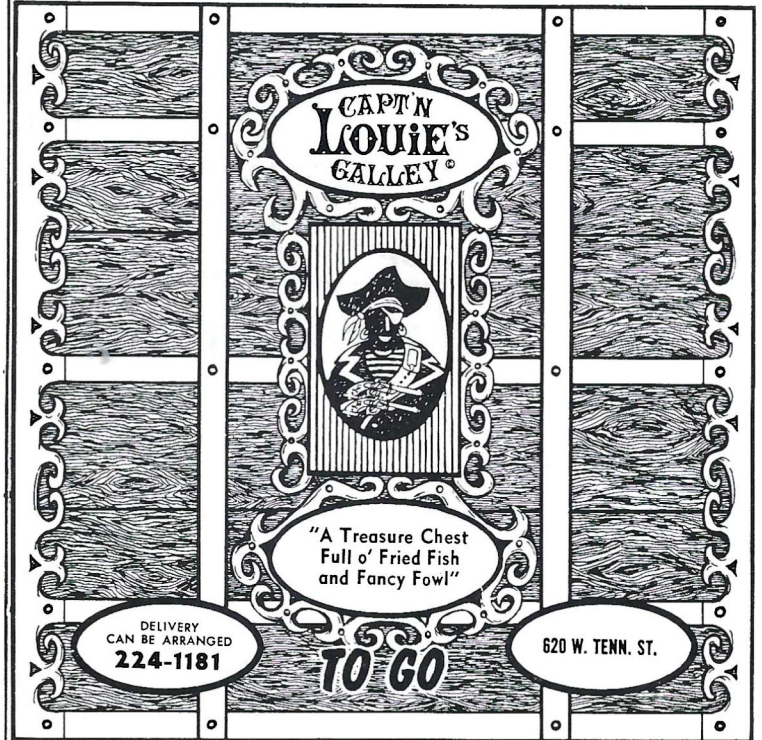
COLD DRINKS	small 15¢	large 25¢
HOT COFFEE	15¢	
SANDWICHES	30¢	
HOT DOGS	25¢	
PEANUTS	25¢	
POP CORN	15¢	
CIGARETTES	40¢	

SOUVENIR ITEMS - PENNANTS - BADGES

SUN VISORS - ASPIRIN

Please pay no more than

ESTABLISHED PRICES



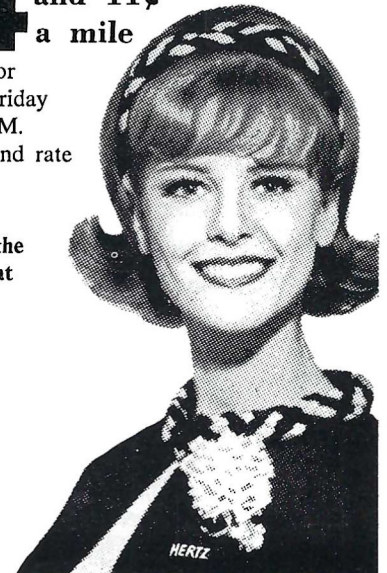
Drive a bargain with Hertz this weekend.

Only \$ **14⁹⁵** and 11¢ a mile

rents a Ford Galaxie or similar sedan from Friday noon to Monday 9 A.M. (And this low weekend rate includes insurance, gas, and oil.)

Let Hertz put you in the driver's seat. (Isn't that where you belong?)

For details, call: **222-1686**



WHEN YOU GET HUNGRY WHY NOT TRY SOME COLONEL SANDERS RECIPE KENTUCKY FRIED CHICKEN ©

three sizes to choose from:

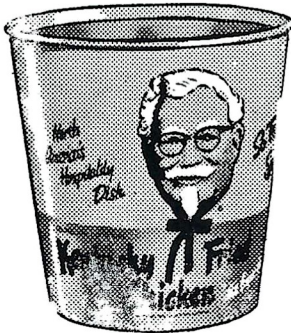
Individual Box
3 Big Pieces of Chicken,
Cole Slaw, French Fries,
Rolls, Gravy
\$1.10

Family Bucket
Serves 5 to 7
\$3.75

Barrel O' Chicken
Serves 8 to 10
\$5.00
Gravy & Rolls 5.40

Bar-B-Q Chicken Sandwich
French Fries—Jumbo Shake

60c



or if you prefer!

- Jumbo Shrimp Boxes
- Chicken Gizzard Boxes
- Filet of Fish Boxes
- Famous Home-Made Pies
- Chicken Liver Boxes

Holland's Drive In

TWO LOCATIONS TO SERVE YOU

Drive in No. 1
1002 N. Monroe—224-1645

Drive in No. 2
1603 W. Tenn. St.—224-4313

Tenn. St. Location Open 'Til 11 P. M.

Home Owned and Operated by Mr. & Mrs. N. T. Holland

**The
Association
of
Tallahassee Banks**

- Lewis State Bank
- The Peoples Bank
- Industrial Savings Bank
- Parkway National Bank
- The Tallahassee Bank & Trust Co.
- Capital City First National Bank

All Members of F.D.I.C.

Go Injun's

Pike's Studio

CHICK-N-TREAT
Fried Chicken Takeout

- 3 Pieces Chicken
- French Fries
- Cole Slaw
- Hot Rolls—Honey

\$1.00

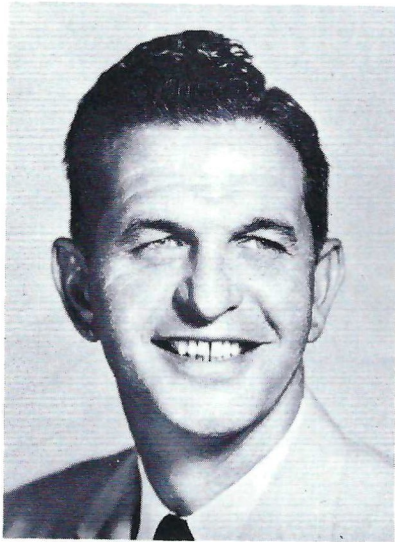
LOCATED TWO BLOCKS FROM STADIUM

1342 Jackson Bluff Road
Phone 224-4425

Go Seminoles! Go!



DR. PHILLIP HOFFMAN
President



HARRY FOUKE
Athletic Director



BILL YEOMAN
Head Football Coach



INSIDE HOUSTON'S ASTRODOME . . . HOME OF THE COUGARS

HOUSTON

The University of Houston was founded as a four-year institution in 1934. It began as a public junior college in 1927. In September of 1963 it became the twentieth member of the Texas state system of higher education. The University moved in 1939 to its present site in southeast Houston, three miles from downtown via the Gulf Freeway, where it now occupies 300 acres and a \$40 million physical plant.

A current expansion program will add about \$22,000,000 in new, critically-needed structures to the campus by the fall of 1967, and an estimated additional \$33,000,000 in other new facilities by 1969. The University also operates a Downtown School in the heart of Houston and the Clear Lake City Center in the NASA Manned Spacecraft area.

The University is the outgrowth of a community junior college established in 1927 to serve the young men and women of the area who could not travel elsewhere to continue their education. The present University campus, was opened in 1939 with the dedication of the Roy Gustav Cullen Building. The University's fine physical plant was contributed largely by Mr. and Mrs. Hugh Roy Cullen and their family. The University is composed of nine separate colleges (Architecture, Arts and Sciences, Business Administration, Cullen College of Engineering, Education, Law, Optometry, Pharmacy and Technology), plus the Downtown School and the Graduate School.

Accredited by the Southern Association of Colleges and Secondary Schools, the University also has received accreditation from separate agencies for many of its colleges and departments.

The University faculty includes over 600 full-time members and 400 part-time members. Half of the University of Houston's faculty have Ph.D. degrees; this is far above the national average. Faculty members come from more than 200 leading U.S. and European universities.

Enrollment is now above 20,000 and projections indicate a level of 27,000 by 1970. This is despite higher admission requirements which are equal to any unit in the state system and above many.

The University of Houston is the home of the nation's first educational television station, KUHT-TV, Channel 8, which has pioneered in this new field of higher education.

The Management Development Center, located in the Fred J. Heyne Building is one of a number of University of Houston agencies offering valuable training and services to the community and state at cost.

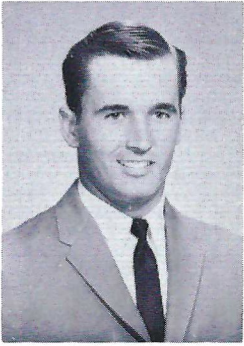
Other such University agencies include the Center for Research in Business and Economics, the Reading Clinic, the Personnel Psychology Services Center, and the Optometry Clinic.

The University operates from 7 AM to 10 PM with classes the year round assuring maximum efficient use of the physical plant. All instruction is under the same administration and faculty.

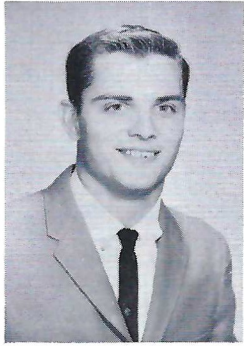
About 75% of the students at the University of Houston work full or part time and some Houston companies have as many as 600 employees or members of their families attending the University.

The present administrative staff of the University consists of Dr. Phillip G. Hoffman, president; C. F. McElhinney, senior vice president and treasurer; Dr. John C. Allred, vice president, dean of faculties; Dr. Patrick J. Nicholson, vice president, development; Douglas Mac Lean, assistant to the president and director of personnel services; and Dr. William A. Yardley, dean of students.

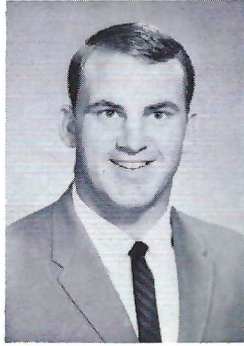
LARRY SATCHER



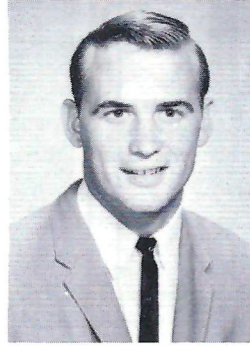
MIKE TRACY



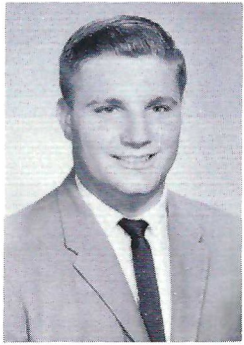
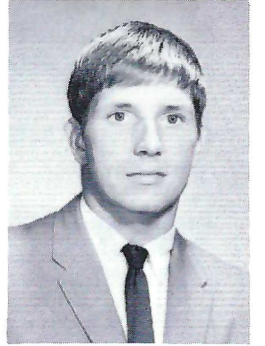
DICK GEORGE



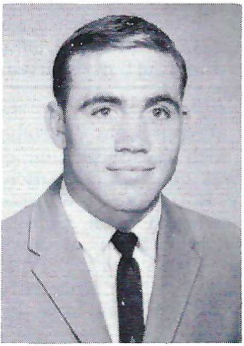
ROYCE BERRY



TOM BEER

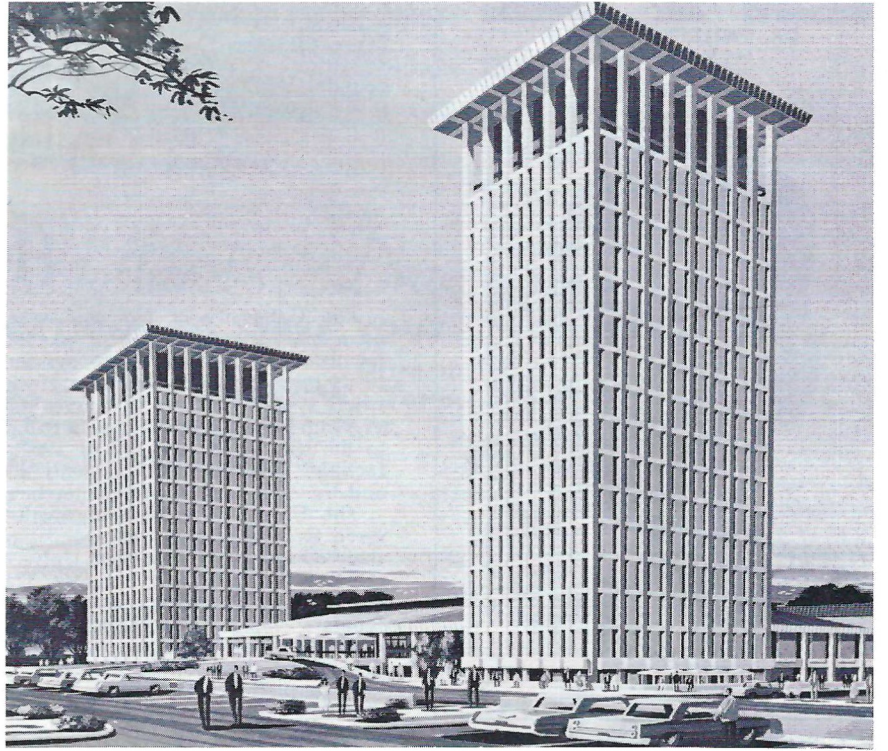


BILL PICKENS



KEN HEBERT

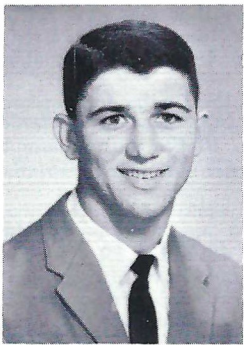
C
O
U
G
A
R
S



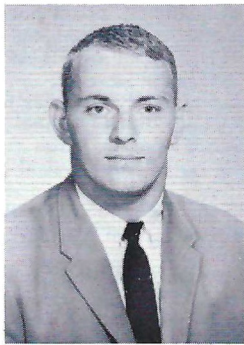
MOODY TOWERS
Twin 17 Story Dormitories



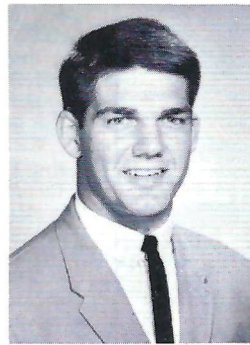
GEORGE NORDGREN



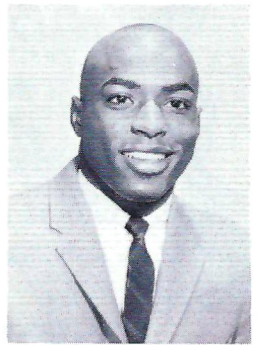
GUS HOLLOMON



CHARLES FOWLER



GREG BREZINA



WARREN McVEA

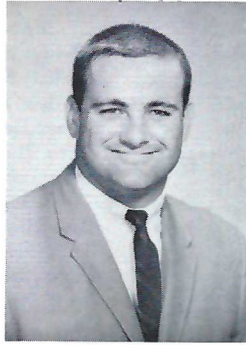
TOM PACIOREK



JIM DYAR



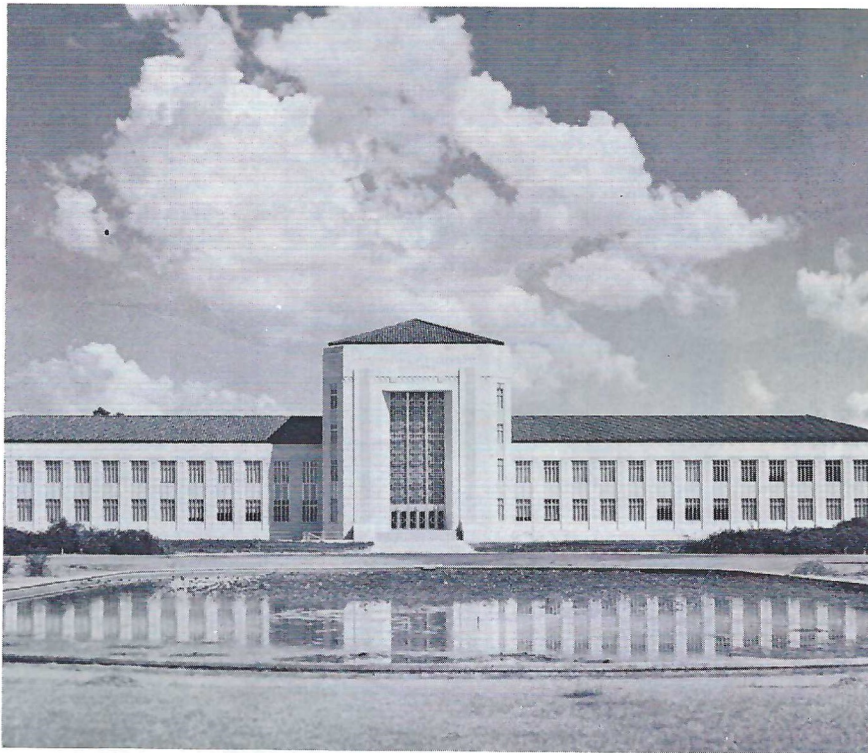
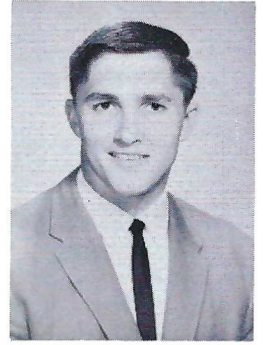
MIKE BARBOUR



DICK SPRATT

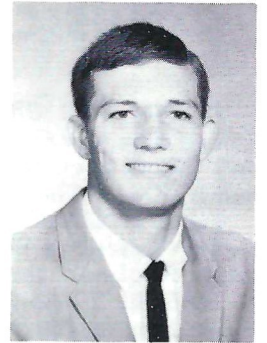


DICK WOODALL

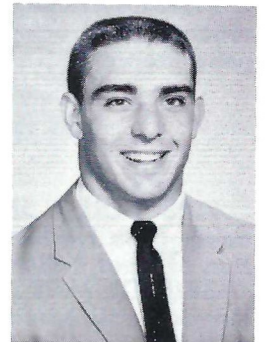


EZEKIEL W. CULLEN BUILDING
Administration Building

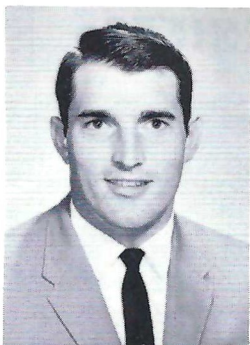
**C
O
U
G
A
R
S**



BO BURRIS



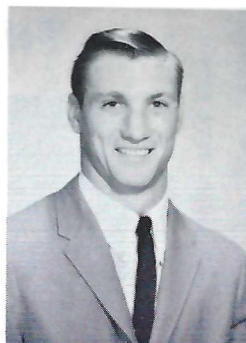
DICK POST



PAUL OTIS



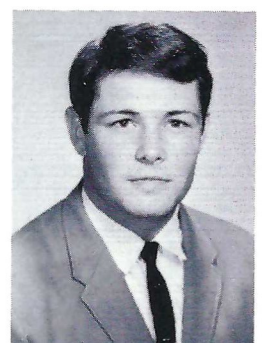
CARL CUNNINGHAM



JIM PAT BERGER



RICH STOTTER



BARRY SIDES

FSU'S 16TH ANNUAL BAND DAY PRESENTS "A SALUTE TO YODER"

MUSIC AT HALF-TIME

DOWN THE GRIDIRON—In a special salute to famed arranger and composer Paul Yoder, The Marching Chiefs open the half-time show with Yoder's famous "Down The Gridiron."

FLAMENCO—To honor Yoder for his membership in the American Bandmasters Association, the band plays the final section to "Flamenco."

HASKEL'S RASCALS—As the band forms a metronome they feature the percussion section. Then in 5/4 meter the band plays "Barcelona" as the metronome moves.

STATE FAIR MARCH—The band performs a drill sequence of moving rectangles that end in two company fronts.

MASSED BANDS

FIRE HOUSE SPECIAL—A football field full of bands from Florida and Georgia join under the direction of Paul Yoder in "Fire House Special."

BRISTOL MARCH—In a grand finale to our band day guest the bands play "Bristol March."

SEMINOLE TWINS

Bookie Reynolds & Jerry Williams



BAND DAY GUESTS

BANDS	TOWN	DIRECTOR
Albany High	Albany, Ga.	Harry Martin
Berrien High	Nashville, Ga.	Lane Smith
Bowden High	Bowden, Ga.	Norman Padgett
Brooks County High	Quitman, Ga.	George Hammett
Cairo High	Cairo, Ga.	Jack Willis
Chapman High	Appalachicola, Fla.	Andrew Valkuchak
Chattahoochee High	Chattahoochee, Fla.	J. Broox Jones
Clay High	Green C. Springs, Fla.	Winford Franklin
Columbia High	Lake City, Fla.	Dean Cassels
Coffee County High	Douglas, Ga.	John Maley
Cook High	Adel, Ga.	Carolyn Russell
Crisp County High	Cordele, Ga.	Joseph M. Tate
Dodge County High	Eastman, Ga.	Ronald Brooks
Florida High	Tallahassee, Fla.	Glenn Heinlen
Graceville High	Graceville, Fla.	Harvie B. McClure
Grand Ridge High	Grand Ridge, Fla.	Ron Kroenke
Greensboro High	Greensboro, Fla.	Robert A. Fritz
Havana High	Havana, Fla.	Early G. Brackin
Jefferson High	Monticello, Fla.	Romulus Thompson
Leon High	Tallahassee, Fla.	Oliver Hobbs
Milton High	Milton, Fla.	John H. Chalker
Pelham High	Pelham, Ga.	Richard Reis
Port St. Joe High	Port St. Joe, Fla.	Hugh M. Jones
Sopchoppy High	Sopchoppy, Fla.	Mrs. Nan R. Bowen
Suwannee High	Live Oak, Fla.	Fred C. Turner
Waycross High	Waycross, Ga.	Huey Kent
Wawahitchka High	Wawahitchka, Fla.	Miss Lee Beckman
Worth County High	Sylvester, Ga.	Eugene H. Wyles



THE MARCHING CHIEFS

Robert T. Braunagel, Director
James Moody, Assistant Director
Charles Carter, Assistant Director and Arranger

Ed Mobley, Band Day Coordinator
Camp Kirkland, Drum Major
Paulette Gergen, Head Majorette

FLORIDA STATE

OFFENSE

SE 27 Bill Cox	28 T. K. Wetherell
LT 76 Jack Fenwick	75 Billy Rhodes
LG 60 Larry Williamson	66 Ken Hart
C 54 John Stephens	51 John Richardson
RG 70 Del Williams	61 Chuck Elliott
RT 73 Larry Kissam	77 Jeff Curchin
TE 83 Thurston Taylor	84 Chip Glass
QB 11 Kim Hammond	16 Gary Pajcic
LH 30 Bill Moreman	29 John Hurst
FB 44 Jim Mankins	40 Mike Blatt
FL 34 Ron Sellers	21 Donovan Jones

DEFENSE

LE 87 Wayne McDuffie	80 Doug Gurr
LT 78 Charles Pennie	64 David Braggins
LB 23 Wayne Giardino	47 Joe Benson
MG 68 Larry Pendleton	52 Harvey Zion
LB 65 Dale McCullers	88 Jerry Jones
RT 74 Jay Mac Matthews	79 Frank Vohun
RE 89 Bob Menendez	81 H. T. Waller
CB 33 Butch Riser	24 Walter Sumner
CB 26 Bill Campbell	18 Clint Burton
S 17 Marty Kolbus	22 Chuck Eason
S 43 Howell Montgomery	15 Pat Conway

CAPTAINS

54 John Stephens
23 Wayne Giardino
(Game Captains)

SPECIALISTS

Punters: 35 John Hosack, 83 Thurston Taylor
Placements: 19 Pete Roberts
Holder: 11 Kim Hammond

HOUSTON

OFFENSE

TE 82 Tom Beer	83 Paul Daulong
LT 70 Bill Cloud	64 Larry Perez
LG 67 Rich Stotter	73 David Schneider
C 55 Barry Sides	62 Pat Pryor
RG 72 Bill Pickens	68 Mike Smith
RT 78 Charlie Fowler	76 Charles Odom
SE 23 Ken Hebert	22 Don Bean
QB 16 Bo Burris	11 Dick Woodall
HB 26 Dick Post	46 Paul Gipson
FB 35 George Nordgren	41 Mike Johnston
FL 42 Warren McVea	31 Doug Matthews

DEFENSE


LE 88 Royce Berry	89 George Caraway
LT 77 Dick George	74 Eddie Thompson
RT 71 Paul Otis	60 Cliff Larson
RE 81 Carl Cunningham	86 Jim Dyar
LLB 53 Greg Brezina	14 Mike Barbour
MLB 51 Skippy Spruill	65 Jerry Gardner
RLB 90 Larry Satcher	27 Wade Phillips
LS 44 Tom Paciorek	43 Paul Shires
LH 33 Bill Hollon	37 Johnny Peacock
RH 24 Dick Spratt	25 Mike Simpson
RS 17 Gus Hollomon	45 Phil Woodring

CAPTAIN

Dick Post

SPECIALISTS

Punters: 23 Ken Hebert, 17 Gus Hollomon, 41 Doug Matthews
Placements: 53 Greg Brezina, 23 Ken Hebert, Jim Dyar
Holders: 16 Bo Burris, 11 Dick Woodall



TALLAHASSEE FEDERAL SAVINGS & LOAN ASSOCIATION

FLORIDA STATE'S 1966 VARSITY FOOTBALL ROSTER

No.	Name	Pos.	Class	Age	Ht.	Wt.
11	Kim Hammond	QB	Jr.	22	6-1	185
12	Bill Burkhardt	QB	Soph.	20	6-1	194
14	Bill Cappelman	QB	Soph.	19	6-3	204
15	Pat Conway**	DB	Sr.	21	5-10	176
16	Gary Pajcic	QB	Soph.	19	6-2	192
17	Marty Kolbus	DB	Soph.	20	6-2	186
18	Clint Burton	DB	Soph.	19	6-2	175
19	Pete Roberts*	K	Jr.	21	5-11	205
20	Larry Green*	HB	Jr.	21	5-10	180
21	Donovan Jones	FL	Sr.	21	6-1	206
22	Chuck Eason	DB	Soph.	19	5-10	187
23	Wayne Giardino**	LB	Sr.	23	5-10	195
24	Walter Sumner	DB	Soph.	19	6-1	179
26	Bill Campbell*	DB	Sr.	21	5-9	188
27	Bill Cox	OE	Soph.	20	6-1	180
28	T. K. Wetherell*	OE	Jr.	20	5-10	183
29	John Hurst	HB	Soph.	19	6-0	200
30	Bill Moreman*	HB	Jr.	21	5-11	188
31	Bill Gunter	HB	Soph.	19	6-0	172
33	Butch Riser	DB	Jr.	21	6-0	186
34	Ron Sellers	FL	Soph.	19	6-4	186
35	John Hosack*	K	Jr.	21	5-10	195
40	Mike Blatt*	FB	Jr.	20	5-11	203
41	John Crowe	FL	Soph.	19	6-2	168
43	Howell Montgomery	DB	Soph.	19	5-11	183
44	Jim Mankins*	FB	Sr.	22	6-2	220
47	Joe Benson	LB	Soph.	20	5-10	197
50	Billy Joe Jones	C	Soph.	19	6-1	215
51	John Richardson	C	Soph.	19	6-0	199
52	Harvey Zion	MG	Soph.	19	5-11	195
54	John Stephens**	C	Sr.	21	6-1	201
59	Frank Loner	MG	Soph.	20	6-0	196
60	Larry Williamson*	OG	Sr.	21	5-11	202
61	Chuck Elliott	OG	Soph.	20	6-0	194
62	Dan Douglas	OG	Soph.	19	6-0	207
64	David Braggins*	DT	Sr.	21	6-2	224
65	Dale McCullers	LB	Soph.	19	6-2	203
66	Ken Hart	OG	Soph.	20	6-3	219
68	Larry Pendleton	MG	Soph.	20	6-0	206
69	Edwin Pope	OG	Sr.	21	6-1	206
70	Del Williams**	OG	Sr.	21	6-2	240
73	Larry Kissam*	OT	Sr.	21	6-0	221
74	Jay Mac Matthews*	DT	Sr.	22	6-1	217
75	Billy Rhodes	OT	Soph.	19	6-2	230
76	Jack Fenwick	OT	Soph.	20	6-4	214
77	Jeff Curchin	OT	Soph.	18	6-6	238
78	Charles Pennie*	DT	Sr.	21	6-4	242
79	Frank Vohun	DT	Soph.	19	6-3	212
80	Doug Gurr	DE	Soph.	19	6-1	210
81	H. T. Waller	DE	Jr.	21	6-1	191
83	Thurston Taylor*	OE	Jr.	20	6-2	215
84	Chip Glass	OE	Soph.	19	6-4	218
87	Wayne McDuffie*	DE	Jr.	22	6-2	215
88	Jerry Jones*	LB	Jr.	21	6-1	193
89	Bob Menendez	DE	Sr.	21	5-10	189

*Denotes letters won.

1966 HOUSTON FOOTBALL ROSTER

No.	Name	Pos.	Class	Age	Ht.	Wt.	Hometown
11	Dick Woodall*	QB	Jr.	21	6-1	190	Houston
14	Mike Barbour*	LB	Jr.	21	5-10	190	Houston
16	Bo Burris**	QB	Sr.	21	6-2	190	Lake Jackson
17	Gus Holloman*	S	Jr.	20	6-2	190	Beaumont
20	Jim Berger*	DHB	Jr.	20	5-11	165	Weimar
22	Don Bean	FC	Jr.	19	5-9	168	Beaumont
23	Ken Hebert*	SE	Jr.	21	5-11	195	Pampa
24	Dick Spratt*	DHB	Sr.	21	5-11	175	Sharyland
25	Mike Simpson	DHB	Soph.	19	5-9	165	Pt. Neches
26	Dick Post**	RB	Sr.	20	5-9	195	Pauls Valley, Okla.
27	Wade Phillips	LB	Soph.	19	6-0	185	Pt. Neches
31	Doug Matthews	FLK	Soph.	19	6-1	190	Corpus Christi
32	Robbie Williams	FB	Jr.	21	6-3	205	Texas City
33	Bill Hollon*	R	Jr.	20	5-10	184	Elsa
35	George Nordgren*	FB	Jr.	21	5-11	205	Covington, La.
37	Johnny Peacock	DHB	Soph.	19	6-2	185	Goliad
41	Mike Johnston	FB	Soph.	19	5-11	190	Hull
42	Warren McVea*	FLK	Jr.	20	5-9	180	San Antonio
43	Paul Shires	R	Soph.	20	6-1	195	San Antonio
44	Tom Paciorek*	R	Jr.	19	6-2	210	Detroit, Mich.
45	Phil Woodring	S	Soph.	20	6-1	192	Lefors
46	Paul Gipson	RB	Soph.	20	6-0	200	Conroe
51	Skippy Spruill	LB	Soph.	19	6-2	255	Odessa
53	Greg Brezina*	LB	Jr.	20	6-1	200	Louise
55	Barry Sides**	C	Sr.	21	6-1	208	Houston
60	Cliff Larson	DT	Soph.	19	6-3	250	Beaumont
62	Pat Pryor	C	Soph.	20	6-0	200	Texas City
64	Larry Perez	OG	Jr.	25	5-10	235	Archbald, Pa.
65	Jerry Gardner	LB	Soph.	18	6-1	200	Galena Park
67	Rich Stotter*	OG	Jr.	21	5-11	225	Cleveland, Ohio
68	Mike Smith	OG	Soph.	20	5-11	210	Bossier City, La.
70	Bill Cloud	OT	Soph.	19	6-2	220	Galena Park
71	Paul Otis**	DT	Sr.	22	6-3	245	Channelview
72	Bill Pickens*	OT	Jr.	20	6-1	220	Alvin
73	David Schneider	OG	Soph.	19	6-4	235	Columbus
74	Eddie Thompson	DT	Soph.	20	6-5	295	Ft. Worth
76	Chuck Odom	OT	Soph.	24	6-5	248	Eunice, La.
77	Dick George*	DT	Jr.	20	6-3	260	Plano
78	Charlie Fowler**	OT	Sr.	21	6-2	255	Hendersonville, Tenn.
81	Carl Cunningham**	DE	Sr.	22	6-5	230	Houston
82	Tom Beer*	OE	Sr.	21	6-4	220	Detroit, Mich.
83	Paul Daulong	OE	Soph.	21	6-1	210	Galveston
89	George Caraway	DE	Soph.	19	6-3	205	Pt. Neches
86	Jim Dyar*	DE	Sr.	22	6-3	220	Enterprise, Ala.
88	Royce Berry*	DE	Jr.	20	6-3	230	Odessa
90	Larry Satcher	LB	Jr.	20	6-1	198	San Antonio

*Denotes letters won.

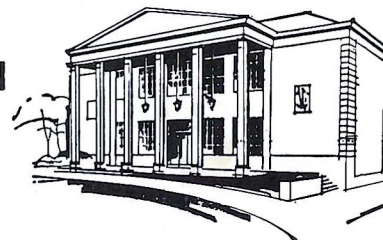
Tallahassee Federal

SAVINGS AND LOAN ASSOCIATION

440 N. Monroe Street * Tallahassee, Florida

HOURS: Monday-Thursday, 8:30 a.m. to 3 p.m.—Friday, 8:30 a.m. to 6 p.m.

TELEPHONE 224-2161





Your local *McDonald's* which has sold over 6 million Hamburgers has three new products . . .

- • • Double Hamburgers 29¢
- • • Fish Sandwich 29¢
- • • Hot Apple Pie 15¢

McDONALD'S 1701 W. TENNESSEE ST.



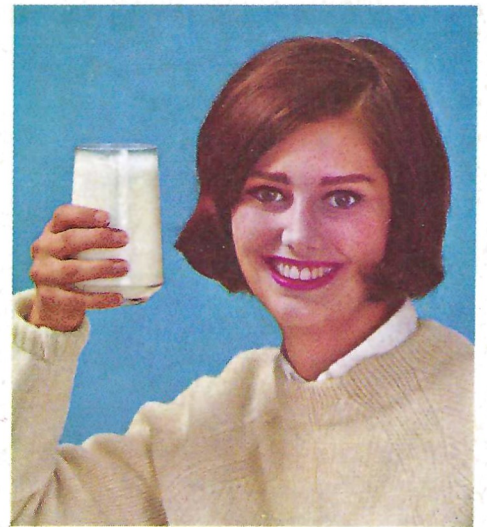
FOR ALL YOUR PHOTO
NEEDS FOCUS ON

TALLAHASSEE
CAMERA CENTER, INC.

117 North Monroe
Across From The Florida Theatre

- CAMERAS
- FILM
- BINOCULARS
- FAST PHOTO FINISHING
- RENTALS

A Complete Line of Equipment and Supplies for the Amateur & Professional



CHEER FOR MILK'S VITALITY

Put Vitality on your team... drink milk! A glass of cool, refreshing milk with meals and snacks helps see you through the busiest fall schedule. No other beverage helps you get the lasting energy found only in nature's Vitality drink... Milk. You'll cheer for milk's Vitality.

a message from dairy farmer members of



american
dairy
association