

Official Program
50c



FLORIDA STATE vs. FLORIDA

October 8, 1966

DOAK S. CAMPBELL STADIUM—Tallahassee, Florida

AFTER THE GAME GO...

Jerry's



*Beautiful
Dining Room*



*Convenient
Curb Service*



*Prompt Carry-Out
Orders*



**445 W. Tennessee St.
Tallahassee
224-5104**

STRAWBERRY
PIE

CHAMP

J-BOY

Florida State University . . .

In This Issue . . .

Today's Game	4
University Features	5
Guest Column	8
Seminole Football Family	9
Statistics	10
FSU All Time Records	11
Athletic Committee	12
The College Game is Best	13
FSU News Briefs	14
State Officials	15
FSU Player Photos	17
Officials' Signals	22
Starting Lineups	25
Penalties	27
Seminole Boosters, Inc.	28
Freshman Squad, Roster	31
Cheerleaders	33
Seminole Radio Network	35
FSU and Florida via the Governor's Office	36
National Football Hall of Fame Week	37
FSU Cross Country	38
Stadium Information	39
Today's Opponents	41
The Marching Chiefs	44
Rosters, Depth Charts	45



SEMINOLES ON THE WARPATH

Date	Opponent	Site	Time
Sept. 17	Houston	Tallahassee	8:00 p.m. EST
Sept. 24	Miami	Miami	8:00 p.m. EST
Oct. 1	Open Date		
Oct. 8	Florida	Tallahassee	2:00 p.m. EST
Oct. 15	Texas Tech	Lubbock	7:30 p.m. CST
Oct. 22	Mississippi State	Tallahassee	8:00 p.m. EST
Oct. 29	Virginia Tech	Blacksburg	2:00 p.m. EST
Nov. 5	South Carolina	Columbia	2:00 p.m. EST
Nov. 12	Syracuse	Syracuse	1:30 p.m. EST
*Nov. 19	Wake Forest	Tallahassee	2:00 p.m. EST
Nov. 26	Maryland	Tallahassee	8:00 p.m. EST

* (Homecoming)

*Compliments and
Best Wishes from*



**YOUR APPLIANCE
HEADQUARTERS
611 N. Monroe St.**

OFFICIAL WATCH FOR THIS GAME

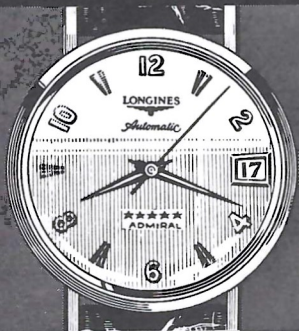


LONGINES THE WORLD'S MOST HONORED WATCH

10 WORLD'S FAIR
GRAND PRIZES
28 GOLD MEDALS



Longines watches are recognized as **OFFICIAL** for timing world championships and Olympic sports in all fields throughout the world.



Longines 5-Star Admiral Automatic with Calendar, All-Proof®, sweep-second, 14K gold strap-\$185.00

The Longines Credo

Every Longines watch, whatever its type, for whatever its use, today, as for almost a century, is manufactured to be the finest of its kind and worthy in every respect to be called **The World's Most Honored Watch**

LONGINES-WITTTNAUER WATCH CO.
MONTREAL • NEW YORK • GENEVA
Maker of Watches of the Highest Character Since 1867

Today's Game

By **LONNIE BURT**

Sports Information Director
Florida State University



This is THE game!

When Florida and Florida State get together, a victory may not make or break a season but it can bend it pretty badly.

This will be the ninth meeting between the Seminoles and Gators and only the second game contested in Tallahassee. The State Capital hosted the 1964 game when Florida State scored its lone victory in this heated rivalry.

Gator buffs still remember last year's thriller in Gainesville while Seminole fans have been trying to wipe this one out of their memories.

In that 1965 tussle, underdog Florida State rallied with 2:10 remaining for a 17-16 advantage. But the Gators' pitch and catch combination of Steve Spurrier and Charles Casey combined for a touchdown with 1:12 remaining and then Allen Trammel picked off an FSU pass and romped to another TD with less than a minute on the clock for a 30-17 triumph.

Spurrier, one of the greatest backs in Florida history, returns and the Seminoles must slow him down if they are to pull an upset this afternoon.

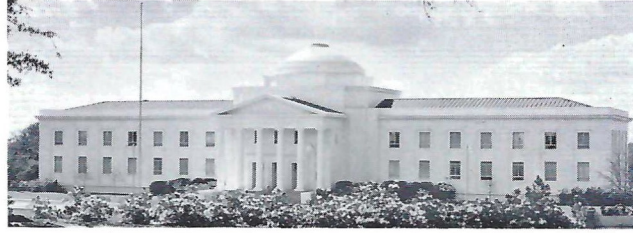
The Gators have Larry Smith, a highly-touted running back, to give Super Steve help. Florida also has one of its quickest defensive lines to go with that point-producing offense.

In two games, the Seminoles have shown they too, can score. Quarterbacks Kim Hammond and sophomore Gary Pajcic will do the throwing today. Now its just a case of how much Florida State's young defenders can slow Spurrier and Co.

It should be a fine game. Most Florida-Florida State tussles are.



FLORIDA'S LAW CAPITAL



THE FLORIDA SUPREME COURT

United States District Court

First District Court of Appeals

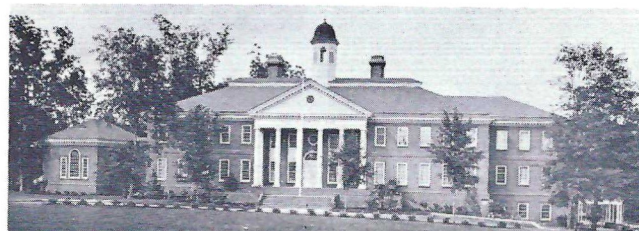
Circuit Court

Leon County Court

Florida State University College of Law

Tallahassee Municipal Court

Juvenile Court



THE FLORIDA BAR HEADQUARTERS

please turn the page



Learning the Law...



When the first class enrolled in the Florida State University College of Law, the library was well stocked with books thanks to the generosity of Edward Ball, trustee for the Alfred I. duPont estate. Mr. Ball donated \$70,000 in stocks and bonds to help establish a first class legal library. Dean Mason Ladd is showing one of the students part of the library.

The opening of the Florida State University College of Law last month made Tallahassee truly the Legal Capital of the State.

Today within a radius of just a few blocks there is located the Florida Supreme Court, United States District Court, First District Court of Appeal, a Circuit Court, County Court, City Court and Juvenile Court.

In addition, the headquarters of the 9,500-member Florida Bar Association is located here.

The 1965 Legislature established the new College of Law at Florida State and one of the main reasons for this location was the proximity of courts of every description in the Capital City. Already the law students at Florida State have been addressed by members of the Supreme Court and will have an opportunity to see each of the courts in session.

Chosen to lay the foundation for the new College of Law was Dean Mason Ladd, whose background includes 36 years of distinguished leadership in the field of education, 26 years as Dean of the University of Iowa College of Law.

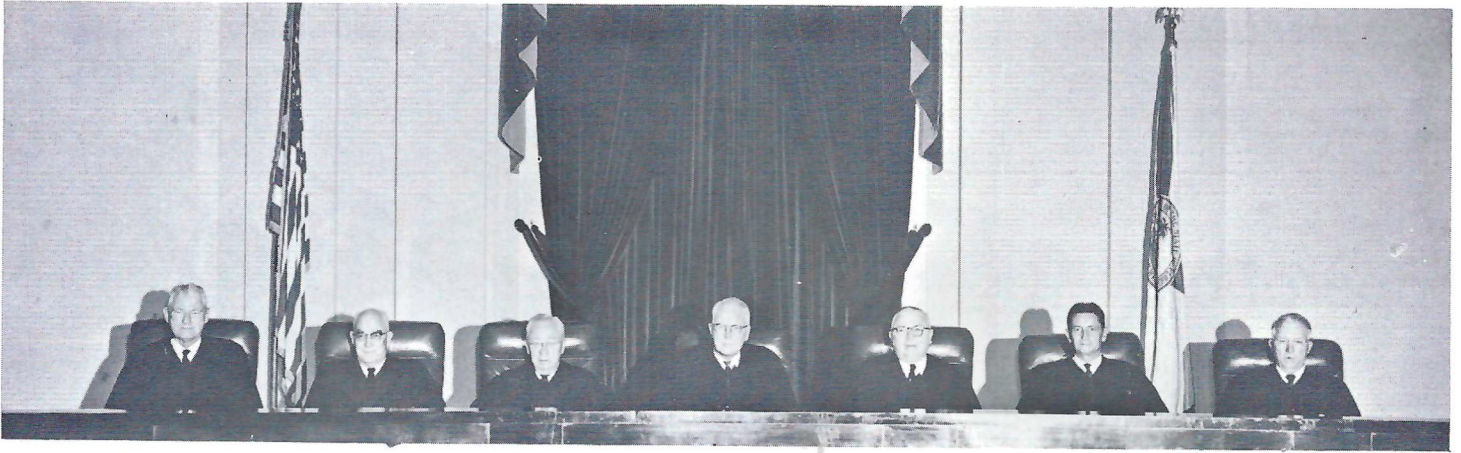
When classes began in September, 117 students were enrolled, almost double the anticipated number. Classes began in temporary quarters but within two years the law students hope to move into a new building within the shadow of the Florida Supreme Court.

"The new College of Law must have a close relationship with the members of the legal profession in the state, with the courts and with law making and law administering bodies. Close work and cooperation with other legal educational institutions in the state are essential to the fulfillment of our goals."—DEAN MASON LADD



One of the first visiting lecturers to the Florida State University College of Law was Supreme Court Justice B. K. Roberts, one of many lawyers in Florida who supported establishment of the new law facility.





Members of the Florida Supreme Court, seated at the bench from left to right, are Justice Millard F. Caldwell, Justice E. Harris Drew, Justice Elwyn Thomas, Chief Justice Campbell Thornal, Justice B. K. Roberts, Justice Stephen C. O'Connell and Justice Richard Ervin.

... Practicing the Law

Establishment of the College of Law at Florida State was supported by many members of the legal profession from throughout the state, several of whom have since contributed to scholarships or have given law books and other necessary equipment.

Also active in support of the College of Law were Florida State alumni and friends of the University.

State Senator L. P. (Pete) Gibson, an alumnus of the University, introduced the bill to establish the College. Sen. Wilson Carraway and Rep. Dick Mitchell of Tallahassee were joined by many friends in the Legislature in steering the bill to passage.

Dean Ladd in a few months on the campus has made his mark with a blueprint for legal education which calls for "creativity as well as competence."

"Law is never just learned," Dean Ladd says, "it is acquired . . . through experience . . . and by thinking legal problems through to their plausible solutions."

In assuming leadership of the College of Law, Dean Ladd said:

"We must be guided by one goal of supreme excellence."



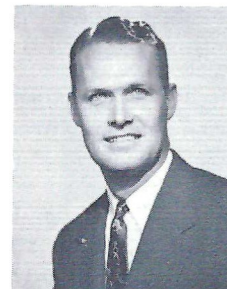
Charter faculty members of the Florida State University College of Law are, left to right, Mrs. Elizabeth Leeman, assistant professor and law librarian; Dean Mason Ladd; Francis N. (Pete) Millett, associate professor; Ronald T. Anderson, assistant to the dean; David F. Dickson, instructor; and Dr. Walter Ray Phillips, associate professor.

Florida Bar Building Dedicated

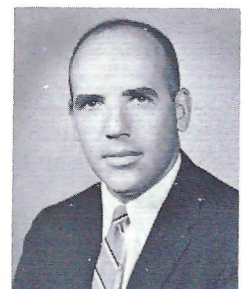
The Florida Bar Association officially dedicated its new headquarters building in Tallahassee today.

The colonial style structure, impressive on the skyline of the Apalachee Parkway approach to the Capitol, is the headquarters for the 9,500 members of the Florida Bar.

Florida Supreme Court Chief Justice Campbell Thornal delivered the dedication address before a group of lawyers and legal educators from throughout the state. Fletcher G. Rush of Orlando is president of the Florida Bar. Marshall R. Cassedy is executive director.



Fletcher G. Rush of Orlando is president of the Florida Bar.



Marshall R. Cassedy is executive director of the Florida Bar.

Cooperation thru Rivalry

By **BILL McGROTHA**
Tallahassee Democrat



This is the one.

This is the one that splits households right down the middle . . . with many wives Florida State University graduates, many husbands counted, forever, among the boys from old Florida.

This is the one from which one husband, Florida fan, returned two years ago to a wife, FSU fan, who had remained home and who was considerably silent as he climbed slowly from the car. Their 3-year-old daughter, possibly briefed, shattered the spell. "Scalp 'em," she said.

This is the one for which Florida Coach Ray Graves said the two schools could have sold 100,000 tickets.

This is the one that enlarged a stadium . . . that enabled Florida State to expand this arena in which you sit to reasonable capacity. Without this one, it would not have been possible—nor would Florida State's rapid overall football progress have been probable.

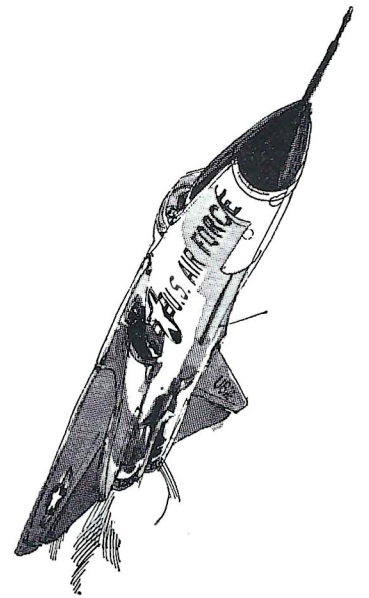
This is the one that will bring more stadium enlargements, here and in Gainesville.

This is the one for which all tickets and all hotel, motel rooms were tied up months ago.

This is the one that has helped bring about some genuine cooperation, more respect between and for the state's two foremost universities—who, this day of high rivalry notwithstanding, have so much in common.

This is the one that grew up—really grew up—last year when underdog Florida State fought magnificently from behind to go ahead 17-16 with two minutes to play, when Florida then climbed from the floor to win 30-17. There was no way any reasonable person, no matter the colors he wore, could have failed to have been proud of both.

This is the one that evermore shall be . . . as long as both are playing the game.



Have astronauts made pilots old hat?

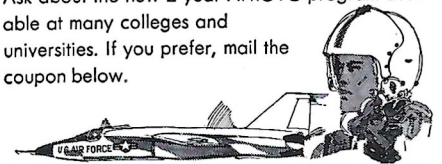
Sure, the boys who go off the "pads" get the big, bold headlines. But if you want to fly, the big opportunities are still with the aircraft that take off and land on several thousand feet of runway.

Who needs pilots? TAC does. And MAC. And SAC. And ADC.

There's a real future in Air Force flying. In years to come aircraft may fly higher, faster, and further than we dare dream of. But they'll be flying, with men who've had Air Force flight training at the controls. Of course the Air Force also has plenty of jobs for those who won't be flying. As one of the world's largest and most advanced research and development organizations, we have a continuing need for scientists and engineers.

Young college graduates in these fields will find that they'll have the opportunity to do work that is both interesting and important. The fact is, nowhere will you have greater latitude or responsibility *right from the start* than on the Aerospace Team—the U.S. Air Force!

Interested? The place to find out more is at the office of the Professor of Aerospace Studies, if there is an Air Force ROTC unit on your campus. Ask about the new 2-year AFROTC program available at many colleges and universities. If you prefer, mail the coupon below.



Air Force ROTC		14
Maxwell Air Force Base, Ala. 36112		
Name _____	Please Print	
College _____	Class of 19 _____	
Address _____		
City _____	State _____	Zip _____

UNITED STATES AIR FORCE

BILL CRUTCHFIELD
First Assistant
Offensive Chief



DON POWELL
Offensive Line



DON BREAUX
Receivers



KEN MacLEAN
Head Recruiter



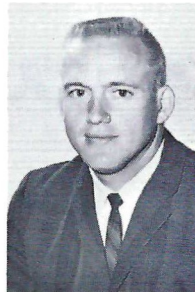
BOB HARBISON
Defensive Chief



NEIL SCHMIDT
Defensive Backs



GARY WYANT
Linebackers



BOBBY JACKSON
Defensive Ends



BILL PETERSON
Head Football Coach



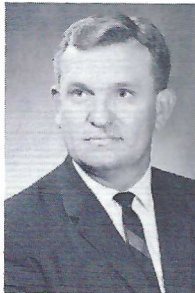
GENE McDOWELL
Freshmen

THE SEMINOLE FOOTBALL FAMILY

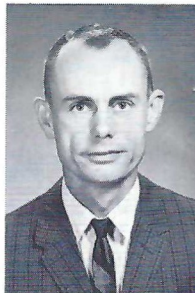
RONALD MELTON
Business Manager



JEFF SAVAGE
Academic
Advisor



CLAUDE THIGPEN
Ticket Manager



LONNIE BURT
Sports
Information



VAUGHN MANCHA
Director of Athletics



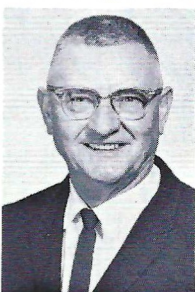
DR. RICHARD SHAARA
Team Physician



DON FAULS
Head Trainer



ROY DON WILSON
Trainer



TILLMAN DIXON
Equipment
Manager



W. H. Davis (left), Alcoa's General Manager—Industrial Relations, says: "We've found that Army ROTC graduates with active duty experience as officers possess better than average initiative, foresight, and responsibility. These are qualities we rate very highly, and we gladly pay a premium to get them."

Why did Alcoa hire Rod Wilson?

Because Alcoa needs men to fill key positions—men capable of moving to the top; men who seek and measure up to responsibility. Rod Wilson is that kind of man. An Army ROTC Distinguished Military Graduate at Colorado State University, Rod won an officer's commission in the Regular Army along with his degree. Forty-four months of active duty, including 16 months overseas as an artillery commander, earned Rod Wilson 24-carat credentials as a leader, a man schooled in the demanding disciplines of command, the kind of man Alcoa looks for.

If you're this kind of man, prove it to yourself, and to the companies like Alcoa who are looking for you. How? Get in Army ROTC. Stay with Army ROTC, all the way to success.

ARMY ROTC

TODAY'S TEAMS

1966 Statistics

FLORIDA STATE		
13	Houston	21
23	Miami	20

FLORIDA		
43	Northwestern	7
28	Miss. State	7
13	Vanderbilt	0

TEAM STATISTICS

35	First Downs	64
195	Yards Rushing	429
458	Yards Passing	646
653	Total Offense	1075
78	Passes Attempted	74
35	Passes Completed	50
5	Passes Had Intercepted	2
2	Fumbles Lost	6
13	Punts	13
43.2	Punting Average	38.9

INDIVIDUAL LEADERS

Rushing

Name	Att.	Yds.	Avg.	Name	Att.	Yds.	Avg.
Moreman	28	90	3.2	Smith	27	150	5.5
Mankins	26	63	2.4	McKeel	25	76	2.8
Green	11	21	3.3	Baeszler	8	36	4.5

Passing

Name	Att.	Comp.	Yds.	TD	Name	Att.	Comp.	Yds.	TD
Hammond	49	21	244	1	Spurrier	56	38	525	7
Pajcic	26	11	183	2	Wages	8	5	45	0

Pass Receiving

Name	Cgt.	Yds.	TD	Name	Cgt.	Yds.	TD
Sellers	10	172	1	Trapp	11	213	2
Mankins	8	52	1	Ewaldsen	9	109	2
Taylor	7	121	1	Coons	6	72	2
Glass	4	50	1	Smith	5	52	1

Scoring

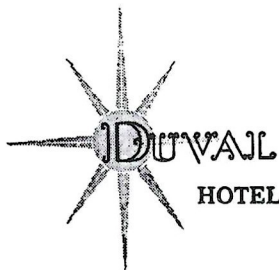
Name	TD	FG	PAT	TP	Name	TD	FG	PAT	TP
Glass	1	0	0	6	Trapp	2	0	0	12
Taylor	1	0	0	6	Wages	2	0	0	12
Mankins	1	0	0	6	Ewaldsen	2	0	0	12
Sellers	1	0	0	6	Smith	2	0	0	12
Wetherell	1	0	0	6	Cooks	2	0	0	12
Roberts	0	1	3	6	Barfield	0	0	10	10

The Vogue

TALLAHASSEE, FLORIDA

TRAVELING
DESSERT TRAYS

FAMOUS
TOWN HOUSE
ROAST
PRIME RIB
OF BEEF



HOTEL • TALLAHASSEE, FLORIDA

ALL TIME FLORIDA STATE RECORDS

SINGLE GAME

Individual

- TOUCHDOWNS SCORED**—4 by Fred Biletnikoff vs. Oklahoma, Gator Bowl, 1965
- LONGEST TOUCHDOWN RUN FROM SCRIMMAGE**—81 yards by Fred Pickard vs. Virginia Tech, 1957
- LONGEST TOUCHDOWN PASS**—80 yards, Nelson Italiano to Eddie Gray vs. Newberry, 1950
- LONGEST TOUCHDOWN RUN ANY SITUATION**—99 yards by Ted Hewitt vs. Stetson, 1948 and Fred Biletnikoff vs. Miami, 1963 (interception return)
- LONGEST TOUCHDOWN PLAY**—100 yards by Bill Moreman and T. K. Wetherell (lateral on kickoff return) vs. Kentucky, 1965
- LONGEST RUN FROM SCRIMMAGE WITHOUT SCORING**—76 yards by Roy Thompson vs. Stetson, 1951
- LONGEST INTERCEPTION RETURN**—99 yards by Ted Hewitt vs. Stetson, 1948 and Fred Biletnikoff vs. Miami, 1963
- LONGEST PUNT RETURN**—80 yards by Billy Odom vs. Stetson, 1954
- LONGEST KICKOFF RETURN**—89 yards by Billy Odom vs. Va. Tech, 1955
- LONGEST PUNT**—84 yards by Tommy Brown vs. Tampa, 1950
- LONGEST FIELD GOAL**—44 yards by Les Murdock vs. Virginia Tech, 1963
- TIMES RUSHING**—29 by Fred Pickard vs. Georgia, 1949
- YARDS RUSHING**—161 by Buddy Strauss vs. Mississippi College, 1949
- PASSES ATTEMPTED**—39 by Steve Tensi vs. Virginia Tech, 1964
- PASSES COMPLETED**—23 by Steve Tensi vs. Oklahoma, Gator Bowl, 1965
- YARDS PASSING**—313 by Joe Majors vs. Tampa, 1959
- TOUCHDOWN PASSES**—5 by Steve Tensi vs. Oklahoma, Gator Bowl, 1965
- TOTAL OFFENSE**—369 yards by Joe Majors vs. Tampa, 1959 (56 rush, 313 pass)
- PASSES CAUGHT**—13 by Fred Biletnikoff vs. Oklahoma, Gator Bowl, 1965
- YARDS RECEIVING PASSES**—192 by Fred Biletnikoff vs. Oklahoma, Gator Bowl, 1965
- TOUCHDOWN PASSES CAUGHT**—4 by Fred Biletnikoff vs. Oklahoma, Gator Bowl, 1965
- PASSES INTERCEPTED**—3 by Tommy Brown vs. Stetson, 1950; and Georgia Tech, 1952; Lee Corso vs. Georgia, 1954; and Bud Whitehead vs. Virginia Tech, 1959
- FIELD GOALS**—3 by Les Murdock vs. Florida, 1964.
- PUNTS**—11 by John Hosack vs. Baylor, 1965 (40.8 average)

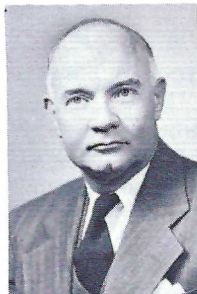
TEAM

- POINTS SCORED**—74 vs. Whiting Field, 1949
- MARGIN OF VICTORY**—74-0 vs. Whiting Field, 1949
- MARGIN OF DEFEAT**—0-42 vs. Georgia, 1959
- YARDS RUSHING**—383 vs. Abilene Christian, 1957
- YARDS PASSING**—355 vs. Villanova, 1954
- TOTAL OFFENSE**—526 vs. Furman, 1962 (277 rush, 239 pass)
- PASSES ATTEMPTED**—43 vs. Houston, 1966
- PASSES COMPLETED**—23 vs. Oklahoma, Gator Bowl, 1965
- PASSES INTERCEPTED**—7 vs. Virginia Tech, 1959
- PUNTS**—11 vs. Baylor, 1965

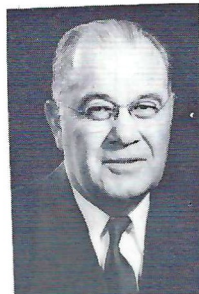
FLORIDA STATE'S ATHLETIC COMMITTEE



Robert Earnest
Chairman
Professor, Business



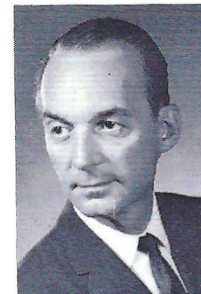
Mode L. Stone
Dean, School of
Education



Coyle E. Moore
Dean, School of
Social Welfare



Claude Flory
Professor, English



Thomas Wright
Professor, Music



Elston Roady
Professor,
Government



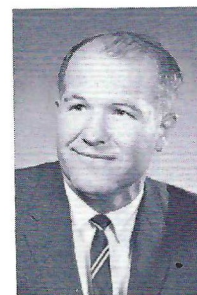
J. M. Plant
Assoc. Professor
Engineering Science



Mary Alexander
Assoc. Professor
Physical Education
and Recreation



Mason Ladd
Dean, College
of Law



John Carey
Dean of Students

MIDYETTE-MOOR Insurance Agency

"Ask Those We Serve"

Complete Insurance and Bond Service

PHONE 222-3456



MIDYETTE-MOOR BUILDING
TALLAHASSEE, FLORIDA

SAYS

SCALP 'EM SEMINOLES!



Payne Midyette
Frank Moor
Ed Clark
Winslow Sullivan
Bob Dickinson
Paul Lewis
Payne Midyette, Jr.

Bill Moor
Bill Franklin
Glenn Sears
Dick Wall
Don Northcut
Rex Sikes
Mike Lee

BENNETT'S DISCOUNT DRUG STORE

- Prescriptions
- Cameras
- Sundries
- Gifts
- Fountain
- Cafe
- Cosmetics
- Drugs

MEET ME AT BENNETT'S

BEFORE AND AFTER THE GAME!

Corner Monroe and College Streets

Phone 222-8980 — 222-4450

The College Game Is Best

by JOHN UNDERWOOD

Sports Illustrated

Condensed from SPORTS ILLUSTRATED, Sept. 20, 1965, by Time, Inc. by permission of the publisher

COLLEGE football is a better game than professional football. Better esthetically because there is more art and imagination to it, better technically because it is better coached, more entertaining, certainly more inspiring, more meaningful, more colorful.

Pro football is for fat linemen, quarterbacks who cannot run and coaches who never vary an offense. It is a pale imitation of the college brand.

Almost every pro team runs from what is known as the pro-slot offense (two running backs, a split end and a flanker) but what in reality is pass, pass, pass, *ad nauseam*. And they all at least begin with a 4-3 defense. Where is the diversity in that? The pros are stereotyped. Exchange the jerseys before almost any game and you would not be able to tell the difference.

The college coaches will try anything—single wing, double wing, spreads, I formation with motion, I with a shift, V, split-T, short-T, tackle-eligible passes, double flankers, scatbacks, pilot-backs, ratbacks, coonskin-hatbacks. When one mode of attack phases out they quickly go to another. Each team has a personality. College coaches learn to adjust to the players on hand. The pros pick through that talent and make it adjust. The pros will not change because they cannot afford to risk an image of failure. It's box office, brother, box office.

How many college coaches would put up with all that whale fat you see running loose on pro fields? At Alabama, Paul Bryant would exile the offender to another country.

There is furthermore a myth that pro ends and flankers have a unique,



"The good run is still the most exciting play in football."

secret understanding of how to run a pass pattern. Television's isolated camera took care of that. It always shows the familiar tableau. An end runs downfield, cut in, or out, or slants, or buttonhooks or does something else that he first learned in high school—and the quarterback throws him the ball. As simple as that. No mystery.

The good run is still the most exciting play in football. Interesting, too, is how things open up for you when you run the ball better. The most effective quarterback in pro football last year was Bart Starr of Green Bay—a "running" team. The pros have great running backs. They get the best the colleges can offer. They just do not have great running attacks. No self-respecting college coach would prepare an offense that did not include a reverse trap or two, a few counters, a bootleg, a scissors, some rollouts. You see sucker traps in the pros but you seldom see effective two-on-one blocking. There is little faking. You almost never see a sustained drive, the kind that takes the heart out of a defense. The line play is not crisp, it is just violently heavy.

The pros don't block. Jimmy Brown may be the best running back in the history of pro football but he wouldn't

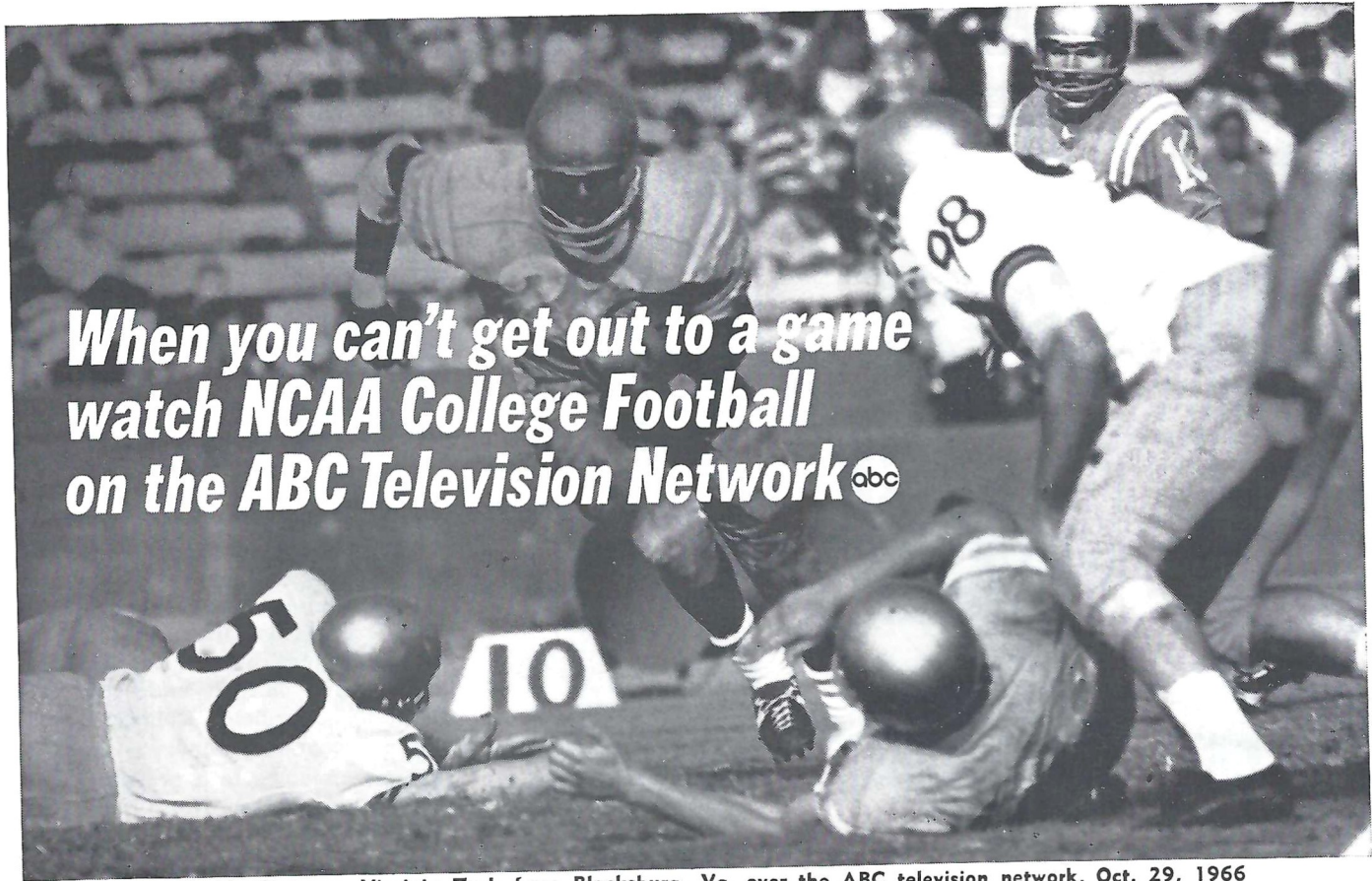
play first team for a lot of college coaches unless he learned to block. A college player blocks, gets up and blocks again. I once saw an LSU lineman block four different men on one play. The college player is reckless and daring and unconcerned about his personal safety. Football is not his life's work, it is his sport.


Red Blaik of Army believed that the extra weight and attitude of the professional combine to work against him when he is called on to go beyond his immediate responsibility—pursuing a fleeing ballcarrier or blocking downfield. College teams thrive on going beyond.

You cannot go to a pro park and see the kind of team Notre Dame had last year with that splendid blend of running and passing, that defensive team that did not eat meat all week so it would have an appetite for Saturdays.

Pro coaches are faceless. With the exception of Vince Lombardi, there has not been a real innovator, an iconoclast in pro football since Paul Brown. Of the present group only Mike Holovak could be called a successful college coach: he won 49 and lost 29 in nine years at Boston College. I do not mean to discredit these men. I just say they do not measure up to the giants of college football—the original thinkers like Bryant, Wilkinson, Tatum, Dodd and Leahy.

College football is Mormon schools, Quaker schools, Baptist, Catholic, neoatheistic schools, poor-boy and rich-boy schools. It is a game for towns like Austin, Tex., Boulder, Colo., South Bend, Ind., Fayetteville, Ark.—or away from the blackened cities and the skinned infields of baseball parks, up where you can see Mt. Rainier in the background, or look out over Lake Cayuga. There is a spirit about it, a drawing together. People identify with a college team and it is totally unlike that tenuous identification a pro fan may feel for two hours on a Sunday afternoon. A pro fan would never understand that.



*When you can't get out to a game
watch NCAA College Football
on the ABC Television Network *

See Florida State vs. Virginia Tech from Blacksburg, Va. over the ABC television network, Oct. 29, 1966

Campus Headlines and Coming Events



TONIGHT

- 8 p.m.—Victory Dance, with "The Ventures", Union Ballrooms
MONDAY, OCT. 10
- 8:15 p.m.—Pietro Spada: Pianist; Opperman Music Hall
WEDNESDAY, OCT. 12
- 8:15 p.m.—Theatre Production "Cat On A Hot Tin Roof"
Augusta Conradi Theatre (From Oct. 12-15 at 8:15 p.m.;
Oct. 16 at 2:30 p.m.)
FRIDAY, OCT. 14
- 8:15 p.m.—University Symphony Concert; Westcott Auditorium
SATURDAY, OCT. 15
- 7:30 p.m.—FSU vs. Texas Tech (Football); at Lubbock
SUNDAY, OCT. 16
- 3:00 p.m.—Campus Composers Concert; Opperman Music Hall
MONDAY, OCT. 17
- 7:30 p.m.—Chaplain's Lecture Series; Moore Auditorium. Dr.
Richard L. Rubenstein, University of Pittsburgh, lectures on
"The New Morality and the Tragic Sense of Life."
FRIDAY, OCT. 21
- 8:15 p.m.—Choral Union Concert; Westcott Auditorium
SATURDAY, OCT. 22
- 8 p.m.—FSU vs. Mississippi State (Legislative Day);
Campbell Stadium
- 10 p.m.—Victory Dance, with "The Check Mates."
Union Ballrooms



Haydon Burns*
Governor



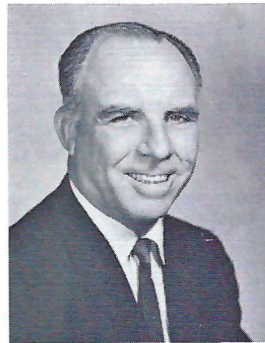
Tom Adams*
Secretary of State



Earl Faircloth*
Attorney General



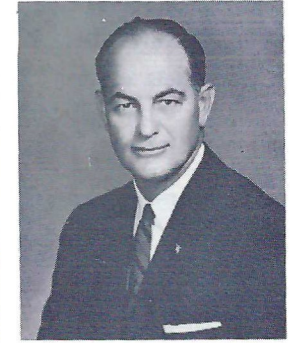
Broward Williams*
Treasurer



Floyd T. Christian*
Supt. of Public Instr.



Doyle Conner
Comm. of Agriculture



Fred O. Dickinson, Jr.
Comptroller

State Officials

*Indicates membership on the State Board of Education.



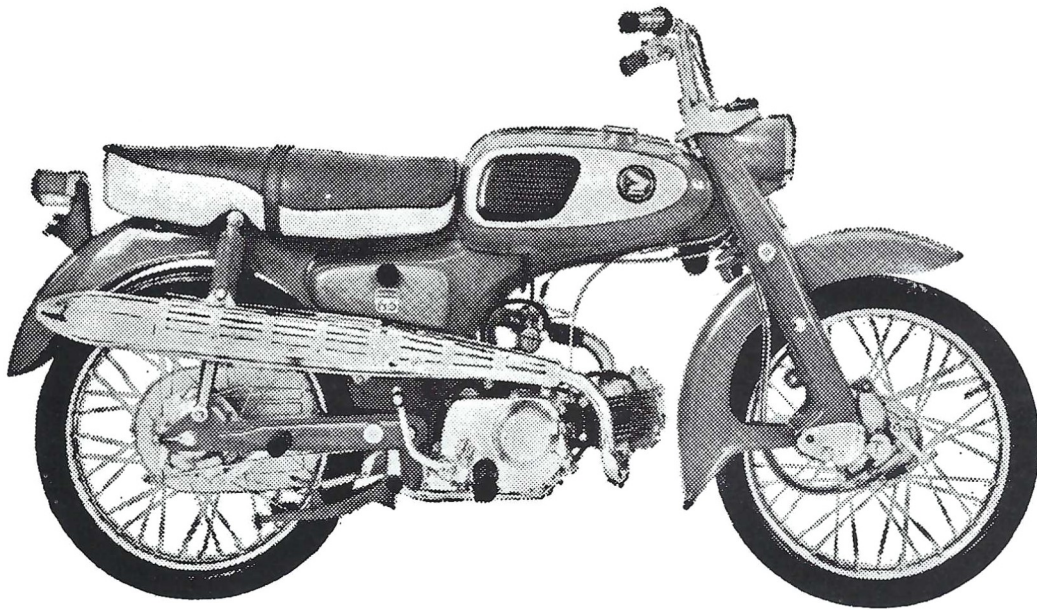
BOARD OF REGENTS—STATE UNIVERSITY SYSTEM

Left to right, front row: Wayne C. McCall, D.D.S., vice chairman, Ocala; Chester H. Ferguson, chairman, Tampa; Mrs. E. D. Pearce, Coral Gables; and John C. Pace, Pensacola. Left to right, back row: Clifton G. Dyson, W. Palm Beach; Woodrow J. Darden, Titusville; Louis C. Murray, M.D., Orlando; Clarence L. Menser, D. Litt., Vero Beach; Henry Kramer, Jacksonville; and J. Broward Culpepper, Ed.D.

"You meet the nicest people on a

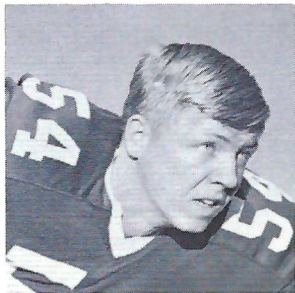
H O N D A

World's largest seller"

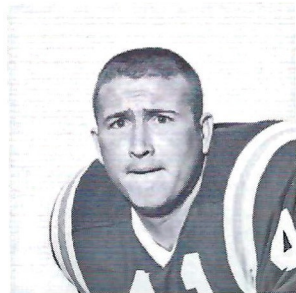


HONDA OF TALLAHASSEE

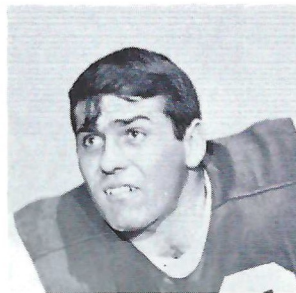
At the Underpass on West Tennessee



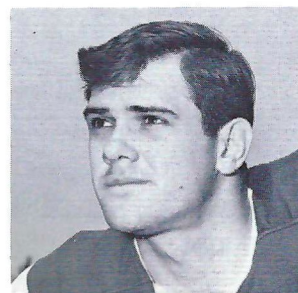
John Stephens



Bob Menendez

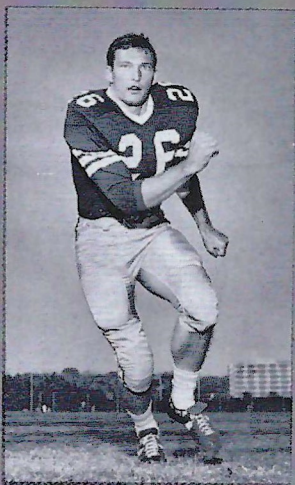


Wayne Giardino



John Hosack

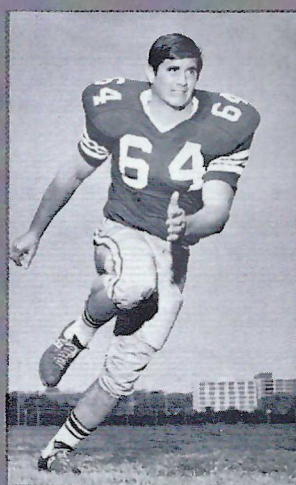
FLORIDA STATE UNIVERSITY 66 SEMINOLES



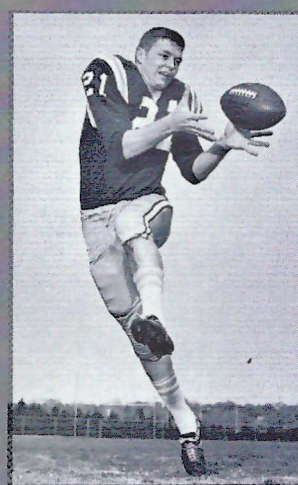
Bill Campbell



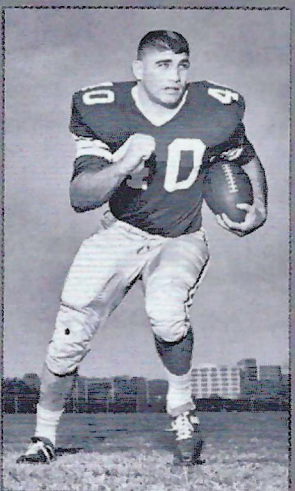
Gary Pajcic



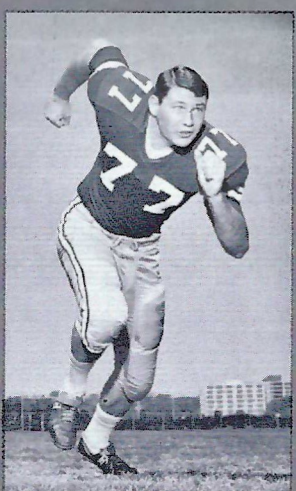
David Braggins



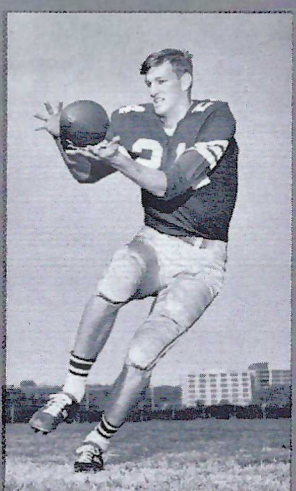
Bill Cox



Mike Blatt



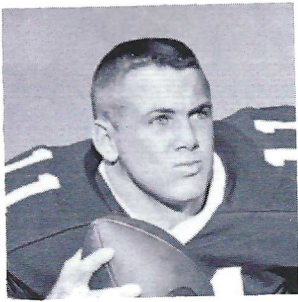
Jeff Curchin



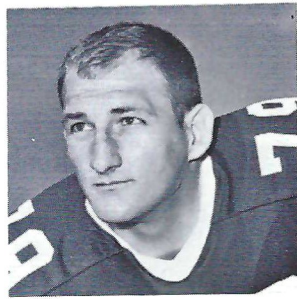
Ron Sellers



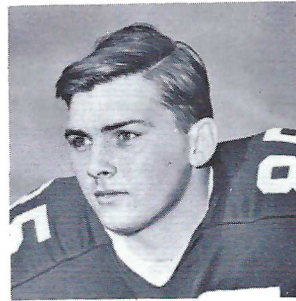
Larry Williamson



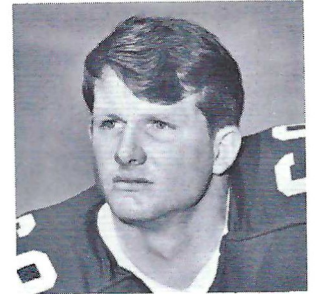
Kim Hammond



Frank Vohun

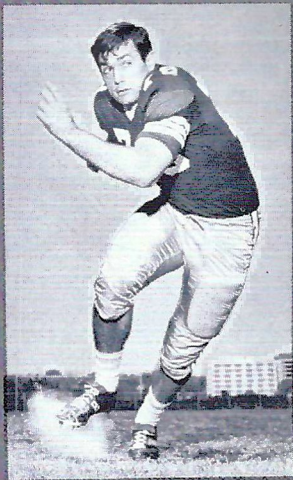


Doug Gurr



Jeff Chapman

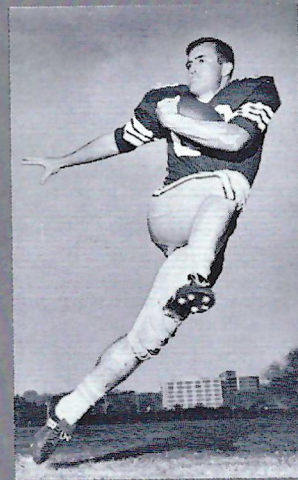
the FLORIDA STATE UNIV



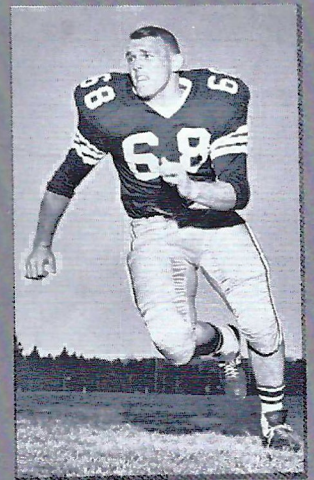
Charles Pennie



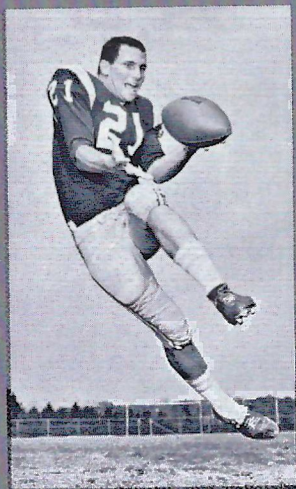
Billy Joe Janes



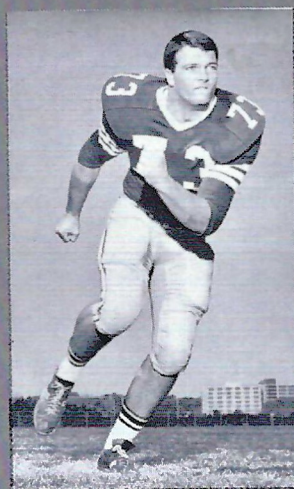
Larry Green



Larry Pendleton



Donovan Jones



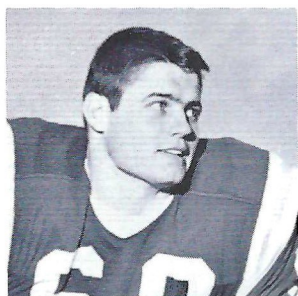
Larry Kissam



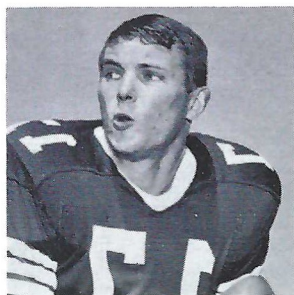
James Riser



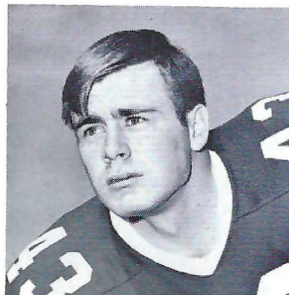
Chip Glass



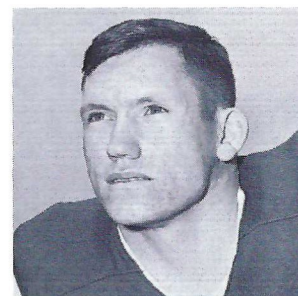
Edwin Pope



Marty Kolbus



Howell Montgomery



H. T. Waller

UNIVERSITY 1966 SEMINOLES



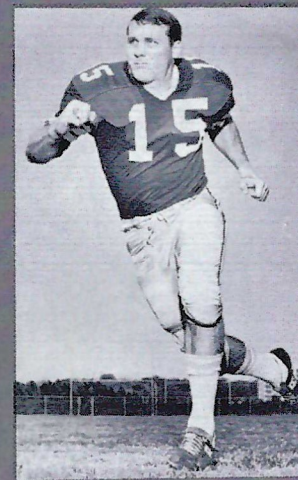
Lane Fenner



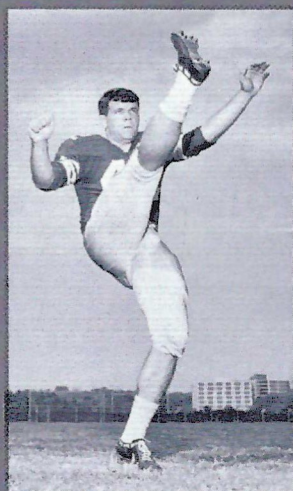
Bill Cappleman



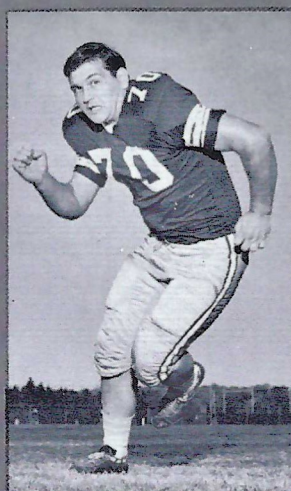
Bill Richardson



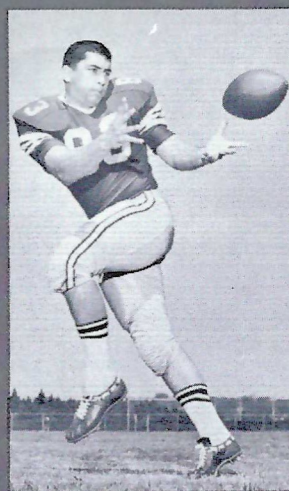
Pat Conway



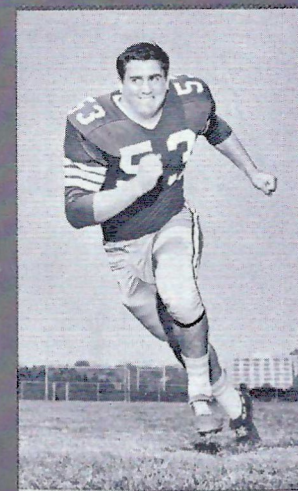
Pete Roberts



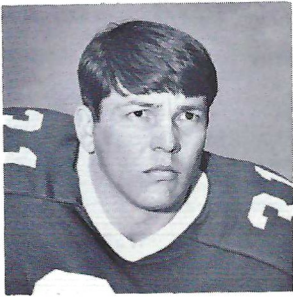
Del Williams



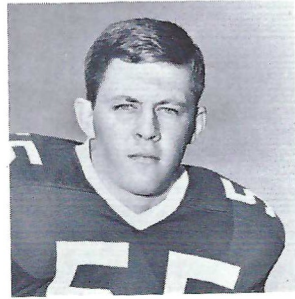
Thurston Taylor



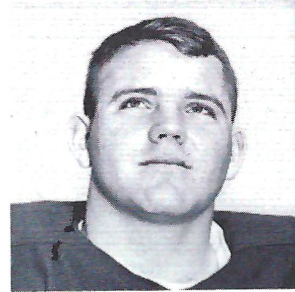
Harvey Zion



John Hurst



Ken Hart

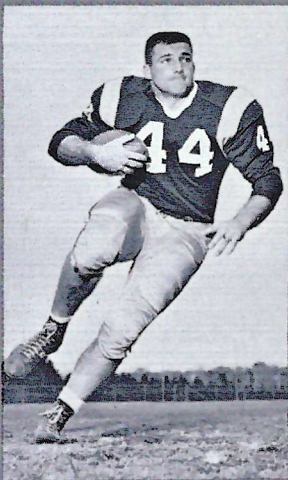


Jerry Jones

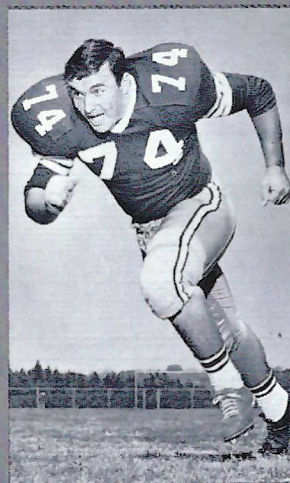


Dan Douglas

FLORIDA STATE UNIVERSITY 66 SEMINOLES



Jim Mankins



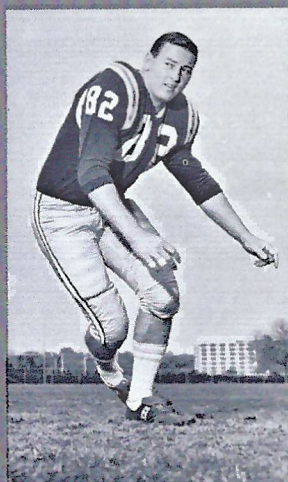
Jay Mac Matthews



Billy Rhodes



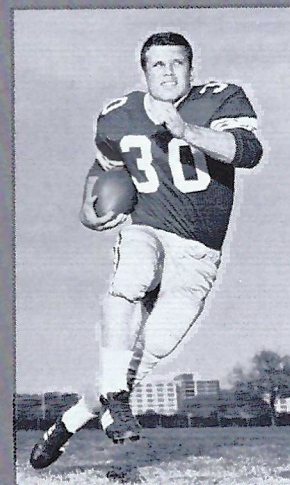
T. K. Wetherell



Wayne McDuffie



Dale McCullers



Bill Moreman



Jack Fenwick



Football and Fitness Film Now Available!

This brand-new, exciting 28-minute color film captures the thrills of professional football. It shows 13 N.F.L. stars in action, in some of their biggest moments of play last year. In addition, the 16 mm. sound film depicts these same players in "how-we-do-it" demonstrations of these plays, as well as their own favorite methods of staying in peak physical shape.

The film and an accompanying 36-page booklet outlines football-oriented plays, exercises, fundamentals and skills.

The film, sponsored by Prudential in cooperation with the President's Council on Physical Fitness and the National Football League, is available for free loan. It will make a terrific program for your civic club, youth group or physical education class.

For information, contact your local Prudential office. Or write Public Relations Dept., The Prudential Insurance Co. of America, P. O. Box 4579, Jacksonville, Florida 32201.



THE PRUDENTIAL INSURANCE COMPANY OF AMERICA
SOUTH-CENTRAL HOME OFFICE • JACKSONVILLE, FLORIDA

Collins furniture co.
INCORPORATED

1117 THOMASVILLE ROAD
PH. 222-1415

TALQUIN INN

West Tennessee Street

Open Daily 5:00 p.m.

Closed Sundays

Learn to Fly at

G. C. Shuler

Seminole Flying Service, Inc.

Municipal Airport

Phone 222-3121

Tallahassee, Fla.

- STUDENT CLUBS
- AIRPLANE RIDES
- FLIGHT INSTRUCTION
- AERIAL PHOTOGRAPHY
- CHARTER FLIGHTS
- AIRCRAFT RENTAL

FLY the best—A New Cessna

"Look up—a new CESSNA will be overhead"

Go Seminoles

OWNED AND OPERATED BY FRANK, RICHARD & RAYMOND CHASE

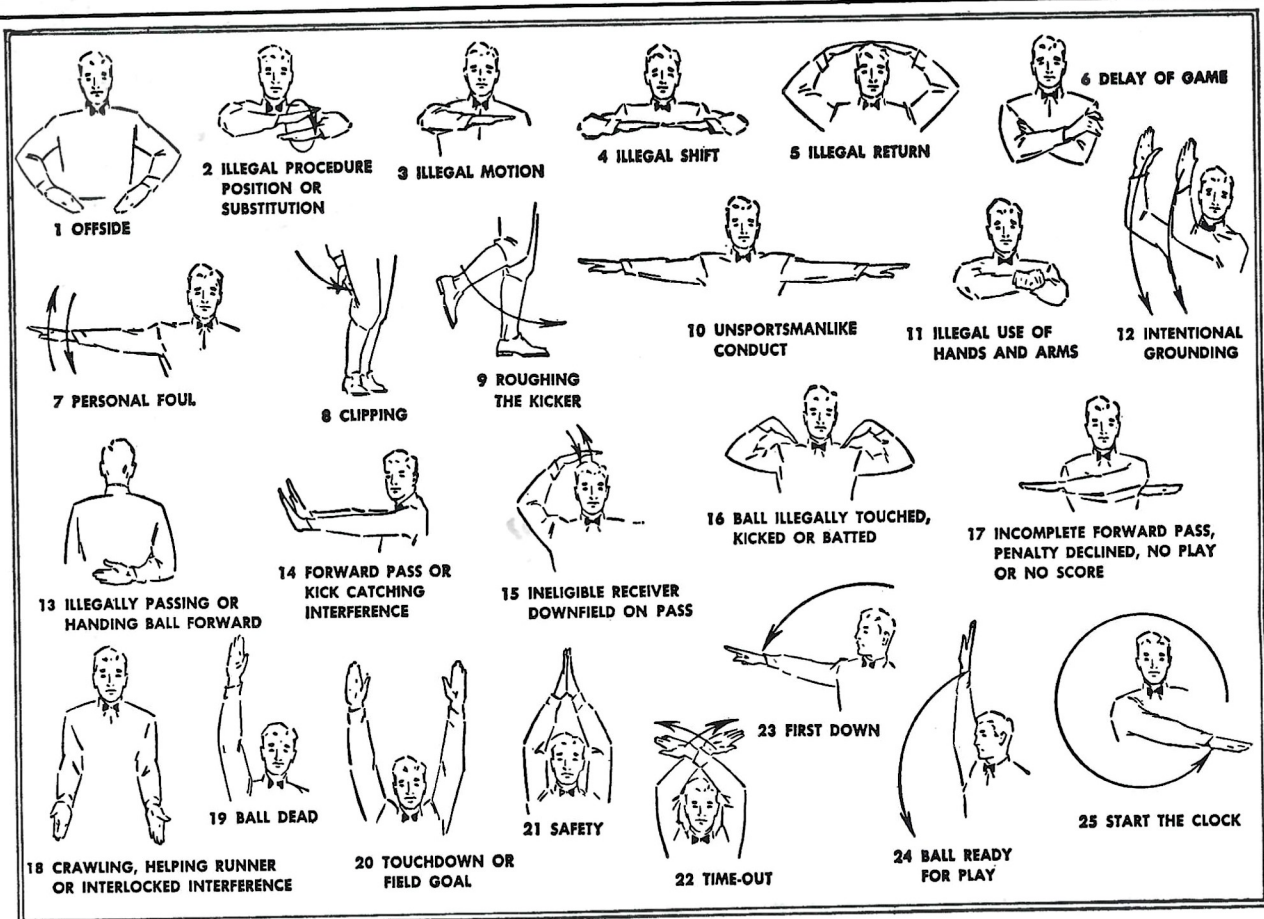


2220 W. TENNESSEE ST.
TALLAHASSEE, FLORIDA

"Serving Good Food for Fine People"

Private Rooms and Banquet Facilities

FOR RESERVATIONS CALL: 599-9460 — 224-9546



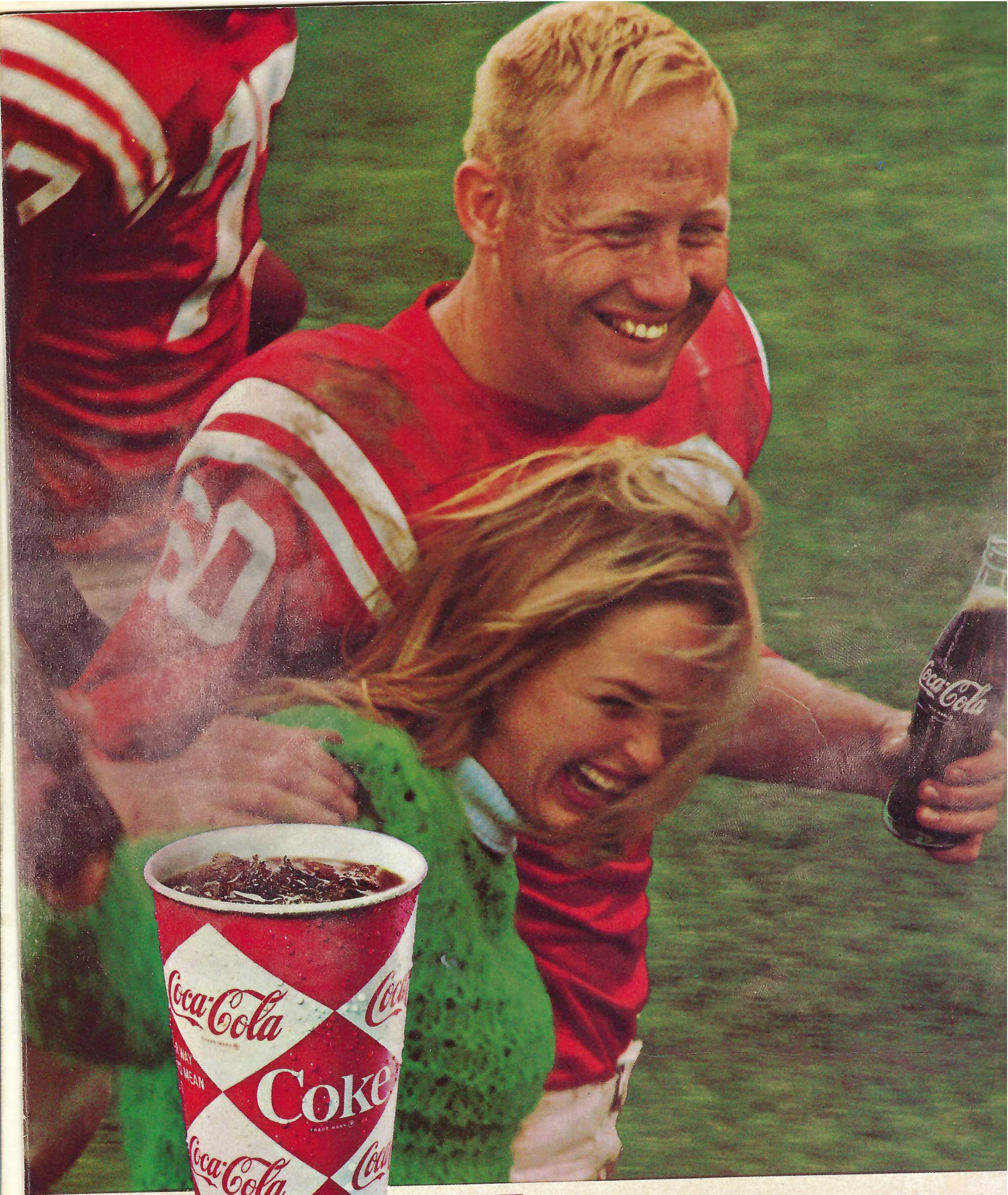


IN '67 BUICK

Get in with the In Crowd in a GS-400



BUICK MOTOR DIVISION



things go
better
with
Coke
TRADE-MARK ©

FOR THE TASTE

OFFENSE

- 85 PAUL EWALDSEN SE
- 71 JOHN PRESTON LT
- 77 GUY DENNIS LG
- 51 BILL CARR C
- 60 JIM BENSON RG
- 66 J. D. PASTERIS RT
- 83 JACK COONS TE
- 11 STEVE SPURRIER QB
- 33 LARRY SMITH TB
- 44 RICHARD TRAPP WB
- 43 GRAHAM McKEEL FB

FLORIDA

DEFENSE

- 81 REX RITTGERS LE
- 74 DON GIORDANO LT
- 78 GEORGE DEAN LG
- 69 BILL DORSEY RG
- 62 RED ANDERSON RT
- 82 DON BARRETT RE
- 41 STEVE HEIDT LLB
- 1 JACK CARD RLB
- 12 BOBBY DOWNS LHB
- 36 T. HUNGERBUHLER RHB
- 10 LARRY RENTZ SAF

FLORIDA SQUAD

- | | |
|----------------------|------------------|
| 1 Card, LB | 59 Lamb, DT |
| 10 Rentz, SAF-QB | 60 Benson, OG |
| 11 Spurrier, QB | 61 Foster, OG |
| 12 Downs, DHB | 62 Anderson, DT |
| 15 Stephenson, QB | 63 Duven, OG |
| 16 Wages, QB | 64 Paulson, DG |
| 20 McQuinn, SAF | 65 Warner, DG |
| 24 Peek, SAF | 66 Pasteris, OT |
| 25 Gaisford, DHB | 67 Young, OG |
| 26 Grandy, DHB | 68 Turman, DG |
| 31 Christian, FB | 69 Dorsey, DG |
| 32 McBride, TB | 70 Colson, OG |
| 33 Smith, TB | 71 Preston, OT |
| 34 Baeszler, FB | 72 Morris, OT |
| 35 Hinton, LB | 73 Clark, OT |
| 36 Hungerbuhler, SAF | 74 Giordano, DT |
| | 75 Splane, DG |
| 37 Manry, DHB | 76 Cutcliffe, DG |
| 38 McCall, LB | 77 Dennis, OG |
| 41 Heidt, LB | 78 Dean, DG |
| 43 McKeel, FB | 79 Kyle, DT |
| 44 Trapp, WB | 80 Jetter, DE |
| 45 Knapp, TB | 81 Rittgers, DE |
| 46 Dunn, FB | 82 Barrett, DE |
| 48 Barfield, FB | 83 Coons, OE |
| 49 Glenn, WB | 84 Ely, DE |
| 51 Carr, C | 85 Ewaldsen, OE |
| 52 Adams, LB | 86 Byers, DE |
| 53 Cain, C | 87 Santille, DE |
| 54 Barnhart, C | 88 Yarbrough, OE |
| 56 Pippin, LB | 89 McCann, OE |

— Officials —

- Referee Charles W. Bowen, Fort Lauderdale
- Umpire Harvey Hadry, Lakeland
- Linesman E. D. Cavette, Memphis, Tenn.
- Field judge Doug Moseley, Memphis, Tenn.
- Back judge Johnny Grace, West Helena, Ark.
- ECO Erich Sauerbrey, Jonesboro, Ga.

DEFENSE

- 87 WAYNE McDUFFIE LE
- 78 CHARLES PENNIE LT
- 23 WAYNE GIARDINO LB
- 68 LARRY PENDLETON MG
- 40 MIKE BLATT LB
- 74 JAY MAC MATTHEWS RT
- 89 BOB MENENDEZ RE
- 33 BUTCH RISER CB
- 26 BILL CAMPBELL CB
- 17 MARTY KOLBUS S
- 15 PAT CONWAY S

FSU

OFFENSE

- 27 BILL COX SE
- 76 JACK FENWICK LT
- 69 EDWIN POPE LG
- 54 JOHN STEPHENS C
- 70 DEL WILLIAMS RG
- 73 LARRY KISSAM RT
- 83 THURSTON TAYLOR TE
- 16 GARY PAJCIC QB
- 30 BILL MOREMAN LH
- 44 JIM MANKINS FB
- 34 RON SELLERS FL

FLORIDA STATE SQUAD

- | | |
|-------------------|-------------------|
| 11 Hammond, QB | 51 Richardson, C |
| 12 Burkhardt, QB | 52 Zion, MG |
| 14 Cappleman, QB | 54 Stephens, C |
| 15 Conway, DB | 59 Loner, MG |
| 16 Pajcic, QB | 60 Williamson, OG |
| 17 Kolbus, DB | 61 Elliott, OG |
| 18 Burton, DB | 62 Douglas, OG |
| 19 Roberts, K | 64 Braggins, DT |
| 20 Green, HB | 65 McCullers, LB |
| 21 Jones, FL | 66 Hart, OG |
| 22 Eason, DB | 68 Pendleton, MG |
| 23 Giardino, LB | 69 Pope, OG |
| 24 Sumner, DB | 70 Williams, OG |
| 26 Campbell, DB | 73 Kissam, OT |
| 27 Cox, OE | 74 Matthews, DT |
| 28 Wetherell, OE | 75 Rhodes, OT |
| 29 Hurst, HB | 76 Fenwick, OT |
| 30 Moreman, HB | 77 Curchin, OT |
| 31 Gunter, HB | 78 Pennie, DT |
| 33 Riser, DB | 79 Vohun, DT |
| 34 Sellers, FL | 80 Gurr, DE |
| 35 Hosack, K | 81 Waller, DE |
| 40 Blatt, FB | 82 Fenner, SE |
| 41 Crowe, FL | 83 Taylor, OE |
| 43 Montgomery, DB | 84 Glass, OE |
| 44 Mankins, FB | 87 McDuffie, DE |
| 47 Benson, LB | 88 Jones, LB |
| 50 Janes, MG | 89 Menendez, DE |

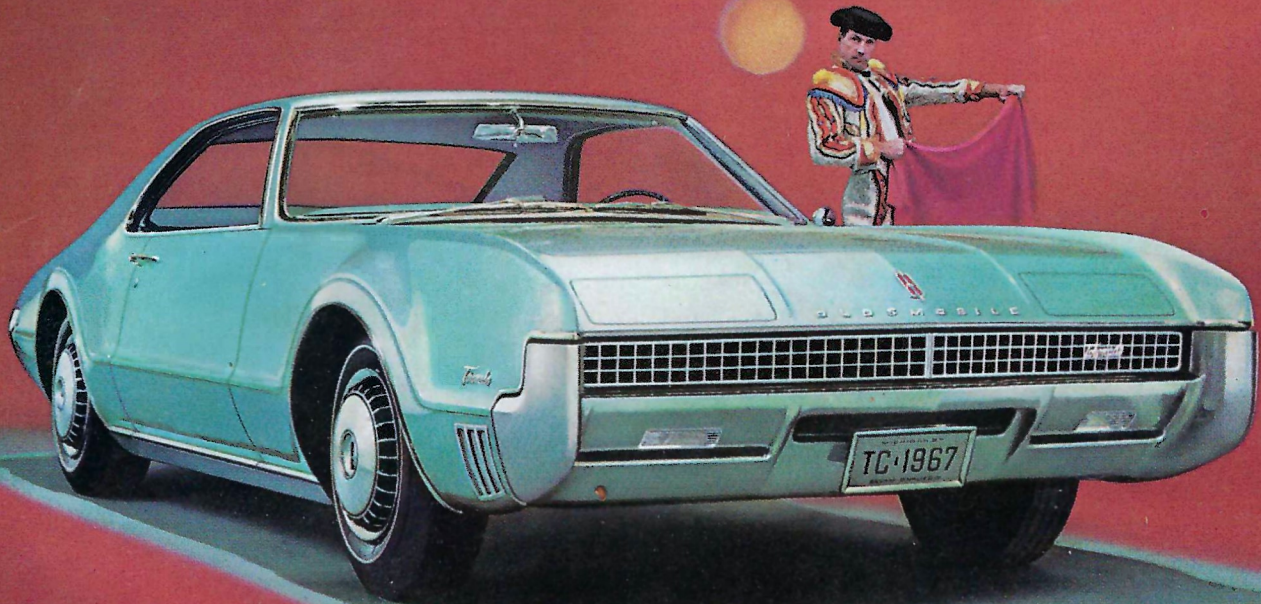


"COCA-COLA" AND "COKE" ARE REGISTERED TRADE-MARKS WHICH IDENTIFY ONLY THE PRODUCT OF THE COCA-COLA COMPANY. PRINTED IN U.S.A.

YOU NEVER GET TIRED OF



The Rocket Action Cars are out front again!



**After you've walked off with all the honors,
what do you do for an encore?**

Meet Olds Toronado—'67 edition.

Awards for this. Awards for that. Awards for just about everything. But rest on its laurels? Not Toronado. Swinging new look outside. Posh new detailing inside. Doors with torsion-bar spring assists that open easier than ever to the flat-floored, room-for-six interior. Even that fabulous front-wheel-drive ride is smoother and quieter for '67. And front disc brakes and radial ply tires are available. Trend-setting Toronado: Proved and applauded by tens of thousands of satisfied owners. Greater than ever the second time around!

**OBEY
LAWS
DRIVE
SAFELY**

Olds thinks of your safety, too, with the GM-developed energy-absorbing steering column that can compress on severe impact up to 8½ inches; with four-way hazard warning flasher; outside rearview mirror; dual master cylinder brake system, plus many other safety features—all standard for '67.

Engineered for excitement . . . Toronado-style!

'67 OLDSMOBILE



PENALTIES

1. **OFFSIDE** by either team; Violation of scrimmage or free kick formation; Encroachment on neutral zone—Loss of Five Yards.
2. **ILLEGAL PROCEDURE, POSITION OR SUBSTITUTION**—Putting ball in play before Referee signals "Ready-for-play"; Failure to complete substitution before play starts; Player out of bounds when scrimmage begins; Failure to maintain proper alignment of offensive team when ball is snapped; False start or simulating start of a play; Taking more than two steps after Fair Catch is made; Player on line receiving snap—Loss of Five Yards.
3. **ILLEGAL MOTION**—Offensive player illegally in motion when ball is snapped—Loss of Five Yards.
4. **ILLEGAL SHIFT**—Failure to stop one full second following shift—Loss of Fifteen Yards.
5. **ILLEGAL RETURN** of substitute not previously disqualified—Loss of Fifteen Yards.
6. **ILLEGAL DELAY OF GAME**; Taking more than four times out during either half (except for replacement of injured player)—Loss of Five Yards. Team not ready to play at start of either half—Loss of Fifteen Yards.
7. **PERSONAL FOUL** — Tackling or blocking defensive player who has made fair catch; Piling on; Hurdling; Grasping face mask of opponent; Tackling player out of bounds, or running into player obviously out of play; Striking an opponent with fist, forearm, elbow or locked hands; Kicking or kneeling—Loss of Fifteen Yards (Flagrant offenders will be disqualified.)
8. **CLIPPING**—Loss of Fifteen Yards.
9. **ROUGHING THE KICKER** or holder—Loss of Fifteen Yards.
10. **UNSPORTSMANLIKE CONDUCT**—Violation of rules during intermission; Illegal return of suspended player; Coaching from sidelines; Invalid signal for Fair Catch; Persons illegally on field—Loss of Fifteen Yards. (Flagrant offenders will be disqualified.)
11. **ILLEGAL USE OF HANDS AND ARMS** by offensive or defensive player; Defensive holding—Loss of Fifteen Yards.
12. **INTENTIONAL GROUNDING** of forward pass—Loss of Five Yards Plus Loss of Down.
13. **ILLEGALLY PASSING OR HANDING BALL FORWARD**—Loss of Five Yards Plus Loss of Down.
14. **FORWARD PASS OR KICK CATCHING INTERFERENCE**—Interference with opportunity of player of receiving team to catch a kick—Loss of Fifteen Yards. Interference by member of offensive team with defensive player making pass interception—Loss of Fifteen Yards Plus Loss of Down. Interference by defensive team on forward pass—Passing Team's Ball at Spot of Foul and First Down.
15. **INELIGIBLE RECEIVER DOWNFIELD ON PASS**—Loss of Fifteen Yards.
16. **BALL ILLEGALLY TOUCHED, KICKED OR BATTED**—Forward pass being touched by ineligible receiver beyond the line of scrimmage—Loss of Fifteen Yards from Spot of Preceding Down and Loss of a Down. Eligible pass receiver who goes out of bounds and later touches a forward pass—Loss of Down. Illegal touching of kicked ball within opponent's ten yard line—Touchback.
17. **PENALTY DECLINED**; Incomplete forward pass; No play or no score.
18. **CRAWLING** by runner—Loss of Five Yards. Interlocked Interference—Loss of Fifteen Yards.

PRESCRIPTIONS

- COSMETICS
- GREETING CARDS
- TOYS
- FILMS & CAMERAS

224-9031

SOUTHSIDE
Rexall
PHARMACY



1549 S. MONROE



"BUDDY STEWART"
WE BILL THE BANK
"WORKING FOR BETTER
COMMUNITY HEALTH"
HAVE YOUR DOCTOR CALL US

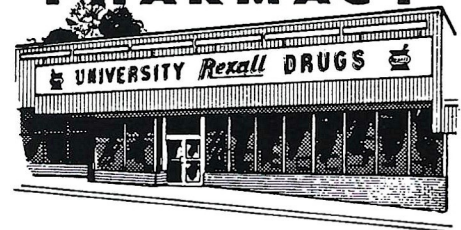
NO CHARGE FOR
DELIVERY SERVICE

CITY WIDE AND
SURROUNDING AREAS

- VITAMINS
- CANDY
- GIFTS
- HOSPITAL SUPPLIES

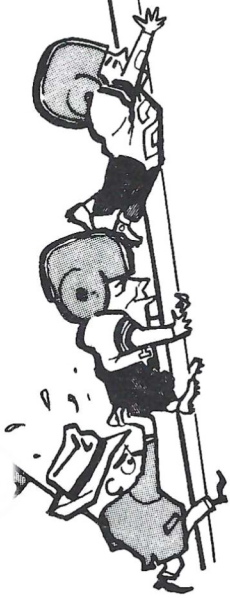
224-5011

UNIVERSITY
Rexall
PHARMACY



W. TENN & HIGH RD.

SEMINOLE BOOSTERS, INCORPORATED



MEMBERSHIP CARD
 Here is Your 1966 Membership Card
 Seminole Boosters, Inc.
 114 LINDSEY ALUMNI BUILDING TALLAHASSEE

BOOSTER CARD
 FLORIDA STATE UNIVERSITY
 1966 FOOTBALL SUPPORTER
 SEMINOLE BOOSTERS, INC.
 114 LINDSEY ALUMNI BUILDING TALLAHASSEE

SEMINOLE BOOSTER NEWS
 SEMINOLE BOOSTER NEWS
 SEMINOLE BOOSTERS, INC.
 114 LINDSEY ALUMNI BUILDING TALLAHASSEE

POW WOW with PETE
 BY BILL PETERSON
 Head Football Coach
 Florida State University

SEMINOLE BOOSTER-66
 FLORIDA STATE UNIVERSITY
 TALLAHASSEE, FLORIDA

FORM
 SEMINOLE BOOSTERS, INC.
 114 LINDSEY ALUMNI BUILDING TALLAHASSEE

FOR A BIGGER AND BETTER FLORIDA STATE UNIVERSITY



SEMINOLE BOOSTERS, INC. BOARD OF DIRECTORS 1966

Seated, left to right: Weldon G. Starry, Director; Hank Mannheimer, Secretary; W. S. "Bill" Lee, President; Herschel Williams, Treasurer; and Dr. Ed Haskell, Jr., Immediate Past President.

Standing, left to right: Rainey Cawthon, Director; Louis Hill, Director; Tom Feamster, Jr., Director; Godfrey Smith, Director; J. T. Williams, Jr., Director; Theo Proctor, Jr., Director; William I. DuBey, Director; Wayne Cook, Director; Dr. Laurence Chalmers, Director; and Dan Wright, Director.

Not present when picture was taken were: T. A. Waits, Executive Director; J. Edwin White, President-Elect; Guy McKenzie, Director; Dr. Francis H. Watt, Director; F. W. "Bill" Carraway, Jr., Director; and Robert B. Drake, Director.

Seminole Boosters, Inc. is an organization devoted entirely to the support of the Florida State University athletic program with emphasis on football.

Membership in the Boosters—the group numbers approximately 1,400—is open to anyone with a sincere interest in the University's athletic progress. Minimum contribution for an individual membership is \$15. A business membership costs \$30.

Contributions are administered in accordance with NCAA regulations and in conjunction with the Florida State Department of Intercollegiate Athletics.

Boosters receive a colorful automobile license plate which can be used for admission to special reserved parking lot at the stadium, a membership card, a weekly fall publication, "The Grandstand Coach," and certain priorities on season and single game football tickets.

SEMINOLE BOOSTERS, INCORPORATED FLORIDA STATE UNIVERSITY TALLAHASSEE, FLORIDA 32306

My 1966 gift is:
 Check attached for \$ _____
 Pledge to pay \$ _____ Bill me for \$ _____ (TOTAL AMT.) (PAYMENTS) MONTHLY QUARTERLY OTHER _____ (SPECIFY)

MEMBERSHIP: Individual - \$15 minimum
Business - \$30 minimum



ARE YOU AN F.S.U. ALUMNUS? Yes No

Make check payable to Seminole Boosters, Inc.
 Mail To: 114 Longmire Alumni Bldg., FSU
 TALLAHASSEE, Florida 32306



(PLEASE CORRECT ANY ERRORS IN YOUR ADDRESS)

NAME _____
 ADDRESS _____
 CITY, STATE _____

ZIP _____

SOLICITOR'S SIGNATURE _____ CONTRIBUTOR'S SIGNATURE _____ DATE _____



WHERE YOU
WILL FIND
YOUR FRIENDS

701 W. JEFFERSON
South Gate F.S.U.

QUALITY CLEANERS

215 W. COLLEGE AVE.—DIAL 222-5097

ONE DAY SERVICE

PICK-UP and DELIVERY

Quality Laundry Work

Fluff Dry Service

EXPERT TAILORING and ALTERATIONS

ZIPPERS REPAIRED



SPURGEON CAMP

*"Let's Be
#1
In 1966"*



**The cigar for men
that ladies love*

**HAV-A-TAMPA
JEWELS**

WITH EXCLUSIVE BIRCHWOOD TIP

2 for 15c

or new Push-Pak of five 36c
(Plus state and local taxes, if any)

FROM HAVATAMPA—TAMPA'S LARGEST MANUFACTURER OF FINE CIGARS

Distributed by **Eli Witt Tobacco & Candy Co.**

Tallahassee, Florida

NOBODY...
BUT NOBODY
UNDERSELLS.

**SOUTHERN
ELECTRIC INC.**



FLORIDA STATE'S 1966 FRESHMAN SQUAD

No.	Name	Pos.	Ht.	Wt.	Hometown	No.	Name	Pos.	Ht.	Wt.	Hometown
14	Doug Mitchell	QB	6-0	185	Williston	70	Terry Fisher	T	6-3	235	North Miami
15	Bobby Burt	E	6-0	185	Cairo, Ga.	71	Bill Lee	C	6-3	220	Chipley
16	Tommy Warren	QB	5-11	175	Coral Gables	73	Keith Kleinbach	T	6-3	230	Green Lane, Pa.
20	Phil Abraira	FL	6-0	180	Ft. Lauderdale	75	Tom White	T	6-1	240	West Palm Beach
21	Randy Hodges	HB	5-10	170	Tallahassee	78	Floyd Ratliff	FB	6-4	195	Jesup, Ga.
22	Mike Gray	E	6-3	180	Sanford	79	Duke Johnston	T	6-1	210	Ft. Lauderdale
27	Barry Wenhold	HB	5-10	190	Souderton, Pa.	80	Bob Eschelman	E	6-2	215	Coral Gables
28	Bill Donohoe	HB	6-0	180	North Miami	81	Jimmy Tyson	E	5-11	187	Pahokee
29	Bob Flynn	QB	6-0	190	Akron, O.	82	Jim Rust	T	6-3	200	Ft. Lauderdale
40	Ed Gibson	FB	5-10	195	Orlando	88	Lamar Munroe	HB	6-1	175	Quincy
41	Bill Cheshire	QB	6-0	180	Jesup, Ga.	89	Rick Anderson	QB	6-3	190	Winter Haven
42	Ron Montford	FB	6-0	195	Blountstown		Robert Webb	QB	6-1	185	St. Augustine
43	Bay Gruber	QB	6-1	175	Ft. Myers		Cecil Presnell	C	5-10	180	Miami
44	Mike Page	HB	5-10	170	Winter Haven		Skipper Babb	DB	5-11	165	Umatilla
52	Bill Hughes	C	6-1	205	Cocoa		Jimmy Bird	DB	5-10	155	Bronson
54	Pete Rupp	FL	5-10	180	Evansville, Ind.						
55	Ed Chereskhoff	HB	5-10	180	Pembroke Pine						
60	Barry Rice	HB	6-1	185	Fernandina Beach						
63	David Worrall	LB	5-10	160	Fort Walton Beach						
64	Stan Walker	T	6-2	205	Tallahassee						
65	Dick Johnson	G	6-1	180	Miami Springs						
67	Paul Fuder	C	6-2	190	Marianna						
68	Jim Bracken	T	6-2	215	Canton, O.						
69	Beryl Rice	HB	6-0	180	Fernandina Beach						

1966 FRESHMAN FOOTBALL SCHEDULE			
DATE	OPPONENT	SITE	TIME
Sept. 24	Miami	Sarasota	8:15 p.m.
Oct. 15	Florida	Gainesville	2:00 p.m.
Oct. 29	Southern Mississippi	Tallahassee	8:00 p.m.
Nov. 12	Georgia Tech	Moultrie, Georgia	8:00 p.m.



ROSE PRINTING COMPANY, INC.

TALLAHASSEE, WASHINGTON, NEW YORK AND CHICAGO

Your University Union



is more than a beautiful complex of buildings — it is an organization of a Union Board — Committees comprised of over 200 students — a professional staff — and YOU! It is an organization designed to serve you — the students, faculty, staff and members of the Alumni Association — with

PROGRAMS ★ SERVICES ★ FACILITIES

Beginning its third year and already an FSU campus tradition

**Activities Night — Union Birthday Party — President's Ball
Madrigal Christmas Dinners**

Operated entirely without the use of any state tax funds

FOR ALL CAMPUS INFORMATION

CALL THE UNION

599-3317



SEMINOLE CHEERLEADERS

Left to right: Dixie Wilcoxin, Jacksonville; Bruce Turner, Jacksonville; Judy Holman, Albany, Ga.; Doug Traxler, Boca Raton; Head Cheerleader Toni Beals, Sumter, S. C.; John Mullins, Tallahassee; Peggy Thompson, Ormond Beach; Bill Abney, Jacksonville; Doreen Brown, Manassas Park, Va.; Dave Deutsch, Palatka.

THE ALMA MATER

High o'er the towering pines our
 voices swell
 Praising these Gothic spires we love
 so well;
 Here sons and daughters stand . . .
 Faithful and True, Hailing our Alma
 Mater
 F . . . S . . . U . . .

FSU FIGHT SONG*

We're going to FIGHT, FIGHT,
 FIGHT for FSU
 We're going to scalp 'em Seminoles.
 We're going to WIN, WIN, WIN,
 WIN, WIN this game . . . and
 roll on down and make those
 goals!
 For FSU is on the warpath now, and
 and at the battle's end she's
 great . . .
 So FIGHT, FIGHT, FIGHT, FIGHT
 for victory
 Our Seminoles of Florida State . . .
 F-L-O-R-I-D-A S-T-A-T-E
 FLORIDA STATE (3 times)

THE FLORIDA STATE VICTORY MARCH*

Onward to victory, Seminoles, GO! FORWARD MARCH, we must move
 out together and . . . FORWARD MARCH, it's always marching weather
 when thousands strong, we swing along. All in step for VIC . . . TO . . . RY.
 Our F-S-U and all our loyal Seminoles, ON-WARD GO . . . To conquer all
 our savage foes . . . won't be long . . . we can't go wrong . . . we will crush
 the EN . . . E . . . MY . . . So SCALP'EM . . . SCALP'EM . . . SCALP'EM
 . . . it's a case of do or die . . .

Strike the fatal thrust, we'll be victorious; with terrible tenacity we can,
 we will, we must!

FORWARD MARCH, we'll ride the swelling battle tide
 FORWARD MARCH, we'll face the future side by side
 With our might, we'll FIGHT, FIGHT, FIGHT!
 . . . For Florida State University.

*Written by Thomas G. Wright,
 Professor of Music at Florida State University.

YOUNG HO! GO CHEVRON!

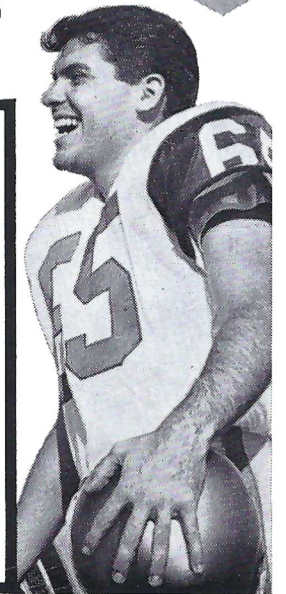


Follow the SEMINOLES in '66



ON THE
STANDARD OIL
RADIO NETWORK

WTNT Tallahassee	WJAX Jacksonville
WGBS Miami	WKIS Orlando
WCOA Pensacola	WDAE Tampa



**Enjoy a Treat
after the Game!**



**Frisch's
BIG BOY**

® RCW
© FRI

RESTAURANT
1175 WEST TENNESSEE STREET
TALLAHASSEE

•
OPEN 7a.m. To 12 Midnight
'TIL 2 a.m. Friday & Saturday

•
Diningroom & In-Car Service
Plenty of Easy Parking

•
For CARRY-OUT Orders Telephone 224-1246

THE SEMINOLE FOOTBALL NETWORK

Popular Bo Mitchell returns to the Seminole microphone for the fourth straight season, bringing play-by-play action to every corner of the Sunshine State.

The energetic Mitchell, an ex-naval aviator with more than 17 years broadcasting experience, is vice-president and station manager of station WCOA, Pensacola.

His partner at the mike this season will be Bud Kaatz, a native of Ohio who was formerly color man for the University of Michigan Football Network and play by play announcer for Ohio University and Marietta College. Kaatz will handle pre-game, halftime and time out commentary on the Seminoles.

Originating station for the Seminole Network is WTNT, Tallahassee. The network consisted of 29 stations in Georgia and Florida.



Bo Mitchell



Bud Kaatz

THE SEMINOLE NETWORK

- | | |
|----------------------|-----------------------|
| WCOA Pensacola | WPCF Panama City |
| WTNT Tallahassee | WROD Daytona Beach |
| WJAX Jacksonville | WSPB Sarasota |
| WKIS Orlando | WTOT Marianna |
| WDAE Tampa | WZET Defuniak Springs |
| WGBS Miami | WTTB Vero Beach |
| WARN Ft. Pierce | WPAX Thomasville, Ga. |
| WDSR Lake City | WINK Ft. Myers |
| WEBY Milton | WTRR Sanford |
| WFOY St. Augustine | WPRY Perry |
| WGCG Gainesville | WFTW Ft. Walton Beach |
| WTRK West Palm Beach | WMAF Madison |
| WLAK Lakeland | WMGA Moultrie, Ga. |
| WLCO Eustis | WSIR Winter Haven |
| WMOP Ocala | WCNH Quincy |

BOWLING'S GREAT

the Perfect date

**AFTER THE GAME
MEET YOUR FRIENDS
AT THE**

Parkway Bowl

COFFEE SHOP

1230 Apalachee Parkway
TALLAHASSEE, FLORIDA

And Enjoy



WAFFLE VARIETIES
With Your Favorite Beverage
or Rich Creamy Hot Chocolate

GOOD LUCK SEMINOLES!

VARSITY THEATRE

1833 W. Tennessee

Phone 224-8636

PLEASE!

**CONSUMPTION OF ALCOHOLIC
BEVERAGES IS PROHIBITED
ON UNIVERSITY PROPERTY**

University regulations, and those of the State Board of Regents prohibit the consumption of alcoholic beverages on any part of the campus of Florida State University.

Please cooperate and abide by these regulations. Enjoy the game in the true spirit under which collegiate athletic contests are held, and be mindful of the rights of others.

FSU and Florida via the Governor's Office

By **TOM NUGENT**

Former Florida State Coach



Tom Nugent was Florida State's third football coach. He coached the Seminoles to a pair of post season games before leaving to take the University of Maryland job. He is now sports director of television station WLBW in Miami.

My six years at Florida State were the happiest of my twenty-five in the coaching profession.

There are many highlights and memories including a couple of bowl games (Sun Bowl, 1955), and Blue Grass Bowl in 1958) along with our first smashing wins over Southeastern Conference Tennessee 10-0 and over Miami, 17-6 in 1958.

Above all, however, was the final realization of a goal, to play the Florida Gators in football. This, of course, is a matter of record now and probably taken for granted as something that just naturally happened.

Believe me it was not! It took years of speech making, political pressures, constant attention and devotion of purpose.

Bob Woodruff said in 1953 that as long as he was Director of Athletics

at Florida, there would be no football game with Florida State. At least he was quoted in this fashion.

As coach and Director of Athletics at Florida State I made a promise that we would find a way if we had to work through the Legislature.

State Senator Harry Stratton of Calhahan, Fla., probably had more to do with this phase of it than anyone else. There were many other people who gave their time and support, but I do believe that Senator Stratton contributed most.

The Governor of Florida LeRoy Collins, averted legislative action when he ordered the two Athletic Directors to "schedule a game of football between the two universities and sign contractual agreements within forty-eight hours." This statement was made, as I recall, in early 1957.

The game itself was thrilling and full of high pitched emotion. The Florida State fans, alumni, and student body backed their team all the way and a record crowd jammed Florida Field, in Gainesville, that November day in 1958. At least half of the 49,000-plus were screaming for FSU.

We lost the game 21-7 to a strong Florida team. Our club gave their best and were out in front most of the first half. Quarterback Vic Prinzi, our captain, was injured just before the half on a clean hard tackle by Asa Cox, of Gainesville, and that seemed to be the turning point in the game. Florida deserved the win because they stopped our passing game in the second half.

An important development as a direct result of our first meeting in a



Vic Prinzi

football game came a year later. The annual distribution of Race Track Scholarship Funds found Florida State getting an equal share. It has been this way since.

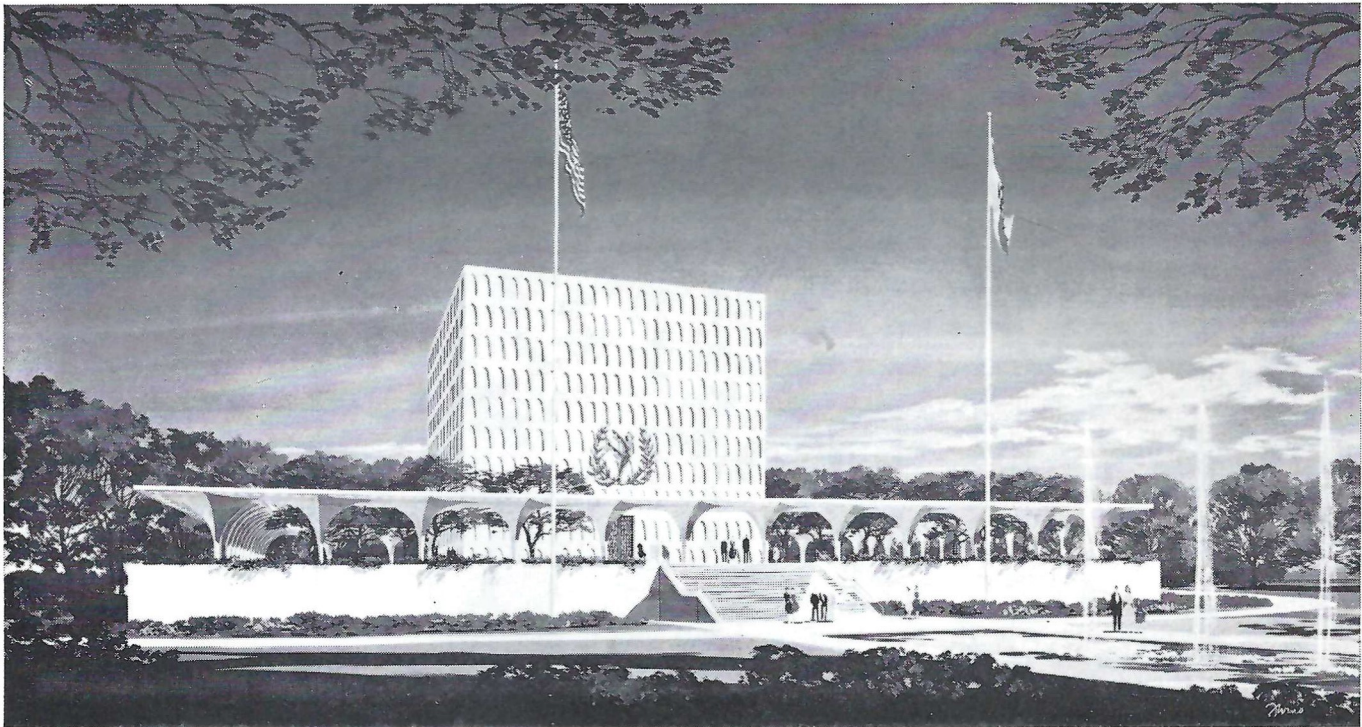
Playing Florida was truly the beginning of "big time" football for the Seminoles and there will always be a cherished memory and a lump in the throat of many FSU alumni when they recall that opening kickoff in Gainesville when Bobby Renn took a double reverse and nearly went all the way. A few plays later Freddie Pickard scored from the side line.

Yes, Florida won the game.—But the Seminoles had arrived.



Bobby Renn

National Football Hall of Fame Week



Perspective of the National Football Foundation and Hall of Fame building.

Governors in 50 states have again been invited to officially proclaim the week of Oct. 15-Oct. 22 National Football Hall of Fame Week.

In addition to issuing official proclamations, which are forwarded to the National Football Foundation and Hall of Fame headquarters, the chief executives of 50 states also traditionally write a congratulatory letter to the Foundation's Gold Medal winner.

This year, Dec. 6 at the Waldorf-Astoria in New York, Col. Earl (Red) Blaik, Army and Dartmouth Hall of Fame coach, and chairman of the executive committee of AVCO, Corp. will receive the Gold Medal. As one of the nation's foremost builders of men, Col. Blaik was called a "true architect of victory" by his late and great friend, General Douglas MacArthur.

One of Col. Blaik's prize proteges was Bill Carpenter, Army's famed Lonely End in 1959. The former All-America football player distinguished himself in battle against the Viet Cong earlier this year when surrounded by overwhelming odds, he turned certain death into miraculous survival by ordering napalm bombs dropped on himself and his embattled troops in Viet Nam.

He is one of the many Army football players coached by Red Blaik, who helped form the first line of defense in World War II, Korea and now in Viet Nam, who lived up to the famous General MacArthur quote:

"Upon the fields of friendly strife are sown the seeds that upon other fields, on other days, will bear the fruits of victory."

This is particularly important today when the beatnik and bearded element seeks to lead campus revolts around the nation. For this reason, the National Football Foundation's Scholar-Athlete program is more important than ever, and most of the 102 Hall of Fame chapters across the country recognize students who excel academically as well as athletically.

This year's National Football Hall of Fame Week is particularly eventful inasmuch as ground-breaking ceremonies for the Football Hall of Fame will be held Oct. 15 in New Brunswick when Army plays Rutgers. Target date for completion is 1969, 100th anniversary of the college football game.

College football attendance soared beyond the 24,000,000 figure last year. It is more popular than ever before. You are invited to become a member of a Football Hall of Fame chapter in your state. You may affiliate with the chapter of your choice. Membership dues is \$10.00 a year, tax deductible. Send your dues to the National Football Foundation headquarters, 137 Church Street, New Brunswick, N. J.

Hall of Fame Building Fund Donations, tax deductible, are also being received at National Hall of Fame headquarters. All football fans are urged to support the effort. The Football Hall of Fame belongs to the nation, not only to honor the gridiron heroes of the past, but to serve as an inspiration to America's youth, the leaders of tomorrow.

1966 CROSS COUNTRY SCHEDULE

Date	Opponent	Place
Sept. 24	*Pensacola Athletic Club	Tallahassee
Oct. 1	South Florida	Tampa
Oct. 8	*Florida	Tallahassee
Oct. 15	Georgia Tech	Atlanta
Oct. 22	Calloway Gardens Invitational	Pine Mt., Ga.
Oct. 28	Auburn	Auburn
Nov. 4	Regional N.C.A.A.	Pine Mt., Ga.
Nov. 12	*Miami	Tallahassee
Nov. 19	*South Florida	Tallahassee
Nov. 26	*Florida Collegiate Championships	Miami

*Freshmen will also compete



THE 1966 FLORIDA STATE CROSS-COUNTRY TEAM: Front Row; left to right: Bob Thomas, Baltimore, Md.; Ken Watkinson, Tampa; Bill Smith, Pittsburgh, Pa.; Craig Kavka, Plainfield, N. J. Second Row: Coach Mike Long; Sid Merchant, Melbourne; Charlie Vickers, Orlando; Marc Williamson, Raleigh, N. C.; Tommy Rickards, Ft. Myers; Joe Henderson, Port Washington, N. Y. Not Pictured: Joe Rooney, Fort Lauderdale.

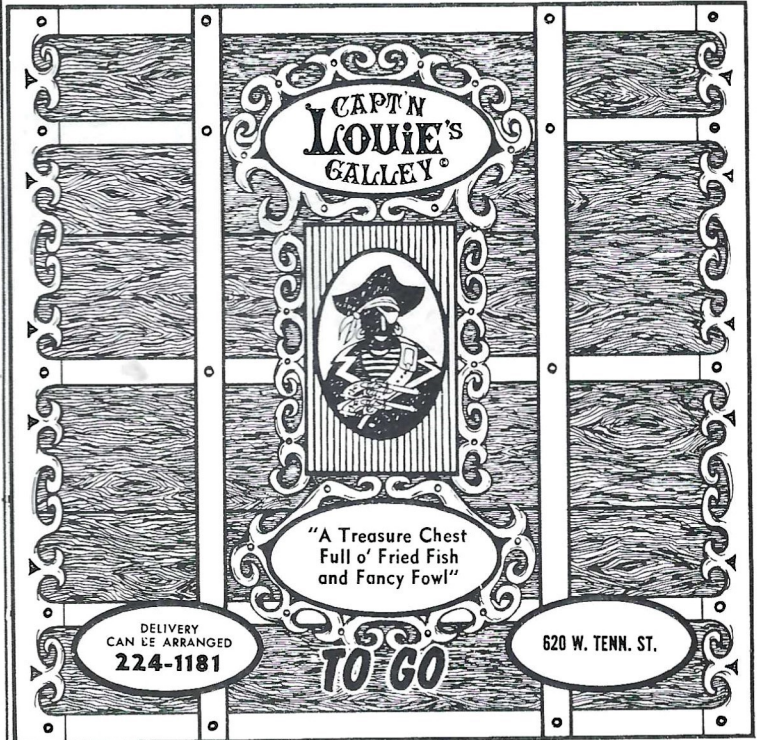
COMPLIMENTS OF TALLAHASSEE AUTOMOBILE DEALERS ASSOCIATION

ALFORD CHEVROLET COMPANY
CAPITAL LINCOLN & MERCURY, INC.
CAPITAL PLYMOUTH, INC.
COURTESY OLDSMOBILE, INC.
BOB DRAKE DODGE, INC.

KINNEBREW MOTORS, INC.
MINGLEDORFF MOTORS, INC.
PALMER-HARRELL BUICK COMPANY
PROCTOR & PROCTOR, INC.
TALLAHASSEE MOTORS, INC.

STADIUM INFORMATION

- Rest Rooms**—Located on concourse and on ground level on both east and west sides.
- First Aid**—Located in southwest corner of stadium. Registered nurse on duty.
- Lost and Found:** Items may be claimed or turned in at the ticket booth next to the press box elevator, west side.
- Public Telephones:** Located ground level, west side.
- Public Address:** No special announcements are made over the stadium public address system except in cases of emergency.
- Field Regulations:** No spectators are allowed on the field, either during or after the game. Please leave the stadium by ramp and section exits rather than field level exits.
- Drive Carefully**—Your cooperation with law enforcement officers will help speed the flow of traffic away from the stadium.



Patronize Stadium

CONCESSIONS

Located beneath the stands on each side of stadium

COLD DRINKS	small 15¢	large 25¢
HOT COFFEE	15¢	
SANDWICHES	30¢	
HOT DOGS	25¢	
PEANUTS	25¢	
POP CORN	15¢	
CIGARETTES	40¢	

SOUVENIR ITEMS - PENNANTS - BADGES

SUN VISORS - ASPIRIN

Please pay no more than

ESTABLISHED PRICES

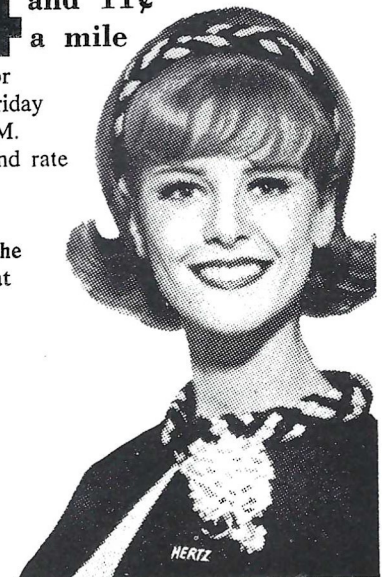
Drive a bargain with Hertz this weekend.

Only \$ **14⁹⁵** and 11¢
a mile

rents a Ford Galaxie or similar sedan from Friday noon to Monday 9 A.M. (And this low weekend rate includes insurance, gas, and oil.)

Let Hertz put you in the driver's seat. (Isn't that where you belong?)

For details, call:
222-1686



**WHEN YOU GET HUNGRY WHY NOT TRY SOME
COLONEL SANDERS RECIPE KENTUCKY FRIED CHICKEN ©**

three sizes to choose from:

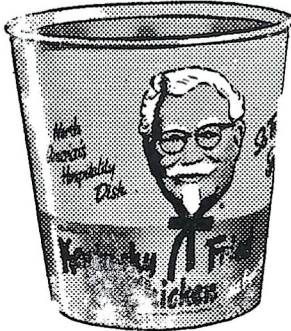
Individual Box
3 Big Pieces of Chicken,
Cole Slaw, French Fries,
Rolls, Gravy
\$1.10

Family Bucket
Serves 5 to 7
\$3.75

Barrel O' Chicken
Serves 8 to 10
\$5.00
Gravy & Rolls 5.40

Bar-B-Q Chicken Sandwich
French Fries—Jumbo Shake

60c



or if you prefer!

- Jumbo Shrimp Boxes
- Chicken Gizzard Boxes
- Filet of Fish Boxes
- Famous Home-Made Pies
- Chicken Liver Boxes

Holland's Drive In

TWO LOCATIONS TO SERVE YOU

Drive in No. 1
1002 N. Monroe—224-1645

Drive in No. 2
1603 W. Tenn. St.—224-4313

Tenn. St. Location Open 'Til 11 P.M.

Home Owned and Operated by Mr. & Mrs. N. T. Holland

**The
Association
of
Tallahassee Banks**

Lewis State Bank
The Peoples Bank
Industrial Savings Bank
Parkway National Bank
The Tallahassee Bank & Trust Co.
Capital City First National Bank

All Members of F.D.I.C.

Go Injun's

Pike's Studio

CHICK-N-TREAT
Fried Chicken Takeout

- 3 Pieces Chicken
- French Fries
- Cole Slaw
- Hot Rolls — Honey

\$1.00

LOCATED TWO BLOCKS FROM STADIUM

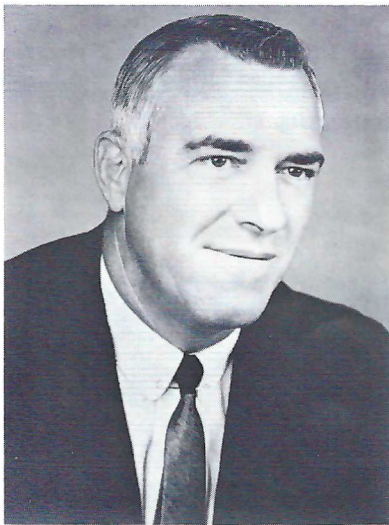
1342 Jackson Bluff Road
Phone 224-4425

Go Seminoles! Go!

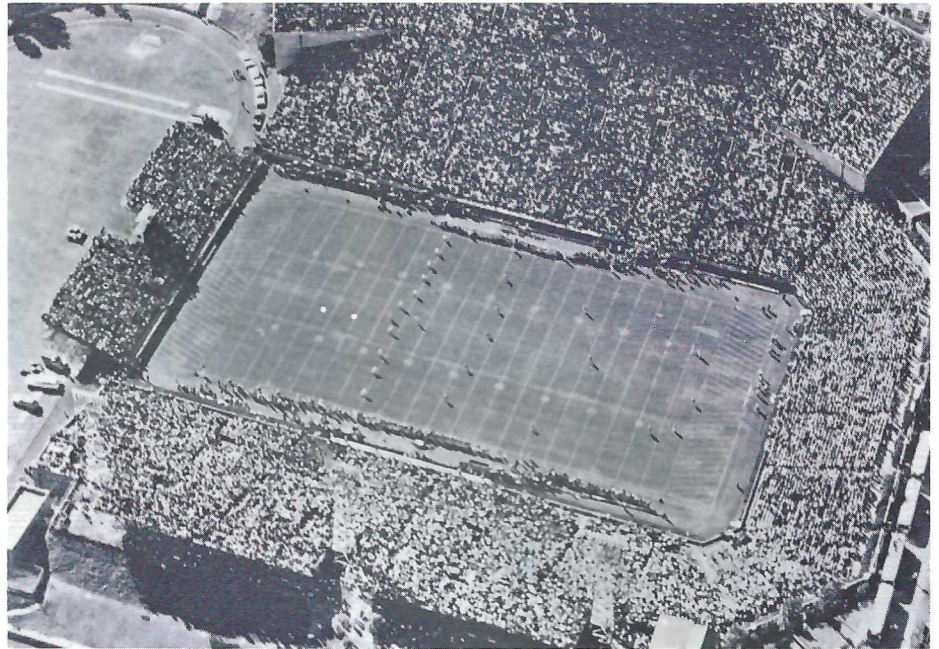
University of Florida



DR. J. WAYNE REITZ
President



RAY GRAVES
Athletic Director & Head Coach



FLORIDA FIELD

Gainesville is located in north-central Florida, about equidistant—60 miles—from the Atlantic Ocean and the Gulf of Mexico. It is 72 miles southwest of Jacksonville, 120 miles northwest of Orlando and 150 miles southeast of Tallahassee, capital of Florida.

In 1853 the foundation work of the present University of Florida was laid in Ocala when a small private school, East Florida Independent Institute, was opened. Florida Agricultural College was established at Lake City in 1883, and by 1905 six colleges were at least in part state supported. With the passage of the Buckman Act in 1905, the University of Florida was established at Gainesville. There have been five presidents: Dr. Andrew Sledd (1905-09), Dr. Albert A. Murphree (1909-28), Dr. John J. Tigert (1928-47), Dr. J. Hillis Miller (1947-53), and Dr. J. Wayne Reitz (1955-).

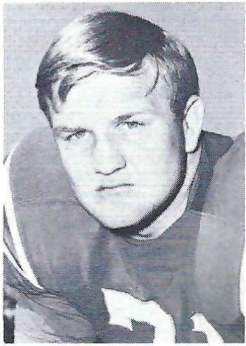
The University's colleges are: Agriculture, Architecture and Fine Arts, Arts and Science, Business Administration, Education, Engineering, Law, Medicine, Health Related Service, Nursing, Pharmacy, Physical Education and Health, and University College. Schools are: Forestry, Graduate, Journalism and Communications.

The University of Florida is the largest land-grant institution in the South with a faculty of 2,000 and a student body of more than 18,000. Extensive building and modernization in the last ten years has resulted in a physical plant valued at approximately 100 million dollars.

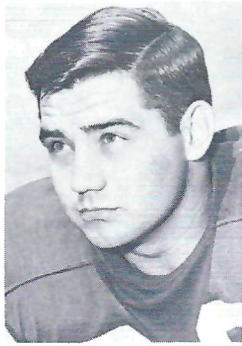
In addition to numerous special research projects in the various schools and departments, the University has established a number of independent laboratories. These agencies carry on continuous basic research in the fields of engineering, nuclear physics, agriculture, forestry, business, economics, public administration, communications, and statistics, making significant contributions to private industry and government research.

A broad program in Medical education, research and patient care is being carried out in the University's newest and finest facility at the J. Hillis Miller Health Center. Encompassing the Colleges of Medicine, Nursing, Pharmacy and Health Related Services, the Health Center is housed in a 20 million dollar facility.

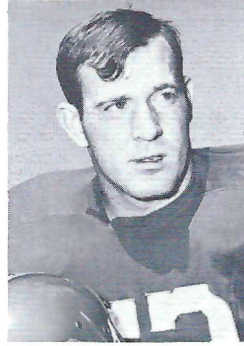
JOHN PRESTON



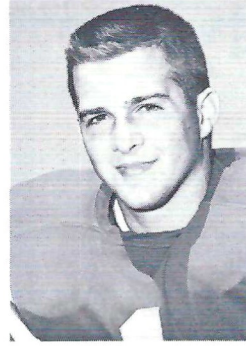
DON BARRETT



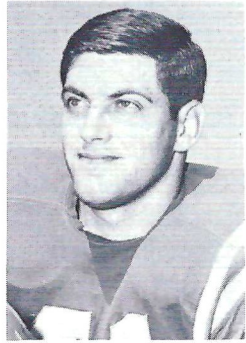
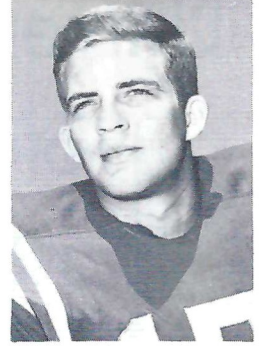
RED ANDERSON



JACK CARD



KAY STEPHENSON

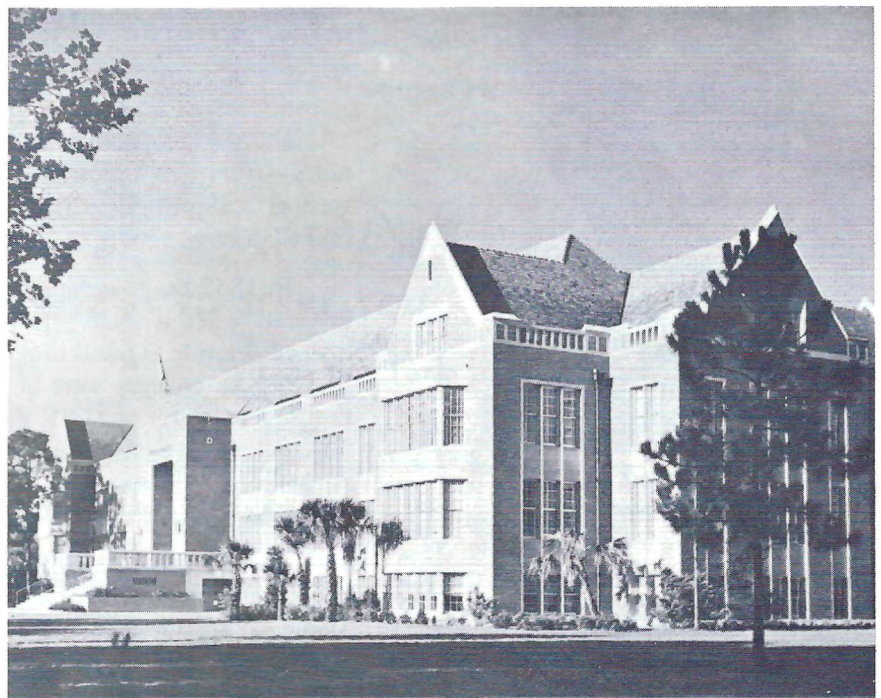


STEVE HEIDT

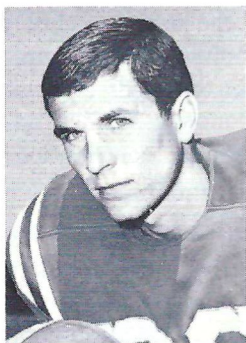


BOB McCULLOUGH

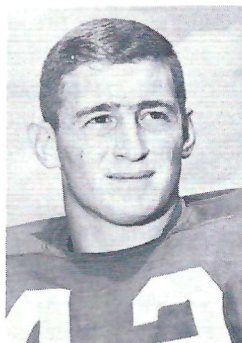
**F
L
O
R
I
D
A**



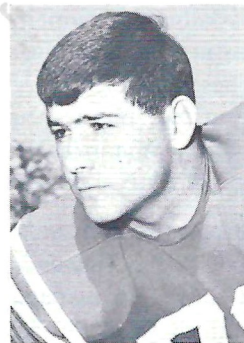
ADMINISTRATION BUILDING



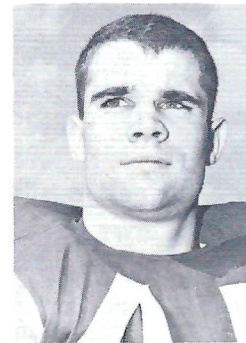
GEORGE GRANDY



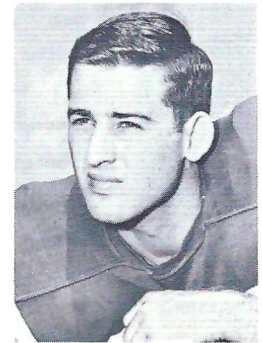
JOHN FEIBER



WALLY COLSON



DON KNAPP



PAUL EWALDSEN

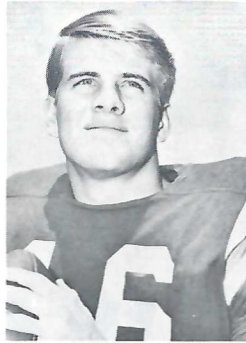
STEVE SPURRIER



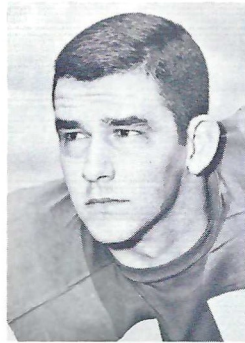
CHARLIE PIPPIN



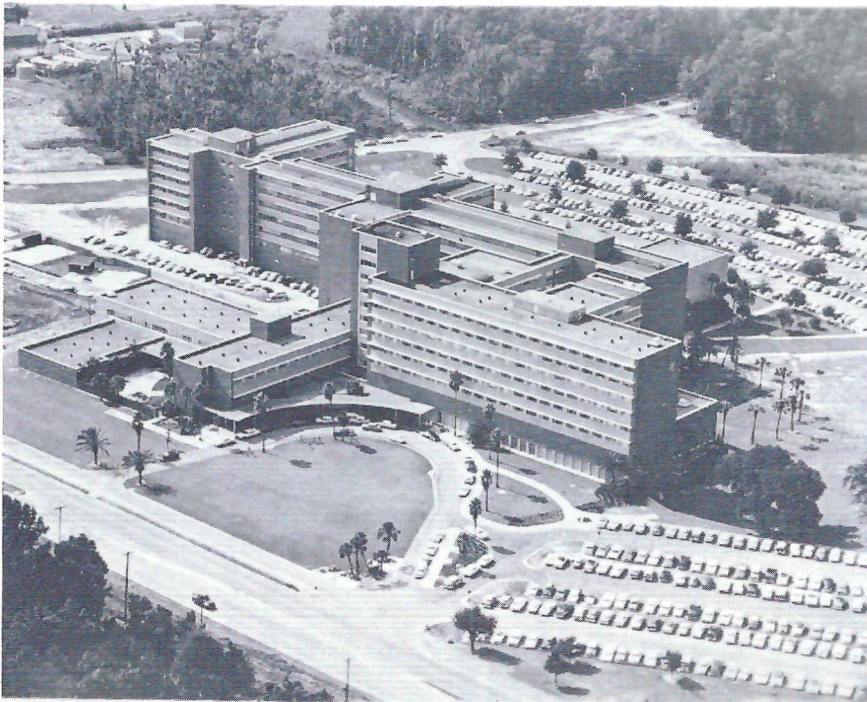
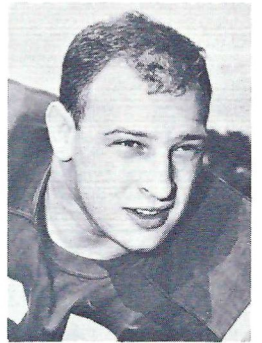
HARMON WAGES



DOUG SPLANE

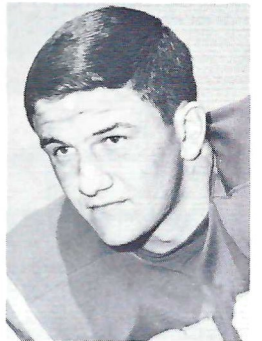


ED WARNER

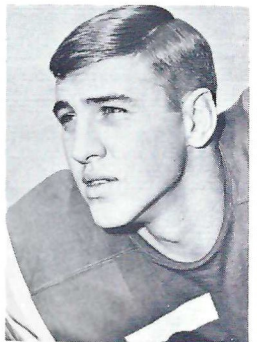


J. HILLIS MILLER HEALTH CENTER

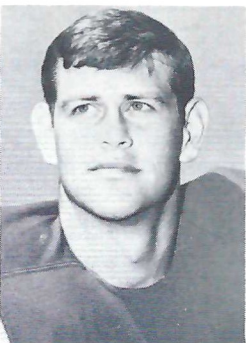
**F
L
O
R
I
D
A**



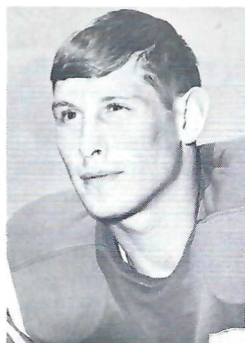
JIM BENSON



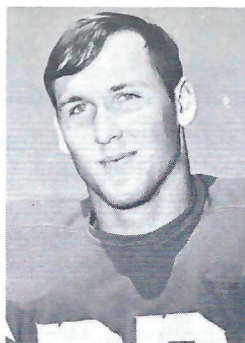
BILL CARR



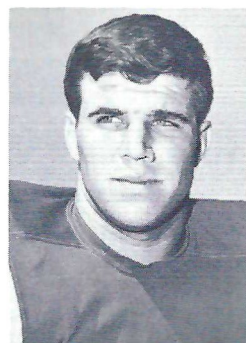
JIM YARBROUGH



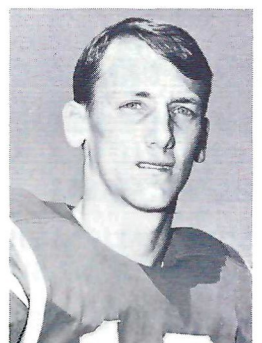
STEVE ELY



LARRY SMITH



TOM CHRISTIAN



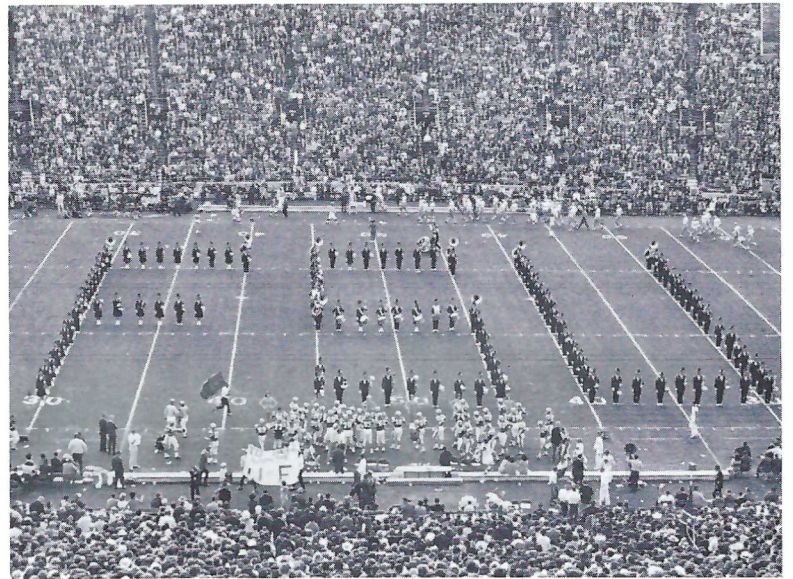
LARRY RENTZ



**THE SEMINOLE
"TWINS"**

Bookie Reynolds & Jerry Williams

A SALUTE TO WALT DISNEY



THE MARCHING CHIEFS

Robert T. Braunagel,
Director
James Moody,
Assistant Director
Charles Carter,
Assistant Director and Arranger
Camp Kirkland,
Drum Major
Paulette Gergen,
Head Majorette

MUSIC AT HALF-TIME

MUSIC

FANFARE

MICKEY MOUSE MARCH

THAT DARNED CAT

**BIBBIDI BOBBIDI BOO
A DREAM IS A WISH YOUR
HEART MAKES**

**SUPERCALIFRAGILISTIC
SPOONFUL OF SUGAR**

WHEN YOU WISH UPON A STAR

FORMATION

COMPANY FRONT AND MICKEY MOUSE CLUB SYMBOL

To honor Walt Disney's coming extravaganza in Florida, the Marching Chiefs open the show with an all-time favorite, "The Mickey Mouse Club March".

CAT—Wherever there is a mouse, there is usually a cat—the band salutes Disney's most recent production, "That Darned Cat".

CARRIAGE-PUMPKIN—Remember the beautiful productions of Peter Pan and Cinderella? The band forms a carriage and at the stroke of midnight, changes into a pumpkin.

UMBRELLA—Mary Poppins, that delightful Nanny, is our next feature. The band forms an umbrella and opens it to two favorites from the show.

STAR—In a grand climax to Walt Disney, the Marching Chiefs close with the theme from the Wonderful World of Color, "When You Wish Upon a Star".

FLORIDA STATE

OFFENSE

SE 27 Bill Cox	28 T. K. Wetherell
LT 76 Jack Fenwick	75 Billy Rhodes
LG 69 Edwin Pope	60 Larry Williamson
C 54 John Stephens	51 John Richardson
RG 70 Del Williams	61 Chuck Elliott
RT 73 Larry Kissam	77 Jeff Curchin
TE 83 Thurston Taylor	84 Chip Glass
QB 11 Kim Hammond	16 Gary Pajcic
LH 30 Bill Moreman	20 Larry Green
FB 44 Jim Mankins	29 John Hurst
FL 34 Ron Sellers	21 Donovan Jones

DEFENSE

LE 87 Wayne McDuffie	80 Doug Gurr
LT 78 Charles Pennie	64 David Braggins
LB 23 Wayne Giardino	47 Joe Benson
MG 68 Larry Pendleton	52 Harvey Zion
LB 40 Mike Blatt	88 Jerry Jones
RT 74 Jay Mac Matthews	79 Frank Vohun
RE 89 Bob Menendez	81 H. T. Waller
CB 33 Butch Riser	24 Walter Sumner
CB 26 Bill Campbell	18 Clint Burton
S 17 Marty Kolbus	22 Chuck Eason
S 15 Pat Conway	43 Howell Montgomery

CAPTAINS

70 Del Williams
 26 Billy Campbell
 (Game Captains)

SPECIALISTS

Punters: 35 John Hosack, 83 Thurston Taylor
Placements: 19 Pete Roberts
Holder: 11 Kim Hammond

FLORIDA

OFFENSE

SE 85 Paul Ewaldsen	89 Mike McCann
LT 71 John Preston	73 Steve Clark
LG 77 Guy Dennis	67 Bob Young
C 51 Bill Carr	54 Dave Barnhart
RG 60 Jim Benson	63 Gary Duven
RT 66 J. D. Pasteris	72 Terry Morris
TE 83 Jack Coons	88 Jim Yarbrough
QB 11 Steve Spurrier	16 Harmon Wages
LH 33 Larry Smith	45 Don Knapp
RH 44 Richard Trapp	49 Tommy Glenn
FB 43 Graham McKeel	48 Wayne Barfield

DEFENSE

LE 81 Rex Rittgers	87 Mike Santille
LT 74 Don Giordano	80 Brian Jetter
LG 78 George Dean	78 George Dean
RG 69 Bill Dorsey	70 Wally Colson
RT 62 Red Anderson	52 Bobby Adams
RE 82 Don Barrett	84 Steve Ely
LLB 41 Steve Heidt	35 Chip Hinton
RLB 1 Jack Card	38 Wayne McCall
LHB 12 Bobby Downs	37 Dan Manry
RHB 36 T. Hungerbuhler	26 George Grandy
SAF 10 Larry Rentz	25 Bill Gaisford

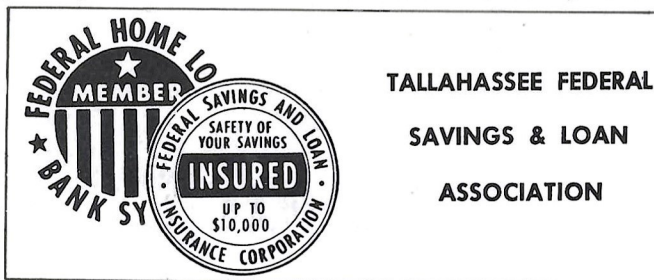
CAPTAINS

51 Bill Carr
 62 Jerry Anderson

SPECIALISTS

Punters: 11 Spurrier, 10 Rentz
PATs, FGs: 11 Spurrier, 48 Barfield
Kickoffs: 71 Preston

45



FLORIDA STATE'S 1966 VARSITY FOOTBALL ROSTER

No.	Name	Pos.	Class	Age	Ht.	Wt.	Hometown
11	Kim Hammond	QB	Jr.	22	6-1	185	Melbourne
12	Bill Burkhardt	QB	Soph.	20	6-1	194	Rocky River, O.
14	Bill Cappleman	QB	Soph.	19	6-3	204	Dunedin
15	Pat Conway**	DB	Sr.	21	5-10	176	Miami
16	Gary Paicic	QB	Soph.	19	6-2	192	Jacksonville
17	Marty Kolbus	DB	Soph.	20	6-2	186	E. Chicago, Ind.
18	Clint Burton	DB	Soph.	19	6-2	175	Atlanta, Ga.
19	Pete Roberts*	K	Jr.	21	5-11	205	Gainesville
20	Larry Green*	HB	Jr.	21	5-10	180	Cairo, Ga.
21	Donovan Jones	FL	Sr.	21	6-1	206	Lakeland
22	Chuck Eason	DB	Soph.	19	5-10	187	Tallahassee
23	Wayne Giardino**	LB	Sr.	23	5-10	195	West Palm Beach
24	Walter Sumner	DB	Soph.	19	6-1	179	Fitzgerald, Ga.
26	Bill Campbell*	DB	Sr.	21	5-9	188	Tampa
27	Bill Cox	OE	Soph.	20	6-1	180	Atlanta, Ga.
28	T. K. Wetherell*	OE	Jr.	20	5-10	183	Daytona Beach
29	John Hurst	HB	Soph.	19	6-0	200	Live Oak
30	Bill Moreman*	HB	Jr.	21	5-11	188	Daytona Beach
31	Bill Gunter	HB	Soph.	19	6-0	172	Dothan, Ala.
33	Butch Riser	DB	Jr.	21	6-0	186	Sanford
34	Ron Sellers	FL	Soph.	19	6-4	186	Jacksonville
35	John Hosack*	K	Sr.	21	5-10	195	Miami
40	Mike Blatt*	FB	Jr.	20	5-11	203	Key West
41	John Crowe	FL	Soph.	19	6-2	168	St. Cloud
43	Howell Montgomery	DB	Soph.	19	5-11	183	Blountstown
44	Jim Mankins*	FB	Sr.	22	6-2	220	King City, Calif.
47	Joe Benson	LB	Soph.	20	5-10	197	Birmingham, Ala.
50	Billy Joe Jones	C	Soph.	19	6-1	215	Live Oak
51	John Richardson	C	Soph.	19	6-0	199	Jacksonville
52	Harvey Zion	MG	Soph.	19	5-11	195	Atlanta, Ga.
54	John Stephens**	C	Sr.	21	6-1	201	Tallahassee
59	Frank Loner	MG	Soph.	20	6-0	196	Atlanta, Ga.
60	Larry Williamson*	OG	Sr.	21	5-11	202	Macon, Ga.
61	Chuck Elliott	OG	Soph.	20	6-0	194	Troy, O.
62	Dan Douglas	OG	Soph.	19	6-0	207	Hialeah
64	David Braggins*	DT	Sr.	21	6-2	224	Lake Wales
65	Dale McCullers	LB	Soph.	19	6-2	203	Live Oak
66	Ken Hart	OG	Soph.	20	6-3	219	Groveland
68	Larry Pendleton	MG	Soph.	20	6-0	206	Winter Garden
69	Edwin Pope	OG	Sr.	21	6-1	206	Waycross, Ga.
70	Del Williams**	OG	Sr.	21	6-2	240	Live Oak
73	Larry Kissam*	OT	Sr.	21	6-0	221	Inglewood, Calif.
74	Jay Mac Matthews*	DT	Sr.	22	6-1	217	Chiefland
75	Billy Rhodes	OT	Soph.	19	6-2	230	Eustis
76	Jack Fenwick	OT	Soph.	20	6-4	214	Cincinnati, O.
77	Jeff Curchin	OT	Soph.	18	6-6	238	Ocala
78	Charles Pennie*	DT	Sr.	21	6-4	242	Hollywood
79	Frank Vohun	DT	Soph.	19	6-3	212	Brooksville
80	Doug Gurr	DE	Soph.	19	6-1	210	Albany, Ga.
81	H. T. Waller	DE	Jr.	21	6-1	191	Vernon
82	Lane Fenner	OE	Jr.	21	6-5	202	Evansville, Ind.
83	Thurston Taylor*	OE	Jr.	20	6-2	215	College Park, Ga.
84	Chip Glass	OE	Soph.	19	6-4	218	Tampa
87	Wayne McDuffie*	DE	Jr.	22	6-2	215	Hawkinsville, Ga.
88	Jerry Jones*	LB	Jr.	21	6-1	193	Jessup, Ga.
89	Bob Menendez	DE	Sr.	21	5-10	189	Key West

*Denotes letters won.

1966 FLORIDA FOOTBALL ROSTER

No.	Name	Pos.	Class	Ht.	Wt.	Hometown
1	Jack Card**	LB	Sr.	5-6	158	Coral Gables
10	Larry Rentz	SAF	So.	6-2	152	Coral Gables
11	Steve Spurrier**	QB	Sr.	6-2	203	Johnson City, Tenn.
12	Bobby Downs	DHB	Jr.	6-0	184	Winter Haven
15	Kay Stephenson	QB	Sr.	6-1	193	Pensacola
16	Harmon Wages*	QB	Jr.	6-2	216	Jacksonville
24	Gene Peek	SAF	So.	6-2	178	Ocala
25	Bill Gaisford	DHB	So.	5-10	174	Ft. Lauderdale
26	George Grandy*	DHB	Sr.	5-11	177	Jacksonville Beach
31	Tom Christian	FB	So.	6-1	210	St. Petersburg
32	Bill McBride	TB	So.	5-10	172	Clearwater
33	Larry Smith	TB	So.	6-4	216	Tampa
34	Marquis Baeszler**	FB	Sr.	5-8	183	Atlanta, Ga.
35	Chip Hinton	LB	So.	6-2	201	Pensacola
36	Tom Hungerbuhler	DHB	Jr.	6-0	174	North Miami
37	Dan Manry*	DHB	Jr.	5-10	168	Jacksonville
38	Wayne McCall*	LB	Jr.	6-1	194	Ocala
41	Steve Heidt*	LB	Sr.	6-0	189	Albany, Ga.
43	Graham McKeel*	FB	Jr.	6-1	203	Lakeland
44	Richard Trapp*	WB	Jr.	6-1	179	Bradenton
45	Don Knapp**	TB	Sr.	6-0	200	Pensacola
48	Wayne Barfield	FB	Jr.	6-0	194	Albany, Ga.
49	Tommy Glenn	WB	So.	6-2	203	Jacksonville
51	Bill Carr**	C	Sr.	6-4	212	Pensacola
52	Bobby Adams	DT	Sr.	6-1	197	Tallahassee
53	Frank Cain	C	So.	6-1	194	Lake Wales
54	Dave Barnhart	C	So.	6-0	202	West Palm Beach
56	Charlie Pippin	LB	Sr.	5-11	191	Moultrie, Ga.
60	Jim Benson**	OG	Sr.	6-3	231	Albany, Ga.
61	Eddie Foster	OG	So.	6-0	201	Decatur, Ga.
62	Red Anderson**	DT	Sr.	5-11	206	North Miami
63	Gary Duven	OG	So.	6-1	206	Hollywood
64	Gunnar Paulson	DG	So.	5-11	196	Hollywood
65	Ed Warner*	OG	Sr.	5-7	185	Sumter, S. C.
66	J. D. Pasteris	OT	Jr.	6-0	217	Miami
67	Bob Young	OG	So.	6-2	203	Jacksonville Beach
68	Lloyd Turman	DG	So.	6-1	210	Miami
69	Bill Dorsey	DG	So.	6-0	203	Jacksonville
70	Wally Colson**	DG	Sr.	6-2	223	Valdosta, Ga.
71	John Preston**	OT	Sr.	6-2	221	Columbus, Ga.
72	Terry Morris	OT	So.	6-3	219	Panama City
73	Steve Clark	OT	So.	6-5	213	Naples
74	Don Giordano*	DT	Jr.	6-1	221	Miami
75	Doug Splane*	DG	Jr.	6-5	221	Ft. Lauderdale
77	Guy Dennis	OG	So.	6-2	241	Walnut Hill
78	George Dean	DG	So.	6-3	211	Tampa
80	Brian Jetter*	DE	Jr.	6-2	201	Ft. Lauderdale
81	Rex Rittgers	DE	Jr.	6-1	192	Jacksonville
82	Don Barrett**	DE	Sr.	6-1	197	Vero Beach
83	Jack Coons	OE	Jr.	6-2	200	Lake Worth
84	Steve Ely	OE	So.	6-0	184	Tampa
85	Paul Ewaldsen**	DE	Sr.	6-2	193	Savannah, Ga.
87	Mike Santille	DE	So.	6-2	198	Pensacola
88	Jim Yarbrough	OE	So.	6-6	236	Arcadia
89	Mike McCann	OE	Jr.	6-1	180	Jacksonville Beach

*Denotes letters won.

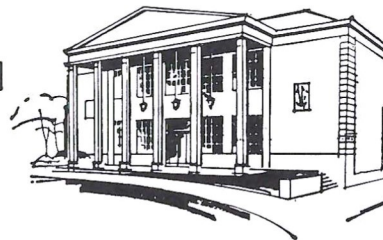
Tallahassee Federal

SAVINGS AND LOAN ASSOCIATION

440 N. Monroe Street * Tallahassee, Florida

HOURS: Monday-Thursday, 8:30 a.m. to 3 p.m.—Friday, 8:30 a.m. to 6 p.m.

TELEPHONE 224-2161





Your local *McDonald's* which has sold over 6 million Hamburgers has three new products . . .

- • • Double Hamburgers 29¢
- • • Fish Sandwich 29¢
- • • Hot Apple Pie 15¢

McDONALD'S 1701 W. TENNESSEE ST.



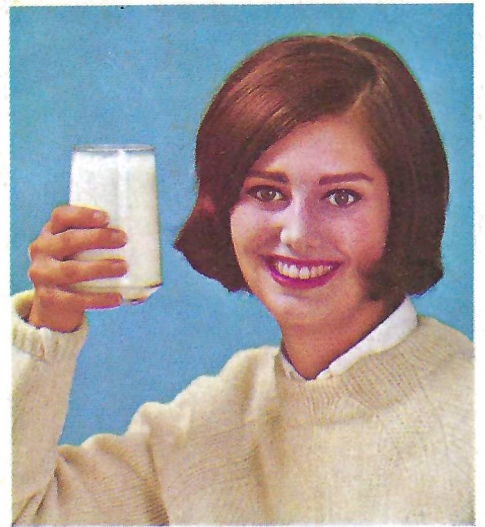
FOR ALL YOUR PHOTO
NEEDS FOCUS ON

TALLAHASSEE
CAMERA CENTER, INC.

117 North Monroe
Across From The Florida Theatre

- CAMERAS
- FILM
- BINOCULARS
- FAST PHOTO FINISHING
- RENTALS

A Complete Line of Equipment and Supplies for the Amateur & Professional



CHEER FOR MILK'S VITALITY

Put Vitality on your team ... drink milk! A glass of cool, refreshing milk with meals and snacks helps see you through the busiest fall schedule. No other beverage helps you get the lasting energy found only in nature's Vitality drink... Milk. You'll cheer for milk's Vitality.

a message from dairy farmer members of



american
dairy
association