

13



4



16



21



15



5



22

See
Page 41
For
Descriptions



18



2

FLORIDA STATE VS. NORTH CAROLINA STATE

1917-1966 September 30, 1967
football's fabulous half century



1



12



10



3



6



7



9

DOAK S. CAMPBELL STADIUM
Tallahassee, Florida



11

Official Program
50c



8



17



14



20



19



HAMS • BACON • SAUSAGE • WIENERS

FROSTY MORN MEATS

Florida State University . . .

In This Issue . . .

Tonight's Game	4
Florida's Governor	5
Florida State University's President	7
University Feature	8
Statistics	10
State Officials	11
University Athletic Board	12
A Referee In Trouble	13
Guest Column: Frank Weedon, N. C. State	14
Football Family	15
Florida State Players	16
Composite Schedule—Florida State 1967 Opponents	20
1967 Seminoles	21
Referee's Signals	22
Tonight's Starting Line-ups	25
Penalties	27
Florida State's Records	28
Sammy Seminole	29
Florida State Freshman Football Team	30
Seminole Boosters, Inc.	32
North Carolina State	35
Seminole Radio Network	38
Florida State Cross Country Team	39
The Marching Chiefs	40
Cheerleaders	43
Stadium Information	44
Rosters, Depth Chart	45

Florida State's 1967 Football Schedule

HOME

Sept. 30 N.C. State (7:30)
Oct. 14 South Carolina (2:00)
Oct. 21 Texas Tech* (2:00)
*Homecoming
Oct. 28 Miss. State (7:30)
Nov. 11 Virginia Tech (7:30)

AWAY

Sept. 15 Houston (7:30 CST)
Sept. 23 Alabama (7:15 CST)
at Birmingham
Oct. 7 Texas A&M (7:30 CST)
Nov. 4 Memphis State (1:00 CST)
Nov. 25 Florida (2:00)

FOOTBALL



*Compliments and
Best Wishes from*



**YOUR APPLIANCE
HEADQUARTERS**
611 N. Monroe St.

OFFICIAL WATCH FOR THIS GAME



LONGINES THE WORLD'S MOST HONORED WATCH®

10 world's fair grand prizes
28 gold medals



Longines watches are recognized
as OFFICIAL for timing world
championships and Olympic sports
in all fields throughout the world.



Longines Ultra-Chron #8205, automatic with calendar, \$175.
Other Ultra-Chron Models, \$150 to \$595.

the fabulous new LONGINES ULTRA-CHRON

Guaranteed Accurate To A Minute A Month

The ultimate personal chronometer,
guaranteed accurate to a minute a month —
a mean average of 2 seconds per day.
Ultra-Chron tells the date, hour, minute,
second. Never needs batteries. Winds
automatically while you wear it. All-Proof®
construction defeats water, dust,
shock, magnetism. At Longines-Wittnauer
Franchised Jewelers, coast-to-coast.

LONGINES-WITTNAUER WATCH CO.

MONTREAL • NEW YORK • GENEVA

Maker of Watches Of The Highest Character
For Over A Century

Tonight's Game

By **LONNIE BURT**

Florida State Sports Information Director



Even though the Seminoles mustered 37 points and a tie with Alabama last week, they have every reason to be concerned about tonight's opponent.

Some of the Florida State veterans remember 1965 when they traveled to Raleigh, N. C., and were blanked 3-0 on a 41-yard field goal by Harold Deters, now a kicker with the Dallas Cowboys. That whitewashing job was the last time a Bill Peterson-coached Florida State outfit was shut out.

This will be the 10th meeting between Atlantic Coast Conference N.C. State and independent Florida State with the Seminoles owning a 6-3 advantage. The Wolfpack has managed only one of their victories on Tallahassee soil.

North Carolina State opened its season with a 13-7 victory over arch rival North Carolina and then last week tuned up for its date against the Seminoles with a 24-6 triumph over Buffalo. Florida State bowed to Houston 33-13 in its 1967 debut and then tied the Crimson Tide last Saturday night.

The Wolfpack's strong suit is a veteran defense, paced by end Pete Sokalsky. Only veteran in the offensive backfield is senior quarterback Jim Donnan, although the forward wall has All-America tackle Dennis Byrd.

They tell this story about Byrd. Last week, four Buffalo players who were to face N.C. State on Saturday were in class together. A teacher asked one, "Son, what is the most serious threat to your health?" The player's answer was simple: "Dennis Byrd."

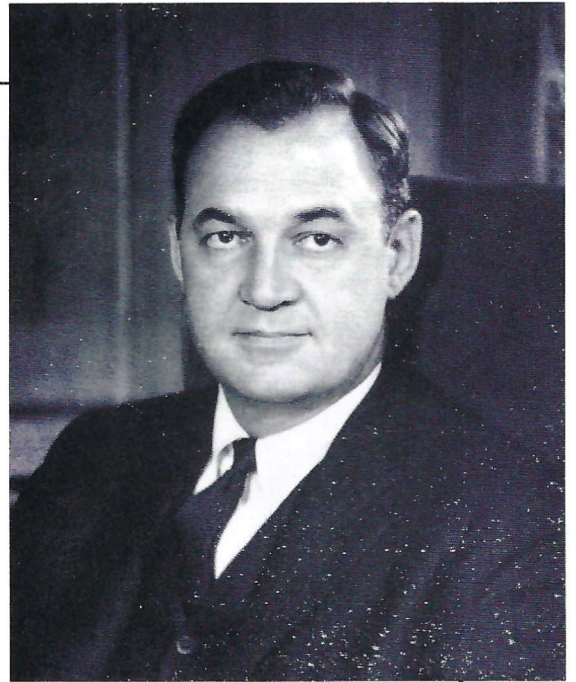
The Seminoles again will be counting on one of the country's better forward passing attacks to register their first victory of the young season. Senior quarterback Kim Hammond was sensational against 'Bama and gets the starting assignment again tonight.

And for the first time in 1967, the Seminoles will be listening to a Doak S. Campbell crowd. It makes a difference.



CLAUDE R. KIRK, JR.
GOVERNOR

STATE OF FLORIDA
OFFICE OF THE GOVERNOR
TALLAHASSEE



Dear Football Fan:

A cordial welcome to Tallahassee's Doak Campbell Stadium, home of Florida State University's football Seminoles.

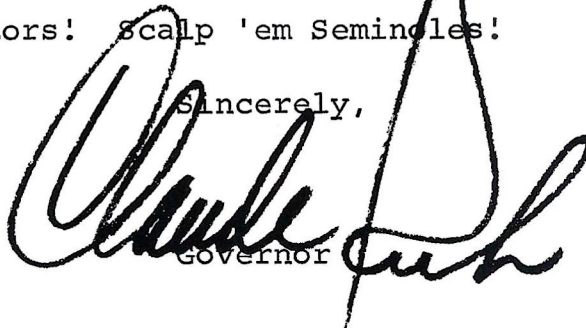
The rise to football prominence in the past six years by our Seminoles coincides with the similar ascendancy by the state of Florida as the sports capital of the world.

We are truly and justifiably proud of Coach Bill Peterson and his staff for the marvelous job they have done in making Florida State University one of the most respected independent football powers in the nation.

As Governor of Florida, I extend a warm welcome to our visitors, and we intend to be impeccable hosts, except for about two hours on the gridiron.

Welcome, visitors! Scalp 'em Seminoles!

Sincerely,


Governor

CRK/lw

"You meet the nicest people on a

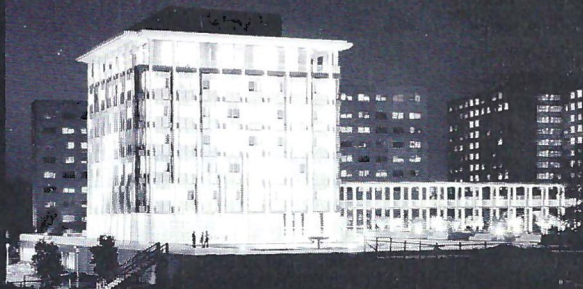
H O N D A

World's largest seller"



HONDA OF TALLAHASSEE

At the Underpass on West Tennessee



FLORIDA STATE

is a coeducational, state-supported institution of higher learning.

Founded in 1857, Florida State has transformed in the one short score of years since it became coeducational (1947) from a strong liberal arts college for women to a University of demonstrated national stature.

Nearly 16,000 students are presently enrolled in the university's 10 Colleges and Schools (Arts and Sciences, Education, Home Economics, Music, Librarianship, Business, Social Welfare, Nursing, Engineering Science, and Law). By 1975 this figure is expected to reach 28,000.

Characterized by phenomenal growth in new programs, enrollments, and constant physical expansion of the campus the University's spirit of excellence has led to Florida State's great pride in All-Americas (Fred Biletnikoff, 1964), its share of the 1966 Nobel Prize Winner in Chemistry, (Dr. Robert S. Mulliken) and its contribution to the U.S. Astronauts (Dr. Anthony Llewellyn). It is this same spirit that makes every football game and every research project a testing-ground for innovation and a proving-ground for the time-honored theories of education.



DR. JOHN E. CHAMPION
PRESIDENT

One of a growing number of young university presidents in America, Dr. John E. Champion at 45, is the youngest of 10 chief executives in the University's 110-year history, and the fourth distinguished educator to serve as fulltime president of the University since it achieved university status in 1947.

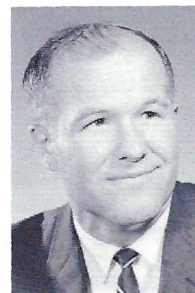
Before ascending to the University's presidency on June 22, 1965, Dr. Champion has served as a professor in accounting, assistant dean of the School of Business and as the University's first Vice-President for Administration.

Among the expanding list of honors accorded to Dr. Champion in his teaching and administrative careers at the University of Georgia (1948 to 1956) and at Florida State are memberships in Phi Beta Kappa, Phi Kappa Phi, Beta Gamma Sigma, Omicron Delta Kappa, Gold Key, Alpha Phi Omega, Beta Alpha Psi, Delta Sigma Pi and Kappa Delta Pi. Active in numerous campus organizations at Florida State, he served as president of the Alpha of Florida Chapter of Phi Beta Kappa in 1961-62.

A recent honor to come his way are the Republic of Panama's award of the Grand Cross of the Order of Vasco Nunez de Balboa—recognizing his contributions and leadership in Florida State's student and faculty exchange program with the National University of Panama.



DR. ODELL WALDBLY
Vice President for
Administration



DR. JOHN J. CAREY
Vice President of
Student Affairs

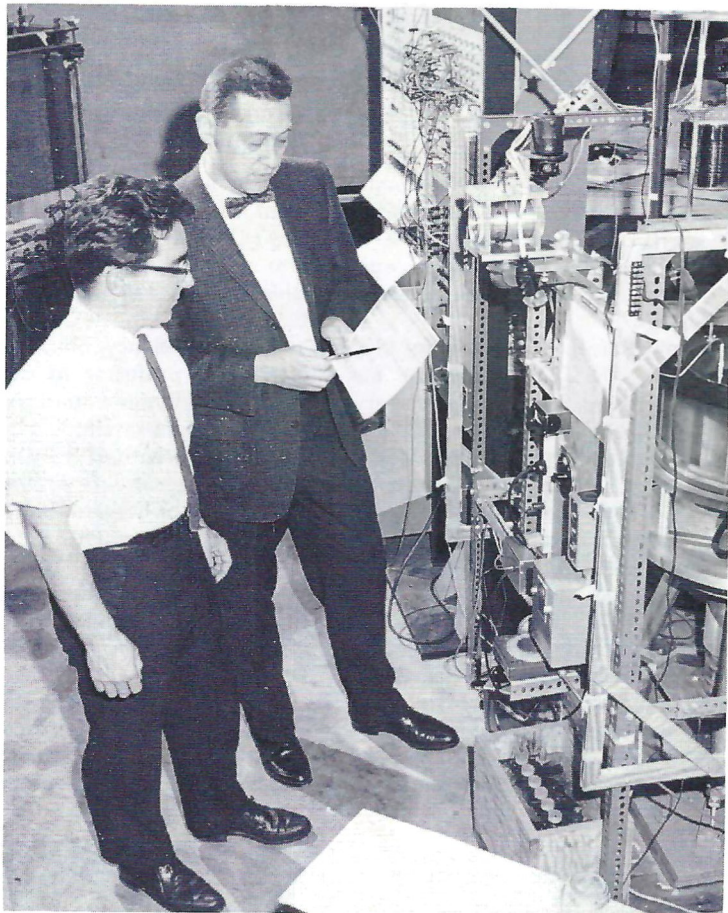


**DR. E. LAWRENCE
CHALMERS, JR.**
Vice President
Academic Affairs

FLORIDA STATE FIELDS A NEW RESEARCH TEAM

...WITH \$600,000 NAVAL RESEARCH CONTRACT

METEOROLOGY



A BOTTLED JET STREAM—Florida State University meteorologists Richard L. Pfeffer and William W. Fowles have been keeping a kind of "world weather watch" on jet streams created in a laboratory in the basement of the Love Building. Cameras above a rotating annular plexiglass chamber record the meanders of a fluid jet stream (photograph on page 9) as various degrees of tropical heat, applied at the outer wall, and polar cold, applied at the center, set the fluids in motion. Aluminum powder in the fluid marks the course of its flow.

It takes a good many specialists pooling their energies to make a winning football team; and at Florida State, this same theory applies to good research teams—particularly to a new one in the field of geophysics.

Florida State has just scored another major victory in the big leagues of science, winning one of the largest single contracts among 50 selected for Project THEMIS supported by the Department of Defense!

THEMIS—ancient Greek goddess of cooperation and code name for the Defense Department's search for the raw material of centers of excellence in essential research areas—attracted 479 proposals from 171 universities across the country in national competitions for portions of \$20 million in contract funds.

The odds were high; but Florida State's newest research team not only scored a touchdown in receiving the largest of 17 contracts awarded by the Office of Naval Research—but may yet complete a two-point conversion to win the largest single contract awarded to any of the 50 projects selected by the three military-research branches of the U.S. Department of Defense! Final standings in the THEMIS league should be announced this week.

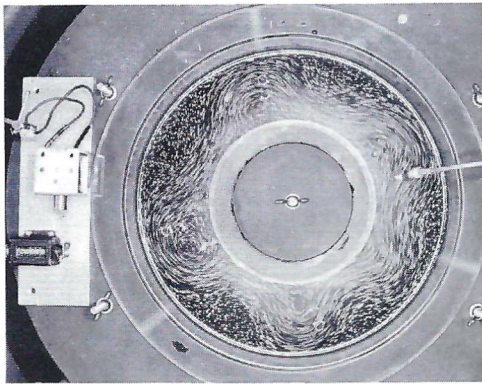
The \$600,000 contract will be used to create a 'center of excellence' at Florida State in the field of Geophysical Fluid Dynamics.

Admittedly, that's a scientific mouthful; but to Florida State fans, no more difficult to translate than the Institute of Molecular Biophysics, which once rolled off freshman tongues with difficulty and is now proudly known as the "IMB" and the winter home of the 1966 Nobel Prize Laureate in Chemistry, Dr. Robert S. Mulliken.

According to Dr. Richard L. Pfeffer, who will direct development of the Geophysical Fluid Dynamics Institute and its proposed graduate research and training programs, the "GFDI" will be a counterpart in its field to the "IMB."

(Continued on page 9)

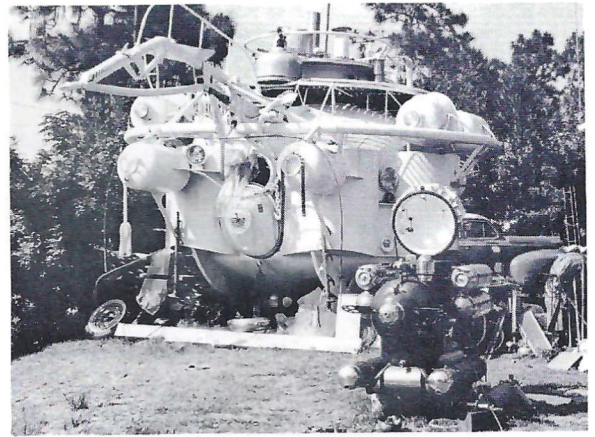
GEOLOGY AND ENGINEERING SCIENCES



Jet Stream In A Bottle?

(See Page 8)

TWO NEW SUBMARINES will be tested by Florida State this year, for possible use in exploration of shore-line formations. Large and small models shown at right.



When it comes to translating the "GFDI," Dr. Pfeffer says it is best explained as a program which stimulates cooperative research in meteorology (his specialty), oceanography, geology, mathematics, physics and the engineering sciences.

"Cooperative research programs in these areas are vital to mankind's future ability to control his environment and definitely vital to the nation's space program from a number of scientific standpoints," notes Dr. Pfeffer.

Pertinent University research activities in progress which will become a part of the GFDI programs include:

- a. Simulating the formation of offshore shoals and the transformation of shorelines, in laboratory experiments;
- b. Simulating wind-currents and hurricanes in laboratory tanks ;

c. Experimenting and observing the energy transformations of ocean waves;

d. Interpreting satellite photos and studying cellular convection;

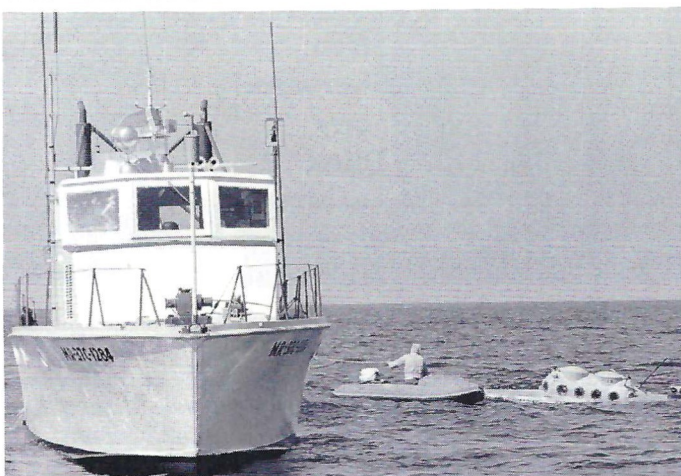
e. Bottling a model of the global atmospheric jet stream and making theoretical, experimental and observational studies of its activities ;

f. Simulating atmospheric circulations of Earth, and possibly other planets; and

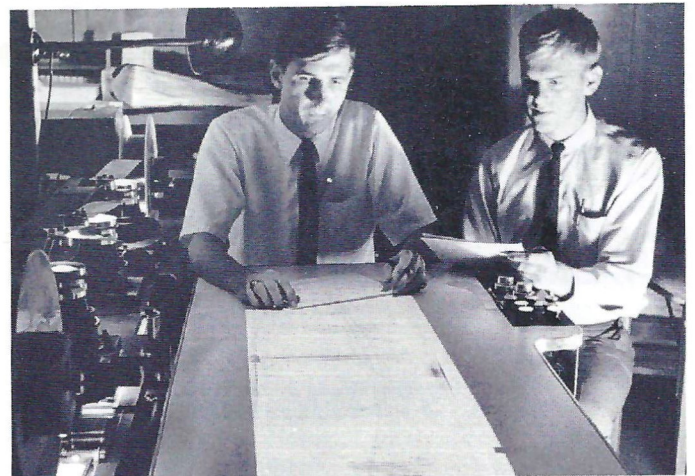
g. Using applied mathematics and computer technology to solve hydrodynamical problems.

It is this spirit of cooperation among and between the departments and schools involved in the GFDI, and other strategic research programs which may one day help field America's first inter-planetary football game!

OCEANOGRAPHY



PHYSICS AND MATHEMATICS



TONIGHT'S TEAMS

RECORD TO DATE

FLORIDA STATE		
13	Houston	33
37	Alabama	37
NORTH CAROLINA STATE		
13	North Carolina	7
24	Buffalo	6

TEAM STATISTICS

FSU		NCSU
37	First Downs	24
164	Yards Rushing	305
449	Yards Passing	197
613	Total Yardage	502
92	Passes Attempted	33
43	Passes Completed	18
7	Passes Had Intercepted	0
3	Fumbles Lost	0

INDIVIDUAL LEADERS

FLORIDA STATE

RUSHING				RECEIVING (Cont'd.)			
Name	Att.	Yds.	Avg.	Name	Att.	Yds.	TD
Green	15	68	4.5	Cox	4	49	0
Hammond	17	63	3.7	Moremen	5	37	1
Moremen	19	27	1.4				
PASSING				SCORING			
Name	Att.	Comp.	Yds.	TD	FG	PAT	TP
Hammond	69	38	407	5			
Pajcic	20	4	35	0			
Moremen	3	1	7	1			
RECEIVING				SCORING			
Name	No.	Yds.	TD	Name	TD	FG	PAT
Sellers	15	187	1	Green	1	0	0
Taylor	8	94	1	Sumner	1	0	0

NORTH CAROLINA STATE

RUSHING				RECEIVING			
Name	Att.	Yds.	Avg.	Name	No.	Yds.	TD
Barchuk	29	68	2.3	Martell	7	152	2
Hall	9	47	5.2	Hall	4	46	0
Mason	11	41	3.7	Donaldson	4	88	0
Bowers	10	30	3.0	Dockery	1	15	0
Klebe	4	16	4.0	Bowers	1	-2	0
Donnan	8	7	0.9	Mason	1	-2	0
Dockery	2	1	0.5				
Waleski	3	-5	-1.6				
PASSING				SCORING			
Name	Att.	Comp.	Yds.	TD	PAT	FG	TP
Donnan	30	17	299	2			
Klebe	2	1	-2	0			

THE SOUND SHOP

"Southeast's Finest In Audio"

2234 S. Monroe, Tallahassee, Fla.
Ph. 222-2443

806 W. Broad, Albany, Ga.
Ph. 435-6800

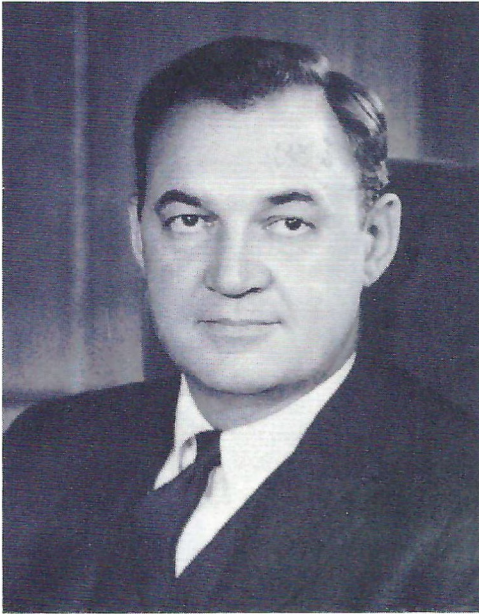
FRANCHISED DEALERS FOR:

Aztec
Borg Warner
Dual
Dyna
Fisher
Garrard
Harmon-Kardon
J. B. Lansing

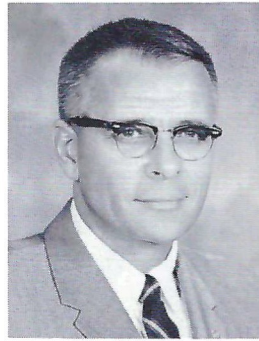
Koss
Magnacord
Marantz
Martel
Monarch
Pilot
Rek-O-Kut
Roberts
Robins

Sarkes-Tarzian
Scott
Sherwood
Sony
Telex
Toshiba
Uher
Warfedale

SYSTEM DISCOUNTS ON MOST MERCHANDISE



CLAUDE R. KIRK, JR.*
Governor



Tom Adams*
Secretary of State



Earl Faircloth*
Attorney General



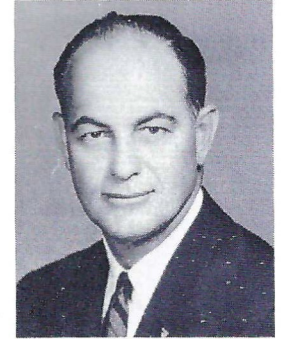
Broward Williams*
Treasurer



Floyd T. Christian*
Supt. of Public Instr.



Doyle Conner
Comm. of Agriculture



Fred O. Dickinson, Jr.
Comptroller

State Officials

*Indicates membership on the
State Board of Education.



BOARD OF REGENTS—STATE UNIVERSITY SYSTEM

Seated, Left to Right—Mrs. John C. Behringer, Fort Lauderdale; Dr. Wayne C. McCall, Ocala; Chester Ferguson, Tampa; Mrs. E. D. Pearce, Miami.

Standing, Left to Right—Henry Kramer, Jacksonville; D. Burke Kibler III, Lakeland; Dr. Louis C. Murray, Orlando; John C. Pace, Pensacola; Dr. Clarence Menser, Vero Beach; Chancellor J. Broward Culpepper, Tallahassee.

FLORIDA STATE'S ATHLETIC COMMITTEE



Robert Earnest
Chairman
Professor, Business



Mode L. Stone
Dean, School of
Education



Coyle E. Moore
Dean, School of
Social Welfare



Ralph Bradley
Prof. & Dept. Head,
Statistics



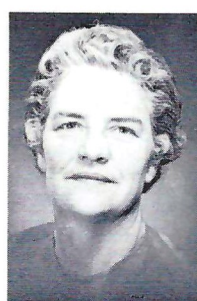
William W. Rogers
Associate Professor
History



Charles Grigg
Prof. of Sociology
and Director of
Institute for
Social Research



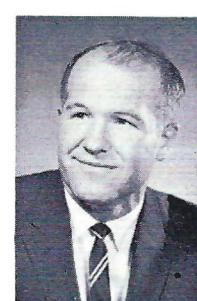
William H. Long
Assistant Professor
Department of
Meteorology



Mary Alexander
Assoc. Professor
Physical Education
and Recreation



Mason Ladd
Dean, College
of Law



John Carey
Dean of Students

**WHEN YOU GET HUNGRY WHY NOT TRY SOME
COLONEL SANDERS RECIPE KENTUCKY FRIED CHICKEN ©**

three sizes to choose from:

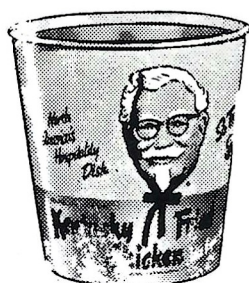
Individual Box
3 Big Pieces of Chicken,
Cole Slaw, French Fries,
Rolls, Gravy
\$1.10

Family Bucket
Serves 5 to 7
\$3.75

Barrel O' Chicken
Serves 8 to 10
\$5.00
Gravy & Rolls 5.40

Bar-B-Q Chicken Sandwich
French Fries—Jumbo Shake

60c



or if you prefer!

- Jumbo Shrimp Boxes
- Chicken Gizzard Boxes
- Filet of Fish Boxes
- Famous Home-Made Pies
- Chicken Liver Boxes

Holland's Carry Out

TWO LOCATIONS TO SERVE YOU

Drive in No. 1
1002 N. Monroe—224-1645

Drive in No. 2
1603 W. Tenn. St.—224-4313

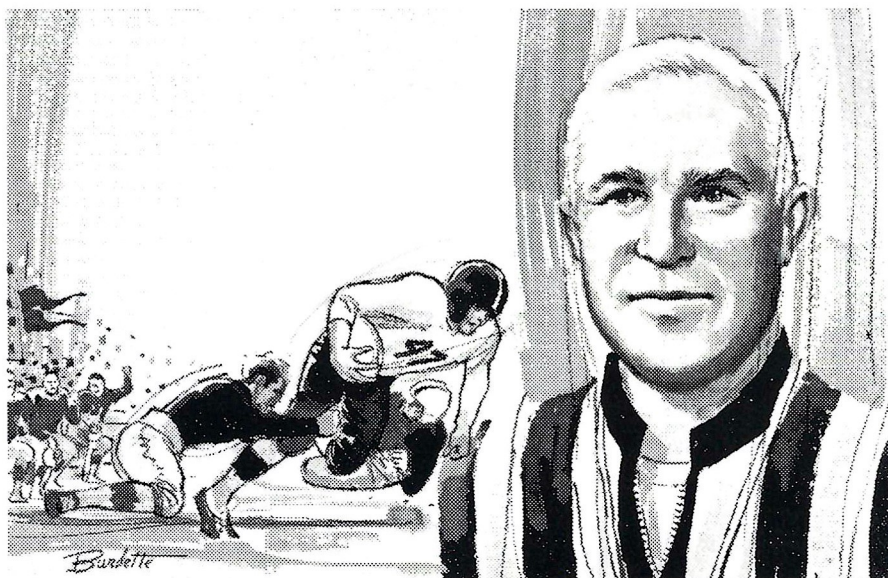
Tenn. St. Location Open 'Til 11 P. M.

Home Owned and Operated by Mr. & Mrs. N. T. Holland

A Referee in Trouble

by CLIFFORD H. SHAW

Retired Southwest Conference Official, as told to Orville Henry



A REFEREE in trouble has to rely on common sense and a smile.

I'll never forget the first time a touchdown was awarded a ball-carrier loose in the open who was felled by an opponent who came off the opposing bench to make the illegal tackle at the sideline.

It was an explosive moment. Rice was playing Alabama in the 1954 Cotton Bowl and the score was tied 6-6 in the second quarter. Seventy-five thousand fans jammed the Dallas bowl and millions more were watching on national television.

Rice had the ball back on its 5. Dickie Moegle, Rice's All-American back, with one of the quick moves for which he was famous darted into the open down the right sideline. A radio announcer whom I shall not identify described the play as follows:

"Moegle takes a pitchout in the end zone. He's almost trapped—no!—he's back to the 5, the 10, the 15. He cuts suddenly to the right sideline. Now he's in the open! He's past the 20, the 30, the 40! He's loose for a touchdown! He's . . ." (several seconds of silence).

Then the announcer, in plain hearing of his whole radio audience, muttered softly, meekly and incredulously to himself, "Where the hell did he come from?"

The "he" was Tommie Lewis, Alabama fullback. As Moegle passed the 'Bama bench, Lewis was charged so high emotionally that he jumped onto the field and leveled Moegle with a

body block. Jack Freeman, the head-linesman, called the infraction. Lewis was easily detected because he wasn't wearing a helmet when he struck Moegle.

As referee, I had to act fast. There was a rule on the books that said if a play be interfered with by some act palpably unfair and not elsewhere prohibited in the rules, "the referee may make such ruling as in his judgment justice may require."

I ruled a 95-yard touchdown for Moegle. The situation was helped magnificently when on the try for extra point, each Rice player, before lining up, stepped across the scrimmage line and shook hands with an Alabama player.

At its next meeting, the national rules committee backed up my improvisation by incorporating it in the rules.

My most embarrassing moment as a referee happened in a Thanksgiving game between Texas and Texas A&M played in a light drizzle. I had stuffed my pockets full of towels so the players could use them in the huddles to dry their hands. This left no room in my pockets for my red flag so I would simply throw one of the towels to indicate infractions.

The Texas quarterback faded with the ball, trying to retreat into the pocket to throw a forward pass. I detected a foul by one of the offensive guards. I threw the towel just as the passer was getting set to look for his receivers. The wind spread the towel out flat, like a magic carpet, and it settled over the passer's head, blind-

ing him temporarily. The defense was on him.

He reacted courageously. Throwing off the towel, he tucked the ball under his arm, ran a right end sweep and gained 12 yards. Even an official couldn't foul it up for him. But for a long time I had nightmares wondering what I would have done had he been tackled with the towel over his face, or if he had fumbled, or if a dozen other things had happened.

Another time when I was refereeing a Baylor game at Waco, I threw a red flag for an illegal use of the hands penalty and followed the play, a sweep, to its conclusion on the sideline. Looking around for my red flag, I saw an amazing sight.

One of Baylor's bear cub mascots had slipped out of its chained collar, dashed onto the field, grabbed the red flag and was ambling towards the end zone with it, tossing it into the air, batting it with a forepaw, then grabbing it and continuing its trip to the goal.

The fans broke up in laughter and of course to inflict the penalty we had to guess at the spot of the foul.

My most heartwarming moment as an official occurred in a Texas-Texas A&M game at Austin. A Texas drive had reached the Cadet 30-yard line and on fourth down the Longhorns carried the ball almost to the point needed for a first down. We called for the chain to make the measurement. As I dropped to one knee to get a better view of the chain stake and the end of the ball, I realized somebody else was helping me make the decision.

A small boy, possibly nine or ten years old, had come onto the field and stretched himself out full-length on his stomach with his nose three feet from the ball.

I got down with him, put one arm around his shoulders, and together we looked at this thing that involved about one-fourth inch. We talked it over and both decided it was a first down and he returned to the stands. The fans laughed extravagantly over the enthusiasm of one small boy. Because of it, a lot of people went home happier that day.

I'll close with a Colorado-Kansas State game. I had just disqualified a big, rugged end. His captain was disenchanted with him and as he walked away with him to the bench, I heard the captain say, "Come back and apologize to the referee."

"Tell the referee to go to hell," the end growled and kept walking.

The captain came back to me. "Mr. Referee, he said to tell you he was sorry."

"Yes, I heard him," I replied and we both enjoyed a good laugh.



**MAKE
EVERY YARD
COUNT...
DOUBLE!**

Double because you'll be earning a commission while you earn your college degree.

All it takes is a few hours a week and a six-week summer camp. It's that easy in Army ROTC.

Whether you plan a civilian or a military career, Army ROTC gives you the kind of training and experience you need to motivate, organize and lead men. You'll learn them all in Army ROTC.

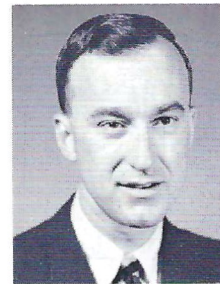
Get the details from your Professor of Military Science at any ROTC college.

Your future, your decision... choose **Army ROTC**.

Wolfpack on Rampage

By **FRANK WEEDON**

North Carolina State Sports Information Director



The big play. That sums up North Carolina State's two-game football efforts thus far in 1967.

The Wolfpack has come up with the big play on both offense and defense to win its first two games over North Carolina and Buffalo.

State has been on the short end of the statistics, but not outscored in beating arch-rival North Carolina, 13-7, and Buffalo, 24-6.

Quarterback Jim Donnan and end Harry Martell have been the big men offensively, while the Wolfpack secondary came up with four interceptions against Buffalo and a hard rush led by All-America tackle Dennis Byrd thwarted the Bulls.

Before an overflow crowd of 42,300 in Carter Stadium, the Wolfpack jumped to a 3-0 lead against Carolina on a 44-yard field goal by Gerald Warren, the first of two by the Pack's kicking specialist. But the Tar Heels scored on fourth and one with 14 seconds to go in the half.

With 8:48 remaining in the game and State trailing, 7-6, the Wolfpack was faced with a second-down-three situation on State's 45-yard line. Donnan, a senior who was the Wolfpack's total offense leader last year, faked to his fullback and then threw to Martell all alone behind the defense. The play covered 55-yards for a touchdown. Donnan never saw the winning catch, as he was flat on his back from a Tar Heel blitz, which left Martell wide open. But the play enabled Wolfpack coach Earle Edwards to even his record with the Tar Heels at 7-7. In 42 previous meetings, State had won only five games from North Carolina.

The Donnan-Martell combination got the Wolfpack off and running against Buffalo. On the Pack's fifth offensive play, Donnan connected with Martell, all alone at the 20, for a 47-yard touchdown pass play. A Donnan to Don Donaldson 48-yard pass set up a Warren 25-yard field goal, for a 10-0 State advantage.

Then an interception, this one by Fred Combs, halted the Bulls at the 16-yard line. Combs returned the interception 70-yards to the State 14, from where the Wolfpack scored in two plays to increase its lead to 17-0. Other interceptions by Steve Diacont, Greg Williams and Billy Morrow, and fumble recoveries by Pete Sokalsky and Terry Brookshire ended the Bulls' hopes.

Buffalo had 26 first downs to State's 11, but the big passes early and the interceptions saved the Wolfpack. The Bulls got their score with 1:10 left against State reserves.

The Seminole Football Family



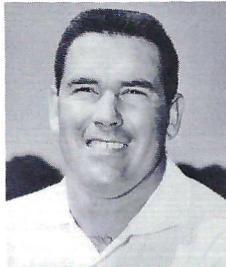
BILL PETERSON
Head Football Coach



VAUGHN MANCHA
Director of Athletics



BOB HARBISON
Defensive Chief



DON BREAUX
Offensive Chief



KEN MacLEAN
Assistant to A.D.



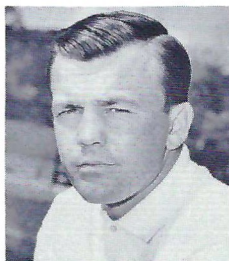
NEIL SCHMIDT
Offensive Backfield



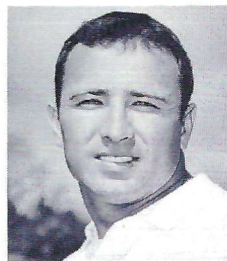
BOBBY JACKSON
Defensive Ends,
Linebackers



GARY WYANT
Defensive Backfield



JOE GIBBS
Offensive Line



GENE McDOWELL
Freshman Coach



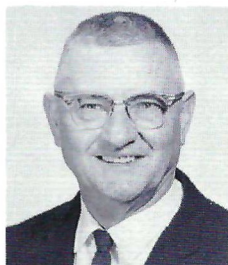
DOUG HAFNER
Head Recruiter



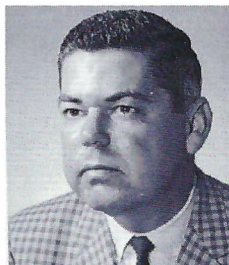
DON FAULS
Head Trainer



ROY DON WILSON
Assistant Trainer



TILLMAN DIXON
Equipment Manager



LONNIE BURT
Sports Information
Director



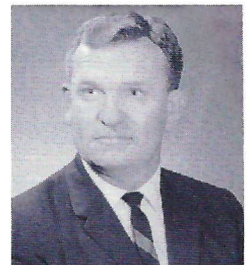
HANK SCHOMBER
Assistant SID



CLAUDE THIGPEN
Ticket Manager



DR. LANE MAXWELL
Team Physician



JEFF SAVAGE
Academic Advisor



why pay **MORE** when you
can buy for **LESS** at

A B C
Mobile Homes
2737 W. Tennessee
Tallahassee, Florida

HERSCHEL COOK
Manager

Phone 576-5146

Southernair
MOTEL

Across from F.S.U.
Tallahassee, Florida 32304

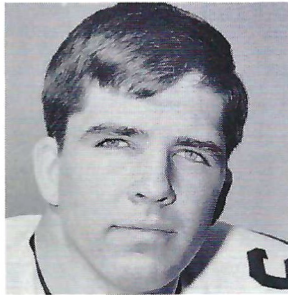


and

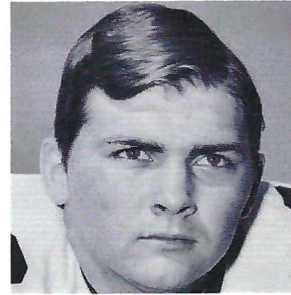
Skyline
Motor Lodge

U. S. 90 West

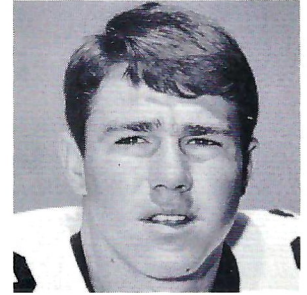
Quality Courts
for **Quality People**



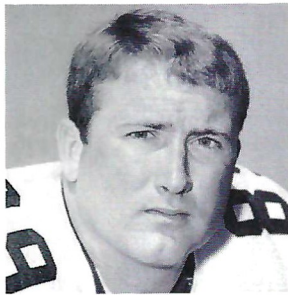
Stan Walker



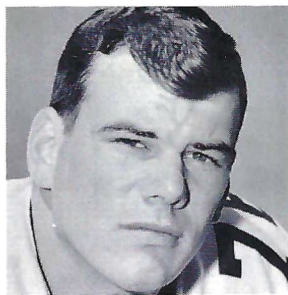
Doug Gurr



Ed Chereshkoff



Bob Menendez



Jack Fenwick

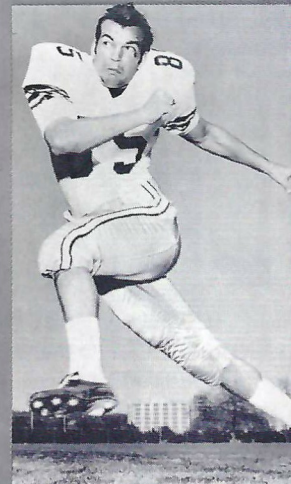


Wayne Johnson



T. K. Wetherell

FLORIDA STATE



Floyd Ratliff



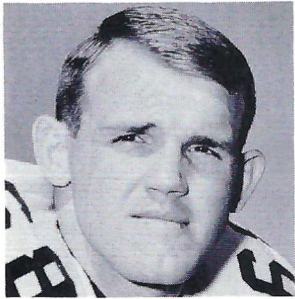
Larry Green



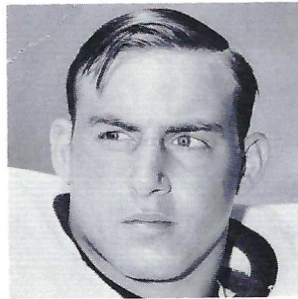
Bill Moremen



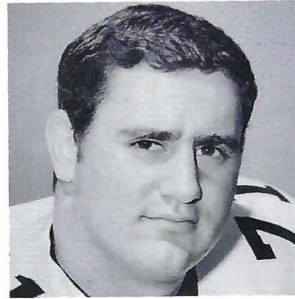
Ron Sellers



Larry Pendleton



Chuck Elliott



Harvey Zion

1967 SEMINOLES



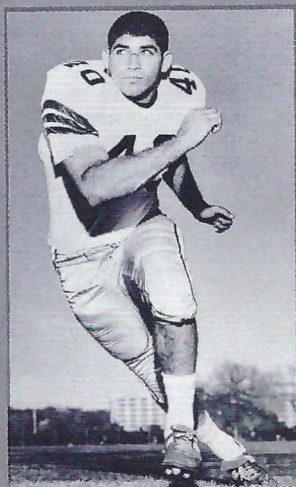
Bill Cox



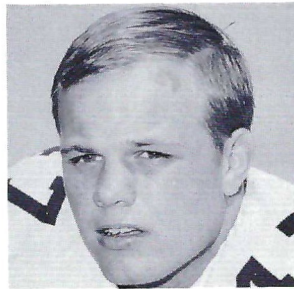
Frank Vohun



Thurston Taylor



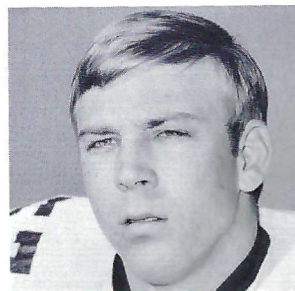
Mike Blatt



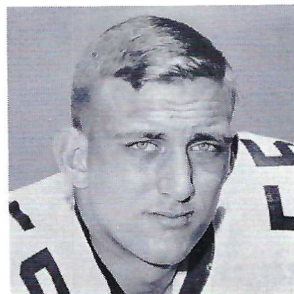
Joe Benson



Henry Lohse



Joe Kinnan



Ted Mosley



324
N. MONROE

1405
S. ADAMS

**ONE
HOUR
DRY
CLEANERS**

KEEP YOUR CLOTHES
FRESH AS A ROSE

1100
W. TENN.

GOOD LUCK SEMINOLES!

Varsity
THEATRE

1833 W. Tennessee

Phone 224-8636

Miracle
THEATRE

Thomasville Road

Opening Early 1968

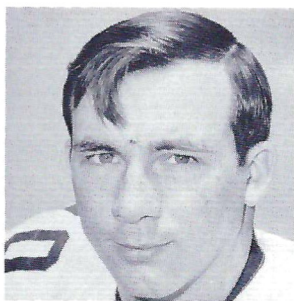
*Best Wishes for a successful
season, and we are proud
to have had a part in
furnishing the football equipment
for the Seminoles*

OWENS Inc.

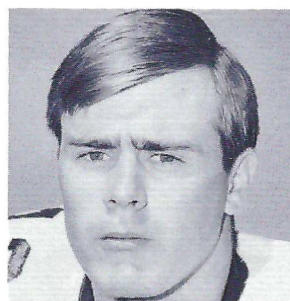
Sporting Goods — Hardware
ALBANY, GEORGIA



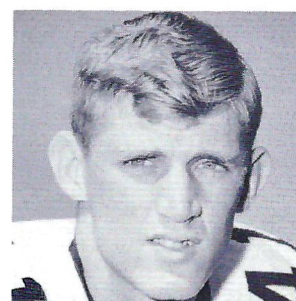
BONANZA
Mobile Homes of Tallahassee
2749 W. TENN.



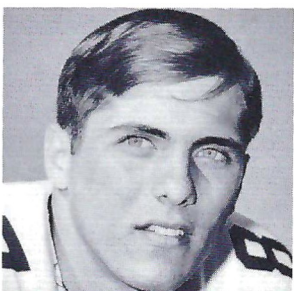
Tony Sewell



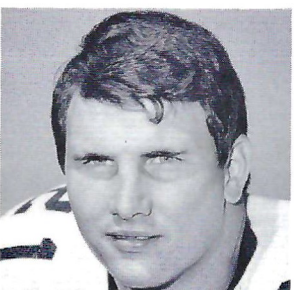
Howell Montgomery



John Crowe



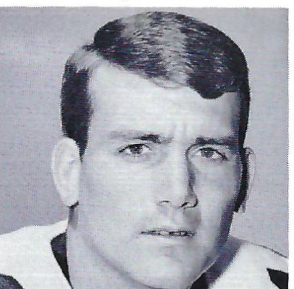
Phil Abaira



Donovan Jones



Bill Gunter

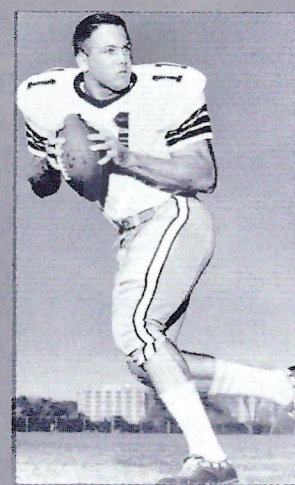


Bill Cappleman

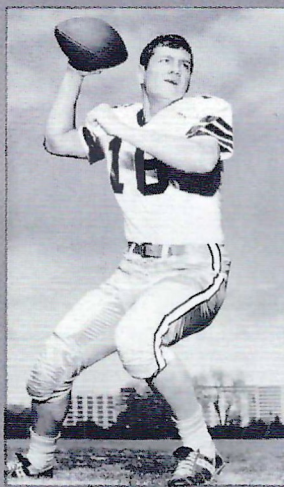
FLORIDA STATE



Wayne McDuffie



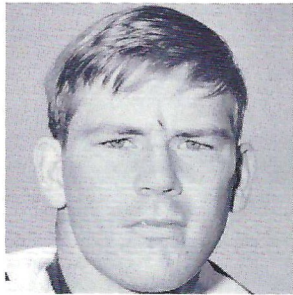
Kim Hammond



Gary Pajcic



Ken Hart



Ron Montford

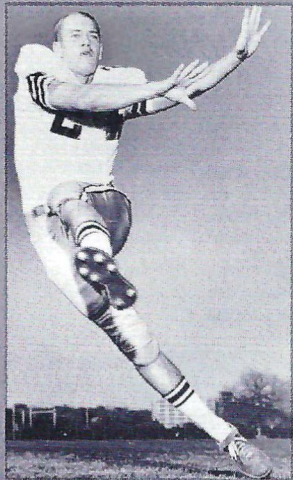


Bobby Burt

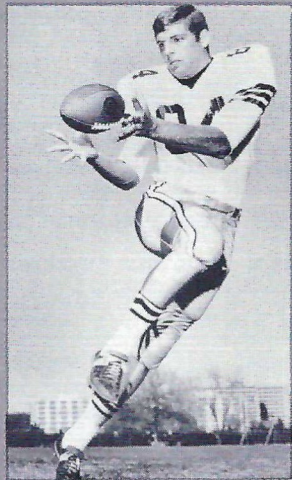


Jeff Curchin

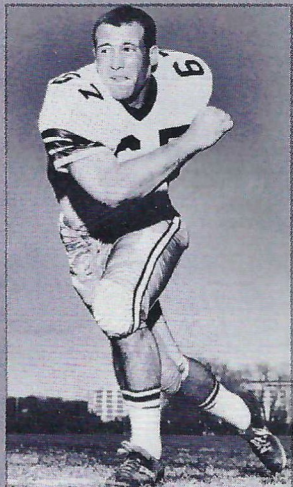
1967 SEMINOLES



Walt Sumner



Chip Glass



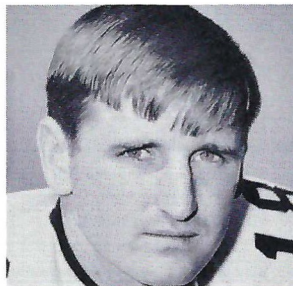
Mike Bugar



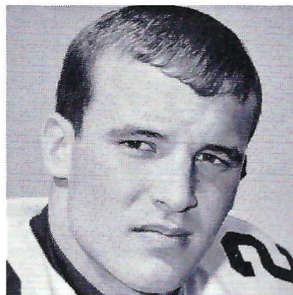
Jerry Jones



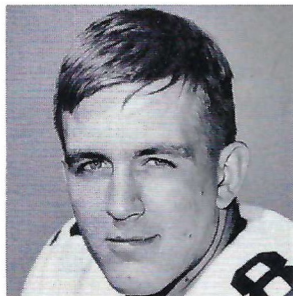
Terry Eggerton



Clint Burton



Chuck Eason



Lane Fenner

BAIRD
MOBILE HOMES
2901 Apalachee Parkway
877-4524
TALLAHASSEE

Collins
furniture co.
INCORPORATED

1117 THOMASVILLE ROAD
PH. 222-1415

Spend less of your parents' money on weekends.

Rent a Ford Mustang or another good car from Hertz at a special low weekend rate: \$20 and 12c a mile including gas, oil and insurance, from noon Friday to noon Monday. To reserve a car call: 222-1686. To pick it up come to the Duval Hotel.



Composite Schedule — FSU's 1967 Opponents

DATE	HOUSTON	ALABAMA	N. C. STATE	TEXAS A & M	SO. CAROLINA	TEXAS TECH	MISSISSIPPI STATE	MEMPHIS STATE	VIRGINIA TECH	FLORIDA
SEPT. 16	(15th) FLA. STATE		NORTH CAROLINA		IOWA STATE				AT TAMPA	
SEPT. 23	AT MICH. STATE	FLA. STATE*	BUFFALO	PURDUE#	N. CAROLINA	IOWA STATE	AT GEORGIA	MISSISSIPPI	WM. & MARY	ILLINOIS
SEPT. 30	(29th) WAKE FOREST	AT SOU. MISS.†	AT FLA. STATE	AT L. S. U.	AT DUKE	AT TEXAS	FLORIDA††	CINCINNATI	AT KANS. STATE	MISS. STATE††
OCT. 7	N. CAROLINA STATE	MISSISSIPPI*	AT HOUSTON	FLA. STATE	AT GEORGIA	MISS. STATE	AT TEXAS TECH	AT UTAH STATE	VILLANOVA	L. S. U.
OCT. 14		AT VANDERBILT	AT MARYLAND	AT TEXAS TECH	AT FLA. STATE	TEXAS A & M	SOU. MISS.	WAKE FOREST	AT KENTUCKY	AT TULANE
OCT. 21	AT MISS. STATE	TENNESSEE*	WAKE FOREST	AT T. C. U.	VIRGINIA	AT FLA. STATE	HOUSTON	SOU'WESTERN LOUISIANA	RICHMOND	
OCT. 28	AT MISSISSIPPI	AT CLEMSON	DUKE	BAYLOR	MARYLAND	AT S. METHODIST	AT FLA. STATE	SOU. MISS.	AT W. VIRGINIA	VANDERBILT
NOV. 4	GEORGIA	MISS. STATE	AT VIRGINIA	AT ARKANSAS	AT WAKE FOREST	RICE	AT ALABAMA	FLA. STATE	MIAMI	AT AUBURN
NOV. 11	MEMPHIS ST.	AT L. S. U.	AT PENN. STATE	S. METHODIST		AT T. C. U.	AT AUBURN	AT HOUSTON	AT FLA. STATE	GEORGIA**
NOV. 18	IDAHO	S. CAROLINA	AT CLEMSON	AT RICE	AT ALABAMA	BAYLOR	AT L. S. U.			KENTUCKY
NOV. 25	AT TULSA			TEXAS	CLEMSON	ARKANSAS†		N. TEXAS ST.	(23rd) V. M. I.††	FLA. STATE
DEC. 2		AUBURN*					MISSISSIPPI			AT MIAMI

Neutral Sites: * Birmingham, Ala. # Dallas, Tex. † Little Rock, Ark. ** Jacksonville, Fla. †† Roanoke, Va. ‡ Mobile, Ala. ‡‡ Jackson, Miss.



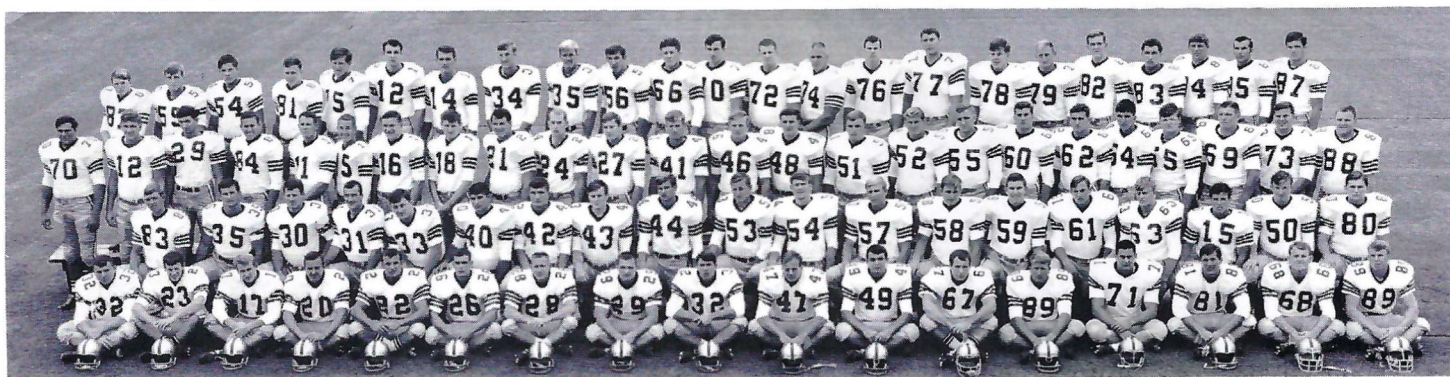
LAFAYETTE MOTEL

1525 W. Tennessee St. (U.S. 90-W) • Tallahassee, Florida 32304

Telephone 904 224-1145



FLORIDA STATE 1967 SEMINOLES



FIRST ROW—Barry Wenhold, Bill Mortiz, Mike Page, Larry Green, Chuck Eason, Hal Hodges, T. K. Wetherell, Chuck Pickens, Ed Chereschkoff, Joe Benson, Terry Eagerton, Mike Bugar, Bob Menendez, Harvey Zion, Phil Abaira, Larry Pendleton, Mike Connors.

SECOND ROW—Skip Babbs, John Pittman, Bill Moremen, Bill Gunter, Grant Guthrie, Mike Blatt, Bill Cheshire, Howell Montgomery, Mike Corey, Bobby Burt, Ron Montford, Joe Kinnan, Rich Jones, Frank Loner, Chuck Elliott, Richard McLean, Danny Thomas, Dick Johnson, Doug Gurr.

THIRD ROW—Tom White, Rick Anderson, Doug Mitchell, Bill Yeldell, Kim Hammond, Tommy Warren, Gary Pajcic, Clint Burton, Donovan Jones, Walt Sumner, Billy Cox, John Crowe, Charlie Huggins, Dale McCullers, Bill Hughes, Wayne McDuffie, Ted Mosley, Barry Rice, Beryl Rice, Stan Walker, Bill Dew, Randy Logan, Duke Johnston, Jerry Jones.

FOURTH ROW—Frank Edmunds, Ed Gibson, Dave Bracken, Jim Tyson, Billy Rhodes, Phil Hiatt, Bill Cappleman, Ron Sellers, Mike Gray, Henry Lohse, Ken Hart, Tony Sewell, Jeff Chapman, Chris Palmer, Jack Fenwick, Jeff Curchin, Wayne Johnson, Frank Vohun, Lane Fenner, Thurston Taylor, Chip Glass, Floyd Ratliff, Jim Rust.



GOING
PLACES
?

ATHENS, GEORGIA? ATHENS, GREECE?
NEW YORK? NASSAU? NEPAL?

TRAVEL IS OUR PROFESSION

No Charge For Our Services
Tickets - Reservations At Printed Rates

MARION HAY

TOM LYLE

BETTY MOCK

JEANNIE SMITH

TALLAHASSEE TRAVEL AND TOURS, INC.

Formerly Hay Travel Service

Established 1930

CALHOUN AT CALL STREET

TELEPHONE 224-4161

BENNETT'S DISCOUNT DRUG STORE

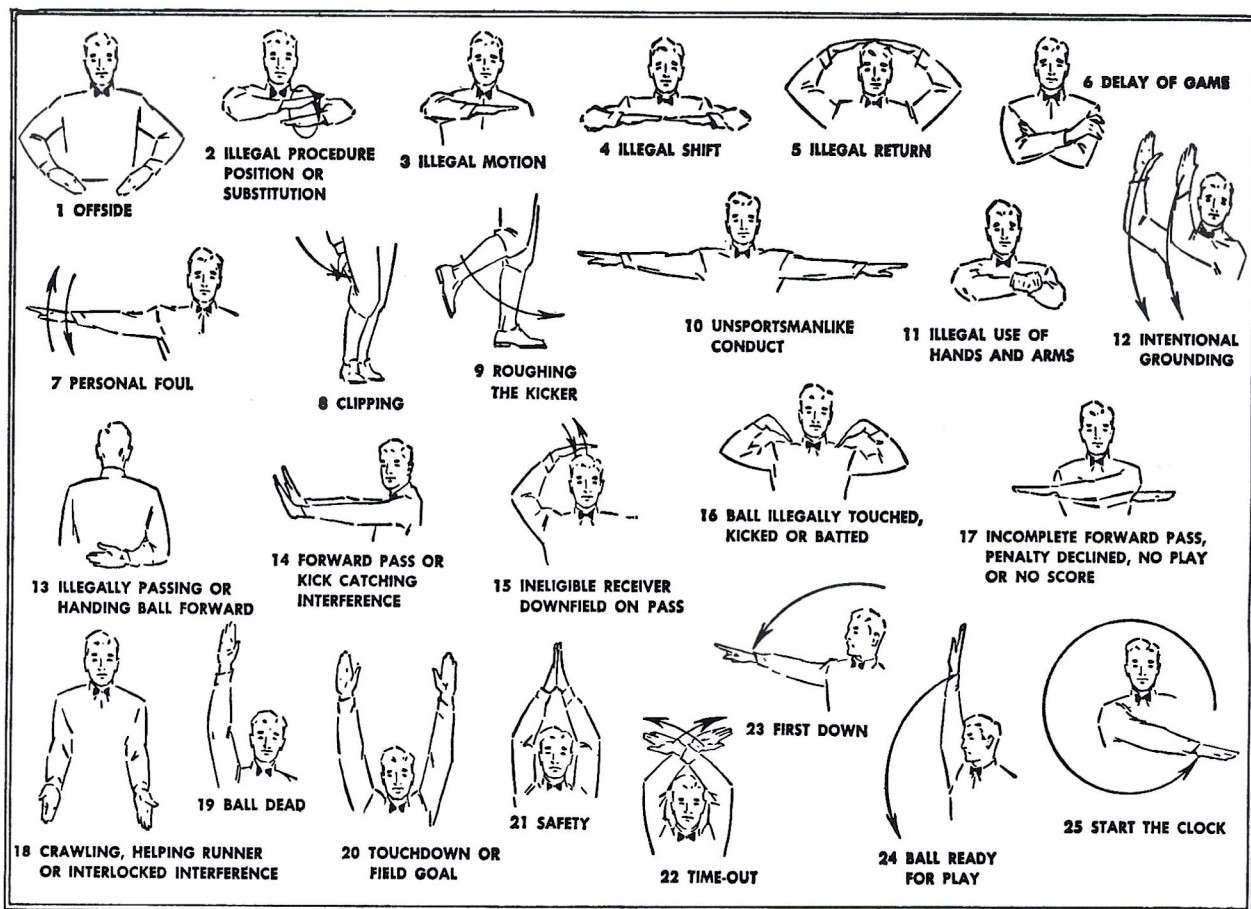
- Prescriptions
- Cameras
- Sundries
- Gifts
- Fountain
- Cafe
- Cosmetics
- Drugs

MEET ME AT BENNETT'S

BEFORE AND AFTER THE GAME!

Corner Monroe and College Streets

Phone 222-8980 — 222-4450



Le Roc Cocktail Lounge

Tallahassee's Finest . . .

Located in the
DUVAL HOTEL

For an evening of relaxed
entertainment — enjoy your
favorite beverage — prepared by
a professional.

No cover charge

Entertainment nightly

Open daily 11 A.M. to 2 A.M. — except Sunday



HAV-A-TAMPA JEWELS

WITH EXCLUSIVE BIRCHWOOD TIP

2 for 15c

or new Push-Pak of five 36c
(Plus state and local taxes, if any)

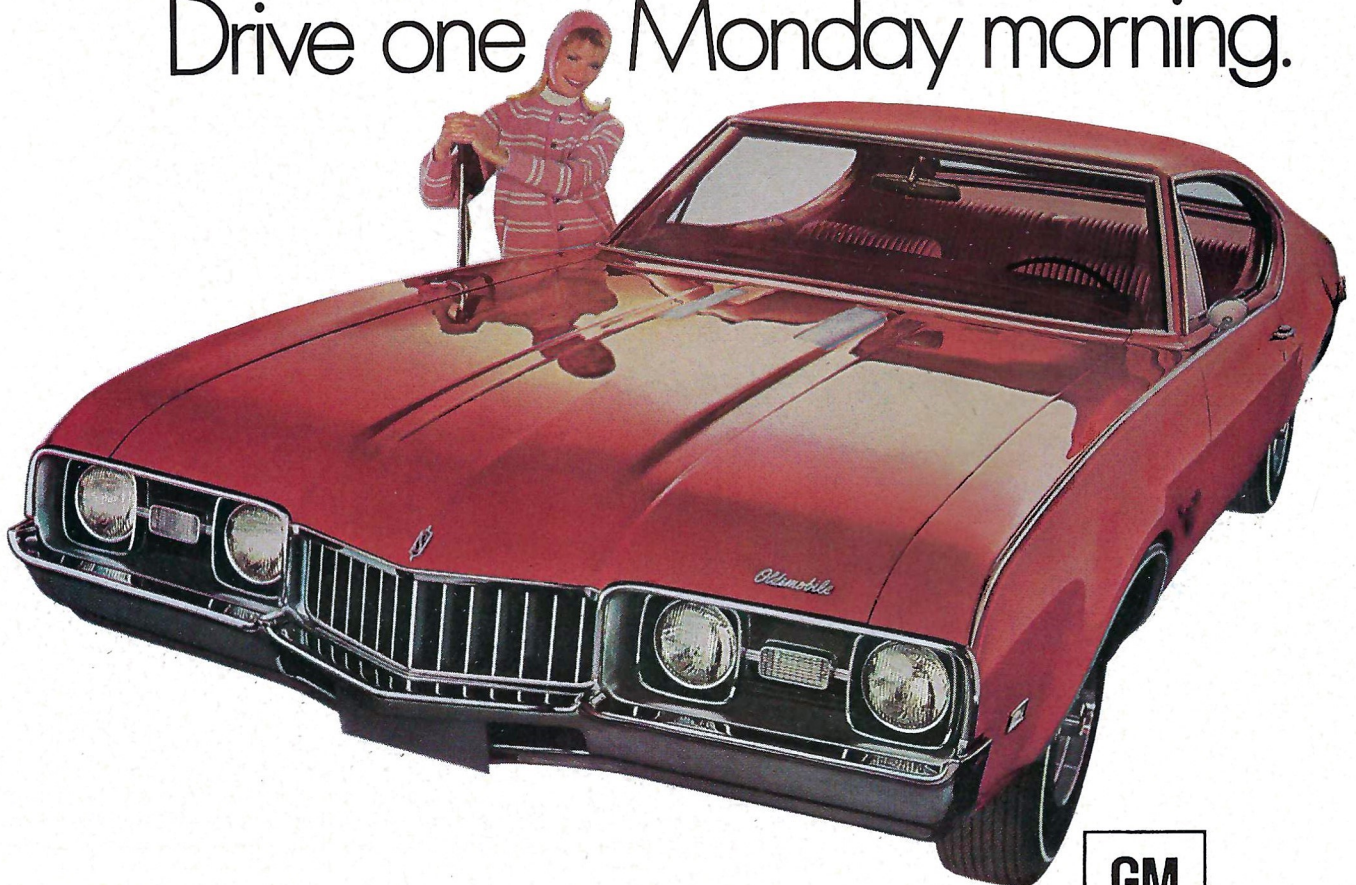
FROM HAVATAMPA—TAMPA'S LARGEST MANUFACTURER OF FINE CIGARS

Distributed by Eli Witt Tobacco & Candy Co.

Tallahassee, Florida

The '68 "youngmobiles" from Oldsmobile are here.

Drive one Monday morning.



Cutlass S Holiday Coupe
at your nearest Oldsmobile Dealer's.





Coca-Cola... served at the training centers of the United States Olympic Team.

Coke has the ta
TRADE-MARK®

OFFENSE		
86	DON DONALDSON	LE
76	LLOYD SPANGLER	LT
66	NORMAN CATES	LG
54	CAREY METTS	C
63	FLAKE CAMPBELL	RG
78	STEVE WARREN	RT
84	HARRY MARTELL	RE
14	JIM DONNAN	QB
35	TONY BARCHUK	HB
36	SETTLE DOCKERY	FB
34	BOBBY HALL	WB

N. C. STATE

DEFENSE		
88	PETE SOKALSKY	LE
77	DENNIS BYRD	LT
62	TERRY BROOKSHIRE	MG
75	TRENT HOLLAND	RT
82	MARK CAPUANO	RE
33	CHUCK AMATO	LLB
55	MIKE HILKA	RLB
41	BILL MORROW	LCB
42	FRED COMBS	RCB
15	GREG WILLIAMS	LS
26	ART McMAHON	RS

NORTH CAROLINA STATE SQUAD

14	Donnan, QB	55	Hilka, LB
15	Williams, S	62	Brookshire, MG
16	Klebe, QB	63	Campbell, G
19	Waleski, QB	66	Cates, G
20	Hardin, HB	67	Evans, G
21	Lisk, WB	68	Jordan, G
22	Idol, CB	70	Carpenter, DT
23	Reid, DB	72	Nicholas, T
25	Mason, HB	73	Tharp, T
26	McMahon, DB	74	Hudson, DT
30	Bowers, WB	75	Holland, DT
31	Bailey, LB	76	Spangler, T
32	Watkins, FB	77	Byrd, DT
33	Amato, LB	78	Warren, T
34	Hall, FB	79	Chapman, T
35	Barchuk, HB	80	Follweiler, DE
36	Dockery, FB	81	Lemmons, DE
41	Morrow, CB	82	Capuano, DE
42	Combs, CB	83	Jones, E
45	Warren, K	84	Martell, E
46	Yount, DB	85	Lewis, E
50	McDuffie, C	86	Donaldson, E
52	Diacont, LB	88	Sokalsky, DE
53	Biega, C	89	Tope, E
54	Metts, C		

— Officials —

Referee	Johnny Cook, Rome, Ga.
Umpire	V. E. Baugh, Orangeburg, S. C.
Linesman	Pete Williams, Huntsville, Ala.
Field Judge	Thomas J. Richert, Coral Gables, Fla.
Field Judge	Billy Teas, Atlanta, Ga.
ECO	Henry Hair, Atlanta, Ga.

DEFENSE		
85	FLOYD RATLIFF	LE
79	FRANK VOHUN	LT
67	MIKE BUGAR	MG
57	JOE KINNAN	RT
89	BOB MENENDEZ	RE
50	DALE McCULLERS	LLB
40	MIKE BLATT	RLB
24	WALT SUMNER	LCB
28	T. K. WETHERELL	RCB
41	JOHN CROWE	LS
22	CHUCK EASON	RS

FLORIDA STATE

OFFENSE		
82	LANE FENNER	LE
76	JACK FENWICK	LT
52	WAYNE McDUFFIE	LG
55	TED MOSLEY	C
68	LARRY PENDLETON	RG
75	BILLY RHODES	RT
83	THURSTON TAYLOR	RE
11	KIM HAMMOND	QB
20	LARRY GREEN	HB
30	BILL MOREMEN	FB
34	RON SELLERS	FLB

FLORIDA STATE SQUAD

11	Hammond, QB	55	Mosley, C
12	Hiatt, QB	56	Lohse, G
14	Cappleman, QB	57	Kinnan, T
15	Warren, QB-DB	58	R. Jones, T
16	Pajcic, QB	59	Loner, PK
17	Page, DB	60	Ba. Rice, LB
18	Burton, DB	61	Elliott, LB
19	Abraira, E	62	Be. Rice, LB
20	Green, HB	63	McLean, G
21	D. Jones, FB	64	Walker, G
22	Eason, DB	65	Dew, T
24	Sumner, DB	66	Hart, C-G
26	Hodges, DB	67	Bugar, M-G
27	Cox, E	68	Pendleton, G
28	Wetherell, DB	70	Sewell, T
29	Pickens, DB	71	Zion, T
30	Moremen, HB-FB	72	Logan, T
31	Gunter, HB	73	Johnston, T
32	Chershkoff, HB	75	Rhodes, T
33	Guthrie, PK-FB	76	Fenwick, T
34	Sellers, FL	77	Curchin, T
35	Gray, FL	78	Johnson, T
40	Blatt, LB	79	Vohun, T
41	Crowe, DB	80	Gurr, DE
42	Cheshire, P-E	81	Tyson, E
43	Montgomery, DB	82	Fenner, FL
44	Pittman, FB	83	Taylor, E
46	Huggins, DB	84	Glass, FB
47	Benson, LB	85	Ratliff, DE
49	Eagerton, FB	86	Hall, E
50	McCullers, LB	87	Yeldell, E
51	Hughes, C	88	J. Jones, DE
52	McDuffie, C-G	89	Menendez, DE
54	Montford, MG		

"COCA-COLA" AND "COKE" ARE REGISTERED TRADE-MARKS WHICH IDENTIFY ONLY THE PRODUCT OF THE COCA-COLA COMPANY. PRINTED IN U.S.A.

ste you never get tired of.



Here he
comes ...
ready
or not!

The world beckons and he's on his way—proud and independent.

He will need all the education he can get—college, even graduate school.

But there's a problem. Because enrollments are increasing every year, colleges must meet the expanding costs of providing more teachers and additional facilities.

You can help now.

Give to the college of your choice now to help assure his future ... to help make sure that college is ready when he is.

College is
America's Best Friend



Published as a public service in cooperation with The Advertising Council and the Council for Financial Aid to Education.

PENALTIES

1. **OFFSIDE** by either team; Violation of scrimmage or free kick formation; Encroachment on neutral zone—Loss of Five Yards.
2. **ILLEGAL PROCEDURE, POSITION OR SUBSTITUTION**—Putting ball in play before Referee signals "Ready-for-play"; Failure to complete substitution before play starts; Player out of bounds when scrimmage begins; Failure to maintain proper alignment of offensive team when ball is snapped; False start or simulating start of a play; Taking more than two steps after Fair Catch is made; Player on line receiving snap—Loss of Five Yards.
3. **ILLEGAL MOTION**—Offensive player illegally in motion when ball is snapped—Loss of Five Yards.
4. **ILLEGAL SHIFT**—Failure to stop one full second following shift—Loss of Fifteen Yards.
5. **ILLEGAL RETURN** of substitute not previously disqualified—Loss of Fifteen Yards.
6. **ILLEGAL DELAY OF GAME**; Taking more than four times out during either half (except for replacement of injured player)—Loss of Five Yards. Team not ready to play at start of either half—Loss of Fifteen Yards.
7. **PERSONAL FOUL**—Tackling or blocking defensive player who has made fair catch; Piling on; Hurdling; Grasping face mask of opponent; Tackling player out of bounds, or running into player obviously out of play; Striking an opponent with fist, forearm, elbow or locked hands; Kicking or kneeling—Loss of Fifteen Yards (Flagrant offenders will be disqualified.)
8. **CLIPPING**—Loss of Fifteen Yards.
9. **ROUGHING THE KICKER** or holder—Loss of Fifteen Yards.
10. **UNSPORTSMANLIKE CONDUCT**—Violation of rules during intermission; Illegal return of suspended player; Coaching from sidelines; Invalid signal for Fair Catch; Persons illegally on field—Loss of Fifteen Yards. (Flagrant offenders will be disqualified.)
11. **ILLEGAL USE OF HANDS AND ARMS** by offensive or defensive player; Defensive holding—Loss of Fifteen Yards.
12. **INTENTIONAL GROUNDING** of forward pass—Loss of Five Yards Plus Loss of Down.
13. **ILLEGALLY PASSING OR HANDING BALL FORWARD**—Loss of Five Yards Plus Loss of Down.
14. **FORWARD PASS OR KICK CATCHING INTERFERENCE**—Interference with opportunity of player of receiving team to catch a kick—Loss of Fifteen Yards. Interference by member of offensive team with defensive player making pass interception—Loss of Fifteen Yards Plus Loss of Down. Interference by defensive team on forward pass—Passing Team's Ball at Spot of Foul and First Down.
15. **INELIGIBLE RECEIVER DOWN-FIELD ON PASS**—Loss of Fifteen Yards.
16. **BALL ILLEGALLY TOUCHED, KICKED OR BATTED**—Forward pass being touched by ineligible receiver beyond the line of scrimmage—Loss of Fifteen Yards from Spot of Preceding Down and Loss of a Down. Eligible pass receiver who goes out of bounds and later touches a forward pass—Loss of Down. Illegal touching of kicked ball within opponent's ten yard line—Touchback.
17. **PENALTY DECLINED**; Incomplete forward pass; No play or no score.
18. **CRAWLING** by runner—Loss of Five Yards. Interlocked Interference—Loss of Fifteen Yards.

MIDYETTE-MOOR Insurance Agency

"Ask Those We Serve"

Complete Insurance and Bond Service

PHONE 222-3456



MIDYETTE-MOOR BUILDING
TALLAHASSEE, FLORIDA

SAYS

SCALP 'EM SEMINOLES!



Payne Midyette
Frank Moor
Ed Clark
Winslow Sullivan
Paul Lewis
Payne Midyette, Jr.
Bill Moor
Bob Dickinson

Bill Franklin
Jim Woods
Glenn Sears
Dick Wall
Joe Ausbrook
Ron Davis
Rex Sikes
Ray Atkinson



WHERE YOU
WILL FIND
YOUR FRIENDS

701 W. JEFFERSON
South Gate F.S.U.

Electrical Contractors

- INDUSTRIAL
- COMMERCIAL



Licensed & Bonded

J. B. CLARK,
President

LEE H. TOWNSEND,
Vice President

576-3727

IF NO ANSWER DIAL 385-4030

CLARK ELECTRIC CO.
OF FLORIDA

1133 Kissimmee St.
TALLAHASSEE, FLORIDA

ALL TIME FLORIDA STATE RECORDS

SINGLE GAME

Individual

TOUCHDOWNS SCORED—4 by Fred Biletnikoff vs. Oklahoma Gator Bowl, 1965; and Jim Mankins vs. Texas Tech, 1966

LONGEST TOUCHDOWN RUN FROM SCRIMMAGE—81 yards by Fred Pickard vs. Virginia Tech, 1957

LONGEST TOUCHDOWN PASS—86 yards, Gary Pajcic to Ron Sellers vs. Wake Forest, 1966

LONGEST TOUCHDOWN PLAY—100 yards by Bill Moremen and T. K. Wetherell (lateral on kickoff return) vs. Kentucky, 1965

LONGEST RUN FROM SCRIMMAGE WITHOUT SCORING—76 yards by Roy Thompson vs. Stetson, 1951

LONGEST INTERCEPTION RETURN—99 yards by Ted Hewitt vs. Stetson, 1948 and Fred Biletnikoff vs. Miami, 1963

LONGEST PUNT RETURN—80 yards by Billy Odom vs. Stetson, 1954

LONGEST KICKOFF RETURN—100 yards by Bill Moremen and T. K. Wetherell vs. Kentucky, 1965 (TD lateral)

LONGEST PUNT—84 yards by Tommy Brown vs. Tampa, 1950

LONGEST FIELD GOAL—44 yards by Les Murdock vs. Virginia Tech, 1963

TIMES RUSHING—29 by Fred Pickard vs. Georgia, 1949

YARDS RUSHING—161 by Buddy Strauss vs. Mississippi College, 1949

PASSES ATTEMPTED—53 by Gary Pajcic vs. Virginia Tech, 1966

PASSES COMPLETED—28 by Gary Pajcic vs. Virginia Tech, 1966

YARDS PASSING—313 by Joe Majors vs. Tampa, 1959

TOUCHDOWN PASSES—5 by Steve Tensi vs. Oklahoma, Gator Bowl, 1965

TOTAL OFFENSE—369 yards by Joe Majors vs. Tampa, 1959 (56 rush, 313 pass)

PASSES CAUGHT—13 by Ron Sellers vs. Virginia Tech, 1966 and by Fred Biletnikoff vs. Oklahoma, Gator Bowl, 1965

YARDS RECEIVING PASSES—192 by Fred Biletnikoff vs. Oklahoma, Gator Bowl, 1965

TOUCHDOWN PASSES CAUGHT—4 by Fred Biletnikoff vs. Oklahoma, Gator Bowl, 1965

PASSES INTERCEPTED—3 by Tommy Brown vs. Stetson, 1950; and Georgia, 1952; Lee Corso vs. Georgia, 1954; and Bud Whitehead vs. Virginia Tech, 1959

FIELD GOALS—3 by Les Murdock vs. Florida, 1964

PUNTS—11 by John Hosack vs. Baylor, 1965 (40.8 average)

TEAM

POINTS SCORED—74 vs. Whiting Field, 1949

MARGIN OF VICTORY—74-0 vs. Whiting Field, 1949

MARGIN OF DEFEAT—0-42 vs. Georgia, 1959

YARDS RUSHING—383 vs. Abilene Christian, 1957

YARDS PASSING—355 vs. Villanova, 1954

TOTAL OFFENSE—526 vs. Furman, 1962 (277 rush, 239 pass)

PASSES ATTEMPTED—56 vs. Virginia Tech, 1966

PASSES COMPLETED—29 vs. Virginia Tech, 1966

PASSES INTERCEPTED—7 vs. Virginia Tech, 1959

PUNTS—11 vs. Baylor, 1965

PLUMBING

Contracting

COMMERCIAL • INDUSTRIAL • RESIDENTIAL

- BOILER REPAIRING
- STEAM & HOT WATER
- NATURAL GAS INSTALLATIONS

All Work Guaranteed
Over 20 Yrs. In Tallahassee

385-1691 or **224-4614**
1525 Pullen Rd. 702 W Madison

BLOUNT'S
PLUMBING & HEATING CO.

SEWER
INSTALLATIONS

DITCHING BACK-HOE
RENTALS



Sammy Seminole

One individual who flips at the sight of the Seminole football team is Don Hervig, this year's Sammy Seminole.

Since 1958 the colorful Florida State mascot has been leading the Seminole football team through the goal posts before each game.

During the game Sammy becomes an energetic cheerleader, using his "war lance" to urge the Seminoles on, and when they do he will be seen doing a series of "flip-flops" down the sidelines.

Don is the fifth student to carry on this colorful tradition.

Like all his predecessors, Don is a top gymnast. A native of Huntsville, Ala., he has been working with gymnastics for six years.

When he is not "flip-flopping" around the football field the 19-year old sophomore is working on his bachelors degree in engineering science.



Habit Forming.



HAIRSTON

KASTELZ

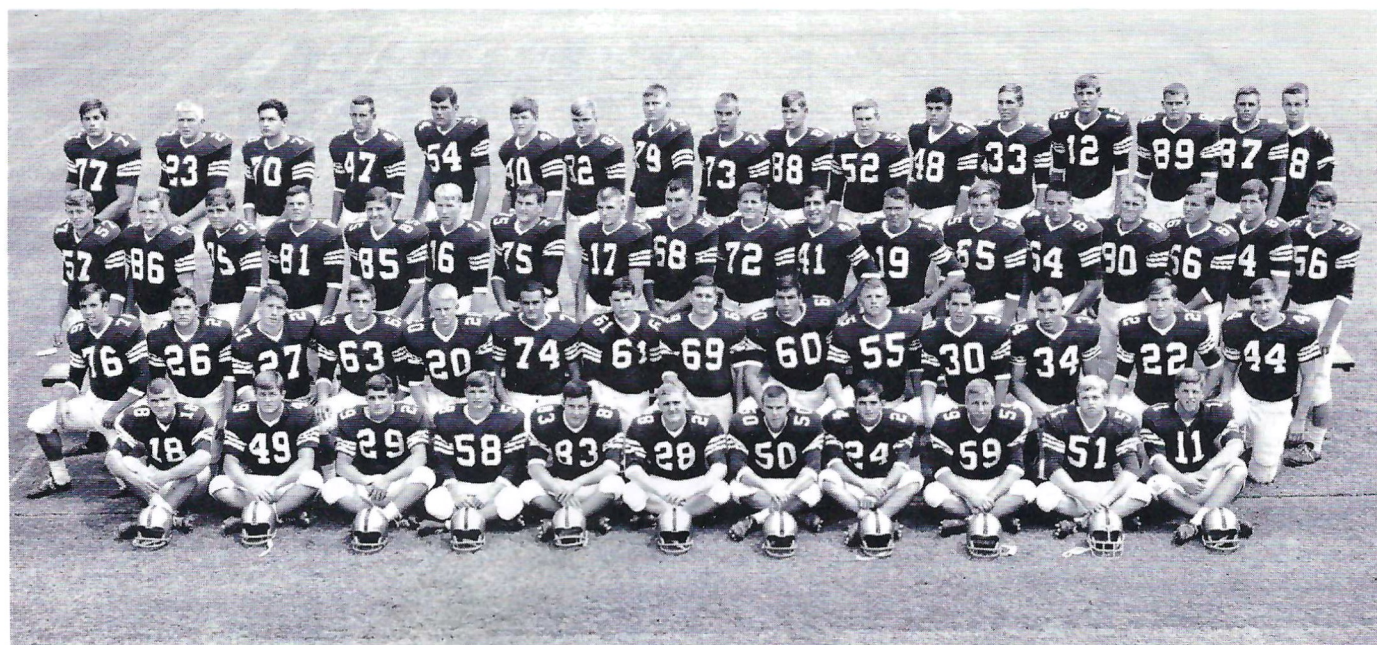
All season long — any time of the year — Bill Kastelz and Jack Hairston report, in depth, on everything in the sports world.

It's that extra margin of effort that makes these two stand out among sports editors. They're never satisfied with just "half" the story. They're diggers. Fact-finders. They wonder about things and investigate. That's why these two specialists bring you **closer** to sports all year long in the Florida Times-Union and Jacksonville Journal.

Be there — with Kastelz and Hairston — for every piece of the action.

The Florida Times-Union
EVERY MORNING
Jacksonville Journal
WEEKDAY AFTERNOONS

NUMBER ONE RIVERSIDE AVENUE
JACKSONVILLE, FLORIDA



FLORIDA STATE'S 1967 FRESHMAN SQUAD

NAME	HT.	WT.	AGE	HOMETOWN	NAME	HT.	WT.	AGE	HOMETOWN
Robert Ashmore	6-0	185	18	Tallahassee	Ned Jaros	6-3	237	22	No. Plainfield, N. J.
Fred Ayer	6-1	190	22	Tallahassee	Gary Klesius	6-2	210	18	St. Petersburg
George Bailey	6-2	205	18	Miami	Bill Lohse	6-0	210	18	St. Petersburg
Don Bancroft	6-1	205	18	Ft. Lauderdale	Craig MacKenzie	6-2	190	18	Clearwater
Theron Bass	5-11	189	17	Live Oak	Robert McEachern	6-2	215	18	Tallahassee
Steve Beville	6-1	198	18	Fernandina	Donald Mikell	6-2	201	18	Lubbock, Texas
Jon Blier	6-2	225	17	Brooklyn, N. Y.	George Montgomery	6-2	200	18	Coral Gables
Jerry Brooks	5-10	195	18	Valdosta, Ga.	Arthur Munroe	6-1	180	18	Quincy
Randy Burden	6-0	180	17	Atlanta, Ga.	Don Pederson	6-1	175	18	Groveland
Bill Cashman	6-1	175	18	Miami	Bill Rimby	6-4	198	17	St. Petersburg
Chris Corral	5-9	170	17	Tampa	John Romano	6-2	210	18	Lake Worth
Ralph Costantino	5-11	225	17	Bradenton	Ben Rust	6-2	190	18	Palm Beach
Rhett Dawson	6-1	180	18	Valdosta, Ga.	James Sammons	6-0	200	18	Atlanta, Ga.
Mike DeLoach	5-10	165	18	Valdosta, Ga.	Robert Searcy	6-5	240	18	Orlando
George Diaz	6-1	215	18	Jacksonville	Gary Semanchik	6-0	198	18	Leesburg
Michael Dowsett	6-1	230	18	Ft. Lauderdale	Phillip Shaw	5-10	160	18	Perry
Kent Gaydos	6-6	195	18	Maitland	Steve Spooner	6-2	205	18	Coral Gables
Stephen Gildea	6-0	185	18	Daytona Beach	Jay Stokes	6-3	200	17	Sanford
Max Harrell	6-3	182	18	Eastman, Ga.	Joe Strickler	6-1	230	18	Avon Park
George Henderson	5-9	170	18	Tallahassee	David Swindells	5-11	182	18	Washington, D. C.
Charles Hughes	5-10	200	18	Ft. Lauderdale	Ronnie Wallace	6-2	190	18	Macon, Ga.
Stephen Ivie	6-2	175	18	Atlanta, Ga.	Frank Whigham	6-1	175	18	Sanford
James Jarrett	6-2	182	18	Elizabethton, Tenn.	Steve Zadehh	6-1	185	18	North Miami
Steven Jernigan	5-11	194	18	Tampa	Ted Zaffren	6-3	185	18	Orlando
Steve Jones	6-1	212	18	Griffin, Ga.	John Boyett	6-3	195	18	Clermont

The pro makes it look easy

And with RCA Victor's new color portable —14" diagonal and 102 sq. in.—everything is easy. It's easy to carry from room to room because it weighs just 42 pounds. It's easy to see in daylight because its RCA Super Bright Hi-Lite Color Tube gives you 38% brighter highlights. And, it has a 21,500-volt New Vista® Color chassis. Pick a pro. Have your RCA Victor dealer show you The Headliner, a new level of performance in portable color TV.



TWO LOCATIONS TO SERVE YOU.

Rainey Cawthon's
700 N. MONROE • 222-1865

AND
Tallahassee Tire Co.
1530 S. MONROE • 222-3130

WE SERVICE WHAT WE SELL



The Most Trusted Name
in Electronics

Trmk(s)®



SEMINOLE BOOSTERS, INCORPORATED

Seminole Boosters, Inc. is an organization devoted entirely to the support of the Florida State University athletic program with emphasis on football.

Membership in the Boosters — the group numbers approximately 1,400 — is open to anyone with a sincere interest in the University's athletic progress. Minimum contribution for an individual membership is \$30. A business membership costs \$30.

Contributions are administered in accordance with NCAA regulations and in conjunction with the Florida State Department of Intercollegiate Athletics.

Boosters receive a colorful automobile license plate which can be used for admission to special reserved parking lot at the stadium, a membership card, a weekly fall publication, "The Grandstand Coach," and certain priorities on season and single game football tickets.

SEMINOLE BOOSTERS, INCORPORATED FLORIDA STATE UNIVERSITY TALLAHASSEE, FLORIDA 32306

1967 Contribution

☐ Check attached for \$ _____

☐ Pledge to pay \$ _____ Bill me for \$ _____
(TOTAL AMT.) (PAYMENTS) ☐ MONTHLY ☐ QUARTERLY ☐ OTHER _____
(SPECIFY)

Minimum Contribution of \$30 Required for Membership Privileges.



(PLEASE CORRECT ANY ERRORS IN YOUR ADDRESS)

NAME _____

ADDRESS _____

CITY, STATE _____

ARE YOU AN F.S.U. ALUMNUS? Yes ☐ No ☐

Make check payable to Seminole Boosters, Inc.
Mail To: 114 Longmire Alumni Bldg., FSU
TALLAHASSEE, Florida 32306

ZIP _____

SOLICITOR'S SIGNATURE _____ CONTRIBUTOR'S SIGNATURE _____ DATE _____

COMPLIMENTS OF TALLAHASSEE AUTOMOBILE DEALERS ASSOCIATION

ALFORD CHEVROLET COMPANY

KINNEBREW MOTORS, INC.

CAPITAL LINCOLN & MERCURY, INC.

MINGLEDORFF MOTORS, INC.

CAPITAL PLYMOUTH, INC.

PALMER-HARRELL BUICK COMPANY

COURTESY OLDSMOBILE, INC.

PROCTOR & PROCTOR, INC.

BOB DRAKE DODGE, INC.

TALLAHASSEE MOTORS, INC.

SEMINOLE BOOSTERS, INC. BOARD OF DIRECTORS 1967



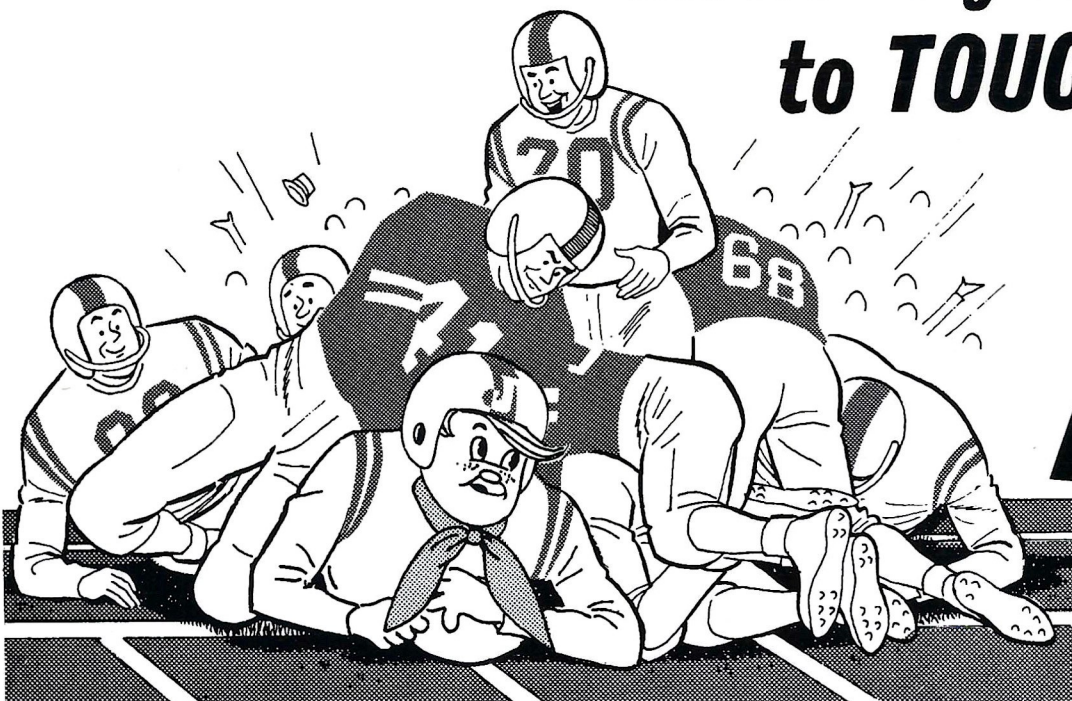
Seated, left to right: W. S. "Bill" Lee, Immediate Past President; Hank Mannheimer, Secretary; Frank Pope, President; Theo Proctor, Jr., President-Elect; and Herschel Williams, Treasurer.

Standing, First Row: Ryals Lee, T. A. Waits, Wayne Cook, Coach Bill "Pete" Peterson, J. Edwin White, Sid Rayborn, William T. Smith, William "Curt" Smith.

Second Row: Thomas O. Feamster, Louis Hill, Doyle Pope, Leo Crutchfield, Dr. Evan E. "Dick" Dussia, Robert C. Camp, Robert B. Drake, Jr.

Not Pictured: Dr. James Booth, Anthony "Ad" Brautigam, Dr. Laurence Chalmers, Syde P. Deeb, Hugh Donovan, Fred Orr Drake, Jr., William I. DuBey, Dr. Ed. Haskell, Jr., Guy McKenzie, Payne Midyette, Jr., Godfrey Smith.

AFTER THE GAME
make it your goal
to TOUCH DOWN
at...



Jerry's
 RESTAURANTS

445 West Tennessee St.
 In
 Tallahassee, Fla.

Patronize Stadium
CONCESSIONS

Located beneath the stands on each side of stadium

COLD DRINKS	small 15¢ large 25¢
HOT COFFEE	15¢
SANDWICHES	30¢
HOT DOGS	25¢
PEANUTS	25¢
POP CORN	15¢
CIGARETTES	40¢

SOUVENIR ITEMS - PENNANTS - BADGES

SUN VISORS - ASPIRIN

Please pay no more than

ESTABLISHED PRICES

EAT 'EM UP SEMINOLES!



**FAMOUS DOUBLE-DECK HAMBURGERS
and OTHER DELICIOUS FOODS**

THE POPULAR SPOT IN TOWN — SERVING:

- BREAKFAST ● LUNCH ● DINNER and
- LATE EVENING SNACKS

DINING ROOM AND IN-CAR SERVICE

OPEN 7 A.M. TO MIDNIGHT

'TIL 2 A.M. FRIDAYS & SATURDAYS

1775 W. TENNESSEE ST.

TALLAHASSEE - TEL. 224-1246

TRY FRISCH'S CARRY-OUT SERVICE



Football and Fitness Film Now Available!

This exciting 28-minute color film captures the thrills of professional football. It shows 13 N.F.L. stars in action, in some of their biggest moments of play. In addition, the 16 mm. sound film depicts these same players in "how-we-do-it" demonstrations of these plays, as well as their own favorite methods of staying in peak physical shape.

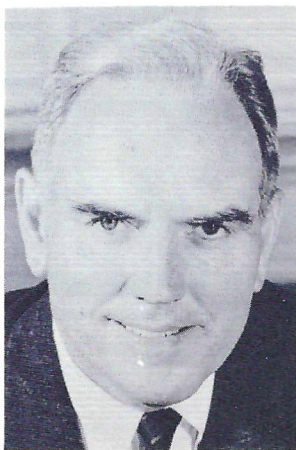
The film and an accompanying 36-page booklet outlines football-oriented plays, exercises, fundamentals and skills.



THE PRUDENTIAL INSURANCE COMPANY OF AMERICA
 SOUTH-CENTRAL HOME OFFICE • JACKSONVILLE, FLORIDA

The film, sponsored by Prudential in cooperation with the President's Council on Physical Fitness and the National Football League, is available for free loan. It will make a terrific program for your civic club, youth group or physical education class.

For information, contact your local Prudential office. Or write Public Relations Dept., The Prudential Insurance Co. of America, P. O. Box 4579, Jacksonville, Florida 32201.



DR. JOHN T. CALDWELL
Chancellor



ROY B. CLOGSTON
Athletics Director



EARLE EDWARDS
Head Football

North Carolina State University

North Carolina State was founded by the General Assembly in 1887. The State's land-grant university, located in the capital city of Raleigh, conducts educational, extension and research programs on campus and throughout the State.

The undergraduate enrollment exceeds 10,000 students. More than 2,000 students are enrolled for graduate study in 46 master's and 32 doctoral fields.

Chancellor of the University is Dr. John T. Caldwell, past-president of the American Association of the State Universities and Land-Grant Colleges, and who was formerly President of the University of Arkansas.

North Carolina State is composed of eight schools offering degree work — Agriculture and Life Sciences, Design (including architecture and landscape architecture), Education, Engineering, Forestry, Liberal Arts, Physical Sciences and Applied Mathematics, Textiles, and the Graduate School.

The educational program of the university is offered through 60 instructional departments and its research program is conducted through several special institutes, the departments and agricultural research stations.

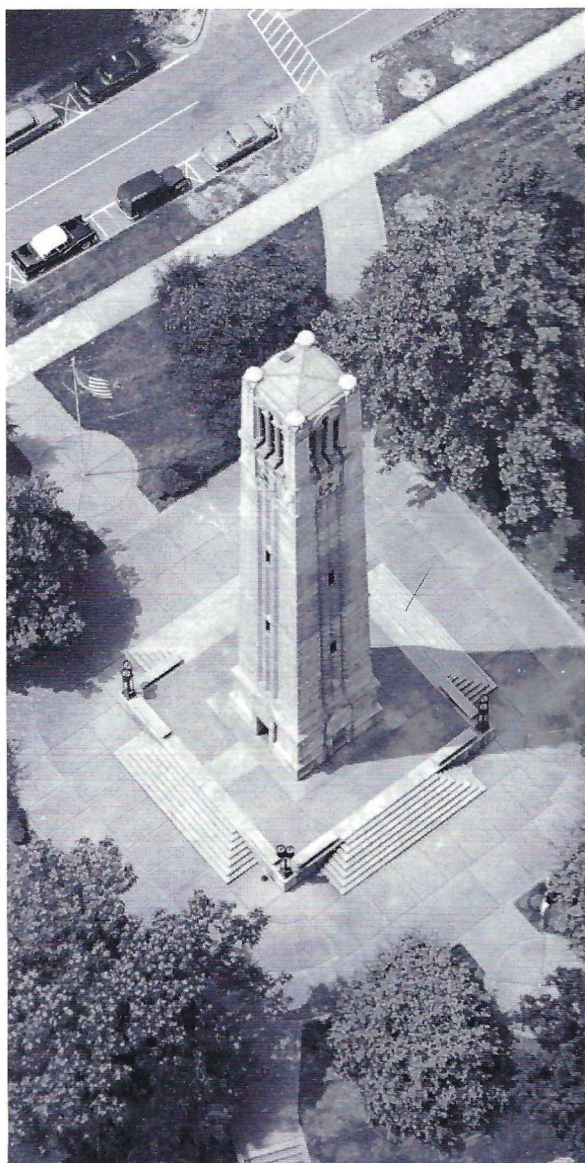
State's physical plant is valued at more than \$60,000,000 and includes forest laboratories in four regions of North Carolina, engineering facilities in Asheville, a coastal research station, and 17 branch agricultural research stations. Currently underway is more than \$15,000,000 of grant and contract research. There are more than 3,000 staff members at North Carolina State and its offices throughout the State.

In recent years State has been acclaimed as one of the nation's leading scientific and technological institutions.

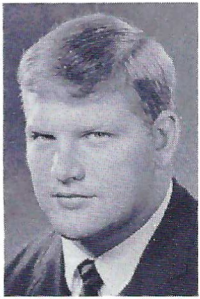
Indicative of this reputation is the recent grant to North Carolina State of \$3.5 million from the National Science Foundation to be used to expand and further develop the University's highly-regarded engineering and biomathematics programs.

The University continues to grow. Recently completed include the \$2 million food sciences building, a biological sciences building and an addition to the School of Design. Work is underway on a 10-story chemistry laboratory, a \$1.2 million forestry building, three dormitories, and a phytotron facility.

North Carolina State is a part of the Consolidated University of North Carolina.



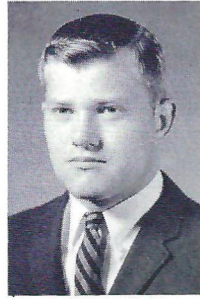
**Memorial Bell Tower,
North Carolina State University**



DENNUS BYRD



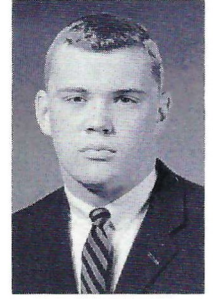
TONY BARCHUK



FLAKE CAMPBELL



JIM DONNAN



STEVE WARREN



DON JORDAN

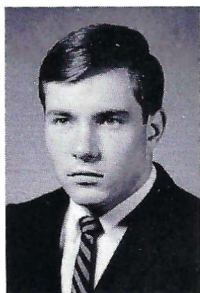


DON DONALDSON

North Carolina



Physical Sciences Laboratory Bldg.



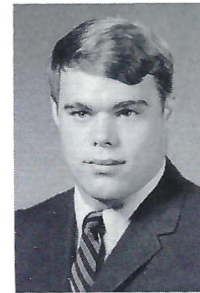
MIKE HILKA



TERRY BROOKSHIRE



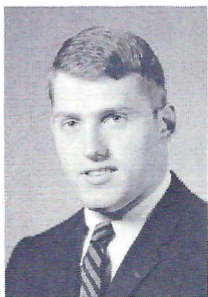
PETE SOKALSKY



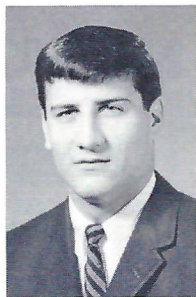
SETTLE DOCKERY



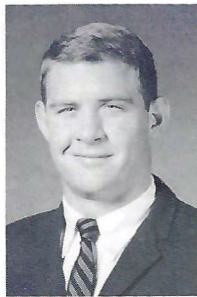
BOBBY HALL



CAREY METTS



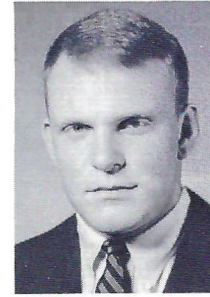
HARRY MARTELL



NORMAN CATES



JOHN McDUFFIE

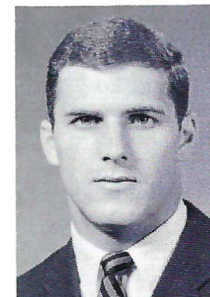


LLOYD SPANGLER

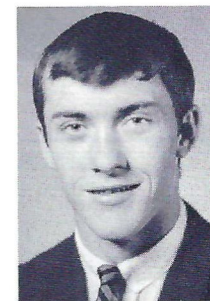
State University



Harrelson Hall, Circular Classroom Bldg.

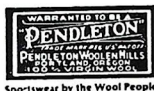


ART McMAHON



BILL MARROW

SHOW YOUR COLORS! Genuine **PENDLETON** wool blankets in authentic school colors, solid background with felt emblem, in carrying case. Ideal for stadium, home, and travel. Perfect for gift giving. Choose from those shown, or specify your school. If not offered, your money will be promptly refunded. Price: \$20.00 each, includes sales tax and shipping charges. Check or money order must accompany order. No C.O.D. shipments.



Gentlemen: Please ship me _____ Blankets at \$20.00 each.
My school is _____
Enclosed find \$_____.

Name _____
Address _____
City, State, & Zip Code _____

"ONE OF FLORIDA'S FINE STORES"

Fletcher-Cantey

*Men's
Wear*

P. O. BOX 899

QUINCY, FLORIDA 32351



THE SEMINOLE FOOTBALL NETWORK

Florida's 1967 sportscaster of the year, popular Bo Mitchell returns to the Seminole microphone for the fifth straight season, bringing play-by-play action to every corner of the Sunshine State.

The energetic Mitchell, an ex-naval aviator with more than 18 years broadcasting experience, is vice-president and manager of station WXIS, Orlando.

His partner at the mike again this season will be Bud Kaatz, a native of Ohio who was formerly color man for the University of Michigan Football Network and play by play announcer for Ohio University and Marietta College. Kaatz will handle pre-game, half-time and time out commentary on the Seminoles.

Originating station for the Seminole Network is WTNT, Tallahassee. The network consists of 29 stations in Georgia and Florida.



Bo Mitchell



Bud Kaatz

THE SEMINOLE NETWORK

WTNT—Tallahassee	WORD—Daytona Beach
WAAZ—Crestview	WCOA—Pensacola
WDSR—Lake City	WDAE—Tampa
WFTW—Ft. Walton Beach	WGBS—Miami
WINK—Ft. Myers	WJAX—Jacksonville
WKMK—Blountstown	WKIS—Orlando
WMAF—Madison	WSIR—Winter Haven
WMGA—Moultrie, Ga.	WSPB—Sarasota
WMMB—Melbourne	WTOT—Marianna
WMOP—Ocala	WFOY—St. Augustine
WONN—Lakeland	WCNH—Quincy
WOOO—DeLand	WEAT—West Palm Beach
WPAX—Thomasville, Ga.	WFFG—Marathon - Key West
WPCF—Panama City	WTRR—Sanford
WPRY—Perry	

**Follow
STATE
in '67**

on
the



Radio
Network

WTNT
Tallahassee

WJAX
Jacksonville

WGBS
Miami

WKIS
Orlando

WCOA
Pensacola

WDAE
Tampa

*Come to
Chevron Island!*



1967 CROSS COUNTRY SCHEDULE

DATE	OPPONENT	SITE	TIME
Oct. 5 (Thurs.)	Eastern Kentucky	Tallahassee	4:00
Oct. 7 (Sat.)	South Florida	Tampa	3:30
Oct. 14 (Sat.)	Aldridge Championships	Atlanta, Ga.	11:00
Oct. 21 (Sat.)	Callaway Gardens	Pine Mountain, Ga.	11:00
Oct. 23 (Mon.)	Auburn	Tallahassee	4:00
Nov. 4 (Sat.)	South Florida	Tallahassee	11:00
Nov. 6 (Mon.)	*Florida	Gainesville	3:30
Nov. 11 (Sat.)	Georgia Tech	Tallahassee	11:00
Nov. 18 (Sat.)	State Meet	Tallahassee	11:00

*"A" and "B" Meets



THE 1967 FLORIDA STATE CROSS-COUNTRY TEAM:

Front Row: Left to Right: Joe Law, Joe Rooney, Terry Smith, Bob Courter. **Second Row:** Left to Right: Marc Williamson, Sid Merchant, George Griffin, Bob Thomas. **Third Row:** Left to Right: Phil Scott, Jack Castner, Mike Kelly, Ken Misner, Tom Richards.



SPURGEON CAMP

"Let's Be
#1
In 1967"



QUALITY CLEANERS

215 W. COLLEGE AVE.—DIAL 222-5097

ONE DAY SERVICE

PICK-UP and DELIVERY

Quality Laundry Work

Fluff Dry Service

EXPERT TAILORING and ALTERATIONS

ZIPPERS REPAIRED

THE MARCHING CHIEFS

MUSIC AT HALF-TIME

Robert Braunagel—Director

Camp Kirkland—Assistant Director

Charles Carter—Assistant Director and Arranger

Herschel Beazley—Drum Major

Paulette Gergen—Head Majorette

Will Surley and Jerry Williams—Feature Twirlers

THEME: A SALUTE TO ACADEMY AWARD TUNES

MUSIC

Fanfare—Born Free

Lullaby of Broadway

The Way You Look Tonight

Baby, It's Cold Outside

It Might As Well Be Spring

On the Atchison, Topeka and the Sante Fe

High Hopes

Thanks For The Memory

FORMATIONS

Company Front

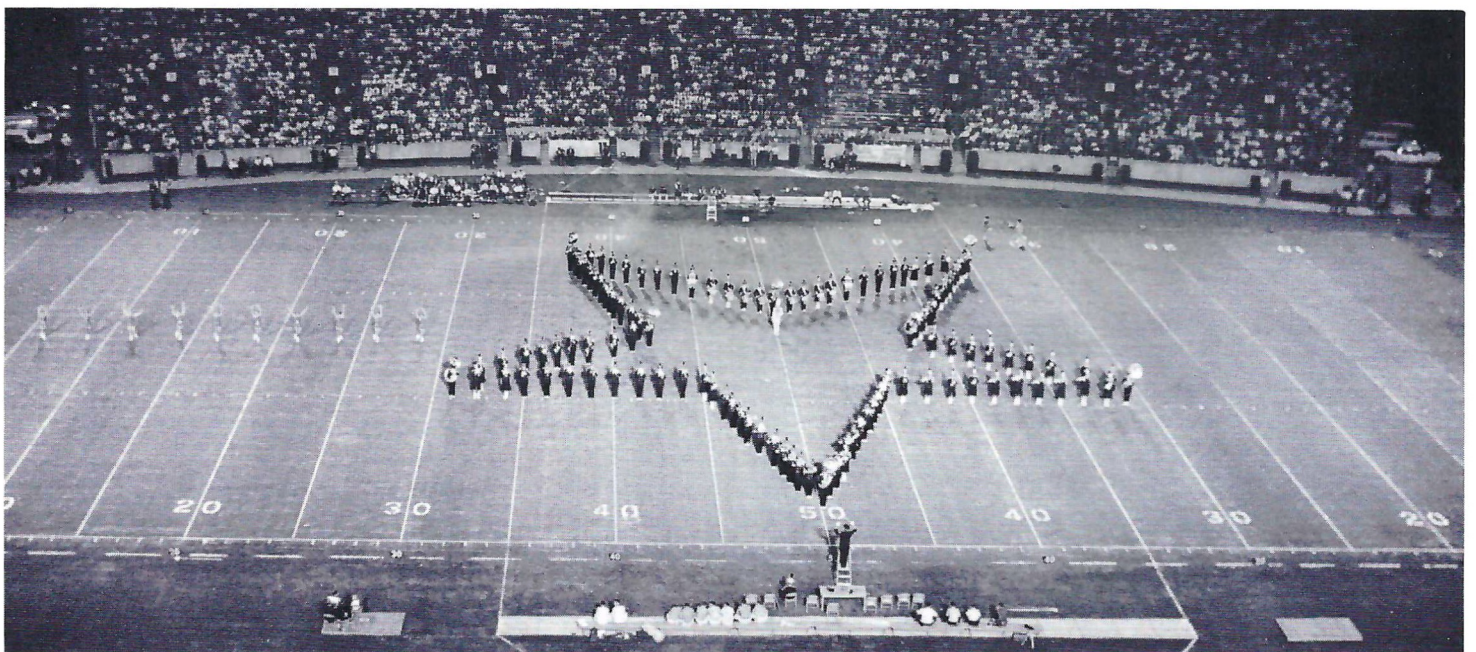
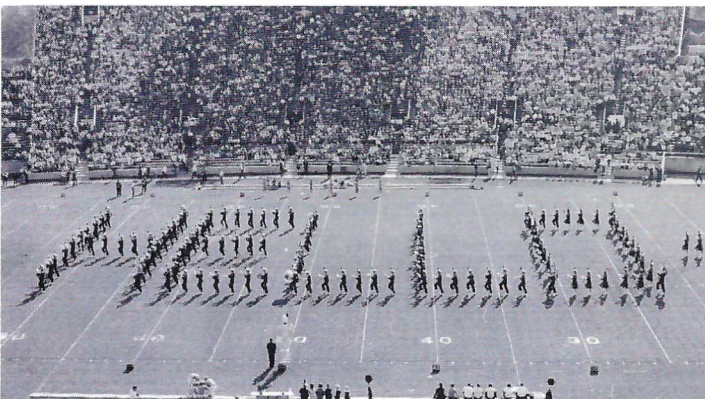
Company Front

Stick figure—To the music of the dance team of Astaire and Rogers the band features a soft shoe routine.

Flower Pot

Train—The Chiefs form a train and revolve the wheels.

Oscar—In a tribute to Academy Award songs the Chiefs form an Oscar and feature the twirlers to the music of Thanks For The Memory.



1917-1966 FOOTBALL'S FABULOUS HALF-CENTURY

By STEVE BODA, JR.

NOTE: Numbers opposite biographical material match numbers included on cover design.

Fifty golden autumns. Fifty exciting, colorful seasons. And on the ever-changing stage of a half-century, a legion of spirited young men have shared in the traditional rivalry of college football.

1. Elmer Oliphant, Army—An indestructible player who could do it all; run, pass, kick, tackle, block. One of the greatest all-around athletes in West Point history, Ollie powered the great Army teams during 1914-17, after starring for three years at Purdue.

2. George Gipp, Notre Dame—To Notre Dame fans one name stands out, unsurpassed and seldom approached. It is that of George Gipp, one of the greatest triple-threat men ever. The Gipper, then 23, died of pneumonia on the day he was chosen for the 1920 All-American team.

3. Harold (Brick) Muller, California—The first All-America player west of the Mississippi. An outstanding receiver, he also threw the longest completed pass in Rose Bowl history (1921), 53 yards in the air.

4. Homer Hazel, Rutgers—Rutgers only Hall of Famer, Homer was an All-America two years, 1923 as an end, 1924 as a fullback. Had great power as a runner, also passed and kicked. Still holds Rutgers field goal record for a season (10).

5. Four Horsemen, Notre Dame—At the 1924 Notre Dame-Army game, sports writer Grantland Rice wrote an epic lead: "Outlined against a blue-gray October sky, the Four Horsemen rode again." Thus, (from left) Don Miller, Elmer Layden, Jim Crowley and Harry Stuhldreher were immortalized as the most gifted backfield of all-time.

6. Harold (Red) Grange, Illinois—The most publicized player of all-time who turned a number—77—into a by-word. In high school, college and a pro career, the Galloping Ghost carried the ball 4,013 times, gained 33,820 yards (19¼ miles) and scored 2,366 points in 247 games.

7. Bennie Oosterbann, Michigan—One of football's greatest ends. A three-time All-America in 1925-26-27, he was named on the Associated Press all-time team in 1951. As a coach he led his 1950 Michigan

team into the Rose Bowl to win and his 1948 squad was national champion.

8. Bronko Nagurski, Minnesota—Whenever and wherever a discussion of the greats of intercollegiate football comes up, Bronko's name is mentioned. In 1929, his was the rare distinction of being chosen All-America tackle and fullback. Said one sports-writer: "Bronko is the only player I ever saw who ran his own interference."

9. Fred Crawford, Duke—Rated one of the greatest players to ever come out of the South. He made just about every All-America team in 1933 with his slashing, daring play at tackle. Fred had great speed and his specialty was going down on punts.

10. Gaynell Tinsley, Louisiana State—A two-time All-America for the Tigers in 1935-36 and regarded as the best defensive end in the history of LSU football. Tinsley came to LSU on a baseball scholarship, but decided to try football and immediately became a sensation.

11. The Seven Blocks of Granite, Fordham—The most famous defensive line ever assembled. The group played for Fordham in its football heyday of 1935-36-37. Left to right, the rugged Rams were John Druze, Al Barbartsky, Vince Lombardi (later head coach of the World Champion Green Bay Packers), Alex Wojciechowicz, Nat Pierce, Ed Franco and Leo Paquin.

12. Byron (Whizzer) White, Colorado—Now a U. S. Supreme Court Justice, White is a living Colorado legend. Was a 12-letter athlete, Rhodes Scholar and World War II naval intelligence hero. A consensus All-America in 1937 when he led the nation in rushing and scoring.

13. Nile Kinnick, Iowa—Nile was the No. 1 athlete in the U. S. in 1939, winner of most major awards and named on 11 All-America teams. He passed, drop-kicked and ran and was a top scholar, too. Nile died in 1943 in a crash of his fighter plane.

14. Frank Sinkwich, Georgia—Fabulous tailback, winner of Heisman Trophy and one of Georgia's greatest athletes who starred on Orange (1942) and Rose Bowl (1943) teams. Known as Flatfoot Frankie, he still holds SEC total yardage record of 2187.

15. Blanchard and Davis, Army—Mr. Inside and Mr. Outside, Felix (Doc) Blanchard (left) at fullback and

Glenn Davis at halfback, led Army to national championships in 1944-45. Their running and scoring records still stand 20 years later. And both were three-time All-America and Heisman Trophy winners.

16. Charlie (Choo Choo) Justice, North Carolina—The greatest back in Tar Heel football history, a two-time consensus All-America. During 1946-49, he gained more than 5,000 yards running and passing as a tailback, averaged 42.6 yards per punt and scored 39 touchdowns.

17. Vito (Babe) Parilli, Kentucky—Rewrote record books as quarterback of fine Kentucky teams during 1949-51. Completed 331 passes for 4,351 yards and 50 touchdowns while setting four national records. His 50 scoring passes have never been surpassed.

18. George Morris, Georgia Tech—Coach Bobby Dodd calls Morris, without reservation, "the greatest all-around football player I have ever coached." Defensively he was the perfect linebacker. Offensively he was an outstanding blocker at center and the best deep-punt snapper the South has ever seen.

19. Jim Brown, Syracuse—One of the greatest athletes ever to don a uniform at Syracuse, Jim set many school records that weren't toppled until Floyd Little came along. He scored 43 points against Colgate in his senior year and three TDs in 1957 Cotton Bowl. Also sparked Syracuse to an undefeated lacrosse season in 1957.

20. Gary Collins, Maryland—The most brilliant end in Maryland history who was a great pass receiver, blocker, tackler and punter. A fine diagnostician of enemy plays; made at least one superb effort in every game he played. Once blocked three punts in a game.

21. Gale Sayers, Kansas—The greatest ground gainer in Big Eight history, Gale rolled up 2,675 yards in 1962-64 with rushing totals of 1125, 917 and 633. His 99-yard gallop against Nebraska in 1963 is the longest run from scrimmage in conference annals.

22. Charles (Bubba) Smith, Michigan State—A 6-7, 283-pound giant with power and mobility. He was so devastating at defensive end or tackle that entire games passed without a play going his way. Bubba spearheaded famed defensive units on the great 1965 and 1966 Spartan teams.

The Vogue

TALLAHASSEE, FLORIDA

Learn to Fly at
G. C. Shuler
Seminole Flying Service, Inc.

Municipal Airport

Phone 576-5151

Tallahassee, Fla.

- STUDENT CLUBS
- AIRPLANE RIDES
- FLIGHT INSTRUCTION
- AERIAL PHOTOGRAPHY
- CHARTER FLIGHTS
- AIRCRAFT RENTAL

FLY the best—A New Cessna

"Look up—a new CESSNA will be overhead"

Your
University Union



CAMPUS HEADQUARTERS FOR
Programs ★ Services ★ Facilities
FOR ALL CAMPUS INFORMATION
CALL THE UNION
599-3317



**TIME!
OUT!**

FOR
YOUR FAVORITE

**Meal
or
Snack**

AFTER THE GAME AT
THE **UNIVERSITY UNION**
FSU FOOD SERVICE

Go Seminoles

OWNED AND OPERATED BY FRANK, RICHARD & RAYMOND CHASE


Skyline
RESTAURANT
2220 W. TENNESSEE ST.
TALLAHASSEE, FLORIDA

"Serving Good Food for Fine People"

FREE PARKING

Private Rooms and Banquet Facilities

FOR RESERVATIONS CALL: 576-2515 — 576-9135



KNEELING (left to right): Cherry Hand, Dixie Wilcoxn and Jan Berry.

STANDING: Bruce Turner, Jim Sharp, Dave Deutsch (Captain).

THE ALMA MATER

High o'er the towering pines our voices swell
Praising these Gothic spires we love so well;
Here sons and daughters stand . . .
Faithful and True, Hailing our Alma Mater
F . . . S . . . U . . .

FSU FIGHT SONG*

You're going to FIGHT, FIGHT, FIGHT for FSU
You're going to scalp 'em Seminoles.
You're going to WIN, WIN, WIN, WIN,
WIN this game . . . and roll
on down and make those goals!
For FSU is on the warpath now, and at
the battle's end she's great . . .
So FIGHT, FIGHT, FIGHT, FIGHT for victory
The Seminoles of Florida State . . .
F-L-O-R-I-D-A S-T-A-T-E
FLORIDA STATE (3 times)

HYMN TO THE GARNET AND GOLD

Here's a hymn to the Garnet and the Gold
Ringing to the sky.
Here's a song for our men and women bold
Sing with heads held high.
Striving e'er to seek, to know,
Fight for victory.
Alma Mater, this, our song to you,
Echoes FSU.



REMEMBER THE DAY WITH PICTURES !!

For All Of Your Photographic Needs Remember

TALLAHASSEE CAMERA CENTER

117 NORTH MONROE STREET

Across From The Florida Theater

CAMERAS • FILM • BINOCULARS • RECORDERS • RENTALS

Fast, Fast, Black & White and Color Processing

STADIUM INFORMATION

Rest Rooms—Located on concourse and on ground level on both east and west sides.

First Aid—Located in southwest corner of stadium. Registered nurse on duty.

Lost and Found: Items may be claimed or turned in at the ticket booth next to the press box elevator, west side.

Public Telephones: Located ground level, west side.

Public Address: No special announcements are made over the stadium public address system except in cases of emergency.

Field Regulations: No spectators are allowed on the field, either during or after the game. Please leave the stadium by ramp and section exits rather than field level exits.

Drive Carefully—Your cooperation with law enforcement officers will help speed the flow of traffic away from the stadium.

Miller CHEVROLET COMPANY

Havana, Florida

539-6376

15 Miles North of Tallahassee

on U. S. 27

Phone Toll Free

224-1317

See WAKULLA SPRINGS
through Glass Bottom Boats
JUST 14 MILES SOUTH OF TALLAHASSEE

WAKULLA SPRINGS

N.C. STATE V.P.I. RED RAIDERS GAME COCKS MAROONS

Special Rates To Visiting Teams, Bands And Groups

"While in Tallahassee Before the Falling Sun Be sure and see Wakulla Springs No matter who has won"

Sammy Seminole

"THE WORLD'S LARGEST AND DEEPEST SPRING"

BASIC DEFENSE

RIGHT SAFETY
26 ART McMAHON
42 FRED COMBS

RIGHT CORNERBACK
42 FRED COMBS
23 PAUL REID

LEFT CORNERBACK
41 BILL MORROW
22 DICKIE IDOL

LEFT SAFETY
15 GREG WILLIAMS
46 GARY YOUNT

RIGHT END
82 MARK CAPUANO
81 BENNY LEMMONS

RIGHT TACKLE
75 TRENT HOLLAND
70 RON CARPENTER

RIGHT LINEBACKER
55 MIKE HILKA
52 STEVE DIACONT

MIDDLE GUARD
62 TERRY BROOKSHIRE
61 JOHN PEROTTI

LEFT LINEBACKER
33 CHUCK AMATO
31 PETE BAILEY

LEFT TACKLE
77 DENNIS BYRD
74 ART HUDSON

LEFT END
88 PETE SOKALSKY
80 BOB FOLLWEILER

LEFT END
82 LANE FENNER
27 BILL COX

LEFT TACKLE
76 JACK FENWICK
77 JEFF CURCHIN

LEFT GUARD
52 WAYNE McDUFFIE
63 RICHARD McLEAN

CENTER
55 TED MOSLEY
66 KEN HART

RIGHT GUARD
68 LARRY PENDLETON
64 STAN WALKER

RIGHT TACKLE
75 BILLY RHODES
78 WAYNE JOHNSON

RIGHT END
83 THURSTON TAYLOR
84 CHIP GLASS

BASIC OFFENSE

HALFBACK
20 LARRY GREEN
31 BILL GUNTER

QUARTERBACK
11 KIM HAMMOND
16 GARY PAJCIC

FULLBACK
30 BILL MOREMEN
44 JOHN PITTMAN

FLANKER
34 RON SELLERS
19 PHIL ABRAIRA

BASIC DEFENSE

RIGHT SAFETY
22 CHUCK EASON
18 CLINT BURTON

RIGHT CORNERBACK
28 T. K. WETHERELL
17 MIKE PAGE

LEFT CORNERBACK
24 WALT SUMNER
15 TOMMY WARREN

LEFT SAFETY
41 JOHN CROWE
43 HOWELL MONTGOMERY

RIGHT END
89 BOB MENENDEZ
80 DOUG GURR

RIGHT TACKLE
57 JOE KINNAN
72 RANDY LOGAN

RIGHT LINEBACKER
40 MIKE BLATT
61 CHUCK ELLIOTT

MIDDLE GUARD
67 MIKE BUGAR
57 JOE KINNAN

LEFT LINEBACKER
50 DALE McCULLERS
47 JOE BENSON

LEFT TACKLE
79 FRANK VOHUN
71 HARVEY ZION

LEFT END
85 FLOYD RATLIFF
88 JERRY JONES

TIGHT END
86 DON DONALDSON
89 CHARLES TOPE

LEFT TACKLE
76 LLOYD SPANGLER
79 DICK CHAPMAN

LEFT GUARD
66 NORMAN CATES
67 ROBBY EVANS

CENTER
54 CAREY METTS
50 JOHN McDUFFIE

RIGHT GUARD
63 FLAKE CAMPBELL
68 DON JORDAN

RIGHT TACKLE
78 STEVE WARREN
73 MARVIN THARP

RIGHT END
84 HARRY MARTELL
85 WAYNE LEWIS

BASIC OFFENSE

WINGBACK
34 BOBBY HALL
21 JIMMY LISK

HALFBACK
35 TONY BARCHUK
25 LEON MASON

QUARTERBACK
14 JIM DONNAN
16 JACK KLEBE

FULLBACK
36 SETTLE DOCKERY
30 CHARLIE BOWERS

NORTH
CAROLINA
STATE

FLORIDA
STATE

NORTH
CAROLINA
STATE

- RCA COLOR TV IN ROOMS
- POOL
- Northwest corner of Campus on U.S. 90; Fla. 20 West



DRIFTWOOD MOTEL and RESTAURANT

AMERICAN EXPRESS - DINERS - AMERICAN OIL CREDIT CARDS HONORED

- AIR CONDITIONED
- DIRECT DIAL PHONES
- Se habla Espanol

1402 W. TENN. U.S. 90

(904) 224-4174 (TWX904) 224-6510

1967 FLORIDA STATE FOOTBALL ROSTER

No.	Name	Pos.	Class	Age	Hgt.	Wgt.	Hometown
11	Kim Hammond	QB	Sr.	23	6-1	190	Melbourne
12	Phil Hiatt	QB	So.	21	6-4	190	Tipp City, Ohio
14	Bill Cappleman	QB	So.	20	6-3	205	Dunedin
15	Tommy Warren	QB-DB	So.	19	6-1	185	Miami
16	Gary Pajcic	QB	Jr.	20	6-2	192	Jacksonville
17	Mike Page	DB	So.	20	5-10	175	Winter Haven
18	Clint Burton	DB	Jr.	20	6-2	180	Atlanta, Ga.
19	Phil Abaira	E	So.	19	6-0	180	Ft. Lauderdale
20	Larry Green	HB	Sr.	22	5-10	173	Cairo, Ga.
21	Donovan Jones	FB	Sr.	22	6-1	206	Lakeland
22	Chuck Eason	DB	Jr.	20	5-10	195	Tallahassee
24	Walt Sumner	DB	Jr.	20	6-1	172	Ocala, Ga.
26	Hal Hodges	DB	So.	19	5-9	161	Tallahassee
27	Billy Cox	E	Jr.	20	6-1	182	Atlanta, Ga.
28	T. K. Wetherell	DB	Sr.	22	5-10	185	Daytona Beach
29	Chuck Pickens	DB	So.	21	5-10	190	Etowah, Tenn.
30	Bill Moremen	HB-FB	Sr.	22	5-11	188	Daytona Beach
31	Bill Gunter	HB	Jr.	21	6-0	171	Dothan, Ala.
32	Ed Chereshkoff	HB	So.	19	5-10	188	Hollywood
33	Grant Guthrie	PK-FB	So.	19	6-0	207	Claymont, Del.
34	Ron Sellers	FL	Jr.	20	6-4	187	Jacksonville
35	Mike Gray	FL	So.	19	6-3	190	Lake Mary
40	Mike Blatt	LB	Sr.	21	5-11	203	Key West
41	John Crowe	DB	Jr.	20	6-2	173	St. Cloud
42	Bill Cheshire	P-E	So.	19	6-0	183	Odum, Ga.
43	Hal Montgomery	DB	Jr.	20	5-11	176	Bountstown
44	John Pittman	FB	Jr.	21	5-9	195	Brunswick, Ga.
46	Charlie Huggins	DB	So.	20	6-1	194	Mims
47	Joe Benson	LB	Jr.	22	5-10	197	Birmingham, Ala.
49	Terry Eagerton	FB	So.	20	5-10	190	Jacksonville
50	Dale McCullers	LB	Jr.	20	6-2	200	Live Oak
51	Billy Hughes	C	So.	19	6-1	221	Rockledge
52	Wayne McDuffie	C-G	Sr.	23	6-2	223	Hawkinsville, Ga.
54	Ron Montford	MG	So.	19	6-0	195	Bountstown
55	Ted Mosley	C	Jr.	20	6-2	202	Tampa
56	Henry Lohse	G	So.	20	6-3	203	St. Petersburg Beach
57	Joe Kinnan	T	Sr.	22	6-0	206	Bradenton
58	Rich Jones	T	Jr.	21	6-0	203	River Vale, N. J.
59	Frank Loner	PK	Jr.	21	6-0	196	Atlanta, Ga.
60	Barry Rice	LB	So.	19	6-1	188	Fernandina Beach
61	Chuck Elliott	LB	Jr.	21	6-0	197	Troy, Ohio
62	Beryl Rice	LB	So.	19	6-1	186	Fernandina Beach
63	Richard McLean	G	Jr.	21	6-0	189	Holly Hill
64	Stan Walker	G	So.	19	6-2	210	Tallahassee
65	Billy Dew	T	So.	20	6-2	210	Apopka
66	Ken Hart	C-G	Jr.	21	6-3	217	Groveland
67	Mike Bugar	MG	Jr.	21	5-10	206	Youngstown, Ohio
68	Larry Pendleton	G	Jr.	21	6-0	206	Winter Garden
70	Tony Sewell	T	So.	21	6-5	220	Union Springs, Ala.
71	Harvey Zion	T	Jr.	20	5-11	212	Atlanta, Ga.
72	Randy Logan	T	Jr.	22	6-1	230	Seal Beach, Calif.
73	Duke Johnston	T	So.	19	6-2	229	Ft. Lauderdale
75	Billy Rhodes	T	Jr.	21	6-2	245	Eustis
76	Jack Fenwick	T	Jr.	21	6-4	225	Norwood, Ohio
77	Jeff Curchin	T	So.	19	6-6	247	Ocala
78	Wayne Johnson	T	So.	20	6-3	230	Macon, Ga.
79	Frank Vohn	T	So.	20	6-3	223	Brooksville
80	Doug Gurr	DE	Jr.	20	6-2	195	Albany, Ga.
81	Jim Tyson	E	So.	19	6-1	188	Pahokee
82	Lane Fenner	FL	Sr.	21	6-5	202	Evansville, Ind.
83	Thurston Taylor	E	Sr.	21	6-2	222	Atlanta, Ga.
84	Chip Glass	FB	Jr.	20	6-4	225	Tampa
85	Floyd Ratliff	DE	So.	19	6-4	195	Jesup, Ga.
86	Randy Hall	E	So.	19	6-4	187	Homestead
87	Bill Yeldell	E	So.	20	6-1	190	Jacksonville
88	Jerry Jones	DE	Sr.	22	6-1	193	Jesup, Ga.
89	Bob Menendez	DE	Sr.	22	5-10	195	Key West

1967 NORTH CAROLINA STATE FOOTBALL ROSTER

No.	Name	Pos.	Class	Age	Hgt.	Wgt.	Hometown
14	*Jim Donnan	QB	Sr.	22	6-1	195	Burlington
15	*Greg Williams	S	Sr.	21	5-11	193	Danville, Pa.
16	Jack Klebe	QB	Jr.	20	5-11	185	Cornwell Heights, Pa.
19	Art Waleski	QB	So.	21	6-2	207	Bassett, Va.
20	Jim Hardin	HB	So.	19	5-10	176	East Point, Ga.
21	Jimmy Lisk	WB	Jr.	21	6-1	185	Norwood
22	Dickie Idol	CB	So.	20	6-0	180	Kernersville
23	Paul Reid	DB	Jr.	22	6-0	176	Avon-by-the-Sea, N. J.
25	Leon Mason	HB	Jr.	20	5-11	175	Washington
26	*Art McMahon	DB	Sr.	21	6-0	187	Carteret, N. J.
30	Charlie Bowers	WB	So.	19	6-1	200	Thomasville
31	Pete Bailey	LB	So.	20	5-10	192	Milledgeville, Ga.
32	Ron Watkins	FB	Jr.	21	6-1	201	Black Mountain
33	*Charles Amato	LB	Sr.	21	5-10	216	Easton, Pa.
34	*Bobby Hall	FB	Jr.	20	6-2	204	Plymouth
35	*Tony Barchuk	HB	Sr.	21	6-0	209	Brooklyn, N. Y.
36	Settle Dockery	FB	Jr.	21	5-9	209	Rockingham
41	*Bill Morrow	CB	Sr.	22	5-11	177	S. Williamsport, Pa.
42	*Fred Combs	CB	Sr.	21	5-10	185	Hertford
45	Gerald Warren	K	Jr.	20	6-0	167	Elizabeth City
46	Gary Yount	DB	So.	20	6-1	184	Newton
50	*John McDuffie	C	Jr.	21	6-0	213	East Point, Ga.
52	Steve Diacont	LB	So.	20	6-0	210	Easton, Pa.
53	Lou Biega	C	So.	19	5-11	209	Aliquippa, Pa.
54	*Carey Metts	C	Jr.	21	6-1	220	Greensboro
55	Mike Hilka	LB	So.	20	6-2	202	McKees Rock, Pa.
62	*Terry Brookshire	MG	Sr.	22	5-10	214	Enka
63	*Flake Campbell	G	Sr.	21	5-11	210	Charlotte
66	*Norman Cates	G	Sr.	21	5-10	220	Morehead City
67	Robby Evans	G	So.	20	6-1	199	Raleigh
68	Don Jordan	G	So.	19	6-0	230	Tucker, Ga.
70	Ron Carpenter	DT	So.	19	6-6	257	Thomasville
72	Ed Nicholas	T	So.	19	6-4	219	Warren, N. J.
73	Marvin Tharp	T	So.	20	6-0	217	Vineland, N. J.
74	Art Hudson	DT	So.	20	6-4	247	Camden, S. C.
75	*Trent Holland	DT	Sr.	22	6-2	219	Clinton
76	*Lloyd Spangler	T	Sr.	22	6-0	225	Richmond, Va.
77	*Dennis Byrd	DT	Sr.	21	6-4	260	Lincolnton
78	*Steve Warren	T	Sr.	21	6-1	224	Lincolnton
79	Dick Chapman	T	Jr.	20	6-2	230	Sanford
80	Bob Follweiler	DE	So.	20	6-1	200	Allentown, Pa.
81	*Benny Lemmons	DE	Jr.	20	6-2	229	Gaffney, S. C.
82	*Mark Capuano	DE	Jr.	21	6-2	200	Neville Island, Pa.
83	Kelly Jones	E	So.	20	6-2	205	Albemarle
84	*Harry Martell	E	Sr.	22	6-1	207	Penns Grove, N. J.
85	Wayne Lewis	E	So.	20	6-5	205	Aberdeen
86	*Don Donaldson	E	Sr.	22	6-2	213	Saxton, Pa.
88	*Pete Sokalsky	DE	Sr.	22	6-1	211	Allentown, Pa.
89	Charles Tope	E	So.	20	6-2	216	Aiken, S. C.

* Denotes Lettermen

- RCA COLOR TV IN ROOMS
- POOL
- Northwest corner of Campus on U.S. 90; Fla. 20 West



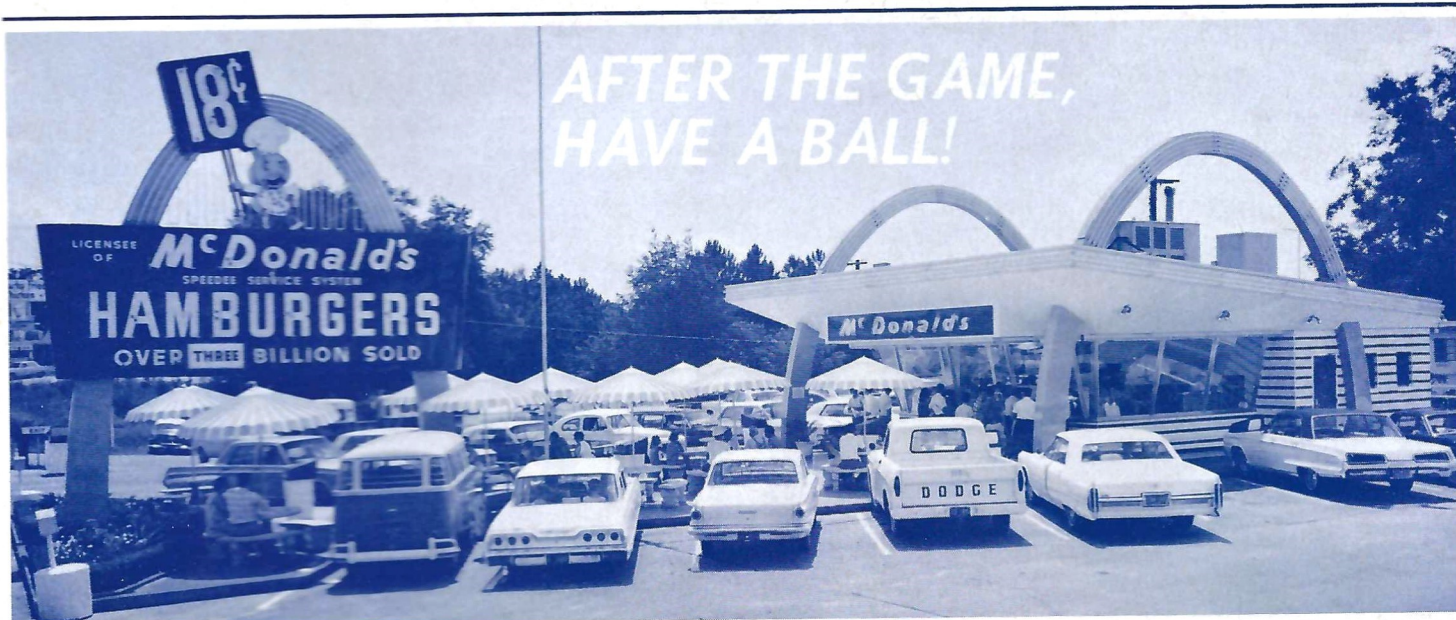
DRIFTWOOD MOTEL and RESTAURANT

AMERICAN EXPRESS - DINERS - AMERICAN OIL CREDIT CARDS HONORED

- AIR CONDITIONED
- DIRECT DIAL PHONES
- Se habla Espanol

1402 W. TENN. U.S. 90

(904) 224-4174 (TWX904) 224-6510



MENU

WORLD'S MOST DELICIOUS HAMBURGERS
CHEESEBURGERS WITH MELTED CHEDDAR
DOUBLE HAMBURGERS & CHEESEBURGERS
DEEP SEA FILET 'O FISH SANDWICHES
FRESH IDAHO FRENCH FRIES • COFFEE
COKE • ROOT BEER • ORANGE • MILK
CREAMY MILK SHAKES (THREE FLAVORS)
HOT CHOCOLATE (WINTER) • APPLE PIE

McDonald's



1701 WEST TENNESSEE STREET (HWY. 90) NEAR SEMINOLE COUNTRY

THE CLOSEST THING TO HOME • LOOK FOR THE GOLDEN ARCHES

Tallahassee's Most Exclusive
Steak House

the Silver Slipper



RESTAURANT



DELICIOUS CHARCOAL BROILED STEAKS

SEA FOODS CHICKEN

25 PRIVATE DINING ROOMS — BANQUET ROOM SEATING 100

CALL JIMMIE OR CHRIS
KALFAS FOR RESERVATIONS
FOR PRIVATE PARTIES
AND BANQUETS

224-1266

OPEN 5 P.M. TILL 11:30
OPEN EVERYDAY & SUNDAY

2000 S. MONROE • One Mile From Capitol On So. Monroe St. U.S. 319 S.
BEHIND S.&S. PACKAGE STORE



New Chevrolet Impala, foreground. Chevelle Concours, top right. Camaro, "The Hugger," top left.



'68 Chevrolets

Dramatic!
Distinctive!
Daringly new!

Expect a lot of never-befores and nice-to-haves from Chevrolet for 1968. You can count on nothing being newer. Formal and fastback roof lines. Elegant new interiors with exciting colors, fabrics, and easy-to-reach instruments. Concealed headlights, Hide-A-Way windshield wipers, and refreshing Astro Ventilation, available on many models.

NEW SILENT RIDE.

More effective body and engine mounts, quieter exhaust systems, and further improved shock absorbers. The result? Every new Chevrolet rides incredibly smooth and silent.

NEW MODELS, TOO.

Like the elegant Impala Custom Coupe and rugged new Chevelle Nomad Station Wagons. For the serious sports fan, there's the completely re-styled Corvette Sting Ray, and the Chevelle SS 396 with long-hood short-deck styling and a wider wheel

stance to make it cling to the road better. Camaro, "The Hugger," features Astro Ventilation, and special hood on all SS models. What's more, there's a larger 307-cubic-inch V8 standard on Chevrolet, Chevelle and Chevy II models for '68. And on automatic transmission models, there's even a built-in heater that warms air en route to the carburetor and increases engine efficiency during cold weather. The new GM exhaust emission control is standard.

PROVED SAFETY FEATURES.

The famous proved GM-developed energy absorbing steering column and many other popular safety items are back again. Plus new features like energy absorbing front seat backs, safety armrests that shield door handles, padded windshield pillars, and seat belts for all passenger positions. Be smart. Be sure. Buy now at your Chevrolet dealer's.



Free! Get Chevrolet's 60-page College Football Handbook

Chevrolet's College Football Handbook contains a complete run-down on all the top teams, plus action photographs and inside stories by famous sports commentators. You'll also find the schedules and line-ups of all 33 NCAA games to be televised this fall. It's yours for the asking at your Chevrolet dealer's.

