

**LEGISLATIVE
and
BAND DAY**

**FLORIDA STATE
VS.
SOUTH CAROLINA**

**DOAK S. CAMPBELL STADIUM
Tallahassee, Florida**

**Official
Program
50c**

October 14, 1967



HAMS • BACON • SAUSAGE • WIENERS

FROSTY MORN MEATS

Florida State University . . .

In This Issue . . .

Today's Game	4
Florida's Governor	5
Florida State University's President	7
University Feature	8
Statistics	10
State Officials	11
University Athletic Board	12
Teddy and the NCAA	13
Guest Column: Tom Price, University of South Carolina	14
Football Family	15
Florida State Players	16
Composite Schedule—Florida State 1967 Opponents	20
1967 Seminoles	21
Referee's Signals	22
Today's Starting Line-ups	25
Penalties	27
Florida State's Records	28
Sammy Seminole	29
Florida State Freshman Football Team	30
Seminole Boosters, Inc.	32
Dedication: Mode L. Stone	35
South Carolina	36
Seminole Radio Network	38
The Marching Chiefs	40
Florida State Cross Country Team	41
Cheerleaders	43
Stadium Information	44
Rosters, Depth Chart	45



Florida State's 1967 Football Schedule

HOME

Sept. 30 N.C. State (7:30)
 Oct. 14 South Carolina (2:00)
 Oct. 21 Texas Tech* (2:00)
 *Homecoming
 Oct. 28 Miss. State (7:30)
 Nov. 11 Virginia Tech (7:30)

AWAY

Sept. 15 Houston (7:30 CST)
 Sept. 23 Alabama (7:15 CST)
 at Birmingham
 Oct. 7 Texas A&M (7:30 CST)
 Nov. 4 Memphis State (1:00 CST)
 Nov. 25 Florida (2:00)

*Compliments and
Best Wishes from*



**YOUR APPLIANCE
HEADQUARTERS
611 N. Monroe St.**

OFFICIAL WATCH FOR THIS GAME



LONGINES

THE WORLD'S
MOST HONORED
WATCH®

10 world's fair grand prizes
28 gold medals



Longines watches are recognized as OFFICIAL for timing world championships and Olympic sports in all fields throughout the world.



Longines Ultra-Chron #8205, automatic with calendar, \$175.
Other Ultra-Chron Models, \$150 to \$595.

the fabulous new LONGINES ULTRA-CHRON

Guaranteed Accurate To A Minute A Month

The ultimate personal chronometer, guaranteed accurate to a minute a month — a mean average of 2 seconds per day. Ultra-Chron tells the date, hour, minute, second. Never needs batteries. Winds automatically while you wear it. All-Proof® construction defeats water, dust, shock, magnetism. At Longines-Wittnauer Franchised Jewelers, coast-to-coast.

LONGINES-WITNAUER WATCH CO.

MONTREAL • NEW YORK • GENEVA

Maker of Watches Of The Highest Character
For Over A Century

Today's Game

By **LONNIE BURT**

Florida State Sports Information Director



Today's Florida State - South Carolina contest has an interesting angle. The Gamecocks, boasting a 3-1 record, hasn't had a touchdown scored against them through the air all fall.

On the other hand, all but two of the Seminoles' TDs have been through the airplanes.

This is Coach Paul Dietzel's second year as Gamecock boss and South Carolina, which won only once in 1966, is on the way back.

The Seminole opponent opened with a 34-3 victory over Iowa State and followed with victories over North Carolina (16-10) and Duke (21-17) before bowing to powerful Georgia last Saturday 21-0.

Even in defeat, the Gamecocks held Georgia to a pair of first downs in the opening half, one being an 87-yard touchdown run on a busted play.

This is Florida State's second home game. The Seminoles picked up their first victory last Saturday night with a comeback 19-18 thriller over Texas A&M at College Station in the rain.

Florida State depends primarily on a passing game, although the Seminoles' running game was vastly improved against the Aggies. South Carolina's pass defense is one of its stronger suits so this pits strength against strength.

The Seminoles have been up near the top since the Alabama game in passing offense and quarterback Kim Hammond is near the leader in passing and total offense.

This will be the second meeting between Florida State and the Gamecocks, the Seminoles taking last year's tussle 32-10 at Columbia, S. C.

Fullback Warren Muir, a transfer from West Point, has made the big difference in South Carolina's attack this season. The 197-pound fullback, who dropped out of the Academy to get married, has picked up 391 yards in 91 carries. During the entire 1966 season, South Carolina fullbacks were able to gain only 70 yards.

Wingback Ben Garnto is a name the Seminoles should remember from last year's game. He sparked the Gamecocks to their only touchdown and finally carried it over from the one.

The Gamecocks should recall Seminole fullback Billy Moremen since the Daytona Beach senior counted three times in last year's victory.

Florida State's chances ride with its defense — which showed a big improvement in last week's triumph over Texas A&M.



CLAUDE R. KIRK, JR.
GOVERNOR

STATE OF FLORIDA
OFFICE OF THE GOVERNOR
TALLAHASSEE



Dear Football Fan:

A cordial welcome to Tallahassee's Doak Campbell Stadium, home of Florida State University's football Seminoles.

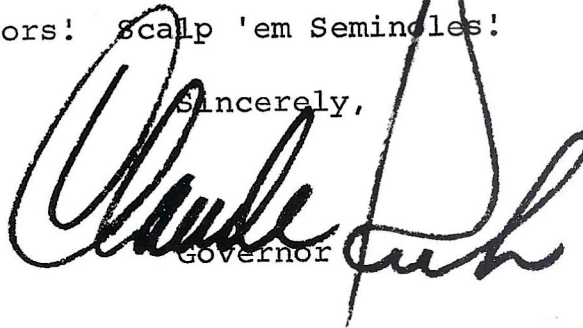
The rise to football prominence in the past six years by our Seminoles coincides with the similar ascendancy by the state of Florida as the sports capital of the world.

We are truly and justifiably proud of Coach Bill Peterson and his staff for the marvelous job they have done in making Florida State University one of the most respected independent football powers in the nation.

As Governor of Florida, I extend a warm welcome to our visitors, and we intend to be impeccable hosts, except for about two hours on the gridiron.

Welcome, visitors! Scalp 'em Seminoles!

Sincerely,


Governor

CRK/lw

"You meet the nicest people on a

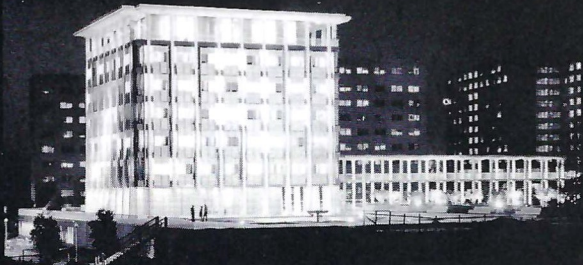
H O N D A

World's largest seller"



HONDA OF TALLAHASSEE

At the Underpass on West Tennessee



FLORIDA STATE

is a coeducational, state-supported institution of higher learning.

Founded in 1857, Florida State has transformed in the one short score of years since it became coeducational (1947) from a strong liberal arts college for women to a University of demonstrated national stature.

Nearly 16,000 students are presently enrolled in the university's 10 Colleges and Schools (Arts and Sciences, Education, Home Economics, Music, Librarianship, Business, Social Welfare, Nursing, Engineering Science, and Law). By 1975 this figure is expected to reach 28,000.

Characterized by phenomenal growth in new programs, enrollments, and constant physical expansion of the campus the University's spirit of excellence has led to Florida State's great pride in All-Americans (Fred Biletnikoff, 1964), its share of the 1966 Nobel Prize Winner in Chemistry, (Dr. Robert S. Mulliken) and its contribution to the U.S. Astronauts (Dr. Anthony Llewellyn). It is this same spirit that makes every football game and every research project a testing-ground for innovation and a proving-ground for the time-honored theories of education.



DR. JOHN E. CHAMPION
PRESIDENT

One of a growing number of young university presidents in America, Dr. John E. Champion at 45 is the youngest of 10 chief executives in the University's 110-year history, and the fourth distinguished educator to serve as fulltime president of the University since it achieved university status in 1947.

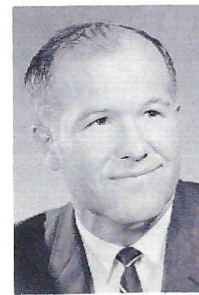
Before ascending to the University's presidency on June 22, 1965, Dr. Champion had served as a professor in accounting, assistant dean of the School of Business and as the University's first Vice President for Administration.

Among the expanding list of honors accorded to Dr. Champion in his teaching and administrative careers at the University of Georgia (1948 to 1956) and at Florida State are memberships in Phi Beta Kappa, Phi Kappa Phi, Beta Gamma Sigma, Omicron Delta Kappa, Gold Key, Alpha Phi Omega, Beta Alpha Psi, Delta Sigma Pi and Kappa Delta Pi. Active in numerous campus organizations at Florida State, he served as president of the Alpha of Florida Chapter of Phi Beta Kappa in 1961-62.

A recent honor to come his way is the Republic of Panama's award of the Grand Cross of the Order of Vasco Nunez de Balboa—recognizing his contributions and leadership in Florida State's student and faculty exchange program with the National University of Panama.



DR. ODELL WALDBLY
Vice President for
Administration



DR. JOHN J. CAREY
Vice President for
Student Affairs



**DR. E. LAURENCE
CHALMERS, JR.**
Vice President
Academic Affairs

● **COLLEGE OF ARTS AND SCIENCES** — Serving the state and nation by providing new knowledge in the humanities, the social sciences and the natural sciences through dedicated teaching, research and service . . . Providing broadly educated yet highly trained students, at both the undergraduate and graduate levels, capable of meeting the demands and challenges of a growing and expanding society.

● **SCHOOL OF BUSINESS** — Offering professional education for business leadership in the fields of Accounting, Finance, Management, Marketing, Risk and Insurance, Hotel and Restaurant Administration and Multinational Business Operations.

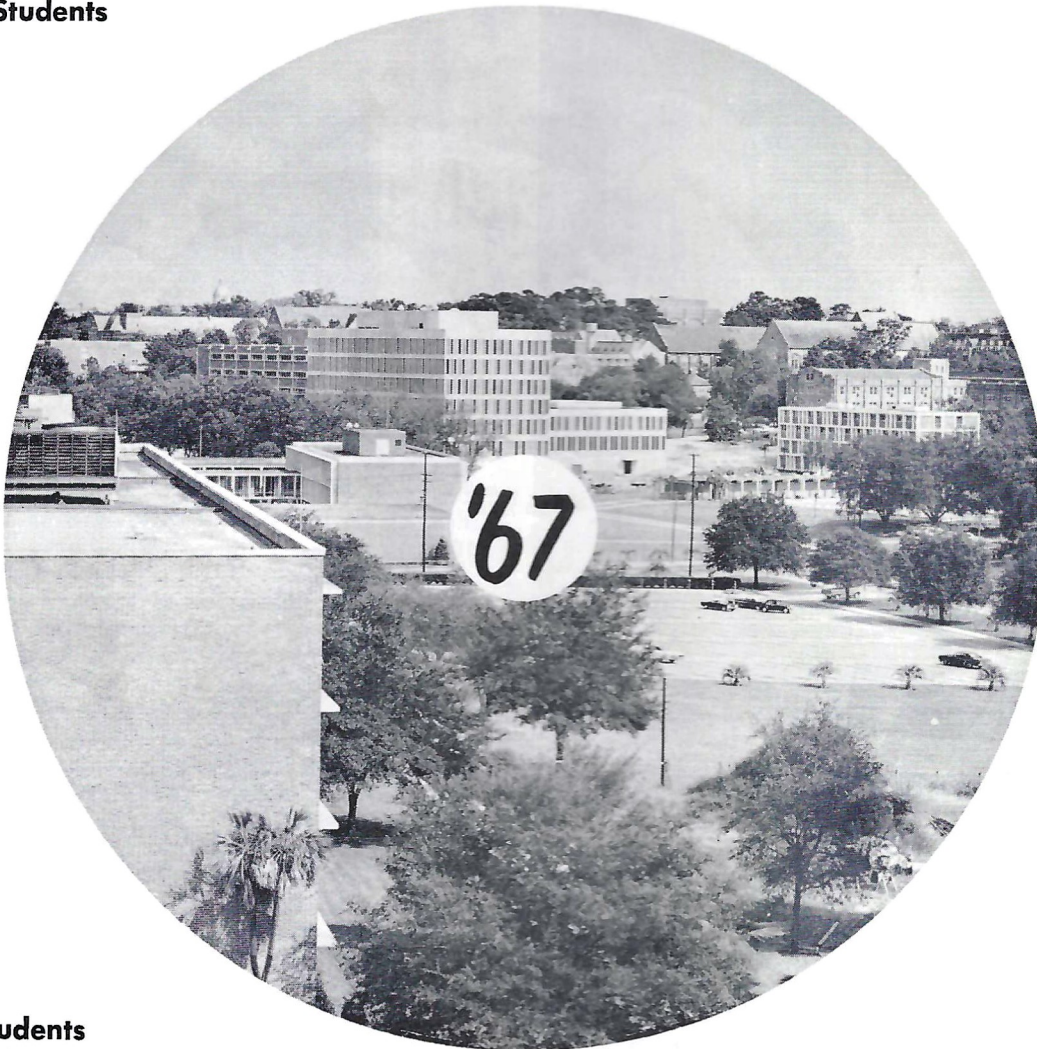
● **SCHOOL OF ENGINEERING SCIENCE** — Training elite research-scientists for the nation's continuing venture into space — in Astronautics, Electronics, Materials and Systems Sciences.

'67 15,407 Students

'57 7,203

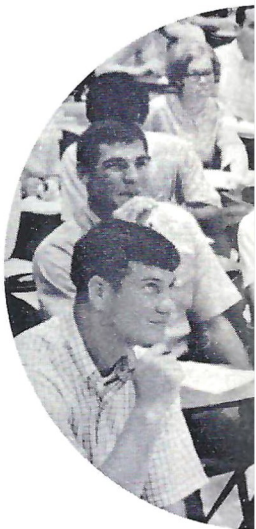
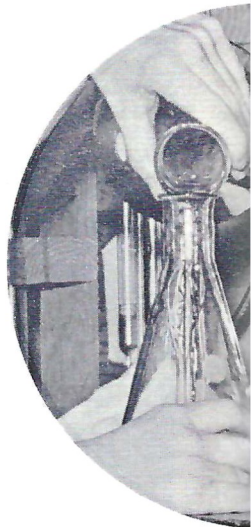
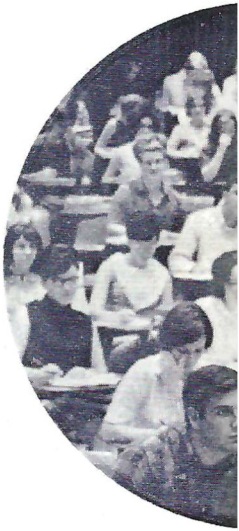
'47 4,404 Students

● **COLLEGE OF EDUCATION** — Producing the largest annual number of teachers in the Southeast, for the nation's schools and colleges . . . Training special service personnel for elementary, secondary and higher education systems . . . Providing professional services to the state's teachers . . . Applying the benefits of curriculum research in classrooms at home and abroad . . . Innovating, disseminating and implementing new teaching methods.



FLORIDA STATE

● **COLLEGE OF LAW** — Making significant strides in education and service to the legal profession . . . Adding the sophomore law courses to its curriculum this year, and 160 top freshmen from a field of 1,000 prospects.



FLORIDA STATE

Bachelor's Degrees – 94 Subjects

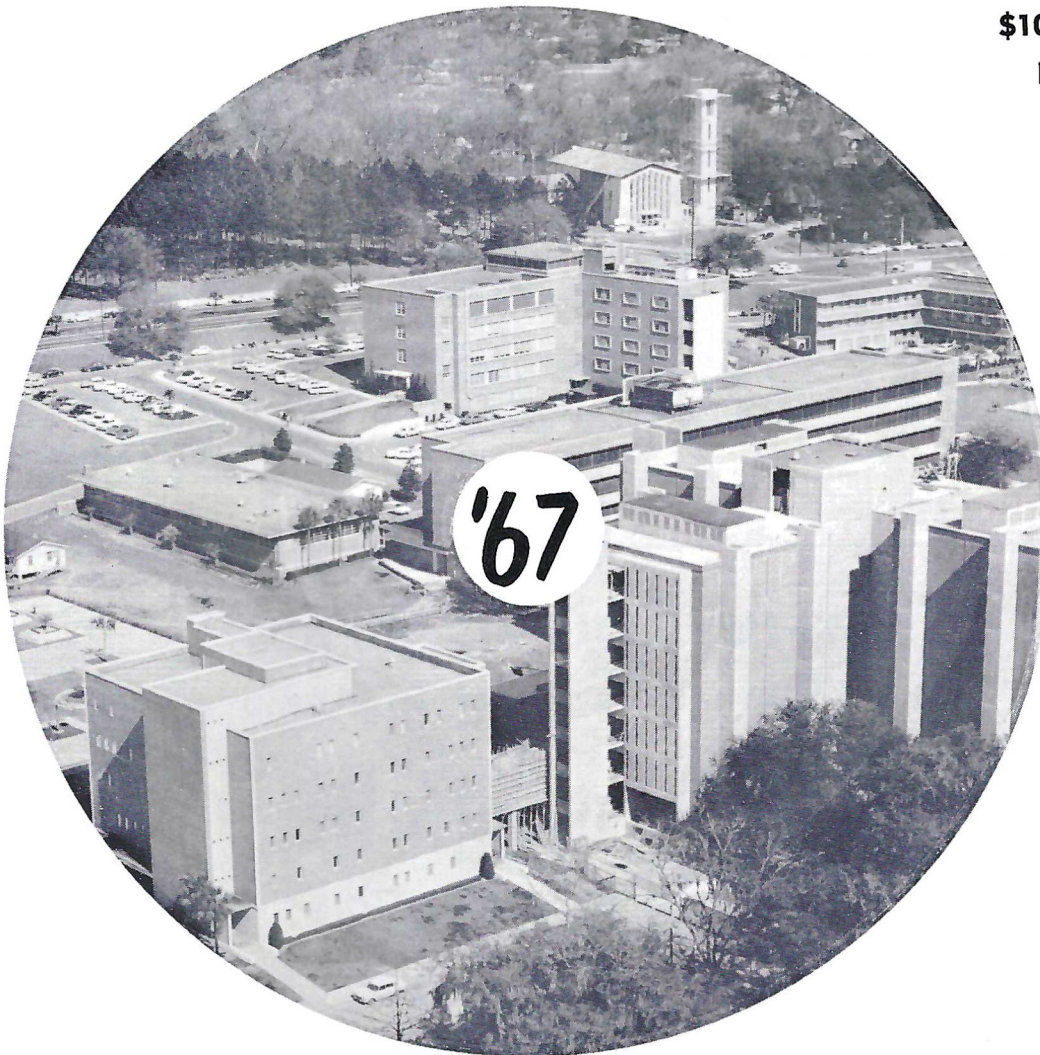
Master's Degrees – 95 Majors

Doctorates – 43 Fields

SERVING FLORIDA SINCE 1857

● **LIBRARY SCHOOL** – Specializing in postgraduate training for automated libraries of the future . . . Preparing students for service in academic, special, public and school libraries . . . Researching the state's needs for computerized resource centers and modern methods of storing and retrieving knowledge.

\$10 Million '67
Per Year
In
Research



\$1.2 Million '57

\$00 '47

● **SCHOOL OF HOME ECONOMICS** – Looking ahead to the 21st Century's worldwide problems of housing, feeding and clothing millions of people . . . Training experts for tomorrow's fashions, families and foods.

● **SCHOOL OF MUSIC** – Making substantial contributions to the nation's corps of composers, artists and educators . . . Recognized as one of the half-dozen major music schools in the country and the home of fine arts in Florida.

● **SCHOOL OF NURSING** – Utilizing television to improve statewide instruction in basic nursing skills . . . Using U. S. Public Health Service funds to produce 40 video tapes for distribution to 24 Florida institutions.

● **SCHOOL OF SOCIAL WELFARE** – Combatting the country's welfare and crime problems by training critically needed welfare and social workers, marriage counselors, criminologists and corrections personnel.

TODAY'S TEAMS

RECORD TO DATE

FLORIDA STATE (1-2-1)			
13	Houston		34
37	Alabama		37
10	N. C. State		20
19	Texas A&M		18
SOUTH CAROLINA (3-1-0)			
34	Iowa State		3
16	N. Carolina		10
21	Duke		17
0	Georgia		21

TEAM STATISTICS

FSU		USC
70	First Downs	66
394	Yards Rushing	599
840	Yards Passing	488
1231	Total Yards	1087
129	Atts. Rushing	197
155	Passes Attempted	86
75	Passes Completed	41
11	Passes Had Intercepted	7
7	Fumbles Lost	3

INDIVIDUAL STATISTICS

FLORIDA STATE

RUSHING					RECEIVING			
Name	Att.	Yds.	Avg.		Name	No.	Yds.	TD
Moremen	38	141	3.7		Sellers	26	379	3
Green	39	135	3.2		Taylor	18	198	1
Hammond	36	90	2.5		Glass	7	66	0
					Cox	5	57	1

PASSING					SCORING			
Name	Att.	Cp.	Int.	Yds.	TD	PAT	FG	TP
Hammond	112	62	6	708	6			
Pajcic	40	12	4	122	1			

SOUTH CAROLINA

RUSHING				RECEIVING			
Name	Att.	Yds.	Avg.	Name	No.	Yds.	TD
Muir	91	391	4.3	Zeigler	18	179	0
Garnto	34	87	2.6	Reeves	9	125	0
Reeves	7	48	6.9	Gregory	5	54	0

PASSING					SCORING			
Name	Att.	Cp.	Int.	Yds.	TD	PAT	FG	TP
Fair	80	38	7	454	0			

THE SOUND SHOP

"Southeast's Finest In Audio"

2234 S. Monroe, Tallahassee, Fla.
Ph. 222-2443

806 W. Broad, Albany, Ga.
Ph. 435-6800

FRANCHISED DEALERS FOR:

Aztec
 Borg Warner
 Dual
 Dyna
 Fisher
 Garrard
 Harmon-Kardon
 J. B. Lansing

Koss
 Magnacord
 Marantz
 Martel
 Monarch
 Pilot
 Rek-O-Kut
 Roberts
 Robins

Sarkes-Tarzian
 Scott
 Sherwood
 Sony
 Telex
 Toshiba
 Uher
 Warfedale

SYSTEM DISCOUNTS ON MOST MERCHANDISE



CLAUDE R. KIRK, JR.*
Governor



Tom Adams*
Secretary of State



Earl Faircloth*
Attorney General



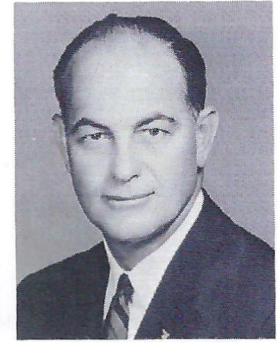
Broward Williams*
Treasurer



Floyd T. Christian*
Supt. of Public Instr.



Doyle Conner
Comm. of Agriculture



Fred O. Dickinson, Jr.
Comptroller

State Officials

*Indicates membership on the State Board of Education.



BOARD OF REGENTS—STATE UNIVERSITY SYSTEM

Seated, Left to Right—Mrs. John C. Behringer, Fort Lauderdale; Dr. Wayne C. McCall, Vice Chairman, Ocala; Chester Ferguson, Chairman, Tampa; Mrs. E. D. Pearce, Miami.

Standing, Left to Right—Henry Kramer, Jacksonville; D. Burke Kibler III, Lakeland; Dr. Louis C. Murray, Orlando; John C. Pace, Pensacola; Dr. Clarence Menser, Vero Beach; Chancellor J. Broward Culpepper, Tallahassee.

FLORIDA STATE'S ATHLETIC COMMITTEE



Robert Earnest
Chairman
Professor, Business



Mode L. Stone
Professor, College
of Education



Coyle E. Moore
Dean, School of
Social Welfare



Ralph Bradley
Prof. & Dept. Head,
Statistics



William W. Rogers
Associate Professor
History



Charles Grigg
Prof. of Sociology
and Director of
Institute for
Social Research



William H. Long
Assistant Professor
Department of
Meteorology



Mary Alexander
Assoc. Professor
Physical Education
and Recreation



Mason Ladd
Dean, College
of Law



John Carey
Vice President for
Student Affairs

**WHEN YOU GET HUNGRY WHY NOT TRY SOME
COLONEL SANDERS RECIPE KENTUCKY FRIED CHICKEN ©**

three sizes to choose from:

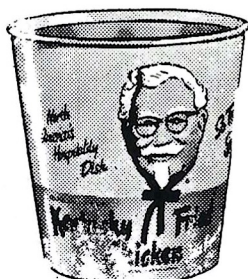
Individual Box
3 Big Pieces of Chicken,
Cole Slaw, French Fries,
Rolls, Gravy
\$1.10

Family Bucket
Serves 5 to 7
\$3.75

Barrel O' Chicken
Serves 8 to 10
\$5.00
Gravy & Rolls 5.40

Bar-B-Q Chicken Sandwich
French Fries—Jumbo Shake

60c



or if you prefer!

- Jumbo Shrimp Boxes
- Chicken Gizzard Boxes
- Filet of Fish Boxes
- Famous Home-Made Pies
- Chicken Liver Boxes

Holland's Carry Out

TWO LOCATIONS TO SERVE YOU

Drive in No. 1
1002 N. Monroe—224-1645

Drive in No. 2
1603 W. Tenn. St.—224-4313

Tenn. St. Location Open 'Til 11 P. M.

Home Owned and Operated by Mr. & Mrs. N. T. Holland

Teddy and the NCAA

by BOB HOOBING

Sports Editor, Boston Traveler



THE FACE of Robert W. Maxwell changed the complexion of American football. It forced adoption of the forward pass and led to the formation of the National Collegiate Athletic Association.

"Tiny" Maxwell wasn't that tough to look at—usually.

But when Penn got through pulverizing the 240-pound Swarthmore lineman in the third game of the 1905 collegiate season, his face was a bloody pulp. A photographer snapped an historic picture as "Tiny" stumbled off the field.

That picture set off a White House explosion.

Football already was in trouble. When tackling below the waist had become legal, the game changed from a wide open combination of soccer and rugby to massed mayhem. Without a neutral zone at the line of scrimmage, the ball snap set off a flurry of slugging, shoving and clawing.

Injuries were numerous. Some schools had already dropped the sport and others talked of it.

Penn's masters of mass momentum beat Swarthmore 11-4 by mercilessly pounding the latter's strong man, Maxwell, who nonetheless lasted the full 70 minutes.

The aftermath picture came to the attention of President Theodore Roosevelt who proved his temper was as strong as his reputation as a rugged individualist. He became so angered at the sight of Tiny's bruised features in the newspapers that he issued an ultimatum to football authorities to eliminate rough play immediately or have the game abolished by his own executive order.

Roosevelt told a hastily summoned mid-season White House conference of Big Three representatives (Harvard, Yale, Princeton) the fate of the game was up to them, adding:

"Brutality and foul play should receive the same summary punishment given to a man who cheats at cards."

Chancellor Henry McCracken of New York University asked Harvard President Charles William Eliot to take the lead in bringing about reforms. The latter, replying he had no jurisdiction, took the opportunity to comment:

"Deaths and injuries are not the strongest argument against football; that cheating and brutality are profitable is the main evil."

The season lumbered on—painfully. Penn completed its second straight unbeaten campaign at the

cost of broken legs to three regulars.

California President Wheeler saw Stanford hack up his team with force plays and wired officials in Chicago: "The game of football must be entirely made over or go." When quick action was not forthcoming, Cal and Stanford joined Columbia and Northwestern in dropping the sport.

At the same time the Chicago Tribune issued a 1905 casualty list: 18 dead, 159 seriously injured.

That did it.

A December 9 meeting at New York University called by Chancellor McCracken and involving 13 eastern schools agreed on some reforms. On December 28 at the same site 62 schools participated, forming the Intercollegiate Athletic Association of the United States (to become the NCAA in 1910). Among the acts was formation of a new rules committee, headed by Capt. Palmer Pierce of West Point.

It was Jan. 12, 1906, when the old rules group, led by Walter Camp and the Pierce delegation met and merged. From their deliberations came:

Legalization of the forward pass; lengthening the required yardage for a first down from 5 to 10 yards; shortening the game from 70 to 60 minutes; addition of an official; creation of a neutral zone between opposing lines; vast strengthening of the rules against foul play.

The forward pass rule was suggested by Penn's John Bell and Navy's Paul Dashiell. Yale, St. Louis and Wesleyan were among the schools to claim using it first. But "the establishment" died hard.

It took upstart Notre Dame's visit to West Point in 1913 to demonstrate what passing could really do in revolutionizing and opening up the game. Without Maxwell, none of it might have happened. Tiny became a noted football official and sports writer. He had a trophy named in his honor.

Yet Maxwell may never have done anything more important than have his picture taken that blood-stained afternoon in Philadelphia!



**MAKE
EVERY YARD
COUNT...
DOUBLE!**

Double because you'll be earning a commission while you earn your college degree.

All it takes is a few hours a week and a six-week summer camp. It's that easy in Army ROTC.

Whether you plan a civilian or a military career, Army ROTC gives you the kind of training and experience you need to motivate, organize and lead men. You'll learn them all in Army ROTC.

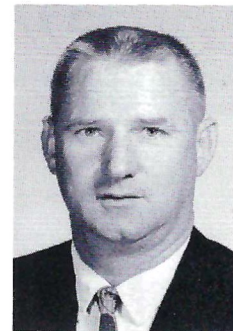
Get the details from your Professor of Military Science at any ROTC college.

Your future, your decision... choose **Army ROTC.**

Muir and the Madmen

By **TOM PRICE**

Sports Information Director, University of South Carolina



Georgia coach Vince Dooley called them "Muir and the Madmen," and executive sports editor Herman Helms of The Columbia State said they played like they were "The Chinese Bandits Reincarnated."

These were high compliments indeed for a football team which, in pre-season evaluations, was given little chance of winning more than two games while some experts predicted they wouldn't win any.

South Carolina's Fighting Gamecocks, in their second season under Coach Paul Dietzel, startled everyone by winning their first three games before being overpowered last weekend by nationally ranked Georgia.

The two biggest ingredients in this about face from last year's miserable 1-9 showing have been the addition of a great sophomore fullback named Warren Muir and a fiery, Dietzel-inspired, spirit that has had the small, skinny and depth shy Gamecocks fighting and scrapping like madmen in every game.

"The best thing that ever happened to South Carolina football was when Warren Muir fell in love," is the way one wag explained the addition of the 5-10, 197 pound youngster from Fitchburg, Mass., to the Gamecock Roost.

Muir was a plebe at the U. S. Military Academy where they don't allow married cadets when cupid won out and he withdrew from the academy to get married. When Dietzel left the head job at Army to take over the South Carolina program, it was only natural that the New Englander with the strong legs and good balance should bring his bride south as a transfer student.

"Warren Muir was the best back we recruited in our four years at West Point," Dietzel kept saying last year when Muir was putting in his year of residence before becoming eligible to play.

In four games, Muir has carried the football 91 times for 391 yards and four touchdowns. He rushed for 79 yards against Iowa State, 164 against North Carolina, 87 against Duke, and 61 against Georgia.

Except for Muir, the Gamecock personnel is substantially the same as the squad that fell, 32-10, to Florida State last year in Columbia. However, quarterback Mike Fair was injured and didn't play in that game. A healthy Fair — the scrambling unpredictable type of field general — has run and passed for 480 yards in four games this season and has scored two touchdowns.

It's hard to predict how many more games, if any, "Muir and the Madmen" will win during the remainder of the season. But, one thing is certain, they'll fight and scratch and claw and hustle and they may indeed be "The Chinese Bandits Reincarnated."

The Seminole Football Family



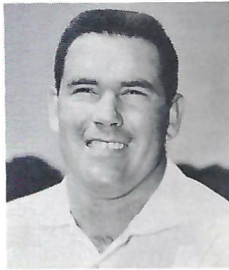
BILL PETERSON
Head Football Coach



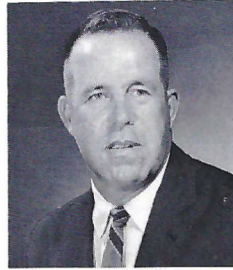
VAUGHN MANCHA
Director of Athletics



BOB HARBISON
Defensive Chief



DON BREAU
Offensive Chief



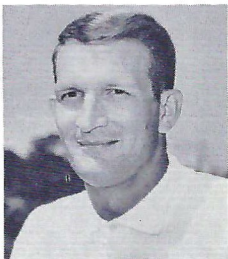
KEN MacLEAN
Assistant to A.D.



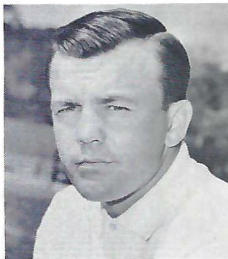
NEIL SCHMIDT
Offensive Backfield



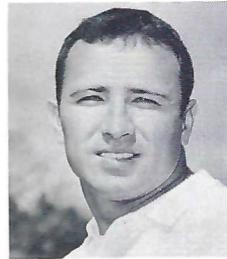
BOBBY JACKSON
Defensive Ends,
Linebackers



GARY WYANT
Defensive Backfield



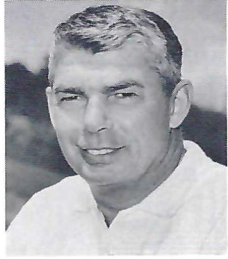
JOE GIBBS
Offensive Line



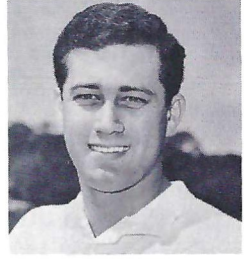
GENE McDOWELL
Freshman Coach



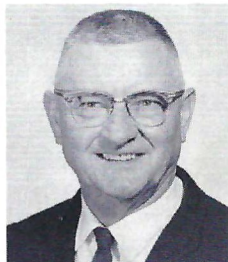
DOUG HAFNER
Head Recruiter



DON FAULS
Head Trainer



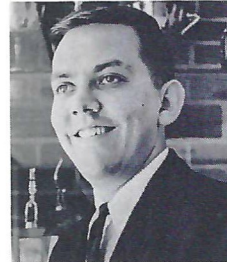
ROY DON WILSON
Assistant Trainer



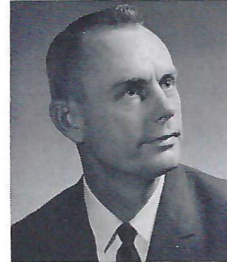
TILLMAN DIXON
Equipment Manager



LONNIE BURT
Sports Information
Director



HANK SCHOMBER
Assistant SID



CLAUDE THIGPEN
Ticket Manager



DR. LANE MAXWELL
Team Physician



JEFF SAVAGE
Academic Advisor



why pay **MORE** when you
can buy for **LESS** at

ABC
Mobile Homes
2737 W. Tennessee
Tallahassee, Florida

HERSCHEL COOK
Manager

Phone 576-5146

Southernair
MOTEL

Across from F.S.U.
Tallahassee, Florida 32304

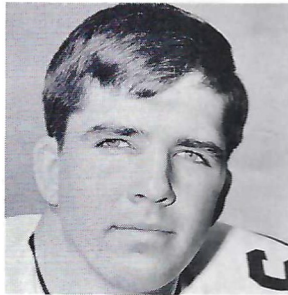


and

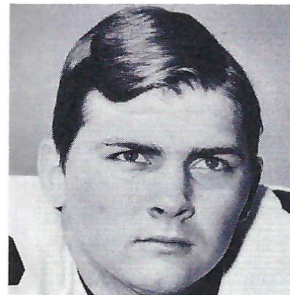
Skyline
Motor Lodge

U. S. 90 West

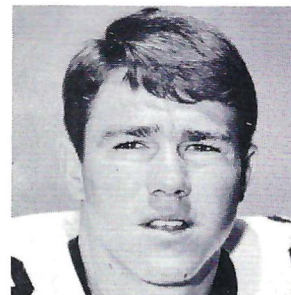
Quality Courts
for Quality People



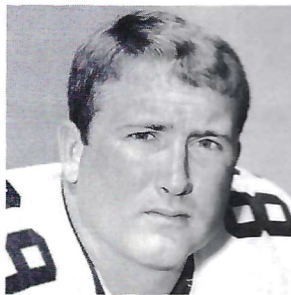
Stan Walker



Doug Gurr



Ed Chereschkoff



Bob Menendez



Jack Fenwick



Wayne Johnson



T. K. Wetherell

FLORIDA STATE



Floyd Ratliff



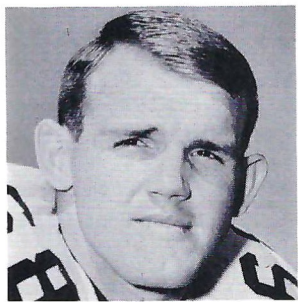
Larry Green



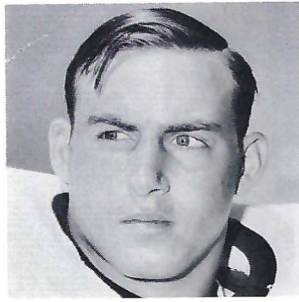
Bill Moremen



Ron Sellers



Larry Pendleton



Chuck Elliott



Harvey Zion

1967 SEMINOLES



Bill Cox



Frank Vohun



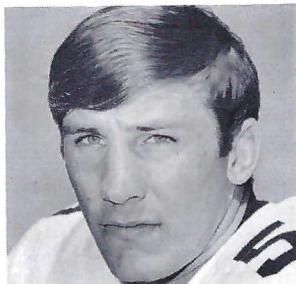
Thurston Taylor



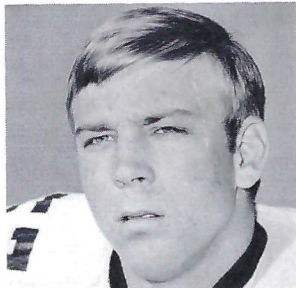
Mike Blatt



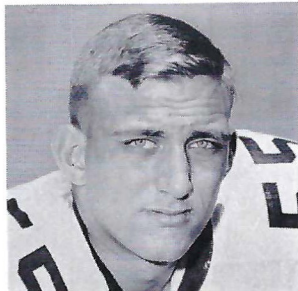
Joe Benson



Henry Lohse



Joe Kinnan



Ted Mosley



324
N. MONROE

1405
S. ADAMS

ONE HOUR DRY CLEANERS

KEEP YOUR CLOTHES
FRESH AS A ROSE

1100
W. TENN.

GOOD LUCK SEMINOLES!

Varsity **THEATRE**

1833 W. Tennessee

Phone 224-8636

Miracle **THEATRE**

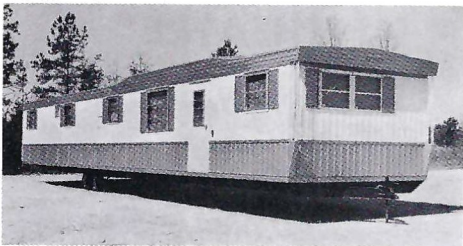
Thomasville Road

Opening Early 1968

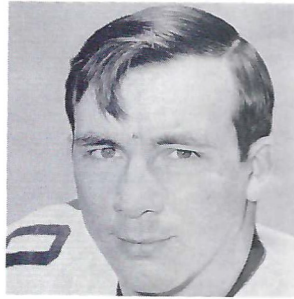
Best Wishes for a successful season, and we are proud to have had a part in furnishing the football equipment for the Seminoles

OWENS Inc.

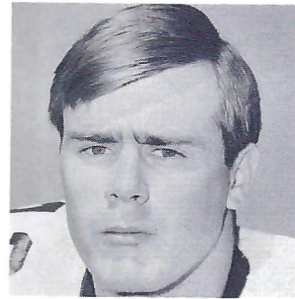
Sporting Goods — Hardware
ALBANY, GEORGIA



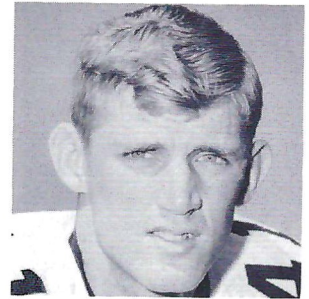
BONANZA
Mobile Homes of Tallahassee
2749 W. TENN.



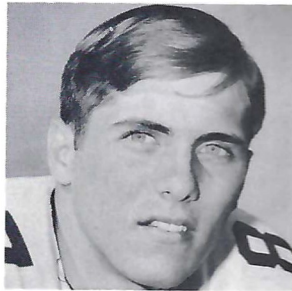
Tony Sewell



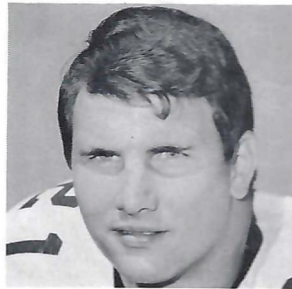
Howell Montgomery



John Crowe



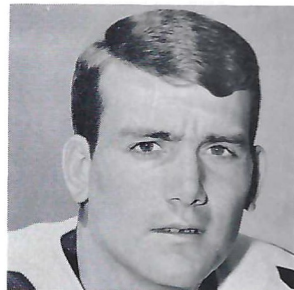
Phil Abaira



Donovan Jones



Bill Gunter



Bill Cappleman

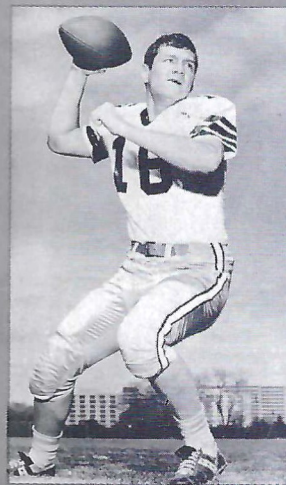
FLORIDA STATE



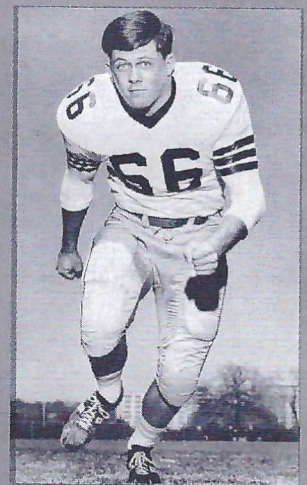
Wayne McDuffie



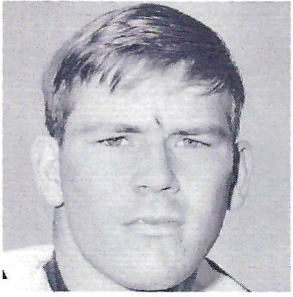
Kim Hammond



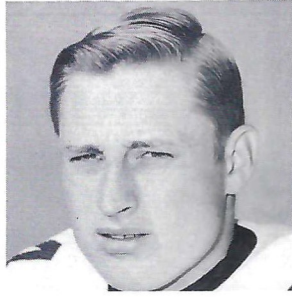
Gary Pajcic



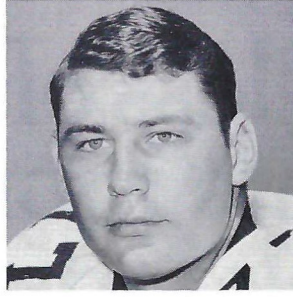
Ken Hart



Ron Montford



Bobby Burt



Jeff Curchin

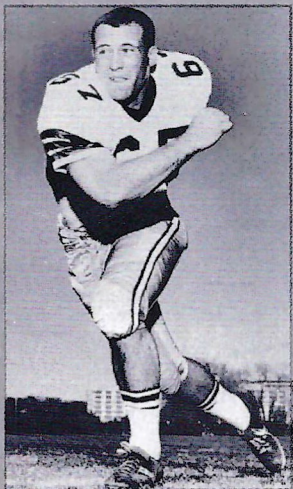
1967 SEMINOLES



Walt Sumner



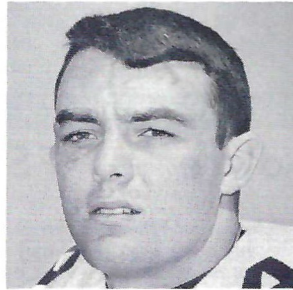
Chip Glass



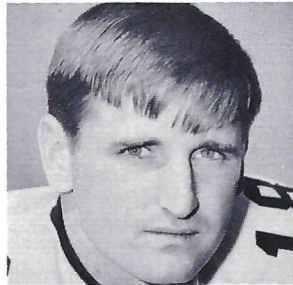
Mike Bugar



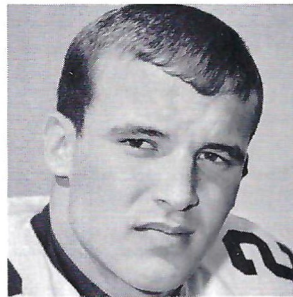
Jerry Jones



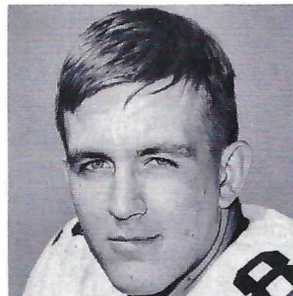
Terry Eggerton



Clint Burton



Chuck Eason



Lane Fenner

BAIRD
 MOBILE HOMES
 2901 Apalachee Parkway
 ☎ 877-4524
 TALLAHASSEE

Collins
 furniture co.
INCORPORATED

1117 THOMASVILLE ROAD
 PH. 222-1415

Spend less of your parents' money on weekends.

Rent a Ford Mustang or another good car from Hertz at a special low weekend rate: \$20 and 12c a mile including gas, oil and insurance, from noon Friday to noon Monday. To reserve a car call: 222-1686. To pick it up come to the Duval Hotel.



Composite Schedule — FSU's 1967 Opponents

DATE	HOUSTON	ALABAMA	N. C. STATE	TEXAS A & M	SO. CAROLINA	TEXAS TECH	MISSISSIPPI STATE	MEMPHIS STATE	VIRGINIA TECH	FLORIDA
SEPT. 16	(15th) FLA. STATE		NORTH CAROLINA		IOWA STATE				AT TAMPA	
SEPT. 23	AT MICH. STATE	FLA. STATE*	BUFFALO	PURDUE#	N. CAROLINA	IOWA STATE	AT GEORGIA	MISSISSIPPI	WM. & MARY	ILLINOIS
SEPT. 30	(29th) WAKE FOREST	AT SOU. MISS.‡	AT FLA. STATE	AT L. S. U.	AT DUKE	AT TEXAS	FLORIDA‡‡	CINCINNATI	AT KANS. STATE	MISS. STATE‡‡
OCT. 7	N. CAROLINA STATE	MISSISSIPPI*	AT HOUSTON	FLA. STATE	AT GEORGIA	MISS. STATE	AT TEXAS TECH	AT UTAH STATE	VILLANOVA	L. S. U.
OCT. 14		AT VANDERBILT	AT MARYLAND	AT TEXAS TECH	AT FLA. STATE	TEXAS A & M	SOU. MISS.	WAKE FOREST	AT KENTUCKY	AT TULANE
OCT. 21	AT MISS. STATE	TENNESSEE*	WAKE FOREST	AT T. C. U.	VIRGINIA	AT FLA. STATE	HOUSTON	SOU'WESTERN LOUISIANA	RICHMOND	
OCT. 28	AT MISSISSIPPI	AT CLEMSON	DUKE	BAYLOR	MARYLAND	AT S. METHODIST	AT FLA. STATE	SOU. MISS.	AT W. VIRGINIA	VANDERBILT
NOV. 4	GEORGIA	MISS. STATE	AT VIRGINIA	AT ARKANSAS	AT WAKE FOREST	RICE	AT ALABAMA	FLA. STATE	MIAMI	AT AUBURN
NOV. 11	MEMPHIS ST.	AT L. S. U.	AT PENN. STATE	S. METHODIST		AT T. C. U.	AT AUBURN	AT HOUSTON	AT FLA. STATE	GEORGIA**
NOV. 18	IDAHO	S. CAROLINA	AT CLEMSON	AT RICE	AT ALABAMA	BAYLOR	AT L. S. U.			KENTUCKY
NOV. 25	AT TULSA			TEXAS	CLEMSON	ARKANSAS†		N. TEXAS ST.	(23rd) V. M. I.‡‡	FLA. STATE
DEC. 2		AUBURN*					MISSISSIPPI			AT MIAMI

Neutral Sites: * Birmingham, Ala. # Dallas, Tex. † Little Rock, Ark. ** Jacksonville, Fla. ‡‡ Roanoke, Va. ‡ Mobile, Ala. ‡‡ Jackson, Miss.



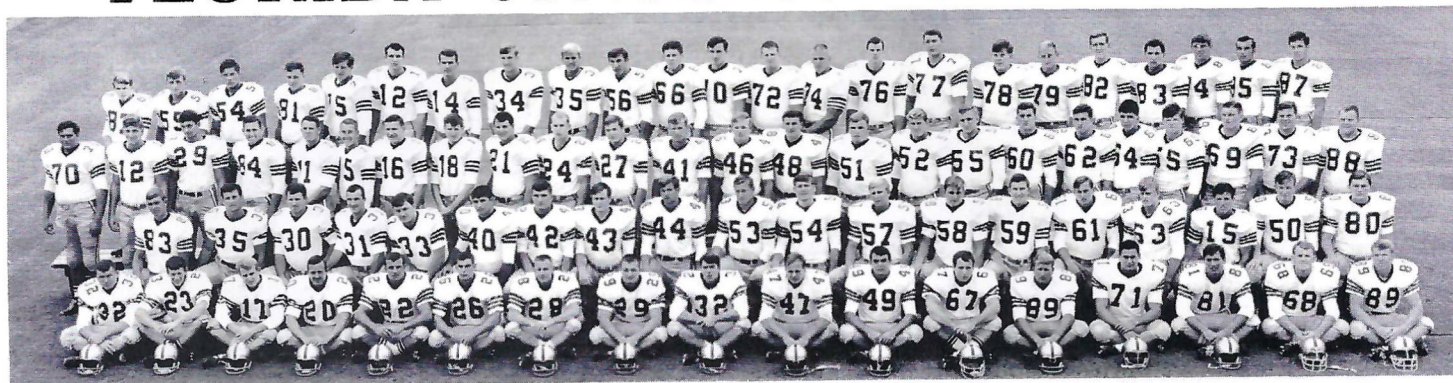
LAFAYETTE MOTEL

1525 W. Tennessee St. (U.S. 90-W) • Tallahassee, Florida 32304

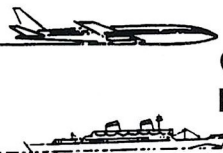
Telephone 904 224-1145



FLORIDA STATE 1967 SEMINOLES



FIRST ROW—Barry Wenhold, Bill Mortiz, Mike Page, Larry Green, Chuck Eason, Hal Hodges, T. K. Wetherell, Chuck Pickens, Ed Chereshkoff, Joe Benson, Terry Eagerton, Mike Bugar, Bob Menendez, Harvey Zion, Phil Abraira, Larry Pendleton, Mike Connors.
SECOND ROW—Skip Babbs, John Pittman, Bill Moremen, Bill Gunter, Grant Guthrie, Mike Blatt, Bill Cheshire, Howell Montgomery, Mike Corey, Bobby Burt, Ron Montford, Joe Kinnan, Rich Jones, Frank Loner, Chuck Elliott, Richard McLean, Danny Thomas, Dick Johnson, Doug Gurr.
THIRD ROW—Tom White, Rick Anderson, Doug Mitchell, Bill Yeldell, Kim Hammond, Tommy Warren, Gary Pajcic, Clint Burton, Donovan Jones, Walt Sumner, Billy Cox, John Crowe, Charlie Huggins, Dale McCullers, Bill Hughes, Wayne McDuffie, Ted Mosley, Barry Rice, Beryl Rice, Stan Walker, Bill Dew, Randy Logan, Duke Johnston, Jerry Jones.
FOURTH ROW—Frank Edmunds, Ed Gibson, Dave Bracken, Jim Tyson, Billy Rhodes, Phil Hiatt, Bill Cappleman, Ron Sellers, Mike Gray, Henry Lahse, Ken Hart, Tony Sewell, Jeff Chapman, Chris Palmer, Jack Fenwick, Jeff Curchin, Wayne Johnson, Frank Vohun, Lane Fenner, Thurston Taylor, Chip Glass, Floyd Ratliff, Jim Rust.



**GOING
PLACES
?**

**ATHENS, GEORGIA? ATHENS, GREECE?
NEW YORK? NASSAU? NEPAL?**

TRAVEL IS OUR PROFESSION

*No Charge For Our Services
Tickets - Reservations At Printed Rates*

**MARION HAY
TOM LYLE**

**BETTY MOCK
JEANNIE SMITH**

TALLAHASSEE TRAVEL AND TOURS, INC.

Formerly Hay Travel Service

Established 1930

CALHOUN AT CALL STREET

TELEPHONE 224-4161

BENNETT'S DISCOUNT DRUG STORE

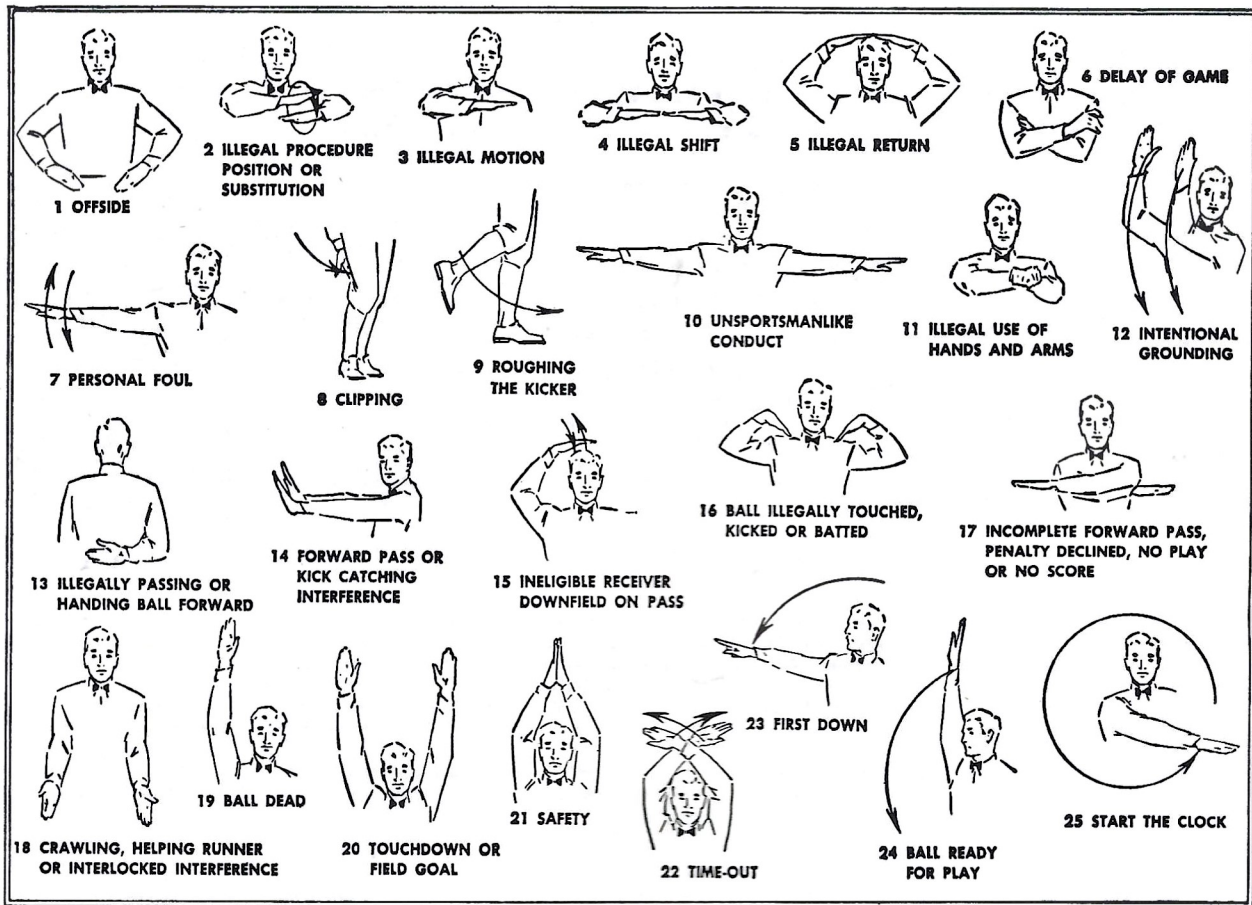
- Prescriptions
- Cameras
- Sundries
 - Gifts
 - Fountain
 - Cafe
 - Cosmetics
 - Drugs

MEET ME AT BENNETT'S

BEFORE AND AFTER THE GAME!

Corner Monroe and College Streets

Phone 222-8980 — 222-4450



Le Roc Cocktail Lounge

Tallahassee's Finest . . .

Located in the
DUVAL HOTEL

For an evening of relaxed
entertainment — enjoy your
favorite beverage — prepared by
a professional.

No cover charge

Entertainment nightly

Open daily 11 A.M. to 2 A.M. — except Sunday



*The cigar for men
that ladies love*

**HAV-A-TAMPA
JEWELS**

WITH EXCLUSIVE BIRCHWOOD TIP

2 for 15c

or new Push-Pak of five 36c
(Plus state and local taxes, if any)

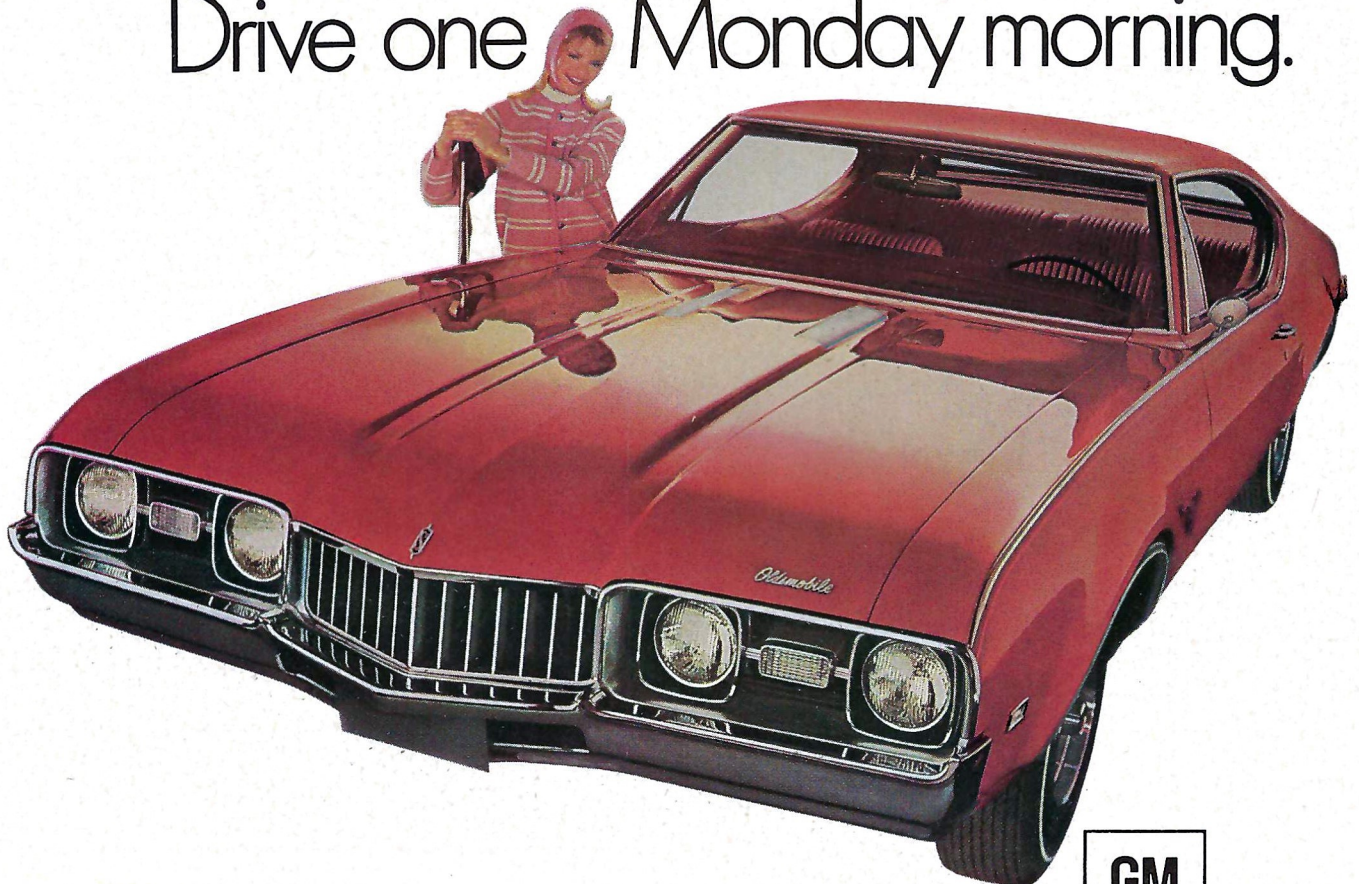
FROM HAVATAMPA—TAMPA'S LARGEST MANUFACTURER OF FINE CIGARS

Distributed by **Eli Witt Tobacco & Candy Co.**

Tallahassee, Florida

The '68 "youngmobiles" from Oldsmobile are here.

Drive one Monday morning.



Cutlass S Holiday Coupe
at your nearest Oldsmobile Dealer's.





Coca-Cola... served at the training centers of the United States Olympic Team.

Coke has the ta
TRADE-MARK (R)

DEFENSE

84 DAVE LUCAS	RE
66 DON SOMMA	RT
35 CANDLER BOYD	R
47 TIM BICE	RLB
15 OAT WATSON	RHB
52 DAVE GRANT	MG
21 TOY McCORD	LHB
33 BOB COLE	LLB
27 WALLY ORRELL	S
77 JOE KOMOROSKI	LT
82 GENE SCHWARTING	LE

DEFENSE

85 FLOYD RATLIFF	LE
73 DUKE JOHNSTON	LT
57 JOE KINNAN	MG
72 RANDY LOGAN	RT
89 BOB MENENDEZ	RE
50 DALE McCULLERS	LLB
40 MIKE BLATT	RLB
24 WALT SUMNER	LCB
28 T. K. WETHERELL	RCB
41 JOHN CROWE	LS
22 CHUCK EASON	RS

SOUTH CAROLINA

OFFENSE

80 FRED ZEIGLER	LE
74 BOB MAURO	LT
61 BOB MORRIS	LG
11 BEN GARNTO	LHB
50 JIMMY GOBBLE	C
12 MIKE FAIR	QB
64 TOM WINGARD	RG
45 ROY DON REEVES	RHB
63 HYRUM PIERCE	RT
36 WARREN MUIR	FB
88 JOHNNY GREGORY	RE

FLORIDA STATE

OFFENSE

82 LANE FENNER	LE
76 JACK FENWICK	LT
52 WAYNE McDUFFIE	LG
55 TED MOSLEY	C
68 LARRY PENDLETON	RG
75 BILLY RHODES	RT
83 THURSTON TAYLOR	RE
11 KIM HAMMOND	QB
20 LARRY GREEN	HB
30 BILL MOREMEN	FB
34 RON SELLERS	FLB

SOUTH CAROLINA SQUAD

1 Jimmy Poole, PK	54 Jim Ross, C
2 Martin Becker, PK	55 George McCarthy, C
4 Scott Townsend, PNTR	57 Richard Harrelson, C
10 Carl Cowart, DB	58 Charles Stokes, DT
11 Ben Garnto, HB	59 John Tominack, MG
12 Mike Fair, QB	60 Billy Tharp, DE
15 Pat Watson, DB	61 Bob Morris, OG
17 Dan Harbison, QB	62 Clyde Smith, MG
21 Toy McCord, DB	63 Hyrum Pierce, OT
22 Curtis Williams, FB	64 Tom Wingard, OG
23 Bob White, SAF	66 Don Somma, DT
24 Rudy Holloman, HB	67 Jack James, OG
25 Allen Owen, DE	68 Johnny Glass, OG
27 Wally Orrell, SAF	69 John Dyer, DT
28 Wally Medlin, SAF	70 Larry Royal, OT
29 Andy Chavous	71 Bill Anderson, OT
30 Ronnie Palmer, HB	73 Tony Musaro, OG
33 Bob Cole, LB	74 Bob Mauro, OT
34 Allen Brown	75 Gordon Gibson, DT
35 Candler Boyd, ROV	76 Eddie Whittington, LB
36 Warren Muir	77 Joe Komoroski, DT
43 Jim Mulvihill, ROV	78 Bob Wehmeyer, OT
44 Fletcher Spigner, HB	79 Ray Edwards, DT
45 Roy Don Reeves	80 Fred Zeigler, SE
46 Don Dunning, FB	82 Gene Schwarting, DE
47 Tim Bice, LB	83 John King, TE
48 Don Buckner, LB	84 Dave Lucas, DE
50 Jimmy Gobble, C	85 John Coleman, DE
51 Ron Bunch, LB	87 Don Brant, DE
52 Dave Grant, MG	88 Johnny Gregory, TE

FLORIDA STATE SQUAD

11 Hammond, QB	55 Mosley, C
12 Hiatt, QB	56 Lohse, G
14 Cappleman, QB	57 Kinnan, T
15 Warren, QB-DB	58 R. Jones, T
16 Pajcic, QB	59 Loner, PK
17 Page, DB	60 Ba. Rice, LB
18 Burton, DB	61 Elliott, LB
19 Abraira, E	62 Be. Rice, LB
20 Green, HB	63 McLean, G
21 D. Jones, FB	64 Walker, G
22 Eason, DB	65 Dew, T
24 Sumner, DB	66 Hart, C-G
26 Hodges, DB	67 Bugar, M-G
27 Cox, E	68 Pendleton, G
28 Wetherell, DB	70 Sewell, T
29 Pickens, DF	71 Zion, T
30 Moremen, HB-FB	72 Logan, T
31 Gunter, HB	73 Johnston, T
32 Chershkoff, HB	75 Rhodes, T
33 Guthrie, PK-FB	76 Fenwick, T
34 Sellers, FL	77 Curchin, T
35 Gray, FL	78 Johnson, T
40 Blatt, LB	79 Vohun, T
41 Crowe, DB	80 Gurr, DE
42 Cheshire, P-E	81 Tyson, E
43 Montgomery, DB	82 Fenner, FL
44 John Pittman, FB	83 Taylor, E
46 Huggins, DB	84 Glass, FB
47 Benson, LB	85 Ratliff, DE
49 Eagerton, FB	86 Hall, E
50 McCullers, LB	87 Yeldell, E
51 Hughes, C	88 J. Jones, DE
52 McDuffie, C-G	89 Menendez, DE
54 Montford, MG	

Officials—RefereeErnest Hackney, Wilson, N. C.
 UmpireOscar Edmonds, Memphis, Tenn.
 LinesmanM. E. McClenny, Goldsboro, N. C.
 Field JudgeBill Henderson, Tuscaloosa, Ala.
 Back JudgeJim Campbell, Memphis, Tenn.
 ECOHenry Hair, Atlanta, Ga.

"COCA-COLA" AND "COKE" ARE REGISTERED TRADE-MARKS WHICH IDENTIFY ONLY THE PRODUCT OF THE COCA-COLA COMPANY. PRINTED IN U.S.A.

ste you never get tired of.



Here he comes ... ready or not!

The world beckons and he's on his way—proud and independent.

He will need all the education he can get—college, even graduate school.

But there's a problem. Because enrollments are increasing every year, colleges must meet the expanding costs of providing more teachers and additional facilities.

You can help now.

Give to the college of your choice now to help assure his future ... to help make sure that college is ready when he is.

**College is
America's Best Friend**



Published as a public service in cooperation with The Advertising Council and the Council for Financial Aid to Education.

PENALTIES

1. **OFFSIDE** by either team; Violation of scrimmage or free kick formation; Encroachment on neutral zone—Loss of Five Yards.
2. **ILLEGAL PROCEDURE, POSITION OR SUBSTITUTION**—Putting ball in play before Referee signals "Ready-for-play"; Failure to complete substitution before play starts; Player out of bounds when scrimmage begins; Failure to maintain proper alignment of offensive team when ball is snapped; False start or simulating start of a play; Taking more than two steps after Fair Catch is made; Player on line receiving snap—Loss of Five Yards.
3. **ILLEGAL MOTION**—Offensive player illegally in motion when ball is snapped—Loss of Five Yards.
4. **ILLEGAL SHIFT**—Failure to stop one full second following shift—Loss of Fifteen Yards.
5. **ILLEGAL RETURN** of substitute not previously disqualified—Loss of Fifteen Yards.
6. **ILLEGAL DELAY OF GAME**; Taking more than four times out during either half (except for replacement of injured player)—Loss of Five Yards. Team not ready to play at start of either half—Loss of Fifteen Yards.
7. **PERSONAL FOUL** — Tackling or blocking defensive player who has made fair catch; Piling on; Hurdling; Grasping face mask of opponent; Tackling player out of bounds, or running into player obviously out of play; Striking an opponent with fist, forearm, elbow or locked hands; Kicking or kneeing—Loss of Fifteen Yards (Flagrant offenders will be disqualified.)
8. **CLIPPING**—Loss of Fifteen Yards.
9. **ROUGHING THE KICKER** or holder—Loss of Fifteen Yards.
10. **UNSPORTSMANLIKE CONDUCT**—Violation of rules during intermission; Illegal return of suspended player; Coaching from sidelines; Invalid signal for Fair Catch; Persons illegally on field—Loss of Fifteen Yards. (Flagrant offenders will be disqualified.)
11. **ILLEGAL USE OF HANDS AND ARMS** by offensive or defensive player; Defensive holding—Loss of Fifteen Yards.
12. **INTENTIONAL GROUNDING** of forward pass—Loss of Five Yards Plus Loss of Down.
13. **ILLEGALLY PASSING OR HANDING BALL FORWARD**—Loss of Five Yards Plus Loss of Down.
14. **FORWARD PASS OR KICK CATCHING INTERFERENCE**—Interference with opportunity of player of receiving team to catch a kick—Loss of Fifteen Yards. Interference by member of offensive team with defensive player making pass interception—Loss of Fifteen Yards Plus Loss of Down. Interference by defensive team on forward pass—Passing Team's Ball at Spot of Foul and First Down.
15. **INELIGIBLE RECEIVER DOWN-FIELD ON PASS**—Loss of Fifteen Yards.
16. **BALL ILLEGALLY TOUCHED, KICKED OR BATTED**—Forward pass being touched by ineligible receiver beyond the line of scrimmage—Loss of Fifteen Yards from Spot of Preceding Down and Loss of a Down. Eligible pass receiver who goes out of bounds and later touches a forward pass—Loss of Down. Illegal touching of kicked ball within opponent's ten yard line—Touchback.
17. **PENALTY DECLINED**; Incomplete forward pass; No play or no score.
18. **CRAWLING** by runner—Loss of Five Yards. Interlocked Interference—Loss of Fifteen Yards.

MIDYETTE-MOOR Insurance Agency

"Ask Those We Serve"

Complete Insurance and Bond Service

PHONE 222-3456



MIDYETTE-MOOR BUILDING
TALLAHASSEE, FLORIDA

SAYS

SCALP 'EM SEMINOLES!



Payne Midyette
Frank Moor
Ed Clark
Winslow Sullivan
Paul Lewis
Payne Midyette, Jr.
Bill Moor
Bob Dickinson

Bill Franklin
Jim Woods
Glenn Sears
Dick Wall
Joe Ausbrook
Ron Davis
Rex Sikes
Ray Atkinson



WHERE YOU
WILL FIND
YOUR FRIENDS

701 W. JEFFERSON
South Gate F.S.U.

Electrical Contractors

- INDUSTRIAL
- COMMERCIAL



Licensed & Bonded

J. B. CLARK,
President

LEE H. TOWNSEND,
Vice President

576-3727
IF NO ANSWER DIAL 385-4030

CLARK ELECTRIC CO.
OF FLORIDA

1133 Kissimmee St.
TALLAHASSEE, FLORIDA

PLUMBING

Contracting

COMMERCIAL • INDUSTRIAL • RESIDENTIAL

- BOILER REPAIRING
- STEAM & HOT WATER
- NATURAL GAS INSTALLATIONS

All Work Guaranteed
Over 20 Yrs. In Tallahassee

385-1691 or **224-4614**
1525 Pullen Rd. 702 W Madison

BLOUNT'S
PLUMBING & HEATING CO.

SEWER
INSTALLATIONS

DITCHING BACK-HOE
RENTALS

ALL TIME FLORIDA STATE RECORDS

SINGLE GAME

Individual

- TOUCHDOWNS SCORED**—4 by Fred Biletnikoff vs. Oklahoma Gator Bowl, 1965; and Jim Mankins vs. Texas Tech, 1966
- LONGEST TOUCHDOWN RUN FROM SCRIMMAGE**—81 yards by Fred Pickard vs. Virginia Tech, 1957
- LONGEST TOUCHDOWN PASS**—86 yards, Gary Pajcic to Ron Sellers vs. Wake Forest, 1966
- LONGEST TOUCHDOWN PLAY**—100 yards by Bill Moremen and T. K. Wetherell (lateral on kickoff return) vs. Kentucky, 1965
- LONGEST RUN FROM SCRIMMAGE WITHOUT SCORING**—76 yards by Roy Thompson vs. Stetson, 1951
- LONGEST INTERCEPTION RETURN**—99 yards by Ted Hewitt vs. Stetson, 1948 and Fred Biletnikoff vs. Miami, 1963
- LONGEST PUNT RETURN**—80 yards by Billy Odom vs. Stetson, 1954
- LONGEST KICKOFF RETURN**—100 yards by Bill Moremen and T. K. Wetherell vs. Kentucky, 1965 (TD lateral)
- LONGEST PUNT**—84 yards by Tommy Brown vs. Tampa, 1950
- LONGEST FIELD GOAL**—44 yards by Les Murdock vs. Virginia Tech, 1963
- TIMES RUSHING**—29 by Fred Pickard vs. Georgia, 1949
- YARDS RUSHING**—161 by Buddy Strauss vs. Mississippi College, 1949
- PASSES ATTEMPTED**—53 by Gary Pajcic vs. Virginia Tech, 1966
- PASSES COMPLETED**—28 by Gary Pajcic vs. Virginia Tech, 1966
- YARDS PASSING**—313 by Joe Majors vs. Tampa, 1959
- TOUCHDOWN PASSES**—5 by Steve Tensi vs. Oklahoma, Gator Bowl, 1965
- TOTAL OFFENSE**—369 yards by Joe Majors vs. Tampa, 1959 (56 rush, 313 pass)
- PASSES CAUGHT**—13 by Ron Sellers vs. Virginia Tech, 1966 and by Fred Biletnikoff vs. Oklahoma, Gator Bowl, 1965
- YARDS RECEIVING PASSES**—192 by Fred Biletnikoff vs. Oklahoma, Gator Bowl, 1965
- TOUCHDOWN PASSES CAUGHT**—4 by Fred Biletnikoff vs. Oklahoma, Gator Bowl, 1965
- PASSES INTERCEPTED**—3 by Tommy Brown vs. Stetson, 1950; and Georgia, 1952; Lee Corso vs. Georgia, 1954; and Bud Whitehead vs. Virginia Tech, 1959
- FIELD GOALS**—3 by Les Murdock vs. Florida, 1964
- PUNTS**—11 by John Hosack vs. Baylor, 1965 (40.8 average)

TEAM

- POINTS SCORED**—74 vs. Whiting Field, 1949
- MARGIN OF VICTORY**—74-0 vs. Whiting Field, 1949
- MARGIN OF DEFEAT**—0-42 vs. Georgia, 1959
- YARDS RUSHING**—383 vs. Abilene Christian, 1957
- YARDS PASSING**—355 vs. Villanova, 1954
- TOTAL OFFENSE**—526 vs. Furman, 1962 (277 rush, 239 pass)
- PASSES ATTEMPTED**—56 vs. Virginia Tech, 1966
- PASSES COMPLETED**—29 vs. Virginia Tech, 1966
- PASSES INTERCEPTED**—7 vs. Virginia Tech, 1959
- PUNTS**—11 vs. Baylor, 1965



Sammy Seminole

One individual who flips at the sight of the Seminole football team is Don Hervig, this year's Sammy Seminole.

Since 1958 the colorful Florida State mascot has been leading the Seminole football team through the goal posts before each game.

During the game Sammy becomes an energetic cheerleader, using his "war lance" to urge the Seminoles on, and when they do he will be seen doing a series of "flip-flops" down the sidelines.

Don is the fifth student to carry on this colorful tradition.

Like all his predecessors, Don is a top gymnast. A native of Huntsville, Ala., he has been working with gymnastics for six years.

When he is not "flip-flopping" around the football field the 19-year old sophomore is working on his bachelors degree in engineering science.



Habit Forming.



HAIRSTON

KASTELZ

All season long — any time of the year — Bill Kastelz and Jack Hairston report, in depth, on everything in the sports world.

It's that extra margin of effort that makes these two stand out among sports editors. They're never satisfied with just "half" the story. They're diggers. Fact-finders. They wonder about things and investigate. That's why these two specialists bring you **closer** to sports all year long in the Florida Times-Union and Jacksonville Journal.

Be there — with Kastelz and Hairston — for every piece of the action.

The Florida Times-Union
EVERY MORNING
Jacksonville Journal
WEEKDAY AFTERNOONS

NUMBER ONE RIVERSIDE AVENUE
JACKSONVILLE, FLORIDA



FLORIDA STATE'S 1967 FRESHMAN SQUAD

NAME	HT.	WT.	AGE	HOMETOWN	NAME	HT.	WT.	AGE	HOMETOWN
Robert Ashmore	6-0	185	18	Tallahassee	Ned Jaros	6-3	237	22	No. Plainfield, N. J.
Fred Ayer	6-1	190	22	Tallahassee	Gary Klesius	6-2	210	18	St. Petersburg
George Bailey	6-2	205	18	Miami	Bill Lohse	6-0	210	18	St. Petersburg
Don Bancroft	6-1	205	18	Ft. Lauderdale	Craig MacKenzie	6-2	190	18	Clearwater
Theron Bass	5-11	189	17	Live Oak	Robert McEachern	6-2	215	18	Tallahassee
Steve Beville	6-1	198	18	Fernandina	Donald Mikell	6-2	201	18	Lubbock, Texas
Jon Blier	6-2	225	17	Brooklyn, N. Y.	George Montgomery	6-2	200	18	Coral Gables
Jerry Brooks	5-10	195	18	Valdosta, Ga.	Arthur Munroe	6-1	180	18	Quincy
Randy Burden	6-0	180	17	Atlanta, Ga.	Don Pederson	6-1	175	18	Groveland
Bill Cashman	6-1	175	18	Miami	Bill Rimby	6-4	198	17	St. Petersburg
Chris Corral	5-9	170	17	Tampa	John Romano	6-2	210	18	Lake Worth
Ralph Costantino	5-11	225	17	Bradenton	Ben Rust	6-2	190	18	Palm Beach
Rhett Dawson	6-1	180	18	Valdosta, Ga.	James Sammons	6-0	200	18	Atlanta, Ga.
Mike DeLoach	5-10	165	18	Valdosta, Ga.	Robert Searcy	6-5	240	18	Orlando
George Diaz	6-1	215	18	Jacksonville	Gary Semanchik	6-0	198	18	Leesburg
Michael Dowsett	6-1	230	18	Ft. Lauderdale	Phillip Shaw	5-10	160	18	Perry
Kent Gaydos	6-6	195	18	Maitland	Steve Spooner	6-2	205	18	Coral Gables
Stephen Gildea	6-0	185	18	Daytona Beach	Jay Stokes	6-3	200	17	Sanford
Max Harrell	6-3	182	18	Eastman, Ga.	Joe Strickler	6-1	230	18	Avon Park
George Henderson	5-9	170	18	Tallahassee	David Swindells	5-11	182	18	Washington, D. C.
Charles Hughes	5-10	200	18	Ft. Lauderdale	Ronnie Wallace	6-2	190	18	Macon, Ga.
Stephen Ivie	6-2	175	18	Atlanta, Ga.	Frank Whigham	6-1	175	18	Sanford
James Jarrett	6-2	182	18	Elizabethton, Tenn.	Steve Zadehh	6-1	185	18	North Miami
Steven Jernigan	5-11	194	18	Tampa	Ted Zaffren	6-3	185	18	Orlando
Steve Jones	6-1	212	18	Griffin, Ga.	John Boyett	6-3	195	18	Clermont

The pro makes it look easy

And with RCA Victor's new color portable —14" diagonal and 102 sq. in.—everything is easy. It's easy to carry from room to room because it weighs just 42 pounds. It's easy to see in daylight because its RCA Super Bright Hi-Lite Color Tube gives you 38% brighter highlights. And, it has a 21,500-volt New Vista® Color chassis. Pick a pro. Have your RCA Victor dealer show you The Headliner, a new level of performance in portable color TV.



TWO LOCATIONS TO SERVE YOU.

Rainey Cawthon's
700 N. MONROE • 222-1865

AND

Tallahassee Tire Co.
1530 S. MONROE • 222-3130

WE SERVICE WHAT WE SELL

31



The Most Trusted Name
in Electronics

Tmk(s)®



SEMINOLE BOOSTERS, INCORPORATED

Seminole Boosters, Inc. is an organization devoted entirely to the support of the Florida State University athletic program with emphasis on football.

Membership in the Boosters — the group numbers approximately 1,400 — is open to anyone with a sincere interest in the University's athletic progress. Minimum contribution for an individual membership is \$30. A business membership costs \$30.


Contributions are administered in accordance with NCAA regulations and in conjunction with the Florida State Department of Intercollegiate Athletics.

Boosters receive a colorful automobile license plate which can be used for admission to special reserved parking lot at the stadium, a membership card, a weekly fall publication, "The Grandstand Coach," and certain priorities on season and single game football tickets.

SEMINOLE BOOSTERS, INCORPORATED
 FLORIDA STATE UNIVERSITY TALLAHASSEE, FLORIDA 32306

1967 Contribution
 Check attached for \$ _____
 Pledge to pay \$ _____ Bill me for \$ _____
 (TOTAL AMT.) (PAYMENTS) MONTHLY QUARTERLY OTHER _____
 (SPECIFY)

Minimum Contribution of \$30 Required for Membership Privileges.



(PLEASE CORRECT ANY ERRORS IN YOUR ADDRESS)

NAME _____
 ADDRESS _____
 CITY, STATE _____
 ZIP _____

ARE YOU AN F.S.U. ALUMNUS? Yes No

Make check payable to Seminole Boosters, Inc.
 Mail To: 114 Longmire Alumni Bldg., FSU
 TALLAHASSEE, Florida 32306

SOLICITOR'S SIGNATURE _____ CONTRIBUTOR'S SIGNATURE _____ DATE _____

COMPLIMENTS OF TALLAHASSEE AUTOMOBILE DEALERS ASSOCIATION

- | | |
|---------------------------------|------------------------------|
| ALFORD CHEVROLET COMPANY | KINNEBREW MOTORS, INC. |
| CAPITAL LINCOLN & MERCURY, INC. | MINGLEDORFF MOTORS, INC. |
| CAPITAL PLYMOUTH, INC. | PALMER-HARRELL BUICK COMPANY |
| COURTESY OLDSMOBILE, INC. | PROCTOR & PROCTOR, INC. |
| BOB DRAKE DODGE, INC. | TALLAHASSEE MOTORS, INC. |

SEMINOLE BOOSTERS, INC. BOARD OF DIRECTORS 1967



Seated, left to right: W. S. "Bill" Lee, Immediate Past President; Hank Mannheimer, Secretary; Frank Pope, President; Theo Proctor, Jr., President-Elect; and Herschel Williams, Treasurer.

Standing, First Row: Ryals Lee, T. A. Waits, Wayne Cook, Coach Bill "Pete" Peterson, J. Edwin White, Sid Rayborn, William T. Smith, William "Curt" Smith.

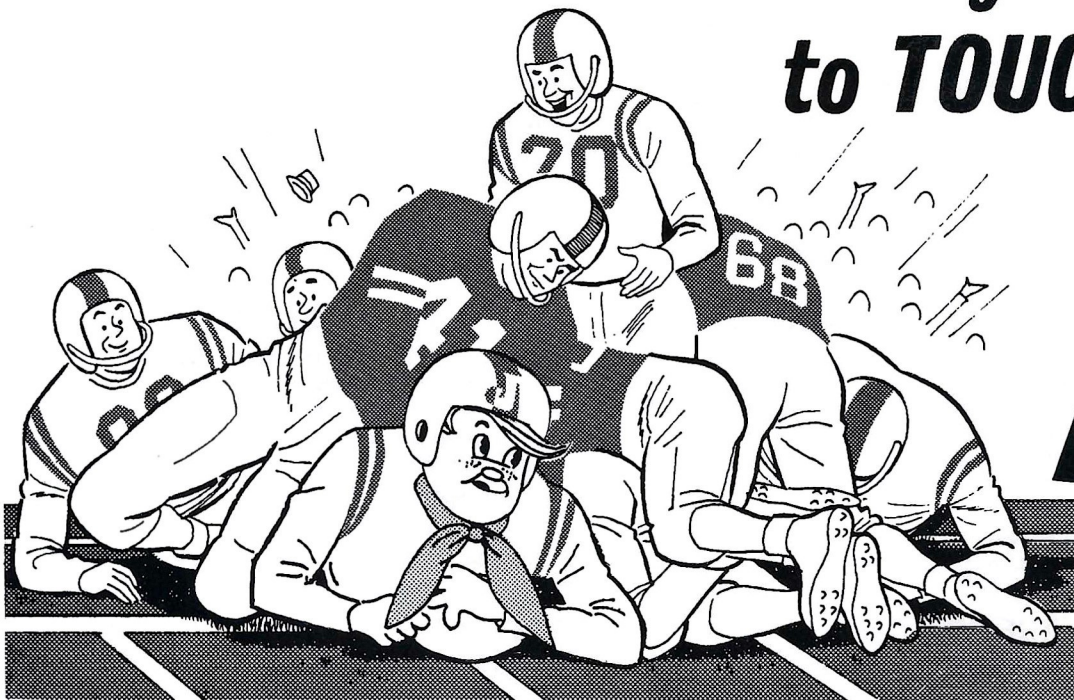
Second Row: Thomas O. Feamster, Louis Hill, Doyle Pope, Leo Crutchfield, Dr. Evan E. "Dick" Dussia, Robert C. Camp, Robert B. Drake, Jr.

Not Pictured: Dr. James Booth, Anthony "Ad" Brautigam, Dr. Laurence Chalmers, Syde P. Deeb, Hugh Donovan, Fred Orr Drake, Jr., William I. DuBey, Dr. Ed. Haskell, Jr., Guy McKenzie, Payne Midyette, Jr., Godfrey Smith.

AFTER THE GAME

make it your goal
to **TOUCH DOWN**

at...



Jerry's
RESTAURANTS

445 West Tennessee St.
In
Tallahassee, Fla.

Patronize Stadium
CONCESSIONS

Located beneath the stands on each side of stadium

COLD DRINKS	small 15¢	large 25¢
HOT COFFEE	15¢	
SANDWICHES	30¢	
HOT DOGS	25¢	
PEANUTS	25¢	
POP CORN	15¢	
CIGARETTES	40¢	

SOUVENIR ITEMS - PENNANTS - BADGES

SUN VISORS - ASPIRIN

Please pay no more than

ESTABLISHED PRICES

EAT 'EM UP SEMINOLES!



**FAMOUS DOUBLE-DECK HAMBURGERS
 and OTHER DELICIOUS FOODS**

THE POPULAR SPOT IN TOWN — SERVING:
 ● BREAKFAST ● LUNCH ● DINNER and
 ● LATE EVENING SNACKS

**DINING ROOM AND IN-CAR SERVICE
 OPEN 7 A.M. TO MIDNIGHT
 'TIL 2 A.M. FRIDAYS & SATURDAYS**

**1775 W. TENNESSEE ST.
 TALLAHASSEE - TEL. 224-1246**

TRY FRISCH'S CARRY-OUT SERVICE



Football and Fitness Film Now Available!

This exciting 28-minute color film captures the thrills of professional football. It shows 13 N.F.L. stars in action, in some of their biggest moments of play. In addition, the 16 mm. sound film depicts these same players in "how-we-do-it" demonstrations of these plays, as well as their own favorite methods of staying in peak physical shape.

The film and an accompanying 36-page booklet outlines football-oriented plays, exercises, fundamentals and skills.

The film, sponsored by Prudential in cooperation with the President's Council on Physical Fitness and the National Football League, is available for free loan. It will make a terrific program for your civic club, youth group or physical education class.

For information, contact your local Prudential office. Or write Public Relations Dept., The Prudential Insurance Co. of America, P. O. Box 4579, Jacksonville, Florida 32201.



THE PRUDENTIAL INSURANCE COMPANY OF AMERICA
 SOUTH-CENTRAL HOME OFFICE • JACKSONVILLE, FLORIDA

FLORIDA STATE UNIVERSITY

DEPARTMENT OF INTERCOLLEGIATE ATHLETICS

Salutes
MODE L. STONE

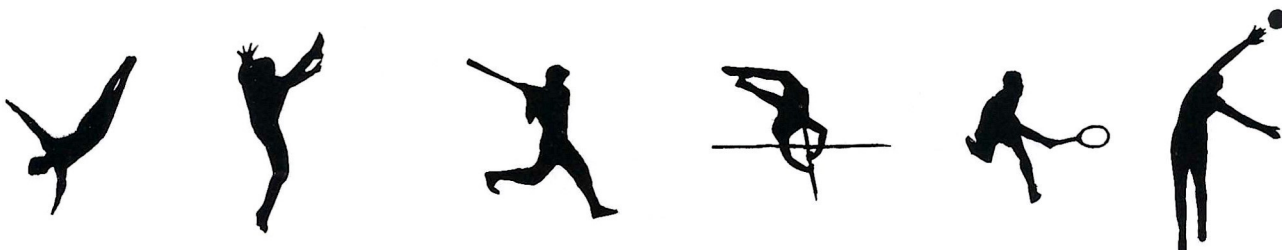


For his interest in and long association with athletic activities and the Department of Intercollegiate Athletics.

For having served as a member of the Athletic Board since 1949 and as its president from 1957 to this time.

Dr. Stone has taken a deep and personal interest in the development of all sports activities at this institution. His untiring and persistent effort helped Florida State University attain a high and proper place in intercollegiate athletic circles.

We salute you, Mode L. Stone, for your selfless direction and major contribution to the Florida State University Intercollegiate Athletic Program.





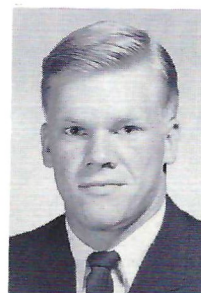
TIM BICE



DON BUCKNER



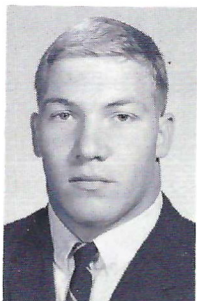
BOB COLE



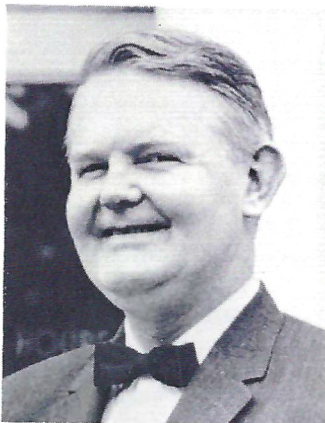
MIKE FAIR



BENNY GALLOWAY



BEN GARNTO



DR. THOMAS F. JONES
President



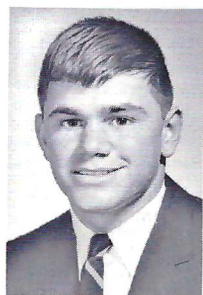
JIMMY GOBBLE



DAVE GRANT



PAUL DIETZEL
Head Coach



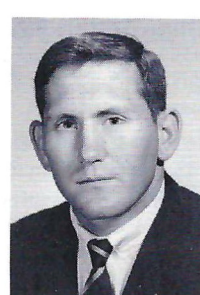
JOHNNY GREGORY



JIMMY KILLEN



JOE KOMOROSKI



TOY McCORD



BOB MORRIS

University of South

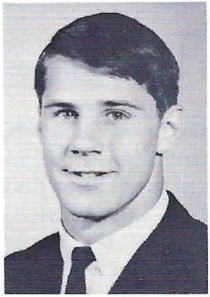
The University of South Carolina is one of the oldest as well as one of the youngest institutions of higher learning in the United States.

If this sounds contradictory, consider: the University was founded in 1801 and is the oldest fully state-supported institution of higher learning in the nation. Since 1953, enrollment has increased more than 200 per cent, largest growth percentage in the Atlantic Coast Conference.

Faculty and physical plant growth have kept pace with more than \$30 million in new facilities either presently under construction or in final planning stage. Completed just in time for the 1967 fall semester were the \$3 million "Capstone House," a 21 story honors residence hall for women, and a \$7 million science center. Nearing the halfway mark in construction is the \$6.9 million Carolina Coliseum, which will house the University's School of Journalism and College of General Studies in addition to providing a 12,500 seat arena for basketball, commencements and other attractions.

The faculty and staff numbers more than 1,000 and enrollment for the fall 1967 semester tops 14,000. Of this number, some 12,000 are studying on the main campus in Columbia with 2,000 at two-year branch campuses throughout South Carolina.

The main campus is situated downtown in Columbia, South Carolina's state capital and twice named an All America City. Columbia's metropolitan population totals about 300,000 and the University draws from the social and cultural activities of the city as well as providing adequate outlets of its own.



WARREN MUIR



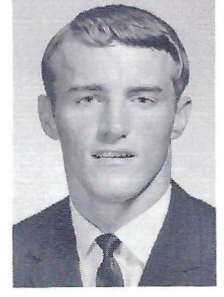
JIM MULVIHILL



WALLY ORRELL



HYRUM PIERCE



JIMMY POOLE

Carolina

At South Carolina, a student can prepare himself to become an engineer, businessman, doctor, lawyer, clergyman, teacher, coach, nuclear scientist, military officer, or any of a number of other professions. Divisions of the University include the College of Arts and Science, College of Business Administration, College of Engineering, College of General Studies, School of Education, School of Journalism, School of Law, School of Nursing, School of Pharmacy, and the Graduate School.

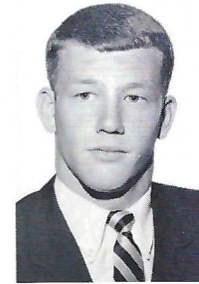
Military training is not compulsory at the University of South Carolina but most young men face a military obligation and the University offers Naval and Air Force Reserve Officers Training programs in cooperation with the U. S. Department of Defense.

Athletically, the University of South Carolina fields varsity teams in football, basketball, baseball, track, swimming, tennis, golf and cross country. In both 1965 and '66 the Gamecock football squad met three teams that were ranked among the top 10 in the nation at season's end. The 1967 schedule lists three teams who were post-season bowl participants after the 1966 season.

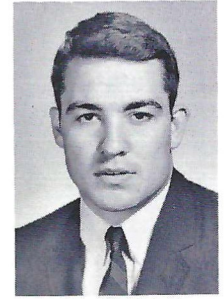
(continued on page 39)



ROY DON REEVES



PAT WATSON



GENE SCHWARTING



DON SOMMA

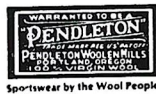


TOM WINGARD



RON ZUKOWSKI

SHOW YOUR COLORS! Genuine **PENDLETON** wool blankets in authentic school colors, solid background with felt emblem, in carrying case. Ideal for stadium, home, and travel. Perfect for gift giving. Choose from those shown, or specify your school. If not offered, your money will be promptly refunded. Price: \$20.00 each, includes sales tax and shipping charges. Check or money order must accompany order. No C.O.D. shipments.



Gentlemen: Please ship me **Blankets at \$20.00 each.**
My school is _____
Enclosed find \$ _____

Name _____
Address _____
City, State, & Zip Code _____

"ONE OF FLORIDA'S FINE STORES"

Fletcher-Cantey

*Men's
Wear*

P. O. BOX 899

QUINCY, FLORIDA 32351



THE SEMINOLE FOOTBALL NETWORK

Florida's 1967 sportscaster of the year, popular Bo Mitchell returns to the Seminole microphone for the fifth straight season, bringing play-by-play action to every corner of the Sunshine State.

The energetic Mitchell, an ex-naval aviator with more than 18 years broadcasting experience, is vice-president and manager of station WXIS, Orlando.

His partner at the mike again this season will be Bud Kaatz, a native of Ohio who was formerly color man for the University of Michigan Football Network and play by play announcer for Ohio University and Marietta College. Kaatz will handle pre-game, half-time and time out commentary on the Seminoles.

Originating station for the Seminole Network is WTNT, Tallahassee. The network consists of 29 stations in Georgia and Florida.



Bo Mitchell



Bud Kaatz

THE SEMINOLE NETWORK

WTNT—Tallahassee	WORD—Daytona Beach
WAAZ—Crestview	WCOA—Pensacola
WDSR—Lake City	WDAE—Tampa
WFTW—Ft. Walton Beach	WGBS—Miami
WINK—Ft. Myers	WJAX—Jacksonville
WKMK—Blountstown	WKIS—Orlando
WMAF—Madison	WSIR—Winter Haven
WMGA—Moultrie, Ga.	WSPB—Sarasota
WMMB—Melbourne	WTOT—Marianna
WMOP—Ocala	WFOY—St. Augustine
WONN—Lakeland	WCNH—Quincy
WOOO—DeLand	WEAT—West Palm Beach
WPAX—Thomasville, Ga.	WFFG—Marathon - Key West
WPCF—Panama City	WTRR—Sanford
WPRY—Perry	

**Follow
STATE
in '67**

on the **STANDARD OIL** Radio Network

WTNT Tallahassee	WJAX Jacksonville
WGBS Miami	WKIS Orlando
WCOA Pensacola	WDAE Tampa

*Come to
Chevron Island!*



University of South Carolina

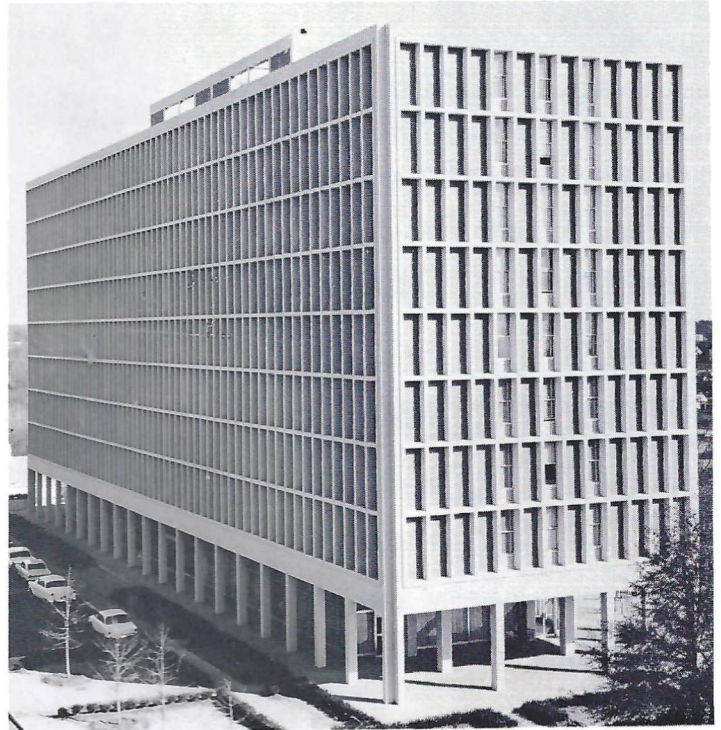
(continued from page 37)

Two of the University's varsity athletes in the class of 1967 were recipients of National Collegiate Athletic Association scholarships for post-graduate study. Football star Stan Juk, was one of 22 NCAA winners among football and basketball players, used his \$1,000 award plus a \$1,200 Earl Blaik Scholarship, to enter the Duke University Medical School. Track man Bob Turner, one of 22 recipients in sports other than football or basketball, used his \$1,000 plus a \$500 scholarship from the Women's Auxiliary of the South Carolina Medical Association, to enter the Medical College of South Carolina at Charleston.

The University of South Carolina, an old institution that is young at heart, faces the future, vigorously determined to carry out the role of the state university as South Carolina sees it in the space age and the final third of the 20th century.



Undergraduate Library

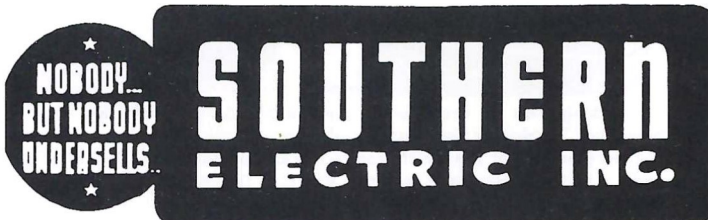


South Building



SPURGEON CAMP

*"Let's Be
#1
In 1967"*



QUALITY CLEANERS

215 W. COLLEGE AVE.—DIAL 222-5097

ONE DAY SERVICE

PICK-UP and DELIVERY

Quality Laundry Work

Fluff Dry Service

EXPERT TAILORING and ALTERATIONS

ZIPPERS REPAIRED

MUSIC AT HALF-TIME

Robert Braunagel—Director
 Camp Kirkland—Assistant Director
 Charles Carter—Assistant Director and Arranger
 Oliver Hobbs—Guest Conductor

Jim Poolis—Band Day Coordinator
 Herschel Beazley—Drum Major
 Paulette Gergen—Head Majorette
 Will Surley and Jerry Williams—Feature Twirlers

THEME: A SALUTE TO OUR LEGISLATURE

MUSIC

March—Chimes of Liberty

March—The Liberty Bell

High School Cadets

Medley—Hail, Hail

Suwannee River
 America The Beautiful

FORMATIONS

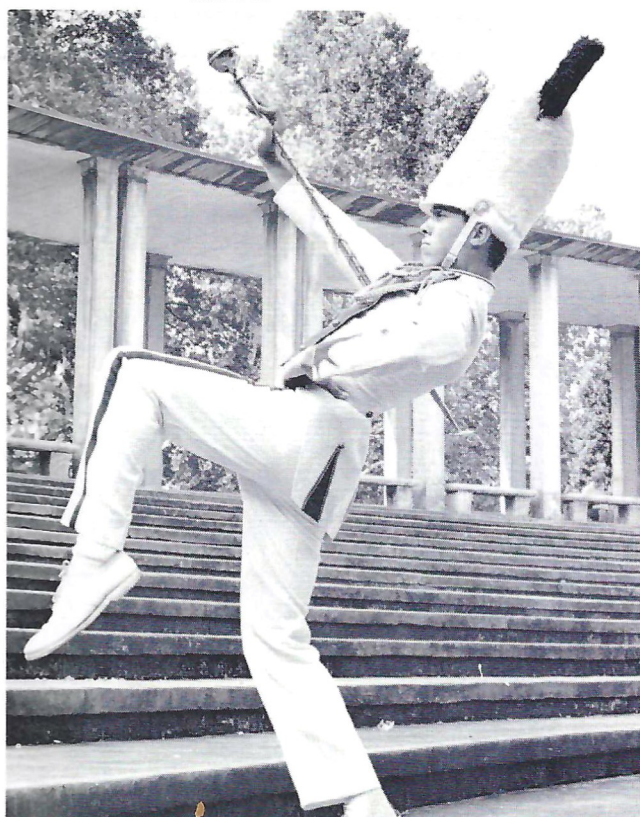
Drill—The Marching Chiefs salute the legislature and the thirty-one high school bands with a drill sequence to two famous marches.

Band Day—The thirty-one high school bands from Alabama, Georgia, and Florida enter the field and play *High School Cadets March* under our guest conductor Oliver Hobbs, retired director of Leon High School in Tallahassee.

Capitol Building—The bands form a replica of the Capitol and salute the Florida Legislature.

BAND DAY 1967

HIGH SCHOOL	TOWN	DIRECTOR
Albany	Albany, Ga.	Harry Martin
Baker County	Macclenny, Fla.	M. C. Thompson
Bainbridge	Bainbridge, Ga.	William Widener
Berrien County	Nashville, Ga.	Frederic C. Schley
Blackshear & Patterson	Blacksherr & Patterson, Ga.	Milton Norras
Bradford	Starke, Fla.	Virgil Lovett
Brooks County	Quitman, Ga.	George W. Hammett
Chapman	Apalachicola, Fla.	Andrew Valkuchak
Chattahoochee	Chattahoochee, Fla.	J. Broox Jones
Clay	Green Cove Springs, Fla.	Winford E. Franklin
Coffee County	Douglas, Ga.	John Maley
Columbia	Lake City, Fla.	L. Dean Cassels
Eastman	Eastman, Ga.	Clifton R. Jones
Florida	Tallahassee, Fla.	Heinlen
Graceville	Graceville, Fla.	Harvie B. McClure
Greenville	Greenville, Fla.	Jim Copeland
Hamilton County	Jasper, Fla.	H. E. Oehlert, Jr.
Havana	Havana, Fla.	Early G. Brackin
Jefferson	Monticello, Fla.	Romulus Thompson
Leon	Tallahassee, Fla.	F. Lewis Jones
Pelham	Pelham, Ga.	Richard Reis
Port St. Joe	Port St. Joe, Fla.	Hugh M. Jones
Quincy	Quincy, Fla.	Charles A. Burns
James S. Richards	Tallahassee, Fla.	Bentley Shellahamer
Suwannee	Live Oak, Fla.	Ronald R. Reagan
Taylor County	Perry, Fla.	Dean Mann
Thomasville	Thomasville, Ga.	James B. Moody
Wakulla	Medart, Fla.	G. R. Rounsaville
Wayne County	Jesup, Ga.	C. Richard Tuten
Worth County	Sylvester, Ga.	Eugene H. Wyles



Taking over as drum major for the Marching Chiefs this year is Herschel Beazley, a sophomore majoring in music education. The new "field general" of the Chiefs comes to Florida State from Decatur, Ga., where he was drum major for three years, at Decatur High.

Herschel's principal instrument is the piano, but has a wide range of instruments he can play. In high school he played the bassoon and saxophone, and has five years twirling experience.

The 1965 State of Georgia drum major champion hopes to become a high school band director following his graduation from Florida State.

1967 CROSS COUNTRY SCHEDULE

DATE	OPPONENT	SITE	TIME
Oct. 5 (Thurs.)	Eastern Kentucky	Tallahassee	4:00
Oct. 7 (Sat.)	South Florida	Tampa	3:30
Oct. 14 (Sat.)	Aldridge Championships	Atlanta, Ga.	11:00
Oct. 21 (Sat.)	Callaway Gardens	Pine Mountain, Ga.	11:00
Oct. 23 (Mon.)	Auburn	Tallahassee	4:00
Nov. 4 (Sat.)	South Florida	Tallahassee	11:00
Nov. 6 (Mon.)	*Florida	Gainesville	3:30
Nov. 11 (Sat.)	Georgia Tech	Tallahassee	11:00
Nov. 18 (Sat.)	State Meet	Tallahassee	11:00

*"A" and "B" Meets



THE 1967 FLORIDA STATE CROSS-COUNTRY TEAM:

Front Row: Left to Right: Joe Law, Joe Rooney, Terry Smith, Bob Courter. **Second Row:** Left to Right: Marc Williamson, Sid Merchant, George Griffin, Bob Thomas. **Third Row:** Left to Right: Phil Scott, Jack Castner, Mike Kelly, Ken Misner, Tom Richards.

The Vogue

TALLAHASSEE, FLORIDA

Learn to Fly at
G. C. Shuler
Seminole Flying Service, Inc.

Municipal Airport

Phone 576-5151

Tallahassee, Fla.

- STUDENT CLUBS
- AIRPLANE RIDES
- FLIGHT INSTRUCTION
- AERIAL PHOTOGRAPHY
- CHARTER FLIGHTS
- AIRCRAFT RENTAL

FLY the best—A New Cessna

"Look up—a new CESSNA will be overhead"

Your
University Union



CAMPUS HEADQUARTERS FOR
Programs ★ Services ★ Facilities
FOR ALL CAMPUS INFORMATION
CALL THE UNION
599-3317



**TIME!
OUT!**

FOR
YOUR FAVORITE

**Meal
or
Snack**

AFTER THE GAME AT
THE **UNIVERSITY UNION**
FSU FOOD SERVICE

Go Seminoles

OWNED AND OPERATED BY FRANK, RICHARD & RAYMOND CHASE


Skyline
RESTAURANT
2220 W. TENNESSEE ST.
TALLAHASSEE, FLORIDA

"Serving Good Food for Fine People"

FREE PARKING

Private Rooms and Banquet Facilities

FOR RESERVATIONS CALL: 576-2515 – 576-9135



KNEELING (left to right): Cherry Hand, Dixie Wilcox and Jan Berry.

STANDING: Bruce Turner, Jim Sharp, Dave Deutsch (Captain).

THE ALMA MATER

High o'er the towering pines our voices swell
 Praising these Gothic spires we love so well;
 Here sons and daughters stand . . .
 Faithful and True, Hailing our Alma Mater
 F . . . S . . . U . . .

FSU FIGHT SONG*

You're going to **FIGHT, FIGHT, FIGHT** for FSU
 You're going to scalp 'em Seminoles.
 You're going to **WIN, WIN, WIN, WIN,**
WIN this game . . . and roll
 on down and make those goals!
 For FSU is on the warpath now, and at
 the battle's end she's great . . .
 So **FIGHT, FIGHT, FIGHT, FIGHT** for victory
 The Seminoles of Florida State . . .
F-L-O-R-I-D-A S-T-A-T-E
FLORIDA STATE (3 times)

HYMN TO THE GARNET AND GOLD

Here's a hymn to the Garnet and the Gold
 Ringing to the sky.
 Here's a song for our men and women bold
 Sing with heads held high.
 Striving e'er to seek, to know,
 Fight for victory.
 Alma Mater, this, our song to you,
 Echoes FSU.



REMEMBER THE DAY WITH PICTURES !!

For All Of Your Photographic Needs Remember

TALLAHASSEE CAMERA CENTER

117 NORTH MONROE STREET

Across From The Florida Theater

CAMERAS • FILM • BINOCULARS • RECORDERS • RENTALS

Fast, Fast, Black & White and Color Processing

STADIUM INFORMATION

Rest Rooms—Located on concourse and on ground level on both east and west sides.

First Aid—Located in southwest corner of stadium. Registered nurse on duty.

Lost and Found: Items may be claimed or turned in at the ticket booth next to the press box elevator, west side.

Public Telephones: Located ground level, west side.

Public Address: No special announcements are made over the stadium public address system except in cases of emergency.

Field Regulations: No spectators are allowed on the field, either during or after the game. Please leave the stadium by ramp and section exits rather than field level exits.

Drive Carefully—Your cooperation with law enforcement officers will help speed the flow of traffic away from the stadium.

Miller CHEVROLET COMPANY

Havana, Florida

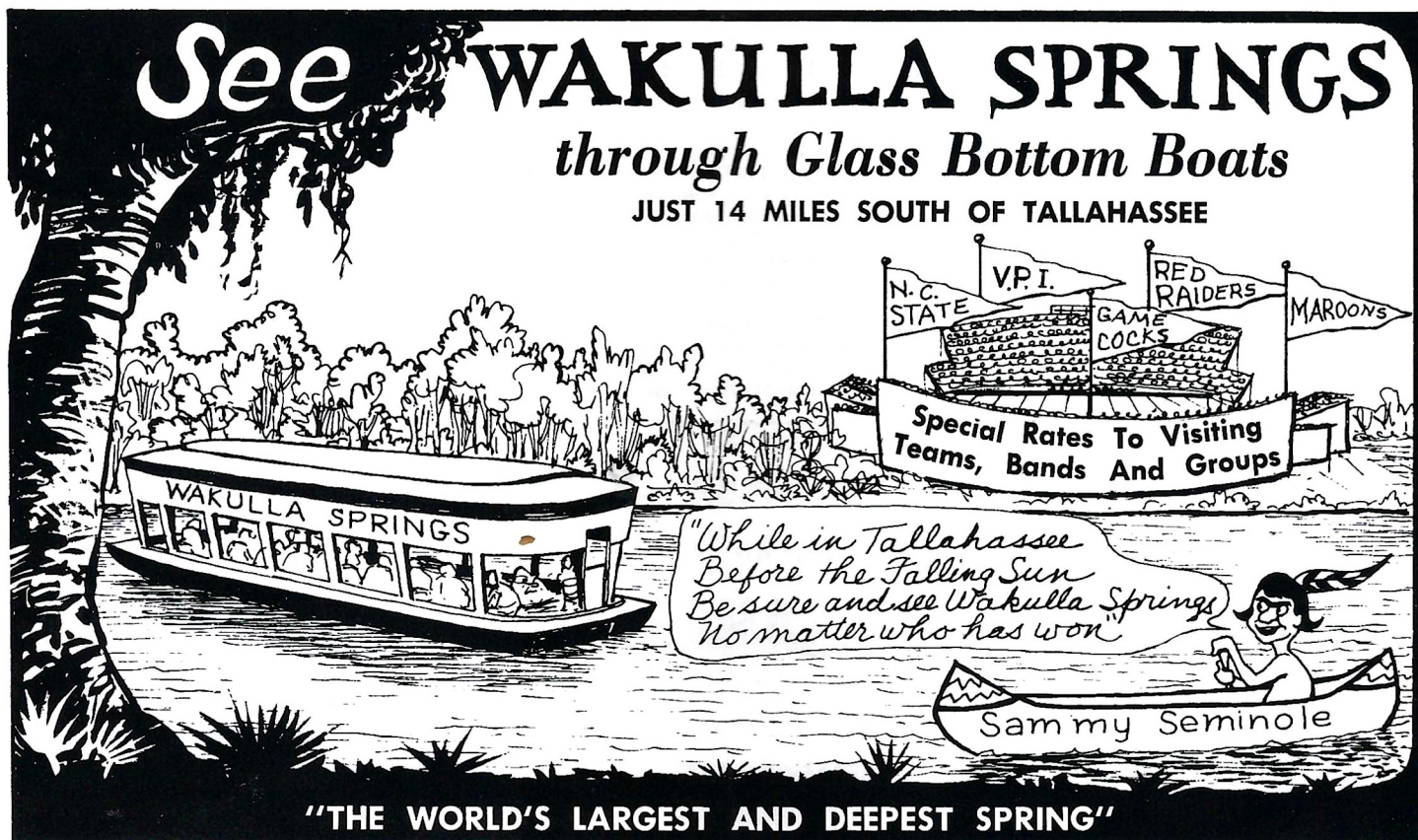
539-6376

15 Miles North of Tallahassee

on U. S. 27

Phone Toll Free

224-1317



See WAKULLA SPRINGS
through Glass Bottom Boats
JUST 14 MILES SOUTH OF TALLAHASSEE

Special Rates To Visiting Teams, Bands And Groups

"While in Tallahassee Before the Falling Sun Be sure and see Wakulla Springs No matter who has won"

Sammy Seminole

"THE WORLD'S LARGEST AND DEEPEST SPRING"

The illustration shows a glass bottom boat on a river. The boat is labeled "WAKULLA SPRINGS" and has several people inside. In the background, a stadium is visible with several flags flying: "N.C. STATE", "V.P.I.", "RED RAIDERS", "GAME COCKS", and "MAROONS". A sign in front of the stadium reads "Special Rates To Visiting Teams, Bands And Groups". A speech bubble from a person in a canoe says, "While in Tallahassee Before the Falling Sun Be sure and see Wakulla Springs No matter who has won". The canoe is labeled "Sammy Seminole". At the bottom of the illustration, it says "THE WORLD'S LARGEST AND DEEPEST SPRING".

BASIC DEFENSE

ROVER	RIGHT HALFBACK	LEFT HALFBACK	SAFETY
48 DON BUCKNER	15 OAT WATSON	21 TOY McCORD	27 WALLY ORRELL
35 CANDLER BOYD	23 BOB WHITE	10 CARL COWART	28 WALLY MEDLIN

RIGHT END	RIGHT TACKLE	RIGHT LINEBACKER	MIDDLE GUARD	LEFT LINEBACKER	LEFT TACKLE	LEFT END
84 DAVE LUCAS	66 DON SOMMA	47 TIM BICE	52 DAVE GRANT	33 BOB COLE	77 JOE KOMOROSKI	82 GENE SCHWARTING
85 JOHN COLEMAN	55 GEORGE McCARTHY	51 RON BUNCH	59 JOHN TOMINACH	51 RON BUNCH	75 GORDEN GIBSON	60 BILLY THARP

LEFT END	LEFT TACKLE	LEFT GUARD	CENTER	RIGHT GUARD	RIGHT TACKLE	RIGHT END
82 LANE FENNER	76 JACK FENWICK	52 WAYNE McDUFFIE	55 TED MOSLEY	68 LARRY PENDLETON	75 BILLY RHODES	83 THURSTON TAYLOR
27 BILL COX	77 JEFF CURCHIN	63 RICHARD McLEAN	66 KEN HART	64 STAN WALKER	78 WAYNE JOHNSON	84 CHIP GLASS

BASIC OFFENSE

HALFBACK	QUARTERBACK	FULLBACK	FLANKER
20 LARRY GREEN	11 KIM HAMMOND	30 BILL MOREMEN	34 RON SELLERS
31 BILL GUNTER	16 GARY PAJCIC	44 JOHN PITTMAN	19 PHIL ABRAIRA

FLORIDA STATE SPECIALISTS: PUNTING, 43 BILL CHESHIRE; PLACEKICKER, 33 GRANT GUTHERIE

BASIC DEFENSE

RIGHT SAFETY	RIGHT CORNERBACK	LEFT CORNERBACK	LEFT SAFETY
22 CHUCK EASON	28 T. K. WETHERELL	24 WALT SUMNER	41 JOHN CROWE
18 CLINT BURTON	17 MIKE PAGE	15 TOMMY WARREN	43 HOWELL MONTGOMERY

RIGHT END	RIGHT TACKLE	RIGHT LINEBACKER	MIDDLE GUARD	LEFT LINEBACKER	LEFT TACKLE	LEFT END
89 BOB MENENDEZ	72 RANDY LOGAN	40 MIKE BLATT	57 JOE KINNAN	50 DALE McCULLERS	73 DUKE JOHNSTON	85 FLOYD RATLIFF
80 DOUG GURR	71 HARVEY ZION	61 CHUCK ELLIOTT	67 MIKE BUGAR	47 JOE BENSON	79 FRANK VOHUN	88 JERRY JONES

LEFT END	LEFT TACKLE	LEFT GUARD	CENTER	RIGHT GUARD	RIGHT TACKLE	RIGHT END
80 FRED ZEIGLER	74 BOB MAURO	61 BOB MORRIS	50 JIMMY GOBBLE	64 TOM WINGARD	63 HYRUM PIERCE	88 JOHNNY GREGORY
29 ANDY CHAVOUS	78 BOB WEHMEYER	68 JOHNNY GLASS	54 JIM ROSS	73 TONY FUSARO	69 JOHN DYER	83 JOHN KING

BASIC OFFENSE

LEFT HALFBACK	QUARTERBACK	RIGHT HALFBACK	FULLBACK
11 BEN GARNTO	12 MIKE FAIR	45 ROY DON REEVES	36 WARREN MUIR
24 RUDY HOLLOMAN	17 DAN HARBISON	14 FLETCHER SPIGNER	22 CURTIS WILLIAMS

SOUTH CAROLINA SPECIALISTS: PLACEKICKER, 1 JIMMY POOLE; PUNTS, 4 SCOTT TOWNSEND

- RCA COLOR TV IN ROOMS
- POOL
- Northwest corner of Campus on U.S. 90; Fla. 20 West



DRIFTWOOD MOTEL and RESTAURANT

AMERICAN EXPRESS - DINERS - AMERICAN OIL CREDIT CARDS HONORED

- AIR CONDITIONED
- DIRECT DIAL PHONES
- Se habla Espanol

1402 W. TENN. U.S. 90

(904) 224-4174 (TWX904) 224-6510

SOUTH
CAROLINA

FLORIDA STATE

SOUTH
CAROLINA

1967 FLORIDA STATE FOOTBALL ROSTER

1967 SOUTH CAROLINA FOOTBALL ROSTER

No.	Name	Pos.	Class	Age	Hgt.	Wgt.	Hometown
11	Kim Hammond	QB	Sr.	23	6-1	190	Melbourne
12	Phil Hiatt	QB	So.	21	6-4	190	Tipp City, Ohio
14	Bill Cappleman	QB	So.	20	6-3	205	Dunedin
15	Tommy Warren	QB-DB	So.	19	6-1	185	Miami
16	Gary Paicic	QB	Jr.	20	6-2	192	Jacksonville
17	Mike Page	DB	So.	20	5-10	175	Winter Haven
18	Clint Burton	DB	Jr.	20	6-2	180	Atlanta, Ga.
19	Phil Abraira	E	So.	19	6-0	180	Ft. Lauderdale
20	Larry Green	HB	Sr.	22	5-10	173	Cairo, Ga.
21	Donovan Jones	FB	Sr.	22	6-1	206	Lakeland
22	Chuck Eason	DB	Jr.	20	5-10	195	Tallahassee
24	Walt Sumner	DB	Jr.	20	6-1	172	Ocala, Ga.
27	Billy Cox	E	Jr.	20	6-1	182	Atlanta, Ga.
28	T. K. Wetherell	DB	Sr.	22	5-10	185	Daytona Beach
29	Chuck Pickens	DF	So.	19	5-10	190	Etowah, Tenn.
30	Bill Moremen	HB-FB	Sr.	22	5-11	188	Daytona Beach
31	Bill Gunter	HB	Jr.	21	6-0	171	Dothan, Ala.
32	Ed Chereschkoff	HB	So.	19	5-10	188	Hollywood
33	Grant Gutherie	PK-FB	So.	19	6-0	207	Claymont, Del.
34	Ron Sellers	FL	Jr.	20	6-4	187	Jacksonville
35	Mike Gray	FL	So.	19	6-3	190	Lake Mary
40	Mike Blatt	LB	Sr.	21	5-11	190	Key West
41	John Crowe	DB	Jr.	20	6-2	173	St. Cloud
42	Bill Cheshire	P-E	So.	19	6-0	183	Odum, Ga.
43	Hal Montgomery	DB	Jr.	20	5-11	176	Bountstown
44	John Pittman	FB	Jr.	21	5-11	195	Brunswick, Ga.
46	Charlie Huggins	DB	So.	20	6-1	194	Mims
47	Joe Benson	LB	Jr.	22	5-10	197	Birmingham, Ala.
49	Terry Eagerton	FB	So.	20	5-10	190	Jacksonville
50	Dale McCullers	LB	Jr.	20	6-2	200	Live Oak
51	Billy Hughes	C	So.	19	6-1	221	Rockledge
52	Wayne McDuffie	C-G	Sr.	23	6-2	223	Hawkinsville, Ga.
54	Ron Montford	MG	So.	19	6-0	195	Bountstown
55	Ted Mosley	C	Jr.	20	6-2	202	Tampa
56	Henry Lohse	G	So.	20	6-3	203	St. Petersburg Beach
57	Joe Kinnan	T	Sr.	22	6-0	206	Bradenton
58	Rich Jones	T	Jr.	21	6-0	203	River Vale, N. J.
59	Frank Loner	PK	Jr.	21	6-0	196	Atlanta, Ga.
60	Barry Rice	LB	So.	19	6-1	188	Fernandina Beach
61	Chuck Elliott	LB	Jr.	21	6-0	197	Troy, Ohio
62	Beryl Rice	LB	So.	19	6-1	186	Fernandina Beach
63	Richard McLean	G	Jr.	21	6-0	189	Holly Hill
64	Stan Walker	G	So.	19	6-2	210	Tallahassee
65	Billy Dew	T	So.	20	6-2	210	Apopka
66	Ken Hart	C-G	Jr.	21	6-3	217	Groveland
67	Mike Bugar	MG	Jr.	21	5-10	206	Youngstown, Ohio
68	Larry Pendleton	G	Jr.	21	6-0	206	Winter Garden
70	Tony Sewell	T	So.	21	6-5	220	Union Springs, Ala.
71	Harvey Zion	T	Jr.	20	5-11	212	Atlanta, Ga.
72	Randy Logan	T	Jr.	22	6-1	230	Seal Beach, Calif.
73	Duke Johnston	T	So.	19	6-2	229	Ft. Lauderdale
75	Billy Rhodes	T	Jr.	21	6-2	245	Eustis
76	Jack Fenwick	T	Jr.	21	6-4	225	Norwood, Ohio
77	Jeff Curchin	T	So.	19	6-6	247	Ocala
78	Wayne Johnson	T	So.	20	6-3	230	Macon, Ga.
79	Frank Vohun	T	So.	20	6-3	223	Brooksville
80	Doug Gurr	DE	Jr.	20	6-2	195	Albany, Ga.
81	Jim Tyson	E	So.	19	6-1	188	Pahokee
82	Lane Fenner	FL	Sr.	21	6-5	202	Evansville, Ind.
83	Thurston Taylor	E	Sr.	21	6-2	222	Atlanta, Ga.
84	Chip Glass	FB	Jr.	20	6-4	225	Tampa
85	Floyd Ratliff	DE	So.	19	6-4	195	Jesup, Ga.
86	Randy Hall	E	So.	19	6-4	187	Homestead
87	Bill Yeldell	E	So.	20	6-1	190	Jacksonville
88	Jerry Jones	DE	Sr.	22	6-1	193	Jesup, Ga.
89	Bob Menendez	DE	Sr.	22	5-10	195	Key West

No.	Name	Pos.	Class	Age	Hgt.	Wgt.	Hometown
1	Jimmy Poole	PK	Sr.	21	5-8	170	Due West, S. C.
2	Martin Becker	PK	Sr.	21	5-7	153	Orangeburg, S. C.
4	Scott Townsend	PNTR	Sr.	21	5-9	180	Decatur, Ga.
10	Carl Cowart	DB	So.	20	5-9	159	Jesup, Ga.
11	Ben Garnto	HB	Sr.	21	5-10	199	Columbus, Ga.
12	Mike Fair	QB	Sr.	21	6-1	193	Columbus, Ga.
15	Pat Watson	DB	So.	19	5-11	152	Greenville, S. C.
17	Dan Harbison	QB	So.	19	5-10	179	Myrtle Beach, S. C.
21	Toy McCord	DB	Jr.	20	5-8	165	Washington, D. C.
22	Curtis Williams	FB	Sr.	21	5-11	200	Manning, S. C.
23	Bob White	SAF	So.	20	5-10	182	Bamberg, S. C.
24	Rudy Holloman	HB	So.	20	5-9	168	Sharon, Pa.
25	Allen Owen	DE	So.	19	6-2	175	McBee, S. C.
27	Wally Orrell	AF	Jr.	20	5-10	182	Columbus, Ga.
28	Wally Medlin	SAF	Jr.	21	5-9	183	Savannah, Ga.
29	Andy Chavous	DB	So.	19	6-2	176	Ehrhardt, S. C.
30	Ronnie Palmer	HB	So.	20	5-5	157	Hepzibah, Ga.
33	Bob Cole	LB	Sr.	22	6-3	220	Morristown, Tenn.
34	Allen Brown	HB	Jr.	20	6-0	191	Columbia, S. C.
35	Candler Boyd	ROV	So.	19	5-9	175	Hinesville, Ga.
36	Warren Muir	FB	So.	20	5-10	197	Hinesville, Ga.
43	Jim Mulvihill	ROV	Sr.	22	5-9	195	Fitchburg, Mass.
44	Fletcher Spigner	HB	So.	19	5-11	184	Atlanta, Ga.
45	Roy Don Reeves	HB	Jr.	21	5-11	182	Columbia, S. C.
46	Don Dunning	FB	So.	19	5-10	185	Americus, Ga.
47	Tim Bice	LB	Jr.	21	5-10	181	Florence, S. C.
48	Don Buckner	LB	So.	19	6-0	182	Atlanta, Ga.
50	Jimmy Gobble	C	Sr.	22	6-2	228	Cleveland, Tenn.
51	Ron Bunch	LB	Jr.	20	5-9	199	Spartanburg, S. C.
52	Dave Grant	MG	Jr.	20	5-10	199	Bamberg, S. C.
54	Jim Ross	C	So.	19	6-1	195	Clarksville, Ga.
55	George McCarthy	C	So.	21	6-2	197	Williamston, S. C.
57	Richard Harrelson	C	So.	20	6-1	185	Washington, D. C.
58	Charles Stokes	DT	So.	19	6-1	196	Barnwell, S. C.
59	John Tominack	MG	So.	20	5-10	180	Clover, S. C.
60	Billy Tharp	DE	So.	19	6-2	195	Triadelphia, W. Va.
61	Bob Morris	OG	So.	19	6-0	178	Charleston, S. C.
62	Clyde Smith	MG	So.	19	5-11	187	Charleston, S. C.
63	Hyrum Pierce	OT	Sr.	22	6-2	225	Virginia Beach, Va.
64	Tom Wingard	OG	Jr.	20	6-1	206	Church Hill, Tenn.
66	Don Somma	DT	Sr.	21	5-11	215	Empire, Ga.
67	Jack James	OG	So.	20	5-10	191	Greenwood, S. C.
68	Johnny Glass	OG	Sr.	21	5-11	200	Middlesex, N. J.
69	John Dyer	DT	Sr.	23	6-0	191	Atlanta, Ga.
70	Larry Royal	OT	So.	20	6-2	223	Kingsport, Tenn.
71	Bill Anderson	OT	So.	20	6-0	220	Bloomington, Ind.
73	Tony Musaro	OG	So.	19	6-2	230	Virginia Beach, Va.
74	Bob Mauro	OT	Jr.	21	6-0	215	Ware Shoals, S. C.
75	Gordon Gibson	DT	So.	20	6-3	199	Huntington, N. Y.
76	Eddie Whittington	LB	So.	19	6-0	199	Madison, N. J.
77	Joe Komoroski	DT	Sr.	22	6-2	225	Greenville, S. C.
78	Bob Wehmeyer	OT	Sr.	22	6-2	230	Marion, S. C.
79	Ray Edwards	DT	So.	20	6-0	207	Linden, N. J.
80	Fred Zeigler	SE	So.	20	5-10	183	Port Murray, N. J.
82	Gene Schwarting	DE	Jr.	20	6-1	192	Chatham, N. J.
83	John King	TE	So.	19	6-3	197	Reevesville, S. C.
84	Dave Lucas	DE	So.	20	6-5	183	Bamberg, S. C.
85	John Coleman	DE	So.	20	6-4	203	Lancaster, S. C.
87	Don Brant	DE	So.	19	6-4	173	Bishopville, S. C.
88	Johnny Gregory	TE	Jr.	21	5-11	174	Latta, S. C.
							Sycamore, S. C.
							Aiken, S. C.

- RCA COLOR TV IN ROOMS
- POOL
- Northwest corner of Campus on U.S. 90; Fla. 20 West



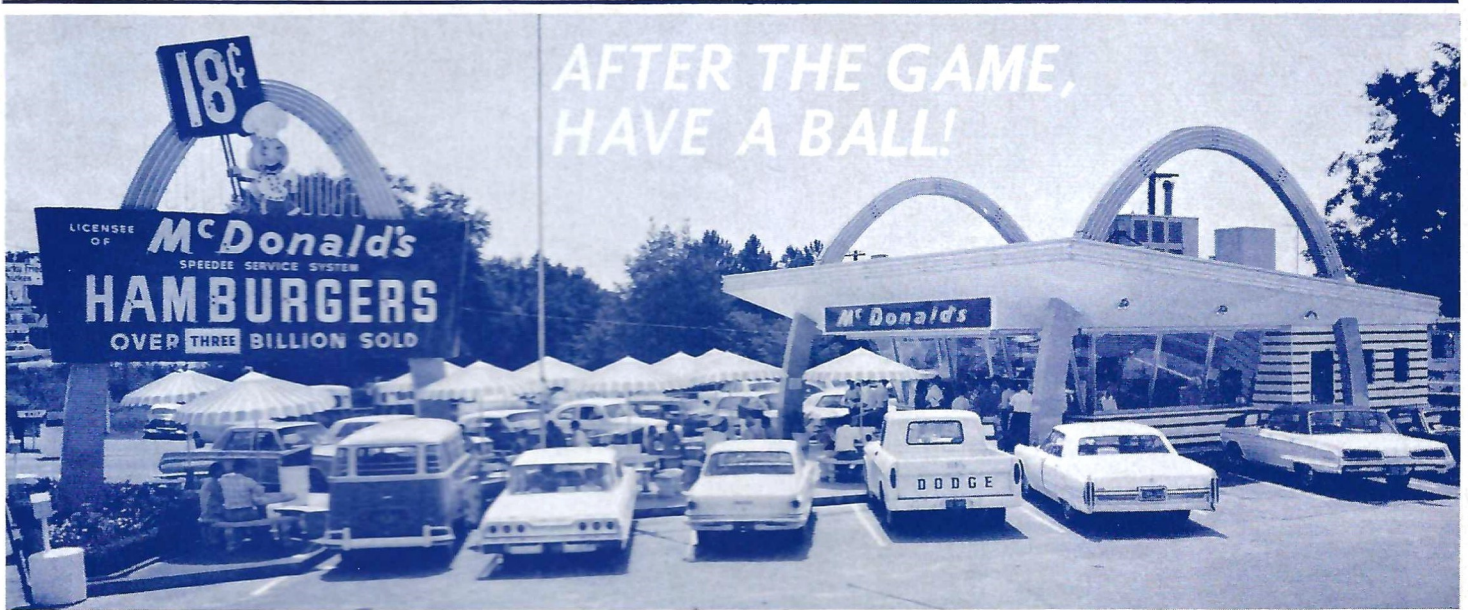
DRIFTWOOD MOTEL and RESTAURANT

- AIR CONDITIONED
- DIRECT DIAL PHONES
- Se habla Espanol

AMERICAN EXPRESS - DINERS - AMERICAN OIL CREDIT CARDS HONORED

1402 W. TENN. U.S. 90

(904) 224-4174 (TWX904) 224-6510



MENU

WORLD'S MOST DELICIOUS HAMBURGERS
 CHEESEBURGERS WITH MELTED CHEDDAR
 DOUBLE HAMBURGERS & CHEESEBURGERS
 DEEP SEA FILET 'O FISH SANDWICHES
 FRESH IDAHO FRENCH FRIES • COFFEE
 COKES • ROOT BEER • ORANGE • MILK
 CREAMY MILK SHAKES (THREE FLAVORS)
 HOT CHOCOLATE (WINTER) • APPLE PIE

McDonald's



1701 WEST TENNESSEE STREET (HWY. 90) NEAR SEMINOLE COUNTRY

THE CLOSEST THING TO HOME • LOOK FOR THE GOLDEN ARCHES

Tallahassee's Most Exclusive
 Steak House

the *Silver Slipper*



RESTAURANT

DELICIOUS CHARCOAL BROILED STEAKS

SEA FOODS CHICKEN

25 PRIVATE DINING ROOMS — BANQUET ROOM SEATING 100

CALL JIMMIE OR CHRIS

KALFAS FOR RESERVATIONS

FOR PRIVATE PARTIES

AND BANQUETS

224-1266

OPEN 5 P.M. TILL 11:30

OPEN EVERYDAY & SUNDAY

2000 S. MONROE • One Mile From Capitol On So. Monroe St. U.S. 319 S.
 BEHIND S.&S. PACKAGE STORE



"Bill
 the
 Bank"
 Hilton
 Court Blanche



New Chevrolet Impala, foreground. Chevelle Concours, top right. Camaro, "The Hugger," top left.



'68 Chevrolets

Dramatic!
Distinctive!
Daringly new!

Expect a lot of never-befores and nice-to-haves from Chevrolet for 1968. You can count on nothing being newer. Formal and fastback roof lines. Elegant new interiors with exciting colors, fabrics, and easy-to-reach instruments. Concealed headlights, Hide-A-Way windshield wipers, and refreshing Astro Ventilation, available on many models.

NEW SILENT RIDE.

More effective body and engine mounts, quieter exhaust systems, and further improved shock absorbers. The result? Every new Chevrolet rides incredibly smooth and silent.

NEW MODELS, TOO.

Like the elegant Impala Custom Coupe and rugged new Chevelle Nomad Station Wagons. For the serious sports fan, there's the completely re-styled Corvette Sting Ray, and the Chevelle SS 396 with long-hood short-deck styling and a wider wheel

stance to make it cling to the road better. Camaro, "The Hugger," features Astro Ventilation, and special hood on all SS models. What's more, there's a larger 307-cubic-inch V8 standard on Chevrolet, Chevelle and Chevy II models for '68. On most automatic transmission models, there's even a built-in heater that warms air en route to the carburetor and increases engine efficiency during cold weather. The new GM exhaust emission control is standard.

PROVED SAFETY FEATURES.

The famous proved GM-developed energy absorbing steering column and many other popular safety items are back again. Plus new features like energy absorbing front seat backs, safety armrests that shield door handles, side marker lights, and seat belts for all passenger positions. Be smart. Be sure. Buy now at your Chevrolet dealer's.



Free! Get Chevrolet's 60-page College Football Handbook

Chevrolet's College Football Handbook contains a complete run-down on all the top teams, plus action photographs and inside stories by famous sports commentators. You'll also find the schedules and line-ups of all 33 NCAA games to be televised this fall. It's yours for the asking at your Chevrolet dealer's.

