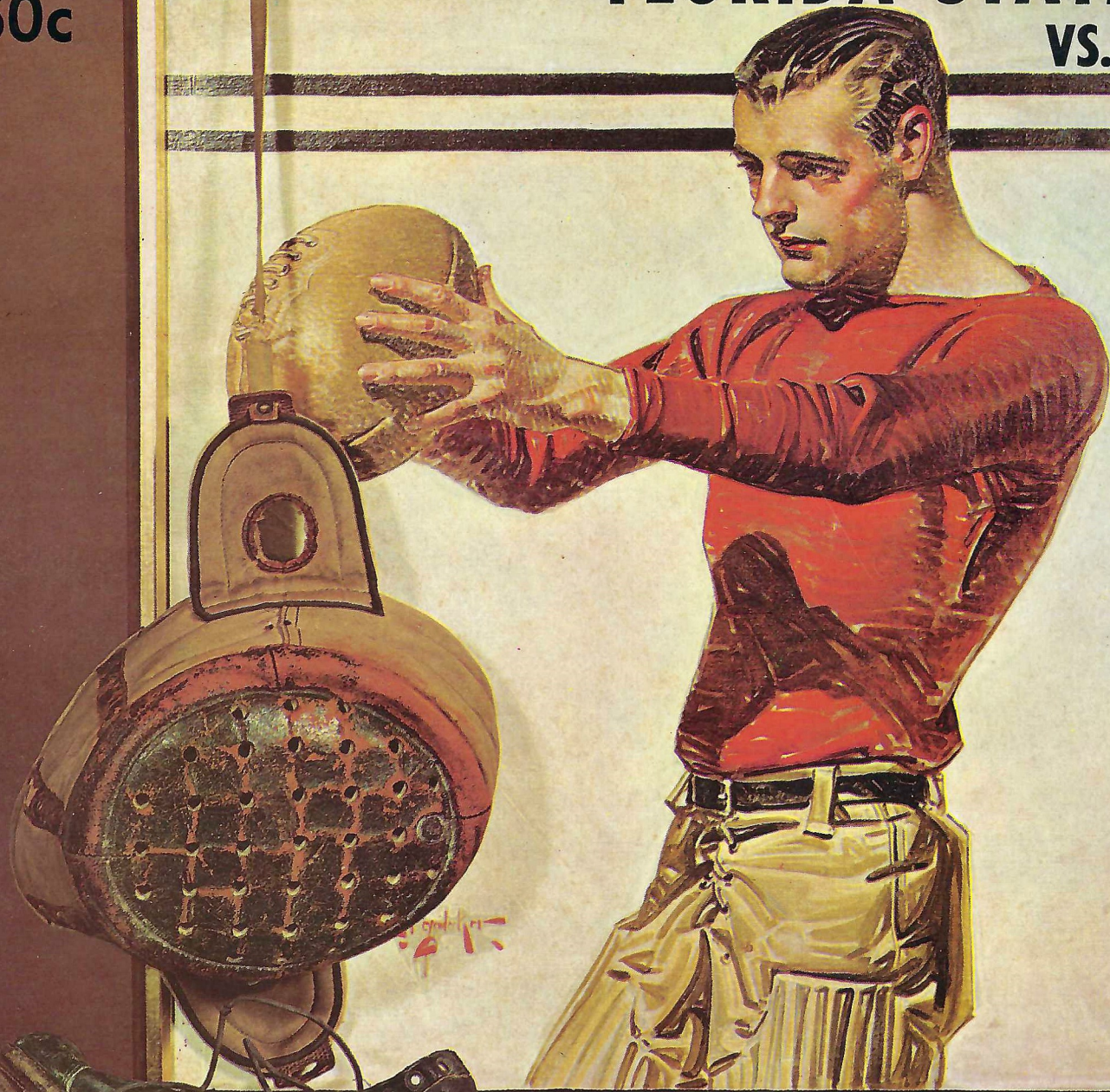


Official
Program
50c

HOMECOMING

**FLORIDA STATE
VS.**



TEXAS TECH

October 21, 1967

**DOAK S. CAMPBELL
STADIUM
Tallahassee, Florida**



HAMS • BACON • SAUSAGE • WIENERS

FROSTY MORN MEATS

Florida State University . . .

In This Issue . . .

Today's Game	4
Florida's Governor	5
Florida State University's President	7
University Feature	8
Statistics	10
State Officials	11
University Athletic Board	12
The Bard of Des Moines	13
Guest Column: Ralph Carpenter, Texas Tech	14
Football Family	15
Florida State Players	16
Composite Schedule—Florida State 1967 Opponents	20
1967 Seminoles	21
Referee's Signals	22
Today's Starting Line-ups	25
Penalties	27
Florida State's Records	28
Sammy Seminole	29
Florida State Freshman Football Team	30
Seminole Boosters, Inc.	32
Portraits of Progress	35
Welcome Alumni	36
Texas Tech	37, 39
Seminole Radio Network	38
The Marching Chiefs	40
Florida State Cross Country Team	41
Cheerleaders	43
Stadium Information	44
Rosters, Depth Chart	45



Florida State's 1967 Football Schedule

HOME

Sept. 30 N.C. State (7:30)
 Oct. 14 South Carolina (2:00)
 Oct. 21 Texas Tech* (2:00)
 *Homecoming
 Oct. 28 Miss. State (7:30)
 Nov. 11 Virginia Tech (7:30)

AWAY

Sept. 15 Houston (7:30 CST)
 Sept. 23 Alabama (7:15 CST)
 at Birmingham
 Oct. 7 Texas A&M (7:30 CST)
 Nov. 4 Memphis State (1:00 CST)
 Nov. 25 Florida (2:00)

*Compliments and
Best Wishes from*



**YOUR APPLIANCE
HEADQUARTERS
611 N. Monroe St.**

OFFICIAL WATCH FOR THIS GAME



LONGINES THE WORLD'S MOST HONORED WATCH®

10 world's fair grand prizes
28 gold medals



Longines watches are recognized as OFFICIAL for timing world championships and Olympic sports in all fields throughout the world.



Longines Ultra-Chron #8205, automatic with calendar, \$175.
Other Ultra-Chron Models, \$150 to \$595.

the fabulous new LONGINES ULTRA-CHRON

Guaranteed Accurate To A Minute A Month

The ultimate personal chronometer, guaranteed accurate to a minute a month — a mean average of 2 seconds per day. Ultra-Chron tells the date, hour, minute, second. Never needs batteries. Winds automatically while you wear it. All-Proof® construction defeats water, dust, shock, magnetism. At Longines-Wittnauer Franchised Jewelers, coast-to-coast.

LONGINES-WITTAUER WATCH CO.
MONTREAL • NEW YORK • GENEVA
Maker of Watches Of The Highest Character
For Over A Century

Today's Game

By **LONNIE BURT**

Florida State Sports Information Director



Last year's Florida State-Texas Tech contest in Lubbock was a statistician's nightmare. When the adding machine had been punched for the final time, the scoreboard read: Seminoles 42, Red Raiders 33.

This afternoon's tussle could well be the same kind of an affair because the principal characters who helped produce last year's wild affair are back again this season.

Larry Gilbert, Texas Tech's fine split end, set two school records against the Seminoles last year when he caught 12 passes for 159 yards. He returns, as do quarterback John Scovell and running back Mike Leinert.

Scovell had a great night when the Red Raiders upset Texas earlier this season for the first time in 15 years. The 185 pounder from Dallas picked up 176 yards rushing against the Longhorns. Leinert had 117 last Saturday night when the Raiders were beaten 28-24 in the final seconds by Texas A&M.

Gilbert's counterpart in today's apparent offensive duel will be Florida State's All-America candidate, Ron Sellers. The Jacksonville Paxon junior is in high gear following a slow start in the Seminoles' opening game loss to Houston.

Sellers now has 33 receptions for 480 yards and a 14.5 average every time he latches on to the ball.

Florida State found a runner in last week's 17-0 victory over South Carolina. He's Bill Gunter, a 172-pound junior from Dothan, Ala. The lanky halfback carried 21 times against the Gamecocks and came up with 113 yards and one touchdown. Gunter's sudden burst into the spotlight should take some of the pressure off Florida State's outstanding passing attack.

Last week's defensive performance was by far the best of the season. The Seminole secondary intercepted five Gamecock passes which shows the progress in that department.

Texas Tech opened the season with a 52-0 triumph over Iowa State, the same club which South Carolina defeated 34-3. The Raiders then shocked Texas 19-13 before losing a pair to Mississippi State 7-3 and Texas A&M 28-24. The Aggie loss came in the final six seconds when quarterback Edd Hargett raced 15 yards for the deciding touchdown.

Florida State will be trying to get on the winning side of the ledger since the Seminoles are 2-2-1. The Seminoles have beaten Texas A&M and South Carolina while losing to nationally-ranked North Carolina State and Houston. They played Alabama, another club in the top 10, to a 37-37 standoff.



CLAUDE R. KIRK, JR.
GOVERNOR

STATE OF FLORIDA
OFFICE OF THE GOVERNOR
TALLAHASSEE



Dear Football Fan:

A cordial welcome to Tallahassee's Doak Campbell Stadium, home of Florida State University's football Seminoles.

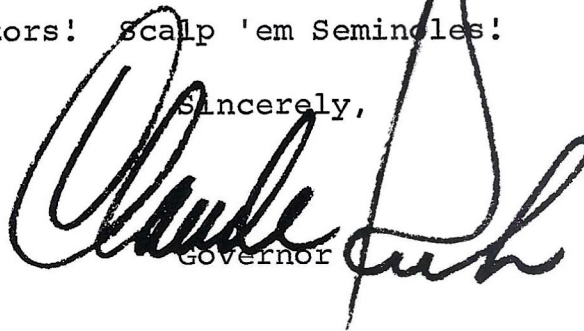
The rise to football prominence in the past six years by our Seminoles coincides with the similar ascendancy by the state of Florida as the sports capital of the world.

We are truly and justifiably proud of Coach Bill Peterson and his staff for the marvelous job they have done in making Florida State University one of the most respected independent football powers in the nation.

As Governor of Florida, I extend a warm welcome to our visitors, and we intend to be impeccable hosts, except for about two hours on the gridiron.

Welcome, visitors! Scalp 'em Seminoles!

Sincerely,

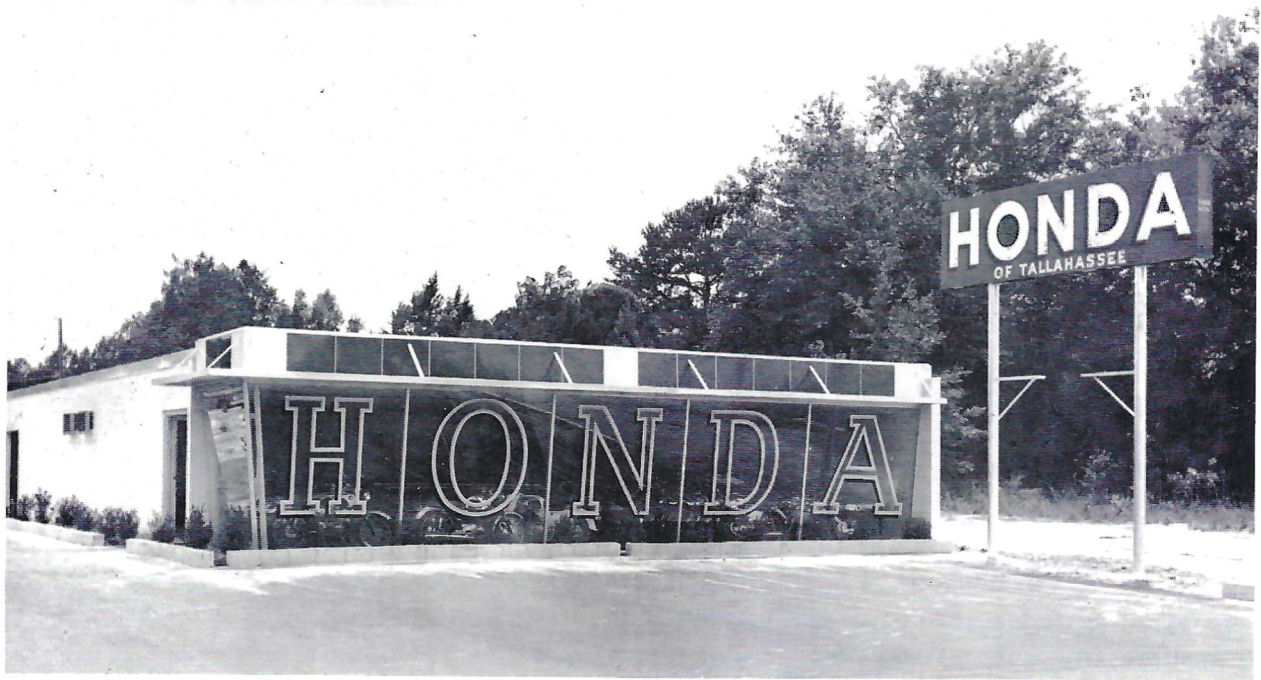

Governor

CRK/lw

"You meet the nicest people on a

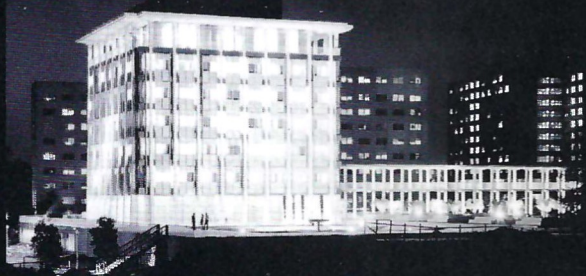
H O N D A

World's largest seller"



HONDA OF TALLAHASSEE

At the Underpass on West Tennessee



FLORIDA STATE

is a coeducational, state-supported institution of higher learning.

Founded in 1857, Florida State has transformed in the one short score of years since it became coeducational (1947) from a strong liberal arts college for women to a University of demonstrated national stature.

Nearly 16,000 students are presently enrolled in the university's 10 Colleges and Schools (Arts and Sciences, Education, Home Economics, Music, Librarianship, Business, Social Welfare, Nursing, Engineering Science, and Law). By 1975 this figure is expected to reach 28,000.

Characterized by phenomenal growth in new programs, enrollments, and constant physical expansion of the campus the University's spirit of excellence has led to Florida State's great pride in All-Americans (Fred Biletnikoff, 1964), its share of the 1966 Nobel Prize Winner in Chemistry, (Dr. Robert S. Mulliken) and its contribution to the U.S. Astronauts (Dr. Anthony Llewellyn). It is this same spirit that makes every football game and every research project a testing-ground for innovation and a proving-ground for the time-honored theories of education.



DR. JOHN E. CHAMPION
PRESIDENT

One of a growing number of young university presidents in America, Dr. John E. Champion at 45 is the youngest of 10 chief executives in the University's 110-year history, and the fourth distinguished educator to serve as fulltime president of the University since it achieved university status in 1947.

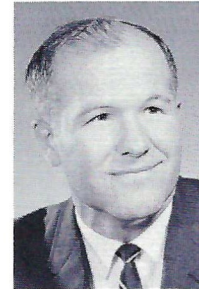
Before ascending to the University's presidency on June 22, 1965, Dr. Champion had served as a professor in accounting, assistant dean of the School of Business and as the University's first Vice President for Administration.

Among the expanding list of honors accorded to Dr. Champion in his teaching and administrative careers at the University of Georgia (1948 to 1956) and at Florida State are memberships in Phi Beta Kappa, Phi Kappa Phi, Beta Gamma Sigma, Omicron Delta Kappa, Gold Key, Alpha Phi Omega, Beta Alpha Psi, Delta Sigma Pi and Kappa Delta Pi. Active in numerous campus organizations at Florida State, he served as president of the Alpha of Florida Chapter of Phi Beta Kappa in 1961-62.

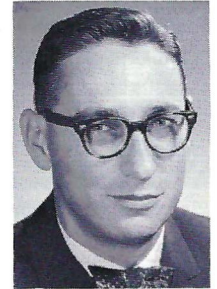
A recent honor to come his way is the Republic of Panama's award of the Grand Cross of the Order of Vasco Nunez de Balboa—recognizing his contributions and leadership in Florida State's student and faculty exchange program with the National University of Panama.



DR. ODELL WALDBLY
Vice President for
Administration

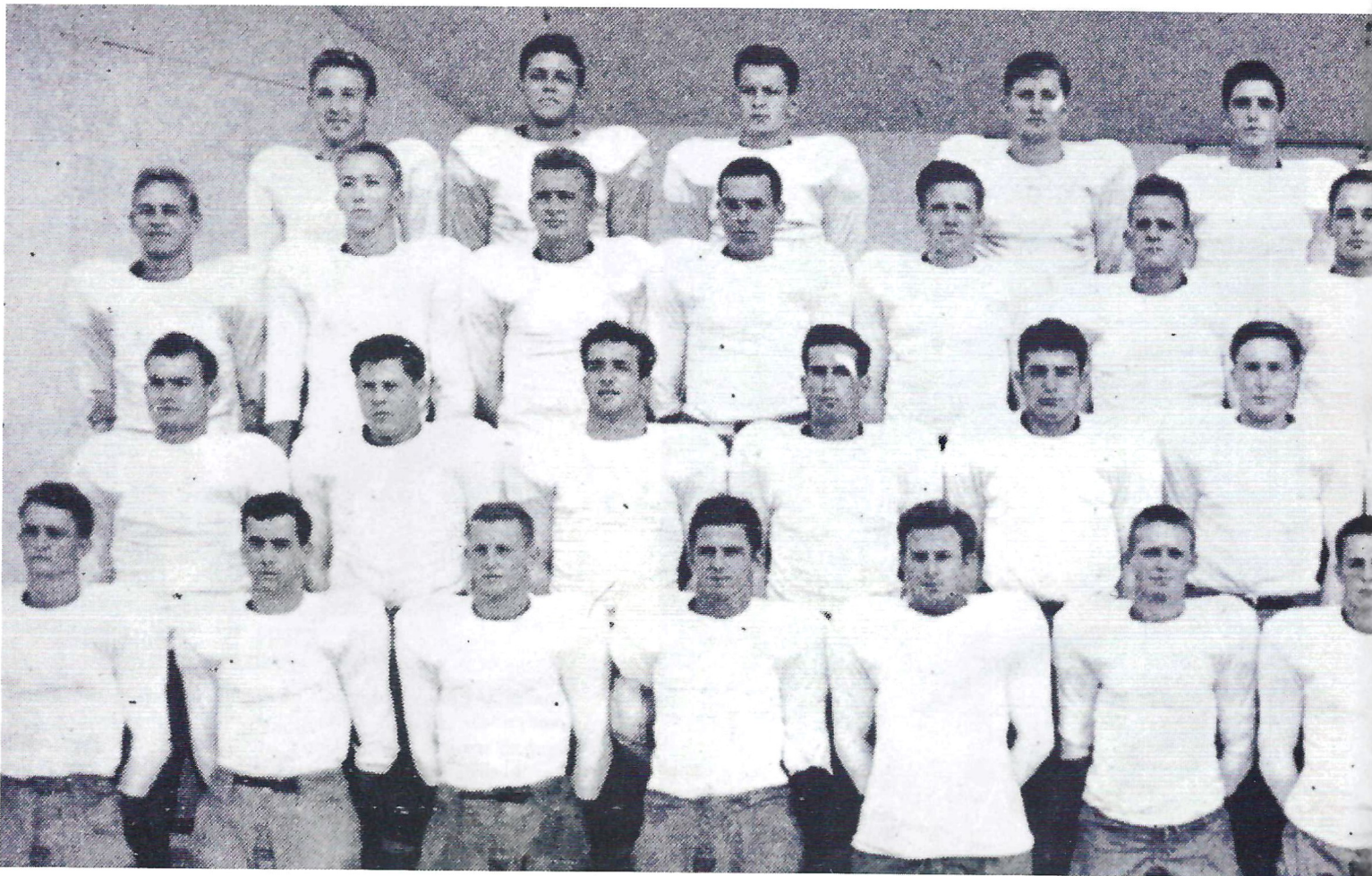


DR. JOHN J. CAREY
Vice President for
Student Affairs



**DR. E. LAURENCE
CHALMERS, JR.**
Vice President
Academic Affairs

FLORIDA STATE'S



Philip Rountree, Gerald Manuel, Jack McMillan, Wendell Barnes, Harry Hughey, James Watson, James De Cosmo, Jack Tully, Buddy Bryant, Joe Crona, Kenneth MacLean, Al Tharpe, Charles McMillan, Ed Dilsaver, Jim Quigley, Bob Browning, Dick Williams, Leonard Gilberg, Donald Grant, Ralph Chaudron, Leonard Melton, Wesley Carter, Billy Bishop, Harold Conard, Wyatt Parish, Ed Quigley, Bob Fegers, Dan McClure, Chris Kalfas, Jim Costello, Chris Banakas, Bill Kratzert, David Middlebrooks, Frederick Boris, C. N. Proctor, Billy Osteen, Clyde Stanaland, Bill Fannin, Bob Lanigan, Fred Schneider,

FLORIDA STATE UNIVERSITY



Ed Williamson



Doak S. Campbell

It was somewhere near 10:30 p.m., Oct. 18, 1947. Eight thousand fans had crammed into Centennial Field's bleachers and watched a heavily favored Stetson team beat up-start Florida State University 14-6.

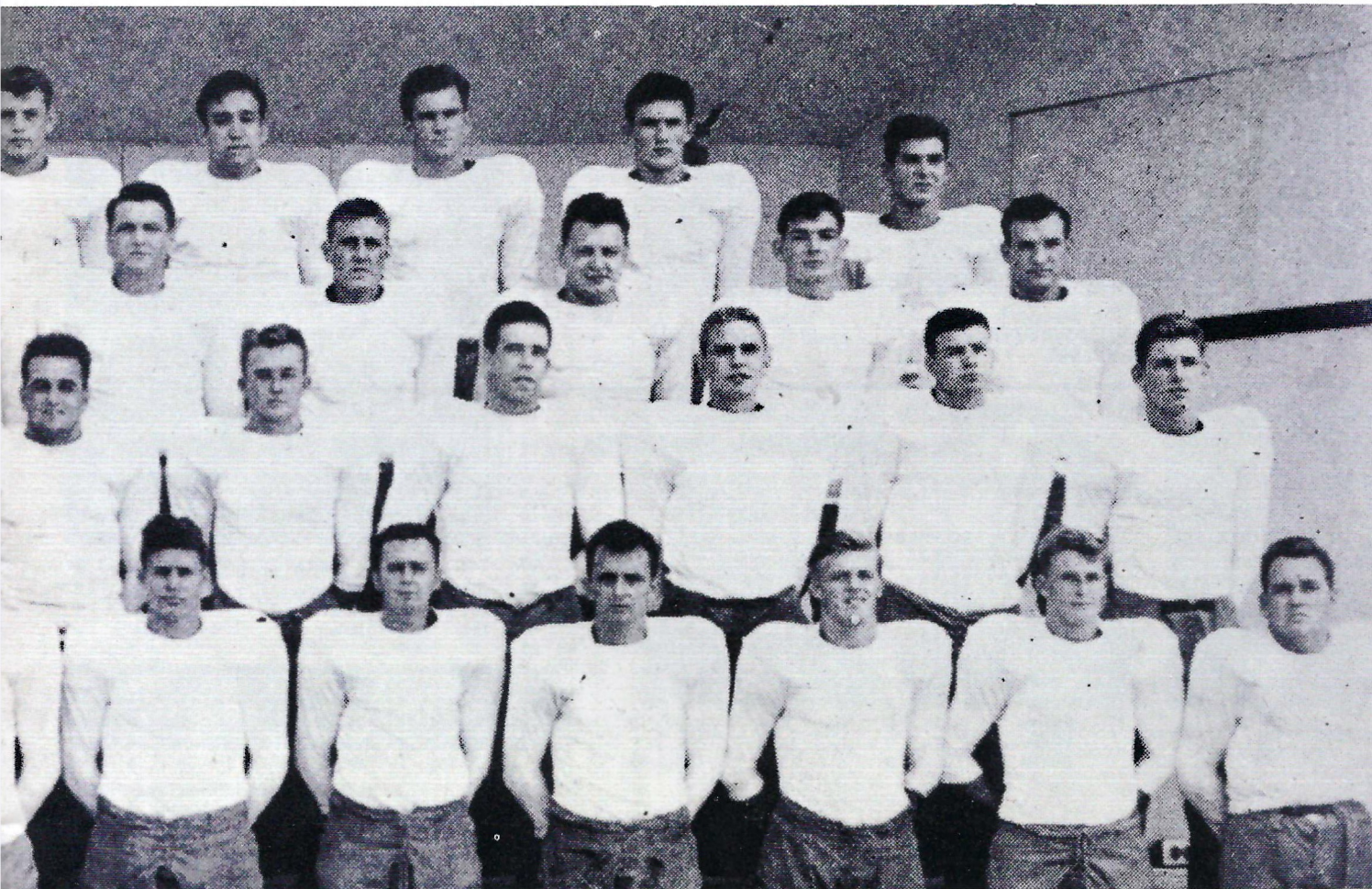
This was Florida State's introduction to intercollegiate football 20 years ago. Prior to the kickoff of today's Texas Tech - Florida State game, the Athletic Department is honored to welcome back those "First Seminoles," the 1947 team.

This is the first Florida State sports group reunion, but it won't be the last. The Athletic Department plans to make this an annual occasion in conjunction with Homecoming. Hopefully, it will become a tradition.

The gridiron Seminoles have come a long way since 1947. The journey includes a spot among independent football powers of the nation. However, no one associated with the "First Seminoles" will forget them, or that first, make-shift season.

Ed Williamson was the first head coach and Jack Haskins his assistant. The squad consisted of some

FIRST — 1947



Earl G. Payne, Ed Morgan, Richard Brooks, J. P. Love, Truby Shaw, Bull Benz, Paul M. Dubelis, Charles Hospodar, Ral Wilkerson, Clive Yancey, J. E. Kinsey, B. J. Carastro. Other squad members who are not pictured: Gus Adkinson, Ken Barefeet, Lamar Brown, George Cave, Bishop Clark, Lemuel Davis, John Fisher, C. M. Fisher, Sam Harris, Al Massey, John Matter, Charles Mead, Ronald Melton, Bill Miller, Ronald Nettles, Billy Parker, Clifton Parsons, Chester Silas, Bill Starkweather and Jim Tompkins. Also Managers Gilbert Aldrich, Lonnie Burt, Joe Carlucci, Johnnie Johns and Odell Turner.

WELCOMES THE "FIRST SEMINOLES"

talented transfers from other universities, some battle-tested World War II veterans and some fuzzy-faced youngsters fresh off the high school gridirons.

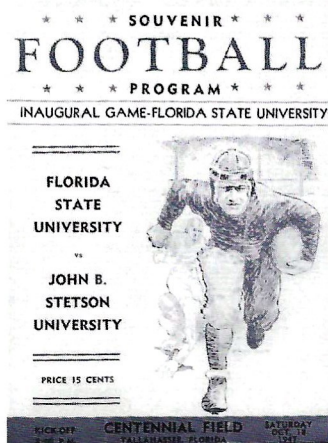
Doak S. Campbell, then president of Florida State University, had given his complete approval to this hurried football program. It was Dr. Campbell who told the squad before the first game: "If you need me, I'll be on the sidelines."

And out of that first game came the now famous Seminole yell: "FSU one time, FSU two times, FSU three times, FSU all the time!"

None accused the "First Seminoles" of being a good football team. Their opponents — Stetson, Cumberland, Tennessee Tech, Troy State and Jacksonville State — haven't been rated in the Top 10 lately. And there were five Florida State losses during that first season.

But the groundwork for an outstanding athletic program was laid.

So, welcome home "First Seminoles." Florida State University thanks you.



Program — 1947



Jack Haskins

TODAY'S TEAMS

RECORD TO DATE

FLORIDA STATE (2-2-1)		
13	Houston	34
37	Alabama	37
10	N. C. State	20
19	Texas A&M	18
17	S. Carolina	0
TEXAS TECH (2-2-0)		
52	Iowa State	0
19	Texas	13
3	Mississippi State	7
24	Texas A&M	28

TEAM STATISTICS

FLORIDA STATE		TEXAS TECH
93	First Downs	78
575	Yards Rushing	250
1008	Yards Passing	105
1583	Total Yards	355
182	Atts. Rushing	219
179	Passes Attempted	96
88	Passes Completed	36
11	Passes Had Intercepted	8
7	Fumbles Lost	3

INDIVIDUAL STATISTICS

FLORIDA STATE

RUSHING				RECEIVING			
Name	Att.	Yds.	Avg.	Name	No.	Yds.	TD
Moremen	48	191	4.0	Sellers	33	480	3
Green	48	138	2.9	Taylor	18	198	1
Gunter	28	137	4.9	Glass	9	75	0
				Fenner	8	71	1
SCORING							
Name	Att.	Comp.	Yds.	TD	Name	TD	PAT
Hammond	121	67	774	6	Gutherie	0	9
Pajcic	52	18	209	1	Sellers	3	0
					Moremen	3	0
					Gunter	2	0

TEXAS TECH

RUSHING				RECEIVING			
Name	Att.	Yds.	Avg.	Name	No.	Yds.	TD
Scovell	58	303	5.2	Gilbert	15	219	2
Leinert	60	249	4.2	Allen	5	66	1
Baker	40	155	3.9	Baker	6	54	0
Butler	20	77	3.9				
SCORING							
Name	Att.	Cp.	Int.	Yds.	TD	Name	TD
Scovell	77	28	5	317	2	Scovell	4
Matulich	19	8	3	102	1	Vinyard	0
						Leinert	2

THE SOUND SHOP

"Southeast's Finest In Audio"

2234 S. Monroe, Tallahassee, Fla.
Ph. 222-2443

806 W. Broad, Albany, Ga.
Ph. 435-6800

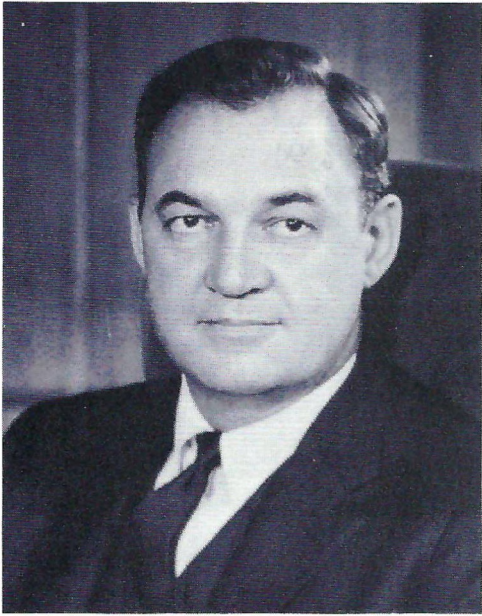
FRANCHISED DEALERS FOR:

Aztec
Borg Warner
Dual
Dyna
Fisher
Garrard
Harmon-Kardon
J. B. Lansing

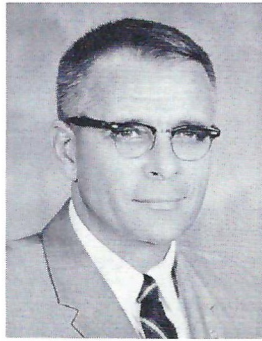
Koss
Magnacord
Marantz
Martel
Monarch
Pilot
Rek-O-Kut
Roberts
Robins

Sarkes-Tarzian
Scott
Sherwood
Sony
Telex
Toshiba
Uher
Warfedale

SYSTEM DISCOUNTS ON MOST MERCHANDISE



CLAUDE R. KIRK, JR.*
Governor



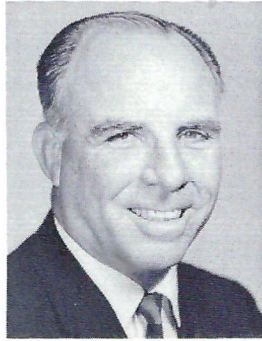
Tom Adams*
Secretary of State



Earl Faircloth*
Attorney General



Broward Williams*
Treasurer



Floyd T. Christian*
Supt. of Public Instr.



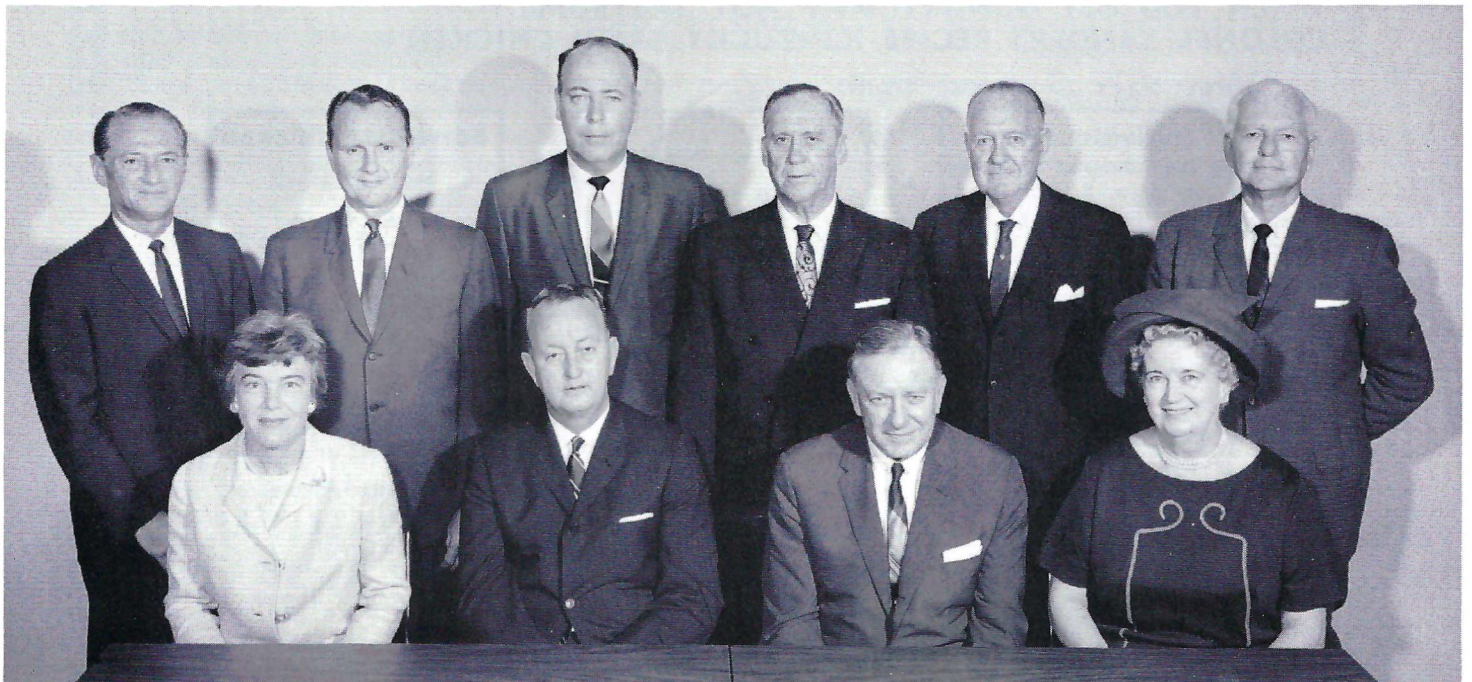
Doyle Conner
Comm. of Agriculture



Fred O. Dickinson, Jr.
Comptroller

State Officials

*Indicates membership on the State Board of Education.



BOARD OF REGENTS—STATE UNIVERSITY SYSTEM

Seated, Left to Right—Mrs. John C. Behringer, Fort Lauderdale; Dr. Wayne C. McCall, Vice Chairman, Ocala; Chester Ferguson, Chairman, Tampa; Mrs. E. D. Pearce, Miami.

Standing, Left to Right—Henry Kramer, Jacksonville; D. Burke Kibler III, Lakeland; Dr. Louis C. Murray, Orlando; John C. Pace, Pensacola; Dr. Clarence Menser, Vero Beach; Chancellor J. Broward Culpepper, Tallahassee.

FLORIDA STATE'S ATHLETIC COMMITTEE



Robert Earnest
Chairman
Professor, Business



Mode L. Stone
Professor, College
of Education



Coyle E. Moore
Dean, School of
Social Welfare



Ralph Bradley
Prof. & Dept. Head,
Statistics



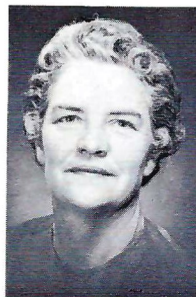
William W. Rogers
Associate Professor
History



Charles Grigg
Prof. of Sociology
and Director of
Institute for
Social Research



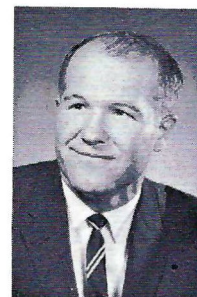
William H. Long
Assistant Professor
Department of
Meteorology



Mary Alexander
Assoc. Professor
Physical Education
and Recreation



Mason Ladd
Dean, College
of Law



John Carey
Vice President for
Student Affairs

**WHEN YOU GET HUNGRY WHY NOT TRY SOME
COLONEL SANDERS RECIPE KENTUCKY FRIED CHICKEN ©**

three sizes to choose from:

<p>Individual Box 3 Big Pieces of Chicken, Cole Slaw, French Fries, Rolls, Gravy \$1.10</p>

<p>Family Bucket Serves 5 to 7 \$3.75</p>

<p>Barrel O' Chicken Serves 8 to 10 \$5.00 Gravy & Rolls 5.40</p>

Bar-B-Q Chicken Sandwich
French Fries—Jumbo Shake

60c



or if you prefer!

- Jumbo Shrimp Boxes
- Chicken Gizzard Boxes
- Filet of Fish Boxes
- Famous Home-Made Pies
- Chicken Liver Boxes

Holland's Carry Out

TWO LOCATIONS TO SERVE YOU

Drive in No. 1
1002 N. Monroe—224-1645

Drive in No. 2
1603 W. Tenn. St.—224-4313

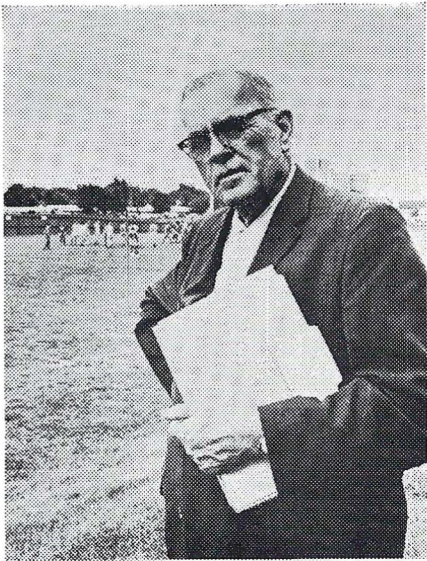
Tenn. St. Location Open 'Til 11 P. M.

Home Owned and Operated by Mr. & Mrs. N. T. Holland

The Bard of Des Moines

by HAROLD KEITH

Sports Information Director, University of Oklahoma



Trumpets blew the fanfare
Whistle blew for play
Halfback blew the kickoff
We always start that way.

BERT McGRANE probably scribbled that with a ball point on the back of an old envelope wherever he was when the idea seized him, then batted it out on his 12-year-old Underwood in the basement of his two-story farm home located eight miles from downtown Des Moines, Iowa.

Who's Bert McGrane? He's the former football writer for the Des Moines Register (for 41 years) who is now retired from newspapering but stays enthusiastically active as permanent secretary and poet laureate of the Football Writers of America, an organization of 1,200 sports writers from all over the nation.

"The Dam Sec," as McGrane calls himself, edits "The Fifth Down," a mimeographed publication composed of humorous odds and ends mailed during the college football season to each member of the FWA clan.

Best part by far of "The Fifth Down" are McGrane's amusing little ballads dealing with all aspects of the college game. Like this one:

They all raced after the fumble,
He captured it after a dive
The rest of the pack piled onto
his back
He's cold and inert, but alive.

McGrane's verse makes frequent use of the symbol "&." He says brevity isn't the reason. "I use it because it seems to tie in with my notion that my efforts are just a motley assortment of trifles anyway," the Bard of Des Moines modestly explains. Like this tribute to the lowly lineman:

Halfbacks get big headlines
Coaches get fat check
Linemen pick up scabs & scars
North and south of neck.

Like everybody, he enjoys poking fun at referees and umpires:

Here's tip to officials
From ocean to ocean
Whenever in doubt
Just call backfield in motion.

Coaches and the uncertainty of their continued employment are the subject of many of McGrane's stanzas. Like these two:

Luckless coach who
Failed to win
Lost his head just
South of chin.

When howling alumni
Confer with the President
Coach who's a loser is
Soon a non-resident.

Football games are won in winter by assistant coaches and alumni who work like stevedores recruiting top-notch high school players, as this verse recognizes:

He was famed as a builder of men
He triumphed again and again
But without his recruiter
This same master tutor
Might never have got where he's
been.

College athletic business managers love this ballad. Many of them have framed it and posted it on their walls:

The best of the linemen get clobbered
& the life of a back ain't so hot
But what of the guy to whom they
apply
For tickets he simply ain't got?

Lady spectators, and what husbands hold is the chief reason for their attendance at games, aren't neglected by the Hoosier Bobby Burns:

Sweetie-pie with dreamy eye
Disregards the score
Makes a point to case the joint
For what the ladies wore.

The shifting pattern of college football romance also rates a rhyme:

He was a helluva halfback
& she was the gorgeous sort
She gave him the brush &
Developed a crush for
A guy who hated the sport.

Here McGrane sketches the patient substitute and his fate:

He sat on the bench three seasons
He worried, he squirmed & he
sweat
If he hadn't received his diploma
He might have been sitting there
yet.

After living through four wars,
McGrane knew their effect on college football:

The coach had a dream of a miracle
team

He hardly could wait until autumn
He had talent galore
But along came a war
The draft board came over & got
'em.

Here's his caricature of the heart-breaking penalty:

Joe Zilch ran 80 from scrimmage
As rugged a run as you'll see
But the ref caught somebody holding
& whistled it back to the three.

McGrane even dashed off a pome about nicknames:

Bruins, Gators, Coyotes, Cats
Bulldogs, Lions, Steers get votes
But no football team, alas
Ever chose the nickname Goats.

And this whimsy on the importance of concentration:

He took the ball, he hit the hole
He galloped toward the distant goal
Above him, watching, was his doll.
He sneaked a look & dropped the
ball.

He can even make fun of his own profession as this final iambic shows:

Country's fulla experts
Putting teams on top
Teams are fulla dynamite
Experts fulla hop.

Washington Irving once wrote, "Honest good humor is the oil and wine of merry meeting, and there is no jovial companionship equal to that where the jokes are rather small, and the laughter abundant." McGrane's verse gets awfully close to that.



**MAKE
EVERY YARD
COUNT...
DOUBLE!**

Double because you'll be earning a commission while you earn your college degree.

All it takes is a few hours a week and a six-week summer camp. It's that easy in Army ROTC.

Whether you plan a civilian or a military career, Army ROTC gives you the kind of training and experience you need to motivate, organize and lead men. You'll learn them all in Army ROTC.

Get the details from your Professor of Military Science at any ROTC college.

Your future, your decision... choose **Army ROTC.**

Poetry on the Gridiron

By **RALPH CARPENTER**

Sports Information Director, Texas Technological College



"They do me wrong in saying I come no more, When once I knock and fail to find you in; For every day I stand outside your door, And bid you rise to fight — and win."

These words, written by a poet about the elusive thing called opportunity, could sum up the feelings of Texas Tech as they battle the Florida State Seminoles today.

In the space of three heartbeats, Tech's Red Raiders saw victory snatched from them in a last-play-of-the-game 15-yard run by A&M's Edd Hargett last week. The past, however, is like water under the bridge. Each week brings a new opportunity. Tech has put the past behind them and gathered their forces for another try at getting back in the win column.

After a convincing 52-0 win over Iowa State and a superb 19-13 victory over Texas, Tech was derailed by Mississippi State, 7-3.

The Red Raiders have an engineer, quarterback John Scovell, who is capable of getting them back on the winning track. He directed them in drives of 67 and 58 yards that brought them from a 14-3 halftime deficit to a 17-14 lead going into the fourth quarter. Even after A&M had stormed back to take the lead, 21-17, Scovell went to work and reached in his bag of tricks for a touchdown play that for a moment looked like it had Victory stamped on it.

His chief assistant will be hard-driving Mike Leinert, a slashing type of runner who scored two of Tech's touchdowns in the A&M game. Leinert has been the bright spot in a Red Raider offense that has at times sputtered and stalled. It is a type of offense, however, that is explosive. Once it gets started, it is capable of generating drives that eat up huge chunks of yards in a short period of time.

Tech's defense is not without its stars, too. Ed Mooney, 232-pound linebacker; Gene Darr, 221-pound tackle; Pete Norwood, 224-pound nose-guard, and Pat Knight, 210-pound right end.

In addition to losing the game on the last play of the game, Tech also lost the services of George Cox, outstanding defensive end. Cox suffered a knee injury that will keep him out of the Florida State game.

The Raider defense will be geared to stop a Seminole team that ran up 42 points against Tech in the first meeting between the two teams last year. Tech managed to untrack long enough to put 33 points on the scoreboard in a losing cause.

Tech has the horses, and if everything clicks, there should be fireworks that will make it a very interesting afternoon in Tallahassee.

The Seminole Football Family



BILL PETERSON
Head Football Coach



VAUGHN MANCHA
Director of Athletics



BOB HARBISON
Defensive Chief



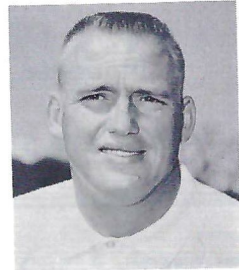
DON BREAUX
Offensive Chief



KEN MacLEAN
Assistant to A.D.



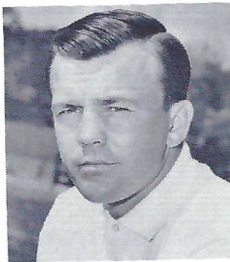
NEIL SCHMIDT
Offensive Backfield



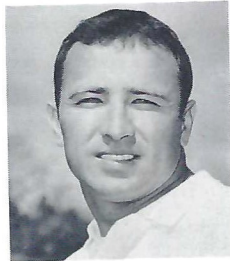
BOBBY JACKSON
Defensive Ends,
Linebackers



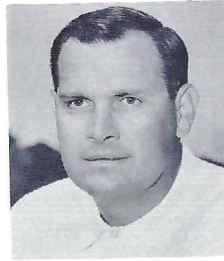
GARY WYANT
Defensive Backfield



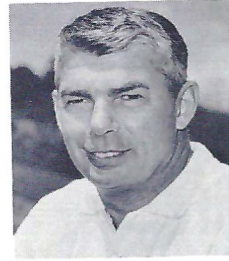
JOE GIBBS
Offensive Line



GENE McDOWELL
Freshman Coach



DOUG HAFNER
Head Recruiter



DON FAULS
Head Trainer



ROY DON WILSON
Assistant Trainer



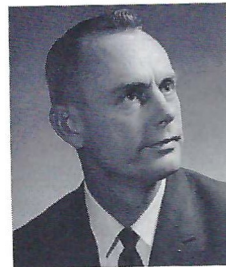
TILLMAN DIXON
Equipment Manager



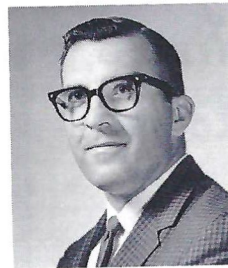
LONNIE BURT
Sports Information
Director



HANK SCHOMBER
Assistant SID



CLAUDE THIGPEN
Ticket Manager



DR. LANE MAXWELL
Team Physician



JEFF SAVAGE
Academic Advisor



why pay MORE when you
can buy for LESS at

ABC
Mobile Homes
2737 W. Tennessee
Tallahassee, Florida

HERSCHEL COOK
Manager

Phone 576-5146

Southernair
MOTEL

Across from F.S.U.
Tallahassee, Florida 32304



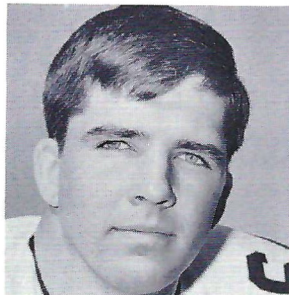
and

Skyline

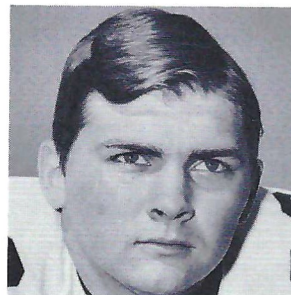
Motor Lodge

U. S. 90 West

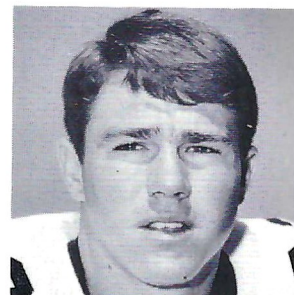
Quality Courts
for Quality People



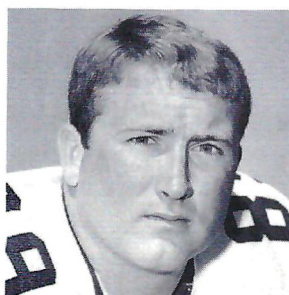
Stan Walker



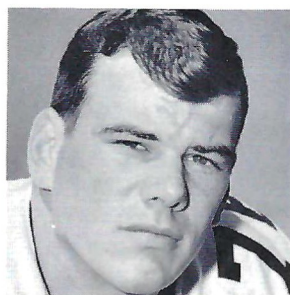
Doug Gurr



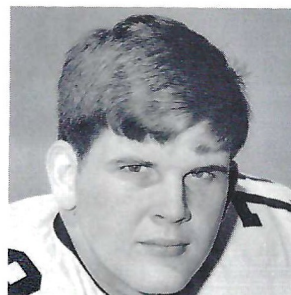
Ed Chereskoff



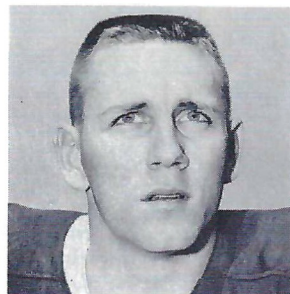
Bob Menendez



Jack Fenwick



Wayne Johnson

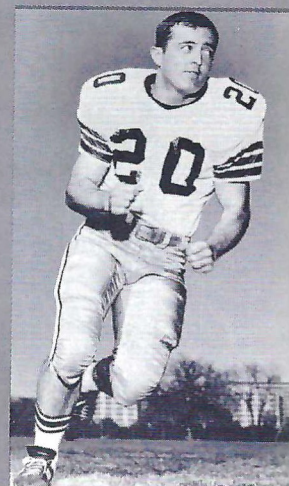


T. K. Wetherell

FLORIDA STATE



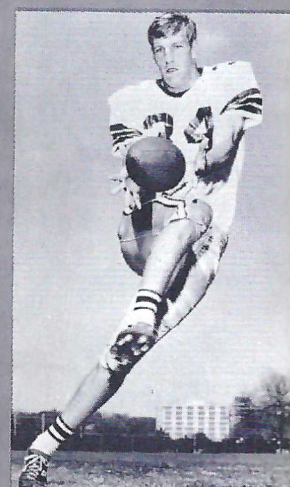
Floyd Ratliff



Larry Green



Bill Moremen



Ron Sellers



OFFENSIVE TEAM. Kneeling: Dee Andros, Coach of the Year (Oregon State). Seated, l to r: Leroy Keyes, halfback (Purdue); Ron Sellers, end (Florida State); Ted Kwalick, end (Penn State); George Kunz, tackle (Notre Dame). Standing, l to r: Terry Hanratty, quarterback (Notre Dame); O. J. Simpson, halfback (Southern Cal); Guy Dennis, guard (Florida); Larry Smith, fullback (Florida); Mike Montler, tackle (Colorado); Charles Rosenfelder, guard (Tennessee); John Didion, center (Oregon State).



Isenbarger in battle for Rose Bowl berth.

THE ALL-AMERICA SQUAD

(Any one of whom has a good chance of making someone's All-America team)

ENDS: Jim Seymour (Notre Dame), Jerry Levias (SMU), Volly Murphy (Texas at El Paso), Al Brenner (Michigan St.), John Sias (Georgia Tech), Jim Yarbrough (Florida), Gary Arthur (Miami of Ohio), Mark Capvano (North Carolina St.), John Zook (Kansas), Mike Ford (Alabama)

TACKLES: Dave Foley (Ohio St.), Leland Winston (Rice), Ezell Jones (Minnesota), Jack Fenwick (Florida St.), Ron Carpenter (North Carolina St.), Phil Olsen (Utah St.), Mike McCoy (Notre Dame), Rich Moore (Villanova), Tony Pleviak (Illinois), Rolf Krueger (Texas A&M), Art Thoms (Syracuse)

GUARDS: James Ray (TCU), Danny Abbott (Texas), Don Jordan (North Carolina St.), Jim Barnes (Arkansas), Wally Schoessow (Wisconsin), Carl Crennel (West Virginia), Chuck Kyle (Purdue), Rex Barnes (Southern Mississippi)

CENTERS: Jon Kolb (Oklahoma St.), Dennis Bramlett (Texas at El Paso), Wayne Mulligan (Clemson), Dave Harris (Washington St.)

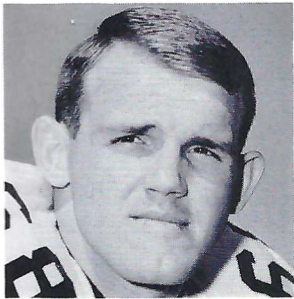
LINEBACKERS: Bob Olson (Notre Dame), Chip Healy (Vanderbilt), John Small (Citadel), Jim Sniadecki (Indiana), Dave Mann (Florida), Jim House (Wyoming), Dennis Onkofz (Penn St.),

Jim Snow (Southern California), Ken Criter (Wisconsin), Dale McCullers (Florida St.)

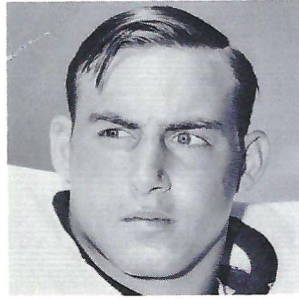
BACKS: Bobby Douglass (Kansas), Edd Hargett (Texas A&M), Brian Dowling (Yale), Mike Phipps (Purdue), Frank Patrick (Nebraska), Bob Anderson (Colorado), Robby Shelton (Rice), Harry Gonso (Indiana), Steve Preece (Oregon St.), Chris Gilbert (Texas), Eugene Morris (West Texas St.), Buddy Gore (Clemson), Dicky Lyons (Kentucky), Paul Gipson (Houston), Frank Quayle (Virginia), Ron Johnson (Michigan), Bill Enyart (Oregon St.), Perry Williams (Purdue), Dick Davis (Nebraska), Calvin Hill (Yale), Warren Muir (South Carolina), Mike Battle (Southern California), Wes Plummer (Arizona St.), Bill Kishman (Colorado St.), Glenn Cannon (Mississippi), Buddy McClinton (Auburn), Ron Davidson (Virginia Tech), Gary Adams (Arkansas)

SOPHOMORE LINEMAN OF THE YEAR: Center Chip Kell (Tennessee)

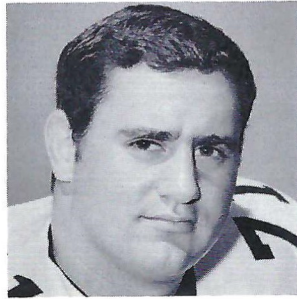
SOPHOMORE BACK OF THE YEAR: Quarterback Bill Montgomery (Arkansas)



Larry Pendleton



Chuck Elliott



Harvey Zion



324
N. MONROE

1405
S. ADAMS

**ONE
HOUR
DRY
CLEANERS**

KEEP YOUR CLOTHES
FRESH AS A ROSE

1100
W. TENN.

GOOD LUCK SEMINOLES!

Varsity
THEATRE

1833 W. Tennessee

Phone 224-8636

Miracle
THEATRE

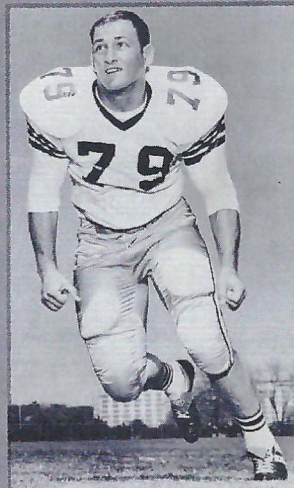
Thomasville Road

Opening Early 1968

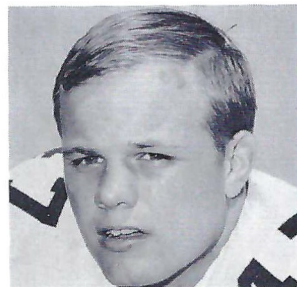
1967 SEMINOLES



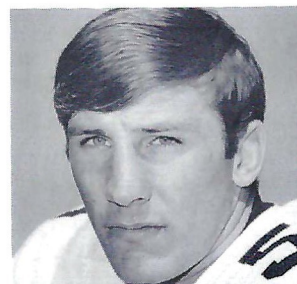
Bill Cox



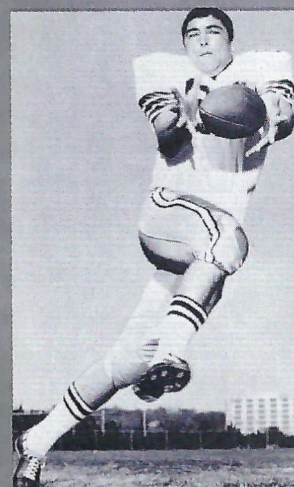
Frank Vohun



Joe Benson



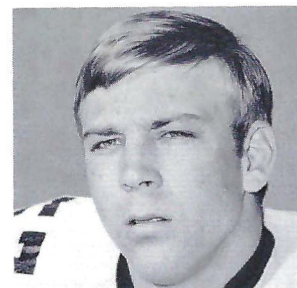
Henry Lohse



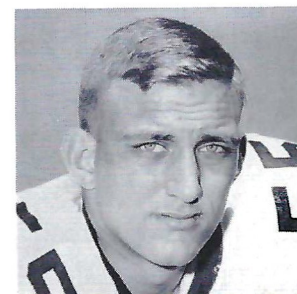
Thurston Taylor



Mike Blatt



Joe Kinnan



Ted Mosley

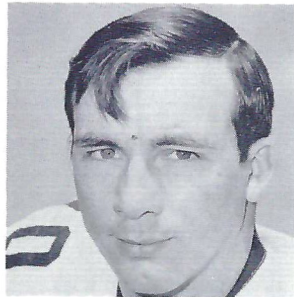
Best Wishes for a successful season, and we are proud to have had a part in furnishing the football equipment for the Seminoles

OWENS Inc.

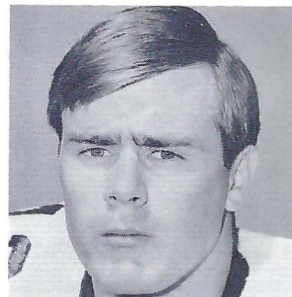
Sporting Goods — Hardware
ALBANY, GEORGIA



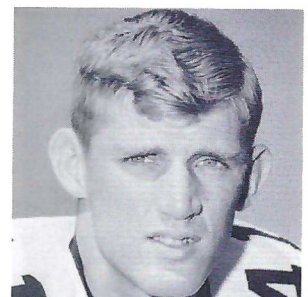
BONANZA
Mobile Homes of Tallahassee
2749 W. TENN.



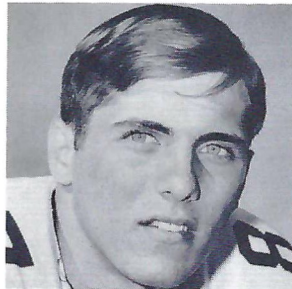
Tony Sewell



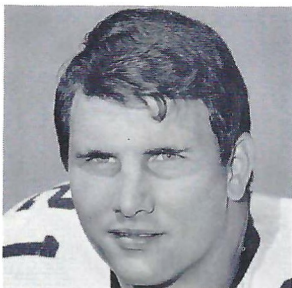
Howell Montgomery



John Crowe



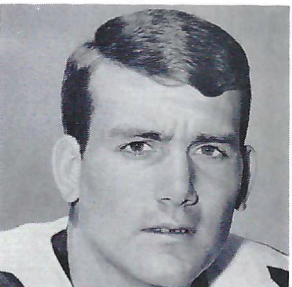
Phil Abreira



Donovan Jones

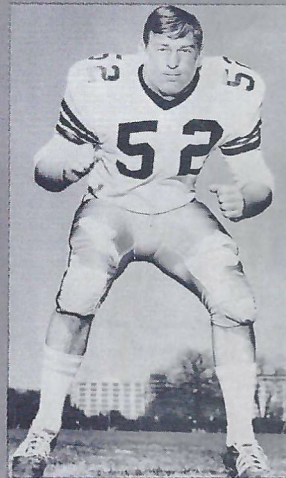


Bill Gunter



Bill Cappleman

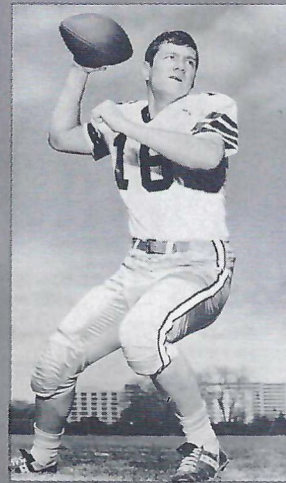
FLORIDA STATE



Wayne McDuffie



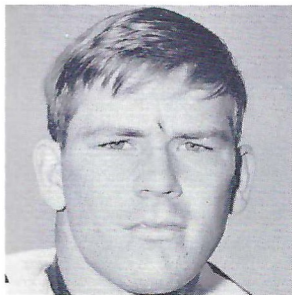
Kim Hammond



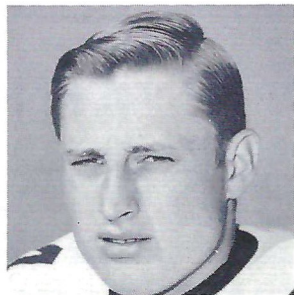
Gary Pajic



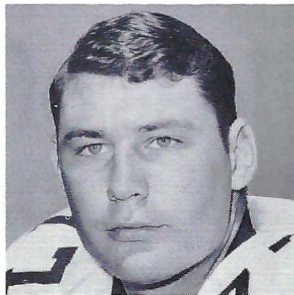
Ken Hart



Ron Montford

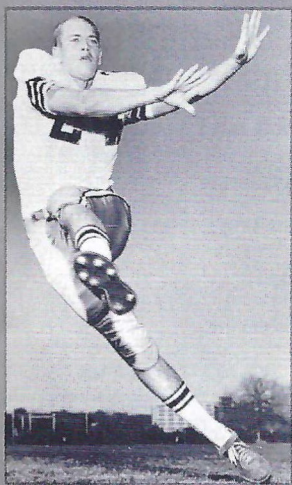


Bobby Burt

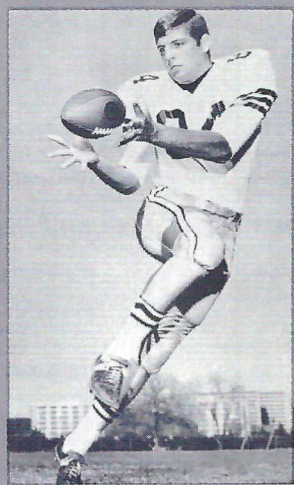


Jeff Curchin

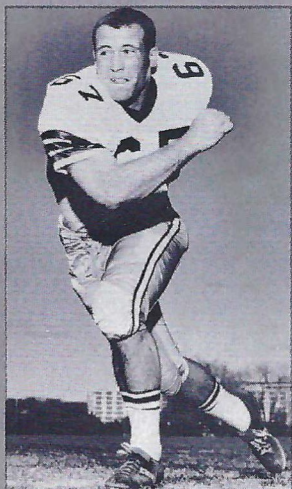
1967 SEMINOLES



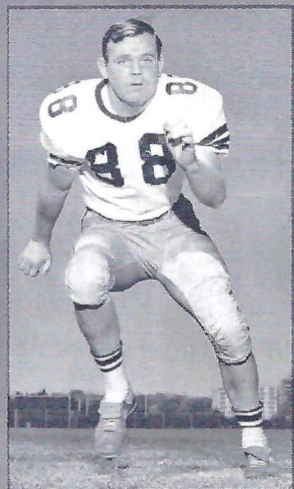
Walt Sumner



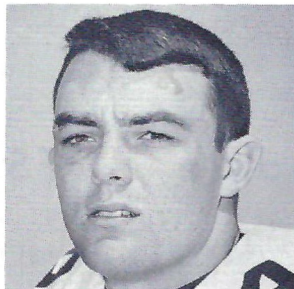
Chip Glass



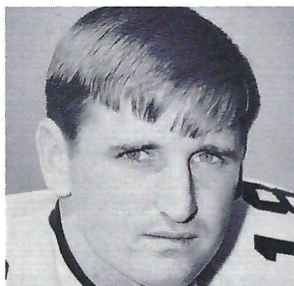
Mike Bugar



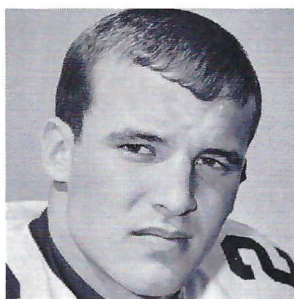
Jerry Jones



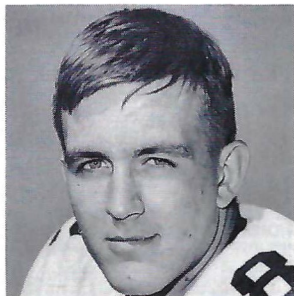
Terry Eggerton



Clint Burton



Chuck Eason



Lane Fenner

BAIRD
 MOBILE HOMES
 2901 Apalachee Parkway
 877-4524
 TALLAHASSEE

Collins
 furniture co.
 INCORPORATED

1117 THOMASVILLE ROAD
 PH. 222-1415

Spend less of your parents' money on weekends.

Rent a Ford Mustang or another good car from Hertz at a special low weekend rate: \$20 and 12c a mile including gas, oil and insurance, from noon Friday to noon Monday. To reserve a car call: 222-1686. To pick it up come to the Duval Hotel.



Composite Schedule — FSU's 1967 Opponents

DATE	HOUSTON	ALABAMA	N. C. STATE	TEXAS A & M	SO. CAROLINA	TEXAS TECH	MISSISSIPPI STATE	MEMPHIS STATE	VIRGINIA TECH	FLORIDA
SEPT. 16	(15th) FLA. STATE		NORTH CAROLINA		IOWA STATE				AT TAMPA	
SEPT. 23	AT MICH. STATE	FLA. STATE*	BUFFALO	PURDUE#	N. CAROLINA	IOWA STATE	AT GEORGIA	MISSISSIPPI	WM. & MARY	ILLINOIS
SEPT. 30	(29th) WAKE FOREST	AT SOU. MISS. †	AT FLA. STATE	AT L. S. U.	AT DUKE	AT TEXAS	FLORIDA ††	CINCINNATI	AT KANS. STATE	MISS. STATE ††
OCT. 7	N. CAROLINA STATE	MISSISSIPPI*	AT HOUSTON	FLA. STATE	AT GEORGIA	MISS. STATE	AT TEXAS TECH	AT UTAH STATE	VILLANOVA	L. S. U.
OCT. 14		AT VANDERBILT	AT MARYLAND	AT TEXAS TECH	AT FLA. STATE	TEXAS A & M	SOU. MISS.	WAKE FOREST	AT KENTUCKY	AT TULANE
OCT. 21	AT MISS. STATE	TENNESSEE*	WAKE FOREST	AT T. C. U.	VIRGINIA	AT FLA. STATE	HOUSTON	SOU'WESTERN LOUISIANA	RICHMOND	
OCT. 28	AT MISSISSIPPI	AT CLEMSON	DUKE	BAYLOR	MARYLAND	AT S. METHODIST	AT FLA. STATE	SOU. MISS.	AT W. VIRGINIA	VANDERBILT
NOV. 4	GEORGIA	MISS. STATE	AT VIRGINIA	AT ARKANSAS	AT WAKE FOREST	RICE	AT ALABAMA	FLA. STATE	MIAMI	AT AUBURN
NOV. 11	MEMPHIS ST.	AT L. S. U.	AT PENN. STATE	S. METHODIST		AT T. C. U.	AT AUBURN	AT HOUSTON	AT FLA. STATE	GEORGIA**
NOV. 18	IDAHO	S. CAROLINA	AT CLEMSON	AT RICE	AT ALABAMA	BAYLOR	AT L. S. U.			KENTUCKY
NOV. 25	AT TULSA			TEXAS	CLEMSON	ARKANSAS †		N. TEXAS ST.	(23rd) V. M. I. ††	FLA. STATE
DEC. 2		AUBURN*					MISSISSIPPI			AT MIAMI

Neutral Sites: * Birmingham, Ala. # Dallas, Tex. † Little Rock, Ark. ** Jacksonville, Fla. †† Roanoke, Va. ‡ Mobile, Ala. †† Jackson, Miss.



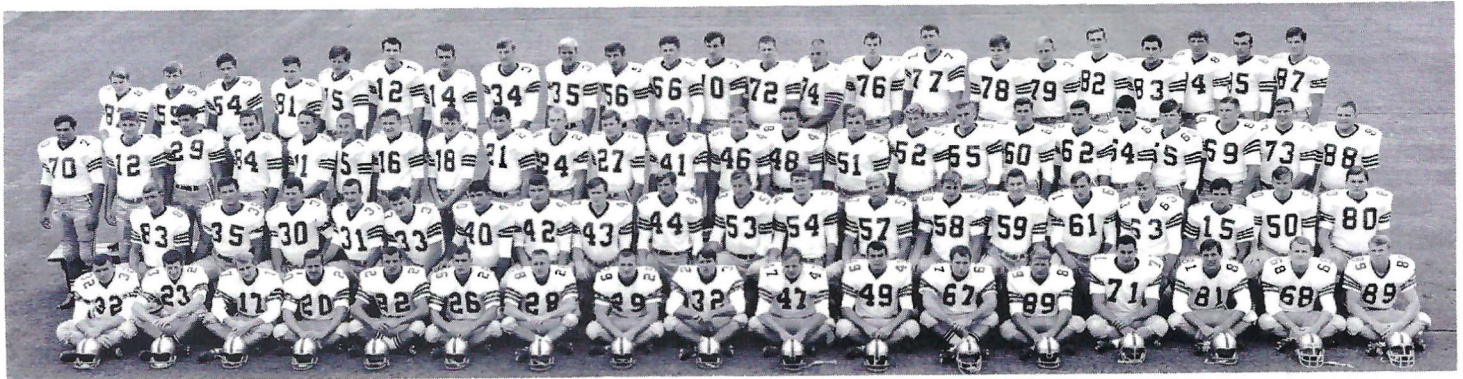
LAFAYETTE MOTEL

1525 W. Tennessee St. (U.S. 90-W) • Tallahassee, Florida 32304

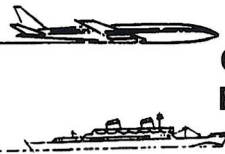
Telephone 904 224-1145



FLORIDA STATE 1967 SEMINOLES



FIRST ROW—Barry Wenhold, Bill Mortiz, Mike Page, Larry Green, Chuck Eason, Hal Hodges, T. K. Wetherell, Chuck Pickens, Ed Chereshkoff, Joe Benson, Terry Eagerton, Mike Bugar, Bob Menendez, Harvey Zion, Phil Abraira, Larry Pendleton, Mike Connors.
SECOND ROW—Skip Babbs, John Pittman, Bill Moremen, Bill Gunter, Grant Guthrie, Mike Blatt, Bill Cheshire, Howell Montgomery, Mike Corey, Bobby Burt, Ron Montford, Joe Kinnan, Rich Jones, Frank Loner, Chuck Elliott, Richard McLean, Danny Thomas, Dick Johnson, Doug Gurr.
THIRD ROW—Tom White, Rick Anderson, Doug Mitchell, Bill Yeldell, Kim Hammond, Tommy Warren, Gary Pajcic, Clint Burton, Donovan Jones, Walt Sumner, Billy Cox, John Crowe, Charlie Huggins, Dale McCullers, Bill Hughes, Wayne McDuffie, Ted Mosley, Barry Rice, Beryl Rice, Stan Walker, Bill Dew, Randy Logan, Duke Johnston, Jerry Jones.
FOURTH ROW—Frank Edmunds, Ed Gibson, Dave Bracken, Jim Tyson, Billy Rhodes, Phil Hiatt, Bill Cappleman, Ron Sellers, Mike Gray, Henry Lohse, Ken Hart, Tony Sewell, Jeff Chapman, Chris Palmer, Jack Fenwick, Jeff Curchin, Wayne Johnson, Frank Vohun, Lane Fenner, Thurston Taylor, Chip Glass, Floyd Ratliff, Jim Rust.



**GOING
PLACES
?**

**ATHENS, GEORGIA? ATHENS, GREECE?
NEW YORK? NASSAU? NEPAL?**

TRAVEL IS OUR PROFESSION

*No Charge For Our Services
Tickets - Reservations At Printed Rates*

**MARION HAY
TOM LYLE**

**BETTY MOCK
JEANNIE SMITH**

TALLAHASSEE TRAVEL AND TOURS, INC.

Formerly Hay Travel Service

Established 1930

CALHOUN AT CALL STREET

TELEPHONE 224-4161

BENNETT'S DISCOUNT DRUG STORE

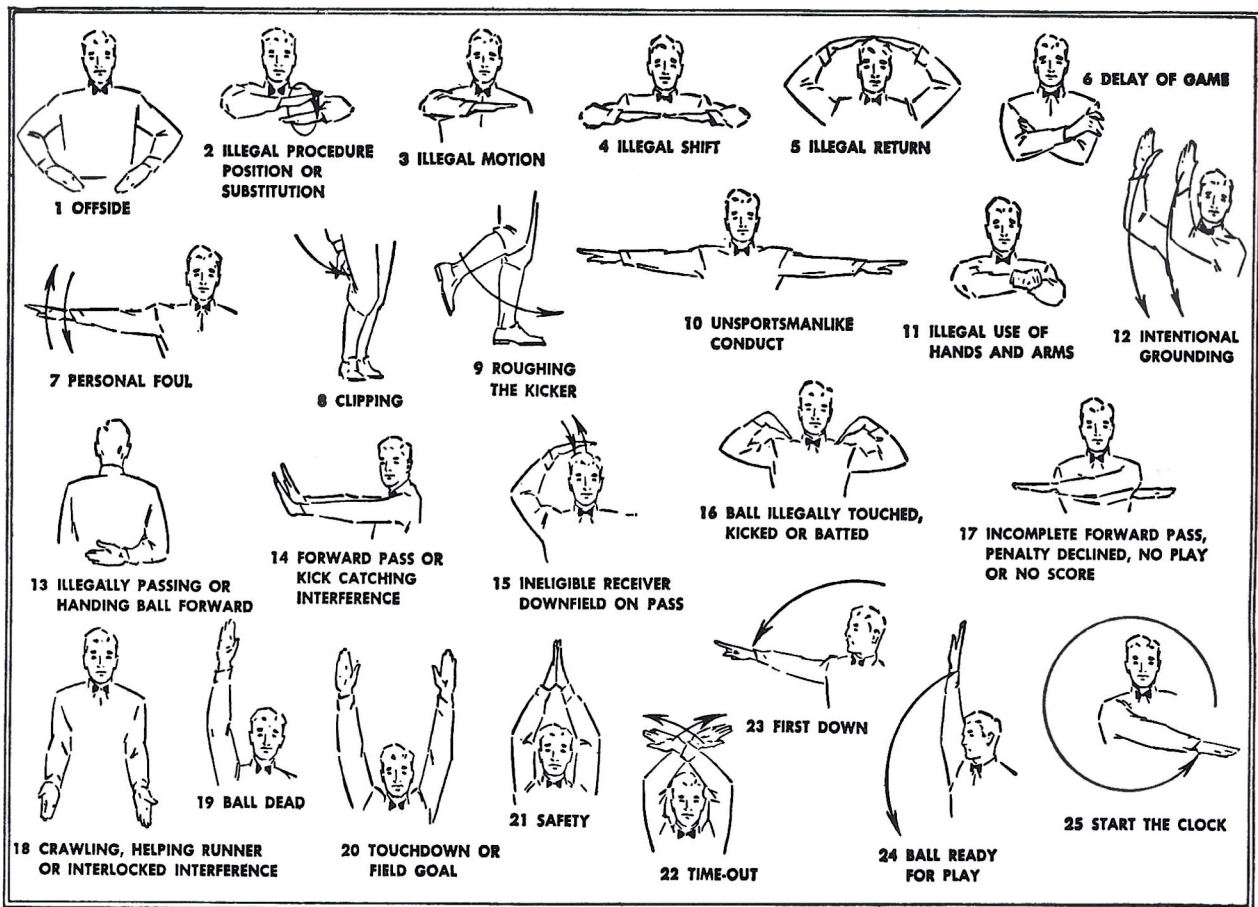
- Prescriptions
- Cameras
- Sundries
- Gifts
- Fountain
- Cafe
- Cosmetics
- Drugs

MEET ME AT BENNETT'S

BEFORE AND AFTER THE GAME!

Corner Monroe and College Streets

Phone 222-8980 — 222-4450



Le Roc Cocktail Lounge

Tallahassee's Finest . . .

Located in the
DUVAL HOTEL

For an evening of relaxed
entertainment — enjoy your
favorite beverage — prepared by
a professional.

No cover charge

Entertainment nightly

Open daily 11 A.M. to 2 A.M. — except Sunday



*
*The cigar for men . . .
that ladies love*

HAV-A-TAMPA JEWELS

WITH EXCLUSIVE BIRCHWOOD TIP

2 for 15c

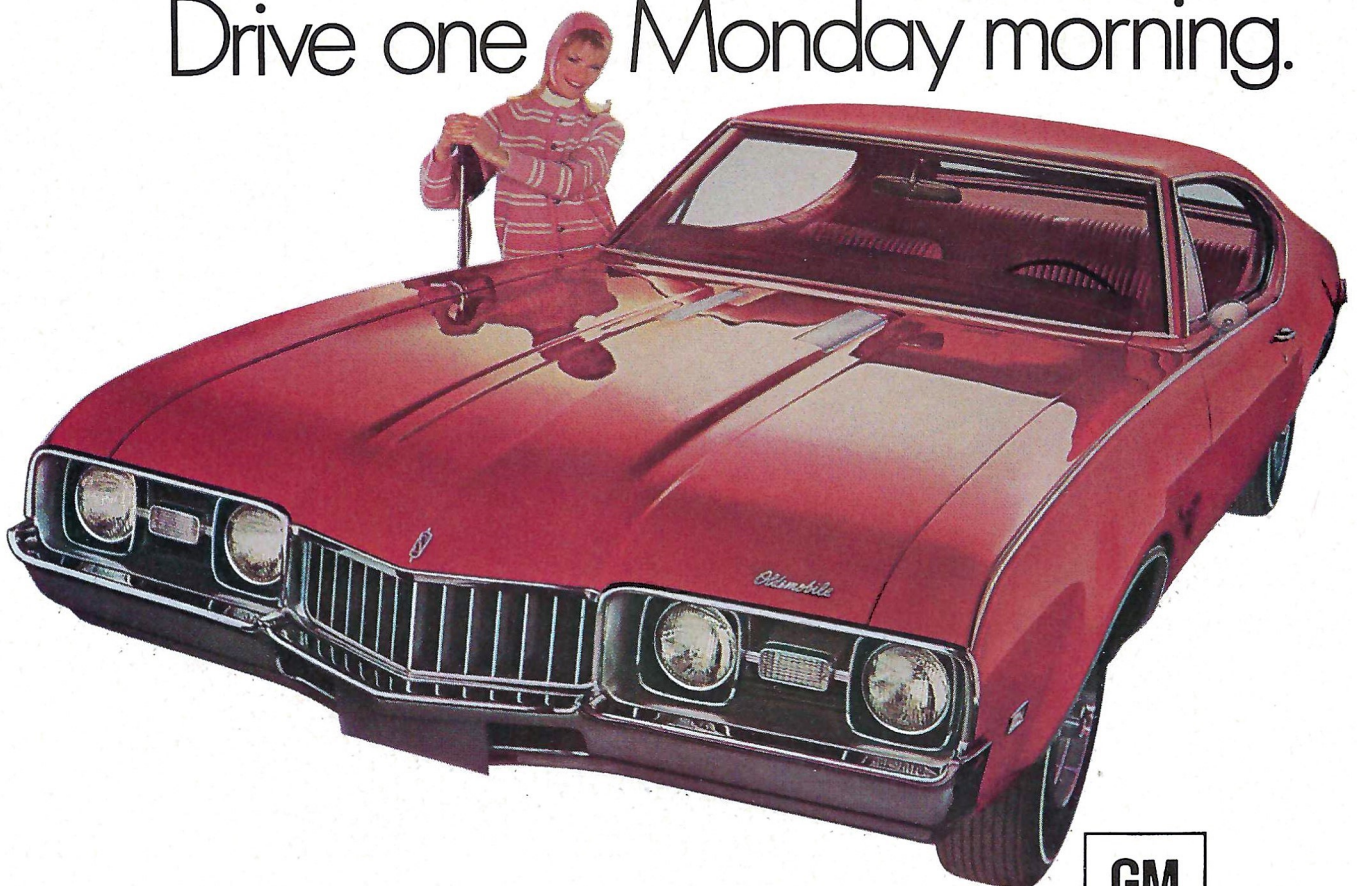
or new Push-Pak of five 36c
(Plus state and local taxes, if any)



FROM HAVATAMPA—TAMPA'S LARGEST MANUFACTURER OF FINE CIGARS
Distributed by **Eli Witt Tobacco & Candy Co.**
Tallahassee, Florida

The '68 "youngmobiles" from Oldsmobile are here.

Drive one Monday morning.



Cutlass S Holiday Coupe
at your nearest Oldsmobile Dealer's.





Coca-Cola... served at the training centers of the United States Olympic Team.

Coke has the ta
TRADE-MARK®

DEFENSE

88	JIM HANEU	LE
56	RICHARD GRIGG	LT
35	ED MOONEY	LLB
67	PETE NORWOOD	MG
62	DENNIS LANE	RLB
91	GENE DARR	RT
80	PAT KNIGHT	RE
15	EDDY WINDOM	LS
45	RONNIE RHOADS	LH
24	KEVIN ORMES	RH
10	LARRY ALFORD	RS

DEFENSE

85	FLOYD RATLIFF	LE
73	DUKE JOHNSTON	LT
57	JOE KINNAN	RT
89	BOB MENENDEZ	RE
61	CHUCK ELLIOTT	LLB
50	DALE McCULLERS	MLB
40	MIKE BLATT	RLB
24	WALT SUMNER	LCB
28	T. K. WETHERELL	RCB
41	JOHN CROWE	LS
22	CHUCK EASON	RS

TEXAS TECH

OFFENSE

82	LARRY GILBERT	LE
72	STAN EDWARDS	LT
77	PHIL TUCKER	LG
50	JERRY TURNER	C
64	DON KING	RG
74	MIKE PATTERSON	RT
84	LOU BREUER	RE
18	JOHN SCOVELL	QB
40	MIKE LEINERT	LH
21	KENNY BAKER	RH
30	TONY BUTLER	FB

FLORIDA STATE

OFFENSE

82	LANE FENNER	LE
76	JACK FENWICK	LT
52	WAYNE McDUFFIE	LG
55	TED MOSLEY	C
68	LARRY PENDLETON	RG
75	BILLY RHODES	RT
83	THURSTON TAYLOR	RE
11	KIM HAMMOND	QB
20	LARRY GREEN	HB
30	BILL MOREMEN	FB
34	RON SELLERS	FLB

TEXAS TECH SQUAD

10	Alford, HB-S	54	Wheat, T
13	Sawyer, QB	56	Grigg, G
15	Windom, HB-R	57	Neal, G
16	Howard, HB	60	Brown, G
17	Matulich, QB	61	Reed, G
18	Scovell, QB	62	Lane, LB
20	Gary Golden, S	64	King, G
21	Baker, HB	66	Sowell, G
22	Davis, HB	67	Norwood, T
23	Seat, HB	68	Warren, LB
24	Ormes, HB	69	Avent, G
25	Vinyard, KS	70	Lovelace, T
26	Sanders, KS	72	Edwards, T
29	David, HB	73	Wuest, T
30	Butler, FB	74	Patterson, T
31	Fox, HB	77	Tucker, G
32	Moore, LB	78	Moylan, T
33	Robertson, FB	79	Holladay, T
34	Stewart, FB	80	Knight, E
35	Mooney, LB	82	Gilbert, E
40	Leinert, HB	83	Oliver, E
41	Bennett, HB	84	Breuer, E
42	Brown, HB	85	Lowery, E
43	Freeman, HB	86	Bevers, E
44	Allen, E	87	Evans, E
49	Evans, HB	88	Haneu, E
50	Turner, C	89	May, E
51	Booe, C	90	Junnel, LB
52	Cowan, G	91	Darr, T
53	Hahn, C	92	Yarbrough, T

OFFICIALS: Referee—Pat McHugh, Chattanooga, Tenn. — Umpire—Joe Carter, San Antonio, Tex. — Linesman—D. L. Claborn, East Point, Ga. — Field Judge—Roland Goss, Dallas, Tex. — Back Judge—Dick Pace, Maitland, Fla. — ECO—Eric Sauerbrey

FLORIDA STATE SQUAD

11	Hammond, QB	55	Mosley, C
12	Hiatt, QB	56	Lohse, G
14	Cappleman, QB	57	Kinnan, T
15	Warren, QB-DB	58	R. Jones, T
16	Pajcic, QB	59	Loner, PK
17	Page, DB	60	Ba. Rice, LB
18	Burton, DB	61	Elliott, LB
19	Abraira, E	62	Be. Rice, LB
20	Green, HB	63	McLean, G
21	D. Jones, FB	64	Walker, G
22	Eason, DB	65	Dew, T
24	Sumner, DB	66	Hart, C-G
27	Cox, E	67	Bugar, M-G
28	Wetherell, DB	68	Pendleton, G
29	Pickens, DF	70	Sewell, T
30	Moremen, HB-FB	71	Zion, T
31	Gunter, HB	72	Logan, T
32	Chershkoff, HB	73	Johnston, T
33	Guthrie, PK-FB	75	Rhodes, T
34	Sellers, FL	76	Fenwick, T
35	Gray, FL	77	Curchin, T
40	Blatt, LB	78	Johnson, T
41	Crowe, DB	79	Vohun, T
42	Cheshire, P-E	80	Gurr, DE
43	Montgomery, DB	81	Tyson, E
44	John Pittman, FB	82	Fenner, FL
46	Huggins, DB	83	Taylor, E
47	Benson, LB	84	Glass, FB
48	Chapman, P	85	Ratliff, DE
49	Eagerton, FB	86	Hall, E
50	McCullers, LB	87	Yeldell, E
51	Hughes, C	88	J. Jones, DE
52	McDuffie, C-G	89	Menendez, DE
54	Montford, MG		

"COCA-COLA" AND "COKE" ARE REGISTERED TRADE-MARKS WHICH IDENTIFY ONLY THE PRODUCT OF THE COCA-COLA COMPANY. PRINTED IN U.S.A.

ste you never get tired of.



Here he comes . . . ready or not!

The world beckons and he's on his way—proud and independent.

He will need all the education he can get—college, even graduate school.

But there's a problem. Because enrollments are increasing every year, colleges must meet the expanding costs of providing more teachers and additional facilities.

You can help now.

Give to the college of your choice now to help assure his future . . . to help make sure that college is ready when he is.

College is



America's Best Friend

Published as a public service in cooperation with The Advertising Council and the Council for Financial Aid to Education.

PENALTIES

1. **OFFSIDE** by either team; Violation of scrimmage or free kick formation; Encroachment on neutral zone—Loss of Five Yards.
2. **ILLEGAL PROCEDURE, POSITION OR SUBSTITUTION**—Putting ball in play before Referee signals "Ready-for-play"; Failure to complete substitution before play starts; Player out of bounds when scrimmage begins; Failure to maintain proper alignment of offensive team when ball is snapped; False start or simulating start of a play; Taking more than two steps after Fair Catch is made; Player on line receiving snap—Loss of Five Yards.
3. **ILLEGAL MOTION**—Offensive player illegally in motion when ball is snapped—Loss of Five Yards.
4. **ILLEGAL SHIFT**—Failure to stop one full second following shift—Loss of Fifteen Yards.
5. **ILLEGAL RETURN** of substitute not previously disqualified—Loss of Fifteen Yards.
6. **ILLEGAL DELAY OF GAME**; Taking more than four times out during either half (except for replacement of injured player)—Loss of Five Yards. Team not ready to play at start of either half—Loss of Fifteen Yards.
7. **PERSONAL FOUL** — Tackling or blocking defensive player who has made fair catch; Piling on; Hurdling; Grasping face mask of opponent; Tackling player out of bounds, or running into player obviously out of play; Striking an opponent with fist, forearm, elbow or locked hands; Kicking or knocking—Loss of Fifteen Yards (Flagrant offenders will be disqualified.)
8. **CLIPPING**—Loss of Fifteen Yards.
9. **ROUGHING THE KICKER** or holder—Loss of Fifteen Yards.
10. **UNSPORTSMANLIKE CONDUCT**—Violation of rules during intermission; Illegal return of suspended player; Coaching from sidelines; Invalid signal for Fair Catch; Persons illegally on field—Loss of Fifteen Yards. (Flagrant offenders will be disqualified.)
11. **ILLEGAL USE OF HANDS AND ARMS** by offensive or defensive player; Defensive holding—Loss of Fifteen Yards.
12. **INTENTIONAL GROUNDING** of forward pass—Loss of Five Yards Plus Loss of Down.
13. **ILLEGALLY PASSING OR HANDING BALL FORWARD**—Loss of Five Yards Plus Loss of Down.
14. **FORWARD PASS OR KICK CATCHING INTERFERENCE**—Interference with opportunity of player of receiving team to catch a kick—Loss of Fifteen Yards. Interference by member of offensive team with defensive player making pass interception—Loss of Fifteen Yards Plus Loss of Down. Interference by defensive team on forward pass—Passing Team's Ball at Spot of Foul and First Down.
15. **INELIGIBLE RECEIVER DOWN-FIELD ON PASS**—Loss of Fifteen Yards.
16. **BALL ILLEGALLY TOUCHED, KICKED OR BATTED**—Forward pass being touched by ineligible receiver beyond the line of scrimmage—Loss of Fifteen Yards from Spot of Preceding Down and Loss of a Down. Eligible pass receiver who goes out of bounds and later touches a forward pass—Loss of Down. Illegal touching of kicked ball within opponent's ten yard line—Touchback.
17. **PENALTY DECLINED**; Incomplete forward pass; No play or no score.
18. **CRAWLING** by runner—Loss of Five Yards. Interlocked Interference—Loss of Fifteen Yards.

MIDYETTE-MOOR Insurance Agency

"Ask Those We Serve"

Complete Insurance and Bond Service

PHONE 222-3456



MIDYETTE-MOOR BUILDING
TALLAHASSEE, FLORIDA

SAYS

SCALP 'EM SEMINOLES!



Payne Midyette
Frank Moor
Ed Clark
Winslow Sullivan
Paul Lewis
Payne Midyette, Jr.
Bill Moor
Bob Dickinson

Bill Franklin
Jim Woods
Glenn Sears
Dick Wall
Joe Ausbrook
Ron Davis
Rex Sikes
Ray Atkinson



WHERE YOU
WILL FIND
YOUR FRIENDS

701 W. JEFFERSON
South Gate F.S.U.

Electrical Contractors

- INDUSTRIAL
- COMMERCIAL



Licensed & Bonded

J. B. CLARK,
President

LEE H. TOWNSEND,
Vice President

576-3727
IF NO ANSWER DIAL 385-4030

CLARK ELECTRIC CO.
OF FLORIDA

1133 Kissimmee St.
TALLAHASSEE, FLORIDA

ALL TIME FLORIDA STATE RECORDS

SINGLE GAME

Individual

- TOUCHDOWNS SCORED—4 by Fred Biletnikoff vs. Oklahoma Gator Bowl, 1965; and Jim Mankins vs. Texas Tech, 1966
- LONGEST TOUCHDOWN RUN FROM SCRIMMAGE—81 yards by Fred Pickard vs. Virginia Tech, 1957
- LONGEST TOUCHDOWN PASS—86 yards, Gary Pajcic to Ron Sellers vs. Wake Forest, 1966
- LONGEST TOUCHDOWN PLAY—100 yards by Bill Moremen and T. K. Wetherell (lateral on kickoff return) vs. Kentucky, 1965
- LONGEST RUN FROM SCRIMMAGE WITHOUT SCORING—76 yards by Roy Thompson vs. Stetson, 1951
- LONGEST INTERCEPTION RETURN—99 yards by Ted Hewitt vs. Stetson, 1948 and Fred Biletnikoff vs. Miami, 1963
- LONGEST PUNT RETURN—80 yards by Billy Odom vs. Stetson, 1954
- LONGEST KICKOFF RETURN—100 yards by Bill Moremen and T. K. Wetherell vs. Kentucky, 1965 (TD lateral)
- LONGEST PUNT—84 yards by Tommy Brown vs. Tampa, 1950
- LONGEST FIELD GOAL—44 yards by Les Murdock vs. Virginia Tech, 1963
- TIMES RUSHING—29 by Fred Pickard vs. Georgia, 1949
- YARDS RUSHING—161 by Buddy Strauss vs. Mississippi College, 1949
- PASSES ATTEMPTED—53 by Gary Pajcic vs. Virginia Tech, 1966
- PASSES COMPLETED—28 by Gary Pajcic vs. Virginia Tech, 1966
- YARDS PASSING—313 by Joe Majors vs. Tampa, 1959
- TOUCHDOWN PASSES—5 by Steve Tensi vs. Oklahoma, Gator Bowl, 1965
- TOTAL OFFENSE—369 yards by Joe Majors vs. Tampa, 1959 (56 rush, 313 pass)
- PASSES CAUGHT—13 by Ron Sellers vs. Virginia Tech, 1966 and by Fred Biletnikoff vs. Oklahoma, Gator Bowl, 1965
- YARDS RECEIVING PASSES—192 by Fred Biletnikoff vs. Oklahoma, Gator Bowl, 1965
- TOUCHDOWN PASSES CAUGHT—4 by Fred Biletnikoff vs. Oklahoma, Gator Bowl, 1965
- PASSES INTERCEPTED—3 by Tommy Brown vs. Stetson, 1950; and Georgia, 1952; Lee Corso vs. Georgia, 1954; and Bud Whitehead vs. Virginia Tech, 1959
- FIELD GOALS—3 by Les Murdock vs. Florida, 1964
- PUNTS—11 by John Hosack vs. Baylor, 1965 (40.8 average)

TEAM

- POINTS SCORED—74 vs. Whiting Field, 1949
- MARGIN OF VICTORY—74-0 vs. Whiting Field, 1949
- MARGIN OF DEFEAT—0-42 vs. Georgia, 1959
- YARDS RUSHING—383 vs. Abilene Christian, 1957
- YARDS PASSING—355 vs. Villanova, 1954
- TOTAL OFFENSE—526 vs. Furman, 1962 (277 rush, 239 pass)
- PASSES ATTEMPTED—56 vs. Virginia Tech, 1966
- PASSES COMPLETED—29 vs. Virginia Tech, 1966
- PASSES INTERCEPTED—7 vs. Virginia Tech, 1959
- PUNTS—11 vs. Baylor, 1965

PLUMBING

Contracting

COMMERCIAL • INDUSTRIAL • RESIDENTIAL

- BOILER REPAIRING
- STEAM & HOT WATER
- NATURAL GAS INSTALLATIONS

All Work Guaranteed
Over 20 Yrs. In Tallahassee

385-1691 or **224-4614**
1525 Pullen Rd. 702 W Madison

BLOUNT'S
PLUMBING & HEATING CO.

SEWER
INSTALLATIONS

DITCHING BACK-HOE
RENTALS



Sammy Seminole

One individual who flips at the sight of the Seminole football team is Don Hervig, this year's Sammy Seminole.

Since 1958 the colorful Florida State mascot has been leading the Seminole football team through the goal posts before each game.

During the game Sammy becomes an energetic cheerleader, using his "war lance" to urge the Seminoles on, and when they do he will be seen doing a series of "flip-flops" down the sidelines.

Don is the fifth student to carry on this colorful tradition.

Like all his predecessors, Don is a top gymnast. A native of Huntsville, Ala., he has been working with gymnastics for six years.

When he is not "flip-flopping" around the football field the 19-year old sophomore is working on his bachelors degree in engineering science.



Habit Forming.



HAIRSTON

KASTELZ

All season long — any time of the year — Bill Kastelz and Jack Hairston report, in depth, on everything in the sports world.

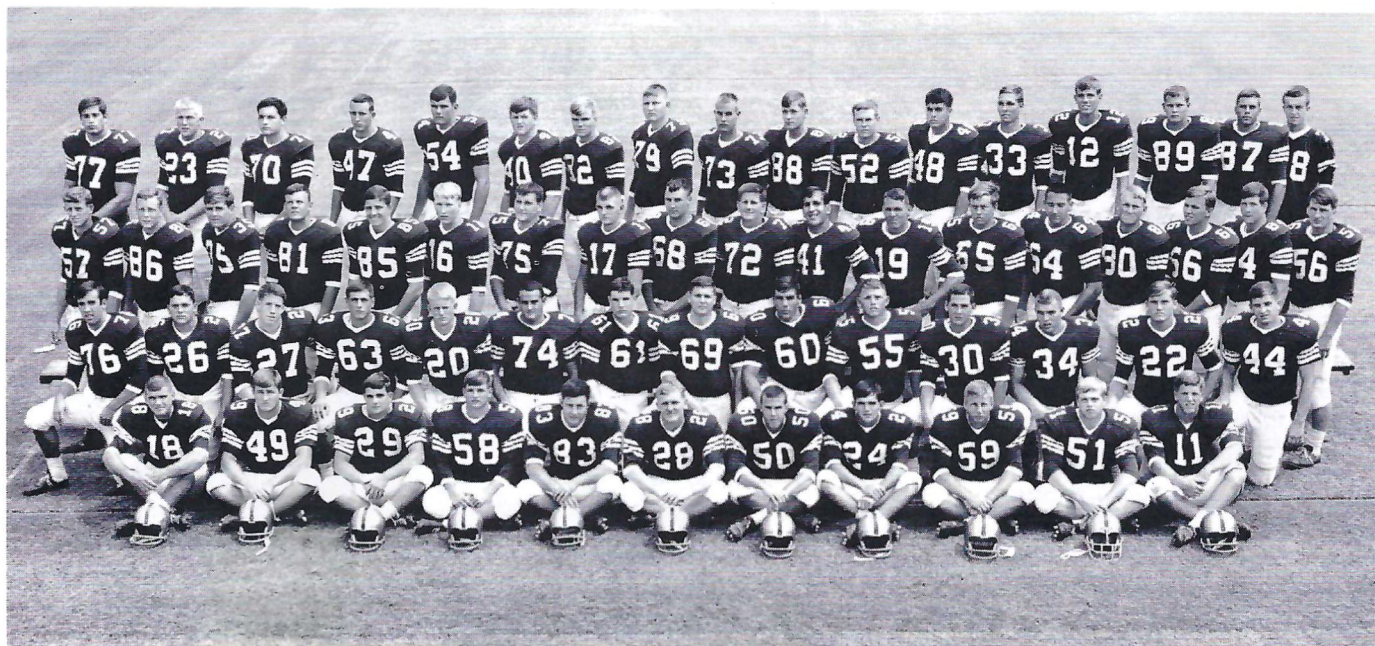
It's that extra margin of effort that makes these two stand out among sports editors. They're never satisfied with just "half" the story. They're diggers. Fact-finders. They wonder about things and investigate. That's why these two specialists bring you **closer** to sports all year long in the Florida Times-Union and Jacksonville Journal.

Be there — with Kastelz and Hairston — for every piece of the action.

The Florida Times-Union
EVERY MORNING

Jacksonville Journal
WEEKDAY AFTERNOONS

NUMBER ONE RIVERSIDE AVENUE
JACKSONVILLE, FLORIDA



FLORIDA STATE'S 1967 FRESHMAN SQUAD

NAME	HT.	WT.	AGE	HOMETOWN	NAME	HT.	WT.	AGE	HOMETOWN
Robert Ashmore	6-0	185	18	Tallahassee	Ned Jaros	6-3	237	22	No. Plainfield, N. J.
Fred Ayer	6-1	190	22	Tallahassee	Gary Klesius	6-2	210	18	St. Petersburg
George Bailey	6-2	205	18	Miami	Bill Lohse	6-0	210	18	St. Petersburg
Don Bancroft	6-1	205	18	Ft. Lauderdale	Craig MacKenzie	6-2	190	18	Clearwater
Theron Bass	5-11	189	17	Live Oak	Robert McEachern	6-2	215	18	Tallahassee
Steve Beville	6-1	198	18	Fernandina	Donald Mikell	6-2	201	18	Lubbock, Texas
Jon Blier	6-2	225	17	Brooklyn, N. Y.	George Montgomery	6-2	200	18	Coral Gables
Jerry Brooks	5-10	195	18	Valdosta, Ga.	Arthur Munroe	6-1	180	18	Quincy
Randy Burden	6-0	180	17	Atlanta, Ga.	Don Pederson	6-1	175	18	Groveland
Bill Cashman	6-1	175	18	Miami	Bill Rimby	6-4	198	17	St. Petersburg
Chris Corral	5-9	170	17	Tampa	John Romano	6-2	210	18	Lake Worth
Ralph Costantino	5-11	225	17	Bradenton	Ben Rust	6-2	190	18	Palm Beach
Rhett Dawson	6-1	180	18	Valdosta, Ga.	James Sammons	6-0	200	18	Atlanta, Ga.
Mike DeLoach	5-10	165	18	Valdosta, Ga.	Robert Searcy	6-5	240	18	Orlando
George Diaz	6-1	215	18	Jacksonville	Gary Semanchik	6-0	198	18	Leesburg
Michael Dowsett	6-1	230	18	Ft. Lauderdale	Phillip Shaw	5-10	160	18	Perry
Kent Gaydos	6-6	195	18	Maitland	Steve Spooner	6-2	205	18	Coral Gables
Stephen Gildea	6-0	185	18	Daytona Beach	Jay Stokes	6-3	200	17	Sanford
Max Harrell	6-3	182	18	Eastman, Ga.	Joe Strickler	6-1	230	18	Avon Park
George Henderson	5-9	170	18	Tallahassee	David Swindells	5-11	182	18	Washington, D. C.
Charles Hughes	5-10	200	18	Ft. Lauderdale	Ronnie Wallace	6-2	190	18	Macon, Ga.
Stephen Ivie	6-2	175	18	Atlanta, Ga.	Frank Whigham	6-1	175	18	Sanford
James Jarrett	6-2	182	18	Elizabethton, Tenn.	Steve Zadehh	6-1	185	18	North Miami
Steven Jernigan	5-11	194	18	Tampa	Ted Zaffren	6-3	185	18	Orlando
Steve Jones	6-1	212	18	Griffin, Ga.	John Boyett	6-3	195	18	Clermont

The pro makes it look easy

And with RCA Victor's new color portable —14" diagonal and 102 sq. in.—everything is easy. It's easy to carry from room to room because it weighs just 42 pounds. It's easy to see in daylight because its RCA Super Bright Hi-Lite Color Tube gives you 38% brighter highlights. And, it has a 21,500-volt New Vista® Color chassis. Pick a pro. Have your RCA Victor dealer show you The Headliner, a new level of performance in portable color TV.



TWO LOCATIONS TO SERVE YOU.

Rainey Cawthon's
700 N. MONROE • 222-1865

AND

Tallahassee Tire Co.
1530 S. MONROE • 222-3130



The Most Trusted Name
in Electronics



WE SERVICE WHAT WE SELL

SEMINOLE BOOSTERS, INCORPORATED

Seminole Boosters, Inc. is an organization devoted entirely to the support of the Florida State University athletic program with emphasis on football.

Contributions are administered in accordance with NCAA regulations and in conjunction with the Florida State Department of Intercollegiate Athletics.


Membership in the Boosters — the group numbers approximately 1,400 — is open to anyone with a sincere interest in the University's athletic progress. Minimum contribution for an individual membership is \$30. A business membership costs \$30.

Boosters receive a colorful automobile license plate which can be used for admission to special reserved parking lot at the stadium, a membership card, a weekly fall publication, "The Grandstand Coach," and certain priorities on season and single game football tickets.

SEMINOLE BOOSTERS, INCORPORATED
 FLORIDA STATE UNIVERSITY TALLAHASSEE, FLORIDA 32306

1967 Contribution
 Check attached for \$ _____
 Pledge to pay \$ _____ Bill me for \$ _____
 (TOTAL AMT.) (PAYMENTS) MONTHLY QUARTERLY OTHER _____ (SPECIFY)

Minimum Contribution of \$30 Required for Membership Privileges.



ARE YOU AN F.S.U. ALUMNUS? Yes No

Make check payable to Seminole Boosters, Inc.
 Mail To: 114 Longmire Alumni Bldg., FSU
 TALLAHASSEE, Florida 32306

(PLEASE CORRECT ANY ERRORS IN YOUR ADDRESS)

NAME _____
 ADDRESS _____
 CITY, STATE _____
 ZIP _____
 SOLICITOR'S SIGNATURE _____ CONTRIBUTOR'S SIGNATURE _____ DATE _____

COMPLIMENTS OF TALLAHASSEE AUTOMOBILE DEALERS ASSOCIATION

- | | |
|---------------------------------|------------------------------|
| ALFORD CHEVROLET COMPANY | KINNEBREW MOTORS, INC. |
| CAPITAL LINCOLN & MERCURY, INC. | MINGLEDORFF MOTORS, INC. |
| CAPITAL PLYMOUTH, INC. | PALMER-HARRELL BUICK COMPANY |
| COURTESY OLDSMOBILE, INC. | PROCTOR & PROCTOR, INC. |
| BOB DRAKE DODGE, INC. | TALLAHASSEE MOTORS, INC. |

SEMINOLE BOOSTERS, INC. BOARD OF DIRECTORS 1967



Seated, left to right: W. S. "Bill" Lee, Immediate Past President; Hank Mannheimer, Secretary; Frank Pope, President; Theo Proctor, Jr., President-Elect; and Herschel Williams, Treasurer.

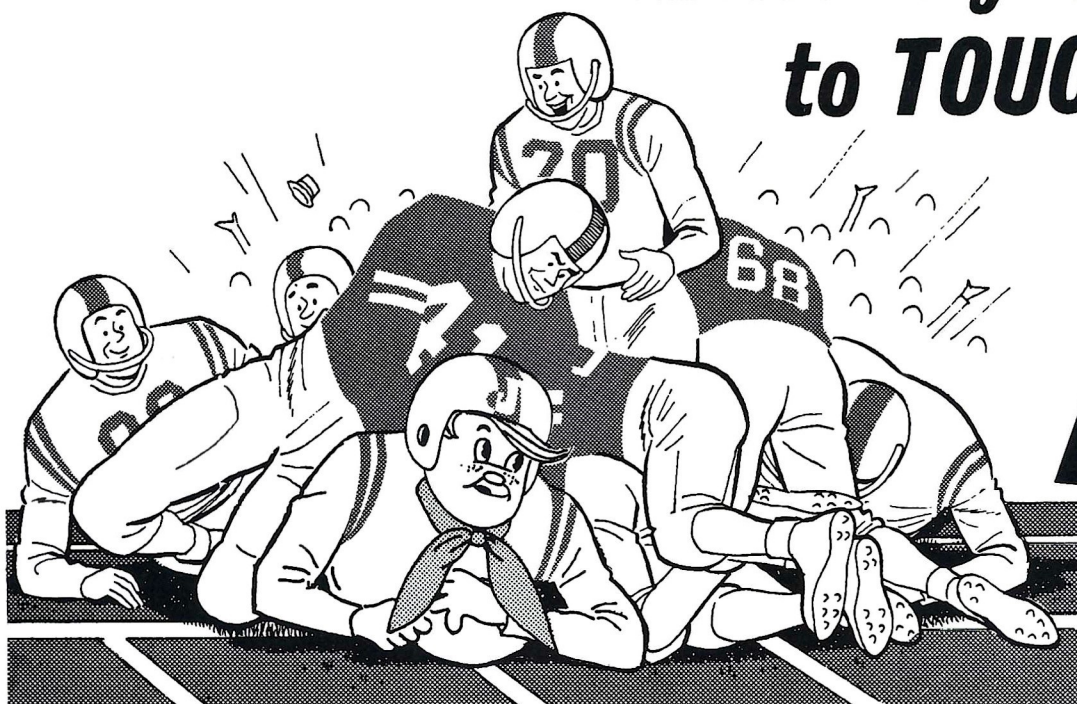
Standing, First Row: Ryals Lee, T. A. Waits, Wayne Cook, Coach Bill "Pete" Peterson, J. Edwin White, Sid Rayborn, William T. Smith, William "Curt" Smith.

Second Row: Thomas O. Feamster, Louis Hill, Doyle Pope, Leo Crutchfield, Dr. Evan E. "Dick" Dussia, Robert C. Camp, Robert B. Drake, Jr.
Not Pictured: Dr. James Booth, Anthony "Ad" Brautigam, Dr. Laurence Chalmers, Syde P. Deeb, Hugh Donovan, Fred Orr Drake, Jr., William I. DuBey, Dr. Ed. Haskell, Jr., Guy McKenzie, Payne Midyette, Jr., Godfrey Smith.

AFTER THE GAME

make it your goal
to **TOUCH DOWN**

at...



Jerry's
RESTAURANTS

445 West Tennessee St.
In
Tallahassee, Fla.

Patronize Stadium

CONCESSIONS

Located beneath the stands on each side of stadium

COLD DRINKS	small 15¢	large 25¢
HOT COFFEE		15¢
SANDWICHES		30¢
HOT DOGS		25¢
PEANUTS		25¢
POP CORN		15¢
CIGARETTES		40¢

SOUVENIR ITEMS - PENNANTS - BADGES

SUN VISORS - ASPIRIN

Please pay no more than

ESTABLISHED PRICES

EAT 'EM UP SEMINOLES!



FAMOUS DOUBLE-DECK HAMBURGERS
and OTHER DELICIOUS FOODS

THE POPULAR SPOT IN TOWN — SERVING:
● BREAKFAST ● LUNCH ● DINNER and
● LATE EVENING SNACKS

DINING ROOM AND IN-CAR SERVICE
OPEN 7 A.M. TO MIDNIGHT
'TIL 2 A.M. FRIDAYS & SATURDAYS

1775 W. TENNESSEE ST.
TALLAHASSEE - TEL. 224-1246

TRY FRISCH'S CARRY-OUT SERVICE



Football and Fitness Film Now Available!

This exciting 28-minute color film captures the thrills of professional football. It shows 13 N.F.L. stars in action, in some of their biggest moments of play. In addition, the 16 mm. sound film depicts these same players in "how-we-do-it" demonstrations of these plays, as well as their own favorite methods of staying in peak physical shape.

The film and an accompanying 36-page booklet outlines football-oriented plays, exercises, fundamentals and skills.



THE PRUDENTIAL INSURANCE COMPANY OF AMERICA
SOUTH-CENTRAL HOME OFFICE • JACKSONVILLE, FLORIDA

The film, sponsored by Prudential in cooperation with the President's Council on Physical Fitness and the National Football League, is available for free loan. It will make a terrific program for your civic club, youth group or physical education class.

For information, contact your local Prudential office. Or write Public Relations Dept., The Prudential Insurance Co. of America, P. O. Box 4579, Jacksonville, Florida 32201.



Portraits of Progress

FLORIDA STATE UNIVERSITY ALUMNI PRESIDENTS



Judge Edward C. Love
1903



Rowena Longmire
1917-1918



Florence R. Tryon
1940-1942



Mallory E. Horne
1967

- 1909-1911 Bessie Damon
- 1911-1912 Alice Corbett Cordes
- 1912-1913 Ruth Reynolds
- 1914-1915 Jessie Partridge McCall
- 1915-1916 Myrtie Ethel Warren Felkel
- 1919-1920 Inga Olla Helseth
- 1921-1922 Katherine W. Montgomery
- 1922-1923 Lillian Walker Page Hough
- 1924-1925 Allie Lou Felton Gilbreath
- 1925-1926 Elizabeth Conradi Boone
- 1927-1928 Caroline LaFontisse Palmer
- 1929-1930 Clara Johnson Wallis
- 1931-1932 Frances Hawkes Tippetts Johnston
- 1933-1934 Dorothy Strong Johnson Nilson
- 1934-1937 Cecil Jenkins Beeson
- 1937-1938 Beth Walton Moor
- 1938-1939 Willie Netherland Igou Gamble
- 1939-1940 Beth Walton Moor
- 1942-1943 Ella Taylor Semons Bisbee
- 1943-1945 Gracie Flournoy Ashmore
- 1945-1947 Margaret J. Boyle
- 1947-1949 Eleanor Brewer Morgan
- 1949-1951 Alma Warren
- 1951-1953 Ellen Knight
- 1953-1955 William W. "Bill" Meigs
- 1955-1957 Ruth Teal Dichtenmueller
- 1957-1959 L. B. "Buck" Vocelle
- 1959-1961 Fred Orr Drake, Jr.
- 1961-1962 Philip J. Fleming
- 1962-1963 Edward M. Eissey
- 1965 Charles F. Mixon
- 1966 Harry W. Massey
- 1967- Mallory E. Horne

WELCOME ALUMNI

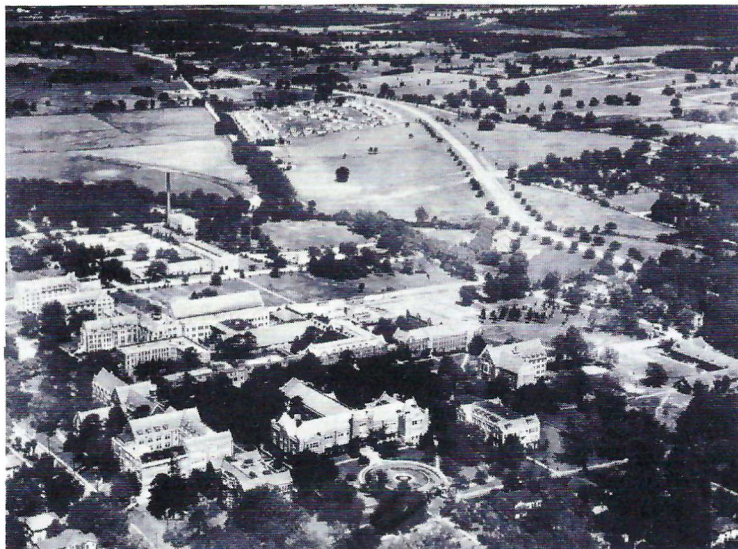
The Mid 40's

REUNION CLASS

PRESIDENTS-

HONOR CLASS — 1917

Mrs. John E. Coxe



CLASS

PRESIDENT

1924	Mrs. Thomas H. Wallis
1925	Miss Lucile D. Sumner
1926	Mrs. Richard R. Parkhill
1927	Mrs. Hugh Chace
1943	Mrs. W. J. Boynton, Jr.
1944	Mrs. Wayne C. Eubanks
1945	Mrs. Burwell C. Harrison
1962	F. Jackson Ascherl
1963	H. K. Van Assenderp
1965	Julian Proctor, Jr.
1967	Miss Cynthia Lou Skelton

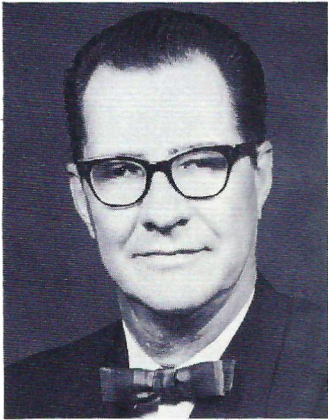
The Mid 60's



ANNIVERSARY CLASSES

1942	Mrs. Walter Mozo
1947	Football Team Chairman, Ken MacLean
1957	David D. Bachman

TEXAS TECHNOLOGICAL COLLEGE



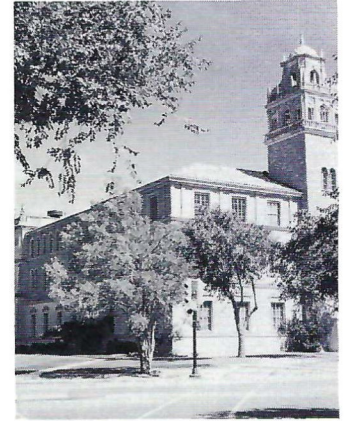
Dr. Grover Murray
President



J. T. King
Head Football Coach

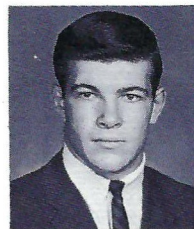


Polk Robinson
Athletic Director

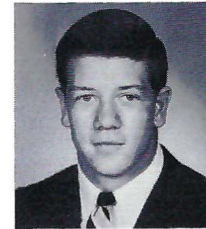


Administration Building

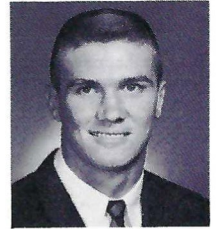
Texas Technological College, located on 1,839 acres in the city of Lubbock, got its name from the 1923 session of the Texas Legislature which established the College. Tech first opened its doors to students in the fall of 1925 with an enrollment of 910. Enrollment of 16,305 in 1965. More than 26,000 students are expected by 1970, and 35,000 by 1975. Forty-four departments are contained in the College's six schools, Agriculture, Arts and Sciences, Business Administration, Engineering, Home Economics, and Graduate. Curriculum also includes an Extension Service, and the Army and Air Force ROTC training programs. The Legislature-approved Law School is scheduled to open in September of 1967. Tech's six schools offer 83 areas of study leading to the Bachelor's degree, 43 leading to the Master's and 14 leading to the Ph.D. Lubbock, a city of 163,000, is at 3,200 feet elevation on the South Plains, 200 miles south of the northern line of the Panhandle and 400 miles northwest of Austin.



MIKE LEINERT



JOHN SCOVELL



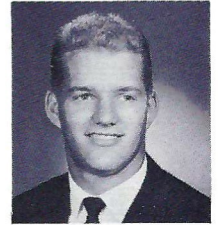
JERRY TURNER



JOHN AVENT



DON KING



STANLEY EDWARDS

(continued on page 39)

SHOW YOUR COLORS! Genuine **PENDLETON** wool blankets in authentic school colors, solid background with felt emblem, in carrying case. Ideal for stadium, home, and travel. Perfect for gift giving. Choose from those shown, or specify your school. If not offered, your money will be promptly refunded. Price: \$20.00 each, includes sales tax and shipping charges. Check or money order must accompany order. No C.O.D. shipments.



Sportswear by the Wool People

Gentlemen: Please ship me _____ Blankets at \$20.00 each.
My school is _____
Enclosed find \$ _____

Name _____
Address _____
City, State, & Zip Code _____

"ONE OF FLORIDA'S FINE STORES"

Fletcher-Cantey

*Men's
Wear*

P. O. BOX 899

QUINCY, FLORIDA 32351



THE SEMINOLE FOOTBALL NETWORK

Florida's 1967 sportscaster of the year, popular Bo Mitchell returns to the Seminole microphone for the fifth straight season, bringing play-by-play action to every corner of the Sunshine State.

The energetic Mitchell, an ex-naval aviator with more than 18 years broadcasting experience, is vice-president and manager of station WXIS, Orlando.

His partner at the mike again this season will be Bud Kaatz, a native of Ohio who was formerly color man for the University of Michigan Football Network and play by play announcer for Ohio University and Marietta College. Kaatz will handle pre-game, half-time and time out commentary on the Seminoles.

Originating station for the Seminole Network is WTNT, Tallahassee. The network consists of 29 stations in Georgia and Florida.



Bo Mitchell



Bud Kaatz

THE SEMINOLE NETWORK

- | | |
|-----------------------|--------------------------|
| WTNT—Tallahassee | WORD—Daytona Beach |
| WAAZ—Crestview | WCOA—Pensacola |
| WDSR—Lake City | WDAE—Tampa |
| WFTW—Ft. Walton Beach | WGBS—Miami |
| WINK—Ft. Myers | WJAX—Jacksonville |
| WKMK—Blountstown | WKIS—Orlando |
| WMAF—Madison | WSIR—Winter Haven |
| WMGA—Moultrie, Ga. | WSPB—Sarasota |
| WMMB—Melbourne | WTOT—Marianna |
| WMOP—Ocala | WFOY—St. Augustine |
| WONN—Lakeland | WCNH—Quincy |
| WOOO—DeLand | WEAT—West Palm Beach |
| WPAX—Thomasville, Ga. | WFFG—Marathon - Key West |
| WPCF—Panama City | WTRR—Sanford |
| WPRY—Perry | |

**Follow
STATE
in '67**

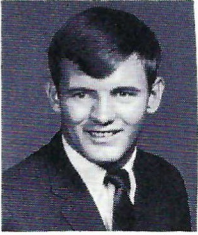
on the **STANDARD OIL** Radio Network

- | | |
|----------------------------|-----------------------------|
| WTNT
Tallahassee | WJAX
Jacksonville |
| WGBS
Miami | WKIS
Orlando |
| WCOA
Pensacola | WDAE
Tampa |

*Come to
Chevron Island!*



TEXAS TECHNOLOGICAL COLLEGE



ROGER FREEMAN



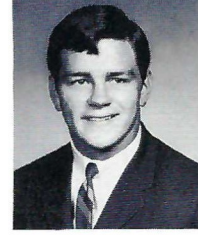
PHIL TUCKER



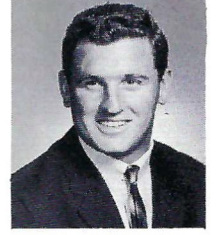
LOU BREVER



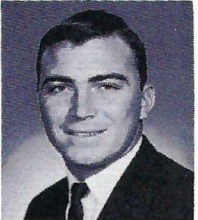
L. D. GILBERT



ROBERT ALLEN



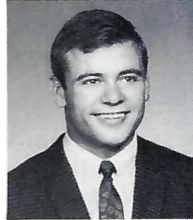
MICKEY MERRITT



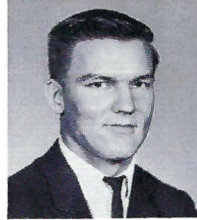
RONNIE RHOADS



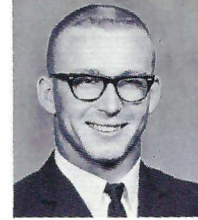
GARY SEAT



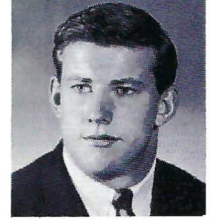
KENNY VINYARD



GARY GOLDEN



JACKIE M. BOSE



ED MOONEY



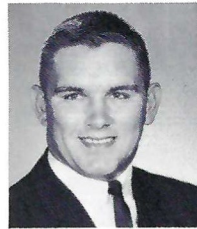
GENE DARR



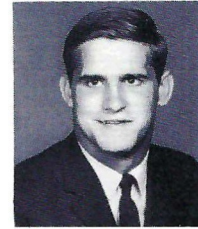
JIMMY MAYLAN



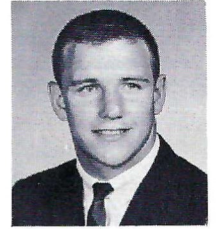
LEON LOVELACE



PAT KNIGHT



JOHN STEWART



KENNY BAKER



SPURGEON CAMP

*"Let's Be
#1
In 1967"*

QUALITY CLEANERS

215 W. COLLEGE AVE.—DIAL 222-5097

ONE DAY SERVICE

PICK-UP and DELIVERY

Quality Laundry Work

Fluff Dry Service

EXPERT TAILORING and ALTERATIONS

ZIPPERS REPAIRED



**SOUTHERN
ELECTRIC INC.**

MUSIC AT HALF-TIME

THE MARCHING CHIEFS

Robert T. Braunagel, Director

Camp Kirkland, Assistant Director

Charles Carter, Assistant Director and Arranger

Herschel Beazley, Drum Major

Paulette Gergen, Head Majorette

Will Shurley and Jerry Williams, Solo Twirlers

THEME: F.S.U. AROUND THE WORLD

MUSIC

Fanfare

French Fight Song

Spanish Fight Song

Hindu Fight Song

Oriental Fight Song

Fight Song

FORMATION

Company Front Entrance—We take Florida State University around the world—and feature the F.S.U. fight song in the styles of various countries.

EIFFEL TOWER—We first visit the Eiffel Tower in France.

FAN—A trip to Spain as we open the fan.

SNAKE CHARMER—A visit to India—watch the snake.

PAGODA—Our final stop off in Japan—we feature our majorettes.

F.S.U.

The feature twirlers for the Marching Chiefs this year are Will Shurley and Jerry Williams.

Keep your eye on these two during today's half time. Their performances will speak for themselves.



This is Will Shurley's first season with the Chiefs. The Warrington, Ga. native was a trombonist in high school, where he also served as Drum Major. He has been twirling for six years, and has been the Georgia state solo champion for three years. Among his other titles, Will holds the 1966 National two baton twirling championship, and the 1967 International solo twirling championship.

A junior accounting major Will is generally regarded as one of the nation's top twirlers.



Jerry Williams is in his fourth year with the Chiefs. A senior music major Jerry also lists an impressive number of twirling titles. Five times he has been the South Carolina State boys champion, and the North and South Carolina championships have been his for five years also. In addition Jerry has won the Orange Bowl Classic Twirling Championship three years in a row.

1967 CROSS COUNTRY SCHEDULE

DATE	OPPONENT	SITE	TIME
Oct. 5 (Thurs.)	Eastern Kentucky	Tallahassee	4:00
Oct. 7 (Sat.)	South Florida	Tampa	3:30
Oct. 14 (Sat.)	Aldridge Championships	Atlanta, Ga.	11:00
Oct. 21 (Sat.)	Callaway Gardens	Pine Mountain, Ga.	11:00
Oct. 23 (Mon.)	Auburn	Tallahassee	4:00
Nov. 4 (Sat.)	South Florida	Tallahassee	11:00
Nov. 6 (Mon.)	*Florida	Gainesville	3:30
Nov. 11 (Sat.)	Georgia Tech	Tallahassee	11:00
Nov. 18 (Sat.)	State Meet	Tallahassee	11:00

*"A" and "B" Meets



THE 1967 FLORIDA STATE CROSS-COUNTRY TEAM:

Front Row: Left to Right: Joe Law, Joe Rooney, Terry Smith, Bob Courter. Second Row: Left to Right: Marc Williamson, Sid Merchant, George Griffin, Bob Thomas. Third Row: Left to Right: Phil Scott, Jack Castner, Mike Kelly, Ken Misner, Tom Richards.

The Vogue

TALLAHASSEE, FLORIDA

Learn to Fly at
G. C. Shuler
Seminole Flying Service, Inc.

Municipal Airport

Phone 576-5151

Tallahassee, Fla.

- STUDENT CLUBS
- AIRPLANE RIDES
- FLIGHT INSTRUCTION
- AERIAL PHOTOGRAPHY
- CHARTER FLIGHTS
- AIRCRAFT RENTAL

FLY the best—A New Cessna

"Look up—a new CESSNA will be overhead"

Your
University Union



CAMPUS HEADQUARTERS FOR
Programs ★ Services ★ Facilities
FOR ALL CAMPUS INFORMATION
CALL THE UNION
599-3317



**TIME!
OUT!**

FOR
YOUR FAVORITE

**Meal
or
Snack**

AFTER THE GAME AT
THE **UNIVERSITY UNION**
FSU FOOD SERVICE

Go Seminoles

OWNED AND OPERATED BY FRANK, RICHARD & RAYMOND CHASE


Skyline
RESTAURANT
2220 W. TENNESSEE ST.
TALLAHASSEE, FLORIDA

"Serving Good Food for Fine People"

FREE PARKING

Private Rooms and Banquet Facilities

FOR RESERVATIONS CALL: 576-2515 – 576-9135



KNEELING (left to right): Cherry Hand, Dixie Wilcoxn and Jan Berry.

STANDING: Bruce Turner, Jim Sharp, Dave Deutsch (Captain).

THE ALMA MATER

High o'er the towering pines our voices swell
 Praising these Gothic spires we love so well;
 Here sons and daughters stand . . .
 Faithful and True, Hailing our Alma Mater
 F . . . S . . . U . . .

FSU FIGHT SONG

You're going to FIGHT, FIGHT, FIGHT for FSU
 You're going to scalp 'em Seminoles.
 You're going to WIN, WIN, WIN, WIN,
 WIN this game . . . and roll
 on down and make those goals!
 For FSU is on the warpath now, and at
 the battle's end she's great . . .
 So FIGHT, FIGHT, FIGHT, FIGHT for victory
 The Seminoles of Florida State . . .
 F-L-O-R-I-D-A S-T-A-T-E
 FLORIDA STATE (3 times)

HYMN TO THE GARNET AND GOLD

Here's a hymn to the Garnet and the Gold
 Ringing to the sky.
 Here's a song for our men and women bold
 Sing with heads held high.
 Striving e'er to seek, to know,
 Fight for victory.
 Alma Mater, this, our song to you,
 Echoes FSU.



REMEMBER THE DAY WITH PICTURES !!

For All Of Your Photographic Needs Remember

TALLAHASSEE CAMERA CENTER

117 NORTH MONROE STREET
 Across From The Florida Theater

CAMERAS • FILM • BINOCULARS • RECORDERS • RENTALS

Fast, Fast, Black & White and Color Processing

STADIUM INFORMATION

Rest Rooms—Located on concourse and on ground level on both east and west sides.

First Aid—Located in southwest corner of stadium. Registered nurse on duty.

Lost and Found: Items may be claimed or turned in at the ticket booth next to the press box elevator, west side.

Public Telephones: Located ground level, west side.

Public Address: No special announcements are made over the stadium public address system except in cases of emergency.

Field Regulations: No spectators are allowed on the field, either during or after the game. Please leave the stadium by ramp and section exits rather than field level exits.

Drive Carefully—Your cooperation with law enforcement officers will help speed the flow of traffic away from the stadium.

Miller CHEVROLET COMPANY

Havana, Florida

539-6376

15 Miles North of Tallahassee

on U. S. 27

Phone Toll Free

224-1317

See WAKULLA SPRINGS
through Glass Bottom Boats
JUST 14 MILES SOUTH OF TALLAHASSEE

N.C. STATE V.P.I. RED RAIDERS GAME COCKS MAROONS

Special Rates To Visiting Teams, Bands And Groups

"While in Tallahassee Before the Falling Sun Be sure and see Wakulla Springs No matter who has won"

Sammy Seminole

"THE WORLD'S LARGEST AND DEEPEST SPRING"

The advertisement is a black and white illustration. On the left, a large tree with hanging vines frames the scene. In the center, a glass-bottom boat labeled 'WAKULLA SPRINGS' is on the water, with people visible inside. To the right, a building with several flags (N.C. STATE, V.P.I., RED RAIDERS, GAME COCKS, MAROONS) is shown. A banner in front of the building reads 'Special Rates To Visiting Teams, Bands And Groups'. In the foreground, a small canoe with a person named 'Sammy Seminole' is on the water. A speech bubble from the canoe contains the text: 'While in Tallahassee Before the Falling Sun Be sure and see Wakulla Springs No matter who has won'. At the bottom, a banner reads 'THE WORLD'S LARGEST AND DEEPEST SPRING'.

BASIC DEFENSE

RIGHT SAFETY
10 LARRY ALFORD
20 GARY GOLDEN

RIGHT CORNERBACK
24 KEVIN ORMES
23 GARY SEAT

LEFT CORNERBACK
45 RONNIE RHOADS
49 CRAIG EVANS

LEFT SAFETY
15 EDDY WINDOM
29 ROBERT DAVID

RIGHT END
80 PAT KNIGHT
85 FLOYD LOWERY

RIGHT TACKLE
91 GENE DARR
78 JIM MOYLAN

RIGHT LINEBACKER
62 DENNIS LANE
68 FRED WARREN

MIDDLE GUARD
67 PETE NORWOOD
60 JOE BROWN

LEFT LINEBACKER
35 ED MOONEY
90 REB JUNNEL

LEFT TACKLE
56 RICHARD GRIGG
70 LEON LOVELACE

LEFT END
88 JIM HANEU
85 FLOYD LOWERY

LEFT END
82 LANE FENNER
27 BILL COX

LEFT TACKLE
76 JACK FENWICK
77 JEFF CURCHIN

LEFT GUARD
52 WAYNE McDUFFIE
63 RICHARD McLEAN

CENTER
55 TED MOSLEY
66 KEN HART

RIGHT GUARD
68 LARRY PENDLETON
64 STAN WALKER

RIGHT TACKLE
75 BILLY RHODES
78 WAYNE JOHNSON

RIGHT END
83 THURSTON TAYLOR
84 CHIP GLASS

BASIC OFFENSE

HALFBACK
20 LARRY GREEN
31 BILL GUNTER

QUARTERBACK
11 KIM HAMMOND
16 GARY PAJICIC

FULLBACK
30 BILL MOREMEN
44 JOHN PITTMAN

FLANKER
34 RON SELLERS
19 PHIL ABRAIRA

FLORIDA STATE SPECIALISTS: PUNTING, 43 BILL CHESHIRE; PLACEKICKER, 33 GRANT GUTHERIE

BASIC DEFENSE

RIGHT SAFETY
22 CHUCK EASON
18 CLINT BURTON

RIGHT CORNERBACK
28 T. K. WETHERELL
17 MIKE PAGE

LEFT CORNERBACK
24 WALT SUMNER
15 TOMMY WARREN

LEFT SAFETY
41 JOHN CROWE
43 HOWELL MONTGOMERY

RIGHT END
89 BOB MENENDEZ
80 DOUG GURR

RIGHT TACKLE
57 JOE KINNAN
72 RANDY LOGAN

RIGHT LINEBACKER
40 MIKE BLATT
60 BARRY RICE

MIDDLE LINEBACKER
50 DALE McCULLERS
47 JOE BENSON

LEFT LINEBACKER
61 CHUCK ELLIOTT
84 CHIP GLASS

LEFT TACKLE
73 DUKE JOHNSTON
79 FRANK VOHUN

LEFT END
85 FLOYD RATLIFF
88 JERRY JONES

LEFT END
82 LARRY GILBERT
44 BOBBY ALLEN

LEFT TACKLE
72 STAN EDWARDS
71 JIM ARNOLD

LEFT GUARD
77 PHIL TUCKER
61 ANDY REED

CENTER
50 JERRY TURNER
53 JAMIE HAHN

RIGHT GUARD
64 DON KING
66 RONNIE SOWELL

RIGHT TACKLE
74 MIKE PATTERSON
79 MIKE HOLLADAY

RIGHT END
84 LOU BREUER
87 CHARLES EVANS

BASIC OFFENSE

LEFT HALFBACK
40 MIKE LEINERT
41 JIMMY BENNETT

QUARTERBACK
18 JOHN SCOVELL
17 JOE MATULICH

RIGHT HALFBACK
21 KENNY BAKER
43 ROGER FREEMAN

FULLBACK
30 TONY BUTLER
34 JACKIE STEWART

- RCA COLOR TV IN ROOMS
- POOL
- Northwest corner of Campus on U.S. 90; Fla. 20 West



DRIFTWOOD MOTEL and RESTAURANT

AMERICAN EXPRESS - DINERS - AMERICAN OIL CREDIT CARDS HONORED

- AIR CONDITIONED
- DIRECT DIAL PHONES
- Se habla Espanol

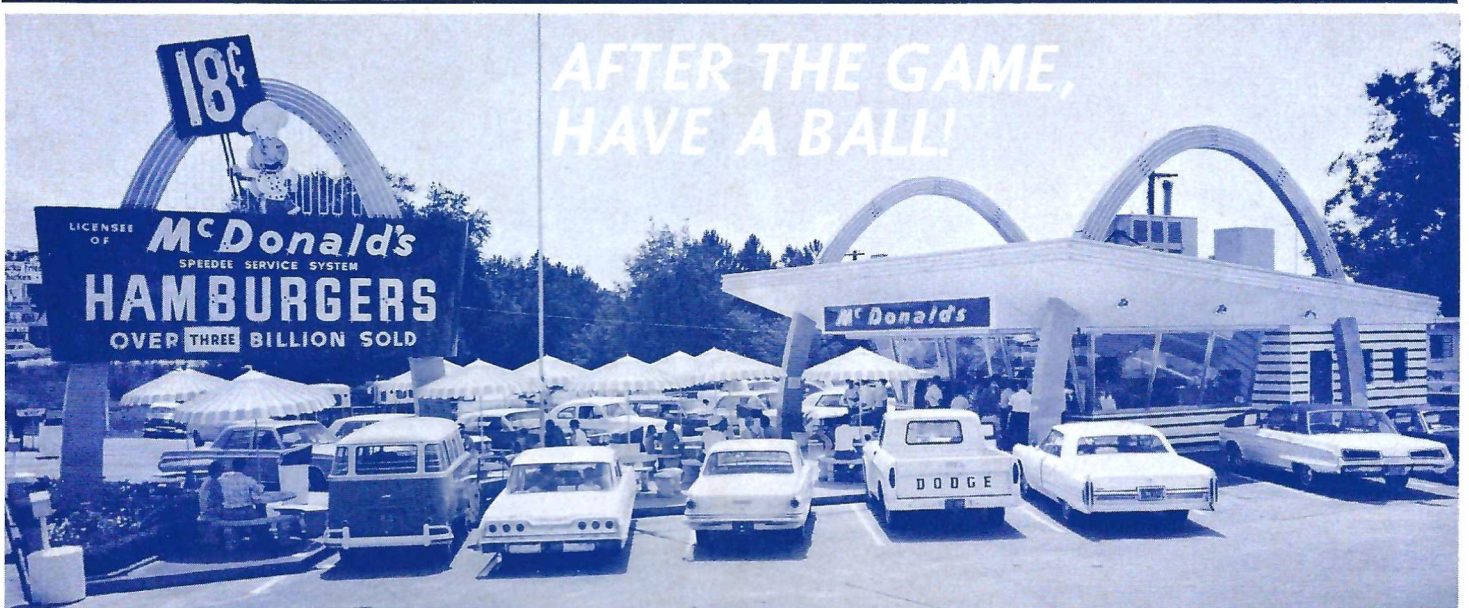
1402 W. TENN. U.S. 90

(904) 224-4174 (TWX904) 224-6510

TEXAS
TECH

FLORIDA STATE

TEXAS
TECH



MENU

WORLD'S MOST DELICIOUS HAMBURGERS
 CHEESEBURGERS WITH MELTED CHEDDAR
 DOUBLE HAMBURGERS & CHEESEBURGERS
 DEEP SEA FILET 'O FISH SANDWICHES
 FRESH IDAHO FRENCH FRIES • COFFEE
 COKES • ROOT BEER • ORANGE • MILK
 CREAMY MILK SHAKES (THREE FLAVORS)
 HOT CHOCOLATE (WINTER) • APPLE PIE

McDonald's



1701 WEST TENNESSEE STREET (HWY. 90) NEAR SEMINOLE COUNTRY

THE CLOSEST THING TO HOME • LOOK FOR THE GOLDEN ARCHES

Tallahassee's Most Exclusive
 Steak House

the *Silver Slipper*



RESTAURANT

DELICIOUS CHARCOAL BROILED STEAKS

SEA FOODS CHICKEN

25 PRIVATE DINING ROOMS — BANQUET ROOM SEATING 100

CALL JIMMIE OR CHRIS

KALFAS FOR RESERVATIONS

FOR PRIVATE PARTIES

AND BANQUETS

224-1266

OPEN 5 P.M. TILL 11:30

OPEN EVERYDAY & SUNDAY

2000 S. MONROE • One Mile From Capitol On So. Monroe St. U.S. 319 S.
 BEHIND S.&S. PACKAGE STORE



"Bill
 the
 Bank"
 Hilton
 Paris-Blanche



New Chevrolet Impala, foreground. Chevelle Concours, top right. Camaro, "The Hugger," top left.



'68 Chevrolets

Dramatic!
Distinctive!
Daringly new!

Expect a lot of never-befores and nice-to-haves from Chevrolet for 1968. You can count on nothing being newer. Formal and fastback roof lines. Elegant new interiors with exciting colors, fabrics, and easy-to-reach instruments. Concealed headlights, Hide-A-Way windshield wipers, and refreshing Astro Ventilation, available on many models.

NEW SILENT RIDE.

More effective body and engine mounts, quieter exhaust systems, and further improved shock absorbers. The result? Every new Chevrolet rides incredibly smooth and silent.

NEW MODELS, TOO.

Like the elegant Impala Custom Coupe and rugged new Chevelle Nomad Station Wagons. For the serious sports fan, there's the completely re-styled Corvette Sting Ray, and the Chevelle SS 396 with long-hood short-deck styling and a wider wheel

stance to make it cling to the road better. Camaro, "The Hugger," features Astro Ventilation, and special hood on all SS models. What's more, there's a larger 307-cubic-inch V8 standard on Chevrolet, Chevelle and Chevy II models for '68. And on automatic transmission models, there's even a built-in heater that warms air en route to the carburetor and increases engine efficiency during cold weather. The new GM exhaust emission control is standard.

PROVED SAFETY FEATURES.

The famous proved GM-developed energy absorbing steering column and many other popular safety items are back again. Plus new features like energy absorbing front seat backs, safety armrests that shield door handles, padded windshield pillars, and seat belts for all passenger positions. Be smart. Be sure. Buy now at your Chevrolet dealer's.



Free! Get Chevrolet's 60-page College Football Handbook

Chevrolet's College Football Handbook contains a complete run-down on all the top teams, plus action photographs and inside stories by famous sports commentators. You'll also find the schedules and line-ups of all 33 NCAA games to be televised this fall. It's yours for the asking at your Chevrolet dealer's.

