

FLORIDA STATE VS. VIRGINIA TECH

Official
Program
50c

November 11, 1967

DOAK S. CAMPBELL STADIUM
Tallahassee, Florida





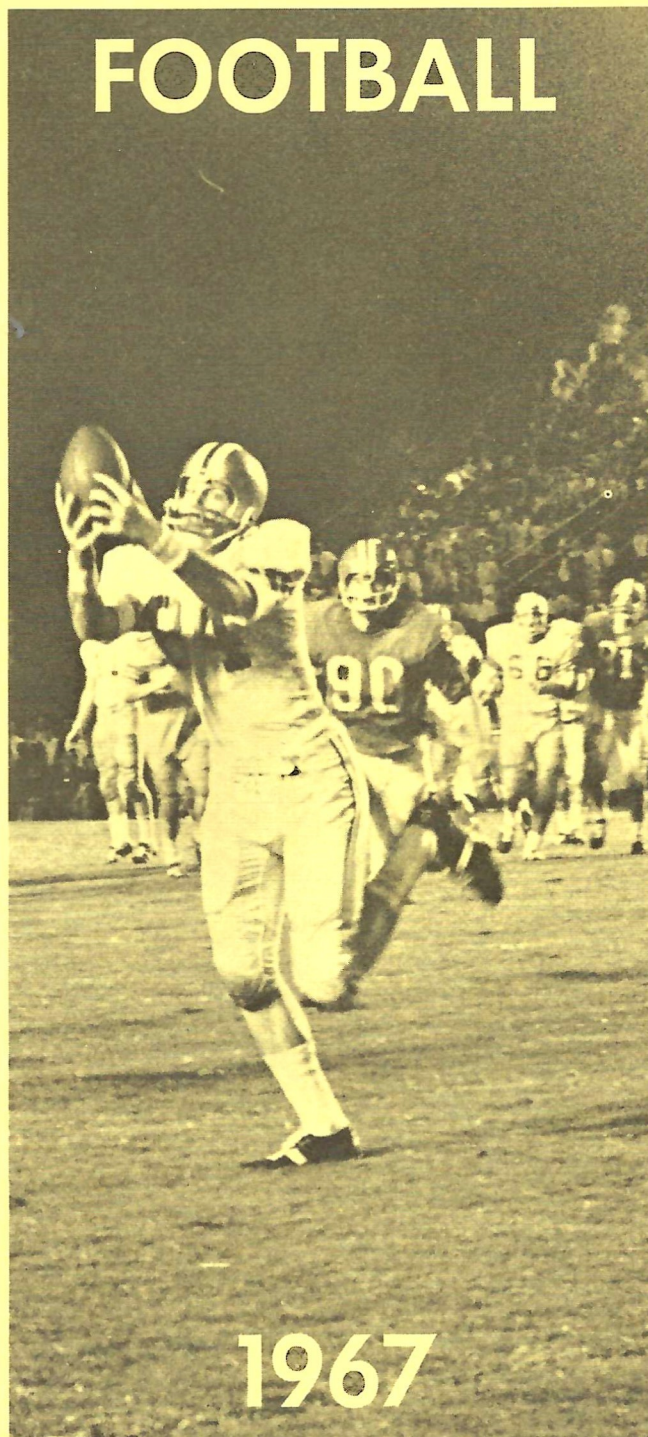
HAMS • BACON • SAUSAGE • WIENERS

FROSTY MORN MEATS

Florida State University . . .

In This Issue . . .

Tonight's Game	4
Florida's Governor	5
Florida State University's President	7
University Feature	8
Statistics	10
State Officials	11
University Athletic Board	12
Guest Column: by Wendy Weisend	14
Football Family	15
Florida State Players	16
Composite Schedule—Florida State 1967 Opponents	20
1967 Seminoles	21
Referee's Signals	22
Tonight's Starting Line-ups	25
Penalties	27
Florida State's Records	28
Sammy Seminole	29
Florida State Freshman Football Team	30
Seminole Boosters, Inc.	32
Virginia Tech	35
Seminole Radio Network	38
Florida State Basketball Schedule	39
The Marching Chiefs	40
Feature	41
Cheerleaders	43
Stadium Information	44
Rosters, Depth Chart	45



Florida State's 1967 Football Schedule

HOME

Sept. 30 N.C. State (7:30)
 Oct. 14 South Carolina (2:00)
 Oct. 21 Texas Tech* (2:00)
 *Homecoming
 Oct. 28 Miss. State (7:30)
 Nov. 11 Virginia Tech (7:30)

AWAY

Sept. 15 Houston (7:30 CST)
 Sept. 23 Alabama (7:15 CST)
 at Birmingham
 Oct. 7 Texas A&M (7:30 CST)
 Nov. 4 Memphis State (1:00 CST)
 Nov. 25 Florida (2:00)

*Compliments and
Best Wishes from*



**YOUR APPLIANCE
HEADQUARTERS
611 N. Monroe St.**

OFFICIAL WATCH FOR THIS GAME



LONGINES

THE WORLD'S
MOST HONORED
WATCH®

10 world's fair grand prizes
28 gold medals



Longines watches are recognized as OFFICIAL for timing world championships and Olympic sports in all fields throughout the world.



Longines Ultra-Chron #8205, automatic with calendar, \$175.
Other Ultra-Chron Models, \$150 to \$595.

the fabulous new LONGINES ULTRA-CHRON

Guaranteed Accurate To A Minute A Month

The ultimate personal chronometer, guaranteed accurate to a minute a month—a mean average of 2 seconds per day. Ultra-Chron tells the date, hour, minute, second. Never needs batteries. Winds automatically while you wear it. All-Proof® construction defeats water, dust, shock, magnetism. At Longines-Wittnauer Franchised Jewelers, coast-to-coast.

LONGINES-WITNAUER WATCH CO.
MONTREAL • NEW YORK • GENEVA
Maker of Watches Of The Highest Character
For Over A Century

Tonight's Game

By **LONNIE BURT**

Florida State Sports Information Director



This stacks up as a great offense against a great defense. Throw in the fact that Virginia Tech and Florida State are a pair of Southern independents battling for national prominence and you have the makings for an exceptional football game.

Fresh in the Seminoles' minds is last year's bitter 23-21 television defeat in Blacksburg. And some of these same Seminoles remember 1964 when Virginia Tech handed Florida State its lone loss, 20-11.

Florida State will be shooting for its sixth straight triumph, a trick the Seminoles haven't turned since 1950 when Coach Don Veller's club went undefeated (8-0). In 1950, Florida State wasn't considered a major college football power.

The Gobblers had a seven-game victory string snapped last week in Blacksburg when powerful Miami managed a 14-7 win. In defeat, Virginia Tech's All-America safetyman, Frank Loria, had a 95-yard touchdown punt return. He also scored on Florida State last year with a punt return.

Another interesting point about tonight's game is the fact that Tech has one of the top pass defenses in the country. The Gobblers have intercepted 21 passes this season with Ron Davidson's six leading the way. Loria and Frank Beamer have three each.

In Tech's last four games, Loria has returned 19 punts for 346 yards. In the Gobblers' first four games, the defense gave up one touchdown and two field goals.

On the other hand, Florida State's offense and defense were outstanding against Memphis State. The Seminoles gained a record-breaking 548 yards against the Tigers and after a halftime adjustment, the defense completely stopped a club which had beaten Ole Miss 27-17.

Ron Sellers, Florida State's All-America flanker candidate, is nearing three more of Fred Biletnikoff's school receiving records. The Jacksonville junior needs 76 yards tonight to break Fred's total career mark, 132 yards for a new season record and three catches to set a new season reception mark.

As a team, the Seminoles have passed for more than twice the amount of yardage than the enemy. Florida State has 1,964 yards in the air to the opponents' 831.

Virginia Tech leads the series 6-5. However, the Gobblers have beaten Coach Bill Peterson only once in Tallahassee and that came in 1963, 31-23.



STATE OF FLORIDA
OFFICE OF THE GOVERNOR
TALLAHASSEE

CLAUDE R. KIRK, JR.
GOVERNOR



Dear Football Fan:

A cordial welcome to Tallahassee's Doak Campbell Stadium, home of Florida State University's football Seminoles.

The rise to football prominence in the past six years by our Seminoles coincides with the similar ascendancy by the state of Florida as the sports capital of the world.

We are truly and justifiably proud of Coach Bill Peterson and his staff for the marvelous job they have done in making Florida State University one of the most respected independent football powers in the nation.

As Governor of Florida, I extend a warm welcome to our visitors, and we intend to be impeccable hosts, except for about two hours on the gridiron.

Welcome, visitors! Scalp 'em Seminoles!

Sincerely,

A large, stylized handwritten signature of Claude R. Kirk, Jr. in black ink, written over the printed name "Claude R. Kirk, Jr." and the word "Governor".

Claude R. Kirk, Jr.
Governor

CRK/lw

"You meet the nicest people on a

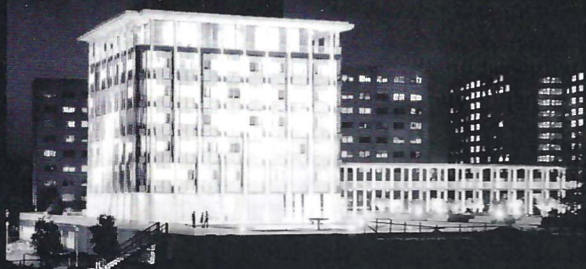
H O N D A

World's largest seller"



HONDA OF TALLAHASSEE

At the Underpass on West Tennessee



FLORIDA STATE

is a coeducational, state-supported institution of higher learning.

Founded in 1857, Florida State has transformed in the one short score of years since it became coeducational (1947) from a strong liberal arts college for women to a University of demonstrated national stature.

Nearly 16,000 students are presently enrolled in the university's 10 Colleges and Schools (Arts and Sciences, Education, Home Economics, Music, Librarianship, Business, Social Welfare, Nursing, Engineering Science, and Law). By 1975 this figure is expected to reach 28,000.

Characterized by phenomenal growth in new programs, enrollments, and constant physical expansion of the campus the University's spirit of excellence has led to Florida State's great pride in All-Americans (Fred Biletnikoff, 1964), its share of the 1966 Nobel Prize Winner in Chemistry, (Dr. Robert S. Mulliken) and its contribution to the U.S. Astronauts (Dr. Anthony Llewellyn). It is this same spirit that makes every football game and every research project a testing-ground for innovation and a proving-ground for the time-honored theories of education.



DR. JOHN E. CHAMPION
PRESIDENT

One of a growing number of young university presidents in America, Dr. John E. Champion at 45 is the youngest of 10 chief executives in the University's 110-year history, and the fourth distinguished educator to serve as fulltime president of the University since it achieved university status in 1947.

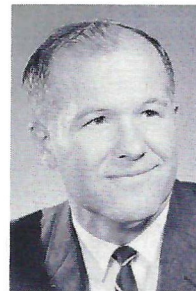
Before ascending to the University's presidency on June 22, 1965, Dr. Champion had served as a professor in accounting, assistant dean of the School of Business and as the University's first Vice President for Administration.

Among the expanding list of honors accorded to Dr. Champion in his teaching and administrative careers at the University of Georgia (1948 to 1956) and at Florida State are memberships in Phi Beta Kappa, Phi Kappa Phi, Beta Gamma Sigma, Omicron Delta Kappa, Gold Key, Alpha Phi Omega, Beta Alpha Psi, Delta Sigma Pi and Kappa Delta Pi. Active in numerous campus organizations at Florida State, he served as president of the Alpha of Florida Chapter of Phi Beta Kappa in 1961-62.

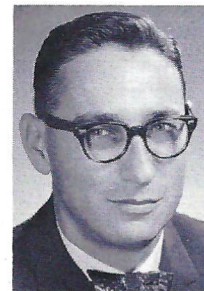
A recent honor to come his way is the Republic of Panama's award of the Grand Cross of the Order of Vasco Nunez de Balboa—recognizing his contributions and leadership in Florida State's student and faculty exchange program with the National University of Panama.



DR. ODELL WALDBY
Vice President for
Administration



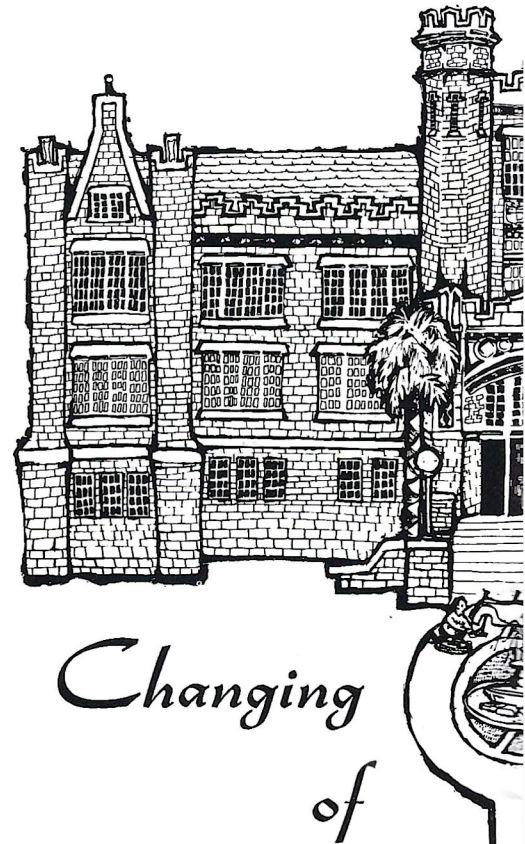
DR. JOHN J. CAREY
Vice President for
Student Affairs



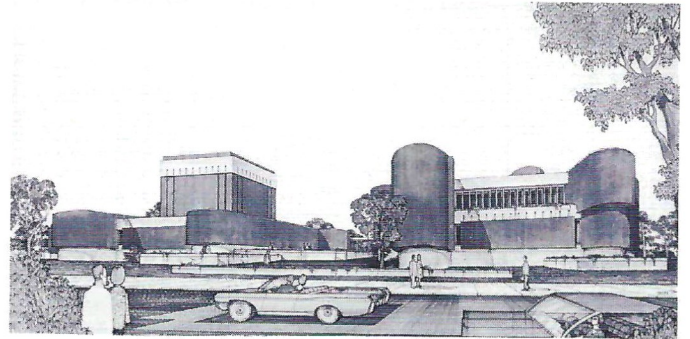
**DR. E. LAURENCE
CHALMERS, JR.**
Vice President
Academic Affairs



RAYMOND F. BELLAMY BUILDING—Occupied this quarter by the School of Social Welfare and seven departments in the Social Sciences, it was dedicated last month and named for Professor Emeritus of Sociology, Dr. Raymond F. Bellamy.



GROUNDBREAKING FOR FINE ARTS BUILDING—President John Champion, center, turned the shovel at the new Fine Arts site recently, assisted by Dr. Adolph Karl, left, representing the Department of Art; and Dr. Wayne Minnick, right, associate dean for the humanities in the College of Arts and Sciences and chairman of the Department of Speech.



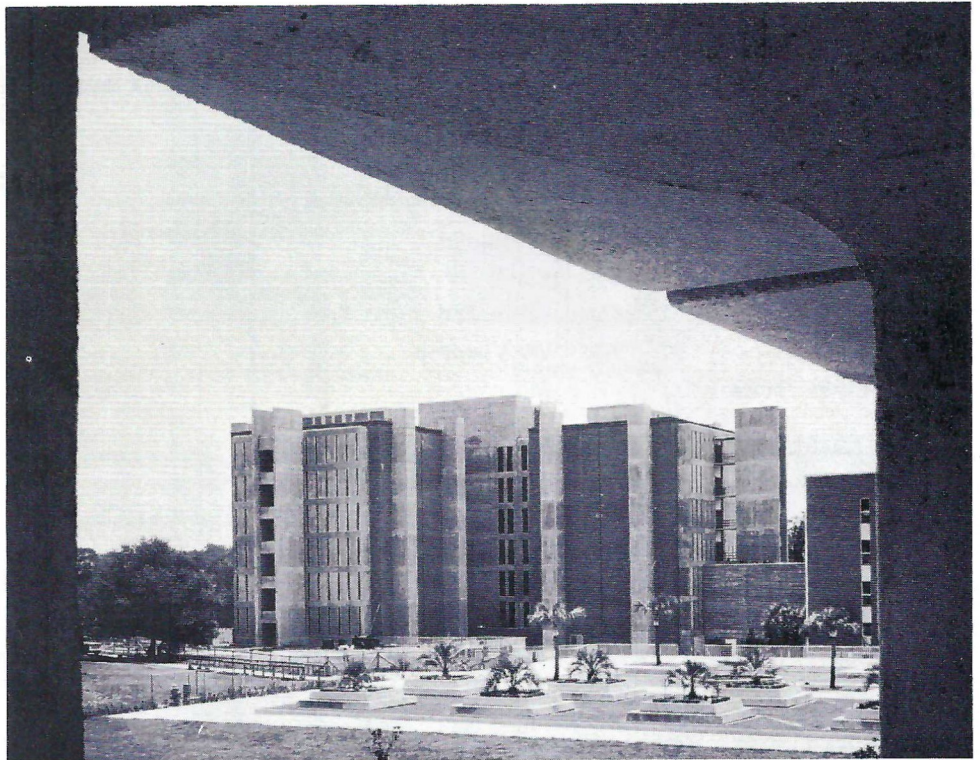
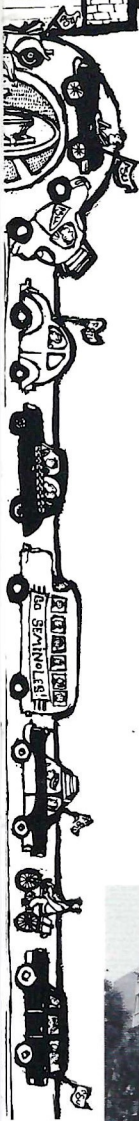
FINE ARTS BUILDING—Construction has begun on the \$2.3 million building, sketched above, at the corner of Tennessee and Copeland Streets.



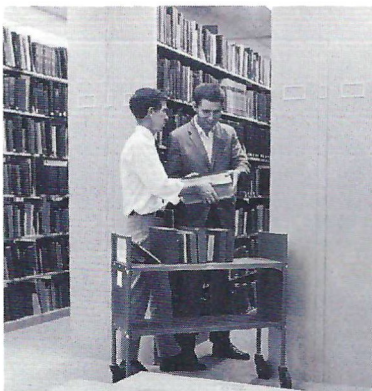
BIOLOGICAL SCIENCE BUILDING—Completed 1967



Face the Campus



CHEMISTRY GRADUATE INSTRUCTION BUILDING—The finishing touches are being applied to this \$4.3 million, classroom and research unit which has seven floors and a basement. The new building is expected to be occupied by Christmas.



**ROOM FOR ANOTHER
MILLION BOOKS**



ENGINEERING SCIENCE BUILDING—Construction of this building is expected to get underway within a matter of months, on a site facing the College of Education on the south side of Call Street. Estimated cost of construction is \$1.2 million.



STROZIER LIBRARY ADDITION

TONIGHT'S TEAMS

RECORD TO DATE

FLORIDA STATE (5-2-1)				VIRGINIA TECH (7-1)			
13	Houston	33	13	Tampa	3		
37	Alabama	37	31	William & Mary	7		
10	N. C. State	20	15	Kansas State	3		
19	Texas A&M	18	3	Villanova	0		
17	S. Carolina	0	24	Kentucky	14		
28	Texas Tech	12	45	Richmond	14		
24	Miss. State	12	20	W. Virginia	7		
26	Memphis State	7	7	Miami	14		

TEAM STATISTICS

FLORIDA STATE		VIRGINIA TECH	
162 First Downs	88	
968 Yards Rushing	1293	
1964 Yards Passing	449	
2972 Total Yards	1742	
295 Attempts Rushing	432	
292 Passes Attempted	103	
156 Passes Completed	53	
17 Passes Had Intercepted	4	
11 Fumbles Lost	7	

INDIVIDUAL STATISTICS

FLORIDA STATE					VIRGINIA TECH								
RUSHING					RECEIVING								
Name	Att.	Yds.	Avg.	TD	Name	No.	Yds.	TD	Name	Att.	Yds.	Avg.	TD
Moremen	72	346	4.8	5	Sellers	55	846	4	Smoot	68	356	5.2	4
Green	95	313	3.3	1	Taylor	23	244	1	Const'tinides	80	289	3.6	6
Gunter	48	198	4.1	3	Fenner	22	237	1	Kincaid	90	154	1.7	0
					Glass	16	158	1					
					Moremen	14	164	2					
PASSING					SCORING								
Name	Att.	Comp.	Yds.	TD	Name	TD	PAT	FG	TP				
Hammond	199	116	1520	9	Moremen	7	0	0	42				
Pajic	83	35	410	2	Guthrie	0	18	8	42				
Cappleman	5	4	27	0	Sellers	4	0	0	24				
					Gunter	3	0	0	18				
					Green	3	0	0	18				

THE SOUND SHOP

"Southeast's Finest In Audio"

**2234 S. Monroe, Tallahassee, Fla.
Ph. 222-2443**

**806 W. Broad, Albany, Ga.
Ph. 435-6800**

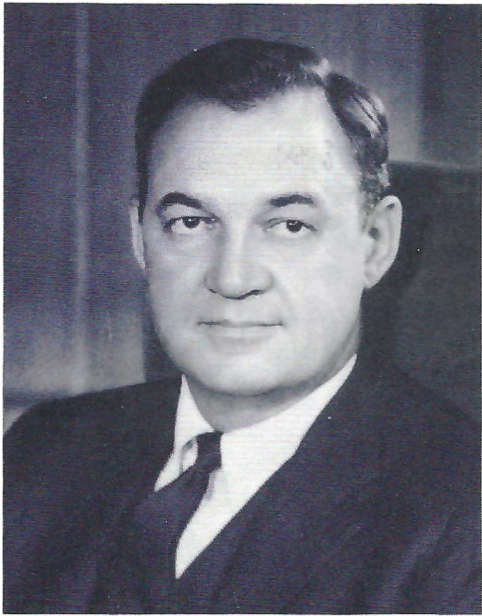
FRANCHISED DEALERS FOR:

Aztec
Borg Warner
Dual
Dyna
Fisher
Garrard
Harmon-Kardon
J. B. Lansing

Koss
Magnacord
Marantz
Martel
Monarch
Pilot
Rek-O-Kut
Roberts
Robins

Sarkes-Tarzian
Scott
Sherwood
Sony
Telex
Toshiba
Uher
Warfedale

SYSTEM DISCOUNTS ON MOST MERCHANDISE



CLAUDE R. KIRK, JR.*
Governor



Tom Adams*
Secretary of State



Earl Faircloth*
Attorney General



Broward Williams*
Treasurer



Floyd T. Christian*
Supt. of Public Instr.



Doyle Conner
Comm. of Agriculture



Fred O. Dickinson, Jr.
Comptroller

State Officials

*Indicates membership on the State Board of Education.



BOARD OF REGENTS—STATE UNIVERSITY SYSTEM

Seated, Left to Right—Mrs. John C. Behringer, Fort Lauderdale; Dr. Wayne C. McCall, Vice Chairman, Ocala; Chester Ferguson, Chairman, Tampa; Mrs. E. D. Pearce, Miami.

Standing, Left to Right—Henry Kramer, Jacksonville; D. Burke Kibler III, Lakeland; Dr. Louis C. Murray, Orlando; John C. Pace, Pensacola; Dr. Clarence Menser, Vero Beach; Chancellor J. Broward Culpepper, Tallahassee.

FLORIDA STATE'S ATHLETIC COMMITTEE



Robert Earnest
Chairman
Professor, Business



Mode L. Stone
Professor, College
of Education



Coyle E. Moore
Dean, School of
Social Welfare



Ralph Bradley
Prof. & Dept. Head,
Statistics



William W. Rogers
Associate Professor
History



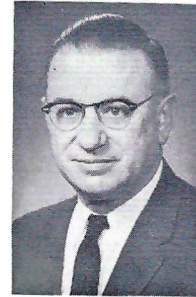
Charles Grigg
Prof. of Sociology
and Director of
Institute for
Social Research



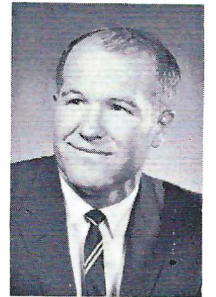
William H. Long
Assistant Professor
Department of
Meteorology



Mary Alexander
Assoc. Professor
Physical Education
and Recreation



Mason Ladd
Dean, College
of Law



John Carey
Vice President for
Student Affairs

**WHEN YOU GET HUNGRY WHY NOT TRY SOME
COLONEL SANDERS RECIPE KENTUCKY FRIED CHICKEN ©**

three sizes to choose from:

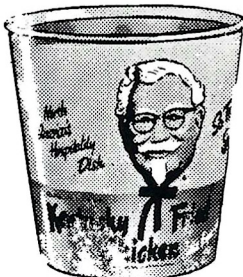
<p>Individual Box 3 Big Pieces of Chicken, Cole Slaw, French Fries, Rolls, Gravy \$1.10</p>

<p>Family Bucket Serves 5 to 7 \$3.75</p>

<p>Barrel O' Chicken Serves 8 to 10 \$5.00 Gravy & Rolls 5.40</p>

Bar-B-Q Chicken Sandwich
French Fries—Jumbo Shake

60c



or if you prefer!

- Jumbo Shrimp Boxes
- Chicken Gizzard Boxes
- Filet of Fish Boxes
- Famous Home-Made Pies
- Chicken Liver Boxes

Holland's Carry Out

TWO LOCATIONS TO SERVE YOU

Drive in No. 1
1002 N. Monroe—224-1645

Drive in No. 2
1603 W. Tenn. St.—224-4313

Tenn. St. Location Open 'Til 11 P. M.

Home Owned and Operated by Mr. & Mrs. N. T. Holland

Touchdowns and Stew

by MARIAN ROGERS



DO YOU have a "pigskin" pantry?

Thousands of American women have so that everyone in the family can enjoy the football game and still get balanced meals to offset that unbalanced line which may be playing the devil with the team's chances of winning.

The "pigskin" pantry, adaptable to any climate, contains shortcuts for meals before, after or during the game.

If you keep your family well-fed during football mania, you'll avoid getting "fed-up" and still score with Dad, the kids, friends and yourself. Women have taken to football in ever-increasing numbers and quick meals are their salvation.

To keep an eye on the action, plan foods that can be cooked and frozen ahead of time, then simply reheated. Try the "meal-in-a-pot" which cooks untended. Also, ranges with timers and temperature controls can untie your apron strings, freeing you to relax at the stadium or in the den.

If you're game-bound, eat a late breakfast. Then, with a snack during the game, you'll be ready for a bubbling casserole dish with a bean salad, fruit jello, packaged rolls and coffee or tea when you return home.

A life-saver for today's woman whose schedule is as jammed as the lengthening football season is beef stew prepared and frozen a month before the big clash.

Thaw the stew overnight in the refrigerator. Reheat it over a low fire,

and serve with frozen peas and carrots. Do not add sour cream to beef stroganoff until after it has been reheated.

Onion-topped green bean casserole makes a wonderful teammate for "scoreboard stroganoff." It can be put together almost as fast as the quarterback can complete a pass to paydirt. Rolls, a fruit cup, assorted cookies and coffee round out this gridiron gourmet specialty.

Thanksgiving Day football games conflict with this patriotic meal. However, housewives can switch from mid-day to an after-game feast. You can use your automated range or bake your turkey at a low, steady temperature, putting it in the oven just before piling in the car for the football field. When you get back to the kitchen, the finishing touches don't take long. Cranberry jelly or sauce and dessert are already prepared. Whip up the gravy and mash the potatoes. Potato buds in a package merely require warmed milk, butter and seasoning.

Thus your Thanksgiving dinner can be on the table in less than a timeout period.

If it's cold, set a roaring fire in the fireplace. Rush out a tray of zippy hot soup drinks to melt the frost in their radiators. How about cream of asparagus soup with crumbled Roquefort cheese and a sprinkling of chives? Put extra "third down" punch in black bean soup with a splash of orange liqueur. Or be generous with gin and lemon juice to bring out the

best in a pot of broth.

Companions for the soup chill-cures are mixtures of olives, nuts and stuffed French bread slices. Scoop out the soft centers of small-size French loaves early in the day. Fill them with tuna salad, deviled ham and grated cheese or peanut butter and chutney spread.

To "cool" it after a game in 90 degree weather, include cold drinks, fruit plates, and salads, "store-bought" frozen desserts or a summer luncheon menu.

Good thirst quenchers are sunshine fruit punch, club soda iced tea punch and iced coffee. Sunshine punch calls for one cup orange juice, one cup unsweetened pineapple juice, one-fourth cup lemon juice, one-fourth cup maraschino cherry juice, one cup dry ginger ale, two tablespoons of honey and one pint of vanilla ice cream. Mix juices, ginger ale and honey. Add ice cream and stir until blended. Serve topped with maraschino cherries. Makes one and one-half quarts.

The club soda iced tea punch would make the team's water boy throw away his bucket. Steep one and one-fourth pound of tea leaves with one quart of boiling water for five minutes. Next boil together four cups of sugar and four cups of water for five minutes, then add to tea. Pour in one quart of lemon juice and an equal amount of orange juice plus one No. 5 can of pineapple juice. Mix in two quarts of club soda. Makes seven quarts that will slake your family's thirst and leave enough for the entire football team.

Cold cantaloupe can be a winner with scoops of softened cream cheese, crunchy with pecans. Or maybe coconut banana rolls? They're easy. Dip banana sections in lemon juice and honey, and sprinkle with coconut. Serve with cream cheese softened with fruit juice. Garnish with red, flavored gelatine or jellied cranberry sauce.

The makings of a cold menu treat after the final quarter include cold sliced ham, toasted rolls, hot baked beans, a relish and baked frozen cupcakes. Finish off with coffee. Take canned baked beans, add molasses, brown sugar, catsup, mustard and bacon. Only takes a jiffy and you haven't missed a single play on the TV screen.

With these shortcuts to gridiron cookery with a gourmet touch, don't be surprised if your family chooses you for the All-America team of housewives. Isn't it easy to join in on the football fun?



**MAKE
EVERY YARD
COUNT...
DOUBLE!**

Double because you'll be earning a commission while you earn your college degree.

All it takes is a few hours a week and a six-week summer camp. It's that easy in Army ROTC.

Whether you plan a civilian or a military career, Army ROTC gives you the kind of training and experience you need to motivate, organize and lead men. You'll learn them all in Army ROTC.

Get the details from your Professor of Military Science at any ROTC college.

Your future, your decision... choose Army ROTC.

Gauchos and Amigos— Gobbler's Defense

By WENDALL WEISEND

Virginia Tech Sports Information Director



For the second time in two seasons Virginia Tech has had a 7 game winning streak snapped by Miami's Hurricanes—and by identical scores, 14 - 7.

Tech's defense, "Gauchos and Amigos," has been superb but their offense, which appeared to be developing, was virtually non-existent against Miami's big defense.

The "Gauchos" three-deep defensive secondary, All America safety Frank Lorria, half-back, Ron Davidson and Frank Beamer have been severely tested, and their pass defense abilities figure to be even more challenged against Florida State's powerful passing. Lorria and Davidson are fine punt returners, with the former having broken one all the way for 95 yards and a touchdown against the Hurricanes.

"Amigos," Tech's pass defense of line backers and ends have been a big help to the secondary as well as adding strength to the defensive line which has remained among the nation's leaders all season. Only two teams, Villanova "122" and Miami "124" have gained as much as 100 yards on the ground against the Tech men.

Spearheading the front defense are end, George Foussekis and guard, Don Tacker.

Tech gave up only one touchdown in its first 4 games while they defeated Tampa, 13-3; William & Mary, 31-7; Kansas State, 15-3; Villanova, 3-0.

The Gobblers downed Kentucky 24-14; Richmond, 45-14; West Virginia, 20-7. In the process, Tech has played against two fine receivers, including William & Mary's Jim Cavanaugh, Richmond's Walker Gillette and Miami's Jim Cox, but the Gobblers know they probably face the best of all in Florida State's Ron Sellers. The Gauchos remember him from last season.

Tech, despite good receivers, Ken Barefoot and Gene Fisher, so far haven't mounted an effective passing game and the Gobbler's passive running game has missed the punch of sophomore tailback, Terry Smoot, who hasn't played since sustaining a knee injury early in the second half of the Kentucky game.

And now the Tech men are challenged with having to bounce back their perennially toughest rival, Florida State.

Tech has beaten Coach Bill Peterson only once in Tallahassee, 31-23 in 1963.

The Seminole Football Family



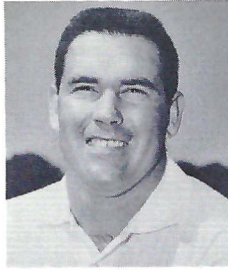
BILL PETERSON
Head Football Coach



VAUGHN MANCHA
Director of Athletics



BOB HARBISON
Defensive Chief



DON BREAUX
Offensive Chief



KEN MacLEAN
Assistant to A.D.



NEIL SCHMIDT
Offensive Backfield



BOBBY JACKSON
Defensive Ends,
Linebackers



GARY WYANT
Defensive Backfield



JOE GIBBS
Offensive Line



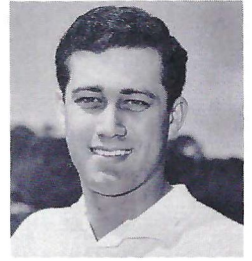
GENE McDOWELL
Freshman Coach



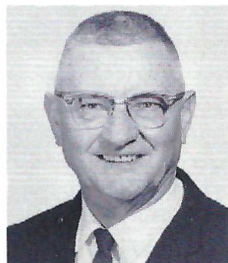
DOUG HAFNER
Head Recruiter



DON FAULS
Head Trainer



ROY DON WILSON
Assistant Trainer



TILLMAN DIXON
Equipment Manager



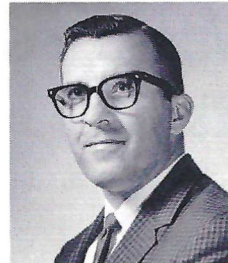
LONNIE BURT
Sports Information
Director



HANK SCHOMBER
Assistant SID



CLAUDE THIGPEN
Ticket Manager



DR. LANE MAXWELL
Team Physician



JEFF SAVAGE
Academic Advisor



why pay **MORE** when you
can buy for **LESS** at

ABC
Mobile Homes
2737 W. Tennessee
Tallahassee, Florida

HERSCHEL COOK
Manager

Phone 576-5146

Southernair
MOTEL

Across from F.S.U.
Tallahassee, Florida 32304



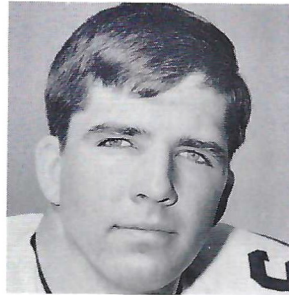
and

Skyline

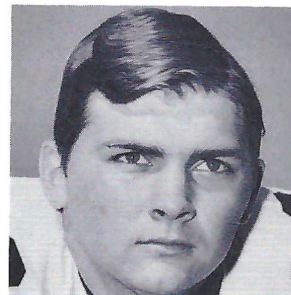
Motor Lodge

U. S. 90 West

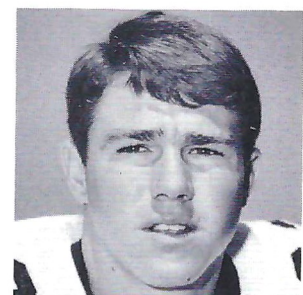
Quality Courts
for **Quality People**



Stan Walker



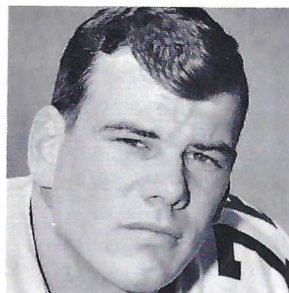
Doug Gurr



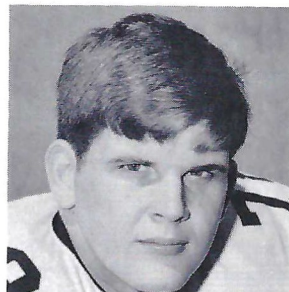
Ed Chereskoff



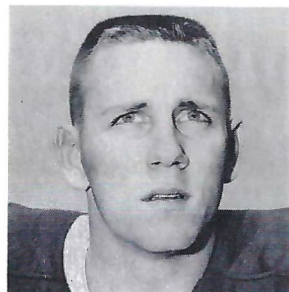
Bob Menendez



Jack Fenwick



Wayne Johnson



T. K. Wetherell

FLORIDA STATE



Floyd Ratliff



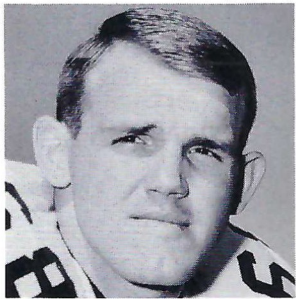
Larry Green



Bill Moremen



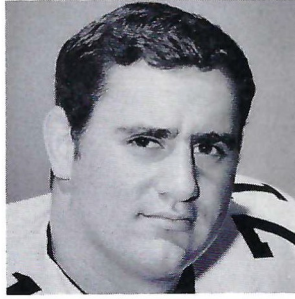
Ron Sellers



Larry Pendleton



Chuck Elliott



Harvey Zion

1967 SEMINOLES



Bill Cox



Frank Vohun



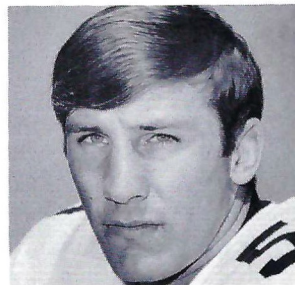
Thurston Taylor



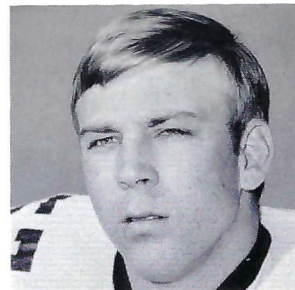
Mike Blatt



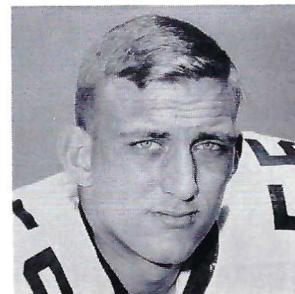
Joe Benson



Henry Lohse



Joe Kinnan



Ted Mosley



324
N. MONROE

1405
S. ADAMS

**ONE
HOUR
DRY
CLEANERS**

KEEP YOUR CLOTHES
FRESH AS A ROSE

1100
W. TENN.

GOOD LUCK SEMINOLES!

Varsity
THEATRE

1833 W. Tennessee

Phone 224-8636

Miracle
THEATRE

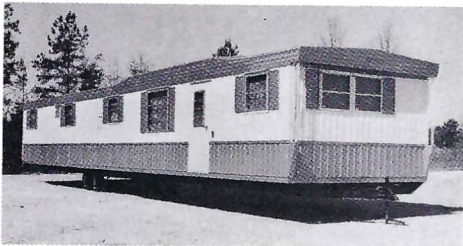
Thomasville Road

Opening Early 1968

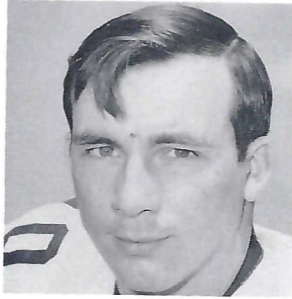
Best Wishes for a successful season, and we are proud to have had a part in furnishing the football equipment for the Seminoles

OWENS Inc.

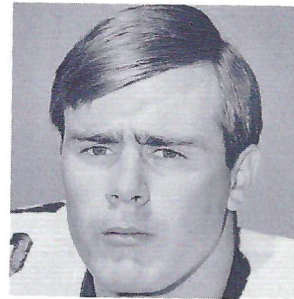
Sporting Goods — Hardware
ALBANY, GEORGIA



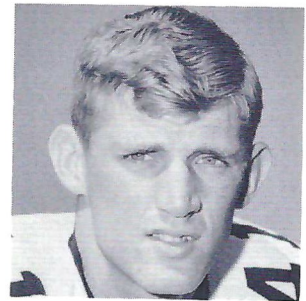
BONANZA
Mobile Homes of Tallahassee
2749 W. TENN.



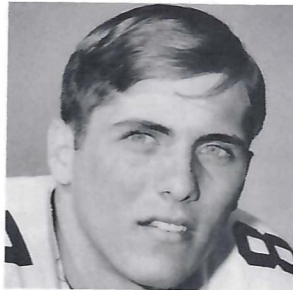
Tony Sewell



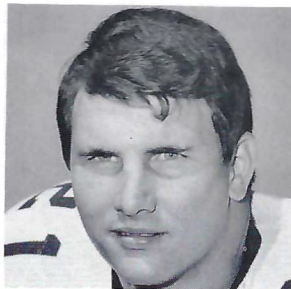
Howell Montgomery



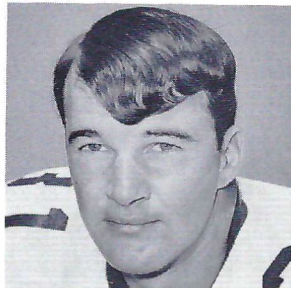
John Crowe



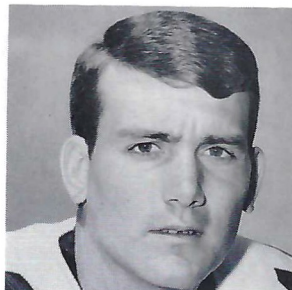
Phil Abaira



Donovan Jones



Bill Gunter



Bill Cappleman

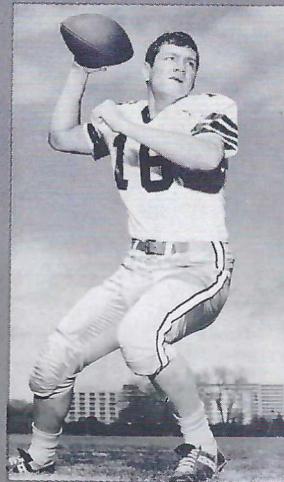
FLORIDA STATE



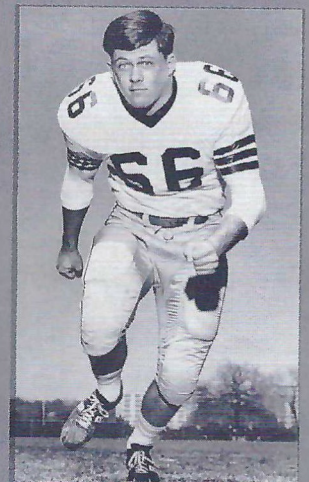
Wayne McDuffie



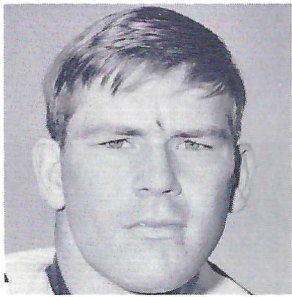
Kim Hammond



Gary Pajcic



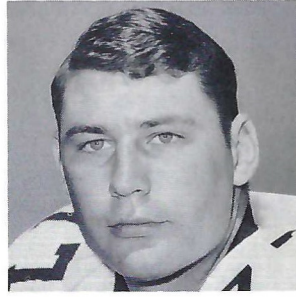
Ken Hart



Ron Montford



Bobby Burt

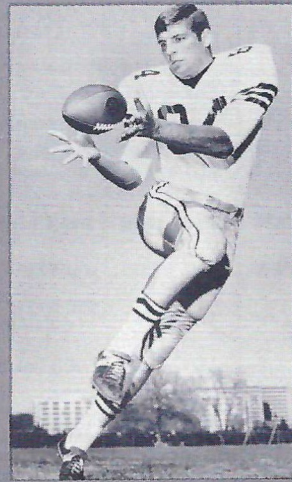


Jeff Curchin

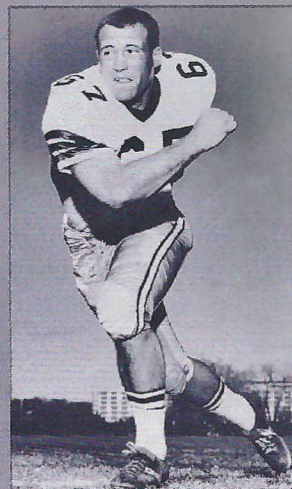
1967 SEMINOLES



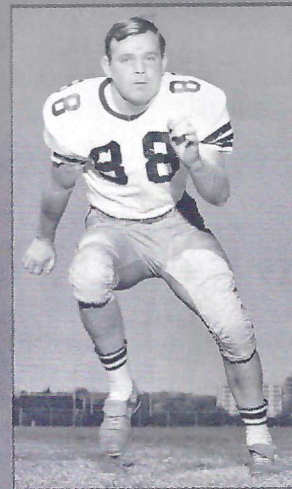
Walt Sumner



Chip Glass



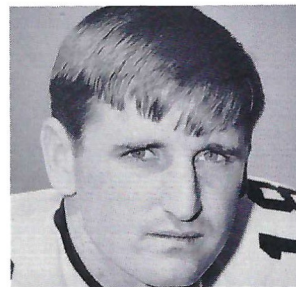
Mike Bugar



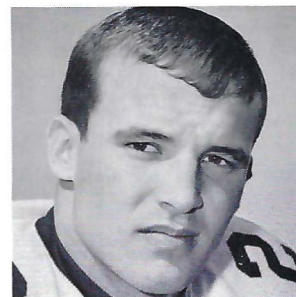
Jerry Jones



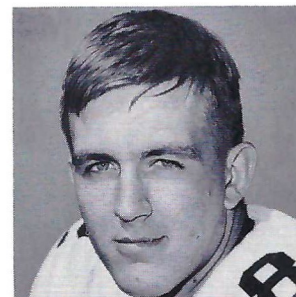
Terry Eggerton



Clint Burton



Chuck Eason



Lane Fenner

BAIRD
 MOBILE HOMES
 2901 Apalachee Parkway
 877-4524
 TALLAHASSEE

Collins
 furniture co.
 INCORPORATED

1117 THOMASVILLE ROAD
 PH. 222-1415

Spend less of your parents' money on weekends.

Rent a Ford Mustang or another good car from Hertz at a special low weekend rate: \$20 and 12c a mile including gas, oil and insurance, from noon Friday to noon Monday. To reserve a car call: 222-1686. To pick it up come to the Duval Hotel.



Composite Schedule — FSU's 1967 Opponents

DATE	HOUSTON	ALABAMA	N. C. STATE	TEXAS A & M	SO. CAROLINA	TEXAS TECH	MISSISSIPPI STATE	MEMPHIS STATE	VIRGINIA TECH	FLORIDA
SEPT. 16	(15th) FLA. STATE		NORTH CAROLINA		IOWA STATE				AT TAMPA	
SEPT. 23	AT MICH. STATE	FLA. STATE*	BUFFALO	PURDUE#	N. CAROLINA	IOWA STATE	AT GEORGIA	MISSISSIPPI	WM. & MARY	ILLINOIS
SEPT. 30	(29th) WAKE FOREST	AT SOU. MISS. ‡	AT FLA. STATE	AT L. S. U.	AT DUKE	AT TEXAS	FLORIDA ††	CINCINNATI	AT KANS. STATE	MISS. STATE ††
OCT. 7	N. CAROLINA STATE	MISSISSIPPI*	AT HOUSTON	FLA. STATE	AT GEORGIA	MISS. STATE	AT TEXAS TECH	AT UTAH STATE	VILLANOVA	L. S. U.
OCT. 14		AT VANDERBILT	AT MARYLAND	AT TEXAS TECH	AT FLA. STATE	TEXAS A & M	SOU. MISS.	WAKE FOREST	AT KENTUCKY	AT TULANE
OCT. 21	AT MISS. STATE	TENNESSEE*	WAKE FOREST	AT T. C. U.	VIRGINIA	AT FLA. STATE	HOUSTON	SOU'WESTERN LOUISIANA	RICHMOND	
OCT. 28	AT MISSISSIPPI	AT CLEMSON	DUKE	BAYLOR	MARYLAND	AT S. METHODIST	AT FLA. STATE	SOU. MISS.	AT W. VIRGINIA	VANDERBILT
NOV. 4	GEORGIA	MISS. STATE	AT VIRGINIA	AT ARKANSAS	AT WAKE FOREST	RICE	AT ALABAMA	FLA. STATE	MIAMI	AT AUBURN
NOV. 11	MEMPHIS ST.	AT L. S. U.	AT PENN. STATE	S. METHODIST		AT T. C. U.	AT AUBURN	AT HOUSTON	AT FLA. STATE	GEORGIA**
NOV. 18	IDAHO	S. CAROLINA	AT CLEMSON	AT RICE	AT ALABAMA	BAYLOR	AT L. S. U.			KENTUCKY
NOV. 25	AT TULSA			TEXAS	CLEMSON	ARKANSAS †		N. TEXAS ST.	(23rd) V. M. I. ††	FLA. STATE
DEC. 2		AUBURN*					MISSISSIPPI			AT MIAMI

Neutral Sites: * Birmingham, Ala. # Dallas, Tex. † Little Rock, Ark. ** Jacksonville, Fla. †† Roanoke, Va. ‡ Mobile, Ala. †† Jackson, Miss.



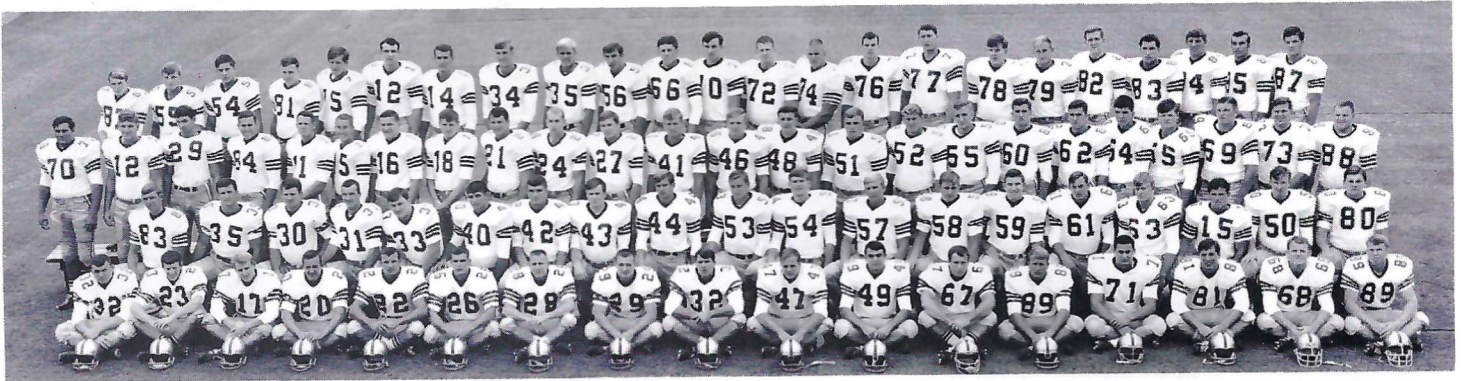
LAFAYETTE MOTEL

1525 W. Tennessee St. (U.S. 90-W) • Tallahassee, Florida 32304

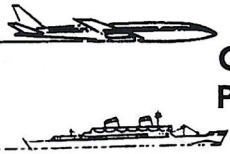
Telephone 904 224-1145



FLORIDA STATE 1967 SEMINOLES



FIRST ROW—Barry Wenhold, Bill Mortiz, Mike Page, Larry Green, Chuck Eason, Hal Hodges, T. K. Wetherell, Chuck Pickens, Ed Chereshkoff, Joe Benson, Terry Eagerton, Mike Bugar, Bob Menendez, Harvey Zion, Phil Abraira, Larry Pendleton, Mike Connors.
SECOND ROW—Skip Babbs, John Pittman, Bill Moremen, Bill Gunter, Grant Guthrie, Mike Blatt, Bill Cheshire, Howell Montgomery, Mike Corey, Bobby Burt, Ron Montford, Joe Kinnan, Rich Jones, Frank Loner, Chuck Elliott, Richard McLean, Danny Thomas, Dick Johnson, Doug Gurr.
THIRD ROW—Tom White, Rick Anderson, Doug Mitchell, Bill Yeldell, Kim Hammond, Tommy Warren, Gary Pajcic, Clint Burton, Donovan Jones, Walt Sumner, Billy Cox, John Crowe, Charlie Huggins, Dale McCullers, Bill Hughes, Wayne McDuffie, Ted Mosley, Barry Rice, Beryl Rice, Stan Walker, Bill Dew, Randy Logan, Duke Johnston, Jerry Jones.
FOURTH ROW—Frank Edmunds, Ed Gibson, Dave Bracken, Jim Tyson, Billy Rhodes, Phil Hiatt, Bill Cappleman, Ron Sellers, Mike Gray, Henry Lohse, Ken Hart, Tony Sewell, Jeff Chapman, Chris Palmer, Jack Fenwick, Jeff Curchin, Wayne Johnson, Frank Vohun, Lane Fenner, Thurston Taylor, Chip Glass, Floyd Ratliff, Jim Rust.



**GOING
PLACES
?**

**ATHENS, GEORGIA? ATHENS, GREECE?
NEW YORK? NASSAU? NEPAL?**

TRAVEL IS OUR PROFESSION

*No Charge For Our Services
Tickets - Reservations At Printed Rates*

**MARION HAY
TOM LYLE
BETTY MOCK
JEANNIE SMITH**

TALLAHASSEE TRAVEL AND TOURS, INC.

Formerly Hay Travel Service *Established 1930*

CALHOUN AT CALL STREET TELEPHONE 224-4161

BENNETT'S DISCOUNT DRUG STORE

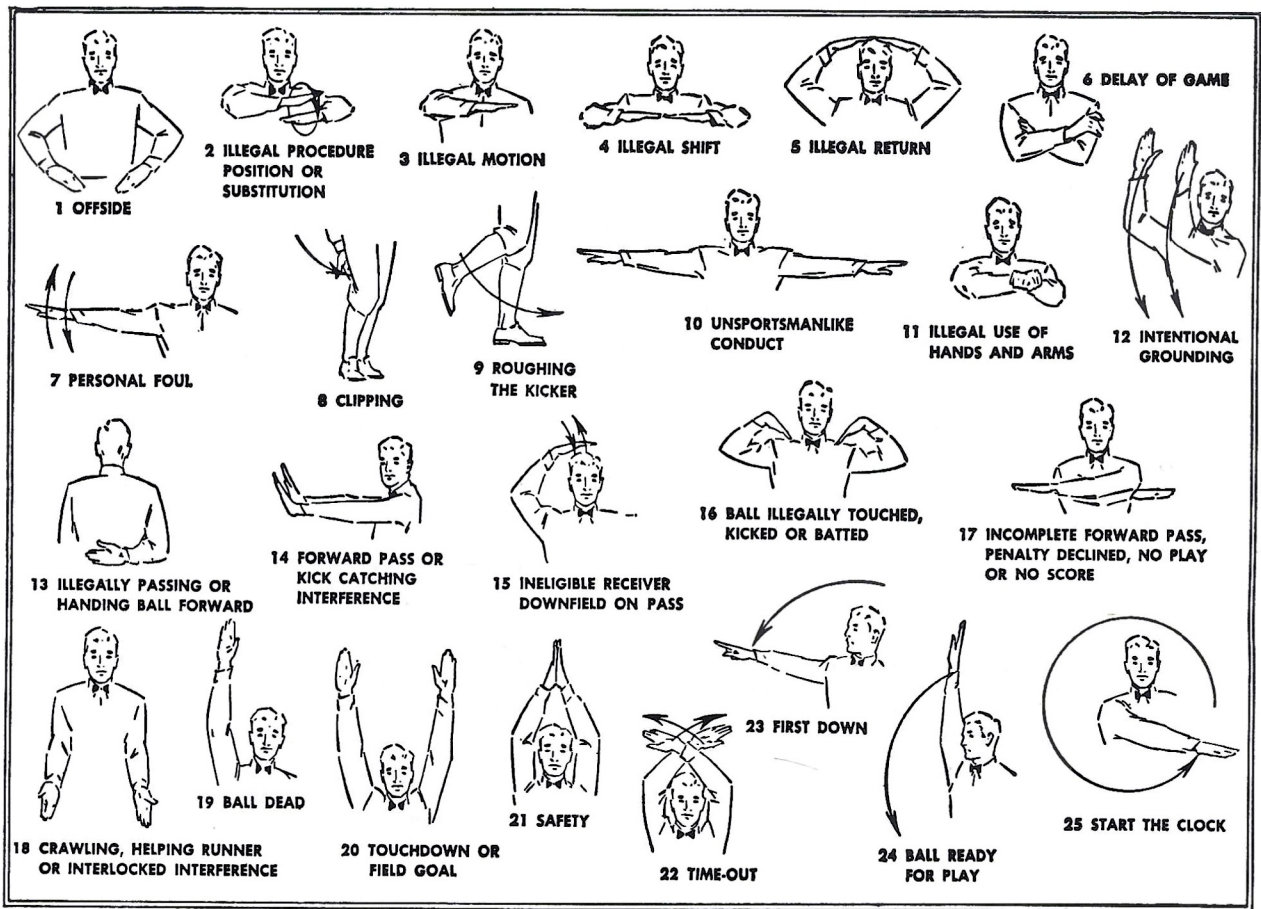
- Prescriptions
- Cameras
- Sundries
- Gifts
 - Fountain
 - Cafe
 - Cosmetics
 - Drugs

MEET ME AT BENNETT'S

BEFORE AND AFTER THE GAME!

Corner Monroe and College Streets

Phone 222-8980 — 222-4450



Le Roc Cocktail Lounge

Tallahassee's Finest . . .

Located in the
DUVAL HOTEL

For an evening of relaxed
entertainment — enjoy your
favorite beverage — prepared by
a professional.

No cover charge

Entertainment nightly

Open daily 11 A.M. to 2 A.M. — except Sunday



**The cigar for men
that ladies love*

HAV-A-TAMPA JEWELS

WITH EXCLUSIVE BIRCHWOOD TIP

2 for 15c

or new Push-Pak of five 36c
(Plus state and local taxes, if any)

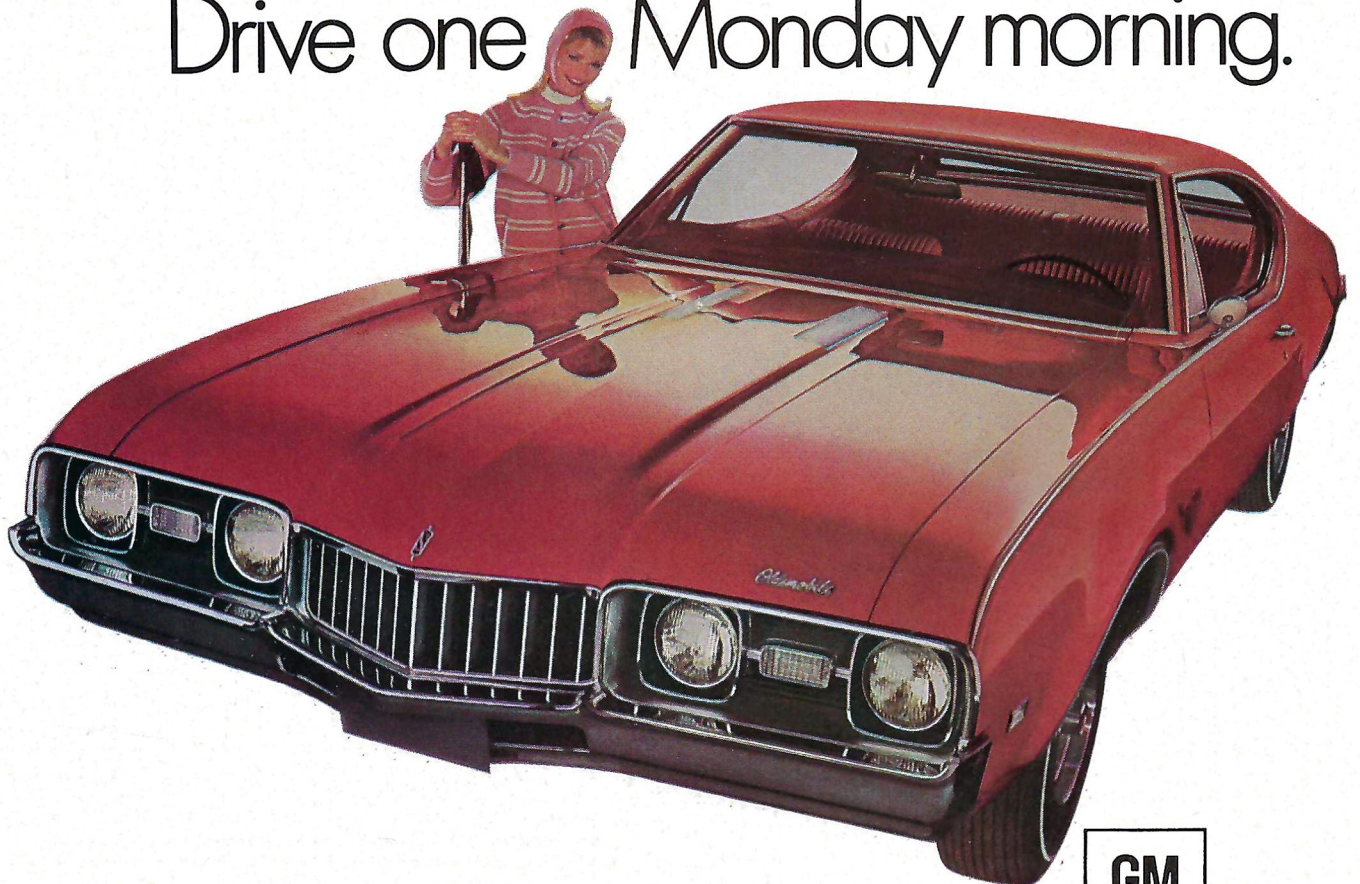
FROM HAVATAMPA-TAMPA'S LARGEST MANUFACTURER OF FINE CIGARS

Distributed by Eli Witt Tobacco & Candy Co.

Tallahassee, Florida

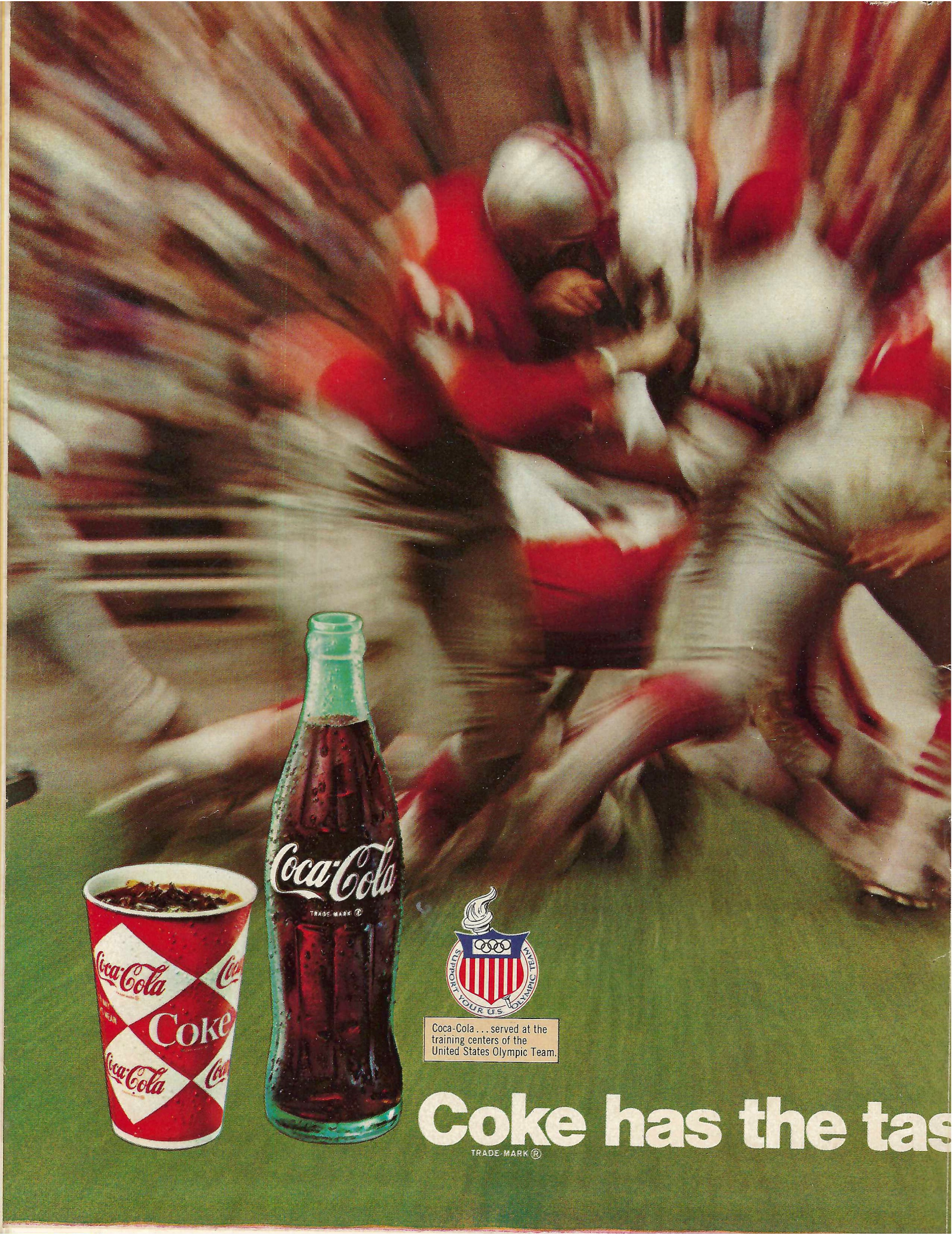
The '68 "youngmobiles" from Oldsmobile are here.

Drive one Monday morning.



Cutlass S Holiday Coupe
at your nearest Oldsmobile Dealer's.





Coca-Cola... served at the training centers of the United States Olympic Team.

Coke has the taste

TRADE-MARK®

DEFENSE

- 41 CLARENCE CULPEPPER RL
- 25 FRANK BEAMER RH
- 10 FRANK LORIA S
- 24 RON DAVIDSON LH
- 31 PETE WRENN LL
- 88 DAN MOONEY RE
- 73 JEFF HAYNES RT
- 63 LARRY CREEKMORE RG
- 67 DON THACKER LG
- 70 JIM HARVEY LT
- 86 GEORGE FOUSSEKIS LE

VIRGINIA TECH

OFFENSE

- 81 KEN BAREFOOT LE
- 76 JERRY GREEN LT
- 61 BOB GRIFFITH LG
- 51 SCOTT DAWSON C
- 68 DAMON DEDO RG
- 64 RICHARD MOLLO RT
- 87 GENE FISHER RE
- 11 AL KINCAID QB
- 45 BURT HENDERSON LH
- 20 DICKIE LONGERBEAM RH
- 32 RICK PILAND FB

VIRGINIA TECH SQUAD

- | | |
|-----------------------|-------------------|
| 10 Loria, SAF | 60 Bigelow, OG |
| 11 Kincaid, QB | 61 Griffith, OG-C |
| 12 Barker, QB | 62 Blackburn, OT |
| 13 Schwabe, QB | 63 Creekmore, DG |
| 14 Treadwell, DHB | 64 Mollo, OT |
| 15 Skinner, QB | 65 Aguilar, OT |
| 20 Longerbeam, HB | 66 Luongo, OT |
| 23 Utin, PK | 67 Thacker, DG |
| 24 Davidson, DHB | 68 Dedo, OG-T |
| 25 Beamer, DHB | 69 Forrester, CG |
| 26 Immel, HB | 70 Harvey, DT |
| 27 Rash, QB | 71 Maxwell, OT |
| 30 Sholtis, FB | 72 Strager, DT |
| 31 Wrenn, LB | 73 Haynes, DT |
| 32 Piland, FB | 74 Bocko, DT |
| 33 Edwards, LB | 75 Ripley, DT |
| 34 Constantinides, HB | 76 Green, OT |
| 35 Mooney, LB | 77 Swords, OT |
| 36 Gainous, DG | 77x Boykin, DE |
| 41 Culpepper, LB | 78 Parks, DE |
| 43 Richards, DHB | 80 Tucker, DE |
| 44 Smoot, HB | 81 Barefoot, OE |
| 45 Henderson, HB | 82 Brownell, DE |
| 50 Carter, C | 83 Crigger, OE |
| 51 Dawson, C | 85 Cupp, OE |
| 52 Miller, OG | 86 Foussekis, DE |
| 55 Widger, C-LB | 87 Fisher, OE |
| 56 Dawyot, DT | 88 Mooney, DE |
| 57 Eades, DG | 89 Slaughter, OE |
| 58 Stonesifer, OG | 90 Collis, DE |

OFFICIALS: Referee—Johnny Cook, Rome Ga. —
 Umpire—V. E. Baugh, Orangeburg, S. C. — Lines-
 man—D. L. Claborn, East Point, Ga. — Field Judge
 —Billy Teas, Atlanta, Ga. — ECO—Charles Erdmann,
 New Orleans, La.

DEFENSE

- 85 FLOYD RATLIFF LE
- 73 DUKE JOHNSTON LT
- 57 JOE KINNAN RT
- 89 BOB MENENDEZ RE
- 61 CHUCK ELLIOTT LLB
- 50 DALE McCULLERS MLB
- 40 MIKE BLATT RLB
- 24 WALT SUMNER LCB
- 28 T. K. WETHERELL RCB
- 41 JOHN CROWE LS
- 22 CHUCK EASON RS

FLORIDA STATE

OFFENSE

- 82 LANE FENNER LE
- 76 JACK FENWICK LT
- 52 WAYNE McDUFFIE LG
- 55 TED MOSLEY C
- 68 LARRY PENDLETON RG
- 75 BILLY RHODES RT
- 83 THURSTON TAYLOR RE
- 20 LARRY GREEN HB
- 11 KIM HAMMOND QB
- 30 BILL MOREMEN FB
- 34 RON SELLERS FLB

FLORIDA STATE SQUAD

- | | |
|---------------------|-----------------|
| 11 Hammond, QB | 55 Mosley, C |
| 12 Hiatt, QB | 56 Lohse, G |
| 14 Cappleman, QB | 57 Kinnan, T |
| 15 Warren, QB-DB | 58 R. Jones, T |
| 16 Pajcic, QB | 59 Loner, PK |
| 17 Page, DB | 60 Ba. Rice, LB |
| 18 Burton, DB | 61 Elliott, LB |
| 19 Abraira, E | 62 Be. Rice, LB |
| 20 Green, HB | 63 McLean, G |
| 21 D. Jones, FB | 64 Walker, G |
| 22 Eason, DB | 65 Dew, T |
| 24 Sumner, DB | 66 Hart, C-G |
| 27 Cox, E | 67 Bugar, M-G |
| 28 Wetherell, DB | 68 Pendleton, G |
| 29 Pickens, DF | 70 Sewell, T |
| 30 Moremen, HB-FB | 71 Zion, T |
| 31 Gunter, HB | 72 Logan, T |
| 32 Chershkoff, HB | 73 Johnston, T |
| 33 Guthrie, PK-FB | 75 Rhodes, T |
| 34 Sellers, FL | 76 Fenwick, T |
| 35 Gray, FL | 77 Curchin, T |
| 40 Blatt, LB | 78 Johnson, T |
| 41 Crowe, DB | 79 Vohun, T |
| 42 Cheshire, P-E | 80 Gurr, DE |
| 43 Montgomery, DB | 81 Tyson, E |
| 44 John Pittman, FB | 82 Fenner, FL |
| 46 Huggins, DB | 83 Taylor, E |
| 47 Benson, LB | 84 Glass, FB |
| 48 Chapman, P | 85 Ratliff, DE |
| 49 Eagerton, FB | 86 Hall, E |
| 50 McCullers, LB | 87 Yeldell, E |
| 51 Hughes, C | 88 J. Jones, DE |
| 52 McDuffie, C-G | 89 Menendez, DE |
| 54 Montford, MG | |

"COCA-COLA" AND "COKE" ARE REGISTERED TRADE-MARKS WHICH IDENTIFY ONLY THE PRODUCT OF THE COCA-COLA COMPANY. PRINTED IN U.S.A.

ste you never get tired of.

Why do so many corporations contribute to America's colleges?

1. () they want to help the colleges

You were right if you checked No. 2.

American corporations want to make sure there will be enough college-trained leaders to fill the management jobs open today and in the future.

This is good insurance for business.

And the need, we must remember, isn't getting smaller.

World trade is developing fast; business is getting more competitive, more complex; science is introducing new products and processes rapidly.

College-trained men and women are needed, in increasing numbers, to plan and direct the activities of business.



Published as a public service in cooperation with The Advertising Council and the Council for Financial Aid to Education

2. () they need the leaders colleges train

But the colleges can't do the training job alone. They need classrooms, laboratories and facilities, yes. But even more, they need backing to maintain a staff of top-notch teachers.

This is the human equation that makes the difference in reaching the **margin of excellence** needed in the U.S.

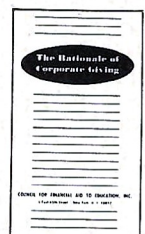
This is everybody's job, but especially industry's.

Of course American business wants to help the colleges, so you were also right if you checked No. 1. College, after all, is business' best friend.

GIVE TO THE COLLEGE OF YOUR CHOICE

SPECIAL TO MANAGEMENT—A new booklet of particular interest if your company has not yet established an aid-to-education program. Write for:

"The Rationale of Corporate Giving",
Box 36, Times Square Station
New York, N. Y. 10036



PENALTIES

1. **OFFSIDE** by either team; Violation of scrimmage or free kick formation; Encroachment on neutral zone—Loss of Five Yards.
2. **ILLEGAL PROCEDURE, POSITION OR SUBSTITUTION**—Putting ball in play before Referee signals "Ready-for-play"; Failure to complete substitution before play starts; Player out of bounds when scrimmage begins; Failure to maintain proper alignment of offensive team when ball is snapped; False start or simulating start of a play; Taking more than two steps after Fair Catch is made; Player on line receiving snap—Loss of Five Yards.
3. **ILLEGAL MOTION**—Offensive player illegally in motion when ball is snapped—Loss of Five Yards.
4. **ILLEGAL SHIFT**—Failure to stop one full second following shift—Loss of Fifteen Yards.
5. **ILLEGAL RETURN** of substitute not previously disqualified—Loss of Fifteen Yards.
6. **ILLEGAL DELAY OF GAME**; Taking more than four times out during either half (except for replacement of injured player)—Loss of Five Yards. Team not ready to play at start of either half—Loss of Fifteen Yards.
7. **PERSONAL FOUL** — Tackling or blocking defensive player who has made fair catch; Piling on; Hurdling; Grasping face mask of opponent; Tackling player out of bounds, or running into player obviously out of play; Striking an opponent with fist, forearm, elbow or locked hands; Kicking or kneeing—Loss of Fifteen Yards (Flagrant offenders will be disqualified.)
8. **CLIPPING**—Loss of Fifteen Yards.
9. **ROUGHING THE KICKER** or holder—Loss of Fifteen Yards.
10. **UNSPORTSMANLIKE CONDUCT**—Violation of rules during intermission; Illegal return of suspended player; Coaching from sidelines; Invalid signal for Fair Catch; Persons illegally on field—Loss of Fifteen Yards. (Flagrant offenders will be disqualified.)
11. **ILLEGAL USE OF HANDS AND ARMS** by offensive or defensive player; Defensive holding—Loss of Fifteen Yards.
12. **INTENTIONAL GROUNDING** of forward pass—Loss of Five Yards Plus Loss of Down.
13. **ILLEGALLY PASSING OR HANDING BALL FORWARD**—Loss of Five Yards Plus Loss of Down.
14. **FORWARD PASS OR KICK CATCHING INTERFERENCE**—Interference with opportunity of player of receiving team to catch a kick—Loss of Fifteen Yards. Interference by member of offensive team with defensive player making pass interception—Loss of Fifteen Yards Plus Loss of Down. Interference by defensive team on forward pass—Passing Team's Ball at Spot of Foul and First Down.
15. **INELIGIBLE RECEIVER DOWNFIELD ON PASS**—Loss of Fifteen Yards.
16. **BALL ILLEGALLY TOUCHED, KICKED OR BATTED**—Forward pass being touched by ineligible receiver beyond the line of scrimmage—Loss of Fifteen Yards from Spot of Preceding Down and Loss of a Down. Eligible pass receiver who goes out of bounds and later touches a forward pass—Loss of Down. Illegal touching of kicked ball within opponent's ten yard line—Touchback.
17. **PENALTY DECLINED**; Incomplete forward pass; No play or no score.
18. **CRAWLING** by runner—Loss of Five Yards. Interlocked Interference—Loss of Fifteen Yards.

MIDYETTE-MOOR Insurance Agency

"Ask Those We Serve"

Complete Insurance and Bond Service

PHONE 222-3456



MIDYETTE-MOOR BUILDING
TALLAHASSEE, FLORIDA

SAYS

SCALP 'EM SEMINOLES!



Payne Midyette
Frank Moor
Ed Clark
Winslow Sullivan
Paul Lewis
Payne Midyette, Jr.
Bill Moor
Bob Dickinson

Bill Franklin
Jim Woods
Glenn Sears
Dick Wall
Joe Ausbrook
Ron Davis
Rex Sikes
Ray Atkinson



WHERE YOU
WILL FIND
YOUR FRIENDS

701 W. JEFFERSON
South Gate F.S.U.

Electrical Contractors

- INDUSTRIAL
- COMMERCIAL



Licensed & Bonded

J. B. CLARK,
President

LEE H. TOWNSEND,
Vice President

576-3727

IF NO ANSWER DIAL 385-4030

CLARK ELECTRIC CO.
OF FLORIDA

1133 Kissimmee St.
TALLAHASSEE, FLORIDA

ALL TIME FLORIDA STATE RECORDS

SINGLE GAME

Individual

- TOUCHDOWNS SCORED**—4 by Fred Biletnikoff vs. Oklahoma Gator Bowl, 1965; and Jim Mankins vs. Texas Tech, 1966
- LONGEST TOUCHDOWN RUN FROM SCRIMMAGE**—81 yards by Fred Pickard vs. Virginia Tech, 1957
- LONGEST TOUCHDOWN PASS**—86 yards, Gary Pajcic to Ron Sellers vs. Wake Forest, 1966
- LONGEST TOUCHDOWN PLAY**—100 yards by Bill Moremen and T. K. Wetherell (lateral on kickoff return) vs. Kentucky, 1965
- LONGEST RUN FROM SCRIMMAGE WITHOUT SCORING**—76 yards by Roy Thompson vs. Stetson, 1951
- LONGEST INTERCEPTION RETURN**—99 yards by Ted Hewitt vs. Stetson, 1948 and Fred Biletnikoff vs. Miami, 1963
- LONGEST PUNT RETURN**—80 yards by Billy Odom vs. Stetson, 1954
- LONGEST KICKOFF RETURN**—100 yards by Bill Moremen and T. K. Wetherell vs. Kentucky, 1965 (TD lateral)
- LONGEST PUNT**—84 yards by Tommy Brown vs. Tampa, 1950
- LONGEST FIELD GOAL**—44 yards by Les Murdock vs. Virginia Tech, 1963
- TIMES RUSHING**—29 by Fred Pickard vs. Georgia, 1949
- YARDS RUSHING**—161 by Buddy Strauss vs. Mississippi College, 1949
- PASSES ATTEMPTED**—53 by Gary Pajcic vs. Virginia Tech, 1966
- PASSES COMPLETED**—28 by Gary Pajcic vs. Virginia Tech, 1966
- YARDS PASSING**—313 by Joe Majors vs. Tampa, 1959
- TOUCHDOWN PASSES**—5 by Steve Tensi vs. Oklahoma, Gator Bowl, 1965
- TOTAL OFFENSE**—369 yards by Joe Majors vs. Tampa, 1959 (56 rush, 313 pass)
- PASSES CAUGHT**—13 by Ron Sellers vs. Virginia Tech, 1966 and by Fred Biletnikoff vs. Oklahoma, Gator Bowl, 1965
- YARDS RECEIVING PASSES**—192 by Fred Biletnikoff vs. Oklahoma, Gator Bowl, 1965
- TOUCHDOWN PASSES CAUGHT**—4 by Fred Biletnikoff vs. Oklahoma, Gator Bowl, 1965
- PASSES INTERCEPTED**—3 by Tommy Brown vs. Stetson, 1950; and Georgia, 1952; Lee Corso vs. Georgia, 1954; and Bud Whitehead vs. Virginia Tech, 1959
- FIELD GOALS**—3 by Les Murdock vs. Florida, 1964
- PUNTS**—11 by John Hosack vs. Baylor, 1965 (40.8 average)

TEAM

- POINTS SCORED**—74 vs. Whiting Field, 1949
- MARGIN OF VICTORY**—74-0 vs. Whiting Field, 1949
- MARGIN OF DEFEAT**—0-42 vs. Georgia, 1959
- YARDS RUSHING**—383 vs. Abilene Christian, 1957
- YARDS PASSING**—355 vs. Villanova, 1954
- TOTAL OFFENSE**—526 vs. Furman, 1962 (277 rush, 239 pass)
- PASSES ATTEMPTED**—56 vs. Virginia Tech, 1966
- PASSES COMPLETED**—29 vs. Virginia Tech, 1966
- PASSES INTERCEPTED**—7 vs. Virginia Tech, 1959
- PUNTS**—11 vs. Baylor, 1965

PLUMBING

Contracting

COMMERCIAL • INDUSTRIAL • RESIDENTIAL

- BOILER REPAIRING
- STEAM & HOT WATER
- NATURAL GAS INSTALLATIONS

All Work Guaranteed
Over 20 Yrs. In Tallahassee

385-1691 or **224-4614**
1525 Pullen Rd. 702 W Madison

BLOUNT'S

PLUMBING & HEATING CO.

SEWER
INSTALLATIONS

DITCHING BACK-HOE
RENTALS



Sammy Seminole

One individual who flips at the sight of the Seminole football team is Don Hervig, this year's Sammy Seminole.

Since 1958 the colorful Florida State mascot has been leading the Seminole football team through the goal posts before each game.

During the game Sammy becomes an energetic cheerleader, using his "war lance" to urge the Seminoles on, and when they do he will be seen doing a series of "flip-flops" down the sidelines.

Don is the fifth student to carry on this colorful tradition.

Like all his predecessors, Don is a top gymnast. A native of Huntsville, Ala., he has been working with gymnastics for six years.

When he is not "flip-flopping" around the football field the 19-year old sophomore is working on his bachelors degree in engineering science.



Habit Forming.



HAIRSTON

KASTELZ

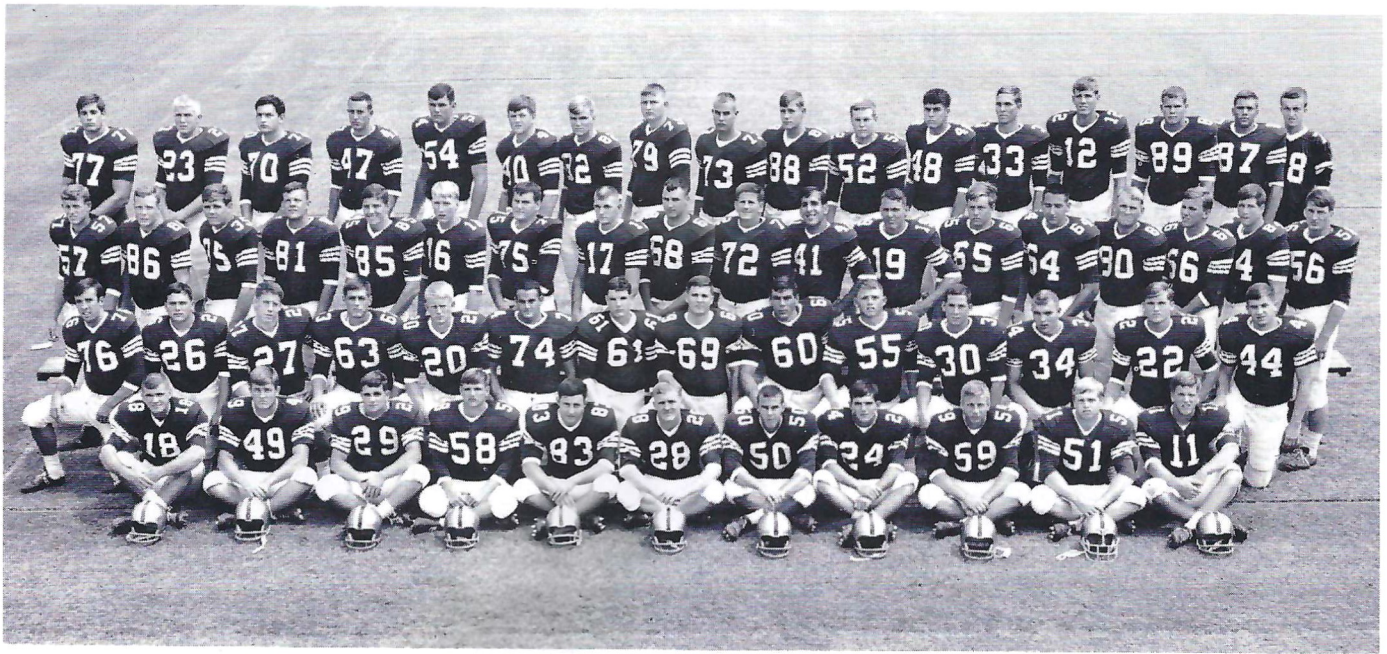
All season long — any time of the year — Bill Kastelz and Jack Hairston report, in depth, on everything in the sports world.

It's that extra margin of effort that makes these two stand out among sports editors. They're never satisfied with just "half" the story. They're diggers. Fact-finders. They wonder about things and investigate. That's why these two specialists bring you **closer** to sports all year long in the Florida Times-Union and Jacksonville Journal.

Be there — with Kastelz and Hairston — for every piece of the action.

The Florida Times-Union
EVERY MORNING
Jacksonville Journal
WEEKDAY AFTERNOONS

NUMBER ONE RIVERSIDE AVENUE
JACKSONVILLE, FLORIDA



FLORIDA STATE'S 1967 FRESHMAN SQUAD

NAME	HT.	WT.	AGE	HOMETOWN	NAME	HT.	WT.	AGE	HOMETOWN
Robert Ashmore	6-0	185	18	Tallahassee	Ned Jaros	6-3	237	22	No. Plainfield, N. J.
Fred Ayer	6-1	190	22	Tallahassee	Gary Klesius	6-2	210	18	St. Petersburg
George Bailey	6-2	205	18	Miami	Bill Lohse	6-0	210	18	St. Petersburg
Don Bancroft	6-1	205	18	Ft. Lauderdale	Craig MacKenzie	6-2	190	18	Clearwater
Theron Bass	5-11	189	17	Live Oak	Robert McEachern	6-2	215	18	Tallahassee
Steve Beville	6-1	198	18	Fernandina	Donald Mikell	6-2	201	18	Lubbock, Texas
Jon Blier	6-2	225	17	Brooklyn, N. Y.	George Montgomery	6-2	200	18	Coral Gables
Jerry Brooks	5-10	195	18	Valdosta, Ga.	Arthur Munroe	6-1	180	18	Quincy
Randy Burden	6-0	180	17	Atlanta, Ga.	Don Pederson	6-1	175	18	Groveland
Bill Cashman	6-1	175	18	Miami	Bill Rimby	6-4	198	17	St. Petersburg
Chris Corral	5-9	170	17	Tampa	John Romano	6-2	210	18	Lake Worth
Ralph Costantino	5-11	225	17	Bradenton	Ben Rust	6-2	190	18	Palm Beach
Rhett Dawson	6-1	180	18	Valdosta, Ga.	James Sammons	6-0	200	18	Atlanta, Ga.
Mike DeLoach	5-10	165	18	Valdosta, Ga.	Robert Searcy	6-5	240	18	Orlando
George Diaz	6-1	215	18	Jacksonville	Gary Semanchik	6-0	198	18	Leesburg
Michael Dowsett	6-1	230	18	Ft. Lauderdale	Phillip Shaw	5-10	160	18	Perry
Kent Gaydos	6-6	195	18	Maitland	Steve Spooner	6-2	205	18	Coral Gables
Stephen Gildea	6-0	185	18	Daytona Beach	Jay Stokes	6-3	200	17	Sanford
Max Harrell	6-3	182	18	Eastman, Ga.	Joe Strickler	6-1	230	18	Avon Park
George Henderson	5-9	170	18	Tallahassee	David Swindells	5-11	182	18	Washington, D. C.
Charles Hughes	5-10	200	18	Ft. Lauderdale	Ronnie Wallace	6-2	190	18	Macon, Ga.
Stephen Ivie	6-2	175	18	Atlanta, Ga.	Frank Whigham	6-1	175	18	Sanford
James Jarrett	6-2	182	18	Elizabethton, Tenn.	Steve Zadehh	6-1	185	18	North Miami
Steven Jernigan	5-11	194	18	Tampa	Ted Zaffren	6-3	185	18	Orlando
Steve Jones	6-1	212	18	Griffin, Ga.	John Boyett	6-3	195	18	Clermont

The pro makes it look easy

And with RCA Victor's new color portable —14" diagonal and 102 sq. in.—everything is easy. It's easy to carry from room to room because it weighs just 42 pounds. It's easy to see in daylight because its RCA Super Bright Hi-Lite Color Tube gives you 38% brighter highlights. And, it has a 21,500-volt New Vista® Color chassis. Pick a pro. Have your RCA Victor dealer show you The Headliner, a new level of performance in portable color TV.



TWO LOCATIONS TO SERVE YOU.

Rainey Cawthon's
700 N. MONROE • 222-1865

AND

Tallahassee Tire Co.
1530 S. MONROE • 222-3130

WE SERVICE WHAT WE SELL



The Most Trusted Name
in Electronics

Tmk(s)®



SEMINOLE BOOSTERS, INCORPORATED

Seminole Boosters, Inc. is an organization devoted entirely to the support of the Florida State University athletic program with emphasis on football.

Membership in the Boosters — the group numbers approximately 1,400 — is open to anyone with a sincere interest in the University's athletic progress. Minimum contribution for an individual membership is \$30. A business membership costs \$30.

Contributions are administered in accordance with NCAA regulations and in conjunction with the Florida State Department of Intercollegiate Athletics.

Boosters receive a colorful automobile license plate which can be used for admission to special reserved parking lot at the stadium, a membership card, a weekly fall publication, "The Grandstand Coach," and certain priorities on season and single game football tickets.


SEMINOLE BOOSTERS, INCORPORATED
 FLORIDA STATE UNIVERSITY TALLAHASSEE, FLORIDA 32306

1967 Contribution

Check attached for \$ _____

Pledge to pay \$ _____ Bill me for \$ _____
 (TOTAL AMT.) (PAYMENTS) MONTHLY QUARTERLY OTHER _____
 (SPECIFY)

Minimum Contribution of \$30 Required for Membership Privileges.



ARE YOU AN F.S.U. ALUMNUS? Yes No

Make check payable to Seminole Boosters, Inc.
 Mail To: 114 Longmire Alumni Bldg., FSU
 TALLAHASSEE, Florida 32306

(PLEASE CORRECT ANY ERRORS IN YOUR ADDRESS)

NAME _____

ADDRESS _____

CITY, STATE _____

ZIP _____

SOLICITOR'S SIGNATURE _____ CONTRIBUTOR'S SIGNATURE _____ DATE _____

COMPLIMENTS OF TALLAHASSEE AUTOMOBILE DEALERS ASSOCIATION

- | | |
|---------------------------------|------------------------------|
| ALFORD CHEVROLET COMPANY | KINNEBREW MOTORS, INC. |
| CAPITAL LINCOLN & MERCURY, INC. | MINGLEDORFF MOTORS, INC. |
| CAPITAL PLYMOUTH, INC. | PALMER-HARRELL BUICK COMPANY |
| COURTESY OLDSMOBILE, INC. | PROCTOR & PROCTOR, INC. |
| BOB DRAKE DODGE, INC. | TALLAHASSEE MOTORS, INC. |

SEMINOLE BOOSTERS, INC. BOARD OF DIRECTORS 1967



Seated, left to right: W. S. "Bill" Lee, Immediate Past President; Hank Mannheimer, Secretary; Frank Pope, President; Theo Proctor, Jr., President-Elect; and Herschel Williams, Treasurer.

Standing, First Row: Ryals Lee, T. A. Waits, Wayne Cook, Coach Bill "Pete" Peterson, J. Edwin White, Sid Rayborn, William T. Smith, William "Curt" Smith.

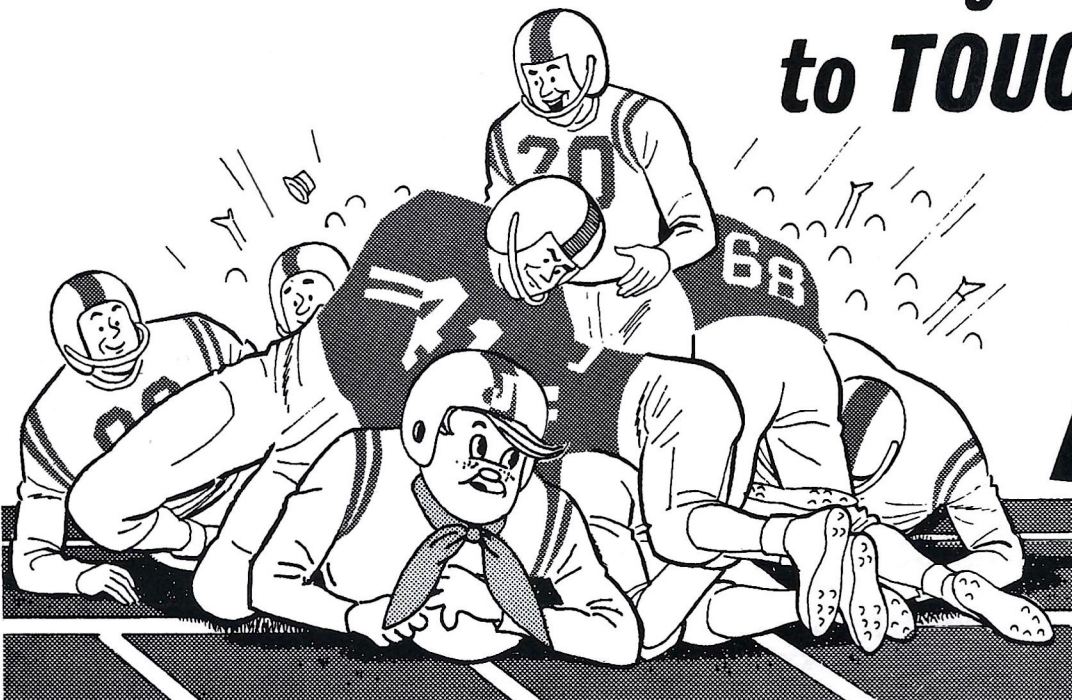
Second Row: Thomas O. Feamster, Louis Hill, Doyle Pope, Leo Crutchfield, Dr. Evan E. "Dick" Dussia, Robert C. Camp, Robert B. Drake, Jr.

Not Pictured: Dr. James Booth, Anthony "Ad" Brautigam, Dr. Laurence Chalmers, Syde P. Deeb, Hugh Donovan, Fred Orr Drake, Jr., William I. DuBay, Dr. Ed. Haskell, Jr., Guy McKenzie, Payne Midyette, Jr., Godfrey Smith.

AFTER THE GAME

make it your goal
to **TOUCH DOWN**

at...



Jerry's
RESTAURANTS

445 West Tennessee St.
In
Tallahassee, Fla.

Patronize Stadium

CONCESSIONS

Located beneath the stands on each side of stadium

COLD DRINKS	small 15¢ large 25¢
HOT COFFEE	15¢
SANDWICHES	30¢
HOT DOGS	25¢
PEANUTS	25¢
POP CORN	15¢
CIGARETTES	40¢

SOUVENIR ITEMS - PENNANTS - BADGES

SUN VISORS - ASPIRIN

Please pay no more than

ESTABLISHED PRICES

EAT 'EM UP SEMINOLES!



FAMOUS DOUBLE-DECK HAMBURGERS
and OTHER DELICIOUS FOODS

THE POPULAR SPOT IN TOWN — SERVING:
● BREAKFAST ● LUNCH ● DINNER and
● LATE EVENING SNACKS

DINING ROOM AND IN-CAR SERVICE

OPEN 7 A.M. TO MIDNIGHT

'TIL 2 A.M. FRIDAYS & SATURDAYS

1775 W. TENNESSEE ST.

TALLAHASSEE - TEL. 224-1246

TRY FRISCH'S CARRY-OUT SERVICE



Football and Fitness Film Now Available!

This exciting 28-minute color film captures the thrills of professional football. It shows 13 N.F.L. stars in action, in some of their biggest moments of play. In addition, the 16 mm. sound film depicts these same players in "how-we-do-it" demonstrations of these plays, as well as their own favorite methods of staying in peak physical shape.

The film and an accompanying 36-page booklet outlines football-oriented plays, exercises, fundamentals and skills.



THE PRUDENTIAL INSURANCE COMPANY OF AMERICA
SOUTH-CENTRAL HOME OFFICE • JACKSONVILLE, FLORIDA

The film, sponsored by Prudential in cooperation with the President's Council on Physical Fitness and the National Football League, is available for free loan. It will make a terrific program for your civic club, youth group or physical education class.

For information, contact your local Prudential office. Or write Public Relations Dept., The Prudential Insurance Co. of America, P. O. Box 4579, Jacksonville, Florida 32201.



Virginia Tech: War Memorial Chapel & Carol M. Newman Library

VIRGINIA TECH

Virginia's Land-Grant University

The Virginia Tech campus had taken on an untidy appearance at the opening of this academic year, the university's 96th; the growing pains were evident.

And small wonder. The clamor of jack hammers and the creak of construction cranes have become familiar sounds on the tree-shaded campus nestled in the southwest Virginia highlands. Bulldozers and earth moving machines seem almost constantly chewing into the clay and rock to make way for new foundations.

Among the major projects underway are a 4-million dollar arts and sciences building, a million dollar architecture building, a major addition to the university's administration building, a 2-million dollar continuing education center, a 3.5-million renovation of the Student Activities Center and across campus finishing touches had just been put on a new College of Home Economics building.

Where only a few years ago stood old Miles Stadium, in which Virginia Tech played football from 1926 to 1964, there now are three high-rise dormitories. Construction of a fourth eight-story dorm is just getting under way.

The construction program also includes extensive facilities for women students. The university's current co-ed enrollment exceeds 1,000.

Behind the high-rise dormitory complex the new Lane Stadium is in final stages of construction; when finished it will seat some 45,000. A few blocks away a major addition to the university's food processing laboratory has been under construction for several months. And on the edge of the campus a new 4,200-foot runway has been completed for the university airport.

There's a good deal more to come. Construction planning for the next biennium totals 29 million, exclusive of proposals for the university's Research and Extension Divisions. And in longer range planning, total construction for the next six years is projected at almost 74 million dollars.

The growth of Virginia Tech in recent years has been extraordinary; current enrollment exceeds 9,000, almost doubled in the past decade. It will more than double in the next 10 years. Such a pattern of growth will accommodate more additional students than the total enrollment of any college or university in Virginia. Even so, increasing numbers of qualified students are denied admission to the university each year.

This is the basic reason for the university's rapid physical growth. Virginia's population is increasing more rapidly than any state east of the Mississippi, with the exception of Florida. And a disproportionately small percentage of Virginia's college age people have been able to continue the educational opportunities they are seeking.

Traditionally Virginia Tech's strengths have been in engineering and agriculture, and although these fields remain quite important in the university curriculum, Tech's curriculum has been redesigned into a broader scope for better educational balance, particularly in liberal arts and the humanities.

Graduate enrollment has climbed steadily, and faculty recruitment has been unusually successful.

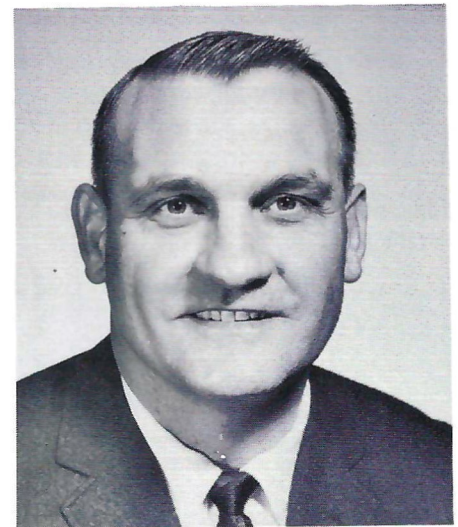
In brief, the academic excitement apparent on a rapidly developing campus is contagious. The changed focus of the university and the broadening of its educational programs to better meet Virginia's needs looks like a good combination in elevating the university's future as one of the nation's outstanding institutions of higher learning.



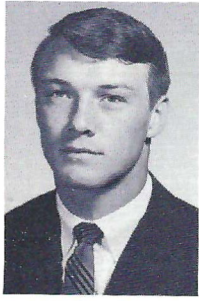
DR. T. MARSHALL HAHN
President



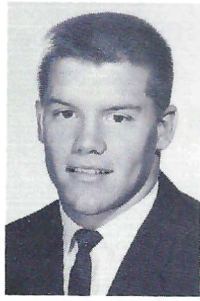
FRANK MOSELEY
Athletic Director



JERRY CLAIBORNE
Coach



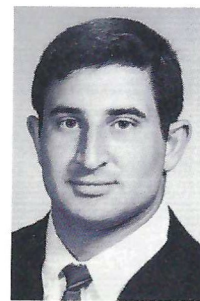
KEN BAREFOOT



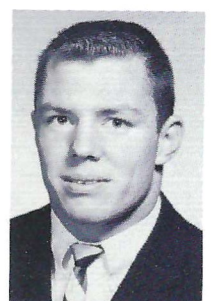
PETE WRENN



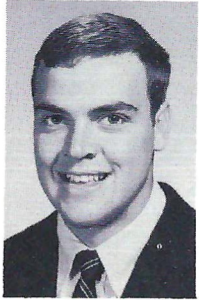
FRANK BEAMER



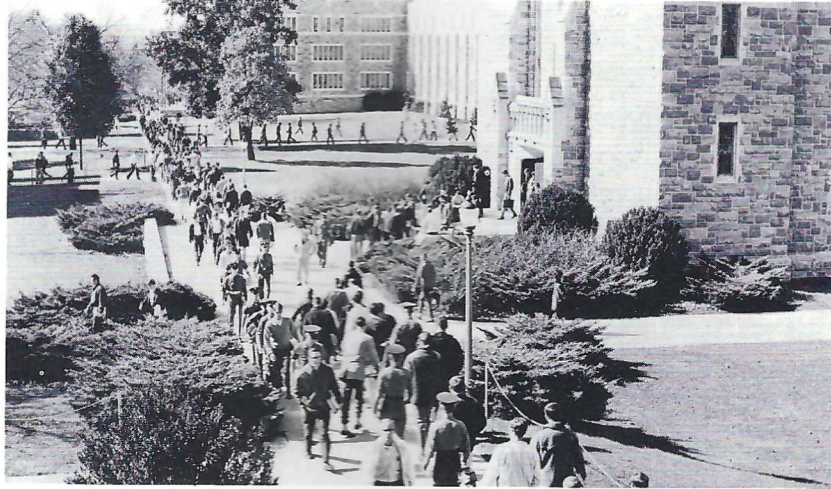
GEORGE CONSTANTINIDES



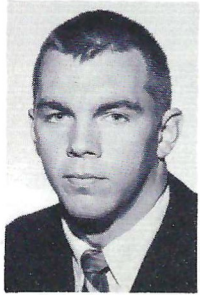
CLARENCE CULPEPPER



DANNY CUPP

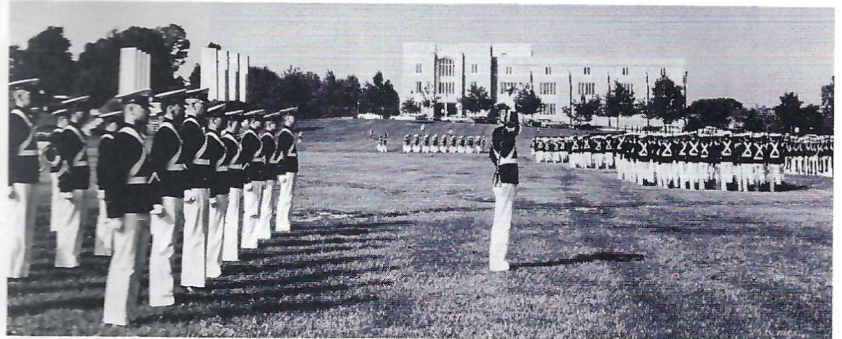


Virginia Tech Campus Scene: Commerce Hall is at right; the Physics Building is at upper right.

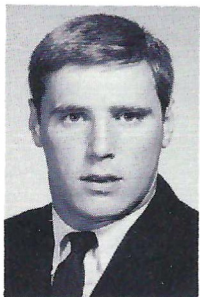


SCOTT DAWSON

VIRGINIA TECH



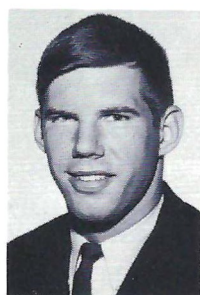
The Corps—Virginia Tech's Cadet Corps is one of the few in the nation to function on a university campus essentially as a military college within a larger university. The Corps has about 1,400 members in the current year, out of a total university enrollment of more than 9,000.



RON DAVIDSON



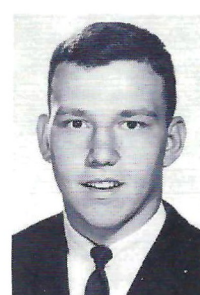
DAMON DEDO



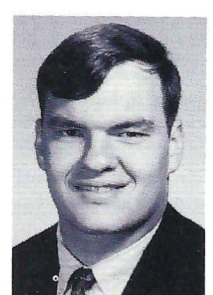
GENE FISHER



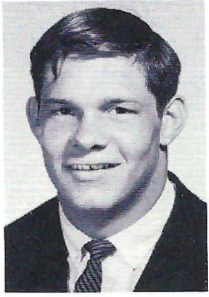
GEORGE FOUSSEKIS



BOB GRIFFITH



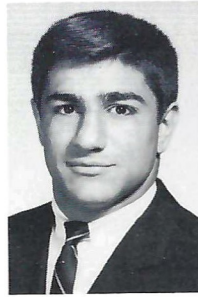
WADDEY HARVEY



JEFF HAYNES



DICKIE LONGERBEAM



FRANK LORIA



MILT MILLER



RICHARD MOLLO



VIRGINIA TECH'S ATHLETIC COMPLEX
Lane Stadium (foreground), Tech Park (baseball field)
and the Virginia Tech Coliseum.



DAN MOONEY



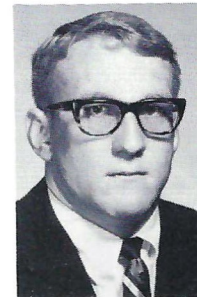
RICK PILAND



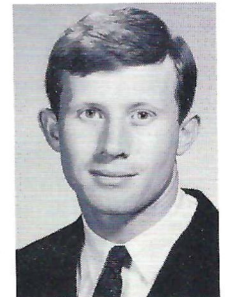
WAYNE RASH



JIMMY RICHARDS

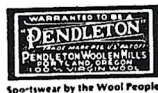


DON THACKER



JON UTIN

SHOW YOUR COLORS! Genuine **PENDLETON** wool blankets in authentic school colors, solid background with felt emblem, in carrying case. Ideal for stadium, home, and travel. Perfect for gift giving. Choose from those shown, or specify your school. If not offered, your money will be promptly refunded. Price: \$20.00 each, includes sales tax and shipping charges. Check or money order must accompany order. No C.O.D. shipments.



Gentlemen: Please ship me _____ Blankets at \$20.00 each.
My school is _____
Enclosed find \$ _____.

Name _____
Address _____
City, State, & Zip Code _____

"ONE OF FLORIDA'S FINE STORES"

Fletcher-Cantey

*Men's
Wear*

P. O. BOX 899

QUINCY, FLORIDA 32351



THE SEMINOLE FOOTBALL NETWORK

Florida's 1967 sportscaster of the year, popular Bo Mitchell returns to the Seminole microphone for the fifth straight season, bringing play-by-play action to every corner of the Sunshine State.

The energetic Mitchell, an ex-naval aviator with more than 18 years broadcasting experience, is vice-president and manager of station WXIS, Orlando.

His partner at the mike again this season will be Bud Kaatz, a native of Ohio who was formerly color man for the University of Michigan Football Network and play by play announcer for Ohio University and Marietta College. Kaatz will handle pre-game, half-time and time out commentary on the Seminoles.

Originating station for the Seminole Network is WTNT, Tallahassee. The network consists of 29 stations in Georgia and Florida.



Bo Mitchell



Bud Kaatz

THE SEMINOLE NETWORK

WTNT—Tallahassee	WORD—Daytona Beach
WAAZ—Crestview	WCOA—Pensacola
WDSR—Lake City	WDAE—Tampa
WFTW—Ft. Walton Beach	WGBS—Miami
WINK—Ft. Myers	WJAX—Jacksonville
WKMK—Blountstown	WKIS—Orlando
WMAF—Madison	WSIR—Winter Haven
WMGA—Moultrie, Ga.	WSPB—Sarasota
WMMB—Melbourne	WTOT—Marianna
WMOP—Ocala	WFOY—St. Augustine
WONN—Lakeland	WCNH—Quincy
WOOO—DeLand	WEAT—West Palm Beach
WPAX—Thomasville, Ga.	WFFG—Marathon - Key West
WPCF—Panama City	WTRR—Sanford
WPRY—Perry	

Follow
STATE
in '67

on the **STANDARD OIL** Radio Network

WTNT Tallahassee	WJAX Jacksonville
WGBS Miami	WKIS Orlando
WCOA Pensacola	WDAE Tampa

*Come to
Chevron Island!*



Sports Capital of the World



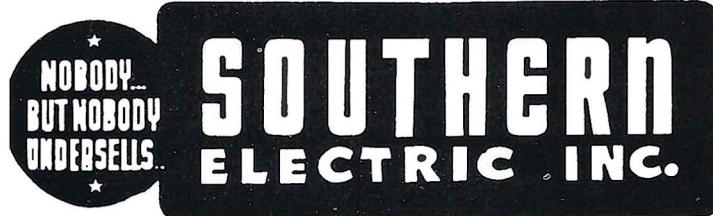
The coin flipping ceremony at the beginning of a football game is as much a part of each contest as cheerleaders or a halftime show. The coin used at all Florida State home games, and at all collegiate and pro games played in the state, this year is a commemorative, boasting "Florida, Sports Capital of the

World." The half dollar size piece depicts the State Seal on one side and a map of the state with a football across it on the other. Players from each of the state's football teams, plus all the visiting teams receive a souvenir coin. The coin is supplied through the Florida Development Commission.



SPURGEON CAMP

*"Let's Be
#1
In 1967"*



QUALITY CLEANERS

215 W. COLLEGE AVE.—DIAL 222-5097

ONE DAY SERVICE

PICK-UP and DELIVERY

Quality Laundry Work

Fluff Dry Service

EXPERT TAILORING and ALTERATIONS

ZIPPERS REPAIRED

MUSIC AT HALF-TIME

FLORIDA STATE VS. VIRGINIA TECH

NOVEMBER 11, 1967

THE MARCHING CHIEFS

Robert T. Braunagel, Director
Camp Kirkland, Assistant Director
Charles Carter, Assistant Director and Arranger

Herschel Beazley, Drum Major
Paulette Gergen, Head Majorette
Will Shurley and Jerry Williams, Solo Twirlers

THEME: A PATRIOTIC SALUTE

MUSIC

Armed Forces Fanfare
I Love A Parade

Armed Forces Sequence

Green Beret
Taps

Over There

Sousa Sequence

FORMATION

BLOCK ENTRANCE—In recognition of all Veterans, the Chiefs open with a fanfare and play *I Love A Parade*.

DRILL—The Chiefs execute a drill sequence to a medley of armed forces tunes.

SOLDIER—Honoring our current effort in Viet Nam, we form a soldier and change the gun into a bugle and honor the many who have lost their lives in our current conflict with a symphonic arrangement of *Taps*.

PARACHUTE—To the Cohan hit from World War I, *Over There*, the Chiefs open a parachute.

SHIELD—USA—In a grand finale, we feature the Air Force Angel Flight in a drill, and combine the band and the University Singers in a stirring rendition of *God Bless America*.

MARCHING CHIEFS PERSONNEL

FLUTES
LARRY ATTAWAY
MARYBETH DARDIS
SHARON FORBES
ELLEN FUGUA
JO ELLEN HICKS
KATHY HIGGINS
GEORGE HIGHAN
DAN JENSEN
LINDA KOCHER
PAT KOCHER
MARGARET LOVE
DONNA McMASTER
YIKKI RIDAUGHT
SUSAN ROMINE
VALERIE SCOTT
JOAN SOKOLOWSKI
BOB STAFFORD
PATTY TULLOS
VICKIE VEGA
BEV WHITE
ALBERT WOODWARD

BASS CLARINET
PAM GLATTIE

CLARINET
JIM BANIM
CINDI BARFIELD
JAMES BROWNLEE
JANET COADY
JEFF COOPER
JAN COSTNER
THAZTON DICKEY
CHARLES DODGEN
RUSS ECKERT
CURTIS FALANY
MARTHA FORESTER
ALAN GOLDBERG
KATHLEEN GOWEN
CAROLINE GRAY
SUZANNE GRENOIUILLLOU
ANDREA HALL
ANN LEONE HARVEY

SHIRLEY HUTCHENSON
FRANK HUTCHISON
CAROL LYON
ANN MAJOR
JUDY MANES
LINDA MATHIS
TONI RUTH MOORES
COLLEEN MURPHEY
ED OLDS
STEVE REIDY
JUDY REIGLE
MARLENE ROBINSON
LINDA ROLAND
EVELYN SEAL
JOYCE SHATTO
HOWARD SMELT
DALLAS SMITH
EVA SORBELLA
MARY WALKER
LINDA WHITE
LINDA WIGGERS

ALTO SAX
PAT BOATNER
STEPHEN BURTON
TOM CROW
ARTHUR FORREST
BRIAN METELITS
KENNETH MINTON
MIKE PARMELEE
JOHN PASTERIS
MIKE PATE
BARRY TAFFEE

TENOR SAX
JOE CONTE
TOM GARRETT
JAY SHERMAN
RON ROTZKO

BARI SAX
WARD ALLEN SMITH
RICHARD SWAINE

HORN
ROZANNE DAVIS
JANE DRESSER
VELMA FRYE
LINDA GOODMAN
PAM LUCE
JAN McKENZIE
MIKE McMANAUSY
HARVEY NELSON
SUZANNE PARSONS
SUZANNE SARGEANT
VIVIAN SHIPLEY
SANDY SKIDELL
KAREN SUTTNER
MAXINE TABER

CORNET
DENNIS BAKER
CLAYTON BRASINGTON
CAROLYN BROCKMAN
TOM BOUSE
MIKE CAPLIN
CLIFF COLNOT
ROBERT COTTER
BOB DENDY
WALTER EICHEN
JIM EVANS
PAUL EVANS
JACK FOOS
DAVID GARRET
GINGER GUYETTE
FRANK HAMMETT
BILL HINKLE
TOMMY HOLLEMAN
JIM LAIRD
WILLIAM MARKS
PAT McDERMOTT
TOM McINTIRE
ROBERT McKIBBON
DON McLAUREN
DOUG MINEAR
JOE POWELL
BILL RINGGOLD
ROGER ROCKWELL

BOB SCANZIANI
JOHN SCHNELL
ROBERT SCHWENDEMAN
DAVID STEVENS
SUMMERLIND
MIKE WALKER
JOHN WARDER
BOB ZAHNER

TROMBONE
CATHEY BUSH
KAREN DETERS
RUSSELL DELL
DAREN DETERS
JEAN FOSTER
RON GREGORY
ETHONE HELMS
GORDEN HOLDER
JAMES KANOY
FRANZ KUDER
PETER MacLEAN
NAT MALCOLM
RON McCREARY
PAUL McRAE
WILLIAM NEERIEMER
BOB PHILLIPS
JIMMY PIGNATO
MIKE SMILEY
AL SMITH
WILLIAM THOMAS
CHARLES TOWNSEND

BARITONE
JEFF GOYER
CAROLYN COCKRUN
SUE HAWKINS
GARY LLOYD
KATHY SPIKER

TUBA
CHUCK BEUTEL
RICHARD DAVIS
MIKE DZOBA
DOUG KEWAR

ALLEN LOBDELL
RICHARD RALEIGH
JOHN RHODES
BRITT SMALL
TOM TABER

PERCUSSION
MARK BUNDY
CAROL DAVIS
HILDA HENDERSON
ED KOENIG
JERRY MICHAELSON
SUSAN MacMANUS
JERRY McGRATH
JOHN SANDERS
GARY SEIDERSKI
AL SERGEL
ELIZABETH SPONHOLTZ
CHRIS STONE
LIANE SPRINKLE
GEORGE TAYLOR
LINDSAY WARREN
DAVE WOODS

MAJORETTES
JULIE BARTELS
BEVERLY DOBBINS
GAIL GERGEN
MARY LYNN HENDRICKSON
MARGY HINMAN
BARBARA KNOX
BECKY LAMB
SANDY PHILIPS
SHARON PRESCOTT
KATHY RILEY
GAIL SIMONTON
KATHY SMITH
JAN SWANSON

SOLOISTS
WILL SHURLEY
JERRY WILLIAMS

DRUM MAJOR
HERSCHEL BEAZLEY

1967-68 BASKETBALL SCHEDULE

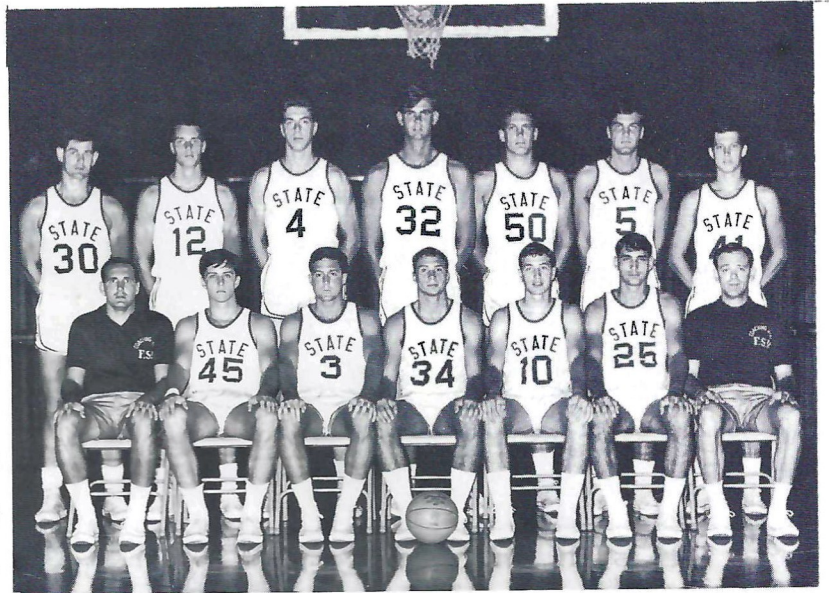
HOME GAMES

Dec. 7—Florida	Jan. 26—Hofstra
Dec. 9—Samford	Jan. 30—Valdosta
Dec. 20—Richmond	Feb. 3—East Carolina
Dec. 22—Rutgers	Feb. 7—Citadel
Jan. 6—Stetson	Feb. 10—Florida Southern
Jan. 12—Miami	Feb. 24—Georgia Tech
Jan. 16—Jacksonville	

All home games begin at 7:30 p.m. except East Carolina and Georgia Tech games which start at 3 p.m. Season tickets are now available at the Athletic Ticket Office in Tully Gym for \$20.

AWAY GAMES

Dec. 2—Florida Presbyterian	Jan. 2—The Citadel
Dec. 4—Ohio State	Jan. 20—Georgia Tech
Dec. 15—Milwaukee Classic	Feb. 1—North Carolina
Dec. 16—(Marquette, Wisconsin, LSU)	Feb. 16—Jacksonville
Dec. 29—Evansville Tournament	Feb. 21—Florida
Dec. 30—(Geo. Washington, Montana, Evansville)	Feb. 29—Stetson
	Mar. 1—Miami



1967-68 FLORIDA STATE BASKETBALL TEAM

Front Row—Left to Right: Head Coach Hugh Durham, Bob DePathy, Ian Morrison, Randy Cable, Jeff Hogan, Darrel Stewart, Assistant Coach Bill Clendinen. **Back Row**—Left to Right: Larry Moore, Dave Ross, Dave Cowens, Dick Danford, Don Biggs, Jan Gies, Dale Klay.

The Vogue

TALLAHASSEE, FLORIDA

Learn to Fly at
G. C. Shuler
Seminole Flying Service, Inc.

Municipal Airport

Phone 576-5151

Tallahassee, Fla.

- STUDENT CLUBS
- AIRPLANE RIDES
- FLIGHT INSTRUCTION
- AERIAL PHOTOGRAPHY
- CHARTER FLIGHTS
- AIRCRAFT RENTAL

FLY the best—A New Cessna

"Look up—a new CESSNA will be overhead"

Your
University Union



CAMPUS HEADQUARTERS FOR
Programs ★ Services ★ Facilities
FOR ALL CAMPUS INFORMATION
CALL THE UNION
599-3317



**TIME!
OUT!**

FOR
YOUR FAVORITE

**Meal
or
Snack**

AFTER THE GAME AT
THE **UNIVERSITY UNION**
FSU FOOD SERVICE

Go Seminoles

OWNED AND OPERATED BY FRANK, RICHARD & RAYMOND CHASE



2220 W. TENNESSEE ST.
TALLAHASSEE, FLORIDA

"Serving Good Food for Fine People"

FREE PARKING

Private Rooms and Banquet Facilities

FOR RESERVATIONS CALL: 576-2515 – 576-9135



KNEELING (left to right): Cherry Hand, Dixie Wilcoxn and Jan Berry.

STANDING: Bruce Turner, Jim Sharp, Dave Deutsch (Captain).

THE ALMA MATER

High o'er the towering pines our voices swell
 Praising these Gothic spires we love so well;
 Here sons and daughters stand . . .
 Faithful and True, Hailing our Alma Mater
 F . . . S . . . U . . .

FSU FIGHT SONG

You're going to **FIGHT, FIGHT, FIGHT** for FSU
 You're going to scalp 'em Seminoles.
 You're going to **WIN, WIN, WIN, WIN,**
WIN this game . . . and roll
 on down and make those goals!
 For FSU is on the warpath now, and at
 the battle's end she's great . . .
 So **FIGHT, FIGHT, FIGHT, FIGHT** for victory
 The Seminoles of Florida State . . .
 F-L-O-R-I-D-A S-T-A-T-E
 FLORIDA STATE (3 times)

HYMN TO THE GARNET AND GOLD

Here's a hymn to the Garnet and the Gold
 Ringing to the sky.
 Here's a song for our men and women bold
 Sing with heads held high.
 Striving e'er to seek, to know,
 Fight for victory.
 Alma Mater, this, our song to you,
 Echoes FSU.



REMEMBER THE DAY WITH PICTURES !!

For All Of Your Photographic Needs Remember

TALLAHASSEE CAMERA CENTER

117 NORTH MONROE STREET
 Across From The Florida Theater

CAMERAS • FILM • BINOCULARS • RECORDERS • RENTALS

Fast, Fast, Black & White and Color Processing

STADIUM INFORMATION

Rest Rooms—Located on concourse and on ground level on both east and west sides.

First Aid—Located in southwest corner of stadium. Registered nurse on duty.

Lost and Found: Items may be claimed or turned in at the ticket booth next to the press box elevator, west side.

Public Telephones: Located ground level, west side.

Public Address: No special announcements are made over the stadium public address system except in cases of emergency.

Field Regulations: No spectators are allowed on the field, either during or after the game. Please leave the stadium by ramp and section exits rather than field level exits.

Drive Carefully—Your cooperation with law enforcement officers will help speed the flow of traffic away from the stadium.

Miller CHEVROLET COMPANY

Havana, Florida

539-6376

15 Miles North of Tallahassee

on U. S. 27

Phone Toll Free

224-1317

See WAKULLA SPRINGS
through Glass Bottom Boats
JUST 14 MILES SOUTH OF TALLAHASSEE

N.C. STATE V.P.I. RED RAIDERS GAME LOCKS MAROONS

Special Rates To Visiting Teams, Bands And Groups

"While in Tallahassee Before the Falling Sun Be sure and see Wakulla Springs No matter who has won"

Sammy Seminole

"THE WORLD'S LARGEST AND DEEPEST SPRING"

The advertisement is a black and white illustration. On the left, a large tree with hanging vines frames a boat labeled 'WAKULLA SPRINGS' with people inside. In the background, a stadium is shown with several flags: 'N.C. STATE', 'V.P.I.', 'RED RAIDERS', 'GAME LOCKS', and 'MAROONS'. A banner in front of the stadium reads 'Special Rates To Visiting Teams, Bands And Groups'. A speech bubble from the stadium area contains the text: 'While in Tallahassee Before the Falling Sun Be sure and see Wakulla Springs No matter who has won'. In the foreground, a small canoe with a person named 'Sammy Seminole' is on the water. At the bottom, a banner reads 'THE WORLD'S LARGEST AND DEEPEST SPRING'.

BASIC DEFENSE

RIGHT LINEBACKER
41 C. CULPEPPER
55 MIKE WIDGER

RIGHT HALFBACK
25 FRANK BEAMER
43 JIMMY RICHARDS

SAFETY
10 FRANK LORIA

LEFT HALFBACK
24 RON DAVIDSON
14 RANDY TREADWELL

LEFT LINEBACKER
31 PETE WRENN
55 MIKE WIDGER

RIGHT END
88 DAN MOONEY
80 JOE TUCKER

RIGHT TACKLE
73 JEFF HAYNES
77 PETE DAWYOT

RIGHT GUARD
63 LARRY CREEKMORE
57 CHALKIE EADES

LEFT GUARD
67 DON THACKER
75 PAUL RIPLEY

LEFT TACKLE
70 JIM HARVEY
77 PETE DAWYOT

LEFT END
86 GEORGE FOUSSEKIS
82 JUD BROWNELL

LEFT END
82 LANE FENNER
27 BILL COX

LEFT TACKLE
76 JACK FENWICK
78 WAYNE JOHNSON

LEFT GUARD
52 WAYNE McDUFFIE
66 KEN HART

CENTER
55 TED MOSLEY
51 BILL HUGHES

RIGHT GUARD
68 LARRY PENDLETON
64 STAN WALKER

RIGHT TACKLE
75 BILLY RHODES
78 WAYNE JOHNSON

RIGHT END
83 THURSTON TAYLOR
84 CHIP GLASS

BASIC OFFENSE

HALFBACK
20 LARRY GREEN
31 BILL GUNTER

QUARTERBACK
11 KIM HAMMOND
16 GARY PAJIC

FULLBACK
30 BILL MOREMEN
44 JOHN PITTMAN

FLANKER
34 RON SELLERS
19 PHIL ABRAIRA

FLORIDA STATE SPECIALISTS: PUNTING, 43 BILL CHESHIRE; PLACEKICKER, 33 GRANT GUTHERIE

BASIC DEFENSE

RIGHT SAFETY
22 CHUCK EASON
18 CLINT BURTON

RIGHT CORNERBACK
28 T. K. WETHERELL
17 MIKE PAGE

LEFT CORNERBACK
24 WALT SUMNER
15 TOMMY WARREN

LEFT SAFETY
41 JOHN CROWE
43 HOWELL MONTGOMERY

RIGHT END
89 BOB MENENDEZ
58 JERRY JONES

RIGHT TACKLE
57 JOE KINNAN
71 HARVEY ZIOP

RIGHT LINEBACKER
40 MIKE BLATT
84 CHIP GLASS

MIDDLE LINEBACKER
50 DALE McCULLERS
47 JOE BENSON

LEFT LINEBACKER
61 CHUCK ELLIOTT
67 MIKE BUGAR

LEFT TACKLE
73 DUKE JOHNSTON
79 FRANK VOHUN

LEFT END
85 FLOYD RATLIFF
80 DOUG GURR

LEFT END
81 KEN BAREFOOT
83 DEE CRIGGER

LEFT TACKLE
76 JERRY GREEN
66 LEN LUONGO

LEFT GUARD
61 BOB GRIFFITH
60 JUDD BIGELOW

CENTER
51 SCOTT DAWSON
61 BOB GRIFFITH

RIGHT GUARD
58 LEE STONESIFER
69 CHET FORRESTER

RIGHT TACKLE
64 RICHARD MOLLO
62 PRESTON BLACKBURN

RIGHT END
87 GENE FISHER
89 BOBBY SLAUGHTER

BASIC OFFENSE

LEFT HALFBACK
45 BURT HENDERSON
34 G. CONSTANTINIDES

QUARTERBACK
11 AL KINCAID
27 WAYNE RASH

RIGHT HALFBACK
20 DICKIE LONGERBEAM
33 KEN EDWARDS

FULLBACK
32 RICK PILAND
33 KEN EDWARDS

VIRGINIA TECH SPECIALISTS: EXTRA POINTS & FIELD GOALS—23 JON UTIN; KICKOFF—23 JON UTIN; PUNTS—87 GENE FISHER

- RCA COLOR TV IN ROOMS
- POOL
- Northwest corner of Campus on U.S. 90; Fla. 20 West



DRIFTWOOD MOTEL and RESTAURANT

AMERICAN EXPRESS - DINERS - AMERICAN OIL CREDIT CARDS HONORED

- AIR CONDITIONED
- DIRECT DIAL PHONES
- Se habla Espanol

1402 W. TENN. U.S. 90

(904) 224-4174 (TWX904) 224-6510

VIRGINIA
TECH

FLORIDA STATE

VIRGINIA
TECH

1967 FLORIDA STATE FOOTBALL ROSTER

No.	Name	Pos.	Class	Age	Hgt.	Wgt.	Hometown
11	Kim Hammond	QB	Sr.	23	6-1	190	Melbourne
12	Phil Hiatt	QB	So.	21	6-4	190	Tipp City, Ohio
14	Bill Cappleman	QB	So.	20	6-3	205	Dunedin
15	Tommy Warren	DB	So.	19	6-1	185	Miami
16	Gary Rajic	QB	Jr.	20	6-2	192	Jacksonville
17	Mike Page	DB	So.	20	5-10	175	Winter Haven
18	Clint Burton	DB	Jr.	20	6-2	180	Atlanta, Ga.
19	Phil Abraira	E	So.	19	6-0	180	Ft. Lauderdale
20	Larry Green	HB	Sr.	22	5-10	173	Cairo, Ga.
21	Donovan Jones	FB	Sr.	22	6-1	206	Lakeland
22	Chuck Eason	DB	Jr.	20	5-10	195	Tallahassee
24	Walt Sumner	DB	Jr.	20	6-1	172	Ocala, Ga.
27	Billy Cox	E	Jr.	20	6-1	182	Atlanta, Ga.
28	T. K. Wetherell	DB	Sr.	22	5-10	185	Daytona Beach
29	Chuck Pickens	DF	So.	19	5-10	190	Etowah, Tenn.
30	Bill Moremen	HB-FB	Sr.	22	5-11	188	Daytona Beach
31	Bill Gunter	HB	Jr.	21	6-0	171	Dothan, Ala.
32	Ed Chereskoff	HB	So.	19	5-10	188	Hollywood
33	Grant Gutherie	PK	So.	19	6-0	207	Claymont, Del.
34	Ron Sellers	FL	Jr.	20	6-4	187	Jacksonville
35	Mike Gray	FL	So.	19	6-3	190	Lake Mary
40	Mike Blatt	LB	Sr.	21	5-11	203	Key West
41	John Crowe	DB	Jr.	20	6-2	173	St. Cloud
42	Bill Cheshire	P	So.	19	6-0	183	Odom, Ga.
43	Hal Montgomery	DB	Jr.	20	5-11	176	Bountstown
44	John Pittman	FB	Jr.	21	5-11	195	Brunswick, Ga.
46	Charlie Huggins	DB	So.	20	6-1	194	Mims
47	Joe Benson	LB	Jr.	22	5-10	197	Birmingham, Ala.
48	Jeff Chapman	P	So.	20	6-3	230	Sarasota
49	Terry Eagerton	FB	So.	20	5-10	190	Jacksonville
50	Dale McCullers	LB	Jr.	20	6-2	200	Live Oak
51	Billy Hughes	C	So.	19	6-1	221	Rockledge
52	Wayne McDuffie	C-G	Sr.	23	6-2	223	Hawkinsville, Ga.
54	Ron Montford	MG	So.	19	6-0	195	Bountstown
55	Ted Mosley	C	Jr.	20	6-2	202	Tampa
56	Henry Lohse	G	So.	20	6-3	203	St. Petersburg Beach
57	Joe Kinnan	T	Sr.	22	6-0	206	Bradenton
58	Rich Jones	T	Jr.	21	6-0	203	River Vale, N. J.
59	Frank Loncr	PK	Jr.	21	6-0	196	Atlanta, Ga.
60	Barry Rice	LB	So.	19	6-1	188	Fernandina Beach
61	Chuck Elliott	LB	Jr.	21	6-0	197	Troy, Ohio
62	Beryl Rice	LB	So.	19	6-1	186	Fernandina Beach
63	Richard McLean	G	Jr.	21	6-0	189	Holly Hill
64	Stan Walker	G	So.	19	6-2	210	Tallahassee
65	Billy Dew	T	So.	20	6-2	210	Apopka
66	Ken Hart	C-G	Jr.	21	6-3	217	Groveland
67	Mike Bugar	MG	Jr.	21	5-10	206	Youngstown, Ohio
68	Larry Pendleton	G	Jr.	21	6-0	206	Winter Garden
70	Tony Sewell	T	So.	21	6-5	220	Union Springs, Ala.
71	Harvey Zion	T	Jr.	20	5-11	212	Atlanta, Ga.
72	Randy Logan	T	Jr.	22	6-1	230	Seal Beach, Calif.
73	Duke Johnston	T	So.	19	6-2	229	Ft. Lauderdale
75	Billy Rhodes	T	Jr.	21	6-2	245	Eustis
76	Jack Fenwick	T	Jr.	21	6-4	225	Norwood, Ohio
77	Jeff Curchin	T	So.	19	6-6	247	Ocala
78	Wayne Johnson	T	So.	20	6-3	230	Macon, Ga.
79	Frank Vohun	T	So.	20	6-3	223	Brooksville
80	Doug Gurr	DE	Jr.	20	6-2	195	Albany, Ga.
81	Jim Tyson	E	So.	19	6-1	188	Pahokee
82	Lane Fenner	FL	Sr.	21	6-5	202	Evansville, Ind.
84	Thurston Taylor	E	Sr.	21	6-2	222	Atlanta, Ga.
85	Chip Glass	FB	Jr.	20	6-4	225	Tampa
86	Floyd Ratliff	DE	So.	19	6-4	195	Jesup, Ga.
87	Randy Hall	E	So.	19	6-4	187	Homestead
88	Bill Yeldell	E	So.	20	6-1	190	Jacksonville
88	Jerry Jones	DE	Sr.	22	6-1	193	Jesup, Ga.
89	Bob Menendez	DE	Sr.	22	5-10	195	Key West

1967 VIRGINIA TECH ROSTER

No.	Name	Pos.	Class	Age	Hgt.	Wgt.	Hometown
10	Frank Loria	SAF	Sr.	20	5-9	175	Clarksburg, W. Va.
11	Al Kincaid	QB	So.	20	5-11	182	Tuscaloosa, Ala.
12	Eddy Barker	QB	Jr.	20	6-0	181	Paducah, Ky.
13	Gil Schwabe	QB	So.	19	6-0	191	Roosevelt, N. Y.
14	Randy Treadwell	DHB	Jr.	20	5-10	178	Bristol, Tenn.
15	Bill Skinner	QB	Jr.	21	6-1	181	Williamsburg, Va.
20	Dickie Lingerbeam	HB	Jr.	22	6-0	195	Berryville, Va.
23	Jon Utin	PK	Sr.	25	5-9	153	Oxford, England
24	Ron Davidson	DHB	Jr.	21	5-10	170	Marlton, N. J.
25	Frank Beamer	DHB	Jr.	20	5-9	170	Hillsville, Va.
26	Hank Immel	HB	So.	21	5-9	175	Alexandria, Va.
27	Wayne Rash	QB	Jr.	22	5-10	178	Richmond, Va.
30	Emil Sholtis	FB	So.	18	5-11	187	Swoyersville, Pa.
31	Pete Wrann	LB	Sr.	23	6-0	198	Vienna, Va.
32	Rick Piland	FB	Jr.	21	6-2	229	Williamsburg, Va.
33	Ken Edwards	LB	So.	19	6-1	201	Radford, Va.
34	Geo. Constantinides	HB	Jr.	20	5-10	228	Chesapeake, Va.
35	Fred Mooney	LB	So.	20	5-11	176	Annapdale, Va.
36	Doug Gainous	DG	So.	20	6-1	210	Richmond, Va.
41	Clarence Culpepper	LB	Sr.	21	6-0	190	Birmingham, Ala.
43	Jimmy Richards	DHB	Sr.	20	6-1	173	Charleston, W. Va.
44	Terry Smoot	HB	So.	20	6-0	196	Charlotte, N. C.
45	Bert Henderson	HB	So.	21	6-3	218	Crittenden, Va.
50	Eddie Carter	C	Jr.	20	6-2	202	Staunton, Va.
51	Scott Dawson	C	Sr.	20	6-3	207	Ft. Walton, Fla.
52	Milt Miller	OG	Sr.	22	5-11	206	Louisville, Ky.
55	Mike Widger	C-LB	So.	19	6-0	190	Pennsville, N. J.
56	Pete Dawyot	DT	So.	19	6-4	215	Syosset, N. Y.
57	Chalkie Eades	DG	So.	20	6-0	192	Richmond, Va.
58	Lee Stonesifer	OG	So.	20	6-1	205	Staunton, Va.
60	Jud Bigelow	OG	Sr.	22	6-1	196	Bethesda, Md.
61	Bob Griffith	OG-C	Sr.	23	5-11	204	Louisville, Ky.
62	Preston Blackburn	OT	So.	19	6-0	202	Dover, N. J.
63	Larry Creekmore	DG	So.	19	5-10	207	Chesapeake, Va.
64	Richard Mallo	OT	Sr.	23	5-9	200	Cedarhurst, N. Y.
65	Art Aguilar	OT	Jr.	21	5-11	219	Springfield, Va.
66	Len Luongo	OT	Jr.	20	5-10	225	Belleville, N. J.
67	Don Thacker	DG	Sr.	21	6-0	212	Charlottesville
68	Damon Dedo	OG-T	Sr.	20	5-11	206	Rifflon, Pa.
69	Chet Forrester	OG	So.	20	6-1	235	Portsmouth, Va.
70	Jim Harvey	DT	Jr.	20	6-4	260	Richmond, Va.
71	John Maxwell	OT	Jr.	20	6-4	240	Alexandria, Va.
72	Larry Strager	DT	So.	19	6-1	200	Cambridge, O.
73	Jeff Haynes	DT	Sr.	21	6-1	232	Princeton, W. Va.
74	Steve Bocko	DT	So.	20	5-10	199	Louisville, Ky.
75	Paul Ripley	DT	So.	19	5-10	212	Roanoke, Va.
76	Jerry Green	OT	So.	20	6-4	225	Alexandria, Va.
77	Tom Swords	OT	Jr.	21	6-2	220	Charleston, W. Va.
77x	Jerry Boykin	DE	So.	19	6-1	202	New Bern, N. C.
78	Tom Parks	DE	So.	20	6-2	193	Valley Stream, N. Y.
80	Joe Tucker	DE	So.	20	6-5	191	Greenville, Tenn.
81	Ken Barefoot	OE	Sr.	21	6-4	228	Chesapeake, Va.
82	Jud Brownell	DE	Jr.	21	6-0	197	Kingsport, Tenn.
83	Dee Crigger	OE	So.	21	6-0	197	Virginia Beach, Va.
85	Danny Cupp	OE	Jr.	20	6-1	207	Blacksburg, Va.
86	George Foussekis	DE	DE	22	5-11	202	Charlottesville
87	Gene Fisher	OE	Sr.	21	6-3	218	Winchester, Va.
88	Dan Mooney	OE	Sr.	22	6-2	200	Annapdale, Va.
89	Bobby Slaughter	OE	So.	20	6-3	184	Roanoke, Va.
90	Chris Collis	DE	So.	21	6-2	194	Fairfax, Va.

- RCA COLOR TV IN ROOMS
- POOL
- Northwest corner of Campus on U.S. 90; Fla. 20 West



DRIFTWOOD MOTEL and RESTAURANT

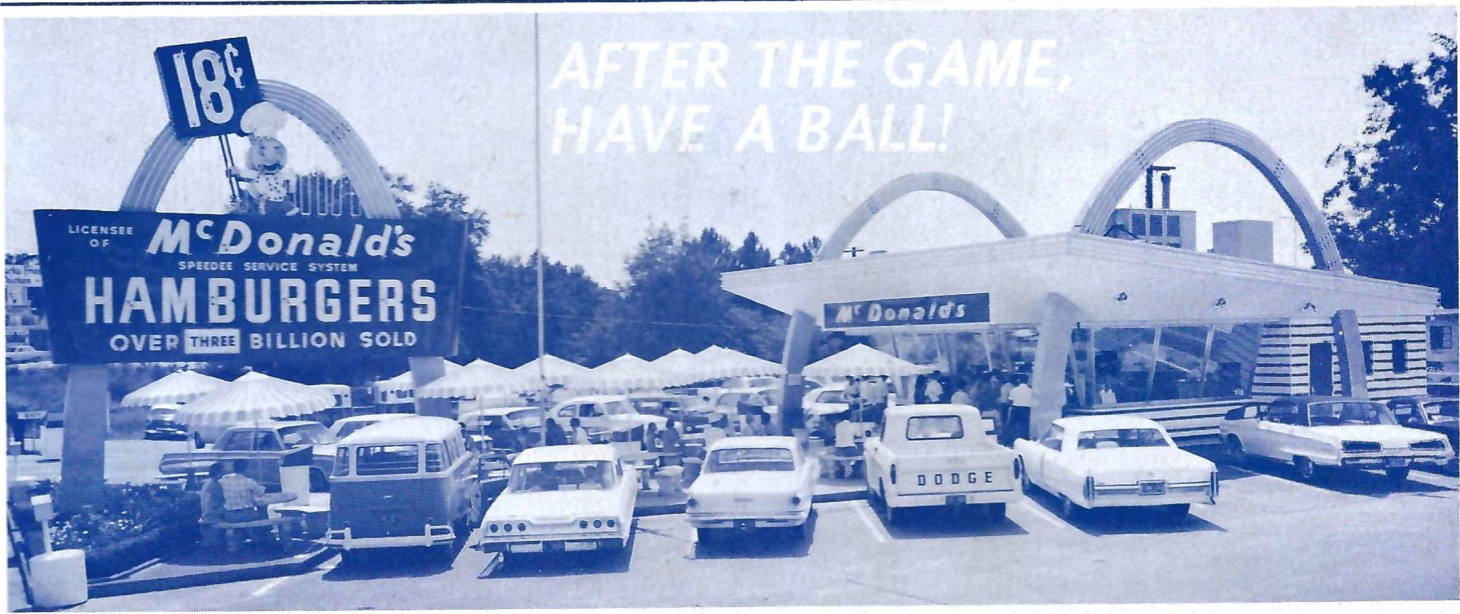
AMERICAN EXPRESS - DINERS - AMERICAN OIL CREDIT CARDS HONORED

- AIR CONDITIONED
- DIRECT DIAL PHONES
- Se habla Espanol

1402 W. TENN. U.S. 90

(904) 224-4174 (TWX904) 224-6510

AFTER THE GAME,
HAVE A BALL!



MENU

WORLD'S MOST DELICIOUS HAMBURGERS
CHEESEBURGERS WITH MELTED CHEDDAR
DOUBLE HAMBURGERS & CHEESEBURGERS
DEEP SEA FILET 'O FISH SANDWICHES
FRESH IDAHO FRENCH FRIES • COFFEE
COKES • ROOT BEER • ORANGE • MILK
CREAMY MILK SHAKES (THREE FLAVORS)
HOT CHOCOLATE (WINTER) • APPLE PIE

McDonald's



1701 WEST TENNESSEE STREET (HWY. 90) NEAR SEMINOLE COUNTRY

THE CLOSEST THING TO HOME • LOOK FOR THE GOLDEN ARCHES

Tallahassee's Most Exclusive
Steak House

the *Silver Slipper*



RESTAURANT



DELICIOUS CHARCOAL BROILED STEAKS

SEA FOODS CHICKEN

25 PRIVATE DINING ROOMS — BANQUET ROOM SEATING 100

CALL JIMMIE OR CHRIS
KALFAS FOR RESERVATIONS
FOR PRIVATE PARTIES
AND BANQUETS

224-1266

OPEN 5 P.M. TILL 11:30
OPEN EVERYDAY & SUNDAY

2000 S. MONROE • One Mile From Capitol On So. Monroe St. U.S. 319 S.
BEHIND S.&S. PACKAGE STORE

"Bill
the
Bank"
Hilton
Conte Blanche





Foreground: Chevelle SS 396. Camaro SS, top right. Corvette Sting Ray, top left.



Our Sports Department

A look of bold innovation and the feel of competitive excitement set Chevrolet sport models apart from the pack for '68.

Revolutionary styling.

Looking like a dream car come to life, the '68 Corvette Sting Ray is an astonishingly beautiful new sports car. It's nearly seven inches longer and two inches lower. Startling new features include Hide-A-Way windshield wipers concealed beneath a power-operated cowl panel, rear deck spoiler, high-backed bucket seats and push-type door opening buttons.

Great performers, too.

Quieter and smoother riding this year, Chevelle and Camaro,

"The Hugger," offer new sports car-type performance—better handling, big engines. Camaro SS has a bulging striped hood that covers your choice of either a 350- or 396-cubic-inch V8. Chevelle SS 396 for '68 has completely new styling, a wider tread, shorter wheelbase, and a twin-domed hood.

More engine efficiency.

Standard on many models with automatic transmission is an ingenious carburetor heater that gives you increased efficiency in cold weather. Standard, also, is a new GM exhaust emission control.

New ventilation system.

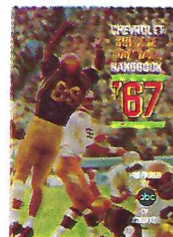
Astro Ventilation, a brand-new system of bringing in outside air, comes on Corvette, Camaro and the Caprice Coupe, and is available on many other models.

Proved safety features.

All Chevrolet safety features are continued and you get many new ones such as energy-absorbing front seat backs and side marker lights for '68. Be smart. Be sure. Buy now at your Chevrolet dealer's.

Free!

Get Chevrolet's 60-page College Football Handbook



Chevrolet's College Football Handbook contains a complete rundown on all the top teams, plus action photographs and inside looks by famous sports commentators. You'll also find the schedules and line-ups of all 33 NCAA games to be televised this fall. It's yours for the asking at your Chevrolet dealer's.

'68 Chevrolets

