

MARYLAND-FLORIDA STATE

SEPTEMBER 21, 1968

SEVENTY-FIVE CENTS





*Welcome to the
University of Maryland
football fans from the*

Leedo
Restaurant

2420 University Blvd., Hyattsville, Maryland
(1/4 mile from the stadium)

Enjoy our fine foods & your favorite beverages after the game

If you've been known to daydream . . . don't read the following. These are the wide-awake facts about Metropolitan Washington's newest mood restaurant—**THE FIRESIDE**. • Succulent aged beef, charcoaled fired to an exact tenderness. • Attentive waitress who will help you select a wine or be more than happy to bring you that second cup of coffee. • Unmatched juicy Prime Ribs of Beef; superb thick cuts of Sirloin; flavor sealed Filets; famous Maryland Fried Chicken; Lobster Tail Supreme and other in-season specialties. • Early American decor with walnut panels and a blending of shimmering candlelight. • Your favorite before or after dinner drinks, of course. Including Wine/Beer and Liquor. • Banquet facilities available. • Stop dreaming and see for yourself . . . The Fireside Beef House, open seven days a week from 11 a.m. until 12 midnight.



The **FIRESIDE** Beef House

Greenbelt Road between Route #1 (Balto-Washington Boulevard) and Kenilworth Avenue.
Just across from the Beltway Plaza, Berwyn Heights, Maryland. GR 4-1755

**Bob Ward
speaks out**



**Maryland
Football**
WITH
Bob Ward

Coach Ward and WMAL-TV sportscaster Mal Campbell preview and review each Maryland game. See close-up films of the most exciting plays . . . interviews with coaches and players.

IN COLOR
12:00-12:30 PM SUNDAY

wmal-tv 7^{abc}

**Speak out to
Bob Ward**



**Maryland
Football**
WITH
Bob Ward

WMAL-Radio sportscaster Mal Campbell and coach Bob Ward discuss college football; the Maryland Team and its opponents in the Atlantic Coast Conference. They will also answer questions telephoned in by listeners.

WEDNESDAYS 7:05-7:30 PM

wmal-radio 63

OFFICIAL PROGRAM

MARYLAND-FLORIDA STATE

COLLEGE PARK, MD. SEPTEMBER 21, 1968

TABLE OF CONTENTS

Your Host, The University of Maryland	4	ACC Comments	26
Director of Athletics & Athletic Council	6	Campus Spotlight	28
Head Coach & Coaching Staff	8	Statistics of the Week	30-31
Coaches' Biographies	10	Maryland Alphabetical Roster	32
Athletic Department Staff Members	14	Numerical Rosters	34-35
Coaches' Records	15	Visitors Alphabetical Roster	37
Terp All-Americans	16	Visiting Players	39
Introducing The Visitors	18	Atlantic Coast Conference Officials	46
Visiting Team Coaches	20	Maryland Players	49
Next Home Game	22	The Terrapin Club Officers	64
Md. Opponents' Schedule	24	Referee's Signals	66
		The M Club Board of Governors	68

Cover Photo By Bill Clark

Price 75 Cents

Est. Price .72
State Tax .03

ABOUT TODAY'S GAME

By Bill Dismer
Maryland's Sports Information Director

A new season with new hopes and new faces: that's the situation for Maryland football fans eager for their team to start the "year of the comeback" as head coach Bob Ward starts his second season at the helm and throws his first recruits into the opening game against a Florida State team rated among the Nation's Top Twenty.

Co-champions of the 1968 Gator Bowl by tying Penn State, 17-17, Florida State has 35 lettermen returning from a team which finished 7-2-2 last season. The other tie was with mighty Alabama, 37-37, in the season's second game. And, although the Seminoles have lost their top quarterback, they are reputed to have their best defensive team in history . . . and Ron Sellers!

Sellers is the young man who was the flanker on the all-America teams last year and is tabbed by veteran coach Bill Peterson as "the best receiver I've ever seen." Last year Sellers broke all but two of FSU receiving records. In two years, Sellers has caught 145 passes for 2,407 yards. He'll bear watching this afternoon.

Maryland's hopes for getting back on the victory trail depend primarily on quarterback Alan Pastrana who set an Atlantic Coast Conference record with 17 touchdown passes two years ago but who missed last season as the result of a knee operation. But Pastrana looked great in spring drills and seems ready to again flash the form which saw his passes account for 1,499 yards—a new Maryland passing yardage record—in 1966.

What's more, Pastrana appears to have an ample number of receivers available as the Terps open their season. One who could be the best hasn't played football for five years. That, of course, is Roland Merritt, the fastest track man in the ACC who volunteered his services to Coach Ward the week before pre-season drills began. Merritt won his conference 100-yard title with a 9.4 time and the 220 in 20.8. Used as a flanker, he could be the answer to yesteryear's problem: the lack of a breakaway receiver.

Among the top sophs to watch will be two in-state products: Al Thomas 6-1, 190-pound tailback from Surrattsville, and Tony Greene, 5-9, 160-pound flanker from Gaithersburg. Both are fast and shifty. The yearling class also has produced three promising linemen: offensive tackle Rich Slaninka 6-2, 260; offensive guard Bill Meister (6-1, 220) and defensive middle guard Pete Mattia (5-11, 205). And among the linebacking corps is Dean Landolt, an area product from Bullis.

Florida State and Maryland have met only once on the gridiron, the Seminoles winning the season's finale, 45-21, in 1966 at Tallahassee.

All Terp fans are hoping today will be the start of their first winning season since 1962.

OFFICIAL WATCH FOR THIS GAME



LONGINES THE WORLD'S MOST HONORED WATCH®

10 world's fair grand prizes
28 gold medals



Longines watches are recognized as OFFICIAL for timing world championships and Olympic sports in all fields throughout the world.



Longines Ultra-Chron #8205, automatic with calendar, \$175.
Other Ultra-Chron Models, \$115 to \$595.

the fabulous, new LONGINES ULTRA-CHRON®

Guaranteed Accurate To A Minute A Month*

The ultimate personal chronometer, guaranteed accurate to a minute a month—a mean average of 2 seconds per day. Ultra-Chron tells the date, hour, minute, second. Never needs batteries. Winds automatically while you wear it. All Proof® construction defeats water, dust, shock, magnetism. At Longines-Wittnauer Franchised Jewelers, coast-to-coast.

*Your Longines-Wittnauer Franchised Jeweler will adjust your Ultra-Chron to this accuracy, if necessary. Guarantee is for one year.

LONGINES-WITRNAUER WATCH CO.
NEW YORK • MONTREAL • GENEVA
Maker of Watches Of The Highest Character
For Over A Century



An Aerial view of the College Park campus. In the foreground is the Memorial Chapel. The grassy, criss-crossed mall in back is surrounded by (from right to left) the agriculture lecture hall, the philosophy and psychology lecture hall, the arts and science building, business and public administration building, McKeldin Library (center), the foreign language building and the botany lecture hall. Byrd Stadium and several high-rise dormitories are in the background.

YOUR HOST,

THE UNIVERSITY OF MARYLAND

The University of Maryland, your host today, has a rich and proud history and a dynamic future.

Three decades after the Declaration of Independence was signed, a College of Medicine was established in Baltimore, the fifth such school in the United States. The first seven students enrolled received their lectures in the homes of their professors.

In 1812, the State Legislature authorized the College of Medicine of Maryland to appoint and annex to itself three other colleges and facilities—Divinity, Law and Arts and Sciences. These four colleges became known as the University of Maryland. In the years that followed the departments of Dentistry and Pharmacy as well as the Training School for Nurses was created within the College of Medicine.

Meanwhile on the old Rossborough Estate, 30 miles

south of Baltimore near Washington, D.C., another institution, the Maryland Agricultural College, was developing.

In 1856, as a result of interest generated by a group of farsighted Maryland farmers, the State Legislature passed an act to establish and endow an agricultural college, making it the second such institution established in the Western Hemisphere. In 1862 the college became a land-grant institution under the act of the United States Congress.

In 1920 the State Legislature passed an act which merged the University of Maryland (Baltimore) with the Maryland State College of Agriculture (College Park). It was given the name University of Maryland.

To meet the growing demands of higher education both the Baltimore and College Park campuses grew in size and diversity.

Two years ago the University of Maryland Baltimore

County campus was opened near Catonsville, Md. This fall nearly 2000 students are enrolled on the 445-acre campus.

Last year another dimension in the University's continuing effort to meet the needs of the state was added—the School of Architecture.

Located on the College Park campus, the School expects to enroll 150 students this fall. Plans are underway for a new building to house the school.

Broadly, the University's program seeks to attain its objective through three main avenues of endeavor. First, through the educational programs at home and abroad; second, through research activities in College Park and in Baltimore and through agricultural programs in various sections of the State; and third, through service to farm groups, commerce and industry.

The University makes available more than 2,000 courses of instruction, ranging through the entire field of human knowledge. More than 1,500 courses are offered at College Park. Courses are offered, through University College, more than 178 centers overseas and 60 centers stateside and are based on those offered at College Park.

The instructional program is carried on through 59 separate departments in the nine colleges at College Park and through 48 departments in the six professional schools in Baltimore. The Department of Air Science conducts a voluntary four year curriculum leading to a commission in the Air Force.

The University offers fourteen different categories of degrees ranging from the B.A. and B.S. to Ph.D.

As President Wilson H. Elkins has pointed out, the University's chief product is its graduates, Maryland educated men and women who contribute to the professional life of their State and nation.

Of all the practicing physicians in the State, more than one in every three is a University of Maryland Medical School graduate.

Approximately 60 percent of the registered pharmacists in the State today are graduates of the University's School of Pharmacy.

In nursing approximately 60 percent of our Nursing School alumni remain in Maryland to serve in their profession.



University students combine textbook learning with practical experience. Here art students put their knowledge of color, lines and design to test. Laboratory classes like this help students apply what they learn in the classroom.

About 75 percent of all the dentists licensed by the Maryland State Board are University of Maryland graduates.

The University's science departments are playing an increasing role in the study of outer space. A new Space Science Building houses scientists of many disciplines who are working on space projects.

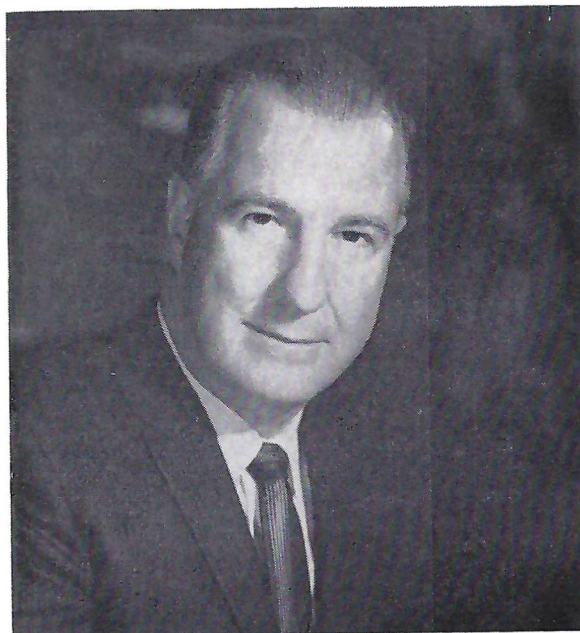
A highly refined cyclotron for study in high energy physics, built with a \$3,000,000 grant from the Atomic Energy Commission, is scheduled to begin operation in January.

Research being undertaken at the University touches virtually every segment of our economy.

Dr. Wilson H. Elkins, President,
University of Maryland



The Honorable Spiro T. Agnew, Governor





WILLIAM W. COBEY
Athletic Director, University of Maryland



The University of Maryland ATHLETIC COUNCIL



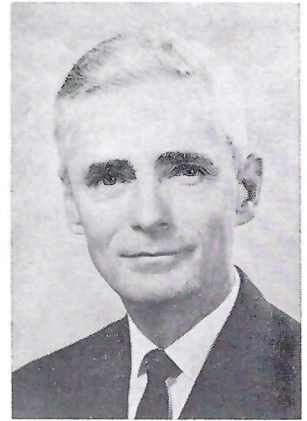
Dr. Jack Faber, Chairman
Head, Dept. of
Microbiology



Dr. Paul P. Traver
Associate Professor
of Music



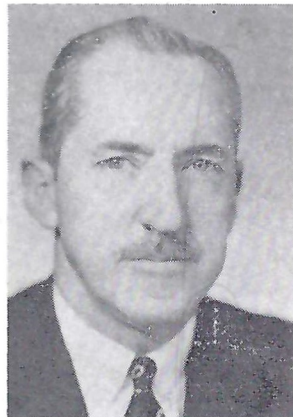
Dr. Robert L. Green
Professor and Head
Agricultural Engineering



Dr. Charles A. Taff
Head, Business
Administration



Warren L. Strausbaugh
Head, Dept. of Speech
and Dramatic Art



Judge Ralph Shure
President Alumni
Association

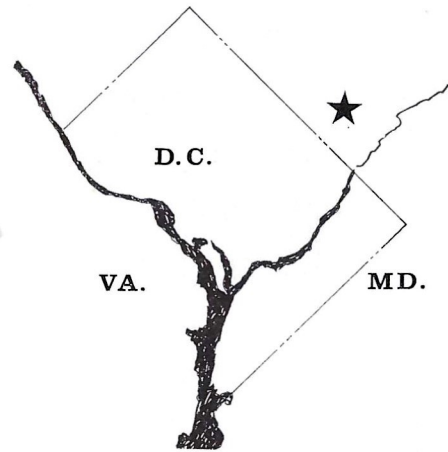


Jerry Fleischer
President Student
Government Association



Dr. Marvin H. Eyler
Head, Dept. of
Physical Education

YOU'RE IN BUICK-OPEL COUNTRY BECAUSE THIS IS **FIELDS** COUNTRY

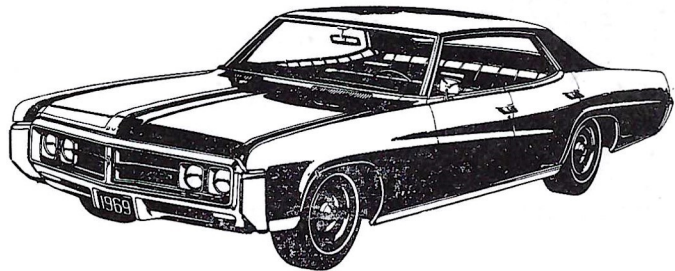


and FIELDS IS AMERICA'S LARGEST OPEL-BUICK DEALER!

You're in the right place to get the best buy on a new Buick or Opel. Why? Because this is Fields country.

Have a Fields' day with Opel. Fields, right here in Hyattsville, is number one in Opel sales for the entire nation. Why? Because we give a better buy!

Have a Fields' day with Buick. Fields, right here in Hyattsville, has the World's Largest Buick Showrooms. You can always see more than 100 new Buicks on display—indoors!



FIELDS BUICK

5323 BALTIMORE AVE., HYATTSVILLE • AP 7-5200

OPEL DIVISION, 5504 BALTIMORE AVE. • UN 4-1446

The Maryland Coaching Staff



ERNIE JORGE



DIM MONTERO



HOWARD JUSTICE



CHUCK STEIMLE



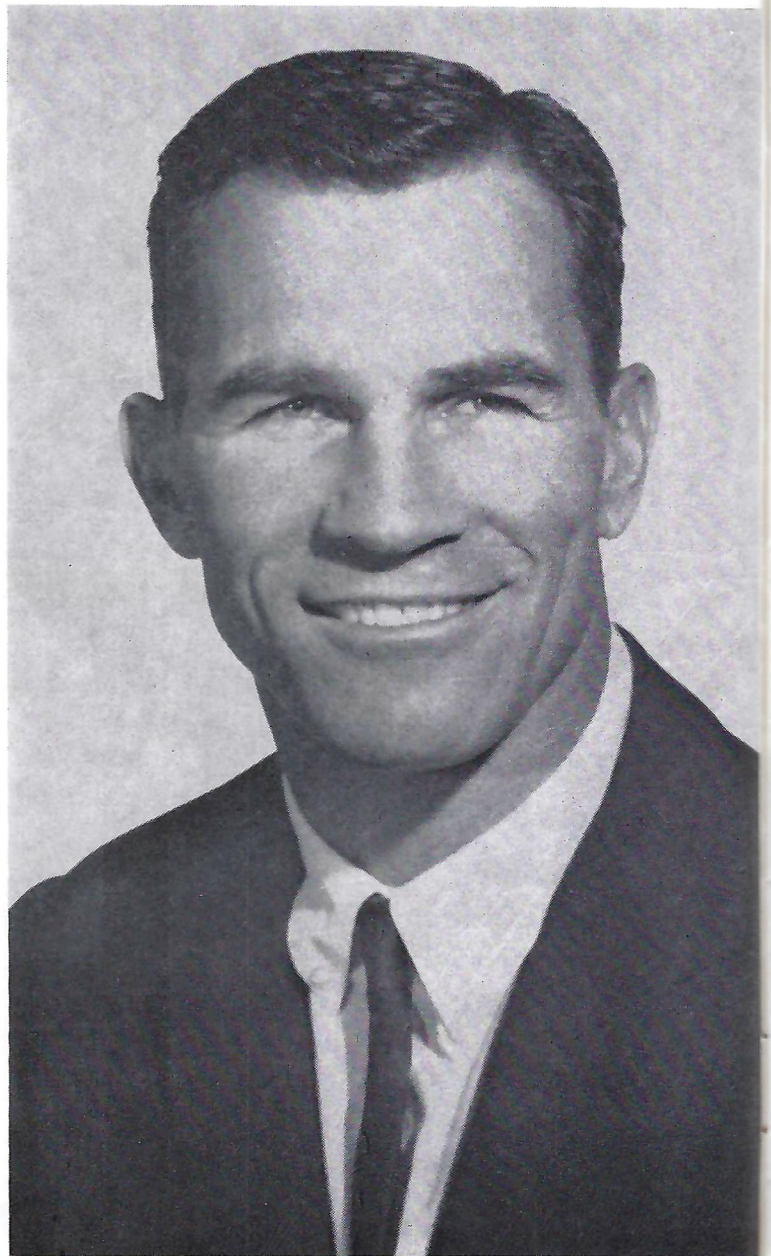
FRED KERN



HARRY DIETZ



LEE ROYER

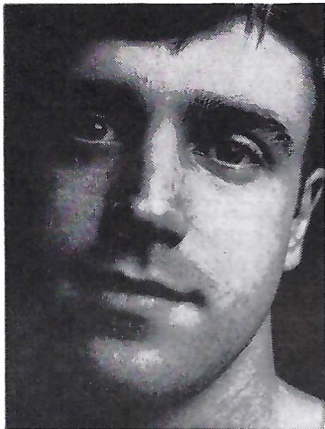


**Head Coach
BOB WARD**

Break your beard in right.

Right now your beard is in the formative stage.

You can shave it with a razor blade like your father does. And each time you do your beard will grow back a little more difficult. Until one day shaving's no longer a chore. It's an agony.



Look no further than your father's face for proof.

But fortunately, you're catching your beard at an early age. You can break it in to be just as shaveable 10 and 20 years from now as it is today.

With a REMINGTON® shaver.

And if you think the kind of shave we're selling won't be close enough for you, you're wrong.

Our new blades are sharper than anything that's been in an electric shaver before. And there's a dial that lets you adjust them for your skin and beard.

What's more, you can dial a REMINGTON electric shaver into a sideburn trimmer.

Admittedly, it costs more to buy our electric shaver than a razor and some blades.

But it's a good investment.

These next few years will determine how you and your beard will get along for the rest of your lives. † SPERRY RAND™ ©1968, SPERRY RAND CORP.



REMINGTON
ELECTRIC SHAVING DIVISION, BRIDGEPORT, CONNECTICUT.

MARYLAND COACHING STAFF



Head Coach Bob Ward

Bob Ward, Maryland's first all-America, never had experienced a losing season as a player and only one in five years as an assistant coach at his alma mater, but last year Fate more than made up for her previous favors.

Although undoubtedly stunned by the 0-9 record of his first year as head coach, Ward has recovered nicely and, although admittedly two or three years away from achieving his primary goals, seems to be on the right road. His first recruits went undefeated as freshmen last year and he's hopeful that this year's crop of schoolboys will be just as potent.

A firm believer in close and personal relationships between players and coaches, Ward realizes that each boy is an individual with a different background, personality and temperament. Proceeding on that theory, he insists that each of his players be handled as an individual. His philosophy seems to be summed up best by this paragraph:

"I feel that when a boy steps on to that Maryland playing field, he wants to develop himself into the best possible player and is willing to work toward that goal. Therefore, I expect him to put forth the necessary effort and determination to become an excellent football player. We expect an all-out effort at all times and, in return, we give our very best as coaches."

It's noteworthy that Maryland suited up more than 100 players for its spring game last May. The University's oldest supporters couldn't remember seeing as many in uniform before, except on a few days during the start of spring or fall workouts.

Ward's actions on behalf of his players substantiate his words. He arranged to have both the varsity and freshmen squads housed in one of Maryland's newest high-rise dorms directly north and overlooking Byrd Stadium. ("It's just like raising a family—you have your family under one roof and good children come from good home environment"). Two assistant coaches, a graduate resident and a trainer live with the athletes. These residents of Ellicott Hall eat in the new and modern Ellicott complex dining hall. The training table is bright and cheerful and maintained under the supervision of a staff food coordinator.

A full-equipped weight room has been provided for the players in the Cole Field House across the road from the stadium. Here are five power racks, four Olympic sets with 375 pounds of weights, incline boards and skip ropes. Ward is a stickler for conditioning: he was an all-American at 185 and retains that weight today.

All of these new facilities are designed to further Ward's chief objective: to raise Maryland to the grid heights it knew just prior to, during and immediately after his days as a player (four bowl teams in eight years and a national champion in 1953).

Ward's honors as a player were many: all-America guard for two years, "lineman of the year" of the Southern Conference, most valuable player in the 1950 Gator Bowl, the Washington Touchdown Club's player of the area in 1951, and the national "lineman of the year" as a senior. He was captain of every team he played on from his high school days through the College All-Stars of 1952. His Maryland jersey number—28—is the only number which ever has been retired by Maryland officials.

During his undergraduate days he also had time for extracurricular campus activities, being vice president of the Maryland Student Government Association, a member of Omicron Delta Kappa (national honorary leadership fraternity), Phi Delta Theta (social fraternity) and a listing in Who's Who In American Colleges and Universities.

Bob's wife, Ellen, attended Iowa State University for two years during their second stay in Ames. They have a family of four consisting of three boys—Jim, 17; Chip, 14, and Kelly, 11, and one daughter, Kathy, 16.

His former positions, in chronological order:

1952-55 Maryland's offensive line coach in regular season play; under Coach Jim Tatum. Two of the four teams were undefeated; two were Orange Bowl teams.

1956 First assistant at Maryland under Coach Tommy Mont.

1957-58 Line coach at Iowa State, '58 team known as "The Dirty Thirty" . . . only two of squad weighed more than 200.

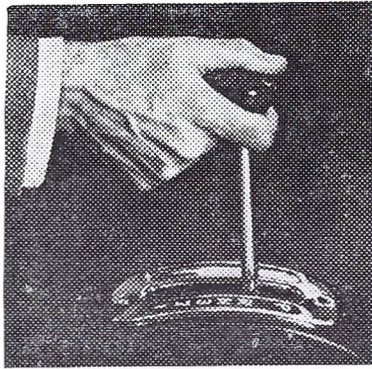
1959-62 Assistant coach at Oklahoma under Bud Wilkinson.

1963-65 First assistant at Iowa State under Coach Clay Stapleton.

1966 Assistant coach, U. S. Military Academy. In charge of defense.

1967 HOME—at MARYLAND!

Volkswagen leaps into the present.



With a fully automatic transmission.

If you bet a friend we never would, we almost didn't.

10 years ago the decision was made. To design a fully automatic transmission. The kind you put in drive and forget.

Our aim was to make things easy, but for us changes aren't easy to make.

Especially in this case. There were certain things we just didn't want to lose.

Like horsepower, and our reputation for being economical.

What we've ended up with is a 3-speed automatic transmission that's pure Volkswagen—designed from scratch to get the most out of the VW with the least expenditure of effort.

It has the fewest moving parts.

It's the lightest per horsepower out-

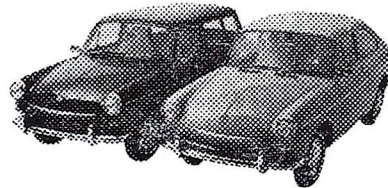
put. And it's incredibly sensitive. (A model airplane engine is powerful enough to turn it.)

So come see how far Volkswagen has come.

The Squareback and Fastback. Both have disk brakes, an electronically controlled fuel injection system, and now, a fully automatic transmission.

If you're interested, it's available as an option on our '69 models.

If you're not interested, we sure went to a lot of trouble for nothing.



Mid-City Sales Corp.
1401 Rhode Island Avenue
Washington, D. C.



UNIVERSITY OF MARYLAND ASSISTANT COACHES

ERNIE JORGE

Will handle the offensive line, is a native of California where he coached after playing at St. Mary's. He has probably the broadest experience in coaching of any of the staff. After participating in three sports—football, baseball and track—at St. Mary's where he captained the grid team in 1937 and received the most loyal player award, Ernie started his coaching career at Modesto (Calif.) High, leading it to three championships during his six years there. He spent the next six years at the College (now University) of the Pacific, the last two as head coach. He twice led the Tigers into the Sun Bowl before accepting an assistant's job with the old Chicago Cardinals of the NFL. After two years with the pros, Jorge joined the Naval Academy's staff at Annapolis and served there 12 years. He and the late Eddie Erdelatz were the closest of friends. While serving with the middies, Navy defeated Army six times in the 12 games played. Two were tied.

Ernie and his wife, Dorothy, have a grown daughter, Mrs. Joanne Wilkins, and one grandchild, Debra Lynn.

DIM MONTERO

Ward's administrative assistant and defensive coach is a man who has had an extremely successful career as high school coach with four undefeated teams at Salesianum, Delaware, marked by winning streaks of 29 and 22 straight victories. Dim not only can coach with the best but has a genuine understanding of young men. His many friends will tell you his qualities run deep. He is an excellent technician and his coaching technique earned him honors as national Catholic coach of the year in 1964. One year he was Delaware's coach-of-the-year.

Before turning to high school ranks, Dim had been head coach at Washington College, King College and an assistant at VMI. He is a graduate of LaSalle ('46) and his wife, Dottiejean, attended Immaculata College in the Philadelphia area. They have three children: Dennis, 18; Diane, 15, and Denise, 13.

HOWARD JUSTICE

Will coach the offensive backs and ends this year, served with head coach Ward at Iowa State where both were assistants. Prior to coaching the Cyclones, Justice had compiled a very impressive record as a high school coach in Iowa, with a 76-26-6 record.

Howard graduated from Simpson College, Iowa, with an A.B. and Masters degree in Education. He lettered in both football and baseball in his undergraduate days.

Howard and his wife, Norma who attended the University of Northern Iowa have one daughter, Vicki, 15, and two sons, Steve, 12, and Craig, 7.

FRED KERN

A Maryland alumnus and formerly a successful high school coach. During his four years at Baltimore's Calvert Hall High School, Kern's teams compiled a 29-9-1 record.

He was an all-state football selection at Baltimore Poly and played both football and lacrosse here at Maryland. His play in the latter sport earned him honorable mention for the all-America squad of 1959.

Freds' wife, Patty, was a Maryland coed. The Kern clan includes Fred 9; Kathy, 8; Joanne, 5; Mary Pat, 2, and Susan, 1.

LEE ROYER

The new addition to the varsity staff this year, came to Maryland from Virginia Tech. His previous experience was at Fort Knox, Chester (Pa.) High, Penn Military College, University of Connecticut and Boston College. A highly-spirited coach, his enthusiasm is infectious and serves to pep up any situation. Lee played his college football at West Chester, winning letters all four years as a fullback and line backer. He served as co-captain of the 1956 team.

Both Lee and his wife, Ruth, are graduates of West Chester State Teachers College. The three small Royers are Jenny, 8; Amy, 6, and Timmy, 2.

"CHUCK" STEIMLE

Iowa State '63—Chuck was an outstanding guard for the Cyclones and lettered for three years at the University. After graduation he played a year of pro ball for Montreal in the Canadian League. In 1965 he returned to I.S.U. to coach the freshman football team. This past year he served as a resident coach in Ellicott Hall and enjoyed a great relationship with the players.

HARRY DIETZ

Joined the Maryland staff this past April as the head Freshman coach. His return to football coaching follows a year's duty in Viet Nam as a captain in the Marine Corps. He formerly served as an assistant coach at the U.S. Naval Academy. In his playing days he quarterbacked the Navy team to an Orange Bowl appearance in 1961.

Harry and Wynne (U. of Arizona) are the parents of one son, Stephen Todd Moss, 2.

ECCI

EQUITABLE CONSTRUCTION COMPANY, INC.

ENGINEERS AND CONTRACTORS

3865 WILSON BLVD., ARLINGTON, VA.
PHONE 524-1135

THOMAS H. MAICHAK, P.E.
PRESIDENT

GEORGE W. GAULT, P.E.
VICE PRESIDENT

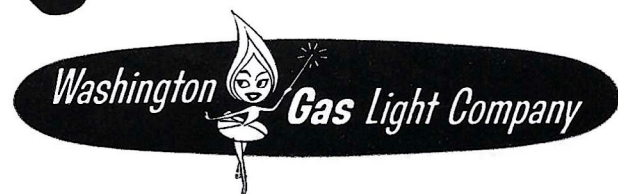
ENGINEERING • COST ANALYSIS • CONSTRUCTION • INSPECTION

If gas air conditioning has fewer moving parts, why does it sometimes cost you more?

“Fewer moving parts” has nothing to do with cost. It means there’s less to break down or go wrong. What CAN make gas air conditioning a little more expensive to install are your individual cooling requirements. When a gas air conditioning expert comes to survey your home you can depend on his judgment. He knows what cooling capacity you’re going to need—and what has to be done to insure perfect comfort for years to come. He may suggest some things that raise the cost a bit. Like altering ducts. Or changing air returns. If he does—listen. Every hot day for years and years you’ll be glad you got all the facts. Call now for reliable advice on air conditioning your home.

CALL FE 3-4500 for a free survey and estimate by a Gas Company expert... or see a qualified gas air conditioning dealer!

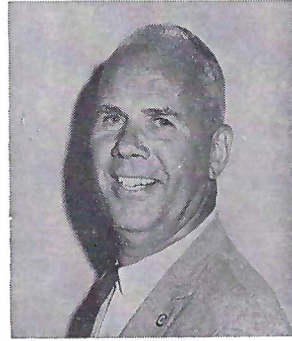
Discover
the newness
of Gas



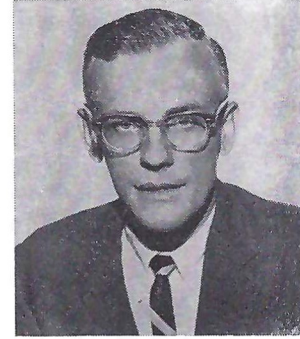
Staff Members of the Department of Intercollegiate Athletics University of Maryland



EDDIE BEAN
Business Manager



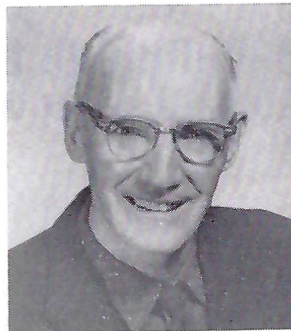
BILL DISMER
Director of Sports Information



BILL "SPIDER" FRY
Head Trainer



CHARLES "LINDY" KEHOE
Head of Facilities



DON HUTCHISON
Equipment Manager



KENNETH METTLER
Assistant Trainer

A. H. SMITH **Branchville, Maryland**

Asphalt
Sand and Gravel
Ready Mixed Concrete

PLANTS:

Branchville, Md. 474-6200
Brandywine, Md. 782-7970

Priest Bridge, Md. 262-1138
Rockville, Md. 424-7714

COACHES' RECORDS

Year	Head Coach	W	L	T
MARYLAND AGGIES				
	W. W. Skinner	0	3	0
	S. H. Harding	6	0	0
	J. G. Bannon	3	3	0
1895	No Team			
1896	Grenville Lewis	6	2	2
	John Lillibridge	2	4	0
	J. F. Kenly	2	5	0
	S. M. Cooke	1	4	0
	F. H. Peters	3	4	1
1901	*E. B. Dunbar	1	7	0
1902	D. John Markey	3	5	2
1903	D. John Markey	7	4	0
1904	D. John Markey	2	4	2
1905	Fred Nielsen	6	4	0
1906	Fred Nielsen	5	3	0
1907	C. G. Church & C. W. Melick	3	6	0
1908	Bill Lang	3	8	0
1909	Barney Cooper & E. P. Larkin	2	5	0
1910	R. Alston	4	3	1
1911	C. F. Donnelly & H. C. Byrd	4	4	2
1912	H. C. Byrd	6	1	1
1913	"	6	3	0
1914	"	5	3	0
1915	"	6	3	0

MARYLAND STATE				
1916	H. C. Byrd	6	2	0
1917	"	4	3	1
1918	"	4	1	1
1919	"	5	4	0

UNIV. OF MARYLAND				
1920	H. C. Byrd	7	2	0
1921	"	3	5	1
1922	"	4	5	1
1923	"	7	2	1
1924	"	3	3	3
1925	"	2	5	1
1926	"	5	4	1
1927	"	4	7	0
1928	"	6	3	1
1929	"	4	4	2
1930	"	7	5	0
1931	"	8	1	1
1932	"	5	6	0
1933	"	3	7	0
1934	"	7	3	0
1935	Frank M. Dobson	7	2	2
1936	"	6	5	0
1937	"	8	2	0
1938	"	2	7	0
1939	"	2	7	0
1940	Jack Faber—Al Heagy— Al Woods	2	6	1
1941	"	3	5	1
1942	Clark Shaughnessy	7	2	0
1943	Clarence Spears	4	5	0
1944	"	1	7	1
1945	Paul Bear Bryant	6	2	1
1946	Clark Shaughnessy	3	6	0
a-1947	Jim Tatum	7	2	2
1948	"	6	4	0
b-1949	"	9	1	0
1950	"	7	2	1
c-1951	"	10	0	0
1952	"	7	2	0
d-1953	"	10	1	0
1954	"	7	2	1
e-1955	"	10	1	0
1956	Tommy Mont	2	7	1
1957	"	5	5	0
1958	"	4	6	0
1959	Tom Nugent	5	5	0
1960	"	6	4	0
1961	"	7	3	0
1962	"	6	4	0
1963	"	3	7	0
1964	"	5	5	0
1965	"	4	6	0
1966	Lou Saban	4	6	0
1967	Bob Ward	0	9	0
75-Year TOTALS		355	298	36

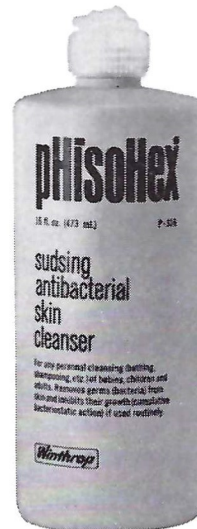
- a-Gator Bowl CoChampion, Tied Georgia, 20-20
- b-Gator Bowl Champion, Defeated Missouri, 20-7
- c-Sugar Bowl Champion, Defeated Tennessee, 28-13
- d-National Champion, Orange Bowl runnerup, Lost to Oklahoma, 0-7
- e-Orange Bowl runnerup, Lost to Oklahoma, 6-20

*Captains who coached.



We're proud...

that pHisoHex® has been selected as the antibacterial wash to be used by the U.S. Team for the 1968 Olympic Games!



A winning athlete takes special care of his skin. Above all, he protects it against bacteria that can cause infections and lead to missed practice sessions and games.

If you've ever tried to play with an infected blister on your heel or an abscess on your finger, then you know the role of healthy skin in sports. And that's why pHisoHex is an important part of an athlete's daily health routine. pHisoHex is America's leading liquid antibacterial skin cleanser in homes and in hospitals. Used regularly in place of soap, pHisoHex produces a superclean skin and builds up an invisible antibacterial film of hexa-

chlorophene to protect your skin against germs between washings.

And if you have problem skin, pHisoHex is often valuable. The antibacterial film it leaves on your face will ward off blemish-infecting bacteria. pHisoHex also helps to soften and wash away blackheads.

Use pHisoHex, the skin cleanser of winning athletes.

Made by Winthrop Laboratories, 90 Park Avenue, New York, N.Y. 10016. Available in drugstores in 5 oz. and 16 oz. plastic squeeze bottles.



Winthrop Laboratories, New York, N.Y. 10016

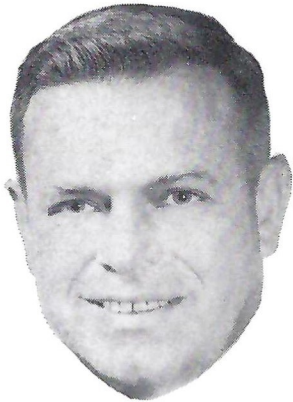
TERP ALL-AMERICA PLAYERS



Suburban Washington's
Famous Resort Motel
WASHINGTONIAN
COUNTRY CLUB & MOTEL
Gaithersburg, Md.

- 1923—W. Supplee, End—Second Team, AP
- 1928—Gerald Snyder, Fullback—Second Team, AP
- 1931—Jess Krajcovic, Guard—Honorable Mention, AP
- 1934—Norwood Sathoron, Fullback—Honorable Mention, AP
Vic Willis, End—Honorable Mention, AP
Bill Guckeyson, Halfback—Honorable Mention, AP
Ed Minion, Tackle—Honorable Mention, AP
- 1935—Bill Guckeyson, Halfback—Honorable Mention, AP
Vic Willis, End—Honorable Mention, AP
- 1936—Bill Guckeyson, Halfback—Honorable Mention, AP
- 1937—Jim Meade, Halfback—Honorable Mention, AP
- 1940—Bob Smith, Center—Honorable Mention, AP
Ralph Albavano, Tackle—Honorable Mention, AP
- 1942—Tommy Mont, Quarterback—Honorable Mention, AP
Paul Flick, Center—Honorable Mention, AP
- 1947—Lou Gambino, Halfback—Honorable Mention, AP
Gene Kinney, Center—Honorable Mention, AP
- 1948—Ray Krouse, Tackle—Honorable Mention, AP, UP
Elmer Wingate, End—Honorable Mention, UP
- 1949—Ray Krouse, Tackle—Second Team, AP
- 1950—Bob Ward, Guard—First Team, AP, Look, NEA, Gridiron, All-Players, Colliers
Second Team, UP, INS, The Quarterback
Ed Modzelewski, Fullback—Honorable Mention, AP, UP
- 1951—Bob Ward, Guard—UNANIMOUS First Teams
Dick Modzelewski, Tackle—First Team, All Players; Second Team, AP; Third Team, UP
Ed Modzelewski, Fullback—First and Second Teams
Jack Scarbath, Quarterback—Honorable Mention, AP, All-Players
Tom Cosgrove, Center—Honorable Mention, AP, All-Players
Dave Cianelli, Fullback—Honorable Mention, AP
Joe Petruzzo, Halfback—Honorable Mention, AP
- 1952—Jack Scarbath, Quarterback—UNANIMOUS First Teams
Dick Modzelewski, Tackle—UNANIMOUS First Teams
Tom Cosgrove, Center—Second Team, All-Players
Stan Jones, Tackle—Honorable Mention, All-Players
- 1953—Stan Jones, Tackle—UNANIMOUS First Teams
Bernie Faloney, Quarterback—Eight First Teams, All Second Teams
Chester Hanulak, Halfback—Second Team, INS; Honorable Mention, AP, UP, NEA
Ralph Felton, Fullback—Honorable Mention, AP, UP, NEA
Bill Walker, End—Honorable Mention, UP
John Irvine, Center—Honorable Mention, UP
Bob Morgan, Tackle—Honorable Mention, UP
- 1954—Dick Bielski, Fullback—Third Team, All-Players; Honorable Mention, AP, UP
Ronnie Waller, Halfback—Honorable Mention, AP, UP
Jack Bowersox, Guard—First Team, Gridiron Index; Honorable Mention, AP, UP
John Irvine, Center—Honorable Mention, UP
Bill Walker, End—Second Team, AP; Honorable Mention, UP
Bob Pellegrini, Guard—Honorable Mention, UP
George Palahunik, Guard—Honorable Mention, UP
- 1955—Bob Pellegrini, Center—UNANIMOUS First Teams
Ed Vereb, Halfback—First Team, Movietone News, N. Y. Daily News, Extension; Second Team, INS; Third Team, AP, UP, Sporting News
Mike Sandusky, Tackle—First Team, Sporting News, Extension; Second Team, UP, NEA, N. Y. Daily News; Honorable Mention, AP
Jack Davis, Guard—Honorable Mention, AP, UP, NEA
Frank Tamburello, Quarterback—First Team, Movietone News; Honorable Mention, AP, UP, NEA
Bill Walker, End—Second Team, UP, Sporting News; Honorable Mention, NEA
Russell Dennis, End—First Team, N. Y. Daily News
Ed Heuring, Tackle—Honorable Mention, AP, UP
- 1956—Mike Sandusky, Tackle—Honorable Mention, AP, UP, INS, NEA
Jack Davis, Guard—Honorable Mention, AP, UP, INS, NEA
Gene Alderton, Center—Honorable Mention, AP, UP
- 1957—Rod Breedlove, Guard—Honorable Mention, AP, UP, NEA, Sporting News
Ed Cooke, End—Honorable Mention, AP, UP, NEA
Gene Alderton, Center—Honorable Mention, AP, NEA
- 1958—Rod Breedlove, Guard—Honorable Mention, AP, UPI, NEA, Sporting News
Fred Cole, Tackle—Honorable Mention, AP, UPI
- 1959—Rod Breedlove, Guard—Honorable Mention, AP, UPI, NEA
Jim Joyce, Fullback—Honorable Mention, AP, NEA
Gary Collins, End—Honorable Mention, AP, UPI
Tom Gunderman, Guard—Honorable Mention, AP, UPI
Kurt Schwarz, Tackle—Honorable Mention, UPI
- 1960—Gary Collins, End—Honorable Mention, AP, UPI
Dale Betty, Quarterback—Honorable Mention, AP
- 1961—Gary Collins, End—First Team, UPI, NEA, American Football Coaches Association, Football Writers Association, Pro Football Scouts; Second Team, AP
Bob Hacker, Center—Honorable Mention, AP, UPI
- 1962—Dick Shiner, Quarterback—Honorable Mention, AP, UPI
Walter Rock, Guard—Honorable Mention, AP, UPI
Roger Shoals, Tackle—Honorable Mention, UPI
Tom Brown, Halfback—Honorable Mention, AP

Go Maryland!



Right Here on U.S. #1

BIG BOB BANNING

HAS THE #1 DEAL
ON THE SENSATIONAL NEW

1969 DODGE and PLYMOUTH

- Highest Trades
- Low Bank Financing
- Immediate Delivery
- Area's Largest Service Facilities

BIG BOB BANNING

Over 2 Decades at One Location



5800 BALTIMORE AVE.
HYATTSVILLE, MD.
779-7400

DODGE o PLYMOUTH o VALIANT

Give the

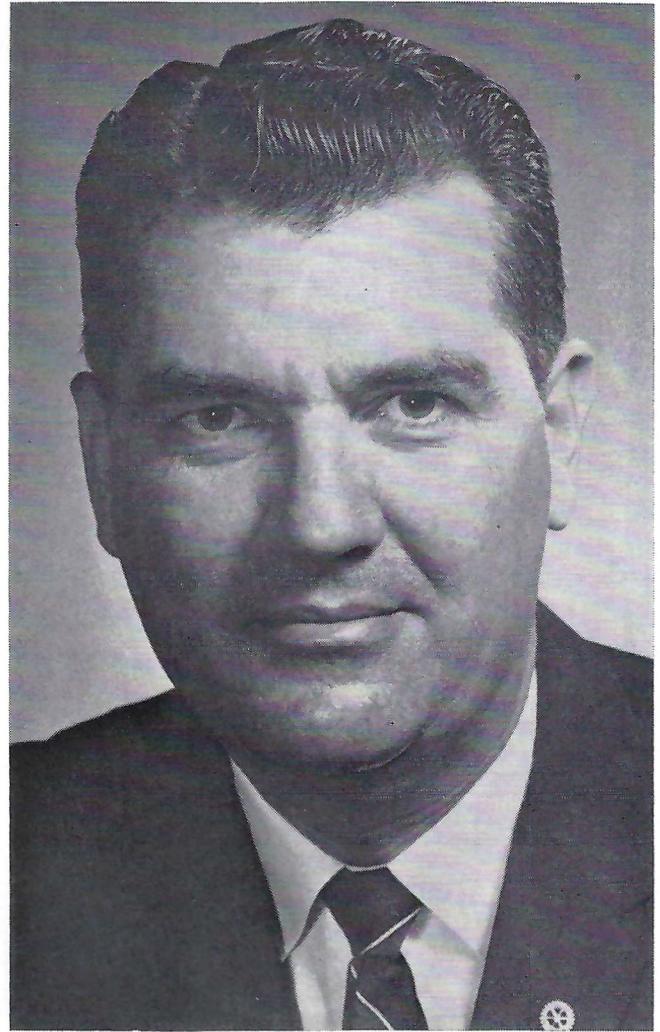
gang

our best.





FLORIDA STATE UNIVERSITY



DR. JOHN E. CHAMPION
President
Florida State University



VAUGHN MANCHA
Athletic Director

Florida state's 41,000 alumni, 16,000 students and a faculty-staff cheering section of more than 3,000 know where the action is going to be this year—in their stadium, their University's classrooms and in the national arena at progress in higher education.

On the football field, in the science laboratory, at professional academic conferences, Florida State's "pro-style" of leadership is fast becoming known throughout the country. Among the rating systems which have brought All-America honors to the campus, in addition to those given in recent years to Seminole football players, are a \$4.8 million incentive grant to the University's programs in chemistry, physics, statistics and psychobiology, awarded by the National Science Foundation last spring, and recent selections of a Noble Prize winner (Dr. Robert S. Mulliken) and one of the nation's first science astronauts (Dr. Anthony Llewellyn) from the University's faculty.

Preparing for the major task of educating some 28,000 students each year by 1975, Florida State is experimenting with new "formations" in its educational scrimmage patterns—testing, innovating, and selecting the most promising methods of making a multi-versity more individually meaningful for all of its students. Faced with a team of

incoming students each year whose academic potential and initiative surpass all previous generations in these characteristics, the University feels it must offer a variety of programs suited to differing student needs. Among the chalkplays being drawn on the University's blackboards are those of a "cluster plan," which groups freshmen in small teams of congenial competition and identical class schedules; a "flex" program which allows students and professors to determine their own courses and class hours; an honors program for scholastically advanced freshmen and sophomores; and a pass-fail option which permits students to explore unfamiliar territories of study outside their major field without damaging their grade averages.

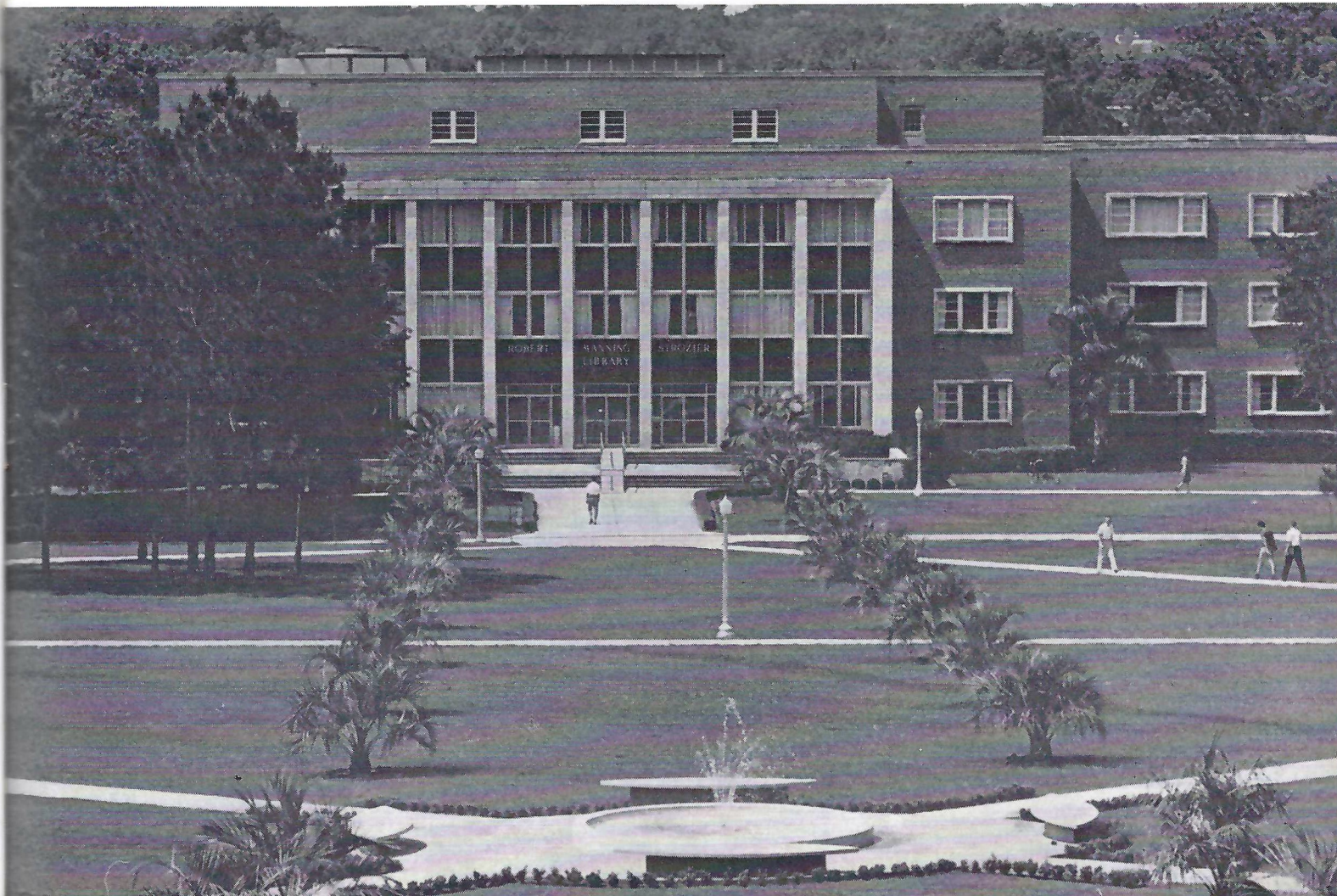
Moving also toward its designated role as a senior university in Florida's system of higher education, Florida State is expanding its research and instruction at the graduate levels as rapidly as funds and facilities permit to ready itself for an expected 7,500 graduate students by 1975. One of the nation's two dozen institutions granting more than 100 doctoral degrees each year, Florida State's responsibilities for advanced, post-graduate research and post doctoral study will play an increasingly important part in its development in the decade ahead.

Founded in 1857, Florida State University sums up its 111th year of public service to higher education with pride and confidence in programs attuned to the needs of the 21st Century. Visitors and alumni will find the excitement of this commitment in each of the University's Colleges and Schools—Arts and Sciences, Education, Home Economics, Music, Engineering Science, Library Science, Law, Business, Nursing and Social Welfare.



Physics Research Building

Strozier Library Florida State University





BILL PETERSON
Head Coach
Florida State University

FLORIDA STATE UNIVERSITY COACHING STAFF

Front row l to r: Bobby Jackson, Gene McDowell, head coach Bill Peterson, Joe Gibbs and Gary Wyant. Standing, l to r: Roy Don Wilson, Doug Hafner, Dan Henning, Al Conover, Bob Harbison and Don Fauls, trainer.



Go to the Games with Humble

There's enjoyment in the game . . . and enjoyment in the going if you stop for "Happy Motoring"® products and service—and the cleanest restrooms ever—at Humble's Esso sign.
Put a Tiger In Your Tank®!



HUMBLE

OIL & REFINING COMPANY
AMERICA'S LEADING ENERGY COMPANY



CONTEE SAND and GRAVEL CO., Inc.

- Sand and Gravel
- Road Gravel
- Bituminous Concrete
- Ready Mixed Concrete
- Asphalt
- Bridge Construction
- Road and Street Construction and Repairs



SILVER SPRING, MD.

Phone:

766-7300

LAUREL, MD.

Phone:

Parkway 5-3333

Scouting The Next Home Game

NORTH CAROLINA

October 12

1:30 P M

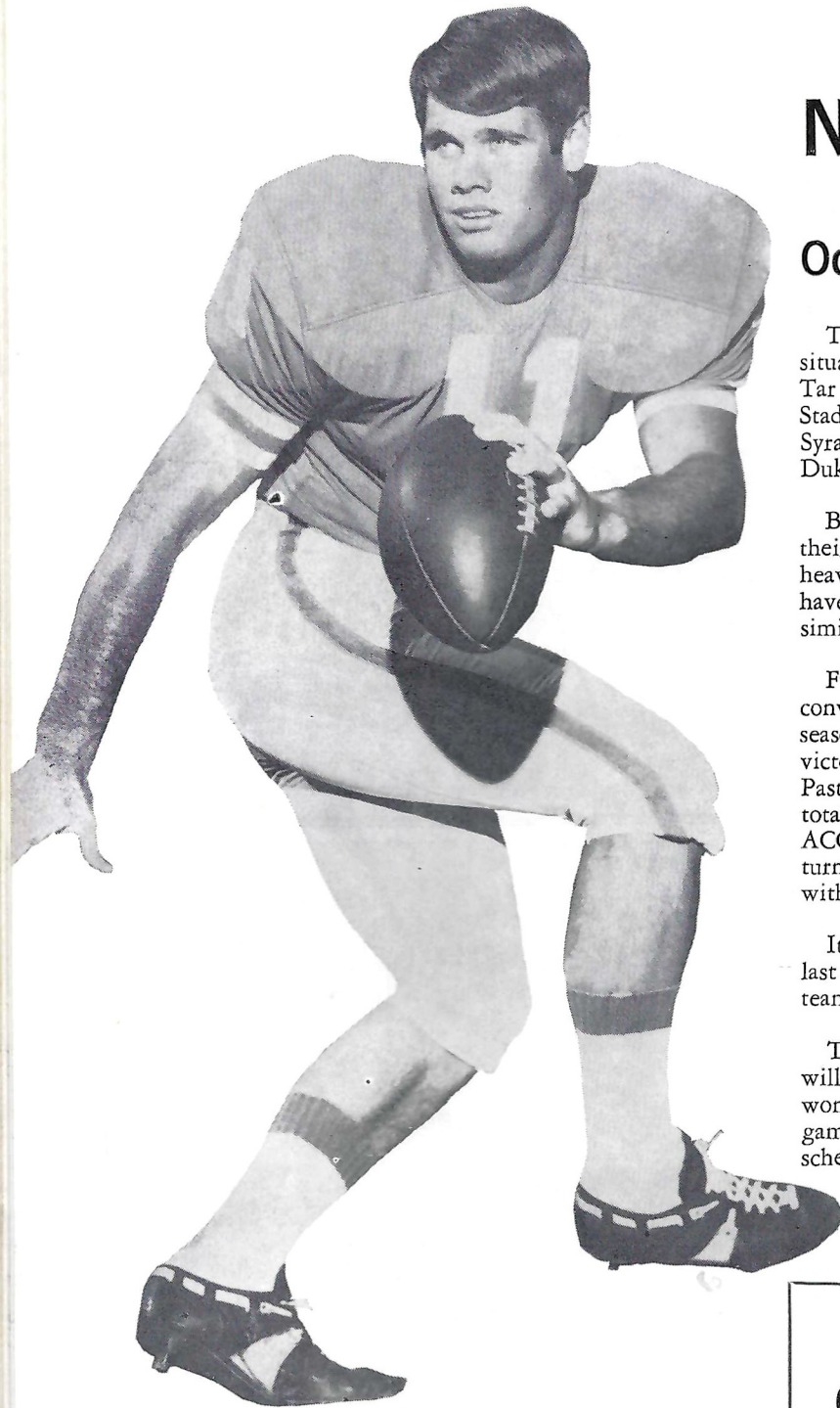
Two Atlantic Coast Conference rivals with more similar situations could hardly be imagined than North Carolina's Tar Heels and Maryland's Terrapins who clash here in Byrd Stadium three weeks from today. (Maryland plays at Syracuse next week and in Norfolk's Oyster Bowl, against Duke, on October 5.)

Both head coaches, Bob Ward and Bill Dooley, are in their second seasons as head coaches. Both are depending heavily on sophomores, their first recruits. And both schools have experienced three losing seasons in a row following similar break-even records in 1964.

Further, each has a fine senior quarterback who was converted from defensive back after his sophomore season and upon whom chief hopes rest for a return to the victory road. Carolina's Gayle Bomar, like Maryland's Alan Pastrana, was a defensive back in 1966 but last season his total offensive totaled 1,402 yards, just 17 yards under the ACC's leader, Wake Forest's Freddie Summers. Pastrana, in turn, was the ACC's third leading offensive leader in '66 with a 1,395 yardage figure.

It was Bomar who rushed for 117 yards against Maryland last year and threw the two touchdown passes to pace his team to the 14-0 victory at Chapel Hill.

The Tar Heels have 27 lettermen on the squad which will invade College Park, four less the Terps. Carolina has won the last two games and holds a 19-13 edge in 33 games since 1899. It is the oldest opponent on Maryland's schedule. One contest, in 1950, ended in a 7-7 tie.



GAYLE BOMAR

OLD LINE CONTRACTING CO., INC.

**Road, Street, Sidewalk, Curb and Gutter and
Concrete Construction**

Loader, Grader and Gradall Rental

BELTSVILLE, MARYLAND

474-4335

Wildwood Manor Shopping Center



Old Georgetown Road and Grosvenor Lane and Democracy Boulevard

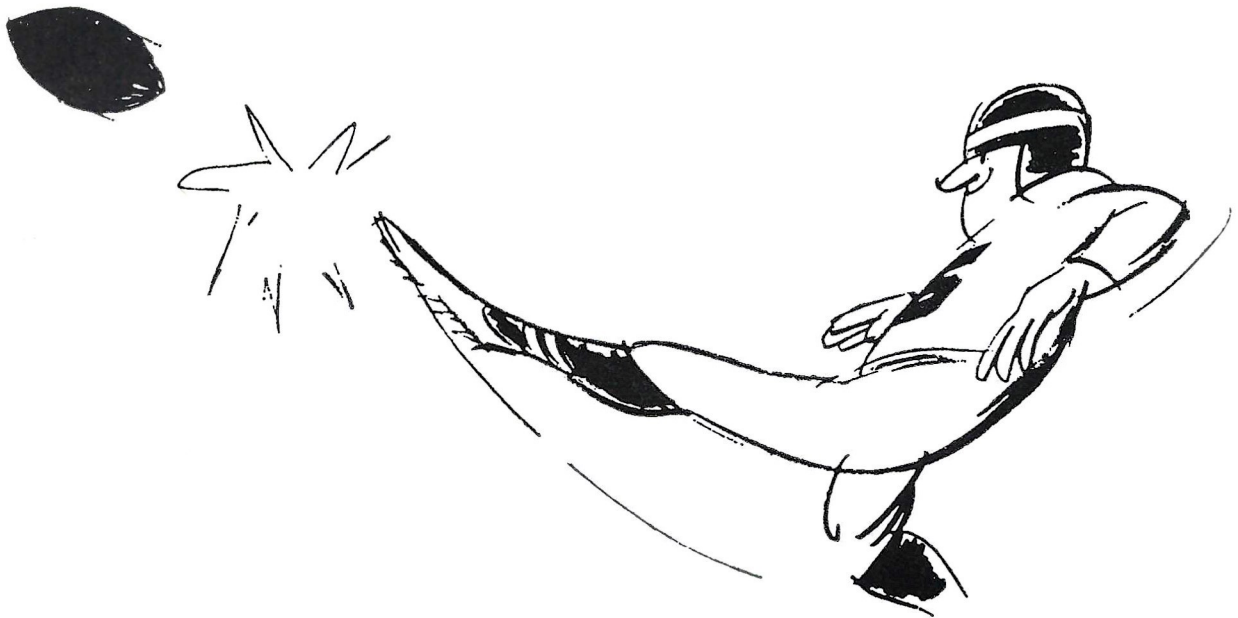
Free Parking for over 800 Cars

**Architects
AUBINOE & BEERY**

**Builder
AUBINOE CONSTRUCTION COMPANY**

BEST WISHES TO THE **BIG 'M'** FOR A SUCCESSFUL SEASON

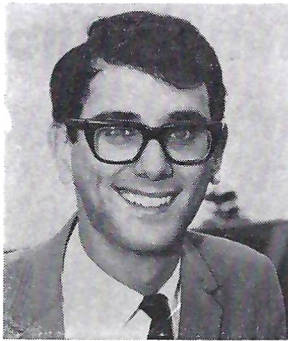
From the MARYLAND & VIRGINIA MILK PRODUCERS' ASSOCIATION
Producers of the World's Highest Quality Milk



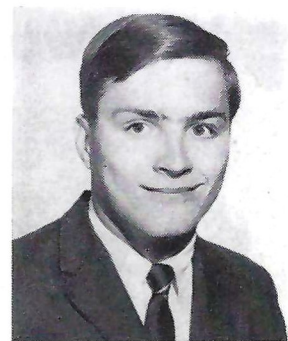
The University of Maryland . . .



BOB STUMPF
Administrative Assistant



LOUIS GERTZ
Football Manager



JOHN BOSTON
Assistant Manager



AND



LIQUOR STORE

Largest Cut-Rate Store in Northeast Washington

KEG BEER

IMPORTED WINES & CORDIALS

3011 RHODE ISLAND AVENUE, N.E.—BETWEEN S. DAKOTA & EASTERN AVE., N.E.

15,000 Square Feet of Free Parking

Open Daily 10:00 A.M. to 9:00 P.M.

Saturdays—10: A.M. to Midnight



Last Stop on R. I. Ave. Leaving D. C.

Phone: LA. 9-2100—LA. 9-2101

We Honor VISA Cards

SCHEDULE OF MARYLAND'S OPPONENTS

DATE	FLORIDA STATE	SYRACUSE	DUKE	NORTH CAROLINA	SOUTH CAROLINA	N.C. STATE	WAKE FOREST	CLEMSON	PENN STATE	VIRGINIA
Sept. 14						At Wake Forest	North Carolina State			
Sept. 21	At Maryland	At Michigan State	At South Carolina (N)	North Carolina State	Duke (N)	At North Carolina	Clemson	At Wake Forest	Navy	At Purdue
Sept. 28	Florida	Maryland	Michigan	South Carolina	At North Carolina	At Oklahoma	Open	At Georgia	Kansas State	V.M.I.
Oct. 5	Texas A&M (N)	U.C.L.A.	MARYLAND At Norfolk, Va.	At Vanderbilt	Georgia (N)	At Southern Methodist	At Minnesota	At Georgia Tech	At West Virginia	Davidson
Oct. 12	Open	Pittsburgh	Virginia	At Maryland	At North Carolina State (N)	South Carolina (N)	At Virginia Tech	Auburn.	At U.C.L.A.	At Duke
Oct. 19	Memphis State (N)	Open	At Clemson	Florida	At Maryland	Virginia	At Purdue	Duke	Open	At North Carolina State
Oct. 26	At South Carolina(N)	At California	At Army	At Wake Forest	Florida State (N)	Maryland	North Carolina	At Alabama	At Boston College	At Navy
Nov. 2	Virginia Tech (N)	At Holy Cross	Georgia Tech	At Air Force	At Virginia	Clemson	Maryland	At North Carolina State	Army	South Carolina
Nov. 9	At Mississippi State	William & Mary	North Carolina State	Virginia	At Wake Forest	At Duke	South Carolina	At Maryland	Miami(Fla.)	At North Carolina
Nov. 16	At North Carolina State	Navy	Wake Forest	At Clemson	Virginia Tech (N)	Florida State	At Duke	North Carolina	At Maryland	Tulane
Nov. 23	Wake Forest	At West Virginia	At North Carolina	Duke	At Clemson		At Florida State	South Carolina	At Pitt	Maryland
Dec. 7	Houston	At Penn State							Syracuse	



9137 BALTIMORE BLVD.
COLLEGE PARK, MD.
5 MINUTES FROM THE STADIUM



MOUTHWATERING, WESTERN CORN FED PRIME RIBS and STEAKS

COCKTAILS 7 DAYS A WEEK

THE FAMOUS

Old Angus

RESTAURANT

TELEPHONE 935-5800

FREE PARKING • CREDIT CARDS HONORED

THE RED FOX LOUNGE COMPLIMENTARY BUFFET

FOR YOUR NEXT FUNCTION
OUR BANQUET ROOMS CAN
ACCOMMODATE FROM
20-200 PERSONS

The George Hyman Construction Co.

ENGINEERS AND CONTRACTORS

WASHINGTON, D. C.

*Builders of the following structures on the College Park campus
of the University of Maryland:*

ENGINEERING CLASSROOM BUILDING

CHEMICAL ENGINEERING BUILDING

CHEMISTRY BUILDING

CUMBERLAND HALL DORMITORY

U. S. BUREAU OF MINES

MEMORIAL CHAPEL

ANIMAL SCIENCES BUILDING

ENGINEERING LABORATORIES

PHYSICS BUILDING

McKELDIN LIBRARY

EASTON HALL DORMITORY

ELKTON HALL DORMITORY

FINE ARTS BUILDING

ADDITIONS TO PHYSICAL
SCIENCES COMPLEX

ACC Comments: *The ACC Football Game I Remember:*

ALAN PASTRANA, Maryland Quarterback: The ACC game I remember most was against North Carolina State on November 5, 1966. Through the first 53 minutes of play the Wolfpack defense completely stopped us. N. C. State had put 24 points on the scoreboard and many of the spectators started to leave. However, with 6:10 left to play in the game, Maryland struck for three touchdown passes of 41, 36 and 56 yards in one minute and 54 seconds. During that 114 seconds we had the ball for four plays and scored on three of them. We lost, 21-24, but the spectators who stayed saw a determined Maryland team trying to come back. (Editor's note: Pastrana was too modest to say that he was the passer who threw those three touchdown passes.)

LARRY DEMPSEY, Duke Safety: I knew we had better beat Carolina or it would be a long winter. We were playing against a lot of boys I had played with in high school and I could just imagine their razzing over Thanksgiving and Christmas vacations. For most of the season I had played behind senior co-captain Mike Shasby at safety. But I knew I wanted to beat Carolina and I probably wasn't as nervous as a sophomore should have been. The interception in the third period which led to our fourth touchdown was a big thrill. It was the first of my college career. Then came the pass I intercepted on the Carolina 26 and ran back for an insurance touchdown. That was even a bigger thrill. And we won the game, the 1966 Duke-Carolina game, 41-25.

TIM BICE, South Carolina Guard: At first, I chose our game with Duke in 1967 because we recovered a fumble for a touchdown on the opening kickoff and then scored with less than a minute remaining in the game to win 21-17, but after thinking it over, I believe our 1967 game with Virginia is most remembered. We were behind 17-0 at half-time and those of us on the defensive unit knew we hadn't played very well. One of Virginia's guards gave me a hard time during the first half. When Pat Watson, our little defensive back, ran a punt back 67 yards in the second half, however, we snapped out of it and began playing better defense. The offense got going, too, and we came back to win, 24-23. And that Virginia guard didn't bother me as much.

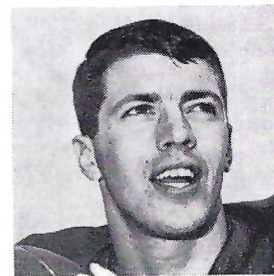
RONNIE DUCWORTH, Clemson End: "I think the Duke game really started us going in 1967, but the one that stands out in my mind the most was the one against N. C. State. State came to Clemson with a national ranking. That was some incentive to use. But we also knew that to stay in the championship race, we had to win. Another overflow crowd came to see us play and the team was determined to send all of the Clemson fans away happy. State had some big, strong, tough blockers in its backfield and sometimes it seemed that two or three of those backs were coming by twice. But we were able to stop them. State is always well-coached and drilled in fundamentals. But on that particular day our execution was enough to win and that's what we went to 'Death Valley' for."

GAYLE BOMAR, North Carolina Quarterback: "Without a doubt, the Duke game of 1967 stands out as the one I remember most. We won that game, 20-9, in a big upset to close out the season on a successful note. The week before that game, I had played probably the worst game of my football career in a dismal loss at the University of Virginia. It was one of those days when nothing seemed to go right. I was determined to prove against Duke that I wasn't all that bad. I was fortunate enough to score the first touchdown and later threw a touchdown pass to Charlie Carr. After that I felt confident we were going to win. Our entire team was charged up that day. My contributions to the victory were small compared to those made by some other members of the Squad."

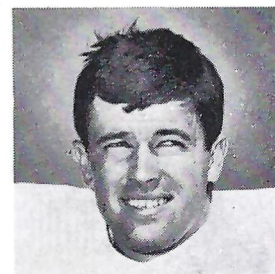
GERALD WARREN, N. C. State Kicker: "The first time you succeed at something is always memorable, so I'd have to say that the North Carolina game last year was the game I remember most. Not only did I kick my first field goal from 44-yards out, but I added another one and an extra point for seven points (State won, 13-7). Anytime you have a hand, or foot, in beating your biggest rival, it has to be memorable. The UNC game proved to Coach (Earle) Edwards that I could do the job. I came to State on a small academic scholarship in chemical engineering. But after those field goals against Carolina, Coach Edwards gave me a full grant-in-aid. Winning both the game and the scholarship against Carolina was the greatest for me."

FRANK QUAYLE, Virginia, Halfback: The ACC game I remember most was the 1966 Clemson game played at Death Valley. We knew that Clemson was the best team we would face all year. They jumped off to an 18-6 lead and things looked hopeless for us but our great quarterback, Bob Davis, scored two touchdowns to give us a 21-18 lead. We scored twice more in the third quarter for a 35-18 lead. The 40,000 Clemson fans in the stands were stunned and silent. But Clemson came back and scored 22 points in the fourth quarter to take a 40-35 lead. We came right back and were marching for another touchdown, but they intercepted one of our passes on their 12. It is the game I remember most and also my biggest disappointment.

DIGIT LAUGHRIDGE, Wake Forest Back: The 1966 game with North Carolina is the one I remember the most because the defense played the major role in the 3-0 victory. We stood at the bridge all the second half, when we didn't have a single play on the Carolina side of the field. I recall that I had 10 or 11 unassisted tackles from my corner back post. The most satisfying action came with only 59 seconds left in the game when Jim Clark and I teamed to stop the Tar Heel back just inches short of a first down with the ball deep in our territory. Winning was enough satisfaction, but the fact I was playing against some old high school teammates made it that much more enjoyable.



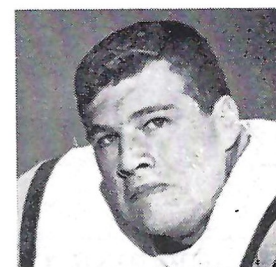
ALAN PASTRANA



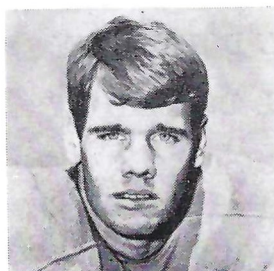
LARRY DEMPSEY



TIM BICE



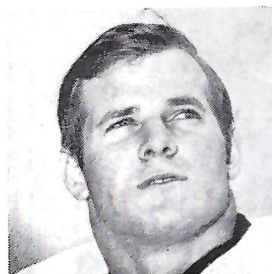
RONNIE DUCWORTH



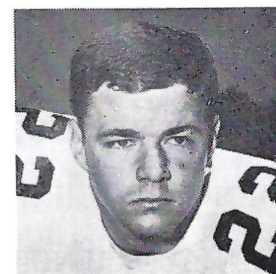
GAYLE BOMAR



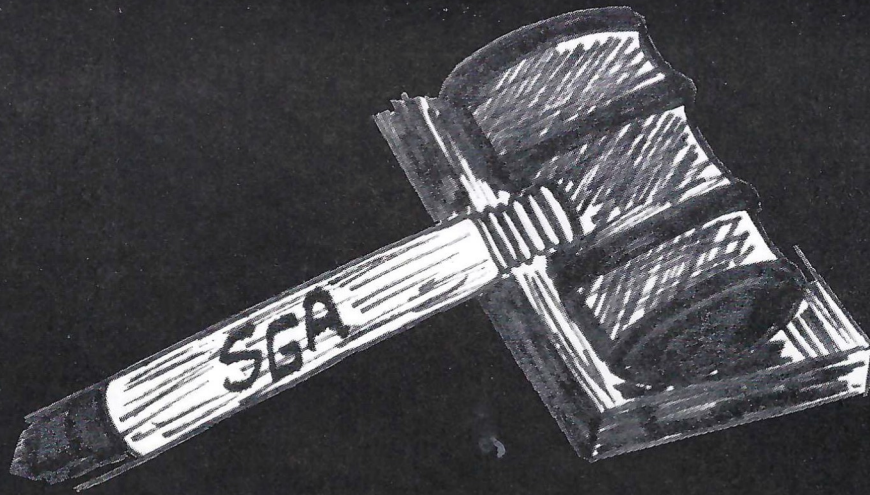
GERALD WARREN



FRANK QUAYLE



DIGIT LAUGHRIDGE



From the members of
**THE STUDENT GOVERNMENT
ASSOCIATION OF
THE UNIVERSITY OF MARYLAND**
1968
"We Support the Terps"

Famous for Delicious Hamburgers

"BUY 'EM BY THE BAG"



LITTLE TAVERN
SHOPS

40 LOCATIONS IN WASHINGTON AND BALTIMORE AREA

GOOD COFFEE • PIES • PASTRIES • SOFT DRINKS

FOR A TASTY BITE... DAY OR NITE... STOP AT A LITTLE TAVERN SHOP!

7413 BALTIMORE BLVD. COLLEGE PARK, MARYLAND

SUMMER

FRESHMAN ORIENTATION...



A GUIDED PLUNGE INTO THE FUTURE

WRITTEN BY:

RON MEININGER

PHOTOS BY:

TONY ANTHONY

OFFICE OF UNIVERSITY RELATIONS

Some college freshmen are content with a small college atmosphere, full of peace and quiet. Many others make the exciting plunge into the big university arena. For these new freshmen, the first days at the University of Maryland in College Park could be a strange, often bewildering experience.

The University of Maryland has solved this problem by laying out the red carpet for its new freshmen. Each summer, thousands of them come to College Park to look, listen, and ask questions like: What courses should I take? What is it like living in a dormitory. How is the food? Should I join a fraternity? Where am I? I think I'm lost.

According to James Tschechtelin, associate director of student activities, 4000 freshmen participated in the summer orientation program this year. Approximately 5250 freshmen began classes this fall at College Park. The program is voluntary and cost a nominal \$10.00 for two days which included food, lodging and miscellaneous expenses.

The summer orientation program emphasizes personal communication and individual assistance. Freshmen were divided into small groups of 20 and led by sponsors, upperclassmen hired by the university for their knowledge of and interest in the university. These sponsors, if carefully questioned, gave candid viewpoints and insights about university life and in addition guided the students and answered standard questions.

One of the biggest advantages of the summer orientation program is registration. Freshmen registered for their fall classes in small groups, filled out forms, paid tuition and had I.D. pictures taken. They weren't part of the roaring crowd of 25,000 that registered during five days in September.

During the two day program, freshmen met their academic advisors, usually college deans and distinguished faculty members, to discuss what courses they should take the first semester. Most freshmen seemed to have general ideas of what field they want to study but were often undecided about a specific major.

A new feature introduced this summer

Phyllis Rosenzweig, of Greenbelt, Md., realizes she will have to fill out the whole form all over again.

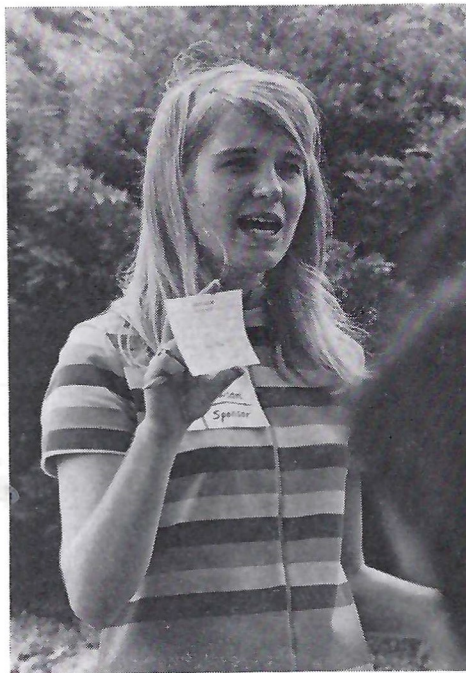


Dr. Peter P. Lejins, professor of sociology at the University of Maryland, served as an advisor for a student interested in a sociology major. Many faculty members and administrative officials devoted a great deal of time to the program to help make it more successful.

was the academic seminar, where freshmen discussed several books assigned them before the orientation program began. Gerry Money Penny, student director for the summer orientation program, said the purpose of the seminar is "self-expression of the individual. We found in previous orientations that we were doing all the talking and lecturing to the students. It is disappointing for them not to be able to express themselves in return."

Typical student reaction to the program ranged from "Why is it so hot" to "I think I'm going to like this place." Actually, students presented some useful suggestions for improving the summer orientation program such as a more extensive library tour. For the most part, students had nothing but praise for the program. In fact, most of them even went so far as to say they wouldn't mind doing it all over again. Now that's saying something.

Dee Poe of Lutherville, Md., examines her new I.D. picture for the first time.



Linda Lawson, of Bethesda, secretary of the Student Government Association, was one of 20 sponsors hired for the summer orientation program. She answered questions, gave helpful hints, and guided her students during the two day program.



Suburban Trust STATISTICS

MARYLAND

TEAM STATISTICS—1967

	Md.	Opp.
First Downs	116	181
Rushing Yardage	1087	2371
Passing Yardage	1141	1053
Passes Attempted	217	146
Passes Completed	100	77
Passes Had Intercepted	12	13
No. of Punts	60	48
Avg. Yardage of Punts	38.1	37.8
Own Fumbles Lost	12	11
Yards Penalized	382	467
Total Points	46	231

1968 SCHEDULE

Sept. 21—Florida State
Sept. 28—At Syracuse
Oct. 5—Duke, at Norfolk
Oct. 12—North Carolina
Oct. 19—South Carolina
Oct. 26—At N. C. State
Nov. 2—At Wake Forest
Nov. 9—Clemson
Nov. 16—Penn State
Nov. 23—At Virginia

INDIVIDUAL LEADERS (Statistics of three top players)

RUSHING	Times Carried	Yards Gained	Avg. Gain
Lovett	137	499	3.8
Dutton	81	246	3.0
Fitzpatrick	16	77	4.8

PUNTING	No.	Avg.
Carlson	6	28.0

PASS RECEIVING	Caught	Yds.	TD Passes
Carlson	24	309	2
Dutton	15	155	0
Fitzpatrick	9	73	0

SCORING	Points
Carlson	28
Gareis	6
Gillespie, Sniscak	6

PASSING	Att.	Comp.	Yds.	TD Passes	Int.
Sniscak	43	26	287	1	3
Faries	42	16	151	0	1
*Pastrana *—1966 Record	195	102	1499	17	14

PUNT RETURNS	No.	Yds.	Avg.
Dutton	10	64	6.4
Haley	8	125	15.6
Stalnaker	7	64	9.1

KICKOFF RETURNS	No.	Yds.	Avg.
Dutton	24*	454*	18.0
Lovett	4	93	19.7
Fitzpatrick	3	59	19.7

*All-time Maryland record.

“MARYLAND, WE’RE

All 38 Convenient Suburban Trust Banking Offices

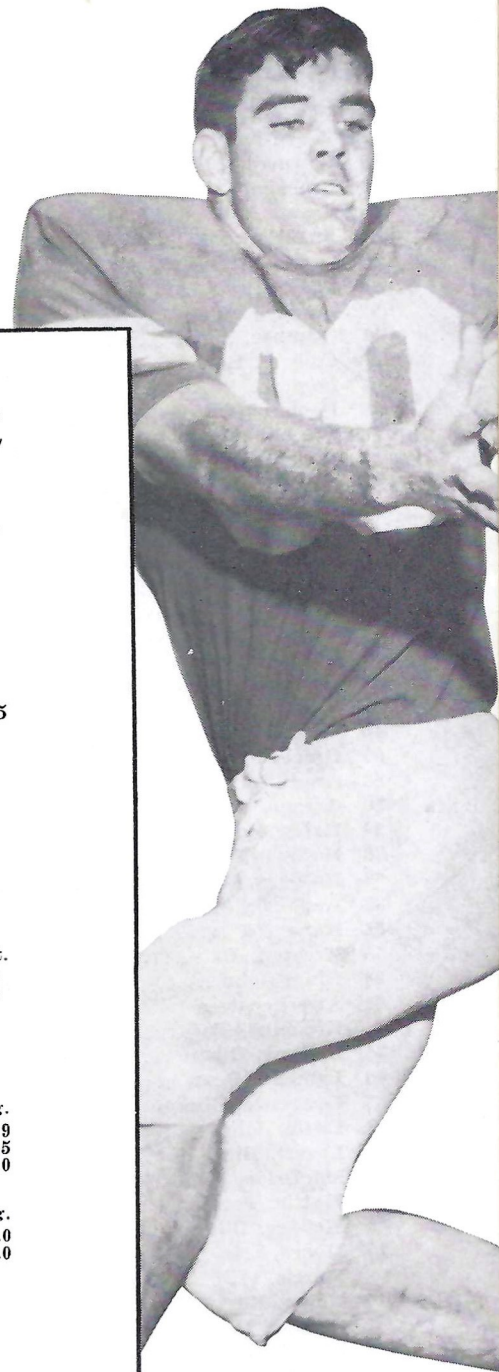


SUBURBAN

A FULL SERVICE BANK • MEMBER

RESOURCES

Company Presents OF THE WEEK



FLORIDA STATE

1968 RECORD AND SCHEDULE

Sept. 21—At Maryland
Sept. 28—Florida
Oct. 5—Texas A & M
Oct. 12—Open
Oct. 19—Memphis State
Oct. 26—At South Carolina
Nov. 2—Virginia Tech
Nov. 9—At Miss. State
Nov. 16—At N.C. State
Nov. 23—Wake Forest
Nov. 29—Houston (At Jacksonville)

TEAM STATISTICS—1967	F.S.U.	Opp.
First Downs	200	146
Rushing Yardage	1202	1509
Passing Yardage	2584	1146
Passes Attempted	352	194
Passes Completed	190	86
Passes Had Intercepted	21	17
No. of Punts	53	62
Avg. Yardage of Punts	38.1	40.5
Own Fumbles Lost	13	12
Yards Penalized	566	618
Total Points	233	170

INDIVIDUAL LEADERS (Statistics of three top players)

RUSHING	Times Carried	Yards Gained	Avg. Gain	PASSING	Att.	Comp.	Yds.	TD Passes	Int.
Gunter	58	225	3.9	Pajcic	98	43	507	2	10
Pajcic	15	40	2.7	Cappleman	5	4	27	0	0
Eagerton	3	20	6.7						

PUNTING	No.	Avg.
Cheshire	51	38.0

PASS RECEIVING	Caught	Yds.	TD Passes	PUNT RETURNS	No.	Yds.	Avg.
Sellers	70	1228	8	Sumner	17	150	8.9
Glass	17	184	1	Crowe	2	5	2.5
Cox	16	167	2	Elliott	1	13	13.0

SCORING	Points	KICKOFF RETURNS	No.	Yds.	Avg.
Guthrie	53	Gunter	3	36	12.0
Sellers	48	Glass	1	0	.0
Gunter	18				

ALL BEHIND YOU"

in Montgomery and Prince Georges Counties

TRUST COMPANY

FEDERAL DEPOSIT INSURANCE CORPORATION

OVER 475 MILLION DOLLARS



University of Maryland

ROSTER

No.	Name	Pos.	Hgt.	Wgt.	Age	Class	Hometown
59	Bowman, Charles	T	6-1	213	20	Jr.	Williamsburg, Ohio
89	Bracken, Lou	DE	6-2	197	21	Sr.	Altoona, Pa.
25	Brant, Mike	DB	5-10	188	20	Sr.	Avondale, Md.
64	Burke, Pat	G	6-2	215	19	So.	Clifton Heights, Pa.
83	Carlson, Rick	E	6-3	195	21	Sr.	Willingboro, N. J.
86	Chacos, Don	E	6-2	195	21	Jr.	Bethesda, Md.
72	Chadick, Mike	DT	6-2	223	19	So.	Wilmington, Del.
11	Ciambor, Steve	DB	5-10	175	19	Jr.	Cheektowaga, N. Y.
14	Colbert, Bob	DB	5-11	185	21	Sr.	Pittsburgh, Pa.
87	Comfort, Steve	E	6-2	170	19	So.	Chesapeake City, Va.
26	Demczuk, Sonny	WB	6-0	170	20	Jr.	Baltimore, Md.
73	Dill, John	DE	6-1	202	21	Jr.	Washington, D. C.
53	DiOrio, Joe	MG	6-0	208	20	Jr.	Newark, N. J.
3	Drimal, Chuck	QB	6-2	191	20	Jr.	Valley Stream, N. Y.
31	Dutton, Kenny	WB	5-10	175	20	Jr.	Baltimore, Md.
45	Dyer, John	LB	6-0	190	19	So.	Norfolk, Va.
2	Faries, Bob	QB	6-1	192	20	Jr.	Glenolden, Pa.
35	Fitzpatrick, Paul	TB	6-1	190	20	Jr.	Buffalo, N. Y.
61	Friedgen, Ralph	G	6-0	200	21	Sr.	Harrison, N. Y.
17	Fries, Greg	KS	6-2	190	19	So.	Salisbury, Md.
82	Gareis, Henry	DE	6-3	190	19	Jr.	Baltimore, Md.
68	Gebhardt, John	DT	6-0	225	20	Jr.	Lancaster, N. Y.
67	Gienger, Craig	LB	6-0	200	19	So.	Silver Spring, Md.
42	Gillespie, Bill	TB	5-9	173	20	Jr.	Maple Heights, Ohio
66	Grace, Mike	MG	5-10	222	20	Sr.	Laurel, Md.
88	Grant, Bill	DE	6-2	184	20	Jr.	Brooklawn, N. J.
30	Greene, Tony	WB	5-9	160	19	So.	Gaithersburg, Md.
24	Haley, Bob	DB	5-10	183	20	Sr.	Midway, Pa.
76	Hoffman, Charles	T	6-4	260	21	Jr.	Mamaroneck, N. Y.
32	Holliday, Ken	TB	5-10	185	19	So.	Amityville, N. Y.
81	Imphong, Mike	DE	6-3	203	19	Jr.	Hancock, Md.
62	Kane, Ed	G	6-2	201	21	Sr.	Levittown, N. Y.
58	Kecman, Dan	LB	6-1	205	20	Jr.	West Mifflin, Pa.
33	King, John	TB	5-10	178	20	Jr.	Fort Monroe, Va.
84	Kirschensteiner, Bill	E	6-3	210	19	Jr.	Willowick, Ohio
	Krochina, Pat	S	6-0	186	19	So.	Amsterdam, N. Y.
74	Kubany, Glenn	DE	6-4	211	20	Jr.	Natrona Heights, Pa.
40	Landolt, Dean	LB	6-0	180	21	So.	Silver Spring, Md.
85	Lawrence, Jimmy	E	6-0	181	20	Jr.	Chesapeake, Va.
71	Little, John	DE	6-2	202	20	So.	Levittown, Pa.
20	Lovett, Billy	FB	5-11	200	21	Sr.	Cherry Hill, N. J.
52	MacBride, Bob	LB	6-1	210	20	Jr.	Oaklyn, N. J.
63	Mattia, Pete	MG	5-11	220	19	So.	Montclair, N. J.
60	Meister, Bill	G	6-1	220	19	So.	Cumberland, Md.
15	Moore, Eric	DB	5-11	165	19	So.	Laurel, Md.
1	Morris, Will	QB	6-3	185	19	So.	Chevy Chase, Md.
41	Nolan, Russ	LB	6-1	197	20	So.	Silver Spring, Md.
5	O'Hara, Dennis	QB	6-2	180	20	So.	Chester, Pa.
77	Olecki, Bruce	T	6-3	245	20	Jr.	Lakewood, Ohio
16	Pancza, Joe	DB	5-10	175	21	Jr.	Highland Park, N. J.
12	Pastrana, Al	QB	6-1	190	23	Sr.	Annapolis, Md.
80	Pearson, Ron	SE	6-3	219	20	Sr.	Rockville, Md.
70	Plevin, Tom	DT	6-1	206	21	Sr.	Uniontown, Pa.
36	Ruckert, Steve	DB	5-9	175	19	So.	College Park, Md.
65	Santacrose, Len	T	6-4	235	20	So.	Waterford, Conn.
55	Seifert, Dave	LB	6-1	209	19	So.	Pittsburgh, Pa.
78	Slaninka, Rich	T	6-2	235	19	So.	Cherry Hill, N. J.
4	Sniscak, Jim	QB	6-2	205	20	Jr.	Middletown, Pa.
75	Sonntag, Ralph	T	6-3	242	19	Jr.	Hicksville, N. Y.
10	Stalnaker, Wally	S	6-1	191	19	Jr.	Fort Myers, Fla.
54	Stubljar, Mike	C	5-11	189	20	Jr.	Steelton, Pa.
56	Stoll, Rick	DT	6-1	221	19	So.	Takoma Park, Md.
50	Stull, Jim	C	6-3	234	20	Jr.	Mechanicsburg, Pa.
44	Thomas, Al	WB	6-1	190	19	So.	Oxon Hill, Md.
21	Tomcho, Joe	DB	6-0	180	20	Jr.	Allentown, Pa.
22	Torain, Ernie	FB	5-11	210	23	Sr.	Baltimore, Md.
23	Van Sickler, Gary	HB	5-11	187	19	So.	Rockville, Md.
51	Vince, Larry	C	6-0	206	21	Sr.	Labelle, Pa.
57	Welhorsky, Steve	MG	6-2	230	19	So.	Little Falls, N. J.

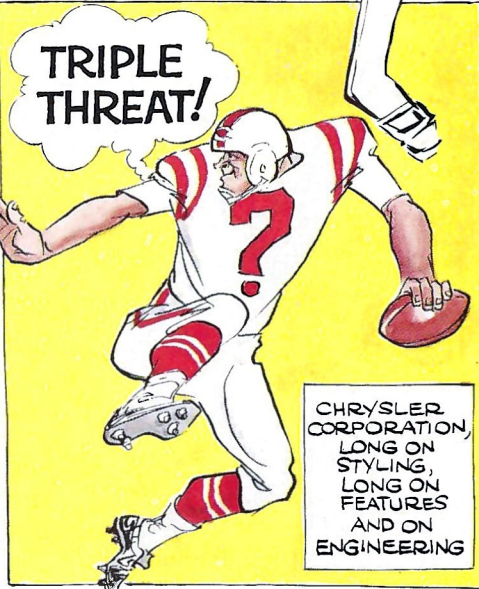


BEFORE YOU BUY, SEE YOUR CHRYSLER-PLYMOUTH OR DODGE DEALER.

...BE THE CENTER OF ATTENTION IN A NEW CAR FROM CHRYSLER CORPORATION!



WHAT A LINE!
PLYMOUTH, DODGE, CHRYSLER, IMPERIAL, SIMCA OR SUNBEAM



CHRYSLER CORPORATION, LONG ON STYLING, LONG ON FEATURES AND ON ENGINEERING

Plymouth • Dodge • Chrysler • Imperial • Dodge Trucks • Simca • Sunbeam



CHRYSLER CORPORATION

SEE THE AFL IN ACTION EACH WEEK ON NBC-TV.



Coca-Cola
TRADE-MARK ®

Coca-Cola
TRADE-MARK ®
Coke
TRADE-MARK ®
Coca-Cola
TRADE-MARK ®

Coke has the taste
TRADE-MARK ®

COCA-COLA AND "COKE" ARE REGISTERED TRADE MARKS WHICH IDENTIFY ONLY THE PRODUCT OF THE COCA-COLA COMPANY. PRINTED IN U.S.A.



OFFENSE

27 BILL COX LE
 76 JACK FENWICK LT
 64 STAN WALKER LG
 55 TED MOSLEY C
 68 LARRY PENDLETON RG
 75 BILLY RHODES RT
 84 CHIP GLASS RE
 16 GARY PAJICIC QB
 31 BILL GUNTER LH
 44 JOHN PITTMAN FB
 34 RON SELLERS FLA

FLORIDA STATE

DEFENSE

85 FLOYD RATLIFF LE
 79 FRANK VOHUN LT
 47 JOE BENSON LLB
 50 DALE McCULLERS MLB
 61 CHUCK ELLIOTT RLB
 71 HARVEY ZION RT
 83 RON WALLACE RE
 41 JOHN CROWE LS
 22 CHUCK EASON RS
 24 WALT SUMNER LC
 17 MIKE PAGE RC

NUMERICAL ROSTER

11 Anderson, QB	54 Burt, LB
14 Cappleman, QB	55 Mosley, C
15 Warren, QB	56 Lohse, LB
16 Pajcic, QB	58 Gildea, LB
17 Page, DB	59 Loner, PK
18 Burton, DB	60 Rice, LB
19 Abairra, SE	61 Elliott, LB
20 Thomas, DB	64 Walker, G
21 Pell, DB	66 Hart, G
22 Eason, DB	67 Bugar, DE
23 Pederson, FL	68 Pendleton, G
24 Sumner, DB	69 White, DT
27 Cox, SE	71 Zion, DT
30 Bailey, RB	72 Logan, OT
31 Gunter, RB,	73 Johnston, DT
33 Guthrie, PK	74 McEachern, DT
34 Sellers, FL	75 Rhodes, OT
35 Gray, SE	76 Fenwick, OT
40 Gilman, FB	77 Curchin, OT
41 Crowe, DB	78 Johnson, OT
42 Cheshire, P	79 Vohun, DT
43 Montgomery, DB	80 Gurr, DE
44 Pittman, FB	81 Tyson, TE
46 Munroe, RB	82 Dawson, FL
47 Benson, LB	83 Wallace, DE
49 Eagerton, FB	84 Glass, TE
50 McCullers, LB	85 Ratliff, DE
51 Huges, C	87 Rimby, TE
52 Sammons, G	88 Rice, DE
53 Cassady, G	

DEFENSE

88 BILL GRANT LE
 68 JOHN GEBHARDT LT
 63 PETE MATTIA MG
 70 TOM PLEVIN RT
 82 HENRY GAREIS RE
 45 JOHN DYER LLB
 58 DAN KECMAN MLB
 11 STEVE CIAMBOR RLB
 24 BOB HALEY LHB
 25 MIKE BRANT RHB
 10 WALLY STALNAKER S

MARYLAND

OFFENSE

80 RON PEARSON LE
 78 RICH SLANINKA LT
 62 ED KANE LG
 54 MIKE STUBLJAR C
 60 BILL MEISTER RG
 74 RALPH SONNTAG RT
 83 RICK CARLSON RE
 12 ALAN PASTRANA QB
 26 SONNY DEMCZUK WB
 35 PAUL FITZPATRICK TB
 20 BILLY LOVETT FB

NUMERICAL ROSTER

1 Morris, QB	55 Seifert, LB
2 Faries, QB	56 Stoll, DT
3 Drimal, S	57 Welhorsky, DE
4 Sniscak, QB	58 Kecman, LB
5 O'Hara, QB	59 Bowman, LB
10 Stalnakar, S	60 Meister, G
11 Ciambor, LB	61 Friedgen, G
12 Pastrana, QB	62 Kane, G
14 Colbert, DB	63 Mattia, MG
15 Moore, DB	64 Burke, G
16 Pancza, DB	65 Santacrose, T
17 Fries, KS	66 Grace, DT
20 Lovett, FB	67 Gienger, LB
21 Tomcho, DB	68 Gebhardt, DT
22 Torain, FB	70 Plevin, DT
23 Van Sickler, DB	71 Little, DE
24 Haley, DB	72 Chadick, MG
25 Brant, DB	73 Dill, DT
26 Demczuk, WB	74 Kubany, DE
30 Greene, WB	75 Sonntag, T
31 Dutton, WB	76 Hoffman, T
32 Holliday, WB	77 Olecki, T
33 King, TB	78 Slaninka, T
35 Fitzpatrick, TB	79 Humphries, T
36 Ruckert, DB	80 Pearson, E
40 Landolt, LB	81 Imphong, DE
41 Nolan, LB	82 Gareis, DE
42 Gillespie, WB	83 Carlson, E
44 Thomas, TB	84 Kirschensteiner, E
45 Dyer, LB	85 Lawrence, E
50 Stull, C	86 Chacos, E
51 Vince, C	87 Comfort, E
52 MacBride, LB	88 Grant, E
53 DiOrio, MG	89 Bracken, E
54 Stubljar, C	

ste you never get tired of.

Olds Vista-Cruiser: Kind of like owning your own stadium.

We didn't start out to build a stadium on wheels. Vista-Cruiser just sort of grew into one. It's bigger this year. Handles like a bigger car. Built on a longer 121-inch wheelbase. Inside, there's more room to stretch out, up and sideways. The

forward-facing third seat lets you see where you're going . . . not where you've been. And there's more room to carry all the stuff you carry . . . on and under the big rear deck. Plus room for even more when

you order the sturdy chrome luggage rack topside. All this, plus a 50-yard-line view of the world outside through the cool, tinted Vista-Roof. Take the whole family along for a test drive in a Vista-Cruiser at your Olds Dealer's. That way you'll have your own cheering section, too.



1968 Vista-Cruiser, in 2- and 3-seat versions, both with all the new GM safety features.

Drive a youngmobile from Oldsmobile

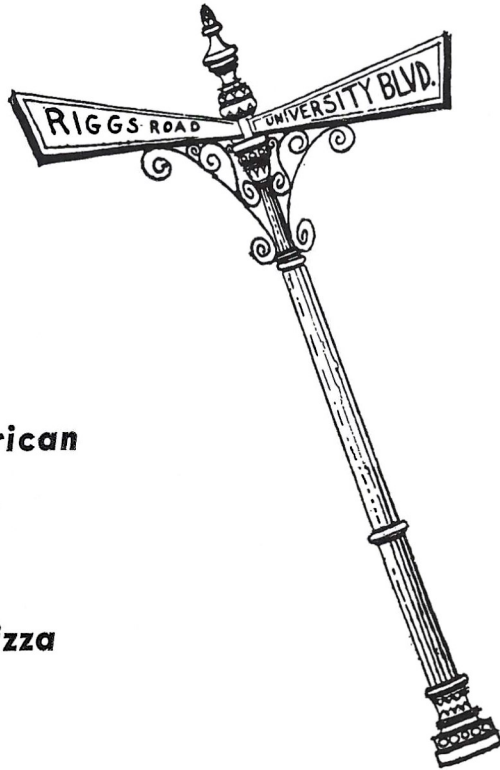


Florida State University

ROSTER

No.	Name	Pos.	Hgt.	Wgt.	Class	Hometown
19	Abraira, Phil	SE	6-0	184	Jr.	Ft. Lauderdale, Fla.
11	Anderson, Rick	QB	6-2	213	So.	Winter Haven, Fla.
30	Bailey, Tom	RB	6-2	212	So.	Miami, Fla.
47	Benson, Joe	LB	5-11	199	Sr.	Birmingham, Ala.
67	Bugar, Mike	DE	5-10	206	Sr.	Youngstown, Ohio
54	Burt, Bobby	LB	6-2	210	So.	Cairo, Ga.
18	Burton, Clint	DB	6-1	180	Sr.	Atlanta, Ga.
14	Cappleman, Bill	QB	6-3	207	Jr.	Dunedin, Fla.
53	Cassady, Randy	OG	6-2	225	Jr.	Floral, Ala.
42	Cheshire, Bill	P	6-1	193	Jr.	Odum, Ga.
27	Cox, Billy	SE	6-1	182	Sr.	Atlanta, Ga.
41	Crowe, John	DB	6-0	178	Sr.	St. Cloud, Fla.
77	Curchin, Jeff	OT	6-7	268	Jr.	Ocala, Fla.
82	Dawson, Rhett	FL	6-1	184	So.	Valdosta, Ga.
49	Eagerton, Terry	FB	5-10	194	Jr.	Jacksonville, Fla.
22	Eason, Chuck	DB	5-10	192	Sr.	Tallahassee, Fla.
61	Elliott, Chuck	LB	6-0	195	Sr.	Troy, Ohio
76	Fenwick, Jack	OT	6-4	226	Sr.	Norwood, Ohio
58	Gildea, Steve	LB	6-0	190	So.	Daytona Beach, Fla.
40	Gilman, Brent	FB	6-2	210	Jr.	Long Beach, Calif.
84	Glass, Chip	TE	6-4	231	Sr.	Tampa, Fla.
38	Gray, Mike	SE	6-3	198	So.	Lake Mary, Fla.
31	Gunter, Bill	RB	6-0	171	Sr.	Dothan, Ala.
80	Gurr, Doug	DE	6-0	208	Sr.	Albany, Ga.
33	Guthrie, Grant	PK	6-0	204	Jr.	Claymont, Del.
66	Hart, Ken	LB	6-3	217	Sr.	Groveland, Fla.
51	Hughes, Billy	C	6-0	230	Jr.	Mims, Fla.
78	Johnson, Wayne	OT	6-2	238	Jr.	Macon, Ga.
73	Johnston, Duke	DT	6-2	252	Jr.	Ft. Lauderdale, Fla.
72	Logan, Randy	OT	6-3	230	Sr.	Seal Beach, Calif.
56	Lohse, Bill	LB	6-0	225	So.	St. Petersburg, Fla.
54	Loner, Frank	PK	6-0	200	Sr.	Atlanta, Ga.
50	McCullers, Dale	LB	6-1	207	Sr.	Live Oak, Fla.
74	McEachern, Robert	DT	6-2	219	So.	Tallahassee, Fla.
43	Montgomery, Howell	DB	5-11	182	Sr.	Blountstown, Fla.
55	Mosley, Ted	C	6-1	213	Sr.	Tampa, Fla.
46	Munroe, Arthur	RB	6-0	188	So.	Quincy, Fla.
17	Page, Mike	DB	5-11	175	Jr.	Winter Haven, Fla.
16	Pajcic, Gary	QB	6-2	188	Sr.	Jacksonville, Fla.
25	Pederson, Don	FL	6-0	174	So.	Groveland, Fla.
21	Pell, John	DB	5-11	173	Jr.	Pahokee, Fla.
68	Pendleton, Larry	OG	6-0	212	Sr.	Winter Garden, Fla.
44	Pittman, John	FB	5-11	195	Sr.	Brunswick, Ga.
85	Ratliff, Floyd	DE	6-3	195	Jr.	Jesup, Ga.
75	Rhodes, Billy	OT	6-3	240	Sr.	Eustis, Fla.
87	Rimby, John	TE	6-4	205	So.	St. Petersburg, Fla.
60	Rice, Barry	LB	6-1	203	So.	Fernandina Beach, Fla.
88	Rice, Beryl	DE	6-1	211	So.	Fernandina Beach, Fla.
52	Sammons, Mike	OG	6-1	208	So.	Atlanta, Ga.
34	Sellers, Ron	FL	6-4	187	Sr.	Jacksonville, Fla.
24	Sumner, Walt	DB	6-1	178	Sr.	Ocilla, Ga.
20	Thomas, Danny	DB	5-9	178	So.	West Palm Beach, Fla.
81	Tyson, Jim	TE	6-1	196	So.	Pahokee, Fla.
79	Vohun, Frank	DT	6-3	225	Jr.	Brooksville, Fla.
64	Walker, Stan	OG	6-2	220	Jr.	Tallahassee, Fla.
83	Wallace, Ronnie	DE	6-2	193	So.	Macon, Ga.
15	Warren, Tommy	QB	6-1	185	Jr.	Miami, Fla.
69	White, Tom	DT	6-0	238	So.	West Palm Beach, Fla.
71	Zion, Harvey	DT	5-11	210	Sr.	Atlanta, Ga.

Jimmy Comber's Hearth



**Italian-American
Cuisine**

Seafood-Pizza

Open From
11.00 a.m.-2:00 a.m.

**ADELPHI'S
NEWEST
RESTAURANT**

**CALL
HEmlock 9-1900**

**2059 UNIVERSITY
BLVD. EAST
ADELPHI, MARYLAND**

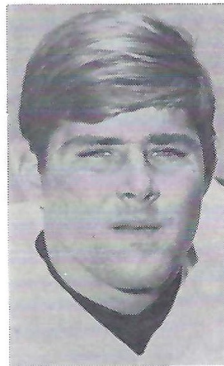


James J. Comber, Proprietor

FLORIDA STATE PLAYERS



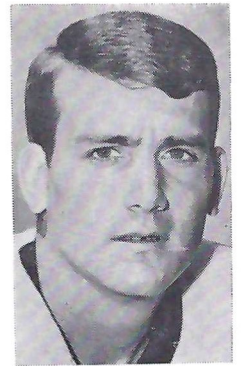
Phil Abraira



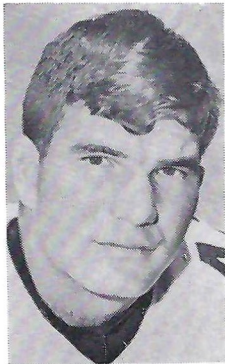
Tom Bailey



Theron Bass



Bill Cappleman



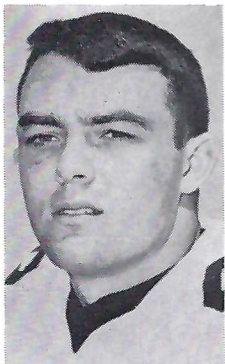
Bill Cheshire



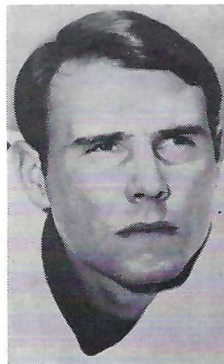
Bill Cox



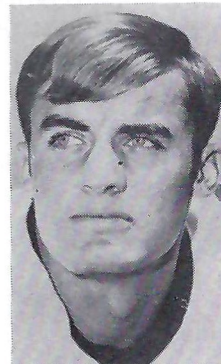
Jeff Curchin



Terry Eagerton



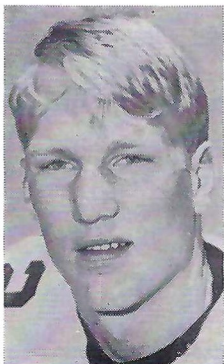
Brent Gilman



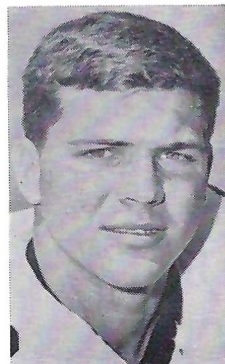
Mike Gray



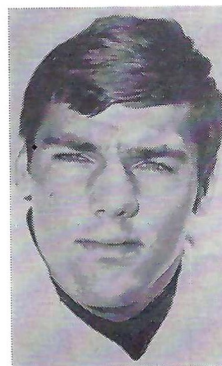
Grant Guthrie



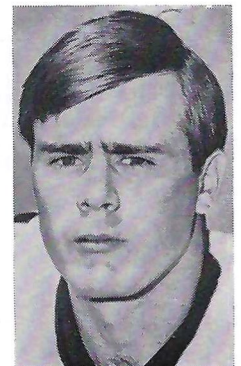
James Jarrett



Duke Johnston



Billy Lohse



Howell Montgomery

the Macke company

SERVING

the

UNIVERSITY of MARYLAND

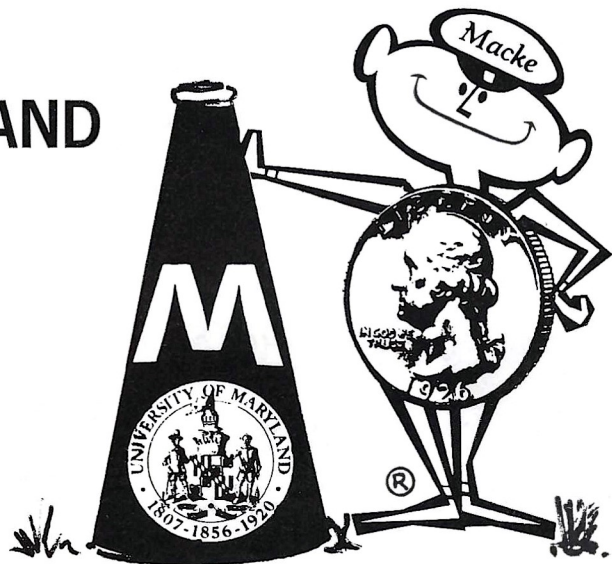
MARYLAND CAMPUS

Byrd Stadium

Cole Field House

University of Maryland

Baltimore Campus



EXTRAordinary food and refreshment services!

NATIONAL HEADQUARTERS • ONE MACKE CIRCLE • CHEVERLY, MARYLAND

GROWERS OF HIGHEST QUALITY SOD FOR LAWNS—PARKS—GOLF COURSES
ATHLETIC FIELDS. INDUSTRIAL AREAS

PRINCETON



TURF FARMS, INC.

1000 ACRES ON EASTERN
SHORE—12 Miles East of Bay Bridge

Rte. 3, Box 105A, Centreville, Md.
Zip 21617—Tel. 301-827-8454

- WE ONLY GROW SOD—BUT WE GROW IT ON PURPOSE
- WE GROW AND MARKET SOD under MARYLAND STATE CERTIFICATION STANDARDS and SUPERVISION, and you get A STATE LABEL with each load.
- WE have 8 kinds, varieties or mixtures to best suit your requirements.
- YOU should **INSIST** your supplier or contractor furnish and use PRINCETON STATE certified grades of sod and see the STATE LABEL.
- You ARE LOOKING AT PRINCETON TURF and WE ARE PROUD OF IT.

PARKER SHIRLING

PRINCETON TURF FARMS INC.

ALSO
CRANBURY, N. J.

PRODUCERS OF STATE CERTIFIED
SOD

CENTREVILLE, MD.

FLORIDA STATE PLAYERS



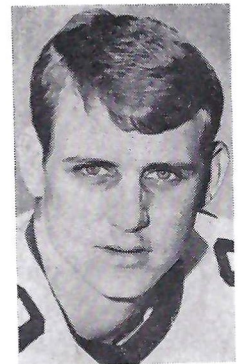
Ted Mosley



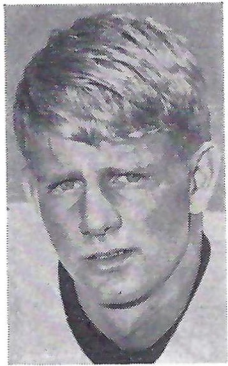
Dale McCullers



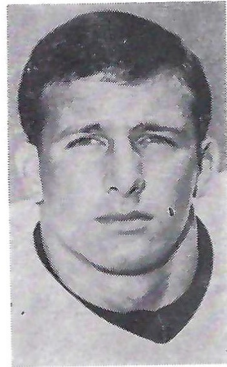
Robert McEachern



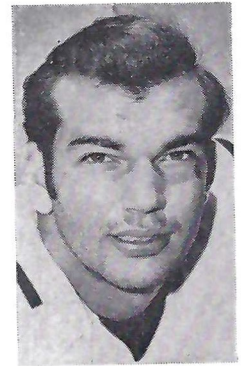
Mike Page



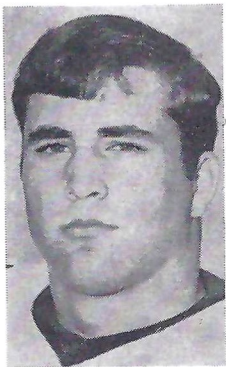
Don Pederson



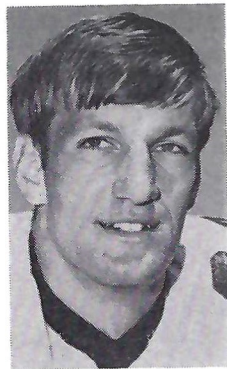
John Pittman



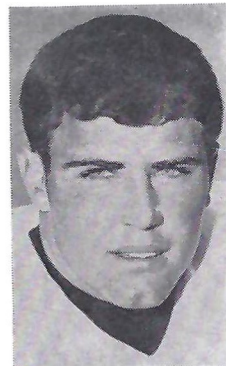
Floyd Ratliff



Barry Rice



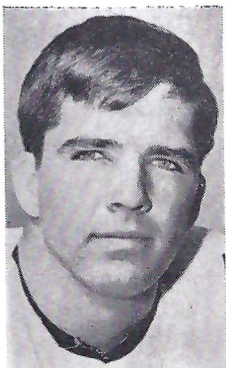
Ron Sellers



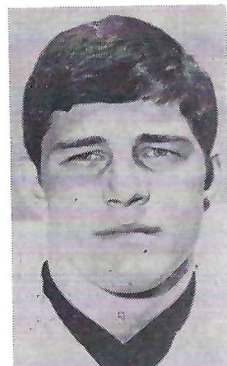
Danny Thomas



Frank Vohun



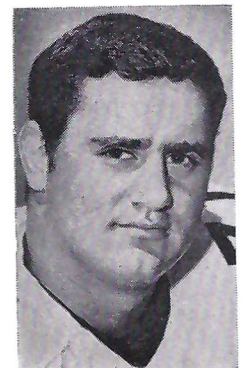
Stan Walker



Ronnie Wallace



Tommy Warren



Harvey Zion

FOOTBALL PLAY ON WORDS

Catch the clues and dash your answers down the field of football terms.

1. Type of pin	G	S _ _ _ _ _ Y	G
2. Deodorant	5	R _ _ _ _ _ A _ _	5
3. Eligible bachelor	10	_ _ I _ _ _ T _ _	10
4. Change for a dollar	15	Q _ _ _ _ _ C _ _	15
5. Irritated male deer	20	C _ _ _ _ _ U _ _	20
6. Frankenstein	25	_ _ N _ _ _ _	25
7. Dater's indiscretion	30	_ _ _ S	30
8. Mother-in-law's visit	35	P _ _ _ L _ _	35
9. Pop top tab	40	_ U _ _ _ _ P _ _ _ R	40
10. Inebriated receiver	45	_ _ _ _ T _ _ D	45
11. An uncalled play	50	_ _ M _ L _ _	50
12. Digital command by co-ed	45	H _ N _ O _ _	45
13. Beer joint	40	_ I _ E	40
14. Love triangle	35	I _ _ _ R _ _ _ T _ _ _	35
15. Lying on your back or stomach	30	_ F _ S _ _ _	30
16. Area for falsies	25	F _ A _ Z _ _ _	25
17. Ulysses S. to the rescue	20	G _ _ _ _ - N - A _ _	20
18. Quarterback with two dates	15	O _ T _ _ _ _ _ Y	15
19. Barbershop tactics	10	_ _ _ P P _ _ _	10
20. Chip off the old	5	_ L _ _ _ _	5
21. To feel a duck	G	_ _ _ H _ _ W _	G

Answers: 1. Safety; 2. Safety; 3. Fair Catch; 4. Quarterback; 5. Cross Buck; 6. Monster; 7. Pass; 8. Penalty; 9. Quick Open; 10. Tight End; 11. Fumble; 12. Hand Off; 13. Dive; 14. Interception; 15. Offside; 16. Flat Zone; 17. Grant-in-Aid; 18. Option Play; 19. Clipping; 20. Block; 21. Touchdown.

Esskay's

DIXIE MAID FRANKS

PURE ALL MEAT

Served Here Exclusively

Enjoy their zesty flavor here at the game, home or at picnics and barbeques.

Schluderberg-Kurdle Co., Inc.

Baltimore, Maryland

UNIVERSITY OF MARYLAND STUDENT UNION

(The Center of Student Activity)

STUDENT SUPPLY STORE

Textbooks
Paperbacks and Novels
Class Rings—Sweatshirts & Jackets
Engineering Equipment
School Supplies & Novelties
Records & Drug Sundries

Hours: 8:35 to 4:30
"READ GOOD BOOKS TODAY"

TOBACCO SHOP

Candy—Sundries
Cigars & Cigarettes

MEETING ROOMS

Rooms available for all sized groups—Up to 300 people

RECREATION

Lounges, Television and Music Rooms, Browsing Library, Movies, Cards, Chess, and Dances

BOWLING LANES & BILLIARDS

Formation of Leagues; Free Instruction
Bowling and Billiards
Snack Bar
Merchandise Sales; Locker Rental

Weekly hours: 9:AM to 11:PM
Saturday: 10:AM to 12:midnite;
Sun. & Holiday: 2PM to 10PM
FOR PLEASURE AND RELAXATION

—YOUR HOST FOR STUDENT, ALUMNI, STAFF, AND FACULTY ACTIVITY—

Post-Game Party Gets Top Rating

by CAROLYN ANDERSEN

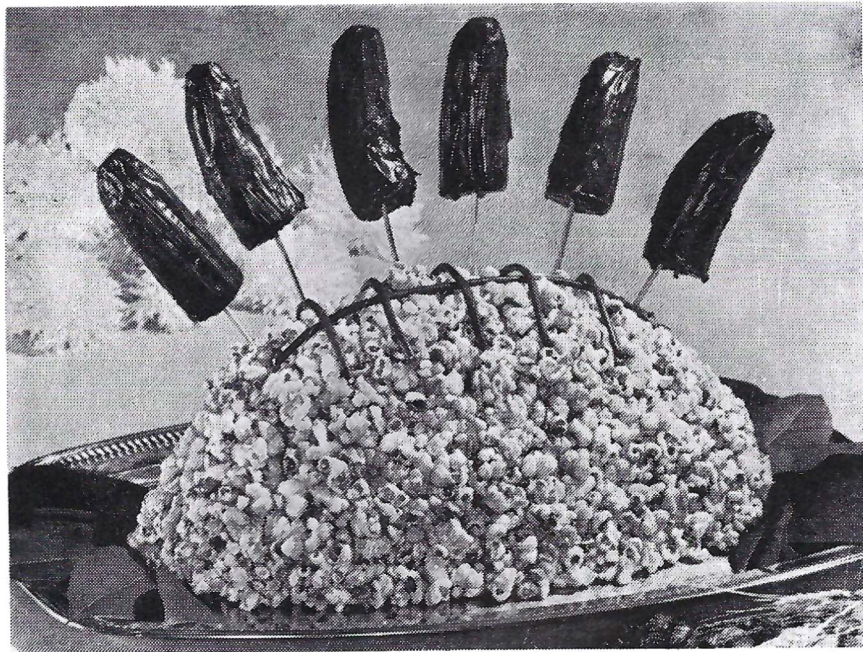


Photo: The Popcorn Institute

WHEN the referee throws both arms high into the air signaling "touchdown" for your favorite collegiate team, he also signals a time for celebration. And what better way to climax a big gridiron victory than by hosting a post-game party?

In order that the hostess may enjoy the excitement of the event to its fullest, the party should be a simple one. Plenty of good food can be prepared ahead of time so that only last minute warm-ups will be necessary when you get back from the stadium.

On game day, prepare one of the suggested main dishes, your own favorite gelatine salad, and have plenty of rolls, a simple dessert and the beverage of your choice on hand. Then, with your party fixin's ready, you'll still be on time for the opening kickoff and will be able to stay until the final gun.

First, try this idea for a chicken dish that is accented with crumbles of blue cheese and succulent mushrooms. The zesty concoction is served on top of crunchy chow mein noodles, or in pattie shells.

Melt one-quarter cup butter and stir in one-quarter cup flour. Gradu-

ally add one and three-quarters cups milk and one-half cup chicken broth (canned). Cook over medium heat, stirring constantly, until thickened. Add one-half teaspoon salt, pinch of sugar, one four-ounce can drained mushrooms, dash of monosodium glutamate, pepper, one teaspoon prepared horseradish, one and one-half cups blue cheese and two cups diced, cooked chicken. Cook over low heat, stirring constantly, until just heated through. Turn off heat and cover until time to reheat before serving your guests.

If you prefer a little more gourmet style main dish, try this recipe for Veal Elegante.

In large skillet, melt one-quarter cup butter or margarine and lightly brown two pounds veal cutlets, cut into one-inch pieces. Add one can (eight ounces) drained mushroom stems and pieces, and one clove minced garlic. Remove from skillet. Into drippings in skillet, stir two tablespoons flour, then one envelope onion soup mix; gradually add two cups water and one-quarter cup dry red wine. Cover and simmer 10 minutes, stirring occasionally. Add meat, mushrooms, and two tablespoons

chopped parsley and heat through. Turn off heat and leave covered until ready to heat at party time. Serve over noodles. Recipe makes six to eight servings.

Another fun idea is a Knife and Fork sandwich. The convenience of pre-cooked frozen foods keeps you from spending hours in the kitchen when the crowd gathers.

Slice one large loaf unsliced French bread lengthwise and spread bottom half with butter and prepared mustard. Heat in 350-degree oven for 10 or 15 minutes. Heat two packages frozen chili according to package directions. Spoon over buttered bread. Cut three slices processed cheese into several strips and place on top of chili. Top with strips of bacon and fresh onion rings. Cut into six or eight knife and fork sandwiches.

If you would like to plan something clever in the way of decorations for your "pigskin party," why not take a signal from the game ball itself and create a popcorn touchdown centerpiece?

To begin, mold a football out of five quarts popped popcorn and lace it with candy licorice strings. The popcorn can be molded the day before your party. A simple syrup coating can be made by combining two cups sugar, one and one-half cups water, one-half cup light corn syrup and one teaspoon vinegar, then cook to hard ball stage (250 degrees). Add one teaspoon vanilla and pour over popcorn. It will add delicious flavor and will help you shape your oval football.

Once the centerpiece has been molded place the licorice "strings" in lacing fashion and then wrap the popcorn in foil or saran until time to decorate the table. This way, it will keep fresh and crisp for eating.

Come party time, insert chocolate-coated bananas on skewers into the popcorn football. They're a frozen confection that everyone will enjoy. The bananas are cut in half, dipped in one package (six-ounce) melted semi-sweet chocolate chips and one tablespoon vegetable shortening and frozen until serving time. Easy to eat off the skewers, the bananas make an unusual and tasty sweet.

Whether your team scores a victory or not, your party is bound to be a winner.

James L. Partello
Construction
Company

2510—50th Avenue
Tuxedo, Maryland
Phone SP 3-0353

GOOD LUCK

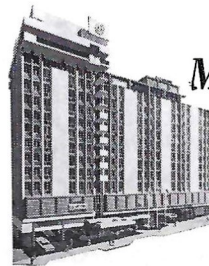
University of Maryland

TERRAPINS

Best on the Gridiron from

Ric-Wil, Inc.

Prefabricated, Insulated Underground Piping
Alexandria, Va.



Metropolitan 
Washington's
Finest
Motor Hotel

SHERATON SILVER SPRING

Just 5 Express miles from the Campus
Via 495, located on exit 23, South

Before or after the game
enjoy truly outstanding cuisine at

THE *Fire*
Fountain

RESTAURANT

AND Dinner, Dancing
At the El Fontanal Supper Club

THE **SHERATON SILVER SPRING**

8727 Colesville Rd. Phone 589-5200

Party and Banquet facilities available
for groups from 5 to 800 persons

Walter C. Doe
& Co.

Electrical Contractors

5101 WISCONSIN AVENUE, N.W.

WASHINGTON, D. C. 20016

Compliments of
**Washington
 Seven-Up Bottling
 Company**



Distributors of
 7-Up, Tru-Ade, Dr. Pepper and

The Diet Drink of Seven-Up Quality



ATLANTIC COAST CONFERENCE FOOTBALL OFFICIALS 1968

J. EARL BARNETT. Charlottesville, Va. Graduate University of Virginia 1950. B.S. in Civil Engineering. Member of boxing team. Building contractor. Member of Elks, Masons and a Scout Master. Started officiating 1948, ACC 1959. Baptist. Back Judge.

V. E. (ED) BAUGH. Orangeburg, S. C. Attended Clemson 1939. Started officiating 1944, joined ACC staff 1957. Worked Gator Bowl in 1963 and Coaches All America Game 1967. Superintendent, Ethyle Corp. Deacon, First Presbyterian Church. Umpire.

WALLACE W. BURKE. Raleigh, N. C. Graduate Elon College 1951. Lettered in football as a halfback. Started officiating 1951, joined ACC staff 1963. Educational supervisor. Member of Elks and First Reformed United Church of Christ. Back Judge.

RICHARD A. CARRINGTON, III. Lynchburg, Va. Graduate University of Virginia 1954. B.A. Varsity lacrosse letterman. Started officiating 1956, joined ACC staff 1966. Vice president Consolidated Shoe Co. Member YMCA Board, and Sunday School Superintendent. Episcopal. Head Linesman.

TOM CHAMBERS. Winston-Salem, N. C. Graduate of Duke University 1950. Business Administration. Played guard on Duke football team. Worked Liberty Bowl games 1963 & 1967, and Coaches All America in 1965. Officer of Goody's Manufacturing Corporation. Started officiating 1950, joined ACC staff 1959. Baptist. Umpire.

WILBURN C. CLARY. Winston-Salem, N. C. Graduate of S. C. 1937. Holds MS in Education. Lettered in football, boxing and baseball and honorable mention All American as halfback. Started officiating 1951, joined ACC staff as charter member. Worked 1956 Orange Bowl. Manager of Sportsman Supply Co. Methodist. Referee.

JIM COLLIER. Greenville, S. C. Graduate of Presbyterian College 1943. Letters in football, basketball, track. Started officiating 1948, joined ACC staff 1959. Industrial Relations Director for Woodside Mills. Rotary. Westminster Presbyterian Church. Umpire.

NELVIN E. COOPER. Cary, N. C. Graduate Elon College 1953. MS in Education. Letters in basketball, baseball and golf, and All Conference in basketball. Assistant professor of physical education at N. C. State. Methodist. Field Judge.

HUGH M. CURRIN. Oxford, N. C. Graduate Wake Forest 1943. Law degree 1948. Lettered in football, and member of student council. Started officiating 1948, joined ACC staff 1958. Worked Coaches All America Game 1967. Attorney at Law and former Mayor of Oxford. Baptist. Head Linesman.

BILL DAVIS. Wilson, N. C. Graduate Duke 1950. Letter as guard in football and was most valuable player in season of 1948. Played in Blue-Gray Game 1948. Started officiating 1951, joined ACC staff 1964. Manager Davis Auto Co. First Christian Church. Back Judge.

CARL B. DEANE. Charlottesville, Va. Graduate Duke 1941. Lettered in football as quarterback. Started officiating 1947, joined ACC staff 1955. Worked Coaches All America Game 1967. Operates Sporting Goods Firm. Member Elks. Methodist. Referee.

BRADLEY E. FAIRCLOTH. Greensboro, N. C. Attended Duke 1952. Letter as football tackle. Started officiating 1954, joined ACC staff 1968. Treasurer J. D. Wilkins Co. Board of Directors Greensboro Lions Club. Methodist. Umpire.

PAUL C. GIROLAMO. Spartanburg, S. C. Graduate of Cornell 1950. Three year football halfback and captain of 1949 team. Started officiating 1951, joined ACC staff 1962. Program manager. Little League Director. Catholic. Head Linesman.

ERNEST D. HACKNEY. Wilson, N. C. Graduate UNC as Phi Beta Kappa 1947. BS in Commerce. Letter as baseball shortstop. Started officiating 1948, joined ACC staff 1956. Worked NAIA championship. Secretary Wilson Savings & Loan Association. Past President Jaycees. United Methodist. Referee.

THOMAS B. HARRIS. Charlotte, N. C. Graduate Duke 1950. Letters as football halfback. Started officiating 1956, joined ACC staff 1968. Insurance Sales, President Optimist Club. Baptist. Head Linesman.

MILTON A. HINES. Elkin, N. C. Graduate Guilford 1941. Letters in football, basketball, baseball. Started officiating 1949, joined ACC staff 1960. Branch Manager Quality Oil Co. Kiwanis Club, Scout Master. Methodist. Umpire.

WARREN A. HODGES. Winston-Salem, N. C. Graduate University of Wichita 1949. All Conference honors in football. Started

(Continued on page 62)



AUTH.
DEALER

VOLKSWAGEN

AUTOVILLE, LTD.

9330 BALTIMORE AVE.

COLLEGE PK., MD.

1/2 Mile South of Beltway Exit #27

TEL. 935-3070



AUTH.
DEALER

SALES • SERVICE • PARTS
PAINT & BODY SHOP

HUGHES & SMITH, INC.
GENERAL CONTRACTOR

231 MILL STREET, N.E.
VIENNA, VIRGINIA 22180
938-9393

ROCKVILLE

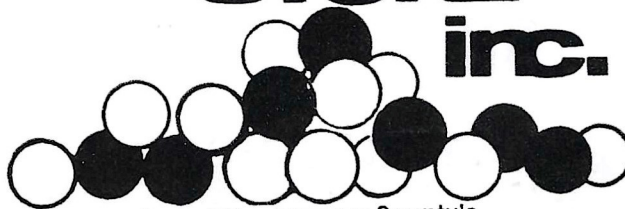
For all Residential,
Commercial and
Industrial Uses
Delivered Promptly
to your Home or
Construction Site

POplar
2-9307

Graded Aggregate to
Meet all State and
Federal Specifications

Roads
Parking Areas
Window Wells
Driveways
Sidewalks
Built-Up Roofs

STONE inc.



One of Montgomery County's
most community conscious industries

P.O. BOX 407, 13900 PINEY MEETING HOUSE RD., ROCKVILLE, MD.

THE STANDARD ELEVATOR COMPANY

A MARYLAND COMPANY

OUR BUSINESS
GETTING YOU UP IN THE WORLD

OFFICE BALTIMORE, MARYLAND
413 S. HANOVER STREET

JOHN K. RUFF, INC.

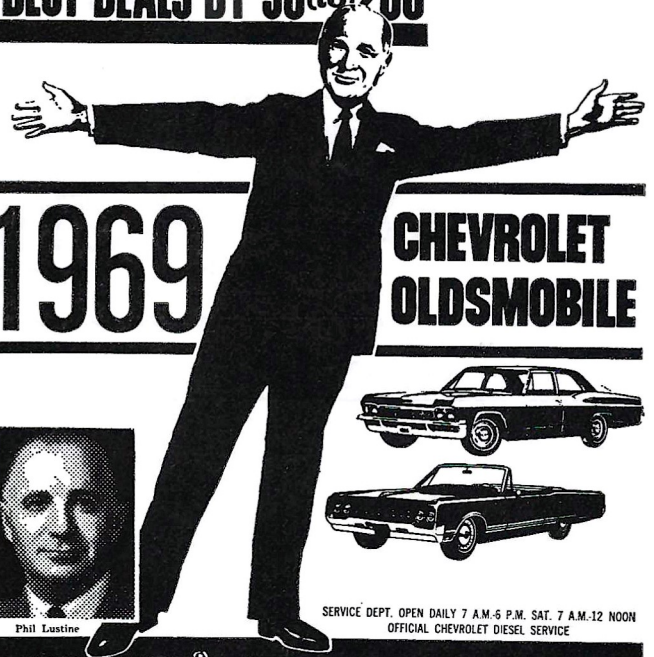
CONTRACTORS * BUILDERS

9920 York Road
Cockeysville, Maryland 21030

666-3000

*Building the new University of Maryland
in Baltimore County*

As many of Phil Lustine's Nearly Half-Million Customers Have said
**"LUSTINE BEATS EVEN THE
BEST DEALS BY '50 (to) '200"**



**1969 CHEVROLET
OLDSMOBILE**

SERVICE DEPT. OPEN DAILY 7 A.M.-6 P.M. SAT. 7 A.M.-12 NOON
OFFICIAL CHEVROLET DIESEL SERVICE

Lustine
CHEVROLET
5710 BALTIMORE AVE., U.S. 1, HYATTSVILLE • WA. 7-7200
OLDSMOBILE
5600 BALTIMORE AVE., U.S. 1, HYATTSVILLE • AP. 7-2000
OPEN EVES. 'TIL 9—SATURDAY 'TIL 6

Ride the route
of the
Silver Eagles

**THRU BUSES
EXPRESS SHIPPING
CHARTER SERVICE
TOURS**

Continental
Trailways



easiest travel on earth

It's a tradition among University
of Maryland students, professors,
and alumni to bank at.

UNIVERSITY NATIONAL BANK

- Located within easy walking distance of the campus . . . free parking.
- Complete line of banking services.
- Open from 8 AM to 8 PM Monday through Friday, to noon on Saturday.

Main Office:

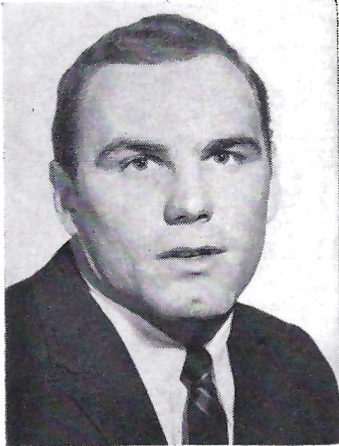
4321 Hartwick Rd., College Park, Md. 779-6700

Branch Offices:

Riverdale: Riverdale Rd. & Kenilworth Ave.
Gaithersburg: Walnut Hill Shopping Center



MARYLAND



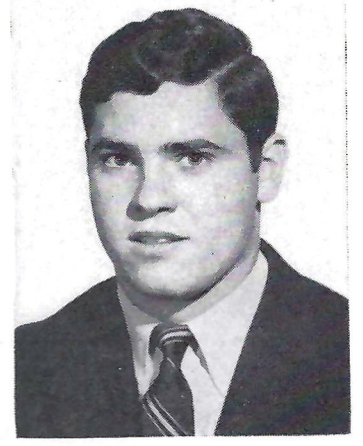
Charles Bowman
Linebacker



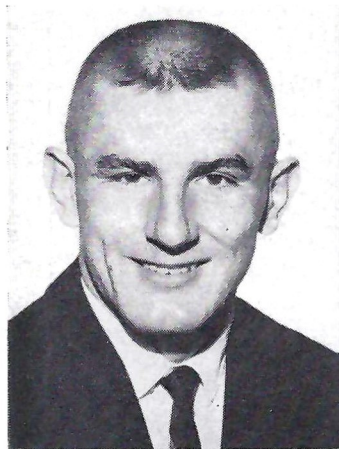
Lou Bracken
End



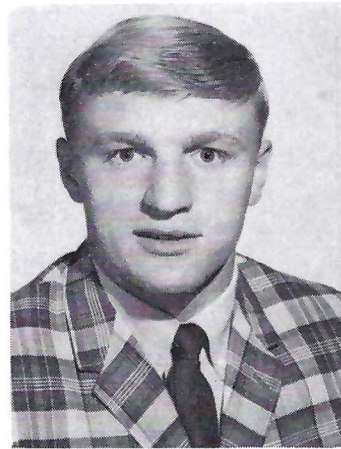
Mike Brant
Defensive Halfback



Pat Burke
Tackle



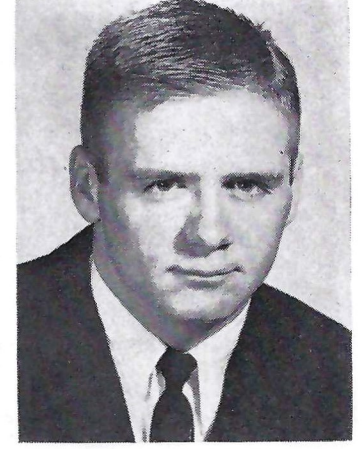
Rick Carlson
End—Kicker



Steve Ciambor
Linebacker



Mike Chadick
Middle Guard



Bob Colbert
Defensive Back



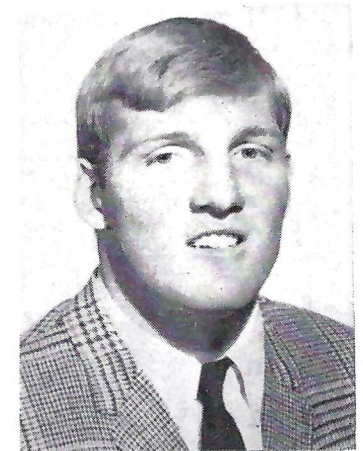
Sonny Demczuk
Wingback



Tim Di Gennaro
Center



John Dill
Defensive Tackle

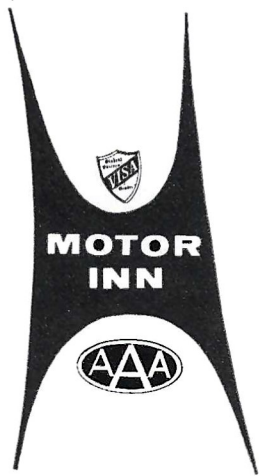


Joe Diorio
Middle Guard



120 SMARTLY APPOINTED ROOMS

RESTAURANT * SWIMMING POOL * COMPLETE BANQUET FACILITIES



HAMPSHIRE

7411 NEW HAMPSHIRE AVE., LANGLEY PARK

MOTOR INN

***5 Minutes from Campus *Two Blocks South of Langley Park**

FOR RESERVATIONS AND INFORMATION, 439-3000

Coleman and Wood, Inc.

— *General Contractors* —

963 SELIM ROAD

Silver Spring, Md.

Tracy C. Coleman Class of Engr.—1935

Thomas L. Coleman Class of Engr.—1940

474-9713

474-8758

GREENBELT ROAD SHELL

6327 GREENBELT ROAD
BERWYN HEIGHTS, MARYLAND

Towing Service :- Minor Repairs



UN. 4-9454

WA. 7-9728

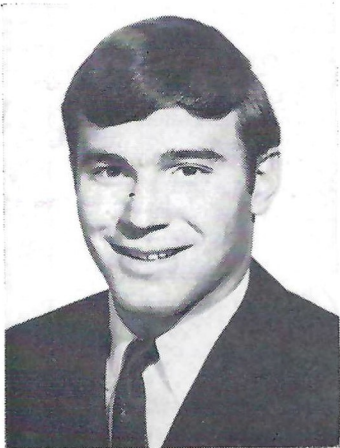
COLLEGE PARK SHELL SERVICE CENTER

7250 BALTIMORE BOULEVARD
COLLEGE PARK, MARYLAND

GET THE MESSAGE?
We are at 3500 East-West Highway near Queens Chapel Road in Hyattsville . . . All 85 Stores of Us!



MARYLAND



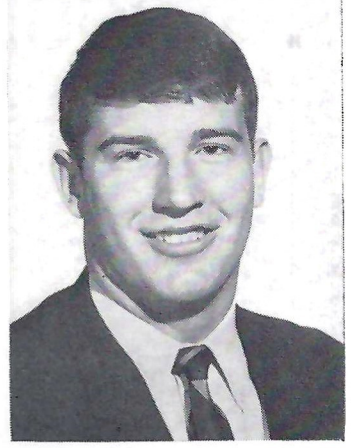
Chuck Drimal
Safety



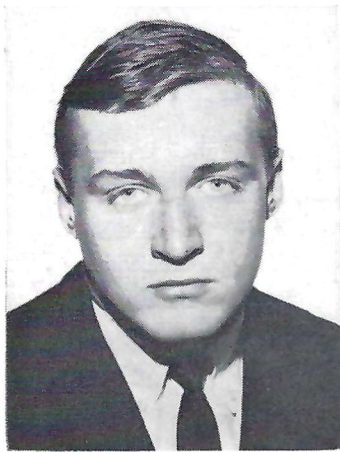
Kenny Dutton
Wingback



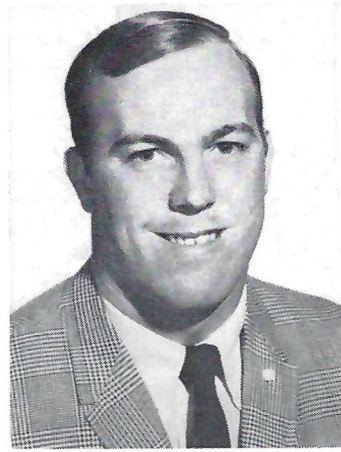
John Dyer
Linebacker



Bob Faries
Quarterback



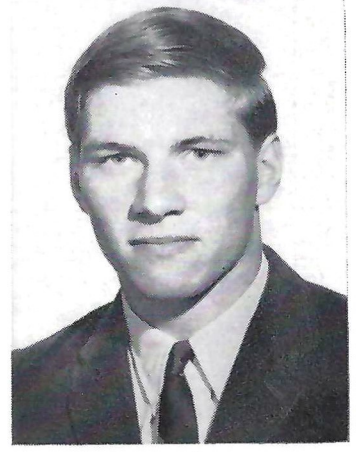
Paul Fitzpatrick
Halfback



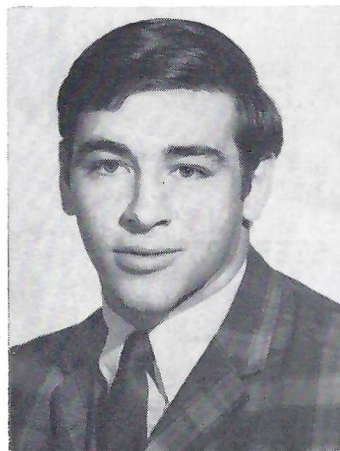
Ralph Friedgen
Guard



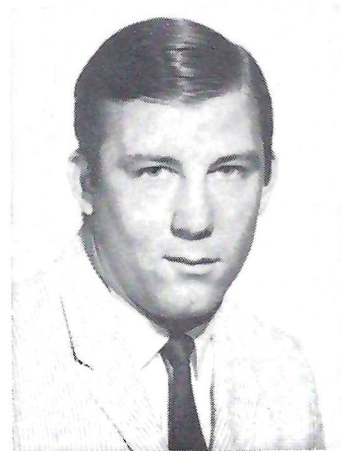
Greg Fries
Kicking Specialist



Henry Gareis
Defensive End



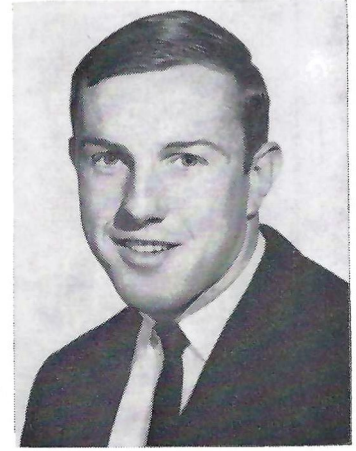
John Gebhardt
Defensive Tackle



Craig Gienger
Linebacker



Mike Grace
Defensive Tackle



Bill Grant
Defensive End



GOOD LUCK TERPS

Chas. E. Brohawn & Bros., Inc.
General Contractors

U. S. Highway 50
Cambridge, Md.

Where the crowd meets after the
game for swinging re-play action,
memorable steaks and cold, bold drinks!

- aged heavy western beef
- select fish and seafood
- cocktails daily including Sunday
- ample free parking
- 130 rooms and suites

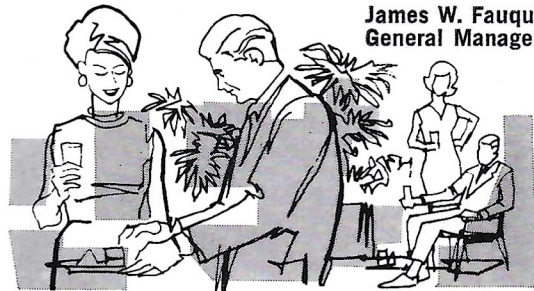


Governor's House

Vernon M. Briggs
President

MOTOR HOTEL

James W. Fauquier
General Manager



8400 Wisconsin Avenue / Bethesda, Maryland / Dial 654-1000

TEXT BOOKS NEW & USED

ARTISTS • ENGINEERING SUPPLIES
NOVELTIES • SOUVENIRS • GIFTS • PAPERBACKS

Cash for Used Books and Supplies

our aim

SERVICE • SATISFACTION

MARYLAND BOOK EXCHANGE

THREE ENTRANCES:
7501 BALTIMORE AVE.
&
4500 COLLEGE AVE.
&

7505 BALTIMORE BLVD.
COLLEGE PARK, MD.
WA 7-2510



U.S. Patents #3,052,332 & 3,228,154



PICO PRE-ERECTED STEEL STAIRS
OFFER THE ARCHITECT
COMPLETE FLEXIBILITY OF DESIGN...
AND EXTRA EASE
IDEAL FOR STEEL, CONCRETE,
AND MASONRY BUILDINGS.

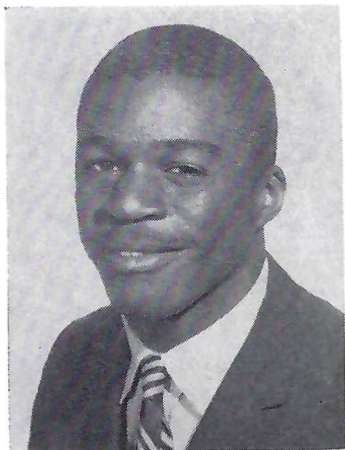
For full details, contact: Milton Mulitz '40
POTOMAC IRON WORKS, INC.
Hyattsville, Md. 779-7500
Your local Pico licensee



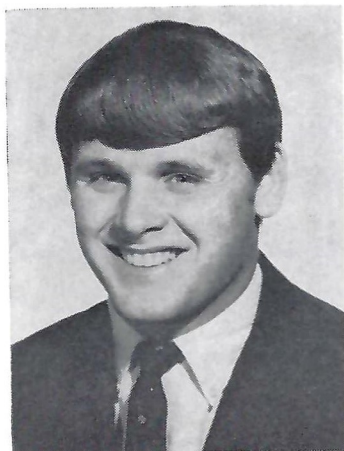
Licensee



MARYLAND



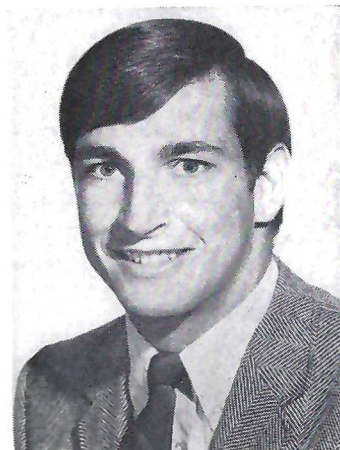
Tony Greene
Wingback



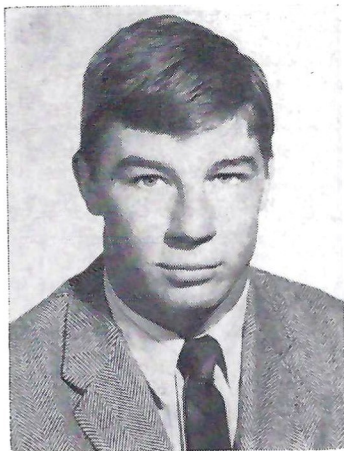
Bob Haley
Defensive Halfback



Mike Imphong
Defensive End



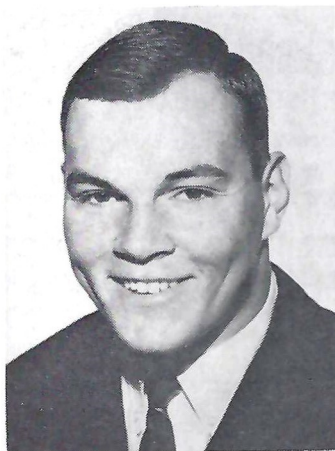
Ed Kane
Guard



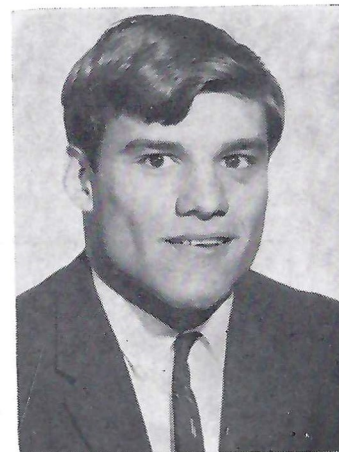
Dan Kecman
Linebacker



Bill Kirschensteiner
End



Glenn Kubany
Tackle



Dean Landolt
Linebacker



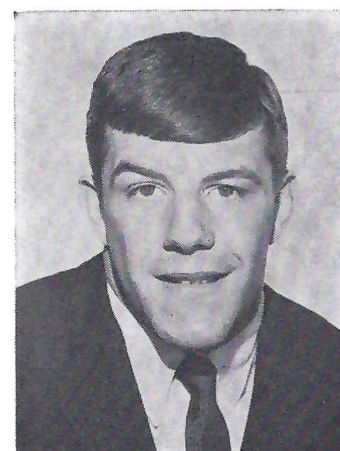
Jimmy Lawrence
End



Billy Lovett
Fullback



John Little
Defensive End



Bob MacBride
Linebacker





The Cushwa Brick & Building Supply Co.

Complete Line of Building Materials

- Brick • Cement
- Plaster Materials • Wallboard
- Cinder Block • Mortar
- Styrofoam Insulation



**HEATING
and AIR CONDITIONING**

137 INGRAHAM STREET, N.E.
TUCKERMAN 2-1000

Old World Recipe
Pizza
Italian Cuisine

BEFORE
BETWEEN
AFTER
the game . . .

Di Gennaro's
ITALIAN GARDENS

7416 Baltimore Boulevard • College Park, Maryland Phone 927-4438
(A Half Block South of U. of Md. on U.S. Rt. 1)

Have you tried our "Other Room"?

**"WHITEY" MILLER SAYS
"HE CAN BEAT ANY DEAL
HE HAS SEEN ADVERTISED
ANYWHERE"**



V. H. "WHITEY" MILLER

MILLER BUICK
FAMOUS FOR SMALL TOWN DEALS

ROCKVILLE, MARYLAND
300 North Washington Street 424-6363

**GOOD
LUCK
TERPS**

N. LITTERIO & CO., INC.
Bricklaying Contractors

5724 Edsal Road
Alexandria, Virginia
22304
Tel. 751-5484



MARYLAND



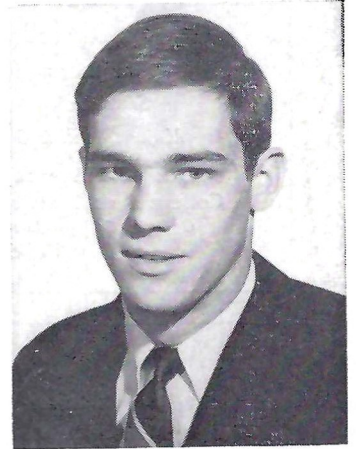
Pete Mattia
Middle Guard



Bill Meister
Guard



Eric Moore
Defensive Halfback



Dennis O'Hara
Quarterback



Bruce Olecki
Tackle



Joe Panca
Defensive Halfback



Alan Pastrana
Quarterback



Ron Pearson
End



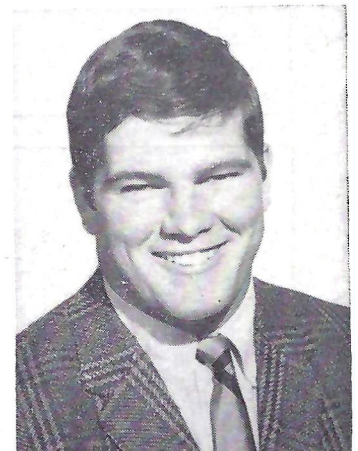
Tom Plevin
Defensive Tackle



Len Santacrose
Tackle



Dave Seifert
Linebacker



Rich Slaninka
Tackle



Albrecht's Pharmacy

The Students Corner

Copying Machine—10c/copy

Russell Stover Candies

Prescriptions

Cosmetics

Sundries

Drugs

Major Gasoline & Other Credit Cards Honored

Baltimore Avenue
College Park, Maryland
Opposite College Gate

Phone:
WA 7-3838

VISA Cards Honored

Edw. J. McEvoy

Catering

“College Park's Favorite Eating Place”

BREAKFAST • LUNCH • DINNERS

SNACKS • FOUNTAIN SERVICE

ALBRECHT'S PHARMACY

College Park, Md. Phone:
WA 7-3838

G. L. Cornell Company

TURF EQUIPMENT FOR:

Golf Courses

Highways

Cemeteries

Parks

Schools

Industrial Plants

16031 Industrial Drive

Gaithersburg, Maryland

Phone 948-2000

SERVING THE AREA SINCE 1935 . . .

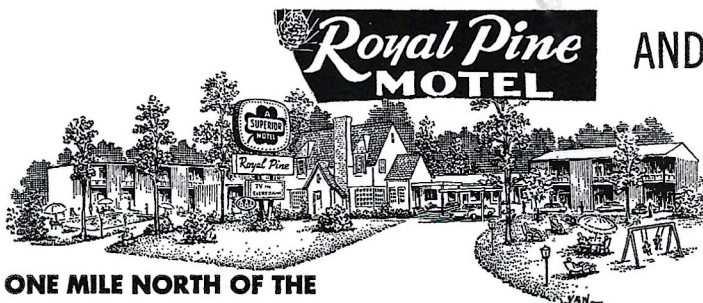
HEATING • AIR CONDITIONING • ROOFING

W. B. MASKE SHEET METAL WORKS, INC.

4505 BALTIMORE AVE.

BLADENSBURG, MD.

WA 7-3412



ONE MILE NORTH OF THE
UNIVERSITY ON U.S. NO. 1



Tel. 935-0311

AND



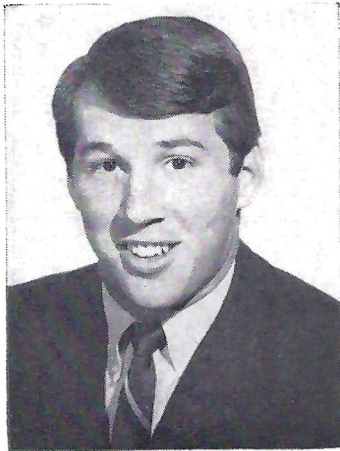
2 MILES NORTH OF THE
UNIVERSITY ON U.S. NO. 1

SERVING
COLLEGE PARK

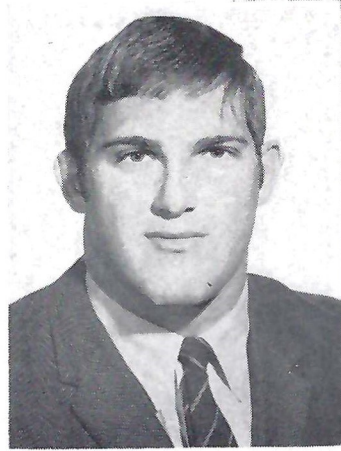
- 50 Attractive Units
- GR 4-6565



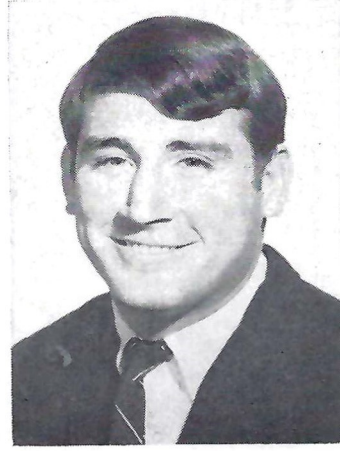
MARYLAND



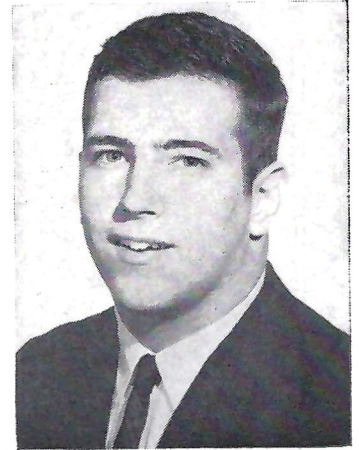
Jim Sniscak
Quarterback



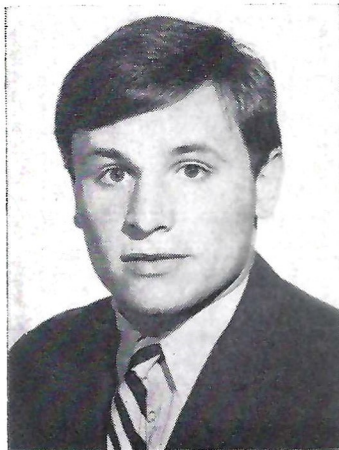
Ralph Sonntag
Tackle



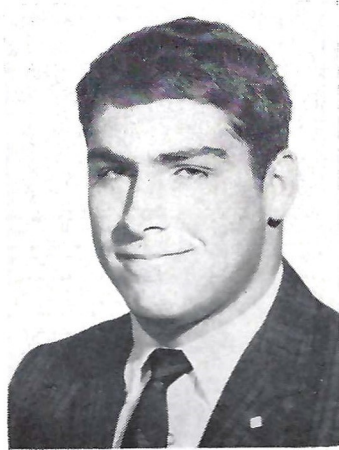
Wally Stalnaker
Safety



Rick Stoll
Defensive Tackle



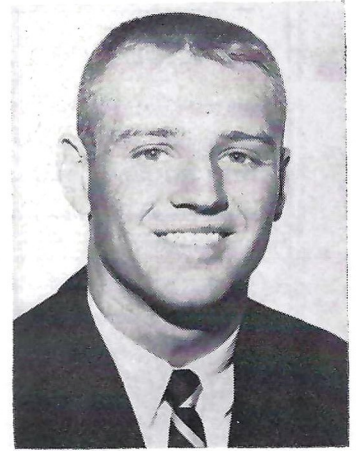
Mike Stubljar
Center



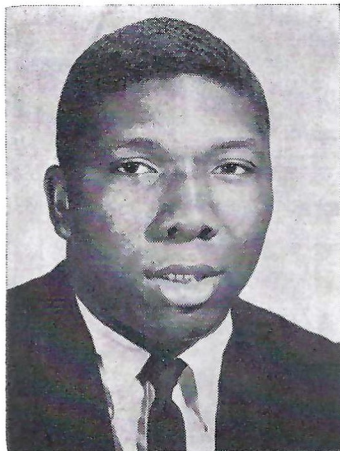
Jim Stull
Center



Al Thomas
Tailback



Joe Tomcho
Quarterback



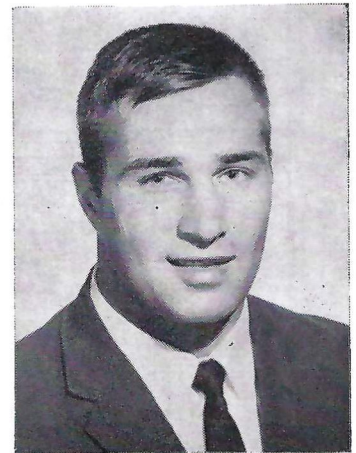
Ernie Torain
Halfback



Gary Van Sickler
Defensive Halfback



Larry Vince
Center



Steve Welhorsky
Middle Guard



**"WHITEY" MILLER SAYS
"HE CAN BEAT ANY DEAL
HE HAS SEEN ADVERTISED
ANYWHERE"**



V. H. "WHITEY" MILLER

MILLER BUICK

FAMOUS FOR SMALL TOWN DEALS

ROCKVILLE, MARYLAND

300 North Washington Street 424-6363

Compliments

of

J. H. DeVeau & Son, Inc.

General Contractors

Rockville, Maryland

POplar 2-5100



"Good Luck Terps"

LES WELLS

**UNIVERSITY ESSO
8401 Baltimore Ave.
College Park, Md.**

**2 Blocks North
Univ. of Md. Gate
Telephone 474-9658**



ACME IRON WORKS, INC.

Designers and Manufacturers
of

ARCHITECTURAL IRON WORK

**4900 Frolich Lane, Kenilworth Industrial Park,
Tuxedo, Md. 20781 Telephone 322-3900**

**"SERVING WASHINGTON HOME OWNERS
OVER 25 YEARS"**

PLUMBING

Atchison & Keller, INC.
LICENSED AND REG. PLUMBER IN D.C., MD. AND VA.

HEATING

AIR-CONDITIONING COMPLETE KITCHENS

MEL KELLER—CLASS OF 1958

1246 Taylor St., N.W. Phone Taylor 9-8100



CROWN SUPPLY, INC.

DISTRIBUTOR OF PAPER PRODUCTS—SANITARY
SUPPLIES—SANITARY CHEMICALS

**195 Telegraph Rd. Alexandria, Va. 22314
836-6060**

LEE MARKEY EQUIPMENT, INC.

GLASSWARE—CHINAWARE—RESTAURANT SUPPLIES

**197 Telegraph Rd. Alexandria, Va. 22314
548-5010**

EDWIN PARKER

E. C. ERNST, Inc.

Electrical Contractors

1624 Fourteenth Street, N.W.

Washington, D. C. 20009

Tel. DUpont 7-6500

Distinguished Natural Shoulder Clothing

*Deansgate, Freedberg of Boston,
Norman Hilton, Gant, Eagle,
Bass Weejuns, Corbin, Austin-Hill*



Powers & Goode

7403 Baltimore Ave.
4509 College Ave.

College Park, Md.
WA. 7-0421

BELTSVILLE LUMBER CO.



10730 Baltimore Avenue (U. S. Rt. 1)

BELTSVILLE, MARYLAND

Telephone 474-8111

*Those Who Know The Best In Dough,
Say . . .*

Koester's Twins Please

**650 W. Lexington Street
The E. H. Koester Bakery Co., Inc.
Baltimore 1, Maryland**

Serving Flower Lovers Since 1938

WOOD'S FLORISTS

DELIVERING TO
COLLEGE PARK - GREENBELT
BELTSVILLE - ADELPHI
LANGLEY PARK
AND ADJACENT AREAS

"Flowers of Distinction For All Occasions"

Member Florists' Telegraph Delivery

Call

GRanite 4-7000

**9066 BALTIMORE BOULEVARD
College Park, Md.**

THE SHADE SHOP INC.

and our new products division

ACACIA MFG. & DISTRIBUTING CO.

Serving Metropolitan Washington for over 60 years

FINE QUALITY

- VENETIAN BLINDS
- SHOWER DOORS
- PATIO DOORS
- DRAPERIES
- DISTINCTIVE WINDOW COVERINGS
- DU PONT TONTINE WASHABLE WINDOW SHADES

Telephone: 321-9700

**Ravensworth Industrial & Shopping Park at Capital
Beltway #495—Braddock Rd. Exit, Springfield, Va.**

COMPLIMENTS

OF

CURTIN & JOHNSON, INC.
ASPHALT & CONCRETE
CONTRACTORS

Jack Curtin

Guy Johnson

Bob Garner

EDWARD BOKER FOODS, INC.

Washington, D. C.

PURVEYORS OF FINE FOODS

for

INSTITUTIONAL SERVICE

Food Service for the Atlantic Seaboard

In Washington
529-3636

In Baltimore
685-3663

S. Freedman & Sons, Inc.

Distributors of Nationally Known Paper Products

SCOTT TOWELS



DUPONT WAXES

BRANCH:
618 K Street, N.W.
Washington, D. C.

3322 Pennsy Drive
Ardwick Industrial Park
Landover, Maryland

PHONE: 322-3322

SIDNEY F. HOFFMAN & ASSOCIATES
LAND SURVEYORS

6419 BALTIMORE BOULEVARD
RIVERDALE, MARYLAND

•
REGISTERED LAND SURVEYOR
MARYLAND and VIRGINIA

OFFICE 779-9494
RES. 384-6623



M O N T E
MINIATURE GOLF

UNIVERSITY BOULEVARD
BETWEEN ROUTE 1 AND
UNIVERSITY OF MARYLAND STADIUM
COLLEGE PARK, MD.

Tel: WEBster 5-9821



SAVE
for your goal
in life



8485 Fenton Street, Silver Spring, Md. 585-9000

Laurel — White Oak — Kensington — Rockville —
Damascus — Gaithersburg

From a Friend of The
University of Maryland

Clevenger Corp.

INTERIOR MOVABLE PARTITIONS
ACOUSTICAL AND FLOORING
CONTRACTORS

4703 WEBSTER STREET
BLADENSBURG, MD.
Phone 864-4466

E. A. BAKER CO., INC.
BUILDERS
TAKOMA PARK, MD.

BUILDERS OF GRADUATE SCHOOL AND
 ADMINISTRATIVE SERVICES BUILDING



A WINNING DEAL EVERYTIME!
FOR PONTIAC'S & TEMPEST'S
 7125 Baltimore Boulevard, College Park, Md.
OPEN WEEKNIGHTS 'TIL 9—SAT. 'TIL 6
PHONE: AP 7-4282
GET A WHALE OF A DEAL



Joseph W. McCartin
 Insurance


Specializing in Serving University Personnel

10207 SOUTHMOOR DRIVE
 SILVER SPRING, MD. 20901
 Telephone 593-8309

EWING
LUMBER and MILLWORK
CORP.

474-9100

Beltsville, Md.

C. D. DENISON
ORTHOPAEDIC  **APPLIANCE**
CORPORATION

220 W. 28th St. Baltimore, Md. 21211

*A Complete Line of Custom-Built
 Orthopaedic Appliances on Prescription*

HILLYARD FLOOR TREATMENTS

*Hillyard Manufactured Cleaners - Waxes - Seals
 Finishes - Dressings - Machines
 Custodial Supplies - Expert Consultant Service*

LAWRENCE E. WEYER, SR.

9214 FLOWER AVENUE

Silver Spring, Md. 20901

JUniper 5-3957

Compliments of

Wallace S. Lippincott

**Whims And Fashions May Change
 And Pass But — Never
 The Charm of BRICK**

**“HOMEWOODS” “LOMBARDY”
 BALTIMORE BRICK COMPANY**

3200 E. Madison Street
 Baltimore, Md. 21205
 ORleans 5-0260

"Good Luck Terps"

POTOMAC VALLEY CHAPTER
AMERICAN INSTITUTE OF ARCHITECTS

**Standard Art,
Marble & Tile Co. Inc.**

117 D Street, N.W.
Washington, D. C.

**BROOKS
PAINTING CO., Inc.**

PAINTING & DECORATING

DEALE, MARYLAND
301-867-2950



529 - 6100

ACC OFFICIALS—continued

officiating 1949, joined ACC 1967. Worked 1958 Sun Bowl. District Manager for Hanes Corp. Parkway Presbyterian. Referee.

MARK A. KANE. Charlotte, N. C. Graduate Clemson 1955. Played guard and was co-captain of 1954 football team. Started officiating 1957, joined ACC staff 1967. Stock Broker. Roman Catholic. Field Judge.

JOHN W. LINDSAY. Greenville, S. C. Graduate of UNC 1947. Law degree with honors 1950. Started officiating 1947, joined ACC staff 1956. Worked Coaches All America Game 1966. Attorney and Corporate Executive. Lt. Col. National Guard. Lutheran. Referee.

GEORGE MANNING. Gastonia, N. C. Graduate Ga. Tech 1943. MS in English. All American honors as Center in football. Started officiating 1946, joined ACC staff 1956. Worked Coaches All America Game 1966. Director of Engineering. Rotary. Episcopal. Head Linesman.

M. E. McCLENNY. Goldsboro, N. C. Started officiating 1947, joined ACC staff 1955. Bakery owner. Lions, Elks, American Legion, Boy's Club Director. Quaker. Head Linesman.

JULIAN McKENZIE. Jacksonville, Fla. Graduate of UNC 1949. Captain track & cross country. Started officiating 1950, joined ACC staff 1955. Physical Relations Representative Blue Shield of Fla. U-P Employees Club, U-P San Jose Lake Association. Episcopal. Head Linesman.

R. D. MENTON, Jr. (BO) Ellicott City, Md. Graduate Loyola College 1954. DDS Degree. Started officiating 1952, joined ACC staff 1963. Worked Rice Bowl in Tokyo 1958. Dentist. Rotary. National Football Foundation. Catholic. Field Judge.

RAY MOORE. Columbia, S. C. Attended US Maritime Academy. Letters in football, basketball, baseball, boxing. Started officiating 1939, joined ACC staff as charter member. Worked 1947 Orange Bowl, 1961 Cotton Bowl, 1968 Coaches All America Game. Insurance Sales. Deacon Reformed Presbyterian. Umpire.

THOMAS J. RICHERT. Coral Gables, Fla. Graduate University Detroit, 1942. Engineering. Letters as football quarterback, basketball and tennis. Started officiating 1947, joined ACC staff 1964. Worked East-West, North-South, and Coaches All America Game. Vice president Eastern Airlines. Roman Catholic. Field Judge.

EXCAVATION—GRADING

Contract and Rental

*Arnold Parreco
&
Haass, Inc.*

4700 Lawrence Street
Hyattsville, Maryland

PHONE UN 4-8220

**ARNOLD PARRECO
UN 4-5515**

**CARL HAASS
UN 4-8835**

Compliments of

N. T. A., Inc.

**QUALITY MOTEL
PARK UNIVERSITY**

7200 Baltimore Avenue (US 1)
College Park, Maryland
Phone 864-5820 TWX. 710-826-0053
Adjacent to Maryland University

**SCOUTING ROUNDS
A GUY OUT . . .**

**FUN AND ADVENTURE
FOR ALL BOYS!**
Scouting needs adult assistance
PHONE DE 2-1962
National Capital Area Council
Boy Scouts of America

Ted Englehardt

NORMAN

We Will Save You Money

8315 WASHINGTON-BALTIMORE BLVD.
1 Mile North of U. of Md. on Washington Blvd.
474-5100 College Park, Md.

WELCOME

"TERPS"

Oyster Bowl 68

**the GOLDEN TRIANGLE
CONVENTION CENTER**

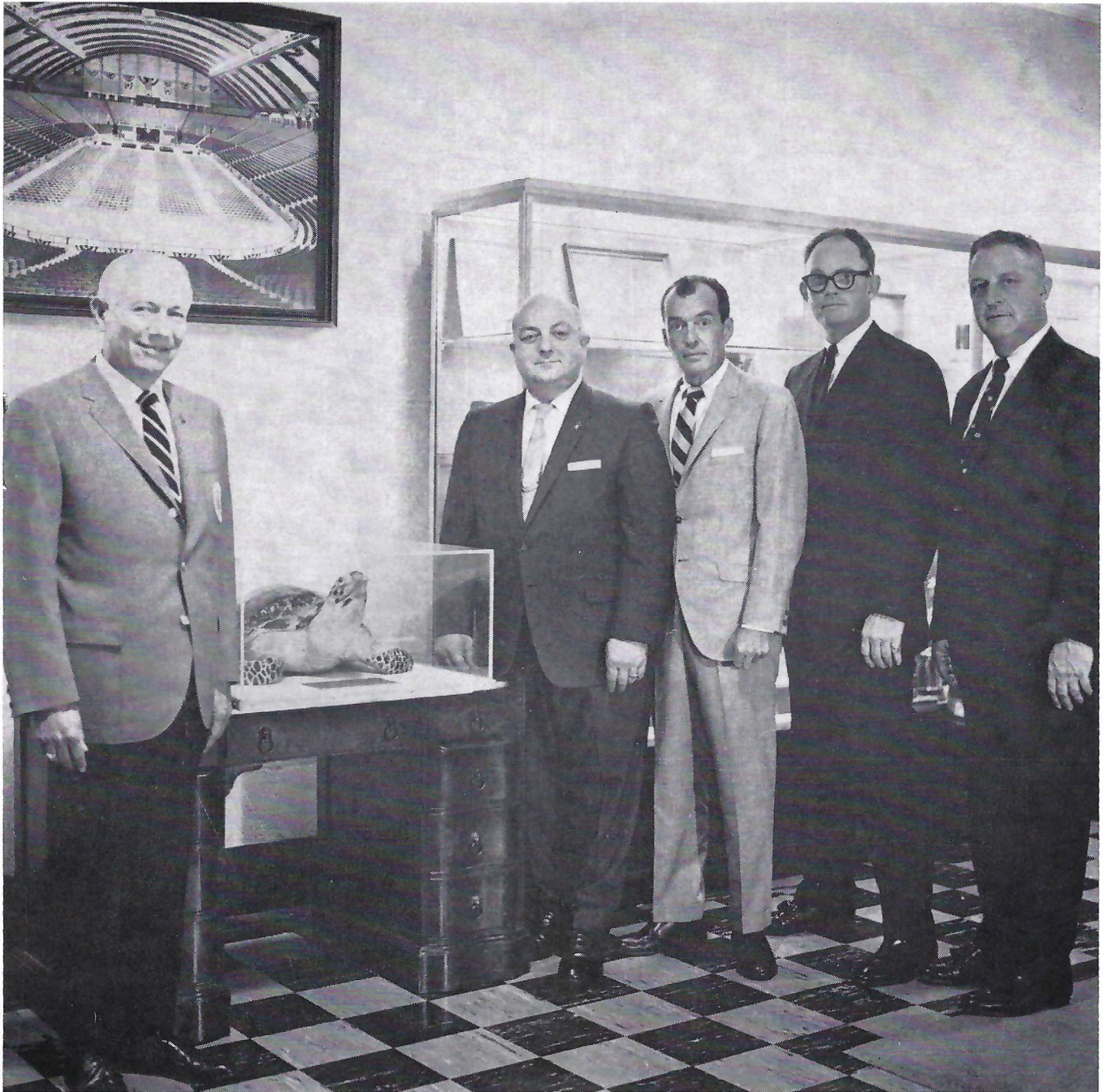
Monticello Ave. at Olney Rd Downtown Norfolk, Virginia Telephone: 627-5555 Teletype: 703 625-8353

"GOOD LUCK, TERRAPINS!"
WITH LOTS OF TEAM WORK

Seidenspinner
REALTOR

Real Estate — Insurance
Specializing in Properties near
University of Maryland

6037 BALTIMORE BOULEVARD
WARfield 7-1010 Riverdale, Md.



TERRAPIN CLUB OFFICIALS—1968-1969

Left to right—Alvin E. Johnson, President; F. Elmer Gelhaus, First Vice President; James C. Davis, D.D.S., Second Vice President; Austin G. Kenny, Treasurer; Charles Ellinger, Secretary.



Olney Inn
OLNEY, MD.

Distinctive Country Dining
FAMOUS OLD PLANTATION RECIPES
SUNDAY COCKTAILS ★ PARTY ACCOMMODATIONS

Georgia Ave. Extended, Rt. 97
Telephone 929-1717 Air Conditioned Closed Mondays

593-7800 593-7801

A. Myron Cowell, Inc.

QUALITY MASONRY CONTRACTORS

Brick — Glazed Tile, Cinder Block
Rubble Stone — Glass Block
Cut Stone Setting

538 FOREST GLEN ROAD SILVER SPRING, MD.

ELLENCO INC.

MANUFACTURERS - ELECTRIC SIGNALING

and

ARNOLD KORAB & ASSOC.

MANUFACTURERS REPRESENTATIVES

extend best wishes to the TERPS

"Best Wishes for A Successful Season"

H. Walton Redmile Associates

Consulting Engineers

4924 ST. ELMO AVENUE

Bethesda 14, Md.



*Matchless
Service
In*

- ★ Limestone
- ★ Granite
- ★ Marble
- ★ Sandstone

McLEOD & ROMBORG STONE CO., Inc.

BLADENSBURG, MD.

Phone: WARfield 7-2462

Good Luck, Terps!

DU-RITE CHEMICAL CO., INC.

**SWIMMING POOL CHEMICAL CLEANING
AND MAINTENANCE**

3564 Bladensburg Rd.
Brentwood, Maryland

Phone:
WA. 7-1662

APpleton 7-5500

peeler's *Cleaning Service*

OF MARYLAND

DRY CLEANING and LAUNDRY

6227 Baltimore Avenue

Riverdale, Maryland

*Drive In
Delivery Service*

ROGER S. CARLSEN, Pres.

FISH LINEN SUPPLY CO.

2565 PENNSYLVANIA AVENUE

BALTIMORE, MD. 21217

A COMPLETE LINEN & UNIFORM RENTAL SERVICE

SHIP SHAPE MAINTENANCE CO., INC.

5506 Connecticut Avenue, N.W.
Washington 15, D.C.

REFEREE'S SIGNALS

1 OFFSIDE (INFRACTION OF SCRIMMAGE OR FREE KICK FORMATION)

2 ILLEGAL PROCEDURE, POSITION OR SUBSTITUTION

3 ILLEGAL MOTION

4 ILLEGAL SHIFT

5 EXCESS PLAYERS OR RETURN OF DISQUALIFIED PLAYER

6 DELAY OF GAME

7 PERSONAL FOUL

8 CLIPPING

9 ROUGHING THE KICKER

10 UNSPORTSMANLIKE CONDUCT

11 ILLEGAL USE OF HANDS AND ARMS

12 INTENTIONAL GROUNDING

13 ILLEGALLY PASSING OR HANDING BALL FORWARD

14 FORWARD PASS OR KICK CATCHING INTERFERENCE

15 INELIGIBLE RECEIVER DOWNFIELD ON PASS

16 BALL ILLEGALLY TOUCHED, KICKED OR BATTED

17 INCOMPLETE FORWARD PASS, PENALTY DECLINED, NO PLAY OR NO SCORE

18 HELPING RUNNER, OR INTERLOCKED INTERFERENCE

19 BALL DEAD; IF HAND IS MOVED FROM SIDE TO SIDE: TOUCHBACK

20 TOUCHDOWN OR FIELD GOAL

21 SAFETY

22 TIME-OUT, REFEREE'S DISCRETIONARY OR EXCESS TIME-OUT FOLLOW WITH TAPPING HANDS ON CHEST

23 FIRST DOWN

24 BALL READY FOR PLAY

25 START THE CLOCK OR NO MORE TIME-OUTS ALLOWED

ALLEY SHOPS

'call the signals'

FOR THE RECORD

ONLY RECORD SHOP
IN COLLEGE PARK

Low Discount Prices

TOP 100'S
ALBUMS

TAPES
EQUIPMENT
ACCESSORIES

THE UNIVERSITY SHOP

"THE FINEST IN TRADITIONAL
FURNISHINGS and CLOTHING"

FEATURING

Shirts by ENRO Pants by LEE

Sweater by BYFORD & LORD JEFF

U of M rings by JENKINS

THE ALLEY

COLLEGE PARK SPORTS SHOP

— FEATURING —
THE GOLF PRO SHOP

and

SKI HUT . . . sales, rentals, leasing

REGULATION:

FOOTBALL — BASKETBALL — TENNIS

EQUIPMENT . . .

THE DUNGEON of Georgetown

Out-of-this-world

selection of

NOVELTIES

POSTERS

WILD TIES

BUTTONS

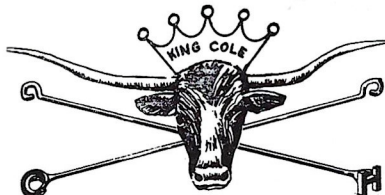
STATIONERY

FUN STUFF

FANTASTIC EARRINGS

"House of the Finest charcoal broiled foods"

CHARCOAL



HOUSE

15 FABULOUS VARIETIES of BURGERS

featuring our . . . **SPECIALS**

MONDAY

**STEAK
-A
BOB**

All Served with tossed salad—choice of dressing

TUESDAY

**MINUTE
SIRLOIN
STEAK**

WEDNESDAY

**SLICED
BEEF
STEAK**

French Fries Rolls Butter
Served From 4:00 P.M. until Closing

**SATURDAY
& SUNDAY**

**SLICED
BEEF
STEAK**

VISIT OUR EL TORO COCKTAIL LOUNGE

CHARCOAL HOUSE

LANGLEY PARK SHOPPING CENTER
SILVER SPRING
SHOPPING CENTER

"There's One Near You"
OPEN DAILY
11 a.m.-8:30 p.m.

OPEN SUNDAYS NOON—8 P.M.
WHEATON PLAZA MALL
Opp. The PLAYHOUSE

**GLENMAR
CONSTRUCTION CO., INC.**

200 N. Stonestreet Ave.
Rockville, Maryland

**MOSES-ECCO CO.,
INC.**

Concrete Construction

2900 South Eads St.
Arlington, Va.
684-3454

UNion 4-2345



Air Products and Chemicals
SOUTHERN OXYGEN DIVISION **INC.**

LIQUEFIED and COMPRESSED GAS MANUFACTURERS
2900 52nd AVE.
HYATTSVILLE, MARYLAND



**COLLEGE PARK
ESSO SERVICE
BALTIMORE AVENUE
and
GUILFORD ROAD
UN 4-3400**

Complete Automotive Repairs
Towing & Crane Service
ESSO and Atlas Products



M CLUB BOARD OF GOVERNORS

Left to right: standing—R. Weiss, R. DeStefano, J. Parsons L. Schutz, D. Brinkley, H. Alperstein, W. Larash, Mrs. Judy Kehoe, K. Maskell, B. Bondy (guest), H. Simms, N. Kovalakides, W. Smith. Seated—J. Flynn, N. Miller (2nd V.P.), J. Heise (Pres.), J. Phillips (1st V.P.). Absent from Picture: F. Beamer, C. Beebe (Ass't treas.), W. Beers, R. Boucher, F. Cronin, J. Deckman (Treas.), B. Hall, W. Holbrook, J. Kehoe (Sec.), J. Kluac, G. Knepley, V. Miller, J. Poole, W. Schrider, V. Sigworth, W. L. Smallwood, G. Kerin, R. Everett, J. Kreissig

The "M" Club

All Alumni lettermen are eligible for membership in the "M" Club. Friends of the University interested in the program may apply for membership in the Associate "M" Club. Through the "M" Club Foundation, letter winners and Associate members participate in the Maryland Scholarship Program.

Any lettermen or friends not participating should request an application for membership from:

"M" Club Foundation
University of Maryland, Inc.
Box 273
College Park, Maryland 20740

*Best Wishes for a
Successful 1968 Season*

MARLOW SPORTS INC.

Bill & Ralph

NATIONAL CAPITAL TORO, INC.

**928 Philadelphia Avenue
Silver Spring, Maryland**

TORO

Power Mowers

**A Complete Line Of Turf & Irrigation
Equipment For**

**Golf Courses — Parks — Schools — Estates
Cemeteries — Airports**

Phone JU 5-1322

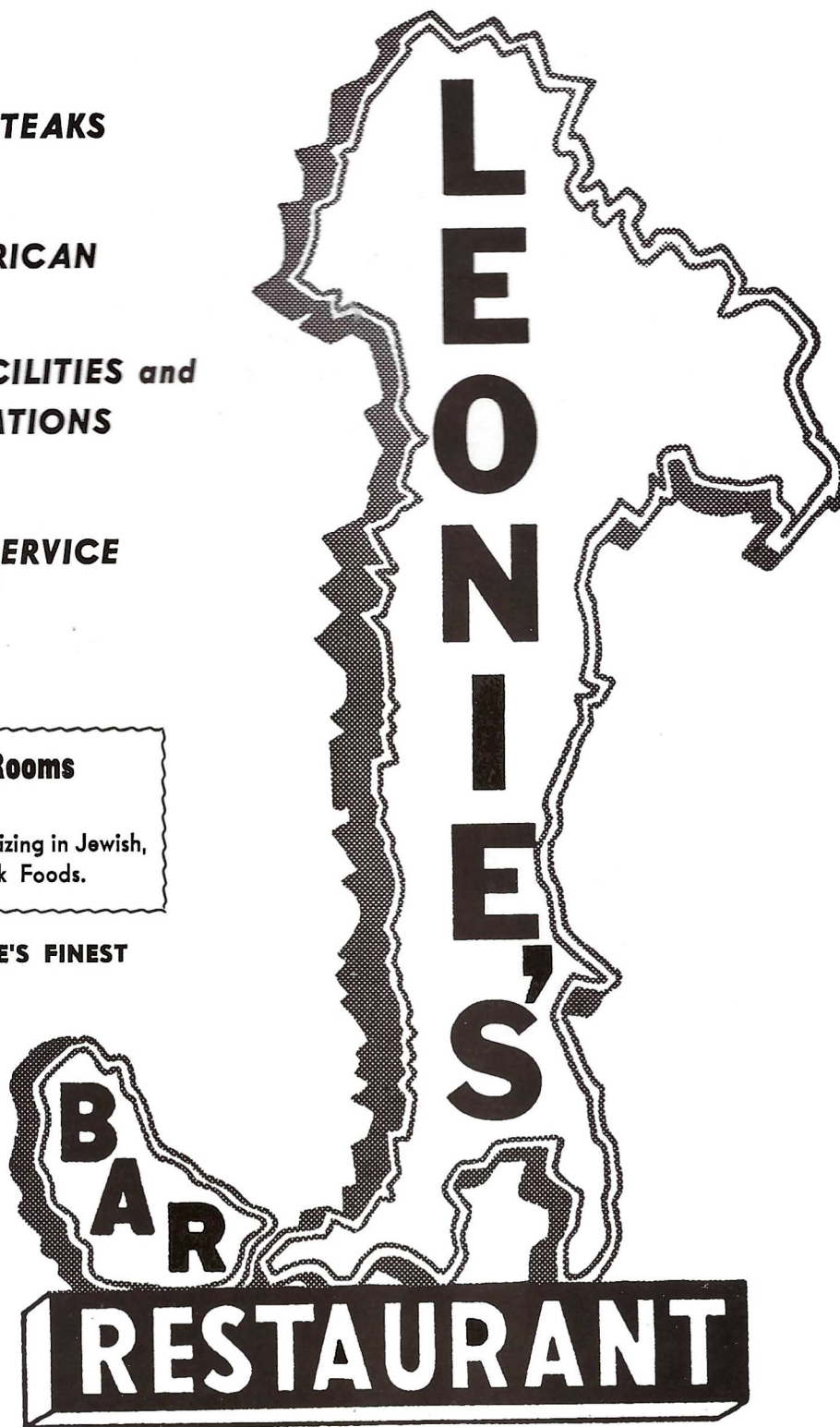
- **CHARCOAL STEAKS**
- **COCKTAILS**
- **ITALIAN-AMERICAN CUISINE**
- **BANQUET FACILITIES and ACCOMMODATIONS**
- **PIZZA**
- **CARRY-OUT SERVICE**

5 Dining Rooms
Newest additions
Delicatessen—Specializing in Jewish,
Italian & Greek Foods.

PRINCE GEORGE'S FINEST

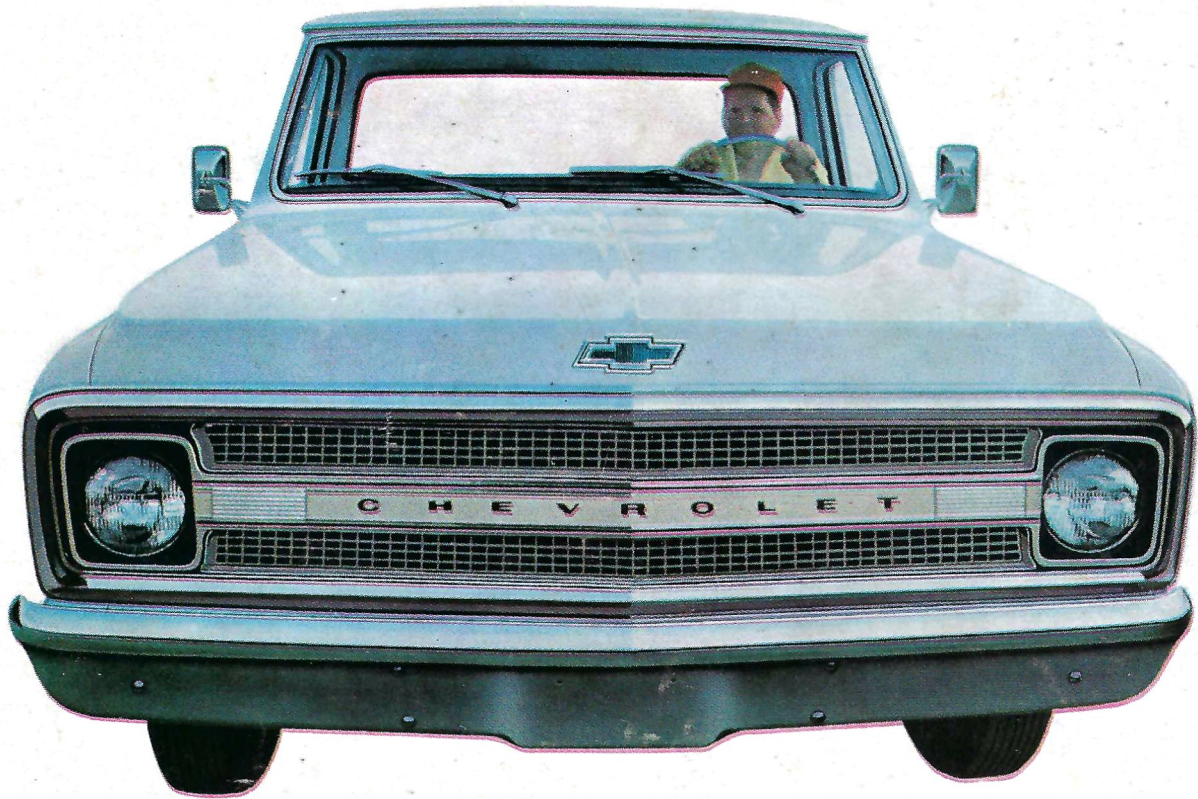
*3 Minutes
From Stadium*

Free Parking
400 Cars



**1500 UNIVERSITY BOULEVARD
LANGLEY PARK, MARYLAND**

PHONE:
HE. 9-2000



Out to win All America again.

In trucks, you don't make No. 1 for thirty years in a row without a tough bunch of fleet-footed pickups in your lineup.

And Chevy's got 'em again in '69.

Fleetsides and Stepsides have new styling. The Long-

horn has new length for camping. There's new power in Chevy's engine line. And the interiors are more car-like than ever.

Chevy's time-proven double-wall construction is the most rugged on the road. And when it comes to comfort, Independent Front Suspension

and deep coil springs give Chevies a special kind of smoothness all their own.

Why not get in and quarter-back one for yourself at your Chevrolet dealer's soon? Why not Monday morning?

Chevrolet Division of General Motors, Detroit, Mich.



More trucks are Chevrolets because Chevrolet is more truck!