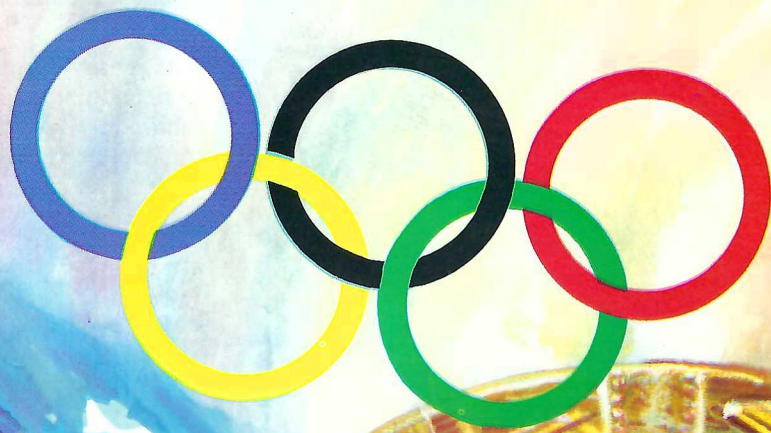


**THE  
COLLEGE  
GAME**

*Salute to the U.S. Olympic Team*

Legislative and Band Day



**FLORIDA  
STATE / MEMPHIS  
STATE**  
**Football Magazine**

**OCTOBER 19, 1968**

**DOAK CAMPBELL STADIUM**

**SEVENTY-FIVE CENTS**





**HAMS • BACON • SAUSAGE • WIENERS**

**FROSTY MORN MEATS**



# TONIGHT

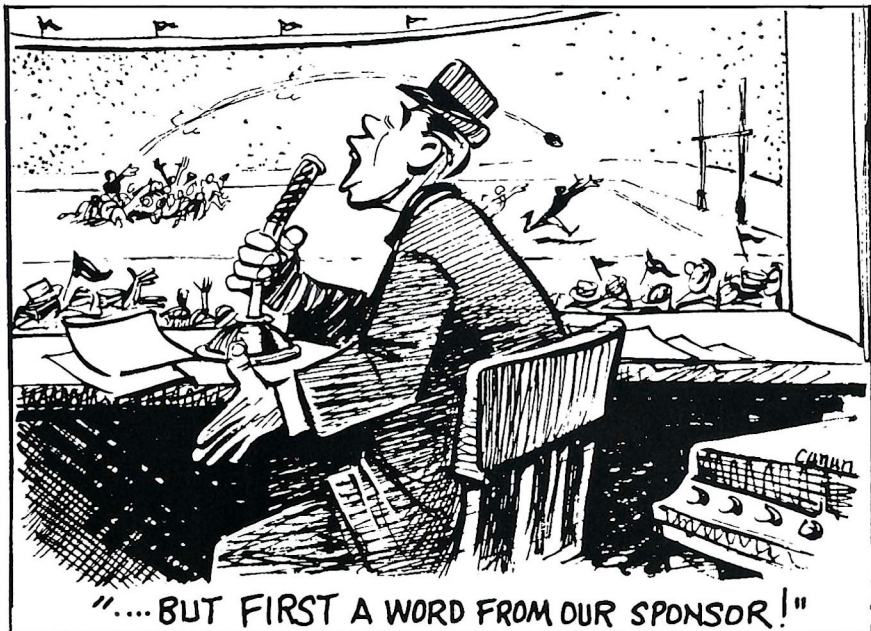
by Hank Schomber

Florida State University has been proud to play host to its annual Legislative Recognition Day, climaxed by tonight's Seminole-Memphis State football game.

Also honored tonight are some of South Georgia and North Florida's top high school bands, who will play in pre-game and halftime programs.

Whether this is a bigger treat for the bands or the fans is debatable. All 10 high school bands represented here tonight are noted for their fine music along with excellent marching ability. Also on hand are Florida State's Marching Chiefs and Memphis State's "Mighty Sound of the South" Band.

An additional salute is made to the United States' Olympic Team and the XIX Olympiad now in its second week at Mexico City.



## MEMPHIS STATE Scouting Report

LEGISLATIVE AND BAND DAY

October 19, 1968

Kickoff 7:30 p.m.

Location: Memphis, Tenn.  
Enrollment: 16,000  
Nickname: Tigers  
Colors: Blue and Gray  
Band: Mighty Sound of the South  
Stadium: Memorial Stadium (50,160)  
1967 Record: 6-3-0  
Series: Tied One Game Each  
1967 Score: 26-7 Florida State

MEMPHIS STATE UNIVERSITY, from its humble beginnings as West Tennessee State Normal School in 1909 to its present structure of eight Colleges and Divisions, has been one of the nation's fastest developing Universities. Credit for much of this successful rapid growth goes to the foresight of its administration and president, Dr. C. C. Humphreys. The University has more than 1,100 acres in four locations within Shelby County. Undergraduate and graduate degrees are awarded in more than seventy-five major areas.

THE TIGERS are competing in the rugged Missouri Valley Conference football race for the first time this year and are given a good chance of walking away with the

championship. The season started slow for the Tigers, as they dropped their first two games to non-conference foes Tennessee and Mississippi. The slow start might have been expected though considering the competition and the number of young untested players on the Tiger squad. After the opening losses Memphis State has come on strong with wins over North and West Texas State. Ricky Thurow is one of two Tiger quarterbacks. Last year he ran the second team which was known as the "Touchdown Team." He guides the Tiger option offense and is a fine sprint out passer. Defensively the Tigers are as strong as last year. The defense is sparked by the play of brothers Alex and Bobby Dees, a fine pair of ends.

### 1968 RESULTS AND SCHEDULE

7	Mississippi	21
17	Tennessee	24
30	N. Texas State	12
42	W. Texas State	21
	10-19 at Florida State	
	10-26 So. Mississippi (HC)	
	11-2 at Tulsa	
	11-9 Houston	
	11-16 Wichita State	
	11-30 at Louisville	

**NEXT WEEK:** *The Seminoles take to the road for the first time in a month when they journey to Columbia to face South Carolina in a night contest. It will be homecoming for the Gamecocks, which doesn't make the Tribe's task any easier. Carolina Coach Paul Dietzel was Bill Peterson's boss back in the 1950's when both were at LSU. And Dietzel is still looking for his first win over his former assistant coach. While the varsity is on the road, the Seminole freshmen will take over Campbell Stadium hosting the Southern Mississippi frosh Saturday night at 8 p.m. It will be the Baby Seminoles' only home appearance this season. The varsity will return to Campbell Stadium Nov. 2 for a night game with Virginia Tech.*

# OFFICIAL WATCH FOR THIS GAME



# LONGINES THE WORLD'S MOST HONORED WATCH®

10 world's fair grand prizes  
28 gold medals



Longines watches are recognized as OFFICIAL for timing world championships and Olympic sports in all fields throughout the world.



Longines Ultra-Chron #8205, automatic with calendar, \$175.  
Other Ultra-Chron Models, \$115 to \$595.

## the fabulous, new LONGINES ULTRA-CHRON®

Guaranteed Accurate To A Minute A Month\*

The ultimate personal chronometer, guaranteed accurate to a minute a month—a mean average of 2 seconds per day. Ultra-Chron tells the date, hour, minute, second. Never needs batteries. Winds automatically while you wear it. All Proof® construction defeats water, dust, shock, magnetism. At Longines-Wittnauer Franchised Jewelers, coast-to-coast.

\*Your Longines-Wittnauer Franchised Jeweler will adjust your Ultra-Chron to this accuracy, if necessary. Guarantee is for one year.

**LONGINES-WITNAUER WATCH CO.**  
NEW YORK • MONTREAL • GENEVA  
Maker of Watches Of The Highest Character  
For Over A Century

# FLORIDA STATE / MEMPHIS STATE


## Football Magazine

Vol. XXII

October 19, 1968

No. 3

### In This Issue . . .

	Florida State University	3
	Progress Is A Matter of People	4
	State and University Officials	6
	First Team to Fly	9
	Tonight's Halftime	10
	Officials Signals	11
	Head Coach Bill Peterson	12
	The Football Family	13
	1968 Seminoles	14
	Tonight's Game	21
	Stat Facts	22
	Rosters	25
	Flip Card	27
	Stadium Information	30
	Seminole Basketball	31
	Seminole Cheerleaders	32
	Seminole Boosters	34
	Penalty Explanations	36
	Seminole Radio Network	37
	Memphis State University	39
	Fundamental Football: Offensive Line and Running Backs	44
	Citius, Altius, Fortius	45
	Post-Game Party Gets Top Rating	47
	Directory of Advertisers	48

### Florida State Athletic Committee

Dr. Robert Earnest, Chairman, Ralph Bradley, William W. Rogers, Charles Grigg, William H. Long, John Carey, Fred W. Metzke, J. Stanley Marshall, Harold Goldstein, Charles Ehrhardt.



The Florida State Football Magazine is published by the Florida State University Department of Intercollegiate Athletics. Hank Schomber, Editor; Ken MacLean, Program Manager; Lonnie Burt, Executive Editor; Jayleen Woods, Associate Editor; Carl Haire, Associate Editor; Jack Ibach, Circulation Manager.



**FLORIDA STATE's** "pro-style of leadership is not limited to athletics. It permeates the 350-acre campus and characterizes the University's 41,000 alumni, 16,000 students and more than 3,000 dedicated members of the faculty and staff.

**FOUNDED IN 1857**, the University has grown to a complement of 10 colleges and schools, winning All-America honors both in arts and sciences as well as athletics. Moving rapidly upward in the national leagues of innovative institutions, Florida State is one of the 24 universities in this country which confers more than 100 Ph.D. degrees each year. It also has the distinction of holding one of the National Science Foundation's largest (\$4.8 million) grants for development as a "center of excellence" in four science areas—physics, statistics, psychobiology and chemistry.

**AS THE WINTER HOME** of the 1966 Nobel Laureate in Chemistry (Dr. Robert S. Mulliken), and as year-round headquarters for a faculty team with Nobel Prize potential, the University is one in which excellence in classroom teaching is its most important goal. Constantly experimenting with new formations in its educational teaching patterns, Florida State is preparing for a yearly enrollment of 28,000 by 1975.

# WELCOME TO FLORIDA STATE UNIVERSITY



**Dr. John E. Champion**  
President

President John E. Champion began his fourth year as Florida State University's chief executive in June of 1968. Having served the University previously as assistant dean of the School of Business and as Vice President for Administration, the 46-year-old business administrator and educator has an extensive and exemplary background in the fields of business education and accounting.

Cited as Distinguished Alumnus of the University of Georgia's Graduate School of Business Administration, he holds the bachelor's and master's degrees from that institution and the Ph.D. from the University of Michigan. He came to Florida State in 1956, following eight years of teaching at Georgia.

Progress  
Is A  
Matter  
Of People

*Political Research Institute*  
*Assists State Agencies*  
*In*  
*Government Studies*

Florida State University today pays special tribute to members of The Florida Legislature; but in a very real sense, Florida State works day in and day out with the Legislature and other governmental agencies in helping to solve state problems.

Through its Political Research Institute, Florida State provides a focus for basic research into political and governmental questions and problems.

This year prior to the opening of the 1969 Legislature, the Institute will direct and plan the Second Pre-Session Conference for Florida Legislators.

Current studies of the Institute focus upon race and politics, personality and politics, political elites, metropolitan consolidation, urban reform, legislative and congressional studies, community politics, research methods and methodology, intergovernmental relations, political participation and bureaucratic behavior. In addition to support from the University, projects have been funded by the National Municipal League, the Department of Health, Education and Welfare, the Sears Foundation, the Graduate Research Council, and from contracts with various state and local agencies.

Research conducted by the Institute is reported in private publications, a variety of professional journals and in special reports. The Institute publishes the **Florida Government Series**, reporting major studies of state interest, and the **Governmental Research Bulletin**. The **Bulletin** is edited by Annie Mary Hartsfield and is published five times a year. It is distributed, without cost, to other research organizations, public officials and other individuals and groups interested in public policy research.

In addition to pursuing basic research goals the Institute seeks

**Speaker of the House**



**Hon. Ralph D. Turlington**

**President of the Senate**



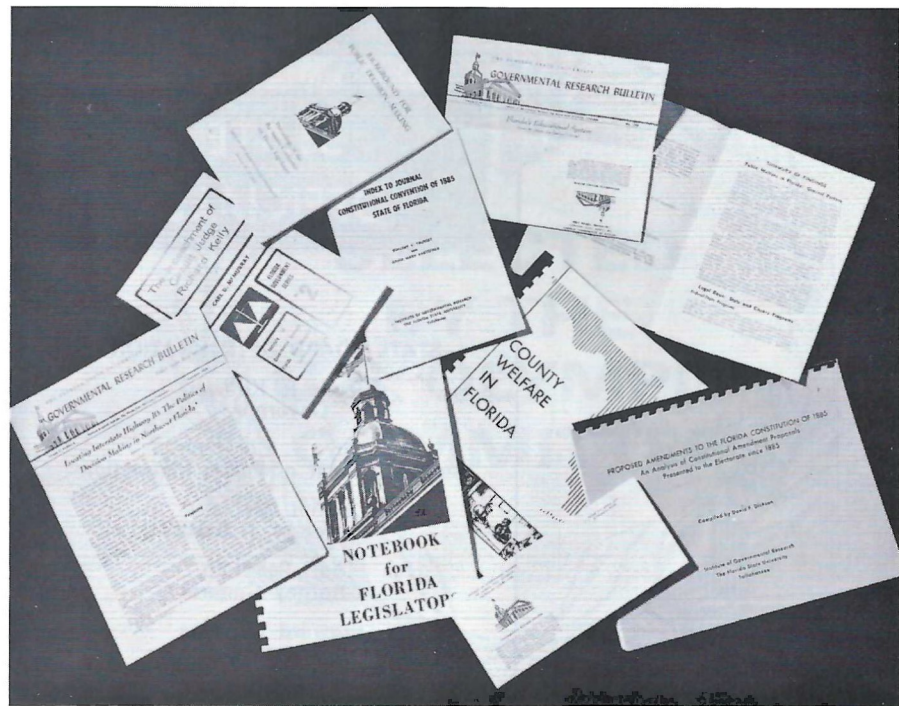
**Hon. Verle A. Pope**

FLORIDA STATE UNIVERSITY believes that "Progress is a Matter of People," whether one is talking about athletics or academics . . . and in its 1968 football programs will seek to introduce its fans to the many people who matter in the progress of a great institution. This week, the University honors those members of the legislative, executive and judicial branches of the State Government whose continuing interest and support has assured progress for this institution.

to be of assistance to state government in clarifying the long range problems and goals of government. E. Lester Levine, associate director of the Institute serves as liaison between officials of the state and the Institute's academic staff. He is currently responsible, for example, for directing the planning of the Second Pre-session Legislative Conference for Florida Legislators which will be held on the campus of Florida State University, Nov. 10-11, just prior to the organizational session of the 1969 legislative session.

First organized in 1950 as a part of the School of Public Administration, the Institute was transferred to the Graduate School in 1959. Since its reorganization in 1962, the Institute's primary functions have been twofold: first, to conduct a program of basic and applied research on political problems and issues and to publish the results of such research; second, to provide research on public problems in cooperation with governmental officials and units.

Formerly most of the studies of the Political Research Institute have focused mainly on governmental problems and issues of Florida and the southeastern region; however, current efforts are extending research activity to wider areas and to involve interdisciplinary participation.



Dr. Douglas St. Angelo is the Director of the Political Research Institute. The Institute has six other faculty associated with it on a full-time basis, three secretaries, seven part-time graduate assistants, and five part-time student assistants. All faculty members in the Institute hold a joint appointment with the Department of Government. Institute members teach in the Department of Government and share a major responsibility for directing the graduate program of that department.

---

◆ Douglas St. Angelo  
Bellamy Headquarters ◆

---



The Institute is housed on one-half floor of the new Bellamy Social Science Building. In addition to office space, provisions have been made for statistical and computing services, conference facilities, library facilities and group observation rooms. The Institute maintains a library of approximately 15,000 volumes. This library specializes largely in current materials relating to the research work of the Institute. The Institute does not, by choice, engage in administrative management studies for governmental agencies. Rather, it sees its function as providing a basic research role into political behavior and in this sense must be distinguished from university-based bureaus of government which have primarily been known for their efforts in management analysis and administrative training.



Your Host from Coast to Coast®

1302 Apalachee Parkway

Tele. 877-3141

Complete Banquet Facilities

## STATE OFFICIALS

### STATE BOARD OF EDUCATION

Claude R. Kirk, Jr.  
Governor

Floyd T. Christian  
Superintendent of Public Instruction

Tom Adams  
Secretary of State

Earl Faircloth  
Attorney General

Broward Williams  
Treasurer



Hon. Claude R. Kirk, Jr.  
GOVERNOR

## UNIVERSITY OFFICIALS



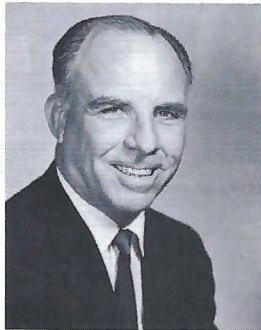
### BOARD OF REGENTS—STATE UNIVERSITY SYSTEM

Members of the Board of Regents, left to right, back row: Dr. Louis C. Murray, Dr. Clarence L. Menser, Chancellor Robert B. Mautz, D. Burke Kibler, III, Julius F. Parker, Jr.; Front Row, left to right: Mrs. E. D. Pearce, Henry Kramer, Vice Chairman; Chairman Chester H. Ferguson and John C. Pace. Another Board Member, not present, was Mrs. John C. Behringer.





**Tom Adams**  
Secretary of State



**Floyd T. Christian**  
Supt. of Public Instr.



**Earl Faircloth**  
Attorney General



**Broward Williams**  
Treasurer



**Doyle Conner**  
Comm. of Agriculture



**Fred O. Dickinson, Jr.**  
Comptroller

**FLORIDA STATE UNIVERSITY**

**Dr. John E. Champion**  
President

**Dr. E. Laurence Chalmers, Jr.**  
Vice President for Academic Affairs

**John K. Arnold, Jr.**  
Acting VP for Student Affairs

**Dr. Juanita Gibson**  
Executive Assistant to the President

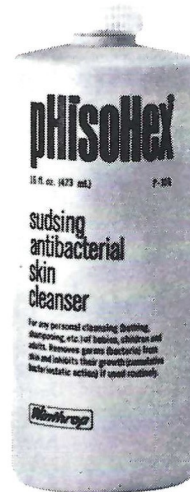
**Patrick W. Hogan**  
Director of University Relations



**SELECTED  
BY THE  
U.S. OLYMPIC  
COMMITTEE**

**We're proud...**

that pHisoHex® has been selected as the antibacterial wash to be used by the U.S. Team for the 1968 Olympic Games!



A *winning athlete* takes special care of his skin. Above all, he protects it against bacteria that can cause infections and lead to missed practice sessions and games.

If you've ever tried to play with an infected blister on your heel or an abscess on your finger, then you know the role of healthy skin in sports. And that's why pHisoHex is an important part of an athlete's daily health routine. pHisoHex is America's leading liquid antibacterial skin cleanser in homes and in hospitals. Used regularly in place of soap, pHisoHex produces a superclean skin *and* builds up an invisible antibacterial film of hexa-

chlorophene to protect your skin against germs between washings.

And if you have problem skin, pHisoHex is often valuable. The antibacterial film it leaves on your face will ward off blemish-infecting bacteria. pHisoHex also helps to soften and wash away blackheads.

Use pHisoHex, the skin cleanser of winning athletes.

Made by Winthrop Laboratories, 90 Park Avenue, New York, N.Y. 10016. Available in drugstores in 5 oz. and 16 oz. plastic squeeze bottles.

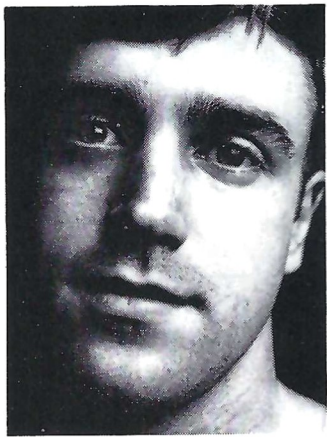


Winthrop Laboratories, New York, N.Y. 10016

# Break your beard in right.

Right now your beard is in the formative stage.

You can shave it with a razor blade like your father does. And each time you do your beard will grow back a little more difficult. Until one day shaving's no longer a chore. It's an agony.



Look no further than your father's face for proof.

But fortunately, you're catching your beard at an early age. You can break it in to be just as shaveable 10 and 20 years from now as it is today.

With a REMINGTON® shaver.

And if you think the kind of shave we're selling won't be close enough for you, you're wrong.

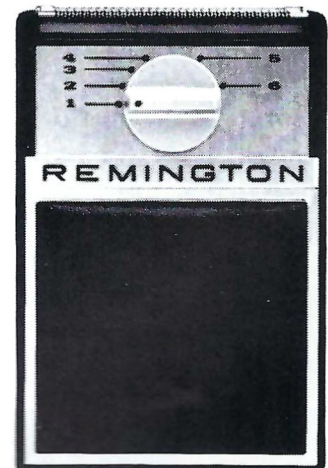
Our new blades are sharper than anything that's been in an electric shaver before. And there's a dial that lets you adjust them for your skin and beard.

What's more, you can dial a REMINGTON electric shaver into a sideburn trimmer.

Admittedly, it costs more to buy our electric shaver than a razor and some blades.

But it's a good investment.

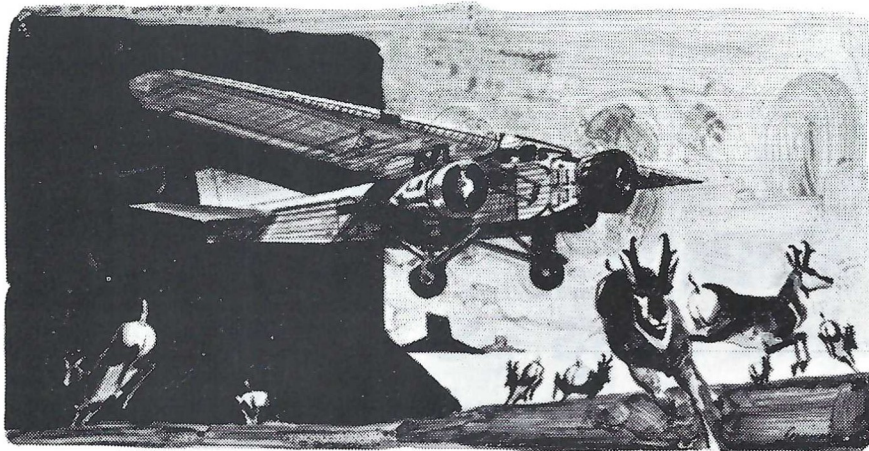
These next few years will determine how you and your beard will get along for the rest of your lives. †SPERRY RAND™ ©1968, SPERRY RAND CORP.



**REMINGTON**  
ELECTRIC SHAVING DIVISION, BRIDGEPORT, CONNECTICUT.

# FIRST TEAM TO FLY

by ARCH NAPIER



**I**T WAS BACK in 1929 that a football coach first decided to *fly* his team to a game.

"Fly?" everyone asked. "Golly, where's he going to get all the planes? It would take the Graf Zeppelin to fly a whole football squad. And why fly? No sensible coach wants to field a team that's airsick!"

No, but you didn't build an athletic program in a little cow college by being *too* sensible, either. When Coach Roy Johnson came to the University of New Mexico in 1920, the enrollment was 227, and the football field didn't have any grass. The first day of practice each September was devoted to removing tumbleweeds, cacti, and some of the larger rocks. By 1927, Coach Johnson got tired of this; so, he borrowed a plow and a team, and planted grass. He watered it himself every morning. In his spare time, he taught Phys. Ed., coached boxing, baseball, track, golf, basketball, and—when there was water in the fire department pond—swimming. The pond lacked a diving board, but the students jumped out of a tree.

The football team played nearby schools like Montezuma Seminary and occasionally got as far west as Arizona. Then came the big invitation from Occidental College to play in the huge new bowl in Pasadena!

Oxy was evidently reaching far for an opponent. Stanford and UCLA had the Rose Bowl booked for the afternoon of October 12, so Occidental had to settle for Friday night. Few coaches wanted to play under the lights, which were a novelty at the time. (Newsmen were still writing columns with titles like: "Night Baseball and the Mosquito.")

New Mexico had never played at

night, but Coach Johnson agreed to try. He felt that a trip to California—the first one in the school's history—would be very educational for his ranch kids . . . and it might help recruiting, too.

His decision came just at the time that Albuquerque was delirious with "airline fever." In the summer of 1929, Charles A. Lindbergh helped organize Transcontinental Air Transport (T. A. T.), the first line with a coast-to-coast schedule. The passengers travelled by train at night and by plane in the daytime, and the segment from Clovis, N. M., to Albuquerque and on to Los Angeles was entirely by air. The line had four or five huge Ford Tri-Motors that carried 12 passengers each.

Caught up in the fever, Coach Johnson decided that the team should fly to the big game, but as a wily strategist, he prepared public opinion by calling several press conferences to say that flying was out of the question. That started the citizens talking, and soon they were all begging him to reconsider. Slowly he gave in, and he finally agreed that every boy who brought a note from his parents—and promised to study on the trip—would have an airplane ride.

Yet T. A. T. didn't have enough space. Even by adding its one spare plane, it could provide only about 18 seats. You see, it did have a few other paying passengers.

"Eighteen seats will be fine," said the coach. "Because of the risk of air-sickness, we'll send our best eleven boys to Los Angeles by train, and the subs will go in the two planes. Then for the return trip, they will switch, and everyone will get a plane ride."

The train group left town quietly

that Thursday at 3:45 a.m., and the subs assembled at the Albuquerque Airport before a cheering crowd the same morning at 10. One-fifth of the town's adult population was on hand to see history in the making. The first plane left on schedule, but the second one was delayed by a mysterious weight problem in its tail. A search revealed two student stowaways in the baggage compartment. When they were ejected, the second plane soared away, too.

The pilots took them across Arizona, buzzing herds of antelope and detouring over the Grand Canyon for fun, and the boys reached Los Angeles in time to motor out to Pasadena for a little practice under the lights. But where was the first team? Still on the train! They did not encounter the lights (henceforth described in school annals as "those glaring lights") until the night of the game itself.

Coach Johnson's precautions against air-sickness led to the great strategic error of the trip. The New Mexico starters had difficulty adjusting to the lights. Not once did they manage to catch and hold a punt.

The Oxy team was notably stronger, too, and the New Mexico boys were awed by the size of the Rose Bowl and the huge crowd of 17,000. The Pacific night fog rolled into Pasadena until Coach Johnson thought he was back in the Albuquerque Little Theatre playing the preacher in "Rain." The New Mexico Lobos slipped and slithered on cleats that were designed for sand, not wet grass.

Most troublesome was the fact that the ball was white and the Occidental jerseys were white, too. When Oxy carried the ball, it was well-nigh invisible. (Coach Johnson later persuaded his old coach, Fielding Yost of Michigan, to get the rules changed so that the ball makes a contrast.)

The game ended with a 26 to 0 loss for New Mexico, but everyone enjoyed the trip and the University was proud to have the first aerial team in history.

The air trip did help recruiting. In fact, the football teams became so successful that the regents felt they needed a coach from Notre Dame. So Coach Johnson was elevated to athletic director, and he didn't have to water the grass anymore.

The business manager on that flight, Tom Popejoy, later became president of the University and served with distinction until his retirement in June, 1968. T. A. T. eventually became Trans World Airlines, and now has much bigger planes. The trip across the West is much faster, but the pilots don't buzz antelope anymore.

# Electrical Contractors

- INDUSTRIAL
- COMMERCIAL



Licensed & Bonded

J. B. CLARK,  
President

LEE H. TOWNSEND,  
Vice President

**576-3727**

IF NO ANSWER DIAL 385-4030

**CLARK** ELECTRIC CO.  
OF FLORIDA

1133 Kissimmee St.  
TALLAHASSEE, FLORIDA

# BENNETT'S DISCOUNT DRUG STORE

- Prescriptions
- Cameras
- Sundries
- Gifts
- Fountain
- Cafe
- Cosmetics
- Drugs

MEET ME AT BENNETT'S

BEFORE AND AFTER THE GAME!

Corner Monroe and College Streets

Phone 222-8980 — 222-4450

# Music at Pregame and Halftime

Memphis State vs. FSU

October 19, 1968

The Florida State University School of Music

Dr. Wiley Housewright, Dean

presents

## THE MARCHING CHIEFS

Robert T. Braunagel, Director  
Alvin Wardle, Assistant Director  
Charles Carter, Assistant Director  
and Arranger

Herschel Beazley, Drum Major  
Kathy Smith, Head Majorette  
Will Shurley, Solo Twirler

### PREGAME

#### Music

Fanfare  
Fight Song

Star-Spangled Banner  
Garnet and Gold March  
Monday, Monday

Gardes Du Corps  
Americans We

#### Formation

BAND BLOCK—Introduction of the Marching Chiefs and the majorettes and feature twirler.

BAND BLOCK—We feature the majorettes from the visiting high school bands in two routines.

BLOCK DRILL SEQUENCE

### BAND DAY—HALFTIME

Charles Carter, Conducting

#### Music

Medley:  
Yes Sir, That's My Baby  
Don't Be Cruel  
By the Time I Get to Phoenix

Born Free

#### Formation

For the teenagers we feature the music of the 20's, the 50's, and today.—1920, 1950, 1968

We close the Band Day salute by forming USA and playing in a concert arrangement, Born Free.—USA

### HIGH SCHOOL BANDS

Albany High—Albany, Ga.—Harry Martin, Director  
Chattahoochee High—Chattahoochee, Fla.—J. Broox Jones, Director  
Clay High—Green Cove Springs, Fla.—Winford Franklin, Director  
Crisp County High, Cordele, Ga.—R. C. Bissett, Director  
Florida High—Tallahassee, Fla.—Glenn F. Heinlen, Director  
Greensboro High—Greensboro, Fla.—Bob Fretz, Director  
Leon High—Tallahassee, Fla.—F. Lewis Jones, Director  
Milton High—Milton, Fla.—John H. Chalker, Director  
Richards High—Tallahassee, Fla.—Bentley Shellahamer, Director  
Washington High—Pensacola, Fla.—Theodore Bennett, Director



The most attractive forward wall in football—The Seminole Majorette Corps



Illegal Use of Hands & Arms



Ball Illegally Touched, Kicked or Batted



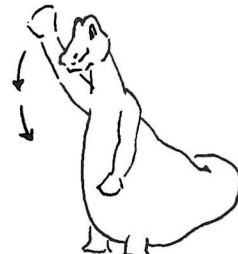
Touchdown or Field Goal



Forward Pass or Kick Catching Interference



Personal Foul (Tripping, hurdling, tackling out of bounds)



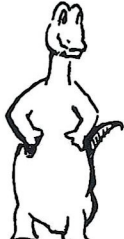
Ball Ready-for-Play



Ball Dead; If Hand is Moved from Side to Side: Touchback



Crawling, Helping the Runner or Interlocked Interference



Offside (Violation of scrimmage or free kick formation)



Ineligible Receiver Down Field on Pass



Illegal Position, Procedure or Motion



Delay of Game



Incomplete Forward Pass, Penalty Declined, No Play or No Score



Start the Clock or No More Time-Outs Allowed



Time-Out



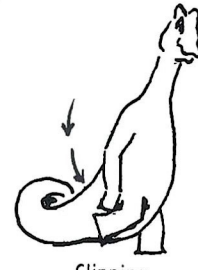
Unsportsmanlike Conduct



Intentional Grounding



First Down



Clipping



Illegally Passing or Handing Ball Forward



# RAGANS and ROBERTS TIRE COMPANY



*Big Bend's Largest  
Goodyear & Sinclair Dealer*

James W. Ragans — OWNERS — Eli P. Roberts

Complete Service Department  
Including Front End and Brake Rebuilding  
Tires - Batteries - Accessories - Toys  
— Philco Appliances —  
— USE OUR BUDGET PLAN —

Fuel Oils For Home, Business and Farm

for AUTOMOTIVE SERVICE  
call

224-8156

for FUEL OIL  
call

576-3145

609 W. Tennessee Street  
2203 Lake Bradford Rd.  
1031 South Magnolia

DRIVE WITH CARE AND BUY SINCLAIR



# Sinclair

## OFFICIAL SIGNALS



Illegal Motion



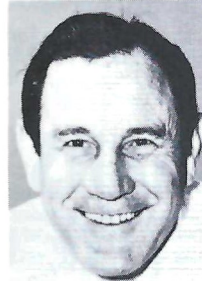
Safety



Roughing the Kicker

# Coach Peterson

by BILL MCGROTHA  
Sports Editor, Tallahassee Democrat



A fellow on the phone asked would I write a story about Bill Peterson for this program, make it personal, tell it like I know him . . . and hold it to 250 words.

There ain't no way.

There is hardly any way to explain Florida State's head football coach in 250,000 words. He lends himself not at all well to telling about in words, period. You have to have a "feel" for knowing about Pete, and for most it comes only from being around him a long, long time.

He is what you call a walking paradox. More than most, he is not always what he seems.

Sometimes he kind of reminds me of a woman, the way he talks. You see, when something crosses his mind he often blurts it out. He's always thinking out loud. He is emotional; it is a way of getting things out of his system. Because he does this, some call him a cry baby . . . He is that and much in the manner of Georgia's Wallace Butts, another renowned weeper. Like Butts, Pete will use any convenient shoulder.

Also like Butts, he's much of a man . . . which they don't make many of anymore. Thoroughly rugged with more energy than a 2-year-old colt, Peterson can be terribly impatient with the little annoying things that get in his way—and these are the molehills he sometimes makes mountains out of. Of course, some of the mountains are very real ones.

But give the man some real trouble, the kind that makes nice out of men, and he's got his cup of tea. He's one of those who reacts better with a crisis. If he doesn't have a ready-made crisis, you can give points on his manufacturing one—or more.

What he does to the English language, on occasion, only Casey Stengel before him has done. Yet, when he's at ease, with his busy mind firmly on the matter at hand, he can be among the most articulate of speakers.

He enjoys life, and he tackles it with the same zest that he does football. The only "name" of any game with him is winning. Yet, he likes his fun with it, and he is totally obsessed.

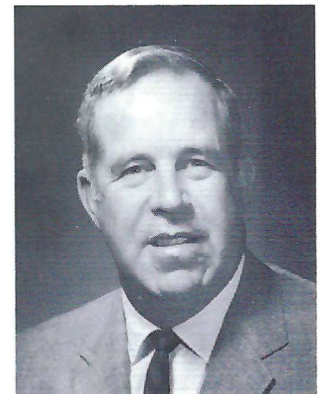
Only he, I think, could have accomplished what he has in FSU football with the same resources. Despite his yelps, he's never recognized the odds, really. He has never stopped believing that he could, despite all, make his football team No. 1. He's one to find a way.

He summed himself up really well, paradoxes and all, one day during the summer when near the end of a particularly long lament over the telephone, he said: "Hell, Bill, I don't want to be no Knute Rockne—I just want to win!"

That's Pete!



Vaughn Mancha  
Athletic Director



Ken MacLean  
Assistant to A.D.



**OPEN**  
**7a.m. to 6p.m.**  
**Mon. thru Sat.**

**WITH 2 CONVENIENT  
LOCATIONS TO  
SERVE YOU**

**LOCATION NO. 1**  
**1001 W. PENSACOLA ST.**  
**PHONE 224-0731**

**LOCATION NO. 2**  
**836 LAKE BRADFORD RD.**  
**PHONE 222-3523**

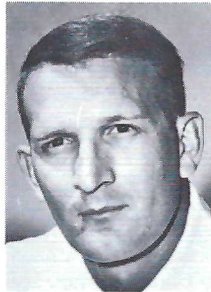
# Football Family



Bob Harbison  
Defensive Chief



Joe Gibbs  
Offensive Chief



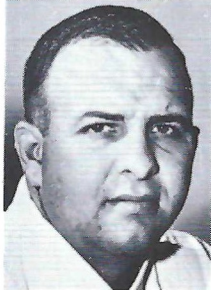
Gary Wyant  
Defensive Backs



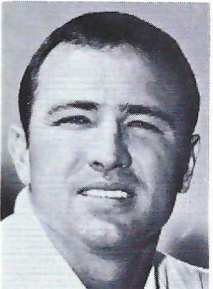
Bobby Jackson  
Def. Ends,  
Linebackers



Dan Henning  
Quarterbacks,  
Receivers



Al Conover  
Running Backs



Gene McDowell  
Freshmen



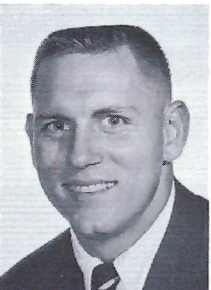
Doug Hafner  
Recruiter



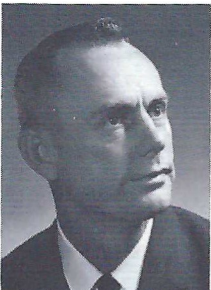
Don Fauls  
Head Trainer



Bill Zeigler  
Asst. Trainer



T. K. Wetherell  
Acad. Advisor



Claude Thigpen  
Ticket Mgr.



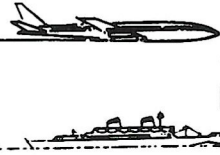
Lonnie Burt  
Sports Info. Dir.



Tillman Dixon  
Equip. Mgr.



Dr. Dale Maxwell  
Team Physician



GOING  
PLACES  
?

ATHENS, GEORGIA? ATHENS, GREECE?  
NEW YORK? NASSAU? NEPAL?

**TRAVEL IS OUR PROFESSION**

*No Charge For Our Services*  
*Tickets - Reservations At Printed Rates*

MARION HAY  
TOM LYLE  
JEANNIE SMITH

**TALLAHASSEE TRAVEL AND TOURS, INC.**

*Formerly Hay Travel Service*

*Established 1930*

CALHOUN AT CALL STREET

TELEPHONE 224-4161



WHERE YOU  
WILL FIND  
YOUR FRIENDS

701 W. JEFFERSON  
South Gate F.S.U.

**MIDYETTE-MOOR  
Insurance Agency**

**"Ask Those We Serve"**

**Complete Insurance and Bond Service**

**PHONE 222-3456**



**MIDYETTE-MOOR BUILDING  
TALLAHASSEE, FLORIDA**

**SAYS**

**SCALP 'EM SEMINOLES!**



Payne Midyette  
Frank Moor  
Ed Clark  
Winslow Sullivan  
Paul Lewis  
Payne Midyette, Jr.  
Bill Moor  
Bill Franklin

Jim Woods  
Glenn Sears  
Jerry Darnell  
Ron Davis  
Richard Lobb  
Rex Sikes  
Walt Young

*Miller*  
**CHEVROLET COMPANY**

**Havana, Florida**

**539-6376**

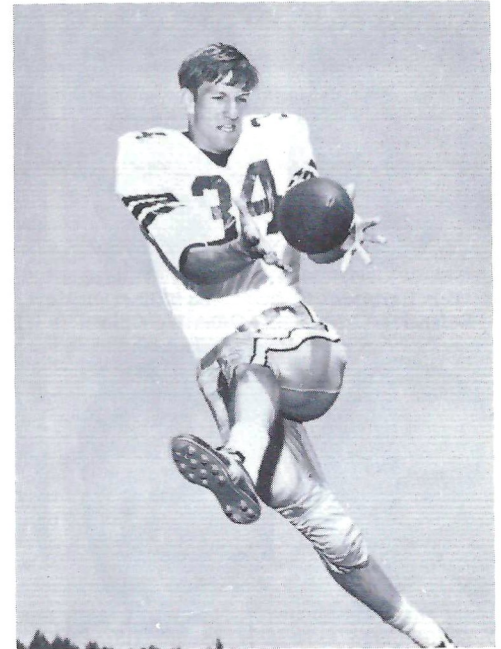
**15 Miles North of Tallahassee**

**on U. S. 27**

**Phone Toll Free**

**224-1317**

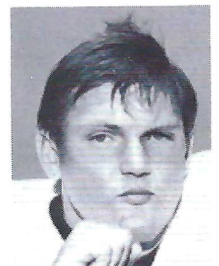
# The 1968 Seminoles



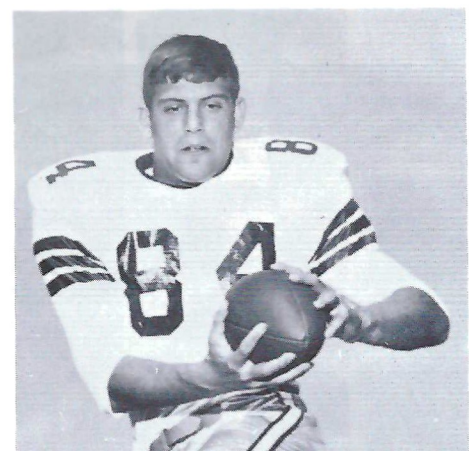
**Ron Sellers—Jacksonville  
Sr.—Business**



**Dale McCullers—Live Oak  
Sr.—Criminology**

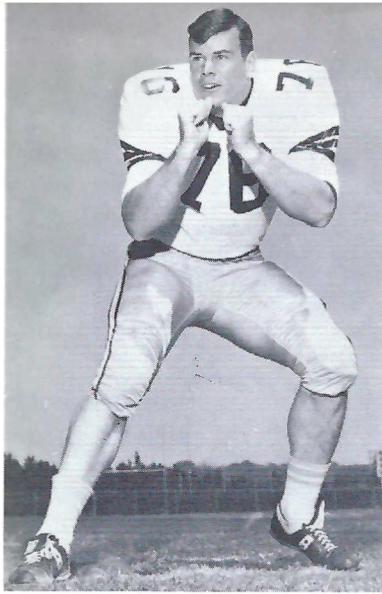


**Randy Logan  
Seal Beach, Calif.  
Sr.—Business**



**Chip Glass—Tampa  
Sr.—Soc. St. Ed.**





Jack Fenwick—Norwood, Ohio  
Sr.—Criminology

# The 1968 Seminoles



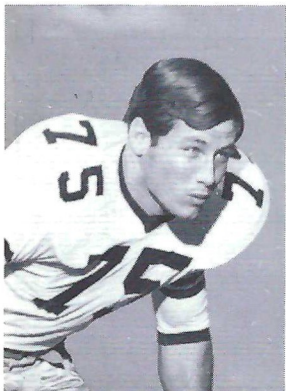
Billy Cox—Atlanta, Ga.  
Sr.—Business



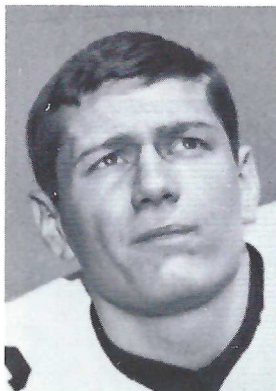
Chuck Eason—Tallahassee  
Sr.—Business



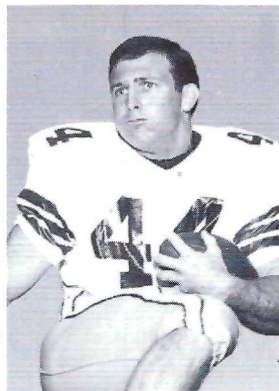
Larry Pendleton—Winter Garden  
Sr.—Soc. St. Ed.



Billy Rhodes—Eustis  
Sr.—Hotel & Rest. Mgt.



Gary Pajcic—Jacksonville  
Sr.—Pre Law



John Pittman  
Brunswick, Ga.  
Sr.—Business

## Compliments of a Fan.....

The folks at DOLIME who supply . . . Florida's agricultural soil with dolomite and high calcium lime (as well as the soil in the field in Campbell Stadium) . . . wish the Florida State "Seminoles" best of luck for a winning season.



**DOLIME**  
**MINERALS COMPANY**

P. O. Box 1441  
Bartow, Florida 33830  
Phone 813/533-8144

**DOLIME MAKES  
YOUR GOOD EARTH  
EVEN SWEETER!**



SPURGEON CAMP

*"Let's Be  
#1  
In 1968"*

NOBODY...  
BUT NOBODY  
UNDERSELLS.

**SOUTHERN  
ELECTRIC INC.**

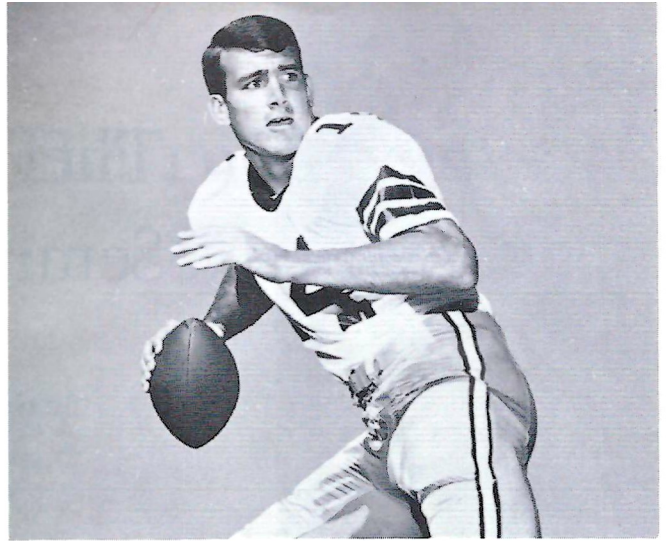


**TIME!  
OUT!**

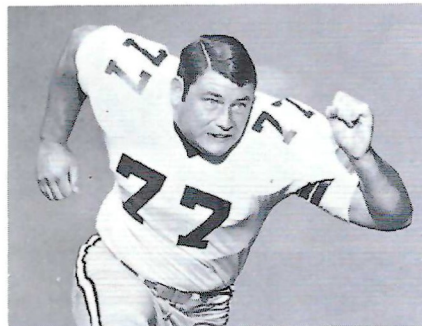
FOR  
YOUR FAVORITE

**Meal  
or  
Snack**

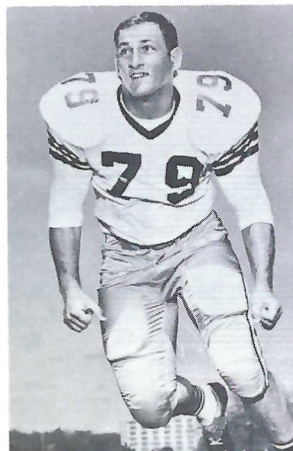
AFTER THE GAME AT  
THE **UNIVERSITY UNION**  
FSU FOOD SERVICE



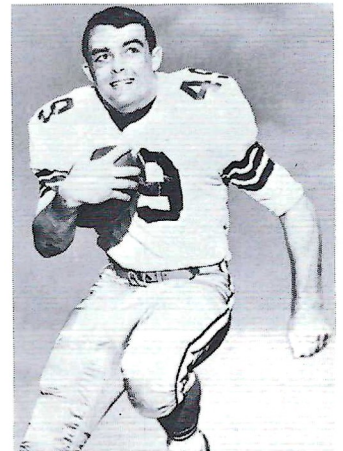
Bill Cappleman—Dunedin  
Jr.—Business



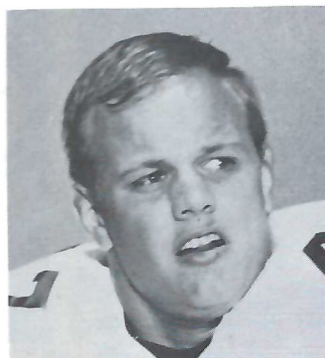
Jeff Curchin—Ocala  
Jr.—Criminology



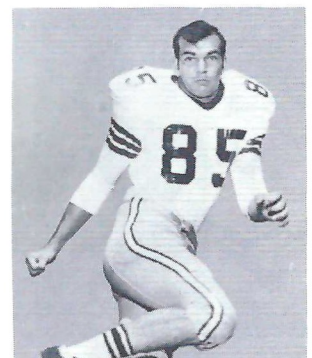
Frank Vohun—Brooksville  
Jr.—Phys. Educ.



Terry Eagerton—Jacksonville  
Jr.—Business

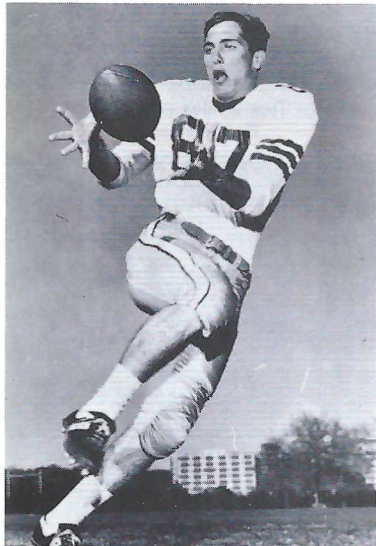


Joe Benson—Birmingham, Ala.  
Sr.—Accounting

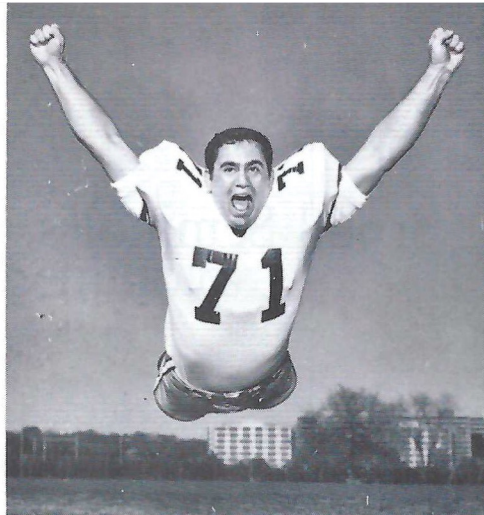


Floyd Ratliff—Jesup, Ga.  
Jr.—Psychology

# 1968 Seminoles



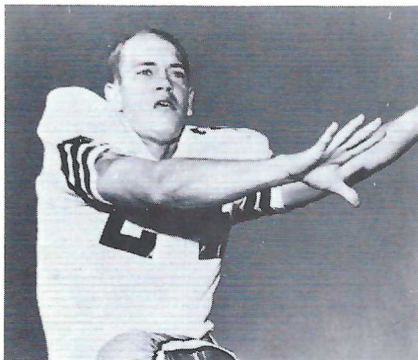
Phil Abraira—Ft. Lauderdale  
Jr.—Engr. Sc.



Harvey Zion—Atlanta, Ga.  
Sr.—Pre Med



Bill Gunter—Dothan, Ala.  
Sr.—Business



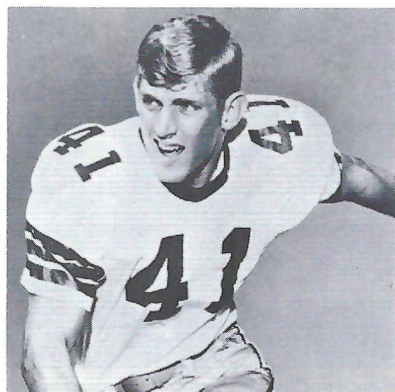
Walt Sumner—Ocilla, Ga.  
Sr.—Business



Chuck Elliott—Troy, Ohio  
Sr.—Business



Ted Mosley—Tampa  
Sr.—Business



John Crowe—St. Cloud  
Sr.—Math



why pay **MORE** when you  
can buy for **LESS** at

**ABC**  
**Mobile Homes**

2737 W. Tennessee  
Tallahassee, Florida

**HERSCHEL COOK**  
Manager

Phone 576-5146

*Southernair*  
**MOTEL**

Across from F.S.U.  
Tallahassee, Florida 32304



and  
*Skyline*  
**Motor Lodge**

U. S. 90 West

**Quality Courts**  
for **Quality People**

Best Wishes for a successful season, and we are proud to have had a part in furnishing the football equipment for the Seminoles

**OWENS** Inc.

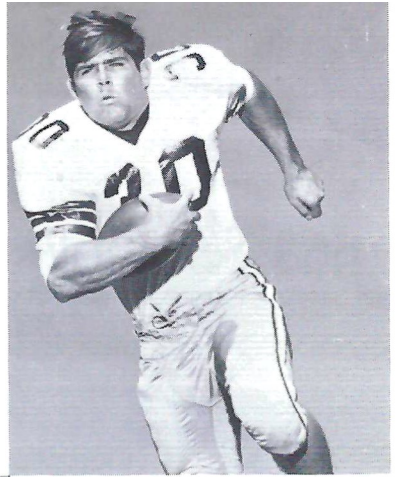
Sporting Goods — Hardware  
ALBANY, GEORGIA

*Joby's*  
**SEAFOOD HOUSE**

1425 W. TENNESSEE ST.  
TALLAHASSEE, FLORIDA  
222-1929

OYSTERS ON THE  
HALF SHELL

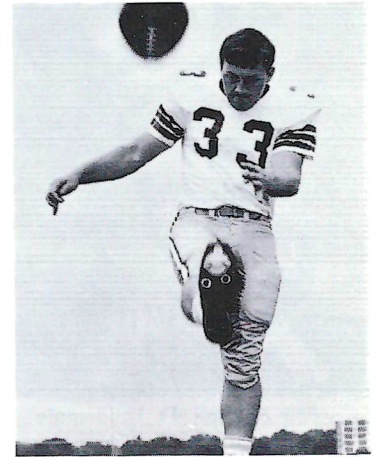
# 1968 Seminoles



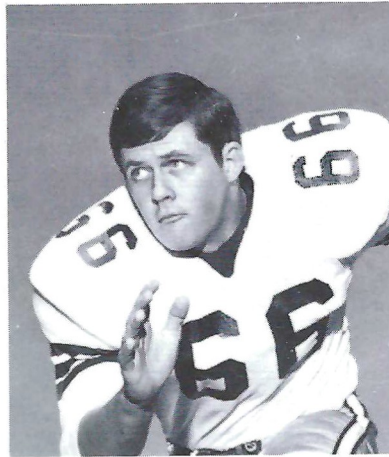
Tom Bailey—Miami  
So.—Business



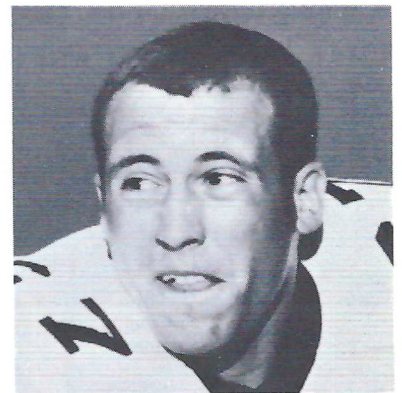
Tommy Warren—Miami  
Jr.—Business



Grant Guthrie—Claymont, Del.  
Jr.—Business



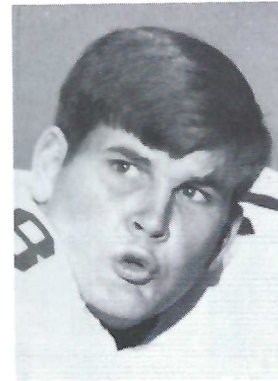
Ken Hart—Groveland  
Sr.—Pre Law



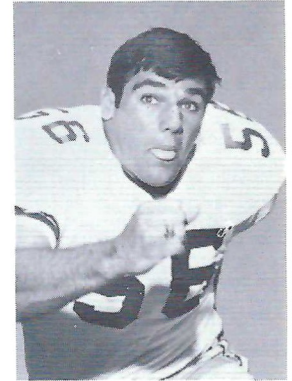
Mike Bugar—Youngstown, Ohio  
Sr.—Phys. Educ.



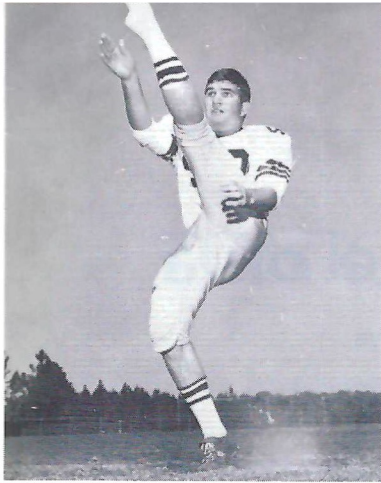
Clint Burton  
Atlanta, Ga.  
Sr.—Phys. Educ.



Wayne Johnson  
Macon, Ga.  
Jr.—Business

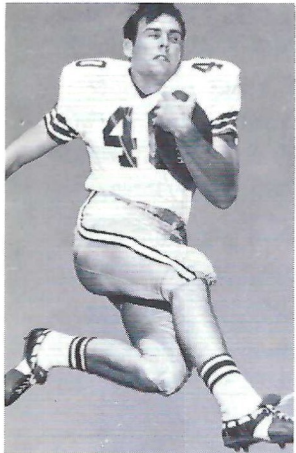


Bill Lohse—St. Petersburg  
So.—Undec.



Bill Cheshire—Odum, Ga.  
Jr.—Pre Med

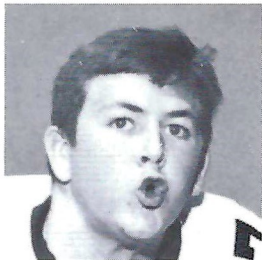
# 1968 Seminoles



Brent Gilman  
Long Beach, Calif.  
Jr.—Business



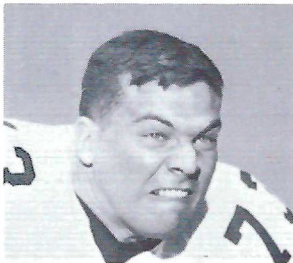
Mike Page—Winter Haven  
Jr.—Psychology



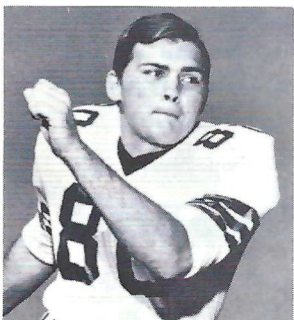
Robert McEachern  
Tallahassee  
So.—Undec.



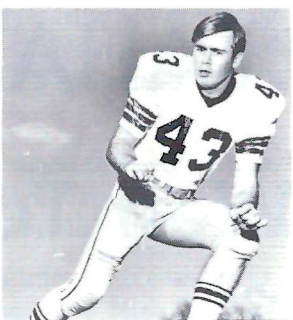
Ronnie Wallace—Macon, Ga.  
So.—Undec.



Duke Johnston  
Ft. Lauderdale  
Jr.—Business



Doug Gurr—Albany, Ga.  
Sr.—Business



Howell Montgomery  
Blountstown  
Sr.—Business

# Go

# Seminoles

## We'll help all we can

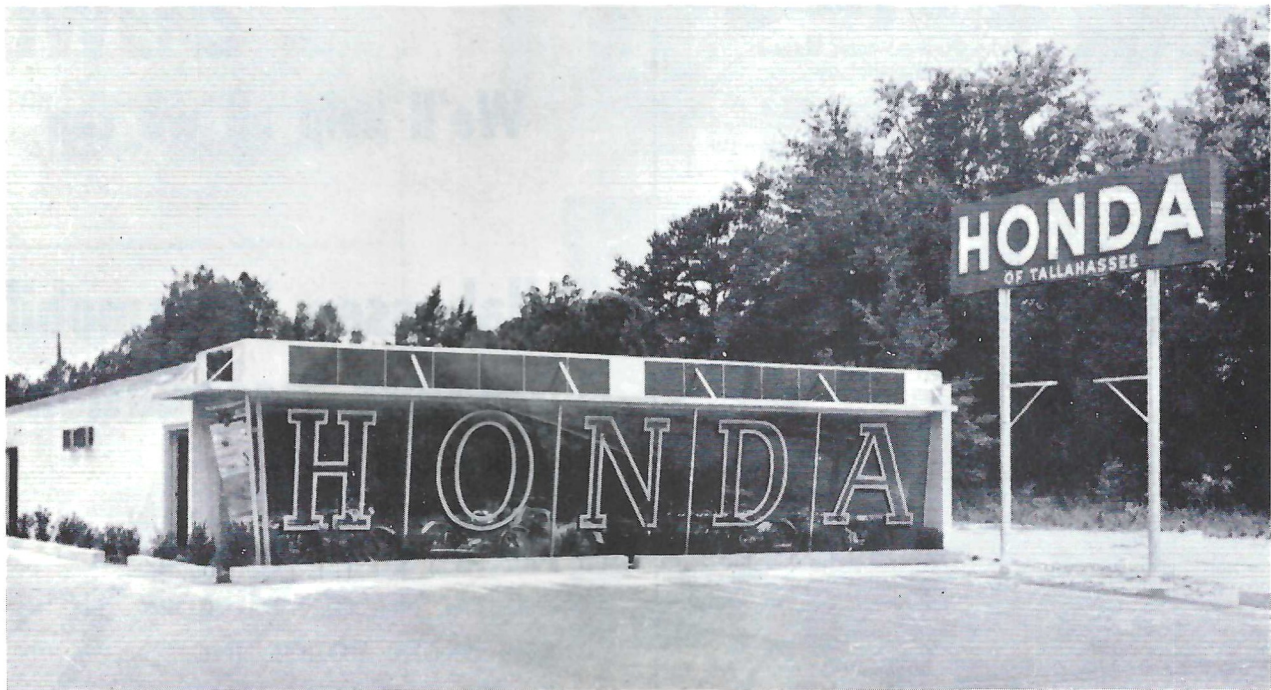
## Tallahassee Automobile Dealers Association

- ALFORD CHEVROLET CO.
- COURTESY RAMBLER—DATSUN
- PROCTER & PROCTER, INC.
- CAPITAL LINCOLN—MERCURY, INC.
- BOB DRAKE DODGE, INC.
- TOYOTA OF TALLAHASSEE
- COURTESY OLDSMOBILE—VOLVO
- PALMER—HARRELL BUICK CO.
- CAPITAL CHRYSLER—PLYMOUTH, INC.
- TALLAHASSEE MOTORS, INC.
- KINNEBREW MOTORS, INC.
- MINGLEDORFF MOTORS, INC.

**"You meet the nicest people on a**

**H O N D A**

**World's largest seller"**



**HONDA OF TALLAHASSEE**

**At the Underpass on West Tennessee**

**Phone 576-1020**

# TONIGHT'S GAME

By **LONNIE BURT**

Sports Information Director

Tonight's opponents, Florida State and Memphis State, may well think twice before they put the ball in the air.

Both boast fine pass defenses, Florida State 1st in the country and the Tigers rate high in interceptions with 11.

Memphis State, in its last two games, have intercepted 10 passes and recovered four fumbles. The Tigers picked off six in downing North Texas 30-12 and then last Saturday night they intercepted four while downing West Texas 42-21.

On the other hand, the Seminoles have eight interceptions and have allowed an average of only 67.3 yards passing in three contests.

Memphis State relies primarily on a rushing offense featuring a pair of sophomores in the starting backfield. Jay McCoy, from Miami, is the tailback and 220-pound Ray Jamieson is the fullback.

Like Florida State, the Tigers are a two-quarterback club since juniors Ricky Thurow and Danny Pierce split the playing time. The Seminoles remember Thurow well since he counted Memphis State's lone touch-down last season on a 59-yard option play as Florida State dumped the Tigers 26-7 before a regional television audience.

If the Seminoles remember Thurow, the Tigers should remember Florida State's All-America linebacker candidate, Dale McCullers. Against Memphis State last year, the 210-pound McCullers made 17 unassisted tackles and for this performance was named National Line-man of the Week by the Associated Press.

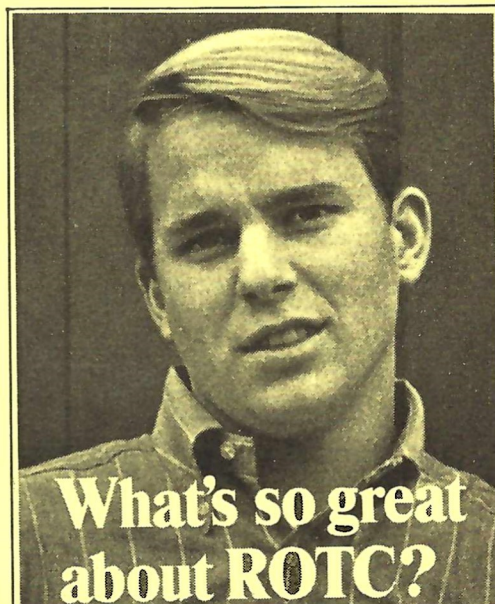
McCullers gained the same honor this year following the Seminoles' 20-14 victory over Texas A&M when he made 20 tackles.

The Seminoles are likely to go with the same starting lineup which faced Texas A&M. That includes quarterback Bill Cappleman, fullback Tom Bailey and tight end Jim Tyson, three players who started for the first time against the Aggies.

Florida State will pit its "Pro-T" attack against Memphis State's crushing running game featuring the option play. The Tigers will throw but not as much as the Seminoles since Florida State has thrown an average of 33 times in three contests to Memphis State average of 19 in four games.

This will be the third meeting between the Missouri Valley Conference Tigers and the independent Seminoles. Memphis State won 16-6 in 1959 while Florida State claimed last year's game 26-7.

Memphis State comes into the contest with a 2-2 record having lost its first two to SEC powers Ole Miss (21-7) and Tennessee (24-17).



## What's so great about ROTC?

### Check 'em.

**Great opportunity.** You earn a commission while you earn your college degree. Graduate—you start at the top. Fulfill your military obligation as an Army officer. With officer's pay. Officer's privileges.

**Great advantages.** Employers prefer a college graduate with service as an officer. Pay more to get him. Because he's a trained, experienced leader. Can handle heavier responsibilities.

**Great success.** From the 5% of college men who had ROTC training have come 24% of our state governors, 28% of executives earning \$100,000 to \$325,000 per year, 10% of Congress, 15% of our ambassadors.

**Great guys.** ROTC men are campus leaders—in ROTC, athletics, extracurricular activities. And they do better scholastically than non-ROTC students.

**Great extras.** \$50 per month in junior and senior years. Scholarships for outstanding students. Free flight training at over 125 colleges. Extra social activities—military balls, honor societies, bands, rifle teams.

Any way you look at it, there's a lot more going for you when you're in ROTC.

Your future, your decision . . .

choose **Army ROTC.**

Army ROTC	CP 69
P.O. Box 12703	
Philadelphia, Pa. 19134	
I want to know more about Army ROTC.	
Send me your free brochure.	
Name _____	Age _____
Address _____	
City _____	
State _____	Zip _____



REMEMBER THE DAY WITH PICTURES !!

For All Of Your Photographic Needs Remember

# Tallahassee Camera Center

117 NORTH MONROE STREET  
Across From The Florida Theater

CAMERAS • FILM • BINOCULARS • RECORDERS • RENTALS  
Fast, Fast, Black & White and Color Processing



## STAT FACTS

FLORIDA STATE			RESULTS	MEMPHIS STATE		
24	Maryland	14	7	Mississippi	21	
3	Florida	9	17	Tennessee	24	
20	Texas A&M	14	30	N. Texas St.	12	
			42	W. Texas St.	21	
FSU	OPP		Points	MSU	OPP	
47	37		First Downs	96	78	
55	49		Rushing Plays	55	62	
146	144		Net Yards Rushing	196	179	
481	529		Rushing Average	684	657	
3.3	3.7		Passes Att/Comp/Had Int.	3.5	3.6	
99/46/4	59/19/8		Passing Yardage	76/27/3	100/55/11	
613	202		Total Offense	323	572	
1094	731		Fumbles	1007	1229	
3	7		Fumbles Lost	16	14	
1	3			9	10	

### INDIVIDUAL LEADERS

FLORIDA STATE						MEMPHIS STATE					
<b>PASSING</b>	ATT.	COMP.	INT.	YDS.	TD	<b>PASSING</b>	ATT.	COMP.	INT.	YARDS	TD
Pajcic	49	25	1	332	2	Pierce	55	24	0	287	0
Cappleman	47	21	3	281	2	McCoy	5	1	2	30	1
						Thurow	16	2	1	6	0
<b>RECEIVING</b>	NO.	YDS.	TD	LG		<b>RECEIVING</b>	NO.	YARDS	TD	LG	
Sellers	14	282	1	82		Blackwell	7	82	1	30	
Cox	9	95	1	33		McCoy	5	64	0	43	
Pittman	5	11	1	6		Kirschner	4	50	0	—	
Tyson	4	33	1	14							
<b>RUSHING</b>	TC	NET	AVG.	TD	LG	<b>RUSHING</b>	TC	NET	AVG.	TD	
Gunter	79	234	3.0	0	22	Jamieson	41	152	3.7	1	
Bailey	24	129	5.4	0	20	McCoy	48	138	3.0	4	
Pittman	19	70	3.7	0	17	Thurow	32	108	3.4	2	
<b>SCORING</b>	TD	FG	EPM	TP		<b>SCORING</b>	TD	FG	EPM	TP	
Guthrie	0	4	5	17		McCoy	4	0	0	24	
						Thurow	2	0	0	12	
						Manger	2	0	0	12	
						Weeks	0	1	9	12	

Five tied with six points each

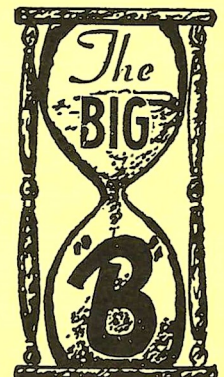


## BIG "B" Cleaners

1100 W. Tennessee  
1405 S. Adams  
324 N. Monroe

Student and Faculty Discounts Every Thursday

# SAVE



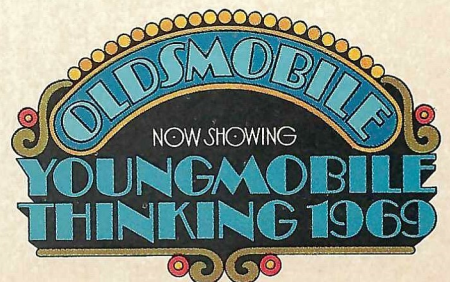


Oldsmobile recreates a scene from the classic movies.



## Olds Delta 88 Royale: The bold and the beautiful.

Meet our new top-of-the-line 88. Big-car room and ride on a longer 124-inch wheelbase. Vinyl roof, pin-striping, fender louvers, big Rocket 455 V-8 and much more, standard. All for little more than you'd pay for an ordinary car! **Escape from the ordinary.**





*Coca-Cola*  
TRADE-MARK®

*Coca-Cola*  
TRADE-MARK®  
Coke  
TRADE-MARK®  
*Coca-Cola*  
TRADE-MARK®

**Coke has the taste**  
TRADE-MARK®

COCA-COLA™ AND "COKE" ARE REGISTERED TRADE MARKS WHICH IDENTIFY ONLY THE PRODUCT OF THE COCA-COLA COMPANY PRINTED IN U.S.A.

# FLORIDA STATE

## DEFENSE

22	CHUCK EASON	RS
17	MIKE PAGE	RC
24	WALT SUMNER	LC
41	JOHN CROWE	LS
83	RON WALLACE	RE
71	HARVEY ZION	RT
61	CHUCK ELLIOTT	RL
50	DALE McCOLLERS	ML
47	JOE BENSON	LL
79	FRANK VOHUN	LT
85	FLOYD RATLIFF	LE

## OFFENSE

27	BILLY COX	LE
76	JACK FENWICK	LT
64	STAN WALKER	LG
55	TED MOSLEY	C
68	LARRY PENDLETON	RG
75	BILLY RHODES	RT
81	JIM TYSON	RE
31	BILL GUNTER	LH
16	GARY PAJCIC	QB
30	TOM BAILEY	FB
34	RON SELLERS	FL

## FLORIDA STATE SQUAD

11	Anderson, QB	53	Cassady, DT
12	Hiatt, SE	54	Burt, LB
14	Cappleman, QB	55	Mosley, C
15	Warren, QB	56	Lohse, LB
16	Pajcic, QB	57	Low, LB
17	Page, DB	58	Gildea, LB
18	Burton, DB	59	Loner, PK
19	Abraira, SE	60	Barry Rice, LB
20	Thomas, DB	61	Elliott, LB
21	Pell, DB	62	Bass, LB
22	Eason, DB	64	Walker, OG
23	Pederson, FL	66	Hart, OG
24	Sumner, DB	67	Bugar, DE
26	Wenhold, FB	68	Pendleton, OG
27	Cox, SE	69	White, DT
28	Lanahan, DB	70	Sewell, OT
29	Rust, DB	71	Zion, DT
30	Bailey, RB	72	Logan, OG
31	Gunter, RB	73	Johnston, DT
32	Chereshkoff, RB-P	74	McEachern, DT
33	Guthrie, PK	75	Rhodes, OT
34	Sellers, FL	76	Fenwick, OT
35	Gray, SE	77	Curchin, OT
40	Gilman, FB	78	Johnson, OT
41	Crowe, DB	79	Vohun, DT
42	Cheshire, P	80	Gurr, DE
43	Montgomery, DB	81	Tyson, TE
44	Pittman, FB	82	Dawson, FL
46	Munroe, RB	83	Wallace, DE
47	Benson, LB	84	Glass, TE
48	Jarrett, FB	85	Ratliff, DE
49	Eagerton, FB	86	Hall, DE
50	McCullers, LB	87	Rimby, TE
51	Hughes, C	88	Beryl Rice, DE
52	Sammons, OG	89	Richardson, PK

# MEMPHIS STATE

## OFFENSE

42	FRANK BLACKWELL	LE
63	LARRY MCGEE	LT
66	BOB PARKER	LG
52	DEAN LOTZ	C
69	RAY DAMPHOUSE	RG
72	AL SHIPMAN	RT
84	JOHN KIRSCHNER	RE
16	JAMES MCCOY	TB
18	RICK THUROW	QB
43	RAY JAMIESON	FB
21	PRESTON RILEY	WB

## DEFENSE

46	JERRY TODD	RH
17	DAVID BERRONG	S
45	BILL MCRIGHT	MM
23	STEVE JAGGARD	LH
82	ALEX DEES	RE
77	LUIS FERNANDEZ	RT
65	JOE RUSHING	RL
50	FRED ALMON	MG
56	JOHN APPLE	LL
75	MARTIN ORCUTT	LT
88	GARY HARTE	LE

## MEMPHIS STATE SQUAD

10	Gordon, QB	57	Bomer, C
12	Shelley, S	59	Marks, LB
14	Lynch, QB	60	Huber, LB
15	Skinner, DHB	62	Myers, OG
16	McCoy, TB	63	McGhee, OT
17	Berrong, S	64	Hotz, OG
18	Thurrow, QB	65	Rushing, LB
19	Pierce, QB	66	Parker, OG
20	Pappas, TB	67	Apple, LB
21	Riley, WB	68	Smith, MG
23	Jaggard, DHB	69	Damphousse, OG
25	Gassett, DHB	70	Fuder, OT
30	Manger, WB	72	Shipman, OT
31	Brumit, MG	73	Davis, OT
32	James, LB	74	Dulac, OT
33	Byrd, FB	75	Orcutt, DT
35	Moore, DHB	77	Fernandez, DT
36	Penn, FB	78	Teixeira, OT
41	Huffman, DHB	79	Hayden, DT
42	Blackwell, SE	80	Dees, DE
43	Jamieson, FB	82	Dees, DE
45	McRight, MM	84	Kirschner, TE
46	Todd, DHB	85	Wright, SE
50	Almon, MG	86	Stubbs, TE
52	Lotz, C	88	Harte, DE
53	Hubbell, OG	89	Lay, DE
54	Williams, DT	91	Vaughn, TE
55	Wroblewski, OG	92	Weeks, K-OE
56	Allen, LB		

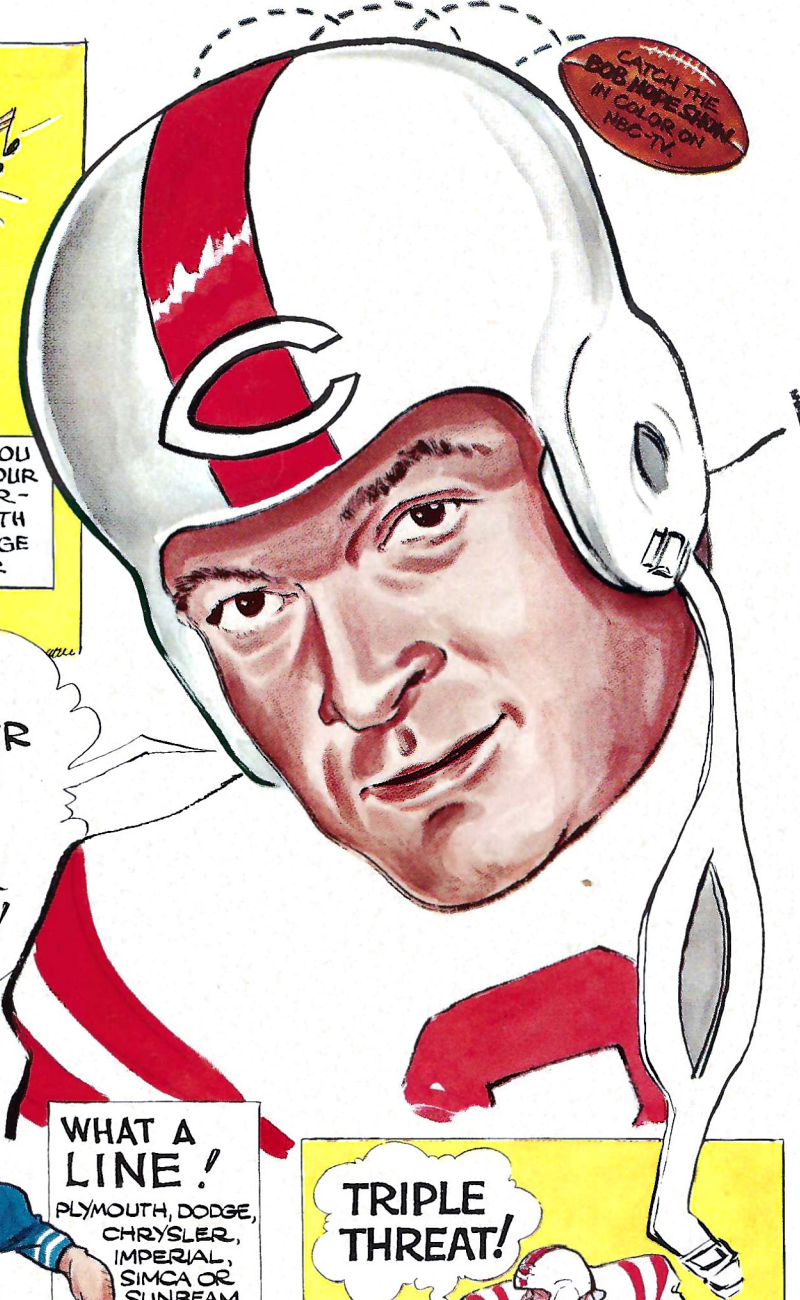
OFFICIALS: Referee—John Overby, Wichita, Kan.;  
 Umpire—Robert Boylston, Atlanta, Ga.; Linesman—  
 Dan Watson, Austin, Tex.; Field Judge—Bill Bryson,  
 Marietta, Ga.; Back Judge—Joe DeLany, Atlanta,  
 Ga.; E.C.O.—Bill Henderson, Tuscaloosa, Ala.

ste you never get tired of.

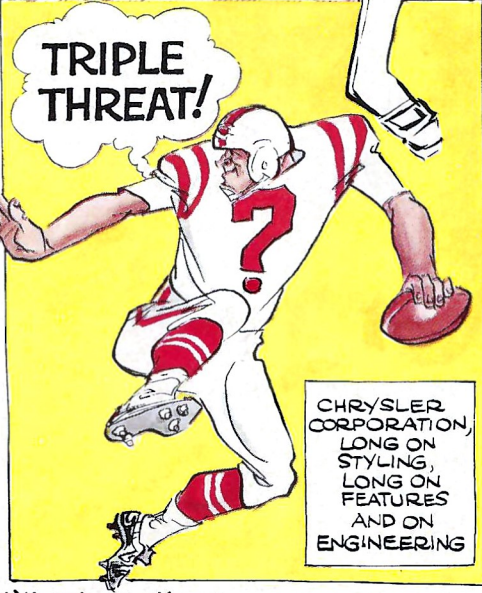


BEFORE YOU BUY, SEE YOUR CHRYSLER-PLYMOUTH OR DODGE DEALER.

...BE THE CENTER OF ATTENTION IN A NEW CAR FROM CHRYSLER CORPORATION!



WHAT A LINE!  
PLYMOUTH, DODGE, CHRYSLER, IMPERIAL, SIMCA OR SUNBEAM



CHRYSLER CORPORATION, LONG ON STYLING, LONG ON FEATURES AND ON ENGINEERING

Plymouth • Dodge • Chrysler • Imperial • Dodge Trucks • Simca • Sunbeam



**CHRYSLER CORPORATION**

SEE THE AFL IN ACTION EACH WEEK ON NBC-TV.

## Memphis State Basic Defense

RIGHT END  
82 ALEX DEES  
89 RICHARD LAY

RIGHT HALFBACK  
46 JERRY TODD  
25 TOM GASSETT

RIGHT TACKLE  
77 LUIS FERNANDEZ  
54 FRED WILLIAMS

SAFETY  
17 DAVID BERRONG  
15 FERRELL SKINNER

RIGHT LINEBACKER  
65 JOE RUSHING  
60 ROBERT HUBER

MONSTER MAN  
45 BILL MCRIGHT  
41 ROBERT HUFFMAN

MIDDLE GUARD  
50 FRED ALMON  
31 ART BRUMIT

LEFT HALFBACK  
23 STEVE JAGGARD  
35 STEVE MOORE

LEFT LINEBACKER  
56 JOHN ALLEN  
67 KEN APPLE

LEFT TACKLE  
75 MARTIN ORCUTT  
79 ROD HAYDEN

LEFT END  
88 GARY HARTE  
80 BOBBY DEES

LEFT END  
27 BILLY COX  
19 PHIL ABRAIRA

LEFT TACKLE  
76 JACK FENWICK  
78 WAYNE JOHNSON

LEFT GUARD  
64 STAN WALKER  
66 KEN HART

CENTER  
55 TED MOSLEY  
51 BILL HUGHES

RIGHT GUARD  
68 LARRY PENDLETON  
72 RANDY LOGAN

RIGHT TACKLE  
75 BILLY RHODES  
77 JEFF CURCHIN

RIGHT END  
81 JIM TYSON  
84 CHIP GLASS

## FLORIDA STATE Basic Offense

LEFT HALFBACK  
31 BILL GUNTER  
26 BARRY WENHOLD

QUARTERBACK  
14 BILL CAPPLEMAN  
16 GARY PAJCIC

FULLBACK  
30 TOM BAILEY  
44 JOHN PITTMAN

FLANKER  
34 RON SELLERS  
23 DON PEDERSON

FLORIDA STATE SPECIALISTS; PUNTS—42 BILL CHESHIRE; KO—89 JOHN RICHARDSON; FG-PAT—35 GRANT GUTHRIE  
FLORIDA STATE RETURN SPECIALISTS: PUNT RET., SUMNER, WARREN; KICKOFF RET., WARREN, PEDERSON.

## FLORIDA STATE Basic Defense

RIGHT END  
83 RON WALLACE  
67 MIKE BUGAR

RIGHT SAFETY  
22 CHUCK EASON  
18 CLINT BURTON

RIGHT TACKLE  
71 HARVEY ZION  
74 ROBERT McEACHERN

RIGHT CORNERBACK  
21 JOHN PELL  
17 MIKE PAGE

RIGHT LINEBACKER  
61 CHUCK ELLIOTT  
58 STEVE GILDEA

LEFT CORNERBACK  
24 WALT SUMNER  
20 DANNY THOMAS

MIDDLE LINEBACKER  
50 DALE McCULLERS  
62 THERON BASS

LEFT SAFETY  
41 JOHN CROWE  
43 HOWELL MONTGOMERY

LEFT LINEBACKER  
47 JOE BENSON  
56 BILLY LOHSE

LEFT TACKLE  
79 FRANK VOHUN  
69 TOM WHITE

LEFT END  
85 FLOYD RATLIFF  
80 DOUG GURR

LEFT END  
42 FRANK BLACKWELL  
85 BILL WRIGHT

LEFT TACKLE  
63 LARRY MCGEE  
78 LEONARD TEIXEIRA

LEFT GUARD  
66 BOB PARKER  
62 GARY MYERS

CENTER  
52 DEAN LOTZ  
57 JOHN BOMER

RIGHT GUARD  
69 RAY DAMPHOUSSE  
58 LYNN WROBLEWSKI

RIGHT TACKLE  
72 AL SHIPMAN  
70 FRANK FUDER

RIGHT END  
84 JOHN KIRSCHNER  
91 DAVID VAUGHN

## Memphis State Basic Offense

TAILBACK  
16 JAMES MCCOY  
33 LARRY BYRD

QUARTERBACK  
18 RICK THUROW  
19 DANNY PIERCE

FULLBACK  
43 RAY JAMIESON  
32 TOMMY JAMES

WINGBACK  
21 PRESTON RILEY  
30 JOHN MANGER

MEMPHIS STATE SPECIALISTS: PUNT—10 DURWOOD GORDON; FG-PAT—92 PETE WEEKS; KO—15 FERRELL SKINNER  
MEMPHIS STATE RETURN SPECIALISTS: PUNT RET., BERRONG; KICKOFF RET., MCCOY, JAMIESON

- CABLE COLOR TV IN ALL ROOMS RECEIVING NINE CHANNELS

- POOL

- Northwest corner of Campus on U.S. 90; Fla. 20 West

1402 W. TENN. (U.S. 90)



# DRIFTWOOD MOTEL and RESTAURANT

AMERICAN EXPRESS - DINERS - AMERICAN OIL - PHILLIPS 66 CREDIT CARDS HONORED

- AIR CONDITIONED
- DIRECT DIAL PHONES
- Se habla Espanol

(904) 224-4174

1968 FLORIDA STATE FOOTBALL ROSTER

No.	Name	Pos.	Class	Ht.	Wt.	Hometown
11	Rick Anderson	QB	Soph.	6-2	213	Winter Haven
12	Phil Hiatt	SE	Jr.	6-4	205	Tipp City, Ohio
14	Bill Cappleman	QB	Jr.	6-3	207	Dunedin
15	Tommy Warren	QB	Jr.	6-1	185	Miami
16	Gary Pajic	QB	Sr.	6-2	188	Jacksonville
17	Mike Page	DB	Jr.	5-11	175	Winter Haven
18	Clint Burton	DB	Sr.	6-1	180	Atlanta, Ga.
19	Phil Abraria	SE	Jr.	6-0	184	Ft. Lauderdale
20	Danny Thomas	DB	Soph.	5-9	178	West Palm Beach
21	John Pell	DB	Jr.	5-11	173	Pahokee
22	Chuck Eason	DB	Sr.	5-10	192	Tallahassee
23	Don Pederson	FL	Soph	6-0	174	Groveland
24	Walt Sumner	DB	Sr.	6-1	178	Ocala, Ga.
26	Barry Wenhold	FB	Jr.	5-10	200	Souderton, Pa.
27	Billy Cox	SE	Sr.	6-1	182	Atlanta, Ga.
28	John Lanahan	DB	Soph.	6-0	196	Jacksonville
29	Ben Rust	DB	Soph.	6-0	183	West Palm Beach
30	Tom Bailey	RB	Soph.	6-2	212	Miami
31	Bill Gunter	RB	Sr.	6-0	171	Dothan, Ala.
32	Ed Chereshkoff	RB-P	Soph.	5-11	195	Hollywood
33	Grant Guthrie	PK	Jr.	6-0	204	Claymont, Del.
34	Ron Sellers	FL	Sr.	6-4	187	Jacksonville
35	Mike Gray	SE	Soph.	6-3	198	Lake Mary
40	Brent Gilman	FB	Jr.	6-2	210	Long Beach, Calif.
41	John Crowe	DB	Sr.	6-0	178	St. Cloud
42	Bill Cheshire	P	Jr.	6-1	193	Odum, Ga.
43	Howell Montgomery	DB	Sr.	5-11	182	Blountstown
44	John Pittman	FB	Sr.	5-11	195	Brunswick, Ga.
46	Authur Monroe	RB	Soph.	6-0	188	Quincy
47	Joe Benson	LB	Sr.	5-11	199	Birmingham, Ala.
48	James Jarrett	FB	Soph.	6-1	194	Elizabethton, Tenn.
49	Terry Eagerton	FB	Jr.	5-10	194	Jacksonville
50	Dale McCullers	LB	Sr.	6-1	207	Live Oak
51	Billy Hughes	C	Jr.	6-0	230	Rockledge
52	Mike Sammons	OG	Soph.	6-1	208	Atlanta, Ga.
53	Randy Cassady	DT	Jr.	6-2	225	Florida, Ala.
54	Bobby Burt	LB	Soph.	6-2	210	Cairo, Ga.
55	Ted Mosley	C	Sr.	6-1	213	Tampa
56	Bill Lohse	LB	Soph.	6-0	225	St. Petersburg
57	Ronnie Lowe	LB	Jr.	6-0	175	Thomaston, Ga.
58	Steve Gildea	LB	Soph.	6-0	190	Daytona Beach
59	Frank Loner	PK	Sr.	6-0	200	Atlanta, Ga.
60	Barry Rice	LB	Soph.	6-1	203	Fernandina Beach
61	Chuck Elliott	LB	Sr.	6-0	195	Troy, Ohio
62	Theron Bass	LB	Soph.	5-10	200	Live Oak
64	Stan Walker	OG	Jr.	6-2	220	Tallahassee
66	Ken Hart	OG	Sr.	6-3	217	Groveland
67	Mike Bugar	DE	Sr.	5-10	206	Youngstown, Ohio
68	Larry Pendleton	OG	Sr.	6-0	212	Winter Garden
69	Tom White	DT	Soph.	6-0	238	West Palm Beach
70	Tony Sewell	OT	Jr.	6-4	228	Union Springs, Ala.
71	Harvey Zion	DT	Sr.	5-11	210	Atlanta, Ga.
72	Randy Logan	OG	Jr.	6-3	230	Seal Beach, Calif.
73	Duke Johnson	DT	Sr.	6-2	252	Ft. Lauderdale
74	Robert McEachern	DT	Soph.	6-2	219	Tallahassee
75	Billy Rhodes	OT	Sr.	6-3	240	Eustis
76	Jack Fenwick	OT	Sr.	6-4	226	Norwood, Ohio
77	Jeff Curchin	OT	Jr.	6-7	268	Ocala
78	Wayne Johnson	OT	Jr.	6-2	238	Macon, Ga.
79	Frank Vohun	DT	Jr.	6-3	225	Brooksville
80	Doug Gurr	DE	Sr.	6-0	208	Albany, Ga.
81	Jim Tyson	TE	Soph.	6-1	196	Pahokee
82	Rhett Dawson	FL	Soph.	6-1	184	Valdosta, Ga.
83	Ron Wallace	DE	Soph.	6-2	193	Macon, Ga.
84	Chip Glass	TE	Sr.	6-4	231	Tampa
85	Floyd Ratliff	DE	Sr.	6-3	195	Jesup, Ga.
86	Randy Hall	DE	Jr.	6-0	198	Miami
87	Bill Rimby	TE	Soph.	6-4	205	St. Petersburg
88	Beryl Rice	DE	Soph.	6-1	211	Fernandina Beach
89	John Richardson	PK	Jr.	6-0	205	Jacksonville

1968 MEMPHIS STATE FOOTBALL ROSTER

No.	Name	Pos.	Class	Ht.	Wt.	Hometown
10	Durwood Gordon	QB	Jr.	5-9	160	Batesville, Miss.
12	Larry Shelly	S	So.	5-10	170	Chattanooga, Tenn.
14	Joe Lynch	QB	So.	6-1	180	Washington, Pa.
15	Ferrell Skinner	DHB	Sr.	6-0	170	Philadelphia, Miss.
17	James McCoy	S	So.	6-0	200	Miami, Fla.
18	David Berrong	Jr.	Jr.	5-11	170	Sweetwater, Tenn.
19	Rick Thuro	QB	Jr.	5-10	175	North Little Rock, Ark.
20	Danny Pierce	QB	Jr.	6-3	210	Hattiesburg, Miss
21	Nicky Pappas	TB	Sr.	5-11	190	Corning, N. Y.
22	Preston Riley	WB	Jr.	6-1	185	Vicksburg, Miss.
23	Steve Jaggard	DHB	Jr.	6-2	185	Beaumont, Texas
25	Tom Gassett	DHB	So.	6-0	170	Gainesville, Fla.
30	John Manger	WB	So.	5-11	180	Memphis, Tenn.
31	Art Brumit	MG	Sr.	6-0	205	Kingsport, Tenn.
32	Tommy James	LB	Sr.	5-9	185	Chattanooga, Tenn.
33	Larry Byrd	FB	So.	5-10	190	Frostproof, Fla.
35	Steve Moore	DHB	So.	5-11	160	Chattanooga, Tenn.
36	Walter Penn	FB	So.	6-0	210	Miami, Fla.
41	Robert Huffman	DHB	So.	6-2	210	Covington, Va.
42	Frank Blackwell	SE	Jr.	6-3	210	Nashville, Tenn.
43	Ray Jamieson	FB	So.	6-1	220	Cranston, R. I.
45	Bill McRight	MM	Sr.	6-0	205	Greenville, Miss.
46	Jerry Todd	DHB	Jr.	6-0	180	Heber Springs, Ark.
50	Fred Almon	MG	Jr.	6-1	215	Tampa, Fla.
52	Dean Lotz	C	Sr.	6-2	215	Titusville, Fla.
53	Ralph Hubbell	OG	Jr.	6-1	215	Arcadia, Calif.
54	Fred Williams	DT	Jr.	6-0	200	Nashville, Tenn.
55	Lynn Wroblewski	OG	Sr.	6-0	210	Chicago, Ill.
56	John Allen	LB	So.	6-0	200	Chattanooga, Tenn.
57	John Bomer	C	So.	6-3	215	Memphis, Tenn.
59	Paul Marks	LB	So.	6-0	210	Massillon, Ohio
60	Robert Huber	LB	So.	5-11	195	Palmyra, N. J.
62	Gary Myers	OG	So.	6-0	205	Chicago, Ill.
63	Larry McGhee	OT	So.	6-1	210	Kennett, Mo.
64	Al Hotz	OG	Jr.	6-3	215	Melbourne, Fla.
65	Joe Rushing	LB	Sr.	6-0	210	Bartlett, Tenn.
66	Bob Parker	OG	Jr.	6-3	240	Taylorville, Ill.
67	Ken Apple	LB	Jr.	6-2	210	Madison, Tenn.
68	Palmer Smith	MG	So.	6-2	190	Memphis, Tenn.
69	Ray Damphousse	OG	So.	6-1	220	Lawrence, Mass.
70	Frank Fuder	OT	Sr.	6-3	245	Marianna, Fla.
72	Al Shipman	OT	Sr.	6-1	220	Peoria, Ill.
73	Larry Davis	OT	So.	6-6	235	Wartburg, Tenn.
74	Dennis Dulac	OT	So.	6-3	240	Donora, Pa.
75	Martin Orcutt	DT	Jr.	6-2	230	Norwich, Conn.
77	Luis Fernandez	DT	Jr.	6-3	230	Coral Gables, Fla.
78	Leonard Teixeira	OT	So.	6-3	240	Hialeah, Fla.
79	Rod Hayden	DT	So.	6-6	260	Alexandria, Va.
80	Bobby Dees	DE	Jr.	6-0	200	Philadelphia, Miss.
82	Alex Dees	DE	Sr.	6-0	200	Philadelphia, Miss.
84	John Kirschner	TE	So.	6-3	205	West Palm Beach, Fla.
85	Bill Wright	SE	So.	6-4	205	Beaumont, Texas
86	Howard Stubbs	TE	So.	6-4	220	Pickens, Miss.
88	Gary Harte	DE	Sr.	6-0	190	Chicago, Ill.
89	Richard Lay	DE	So.	6-1	200	Poplar Bluff, Mo.
91	David Vaughn	TE	So.	6-4	230	Wilton, Conn.
92	Pete Weeks	K-OE	Jr.	6-4	250	Tutwiler, Miss.

- CABLE COLOR TV IN ALL ROOMS RECEIVING NINE CHANNELS
- POOL
- Northwest corner of Campus on U.S. 90; Fla. 20 West



# DRIFTWOOD

## MOTEL and RESTAURANT

- AIR CONDITIONED
- DIRECT DIAL PHONES
- Se habla Espanol

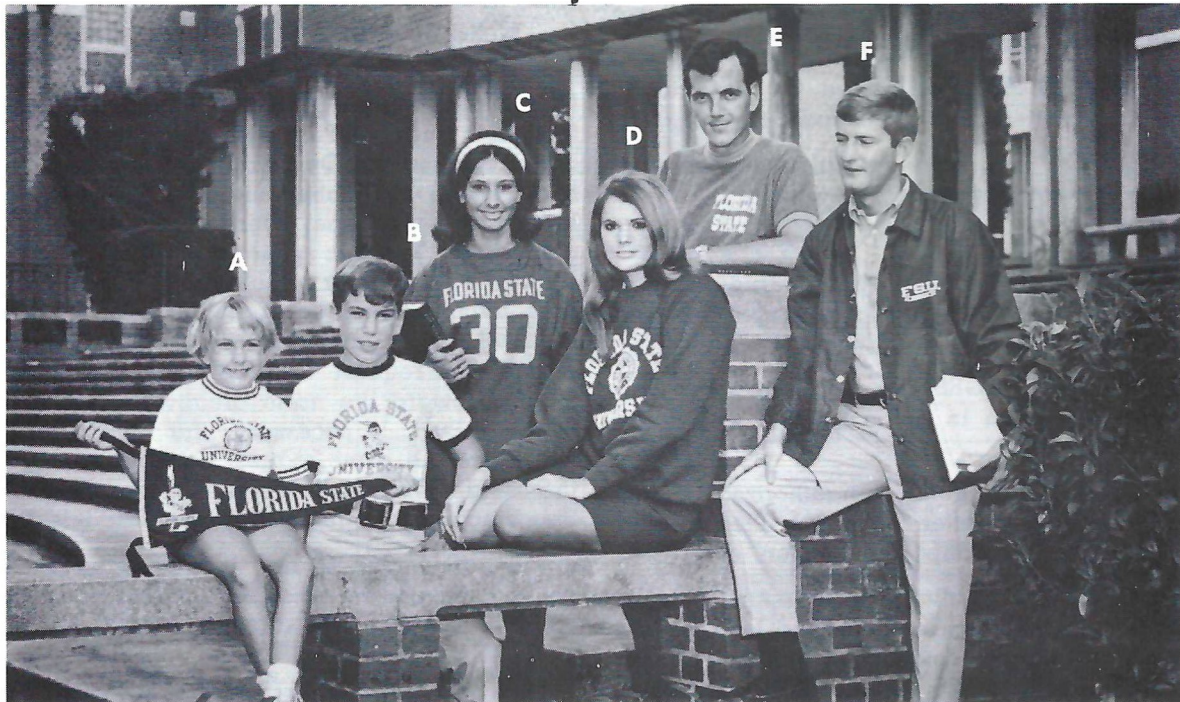
1402 W. TENN. (U.S. 90)

AMERICAN EXPRESS - DINERS - AMERICAN OIL - PHILLIPS 66 CREDIT CARDS HONORED

(904) 224-4174

# Take Home a GIFT That Says FLORIDA STATE

From the *Champion* KNITWEAR LINE



**C**  
The real McCoy. Authentic cotton football jersey with three-quarter length sleeves and double shoulder and elbow pads. School name on front and numbers on front and back.

Style P12 3/4 S/C (41054)  
COLORS: Cardinal with Gold Trim.  
SIZES: S, M, L, XL.  
\$4.50

**D**  
Heavyweight, fleece-lined sweat shirt in a Kingsized cut that Queens like too. Crew neck and raglan sleeves. Ribbed neck, cuffs and bottom.

Style CRSS (S1603)  
COLORS: Loden, Maroon, Powder Blue, Buff.  
SIZES: S, M, L, XL.  
\$2.95

**E**  
A new sweater shirt flare adds sparkle to the campus fashion world. Woven vertical stripes. Contrast color mock turtle collar, sleeve cuffs and bottom trim provide the color accent in setting this new stripe in motion as a star performer.

Style 7343 (T1737)  
COLORS: NuBlue stripes, Whiskey stripes.  
SIZES: S, M, L, XL.  
\$3.95

**F**  
**THE COACH**  
A lightweight, two-ply Nylon winner. Snap-button front, Byron collar, drawstring bottom, and elastic cuffs. Athletic cut; extra full and long.

Style Coach (B1366)  
COLORS: Navy, Maroon.  
SIZES: S, M, L, XL.  
\$8.95

## FOR THE FUTURE SEMINOLES

**APPEALING  
GIFTS  
FROM**

**A**  
Color-trimmed sweatshirt. Standard weight, full cut, and short raglan sleeves. Knit trim on neck and cuffs.

Style J/OLYMPIC (S1665).  
SIZES: 4, 6, 8.  
Style B/OLYMPIC (S1664).  
SIZES: 10, 12, 14.

Colors for Both Styles: White body with Red/White/Blue trim.

\$2.00

**B**  
**T-SHIRTS**  
The trim is the thing in this youth version of an all-time Champion best seller. Soft, fine quality cotton with color fast trim on neck and sleeve ends.

Style TJ78 (T1753)  
COLORS: White body with Dark Red.  
SIZES: 2, 4, 6, 8.

Style TB78  
COLORS: White body with Dark Red.  
SIZES: 10, 12, 14, 16.

\$1.40

**The University Book Store on the Campus**  
**FLORIDA STATE UNIVERSITY—TALLAHASSEE, FLA. 32306**

MAIL ORDERS WELCOME—PRICE INCLUDES POSTAGE

# STADIUM INFORMATION

**REST ROOMS** are located on concourse and ground levels of both the east and west stands.

**FIRST AID** station is located at the southwest corner of the stadium opposite gate five. A registered nurse is on duty at all times.

**PUBLIC TELEPHONES** are located on the ground levels of the east and west stands.

**PUBLIC ADDRESS** will make special announcements in cases of emergency only.

**DOCTORS** receiving calls will be paged by number.

**LOST AND FOUND** items may be turned in and claimed at the ticketbooth at three under the west stands by the press box elevator.

**ALCOHOLIC BEVERAGES** are prohibited by state law. Your cooperation in enforcing this law is appreciated.

**FIELD REGULATIONS** prohibit unauthorized persons on the field during or after the game. Please leave the Stadium by the ramp and section exits.

**REFRESHMENTS** are available in the stands and at locations on the concourse and ground levels of the east and west stands. Established prices are: soft drinks small 15¢, large 25¢; coffee 25¢; sandwiches

35¢; hot dogs 25¢; peanuts 25¢; pop corn 25¢; cigarettes 50¢. Please pay no more.

## STUDENTS, SPECTATORS!

Make Sportsmanship a Part of Your Game Equipment

**NOISE** is a serious problem at many intercollegiate football games, and on some occasions in the past has prevented the Quarterback's signals from being heard. Such a situation may be interpreted as "interference" with the conduct of the game, and penalized. We seek your assistance in preventing excessive noise, which could cause a penalty against your team. Should unusual noise develop, the referee will call "Time-Out" and instruct the Defensive Captain to request **QUIET**, which he will do by moving toward the noise area with both arms and hands raised. If necessary, the Offensive Captain will make the same request on the opposite side of the field. We shall appreciate your respect for Sportsmanship in remaining quiet at this time.

In all games the Referee is authorized to inflict a penalty based on noise developments. Please cooperate. Don't help to draw a penalty against your team.

**CHEER TO HELP, NOT TO HURT**

## Exciting, instructive baseball and football films available free.

See famous professional athletes show you how they do it.

Each film is in color, 16 mm and runs about 28 minutes. A terrific program for your youth group, civic club or Phys. Ed. class. With each film you get valuable instruction booklets, 36 pages of inside information and expert advice on how to stay in peak physical shape.

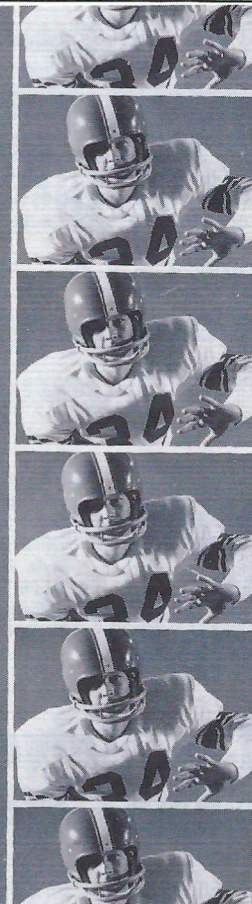
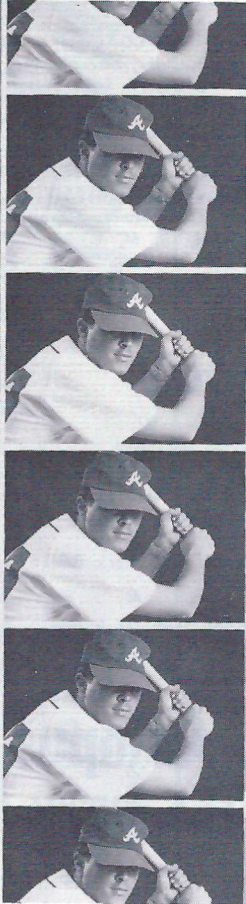
It's part of Prudential's contribution to the President's Council on Physical Fitness.

For information about a free loan of the films, contact your local Prudential office. Or write Public Relations Dept., The Prudential Insurance Company of America, P.O. Box 4579, Jacksonville, Fla. 32201.



**THE PRUDENTIAL  
INSURANCE COMPANY  
OF AMERICA**

**SOUTH-CENTRAL HOME OFFICE  
JACKSONVILLE, FLORIDA**





# FLORIDA STATE BASKETBALL BIGGER & BETTER!



1968-69

## BASKETBALL SCHEDULE

### HOME GAMES

Dec. 2 Valdosta State  
 Dec. 21 Southern Cal.  
 Dec. 27 Ohio State  
 Dec. 30 New Hampshire  
 Jan. 10 Miami  
 Jan. 13 Kent State  
 Jan. 18 Tulane  
 Jan. 23 Hawaii  
 Jan. 28 South Carolina  
 Feb. 1 Jacksonville U.  
 Feb. 10 Stetson  
 Feb. 15 Dayton  
 Feb. 18 Georgia Tech

### AWAY GAMES

Dec. 6-7 Florida Sunshine Classic  
 Dec. 14 Virginia Tech  
 Dec. 16 Louisville  
 Jan. 4 Jacksonville U.  
 Jan. 8 Tulane  
 Jan. 20 Rice  
 Feb. 3 Valdosta State  
 Feb. 7 Clemson  
 Feb. 8 North Carolina  
 Feb. 22 Georgia Tech  
 Feb. 27 Florida Southern  
 Mar. 1 Miami  
**Game Time: 7:30**  
**Freshman Games: 5:30**

## ORDER SEASON TICKETS NOW!

Individual game tickets \$2.50 each. Season Ticket (for 13 home games) \$20.00 (save \$12.50). For group seating send orders in single envelope and mark order "group seating".

Name \_\_\_\_\_

Address \_\_\_\_\_

City and State \_\_\_\_\_ (Zip) \_\_\_\_\_

Phone-Bus \_\_\_\_\_ Home \_\_\_\_\_

Check correct group(s)

- 1967-68 season ticket holder
- Tipoff Club Member
- New Purchaser

All orders must be accompanied by check made payable to FLORIDA STATE UNIVERSITY. Mail orders to the ATHLETIC TICKET OFFICE TULLY GYM

**SEMINOLES**

**1968  
-69**

## FAVORITE OF THE BIG BRAVES!



*Frisch's*

THE ORIGINAL

**BIG BOY**

**RESTAURANT**

**GREAT PLACE FOR POW WOWS  
AND GOOD FOOD**

SERVING:

- Breakfast
- Lunch
- Dinner
- Snacks

Open 7 A.M. to Midnight  
 'Til 2 A.M. Fridays and Saturdays

1775 W. Tennessee Street

TALLAHASSEE — TELEPHONE 224-1246

TRY FRISCH'S CARRY-OUT

**TALQUIN ELECTRIC  
Cooperative, Inc.**

**Helping**

**Gadsden, Leon, Liberty  
and Wakulla Counties**

**LIVE BETTER . . . Electrically**

**1968 SEMINOLE  
CHEERLEADERS**



Front Row: Rich Chichetti, Jim Sharp, Zan Tracy. Standing Lee Clifton, Bill Reilly. On ladder Top to bottom: Cherry Hand (Head Cheerleader), Jann Berry, Karen Jalko, Charolette Baker.

**WAKULLA  
SPRINGS**  
14 MILES SOUTH OF TALLAHASSEE

*Glass Bottom Boats*

**WORLD'S LARGEST AND DEEPEST SPRING**

**1968 SEMINOLE  
CHEERLEADERS  
REMIND YOU  
CHEER TO HELP  
NOT TO HURT**

# SEMINOLE SONGS

## THE ALMA MATER

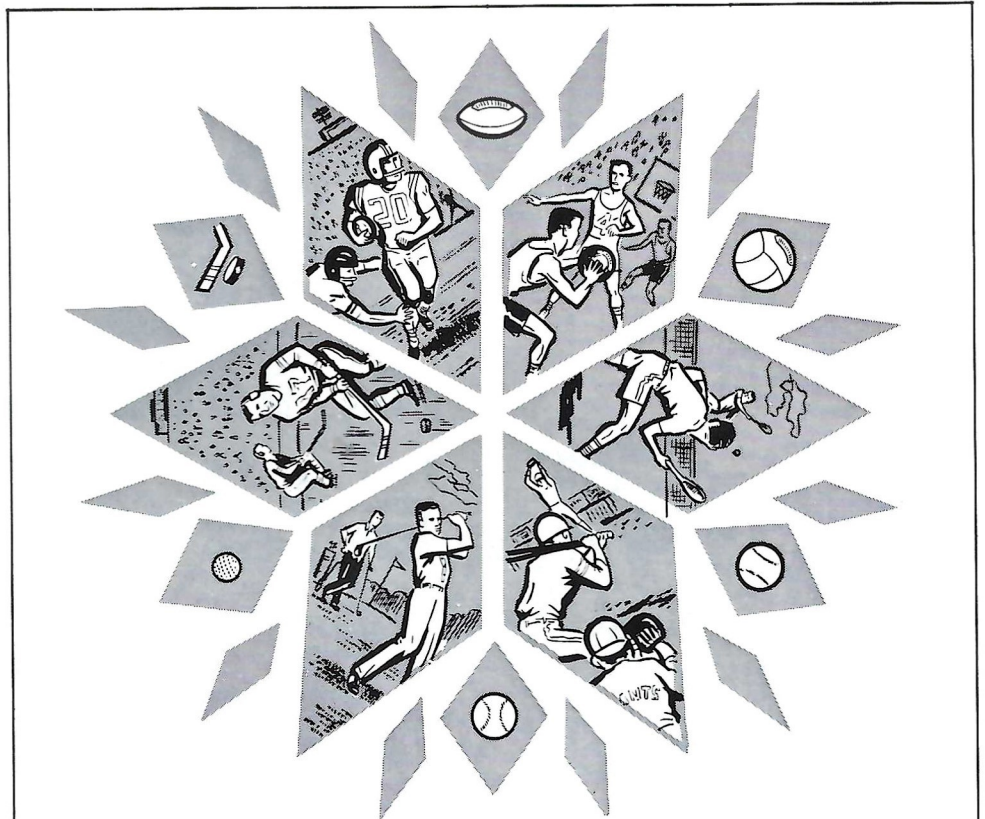
High o'er the towering pines  
our voices swell  
Praising these Gothic spires we  
love so well;  
Here sons and daughters  
stand . . .  
Faithful and True, Hailing our  
Alma Mater  
F . . . S . . . U . . .

## FSU FIGHT SONG

You're going to FIGHT, FIGHT,  
FIGHT for FSU  
You're going to scalp 'em  
Seminoles.  
You're going to WIN, WIN,  
WIN, WIN, WIN this game . . .  
and roll on down and  
make those goals!  
For FSU is on the warpath now,  
and at the battle's end she's  
great . . .  
So FIGHT, FIGHT, FIGHT, FIGHT  
for victory  
The Seminoles of Florida  
State . . .  
F-L-O-R-I-D-A S-T-A-T-E  
FLORIDA STATE (3 times)  
(repeat verse)

## HYMN TO THE GARNET AND GOLD

Here's a hymn to the Garnet  
and the Gold  
Ringing to the sky.  
Here's a song for our men and  
women bold  
Sing with heads held high.  
Striving e'er to seek, to know,  
Fight for victory.  
Alma Mater, this, our song to  
you,  
Echoes FSU.

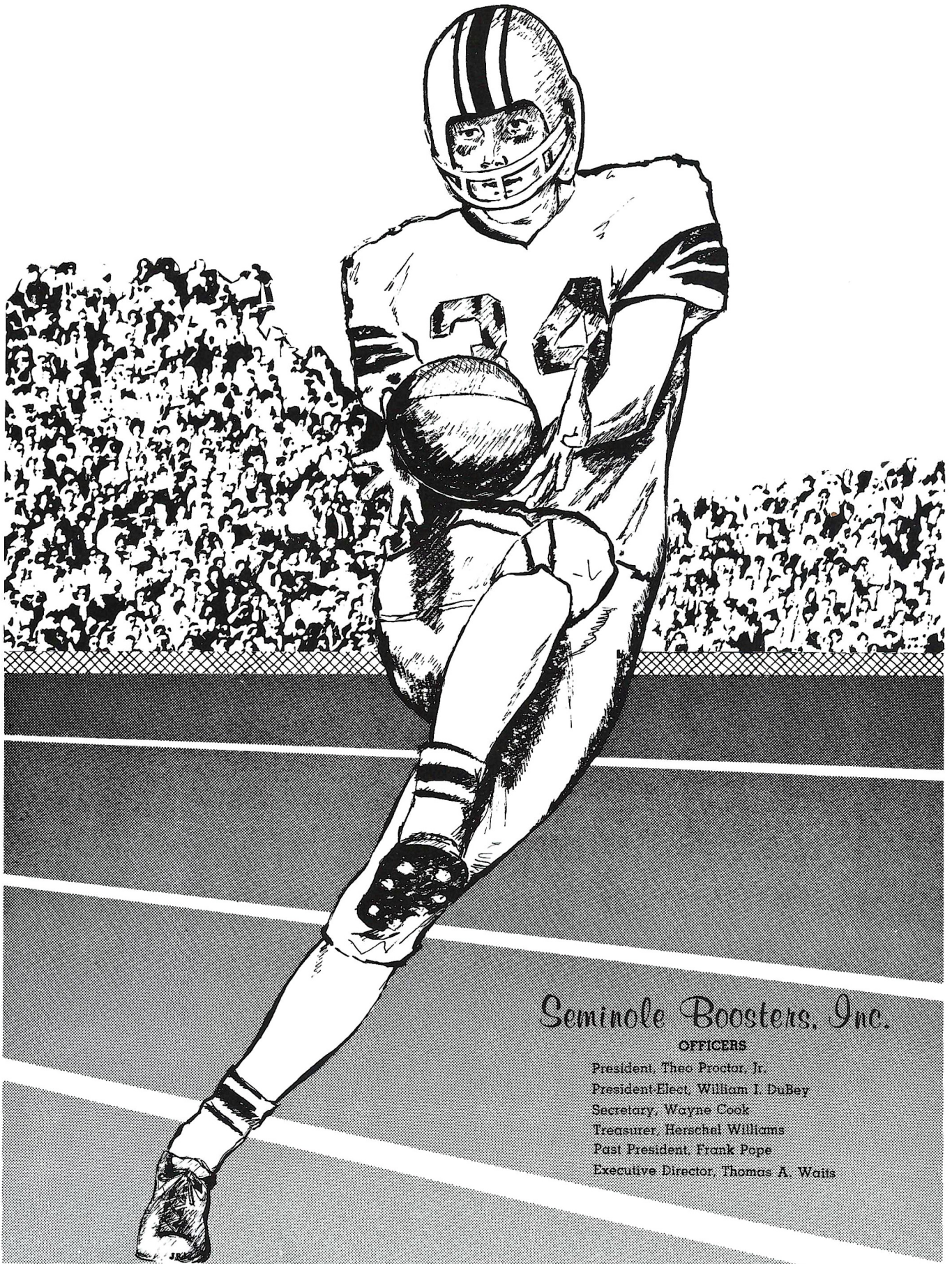


# SPORTS WORLD KALEIDOSCOPE

All season long — any time of the year — the Florida Times-Union and Jacksonville Journal report, in depth, on everything in the sports world. It's that "extra margin of effort" that makes these daily sports pages so interesting and informative. That's why sports fans who like to read an accurate analysis of the team BEFORE the game, then settle down to pinpoint descriptions AFTER the game, look forward to the kind of reporting done by real pros. Be there, with us, for every piece of the action.

**The Florida Times-Union**  
EVERY MORNING  
**Jacksonville Journal**  
WEEKDAY AFTERNOONS

ONE RIVERSIDE AVENUE • JACKSONVILLE, FLORIDA



## *Seminole Boosters, Inc.*

### OFFICERS

President, Theo Proctor, Jr.  
President-Elect, William I. DuBey  
Secretary, Wayne Cook  
Treasurer, Herschel Williams  
Past President, Frank Pope  
Executive Director, Thomas A. Waits

# Support Football's Finest

Football has come of age at Florida State University and outstanding players like All America Ron Sellers have helped make this possible. As any coach will tell you, much of the secret in fielding winning teams is recruiting top-flight student-athletes. Seminole Boosters was founded for the sole purpose of providing Coach Bill Peterson with financial support in his recruiting program. Membership in the Boosters is open to anyone with a sincere interest in Florida State's football progress. Minimum contribution

for membership is \$30. Contributions are administered in accordance with NCAA regulations and in conjunction with the Florida State Department of Intercollegiate Athletics. Boosters receive a colorful automobile license plate which can be used for admission to a special reserved parking lot at Campbell Stadium, a membership card, a weekly football season publication, "The Grandstand Coach," and certain priorities on season and single game football tickets.

## JOIN THE BOOSTERS!

SEMINOLE BOOSTERS, INCORPORATED  
FLORIDA STATE UNIVERSITY TALLAHASSEE, FLORIDA 32306

Check attached for \$ \_\_\_\_\_  
 Pledge to pay \$ \_\_\_\_\_ Bill me for \$ \_\_\_\_\_  
(TOTAL AMT.) (PAYMENTS)  MONTHLY  QUARTERLY  OTHER \_\_\_\_\_  
(SPECIFY)

Minimum Contribution of \$30 Required for Membership Privileges.

NAME \_\_\_\_\_ DATE \_\_\_\_\_

ADDRESS \_\_\_\_\_

CITY, STATE \_\_\_\_\_ ZIP \_\_\_\_\_

Make check payable to Seminole Boosters, Inc.  
Mail To: 114 Longmire Alumni Bldg., FSU  
TALLAHASSEE, Florida 32306

ARE YOU AN F.S.U. ALUMNUS? Yes  No

CONTRIBUTOR'S SIGNATURE \_\_\_\_\_



## Lindy's Fried Chicken

FRIED IN PURE VEGETABLE OIL AND TESTED TO BE 90 TO 95 % FAT FREE, SERVED TO YOU GOLDEN BROWN, TENDER AND CRISP.

### SPECIAL BOX

3 pcs. chicken, F.F.,  
cole slaw & rolls 1.10

### 1/2 FRY CHICKEN

4 pcs. chicken, F.F.,  
cole slaw & rolls 1.35

### WHOLE CHICKEN

serves 3 to 4 2.00

### BUCKET'O CHICKEN

serves 5 to 7 3.75

### BARREL'O CHICKEN

serves 7 to 10 5.00

1447 Thomasville Rd.  
Ph. 224-5811

OPEN 7 Days a Week  
10:00 AM-9:00 PM

# PENALTIES

1. **OFFSIDE** by either team; Violation of scrimmage or free kick formation; Encroachment on neutral zone—Loss of Five Yards.
2. **ILLEGAL PROCEDURE, POSITION OR SUBSTITUTION**—Putting ball in play before Referee signals "Ready-for-play"; Failure to complete substitution before play starts; Player out of bounds when scrimmage begins; Failure to maintain proper alignment of offensive team when ball is snapped; False start or simulating start of a play; Taking more than two steps after Fair Catch is made; Player on line receiving snap—Loss of Five Yards.
3. **ILLEGAL MOTION**—Offensive player illegally in motion when ball is snapped—Loss of Five Yards.
4. **ILLEGAL SHIFT**—Failure to stop one full second following shift—Loss of Fifteen Yards.
5. **ILLEGAL RETURN** of substitute not previously disqualified—Loss of Fifteen Yards.
6. **ILLEGAL DELAY OF GAME**; Taking more than four times out during either half (except for replacement of injured player)—Loss of Five Yards. Team not ready to play at start of either half—Loss of Fifteen Yards.
7. **PERSONAL FOUL** — Tackling or blocking defensive player who has made fair catch; Piling on; Hurdling; Grasping face mask of opponent; Tackling player out of bounds, or running into player obviously out of play; Striking an opponent with fist, forearm, elbow or locked hands; Kicking or kneeling—Loss of Fifteen Yards (Flagrant offenders will be disqualified.)
8. **CLIPPING**—Loss of Fifteen Yards.
9. **ROUGHING THE KICKER** or holder—Loss of Fifteen Yards.
10. **UNSPORTSMANLIKE CONDUCT**—Violation of rules during intermission; Illegal return of suspended player; Coaching from sidelines; Invalid signal for Fair Catch; Persons illegally on field—Loss of Fifteen Yards. (Flagrant offenders will be disqualified.)
11. **ILLEGAL USE OF HANDS AND ARMS** by offensive or defensive player; Defensive holding—Loss of Fifteen Yards.
12. **INTENTIONAL GROUNDING** of forward pass—Loss of Five Yards Plus Loss of Down.
13. **ILLEGALLY PASSING OR HANDING BALL FORWARD**—Loss of Five Yards Plus Loss of Down.
14. **FORWARD PASS OR KICK CATCHING INTERFERENCE**—Interference with opportunity of player of receiving team to catch a kick—Loss of Fifteen Yards. Interference by member of offensive team with defensive player making pass interception—Loss of Fifteen Yards Plus Loss of Down. Interference by defensive team on forward pass—Passing Team's Ball at Spot of Foul and First Down.
15. **INELIGIBLE RECEIVER DOWN-FIELD ON PASS**—Loss of Fifteen Yards.
16. **BALL ILLEGALLY TOUCHED, KICKED OR BATTED**—Forward pass being touched by ineligible receiver beyond the line of scrimmage—Loss of Fifteen Yards from Spot of Preceding Down and Loss of a Down. Eligible pass receiver who goes out of bounds and later touches a forward pass—Loss of Down. Illegal touching of kicked ball within opponent's ten yard line—Touchback.
17. **PENALTY DECLINED**; Incomplete forward pass; No play or no score.
18. **CRAWLING** by runner—Loss of Five Yards. Interlocked Interference—Loss of Fifteen Yards.

## WHEN YOU GET HUNGRY WHY NOT TRY SOME COLONEL SANDERS RECIPE KENTUCKY FRIED CHICKEN ©

three sizes to choose from:

**Individual Box**  
3 Big Pieces of Chicken,  
Cole Slaw, French Fries,  
Rolls, Gravy  
**\$1.10**

**Family Bucket**  
Serves 5 to 7  
**\$3.75**

**Barrel O' Chicken**  
Serves 8 to 10  
**\$5.00**  
Gravy & Rolls 5.40

**Bar-B-Q Chicken Sandwich**  
French Fries—Jumbo Shake

**60c**



or if you prefer!

- Jumbo Shrimp Boxes
- Chicken Gizzard Boxes
- Filet of Fish Boxes
- Famous Home-Made Pies
- Chicken Liver Boxes

*Holland's Carry Out*

THREE LOCATIONS TO SERVE YOU

Take Home Service No. 1  
1002 N. Monroe—224-1645

Take Home Service No. 2  
1603 W. Tenn. St.—224-4313

Take Home Service No. 3  
1583 Apalachee Parkway—877-7620

# SEMINOLE FOOTBALL NETWORK

Handling the play-by-play for the ever-expanding Seminole Football Network will be Bo Mitchell, in his sixth season as the Seminoles' announcer.

An 18-year veteran in broadcasting, Mitchell is vice-president and station manager of WKIS in Orlando.

Dr. Don Veller, former head football coach and presently serving as the golf coach at Florida State will assist Bo with the color analysis on the Seminole Network this year.

More than 30 stations carry Florida State's 1968 season to all parts of Florida as well as Southern Georgia and Alabama. Originating station for the Seminole Football Network is WTNT in Tallahassee.



**Bo Mitchell**



**Dr. Don Veller**

## THE SEMINOLE NETWORK

WTNT—Tallahassee	WDSR—Lake City
WROD—Daytona Beach	WCOA—Pensacola
WPRY—Perry	WJAX—Jacksonville
WLAK—Lakeland	WKIS—Orlando
WSPB—Sarasota	WGBS—Miami
WCNH—Quincy	WDAE—Tampa
WMMB—Melbourne	WEAT—West Palm Beach
WPAX—Thomasville, Ga.	WSIR—Winter Haven
WMYR—Ft. Myers	WTRR—Sanford
WMOP—Ocala	WRUF—Gainesville
WOOO—Deland	WSBR—Boca Raton
WTOT—Marianna	WNOG—Naples
WFTW—Ft. Walton Beach	WMGA—Moultrie, Ga.
WAAZ—Crestview	WKMK—Blountstown
WFOY—St. Augustine	WJOE—Port St. Joe

# Come to Chevron Island

...and follow the SEMINOLES in '68



ON THE  
STANDARD  
OIL  
RADIO  
NETWORK

**WTNT**  
Tallahassee

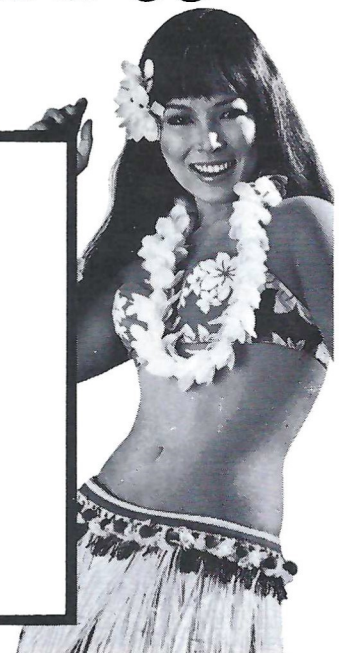
**WJAX**  
Jacksonville

**WGBS**  
Miami

**WKIS**  
Orlando

**WCOA**  
Pensacola

**WDAE**  
Tampa



# CAMP.O.TEL CORP

## HUNTING, FISHING, VACATION ECONOMY

NORTH FLORIDA'S ONLY COMPLETE FULL TIME

# CAMPER CENTER

2720 W. Tennessee St.

P. O. Box 2235 Tallahassee, Fla. 32304

Telephone 576-4545 AC 904

. . . Harvest the fun with the whole family anywhere you go with home-based comfort. Ride or sleep—cook and eat enroute—take your boat or trailer. Your Camp-O-Tel puts your family in this picture. Special jacks to load or unload your Camp-O-Tel.

National rally

free camp Vacation

National caravan club



INVITES YOU TO VISIT OUR FACTORY AND INSPECT THE ONLY BRAND OF PICKUP CAMPER MANUFACTURED IN THE STATE OF FLORIDA THAT IS 5 STAR RATED BY MOBILE HOME JOURNAL-MOBILE LIFE MAGAZINE.

WE ARE A COMPLETE CAMPER SHOPPING CENTER—PICKUP CAMPERS, TRAVEL TRAILERS, CAMP TRAILERS. WE DISTRIBUTE FULTON FIBERGLASS MODELS PLUS OUR OWN AWARD WINNING CAMP-O-TEL. YOU SIMPLY OWE IT TO YOURSELF TO MAKE A THOROUGH COMPARISON OF QUALITY AND VALUE.

5 STAR RATING

Mobile Life's

HIGHEST AWARD





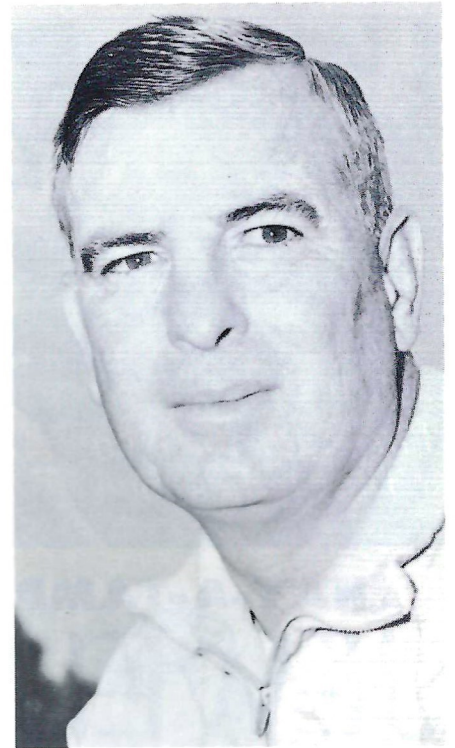


Dr. C. C. Humphreys—President



COPYRIGHT PENDING M.S.U.

# MSU TIGERS



Coach Billy (Spook) Murphy



**get off the  
bench, join us  
at...**



**445 West Tennessee St.  
Tallahassee, Florida**



\*  
*The cigar for men  
 that ladies love*

**HAV-A-TAMPA**  
**JEWELS**

WITH EXCLUSIVE BIRCHWOOD TIP

2 for 15c

or new Push-Pak of five 36c  
 (Plus state and local taxes, if any)



**FROM HAVATAMPA—TAMPA'S LARGEST MANUFACTURER OF FINE CIGARS**  
*Distributed by Eli Witt Tobacco & Candy Co.*  
 Tallahassee, Florida

*Le Roc*  
*Cocktail Lounge*

*Tallahassee's Finest . . .*

**Located in the  
 DUVAL HOTEL**

**For an evening of relaxed  
 entertainment — enjoy your  
 favorite beverage**

**No cover charge**

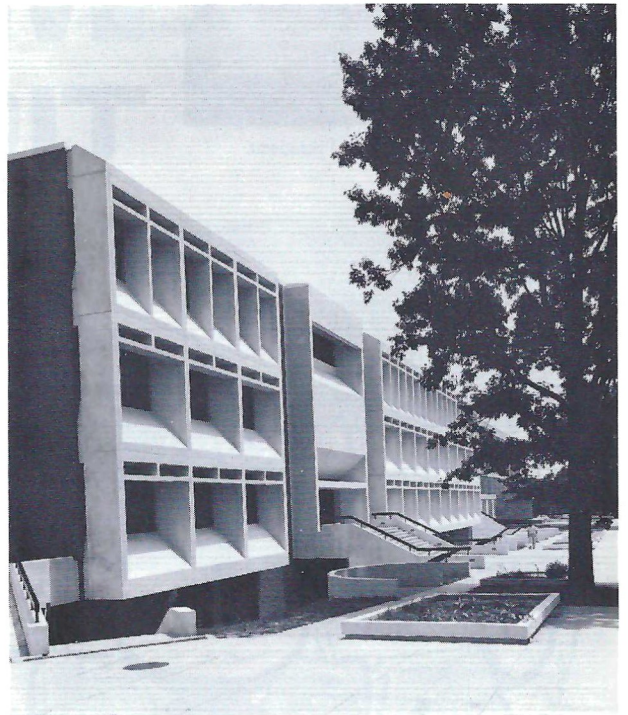
**Entertainment nightly**

**Open daily 11 A.M. to 2 A.M. — except Sunday**

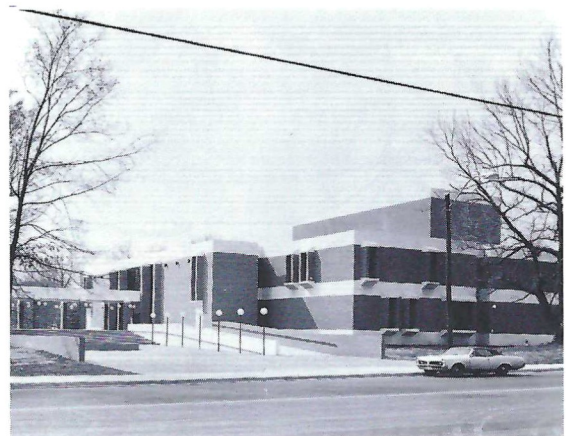
# Memphis State



Patterson Building



University Center



Fine Arts Building

# Spend less of your parents' money on weekends.

**Hertz**

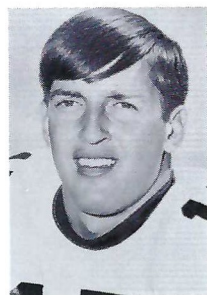


Rent a Ford Mustang or another good car from Hertz at a special low weekend rate: \$15 and 12¢ a mile including gas, oil and insurance, from noon Friday to noon Monday. To reserve a car call: 222-1686. To pick it up come to the Duval Hotel.

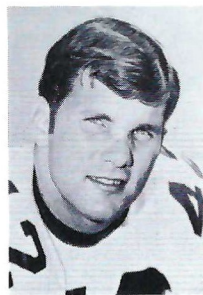
## The Tigers



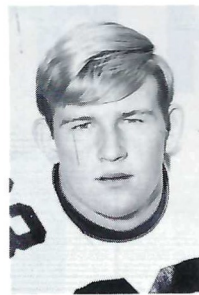
John Allen



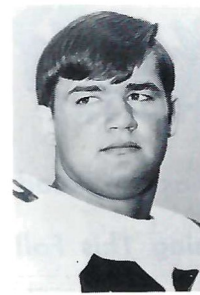
David Berrong



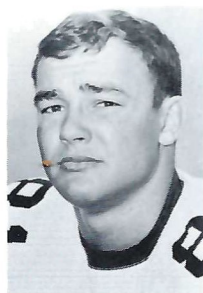
Frank Blackwell



Larry Byrd



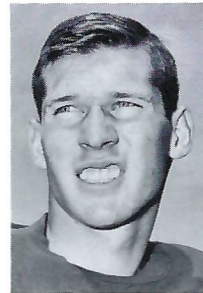
Alex Dees



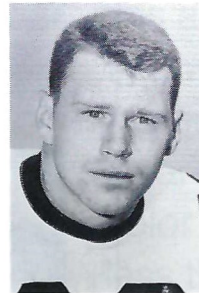
Bobby Dees



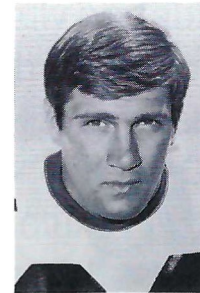
Luis Fernandez



Durwood Gordon



Gary Harte



Al Hotz

# The Vogue

TALLAHASSEE, FLORIDA

GOOD LUCK SEMINOLES!

*Varsity*  
**THEATRE**

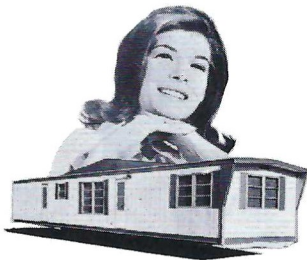
1833 W. Tennessee

Phone 224-8636

*Miracle*  
**THEATRE**

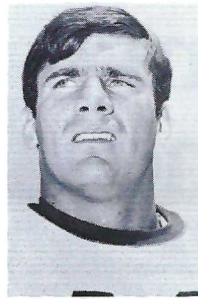
Thomasville Road

Opening This Fall

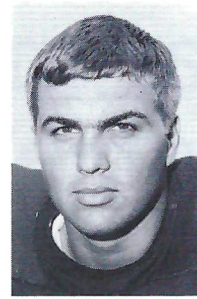


**BAIRD**  
MOBILE HOMES  
2901 Apalachee Parkway  
877-4524  
TALLAHASSEE

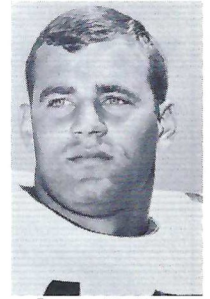
# The Tigers



Ray Jamieson



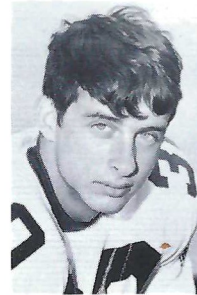
Dean Lotz



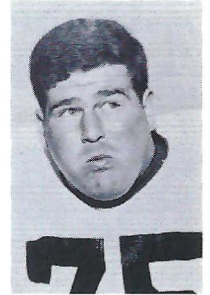
James McCoy



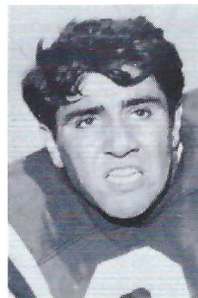
Bill McRight



Steve Moore



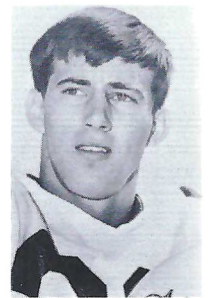
Martin Orcutt



Nick Pappas



Bob Parker



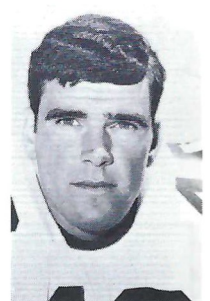
Preston Riley



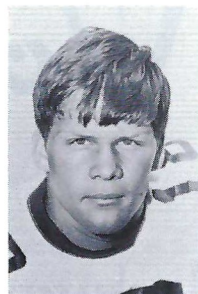
Joe Rushing



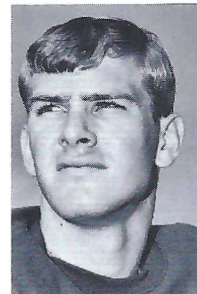
Al Shipman



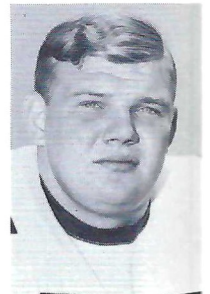
Jack Smith



Rick Thurow



Jerry Todd



Lynn Wroblewski

# The mini-color portable with the maxi-color screen from RCA.

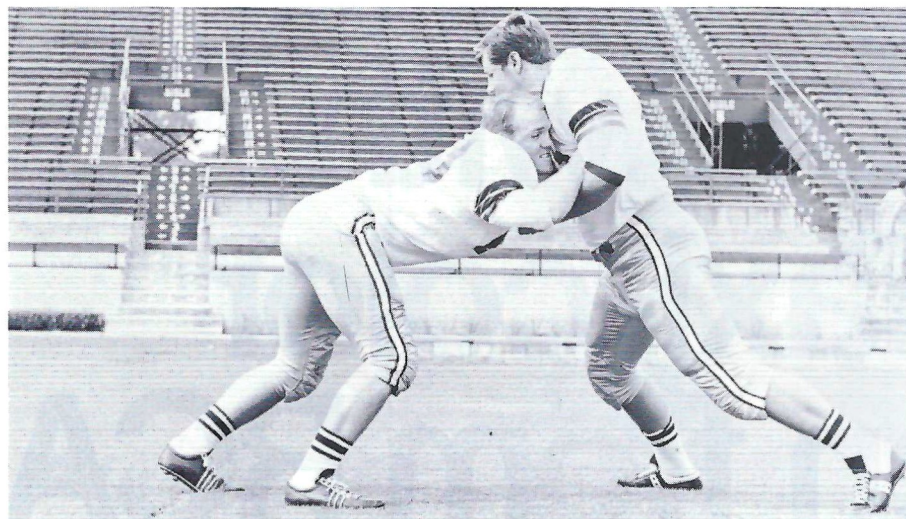


RCA engineers have pared pounds to make this a truly portable color TV—with no sacrifice in the quality of its sharp, clear 18" diag., 180-sq. in. color picture. Weighs less than some other sets with smaller screens. Carry the Candidate home from your RCA dealer's today.

## RCA

*Rainey Cawthon's*  
700 N. MONROE • 222-1865

# Offensive Line and Running Backs



By Joe Gibbs and Al Conover

It may seem strange to some that the offensive linemen and the running backs have been grouped together for this series, but actually it is a logical move. The linemen and the backs have very integrated jobs.

The duty of the line is two-fold. First it must provide the holes for the running game. Secondly it provides protection for the passer. There is no order of importance in these two things, one is as necessary as the other—especially in our offense.

There is a distinct difference in the mechanics involved in the two actions, however. The block applied on a running play is what we call a drive block. It is the most fundamental type of block there is and the first one we work on.

The drive block is a punishing block. The lineman literally explodes forward. His duty is to make contact and move his man back. His responsibility is then twofold on this play; he must pick the right man and then he must move him.

The pass block, on the other hand, is not a punishing block—that is the offensive lineman is not trying to drive or punish his defensive counter part. The idea here is

to meet your man at the line of scrimmage and keep him there by preventing him from going over or around you.

On this block there is no explosion by the lineman. He straightens up and uses his forearms and chest to keep his man out. The offensive lineman must be so good at keeping the defense out that the quarterback never thinks about it. Pass blocking has to be automatic. If the quarterback does not have complete confidence in his line, it isn't getting the job done. This is one of the most important aspects of the passing game.

The two styles could be summed up this way. In the drive block, the offensive lineman becomes the irresistible force meeting the immovable object. In the pass block the offensive lineman is the immovable object warding off the irresistible force, from this description you can see that the offensive line has to be able to take as well as give.

The physical qualities of the interior lineman depends on which of the three positions he plays. The guard must possess some speed. He has to be able to pull for the sweeps and traps. He does not have to possess as much strength

as the tackle because he does not have a man right over him as often.

The tackle sacrifices speed for strength. He almost always has a man on him and he doesn't have as much running and pulling to do. The center has to have some speed, but he must also be quick, because more often than not his man is off to one side and he must go to him.

The running back (we use the term to mean both the halfback and the fullback) has a three fold duty and may be the most versatile athlete on the team. He has to be tough and sturdy enough to block, have the speed, agility and quickness to run and possess the sure hands of the receiver.

First and foremost, the back's job is to be a runner. He heads for the end zone every chance he gets. In our pro-style, passing-oriented offense, the running back doesn't get as much of a chance as others, but running is still a strategic part of the offense.

The passing game actually makes the running game go. If the defense has to open up for the passing game it leaves holes for the running game to use. Likewise with the threat of a run the defense can not concentrate wholly on the receivers.

The backs also play important part in pass protection. Each back will work in a unit with two interior linemen. Generally they are responsible for the defensive tackle, end and linebacker on their side. The key man for the running back is the linebacker. If the linebacker drops off for pass coverage, the running back can run a pass pattern in which case he becomes an extra receiver. If the linebacker is blitzing or stunting the running back is committed to a blocking role.



## *Citius, Altius, Fortius—Swifter, Higher, Stronger*

**By C. ROBERT PAUL, JR.**  
 Publications Editor,  
 U.S. Olympic Committee

For the Games of the XIX Olympiad in Mexico City 101 colleges are represented by 250 athletes on the U.S. Olympic team of about 400 athletes. This is the largest number of colleges ever to be represented on the U.S. Olympic team in the quadrennial gathering of the world's outstanding amateur athletes.

### **NEW FACES**

The heavy turnover of athletes is apparent when the United States Olympic team has only 80 men and women returning from the 1964 Olympic team, 47 of whom are identified with colleges. Among the gold medalists returning are Al Oerter, University of Kansas, three-time winner of the discus throw; Don Schollander, Yale '69, who earned four gold medals in swimming at Tokyo; Lesley Bush, Indiana '69,

women's platform diving champion in 1964; Pokey Watson, UCLA '72, a member of the winning USA freestyle relay team four years ago, and shooters Gary L. Anderson, Hastings College and Major Lones Wigger, USA, Montana State.

It is interesting to note that there are 89 sophomores, juniors and seniors on the 1968 U.S. team, whose schooling is being delayed, along with 30 who were graduated this year and about nine who plan to enter college after the Olympic Games. Among those planning to enter college after the Olympic Games is Mark Spitz entered in six swimming events (including three relays). He will matriculate at California State at Long Beach. One of the world's finest women swimmers, Claudia Kolb, tops in the two individual medley events, plans to enter Santa Clara University.

The Athletic Association of Western Universities (Pacific Eight) is represented by all eight colleges, contributing a record number of 60 athletes.

Six of the Ivy League colleges have 38 on the team and seven members of the Big Ten are represented by 30 participants.

Among the individual colleges, Harvard University and UCLA each have 14, 12 of the Cantabridgians are oarsmen. Stanford is third in the number of athletes on the team with 13, followed by the University of Southern California, 10; Indiana and Michigan, 9 each; the University of Pennsylvania and San Jose State, 8 each, and California State at Long Beach, 7.

It can be estimated that there were at least 10,000 athletes seeking places on the United States Olympic team when the Olympic Trials started early this year. The United States will be represented in 17 of the 19 sports on the calendar for the Games of the XIX Olympiad. The soccer team was eliminated in the first round of qualifying play last year and the field hockey team failed to qualify for the tournament in Mexico.

Although the United States may have its "deepest" men's track and field team in history, it will be difficult for them to equal the 12 gold medals won at Tokyo. Stanford coach Payton Jordan, head mentor for the Olympic track and field team, was gratified with the results of the Olympic Trials conducted at South Lake Tahoe, Calif. Four world records were broken in these trials.

### **STRONGEST EVER**

Never has any country been represented by a stronger team in any sport than the United States women's swimming team, planning to win 12 or 13 of the 16 events on the program. The men's swimming team, according to George Haines, head coach, is laden with talent in every event. Haines half jokingly said after the team had been selected following trials in the Belmont Plaza Pool in Long Beach, Cal., "If I were coach of the Soviet team I'd start shaking in my boots."

### **CAGERS QUESTIONABLE**

The biggest question mark of all is basketball, a sport in which the United States has never lost a game. The success of the team may depend on three key players: pivotman Spencer Haywood, Detroit '71; Bill Hosket, Ohio State '68; and Joseph (Jojo) White, Kansas '69. Oklahoma State coach Henry Iba is the first man named to handle the USA basketball team in successive Olympic Games.

At Tokyo the United States won 36 Olympic gold medals. Because of the strength of the men's and women's swimming teams and the men's track and field team, along with outstanding athletes in rowing, shooting and yachting it is possible for the United States to equal the 1964 performance.

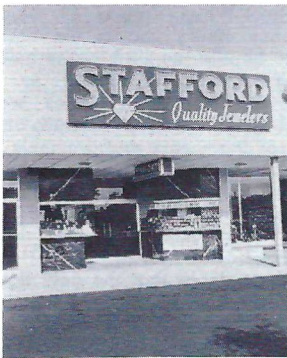
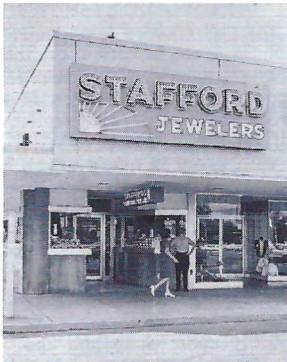
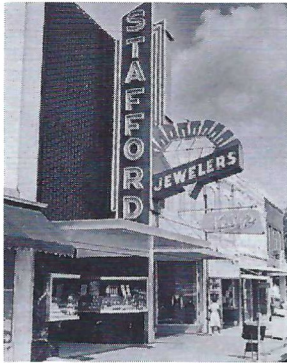
There's no doubt that the gold flow will be to the United States in swimming. In the men's events top favorites include Zachary Zorn, UCLA, 100 meters freestyle; Don Schollander, Yale, 200 meters freestyle; Mike Burton, UCLA, 1500 meters freestyle; Charley Hickcox, Indiana, individual medley, and Spitz, butterfly.

Claudia Kolb, Santa Clara, is counted on for two gold medals in the individual medley, Pokey Watson, UCLA, in the backstroke, and Lesley Bush will defend her laurels in the platform dive against Ann Peterson, Arizona State.

Again the USA is strong in the sprints in track and field. Wyoming Tyus, Tennessee State, could score a double. Charlie Greene, Nebraska and Jim Hines, Texas Southern, are co-favorites in the 100 with

# Let's Go Seminoles

From the friendly folks  
at STAFFORD JEWELERS



THOMASVILLE, GEORGIA  
Nathan Braswell, Manager

**STAFFORD**  
Quality Jewelers

New with three fine stores  
for your  
shopping convenience

## Olympics (con't)

Tommie Smith and John Carlos, both San Jose State, battling over the 200-meter route.

Lee Evans, San Jose State, '69 and Villanova's Larry James, '70 are capable of winning the 400 meters in world record time. Bob Seagren, '69 NCAA champion from Southern California, currently holds the world record in the pole vault and will vie with Bliznetsov of the Soviet Union and Greece's Papanikalou; hurdler Ron Whitney, Occidental and University of Colorado, is outstanding in the intermediate hurdles, while there is little to choose between Al Oerter, Kansas, and Utah State's L. Jay Silvester, in the discus throw.

### RYUN'S DILEMMA

The big hope of the USA winning the 1,500 meters for the first time in 60 years is Jim Ryun, Kansas, '69. The big question is whether Ryun believes in his own mind that the climate in Mexico is more a question of attitude than altitude.

Gary Anderson, Hastings College, and Major Lones Wigger of Montana State should do well in the shooting events and Princeton's Gardner Cox has a "real shot" at the gold medal in the 5.5-meter yachting class.

Rowing competition, always one of the favorite sports of the United States, could result in another winner, but the best chance for a coveted gold medal rests with Larry Hough, Stanford, and Syracuse's Tony Johnson handling the assignment in the pair oars without coxswain event. The splendid Harvard varsity eight will get another crack at the strong European crews they met in the 1967 European Championships at Vichy.

The athletes have been impressed with the spirit of the Olympic Games. When founded by the late Baron de Coubertin of France, he envisioned a quadrennial sports gala in which athletes vied for personal glory, without regard to competitions between nations. That's the real spirit of the Olympic Games.

## Olympic Quiz

Think you can name all 19 divisions of the Olympic Games? Here's your chance, and just to make things a little easier we have included the symbols developed by the officials of the XIX Olympiad to help overcome the language barrier. Answers are at the bottom of the page.



1



2



3



4



5



6



7



8



9



10



11



12



13



14



15



16



17



18



19

1-Cycling, 2-Gymnastics, 3-Shooting, 4-Volleyball, 5-Boxing, 6-Yachting, 7-Tack and Field, 8-Basketball, 9-Pentathlon, 10-Water Polo, 11-Rowing, 12-Fencing, 13-Swimming, 14-Weightlifting, 15-Canoing, 16-Wrestling, 17-Soccer, 18-Equestrian, 19-Field Hockey.

ANSWERS



# Post-Game Party Gets Top Rating

by CAROLYN ANDERSEN



Photo: The Popcorn Institute

**W**HEN the referee throws both arms high into the air signaling "touchdown" for your favorite collegiate team, he also signals a time for celebration. And what better way to climax a big gridiron victory than by hosting a post-game party?

In order that the hostess may enjoy the excitement of the event to its fullest, the party should be a simple one. Plenty of good food can be prepared ahead of time so that only last minute warm-ups will be necessary when you get back from the stadium.

On game day, prepare one of the suggested main dishes, your own favorite gelatine salad, and have plenty of rolls, a simple dessert and the beverage of your choice on hand. Then, with your party fixin's ready, you'll still be on time for the opening kickoff and will be able to stay until the final gun.

First, try this idea for a chicken dish that is accented with crumbles of blue cheese and succulent mushrooms. The zesty concoction is served on top of crunchy chow mein noodles, or in pattie shells.

Melt one-quarter cup butter and stir in one-quarter cup flour. Gradu-

ally add one and three-quarters cups milk and one-half cup chicken broth (canned). Cook over medium heat, stirring constantly, until thickened. Add one-half teaspoon salt, pinch of sugar, one four-ounce can drained mushrooms, dash of monosodium glutamate, pepper, one teaspoon prepared horseradish, one and one-half cups blue cheese and two cups diced, cooked chicken. Cook over low heat, stirring constantly, until just heated through. Turn off heat and cover until time to reheat before serving your guests.

If you prefer a little more gourmet style main dish, try this recipe for Veal Elegante.

In large skillet, melt one-quarter cup butter or margarine and lightly brown two pounds veal cutlets, cut into one-inch pieces. Add one can (eight ounces) drained mushroom stems and pieces, and one clove minced garlic. Remove from skillet. Into drippings in skillet, stir two tablespoons flour, then one envelope onion soup mix; gradually add two cups water and one-quarter cup dry red wine. Cover and simmer 10 minutes, stirring occasionally. Add meat, mushrooms, and two tablespoons

chopped parsley and heat through. Turn off heat and leave covered until ready to heat at party time. Serve over noodles. Recipe makes six to eight servings.

Another fun idea is a Knife and Fork sandwich. The convenience of pre-cooked frozen foods keeps you from spending hours in the kitchen when the crowd gathers.

Slice one large loaf unsliced French bread lengthwise and spread bottom half with butter and prepared mustard. Heat in 350-degree oven for 10 or 15 minutes. Heat two packages frozen chili according to package directions. Spoon over buttered bread. Cut three slices processed cheese into several strips and place on top of chili. Top with strips of bacon and fresh onion rings. Cut into six or eight knife and fork sandwiches.

If you would like to plan something clever in the way of decorations for your "pigskin party," why not take a signal from the game ball itself and create a popcorn touchdown centerpiece?

To begin, mold a football out of five quarts popped popcorn and lace it with candy licorice strings. The popcorn can be molded the day before your party. A simple syrup coating can be made by combining two cups sugar, one and one-half cups water, one-half cup light corn syrup and one teaspoon vinegar, then cook to hard ball stage (250 degrees). Add one teaspoon vanilla and pour over popcorn. It will add delicious flavor and will help you shape your oval football.

Once the centerpiece has been molded place the licorice "strings" in lacing fashion and then wrap the popcorn in foil or saran until time to decorate the table. This way, it will keep fresh and crisp for eating.

Come party time, insert chocolate-coated bananas on skewers into the popcorn football. They're a frozen confection that everyone will enjoy. The bananas are cut in half, dipped in one package (six-ounce) melted semi-sweet chocolate chips and one tablespoon vegetable shortening and frozen until serving time. Easy to eat off the skewers, the bananas make an unusual and tasty sweet.

Whether your team scores a victory or not, your party is bound to be a winner.

# Learn to Fly at Seminole Flying Service, Inc.

**Municipal Airport**

Phone 576-5151

Tallahassee, Fla.

- STUDENT CLUBS
- AIRPLANE RIDES
- FLIGHT INSTRUCTION
- AERIAL PHOTOGRAPHY
- CHARTER FLIGHTS
- AIRCRAFT RENTAL

**FLY the best—A New Cessna**

**"Look up—a new CESSNA will be overhead"**

## DIRECTORY OF 1968 PROGRAM ADVERTISERS

FIRM	LOCATION
ABC Mobile Homes	17
Army ROTC	21
Baird Mobile Homes	42
Big B Cleaners	48
Bill Peacock Chevrolet	22
Bennetts Drugs	10
Camp O Tel	38
Chevrolet	Back Cover
Chrysler Corp.	BCS
Clark Electric	10
Coca Cola	24-25
Dolime	15
Driftwood	27-28
Eli Witt Tobacco	40
Florida Times-Union	33
Frisch's	31
Frosty Morn	Inside Front Cover
Globe Cleaners	12
Hertz	41
Holiday Inn	6
Holland's	36
Honda	20
Jerry's	39
Joby's Seafood	18
LeRoc	40
Lindy's	35
Longines	2
McDonalds	Inside Back Cover
Midyette-Moor	14
Miller Chevrolet	14
Morrison's	16
Oldsmobile	FCS
Owens, Inc.	18
Phisohex	7
Prudential	30
Quality Cleaners	48
Rainey Cawthon—RCA	43
Seminole Flying Service	48
Silver Slipper	Inside Back Cover
Sinclair	11
Southern Electric	16
Southernair—Skyline	17
Sperry Rand	8
Stafford Jewelry	46
Standard Oil	37
Sweet Shop	13
Tallahassee Auto Dealers	19
Tallahassee Camera	22
Tallahassee Travel & Tours	13
Talquin Electric	32
University Bookstore	29
Varsity Theatre	42
Vogue	41
Wakulla Springs	32

Stadium Ambulance Service courtesy of Bevis Funeral Home

## QUALITY CLEANERS

215 W. COLLEGE AVE.—DIAL 222-5097

**ONE DAY SERVICE**

**QUALITY DRY CLEANING**

**PICK-UP and DELIVERY**

**One Day Shirt Service**

**Quality Laundry Work**

**Fluff Dry Service**



## BILL PEACOCK CHEVROLET, INC.

300 West Washington St.  
MONTICELLO, FLORIDA

We *Might* not be the biggest and we *Might* not be the best, although we leave this open for question, with your continued patronage and our dedication to serve we feel sure that we're well on the way to being both.

*Growing With the Seminoles!*

**TALLAHASSEE**  
Phone 224-8827

**MONTICELLO**  
Phone 997-2513

# FOOD FOR FUN!

While you're waiting for the kick-off, live it up with delicious fun food from McDonald's on West Tennessee Street near Seminole Country. Four speedy service windows and extra crewmen for the games guarantee you a quick pick-up for hot, wholesome food to go . . . or eat on the patio.



©McDonald's Corp. 1968

## McDonald's is your kind of place.

T.M.

1701 W. Tennessee Street near Seminole Country

Tallahassee's Most Exclusive  
Steak House

# the Silver Slipper



## RESTAURANT

DELICIOUS CHARCOAL BROILED STEAKS

SEA FOODS CHICKEN

25 PRIVATE DINING ROOMS — BANQUET ROOM SEATING 100

CALL JIMMIE OR CHRIS  
KALFAS FOR RESERVATIONS

FOR PRIVATE PARTIES  
AND BANQUETS

### 224-1266

OPEN 5 P.M. TILL 11:30  
OPEN EVERYDAY & SUNDAY

2000 S. MONROE • One Mile From Capitol On So. Monroe St. U.S. 319 S.  
BEHIND S.&S. PACKAGE STORE



"Bill  
the  
Bank"  
Hilton  
Cote Blanche





# The Chevrolet starting line-up for 1969:

( if we don't build the car you want, maybe what you want isn't a car.)

## Chevrolet

Caprice Coupe  
Caprice Sedan

Impala Custom Coupe  
Impala Sport Coupe  
Impala Sport Sedan  
Impala Convertible  
Impala 4-Door Sedan

Bel Air 4-Door Sedan  
Bel Air 2-Door Sedan

Biscayne 4-Door Sedan  
Biscayne 2-Door Sedan

## Chevelle

Malibu Sport Coupe  
Malibu Sport Sedan  
Malibu Convertible  
Malibu 4-Door Sedan

300 Deluxe Sport Coupe  
300 Deluxe Coupe  
300 Deluxe 4-Door Sedan

## Chevrolet Wagons

119" Wheelbase  
Kingswood Estate Wagon  
(2- & 3-seat)  
Kingswood Station Wagon  
(2- & 3-seat)

Townsmen Station Wagon  
(2- & 3-seat)  
Brookwood Station Wagon  
(2-seat)

116" Wheelbase  
Concours Estate Wagon  
(2- & 3-seat)  
Concours Station Wagon  
(2- & 3-seat)  
Greenbrier Station Wagon  
(2- & 3-seat)  
Nomad Station Wagon  
(2-seat)

## Camaro

Sport Coupe  
Convertible

## Chevy Nova

Coupe  
Sedan

## Corvair

Monza Sport Coupe  
Monza Convertible  
Corvair 500 Sport Coupe

## Corvette

Coupe  
Convertible

Putting you first, keeps us first.

