

VETERANS MEMORIAL COLISEUM  
CIVIC AUDITORIUM  
300 WEST WATER STREET  
JACKSONVILLE, FLORIDA, 32202  
354-2041

HANS G. TANZLER, JR.

MAYOR

GATOR BOWL  
WOLFSON BASEBALL PARK  
1145 EAST ADAMS STREET  
JACKSONVILLE, FLORIDA, 32202  
354-5678

THE JACKSONVILLE SPORTS COMPLEX & AUDITORIUM SAYS:  
"Welcome to No. 1 in Sports and Entertainment"

GATOR BOWL

November 29 — FSU vs. Houston

December 6 — Meninak Bowl

\*13 — State High School Regional Play-off

28 — Gator Bowl

January 19 — A.F.L. All-Star Game

COLISEUM

November 29 — WAPE Show — Wilson Picket

30 — WQIK Show

December 1, 3, 10

14, 20, 22, 28 — Hockey — Jax Rockets

5, 12, 19 — Wrestling

6, 7 — Civitan Basketball Tournament

JU-FSU Miami, Florida Univ.

8 — Vanilla Fudge

23 — Gator Bowl President's Ball

26-27 — Gator Bowl Basketball Tournament

31 — Junior Walker Show

January 4 — J. U. vs. F. S. U. BB

18 — Symphony Ball

25 — WQIK Show

28 — J. U. vs. Hawaii BB

30-31 — Ringling Bros. Circus

February 5 — J. U. vs Wm. & Mary BB

8 — J. U. vs. Ga. Tech 2:00 P.M.

14 — Revellers Ball

17 — J. U. vs. Loyola BB

20-23 — Southeastern Home & Garden Show

\* Tentative in Gator Bowl

March

1 — Globetrotters

3 — Univ. Fla. vs. West Virginia BB

14-15 — State High School BB Tournament

28 — Miami Floridians vs Ky. Colonels

April

1 — The Supremes

9-13 — Holiday on Ice

AUDITORIUM

November 30 — Guy Lombardo

December 5 — The Apple Tree

6 — The Apple Tree

10 — Jax Symphony

14 — Young People's Concert

January

7 — Jax Symphony

8-12 — Passion Play

14-19 — Fiddler on The Roof

24 — Ferrante & Teicher

25 — Ballet Guild

29 — Preservation Hall

Jazz Band

30-31 — Cactus Flower

February

1 — Peter, Paul & Mary

3 — Fred Waring

10-15 — Man of LaMancha

22 — Roberta Peters & Jan Peerce

March

1 — Young People's Concert

13 — Harkness Ballet

17 — Funny Girl

20 — Van Cliburn

22 — The Lettermen

April

4 — Beach Boys

7 — The Stern Trio

27 — Mary Martin & Robert Preston  
in "I Do I Do"

FLORIDA  
STATE

HOUSTON  
COUGARS

Football Magazine

OFFICIAL MAGAZINE \$1.00



FRIDAY NIGHT, NOVEMBER 29, 1968

Gator Bowl



***Reaching  
your  
goal***

***is our  
aim!***

A Gulf Life Property Survey helps you reach your financial goal. It could be the most important part of your security. See your Gulf Life Agent.

**Gulf  Life**  
**INSURANCE COMPANY**  
HOME OFFICE / JACKSONVILLE, FLORIDA  
 LIFE / GROUP / HEALTH / ANNUITIES

# TONIGHT



Lonnie Burt  
Sports Info. Dir.

This will be the eighth meeting between Florida State and Houston and the Seminoles will be trying to snap a jinx in that they've never beaten the Cougars.

Houston has gained five victories with the Seminoles managing ties in 1964 (13-13) and 1965 (16-16).

Last year, the Seminoles were embarrassed 33-13 in the Astrodome by a Houston club which one week later drubbed Michigan State 37-7.

As has been the case in recent years, the Cougars have another powerhouse. In fullback Paul Gibson and running back Carlos Bell, Houston owns two of the best rushers in the country. The All-America Gibson has already carried the ball for over 1,000 yards in nine contests which puts him among the nation's top 10 rushers. He gained 230 yards against Georgia in a 10-10 standoff.

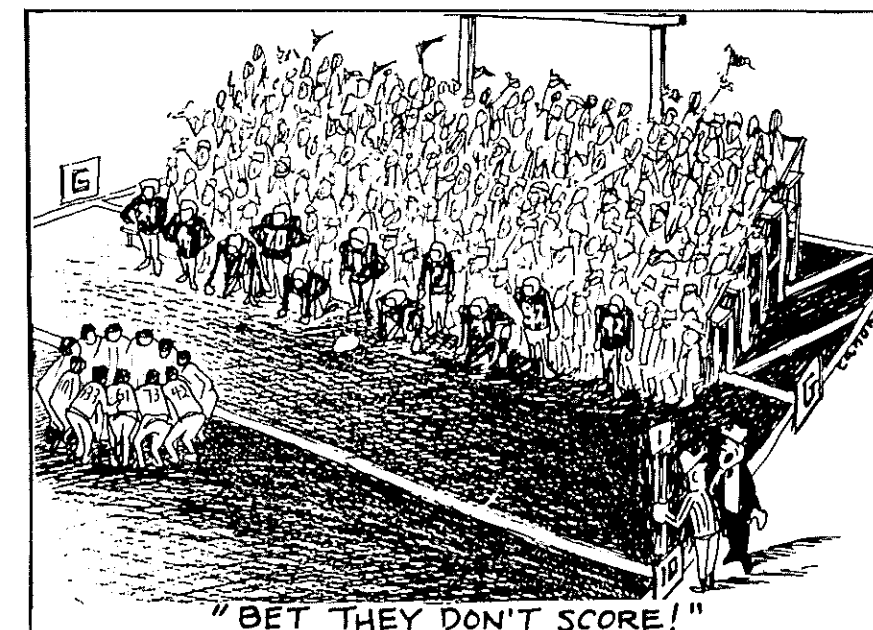
Bell, a 6-5, 220 pounder, is the other half of the rushing team which has seen the Cougars average more than 350 yards per contest on the ground.

Not only does Houston pose a major problem on offense, the Cougars are extremely tough on defense since the opposition has managed less than 90 yards per game on the ground.

Junior end Jerry Drones heads a defensive line which has made it unsafe for enemy runners. In the backfield, safety Paul Shires and Johnny Peacock lead a pass defense which has stolen 23 in eight games.

Most observers figure this is a sounder Houston club than the 1967 outfit.

If the Seminoles are to spring an upset, their chief hope lies in All-America flanker Ron Sellers.



THIS PROGRAM IS  
 ANOTHER PROJECT OF  
**THE WEST DUVAL JAYCEES**  
 LEADERSHIP TRAINING THRU COMMUNITY SERVICE



*The Smart  
Place  
To Go . . .  
For Good  
Things  
To Eat!*



**Mc STEPHENSON  
FEED HARDWARE INC.**

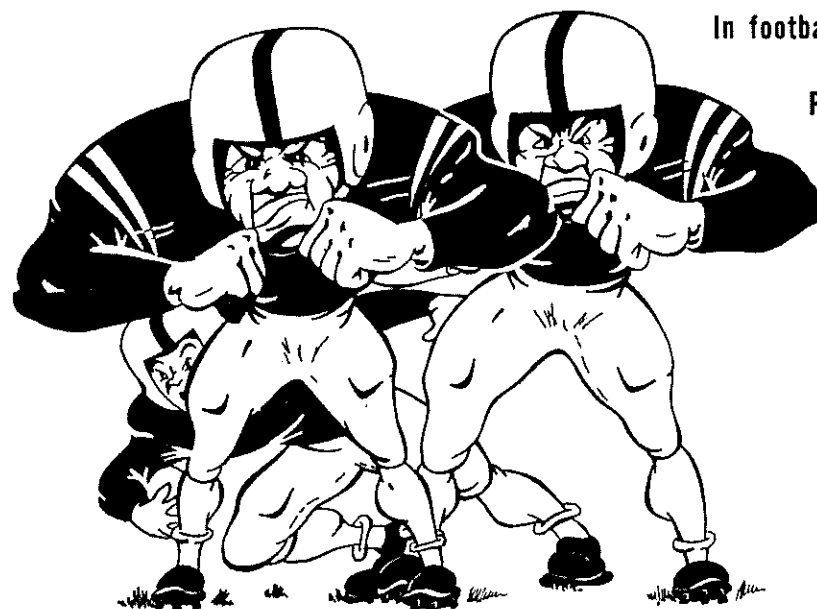
**THE OLD TIME  
COUNTRY HARDWARE**

1950 CASSAT AVE.

389-2852

**"WE RENT MOST ANYTHING"**

## COMPLETE PROTECTION



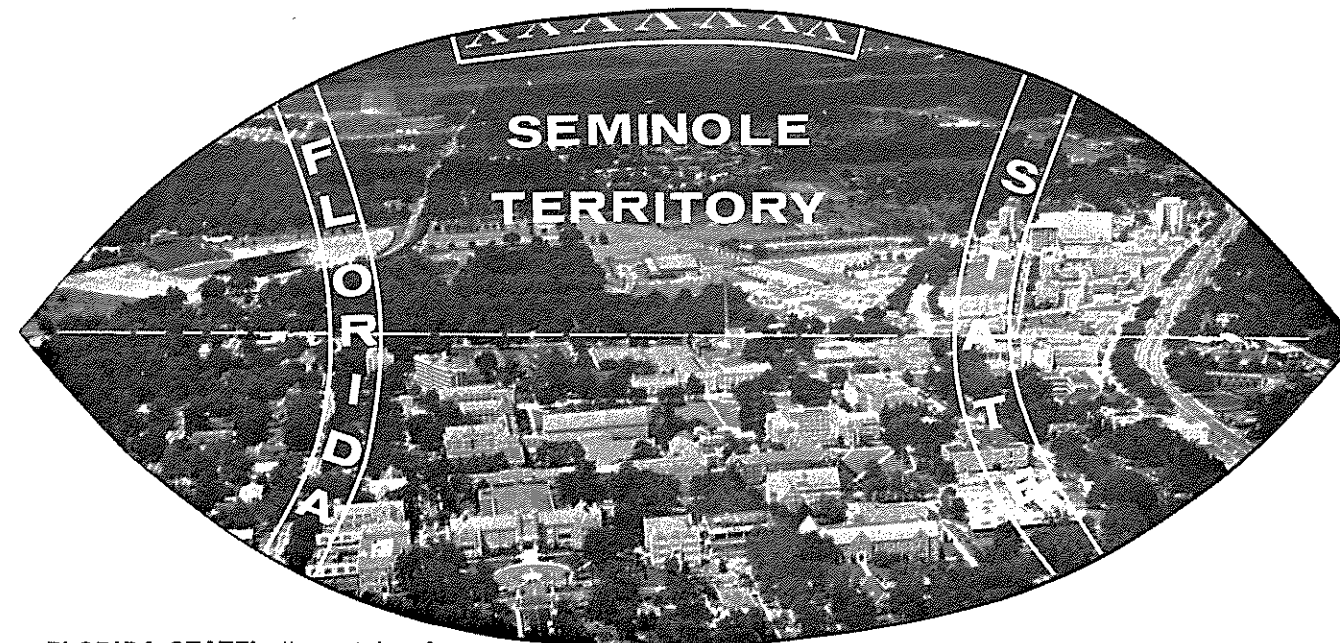
In football the ball carrier must be protected or he will get thrown for a loss. Protection is even more important for the head of a family. The loss of his income could mean a severe setback for all -- his wife, his children and himself.

For complete insurance protection --  
life, accident and hospital --  
call Independent Life.

**THE INDEPENDENT LIFE AND ACCIDENT INSURANCE CO.**

Home Office, Jacksonville, Florida

*There Is No Substitute for Life Insurance*

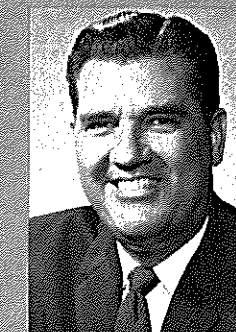


FLORIDA STATE's "pro-style of leadership is not limited to athletics. It permeates the 350-acre campus and characterizes the University's 41,000 alumni, 16,000 students and more than 3,000 dedicated members of the faculty and staff.

FOUNDED IN 1857, the University has grown to a complement of 10 colleges and schools, winning All-America honors both in arts and sciences as well as athletics. Moving rapidly upward in the national leagues of innovative institutions, Florida State is one of the 24 universities in this country which confers more than 100 Ph.D. degrees each year. It also has the distinction of holding one of the National Science Foundation's largest (\$4.8 million) grants for development as a "center of excellence" in four science areas —physics, statistics, psychobiology and chemistry.

AS THE WINTER HOME of the 1966 Nobel Laureate in Chemistry (Dr. Robert S. Mulliken), and as year-round headquarters for a faculty team with Nobel Prize potential, the University is one in which excellence in classroom teaching is its most important goal. Constantly experimenting with new formations in its educational teaching patterns, Florida State is preparing for a yearly enrollment of 28,000 by 1975.

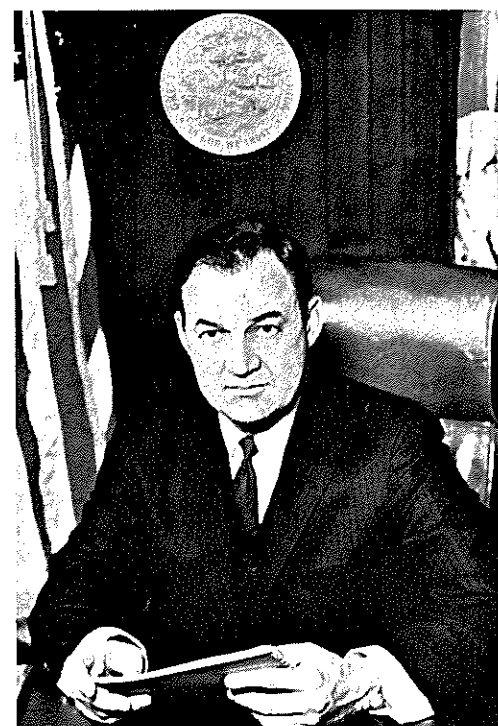
**WELCOME  
TO  
FLORIDA  
STATE  
UNIVERSITY**



Dr. John E. Champion  
President

President John E. Champion began his fourth year as Florida State University's chief executive in June of 1968. Having served the University previously as assistant dean of the School of Business and as Vice President for Administration, the 46-year-old business administrator and educator has an extensive and exemplary background in the fields of business education and accounting.

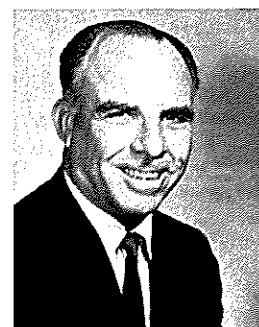
Cited as Distinguished Alumnus of the University of Georgia's Graduate School of Business Administration, he holds the bachelor's and master's degrees from that institution and the Ph.D. from the University of Michigan. He came to Florida State in 1956, following eight years of teaching at Georgia.



Hon. Claude R. Kirk, Jr.  
GOVERNOR



Tom Adams  
Secretary of State



Floyd T. Christian  
Supt. of Public Instr.



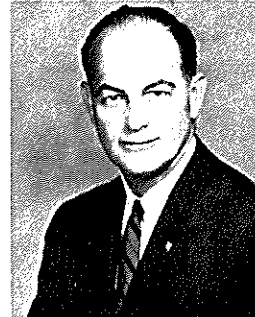
Doyle Conner  
Comm. of Agriculture



Earl Faircloth  
Attorney General



Broward Williams  
Treasurer



Fred O. Dickinson, Jr.  
Comptroller

## UNIVERSITY OFFICIALS



### FLORIDA STATE UNIVERSITY

Dr. John E. Champion  
President

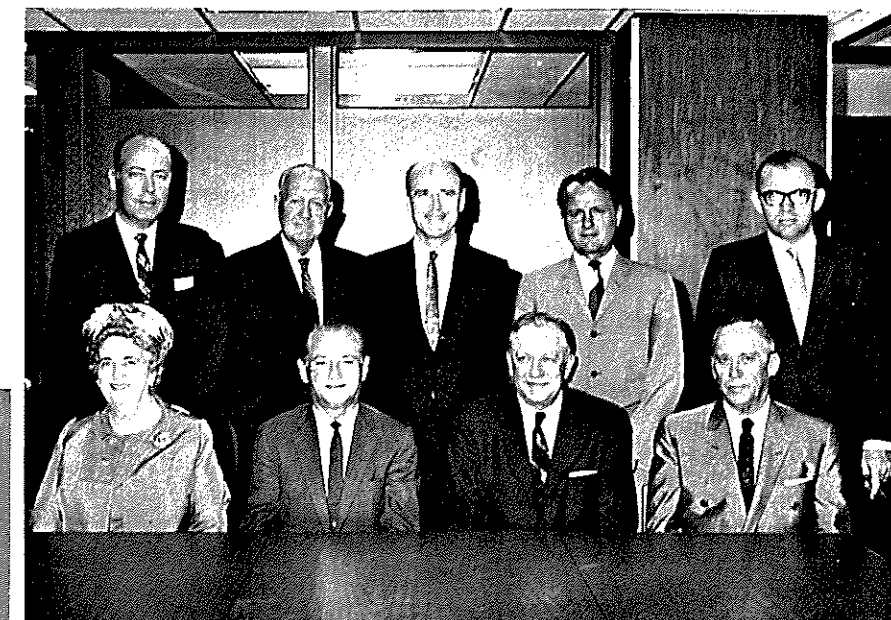
Dr. E. Laurence Chalmers, Jr.  
Vice President for Academic Affairs

Dr. H. Odell Waldby  
Vice President for Administration

John K. Arnold, Jr.  
Acting VP for Student Affairs

Dr. Juanita Gibson  
Executive Assistant to the President

Patrick W. Hogan  
Director of University Relations



### BOARD OF REGENTS—STATE UNIVERSITY SYSTEM

Members of the Board of Regents, left to right, back row: Dr. Louis C. Murray, Dr. Clarence L. Menser, Chancellor Robert B. Mautz, D. Burke Kibler, III, Julius F. Parker, Jr.; Front Row, left to right: Mrs. E. D. Pearce, Henry Kramer, Vice Chairman; Chairman Chester H. Ferguson and John C. Pace. Another Board Member, not present, was Mrs. John C. Behringer.

**CONSTRUCTION BY**  
**The AUCHTER CO.**

**WELCOME TO JACKSONVILLE**  
**AMERICAN HERITAGE LIFE INSURANCE CO.**  
**FORSYTH STREET**

**COMPLIMENTS**  
**OF**  
**FRED SCHULTZ**

**DYCO** INC





## UNIVERSITY PLAYERS TO MAKE "SNOW BALL" TOUR FOR THE U.S.O.

"Li'l Abner", Dalton Cathay of Miami, hoists Daisy Mae, Mary Jo Hall of Atlanta, high above his head in this scene from the musical which opened the University Theater season in October. The players have toured neighboring college campuses and will travel to military bases in the northeast Command on a USO Tour during the Christmas holidays.



**HOUSTON**



Edward White, bass baritone who was a member of the Florida State University School of Music faculty last year, sang the role of Ludovico in the opera, "Othello." White is now a member of the Atlanta Opera Company.

By Martee Wills  
Florida State University News Bureau

What do Houston, Jacksonville and Tallahassee have in common besides thousands of loyal football fans and baseball buffs? Well, U. S. Highway 90 is one thing . . . and major centers for the performing arts is another.

Florida State University, located directly on U. S. 90, is the hub of artistic, as well as athletic, entertainment for the capital city. A full schedule of cultural events on campus, combined with imaginative and unique programs elsewhere, keep Florida State in the forefront of the arts in the Sunshine State. As headquarters for the State Opera, State Symphony and State Theater of Florida, its faculty members and student body make "standing room only" a byword in its concert halls and theaters, as well as its stadium.

Ambitious operas are produced each year, the most recent being the demanding "Othello" by Verdi, which

was presented last April during the first annual Fine Arts Festival. Plans already are underway for another festival in the spring. The sprightly and colorful opera, "Hansel and Gretel" opens a four-day run on Wednesday, Dec. 4, in Westcott Auditorium. More than 20 different choral and instrumental groups, including a symphony orchestra, give frequent concerts in Westcott and in Opperman Music Hall.

Artists who are acclaimed nationally and internationally are brought to the campus as part of the Artist Series. The New Orleans Symphony performed last week and on Jan. 9 and 10 the Philharmonic Orchestra from The Hague, Netherlands, is due. The play, "Man of La Mancha," which drew raves on Broadway, will come to Florida State University Feb. 4 and 5, to be followed by the top classical guitarist, Andres Segovia, on Feb.

## THE ARTIST SERIES PRESENTS ANDRES SEGOVIA

IN FEBRUARY

Andres Segovia, world famous classical guitarist, will play in Westcott Auditorium on Feb. 26 as part of the Artist Series-Blue. Florida State University has two Artist Series each year, bringing to the campus a variety of top entertainers.



**TALLAHASSEE**

**JACKSONVILLE**

## Florida State Your Next Stop

26. The University Art Gallery features traveling exhibits by prominent artists, as well as the works of the University's own award-winning faculty, including Karl Zerbe and Arthur Deshaies.

The Asolo Theater Festival in Sarasota is another facet of Florida State's outstanding arts program and has helped to make the University's theater department first in the southeast among colleges and universities. Richard Fallon, professor of speech, is director of the Florida State University Theater and of the Asolo Theater Festival. The Festival is currently on an educational tour of the state with productions of G. B. Shaw's "Arms and the Man" and Moliere's

"The Misanthrope." The troupe is due in Orlando Nov. 30 for a week of special student appearances and public performances. The itinerary also calls for the Asolo players to be in Winter Haven on Dec. 7 and then in Daytona Beach for a week from Dec. 9-14. Both of the touring productions

have been added to the plays for the regular winter and spring season of the Asolo Theater Festival in Sarasota. Discount coupon books for the season are on sale now at \$14.50. They may be purchased from the Asolo Theater Festival, P. O. Drawer E, Sarasota, Fla. 33578.

The Madrigal Christmas Dinners have become a traditional way to begin the holiday season at Florida State University. The scene is "merrie olde England" and authentically garbed Madrigal Singers present a program of fifteenth century music, by the light of the dinner's flaming plum puddings.





The Asolo Theater Festival at Sarasota is housed in a gem of a theater which was built in 1798 in the little Italian hill town of Asolo, near Venice. In 1949 the theater interior was purchased by the State of Florida and transferred to its own building on the Ringling Museum grounds. Regular winter and spring season plays are held there annually.

### STATE THEATER OF FLORIDA

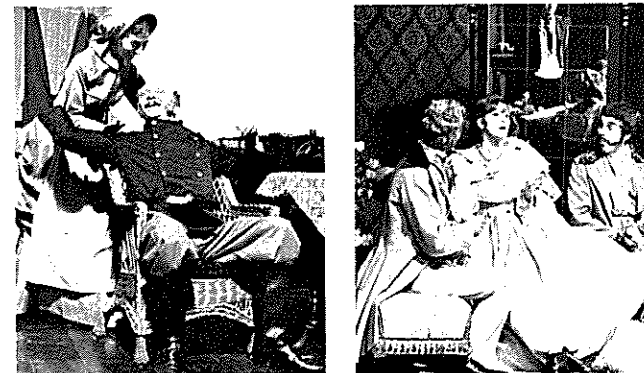
The University Theater already has presented two plays of widely varying appeal. The first was the musical "Li'l Abner," which will tour military bases in the Northeast Command during the Christmas holidays. Florida State was chosen by the USO last spring to be one of the participating universities in the entertainment program. Three more plays, including the annual premiere of a new work starring professional Broadway actors, are on the season's schedule.

The School of Music will lead off the holiday season in gay and traditional fashion with the aforementioned "Hansel and Gretel" and with four nights (Nov. 30-Dec. 3) of the annual Madrigal Christmas dinners. The setting for the dinners, which are held in the University Union ballrooms, is fifteenth-century England and the program includes the Madrigal Singers dressed in authentic and colorful costumes.

Tickets for Jacksonville theater and music buffs to any of the performances at Florida State may be obtained by mail from the Central Ticket Office, 140 University Union, Florida State University, Tallahassee, Fla. 32306.

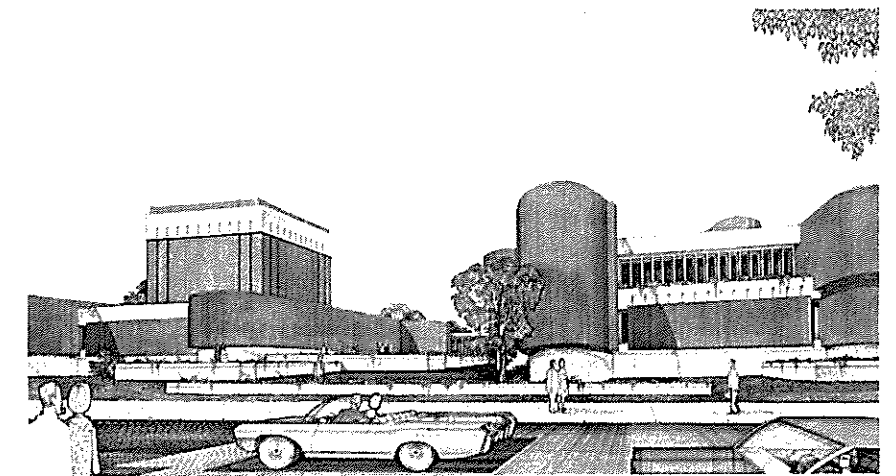
The new schedule includes the two plays currently on an educational tour of the state. They are G. B. Shaw's "Arms and the Man" and Moliere's "The Misanthrope." The below-left scene from "Arms and the Man," shows Catherine Petkoff, played by Lois de Banzie, greeting her husband, played by Macon MacCalman, on his return from the war. In "The Misanthrope," below-right, are David O. Peterson, Clitandre; Barbara Lyon, Celine; C. David Colson (in mirror), Alceste, and Robert Britton, Acaste.

### Asolo Players Tour Florida



### THE WOODWIND QUINTET

The Woodwind Quintet of the Florida State University School of Music is composed of, left to right, Harry Schmidt, clarinet; Janet Worth, bassoon; William C. Robinson, horn; Nancy Fowler, oboe, and Albert Tipton, flute.



### NEW FINE ARTS BUILDING GOING UP

This is an artist's drawing of the \$2,148,000 Fine Arts Building, currently under construction at Florida State University. Scheduled for completion in mid-1969, the building was designed by Robert Wielage of the Tampa architectural firm of Walker and Wielage. It will house a 500-seat auditorium with revolving stage, 9,557 feet of art gallery, a foundry, painting, figure drawing and photography laboratories and classrooms.

**FASTEST GROWING NAME IN BUSINESS FORMS**

**DRUMMOND Business Forms**  
P. O. Box 2421, JACKSONVILLE, FLORIDA 32203

STRICKLAND'S

Town House

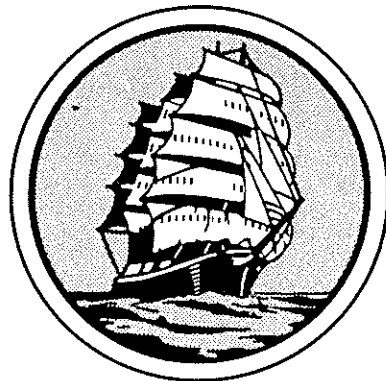
3510 PHILIPS HIGHWAY

JACKSONVILLE, FLORIDA 32207

359-1682  
Area 904

Compliments  
of a  
Fan.....

*"It's a Pleasure  
to Bank  
at The Atlantic"*



**THE ATLANTIC NATIONAL BANK**  
OF JACKSONVILLE

MEMBER FEDERAL DEPOSIT INSURANCE CORPORATION

COMPLIMENTS OF

*John Hancock*  
MUTUAL LIFE INSURANCE COMPANY

**WILLIAM W. O'NALE**

GENERAL AGENT

&

ASSOCIATES

729 POST STREET  
JACKSONVILLE, FLORIDA

COMPLIMENTS  
**HARDAGE & SONS**

FIVE LOCATIONS FOR  
YOUR CONVENIENCE

517 PARK ST  
5753 BLANDING BLVD.  
4115 HENDRICKS AVE.  
4315 MAIN ST.  
5540 ARLINGTON RD.

HUGH, ROBERT, RICHARD,  
DONALD & GORDON  
HARDAGE

Compliments  
of  
**McDUFF APPLIANCE  
STORES**

Compliments of

**George A. Babcock, Inc.**

PAINTING CONTRACTORS  
2345 DENNIS ST.

## Make Florida State Your Next Stop

**Coach (Bill) Peterson**

by BILL McGROTHA  
Sports Editor, Tallahassee Democrat



A fellow on the phone asked would I write a story about Bill Peterson for this program, make it personal, tell it like I know him . . . and hold it to 250 words.

There ain't no way.

There is hardly any way to explain Florida State's head football coach in 250,000 words. He lends himself not at all well to telling about in words, period. You have to have a "feel" for knowing about Pete, and for most it comes only from being around him a long, long time.

He is what you call a walking paradox. More than most, he is not always what he seems.

Sometimes he kind of reminds me of a woman, the way he talks. You see, when something crosses his mind he often blurts it out. He's always thinking out loud. He is emotional; it is a way of getting things out of his system. Because he does this, some call him a cry baby . . . He is that and much in the manner of Georgia's Wallace Butts, another renowned weeper. Like Butts, Pete will use any convenient shoulder.

Also like Butts, he's much of a man . . . which they don't make many of anymore. Thoroughly rugged with more energy than a

2-year-old colt, Peterson can be terribly impatient with the little annoying things that get in his way—and these are the molehills he sometimes makes mountains out of. Of course, some of the mountains are very real ones.

But give the man some real trouble, the kind that makes mice out of men, and he's got his cup of tea. He's one of those who reacts better with a crisis. If he doesn't have a ready-made crisis, you can give points on his manufacturing one—or more.

What he does to the English language, on occasion, only Casey Stengel before him has done. Yet, when he's at ease, with his busy mind firmly on the matter at hand, he can be among the most articulate of speakers.

He enjoys life, and he tackles it with the same zest that he does football. The only "name" of any game with him is winning. Yet, he likes his fun with it, and he is totally obsessed.

Only he, I think, could have accomplished what he has in FSU football with the same resources. Despite his yelps, he's never recognized the odds, really. He has never stopped believing that he could, despite all, make his football team No. 1. He's one to find a way.

He summed himself up really well, paradoxes and all, one day during the summer when near the end of a particularly long lament over the telephone, he said: "Hell, Bill, I don't want to be no Knute Rockne—I just want to win!"

That's Pete!



The Officers and Directors of the  
*Greater Jacksonville* **FAIR**

Thank Northeast Floridians for their continued support which enabled the 1968 Fair last month to reach new heights of financial success and an all-time daily attendance average in spite of inclement weather.

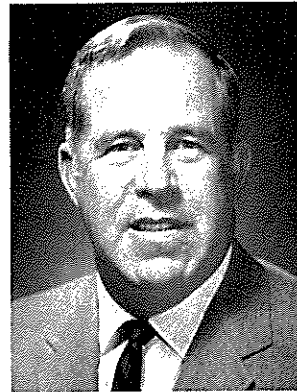
**WE CORDIALLY INVITE YOU . . .**  
To Make Plans Now to Attend Our  
15th Annual Production in October, 1969





Vaughn Mancha  
Athletic Director

# FLORIDA STATE FOOTBALL FAMILY



Ken MacLean  
Assistant to A.D.



Joe Gibbs  
Offensive Chief



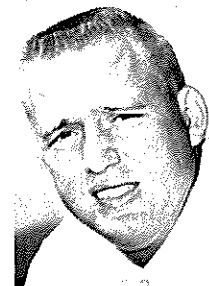
DOAK S. CAMPBELL STADIUM



Bob Harbison  
Defensive Chief



Gary Wyant  
Defensive Backs



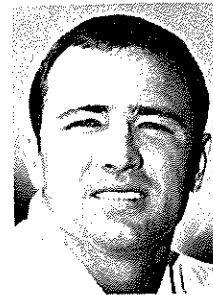
Bobby Jackson  
Def. Ends,  
Linebackers



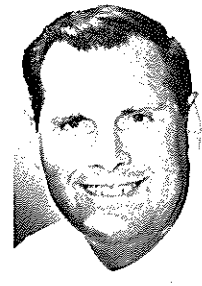
Dan Henning  
Quarterbacks,  
Receivers



Al Conover  
Running Backs



Gene McDowell  
Freshmen



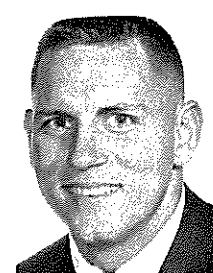
Doug Hafner  
Recruiter



Don Fauls  
Head Trainer



Bill Zeigler  
Asst. Trainer



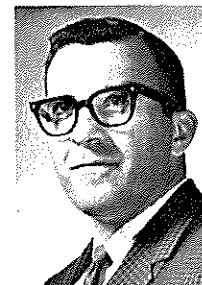
T. K. Wetherell  
Acad. Advisor



Claude Thigpen  
Ticket Mgr.



Tillman Dixon  
Equip. Mgr.



Dr. Dale Maxwell  
Team Physician

## WEST DUVAL JAYCEES "THE BOLD NEW CLUB IN THE WEST" present THE LANCERS



The Lancers, sponsored by the West Duval Jaycees, is one of six football teams in the Cedar Hills Athletic Association's Youth Activities Program, and has been entered for competition in the 1968 Duval County Pop Warner Football Program (Pee Wee Division, Ages 9-11, with a maximum weight of 99 pounds). The team is currently in first place in its League with a record of 6 wins and no losses.

The Cedar Hills Athletic Association sponsors baseball, basketball and football, and girls' and boys' softball. They field about 50 teams annually for children ages 8-18, and their annual budget is about \$25,000.00, raised exclusively through sponsorship such as the West Duval Jaycees and one project a year.

9/28/68	Lancers	19	Raiders	0
10/5/68	Lancers	20	Packers	0
10/12/68	Lancers	27	Bandits	0
10/26/68	Lancers	27	Stingers	0
11/2/68	Lancers	12	Renegades	6
11/16/68	Lancers	13	Cubs	0



**Coke has the  
taste you never  
get tired of.**



ENJOY  
**Coca-Cola**  
TRADE-MARK®

### FLORIDA STATE

OFFENSE			DEFENSE		
NO.	NAME	POS.	NO.	NAME	POS.
27	Billy Cox	LE	67	Mike Bugar	LE
76	Jack Fenwick	LT	79	Frank Vohun	LT
64	Stan Walker	LG	47	Joe Benson	LLB
55	Ted Mosley	C	50	Dale McCullers	MLB
68	Larry Pendleton	RG	61	Chuck Elliott	RLB
75	Billy Rhodes	RT	71	Harvey Zion	RT
84	Chip Glass	RE	83	Ron Wallace	RE
14	Bill Cappleman	QB	24	Walt Sumner	LC
31	Bill Gunter	HB	17	Mike Page	RC
30	Tom Bailey	FB	41	John Crowe	LS
34	Ron Sellers	FL	18	Clint Burton	RS

### FLORIDA STATE SQUAD

11 Anderson, QB	41 Crowe, DB	68 Pendleton, OG
12 Hiatt, SE	42 Cheshire, P	69 White, DT
14 Cappleman, QB	43 Montgomery, DB	70 Sewell, OT
15 Warren, QB	44 Pittman, FB	71 Zion, DT
16 Pajcic, QB	46 Munroe, RB	72 Logan, OG
17 Page, DB	47 Benson, LB	73 Johnston, DT
18 Burton, DB	48 Jarrett, FB	74 McEachern, DT
19 Abraira, SE	49 Eagerton, FB	75 Rhodes, OT
20 Thomas, DB	50 McCullers, LB	76 Fenwick, OT
21 Pell, DB	51 Hughes, C	77 Curchin, OT
22 Eason, DB	52 Sammons, OG	78 Johnson, OT
23 Pederson, FL	53 Cassady, DT	79 Vohun, DT
24 Sumner, DB	54 Burt, LB	80 Gurr, DE
26 Wenhold, FB	55 Mosley, C	81 Tyson, TE
27 Cox, SE	56 Lohse, LB	82 Dawson, FL
28 Lanahan, DB	57 Lowe, LB	83 Wallace, DE
29 Rust, DB	58 Gildea, LB	84 Glass, TE
30 Bailey, RB	59 Loner, PK	85 Ratliff, DE
31 Gunter, RB	60 Barry Rice, LB	86 Hall, DE
32 Chereschkoff, RB-P	61 Elliott, LB	87 Rimby, TE
33 Guthrie, PK	62 Bass, LB	88 Beryl Rice, DE
34 Sellers, FL	64 Walker, OG	89 Richardson, PK
35 Gray, SE	66 Hart, OG	
40 Gilman, FB	67 Bugar, DE	



### UNIVERSITY OF HOUSTON

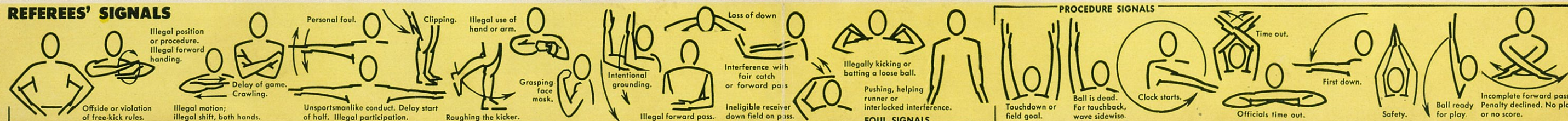
OFFENSE			DEFENSE		
NO.	NAME	POS.	NO.	NAME	POS.
23	Elmo Wright	SE	78	Royce Berry	LE
70	Bill Cloud	LT	75	John Thornburg	LT
51	Billy Bridges	LG	60	Cliff Larson	RT
62	Pat Pryor	C	80	Jerry Drones	RE
73	David Schneider	RG	85	Charlie Hall	LLB
76	Chuck Odom	RT	55	Glenn Graef	MLB
83	Paul Dalong	TE	66	Wade Phillips	RLB
10	Ken Bailey	QB	37	Johnny Peacock	LC
34	Carlos Bell	RB	43	Paul Shires	LS
46	Paul Gipson	FB	16	Richard Harrington	RS
29	Calvin Achey	FL	25	Mike Simpson	RC

### 1968 VARSITY FOOTBALL ROSTER

NO.	NAME	POS.	NO.	NAME	POS.	NO.	NAME	POS.
10	Bailey	QB	37	Peacock	CB	65	Gardner	DT
11	Mullins	QB	38	Gatlin	SE	66	Phillips	LB
12	Clark	QB	39	Ford	RS	70	Cloud	OT
14	Mayfield	QB	40	Thomas	TE	71	Barnhill	OT
16	Harrington	RS	41	Johnston	LB	72	Dickey	OT
17	Leiweke	QB	42	Rowden	RS	73	Schneider	OG
18	Sumerford	CB	43	Shires	LS	75	Thornburg	DT
20	Gibbs	LS	45	Woodring	E	76	Odom	OT
23	Wright	SE	46	Gipson	RB	77	McDaniel	OT
25	Simpson	CB	49	Brumley	LB	78	Berry	DE
27	Lopez	CB	51	Bridges	OG	79	Welch	OG
28	Strong	RB	52	Robinson	OT	80	Drones	DE
29	Achey	FLK	54	Lewis	DT	81	Bugaj	TE
30	Green	RB	55	Graef	LB	82	Long	SE
31	Jones	LB	57	Herman	OG	83	Daulong	TE
32	Heiskell	FB	60	Larson	DT	85	Hall	LB
33	Parrott	SE	62	Pryor	C	91	Stewart	FLK
34	Bell	FB	63	Arthur	C			

"COCA-COLA" AND "COKE" ARE REGISTERED TRADE-MARKS WHICH IDENTIFY ONLY THE PRODUCT OF THE COCA-COLA COMPANY. PRINTED IN U.S.A.

### REFEREES' SIGNALS





A Special Salute

TO THE DIRECTORS AND MEMBERS OF SEMINOLE BOOSTERS IN THE JACKSONVILLE AREA

. . . . a group dedicated to Florida State's football future.

Donald Wayne Adams, BS '61

Advise of Southeast, Inc.

American Heritage Life Ins. Co.

Duval Spirits

John Reid Baggett, BS '57

Temple C. Bailey, BS '59

A. R. Beville

Thomas Albert Boyd, BS '57

Danny Bridges

Roy Brown, BS '66

J. A. Burke

Dick Butler

Ikie M. Butler, BS '50

John C. Cavanaugh

Jim Cochran

Consolidated Distributing Company

Michael Connor Copps, BS '60

Mrs. Norman D. Cote, MA '62

Archie Davis, Inc.

Gustavo Diaz, Sr.

Gerald Wayne Donaway, BS '60

Hugh W. Donovan, Director

Thomas Wm. Donovan, BS '59

Ed H. Felton

Louis E. Fischer, BS '52

Van Fletcher

Ronald S. Folk

Bill Folson

Fulton Distributing Company

Tommy Gay

General Wholesale

John David Griner, BS '56

C. John Gunti

Mattox S. Hair, BS '60

Y. E. Hall

Harry C. Harrell, BS '65

John D. "Tim" Harris, Director, BS '56

John Hartman

Jackson C. Henry, BS '55

Charles Gerald Hohne, BS '60

Bill Howard

Dr. William Hutchinson

Edmund H. Johnson, III, BS '65

Jim Jones

Dr. Max Karrer

Kenneth J. Kissell, BS '65

Lemuel Wayne Koger, BS '50

John Lanahan

Randolph Frederick Lenczyk, BA '68

Joseph Herman Luten '59

Al McDonald

Dennis F. McDonald, BS '66

Richard T. McGiffin, BS '66

John Harrison Martin, BS '60

Theobold Charles Maurer, BS '50

Cliff Mayfield, Jr.

Sam D. Melson

James Allen Messinese, BS '55

Richard Hugh Montney, BS '51

Stan Murphy

Ogden Foods — Bernie Hoffman

Tom Petaway

William Joseph Phelan, III, BS '65

David Rolland Pickard, BS '65

George Ralsen

Philip Michael Riffe, BS '68

Lance Ringhaver

Herb Rohaen

Ned Pate Searcy, Jr., BS '64

Bill Sheppard

Lawshe Smith

Charles A. Snead

Jesse Herbert Stanley, BA '63

Wayne M. Stone, BS '58

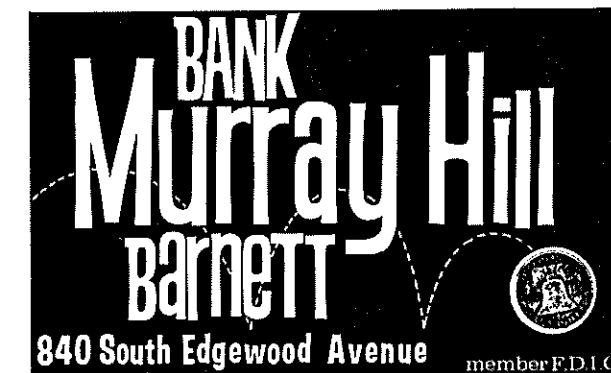
William Henry Swindell, BS '66

Byron Thompson

Robert F. Waits, BS '58

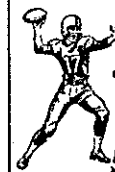
Winn-Dixie Stores

Jeffery Lynn Wright, BS '67



## FLORIDA STATE HOUSTON

FANS



JOIN  
THE CROWD

Sandy's

STEER  
ROOM

featuring the  
beautiful

FRONTIER  
COCKTAIL  
LOUNGE

FOOT OF WEST BEAVER ST. VIADUCT  
AMERICAN EXPRESS  
& DINERS CLUB CARDS  
HONORED

Jacksonville's  
Football  
Headquarters

BEFORE and AFTER THE GAME!

## MODERN ELECTRIC

OF FLORIDA, INC.

PHONE: 398-6953

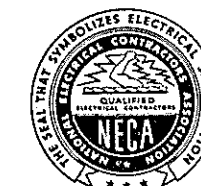
CONTRACTING  
REPAIRING

POST OFFICE BOX 5088

4873 VICTOR STREET

JACKSONVILLE, FLORIDA

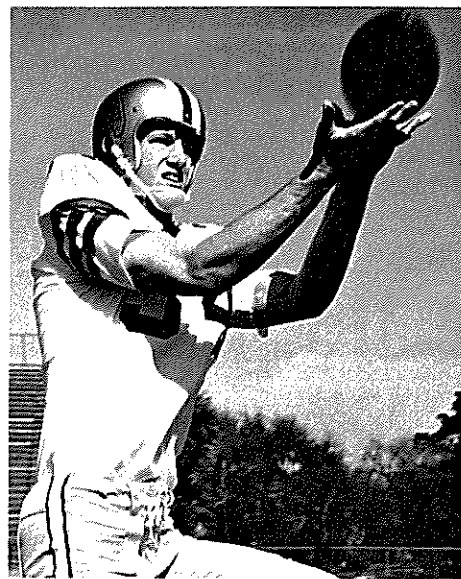
32207



COMPLIMENTS OF  
**PAINTERS POULTRY  
COMPANY INC.**

5421 W. BEAVER ST. 781-9311



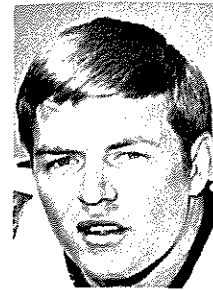


RON SELLERS

# The 1968 SEMINOLES



JACK FENWICK



BILL COX



JIM TYSON



CHIP GLASS



LARRY PENDLETON



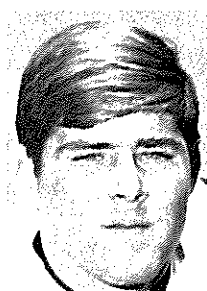
PHIL ABRAIRA



GARY PAJCIC



GRANT GUTHRIE



TOM BAILEY



BILLY RHODES



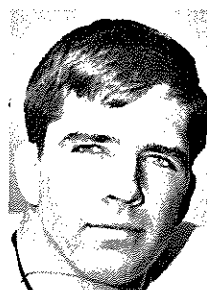
WAYNE JOHNSON



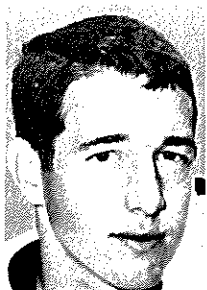
KEN HART



TED MOSLEY



STAN WALKER



TOMMY WARREN



BILL GUNTER

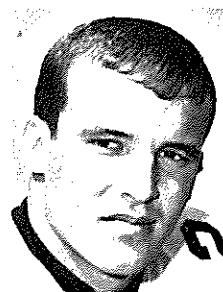


BILL CAPPLEMAN

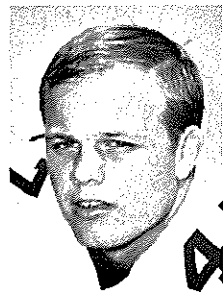
## UNIVERSITY OF HOUSTON 1968 VARSITY FOOTBALL ROSTER

No.	Name	Pos.	Class	Ht.	Wt.	Hometown
10	Ken Bailey	QB	Jr.	6-4	210	Beaumont
11	Gary Mullins	QB	Soph.	5-10	195	San Angelo
12	Rusty Clark	QB	Jr.	6-2	212	Houston
14	James Mayfield	QB	Soph.	6-2	197	Carrollton
16	Richard Harrington	RS	Soph.	6-1	175	Houston
17	Terry Leiweke	QB	Soph.	6-1	195	St. Louis, Mo.
18	Allen Sumerford	CB	Jr.	6-0	185	Clute
20	Steve Gibbs	LS	Soph.	5-11	170	Beaumont
23	Elmo Wright	SE	Soph.	6-0	190	Brazoria
25	Mike Simpson	CB	Sr.	5-9	176	Pt. Neches-Groves
27	Carlos Lopez	CB	Soph.	6-2	188	San Isidro
28	Jim Strong	RB	Jr.	6-1	198	San Antonio
29	Calvin Achey	FLK	Jr.	6-0	180	Englewood, Colo.
30	Jake Green	RB	Soph.	5-10	185	Denver, Colo.
31	Phillip Jones	LB	Jr.	6-2	210	Jasper
32	Ted Heiskell	FB	Soph.	6-3	210	Pampa
33	Mike Parrott	SE	Soph.	5-11	190	Houston
34	Carlos Bell	FB	Jr.	6-5	215	Clinton, Okla.
37	Johnny Peacock	CB	Sr.	6-2	195	Goliad
38	Larry Gatlin	SE	Jr.	5-9	165	Odessa
39	Charles Ford	RS	Soph.	6-3	182	Beaumont
40	Earl Thomas	TE	Soph.	6-2	225	Greenville
41	Mike Johnston	LB	Jr.	5-11	205	Hull
42	L. D. Rowden	RS	Soph.	6-2	205	Pampa
43	Paul Shires	LS	Sr.	6-2	200	San Antonio
45	Phil Woodring	E	Sr.	6-2	195	Lefors
46	Paul Gipson	RB	Sr.	6-0	205	Conroe
49	Bob Brumley	LB	Soph.	6-0	190	Donna
51	Billy Bridges	OG	Jr.	6-2	225	Carrollton
52	Craig Robinson	OT	Soph.	6-4	225	Austin
54	Glen Lewis	DT	Soph.	6-3	230	Pampa
55	Glenn Graef	LB	Jr.	5-10	195	San Antonio
57	Ronnie Herman	OG	Soph.	6-0	235	Orange
60	Cliff Larson	DT	Sr.	6-3	235	Beaumont
62	Pat Pryor	C	Sr.	6-0	214	Texas City
63	Jim Arthur	C	Jr.	5-11	205	Pampa
65	Jerry Gardner	DT	Sr.	6-1	208	Galena Park
66	Wade Phillips	LB	Sr.	6-0	210	Pt. Neches-Groves
70	Bill Cloud	OT	Sr.	6-1	225	Galena Park
71	Keith Barnhill	OT	Soph.	6-2	225	Woodsboro
72	Dale Dickey	OT	Soph.	6-2	210	Odessa
73	David Schneider	OG	Jr.	6-4	220	Columbus
75	Jon Thornburg	DT	Soph.	6-1	200	Ft. Worth
76	Chuck Odom	OT	Sr.	6-5	250	Eunice, La.
77	Joe McDaniel	OT	Jr.	6-3	235	Dallas
78	Royce Berry	DE	Sr.	6-3	235	Odessa
79	Max Welch	OG	Jr.	6-3	230	Nederland
80	Jerry Drones	DE	Jr.	6-3	200	San Angelo
81	Mark Bugaj	TE	Soph.	6-5	215	Detroit, Mich.
82	Bob Long	SE	Sr.	6-4	212	Van Nuys, Calif.
83	Paul Daulong	TE	Sr.	6-1	210	Galveston
85	Charlie Hall	LB	Soph.	6-3	202	Yoakum
91	Otis Stewart	FLK	Jr.	5-11	178	Baton Rouge, La.





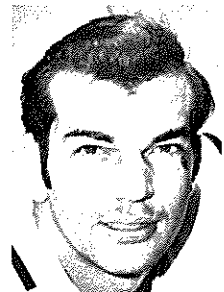
CHUCK EASON



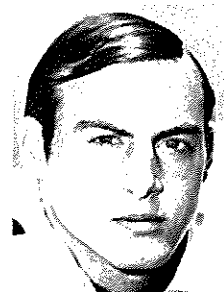
JOE BENSON



HARVEY ZION



FLOYD RATLIFF



CHUCK ELLIOTT



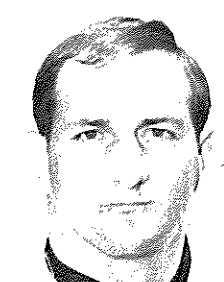
JOHN CROWE



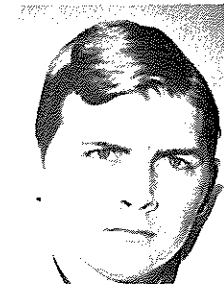
MIKE BUGAR



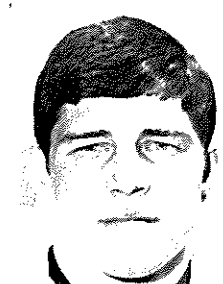
DALE McCULLERS



FRANK VOHUN



DOUG GURR



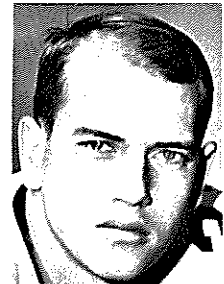
RONNIE WALLACE



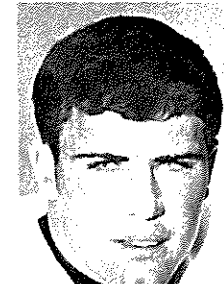
ROBERT McEACHERN



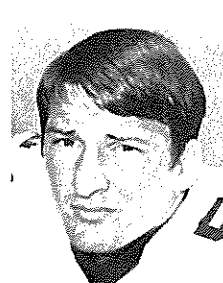
JOHN PITTMAN



WALT SUMNER



DANNY THOMAS



STEVE GILDEA



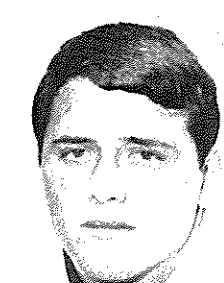
MIKE PAGE



DUKE JOHNSTON



HOWELL MONTGOMERY



THERON BASS

## THE SEMINOLES



DON PEDERSON



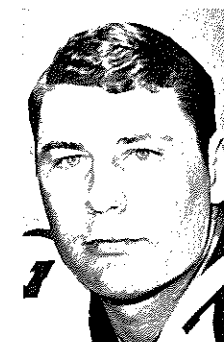
BILL CHESHIRE



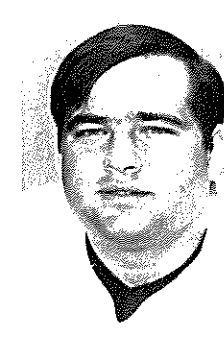
MIKE GRAY



BRENT GILMAN



JEFF CURCHIN



TOM WHITE



BILLY LOHSE

## TIM HARRIS AND ASSOCIATES INSURANCE



EXPERIENCE - PLUS SERVICE

TIM HARRIS  
233 East Bay Street  
Jacksonville, Fla. 32202  
PHONE 354-4528

## SEPTIC TANK PUMPING BY



Call **359-7042**

ANY TIME  
NIGHTS - WEEKENDS - HOLIDAYS  
NO ADDITIONAL COST  
2808 KINGS AVE.

Drain Fields  
Relaid, Inspected  
and Approved

HEALTH DEPT  
PERMIT 2119

## HOME FUEL DELIVERY

KEROSENE and FUEL OIL  
FAST RADIO  
DISPATCHED SERVICE

HEATING and AIR  
CONDITIONING SALES •  
SERVICE • INSTALLATION

CALL

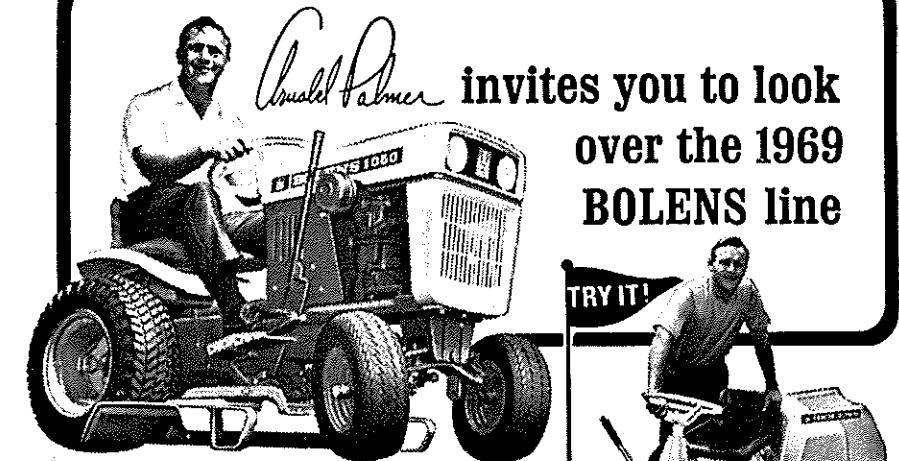
**388-0509**

**JOE DONEY**



# 1968 FLORIDA STATE FOOTBALL ROSTER

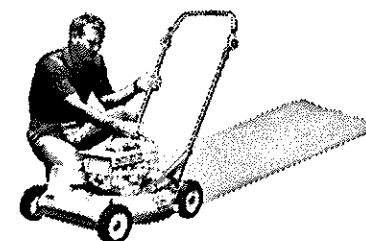
No.	Name	Pos.	Class	Ht.	Wt.	Hometown
11	Rick Anderson	QB	Soph.	6-2	213	Winter Haven
12	Phil Hiatt	SE	Jr.	6-4	205	Tipp City, Ohio
14	Bill Cappleman	QB	Jr.	6-3	207	Dunedin
15	Tommy Warren	QB	Jr.	6-1	185	Miami
16	Gary Pajic	QB	Sr.	6-2	188	Jacksonville
17	Mike Page	DB	Jr.	5-11	175	Winter Haven
18	Clint Burton	DB	Sr.	6-1	180	Atlanta, Ga.
19	Phil Abraria	SE	Jr.	6-0	184	Ft. Lauderdale
20	Danny Thomas	DB	Soph.	5-9	178	West Palm Beach
21	John Pell	DB	Jr.	5-11	173	Pahokee
22	Chuck Eason	DB	Sr.	5-10	192	Tallahassee
23	Don Pederson	FL	Soph.	6-0	174	Groveland
24	Walt Sumner	DB	Sr.	6-1	178	Ocala, Ga.
26	Barry Wenhold	FB	Jr.	5-10	200	Souderton, Pa.
27	Billy Cox	SE	Sr.	6-1	182	Atlanta, Ga.
28	John Lanahan	DB	Soph.	6-0	196	Jacksonville
29	Ben Rust	DB	Soph.	6-0	183	West Palm Beach
30	Tom Bailey	RB	Soph.	6-2	212	Miami
31	Bill Gunter	RB	Sr.	6-0	171	Dothan, Ala.
32	Ed Chereschkoff	RB-P	Soph.	5-11	195	Hollywood
33	Grant Guthrie	PK	Jr.	6-0	204	Claymont, Del.
34	Ron Sellers	FL	Sr.	6-4	187	Jacksonville
35	Mike Gray	SE	Soph.	6-3	198	Lake Mary
40	Brent Gilman	FB	Jr.	6-2	210	Long Beach, Calif.
41	John Crowe	DB	Sr.	6-0	178	St. Cloud
42	Bill Cheshire	P	Jr.	6-1	193	Odum, Ga.
43	Howell Montgomery	DB	Sr.	5-11	182	Blountstown
44	John Pittman	FB	Sr.	5-11	195	Brunswick, Ga.
46	Authur Monroe	RB	Soph.	6-0	188	Quincy
47	Joe Benson	LB	Sr.	5-11	199	Birmingham, Ala.
48	James Jarrett	FB	Soph.	6-1	194	Elizabethton, Tenn.
49	Terry Eagerton	FB	Jr.	5-10	194	Jacksonville
50	Dale McCullers	LB	Sr.	6-1	207	Live Oak
51	Billy Hughes	C	Jr.	6-0	230	Rockledge
52	Mike Sammons	OG	Soph.	6-1	208	Atlanta, Ga.
53	Randy Cassady	DT	Jr.	6-2	225	Florida, Ala.
54	Bobby Burt	LB	Soph.	6-2	210	Cairo, Ga.
55	Ted Mosley	C	Sr.	6-1	213	Tampa
56	Bill Lohse	LB	Soph.	6-0	225	St. Petersburg
57	Ronnie Lowe	LB	Jr.	6-0	175	Thomaston, Ga.
58	Steve Gildea	LB	Soph.	6-0	190	Daytona Beach
59	Frank Laner	PK	Sr.	6-0	200	Atlanta, Ga.
60	Barry Rice	LB	Soph.	6-1	203	Fernandina Beach
61	Chuck Elliott	LB	Sr.	6-0	195	Troy, Ohio
62	Theron Bass	LB	Soph.	5-10	200	Live Oak
64	Stan Walker	OG	Jr.	6-2	220	Tallahassee
66	Ken Hart	OG	Sr.	6-3	217	Groveland
67	Mike Bugar	DE	Sr.	5-10	206	Youngstown, Ohio
68	Larry Pendleton	OG	Sr.	6-0	212	Winter Garden
69	Tom White	DT	Soph.	6-0	238	West Palm Beach
70	Tony Sewell	OT	Jr.	6-4	228	Union Springs, Ala.
71	Harvey Zion	DT	Sr.	5-11	210	Atlanta, Ga.
72	Randy Logan	OG	Jr.	6-3	230	Seal Beach, Calif.
73	Duke Johnston	DT	Jr.	6-2	252	Ft. Lauderdale
74	Robert McEachern	DT	Soph.	6-2	219	Tallahassee
75	Billy Rhodes	OT	Sr.	6-3	240	Eustis
76	Jack Fenwick	OT	Jr.	6-4	226	Norwood, Ohio
77	Jeff Curchin	OT	Sr.	6-7	268	Ocala
78	Wayne Johnson	OT	Jr.	6-2	238	Macon, Ga.
79	Frank Vohun	DT	Jr.	6-3	225	Brooksville
80	Doug Gurr	DE	Sr.	6-0	208	Albany, Ga.
81	Jim Tyson	TE	Soph.	6-1	196	Pahokee
82	Rhett Dawson	FL	Soph.	6-1	184	Valdosta, Ga.
83	Ron Wallace	DE	Soph.	6-2	193	Macon, Ga.
84	Chip Glass	TE	Sr.	6-4	231	Tampa
85	Floyd Ratliff	DE	Jr.	6-3	195	Jesup, Ga.
86	Randy Hall	DE	Soph.	6-0	198	Miami
87	Bill Rimby	TE	Soph.	6-4	205	St. Petersburg
88	Beryl Rice	DE	Soph.	6-1	211	Fernandina Beach
89	John Richardson	PK	Jr.	6-0	205	Jacksonville



**SHIFT** gears on a Bolens Husky tractor and get the feel of the most completely equipped compact you can buy. Many sizes — 7 to 12½ hp. Each with Fast-Switch Power-lock Hitch to change powered attachments, easily, in seconds.



**MAKE** the Bolens Lawn Keeper bend at its waist. Its tiny turning radius and unique maneuverability make it a tough act to follow...for any other riding mower. Examine the benefits of front-mounted attachments, up-front seating and 6 hp rear-engine design.



**TURN** the steering wheel of the Bolens Estate Keeper. Experience its unique Center-Pivot Steering. Note advantages of front-mounted attachments, up-front seating, rugged 10 hp Wisconsin engine...at the rear to eliminate noise and exhaust.



**SIT** on a 5 hp Bolens Suburban Riding Mower. Controls are convenient. Cuts a 26-inch swath at up to 286 feet per minute. Suburban 24 blazes a path ¾ of a yard wide.

**LOOK** closely at Bolens Orbit-Air mower that cleans and mulches your lawn as you mow. Blade is fully enclosed. There is less danger of objects being picked up and thrown. Choose 22-inch self-propelled or push type.

**BOLENS**

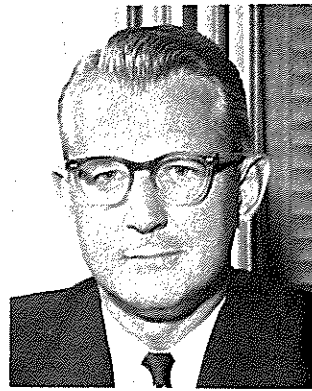
Proudly distributed from Jacksonville  
—The Bold New City of the South—  
in Florida, Georgia and Alabama By



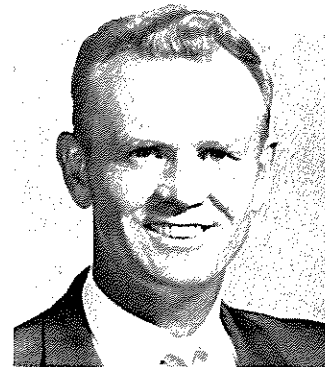
**FLORIDA TRACTOR CORPORATION**

P. O. Box 2500, Jacksonville, Florida 32203  
Phone: A.C. 904-388-6581 Cable: FlaTrac



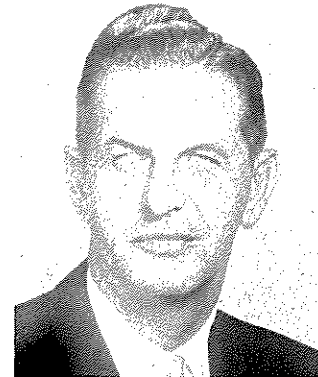


DR. PHILIP G. HOFFMAN



BILL YEOMAN —  
HEAD FOOTBALL COACH

# The UNIVERSITY of HOUSTON



HARRY FOUKE —  
ATHLETIC DIRECTOR

The University of Houston was founded as a four-year institution in 1934 after beginning as a public junior college in 1927. In September of 1963 it became the 20th member of the Texas state system of higher education. The University moved in 1939 to its present site in southeast Houston, three miles from downtown via the Gulf Freeway, where it now occupies 300 acres and a physical plant nearing the \$70 million mark.

By the mid 1970's, the University's physical plant is expected to reach \$100 million. The University also operates the Clear Lake City Center in the NASA Manned Spacecraft area.

The University is composed of nine separate colleges (Architecture, Arts and Sciences, Bates College of Law, Business Administration, Cullen College of Engineer-

ing, Education, Optometry, Pharmacy and Technology), plus the Downtown School, the Graduate School and the Graduate School of Social Work.

Accredited by the Southern Association of Colleges and Schools and the Association of Texas Colleges and Universities, the University also has received accreditation from separate agencies for many of its colleges and departments.

The University faculty includes over 650 full-time members and 450 part-time members.

Enrollment is now above 22,000 and projections indicate a level of 30,000 by the mid 1970's. This is despite higher admission requirements which are equal to any unit in the state system and above many.



DANNY R. BRIDGES

Director, Gator Bowl Sports Complex  
and Auditorium

Danny, a native of Valdese, North Carolina, holds a B.S. Degree in Chemistry and Social Studies from the University of Southwestern Louisiana, and a Masters Degree in Administration. He played football and basketball in college and was chosen for the All-American Scholastic Team in 1958. In 1961, Danny signed with the Green Bay Packers Pro-Football team.

After coming to Jacksonville, Florida, in 1962, Danny was the head of the Social Studies Department at Paxon High School, and coached football, basketball, swimming and golf, coaching such All-American athletes as Ron Sellers, Gary Pacjic, Ben Sellers, Bobby Caron and Bill Thompson. He also played semi-pro football with the Jacksonville Bears. In 1965, Danny's team won the State Championship in Basketball, and he was selected Coach of the Year in Florida.

## DANNY BRIDGES

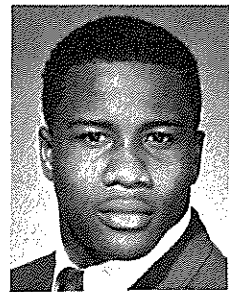
Is president of the Jax Seminole Boosters, Inc., the club which worked with many local civic organizations in securing this game for Jacksonville.

In June, 1966, Danny joined the staff of Florida Junior College at Jacksonville, as Social Science Instructor and Basketball Coach.

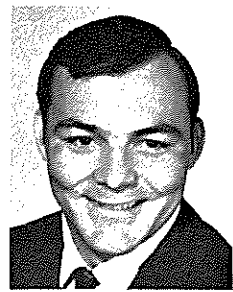
Danny was appointed Director of the Gator Bowl Complex in January, 1967, having helped to bring the AFL All-Star game to Jacksonville (1968 and 1969) and the 1969 State Basketball Tournament, neither of which had been here previously. Since Danny has been Director of the Complex, the Gator Bowl has been expanded to a seating capacity of nearly 70,000 and new lighting was installed. Danny was also instrumental in bringing the FSU-Houston game to Jacksonville this year.

Danny is married to the former Susan Tucker of Baton Rouge, Louisiana, has two children, Danny, Jr., age 8, and Debbie, age 6. He is a member of the Board of Directors of the West Duval Jaycees, Board of Directors of Gator Bowl Association, and Board of Directors of Greater Jacksonville Fair.

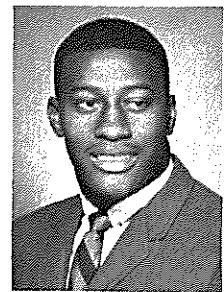




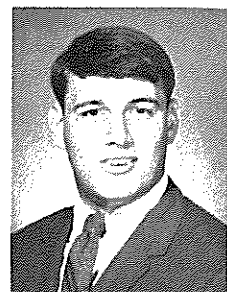
PAUL GIPSON



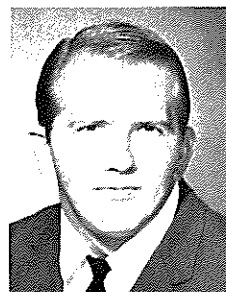
JERRY GARDNER



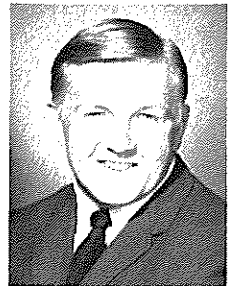
JERRY DRONES



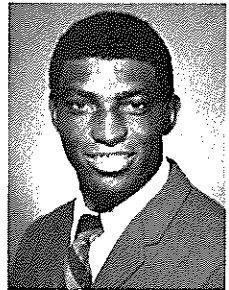
PAUL DAULONG



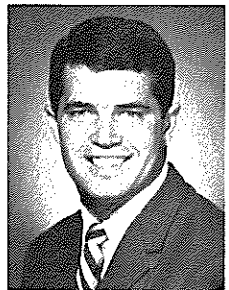
BILL CLOUD



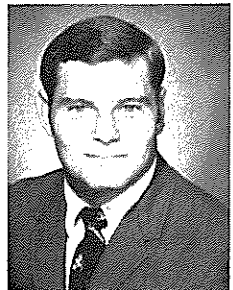
BILL BRIDGES



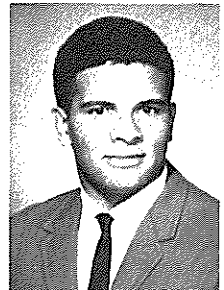
CARLOS BELL



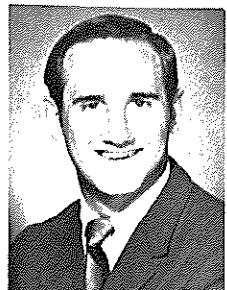
CALVIN ACHEY



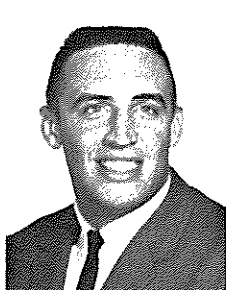
GLENN GRAEF



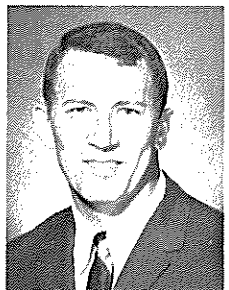
CHARLIE HALL



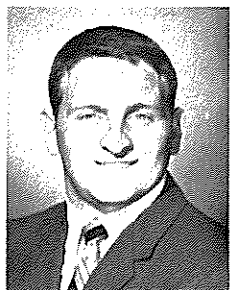
RICHARD HARRINGTON



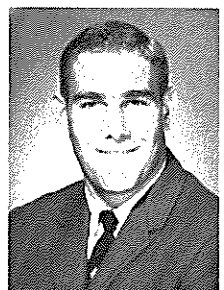
CLIFF LARSON



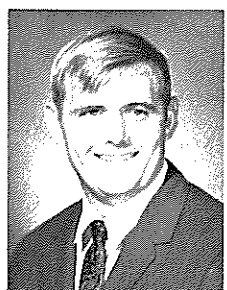
CHUCK ODOM



MIKE PARROTT



JOHNNY PEACOCK

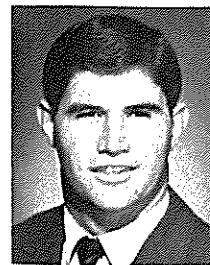
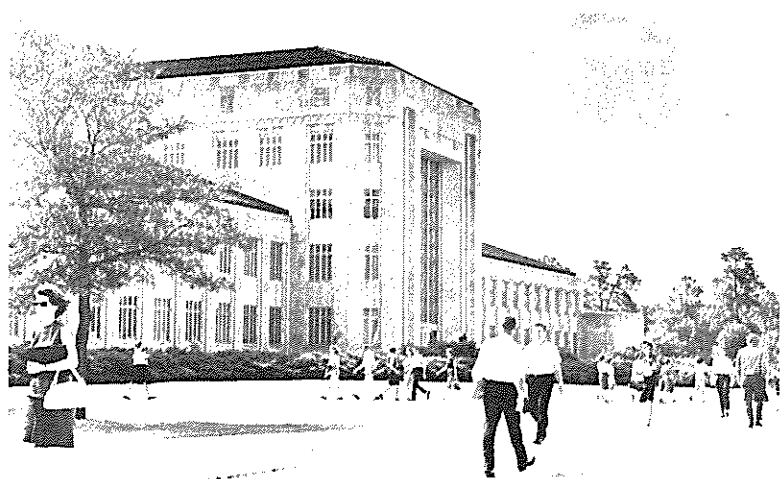


WADE PHILLIPS

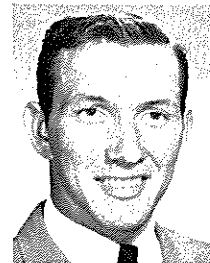


PAT PRYOR

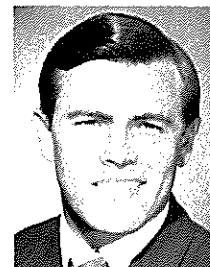
# HOUSTON



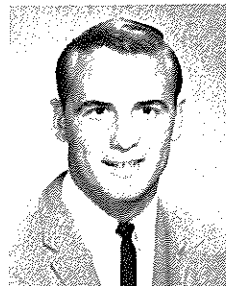
DAVID SCHREIDER



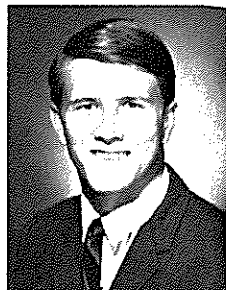
PAUL SHIRES



MIKE SIMPSON

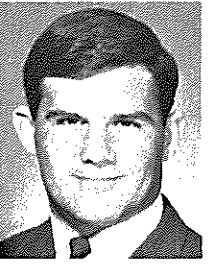
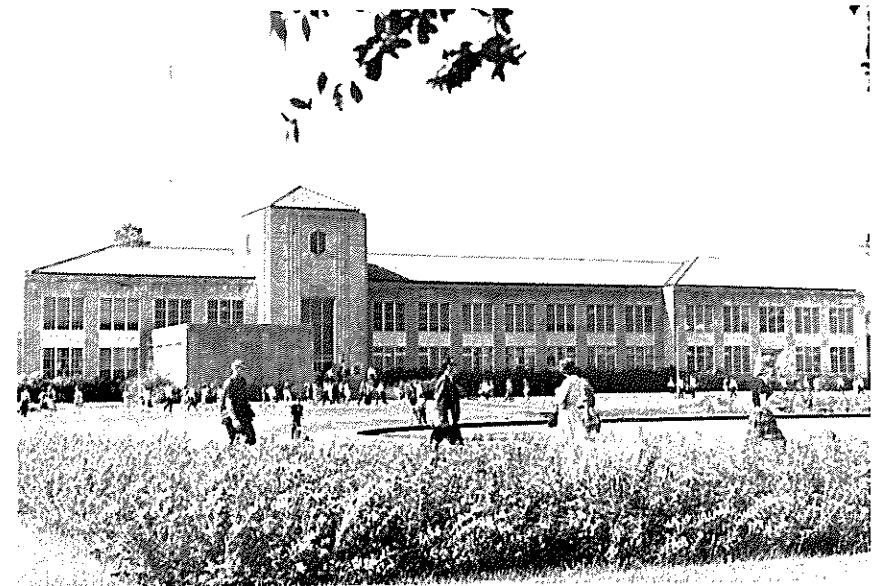


ROYCE BERRY

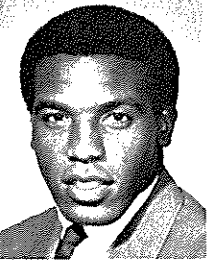


KEN BAILEY

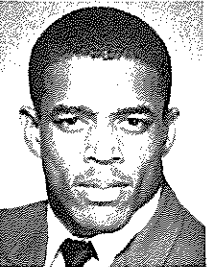
# HOUSTON



JIM STRONG



EARL THOMAS



ELMO WRIGHT

WELCOME

SEMINOLES AND COUGARS—

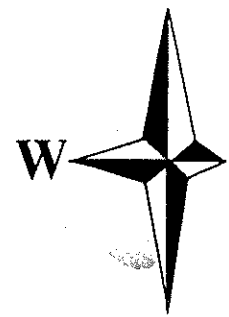
Football is great in Our

Sunshine State.



Southern Bell





## WEST DUVAL JAYCEES



PRESIDENT  
ALBERT S. C. MILLAR, JR.

1ST VICE PRESIDENT  
JACK CAIREL

2ND VICE PRESIDENT  
ALAN HOLT

3RD VICE PRESIDENT  
ERNEST KING

SECRETARY  
DICK BROWN

TREASURER  
JACK WYNNE

STATE DIRECTOR  
GILBERT MACKOUL

LEGAL COUNSEL  
EVERETT RICHARDSON

DIRECTORS  
DANNY BRIDGES  
CHARLES BASSETT  
RON DUGAN  
HERMAN DANCE  
JACK STRICKLAND  
JOHN GRINER  
WALTER WILLIAMS, JR.

PAST PRESIDENTS—  
63-64—LYNWOOD ROBERTS  
64-65—LEW BRANTLEY  
65-66—CHARLES D. WEBB  
66-67—RICHARD L. MILLIGAN  
67-68—WALTER L. WILLIAMS, JR.

### LEWIS TAYLOR, INC. APARTMENT DEVELOPER

2045 Jammes Road  
781-5951

FAIRWAYS APARTMENTS  
VILLAGWOOD APARTMENTS  
WILLOWICK APARTMENTS  
TAHITIAN VILLAGE

### SOUTHERN TURF NURSERY

PRODUCER OF  
SUPERIOR  
TURF GRASSES

FOR GOLF COURSES  
AND ATHLETIC FIELDS

TIFTON, GEORGIA  
TELEPHONE 382-5655

# McCALL SERVICE, INC.



## OUR MIDDLE NAME!



389-5561

AIR CONDITIONING  
TERMITE CONTROL  
FUEL OIL • HEATING  
HOUSEHOLD PEST CONTROL