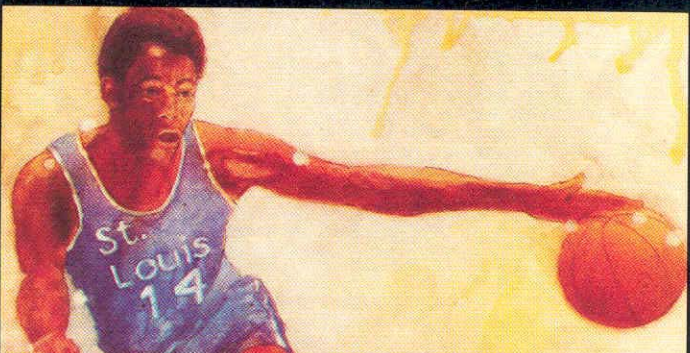
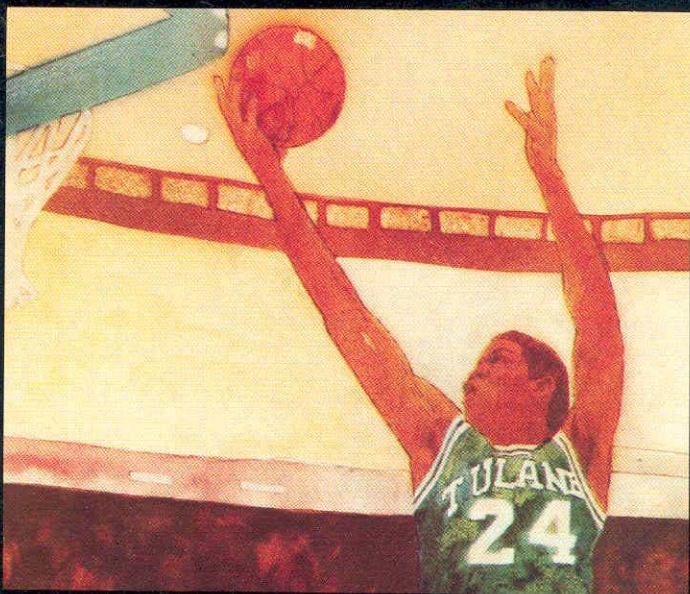
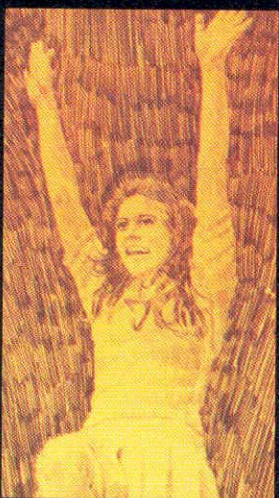
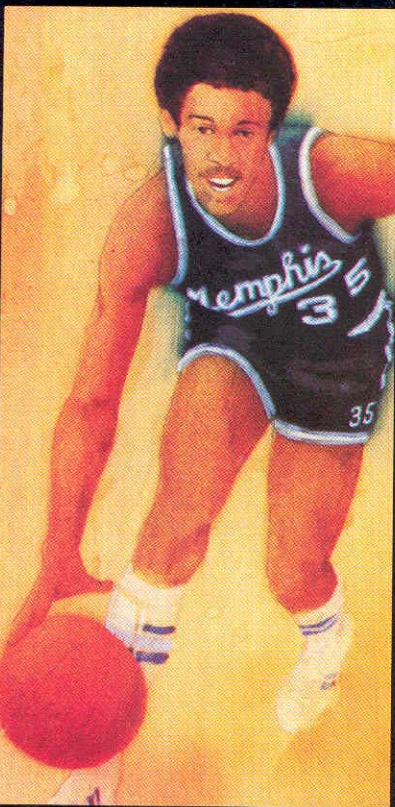
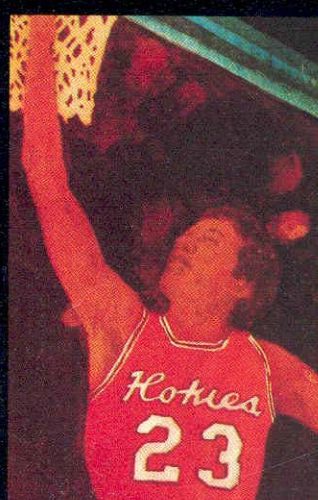
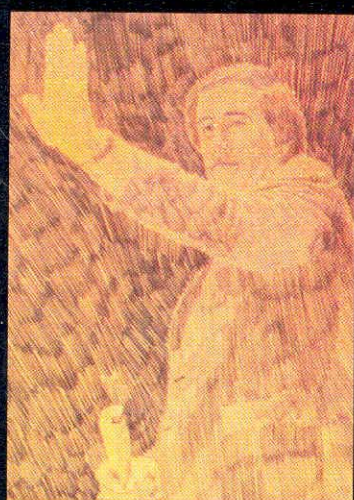
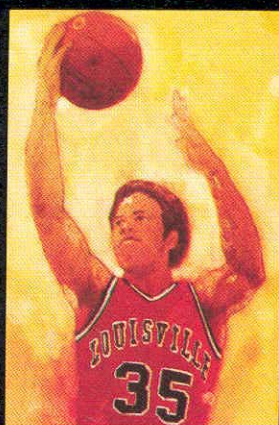


metro

Metropolitan Collegiate
Athletic Conference

Cincinnati
Florida State
Louisville
Memphis State
St. Louis
Tulane
Virginia Tech



The Season Approaches with Four New Coaches

The Metro welcomes four new coaches who have put on a lot of miles on the road to winning.

By JOE CASTELLANO
St. Louis Globe-Democrat

"But I'm Ed Badger," Ed Badger was telling the veteran woman, the person in charge of keeping hooligans, cheapskates and riff-raff out of the University of Cincinnati parking lots. "I'm the new basketball coach here."

"I don't care who you are," the woman said. "You don't have a sticker on your car, so you can't park in that lot."

"But, but..."

"Sorry, buster. We don't even have a record of you working for the university. So scram."

Well, Ed, welcome back to the college life, where things move just a little bit more slowly than in the pros. A heckuva lot more slowly than the comet you had been riding the last couple of years in Chicago. Of course, frightened waterbugs move more slowly than life in the National Basketball Association.

"Last year," said Badger, "we had a game at home New Year's Eve, played in Seattle on the first, in Portland on the second, back home on the fifth and in Denver on the sixth. I told my assistant, 'If the guys feel like I do, I don't know how they can play. I don't even know where I'm at. And what's worse, I don't care.'"

Actually, his Chicago Bulls played at home Dec. 30, in Seattle Jan. 1, in Portland Jan. 3, at Golden State Jan. 4, in Chicago Jan. 6 and in Denver Jan. 8. But if he didn't know where he was at the time, how can he be expected to recall the dates and time now? He was in the NBA then, where they play, as he calls it, "three college seasons in one year."

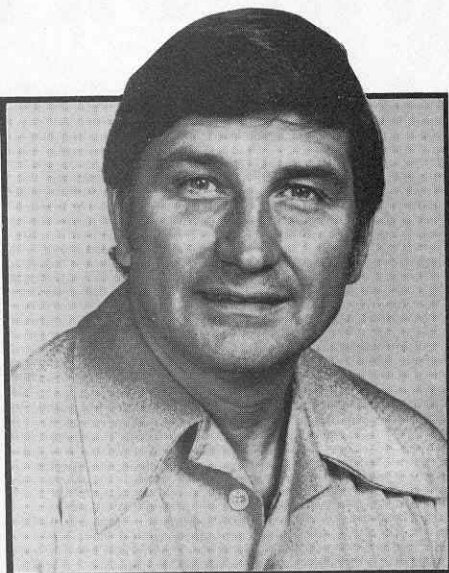
"The biggest difference is the schedule," said Badger. "In the pros, if you get to the playoffs you can play more than a hundred games, compared to 27 or 30 in college. In the pros it's like three college seasons in one."

"The way I look at it, I'm in my 32nd year of coaching. Fifteen seasons in five years (including three as an assistant) in the pros and 16 before that."

So he comes back to where they play just one season a year and what does he get? The runaround from the UC committees on parking lot stickers.

"When she told me they had no record of me working for the university," said Badger, "I began wondering whether I was or not."

Of course, that reception is nothing like the one he and fellow newcomers Joe Williams of Florida State, Ron Ekker of St. Louis and Charlie Moir of Virginia Tech are going to get when they are greeted by all those Doctors



Ed Badger

and Scooters and whatever elses down in Louisville, the fanatical patrons of the Mid-South Coliseum in Memphis and the alluring violations of training on Bourbon Street in New Orleans.

They're in the Metro now, the conference that has been rated by some publications as being the second conference in the country. Moir enters his third year at Virginia Tech, the newest Metro member, with a group of recruits considered by some to be the best at Blacksburg in two decades and a team he calls his best since he has been there. And he has won 19 games in each of the last two seasons.

"It's going to be tough to win 19 games this year," he said. "Of course, the people expect us to."

At least Moir is established in his program. The three other newcomers are still shaking hands and saying things like, "We hope to maintain our fine tradition and firmly establish (fill in blank) University in a position

Charlie Moir



of national prominence."

Actually, Williams, Badger and Ekker each has a different sort of act to follow.

Williams replaced Hugh Durham, who averaged about 20 victories a year in a dozen seasons at Tallahassee before taking the job at Georgia. Last season, the Seminoles won the Metro's won the regular season championship and an NCAA tournament berth.

"When I was first starting out coaching in high school, I had to follow a guy who had a great team, off which everybody graduated," said Williams.

Yeah, and what happened?

"Well," Williams said, "it was my second year of coaching and I thought I knew everything there was to know about coaching. I made some mistakes. I was a rookie coach."

In a sense, he is a rookie once more. But he has learned quite a bit about the profession in the interim, as his record indicates. In six years as the head coach at Jacksonville his teams compiled a 92-61 record, and his 1970 team finished second to UCLA in the NCAA tournament. In eight years at Furman his teams won 142 or 229 games and five Southern Conference championships. Now as he returns to the site of this first college job (as an assistant coach in 1962), Williams knows a thing or two more than he did as a young high school coach.

"Instead of coming in here and saying, 'This is MY program, and changing everything, I plan to keep the good things in the program. The things that are weak, we'll make changes on."

"The players know the things they did right will stay. I have respect for what they've done, and I'm not going to make any radical changes."

At St. Louis, on the other hand, a few radical changes seem in order. The Billikens have not had a winning team since 1973, and that was four coaches ago.

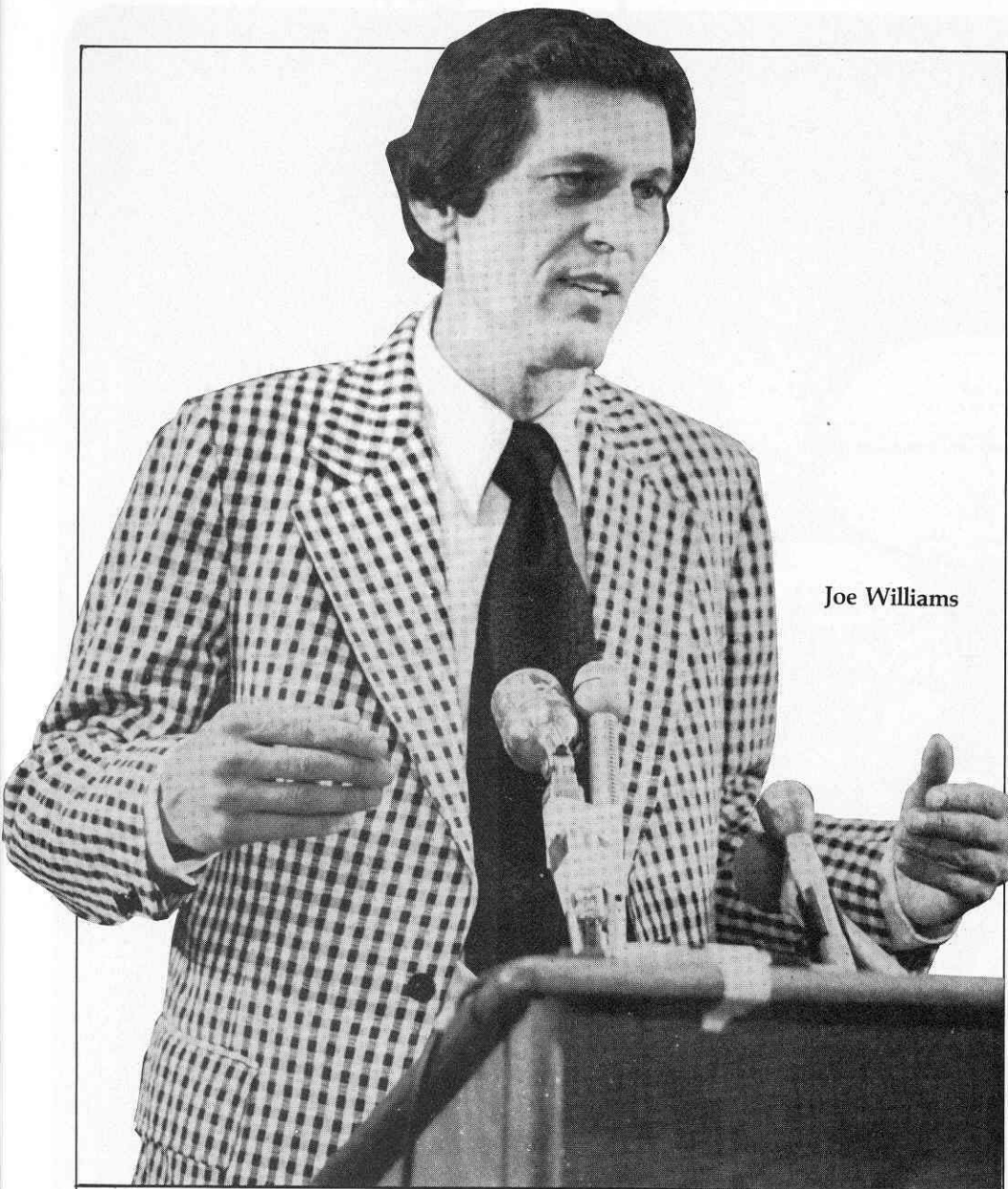
"I kind of like going into a new program and trying to get it organized," said Ekker, fresh from performing a miracle at West Texas State. "The job that has to be done is changing the attitude around of some players, the administration, the fans and the news media."

And building a team that can be known for more than losing by two points to Cincinnati, Marquette and Louisville.

"Winning is THE most important thing in establishing a program," Ekker said. "And

Continued

Four New Coaches



Joe Williams

recruiting has the most direct effect on winning. The major emphasis will be on the team and on recruiting, but all the other things are important, too. The booster club can be a very strong element for you. And you need promotions, so that you can get better attendance.

"People are selective. They want to go to a first class production. We have to be good. And then we have to be exciting."

The situation at Cincinnati seems to split the extremes at Florida State and St. Louis. Badger plans to squeeze all the potential out of this year's edition of what has been the Metro's most enigmatic program in the recent past.

"One thing I'm going to do is change the schedule," Badger said. "It has always been my belief that you should play good people so that when you get to the tournament you will be ready for it. In the past, Cincinnati has played a bunch of rummies and Sisters of the Poor teams in the regular season, then never did anything when it got to the tournament."

Badger has looked forward to his return to college, where he established himself as a successful coach at Chicago's Wright Junior College.

"There are great kids in the NBA," he said, "but I don't think many want to be taught anything. Most of them know it all. It'll be nice to get back to being a teaching coach—that's the kind of work I enjoy."

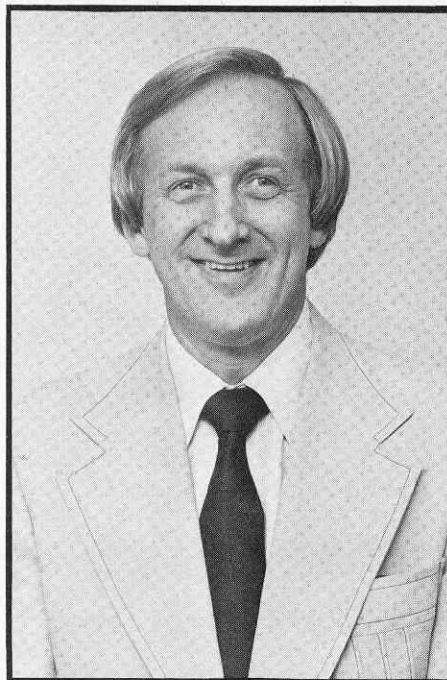
Of all the newcomers, Moir might feel the most at home.

"I'm pretty familiar with most of the teams in the Metro," he said. "We have played Memphis State, I watched Louisville and Cincinnati on TV a few times, I'm familiar with Ron Ekker - I knew him when he was at West Texas State, and I know Joe Williams real well - he was at Furman when I was at Florida State (as an assistant)."

And Moir coached for three years at Tulane, including his last season there in 1976 when Tulane first joined the Metro. That 1976 season resulted in an 18-9 record, the school's best record in 27 years.

"I know all these teams," said Moir. "Now the idea is to keep from getting our brains beat out."

Welcome to the Metro.



Ron Ekker



Florida State Seminoles

The Seminoles will be hardpressed to match last year's accomplishments - winning 23 games, including the regular-season Metro title, and a berth in the NCAA tournament where they nearly defeated eventual national champion Kentucky.

In Harry Davis, David Thompson and Eugene Harris, the Seminoles lose three of last year's top four scorers whose combined averages were 45 points and 17 rebounds a game. A bit of good news, however, is that 6-9 center Kris Anderson, previously thought to be academically ineligible, now will join the team at the start of the second semester, in time to play all 12 Seminole conference games.

On top of the inevitable lineup changes, the Seminoles are experiencing a change of coaches. Hugh Durham coached FSU for 13 years and was named Metro Coach of the Year in his final season. He has moved on to the University of Georgia and has been replaced by an equally successful coach, Joe Williams.

Williams comes to Tallahassee from Furman University, where he won five Southern conference championships in eight years. The most recent title came last season when Furman won 19 games and advanced to the NCAA Tournament. His eight-year record of 142-87 (.620) is the best in Furman history and includes a string of 26 consecutive Southern Conference game victories.

Prior to that, Williams coached at Jacksonville University, where, in his first year, he took the Dolphins to the NAIA national playoffs. In his final season at Jacksonville in 1969-70, the Dolphins went 27-2 and lost the national championship game to UCLA.

Ironically, Florida State was Williams' first collegiate coaching assignment. In 1962 he was hired to coach the freshman team.

"I'm delighted to be playing in the Metro Conference," said Williams of his new challenge. "It is a good conference played in large cities and areas which will give tremendous exposure to our program."

"My goal is to put a team on the floor where a group can enjoy playing basketball and enjoy playing well. I'm basically interested in team-oriented play that still gives players a chance to do things they do best."

Williams has only one returning starter,



Tony Jackson

Tony Jackson, but valuable sixth man Mickey Dillard is also back. Jackson, a 6-0 guard, scored sparingly (6 pts.) but led the Metro in assists (166) and steals (73). Dillard was perhaps the best player in the conference last year coming off the bench and will probably start this year. He scored in double figures 23 times last season, on his way to compiling a 13.7 scoring average, second best on the team. His efforts earned him a second team All-Metro selection.

Murray Brown is the only other returning

player with a healthy amount of experience, excluding Anderson. He played in all but one game last year as a swing man and averaged six points a game. With the holes left by the departure of Thompson and Davis at forward, Brown will likely see most of his action on the front line.

He will receive some formidable competition, however, from two of the recruits Williams signed in late spring. Pernel Tookes is a 6-6 forward from Orlando, Fla. who averaged 21.0 points and 10 rebounds a game for the 1977-78 season. Greg Collinsworth brings even more impressive credentials to Tallahassee. As a 6-5 forward from Titusville, Fla., Collinsworth averaged 25 points and 12 rebounds a game.

A third quality recruit is 6-3 guard Ed Chatman from Gulf Coast Junior College, who averaged in double figures in both scoring and rebounding (21.0 pts. and 11 rebs.) last season.

If Tookes and Collinsworth, along with Brown and returnee Hank Mann, can fill the forward spots, the Seminoles will remain a dangerous foe. Florida State was the quickest team in the Metro last year and relied heavily on the play of their guards on offense and defense. And in Jackson and Dillard, who also contributed 30 steals last season, Florida State probably have the best backcourt in the Metro this year.

When the schedule moves into inter-conference play, the role of Anderson will become all important. His value to the team last season occasionally went unnoticed since it could not be readily extolled by his statistics, which were overshadowed by those of Harry Davis and David Thompson. But Anderson did average 6.7 rebounds and 8.1 points a game, and hit 56 per cent of his shots, sixth best in the conference.

His real contributions came on defense and in setting up his sharp-shooting teammates (Florida State led the conference in field goal percentage). Anderson handed out 36 assists last year, ranking him second in the league among centers.

Without their center for the first month of the season, and with new players gaining experience as the year progresses, the Seminoles shouldn't match those 23 victories of a year ago. But they should still be a factor in determining the Metro champion.



Tully Gym, Home of the Seminoles

FLORIDA STATE UNIVERSITY

1978-79 Basketball Schedule

DATE	OPPONENT	SITE	TIME
Nov. 27	Eckerd	Tallahassee, Florida	8:05 ET
Nov. 30	Western Kentucky	Tallahassee, Florida	8:05 ET
Dec. 4	Auburn	Auburn, Alabama	7:30 CT
Dec. 9	Florida	Jacksonville, Florida	8:00 ET
Dec. 18	Florida Southern	Tallahassee, Florida	8:05 ET
Dec. 22-23	Dayton Invitational (FSU, Penn State, Tulane)	Dayton, Ohio	7/9:00 ET
Dec. 30	Alabama-Birmingham	Birmingham, Alabama	8:00 CT
Jan. 3	Jacksonville	Jacksonville, Florida	7:35 ET
Jan. 5-6	Old Dominion Classic (FSU, Ga. Southern, Bucknell)	Norfolk, Virginia	7/9:00 ET
Jan. 10	Tulane*	New Orleans, Louisiana	7:00 CT
Jan. 12	St. Louis*	St. Louis, Missouri	8:05 CT
Jan. 18	Memphis State*	Memphis, Tennessee	8:05 CT
Jan. 20	Louisville*	Tallahassee, Florida	1:30 ET
Jan. 23	Georgia Tech	Tallahassee, Florida	8:05 ET
Jan. 25	George Washington	Washington, D.C.	8:00 ET
Jan. 27	Cincinnati*	Cincinnati, Ohio	8:05 ET
Jan. 29	Tulane*	Tallahassee, Florida	8:05 ET
Feb. 1	Louisville*	Louisville, Kentucky	8:05 ET
Feb. 3	Jacksonville	Tallahassee, Florida	8:05 ET
Feb. 6	South Alabama	Mobile, Alabama	7:35 CT
Feb. 10	Georgia Tech	Atlanta, Georgia	8:00 ET
Feb. 12	St. Louis*	Tallahassee, Florida	8:05 ET
Feb. 17	Cincinnati*	Tallahassee, Florida	8:05 ET
Feb. 25	Memphis State	Tallahassee, Florida	1:30 ET
Mar. 1-3	Metro Conference Tournament	Memphis, Tennessee	TBA

*Metro Conference Game

Joe Williams, who began his collegiate basketball coaching career at Florida State, has returned to become the Seminoles fourth head coach in the 31-year history of the school.

Williams, with previous coaching stints at Jacksonville and Furman, replaced 12-year coach Hugh Durham who resigned to take the head coaching job at Georgia.

Florida State was Williams' first coaching assignment in 1962 when he was the freshman coach for the late Bud Kennedy. He went to Furman in 1963 as an assistant coach before assuming the reigns as head coach at Jacksonville in 1964.

During his first season at Jacksonville, the Dolphins advanced to the NAIA national playoffs in Kansas City. Five years after that, Jacksonville found itself in the NCAA championship game against powerful UCLA and finished with a 27-2 record. In a short span Williams had made the Jacksonville program one of the nation's most respected. His six year coaching record with the Dolphins was 92-61.

At Furman, Williams wasted no time becoming the school's winningest coach. The Paladins enjoyed a winning record in seven of eight seasons as Williams ran up a 142-87 record.

Five times in eight years, Furman won the Southern Conference championship with Williams at the helm. The most recent title came last winter when the Paladins compiled a 19-11 record and advanced to the first round of the NCAA tournament before bowing by a single point (63-62) to Indiana.

His record at Furman also included a 15-0 record against Southern Conference competition — its first undefeated record ever in league play — in 1974-75 and three consecutive 20 game win seasons.

Williams' overall ledger during his 14 years as a head coach reads 234-148, or .612 percent.

"My goal is to put a team on the floor where a group can enjoy playing basketball and enjoy playing well," says Williams. "I want the players to be unselfish, give good effort and winning will take care of itself.

"I'm basically interested in team oriented playing that still gives players a chance to do things they do best."

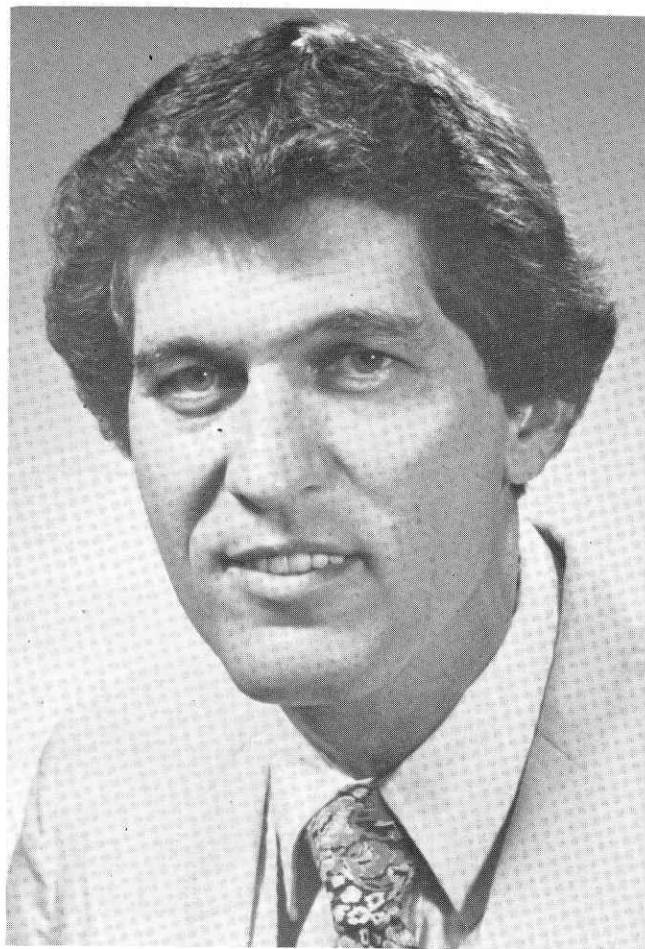
Realizing a personal dream to someday return to Florida, Williams set forward a goal to strengthen collegiate basketball in the Sunshine State.

"I want to play as many teams in the state as I can," he explains. "I want to help improve basketball in the state and will do anything I can to achieve that goal. Florida State will resume its series with Florida and Jacksonville this season and I hope to add South Florida next year." Williams also plans to play a Florida State "home" game outside of Tallahassee on a regular basis in the near future.

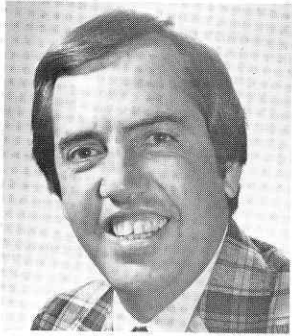
Williams' coaching career began in 1960 when he guided Jacksonville's Terry Parker High School to the county championship. The following season he coached Ribault High to the Gateway Conference title.

Williams is a native of Morton, Miss., but he grew up in Oklahoma, graduating from Durant High School in 1952. He played and learned basketball under Abe Lemmons (now head coach at Texas) at Oklahoma City College. Williams received his bachelor's degree in English from Southern Methodist University in 1956. He later earned a master's degree in English from the University of Florida in 1968.

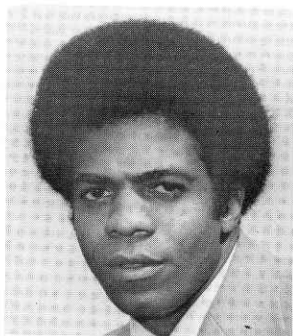
Williams enjoys outdoor activities and he spends time playing basketball and fishing with his two sons, Joey, 13, and Patrick, 11.



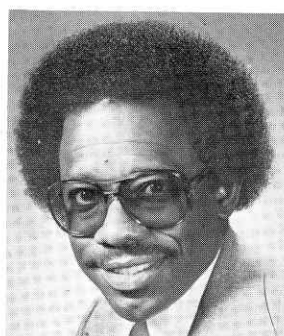
Joe Williams
Head Basketball Coach



Bob Dotson
Assistant Coach



Frank Gilmore
Assistant Coach

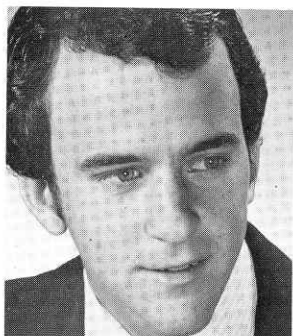


John Jones
Assistant Coach

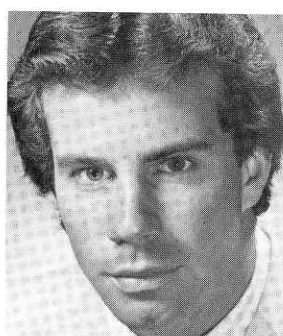
Seminole Basketball Staff



John Mooney
Basketball Trainer



Jim Towey
Basketball Aide



Jim Smith
Basketball Aide

First Federal Salutes the Seminoles

First Federal Savings
& Loan Association of Gadsden County



Quincy

Tallahassee

Havana

Chattahoochee



Earl Bacon Agency
INSURANCE • BONDS

"Serving All Your Insurance Needs"

Eastwood Office Plaza/Highway 90 East/878-2121

A nine-station network, the largest in the history of the school, will carry Florida State basketball throughout north Florida during the 1978-79 campaign. Listeners will be able to follow the Seminoles this season home and away on the radio hook-up.

Gene Deckerhoff will begin his fifth season at the mike handling the play-by-play duties. A popular sports reporter for WCTV-TV in Tallahassee, Deckerhoff is a veteran sports-caster who also shares the Florida State baseball play-by-play.

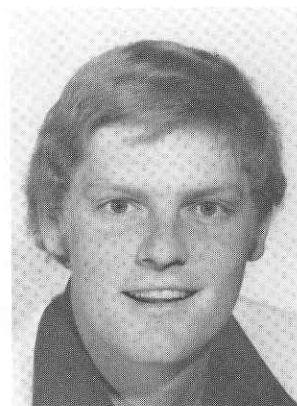
Wayne Hogan will begin his first year as the color analyst for the network and will also double as the producer-engineer. A native of Tallahassee, Hogan is a sports information assistant at Florida State and joins Deckerhoff on baseball play-by-play.

Florida State basketball is sponsored on the network this season by the brewers of Budweiser. FSU fans are appreciative of Budweiser's support of the network which will allow all Seminole supporters to follow the action this year.

City	Station
Defuniak Springs, Fla.	WQUH(103.1)
Jacksonville-Atlantic Beach, Fla.	WJNJ-FM(104.9)
Live Oak, Fla.	WGHL-FM(1250)
Madison, Fla.	WMAF(1230)
Marianna, Fla.	WTYS(1340)
Sebring, Fla.	WSEB(1340)
South Daytona, Fla.	WELE-FM(106.0)
Tallahassee, Fla.	WGLF-FM(104.1)
Winter Haven, Fla.	WPCV-FM(97.5)



Gene Deckerhoff



Wayne Hogan

Seminole Basketball Network



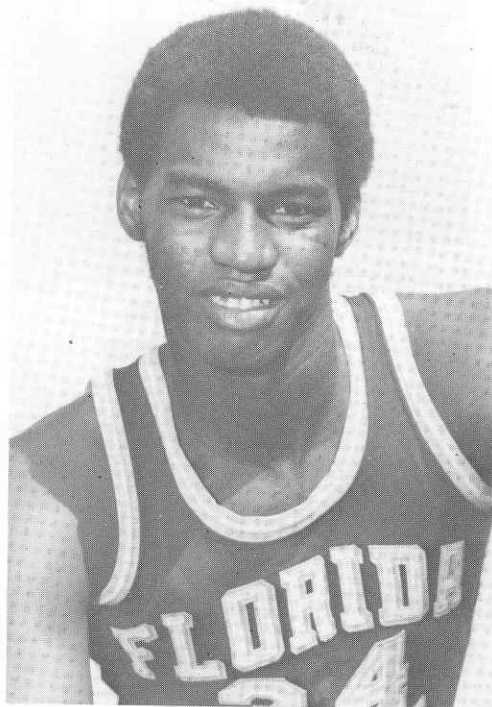
20

James Bozeman
Forward
Tallahassee, Fla.



34

Murray Brown
Forward-Center
Tampa, Fla.



Quality Inn Southernaire

West Tennessee at Brevard
Directly Across From FSU Campus
(Walking Distance From Tully Gym)

Visit

RICCOS

Cocktail Lounge

LIVE ENTERTAINMENT
NIGHTLY

Piano Bar/Jazz Band

224-7116

TED & SUE RODRIQUE
(FSU '58)

Owners and Operators

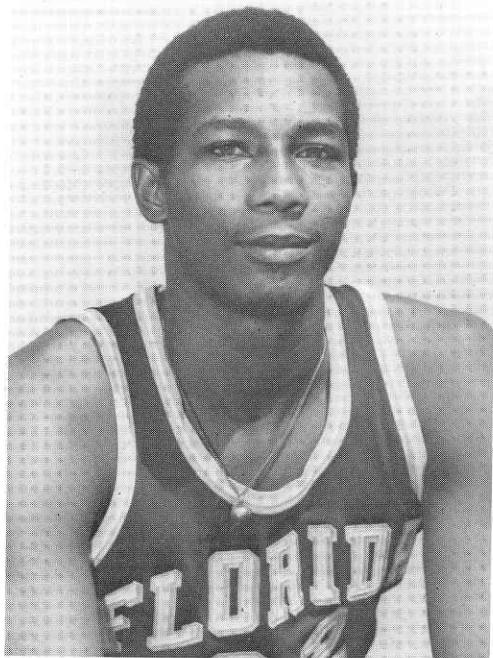
RYALS LEE SALES COMPANY

Wholesalers of



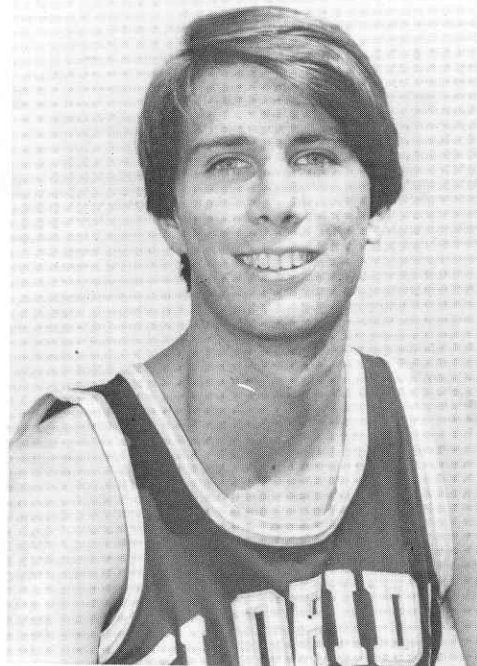
30

Ed Chatman
Forward
Leesburg, Fla.



24

Greg Collinsworth
Forward
Titusville, Fla.



LEADERSHIP, ADVENTURE AND NO OBLIGATION

The leadership training available in Army ROTC is second to none. The adventurous, challenging activities you'll experience make for one of the most exciting courses on campus.

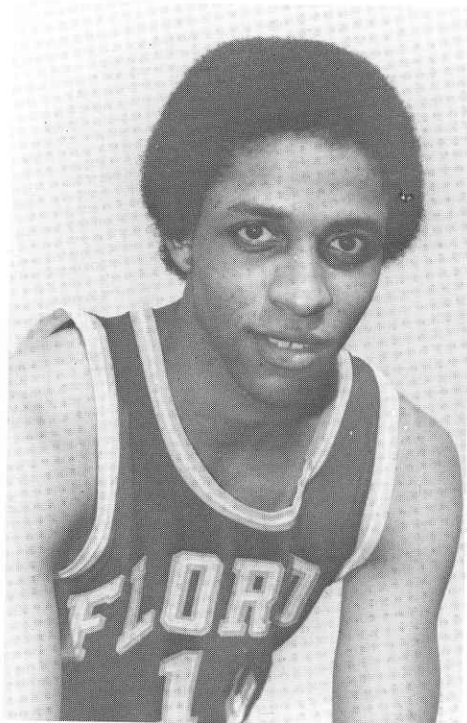
And there's no obligation your first two years. If you decide to drop Army ROTC as a freshman or sophomore, you can. With no military obligation. That's how sure we are you'll want to stay in.

Call: Bill Sutton, Dick Monroe, Jim Lawton, Greg Dyson, Bob Lehman,
Rick Smith or Doug Gifford
Florida State University
Tallahassee, Florida 32306
904/644-1016 or 644-2784

Army ROTC  Learn what it takes to lead.

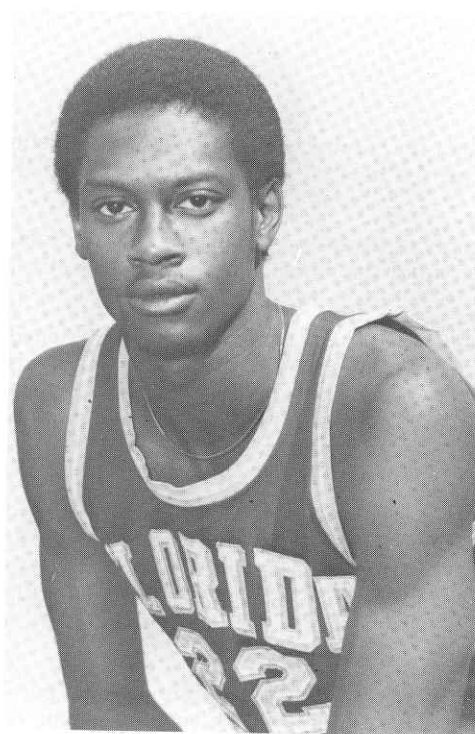
35

Jerry Cox
Guard
Indianapolis, Ind.



22

Mickey Dillard
Guard
Dania, Fla.



Tallahassee Travel & Tours, inc.

224-4161
Calhoun at Call



**Travel
Service**

Representative

METROMANIA

METRO NEWS

Covering Basketball in the Metro Conference
Cincinnati
Florida State
Louisville
Memphis State
St. Louis
Tulane
Virginia Tech

Catch all of
the action of
Metro
Conference
basketball by
subscribing to
the league's exclusive
weekly newspaper,
Metro News. 20 issues
for only \$9.00. Order
your copy today!



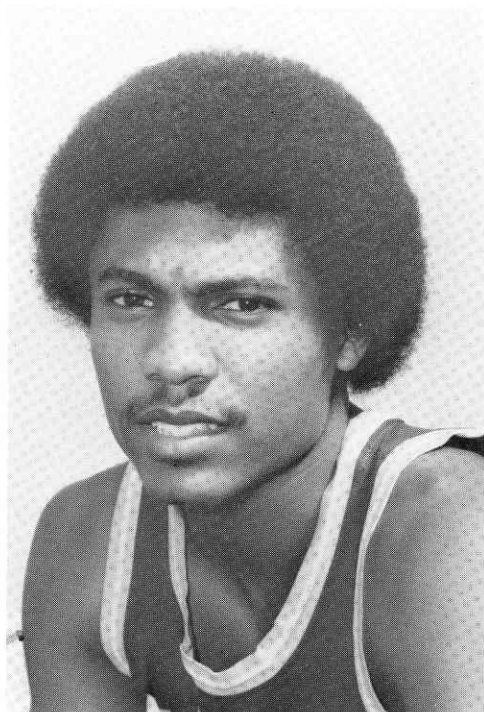
Name _____
Address _____
City _____ Zip _____
State _____

Return order form and check or money
order to:

METRO NEWS
7777 Bonhomme Ave., Suite 1501
St. Louis, Mo. 63105

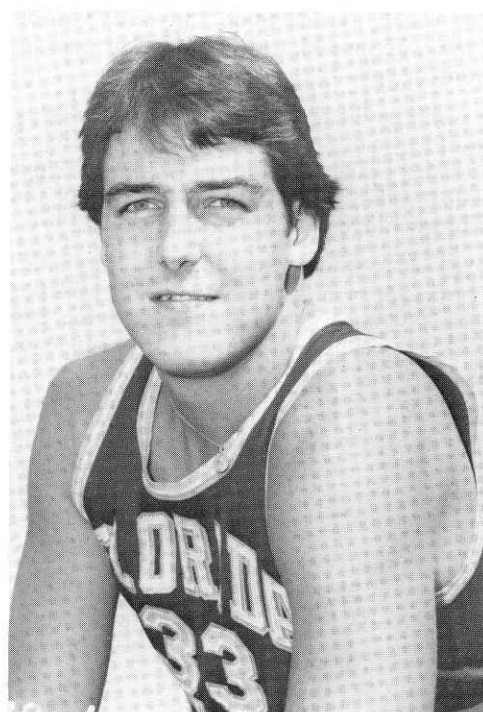
23

Tony Jackson
Guard
Lexington, Ky.



33

Donnie Kuhl
Center
Orlando, Fla.

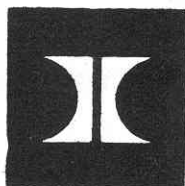


**The
Capital
Scene**

NEW

7 DAYS A WEEK
6 TO 11 P.M.

Featuring
one of the most unique
menus in the South. With such
delicacies as Veal Oscar, Broiled
Lamb Chops, and Coquille St. Jacques,
each prepared for the discriminating patron.



Tallahassee / Hilton

Conveniently situated at
101 South Adams Street,
one block from the State Capitol.

Dr. Bernard F. Sliger, Florida State University's president since 1977, is one of the most ardent fans in Seminole sports history.

When he is on campus, President Sliger rarely misses an athletic event. And, since he became president he has watched every Metro Conference basketball tournament game — not just the games involving the Seminoles, but all others of the colorful three-day tournament, too.

Known as "Bernie" to nearly all of the student athletes, Dr. Sliger makes no secret of his sentiments about athletics at Florida State. He says he wants a "spot in the top 20" for every Seminole team, including those who compete in the arenas of academe.

Although President Sliger now classifies himself as "an energetic spectator," during his high school days in his hometown of Trout Creek, Mich., he was a member of the basketball, track and football teams. He later returned to coach the latter two teams and teach math there, following a three-year tour of duty with the Army during World War II.



Dr. Bernard Sliger
President

Since John Bridgers took over as Florida State's athletic director in the spring of 1973, the program has been on a constant upward trend.

The pattern climaxed during 1977 with startling results. Three Seminoles squads—football, basketball and baseball—participated in post season events. Only one other school in the country was able to do the same. The basketball team was the regular season Metro Conference champion while the golf, swimming and track and field teams also won conference titles.

Bridgers was primarily responsible for Florida State's admission to the Metropolitan (Metro) Athletic Conference through his personal friendship with conference athletic directors. The conference last year was ranked as the second strongest in the country for basketball.

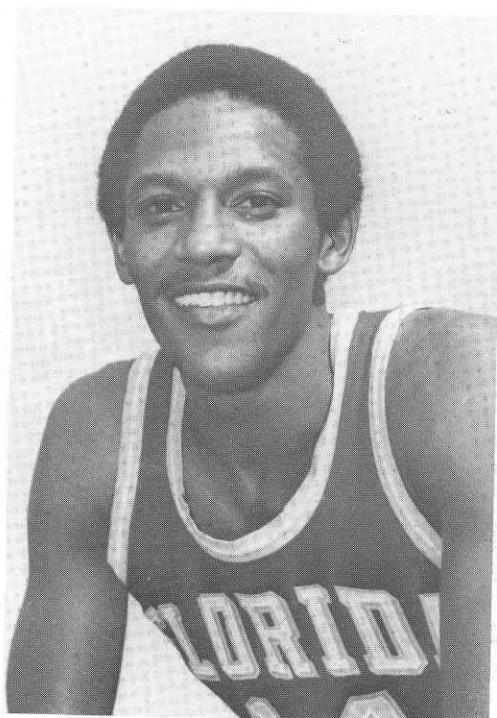
And, it was Bridgers, who persuaded new mentor Joe Williams to leave Furman last winter for the Florida State position. Williams has often said there probably isn't another athletic director in the country who would have been able to convince him to leave the security he enjoyed at Furman.



John Bridgers
Athletic Director

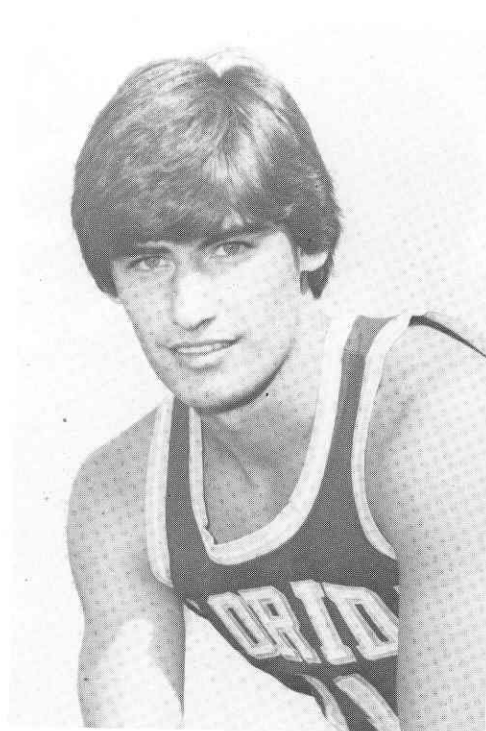
14

Hank Mann
Forward
Chester, Pa.



11

Bobby Parks
Guard
Clearwater, Fla.



Brian's

**TALLAHASSEE'S FINEST
family fast food restaurant**

Featuring the most delightfully
refreshing salad bar in town...

together with delicious 1/3 lb. ham-
burgers, roast beef, ham, and a variety
of desserts, along with your favorite
beer and soft drinks.

410 W. TENNESSEE STREET — PH. 224-6197

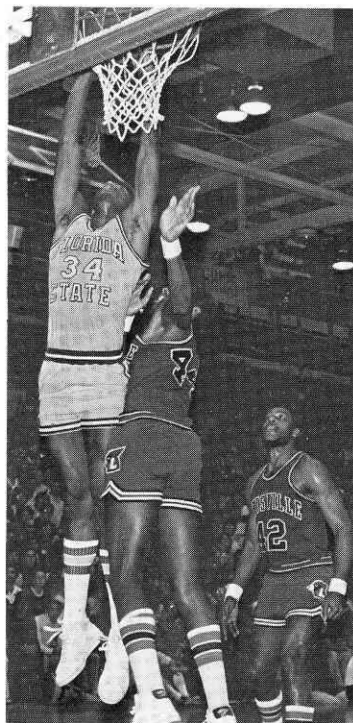
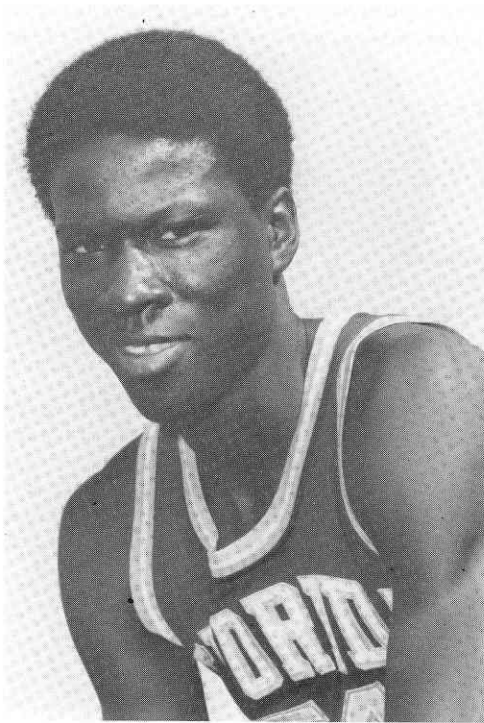
*When you do
business with us,
you get treated like
you're worth half
a million bucks.
Because to us,
you are.*



All Barnett Banks are members of FDIC.

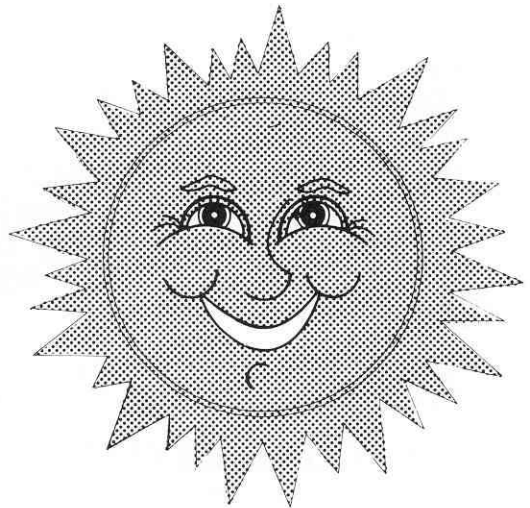
54

Pernell Tookes
Forward
Orlando, Fla.



Seminole Action

SUNNY plus



the modern way to manage your money!



SUN FEDERAL SAVINGS

DOWNTOWN • EASTSIDE • NORTHSIDE
NORTHWOOD MALL • WESTSIDE • VENICE

Sun Action is a registered service mark.



1978, F.A.A.

Not associated with Sun Banks of Florida Inc.



The schools available:

Akron, U. of	Iowa	St. Louis U.
Alabama	Iowa State	San Diego State U.
Arizona	Kansas	San Francisco, U. of
Arizona State	Kansas State	San Jose State U.
Arkansas	Kent State	Slippery Rock State
Arkansas State	Kentucky	South Carolina, U. of
Army	Louisiana State U.	South California
Auburn U.	Louisville U.	Southern Florida, U. of
Ball State	Marquette	Southern Methodist
Baylor	Maryland, U. of	Southern Mississippi,
Boise State	Memphis State	U. of
Boston College	Miami U. (Ohio)	Southern U. and
Boston U.	Miami, U. of (Florida)	A&M (Baton
Bowling Green	Michigan State	Rouge)
Brigham Young U.	Michigan, U. of	Southwest Texas
Brown U.	Minnesota	State U.
California State	(Minneapolis)	Southwestern
(Long Beach)	Mississippi	Louisiana, U. of
California,	Mississippi State	Stanford
U. of (Berkeley)	Morgan State	Syracuse U.
Central Michigan	Navy	Temple U.
Cincinnati	Nebraska	Tennessee, U. of
Citadel, The	New Mexico State	Texas
Clemson	New Mexico U.	Texas A&I
Colgate	New York U.	Texas A&M
Colorado State	(New York)	Texas Christian U.
Colorado U.	North Carolina, U. of	Texas Southern
Columbia	North Carolina State	Texas Tech
Connecticut	North Texas State	Toledo, U. of
Delaware, U. of	Northwest Louisiana	Tulane
Duke	Northwestern U.	UCLA
East Carolina U.	Notre Dame	U.S. Air Force
East Kentucky	Ohio State	Academy
East Michigan U.	Ohio U.	Utah
East Texas State	Oklahoma	Utah State U.
Florida	Oklahoma State U.	Vanderbilt U.
Florida State	Oregon	Villanova U.
Fresno State U.	Oregon State	Virginia, U. of
Furman	Pennsylvania State	VMI
Georgetown U.	Pennsylvania, U. of	VPI
Georgia	Pittsburgh	Wake Forest
Georgia Tech	Portland State	Washington State
Grambling State U.	Princeton	Washington, U. of
Harvard	Providence College	West Texas State
Hawaii,	Puerto Rico U.	West Virginia
U. of (Honolulu)	Purdue	Western Michigan U.
Houston	Rice	William & Mary,
Illinois	Richmond, U. of	College of
Illinois State U.	Rutgers	Wisconsin
Indiana	St. John's U.	Wyoming
Indiana State U.		Yale

Please send me _____ caps
at \$8.00 (postage paid) each for
(school name) _____
Size: ☐ Man's ☐ Woman's ☐ Child's
Enclosed is check or money order for
\$ _____
Get an official licensed Superstripe cap
for your favorite NFL or major league
baseball team for \$8.50 (postage paid)
each.
Please send:
NFL team _____ qty. _____
baseball team _____ qty. _____
Size: ☐ Man's ☐ Woman's ☐ Child's

AJD Cap Company
3301 Castlewood Road
Richmond, Virginia 23234

1977-78 Final Basketball Standings and Statistics

1977-78 Metro Basketball Standings

League Games				Off.		Def.			All Games			Off.		Def.		
	Won	Lost	Pct.	Avg.	Avg.	Won	Lost	Pct.	Avg.	Avg.	Won	Lost	Pct.	Avg.	Avg.	Def.
Florida State	11	1	.916	83.1	77.1	23	6	.793	83.3	72.1						
*Louisville	9	3	.750	84.7	75.6	23	6	.767	83.1	73.8						
Memphis State	7	5	.583	79.5	78.4	19	9	.679	82.0	79.3						
Cincinnati	6	6	.500	70.8	67.2	17	10	.630	69.8	65.7						
Georgia Tech	6	6	.500	67.8	66.7	15	12	.556	71.5	65.9						
St. Louis	2	10	.167	68.5	78.5	7	20	.259	70.1	76.5						
Tulane	1	11	.083	76.4	89.1	5	22	.185	79.2	88.3						

*Won Metro Conference post-season tournament championship.

Final 1977-78 Metro Statistics - All Games

Individual Scoring

Player	G	FG	FT	PTS	AVG.
Sam Drummer, GT	27	232	104	568	21.0
Harry Davis, FSU	28	271	112	546	19.5
Darrell Griffith, UL	30	240	78	558	18.6
James Bradley, MSU	28	212	88	512	18.3
Pat Cummings, UC	27	212	63	487	18.0
Rick Wilson, UL	30	218	98	534	17.8
Tico Brown, GT	27	182	71	435	16.1
Alvin Wright, MSU	28	180	73	433	15.5
Darrell Hollimon, MSU	28	173	69	415	14.8
Pierre Gaudin, TU	26	138	84	360	13.8
David Thompson, FSU	29	175	49	399	13.8
Mickey Dillard, FSU	29	153	92	398	13.7
Ricky Frazier, SLU	17	89	55	233	13.7
Carlos Zuniga, TU	27	156	53	365	13.5
Bob Miller, UC	27	149	60	358	13.3
Carl Johnson, SLU	27	148	60	356	13.2
Ricky Gallon, UL	30	160	72	392	13.1
Eugene Harris, FSU	28	153	33	339	12.1
Bobby Turner, UL	30	142	63	347	11.6
Lenny Horton, GT	27	107	80	294	10.9
Eric Dozier, TU	27	109	76	294	10.9
Larry Williams, UL	29	133	45	311	10.7
Steve Collier, UC	26	107	56	270	10.4
Marc Fletcher, TU	27	119	39	277	10.3
Rodney Lee, MSU	27	117	42	276	10.2

Rebounding

Player	G	NUM	AVG.
James Bradley, MSU	28	273	9.8
Dennis Isbell, MSU	28	262	9.4
Bob Miller, UC	27	229	8.5
Carl Johnson, SLU	27	227	8.3
Ricky Gallon, UL	30	246	8.2
Larry Williams, UL	29	226	7.8
Pat Cummings, UC	27	206	7.6
Lenny Horton, GT	27	202	7.5
Harry Davis, FSU	28	208	7.4
David Thompson, FSU	29	211	7.3

Assists

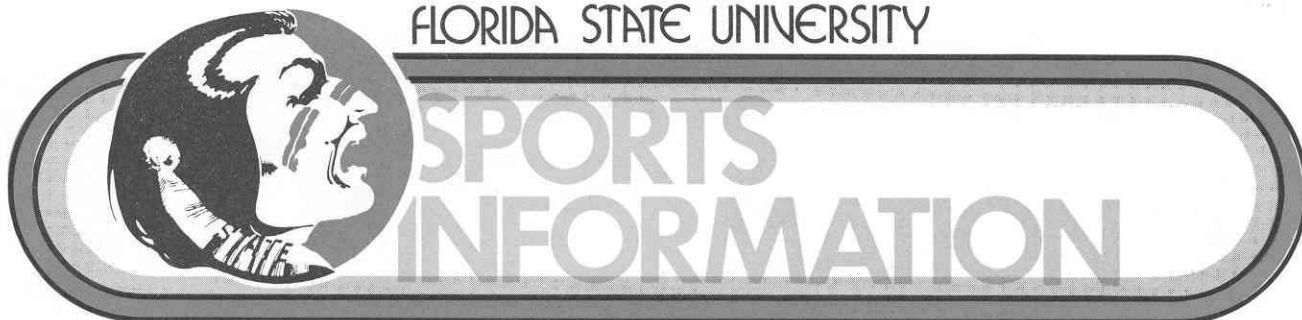
Player	G	NUM	AVG.
Tony Jackson, FSU	29	166	5.7
Alvin Wright, MSU	28	150	5.4
Rick Wilson, UL	30	134	4.5
Darrell Griffith, UL	30	105	3.5
Craig Harris, TU	27	94	3.5
Steve Collier, UC	26	82	3.2
James Bradley, MSU	28	77	2.8
Mark Alcorn, SLU	27	76	2.8
Marc Fletcher, TU	27	70	2.6
Eddie Lee, UC	19	69	3.6

Field Goal Percentage

Player	G	FGM	FGA	PCT
Pat Cummings, UC	27	212	330	.642
Murray Brown, FSU	28	61	98	.622
Lenny Horton, GT	27	107	175	.611
Harry Davis, FSU	28	217	376	.577
Bob Miller, UC	27	149	262	.569
Kris Anderson, FSU	29	93	167	.557
Eric Dozier, TU	27	109	199	.548
Clarence James, TU	25	64	117	.547
Mickey Dillard, FSU	29	153	282	.543
Bill Allgood, GT	27	93	173	.538

Free Throw Percentage

Player	G	FTM	FTA	PCT
Rick Wilson, UL	30	98	115	.852
Sam Drummer, GT	27	104	128	.813
Darrell Hollimon, MSU	28	69	85	.812
Pierre Gaudin, TU	26	84	104	.808
Steve Collier, UC	26	56	70	.800
Lenny Horton, GT	27	88	112	.786
Ricky Gallon, UL	30	72	93	.774
Gary Lorio, TU	26	58	75	.773
Mickey Dillard, FSU	29	92	119	.773



200 TULLY GYM • TALLAHASSEE FL 32306 • 904-644-4038

FLORIDA STATE (0-0) vs. ECKERD (0-0)
Tully Gym, Tallahassee, Fla.
November 27, 1978, 7:00 P.M.

THE TEAMS: Florida State, a member of the fledgling Metro Conference, opens its season with Eckerd College of St. Petersburg. Eckerd, a member of NCAA Division II, plays in the Sunshine State Conference.

THE COACHES: Tonight for the first time ever, Florida State will be coached by Joe Williams. Williams joined the Seminole staff last spring after successful stints at Jacksonville and Furman. In 14 years, he has compiled an overall coaching record of 234-148.

Georgia Southern graduate ('55) Jim Harley is in charge of the Eckerd program. This is his 22nd season as a college head coach. His cumulative record is 274-182.

THE OFFICIALS: A three-man crew has been assigned by the Metro Conference. Robert (Bob) Collins of Biloxi, Miss., will be the referee with Dave Dodge (Columbia, S.C.) and Don Rutledge (Windermere, Fla.) serving as the umpires. This will be the first game played by FSU where three officials are used. It will be standard procedure this season in the Metro Conference.

THE LINEUPS:

<u>FLORIDA STATE</u>	<u>POS.</u>	<u>ECKERD</u>
Tony Jackson (6-0)	G	Pete Anton (6-2)
Mickey Dillard (6-3)	G	Bob Kumpfeck (6-2)
Murray Brown (6-8)	C	Al Braithwaite (6-4)
Ed Chatman (6-3)	F	Brad Bolton (6-4)
Hank Mann (6-5)	F	Keither McLachlan (6-4)

THE SERIES: This is the first time Florida State has played Eckerd since the name of the college was changed from Florida Presbyterian. The Seminoles played Presbyterian in 1967 and won a 90-66 victory at Bayfront Center in St. Petersburg.

AROUND THE CONFERENCE: One other Metro Conference team opens its season tonight. Virginia Tech begins its initial season in the league when it hosts Samford in a non-conference test. The remainder of the league schedule this week: TUESDAY--Missouri Western at Memphis State and Roosevelt (Chicago) at Tulane; WEDNESDAY--Southern Methodist at Tulane and Southern Illinois-Carbondale at St. Louis; THURSDAY--Western Kentucky at Florida State and Cincinnati at Athletes in Action; FRIDAY--St. Louis at Wisconsin Invitational; SATURDAY--Memphis State at Jacksonville; Tennessee at Louisville; Illinois at Tulane, St. Louis at Wisconsin Invitational, VMI vs. Virginia Tech at Roanoke, Va., and Cincinnati at Long Beach State.

No.	FLORIDA STATE UNIV.	FG	FGA	FT	FTA	REB			PF	TP	A	TO	BLK	S	MIN
						O	D	T							
14	HANK MANN	6	11	0	0	3	3	6	2	12	0	2	0	0	18.5
30	ED CHATMAN	4	14	0	0	3	4	7	3	8	2	0	0	2	25
34	MURRAY BROWN	5	7	0	0	3	3	6	4	10	0	2	3	0	16.5
22	MICKEY DILLARD	9	13	5	6	1	2	3	3	23	2	3	0	3	27
23	TONY JACKSON	5	9	0	0	0	0	0	1	10	5	4	0	5	31
20	JAMES BOZEMAN	7	8	1	4	0	1	1	3	15	2	1	1	1	19
11	Bobby PARKS	3	4	2	2	1	0	1	3	8	2	1	0	1	13
33	DONNIE KUHLE	5	6	0	0	1	2	3	3	10	0	2	0	0	15.5
35	JERRY COX	1	1	2	2	2	0	2	0	4	1	3	0	1	8
54	PERNELL TOOKES	5	8	3	3	3	4	7	4	13	3	2	0	0	16
24	Greg Collinsworth	1	4	1	3	1	4	5	1	3	0	1	0	0	10.5

TEAM REBOUNDS (Included in Totals)												5																									
TOTALS										51		85		14		20		18		23		46		27		116		17		21		4		12		200	
										Game		FG 60%		FT 70%				4		Deadball Rebounds																	
PERCENTAGES:										1st Half		FG 53%		FT 57%																							
										2nd Half		FG 66%		FT 75%																							

No.	ECKERD	FG	FGA	FT	FTA	REB			PF	TP	A	TO	BLK	S	MIN
						O	D	T							
25	KUMPFBECK, BOB	0	1	0	2	0	1	1	0	0	0	4	0	0	13
31	ANTON, PETE	3	7	3	4	0	1	1	5	9	0	1	0	1	21
45	BOLTON, BRAD	1	10	6	6	2	6	8	3	8	1	5	0	0	34.5
51	BRAITHWAITE, AL	3	8	2	2	1	2	3	5	8	0	1	0	0	26
43	McLACHLAN, KEITH	7	14	12	14	2	3	5	4	26	0	5	0	0	32
33	BOHATCH, PETE	3	7	1	1	1	0	1	1	7	0	0	0	0	10
15	HAIR, VERNON	1	4	0	1	0	0	0	1	2	0	3	0	0	19.5
21	WELCH, GREGG	0	1	2	2	0	0	0	1	2	0	3	0	0	9.5
12	BUTTERFIELD, TERRY	0	0	0	0	0	0	0	0	0	0	0	0	1	2
41	COX, DENNIS	1	4	1	2	1	1	2	0	3	0	1	0	0	7
11	LAYER, DALE	2	3	2	2	1	2	3	2	6	1	4	0	0	21
35	PERKINS, Bill	0	0	0	0	0	0	0	0	0	0	0	0	0	2
23	SEQUERTH, RICK	0	0	0	0	0	0	0	0	0	0	0	0	0	0
10	WINGATE, MIKE	0	1	0	0	0	0	0	0	0	0	0	0	0	2.5

TEAM REBOUNDS (Included in Totals)												5							
TOTALS					21	60	29	36	8	16	29	22	71	2	27	0	2	200	
					Game FG 35%		FT 80%				7	Deadball Rebounds							
PERCENTAGES:					1st Half FG 32%		FT 84%												
					2nd Half FG 37%		FT 76%												

OFFICIALS: _____		SCORE BY PERIODS		1st H.	2nd H.	OT	OT	FINAL
Technical Fouls: _____		FLORIDA STATE		50	66			116
Notes: _____		ECKERD		30	41			71

TIME	FLORIDA STATE	SCORE	ECKERD COLLEGE
1948	Mann jumper	2 0	
1905	Brown tip in	4 0	
1845	Brown pfl	4 0	Kumpfeck misses two
1830	Chatman short jumper	6 0	
1800	Dillard tip in	8 0	
1712		8 0	McLacklan pfl
1622		8 0	TIME OUT
1525	Dillard jumper	10 0	
1514	Jackson steal & layup	12 0	
1452	Mann pfl	12 0	Layer in for Kumpfeck
		12 2	McLachlan makes 2 of 2
1446	Mann pf2	12 2	
1433	Dillard pfl	12 2	
1419	Chatman pfl	12 4	McLachlan makes 2 of 2
1410	Jackson long jumper	14	
1357		14 6	Braitwait jumper
1346	Chatman jumper	16 6	
1328		16 8	McLachlan jumper
1308			Welch for Anton TIMEOUT
1255	Dillard dunk	18 8	
1224	Brown layup	20 8	
1207	Brown pf2	20 10	McLachlan makes 2 of 2
1143		20 12	Layer jumper
1135	Jackson long jumper	22 12	
1121		22 12	Braitwaite pfl
	Bozeman for Mann		Anton for Braitwaite
1105	Brown jumper	24 12	
1040	Bozeman jumper	26 12	
1012	Parks Jackson	26 12	Hair for McLachlan
		26 12	Sequerth for Welch
			Cox for Layer
958	Brown pf3		
	Kuhl for Brown	26 12	
948	Parks layup	28 12	
932	Dillard makes 2 of 2	30 12	Anton pfl
920		30 14	Cox jumper
912	Parks layup	32 14	
902	Kuhl pfl	32 16	Anton makes 2 of 2
	Jackson for Chatman		
853	Kuhl layup	34 16	
829	Bozeman makes 1 of 2	35 16	Anton pf2
816	Tookes for Bozeman	35 16	Layer for Sequerth
816		35 16	McLachlan for Anton
740	Dillard jumper	37 16	
725		37 16	Layer pfl
			Braitwaite for Cox
643	Jackson jumper	39 16	
625		39 16	Braitwaite pf2
		39 16	TIME OUT
534	Tookes layup	41 16	Bolton pfl
	Tookes 1 of 1	42 16	
	Bozeman for Kuhl		
	Chatman for Dillard	42 16	
508	Bozeman pfl	42 18	McLachlan makes 2 of 2
445	Tookes layup	44 18	
410		44 20	Hair jumper
402	Jackson pfl	44 20	
354	Parks pfl	44 22	Layer makes 2 of 1+
			Kumpfeck for Layer
340	Bozeman misses 1st of 1+	22	Braitwaite pf3
335	Tookes	46 22	
315		46 22	Collingsworth for Chatman
			Cox for Parks
304		46 24	McLachlan layup
253	Tookes pfl	46 26	Bolton makes 2 of 1+
228	Bozeman long jumper	48 26	
156	Collingsworth misses 1+	48 26	Bolton pf2
115		48 26	Anton for McLachlan
32	Tookes pf2	48 28	Bolton makes 2 of 1+
19		48 30	Anton breakaway layup
04	Tookes layup & pf3	50 30	Hair misses 1+
FIRST HALF FLORIDA STATE 50		ECKERD COLLEGE 30	

OFFICIAL METRO CONFERENCE
BASKETBALL BOX SCORE

Date Nov. 27, 1978 Site Tallahassee, FLA.
Attendance _____

No.	FLORIDA STATE	FG	FGA	FT	FTA	REB			PF	TP	A	TO	BLK	S	MIN
						O	D	T							
14	HANK MANN	1	3	0	0			3	2	2					
30	ED CHATMAN	2	11	0	0			5	1	4					
34	MURRAY BROWN	3	5	0	0			3	3	6					
22	MICKEY DILLARD	4	7	2	2			2	1	10					
23	TONY JACKSON	4	5	0	0			0	1	8					
20	JAMES BOZEMAN	2	2	1	3			0	1	5					
11	Bobby PARKS	2	2	0	0			0	1	4					
33	DONNIE KUHLE	1	1	0	0			1	1	2					
35	JERRY COX	0	0	0	0			1	0	0					
54	PERNELL TOOKES	4	6	1	1			5	3	9					
24	GREG COLLINSWORTHS	0	1	0	1			2	0	0					

TEAM REBOUNDS (Included in Totals)						3									
TOTALS						23	43	4	7	24	50	4	13	2	7

Game FG FT 2 Deadball Rebounds
PERCENTAGES: 1st Half FG 53% FT 57%
2nd Half FG FT

No.	ECKERD	FG	FGA	FT	FTA	REB			PF	TP	A	TO	BLK	S	MIN
						O	D	T							
25	KUMPFBECK, BOB	0	0	0	2			1	0	0					
31	ANTON, PETE	1	3	2	2			0	2	4					
45	BOLTON, BRAD	0	1	4	4			2	2	4					
51	BRAITHWAITE, AL	1	4	0	0			1	3	2					
43	McLACHLAN, KEITH	2	7	8	8			4	1	12					
33	BOHATCH, PETE	0	0	0	0			0	0	0					
15	HAIR, VERNON	1	3	0	1			0	0	2					
21	WELCH, GREGG	0	0	0	0			0	0	0					
12	BUTTERFIELD, TERRY	0	0	0	0			0	0	0					
41	COX, DENNIS	1	3	0	0			1	0	2					
11	LAYER, DALE	1	1	2	2			1	1	4					
35	PERKINS, BILL														
23	SEQUERTH, RICK														
10	WINGATE, MIKE														

TEAM REBOUNDS (Included in Totals)						1									
TOTALS						7	22	16	19	11	9	30	0	15	0

Game FG FT 3 Deadball Rebounds
PERCENTAGES: 1st Half FG 32% FT 84%
2nd Half FG FT

OFFICIALS: _____	SCORE BY PERIODS		1st H.	2nd H.	OT	OT	FINAL
Technical Fouls: _____	FLORIDA STATE		50				
Notes: _____	ECKERD		30				

TIME	FLORIDA STATE	SCORE	ECKERD COLLEGE
1957	Dillard jumper	52 30	
1909	Dillard layup	54 30	
1812	Dillard jumper	56 30	
1723	Dillard makes 2 of 2	58 30	Anton pf3
1710		58 30	Bolton layup
1656	Brown layup	60 32	
1638	Mann follow-up tip in	62 32	
1620		62 32	McLachlan pf2
1558	Brown dunk	64 32	
1539	Brown pf4	64 32	
1525		64 34	Layer jumper
1516	Chatman layup	66 34	
1459		66 36	Anton layup
1448	Kuhl for Brown	66 36	Anton pf4
1440	Mann long jumper	68 36	
1425	Dillard pf2	68 38	McLachlan makes 2 of 2
1413	Chatman pf2	68 40	McLachlan makes 2 of 2
			Braitwaite for Bolton
1357		68 40	Hair pfl
1356	Kuhl tip in	70 40	
1324		70 42	Braitwaite spin-around layup
1315	Kuhl pf2 charging	70 42	
1251	Chatman pf3	70 42	
1244		70 44	McLachlan short jumper
1232	Mann follow-up tip in	72 44	
1217	Mann layup from Chatman	74 44	
1145		74 46	McLachlan layup
1132	Dillard spin-around layup	76 46	
1057	Mann long jumper	78 46	
1036		78 46	Braitwaite pf4
			Bolton for McLachlan
			Kumpfeck for Hair
			Bonatch for Braitwaite
1020	Jackson long jumper	80 46	
941	Dillard long jumper	82 46	
928	Dillard pf3	82 48	Bonatch short jumper
903		82 49	Bonatch makes 1 of 1
903	Chatman dunk	84 49	
850	Parks for Jackson	84 49	Layer pf2
	Tookes for Chatman		
	Bozeman for Mann		
840	Bozeman layup	86 49	
823	Kuhl pf3	86 49	
809	Tookes layup	88 49	
751		88 51	Bolton layup
744	Brown for Kuhl	88 51	Bolton pf3
	Dillard makes 1 of 2	89 51	Welch for Layer
	Collingsworth for Dillard	89 51	
722	Parks layup	91 51	
656	Bozeman pf2	91 53	Bolton makes 2 of 2
	Kuhl for Brown		
650	Bozeman long jumper	93 53	
635		93 55	Bonatch layup
610	Parks makes 2 of 2	95 55	Welch pfl
			Cox for Kumpfeck
558		95 57	Braitwaite
536	Kuhl layup	97 57	
510			McLachlan for Bonatch
501	Kuhl hook shot	99 57	
452	Collingsworth pfl	99 58	Cox makes 1 of 2
	Cox for Kuhl		
445	Bozeman jumper	101 58	
440		101 58	McLachlan charge pf3
430	Tookes pf4	101 59	Anton makes 1 of 2
412	Bozeman short jumper	103 59	
404	Parks pf2	103 61	Braitwaite makes 2 of 2
338		103 63	McLachlan layup
310	Collingsworth layup	105 63	
308	Bozeman misses 1st of 1+	105 63	Braitwaite pf5
			Bolton for Braitwaite

SECOND HALF

TIME	FLORIDA STATE	SCORE	ECKERD COLLEGE
246		105 65	Anton jumper
230	Cox pf 1	105 67	Welch makes 2 of 2
219	Bozeman jumper	107 67	
208	KUHL FOR Parks	107 67	Anton pf 5
	Cox makes 2 of 2	109 67	Bohatch for Anton
159	Bozeman pf3	109 67	Butterfield for Welch
		109 67	McLachlan misses 2 of 2
147			
140	Cox long jumper	111 67	
129		111 69	Bohatch long jumper
105	Tookes makes 2 of 2	113 69	Bohatch pfl
55		113 71	McLachlan layup
25	Collingsworth makes 1 of 1+	114 71	McLachlan pf4
14		114 71	Cox for McLachlan
07	Bozeman long jumper	116 71	

END OF SECOND HALF: FLORIDA STATE 116 ECKERD COLLEGE 71