

LEA SCORE: \*\*\* FINAL \*\*\* Date: 01-11-80 Site: Cincinnati, O. Attendance: 10,044  
 Team: FLORIDA STATE

NO.	NAME	TOTAL FG		3-POINT		FT		REB		PF	A	TO	BLK	C	TIME
		FG	FBA	FG	FBA	FT	FBA	D	REB						
31	WHITE, David	1	1	0	0	0	0	2	2	2	0	1	0	0	13:14
45	POLITE, Michael	5	8	0	0	1	1	4	4	11	1	4	0	2	32:10
30	THOMAS, Irving	7	16	0	0	7	7	3	10	4	1	1	0	0	37:52
04	GRAHAM, Chuck	3	7	2	4	2	2	4	1	10	0	2	0	0	26:20
22	WAYES, Tharon	4	17	1	5	8	10	3	5	17	5	7	0	1	26:38
20	BOYD, Aubry	0	2	0	1	2	2	1	3	1	2	3	0	1	18:46
11	HANDS, Lorenzo	0	2	0	1	2	2	1	1	2	0	0	0	1	10:17
10	CORELAND, Chad	1	1	0	0	0	1	1	1	0	0	3	0	1	10:59
34	DOBARD, Rodney	1	1	0	0	0	1	0	1	0	0	0	0	0	7:19
23	MILLER, Son	0	0	0	0	0	0	0	0	0	0	0	0	1	4:26
TEAM		22	75	3	12	15	21	14	30	18	3	21	0	7	200
TOTALS		22	75	3	12	15	21	14	30	18	3	21	0	7	200

Percentages: Game Period 1 Period 2  
 FG 22/55 40.0% 3-PT. 3/12 25.0% FT 11/27 40.7%  
 REB 15/29 51.7% Deadball Rebounds 3/9 33.3%

Team: CINCINNATI

NO.	NAME	TOTAL FG		3-POINT		FT		REB		PF	A	TO	BLK	C	TIME
		FG	FBA	FG	FBA	FT	FBA	D	REB						
20	ROBINSON, Levert	7	15	0	0	0	0	3	6	3	14	2	0	0	31:52
25	BANKS, Louis	8	15	0	3	3	4	1	4	3	19	3	0	1	37:31
42	STARKS, Keith	6	10	0	0	3	4	2	4	5	15	1	1	2	33:42
04	TATE, Andre	5	6	0	0	8	12	1	3	2	18	5	0	2	20:14
32	SANDERS, Steve	3	6	0	3	2	2	1	5	2	8	2	0	2	21:09
10	GIBSON, Tarrance	0	0	0	0	0	0	0	0	0	0	0	0	0	1:25
40	WARG, B. J.	2	3	0	0	0	0	2	2	4	4	0	0	0	14:53
24	JOYNER, Michael	1	2	0	0	2	2	0	0	3	4	1	0	0	8:51
22	HUGHES, Brady	0	0	0	0	0	0	0	0	0	0	0	0	0	0:37
30	WEIGEL, Rick	0	0	0	0	0	0	0	0	0	0	0	0	0	0:32
23	WILLIAMS, Orlando	0	1	0	0	0	0	0	1	0	0	0	0	0	0:32
11	WHITEMAN, Todd	0	0	0	0	0	0	0	1	0	0	0	0	0	0:21
34	NELSON, Lindsey	0	0	0	0	0	0	0	0	0	0	0	0	0	0:21
TEAM		22	58	0	5	18	24	10	20	30	22	14	1	7	200
TOTALS		22	58	0	5	18	24	10	20	30	22	14	1	7	200

Percentages: Game Period 1 Period 2  
 FG 32/58 55.2% 3-PT. 0/5 0.0% FT 16/24 66.7%  
 REB 16/24 66.7% Deadball Rebounds 0/0 0.0%

OFFICIALS: Bobby Glah, David Hair, Mike Smith

Technicals:  
 CINCINNATI Bench - 11  
 WAYES, Tharon - 11  
 Produced by the University of Cincinnati Stat Dwe with FINAL III - a Product of LEKIMIN SPORTS™

SCORE BY PERIODS  
 FLORIDA STATE 29 33 = 62  
 CINCINNATI 33 17 = 50

FLORIDA STATE "SEAWALKERS" vs CINCINNATI "BEARCATS"  
1st Half Play by Play

Top left of page shows time of play and score. Middle of page shows play by play. Right side shows time of play and score.

Player Team  
**REDFERN, Levert, REXIS, Louis, STARKS, Keith, YATE, Andre, SANDERS, Steve**  
 Ball to REDFERN

Player Team  
**FLORIDA STATE**  
**WHITE, David, MILLIE, Michael, TERRY, Bruce, HARRIS, George, HARRIS, Bruce**

1-1 100% 1-1 Foul on REXIS, Louis  
 Sub In: SANDERS, Steve  
 Sub In: SANDERS, Steve

1-1 100% 1-1 Foul on WHITE, David  
 Sub In: HARRIS, George  
 Sub In: HARRIS, George

1-2 50.0% 1-2 50.0% STARKS, Keith 2 Free Throws - made 1st missed 2nd  
 1-1 100% 1-3 33.3% 6 ft Left Side Turnaround by STARKS, Keith  
 Assist by SANDERS, Steve  
 1-2 50.0% 2-5 40.0% Layup by REDFERN, Levert  
 Assist by SANDERS, Louis

1-1 100% 1-1 Foul on WHITE, David  
 Sub In: HARRIS, George  
 Sub In: HARRIS, George

1-1 100% 3-9 33.3% Foul on YATE, Andre  
 Sub In: SANDERS, Steve  
 Sub In: SANDERS, Steve  
 1-2 50.0% 2-4 50.0% YATE, Andre 2 Free Throws - made 1st missed 2nd  
 Sub In: SANDERS, Levert

1-1 100% 1-1 Foul on WHITE, David  
 Sub In: HARRIS, George  
 Sub In: HARRIS, George

1-3 33.3% 4-12 33.3% Bank Follow by SANDERS, Steve  
 Sub In: REDFERN, Levert  
 Sub In: SANDERS, Keith  
 2-4 50.0% 3-5 50.0% YATE, Andre 2 Free Throws - made 1st missed 2nd

1-1 100% 1-1 Foul on WHITE, David  
 Sub In: HARRIS, George  
 Sub In: HARRIS, George

2-5 40.0% 5-13 38.4% 4 ft Lane Drive by REDFERN, Levert  
 Assist by SANDERS, Steve  
 Foul on REDFERN, Levert  
 Sub In: SANDERS, Keith  
 Sub In: SANDERS, Keith  
 3-6 50.0% 6-15 40.0% Follower Tip by REDFERN, Levert

1-1 100% 1-1 Foul on WHITE, David  
 Sub In: HARRIS, George  
 Sub In: HARRIS, George

1-1 100% 7-15 46.7% 5 ft Lane Turnaround by YATE, Andre  
 Sub In: SANDERS, Michael  
 Sub In: SANDERS, Steve  
 2-4 50.0% 8-20 40.0% 4 ft Lane Follow by STARKS, Keith  
 Foul on STARKS, Keith  
 1-1 100% 9-21 42.9% 6 ft Right Base Line Jump shot by SANDERS, Michael  
 Sub In: SANDERS, Michael  
 Sub In: SANDERS, Steve

1-1 100% 1-1 Foul on WHITE, David  
 Sub In: HARRIS, George  
 Sub In: HARRIS, George

1st Half Play by Play (continued)

PAGE : 2

Player	Team	CINCINNATI	FLORIDA STATE	Time	Score	Player	Team
1	4	Foul on JOINER, Michael		1 7:08			
4-8	50.0%	10-23 43.4%	16 ft Right Base Line Jump shot by ROBINSON, Levert	1 7:08			
2-2	100%	11-24 45.8%	Layup Off Fast Break by TATE, Andre	1 6:46	#23-15		
1	4	Assist by ROBINSON, Levert		1 6:26	#23-15		
		REB: 15 A: 4 B.L.K: 0 T.D: 4 P.F: 4	REB: 15 A: 4 B.L.K: 0 T.D: 10 P.F: 5	1 6:24			
		S: 4 FT: 3-6 50.0% FG: 11-24 45.8%	S: 1 FT: 1-1 100% FG: 7-20 35.0%	OUT			
1	5	Foul on TATE, Andre		1 6:24			
2	6	Sub In: SWEENEY, Steve Out: JOINER, Michael		1 6:24			
2	7	Foul on ROBINSON, Levert		1 5:57			
		Sub In: STARKS, Keith Out: ROBINSON, Levert		1 5:30			
		Player-Control Foul on BOWNS, Louis		1 5:30			
1-5	20.0%	12-26 46.1%	Sub In: JOINER, Michael Out: SWEENEY, Steve	1 5:12			
		17 ft Right Angle Jump shot by BOWNS, Louis		1 4:46			
3-5	60.0%	13-27 48.1%		1 4:46			
1	8	Foul on WARD, R. J.		1 4:04	#27-22		
2-5	33.3%	14-38 36.8%	12 ft Lane Jump shot by STARKS, Keith	1 3:45			
1	5	6 ft Lane Turnaround by BOWNS, Louis		1 3:43	#29-22		
2	9	Assist by TATE, Andre		1 2:55			
3	10	Foul on JOINER, Michael		1 2:55			
		Foul on BOWNS, Louis		1 2:39	#31-22		
		Sub In: HUGHES, Brady Out: BOWNS, Louis		1 2:00			
4-7	57.1%	15-32 46.8%	Dunk Off Fast Break by STARKS, Keith	1 1:28			
1	6	Assist by HUGHES, Brady		1 0:56			
2	11	Foul on WARD, R. J.		1 0:56			
		Sub In: ROBINSON, Levert Out: HUGHES, Brady		1 0:30			
5-9	55.5%	16-34 47.0%	Follow-Finger Roll by ROBINSON, Levert	1 0:30			
3	12	Foul on WARD, R. J.		1 0:16	#35-27		
				1 0:01			
				1 0:01			

Sub In: DUPELAND, Chad Out: BROWN, Chuck

Sub In: WHITE, David Out: PELITE, Michael

Sub In: BROWN, Chuck Out: BOWNS, Louis

Sub In: PELITE, Michael Out: WHITE, David

BROWN, Chuck 1 & Bonus - missed 1st

DUPELAND, Chad 1 & Bonus - missed 1st

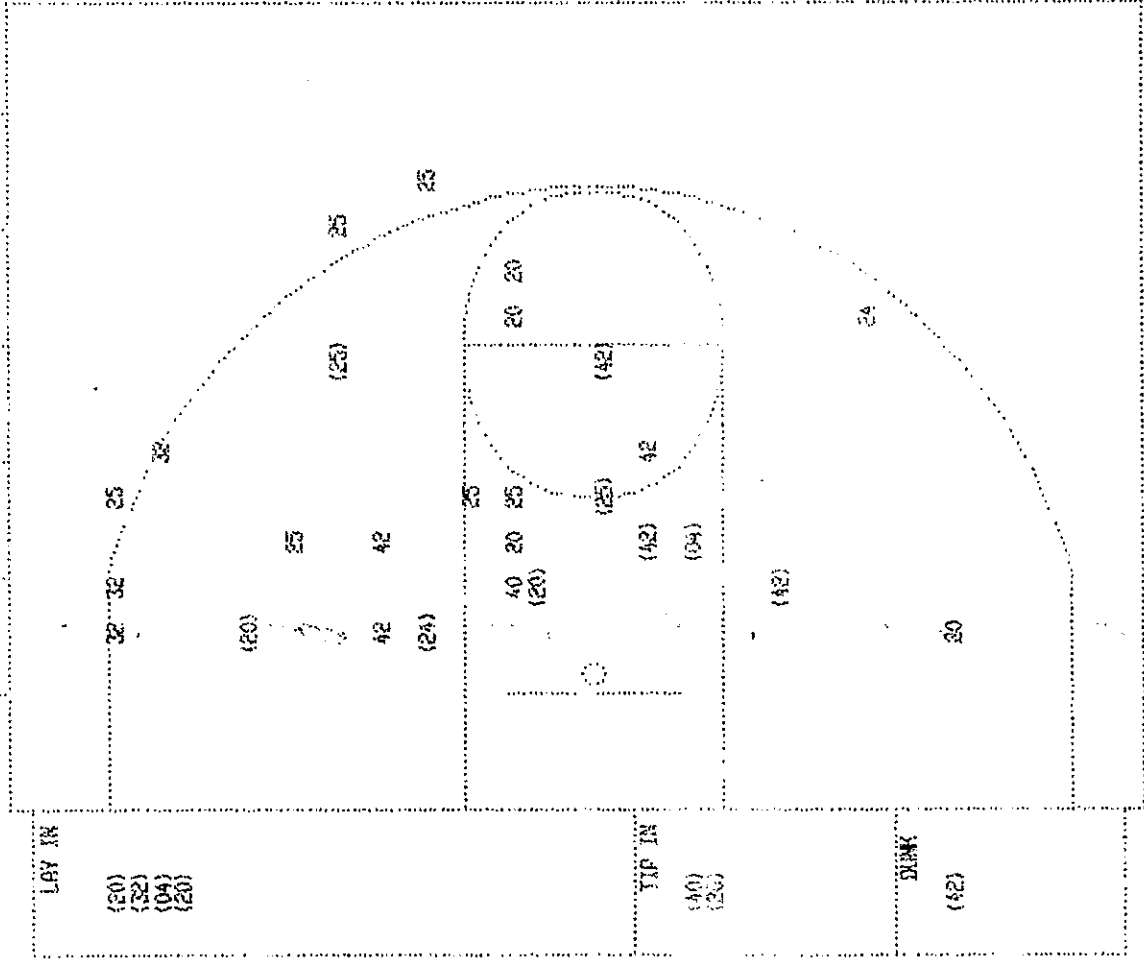
14 ft Right Angle Jump shot by THOMAS, Irving

MYLES, Tharon 1 & Bonus - made both

Sub In: DEBORD, Rodney Out: THOMAS, Irving

MYLES, Tharon 2 Free Throws - missed 1st made 2nd

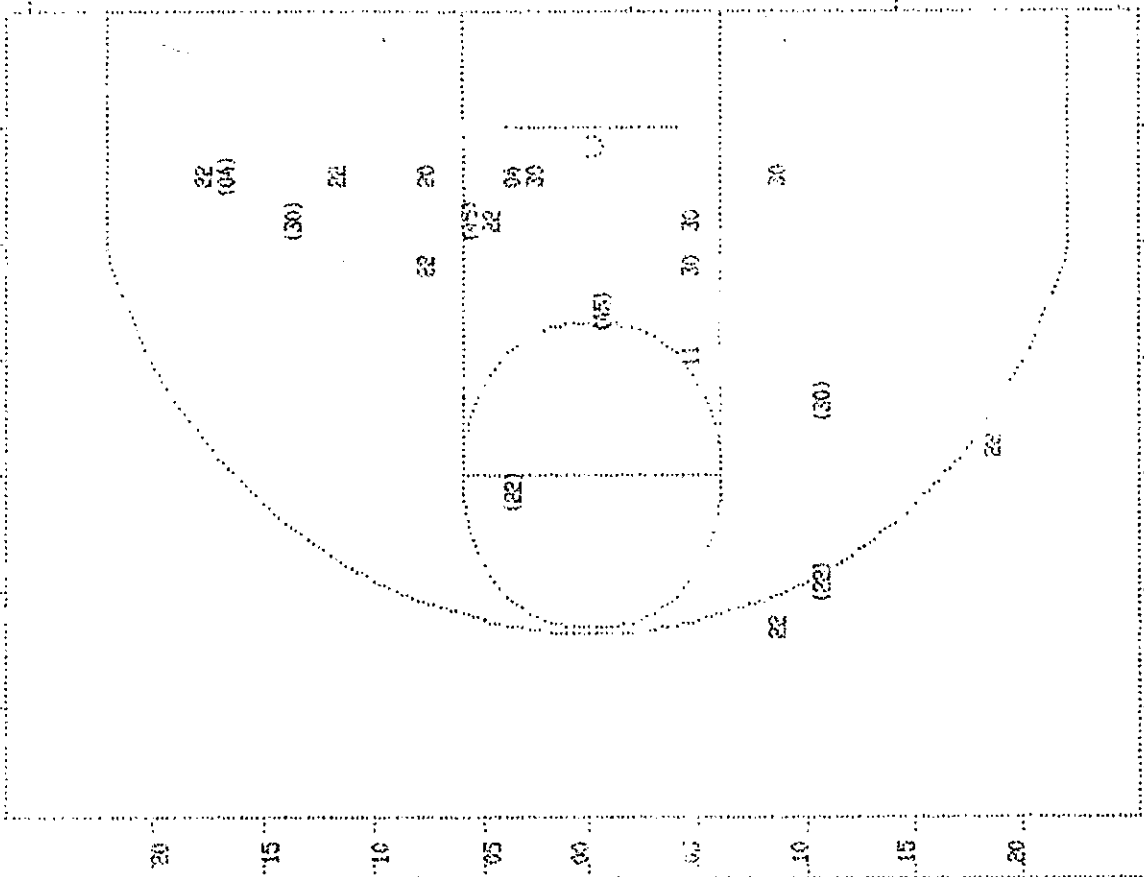
MYLES, Tharon 2 Free Throws - made both



CINCINNATI

Player	Player	Player
23 - BORNISON, I.	5 / 9	55.5%
25 - BOWEN, L. OUI	2 / 8	25.0%
42 - STARRS, M. E.	4 / 7	57.1%
04 - TATE, G. D.	2 / 2	100.0%
32 - SPAIN, S.	1 / 4	25.0%
Layups	1-9 Ft	10-15 Ft
7 / 7	5 / 11	1 / 5
100.0%	50.5%	20.0%
Over 15 Ft 3 Pointers Total		
	2 / 5	40.0%
	1 / 2	50.0%
	15 / 34	47.1%

FINIX III - A Product of LEXICON SPORTS  
 (c) Copyright Davies & Associates, Inc.  
 All Rights Reserved



FLORIDA STATE

Player	Player	Player
31 - WHITE, D. E. V.	1 / 1	100.0%
45 - WHITE, M. I. C.	4 / 4	100.0%
20 - THOMPSON, T. R. Y.	2 / 7	28.5%
04 - THOMPSON, C. H. U.	1 / 3	33.3%
22 - WYLES, T. H. E. R.	3 / 10	30.0%
Layups	1-9 Ft	10-15 Ft
4 / 7	2 / 11	3 / 4
57.1%	18.2%	75.0%
Over 15 Ft 3 Pointers Total		
	1 / 3	33.3%
	1 / 2	50.0%
	11 / 27	40.7%

FINIX III - A Product of LEXICON SPORTS  
 (c) Copyright Davies & Associates, Inc.  
 All Rights Reserved

BOX SCORE: \* OFFICIAL FIRST HALF \* Date: 01-11-90 Site: Cincinnati, O. Attendance:

NO.	NAME	3-POINT		FT	FTA	REB			PF	TP	TO	BLK	S	TIME
		FG	FSA			U	D	T						
31	WHITE, David	0	0	0	0	0	0	0	0	0	0	0	0	17:00
45	POLITE, Michael	4	4	1	1	0	3	0	0	0	0	0	0	10:00
30	THOMAS, Irving	2	7	0	0	4	3	7	2	4	0	0	0	15:07
04	BRADAM, Chuck	1	3	0	1	2	2	4	1	2	0	0	0	20:00
22	MAYES, Tharch	3	10	5	5	0	2	2	1	12	0	0	0	4:04
20	BOYD, Aubry	0	1	0	0	0	0	0	0	0	0	0	1	6:23
11	HANDS, Lorenzo	0	1	0	0	1	0	1	0	0	0	0	1	7:08
10	COLELAND, Chad	0	0	0	1	0	0	0	0	0	0	0	0	0:56
34	DOBARD, Rodney	0	0	0	0	0	0	0	0	0	0	0	0	
TEAM TOTALS		13	27	1	3	5	7	12	15	5	29	0	2	100
Percentages:		FG		FG		3-PT.		Deadball		Rebounds		FT		
		11/27		40.7%		3-PT.		1/3		33.3%		6/9		66.7%
		11/27		40.7%				1/3		33.3%		6/9		66.7%

NO.	NAME	3-POINT		FT	FTA	REB			PF	TP	TO	BLK	S	TIME
		FG	FSA			U	D	T						
20	ROBINSON, Levert	5	9	0	0	3	2	2	2	10	1	0	0	13:38
25	SANKS, Lewis	2	9	0	0	0	2	3	3	4	1	0	1	19:03
42	STARKS, Keith	4	7	1	2	1	1	2	1	9	0	0	2	19:27
04	TATE, Andre	2	2	2	4	1	2	3	1	6	3	0	1	18:48
32	SANDERS, Steve	1	4	0	0	1	2	3	0	2	1	0	0	12:02
10	GIBSON, Terrance	0	0	0	0	0	0	0	0	0	0	0	0	1:14
40	WARD, B. J.	1	2	0	0	2	0	3	3	2	0	0	0	9:26
24	JOINER, Michael	1	2	0	0	0	0	0	2	2	0	0	0	7:58
22	HUGHES, Brady	0	0	0	0	0	0	0	0	0	0	0	0	0:26
TEAM TOTALS		16	34	3	5	5	10	18	12	35	5	0	4	100
Percentages:		FG		FG		3-PT.		Deadball		Rebounds		FT		
		16/34		47.1%		3-PT.		0/6		0.0%		3/5		60.0%
		16/34		47.1%				0/6		0.0%		3/5		60.0%

Team: CINCINNATI  
 OFFICIALS: Bobby Ojah, David Bair, Mike Smith  
 Technicals: None

Produced by the University of Cincinnati Stat Crew with FMSL III - a Product of LEXICON SPORTS™

Player	Years	CINCINNATI	Tip	Score	FLORIDA STATE	Player	Years
ROBINSON, Levert, BARKS, Louis, STARKS, Keith, TATE, Andre, SANDERS, Steve		Ball to ROBINSON			WHITE, David, POLITE, Michael, THOMAS, Irving, GIBSON, Chuck, MAYES, Tharon		
3	1	Foul on ROBINSON, Levert	2 19:28				
	1	Technical foul on CINCINNATI BENCH	2 19:28				
3-3	33.3%	17-36 47.2%	2 18:55	35-30*	MAYES, Tharon 2 Free Throws - missed 1st made 2nd	5-8	75.0%
		9 ft Lane Jump shot by BARKS, Louis	2 18:55	37-30	10 ft Left Base Line Jump shot by THOMAS, Irving	3-8	37.5%
			2 18:46	37-32*	Assist by MAYES, Tharon		
			2 17:51				
			2 17:55	37-35*	3 pt 21 ft Right Side Jump shot by GIBSON, Chuck	2-4	50.0%
			2 17:10	39-35	Foul on WHITE, David		
			2 16:48	41-35			
			2 16:41		Foul on POLITE, Michael		
			2 16:14		Foul on POLITE, Michael		
			2 16:01	43-35			
4-11	35.3%	19-40 47.5%	2 15:48		REP: 20 A: 6 BLK: 0 TO: 13 PF: 3		
		4 ft Lane Driving by BARKS, Louis	5: 4 FT: 5-8 62.5% FB: 19-40 47.5%		S: 3 FT: 7-11 63.6% FG: 13-33 33.3%		
5-12	50.0%	20-42 47.6%	2 15:15		Foul on POLITE, Michael		
		9 ft Left Side Jump shot by ROBINSON, Levert	2 15:15	45-35	Sub In: BOYD, Aubry Out: WHITE, David	3	4
5-9	55.5%	21-43 48.8%	2 14:23		Player Control Foul on POLITE, Michael		
		13 ft Right Angle Jump shot by STARKS, Keith	2 14:23	47-35	Sub In: DUBARD, Rodney Out: POLITE, Michael	4	5
1	3	Foul on SANDERS, Steve	2 13:48	47-37*	4 ft Lane Follow by DUBARD, Rodney	1-1	100%
7-13	53.8%	22-44 50.0%	2 13:48		DUBARD, Rodney 1 Free Throw - missed	0-1	00.0%
		15 ft Right Side Jump shot by ROBINSON, Levert	2 13:28	49-37			
		Assist by TATE, Andre	2 13:15	49-39*	Bunk by THOMAS, Irving		
		Sub In: WARD, S.J. Out: STARKS, Keith	2 13:15	51-39	Assist by MAYES, Tharon	4-11	36.3%
5-12	41.6%	23-45 50.0%	2 12:54				
4-4	100%	24-47 51.0%	2 12:54	53-39	REP: 21 A: 7 BLK: 0 TO: 15 PF: 5		
		Follow Layup by BARKS, Louis	2 12:32	53-39	S: 3 FT: 7-12 58.3% FG: 15-35 41.6%		
		Reverse Lay Up Off Fast Break by TATE, Andre	2 12:28		Sub In: COPELAND, Chad Out: GIBSON, Chuck		
		Assist by SANDERS, Steve	2 12:15	53-41*	16 ft Left Base Line Jump shot by COPELAND, Chad	1-1	100%
		Foul on SANDERS, Steve	2 12:28	55-41	Assist by BOYD, Aubry		
2-3	66.6%	25-48 52.0%	2 11:33				
		17 ft Left Angle Jump shot by WARD, S.J.	2 11:16	55-43*	5 ft Lane Driving by MAYES, Tharon	4-14	28.5%
			2 11:02	56-43	Foul on MAYES, Tharon		
			2 11:02	56-43	Technical foul on MAYES, Tharon		
1-2	50.0%	6-10 60.0%	2 11:02		Sub In: HARDS, Lorenzo Out: MAYES, Tharon		
		BARKS, Louis 2 Free Throws - missed 1st made 2nd	2 9:47	58-43			
2-5	40.0%	25-50 52.0%	2 9:14		Sub In: POLITE, Michael Out: BOYD, Aubry		
		10 ft Left Side Turnaround by SANDERS, Steve	2 9:14		Sub In: MAYES, Tharon Out: DUBARD, Rodney		
		Assist by BARKS, Louis					

Player	Team	CINCINNATI	FLORIDA STATE	Player	Team
3	5	Sub In: JOINER, Michael Out: SWAGERS, Steve Foul on JOINER, Michael Sub In: WARD, R. J. Out: ROBINSON, Levert Sub In: SWAGERS, Steve Out: JOINER, Michael	Sub In: ROYD, Aubry Out: HANDE, Lorenzo	2-2	100% 9-14 64.3%
3	6	Foul on STARKS, Keith	Sub In: MILLER, Ron Out: CIPOLANO, Chad Sub In: ROYD, Aubry 1 & Bonus - made both	5-13	38.4% 19-43 41.8%
3-4	75.0%	8-12 66.5% Sub In: ROBINSON, Levert Out: WARD, R. J. SWAGERS, Louis 1 & Bonus - made both	Sub In: ROYD, Aubry 2 ft Lane Follow by THOMAS, Irving Foul on ROYD, Aubry	2-3	100% 9-14 64.3%
5-6	83.3%	27-51 52.5% Finger Roll Off Fast Break by TATE, Andre	REB: 24 A: 8 BLK: 0 TD: 18 PF: 7 S: 6 FT: 9-14 64.3% FG: 16-43 41.8%	5-6	83.3% 19-43 43.1%
6-13	46.1%	28-52 53.8% 19 ft Circle Jump shot by BARKS, Louis	REB: 24 A: 8 BLK: 0 TD: 20 PF: 7 S: 6 FT: 9-14 64.3% FG: 16-43 41.8%	6-14	42.8% 20-45 44.4%
6-10	60.0%	29-54 53.7% 4 ft Lane Driving by STARKS, Keith Foul on TATE, Andre	Sub In: MILLER, Ron 1 & Bonus - made both Sub In: SWAGERS, Steve Out: MILLER, Ron Foul on WARD, R. J.	8-10	80.0% 11-16 68.7%
2-2	100%	10-14 71.4% SWAGERS, Steve 1 & Bonus - made both Foul on STARKS, Keith	Sub In: SWAGERS, Steve 1 & Bonus - made both	2-3	66.5% 13-18 72.2%
4			REB: 25 A: 9 BLK: 0 TD: 20 PF: 8 S: 7 FT: 10-14 71.4% FG: 23-54 53.7%	4	9
4-6	66.5%	12-16 75.0% TATE, Andre 1 & Bonus - made both	Sub In: SWAGERS, Steve 1 & Bonus - made both	2-3	66.5% 13-18 72.2%
5-8	75.0%	14-16 77.7% TATE, Andre 1 & Bonus - made both Foul on STARKS, Keith Sub In: WARD, R. J. Out: STARKS, Keith	REB: 25 A: 9 BLK: 0 TD: 20 PF: 8 S: 7 FT: 13-19 72.2% FG: 20-46 43.4%	3	10
7-14	50.0%	30-55 54.5% 6 ft Lane Jump shot by BARKS, Louis Assist by ROBINSON, Levert	Sub In: ROYD, Aubry 1 & Bonus - missed 1st Sub In: THOMAS, Irving	2-3	66.5% 13-19 68.4%
7-10	70.0%	15-20 75.0% TATE, Andre 2 Free Throws - missed 1st made 2nd	Sub In: HANDE, Lorenzo Out: WARD, R. J.	7-16	43.7% 21-50 42.0%
8-12	66.5%	16-22 72.7% TATE, Andre 2 Free Throws - missed 1st made 2nd	Sub In: HANDE, Lorenzo Out: WARD, R. J.	3-6	50.0% 22-52 42.3%
			Sub In: THOMAS, Irving	4	12

Player	Team	CINCINNATI	FLORIDA STATE	Player	Team	
6-15	31-25	55-34	6 ft Lane Driving by BOWNS, Louis	2	1:12	470-60
3-6	32-57	58-14	Driving Layup by SPADERS, Steve	2	1:12	470-60
4	10		Foul on WARD, B. J.	2	0:49	480-50
			Subs In: WEISEL, Rick, GIBSON, Yarrance, JOHNER, Michael, WILLIAMS, Orland,	2	0:35	
			HASKES, Brady	2	0:32	
			Out: TATE, Andre, ROBINSON, Lavert, BOWNS, Louis, SANIERS, Steve,	2	0:32	
			WARD, B. J.	2	0:21	
2-2	100X	13-24	75-0X	2	0:21	482-62
2-1	Tot-1	0-1	Tot-30	2	0:00	
			Sub In: WHITEMAN, Todd Out: GIBSON, Yarrance	2	0:21	
			Sub In: NELSON, Lindsey Out: HASKES, Brady	2	0:21	
			JOHNER, Michael I & Bonus - made both	2	0:21	
			Retained by WHITEMAN, Todd	2	0:00	
2-2			100X 15-21	2	0:22	50-52*
1			13	2	0:21	50-50
				2	0:21	
			Sub In: HASKES, Lorenzo I & Bonus - made both	2	0:21	
			Foul on HASKES, Lorenzo	2	0:21	



