

Official Basketball Box Score -- GAME TOTALS -- FINAL STATISTICS

Florida State vs Clemson

1/4/06 7:00 PM at Clemson, SC (Littlejohn Coliseum)

VISITORS: Florida State 9-2,0-1

			TOT-FG		3-PT		REBOUNDS									
##	Player Name		FG-FGA	FG-FGA	FT-FTA	OF	DE	TOT	PF	TP	A	TO	BLK	S	MIN	
12	Al Thornton.....	f	4-9	0-0	4-5	3	5	8	3	12	0	3	0	0	35	
32	Alexander Johnson...	c	4-10	0-1	3-5	0	0	0	4	11	0	2	1	2	30	
03	Isaiah Swann.....	g	3-6	0-1	0-0	0	0	0	4	6	2	2	0	0	17	
04	Todd Galloway.....	g	2-6	0-2	1-2	0	2	2	3	5	4	4	0	4	37	
21	Jason Rich.....	g	4-9	0-0	0-0	0	4	4	4	8	1	0	1	0	27	
10	Ralph Mims.....		0-0	0-0	0-0	0	0	0	0	0	0	0	0	0	3	
11	Jerel Allen.....		2-4	1-3	0-0	1	3	4	1	5	0	0	0	1	13	
15	Casaan Breeden.....		1-2	0-1	0-0	0	2	2	1	2	0	2	0	0	3	
20	Andrew Wilson.....		3-5	0-0	0-3	2	2	4	2	6	0	0	1	0	24	
25	Diego Romero.....		0-0	0-0	0-0	0	0	0	0	0	0	0	0	0	10	
41	Uche Echefu.....		0-0	0-0	0-0	0	0	0	0	0	0	2	0	0	1	
TEAM.....						1	3	4								
Totals.....			23-51	1-8	8-15	7	21	28	22	55	7	15	3	7	200	

TOTAL FG% 1st Half: 14-25 56.0% 2nd Half: 9-26 34.6% Game: 45.1% DEADB
 3-Pt. FG% 1st Half: 0-1 0.0% 2nd Half: 1-7 14.3% Game: 12.5% REBS
 F Throw % 1st Half: 2-7 28.6% 2nd Half: 6-8 75.0% Game: 53.3% 2

HOME TEAM: Clemson 12-2,1-0

			TOT-FG		3-PT		REBOUNDS									
##	Player Name		FG-FGA	FG-FGA	FT-FTA	OF	DE	TOT	PF	TP	A	TO	BLK	S	MIN	
32	Sam Perry.....	f	0-3	0-0	3-4	0	4	4	3	3	4	3	4	1	22	
33	Akin Akingbala.....	c	2-3	0-0	1-1	5	3	8	4	5	0	1	0	1	32	
03	Vernon Hamilton.....	g	3-9	0-4	4-8	2	3	5	1	10	3	3	0	2	35	
22	Shawan Robinson.....	g	4-11	2-7	2-2	1	4	5	1	12	2	5	0	2	29	
25	Cliff Hammonds.....	g	1-4	1-4	2-4	1	5	6	3	5	0	1	0	0	23	
01	K.C. Rivers.....		3-7	2-5	0-0	4	3	7	2	8	0	3	0	1	24	
04	Steve Allen.....		1-2	0-0	0-0	1	3	4	3	2	0	1	1	0	8	
20	Troy Mathis.....		3-5	3-5	1-1	0	1	1	0	10	0	0	0	0	10	
42	Julius Powell.....		2-9	1-6	1-2	0	0	0	2	6	0	2	0	0	17	
TEAM.....						2		2				1				
Totals.....			19-53	9-31	14-22	16	26	42	19	61	9	20	5	7	200	

TOTAL FG% 1st Half: 14-30 46.7% 2nd Half: 5-23 21.7% Game: 35.8% DEADB
 3-Pt. FG% 1st Half: 7-19 36.8% 2nd Half: 2-12 16.7% Game: 29.0% REBS
 F Throw % 1st Half: 1-1 100 % 2nd Half: 13-21 61.9% Game: 63.6% 5

Officials: Bryan Kersey, Michael Eades, Larry Rose

Technical fouls: Florida State-None. Clemson-None.

Attendance: 4800

Score by Periods	1st	2nd	Total
Florida State.....	30	25	- 55
Clemson.....	36	25	- 61

ID-366687

Points in the paint-FS 28,CU 16. Points off turnovers-FS 24,CU 21.

2nd chance points-FS 6,CU 11. Fast break points-FS 6,CU 4.

Bench points-FS 13,CU 26. Score tied-3 times. Lead changed-4 times.

Last FG-FS 2nd-00:18, CU 2nd-08:15.

Largest lead-FS by 4 1st-16:29, CU by 11 1st-02:25.

Second Half – Clemson vs. Florida State

Clemson Starters: Hamilton, Hammonds, Robinson, Akingbala, Perry

Florida State Starters: Galloway, Swann, Thornton, Rich, Johnson

Time	CU	FSU	Description of the Action
20:00	36	30	FSU begins play
19:47			Swann with an offensive foul (1p1t)
			Powell in for Perry
19:20	38		Akingbala with a short hoop from Robinson – fouled by Rich (1p2t)
	39		Akingbala to the line – he makes
18:50	41		Robinson with a drive and deposit of a short banker
18:42			FSU calls a TO
18:29			Akingbala with a blocking foul (1p1t)
18:22		32	Johnson with a layup from Swann – fouled by Akingbala (2p2t)
		33	Johnson to the line – he makes the FT
			Perry in for Powell
18:11		35	Johnson with a short corner jumper
17:59			Clemson calls a TO
17:53			Rich with a reach in (2p3t)
16:58	44		Robinson hits a deep three from the top from Perry
16:42		37	Thornton fouled by Perry (1p3t) – he makes both FTs
			Rivers and Allen in for Akingbala and Hammonds
16:36			Swann with a pushing foul (2p4t)
16:07			Rich with a reach in (3p5t)
			Wilson and Allen in for Swann and Rich
15:36		40	Allen with a wing three from Galloway
15:25			Allen with an illegal screen (3p4t)
			TV TO
			Mathis and Akingbala in for Allen and Robinson
13:38	46		Rivers with a layup from Hamilton after a Perry block on the other end
13:14			Perry with a reach in (2p5t)
			Powell and Robinson in for Perry and Robinson
12:58		42	Rich with a drive and short banker
12:25			Powell with a holding foul (2p6t)
			Hammonds in for Mathis
10:59			Johnson with a pushing foul (2p6t)
			TV TO
			Swann and Romero in for Thornton and Johnson
			Breeden in for Galloway
			Perry in for Rivers
10:31	47		Powell fouled by Wilson (1p7t) – he makes, misses
9:40			Thornton in for Breeden
			Hamilton in for Robinson
9:30		44	Swann with a banker from in close
9:01			Rivers in for Perry
			Allen in for Akingbala
8:40	48		Hamilton fouled by Swann (3p8t) – he misses, makes
8:10	51		Hammonds hits a three from the top
7:22			Hammonds drives to the hoop and fouled by Swann (4p9t)
			TV TO
			Rich and Johnson in for Wilson and Swann
			Perry and Akingbala in for Powell and Allen
	52		Hammonds to the line – he misses, makes
6:50		46	Rich with a post up and short jumper

Page 2 – Clemson vs. Florida State second half

Time	CU	FSU	Description of the Action
5:35	53		Perry fouled by Johnson (3p10t) – he misses, makes Robinson in for Hamilton Wilson in for Allen
5:17		47	Galloway fouled by Rivers (2p8t) – he misses, makes
5:04			FSU (Galloway) calls a TO after picking up a loose ball Hamilton in for Perry
4:40		49	Johnson with a drive and layup
3:30			Five second call on FSU as Galloway dribbles at the top TV TO Perry in for Rivers
3:17			Perry with a moving screen (3p9t)
2:57		51	Thornton with an inside move and hoop
2:38	55		Hamilton fouled by Johnson (4p11t) – he makes both FTs Rivers in for Robinson
2:13			Perry with a rebound after a Johnson miss
1:23			Thornton with an offensive foul (3p12t) over Rivers under the hoop Clemson calls a TO Robinson in for Perry
:45.8			Rivers grabs a long rebound after a Hamilton miss
:42.9	57		Robinson fouled by Galloway (2p13t) – he makes both FTs Perry in for Rivers Swann in for Johnson
:42.9			Clemson calls a TO
:35.4		53	Thornton fouled by Akingbala (4p10t) going to the hoop Thornton to the line – he makes both FTs Allen in for Swann
			Rivers in for Perry
:33.2	58		Hamilton fouled by Galloway (3p14t) – he misses, makes Perry in for Akingbala
:25.8			Perry with a block of an FSU shot
:18.7	60		Perry fouled by Rich (4p15t) – he makes both FTs Swann in for Thornton
:14.8		55	Galloway with a driving layup FSU calls a TO
:13.3			Hamilton fouled by Allen (1p16t) – he misses both FTs
:06			Galloway misses a long three
:05.8	61		Hammonds fouled by Wilson (2p17t) – he makes, misses

FINAL SCORE: Clemson 61, Florida State 55

Clemson is now 12-2 (1-0 in the ACC) and travels to Virginia on Sat. Jan. 7th

Florida State is now 9-2 (0-1 in the ACC) and hosts Virginia Tech on Sat. Jan. 7th

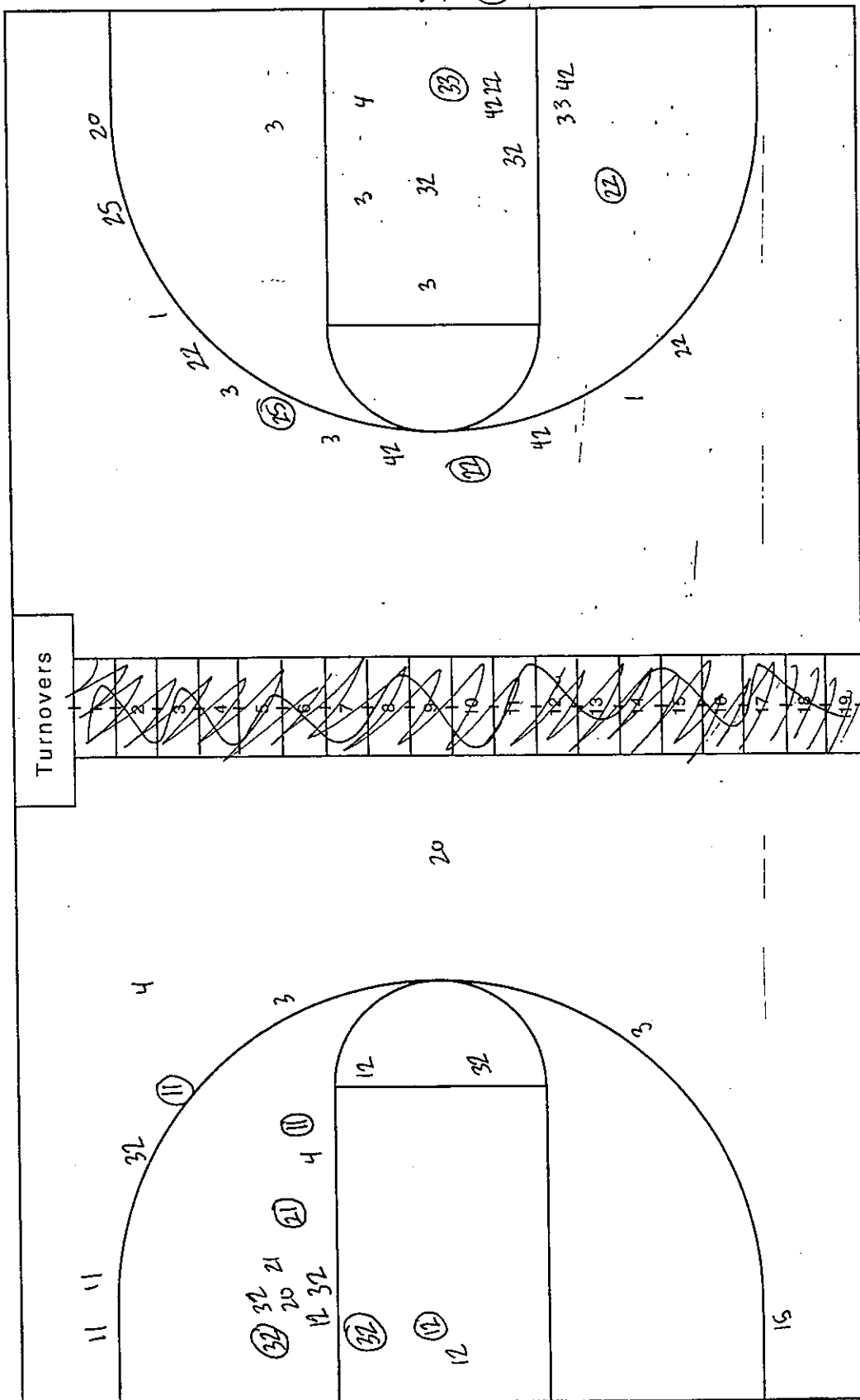
NCAA® BASKETBALL SHOT CHART

First Half (Circle one) Second Half

Layups

Team Clemson

Team Florida State



Attempted _____

Made _____

Percentage _____

Attempted _____

Made _____

Percentage _____

④ ③ ④ Layups ③ ③

Official Basketball Box Score -- 1st Half
 Florida State vs Clemson
 1/4/06 7:00 PM at Clemson, SC (Littlejohn Coliseum)

VISITORS: Florida State

##	Player Name		TOT-FG		3-PT		REBOUNDS			PF	TP	A	TO	BLK	S	MIN
			FG-FGA	FG-FGA	FG-FGA	FT-FTA	OF	DE	TOT							
12	Al Thornton.....	f	3-5	0-0	0-1	0-1	1	4	5	1	6	0	1	0	0	17
32	Alexander Johnson...	c	1-3	0-0	2-4	0-0	0	0	0	1	4	0	0	0	1	14
03	Isaiah Swann.....	g	2-3	0-0	0-0	0-0	0	0	0	1	4	1	1	0	0	9
04	Todd Galloway.....	g	1-3	0-1	0-0	0-0	0	0	0	1	2	3	2	0	3	17
21	Jason Rich.....	g	3-7	0-0	0-0	0-0	0	2	2	0	6	1	0	1	0	16
10	Ralph Mims.....		0-0	0-0	0-0	0-0	0	0	0	0	0	0	0	0	0	3
11	Jerel Allen.....		0-0	0-0	0-0	0-0	0	1	1	0	0	0	0	0	1	5
15	Casaan Breeden.....		1-1	0-0	0-0	0-0	0	0	0	1	2	0	1	0	0	2
20	Andrew Wilson.....		3-3	0-0	0-2	0-2	0	1	1	0	6	0	0	0	0	10
25	Diego Romero.....		0-0	0-0	0-0	0-0	0	0	0	0	0	0	0	0	0	6
41	Uche Echefu.....		0-0	0-0	0-0	0-0	0	0	0	0	0	0	2	0	0	1
TEAM.....							1	1	2							
Totals.....			14-25	0-1	2-7		2	9	11	5	30	5	7	1	5	100

TOTAL FG% 1st Half: 14-25 56.0%
 3-Pt. FG% 1st Half: 0-1 0.0%
 F Throw % 1st Half: 2-7 28.6%

HOME TEAM: Clemson

##	Player Name		TOT-FG		3-PT		REBOUNDS			PF	TP	A	TO	BLK	S	MIN
			FG-FGA	FG-FGA	FG-FGA	FT-FTA	OF	DE	TOT							
32	Sam Perry.....	f	0-2	0-0	0-0	0-0	0	1	1	0	0	3	1	2	0	10
33	Akin Akingbala.....	c	1-1	0-0	0-0	0-0	2	2	4	0	2	0	1	0	1	15
03	Vernon Hamilton.....	g	3-5	0-2	0-0	0-0	1	2	3	1	6	2	2	0	1	19
22	Shawan Robinson.....	g	2-6	1-4	0-0	0-0	0	3	3	1	5	1	5	0	2	16
25	Cliff Hammonds.....	g	0-2	0-2	0-0	0-0	1	1	2	3	0	0	0	0	0	7
01	K.C. Rivers.....		2-4	2-3	0-0	0-0	2	2	4	1	6	0	1	0	0	11
04	Steve Allen.....		1-1	0-0	0-0	0-0	0	2	2	2	2	0	0	1	0	5
20	Troy Mathis.....		3-4	3-4	1-1	1-1	0	0	0	0	10	0	0	0	0	7
42	Julius Powell.....		2-5	1-4	0-0	0-0	0	0	0	1	5	0	1	0	0	10
TEAM.....							1		1							
Totals.....			14-30	7-19	1-1		7	13	20	9	36	6	11	3	4	100

TOTAL FG% 1st Half: 14-30 46.7%
 3-Pt. FG% 1st Half: 7-19 36.8%
 F Throw % 1st Half: 1-1 100 %

Officials: Bryan Kersey, Michael Eades, Larry Rose
 Technical fouls: Florida State-None. Clemson-None.

Attendance:

Score by Periods 1st
 Florida State..... 30
 Clemson..... 36

ID-366687

Points in the paint-FS 18,CU 12. Points off turnovers-FS 16,CU 10.
 2nd chance points-FS 4,CU 9. Fast break points-FS 6,CU 2.
 Bench points-FS 8,CU 23. Score tied-3 times. Lead changed-4 times.
 Last FG-FS 1st-00:22, CU 2nd-18:53.
 Largest lead-FS by 4 1st-16:29, CU by 11 1st-02:25.

Clemson Tigers vs Florida State Seminoles

Littlejohn Coliseum – Clemson, SC – January 4, 2006

Clemson Starters: Vernon Hamilton, Shawan Robinson, Cliff Hammonds, Sam Perry, Akin Akingbala

Florida State Starters: Isaiah Swann, Todd Galloway, Al Thornton, Jason Rich, Alexander Johnson

Time	CU	FSU	Description of the Action
20:00			Clemson controls the tip
18:54	2		Akingbala follows a Robinson miss
18:42			Hammonds with a reach in (1p1t)
18:01		2	Rich with a slam off a Galloway steal and pass
16:56		4	Thornton with a drive and one handed scoop
16:27		6	Swann with a layup from Galloway
15:50			Hammonds with a reach in (2p2t)
			TV TO
			Rivers and Powell in for Hammonds and Perry
			Wilson in for Swann
			Rich to the line – he misses both FTs
15:20			Romero in for Johnson
15:10			Allen in for Rich
13:59	4		Hamilton with a drive and one hander
13:28		8	Wilson with a fallaway jumper – fouled by Hamilton (1p3t)
			Wilson to the line – he misses
			Hammonds in for Robinson
13:05			Powell with a pushing foul (1p4t)
12:41			Thornton with an offensive foul (1p1t)
			Allen in for Akingbala
12:14	7		Rivers hits a wing three from Hamilton
11:58		10	Wilson with an inside jumper – fouled by Allen (1p5t)
			TV TO
			Echefu and Mims in for Galloway and Thornton
			Perry in for Hamilton
11:23			Wilson to the line – he misses the FT
11:23	10		Rivers hits a wing three from Perry
11:00	12		Robinson with a steal and slam on the other end
10:40			Thornton, Johnson, Rich and Galloway in for Wilson, Echefu, Romero, Mims
10:23			Hammonds with a blocking foul (3p6t)
			Hamilton in for Hammonds
			Breeden in for Allen
10:07		12	Rich with a post up and fallaway jumper
9:34		14	Breeden with a corner jumper from Galloway
9:06			Akingbala in for Allen, Powell in for Perry, Mathis in for Rivers
8:38			Breeden with a reach in (1p2t)
8:26	15		Mathis hits a wing three from Robinson
8:07			Swann in for Breeden
8:02	18		Powell with a three from the top that uses the backboard
7:46		16	Galloway with a steal and layup
7:31	20		Powell with a driving layup
7:13			TV TO
			Rivers in for Robinson
7:02			Rivers with a charging foul (1p7t) over Johnson
6:45		18	Johnson with a jumper inside from Swann
6:26			Galloway with a reach in (1p3t)
6:20	23		Mathis hits a three from the top (a banker) from Akingbala – fouled by Swann (1p4t)
	24		Mathis to the line – he hits the FT
			Perry in for Powell, Allen in for Akingbala
5:58			Johnson with a pushing foul (1p5t)
5:06	26		Allen with a strong move to the hoop from Perry
4:46			Robinson in for Mathis
			Wilson in for Swann
4:37		20	Johnson fouled by Allen (2p8t) – he makes both FTs

Page 2 – Clemson vs. Florida State

Time	CU	FSU	Description of the Action
4:28	28		Hamilton avoids a trap and hits a short jumper
3:47		22	Thornton with a jumper from the elbow
3:24	31		Robinson with a deep wing three from Perry
3:09			Thornton fouled by Robinson (1p9t)
			TV TO
			Mathis and Powell in for Rivers and Perry
			Thornton to the line – he misses
2:20	33		Hamilton with a drive and underhanded layup
2:03		24	Thornton follows a Galloway miss
1:35			Mims, Swann and Romero in for Galloway, Thornton and Johnson
1:17		26	Swann with a banker in the lane
:55.8		28	Wilson with a jumper from Swann
:48.9			Clemson calls a TO
:20.5		30	Rich wit a steal and layup
:00.1	36		Mathis makes a circus wing three from Hamilton as the clock expires

HALFTIME: Clemson 36, Florida State 30

NCAA® BASKETBALL SHOT CHART

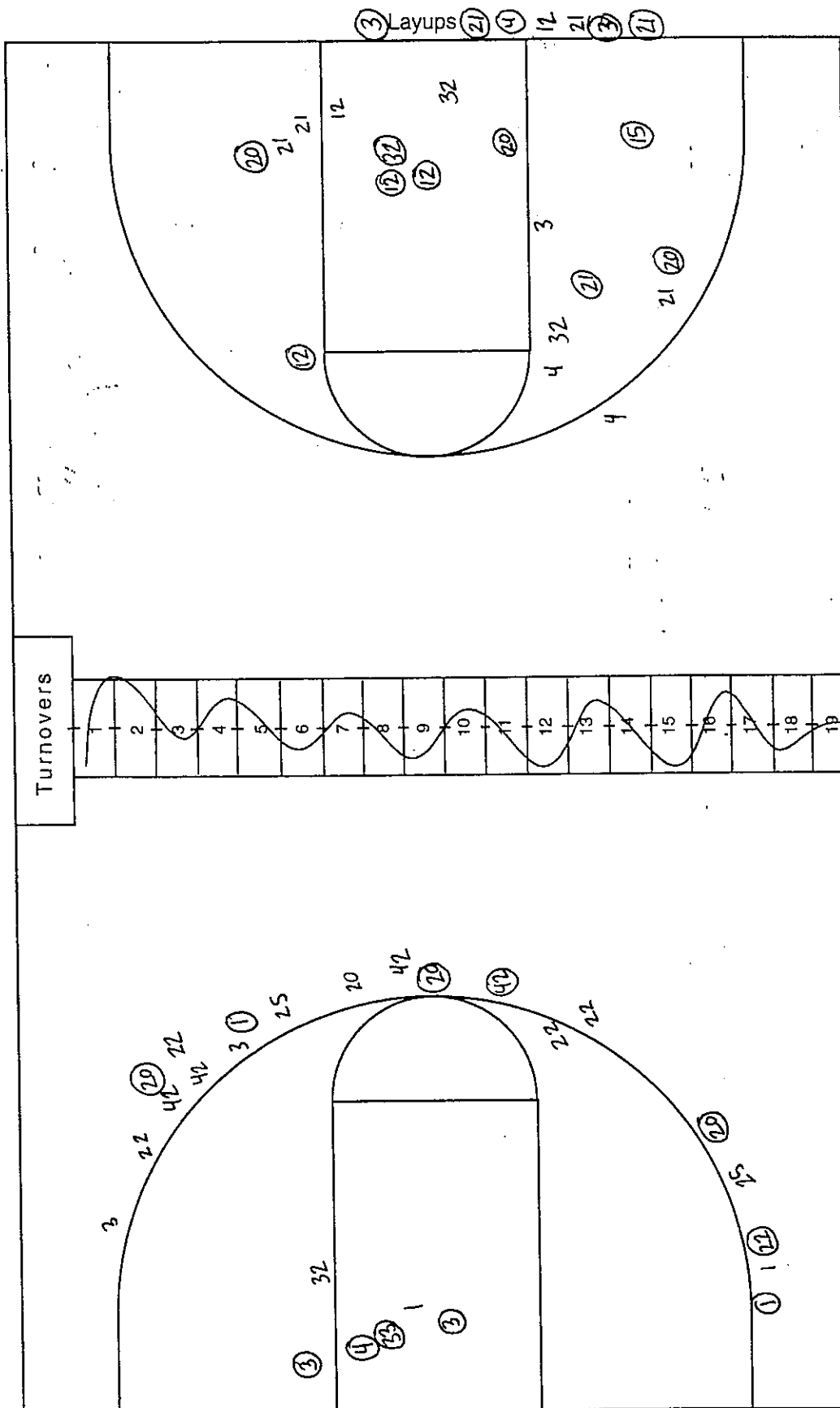
First Half

Second Half

(Circle one)

Team Florida State

Team Clemson



Attempted _____
Made _____
Percentage _____

Attempted _____
Made _____
Percentage _____

32 21 Layups 41 3