



Official Basketball Box Score - Final  
**Florida St. at Loyola Marymount**  
 11/21/21 UNF Arena, Jacksonville, Fla.  
 2021-22 Men's Basketball

Game Time: 5:30 PM  
 Game Duration: 2:04

Officials: Mike Nance, KB Burdett, Matt Potter

Florida St. - 73

Record: 3-1

NO.	Name	F	Min	FG	3P	FT	Rebounds			Fouls		TP	AS	TO	ST	Blocks		+/-
				M-A	M-A	M-A	OR	DR	TOT	PF	FD					BS	BA	
10	Malik Osborne	F	19:42	2-4	2-2	4-4	1	2	3	0	1	10	2	0	1	0	0	13
11	Tanor Ngom	C	13:53	5-6	0-0	0-0	2	2	4	2	2	10	1	2	0	0	0	-1
0	RayQuan Evans	G	16:21	2-5	2-3	0-0	0	0	0	1	2	6	1	2	2	0	0	7
2	Anthony Polite	G	19:48	2-6	1-3	1-2	2	5	7	2	1	6	4	2	2	0	0	20
4	Caleb Mills	G	23:38	4-10	1-3	0-0	1	2	3	0	4	9	3	3	2	1	0	24
31	Wyatt Wilkes		12:27	1-3	1-3	0-0	0	1	1	3	1	3	1	1	1	0	0	7
1	Jalen Warley		21:28	0-2	0-1	0-0	0	4	4	1	2	0	4	2	2	0	0	16
22	John Butler		18:24	2-4	1-2	0-0	0	3	3	2	0	5	1	0	1	3	0	11
35	Matthew Cleveland		16:52	6-8	0-1	1-2	0	1	1	3	1	13	1	0	1	0	0	3
24	Naheem McLeod		16:28	3-5	0-0	0-1	1	1	2	1	1	6	0	0	1	0	0	21
21	Cam'Ron Fletcher		11:36	0-1	0-1	0-0	0	0	0	2	0	0	2	1	0	1	0	5
15	Quincy Ballard		04:21	0-0	0-0	0-0	1	0	1	1	0	0	1	0	1	1	0	4
30	Harrison Prieto		02:51	2-2	0-0	1-2	1	0	1	0	1	5	0	0	0	0	0	5
12	Justin Lindner		02:11	0-1	0-0	0-0	0	1	1	0	0	0	0	0	0	0	0	5
Team							0	5	5			0		4				
<b>Totals</b>				29-57	8-19	7-11	9	27	36	18	16	73	21	17	14	6	0	28

Shooting By Period		
1 <sup>st</sup> FG%	12-28	42.9%
3PT%	2-8	25.0%
FT%	6-9	66.7%
2 <sup>nd</sup> FG%	17-29	58.6%
3PT%	6-11	54.5%
FT%	1-2	50%
GM FG%	29-57	50.9%
3PT%	8-19	42.1%
FT%	7-11	63.6%

Dead Ball Rebounds: 2, 2

Technical Fouls: Team 2<sup>nd</sup>: 2:11

Loyola Marymount - 45

Record: 2-2

NO.	Name	F	Min	FG	3P	FT	Rebounds			Fouls		TP	AS	TO	ST	Blocks		+/-
				M-A	M-A	M-A	OR	DR	TOT	PF	FD					BS	BA	
0	Eli Scott	F	25:32	3-8	1-3	0-0	0	3	3	3	0	7	0	4	0	0	2	-11
34	Keli Leapepe	F	24:32	2-6	1-4	2-2	3	3	6	1	1	7	0	1	0	0	0	-22
2	Joe Quintana	G	28:23	4-8	4-7	0-0	0	0	0	2	1	12	1	2	0	0	0	-12
11	Kwane Marble II	G	26:35	2-5	0-2	2-5	0	3	3	1	5	6	1	4	1	0	1	-29
20	Cam Shelton	G	26:29	1-4	0-1	1-4	0	4	4	1	4	3	2	4	3	0	1	-23
3	Gary Harris, Jr.		12:23	2-6	0-1	0-0	1	0	1	4	0	4	0	0	1	0	2	-12
1	Dameane Douglas		14:33	2-2	0-0	2-4	0	3	3	1	2	6	1	3	2	0	0	-2
13	Lamaj Lewis		20:20	0-2	0-2	0-0	0	2	2	2	3	0	2	2	0	0	0	-10
24	Alex Merkviladze		17:33	0-3	0-2	0-1	1	2	3	2	2	0	0	3	0	0	0	-11
10	Quentin Jackson, Jr.		03:40	0-0	0-0	0-0	0	0	0	0	0	0	0	0	0	0	0	-8
Team							1	1	2			0		1				
<b>Totals</b>				16-44	6-22	7-16	6	21	27	17	18	45	7	24	7	0	6	-28

Shooting By Period		
1 <sup>st</sup> FG%	6-19	31.6%
3PT%	2-9	22.2%
FT%	3-5	60%
2 <sup>nd</sup> FG%	10-25	40.0%
3PT%	4-13	30.8%
FT%	4-11	36.4%
GM FG%	16-44	36.4%
3PT%	6-22	27.3%
FT%	7-16	43.8%

Dead Ball Rebounds: 2, 0

Technical Fouls: Scott 1<sup>st</sup>: 18:22

	FSU	LMU
Biggest lead	28 (2 <sup>nd</sup> 0:42)	6 (1 <sup>st</sup> 18:24)
Best Scoring Run	11 (1 <sup>st</sup> 13:05)	6 (1 <sup>st</sup> 9:40)
Lead Changes	3	
Times Tied	1	
Time with Lead	35:23	04:27

	FSU	LMU
Points from		
Turnovers	33	15
Paint	36	16
Second Chance	9	6
Fast Breaks	16	7
Bench	32	10

Period by Period Scoring			
	1st	2nd	TOT
FSU	32	41	73
LMU	17	28	45



**Period 1**

**Quarter Starters:**

<b>FSU</b>	0 Evans R	2 Polite A	4 Mills C	10 Osborne M	11 Ngom T
<b>LMU</b>	0 Scott E	2 Quintana J	11 Marble II K	20 Shelton C	34 Leaupepe K

Game Time	FSU	Score	Diff	LMU
20:00	11 NGOM T jumpball lost			34 LEAUPEPE K jumpball won
19:50		<b>0-3</b>	<b>-3</b>	2 QUINTANA J 3pt FG , jump shot made (3)
19:50				20 SHELTON C assist (1)
19:26	2 POLITE A turnover bad pass (1)			
19:13	0 EVANS R steal (1)			11 MARBLE II K turnover bad pass (1)
19:13	0 EVANS R foul drawn (1)			11 MARBLE II K foul personal (1 - 1)
19:02	0 EVANS R turnover bad pass (1)			20 SHELTON C steal (1)
18:58		<b>0-5</b>	<b>-5</b>	20 SHELTON C 2pt FG fast break from turnover in the paint, dunk, made (2)
18:39	11 NGOM T 2pt FG in the paint, jump shot made (2)	<b>2-5</b>	<b>-3</b>	
18:39	10 OSBORNE M assist (1)			
18:24		<b>2-8</b>	<b>-6</b>	0 SCOTT E 3pt FG , jump shot made (3)
18:24				2 QUINTANA J assist (1)
18:22				0 SCOTT E foul class A technical (1 - 2)
18:22	10 OSBORNE M free throw fast break 1 - 2 made (1)	<b>3-8</b>	<b>-5</b>	
18:22	10 OSBORNE M free throw fast break 2 - 2 made (2)	<b>4-8</b>	<b>-4</b>	
18:04	4 MILLS C 2pt FG outside the paint, jump shot missed			
17:56	4 MILLS C offensive rebound (1)			
17:52	11 NGOM T 2pt FG second chance in the paint, layup missed			
17:49	10 OSBORNE M offensive rebound (1)			
17:44	4 MILLS C foul drawn (1)			2 QUINTANA J foul personal (1 - 3)
17:32	10 OSBORNE M 2pt FG second chance outside the paint, jump shot missed			
17:29	11 NGOM T offensive rebound (1)			
17:29	11 NGOM T foul drawn (1)			0 SCOTT E foul personal (2 - 4)
17:22				0 SCOTT E substitution out
17:22				3 HARRIS, JR. G substitution in
17:19	4 MILLS C 2pt FG second chance in the paint, jump shot missed			
17:16	11 NGOM T offensive rebound (2)			
17:16	11 NGOM T 2pt FG second chance in the paint, layup made (4)	<b>6-8</b>	<b>-2</b>	
17:12	11 NGOM T substitution out			
17:12	31 WILKES W substitution in			
17:07	4 MILLS C foul drawn (2)			34 LEAUPEPE K foul offensive (1 - 5)
17:07				34 LEAUPEPE K turnover offensive (1)
16:49	4 MILLS C 3pt FG from turnover, jump shot missed			
16:47	2 POLITE A offensive rebound (1)			
16:44	0 EVANS R 3pt FG from turnover second chance, jump shot made (3)	<b>9-8</b>	<b>1</b>	
16:44	2 POLITE A assist (1)			
16:14				3 HARRIS, JR. G 2pt FG in the paint, layup missed
16:12	defensive rebound (6)			
16:12	0 EVANS R substitution out			
16:12	1 WARLEY J substitution in			
16:12	2 POLITE A substitution out			



Official Basketball Play by Play - First Half  
**Florida St. at Loyola Marymount**  
 11/21/21 UNF Arena, Jacksonville, Fla.  
 2021-22 Men's Basketball

Game Time: 5:30 PM  
 Game Duration: 2:04

Officials: Mike Nance, KB Burdett, Matt Potter

Game Time	FSU	Score	Diff	LMU
16:12	22 BUTLER J substitution in			
16:12				11 MARBLE II K substitution out
16:12				1 DOUGLAS D substitution in
16:02	4 MILLS C 2pt FG in the paint, driving layup missed			
15:59				1 DOUGLAS D defensive rebound (1)
15:43	22 BUTLER J foul personal (1 - 1)			20 SHELTON C foul drawn (1)
15:43	Timeout media			
15:43	4 MILLS C substitution out			
15:43	35 CLEVELAND M substitution in			
15:39				1 DOUGLAS D turnover travel (1)
15:39	10 OSBORNE M substitution out			
15:39	24 MCLEOD N substitution in			
15:39				2 QUINTANA J substitution out
15:39				34 LEAUPEPE K substitution out
15:39				13 LEWIS L substitution in
15:39				24 MERKVILADZE A substitution in
15:30	1 WARLEY J 2pt FG from turnover in the paint, jump shot missed			
15:27				1 DOUGLAS D defensive rebound (2)
15:25				1 DOUGLAS D turnover bad pass (2)
15:03	31 WILKES W foul offensive (1 - 2)			20 SHELTON C foul drawn (2)
15:03	31 WILKES W turnover offensive (1)			
14:46	22 BUTLER J steal (1)			13 LEWIS L turnover lost ball (1)
14:34	24 MCLEOD N 2pt FG from turnover in the paint, alleyoop made (2)	11-8	3	
14:34	35 CLEVELAND M assist (1)			
14:21				3 HARRIS, JR. G 2pt FG outside the paint, jump shot blocked
14:21	22 BUTLER J block (1)			
14:21				offensive rebound (3)
14:21	31 WILKES W substitution out			
14:21	21 FLETCHER C substitution in			
14:04				20 SHELTON C 2pt FG second chance outside the paint, jump shot missed
13:59	1 WARLEY J defensive rebound (1)			
13:39	22 BUTLER J 3pt FG , jump shot missed			
13:34				13 LEWIS L defensive rebound (1)
13:34	21 FLETCHER C foul personal (1 - 3)			13 LEWIS L foul drawn (1)
13:34				3 HARRIS, JR. G substitution out
13:34				20 SHELTON C substitution out
13:34				0 SCOTT E substitution in
13:34				2 QUINTANA J substitution in
13:09	35 CLEVELAND M steal (1)			0 SCOTT E turnover lost ball (1)
13:05	35 CLEVELAND M 2pt FG fast break from turnover outside the paint, pull up jump shot made (2)	13-8	5	
13:05				Timeout 30 Sec
13:03	35 CLEVELAND M foul personal (1 - 4)			13 LEWIS L foul drawn (2)
12:46		13-10	3	1 DOUGLAS D 2pt FG in the paint, driving layup made (2)
12:28	22 BUTLER J 2pt FG outside the paint, jump shot missed			
12:25				0 SCOTT E defensive rebound (1)
12:14				13 LEWIS L 3pt FG , jump shot missed



Official Basketball Play by Play - First Half  
**Florida St. at Loyola Marymount**  
 11/21/21 UNF Arena, Jacksonville, Fla.  
 2021-22 Men's Basketball

Game Time: 5:30 PM  
 Game Duration: 2:04

Officials: Mike Nance, KB Burdett, Matt Potter

Game Time	FSU	Score	Diff	LMU
12:11	defensive rebound (8)			
12:11				13 LEWIS L substitution out
12:11				20 SHELTON C substitution in
12:11	1 WARLEY J substitution out			
12:11	24 MCLEOD N substitution out			
12:11	0 EVANS R substitution in			
12:11	11 NGOM T substitution in			
12:11				24 MERKVILADZE A substitution out
12:11				34 LEAUPEPE K substitution in
11:44	11 NGOM T turnover travel (1)			
11:44	Timeout media			
11:44				1 DOUGLAS D substitution out
11:44				11 MARBLE II K substitution in
11:18				34 LEAUPEPE K 3pt FG from turnover, jump shot missed
11:15	11 NGOM T defensive rebound (3)			
11:03	11 NGOM T turnover travel (2)			
10:43		<b>13-12</b>	<b>1</b>	0 SCOTT E 2pt FG from turnover outside the paint, jump shot made (5)
10:33	0 EVANS R foul drawn (2)			20 SHELTON C foul personal (1 - 6)
10:33	0 EVANS R substitution out			
10:33	21 FLETCHER C substitution out			
10:33	22 BUTLER J substitution out			
10:33	35 CLEVELAND M substitution out			
10:33	1 WARLEY J substitution in			
10:33	2 POLITE A substitution in			
10:33	4 MILLS C substitution in			
10:33	10 OSBORNE M substitution in			
10:20	1 WARLEY J 3pt FG , jump shot missed			
10:16				34 LEAUPEPE K defensive rebound (1)
10:03				0 SCOTT E 2pt FG in the paint, layup blocked
10:03	4 MILLS C block (1)			
10:00	4 MILLS C defensive rebound (2)			
09:58	10 OSBORNE M 2pt FG outside the paint, jump shot missed			
09:54				34 LEAUPEPE K defensive rebound (2)
09:46				0 SCOTT E 3pt FG , jump shot missed
09:41				34 LEAUPEPE K offensive rebound (3)
09:40	11 NGOM T foul shooting (1 - 5)			34 LEAUPEPE K foul drawn (1)
09:40		<b>13-13</b>	<b>0</b>	34 LEAUPEPE K free throw 1 - 2 made (1)
09:40	11 NGOM T substitution out			
09:40	24 MCLEOD N substitution in			
09:40		<b>13-14</b>	<b>-1</b>	34 LEAUPEPE K free throw 2 - 2 made (2)
09:23	4 MILLS C turnover lost ball (1)			20 SHELTON C steal (2)
09:07	1 WARLEY J steal (1)			20 SHELTON C turnover bad pass (1)
08:53	2 POLITE A 3pt FG from turnover, jump shot missed			
08:47				20 SHELTON C defensive rebound (1)
08:32				20 SHELTON C substitution out
08:32				34 LEAUPEPE K substitution out
08:32				13 LEWIS L substitution in
08:32				24 MERKVILADZE A substitution in



Official Basketball Play by Play - First Half  
**Florida St. at Loyola Marymount**  
 11/21/21 UNF Arena, Jacksonville, Fla.  
 2021-22 Men's Basketball

Game Time: 5:30 PM  
 Game Duration: 2:04

Officials: Mike Nance, KB Burdett, Matt Potter

Game Time	FSU	Score	Diff	LMU
08:24	4 MILLS C steal (1)			11 MARBLE II K turnover lost ball (2)
08:19	4 MILLS C 2pt FG fast break from turnover in the paint, driving layup made (2)	15-14	1	
08:03	Timeout media			
08:03	10 OSBORNE M substitution out			
08:03	22 BUTLER J substitution in			
08:03				11 MARBLE II K substitution out
08:03				1 DOUGLAS D substitution in
08:03				1 DOUGLAS D turnover out of bounds (3)
07:45	24 MCLEOD N 2pt FG from turnover in the paint, layup missed			
07:45				defensive rebound (10)
07:20				24 MERKVILADZE A 3pt FG , jump shot missed
07:17	2 POLITE A defensive rebound (2)			
07:12	24 MCLEOD N 2pt FG in the paint, dunk, missed			
07:08				24 MERKVILADZE A defensive rebound (1)
06:56	2 POLITE A steal (1)			0 SCOTT E turnover bad pass (2)
06:44	4 MILLS C 2pt FG from turnover in the paint, driving layup made (4)	17-14	3	
06:24				2 QUINTANA J 3pt FG , jump shot missed
06:21	1 WARLEY J defensive rebound (2)			
06:18	24 MCLEOD N foul drawn (1)			1 DOUGLAS D foul personal (1 - 7)
06:18	1 WARLEY J substitution out			
06:18	2 POLITE A substitution out			
06:18	22 BUTLER J substitution out			
06:18	0 EVANS R substitution in			
06:18	31 WILKES W substitution in			
06:18	35 CLEVELAND M substitution in			
06:18				2 QUINTANA J substitution out
06:18				24 MERKVILADZE A substitution out
06:18				20 SHELTON C substitution in
06:18				34 LEAUPEPE K substitution in
06:18	24 MCLEOD N 1&1 free throw 1 missed			
06:17				34 LEAUPEPE K defensive rebound (4)
05:47				turnover shot clock (11)
05:47	35 CLEVELAND M substitution out			
05:47	21 FLETCHER C substitution in			
05:47	4 MILLS C substitution out			
05:47	35 CLEVELAND M substitution in			
05:35	24 MCLEOD N 2pt FG from turnover in the paint, layup made (4)	19-14	5	
05:35	21 FLETCHER C assist (1)			
05:20				20 SHELTON C turnover bad pass (2)
05:20	0 EVANS R substitution out			
05:20	1 WARLEY J substitution in			
05:20				13 LEWIS L substitution out
05:20				11 MARBLE II K substitution in
05:06	31 WILKES W 3pt FG from turnover, jump shot made (3)	22-14	8	
05:06	1 WARLEY J assist (1)			
04:55				0 SCOTT E turnover bad pass (3)
04:45	21 FLETCHER C 3pt FG from turnover, jump shot missed			
04:42				11 MARBLE II K defensive rebound (1)



Official Basketball Play by Play - First Half  
**Florida St. at Loyola Marymount**  
 11/21/21 UNF Arena, Jacksonville, Fla.  
 2021-22 Men's Basketball

Game Time: 5:30 PM  
 Game Duration: 2:04

Officials: Mike Nance, KB Burdett, Matt Potter

Game Time	FSU	Score	Diff	LMU
04:42	31 WILKES W foul personal (2 - 6)			11 MARBLE II K foul drawn (1)
04:18				11 MARBLE II K 2pt FG in the paint, layup blocked
04:18	21 FLETCHER C block (1)			
04:13	24 MCLEOD N defensive rebound (1)			
04:12	35 CLEVELAND M foul drawn (1)			0 SCOTT E foul personal (3 - 8)
04:12				0 SCOTT E substitution out
04:12				1 DOUGLAS D substitution out
04:12				2 QUINTANA J substitution in
04:12				3 HARRIS, JR. G substitution in
04:12	35 CLEVELAND M 1&1 free throw 1 made (3)	<b>23-14</b>	<b>9</b>	
04:12	35 CLEVELAND M 1&1 free throw 2 missed			
04:11				20 SHELTON C defensive rebound (2)
03:51		<b>23-16</b>	<b>7</b>	11 MARBLE II K 2pt FG in the paint, driving layup made (2)
03:51	24 MCLEOD N foul shooting (1 - 7)			11 MARBLE II K foul drawn (2)
03:51	Timeout media			
03:51	31 WILKES W substitution out			
03:51	22 BUTLER J substitution in			
03:51				11 MARBLE II K free throw 1 - 1 missed
03:48	22 BUTLER J defensive rebound (1)			
03:44	35 CLEVELAND M 2pt FG fast break in the paint, layup made (5)	<b>25-16</b>	<b>9</b>	
03:44	21 FLETCHER C assist (2)			
03:11	24 MCLEOD N steal (1)			20 SHELTON C turnover bad pass (3)
03:05	35 CLEVELAND M 2pt FG fast break from turnover in the paint, dunk, made (7)	<b>27-16</b>	<b>11</b>	
03:05	22 BUTLER J assist (1)			
02:39				11 MARBLE II K 3pt FG , jump shot missed
02:36	35 CLEVELAND M defensive rebound (1)			
02:09	35 CLEVELAND M 3pt FG , jump shot missed			
02:06				20 SHELTON C defensive rebound (3)
02:05	1 WARLEY J foul personal (1 - 8)			20 SHELTON C foul drawn (3)
02:05	1 WARLEY J substitution out			
02:05	21 FLETCHER C substitution out			
02:05	22 BUTLER J substitution out			
02:05	24 MCLEOD N substitution out			
02:05	35 CLEVELAND M substitution out			
02:05	0 EVANS R substitution in			
02:05	2 POLITE A substitution in			
02:05	4 MILLS C substitution in			
02:05	10 OSBORNE M substitution in			
02:05	15 BALLARD Q substitution in			
02:05		<b>27-17</b>	<b>10</b>	20 SHELTON C 1&1 free throw 1 made (3)
02:05				3 HARRIS, JR. G substitution out
02:05				24 MERKVILADZE A substitution in
02:05				20 SHELTON C 1&1 free throw 2 missed
02:04	defensive rebound (16)			
01:47	2 POLITE A foul offensive (1 - 9)			11 MARBLE II K foul drawn (3)
01:47	2 POLITE A turnover offensive (2)			
01:22	15 BALLARD Q steal (1)			2 QUINTANA J turnover lost ball (1)
01:20	2 POLITE A foul drawn (1)			24 MERKVILADZE A foul shooting (1 - 9)



Official Basketball Play by Play - First Half  
**Florida St. at Loyola Marymount**  
 11/21/21 UNF Arena, Jacksonville, Fla.  
 2021-22 Men's Basketball

**Game Time:** 5:30 PM  
**Game Duration:** 2:04

**Officials:** Mike Nance, KB Burdett, Matt Potter

Game Time	FSU	Score	Diff	LMU
01:20	2 POLITE A free throw fast break 1 - 2 missed			
01:20	offensive dead ball rebound (1)			
01:20	2 POLITE A free throw fast break 2 - 2 made (1)	<b>28-17</b>	<b>11</b>	
00:50				20 SHELTON C 2pt FG in the paint, layup blocked
00:50	15 BALLARD Q block (1)			
00:47	4 MILLS C defensive rebound (3)			
00:44	4 MILLS C 2pt FG fast break in the paint, floating jump shot made (6)	<b>30-17</b>	<b>13</b>	
00:32	0 EVANS R steal (2)			24 MERKVILADZE A turnover lost ball (1)
00:28	10 OSBORNE M foul drawn (1)			24 MERKVILADZE A foul shooting (2 - 10)
00:28	10 OSBORNE M free throw fast break 1 - 2 made (3)	<b>31-17</b>	<b>14</b>	
00:28	10 OSBORNE M free throw fast break 2 - 2 made (4)	<b>32-17</b>	<b>15</b>	
00:01				24 MERKVILADZE A 3pt FG , jump shot missed
00:00	defensive dead ball rebound (2)			
<b>END OF PERIOD</b>				
<b>FSU 32-17 LMU</b>				



Official Basketball Box Score - First Half  
**Florida St. at Loyola Marymount**  
 11/21/21 UNF Arena, Jacksonville, Fla.  
 2021-22 Men's Basketball

Game Time: 5:30 PM  
 Game Duration: 2:04

Officials: Mike Nance, KB Burdett, Matt Potter

**Florida St. - 32**

NO.	Name	F/C	Min	FG			Rebounds			Fouls		TP	AS	TO	ST	Blocks		+/-
				M-A	M-A	M-A	OR	DR	TOT	PF	FD					BS	BA	
10	Malik Osborne	F	08:56	0-2	0-0	4-4	1	0	1	0	1	4	1	0	0	0	0	5
11	Tanor Ngom	C	05:19	2-3	0-0	0-0	2	1	3	1	1	4	0	2	0	0	0	-5
0	RayQuan Evans	G	08:29	1-1	1-1	0-0	0	0	0	0	2	3	0	1	2	0	0	5
2	Anthony Polite	G	10:08	0-1	0-1	1-2	1	1	2	1	1	1	1	2	1	0	0	7
4	Caleb Mills	G	11:08	3-7	0-1	0-0	1	2	3	0	2	6	0	1	1	1	0	7
31	Wyatt Wilkes		05:18	1-1	1-1	0-0	0	0	0	2	0	3	0	1	0	0	0	9
1	Jalen Warley		11:31	0-2	0-1	0-0	0	2	2	1	0	0	1	0	1	0	0	10
22	John Butler		09:10	0-2	0-1	0-0	0	1	1	1	0	0	1	0	1	1	0	6
35	Matthew Cleveland		09:23	3-4	0-1	1-2	0	1	1	1	1	7	1	0	1	0	0	8
24	Naheem McLeod		11:03	2-4	0-0	0-1	0	1	1	1	1	4	0	0	1	0	0	13
21	Cam'Ron Fletcher		07:30	0-1	0-1	0-0	0	0	0	1	0	0	2	0	0	1	0	6
15	Quincy Ballard		02:05	0-0	0-0	0-0	0	0	0	0	0	0	0	0	1	1	0	4
Team							0	3	3			0		0				
<b>Totals</b>				12-28	2-8	6-9	5	12	17	9	9	32	7	7	9	4	0	15

Shooting By Period		
1 <sup>st</sup> FG%	12-28	42.9%
3PT%	2-8	25.0%
FT%	6-9	66.7%
GM FG%	12-28	42.9%
3PT%	2-8	25.0%
FT%	6-9	66.7%

Dead Ball Rebounds: 1, 1

Technical Fouls::NONE

**Loyola Marymount - 17**

NO.	Name	F/C	Min	FG			Rebounds			Fouls		TP	AS	TO	ST	Blocks		+/-
				M-A	M-A	M-A	OR	DR	TOT	PF	FD					BS	BA	
0	Eli Scott	F	12:00	2-4	1-2	0-0	0	1	1	3	0	5	0	3	0	0	1	-1
34	Keli Leapepe	F	14:18	0-1	0-1	2-2	1	3	4	1	1	2	0	1	0	0	0	-9
2	Joe Quintana	G	15:49	1-2	1-2	0-0	0	0	0	1	0	3	1	1	0	0	0	-8
11	Kwane Marble II	G	12:49	1-3	0-1	0-1	0	1	1	1	3	2	0	2	0	0	1	-9
20	Cam Shelton	G	16:23	1-3	0-0	1-2	0	3	3	1	3	3	1	3	2	0	1	-11
3	Gary Harris, Jr.		05:55	0-2	0-0	0-0	0	0	0	0	0	0	0	0	0	0	1	-9
1	Dameane Douglas		08:19	1-1	0-0	0-0	0	2	2	1	0	2	0	3	0	0	0	-9
13	Lamaj Lewis		06:40	0-1	0-1	0-0	0	1	1	0	2	0	0	1	0	0	0	-8
24	Alex Merkviladze		07:47	0-2	0-2	0-0	0	1	1	2	0	0	0	1	0	0	0	-11
Team							1	1	2			0		1				
<b>Totals</b>				6-19	2-9	3-5	2	13	15	10	9	17	2	16	2	0	4	-15

Shooting By Period		
1 <sup>st</sup> FG%	6-19	31.6%
3PT%	2-9	22.2%
FT%	3-5	60%
GM FG%	6-19	31.6%
3PT%	2-9	22.2%
FT%	3-5	60.0%

Dead Ball Rebounds: 0, 0

Technical Fouls:Scott 1<sup>st</sup>18:22

	FSU	LMU
Biggest lead	15 (1 <sup>st</sup> 0:28)	6 (1 <sup>st</sup> 18:24)
Best Scoring Run	11 (1 <sup>st</sup> 13:05)	6 (1 <sup>st</sup> 9:40)
Lead Changes	3	
Times Tied	1	
Time with Lead	15:23	04:27

	FSU	LMU
Points from		
Turnovers	21	4
Paint	18	6
Second Chance	5	2
Fast Breaks	16	3
Bench	14	2

	Period by Period Scoring		
	1st	2nd	TOT
FSU	32	41	73
LMU	17	28	45





**Period 2**

**Quarter Starters:**

<b>FSU</b>	0 Evans R	2 Polite A	4 Mills C	10 Osborne M	11 Ngom T
<b>LMU</b>	0 Scott E	2 Quintana J	11 Marble II K	20 Shelton C	34 Leaupepe K

Game Time	FSU	Score	Diff	LMU
20:00	15 BALLARD Q substitution out			
20:00	11 NGOM T substitution in			
20:00				24 MERKVILADZE A substitution out
20:00				0 SCOTT E substitution in
19:36				0 SCOTT E 2pt FG outside the paint, jump shot missed
19:32				34 LEAUPEPE K offensive rebound (5)
19:29				11 MARBLE II K 3pt FG second chance, jump shot missed
19:25	11 NGOM T defensive rebound (4)			
19:12	4 MILLS C turnover lost ball (2)			11 MARBLE II K steal (1)
19:05		<b>32-19</b>	<b>13</b>	11 MARBLE II K 2pt FG fast break from turnover in the paint, driving layup made (4)
19:05	0 EVANS R foul shooting (1 - 1)			11 MARBLE II K foul drawn (4)
19:05				11 MARBLE II K free throw fast break 1 - 1 missed
19:04	2 POLITE A defensive rebound (3)			
18:40	0 EVANS R 2pt FG outside the paint, jump shot missed			
18:36	2 POLITE A offensive rebound (4)			
18:35	2 POLITE A 2pt FG second chance outside the paint, jump shot missed			
18:35	offensive dead ball rebound (3)			
18:35	turnover shot clock (9)			
18:17	10 OSBORNE M steal (1)			2 QUINTANA J turnover lost ball (2)
18:10	0 EVANS R 3pt FG from turnover, jump shot made (6)	<b>35-19</b>	<b>16</b>	
18:10	2 POLITE A assist (2)			
17:56				20 SHELTON C 3pt FG , jump shot missed
17:53	2 POLITE A defensive rebound (5)			
17:44	4 MILLS C 3pt FG , jump shot made (9)	<b>38-19</b>	<b>19</b>	
17:44	2 POLITE A assist (3)			
17:35				11 MARBLE II K turnover lost ball (3)
17:35	0 EVANS R substitution out			
17:35	11 NGOM T substitution out			
17:35	1 WARLEY J substitution in			
17:35	24 MCLEOD N substitution in			
17:19	10 OSBORNE M 3pt FG from turnover, jump shot made (7)	<b>41-19</b>	<b>22</b>	
17:19	4 MILLS C assist (1)			
17:17				Timeout 30 Sec
17:05				34 LEAUPEPE K 3pt FG , jump shot missed
17:01	10 OSBORNE M defensive rebound (2)			
16:37	4 MILLS C turnover bad pass (3)			20 SHELTON C steal (3)
16:30		<b>41-22</b>	<b>19</b>	34 LEAUPEPE K 3pt FG from turnover, jump shot made (5)
16:30				11 MARBLE II K assist (1)
16:08	2 POLITE A 3pt FG , jump shot made (4)	<b>44-22</b>	<b>22</b>	
16:08	10 OSBORNE M assist (2)			
15:41				2 QUINTANA J 2pt FG outside the paint, hook shot missed
15:38				34 LEAUPEPE K offensive rebound (6)



Game Time	FSU	Score	Diff	LMU
15:38				34 LEAUPEPE K 2pt FG second chance in the paint, layup missed
15:36	2 POLITE A defensive rebound (6)			
15:27	10 OSBORNE M 3pt FG , jump shot made (10)	<b>47-22</b>	<b>25</b>	
15:27	1 WARLEY J assist (2)			
15:20	4 MILLS C steal (2)			20 SHELTON C turnover bad pass (4)
15:16	Timeout media			
15:16	1 WARLEY J substitution out			
15:16	2 POLITE A substitution out			
15:16	4 MILLS C substitution out			
15:16	10 OSBORNE M substitution out			
15:16	24 MCLEOD N substitution out			
15:16	0 EVANS R substitution in			
15:16	11 NGOM T substitution in			
15:16	22 BUTLER J substitution in			
15:16	31 WILKES W substitution in			
15:16	35 CLEVELAND M substitution in			
15:16				11 MARBLE II K substitution out
15:16				20 SHELTON C substitution out
15:16				34 LEAUPEPE K substitution out
15:16				1 DOUGLAS D substitution in
15:16				13 LEWIS L substitution in
15:16				24 MERKVILADZE A substitution in
15:08	22 BUTLER J 2pt FG from turnover in the paint, alleyoop made (2)	<b>49-22</b>	<b>27</b>	
15:08	0 EVANS R assist (1)			
14:49		<b>49-25</b>	<b>24</b>	2 QUINTANA J 3pt FG , jump shot made (6)
14:38	31 WILKES W 3pt FG , jump shot missed			
14:34				0 SCOTT E defensive rebound (2)
14:26				13 LEWIS L turnover bad pass (2)
14:04	35 CLEVELAND M 2pt FG from turnover in the paint, floating jump shot made (9)	<b>51-25</b>	<b>26</b>	
14:04	31 WILKES W assist (1)			
13:45		<b>51-28</b>	<b>23</b>	2 QUINTANA J 3pt FG , jump shot made (9)
13:45				13 LEWIS L assist (1)
13:33	0 EVANS R 2pt FG in the paint, driving layup missed			
13:31				1 DOUGLAS D defensive rebound (3)
13:22		<b>51-31</b>	<b>20</b>	2 QUINTANA J 3pt FG , jump shot made (12)
13:22				1 DOUGLAS D assist (1)
13:09	Timeout 30 Sec			
13:03	35 CLEVELAND M 2pt FG outside the paint, jump shot made (11)	<b>53-31</b>	<b>22</b>	
12:59	0 EVANS R substitution out			
12:59	1 WARLEY J substitution in			
12:40				0 SCOTT E 2pt FG in the paint, layup blocked
12:40	22 BUTLER J block (2)			
12:37	1 WARLEY J defensive rebound (3)			
12:36	1 WARLEY J foul drawn (1)			13 LEWIS L foul personal (1 - 1)
12:30	1 WARLEY J turnover bad pass (1)			1 DOUGLAS D steal (1)
12:26		<b>53-33</b>	<b>20</b>	1 DOUGLAS D 2pt FG fast break from turnover in the paint, dunk, made (4)



**Florida St. at Loyola Marymount**

11/21/21 UNF Arena, Jacksonville, Fla.  
2021-22 Men's Basketball

Officials: Mike Nance, KB Burdett, Matt Potter

Game Time	FSU	Score	Diff	LMU
12:07	11 NGOM T 2pt FG in the paint, hook shot made (6)	<b>55-33</b>	<b>22</b>	
12:07	1 WARLEY J assist (3)			
11:58	35 CLEVELAND M foul shooting (2 - 2)			1 DOUGLAS D foul drawn (1)
11:58	Timeout media			
11:58	11 NGOM T substitution out			
11:58	22 BUTLER J substitution out			
11:58	10 OSBORNE M substitution in			
11:58	21 FLETCHER C substitution in			
11:58				0 SCOTT E substitution out
11:58				3 HARRIS, JR. G substitution in
11:58				1 DOUGLAS D free throw 1 - 2 missed
11:58				offensive dead ball rebound (1)
11:58				1 DOUGLAS D free throw 2 - 2 missed
11:57				24 MERKVILADZE A offensive rebound (2)
11:57	31 WILKES W foul personal (3 - 3)			24 MERKVILADZE A foul drawn (1)
11:55		<b>55-35</b>	<b>20</b>	3 HARRIS, JR. G 2pt FG second chance in the paint, layup made (2)
11:38	1 WARLEY J turnover lost ball (2)			3 HARRIS, JR. G steal (1)
11:29	35 CLEVELAND M foul personal (3 - 4)			2 QUINTANA J foul drawn (1)
11:25				2 QUINTANA J 3pt FG from turnover, jump shot missed
11:20				3 HARRIS, JR. G offensive rebound (1)
11:19		<b>55-37</b>	<b>18</b>	3 HARRIS, JR. G 2pt FG from turnover second chance in the paint, layup made (4)
11:08	21 FLETCHER C turnover bad pass (1)			1 DOUGLAS D steal (2)
11:04	31 WILKES W substitution out			
11:04	11 NGOM T substitution in			
10:52	11 NGOM T foul shooting (2 - 5)			1 DOUGLAS D foul drawn (2)
10:52		<b>55-38</b>	<b>17</b>	1 DOUGLAS D free throw 1 - 2 made (5)
10:52	1 WARLEY J substitution out			
10:52	35 CLEVELAND M substitution out			
10:52	0 EVANS R substitution in			
10:52	2 POLITE A substitution in			
10:52		<b>55-39</b>	<b>16</b>	1 DOUGLAS D free throw 2 - 2 made (6)
10:52	turnover sec 5 (14)			
10:52	Timeout 30 Sec			
10:43	21 FLETCHER C foul personal (2 - 6)			13 LEWIS L foul drawn (3)
10:43	21 FLETCHER C substitution out			
10:43	4 MILLS C substitution in			
10:39	2 POLITE A steal (2)			24 MERKVILADZE A turnover bad pass (2)
10:24	11 NGOM T 2pt FG from turnover in the paint, dunk, made (8)	<b>57-39</b>	<b>18</b>	
10:24	4 MILLS C assist (2)			
09:50				3 HARRIS, JR. G substitution out
09:50				24 MERKVILADZE A substitution out
09:50				0 SCOTT E substitution in
09:50				34 LEAUPEPE K substitution in
09:46		<b>57-41</b>	<b>16</b>	0 SCOTT E 2pt FG in the paint, layup made (7)
09:46				13 LEWIS L assist (2)
09:27	11 NGOM T 2pt FG in the paint, layup made (10)	<b>59-41</b>	<b>18</b>	
09:27	2 POLITE A assist (4)			
09:14				2 QUINTANA J 3pt FG , jump shot missed



Game Time	FSU	Score	Diff	LMU
09:07	defensive rebound (25)			
09:02	0 EVANS R turnover lost ball (2)			
09:02	11 NGOM T substitution out			
09:02	24 MCLEOD N substitution in			
09:02				1 DOUGLAS D substitution out
09:02				2 QUINTANA J substitution out
09:02				11 MARBLE II K substitution in
09:02				20 SHELTON C substitution in
08:56				34 LEAUPEPE K 3pt FG from turnover, jump shot missed
08:52	10 OSBORNE M defensive rebound (3)			
08:35	0 EVANS R 3pt FG , jump shot missed			
08:32				13 LEWIS L defensive rebound (2)
08:25		<b>59-43</b>	<b>16</b>	34 LEAUPEPE K 2pt FG outside the paint, jump shot made (7)
08:25				20 SHELTON C assist (2)
08:08	2 POLITE A 2pt FG in the paint, alleyoop made (6)	<b>61-43</b>	<b>18</b>	
08:08	4 MILLS C assist (3)			
07:42				0 SCOTT E turnover lost ball (4)
07:42	Timeout media			
07:42	0 EVANS R substitution out			
07:42	1 WARLEY J substitution in			
07:26	4 MILLS C foul drawn (3)			13 LEWIS L foul personal (2 - 2)
07:15	2 POLITE A 2pt FG from turnover in the paint, jump shot missed			
07:11	24 MCLEOD N offensive rebound (2)			
06:56	2 POLITE A 3pt FG from turnover second chance, jump shot missed			
06:52				0 SCOTT E defensive rebound (3)
06:27				13 LEWIS L 3pt FG , jump shot missed
06:23	2 POLITE A defensive rebound (7)			
06:14	24 MCLEOD N 2pt FG in the paint, dunk, made (6)	<b>63-43</b>	<b>20</b>	
06:14	1 WARLEY J assist (4)			
05:56	2 POLITE A foul shooting (2 - 7)			20 SHELTON C foul drawn (4)
05:56				20 SHELTON C free throw 1 - 2 missed
05:56				offensive dead ball rebound (2)
05:56	2 POLITE A substitution out			
05:56	10 OSBORNE M substitution out			
05:56	24 MCLEOD N substitution out			
05:56	15 BALLARD Q substitution in			
05:56	22 BUTLER J substitution in			
05:56	35 CLEVELAND M substitution in			
05:56				13 LEWIS L substitution out
05:56				2 QUINTANA J substitution in
05:56				20 SHELTON C free throw 2 - 2 missed
05:55	22 BUTLER J defensive rebound (2)			
05:33	4 MILLS C 2pt FG in the paint, jump shot missed			
05:29				11 MARBLE II K defensive rebound (2)
05:20				0 SCOTT E 3pt FG , jump shot missed
05:15	1 WARLEY J defensive rebound (4)			
05:04	4 MILLS C foul drawn (4)			2 QUINTANA J foul personal (2 - 3)
04:53	4 MILLS C 3pt FG , jump shot missed			



**Florida St. at Loyola Marymount**

11/21/21 UNF Arena, Jacksonville, Fla.

2021-22 Men's Basketball

Officials: Mike Nance, KB Burdett, Matt Potter

Game Time	FSU	Score	Diff	LMU
04:49	15 BALLARD Q offensive rebound (1)			
04:48	35 CLEVELAND M 2pt FG second chance outside the paint, jump shot made (13)	<b>65-43</b>	<b>22</b>	
04:48	15 BALLARD Q assist (1)			
04:20	15 BALLARD Q foul shooting (1 - 8)			11 MARBLE II K foul drawn (5)
04:20		<b>65-44</b>	<b>21</b>	11 MARBLE II K free throw 1 - 2 made (5)
04:20				0 SCOTT E substitution out
04:20				2 QUINTANA J substitution out
04:20				34 LEAUPEPE K substitution out
04:20				3 HARRIS, JR. G substitution in
04:20				13 LEWIS L substitution in
04:20				24 MERKVILADZE A substitution in
04:20		<b>65-45</b>	<b>20</b>	11 MARBLE II K free throw 2 - 2 made (6)
04:00	35 CLEVELAND M 2pt FG outside the paint, jump shot missed			
03:55				20 SHELTON C defensive rebound (4)
03:41				24 MERKVILADZE A 2pt FG outside the paint, jump shot missed
03:40	22 BUTLER J defensive rebound (3)			
03:40	Timeout media			
03:40	15 BALLARD Q substitution out			
03:40	11 NGOM T substitution in			
03:40				20 SHELTON C substitution out
03:40				10 JACKSON, JR. Q substitution in
03:21	22 BUTLER J 3pt FG , jump shot made (5)	<b>68-45</b>	<b>23</b>	
03:21	11 NGOM T assist (1)			
02:59				3 HARRIS, JR. G 3pt FG , jump shot missed
02:57	defensive rebound (33)			
02:57	4 MILLS C substitution out			
02:57	31 WILKES W substitution in			
02:51	11 NGOM T foul drawn (2)			3 HARRIS, JR. G foul personal (1 - 4)
02:51	11 NGOM T substitution out			
02:51	35 CLEVELAND M substitution out			
02:51	21 FLETCHER C substitution in			
02:51	30 PRIETO H substitution in			
02:33	31 WILKES W 3pt FG , jump shot missed			
02:29				11 MARBLE II K defensive rebound (3)
02:14	1 WARLEY J steal (2)			24 MERKVILADZE A turnover bad pass (3)
02:11	1 WARLEY J foul drawn (2)			3 HARRIS, JR. G foul personal (2 - 5)
02:11	1 WARLEY J substitution out			
02:11	12 LINDNER J substitution in			
02:11	foul administrative technical (9)			
02:11	turnover offensive (16)			
02:11				11 MARBLE II K free throw 1 - 1 missed
02:11	defensive dead ball rebound (4)			
01:57	30 PRIETO H 2pt FG in the paint, layup made (2)	<b>70-45</b>	<b>25</b>	
01:36				3 HARRIS, JR. G 2pt FG in the paint, dunk, blocked
01:36	22 BUTLER J block (3)			
01:33	31 WILKES W defensive rebound (1)			
01:32	31 WILKES W foul drawn (1)			3 HARRIS, JR. G foul personal (3 - 6)
01:26	30 PRIETO H foul drawn (1)			3 HARRIS, JR. G foul personal (4 - 7)



Official Basketball Play by Play - Second Half  
**Florida St. at Loyola Marymount**  
 11/21/21 UNF Arena, Jacksonville, Fla.  
 2021-22 Men's Basketball

**Game Time:** 5:30 PM  
**Game Duration:** 2:04

**Officials:** Mike Nance, KB Burdett, Matt Potter

Game Time	FSU	Score	Diff	LMU
01:26	30 PRIETO H 1&1 free throw 1 made (3)	<b>71-45</b>	<b>26</b>	
01:26	30 PRIETO H 1&1 free throw 2 missed			
01:25				24 MERKVILADZE A defensive rebound (3)
01:06	22 BUTLER J foul personal (2 - 10)			24 MERKVILADZE A foul drawn (2)
01:06				24 MERKVILADZE A free throw 1 - 1 missed
00:00	12 LINDNER J defensive rebound (1)			
00:46	12 LINDNER J 2pt FG in the paint, jump shot missed			
00:42	30 PRIETO H offensive rebound (1)			
00:42	30 PRIETO H 2pt FG second chance in the paint, layup made (5)	<b>73-45</b>	<b>28</b>	
00:32	31 WILKES W steal (1)			11 MARBLE II K turnover lost ball (4)
00:00	turnover shot clock (17)			
<b>END OF GAME</b>				
<b>FSU 73-45 LMU</b>				



Officials: Mike Nance, KB Burdett, Matt Potter

Florida St. - 41

NO.	Name	Min	FG	3P	FT	Rebounds			Fouls		TP	AS	TO	ST	Blocks		+/-
			M-A	M-A	M-A	OR	DR	TOT	PF	FD					BS	BA	
10	Malik Osborne	F 10:46	2-2	2-2	0-0	0	2	2	0	0	6	1	0	1	0	0	8
11	Tanor Ngom	C 08:34	3-3	0-0	0-0	0	1	1	1	1	6	1	0	0	0	0	4
0	RayQuan Evans	G 07:52	1-4	1-2	0-0	0	0	0	1	0	3	1	1	0	0	0	2
2	Anthony Polite	G 09:40	2-5	1-2	0-0	1	4	5	1	0	5	3	0	1	0	0	13
4	Caleb Mills	G 12:30	1-3	1-2	0-0	0	0	0	0	2	3	3	2	1	0	0	17
1	Jalen Warley	09:57	0-0	0-0	0-0	0	2	2	0	2	0	3	2	1	0	0	6
24	Naheem McLeod	05:25	1-1	0-0	0-0	1	0	1	0	0	2	0	0	0	0	0	8
22	John Butler	09:14	2-2	1-1	0-0	0	2	2	1	0	5	0	0	0	2	0	5
31	Wyatt Wilkes	07:09	0-2	0-2	0-0	0	1	1	1	1	0	1	0	1	0	0	-2
35	Matthew Cleveland	07:29	3-4	0-0	0-0	0	0	0	2	0	6	0	0	0	0	0	-5
21	Cam'Ron Fletcher	04:06	0-0	0-0	0-0	0	0	0	1	0	0	0	1	0	0	0	-1
15	Quincy Ballard	02:16	0-0	0-0	0-0	1	0	1	1	0	0	1	0	0	0	0	0
30	Harrison Prieto	02:51	2-2	0-0	1-2	1	0	1	0	1	5	0	0	0	0	0	5
12	Justin Lindner	02:11	0-1	0-0	0-0	0	1	1	0	0	0	0	0	0	0	0	5
Team						0	2	2			0			4			
<b>Totals</b>			17-29	6-11	1-2	4	15	19	9	7	41	14	10	5	2	0	13

Shooting By Period		
2 <sup>nd</sup> FG%	17-29	58.6%
3PT%	6-11	54.5%
FT%	1-2	50%
GM FG%	17-29	58.6%
3PT%	6-11	54.5%
FT%	1-2	50.0%

Dead Ball Rebounds: 1, 1

Technical Fouls: Team 2<sup>nd</sup>: 2:11

Loyola Marymount - 28

NO.	Name	Min	FG	3P	FT	Rebounds			Fouls		TP	AS	TO	ST	Blocks		+/-
			M-A	M-A	M-A	OR	DR	TOT	PF	FD					BS	BA	
0	Eli Scott	F 13:32	1-4	0-1	0-0	0	2	2	0	0	2	0	1	0	0	1	-10
34	Keli Leapepe	F 10:14	2-5	1-3	0-0	2	0	2	0	0	5	0	0	0	0	0	-13
2	Joe Quintana	G 12:34	3-6	3-5	0-0	0	0	0	1	1	9	0	1	0	0	0	-4
11	Kwane Marble II	G 13:46	1-2	0-1	2-4	0	2	2	0	2	4	1	2	1	0	0	-20
20	Cam Shelton	G 10:06	0-1	0-1	0-2	0	1	1	0	1	0	1	1	1	0	0	-12
1	Dameane Douglas	06:14	1-1	0-0	2-4	0	1	1	0	2	4	1	0	2	0	0	7
13	Lamaj Lewis	13:40	0-1	0-1	0-0	0	1	1	2	1	0	2	1	0	0	0	-2
24	Alex Merkviladze	09:46	0-1	0-0	0-1	1	1	2	0	2	0	0	2	0	0	0	0
3	Gary Harris, Jr.	06:28	2-4	0-1	0-0	1	0	1	4	0	4	0	0	1	0	1	-3
10	Quentin Jackson, Jr.	03:40	0-0	0-0	0-0	0	0	0	0	0	0	0	0	0	0	0	-8
Team						0	0	0			0			0			
<b>Totals</b>			10-25	4-13	4-11	4	8	12	7	9	28	5	8	5	0	2	-13

Shooting By Period		
2 <sup>nd</sup> FG%	10-25	40.0%
3PT%	4-13	30.8%
FT%	4-11	36.4%
GM FG%	10-25	40.0%
3PT%	4-13	30.8%
FT%	4-11	36.4%

Dead Ball Rebounds: 2, 0

Technical Fouls: NONE

	FSU	LMU
Biggest lead	28 (2 <sup>nd</sup> 0:42)	0 (1 <sup>st</sup> 20:00)
Best Scoring Run	9 (2 <sup>nd</sup> 17:19)	6 (2 <sup>nd</sup> 13:22)
Lead Changes	0	
Times Tied	0	
Time with Lead	19:36	00:00

	FSU	LMU
Points from		
Turnovers	12	11
Paint	18	10
Second Chance	4	4
Fast Breaks	0	4
Bench	18	8

	Period by Period Scoring		
	1st	2nd	TOT
FSU	32	41	73
LMU	17	28	45



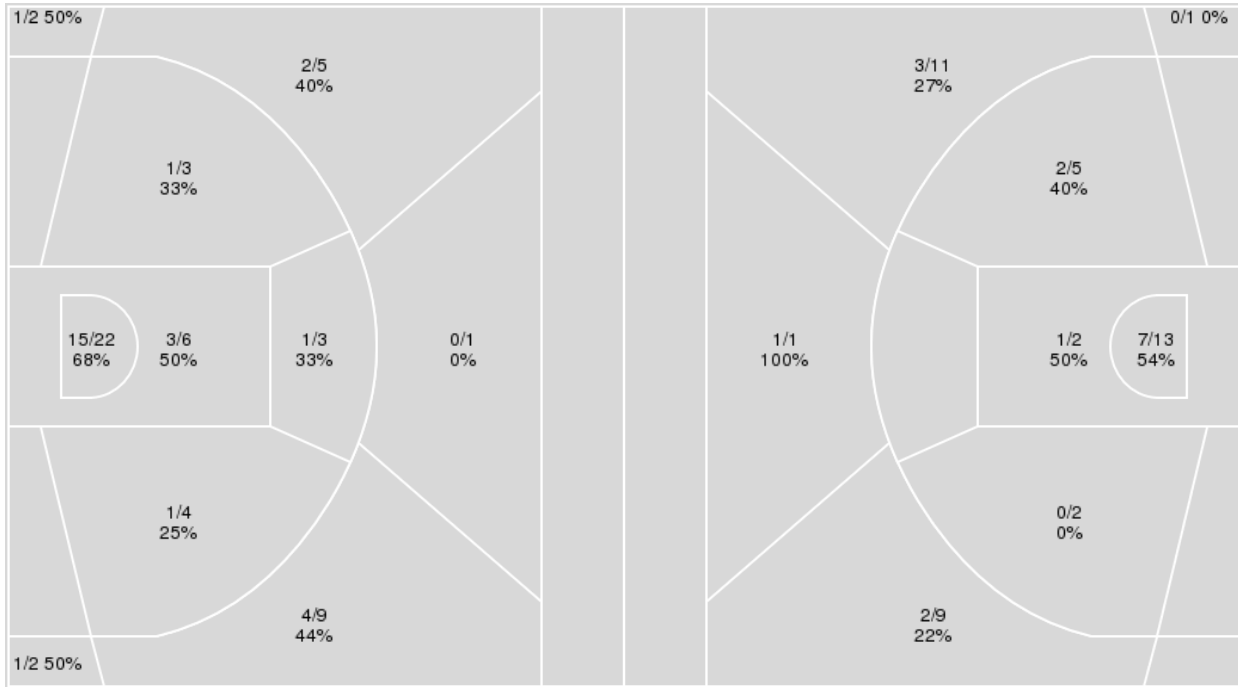
**Officials:** Mike Nance, KB Burdett, Matt Potter

{ Players => All; } FG Types => All; Results => All;

{ Players => All; } FG Types => All; Results => All;

**Florida St.**

**Loyola Marymount**



Florida St.	M/A	%
Field Goals	29/57	51
2 Points	21/38	55
3 Points	8/19	42
Free Throws	7/11	64

Loyola Marymount	M/A	%
Field Goals	16/44	36
2 Points	10/22	45
3 Points	6/22	27
Free Throws	7/16	44





**Florida St. at Loyola Marymount**

11/21/21 UNF Arena, Jacksonville, Fla.  
2021-22 Men's Basketball

Officials: Mike Nance, KB Burdett, Matt Potter

**Florida St.**

No	Name	Mins		Score		Points Diff		Points per Min		Assists		Rebounds		Steals		Turnovers	
		On	Off	On	Off	On	Off	On	Off	On	Off	On	Off	On	Off	On	Off
0	RayQuan Evans	16:21	23:39	34 - 27	39 - 18	7	21	2.08	1.65	10	11	15	21	5	9	9	8
1	Jalen Warley	21:28	18:32	34 - 18	39 - 27	16	12	1.58	2.10	11	10	18	18	8	6	6	11
2	Anthony Polite	19:48	20:12	41 - 21	32 - 24	20	8	2.07	1.58	11	10	21	15	9	5	9	8
4	Caleb Mills	23:38	16:22	46 - 22	27 - 23	24	4	1.95	1.65	13	8	26	10	9	5	8	9
10	Malik Osborne	19:42	20:18	39 - 26	34 - 19	13	15	1.98	1.67	11	10	19	17	8	6	11	6
11	Tanor Ngom	13:53	26:07	27 - 28	46 - 17	-1	29	1.94	1.76	9	12	13	23	3	11	9	8
12	Justin Lindner	02:11	37:49	5 - 0	68 - 45	5	23	2.29	1.80	0	21	3	33	1	13	2	15
15	Quincy Ballard	04:21	35:39	7 - 3	66 - 42	4	24	1.61	1.85	1	20	6	30	2	12	1	16
21	Cam/Ron Fletcher	11:36	28:24	17 - 12	56 - 33	5	23	1.47	1.97	4	17	9	27	4	10	7	10
22	John Butler	18:24	21:36	28 - 17	45 - 28	11	17	1.52	2.08	8	13	16	20	6	8	6	11
24	Naheem McLeod	16:28	23:32	31 - 10	42 - 35	21	7	1.88	1.78	10	11	12	24	7	7	3	14
30	Harrison Prieto	02:51	37:09	5 - 0	68 - 45	5	23	1.75	1.83	0	21	3	33	2	12	2	15
31	Wyatt Wilkes	12:27	27:33	24 - 17	49 - 28	7	21	1.93	1.78	7	14	7	29	3	11	6	11
35	Matthew Cleveland	16:52	23:08	27 - 24	46 - 21	3	25	1.60	1.99	10	11	12	24	3	11	6	11

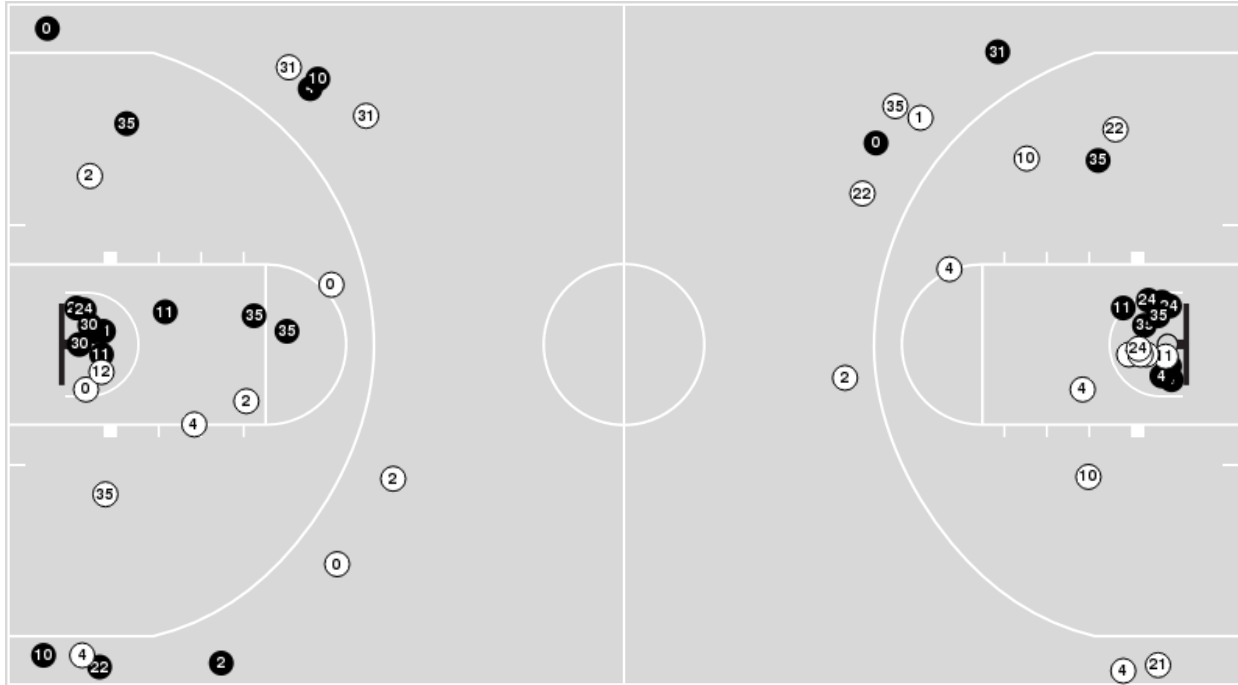
**Loyola Marymount**

No	Name	Mins		Score		Points Diff		Points per Min		Assists		Rebounds		Steals		Turnovers	
		On	Off	On	Off	On	Off	On	Off	On	Off	On	Off	On	Off	On	Off
0	Eli Scott	25:32	14:28	35 - 46	10 - 27	-11	-17	1.37	0.69	7	0	16	11	5	2	14	10
1	Dameane Douglas	14:33	25:27	21 - 23	24 - 50	-2	-26	1.44	0.94	3	4	13	14	3	4	11	13
2	Joe Quintana	28:23	11:37	42 - 54	3 - 19	-12	-16	1.48	0.26	6	1	17	10	7	0	16	8
3	Gary Harris, Jr.	12:23	27:37	10 - 22	35 - 51	-12	-16	0.81	1.27	0	7	11	16	2	5	8	16
10	Quentin Jackson, Jr.	03:40	36:20	0 - 8	45 - 65	-8	-20	0.00	1.24	0	7	2	25	0	7	2	22
11	Kwane Marble II	26:35	13:25	24 - 53	21 - 20	-29	1	0.90	1.57	4	3	15	12	4	3	14	10
13	Lamaj Lewis	20:20	19:40	24 - 34	21 - 39	-10	-18	1.18	1.07	4	3	16	11	3	4	13	11
20	Cam Shelton	26:29	13:31	24 - 47	21 - 26	-23	-5	0.91	1.55	4	3	18	9	4	3	16	8
24	Alex Merkviladze	17:33	22:27	20 - 31	25 - 42	-11	-17	1.14	1.11	2	5	13	14	3	4	12	12
34	Keli Leaupepe	24:32	15:28	25 - 47	20 - 26	-22	-6	1.02	1.29	5	2	14	13	4	3	14	10

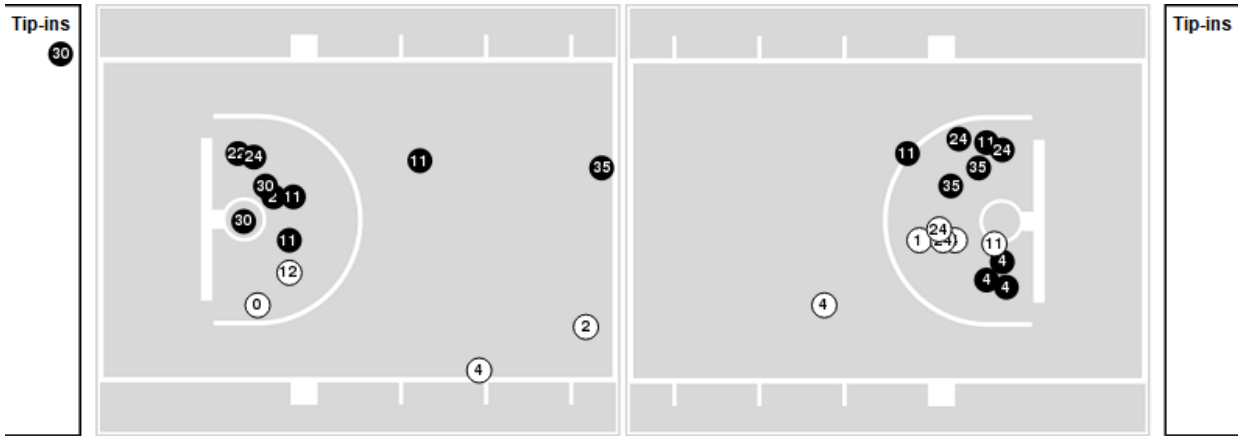


Players => AllFG Types=>AllResults=>All  
**Florida St.**

**All Field Goals**



**Blow Up Chart**



● Made    ○ Missed    N - Player Number

Florida St.	M/A	%
Field Goals	29/57	51
2 Points	21/38	55
3 Points	8/19	42
Free Throws	7/11	64

Florida St.	M/A	%
Points in the Paint	36 (18 / 28)	64
Fast Break Points	16 (11/14)	79
Second Chance Points	9 (4/9)	44
Effective FG%	58	

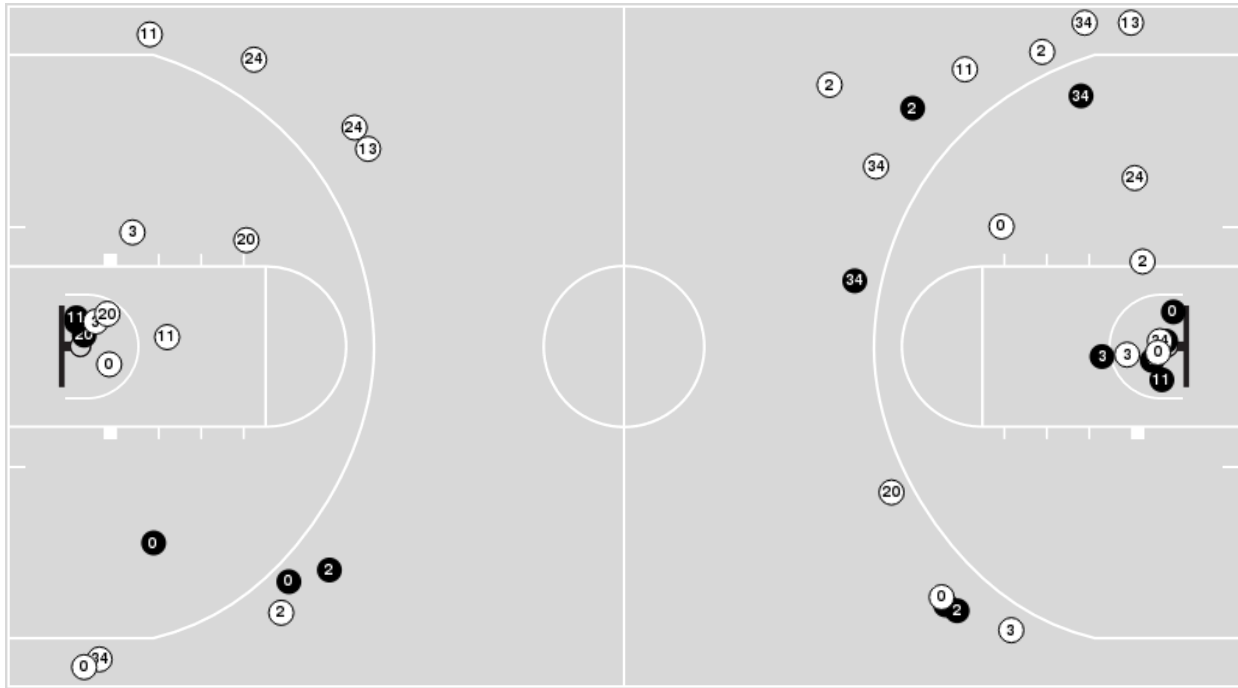


Officials: Mike Nance, KB Burdett, Matt Potter

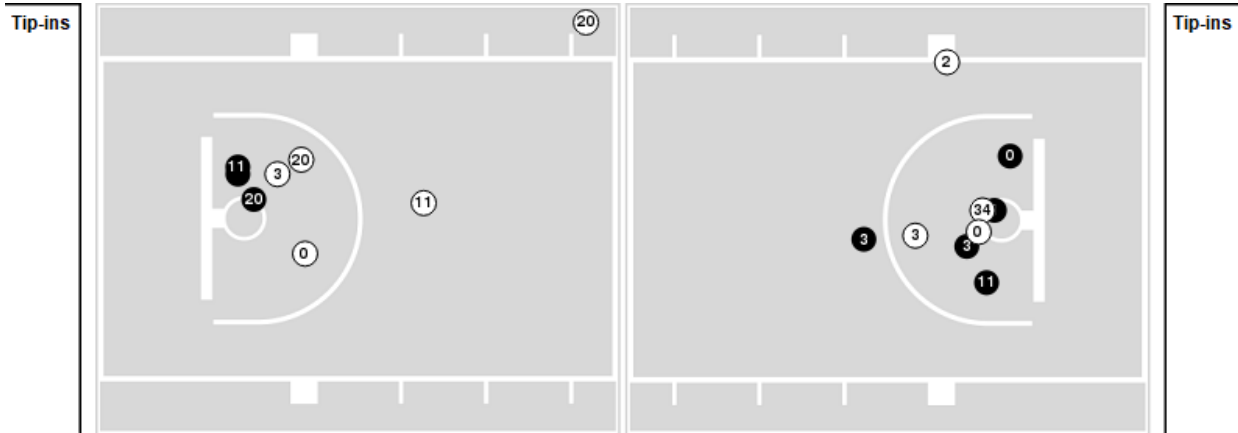
Players => AllFG Types=>AllResults=>All

**Loyola Marymount**

**All Field Goals**



**Blow Up Chart**



● Made    ○ Missed    N - Player Number

Loyola Marymount	M/A	%
Field Goals	16/44	36
2 Points	10/22	45
3 Points	6/22	27
Free Throws	7/16	44

Loyola Marymount	M/A	%
Points in the Paint	16 (8 / 15)	53
Fast Break Points	7 (4/6)	67
Second Chance Points	6 (4/7)	57
Effective FG%	43	



Official Basketball Rotations Summary - Final  
**Florida St. at Loyola Marymount**  
 11/21/21 UNF Arena, Jacksonville, Fla.  
 2021-22 Men's Basketball

Game Time: 5:30 PM  
 Game Duration: 2:04

Officials: Mike Nance, KB Burdett, Matt Potter

**Florida St.**

Lineup	Quarter On	Time On	Quarter Off	Time Off	Time on Court	Score	Score Diff	Reb	Stl	Tov	Ass	PPP
0- Evans R/ 2- Polite A/ 4- Mills C/ 10- Osborne M/ 11- Ngom T/	1	20:00	1	17:12	02:48	6-8	-2	4	1	2	1	1.2295
0- Evans R/ 2- Polite A/ 4- Mills C/ 10- Osborne M/ 31- Wilkes W/	1	17:12	1	16:12	01:00	3-0	3	2	0	0	1	3.0000
1- Warley J/ 2- Polite A/ 4- Mills C/ 10- Osborne M/ 31- Wilkes W/	1	16:12	1	16:12	00:00	0-0	0	0	0	0	0	0.0000
1- Warley J/ 4- Mills C/ 10- Osborne M/ 22- Butler J/ 31- Wilkes W/	1	16:12	1	15:43	00:29	0-0	0	0	0	0	0	0.0000
1- Warley J/ 10- Osborne M/ 22- Butler J/ 31- Wilkes W/ 35- Cleveland M/	1	15:43	1	15:39	00:04	0-0	0	0	0	0	0	0.0000
1- Warley J/ 22- Butler J/ 24- McLeod N/ 31- Wilkes W/ 35- Cleveland M/	1	15:39	1	14:21	01:18	2-0	2	0	1	1	1	0.6667
1- Warley J/ 21- Fletcher C/ 22- Butler J/ 24- McLeod N/ 35- Cleveland M/	1	14:21	1	12:11	02:10	2-2	0	2	1	0	0	0.6667
0- Evans R/ 11- Ngom T/ 21- Fletcher C/ 22- Butler J/ 35- Cleveland M/	1	12:11	1	10:33	01:38	0-2	-2	1	0	2	0	0.0000
1- Warley J/ 2- Polite A/ 4- Mills C/ 10- Osborne M/ 11- Ngom T/	1	10:33	1	09:40	00:53	0-1	-1	1	0	0	0	0.0000
1- Warley J/ 2- Polite A/ 4- Mills C/ 10- Osborne M/ 24- McLeod N/	1	09:40	1	08:03	01:37	2-1	1	0	2	1	0	0.6667
1- Warley J/ 2- Polite A/ 4- Mills C/ 22- Butler J/ 24- McLeod N/	1	08:03	1	06:18	01:45	2-0	2	2	1	0	0	0.6667
0- Evans R/ 4- Mills C/ 24- McLeod N/ 31- Wilkes W/ 35- Cleveland M/	1	06:18	1	05:47	00:31	0-0	0	0	0	0	0	0.0000
0- Evans R/ 4- Mills C/ 21- Fletcher C/ 24- McLeod N/ 31- Wilkes W/	1	05:47	1	05:47	00:00	0-0	0	0	0	0	0	0.0000
0- Evans R/ 21- Fletcher C/ 24- McLeod N/ 31- Wilkes W/ 35- Cleveland M/	1	05:47	1	05:20	00:27	2-0	2	0	0	0	1	2.0000
1- Warley J/ 21- Fletcher C/ 24- McLeod N/ 31- Wilkes W/ 35- Cleveland M/	1	05:20	1	03:51	01:29	4-2	2	1	0	0	1	1.3889
1- Warley J/ 21- Fletcher C/ 22- Butler J/ 24- McLeod N/ 35- Cleveland M/	1	03:51	1	02:05	01:46	4-0	4	2	1	0	2	1.3333
0- Evans R/ 2- Polite A/ 4- Mills C/ 10- Osborne M/ 15- Ballard Q/	1	02:05	2	20:00	02:05	5-1	4	2	2	1	0	1.3298
0- Evans R/ 2- Polite A/ 4- Mills C/ 10- Osborne M/ 11- Ngom T/	2	20:00	2	17:35	02:25	6-2	4	4	1	2	2	1.2000
1- Warley J/ 2- Polite A/ 4- Mills C/ 10- Osborne M/ 24- McLeod N/	2	17:35	2	15:16	02:19	9-3	6	2	1	1	3	2.2500
0- Evans R/ 11- Ngom T/ 22- Butler J/ 31- Wilkes W/ 35- Cleveland M/	2	15:16	2	12:59	02:17	6-9	-3	0	0	0	2	1.2000
1- Warley J/ 11- Ngom T/ 22- Butler J/ 31- Wilkes W/ 35- Cleveland M/	2	12:59	2	11:58	01:01	2-2	0	1	0	1	1	1.0000
1- Warley J/ 10- Osborne M/ 21- Fletcher C/ 31- Wilkes W/ 35- Cleveland M/	2	11:58	2	11:04	00:54	0-4	-4	0	0	2	0	0.0000
1- Warley J/ 10- Osborne M/ 11- Ngom T/ 21- Fletcher C/ 35- Cleveland M/	2	11:04	2	10:52	00:12	0-1	-1	0	0	0	0	0.0000
0- Evans R/ 2- Polite A/ 10- Osborne M/ 11- Ngom T/ 21- Fletcher C/	2	10:52	2	10:43	00:09	0-1	-1	0	0	1	0	0.0000
0- Evans R/ 2- Polite A/ 4- Mills C/ 10- Osborne M/ 11- Ngom T/	2	10:43	2	09:02	01:41	4-2	2	1	1	1	2	1.3333
0- Evans R/ 2- Polite A/ 4- Mills C/ 10- Osborne M/ 24- McLeod N/	2	09:02	2	07:42	01:20	2-2	0	1	0	0	1	1.0000
1- Warley J/ 2- Polite A/ 4- Mills C/ 10- Osborne M/ 24- McLeod N/	2	07:42	2	05:56	01:46	2-0	2	2	0	0	1	1.0000
1- Warley J/ 4- Mills C/ 15- Ballard Q/ 22- Butler J/ 35- Cleveland M/	2	05:56	2	03:40	02:16	2-2	0	4	0	0	1	0.6667
1- Warley J/ 4- Mills C/ 11- Ngom T/ 22- Butler J/ 35- Cleveland M/	2	03:40	2	02:57	00:43	3-0	3	1	0	0	1	3.0000
1- Warley J/ 11- Ngom T/ 22- Butler J/ 31- Wilkes W/ 35- Cleveland M/	2	02:57	2	02:51	00:06	0-0	0	0	0	0	0	0.0000
1- Warley J/ 21- Fletcher C/ 22- Butler J/ 30- Prieto H/ 31- Wilkes W/	2	02:51	2	02:11	00:40	0-0	0	0	1	0	0	0.0000
12- Lindner J/ 21- Fletcher C/ 22- Butler J/ 30- Prieto H/ 31- Wilkes W/	2	02:11	2	00:00	02:11	5-0	5	3	1	2	0	1.0246



Officials: Mike Nance, KB Burdett, Matt Potter

**Loyola Marymount**

Lineup	Quarter On	Time On	Quarter Off	Time Off	Time on Court	Score	Score Diff	Reb	Stl	Tov	Ass	PPP
0- Scott E/ 2- Quintana J/ 11- Marble II K/ 20- Shelton C/ 34- Leaupepe K/	1	20:00	1	17:22	02:38	8-4	4	0	1	1	2	2.0000
2- Quintana J/ 3- Harris, Jr. G/ 11- Marble II K/ 20- Shelton C/ 34- Leaupepe K/	1	17:22	1	16:12	01:10	0-5	-5	0	0	1	0	0.0000
1- Douglas D/ 2- Quintana J/ 3- Harris, Jr. G/ 20- Shelton C/ 34- Leaupepe K/	1	16:12	1	15:39	00:33	0-0	0	1	0	1	0	0.0000
1- Douglas D/ 3- Harris, Jr. G/ 13- Lewis L/ 20- Shelton C/ 24- Merkviladze A/	1	15:39	1	13:34	02:05	0-2	-2	3	0	2	0	0.0000
0- Scott E/ 1- Douglas D/ 2- Quintana J/ 13- Lewis L/ 24- Merkviladze A/	1	13:34	1	12:11	01:23	2-2	0	1	0	1	0	0.6667
0- Scott E/ 1- Douglas D/ 2- Quintana J/ 20- Shelton C/ 24- Merkviladze A/	1	12:11	1	12:11	00:00	0-0	0	0	0	0	0	0.0000
0- Scott E/ 1- Douglas D/ 2- Quintana J/ 20- Shelton C/ 34- Leaupepe K/	1	12:11	1	11:44	00:27	0-0	0	0	0	0	0	0.0000
0- Scott E/ 2- Quintana J/ 11- Marble II K/ 20- Shelton C/ 34- Leaupepe K/	1	11:44	1	08:32	03:12	4-0	4	4	1	1	0	0.8197
0- Scott E/ 2- Quintana J/ 11- Marble II K/ 13- Lewis L/ 24- Merkviladze A/	1	08:32	1	08:03	00:29	0-2	-2	0	0	1	0	0.0000
0- Scott E/ 1- Douglas D/ 2- Quintana J/ 13- Lewis L/ 24- Merkviladze A/	1	08:03	1	06:18	01:45	0-2	-2	2	0	2	0	0.0000
0- Scott E/ 1- Douglas D/ 13- Lewis L/ 20- Shelton C/ 34- Leaupepe K/	1	06:18	1	05:20	00:58	0-2	-2	1	0	2	0	0.0000
0- Scott E/ 1- Douglas D/ 11- Marble II K/ 20- Shelton C/ 34- Leaupepe K/	1	05:20	1	04:12	01:08	0-3	-3	1	0	1	0	0.0000
2- Quintana J/ 3- Harris, Jr. G/ 11- Marble II K/ 20- Shelton C/ 34- Leaupepe K/	1	04:12	1	02:05	02:07	3-5	-2	2	0	1	0	0.7732
2- Quintana J/ 11- Marble II K/ 20- Shelton C/ 24- Merkviladze A/ 34- Leaupepe K/	1	02:05	2	20:00	02:05	0-5	-5	0	0	2	0	0.0000
0- Scott E/ 2- Quintana J/ 11- Marble II K/ 20- Shelton C/ 34- Leaupepe K/	2	20:00	2	15:16	04:44	5-15	-10	2	2	3	1	0.5297
0- Scott E/ 1- Douglas D/ 2- Quintana J/ 13- Lewis L/ 24- Merkviladze A/	2	15:16	2	11:58	03:18	11-8	3	2	1	1	2	1.8333
1- Douglas D/ 2- Quintana J/ 3- Harris, Jr. G/ 13- Lewis L/ 24- Merkviladze A/	2	11:58	2	09:50	02:08	6-2	4	2	2	1	0	1.5957
0- Scott E/ 1- Douglas D/ 2- Quintana J/ 13- Lewis L/ 34- Leaupepe K/	2	09:50	2	09:02	00:48	2-2	0	0	0	0	1	1.0000
0- Scott E/ 11- Marble II K/ 13- Lewis L/ 20- Shelton C/ 34- Leaupepe K/	2	09:02	2	05:56	03:06	2-4	-2	2	0	1	1	0.4505
0- Scott E/ 2- Quintana J/ 11- Marble II K/ 20- Shelton C/ 34- Leaupepe K/	2	05:56	2	04:20	01:36	1-2	-1	1	0	0	0	0.5319
3- Harris, Jr. G/ 11- Marble II K/ 13- Lewis L/ 20- Shelton C/ 24- Merkviladze A/	2	04:20	2	03:40	00:40	1-0	1	1	0	0	0	0.6944
3- Harris, Jr. G/ 10- Jackson, Jr. Q/ 11- Marble II K/ 13- Lewis L/ 24- Merkviladze A/	2	03:40	2	00:00	03:40	0-8	-8	2	0	2	0	0.0000



Official Basketball Line Up Analysis - Final  
**Florida St. at Loyola Marymount**  
 11/21/21 UNF Arena, Jacksonville, Fla.  
 2021-22 Men's Basketball

Game Time: 5:30 PM  
 Game Duration: 2:04

Officials: Mike Nance, KB Burdett, Matt Potter

**Florida St.**

Lineup	Time	Score	Score Diff	Pts/Min	Reb	Stl	Tov	Ass	PPP
0- Evans R/ 2- Polite A/ 4- Mills C/ 10- Osborne M/ 11- Ngom T/	06:54	16-12	4	2.3188	9	3	5	5	1.2422
1- Warley J/ 2- Polite A/ 4- Mills C/ 10- Osborne M/ 24- McLeod N/	05:42	13-4	9	2.2807	4	3	2	4	1.4444
1- Warley J/ 21- Fletcher C/ 22- Butler J/ 24- McLeod N/ 35- Cleveland M/	03:56	6-2	4	1.5254	4	2	0	2	1.0000
0- Evans R/ 11- Ngom T/ 22- Butler J/ 31- Wilkes W/ 35- Cleveland M/	02:17	6-9	-3	2.6277	0	0	0	2	1.2000
1- Warley J/ 4- Mills C/ 15- Ballard Q/ 22- Butler J/ 35- Cleveland M/	02:16	2-2	0	0.8824	4	0	0	1	0.6667
12- Lindner J/ 21- Fletcher C/ 22- Butler J/ 30- Prieto H/ 31- Wilkes W/	02:11	5-0	5	2.2901	3	1	2	0	1.0246
0- Evans R/ 2- Polite A/ 4- Mills C/ 10- Osborne M/ 15- Ballard Q/	02:05	5-1	4	2.4000	2	2	1	0	1.3298
1- Warley J/ 2- Polite A/ 4- Mills C/ 22- Butler J/ 24- McLeod N/	01:45	2-0	2	1.1429	2	1	0	0	0.6667
0- Evans R/ 11- Ngom T/ 21- Fletcher C/ 22- Butler J/ 35- Cleveland M/	01:38	0-2	-2	0.0000	1	0	2	0	0.0000
1- Warley J/ 21- Fletcher C/ 24- McLeod N/ 31- Wilkes W/ 35- Cleveland M/	01:29	4-2	2	2.6966	1	0	0	1	1.3889
0- Evans R/ 2- Polite A/ 4- Mills C/ 10- Osborne M/ 24- McLeod N/	01:20	2-2	0	1.5000	1	0	0	1	1.0000
1- Warley J/ 22- Butler J/ 24- McLeod N/ 31- Wilkes W/ 35- Cleveland M/	01:18	2-0	2	1.5385	0	1	1	1	0.6667
1- Warley J/ 11- Ngom T/ 22- Butler J/ 31- Wilkes W/ 35- Cleveland M/	01:07	2-2	0	1.7910	1	0	1	1	1.0000
0- Evans R/ 2- Polite A/ 4- Mills C/ 10- Osborne M/ 31- Wilkes W/	01:00	3-0	3	3.0000	2	0	0	1	3.0000
1- Warley J/ 10- Osborne M/ 21- Fletcher C/ 31- Wilkes W/ 35- Cleveland M/	00:54	0-4	-4	0.0000	0	0	2	0	0.0000
1- Warley J/ 2- Polite A/ 4- Mills C/ 10- Osborne M/ 11- Ngom T/	00:53	0-1	-1	0.0000	1	0	0	0	0.0000
1- Warley J/ 4- Mills C/ 11- Ngom T/ 22- Butler J/ 35- Cleveland M/	00:43	3-0	3	4.1860	1	0	0	1	3.0000
1- Warley J/ 21- Fletcher C/ 22- Butler J/ 30- Prieto H/ 31- Wilkes W/	00:40	0-0	0	0.0000	0	1	0	0	0.0000
0- Evans R/ 4- Mills C/ 24- McLeod N/ 31- Wilkes W/ 35- Cleveland M/	00:31	0-0	0	0.0000	0	0	0	0	0.0000
1- Warley J/ 4- Mills C/ 10- Osborne M/ 22- Butler J/ 31- Wilkes W/	00:29	0-0	0	0.0000	0	0	0	0	0.0000
0- Evans R/ 21- Fletcher C/ 24- McLeod N/ 31- Wilkes W/ 35- Cleveland M/	00:27	2-0	2	4.4444	0	0	0	1	2.0000
1- Warley J/ 10- Osborne M/ 11- Ngom T/ 21- Fletcher C/ 35- Cleveland M/	00:12	0-1	-1	0.0000	0	0	0	0	0.0000
0- Evans R/ 2- Polite A/ 10- Osborne M/ 11- Ngom T/ 21- Fletcher C/	00:09	0-1	-1	0.0000	0	0	1	0	0.0000
1- Warley J/ 10- Osborne M/ 22- Butler J/ 31- Wilkes W/ 35- Cleveland M/	00:04	0-0	0	0.0000	0	0	0	0	0.0000
1- Warley J/ 2- Polite A/ 4- Mills C/ 10- Osborne M/ 31- Wilkes W/	00:00	0-0	0	NaN	0	0	0	0	0.0000
0- Evans R/ 4- Mills C/ 21- Fletcher C/ 24- McLeod N/ 31- Wilkes W/	00:00	0-0	0	NaN	0	0	0	0	0.0000



Official Basketball Line Up Analysis - Final  
**Florida St. at Loyola Marymount**  
 11/21/21 UNF Arena, Jacksonville, Fla.  
 2021-22 Men's Basketball

Game Time: 5:30 PM  
 Game Duration: 2:04

Officials: Mike Nance, KB Burdett, Matt Potter

**Loyola Marymount**

Lineup	Time	Score	Score Diff	Pts/Min	Reb	Stl	Tov	Ass	PPP
0- Scott E/ 2- Quintana J/ 11- Marble II K/ 20- Shelton C/ 34- Leaupepe K/	12:10	18-21	-3	1.4795	7	4	5	3	0.8911
0- Scott E/ 1- Douglas D/ 2- Quintana J/ 13- Lewis L/ 24- Merkviladze A/	06:26	13-12	1	2.0207	5	1	4	2	1.0000
3- Harris, Jr. G/ 10- Jackson, Jr. Q/ 11- Marble II K/ 13- Lewis L/ 24- Merkviladze A/	03:40	0-8	-8	0.0000	2	0	2	0	0.0000
2- Quintana J/ 3- Harris, Jr. G/ 11- Marble II K/ 20- Shelton C/ 34- Leaupepe K/	03:17	3-10	-7	0.9137	2	0	2	0	0.5102
0- Scott E/ 11- Marble II K/ 13- Lewis L/ 20- Shelton C/ 34- Leaupepe K/	03:06	2-4	-2	0.6452	2	0	1	1	0.4505
1- Douglas D/ 2- Quintana J/ 3- Harris, Jr. G/ 13- Lewis L/ 24- Merkviladze A/	02:08	6-2	4	2.8125	2	2	1	0	1.5957
1- Douglas D/ 3- Harris, Jr. G/ 13- Lewis L/ 20- Shelton C/ 24- Merkviladze A/	02:05	0-2	-2	0.0000	3	0	2	0	0.0000
2- Quintana J/ 11- Marble II K/ 20- Shelton C/ 24- Merkviladze A/ 34- Leaupepe K/	02:05	0-5	-5	0.0000	0	0	2	0	0.0000
0- Scott E/ 1- Douglas D/ 11- Marble II K/ 20- Shelton C/ 34- Leaupepe K/	01:08	0-3	-3	0.0000	1	0	1	0	0.0000
0- Scott E/ 1- Douglas D/ 13- Lewis L/ 20- Shelton C/ 34- Leaupepe K/	00:58	0-2	-2	0.0000	1	0	2	0	0.0000
0- Scott E/ 1- Douglas D/ 2- Quintana J/ 13- Lewis L/ 34- Leaupepe K/	00:48	2-2	0	2.5000	0	0	0	1	1.0000
3- Harris, Jr. G/ 11- Marble II K/ 13- Lewis L/ 20- Shelton C/ 24- Merkviladze A/	00:40	1-0	1	1.5000	1	0	0	0	0.6944
1- Douglas D/ 2- Quintana J/ 3- Harris, Jr. G/ 20- Shelton C/ 34- Leaupepe K/	00:33	0-0	0	0.0000	1	0	1	0	0.0000
0- Scott E/ 2- Quintana J/ 11- Marble II K/ 13- Lewis L/ 24- Merkviladze A/	00:29	0-2	-2	0.0000	0	0	1	0	0.0000
0- Scott E/ 1- Douglas D/ 2- Quintana J/ 20- Shelton C/ 34- Leaupepe K/	00:27	0-0	0	0.0000	0	0	0	0	0.0000
0- Scott E/ 1- Douglas D/ 2- Quintana J/ 20- Shelton C/ 24- Merkviladze A/	00:00	0-0	0	NaN	0	0	0	0	0.0000