

## FINAL SCORE



**Notre Dame**

**72**



**Florida State**

**73**

December 22, 2022 • Donald L. Tucker Center

## FINAL STATISTICS

Officials: Ted Valentine, Lee Cassell, Tony Henderson

Notre Dame - 72

Record: 7-5 (0-2)

NO.	Name	Min	FG	3P	FT	Rebounds			Fouls		TP	AS	TO	ST	Blocks		+/-
			M-A	M-A	M-A	OR	DR	TOT	PF	FD					BS	BA	
14	Nate Laszewski	F 34:03	5-7	2-4	0-0	0	6	6	4	3	12	2	0	0	2	0	-4
1	JJ Starling	G 32:20	7-11	2-3	4-4	0	3	3	0	3	20	0	2	2	0	0	0
3	Trey Wertz	G 30:04	4-9	1-2	1-2	0	2	2	2	1	10	4	2	0	0	1	1
5	Cormac Ryan	G 37:31	6-13	3-6	2-3	0	6	6	1	1	17	2	1	0	0	0	1
23	Dane Goodwin	G 37:00	1-4	0-1	0-0	0	3	3	1	0	2	2	0	0	0	0	-6
2	Ven-Allen Lubin	17:07	3-6	0-0	0-0	4	2	6	0	0	6	1	1	0	0	0	4
10	Marcus Hammond	11:56	2-5	1-3	0-0	0	1	1	1	1	5	1	1	0	0	0	-1
Team						1	0	1			0		0				
<b>Totals</b>			28-55	9-19	7-9	5	23	28	9	9	72	12	7	2	2	1	-1

Shooting By Period		
1st FG%	15-29	51.7%
3PT%	5-12	41.7%
FT%	4-5	80%
2nd FG%	13-26	50.0%
3PT%	4-7	57.1%
FT%	3-4	75%
GM FG%	28-55	50.9%
3PT%	9-19	47.4%
FT%	7-9	77.8%

Dead Ball Rebounds: 2, 1

Technical Fouls: NONE

Florida State - 73

Record: 4-10 (2-1)

NO.	Name	Min	FG	3P	FT	Rebounds			Fouls		TP	AS	TO	ST	Blocks		+/-
			M-A	M-A	M-A	OR	DR	TOT	PF	FD					BS	BA	
3	Cameron Corhen	F 31:05	8-13	0-2	2-2	2	5	7	1	2	18	2	0	0	0	0	1
1	Jalen Warley	G 33:42	4-5	0-0	1-1	2	1	3	1	1	9	5	1	2	0	0	12
4	Caleb Mills	G 38:46	6-13	2-7	4-4	0	2	2	1	2	18	3	1	1	0	1	6
22	Darin Green Jr.	G 38:32	3-11	2-8	0-0	0	3	3	2	0	8	1	0	1	1	0	2
35	Matthew Cleveland	G 34:34	6-14	3-4	4-5	2	10	12	1	3	19	3	1	1	0	1	-1
0	Chandler Jackson	06:18	0-0	0-0	0-0	0	0	0	0	0	0	0	0	0	0	0	-11
5	De'Ante Green	06:48	0-0	0-0	0-0	0	0	0	1	0	0	0	2	0	0	0	-4
12	Tom House	08:08	0-1	0-1	1-2	0	0	0	1	1	1	1	0	0	0	0	-4
51	Sola Adebisi	02:07	0-0	0-0	0-0	0	0	0	1	0	0	0	0	0	0	0	4
Team						1	1	2			0		0				
<b>Totals</b>			27-57	7-22	12-14	7	22	29	9	9	73	15	5	5	1	2	1

Shooting By Period		
1st FG%	14-32	43.8%
3PT%	4-12	33.3%
FT%	6-6	100%
2nd FG%	13-25	52.0%
3PT%	3-10	30.0%
FT%	6-8	75%
GM FG%	27-57	47.4%
3PT%	7-22	31.8%
FT%	12-14	85.7%

Dead Ball Rebounds: 1, 0

Technical Fouls: NONE

	ND	FSU
Biggest lead	11 (1 <sup>st</sup> 10:41)	8 (2 <sup>nd</sup> 9:31)
Best Scoring Run	11 (1 <sup>st</sup> 12:21)	8 (1 <sup>st</sup> 16:49)
Lead Changes	12	
Times Tied	2	
Time with Lead	14:07	24:32

Points from	ND	FSU
Turnovers	7	8
Paint	34	36
Second Chance	4	8
Fast Breaks	8	6
Bench	11	1

	Period by Period Scoring		
	1st	2nd	TOT
ND	39	33	72
FSU	38	35	73

**Period 1**

**Period Starters:**

<b>FSU</b>	1 Warley J	3 Corhen C	4 Mills C	22 Green Jr. D	35 Cleveland M
<b>ND</b>	1 Starling J	3 Wertz T	5 Ryan C	14 Laszewski N	23 Goodwin D

Game Time	FSU	Score	Diff	ND
20:00	3 CORHEN C jumpball won			14 LASZEWSKI N jumpball lost
19:37	4 MILLS C 2pt FG in the paint, driving layup missed			
19:35				1 STARLING J defensive rebound (1)
19:16	35 CLEVELAND M steal (1)			5 RYAN C turnover bad pass (1)
19:13	35 CLEVELAND M 2pt FG fast break from turnover in the paint, driving layup made (2)	2-0	2	
18:43		2-3	-1	1 STARLING J 3pt FG , step back jump shot made (3)
18:12	4 MILLS C 3pt FG , jump shot made (3)	5-3	2	
18:12	35 CLEVELAND M assist (1)			
17:41				1 STARLING J 2pt FG outside the paint, jump shot missed
17:38	3 CORHEN C defensive rebound (1)			
17:29	35 CLEVELAND M 3pt FG , jump shot made (5)	8-3	5	
17:29	1 WARLEY J assist (1)			
17:13				5 RYAN C 3pt FG , jump shot missed
17:11	35 CLEVELAND M defensive rebound (1)			
16:49	3 CORHEN C 2pt FG in the paint, turnaround jump shot made (2)	10-3	7	
16:24		10-5	5	3 WERTZ T 2pt FG in the paint, driving layup made (2)
16:10	3 CORHEN C 2pt FG outside the paint, jump shot missed			
16:08				5 RYAN C defensive rebound (1)
15:48		10-7	3	5 RYAN C 2pt FG in the paint, layup made (2)
15:48				14 LASZEWSKI N assist (1)
15:24	3 CORHEN C 2pt FG in the paint, layup missed			
15:24	offensive rebound (3)			
15:23	35 CLEVELAND M foul drawn (1)			14 LASZEWSKI N foul personal (1 - 1)
15:17	22 GREEN JR. D 2pt FG second chance outside the paint, floating jump shot missed			
15:14	3 CORHEN C offensive rebound (2)			
15:14	3 CORHEN C foul drawn (1)			23 GOODWIN D foul shooting (1 - 2)
15:14	3 CORHEN C free throw 1 - 2 made (3)	11-7	4	
15:14	3 CORHEN C free throw 2 - 2 made (4)	12-7	5	
14:46		12-10	2	3 WERTZ T 3pt FG , jump shot made (5)
14:25	3 CORHEN C 2pt FG in the paint, turnaround jump shot made (6)	14-10	4	
14:25	4 MILLS C assist (1)			
13:58		14-12	2	3 WERTZ T 2pt FG in the paint, turnaround jump shot made (7)
13:43	22 GREEN JR. D 3pt FG , jump shot missed			
13:39				5 RYAN C defensive rebound (2)
13:32		14-14	0	14 LASZEWSKI N 2pt FG in the paint, layup made (2)
13:32				3 WERTZ T assist (1)
13:06	35 CLEVELAND M 3pt FG , jump shot missed			
13:01				14 LASZEWSKI N defensive rebound (1)
12:58		14-16	-2	5 RYAN C 2pt FG fast break in the paint, dunk, made (4)
12:58				3 WERTZ T assist (2)

Official Basketball Play by Play - First Half  
**Notre Dame at Florida State**  
 12/21/22 Donald L. Tucker Center, Tallahassee  
 2022-23 ACC Men's Basketball

Game Time: 8:30 PM  
 Game Duration: 1:54  
 Attendance: 6,394

Officials: Ted Valentine, Lee Cassell, Tony Henderson

Game Time	FSU	Score	Diff	ND
12:43	22 GREEN JR. D 3pt FG , jump shot missed			
12:41				23 GOODWIN D defensive rebound (1)
12:37	22 GREEN JR. D foul shooting (1 - 1)			1 STARLING J foul drawn (1)
12:37		<b>14-17</b>	<b>-3</b>	1 STARLING J free throw fast break 1 - 2 made (4)
12:37	1 WARLEY J substitution out			
12:37	3 CORHEN C substitution out			
12:37	0 JACKSON C substitution in			
12:37	5 GREEN D substitution in			
12:37				14 LASZEWSKI N substitution out
12:37				2 LUBIN V substitution in
12:37		<b>14-18</b>	<b>-4</b>	1 STARLING J free throw fast break 2 - 2 made (5)
12:37				1 STARLING J substitution out
12:37				10 HAMMOND M substitution in
12:29	4 MILLS C turnover bad pass (1)			
12:21		<b>14-21</b>	<b>-7</b>	5 RYAN C 3pt FG from turnover, jump shot made (7)
12:21				23 GOODWIN D assist (1)
11:55	4 MILLS C foul drawn (1)			3 WERTZ T foul shooting (1 - 3)
11:55	Timeout media			
11:55				3 WERTZ T substitution out
11:55				23 GOODWIN D substitution out
11:55				1 STARLING J substitution in
11:55				14 LASZEWSKI N substitution in
11:55	4 MILLS C free throw 1 - 2 made (4)	<b>15-21</b>	<b>-6</b>	
11:55	4 MILLS C free throw 2 - 2 made (5)	<b>16-21</b>	<b>-5</b>	
11:55	4 MILLS C substitution out			
11:55	12 HOUSE T substitution in			
11:38		<b>16-24</b>	<b>-8</b>	5 RYAN C 3pt FG , jump shot made (10)
11:38				2 LUBIN V assist (1)
11:28	35 CLEVELAND M 2pt FG in the paint, alleyoop made (7)	<b>18-24</b>	<b>-6</b>	
11:28	22 GREEN JR. D assist (1)			
11:09		<b>18-27</b>	<b>-9</b>	10 HAMMOND M 3pt FG , jump shot made (3)
10:49	5 GREEN D turnover bad pass (1)			1 STARLING J steal (1)
10:43	12 HOUSE T foul shooting (1 - 2)			5 RYAN C foul drawn (1)
10:41				5 RYAN C free throw 1 - 3 missed
10:41				offensive dead ball rebound (1)
10:41		<b>18-28</b>	<b>-10</b>	5 RYAN C free throw 2 - 3 made (11)
10:41	0 JACKSON C substitution out			
10:41	5 GREEN D substitution out			
10:41	22 GREEN JR. D substitution out			
10:41	1 WARLEY J substitution in			
10:41	3 CORHEN C substitution in			
10:41	4 MILLS C substitution in			
10:41		<b>18-29</b>	<b>-11</b>	5 RYAN C free throw 3 - 3 made (12)
10:41				5 RYAN C substitution out
10:41				23 GOODWIN D substitution in
10:16	4 MILLS C 3pt FG , jump shot missed			
10:12	35 CLEVELAND M offensive rebound (2)			
10:12	35 CLEVELAND M 2pt FG second chance in the paint, layup made (9)	<b>20-29</b>	<b>-9</b>	

Game Time	FSU	Score	Diff	ND
09:35				10 HAMMOND M3pt FG , jump shot missed
09:30				2 LUBIN V offensive rebound (1)
09:30				2 LUBIN V 2pt FG second chance in the paint, layup missed
09:28				2 LUBIN V offensive rebound (2)
09:28		<b>20-31</b>	<b>-11</b>	2 LUBIN V 2pt FG second chance in the paint, layup made (2)
09:17	3 CORHEN C 2pt FG in the paint, turnaround jump shot missed			
09:14	35 CLEVELAND M offensive rebound (3)			
09:14	35 CLEVELAND M 2pt FG second chance in the paint, layup missed			
09:13				14 LASZEWSKI N defensive rebound (2)
09:13	35 CLEVELAND M foul personal (1 - 3)			14 LASZEWSKI N foul drawn (1)
09:13	35 CLEVELAND M substitution out			
09:13	22 GREEN JR. D substitution in			
08:49				10 HAMMOND M 2pt FG outside the paint, jump shot missed
08:45				2 LUBIN V offensive rebound (3)
08:42	1 WARLEY J steal (1)			1 STARLING J turnover lost ball (1)
08:37	1 WARLEY J 2pt FG fast break from turnover in the paint, driving layup made (2)	<b>22-31</b>	<b>-9</b>	
08:13				10 HAMMOND M 3pt FG , jump shot missed
08:12	defensive rebound (7)			
08:12				2 LUBIN V substitution out
08:12				5 RYAN C substitution in
07:55	4 MILLS C 2pt FG outside the paint, step back jump shot made (7)	<b>24-31</b>	<b>-7</b>	
07:55	3 CORHEN C assist (1)			
07:26				1 STARLING J 3pt FG , step back jump shot missed
07:22	3 CORHEN C defensive rebound (3)			
07:04	22 GREEN JR. D 2pt FG outside the paint, floating jump shot missed			
07:01				1 STARLING J defensive rebound (2)
06:53				5 RYAN C 2pt FG in the paint, driving layup missed
06:49	3 CORHEN C defensive rebound (4)			
06:41	4 MILLS C foul drawn (2)			10 HAMMOND M foul shooting (1 - 4)
06:41	Timeout media			
06:41	3 CORHEN C substitution out			
06:41	12 HOUSE T substitution out			
06:41	35 CLEVELAND M substitution in			
06:41	51 ADEBISI S substitution in			
06:41				1 STARLING J substitution out
06:41				10 HAMMOND M substitution out
06:41				2 LUBIN V substitution in
06:41				3 WERTZ T substitution in
06:41	4 MILLS C free throw 1 - 2 made (8)	<b>25-31</b>	<b>-6</b>	
06:41	4 MILLS C free throw 2 - 2 made (9)	<b>26-31</b>	<b>-5</b>	
06:15		<b>26-33</b>	<b>-7</b>	14 LASZEWSKI N 2pt FG in the paint, driving layup made (4)
06:08	22 GREEN JR. D 3pt FG , jump shot made (3)	<b>29-33</b>	<b>-4</b>	
06:08	1 WARLEY J assist (2)			
05:43				5 RYAN C 2pt FG in the paint, driving layup missed

Official Basketball Play by Play - First Half  
**Notre Dame at Florida State**  
 12/21/22 Donald L. Tucker Center, Tallahassee  
 2022-23 ACC Men's Basketball

Game Time: 8:30 PM  
 Game Duration: 1:54  
 Attendance: 6,394

Officials: Ted Valentine, Lee Cassell, Tony Henderson

Game Time	FSU	Score	Diff	ND
05:40				2 LUBIN V offensive rebound (4)
05:40		29-35	-6	2 LUBIN V 2pt FG second chance in the paint, dunk, made (4)
05:19	1 WARLEY J 2pt FG outside the paint, turnaround jump shot missed			
05:15				2 LUBIN V defensive rebound (5)
04:54				14 LASZEWSKI N 3pt FG , jump shot missed
04:52	35 CLEVELAND M defensive rebound (4)			
04:48	4 MILLS C 3pt FG , jump shot made (12)	32-35	-3	
04:48	35 CLEVELAND M assist (2)			
04:34	51 ADEBISI S foul personal (1 - 4)			14 LASZEWSKI N foul drawn (2)
04:34	51 ADEBISI S substitution out			
04:34	3 CORHEN C substitution in			
04:34				14 LASZEWSKI N substitution out
04:34				10 HAMMOND M substitution in
04:18				3 WERTZ T 2pt FG in the paint, driving layup missed
04:16	35 CLEVELAND M defensive rebound (5)			
04:12	35 CLEVELAND M 2pt FG in the paint, jump shot missed			
04:06	3 CORHEN C offensive rebound (5)			
04:06	3 CORHEN C 2pt FG second chance in the paint, dunk, made (8)	34-35	-1	
03:52				2 LUBIN V 2pt FG in the paint, dunk, missed
03:50	1 WARLEY J defensive rebound (1)			
03:39	22 GREEN JR. D 3pt FG , jump shot missed			
03:36				2 LUBIN V defensive rebound (6)
03:36	1 WARLEY J steal (2)			2 LUBIN V turnover lost ball (1)
03:32	4 MILLS C 3pt FG from turnover, jump shot missed			
03:29				23 GOODWIN D defensive rebound (2)
03:03				3 WERTZ T 3pt FG , jump shot missed
03:01	35 CLEVELAND M defensive rebound (6)			
02:46	3 CORHEN C 3pt FG , jump shot missed			
02:43				5 RYAN C defensive rebound (3)
02:37				Timeout 30 Sec
02:37				Timeout media
02:37				2 LUBIN V substitution out
02:37				10 HAMMOND M substitution out
02:37				1 STARLING J substitution in
02:37				14 LASZEWSKI N substitution in
02:14				5 RYAN C 3pt FG , jump shot missed
02:12	35 CLEVELAND M defensive rebound (7)			
01:57	3 CORHEN C 2pt FG in the paint, dunk, made (10)	36-35	1	
01:57	1 WARLEY J assist (3)			
01:42		36-37	-1	14 LASZEWSKI N 2pt FG in the paint, layup made (6)
01:42				23 GOODWIN D assist (2)
01:23	4 MILLS C 2pt FG in the paint, layup made (14)	38-37	1	
01:23	3 CORHEN C assist (2)			
00:56	1 WARLEY J foul personal (1 - 5)			1 STARLING J foul drawn (2)
00:56	Timeout 30 Sec			
00:39		38-39	-1	1 STARLING J 2pt FG in the paint, driving layup made (7)
00:39				3 WERTZ T substitution out

Official Basketball Play by Play - First Half  
**Notre Dame at Florida State**  
 12/21/22 Donald L. Tucker Center, Tallahassee  
 2022-23 ACC Men's Basketball

**Game Time:** 8:30 PM  
**Game Duration:** 1:54  
**Attendance:** 6,394

**Officials:** Ted Valentine, Lee Cassell, Tony Henderson

Game Time	FSU	Score	Diff	ND
00:39				2 LUBIN V substitution in
00:09	22 GREEN JR. D 3pt FG , jump shot missed			
00:07	1 WARLEY J offensive rebound (2)			
00:02	35 CLEVELAND M 2pt FG second chance outside the paint, turnaround jump shot missed			
00:00				5 RYAN C defensive rebound (4)
<b>END OF PERIOD</b>				
<b>FSU 38-39 ND</b>				

Officials: Ted Valentine, Lee Cassell, Tony Henderson

**Notre Dame - 39**

NO.	Name	Min	FG M-A	3P M-A	FT M-A	Rebounds OR DR TOT	Fouls PF FD	TP	AS	TO	ST	Blocks BS BA	+/-
14	Nate Laszewski	F 17:21	3-4	0-1	0-0	0 2 2	1 2	6	1	0	0	0 0	-1
1	JJ Starling	G 15:14	2-4	1-2	2-2	0 2 2	0 2	7	0	1	1	0 0	4
3	Trey Wertz	G 14:07	3-5	1-2	0-0	0 0 0	1 0	7	2	0	0	0 0	1
5	Cormac Ryan	G 17:31	4-8	2-4	2-3	0 4 4	0 1	12	0	1	0	0 0	3
23	Dane Goodwin	G 18:46	0-0	0-0	0-0	0 2 2	1 0	0	2	0	0	0 0	-3
2	Ven-Allen Lubin	09:08	2-4	0-0	0-0	4 2 6	0 0	4	1	1	0	0 0	0
10	Marcus Hammond	07:53	1-4	1-3	0-0	0 0 0	1 0	3	0	0	0	0 0	1
Team						0 0 0		0		0			
<b>Totals</b>			15-29	5-12	4-5	4 12 16	4 5	39	6	3	1	0 0	1

Shooting By Period		
1st FG%	15-29	51.7%
3PT%	5-12	41.7%
FT%	4-5	80%
GM FG%	15-29	51.7%
3PT%	5-12	41.7%
FT%	4-5	80.0%

Dead Ball Rebounds: 1, 0

Technical Fouls: NONE

**Florida State - 38**

NO.	Name	Min	FG M-A	3P M-A	FT M-A	Rebounds OR DR TOT	Fouls PF FD	TP	AS	TO	ST	Blocks BS BA	+/-
3	Cameron Corhen	F 15:57	4-8	0-1	2-2	2 3 5	0 1	10	2	0	0	0 0	2
1	Jalen Warley	G 18:04	1-2	0-0	0-0	1 1 2	1 0	2	3	0	2	0 0	6
4	Caleb Mills	G 18:46	4-7	2-4	4-4	0 0 0	0 2	14	1	1	0	0 0	4
22	Darin Green Jr.	G 18:32	1-7	1-5	0-0	0 0 0	1 0	3	1	0	0	0 0	0
35	Matthew Cleveland	G 17:28	4-8	1-2	0-0	2 5 7	1 1	9	2	0	1	0 0	-5
0	Chandler Jackson	01:56	0-0	0-0	0-0	0 0 0	0 0	0	0	0	0	0 0	-7
5	De'Ante Green	01:56	0-0	0-0	0-0	0 0 0	0 0	0	0	1	0	0 0	-7
12	Tom House	05:14	0-0	0-0	0-0	0 0 0	1 0	0	0	0	0	0 0	-2
51	Sola Adebisi	02:07	0-0	0-0	0-0	0 0 0	1 0	0	0	0	0	0 0	4
Team						1 1 2		0		0			
<b>Totals</b>			14-32	4-12	6-6	6 10 16	5 4	38	9	2	3	0 0	-1

Shooting By Period		
1st FG%	14-32	43.8%
3PT%	4-12	33.3%
FT%	6-6	100%
GM FG%	14-32	43.8%
3PT%	4-12	33.3%
FT%	6-6	100.0%

Dead Ball Rebounds: 0, 0

Technical Fouls: NONE

	ND	FSU
Biggest lead	11 (1 <sup>st</sup> 10:41)	7 (1 <sup>st</sup> 16:49)
Best Scoring Run	11 (1 <sup>st</sup> 12:21)	8 (1 <sup>st</sup> 16:49)
Lead Changes	7	
Times Tied	1	
Time with Lead	12:30	06:09

Points from	ND	FSU
Turnovers	5	4
Paint	20	18
Second Chance	4	6
Fast Breaks	4	4
Bench	7	0

	Period by Period Scoring		
	1st	2nd	TOT
ND	39	33	72
FSU	38	35	73



**Period 2**

**Period Starters:**

<b>FSU</b>	1 Warley J	3 Corhen C	4 Mills C	22 Green Jr. D	35 Cleveland M
<b>ND</b>	1 Starling J	3 Wertz T	5 Ryan C	14 Laszewski N	23 Goodwin D

Game Time	FSU	Score	Diff	ND
20:00				2 LUBIN V substitution out
20:00				3 WERTZ T substitution in
19:39				23 GOODWIN D 3pt FG , jump shot missed
19:36	3 CORHEN C defensive rebound (6)			
19:06	35 CLEVELAND M foul drawn (2)			14 LASZEWSKI N foul shooting (2 - 1)
19:06	35 CLEVELAND M free throw 1 - 3 made (10)	39-39	0	
19:06	35 CLEVELAND M free throw 2 - 3 made (11)	40-39	1	
19:06	35 CLEVELAND M free throw 3 - 3 made (12)	41-39	2	
18:56		41-42	-1	14 LASZEWSKI N 3pt FG , jump shot made (9)
18:56				3 WERTZ T assist (3)
18:37	3 CORHEN C 2pt FG in the paint, jump shot made (12)	43-42	1	
18:17				3 WERTZ T turnover bad pass (1)
18:11	3 CORHEN C 2pt FG fast break from turnover in the paint, turnaround jump shot made (14)	45-42	3	
18:11	35 CLEVELAND M assist (3)			
18:09				Timeout 30 Sec
18:09				Timeout media
18:09	3 CORHEN C substitution out			
18:09	5 GREEN D substitution in			
17:44		45-44	1	5 RYAN C 2pt FG outside the paint, turnaround jump shot made (14)
17:39	5 GREEN D foul offensive (1 - 1)			14 LASZEWSKI N foul drawn (3)
17:39	5 GREEN D turnover offensive (2)			
17:22				14 LASZEWSKI N 3pt FG from turnover, jump shot missed
17:20	35 CLEVELAND M defensive rebound (8)			
17:09	4 MILLS C 3pt FG , jump shot missed			
17:08				5 RYAN C defensive rebound (5)
16:59		45-46	-1	1 STARLING J 2pt FG in the paint, driving layup made (9)
16:35	35 CLEVELAND M 3pt FG , jump shot made (15)	48-46	2	
16:35	1 WARLEY J assist (4)			
16:13				5 RYAN C 2pt FG in the paint, floating jump shot missed
16:11	35 CLEVELAND M defensive rebound (9)			
15:51	35 CLEVELAND M 3pt FG , jump shot made (18)	51-46	5	
15:51	1 WARLEY J assist (5)			
15:28				3 WERTZ T 2pt FG in the paint, layup missed
15:25	35 CLEVELAND M defensive rebound (10)			
15:20	4 MILLS C 3pt FG , jump shot missed			
15:18				14 LASZEWSKI N defensive rebound (3)
14:49		51-49	2	1 STARLING J 3pt FG , jump shot made (12)
14:49				3 WERTZ T assist (4)
14:23	22 GREEN JR. D 3pt FG , jump shot missed			
14:21				14 LASZEWSKI N defensive rebound (4)
14:05	4 MILLS C steal (1)			1 STARLING J turnover bad pass (2)

Official Basketball Play by Play - Second Half  
**Notre Dame at Florida State**  
 12/21/22 Donald L. Tucker Center, Tallahassee  
 2022-23 ACC Men's Basketball

Game Time: 8:30 PM  
 Game Duration: 1:54  
 Attendance: 6,394

Officials: Ted Valentine, Lee Cassell, Tony Henderson

Game Time	FSU	Score	Diff	ND
13:53	1 WARLEY J 2pt FG from turnover in the paint, driving layup made (4)	53-49	4	
13:31				1 STARLING J 2pt FG outside the paint, pull up jump shot missed
13:25	4 MILLS C defensive rebound (1)			
13:17	1 WARLEY J 2pt FG in the paint, driving layup made (6)	55-49	6	
13:17	1 WARLEY J foul drawn (1)			5 RYAN C foul shooting (1 - 2)
13:17	Timeout media			
13:17	5 GREEN D substitution out			
13:17	35 CLEVELAND M substitution out			
13:17	3 CORHEN C substitution in			
13:17	12 HOUSE T substitution in			
13:17				1 STARLING J substitution out
13:17				3 WERTZ T substitution out
13:17				2 LUBIN V substitution in
13:17				10 HAMMOND M substitution in
13:17	1 WARLEY J free throw 1 - 1 made (7)	56-49	7	
13:17	1 WARLEY J substitution out			
13:17	0 JACKSON C substitution in			
13:02				10 HAMMOND M turnover travel (1)
12:48	12 HOUSE T 3pt FG from turnover, jump shot missed			
12:43				10 HAMMOND M defensive rebound (1)
12:33		56-52	4	14 LASZEWSKI N 3pt FG, jump shot made (12)
12:33				10 HAMMOND M assist (1)
12:15	12 HOUSE T foul drawn (1)			14 LASZEWSKI N foul shooting (3 - 3)
12:15	12 HOUSE T free throw 1 - 2 missed			
12:15	offensive dead ball rebound (1)			
12:15	12 HOUSE T free throw 2 - 2 made (1)	57-52	5	
11:52		57-55	2	5 RYAN C 3pt FG, jump shot made (17)
11:52				14 LASZEWSKI N assist (2)
11:39	3 CORHEN C 2pt FG in the paint, turnaround jump shot made (16)	59-55	4	
11:39	12 HOUSE T assist (1)			
11:15		59-57	2	10 HAMMOND M 2pt FG in the paint, driving layup made (5)
10:57	4 MILLS C 2pt FG in the paint, layup made (16)	61-57	4	
10:34				23 GOODWIN D 2pt FG in the paint, driving layup missed
10:31	22 GREEN JR. D defensive rebound (1)			
10:23	3 CORHEN C foul drawn (2)			14 LASZEWSKI N foul personal (4 - 4)
10:23	Timeout media			
10:23	0 JACKSON C substitution out			
10:23	12 HOUSE T substitution out			
10:23	1 WARLEY J substitution in			
10:23	35 CLEVELAND M substitution in			
10:23				14 LASZEWSKI N substitution out
10:23				1 STARLING J substitution in
10:10	35 CLEVELAND M 2pt FG in the paint, turnaround jump shot missed			
10:07	1 WARLEY J offensive rebound (3)			
10:07	1 WARLEY J 2pt FG second chance in the paint, layup made (9)	63-57	6	
10:00				23 GOODWIN D substitution out

Official Basketball Play by Play - Second Half  
**Notre Dame at Florida State**  
 12/21/22 Donald L. Tucker Center, Tallahassee  
 2022-23 ACC Men's Basketball

Game Time: 8:30 PM  
 Game Duration: 1:54  
 Attendance: 6,394

Officials: Ted Valentine, Lee Cassell, Tony Henderson

Game Time	FSU	Score	Diff	ND
10:00				14 LASZEWSKI N substitution in
09:45				5 RYAN C 2pt FG outside the paint, turnaround jump shot missed
09:42	35 CLEVELAND M defensive rebound (11)			
09:31	4 MILLS C 2pt FG in the paint, driving layup made (18)	<b>65-57</b>	<b>8</b>	
09:14	4 MILLS C foul personal (1 - 2)			10 HAMMOND M foul drawn (1)
09:14				10 HAMMOND M substitution out
09:14				14 LASZEWSKI N substitution out
09:14				3 WERTZ T substitution in
09:14				23 GOODWIN D substitution in
09:00		<b>65-59</b>	<b>6</b>	3 WERTZ T 2pt FG in the paint, driving layup made (9)
08:44	35 CLEVELAND M turnover bad pass (1)			1 STARLING J steal (2)
08:38		<b>65-61</b>	<b>4</b>	1 STARLING J 2pt FG fast break from turnover in the paint, driving layup made (14)
08:29	Timeout 30 Sec			
08:29	Timeout media			
08:20	1 WARLEY J turnover bad pass (1)			
07:53				1 STARLING J 2pt FG from turnover in the paint, floating jump shot missed
07:48	35 CLEVELAND M defensive rebound (12)			
07:47	35 CLEVELAND M foul drawn (3)			3 WERTZ T foul shooting (2 - 5)
07:47	35 CLEVELAND M free throw 1 - 2 made (19)	<b>66-61</b>	<b>5</b>	
07:47				2 LUBIN V substitution out
07:47				14 LASZEWSKI N substitution in
07:47	35 CLEVELAND M free throw 2 - 2 missed			
07:45				23 GOODWIN D defensive rebound (3)
07:18		<b>66-63</b>	<b>3</b>	23 GOODWIN D 2pt FG in the paint, layup made (2)
07:18				5 RYAN C assist (1)
06:53	22 GREEN JR. D 3pt FG , jump shot made (6)	<b>69-63</b>	<b>6</b>	
06:53	4 MILLS C assist (2)			
06:28				3 WERTZ T 2pt FG outside the paint, jump shot missed
06:25	22 GREEN JR. D defensive rebound (2)			
06:01	35 CLEVELAND M 2pt FG outside the paint, jump shot missed			
05:58				5 RYAN C defensive rebound (6)
05:39				23 GOODWIN D 2pt FG outside the paint, turnaround jump shot missed
05:37	4 MILLS C defensive rebound (2)			
05:15	4 MILLS C 3pt FG , jump shot missed			
05:13				14 LASZEWSKI N defensive rebound (5)
04:58				5 RYAN C 3pt FG , jump shot missed
04:55	3 CORHEN C defensive rebound (7)			
04:25	35 CLEVELAND M 2pt FG outside the paint, step back jump shot missed			
04:22				3 WERTZ T defensive rebound (1)
04:18	22 GREEN JR. D foul shooting (2 - 3)			3 WERTZ T foul drawn (1)
04:18				3 WERTZ T free throw 1 - 2 missed
04:18				offensive dead ball rebound (2)
04:18	1 WARLEY J substitution out			
04:18	0 JACKSON C substitution in			
04:18		<b>69-64</b>	<b>5</b>	3 WERTZ T free throw 2 - 2 made (10)

Official Basketball Play by Play - Second Half  
**Notre Dame at Florida State**  
 12/21/22 Donald L. Tucker Center, Tallahassee  
 2022-23 ACC Men's Basketball

Game Time: 8:30 PM  
 Game Duration: 1:54  
 Attendance: 6,394

Officials: Ted Valentine, Lee Cassell, Tony Henderson

Game Time	FSU	Score	Diff	ND
04:18				14 LASZEWSKI N substitution out
04:18				2 LUBIN V substitution in
03:50	22 GREEN JR. D 2pt FG outside the paint, pull up jump shot made (8)	71-64	7	
03:50	4 MILLS C assist (3)			
03:30		71-66	5	2 LUBIN V 2pt FG in the paint, layup made (6)
03:30				5 RYAN C assist (2)
03:11	3 CORHEN C 3pt FG , jump shot missed			
03:07				3 WERTZ T defensive rebound (2)
02:50				2 LUBIN V 2pt FG in the paint, layup missed
02:50				offensive rebound (26)
02:50	Timeout media			
02:50	0 JACKSON C substitution out			
02:50	1 WARLEY J substitution in			
02:50				2 LUBIN V substitution out
02:50				14 LASZEWSKI N substitution in
02:35				3 WERTZ T 2pt FG second chance in the paint, layup blocked
02:35	22 GREEN JR. D block (1)			
02:19	22 GREEN JR. D defensive rebound (3)			
02:06	3 CORHEN C 2pt FG in the paint, turnaround jump shot made (18)	73-66	7	
01:51		73-68	5	1 STARLING J 2pt FG outside the paint, pull up jump shot made (16)
01:19	35 CLEVELAND M 2pt FG in the paint, layup blocked			
01:19				14 LASZEWSKI N block (1)
01:17				14 LASZEWSKI N defensive rebound (6)
01:07	3 CORHEN C foul shooting (1 - 4)			1 STARLING J foul drawn (3)
01:07		73-69	4	1 STARLING J free throw 1 - 2 made (17)
01:07				23 GOODWIN D substitution out
01:07				2 LUBIN V substitution in
01:07		73-70	3	1 STARLING J free throw 2 - 2 made (18)
01:03	Timeout 60 Sec			
00:41	4 MILLS C 2pt FG in the paint, layup blocked			
00:41				14 LASZEWSKI N block (2)
00:37				1 STARLING J defensive rebound (3)
00:37		73-72	1	1 STARLING J 2pt FG fast break in the paint, driving layup made (20)
00:06	22 GREEN JR. D 3pt FG , jump shot missed			
00:06				defensive dead ball rebound (3)
00:06				Timeout 60 Sec
00:06				2 LUBIN V substitution out
00:06				23 GOODWIN D substitution in
00:06				Timeout 30 Sec
00:03	22 GREEN JR. D steal (1)			3 WERTZ T turnover bad pass (2)
<b>END OF GAME</b>				
<b>FSU 73-72 ND</b>				

Officials: Ted Valentine, Lee Cassell, Tony Henderson

**Notre Dame - 33**

NO.	Name	Min	FG			Rebounds			Fouls		TP	AS	TO	ST	Blocks		+/-
			M-A	M-A	M-A	OR	DR	TOT	PF	FD					BS	BA	
14	Nate Laszewski	F 16:42	2-3	2-3	0-0	0	4	4	3	1	6	1	0	0	2	0	-3
1	JJ Starling	G 17:06	5-7	1-1	2-2	0	1	1	0	1	13	0	1	1	0	0	-4
3	Trey Wertz	G 15:57	1-4	0-0	1-2	0	2	2	1	1	3	2	2	0	0	1	0
5	Cormac Ryan	G 20:00	2-5	1-2	0-0	0	2	2	1	0	5	2	0	0	0	0	-2
23	Dane Goodwin	G 18:14	1-4	0-1	0-0	0	1	1	0	0	2	0	0	0	0	0	-3
2	Ven-Allen Lubin	07:59	1-2	0-0	0-0	0	0	0	0	0	2	0	0	0	0	0	4
10	Marcus Hammond	04:03	1-1	0-0	0-0	0	1	1	0	1	2	1	1	0	0	0	-2
Team						1	0	1			0		0				
<b>Totals</b>			13-26	4-7	3-4	1	11	12	5	4	33	6	4	1	2	1	-2

Shooting By Period		
2 <sup>nd</sup> FG%	13-26	50.0%
3PT%	4-7	57.1%
FT%	3-4	75%
GM FG%	13-26	50.0%
3PT%	4-7	57.1%
FT%	3-4	75.0%

Dead Ball Rebounds: 1, 1

Technical Fouls: NONE

**Florida State - 35**

NO.	Name	Min	FG			Rebounds			Fouls		TP	AS	TO	ST	Blocks		+/-
			M-A	M-A	M-A	OR	DR	TOT	PF	FD					BS	BA	
3	Cameron Corhen	F 15:08	4-5	0-1	0-0	0	2	2	1	1	8	0	0	0	0	0	-1
1	Jalen Warley	G 15:38	3-3	0-0	1-1	1	0	1	0	1	7	2	1	0	0	0	6
4	Caleb Mills	G 20:00	2-6	0-3	0-0	0	2	2	1	0	4	2	0	1	0	1	2
22	Darin Green Jr.	G 20:00	2-4	1-3	0-0	0	3	3	1	0	5	0	0	1	1	0	2
35	Matthew Cleveland	G 17:06	2-6	2-2	4-5	0	5	5	0	2	10	1	1	0	0	1	4
5	De'Ante Green	04:52	0-0	0-0	0-0	0	0	0	1	0	0	0	1	0	0	0	3
0	Chandler Jackson	04:22	0-0	0-0	0-0	0	0	0	0	0	0	0	0	0	0	0	-4
12	Tom House	02:54	0-1	0-1	1-2	0	0	0	0	1	1	1	0	0	0	0	-2
Team						0	0	0			0		0				
<b>Totals</b>			13-25	3-10	6-8	1	12	13	4	5	35	6	3	2	1	2	2

Shooting By Period		
2 <sup>nd</sup> FG%	13-25	52.0%
3PT%	3-10	30.0%
FT%	6-8	75%
GM FG%	13-25	52.0%
3PT%	3-10	30.0%
FT%	6-8	75.0%

Dead Ball Rebounds: 1, 0

Technical Fouls: NONE

	ND	FSU
Biggest lead	1 (2 <sup>nd</sup> 19:39)	8 (2 <sup>nd</sup> 9:31)
Best Scoring Run	6 (2 <sup>nd</sup> 0:37)	6 (2 <sup>nd</sup> 15:51)
Lead Changes	5	
Times Tied	1	
Time with Lead	01:16	18:23

Points from	ND	FSU
Turnovers	2	4
Paint	14	18
Second Chance	0	2
Fast Breaks	4	2
Bench	4	1

	Period by Period Scoring		
	1st	2nd	TOT
ND	39	33	72
FSU	38	35	73

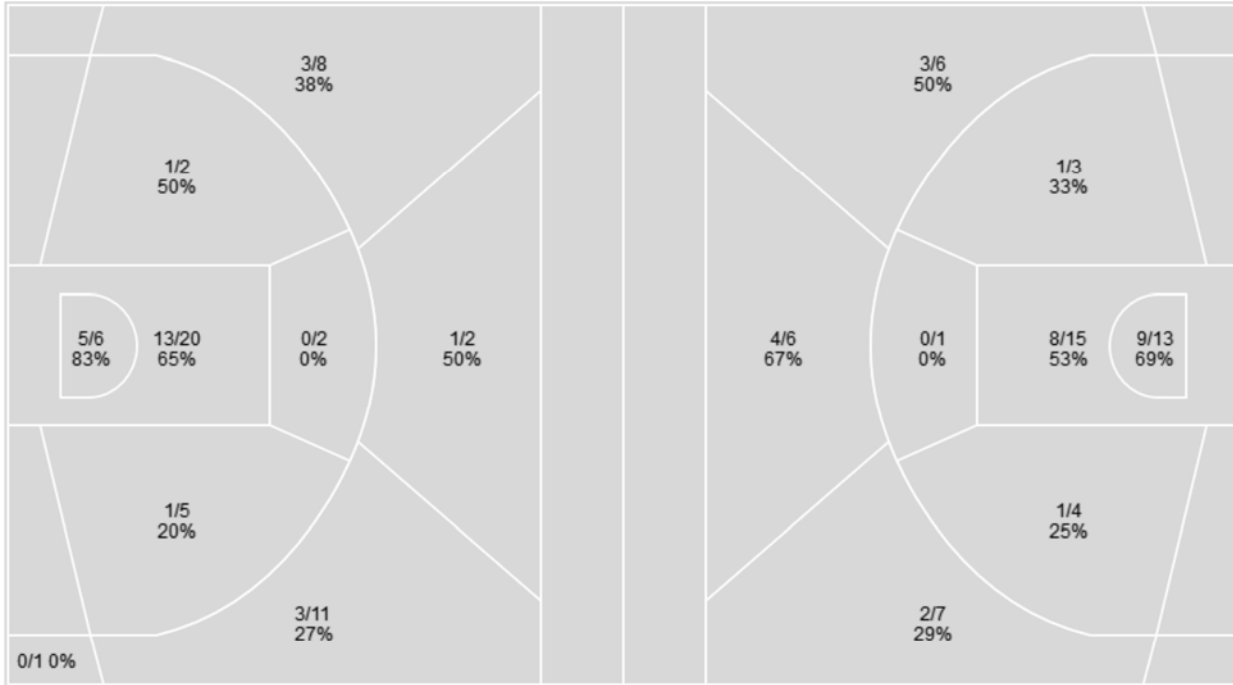
**Officials:** Ted Valentine, Lee Cassell, Tony Henderson

Players => All; FG Types => All; Results => All;

Players => All; FG Types => All; Results => All;

**Florida State**

**Notre Dame**



Florida State	M/A	%
Field Goals	27/57	47
2 Points	20/35	57
3 Points	7/22	32
Free Throws	12/14	86

Notre Dame	M/A	%
Field Goals	28/55	51
2 Points	19/36	53
3 Points	9/19	47
Free Throws	7/9	78

Official Basketball Player Plus/Minus Summary - Final  
**Notre Dame at Florida State**  
 12/21/22 Donald L. Tucker Center, Tallahassee  
 2022-23 ACC Men's Basketball

Game Time: 8:30 PM  
 Game Duration: 1:54  
 Attendance: 6,394

Officials: Ted Valentine, Lee Cassell, Tony Henderson

**Notre Dame**

No	Name	Mins		Score		Points Diff		Points per Min		Assists		Rebounds		Steals		Turnovers	
		On	Off	On	Off	On	Off	On	Off	On	Off	On	Off	On	Off	On	Off
1	JJ Starling	32:20	07:40	57-57	15-16	0	-1	1.76	1.96	9	3	22	6	2	0	5	2
2	Ven-Allen Lubin	17:07	22:53	35-31	37-42	4	-5	2.05	1.62	5	7	14	14	2	0	3	4
3	Trey Wertz	30:04	09:56	54-53	18-20	1	-2	1.80	1.81	9	3	21	7	1	1	5	2
5	Cormac Ryan	37:31	02:29	70-69	2-4	1	-2	1.87	0.81	12	0	24	4	2	0	6	1
10	Marcus Hammond	11:56	28:04	21-22	51-51	-1	0	1.76	1.82	4	8	9	19	1	1	3	4
14	Nate Laszewski	34:03	05:57	62-66	10-7	-4	3	1.82	1.68	10	2	23	5	1	1	6	1
23	Dane Goodwin	37:00	03:01	61-67	11-6	-6	5	1.65	3.66	11	1	27	1	1	1	7	0

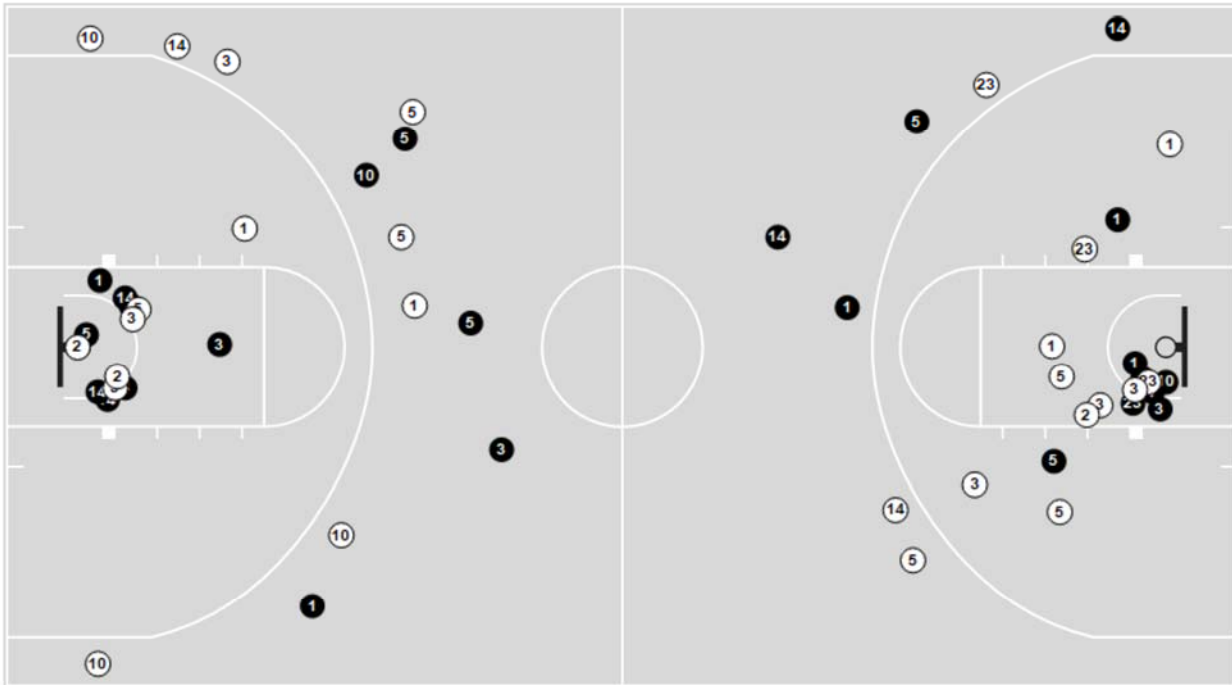
**Florida State**

No	Name	Mins		Score		Points Diff		Points per Min		Assists		Rebounds		Steals		Turnovers	
		On	Off	On	Off	On	Off	On	Off	On	Off	On	Off	On	Off	On	Off
0	Chandler Jackson	06:18	33:42	11-22	62-50	-11	12	1.75	1.84	3	12	1	28	0	5	2	3
1	Jalen Warley	33:42	06:18	62-50	11-22	12	-11	1.84	1.75	12	3	28	1	5	0	3	2
3	Cameron Corhen	31:05	08:55	51-50	22-22	1	0	1.64	2.47	10	5	24	5	4	1	2	3
4	Caleb Mills	38:46	01:14	71-65	2-7	6	-5	1.83	1.62	14	1	29	0	5	0	4	1
5	De'Ante Green	06:48	33:12	14-18	59-54	-4	5	2.06	1.78	3	12	4	25	1	4	3	2
12	Tom House	08:08	31:52	14-18	59-54	-4	5	1.72	1.85	3	12	6	23	1	4	1	4
22	Darin Green Jr.	38:32	01:28	71-69	2-3	2	-1	1.84	1.36	15	0	27	2	5	0	5	0
35	Matthew Cleveland	34:34	05:26	63-64	10-8	-1	2	1.82	1.84	13	2	25	4	4	1	5	0
51	Sola Adebisi	02:07	37:53	8-4	65-68	4	-3	3.78	1.72	2	13	1	28	0	5	0	5

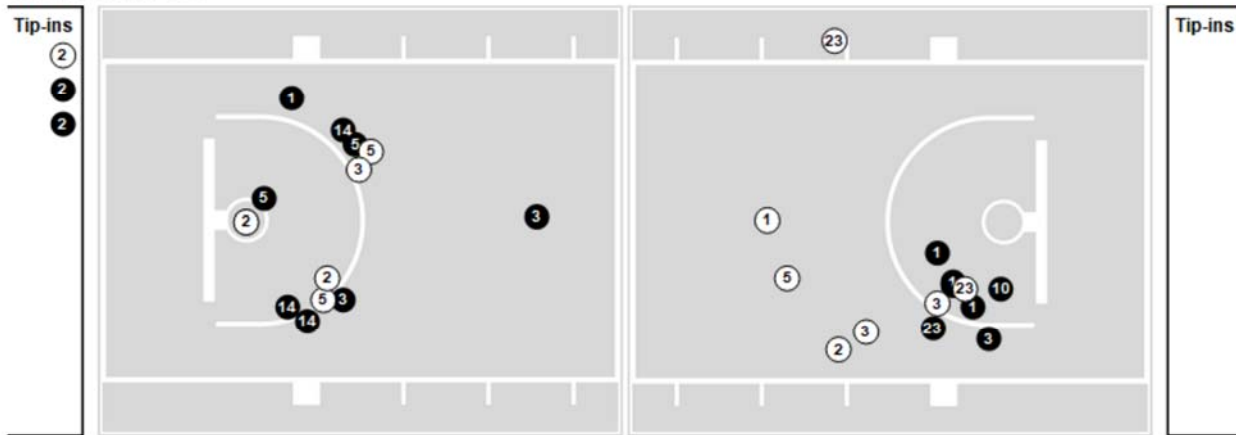
Players => All ; FG Types => All ; Results => All ;

**Notre Dame**

**All Field Goals**



**Shots in the Paint**



● Made ○ Missed N - Player Number

Notre Dame	M/A	%
Field Goals	28/55	51
2 Points	19/36	53
3 Points	9/19	47
Free Throws	7/9	78

Notre Dame	M/A	%
Points in the Paint	34 (17/28)	61
Fast Break Points	8 (5/5)	100
Second Chance Points	4 (2/4)	50
Effective FG%	59	

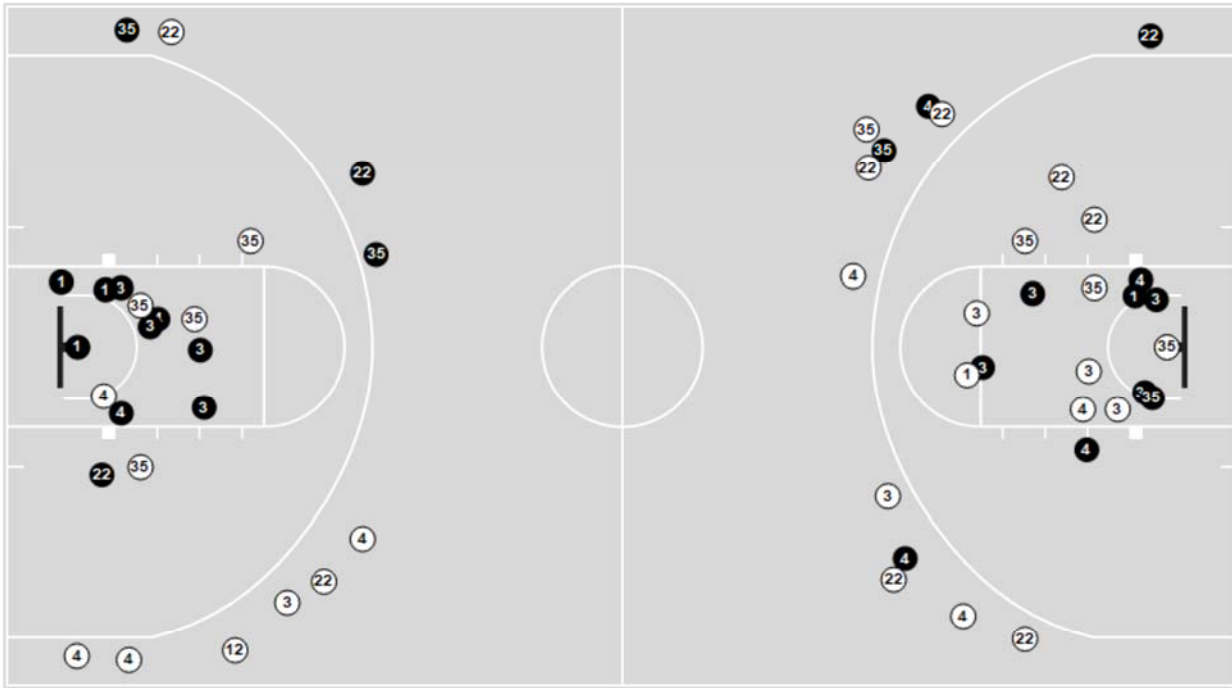


Officials: Ted Valentine, Lee Cassell, Tony Henderson

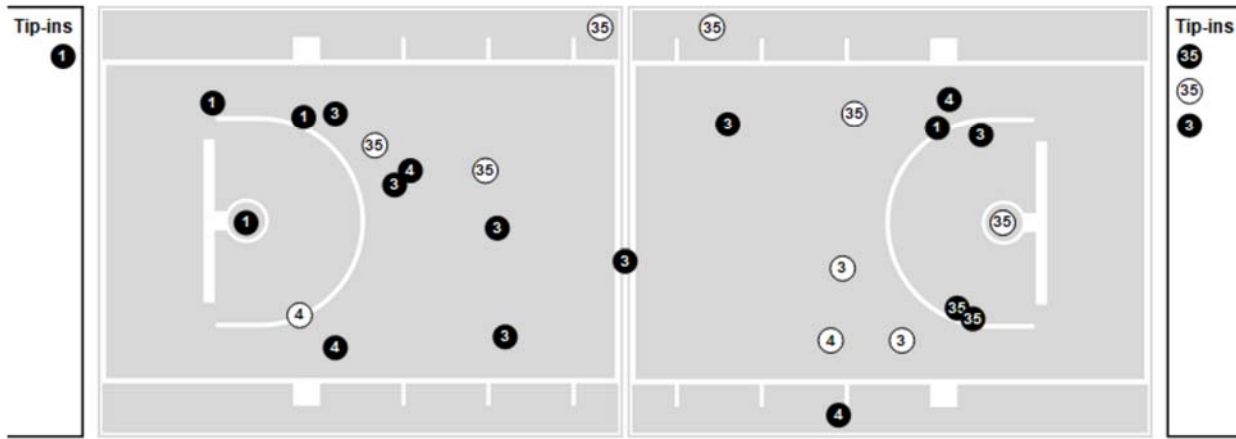
Players => All ; FG Types => All ; Results => All ;

**Florida State**

**All Field Goals**



**Shots in the Paint**



● Made ○ Missed N - Player Number

Florida State	M/A	%
Field Goals	27/57	47
2 Points	20/35	57
3 Points	7/22	32
Free Throws	12/14	86

Florida State	M/A	%
Points in the Paint	36 (18/26)	69
Fast Break Points	6 (3/3)	100
Second Chance Points	8 (5/8)	63
Effective FG%	54	

**Notre Dame**

Lineup	Quarter On	Time On	Quarter Off	Time Off	Time on Court	Score	Score Diff	Reb	Stl	Tov	Ast	PPP
1- Starling J/ 3- Wertz T/ 5- Ryan C/ 14- Laszewski N/ 23- Goodwin D/	1	20:00	1	12:37	07:23	17-14	3	5	0	1	3	1.6284
1- Starling J/ 2- Lubin V/ 3- Wertz T/ 5- Ryan C/ 23- Goodwin D/	1	12:37	1	12:37	00:00	1-0	1	0	0	0	0	2.2727
2- Lubin V/ 3- Wertz T/ 5- Ryan C/ 10- Hammond M/ 23- Goodwin D/	1	12:37	1	11:55	00:42	3-0	3	0	0	0	1	3.0000
1- Starling J/ 2- Lubin V/ 5- Ryan C/ 10- Hammond M/ 14- Laszewski N/	1	11:55	1	10:41	01:14	8-4	4	0	1	0	1	2.4096
1- Starling J/ 2- Lubin V/ 10- Hammond M/ 14- Laszewski N/ 23- Goodwin D/	1	10:41	1	08:12	02:29	2-4	-2	4	0	1	0	0.6667
1- Starling J/ 5- Ryan C/ 10- Hammond M/ 14- Laszewski N/ 23- Goodwin D/	1	08:12	1	06:41	01:31	0-2	-2	1	0	0	0	0.0000
2- Lubin V/ 3- Wertz T/ 5- Ryan C/ 14- Laszewski N/ 23- Goodwin D/	1	06:41	1	04:34	02:07	4-8	-4	2	0	0	0	1.3333
2- Lubin V/ 3- Wertz T/ 5- Ryan C/ 10- Hammond M/ 23- Goodwin D/	1	04:34	1	02:37	01:57	0-2	-2	3	0	1	0	0.0000
1- Starling J/ 3- Wertz T/ 5- Ryan C/ 14- Laszewski N/ 23- Goodwin D/	1	02:37	1	00:39	01:57	4-4	0	0	0	0	1	1.3333
1- Starling J/ 2- Lubin V/ 5- Ryan C/ 14- Laszewski N/ 23- Goodwin D/	1	00:39	2	20:00	00:39	0-0	0	1	0	0	0	0.0000
1- Starling J/ 3- Wertz T/ 5- Ryan C/ 14- Laszewski N/ 23- Goodwin D/	2	20:00	2	13:17	06:43	10-17	-7	3	0	2	2	0.9091
2- Lubin V/ 5- Ryan C/ 10- Hammond M/ 14- Laszewski N/ 23- Goodwin D/	2	13:17	2	10:23	02:54	8-6	2	1	0	1	2	1.6000
1- Starling J/ 2- Lubin V/ 5- Ryan C/ 10- Hammond M/ 23- Goodwin D/	2	10:23	2	10:00	00:23	0-2	-2	0	0	0	0	0.0000
1- Starling J/ 2- Lubin V/ 5- Ryan C/ 10- Hammond M/ 14- Laszewski N/	2	10:00	2	09:14	00:46	0-2	-2	0	0	0	0	0.0000
1- Starling J/ 2- Lubin V/ 3- Wertz T/ 5- Ryan C/ 23- Goodwin D/	2	09:14	2	07:47	01:27	4-1	3	0	1	0	0	1.3333
1- Starling J/ 3- Wertz T/ 5- Ryan C/ 14- Laszewski N/ 23- Goodwin D/	2	07:47	2	04:18	03:29	3-3	0	4	0	0	1	0.6148
1- Starling J/ 2- Lubin V/ 3- Wertz T/ 5- Ryan C/ 23- Goodwin D/	2	04:18	2	02:50	01:28	2-2	0	2	0	0	1	2.0000
1- Starling J/ 3- Wertz T/ 5- Ryan C/ 14- Laszewski N/ 23- Goodwin D/	2	02:50	2	01:07	01:43	3-2	1	1	0	0	0	1.2295
1- Starling J/ 2- Lubin V/ 3- Wertz T/ 5- Ryan C/ 14- Laszewski N/	2	01:07	2	00:06	01:00	3-0	3	1	0	0	0	2.0833
1- Starling J/ 3- Wertz T/ 5- Ryan C/ 14- Laszewski N/ 23- Goodwin D/	2	00:06	2	00:00	00:06	0-0	0	0	0	1	0	0.0000

Official Basketball Rotations Summary - Final  
**Notre Dame at Florida State**  
 12/21/22 Donald L. Tucker Center, Tallahassee  
 2022-23 ACC Men's Basketball

Game Time: 8:30 PM  
 Game Duration: 1:54  
 Attendance: 6,394

Officials: Ted Valentine, Lee Cassell, Tony Henderson

**Florida State**

Lineup	Quarter On	Time On	Quarter Off	Time Off	Time on Court	Score	Score Diff	Reb	Stl	Tov	Ast	PPP
1- Warley J/ 3- Corhen C/ 4- Mills C/ 22- Green Jr. D/ 35- Cleveland M	1	20:00	1	12:37	07:23	14-17	-3	4	1	0	3	1.2868
0- Jackson C/ 4- Mills C/ 5- Green D/ 22- Green Jr. D/ 35- Cleveland M	1	12:37	1	11:55	00:42	2-4	-2	0	0	1	0	1.0638
0- Jackson C/ 5- Green D/ 12- House T/ 22- Green Jr. D/ 35- Cleveland M	1	11:55	1	10:41	01:14	2-7	-5	0	0	1	1	1.0000
1- Warley J/ 3- Corhen C/ 4- Mills C/ 12- House T/ 35- Cleveland M	1	10:41	1	09:13	01:28	2-3	-1	2	0	0	0	1.0000
1- Warley J/ 3- Corhen C/ 4- Mills C/ 12- House T/ 22- Green Jr. D/	1	09:13	1	06:41	02:32	4-0	4	3	1	0	1	1.3333
1- Warley J/ 4- Mills C/ 22- Green Jr. D/ 35- Cleveland M 51- Adebisi S/	1	06:41	1	04:34	02:07	8-4	4	1	0	0	2	2.0619
1- Warley J/ 3- Corhen C/ 4- Mills C/ 22- Green Jr. D/ 35- Cleveland M	1	04:34	2	18:09	06:25	13-7	6	7	1	0	3	1.2597
1- Warley J/ 4- Mills C/ 5- Green D/ 22- Green Jr. D/ 35- Cleveland M	2	18:09	2	13:17	04:52	10-7	3	4	1	1	2	1.2500
1- Warley J/ 3- Corhen C/ 4- Mills C/ 12- House T/ 22- Green Jr. D/	2	13:17	2	13:17	00:00	1-0	1	0	0	0	0	2.2727
0- Jackson C/ 3- Corhen C/ 4- Mills C/ 12- House T/ 22- Green Jr. D/	2	13:17	2	10:23	02:54	5-8	-3	1	0	0	1	1.2887
1- Warley J/ 3- Corhen C/ 4- Mills C/ 22- Green Jr. D/ 35- Cleveland M	2	10:23	2	04:18	06:05	8-6	2	6	0	2	1	0.9009
0- Jackson C/ 3- Corhen C/ 4- Mills C/ 22- Green Jr. D/ 35- Cleveland M	2	04:18	2	02:50	01:28	2-3	-1	0	0	0	1	1.0000
1- Warley J/ 3- Corhen C/ 4- Mills C/ 22- Green Jr. D/ 35- Cleveland M	2	02:50	2	00:00	02:50	2-6	-4	1	1	0	0	0.5000

**Notre Dame**

Lineup	Time	Score	Score Diff	Pts/Min	Reb	Stl	Tov	Ast	PPP
1- Starling J/ 3- Wertz T/ 5- Ryan C/ 14- Laszewski N/ 23- Goodwin D/	21:22	37-40	-3	1.7314	13	0	4	7	1.1294
1- Starling J/ 2- Lubin V/ 3- Wertz T/ 5- Ryan C/ 23- Goodwin D/	02:55	7-3	4	2.4000	2	1	0	1	1.5766
2- Lubin V/ 5- Ryan C/ 10- Hammond M/ 14- Laszewski N/ 23- Goodwin D/	02:54	8-6	2	2.7586	1	0	1	2	1.6000
2- Lubin V/ 3- Wertz T/ 5- Ryan C/ 10- Hammond M/ 23- Goodwin D/	02:39	3-2	1	1.1321	3	0	1	1	0.6000
1- Starling J/ 2- Lubin V/ 10- Hammond M/ 14- Laszewski N/ 23- Goodwin D/	02:29	2-4	-2	0.8054	4	0	1	0	0.6667
2- Lubin V/ 3- Wertz T/ 5- Ryan C/ 14- Laszewski N/ 23- Goodwin D/	02:07	4-8	-4	1.8898	2	0	0	0	1.3333
1- Starling J/ 2- Lubin V/ 5- Ryan C/ 10- Hammond M/ 14- Laszewski N/	02:00	8-6	2	4.0000	0	1	0	1	1.8519
1- Starling J/ 5- Ryan C/ 10- Hammond M/ 14- Laszewski N/ 23- Goodwin D/	01:31	0-2	-2	0.0000	1	0	0	0	0.0000
1- Starling J/ 2- Lubin V/ 3- Wertz T/ 5- Ryan C/ 14- Laszewski N/	01:00	3-0	3	2.9752	1	0	0	0	2.0833
1- Starling J/ 2- Lubin V/ 5- Ryan C/ 14- Laszewski N/ 23- Goodwin D/	00:39	0-0	0	0.0000	1	0	0	0	0.0000
1- Starling J/ 2- Lubin V/ 5- Ryan C/ 10- Hammond M/ 23- Goodwin D/	00:23	0-2	-2	0.0000	0	0	0	0	0.0000

Officials: Ted Valentine, Lee Cassell, Tony Henderson

**Florida State**

Lineup	Time	Score	Score Diff	Pts/Min	Reb	Stl	Tov	Ast	PPP
1- Warley J/ 3- Corhen C/ 4- Mills C/ 22- Green Jr. D/ 35- Cleveland M	22:43	37-36	1	1.6288	18	3	2	7	1.0857
1- Warley J/ 4- Mills C/ 5- Green D/ 22- Green Jr. D/ 35- Cleveland M	04:52	10-7	3	2.0548	4	1	1	2	1.2500
0- Jackson C/ 3- Corhen C/ 4- Mills C/ 12- House T/ 22- Green Jr. D/	02:54	5-8	-3	1.7241	1	0	0	1	1.2887
1- Warley J/ 3- Corhen C/ 4- Mills C/ 12- House T/ 22- Green Jr. D/	02:32	5-0	5	1.9737	3	1	0	1	1.4535
1- Warley J/ 4- Mills C/ 22- Green Jr. D/ 35- Cleveland M 51- Adebisi S/	02:07	8-4	4	3.7795	1	0	0	2	2.0619
1- Warley J/ 3- Corhen C/ 4- Mills C/ 12- House T/ 35- Cleveland M	01:28	2-3	-1	1.3636	2	0	0	0	1.0000
0- Jackson C/ 3- Corhen C/ 4- Mills C/ 22- Green Jr. D/ 35- Cleveland M	01:28	2-3	-1	1.3636	0	0	0	1	1.0000
0- Jackson C/ 5- Green D/ 12- House T/ 22- Green Jr. D/ 35- Cleveland M	01:14	2-7	-5	1.6216	0	0	1	1	1.0000
0- Jackson C/ 4- Mills C/ 5- Green D/ 22- Green Jr. D/ 35- Cleveland M	00:42	2-4	-2	2.8571	0	0	1	0	1.0638