

FLORIDA STATE UNIVERSITY

SEMINOLE BASEBALL 1970

College World Series  
Facts Book

LOCATION: Tallahassee, Florida  
PRESIDENT: Dr. Stanley Marshall  
NICKNAME: Seminoles

ENROLLMENT: 17,010  
ATHLETIC DIRECTOR: Vaughn Mancha  
COLORS: Garnet and Gold

HEAD COACH  
JACK STALLINGS  
Record: 235-129-3

Assistant Coaches

BOB SMITH  
Greenville College

ROY MEWBOURNE  
Florida State

1970 RECORD: 45-7-1  
1970 District III Record: 3-0  
College World Series Appearances: 1957, 1962, 1963, 1965

Team Headquarters  
PROM TOWN HOUSE

Team Sponsors  
Jaycees

# COLLEGE WORLD SERIES

The Seminoles are making their fifth trip to the College World Series, the most of any club in the rugged Third District. Previous Florida State appearances have resulted in a couple of quarterfinal games, but the Tribe has never reached the finals.

Florida State's first CWS trip was in 1957 when the Seminoles were quickly knocked out by Penn State and Connecticut.

The 1962 series was the first of two consecutive FSU appearances and the Tribe's most successful showing. An opening round victory over Santa Clara was followed by a win over Ithaca before the Seminoles were beaten by the eventual winner, Michigan. The Tribe faced Santa Clara again but lost this time and was eliminated.

In 1963 the Seminoles defeated Western Michigan in the opening round but fell to Arizona in 11 innings and were eliminated by eventual champion Southern California in the third round.

The 1965 series saw Florida State fall into the losers bracket with an opening loss to Ohio State. However, the Seminoles came back to eliminate Texas in the second round. A day later however the Tribe was upset by St. Louis and was sent home in the third round.

The Seminoles CWS mark is 4-8 and thier overall tournament record, including 12 District III appearances is 33-26.

1957			1963		
FSU	Opponent	Score	FSU	Opponent	Score
0	Penn State	7	5	Western Michigan	2
3	Connecticut	5	3	Arizona (11 Inn)	4
			3	Southern Cal	4
1962			1965		
5	Santa Clara	1	1	Ohio State	2
5	Ithaca	4	3	Texas	2
7	Michigan	10	3	St. Louis	5
6	Santa Clara	11			

## THE SEMINOLES IN 1970

The 1970 season has been another fine year for the Florida State Seminoles.

The Tribe started the year with only one regular back (Dick Nichols) and he was at a new position (second base in 1970, outfield in 1969). "It will take a while, but we'll come along," said Coach Jack Stallings of his team which started with an all new look.

But nothing really changed from those early games. The Tribe had strong pitching and scrapped for the runs it needed to win. Every game seemed to have a different hero. Sometimes it was a pitcher, sometimes a hitter, and sometimes it was the guy who came up with a big defensive play.

But no one developed as a super star. Even Nichols, who hit well above .400 most of the season could not reach that level.

Not quite halfway through the season the message became clear. The Seminoles were not really a spectacular ball team--in fact all they really seemed to be doing consistently well was win.

Pitching has to be the Tribe's key to success. Not just one or two top quality hurlers, but a whole staff of them. Led by Gene Ammann (13-0), who has seven shutouts, a no-hitter, and a pair of one and two hitters, FSU's pitching is the best in years.

The Tribe batters back the mound corps with a scrappy attack which takes advantage of nearly everything that is given them. Balance at the plate is the key with six of the regulars batting above .290 and all within ten of the leader in RBI.

And it has not all been easy. Fifteen games have been one-run affairs with the Seminoles winning 11 of them. The biggest loss margin has been two runs, so the Tribe has not really been "out" of any game.

## THE ROAD TO OMAHA

The road to Omaha for the Seminoles has been a tough season - long grind.

As an independent, there was no conference title to chase and automatic District bid. And, although the Seminoles have been to the District III tournament 12 times, there was no real assurance that they would get the coveted bid. Therefore, every one of the 53 games was a big one and when selection time came around, the Tribe's 42-7-1 record was too much to pass up and it was off to Gastonia, N.C., for the Shrine-sponsored tourney.

The Seminoles' record made them the tournament favorite. Florida State opened play against East Carolina and the Pirates' all-district pitcher, Ron Hastings. It turned out to be quite a pitchers dual as Hastings, who beat out Tribe starter Gene Ammann for the all-district selection, came in with the best ERA in the country, and Ammann was No. 2.

Ammann and the Seminoles prevailed, 2-0. The Tribe junior tossed a two-hitter and it was his seventh shutout of the year.

Florida State met Maryland in the second round winners bracket and the Terps fell 10-1. Lefty Pat Osburn ducked in and out of trouble the entire game, but gave up only a first inning run. Third baseman Ron Cash meanwhile had a remarkable four-for-four night after being in bed all day with the flu.

The championship game was a heart-stopper. The Seminoles turned back a stubborn Mississippi State team, 5-4, for the title. It all boiled down to a face-off between the Bulldogs' red-hot Phil Still and the Tribe's ace relief man, Mac Scarce.

MSU rallied in the ninth for one run and had the bases loaded with two outs for Still, who came to the plate already having hit a homer and a double that night and three home runs and four doubles in the tourney. But Scarce won the battle. Jammed on a two strike pitch, Still popped up for the final out.



# 1970 BASEBALL ROSTER

NO	NAME	POS	T-B	BIRTH DATE	HT.	WT.	CLASS	STATUS	HOMETOWN	HIGH SCHOOL / JC
2	Tom Porter	IF	R-R	8-30-48	5-10	160	Sr.	1VL	Zephyrhills	Zephyrhills
3	Dick Nichols	2B	R-R	2-4-48	5-6	150	Sr.	1VL	Jacksonville	Wolfson
4	Rick Moss	OF	R-R	8-3-49	5-10	165	Jr.	JC	Lakeland	Polk J.C.
5	Greg Gromek	SS	R-R	10-25-49	5-11	167	Jr.	1VL	Birmingham, Mich.	Brother Rice
6	Larry Cocks	OF	R-R	1-15-49	5-11	170	Jr.	Sq	Oklahoma City, Okla.	Enterprise (Ala)
7	Robin Flake	P	L-L	10-4-48	5-9	163	Jr.	JC	College Park, Ga.	Manatee J.C.
8	Mike Vasquez	1B	R-L	6-25-49	6-1	185	Jr.	Sq	St. Louis, Mo.	DuBourg
9	Dave Grimes	2B	R-L	8-8-49	5-10	160	Jr.	JC	Lakeland	Polk J.C.
10	Greg Schnute	OF	R-R	8-25-48	5-11	180	Sr.	2VL	Huntingburg, Ind.	Ft. Branch
11	Mike Slade	P	R-R	1-24-49	6-1	195	Jr.	1VL	Arlington, Va	Washington-Lee
12	Ron Cash	3B	R-R	11-20-49	6-0	175	Jr.	JC	Decatur, Ga.	Manatee J.C.
13 (31)*	Harry Saferight	C-OF	R-L	3-4-49	5-11	195	Jr.	JC	Richmond, Va.	Manatee J.C.
14 (32)*	Greg Zera	C	R-L	5-31-49	5-9	180	Jr.	Sq	Lincolnwood, Ill.	Niles West
15	Gene Ammann	P	R-R	1-30-49	5-10	175	Jr.	2VL	Decatur, Ga.	Lakeside
16	Carl Gromek	P	R-R	2-27-48	5-10	175	Sr.	1VL	Birmingham, Mich.	Brother Rice
17	Dan Roatche	C	R-R	6-3-50	6-0	205	So.	Sq	Hatboro, Pa.	Hatboro-Horsham
18	Don Harbaugh	P	R-R	2-8-49	6-1	195	Jr.	Sq	Toledo, Ohio	St. Francis DeSales
19	Al Cleveland	P	R-R	12-1-47	6-2	185	Sr.	Sq	Albany, Ga.	Chipola J.C.
20	John Grubb	OF	R-L	8-4-48	6-2	170	Jr.	JC	Richmond, Va.	Manatee J.C.
21 (35)*	Jim Scheller	1B	R-R	12-19-50	6-4	200	So.	Sq	Evansville, Ind.	Memorial
22	Mac Scarce	P	L-L	5-8-49	6-3	175	Jr.	JC	Richmond, Va.	Manatee J.C.
23 (36)*	Tom Henson	P	R-R	7-4-47	6-3	210	Jr.	1VL	Evansville, Ind.	North
24	John Keith	C	R-R	5-6-49	6-1	200	Jr.	1VL	Huntington Valley, Pa.	Upper Moreland
27	Pat Osburn	P	L-L	5-4-49	6-2	190	Jr.	JC	Clearwater	Manatee J.C.
28 (33)*	Doug Kasimier	1B	L-L	5-21-49	6-3	175	Jr.	1VL	Ft. Lauderdale	Ft. Lauderdale
29 (38)*	Mike Leber	OF	L-L	7-13-50	5-10	170	So.	Sq	Newport, R.I.	Rogers
30	John Ferguson	P	R-R	12-15-47	6-0	165	Sr.	1VL	Desota, Ga.	ABAC

1 Jack Stallings, Head Coach; 26 (23) Bob Smith, Ass't. Coach: 25 (34) Roy Mewbourne, Ass't. Coach

\* Numbers in parentheses correspond to gray uniform. All other numbers same for white and gray.

## HOW TO SAY IT

Vasquez -- BAZ kwez  
Schnute -- SHNOO tee  
Zera -- ZEER ah

Ammann -- AM man  
Gromek -- GROW meck  
Roatche -- ROT chee

Harbaugh -- HAR baw  
Kasimier -- KAZ meer  
Leber -- LEE ber  
Mewbourne -- MEW burn

#### THE STARTING LINE-UP

- DICK NICHOLS, 2B, (.362) -- One of the best leadoff men in the country...smallest man on squad, but swings the best bat...set new team record for hits, doubles and stolen bases...doesn't have great speed, but has the knack of getting the good jump...good range in the field and makes the pivot well...made just four errors in 200 chances this season...All-America candidate.
- GREG SCHNUTE, CF, (.268) -- Ability to bunt, hit and run, go to opposite field and speed make him especially valuable as number two hitter...won't hit for big average, but usually comes up with big hits...solid defensive performer.
- JOHN GRUBB, OF, (.304) -- After a slow start this junior college transfer has come on strong...fine looking hitter at the plate, has fluid swing and good wrists...has good power and speed...can go get the ball in the outfield and has good arm.
- RON CASH, 3B, (.346) -- Second leading hitter on the team, leads club in RBI with 41 and hits with authority...when men are on, he is especially dangerous...just 13 strikeouts in 191 at-bats with 41 walks...erratic defensively, can make hard play look simple, but will "fall asleep" on routine one occasionally.
- LARRY COCKS, OF, (.299) -- Moved to outfield this year and has made a remarkable adjustment...defensively is doing a superb job, has good range and most accurate arm on club...made adjustment in stance at plate that has helped his batting average considerably...has been around .300 last half of year.
- HARRY SAFERIGHT, C, (.289) -- Swings from the left side at the plate and is a threat...has never really quite found his mark this season although has had some outstanding series...works well with the pitchers and fine defensive catcher...blocks ball well and has good arm.
- GREG GROMEK, SS, (.339) -- One of most consistent hitters on club all year...first season as a regular he has been making steady improvement...swings an aggressive bat and is quick...his brother Carl is the number four starter in pitching...can make great play in field, but will sometimes boot easy one.
- DOUG KASIMIER, 1B, (.256) -- Has not quite found himself as a hitter, although he had a fine series in the District III Tournament...lanky lefty with potential...has ability to hit long ball...fine defensive first baseman, has made just three errors in 300 chances.

## THE PITCHERS

GENE AMMANN, RH, (13-0, 0.60) -- Number one hurler for last two seasons and only a junior..won 13 games, has second best ERA in nation, but did not make All-District team...doesn't overpower with fast ball, but can throw it by a good hitter...good assortment of pitches...very good curve and slider, when they are both working he is tough...has thrown a no-hitter, two one-hitters and a pair of two-hitters this season in seven shutouts. In addition he worked the first eight innings of an early season one-hit shutout...pitched two hitter over East Carolina in District III opener...holds season and career win record and career strikeout mark.

PAT OSBURN, LH, (10-2, 1.03) -- Among top five in ERA in country...a tough lefty with big league possibilities...can throw hard and has good breaking stuff ...has not really reached his potential this year...holds season strikeout record which he set against Maryland in tournament...has pitched two shutouts.

MIKE SLADE, RH, (7-1, 2.09) -- Could be number one man for most teams in the country...hard throwing righthander, is tough when he keeps the ball down... has pro potential...one of best games came against Mississippi State in District III final...missed a couple of turns early with arm trouble, but is in top shape now.

CARL GROMEK, RH, (5-0, 2.62) -- Has come a long way in three years as a pitcher... came in as shortstop, but made switch following freshman year...has good baseball sense and doesn't rattle easy...fourth starter and long relief... doesn't throw real hard but has good breaking stuff.

TOM HENSON, RH, (3-0, 0.41) -- Injuries sidelined him over half a season, but he had made impressive showings lately...can be a starter or long relief... good fast ball that moves...breaking pitches keep hitter honest...gives Seminoles as strong a number five man as there is.

MAC SCARCE, LH, (1-1, 1.23) -- The stopper...excellent short reliever...has major league stuff...throws hard and keeps the ball down...biggest problem may be that he is "too good", he keeps the ball down so much that sometimes it gives catcher a problem...extremely effective for three innings or so.

FLORIDA STATE UNIVERSITY  
1970 HITTING STATISTICS

	AB	R	H	2B	3B	HR	TB	SB	RBI	BB	SO	FIELDING			
												PO	A	E	AVG
Dick Nichols, 2B	210	60	76	17	5	2	109	32	33	39	19	130	162	4	.986
Ron Cash, 3B	191	46	66	7	6	3	94	5	41	41	13	46	96	17	.893
Gregg Gromek, SS	186	37	63	5	1	2	78	4	33	18	17	85	119	27	.883
John Grubb, OF	204	48	62	5	3	3	81	11	32	28	22	62	6	2	.971
Larry Cocks, OF	177	30	53	5	0	2	64	6	31	20	17	49	8	2	.966
Harry Saferight, C-OF-1B	142	21	41	3	4	4	64	3	31	14	17	255	24	7	.976
Greg Schnute, OF	164	31	44	9	4	2	67	12	19	42	31	75	3	4	.951
Doug Kasimier, 1B	129	14	33	2	2	2	45	5	17	9	24	269	22	3	.990
John Keith, C	101	8	22	3	0	0	25	0	11	9	19	252	22	4	.986
(less than 75 at bats)															
Dan Roatche, C	9	2	3	0	0	1	6	0	3	3	1	19	0	0	1.000
Tom Porter, IF	26	9	8	2	1	0	12	8	6	12	4	12	6	2	.900
David Grimes, IF	4	1	1	1	0	0	2	0	1	0	1	2	0	0	1.000
Greg Zera, C	4	0	1	0	0	0	1	0	0	0	1	0	0	0	---
Jim Scheller, IF	33	4	5	1	0	0	6	0	3	6	3	58	6	4	.941
Rick Moss, OF	8	2	1	0	0	0	1	1	0	3	4	4	0	0	1.000
Mike Vasquez, IF	35	3	4	0	0	1	7	0	4	8	4	68	3	3	.959
(Pitchers)															
Al Cleveland	4	2	2	0	0	0	2	0	2	1	0	1	3	0	1.000
John Ferguson	4	1	2	0	1	0	4	0	2	0	1	1	7	1	.889
Gene Ammann	42	6	9	0	1	0	11	0	2	6	7	6	26	2	.941
Pat Osburn	37	5	7	1	0	0	8	0	1	6	5	4	31	0	1.000
Mike Slade	26	4	4	1	1	1	10	0	2	6	1	10	14	5	.828
Carl Gromek	17	0	0	0	0	0	0	0	1	0	2	3	8	2	.846
Robin Flake	7	1	0	0	0	0	0	0	1	1	3	2	3	3	.625
Tom Henson	7	0	0	0	0	0	0	0	0	0	1	1	3	0	1.000
Mac Scarce	5	0	0	0	0	0	0	0	0	0	1	0	9	2	.818
Don Harbaugh	2	0	0	0	0	0	0	0	0	0	1	2	4	0	1.000
Bill Fuller	0	0	0	0	0	0	0	0	0	0	0	0	0	0	---
FLORIDA STATE	1775	336	507	62	29	23	686	83	282	270	238	1420	565	98	.953
OPPONENTS	1671	135	308	42	5	14	401	31	110	361	474	1342	610	95	.953
SCORE BY INNINGS	1	2	3	4	5	6	7	8	9	10	11	12	13	14	15
Florida State	50	32	40	29	63	41	34	40	14	2	1	0	0	0	0
Opponents	21	13	8	20	17	21	12	15	6	0	1	0	0	0	1

FLORIDA STATE UNIVERSITY  
1970 PITCHING STATISTICS

	APP	GS	CG	W	L	IP	R	ER	H	BB	SO	SHO	ERA
Tom Henson	6	2	1	3	0	22	4	1	14	10	17	0	0.41
Gene Ammann	16	15	8	13	0	119 1/3	20	8	58	57	132	7	0.60
John Ferguson	7	2	1	1	1	20 1/3	6	2	14	9	16	1	0.89
Pat Osburn	16	15	5	11	2	113 2/3	23	13	65	59	136	2	1.03
Mac Scarce	14	0	0	1	1	24 1/3	6	5	12	13	36	0	1.23
Mike Slade	15	10	2	7	1	81 2/3	34	19	70	40	65	0	2.09
Carl Gromek	12	5	1	5	0	44 2/3	16	13	40	29	28	0	2.62
Al Cleveland	8	0	0	1	0	13 2/3	4	4	8	10	12	0	2.63
Robin Flake	5	3	1	1	1	21 1/3	14	9	18	19	19	0	3.86
Don Harbaugh	9	0	0	2	1	9 2/3	8	8	10	8	11	0	7.45
Bill Fuller	1	0	0	0	0	1	0	0	0	1	0	0	0.00
FLORIDA STATE	112	53	19	45	7	473 1/3	135	82	308	261	474	12	1.56
OPPONENTS	132	53	11	7	45	447 1/3	336	259	507	270	238	0	5.20

1970 RECORD

FSU	OPPONENTS		PITCHER	FSU	OPPONENTS		PITCHER
5	Union University	1	Gromek	7	South Florida	0	Ammann
6	Union University	2	Slade	8	South Florida	0	Osburn
6	St. Leo College	1	Osburn	8	St. Leo College	3	Slade
5	St. Leo Coll. (10 Inn)	4	Cleveland	7	Florida Southern	6	Scarce
1	Florida Southern	0	Ammann	9	South Alabama	0	Ammann
10	Miami	1	Osburn	3	South Alabama	5	Flake
5	Michigan State	6	Harbaugh	2**	South Alabama	2**	
8	Miami	3	Gromek	12	Georgia Southern	5	Ammann
1	Stetson	0	Ammann	8	Georgia Southern	4	Slade
17	Bowling Green	8	Harbaugh	4	Jacksonville	1	Osburn
6	New York University	1	Osburn	9	Jacksonville	2	Ammann
8	Rider College	1	Gromek	11	Miami	4	Osburn
4	New York University	2	Henson	6	Miami	2	Ammann
6	Southern Illinois	1	Slade	1	Florida	3	Osburn
15	North Carolina	6	Gromek	4	Florida	5	Scarce
5	North Carolina	4	Osburn	8	Georgia Southern	3	Slade
3	North Carolina	2	Henson	1	Ga. So. (15 Inn)	2	Ferguson
5	*Illinois	4	Slade	5	Auburn	0	Ammann
6	*Maryland	2	Ammann	7	Auburn	6	Henson
11	*Holy Cross	4	Flake	3	Florida	4	Slade
10	*Illinois	0	Osburn	1	Florida (10 Inn)	0	Ammann
3	*Holy Cross	0	Ferguson	9	Florida	4	Osburn
4	*Maryland	3	Gromek	2	#East Carolina	0	Ammann
10	Auburn	4	Ammann	10	#Maryland	1	Osburn
3	Auburn	5	Osburn	5	#Mississippi State	4	Slade
8	South Alabama	41	Harbaugh				
4	South Alabama	0	Osburn				
11	South Alabama	0	Ammann				

\*Florida State Invitational Tournament

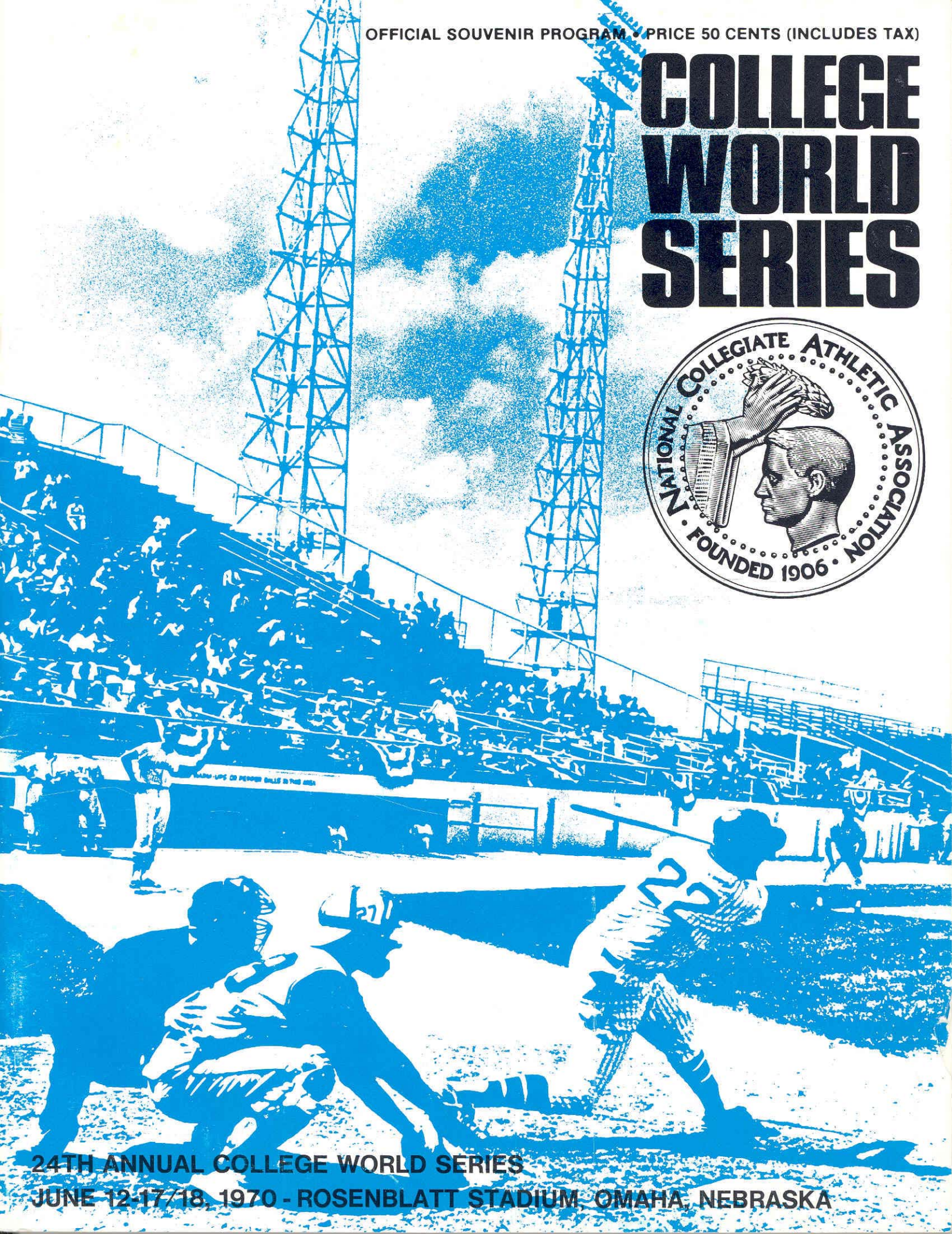
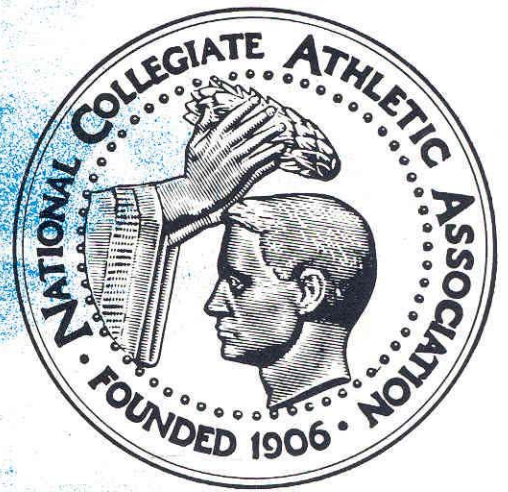
\*\* 10 Inning - Travel Curfew

# District III Games



OFFICIAL SOUVENIR PROGRAM • PRICE 50 CENTS (INCLUDES TAX)

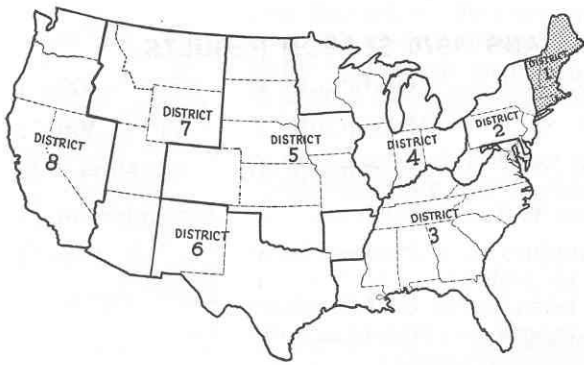
# COLLEGE WORLD SERIES



24TH ANNUAL COLLEGE WORLD SERIES

JUNE 12-17/18, 1970 - ROSENBLATT STADIUM, OMAHA, NEBRASKA





## DISTRICT 1

# Dartmouth College

Hanover, New Hampshire

Enrollment: 3,100 (Men)

Colors: Dartmouth Green.

Nickname: Indians.

**District 1** Connecticut, Maine, Massachusetts, New Hampshire, Rhode Island, Vermont.

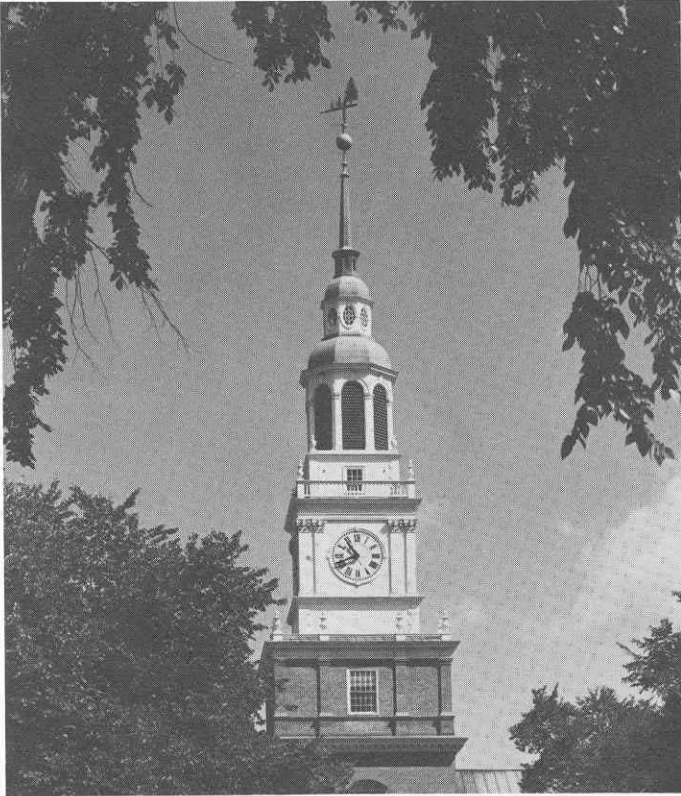
Dartmouth College, ninth oldest college in the United States and the only one in the country founded under Royal Charter from England with an unbroken succession of graduating classes, is celebrating the 200th anniversary of its founding this year.

Established in 1769 as a northern frontier school by the Rev. Eleazer Wheelock, a missionary with a vision of civilizing the wilderness, Dartmouth today is a multifaceted university complex exploring new frontiers of the mind and society.

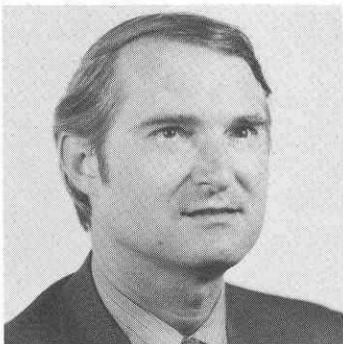
Balancing traditional liberal arts with education relevant to contemporary issues, Dartmouth reaches far beyond Hanover. By means of a unique series of off campus programs, Dartmouth students earn course credit while grappling with problems and forces of the Twentieth Century. On-campus intellectual life at Dartmouth fills the spectrum from the arts to engineering, from medicine to business administration.

Tony Lupien, a former major league player and professional baseball manager, has been baseball coach at Dartmouth College since 1956.

A graduate of Harvard, Lupien played football, basketball and baseball for the Crimson. This will be the first trip to the College World Series for Lupien and his Big Green Indians.



The tower of Baker Library is a Dartmouth College landmark. Baker Library houses nearly a million volumes which are retained in an "open stack" system which makes all material readily available to students and scholars.



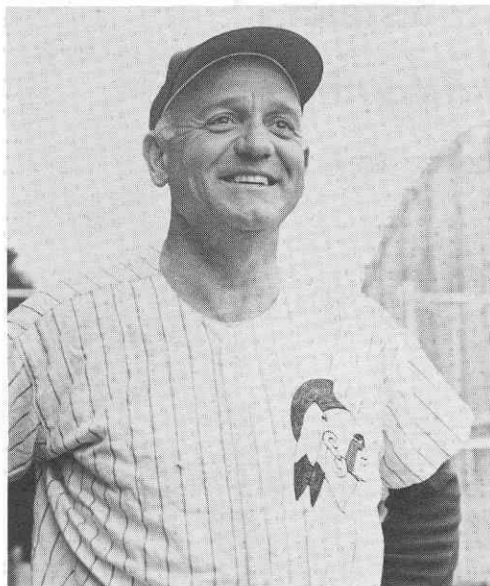
Jim Eggers  
LIONS CLUB - DOWNTOWN



Marlene A. Mickels  
CREIGHTON MEMORIAL  
ST. JOSEPH SCHOOL OF NURSING



Jack Hosking  
LIONS CLUB - DOWNTOWN



25—Ulysses J. (Tony) Lupien - Coach  
9—Fredric (Fred) Kelley - Assistant  
Peter Rogol - Team Manager  
Bob Dagenais - Trainer

DARTMOUTH INDIANS' 1970 SEASON RESULTS

No. Car. St. 7	Dartmouth 0	*Dartmouth 7	(7)	Yale 4
Dartmouth 4	No. Car. St. 0	*Dartmouth 3	(7)	Yale 2
Dartmouth 9	No. Car. St. 5	*Dartmouth 16		Brown 10
No. Car. St. 4	Dartmouth 1	Dartmouth 8	Massachusetts	4
No. Car. St. 4	Dartmouth 3	*Dartmouth 13		Army 3
Wake Forest 7	Dartmouth 6	*Dartmouth 3	(7)	Cornell 2
East Carolina 1	Dartmouth 0	*Dartmouth 3	(7)	Cornell 2
East Carolina 8	Dartmouth 0	*Dartmouth 9		Navy 8
*Columbia 10	Dartmouth 5	Dartmouth 4		Holy Cross 2
*Dartmouth 5	(7) Princeton 0	Dartmouth 6		Boston College 5
*Princeton 8	(8) Dartmouth 7	Dartmouth 4		New Hamp. 2
Dartmouth 7	Boston Univ. 3	*Dartmouth 5	(7)	Penn. 0
*Dartmouth 5	(7) Harvard 2	Dartmouth 5		Springfield 3
*Dartmouth 1	(7) Harvard 0	Dartmouth 4		Vermont 0

NCAA DISTRICT 1 PLAYOFF

Dartmouth 7	Providence 2	Dartmouth 12	Connecticut 3
Dartmouth 8	Connecticut 2		

BASEBALL ROSTER OF DARTMOUTH COLLEGE

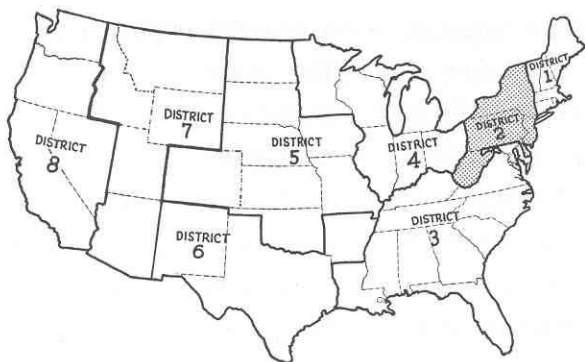
Numerical Baseball Roster

No.	Name	Position	Batting Avg.	Age	Ht.	Wt.	Class	Hometown
2— 2	John Prado	p.	.111	21	5-11	165	Jr.	Westernport, Md.
3— 3	Tom Hanna	of.	.262	20	5-9	155	Jr.	Keene
4— 4	Dick Griebel	p.	.167	20	5-11	175	Jr.	Smoke Rise, N.J.
5— 5	Charles Doll	p.	.000	19	6-1	175	Soph.	Essex Junction, Vt.
6— 6	Bob Mlaker	ss.	.263	22	6-0	185	Sr.	Chagrin Falls, Ohio
7— 7	Jim Bell	2b-p.	.277	21	5-11	175	Jr.	Westville Grove, N.J.
8— 8	Charles Seelbach	p.	.174	22	6-0	185	Sr.	Rocky River, Ohio
10—10	Fred Crossman	p.	1.000	19	6-2	200	Soph.	Pepper Pike, Ohio
11—11	Bruce Saylor	of.	.362	21	5-11	180	Sr.	West Caldwell, N.J.
12—12	Ken Kelly	c.	.000	19	5-10	180	Soph.	New York, N.Y.
14—14	Tim Hannigan	c.	.271	20	6-1	183	Jr.	Scarsdale, N.Y.
15—15	Steve Dagirmanjian	1b	.315	21	5-11	180	Sr.	Whitinsville, Mass.
16—16	Russ Adams	of.-1b	.275	21	5-11	180	Jr.	New Wilmington, Pa.
17—17	Bill Saumsiegle	p.	.143	21	6-2	170	Jr.	Needham, Mass.
18—18	Frank Mannarino	of.	.297	19	5-10	160	Soph.	West Paterson, N.J.
19—19	Dave Dietz	ss.-2b	.118	20	6-1	190	Jr.	Franklin Lake, N.J.
20—20	Don Hooper	of.	.000	20	6-0	200	Soph.	Lynnfield, Mass.
21—21	Wayne Young	c.	.229	20	5-11	195	Soph.	Tarrytown, N.Y.
22—22	Craig Conklin	3b	.275	21	5-11	185	Jr.	Haworth, N.J.
23—23	Charles Janes	p.	.067	19	6-2	185	Soph.	Hurley, N.Y.
24—24	Peter Broberg	p.	.296	20	6-3	205	Soph.	Palm Beach, Fla.

PITCHERS WIN - LOSS RECORD

	W	L		W	L		W	L
Chuck Seelbach	6	3	Oz Griebel	2	1	Fred Crossman	0	0
John Prado	2	1	Charlie James	5	1	Chuck Doll	0	0
Pete Broberg	6	1	Bill Saumsiegle	2	0			





**District 2** Delaware, New Jersey, New York, Pennsylvania, Puerto Rico, West Virginia.

## DISTRICT 2

# University of Delaware

### Newark, Delaware

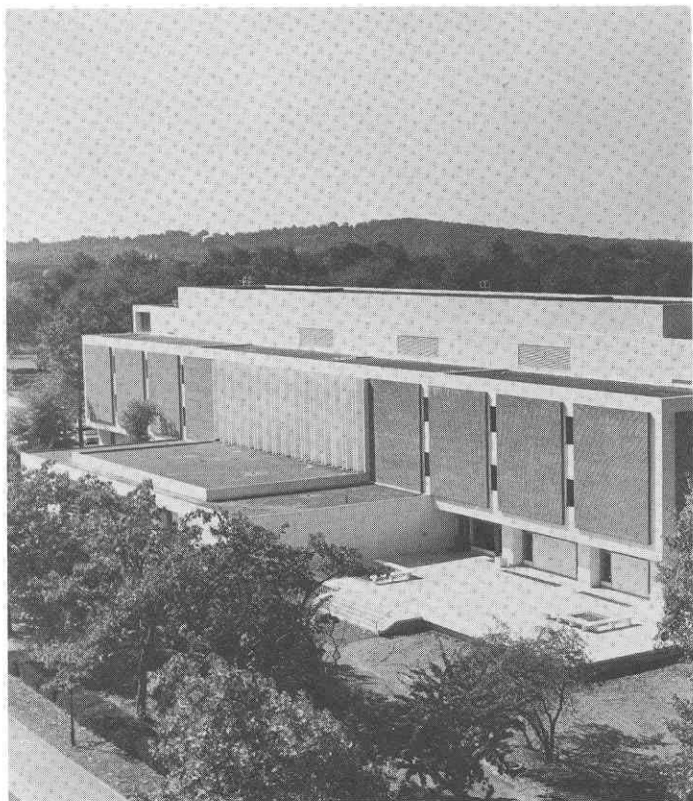
Enrollment: 8,200.  
Colors: Blue and Gold.  
Nickname: Fightin' Blue Hens.

Located in Newark, Delaware, the University of Delaware enjoys the advantages of a small community, but it is close to the opportunities for educational, cultural and social growth provided by the varied facilities of Philadelphia, New York, Baltimore and Washington.

The beautifully landscaped campus consists of more than 1,300 acres with artistically grouped buildings of Georgian architecture.

The nickname "Fightin' Blue Hens" dates back to the Revolutionary War when members of the First Delaware Regiment carried gamecocks into battle. These birds, from the brood of the Kent County blue hen, were famous for their fighting ability. In engagements with the British at Long Island, White Plains, Trenton and Princeton the men of Delaware earned their own reputation as great fighters. Since that time, Delaware's representatives in battle and on the playing fields have proudly carried the title, "Fightin' Blue Hens."

Robert M. Hannah is the first baseball coach in the school's history to bring a team to the College World Series. A graduate of the University of Delaware, Hannah is in his sixth season as varsity baseball coach.



Morris Library, located among the stately elms on the University of Delaware campus, is considered one of the finest college libraries in the East.



Russell McKown  
NATIONAL EXCHANGE CLUB  
OF OMAHA



Connie Jo Switzer  
NEBRASKA METHODIST HOSPITAL  
SCHOOL OF NURSING



Leroy V. Olson  
NATIONAL EXCHANGE CLUB  
OF OMAHA



26—Robert M. Hannah - Coach  
25—Bruce E. Carlyle - Assistant  
Richard Conover - Team Manager

FIGHTIN' BLUE HENS' 1970 SEASON RESULTS

Delaware 16	American 4	Delaware 19	Bucknell 7
Delaware 9	Syracuse 8	Delaware 6	Buchnell 4
(10 innings)		Delaware 15	Ursinus 0
Virginia 6	Delaware 2	West Chester 11	Delaware 3
Delaware 9	So. Conn. 8	Delaware 10	Rider 1
Rutgers 2	Delaware 0	Rider 7	Delaware 6
Delaware 19	Swarthmore 1	Delaware 8	Drexel 4
Delaware 2	Lehigh 1	Delaware 7	Lafayette 2
Delaware 10	Lehigh 4	Delaware 12	Lafayette 4
Delaware 5	West Chester 3	Delaware 11	Georgetown 3
Delaware 6	Gettysburg 1	Delaware 8	Villanova 1
Delaware 9	Gettysburg 0	*Delaware 14	West Chester 10

\*Middle Atlantic Conference championship game

NCAA DISTRICT 2 PLAYOFFS

Delaware 7	Penn State 1	Delaware 4	Seton Hall 0
Delaware 5	Seton Hall 1		

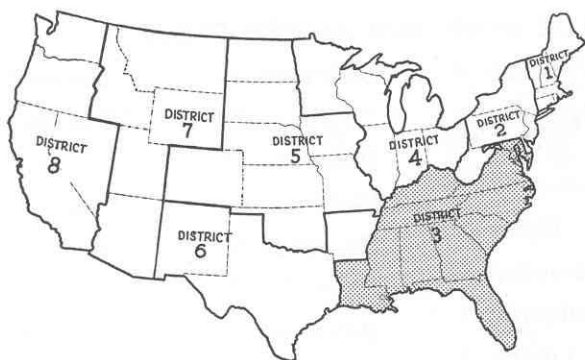
ROSTER OF UNIVERSITY OF DELAWARE

Numerical Baseball Roster

No.	Name	Position	Batting Avg.	Age	Ht.	Wt.	Class	Hometown
1— 8	Glenn Hinton	of.-p.	.319	22	5-9	155	Sr.	Baltimore, Md.
2— 2	Willy Miranada	ss.	.226	21	5-8	170	Sr.	Miami, Fla.
3— 3	Jim Robinson	3b	.333	21	5-11	175	Sr.	Wilmington
4— 4	Fred Blome	of-1b	.328	19	5-10	168	Soph.	Wilmington
5— 5	Bob Riley	inf.	.200	20	5-9	165	Soph.	Wilmington
6— 6	Joe Flickinger	1b	.238	22	5-11	165	Jr.	Wilmington
7— 7	Dave Yates	2b	.390	21	5-11	180	Sr.	Wilmington
9— 9	Ron Klein	ss.	.155	20	5-11	175	Jr.	E. Orange, N.J.
10—10	Bruce Fad	of.	.446	22	6-0	195	Jr.	Ft. Washington, Pa.
11— 1	Craig Martin	p.-of.	.000	22	5-6	155	Sr.	Wilmington
12—12	Mark Brown	p.	.333	20	6-3	200	Jr.	Newark
13—13	Chris Spicer	p.	.182	22	6-2	198	Jr.	Haddonfield, N.J.
14—14	Bill Falasco	c.	.120	21	6-0	196	Jr.	Wyoming
15—15	Doug Hopper	p.	.296	20	5-11	170	Jr.	New Castle
17—17	Dave Willard	c.	.270	21	5-10	200	Sr.	Newport
18—18	Dave Klinger	rf.	.352	22	6-1	195	Sr.	Woodbury Hgts, N.J.
20—20	Ted Zink	p.	.276	20	6-2	205	Jr.	Wilmington
23—23	John Anerousis	c.	.000	20	5-10	192	Jr.	Cinnaminson, N.J.
24—24	Ken Wiggins	of.	.286	20	5-11	175	Jr.	Wilmington

PITCHERS WIN - LOSS RECORD

	W	L		W	L		W	L
Ted Zink	7	0	Glenn Hinton	4	0	Craig Martin	1	0
Doug Hopper	7	2	Chris Spicer	2	0	Mark Brown	1	2



**District 3** Alabama, District of Columbia, Florida, Georgia, Kentucky, Louisiana, Maryland, Mississippi, North Carolina, South Carolina, Tennessee, Virginia.

## DISTRICT 3

### Florida State University

#### Tallahassee, Florida

Enrollment: 17,010.  
Colors: Garnet and Gold.  
Nickname: Seminoles.

Now in its 112th year of service, Florida State University continues its energetic quest for unprecedented excellence in education as well as in athletics. Founded in 1857 as The Seminary West of the Suwanee, Florida State served as a women's college from the early part of this century until 1947 when it achieved co-educational and full university status.

In the 23 years since, Florida State has built a program in academics as well as in athletics that places it among the nation's finest in both areas. Florida State today is one of only 24 institutions granting 100 doctoral degrees each year and is rapidly gaining national distinction as a leading graduate education and research center.

Jack Stallings is no stranger to College World Series play. The veteran collegiate mentor was a "student assistant coach" in 1955 when Wake Forest made the trip to Omaha and the Deacons, that year, took all the marbles.

A graduate of Wake Forest, Stallings played pro ball before turning his attention to coaching.

The Durham, N.C., native is completing his second season as the Seminoles' head coach.



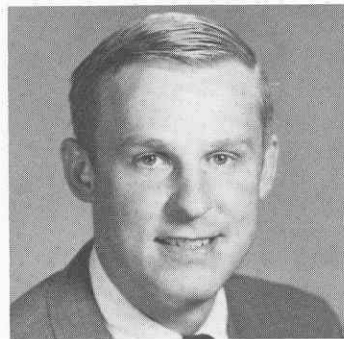
Seminole Field, one of the nation's first on-campus lighted baseball fields, serves as the home park for Florida State's baseball team. The university's fast growing dormitory complex and nationally famous science center is seen in the background.



Ron Nemer  
OMAHA JUNIOR CHAMBER OF COMMERCE



Cynthia Ann Linman  
IMMANUEL HOSPITAL  
SCHOOL OF NURSING



Rich Tompsett  
OMAHA JUNIOR CHAMBER OF COMMERCE





1— 1 Jack Stallings - Coach  
26—23 Bob Smith - Assistant  
25—34 Roy Mewbourne - Assistant  
14—32 Greg Zera - Team Manager  
Don Fauls - Trainer  
Doug May - Assistant

FLORIDA STATE SEMINOLES' 1970 SEASON RESULTS

Florida State 5	Union University 1	Florida State 4	South Alabama 0
Florida State 6	Union University 2	Florida State 11	South Alabama 0
Florida State 6	St. Leo College 1	Florida State 7	South Florida 0
Florida State 5	(10) St. Leo Coll. 4	Florida State 8	South Florida 0
Florida State 1	Florida Southern 0	Florida State 8	St. Leo College 3
Florida State 10	Miami 1	Florida State 7	Florida Southern 6
Michigan State 6	Florida State 5	Florida State 9	South Alabama 0
Florida State 8	Miami 3	South Alabama 5	Florida State 3
Florida State 1	Stetson 0	Florida State 2	South Alabama 2
Florida State 17	Bowling Green 8	(10 Innings, Travel Curfew)	
Florida State 6	New York Uni. 1	Florida State 12	Georgia Southern 5
Florida State 8	Rider College 1	Florida State 8	Georgia Southern 4
Florida State 4	New York Uni. 2	Florida State 4	Jacksonville 1
Florida State 6	Southern Illinois 1	Florida State 9	Jacksonville 2
Florida State 15	North Carolina 6	Florida State 11	Miami 4
Florida State 5	North Carolina 4	Florida State 6	Miami 2
Florida State 3	North Carolina 2	Florida 3	Florida State 1
*Florida State 5	Illinois 4	Florida 5	Florida State 4
*Florida State 6	Maryland 2	Georgia State 8	Georgia Southern 3
*Florida State 11	Holy Cross 4	Ga. Southern 2	(15) Florida State 1
*Florida State 10	Illinois 0	Florida State 5	Auburn 0
*Florida State 3	Holy Cross 0	Florida State 7	Auburn 6
*Florida State 4	Maryland 3	Florida 4	Florida State 3
Florida State 10	Auburn 4	Florida State 1	(10) Florida 0
Auburn 5	Florida State 3	Florida State 9	Florida 4
Florida State 8	South Alabama 4		

\* Florida State Invitational Tournament

NCAA DISTRICT 3 PLAYOFF

Florida State 2	East Carolina 0	Florida State 5	Mississippi State 4
Florida State 10	Maryland 1		

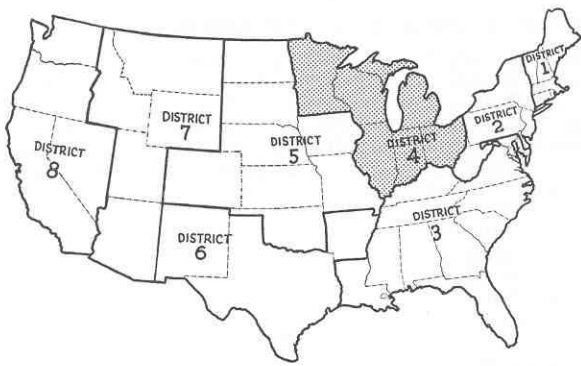
ROSTER OF FLORIDA STATE UNIVERSITY

Numerical Baseball Roster

No.	Name	Position	Batting Avg.	Age	Ht.	Wt.	Class	Hometown
2— 2	Tom Porter	inf.	.308	21	5-10	160	Sr.	Zephyrhills
3— 3	Dick Nichols	2b	.362	22	5-6	150	Sr.	Jacksonville
4— 4	Rick Moss	of.	.125	20	5-10	165	Jr.	Lakeland
5— 5	Greg Gromek	ss.	.339	20	5-11	167	Jr.	Birmingham, Mich.
6— 6	Larry Cocks	of.	.299	21	5-11	170	Jr.	Oklahoma City, Okla.
7— 7	Robin Flake	p.	.000	22	5-9	163	Jr.	College Park, Ga.
8— 8	Mike Vasquez	1b.	.114	20	6-1	185	Jr.	St. Louis, Mo.
9— 9	Dave Grimes	2b	.250	20	5-10	160	Jr.	Lakeland
10—10	Greg Schnute	of.	.268	21	5-11	180	Sr.	Huntingburg, Ind.
11—11	Mike Slade	p.	.154	21	6-1	195	Jr.	Arlington, Va.
12—12	Ron Cash	3b	.346	20	6-0	175	Jr.	Decatur, Ga.
13—31	Harry Saferight	of.-c	.289	21	5-11	195	Jr.	Richmond, Va.
14—32	Greg Zera	c.	.250	20	5-9	180	Jr.	Lincolnwood, Ill.
15—15	Gene Ammann	p.	.214	21	5-10	175	Jr.	Decatur, Ga.
16—16	Carl Gromek	p.	.000	22	5-10	175	Sr.	Birmingham, Mich.
17—17	Dan Roatche	c.	.333	19	6-0	205	Soph.	Hatboro, Pa.
18—18	Don Harbaugh	p.	.000	21	6-1	195	Jr.	Toledo, Ohio
19—19	Al Cleveland	p.	.500	22	6-2	185	Sr.	Albany, Ga.
20—20	John Grubb	of.	.304	21	6-2	170	Jr.	Richmond, Va.
21—35	Jim Scheller	1b	.152	19	6-4	200	Soph.	Evansville, Ind.
22—22	Mac Scarce	p.	.000	21	6-3	175	Jr.	Richmond, Va.
23—36	Tom Henson	p.	.000	21	6-3	210	Jr.	Evansville, Ind.
24—24	John Keith	c.	.218	20	6-1	200	Jr.	Huntington Valley, Pa
27—27	Pat Osburn	p.	.189	20	6-2	190	Jr.	Clearwater
28—33	Doug Kasimier	1b	.256	20	6-3	175	Jr.	Ft. Lauderdale
29—38	Mike Leber	of.	.000	20	5-10	170	Soph.	Newport, R.I.
30—30	John Ferguson	p.	.500	22	6-0	165	Sr.	Desota, Ga.

PITCHERS WIN - LOSS RECORD

	W	L		W	L		W	L
Gene Ammann	13	0	Carl Gromek	5	0	Mac Scarce	1	1
Pat Osburn	11	2	Tom Henson	3	0	John Ferguson	1	1
Mike Slade	7	1	Don Harbaugh	2	1	Robin Flake	1	1
			Al Cleveland	1	0			



**District 4** Illinois, Indiana, Michigan, Minnesota, Ohio, Wisconsin.

## DISTRICT 4

# Ohio University

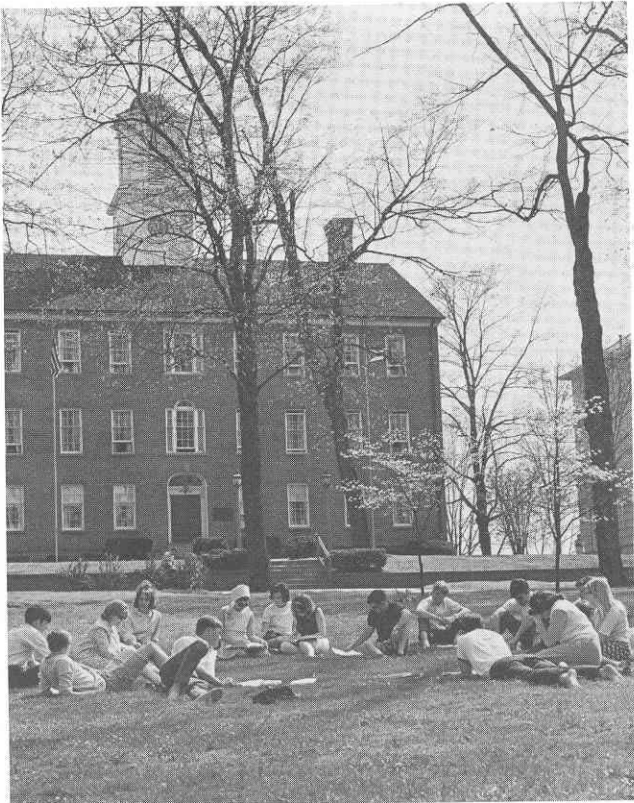
### Athens, Ohio

Enrollment: 17,500.  
Colors: Green and White.  
Nickname: Bobcats.

Located in the forested hills of southeastern Ohio, the University is the oldest institution of higher learning west of the Allegheny Mountains.

Besides the main campus in Athens, the school maintains branch campuses at Chillicothe, Lancaster, Belmont County, Portsmouth and Zanesville, and boasts a total enrollment of nearly 23,000 students.

Founded in 1804, Ohio University provides study in 70 undergraduate areas, Master's degree work in 50 areas and 15 Doctorate programs.



A class is pictured here in front of the Ohio University Administration Building, "Cutler Hall," a national landmark, on the college green (main campus) of Ohio University.

The hardball sport began for Bob Wren on Cleveland's lower East side and continued in his undergraduate days at Ohio University where he also starred in basketball. Following graduation from Ohio, Wren entered pro ball, then spent a brief period in physical education before returning to Athens to begin his coaching career.

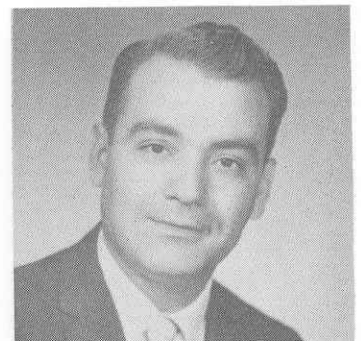
He became the Bobcats' baseball mentor under his old coach Don Peden, then Athletic Director in 1949.



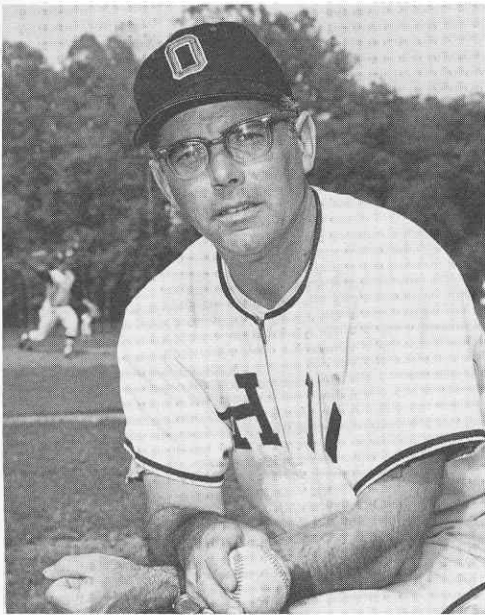
Dyke Newcomer  
OMAHA COSMOPOLITAN CLUB



Virginia C. Dignoti  
CREIGHTON UNIVERSITY



Frank Grasso  
OMAHA COSMOPOLITAN CLUB



39—Bob Wren - Coach  
38—Dick England - Assistant  
19—Lynn Burke - Team Manager  
Larry Starr - Trainer

BOBCATS' 1970 SEASON RESULTS

Ohio U. 5	Wake Forest 4	Ohio U. 3	Western Michigan 1
Ohio U. 11	Wake Forest 6	Ohio U. 9	Western Michigan 5
Ohio U. 5	Clemson 1	Western Michigan 4	Ohio U. 2
Clemson 7	Ohio U. 6	Ohio U. 5	Notre Dame 2
Ohio U. 12	Wake Forest 6	Ohio U. 6	Cincinnati 0
Ohio U. 8	Virginia Tech 1	Ohio U. 18	Marshall 3
Ohio U. 13	W. Vir. Wesleyan 0	Marshall 10	Ohio U. 6
Ohio U. 10	Cincinnati 0	Ohio U. 8	Marshall 1
Ohio U. 5	Miami of Ohio 2	Ohio U. 10	Ohio Wesleyan 1
Ohio U. 9	Miami of Ohio 8	Ohio U. 7	Xavier 4
Ohio U. 7	Miami of Ohio 2	Ohio U. 6	Bowling Green 4
Ohio State 4	Ohio U. 3	Ohio U. 13	Bowling Green 12
Ohio U. 3	Kent State 0	Ohio U. 9	Bowling Green 3
Ohio U. 8	Kent State 1	Ohio U. 21	Toledo 4
Ohio U. 10	Kent State 3	Ohio U. 14	Toledo 6
Ohio U. 13	Dayton 4	Ohio U. 14	Toledo 2

NCAA DISTRICT 4 PLAYOFF

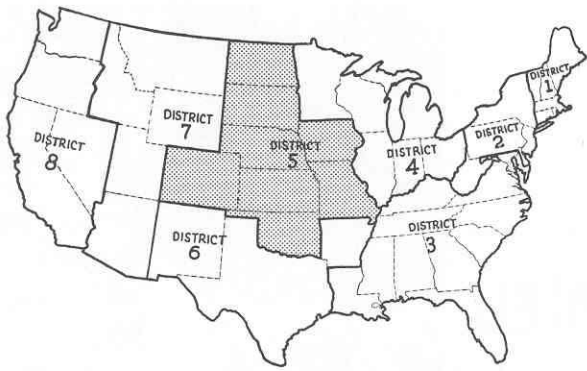
Ohio U. 6	Minnesota 4	Ohio U. 8	Southern Illinois 5
Ohio U. 7	Southern Illinois 0		

ROSTER OF OHIO UNIVERSITY  
Numerical Baseball Roster

No.	Name	Position	Batting Avg.	Age	Ht.	Wt.	Class	Hometown
1—1	Joe Carbone	2b	.318	22	5-10	165	Sr.	Elkland, Pa.
10—10	Mike Schmidt	ss.	.368	20	6-2	190	Jr.	Dayton
12—12	Terry Wenger	p.	.000	19	6-0	175	Fr.	New Carlisle
13—13	Malcolm Smoot	c.	.262	21	6-0	180	Sr.	Dayton
17—17	Mike Hannah	1b	.457	20	6-4	200	Jr.	Newark
21—21	Doug Diamond	p.	.000	19	5-11	160	Soph.	Canton
22—22	Gary Shade	cf.	.371	20	6-0	175	Jr.	Reynoldsburg
23—23	Steve Swisher	c.	.273	18	6-2	185	Fr.	Parkersburg, W. Va.
24—24	Tom Smith	lf.	.352	21	6-0	185	Jr.	Dayton
25—25	Tom Rausch	p.	1.000	19	6-0	190	Soph.	Marysville
27—27	Terry Raszka	rf.	.349	21	6-2	190	Sr.	Sylvania
30—30	Dennis Hagarty	3b	.336	23	5-8	155	Sr.	Verona, N.J.
35—35	Tony Gray	inf.-of.	.222	20	5-8	155	Soph.	Romulus, Mich.
36—36	Bob Kleiber	inf.-of.	.239	19	6-0	170	Fr.	Dayton
37—37	Bill Sawyer	of.	.000	22	5-7	170	Sr.	Dayton
40—40	Scott Fields	p.	.000	21	6-5	180	Sr.	LaRue
41—41	Mark Simpson	p.	.000	22	6-1	190	Sr.	Toledo
42—42	Ed Robbins	p.	.317	22	6-1	185	Sr.	Hillsboro
43—43	Bill Toadvine	p.	.461	21	6-0	185	Jr.	Miamisburg
44—44	Ron Morrison	p.	.385	22	6-2	210	Sr.	Kenton
45—45	Bill Clauss	p.	.286	21	6-0	200	Sr.	S. Charleston, W. Va.

PITCHERS WIN - LOSS RECORD

	W	L		W	L		W	L
Ed Robbins	13	0	Bill Clauss	6	1	Bill Toadvine	2	1
Ron Morrison	4	0	Mark Simpson	3	2	Tom Rausch	1	0
			Doug Diamond	2	0			



## DISTRICT 5

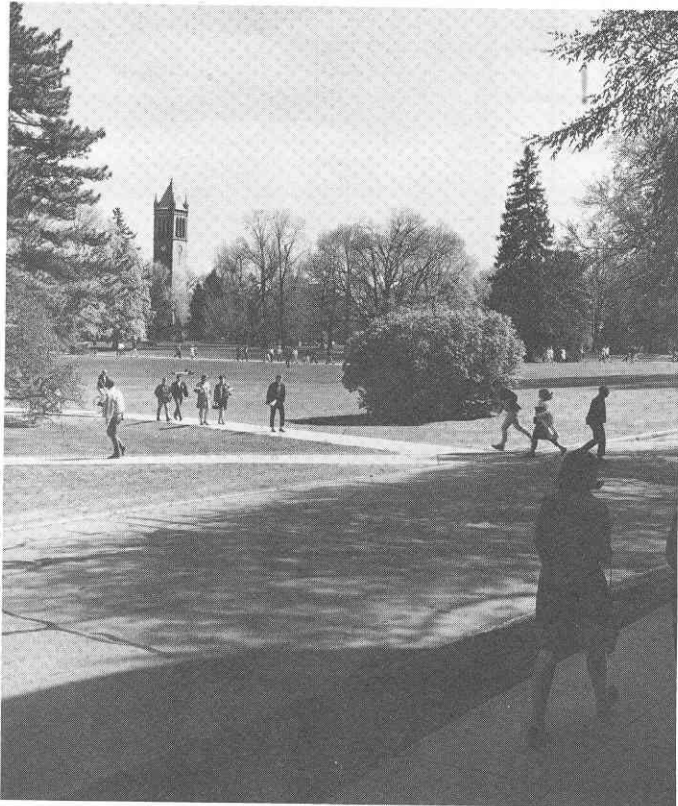
# Iowa State University

### Ames, Iowa

Enrollment: 19,347  
Colors: Cardinal and Gold.  
Nickname: Cyclones.

**District 5** Colorado, Iowa, Kansas, Missouri, Nebraska, North Dakota, Oklahoma, South Dakota.

Iowa State University was founded in 1858 and in its early years was known as the "College of the Prairie." A leader in agriculture and engineering, this school was a pioneer in the fields of veterinary medicine and home economics. For more than 100 years Iowa State University has produced leaders in all fields of science and has developed one of the most extensive programs in atomic energy studies in the nation. The ISU campus contains over 100 major structures for study and residence.



The Stanton Memorial Carillon has long served as a landmark on the attractively landscaped campus which covers over 1,000 acres.

When the name "Cap" enters a conversation relating to college baseball it refers to one man—L. C. "Cap" Timm, Iowa State's baseball coach since 1934. A former president of the Baseball Coaches Association and 1969 winner of the Lefty Gomez award, "Cap" has served as the chairman of the College World Series rules committee for several years. This will be the second time this Hall of Famer has brought a team to the College World Series, having finished third in 1957, the year he was named College Baseball Coach of the Year.



Jim Sunderland  
ROTARY CLUB OF OMAHA



Sandra A. Daugherty  
BISHOP CLARKSON MEMORIAL  
HOSPITAL SCHOOL OF NURSING



Seb Circo  
ROTARY CLUB OF OMAHA





46—46 L. C. "Cap" Timm - Coach  
40—40 Clair Rierson - Assistant  
Curt Anderson - Manager  
Bill Thompson - Manager  
Frank Randall - Trainer

CYCLONES' 1970 SEASON RESULTS

Iowa State 2	Minnesota 1	Iowa State 2	Northern Iowa 1
Minnesota 5	Iowa State 2	*Kansas State 6	Iowa State 3
Minnesota 9	Iowa State 0	*Kansas State 7	Iowa State 5
Minnesota 5	Iowa State 0	*Iowa State 2	Okla. State 1
Iowa 1	Iowa State 0	*Okla. State 5	Iowa State 3
*Iowa State 1	Missouri 0	*Iowa State 4	Okla. State 0
*Iowa State 5	Missouri 1	*Iowa State 3	Kansas 1
*Iowa State 16	Missouri 9	*Kansas 3	Iowa State 2
*Iowa State 6	Colorado 5	*Kansas 2	Iowa State 1
Iowa State 13	Drake 2	*Iowa State 4	Nebraska 1
*Iowa State 8	Oklahoma 2	*Nebraska 2	Iowa State 0
*Iowa State 6	Oklahoma 5	*Iowa State 9	Nebraska 3
*Oklahoma 7	Iowa State 3		

\* Big Eight Conference Game.

NCAA DISTRICT 5 PLAYOFF

Iowa State 7	Tulsa 6	Iowa State 4	Tulsa 0
(12 innings)			

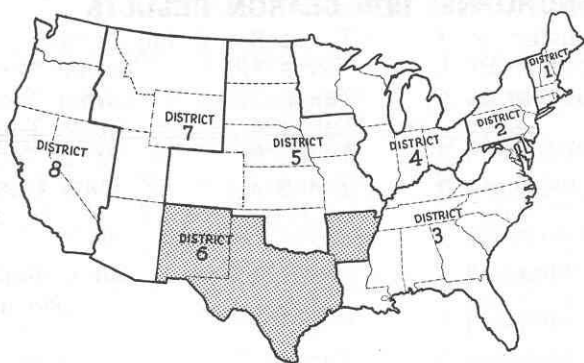
ROSTER OF IOWA STATE UNIVERSITY  
Numerical Baseball Roster

No.	Name	Position	Batting Avg.	Age	Ht.	Wt.	Class	Hometown
10—10	Glenn Reynolds	p.	.000	18	5-8	165	Fr.	Glen Ellyn, Ill.
11—11	Don Powers	p.	.083	18	5-10	155	Fr.	Brampton, Can.
12—12	Ed Tadelman	3b-lf.	.319	19	5-8	155	Soph.	Skokie, Ill.
14—14	Mike Ellens	2b-lf.	.173	19	5-9	168	Soph.	Argo, Ill.
15—15	Bob Case	3b-c.	.287	21	5-9	170	Sr.	Council Bluffs
16—16	Jerry Lundin	ss.	.212	20	5-11	172	Jr.	Rockford, Ill.
17—17	Tom Vaglica	c.	.500	18	6-1	165	Fr.	Downers Grove, Ill.
18—18	Steve Mohr	2b	.149	19	5-10	165	Soph.	Cedar Rapids
19—19	Ray Wood	rf.	.259	20	6-2	173	Jr.	Omaha, Neb.
20—20	Al Bolty	cf.	.260	21	5-11	176	Sr.	Estherville
21—21	Dave Erusha	p.	.250	18	6-3	172	Fr.	Cedar Rapids
22—22	Bob Thomas	p.	.000	18	6-3	170	Fr.	Ludington, Mich.
24—24	Mike Zuk	of.	.235	18	6-1	192	Fr.	Belvidere, Mich.
25—25	Larry Corrigan	p.-c.	.356	19	6-3	192	Soph.	Mendota, Ill.
26—26	Larry Dietrich	of.	.368	19	6-1	182	Soph.	Naperville, Ill.
30—30	Mike Gillespie	p.	.059	19	6-0	200	Soph.	Lake Park
31—31	Bob Walker	p.	.000	21	6-3	190	Sr.	Dubuque
32—32	Steve Crandell	1b	.241	21	6-0	181	Sr.	Boone
42—42	Kirk James	2b	.000	19	5-11	155	Soph.	Davenport

PITCHERS WIN - LOSS RECORD

	W	L		W	L		W	L
Larry Corrigan	8	1	Bob Walker	2	0	Dave Erusha	1	2
Mike Gillespie	3	3	Don Powers	3	1	Steve Crandell	0	1
			Bob Thomas	1	1			





District 6 Arkansas, New Mexico, Texas.

## DISTRICT 6

# The University of Texas at Austin

## Austin, Texas

Enrollment: 35,678.

Colors: Burnt Orange and White.

Nickname: Texas Longhorns.

Although The University of Texas officially dates from Sept. 15, 1883, its history actually parallels that of the state all the way back to the days of the Republic of Texas.

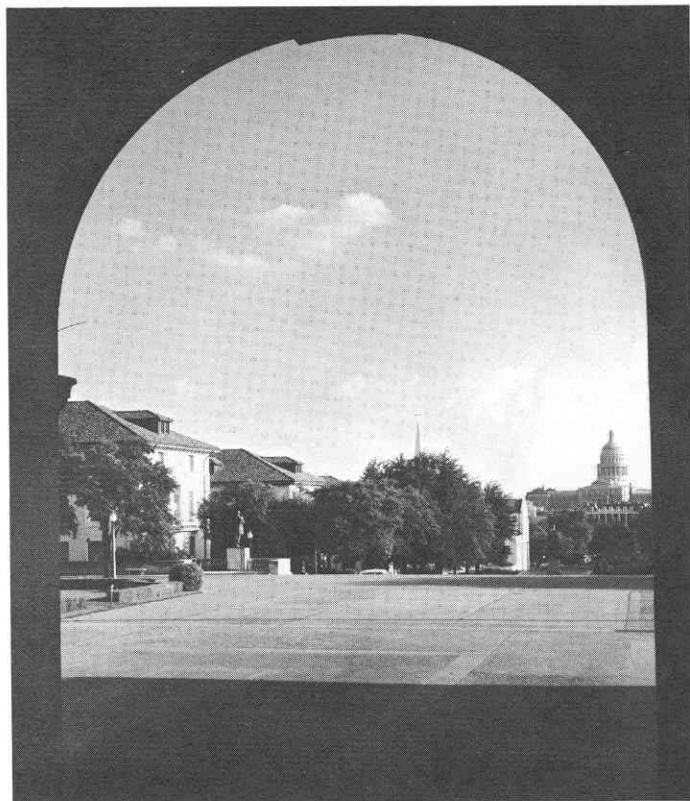
The University received its first boost on Nov. 20, 1837, in a bill suggesting an institution of higher learning. The Second Congress of the Republic took no action at that time; however, even then, Texas' statesmen were hoping and planning for the educational future.

Since its opening, the University's purpose has been to serve Texas through a program of instruction, research and public service.

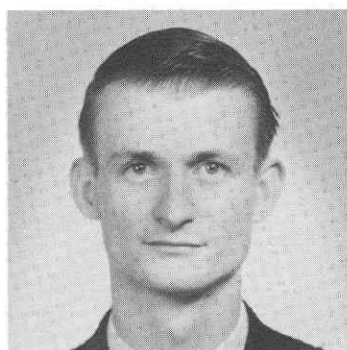
Component units are located at Austin, Galveston, Houston, Dallas, El Paso and Arlington, each with its own role in the University's three-way objective.

This is the third straight trip to the College World Series for the Longhorns under the coaching of Cliff Gustafson; and the fourteenth time University of Texas has appeared in the Series.

Gustafson, the most successful coach in Texas' high school history, started his Longhorn career as a player under Bibb Falk. He succeeded Falk as coach in the summer of 1967.



A view of the South Mall of the University of Texas from beneath the arches of the Tower . . . state capitol building in the background.



Royal K. Sutton  
OMAHA CONCORD CLUB



Debra Diane Braun  
UNIVERSITY OF NEBRASKA  
HOSPITAL SCHOOL OF NURSING



Sid L. Taute  
OMAHA CONCORD CLUB



18—Cliff Gustafson - Coach  
26—Bill Bethea - Assistant  
Gordon Olhausen - Team Manager  
Frank Medina - Team Trainer  
Mike Stephens - Student Trainer  
Larry Horton - Graduate Assistant

### TEXAS LONGHORNS' 1970 SEASON RESULTS

Texas 12	Sam Houston St.	1	Texas 8	Phillips University	3
Texas 10	Sam Houston St.	0	Texas 12	Lamar Tech	0
Texas 14	Sam Houston St.	0	Texas 10	Lamar Tech	0
Sam Houston St.	3	Texas 1	*Texas 4	Texas Tech	0
Texas 8	Texas Lutheran	1	*Texas 6	Texas Tech	3
Texas 11	Texas Lutheran	4	Texas 2	St. Mary's Uni.	1
Texas 2	Univ. of Houston	1	St. Mary's Uni.	7	Texas 6
Univ of Houston	6	Texas 2	Texas 2	Texas Luth. College	0
Texas 3	Univ. of Oklahoma	2	Texas 5	Texas Luth. College	0
Univ. of Oklahoma	3	Texas 2	*Texas 2	Baylor	0
Texas 5	Univ. of Oklahoma	1	*Texas 9	Baylor	3
Texas 6	Univ. of Oklahoma	2	*Texas 2	Baylor	1
*Texas 8	Southern Methodist	0	*Texas 2	Texas Christian	0
*Texas 10	Southern Methodist	5	*Texas 14	Texas Christian	0
*Texas 17	Southern Methodist	4	*Texas 2	Rice	1
Texas 4	Univ. of Minnesota	2	*Texas 5	Rice	1
Univ. of Minnesota	4	Texas 0	*Texas A&M 7	Texas	5
Texas 6	Univ. of Minnesota	0	*Texas 8	Texas A&M	0
Texas 22	Univ. of Minnesota	5	*Texas 5	Texas A&M	3
Texas 6	Phillips University	0	* Southwest Conference Game		

### NCAA DISTRICT 6 PLAYOFF

Texas 5	Arkansas State	0	Texas 4	Pan-American Coll.	3
Texas 2	Pan-American Coll.	1	(11 innings)		

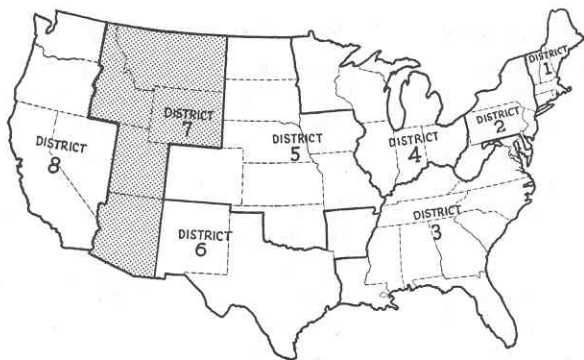
### ROSTER OF THE UNIVERSITY OF TEXAS

#### Numerical Baseball Roster

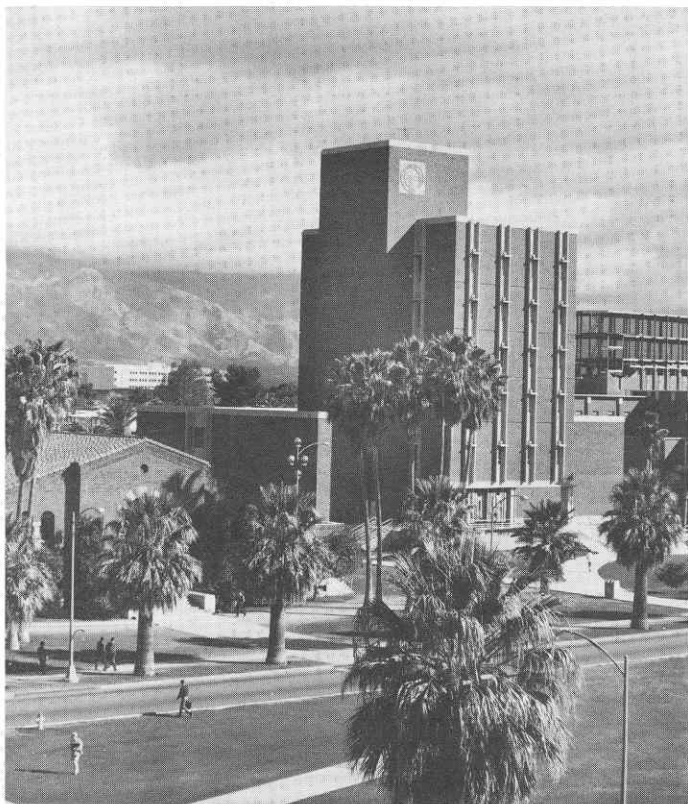
No.	Name	Position	Batting Avg.	Age	Ht.	Wt.	Class	Hometown
1—1	Lou Bagwell	ss.	.280	22	5-11	160	Sr.	Roswell, N.M.
2—2	Mike Markl	lf.	.314	20	5-8	140	Soph.	San Antonio
3—3	David Chalk	3b	.354	19	5-10	170	Soph.	Dallas
4—4	Mike Beard	p.	.333	20	6-0	170	Soph.	Little Rock, Ark.
5—5	James Street	p.	.250	21	5-11	180	Sr.	Longview
6—6	Greg Duffey	p.	.000	18	5-11	175	Fr.	Dallas
7—7	John Langerhans	1b	.331	20	6-0	200	Soph.	San Antonio
8—8	Pat Amos	2b	.248	21	5-11	180	Sr.	Fort Worth
9—9	Donnie Horne	p.	.000	21	5-10	170	Jr.	Waco
10—10	Nati Salazar	p.	.250	21	5-10	180	Jr.	San Antonio
11—11	Gary Erskine	of.	.000	19	5-10	165	Fr.	Anderson, Ind.
12—12	David Hall	3b-rf.	.298	22	5-11	192	Sr.	Houston
13—13	Jack Miller	cf.	.280	21	6-0	180	Sr.	Dallas
14—14	Charlie Crenshaw	of.	.333	19	5-8	180	Fr.	Austin
15—15	Dennis Magro	c.	.000	20	6-0	180	Soph.	San Antonio
16—16	Jimmy Crouch	of.	.346	21	5-11	180	Jr.	Port Arthur
17—17	Larry Hardy	p.	.286	22	5-10	180	Sr.	Houston
20—20	Burt Hooton	p.	.143	20	6-1	195	Soph.	Corpus Christi
21—21	Walt Rothe	p.	.333	21	6-0	180	Jr.	D'Hanis
22—22	Tommy Harmon	c.	.354	21	5-11	185	Jr.	Fort Worth
24—24	Pat Thompson	c.-1b	.333	22	6-3	200	Jr.	Aurora, Colo.

### PITCHERS WIN - LOSS RECORD

	W	L		W	L		W	L
Burt Hooton	10	1	Mike Beard	7	0	Nati Salazar	2	0
James Street	8	1	Larry Hardy	6	2	Donnie Horne	0	0
			Walt Rothe	3	1			



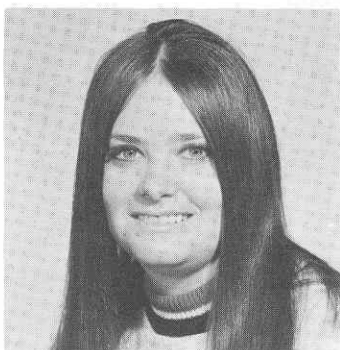
**District 7** Arizona, Idaho, Montana, Utah, Wyoming.



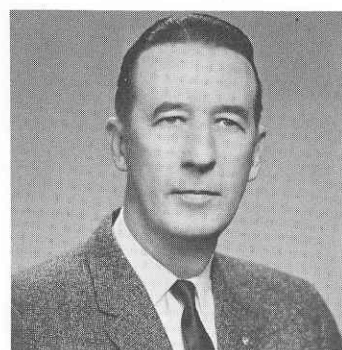
The Administration Building stands out before the natural beauty of the Santa Catalina Mountains in the background.



Irv Dana  
DOWNTOWN KIWANIS CLUB



Diane Marie Dogotch  
ST. CATHERINE HOSPITAL  
SCHOOL OF NURSING



Mark Baldwin  
DOWNTOWN KIWANIS CLUB

## DISTRICT 7

# University of Arizona

## Tucson, Arizona

Enrollment: 24,726.

Colors: Navy Blue and Cardinal Red.

Nickname: Wildcats.

From humble frontier beginnings in 1885, the University of Arizona has, in less than a century, become one of the nation's great Land Grant institutions.

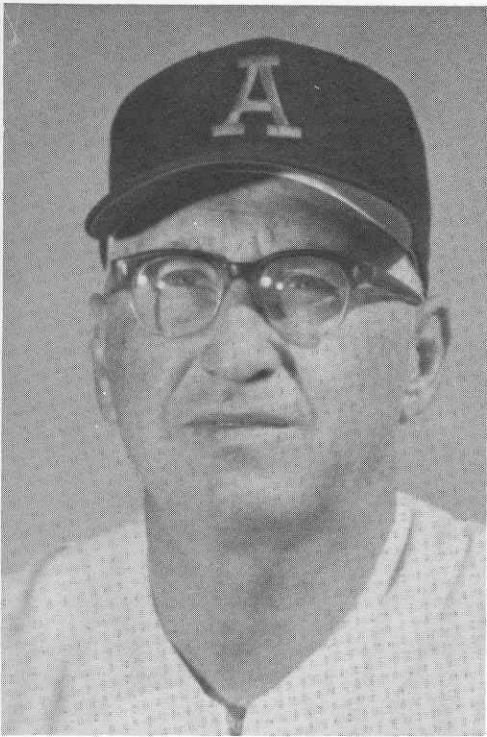
The University is located in Tucson, an historic city founded in 1776 as a Spanish presidio.

Besides the more common colleges and departments of study, the University of Arizona provides programs and activities in several unique areas; the Bureau of Ethnic Research studies modern Indian life and Indian affairs in the Southwest. The Institute of Atmospheric Physics conducts research in physical meteorology and climatology of the arid regions of our country.

Research on the dating of terrestrial events is carried on by the Geochronology Laboratories and the Laboratory of Tree Ring Research undertakes work in archaeological, hydrological and astroclimatical study. In addition, the University Art Gallery contains one of the finest university collections in the country.

Arizona baseball is now in its 64th season and Coach Frank Sancet is in his 21st year. A University of Arizona graduate, Sancet has coached 25 All-Americans and piloted his Wildcats into nine College World Series. Sancet, as one of the winningest coaches in college baseball, has lead the Arizona team to a 719 win, 227 loss and six tie record.





33—Frank Sancet - Coach  
46—Don Lee - Assistant  
Warren Lee - Trainer

WILDCATS' 1970 SEASON RESULTS

Arizona 5	Cal Poly (Pomona) 1	Arizona 6	Iowa 2
Arizona 5	Cal Poly (Pomona) 4	Arizona 7	Iowa 6
Arizona 4	Cal Poly (Pomona) 2	Arizona 5	Iowa 1
San Diego State 8	Arizona 5	Arizona 15	Iowa 4
Arizona 3	San Diego State 2	*Arizona 5	U. of Texas (El Paso) 3
Arizona 5	San Fernando State 4	*Arizona 6	U. of Texas (El Paso) 5
San Fernando State 2	Arizona 1	*U. of Texas (El Paso) 8	Arizona 7
Texas Christian 4	Arizona 3	Arizona 9	Northern Arizona 8
Arizona 7	Texas Christian 6	*New Mexico 1	Arizona 0
Arizona 9	Texas Christian 6	*New Mexico 8	Arizona 3
Arizona 5	Texas Christian 2	*New Mexico 3	Arizona 2
Arizona 4	Texas Christian 3	*Arizona 12	U. of Texas (El Paso) 5
Arizona 25	Weber State 6	*Arizona 6	U. of Texas (El Paso) 0
Arizona 10	Weber State 7	*Arizona 5	U. of Texas (El Paso) 2
Weber State 4	Arizona 1	Arizona 7	Grand Canyon 6
Arizona 25	Weber State 3	*Arizona 3	Arizona State 2
Arizona 6	Michigan 5	*Arizona 6	Arizona State 4
Arizona 5	Michigan 1	*Arizona State 13	Arizona 12
Arizona 8	Michigan 7	Arizona 8	Grand Canyon 7
Arizona 10	Michigan 2	*New Mexico 12	Arizona 6
Michigan 12	Arizona 4	*New Mexico 8	Arizona 6
Arizona 16	Michigan 7	*Arizona 6	New Mexico 3
Michigan 9	Arizona 5	*Arizona 7	Arizona State 3
Arizona 8	Michigan 5	*Arizona 4	Arizona State 0
Arizona 20	Iowa 7	*Arizona 9	Arizona State 3
Iowa 8	Arizona 4	**Arizona 10	Brigham Young 5
Arizona 11	Iowa 5	**Brigham Young 18	Arizona 8
Arizona 11	Tulsa 1	**Arizona 10	Brigham Young 8
Arizona 5	Iowa 2		
*Western Athletic Conference Game		**Western Athletic Championship Game	

NCAA DISTRICT 7 PLAYOFF

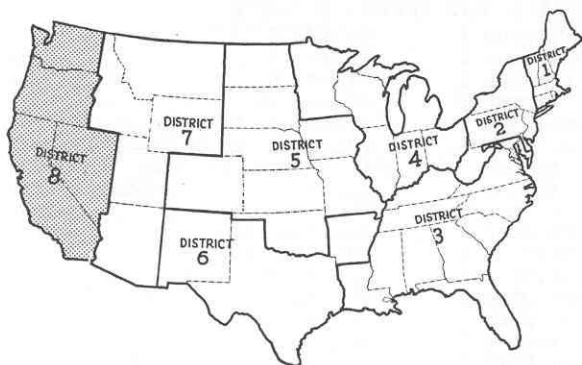
Arizona 4	Denver 2	Arizona 9	Denver 8
Denver 9	Arizona 7		

ROSTER OF THE UNIVERSITY OF ARIZONA  
Numerical Baseball Roster

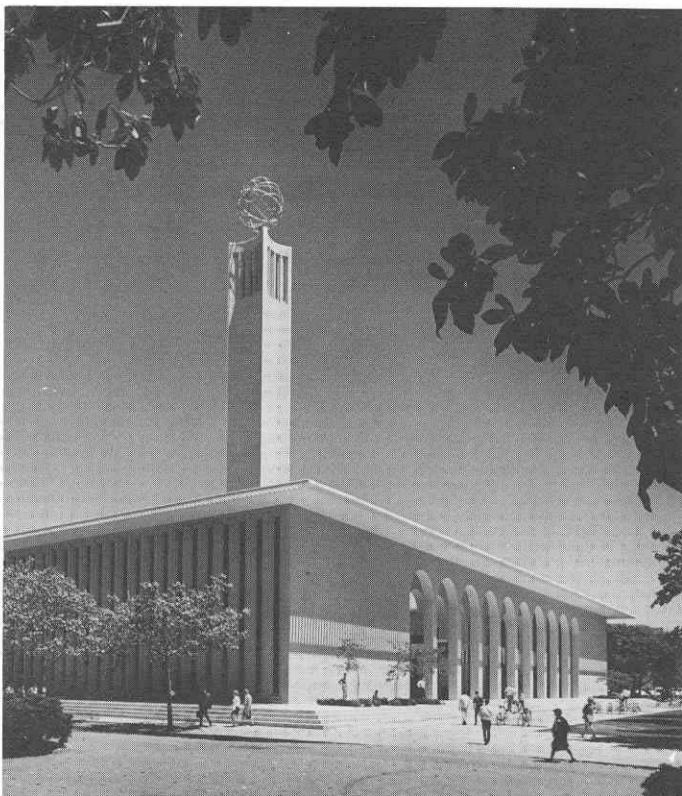
No.	Name	Position	Batting Avg.	Age	Ht.	Wt.	Class	Hometown
10—10	Jim Provenzano	p.	.214	21	5-10	175	Jr.	Tempe City, Calif.
11—11	Jim Williams	3b	.328	21	5-8	180	Sr.	Peoria
12—12	Mark Driscoll	2b	.278	21	5-9	170	Jr.	Arlington, Mass.
14—14	Steve Ballard	ss.	.384	21	6-0	165	Sr.	Galesburg, Ill.
15—15	Harry Lodge	of.	.296	20	5-11	175	Soph.	Tucson
16—16	Darrin Berger	p.	.250	21	6-0	180	Jr.	Huntington, N.Y.
17—17	John Glenn	of.	.353	19	5-10	155	Fr.	Nogales
18—18	Leon Hooten	p.	.354	21	5-11	170	Sr.	Long Beach, Calif.
19—19	Tim Gump	of.	.267	21	5-10	170	Sr.	Tucson
20—20	Dave Prest	of.	.310	21	6-1	180	Sr.	Tempe City, Calif.
21—21	Larry Dierks	p.-of.	.225	21	6-1	188	Jr.	Visalia, Calif.
22—22	Dave Jacome	ss.	.282	21	5-11	175	Sr.	Tucson
23—23	Jerry Benson	1b-of.	.212	20	6-2	195	Soph.	Phoenix
24—24	Rod O'Brien	1b	.375	21	6-3	195	Sr.	Long Beach, Calif.
25—25	Lee Cole	p.	.000	22	6-1	180	Sr.	Litchfield Park
26—26	J. Ray Rokey	c.-of.	.346	21	5-10	190	Jr.	Mesa
28—28	Bryan Shields	p.	.105	21	6-3	190	Jr.	Mesa
29—29	Rick Morache	p.	.000	20	5-10	170	Jr.	Chicago, Ill.
30—30	Steve Mikulic	2b	.408	20	5-10	175	Jr.	South Holland, Ill.
31—31	Mike Bingham	p.	.500	19	6-2	195	Fr.	Anchorage, Alaska
34—34	Mickey O'Hara	p.	.222	24	5-11	190	Sr.	South Pasadena, Cal.
35—35	Don Formiller	p.	.375	20	6-1	165	Jr.	Tucson
36—36	Dale Bauman	1b	.321	20	6-1	190	Jr.	Phoenix
37—37	Dan Montesano	c.	.000	18	5-11	180	Fr.	Phoenix
38—38	Frank Campos	lf.	.250	20	5-10	180	Jr.	Superior
39—39	Keith Rhodes	of.	.265	22	5-10	180	Sr.	Phoenix
40—40	Jim Hamlett	c.	.000	21	5-10	172	Jr.	Hackettstown, N.J.

PITCHERS WIN - LOSS RECORD

	W	L		W	L		W	L
Mike Gray	1	0	Bryan Shields	4	2	Don Formiller	2	2
Rich Morache	5	0	Mickey O'Hara	8	3	Lee Cole	1	0
Darrin Berger	1	0	Larry Dierks	8	1	Don Cary	1	1
Leon Hooten	12	4	Jim Provenzano	1	2	Mike Bingham	0	1



**District 8** Alaska, California, Hawaii, Nevada, Oregon, Washington.



Von Kleinsmid Center for International and Public Affairs exemplifies the beauty of architecture designed in many of University of Southern California's buildings.



Richard Harvey  
OPTIMIST CLUBS OF OMAHA



Marlene Kay Eddy  
JENNIE EDMUNDSON HOSPITAL  
SCHOOL OF NURSING



Don E. McVane  
OPTIMIST CLUBS OF OMAHA

## DISTRICT 8

# University of Southern California

## Los Angeles, California

Enrollment: 12,750.  
Colors: Cardinal and Gold.  
Nickname: Trojans.

The University of Southern California, located four miles southwest of the Civic Center in Los Angeles, began operation with 53 students in 1880 on land donated by a Catholic, a Jew and a Protestant. Nearly 1,000 persons (almost one-tenth of the population of Los Angeles) were present for the laying of the cornerstone on September 4, 1880.

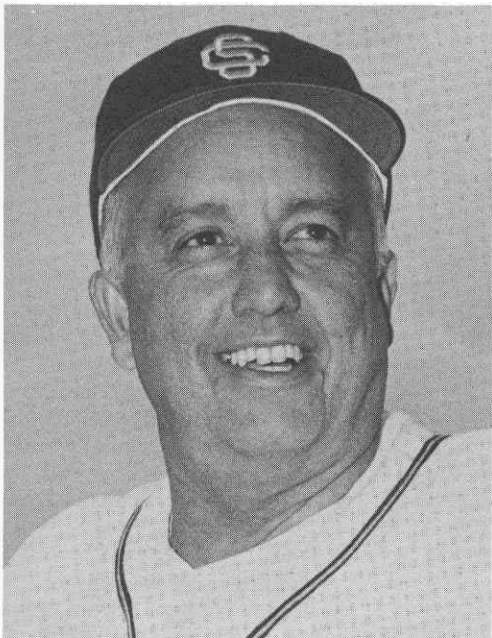
Although it began primarily as a college of liberal arts, the school soon became a major university and now provides three colleges and seventeen professional and specialized schools.

The first USC building, Widney Hall, was erected at a cost of \$5,060 and is still in use today.

Milestones are beginning to multiply for Raoul "Rod" Dedeaux, USC's "perpetual motion" baseball coach. Heading into the 1970 college baseball season, Dedeaux coached teams at USC had a winning percentage of .767.

This Hall-of-Famer has coached Trojan teams to five College World Series titles. Dedeaux, a master psychologist who keeps his teams loose and laughing, is, himself, a protege of the "OI Perfesser," Casey Stengel.

His philosophy is summarized thusly: "Play smart and stay loose."



1—Rod Dedeaux - Coach  
2—Ed Allen - Assistant  
26—Willie Brown - Assistant  
7—Justin Dedeaux - Assistant  
Nate Weiss - Team Manager  
Jack Ward - Trainer

### TROJANS' 1970 SEASON RESULTS

USC 8	Loyola 3	USC 3	San Diego 2
Univ. of Cal. (Irvine) 8	USC 6	USC 14	San Diego 2
USC 4 U. of Cal. (Santa Barbara) 2	USC 8	USC 8	San Diego 1
USC 4 U. of Cal. (Santa Barbara) 2	USC 8	USC 8	Cal. State L. A. 1
U. of Cal. (Santa Barbara) 4	USC 2	USC 4	San Fernando Valley State 1
USC 13 Cal State (Long Beach) 1	*USC 8		UCLA 2
USC 6 Fresno 2	USC 5		Cal State L.A. 4
USC 13 Fresno 6	*USC 4		Cal 2
Fresno 7	USC 6		Stanford 0
USC 3 Pepperdine 2	*USC 3		Stanford 1
USC 4 Utah 2	*Stanford 2		Santa Clara 5
USC 8 Cal State (Long Beach) 1	USC 16		USC 3
USC 4 BYU 0	Chapman 5		USC 2
BYU 8	*Stanford 7		Cal 0
Air Force 10	USC 4		USC 5
USC 13 U. of Cal. (Riverside) 2	*Cal 14		USC 2
USC 11 Tulsa 9	*Cal Poly (Pomona) 3		Washington 3
USC 7 Stanford 5	*USC 9		Washington 4
USC 11 St. Johns 2	*USC 6		Washington State 3
USC 5 Arizona State 2	*USC 7		Washington State 5
USC 4 Oregon State 0	*USC 12		Cal Poly (Pomona) 8
San Fernando Valley State 7	USC 11		Oregon 0
Chapman 9	*USC 6		UCLA 5
USC 4	USC 7		UCLA 1
	Wesmont 3		
	*USC 4		

\* Pacific 8 Conference Game

### DISTRICT 8 CONFERENCE PLAYOFF

USC 11	Oregon State 3	USC 7	UCLA 1
USC 8	UCLA 4		

### NCAA DISTRICT 8 PLAYOFF

USC 12	Santa Clara 1	USC 6	Santa Clara 1
--------	---------------	-------	---------------

### ROSTER OF UNIVERSITY OF SOUTHERN CALIFORNIA

#### Numerical Baseball Roster

No.	Name	Position	Batting Avg.	Age	Ht.	Wt.	Class	Hometown
3—3	Bob Singer	of.	.075	21	5-10	180	Jr.	Los Angeles
4—4	Dan Stolicz	3b	.335	21	6-1	185	Sr.	Canoga Park
6—6	Mike Ball	1b	.261	20	6-4	200	Soph.	San Diego
7—7	Sam Ceci	c.	.255	20	5-8	165	Soph.	Ontario, Oregon
10—10	Gordon Carter	of.	.182	20	6-1	195	Soph.	Fullerton
11—11	Cal Meier	ss.	.311	22	6-1	185	Sr.	La Mesa
12—12	Rick Raczk	c.	.289	22	5-10	190	Sr.	Fullerton
14—14	Mike Swiderski	c.	.000	20	5-10	175	Soph.	Los Angeles
15—15	Milt Guggia	if.	.250	19	5-10	175	Soph.	Santa Maria
16—16	Jeff Port	if.	.315	20	5-11	160	Soph.	Encino
17—22	Jeff Pedersen	of.	.311	20	5-10	182	Soph.	San Pedro
18—18	Mark Sogge	p.	.000	19	6-1	175	Soph.	Gardena
19—19	Craig Perkins	c.	.253	20	6-1	195	Jr.	Los Alamitos
21—21	Jim George	p.	.250	20	6-2	200	Soph.	Long Beach
24—24	Greg Widman	p.	.143	19	5-10	180	Soph.	Pasadena
28—28	Dick Cross	of.	.273	20	5-8	170	Jr.	Los Angeles
31—31	Daryl Arenstein	1b	.258	19	6-1	185	Fr.	San Pedro
32—32	Russ Bennett	of.	.322	21	6-2	203	Sr.	Long Beach
40—40	Orrin Freeman	p.	1.000	19	5-11	170	Jr.	Van Nuys
42—42	Brent Strom	p.	.243	21	6-3	188	Sr.	San Diego
44—44	Wayne Schrader	p.	.000	19	6-0	178	Soph.	Anaheim
45—45	Steve Busby	p.	.167	20	6-2	210	Jr.	Fullerton
46—46	Walt Failor	p.	.000	20	6-2	205	Jr.	Aberdeen, Wash.
47—47	Frank Alfano	2b	.302	20	5-11	175	Jr.	San Diego
50—50	Jim Barr	p.	.154	22	6-3	225	Sr.	Lynwood
51—51	Dave Kingman	of.	.417	21	6-6	220	Jr.	Prospect, Ill.
52—52	Eric Raich	p.	.250	18	6-4	240	Fr.	Detroit, Mich.

### PITCHERS WIN - LOSS RECORD

	W	L		W	L		W	L
Greg Widman	5	3	Jim Barr	12	1	Walt Failor	1	2
Brent Strom	13	1	Mark Sogge	2	2	Orrin Freeman	0	0
Steve Busby	3	0	Jim George	5	1	Wayne Schrader	0	0
			Eric Raich	5	2			



College World Series History

Year	Final Site	Champion	Runner-Up	Final Score	Coach of Team Champions
1947	Kalamazoo, Michigan	California	Yale	8 - 7	Clint Evans, California
1948	Kalamazoo, Michigan	U.S.C.	Yale	9 - 2	Sam Barry, U.S.C.
1949	Wichita, Kansas	Texas	Wake Forest	10 - 3	Bibb Falk, Texas
1950	Omaha, Nebraska	Texas	Washington State	3 - 0	Bibb Falk, Texas
1951	Omaha, Nebraska	Oklahoma	Tennessee	3 - 2	Jack Baer, Oklahoma
1952	Omaha, Nebraska	Holy Cross	Missouri	8 - 4	Jack Barry, Holy Cross
1953	Omaha, Nebraska	Michigan	Texas	7 - 5	Ray Fisher, Michigan
1954	Omaha, Nebraska	Missouri	Rollins	4 - 1	John (Hi) Simmons, Missouri
1955	Omaha, Nebraska	Wake Forest	Western Michigan	7 - 6	Taylor Sanford, Wake Forest
1956	Omaha, Nebraska	Minnesota	Arizona	12 - 1	Dick Siebert, Minnesota
1957	Omaha, Nebraska	California	Penn State	1 - 0	George Wolfman, California
1958	Omaha, Nebraska	U.S.C.	Missouri	8 - 7*	Rod Dedeaux, U.S.C.
1959	Omaha, Nebraska	Oklahoma State	Arizona	5 - 3	Toby Greene, Oklahoma State
1960	Omaha, Nebraska	Minnesota	U.S.C.	2 - 1**	Dick Siebert, Minnesota
1961	Omaha, Nebraska	U.S.C.	Oklahoma State	1 - 0	Rod Dedeaux, U.S.C.
1962	Omaha, Nebraska	Michigan	Santa Clara	5 - 4***	Don Lund, Michigan
1963	Omaha, Nebraska	U.S.C.	Arizona	5 - 2	Rod Dedeaux, U.S.C.
1964	Omaha, Nebraska	Minnesota	Missouri	5 - 1	Dick Siebert, Minnesota
1965	Omaha, Nebraska	Arizona State	Ohio State	2 - 1	Bobby Winkles, Arizona State
1966	Omaha, Nebraska	Ohio State	Oklahoma State	8 - 2	Marty Karow, Ohio State
1967	Omaha, Nebraska	Arizona State	Houston	11 - 2	Bobby Winkles, Arizona State
1968	Omaha, Nebraska	U.S.C.	Southern Illinois	4 - 3	Rod Dedeaux, U.S.C.
1969	Omaha, Nebraska	Arizona State	Tulsa	10 - 1	Bobby Winkles, Arizona State
* 12 Innings			** 10 Innings		*** 15 Innings

Outstanding Player Award

1949 Charles Teague.....Wake Forest	1956 Jerry Thomas .....Minnesota	1963 Bud Hollowell .....U.S.C.
1950 Ray Van Cleef.....Rutgers	1957 Cal Emery .....Penn State	1964 Joe Ferris .....Maine
1951 Sidney Hatfield.....Tennessee	1958 Bill Thom .....U.S.C.	1965 Sal Bando .....Arizona State
1952 James O'Neill .....Holy Cross	1959 Jim Dobson.....Oklahoma State	1966 Steve Arlin .....Ohio State
1953 J. L. Smith.....Texas	1960 John Ericson.....Minnesota	1967 Ron Davini.....Arizona State
1954 Tom Yewcic.....Michigan State	1961 Littleton Fowler....Oklahoma State	1968 Bill Seinsoth .....U.S.C.
1955 Tom Borland.....Oklahoma State	1962 Bob Garibaldi.....Santa Clara	1969 John Dolinsek .....Arizona State

1970-71 NCAA Championship Events

Event	Host Institution and Site	Date	Event	Host Institution and Site	Date
Baseball—24th	Creighton University Rosenblatt Municipal Stadium Omaha, Nebraska	June 12-18/19, 1970	Indoor Track—7th	Univ. of Michigan Cobo Hall Detroit, Michigan	March 12-13, 1971
Basketball—33rd Regionals:			Lacrosse—1st	To be determined	To be determined
East	North Carolina State Univ. Asheville, North Carolina	March 18-20, 1971	Skiing—18th	To be determined	To be determined
Mideast	University of Georgia Athens, Georgia	March 18-20, 1971	Soccer—12th	Southern Illinois Univ. Edwardsville, Illinois	Dec. 3-5, 1970
Midwest	Wichita State University Wichita, Kansas	March 18-20, 1971	Swimming—48th	Iowa State University Ames, Iowa	March 25-27, 1971
West	University of Utah Salt Lake City, Utah	March 18-20, 1971	Tennis—87th	Univ. of Notre Dame Notre Dame, Indiana	June 14-19, 1971
Finals	Astrodome Houston, Texas	March 25-27, 1971	Track & Field—50th	Drake University Des Moines, Iowa	June 18-20, 1970
Cross Country—32nd	College of William and Mary Williamsburg, Virginia	Nov. 23, 1970	Volleyball—2nd	Univ. of California Los Angeles	April 23-24, 1971
Fencing—27th	U. S. Air Force Academy Colorado Springs, Colorado	March 18-20, 1971	Water Polo—2nd	California State College Long Beach, California	Nov. 27-28, 1970
Golf—74th	University of Arizona Tucson, Arizona	June 21-26, 1971	Wrestling—41st	Auburn University Auburn, Alabama	March 25-27, 1971
Gymnastics—29th	University of Michigan Ann Arbor, Michigan	April 1-3, 1971	Baseball—25th	Creighton University Rosenblatt Municipal Stadium Omaha, Nebraska	June 11-17/18, 1971
Ice Hockey—24th	Boston University Boston, Massachusetts	March 18-20, 1971			

## College World Series Won - and - Lost Records

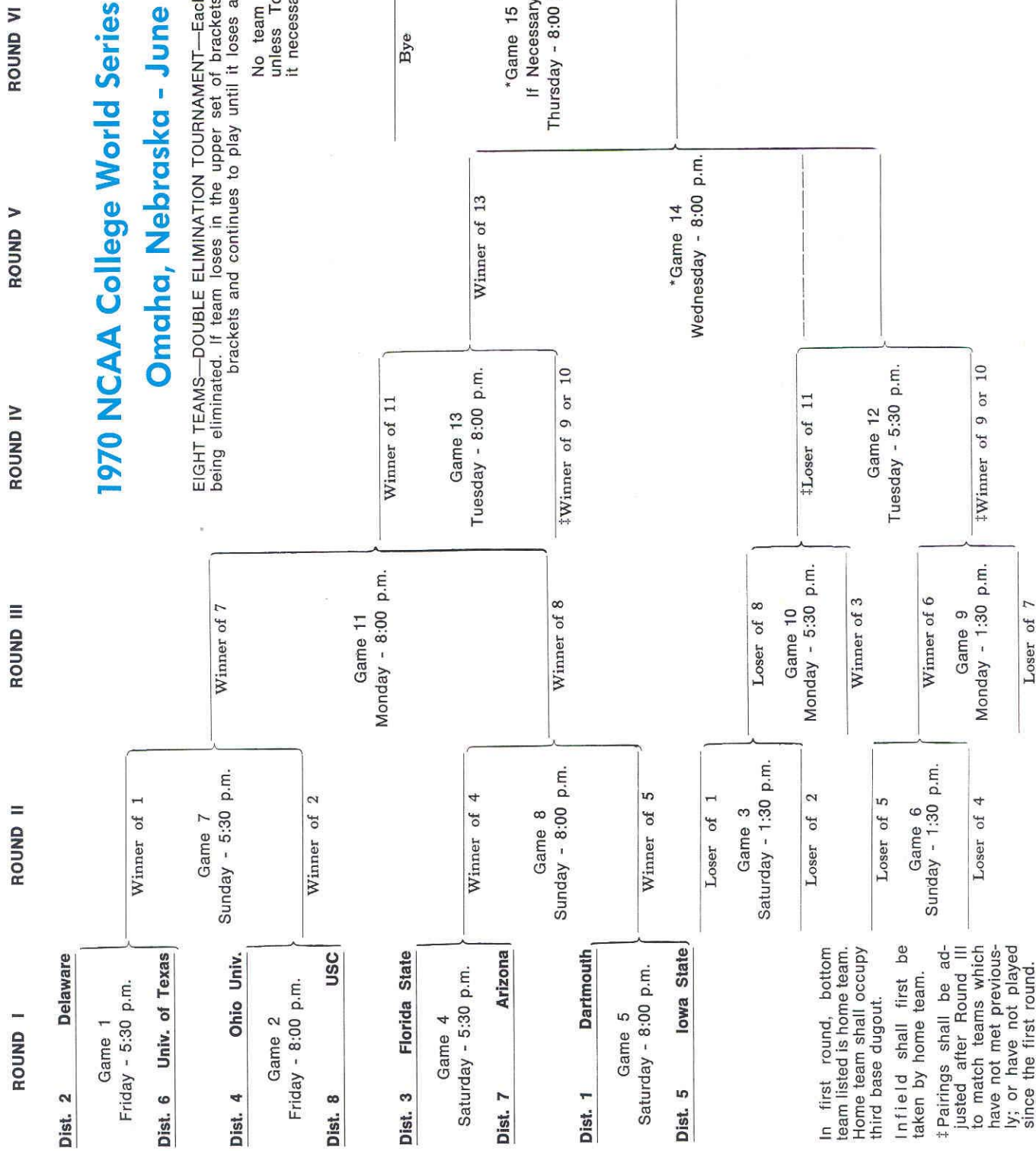
Team (Years Participated)	Won	Lost	Team (Years Participated)	Won	Lost
Alabama (1950) .....	1	2	North Carolina State (1968) .....	2	2
Arizona (1954-55-56-58-59-60-63-66) .....	17	16	Northeastern (1966) .....	0	2
Arizona State (1964-65-67-69) .....	16	5	Notre Dame (1949-57) .....	2	4
Auburn (1967) .....	2	2	Ohio State (1951-65-66-67) .....	9	7
Baylor (1948) .....	2	2	Oklahoma (1947-51) .....	4	1
Boston College (1949-53-60-61-67) .....	6	10	Oklahoma State (1948-49-54-55-59-60-61-66-67-68) .....	20	19
Bradley (1950-56) .....	2	4	Oregon (1954) .....	0	2
Brigham Young (1968) .....	0	2	Oregon State (1952) .....	0	2
California (1947-57) .....	9	0	Penn State (1952-57-59-63) .....	8	8
Clemson (1947-58-59) .....	2	5	Princeton (1951) .....	0	2
Colgate (1955) .....	1	2	Rider (1967) .....	1	2
Colorado State College (1948-49-52-53-55-57-58-59-60-61-62) .....	3	22	Rollins (1954) .....	3	2
Colorado State University (1950) .....	0	2	Rutgers (1950) .....	3	2
Connecticut (1957-59-65) .....	2	6	St. John's (1949-60-66-68) .....	7	8
Denver (1947) .....	0	1	St. Louis (1965) .....	2	2
Duke (1952-53-61) .....	3	6	Santa Clara (1962) .....	4	2
Florida State (1957-62-63-65) .....	4	8	Seton Hall (1964) .....	1	2
Fresno State (1959) .....	3	2	Southern California (1948-49-51-55-58-60-61-63-64-66-68) .....	39	16
Harvard (1968) .....	0	2	Southern Illinois (1968-69) .....	3	4
Holy Cross (1952-58-62-63) .....	9	7	Springfield (1951-55) .....	1	4
Houston (1953-67) .....	3	4	Stanford (1953-67) .....	4	4
Illinois (1947-48) .....	0	3	Syracuse (1961) .....	2	2
Iowa State (1957) .....	2	2	Tennessee (1951) .....	4	2
Ithaca (1962) .....	1	2	Texas (1947-49-50-52-53-57-61-62-63-65-66-68-69) .....	26	22
Lafayette (1948-53-54-58-65) .....	5	10	Texas A&M (1951-64) .....	1	4
Maine (1964) .....	3	2	Tufts (1950) .....	1	2
Massachusetts (1954-69) .....	2	4	Tulsa (1969) .....	3	2
Michigan (1953-62) .....	8	2	UCLA (1969) .....	0	2
Michigan State (1954) .....	3	2	Utah (1951) .....	2	2
Minnesota (1956-60-64) .....	14	3	Wake Forest (1949-55) .....	9	3
Mississippi (1956-64-69) .....	3	6	Washington State (1950-56-65) .....	5	6
Missouri (1952-54-58-62-63-64) .....	18	11	Western Michigan (1952-55-58-59-61-63) .....	9	12
New Hampshire (1956) .....	1	2	Wisconsin (1950) .....	2	2
New York University (1947-56-69) .....	4	5	Wyoming (1954-55-56-61) .....	1	2
North Carolina (1948-60-66) .....	1	6	Yale (1947-48) .....	6	4



**1970 NCAA College World Series Championship,  
Omaha, Nebraska - June 12-17/18**

**EIGHT TEAMS—DOUBLE ELIMINATION TOURNAMENT**—Each team must lose twice before being eliminated. If a team loses in the upper set of brackets, it goes to the lower set of brackets and continues to play until it loses a second game.

No team plays 2 games in one day unless Tournament Committee deems it necessary due to rain.



\*If three teams remain after Round IV, a drawing will be held to determine the opponents in Game 14 and which team shall receive a bye into Game 15.

# FLORIDA STATE BASEBALL

<b>DATE</b>	<b>AB</b>	<b>R</b>	<b>H</b>	<b>BI</b>
<i>FLORIDA STATE</i>				
<b>TOTALS</b>				

PLACE	AB	R	H	BI
ARIZONA				
TOTALS				

	1	2	3	4	5	6	7	8	9	10	11	12	13	14					
FLORIDA STATE	0	0	0	0	1	2	0	1	0	-	4	5	1						
ARIZONA	0	0	0	0	0	0	0	0	0	-	0	2	4						

E- Cash Glenn William Driscoll Jacome	PO-A FS	A
DP-FS <sup>1</sup>	LOB-FS	A
2B		
3B		
HR	RF-Saferight	
SB Glenn Mikulic	S Ammann Driscoll	

	IP	H	R	ER	BB	SO
Armstrong (13-0)	9	" 2	0	0	" 3	<del>###</del> 11
Hooten (12-4)	8	<del>###</del> 6	" 4	" 2	" 4	<del>###</del> 5
Shields	1	" 2	0	0	0	0

HBP	By Annam (O'Brien)	BALK
WP	Hooten	PB Safenight
U		T 1:30 A 10,000 est

# OFFICIAL NCAA BASEBALL BOX SCORE COLLEGE WORLD SERIES GAME NO. 4

Date JUNE 13, 1970 Time 5:30 Stadium ROSENBLATT City OMAHA, NEBR.

FLORIDA STATE	AB	R	H	RBI	PO	A	ARIZONA	AB	R	H	RBI	PO	A
DICK NICHOLS 2B	5	0	0	0	3	4	MARK DRISCOLL 2B	1	0	0	0	2	3
GREG SCHNUTE CF	5	0	2	0	3	0	JOHN GLENN LF	4	0	0	0	2	0
JOHN GRUBB RF	5	0	1	0	0	0	ROD O'BRIEN 1B	0	0	0	0	8	1
RON CASH 3B	1	1	0	0	2	1	DALE BAUMAN 1B	2	0	0	0	3	0
LARRY COCKS LF	4	2	2	0	2	0	STEVE MIKULIC RF	4	0	0	0	4	1
HARRY SAFERIGHT C	3	0	1	2	9	1	J. RAY ROKEY C	3	0	0	0	5	1
GREG GROMEK SS	4	0	0	1	1	2	JIM WILLIAMS 3B	4	0	0	0	0	1
DOUG KASIMIER 1B	3	1	1	0	7	0	DAVE JACOME SS	4	0	0	0	1	3
GENE AMMANN P	3	0	1	0	0	1	DAVE PREST CF	3	0	1	0	2	1
							LEON HOOTEN P	2	0	0	0	0	1
							JERRY BENSON PH	1	0	1	0	0	0
							BRYAN SHIELDS P	0	0	0	0	0	0
TOTALS	33	4	8	3	27	9	TOTALS	28	0	2	0	27	12

SCORE BY	FLORIDA STATE	000	012	010					4
INNINGS	ARIZONA	000	000	000					0

E- CASH, DRISCOLL, GLENN, WILLIAMS, JACOME.  
DP- FLA. ST. 1, ARIZONA 1. LEFT- FLA. ST. 8, ARIZONA 7.  
SB- GLENN, MIKULIC.  
SH- AMMANN, DRISCOLL. SF- SAFERIGHT.

	IP	H	R	ER	BB	SO		IP	H	R	ER	BB	SO
AMMANN	9	2	0	0	4	11	HOOTEN	8	6	4	2	4	5
							SHIELDS	1	2	0	0	0	0

WINNER- AMMANN (14-0) LOSER- HOOTEN (12-5)  
WP- HOOTEN 2. PB- SAFERIGHT.  
HBP- O'BRIEN BY AMMANN.  
U- CARLUCCI, STEINER, J. STANEK, CARROTHERS. T- 2:17 A- 9,000 (est.)