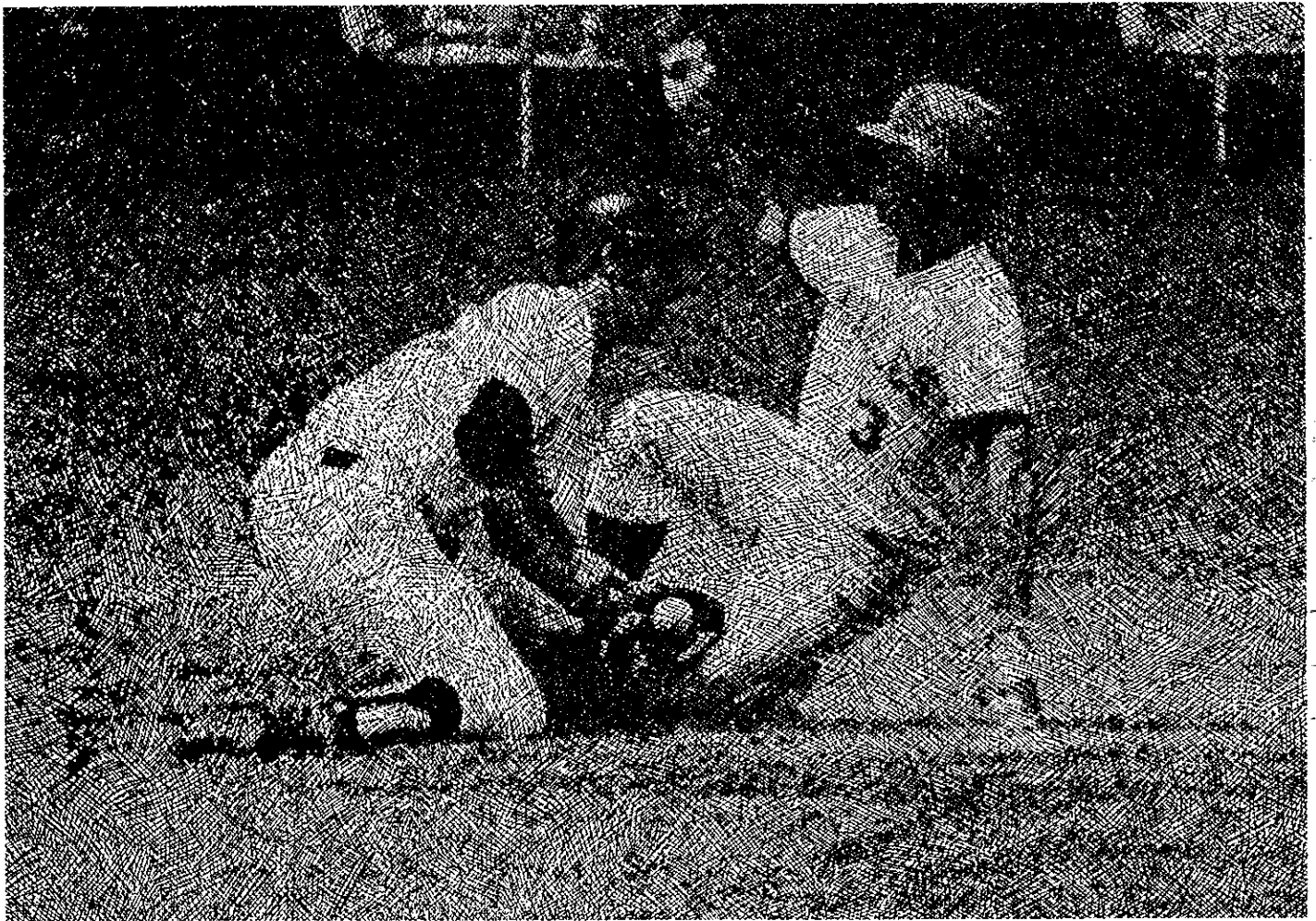


FLORIDA STATE Seminoles



1978 BASEBALL TOURNAMENT
GUIDE

FLORIDA STATE UNIVERSITY
1978 NCAA BASEBALL TOURNAMENT GUIDE

General Information

Location.....	Tallahassee, Fla.
Founded.....	1857
Enrollment.....	21,000
President.....	Dr. Bernard Sliger
Conference.....	Metropolitan Collegiate Athletic Conference
Nickname.....	Seminoles
Colors.....	Garnet and Gold
Home Field.....	Seminole Field
1978 Record.....	44-16

Baseball Staff

Head Coach.....	Woody Woodward
Year.....	Fourth
Record.....	170-55
NCAA Appearances.....	Three
NCAA Tournament Record.....	4-2
Assistant Coach.....	Mike Martin
Athletic Director.....	John Bridgers
Sports Information Director.....	Mark Carlson
Asst. Sports Information Director.....	Mike Parsons
Sports Information Assistant.....	Wayne Hogan

MEMO TO THE MEDIA

Florida State University will be quartered at the Howard Johnson Motor Lodge, across from Mark Light Field, while in Miami for the South Atlantic Regionals. If you have any additional questions about the Seminoles, please contact Mike Parsons or Wayne Hogan at 305/665-7501.

1978 SEASON IN REVIEW

Question: What collegiate baseball team has done the best job in the nation this spring of rebuilding?

Answer: Florida State.

Now, you say, how can coach Woody Woodward claim the rebuilding tag after his team went 37-13 last season and won the Metro Conference championship?

That answer is easy. This year's team enters the NCAA South Atlantic Regional with a nifty 44-16 record, but contains all new faces from '77. The only returning starters are shortstop Bob Benda and third baseman David Mobley.

Gone are the likes of catcher Terry Kennedy, the Most Valuable Player in collegiate baseball during '77, pitcher Larry Jones, infielder Ben Curry and seven other Seminoles from '77 who are now toiling in the minor leagues of professional baseball.

Now, is there any doubt about Florida State's claim as the best rebuilding team of '78?

"I never expected to have 44 wins at this stage of the season," Woodward said early this week. "In fact, I probably would have been satisfied with about 35 considering the number of people we had coming back from last season and the strength of our schedule."

But, this young scrappy bunch played every game in '78 as if it were their first and last. It defied the experts when after splitting a doubleheader with Metro Conference brother Tulane on the first day of the season that it raced to 20 consecutive victories and a 21-1 record. Ironically the next loss was also administered by Tulane and prevented the Seminoles from tying the longest winning streak in school history.

"Those early games were important for our confidence," Woodward said. "Every day I would sit and wait for the bubble to burst and it didn't. The kids kept playing hard and came to believe they could win every day."

Included among those early victims were East Tennessee State, a participant in this week's NCAA southern regional, Ohio State, Western Kentucky, Morehead State and Cincinnati.

"We didn't want anybody easy on the schedule," Woodward continued. "I was really trying to get this team ready for the Metro Conference post-season tournament, hoping we would win the league and earn an automatic berth in NCAA play."

Well, the Seminoles are in NCAA competition, but not exactly the way Woodward had planned. They lost the conference championship last Sunday to Memphis State, 10-9, and received their ticket to Miami through an at-large selection.

What are the reasons for the Seminoles participating in their 16th baseball regional since 1948? First, you start with the players.

Pitching stats confirm that Brooks Carey and Jim Riley are the mound aces. Carey, a lefthander from Key West, has a 13-2 record and nifty 2.77 ERA. Riley, a junior college transfer, doesn't have the impressive won-lost record (6-5), but has a neat 2.99 ERA.

Carey, an All-American candidate, who has tied the school record (12) for most complete games in a season, always received strong support from his teammates. Riley, however, was the hard luck hurler of the staff. In his four losses, FSU only twice scored more than three runs. Once the Seminoles picked up two, another time just one and in the fifth defeat were blanked, 4-0 by Tulane.

When it comes to batting stars, Seminole fans won't forget catcher Blane McDonald, who had the chore of replacing Kennedy. He finished with a .394 batting average that included 76 hits in 193 official trips to the plate.

But, McDonald was one of just six Seminoles who finished with averages between .322 and .394. He was followed in the regular season stats by designated hitter Kevin Rigby (.358), second baseman Craig Patterson (.353), centerfielder Mark Gilbert (.337), shortstop Benda (.328) and third baseman Mobley (.322).

Each member of that group seemed to have some sort of specialty. Gilbert was known for igniting rallies by getting on base and then stealing to get into scoring position. Gilbert was credited with 69 hits but also reached base 62 more times on walks. He has established a new school record with 48 stolen bases, the most for a Seminole since Randy Davidson swiped 39 in 1975. He was also the man Woodward and his assistant Mike Martin liked to see on base when the game was in doubt. Mark contributed seven game winning RBI's for the Seminoles during the campaign.

Benda is a diminutive 5-9, 160-pounder. Don't, however, let that size fool you. He was third on the club in hits with 75 and led the squad in RBI's with 59, five off the school record of Terry Kennedy in the 1976 season.

Patterson, who also came to Woodward via the junior college (Pensacola) route, led the squad in hits with 78. He, along with Gilbert and Benda, was in the starting lineup for all 60 games.

Mobley was the power hitter for Woodward, pounding 13 home runs and 24 extra base hits overall. His 50 RBI's are second to Benda. After starting the season at first, he has moved to third and is fielding at a .971 clip.

Those are just some of the names, though. In any story, the name of outfielder Ronnie Traylor must come up. He was the one who produced a two-out, two-run homer against Louisville in the ninth inning last Saturday to give FSU a 7-5 victory and ticket to the Metro Conference championship game.

And, who can forget the play of first baseman Don Milner? He started the season as the designated hitter and then moved into the field when Woodward to move Mobley to third after starter Doug Casey, a .390 hitter in 21 games, broke his arm at the midway point. Milner is hitting a neat .277, but is also fielding at a .989 clip.

TRIBE TIDBITS

FSU OPPONENTS MAKE IT TO NCAA Three teams on the 1978 Florida State schedule will also journey into post season competition this year. Memphis State, which defeated FSU for the Metro Conference title, will play in the South Regional, East Tennessee State a victim of a two game sweep to the Tribe, will also play in the South Regional. Nevada - Las Vegas received an at-large berth to a west coast regional tournament.

FSU VS. SOUTH ATLANTIC OPPONENTS Florida State has never faced first round opponent Marshall on the baseball diamond but Clemson and Miami are familiar opponents. FSU holds a 19-14 edge in the series with Clemson and a 51-23 edge in the set with Miami. FSU defeated Miami twice in the 1975 District III tournament by 1-0 and 6-5 scores.

COULD HIT .400 Seminole catcher and All-American candidate Blane McDonald has a chance to become the first player in a garnet and gold uniform to hit .400 in a season since 1964. Ken Suarez, another catcher, hit .404 before joining the major leagues. McDonald hovered above the magic mark the entire season but dipped down to .394 after the Metro Conference tournament.

BENDA PLAYS EVERY GAME Shortstop Bob Benda has played in every game since enrolling at Florida State two years ago. He transferred from Brevard Junior College in time for the 1977 season where he suited up for 50 games along with the 60 contests already this spring.

FSU CAPTAINS Brooks Carey, a senior pitcher from Key West, and Greg Jones, a senior infielder and relief pitcher from Tallahassee, serve as captains of the Florida State baseball team.

COMEBACKS Florida State has had its share of thrillers this season. Coach Woody Woodward's team has been involved in 13 one run ball games and a couple have been decided in the final inning. The Seminoles were down 11-5 going to the bottom of the ninth against Mercer but came up with seven runs to pull it out.

RADIO All Florida State games will be aired back to Tallahassee on WGLF-FM with Gene Deckerhoff and Wayne Hogan calling the action. WGLF-FM is the flagship station in Tallahassee for all FSU sports. Deckerhoff is a sports reporter for WCTV-TV in the Capital City and Hogan is an assistant in the Sports Information Office.

RECEPTION A pre-tournament reception for all four teams, visiting media representatives and tournament officials will be held Thursday night at the University of Miami's Student Union. A press conference with the four coaches and their top players will be held at the same site at 6 p.m. followed by the dinner at 7 p.m. and a meeting between the umpires and coaches at 9 p.m.

MEDIA CREDENTIALS All requests for working media credentials should be directed to George Gallet, UM's Sports Information Director. Gallet may be reached at 284-5802 or 661-2391. The Sports Information Office will also serve as a working press area.

1978 FLORIDA STATE STATISTICS

HITTING

NAME	AVG	G	AB	R	H	2B	3B	HR	BI	SB-CS	BB	SO	HBP	S-SF	FA
McDonald, c	.394	58	193	42	76	9	3	4	38	3-1	30	17	2	2-2	.978
Rigby, 2b-dh	.358	27	67	13	24	2	0	0	14	2-0	4	5	1	2-3	1.000
Patterson, 2b	.353	60	221	45	78	12	3	3	42	13-4	31	16	0	1-4	.984
Gilbert, of	.337	60	205	73	69	9	1	1	32	48-6	62	34	6	5-0	.946
Benda, ss	.328	60	229	60	75	15	4	4	59	9-1	28	23	2	2-4	.938
Mobley, 3b	.322	59	208	50	67	11	0	0	50	2-2	28	34	0	2-1	.971
Traylor, of	.288	44	153	31	44	8	1	1	31	1-1	13	21	5	1-0	.922
Milner, 1b-dh	.277	55	155	29	43	3	2	5	28	6-2	22	27	3	2-2	.989
Jones, 3b	.258	35	93	18	24	5	1	1	10	2-3	15	29	1	1-2	.810
Tice, of	.250	27	48	12	12	2	1	1	7	1-0	11	12	0	1-0	.970
B. Huff, of	.246	54	122	23	30	1	0	0	15	9-5	21	19	1	3-1	.957
Schimchak, of	.200	46	90	15	18	3	0	4	16	5-0	16	15	0	1-2	.933
Less than 45 at bats															
Marano, c	.500	3	2	1	1	0	0	0	1	0-0	1	1	0	0-0	.750
Stuart, of	.500	2	2	1	1	0	0	0	1	0-0	0	1	0	0-0	1.000
*Casey, 3b	.390	21	41	12	16	4	0	1	9	0-0	12	3	0	0-0	.800
Fuentes, of	.333	8	6	5	2	1	0	0	2	0-0	3	1	1	0-0	1.000
K. Huff, of	.333	8	3	5	1	0	0	0	0	1-0	2	2	0	0-0	1.000
DeLoach, utl.	.324	19	37	7	12	2	0	0	7	1-0	4	6	0	0-1	.875
Ramsey, c	.194	21	31	9	6	3	1	1	2	0-0	5	8	1	0-0	.946
Jarabeck, of	.111	6	9	1	1	0	0	0	1	0-0	1	3	0	1-0	1.000
Others			10	1	3	1	0	0	1	1-0	1	1	0	0-0	.981
FSU TOTALS	.313	60	1924	455	603	91	17	49	366	104-25	310	278	23	24-22	.951
OPP TOTALS	.268	60	1896	292	509	75	13	44	233	37-15	257	321	22	26-13	.933

LOB: FSU 469 SLUG AVG: FSU .454 DP: FSU 43 PASSED BALLS: McDonald 7, Marano 4, Ramsey 3.
 OPP 461 OPP .391 OPP 40 CAUGHT STEALING: McDonald 13-39, Ramsey 3-12,

Marano 0-1.

GAME WINNING RBI: Gilbert 7, Mobley 5, Benda 4, Patterson 3, McDonald 3, Schimchak 3,
 Tice 2, DeLoach 2, Casey 1, Traylor 2, Rigby 1, Jones 1, B. Huff 1, Milner 1.

PITCHING

NAME	W-L	ERA	APP	GS	CG	IP	H	R	ER	BB	SO	HB	WP	2B	3B	HR
Carey, l	13-2	2.77	20	14	12	110.1	101	38	34	39	84	3	6	16	3	5
Riley, r	6-5	2.99	15	15	7	108.1	115	51	36	37	65	3	4	18	5	5
Long, r	3-0	3.40	3	2	0	10.2	12	5	4	7	7	0	0	0	0	1
Nichols, r	4-0	3.60	14	3	0	40.0	42	27	16	17	30	1	3	4	1	4
Fox, l	5-2	4.64	12	6	1	44.2	64	36	23	17	21	0	4	15	0	8
Brooks, r	4-1	4.85	22	0	0	26.0	24	17	16	16	10	3	1	1	1	2
Holloway, r	3-1	5.72	14	13	1	45.2	36	35	29	54	34	8	13	3	1	5
DeLoach, r	2-1	5.70	7	3	1	31.2	29	21	20	20	36	1	3	1	1	4
Fischer, l	3-2	6.94	17	1	0	37.2	47	31	29	23	25	2	4	12	1	4
Jones, r	0-1	7.86	6	0	0	12.2	21	12	11	7	4	0	1	3	0	2
*Bretz, r	0-0	20.30	3	3	0	2.2	5	7	6	6	1	1	3	1	0	0
Others	1-1	9.90	6	0	0	10.0	12	12	11	14	4	0	1	3	0	4
FSU TOTALS	44-16	4.42	139	60	22	480.1	509	292	235	257	321	22	43	77	13	44
OPP TOTALS	16-44	8.00	122	60	20	460.1	603	455	409	310	276	23	69	91	17	49

SHUTOUTS: Riley (South Florida), Nichols-Fischer (Rose-Hulman), Carey (Tulane),
 Carey (Georgia Southern).

SAVES: Brooks 3, Carey 3, Others 1. PICKOFFS: Carey 3, Fox 2, Riley 2, Fischer 1.

* Injured, out for the season.

1978 GAME-BY-GAME RESULTS

No. Game (Pitcher of Record)	Record	No. Game (Pitcher of Record)	Record
1. FSU 6, Tulane 1 (Carey)	1-0	31. FSU 8, St. Leo 4 (H'way)	27-4
2. Tulane 8, FSU 3 (Miller)	1-1	32. St. Leo 4, FSU 3 (Fox)	27-5
3. FSU 7, So. Florida 4 (Fox)	2-1	33. FSU 5, S. Ala. 4 (Carey)	28-5
4. FSU 2, So. Florida 0 (Riley)	3-1	34. FSU 7, S. Ala. 3 (Riley)	29-5
5. FSU 17, R. Hulman 0 (Nichols)	4-1	35. Jacksonville 4, FSU 3 (Riley)	29-6
6. FSU 6, R. Hulman 5 (DeLoach)	5-1	36. FSU 11, Jacksonville 5 (Carey)	30-6
7. FSU 7, R. Hulman 3 (Long)	6-1	37. FSU 11, Jack'ville 9 (Fischer)	31-6
8. FSU 13, R. Hulman 1 (H'way)	7-1	38. FSU 11, Jack'ville 6 (Riley)	32-6
9. FSU 14, E. Tenn. 1 (Carey)	8-1	39. FSU 1, Ga. South. 0 (Carey)	33-6
10. FSU 7, E. Tenn. 4 (Fox)	9-1	40. Ga. South. 4, FSU 3 (Riley)	33-7
11. FSU 11, St. Leo 6 (Riley)	10-1	41. FSU 10, Valdosta St. 7 (Brooks)	34-7
12. FSU 7, St. Leo 3 (Miller)	11-1	42. UNLV 16, FSU 4 (Carey)	34-8
13. FSU 16, M'head St. 4 (Carey)	12-1	43. UNLV 3, FSU 1 (Riley)	34-9
14. FSU 3, M'head St. 2 (Brooks)	13-1	44. UNLV 9, FSU 6 (Fischer)	34-10
15. FSU 13, W. Ky. 4 (Fox)	14-1	45. UNLV 13, FSU 6 (DeLoach)	34-11
16. FSU 16, W. Ky. 3 (Long)	15-1	46. FSU 5, Florida 1 (Carey)	35-11
17. FSU 3, Ohio St. 2 (Brooks)	16-1	47. FSU 9, Florida 8 (Fox)	36-11
18. FSU 24, Ohio St. 13 (Fox)	17-1	48. FSU 13, Valdosta St. 5 (H'way)	37-11
19. FSU 11, Cin'ati 5 (DeLoach)	18-1	49. FSU 7, Florida 1 (Carey)	38-11
20. FSU 29, Cin'ati 8 (Nichols)	19-1	50. Florida 5, FSU 4 (Brooks)	38-12
21. FSU 7, Ohio St. 4 (Carey)	20-1	51. FSU 12, Mercer 11 (Long)	39-12
22. FSU 10, Cin'ati 6 (Fischer)	21-1	52. FSU 9, Ga. South. 3 (Carey)	40-12
23. Tulane 4, FSU 0 (Riley)	21-2	53. Ga. South. 4, FSU 2 (Riley)	40-13
24. FSU 3, Tulane 0 (Carey)	22-2	54. Ga. South. 7, FSU 4 (Fischer)	40-14
25. So. Ala. 16, FSU 5 (H'way)	22-3	55. FSU 4, Ga. Tech 3 (Brooks)	41-14
26. So. Ala. 9, FSU 2 (Fox)	22-4	56. Louisville 4, FSU 3 (Carey)	41-15
27. FSU 15, Oakland 6 (Nichols)	23-4	57. FSU 3, Tulane 2 (Riley)	42-15
28. FSU 9, Oakland 2 (Riley)	24-4	58. FSU 8, Ga. Tech 4 (Nichols)	43-15
29. FSU 5, S. Fla. 1 (Carey)	25-4	59. FSU 7, Louisville 5 (Carey)	44-15
30. FSU 8, S. Fla. 3 (Fischer)	26-4	60. Memphis St. 10, FSU 9 (Jones)	44-16

WOODY WOODWARD

Head Baseball Coach

In only four seasons at the head of Florida State University's fast-moving baseball program, Woody Woodward has caught more than a casual eye from baseball people everywhere. His 170-55 record over those four seasons speaks for itself. In addition to the trip to the 1978 South Atlantic Regional tournament in Miami, Woody has also directed the FSU fortunes to the College World Series in 1975, a spin in the South Regional in 1976 and a Metro Conference championship in 1977.

The fast start by the former big-league shortstop in the college ranks has had the 34-year-old Miami native's phone ringing constantly. Just this past summer he declined an offer by the St. Louis Cardinals to manage their AAA club in the American Association. One reason for his appeal is his ability to turn out pros. An amazing 18 Seminoles have signed professional contracts since Woodward took the helm.

Getting off to fast starts is nothing new to the former Seminole All-American. Following the 1963 College World Series, where he was named to the all-tournament team, Woody virtually stepped from the ranks of college ball to the major leagues. A nine-year big league career saw him play for the Braves and the Reds.

When he took over the Florida State coaching job in the late summer of 1974, Woodward was well aware of the challenge that lay before him in maintaining the calibre program that Florida State baseball represented. As a player he helped lead the Seminoles to a record two straight College World Series appearances and in 1963 was named All-America at shortstop.

Woodward came to Florida State in the fall of 1959 after graduating from Coral Gables High School. Following the 1963 College World Series, he signed a bonus contract with the then Milwaukee Braves. The 1963 Florida Amateur Baseball Player of the Year was initially assigned to the Braves AAA farm team, but before the conclusion of the 1963 season, he was brought up to Milwaukee. He was with Milwaukee in 1964 and '65 and moved with the club to Atlanta in 1966.

In 1968 Woodward was traded to Cincinnati and played there until retiring in 1971. "The biggest thrill of my professional career," says Woodward who still appears to be in top playing shape, "was being a starter in the 1970 World Series against Baltimore."

His two best seasons in the pros were 1966 in Atlanta when he batted .269 in 142 games and 1967 when he led National League second basemen in fielding. During his stay at Cincinnati he served as the Reds Player Representative. Since leaving pro ball as an active player, he has kept in touch with many of his former teammates and in 1974-75 he served as a broadcaster for the Cincinnati television network.

Woody is married to the former Pamela Terrell of Jacksonville. They have three children, Natalie, 9, Emily, 7, and Matt, 2.

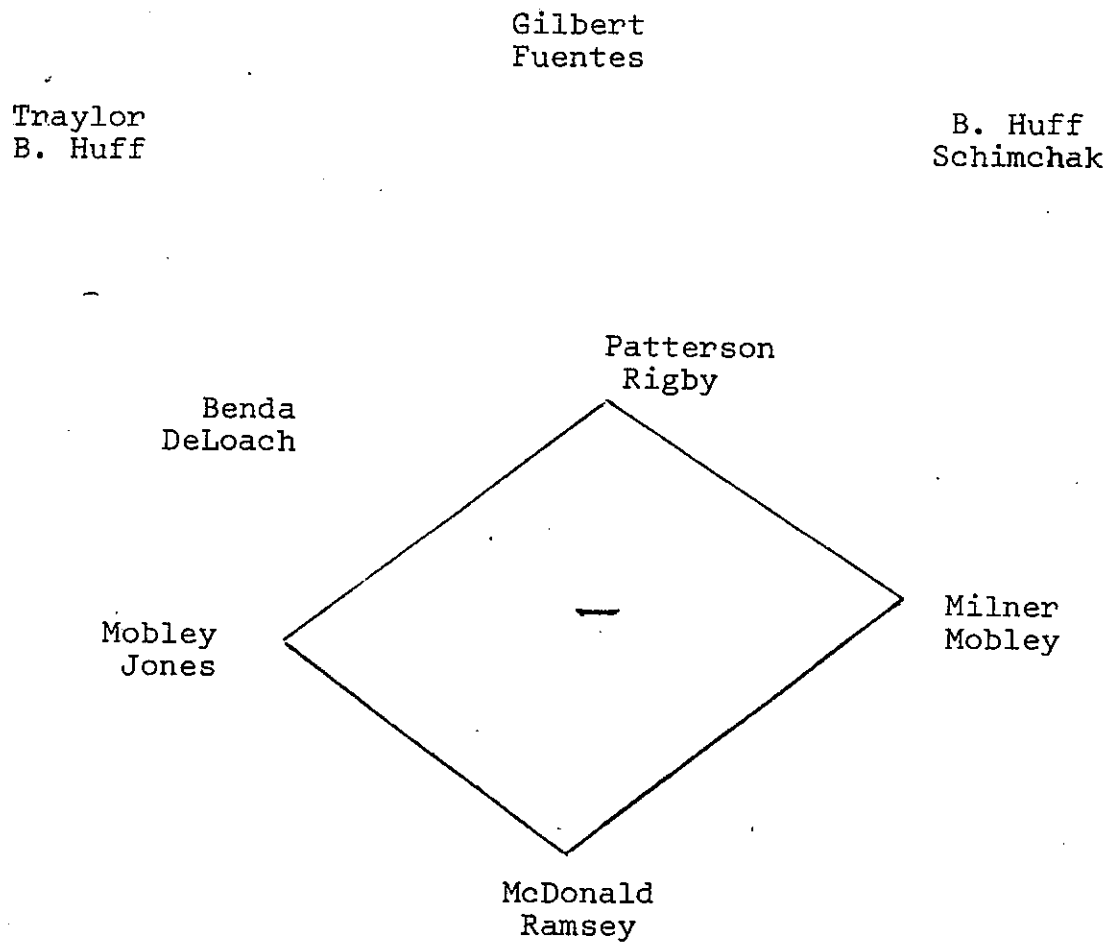
FLORIDA STATE UNIVERSITY
1978 Baseball Roster

NO.	NAME	POS.	B-T	AGE (DOB)	HT.	WT.	CL.	1977	HOMETOWN
								STATUS	
4	Bob Benda	Inf	R-R	21 9/30/56	5-9	160	Sr.	1 VL	No. Palm Beach, Fla.
28	Mike Bretz	P	R-R	20 10/21/57	6-4	215	Jr.	2 VL	Ft. Worth, Tex.
27	Kevin Brooks	P	R-R	21 8/ 4/56	6-0	165	Sr.	1A	Tallahassee, Fla.
19	Brooks Carey	P	L-L	20 3/18/57	6-1	185	Sr.	2 VL	Key West, Fla.
12	Doug Casey	Inf	L-R	25 6/27/52	5-9	165	Jr.	JC	Ellenwood, Ga.
5	Don Deloach	Inf	R-R	19 1/ 6/59	5-10	170	Fr.	HS	Tallahassee, Fla.
9	Mike Fields	OF	R-R	21 8/15/56	5-7	160	Jr.	JC	Cincinnati, Ohio
15	Ken Fischer	P	L-L	19 10/20/58	5-9	162	Fr.	HS	Lincoln, Mass.
13	Ray Fox	P	R-L	21 6/30/56	6-4	205	Sr.	Sqd.	Tallahassee, Fla.
24	Mark Gilbert	OF	B-R	21 8/22/56	6-0	170	Sr.	1 VL	Pompano Beach, Fla.
17	Rick Holloway	P	R-R	20 4/ 3/57	6-2	190	Jr.	JC	Pittsburg, Pa.
1	Bruce Huff	OF	L-R	21 2/11/57	5-11	157	Jr.	2 VL	Columbus, Ga.
2	Ken Huff	OF	B-R	18 10/17/59	5-10	165	Fr.	HS	Columbus, Ohio
20	Ken Jarabeck	OF	R-R	21 12/26/56	5-10	180	Jr.	JC	LaGrange Park, Ill.
10	Greg Jones	Inf	R-R	21 5/17/56	5-9	175	Sr.	2 VL	Tallahassee, Fla.
18	Brad Long	P	R-R	20 9/27/57	6-0	170	Fr.	HS	Jacksonville, Fla.
31	David Marano	C	R-R	18 8/ 6/59	5-10	155	Fr.	HS	Hollywood, Fla.
22	Blane McDonald	C	R-R	21 2/11/57	6-0	200	Jr.	JC	Kirkwood, Mo.
29	John McKnight	P	R-R	19 9/13/58	6-2	180	So.	Sqd.	Largo, Fla.
26	Jim Miller	P	R-R	20 3/ 8/57	5-10	175	Jr.	2 VL	Jacksonville, Fla.
30	Don Milner	Inf	L-R	20 8/25/57	5-11	205	Jr.	JC	Quincy, Fla.
15	David Mobley	Inf	R-R	20 7/ 5/57	6-3	190	Jr.	1 VL	Columbus, Ga.
14	Joe Nichols	P	R-R	20 6/ 6/57	6-1	200	Jr.	1 VL	Tallahassee, Fla.
3	Craig Patterson	Inf	R-R	21 2/ 4/57	5-9	170	Jr.	JC	Western Spring, Ill.
7	Craig Ramsey	C	R-R	19 6/ 3/58	5-10	170	So.	Sqd.	Atlanta, Ga.
33	Kevin Rigby	Inf	L-R	19 11/17/58	6-0	170	So.	1A	Wellington, Conn.
32	Jim Riley	P	R-R	21 5/29/56	6-1	175	Jr.	JC	Decatur, Ga.
8	Ken Schimchak	OF	L-L	19 4/ 4/58	5-9	156	So.	Sqd.	Burlington, N.J.
25	Ricky Stuart	OF	R-L	18 4/ 9/59	5-9	182	Fr.	HS	Greenwich, Conn.
23	Mike Tice	OF	R-R	20 11/30/57	6-0	170	Jr.	JC	Atlanta, Ga.
21	Ronnie Traylor	OF	L-R	21 12/27/56	5-11	190	Jr.	JC	Dothan, Ala.
6	Woody Woodward, Head Coach								
11	Mike Martin, Assistant Coach								

FLORIDA STATE UNIVERSITY
1978 Tournament Roster

<u>No.</u>	<u>Name</u>	<u>Pos.</u>	<u>B-T</u>	<u>Ht.</u>	<u>Wt.</u>	<u>Cl.</u>	<u>Age</u>	<u>HOMETOWN</u>
1.	Bruce Huff	OF	L-R	5-11	157	Jr.	21	Columbus, Ga.
3	Craig Patterson	INF	R-R	5-9	170	Jr.	21	Western Spring, Ill.
4	Bob Benda	INF	R-R	5-9	160	Sr.	21	N. Palm Bch., Fla.
5	Don DeLoach	INF	R-R	5-10	170	Fr.	19	Tallahassee, Fla.
7	Craig Ramsey	C	R-R	5-10	170	So.	19	Atlanta, Ga.
8	Ken Schimchak	OF	L-L	5-9	156	So.	20	Burlington, N.J.
10	Greg Jones	INF	R-R	5-9	175	Sr.	21	Tallahassee, Fla.
13	Ray Fox	P	R-L	6-4	205	Sr.	21	Tallahassee, Fla.
14	Joe Nichols	P	R-R	6-1	200	Jr.	20	Cincinnati, Ohio.
15	David Mobley	INF	R-R	6-3	190	Jr.	20	Columbus, Ga.
16	Ken Fischer	P	L-L	5-9	162	Fr.	19	Lincoln, Mass.
17	Rick Holloway	P	R-R	6-2	190	Jr.	21	Pittsburgh, Pa.
19	Brooks Carey	P	L-L	6-1	185	Sr.	21	Key West, Fla.
21	Ronnie Traylor	OF	L-R	5-11	190	Jr.	21	Dothan, Ala.
22	Blane McDonald	C	R-R	6-0	200	Jr.	21	Kirkwood, Mo.
24	Mark Gilbert	OF	S-R	6-0	170	Sr.	21	Pompano Beach, Fla.
27	Kevin Brooks	P	R-R	6-0	165	Sr.	21	Tallahassee, Fla.
29	Mike Fuentes	OF	R-R	6-2	180	So.	19	Coral Gables, Fla.
30	Don Milner	INF	L-R	5-11	205	Jr.	20	Quincy, Fla.
32	Jim Riley	P	R-R	6-1	175	Jr.	21	Decatur, Ga.
33	Kevin Rigby	INF	R-R	6-2	180	So.	19	Coral Gables, Fla.
6	Woody Woodward,	Head Coach						
11	Mike Martin,	Assistant Coach						

FLORIDA STATE DEPTH CHART



Designated Hitter

Kevin Rigby

Pitchers

Carey
Riley
Nichols
Fischer
Holloway
DeLoach
Fox
Jones
Brooks

MEET THE SEMINOLES

BOB BENDA
Shortstop #4

This Palm Beach Junior College graduate has played 110 consecutive games at shortstop for Woody Woodward . . . a solid defensive player who has had his best year at the plate . . . hit a nifty .328 this season and knocked home an amazing 59 runs as the Tribe's No. 2 hitter . . . second on this year's team in runs scored with 60 . . . has anchored a sound double play combination that has reeled off 43 twin killings . . . led the Seminoles in doubles with 15 . . . hard worker who has proven he can play with pain . . . has an excellent knowledge of the game.

	AVG	G	AB	R	H	2B	3B	HR	RBI
1978	.328	60	229	60	75	15	4	6	59
1977	.305	50	177	40	54	10	3	2	28
FSU TOTALS	.318	110	406	100	129	25	7	8	87

KEVIN BROOKS
Righthanded Pitcher #27

Probably the most pleasant find by the Florida State staff this season . . . this senior played not at all for the last two seasons after spending his freshman year at Central Florida Junior College . . . leads the Seminoles in appearances with 22 . . . has been called on time and again in clutch situations in the late innings and has responded with four relief wins and three saves . . . played high school ball at Tallahassee Florida High . . . his two-year absence from the game seemed to rejuvenate a sometimes troublesome arm . . . has been the most consistent pitcher out of the Tribe bullpen all season long . . . is most effective when he keeps the ball down as the fastball is not overpowering . . great student who has already been accepted to dental school.

	W-L	ERA	APP	GS	CG	IP	H	R	ER	BB	SO
1978	4-1	4.85	22	0	0	26	24	17	16	16	10

BROOKS CAREY
Lefthanded Pitcher #19

The Key West native saved his best year for last as he stacked up 13 mound victories . . . his win total is the highest for a Florida State pitcher since Danny O'Brien and Larry Jones had 15 each in 1975 . . . led the Seminoles in ERA with a 2.77 while appearing in 20 games . . . his 12 complete games in 14 starts ties the Seminole record set by O'Brien in '75 . . . he also notched a team-leading 84 strikeouts and only 38 walks in 110.1 innings . . . held the World Champion New York Yankees scoreless in a two-inning sting on April 5 . . . had a 3-2 victory over Southern Cal while compiling a 6-3 record as a junior . . . also has been utilized as a pinch hitter.

	W-L	ERA	APP	GS	CG	IP	H	R	ER	BB	SO
1978	13-2	2.77	20	14	12	110.1	101	38	34	39	84
1977	6-3	3.72	12	8	2	58.0	46	31	24	34	57
1976	4-4	5.40	20	2	0	40.0	46	31	24	24	44
FSU TOTALS	23-9	3.54	52	24	14	208.1	193	100	82	97	185

DON DeLOACH

Righthanded Pitcher/Infielder #5

Used as both a pitcher and a utility infielder this local freshman has come through in every instance . . . called on for seven mound appearances in 1978 he compiled a 2-1 mark and struck out 36 batters in only 32 innings . . . was called on by Woodward to open the Metro tournament on the mound and pitched 9 2/3 innings against Georgia Tech in a 4-3 win . . . struck out 11 Yellow Jackets in the clutch outing . . . also played in 19 games as a backup shortstop and designated hitter . . . hit for an impressive .324 average and drove in seven runs . . . can play virtually every position and has a bright future ahead at Florida State.

	AVG	G	AB	R	H	2B	3B	HR	RBI	SB-CS	
1978	.324	19	37	7	12	2	0	0	7	1-0	
	W-L	ERA	APP	GS	CG	IP	H	R	ER	BB	SO
1978	2-1	5.70	7	3	1	31.2	29	21	20	20	36

MARK GILBERT

Centerfielder #24

A converted pitcher who has made a habit of smashing Florida State records this year . . . one of the swiftest Seminoles in the history of the school . . . has already broken records for most stolen bases (48) . . . most runs scored (73) . . . most walks (62) . . . has tremendous defensive range and a strong accurate arm . . . is a switch hitter who bats equally well from both sides of the plate . . . probably one of top pro prospects on this year's club . . . came to Florida State as a freshman basketball prospect but returned to Miami-Dade North Junior College as a sophomore . . . returned to FSU as a pitcher but made the smooth transition to centerfield for his senior season . . . excellent student and a good team leader . . . six game-winning hits in '78.

	AVG	G	AB	R	H	2B	3B	HR	RBI	SB-CS
1978	.337	60	205	73	69	9	1	1	32	48-6

RICK HOLLOWAY

Righthanded Pitcher #17

One of the more highly-sought pitchers in the country for several years . . . has been drafted on four separate occasions and was the first round pick of the Oakland A's in the summer draft . . . came to Florida State by way of Gulf Coast Junior College. . . control problems were his main undoing through the early part of the season but he settled down to throw several good games in the late going . . . has great fastball and an improving breaking pitch . . . was fourth on the team with 14 appearances in '78 . . . allowed only 36 hits in 45 innings while striking out 34.

	W-L	ERA	APP	GS	CG	IP	H	R	ER	BB	SO
1978	3-1	5.72	14	13	1	45.2	36	35	29	54	34

BRUCE HUFF
Rightfielder #1

Started his junior season in a hotly contested battle for starting outfield slot . . . clearly has taken over right field in the late going . . . an all-around athlete whose .246 batting average is not an indication of his talent on the field . . . this Columbus, Ga., native had a great year hitting as a freshman when he compiled a .337 worksheet . . . came to Florida State as a walkon and has since more than earned his scholarship for the Seminoles . . . runs well and chipped in with nine stolen bases in 1978 . . . like Gilbert he has a lot of range in the outfield . . . has a brother, Ken, who joined the Seminole club as a freshman this season.

	AVG	G	AB	R	H	2B	3B	HR	RBI	SB-CS
1978	.246	54	122	23	30	1	0	0	15	9-5
1977	.222	37	72	12	16	1	2	0	8	9-2
1976	.337	42	95	28	32	5	0	0	9	7-4
FSU TOTALS	.270	133	289	63	78	7	1	0	32	25-11

BLANE MC DONALD
Catcher #22

A true All-American candidate with the statistics to back him up . . . came to Florida State from South Florida Junior College after being selected in three different professional drafts . . . spent the entire season with a batting average of over .400 before dropping to .394 in the last week of the season . . . has a chance to become first Seminole to hit .400 since Ken Suarez pulled the trick in 1964 . . . leads the Tribe in hits with 76 and that is just eight short of the alltime FSU record of 84 . . . has a tremendous arm and has gunned down 13 enemy base-stealers . . . works with pitchers extremely well and has committed only three errors on the year . . . had to live with shadow of Seminole All-American Terry Kennedy but may follow him as back-to-back A-A selection by a Seminole catcher.

	AVG	G	AB	R	H	2B	3B	HR	RBI	SB-CS
1978	.394	58	193	42	76	9	3	4	38	3-1

DON MILNER
First Baseman #30

Was a great find for Florida State after a two-year stint at George Wallace Junior College in Dothan, Ala. . . worked his way into the starting role at first base . . . hit a solid .277 in 55 games for the Seminoles . . . had a nifty .989 fielding average and backs it up with solid defensive play around the bag . . . hit five homers during the season but that wasn't a true indication of his power at the plate . . . big lefthanded hitter who makes good contact . . . tabbed with nickname "Meatloaf" by teammates and fans alike.

	AVG	G	AB	R	H	2B	3B	HR	RBI	SB-CS
1978	.277	55	155	29	43	3	2	5	28	6-2

DAVID MOBLEY
Third Baseman #15

Has had a great junior season with the Seminoles despite a mid-season defensive shift . . . his switch from first to third base didn't affect his home run bat as he led the team with 13 round-trippers . . . also had 11 doubles and is second on the club with 50 rbi's . . . was a transfer to Florida State two years ago from Chipola Junior College in Marianna but lives in Columbus, Ga. . . the big junior had several key hits this year as evidenced by five game-winning rbi's . . . has had an excellent year with the glove both at first and third . . . also an avid golfer in the off-season.

	AVG	G	AB	R	H	2B	3B	HR	RBI	SB-CS
1978	.322	59	208	50	67	11	0	13	50	2-2
1977	.289	45	138	26	40	3	0	8	26	1-3
FSU TOTALS	.309	104	346	76	107	14	0	21	76	3-5

CRAIG PATTERSON
Second Baseman #3

This junior has stepped into major college baseball with no difficulty . . . played every game for the Seminoles in 1978 . . . hit .474 last season at Pensacola Junior College and proved it was no fluke by batting a torrid .353 at FSU . . . leads the team in hits with 78 . . . second on the club in doubles with 12 . . . a battler at the plate who struck out only 16 times in 221 at bats . . . hits the ball well to all fields and has displayed some power by belting three homers . . . has been a master in the field as evidenced by his solid .984 fielding average . . . teamed with Benda for a smooth double play combination all season . . . another Seminole with great potential to play professional baseball.

	AVG	G	AB	R	H	2B	3B	HR	RBI	SB-CS
1978	.353	60	221	45	78	12	3	3	42	13-4

KEVIN RIGBY
Designated Hitter #32

Finally managed to break the starting lineup during the final weeks of the season . . . this sophomore played not at all as a freshman . . . a lefthanded hitter with a smooth base-hit stroke will likely be in the lineup at DH . . . in 27 games in 1978 he hit a solid .358 . . . proved he could play everyday by getting several clutch hits down the stretch . . . plays second base by trade but had trouble cracking the defensive lineup ahead of Craig Patterson . . . has a good head for the game and plenty of confidence in his bat . . . the Wellingford, Conn., native was a walkon this year for the Seminoles.

	AVG	G	AB	R	H	2B	3B	HR	RBI	SB-CS
1978	.358	27	67	15	24	2	0	0	14	2-0

JIM RILEY

Righthanded Pitcher #32

A super pitcher who has become the hard luck man of the staff . . . his 6-5 record is certainly no indication of his prowess on the mound . . . carries a 2.99 ERA in 15 starts for the Tribe . . . came to Florida State after leading his Dekalb-South (Ga.) Junior College team to the national finals with a 12-0 record and a miniscule ERA . . . has been the victim of three one-run losses . . . on three occasions his teammates scored less than three runs for him . . . also has had some shaky defense behind him . . . only 36 of his 54 runs were earned . . . has completed seven games in 14 starts . . . had a clutch victory over Tulane in the loser's bracket of the Metro Conference tournament . . . easily the No. 2 hurler on the Tribe staff.

	W-L	ERA	APP	GS	CG	IP	H	R	ER	BB	SO
1978	6-5	2.99	15	15	7	108.1	115	51	36	37	65

RONNIE TRAYLOR

Leftfielder #21

Another player who rose to the top among a group of talented outfielders . . . has shown great potential at the plate . . . banged out 18 extra base hits in 44 games in 1978 . . . second on the club behind Mobley in homers with 9 . . . kept the average above .300 most of the season before dropping off to .288 down the stretch . . . has shown some great production with men on base as evidenced by his 31 runs batted in . . . likeable athlete who transferred with Don Milner from George Wallace Junior College in Dothan, Ala. . . is a versatile athlete who could play almost any position on the field . . . gives the Tribe another strong bat from the left side of the plate . . . only player on this year's Seminole team who is married.

	AVG	G	AB	R	H	2B	3B	HR	RBI	SB-CS
1978	.288	44	153	31	44	8	1	9	31	1-1

FLORIDA STATE IN THE 1978 METRO CONFERENCE TOURNAMENT

Georgia Tech..... 3 0 0 0 0 0 0 0 0 0 --- 3 4 2

Florida State..... 0 0 0 3 0 0 0 0 0 1 --- 4 11 2

Roethlisberger and Jackson. DeLoach, Brooks (10) and McDonald.
2B -- Ibele, Traylor, McDonald. HR -- Thompson. SB -- Gilbert.
DP -- Georgia Tech 4.

Florida State..... 0 1 0 0 0 0 0 0 2 --- 3 7 0

Louisville..... 0 0 1 0 0 0 3 0 X --- 4 5 2

Carey, Fischer (8) and McDonald. Shields and Shumate. 2b -- Milner, Traylor.
3B -- Kleis. SB -- Kleis, Gilbert. DP -- Florida State 1, Louisville 1.

Tulane..... 0 0 0 0 0 0 2 0 0 --- 2 11 3

Florida State..... 0 0 0 0 0 2 0 1 X --- 3 4 2

Wills and Maher. Riley, Carey (9) and McDonald. 2B -- Comardo, Rigby,
Stokes. DP -- Florida State 2.

Florida State..... 0 8 0 0 0 0 0 0 0 --- 8 8 2

Georgia Tech..... 0 0 0 0 4 0 0 0 0 --- 4 7 4

Nichols, Jones (8) and McDonald. Suraez, Perry (8) and Jackson.
2B -- Mobley, Ibele. SB -- Patterson, Benda, Huff. DP -- Georgia Tech 3,
Florida State 3.

Louisville..... 0 2 1 0 0 0 2 0 0 --- 5 10 2

Florida State..... 0 0 0 5 0 0 0 0 2 --- 7 12 2

Holland, Gatian (8) and Shumate. Holloway, Jones (4), Carey (7) and
McDonald. 2B -- Conflenti, Patterson. HR -- Gagel, Traylor. SB -- Gilbert.
DP -- Louisville 1, Florida State 1.

Florida State..... 0 1 0 0 0 0 2 0 6 --- 9 10 0

Memphis State..... 1 0 2 0 0 0 2 2 3 --- 10 13 1

*one out when winning run scored

Riley, Fischer (7), Brooks (7), Jones (8) and McDonald. Thetford, Lea (7),
Gilbert (9), Beshears (9) and Webster. 2B -- Henderson, Parks, Pressgrove, Robinson.
HR -- Pressgrove. SB -- Granger, Robinson. DP -- Florida State 2, Memphis State 1.

RECORDS FALL IN 1978

In addition to the records found in the Florida State press guide, the following marks have fallen or been tied this season:

Team Records

Runs Scored

Game/Both Teams -- 37 vs. Ohio State, 1978 (FSU 24, Ohio St. 13)

Home Runs

Game/Both Teams -- 7 vs. Valdosta State, 1978 (Valdosta St. 4, FSU 3)

Hits Allowed

Most in Game -- 23 to Nevada-Las Vegas, 1978

Home Runs Allowed

Most in Game -- 4 to Valdosta State, 1978

Individual Records

Runs Scored

Game -- 6 by Mark Gilbert vs. Ohio State, 1978

Season- 73 by Mark Gilbert, 1978

Hits

Game -- 5 tied by Bob Benda vs. Ohio State, 1978

Hitting Streaks

Consecutive times on base -- 12 tied by Mark Gilbert, 1978

Walks

Game -- 5 tied by Mark Gilbert vs. Ohio State, 1978

Season- 62 by Mark Gilbert, 1978

Stolen Bases

Season- 48 by Mark Gilbert, 1978

Complete Games

Season- 12 tied by Brooks Carey, 1978

Home Runs Allowed

Season- 8 tied by Ray Fox, 1978

SEMINOLES IN CHAMPIONSHIP PLAY

Florida State has won six regional championships since 1957 in a section of the country generally considered the toughest in the nation. The merit of that accomplishment is best noted in the fact that only one other team has been able to win as many as three titles during that same period. The Seminoles' 42 regional victories are the third most recorded in NCAA championship play and only six teams in the country can match their half dozen trips to the College World Series.

	App	W	L	Pct	1st	2nd	3rd	4th
College World Series	6	8	12	.400	0	1	0	1
South Regional	15	42	34	.533	6	3	5	1

REGIONAL TOURNAMENT RECORD

Year	Won	Lost	Place
1956	1	2	Third
1957	3	1	First
1958	1	2	Third
1959	2	2	Second
1961	1	2	Third
1962	4	1	First
1963	3	1	First
1965	4	1	First
1966	3	2	Second
1967	1	2	Third
1968	3	2	Record
1970	3	0	First
1972	1	2	Fourth
1975	3	0	First
1976	1	2	Third

SOUTH ATLANTIC FORM CHART

	<u>Florida State</u>		<u>Marshall</u>		<u>Clemson</u>		<u>Miami</u>	
Record	44-16		25-11		38-12		44-9	
Hitting Leaders	McDonald .394		Bostick .395		Peltz .346		Kutner .345	
	Rigby .358		Sev'ino .354		Weems .342		Robbins .339	
	Patterson .353		Allie .348		Masone .335		Batter .327	
Home Run Leaders	Mobley 13		Allie 5		Schroeder 9		Guerra 11	
	Traylor 9		Wilson 3		Masone 8		Squilla 9	
RBI Leaders	Benda 59		Bostick 24		Masone 46		Guerra 57	
	Mobley 50		Wilson 23		Peltz 41		Squilla 35	
Pitching Leaders	Carey 13-2		DeYoung 7-2		Brown 9-2		Villa 11-1	
	Riley 6-5		Ochal 4-2		Sullivan 7-1		Ruix 11-2	
ERA Leaders	Carey 2.77		Chapman 1.80		Brown 1.81		Morrison 1.17	
	Riley 2.99		DeYoung 1.93		Kenyon 2.70		Ruix 1.26	
Strikeouts	Carey 84		DeYoung 52		Snyder 61		Villa 84	
	Riley 64		Rowsey 37		Sullivan 60		Ruix 83	
Current Win Streak	0 Games		0 Games		7 Games		1 Game	
Longest 1978 Streak	20 Games		7 Games		11 Games		13 Games	
One Run Decisions	9-5		10-1		12-4		7-3	
Team Batting Average	.313		.308		.297		.286	
Team ERA	4.42		4.01		3.32		2.22	
Runs Scored/Game	7.6		4.7		7.2		6.6	
Runs Allowed/Game	4.9		4.0		3.9		3.0	
Previous Region Record	42-34		0-2		19-12		14-11	
Last Appearance	1976		1973		1977		1977	

A LOOK AT THE SOUTH ATLANTIC OPPONENTS

Marshall (25-11)

Hitter	G	AB	R	H	2B	3B	HR	BI	SB	BB	SO	AVG
Randy Bostick	36	114	27	45	8	3	1	24	3	8	9	.395
Garry Severino	29	95	20	34	6	0	2	11	4	8	2	.354
Mike Allie	35	115	24	40	8	1	5	20	6	12	25	.348
Rod Butler	35	38	9	13	2	1	0	3	2	7	5	.348
Glen Lewis	36	120	17	38	4	1	0	7	2	4	6	.342
Team Totals	36	1847	170	323	44	15	14	154	24	114	212	.308

Pitcher	G	GS	CG	IP	H	R	ER	BB	SO	SV	W-L	ERA
Jerry Chapman	7	1	0	15.0	16	3	3	7	10	2	1-0	1.80
Albie DeYoung	14	11	8	73.0	65	24	16	15	52	3	7-2	1.93
Derek McDaniel	6	1	0	18.1	12	6	6	11	10	1	3-0	2.95
Bob Birch	8	2	0	17.2	15	10	7	11	11	2	2-0	3.56
Team Totals	36	36	17	249.1	272	144	111	95	180	7	25-11	4.01

Clemson (38-12)

Hitter	G	AB	R	H	2B	3B	HR	BI	SB	BB	SO	AVG
Pete Paltz	49	159	35	55	11	2	6	41	2	43	8	.346
Billy Weems	44	146	41	50	6	3	0	22	24	21	8	.342
Tony Masone	48	173	33	58	17	4	8	46	11	12	35	.335
Alan Hoover	33	106	24	33	10	1	4	23	3	10	17	.311
Bill Shroeder	43	151	34	46	9	1	9	33	14	21	23	.305
Robert Bonnette	50	163	46	50	9	2	6	40	10	40	24	.307
Team Totals	50	1594	362	474	85	22	41	308	142	279	198	.297

Pitcher	G	GS	CG	IP	H	R	ER	SO	BB	SV	W-L	ERA
Qualters	6	1	0	11.1	7	1	1	11	3	0	3-0	0.79
Sullivan	12	12	4	76.0	69	37	26	60	29	0	7-1	3.08
Kenyon	12	10	5	70.0	64	28	21	53	16	0	5-4	2.70
Woessner	18	1	1	41.1	43	24	17	29	20	6	5-2	3.70
Team Totals	88	50	20	406.1	376	194	150	292	140	10	38-12	3.32

Miami (44-9)

Hitter	G	AB	R	H	2B	3B	HR	BI	SB	AVG
Mike Kutner	47	148	26	51	5	1	0	27	9	.345
Wes Robbins	46	121	41	41	4	2	7	28	37	.339
Ron Batter	50	150	32	49	6	0	0	17	19	.327
Team Totals	53	1653	348	473	74	16	37	293	153	.286

Pitcher	G	GS	CG	IP	H	R	ER	SO	BB	SV	W-L	ERA
Jeff Morrison	14	2	1	38.1	31	9	5	11	36	1	4-1	1.17
Augie Ruix	16	13	4	91.1	50	22	13	37	83	1	11-2	1.26
Tony Villa	18	13	2	98.2	61	29	21	39	84	2	11-1	1.94
Randy Guerra	18	13	1	91.2	66	25	21	47	79	3	8-0	2.06
Team Totals	53	53	8	455.2	355	156	112	180	385	11	44-9	2.22

NCAA SOUTH ATLANTIC REGIONAL
University of Miami
Miami, Florida
May 19-21, 1978

MARSHALL (25-11)

Game 1
May 19
4:30 p.m.

FLORIDA STATE (44-16)

Winner Game 1

Game 4
May 20
7:30 p.m.

Winner Game 4

CLEMSON (38-12)

Game 2
May 19
7:30 p.m.

MIAMI (44-9)

Winner Game 2

Game 6
May 21
7:30 p.m.

Loser Game 1

Game 3
May 20
4:30 p.m.

Loser Game 2

Winner Game 3

Game 5
May 21
4:30 p.m.

Winner Game 5

Loser Game 4

(If an additional game
is required, game 7
is scheduled for Monday
at 7:30)

'78 Seminoles: unforgettable

By BOB COHN

Democrat sports writer

It's been a week since Miami, where the Florida State baseball team ran out of games. The lockers have since been cleaned out, the uniforms have been handed back, and much of what happened during the spring of 1978 has sunk in.

Who would have thought the Seminoles would get to Miami, and the NCAA tournament, in the first place? Certainly not coach Woody Woodward, who said at the beginning of the season that he expected 35 victories.

His team gave him 44.

They did it not with swagger, or cool efficiency, like the team from the previous year. They couldn't, not with all the new faces, all the changes. Instead, the Seminoles hustled and scrapped and battled back. In the end, as Woodward said, "The magic just ran out."

Often, the Seminoles were not a

pretty team to watch. They made nine errors against Ohio State early in the season, yet clubbed their way to a 24-13 win.

They played like little leaguers at other times, too. South Alabama made them look bad in Mobile, and the Seminoles never should have bothered going to Las Vegas.

BUT AFTER Vegas, the Seminoles made some changes.

David Mobley moved from first base to third, and while many held their breaths each time he got ready to throw, he proved he could handle the task.

Other moves saw sophomore Kevin Rigby become the designated hitter, and bat well over .300. Don Milner found a regular home at first, and a swarm of personal fans to go with it. "Meatloaf" was an honest-to-gosh folk hero.

Bruce Huff finally got settled in the outfield, and was a pleasant surprise hitting out of the number-nine spot in the batting order.

With a set line-up for the first time, and the Vegas trip behind them, the Seminoles won six of their last nine, including three of four from the Florida Gators.

They also beat a team from Mercer University.

Only 200 people showed up on that rainy day at Seminole Field. By the ninth inning, just a handful were left.

The Seminoles had played a flat, so-what game to that point, and had

deservedly fallen behind 11-5. Their 31-game home winning streak seemed to certain to end.

Except that it didn't. Summoning up whatever it is that a team uses to pull a miracle, the Seminoles scored seven runs in the bottom of the ninth inning, and won 12-11.

Seminole Field saw some other golden moments, like the emotional, double-win rematch over South Alabama and the day the New York Yankees came to town.

It was a year for some outstanding individual efforts. What few seniors there were, made their presence known.

Mark Gilbert moved from pitcher to centerfield, and had so much trouble with the switch that he hit .323, set an FSU stolen base record with 48, and a batch of other records.

Bob Benda came back to play shortstop. And play and play. Benda appeared in 112 straight games over two years, for another school record. The 59 runs batted in helped a bit, too.

Brooks Carey was, at times, the whole pitching staff. He won 13, lost three and often pitched with no rest.

Another senior, Greg Jones, became a pitcher in Las Vegas. He may not have gotten everyone out, but his frenzied, hectic, waste-no-time performances were unusual, if nothing else.

Bruce Huff, as noted, made a splash and so did pitcher Kevin

Brooks. A walk-on, Brooks pitched in 23 games, all in relief, to lead the staff in appearances.

The younger guys also were heard from. Catcher Blane McDonald led the team in hitting, but his defense was even more impressive. Craig Patterson at second fielded most everything and hit .347. Mobley hit .320, with 13 homers and 50 RBI.

Ronnie Traylor added nine homers, including the unforgettable shot against Louisville in the Metros. Pitcher Jim Riley, who hardly ever got enough runs, led the team in earned run average.

Two freshmen saw a lot of action. Ken Fischer pitched in 18 games, and Don DeLoach pitched, hit and played shortstop.

The 1978 Seminoles: The record book says 44 wins, 18 losses. Their coach, Woody Woodward has said, quite simply, "I'll never forget this team."

FSU Baseball Statistics

NAME	G	AB	R	H	HR	RBI	AVG.
McDonald, c	60	201	42	79	4	39	.393
Rigby, dh-2b	29	69	15	24	0	14	.348
Patterson, 2b	62	228	46	79	3	42	.347
Gilbert, of	62	214	73	69	1	32	.323
Benda, ss	62	237	60	76	6	59	.321
Mobley, 1b-3b	61	216	51	69	13	50	.320
Traylor, of	46	160	31	44	9	31	.275
Milner, 1b-dh	57	162	29	44	5	28	.272
Jones, 3b	35	93	18	24	1	10	.258
Tice, of	27	48	12	12	1	7	.250
B.Huff, of	56	128	23	32	0	15	.250
Schimchak, of	46	90	15	18		4	16.200

Less Than 45 At Bats

Marano, c	3	2	1	1	0	1	.500
Stuart, of	2	2	1	1	0	1	.500
Casey, 3b	21	41	12	16	1	9	.391
Fuentes, of	8	6	5	2	0	2	.333
K.Huff, of	8	3	5	1	0	0	.333
DeLoach, lf-dh	20	40	7	13	0	7	.325
Ramsey, c	21	31	9	6	1	2	.194
Jarabeck, of	6	9	1	1	0		1.111

PITCHING

NAME	IP	R	ER	H	BB	SO	W	L	ERA
Riley	110 $\frac{1}{3}$	51	36	118	38	66	6	5	2.94
Carey	116 $\frac{1}{3}$	45	39	111	42	87	13	3	3.02
Nichols	46 $\frac{2}{3}$	28	17	45	18	33	4		3.28
Long	10 $\frac{2}{3}$	5	4	12	7	7	3		3.40
Fox	44 $\frac{2}{3}$	36	23	64	23	21	5	2	4.64
Brooks	27	17	16	26	17	16	4	1	5.33
Holloway	45 $\frac{2}{3}$	35	29	36	54	34	3	1	5.72
DeLoach	33	24	21	31	23	38	2	2	5.73
Fischer	38 $\frac{2}{3}$	31	29	48	24	26	3	2	6.76
Jones	12 $\frac{2}{3}$	12	11	21	7	4	0	1	7.86
Bretz	2 $\frac{2}{3}$	7	6	5	6	1	0		020.30