

FOOTBALL

★ ★ ★ PROGRAM ★ ★ ★

**FLORIDA
STATE
UNIVERSITY**
(SEMINOLES)

vs.

**TENNESSEE
POLYTECHNIC
INSTITUTE**

PRICE 15 CENTS



**KICK-OFF
8:00 P.M.**

CENTENNIAL FIELD
TALLAHASSEE, FLORIDA

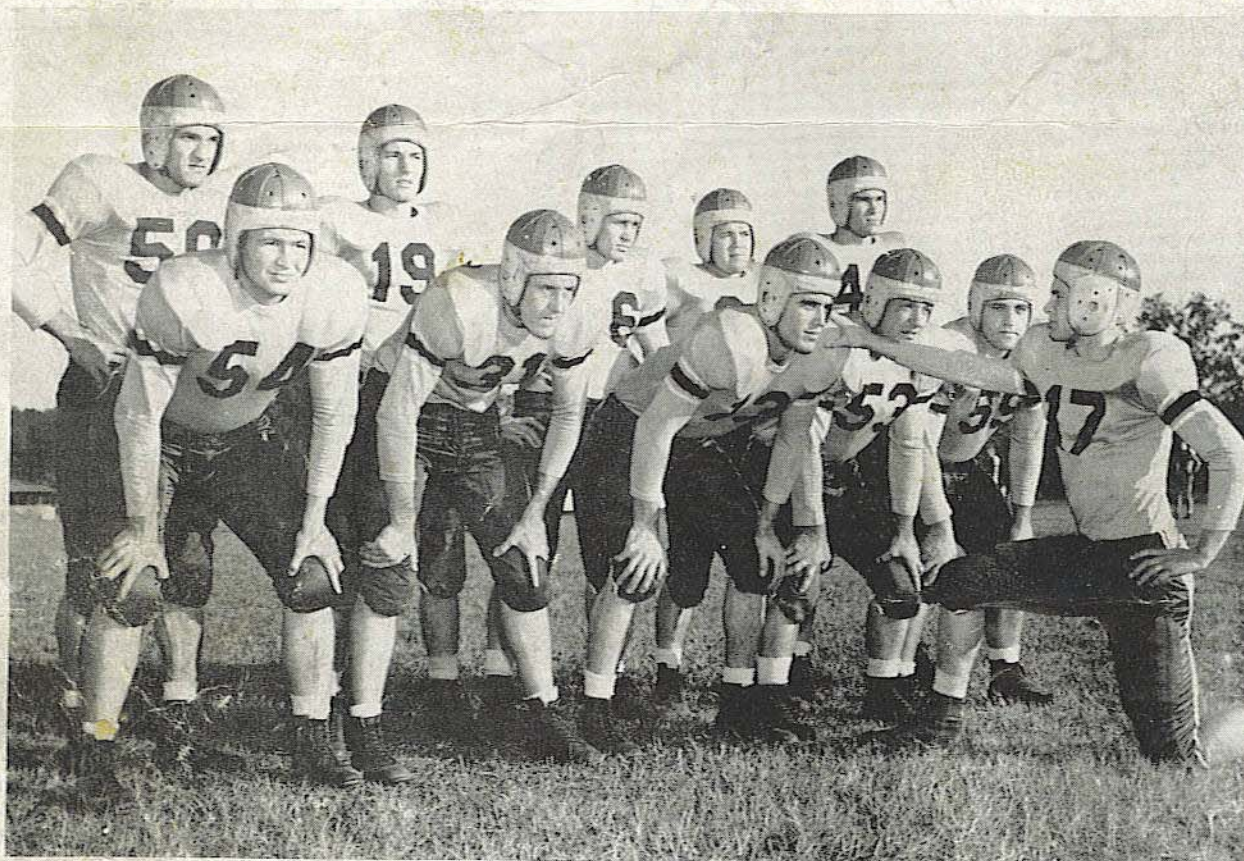
**SATURDAY
NOV. 22
1947**

SEMINOLES, the name by which Florida State University athletic teams will be known, was chosen by the student body after almost three weeks of balloting. Credit for proposing "Seminole" cannot go to any one student, since a number of

students submitted that suggestion in the recent contest. Borrowed from the tribe of Indians who still inhabit the Florida Everglades, the name Seminole is distinctive of the State and is a fitting nickname for FSU teams.



SEMINOLE STARTING LINE-UP



First Row—Middlebrooks—RT; Tully—RG; Bryant—Center; Jim Quigley—LG; Gilberg—LT. Second Row — Banakas — RE; Leonard Melton — RH; Watson — FB; Carter — LH; Costello—LE. In Front—Jack McMillan—QB.

FLORIDA STATE UNIVERSITY PROBABLE STARTING LINE-UP

LE
Costello
48

LT
Gilberg
59

LG
Quigley
53

C
Bryant
32

RG
Tulley
31

RT
Middlebrooks
54

RE
Banakas
50

QB
J. McMillan
17

LH
Carter
21

FB
Watson
26

RH
Melton
19



SEMINOLE BACKS



JACK McMILLAN

MELTON

WATSON

CARTER

PROBABLE STARTING LINE-UP FOR TENNESSEE TECH

TB
Harvey
32

FB
Few
45

WB
Mosier
43

LE
Jarrell
36

BB
Johnson
26

RE
Thaxton
37

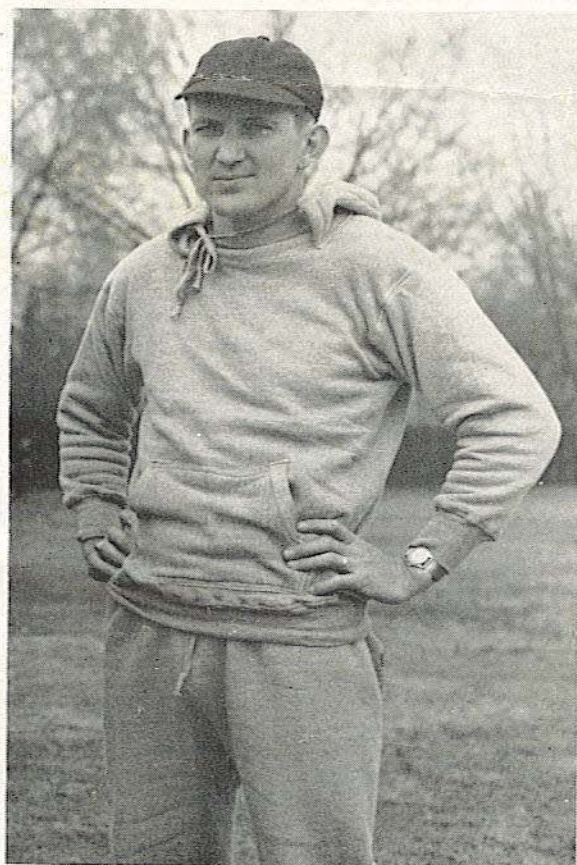
LT
Billingsley
50

LG
Echols
53

C
Henderson
48

RG
Cunningham
52

RT
Day
28



HOOPER EBLEN
Head Coach
Tech Eagles

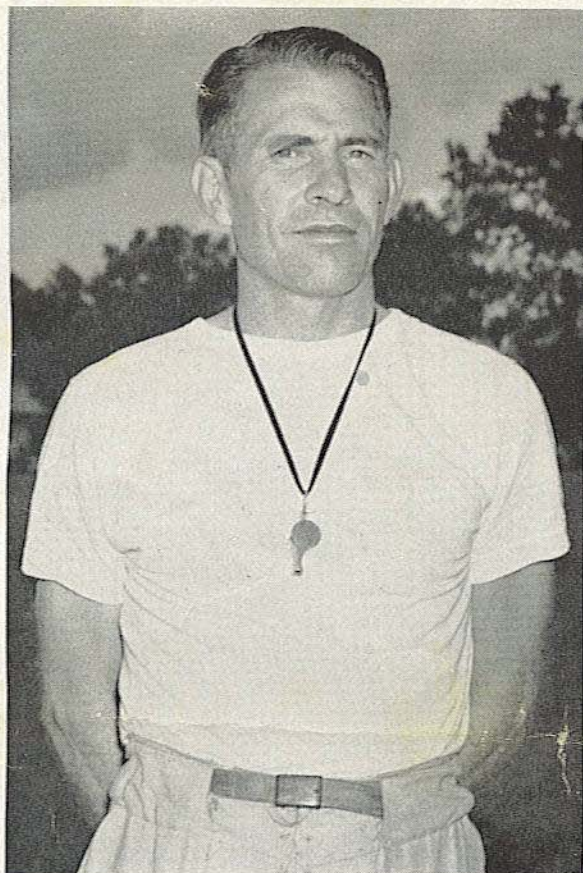


WARDIE HARVEY
Tailback
Leading Ground Gainer

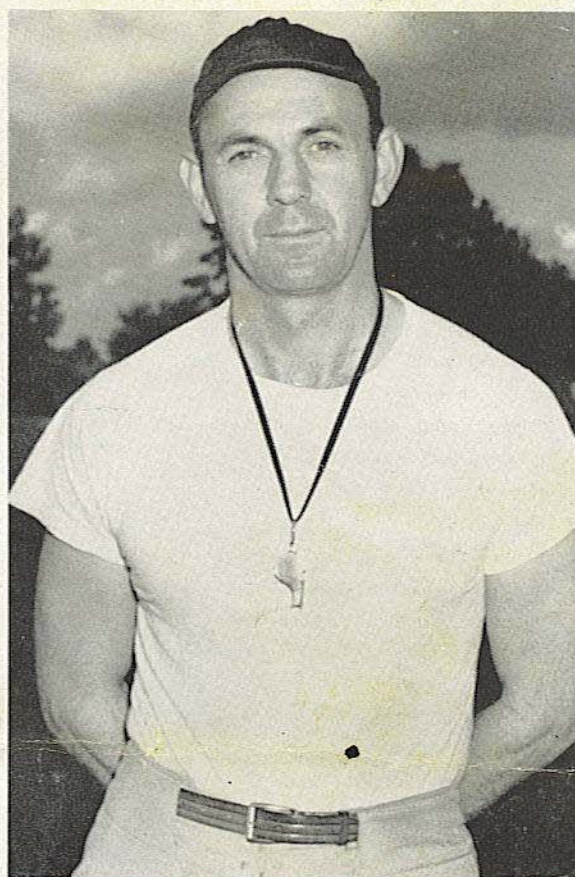
TENNESSEE TECH ROSTER

| No. | NAME | YR. | AGE | WT. | HT. | HOME |
|-----|---------------------------------|-----|-----|-----|------|-----------------------|
| 60 | Ballard, Johnny "Red" | 2 | 19 | 180 | 6- 0 | Dayton, Tenn. |
| 55 | Billings, Charles Kelso "Wahoo" | 4 | 24 | 190 | 5- 8 | Cookeville, Tenn. |
| 31 | Ferguson, Roy "Sonny" | 2 | 19 | 188 | 5-11 | Madison, Tenn. |
| 45 | Few, Oscar Harris | 2 | 23 | 180 | 5- 9 | Dickson, Tenn. |
| 65 | Hall, John M. | 4 | 27 | 155 | 5- 8 | Lebanon, Tenn. |
| 32 | Harvey, Wardie | 4 | 24 | 175 | 5-11 | Charlotte, Tenn. |
| 41 | Highers, R. L. "Rabbit Legs" | 3 | 21 | 170 | 5-10 | Nashville, Tenn. |
| 26 | Johnson, Edgar C. | 2 | 23 | 180 | 5-10 | Gainesboro, Tenn. |
| | Lancaster, Jimmie | 1 | 18 | 155 | 5-10 | Gordonsville, Tenn. |
| | Lancaster, Joe Edwards | 1 | 18 | 155 | 5- 9 | Gordonsville, Tenn. |
| 44 | McDonald, Cordell H. "Mac" | 1 | 20 | 160 | 5-10 | Elmwood, Tenn. |
| 47 | Massa, Clifford, Jr. | 2 | 22 | 180 | 5- 8 | Cookeville, Tenn. |
| 43 | Mosier, James Monroe "Moe" | 2 | 21 | 165 | 5- 8 | Nashville, Tenn. |
| 64 | Pearson, Ralph "Booger" | 2 | 21 | 155 | 5-10 | Manchester, Tenn. |
| 40 | Pickering, Sam Lee | 2 | 22 | 175 | 5-10 | Springfield, Tenn. |
| 20 | Redmond, Kenneth Emerson | 3 | 21 | 185 | 6- 1 | Nashville, Tenn. |
| 46 | Reed, Buster | 4 | 21 | 165 | 5-10 | Pulaski, Tenn. |
| 29 | Webster, Herbert C. "Herbby" | 3 | 21 | 173 | 5-11 | Lenoir City, Tenn. |
| 30 | Whitfield, Elias Welborne | 2 | 23 | 176 | 5-10 | Petros, Tenn. |
| 50 | Billingsley, H. M. "Buttermilk" | 2 | 22 | 205 | 6- 3 | Cookeville, Tenn. |
| 56 | Brewer, Harold Marshall "Mule" | 3 | 22 | 190 | 6- 1 | Hendersonville, Tenn. |
| 28 | Day, John William "Pee Wee" | 4 | 25 | 240 | 6- 1 | Huntsville, Ala. |
| 70 | Ensor, James Kelly | 2 | 22 | 190 | 6- 2 | Cookeville, Tenn. |
| 67 | Esleck, Foster Lee | 2 | 19 | 190 | 5-10 | Fayetteville, Tenn. |
| 21 | Meredith, Bernard E. "Red" | 4 | 21 | 210 | 6- 1 | Old Hickory, Tenn. |
| 39 | Norman, Edward M. "Speedy" | 1 | 20 | 205 | 6- 2 | Big Springs, Tenn. |
| 49 | Page, Thomas W. | 3 | 25 | 195 | 5-10 | Nashville, Tenn. |
| 57 | Powell, Calvin Joseph | 2 | 21 | 202 | 6- 1 | Rockwood, Tenn. |
| 58 | Regen, Dick | 2 | 21 | 220 | 6- 1 | Nashville, Tenn. |
| 38 | Casteel, Bill | 2 | 23 | 182 | 6- 0 | Etowah, Tenn. |
| 71 | Carden, L. D. | 2 | 21 | 195 | 6- 3 | Manchester, Tenn. |
| 35 | Jared, Walter | 1 | 20 | 185 | 6- 0 | Carthage, Tenn. |
| 36 | Jarrell, James Gordon "Red" | 2 | 20 | 176 | 6- 3 | Manchester, Tenn. |
| 34 | Morris, Howell "Cab Hollow" | 2 | 23 | 180 | 6- 2 | Nashville, Tenn. |
| 27 | Thaxton, Ted | 2 | 19 | 185 | 6- 2 | McMinnville, Tenn. |
| 42 | Wilson, Don Taylor | 2 | 19 | 175 | 5-10 | Springfield, Tenn. |
| 25 | Wiltshire, S. O. | 2 | 21 | 185 | 6- 2 | Columbia, Tenn. |
| 51 | Buttrey, Clarence E. "Buddy" | 4 | 22 | 175 | 6- 1 | Livingston, Tenn. |
| 37 | Carr, Dennis "Moose" | 3 | 22 | 196 | 5-11 | Nashville, Tenn. |
| 52 | Cunningham, Earl | 3 | 25 | 192 | 5-10 | Tracy City, Tenn. |
| 22 | Driver, Ben | 2 | 20 | 185 | 5- 8 | Lebanon, Tenn. |
| 23 | Drumwright, Billy | 1 | 19 | 195 | 6- 0 | Nashville, Tenn. |
| 53 | Echols, Ed "Porky" | 4 | 24 | 205 | 5-11 | Nashville, Tenn. |
| 68 | Johnson, William French | 1 | 20 | 190 | 5-10 | Etowah, Tenn. |
| 61 | Matthews, Albert | 2 | 21 | 158 | 5-10 | Springfield, Tenn. |
| 69 | Muncy, Vern H. | 2 | 21 | 205 | 5-11 | Lancaster, Tenn. |
| 54 | Vise, Bob | 3 | 21 | 190 | 5- 8 | Lewisburg, Tenn. |
| 66 | Geiger, John Carlton | 4 | 22 | 175 | 6- 1 | Livingston, Tenn. |
| 24 | Harrison, James H. | 2 | 21 | 185 | 6- 2 | Dayton, Tenn. |
| 48 | Henderson, Don "J" | 2 | 24 | 180 | 6- 2 | London, Tenn. |
| 62 | Murphy, Lawrence G. | 2 | 23 | 190 | 6- 2 | Columbia, Tenn. |
| 59 | Rader, Charles Peter | 2 | 23 | 198 | 6- 2 | East Greenville, Pa. |

FLORIDA STATE UNIVERSITY FOOTBALL COACHING STAFF



ED. WILLIAMSON
Head Coach



JACK HASKIN
Backfield Coach

COMMON PENALTIES

LOSS OF 5 YARDS: Violation of scrimmage positions, kickoff formation, neutral zone, attempt to draw opponents off side, illegal tackling, illegal lateral pass, illegal use of hands and arms on defense, crawling, running into kicker, offsides, delaying game, interference before ball is put into play, out of bounds when ball put in play, crawling.

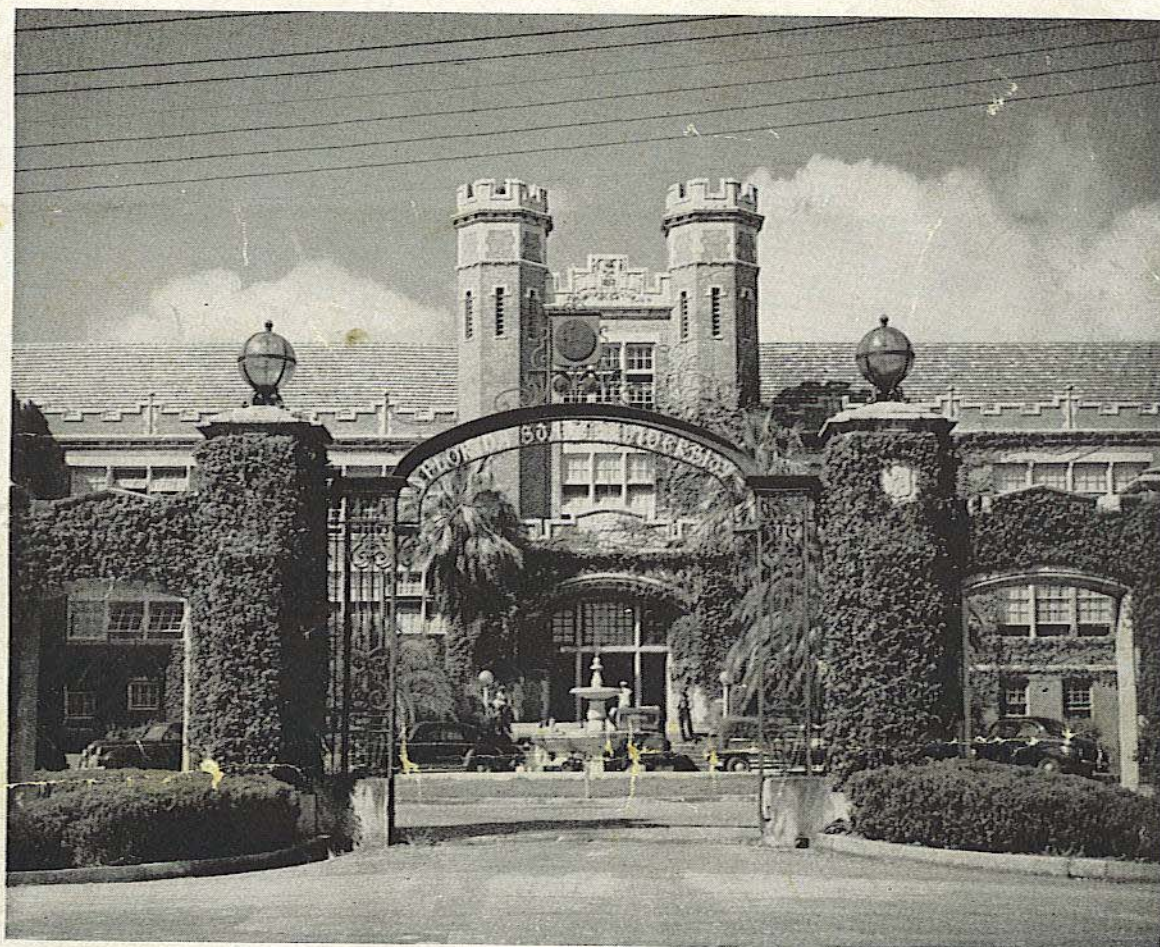
LOSS OF 15 YARDS: Clipping, tackling out of bounds, tripping, hurdling, illegal shift, forward pass beyond line of scrimmage touched by an ineligible player, illegal interference by passing team, interfering with attempt to make fair catch, roughing kicker, tackling player who has made fair catch, interlocked interference, illegal use of hands or arms by offensive team, piling on, running or diving into player obviously out of play, unsportsmanlike conduct, illegally going on field, kneeling, intentionally grounding a pass, slugging.

LOSS OF A DOWN: Illegal lateral pass, illegal forward pass, intentionally grounding a pass (also carries 15 yard penalty), illegal interference by passing team (also carries 15 yard penalty), incomplete forward pass.

LOSS OF BALL: Failure to advance 10 yards in four downs, illegal interference on pass by team on defense, batting free ball forward, kicking free ball, offensive player on kickoff going out of bounds recovering ball.

LOSS OF HALF DISTANCE: Foul inside one yard line.

DISQUALIFICATION: Flagrant unsportsmanlike conduct, slugging, kicking, kneeling, striking on head, neck or face with the heel or back or side of hand, wrist or forearm, flagrant roughing of kicker.



REMAINING GAMES OF SEMINOLES

November 27: Troy State Teachers (Afternoon Game)

December 6: Alabama State Teachers (Night Game)

OFFICIALS

ROTH (Vanderbilt) Referee

WARNER (Florida) Umpire

ALSOBROOK (Georgia) Head Linesman

RAHIN (Notre Dame) Field Judge

Seminoles Lose Mud-Spattered

27-6 Tilt to Eagles

5,436 Fans See FSU Eleven Overwhelmed

By FRED PETT | JOHN

A hard hitting and crisp blocking Golden Eagle eleven from Tennessee Polytechnic Institute ground out a mud-spattered 27-6 decision over a dogged band of Florida State University Seminoles before a crowd of 5,436 fans in Centennial Field's "Bleacher Bowl" last night.

Helpless against the rock-ribbed defense of the Eagles stout forward wall, the Seminoles fought back through the air after the fourth TPI tally, and moved 75 yards to their touchdown.

Bill Osteen slicing off tackle into paydirt after Wendell Barnes, Lake City halfback, and Charles McMillan, Quincy flankman, had moved the oval the majority of the distance in an impressive aerial display.

Early Eagle Lead

The Eagles got off to an early lead when Oscar Few thumped his way across to climax a 71-yard drive with the opening kickoff, and they ripped and tore their way through the Garnet and Gold forward wall for another first half score when fast and shifty Mac McDonald darted through a hole at right tackle just one play before the first half ended.

Coming out after the intermission the big Eagle forward wall smothered two Indian kicks to set up their final two scores.

Red Jarrell, who was a fine end all night for the Eagles, accounted for the third tally when he blocked Gilberg's punt near the goal and fought his way into the end zone to score.

Joe Lancaster took a six-yard pass from John Hall for the final marker after a blocked kick had given the Eagles possession on the Garnet and Gold six.

Hall, Eagle placekicking specialist, booted through over and had one attempt blocked.

FIRST QUARTER

Reed took Gilberg's opening kickoff on his own five and stormed back to the 29 to set the Golden Eagles on the march. Piecing together five consecutive first downs the big Eagles marched 71 yards down the field for the opening score. After Reed had banged the tackles to the 36, fullback Oscar Few picked up the first down at his own 46. Reed and Few alternated carries and in four more stabs at the line moved over into FSU territory on the Garnet and Gold 30. After a penalty had set the Seminoles back to the 25, Reed slammed to the 17 in two charges. With the Seminole stands begging the Garnet and Gold line to hold, Reed stumbled at right tackle, but fought his way to the 14 before Wes Carter came up to stop him. Reed, running hard behind beautiful blocking, swept to the three.

The Seminoles braced momentarily and stopped Johnson and need six inches short of a score, but on third down Few powered his way through over the right side of his own line to score. John Hall, Eagles' placement specialist, came in and kicked the extra point to boost the TPI margin to 7-0.

Costello covered the Eagles kickoff on the FSU 20, and after two tries at the line Leonard Gilberg sent a booming 51-yard spiral to Harvey who took the ball on the 28 and returned to the 35. Aided by an offside penalty on the fourth down the Eagles moved to the Seminole 44 where a third down plunge fell six inches short of a first down. Wardie Harvey backed the Indians deep into their own territory with a boot that rolled dead on the Indian four.

and MacLean barely got a fourth down punt away after the Indians had fallen short of a first down.

The Eagles put the ball in play on their own 40, and after failing to gain kicked out on FSU's 25. The quarter ended with the Seminoles in possession.

SECOND QUARTER

After the Seminoles had punted to the Eagles 30, Gerry Manual, Indian fullback, intercepted Higher's bullet pass on the TPI 46 and n. ved to the Eagle 31. Carter, sweeping right end for eight, and MacLean's diving leap over left guard gave the Seminoles their first first down of the game on the Eagle 20. But the drive fizzled out when the Indians' air game failed, and TPI took over on the 31 when a host of tacklers sifted through and dropped Ralph Chaudron.

After two exchange of punts the Eagles started a scoring drive from their own 44. Racing against the clock the big Eagles pounded to their score just two plays before time ran out.

Cordell McDonald, fleet half-back, roared off the Garnet and Gold tackles and swept the flanks to pace the touchdown parade. He set the scoring wheels in motion when he ripped off ten yards on the first play, and picked up the drive when it lagged with a 25-yard cutback off his own left tackle. Sonny Ferguson gave McDonald a lift with a 10-yard blast that moved the oval to the FSU seven. McDonald cut back to the four, and after Ferguson trudged to the two, McDonald darted off his own right tackle to score.

Hall's placement was good and the Eagles led 14-0 as the half ended.

THIRD QUARTER

Bounding back after the intermission the Eagles rushed their third score over in eight plays.

The Seminoles kicked off, and after the Eagles were stopped by the Garnet and Gold line they booted to the FSU 20.

With the left side of the Eagle line breaking through steadily, the Seminoles were pushed back to their own nine. At that point "Red" Jarrell broke through to block Gilbert's boot, and the rangy end swept into the end zone to score without losing possession of the ball. Hall's kick was good again and the Eagles led 21-0.

The Seminoles, again smothered by the Eagles hard charging line, were unable to make any headway after the kickoff, and were driven back from their own 23 to their nine.

Kicking from his own end zone MacLean got off a low, bounding punt that went 61 yards to the Eagle 30 where McDonald picked it up and scrambled back to his 37.

After the Eagles had failed to gain Carter took Hall's punt on his 12 and returned to the 10.

The big Eagles, holding again, blocked a Seminole fourth down punt and took over on the Garnet and Gold six.

Cliff Massa moved to the two on the next play, and after a yard loss and an offside penalty had driven the Eagles back to the eight. Johnny Hall hit Joe Lancaster with a scoring toss in the end zone to push the count to 27-0.

McLean blocked Hall's kick.

The Seminole's, helpless to this point, took TPI's kickoff and drove to a score on six straight pass completions.

Carter returned the kick from the 17 to the 25, and after one incomplete pass Wendell Barnes hit Charles McMillan on FSU 34.

The same combination clicked again to move the ball to the In-

dians 48. After a toss to Kratzert had lost a yard, another Barnes to McMillan aerial moved to the Eagle 22 when the rangy flankman took the toss on the TPI four and almost got away.

FOURTH QUARTER

After two line plays had failed, the Seminoles found success through the airways on Barnes' shot to Osteen that moved 21 yards to the Eagle 1.

A Watson to McMillan aerial lost two yards to the three, but Barnes banged down to the one, and Osteen found a hole at tackle and slammed over for the Seminole score. Gilbert's attempt from placement was blocked and FSU trailed 27-6.

The Eagles, unable to gain after the kickoff punted to the Indians, and the two teams battled scorelessly inside the 30-yard lines for the remainder of the tilt.

STATISTICS

| | FSU | TPI |
|---------------------------------------|------|------|
| First Downs | 6 | 15 |
| Passes Att | 15 | 11 |
| Passes Comp | 7 | 2 |
| Passes Int | 1 | 2 |
| Penalties | 7 | 5 |
| Yards Lost Penalties | 45 | 45 |
| Number of Punts | 10 | 10 |
| Avg Dist of Punts | 29.5 | 34.0 |
| Fumbles | 2 | 2 |
| Own Fumbles | 2 | 2 |
| Net Gain Rushing | 5 | 260 |
| Net Gain Passing | 100 | 35 |
| Net Gain Rushing and Passing | 105 | 295 |