

SUMMARY OF FOOTBALL GAME STATISTICS — Home Team

TEAM CODE
251

Home Team FLORIDA STATE First Downs: (Rush) 8 (Pass) 4 (Pen.) 0 Total 12 Penalties Against: (No.) 4 (Yards) 43 Own Fumbles: (No.) 10 (Lost) 7

Player Code	PLAYER	RUSHING					FORWARD PASSING				TOT. OFFENSE		RECEIVING		INT. RETURNS		PUNTING		PUNT RETURNS		K. O. RETURNS		SCORING																	
		Times Carried	Yards Gain	Yards Loss	Net Gain	TD's	No. Att.	No. Comp.	Hod Int.	Net Gain	Scoring TD's	Total Plays	Net Gain	No. Caught	Yards Gain	TD's	No. Inter.	Yards Return	TD's	Times Kicked	Yards Kicked	Blkd.	Number Returns	Yards Return	TD's	Touch-downs	X Pts. Att.	Kick Made	Other X Pts. Att.	Field Goals Made	Points									
01	ABRAIRA	A					B				C		D			E			F			G	1	46	0	H					S									
05	BAILEY	A	20	93	0	93	B				C	20	D	1	53	1	E		F			G				H				S	1	6								
12	CAPPLEMAN	A	4	1	8	-7	B	27	12	1	180	2	D			E			F			G				H				S										
13	CARRELL	A					B				C		D			E			F	2	49		G			H				S										
29	CAYDOS	A					B				C		D	1	40	0	E		F			G				H				S										
30	GILDEA	A					B				C		D			E	1	13	0	F			G			H				S										
31	GILMAN	A	12	26	9	17	B				C	12	D	2	5	0	E		F				G			H				S										
35	GUTHRIE	A					B				C		D			E			F				G			H				S										
41	TARRETT	A	4	6	2	4	B				C	4	D			E			F				G			H				S										
51	LOWE	A					B				C		D			E			F				G	1	12	0	H				S									
56	MUNROE	A	3	24	0	24	B				C	3	D			E			F				G	1	6	0	H			S	1	6								
68	PEDERSON	A					B				C		D	3	17	1	E		F				G			H				S	1	6								
69	PELL	A					B				C		D			E	1	0	0	F			G	3	68	0	H				S									
84	THOMAS	A					B				C		D			E	1	19	0	F			G			H				S										
85	TYSON	A					B				C		D	5	65	0	E		F				G			H				S										
91	WHIGHAM	A	1	6	0	6	B				C	1	D			E			F	2	56		G			H				S										
	TEAM	A					B				C		D			E			F	1		1	G			H				S										
	CENTER PASS	A	1	9	-9	0	B				C	1	D			E			F				G			H				S										
		A					B				C		D			E			F				G			H				S										
		A	45	156	29	128	B	27	12	1	180	2	D	12	180	2	E	3	32	0	F	5	105	1	G	6	120	0	H	1	150	S	3	3	3	-	-	2	1	24
	TEAM TOTALS																																							

Opponents WICHITA STATE First Downs: (Rush) 4 (Pass) 7 (Pen.) 2 Total 8 Penalties Against: (No.) 4 (Yards) 36 Own Fumbles: (No.) 17 (Lost) 10

Enter Here Team Totals From Visiting Team Summary	VISITING TEAM TOTALS	RUSHING					FORWARD PASSING				TOT. OFFENSE		RECEIVING		INT. RETURNS		PUNTING			PUNT RETURNS		K. O. RETURNS		SCORING															
		Times Carried	Yards Gain	Yards Loss	Net Gain	TD's	No. Att.	No. Comp.	Had Int.	Net Gain	Scoring TD's	Total Plays	Net Gain	No. Caught	Yards Gain	TD's	No. Inter.	Yards Return	TD's	Times Kicked	Yards Kicked	Blkd.	Number Returns	Yards Return	TD's	Number Returns	Yards Return	TD's	Touch-downs	X Pts. Att.	Kick Made	Other X Pts. Made	Field Goals Made	Points					
		A	53	118	89	29	B	13	4	2	48	0	D	4	48	0	E	1	0	0	F	7	238	1	G	2	11	0	H	4	90	0	S	0	0	0	0	0	0

Date of Game 9-20-69 Where Played Tallahassee, Fla. Authenticated by James L. Smith and W. Wharton
NCSS Form No. 347-A (Copyright, 1969, National Collegiate Sports Services, Box 757, Grand Central Station, New York, N. Y.) (OVER)

ADDITIONAL STATISTICS

SCORING PLAYS

List all scoring plays in sequence and all tries-for-points on the line following the touchdown.

Under "type of play" indicate rush, pass, interception runback, punt runback, kickoff runback or field goal. List tries-for-points as P.A.T. kick, P.A.T. rush or P.A.T. pass. Indicate missed tries-for-points by NG (no good).

On pass play, give passer first, then receiver, and combined yardage of pass and run. Measure runbacks from goal line, if started in end zone. Measure field goal attempted from point of kick. All other plays are measured from line of scrimmage.

Team	Type of Play	Player or Players	Yards
FSU	FWD PASS	CAPPLEMAN TO BAILEY	53
FSU	FIELD GOAL	GUTHRIE	40
FSU	PAT	GUTHRIE	YES
FSU	RUSH	MUNROE	18
FSU	PAT	GUTHRIE	YES
FSU	PASS	CAPPLEMAN - PETERSON	9
FSU	PAT	GUTHRIE	YES

Teams.	Score by Quarters:	1st	2nd	3rd	4th	Total
FLORIDA STATE		10	7	0	7	24
WICHITA STATE		0	0	0	0	0

Official Attendance _____

Weather Conditions

TIME OF GAME

Kickoff 7:33 P.M.

End of Game 9:47 P.M.

TOTAL PLAYING TIME

1:59

(Elapsed time less intermission)

NON-SCORING LONG PLAYS

List all non-scoring long plays (including punts) gaining 70 yards or more, and **all missed field goal attempts for both teams.**

[illegible]

TEAM CODE

426

SUMMARY OF FOOTBALL GAME STATISTICS — Visiting Team

Visiting Team WICHITA STATE First Downs: (Rush) 4 (Pass) 2 (Pen.) 2 Total 8 Penalties Against: (No.) 4 (Yards) 36 Own Fumbles: (No.) 17 (Lost) 10

Player Code	PLAYER	RUSHING				FORWARD PASSING				TOT. OFFENSE		RECEIVING		INT. RETURNS		PUNTING		PUNT RETURNS		K. O. RETURNS		SCORING											
		Times Carried	Yards Gain	Yards Loss	Net Gain	TD's	No. Att.	No. Comp.	Had Int.	Net Gain	Scoring TD's Conv.	Total Plays	Net Gain	No. Caught	Yards Gain	TD's	No. Inter.	Yards Return	TD's	Times Kicked	Yards Kicked	Blkd.	Number Returns	Yards Return	TD's	Touch-downs	X Pts. Att.	Kick Made	Other X Pts. Att.	Field Goals Att.	Points Made		
12	CAIN	A					B				C		D		E	1			F			G	H		S								
13	CAYCE	A	4	2	1	7	B				C	4	D		E				F			G	H		S								
16	CRUTCHFIELD	A	4	15	8	7	B				C	4	D	1	8	E			F			G	H		S								
	DUNCAN, L.	A					B				C		D		E				F			G	H		S								
11	DUSHARM	A	15	22	45	23	B	13	4	2	48	C	25	D		E			F			G	H		S								
35	HAYES	A					B				C		D		E				F			G	H	1	17	S							
41	JACKSON	A	10	26	5	21	B				C	10	D		E				F			G	H		S								
44	KIESAU	A					B				C		D		E				F			G	H		S								
46	KINKAID	A					B				C		D		E				F			G	H		S								
50	LEE	A	17	53	3	50	B				C	17	D		E				F			G	H	3	13	S							
66	OWEN	A					B				C		D	1	10	E			F			G	H		S								
71	RENNER	A	3	-	14	11	B				C	3	D		E				F			G	H		S								
74	RYAN	A					B				C		D	1	17	E			F	2	58		G	H		S							
85	TAYLOR	A					B				C		D	1	13	E			F			G	H		S								
	TEAM	A					B				C		D		E				F	1	1		G	H		S							
		A					B				C		D		E				F			G	H		S								
		A					B				C		D		E				F			G	H		S								
		A					B				C		D		E				F			G	H		S								
		A					B				C		D		E				F			G	H		S								
		A					B				C		D		E				F			G	H		S								
	TEAM TOTALS	A	53	118	87	29	B	13	4	2	48	C	66	D	4	48	E	1		F	7	55	1	G	2	11	H	4	10	S	-	-	-

Opponents FLORIDA STATE First Downs: (Rush) 8 (Pass) 4 (Pen.) 12 Total 24 Penalties Against: (No.) 4 (Yards) 45 Own Fumbles: (No.) 10 (Lost) 7

Enter Here Team Totals From Home Team Summary	HOME TEAM TOTALS	RUSHING					FORWARD PASSING					TOT. OFFENSE		RECEIVING			INT. RETURNS			PUNTING			PUNT RETURNS			K. O. RETURNS			SCORING										
		Times Carried	Yards Gain	Yards Loss	Net Gain	TD's	No. Att.	No. Comp.	Had Int.	Net Gain	Scoring TD's	Conv.	Total Plays	Net Gain	No. Caught	Yards Gain	TD's	No. Inter.	Yards Return	TD's	Times Kicked	Yards Kicked	Blkd.	Number Returns	Yards Return	TD's	Number Returns	Yards Return	TD's	Touch-downs	X Pts. Att.	Kick Made	Other X Pts. Att.	Field Goals Made	Points Made				
A	45	156	28	128	1	B	27	12	1	180	2	C	72	308	D	12	180	2	E	3	52	F	5	105	1	G	6	120	H	1	15	S	3	3	-	-	2	1	24

Date of Game October 20 1969 Where Played TALLAHASSEE, FLA. Authenticated by Lawrence H. Hight and W. H. Hooten
NCSS Form No. 347-B (Copyright, 1969, National Collegiate Sports Services, Box 757, Grand Central Station, New York, N. Y.) (For Opponents) (OVER)

FLORIDA STATE UNIVERSITY
vs.
WICHITA STATE
September 20, 1969
Doak S. Campbell Stadium
Tallahassee, Florida

ATTENDANCE: 31,821

WEATHER: Wind-ENE 7 mph; Temp. 76; Raining

~~FSU~~ FSU wins toss and elects receive. Kincaid kicks to Jarrett on 17; returns 15 yards to 32

FS32 1-10 Cappleman pass complete to Gaydos for 40 yards and 1st down
WS28 1-10 Bailey hits rt for two.
WS26 2-8 Bailey ~~gets~~ gets two more.
WS24 3-6 Cappleman pass intended for Dawson incomplete
WS24 4-6 Guthrie 41 yard FG attempt is fumbled. WS takes over on 33.

Wichita Ball

WS33 1-10 Jackson gets three. McEachern
WS30 2-7 Jackson loses three. Rice
WS33 3-10 Jackson gets two.
WS35 4-8 Renner punts to Pell on F18, returns 29 yards to F46.
49 yard punt.

FSU Ball

F46 1-10 Bailey gains one.
F47 2-9 Cappleman pass complete to Bailey for 53 yards and TD.
Guthrie's kick is good.
FSU 7, Wichita 0 10:28

Guthrie kicks off to Lee at 12, returns ~~20~~ 20 yards to 32

W31 1-10 Dusharm fumbles snap and Wallace recovers for FSU

FSU Ball

F28 1-10 Bailey hits right side for five yards
F23 2-5 Gilman sweeps left, but fumbles and Hoeheisel recovers for WSU on 22.
W22 1-10 Lee on pitchout gains one yard.
W23 2-9 Dusharm pass complete to Taylor 13 yards and 1st down.
W36 1-10 Lee fumbles gains four, ~~Lee~~ fumbles, B. Rich recovers for FSU
FSU Ball
W40 1-10 Bailey sweeps left for 12 yards and 1st down
W28 1-10 ~~Lee~~ Bailey gets one.
W27 2-9 Cappleman pass intended for Munroe incomplete
W27 3-9 ~~Munroe~~ Munroe gets three on HB draw.
W24 4-6 Guthrie 40 yard FG is good.

FSU 10, WSU 0 6:21 remaining

Guthrie kicks off to Hayes on 7; returns 17 yards to 24

W24 1-10 Lee on pitchout gains four. Rice tackle.
W28 2-6 Dusharm pass intended for Hayes incomplete
W28 3-6 Dusharm keeps for 12 yards and first down.
W40 1-10 ~~Munroe~~ Lee loses two on pitch. Lanahan stops.
W38 2-12 Casey fumbles, Dusharm recovers for 5 yard loss.
W33 3-17 Dusharm loses nine. Vohus and White on pass rush.
W24 4-26 Renner kicks to Pell on 35. He fumbles and recovers own.
FSU Ball
F35 1-10 Bailey rips through good hole for 13 yards. and 1st down.
F48 1-10 Bailey gains five through same hole on right side.
W47 2-5 Gilman gets four.
W43 3-1 Bailey gets two and 1st down.
W41 1-10 Cappleman pass complete to Tyson for nine yards.
~~FSU~~

FSU 10, WSU 0

SECOND QUARTER

W32 2-1 Cappleman pass to Gilman complete. No gain.
W32 3-1 Bailey gets two yards and first down.
W30 1-10 Cappleman complete to Bailey for five yards
W25 2-5 Bailey up middle for 7 yards and 1st down.
W18 1-10 Munroe twists 18 yards for TD.
Guthrie kick is good.

FSU 17, WSU 0 12:47 left

Guthrie kicks off to Lee on 11; returns 35 yards to W 46.

W46 1-10 Lee picks up four on counter
W50 2-6 Casey loses two on sweep. Gildea tackle
W48 3-8 Dusharm pass intended for Taylor incomplete. hard FSU rush.
W48 4-8 Renner punts Munroe on 15. He fumbles. ~~Gunn~~ Owens recovers
F13 1-10 Casey gains ~~xxxx~~ two.
F11 2-8 Dusharm keeps for four.
F7 3-4 Dusharm keeps for one. Lohse tackles.
F6 4-3 Lee tries sweep, loses one. Vohun and Thomas.
FSU Ball
F7 1-10 Gilman gains seven off tackle
F14 2-3 Gilman gets two
F16 3-1 Bailey up middle for eight yards and 1st down.
F24 1-10 Cappleman fumbles and recovers own for one yard gain.
F25 2-9 Bailey at left end for eight yards.
F33 3-1 Bailey fumbles and Pancratz recovers for WSU
WSU Ball
F34 1-10 Dusharm pass intended for Casey incomplete
F34 2-10 Crutchfield sweeps right for two yards.
F32 3-8 Dusharm pass ~~xxxx~~ incomplete. knocked down by Vohun.
F32 4-8 Dusharm fumbles, White recovers for FSU.
FSU Ball
F33 1-10 Cappleman pass complete to Tyson for three yards.
F36 2-7 Gilman gets two
F38 3-5 Cappleman pass intended for Tyson incomplete
F38 4-5 Carroll punts out of bounds. 29 yards.
WSU Ball
W41 1-10 Dusharm screen pass complete to Crutchfield for nine yards, but
WSU loses 15 for clipping.
W34 1-17 Jackson gains two.
W36 2-16 Crutchfield up middle for ~~xxx~~ six yards
W42 3-9 Dusharm pass intercepted by Thomas; ~~xxxx~~ 19 yard return
FSU Ball
W39 1-10 Bailey sweeps left for two yards
W37 2-8 Cappleman pass complete to Tyson for 7 yards.
W30 3-1 Jarrett busts for one yard and first down.
W29 1-10 Bailey gets four yards
W25 2-6 Cappleman pass complete to Pederson for eight yards and 1st down
W17 1-10 Bailey gains four but fumbles and Kostal recovers
WSU Ball
W13 1-10 Dusharm loses four. Wallace tackles as half ends.

FSU 17, WSU 0

Circle One

FINAL

FSU-17

Wichita - O

First Downs	10	2
Rushing Yardage (Net)	116	17
Passing Yardage (Net)	125	21
Return Yardage (Net)	39 -	71 -
Plays Completed		
Passes (Compl'd-Att-Had Intc'd)	8-11-0	2-7-1
Plays Completed		
Punts (Number-Average)	1-21	3-42
Fumbles Lost	4	3
Yards Penalized	0	15

FISU

RUSHING	Avg	Yards	Avg.
BAILEY	17	79	4.6
GILMAN	5	14	2.8
MUNROE	2	21	10.5

PASSING	Air'd	Compl.	Mod Int'd	Net Yards
CAPPLEMAN	11	8	0	125

PASS RECEIVING	No. Rec'd	Net Yards	For TD
GAYDOS	1	40	0
BAILEY	1	53	1
TYSON	3	19	0

Wichtig!

RUSHING	Att'd	Net Yards	Avg.
DUSHARM	7	0	0
LEF	6	10	1.7
JACKSON	4	4	1

PASSING	Att'd	Compl.	Had Int'd	Net Yards
DUSHARM	7	2	1	21

PASS RECEIVING	No. Rec'd	No. Yards	For TD
CRUTCHFIELD	1	8	0
TAYLOR	1	13	0

THIRD QUARTER

Guthrie kicks off to Lee on three, returns ~~18~~ 19 yards.

W22 1-10 R Lee fumbles, Wallace recovers for FSU
 FSU Ball
 W20 1-10 ~~Gilman~~ Gilman loses two.
 W22 2-12 Bailey picks up four yards on sweep right.
 W18 3-8 Cappleman pass intended for Gaydos incomplete
 W18 4-8 Guthrie 35 yard ~~FG~~ FG attempt is no good.
 WSU Ball
 W20 1-10 Lee at right tackle for three
 W23 2-7 Dusharm keeps for five yards.
 W28 3-2 Jackson picks up seven and first down.
 W35 1-10 Jackson loses two on pitch.
 W33 2-12 Lee gains two
 W35 3-10 Lee on draw gains ~~threex~~ eight yards
 W42 4-2 Renner punts dead on FSU 12. 46 yard kick.
 FSU ball
 F11 1-10 Bailey picks up four.
 F15 2-6 Gilman hits middle for three
 F18 3-3 Cappleman loses six
 F12 4-9 Carrol punts out of bounds on FSU 41. 28 yard kick
 R WSU Ball
 F41 1-10 Lee picks up two.
 F39 2-8 Lee hits middle for four.
 F35 3-4 Dusharm pass complete to R Ryan for 17 yards and 1st down.
 F18 1-10 Dusharm pass intended for Ryan~~xxxx~~ inc., but FSU interferes.
 F7 1-G Lee picks up three
 F4 2-G Lee gets one.
 F3 3-G Lee fumbles and McEachern recovers on 2 for FSU
 FSU Ball
 F2 1-10 Cappleman pass int. for Pederson incomplete.
 F2 2-10 ~~Cappleman~~ Cappleman pass int for ~~the~~ Pederson incomplete
 F2 3-10 Whigham ~~xx~~ punts dead on FSU 27. 25 yard punt.
 WSU Ball
 F27 1-10 Crutchfield
 FSU Ball
 F35 1-10 ~~xxx~~ on pitch fumbles. Manahan causes and recovers for FSU
 WSU Ball
 F30 1-10 R Gilman fumbles and Hohesiell recovers.
 F27 2-7 Jackson gained three.
 F30 3-12 Jackson slithers for 13, but WSU loses five for illegal pro.
 FSU Ball
 F31 1-10 Dusharm fumble recovered by White for FSU on F31
 W24 1-10 Cappleman pass complete to Tyson for 45 yards and 1st down.
 W24 2-10 Cappleman pass intended for Tyson incomplete in end zone.
 W24 3-10 Gilman gets nothing on draw
 W24 4-10 Cappleman pass intedned for Tyson incomplete
 WSU Ball
 W23 1-10 Cappleman pass on fake FG to Tyson complete for one yard.
 W38 1-10 Lee rambles for 15 yards and 1st down.
 W40 2-8 Lee gains two
 FSU Ball
 W38 1-10 Casey fumbles and Wallace recovers for FSU on W38
 W38 2-10 Cappleman pass complete to Pederson for no gain
 W32 3-4 Bailey picks up six yards.
~~W32~~ Gilman loses one. Kostal tackles

FSU 17, WSU 0

FOURTH QUARTER

W33 4-5 Cappleman pass intended for Dawson inc.
WSU Ball
W33 1-10 Renner fumbles and recovers, but FSU loses 15, per. foul.
W46 1-10 Renner pitches to nobody, then runs out and recovers. loss 10
W36 2-20 Dusharm pass complete to ~~xxxx~~ Owen for ten yards.
W46 3-10 Dusharm pass intended for Crutchfield incomplete
W46 4-10 Renner kicks 47 yards to Pell, returns 37 yards.
FSU Ball
F44 1-10 Cappleman pass intended for Tyson inc. Kincaid defenas
F44 2-10 Cappleman pass intended for Pederson incomplete.
F44 3-10 Cappleman pass intercepted by Cain on F48
WSU Ball
F48 1-10 Dusharm pass intended for Taylor intercepted by Pell on F19
FSU Ball
F19 1-10 Gilman at right side for five yards.
F24 2-5 Gilman struggles for two.
F26 3-3 Munroe gets three yards and 1st down.
F29 1-10 Cappleman pass intended for Tyson incomplete
~~F29xxxx2-10~~ FSU loses 15 for holding
F14 1-25 Cappleman pass intended for Gilman incomplete
F14 2-25 Cappleman pass intended for Munroe incomplete
F14 3-25 Carroll's punt is blocked by Duncan, Moore ret. to F5.
WSU Ball
F5 1-G Lee no gain
F5 2-G Dusharm pass intended for E Ryan incomplete
F5 3-G Dusharm thrown for 18 yard loss by McEachern.
F23 4-G Dusharm fumbles, White recovers for FSU on F27
FSU ball
F27 1-10 Jarrett gains four
F31 2-6 Cappleman fumbles, Jarrett recovers, one yard x loss.
F30 3-7 Jarrett loses two.
F28 4-9 Whigham punts to Kiesau fumbles and recovers. 31 yard punt.
WSU Ball
W42 1-10 Jackson for two.
W44 2-8 Renner loses seven under a swarm
W37 3-15 WSU loses five illegal motion
W32 3-20 Jackson gets two on draw
W34 4-18 Renner's kick blocked by ~~Montgomery~~ Lowe.
FSU Ball
W22 1-10 Jarrett gets one
W21 2-9 Cappleman's fumble recover ed by Duncan
WSU Ball
W22 1-10 Renner's fumble picked from air by ~~xxxx~~ Gildea to nine yard line
FSU Ball
W9 1-G Cappleman pass complete to Pederson for nine yards and TD
Guthrie's kick is good.

FSU 24, WSU 0 3:25

Guthrie kick to Hayes on five, returnw to 30 and fumbles out of bounds.
FSU is offsidess , kick over, to Hayes, ob on W22.

~~W36xxxx1-10~~
W22 1-10 Jackson gets five
W27 2-5 Dusharm pass intended for Jackson incomplete
W27 3-5 Dusharm loses two. Shaw tackles
W25 4-7 Renner kicks to Abaira who returns 46 yards to W18. 39 yard p.
FSU Ball
W18 1-10 Whigham fumbles, Hoeheisel recovers.
WSU Ball
W12 1-10 Dusharm fumbles and recovers
W11 2-11 Crutchfield slides for seven yards.
W18 3-4 Dusharm gains 12, but WSU loses 15, personal foulx
W17 3-19 Dusharm fumbles and recovers.
~~W17xxxx4-10~~

FSU 24, WSU 0

FLASH FOOTBALL STATS

Quick Halftime and After Game Reports of Vital Team Statistics and Individual Leaders

HALFTIME

Circle One

FINAL

TEAM STATISTICS

	FSU 24	Wichita 0
First Downs	12	8
Rushing Yardage (Net)	111 137	29
Passing Yardage (Net)	180	48
Return Yardage (Net)	163 —	101 —
Passes (Compl'd-Att-Had Into'd)	12-27-1	4-13-2
Punts (Number-Average)	5-21	7-36.8
Fumbles Lost	7 of 10	10 of 17
Yards Penalized	45	36

INDIVIDUAL LEADERS

FSU

Wichita

RUSHING	Att'd	Net Yards	Avg.
BAILEY	20	93	4.7
CAPPLEMAN	4	-7	-1.8
GILMAN	12	17	1.4
MUNROE	3	24	8

RUSHING	Att'd	Net Yards	Avg.
LEE	17	50	2.9
JACKSON	5	21	4.2
CRUTCHFIELD	4	7	1.8

PASSING	Att'd	Compl.	Net Yards
CAPPLEMAN	27	12	180

PASSING	Att'd	Compl.	Net Yards
DUSHARM	13	4	48

PASS RECEIVING	No. Rec'd	Net Yards	For TD
GAYDOS	1	40	—
BAILEY	1	53	1
TYSON	5	65	—
PEDERSON	3	17	1

PASS RECEIVING	No. Rec'd	Net Yards	For TD
TAYLOR	1	13	—
CRUTCHFIELD	1	8	—
RYAN	1	17	—
OWEN	1	10	—

FINAL INDIVIDUAL FOOTBALL STATISTICS

WICHITA
VISITORSFSU
HOME TEAM

RUSHING	Avg	Net Yards	For TD	Long Gain
DUSHARM	15	-23	-	12
JACKSON	10	21	-	7
LEE	17	50	-	15
CAYCE	4	-7	-	2
CROTCHFIELD	4	7	-	7
RENNER	3	-19	-	-
TOTALS	53	29	-	43

PASSING	Att-Comp-H.I.	Yards	For TD	Long Gain
DUSHARM	13-4-2	48	-	17
TOTALS	13-4-2	48	-	17

PASS RECEIVING	No.	Yds.	For TD	Long Gain
RYAN	1	17	-	17
TAYLOR	1	13	-	13
OWEN	1	10	-	10
CROTCHFIELD	1	8	-	8
TOTALS	4	48	-	48

PUNTING	No.	Yards	Avg.	Long Gain
RENNER	6	258	43	49
TEAM	1	0	0	-
TOTALS	7	258	43	49

ALL RETURNS	No.	Yds.	No.	Yds.	No.	Yds.
DUNCAN	1	-10	-	-	-	-
KIESAU	1	-1	-	-	-	-
CAIN	-	-	-	-	1	-
LEE	-	-	3	-73	-	-
HAYES	-	-	1	-17	-	-
TOTALS	2	-11	4	-90	1	-0

RUSHING	Avg	Net Yards	For TD	Long Gain
CAPPLEMAN	4	-7	-	1
BAILEY	20	93	-	13
GILMAN	12	17	-	7
MUNROE	3	24	1	18
JARRETT	4	4	-	4
WHIGHAM	1	6	-	6
TOTALS	44	137	1	49

PASSING	Att-Comp-H.I.	Yards	For TD	Long Gain
CAPPLEMAN	27-12-1	180	2	53
TOTALS	27-12-1	180	2	53

PASS RECEIVING	No.	Yds.	For TD	Long Gain
GAYDOS	1	40	-	40
BAILEY	1	53	1	53
TYSON	5	65	-	45
GILMAN	2	5	-	-
PEDERSON	3	17	1	9
TOTALS	12	180	2	141

PUNTING	No.	Yards	Avg.	Long Gain
CARRELL	2	49	24.5	28
WHIGHAM	2	56	28	31
TEAM	1	0	-	-
TOTALS	5	105	26	59

ALL RETURNS	No.	Yds.	No.	Yds.	No.	Yds.
JARRETT	-	-	1	-15	-	-
PELL	3	-68	-	-	1	-6
MUNROE	1	-6	-	-	-	-
LOWE	1	-12	-	-	-	-
ABRAIRA	1	-46	-	-	-	-
THOMAS	-	-	-	-	1	-19
GILDEA	-	-	-	-	1	-13
TOTALS	6	-132	1	-15	3	-32

		<u>LINE SCORE</u>				
		1	2	3	4	F
Wichita State	-----	0	0	0	0	0
Florida State	-----	10	7	0	7	24

FSU-- Bailey 53yd. pass from Cappleman(Guthrie kick). 10:28 1st Period

FSU-- Guthrie 40yd. field goal. 6:21 1st Period

FSU-- Munroe 18yd. run(Guthrie kick). 12:47 2nd Period

FSU-- Pederson 9yd. pass from Cappleman (Guthrie kick). 3:25 4th Period

Attendance: 31,821

Cosach Ben Wilson:

"Florida State has fine, fine personnel. Cappleman is out of sight. It was fantastic the way he threw the ball in this weather. We won't see another quarterback like him this year. If we do we're in trouble.

"If we had scored those three times we were close, I feel we could have won. I was very proud of our team. We never quit fighting and we didn't roll over and play dead.

"I thought our defense was in superb. We gave them a helluva fight."

COACH BILL PETERSON:

"It's hard to say what we looked like. There is no way you can tell in that swimming meet. We were just glad to get out of the game with a win.

~~think~~ "We probably should be playing a couple of more ~~big~~ teams like Wichita because we're not quite ready for two great teams like Miami and Florida.

"We can be a good team before the season is over, if we can get some punting. We didn't catch the football well but you can't blame the receivers in weather like this. But we had them wide open.

"Wichita has a fine defensive football team. There was no way to sustain anything out there tonight. The first part of the game we caught pretty well but the last part the ball was too wet.

"Fumbles hurt both sides. The only people ~~for~~ who fun in a game like this are the players.

"There will be a change in our punting game.

"The defense shut them out when their backs were against the wall more than once.

"After this one, Miami's scouts are probably as confused as I am.

"I don't remember us fumbling that much during a whole season."



**THE
COLLEGE
GAME**

FLORIDA

STATE / WICHITA STATE

Football Magazine

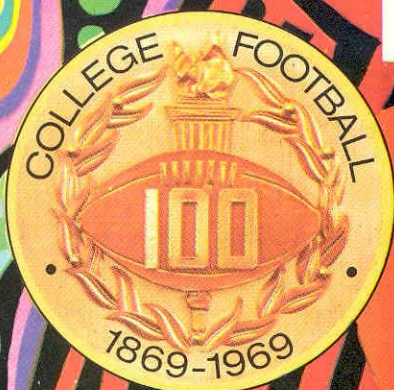
SEPTEMBER 20, 1969

SEVENTY-FIVE CENTS

SEMINOLES SALUTE FLORIDA STATE'S FIRST FAMILY
(See Page 7)



FLORIDA STATE'S NEWEST BOOSTER

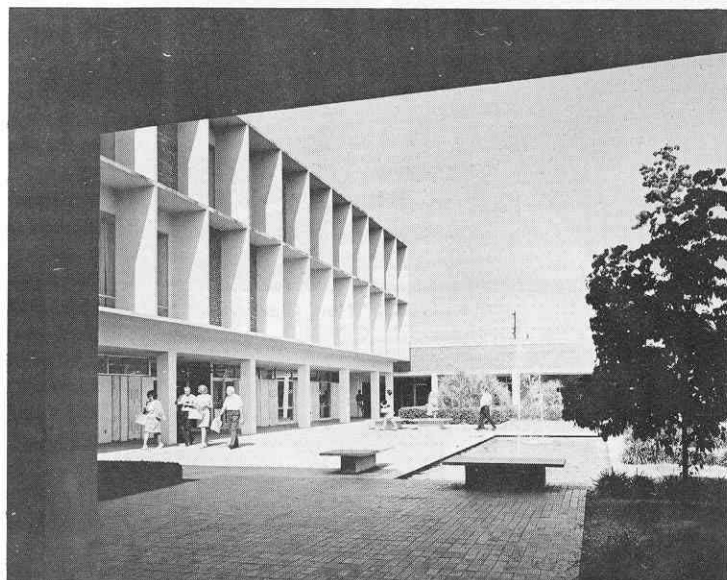


CENTENNIAL EDITION

History of College Football p.10

The First Game p.45

Welcome To Florida State University



A UNIVERSITY ON THE "GROW"

The competition for "All-America" standing is not limited to the football field at Florida State University, which seeks a "10-0" season each year in academics as well as athletics. Field goals, first downs and touchdowns in the classrooms and labs of Florida State's ten schools and colleges are setting pro-style records of achievement at the national and international levels as the University moves into the 112th year of its history. More than 42,000 alumni, more than 17,000 students and more than 3,000 faculty and staff form the dedicated, 1969 scholarship and support teams of this public, coeducational University which expects to have 28,000 students in 1975.

A SALUTE TO FOOTBALL FANS

FROM STATE'S PRESIDENT:



Dr. Stanley Marshall
President

The sight of a full stadium at Florida State's football games is one which affords great satisfaction — both to me, and to the Seminole team, because it represents one of the very few times in the year that all of the University's thousands of supporters are able to assemble in one place at one time. This very visible and public demonstration of your faith in the athletics and academics of a great University calls for the highest commendation and encouragement. On behalf of Florida State's faculty, staff, students and athletes, let me assure you that we are honored by the presence of each Seminole fan and visitor in Campbell Stadium today. Your individual and collective support is vital to the continued growth and success of Florida State.



"Hold that line, Seminoles."

Introducing A New
Seminole Booster

Master "Drew" Marshall
Born: July 31, 1969
Weight: 8 lbs. 5 oz.
Position: Cheerleader



"Touchdown!"

Photographs by Gil Lawhon — Office of Information Services

FLORIDA STATE'S NEW FIRST FAMILY



"That's not gatorade, son;
go ahead and drink it."

(EDITOR'S NOTE: This game program is dedicated to Florida State's "first family," and represents a special salute from the team to the University's new President, Dr. Stanley Marshall, as he begins the season in his new position as head coach of the Seminoles' administrative and academic teams.)

If there's a guy around with more energy than Florida State's new President, Dr. Stanley Marshall, the Seminole team's head coach Bill Peterson says he'll "sign 'em up in a minute."

Contagious enthusiasm and constant activity are the driving forces behind the green eyes and 165

(Continued on next page)



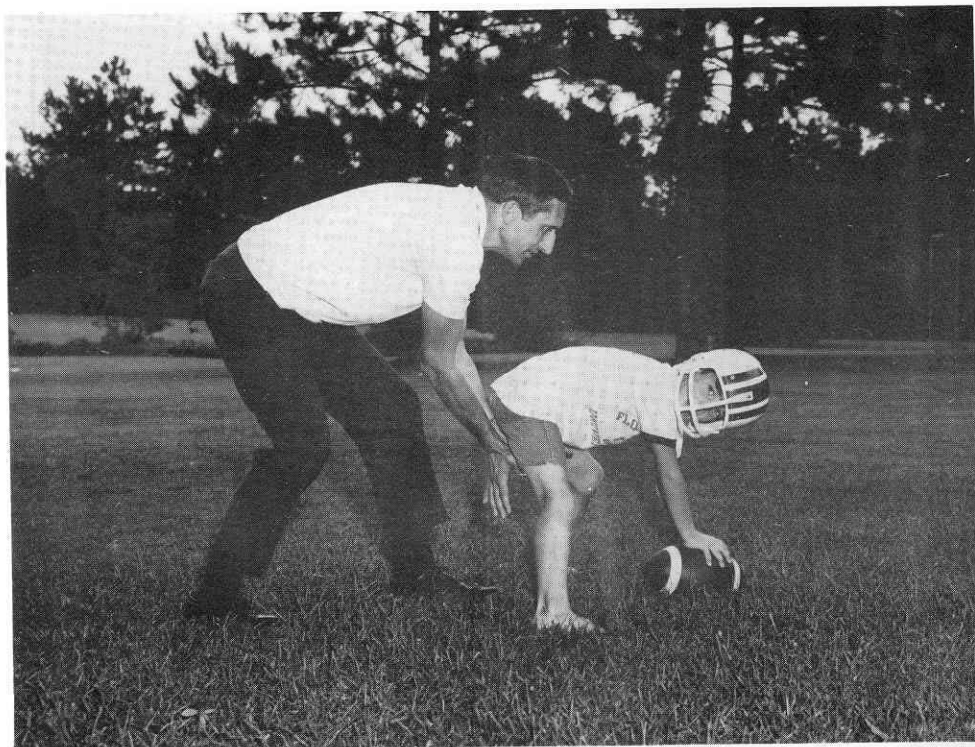
"I see a hole in that line big enough
for me, but not for Curchin."



"Cappleman threw that ball
clear out of the stadium!"



"Scalp 'em, Bailey!"



"Hike"

FLORIDA STATE'S NEW FIRST FAMILY

SPECIAL NOTICE TO SEMINOLES: *Dr. Marshall will give a major, "State of the University" address at Doak Campbell Stadium this coming Monday evening, Sept. 22, at 7:45 p.m. All faculty, staff, students and friends of the University are invited to attend this event.*

pounds of sinew and synergetic leadership that characterize the 5'9" framework and the fight-to-win frame of mind that Stan Marshall has brought to the presidency.

Having nearly eliminated the words "time out" and "halftime" from the vocabularies of colleagues who have shared the long string of 14-hour work days since Marshall became president on June 6, 1969, one might expect he would head for an easy chair the minute he gets home.

Not so.

According to Mrs. (Shirley) Marshall, there's always time for a daily game of touch football with son John, 7, and weekend tennis matches with friends—with Mrs. Marshall frequently playing doubles with him, and 16-year-old Sue Ellen making a fourth for batting or pitching practice in the back yard of the President's home.

It's easy to see that Florida State's new president means it when he says he's a firm supporter of, and believer in, athletics as a means of building character and releasing the tensions of modern living—not to mention those of a university presidency in this era.

"Athletics contribute a great deal to the development of the individual," says Marshall, who notes that he learned "many important lessons in sports and sportsmanship" that he has "tried to instill in" his

children. Among the lessons he hopes they will learn are these principles that he himself lives by:

"When you enter the fray, expect to take whatever wounds the game involves; and if you don't want to get hurt, don't play the game."

"There is no room in any game for the many who want to play but don't want to get into the action; and there is no refuge for those who are unwilling to take their share of the blows, and to lose occasionally."

"I require a team spirit from my staff and a great deal of loyalty—but no more than I am willing to give in return. These are points of character that I believe are built into athletic programs of all kinds."

Partial to football, basketball, baseball, badminton, volleyball, tennis and soccer in equal measures, Marshall claims no expertise in any, but a genuine love of the "contest" that all involve. Saying he's never been a superstar in any sport, he does admit to having lettered in soccer at Slippery Rock and having been undefeated in dual competitions for the mile and two-mile runs in track. As a junior, he played one year of football as a halfback.

Even in his Army days as a "dogface," Marshall recalls looking forward to the Saturday afternoon games between platoons in boot camp—as a means of working out the frustrations of a typical 1943 private.

Marshall's background as a boy on a Pennsylvania farm may have led to his kinship with outdoor activities. He milked cows, pitched hay and drove horses for his father until he was 14; and later worked in a coal mine for one summer while in college—another factor that accounts for his affinity for fresh air.

He waited tables in college and was president of his class—factors which lead him to place less emphasis on his Mayflower ancestry and more on the mixture of Scotch, Irish and English which he combines when describing his nationality.

He also credits much of his education to his children—who now number five, with the latest addition, James Andrew (Drew), having arrived last July 31.

Saying he sometimes thinks that youngsters in revolt must have gotten the feelings that they have from their homes, Dr. Marshall ranks the close-knit ties of his family ahead of athletics, administering the university or anything else.

"There is much sharing of experiences among all of us; and so far, there are no big issues on which any of my kids and I have fundamental differences. There is no position that they have taken so far, that I haven't been able to understand or at least be sympathetic with; and my 18-year-old son, David,

who is a senior at Cornell, has had a decided influence on my own opinions and attitudes," says Marshall.

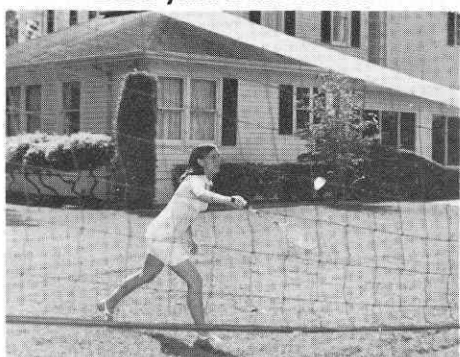
"I have even learned to appreciate some of the tunes played by the Beatles," he adds, noting that they don't, however, turn him on, and that he recognizes the changing sound of music as this generation's form of Rest and Relaxation (R & R).

Apart from the time he now reserves for family-oriented sports and a Saturday or Sunday afternoon football game on television—in which Shirley shares his delight—Dr. Marshall's time for his own "R & R" is limited by the pressures of the presidency and the demands of a growing university.

Scheduled to be "on the road" for at least 30 of the next 90 days, he laments the lack of time for reading—particularly the kind of reading which he says "the mind demands" if one is to keep alert and ready for change.

And change, itself, is another thing in which the new president has a firm belief. Students and faculty returning to the campus this week will find he's spent a busy summer making changes in many areas of the University that will bring students, faculty and staff more actively into the administrative machinery of Florida State's present and future planning and decision-making.

Back-yard Badminton



Sue Ellen and John



Getting Kimberly, 1, into the swing of things Marshall-family style. Left to right: John, Mrs. Marshall, Kim and Sue Ellen.



Ringers But No Horseshoes

(ED NOTE: Although most people consider 1947 as the year Florida State first started playing football, records actually indicate that nearly a half century previous there was a Florida State team. First as Florida Seminary West of the Suwannee River and then as Florida State College the school enjoyed coeducational status from 1858 to 1905 when it became Florida State College for Women. Records of intercollegiate football date back to 1902).

by CARL HAIRE

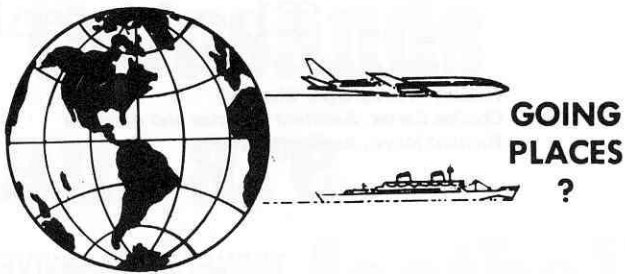
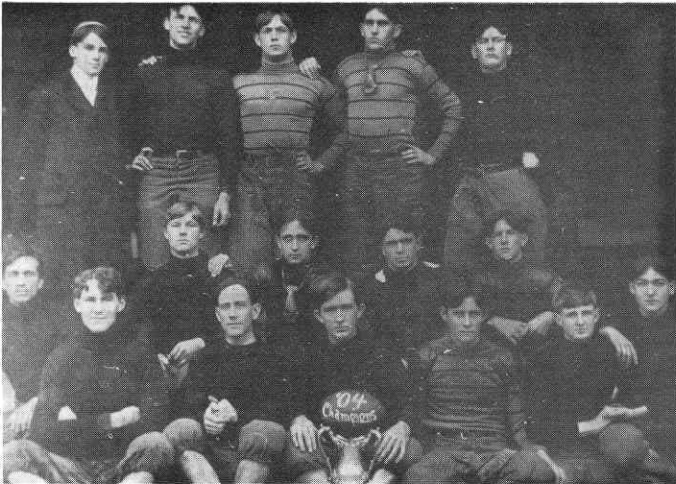
The game of Horseshoes usually comes to mind when one hears the word "ringer", but at the turn of the century the term referred to a different game, football.

Guyte McCord, Sr., tackle on the Florida State College football team that was state champion in 1904, says that the use of ringers was a common practice by all teams in those days. A ringer, according to alumnus McCord, was an experienced player who was not officially a member of the team. In most instances he had played several years for some other school. The outcome of a game usually depended on which team had the most ringers playing. The prominent role played by ringers is evident in a vivid description of a 1903 game between Florida State College and Bainbridge, Ga. which appeared in the college annual that year. The unknown author said, "We were excited, and what's more, if the truth be told, we were scared. Our team was lighter than that of our opponents, and besides the whole world, at least the whole college world knew, that there was in the Bainbridge line-up several old University of Georgia veterans. Men old and tried in the game, and bearing on their muscular bodies the scars of many hard-fought battles of the gridiron." In spite of the ringers used by Bainbridge, the final score was 5-0 in favor of Florida State College.

Then, as now, protective devices were worn by every man on the team. Nose guards were used and pants were padded along the thighs with strips of wood, something like bamboo stays. The players also used shoulder pads and shin guards.

Weight and brute strength were vital then, as much as now, with the yardage gained by the man carrying the ball depending largely on the blocking of the offensive line.

Florida State's 1904 Champions



ATHENS, GEORGIA? ATHENS, GREECE?
NEW YORK? NASSAU? NEPAL?

TRAVEL IS OUR PROFESSION

No Charge For Our Services
Tickets - Reservations At Printed Rates



MARION HAY, PRESIDENT
TOM LYLE

TALLAHASSEE TRAVEL AND TOURS, INC.

Formerly Hay Travel Service Established 1930
CALHOUN AT CALL STREET TELEPHONE 224-4161



Lindy's Fried Chicken

Call 224-5811 YOUR ORDER WILL BE WAITING

SPECIAL BOX — 3 PCS. CHICKEN F.F., COLE SLAW & ROLLS	1.20
1/2 FRY CHICKEN — 4 PCS. CHICKEN, F.F. COLE SLAW & ROLLS	1.45
WHOLE CHICKEN — 8 PCS. (CHICKEN ONLY)	2.25
BUCKET 'O CHICKEN — 15 PCS. (W/CHOICE OF SLAW OR GRAVY & ROLLS)	4.15
BARREL 'O CHICKEN — 21 PCS.	5.50

1447 THOMASVILLE RD. PHONE 224-5811
OPEN 7 DAYS A WEEK — INCLUDING SUNDAY

TONIGHT'S HALF-TIME

The Marching Chiefs

Robert T. Braunagel, Director
Charles Carter, Assistant Director and Arranger
Richard Mayo, Assistant Director

Herschel Beazley, Drum Major
Mary Lynn Hendrickson, Head Majorette

THE MUSIC AT HALFTIME

THEME: 100th ANNIVERSARY OF KING FOOTBALL

Music

Fanfare
Down The Field

Collegiate Medley
Mr. Touchdown, Victory Song,
and Illinois Loyalty

King of the Road

I Get a Kick Out of You
Up Up and Away

I'm Looking Over a Fourleaf
Clover

He's My Guy

Formation

Company Front—In a special salute to the 100 anniversary of Intercollegiate football, The Marching Chiefs open with "Down the Field"

Pennant - 100
The Chiefs form a pennant and change it into 100, which changes into 10 - 0, our hopes for an all victorious season.

King Football - The king of all sports

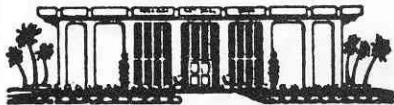
Football player kicks a field goal

Four leaf clover, wishing our serving team a most successful season.

Pete - We close with a salute to our coach, Bill Peterson

The Marching Chiefs are a composite of the whole university life. Numbering two hundred twenty members, of which approximately fifty per cent are music majors, the Chiefs have appeared in Philadelphia, Miami, El Paso, and Jacksonville and have had numerous appearances on television. Acclaimed as one of the finest in the country, the Chiefs have been honored by the football team and the student body and are recognized as leaders of campus life as well as being the best of marching bands. Known for their great "Espirit de Corps" the Chiefs' motto: "We have never lost a half-time show," exemplifies their devotion and pride.

PARKWAY NATIONAL BANK



BANK THE QUICK WAY - BANK THE PARKWAY
COURTESY · CONFIDENCE · CO-OPERATION

Telephone: 877-4121
1407 East Lafayette Street
Tallahassee, Florida



WHERE YOU WILL FIND YOUR FRIENDS

701 W. JEFFERSON
South Gate F.S.U.



Why we have a special interest in serving you

Ours is an independent telephone company which means we're really part of this community. Many of you have a direct interest in our company. We have to work harder and do more to merit your confidence. And since 40% of the area of the growing United States (including Alaska and Hawaii) is served by Independent companies, we must be doing something right.



southeastern
telephone company

Bill Peterson

by JACK HAIRSTON

Sports Editor, Jacksonville Journal



Jack Hairston

Lonnie Burt did me no favor when he asked me to write this page about Florida State University Football Coach Bill Peterson.

Not that Pete and I aren't old friends, going back to the days when he was an assistant at Louisiana State University and I was a New Orleans sports writer who covered the Bayou Bengals regularly.

But what in the devil's name can you tell an FSU fan about the winningest Seminole football coach ever?

The average FSU fan knows almost everything there is to know about Bill Peterson, right down to which house he lives in (because the FSU fan has marched out there to participate in a demonstration designed to persuade Pete from leaving for a pro job), and he knows Pete is a mixture of charm and fire, gross pessimism and unbeatable determination (because he's heard him speak before many a group and watched him pace the sidelines during many a game), and he already knows Pete is one of the four or five best coaches in the business (because he's got eyes and can see for himself by what goes on right out here at Doak Campbell Stadium).

But I don't give up easily, so I'm going to reach way down deep and try to come up with a few things you haven't heard before, or if you have heard a couple of 'em, maybe you've forgotten them.

Such as:

The first year he coached a high-school football team, he did double duty, putting in part of each afternoon coaching that team and part of each afternoon playing end for Ohio Northern, where he was a senior gridder. . .

While a high-school coach, he spent part of each summer at the camp of the Cleveland Browns, watching Paul Brown build those great teams, and he's never forgotten Brown's kindness in permitting him the inside view.

While producing state-championship teams at Mansfield (O.) High, he became offseason friends with a Mansfield native named Paul Dietzel, and when Dietzel moved from an Army assistant job to head coach at LSU, he gave Pete his first college coaching opportunity. Hanging up the phone after Dietzel called, Pete told his wife, Marge, "Get the curtain rods down and the stuff packed. We're going to LSU." He didn't hesitate on the breakthrough chance, and he never gave her a chance to discuss it, as he did regarding recent opportunities when she talked him out of two lucrative pro head-coach jobs (for which every true FSU fan will always be indebted to her). . .

The day Pete signed to coach FSU, he almost got back on the plane to return to Baton Rouge before the final interview. A mysterious phone caller identified himself (incorrectly) as a member of the athletic committee and told Pete there'd been a complete change in plans. Half enraged, half dumbfounded, Pete considered flying out, but he somehow wound up going to the committee meeting, quite possibly to give the committee a piece of his mind for the way they were running things. To his surprise, he was greeted with open arms, and when he left the room, he was FSU's head coach.



Athletic Director Vaughn Mancha

The guiding hand in building Florida State's nationally prominent athletic program has been Athletic Director Vaughn Mancha.

A graduate of Alabama where he was an All-America lineman, Mancha first came to Florida State in 1952. After five seasons as assistant football coach, he went to Columbia University to work on his doctorate. He returned to the Seminoles in 1959 as Athletic Director.

His ultimate goal is to provide Florida State students, alumni and supporters with the strongest over-all athletic program in the nation.



Vaughn Mancha



Assistant to AD
Ken MacLean

Assisting Mancha with the complex administrative duties is former Seminole player and coach, Ken MacLean. He moved into administration three years ago after several seasons as head recruiter.

A successful high school football coach, MacLean's 1961 Florida High (of Tallahassee) squad was unbeaten and unscored upon in ten games.

FAVORITE OF THE BIG BRAVES!



Frisch's

THE ORIGINAL

BIG BOY

RESTAURANT

**GREAT PLACE FOR POW WOWS
AND GOOD FOOD**

SERVING:

• Breakfast

• Lunch

• Dinner

• Snacks

Open 7 A.M. to Midnight

'Til 2 A.M. Fridays and Saturdays

1775 W. Tennessee Street

TALLAHASSEE — TELEPHONE 224-1246

TRY FRISCH'S CARRY-OUT

TEC **TALQUIN ELECTRIC** **COOPERATIVE, INC.**

"OWNED BY THOSE WE SERVE"

IN

GADSDEN, LEON, LIBERTY
AND WAKULLA COUNTIES



LIVE BETTER... ELECTRICALLY

A B C

MOBILE HOMES

why pay **MORE** when you
can buy for **LESS** at

A B C

Mobile Homes

2737 W. Tennessee

Tallahassee, Florida

HERSCHEL COOK
Manager

Phone 576-5146

OPEN 365 DAYS 7:30 AM To 10:00 PM (Downtown Location)



Ask
Your Doctor
To Call Us.

Brown's

PHARMACY

Prescriptions

FILLED ACCURATELY
AND PROMPTLY - - - -

Fast Delivery
Service



TO ALL
SUBDIVISIONS

- Sick Room Supplies
- Baby Department
- Vitamins
- Sundries
- Fountain Service
- Greeting Cards

VISIT OUR GIFT SHOP
GIFTS FOR ALL OCCASIONS
FREE GIFT WRAPPING

COMPLETE LINE:
Elastic Stockings, Anklets
and Knee Caps

RALPH BROWN, PHARMACISTS



FREE CUSTOMER PARKING

DOWNTOWN

NORTHSIDE

222-3431
224-1921

EMERGENCY PHONE 385-3368

385-6531

EMERGENCY PHONE 385-3368

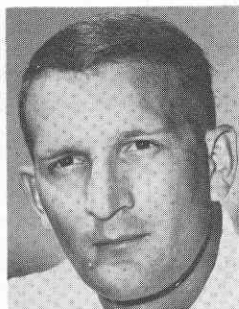
441 N. MONROE

2057 N. MONROE

"CENTRALLY LOCATED - SERVING ENTIRE CITY" "CONVENIENTLY LOCATED - SERVING NORTHSIDE"

ONE OF THE FINEST and MOST COMPLETE
COSMETICS DEPARTMENTS IN TALLAHASSEE

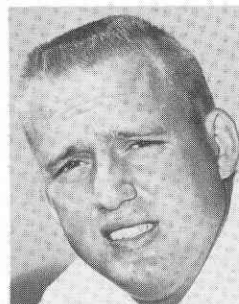
Assistant Coaches



Gary Wyant
First Assistant,
Defensive Backs



Bob Harbison
Defensive Chief



Bobby Jackson
Linebackers



Al Conover
Offensive Line



Dan Henning
Quarterbacks,
Receivers



Bud Whitehead
Running Backs

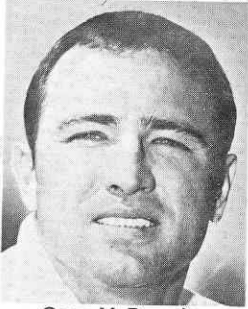


Charlie Wright
Freshman



John McGregor
Recruiting Ass't.

Athletic Staff



Gene McDowell
Head Recruiter



T. K. Wetherell
Academic Advisor



Dr. James D. Maxwell
Team Physician



Don Fauls
Head Trainer



Bill Zeigler
Assistant Trainer



Tillman Dixon
Equipment Manager



Claude Thigpen
Ticket Manager



Lonnie Burt
Sports Info. Dir.



Hank Schomber
Ass't. Sports Info. Dir.

Le Roc Cocktail Lounge

Tallahassee's Finest . . .

Located in the
DUVAL HOTEL

For an evening of relaxed
entertainment — enjoy your
favorite beverage

No cover charge

Entertainment nightly

Open daily 12 Noon to 1 A.M. — except Sunday

=Mendelson's=

Your Personal
Department Store

SAYS

GO
SEMINOLES!

Mendelson's
Downtown

9 A.M. to 6 P.M.
208 So. Monroe

Mendelson's
Northwood

(Opens
Sept. 30th)

=Mendelson's=

Southernair MOTEL

Across from F.S.U.
Tallahassee, Florida 32304



and

Skyline

Motor Lodge

U. S. 90 West

Quality Courts

for Quality People

GOOD LUCK SEMINOLES!

Varsity THEATRE

PHONE 224-8636

1833 W. TENNESSEE

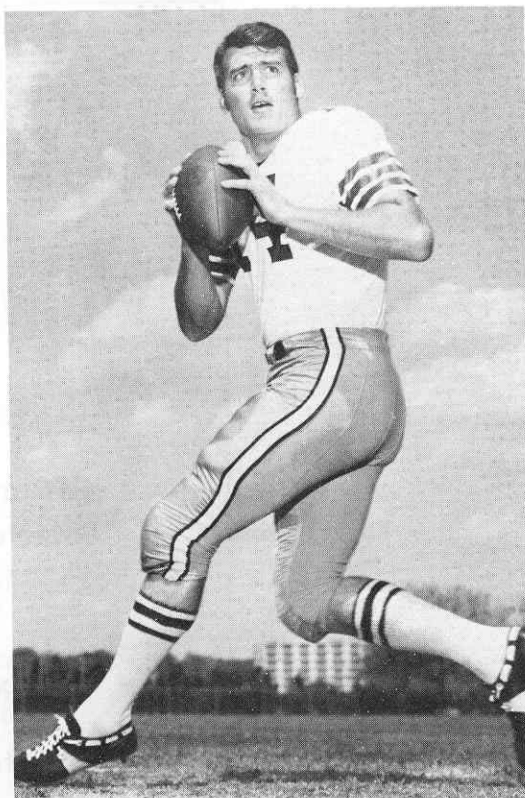
Miracle THEATRE

PHONE 224-2617

1815 THOMASVILLE ROAD

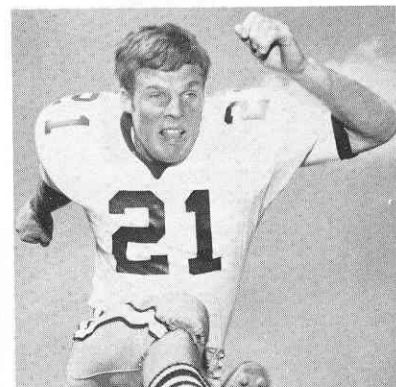
Operated by

**EASTERN FEDERAL
CORPORATION**

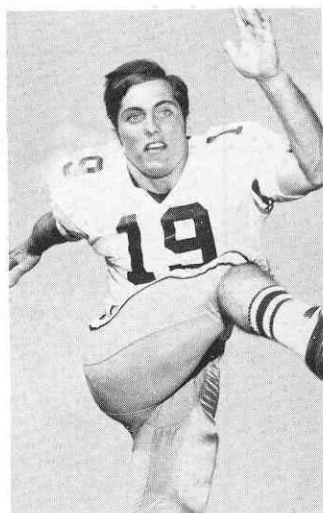


Bill Cappleman—Dunedin
Senior—Marketing

THE 1969 SEMINOLES



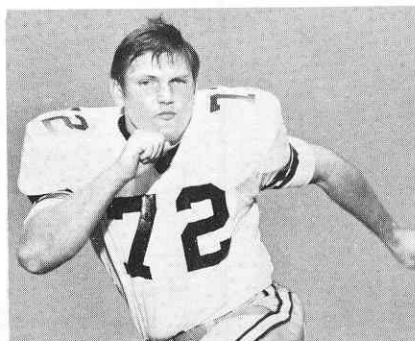
John Pell—Pahokee
Senior—Education



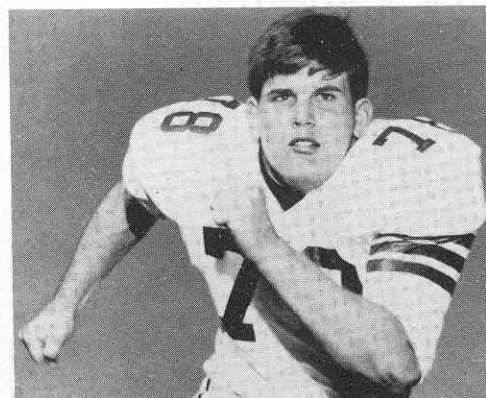
Phil Abaira—Ft. Lauderdale
Senior—Business



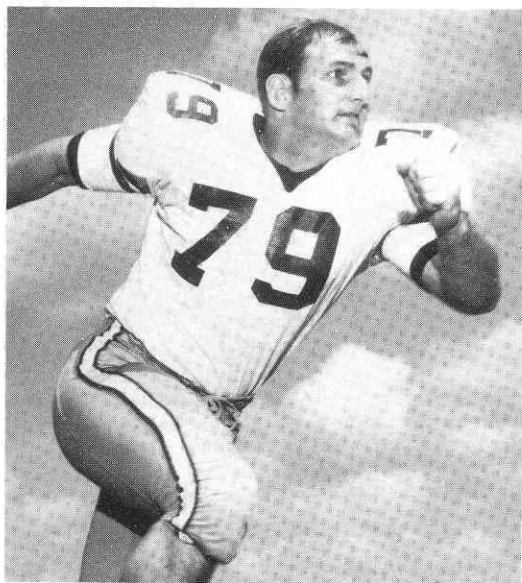
Duke Johnston—Ft. Lauderdale
Senior—Criminology



Randy Logan—Seal Beach, Calif.
Senior—Radio & TV



Wayne Johnson—Macon, Ga.
Senior—Business



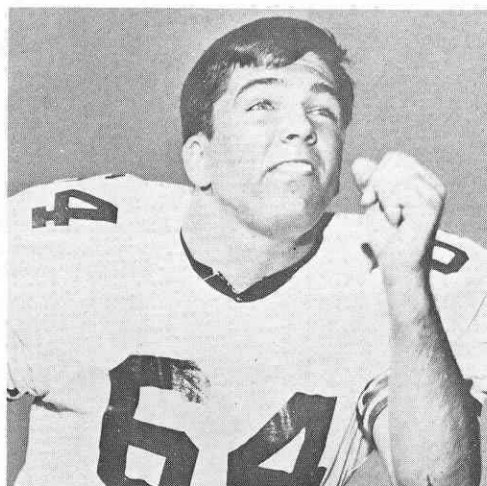
Frank Vohun—Brooksville
Senior—Phys. Ed.



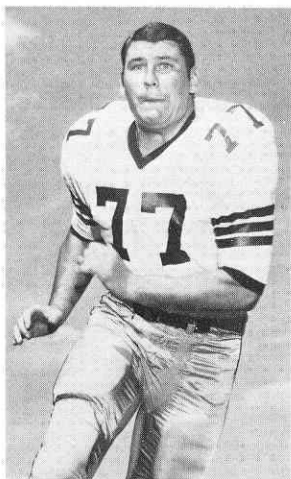
Brent Gilman—Long Beach, Calif.
Senior—Political Science



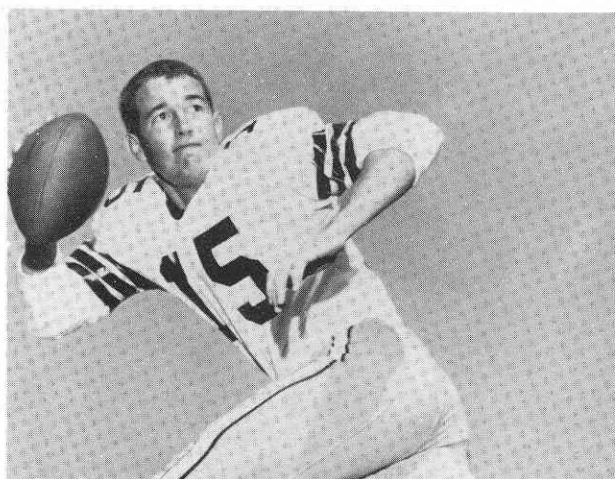
Grant Guthrie—Claymont, Del.
Senior—Criminology



Stan Walker—Tallahassee
Senior—Business



Jeff Curchin—Ocala
Senior—Phys. Ed.



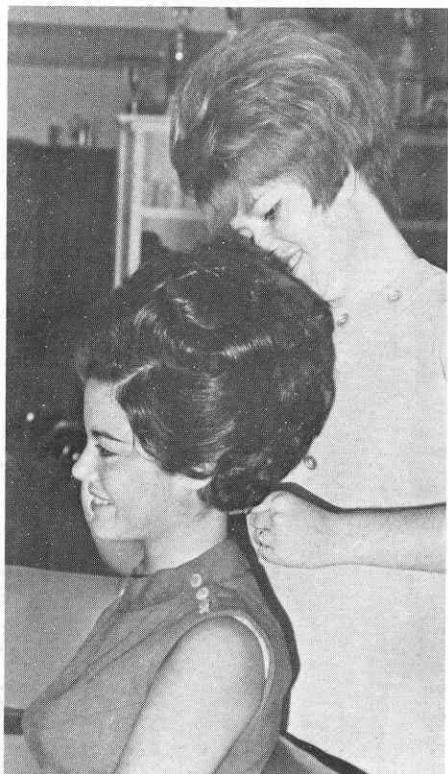
Tommy Warren—Coral Gables
Senior—Business

OPEN MONDAY thru SATURDAY



If she's *Lovely*...
she just came from a

Suburban Salon



Mrs. Stan Walker

Parkway

Suburban Salon

**APPALACHEE
PARKWAY**

SHOPPING CENTER

877-4173

Gladys Brown
Co-Owner, Mgr.

A Joyous Way of Life

Luxurious

Carefree

Detroit

Statler

Plantation

**Crestview
Mobile Housing, Inc.**

2530 W. Tennessee St.

Tallahassee, Fla.

GO

Seminoles!...

GO

Arthur Munroe!

GO

Pontiac!

the Best to you from ...

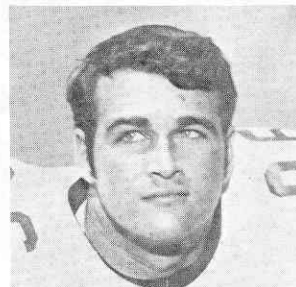
FRYER-THOMAS MOTORS

PONTIAC • OLDSMOBILE • GMC

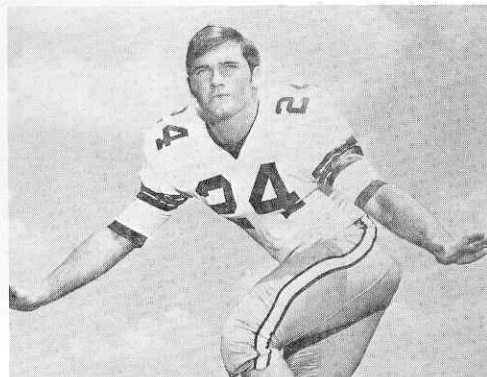
QUINCY, FLORIDA



Jim Tyson—Pahokee
Junior—Business



Randy Hall—Miami
Junior—Business



John Lanahan—Jacksonville
Sophomore—Business



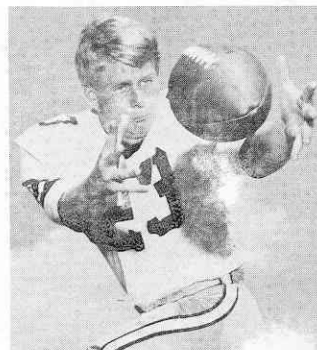
Joe Strickler—Avon Park
Sophomore—Math



Jay Stokes—Sanford
Sophomore—Business



Benny Rust—West Palm Beach
Sophomore—Undecided



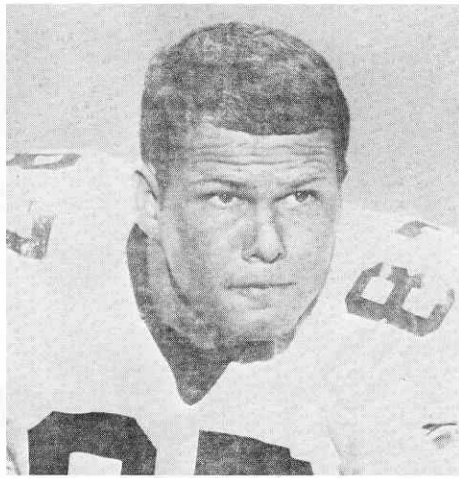
Don Pederson—Grove and
Junior—Hotel Restr. Mgt.



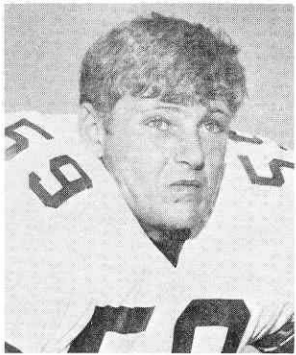
Theron Bass—Live Oak
Junior—Criminology



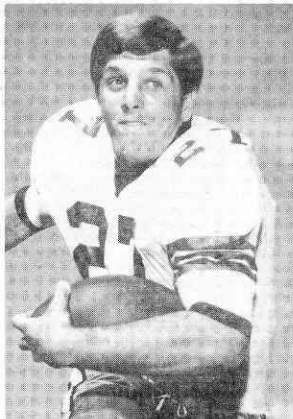
Ron Wallace—Macon, Ga.
Junior—Business



Bill Rimby—St. Petersburg
Sophomore—Business



Larry Strickland—Tallahassee
Sophomore—Undecided



Arthur Munroe—Quincy
Sophomore—Pre Med



Mike Sammons—Atlanta, Ga.
Sophomore—Business



Steve Gildea—Daytona Beach
Junior—Business



John Montgomery—Jacksonville
Sophomore—Undecided



Richard Amman—Cocoa Beach
Sophomore—Undecided



Mike Gray—Lake Mary
Junior—Phys. Ed.

OPEN MONDAY thru SATURDAY



If she's *Lovely* . . .
she just came from a

Suburban Salon



Mrs. Arthur Munroe

Tony's
Suburban Salon

1859 W
TENNESSEE

224-3133

Tony DeMaria
Co-Owner, Mgr.

TONIGHT'S TEAMS

WICHITA STATE

17 Utah State 7

WICHITA STATE

17	Points
53/1.5	Rushing Plays/Avg.
11/4/0	Passes Att./Comp./Had Int.
129	Passing Yardage
208	Total Yardage
1	Fumbles
0	Fumbles Lost

UTAH STATE

7
49/2.1
17/7/3
40
143
5
2

INDIVIDUAL LEADERS FLORIDA STATE (1968 leading returnees)

PASSING	ATT.	COMP.	INT.	YDS.	TD
Cappleman	287	162	11	2410	25
Warren	12	27	1	75	2

RECEIVING	NO.	YDS.	AVG.	TD	LG
Bailey	21	209	10.0	1	16
Tyson	11	151	13.7	4	34
Pederson	4	68	17.0	0	24

RUSHING	TC	NET	AVG.	TD	LG
Bailey	116	570	4.9	2	45
Gilman	11	60	5.5	0	23
Warren	7	48	6.9	0	21

SCORING	TD	FG	XP	TP
Guthrie	0	8	31	55
Tyson	4	0	0	24
Bailey	3	0	0	18

WICHITA STATE

PASSING	ATT.	COMP.	INT.	YDS.	TD
Dusharm	11	4	0	129	1

RECEIVING	NO.	YDS.	AVG.	TD	LG
Owen	1	51	51	1	51
Taylor	1	42	42	0	42
Jackson	2	36	18	0	20

RUSHING	TC	NET	AVG.	TD
Lee	19	36	1.9	0
Jackson	17	34	2.0	1

SCORING	TD	FG	XP	TP
Owen	1	0	0	6
Jackson	1	0	0	6
Kinkaid	0	1	2	5



Established 1891

GOODBODY & CO.

MEMBERS OF LEADING STOCK

and

COMMODITY EXCHANGES

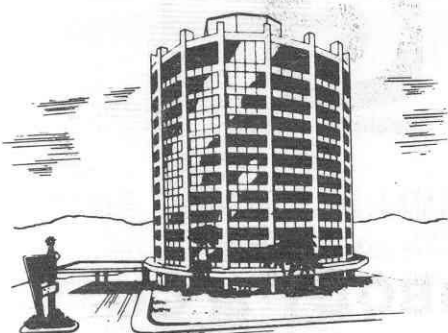
Telephone 222-4380

P. O. Box 810

Tallahassee Bank & Trust
Building

TALLAHASSEE, FLORIDA 32302

Your Host from Coast to Coast®



TWO LOCATIONS
TO SERVE YOU

☆☆☆☆☆

316 W. Tennessee St.

Viking Lounge

With Live Entertainment

Camelot Dining Room

☆☆☆☆☆

1302 Apalachee Parkway

Tele. 877-3141

Complete Banquet Facilities



TONIGHT'S GAME

By LONNIE BURT

Sports Information Director

Wichita, Florida State's opponent tonight, shocked the college football set last Saturday afternoon when the Shockers knocked off three-touchdown favorite Utah State 17-7.

Seminole scouts watching the contest came back to Tallahassee with the word that Wichita "is on the way back." It was the first Shocker victory after 11 straight defeats and certainly an outstanding debut for new head coach Ben Wilson.

The Shockers used a pair of long passes for their touchdowns. In the second period, quarterback Butch Dusharm pitched a 51-yard beauty to wingback Tom Owen, a sophomore from Tampa.

Another Dusharm pass, this one to split end Johnny Taylor, put Utah State in deep trouble and a Shocker fumble recovery inside the one yard line set up the score.

Wichita's defensive ability was what impressed Seminole scouts and leading the defenders was senior left tackle Lynn Duncan, who forced one fumble and recovered another.

Also outstanding was middle linebacker John Hoheisel, 215-pound junior.

Dusharm proved in the Shockers' opener that he can throw the football and senior tailback Kenny Lee is always a threat on the ground.

Florida State goes into tonight's contest with only five starters returning from last season's Peach Bowl outfit. They include quarterback Bill Cappleman, running back Tom Bailey and guard Stan Walker on offense along with end Ron Wallace and tackle Frank Vohun from the defense.

Cappleman, the Seminoles' All-America candidate, must find receivers to take up the slack for the departed Ron Sellers. However, he has available some of the finest running backs in Florida State history.

This is the first meeting between the two schools.

FSU ROSTER

NO.	NAME	POS.	CLASS	HT.	WT.	1988 STATUS	HOMETOWN
19	PHIL ABRAIRA	DB	Sr.	6-0	180	2VL	Ft. Lauderdale
75	RICHARD ANMAN	DT	Soph.	6-6	220	Frosh	Cocoa Beach
28	ROBERT ASHMORE	DB	Soph.	6-0	185	RS	Tallahassee
30	TOM BAILEY	RB	Jr.	6-2	212	1VL	Coral Gables
16	DAVID BARNES	DB	Soph.	5-11	175	Frosh	Maple Heights, O.
62	THERON BASS	LB	Jr.	5-11	200	Frosh	Live Oak
80	STEVE BEVILLE	DE	Soph.	6-2	205	Squad	Fernandina Beach
54	BOBBY BURT	QB	Jr.	6-1	210	1VL	Cairo, Ga.
14	BILL CAPPLEMAN	QB	Sr.	6-3	210	1VL	Dunedin
11	DUANE CARRELL	PK-P	Soph.	5-10	170	Squad	Washington, D.C.
42	BILL CHESHIRE	P	Sr.	6-1	193	2VL	Ocala
77	JEFF CURCHIN	OT	Sr.	6-6	255	1VL	Atlanta, Ga.
32	EDDIE DAVIS	FL	Soph.	6-3	179	Frosh	Winter Haven
47	GEORGE DAVIS	FL	Soph.	6-0	180	RS	Valdosta, Ga.
82	RHETT DAWSON	SE	Soph.	6-1	187	Frosh	Lakeland
55	ALLEN DEES	C	Soph.	6-2	196	Frosh	Miami
61	JOHN ESSEX	OT	Soph.	6-2	226	Frosh	Dallas, Tex.
18	KENT GAYDOS	SE	Soph.	6-6	209	RS	Daytona Beach
58	STEVE GILDEA	LB	Jr.	6-0	197	1VL	Long Beach, Calif.
40	BRENT GILMAN	FB	Sr.	6-2	205	Frosh	Tampa
84	MIKE GLASS	TE	Soph.	6-3	202	Frosh	Lake Mary
49	GUY GLISSON	LB	Soph.	6-0	195	Frosh	Tallahassee
35	MIKE GRAY	FL	Jr.	6-3	201	1VL	Claymont, Del.
44	BUDDY GRIDLEY	DB	Soph.	5-11	195	Frosh	Miami
33	GRANT GUTHRIE	PK	Sr.	6-0	204	2VL	Rockledge
86	RANDY HALL	DE	Jr.	6-0	206	1VL	Elizabethton, Tenn.
51	BILL HUGHES	C	Jr.	6-1	225	1VL	Macon, Ga.
48	JAMES JARRETT	FB	Soph.	6-2	207	RS	Ft. Lauderdale
78	WAYNE JOHNSON	OT	Sr.	6-2	238	2VL	Jacksonville
73	DUKE JOHNSTON	DT	Sr.	6-2	247	2VL	Seal Beach, Calif.
24	JOHN LANAHAN	DB	Soph.	6-0	196	RS	St. Petersburg
72	RANDY LOGAN	OG	Sr.	6-3	230	1VL	Thomaston, Ga.
56	BILL LOHSE	LB	Jr.	6-1	184	Squad	Tallahassee
74	RON LOWE	LB	Jr.	5-11	184	1VL	Macon, Ga.
57	ROBERT McEACHERN	DT-DE	Jr.	6-2	221	Frosh	Garfield Hts., O.
89	J.W. McKINNIE	DE	Soph.	6-2	195	Frosh	Dalray Beach
31	PAUL MAGALSKI	FB	Soph.	5-11	210	Frosh	Williston
70	ROGER MINOR	OT	Soph.	6-3	241	Frosh	Coral Gables
22	DOUG MITCHELL	DB	Jr.	6-3	198	Squad	Jacksonville
63	GEORGE MONTGOMERY	OG	Soph.	6-2	220	RS	Quincy
43	JOHN MONTGOMERY	DB	Soph.	6-1	191	Frosh	Miami
27	ARTHUR MUNROE	RB	Soph.	6-1	184	RS	Groveland
41	CALVIN PATTERSON	RB	Soph.	5-10	190	Frosh	Pahokee
23	DON PEDERSON	FL	Jr.	6-0	181	1VL	Fernandina Beach
21	JOHN PELL	DB	Sr.	6-1	178	1VL	Fernandina Beach
60	BARRY RICE	LB	Jr.	6-2	207	1VL	St. Petersburg
88	BERYL RICE	DE	Jr.	6-0	201	1VL	Hatboro, Pa.
76	BILL RIMBY	OT	Soph.	6-4	221	RS	West Palm Beach
68	DAN ROATCHE	C	Soph.	5-10	198	Frosh	Atlanta, Ga.
29	BENNY RUST	DB	Soph.	6-0	188	RS	Marietta, Ga.
67	MIKE SAMMONS	OG	Soph.	6-1	206	Squad	Ft. Lauderdale
65	BILL SHAW	DT	Soph.	6-2	219	Frosh	Macon, Ga.
52	CRAIG SOWERS	C	Soph.	6-4	224	Frosh	Groveland
71	WAYNE SPENCE	DT	Soph.	6-3	235	Frosh	Sanford
17	JACKIE SPEER	OG	Soph.	6-3	181	RS	Tallahassee
53	JAY STOKES	OG	Soph.	6-4	222	RS	Avon Park
59	LARRY STRICKLAND	LB	Soph.	6-1	206	Frosh	West Palm Beach
66	JOE STRICKLER	OT	Soph.	6-2	235	Squad	Pahokee
81	DANNY THOMAS	DB	Sr.	5-10	184	1VL	Brooksville
20	JIM TYSON	TE	Jr.	6-1	208	1VL	Tallahassee
79	FRANK VOHUN	DT	Sr.	6-2	225	2VL	Macon, Ga.
64	STAN WALLACE	OG	Sr.	6-3	219	1VL	Coral Gables
83	RON WALLACE	DE	Jr.	6-2	187	1VL	Sanford
15	TOMMY WARREN	QB	Sr.	5-11	163	2VL	West Palm Beach
12	FRANK WHIGHAM	OB	Soph.	6-0	181	Squad	Adel, Ga.
69	FRANK WHIGHAM	OB	Soph.	6-0	248	Squad	Orlando
50	TOM WHITE	DT	Jr.	6-4	207	Frosh	
50	DAN WHITEHURST	LB	Soph.	6-4	207	Frosh	
87	TED ZAFFRAN	TE	Soph.	6-3	202	Squad	

WICHITA ROSTER

NO.	NAME	POS.	CLASS	HT.	WT.	AGE	HOMETOWN
57	NICK BARBER	K	Jr.	6-0	185	21	Glenn Falls, N. Y.
40	FLOYD BEARDSLEY	K	Jr.	5-9	180	23	Wichita, Kan.
88	MIKE BOYD	DE	Jr.	5-9	180	20	Lawrence, Kan.
89	MIKE BRUCE	TE	Soph.	6-0	180	20	Sherman, Tex.
36	BILL BURCH	LB	Jr.	6-1	195	20	Hannibal, Mo.
28	SID CAIN	S	Sr.	5-11	175	23	Wichita, Kan.
30	RANDY CAYCE	FB	Sr.	6-2	215	21	Crystal City, Mo.
44	DON CHRISTIAN	DB	Soph.	6-1	200	19	Duncan, Okla.
27	DENNIS CLAUDE	S	Jr.	6-0	175	19	Kansas City, Kan.
76	KELLY COOK	OT	Soph.	6-4	220	20	Cheney, Kan.
26	BOB CRUTCHFIELD	TB	Soph.	6-1	195	21	Ft. Pierce, Fla.
75	LYNN DUNCAN	DT	Sr.	6-2	220	21	Oklahoma City, Okla.
14	BUTCH DUSHARM	OB	Jr.	6-0	180	22	Vineland, N. J.
38	ALAN ESKAM	FB	Soph.	6-0	210	21	Cinaron, Kan.
51	JIMMY FRANKS	C	Soph.	6-3	230	20	Duncan, Okla.
70	JOHN GREGORY	DT	Sr.	6-2	230	24	Roanoke, Va.
79	CHARLES HARRINGTON	DT	Soph.	6-3	220	19	Arlington, Kan.
47	BOB HAYES	DB	Jr.	6-0	180	20	Mission, Kan.
23	MURRELL HAYES	DB	Soph.	5-11	190	19	Mission, Kan.
81	JIM HENRY	DE	Soph.	6-0	200	20	Little Rock, Ark.
37	JOHN HOHEISEL	LB	Jr.	6-4	215	20	Garden Plain, Kan.
78	JACK HUNT	OT	Sr.	6-5	240	23	Ansonia, Conn.
22	RANDY JACKSON	WB	Jr.	6-0	205	20	Atlanta, Tex.
25	RON JOHNSON	S	Jr.	6-0	180	20	Kansas City, Mo.
43	RANDY KIESAU	DB	Soph.	5-11	170	19	Canton, Okla.
53	MALORY KIMMEL	C	Jr.	6-0	210	20	Ste. Genevieve, Mo.
62	RAY KINKAID	OG	Jr.	6-0	210	20	Lawrence, Kan.
71	MIKE KNOL	OT	Soph.	6-2	210	19	Oklahoma City, Okla.
33	GLENN KOSTAL	TB	Soph.	5-11	195	19	Chicago, Ill.
24	KENNY LEE	LB	Sr.	6-0	195	22	Morton, Pa.
80	BENNY LEECE	SE	Soph.	6-2	190	19	Webber, Kan.
86	DAVID LEWIS	DE	Soph.	6-4	215	19	Duncan, Okla.
34	STEVE MOORE	LB	Jr.	5-10	200	20	Derby, Kan.
77	KEITH MORRISON	DT	Sr.	6-1	200	20	Hawkins, Tex.
65	ROBERT NICKS	OG	Jr.	6-0	210	22	Maize, Kan.
50	BRIEN O'BRIEN	DT	Jr.	6-2	210	21	Denver, Colo.
49	TOM OWEN	WB	Soph.	5-11	170	19	Temple Terrace, Fla.
61	JOHN PALJOR	OG	Sr.	6-1	205	22	Avon, Conn.
84	DON PANKRATZ	DE	Jr.	6-2	210	20	Hutchinson, Kan.
32	DAN PIDCOCK	LB	Jr.	5-11	204	22	Chester, Pa.
15	ROBERT RENNER	OB	Soph.	6-1	195	20	Garden Plain, Kan.
42	GENE ROBINSON	WB	Soph.	6-1	180	20	Dayton, Ohio
87	PAT RYAN	TE	Jr.	6-3	220	20	Denver, Colo.
85	JAMES SHEBLE	DE	Jr.	6-0	195	20	Kansas City, Kan.
67	TOM SHEDDEN	OG	Soph.	6-2	190	19	Oklahoma City, Okla.
72	RICH STEPHENS	OT	Jr.	6-2	210	21	Andover, Kan.
82	JOHN TAYLOR	SE	Soph.	5-10	175	20	Sherman, Tex.
20	MIKE TINNIN	S	Soph.	5-11	185	19	Topeka, Ark.
63	JACK VETTER	LB	Jr.	6-2	215	20	McPherson, Kan.
52	MIKE WESTHOFF	C	Sr.	6-1	205	21	Pittsburg, Pa.

OFFICIALS: Referee—Perce Penn, Dallas, Tex.;
 Umpire—P. T. Williams, Huntsville, Ala.; Lines-
 man—Jim Cosgrove, Overland Park, Kan.; Field
 Judge—J. W. Bryson, Athens, Ga.; Back Judge—
 Joe DeLany, Jr., Atlanta, Ga.; E.C.O.—Richard A.
 Allen, Dunwoody, Ga.



• CABLE COLOR TV IN ALL ROOMS
 RECEIVING NINE CHANNELS

• POOL

• AIR CONDITIONED

• DIRECT DIAL PHONES

• Se habla Espanol

AMERICAN EXPRESS - DINERS - AMERICAN OIL
 PHILLIPS 66 - BANKAMERICARD
 MASTER CHARGE - CARTE BLANCHE

DRIFTWOOD
 MOTEL and RESTAURANT

Cocktails — Banquet Room

• Northwest corner of Campus
 on U.S. 90; Fla. 20 West

1402 W. TENN. (U.S. 90)
 (904) 224-4174

FSU

FLORIDA STATE
'Seminoles'

OFFENSE		DEFENSE	
SE	18 Kent Gavidos	LE	74 Robert McEachern
	35 Mike Gray		89 J. W. McKinnie
	82 Rhett Dawson	LT	79 Frank Vohun
LT	78 Wayne Johnson		71 Wayne Spence
	76 Bill Rimby		73 Duke Johnston
LG	64 Stan Walker	LLB	56 Bill Lohse
	63 George Montgomery		49 Guy Glisson
C	51 Bill Hughes	MLB	58 Steve Gilda
	55 Alan Dees		59 Larry Strickland
RG	53 Jay Stokes	RLB	60 Barry Rice
	67 Mike Sammons		57 Ron Lowe
RT	77 Jeff Churchin	RT	69 Tom White
	66 Joe Strickler		75 Richard Amman
TE	81 Jim Tyson		65 Bill Shaw
	87 Ted Zaffran	RE	83 Ron Wallace
QB	14 Bill Cappleman		80 Steve Beville
	15 Tommy Warren		86 Randy Hall
	12 Frank Whigham	LS	19 Phil Abraira
RB	30 Tom Bailey		28 Robert Ashmore
	27 Arthur Munroe	RS	24 John Lanahan
	41 Calvin Patterson		22 Doug Mitchell
FB	40 Brent Gilman		44 Buddy Gridley
	48 James Jarrett	LCB	21 John Peli
	31 Paul Magalski		43 John Montgomery
F	23 Don Pederson	RCB	20 Danny Thomas
	47 George Davis		29 Benny Rust

PUNTS—11 Duane Carrell, 42 Bill Cheshire
PLACEMENTS—33 Grant Guthrie, 11 Duane Carrell

WICHITA STATE
'Shockers'

OFFENSE		DEFENSE	
TE	89 Mike Bruce	LE	84 Don Pankratz
	87 Pat Ryan		77 Keith Morrison
LT	78 Jack Hunt	LT	75 Lynn Duncan
	76 Kelly Cook		50 Brien O'Brien
LG	61 John Pajor	LLB	34 Steve Moore
	65 Robert Nicks		36 Bill Burch
C	52 Mike Westhoff	MLB	37 John Hoeheisel
	53 Mal Kimmel		33 Glenn Kostal
RG	67 Tom Shadden	RLB	33 Glenn Kostal
	65 Robert Nicks		32 Dan Pidcock
RT	72 Rich Stephens	RT	70 John Gregory
	64 Jack Vetter		79 Charles Harrington
SE	82 John Taylor	RE	86 David Lewis
	80 Bernie Leece		85 James Sheble
QB	14 Butch Dusharm	LC	44 Don Christian
	15 Robert Renner		47 Bob Hayes
TB	24 Kenny Lee	RC	23 Murrell Hayes
	26 Bob Crutchfield		43 Randy Kiesau
FB	22 Randy Jackson	LS	25 Ron Johnson
	30 Randy Cayce		28 Sid Cain
WB	49 Tom Owen	RS	27 Dennis Clauder
	42 Gene Robinson		20 Mike Tinnin

PUNTS—14 Butch Dusharm, 15 Robert Renner
PLACEMENTS—40 Floyd Beardsley, 62 Ray Kinkaid

WICHITA

14 Dusharm—OB
15 Renner—OB
20 Tinnin—S
22 Jackson—WB
23 M. Hayes—DB
24 Lee—TB
25 Johnson—S
26 Crutchfield—TB
27 Clauder—S
28 Cain—S
30 Cayce—FB
32 Pidcock—LB
33 Kostal—LB
34 Moore—LB
36 Burch—LB
37 Hoeheisel—LB
38 Etkam—FB
40 Beardsley—K
42 Robinson—WB
43 Kiesau—DB
44 Christian—DB
47 B. Hayes—DB
49 Owen—WB
50 O'Brien—DT
51 Franks—C
52 Westhoff—C
53 Kimmel—C
57 Barber—K
61 Pajor—OG
62 Kinkaid—OG
63 Vetter—LB
65 Nicks—OG
67 Shadden—OG
70 Gregory—DT
71 Knol—OT
72 Stephens—OT
75 Duncan—DT
76 Cook—OT
77 Morrison—DT
78 Hunt—OT
79 Harrington—DT
80 Leece—SE
81 Henry—DE
82 Taylor—SE
84 Pankratz—DE
85 Sheble—DE
86 Lewis—DE
87 Ryan—TE
88 Boyd—DE
89 Bruce—TE



DRIFTWOOD

MOTEL and RESTAURANT

- CABLE COLOR TV
- POOL
- Northwest corner of Campus on U.S. 90; Fla. 20 West

1402 W. TENN. (U.S. 90)

- AIR CONDITIONED
- DIRECT DIAL PHONES
- Se habla Espanol

AMERICAN EXPRESS - DINERS - AMERICAN OIL - PHILLIPS 66 CREDIT CARDS HONORED

(904) 224-4174

Seminole Boosters, Incorporated



Present for a recent Seminole Booster Board of Directors meeting were:
 Standing, left to right: W. S. "Bill" Lee, Robert Camp, Leo Crutchfield, Thomas N. Kinnebrew, Godfrey Smith, Mike Norman, Ronald J. Schomburger, Dr. Edward G. Haskell, Jr., and J. Edwin White; directors.
 Seated, left to right: Thomas A. Waits, Executive Director; Wayne Cook, Secretary; William I. DuBey, President; Doyle Pope, President-Elect; Herschel Williams, Treasurer; and Theo Proctor, Jr., Past President.

BOARD OF DIRECTORS

Officers

WILLIAM I. DuBEY, President
 DOYLE POPE, President Elect
 WAYNE COOK '50, Secretary

HERSCHEL WILLIAMS '63, Treasurer
 THOMAS A. WAITS '56, Executive Director
 THEO PROCTOR, JR. '53, Past President

Directors

Ad Brautigam '51
 Robert Camp '57
 Bill Carraway '57
 Bill Cartee
 Dr. James Conn
 Leo Crutchfield '54
 Syde P. Deeb '35
 Hugh Donovan
 Donald Grant '49
 Tim Harris '56
 J. C. "Red" Hartsfield '49

Dr. Edward G. Haskell, Jr.
 Louis Hill
 Ed Hughes
 Tom Humphress
 Nelson Italiano '53
 Thomas N. Kinnebrew
 George Langford
 Ryals Lee
 W. S. "Bill" Lee
 Duke McCallister
 Guy McKenzie

Payne Midyette, Jr.
 Mike Norman '56
 Daniel J. Patterson
 Nat Polak '61
 Ronald J. Schomburger '58
 Godfrey Smith
 William "Curt" Smith '49
 T. J. Wetherell
 J. Edwin White
 Slater Wight '58

SEMINOLE NETWORK

WCOA—Pensacola
WTNT—Tallahassee
WJAX—Jacksonville
WKIS—Orlando
WDAE—Tampa
WGBS—Miami
WKMK—Blountstown
WBGC—Chipley
WCNH—Quincy
WDSR—Lake City
WFSH—Valparaiso
WLAK—Lakeland
WMAF—Madison

WMMB—Melbourne
WMOP—Ocala
WPCF—Panama City
WPRY—Perry
WROD—Daytona Beach
WSIR—Winter Haven
WSPB—Sarasota
WTOT—Marianna
WTRL—Bradenton
WXVI—West Palm Beach
WAAZ—Crestview
WJHR—Miami

SEMINOLE FOOTBALL NETWORK



Lou Creekmur

Bo Mitchell

Bo Mitchell enters his seventh season as "the voice of the Seminoles" on the ever expanding Florida State football network.

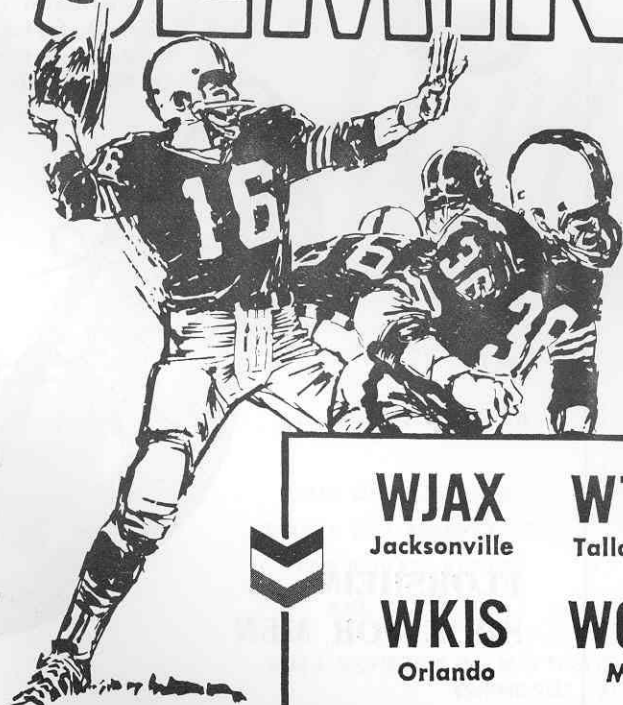
A veteran of 22 years of radio broadcasting, Mitchell is vice-president and station manager of WKIS in Orlando. The former "Florida Sports caster of the Year" has also done the network play-by-play for three post season games—the AFL All-Star game, the Senior Bowl and the Tangerine Bowl.

Joining the veteran play-by-play announcer this season is former all-pro lineman Lou Creekmur. The ten year veteran with the Detroit Lions, handles the "color" commentary and analysis.

More than 30 stations are carrying the Seminoles' games to all of Florida and parts of Georgia and Alabama. Originating station for the Seminole Football Network is WTNT in Tallahassee.

FOLLOW THE

SEMINOLES



ON THE

**STANDARD
OIL**

NETWORK

Come to Chevron Island

WJAX
Jacksonville

WTNT
Tallahassee

WDAE
Tampa

WKIS
Orlando

WGBS
Miami

WCOA
Pensacola

