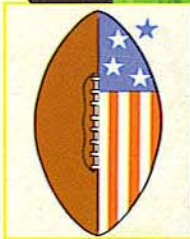


HOMECOMING 1969

FLORIDA

STATE / SOUTH CAROLINA

Football Magazine



**THE
COLLEGE
GAME**

SEE

HOMECOMING

QUEEN

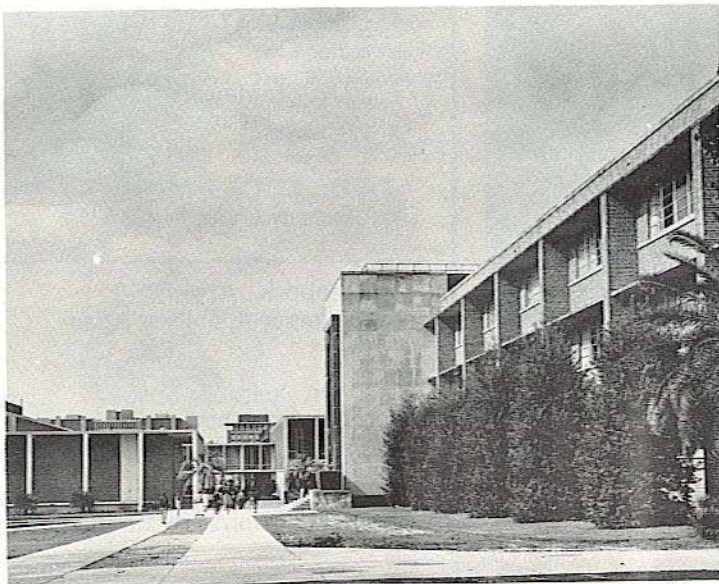
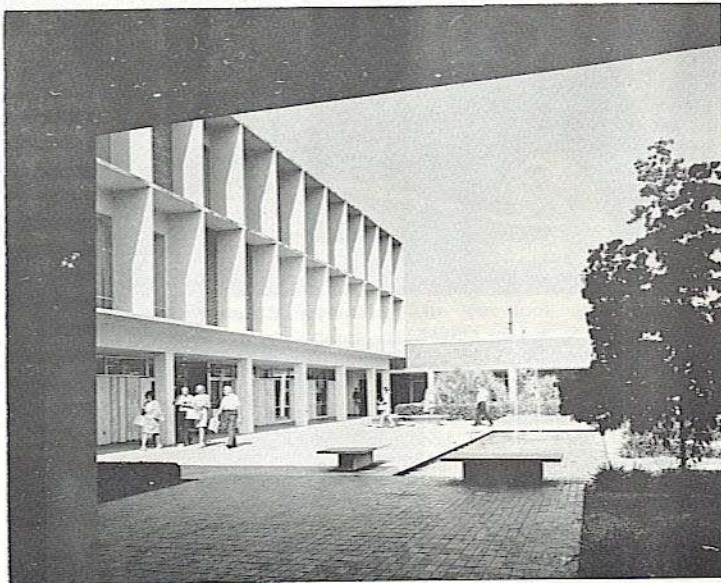
PAGE

12

NOVEMBER 1, 1969

75 CENTS

Welcome To Florida State University



A UNIVERSITY ON THE "GROW"

The competition for "All-America" standing is not limited to the football field at Florida State University, which seeks a "10-0" season each year in academics as well as athletics. Field goals, first downs and touchdowns in the classrooms and labs of Florida State's ten schools and colleges are setting pro-style records of achievement at the national and international levels as the University moves into the 112th year of its history. More than 42,000 alumni, more than 17,000 students and more than 3,000 faculty and staff form the dedicated, 1969 scholarship and support teams of this public, coeducational University which expects to have 28,000 students in 1975.

A SALUTE TO FOOTBALL FANS FROM STATE'S PRESIDENT:



Dr. Stanley Marshall
President

The sight of a full stadium at Florida State's football games is one which affords great satisfaction — both to me, and to the Seminole team, because it represents one of the very few times in the year that all of the University's thousands of supporters are able to assemble in one place at one time. This very visible and public demonstration of your faith in the athletics and academics of a great University calls for the highest commendation and encouragement. On behalf of Florida State's faculty, staff, students and athletes, let me assure you that we are honored by the presence of each Seminole fan and visitor in Campbell Stadium today. Your individual and collective support is vital to the continued growth and success of Florida State.

We Serve the Seminoles



THE 1969 SEMINOLES

FRONT ROW—Abraira, Ashmore, Bass, Carrell, G. Davis, Gildea, Glisson, Gridley, Guthrie, Lowe, Magalski, Roatche, Thomas, Warren, Barnes, Stupakis. SECOND ROW—Burt, Dawson, Hall, Lanahan, Lohse, Maynard, J. Montgomery, Munroe, Pederson, Pell, Rainey, Ratliff, Rust, Sammons, Whigham, White. THIRD ROW—Bailey, Beville, Dees, Essex, Gilman, Hughes, Jarrett, Johnson, Johnston, Logan, McEachern, McKinnie, G. Montgomery, Barry Rice, Beryl Rice, Shaw, Strickland, Strickler, Tyson. FOURTH ROW—Amman, Cappleman, Cheshire, Curchin, E. Davis, Gaydos, Glass, Gray, Minor, Mitchell, Rimby, Sowers, Spence, Speer, Stokes, Vohun, Walker, Wallace, Whitehurst, Zaffran.

CAMPUS FOOD SERVICE

MIDYETTE-MOOR Insurance Agency

"Ask Those We Serve"

Complete Insurance and Bond Service

PHONE 222-3456



MIDYETTE-MOOR BUILDING
TALLAHASSEE, FLORIDA

SAYS

SCALP 'EM SEMINOLES!

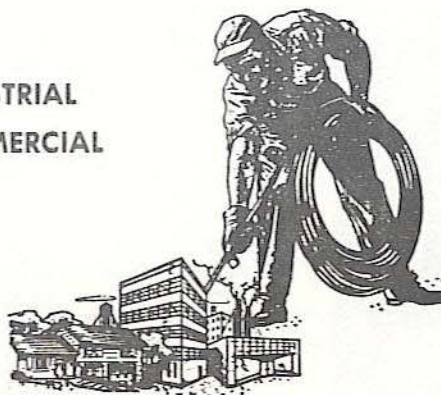


Payne Midyette
Frank Moor
Ed Clark
Winslow Sullivan
Paul Lewis
Payne Midyette, Jr.
Bill Moor
Bill Franklin

Jim Woods
Gordon Henkel
Glenn Sears
Moffett Warren
Chick Prosser
Richard Lobb
Rex Sikes
Walt Young

Electrical Contractors

- INDUSTRIAL
- COMMERCIAL



Licensed & Bonded

J. B. CLARK,
President

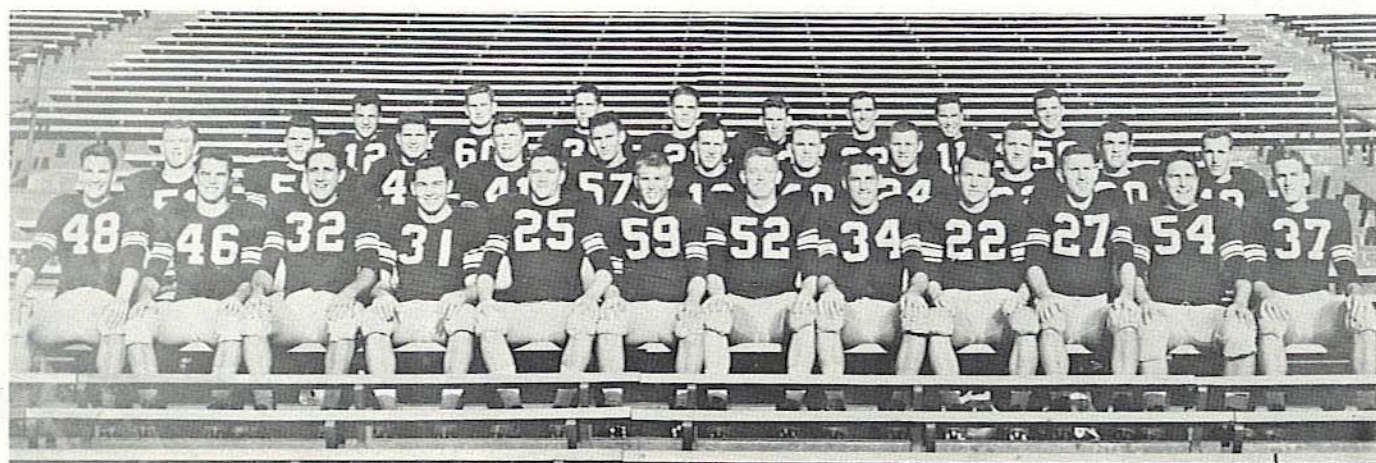
LEE H. TOWNSEND,
Vice President

576-3727

IF NO ANSWER DIAL 385-4030

CLARK ELECTRIC CO. OF FLORIDA
1133 Kissimmee St.
TALLAHASSEE, FLORIDA

1954 SEMINOLES: HEART, CO



1954: A Little Heart Goes a Long Way

Perhaps no Florida State football team ever deserved a bowl game more than the 1954 Seminoles. The Tribe struggled through, not 10, but 11 regular season games in a schedule that was more "class" than common sense for a struggling college division team seeking "major" status.

The Seminoles opened with Georgia and went against North Carolina State, and Auburn, among seven schools of "major" classification. Before the year got underway most Seminole followers felt it was suicidal. In its initial six seasons the Tribe, under Dr. Don Veller's guidance, had become the class of the Deep South small colleges.

In 1953 a new coach was brought in to initiate a new era. Tom Nugent was off to a good start, chalking up a 5-5 record in his first year against a "respectable" major schedule which included Miami and N. C. State. Now the idea was to "establish" Florida State as a potential "major college factor in the South". But against this schedule? Perhaps Nugent had bitten off more than he could chew.

There were nine starters gone from the 1953 team and the '54 group was predominantly a freshman-sophomore group. Of the 43 men listed on the pre-season roster just 16 were upperclassmen. There were 27 first or second-year players and more were added before the season was very old.

At best, thought most followers, this team was a year away from making its move.

"But," said Coach Nugent, recently, "we couldn't be choosy about our scheduling. If a major college team wanted to play us, I would have moved mountains to fit them into the schedule.

"There was only one way to show you were ready for major college ball—that was to play them and play them respectably. If I even heard a rumor someone wanted a game—with us or anyone—I was on the phone immediately trying to set up a date.

"That's how we ended up with 11 games in 1954. Auburn was having problems with one of its opponents and decided to cancel the series. They had open dates then in 1954 and '55. Well, with a year to go it wasn't hard for them to fill that '55 date, but going into the summer they were still looking for a tenth game in 1954.

"I got on the phone and found out their open date. We had a game with Tampa scheduled, but if we could switch it or cancel it, Auburn would play us. I would have promised Tampa almost anything to move that game. They were very generous, agreed to switch to a December date and we had a game with Auburn.

The next step was getting the squad ready to play. It was still the era of limited substitution which meant a man had to play both ways. Even at that, the Tribe was short of manpower.

Bill McGrotha, Tallahassee Democrat Sports Editor recalls, "the Seminoles had several outstanding players they couldn't use, because they couldn't go both ways. They were fine offensively, but they couldn't play defense, or they would do the job defensively but not on offense."

So the squad of 43 was limited even more. "We were so thin in places," said Nugent, "I would have to switch men from one position to another if someone got hurt. There was no 'second team'."

As the season got underway, however, things began to brighten. The opening game was a 14-0 loss to Georgia, but the Tribe was far from disappointed.

"That game may have been our best effort of the year," said Nugent. "Georgia was expected to run all over us, but our kids got in there and fought them tooth and nail all night. Nobody felt like he lost that one."

The Seminoles were shut out by Abilene Christian the next week, but then exploded for 112 points in their next three games to take a 3-2 record into the Auburn game.

"This team showed me something," said Nugent proudly. "They were the most courageous group of players I have ever coached. They weren't big, in number or in size, but they had a lot of heart, dedication and courage.

"Of the 24 teams I have coached, I don't think there is one that stands out in my mind any more than this one does. They knew we were short-handed and worked hard—individually and as a group—to overcome that fact. Just as one example, after practice they used to run wind sprints, on their own, to get in better shape."

(Continued on page 48)

URAGE AND THE SUN BOWL

Perhaps no player exemplified the heart and courage of the 1954 Seminole football team than little Bob Crenshaw. Listed at 5-10, 178, he was one of the fiercest competitors to play for the Tribe. "Bob was our center," said Coach Tom Nugent, "and he never weighed 178 pounds. I would list him at that as a favor to him. I doubt if he weighed more than 160 or 165, but when he hit you, you thought it was by a 200-plus tackle."

"He was the most courageous football player I ever coached. He never gave up. If we had six kickoffs in a game, Bob would make the tackle on five of them."

"His heart was as big as he was. If he had been bigger, he would have been on everybody's All-America."

Bob was a junior in 1954 and played another outstanding season in 1955. In 1958 he was killed in a jet crash. His memory did not die with him, however, and since 1958 the Florida State players have annually chosen one of their teammates as recipient of the "Bob Crenshaw Award". The inscription on the award plaque reads simply: "To the Football Player With the Biggest Heart."



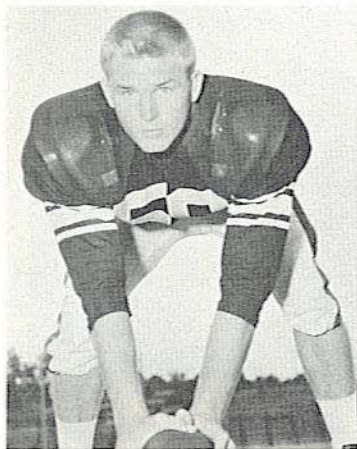
Head Coach Tom Nugent, Winston Siegfried, Frank Twoomey, Vaughn Mancha, Bob Harbison, Vince Ragunas.

The individual players on the 1954 team learned their trade well. Several have gone on to become coaches at both college and high school level.

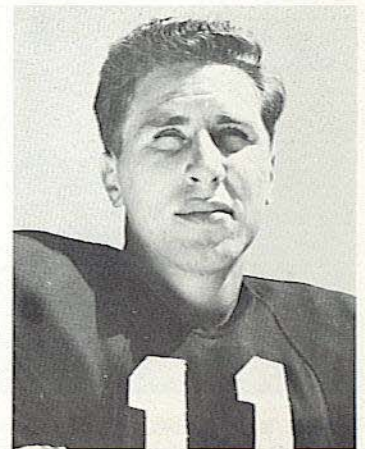
Vince Gibson was a junior guard in 1954. Later he was an assistant coach for the Seminoles and now is head coach at Kansas State. His Wildcat team took a giant step toward a Big-Eight Championship last weekend with a 59-21 victory over Oklahoma.

Lee Corso, a sophomore halfback in '54, is in his first season as head coach at Louisville and has built a 3-1-1 record thus far. His only loss came last weekend to North Texas State.

Don Powell, like Gibson, was a tackle in 1954, and the two are still teammates, with Don serving as an assistant at Kansas State.



Bob Crenshaw



Lee Corso

1954 Results		
FSU		Opp.
0	Georgia	14
0	Abilene Christian	13
47	Louisville	6
52	Villanova	13
13	N. C. State	7
0	Auburn	33
33	VMI	19
33	Furman	14
47	Stetson	6
19	Miss. Southern	18
13	Tampa	0
20	Texas Western	47



Vince Gibson

Don Powell

FLORIDA STATE UNIVERSITY

ALUMNI ASSOCIATION

1969

BOARD OF DIRECTORS



Seated, left to right, officers: Hans W. Tews, Treasurer; Mrs. Randall Chase II, Secretary; Melvin L. Pope, Jr., President; James E. Joanos, President-Elect; Gordon D. Gaster, Immediate Past President; Thomas A. Waits, Executive Director. Standing, left to right, directors: Arthur E. Hempel, Jr., St. Petersburg; Johnnie A. Fortune, Ft. Walton Beach; Donald E. Stone, Coral Gables; William S. Byers, Altamonte Springs; Arthur H. Bougae, West Palm Beach; Edward J. Kercher, Bradenton; Mrs. Carroll F. Brown, Ocala; James D. Booth, Orlando; Walter L. Revell, Hialeah. Directors not present are: Thomas W. Donovan, Jacksonville; Ronald J. Schomburger, Tallahassee; Robert G. Olive, Winter Haven; Carmelo Battaglia, Tucker, Georgia.

"BUILDING A BETTER UNIVERSITY"

ALUMNI AFFAIRS

Homecoming—just one of the many activities for the alumni and friends of Florida State University in which the Office of Alumni Affairs participates. With over 40,000 alumni, you can imagine the complexity of this campus office.

The Office of Alumni Affairs has the primary responsibility for coordinating a diversified program of alumni service for Florida State which includes service of alumni to the University and also service rendered by the University to alumni.

Three organizations headquarter and coordinate their activities through the alumni office. These are the Florida State University Alumni Association, Seminole Boosters, Inc. and the Seminole Tipoff Club.

The Alumni Association is the largest of these organizations and is composed of alumni and friends of Florida State who contribute to the University annual giving program which is called the Greater Florida State Fund. The Association is a non-profit organization, governed by an elected board of directors.

Contributions to the Association through the Greater Florida State Fund are used in many areas of the University where financial assistance is needed. In the past few years the Association has provided help to the National Merit Scholar Program, thereby helping to recruit superior high school students for the University. Specific programs designated by the University president also receive financial support from the Association.

Within the Alumni Association are 25 alumni clubs, the majority of which are located in Florida, but some out-of-state. These clubs are engaged in a year-round calendar of events directed at serving the best interests of Florida State.

Some of the activities in which these clubs participate are the Talented Student Program and New Student Receptions. The objective of the Talented Student Program is to interest outstanding high school students in enrolling at Florida State. Students are invited by the alumni club to meet with University officials and learn of the educational advantages offered by Florida State. At the beginning of the fall quarter, alumni clubs host a reception for freshmen in their area, and tell the new students what they can expect when they arrive on campus for the first time.

Seminole Boosters, Inc. and the Seminole Tipoff Club are special interest groups composed of alumni and friends who are athletically oriented. Both of these groups have a close alliance with the Alumni Association. All three organizations have the same objective and are dedicated to serving Florida State.



GOING
PLACES
?

ATHENS, GEORGIA? ATHENS, GREECE?
NEW YORK? NASSAU? NEPAL?

TRAVEL IS OUR PROFESSION

No Charge For Our Services
Tickets - Reservations At Printed Rates



MARION HAY, PRESIDENT
TOM LYLE

TALLAHASSEE TRAVEL AND TOURS, INC.

Formerly Hay Travel Service

Established 1930

CALHOUN AT CALL STREET

TELEPHONE 224-4161



*Lindy's
Fried Chicken*

Call 224-5811 YOUR ORDER WILL BE WAITING

SPECIAL BOX — 3 PCS. CHICKEN F.F., COLE SLAW & ROLLS	1.20
½ FRY CHICKEN — 4 PCS. CHICKEN, F.F. COLE SLAW & ROLLS	1.45
WHOLE CHICKEN — 8 PCS. (CHICKEN ONLY)	2.25
BUCKET 'O CHICKEN — 15 PCS. (W/CHOICE OF SLAW OR GRAVY & ROLLS)	4.15
BARREL 'O CHICKEN — 21 PCS.	5.50

1447 THOMASVILLE RD.

PHONE 224-5811

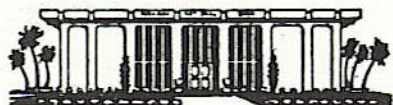
OPEN 7 DAYS A WEEK — INCLUDING SUNDAY



WHERE YOU WILL FIND YOUR FRIENDS

701 W. JEFFERSON
South Gate F.S.U.

PARKWAY NATIONAL BANK



BANK THE QUICK WAY - BANK THE PARKWAY
COURTESY • CONFIDENCE • CO-OPERATION

Telephone: 877-4121
1407 East Lafayette Street
Tallahassee, Florida

TODAY'S HALF-TIME

The Marching Chiefs

Robert T. Braunagel, Director of Bands
Charles Carter, Ass't. Director and Arranger
Richard D. Mayo, Assistant Director
Herschel Beazley, Drum Major
Mary Lynn Hendrickson, Head Majorette

THEME: THOSE WERE THE DAYS

Music	Idea
-------	------

Fanfare

Those Were The Days A salute to the FSCW days of 1919.

Charleston The 1919 mode of transportation and style of dance. Majorette dance routine.

Brother Can You Spare A Dime 1929 Stock Market Crash. Depression.

Shake Rattle & Roll Elevation 1949 Dress style of the "Zoot Suit."

Aquarius 1969 A look at the Broadway show "Hair" and its affect on hair style.

Let The Sun Shine In More music from the show "Hair."

Get Together A salute to the 1969 Homecoming theme, "Peace is Relevant."

Hymn To The Garnet and Gold FSU in the year 1969.

1969 HOMECOMING QUEEN



Lyn Owens



Why we have a special interest in serving you

Ours is an independent telephone company which means we're really part of this community. Many of you have a direct interest in our company. We have to work harder and do more to merit your confidence. And since 40% of the area of the growing United States (including Alaska and Hawaii) is served by Independent companies, we must be doing something right.



southeastern
telephone company

Bill Peterson

by JACK HAIRSTON

Sports Editor, Jacksonville Journal



Jack Hairston

Lonnie Burt did me no favor when he asked me to write this page about Florida State University Football Coach Bill Peterson.

Not that Pete and I aren't old friends, going back to the days when he was an assistant at Louisiana State University and I was a New Orleans sports writer who covered the Bayou Bengals regularly.

But what in the devil's name can you tell an FSU fan about the winningest Seminole football coach ever?

The average FSU fan knows almost everything there is to know about Bill Peterson, right down to which house he lives in (because the FSU fan has marched out there to participate in a demonstration designed to persuade Pete from leaving for a pro job), and he knows Pete is a mixture of charm and fire, gross pessimism and unbeatable determination (because he's heard him speak before many a group and watched him pace the sidelines during many a game), and he already knows Pete is one of the four or five best coaches in the business (because he's got eyes and can see for himself by what goes on right out here at Doak Campbell Stadium).

But I don't give up easily, so I'm going to reach way down deep and try to come up with a few things you haven't heard before, or if you have heard a couple of 'em, maybe you've forgotten them.

Such as:

The first year he coached a high-school football team, he did double duty, putting in part of each afternoon coaching that team and part of each afternoon playing end for Ohio Northern, where he was a senior griddier. . .

While a high-school coach, he spent part of each summer at the camp of the Cleveland Browns, watching Paul Brown build those great teams, and he's never forgotten Brown's kindness in permitting him the inside view.

While producing state-championship teams at Mansfield (O.) High, he became offseason friends with a Mansfield native named Paul Dietzel, and when Dietzel moved from an Army assistant job to head coach at LSU, he gave Pete his first college coaching opportunity. Hanging up the phone after Dietzel called, Pete told his wife, Marge, "Get the curtain rods down and the stuff packed. We're going to LSU." He didn't hesitate on the breakthrough chance, and he never gave her a chance to discuss it, as he did regarding recent opportunities when she talked him out of two lucrative pro head-coach jobs (for which every true FSU fan will always be indebted to her). . .

The day Pete signed to coach FSU, he almost got back on the plane to return to Baton Rouge before the final interview. A mysterious phone caller identified himself (incorrectly) as a member of the athletic committee and told Pete there'd been a complete change in plans. Half enraged, half dumbfounded, Pete considered flying out, but he somehow wound up going to the committee meeting, quite possibly to give the committee a piece of his mind for the way they were running things. To his surprise, he was greeted with open arms, and when he left the room, he was FSU's head coach.



Athletic Director Vaughn Mancha

The guiding hand in building Florida State's nationally prominent athletic program has been Athletic Director Vaughn Mancha.

A graduate of Alabama where he was an All-America lineman, Mancha first came to Florida State in 1952. After five seasons as assistant football coach, he went to Columbia University to work on his doctorate. He returned to the Seminoles in 1959 as Athletic Director.

His ultimate goal is to provide Florida State students, alumni and supporters with the strongest over-all athletic program in the nation.



Vaughn Mancha



Assistant to AD
Ken MacLean

Assisting Mancha with the complex administrative duties is former Seminole player and coach, Ken MacLean. He moved into administration three years ago after several seasons as head recruiter.

A successful high school football coach, MacLean's 1961 Florida High (of Tallahassee) squad was unbeaten and unscored upon in ten games.

FAVORITE OF THE BIG BRAVES!



Frisch's

THE ORIGINAL

BIG BOY

RESTAURANT

**GREAT PLACE FOR POW WOWS
AND GOOD FOOD**

SERVING:

- Breakfast
- Lunch
- Dinner
- Snacks

Open 7 A.M. to Midnight

'Til 2 A.M. Fridays and Saturdays

1775 W. Tennessee Street

TALLAHASSEE — TELEPHONE 224-1246

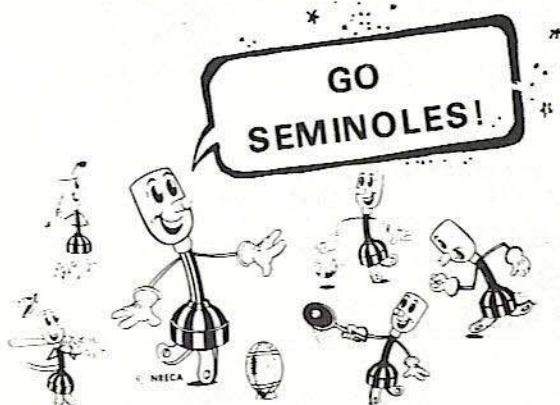
TRY FRISCH'S CARRY-OUT

TEC **TALQUIN ELECTRIC** **COOPERATIVE, INC.**

"OWNED BY THOSE WE SERVE"

IN

GADSDEN, LEON, LIBERTY
AND WAKULLA COUNTIES



LIVE BETTER... ELECTRICALLY



why pay **MORE** when you
can buy for **LESS** at

ABC
Mobile Homes
2737 W. Tennessee
Tallahassee, Florida

HERSCHEL COOK
Manager

Phone 576-5146

OPEN 365 DAYS 7:30 AM To 10:00 PM (Downtown Location)



Ask
Your Doctor
To Call Us.

Brown's
PHARMACY

Prescriptions

FILLED ACCURATELY
AND PROMPTLY - - -

Fast Delivery
Service



TO ALL
SUBDIVISIONS

- Sick Room Supplies
- Baby Department
- Vitamins
- Sundries
- Fountain Service
- Greeting Cards

VISIT OUR GIFT SHOP
GIFTS FOR ALL OCCASIONS
FREE GIFT WRAPPING

COMPLETE LINE:
Elastic Stockings, Anklets
and Knee Caps

RALPH BROWN, PHARMACISTS



FREE CUSTOMER PARKING

DOWNTOWN

222-3431
224-1921

EMERGENCY PHONE 385-3368

NORTHSIDE

385-6531

EMERGENCY PHONE 385-3368

441 N. MONROE

2057 N. MONROE

"CENTRALLY LOCATED - SERVING ENTIRE CITY"

"CONVENIENTLY LOCATED - SERVING NORTHSIDE"

ONE OF THE FINEST and MOST COMPLETE
COSMETICS DEPARTMENTS IN TALLAHASSEE

Assistant Coaches



Gary Wyant
First Assistant,
Defensive Backs



Bob Harbison
Defensive Chief



Bobby Jackson
Linebackers



Al Conover
Offensive Line



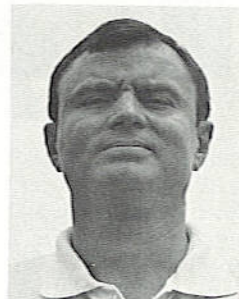
Dan Henning
Quarterbacks,
Receivers



Bud Whitehead
Running Backs



Charlie Wright
Freshman



John McGregor
Recruiting Ass't.

Athletic Staff



Gene McDowell
Head Recruiter



T. K. Wetherell
Academic Advisor



Dr. James D. Maxwell
Team Physician



Don Fauls
Head Trainer



Bill Zeigler
Assistant Trainer



Tillman Dixon
Equipment Manager



Claude Thigpen
Ticket Manager



Lonnie Burt
Sports Info. Dir.



Hank Schomber
Ass't. Sports Info. Dir.

Le Roc Cocktail Lounge

Tallahassee's Finest . . .

Located in the
DUVAL HOTEL

For an evening of relaxed
entertainment — enjoy your
favorite beverage

No cover charge

Entertainment nightly

Open daily 12 Noon to 1 A.M. — except Sunday

=Mendelson's=

Your Personal
Department Store

SAYS

GO
SEMINOLES!

Mendelson's
Downtown
9 A.M. to 6 P.M.
208 So. Monroe

Mendelson's
Northwood
(Opens
Sept. 30th)

=Mendelson's=

Southernair MOTEL

Across from F.S.U.
Tallahassee, Florida 32304



and

Skyline

Motor Lodge

U.S. 90 West

Quality Courts

for Quality People

GOOD LUCK SEMINOLES!

Varsity THEATRE

PHONE 224-8636

1833 W. TENNESSEE

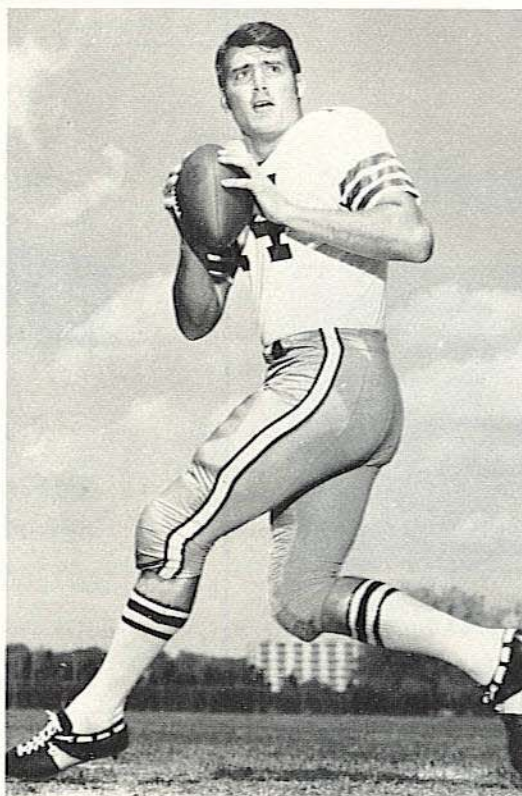
Miracle THEATRE

PHONE 224-2617

1815 THOMASVILLE ROAD

Operated by

EASTERN FEDERAL
CORPORATION



Bill Cappleman—Dunedin
Senior—Marketing

THE 1969 SEMINOLES



John Pell—Pahokee
Senior—Education



Phil Abaira—Ft. Lauderdale
Senior—Business



Duke Johnston—Ft. Lauderdale
Senior—Criminology



Randy Logan—Seal Beach, Calif.
Senior—Radio & TV



Wayne Johnson—Macon, Ga.
Senior—Business



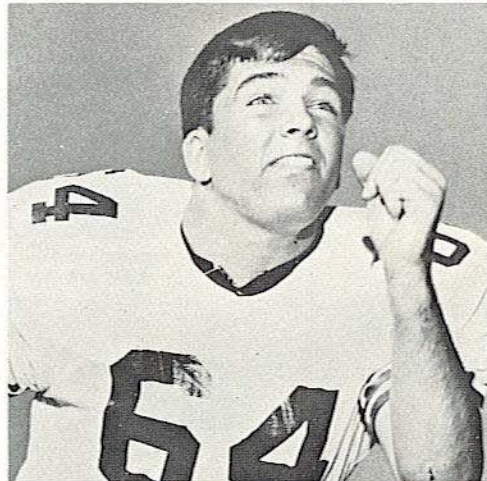
Frank Vohun—Brooksville
Senior—Phys. Ed.



Brent Gilman—Long Beach, Calif.
Senior—Political Science



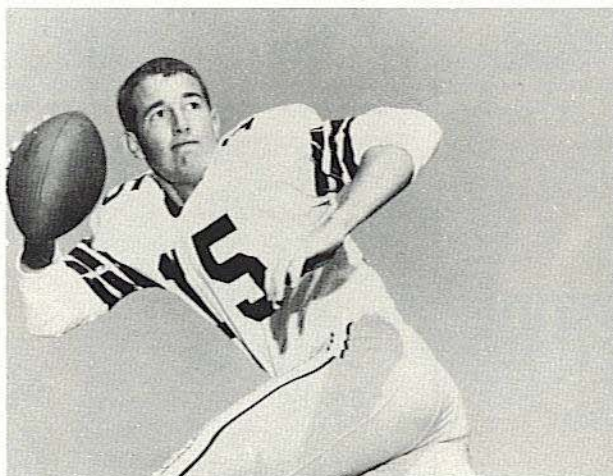
Grant Guthrie—Claymont, Del.
Senior—Criminology



Stan Walker—Tallahassee
Senior—Business



Jeff Curchin—Ocala
Senior—Phys. Ed.



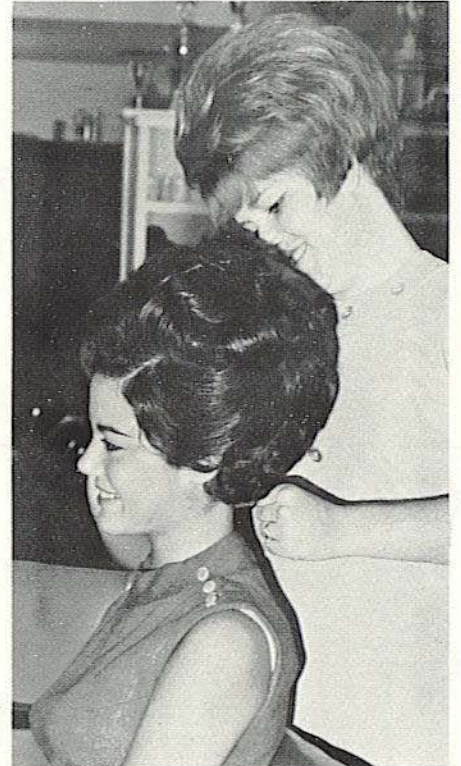
Tommy Warren—Coral Gables
Senior—Business

OPEN MONDAY thru SATURDAY



If she's *Lovely* . . .
she just came from a

Suburban Salon



Mrs. Stan Walker

Parkway
Suburban Salon

APPALACHEE
PARKWAY
SHOPPING CENTER

877-4173

Gladys Brown
Co-Owner, Mgr.

A Joyous Way of Life

Luxurious

Carefree

Detroit

Statler

Plantation

**Crestview
Mobile Housing, Inc.**

2530 W. Tennessee St.

Tallahassee, Fla.

GO

Seminoles!...

GO

Arthur Munroe!

GO

Pontiac!

the Best to you from . . .

FRYER-THOMAS MOTORS

PONTIAC • OLDSMOBILE • GMC

QUINCY, FLORIDA



Jim Tyson—Pahokee
Junior—Business



Randy Hall—Miami
Junior—Business



John Lanahan—Jacksonville
Sophomore—Business



Joe Strickler—Avon Park
Sophomore—Math



Jay Stokes—Sanford
Sophomore—Business



Benny Rust—West Palm Beach
Sophomore—Undecided



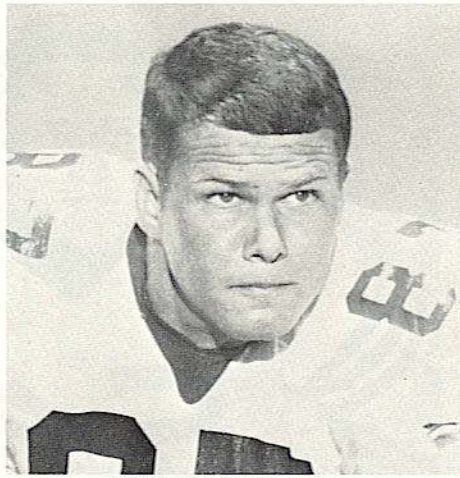
Don Pederson—Groveland
Junior—Hotel Restr. Mgt.



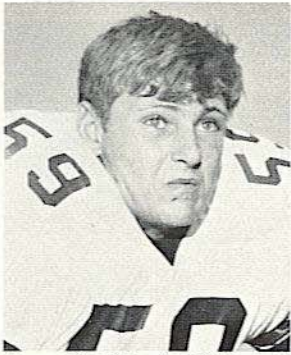
Theron Bass—Live Oak
Junior—Criminology



Ron Wallace—Macon, Ga.
Junior—Business



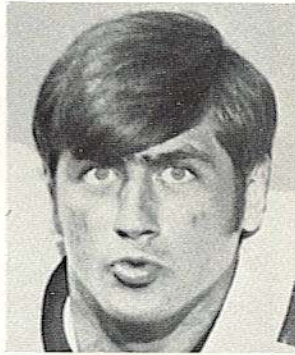
Bill Rimby—St. Petersburg
Sophomore—Business



Larry Strickland—Tallahassee
Sophomore—Undecided



Arthur Munroe—Quincy
Sophomore—Pre Med



Mike Sammons—Atlanta, Ga.
Sophomore—Business



Steve Gildea—Daytona Beach
Junior—Business



John Montgomery—Jacksonville
Sophomore—Undecided



Richard Amman—Cocoa Beach
Sophomore—Undecided



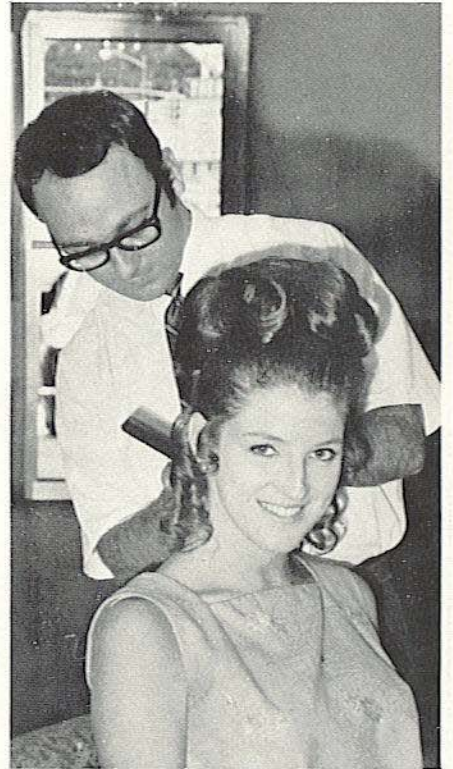
Mike Gray—Lake Mary
Junior—Phys. Ed.

OPEN MONDAY thru SATURDAY



If she's *Lovely* . . .
she just came from a

Suburban Salon



Mrs. Arthur Munroe

Tony's
Suburban Salon

1859 W
TENNESSEE

224-3135

Tony DeMaria
Co-Owner, Mgr.

Have
a
Nice
Day



FIRST

NATIONAL BANK

MEMBER FDIC - FRS



Bobby Burt—Cairo, Ga.
Junior—Criminology



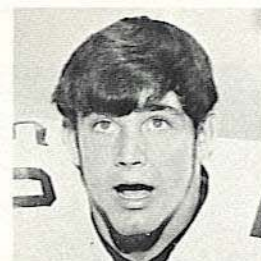
James Jarrett—Elizabethton, Tenn.
Sophomore—Business



Rhett Dawson—Valdosta, Ga.
Sophomore—Education



Allen Dees—Lakeland
Sophomore—Undecided



Dan Whitehurst—Adel, Ga.
Sophomore—Criminology



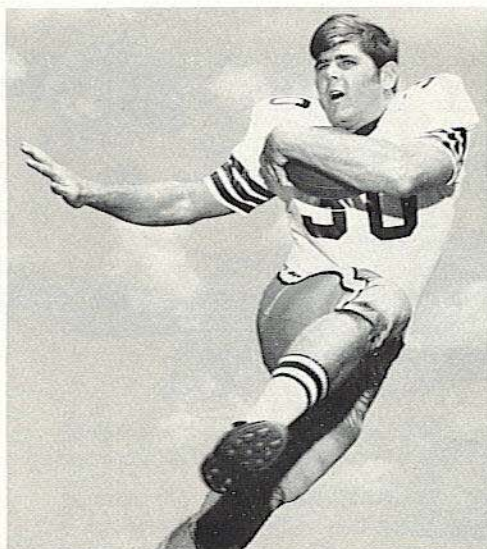
Billy Hughes—Rockledge
Junior—Phys. Ed.



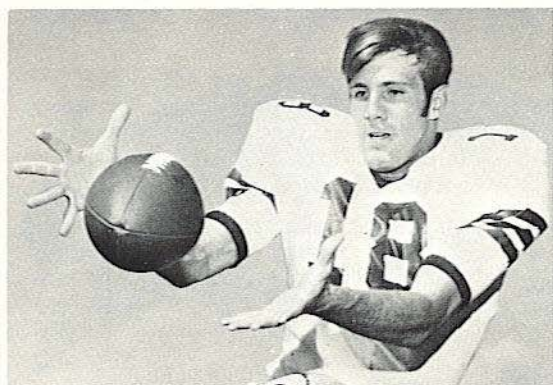
Robert McEachern—Tallahassee
Junior—Undecided



Beryl Rice—Fernandina Beach
Junior—Criminology



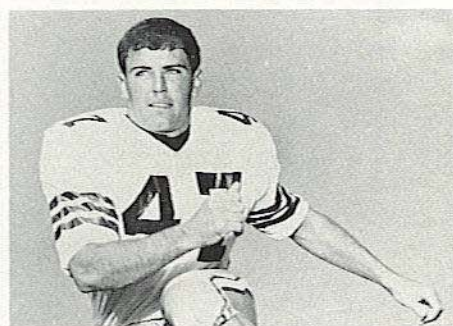
Tom Bailey—Coral Gables
Junior—Business



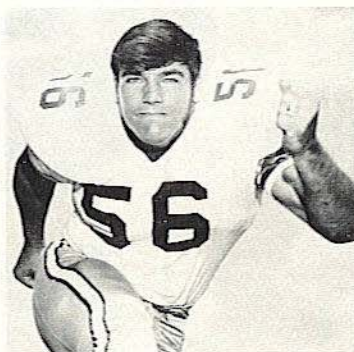
Kent Gaydos—Dallas, Tex.
Sophomore—Business



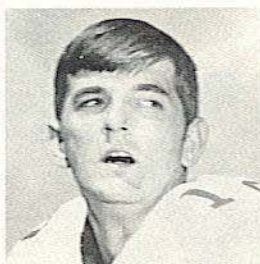
Barry Rice—Fernandina Beach
Junior—Math. Ed.



Danny Thomas—West Palm Beach
Junior—Phys. Ed.



Bill Lohse—St. Petersburg
Junior—Criminology



Frank Whigham—Sanford
Sophomore—Business



Robert Ashmore—Tallahassee
Sophomore—Pre Dental



Ron Lowe—Thomaston, Ga.
Junior—Education

OPEN MONDAY thru SATURDAY



If she's *Lovely*...
she just came from a

Suburban Salon



Mrs. Robert Ashmore

suburban
Hair Fashions

CAPITOL PLAZA
SHOPPING CENTER

224-2169

Carolyn Brown
Co-Owner, Mgr.

TODAY'S GAME

By LONNIE BURT

Sports Information Director

South Carolina, like Florida State, has won some cliffhangers on its way to a 5-1 record this season.

In fact, the Gamecocks have trailed in every contest with the exception of their 17-0 triumph over Maryland last Saturday night.

Coach Paul Dietzel's club went down to the final nine seconds against Virginia Tech before placekicker Billy DuPre booted a 47-yard field goal for a 17-16 win in Blacksburg, Va.

"This is the best club I've had since I've been at South Carolina," says Dietzel. This is easy to understand since the Gamecocks haven't been this well off this deep in the season since 1946 when they won five of their first six and lost their final two in an abbreviated eight-game schedule.

In quarterback Tommy Suggs, the Gamecocks have a scrambling-type quarterback which forces enemy defenses into quail-like coverage. The 178-pound junior is still fresh in the minds of the 1968 Seminoles since he caused great concern before Florida State pulled out a 35-28 verdict in Columbia.

In that contest, Suggs connected on 24 of 37 passes for 324 yards and two touchdowns.

Hopefully, South Carolina's interior offensive line will be the biggest Florida State faces this year. The Gamecock tackles are 245 and 234, the guards 238 and 235 and the center 258 for an average of 242 pounds per man.

Fullback Warren Muir, a senior transfer from Army, missed last year's S.C.-Florida State contest due to injuries. But he's healthy now and figures to be a big factor in today's contest since he's the Gamecocks' leading rusher with a 4.2-yard average.

If the Seminoles remember Suggs, South Carolina must recall Florida State quarterback Bill Cappleman. In the 1968 contest, the Dunedin senior threw 42 times with 25 completions for a school-record 437 yards and four touchdowns. Three of Cappleman's TD passes went to the graduated Ron Sellers.

The Seminoles came up with their best rushing game in some time during last Saturday night's 20-17 win over Mississippi State. With Tom Bailey and Arthur Munroe working in the same backfield for the first time, Florida State traveled 226 yards on the ground. Both Bailey (131) and Munroe (103) went over the 100-yard figure.

Today will be Seminole Coach Bill Peterson's 100th game as head man at Florida State. Nothing would be sweeter than to gain his 54th victory over his old LSU coaching boss, Dietzel.

The South Carolina-Florida State series stands at 3-0, Seminoles.



Established 1891

GOODBODY & CO.

MEMBERS OF LEADING STOCK

and

COMMODITY EXCHANGES

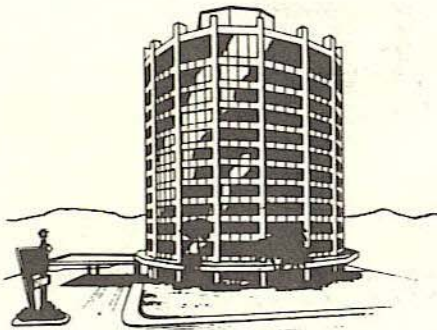
Telephone 222-4380

P. O. Box 810

Tallahassee Bank & Trust
Building

TALLAHASSEE, FLORIDA 32302

Your Host from Coast to Coast®



TWO LOCATIONS
TO SERVE YOU

☆☆☆☆☆

316 W. Tennessee St.

Viking Lounge

With Live Entertainment

Camelot Dining Room

☆☆☆☆☆

1302 Apalachee Parkway

Tele. 877-3141

Complete Banquet Facilities



TODAY'S TEAMS

FLORIDA STATE (4-1)

24	Wichita State (H)	0
16	Miami (A)	14
6	Florida (A)	21
38	Tulsa (A)	20
20	Mississippi St. (H)	17

SOUTH CAROLINA (5-1)

Duke (H)	20
N. Carolina (H)	6
Georgia (A)	41
N. C. State (H)	16
Va. Tech (A)	16
Maryland (H)	0

FSU	OPP	TEAM STATS	USC	OPP
104	72	Points	112	99
213/2.3	215/2.3	Rushing Plays/Avg.	281/3.5	362/3.6
177/94/11	142/62/10	Passes Att./Comp./Hd.Int.	115/64/4	112/52/7
1248	715	Passing Yardage	821	625
1732	1211	Total Yardage	1809	1913
15	14	Fumbles Lost	6	9
28/33.6	35/37.9	Punts/Avg.	45/38.6	35/40.9

INDIVIDUAL LEADERS

FLORIDA STATE

PASSING	ATT.	COMP.	INT.	YDS.	TD
Cappleman	174	92	11	1220	7
RECEIVING	NO.	YDS.	AVG.	TD	
Tyson	29	457	15.8	2	
Pederson	13	204	15.7	3	
Dawson	12	152	12.7	0	
Gaydos	9	139	15.4	1	
RUSHING	TC	NET	AVG.	TD	
Bailey	76	378	4.7	2	
Munroe	47	198	3.9	2	
Jarrett	26	61	2.4		
SCORING	TD	FG	XP	TP	
Bailey	3	0	0	18	
Munroe	3	0	0	18	
Pederson	3	0	0	18	
Guthrie	0	4	4	16	

SOUTH CAROLINA

PASSING	ATT.	COMP.	INT.	YDS.	TD
Suggs	106	60	4	759	3
RECEIVING	NO.	YDS.	AVG.	TD	
Zeigler	28	355	12.7	2	
Holloman	12	174	14.5	1	
Hamrick	8	99	12.4	0	
Muir	6	69	11.5	0	
RUSHING	TC	NET	AVG.	TD	
Muir	113	475	4.2	6	
Holloman	65	253	3.9	1	
B. R. Rice	23	102	4.4	1	
SCORING	TD	FG	XP	TP	
Muir	6	0	0	36	
DuPre	0	5	13	28	
Zeigler	2	0	0	12	
Holloman	2	0	0	12	

OFFENSE

18	KENT GAYDOS	SE
76	BILL RIMBY	LT
64	STAN WALKER	LG
51	BILL HUGHES	C
63	GEORGE MONTGOMERY	RG
77	JEFF CURCHIN	RT
81	JIM TYSON	TE
14	BILL CAPPLEMAN	QB
27	ARTHUR MUNROE	RB
30	TOM BAILEY	FB
23	DON PEDERSON	FL

DEFENSE

89	LYNN HODGE	LE
75	JIMMY POSTON	LT
55	MACK LEE THARPE	LLB
62	DON BUCKNER	MLB
47	GREGG CRABB	RLB
71	RUSTY GANAS	RT
84	DAVE LUCAS	RE
43	DICK HARRIS	LHB
15	PAT WATSON	RHB
3	JIMMY NASH	S
18	BO DAVIES	ROVER

Florida State

DEFENSE

86	RANDY HALL	LE
74	ROBERT McEACHERN	LT
60	BARRY RICE	LLB
56	BILL LOHSE	MLB
62	THERON BASS	RLB
79	FRANK VOHUN	LT
83	RON WALLACE	RE
43	JOHN MONTGOMERY	LC
29	BENNY RUST	RC
28	ROBERT ASHMORE	LS
24	JOHN LANHAN	RS

S. Carolina

OFFENSE

80	FRED ZEIGLER	SE
76	DAVE DeCAMILLA	LT
73	TONY FUSARO	LG
70	DANNY DYCHES	C
66	CHRIS BANK	RG
77	RICK HIPKINS	RT
87	DOUG HAMRICK	TE
12	TOMMY SUGGS	QB
24	RUDY HOLLOMAN	TB
36	WARREN MUIR	FB
40	TOM TREVILLIAN	FL

FLORIDA STATE SQUAD

11 Carrell-PK-P	56 Lohse-LB
12 Whigham-QB	57 Lowe-LB
14 Cappleman-QB	58 Gildea-LB
15 Warren-QB	59 Strickland-LB
16 Barnes-DB	60 Barry Rice-LB
17 Speer-DB	61 Essex-OT
18 Gaydos-SE	62 Bass-LB
19 Abairra-DB	63 G. Montgomery-OG
20 Thomas-DB	64 Walker-OG
21 Pell-DB	65 Shaw-DT
22 Mitchell-DB	66 Strickler-OT
23 Pederson-FL	67 Sammons-OG
24 Lanahan-DB	68 Roatche-C
27 Munroe-RB	69 White-DT
28 Ashmore-DB	70 Minor-OT
29 Rust-DB	71 Spence-DT
30 Bailey-RB	72 Logan-OG
31 Magalski-FB	73 Johnston-DT
32 E. Davis-FL	74 McEachern-DT-DE
33 Guthrie-PK	75 Amman-DT
35 Gray-FL	76 Rimby-OT
40 Gilman-FB	77 Curchin-OT
43 J. Montgomery-DB	78 Johnson-OT
44 Gridley-DB	79 Vohun-DT
47 G. Davis-FL	80 Beville-DE
48 Jarrett-FB	81 Tyson-TE
49 Glisson-LB	82 Dawson-SE
50 Whitehurst-LB	83 Wallace-DE
51 Hughes-C	84 Glass-TE
52 Sowers-C	86 Hall-DE
53 Stokes-OG	87 Zaffran-TE
54 Burt-LB	88 Beryl Rice-DE
55 Dees-C	89 McKinnie-DE

SOUTH CAROLINA SQUAD

1 DuPre-PK	50 Stone-C
2 Bell-PK	52 Kohout-MG
3 Nash-DB	53 Padgett-LB
10 Rhodes-QB	54 Ross-C
11 Hellams-DB	55 Tharpe-LB
12 Suggs-QB	57 Vasgaard-C
14 B. Jones-FL	58 Holstad-OG
15 Watson-DB	60 Boyte-OT
16 Yoakum-QB	61 Moye-OG
17 Morris-QB	62 Buckner-MG
18 Davies-DB	65 Wright-DT
19 Parker-LB-PNT	66 Bank-OG
20 Mitchell-SE	67 Johnson-OG
21 O'Harra-DB	68 Regalis-DT
22 Bailey-DB	69 King-OT
23 Jetton-TB	70 Dyches-C
24 Holloman-TB	71 Ganas-DT
28 C. Jones-DB	72 McCarthy-DT
29 Chavous-DB	73 Fusaro-OG
30 Rice-TB	75 Poston-DT
31 Miranda-TB	76 DeCamilla-OT
32 Cieckler-FL	77 Hipkins-OT
33 Usher-LB	78 Wheat-OG
34 Simmons-FB	80 Zeigler-SE
35 Boyd-DB	81 Duffle-FL
36 Muir-FB	82 Black-SE
38 Montgomery-DB	83 Freeman-TE
40 Trevillian-FL	84 Lucas-DE
41 Sistare-FB	85 Wingard-DE
42 Walkup-FL	86 Pope-DE
43 Harris-DB	87 Hamrick-TE
46 Beasley-LB	88 Hall-DE
47 Crabb-MG	89 Hodge-DE
48 Stirling-TE	90 Bolton-SE
	91 Brant-DE

OFFICIALS

Referee—Art Hodges, Winston-Salem, North Carolina
 Umpire—Oscar H. Edmonds, Jr., Memphis, Tennessee
 Linesman—Tom Harris, Charlotte, North Carolina
 Field Judge—Jack Langford, Atlanta, Georgia
 Back Judge—Gordon Pettus, Alton, Alabama
 E.C.O.—Morris E. Harrison, Decatur, Georgia

"COCA-COLA" AND "COKE" ARE REGISTERED TRADE-MARKS OF THE COCA-COLA COMPANY



FLORIDA STATE

NO.	NAME	1968 STATUS	HT.	WT.	CLASS	POS.	HOMETOWN
19	PHIL ABRAIRA	DB	6-0	180	Sr.	DB	Ft. Lauderdale
75	RICHARD AMMAN	DT	6-6	220	Soph.	DT	Cocoa Beach
28	ROBERT ASHMORE	DB	6-0	185	Soph.	DB	Tallahassee
30	TOM BAILEY	RB	6-2	212	Jr.	RB	Coral Gables
16	DAVID BARNES	DB	5-11	175	Frosh	DB	Maple Heights, O.
62	THERON BASS	LB	5-11	205	Jr.	LB	Live Oak
80	STEVE BEVILLE	DE	6-2	200	Soph.	DE	Fernandina Beach
54	BOBBY BURT	LB	6-1	210	Jr.	LB	Cairo, Ga.
14	BILL CAPPLEMAN	QB	6-3	210	Jr.	QB	Dunedin
11	DUANE CARRELL	PK-P	5-10	170	Soph.	PK-P	Washington, D.C.
77	JEFF CURCHIN	OT	6-6	255	Sr.	OT	Ocala
32	EDDIE DAVIS	FL	6-3	179	Soph.	FL	Atlanta, Ga.
47	RHETT DAWSON	FL	6-0	180	Soph.	FL	Winter Haven
82	GEORGE DAVIS	SE	6-1	187	Soph.	SE	Valdosta, Ga.
55	ALLEN DEES	C	6-2	196	Soph.	C	Lakeland
61	JOHN ESSEX	OT	6-2	226	Soph.	OT	Miami
18	KENT GAYDOS	SE	6-6	209	Soph.	SE	Dallas, Tex.
58	STEVE GILDEA	LB	6-0	197	Jr.	LB	Daytona Beach
40	BRENT GILMAN	FB	6-2	205	Sr.	FB	Long Beach, Calif.
84	MIKE GLASS	TE	6-3	202	Soph.	TE	Tampa
49	GUY GLISSON	LB	6-0	195	Soph.	LB	Lake Mary
35	MIKE GRAY	FL	6-3	201	Jr.	FL	Tallahassee
44	BUDDY GRIDLEY	DB	5-11	195	Soph.	DB	Claymont, Del.
33	GRANT GUTHRIE	PK	6-0	204	Sr.	PK	Rockledge
86	RANDY HALL	DE	6-0	206	Jr.	DE	Elizabethton, Tenn.
51	BILL HUGHES	C	6-1	225	Jr.	C	Macon, Ga.
48	JAMES JARRETT	FB	6-2	207	Soph.	FB	Ft. Lauderdale
78	WAYNE JOHNSON	OT	6-2	238	Sr.	OT	Jacksonville
73	DUKE JOHNSON	DT	6-2	247	Sr.	DT	Snal Beach, Calif.
24	JOHN LANAHAN	DB	6-0	196	Soph.	DB	St. Petersburg
72	RANDY LOGAN	OG	6-3	230	Jr.	OG	Thomasston, Ga.
56	BILL LOHSE	LB	6-1	221	Jr.	LB	Tallahassee
57	RON LOWE	LB	5-11	184	Jr.	LB	Macon, Ga.
74	ROBERT MEACHERN	DT-DE	6-2	221	Jr.	DT-DE	Garfield Hts., O.
89	J. W. MCKINIE	DE	6-2	195	Soph.	DE	Dayton Beach
31	PAUL MAGALSKI	FB	5-11	210	Soph.	FB	Williston
70	ROGER MINOR	OT	6-3	241	Soph.	OT	Coral Gables
22	DOUG MITCHELL	DB	6-3	198	Jr.	DB	Jacksonville
63	GEORGE MONTGOMERY	OG	6-2	220	Soph.	OG	Quincy
43	JOHN MONTGOMERY	DB	6-1	191	Soph.	DB	Groveland
27	ARTHUR MUNROE	RB	6-1	184	Soph.	RB	Phlokee
23	DON PEDERSON	FL	6-0	181	Jr.	FL	Fernandina Beach
21	JOHN PELL	DB	6-1	178	Sr.	DB	Fernandina Beach
60	BARRY RICE	DE	6-2	207	Jr.	DE	St. Petersburg
88	BERYL RICE	LB	6-0	201	Jr.	LB	Hatboro, Pa.
76	BILL RIMBY	DE	6-4	221	Soph.	DE	West Palm Beach
68	DAN ROATCHE	C	5-10	198	Soph.	C	Atlanta, Ga.
29	BENNY RUST	DB	6-0	188	Soph.	DB	Marietta, Ga.
67	MIKE SAMMONS	OG	6-1	206	Soph.	OG	Ft. Lauderdale
65	BILL SHAW	OT	6-2	219	Soph.	OT	Macon, Ga.
52	CRAIG SOWERS	C	6-4	224	Soph.	C	Groveland
71	WAYNE SPENCE	DT	6-3	235	Soph.	DT	Tallahassee
17	JACKIE SPEER	DB	6-3	181	Soph.	DB	Sanford
53	JAY STOKES	OG	6-3	222	Soph.	OG	Avon Park
59	LARRY STRICKLAND	LB	6-1	206	Soph.	LB	West Palm Beach
66	JOE STRICKLER	DB	6-2	235	Soph.	DB	Phlokee
20	DANNY THOMAS	OT	5-10	184	Sr.	OT	Sanford
81	JIM TYSON	TE	6-1	208	Jr.	TE	Tallahassee
79	FRANK VOHUN	DT	6-2	225	Sr.	DT	Brooksville
64	STAN WALKER	OG	6-3	219	Sr.	OG	Tallahassee
83	RON WALLAGE	DE	6-2	187	Jr.	DE	Macon, Ga.
15	TOMMY WARREN	QB	5-11	163	Sr.	QB	Coral Gables
12	TOMK WHIGHAM	QB	6-0	181	Soph.	QB	Sanford
69	TOM WHITE	DT	6-0	248	Jr.	DT	West Palm Beach
50	DAN WHITEHURST	LB	6-4	207	Soph.	LB	Adel, Ga.
87	TED ZAFFRAN	TE	6-3	202	Soph.	TE	Orlando



● CABLE COLOR TV IN ALL ROOMS
RECEIVING NINE CHANNELS

● POOL

● AIR CONDITIONED

● DIRECT DIAL PHONES

● Se habla Espanol

AMERICAN EXPRESS - DINERS - AMERICAN OIL
PHILLIPS 66 - BANKAMERICARD
MASTER CHARGE - CARTE BLANCHE

DRIFTWOOD
MOTEL and RESTAURANT

Cocktails — Banquet Room

● Northwest corner of Campus
on U.S. 90; Fla. 20 West

1402 W. TENN. (U.S. 90)
(904) 224-4174

SOUTH CAROLINA

NO.	NAME	POS.	CLASS	HT.	WT.	HOMETOWN
1	BILLY DUPRE	PK	Jr.	5-6	145	Columbia, S. C.
2	TOMMY BELL	PK	Jr.	5-10	157	Walhalla, S. C.
3	JIMMY NASH	DB	Soph.	5-11	165	Charlotte, N. C.
10	TOMMY RHODES	OB	Soph.	6-2	200	Chesapeake, Va.
11	TYLER HELLMANS	DB	Jr.	5-11	166	Greenwood, S. C.
12	TOMMY SUGGS	OB	Jr.	5-9	178	Lamar, S. C.
14	BUTCH JONES	FL	Soph.	6-2	187	Bamberg, S. C.
15	PAT WATSON	DB	Sr.	5-11	151	Myrtle Beach, S. C.
16	RANDY YOAKUM	QB	Jr.	6-1	192	Columbus, Ohio
17	GLENN MORRIS	QB	Soph.	6-3	192	Charlotte, N. C.
18	BO DAVIES	DB	Soph.	6-1	170	Gettysburg, Pa.
19	BILL PARKER	LB-PNT	Jr.	6-1	194	Kershaw, S. C.
20	JIM MITCHELL	SE	Soph.	5-11	155	Greensboro, N. C.
21	BOB O'HARRA	DB	Soph.	6-1	185	Florence, S. C.
22	DON BAILEY	DB	Jr.	6-0	188	Johns Island, S. C.
23	CHARLIE JETTON	TB	Soph.	5-9	174	Charlotte, N. C.
24	RUDY HOLLOMAN	TB	Sr.	5-10	170	Hurtsville, S. C.
28	CARROLL JONES	DB	Soph.	5-11	171	Canton, N. C.
29	ANDY CHAVOUS	DB	Sr.	6-2	180	Hopzibah, Ga.
30	BILLY RAY RICE	TB	Soph.	6-0	187	Gaffney, S. C.
31	BOB MIRANDA	TB	Jr.	5-11	190	E. Haven, Conn.
32	JIM CLECKLER	FL	Soph.	6-2	181	West Columbia, S. C.
33	AL USHER	LB	Jr.	5-11	201	Pageland, S. C.
34	TOMMY SIMMONS	FB	Soph.	5-10	198	Buffalo, S. C.
35	CANDLER BOYD	DB	Jr.	5-9	173	Hinesville, Ga.
36	WARREN MUIR	FB	Sr.	5-10	195	Fitchburg, Mass.
38	DON MONTGOMERY	DB	Soph.	5-10	190	Kingsree, S. C.
40	TOM TREVILLAN	FL	Jr.	6-0	192	Hampton, Va.
41	BYRON SISTARE	FB	Soph.	6-0	202	West Columbia, S. C.
42	KEN WALKUP	FL	Jr.	5-9	187	Timmonssville, S. C.
43	DICK HARRIS	DB	Soph.	5-11	159	Pt. Pless, Beach, N. J.
46	CHAN BEASLEY	LB	Soph.	5-10	192	Dublin, Ga.
47	GREG CRABB	MG	Soph.	5-10	202	Dublin, Ga.
48	MIKE STIRLING	TE	Soph.	6-4	209	Charlotte, N. C.
50	MACK STONE	C	Soph.	6-3	202	Greenwood, S. C.
52	PAT KOHOUT	MG	Soph.	5-11	204	Hampton, Va.
53	BENNY PADGETT	LB	Jr.	5-11	194	Rome, Ga.
54	KEN ROSS	C	Sr.	6-1	202	Williamston, S. C.
55	MACK LEE THARPE	LB	Jr.	6-1	219	Greenwood, S. C.
57	STEVE VASGAARD	C	Soph.	6-3	218	Winston-Salem, N. C.
58	STEVE HOLSTAD	OG	Soph.	5-10	202	Orangeburg, S. C.
60	BILL BOYTE	OT	Soph.	6-1	222	Canden, S. C.
61	RICHIE MOYE	OG	Soph.	6-0	203	West Columbia, S. C.
62	DON BUCKNER	MG	Sr.	5-11	195	Cleveland, Tenn.
65	JAKE WRIGHT	DT	Soph.	6-2	235	Vannville, S. C.
66	CHRIS BANK	OG	Jr.	6-2	235	Joliet, Ill.
67	JIMMY JOHNSON	OG	Soph.	6-0	200	Jacksonville, Fla.
68	JOE REGALIS	DT	Jr.	6-1	237	Tomaqua, Pa.
69	JOHN KING	OT	Sr.	6-4	220	Lancaster, S. C.
70	DANNY DYCHES	C	Jr.	6-5	258	Hanahan, S. C.
71	RUSTY GANAS	DT	Jr.	6-6	237	Waycross, Ga.
72	GEORGE MCCARTHY	DT	Sr.	6-3	217	Washington, D. C.
73	TONY FUSARO	OG	Jr.	6-2	238	Huntington, N. Y.
75	JIMMY POSTON	DT	Jr.	6-4	245	Canton, N. C.
76	DAVE DECAMILLA	OT	Jr.	6-2	234	Hudson Falls, N. Y.
77	RICK HOPKINS	OT	Jr.	6-4	245	Boothwyn, Pa.
78	KEN WHEAT	OG	Jr.	5-10	183	Milledgeville, Ga.
80	FRED ZEIGLER	SE	Sr.	6-4	188	Reevesville, S. C.
81	BILL DUFFLE	FL	Soph.	6-4	188	Atlanta, Ga.
82	GREG BLACK	SE	Soph.	6-3	192	Bamberg, S. C.
83	BILL FREEMAN	TE	Soph.	6-3	202	Clinton, S. C.
84	DAVE LUCAS	DE	Sr.	6-5	194	Bishopville, S. C.
85	JOE WINGARD	DE	Jr.	6-4	206	Brevard, N. C.
86	JIMMY POPE	DE	Jr.	6-4	207	Rock Hill, S. C.
88	DOUG HAMRICK	TE	Jr.	6-3	213	Cliffside, N. C.
87	DEANE HALL	DE	Soph.	6-0	203	Elkin, N. C.
89	LYNN HODGE	DE	Sr.	6-4	202	Union, S. C.
90	EDDIE BOLTON	SE	Jr.	6-3	211	Greenwood, S. C.
91	DON BRANT	DE	Jr.	6-5	186	Sycamore, S. C.

FLORIDA STATE

FLORIDA STATE

'Seminoles'

SOUTH CAROLINA

SOUTH CAROLINA

'Gamecocks'

11 Carrell-PK-P	12 Whigham-OB	14 Cappelman-OB	15 Warren-OB	16 Barnes-OB	17 Speer-DB	18 Gaydos-SE	19 Abraina-DB	20 Thomas-DB	21 Pail-DB	22 Mitchell-DB	23 Pederson-FL	24 Lanthorn-DB	27 Munro-DB	28 Ashmore-DB	29 Rust-DB	30 Bailey-RB	31 Magalski-FB	32 E. Davis-FL	33 Guthrie-PK	35 Gray-FL	40 Gilman-FB	43 J. Montgomery-DB	44 Grady-DB	47 G. Davis-FL	48 Jarratt-FB	49 Glisson-LB	50 Whitehurst-LB	51 Hughes-C	52 Sawyer-C	53 Stokes-OG	54 Burt-LB	55 Deas-C	56 Lohse-LB	57 Lowe-LB	58 Giddan-LB	59 Strickland-LB	60 Barry Rice-LB	61 Essex-OT	62 Bass-LB	63 G. Montgomery-OG	64 Walker-OG	65 Shaw-DT	66 Strickler-OT	67 Simmons-OG	68 Roache-C	69 White-DT	70 Minor-OT	71 Spence-DT	72 Logan-OG	73 Johnston-DT	74 McEachern-DT-DE	75 Amman-DT	76 Rimby-OT	77 Curchin-OT	78 Johnson-OT	79 Vohun-DT	80 Beville-DE	81 Tyson-TE	82 Dawson-SE	83 Wallace-DE	84 Glas-TE	86 Hall-DE	87 Zaffran-TE	88 Beryl Rice-DE	89 McKinnie-DE
-----------------	---------------	-----------------	--------------	--------------	-------------	--------------	---------------	--------------	------------	----------------	----------------	----------------	-------------	---------------	------------	--------------	----------------	----------------	---------------	------------	--------------	---------------------	-------------	----------------	---------------	---------------	------------------	-------------	-------------	--------------	------------	-----------	-------------	------------	--------------	------------------	------------------	-------------	------------	---------------------	--------------	------------	-----------------	---------------	-------------	-------------	-------------	--------------	-------------	----------------	--------------------	-------------	-------------	---------------	---------------	-------------	---------------	-------------	--------------	---------------	------------	------------	---------------	------------------	----------------

OFFENSE	DEFENSE	OFFENSE	DEFENSE
SE 18 Kent Gaydos 47 George Davis	LE 86 Randy Hall 89 J. W. McKinnie	SE 80 Fred Zeigler 20 Jim Mitchell	LE 89 Lynn Hodge 86 Jimmy Pope
LT 76 Bill Rimby 78 Wayne Johnson	LT 74 Robert McEachern 75 Richard Amman	LT 76 Dave DeCamilla 68 Joe Regalis	LT 75 Jimmy Poston 65 Jake Wright
LG 64 Stan Walker 53 Jay Stokes	LLB 60 Barry Rice 49 Guy Glisson	LG 73 Tony Fusaro 61 Richie Moye	LLB 55 Mack Lee Tharpe 53 Benny Padgett
C 51 Bill Hughes 55 Allen Dees	MLB 56 Bill Lohse 58 Steve Gidea	C 70 Danny Dyches 54 Ken Ross	MLB 62 Don Buckner 52 Pat Kohout
RG 63 George Montgomery 67 Mike Sammons	RLB 62 Theron Bass 57 Ron Lowe	RG 66 Chris Bank 78 Ken Wheat	RLB 47 Gregg Crabh 19 Bill Parker
RT 77 Jeff Curchin 66 Joe Strickler	RT 79 Frank Vohun 69 Tom White	RT 77 Rick Hipkins 60 Bill Boyle	RT 71 Rusty Ganas 72 George McCarthy
TE 81 Jim Tyson 87 Ted Zaffran	RE 83 Ron Wallace 80 Steve Beville	TE 87 Doug Hamrick 83 Billy Freeman	RE 84 Dave Lucas 85 Joe Wingard
QB 14 Bill Cappelman 12 Frank Whigham	LC 43 John Montgomery 21 John Pail	QB 12 Tommy Suggs 16 Randy Yoakum	LHB 43 Dick Harris 22 Don Bailey
RB 27 Arthur Munroe 30 Tom Bailey	RC 29 Benny Rust 20 Danny Thomas	TB 24 Rudy Holloman 30 Billy Ray Rice	RHB 15 Pat Watson 81 Bill Duffie
FB 30 Tom Bailey 48 James Jarrett	LS 28 Robert Ashmore 19 Phil Abraina	FB 36 Warren Muir 34 Tommy Simmons	S 3 Jimmy Nash 29 Andy Chavous
FL 23 Don Pederson 35 Mike Gray	RS 24 John Lanthorn 44 Buddy Gridley	FL 40 Tom Trevillian 42 Ken Walkup	Rover 18 Bo Davies 35 Chandler Boyd

PUNTS-11 Duane Carrell, 12 Frank Whigham
PLACEMENTS-33 Grant Guthrie, 11 Duane Carrell

PUNTS-19 Bill Parker
PLACEMENTS-1 Billy DuPre

1 DuPre-PK	2 Bell-PK	3 Nash-DB	10 Rhoder-OB	11 Hellams-DB	12 Suggs-OB	14 B. Jones-FL	15 Watson-DB	16 Yoakum-OB	17 Morris-OB	18 Davis-DB	19 Parker-LB-PNT	20 Mitchell-SE	21 O'Hara-DB	22 Bailey-DB	23 Jettson-TB	24 Holoman-TB	28 C. Jones-DB	29 Chuvoso-DB	30 Rice-TB	31 Miranda-TB	32 Czekler-FL	33 Uhler-LB	34 Simmons-FB	35 Boyd-DB	36 Muir-FB	38 Montgomery-DB	40 Trevillian-FL	41 Sistrup-FB	42 Walkup-FL	43 Harris-DB	46 Bauley-LB	47 Crabh-MG	48 Stirling-TE	50 Stone-C	52 Kohout-MG	53 Padgett-LB	54 Roe-C	55 Thayer-LB	57 Vagstad-C	58 Hokstad-OG	60 Boyle-OT	61 Moye-OG	62 Buckner-MG	65 Wright-DT	66 Bank-OG	67 Johnson-OG	68 Regalis-DT	69 King-OT	70 Dyches-C	71 Ganas-DT	72 McEachern-DT	73 Fusaro-OG	75 Poston-DT	76 DeCamilla-OT	77 Hipkins-OT	78 Wheat-OG	80 Zeigler-SE	81 Duffie-FL	82 Black-SE	83 Freeman-TE	84 Lucas-DE	85 Wingard-DE	86 Pope-DE	87 Hamrick-TE	88 Hall-DE	89 Hodge-DE	90 Bolton-SE	91 Brant-DE
------------	-----------	-----------	--------------	---------------	-------------	----------------	--------------	--------------	--------------	-------------	------------------	----------------	--------------	--------------	---------------	---------------	----------------	---------------	------------	---------------	---------------	-------------	---------------	------------	------------	------------------	------------------	---------------	--------------	--------------	--------------	-------------	----------------	------------	--------------	---------------	----------	--------------	--------------	---------------	-------------	------------	---------------	--------------	------------	---------------	---------------	------------	-------------	-------------	-----------------	--------------	--------------	-----------------	---------------	-------------	---------------	--------------	-------------	---------------	-------------	---------------	------------	---------------	------------	-------------	--------------	-------------



DRIFTWOOD

MOTEL and RESTAURANT

Cocktails — Banquet Room

- CABLE COLOR TV
- POOL
- Northwest corner of Campus on U.S. 90, Fla. 20 West
- 1402 W. TENN. (U.S. 90)

AMERICAN EXPRESS · DINERS · AMERICAN OIL · PHILLIPS 66
BANKAMERICARD · MASTER CHARGE · CARTE BLANCHE

- AIR CONDITIONED
- DIRECT DIAL PHONES
- Se habla Espanol

(904) 224-4174

Seminole Boosters, Incorporated



Present for a recent Seminole Booster Board of Directors meeting were:
 Standing, left to right: W. S. "Bill" Lee, Robert Camp, Leo Crutchfield, Thomas N. Kinnebrew, Godfrey Smith, Mike Norman, Ronald J. Schomburger, Dr. Edward G. Haskell, Jr., and J. Edwin White; directors.
 Seated, left to right: Thomas A. Waits, Executive Director; Wayne Cook, Secretary; William I. DuBey, President; Doyle Pope, President-Elect; Herschel Williams, Treasurer; and Theo Proctor, Jr., Past President.

BOARD OF DIRECTORS

Officers

WILLIAM I. DuBEY, President
 DOYLE POPE, President Elect
 WAYNE COOK '50, Secretary

HERSCHEL WILLIAMS '63, Treasurer
 THOMAS A. WAITS '56, Executive Director
 THEO PROCTOR, JR. '53, Past President

Directors

Ad Brautigam '51
 Robert Camp '57
 Bill Carraway '57
 Bill Cartee
 Dr. James Conn
 Leo Crutchfield '54
 Syde P. Deeb '35
 Hugh Donovan
 Donald Grant '49
 Tim Harris '56
 J. C. "Red" Hartsfield '49

Dr. Edward G. Haskell, Jr.
 Louis Hill
 Ed Hughes
 Tom Humphress
 Nelson Italiano '53
 Thomas N. Kinnebrew
 George Langford
 Ryals Lee
 W. S. "Bill" Lee
 Duke McCallister
 Guy McKenzie

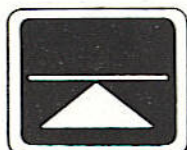
Payne Midyette, Jr.
 Mike Norman '56
 Daniel J. Patterson
 Nat Polak '61
 Ronald J. Schomburger '58
 Godfrey Smith
 William "Curt" Smith '49
 T. J. Wetherell
 J. Edwin White
 Slater Wight '58

*Best Wishes for a successful
season, and we are proud
to have had a part in
furnishing the
football equipment
for the Seminoles*

OWENS Inc.

**Sporting Goods — Hardware
ALBANY, GEORGIA**

**GOOD
LUCK
SEMINOLES!**



**DOLIME
MINERALS
COMPANY**

P.O. BOX 1441
BARTOW, FLORIDA 33830

GYMKANA PROUDLY PRESENTS ACRO-GYPSY

Nov. 5-8 in Tully Gymnasium

The Florida State Gymnastics Team, long a nationally acclaimed club, presents an outstanding gymkana show each year. This year the club presents "Acro-Gypsy." The show is divided into three parts—internationally known gymnasts, talented Seminole coeds, and the nationally famous Tallahassee Tumbling Tots. This year the Gymkana production will be held November 5-8 starting 8 p.m., nightly. Tickets are on sale at the University Union ticket office. They are \$1.25 for general admission, 75-cents for students and 50-cents for children.

A special feature of the Gymkana program is the annual Miss Gymkana contest. More than three hundred Florida State coeds took part in the preliminaries, from which 23 finalists have been chosen on the basis of beauty, poise and charm. On the final night of the show Miss Gymkana and her court will be chosen, based on their costume design, cooperation and enthusiasm toward the Gymkana program.

The gymnastics program at Florida State is under the direction of Dr. Hartley Price.



One of these 23 coeds will be selected Miss Gymkana during the final performance. The beauties here were picked from a field of several hundred entries. Court members are, from left to right:

Front Row: Chris Dietrick, Orlando; Ginger Delong, Gainesville, Ga.; De De Sullivan, Jacksonville; Charla Brackin, Tallahassee; Paula Stratton, Jacksonville; Marty Peagler and Mary Gregory, Pensacola; Mary Fletcher, Quincy.

Second Row: Mary Bauer, Ft. Pierce; Gale Walden, Ocala; Cathy Cooper, Ormond Beach; Jann Van Dusen, Jacksonville; Mary Clark, Perry; Linda Cross, Quincy; Jeannine Phipps, Tampa; Barbara Poe, Pensacola.

Third Row: Carol Castleberry, Ft. Walton Beach; Rosemary Stone, Boaz, Ala.; Darlene Culler, Jacksonville; Barbara Wallace, St. Albans, W. Va.; Linda Magness, Pensacola; Carolyn Crum, Albany, Ga.; Becky Ennis, Tampa.

STEWART TV AND APPLIANCES

24 West Washington Street

Phone 627-7126

QUINCY, FLORIDA 32351



EPPES-EDENFIELD HARDWARE & PAINT CENTER

FREE 222-3311

CITY WIDE DELIVERY

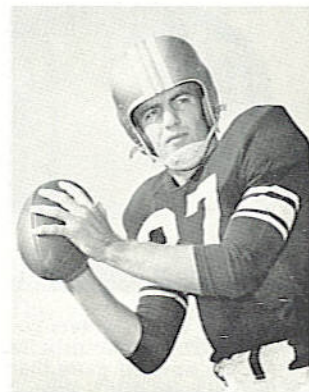
- BENJAMIN MOORE PAINTS
- GARDEN SUPPLIES
- FERTILIZER
- PLUMBING & ELEC SUPPLIES
- BARBECUE EQUIP & SUPPLIES
- LAWN MOWERS
- COMPLETE LINE OF HARDWARE

Open Mon - Sat 7:30 To 6:00

1334 N. MONROE



Al Makowiecki
... Little All America



Harry Massey
... 10 TD Passes

1954 SEMINOLES

(Continued from page 8)

On the field the team was led by quarterback Harry Massey, and he personified the desire in this club to make good. Originally signed by Mississippi State, Massey was let go, because the coaches there thought "he would never make a college quarterback. He can't run and he'll never pass well enough," they explained.

Massey turned to Florida State and the Seminoles never regretted giving him a second chance. Although he rarely threw for more than 15 yards, Massey established passing records at Florida State that stood until the Seminoles' pro-style offense under Bill Peterson moved into high gear during the '60's.

The Seminoles again tasted a shutout defeat when Auburn beat them 33-0, but behind Massey, Lee Corso, Al Makowiecki, Tom Feamster, Bobby Crenshaw and a host of others they came storming back to win all five remaining games and an invitation to the Sun Bowl.

"That invitation was the culmination of what we were shooting for," said Nugent. "People had noticed us. Not only were we considered, but we won the invitation. I let the squad decide whether we should go or not. Oh, I admit, I used a little persuasion, telling them that if they elected to go I would promise them the greatest time of their lives, but I don't think there was ever any doubt in their minds."

So in mid-December the Seminoles packed and left for El Paso, Tex., and the Sun Bowl. "I think," said Nugent tactfully, "we had a little too much pre-game training out there. As I recall we were there eight or nine days before the game. Everyone had a good time, but we were 'over-trained' for the game itself."

Nevertheless the Seminoles gave a respectable account of themselves despite losing to hometown Texas Western 47-20. "Actually the game was closer than that," Nugent explained. "We had two touchdowns called back and on one of them the officials that came with us from the east got into an argument with the Texas Western officials over who the penalty was against."

"I don't think we would have won the game, anyway, but it was the darndest thing I ever saw. Then again, I never had a team like this one either."

"I never saw anything like it. When it was all over, they called both coaches to the center of the field and asked us to talk to our squads, that 'the game was getting out of hand'."

TEAM CODE

251

SUMMARY OF FOOTBALL GAME STATISTICS — Home Team

Home Team FLORIDA STATE First Downs: (Rush) 14 (Pass) 10 (Pen.) 1 Total 25 Penalties Against: (No.) 6 (Yards) 60 Own Fumbles: (No.) 1 (Lost) 1

Player Code	PLAYER	RUSHING				FORWARD PASSING				TOT. OFFENSE		RECEIVING		INT. RETURNS		PUNTING		PUNT RETURNS		K. O. RETURNS		SCORING													
		Times Carried	Yards Gain	Yards Loss	Net Gain	TD's	No. Att.	No. Comp.	Had Int.	Net Gain	Scoring TD's Conv.	Total Plays	Net Gain	No. Caught	Yards Gain	TD's	Times Kicked	Yards Kicked	Blkd.	Number Returns	Yards Return	TD's	Number Returns	Yards Return	TD's	Touch-downs	X Pts. Att.	Kick Made	Other X Pts. Att.	Field Goals Att.	Goals Made	Points			
01	ABRAIRA	A					B				C		D		E	F				G	1	3		H		S									
05	BAILEY	A	22	114	1	113	B	1	1	0	16	D	7	79	-	E	F				G			H		S									
12	CAPPLEMAN	A	6	14	10	4	B	29	17	0	203	D			E	F				G			H		S										
13	CARRELL	A					B					C		D		E	F	3	99	-	G			H		S									
20	DAVIS, G.	A					B					C	D	1	20	-	E	F		G			H		S										
29	GAYDOS	A					B					C	D	4	38	-	E	F		G			H		S										
30	GILDEA	A					B					C	D			E	F				G			H		S									
33	GRAY	A					B					C	D	2	35	1	E	F		G			H		S	1					6				
35	GUTHRIE	A					B					C	D			E	F				G			H		S		4	4		4	2	10		
41	JARRETT	A	2	0	0	0	B					C	2	0		E	F				G			H		S									
53	MAGALSKI	A	12	111	0	111	B					C	12	111		E	F				G			H	1	22	-					12			
55	MONTGOMERY	A					B					C			E	F				G			H		S	1						6			
56	MURDOE	A	10	39	4	35	B					C	10	35		E	F				G			H	1	20	-								
68	PEDERSON	A					B					C	D	2	27	-	E	F		G			H		S										
69	PELL	A					B					C			E	F				G			H		S										
85	TYSON	A					B					C		D	2	20	-	E	F		G			H		S									
91	WHIGHAM	A	1	0	5	-5	B	1	0	1	0	C	2	-5		E	F				G			H		S									
		A					B					C				E	F				G			H		S									
		A					B					C				E	F				G			H		S									
		A					B					C				E	F				G			H		S									
		A					B					C				E	F				G			H		S									
	TEAM TOTALS	A	53	278	20	258	B	31	18	1	29	D	18	29	1	E	3	32	1		G	1	3		H	3	46	-		4	4	-	4	2	34

Opponents	First Downs: (Rush) 16 (Pass) 8 (Pen.) 0 Total 14										Penalties Against: (No.) 4 (Yards) 40										Own Fumbles: (No.) 2 (Lost) 1										
	SOUTH CAROLINA																														
Enter Here Team Totals From Visiting Team Summary	RUSHING				FORWARD PASSING				TOT. OFFENSE		RECEIVING		INT. RETURNS		PUNTING		PUNT RETURNS		K. O. RETURNS		SCORING										
	Times Carried	Yards Gain	Yards Loss	Net Gain	TD's	No. Att.	No. Comp.	Had Int.	Net Gain	Scoring TD's/Conv.	No. Caught	Yards Gain	TD's	No. Inter.	Yards Return	TD's	Times Kicked	Yards Kicked	Blkd.	Number Returns	Yards Return	TD's	Number Returns	Yards Return	TD's	Touch-downs	X Pts. Att.	Kick Made	Other X Pts. Att.	Field Goals Made	Points Made
VISITING TEAM TOTALS	A 36	124	40	84	0	B 31	17	3	203	1	D 17	203	1	E 1	-	-	F 4	147	-	G 1	13	-	H 5	111	-	S 1	-	-	1	2	19

Opponents SOUTH CAROLINA First Downs: (Rush) 6 (Pass) 8 (Pen.) 0 Total 14 Penalties Against: (No.) 4 (Yards) 40 Own Fumbles: (No.) 2 (Lost) 1

ADDITIONAL STATISTICS

SCORING PLAYS

List **all** scoring plays in sequence and all tries-for-points on the line following the touchdown.

Under "type of play" indicate rush, pass, interception runback, punt runback, kickoff runback or field goal. List tries-for-points as P.A.T. kick, P.A.T. rush or P.A.T. pass. Indicate missed tries-for-points by NG (no good).

On pass play, give passer first, then receiver, and combined yardage of pass and run. Measure runbacks from goal line, if started in end zone. Measure field goal attempted from point of kick. All other plays are measured from line of scrimmage.

Team	Type of Play	Player or Players	Yards
SO. CAROLINA	FIELD GOAL	DUPREE	32
FSU	RUSH	MAGALSKI	33
FSU	PAT KICK	GUTHRIE	3
FSU	FIELD GOAL	GUTHRIE	42
FSU	FIELD GOAL	GUTHRIE	40
FSU	PASS	BAILEY-GRAY	16
FSU	PAT KICK	GUTHRIE	3
FSU	INTERCEPTION	MONTGOMERY	27
SO. CAROLINA	PASS	YAKUM-HARRICK	20
SO. CAROLINA	PAT PASS	YAKUM-ZEIGLER	NGB
FSU	RUSH	MAGALSKI	2
FSU	PAT KICK	GUTHRIE	3
FSU	PAT KICK	GUTHRIE	3

Teams.

Teams.	Score by Quarters:	1st	2nd	3rd	4th	Total
F. S. U.		0	20	7	7	34
SO. CAROLINA		3	0	6	0	9

Official Attendance 34, 519 Weather Conditions Wind N-5-10 mph T¹⁰

TIME OF GAME

Kickoff 2 P.M.

End of Game 4:29 P.M.

TOTAL PLAYING TIME

2:09

(Elapsed time less intermission)

NON-SCORING LONG PLAYS

List all non-scoring long plays (including punts) gaining 70 yards or more, and **all missed field goal attempts for both teams.**

[illegible]

SUMMARY OF FOOTBALL GAME STATISTICS — Visiting Team

TEAM CODE

Visiting Team SOUTH CAROLINA First Downs: (Rush) 10 (Pass) 8 (Pen.) 0 Total 18 Penalties Against: (No.) 4 (Yards) 40 Own Fumbles: (No.) 2 (Lost) 1

Player Code	PLAYER	RUSHING				FORWARD PASSING				TOT. OFFENSE		RECEIVING		INT. RETURNS		PUNTING		PUNT RETURNS		K. O. RETURNS		SCORING										
		Times Carried	Yards Gain	Yards Loss	Net Gain	TD's	No. Att.	No. Comp.	Had Int.	Net Gain	Scoring TD's Conv.	Total Plays	Net Gain	No. Caught	Yards Gain	TD's	No. Inter.	Yards Return	TD's	Times Kicked	Yards Kicked	Blkd.	Number Returns	Yards Return	TD's	Touch-downs	X Pts. Att.	Kick Made	Other X Pts. Att.	Field Goals Att.	Points Made	
11	DAVIES	A					B				C		D	E			F		G			H	1	12		S						
21	DUPRE	A					B				C		D	E			F		G			H			S							
32	HARRICK	A					B				C		D	E			F		G			H			S							
33	HARRIS	A					B				C		D	E	1	-	F		G			H	4	11		S						
36	HOLLOMAN	A	6	13	-13		B				C	6	13	D	1	2	F		G			H			S							
53	MIRANDA	A	2	1	1		B				C	2	1	D	1	0	F		G			H			S							
54	MITCHELL	A					B				C			D			F		G			H			S							
58	MUIR	A	13	63	-63		B				C	13	63	D	2	42	F		G			H			S							
68	PARKER	A	6	11	2	9	B				C	6	9	D	1	12	F		G			H			S							
77	SIMMONS	A	4	8	30	32	B				C	4	32	D	14	55	F		G			H			S							
81	SUGGS	A					B				C			D			F		G			H			S							
85	TREVILLIA	A	1	3	-3		B				C	1	3	D	2	21	F		G			H			S							
90	WALKUP	A	4	27	7	17	B				C	4	17	D	3	15	F		G			H			S							
95	YORKUM	A					B				C			D			F		G			H			S							
96	ZEIGLER	A					B				C			D	2	70	F		G			H			S							
		A					B				C			D			F		G			H			S							
		A					B				C			D			F		G			H			S							
		A					B				C			D			F		G			H			S							
		A					B				C			D			F		G			H			S							
		A					B				C			D			F		G			H			S							
		A					B				C			D			F		G			H			S							
		A					B				C			D			F		G			H			S							
		A					B				C			D			F		G			H			S							
		A					B				C			D			F		G			H			S							
		A					B				C			D			F		G			H			S							
		A					B				C			D			F		G			H			S							
		A					B				C			D			F		G			H			S							
		A					B				C			D			F		G			H			S							
		A					B				C			D			F		G			H			S							
		A					B				C			D			F		G			H			S							
		A					B				C			D			F		G			H			S							
		A					B				C			D			F		G			H			S							
		A					B				C			D			F		G			H			S							
		A					B				C			D			F		G			H			S							
		A					B				C			D			F		G			H			S							
		A					B				C			D			F		G			H			S							
		A					B				C			D			F		G			H			S							
		A					B				C			D			F		G			H			S							
		A					B				C			D			F		G			H			S							
		A					B				C			D			F		G			H			S							
		A					B				C			D			F		G			H			S							
		A					B				C			D			F		G			H			S							
		A					B				C			D			F		G			H			S							
		A					B				C			D			F		G			H			S							
		A					B				C			D			F		G			H			S							
		A					B				C			D			F		G			H			S							
		A					B				C			D			F		G			H			S							
		A					B				C			D			F		G			H			S							
		A					B				C			D			F		G			H			S							
		A					B				C			D			F		G			H			S							
		A					B				C			D			F		G			H			S							
		A					B				C			D			F		G			H			S							
		A					B				C			D			F		G			H			S							
		A					B				C			D			F		G			H			S							
		A					B				C			D			F		G			H			S							
		A					B				C			D			F		G			H			S							
		A					B				C			D			F		G			H			S							
		A					B				C			D			F		G			H			S							
		A					B				C			D			F		G			H			S							
		A					B				C			D			F		G			H			S							
		A					B				C			D			F		G			H			S							
		A					B				C			D			F		G			H			S							
		A					B				C			D			F		G			H			S							
		A					B				C			D			F		G			H			S							
		A					B				C			D			F		G			H			S							
		A					B				C			D			F		G			H			S							
		A					B				C			D			F		G			H			S							
		A					B				C			D			F		G			H			S							
		A					B				C			D			F		G			H			S							
		A					B				C			D			F		G			H			S							
		A					B				C			D			F		G			H			S							
		A					B				C			D			F		G			H			S							
		A					B				C			D			F		G			H			S							
		A					B				C			D			F		G			H			S							
		A					B				C			D			F		G			H			S							
		A					B				C			D			F		G			H			S							
		A					B				C			D			F		G			H			S							
		A					B				C			D			F		G			H			S							
		A					B				C			D			F		G			H			S							
		A					B				C			D			F		G			H			S							
		A					B				C			D			F		G			H			S							
		A					B				C			D			F		G			H			S							

Opponents FLA STATE UNIVERSITY First Downs: (Rush) 14 (Pass) 10 (Pen.) 1 Total 25 Penalties Against: (No.) 6 (Yards) 60 Own Fumbles: (No.) 1 (Lost) 1

Enter Here Team Totals From Home Team Summary	HOME TEAM TOTALS	RUSHING					FORWARD PASSING					TOT. OFFENSE		RECEIVING		INT. RETURNS		PUNTING		PUNT RETURNS		K. O. RETURNS		S C O R I N G													
		Times Carried	Yards Gain	Yards Loss	Net Gain	TD's	No. Att.	No. Comp.	Had Int.	Net Gain	Scoring TD's	Conv.	Total Plays	Net Gain	No. Caught	Yards Gain	TD's	No. Inter.	Yards Return	TD's	Times Kicked	Yards Kicked	Blkd.	Number Returns	Yards Return	TD's	Number Returns	Yards Return	TD's	Touch-downs	X Pts. Att.	Kick Made	Other X Pts. Att.	Field Goals Made	Points		
		A	53	278	20	258	B	31	18	1	21	1	84	477	D	18	241	E	3	32	F	1	3		G	1	3		H	3	4						

Date of Game NOVEMBER 1, 1949 Where Played TALLAHASSEE, FL. Authenticated by Laurie Shafford and W. H. Johnston
NCSS Form No. 347-B (Copyright, 1959, National Collegiate Sports Services, Box 757, Grand Central Station, New York, N. Y.) (OVER)

FLORIDA STATE VS. SOUTH CAROLINA

Attendance:

34, 519

Campbell Stadium, Tallahassee

Nov. 1, 1969 2 p.m.

SC Captains: 24 Holloman, 15 Watson. FSU: 64 Walker, 20 Thomas

FSU wins toss and will receive. DuPre kicks to Munroe on 5. Returns 20 yards.

F25 1-10 Bailey on pitch goes 18 yards and 1st down.
 F44 1-10 Munroe gets five yards.
 F49 2-5 Munroe to left side for three yards.
 S48 3-1 Bailey plunge for four yards and 1st down.
 S44 1-10 Bailey sweeps for four, but SC loses five, offsides.
 S39 1-5 Cappleman pass complete to Gaydos for three yards.
 S36 2-2 FSU ~~x~~ loses five--too much time.
 S41 2-7 Munroe sweeps for two. Padgett tackles.
 S38 3-4 Cappleman pass complete to Tyson for one. Parker stops.
 S37 4-3 Guthrie field goal attempt is dead on SC 13.

SC Ball 10:45

S13 1-10 Muir for seven.
 S20 2-3 Muir for two.
 S22 3-1 Muir gets ~~two~~ more for 1st down.
 S24 1-10 Suggs pass ~~is~~ complete to ~~Holloman~~ Holloman for two yards.
 S26 2-8 Muir cracks for seven yards.
 S33 3-1 Suggs pass complete to Muir for 38 yards and 1st down.
 F29 1-10 Muir into line for three yards.
 F26 2-7 Suggs pass intended for Ziegler broken up by Montgomery.
 F26 3-7 Suggs to pass loses 14. Hall and Wallace are there.
 F40 4-21 Dupre field goal attempt is no good.
 FSU 7:17
 F20 1-10 FSU loses five for illegal motion
 F15 1-15 Bailey picks up three.
 F18 2-12 Cappleman pass intended for Gray broken up by Watson.
 F18 3-12 Cappleman pass intended for Bailey incomplete as rain starts.
 F18 4-12 Carrell punts dead on FSU ~~42~~ 43. 25 yard punt.

SC 6:19

F43 1-10 Holloman gains ~~three~~ four.
 F39 2-6 Suggs pass complete to Hamrick for seven yards and 1st down.
 F32 1-10 Muir at left side for four yards. Muir injured.
 F28 2-6 Simmons picks up one.
 F27 3-5 Simmons on draw for six yards and 1st down.
 F21 1-10 Simmons tries left side for no gain
 F21 2-10 Walkup gets three.
 F18 2-7 Simmons gets two.
 F16 4-4 DuPre 32 yard field goal is good. 2:32

SC 3, FSU 0

Dupre kicks off to Munroe who reverses to Pederson who gets to 16.

Four yard return

FSU 2:23

F16 1-10 Munroe thrown for four yard~~x~~ loss by Lucas
 F12 2-14 Cappleman pass complete to Bailey for nine yards.
 F21 3-5 Bailey on draw gets three.
 F24 4-2 Carrell punts dead on SC 48.

SC 0:20

S48 1-10 Suggs pass intended for Holloman broken up by Thomas
 S48 2-10 Muir gets one as quarter ends.

SC 3, FSU 0

SECOND QUARTER

SC Ball

S49 3-8 Suggs pass complete to Trevillion for nine yards and 1st down.
 F42 1-10 Miranda gets two.
 F40 2-8 Suggs loses nine and fumbles, but FSU loses 15-personal foul.
 F36 3-4 Suggs pass intended for Ziegler incomplete.
 F36 4-4 DuPre fakes field goal, Suggs pass complete to Ziegler for 1st down yardage, but SC has illegal receiver downfield. 15 yard penalty.
 S49 4-19 Parker punts to Abairra who is hit before ball arrives, SC loses 15 for interference.
 FSU 13:39
 F31 1-10 Cappleman keeps for five yards.
 F36 2-5 Munroe gets four in heavy traffic.
 F40 3-1 Bailey dives for three and ~~the~~ first down.
 F43 1-10 Cappleman pass complete to G. Davis for 20 yards and 1st down.
 E37 1-10 Bailey sweeps left for seven yards.
 S30 2-3 Bailey sweeps right for four yards and 1st down.
 S26 1-10 Magalski gets three
 S23 2-7 Cappleman loses three.
 S26 3-10 ~~But~~ Bailey sweeps for one yard.
 S25 4-9 Guthrie 42 yard FG is no good. wide to right.

SC 10:04

S20 1-10 Miranda loses one.
 S19 2-11 Suggs to pass loses seven. Mohun, Wallace tackle
 S12 3-18 Simmons loses two.
 S10 4-20 Parker punts to ~~Ed~~ Pell on fair catch at S42. 32 yard punt.

FSU 8:17

S42 1-10 Bailey sweeps right for five yards.
 F37 2-5 Munroe on trap for four yards.
 F33 3-1 Magalski breaks through left tackle for 33 yards and TD.
 Guthrie kick is good. 42 yards/3 plays.

7:26

FSU 7, SC 3

Hall kicks off ~~to~~ to Harris on goal, returns to 27, fumbles, ~~Wallace~~
 Wallace recovers for FSU

FSU 7:16

S27 1-10 ~~But~~ Bailey gets two.
 S25 2-8 Cappleman pass intended for Tyson incomplete.
 S25 3-8 Cappleman pass intended for Tyson ~~incomplete~~ incomplete.
 S25 4-8 Guthrie 42 yard field goal is good. 27 yards/4 plays

FSU 10, SC 3

6:29

Hall kicks off on sides, recovered by Abairra on SC 40.

FSU 6:26

S40 1-10 Bailey on pitch for five yards.
 S35 2-5 Munroe twists for ten yards and 1st down.
 S25 1-10 Cappleman pass intended for ~~Hamrick~~ Davis incomplete.
 S25 2-10 Bailey goes left for three yards.
 S22 3-7 Cappleman pass complete to Bailey for no gain.
 S22 4-7 Guthrie 40 yard FG is good. 40 yards/6 plays

FSU 13, SC 3 4:17

Guthrie kicks off to Davies at 28. return 12 yards to S 40

SC 4:09

S40 1-10 Suggs pass complete to Hamrick for 13 yards and 1st down.
 F47 1-10 Holloman for no gain.
 F47 2-10 Suggs pass complete to Hamrick for five yards.
 F42 3-5 Suggs pass intended for Ziegler broken up by Bar. Rice
 F42 4-5 Parker punts to Abairra on fair catch at FSU 5.

FSU
2:17

F5 1-10 ~~Munroe~~ Munroe gets one.
 F6 2-9 Bailey loses one. Gaydos
 F5 3-10 ~~Cappleman~~ Cappleman pass complete to ~~Gray~~ for 14 yards and 1st down.
 F19 1-10 Cappleman pass ~~incomplete~~ for Gaydos incomplete
 F19 2-10 Jarrett no gain
 F19 3-10 Cappleman pass complete to Gray for 19 yards and 1st down.
 F38 1-10 Cappleman pass complete to Pederson for 15 yards and 1st down.

Second quarter(cont.)

S47 1-10 Cappleman pass to Pederson incomplete

S47 2-10 Cappleman keeps for eight yards

S39 3-2 Magalski breaks for 23 yards.

S16 1-10 ~~Magalski~~ pass complete to Gray for 16 yards and TD

Guthrie kick is good.

BAILEY

FSU 20, SC 3

0:34

95 yds / 11 plays

Carrell kicks off to Harris on six. returns to 15

SC 0:26

S15 1-10 Holloman gets one. as half ends.

~~S16~~

FSU 20, SC 3

FLASH FOOTBALL STATS

Quick Halftime and After Game Reports of Vital Team Statistics and Individual Leaders

HALFTIME

Circle One

FINAL

TEAM STATISTICS

	So. Carolina	FSU
First Downs	5	12
Rushing Yards (Net)	12	151
Passing Yards (Net)	74	97
Return Yards (Net)	0-0	0-0
Interceptions / Interceptions		
Passes / Compl'd-Att-Had Intc'd)	6-10-0	9-16-0
Interceptions / Interceptions		
Punts (Number-Average)	3-34	2-27
Fumbles Lost	1	0
Yards Penalized	35	25

INDIVIDUAL LEADERS

So Carolina

FSU

RUSHING	Att'd	Net Yards	Avg.
Muir	7	26	3.7
Suggs	3	-30	-10
Simmons	5	7	1.4

PASSING	Att'd	Compl.	Had Intc'd	Net Yards
Suggs	10	6	0	74

PASS RECEIVING	No. Rec'd	Net Yards	For TD
Holloman	1	2	-
Hameick	3	25	-
TREVILLIAN	1	9	-
Muir	1	38	-

RUSHING	Att'd	Net Yards	Avg.
Bailey	13	57	4.3
Magalski	3	59	19.7
Mundpoe	8	25	3.1

PASSING	Att'd	Compl.	Had Intc'd	Net Yards
Cappelman	15	8	0	81
Bailey	1	1	0	16

PASS RECEIVING	No. Rec'd	Net Yards	For TD
Tyson	1	1	-
B. Davis	1	20	-
Bailey	2	9	-
Gaydos	2	17	-
GRAY	2	35	1

Carrell kicks off in end zone.

SC Ball 14:57

S20 1-10 Suggs pass intended for Muir incomplete. deflected at scrimmage.
S20 2-10 Suggs pass intercepted by Montgomery who returns 27 yards for FSU touchdown.
Guthrie kick is good.

FSU 27, SC 3 14:33

Carrell kicks to Harris in end zone. returns ⁴⁷~~80~~ yards to SC 4 7

SC 14:19

S47 1-10 Suggs keeps for eight yards.
F45 2-2 Holloman gets two yards and 1st down.
F43 1-10 Holloman sweeps left for five yards.
F38 2-5 Suggs pass ~~intended for Ziegler~~ intended for Ziegler intercepted by Pell on 3.

FSU 13:14

F3 1-10 Bailey picks up eight yards.
F11 2-2 Bailey ~~up~~ up middle for seven and 1st down.
F18 1-10 Bailey gets five more.
F23 2-5 Bailey at left end for five yards and 1st down.
F28 1-10 Magalski at left end for six yards.
F34 2-4 Cappleman pass intended for Tyson incomplete.
F34 3-5 Cappleman pass intended for Davis incomplete
F34 4-5 Carrell punts to Mitchell on 20, returns 13. 46 yard punt.

SC 10:20

S33 1-10 Yoakum keeps for one yard.
S34 2-9 Suggs pass complete to Walkup for four yards.
S37 3-5 Yoakum pass intended for Ziegler incomplete.
S37 4-5 Parker punts to ~~Abraira~~ Abaira on 18, returns 3 yards. 45 yard punt.

FSU 9:13

F21 1-10 Bailey picks up five.
F26 2-5 Jarrett fumbles, Poston recovers ~~for~~ for SC on 26.

SC 8:31

F26 1-10 Muir gets five yards.
F21 2-5 Muir ~~xxxxxx~~ gets one.
F20 3-5 Yoakum pass complete to Hamrick for 20 yards and TD. 26 yards/3 pl.
Yoakum pass batted down by Bar. Ace.

FSU 27, SC 9 7:27

DuPre kicks off to Magalski on 17, returns 22 yards ~~to~~ to 39.

FSU 7:19

F39 1-10 Bailey gets seven yards.
F46 2-3 Magalski threads for ten yards and 1st down.
S44 1-10 Cappleman to pass loses ~~xxxx~~ one.
B45 2-11 Magalski no gain
S45 3-11 Cappleman pass intended for Tyson incomplete
S45 ~~xxxx~~ FSU loses 15 yards, holding.
F37 3-30 Cappleman pass complete to Bailey for ~~xxxxxx~~ 27 yards
S34 4-3 Guthrie FG attempt is dead on SC 7.

SC 4:41

S7 1-10 ~~M~~ Yoakum pass intended for Hamrick ~~x~~ incomplete
S7 2-10 Muir gets three
S10 3-7 Muir gets five.
S15 4-2 Muir picks up four for 1st down.
S19 1-10 Yoakum pass complete to Ziegler for 39 yards and 1st down.
F42 1-10 Yoakum pass complete to Miranda for loss of six. Bass stops
F48 2-16 Yoakum pass complete to Muir for four.
F44 3-12 Yoakum pass complete to Walkup for four yards.
F40 4-8 Muir up middle for 21 yards and 1st down.
F19 1-10 Yoakum pass to Walkup incomplete.
F19 2-10 Yoakum pass complete to Trevillian for 12 yards and 1st down.
F7 1-G Muir at left side for two as quarter ends.

FSU 27, SC 9

FOURTH QUARTER

S6 BALL 2-6

F5 ~~4-10~~ Holloman gets one.
 F4 3-G ~~Yoakum~~ Yoakum pass broken up by ~~anahan~~ anahan
 F4 4-G Yoakum to pass is hit by Wallace for seven yard loss.

FSU 14:18

F11 1-10 Cappleman pass complete to Bailey for four yards.
 F15 2-6 Munroe gets four.
 F19 3-2 Bailey up gut for nine yards and 1st down.
 F28 1-10 Cappleman pass complete to Bailey for 14 yards and 1st down.
 F42 1-10 Magalski slips through for 11 yards and 1st down.
 S47 1-10 Munroe off right tackle for six.
 S41 2-4 Cappleman pass complete to Bailey for seven yards and 1st down.
 S34 1-10 Magalski picks up two.
 S32 2-8 Cappleman pass intended for Bailey incomplete.
 S32 3-8 Bailey on pitch for eight yards and 1st down.
 S24 1-10 Magalski in traffic for nine yards.
 S15 2-1 Magalski no gain
 S15 3-1 Cappleman pass complete to Gaydos for 13 yards and 1st down.
 S2 1-G ~~Magalski~~ Magalski sweeps for two yards and touchdown.
 Guthrie kick is good.

89 yards/14 plays

FSU 34, SC 9 8:00

Carrell kicks off to Harris on 11, returns 16 yards to 27

SC 7:52

S27 1-10 Yoakum breaks out for ¹⁹~~20~~ yards and 1st down.
 S46 1-10 Yoakum pass complete to Walkup for eight yards.
 F46 2-2 Yoakum pass complete to Ziegler for 31 yards and 1st down.
 F15 1-10 Yoakum pass complete to Hamrick for two yards.
 F13 2-8 Simmons picks up two.
 F11 3-6 Yoakum pass intended for Walkup incomplete
 F11 4-6 Yoakum pass intended for Ziegler broken up by Rust in end zone.
 FSU 5:29
 F11 1-10 Magalski gets eight yards.
 F19 2-2 Magalski gets six more and 1st down.
 F25 1-10 Cappleman pass complete to Gaydos for eight yards.
 F33 2-2 SC loses five, offsides. 1st down.
 F38 1-10 Magalski picks up two.
 F40 2-8 Cappleman to pass loses six
 F34 3-14 Cappleman pass complete to Tyson for 19 yards and 1st down.
 S47 1-10 Cappleman pass intended for Tyson is dropped. ~~incomplete~~
 S47 2-10 Cappleman trapped butx gets out for one yard, but FSU loses 15 holding
 F39 2-24 Cappleman pass complete to Pederson, but FSU loses five for illegal procedure
 F34 2-29 Cappleman ~~pass~~ screen pass complete to Bailey for 18 yards.
 S48 3-11 Cappleman pass complete to to Pederson for 12 yards and 1st down.
 S36 1-10 Cappleman pass intended for Magalski incomplete
 S36 2-10 Whigham keeps for five yard loss.
 S41 3-15 Whigham's pass intended for Pederson intercepted by Harris on 7.

SC 0:14

S7 1-10 Yoakum pass complete to Simmons for 12 yards and 1st down.
 S19 1-10 Yoakum pass intended for Ziegler ~~incomplete~~
 S19 2-10 Yoakum pass intercepted by ~~Butt~~ Gildea who returns five yards as game ends.

FSU 34, S. Carolina 9

LINE SCORE

	1	2	3	4	F
South Carolina	3	0	6	0	9
Florida State	0	20	7	7	34

Scoring:

SC- DuPre 32yd. FG, 2:32 1st Period.

FSU- Magalski 33yd run (Guthrie kick) 7:26 2nd Period

FSU- Guthrie 42yd FG 6:29 2nd Period

FSU- Guthrie 40yd FG 4:17 2nd Period

FSU- Gray 16yd pass from Bailey (Guthrie kick) 0:34 2nd Period

FSU- Montgomery 27yard interception return (Guthrie kick)
14:33 3rd Period;

SC- Hamrick 20 yard pass from Yoakum (pass failed)
7:27 3rd Period;

FSU- Magalski 2yd run (Guthrie kick) 8:00 4th Period

FLASH FOOTBALL STATS

Quick Halftime and After Game Reports of Vital Team Statistics and Individual Leaders
(Approved Wire Services Form)

HALFTIME

Circle One

FINAL

TEAM STATISTICS

	S. CAROLINA VISITORS	F.S.U. HOME TEAM
Score	9	34
First Downs	14	25
Rushing Yardage (Net)	84 84	258
Passing Yardage (Net)	203	219
*Return Yardage (Net)	13	35
Passes (Compl'd - Att'd - Had Into'd)	17-31-3	18-31-1
Punts (Number - Average)	4 - 36.8	3 - 33
Fumbles Lost	1	1
Yards Penalized	40	60

*Return of Punts, Intercepted Passes and Fumbles (not kickoffs).

INDIVIDUAL LEADERS

S. CAROLINA
VISITORS

RUSHING	Att'd	Net Yards	For TD	Long Gain
MOIR	13	63	-	21
SUGGS	4	-22	-	8
SIMMONS	6	9	-	6
YOAKUM	4	17	-	19
PASSING	Att-Compl-H.L.	Yds.	For TD	
SUGGS	14-7-2	77	-	
YOAKUM	17-10-1	126	1	

PASS RECEIVING	No.	Yards	For TD	
HAMRICK	5	47	1	
MOIR	2	42	-	
WALKUP	3	15	-	
TREVILLIAN	3	21	-	
PUNTING	No.	Avg.	Long Gain	
PARKER	4	36.8	45	

F.S.U.
HOME TEAM

RUSHING	Att'd	Net Yards	For TD	Long Gain
BAILEY	22	113	0	18
MAGALSKI	12	111	0	33
MUNROE	10	35	-	10
PASSING	Att-Compl-H.L.	Yds.	For TD	
CAPPLEMAN	29-17-0	203	0	
BAILEY	1-1-0	16	1	

PASS RECEIVING	No.	Yards	For TD	
CRAY	2	35	1	
BAILEY	7	75	-	
TYSON	2	20	-	
G. DAVIS	1	20	-	
PUNTING	No.	Avg.	Long Gain	
CARRELL	3	33	46	

F.S.U.

vs. SOUTH CAROLINA

NOV. 1, 1969

FINAL TEAM FOOTBALL STATISTICS

	SO. CAROLINA	FSU
First Downs Rushing	6	14
First Downs Passing	8	10
First Downs by Penalties	0	1
TOTAL FIRST DOWNS	14	25
Number Attempts Rushing	36	53
Yards Gained Rushing	124	278
Yards Lost Rushing	40	20
NET YARDS GAINED RUSHING	84	258
Number Passes Attempted	31	31
Number Passes Completed	17	18
Number Passes Had Intercepted	3	1
NET YARDS GAINED PASSING	203	219
Number Plays Rushing and Passing	67	84
TOTAL OFFENSE YARDAGE	287	477
Number Opponents Passes Intercepted	1	3
NET YARDS INTERCEPTIONS RETURNED	0	32
Number Times Punted	4	3
Number Punts Had Blocked	0	0
PUNTING AVERAGE, YARDS	36.8	33
Number Punts Returned	1	1
NET YARDS PUNTS RETURNED	13	3
Number Kickoffs Returned	5	3
NET YARDS KICKOFFS RETURNED	111	46
Number Times Penalized	4	6
TOTAL YARDS PENALIZED	40	60
Number Times Fumbled	2	1
NUMBER OWN FUMBLES LOST	1	1

Scoring:

Attendance:

Weather:

FINAL INDIVIDUAL FOOTBALL STATISTICS

SO. CAROLINA
VISITORS

RUSHING	Att'd	Net Yards	For TD	Long Gain
SUGGS	4	-22	-	8
HOLLOMAN	6	13	-	5
MUIR	13	63	-	21
SIMMONS	6	9	-	6
WALKUP	1	3	-	3
MIRANDA	2	1	-	2
YORKUM	4	17	-	19
TOTALS	36			

PASSING	Att-Comp-H.I.	Yards	For TD	Long Gain
SUGGS	14-7-2	77	-	38
YORKUM	17-10-1	126	1	39
TOTALS	31-17-3	203	1	

PASS RECEIVING	No.	Yds.	For TD	Long Gain
HOLLOMAN	1	2	-	2
MUIR	2	42	-	38
HAMRICK	5	47	1	20
TREVILLIAN	2	21	-	12
WALKUP	3	15	-	8
ZIEGLER	2	70	-	39
MIRANDA	1	6	-	6
SIMMONS	1	12	-	12
TOTALS	17	203	1	

PUNTING	No.	Yards	Avg.	Long Gain
PARKER	4	147	36.8	45
TOTALS	4	147	36.8	45

ALL RETURNS	Punts No.	Yds.	Kickoffs No.	Yds.	Int'l's No.	Yds.
HARRIS	-	-	-	-	-	-
HARRIS	-	-	4-99	1-	-	-
DAVIES	-	-	1-12	-	-	-
MITCHELL	1-13	-	-	-	-	-
TOTALS	1-13	5-111	1-	-	-	-

F.S.U.
HOME TEAM

RUSHING	Att'd	Net Yards	For TD	Long Gain
CAPPLEMAN	6	4	-	8
BAILEY	22	113	-	18
MUNROE	10	35	-	10
MAGALSKI	12	111	2	33
JARRETT	2	0	-	0
WHIGHAM	1	-5	-	-
TOTALS				

PASSING	Att-Comp-H.I.	Yards	For TD	Long Gain
CAPPLEMAN	29-17-	203	-	27
BAILEY	1-1-	16	1	16
WHIGHAM	1-1-	-	-	-
TOTALS	31-18-1	219	1	

PASS RECEIVING	No.	Yds.	For TD	Long Gain
TYSON	2	20	-	19
G. DAVIS	1	20	-	20
BAILEY	7	75	-	23
GRAY	2	35	1	19
PEDERSON	2	27	-	15
GAYDOS	4	38	-	14
TOTALS	18	215	1	

PUNTING	No.	Yards	Avg.	Long Gain
CARRELL	3	99	33	46
TOTALS	3	99	33	46

ALL RETURNS	Punts No.	Yds.	Kickoffs No.	Yds.	Int'l's No.	Yds.
MUNROE	-	-	1-20	-	-	-
PEDERSON	-	-	1-4	-	-	-
MAGALSKI	-	-	1-22	-	-	-
ABRAIRA	1-3	-	-	-	-	-
MONTGOMERY	-	-	-	-	1-27	-
PELL	-	-	-	-	1-	-
GILDEA	-	-	-	-	1-5	-
TOTALS	1-3	3-46	3-46	3-32	-	-

COACHESQUOTES:

PAUL DIETZEL: "We did a lot of dumb things today and I did most of them. I didn't get our team ready to play ~~xxxxxxxxxxxx~~ and we made a great many mistakes. Florida State capitalized on almost all of them which is the mark of a good team. Pete has a fine team and FSU certainly was ~~xxx~~ the best team on the field today. However, we are a lot better football team than we showed today and we've got to pull ourselves together and prove it. We lost our poise in the second period and this loss of poise was disastrous to us."

BILL PETERSON: We just had all our guns going today. I think we about ready to round into a good football team.

"We used every kid that was dressed unless we plan to ~~dr~~ redshirt him.

"We changed formations in two days of practice this week. We went to what we call a triple with Bailey in the slot. We thought we could take advantage of some of their defenses. We also wanted to get them in some defenses that we wanted them in.

"Then we found out we could run and we did a good job in that department. Actually, we didn't throw ~~xx~~ a whole lot today.

"And I want you to know that we used a few Houston option plays today.

"Our offensive line did a good job. They're gaining some experience and personal pride. Our whole team had that personal pride today.

"The defense did a great job. Those two interceptions really helped.

"Yes, I was ~~phenomenally~~ pleased with Magalski. Also with Bailey and Munroe. Our assistant coaches came up with an outstanding game plan.

"That short kick that we recovered wasn't an onside kick. But you have to have a little luck in this game.

"We tackled a lot better today. And we adjusted to that fullback pass in the flat.

"The key might have been when we threw them back 10 yards in four ~~xxxx~~ downs when they were near our goal line."