

official magazine of FSU



football

TRIBE



**Florida State vs.
South Carolina**

NOVEMBER 10, 1979

Tribe Tonight

by Mark Carlson, Florida State SPORTS INFORMATION DIRECTOR

It's a game that has kept Tallahassee folks talking.

Tonight's matchup between Florida State and South Carolina has been the topic of conversation throughout the week in Florida's Capital City. Sure, this is Homecoming, but it appears that this game means much more to both schools. For instance . . .

(1) This test pits teams with national ranking. The Seminoles are rated sixth by United Press International and seventh by Associated Press while South Carolina has a 19th place ranking by AP.

(2) The Seminoles will be trying to protect their current 12-game win streak. That includes eight games of this season and four more from last year.

(3) Both teams have lofty bowl aspirations that can only mature with a victory. FSU is hoping to land in a "major" bowl for the first time ever and MUST win to keep those aspirations alive. South Carolina with its nifty 6-2 work sheet this season is also in the middle of the bowl picture and hoping to make its first appearance in a post-season classic since 1975.

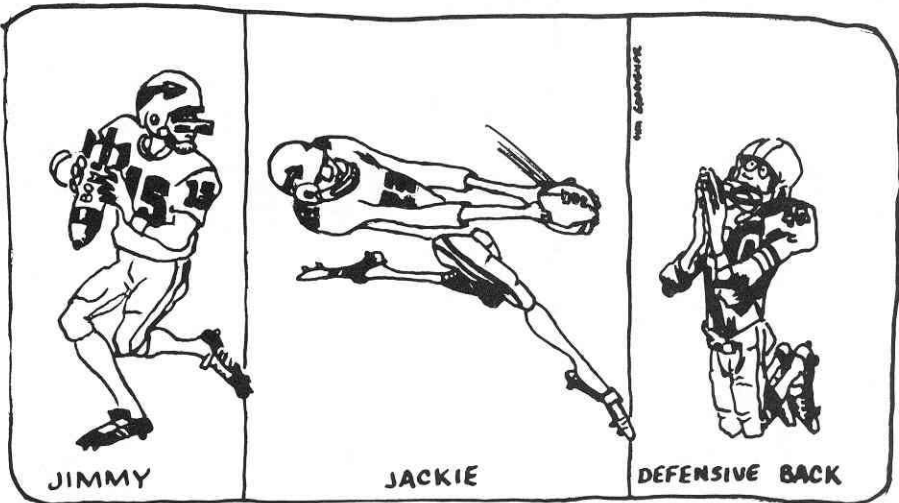
(4) This is one of those affairs that matches teacher vs. pupil. Seminole mentor Bobby Bowden was the offensive coordinator at West Virginia under South Carolina head coach Jim Carlen for four seasons. When Carlen left there to take the head coaching position at Texas Tech, it was Bowden who took over the West Virginia program for the next six seasons.

So, the stage is set for one of the finest matchups to be played at Doak Campbell Stadium in a long, long time.

There are going to be several outstanding individuals on the field tonight.

South Carolina boasts one of the nation's premier runners in tailback George Rogers, who has already gained 1,156 yards this season. How impressive is that statistic? Well, consider that all FSU backs this season have gained just 1,265 yards in eight games. And, the Seminoles' leading rusher Mark Lyles has netted 645 yards. Or, how about this comparison — the most yards ever gained in a single season by a Seminole was the 1,117 picked up by Larry Key in 1977.

Rogers is without doubt the best back to appear here since Pittsburgh



visited with Tony Dorsett to open the 1974 season.

The task of halting Mr. Rogers belongs to the Seminole defense which has had its good and bad moments this season. The good has been far more than the bad. Still, there will be a lot more learned about this group tonight when Rogers trots on the stadium turf.

Try this statistic on for size. Rogers is gaining an average of 144.5 yards per game. The Seminole defense on the ground is giving up just 115.8. Something has to give!

"In South Carolina we meet a different sort of team," says Seminole mentor Bobby Bowden. "The first eight teams we played this season were very similar to us — they went with two wide receivers and relied some on the passing game."

"That isn't so with South Carolina.

They line up with two tight ends and try to run the ball right down your throat. Their strength is the power offense and being able to keep the ball away from the opponent."

—FSU—

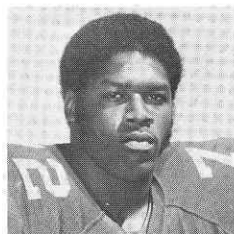
All Seminole fans breathed a sigh of relief Tuesday when it was announced by the university that Bowden has agreed to a new five-year contract that virtually assures him staying at FSU the rest of his coaching career. Bowden, as most Tribe followers know, has been mentioned for practically every head coaching job that was vacant the last three seasons.

"This (the new contract) should put an end to all that," said Bowden, who turned 50 on Thursday. "Those rumors were hurting our football team and also hindering my staff in recruiting. Now Florida State has me for as long as it wants me."

HERE'S HOW THEY STAND

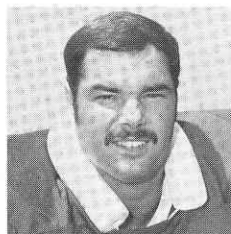
| FLORIDA STATE (8-0) | | SOUTH CAROLINA (6-2) | |
|---------------------|----------------------------------|----------------------|----------------------------------|
| 17 | Southern Mississippi14 | 0 | at North Carolina28 |
| 31 | Arizona State3 | 24 | Western Michigan7 |
| 40 | Miami23 | 35 | Duke0 |
| 17 | Virginia Tech10 | 27 | at Georgia20 |
| 27 | Louisville0 | 23 | Oklahoma State16 |
| 17 | Mississippi State6 | 21 | Mississippi14 |
| 24 | at L.S.U.19 | 17 | Notre Dame18 |
| 26 | at Cincinnati21 | 30 | North Carolina State28 |
| Nov. 10 | South Carolina | Nov. 10 | at Florida State |
| Nov. 17 | Memphis State | Nov. 17 | Wake Forest |
| Nov. 24 | at Florida | Nov. 24 | Clemson |

OT



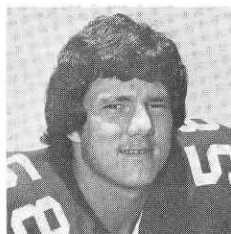
Ken Lanier

OG



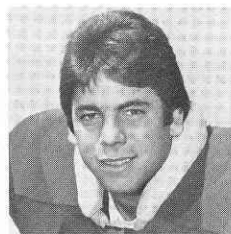
Mike Good

C



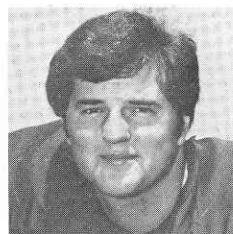
John Madden

OG



Greg Futch

OT



Tom Brannon

Ken, Mike, John, Greg and Tom who? Florida State's Offensive Line Keeps the Seminoles in the Headlines

by Elgin White, FSU SPORTS INFORMATION

Most football fans are avid . . . really avid if they are true, dyed-in-the-wool football fanatics.

And some of those "most" are pretty well versed in the intricacies of this most complicated of sports. But for the majority, all they see is the guy take the ball and run, the guy take a pass from the guy who takes the ball, or the big strong brute on defense who makes a great goal line stand.

This is true, whether or not the average fan will admit it.

So how much does ol' Joe Average know about the intricacies, for example, of the action that goes on in the offensive line. Matter of fact, Joe, who really is playing on the offensive line?

"Well, let's see," Joe ponders. "I know Gil Wesley was the center before he got hurt and had to be operated on."

But did you know Wesley was the center before he got hurt and had to be operated on, Joe? "Oh, yeah, sure I did. We all know about Gil Wesley. Didn't you?"

O.K., Joe. Who took Wesley's place?

"Uhh, well, let's see now. It wasn't Ron Simmons, I know. And Jackie Flowers is out there to catch passes. Oh, I remember, it was Jack Maskin."

Close, Joe. It was John Madden.

Frankly, not too many people are as dense as Joe. They know about John Madden now, and they know about Ken Lanier . . . he has been getting some ink, and they have heard about how good Mike Good is at guard, and they read about Greg Futch, the other offensive guard, when he won a scholarship after being a walk-on.

But then we asked old Joe about Tom Brannon.

"Brannon, Brannon, let's see . . . he runs a restaurant in New Orleans, doesn't he?"

A bit far fetched, this imaginary conversation with an imaginary Joe, but it really isn't too far out of line. The fact is, of all players on any football team, the ones with the least identification are members of the offensive line.

And for the most part, players who participate in this realm of nonentity could care less about the ink they might or might not get. Most of them are cognizant of the fact that if they are good enough and want to advance to professional football bad enough, the newspapers aren't going to get them there.

What they do on the field, how they measure in statistics, and what the pro scouts and their coaches think . . . that's the criteria by which they measure their own hopes and by which they determine their potential.

And perhaps a lot of the Joe Fanatics also don't realize that the smartest players on any football team are usually the ones that are guided into playing on the offensive line.

George Henshaw, Florida State's offensive coordinator and offensive line coach concurs in this opinion. "Yes, on the average, offensive linemen are some of the brightest players on the team. Especially is that the case here at Florida State.

"It is more difficult here than at other schools because our linemen have to block for the run as well as the pass. At places like Oklahoma or Alabama or any other school where

the pass is just a diversion to the running game, the linemen there concentrate on run blocking. But we have to do as much, if not more, pass blocking at Florida State than run blocking.

"That takes a little more moxie than usual. You just can't play on the offensive line if you are not a little brighter than most."

Henshaw also made the point that the offensive linemen must be able to adjust, even on audibles at the line, on what the defense might do.

"They constantly have to adjust. On defense, the linemen know what they are going to do after a set signal has been called. But on offense, the linemen might know what play was called in the huddle, or even on audible changes at the line, but then the defense will switch, stunt or maneuver, and they have to have the instant ability to pick up the stunt or change and make the right block. It certainly isn't easy, and we are fortunate here at Florida State that we have players who can make these adjustments and react to the situation as it presents itself."

One thing Joe Fanatic might not realize, too, is that the tight end is a dual purpose man . . . an offensive lineman as well as a receiver.

"That takes even more moxie for a tight end," Henshaw said. "Here, or anywhere else, the tight end has a dual responsibility. He has to block like a lineman and catch like a wide receiver. It is one of the most difficult positions to play in football, and is one of the better so-called skill positions.

"Actually, the tight end is not con-

continued on page 7

sidered part of the offensive line in our system," Henshaw continued. "But at Alabama, the tight end is an integral part of the offensive line, mainly because of his blocking patterns and schemes.

"Here we look for a catcher first and a blocker second. Catching is the numero uno responsibility for our tight ends.

"We have had some great prospects here who were super blockers on the run but couldn't play a lick at pass blocking. At Florida State that's a no no, so they didn't get to play. We try to weed out the best combination of both skills to put on our offensive line, and in some years that takes a lot of experimenting before you find just that right combination."

Henshaw said the FSU recruiters seldom recruit a high school lineman that just plays on offense. "The reason for that is," he said, "that most high schools put their best players on defense . . . that is, their best linemen. So, we have to go for the best linemen on the team, and then when we get them here we try to determine their capability in pass blocking as well as run blocking. You can see how this runs into a lot of coaching time and selection."

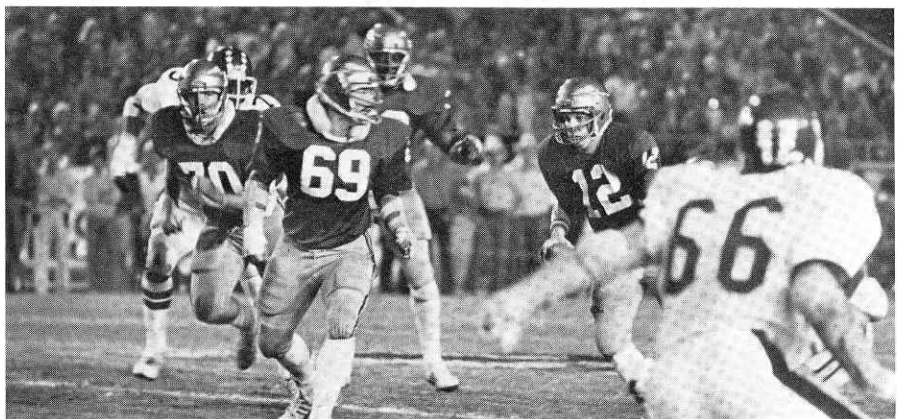
Two freshmen offensive linemen, Chris Nickrenz from Buffalo, New York and Robert Harris of Miami, both played defense in high school. "But we made offensive linemen of them here," Henshaw said, "because (1) the need we had for offensive linemen and the fact they both have super athletic ability, and (2) because both are very intelligent and can handle and learn our blocking schemes."

Henshaw also felt that the other position on a football team that demanded quickness as well as intelligence was defensive backs. "They have to be as smart if not smarter than the offensive linemen," he said.

What about quarterbacks and runners and wide receivers? Aren't they also what are known as skill positions and require extra intelligence? "Oh, certainly," Henshaw replied. "But there you're getting into an entirely different ball game."

Henshaw was asked to give a quick run-down on his five offensive linemen, and he was more than eager to do so.

"As I said before, we are lucky here at Florida State to have some kids who are fine athletes, outstanding young men, with intelligence and the ability to adjust to all kinds of situ-



Offensive linemen Greg Futch (70) and Mike Good (69) block for quarterback Wally Woodham as he gets a first down against Virginia Tech earlier this season.

ations. And they handle their 'no name' existence with the aplomb and quiet certainly that comes from knowing that without them, nothing any of the rest of them do out there would come off."

Starting with tackle Ken Lanier . . . "an excellent all around football player," Henshaw said. "When you are recruiting offensive linemen, you look for a physical specimen like Kenny. He has good concentration, has the smarts and his athletic prowess is the best. Just a dogged good all around football player."

Tommy Brannon. "You mean the one they think owns a restaurant in New Orleans?" Henshaw laughed. "I'll bet Tommy wishes he did own that restaurant. Anyhow, Tommy is one of those players who is not blessed with a great deal of speed, but he has a tremendous amount of talent and has built himself up to be one of the strongest players on the team. He has tremendous leg strength. He relies more on strength than quickness, but Brannon also is a very smart football player."

Mike Good. "Here is a four-year starter for our team, and a fellow who also is very strong. Mike was the heavyweight weight lifting champion in high school. He is somewhat smaller than most offensive guards, he is 6-1 and weighs 241, but he makes up for the lack of size in strength and talent. I would say Mike is second only to Ron Simmons in strength on our football team. He has developed into a good, solid football player. I would say he and Lanier have to do more one on one blocking than anyone else on the team, and they both handle that assignment well."

Greg Futch. "Once in awhile all coaches get lucky and come up with

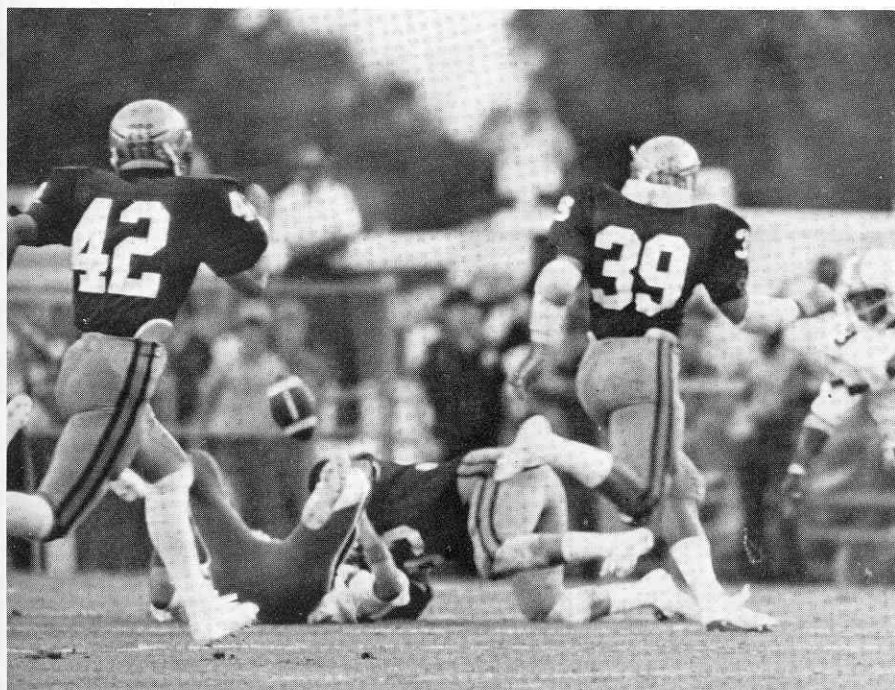
a Greg Futch. Greg was a walk-on, and he relies on toughness and desire more than anything else. He does not have tremendous strength or speed, but he's one of the meanest and toughest players we have. He is a real fine player in spite of having knee, shoulder and neck injuries. But he is one who never misses a practice. If there was ever a Mr. Dependable on our football team it would have to be Greg Futch. He knows what it means to play hurt, because he has done it so many times. A really super young man."

John Madden. "Well, you know John started for the first time against LSU after Gil Wesley went out for the season, and he has the hardest job on the entire offensive line at center. He has to get the ball to the quarterback and then block. That puts him at a real disadvantage when it comes to one on one blocking.

"The center controls all line calls, and he makes defensive alignment calls when the opposition is stunting. He has to block from the nose guard out, and quite frankly he has the hardest job, physically and mentally, of anyone on the line. John has shown the ability to come through for us when we needed him. He was going to be red-shirted this year in order to save a year of eligibility when Gil graduated, but the unfortunate injury to Wesley brought Madden on sooner. And he has responded with a quite determination that typifies all our offensive linemen."

So there you have it, Joe Fanatic. The offensive line is made up of people with size, speed, ability, talent, smarts and great strength. If you meet one of them on the street and don't recognize him, smile anyhow.

It will be the expedient thing to do.



Seminole linebackers Paul Piurowski (causing the fumble) and Reggie Herring (39) are joined by defensive back Monk Bonasorte in a fumble recovery against Miami earlier this season.

"Those birds are real mean and nasty, real mean and tough, just the way I like 'em."

—Gene McDowell

It Pays to be a Little Bit Crazy

by Chris Brockman, FLORIDA FLAMBEAU

In football, a player's position is often determined by his character. Quarterbacks are usually highly competitive, non-physical individuals. Linemen are the introverts; the men who like doing a job well. And the linebackers are the neighborhood bullies who never grow up.

"Those birds are real mean and nasty, real mean and tough, just the way I like 'em," FSU linebacker coach Gene McDowell gloated, grinning wolfishly. "We work 'em hard, but they're tough as all get out when we're done."

McDowell was of course talking about his favorite subject: the linebacker. Commonly referred to as head hunters and monster men, linebackers anchor a defense, performing in the never-never land between the linemen and the defensive backs. They must be quick and aggressive, filling the holes that open in the defensive line and dropping back to stop the short passes that often decimate a defense.

The Seminoles topping McDowell's list of 'nasty' players are juniors Reggie Herring and Paul Piurowski, who have played together since last year's season opener against Syracuse. It was the first start for both players and the beginning of a fine season.

Herring racked up 70 solo tackles

and 67 assists over the next 10 games to lead the team in stops while Piurowski managed to collect 37 unassisted tackles and help out on 47 others before being sidelined by a knee injury. This year the duo is off to an even better start with over 200 total tackles between them. Herring leads the friendly rivalry with 53 solo stops, two more than Piurowski, and 64 assists, 16 more than his playing buddy.

Both are Florida natives, recruited by Bobby Bowden in his first year as head coach for the Tribe. Herring hails from Titusville, where he was a runningback and Piurowski comes from Sarasota where he starred as a quarterback and safety. But both now feel at home in the linebacker's slot.

"It was a little hard to adjust at first, I'd never played linebacker before," Herring admitted. "But after seeing how hard they hit in college, I don't want to play runningback anymore. I like to be the intimidator, not the intimidatee."

"I like to hit," Piurowski added. "I know I'd miss hitting if I played offense. Part of the glory of defense is being the nasty bad guy. Offense is more finesse. It's hard to be nasty and aggressive on offense."

Even though Herring and Piurowski

are exactly what McDowell is looking for in a linebacker, the former FSU All-American linebacker is carefully watching his newest recruits at that position. Sophomores Keith Baker, who was scheduled to start until he sprained his ankle in the '79 season opener, and Jarvis Coursey, who was moved over from his normal defensive end position early in the season, are listed as the first team back-ups, but freshman Ellis Singletary has also won high praise.

"Our next best back is Baker," McDowell revealed. "He may be about ready to start and if he is we'll give the other two some needed rest. Coursey is next in line, but Singletary has to be the strongest and the fastest. He's just got to mature. He's like a big, strong puppy, he just needs experience."

Experience is the key to the Seminole's success, McDowell pointed out. It is the "backbone" of the team. Every defensive starter has some game experience and most of them started last year at some time during the season. Because of this know how, and some talent, the Seminoles are doing very well. Piurowski and Herring would be the first to agree with their mentor.

continued on page 51

Crazy

continued from page 49

"Reggie and I talk over a lot of things with Coach McDowell," the 20-year-old Criminology major stated. "We both know what we gotta do so we don't have to worry about the other guy messing up. But you can always ask for help, and we do. The main thing is knowing the other guy knows what to do."

The FSU defense relies heavily on Piurowski and Herring knowing what they are doing. Herring, the weak side linebacker, gets the defensive call from the coaches on the sidelines while Piurowski determines the down and distance. They then share the responsibility for making the correct call and for calling audibles (quick play changes at the line of scrimmage) and blitzes.

With most of their time devoted to football, the duo readily admits it is tough for them to maintain their grades, but they both insist they are here to get an education. The 20-year-old Herring is also a Criminology major, but his primary field of interest lies in correctional work, such as being a parole officer. Piurowski is looking into the possibility of being a security agent, but both really aren't sure what they want to do when they graduate. They both agree it's been tough getting this far.

"During the Season it's hard. We don't have a lot of time," Piurowski pointed out. "I don't know how people like Scott Warren (who is preparing to go to medical school) do it."

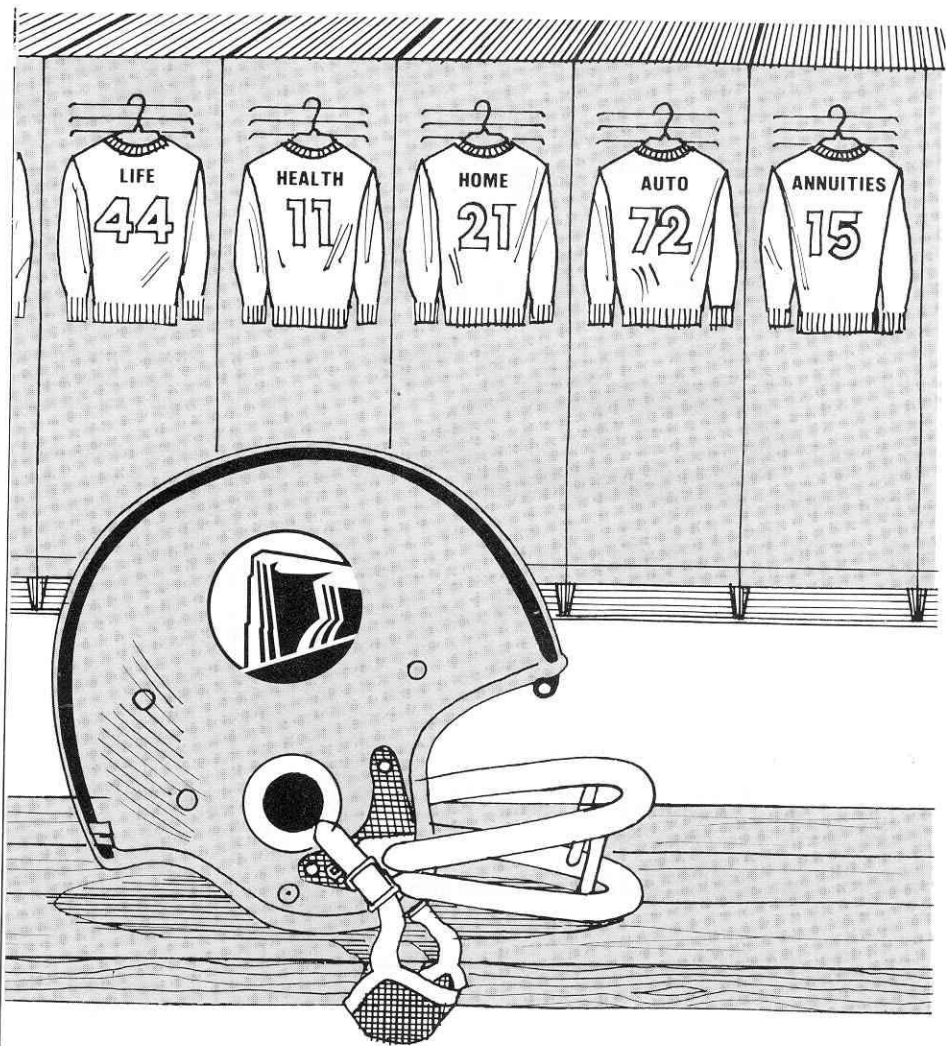
When the two aren't studying, playing football or sleeping, they watch soap operas and chew tobacco.

"I got most of the people on the team addicted to All My Children," the 6-foot, 222-pound Piurowski joked. "You should hear everyone in the locker room before practice talking about what happened that day and what's gonna happen tomorrow. It helps us to relax."

Soap operas aren't their only form of recreation. Pulling pranks on each other also helps ease the tension in the locker room. Athletic tape is frequently used to tape shoes and helmets together or simply to encase someone's lock and locker. They've even gone as far as to superglue one player's tennis shoes together, but no real harm is ever done.

"It's all in fun," Piurowski conceded. "But the offense does think we're a little crazy."

And that's just the way Gene McDowell likes 'em.



Your Pru Team is ready to go

Our lineup is prepared to give you full protection, whatever your needs. Life...health...home...auto...annuities. You call the signals, your Pru Representative will clear the way. Our team is ready to go whenever you are.

Interested in a Prudential career? Write P.O. Box 4579, Jacksonville, Florida 32231. An Equal Opportunity Employer M/F.



Prudential

South-Central Home Office, Jacksonville, Florida



FLORIDA STATE UNIVERSITY

SPORTS INFORMATION

200 TULLY GYM • TALLAHASSEE FL 32306 • 904-644-4038

FLORIDA STATE (8-0) vs. SOUTH CAROLINA (6-2)

November 10, 1979, 7:00 P.M. EST

Doak Campbell Stadium, Tallahassee, Fla.

THE GAME: Florida State (8-0) and South Carolina (6-2), both nationally ranked, meet in a premier battle of southern independents.

THE COACHES: Florida State's Bobby Bowden (Samford '52) now has a 31-11 record since arriving at Florida State for the 1976 season. That has raised his career mark to a nifty 104-43, a winning percentage of .707. Previous Bowden stops were at Samford (31-6) and West Virginia (42-26).

South Carolina's Jim Carlen (Georgia Tech '55) is serving in his 14th season as a head coach. His previous stops were West Virginia (25-13-3) and Texas Tech (37-20-2). Including this season, Carlen has a 29-24-1 record at the helm of the Gamecocks which gives him a career mark of 91-57-6. Like Bowden, Carlen, a native of Cookeville, Tenn., has been named Churchman Coach of the Year (1975) when Carolina went 7-5 and participated in the Tangerine Bowl.

THE CAPTAINS: Florida State has four for the season. Offensive field leaders are guard Mike Good (#69) and quarterback Wally Woodham (#12). Defensively the Tribe has end Scott Warren (#80) and cornerback Ivory Joe Hunter (#46). South Carolina will appoint game captains.

THE SERIES: This is the ninth meeting between the two schools with Florida State presently holding a 6-2 advantage. FSU won the first six meetings before South Carolina came back to take a 24-21 verdict in 1972 and 52-12 verdict in 1973. This is the fifth game of the series to be played in Tallahassee where FSU has a 3-1 edge, winning 17-0 in 1967, 34-9 in 1969 and 49-18 in 1971. The Gamecocks won by the 52-12 count during 1973 in Tallahassee.

SEMINOLE HOMECOMING: Florida State grads will be celebrating Homecoming when the Gamecocks invade. It will be the 32nd Homecoming game played by the Seminoles, who enjoy a 22-8-1 record in such contests. Bowden has kept the graduates happy with three consecutive Homecoming victories since he took over in 1976.

THE OFFICIALS: Appointed by the Southern Independent Collegiate Officials Association (SICOA) and Major Independents Association (MI).

REFEREE--Jimmy Campbell (SICOA), Memphis, Tenn.

UMPIRE--Foster M. Grose, Jr. (MI), Pittsburgh, Pa.

LINESMAN--Hunter Jackson (SICOA), Johnson City, Tenn.

LINE JUDGE--Edward W. Stakem (MI), Gaithersburg, Md.

FIELD JUDGE--Bobby Bright (SICOA), Port Richey, Fla.

BACK JUDGE--Walter J. Walsh (MI), Wheaton, Md.

THE BOWLS: Five are represented tonight. Included are the Orange Bowl, Gator Bowl, Peach Bowl, Tangerine Bowl and Hall of Fame Bowl.

THE CROWD: This game has been a sellout since October 30. It's the earliest non-Florida game sellout in the history of FSU and only the second time the Seminoles have sold out for a game other than Florida. The previous sellout came this season when 48,701 watched the Mississippi State game. That contest was sold out on the day prior to the game. Today's crowd is expected to approach and maybe even surpass 49,000 since chairs and some extra seats have been added. The stadium record is the crowd that witnessed the Mississippi State game.

NEXT WEEK: Florida State concludes its home season against Memphis State with a 7 p.m. kickoff. South Carolina hosts Wake Forest next Saturday in a 1:30 p.m. contest.

FLORIDA STATE (8-0) vs. SOUTH CAROLINA (6-2)

IF FLORIDA STATE WINS...

- ...the Seminoles will be 9-0, South Carolina 6-3
- ...the Seminole win streak will extend to 13 games
- ...the Seminoles will equal their longest win streak in the school's history
- ...Bobby Bowden will have a career coaching record of 105-43
- ...Bobby Bowden will be 32-11 at Florida State
- ...Jim Carlen's South Carolina record will be 29-25
- ...Jim Carlen's career mark will be 91-58
- ...Florida State will have a 7-2 series advantage
- ...the Seminoles will snap a two-game losing streak to South Carolina
- ...the Seminole home record this season will be 4-0
- ...the Seminoles will have an eight-game home winning streak
- ...the Seminoles will be 6-0 this season vs. fellow independents
- ...the Gamecocks will be 0-2 vs. fellow independents
- ...the Seminoles will be 23-8-1 in Homecoming Games

IF SOUTH CAROLINA WINS...

- ...the Gamecocks will be 7-2, FSU 8-1
- ...Florida State's win streak stops at 12 and falls one short of equaling the school record
- ...the Gamecocks win streak extends to two games
- ...the Seminoles will lose their third straight game to South Carolina
- ...the Gamecocks will narrow their series deficit to 6-3
- ...Florida State's home win streak ends at seven
- ...the Seminoles lose their first Homecoming Game under Bowden
- ...the Seminoles drop to 22-9-1 in Homecoming Games
- ...Bobby Bowden will be 31-12 at Florida State
- ...Bobby Bowden's career record dips to 104-44
- ...Bobby Bowden will be 0-1 vs. his former mentor Jim Carlen
- ...Jim Carlen will have a 30-24 mark at South Carolina
- ...Jim Carlen will have a career record of 90-59

IF IT'S A TIE...

- ...the Seminoles will be 8-0-1, South Carolina 6-2-1
- ...Bobby Bowden will have the first tie of his coaching career
- ...Bobby Bowden's career record will be 104-43-1
- ...Bobby Bowden will be 31-11-1 at Florida State
- ...Jim Carlen will be 29-24-2 at South Carolina
- ...Jim Carlen will be 91-57-7 overall
- ...it will be the first Seminole tie game since 1969 (Virginia Tech, 10-10)
- ...it will be the first Gamecock tie game since 1978 (Kentucky, 14-14)
- ...it will be the first tie in Doak Campbell since 1965 (Houston, 16-16)
- ...the series will be 6-2-1 favor of Florida State

IF...

- ...the crowd exceeds 48,701 it will be a Doak Campbell Stadium record--topping the 48,701 that watched Mississippi State on October 13
- ...Florida State scores 41 or more points it will be a season high
- ...Florida State scores 16 or less points it will be a season low
- ...South Carolina scores 36 or more points it will be a season high
- ...South Carolina is blanked it will be the second time this season
- ...South Carolina is blanked it will be the second whitewash of the season for FSU
- ...FSU is blanked it will be the first time that has happened since 1976 (Miami, 47-0)
- ...an FSU running back gains 143 or more yards it will be a season high
- ...an FSU players scores three or more touchdowns it will be an individual season high

FLORIDA STATE UNIVERSITY
1979 Football Statistics
(8-0, Home 3-0, Away 4-0, Neutral 1-0)

| TEAM STATISTICS | | | FSU | FOE | RUSHING | ATT | GAIN | LOSS | NET | AVG | TD | LG |
|--|----------|------|---------|--------|--------------|----------|---|---------|-------------------------|----------|--------------|--------|
| TOTAL POINTS | | | 199 | 96 | Lyles | 153 | 650 | 5 | 645 | 4.2 | 4 | 28 |
| Points Per Game | | | 24.8 | 13.7 | Whiting | 66 | 319 | 12 | 307 | 4.6 | 2 | 24 |
| TD/Run-Pass-Rtn | | | 9-13-3 | 11-2-0 | Ramsey | 37 | 181 | 15 | 166 | 4.4 | 3 | 50 |
| PAT Kick | | | 19-19 | 8-9 | Cherry | 26 | 118 | 10 | 108 | 4.1 | 0 | 18 |
| PAT Run or Pass | | | 1-6 | 2-4 | R. Williams | 30 | 67 | 37 | 30 | 1.0 | 0 | 11 |
| Field Goals | | | 8-14 | 2-4 | Kennedy | 14 | 43 | 4 | 39 | 2.7 | 0 | 11 |
| Safety | | | 2 | 0 | Burney | 2 | 30 | 0 | 30 | 15.0 | 0 | 17 |
| FIRST DOWNS | | | 146 | 101 | Woodham | 22 | 46 | 35 | 11 | 0.5 | 0 | 8 |
| Rushing | | | 74 | 53 | Wallace | 1 | 2 | 0 | 2 | 2.0 | 0 | 2 |
| Passing | | | 65 | 40 | Burnett | 2 | 3 | 2 | 1 | 1.0 | 0 | 3 |
| Penalty | | | 7 | 8 | Platt | 2 | 0 | 31 | -31 | - | 0 | -21 |
| 3rd Dn Consistency | | | 40.1 | 26.2 | Jordan | 18 | 20 | 63 | -43 | - | 0 | - |
| 3rd Dn Att/Conv | | | 122-49 | 118-31 | | | | | | | | |
| TOTAL YARDAGE | | | 2775 | 1856 | RECEIVING | NO. | YDS. | AVG. | TD | LG | | |
| Yds. Per Game | | | 346.8 | 232.0 | Flowers | 25 | 485 | 19.4 | 6 | 44 | | |
| Ball Control Plays | | | 606 | 524 | Lyles | 17 | 158 | 9.2 | 1 | 31 | | |
| Yds. Per Play | | | 4.57 | 3.54 | King | 12 | 144 | 12.0 | 1 | 31 | | |
| % Plays Rush-Pass | | | 62/38 | 66/34 | Platt | 11 | 181 | 16.4 | 2 | 48 | | |
| % Yds. Rush-Pass | | | 46/54 | 49/51 | P. Williams | 11 | 158 | 14.3 | 0 | 36 | | |
| RUSHING YARDAGE | | | 1265 | 927 | Whiting | 10 | 55 | 5.5 | 0 | 25 | | |
| Yds. Per Game | | | 158.1 | 115.8 | R. Williams | 7 | 64 | 9.1 | 1 | 15 | | |
| Gained | | | 1479 | 1310 | Har. Johnson | 6 | 131 | 21.8 | 1 | 53 | | |
| Lost | | | 214 | 383 | Cherry | 3 | 46 | 15.3 | 0 | 17 | | |
| Rushing Plays | | | 373 | 347 | Kennedy | 3 | 10 | 3.3 | 0 | 8 | | |
| Yds. Per Play | | | 3.39 | 2.67 | Ramsey | 2 | 40 | 20.0 | 0 | 26 | | |
| PASSING YARDAGE | | | 1510 | 929 | Unglaub | 2 | 24 | 12 | 0 | 13 | | |
| Yds. Per Game | | | 188.7 | 116.1 | Childers | 2 | 6 | 3.0 | 1 | 5 | | |
| Att-Completions | | | 233/112 | 177/59 | McKinnon | 1 | 8 | 8.0 | 0 | 8 | | |
| % Completed | | | 48.0 | 33.3 | | | | | | | | |
| Yds. Per Attempt | | | 6.48 | 5.24 | RETURNS | KICKOFF | PUNTS | INTERC. | | | | |
| Yds. Per Completion | | | 13.4 | 15.7 | Whiting | 10-164-0 | 0- 0 -0 | 0- 0 -0 | | | | |
| INTERCEPTIONS BY | | | 17 | 13 | Har. Johnson | 4- 38-0 | 0- 0 -0 | 0- 0 -0 | | | | |
| Yds. Rtn/TD | | | 207/0 | 195/0 | Henry | 1- 21-0 | 19-237 -2 | 0- 0 -0 | | | | |
| PUNTS | | | 50 | 63 | Burney | 1- 19-0 | 0- 0 -0 | 0- 0 -0 | | | | |
| Yds. Punted | | | 1960 | 2390 | K. Jones | 0- 0-0 | 1-(-1)-0 | 3- 38-0 | | | | |
| Yds. Per Punt | | | 39.2 | 37.9 | Bonasorte | 0- 0-0 | 1- 9 -0 | 8-100-0 | | | | |
| Blocked | | | 0 | 3 | Butler | 0- 0-0 | 0- 0 -1 | 5- 69-0 | | | | |
| PUNT RETURNS | | | 23 | 16 | Richardson | 0- 0-0 | 1- 14 -0 | 0- 0 -0 | | | | |
| Yds. Rtn/TD | | | 270/3 | 114/0 | Warren | 0- 0-0 | 1- 11 -0 | 0- 0 -0 | | | | |
| KICKOFF RETURNS | | | 17 | 22 | Hunter | 0- 0-0 | 0- 0 -0 | 1- 0-0 | | | | |
| Yds. Rtn/TD | | | 243/0 | 349/0 | | | | | | | | |
| PENALTY | | | 44 | 37 | PUNTING | NO. | YARDS | AVG. | LG | | | |
| Yards | | | 424 | 292 | Stark | 50 | 1960 | 39.2 | 57 | | | |
| FUMBLES-LOST | | | 15-7 | 35-11 | | | | | | | | |
| RESULTS AND SCHEDULE | | | | FSU | FOE | ATTD. | SCORING | | | | | |
| So. Mississippi (H) | | | | 17 | 14 | (45,467) | TD | FGM-A | KICK | OTHER | TP | |
| Arizona State (N) | | | | 31 | 3 | (33,484) | R-P-RTN | | XPM-A | XPM-A | | |
| Miami (H) | | | | 40 | 23 | (47,679) | Cappelen | 0-0-0 | 8-13 | 19-19 | 0-0 | 43 |
| Virginia Tech (A) | | | | 17 | 10 | (39,200) | Flowers | 0-6-0 | 0-0 | 0-0 | 1-0 | 38 |
| Louisville (A) | | | | 27 | 0 | (27,306) | Lyles | 4-1-0 | 0-0 | 0-0 | 0-1 | 30 |
| Mississippi State (H) | | | | 17 | 6 | (48,701) | Ramsey | 3-0-0 | 0-0 | 0-0 | 0-0 | 18 |
| LSU (A) | | | | 24 | 19 | (67,197) | Henry | 0-0-2 | 0-0 | 0-0 | 0-0 | 12 |
| Cincinnati (A) | | | | 26 | 21 | (14,539) | Platt | 0-2-0 | 0-0 | 0-0 | 0-0 | 12 |
| Nov. 10 South Carolina (H) | | | | | | | Whiting | 2-0-0 | 0-0 | 0-0 | 0-0 | 12 |
| Nov. 17 Memphis State (H) | | | | | | | King | 0-1-0 | 0-0 | 0-0 | 0-0 | 6 |
| Nov. 24 Florida (A) | | | | | | | R. Williams | 0-1-0 | 0-0 | 0-0 | 0-0 | 6 |
| | | | | | | | Butler | 0-0-1 | 0-0 | 0-0 | 0-0 | 6 |
| | | | | | | | Childers | 0-1-0 | 0-0 | 0-0 | 0-0 | 6 |
| | | | | | | | Har. Johnson | 0-1-0 | 0-0 | 0-0 | 0-0 | 6 |
| | | | | | | | Jordan | 0-0-0 | 0-0 | 0-0 | 1-3 | 0 |
| | | | | | | | Stockstill | 0-0-0 | 0-0 | 0-0 | 0-1 | 0 |
| TOTAL ATTENDANCE (AVG.) - 323,573 (40,446) | | | | | | | SCORE BY QUARTERS | | | | | |
| TOTAL HOME ATTD. (AVG.) - 141,847 (47,282) | | | | | | | 1 | 2 | 3 | 4 | -- | TP |
| | | | | | | | Florida State | 34 | 76 | 29 | 60 | -- 199 |
| | | | | | | | Foes | 14 | 41 | 13 | 28 | -- 96 |
| | | | | | | | FUMBLES RECOVERED - Simmons (2), Richardson (2), Bonasorte (2), Macek (1), Herring (1), Ga. Futch (1), McLean (1), Hunter (1) | | | | | |
| PASSING | G | ATT | COMP | PCT. | INT. | YDS. | TD | LG | YDS/COMP | YDS/GAME | TOT. OFF/AVG | |
| Jordan | 8 | 125 | 56 | 44.8 | 10 | 854 | 8 | 53 | 15.2 | 106.7 | 811/101.3 | |
| Woodham | 7 | 107 | 55 | 51.4 | 3 | 658 | 5 | 31 | 11.9 | 94.0 | 669/ 95.5 | |
| Stockstill | 2 | 1 | 1 | 100.0 | 0 | -2 | 0 | -2 | -2.0 | X | X | |
| FIELD GOALS | MADE-ATT | AVG. | LONG | BLKD | 10-19 | 20-29 | 30-39 | 40+ | MADE | | | |
| Cappelen | 8-13 | 61.5 | 46 | 1 | 0-0 | 4-6 | 2-4 | 2-3 | 26,42,26,28,20,36,46,31 | | | |
| Capece | 0-1 | 0.0 | - | - | - | - | - | 0-1 | * | | | |
| Foes | 2-4 | 66.6 | 44 | - | - | - | 1-3 | 1-1 | 39,44 | | | |

TOTAL TACKLES
(Eight Games)

| | <u>Tackles</u> | <u>Assists</u> | <u>Total</u> | <u>Big Plays</u> |
|------------------------|----------------|----------------|--------------|---------------------------------|
| Reggie Herring, LB | 53 | 64 | 117 | 5TFL, 1 FR, 1 QS, 1 CF |
| Paul Piurowski, LB | 51 | 48 | 99 | 2 TFL, 5 QS, 2 CF |
| Ron Simmons, NG | 49 | 12 | 61 | 12 TFL, 1 CF, 2 FR, 1 BK, 5 QS |
| Arthur Scott, DE | 26 | 35 | 61 | 5 QS, 5 TFL |
| Scott Warren, DE | 28 | 28 | 56 | 6 TFL, 2 QS, 2 CF |
| Monk Bonasorte, DB | 33 | 21 | 54 | 1 BK, 8 Int., 1 CF, 2 FR, 1 TFL |
| Mark Macek, DT | 26 | 18 | 44 | 1 TFL, 3 QS, 1 FR |
| Ivory Joe Hunter, DB | 17 | 14 | 31 | 1 CF, 1 Int., 1 FR |
| Walter Carter, DT | 16 | 14 | 30 | 1 QS, 1 TFL |
| Edenbur Richardson, DE | 11 | 17 | 28 | 2 FR, 3 TFL |
| Jeremy Mindlin, DT | 13 | 13 | 26 | 2 TFL, 2 QS |
| Keith Jones, DB | 18 | 8 | 26 | 3 CF, 1 QS, 3 Int., 1 TFL |
| James Gilbert, DT | 15 | 11 | 26 | 3 TFL, 2 QS |
| Bobby Butler, DB | 19 | 4 | 23 | 5 Int., 1 FR |
| Garry Futch, NG | 11 | 7 | 18 | 2 QS, 1 TFL, 1 FR |
| Keith Baker, LB | 8 | 8 | 16 | 1 CF |
| Scott McLean, DT | 6 | 7 | 13 | 2 CF, 1 FR |
| Jarvis Coursey, DT | 10 | 3 | 13 | |
| Gary Henry, DB | 0 | 5 | 5 | |
| Mike Smith, DB | 2 | 0 | 2 | |
| James Harris, DB | 2 | 0 | 2 | |
| Hector Gray, DB | 1 | 0 | 1 | |

KEY: TFL-Tackle for Loss; FR-Fumble Recovery; QS-Quarterback Sac; Int.-Interception;
CF-Caused Fumble; BK-Blocked Kick

Homecoming 1979

FLORIDA STATE (8-0) vs. SOUTH CAROLINA (6-2)

November 10, 1979 7:00 p.m.
Doak S. Campbell Stadium

Florida State Seminoles

South Carolina Gamecocks

OFFENSE

| | | |
|----|----|-----------------|
| WR | 22 | Hardis Johnson |
| | 29 | Sam Platt |
| OT | 72 | Ken Lanier |
| | 74 | Danny Collier |
| OG | 69 | Mike Good |
| | 62 | Eric Ryan |
| C | 55 | Gil Wesley |
| | 58 | John Madden |
| OG | 70 | Greg Futch |
| | 59 | Robert Harris |
| OT | 75 | Tom Brannon |
| | 73 | Chris Nickrenz |
| TE | 85 | Grady King |
| | 84 | Sam Childers |
| QB | 12 | Wally Woodham |
| | 15 | Jimmy Jordan |
| RB | 27 | Michael Whiting |
| | 44 | Ricky Williams |
| FB | 48 | Mark Lyles |
| | 49 | Ken Burnett |
| WR | 23 | Jackie Flowers |
| | 87 | Phil Williams |

Punts — 3 Rohn Stark
Placements — 1 Davey Cappelen
Kickoffs — 17 Bill Capece
Holder — 11 Rick Stockstill
Snaps — 65 Trent Barnes
Punt Returns — 40 Gary Henry
KO Returns — 27 Michael Whiting

DEFENSE

| | | |
|----|----|------------------|
| DE | 54 | Arthur Scott |
| | 60 | Scott McLean |
| DT | 67 | Mark Macek |
| | 51 | James Gilbert |
| NG | 50 | Ron Simmons |
| | 79 | Garry Futch |
| DT | 77 | Jeremy Mindlin |
| | 76 | Walter Carter |
| DE | 80 | Scott Warren |
| | 90 | Ed Richardson |
| LB | 39 | Reggie Herring |
| | 64 | Jarvis Coursey |
| LB | 53 | Paul Piurowski |
| | 57 | Keith Baker |
| CB | 21 | Bobby Butler |
| | 33 | James Harris |
| CB | 46 | Ivory Joe Hunter |
| | 43 | Hector Gray |
| FS | 42 | Monk Bonasorte |
| | 7 | Mike Smith |
| SS | 28 | Keith Jones |
| | 40 | Gary Henry |

OFFENSE

| | | |
|----|----|--------------------|
| TE | 47 | Willie Scott |
| | 41 | Zion McKinney |
| LT | 76 | Chuck Slaughtter |
| | 78 | Bill Lane |
| LG | 63 | Fred David |
| | 78 | Bill Lane |
| C | 61 | Quay Farr |
| | 60 | Mark Austin |
| RG | 78 | Bill Lane |
| | 68 | Steve Gettel |
| RT | 77 | George Schechterly |
| | 76 | Chuck Slaughtter |
| TE | 46 | Ben Cornett |
| | 41 | Zion McKinney |
| QB | 10 | Garry Harper |
| | 14 | Gordon Beckham |
| TB | 38 | George Rogers |
| | 35 | Spencer Clark |
| FB | 34 | Steve Dorsey |
| | 32 | Jeff Kendzioriski |
| FL | 41 | Zion McKinney |
| | 45 | Tim Gillespie |

Punts — 16 Jay Feltz, 12 Timmy Lee
Placekicks — 19 John Tanner, 17 Eddie Leopard
Punt Returns — 44 Horace Smith, 13 Jerry Aubin
Kickoff Returns — 40 Len Oliver, 44 Horace Smith,
31, Percy Reeves, 13 Jerry Aubin

OFFICIALS: Referee — Tommy Miller (SICOA); Linesman — James Mahan (SICOA); Field Judge — William E. Lange, Jr. (SICOA); Umpire — James Mosteller; Line Judge — John Wilson; Back Judge — John Buoni

Florida State Seminoles

South Carolina Gamecocks

| NO. | NAME | POS. | HT. | WT. | CL. | HOMETOWN |
|-----|--------------------|------|------|-----|-----|------------------------|
| 1 | Davey Cappelen | PK | 5-9 | 140 | Sr. | Vero Beach, Fla. |
| 3 | Rohn Stark | P | 6-3 | 195 | So. | Fifty Lakes, Minn. |
| 5 | Weegie Thompson | QB | 6-5 | 210 | Fr. | Midlothian, Va. |
| 6 | Dennis McKinnon | WR | 6-2 | 175 | Fr. | Miami, Fla. |
| 7 | Mike Smith | DB | 5-11 | 185 | Jr. | Panama City, Fla. |
| 11 | Rick Stockstill | QB | 6-1 | 182 | So. | Fernandina Beach, Fla. |
| 12 | Wally Woodham | QB | 5-11 | 182 | Sr. | Tallahassee, Fla. |
| 15 | Jimmy Jordan | QB | 6-1 | 185 | Sr. | Tallahassee, Fla. |
| 17 | Bill Capece | PK | 5-11 | 190 | Jr. | Miami, Fla. |
| 19 | Kurt Unglaub | WR | 5-11 | 175 | Sr. | Tallahassee, Fla. |
| 21 | Bobby Butler | DB | 5-11 | 185 | Jr. | Delray Beach, Fla. |
| 22 | Hardis Johnson | WR | 6-0 | 172 | Fr. | Tampa, Fla. |
| 23 | Jackie Flowers | WR | 6-2 | 195 | Sr. | Jacksonville, Fla. |
| 24 | Harvey Clayton | DB | 5-9 | 164 | Fr. | Florida City, Fla. |
| 26 | Wade Wallace | FB | 5-10 | 190 | Sr. | Birmingham, Ala. |
| 27 | Michael Whiting | RB | 6-2 | 195 | So. | Largo, Fla. |
| 28 | Keith Jones | DB | 5-11 | 185 | Jr. | Wildwood, Fla. |
| 29 | Sam Platt | WR | 5-11 | 176 | Jr. | Jacksonville, Fla. |
| 30 | Keith Kennedy | RB | 5-10 | 180 | Sr. | Red Bay, Ala. |
| 31 | Gator Cherry | FB | 5-10 | 205 | Sr. | Lake Wales, Fla. |
| 32 | Greg Ramsey | RB | 5-10 | 170 | Sr. | Ft. Lauderdale, Fla. |
| 33 | James Harris | DB | 6-0 | 170 | So. | Gainesville, Fla. |
| 35 | Ellis Singletary | LB | 5-9 | 210 | Fr. | Jasper, Fla. |
| 36 | Butch Holiday | DB | 5-8 | 161 | Fr. | Newnan, Ga. |
| 39 | Reggie Herring | LB | 6-2 | 195 | Jr. | Titusville, Fla. |
| 40 | Garv Henry | DB | 6-1 | 185 | So. | Orlando, Fla. |
| 41 | Tommy Young | RB | 6-0 | 195 | So. | Lake City, Fla. |
| 42 | Monk Bonasorte | DB | 6-1 | 177 | Jr. | Pittsburgh, Pa. |
| 43 | Hector Gray | DB | 6-1 | 190 | Sr. | Miami, Fla. |
| 44 | Ricky Williams | RB | 5-11 | 170 | Fr. | Griffin, Ga. |
| 46 | Ivory Joe Hunter | DB | 5-11 | 180 | Sr. | Tallahassee, Fla. |
| 48 | Mark Lyles | FB | 6-4 | 232 | Sr. | Buffalo, N.Y. |
| 49 | Ken Burnett | DB | 6-0 | 192 | Fr. | Brandon, Fla. |
| 50 | Ron Simmons | NG | 6-1 | 220 | Jr. | Warner Robins, Ga. |
| 51 | James Gilbert | NG | 6-2 | 235 | So. | Miami, Fla. |
| 52 | Willie Andrusko | C | 6-3 | 227 | So. | Atlanta, Ga. |
| 53 | Paul Pirowski | LB | 6-3 | 205 | Jr. | Sarasota, Fla. |
| 54 | Arthur Scott | DE | 6-2 | 222 | Sr. | Tampa, Fla. |
| 55 | Gil Wesley | C | 6-1 | 220 | Sr. | Birmingham, Ala. |
| 56 | Dmitri Rigas | LB | 6-2 | 210 | Sr. | Augusta, Ga. |
| 57 | Keith Baker | LB | 6-0 | 195 | So. | Delray Beach, Fla. |
| 58 | John Madden | C | 6-2 | 218 | Jr. | Ft. Walton Beach, Fla. |
| 59 | Robert Harris | DL | 6-2 | 245 | Fr. | Miami, Fla. |
| 60 | Scott McLean | DT | 6-4 | 218 | So. | Clermont, Fla. |
| 61 | Brent Brock | OG | 6-4 | 235 | Jr. | Albany, Ga. |
| 62 | Eric Ryan | OG | 6-4 | 225 | Fr. | Sarasota, Fla. |
| 63 | Lee Adams | OG | 6-4 | 245 | Jr. | Ruskin, Fla. |
| 64 | Jarvis Coursey | DE | 6-5 | 195 | So. | Gray, Ga. |
| 65 | Trent Barnes | OG | 6-4 | 230 | Jr. | Lakeland, Fla. |
| 66 | Redus Goggins | OG | 6-3 | 230 | Jr. | Chipley, Fla. |
| 67 | Mark Macek | DT | 6-2 | 235 | Jr. | Wyandotte, Mich. |
| 68 | Jeff Field | OG | 6-1 | 225 | Jr. | Albany, Ga. |
| 69 | Mike Good | OG | 6-2 | 230 | Sr. | Sanford, Fla. |
| 70 | Greg Futch | OT | 6-3 | 245 | Jr. | Ocala, Fla. |
| 71 | Bob Merson | OG | 6-3 | 238 | So. | Seminole, Fla. |
| 72 | Ken Lanier | OT | 6-4 | 260 | Jr. | Columbus, Ohio |
| 73 | Chris Nickrenz | OT | 6-6 | 252 | Fr. | Buffalo, N.Y. |
| 74 | Danny Collier | OT | 6-4 | 250 | So. | Eau Gallie, Fla. |
| 75 | Tom Brannon | OT | 6-3 | 240 | Jr. | Albany, Ga. |
| 76 | Walter Carter | DT | 6-4 | 240 | Sr. | Richmond, Va. |
| 77 | Jeremy Mindlin | DT | 6-3 | 230 | Sr. | Miami, Fla. |
| 79 | Garry Futch | DE | 6-3 | 220 | So. | Ocala, Fla. |
| 80 | Scott Warren | DE | 6-3 | 228 | Sr. | Titusville, Fla. |
| 81 | Zeke Mowatt | TE | 6-3 | 220 | Fr. | Titusville, Fla. |
| 83 | Ron Hester | TE | 6-2 | 205 | Jr. | Umatilla, Fla. |
| 84 | Sam Childers | TE | 6-2 | 195 | So. | Tallahassee, Fla. |
| 85 | Grady King | TE | 6-4 | 205 | Sr. | Satellite Beach, Fla. |
| 86 | Bill Keck | TE | 6-4 | 220 | Jr. | Newark, Ohio |
| 87 | Phil Williams | WR | 5-10 | 168 | Jr. | Warner Robins, Ga. |
| 88 | Jeff Bowden | WR | 5-7 | 165 | So. | Tallahassee, Fla. |
| 90 | Ed Richardson | DE | 6-3 | 206 | Sr. | Crystal River, Fla. |
| 91 | John Diamantas | DT | 6-3 | 230 | Fr. | Merritt Island, Fla. |
| 93 | David Ellis | OT | 6-3 | 235 | So. | Paisley, Fla. |
| 94 | Mark Sims | LB | 6-4 | 215 | So. | Bonifay, Fla. |
| 95 | Terry Widner | OG | 6-5 | 250 | Fr. | Donalsonville, Ga. |
| 97 | Herbert Harp | DL | 6-2 | 275 | Fr. | Winter Garden, Fla. |
| 99 | Ricky Render | DL | 6-4 | 220 | Fr. | Ozark, Ala. |
| 10 | Garry Harper | QB | 6-0 | 180 | Jr. | Hialeah, Fla. |
| 11 | Mark Fleetwood | PK | 5-10 | 175 | Fr. | Atlanta, Ga. |
| 12 | Timmy Lee | P | 6-2 | 190 | Fr. | Morehead, N.C. |
| 13 | Jerry Aubin | RB | 6-0 | 195 | Fr. | Albany, Ga. |
| 14 | Gordon Beckham | QB | 6-1 | 195 | Fr. | Atlanta, Ga. |
| 15 | Terry Bishop | QB | 6-0 | 175 | Fr. | Thomson, Ga. |
| 16 | Jay Feltz | P | 6-2 | 180 | Sr. | Monongah, W.V. |
| 17 | Eddie Leopard | PK | 6-0 | 190 | Jr. | Cayce, S.C. |
| 18 | Tim Rhino | DB | 5-10 | 180 | Fr. | Doraville, Ga. |
| 19 | John Tanner | PK | 6-2 | 175 | Fr. | Winnboro, S.C. |
| 20 | Mark Bridges | DB | 5-10 | 175 | Fr. | Heath Springs, S.C. |
| 21 | Andy Hastings | DB | 5-10 | 185 | Sr. | Watkins Glen, N.Y. |
| 22 | Freddy Snow | DB | 6-1 | 185 | Fr. | Duluth, Ga. |
| 23 | Lou Biondi | DB | 5-5 | 175 | Fr. | Pittsburgh, Pa. |
| 24 | Robert Perlotte | DB | 6-0 | 170 | So. | Hodges, S.C. |
| 25 | Pat Bowen | DB | 6-1 | 190 | Fr. | Mechanicsburg, Pa. |
| 26 | Harry Skipper | DB | 5-10 | 170 | Fr. | Baxley, Ga. |
| 27 | Chuck Finney | DB | 6-0 | 180 | Fr. | Miami, Fla. |
| 28 | Gary Burger | DB | 6-1 | 185 | Fr. | Decatur, Ga. |
| 29 | Al Stevens | DB | 5-9 | 170 | Jr. | Riceboro, Ga. |
| 30 | James McKie | RB | 5-11 | 180 | Jr. | Belvedere, S.C. |
| 31 | Percy Reeves | RB | 6-2 | 180 | So. | Irmo, S.C. |
| 32 | Jeff Kendzioriski | RB | 6-1 | 210 | Jr. | Hopedale, Ohio |
| 34 | Steve Dorsey | RB | 6-0 | 195 | Sr. | Towson, Md. |
| 35 | Spencer Clark | RB | 6-0 | 180 | Sr. | Fleming, Ga. |
| 38 | George Rogers | RB | 6-2 | 210 | Sr. | Duluth, Ga. |
| 40 | Len Oliver | SE | 5-8 | 170 | Jr. | Charlotte, N.C. |
| 41 | Zion McKinney | FL | 6-0 | 200 | Sr. | Pickens, S.C. |
| 42 | Gregg Gresham | FL | 5-9 | 180 | Jr. | Jacksonville, Fla. |
| 44 | Horace Smith | SE | 5-10 | 180 | So. | Thomasville, Ga. |
| 45 | Tim Gillespie | FL | 6-0 | 185 | Jr. | Wahalla, S.C. |
| 46 | Ben Cornett | TE | 6-2 | 220 | Jr. | Greenville, S.C. |
| 47 | Willie Scott | TE | 6-5 | 235 | Jr. | Newberry, S.C. |
| 48 | Dalton Prickett | TE | 6-0 | 170 | Sr. | Matthews, S.C. |
| 49 | Dewayne Chivers | TE | 6-4 | 225 | So. | Camden, S.C. |
| 50 | Ed Baxley | LB | 6-1 | 225 | Jr. | St. Petersburg, Fla. |
| 51 | Fred Sinclair | MG | 6-1 | 250 | Sr. | Homestead, Fla. |
| 52 | Roscoe Watson | MG | 5-11 | 230 | Sr. | Clinton, S.C. |
| 53 | Wade Scott | LB | 6-0 | 220 | Sr. | Nebo, N.C. |
| 54 | Tim Singleton | LB | 6-4 | 235 | Sr. | Charleston, S.C. |
| 55 | Phillip Vickery | LB | 6-2 | 215 | Fr. | Spartanburg, S.C. |
| 57 | Karey Johnson | LB | 5-10 | 195 | Fr. | Athens, Ga. |
| 58 | J. D. Fuller | MG | 6-2 | 215 | Fr. | Clinton, S.C. |
| 59 | Walt Kater | LB | 6-1 | 210 | Jr. | Steeleton, Pa. |
| 60 | Mark Austin | LB | 6-3 | 240 | Fr. | Union, S.C. |
| 61 | Quay Farr | C | 6-2 | 230 | Sr. | Cowpens, S.C. |
| 62 | Gary Hassen | SN | 6-2 | 240 | Sr. | New Castle, Pa. |
| 63 | Fred David | OG | 6-0 | 240 | Sr. | Youngstown, Ohio |
| 64 | Randy Teston | C | 6-0 | 235 | So. | Jesup, Ga. |
| 65 | Rubin Proctor | OG | 6-1 | 240 | So. | Miami, Fla. |
| 66 | Fred Chalmers | OG | 6-1 | 250 | Fr. | Newberry, S.C. |
| 67 | Bill Sarrocco | OG | 6-5 | 245 | Jr. | Ravenna, Ohio |
| 68 | Steve Gettel | OG | 6-1 | 260 | Jr. | Ormond Beach, Fla. |
| 70 | Steve Bernish | DT | 6-4 | 255 | Sr. | White Bear Lake, Minn. |
| 71 | Neal Timmons | DT | 6-5 | 260 | Sr. | Basehor, Kan. |
| 72 | L.T. Williams | DT | 6-1 | 240 | Sr. | Lincolnton, Ga. |
| 73 | Mike Vargo | DT | 6-3 | 240 | Fr. | Columbus, Ohio |
| 74 | Chuck Allen | DT | 6-3 | 250 | Jr. | Anderson, S.C. |
| 75 | Andrew Provence | DT | 6-3 | 245 | Fr. | Savannah, Ga. |
| 76 | Chuck Slaughter | OT | 6-5 | 245 | Jr. | Charleston, S.C. |
| 77 | George Schechterly | OT | 6-3 | 255 | Jr. | Berwick, Pa. |
| 78 | Bill Lane | OT | 6-3 | 250 | Sr. | Acme, Pa. |
| 79 | Tim Dyches | OT | 6-3 | 245 | Fr. | Charlestown, S.C. |
| 80 | Phil Ellis | DE | 6-1 | 220 | Sr. | St. Petersburg, Fla. |
| 81 | Brett Bond | DE | 6-0 | 225 | Fr. | Ironton, Ohio |
| 82 | Arthur Broussard | DE | 6-3 | 195 | Sr. | Missouri City, Tex. |
| 85 | Kevin Crocker | DE | 5-11 | 210 | Fr. | Hampton, Vir. |

DID NOT PLAY IN THIS GAME

Last Name

No. Games Missed

Own Fumbles: (No.) 4 (Lost) 3

49,490

Visiting Team SOUTH CAROLINA First Downs: (Rush) 7 (Pass) 2 (Pen.) 0 Total 9 Penalties Against: (No.) 2 (Yards) 18 Own Fumbles: (No.) 4 (Lost) 3

IMPORTANT: Most player categories are ranked on per-game average. Thus, it's vital that you consider every player (on both teams) with any statistics in any game this season (get season player statistics from both SIDs). Then list below the last name of players who have season figures but did NOT play in this game. All players with previous statistics will be charged with a game unless you indicate otherwise under DID NOT PLAY IN THIS GAME. A game played is one play—whether or not the player touches the ball. (For guidelines on a game played, refer to Bl-7 in 1979 Official Football Statisticians' Manual.) If a player with first-time statistics has missed games, fill in below—after getting from his SID how many games missed.

| DID NOT PLAY IN THIS GAME | | | |
|---------------------------|-----------|-----------|-----------|
| Last Name | Last Name | Last Name | Last Name |
| PLATT | BURNEY | | |

| PLAYERS WITH FIRST-TIME STATISTICS WHO HAVE MISSED GAMES: | | | |
|---|-----------|------------------|------------------|
| Last Name | Last Name | No. Games Missed | No. Games Missed |
| PLATT | BURNEY | 20 | 20 |

| PLAYER | RUSHING | | | PASSING | | | | TOTAL OFFENSE | | | RECEIVING | | | INT. RETURNS | | | PUNTING | | | PUNT RETURNS | | | K. O. RETURNS | | | X Pt. Kicks | | | Other X Pts. | | | Field Goals | | |
|----------------------|---------|------|------|---------|------|------|-------|---------------|-------|------|-----------|-------|-------|--------------|-------|------|---------|-------|------|--------------|-------|------|---------------|-------|------|-------------|------|------|--------------|------|------|-------------|---|---|
| | Rushes | Gain | Loss | Net | TD's | Att. | Comp. | Int. | Yards | TD's | Conv. | Plays | Yards | Catches | Yards | TD's | No. | Yards | TD's | No. | Yards | TD's | No. | Yards | TD's | Att. | Made | Att. | Made | Att. | Made | Points | | |
| HARPER | 6 | 10 | 16 | (6) | 0 | 11 | 3 | 0 | 51 | 0 | 0 | 17 | 45 | | | | | | | | | | | | | | | | | | | | | |
| BECKHAM | 1 | 1 | 0 | 1 | 0 | 1 | 0 | 0 | 0 | 0 | 2 | 1 | | | | | | | | | | | | | | | | | | | | | | |
| ROGERS | 21 | 187 | 1 | 186 | 1 | | | | | | 21 | 186 | | | | | | | | | | | | | | | | | | | | 6 | | |
| CLARK | 8 | 48 | 9 | 39 | 0 | | | | | | 8 | 39 | | | | | | | | | | | | | | | | | | | | | | |
| DORSEY | 2 | 3 | 0 | 3 | 0 | | | | | | 2 | 3 | | | | | | | | | | | | | | | | | | | | | | |
| REEVES | 1 | 2 | 0 | 2 | 0 | | | | | | 1 | 2 | | | | | | | | | | | | | | | | | | | | | | |
| SMITH | | | | | | | | | | | | | | | | | | | | | | | | | | | | | | | | | | |
| AUBIN | | | | | | | | | | | | | | | | | | | | | | | | | | | | | | | | | | |
| MCKINNEY | 1 | 0 | 11 | (11) | 0 | | | | | | 1 | (11) | | 1 | 35 | 0 | | | | | | | | | | | | | | | | | | |
| GILLESPIE | | | | | | | | | | | | | | 1 | 10 | 0 | | | | | | | | | | | | | | | | | | |
| SCOTT | | | | | | | | | | | | | | 1 | 6 | 0 | | | | | | | | | | | | | | | | | | |
| PERLOTTE | | | | | | | | | | | | | | | | | | | | | | | | | | | | | | | | | | |
| LEOPARD | | | | | | | | | | | | | | | | | | | | | | | | | | | | | | | | | | |
| FELTZ | | | | | | | | | | | | | | | | | | | | | | | | | | | | | | | | | | |
| VISITING TEAM TOTALS | 40 | 251 | 37 | 214 | 1 | 12 | 3 | 0 | 51 | 0 | 0 | 52 | 265 | 3 | 51 | 0 | 1 | 0 | 0 | 9 | 336 | 0 | 1 | 15 | 0 | 4 | 77 | 0 | 1 | 1 | 0 | 0 | 0 | 7 |

Home Team **FLORIDA STATE** First Downs: (Rush) **11** (Pass) **12** (Pen.) **0** Total **23** Penalties Against: (No.) **5** (Yards) **55** Own Fumbles: (No.) **1** (Lost) **1**

| | | | | | | | | | | | | | | | | | | | | | | | | | | | | | | | | | |
|------------------|----|----|----|-----|---|----|----|---|-----|---|----|----|---|----|-----|---|---|---|---|-----|---|---|---|---|---|----|---|---|---|----|---|----|----|
| HOME TEAM TOTALS | 45 | 19 | 14 | 177 | 1 | 38 | 21 | 1 | 204 | 1 | 83 | 38 | 1 | 21 | 204 | 1 | 0 | 0 | 5 | 208 | 0 | 2 | 5 | 0 | 2 | 45 | 0 | 2 | 1 | 82 | 1 | 44 | 27 |
|------------------|----|----|----|-----|---|----|----|---|-----|---|----|----|---|----|-----|---|---|---|---|-----|---|---|---|---|---|----|---|---|---|----|---|----|----|

Date NOVEMBER 10, 1979 Game Site TALLAHASSEE, FLA Official Attendance 49,490

National Collegiate Athletic Association OFFICIAL SCORING SUMMARY

South Carolina vs. Florida State
Visitors Home

Date Nov. 10, 1979 Site Doak S. Campbell Attendance 49,490

| Score by Quarters | 1 | 2 | 3 | 4 | Final |
|-------------------|----|---|---|----|-------|
| South Carolina | 0 | 7 | 0 | 0 | 7 |
| Florida State | 10 | 6 | 0 | 11 | 27 |

Florida State—Lyles 1 run (Cappelen kick), 9:23

Florida State—FG Cappelen 19, 5:31

Florida State—FG Cappelen 29, 13:35

South Carolina—Rogers 80 run (Leopard kick), 13:33

Florida State—FG Cappelen 50, 6:07

Florida State—Childers 7 pass from Jordan (Childers pass from Jordan), 9:55

Florida State—FG Cappelen 27, 7:01

Time of Game: Kickoff 7:00 End of Game 9:40 Total Elapsed Time 2hr. 40min.

Officials R—Tommy Miller; L—James Mahan; EJ—Wm. E. Lange, Jr.; U—James Mosteller; LJ—John Wilson

B.J.—John Buoni

Temperature 70 Wind _____ Weather Cloudy

Sample scoring descriptions:

Winsockie—Smith 8 run (Jones run) 9:58
 Tech—Jones 22 pass from Brown (Williams kick) 4:33
 Winsockie—Smith 3 run (kick failed) 13:06
 Tech—FG Jones, 23, 2:12
 Winsockie—Safety, Smith tackled Jones in endzone, 5:05
 Tech—Jones 13 run (Jones pass from Brown) 1:57

FLORIDA STATE VS. SOUTH CAROLINA
DOAK CAMPBELL STADIUM-TALLAHASSEE-NOV. 10, 1979-7 P.M.
WEATHER: FAIR, HUMID 72 degrees.

FSU wins toss and receives. Tanner ~~kicks~~ kicks to Johnson at 2. returns to 18.

| | | | |
|-----|------|---|------------|
| F18 | 1-10 | Whiting on left side for 4 | |
| F22 | 2-6 | Woodham pass blocked by Allen. incomplete | |
| F22 | 3-8 | Lyles in middle for 7. | FIRST DOWN |
| F29 | 1-10 | Woodham pass complete to Whiting for 15 | FIRST DOWN |
| F44 | 1-10 | Woodham pass complete to Lyles for 12 | FIRST DOWN |
| S44 | 1-10 | Lyles gains 4 | |
| S40 | 2-6 | Woodham pass complete to Whiting for 18 | FIRST DOWN |
| S22 | 1-10 | Lyles gains 2. PENALTY : FSU 5, illegal procedure | |
| S27 | 1-15 | Woodham pass intended for Johnson incomplete | |
| S27 | 2-15 | Whiting at left tackle for 2 | |
| S25 | 3-13 | Woodham pass complete to Flowers for 15 | FIRST DOWN |
| S10 | 1-10 | Woodham pass intended for Flowers incomplete in end zone | |
| S10 | 2-10 | Whiting up middle for 9 | |
| S1 | 3-1 | Lyles plunges for 1 and TOUCHDOWN Cappelen kick is good. | FIRST DOWN |

FSU 7, USC 0 9:23 82 yards, 12 plays

Capece kicks to Smith at 4, returns to 24
(9:17)

| | | |
|-----|------|---|
| S24 | 1-10 | Rogers gains 4 |
| S28 | 2-6 | Rogers gains 3, FUMBLES Warren recovers for FSU |

FSU(8:40)

| | | | |
|-----|------|--|------------|
| S31 | 1-10 | Woodham pass to King for 8 | |
| S23 | 2-2 | Whiting at right tackle for 3 | FIRST DOWN |
| S20 | 1-10 | Lyles gains 2 | |
| S18 | 2-8 | Woodham pass complete to Whiting for 11. diving catch. | FIRST DOWN |
| S7 | 1-0 | Lyles hits left side for 2 | |
| S5 | 2-0 | Lyles in middle for 3. PENALTY: SC 3 yds. Offsides | |
| S2 | 2-0 | Lyles in line for no gain | |
| S2 | 3-0 | Woodham to pass, hit by Watson, incomplete | |
| S2 | 4-0 | Cappelen 18 yard field goal is good. | |

FSU 10, USC 0 5:31 31 yards 8 plays

Capece kicks to Smith on 1, returns to S18

SC(5:26)

| | | | |
|-----|------|--|------------|
| S18 | 1-10 | Rogers on right side for 12 | FIRST DOWN |
| S30 | 1-10 | Rogers sweeps left for 1 | |
| S31 | 2-9 | Rogers on pitchout left for 2 | |
| S33 | 3-7 | Rogers on pitchout right for 7 | FIRST DOWN |
| S40 | 1-10 | Clark gains 3 | |
| S43 | 2-7 | Rogers sweeps right for 2 | |
| S45 | 3-5 | Harper pass intended for McKinney incomplete | |
| S45 | 4-5 | Feltz punts into end zone. 55 yard punt. PENALTY: FSU, Clipping 10 yds. | |

FSU(1:21)

| | | | |
|-----|------|---|------------|
| F10 | 1-10 | Woodham pass complete to Flowers for 10 | FIRST DOWN |
| F20 | 1-10 | Whiting on left side gains 2 | |
| F22 | 2-8 | Woodham pass complete to King for 12 | FIRST DOWN |
| F34 | 1-10 | Lyles rips up middle for 26 | FIRST DOWN |
| S40 | 1-10 | Whiting gains 1 as quarter ends. | |

FSU 10, USC 0

National Collegiate Athletic Association

QUICKIE STATISTICS

First Quarter

Half

Third Quarter

Final

(Circle One)

TEAM

SOUTH CAROLINA

FLORIDA STATE

Visitors

Home Team

| | | |
|------------------------------|---------|--------|
| Score..... | 0 | 10 |
| First Downs..... | 2 | 11 |
| Rushes—Yardage (Net) | 8-34 | 13-63 |
| Passing Yardage (Net) | 0 | 101 |
| *Return Yardage (Net)..... | 0 | 0 |
| Passes—Att.—Comp.—Int. | 1-0-0 | 12-8-0 |
| Total Offense—Yards | 34 | 164 |
| Punts (Number—Average) | 1-55-55 | NONE |
| Fumbles—Lost | 1-1 | 0 |
| Penalties—Yards..... | 1-3 | 2-15 |

*Return of Punts, Intercepted Passes and Fumbles (not kickoffs).

INDIVIDUAL LEADERS

SOUTH CAROLINA

Visitors

| | | | | |
|---------|------|-----------|----|------|
| Rushing | Att. | Net Yards | TD | Long |
| ROGERS | 7 | 31 | 0 | 12 |
| CLARK | 1 | 3 | 0 | 3 |

| | | | |
|---------|-----------------|------|----|
| Passing | Att.—Comp.—Int. | Yds. | TD |
| HARPER | 1-0-0 | 0 | 0 |

| | | | | |
|----------------|-----|-------|----|------|
| Pass Receiving | No. | Yards | TD | Long |
| NONE | | | | |

| | | | |
|---------|-----|------|------|
| Punting | No. | Avg. | Long |
| FELTZ | 1 | 55 | 55 |

FLORIDA STATE

Home Team

| | | | | |
|---------|------|-----------|----|------|
| Rushing | Att. | Net Yards | TD | Long |
| WHITING | 6 | 21 | 0 | 9 |
| LYLES | 7 | 42 | 1 | 26 |

| | | | |
|---------|-----------------|------|----|
| Passing | Att.—Comp.—Int. | Yds. | TD |
| Woodham | 12-8-0 | 101 | 0 |

| | | | | |
|----------------|-----|-------|----|------|
| Pass Receiving | No. | Yards | TD | Long |
| WHITING | 2 | 33 | 0 | 17 |
| FLOWERS | 2 | 25 | 0 | 15 |
| KING | 2 | 20 | 0 | 12 |

| | | | |
|---------|-----|------|------|
| Punting | No. | Avg. | Long |
| STARK | | | |

SECOND QUARTER

FSU(15:00)

~~FSU(15:00)~~

S39 2-8 Woodham pass complete to King for 11
 S28 1-10 Lyles on draw gains 15
 S13 1-10 Woodham pass intended for Flowers incomplete in end zone
 S13 2-10 Woodham pass intended for Flowers incomplete
 S13 3-10 Woodham pass intended for Flowers incomplete
 S13 4-10 Cappelen 29 yard field goal is good.

FIRST DOWN
 FIRST DOWN

FSU 13, USC 0 13:45 90 yards, 11 plays

Capece kicks to Smith in end zone. no return

SC(13:45)

S20 1-10 Rogers breaks off tackle for 80 yards and TOUCHDOWN
 Leopard kick is good.

FIRST DOWN

FSU 13, SC 7 13:33 80 yards, 1 play

Tanner kicks to Johnson on goal, returns to 29.

FSU(13:27)

F29 1-10 Whiting sweeps right for 5
 F34 2-5 Woodham pass complete to Whiting for 10
 F44 1-10 Woodham pass deflected at scrimmage. incomplete
 F44 2-10 Lyles sweeps right for 7
 S49 3-3 Woodham pass intended for ~~Ham~~ Johnson incomplete
 S49 4-3 Stark punts into end zone. PENALTY: FSU, interference 15 yards

FIRST DOWN

USC(11:23)

S24 1-10 ~~Rogers breaks off tackle~~ Clark loses 1
 S23 2-11 Clark loses 3
 S20 3-14 Clark loses 5 (Simmons)
 S9 4-19 Feltz punts out of bounds on SC 31. 16 yard punt

FSU(9:26)

S31 1-10 Woodham pass complete to Whiting for loss of 1
 S32 2-11 Lyles on draw for 11
 S21 1-10 Lyles on ~~sweep~~ sweep no gain
 S21 2-10 PENALTY: FSU, Illegal procedure, 5 yds.
 S25 2-15 Woodham pass complete to ~~Black~~ Flowers for 6. PENALTY: FSU, holding, 15
 S45 2-35 Woodham pass intended for Williams incomplete
 S45 3-35 Woodham pass ~~is~~ complete to ~~M~~ Johnson for 11
 S34 4-24 Cappelen 50 yard field goal is good.

FIRST DOWN

FSU 16, SC 7 5:51 31 yards, 6 plays

Capece kicks off into end zone. no return

SC(5:51)

S20 1-10 Rogers gains 8
 S28 2-2 Rogers sweeps left for 9
 S37 1-10 Dorsey gains 2
 S39 2-8 Harper pass intended for McKinney incomplete
 S39 3-8 Rogers in middle for no gain. (Maack)
 S39 4-8 Feltz punts to Henry on 19, returns to 24. 43 yard punt, 5 return

FIRST DOWN

FSU(3:36)

F24 1-10 Lyles up middle for 4
 F28 2-6 Lyles again for 6
 F34 1-10 Woodham pass ~~is~~ complete to King for 7

FIRST DOWN

SECOND QUARTER (page 2)

| | | | |
|----------------|----------------|---|------------|
| FSU | | | |
| F41 | 2-3 | Lyles gains 2 | |
| F43 | 3-1 | Woodham sneaks for 3 | FIRST DOWN |
| F46 | 1-10 | Woodham pass complete to Lyles for 2 | |
| F48 | 2-8 | Whiting gains 4 | |
| S48 | 3-4 | Woodham pass complete to Lyles for 4, FUMBLE, Edm Broussard. | |
| S48 | 3-4 | Woodham pass complete to Lyles for 4, FUMBLE, Edm Broussard. | |
| S48 | 3-4 | Woodham pass complete to Lyles for 4, FUMBLE, Edm Broussard. | |
| S48 | 3-4 | Woodham pass complete to Lyles for 4, FUMBLE, Edm Broussard. | |
| USC(0:31) | | | FIRST DOWN |
| S44 | 1-10 | Harper Pass to Mc Kinney for 35 | FIRST DOWN |
| S21 | 1-10 | Harper pass intended for Scott incomplete | |
| S21 | 2-10 | Harper pass intended for McKimney incomplete | |
| S21 | 3-10 | Harper to pass is rushed. FUMBLE, recovered by Herring, FSU | |
| FSU(0:07) | | | |
| F21 | 1-10 | Woodham loses 1 as half ends | |

FSU 16, USC 7

National Collegiate Athletic Association

QUICKIE STATISTICS

First Quarter

Half

Third Quarter

Final

(Circle One)

TEAM

| | <u>SOUTH CAROLINA</u> Visitors | <u>FLORIDA STATE</u> Home Team |
|------------------------------|-----------------------------------|-----------------------------------|
| Score..... | 7 | 16 |
| First Downs..... | 51 | 17 |
| Rushes—Yardage (Net) | 17-123 | 24-119 |
| Passing Yardage (Net) | 35 | 145 |
| *Return Yardage (Net) | 0 | 5 |
| Passes—Att.—Comp.—Int. | 5-1-0 | 25-15-0 |
| Total Offense—Yards | 158 | 264 |
| Punts (Number—Average) | 3-114-38 | 1-40-40 |
| Fumbles—Lost | 2-2 | 1-1 |
| Penalties—Yards..... | 1-3 | 5-55 |

*Return of Punts, Intercepted Passes and Fumbles (not kickoffs).

INDIVIDUAL LEADERS

| <u>SOUTH CAROLINA</u> Visitors | | | | | <u>Florida State</u> Home Team | | | | |
|-----------------------------------|-----------------|-----------|------|------|-----------------------------------|-----------------|-----------|------|------|
| Rushing | Att. | Net Yards | TD | Long | Rushing | Att. | Net Yards | TD | Long |
| ROGERS | 11 | 127 | 1 | 80 | LYLES | 14 | 87 | 1 | 26 |
| CLARK | 4 | (-6) | 0 | 3 | WHITING | 7 | 26 | 0 | 9 |
| DORSEY | 1 | 2 | 0 | 2 | WOODHAM | 1 | 3 | 0 | 3 |
| Passing | Att.—Comp.—Int. | Yds. | TD | | Passing | Att.—Comp.—Int. | Yds. | TD | |
| HARPER | 5-1-0 | 35 | 0 | | WOODHAM | 25-15-0 | 145 | 0 | |
| Pass Receiving | No. | Yards | TD | Long | Pass Receiving | No. | Yards | TD | Long |
| MCKINNEY | 1 | 35 | 0 | 35 | KING | 4 | 38 | 0 | 12 |
| | | | | | WHITING | 4 | 42 | 0 | 18 |
| | | | | | FLOWERS | 2 | 25 | 0 | 15 |
| Punting | No. | Avg. | Long | | Punting | No. | Avg. | Long | |
| FELTZ | 3 | 38 | 55 | | STARK | 1 | 40 | 40 | |

SC receives. Capece kicks out of end zone.

SC(15:00)

S20 1-10 Rogers gains 15

FIRST DOWN

S35 1-10 Rogers gains 7

S42 2-3 Dorsey in middle gains 1

S43 3-2 Rogers gains 4 PENALTY: SC, holding, 15 yeds.

S28 3-17 Clark on draw gains 5

S33 4-12 Feltz punts dead on F42. 25 yard punt

FSU(12:12)

F42 1-10 Lyles in middle for 2

F44 2-8 Woodham pass intended for Williams incomplete

F44 3-8 Woodham pass intended for Lyles incomplete

F44 4-8 Stark punts to Smith fair catch on S17. 39 yard punt, no return

SC(11:32)

S17 1-10 Rogers gains 3

S20 2-7 Harper keeps for 4

S24 3-3 Harper pass intended for McKinney incomplete

S24 4-3 Feltz punts dead on F31. 45 yard punt.

FSU(10:10)

F31 1-10 Woodham pass intended for Johnson incomplete

F31 2-10 Whiting loses 1(Watson)

F30 3-11 Woodham pass intended for Lyles incomplete

F30 4-11 Stark punts to Smith fair catch on S20. 50 yd punt

SC(9:24)

S20 1-10 Rogers sweeps right for 21

FIRST DOWN

S41 1-10 Reeves gains 2

S43 2-8 Mc Kinney on end around loses 11(Simmons)

S32 3-19 Rogers gains 4

S36 4-15 Feltz punts to Henry fair catch on F20

FSU(7:16)

F20 1-10 Jordan pass intended for Johnson intercepted by Perlotte on S32

SC(7:05)

S32 1-10 Clark gains 3

S35 2-7 Harper pass complete to Gillespie for 14

FIRST DOWN

S45 1-10 Harper to pass sacked for loss of 7 by Simmons and Pirowski

S38 2-17 Harper keeps for 3

S41 3-14 Harper keeps for 3

S44 4-11 Feltz punts to Henry on 11. 45 yd punt. no return

FSU(4:21)

F11 1-10 Lyles gains 2

F13 2-8 Jordan pass complete to Childers for 7

F20 3-1 Whiting off left tackle for 3

FIRST DOWN

F23 1-10 Jordan pass intended for Whiting incomplete

F23 2-10 Lyles gains 5

F28 3-5 Jordan pass complete to Childers for 4

F32 4-1 Stark punts to Smith at 16, returns to 31. 52 yd punt, 15 yd return

SC(1:33)

S31 1-10 Rogers gains 2

S33 2-8 Rogers on pitchout gains 2

F35 3-6 Beckham pass intended for Scott incomplete

F35 4-6 Feltz punts dead on F25 as quarter ends

FSU 16, SC 7

FOURTH QUARTER

FSU(15:00)

F25 1-10 Lyles up middle for 8
 F33 2-2 Lyles gains 4 FIRST DOWN
 F37 1-10 Lyles gains 3
 F40 2-7 Jordan pass complete to Childers for 10 FIRST DOWN
 50 1-10 Whiting slants for 2
 S48 2-8 Jordan pass complete to Williams for 28 FIRST DOWN
 S30 1-10 Whiting up middle for 4
 S26 2-6 Whiting gains 3
 S23 3-2 Jordan pass complete to Johnson for 13 FIRST DOWN
 S10 1-10 Lyles up middle for 3
 S7 2-6 Jordan pass complete to Childers for 7 yards and TOUCHDOWN
 Jordan pass complete to Childers for 2 pt conversion

FSU 24, SC 7 9:55 75 yards, 11 plays

Capece kicks to Smith at 6, returns to 26

SC(9:48)

S26 1-10 Rogers gains 2, FUMBLES, Jones recovers for FSU
 FSU(9:43)
 S28 1-10 Lyles gains 6
 S22 2-4 Lyles again for 6 FIRST DOWN
 S16 1-10 Lyles gains 3 more
 S13 2-7 Lyles gains 2
 S11 3-5 Jordan pass intended for Lyles incomplete
 S11 4-5 Coppelen 27 yd field goal is good.

FSU 27, USC 7 7:01 28 yds, 6 plays

Capece kicks to Aubin on goal, returns to 20

SC(6:55)

S20 1-10 Beckham scrambles for 1
 S21 2-9 Clark on draw gains 7
 S28 3-2 Clark sweeps left for 30 FIRST DOWN
 F42 1-10 Harper pass intended for Scott incomplete(Jones)
 F42 2-10 Rogers sweeps for 1
 F41 3-9 Harper pass complete to Scott for 6
 F35 4-3 Rogers up middle for 2
 FSU(3:19)
 F33 1-10 Williams gains 2
 F35 2-8 Williams on reverse loses 12
 F23 3-20 Kennedy gains 7
 F30 4-13 Stark punts dead on S43. 27 yard punt
 SC(1:51)
 S43 1-10 Harper pass intended for Smith incomplete(Banasorte)
 S43 2-10 Harper pass intended for Gillespie incomplete(Butler)
 S43 3-10 Harper sacked by McLean for loss of 9.
 S34 4-19 Feltz punts dead on F44.
 FSU(0:46)
 F44 1-10 Cherry gains 5
 F49 2-5 Cherry no gain as time runs out.

FSU 27, South Carolina 7

National Collegiate Athletic Association

QUICKIE STATISTICS

First Quarter

Half

Third Quarter

Final

(Circle One)

TEAM

SOUTH CAROLINA

FLORIDA STATE

Visitors

Home Team

| | | |
|------------------------------|-----------------|-----------------|
| Score, | 7 | 27 |
| First Downs..... | 9 | 23 |
| Rushes—Yardage (Net) | 40 - 214 | 45 - 177 |
| Passing Yardage (Net) | 51 | 204 |
| *Return Yardage (Net) | 15 | 5 |
| Passes—Att.—Comp.—Int. | 12 - 3 - 0 | 38 - 21 - 1 |
| Total Offense—Yards | 265 | 381 |
| Punts (Number—Average) | 9 - 33.6 - 37.3 | 5 - 20.8 - 41.6 |
| Fumbles—Lost | 4 - 3 | 1 - 1 |
| Penalties—Yards. | 2 - 18 | 5 - 55 |

*Return of Punts, Intercepted Passes and Fumbles (not kickoffs).

INDIVIDUAL LEADERS

SOUTH CAROLINA

Visitors

| Rushing | Att. | Net Yards | TD | Long |
|---------|------|-----------|----|------|
| ROGERS | 21 | 186 | 1 | 80 |
| CLARK | 8 | 39 | 0 | 30 |
| DORSEY | 2 | 3 | 0 | 2 |

| Passing | Att.—Comp.—Int. | Yds. | TD |
|---------|-----------------|------|----|
| HARPER | 11 - 3 - 0 | 51 | 0 |
| BECKHAM | 1 - 0 - 0 | 0 | 0 |

| Pass Receiving | No. | Yards | TD | Long |
|----------------|-----|-------|----|------|
| MCKINNEY | 1 | 35 | 0 | 35 |
| Gillespie | 1 | 10 | 0 | 10 |
| Scott | 1 | 6 | 0 | 6 |

| Punting | No. | Avg. | Long |
|---------|-----|------|------|
| FELTZ | 9 | 37.3 | 55 |

FLORIDA STATE

Home Team

| Rushing | Att. | Net Yards | TD | Long |
|---------|------|-----------|----|------|
| LYLES | 25 | 132 | 1 | 26 |
| WHITING | 13 | 41 | 0 | 9 |

| Passing | Att.—Comp.—Int. | Yds. | TD |
|---------|-----------------|------|----|
| Woodham | 29 - 15 - 0 | 145 | 0 |
| JORDAN | 9 - 6 - 1 | 59 | 1 |

| Pass Receiving | No. | Yards | TD | Long |
|----------------|-----|-------|----|------|
| CHILDERS | 4 | 28 | 1 | 10 |
| KING | 4 | 38 | 0 | 12 |
| WHITING | 4 | 42 | 0 | 18 |

| Punting | No. | Avg. | Long |
|---------|-----|------|------|
| STARK | 5 | 41.6 | 52 |

National Collegiate Athletic Association

FINAL TEAM STATISTICS

| | <u>SOUTH CAROLINA</u> | <u>FLORIDA STATE</u> |
|-------------------------------------|-----------------------|----------------------|
| First Downs | <u>9</u> | <u># 23</u> |
| Rushing | <u>7</u> | <u>12 11</u> |
| Passing | <u>2</u> | <u>0 12</u> |
| Penalty | <u>0</u> | <u>23 0</u> |
| Rushing Attempts | <u>40</u> | <u>45</u> |
| Yards Rushing | <u>251</u> | <u>191</u> |
| Yards Lost Rushing | <u>37</u> | <u>14</u> |
| Net Yards Rushing | <u>214</u> | <u>177</u> |
| Net Yards Passing | <u>51</u> | <u>204</u> |
| Passes Attempted | <u>12</u> | <u>38</u> |
| Passes Completed | <u>3</u> | <u>21</u> |
| Had Intercepted | <u>0</u> | <u>1</u> |
| Total Offensive Plays | <u>52</u> | <u>83</u> |
| Total Net Yards | <u>265</u> | <u>381</u> |
| Average Gain Per Play | <u>5.1</u> | <u>4.6</u> |
| Fumbles: Number—Lost | <u>4-3</u> | <u>1-1</u> |
| Penalties: Number—Yards | <u>2-18</u> | <u>5-55</u> |
| Interceptions: Number—Yards | <u>1-0</u> | <u>0</u> |
| Number of Punts—Yards | <u>9-336</u> | <u>5-208</u> |
| Average Per Punt | <u>37.3</u> | <u>41.6</u> |
| Punt Returns: Number—Yards | <u>1-15</u> | <u>2-5</u> |
| Kickoff Returns: Number—Yards | <u>4-77</u> | <u>2-45</u> |

National Collegiate Athletic Association

DEFENSIVE STATISTICS

| Player | FLORIDA STATE (Team) | Tackles | | | | Fumb Recd | Pass Intc | Pass BrUp |
|------------|-------------------------|---------|----|-----|-------------|--------------|--------------|--------------|
| | | UT | AT | Tot | for Loss | | | |
| PILKOWSKI | | 5 | 8 | 13 | 1 | | | |
| HERRING | | 1 | 5 | 6 | 0 | 1 | | |
| SIMMONS | | 4 | 4 | 8 | 3 | | | |
| SCOTT | | 0 | 4 | 4 | 0 | | | |
| WARREN | | 2 | 7 | 9 | 0 | 1 | → | 1 |
| MACEK | | 1 | 3 | 4 | 1 | | | |
| MINOLIN | | 1 | 3 | 4 | 0 | | | |
| BUTLER | | 1 | 3 | 4 | 0 | | | |
| HUNTER | | 1 | 3 | 4 | 1 | | | |
| BONASORTE | | 3 | 4 | 7 | 0 | → | | 1 |
| JONES | | 2 | 2 | 4 | 0 | 1 | → | 2 |
| GILBERT | | 2 | 1 | 3 | 1 | | | |
| COURSEY | | 0 | 2 | 2 | 0 | | | |
| STOCKSTILL | | 0 | 3 | 3 | 0 | | | |
| G. FUTCH | | 0 | 3 | 3 | 0 | | | |
| WALLACE | | 1 | 1 | 2 | 0 | | | |
| HARRIS | | 0 | 1 | 1 | 0 | | | |
| MCLEAN | | 1 | 2 | 3 | 1 | | | |

National Collegiate Athletic Association

DEFENSIVE STATISTICS

| Player | SOUTH CAROLINA (Team) | Tackles | | | | Fumb Rcvd | Pass Into | Pass BrUp |
|--------|--------------------------|---------|----|-----|-------------|--------------|--------------|--------------|
| | | UT | AT | Tot | for Loss | | | |
| | SINGLETON | 1 | 7 | 8 | 0 | | | |
| | WADE | 4 | 7 | 11 | 0 | | | |
| | BAXLEY | 4 | 11 | 15 | 0 | | | |
| | BROUSSARD | 4 | 9 | 13 | 1 | 1 | → | 1 |
| | ALLEN | 0 | 4 | 4 | 0 | → | → | 1 |
| | BERNISH | 1 | 0 | 1 | 0 | | | |
| | SINCLAIR | 1 | 7 | 8 | 0 | | | |
| | ELLIS | 2 | 3 | 5 | 0 | | | |
| | PERLOTTE | 0 | 4 | 4 | 0 | → | 1 | 1 |
| | BOWEN | 3 | 4 | 7 | 0 | | | |
| | HASTINGS | 0 | 0 | 0 | 0 | → | → | 1 |
| | BRIDGES | 3 | 1 | 4 | 0 | → | → | 1 |
| | FULLER | 1 | 2 | 3 | 0 | | | |
| | SNOW | 1 | 0 | 1 | 0 | | | |
| | WILLIAMS | 0 | 3 | 3 | 0 | | | |
| | TIMMONS | 2 | 3 | 5 | 0 | | | |
| | WATSON | 3 | 6 | 9 | 1 | → | → | 2 |
| | BURBER | 1 | 0 | 1 | 0 | | | |
| | SARROCCO | 0 | 1 | 1 | 0 | | | |

National Collegiate Athletic Association

FINAL INDIVIDUAL STATISTICS

SOUTH CAROLINA

Visitors

| Rushing | Att. | Gain | Lost | Net | TD | Long |
|----------|------|------|------|------|----|------|
| ROGERS | 21 | 187 | (1) | 186 | 1 | 80 |
| CLARK | 8 | 48 | (9) | 39 | 0 | 30 |
| DORSEY | 2 | 3 | 0 | 3 | 0 | 2 |
| HARPER | 6 | 10 | (16) | (6) | 0 | 4 |
| REEVES | 1 | 2 | 0 | 2 | 0 | 2 |
| MCKINNEY | 1 | 0 | (11) | (11) | 0 | (11) |
| BECKHAM | 1 | 1 | 0 | 1 | 0 | 1 |

Totals 40 251 37 214 1 80

| Passing | Att. | Comp. | Int. | Yards | TD | Long |
|---------|------|-------|------|-------|----|------|
| HARPER | 11 | 3 | 0 | 51 | 0 | 35 |
| BECKHAM | 1 | 0 | 0 | 0 | 0 | 0 |

Totals 12 3 0 51 0 35

| Pass Receiving | No. | Yards | TD | Long |
|----------------|-----|-------|----|------|
| MCKINNEY | 1 | 35 | 0 | 35 |
| Gillespie | 1 | 10 | 0 | 10 |
| SCOTT | 1 | 6 | 0 | 6 |

Totals 3 51 0 35

| Punting | No. | Yds. | Avg. | Long |
|---------|-----|------|------|------|
| FELTZ | 9 | 336 | 37.3 | 55 |

Totals 9 336 37.3 55

| Field Goals | Att. | Made | Long |
|-------------|------|------|------|
|-------------|------|------|------|

NONE

Totals

| All Returns | Punts | | Kickoffs | | Intercepted | |
|-------------|-------|------|----------|------|-------------|------|
| | No. | Yds. | No. | Yds. | No. | Yds. |
| PERLOTTE | - | - | - | - | 1 | 0 |
| SMITH | 1 | 15 | 3 | 57 | - | - |
| AUBIN | - | - | 1 | 20 | - | - |

Totals 1 15 04 77 1 0

FLORIDA STATE

Home Team

| Rushing | Att. | Gain | Lost | Net | TD | Long |
|-------------|------|------|------|------|----|------|
| LYLES | 25 | 132 | 0 | 132 | 1 | 26 |
| WHITING | 13 | 42 | (1) | 41 | 0 | 9 |
| WOODHAM | 2 | 3 | (1) | 2 | 0 | 3 |
| R. WILLIAMS | 2 | 2 | (12) | (10) | 0 | 2 |
| KENNEDY | 1 | 7 | 0 | 7 | 0 | 7 |
| CHERRY | 2 | 5 | 0 | 5 | 0 | 5 |

Totals 45 191 14 177 1 26

| Passing | Att. | Comp. | Int. | Yards | TD | Long |
|---------|------|-------|------|-------|----|------|
| WOODHAM | 29 | 15 | 0 | 145 | 0 | 18 |
| JORDAN | 9 | 6 | 1 | 59 | 1 | 18 |

Totals 38 21 1 204 1 18

| Pass Receiving | No. | Yards | TD | Long |
|----------------|-----|-------|----|------|
| CHILDERS | 4 | 28 | 1 | 10 |
| KING | 4 | 38 | 0 | 12 |
| WHITING | 4 | 42 | 0 | 18 |
| LYLES | 3 | 18 | 0 | 12 |
| H. JOHNSON | 2 | 24 | 0 | 13 |
| P. WILLIAMS | 2 | 29 | 0 | 18 |
| FLOWERS | 2 | 25 | 0 | 15 |

Totals 21 204 1 18

| Punting | No. | Yds. | Avg. | Long |
|---------|-----|------|------|------|
| STARK | 5 | 208 | 41.6 | 52 |

Totals 5 208 41.6 52

| Field Goals | Att. | Made | Long |
|-------------|------|------|------|
| CAPPELEN | 4 | 4 | 50 |

Totals 4 4 50

| All Returns | Punts | | Kickoffs | | Intercepted | |
|-------------|-------|------|----------|------|-------------|------|
| | No. | Yds. | No. | Yds. | No. | Yds. |
| HENRY | 2 | 5 | - | - | - | - |
| H. JOHNSON | - | - | 2 | 45 | - | - |

Totals 2 5 2 45 0 0

BOWDEN QUOTES

On Rogers: That tailback scared us to death he's a great back.

On the defense: Our defense came back tonight.

On Dave Cappelen: Dave had a good game tonight , I was proud of him.

On the game: This was probably our best game of the year.

On starting Woodham: I started Wally to try to nickle and dime em to death.

On being 9-0: It feels " real good "

On Bowl bids : We just hope someone is nice enough to ask us.

Player Quotes

Ron Simmons

- "I think we shut out Rogers out except for that one burst."
- "Rogers will drag you with him or take your arm off."
- "Rogers was the offense"
- "I think the next two games will be OK."
- "We'll just let the bowls take their place—we'll jsut try to win the next one."
- "This is the best game we've played defensively this year."
- "This is the best game we've played as a defensive unit."

Wally Woodham

- "We realized they were dropping their linebackers in the films, and once you start doing something like that its hard to sahnge."
- "Using our backs caught them by surprise."
- "They picked up on our deep routs so we went to the quick outs."
- "I think the delays hurt them badly."
- "Hopefully now, we can get into one of the major bowls."
- "I have to say we've been lucky. We had our share of injuries, but they haven't been really series. We've been fortunate."

*Mark Lyles

- "This game is history now, We have to prepare ourselves for the next one."
- "My primary runs are up the middle. I really like running that way—I feel more comfortable."
- "I finally realized that running doesn't take all that much speed—you just put your head down and plow."
- "We had the reputation of going for the bomb—I think S. Carolina worried about that too much."
- "They had to be one of the best defenses I've ever played against."
- "They had some bad breaks and we took advantage."

HEAD COACH JIM CARLEN

I thought we got whipped real~~l~~ good. Our pass ~~protection~~ protection broke down several times and that cost us.

Florida State is the best team we've faced this season. I said that before the game and I still believe it.

Florida State is a very deserving football team. I give them a lot of credit. Bobby ~~gambor~~ has done a heckuva g job here. They were charged up to play tonight.

They are ~~a~~ one of the top ten teams in the country. I'm on the UPI Coaches Board and I put them ~~in~~ in sixth or seventh place when I voted.

Our youngsters are beat up some, but we'll come back. We'll have an easy Mpm Monday and won't go in pads.

We've got to get cranked up again for Wake Forest. We've got to improve our defense against the throw. Wake Forest will ~~winning~~ come out throwing.

I applaud our fans, I know they are ~~dis~~ disappointed, just as I am disappointed, but I appreciate their support and we'll ~~be~~ be back.

****Tailback George Rogers of South Carolinaa ~~is~~ is now the school's all-time rusher with a total of 2,971 for his career. (1342 for the season as nation's number two rusher)