

Official Basketball Box Score -- GAME TOTALS -- FINAL STATISTICS  
Florida State vs Tulsa  
12/06/05 7:00 pm at Tulsa, Okla. (Donald W. Reynolds Center)

VISITORS: Florida State 6-2

| ## | Player Name            | TOT-FG |      |       | 3-PT |     |     | REBOUNDS |    |     | PF | TP | A  | TO  | BLK | S | MIN |
|----|------------------------|--------|------|-------|------|-----|-----|----------|----|-----|----|----|----|-----|-----|---|-----|
|    |                        | FG     | FGA  | FT    | FG   | FGA | FTA | OF       | DE | TOT |    |    |    |     |     |   |     |
| 33 | MILLER, Britany..... c | 1-4    | 0-0  | 0-0   | 0    | 1   | 1   | 0        | 1  | 1   | 5  | 2  | 0  | 1   | 1   | 3 | 13  |
| 02 | NEELY, LaQuinta..... g | 2-8    | 0-0  | 1-2   | 5    | 1   | 6   | 2        | 5  | 4   | 2  | 5  | 4  | 1   | 0   | 3 | 32  |
| 12 | JOHNSON, Holly..... g  | 3-16   | 3-10 | 5-7   | 1    | 1   | 2   | 3        | 14 | 6   | 4  | 8  | 6  | 2   | 0   | 1 | 32  |
| 23 | GLADDEN, Alicia'.... g | 2-8    | 0-0  | 4-4   | 2    | 3   | 5   | 4        | 8  | 0   | 2  | 10 | 2  | 1   | 2   | 1 | 20  |
| 31 | ADEDUNTAN, Ganiyat.. g | 3-10   | 0-1  | 4-4   | 3    | 1   | 4   | 2        | 13 | 1   | 0  | 13 | 1  | 0   | 0   | 0 | 21  |
| 10 | FRESHOUR, Mara.....    | 5-6    | 3-4  | 0-0   | 2    | 3   | 5   | 0        | 10 | 1   | 0  | 10 | 1  | 1   | 0   | 0 | 28  |
| 20 | DAVIS-CAIN, Tanae...   | 4-10   | 2-3  | 0-0   | 0    | 3   | 3   | 2        | 10 | 1   | 0  | 1  | 1  | 0   | 0   | 0 | 22  |
| 21 | LAUTSCH, Christie...   | 0-0    | 0-0  | 0-0   | 0    | 2   | 2   | 0        | 0  | 1   | 0  | 0  | 1  | 0   | 2   | 0 | 6   |
| 22 | WILLIAMS, Shante....   | 3-8    | 0-1  | 0-0   | 1    | 1   | 2   | 4        | 6  | 0   | 2  | 6  | 0  | 1   | 0   | 2 | 11  |
| 44 | ANTHONY, Nikki.....    | 1-5    | 0-0  | 1-2   | 4    | 1   | 5   | 2        | 3  | 0   | 0  | 3  | 0  | 0   | 0   | 0 | 15  |
|    | TEAM.....              |        |      |       | 1    | 1   | 2   |          |    |     |    |    |    |     |     |   |     |
|    | Totals.....            | 24-75  | 8-19 | 15-19 | 19   | 18  | 37  | 24       | 71 | 15  | 8  | 5  | 12 | 200 |     |   |     |

|                           |       |                 |       |             |       |
|---------------------------|-------|-----------------|-------|-------------|-------|
| TOTAL FG% 1st Half: 11-33 | 33.3% | 2nd Half: 13-42 | 31.0% | Game: 32.0% | DEADB |
| 3-Pt. FG% 1st Half: 2-8   | 25.0% | 2nd Half: 6-11  | 54.5% | Game: 42.1% | REBS  |
| F Throw % 1st Half: 8-10  | 80.0% | 2nd Half: 7-9   | 77.8% | Game: 78.9% | 1     |

HOME TEAM: Tulsa 5-1

| ## | Player Name            | TOT-FG |      |       | 3-PT |     |     | REBOUNDS |    |     | PF | TP | A | TO  | BLK | S | MIN |
|----|------------------------|--------|------|-------|------|-----|-----|----------|----|-----|----|----|---|-----|-----|---|-----|
|    |                        | FG     | FGA  | FT    | FG   | FGA | FTA | OF       | DE | TOT |    |    |   |     |     |   |     |
| 14 | ROBBINS, Jillian.... f | 6-13   | 0-0  | 6-7   | 5    | 14  | 19  | 2        | 18 | 0   | 5  | 6  | 0 | 0   | 31  |   |     |
|    | JASKOWIAK, Emily.... f | 5-5    | 0-0  | 6-6   | 2    | 3   | 5   | 4        | 16 | 2   | 1  | 1  | 1 | 1   | 21  |   |     |
| 41 | MOODY, Megan..... f    | 7-12   | 2-3  | 1-2   | 0    | 3   | 3   | 0        | 17 | 2   | 3  | 2  | 1 | 32  |     |   |     |
| 01 | PONGONIS, Kara..... g  | 3-8    | 3-6  | 6-6   | 0    | 0   | 0   | 0        | 15 | 3   | 3  | 0  | 0 | 30  |     |   |     |
| 23 | MAYS, Tandem..... g    | 1-5    | 0-2  | 2-3   | 2    | 3   | 5   | 2        | 4  | 7   | 1  | 0  | 0 | 32  |     |   |     |
| 03 | UPSHAW, LeAnn.....     | 0-0    | 0-0  | 2-2   | 1    | 1   | 2   | 1        | 2  | 0   | 1  | 0  | 0 | 10  |     |   |     |
| 04 | IDLET, Dana.....       | 0-2    | 0-0  | 1-2   | 0    | 3   | 3   | 4        | 1  | 0   | 2  | 1  | 1 | 12  |     |   |     |
| 05 | DREILING, Jamie.....   | 0-1    | 0-0  | 0-0   | 1    | 1   | 2   | 2        | 0  | 0   | 1  | 0  | 0 | 8   |     |   |     |
| 33 | MERRIWEATHER, Chivis   | 0-3    | 0-0  | 0-0   | 0    | 1   | 1   | 0        | 0  | 2   | 1  | 0  | 0 | 8   |     |   |     |
| 45 | WAGONER, TaTanisha..   | 3-5    | 0-0  | 1-2   | 1    | 3   | 4   | 2        | 7  | 0   | 1  | 3  | 0 | 16  |     |   |     |
|    | TEAM.....              |        |      |       |      |     |     |          |    | 1   |    |    |   |     |     |   |     |
|    | Totals.....            | 25-54  | 5-11 | 25-30 | 14   | 35  | 49  | 17       | 80 | 16  | 20 | 13 | 3 | 200 |     |   |     |

|                           |       |                 |       |             |       |
|---------------------------|-------|-----------------|-------|-------------|-------|
| TOTAL FG% 1st Half: 10-25 | 40.0% | 2nd Half: 15-29 | 51.7% | Game: 46.3% | DEADB |
| 3-Pt. FG% 1st Half: 3-5   | 60.0% | 2nd Half: 2-6   | 33.3% | Game: 45.5% | REBS  |
| F Throw % 1st Half: 11-13 | 84.6% | 2nd Half: 14-17 | 82.4% | Game: 83.3% | 2     |

Officials: Beverly Roberts, Tommy Salerno, Vanessa Welch  
Technical fouls: Florida State-None. Tulsa-None.

Attendance: 1107

| Score by Periods   | 1st | 2nd | Total |
|--------------------|-----|-----|-------|
| Florida State..... | 32  | 39  | - 71  |
| Tulsa.....         | 34  | 46  | - 80  |

ID-376469

# Play-by-Play

Florida State vs Tulsa

12/06/05 7:00 pm at Tulsa, Okla. (Donald W. Reynolds Center)

2nd PERIOD Play-by-Play (Page 1)

HO TEAM: Tulsa

|                                       | TIME  | SCORE | MAR | VISITORS: Florida State                 |
|---------------------------------------|-------|-------|-----|---|
| TURNOVR by MAYS, Tandem               | 19:45 | 34-32 | H 2 |   |
|                                       | 19:41 |       |     | STEAL by MILLER, Britany                |
|                                       | 19:38 |       |     | MISSED JUMPER by MILLER, Britany        |
| REBOUND (DEF) by ROBBINS, Jillian     | 19:26 | 36-32 | H 4 |   |
| GOOD! LAYUP by JASKOWIAK, Emily [PNT] | 19:26 |       |     |   |
| ASSIST by PONGONIS, Kara              | 19:09 |       |     | MISSED JUMPER by NEELY, LaQuinta        |
| BLOCK by JASKOWIAK, Emily             | 19:06 |       |     | REBOUND (OFF) by ADEDUNTAN, Ganiyat     |
|                                       | 19:03 | 36-34 | H 2 | GOOD! LAYUP by ADEDUNTAN, Ganiyat [PNT] |
|                                       | 18:57 | 38-34 | H 4 |   |
| GOOD! LAYUP by ROBBINS, Jillian [PNT] | 18:57 |       |     |   |
| ASSIST by JASKOWIAK, Emily            | 18:40 |       |     | MISSED JUMPER by MILLER, Britany        |
| BLOCK by ROBBINS, Jillian             | 18:40 |       |     | REBOUND (OFF) by (TEAM)                 |
|                                       | 18:31 |       |     | MISSED 3 PTR by JOHNSON, Holly          |
|                                       | 18:31 |       |     | REBOUND (OFF) by FRESHOUR, Mara         |
|                                       | 18:28 | 38-36 | H 2 | GOOD! LAYUP by FRESHOUR, Mara [PNT]     |
|                                       | 18:21 | 40-36 | H 4 |   |
| GOOD! LAYUP by MOODY, Megan [PNT]     | 18:21 |       |     |   |
| ASSIST by PONGONIS, Kara              | 18:07 |       |     | MISSED JUMPER by GLADDEN, Alicia'       |
| REBOUND (DEF) by ROBBINS, Jillian     | 17:53 | 42-36 | H 6 |   |
| GOOD! LAYUP by JASKOWIAK, Emily [PNT] | 17:53 |       |     |   |
| ASSIST by MAYS, Tandem                | 17:29 | 42-37 | H 5 | GOOD! FT SHOT by GLADDEN, Alicia'       |
| FOUL by IDLET, Dana                   | 17:29 | 42-38 | H 4 | GOOD! FT SHOT by GLADDEN, Alicia'       |
|                                       | 17:11 | 44-38 | H 6 |   |
| GOOD! LAYUP by MAYS, Tandem [PNT]     | 17:10 | 45-38 | H 7 | FOUL by GLADDEN, Alicia'                |
| GOOD! FT SHOT by MAYS, Tandem         | 16:56 |       |     | TURNOVR by JOHNSON, Holly               |
|                                       | 16:55 |       |     |   |
| STEAL by MOODY, Megan                 | 16:49 |       |     | REBOUND (DEF) by GLADDEN, Alicia'       |
| MISSED 3 PTR by PONGONIS, Kara        | 16:48 |       |     |   |
| FOUL by JASKOWIAK, Emily              | 16:35 |       |     | MISSED LAYUP by ANTHONY, Nikki          |
| BLOCK by ROBBINS, Jillian             | 16:33 |       |     |   |
| REBOUND (DEF) by ROBBINS, Jillian     | 16:22 |       |     | REBOUND (DEF) by FRESHOUR, Mara         |
| MISSED 3 PTR by MAYS, Tandem          | 16:04 | 45-40 | H 5 | GOOD! LAYUP by FRESHOUR, Mara [PNT]     |
|                                       | 16:04 |       |     | ASSIST by JOHNSON, Holly                |
|                                       | 15:50 | 47-40 | H 7 |   |
| GOOD! JUMPER by MOODY, Megan          | 15:41 |       |     | MISSED JUMPER by ADEDUNTAN, Ganiyat     |
| REBOUND (DEF) by ROBBINS, Jillian     | 15:21 |       |     |   |
| MISSED 3 PTR by PONGONIS, Kara        | 15:21 |       |     |   |
| REBOUND (OFF) by MAYS, Tandem         | 15:12 | 49-40 | H 9 |   |
| GOOD! LAYUP by JASKOWIAK, Emily [PNT] | 15:12 |       |     |   |
| ASSIST by MAYS, Tandem                | 15:00 |       |     | MISSED JUMPER by NEELY, LaQuinta        |
|                                       | 15:00 |       |     | REBOUND (OFF) by ADEDUNTAN, Ganiyat     |
|                                       | 14:55 | 49-42 | H 7 | GOOD! LAYUP by ADEDUNTAN, Ganiyat [PNT] |
|                                       | 14:31 |       |     |   |
| MISSED LAYUP by ROBBINS, Jillian      | 14:31 |       |     | REBOUND (DEF) by (TEAM)                 |
| REBOUND (OFF) by ROBBINS, Jillian     | 14:15 |       |     | MISSED JUMPER by DAVIS-CAIN, Tanae      |
| MISSED 3 PTR by MOODY, Megan          | 14:04 |       |     | REBOUND (OFF) by ANTHONY, Nikki         |
|                                       | 14:04 |       |     | MISSED LAYUP by ANTHONY, Nikki          |
|                                       | 14:02 |       |     |   |
| BLOCK by MOODY, Megan                 | 14:00 |       |     |   |
| REBOUND (DEF) by ROBBINS, Jillian     | 13:44 | 51-42 | H 9 |   |
| GOOD! LAYUP by ROBBINS, Jillian [PNT] | 13:44 |       |     |   |
| ASSIST by MAYS, Tandem                | 13:24 |       |     | MISSED LAYUP by NEELY, LaQuinta         |
|                                       | 13:24 |       |     | REBOUND (OFF) by ADEDUNTAN, Ganiyat     |
|                                       | 13:15 |       |     | MISSED LAYUP by ADEDUNTAN, Ganiyat      |
| BLOCK by ROBBINS, Jillian             | 13:14 |       |     |   |
| REBOUND (DEF) by MOODY, Megan         |       |       |     |   |

HOME TEAM: Tulsa

TIME SCORE MAR VISITORS: Florida State

|                                       |       |       |      |                                       |
|---------------------------------------|-------|-------|------|---------------------------------------|
| MISSED JUMPER by WAGONER, TaTanisha   | 13:09 |       |      |                                       |
| REBOUND (OFF) by MAYS, Tandem         | 13:09 |       |      |                                       |
|                                       | 13:08 |       |      | FOUL by WILLIAMS, Shante              |
| TURNOVR by PONGONIS, Kara             | 13:07 |       |      | STEAL by WILLIAMS, Shante             |
|                                       | 12:53 | 51-44 | H 7  | GOOD! LAYUP by WILLIAMS, Shante [PNT] |
|                                       | 12:53 |       |      | ASSIST by ADEDUNTAN, Ganiyat          |
|                                       | 12:42 |       |      | FOUL by DAVIS-CAIN, Tanae             |
| MISSED JUMPER by MOODY, Megan         | 12:37 |       |      | REBOUND (DEF) by WILLIAMS, Shante     |
|                                       | 12:29 | 51-47 | H 4  | GOOD! 3 PTR by DAVIS-CAIN, Tanae      |
|                                       | 12:29 |       |      | ASSIST by ADEDUNTAN, Ganiyat          |
| TURNOVR by IDLET, Dana                | 12:12 |       |      |                                       |
|                                       | 12:11 |       |      | STEAL by MILLER, Britany              |
| REBOUND (DEF) by MERRIWEATHER, Chivis | 12:06 |       |      | MISSED JUMPER by WILLIAMS, Shante     |
| MISSED JUMPER by IDLET, Dana          | 11:46 |       |      | REBOUND (DEF) by ADEDUNTAN, Ganiyat   |
| BLOCK by IDLET, Dana                  | 11:32 |       |      | MISSED JUMPER by MILLER, Britany      |
|                                       | 11:30 |       |      | REBOUND (OFF) by WILLIAMS, Shante     |
|                                       | 11:24 |       |      | MISSED LAYUP by WILLIAMS, Shante      |
| BLOCK by WAGONER, TaTanisha           | 11:21 |       |      |                                       |
| REBOUND (DEF) by WAGONER, TaTanisha   | 11:15 | 54-47 | H 7  |                                       |
| GOOD! 3 PTR by PONGONIS, Kara         | 10:56 |       |      | MISSED JUMPER by WILLIAMS, Shante     |
| BLOCK by WAGONER, TaTanisha           | 10:55 |       |      |                                       |
| REBOUND (DEF) by IDLET, Dana          | 10:43 | 57-47 | H 10 |                                       |
| GOOD! 3 PTR by MOODY, Megan           | 10:43 |       |      |                                       |
| ASSIST by PONGONIS, Kara              | 10:21 |       |      | MISSED JUMPER by DAVIS-CAIN, Tanae    |
| REBOUND (DEF) by JASKOWIAK, Emily     | 10:04 |       |      |                                       |
| TURNOVR by DREILING, Jamie            | 10:03 |       |      | STEAL by JOHNSON, Holly               |
|                                       | 10:00 | 57-48 | H 9  | GOOD! FT SHOT by JOHNSON, Holly       |
| FOUL by DREILING, Jamie               | 10:00 |       |      | MISSED FT SHOT by JOHNSON, Holly      |
| REBOUND (DEF) by ROBBINS, Jillian     | 09:56 |       |      | FOUL by MILLER, Britany               |
|                                       | 09:29 |       |      | BLOCK by MILLER, Britany              |
| MISSED JUMPER by MERRIWEATHER, Chivis | 09:29 |       |      |                                       |
| REBOUND (OFF) by (TEAM)               | 09:29 |       |      |                                       |
| TURNOVR by (TEAM)                     | 09:29 |       |      |                                       |
| REBOUND (DEF) by DREILING, Jamie      | 09:25 |       |      | MISSED JUMPER by GLADDEN, Alicia'     |
| GOOD! JUMPER by JASKOWIAK, Emily      | 09:01 | 59-48 | H 11 |                                       |
| ASSIST by MERRIWEATHER, Chivis        | 09:01 |       |      |                                       |
|                                       | 08:54 |       |      | TURNOVR by JOHNSON, Holly             |
| STEAL by JASKOWIAK, Emily             | 08:53 |       |      |                                       |
| TURNOVR by MERRIWEATHER, Chivis       | 08:36 |       |      |                                       |
|                                       | 08:35 |       |      | STEAL by FRESHOUR, Mara               |
|                                       | 08:33 |       |      |                                       |
| FOUL by UPSHAW, LeAnn                 | 08:19 |       |      |                                       |
| FOUL by JASKOWIAK, Emily              | 08:04 |       |      | MISSED JUMPER by ADEDUNTAN, Ganiyat   |
| REBOUND (DEF) by MAYS, Tandem         | 07:57 | 61-48 | H 13 |                                       |
| GOOD! LAYUP by MOODY, Megan [FB/PNT]  | 07:57 |       |      |                                       |
| ASSIST by MAYS, Tandem                | 07:42 |       |      | MISSED 3 PTR by DAVIS-CAIN, Tanae     |
| REBOUND (DEF) by (TEAM)               | 07:23 |       |      | STEAL by FRESHOUR, Mara               |
| TURNOVR by MOODY, Megan               | 07:23 |       |      |                                       |
| FOUL by ROBBINS, Jillian              | 07:04 |       |      | MISSED JUMPER by ANTHONY, Nikki       |
| REBOUND (DEF) by ROBBINS, Jillian     | 06:54 |       |      |                                       |
| MISSED JUMPER by ROBBINS, Jillian     | 06:54 |       |      |                                       |
| REBOUND (OFF) by UPSHAW, LeAnn        | 06:46 |       |      | FOUL by WILLIAMS, Shante              |
|                                       | 06:35 | 63-48 | H 15 |                                       |
| GOOD! LAYUP by ROBBINS, Jillian [PNT] | 06:20 |       |      | MISSED JUMPER by DAVIS-CAIN, Tanae    |
| REBOUND (DEF) by MAYS, Tandem         | 06:18 |       |      | FOUL by MILLER, Britany               |
|                                       | 05:59 |       |      | REBOUND (DEF) by JOHNSON, Holly       |
| MISSED JUMPER by MOODY, Megan         | 05:52 |       |      | MISSED JUMPER by JOHNSON, Holly       |

HOME TEAM: Tulsa

VISITORS: Florida State

|  | TIME  | SCORE | MAR  |   |
|--|-------|-------|------|---|
|  | 05:52 |       |      | REBOUND (OFF) by NEELY, LaQuinta        |
|  | 05:48 |       |      | TURNOVR by NEELY, LaQuinta              |
| GOOD! FT SHOT by MOODY, Megan            | 05:36 | 64-48 | H 16 | FOUL by DAVIS-CAIN, Tanae               |
| MISSED FT SHOT by MOODY, Megan           | 05:36 |       |      |   |
| REBOUND (OFF) by ROBBINS, Jillian        | 05:36 |       |      |   |
| TURNOVR by ROBBINS, Jillian              | 05:33 |       |      | STEAL by MILLER, Britany                |
|  | 05:21 | 64-51 | H 13 | GOOD! 3 PTR by JOHNSON, Holly           |
|  | 05:21 |       |      | ASSIST by FRESHOUR, Mara                |
|  | 04:57 |       |      |   |
| MISSED LAYUP by ROBBINS, Jillian         | 04:57 |       |      |   |
| REBOUND (OFF) by ROBBINS, Jillian        | 04:53 |       |      | REBOUND (DEF) by MILLER, Britany        |
| MISSED LAYUP by ROBBINS, Jillian         | 04:46 |       |      | MISSED LAYUP by JOHNSON, Holly          |
| BLOCK by ROBBINS, Jillian                | 04:45 |       |      | REBOUND (OFF) by JOHNSON, Holly         |
|  | 04:41 |       |      | MISSED LAYUP by JOHNSON, Holly          |
|  | 04:38 |       |      |   |
| REBOUND (DEF) by WAGONER, TaTanisha      | 04:17 | 65-51 | H 14 | FOUL by MILLER, Britany                 |
| GOOD! FT SHOT by PONGONIS, Kara          | 04:17 | 66-51 | H 15 |   |
| GOOD! FT SHOT by PONGONIS, Kara          | 04:06 |       |      | MISSED 3 PTR by JOHNSON, Holly          |
| REBOUND (DEF) by MOODY, Megan            | 03:51 | 68-51 | H 17 |   |
| GOOD! JUMPER by MOODY, Megan [PNT]       | 03:34 | 68-53 | H 15 | GOOD! JUMPER by DAVIS-CAIN, Tanae [PNT] |
|  | 03:13 |       |      | BLOCK by GLADDEN, Alicia'               |
|  | 03:12 |       |      | REBOUND (DEF) by GLADDEN, Alicia'       |
|  | 03:11 |       |      | MISSED FT SHOT by JOHNSON, Holly        |
| MISSED JUMPER by IDLET, Dana             | 03:11 |       |      |   |
| FOUL by MAYS, Tandem                     | 02:54 |       |      | STEAL by NEELY, LaQuinta                |
| REBOUND (DEF) by IDLET, Dana             | 02:54 | 68-54 | H 14 | GOOD! FT SHOT by GLADDEN, Alicia'       |
| TURNOVR by IDLET, Dana                   | 02:54 | 68-55 | H 13 | GOOD! FT SHOT by GLADDEN, Alicia'       |
| FOUL by IDLET, Dana                      | 02:43 |       |      |   |
| TURNOVR by ROBBINS, Jillian              | 02:39 | 68-58 | H 10 | GOOD! 3 PTR by FRESHOUR, Mara           |
|  | 02:39 |       |      | ASSIST by JOHNSON, Holly                |
|  | 02:19 | 69-58 | H 11 | FOUL by GLADDEN, Alicia'                |
|  | 02:19 | 70-58 | H 12 |   |
|  | 02:08 |       |      | MISSED 3 PTR by WILLIAMS, Shante        |
| GOOD! FT SHOT by JASKOWIAK, Emily        | 01:48 | 71-58 | H 13 | FOUL by WILLIAMS, Shante                |
| GOOD! FT SHOT by JASKOWIAK, Emily        | 01:48 | 72-58 | H 14 |   |
| REBOUND (DEF) by MAYS, Tandem            | 01:40 | 72-59 | H 13 | GOOD! FT SHOT by JOHNSON, Holly         |
| GOOD! FT SHOT by PONGONIS, Kara          | 01:40 | 72-60 | H 12 | GOOD! FT SHOT by JOHNSON, Holly         |
| GOOD! FT SHOT by PONGONIS, Kara          | 01:36 | 73-60 | H 13 | FOUL by NEELY, LaQuinta                 |
| FOUL by MAYS, Tandem                     | 01:36 | 74-60 | H 14 |   |
|  | 01:31 | 74-63 | H 11 | GOOD! 3 PTR by JOHNSON, Holly           |
|  | 01:31 |       |      | ASSIST by NEELY, LaQuinta               |
|  | 01:03 |       |      |   |
| TURNOVR by MOODY, Megan                  | 00:53 | 74-65 | H 9  | GOOD! LAYUP by GLADDEN, Alicia' [PNT]   |
|  | 00:53 |       |      | ASSIST by JOHNSON, Holly                |
|  | 00:51 | 75-65 | H 10 | FOUL by JOHNSON, Holly                  |
| GOOD! FT SHOT by MAYS, Tandem            | 00:51 |       |      | REBOUND (DEF) by GLADDEN, Alicia'       |
| MISSED FT SHOT by MAYS, Tandem           | 00:44 |       |      | MISSED 3 PTR by JOHNSON, Holly          |
|  | 00:44 |       |      | REBOUND (OFF) by NEELY, LaQuinta        |
|  | 00:38 | 75-68 | H 7  | GOOD! 3 PTR by DAVIS-CAIN, Tanae        |
|  | 00:38 |       |      | ASSIST by NEELY, LaQuinta               |
|  | 00:30 | 77-68 | H 9  |   |
| GOOD! LAYUP by JASKOWIAK, Emily [FB/PNT] | 00:30 |       |      |   |
| ASSIST by MOODY, Megan                   | 00:23 |       |      | MISSED JUMPER by NEELY, LaQuinta        |
| REBOUND (DEF) by ROBBINS, Jillian        | 00:22 | 78-68 | H 10 | FOUL by JOHNSON, Holly                  |
| GOOD! FT SHOT by ROBBINS, Jillian        | 00:22 |       |      | REBOUND (DEF) by DAVIS-CAIN, Tanae      |
| MISSED FT SHOT by ROBBINS, Jillian       | 00:18 | 78-71 | H 7  | GOOD! 3 PTR by JOHNSON, Holly           |

HOME TEAM: Tulsa

|                               | TIME  | SCORE | MAR | VISITORS: Florida State      |
|-------------------------------|-------|-------|-----|------------------------------|
|                               | 00:18 |       |     | ASSIST by DAVIS-CAIN, Tanae  |
| GOOD FT SHOT by UPSHAW, LeAnn | 00:09 | 79-71 | H 8 | FOUL by JOHNSON, Holly       |
| GO FT SHOT by UPSHAW, LeAnn   | 00:09 | 80-71 | H 9 |                              |
| STEAL by IDLET, Dana          | 00:01 |       |     | TURNOVR by DAVIS-CAIN, Tanae |

Tulsa 80, Florida State 71

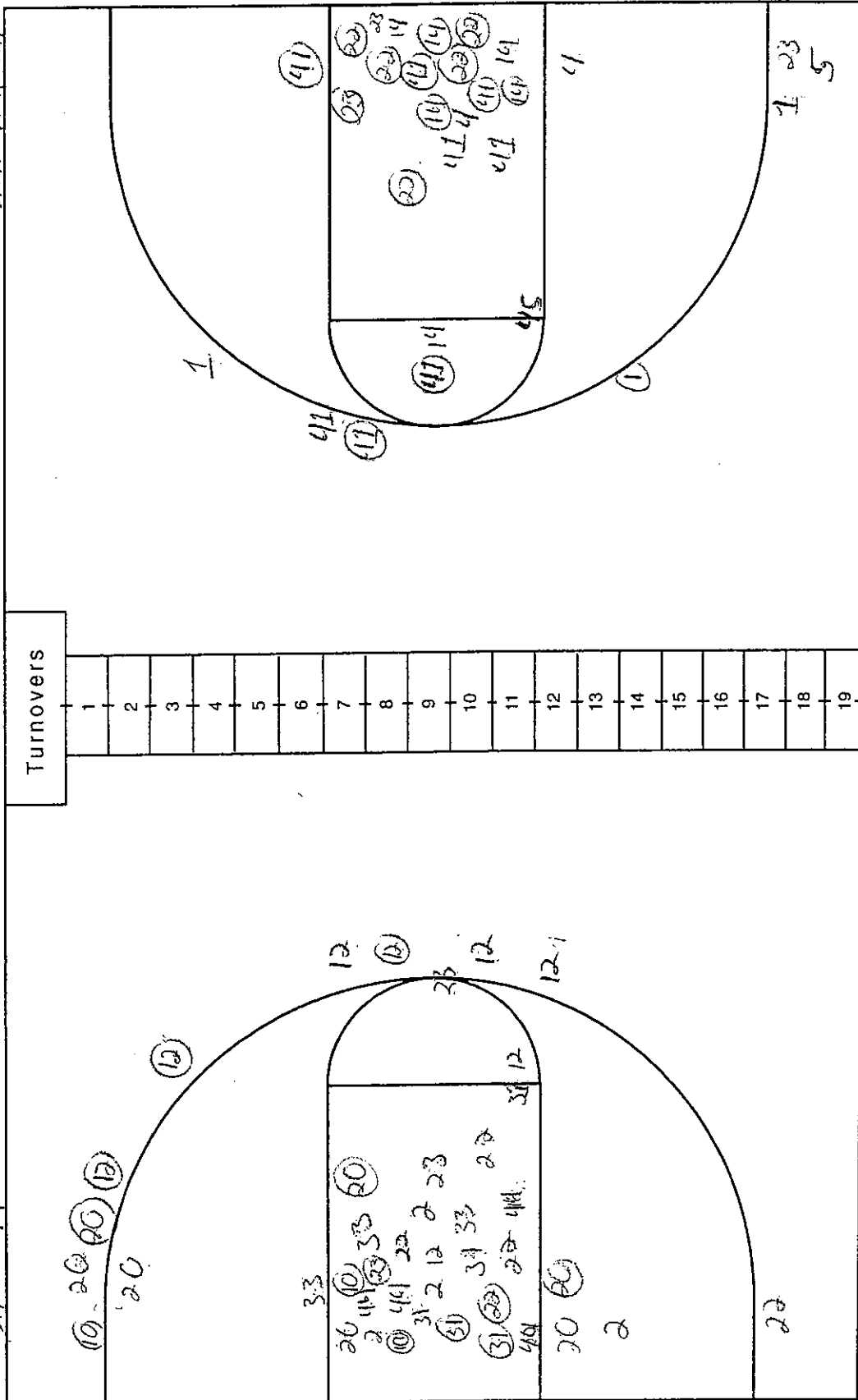
# NCAA® BASKETBALL SHOT CHART

First Half

Second Half

(Circle one)

Layups



Attempted 29  
Made 15  
Percentage 51.7

Attempted 42  
Made 13  
Percentage 31.0

Layups

Official Basketball Box Score -- GAME TOTALS -- 1st HALF  
 Florida State vs Tulsa  
 12/06/05 7:00 pm at Tulsa, Okla. (Donald W. Reynolds Center)

VISITORS: Florida State

| ##          | Player Name            | TOT-FG |        | 3-PT   | REBOUNDS |    |     | PF | TP | A | TO | BLK | S | MIN |
|-------------|------------------------|--------|--------|--------|----------|----|-----|----|----|---|----|-----|---|-----|
|             |                        | FG-FGA | FG-FGA | FT-FTA | OF       | DE | TOT |    |    |   |    |     |   |     |
| 33          | MILLER, Britany..... c | 1-1    | 0-0    | 0-0    | 0        | 0  | 0   | 2  | 2  | 0 | 1  | 0   | 0 | 5   |
| 02          | NEELY, LaQuinta..... g | 2-4    | 0-0    | 1-2    | 3        | 1  | 4   | 1  | 5  | 2 | 0  | 0   | 2 | 16  |
| 12          | JOHNSON, Holly..... g  | 0-7    | 0-4    | 2-2    | 0        | 0  | 0   | 0  | 2  | 3 | 0  | 0   | 0 | 18  |
| 23          | GLADDEN, Alicia'.... g | 1-5    | 0-0    | 0-0    | 2        | 0  | 2   | 2  | 2  | 0 | 1  | 1   | 1 | 11  |
| 31          | ADEDUNTAN, Ganiyat.. g | 1-5    | 0-1    | 4-4    | 0        | 0  | 0   | 2  | 6  | 0 | 1  | 0   | 0 | 9   |
| 10          | FRESHOUR, Mara.....    | 2-3    | 2-3    | 0-0    | 1        | 2  | 3   | 0  | 6  | 0 | 0  | 0   | 0 | 14  |
| 20          | DAVIS-CAIN, Tanae...   | 1-3    | 0-0    | 0-0    | 0        | 2  | 2   | 0  | 2  | 0 | 0  | 0   | 0 | 8   |
| 21          | LAUTSCH, Christie...   | 0-0    | 0-0    | 0-0    | 0        | 2  | 2   | 0  | 0  | 1 | 0  | 2   | 0 | 6   |
| 22          | WILLIAMS, Shante....   | 2-3    | 0-0    | 0-0    | 0        | 0  | 0   | 1  | 4  | 0 | 1  | 0   | 1 | 4   |
| 44          | ANTHONY, Nikki.....    | 1-2    | 0-0    | 1-2    | 3        | 1  | 4   | 2  | 3  | 0 | 0  | 0   | 0 | 9   |
| TEAM.....   |                        |        |        |        |          |    |     |    |    |   |    |     |   |     |
| Totals..... |                        | 11-33  | 2-8    | 8-10   | 9        | 8  | 17  | 10 | 32 | 6 | 4  | 3   | 4 | 100 |

TOTAL FG% 1st Half: 11-33 33.3% 2nd Half: 0-0 0.0% Game: 33.3% DEADB  
 3-Pt. FG% 1st Half: 2-8 25.0% 2nd Half: 0-0 0.0% Game: 25.0% REBS  
 F Throw % 1st Half: 8-10 80.0% 2nd Half: 0-0 0.0% Game: 80.0% 1

HOME TEAM: Tulsa

| ##          | Player Name            | TOT-FG |        | 3-PT   | REBOUNDS |    |     | PF | TP | A | TO | BLK | S | MIN |
|-------------|------------------------|--------|--------|--------|----------|----|-----|----|----|---|----|-----|---|-----|
|             |                        | FG-FGA | FG-FGA | FT-FTA | OF       | DE | TOT |    |    |   |    |     |   |     |
| 14          | ROBBINS, Jillian.... f | 3-6    | 0-0    | 5-5    | 2        | 6  | 8   | 1  | 11 | 0 | 3  | 2   | 0 | 16  |
| 20          | JASKOWIAK, Emily.... f | 0-0    | 0-0    | 4-4    | 2        | 2  | 4   | 2  | 4  | 1 | 1  | 0   | 0 | 9   |
| 40          | MOODY, Megan..... f    | 2-4    | 1-1    | 0-0    | 0        | 1  | 1   | 0  | 5  | 1 | 1  | 1   | 0 | 14  |
| 01          | PONGONIS, Kara..... g  | 2-5    | 2-3    | 0-0    | 0        | 0  | 0   | 0  | 6  | 0 | 2  | 0   | 0 | 15  |
| 23          | MAYS, Tandem..... g    | 0-3    | 0-1    | 0-0    | 0        | 0  | 0   | 0  | 0  | 3 | 0  | 0   | 0 | 17  |
| 03          | UPSHAW, LeAnn.....     | 0-0    | 0-0    | 0-0    | 0        | 1  | 1   | 0  | 0  | 0 | 1  | 0   | 0 | 5   |
| 04          | IDLET, Dana.....       | 0-0    | 0-0    | 1-2    | 0        | 1  | 1   | 2  | 1  | 0 | 0  | 0   | 0 | 7   |
| 05          | DREILING, Jamie.....   | 0-1    | 0-0    | 0-0    | 1        | 0  | 1   | 1  | 0  | 0 | 0  | 0   | 0 | 6   |
| 33          | MERRIWEATHER, Chivis   | 0-2    | 0-0    | 0-0    | 0        | 0  | 0   | 0  | 0  | 1 | 0  | 0   | 0 | 3   |
| 45          | WAGONER, TaTanisha..   | 3-4    | 0-0    | 1-2    | 1        | 1  | 2   | 2  | 7  | 0 | 1  | 1   | 0 | 8   |
| TEAM.....   |                        |        |        |        | 1        | 2  | 3   |    |    |   |    |     |   |     |
| Totals..... |                        | 10-25  | 3-5    | 11-13  | 7        | 14 | 21  | 8  | 34 | 6 | 9  | 4   | 0 | 100 |

TOTAL FG% 1st Half: 10-25 40.0% 2nd Half: 0-0 0.0% Game: 40.0% DEADB  
 3-Pt. FG% 1st Half: 3-5 60.0% 2nd Half: 0-0 0.0% Game: 60.0% REBS  
 F Throw % 1st Half: 11-13 84.6% 2nd Half: 0-0 0.0% Game: 84.6% 2

Officials: Beverly Roberts, Tommy Salerno, Vanessa Welch  
 Technical fouls: Florida State-None. Tulsa-None.

Attendance:

|                    |     |       |
|--------------------|-----|-------|
| Score by Periods   | 1st | Total |
| Florida State..... | 32  | - 32  |
| Tulsa.....         | 34  | - 34  |

ID-376469

Play-by-Play  
Florida State vs Tulsa  
12/06/05 7:00 pm at Tulsa, Okla. (Donald W. Reynolds Center)  
1st PERIOD Play-by-Play (Page 1)  
HOME TEAM: Tulsa

|                                       | TIME  | SCORE | MAR   | VISITORS: Florida State                  |
|---------------------------------------|-------|-------|-------|--|
| -----                                 | ----- | ----- | ----- | -----                                    |
| TURNNOVR by PONGONIS, Kara            | 19:38 |       |       |  |
|                                       | 19:37 |       |       | STEAL by GLADDEN, Alicia'                |
| BLOCK by MOODY, Megan                 | 19:30 |       |       | MISSED LAYUP by GLADDEN, Alicia'         |
|                                       | 19:28 |       |       | REBOUND (OFF) by GLADDEN, Alicia'        |
| REBOUND (DEF) by ROBBINS, Jillian     | 19:15 |       |       | MISSED JUMPER by NEELY, LaQuinta         |
| TURNNOVR by ROBBINS, Jillian          | 19:00 |       |       |  |
|                                       | 18:47 |       |       | TURNNOVR by ADEDUNTAN, Ganiyat           |
| GOOD! FT SHOT by JASKOWIAK, Emily     | 18:27 | 1-0   | H 1   | FOUL by NEELY, LaQuinta                  |
| GOOD! FT SHOT by JASKOWIAK, Emily     | 18:27 | 2-0   | H 2   |  |
|                                       | 18:17 |       |       | MISSED 3 PTR by JOHNSON, Holly           |
|                                       | 18:17 |       |       | REBOUND (OFF) by GLADDEN, Alicia'        |
| FOUL by JASKOWIAK, Emily              | 18:16 |       |       |  |
|                                       | 18:14 |       |       | MISSED JUMPER by ADEDUNTAN, Ganiyat      |
|                                       | 18:14 |       |       | REBOUND (OFF) by NEELY, LaQuinta         |
|                                       | 18:01 |       |       | MISSED 3 PTR by ADEDUNTAN, Ganiyat       |
| REBOUND (DEF) by ROBBINS, Jillian     | 17:46 | 3-0   | H 3   | FOUL by MILLER, Britany                  |
| GOOD! FT SHOT by ROBBINS, Jillian     | 17:46 | 4-0   | H 4   |  |
| GOOD! FT SHOT by ROBBINS, Jillian     | 17:33 |       |       | MISSED JUMPER by GLADDEN, Alicia'        |
| BLOCK by ROBBINS, Jillian             | 17:29 |       |       | REBOUND (OFF) by NEELY, LaQuinta         |
|                                       | 17:23 | 4-2   | H 2   | GOOD! JUMPER by MILLER, Britany [PNT]    |
|                                       | 17:23 |       |       | ASSIST by JOHNSON, Holly                 |
| TURNNOVR by MOODY, Megan              | 17:05 |       |       |  |
|                                       | 16:55 |       |       | MISSED LAYUP by JOHNSON, Holly           |
|                                       | 16:55 |       |       | REBOUND (OFF) by NEELY, LaQuinta         |
|                                       | 16:49 | 4-4   | T 1   | GOOD! LAYUP by NEELY, LaQuinta [PNT]     |
| GOOD! JUMPER by MOODY, Megan [PNT]    | 16:40 | 6-4   | H 2   |  |
|                                       | 16:26 |       |       | TURNNOVR by MILLER, Britany              |
| MISSED JUMPER by MAYS, Tandem         | 15:59 |       |       |  |
| REBOUND (OFF) by JASKOWIAK, Emily     | 15:59 |       |       |  |
| GOOD! 3 PTR by MOODY, Megan           | 15:52 | 9-4   | H 5   |  |
| ASSIST by MAYS, Tandem                | 15:52 |       |       |  |
|                                       | 15:21 | 9-6   | H 3   | GOOD! JUMPER by ADEDUNTAN, Ganiyat [PNT] |
| TURNNOVR by JASKOWIAK, Emily          | 15:04 |       |       |  |
|                                       | 14:50 | 9-8   | H 1   | GOOD! LAYUP by ANTHONY, Nikki [PNT]      |
|                                       | 14:50 |       |       | ASSIST by JOHNSON, Holly                 |
|                                       | 14:32 | 11-8  | H 3   |  |
| GOOD! LAYUP by ROBBINS, Jillian [PNT] | 14:32 |       |       |  |
| ASSIST by MAYS, Tandem                | 14:03 |       |       | MISSED 3 PTR by JOHNSON, Holly           |
| REBOUND (DEF) by MOODY, Megan         | 13:49 | 14-8  | H 6   |  |
| GOOD! 3 PTR by PONGONIS, Kara         | 13:49 |       |       |  |
| ASSIST by JASKOWIAK, Emily            | 13:31 |       |       | MISSED JUMPER by NEELY, LaQuinta         |
| REBOUND (DEF) by JASKOWIAK, Emily     | 13:23 |       |       |  |
| TURNNOVR by ROBBINS, Jillian          | 13:22 |       |       | STEAL by NEELY, LaQuinta                 |
|                                       | 13:06 |       |       | MISSED JUMPER by JOHNSON, Holly          |
| REBOUND (DEF) by JASKOWIAK, Emily     | 12:49 |       |       | REBOUND (DEF) by FRESHOUR, Mara          |
| MISSED LAYUP by MAYS, Tandem          | 12:29 | 14-10 | H 4   | GOOD! LAYUP by GLADDEN, Alicia' [PNT]    |
|                                       | 12:29 |       |       | ASSIST by JOHNSON, Holly                 |
|                                       | 12:17 |       |       | FOUL by ANTHONY, Nikki                   |
|                                       | 12:15 |       |       |  |
| GOOD JUMPER by MOODY, Megan           | 12:15 |       |       |  |
| REBOUND (OFF) by (TEAM)               | 12:03 |       |       | FOUL by MILLER, Britany                  |
| MISSED FT SHOT by IDLET, Dana         | 12:03 |       |       |  |
| REBOUND (OFF) by (DEADBALL)           | 12:03 |       |       |  |
| GOOD! FT SHOT by IDLET, Dana          | 12:03 | 15-10 | H 5   |  |
|                                       | 11:54 | 15-13 | H 2   | GOOD! 3 PTR by FRESHOUR, Mara            |
|                                       | 11:54 |       |       | ASSIST by LAUTSCH, Christie              |

HOME TEAM: Tulsa

TIME SCORE MAR VISITORS: Florida State

|  |       |       |     |  |
|--|-------|-------|-----|--|
| MISSED LAYUP by DREILING, Jamie          | 11:40 |       |     | BLOCK by LAUTSCH, Christie             |
|  | 11:37 |       |     | REBOUND (DEF) by LAUTSCH, Christie     |
| REBOUND (DEF) by WAGONER, TaTanisha      | 11:25 |       |     | MISSED JUMPER by ADEDUNTAN, Ganiyat    |
| MISSED FT SHOT by WAGONER, TaTanisha     | 11:15 |       |     | FOUL by ADEDUNTAN, Ganiyat             |
| REBOUND (OFF) by (DEADBALL)              | 11:15 |       |     |  |
| GOOD! FT SHOT by WAGONER, TaTanisha      | 11:15 | 16-13 | H 3 |  |
| REBOUND (DEF) by UPSHAW, LeAnn           | 11:01 |       |     | MISSED JUMPER by GLADDEN, Alicia'      |
| GOOD! JUMPER by WAGONER, TaTanisha [PNT] | 10:42 | 18-13 | H 5 |  |
| ASSIST by MERRIWEATHER, Chivis           | 10:42 |       |     |  |
| FOUL by DREILING, Jamie                  | 10:17 | 18-14 | H 4 | GOOD! FT SHOT by ADEDUNTAN, Ganiyat    |
|  | 10:17 | 18-15 | H 3 | GOOD! FT SHOT by ADEDUNTAN, Ganiyat    |
|  | 10:03 |       |     | FOUL by GLADDEN, Alicia'               |
| MISSED JUMPER by MERRIWEATHER, Chivis    | 09:54 |       |     |  |
| REBOUND (OFF) by DREILING, Jamie         | 09:54 |       |     |  |
| MISSED LAYUP by MERRIWEATHER, Chivis     | 09:42 |       |     | BLOCK by GLADDEN, Alicia'              |
| REBOUND (OFF) by WAGONER, TaTanisha      | 09:40 |       |     |  |
| GOOD! LAYUP by WAGONER, TaTanisha [PNT]  | 09:38 | 20-15 | H 5 |  |
| FOUL by IDLET, Dana                      | 09:13 |       |     |  |
|  | 09:08 |       |     | MISSED JUMPER by DAVIS-CAIN, Tanae     |
|  | 09:08 |       |     | REBOUND (OFF) by ANTHONY, Nikki        |
|  | 09:02 |       |     | MISSED 3 PTR by FRESHOUR, Mara         |
| REBOUND (DEF) by IDLET, Dana             | 08:52 |       |     |  |
| TURNOVR by WAGONER, TaTanisha            | 08:40 |       |     | MISSED JUMPER by GLADDEN, Alicia'      |
| REBOUND (DEF) by (TEAM)                  | 08:23 |       |     |  |
| MISSED LAYUP by ROBBINS, Jillian         | 08:23 |       |     |  |
| REBOUND (OFF) by ROBBINS, Jillian        | 08:20 |       |     |  |
| MISSED LAYUP by ROBBINS, Jillian         | 08:20 |       |     |  |
| REBOUND (OFF) by JASKOWIAK, Emily        | 08:17 |       |     | REBOUND (DEF) by ANTHONY, Nikki        |
| MISSED 3 PTR by PONGONIS, Kara           | 08:01 |       |     | FOUL by GLADDEN, Alicia'               |
|  | 08:01 |       |     | TURNOVR by GLADDEN, Alicia'            |
|  | 07:50 | 21-15 | H 6 | FOUL by ANTHONY, Nikki                 |
| GOOD! FT SHOT by JASKOWIAK, Emily        | 07:50 | 22-15 | H 7 |  |
| GOOD! FT SHOT by JASKOWIAK, Emily        | 07:33 | 22-16 | H 6 | GOOD! FT SHOT by JOHNSON, Holly        |
| FOUL by JASKOWIAK, Emily                 | 07:33 | 22-17 | H 5 | GOOD! FT SHOT by JOHNSON, Holly        |
|  | 07:20 | 25-17 | H 8 |  |
| GOOD! 3 PTR by PONGONIS, Kara            | 07:20 |       |     |  |
| ASSIST by MAYS, Tandem                   | 06:57 | 25-18 | H 7 | GOOD! FT SHOT by ADEDUNTAN, Ganiyat    |
| FOUL by WAGONER, TaTanisha               | 06:57 | 25-19 | H 6 | GOOD! FT SHOT by ADEDUNTAN, Ganiyat    |
|  | 06:35 |       |     |  |
| TURNOVR by PONGONIS, Kara                | 06:33 |       |     | STEAL by WILLIAMS, Shante              |
|  | 06:25 |       |     | TURNOVR by WILLIAMS, Shante            |
|  | 06:10 |       |     | REBOUND (DEF) by FRESHOUR, Mara        |
| MISSED LAYUP by PONGONIS, Kara           | 05:56 |       |     | MISSED JUMPER by ADEDUNTAN, Ganiyat    |
| BLOCK by WAGONER, TaTanisha              | 05:52 |       |     |  |
| REBOUND (DEF) by ROBBINS, Jillian        | 05:48 | 26-19 | H 7 | FOUL by ADEDUNTAN, Ganiyat             |
| GOOD! FT SHOT by ROBBINS, Jillian        | 05:48 | 27-19 | H 8 |  |
| GOOD! FT SHOT by ROBBINS, Jillian        | 05:28 | 27-21 | H 6 | GOOD! JUMPER by WILLIAMS, Shante [PNT] |
|  | 05:22 | 29-21 | H 8 |  |
| GOOD! JUMPER by WAGONER, TaTanisha [PNT] | 05:22 |       |     |  |
| ASSIST by MOODY, Megan                   | 05:00 |       |     | MISSED 3 PTR by JOHNSON, Holly         |
|  | 05:00 |       |     | REBOUND (OFF) by FRESHOUR, Mara        |
|  | 04:55 | 29-24 | H 5 | GOOD! 3 PTR by FRESHOUR, Mara          |
|  | 04:55 |       |     | ASSIST by NEELY, LaQuinta              |
|  | 04:32 | 31-24 | H 7 |  |
| GOOD! LAYUP by ROBBINS, Jillian [PNT]    | 04:32 | 32-24 | H 8 | FOUL by WILLIAMS, Shante               |
| GOOD! FT SHOT by ROBBINS, Jillian        | 04:15 |       |     | MISSED JUMPER by WILLIAMS, Shante      |

HOME TEAM: Tulsa

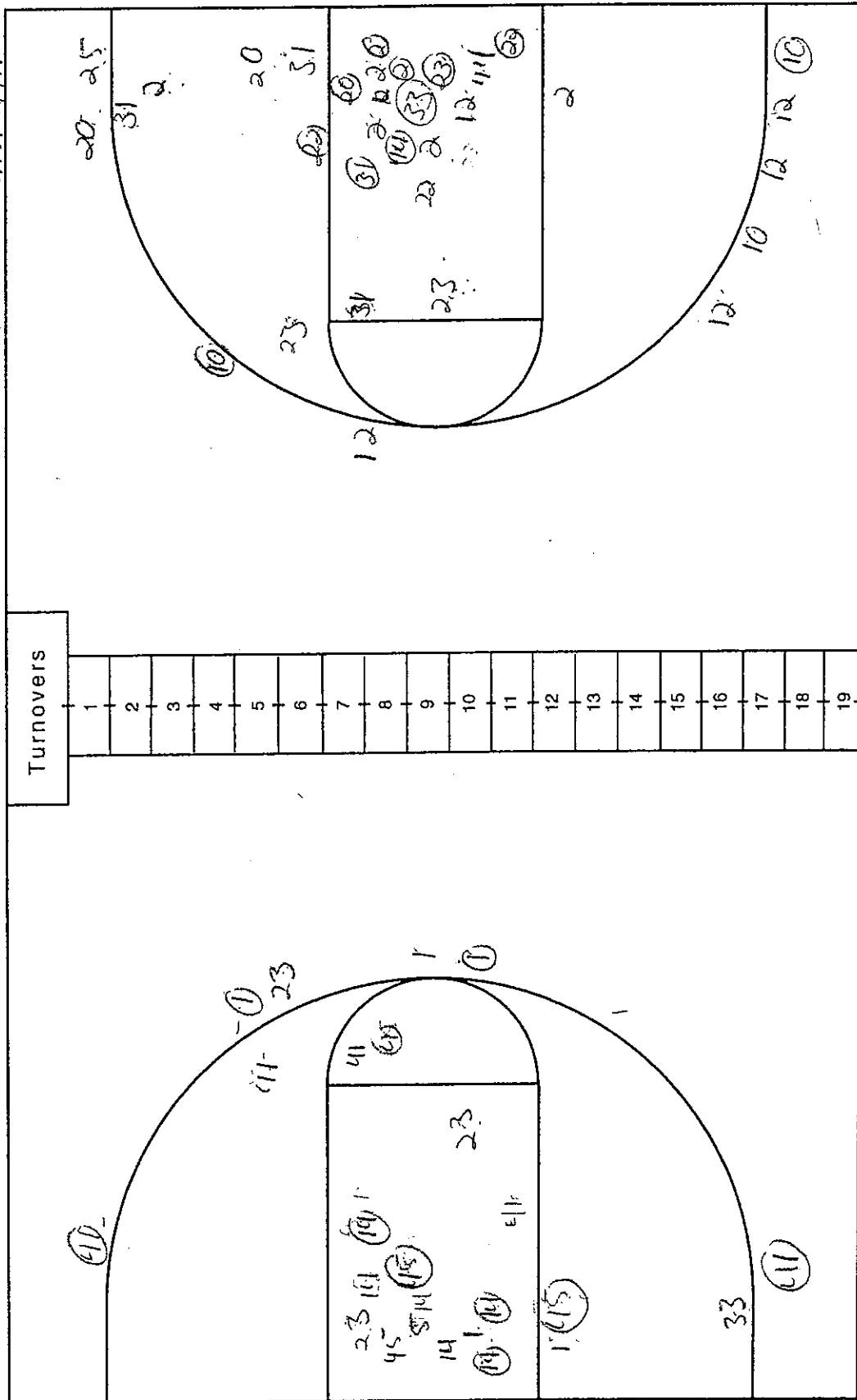
TIME SCORE MAR VISITORS: Florida State

|                                       | TIME  | SCORE | MAR | VISITORS                                 |
|---------------------------------------|-------|-------|-----|--|
| BLOCK by ROBBINS, Jillian             | 04:15 |       |     |  |
|                                       | 04:14 |       |     | REBOUND (OFF) by ANTHONY, Nikki          |
|                                       | 04:12 |       |     | MISSED LAYUP by ANTHONY, Nikki           |
|                                       | 04:12 |       |     | REBOUND (OFF) by ANTHONY, Nikki          |
| FOUL by IDLET, Dana                   | 04:11 |       |     | MISSED FT SHOT by ANTHONY, Nikki         |
|                                       | 04:11 |       |     | REBOUND (OFF) by (DEADBALL)              |
|                                       | 04:11 | 32-25 | H 7 | GOOD! FT SHOT by ANTHONY, Nikki          |
| MISSED 3 PTR by MAYS, Tandem          | 03:41 |       |     | REBOUND (DEF) by NEEELY, LaQuinta        |
|                                       | 03:29 | 32-27 | H 5 | GOOD! LAYUP by WILLIAMS, Shante [PNT]    |
|                                       | 03:29 |       |     | ASSIST by NEEELY, LaQuinta               |
|                                       | 02:55 |       |     |  |
| MISSED LAYUP by PONGONIS, Kara        | 02:55 |       |     |  |
| REBOUND (OFF) by ROBBINS, Jillian     | 02:52 | 34-27 | H 7 |  |
| GOOD! LAYUP by ROBBINS, Jillian [PNT] | 02:23 |       |     | MISSED 3 PTR by JOHNSON, Holly           |
| REBOUND (DEF) by ROBBINS, Jillian     | 02:01 |       |     | REBOUND (DEF) by DAVIS-CAIN, Tanae       |
| MISSED LAYUP by WAGONER, TaTanisha    | 01:38 | 34-28 | H 6 | GOOD! FT SHOT by NEEELY, LaQuinta        |
| FOUL by WAGONER, TaTanisha            | 01:38 |       |     | MISSED FT SHOT by NEEELY, LaQuinta       |
| REBOUND (DEF) by ROBBINS, Jillian     | 01:26 |       |     |  |
| FOUL by ROBBINS, Jillian              | 01:26 |       |     |  |
| TURNOVR by ROBBINS, Jillian           | 01:07 |       |     | MISSED JUMPER by DAVIS-CAIN, Tanae       |
| REBOUND (DEF) by ROBBINS, Jillian     | 00:51 |       |     | BLOCK by LAUTSCH, Christie               |
| MISSED LAYUP by ROBBINS, Jillian      | 00:48 |       |     | REBOUND (DEF) by LAUTSCH, Christie       |
|                                       | 00:42 |       |     | MISSED LAYUP by JOHNSON, Holly           |
| REBOUND (DEF) by (TEAM)               | 00:28 |       |     |  |
| TURNOVR by UPSHAW, LeAnn              | 00:26 |       |     | STEAL by NEEELY, LaQuinta                |
|                                       | 00:23 | 34-30 | H 4 | GOOD! LAYUP by NEEELY, LaQuinta [FB/PNT] |
|                                       | 00:07 |       |     | REBOUND (DEF) by DAVIS-CAIN, Tanae       |
| MISSED JUMPER by MOODY, Megan         | 00:00 | 34-32 | H 2 | GOOD! JUMPER by DAVIS-CAIN, Tanae        |

Tulsa 34, Florida State 32

(Circle one)

## Layups



Attempted 58  
Made 17  
Percentage 33.3

Attempted 25  
Made 10  
Percentage 40%