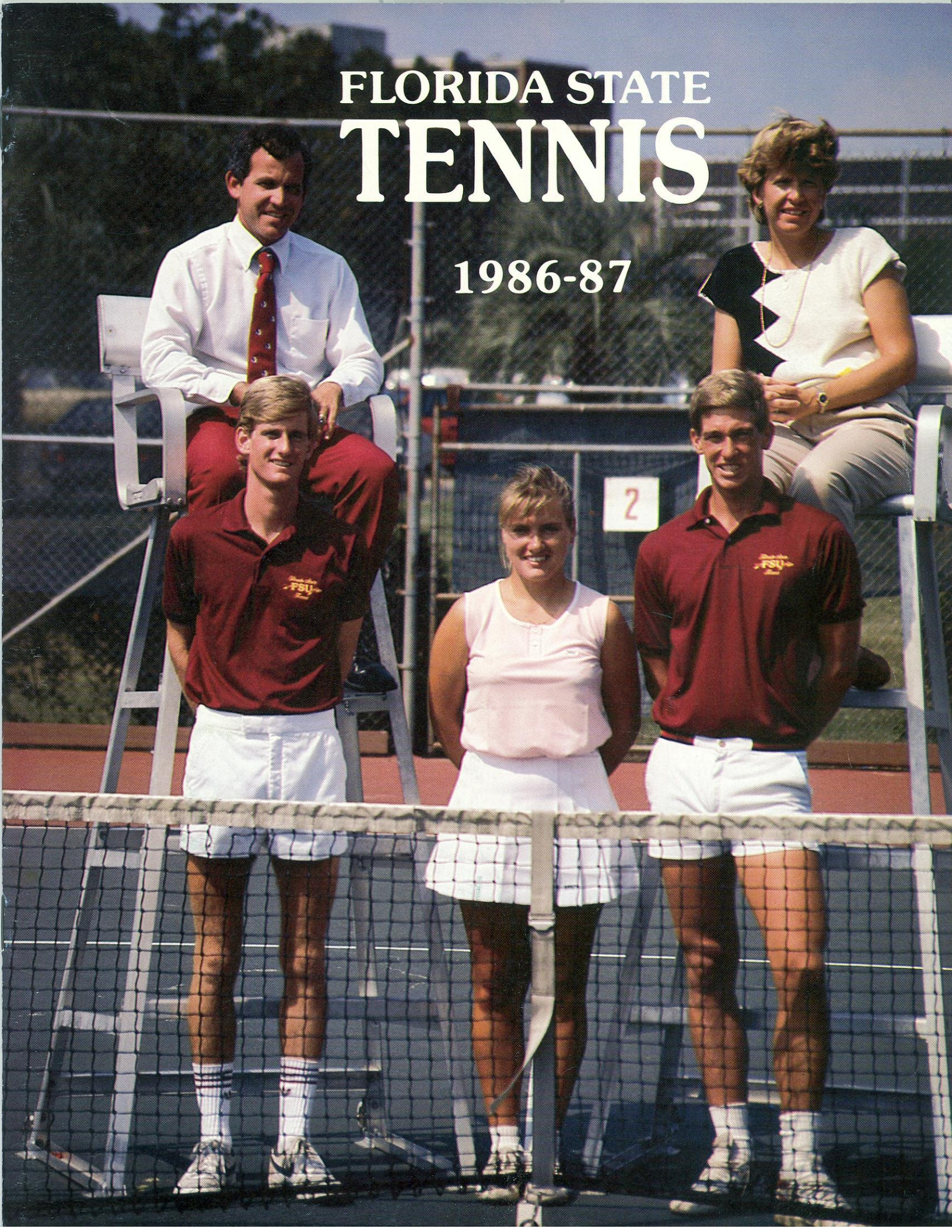


FLORIDA STATE TENNIS

1986-87





86-87 FLORIDA STATE TENNIS MEDIA GUIDE



TABLE OF CONTENTS

FSU Facts	IFC
Men's and Women's Tennis Info	IFC
Men's Schedule and Roster	1
Men's Outlook	2
Seminole Profiles	3-4
Coach Richard McKee	4
Men's Metro at a Glance	5
Seminole Statistics	6
Women's Schedule and Roster	7
Women's Outlook	8
Lady Seminole Profiles	9-10
Head Coach Anne Rizza	11
Graduate Assistant Coach Patti Henderson.....	11
Women's Metro at a Glance	12
Lady Seminole Statistics	12
This is FSU	IBC

ATHLETIC STAFF

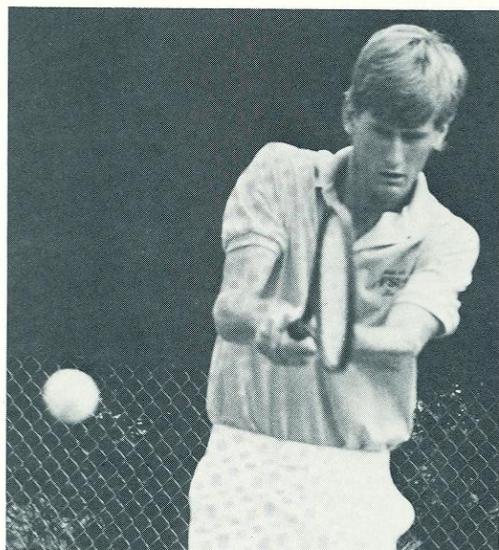
AREA CODE (904)

C.W. "Hootie" Ingram, Athletic Director	644-1060
Bob Goin, Associate Athletic Director	644-1060
Jan Stocker, Assistant Athletic Director	644-1091
Claude Thigpen, Assistant Athletic Director	644-1060
Larry Pendleton, Assistant Athletic Director	644-1060

SPORTS INFORMATION STAFF

644-1060

Wayne Hogan, Sports Information Director	386-5359(H)
Lisa Franson, Assoc. Sports Info. Director	565-4773(H)
Dan Pearson, Assist. Sports Info. Director	562-4628(H)
Nick Gandy, Tennis Contact	222-4936(H)



Alex Rucker

MEN'S TENNIS INFORMATION

Head Coach	Richard McKee
Record at FSU	62-25, .713
Years at FSU	Enters fourth
1986 Metro Finish	Fourth
Metro Champions	1981, 1983, 1984
Highest National Finish.....	Tied 16th (1971)
1986 Record	10-13
Home Facility	H. Donald Loucks Courts
Tennis Phone	(904) 644-1091

CREDITS

The 1987 Florida State tennis guide, which includes information concerning both the men's and women's teams, is published by the Florida State Department of Intercollegiate Athletics, C.W. "Hootie" Ingram, Director, for use by media, faculty, prospective student-athletes and friends of the university.

The guide was written and designed by Nick Gandy, Sports Information Assistant, with editorial assistance from Associate Director, Lisa Franson. Photography by Chris Edwards and the University Photo Lab.

For more information on the 1987 tennis teams, please contact the Sports Information Office, P.O. Drawer 2195, Tallahassee, FL 32316, (904) 644-1060 or (904) 644-1403 (after hours).

ON THE COVER

Head coaches Richard McKee and Anne Rizza will oversee team captains Henner Lenhardt, Sue Hatch and Alex Rucker as they face the 1987 tennis season. Photo taken at the H. Donald Loucks Varsity Courts by Chris Edwards.

FSU FACTS

Location	Tallahassee, Florida
Enrollment	22,800
Founded	1857
Nickname	Seminoles
Colors	Garnet and Gold
Conference	Metro
President	Dr. Bernard F. Sliger
Athletic Director	C.W. "Hootie" Ingram



Kim Temples

WOMEN'S TENNIS INFORMATION

Head Coach	Anne Rizza
Record at FSU	131-89, .595
Years at FSU	Enters Eighth
1986 Metro Finish	Second
Metro Champions	1981, 1983, 1984
Highest National Finish.....	Sixth (1982-AIAW)
1986 Record	17-10
Home Facility	H. Donald Loucks Courts
Tennis Phone	(904) 644-1091



MEN'S SCHEDULE

Date	Opponent	Place	Time
SEPTEMBER			
19-21	City of Perry Invitational	Perry, Fla.	
OCTOBER			
16-19	I.T.C.A. Rolex Invitational	Lafayette, La.	
NOVEMBER			
7-9	Florida Intercollegiate	Gainesville, Fla.	
20-23	I.T.C.A. Panama City Collegiate	Panama City, Fla.	
20-23	Region III Indoor	Athens, Ga.	
JANUARY			
23	Maryland	Tallahassee, Fla.	2:15 pm
30	Auburn-Montgomery	Tallahassee, Fla.	2:15 pm
FEBRUARY			
7	ABAC	Tallahassee, Fla.	10:00 am
12	Florida Jr. College	Tallahassee, Fla.	2:15 pm
14	S.W. Louisiana	Tallahassee, Fla.	9:00 am
15	North Florida	Tallahassee, Fla.	2:15 pm
19	Florida Atlantic	Tallahassee, Fla.	2:15 pm
20-22	South Florida, Mississippi	Tallahassee, Fla.	DAILY
	South Alabama, Armstrong St.		
Feb. 27-Mar. 1	Florida, Furman, Vanderbilt	Gainesville, Fla.	DAILY
MARCH			
3	Southeast Louisiana	Tallahassee, Fla.	2:15 pm
10	Belhaven College	Tallahassee, Fla.	2:15 pm
11	Alabama	Tallahassee, Fla.	2:15 pm
13	Hampton Institute	Tallahassee, Fla.	2:15 pm
15	Miami	Miami, Fla.	1:30 pm
16	North Carolina State	Raleigh, N.C.	2:00 pm
17	North Carolina	Chapel Hill, N.C.	2:00 pm
19	Louisville	Tallahassee, Fla.	2:00 pm
21	Florida	Tallahassee, Fla.	2:00 pm
26	Georgia State	Tallahassee, Fla.	2:15 pm
27	Kalamazoo	Tallahassee, Fla.	2:15 pm
28	Cincinnati	Tallahassee, Fla.	10:00 am
APRIL			
7	ABAC	Tallahassee, Fla.	3:00 pm
10	McNeese State	Tallahassee, Fla.	2:00 pm
11	Georgia Southern	Tallahassee, Fla.	2:00 pm
22	Southern Mississippi	Hattiesburg, Miss.	2:00 pm
23-26	Metro Conference Tournament	Hattiesburg, Miss.	DAILY

MEN'S ROSTER

Name	Height	Class	Weight	Hometown
Jeff Bingo	5'6"	Junior	148	Boca Raton, Florida
Todd Collins	6'5"	Junior	170	Vero Beach, Florida
Scott Espenship	6'2"	Freshman	173	Miami, Florida
Paul Haarhuis	6'3"	Junior	170	Eindhoven, The Netherlands
Shannon Krieger	6'1"	Junior	200	Slidell, Louisiana
Henner Lenhardt	6'2"	Senior	175	Winter Park, Florida
Alex Rucker	6'1"	Junior	125	Delray Beach, Florida
Cary Sochin	5'10"	Junior	150	Miami, Florida



MEN'S OUTLOOK



In the two years following Richard McKee's arrival at FSU, the Seminole tennis teams of 1984 and 1985 compiled a 52-12 record (a winning percentage of .813), won the Metro Conference Championship in 1984 and established themselves on the NCAA tennis scene.

In McKee's third year—1986—injuries occurred on the verge of the season opener, causing a drastic change in the Seminole lineup and the team limped through a 10-13 season while finishing fourth in a disappointing Metro Conference Tournament.

In attempts to return to the pre-1986 form, McKee will determine this year's top six players by using a new system. "Last year we used a system of challenge matches to determine the lineup," he says. "That caused a lot of tension and disrupted our unity."

For this spring's lineup, McKee is evaluating the players based on their tournament performances in fall action. "The better players on this squad will emerge through the local tournaments and other fall action. They will then move up or down in the lineup during the spring season."

In this season of rebounding, McKee has set three goals for his squad: eliminate injuries and academic inconsistency, establish a winning record and gain a top 25 national ranking.

The second and third goals are those of every tennis program. But McKee means it when he says the team needs to avoid injuries and academic difficulties since the Seminole roster rounds out at eight players. "A loss to injuries or academics would be very costly to us," he says.

Although the roster only consists of eight players, six of them have at least a year of experience at FSU. Returning to the 1987 Seminole squad are co-captains Henner Lenhardt and Alex Rucker. In 1986, Rucker and Lenhardt played at the number two and three positions, respectively. McKee is looking to Lenhardt, the lone senior, and to Rucker for leadership. Rucker, a junior, has had two full seasons at FSU which should give him the experience needed to have a winning season.

Other players returning with experience include Jeff Bingo, a junior who was used sparingly in 1986; Shannon Krieger, the holder of a 10-13 record in his sophomore season; Cary Sochin, returning from an 8-10 season as a junior; and redshirt freshman Scott Espenship.

Two newcomers will grace the Seminole lineup in 1987. Coach McKee likes the looks of them and sees a place for them immediately. Paul Haarhuis, a junior transfer from Armstrong State (Ga.), brings to FSU a 64-2 record over the last two years. In 1986, Haarhuis enjoyed an undefeated season with a 30-0 record. McKee gives the early nod to Haarhuis in the number one position. Todd Collins, a junior transfer, was forced to sit out a year after his move to FSU from South Florida, where he played in the number one position. He is now eligible.

New doubles teams must also be set up before the opening of the spring season. McKee is not taking the issue lightly, since he knows that the process involves more than just the pairing of two players. "Doubles combinations are hard to set up," he says. "You must match the personalities so the players are able to communicate during the match. There must be a compliment of styles to come up with the perfect pair."

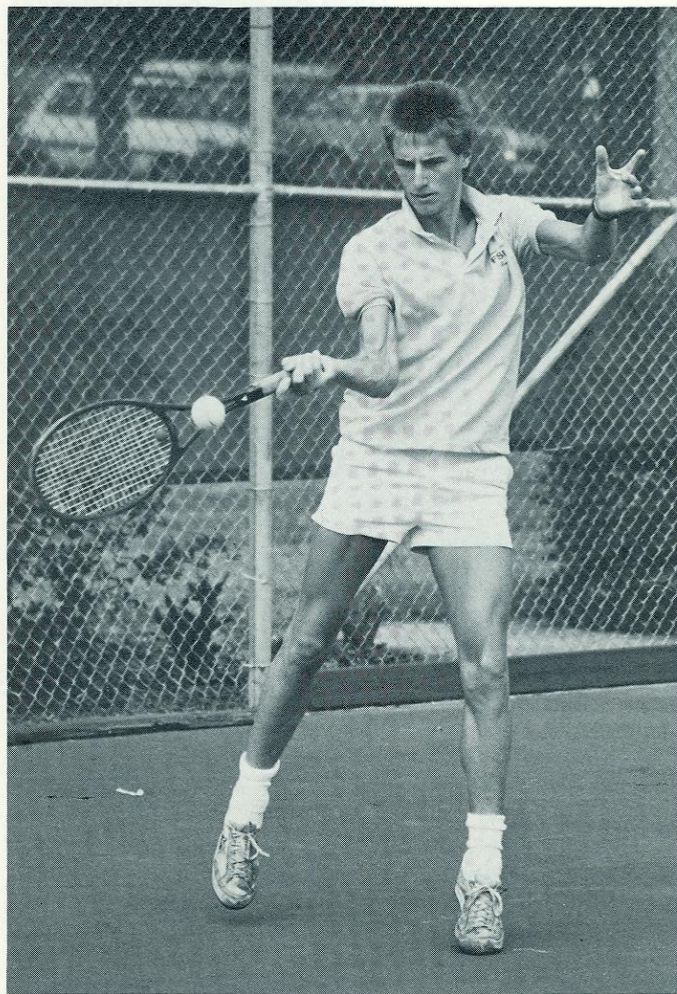
The Seminoles' spring schedule will certainly present a challenge with matches against Florida, Maryland, Alabama and Southwest Louisiana all top 25 teams. McKee feels good about the matches since they will be played in Tallahassee. "It's

hard to win on the road," he says. "It drains the guys both physically and emotionally after they have been in a van for up to eight hours."

The Seminoles will face a stiff challenge when they face four opponents in Tallahassee on the weekend of February 20-22. South Florida, Mississippi, South Alabama and Armstrong State will face FSU over the two-day period. From March 15-17, the team travels to Miami, then heads north to play N.C. State and North Carolina on successive days.

McKee is looking for his 1987 Seminoles to play with a tough, business-like attitude to return to the form which brought national prominence to FSU in 1984 and 1985. "The team must have inner confidence," he says. "We must never have a lackadaisical attitude; it's too hard to get back up in a match after getting down. We must stay on an even keel emotionally."

Looking at the 1987 team, McKee finds some impressive bright spots. With six juniors on the roster, experience should be a plus. The two transfers, Haarhuis and Collins, have great credentials and should be able to pick up where they left off at their previous schools. "Besides, there is a redemption factor from last year's disappointing campaign," says McKee. "The guys are eager to redeem themselves for last year."



Junior transfer from Armstrong State College, Paul Haarhuis, will occupy the number one spot for the 1987 Seminole Tennis team. During the 1986 fall season, Haarhuis won the Men's Intercollegiate Invitational Championship in Panama City, FL.

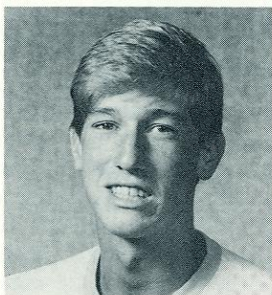


SEMINOLE PROFILES



1987 CO-CAPTAINS

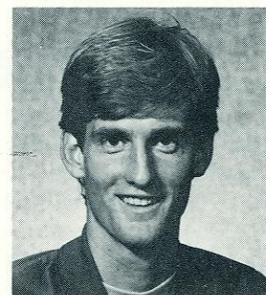
Henner Lenhardt
Senior
Winter Park, Florida



... the lone senior and a co-captain of the team ... finished the 1986 season with a 14-12 singles record, a .538 winning percentage, the best on the team ... transferred from Alabama ... while at Alabama, put together a 13-18 singles record and 16-7 doubles record ... combined with Jeff Horine at #1 doubles in 1986 for a 12-11 record ... the duo advanced to the #1 doubles finals in the Metro Conference Tournament last year ... won #3 singles consolation championship at Metro Championship after losing in second round to South Carolina ... "winning the consolation championship should give Henner confidence for 1987," said coach McKee ... had a 5-0 record against opponents from the state of Florida in 1986, winning two matches against the Gators and beating competitors from North Florida, South Florida and West Florida ... ranked number one doubles in state of Florida in 1982 and 1983 ... ranked number 24 nationally in singles as high school senior ... an international relations major ...

AT ALABAMA		
1984	2-5	.286
1985	11-13	.458
AT FLORIDA STATE		
1986	14-12	.538
Totals	27-30	.478

Alex Rucker
Junior
Delray Beach, Florida



... co-captain of 1987 squad ... played at number two position in 1986 but was not quite ready for tough competition, as evidenced by an 8-18 record, a drastic turnaround from his 23-6 record in 1985 when he played in number five position ... determined to improve his winning percentage this season ... one of six juniors on the team ... was top freshman of 1985 with the .793 winning percentage ... has combined for a 32-17 doubles record in two years ... had a 20-5 record paired with Ken Crosina in 1985 and 12-12 record with Fred Weinman in 1986 ... he and Weinman were state high school doubles champions in 1984 ... according to McKee, Rucker's losses in 1986 were close ones: "he made the competition sweat, and had a very good attitude during his tough season" ... made Metro Conference Commissioner's List for Academics last spring ... runner-up in state of Florida High School singles championships in 1984 ... majoring in finance ...

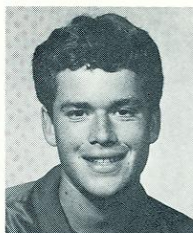
AT FLORIDA STATE		
1985	23-6	.793
1986	8-18	.308
Totals	31-24	.564

Todd Collins
Junior
Vero Beach, Florida



... will have two years of eligibility at FSU after transferring from the University of South Florida ... had to sit out the 1986 season under the transfer rules ... made the jump from a number five position as a freshman to number three in his sophomore year ... was an all-state performer during his freshman year when he had a 12-8 singles record ... made the All-Cape Coast Conference team in his junior and senior years at Vero Beach High School ... is considered a serve and volley-style player ... that's the style that McKee likes his players to have ... at 6-5, his height can be intimidating ... comes to FSU with a GPA over 3.0 while majoring in finance ...

Scott Espenship
Freshman
Miami, Florida



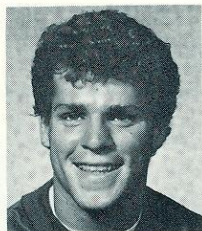
... was redshirted in 1986 after a moped accident where he broke his ulna bone in his arm ... he did get in some playing time in fall of 1985 and made himself known ... was the first signee of 1986 season ... ranked fifth in the state and 42nd nationally among boys 18-and-under during the 1984-85 season ... was the only sophomore to make the Miami Herald All-Dade County first team in 1983 ... went on to repeat on that team his junior and senior years at North Miami Beach High School ... and is developing a good net game to become a better all around player ... he and his dad are the best father-son doubles team in Florida ... has great future ahead of him at FSU ... is a strict baseline player ... is majoring in psychology ...

Paul Haarhuis
Junior
Eindhoven,
The Netherlands



... will play in the number one position following a transfer from Armstrong State ... posted a 64-2 record in two years there ... went undefeated in 1985 with a 30-0 record ... transferred to Florida State for better academics and competition ... could not achieve ranking at Armstrong State because in his two years there Armstrong was reclassified to Division I-AA ... reached fourth round (round of 16) at prestigious Southern Intercollegiate during fall season with wins over #1 players from Ole Miss and Duke ... "Paul has a great mixture of attacking and baseline play," says McKee. "He has great court disposition and is an asset to the program. If he continues to do well in fall play and have a good home record this spring, he has an outside chance for the NCAA Tournament" ... is majoring in economics ...

Shannon Krieger
Junior
Slidell, Louisiana



... walked on to squad in the fall of 1985 and made immediate impact on the number four singles position after injuries to two key players ... turned in a 10-15 record ... transferred from Southern Mississippi where he lettered in 1984 with a singles record of 17-13 as a freshman ... he played between the two and four positions ... McKee is working with him at being more patient in his play ... is the hardest hitter on the team ... is majoring in economics at FSU ...

AT SOUTHERN MISSISSIPPI		
1984	17-13	.567
AT FLORIDA STATE		
1985	10-15	.400
Totals	27-28	.491

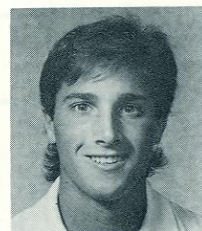
Cary Sochin
Junior
Miami, Florida



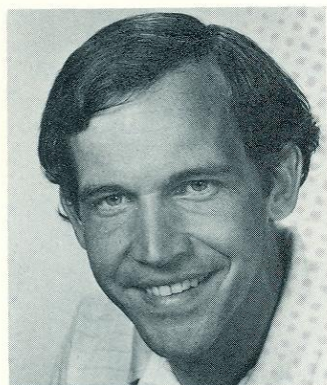
... transferred to FSU from Florida International after playing freshman season at University of Illinois ... played in the number six spot in 1986 as a walk-on and had a 10-11 record ... played and won only one doubles match in 1986, teaming with Shannon Krieger to defeat Baylor opponents in two sets on the way to a 5-4 FSU win ... labeled by McKee as an attacker ... says McKee "Cary is the most improved player from last year. His new attitude and court demeanor has made him a much more competitive individual. If he can maintain this new image, he will definitely be a big plus for us." ... plays a fast-paced, quick tempo game. ... has a double major of psychology and nutrition at FSU ...

AT FLORIDA STATE		
1986	10-11	.476

Jeff Bingo
Junior
Boca Raton, Florida



... was used sparingly in 1986 after his transfer from Alabama where he was a teammate of Henner Lenhardt ... his forte is doubles ... McKee says that Bingo is a "counterpuncher. He stays back and lets his opponent dictate the match, he takes advantage of any mistakes they make". ... a social science major ...



HEAD COACH RICHARD MCKEE

Richard McKee enters his fourth season as Seminole tennis coach, one that he feels will be a testing one.

Having lifted the Florida State program to new heights in his first two campaigns, McKee compiled a 52-12

record and brought FSU into the top 20 rankings and secured several NCAA tournament bids. Last year, Florida State experienced early season injuries and fell to a 10-13 record. In 1987, McKee looks to regain that national prominence he brought to Florida State in the 1984 and 1985 season.

In 1984 McKee guided his team to a 30-8 record, a Metro Conference Championship and a fifth-place finish at the National Invitational Tennis Tournament. His 1985 team topped those achievements with a 22-4 record and FSU's first top 20 ranking—as the Seminoles finished the season ranked 16th. McKee's 62 victories ranks third in career victories at Florida State.

McKee's success at Florida State is hardly a surprise. He has achieved excellence at all levels of collegiate tennis, including during his playing days.

McKee came to Florida State from Presbyterian College in Clinton, S.C. where he coached for six years. While at Presbyterian, McKee coached squads achieved NAIA rankings of seventh (1979), 12th (1981) and 15th (1982), and two of his players were awarded NAIA All-American status.

Prior to his time at Presbyterian, McKee started his collegiate coaching career in 1977 at Winthrop College in Rock Hill, S.C.

Before beginning his coaching career, McKee played on the

Florida Satellite Professional Circuit and in qualifying tournaments for World Championship of Tennis (WCT) events for two years.

McKee graduated from the University of North Carolina-Chapel Hill in 1974 with a bachelor's degree in history. He was also a successful player for the Tar Heel netters as he compiled a singles record of 85-12 at the number three and four positions. During his four-year collegiate career, he won two Atlantic Coast Conference singles titles and was named to the NCAA All-American tennis team three times. McKee's 37 straight singles wins set the mark for the longest winning streak in ACC history until 1980.

McKee also made a large contribution to UNC tennis fortunes in doubles by playing number one doubles for most of his tenure there. As a junior in 1983, McKee and his partner reached the NCAA doubles final before losing to Stanford's top-ranked duo.

In addition to his coaching duties, McKee holds membership on several tennis committees, including the NCAA Region III selection advisory committee and the National Invitational Tennis Tournament selection committee. Each summer he runs the Richard McKee Tennis School which annually attracts some of the top young tennis talents in Florida.

The Seminole mentor is married to the former Mary Kate Jeter of Jacksonville, Florida and has two daughters, Kendall, 6, and Scottie, 4.

McKee's Record at FSU

Year	W-L	Pct.
1984	30-8	.794
1985	22-4	.846
1986	10-13	.435
Totals	62-25	.713



1987 METRO AT A GLANCE



For 12 of the 16 varsity sports at Florida State, the Metro Conference provides top levels of competition at the collegiate level. The seven major universities which comprise the Metro Conference are spread as far north as Cincinnati, south as Tallahassee, west as Hattiesburg, MS and east as Blacksburg, VA.

Since 1976, men's tennis has been included in the conference. Entering its seventh year, the competition is once again exciting. Here is a look at the six other teams which will converge on Hattiesburg, the weekend of March 24-26 for the conference tournament.

Defending champion South Carolina returns with 1986 tournament MVP Jan Sandberg. Sandberg, only a junior, will try to improve on his 22-19 record from last year and will again hold the number one position for the Gamecocks. Third-year coach Kent DeMars has added to an already strong lineup with the addition of junior Ken Diller, a transfer from UCLA where he was a two-time All-American in doubles competition. Diller and Sandberg teamed to win the LSU Fall Classic doubles championship, their first time playing together in competition.

The Virginia Tech Hokies will look to improve on an 11-11 record with the addition of first-year coach Larson Bowker. The Hokies, who were disappointing fifth-place finishers in the conference tournament, will take the court led by sophomore Ed Butterworth. In his freshman season, Butterworth had an impressive 11-2 record while playing in the number five position.

In Hattiesburg, the Southern Miss Golden Eagles will look to replace four positions in the top six. In his 26th season as head coach, Dr. Larry Harrington has faced this kind of problem before. The only top six players returning from the 1986 team which finished 13-10 are sophomore Johan Ericsson, who played in the number five position compiling a 13-10 record

and Clay Wigglesworth, a junior who had a 12-11 campaign at number two.

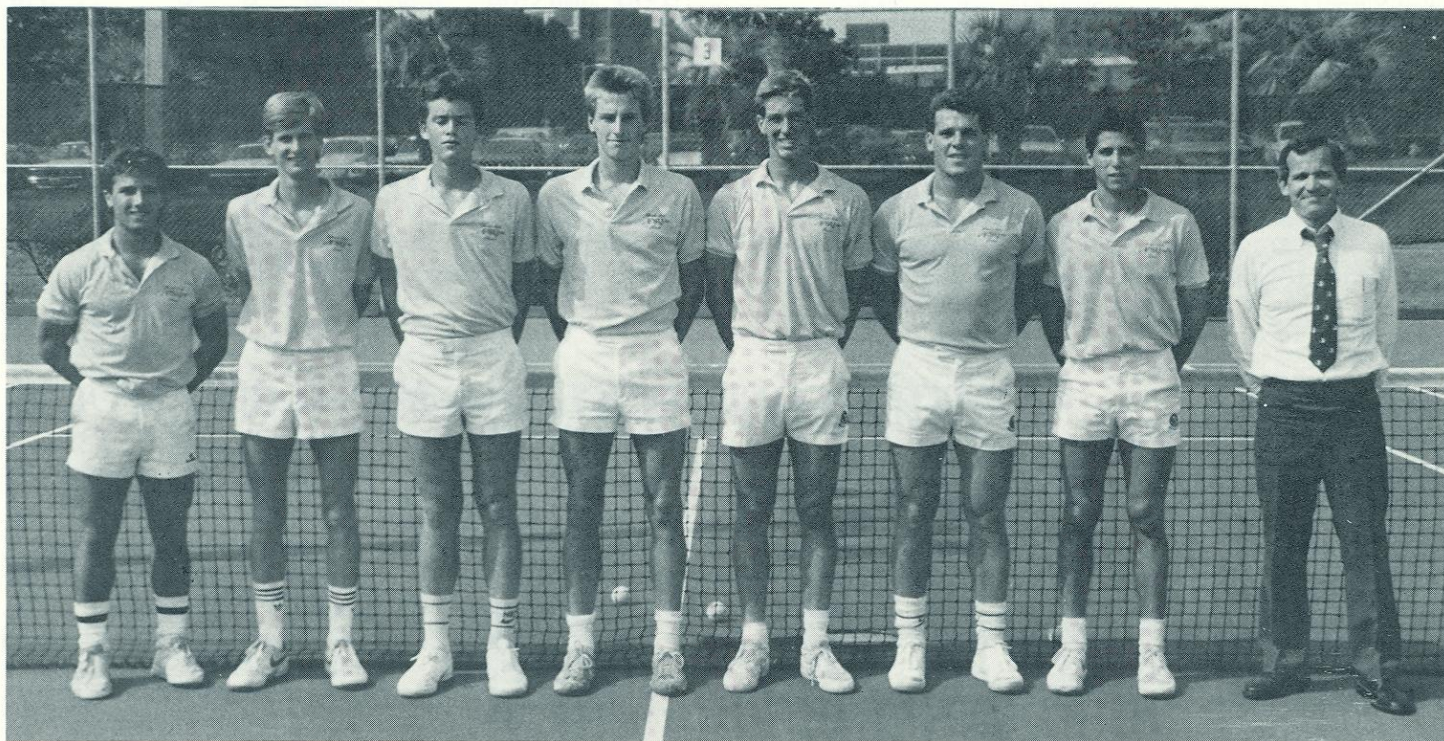
The University of Cincinnati is the only team in the Metro which uses one coach for both the men's and women's programs. Fifth-year coach Marty Wolf, will once again use junior Cliff Riester to lead the squad into the 1987 season. During the Bearcat's 12-8 season, Riester finished with a strong 15-7 record. The Bearcats travel to Tallahassee to face the Seminoles on March 28.

Adding an international flavor to the Metro Conference, Memphis State returns seniors Simon Edmunds, from South Africa, and Peter Lebedevs of Australia. Entering his 20th season, Coach Tommy Buford hopes the two will pace the team and eventually close the 14-point margin, which was the difference in the Tiger's second place finish in last year's conference tournament.

Four-year man Brendan Burke will lead an experienced Louisville Cardinal team into the 1987 season. Suffering only the loss of its number three player, it is practically the same team which Kevin Walsh led to a 21-13 record last season. Burke's 33-10 record was enough to earn him a berth in NCAA post-season competition, a first by a Cardinal tennis player. Burke will once again team with Tim Brueggeman in doubles. The duo completed last season with a 23-8 record and with their experience, they will be a team to watch.

Again in 1987, the Metro Conference will use an individual format with the teams earning two points for each victory in the championship rounds and one point for each victory in the consolation rounds.

According to Metro Conference Director of Communications Craig Thompson, this format is used to recognize an outstanding individual from each team while still gaining points as a team.



1986-87 Men's Seminole Tennis Team (Left to Right) Jeff Bingo, Alex Rucker, Scott Espenship, Paul Haarhuis, Henner Lenhardt, Shannon Krieger, Cary Sochin, Coach Richard McKee. (Not Pictured) Todd Collins.



SEMINOLE STATISTICS



1986 INDIVIDUAL RESULTS

Jeff Horine	(1)	10-15	.400
Alex Rucker	(2)	8-18	.308
Henner Lenhardt	(3)	14-12	.538
Shannon Krieger	(4)	10-15	.400
Robert Cooney	(5)	8-13	.381
Cary Sochin	(6)	10-11	.476
Totals		60-84	.417

Horine-Lenhardt	(1)	12-11	.522
Rucker-Weinman	(2)	11-12	.478
Krieger-Cooney	(3)	13-9	.591
Krieger-Sochin	(4)	1-0	1.000
Totals		37-32	.536

1986 MEN'S RESULTS

Opponent	FSU	OPP	W/L	Record
Tulane (Fall)	6	3	W	1-0
Auburn-Montgomery	4	5	L	1-1
West Florida	9	0	W	2-1
North Florida	7	2	W	3-1
Arizona State	0	9	L	3-2
Florida	2	7	L	3-3
South Florida	3	6	L	3-4
Auburn	3	6	L	3-5
Furman	6	3	W	4-5
Louisiana Tech	3	6	L	4-6
Kentucky	3	6	L	4-7
Baylor	5	4	W	5-7
Arkansas-Little Rock	2	7	L	5-8
Oklahoma State	1	5	L	5-9
West Virginia	5	4	W	6-9
Southern Illinois	7	2	W	7-9
Mississippi State	6	3	W	8-9
Southwest Louisiana	0	9	L	8-10
Tulane	5	1	W	9-10
Alabama	2	7	L	9-11
South Florida	4	5	L	9-12
Florida	1	8	L	9-13
Abraham-Baldwin	8	1	W	10-13

The Metro Conference Tournament did not use a team format of play in 1986, the Seminoles played as individuals and accumulated 27 points to finish fourth.

YEAR-BY-YEAR RECORD

Year	Coach	W	L	T	Pct.
1948	Don Loucks	9	4	0	.692
1949	Don Loucks	11	2	0	.846
1950	Don Loucks	9	7	0	.562
1951	Ralph Matherly	7	8	0	.467
1952	Don Loucks	9	5	0	.643
1953	Don Loucks	15	2	0	.882
1954	Keith Pitchford	13	5	0	.722
1955	Keith Pitchford	10	6	0	.625
1956	Keith Pitchford	8	7	0	.533
1957	Keith Pitchford	5	11	0	.313
1958	Keith Pitchford	9	7	0	.562
1959	John Powless	14	6	0	.700
1960	John Powless	16	5	0	.762
1961	Bubba McGowan	16	5	0	.762
1962	Eddie Cubbon	11	8	0	.579
1963	Eddie Cubbon	18	5	0	.783
1964	Paul Scarpa	12	11	0	.522
1965	Lex Wood	15	9	0	.625
1966	Lex Wood	16	9	0	.640
1967	Lex Wood	16	7	0	.696
1968	Lex Wood	19	3	0	.864
1969	Lex Wood	23	5	1	.793
1970	Pete Barizon	17	7	0	.708
1971	Pete Barizon	18	3	0	.857
1972	Scott Bristol	18	4	0	.818
1973	Randy Jobson	11	4	0	.733
1974	Randy Jobson	13	8	0	.619
1975	Randy Jobson	14	6	0	.700
1976	Ken Vinson	3	16	0	.158
1977	Ken Vinson	7	17	0	.292
1978	Juan Ortiz	20	8	0	.714
1979	Juan Ortiz	16	6	0	.727
1980	Randy Jobson	12	7	0	.632
1981	Randy Jobson	12	14	0	.461
1982	Randy Jobson	23	10	0	.697
1983	Randy Jobson	19	13	0	.593
1984	Richard McKee	30	8	0	.794
1985	Richard McKee	22	4	0	.846
1986	Richard McKee	10	13	0	.435
Totals		546	285	1	.656



Florida State
Southern Miss.
Virginia Tech
South Carolina
Cincinnati
Memphis State
Louisville

METRO CONFERENCE CHAMPIONSHIPS RESULTS 1976-85

Year	Site	Team Champion	Outstanding Individual
1976	Memphis, Tenn.	Memphis State	None
1977	Memphis, Tenn.	Memphis State	Roger Webb, Memphis State
1978	Tallahassee, Fla.	Memphis State	Jim Ladyman, Memphis State
1979	Tallahassee, Fla.	Memphis State	Bob Kronauge, Cincinnati
1980	Tallahassee, Fla.	Memphis State	Jeff Player, Virginia Tech
1981	Tallahassee, Fla.	Florida State	Marco Abilhoa, Florida State
1982	Memphis, Tenn.	Virginia Tech	Marco Abilhoa, Florida State
1983	New Orleans, La.	Florida State	Jon Ramthun, Virginia Tech
1984	New Orleans, La.	Florida State	Marco Abilhoa, Florida State
1985	Memphis, Tenn.	South Carolina	Joey Rive, Florida State
1986	Columbia, S.C.	South Carolina	Jan Sandberg, South Carolina



WOMEN'S SCHEDULE

Date	Opponent	Place	Time
OCTOBER			
3-5	South Carolina Fall Tournament	Columbia, S.C.	DAILY
24	Tulane	Tallahassee, Fla.	2:00 pm
26	South Florida	Tallahassee, Fla.	10:00 am
Oct. 31-Nov. 2	Women's Intercollegiate Championship	St. Augustine, Fla.	DAILY
NOVEMBER			
14-16	Southeastern Region ITCA Tournament	Gainesville, Fla.	
JANUARY			
30	Tennessee	Knoxville, Tenn.	1:00 pm
31	Vanderbilt	Knoxville, Tenn.	10:00 am
FEBRUARY			
1	William & Mary	Knoxville, Tenn.	10:00 am
7	South Carolina	Tallahassee, Fla.	10:00 am
8	Auburn	Tallahassee, Fla.	10:00 am
12	Florida Junior College	Tallahassee, Fla.	2:00 pm
13	University of North Florida	Tallahassee, Fla.	2:00 pm
14	Florida	Tallahassee, Fla.	1:30 pm
22	Stetson	Tallahassee, Fla.	9:00 am
26-28	Lady Seminole Invitational (FSU, South Florida, Rollins, Georgia Miss. St., Furman, South Alabama, Houston)	Tallahassee, Fla.	DAILY
MARCH			
8	Purdue	Tallahassee, Fla.	2:00 pm
15	South Florida	Tallahassee, Fla.	11:00 am
17	Miami of Ohio	Tallahassee, Fla.	11:00 am
19	Duke	Durham, N.C.	2:00 pm
20	North Carolina	Chapel Hill, N.C.	2:00 pm
21	Wake Forest	Winston-Salem, N.C.	10:00 am
23	Virginia Tech	Tallahassee, Fla.	2:00 pm
26	Arkansas-Little Rock	Tallahassee, Fla.	2:00 pm
27	Nebraska	Tallahassee, Fla.	2:00 pm
APRIL			
2-4	Houston Invitational	Houston, Tex.	DAILY
5	Southern Methodist	Dallas, Tex.	
8	Florida	Gainesville, Fla.	1:00 pm
12	Rollins	Winter Park, Fla.	11:00 am
24-26	Metro Conference Tournament	Hattiesburg, Miss.	DAILY
MAY			
14-21	NCAA Tournament	Los Angeles, Calif.	

WOMEN'S ROSTER

Name	Class	Height	Hometown
Beth Corn	Freshman	5'5"	Marietta, Georgia
Sue Hatch	Senior	5'4"	Lambeth, Ontario, Canada
Chris Joyce	Sophomore	5'4"	Pittsburgh, Pennsylvania
Josephine O'Gorman	Freshman	5'½"	Oak Leigh, Victoria, Australia
Keri Preng	Freshman	5'7"	Dallas, Texas
Tracey Smith	Freshman	5'9"	Miami, Florida
Kim Temples	Senior	5'2"	Ponte Vedra Beach, Florida
Kirsten Turk	Sophomore	5'6"	Mt. Lebanon, Pennsylvania
Jill Urban	Sophomore	5'9"	Middletown, Ohio
Mary Wood	Senior	5'8"	Plantation, Florida



WOMEN'S OUTLOOK



Florida State Women's Tennis Coach Anne Rizza hates the word rebuilding. But considering that she lost three seniors as well as 14 match winner Christie Wood from her 1986 squad which finished 17-10 and second in the Metro Conference Tournament, it might be a word to familiarize herself with.

"I'm not saying that we are rebuilding this year," Rizza said. "I feel good about our returnees, and those players make up a good foundation."

With that good foundation of five returning players, Rizza will assemble three new doubles combos and patch up a few holes in the singles positions with the help of five newcomers.

"Our line-up is now wide open," Rizza said. "Anyone could step in and play. Everyone has a chance to play singles and doubles. We have a lot of work to do."

Gone from the top singles position is Patti Henderson, MVP of last year's Metro Conference Tournament. To replace her, Rizza is counting on senior Sue Hatch. In 1986, Hatch posted a 15-14 record and finished 94th in the final top 100 rankings. She made big strides during her junior season and three prior years at FSU should give her the experience for a fine year.

But who will play in the number two spot? That is the biggest question that looms over the program.

The candidates for the position are many in number. They include senior Kim Temples, sophomore returnee Kirsten Turk, as well as sophomore transfer Jill Urban and highly-touted freshman Tracey Smith. One should emerge at the number two spot, while the others will most likely round out positions three through six.

Of the four, Temples has the most experience. Playing in the three and four positions over the last two years, Temples has fallen victim to many tough losses. Her summer circuit experience may give her the lift needed to establish a winning record.

In 1986, Turk turned in an 11-7 record, and Coach Rizza likes the aggressive young player. "She will continue to get better," said Rizza. "Kirsten gets stronger as the match goes on. She keeps coming at you."

Newcomer Urban, a transfer from Louisiana Tech, played in the Techster's number one spot last year and compiled a 7-7 record. "She gained a lot of experience playing at number one last year," said Rizza. "She should be more comfortable playing somewhere other than number one."

Smith, from Miami, brings to FSU some good credentials. She was ranked sixth in singles and fifth in doubles in the Florida 18 and under rankings.

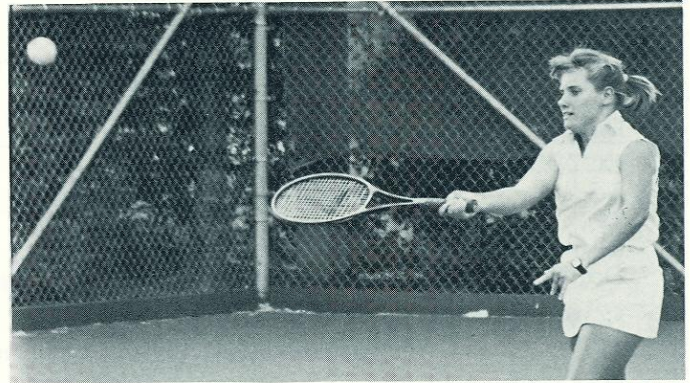
Although she has not yet reached her potential, she figures in the Florida State picture for the coming season.

One who might emerge as a sleeper of the 1987 team is Josephine O'Gorman, a 20-year-old freshman from Victoria, Australia. Although she has traveled overseas to compete, she will see her first competition in the United States at FSU. "I'm hoping she will play somewhere in the two through four positions," said Rizza.

Battling for the five and six spots will be senior Mary Wood, who had some disappointing spring injuries and didn't get on track last year and freshman Keri Preng, a Dallas, Tex. native.

Also adding depth to the team will be walk-ons Chris Joyce, returning for her sophomore season and Beth Corn, a freshman from Marietta, Ga.

Rizza has three players with experience from the 1986 season ready for doubles competition. Sue Hatch, who combined for a 39-13 record over the past two years with Patti Henderson, will anchor one team and Temples and Turk will



Sue Hatch

form another. They have valuable experience in doubles, as both of their 1986 teams recorded 15 victories. "It's kind of scary going into the season with no established doubles teams," said Rizza. "We need our doubles to develop; if they don't, the team will struggle."

To prepare for the upcoming spring season, the Lady Seminoles will compete in three fall tournaments. They will travel to the South Carolina Invitational, the Women's Intercollegiate Championship in St. Augustine and the Southeastern Region ITCA Tournament in Gainesville. Additionally, dual matches against Tulane and South Florida have been scheduled.

"We will start practicing early in the fall to find out what we have," said Rizza. "We need to play as a team this year and learn how to win as a team."

Come spring, the Lady Seminoles will face the true test. The season starts in the colder weather of late January. They will also play more matches away from Tallahassee as well as a handful of matches against top 25 teams.

The 1987 schedule also includes the 24th Annual Lady Seminole Invitational Tournament. Once again the Lady Seminoles will host an 8-team tournament featuring South Florida, Rollins, Georgia, Mississippi State, Furman, South Alabama and Houston.

"Last year we had some big victories and close losses against top-ranked teams," said Rizza. "The people coming back have the knowledge that this could be a good team and challenge for a national spot in the top 25."

The ultimate goal of the 1986-87 team is to reach regional post-season play—a feat that would take some big wins to accomplish since the strong Southeast region takes only three teams for post-season play. "We have the schedule to make it into regional play," said Rizza. "But there are many fine teams in the Southeast. We will have to have an exceptional year."

Rizza also points to the fact that there are many questions surrounding the team. "The biggest question will be the number two position and our doubles. I feel good about the other positions," she said.

Although there are question marks that are looming overhead, Coach Anne Rizza is shaping up another fine Florida State Lady Seminole Tennis Team.

In addition to their on-court performance in 1986, the Lady Seminole tennis team won honors as the varsity sport with the highest FSU GPA for the second straight year with an average of 2.9. In capturing the award, they placed eight players from their roster of 12 on the Metro Conference Commissioner's List. The Seminoles take pride in their in-class achievements and have already set a goal to take the award for the 1986-87 year.



LADY SEMINOLE PROFILES



Sue Hatch
Senior

Lambeth, Ontario, Canada



The only four-year player on the roster . . . has played consistently at number one and two spots in last two years . . . is the top candidate for the number one position again this year . . . finished 1986 season ranked at 98 in top 100 rankings . . . it's the first time an FSU player has been ranked at the end of the year . . . plays excellent doubles . . . she and former partner Patti Henderson compiled a 39-13 doubles record over the last two years . . . the Hatch-Henderson duo qualified for the NCAA tourney in 1985 but were left out of post-season play in 1986 despite winning eight straight matches to close out the season . . . had some big wins over top-ranked singles players in '86, including victories over Tammy Whittington of Florida, Ana Almansa of South Florida and Rene Simpson of TCU . . . her 10-17 fall record in 1985 is misleading since 10 of the losses came in three sets . . . won singles and doubles titles in Metro Tourney in 1984 . . . former Canadian national champion in singles and doubles . . . earned 10 letters in high school, including one in badminton . . . made Metro Conference Commissioner's List in spring 1986 for outstanding academic success . . . a physical education major . . .

Career Record

1984	20-16	.556
1985	13-20	.394
1986	15-14	.517
Totals	48-50	.490

Kim Temples
Senior

Ponte Vedra Beach, Florida



She might be called FSU's hard-luck player . . . unfortunately lost many close matches in both 1985 and 1986 . . . played in the National Amateur Circuit during summers of 1985 and 86 . . . good doubles player who teamed with Christie Wood in 1986 and had 15-10 record . . . going into Metro Tournament, Temples-Wood had won six straight matches, including wins over top-ranked Wisconsin, Georgia and South Florida teams . . . look for her to turn many matches around this year and achieve winning record . . . transferred to FSU in 1984 from Virginia Tech and had to sit out that season . . . has great attitude and is one of the hardest workers on the team . . . was voted Florida Times-Union female Athlete of the Year in 1982 after being named MVP of tennis team at Fletcher High School . . . made Metro Conference Commissioner's List for outstanding academics . . . is majoring in psychology . . .

Career Record

1985	9-21	.300
1986	10-16	.385
Totals	19-57	.339

Chris Joyce
Sophomore

Pittsburgh, Pennsylvania



Returns for her sophomore year again as a walk-on . . . Joyce provides FSU with valuable depth . . . a good team motivator who helps to push others . . . a hard-working player who is willing to put in the time and effort to play in the top six . . . saw no action in 1986 . . . was a four-year letterwinner at Upper St. Clair High School in Pittsburgh . . . a communications major at FSU . . .

Kirsten Turk
Sophomore

Mt. Lebanon, Pennsylvania



Coach Anne Rizza is very excited about this talented sophomore . . . she calls her a fearless player with an aggressive style of play who gets stronger as the match progresses . . . contributed to the team immediately as a freshman and turned in an 11-7 record in singles at the five and six positions . . . Rizza looks for her to fit in the two through four slots in 1987 . . . will continue to get better . . . was ranked in the top 105 junior players in the country in high school, including top 10 in middle states region . . . an honorable mention Prince All-American choice during her senior year of high school . . . majoring in business . . . was lauded for her excellence in the classroom in 1986 by being named to the Metro Conference Commissioner's List . . .

Career Record

1986	11-7	.611
------	------	------

Mary Wood
Senior
Plantation, Florida

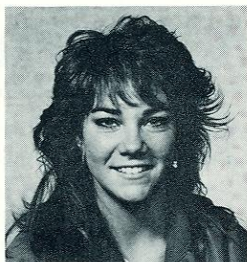


Used sparingly in 1986 after transferring from Kentucky . . . only win of 1986 season came over Purdue in mid-season . . . bothered by injuries in early spring and never got on track but her experience will help the team . . . has played at five and six position during her college career . . . worked very hard over the summer . . . a good doubles player who will be looking to crack FSU's doubles lineup . . . won four high school tennis letters and was named outstanding sophomore . . . is a psychology major . . .

Career Record

1986	1-3	.250
------	-----	------

Beth Corn
Freshman
Marietta, Georgia



Will provide FSU with depth as a walk-on . . . Corn is an added bonus for the team according to head coach Anne Rizza . . . comes to FSU with big expectations . . . was named MVP of Marietta High School tennis team all of her four years there . . . selected as Cobb County's Player of the Year twice . . . also had a national and Georgia ranking . . . she could challenge for number five or six singles slots . . . majoring in physical education . . .

Josephine O'Gorman
Freshman
Oak Leigh, Victoria, Australia



Could emerge as the sleeper of the year . . . wrote to FSU and was accepted and given a scholarship without head coach Anne Rizza seeing her play . . . has a lot of experience as she has played all over Australia . . . was the four singles player in Australian state of Victoria and played on second-ranked doubles team in the state . . . at Florida State she will see her first competition in the United States . . . her development is one of the keys to the 1987 team . . . should land in mid-lineup somewhere . . . a 20-year old freshman . . . has not chosen a major yet . . .

Keri Preng
Freshman
Dallas, Texas



A good high school player who FSU hopes will improve as she spends time in the program . . . the first Texan to play tennis at FSU . . . was ranked 13th in singles and played on second ranked doubles team in her age group in Texas . . . played in her high school's number one position and was selected team MVP three years .

. . . also won her district tournament three years in a row 1983 through 1986 . . . is a fighter on the court and plays an all-court game . . . has all the tools to be a good college tennis player . . . will challenge for number five or six singles positions . . . will major in physical education at FSU . . .

Tracey Smith
Freshman
Miami, Florida



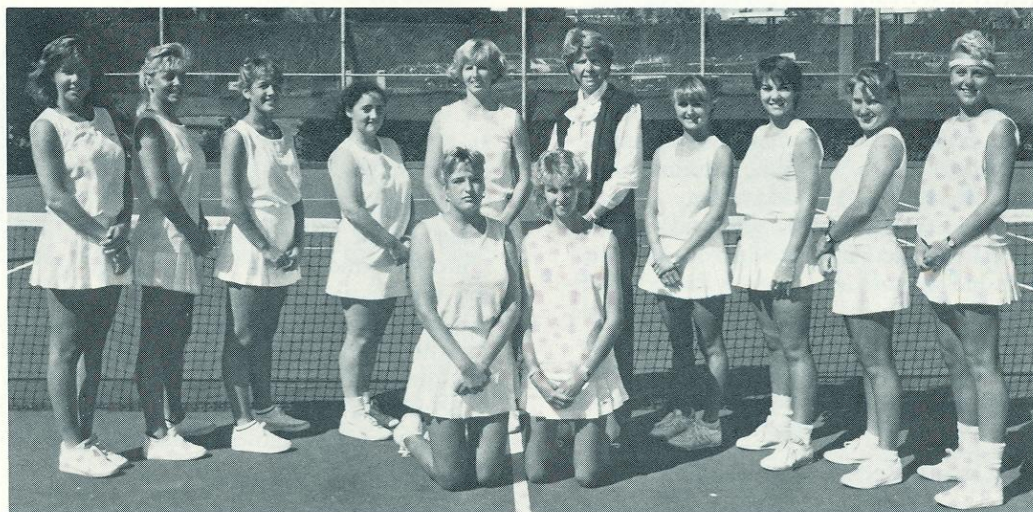
Comes to Florida State after an impressive high school and amateur career . . . was ranked sixth in girl's 18-and-under rankings . . . her doubles team placed fifth . . . was ranked nationally in 1985 girl's 16-and-under rankings . . . was a highly sought after athlete even though she lettered just one year in tennis during high school at South Miami High . . . won a scholarship award for being one of the top amateur players in Florida . . . should be able to step in and contribute immediately, perhaps in the two through four spots . . . has good size and all the tools to be a good one . . . coaches will put her on a weightlifting program to increase strength . . . has plenty of potential . . . plans to major in communications . . .

Jill Urban
Sophomore
Middletown, Ohio

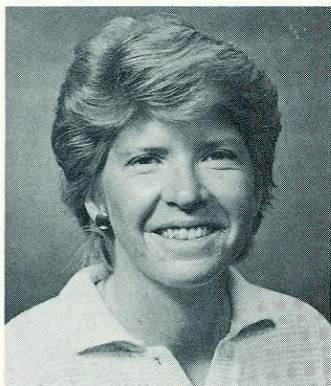


A transfer from Louisiana Tech who brings experience from playing in the number one position there . . . also brings a lot of doubles experience . . . she could fit in perfectly to FSU's unsure doubles picture . . . is hoping to play somewhere between positions two through four . . . is the only lefthander on the team . . . a good student who brings to FSU a GPA over 3.0 . . . was a member of the National Honor Society in high school . . . had a great high school career, going 35-0 at Middletown High School . . . qualified for her state tournament three times while at Middletown . . . majoring in accounting . . .

Record at Louisiana Tech
1986 7-7 .500



1987 Lady Seminole Tennis Team (Left to Right Standing) Mary Wood, Kirsten Turk, Chris Joyce, Josephine O'Gorman, Patti Henderson (Graduate Assistant Coach), Head Coach Anne Rizza, Kim Temples, Beth Corn, Sue Hatch, Keri Preng (Left to Right Kneeling) Jill Urban, Tracey Smith.



HEAD COACH ANNE RIZZA

Anne Rizza enters her eighth season as Florida State's women's tennis coach in 1986, having compiled a 131-89 overall record with the Lady Seminoles. In her seven seasons, Florida State has won three Metro

Rizza is a member of and has held posts in several different coaching associations. In previous summers she has held tennis camps bringing in some of the top women's tennis players and developing them for further competition.

A 1978 graduate of USF in marketing, Rizza went on to complete her master's degree in guidance and coaching at the Tampa school. In addition to coaching at FSU, she is an aide to Assistant Athletic Director Jan Stocker—assisting in several administrative duties.

She is married to Joe Rizza.

Conference crowns, earning Rizza three Metro Coach-of-the-Year awards, achieved its first top 20 rankings in 1983 (18th), and sent five athletes to the NCAA Tennis Championships.

Rizza is only one of a handful of FSU women's tennis coaches to have 100 wins. In the 1985-86 season, Rizza's squad rebounded from the first sub-.500 season she had experienced at FSU to post a 17-10 record. The Lady Seminoles made it to the championship match of the Metro Conference Tournament before losing a tough 5-4 decision to the South Carolina Gamecocks.

Rizza came to Florida State after serving one year as assistant coach at her alma mater, South Florida. In that position she helped guide the Brahms to an 11th place national finish.

From 1975-78, Rizza's contributions to the USF tennis program was on the court where she was a top four singles player each season. In doubles she was one half of South Florida's number one pair.

Rizza's Record at FSU

Year	Record	Pct.
1980	21-11	.656
1981	24-15	.615
1982	23-18	.561
1983	18-8	.692
1984	15-13	.536
1985	13-14	.481
1986	17-10	.630
Totals	131-89	.595



GRADUATE ASSISTANT COACH PATTI HENDERSON

After four years in the Lady Seminole lineup, Patti Henderson joins Anne Rizza on the coaching staff. During her stint as a player, Henderson proved to be one of the most talented individuals ever at FSU.

The Ontario, Canada native came to Florida State in 1983 and promptly began her winning ways. In her freshman season, she won 14 singles matches and captured the number two doubles title in the Metro Conference Tournament. Breaking the sophomore jinx, she followed with 21 singles victories in 1984, moving from the number six to the number three position. Once again at the Metro Conference Tournament she won a doubles tournament and the Lady Seminoles won their second consecutive conference championship.

Henderson's career record as a Lady Seminole is impressive

in both singles and doubles. She compiled a 68-36 singles record for a winning percentage of .654; while accounting for 71 doubles wins in four years. In her last two seasons, she teamed with Sue Hatch for a 39-13 record; they qualified for the NCAA Championships in 1985.

Henderson closed out her career in grand style. Playing both in the number one and two position, she posted 20 singles victories and 19 doubles wins while teaming with Hatch. She and Hatch closed out the season with eight straight victories. In Henderson's last collegiate competition, the 1986 Metro Conference Championship, she was named MVP of the tournament.

Henderson will receive her bachelor's degree in physical education following the fall 1986 semester and will attend graduate school working toward a master's degree in movement science. She will assist Rizza with administrative duties and daily on-court coaching duties.

HISTORY OF THE METRO CONFERENCE TOURNAMENT

Year	Site	Champion	MVP
1981	Tallahassee, Fla.	Florida State	Suzanne Doumar (FSU)
1982	Memphis, Tenn.	Tulane	Andrea Fink (Virginia Tech)
1983	New Orleans, La.	Florida State	Lisa Askanase (Tulane)
1984	New Orleans, La.	Florida State	Johnna Chafin (S. Carolina)
1985	Memphis, Tenn.	South Carolina	Rita Winebarger (S. Carolina)
1986	Columbia, S.C.	South Carolina	Patti Henderson (FSU)



1987 METRO AT A GLANCE



The Metro Conference provides an outstanding outlet for competition in women's athletics. Since 1981 women's tennis has been included in participation in the Metro. The conference strengthens athletes in hopes of further participation at the national level.

The Metro Conference tournament will be held in Hattiesburg, MS the weekend of March 24-26. Here is a brief rundown of the six other schools which will see competition that weekend.

In the 1986 tournament, Coach Arlo Elkins' South Carolina Gamecocks took the women's championship after a 13-13 regular season record. They return in 1987 with junior Rita Winebarger. In her previous two years of competition, she has compiled a 51-18 record and was selected MVP of the conference tournament in 1985 as a freshman. Joining in the ranks for the Gamecocks in 1987 will be junior college transfer Viljana Mirkovic, who was a finalist at the number one position in the junior college championships and highly touted freshman Carolina Culik, a three-time Canadian Junior singles champion.

Virginia Tech will take the court in 1987 under the direction of third year coach Anne Jones. The Hokies, who finished the 1985-86 season with 19-14 record, will be lead by Maria Lochiatto. Playing the number one spot in 1987, she completed last season with a 16-6 record in the number two position.

Southern Mississippi will be led this year by an old friend of the Hattiesburg campus. Laurie White returns to her alma mater to coach the women's tennis program. White was a four year player at USM and a graduate assistant coach for one year. Sophomore Yvonne Wilson will occupy the number one slot this year after an impressive 18-7 mark in the number two

position last year. Wilson will team with another sophomore Laura Alexander again in 1987. As freshmen, the duo had a 16-9 record playing in the number two doubles slot for the Lady Golden Eagles which finished the season 10-13.

Cincinnati hits the courts in 1987 coming off a 20-8 season, its most wins ever. Once again Coach Marty Wolf will rely on senior Chris Halbauer in the number one position. In 1986, Halbauer had a phenomenal 23-3 singles record and a 24-2 record in doubles competition. Also returning is junior Ashley Heiman, who will see action in the number two position. Included in the Cincinnati top six is Diana Stroyls, a Rhodes Scholarship nominee.

In Memphis, 12th year coach Charlotte Peterson will try to bring much needed experience to her young team which finished 9-26 in 1986. Last season for the Tigers, the top three positions were freshmen. With one year under their belts, Stephanie Elek will hold down the number one spot and Kim Faulkner will back her up. A reversal from last year which saw Faulkner with a 14-21 record at number one and Elek with a 12-23 record at number two.

In 1987, the Louisville Lady Cardinals will try to put together a successful fall and spring season. Last year saw them with a 10-3 fall campaign and a 2-9 record in the spring. Fourth year coach Meg Peavy will try and avoid the injuries which plagued the 1986 spring team and led a team which suffered only one loss to the top six to a successful season.

Seniors Brenda Dorrell and Gretchan Moran will once again occupy the top spots in the Louisville lineup. In 1986, Dorrell finished with a 15-14 record and Moran had a 17-10 won-loss mark at number two.



LADY SEMINOLE STATISTICS



INDIVIDUAL RESULTS

Fall and Spring Records Combined

Patti Henderson	20-9	.690	(1/2)
Sue Hatch	15-14	.577	(1/2)
Kim Temples	10-16	.385	(3)
Christie Wood	17-12	.586	(3/4)
Jenny Cerino	15-9	.635	(4)
Claudia Gaughf	12-7	.632	(5)
Kirsten Turk	11-7	.611	(6)
Mary Wood	1-3	.250	(5/6)
Totals	101-77	.567	

Henderson/Hatch	20-8	.714	(1)
Temples/Wood	16-11	.593	(2)
Cerino/Turk	14-11	.560	(3)
Totals	50-30	.625	

1986 WOMEN'S RESULTS

Opponent	Score	W/L	Record
North Florida (H)	6-3	W	1-0
Florida Junior College (H)	9-0	W	2-0
Florida (H)	1-8	L	2-1
Southern Methodist (H)	3-6	L	2-2
Rollins (H)	8-1	W	3-2
Houston (H)	3-6	L	3-3
South Florida (H)	5-4	W	4-3
Alabama (A)	6-3	W	5-3
Auburn (A)	7-2	W	6-3
Florida (A)	1-8	L	6-4
Purdue (H)	6-3	W	7-4
Baylor (H)	9-0	W	8-4
Mississippi (H)	5-4	W	9-4
South Alabama (H)	2-7	L	9-5
Southwest Missouri (H)	8-1	W	10-5
Texas Christian (H)	3-6	L	10-6
Clemson (A)	0-9	L	10-7
South Alabama (A)	3-6	L	10-8
Virginia Tech (H)	9-0	W	11-8
Georgia Tech (H)	7-2	W	12-8
Wisconsin (N)	5-4	W	13-8
Mississippi State (N)	7-2	W	14-8
Stetson (H)	9-0	W	15-8
South Florida (A)	2-7	L	15-9
Rollins (A)	6-0	W	16-9
*Virginia Tech (N)	8-1	W	17-9
*South Carolina (A)	4-5	L	17-10

*Metro Conference Tournament Matches

—This is Florida State University—

Florida State University, a coeducational institution and a senior member of the nine universities in the state system, is in Tallahassee, Florida, the state's capital.

Located just a few blocks from the Capitol, the Florida State campus is considered to be one of the most beautiful in the southeast. The 347-acre campus is covered with hardwoods, pines and palms as well as springtime greenery that combines the blossoms of camellias, azaleas and dogwoods.

The approximately 22,500 students currently enrolled at Florida State learn from a faculty of 1,500, which include four members of the National Academy of Sciences.

Florida State offers students the opportunity to choose from more than 100 career options in arts and sciences, business, communication, criminology, education, engineering, home economics, law, library and information studies, music, nursing, social sciences, social work, theater and visual arts. Honors programs are available for top students.

The University has been recognized by the Board of Regents for its continuing leadership at the graduate levels of education.

Overseas study programs in fields ranging from law to hotel and restaurant administration are offered in Florence, Italy; Oxford and London, England; Switzerland; Yugoslavia, Costa Rica and the Panama Canal Zone.

The University's location in the state capital affords excellent study, research and internship opportunities in the areas of government, social sciences, law and policy sciences.

Florida State is setting the pace as higher education in Florida prepares to enter the 21st century. One of the few institutions of learning in the United States with its own supercomputer, FSU is attracting researchers from around the globe.

In 1982, Florida State received the Panama City campus, originally a part of the University of West Florida, through



administrative transfer from the Board of Regents and the state legislature. Today approximately 85 percent of the courses offered in Panama City are taught by full-time Tallahassee faculty.

The Bay County Commission purchased 21 acres, 16 of which make up Phase I of the new campus. The remaining acreage will be available for expansion into technical degree programs such as engineering and science.

Social life for many students in Tallahassee centers around 24 fraternities and 20 sororities. Wind surfing, swimming and sunning are among the activities to be enjoyed at FSU's lakeside "Reservation" or along the sandy beaches of nearby coasts. In the fall, the campus goes wild for football, supporting the Seminoles both at home and away.

When it comes to intercollegiate athletics, Florida State has established a winning tradition. Both the men's and women's athletic programs are among the nation's best.

A unique extracurricular activity is the Flying High Circus, the nation's only all-collegiate circus. Students from every academic major can become stars on the

flying trapeze or highwire or in clown acts.

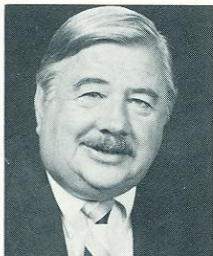
Florida State is growing. Construction has begun on the Florida A&M University/FSU College of Engineering Building, located adjacent to Innovation Park, two miles southwest of the FSU campus. It is expected to be completed by October 1987.

Construction began last fall on the new student union complex and construction is expected to be completed in 1987 on the Science Center Library.

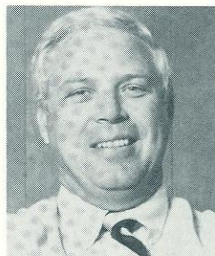
Plans are also underway for a \$12.1 million multipurpose student gym, approved by the 1986 Legislature, as well as improvements to the central utility plant and renovation of the old Music Building (Music School South).

The College of Law's Village Green project has begun. When completed, the \$3.8 million project will feature four restored historic homes to be used as study, meeting and reception areas.

FSU President Bernard P. Sliger takes pride not only in the programs, but also in the people—students, faculty, administrators and staff—who make Florida State a successful monument to learning.



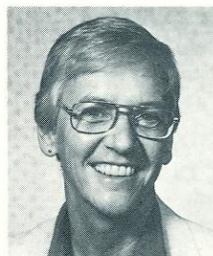
Dr. Bernard F. Sliger
President



C.W. "Hootie" Ingram
Athletic Director



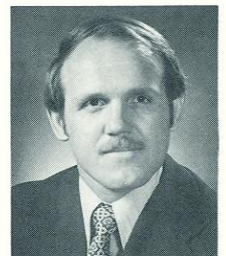
Bob Goin
Associate A.D.



Dr. Janice Stocker
Assistant A.D.



Claude Thigpen
Assistant A.D.



Larry Pendleton
Assistant A.D.