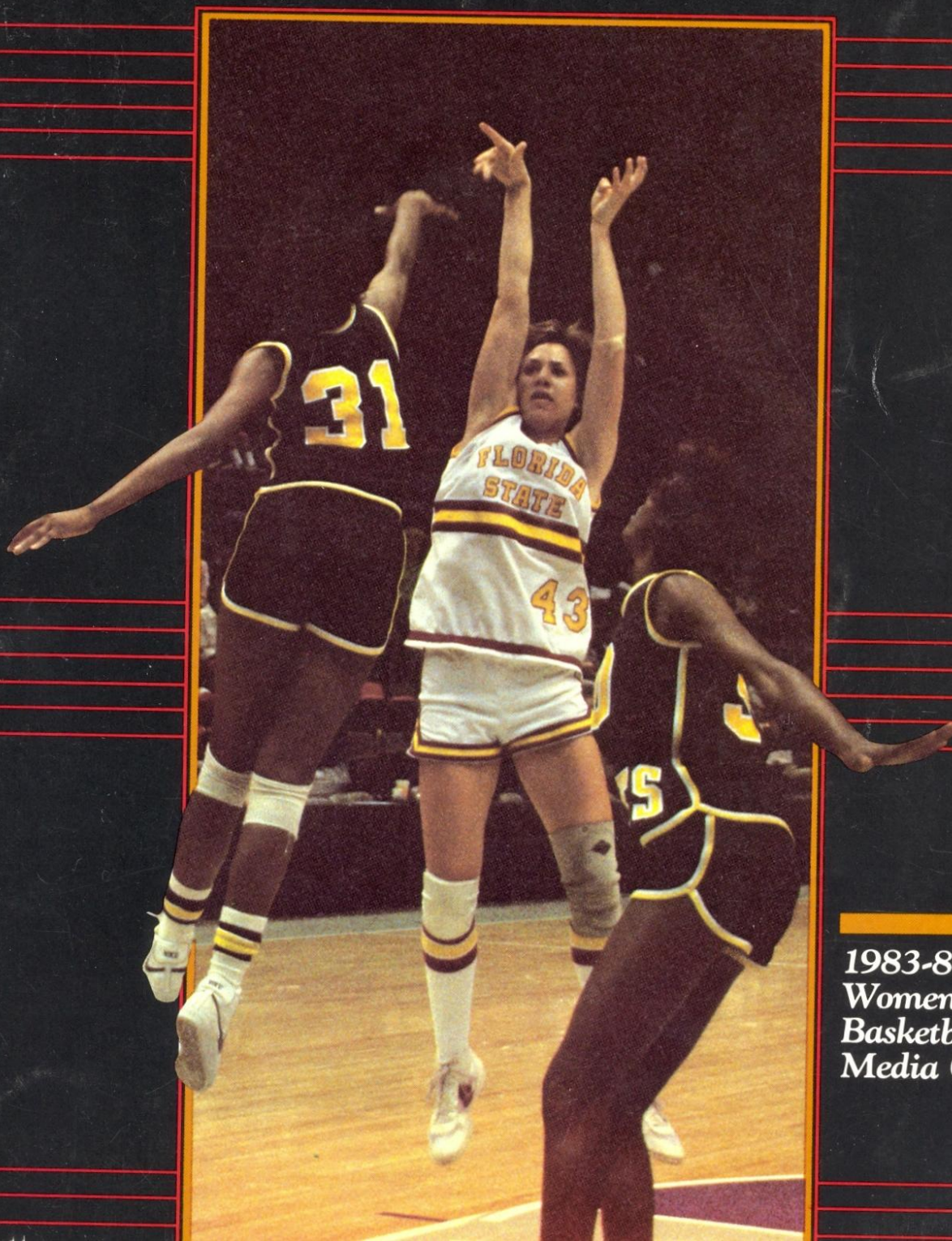


**FLORIDA STATE  
LADY SEMINOLES**



**1983-84  
Women's  
Basketball  
Media Guide**

# 1983-84 SCHEDULE

Date	Opponent	Site	Time
Nov. 18-19	Lady Buff Classic (Arizona State, Brigham Young, Colorado & FSU)	Boulder, Co.	6:30 p.m. & 8:30 p.m.
Nov. 26	Middle Tennessee State	Civic Center	5:30 p.m.
Dec. 2-3	Dial Classic (FSU, Kansas, Louisiana Tech, Western Kentucky)	Rustin, La.	6:30 p.m. & 8:00 p.m.
Dec. 5	Central Florida	Civic Center	5:30 p.m.
Dec. 10	South Florida	Tampa, FL	7:30 p.m.
Dec. 15	Alabama-Birmingham	Tully Gym	7:30 p.m.
Jan. 2-6	Hurricane Christmas Classic	Miami, FL	
Jan. 2	Penn State		5:00 p.m.
Jan. 3	Sanford		2:30 p.m.
Jan. 5	Missouri		5:00 p.m.
Jan. 10	Louisville	Tully Gym	7:30 p.m.
Jan. 13-14	Lady Seminole Invitational (FSU, Mercer, Miami, Temple)	Tully Gym	5:30-7:30 p.m. 3:00-5:00 p.m.
Jan. 20	Florida	Tully Gym	7:30 p.m.
Jan. 23	Memphis State	Tully Gym	7:30 p.m.
Jan. 28	Tulane	New Orleans, La.	7:30 p.m.
Jan. 30	Southern Mississippi	Hattiesburg, Miss.	5:30 p.m.
Feb. 2	Auburn	Tully Gym	7:30 p.m.
Feb. 4	Virginia Tech	Blacksburg, Va.	7:30 p.m.
Feb. 6	South Carolina	Columbia, S.C.	7:30 p.m.
Feb. 11	Southern Mississippi	Tully Gym	5:30 p.m.
Feb. 13	Florida	Gainesville, FL	7:30 p.m.
Feb. 15	Florida A&M	Civic Center	7:30 p.m.
Feb. 18	Memphis State	Memphis, Tenn.	7:30 p.m.
Feb. 20	Tulane	Civic Center	5:15 p.m.
Feb. 23-26	Northern Lights Invitational (Alaska, Cheyney State, FSU Idaho, Miami, Nevada-Las Vegas, Pepperdine & Texas)	Anchorage, Alaska	TBA
Feb. 29	Cincinnati	Tully Gym	7:30 p.m.
Mar. 5-7	Metro Conference Tournament	Cincinnati, Ohio	TBA

## MEDIA INFORMATION

Florida State's 1983-84 basketball guide has been designed for use by the media. Any questions not covered in this brochure concerning FSU Women's Basketball should be directed to the Florida Sports Information Office.

**Working Media**—Requests for working credentials should be made to Dan Pearson, FSU Sports Information Office, at least one week prior to the game in which credentials are being requested for. At the Leon County Civic Center, working media will be seated at the press table on the floor in front of the East stands. For games at Tully Gym, media will be placed along the press table on the floor in front of the West stands.

**Parking**—For games played at the Leon-County Civic Center, a parking pass must be requested along with game credentials. Parking will be at the Civic Center Lot or at the FSU Law Library. For games at Tully Gym, ample parking is readily available and no pass is required.

**Photographers**—Accredited photographers will be admitted to both the Leon County Civic Center and Tully Gym upon presentation of appropriate credentials. Working credentials should be requested at least one week in advance from the FSU Sports Information Office.

**Radio**—Sections for radio broadcast are reserved at both Tully Gym and at the Leon County Civic Center.

**Phones**—Telephone service is available at both Tully and the Leon County Civic Center. In order to obtain an individual line for broadcasting, contact Centel Telephone Company of Tallahassee. Call Centel at 904/222-2236 and have them contact FSU Sports Information Office for placement.

**Services**—Half time and final stats will be made available to the media.

# 1983-84 BASKETBALL MEDIA GUIDE

## Table Of Contents

Schedule .....	Inside Front Cover
Media Information .....	Inside Front Cover
Table of Contents .....	1
<b>1983-84 OUTLOOK</b>	
Scouting the Opponents .....	4
<b>COACHING STAFF</b>	
Coach Dykehouse .....	8
Assistants .....	9
Support Staff .....	10
<b>PLAYERS</b>	
Veterans .....	11
Rookies .....	15
Roster .....	17
Radio Chart .....	18
<b>RECORD SECTION</b>	
1983 Game Results .....	20
Final Statistics .....	20
Scoring/Rebounding By Game .....	21
Highs and Lows .....	21
Single Season Records .....	22
Career Records .....	23
Top Scoring/Rebounding Performances .....	23
Series Records vs. All Opponents .....	24
Top Team Performances .....	25
All-Time Letterwinners .....	25
Year By Year Results .....	26
Coaching Records .....	26
<b>THE UNIVERSITY</b>	
This is Florida State .....	28

## CREDITS

The 1984 Florida State Media Guide is published by the Department of Intercollegiate Athletics, C.W. 'Hootie' Ingram, Director. Graphic Design was performed by Perez Lynch & Rice Advertising, and Boyd Brothers served as printers.

Editor ..... Dan Pearson  
 Photography ..... FSU Photo Lab,  
 Terry Hume, Bucky Parrish

## ON THE COVER

FSU's all-time leading scorer Sue Galkantas returns for her senior year to lead the Lady Seminoles into the 1983-84 season.

## General Information

### BASKETBALL STAFF

Head Coach ..... Janice Dykehouse  
 Assistant Coach ..... Buz Narbut  
 Assistant Coach ..... Cherry Rivers  
 Graduate Assistant Coach ..... Michele Lent  
 Secretary ..... Tammy Eason  
 Basketball Phone ..... (904) 644-1007

### ATHLETIC STAFF

Director ..... C.W. 'Hootie' Ingram  
 Associate AD/Women's AD ... Barbara Palmer  
 Associate Athletic Director ..... Bob Goin  
 Assistant Athletic Director ..... Jo Heath  
 Promotions Coordinator ..... Terry Hume  
 Academic Advisor ..... Trudy Raybun  
 Travel Coordinator ..... Judy Spainhour  
 Strength Coach ..... Donna Murdock  
 Secretary ..... Charlotte Glover  
 Athletic Phone ..... (904) 644-2086

### SPORTS INFORMATION

Director ..... Wayne Hogan  
 Associate ..... Lisa Morton  
 Assistant ..... Dan Pearson  
 Graduate Assistant ..... Scott Atwell  
 Secretary ..... Judy Greve  
 Phone ..... (904) 644-1060

### FSU QUICK FACTS

Location ..... Tallahassee, FL  
 Enrollment ..... 22,500  
 Founded ..... 1857  
 Nickname ..... Lady Seminoles  
 Colors ..... Garnet and Gold  
 President ..... Dr. Bernard F. Slinger  
 Conference ..... Metro  
 Home Court ..... Tully Gym (3500)  
 Leon County Civic Center (12,500)  
 Affiliation ..... NCAA Division I

**Interview Policy:** All player interviews should be arranged through the Florida State Sports Information Office, (904) 644-1060. The best time to contact Coach Dykehouse is Monday-Friday during the morning hours.



# FLORIDA STATE LADY SEMINOLES



## OUTLOOK '84

---

From all indications, 1984 appears to be a rebuilding year for Jan Dykehouse and the Lady Seminole basketball team. After back-to-back 20 win seasons, FSU finds itself with a roster that consists of three seniors, two juniors, one sophomore and six freshmen. Added to the relatively young team, is the fact that the Seminoles lost four players that could be considered starters or part-time starters.

---

Jan Dykehouse finds herself in the position of having to replace three starters and the sixth player off of last season's 24-6 NCAA tournament team. The task will not be an easy one.

Gone is sharp shooting guard Lisa Foglio, FSU's record holder in field goal and foul shooting percentage. A 1000-point career scorer, Foglio averaged over 15 points a game as the starter at wing. Florida State lost considerable strength underneath with the graduation of Glenda Stokes and a year long hiatus by Brenda Cliette. A mainstay in the FSU lineup for three years, Stokes concluded her career by averaging close to 10 points a game and over six rebounds per contest.

Cliette's absence this season will hurt, but was not totally unexpected. A world class sprinter, Cliette will redshirt this season as she trains for an anticipated shot at the United States Olympic team.

FSU's other key loss was starting point guard Lynn Marnie, who finished her career second on the all-time assist list.

Although losing four key players, Dykehouse has remained optimistic throughout the pre-season. "I never really cared too much for the term rebuilding year," Dykehouse says. "It's almost like you're making excuses before you play. There is no question we lost some key personnel, but all good teams graduate key personnel eventually. We've recruited well and are going into this season with the idea that we have a solid team and we're going to be in every game we play."

Dykehouse's optimism is based on the fact that FSU will have two starters back to form the nucleus of a talented team.

Leading the returning starters will be senior forward Sue Galkantas. Florida State's most prolific player of all-time, Galkantas carries a 20-point career scoring average into her final season.

Front court help for Galkantas will come from senior forward LeeVayn Oliver. A two-year starter, Oliver has quietly moved into the top five in most of Florida State's career records for scoring and rebounding. The 5-10 position player averaged 11.7 points and 8.3 rebounds per game.

The combination of Galkantas and Oliver give the Lady Seminoles solid senior leadership. "Sue and LeeVayn have both lettered three times and have been solid players for us," Dykehouse notes. "In order for us to be successful, I believe we are going to have to have good years from both players."

FSU will also be counting heavily on point guard Lahna Wood. A sophomore who averaged nearly 18 minutes of playing time a game last year, Wood may be ready to assert herself as the team's quarterback.

Jill Baker rounds out the list of returning letterwinners. Baker, another three-year veteran, will provide quality depth at both guard and small forward.

If Florida State is to rise to the heights of last season, it must get productive years from at least some of the newcomers. Lorraine Rimson was the first FSU recruit to have been picked to the Parade All-American team. After averaging 18 points a game for W.T. Woodson, Rimson was listed by B.C. Scouting Services as the 11th best forward prospect in the country. She is FSU's most highly recruited basketball signee ever.

---

---

*This is without question the best schedule we've ever played. There are hardly any games where FSU would be listed as the clear favorite.*

*Jan Dykehouse*

---

---

Linda Ann McGowan and Stacy Moneymaker are two freshmen that could challenge for the starting job at center. McGowan averaged 14.6 points per game in leading Satellite High School to the state 4A championship; while the 6-3 Moneymaker is described by Dykehouse as a fine player "that hasn't come close to reaching her potential."

Although a newcomer, Celia Slater will provide FSU with some veteran leadership at the shooting guard position. A junior who transferred from Clemson prior to the start of the 1982-83 season, Slater practiced all last year with the FSU team and has probably nailed down a starting position. Freshman Lori Smith will provide quality depth at this position. Smith averaged 21 points a game last year and led Southeast High School to a four year mark of 101-8

Sheri Kaminski should also see plenty of playing time at point guard with Wood. A teammate of McGowan at Satellite, Kaminski scored over 1500 career points while averaging five steals and four assists per game. She was twice selected "Space Coast Player of the Year" by the Cocoa Today newspaper.

Although returning two starters and boasting its strongest recruiting class ever, the Seminoles may run into several road blocks that may prevent another 20 win season.

In addition to the experience factor, the Florida State team will find the 1983-84 schedule among the nation's most competitive. Four difficult invitationals await FSU during the course of the season including possible matchups with top 20 teams Arizona State, Louisiana Tech and Texas. Regular season games against South Carolina, Penn State, Missouri, Memphis State, Louisville and Auburn also await FSU. "This is without question the best schedule we've ever played," Dykehouse says. "There are hardly any games on the slate where Florida State would be listed as the clear favorite. But at the same time I hope our team is excited about the schedule and I hope they see it as a challenge. I look forward to the opportunity to mold a young team against such high quality opponents it will be a great test."

# 1983-84 OPPONENT INFORMATION

---

## ARIZONA STATE

Nov. 18-19  
Lady Buff  
Classic



Nickname: Sun Devils  
Head Coach: Julene Simpson  
Record at School: 81-38 (5th year)  
Overall Record: 93-56 (6th year)  
Assistant(s):  
Ethel Gregory, Lisa Williams  
1983 Record: 23-7

**Top Returning Scorer:**  
Kim Hampton (C, 6-2, Sr., 18.9 ppg)  
**Top Returning Rebounder:**  
Kim Hampton (11.3 rpg)  
**Media Contact:**  
Julie Johnson (602) 965-6592  
**First Meeting Between Schools**

## BRIGHAM YOUNG

Nov. 18-19  
Lady Buff  
Classic



Nickname: Cougars  
Head Coach: Dr. Courtney Leishman  
Record at School: 126-52 (7th year)  
Overall Record: 126-52 (7th year)  
Assistant(s): Jackie McBride  
1983 Record: 17-8

**Top Returning Scorer:**  
Lori Vreeken (C, 6-2, Sr., 18.2 ppg.)  
**Top Returning Rebounder:**  
Cindy Battistone (F, 5-10, Jr., 5.8 rpg)  
**Media Contact:**  
Ellen Larsen (801) 374-5845  
**Florida State Leads Series 1-0**

## COLORADO

Nov. 18-19  
Lady Buff  
Classic



Nickname: Lady Buffs  
Head Coach: Ceal Barry  
Record at School: 0-0 (1st year)  
Overall Record: 83-42 (5th year)  
Assistant(s):  
Beth Burns, Diane Redmond  
1983 Record: 19-11

**Top Returning Scorer:**  
Lisa VanGoor (C, 6-3, Sr., 17.0 ppg)  
**Top Returning Rebounder:**  
Lisa VanGoor (10.3 rpg)  
**Media Contact:**  
Chris Yuhl (303) 492-5626  
**First Meeting Between Schools**

## MIDDLE TENNESSEE STATE

Nov. 26  
Home



Nickname: Lady Raiders  
Head Coach: Larry Inman  
Record at School: 99-46 (6th year)  
Overall Record: 99-46 (6th year)  
Assistant(s): Diane Cummings  
1983 Record: 26-5

**Top Returning Scorer:**  
Holly Hoover (C, 6-4, Sr., 17.6 ppg)  
**Top Returning Rebounder:**  
Holly Hoover (10.2 rpg)  
**Media Contact:**  
Ed Given (615) 898-2450  
**First Meeting Between Schools**

## KANSAS

Dec. 2-3  
Dial Classic



Nickname: Lady Jayhawks  
Head Coach: Marian Washington  
Record at School: 180-114 (11th year)  
Overall Record: 180-114 (11th year)  
Assistant(s):  
Murray Knox, Lynette Woodward  
1983 Record: 13-15

**Top Returning Scorer:**  
Angie Snider (F, 5-10, Sr., 19.5 ppg)  
**Top Returning Rebounder:**  
Phylicia Allen (C, 6-6, Sr., 9.6 rpg)  
**Media Contact:**  
Barbara Zeff (913) 864-3417  
**First Meeting Between Schools**

## LOUISIANA TECH

Dec. 2-3  
Dial Classic



Nickname: Lady Techsters  
Head Coach: Sonja Hogg & Leon Barmore  
Record at School: (H)248-48 (10th year)  
(B)31-2 (2nd year)  
Overall Record: (H)248-48 (10th year)  
(B)31-2 (2nd year)  
Assistant(s): Gary Blair, Jennifer White  
1983 Record: 31-2

**Top Returning Scorer:**  
Janice Lawrence (C, 6.3, Sr., 20.7 ppg)  
**Top Returning Rebounder:**  
Debra Rodman (C, 6-3, Sr., 10.7 rpg)  
**Media Contact:**  
Keith Prince (318) 257-4111  
**First Meeting Between Schools**

## WESTERN KENTUCKY

Dec. 2-3  
Dial Classic



Nickname: Lady Toppers  
Head Coach: Paul Sanderford  
Record at School: 22-7 (2nd year)  
Overall Record: 185-26  
Assistant(s):  
Cristy Earnhardt, Susan Porter  
1983 Record: 22-7

**Top Returning Scorer:**  
Lillie Mason (F, 6-2, Jr., 18.0 ppg)  
**Top Returning Rebounder:**  
Lillie Mason (8.1 rpg)  
**Media Contact:**  
Sally Raque (502) 745-4295  
**First Meeting Between Schools**

## CENTRAL FLORIDA

Dec. 5  
Home



Nickname: Lady Knights  
Head Coach: Joe Sanchez  
Record at School: 49-20 (3rd year)  
Overall Record: 136-54 (7th year)  
Assistant(s): Ron Smith  
1983 Record: 25-5

**Top Returning Scorer:**  
Dorine Van Tongeren (F, 6-0, Sr., 16.5 ppg)  
**Top Returning Rebounder:**  
Dorine Van Tongeren (7.8 rpg)  
**Media Contact:**  
Dave Miller (305) 275-2464  
Florida State Leads Series 3-0

## SOUTH FLORIDA

Dec. 10  
Away



Nickname: Lady Brahams  
Head Coach: Anne Strusz  
Record at School: 0-0 (1st year)  
Overall Record: 48-57 (5th year)  
Assistant(s): Genia Beasley  
1983 Record: 9-16

**Top Returning Scorer:**  
Kristy Burns (F, 5-10, Jr., 16.1 ppg)  
**Top Returning Rebounder:**  
Mary Klinewski (F, 5-11, Sr., 8.8 rpg)  
**Media Contact:** TBA (813) 949-2660  
Florida State Leads Series 19-2

## ALABAMA BIRMINGHAM

Dec. 15  
Home



Nickname: Lady Blazers  
Head Coach: Avie Bridges  
Record at School: 33-20 (3rd year)  
Overall Record: 74-64 (6th year)  
Assistant(s): Hilary Allen, Sharon Towry  
1983 Record: 14-14

**Top Returning Scorer:**  
Sonya Meadows (G, 5-7, Sr., 19.7 ppg)  
**Top Returning Rebounder:**  
Kathy Betz (C, 6-0, So., 7.2 rpg)  
**Media Contact:**  
Barbara Walker (205) 934-7252  
Florida State Trails Series 0-5

## PENN STATE

Jan. 2  
Hurricane  
Classic



Nickname: Lady Lions  
Head Coach: Rene Portland  
Record at School: 69-22 (4th year)  
Overall Record: 156-51 (8th year)  
Assistant(s): Bob Foley, Eileen Kleinfelter  
1983 Record: 26-7

**Top Returning Scorer:**  
Kahadeejah Herbert (C, 6-3, Jr., 16.6 ppg)  
**Top Returning Rebounder:**  
Kahadeejah Herbert (8.2 rpg)  
**Media Contact:**  
Mary Jo Haverbeck (814) 865-1757  
Florida State Trails Series 0-1

## STANFORD

Jan. 3  
Hurricane  
Classic



Nickname: Lady Cardinals  
Head Coach: Dotty McCrea  
Record at School: 114-84 (8th year)  
Overall Record: 120-90 (9th year)  
Assistant(s): Mike Kehoe, Eileen Roche  
1983 Record: 19-16

**Top Returning Scorer:**  
Virginia Sourliss (G, 5-2, So., 11.0 ppg)  
**Top Returning Rebounder:**  
Virginia Sourliss (3.2 rpg)  
**Media Contact:**  
Meg Donovan (415) 497-4418  
First Meeting Between Schools

## MISSOURI

Jan. 5  
Hurricane  
Classic



Nickname: Tigers  
Head Coach: Dr. Joann Rutherford  
Record at School: 173-78 (9th year)  
Overall Record: 173-78 (9th year)  
Assistant(s): Donita Davenport, Daina Supstiks  
1983 Record: 25-6

**Top Returning Scorer:**  
Joni Davis (F, 6-0, Jr., 13.9 ppg)  
**Top Returning Rebounder:**  
Annette Schwander (F, 6-1, Sr., 6.9 rpg)  
**Media Contact:**  
Dru Ann Hancock (314) 882-6501 ext. 210  
First Meeting Between Schools

## LOUISVILLE

Jan. 10  
Home



Nickname: Lady Cards  
Head Coach: Peggy Fiehrer  
Record at School: 53-32 (4th year)  
Overall Record: 53-32 (4th year)  
Assistant(s): Reene Wilkins-Maloy, Loretta Hummeldorf  
1983 Record: 20-10

**Top Returning Scorer:**  
Jackie Spencer (G, 5-6, Jr., 10.8 ppg)  
**Top Returning Rebounder:**  
Devita Ceaser, (F, 5-11, Jr., 6.4 rpg)  
**Media Contact:**  
Ed Atlas (502) 588-6581  
Florida State Trails Series 0-6

## MERCER

Jan. 13-14  
Lady Seminole  
Classic



Nickname: Teddy Bears  
Head Coach: Ed Nixon  
Record at School: 46-36 (4th year)  
Overall Record: 232-138 (14th year)  
Assistant(s): Regina Osborne  
1983 Record: 15-12

**Top Returning Scorer:**  
Anita Meadows (G, 5-9, So., 8.9 ppg)  
**Top Returning Rebounder:**  
Vickie Cox (F, 5-9, Jr., 4.6 rpg)  
**Media Contact:**  
Danny Smith (912) 744-2994  
Florida State Trails Series 0-6

---

---

## MIAMI

Jan. 13-14  
Lady Seminole Classic  
Feb. 23-24  
Northern Lights  
Tournament



Nickname: Hurricanes  
Head Coach: Lin Dunn  
Record at School: 85-67 (6th year)  
Overall Record: 128-91 (12th year)  
Assistant(s): TBA  
1983 Record: 14-13

**Top Returning Scorer:**  
Gwen Harris (G, 5-5, Sr., 12.2 ppg)  
**Top Returning Rebounder:**  
Robin Harmony (F, 5-9, Sr., 8.1 rpg)  
**Media Contact:**  
George Pearson (305) 284-3244  
Florida State Leads Series 12-1

---

## TEMPLE

Jan. 13-14  
Lady Seminole  
Classic



Nickname: Lady Owls  
Head Coach: Linda MacDonald  
Record at School: 51-40 (4th year)  
Overall Record: 51-40 (4th year)  
Assistant(s): Jerry McLaughlin  
1983 Record: 19-12

**Top Returning Scorer:**  
Marilyn Stephens (C, 6-2, Sr., 19.6 ppg)  
**Top Returning Rebounder:**  
Marilyn Stephens (13.0 rpg)  
**Media Contact:**  
Mary Dillon (215) 787-1608  
Florida State Leads Series 1-0

---

## FLORIDA

Jan. 20 (Home)  
Feb. 13 (Away)



Nickname: Lady Gators  
Head Coach: Debbie Yow  
Record at School: 0-0 (1st year)  
Overall Record: 119-51 (7th year)  
Assistant(s): Ed Stepp, Debbie Pennick  
1983 Record: 11-16

**Top Returning Scorer:**  
Tammy Jackson (C, 6-3, Jr., 20.7 ppg)  
**Top Returning Rebounder:**  
Tammy Jackson (12.7 rpg)  
**Media Contact:**  
Gayle Bodin (904) 392-0664 ext. 223  
Florida State Leads Series 19-15

---

## MEMPHIS STATE

Jan. 18 (Home)  
Feb. 18 (Away)



Nickname: Lady Tigers  
Head Coach: Mary Lou Johns  
Record at School: 264-113 (13th year)  
Overall Record: 264-113 (13th year)  
Assistant(s): Donna Murphy  
1983 Record: 20-12

**Top Returning Scorer:**  
Regina Street (C, 6-4, Jr., 16.3 ppg)  
**Top Returning Rebounder:**  
Regina Street (10.2 rpg)  
**Media Contact:**  
Mike Finn (901) 454-2337  
Florida State Trails Series 2-3

---

## TULANE

Jan. 28 (Home)  
Feb. 20 (Away)



Nickname: Green Wave  
Head Coach: Julia Yeater  
Record at School: 20-35 (3rd year)  
Overall Record: 65-52 (5th year)  
Assistant(s): Mike Fisher  
1983 Record: 8-20

**Top Returning Scorer:**  
Daryl Kimche (G, 5-8, Sr., 16.4 ppg)  
**Top Returning Rebounder:**  
Beth Lebsack (C, 6-2, Sr., 6.4 rpg)  
**Media Contact:**  
Arthur Triche (504) 865-5503  
Florida State Trails Series 3-4

---

## SOUTHERN MISSISSIPPI

Jan. 30 (Away)  
Feb. 11 (Home)



Nickname: Golden Eagles  
Head Coach: Kay James  
Record at School: 101-59 (7th year)  
Overall Record: 186-79 (12th year)  
Assistant(s):  
Laura Porciello, Shirley Jones  
1983 Record: 17-10

**Top Returning Scorer:**  
Portland McCaskill (F, 5-11, Jr., 19.8 ppg)  
**Top Returning Rebounder:**  
Portland McCaskill (10.2 rpg)  
**Media Contact:**  
Shirley Jones (601) 268-2841  
Florida State Trails Series 0-3

---

## AUBURN

Feb. 2 (Home)



Nickname: Lady Tigers  
Head Coach: Joe Ciampi  
Record at School: 91-33 (5th year)  
Overall Record: 130-43 (7th year)  
Assistant(s): TBA  
1983 Record: 24-8

**Top Returning Scorer:**  
Becky Jackson (C, 6-2, Sr., 16.9 ppg)  
**Top Returning Rebounder:**  
Becky Jackson (9.4 rpg)  
**Media Contact:**  
Mark McClellan (205) 826-4750  
Florida State Trails Series 0-2

---

## VIRGINIA TECH

Feb. 4 (Away)



Nickname: Lady Hokies  
Head Coach: Carol Alfano  
Record at School: 67-67 (6th year)  
Overall Record: 67-67 (6th year)  
Assistant(s): TBA  
1983 Record: 13-12

**Top Returning Scorer:**  
Robin Lee (F, 5-10, Jr., 9.4 ppg)  
**Top Returning Rebounder:**  
Robin Lee (4.0 rpg)  
**Media Contact:**  
Doug Herakovich (703) 961-6726  
Florida State Leads Series 2-1

---

## SOUTH CAROLINA

Feb. 6 (Away)



Nickname: Lady Gamecocks  
Head Coach: Terry Kelly  
Record at School: 32-20 (3rd year)  
Overall Record: 32-20 (3rd year)  
Assistant(s):  
Suzanne Barbre, Jerilyn Harper  
1983 Record: 16-12

**Top Returning Scorer:**  
Sharon Gilmore (C, 6-3, So., 15.2 ppg)  
**Top Returning Rebounder:**  
Sharon Gilmore (8.3 rpg)  
**Media Contact:**  
Scott Jared (803) 777-5204  
Florida State Trails Series 0-4

---



## FLORIDA A&M

Feb. 15 (Away)



Nickname: Rattlerettes  
 Head Coach: Mickey Clayton  
 Record at School: 87-70 (7th year)  
 Overall Record: 87-70 (7th year)  
 Assistant(s):  
 Ralph Coleman, Vera Crawford  
 1983 Record: 15-11

**Top Returning Scorer:**  
 Cynthia Lee (G, 5-10, Jr., 13.3 ppg)  
**Top Returning Rebounder:**  
 Laura Johnson (C, 6-0, Sr., 7.5 rpg)  
**Media Contact:**  
 Herb Reinhard (904) 599-3206  
 Florida State Leads Series 10-4

## ALASKA

Feb. 23-26

Northern Lights  
 Invitational



Nickname: Seawolves  
 Head Coach: Linda Burns  
 Record at School: 39-80 (5th year)  
 Overall Record: 39-80 (5th year)  
 Assistant(s): Milt Raugust  
 1983 Record: 12-11

**Top Returning Scorer:**  
 Cheryl Bishop (F, 5-10, So., 14.8 ppg)  
**Top Returning Rebounder:**  
 Cheryl Bishop (5.7 rpg)  
**Media Contact:**  
 Tim McDiffet (907) 786-1295  
 First Meeting Between Schools

## CHEYNEY STATE

Feb. 23-26  
 Northern Lights  
 Invitational



Nickname: Lady Wolves  
 Head Coach: Winthrop McGriff  
 Record at School: 0-0 (1st year)  
 Overall Record: 14-11 (2nd year)  
 Assistant(s): Patricia Walker  
 1983 Record: 29-3

**Top Returning Scorer:**  
 Yolanda Laney (G, 5-11, Sr., 12.9 ppg)  
**Top Returning Rebounder:**  
 Yolanda Laney (6.0 rpg)  
**Media Contact:**  
 Al Willis (215) 399-2287  
 First Meeting Between Schools

## IDAHO

Feb. 23-26  
 Northern Lights  
 Invitational



Nickname: Vandals  
 Head Coach: Pat Dobratz  
 Record at School: 65-23 (4th year)  
 Overall Record: 79-37 (5th year)  
 Assistant(s): Giner Reid  
 1983 Record: 16-10

**Top Returning Scorer:**  
 Dana Fish (F, 6-0, Sr., 11.1 ppg)  
**Top Returning Rebounder:**  
 Leslie McIntosh (F, 6-0, Jr., 8.0 rpg)  
**Media Contact:**  
 Ann Rice (208) 885-0200  
 First Meeting Between Schools

## NEVADA LAS VEGAS

Feb. 23-26  
 Northern Lights  
 Invitational



Nickname: Lady Rebels  
 Head Coach: Sheila Strike, Jim Bolla  
 Record at School: (S) 49-32 (3rd year),  
 (B) 0-0 (1st year)  
 Overall Record: (S) 49-32 (3rd year),  
 (B) 0-0 (1st year)  
 Assistant(s): Dan Pence, Penny Welsh  
 1983 Record: 24-4

**Top Returning Scorer:**  
 Rochelle Oliver (G, 5-7, Sr., 17.2 ppg)  
**Top Returning Rebounder:**  
 Donya Monroe (F, 6-2, So., 8.0 rpg)  
**Media Contact:**  
 Joyce Aschnebrenner (702) 739-3207  
 First Meeting Between Schools

## PEPPERDINE

Feb. 23-26  
 Northern Lights  
 Invitational



Nickname: Waves  
 Head Coach: Ron Fortner  
 Record at School: 0-0 (1st year)  
 Overall Record: 0-0 (1st year)  
 Assistant(s): TBA  
 1983 Record: 15-11

**Top Returning Scorer:**  
 Stephanie Turman (G, 5-7, Sr., 11.3 ppg)  
**Top Returning Rebounder:**  
 Maureen Formico (F, 6-0, So., 6.3 rpg)  
**Media Contact:**  
 Greg Fritz (213) 704-8609  
 Florida State Leads Series 1-0

## TEXAS

Feb. 23-26  
 Northern Lights  
 Invitational



Nickname: Longhorns  
 Head Coach: Jody Conradt  
 Record at School: 228-43 (8th year)  
 Overall Record: 345-106 (15th year)  
 Assistant(s):  
 Lynn Davis Pool, Jill Rankin  
 1983 Record: 30-3

**Top Returning Scorer:**  
 Annette Smith (C, 5-11, Jr., 22.3 ppg)  
**Top Returning Rebounder:**  
 Annette Smith (7.7 rpg)  
**Media Contact:**  
 Chris Plonsky (512) 471-7693  
 First Meeting Between Schools

## CINCINNATI

Feb. 29 (Home)



Nickname: Lady Bearcats  
 Head Coach: Sandy Smith  
 Record at School: 0-0 (1st year)  
 Overall Record: 0-0 (1st year)  
 Assistant(s): Jane Albright  
 1983 Record: 19-11

**Top Returning Scorer:**  
 Cheryl Cook (G, 5-10, Jr., 17.3 ppg)  
**Top Returning Rebounder:**  
 Stasia Kissel (F, 5-11, Sr., 8.6 rpg)  
**Media Contact:**  
 Brent Rutkowski (513) 475-5091  
 Florida State Leads Series 2-1

## METRO CONFERENCE TOURNAMENT

March 5-7  
 Cincinnati, Ohio



Participants	Series Record	Last Meeting
Louisville	FSU Trails 0-6	56-67, 1983
Virginia Tech	FSU Leads 2-1	93-82, 1982
Memphis State	FSU Trails 2-3	68-66, 1983
Southern Mississippi	FSU Trails 0-3	84-94, 1982
Tulane	FSU Trails 3-4	91-65, 1983
Cincinnati	FSU Leads 2-1	84-61, 1983
South Carolina	FSU Trails 0-4	81-82, 1982
FSU		

# COACHING STAFF



**Janice Dykehouse**  
*Head Basketball Coach*

When Janice Dykehouse took over the Florida State women's basketball program prior to the start of the 1979-80 season, she had a specific goal in mind. She wanted to see that day when FSU would consistently make the NCAA championship field.

At the time, the goal was a lofty one. FSU had no reputation on the national level and had only two winning seasons since 1973. Playing against small schools in the South, FSU had compiled an overall record of just over .500.

But Dykehouse meant business when she arrived. Through hard work, diligent recruiting and support from the administration, Dykehouse quickly took Florida State from a team that could barely compete on the regional level to a team that cracked the nation's top 20 for the first time last year. It took just four short seasons for Dykehouse to transform FSU into a championship calibre team.

After two rebuilding seasons, Dykehouse has started to see her goal of national prominence for Florida State come within reach. FSU has now had two consecutive seasons of 20 or more wins. And more importantly, the Lady Seminoles made it to the first round of the NCAA playoffs last year finishing with a 24-6 record.

During the past two campaigns, Florida State has rolled up an impressive 54-16 record. Dykehouse's coaching successes can be summed up by the fact that the Lady Seminoles broke into the Associated Press' top 20 twice last year, the first time any FSU women's basketball team achieved that honor.

Dykehouse's coaching abilities earned her national "Coach of the Year" nominations by several publications and she was voted Florida Women's Basketball Coach of the Year honors in 1982. She

serves on several important committees, including the NCAA tournament selection group, the AP top 20 coaches poll and the Wade Trophy selection committee.

A quick glance at Dykehouse's background reveals the reason for her success. She possesses a wealth of experience as both a teacher and student game.

After a fine junior college career at Grand Rapids Junior College, Dykehouse transferred to Grand Valley State College where she paced her squad to 38-12 mark over two seasons. During her senior season, Grand Valley recorded a 22-6 mark and placed third in the regional tournament. Jan carried an average of 12 points and 11 rebounds per game.

Following graduation with a bachelor's degree in physical education, Dykehouse played one season of AAU ball in Allentown, Pa. before concluding her playing career with Union Sportive, Vierzon—a French national team. The senior team she played on finished 22-4 and won its division title. She coached the junior team to an undefeated season. As a player on the senior team, Dykehouse averaged 22 points a game.

In addition to coaching duties with the Vierzon team, Dykehouse also coached at Lehigh University (Pa.), American High School (Paris) and Spring Lake High School (Michigan), before moving to the University of Denver where she served as assistant women's basketball coach.

---

---

*Making the NCAA playoffs last year was a big step towards our ultimate goal of annual representation in the national championship field.*

*Jan Dykehouse*

---

---

Dykehouse left Denver in 1979 to become the third varsity basketball coach at Florida State.

The 29-year old coach hopes the successes of the past two seasons have laid a foundation for the future. "Right now we have established ourselves as a nationally recognized team," Dykehouse said. "But we must continue to build on that. Making the NCAA playoffs last year was a big step towards our ultimate goal of annual representation in the championship field."

But success on the court is only one aspect of coaching that Dykehouse is concerned with. Academic progress for each athlete towards the goal of obtaining a marketable degree is also a chief priority with Dykehouse. Upon her arrival on campus, the team's grade point average has shown a steady increase. "We want our players to have every opportunity to develop their athletic skills to the highest possible level," Dykehouse says. "But more importantly, we want our players to reach their highest level possible academically. A successful program is one that achieves both of these goals at the same time."

---

---

## Dykehouse's Collegiate Coaching Record

Year	Team	Record	Pct.
1980	Florida State	13-22	.371
1981	Florida State	14-15	.482
1982	Florida State	28-10	.737
1983	Florida State	24-6	.800
Four-season totals		79-53	.590



**Benjamin  
"Buz" Narbut**  
*Assistant Coach*

Buz Narbut is the newest member of the Florida State coaching staff, being appointed as assistant coach in September of this year to fill the vacancy left when Dennis McNelis resigned to become head coach at Southwest Texas State University.

Narbut brings one of the most impressive prep coaching records in the country to FSU. As head mentor at Southeast High in Bradenton, Fla., Narbut compiled an ultra impressive mark of 140-14.

Included in that mark are six conference, three district and two regional titles. His 1981 team went 33-0 and won a state high school championship. None of his squads ever lost more than four games in a season and he put together five consecutive seasons of 20 or more wins.

Nineteen of his former players went on to earn college scholarships, including FSU freshman Lori Smith.

In addition to coaching the women's team, Narbut coached Southeast's cross country team for five years and also handled the boy's junior varsity team from 1972 to 1977. During that period, Southeast went 79-27 in junior varsity games. He also served as assistant coach of the boy's varsity team during the same time period.

Narbut served on the staff of the Lady Seminole Summer Basketball Camp for the past four years and prior to that worked the Clemson Summer Camp for two other years. He was a member of the Physical Education Staff at Southeast since 1969.

A 1969 graduate with a degree in physical education from the University of Tampa, Narbut went on to receive a master's degree in education administration in 1974. He added an Ed. S. in the same subject from the University of Alabama in 1976.

In addition to practice and game coaching duties, Narbut will assist in recruiting with emphasis on the northern section of the country. Narbut is married with his wife Donna working as a music teacher.



**Cherry Rivers**  
*Assistant Coach*

A former Florida State athlete, Cherry Rivers enters her third season on the FSU coaching staff and her first as a full-time

assistant. As an assistant to Coach Dykehouse, Rivers serves as Florida State's primary recruiter. In addition to on the floor coaching duties, Rivers handles several

administrative duties associated with the day-to-day running of a major collegiate basketball program.

Rivers came to Florida State in 1976 as a highly recruited basketball player out of Miami High School. During the next four years, Rivers would go on to rewrite the FSU record book in practically every offensive category. Her 1,029 career rebounds still stands as a school record as do four other career and single season marks. She earned Metro Conference MVP honors in 1980.

Following graduation with a bachelor's degree in Counseling, Health and Rehabilitation, Rivers traveled to Venezuela to join Petroleras de Zulia's semi-pro team located in Maracaibro. She averaged 25 points per game as player/coach before returning to the United States to play briefly for the Chicago Hustle of the former WBA.

Following her professional career, Rivers accepted an assistant coaching job at Miami Dade Community College where that team finished the year with a 22-5 record and a state championship.

After a summer of working for Miami Upward Bound Project which benefits economically disadvantaged youth, Rivers enrolled in graduate school at Florida A&M University and also joined the Florida State coaching staff as a part-time assistant coach.

During the last two seasons, Rivers coordinated recruiting files and also helped coach the Seminole offense.

A certified high school official, Rivers has spent four summers on the coaching staff of several basketball camps including Florida State summer camp in 1982 and 1983.

The 25 year-old Rivers was appointed to full-time status in September of 1983.



**Michele Lent**  
*Graduate Assistant Coach*

A former college head coach with several years experience on the major college level, Michele Lent is in her first season as graduate assistant at Florida State.

Lent comes to FSU from Mount St. Vincent College in New York where she served as head coach for the past two seasons. During that time period, Lent led her team to a 20-20 record.

Prior to that, Lent worked for two years at Yale University as assistant coach. While at Yale, Lent handled recruiting, scheduling, and travel arrangements, as well as on the floor coaching duties.

As an assistant to coach Dykehouse, Lent will assist with practices, scouting and administrative duties as assigned by the head coach.

Lent graduated from State University of New York at Cortland in May 1979, with a degree in health education. At SUNY-Cortland, played two seasons of basketball for a team that won the state AIAW title in 1978 and went on to place third in the Eastern Regional competition.

# ATHLETIC STAFF



**C.W. "Hootie" Ingram**  
*Director of Athletics*

C.W. "Hootie" Ingram is in his third year as Director of Athletics at Florida State University. Ingram came to Tallahassee from the Southeastern Conference where he

served first as assistant commissioner and later as an associate commissioner.

A native of Tuscaloosa, Alabama, Ingram played football for the University of Alabama from 1951-54. After a stint in the army, Ingram entered the coaching field. After coaching the prep ranks and serving as an assistant at several universities, Ingram was named head coach at Clemson University and remained there for three seasons before joining the SEC in 1973.

While at the SEC, Ingram was responsible for supervision of football and basketball officials, rules interpretation and eligibility.



**Barbara Palmer**  
*Associate Athletic Director  
Women's Athletic Director*

A member of the FSU staff since 1977, Barbara Palmer has been instrumental in the development of women's athletics at FSU to the point that the Lady Seminole program is considered one of the finest in the country.

Under Palmer, FSU has won three national championships during the past two seasons, two in softball (1981, 1982) and one in golf (1981). In addition, the past year saw five of FSU's eight women sports crack the nation's top 20.

Palmer's duties as women's athletic director include hiring of coaches, preparation of budget, scheduling of travel and raising of funds. It was Palmer's lobbying effort that pushed Title IX legislation through state government in 1980, insuring equal athletic opportunities for women at educational institutions.

Palmer graduated from Florida State in 1970 and earned a master's degree from her alma mater in 1974.

# SUPPORT STAFF

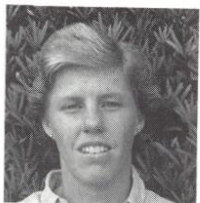


**Terry Hume**  
*Coordinator of Public Affairs*

A former FSU athlete, Terry Hume begins her sixth year on the Florida State staff.

As coordinator of Public Affairs for FSU, Hume serves as promotions director for women's athletics.

Securing sponsorship of programs, schedule cards, posters and other promotional items on women's athletics all fall under Hume's responsibility. Hume graduated from FSU with a degree in English Business in 1977.



**Donna Murdock**  
*Strength Coach*

A graduate of Florida ('81) with a master's degree in exercise physiology, Murdock begins her third year as strength coach of the Lady Seminole program.

As strength coach, Murdock is responsible for designing individual weight conditioning programs for each athlete and assisting coaches with any conditioning problems that arise during the season.

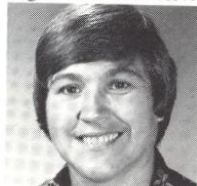


**Jo Heath**  
*Assistant Athletic Director*

Jo Heath enters her fourth year at Florida State as chief aide to women's athletic

director Barbara Palmer. As assistant to the director, Heath's main duties includes monitoring the budget, hiring personnel, event contracts and recommending policy and procedures.

A native of Tallahassee, Heath graduated from Florida State and later earned a master's degree in leisure services.



**Judy Spainhour**  
*Travel, Equipment and Cinematography*

As a member of FSU's athletic staff, Judy Spainhour covers a wide

range of responsibilities concerning women's athletics.

Arranging for travel, equipment inventory and working as the cinematographer for all women's sports are just a few of Spainhour's duties.



**Dan Pearson**  
*Assistant Sports Information Director*

A graduate of West Virginia's School of Journalism, Dan Pearson

is in his 3rd year on the Seminole staff. As assistant SID, Pearson is responsible for publicizing the Lady Seminole Basketball team and acting as a liaison between the athletic department and media.



**Trudy Rayburn**  
*Coordinator of Student Affairs*

A 1977 graduate of Florida State, Trudy serves as coordinator of student

affairs at FSU. Involved in the scholastic side of college life, Rayburn is involved with the admission and registration process of all Lady Seminole athletes.

Once the academic year begins, Rayburn provides academic counseling and arranges tutors and study halls for athletes as needed.



**Nancy Watson**  
*Athletic Director*

Nancy Watson is in her fifth year as the head trainer at Florida State and her first with the Women's bas-

ketball program. As head trainer, Watson oversees the entire athletic training area for all eight women's varsity sports.

Watson came to FSU in 1979, after serving two years in a similar capacity at the University of Miami. She graduated with a Master's degree in sports medicine from Indiana in 1978 and received a BS degree from Indiana in 1975.



**Tammy Eason**  
*Secretary*

A native of Tallahassee, she is in her fourth year of working in the women's athletic

department. A 1978 graduate of Godby High, Eason serves as secretary for the Lady Seminole basketball, swimming and volleyball teams.

## THE PLAYERS

---

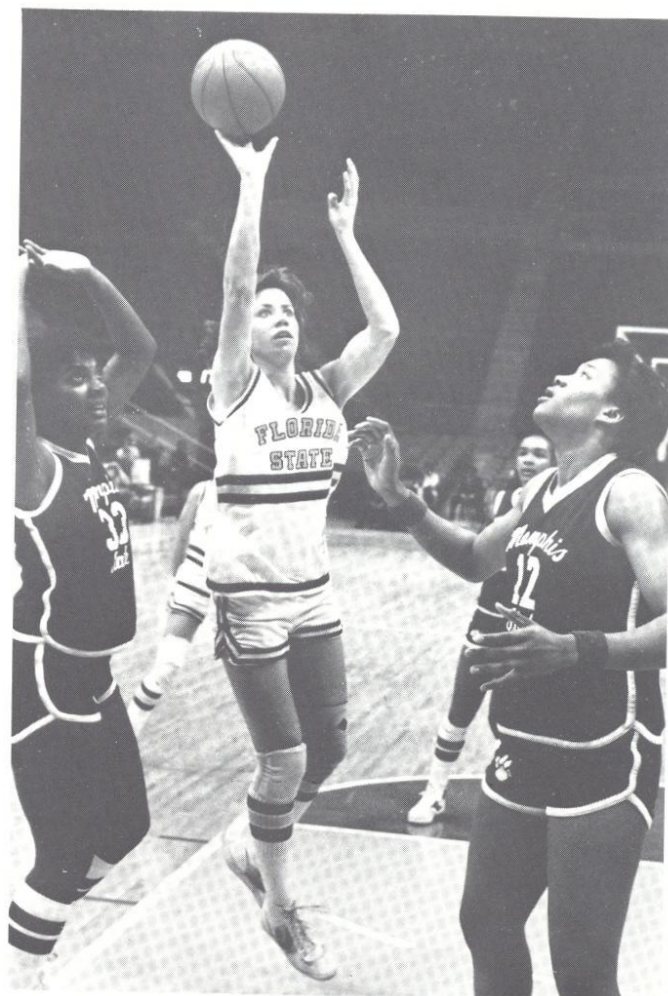


# ALL-AMERICAN CANDIDATE

**Sue Galkantas**  
*Senior, 6-0, Forward*  
*Oak Forest, Ill.*



Most prolific scorer in Florida State basketball history with 1828 points...should become first player (male or female) to score 2000 career points at FSU...holds 16 different school records and is listed in the top five in practically every other statistical category...selected second team All-American by *Women's Basketball Yearbook*...also tabbed honorable mention All-American by several other publications...1983 finalist for Wade Trophy, one of only six juniors to earn that distinction...has scored 30 or more points, a school record 10 times...has scored 20 or more points an incredible 45 times during career...was team's leading scorer 64 times in last three seasons...scored in double figures 88 of 92 career games...career high of 37 points against Florida A&M in 1981...scored and rebounded in double figures seven times last year, including a 34 point, 10 rebound season high performance against Tulane...selected to the Kodak All-Region team twice...holds freshman, sophomore and junior single season records...selected to the all-tournament teams of the Lady Sunshine Classic, Mid-American Classic and Metro Conference tournament last year, bringing to 11 the number of all-tournament teams she has made in three years...three-time MVP of Lady Sunshine Classic...finished third in scoring, third in field goal percentage and nine in rebounding to make the Metro Conference regular season all-star team...was a *Smith and Street* freshman All-American...played for the East team during the 1981 National Sports Festival...attended Oak Forest High School where she was all-conference, all-district, all-state and Converse All-American...majoring in leisure services.



## Galkantas School Records

- Points (Game) - 37, 1981
- Points (Season) - 710, 1982
- 30-Point Games - 10, 1980-83
- Scoring Average (Season) - 21.6, 1980
- Field Goals (Season) - 282, 1982
- Free Throws Made (Game) - 17, 1981
- Free Throws Made (Career) - 378, 1980-83
- Points by a Sophomore - 710, 1982
- Points (Half) - 25, 1981
- Points (Career) - 1828, 1980-83
- 20-Point Games - 45, 1980-83
- Scoring Average (Career) - 19.9, 1980-83
- Field Goals (Career) - 727, 1980-83
- Free Throws Made (Season) - 146, 1982
- Points by a Freshman - 627, 1981
- Points by a Junior - 491, 1983

## Galkantas Statistically

Year	Games	FG-FGA	Pct.	FT-FTA	Pct.	Rebs.-Avg.	Assists	Blocks	Steals	Points-Avg.
1983	29	184-323	.570	123-154	.799	221-7.6	46	5	31	491-16.9
1982	34	282-536	.526	146-214	.682	296-8.7	60	9	44	710-20.9
1981	29	261-520	.502	109-139	.755	270-9.3	64	13	41	627-21.6
Totals	92	727-1379	.527	378-507	.746	787-8.5	170	27	116	1828-19.9

## Jill Baker

*Senior, 5-8, Guard  
Lake Worth, Fla.*

Returns for senior season after appearing in 20 games last year, averaging 1.2 points per game...credited with 23 rebounds and 10 assists in part-time role in 1983...top game last year was a four point, three-rebound performance against Stetson...had a career high 10 points against Alabama in 1981...one of three, three-year letter winners on 1983 team...also lettered in softball at FSU and was a member of the Seminoles' 1981 AIAW National Championship team...outstanding softball and basketball player at Lake Worth High, earning all-district and all-academic for each sport...double major in psychology and business.



### Baker Statistically

Year	Games	FG-FGA	Pct.	FT-FTA	Pct.	Rebs.-Avg.	Assists	Blocks	Steals	Points-Avg.
1983	20	9-36	.250	5-7	.714	23-1.2	10	0	8	23-1.2
1982	15	7-21	.333	3-5	.600	13-0.9	9	0	2	17-1.1
1981	21	20-61	.329	9-19	.474	65-3.1	14	0	10	49-2.3
Totals	56	36-118	.305	17-31	.548	101-1.8	33	0	20	89-1.8

## LeeVayn Oliver

*Senior, 5-10, Forward  
Orlando, Fla.*

One of the most consistent players for FSU over the past three seasons, Oliver scored in double figures 18 times last year...was fourth in scoring (11.7) and second in rebounding (8.3) on 1983 squad...top overall game was a 17 point, 12 rebound performance in road win over Alabama...scored 20 or more points three times last year, and now has six career 20-point games...career high was 29 points against Georgia Southern in AIAW Region III playoff game in 1982...career totals place her in the top 10 in seven categories—including fourth place in career rebounds at 646...only Florida State player to appear in all 30 of the team's games last season...11.7 scoring average was 13th best in Metro Conference last year...also placed fourth in field goal percentage and sixth in rebounding in final conference stats...selected to the all-tournament team at 1982's National Women's Invitational Tournament...named by the Orlando Amateur Athletic Union as Collegiate Athlete of the Year in 1983...all-conference, all-metro, all-state and All-American senior year at Orlando's Evans High School...academic All-American candidate with a 3.1 overall average in leisure services.



### Oliver Statistically

Year	Games	FG-FGA	Pct.	FT-FTA	Pct.	Rebs.-Avg.	Assists	Blocks	Steals	Points-Avg.
1983	30	147-281	.523	58-87	.667	248-8.3	37	2	28	352-11.7
1982	35	160-307	.521	47-71	.662	260-7.4	28	3	52	367-10.5
1981	26	51-107	.477	25-41	.609	138-5.3	5	3	12	127-4.9
Totals	91	358-695	.515	130-199	.653	646-7.1	70	8	162	846-9.2

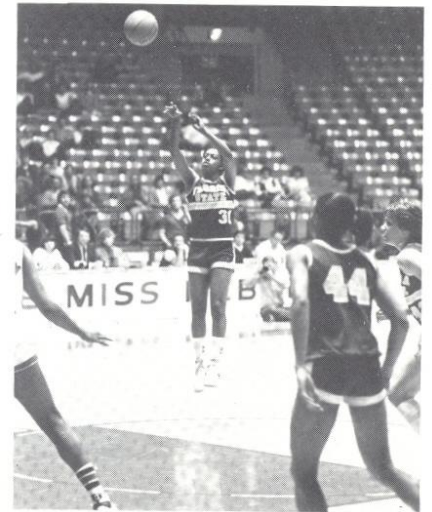
---

---

## Lahna Wood

*Sophomore, 5-5, Guard  
Ft. Lauderdale, Fla.*

Split time at point guard last season with Lynn Marnie...started six contests in middle of season when Marnie was out with ankle injury...had good freshman campaign, contributing 75 points and 51 assists in 26 games...top game was a nine point performance in 69-60 win over Army...had eight point games against Tulane and Albany State...averaged almost 18 minutes of playing time per contest last season...good quickness will enable Wood to challenge for starting position...attended South Plantation High where she was that team's MVP for three consecutive years...all-time scoring leader at Plantation with over 1000 career points...majoring in computer science.



### Wood Statistically

---

Year	Games	FG-FGA	Pct.	FT-FTA	Pct.	Rebs.-Avg.	Assists	Blocks	Steals	Points-Avg.
1983	26	29-76	.382	17-34	.500	20-0.8	51	1	17	75-2.9

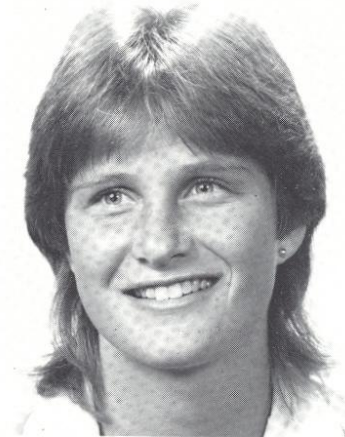
---

---

## Celia Slater

*Junior, 5-9, Guard  
Dunedin, Fla.*

Transferred to Florida State in fall of 1982 after playing two seasons for Clemson University...will be eligible for two seasons of competition, after taking a red shirt last season...selected as Rookie of Year at Clemson in 1980...led the Lady Tigers in free throw shooting during both freshman and sophomore seasons...was a standout player at Clearwater Central High School, where she was selected all-county and all-region...majoring in physical education.





# NEWCOMERS

---

---

## **Julie Jones**

*Freshman, 5-11, Center  
Savannah, Ga.*

Made team as a walkon this fall...was a standout player at Savannah Christian Prep, where she lettered four times...selected to play in the Georgia All-Star game...led high school team in rebounding and scoring last three seasons...selected to all-state team in 1982 and 1983...earned spot on 11 all-tournament teams during high school career...could also see action at forward...will major in special education at FSU.



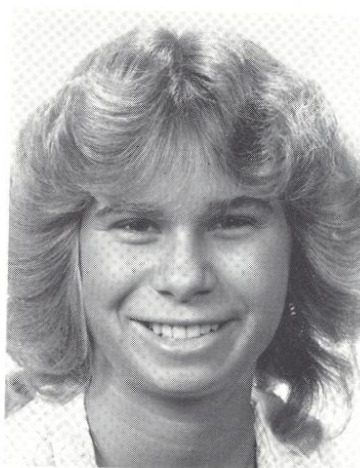
---

---

## **Sheri Kaminski**

*Freshman, 5-6, Guard  
Satellite Beach, Fla.*

Averaged 14.6 points per game last season as she led Satellite Beach to the state AAAA crown...a three-year starter, Kaminski scored over 1500 points in career...tabbed first team all-state during both junior and senior seasons...also picked to all-conference team three times...Cocoa Today newspaper selected Kaminski as "Space Coast Player of the Year" in both 1982 and 1983...selected to Converse's honorable mention All-American team...was teammate of FSU signee Linda-Ann McGowan at Satellite Beach High...will major in computer science...strong student, compiling a 3.7 grade point average in academic subjects at Satellite Beach.



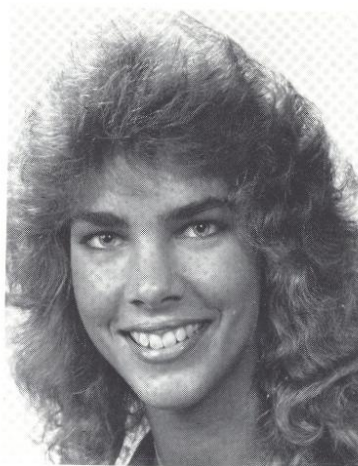
---

---

## **Linda-Ann McGowan**

*Freshman, 6-2, Center  
Cocoa Beach, Fla.*

Another standout player to come from Pete Ballard's program at Satellite Beach High School...lettered three years at center, while helping Satellite to state AAAA championship...first player in school history to score over 1500 points and also collect 1000 career rebounds...selected to the Converse All-American team; while also being picked for the honorable mention All-American teams for Carnation, Parade Magazine and USA Today newspaper...selected to the Florida all-state first team during both junior and senior seasons...tabbed to both all-conference and All Space Coast teams for past two years...will major in communications...good student, compiling a 3.2 GPA in college preparatory subjects.



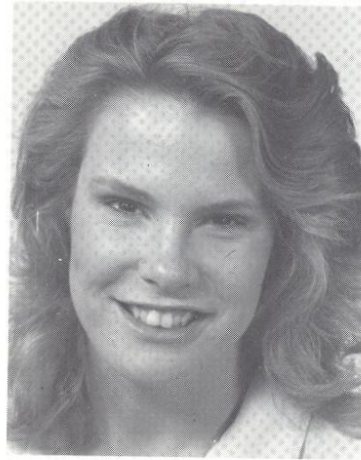
---

---

## **Stacy Moneymaker**

*Freshman, 6-3, Center  
Niceville, Fla.*

Tallest female athlete to ever sign an athletic scholarship with Florida State...averaged over 21 points and 11.5 rebounds at Niceville High School last season...was selected to all-county, all-conference and all-state teams last year; as well as being named "Player of the Year" for Okaloosa County...lettered three years and led Niceville to a 47-16 record and three trips to playoffs...also a member of FSU's volleyball team where she plays middle hitter position...outstanding student, compiling a 3.6 GPA during high school career...will major in pre-med.



---

---

## **Lorraine Rimson**

*Freshman, 5-11, Forward  
Annandale, Va.*

A Parade All-American (fourth team), Rimson became the first FSU women's basketball player to earn that distinction...listed by BC Scouting Services as the 11th best forward in the country last season, Rimson is the Lady Seminole's most heralded recruit ever...three year career included 1500 points and 1000 rebounds...Rimson led W.T. Woodson to a 53-2 record over past two years, including a Virginia AAA Championship last season...was a two-time all-district, all-region and all-state selection...recruited by most of the top teams in the country...Good student, compiling 3.1 during high school career in college prep classes...major is undecided.



---

---

## **Lori Smith**

*Freshman, 5-10, Guard  
Bradenton, Fla.*

Will compete for starting position at shooting guard slot...averaged 21 points a game for Southeast High School last season under new FSU assistant coach Buz Narbut...led Southeast to a 101-8 record in four years as a starter—including a 33-0 state championship year in 1981...scored over 1700 points in career...selected to three All-American teams including Converse and Smith and Street magazine...three-time all-conference, all-region and all-state selection...averaged solid 3.0 for academic class work in high school...major undecided.



# 1983-84 FLORIDA STATE WOMEN'S BASKETBALL ROSTER

## Alphabetical Roster

No.	Name	Position	Height	Class	Hometown/High School
14	Jill Baker	Guard	5-7	Sr.	Lake Worth, FL/Lake Worth
43	Sue Galkantas	Forward	6-0	Sr.	Oak Forest, Ill/Oak Forest
45	Julie Jones	Center	5-11	Fr.	Savannah, GA/Savannah
12	Sheri Kaminski	Guard	5-6	Fr.	Satellite Beach, FL/Satellite
20	Linda Ann McGowan	Center	6-2	Fr.	Cocoa Beach, FL/Satellite
42	Stacy Money maker	Center	6-3	Fr.	Niceville, FL/Niceville
31	Devon Myers	Guard	5-8	Jr.	Newport Richey, FL/Gulf
33	LeeVayn Oliver	Forward	5-10	Sr.	Orlando, FL/Evans
55	Lorraine Rimson	Forward	5-11	Jr.	Annandale, VA/Woodson
22	Celia Slater	Guard	5-9	Jr.	Dunnedin, FL/Clearwater
13	Lori Smith	Guard	5-9	Fr.	Bradenton, FL/Southeast
10	Lahna Wood	Guard	5-8	So.	Ft. Lauderdale, FL/Plantation

## Numerical Roster

No.	Name	Position	Height	Class	Hometown/High School
10	Lahna Wood	Guard	5-8	So.	Ft. Lauderdale, FL/Plantation
12	Sheri Kaminski	Guard	5-6	Fr.	Satellite Beach, FL/Satellite
13	Lori Smith	Guard	5-9	Fr.	Bradenton, FL/Southeast
14	Jill Baker	Guard	5-7	Sr.	Lake Worth, FL/Lake Worth
20	Linda Ann McGowan	Center	6-2	Fr.	Cocoa Beach, FL/Satellite
22	Celia Slater	Guard	5-9	Jr.	Dennedin, FL/Clearwater
31	Devon Myers	Guard	5-8	Jr.	Newport Richey, FL/Gulf
33	LeeVayn Oliver	Forward	5-10	Sr.	Orlando, FL/Evans
42	Stacy Money maker	Center	6-3	Fr.	Niceville, FL/Niceville
43	Sue Galkantas	Forward	6-0	Sr.	Oak Forest, Ill/Oak Forest
45	Julie Jones	Center	5-11	Fr.	Savannah, GA/Savannah
55	Lorraine Rimson	Forward	5-11	Fr.	Annandale, VA/Woodson

## Student Managers



Amy Snider



Wini Taylor

# FLORIDA STATE RADIO CHART

---

---

**#12** **Sheri Kaminski**  
5-6, Fr., Guard  
Satellite Beach, FL  
Last Year: Satellite Beach HS 14.6 ppg

**#14** **Jill Baker**  
5-7, Sr., Guard  
Lake Worth, FL  
Last Year: FSU 1.2 ppg

**#22** **Celia Slater**  
5-9, Jr., Guard  
Dunedin, FL  
Last Year: Transfer Redshirt

**#33** **LeeVayn Oliver**  
5-10, Sr., Forward  
Orlando, FL  
Last Year: FSU 11.7 ppg

**#43** **Sue Galkantas**  
6-0, Sr., Forward  
Oak Forest, IL  
Last year: FSU 16.9 ppg

**#55** **Lorraine Rimson**  
5-11, Fr., Forward  
Annandale, VA  
Last Year: W.T. Woodson HS 19 ppg

**#10** **Lahna Wood**  
5-8, So., Guard  
Ft. Lauderdale, FL  
Last Year: Florida State 2.9 ppg

**#13** **Lori Smith**  
5-9, Fr., Guard  
Bradenton, FL  
Last Year: Southeast HS 21 ppg

**#20** **Linda-Ann McGowan**  
6-2, Fr., Center  
Cocoa Beach, FL  
Last Year: Satellite Beach HS 16 ppg

**#31** **Devon Myers**  
5-8, Jr., Guard  
Newport Richey, FL  
Last Year: FSU, Walk-on in 1983-84

**#42** **Stacy Moneymaker**  
6-3, Fr., Center  
Niceville, FL  
Last Year: Niceville HS 21 ppg

**#45** **Julie Jones**  
5-11, Fr., Center  
Savannah, GA  
Last Year: Savannah HS 18 ppg

# RECORD BOOK

These people were responsible for the building of a program.

State of Florida

## HOUSE OF REPRESENTATIVES

Resolution 1118

By Representatives Lawson, Thompson and Morgan

A resolution commending the Florida State University Lady Seminoles Basketball Team.

WHEREAS, the House of Representatives has previously recognized the value of women's intercollegiate athletics by enacting the Florida Women's Intercollegiate Athletics Equity Act (House Bill 556, Chapter 80-359, Laws of Florida), and

WHEREAS, Ms. Barbara J. Palmer, Director of Women's Intercollegiate Athletics of the Florida State University, has provided outstanding leadership in the development of women's intercollegiate athletics in the State of Florida, and

WHEREAS, the Florida State University Lady Seminoles Basketball Team has brought great honor to the State of Florida by compiling a record of 24 wins and 6 losses during the 1982-1983 season, including victories over such outstanding rivals as the University of North Carolina, the University of Alabama, the University of Nebraska, Temple University, and Memphis State University, and

WHEREAS, the Florida State University Lady Seminoles Basketball Team was invited to participate in the NCAA Playoffs in their first year of NCAA competition, NOW, THEREFORE,

*Be It Resolved by the House of Representatives of the State of Florida:*

That Head Coach Janice Dykehouse, Assistant Coaches Dennis McNelis, Cherry Rivers, and Heidi Owen are recognized by the House of Representatives for providing outstanding leadership to the Florida State University Lady Seminoles.

BE IT FURTHER RESOLVED that Captains Sue Galkantas and LeeVayn Oliver and team members Lisa Foglio, Brenda Cliette, Glenda Stokes, Lynn Marnie, Lahna Wood, Nancy Galkantas, Jill Baker, and Kim Hinote of the Florida State University Lady Seminoles be congratulated for their outstanding performance during the 1982-1983 season which has brought great honor to the Florida State University and the State of Florida.

BE IT FURTHER RESOLVED that copies of this resolution be presented to the individuals named herein as a tangible token of the sentiments of the House of Representatives.

*This is to certify the foregoing was adopted on April 21, 1983.*



*[Signature]*  
Speaker

*[Signature]*  
Clerk of the House

# THE YEAR IN REVIEW

## Individual Game Results

Won: 24      Lost: 6  
Home: 9-1;      Away: 8-4;      Neutral: 7-1

Date	FSU	Opp	Leading Scorer	Leading Rebounder
Nov. 26	94—Tennessee—Chattanooga (N)	77	S. Galkantas, Stokes . . .17	Cliette . . . . .10
Nov. 27	75—North Carolina (N)	74	S. Galkantas . . . . .25	Cliette . . . . .15
Dec. 1	94—Albany State (H)	52	Foglio . . . . .21	Cliette, Oliver . . . . .11
Dec. 4	102—Stetson (H)	42	Oliver . . . . .20	S. Galkantas . . . . .9
Dec. 6	73—Alabama (A)	64	Foglio . . . . .18	Oliver . . . . .12
Dec. 10	84—Penn State (N)	86	Foglio . . . . .20	Cliette, S. Galkantas . . .9
Dec. 11	75—Delta State (N)	67	S. Galkantas . . . . .20	Oliver . . . . .8
Dec. 31	100—Nebraska (N)	84	Stokes . . . . .25	Cliette . . . . .10
Jan. 2	69—Army (N)	60	Cliette . . . . .24	Cliette . . . . .10
Jan. 3	72—Oklahoma State (N)	52	Cliette, S. Galkantas . .14	Cliette, Oliver . . . . .10
Jan. 6	74—Temple (A)	69	S. Galkantas . . . . .24	Oliver . . . . .13
Jan. 7	59—St. Joseph's (A)	54	Foglio . . . . .20	S. Galkantas . . . . .12
Jan. 10	89—Montclair State (H) OT	81	Oliver . . . . .23	Cliette . . . . .17
Jan. 15	81—Tulane (H)	56	Cliette . . . . .21	Stokes . . . . .15
Jan. 17	90—Memphis State (H)	82	S. Galkantas . . . . .26	Cliette . . . . .11
Jan. 19	66—Florida A&M (A)	60	S. Galkantas . . . . .17	Oliver . . . . .12
Jan. 22	73—Alabama—Birmingham (A)	75	Cliette . . . . .21	Cliette . . . . .9
Jan. 24	43—Auburn (A)	73	S. Galkantas, Cliette . .10	Cliette, Stokes . . . . .6
Jan. 27	68—Florida (A)	63	Oliver . . . . .23	Stokes . . . . .9
Jan. 28	77—Stetson (A)	64	Foglio . . . . .22	S. Galkantas . . . . .10
Feb. 3	71—South Florida (H)	52	Foglio . . . . .24	Oliver . . . . .8
Feb. 5	91—Tulane (A)	65	S. Galkantas . . . . .34	Cliette, Oliver . . . . .10
Feb. 9	82—Florida A&M (H)	65	S. Galkantas . . . . .28	Cliette, S. Galkantas . .10
Feb. 12	77—Florida International (H)	65	Cliette . . . . .20	Stokes . . . . .13
Feb. 16	61—Alabama (H)	64	S. Galkantas . . . . .23	Oliver . . . . .9
Feb. 19	89—Florida (H)	67	Foglio . . . . .28	Stokes . . . . .11
Feb. 26	68—Memphis State (A)	66	S. Galkantas . . . . .17	Cliette . . . . .14
Mar. 7	56—Louisville (A)	67	S. Galkantas . . . . .16	Oliver . . . . .11
Mar. 8	84—Cincinnati (N)	61	S. Galkantas . . . . .23	S. Galkantas . . . . .13
Mar. 18	76—Ole Miss (A)	86	Cliette . . . . .15	Cliette . . . . .12

## 1982-83 Final Statistics

Name	G	MIN-AVG	FGM-FGA	PCT	FTM-FTA	PCT	REB-AVG	AST	BK	ST	TO	PF-DQ	PTS-AVG
S. Galkantas	29	887-30.5	184-323	.570	123-154	.799	221-7.6	46	5	31	120	98-5	491-16.9
L. Foglio	29	866-29.9	184-357	.515	77-94	.819	97-3.3	96	4	59	90	61-2	445-15.3
B. Cliette	29	846-29.2	163-320	.509	66-120	.550	269-9.3	45	32	77	89	78-0	392-13.5
L. Oliver	30	837-27.9	147-281	.523	58-87	.667	248-8.3	37	2	28	54	94-2	352-11.7
G. Stokes	29	716-24.7	103-171	.602	80-121	.661	181-6.2	20	15	33	63	93-3	286-9.9
L. Marnie	23	523-22.7	29-94	.309	29-38	.763	39-1.7	93	0	27	105	38-0	87-3.8
L. Wood	26	463-17.8	29-76	.382	17-34	.500	20-0.8	51	1	17	57	39-1	75-2.9
N. Galkantas	24	235-9.8	20-52	.385	11-20	.550	33-1.4	1	1	3	21	29-0	51-2.1
J. Baker	20	191-9.6	9-36	.250	5-7	.714	23-1.2	10	0	8	21	23-0	23-1.2
Others	26	436-16.8	44-113	.389	23-35	.657	39-1.5	63	4	32	66	53-0	111-4.3
Team							104-3.5						
FSU Totals	30	1205-40.2	912-1823	.500	489-710	.689	1274-42.5	462	64	315	686	606-13	2313-77.1
OPP Totals	20	1205-40.2	823-1885	.436	348-595	.585	112-37.1	349	69	329	598	641-25	1994-66.5

# 1982-83 STATISTICS

## Individual Scoring & Rebounding By Game

	BKR	BURR	CLI	FOG	N. GALKS.	GALK	HNT	MARN	O'NL	OLIV	STKS	WOOD
Tenn. Chattanooga	1/1	7/4	16/10	9/1	0/0	17/9	4/0	4/5	6/0	13/6	17/6	0/1
North Carolina	DNP	4/2	15/15	5/3	DNP	25/13	DNP	6/2	0/0	14/9	6/4	DNP
Albany State	4/2	DNP	17/11	21/3	10/3	12/9	0/6	4/0	6/0	12/11	DNP	8/0
Stetson	4/3	18/2	DNP	18/3	4/4	19/9	INJ	2/0	0/2	20/7	13/7	4/1
Alabama	DNP	0/0	5/9	18/4	0/1	10/4	INJ	6/1	3/0	17/12	14/9	DNP
Penn State	DNP	0/0	14/9	20/2	0/0	14/9	INJ	0/4	10/0	10/5	17/6	DNP
Delta State	DNP	6/3	13/7	DNP	DNP	20/7	INJ	9/1	6/2	9/8	12/3	0/0
Nebraska	DNP	DNP	24/10	15/1	0/0	21/9	INJ	2/7	5/0	8/5	25/9	0/0
Army	2/0	DNP	24/10	10/2	0/2	0/2	INJ	DNP	8/2	8/12	6/4	9/1
Oklahoma State	0/2	DNP	14/10	11/4	4/0	14/5	INJ	4/0	6/3	8/10	5/6	6/1
Temple	DNP	DNP	5/6	15/3	0/0	24/8	INJ	8/0	4/1	14/13	4/3	DNP
St. Joseph's	0/0	DNP	11/7	20/3	DNP	12/12	INJ	5/1	DNP	7/10	4/9	0/0
Montclair State	DNP	DNP	19/17	19/3	DNP	14/15	INJ	0/0	3/2	10/5	23/8	1/2
Tulane	0/2	DNP	21/12	20/3	2/2	INJ	INJ	5/4	20/14	7/15	6/3	6/3
Memphis State	DNP	DNP	14/11	18/0	DNP	26/4	INJ	INJ	4/1	14/6	9/8	5/1
Florida A&M	DNP	DNP	11/11	16/4	0/0	17/5	INJ	INJ	0/0	15/12	7/7	0/1
Ala.-Birmingham	0/0	DNP	21/9	20/6	0/0	4/0	INJ	INJ	2/0	17/8	7/5	2/0
Auburn	0/1	DNP	10/6	6/0	2/1	10/2	INJ	INJ	0/4	6/4	5/6	4/1
Florida	DNP	DNP	10/7	9/1	0/1	8/6	INJ	INJ	4/0	23/8	11/9	3/0
Stetson	2/5	DNP	4/8	22/4	4/2	18/10	INJ	8/4	DNP	14/8	5/4	0/0
South Florida	0/0	DNP	16/7	24/3	0/0	16/7	INJ	4/0	DNP	9/8	2/6	0/0
Tulane	4/1	DNP	13/9	12/3	9/1	34/10	INJ	0/2	DNP	7/10	4/4	8/1
Florida A&M	2/1	DNP	19/10	14/6	0/0	28/10	INJ	0/3	DNP	7/5	8/2	4/0
Fl. International	0/1	DNP	20/8	11/3	4/1	16/7	INJ	0/2	DNP	8/7	14/13	4/1
Alabama	0/0	DNP	6/4	12/7	0/1	23/8	INJ	4/0	DNP	10/9	6/4	0/2
Florida	0/1	DNP	11/8	28/4	2/1	17/7	INJ	2/0	DNP	10/6	17/11	2/1
Memphis State	0/0	DNP	9/14	12/2	DNP	17/8	INJ	10/2	DNP	9/3	6/2	5/0
Louisville	0/0	DNP	8/10	12/3	0/2	16/4	INJ	2/2	DNP	4/11	14/9	0/0
Cincinnati	2/1	DNP	8/6	18/10	5/2	23/13	INJ	0/1	DNP	16/11	12/4	0/1
Ole Miss	2/1	DNP	15/12	10/8	5/3	14/1	INJ	7/2	DNP	13/5	6/0	4/1

## Florida State & Opponent High/Lows

	FSU High	FSU Low	Opponent Low	Opponent High
Field Goals Made	45, vs. Stetson	17, vs. Auburn	13 by Stetson	38 by Memphis State
Field Goals Attempted	72, vs. Stetson	51, vs. Auburn	40 by Oklahoma State	80 by North Carolina
Field Goal Percentage	66.0, vs. Nebraska	33.3, vs. Auburn	26.0 by Stetson	56.3 by Louisville
Free Throws Made	33, vs. Tulane	4, vs. Memphis State	0 by Albany State	23 by Auburn & Montclair St.
Free Throws Attempted	41, vs. Tulane	8, vs. Memphis State	7 by Albany State & S. Florida	39 by Mississippi
Free Throw Percentage	80.9, vs. St. Joseph's	52.0, vs. North Carolina	0 by Albany State	91.0 by North Carolina
Rebounds	58, vs. Tulane	30, vs. Auburn	22 by Nebraska	48 by Florida
Team Fouls	35, vs. Mississippi	13, vs. North Carolina	15 by Stetson	29 by Delta State
Assists	24, vs. Albany State	5, vs. Auburn	3 by Stetson	24 by Penn State
Turnovers	34, vs. Nebraska	13, vs. Temple	11 by North Carolina	39 by Stetson
	vs. Delta State			
Blocks	9, vs. Army	0, vs. Several Opponents	0 by S. Florida & Stetson	7 by Temple
Steals	19, vs. Florida (1/27)	2, vs. Stetson	4 by Florida	19 by Delta State
	19, vs. Florida (2/19)			

## Individual Season Highs

	FSU	Opponents
Field Goals Made	12, Brenda Cliette vs. Nebraska	12, Regina Pope, Albany State
Field Goals Attempted	25, Lisa Foglio vs. Alabama-Birmingham	30, Regina Pope, Albany State
Free Throws Made	14, Sue Galkantas vs. Tulane	9, Tracey Brown, Montclair State
Free Throws Attempted	17, Sue Galkantas v. Tulane	13, Tracey Brown, Montclair State
Points	34, Sue Galkantas v. Tulane	29, Tracey Brown, Montclair State
Rebounds	17, Brenda Cliette vs. Montclair State	18, Deb Temple, Delta State
Assists	8, Lynn Marnie vs. Tennessee-Chattanooga	9, Anne Troyan, Penn State
	8, Lynn Marnie vs. Cincinnati	9, Val Robinson, Florida A&M
Blocked Shots	6, Brenda Cliette vs. Army	7, Marilyn Stephens, Temple
Steals	7, Brenda Cliette vs. Tennessee-Chattanooga	8, Pam Leake, North Carolina
	7, Brenda Cliette vs. Florida	

# INDIVIDUAL RECORDS

## Florida State

**Points**—37, Sue Galkantas vs. Florida (12/3/80)  
**Points (Half)**—25, Sue Galkantas vs. Georgia State (11/21/80)  
**Field Goals Attempted**—30, Laine Lasseter vs. Mercer (1/26/81)  
**Field Goals Made**—17, Laine Lasseter v. SE Louisiana (12/13/79)  
**Free Throws Attempted**—17, Sue Galkantas vs. Tulane (2/5/83)  
**Free Throws Made**—14, Sue Galkantas vs. Tulane (2/5/83) and Sue Galkantas vs. Memphis State (1/25/82)  
**Free Throw Pct. (10 min.)**—92.3, Lynn Dee McDonald (12 of 13) vs. Florida A&M (12/4/79)  
**Rebounds**—23, Laine Lasseter vs. South Florida (12/2/78)  
**Assists**—14, Shirley Silsby vs. Flagler (2/6/76)  
**Steals**—8, Glenda Stokes vs. Oral Roberts (12/15/79)  
**Blocked Shots**—6, Brenda Cliette vs. Army (1/2/83) and Laine Lasseter vs. Mercer (11/17/78)

## Opponents

**Points**—44, Wanda Hightower, Alabama-Birmingham (1/13/80)  
**Points (Half)**—25, Wanda Hightower, Alabama-Birmingham (1/13/80)  
**Field Goals Attempted**—30, Regina Pope, Albany State (12/1/82)  
**Field Goals Made**—18, Wanda Hightower, Alabama-Birmingham (1/13/80) and Carol Chason, Valdosta State (2/24/76)  
**Free Throws Attempted**—17, Robin Lee, Virginia Tech (1/16/82)  
**Free Throws Made**—14, Robin Lee, Virginia Tech (1/16/82)  
**Free Throw Pct. (10 min.)**—88.5 Robin Lee (14 of 17), Virginia Tech (1/16/82)  
**Rebounds**—19, Tammy Jackson, Florida (12/8/83)  
**Assists**—12, Diane Jones, Memphis State, (1/25/82)  
**Steals**—8, Pam Leake, North Carolina (11/27/82)  
**Blocked Shots**—7, Quintella Bonner, Florida (1/10/79); Anne Donovan, Old Dominion (1/17/82) and Marilyn Stephens, Temple (1/6/83)

## Single Season Records

### Total Points

Name	Season	Games	Points
Sue Galkantas	1982	29	710
Sue Galkantas	1981	34	627
Cherry Rivers	1980	31	514
Sue Galkantas	1983	29	491
Cherry Rivers	1979	36	464
Lisa Foglio	1983	29	445
Lisa Foglio	1982	26	439
Jackie Arnold	1978	23	410
Laine Lasseter	1979	22	405
Brenda Cliette	1983	29	392

### Scoring Average

Name	Season	Games	FG	FT	Pts.	Avg.
Sue Galkantas	1981	29	261	105	627	21.6
Sue Galkantas	1980	34	282	146	710	20.9
Laine Lasseter	1979	22	173	59	405	18.4
Cherry Rivers	1979	26	197	70	464	17.8
Jackie Arnold	1978	23	173	37	410	17.8
Laine Lasseter	1980	21	162	47	371	17.6
Sue Galkantas	1983	29	184	123	491	16.9
Lisa Foglio	1982	26	190	59	439	16.9
Cherry Rivers	1980	31	216	82	514	16.6
Lisa Foglio	1983	29	184	77	445	15.3

## Total Rebounds

Name	Season	Games	Rebounds
Cherry Rivers	1977	24	336
Sue Galkantas	1982	34	296
Glenda Stokes	1980	35	294
Brenda Cliette	1983	29	269
Glenda Stokes	1982	37	276
Sue Galkantas	1981	29	270
LeeVayn Oliver	1982	35	260
Cherry Oliver	1980	31	257
LeeVayn Oliver	1983	29	248
Cherry Rivers	1978	22	226

## Rebounding Average

Name	Season	Games	Rebounds	Avg.
Cherry Rivers	1977	24	336	14.0
Cherry Rivers	1978	22	226	10.3
Laine Lasseter	1979	22	222	10.0
Sue Galkantas	1981	29	270	9.3
Brenda Cliette	1983	29	269	9.3
Sue Galkantas	1982	34	296	8.7
Glenda Stokes	1980	35	294	8.4
LeeVayn Oliver	1983	30	298	8.3
Cherry Rivers	1980	31	257	8.3
Cherry Rivers	1979	26	210	8.1

## Assists

Name	Season	Games	Assists
Shirley Silsby	1977	23	184
Lynn Marnie	1982	36	135
Rose Harper	1980	35	125
Sunnie O'Neal	1982	37	120
Teresa Tinsley	1979	27	102
Lisa Foglio	1981	27	98
Lisa Foglio	1983	29	96
Teresa Tinsley	1980	35	95
Lynn Marnie	1983	23	93
Lisa Foglio	1982	26	80

## Field Goal Percentage

Name	Season	Games	FG-FGA*	Pct.
Glenda Stokes	1983	29	103-171	.602
Lisa Foglio	1982	26	190-319	.596
Sue Galkantas	1983	29	184-323	.570
Laine Lasseter	1980	21	162-290	.560
Sue Galkantas	1982	34	282-536	.526
LeeVayn Oliver	1983	30	147-281	.523
LeeVayn Oliver	1982	35	160-307	.521
Laine Lasseter	1981	28	154-296	.520
Lisa Foglio	1982	29	184-357	.515
Lisa Foglio	1981	27	139-270	.515

\*Minimum of 100 made

## Free Throw Percentage

Name	Season	Games	FT-FTA*	Pct.
Lisa Foglio	1983	29	77-94	.819
Lisa Foglio	1981	27	65-81	.802
Sue Galkantas	1983	29	123-154	.799
Sue Galkantas	1981	29	109-139	.755
Lisa Foglio	1982	26	59-80	.738
Rose Harper	1979	27	39-56	.696
Lynn Dee McDonald	1980	28	103-150	.687
Meg Fahey	1982	34	37-54	.685
Sue Galkantas	1982	29	146-214	.682
Sunnie O'Neal	1982	37	35-52	.673

\*Minimum of 50 attempts



# CAREER RECORDS

## Total Points

Name	Years	Games	Points
Sue Galkantas	1980-83	92	1828
Cherry Rivers	1976-80	103	1636
Laine Lasseter	1978-82	86	1265
Lisa Foglio	1980-83	82	1227
Glenda Stokes	1979-83	130	1118
LeeVayn Oliver	1981-83	91	846
Chris Brokas	1976-79	64	833
Shirley Silsby	1976-79	69	799
Rose Harper	1977-81	111	799
Jackie Arnold	1977-79	46	727

## Scoring Average

Name	Years	Games	FG	FT	Pts.	Avg.
Sue Galkantas	1980-83	92	727	378	1828	19.9
Cherry Rivers	1976-80	103	669	298	1636	15.9
Jackie Arnold	1977-79	46	319	89	727	15.8
Lisa Foglio	1981-83	82	513	201	1227	15.0
Laine Lasseter	1978-82	86	540	185	1265	14.6
Brenda Cliette	1982-83	29	163	66	392	13.5
Chris Brokas	1976-79	64	349	101	833	13.0
Shirley Silsby	1976-79	69	372	55	799	11.6
LeeVayn Oliver	1980-83	91	358	130	846	9.3
Lynn Dee McDonald	1979-81	47	154	125	433	9.2

## Total Rebounds

Name	Years	Games	Rebounds
Cherry Rivers	1976-80	103	1029
Glenda Stokes	1979-83	130	938
Sue Galkantas	1980-83	92	787
LeeVayn Oliver	1980-83	91	646
Laine Lasseter	1978-82	86	624
Chris Brokas	1976-79	64	580
Rose Harper	1977-81	111	384
Jackie Arnold	1977-79	46	325
Linda Gray	1978-82	82	309
Brenda Cliette	1982-83	29	269
Lisa Foglio	1980-83	82	269

## Rebounding Average

Name	Years	Games	Rebounds	Avg.
Cherry Rivers	1976-80	103	1029	10.0
Brenda Cliette	1982-83	29	269	9.3
Chris Brokas	1976-79	64	530	9.1
Sue Galkantas	1980-83	92	787	8.5
Glenda Stokes	1979-83	130	938	7.2
Laine Lasseter	1978-82	86	624	7.2
LeeVayn Oliver	1980-83	91	646	7.1
Jackie Arnold	1977-79	46	325	7.1

## Assists

Name	Years	Games	Assists
Shirley Silsby	1976-79	69	348
Lynn Marnie	1980-83	86	293
Lisa Foglio	1980-83	82	274
Rose Harper	1977-81	111	268
Sunnie O'Neal	1980-83	72	253
Teresa Tinsley	1978-81	67	198
Sue Galkantas	1980-83	92	170
Glenda Stokes	1979-83	130	148

## Field Goal Percentage

Name	Years	Games	FG-FGA	Pct.
Lisa Foglio	1980-83	82	513-946	.542
Sue Galkantas	1980-83	92	727-1379	.527
Laine Lasseter	1978-82	86	540-1036	.521
LeeVayn Oliver	1980-83	91	358-695	.515
Brenda Cliette	1982-83	29	163-320	.509
Glenda Stokes	1979-83	130	417-827	.504
Meg Fahey	1981-82	34	119-237	.502
Lynn Dee McDonald	1979-81	47	154-330	.467
Cherry Rivers	1976-80	103	669-1513	.442
Linda Gray	1978-82	82	197-450	.437

## Free Throw Percentage

Name	Years	Games	FT-FTA	Pct.
Lisa Foglio	1980-83	82	201-255	.788
Sue Galkantas	1980-83	92	374-507	.738
Meg Fahey	1981-82	34	37-54	.685
Lynn Dee McDonald	1979-81	47	125-185	.675
Lynn Marnie	1980-83	86	91-141	.667
LeeVayn Oliver	1980-83	91	130-199	.653
Sunnie O'Neal	1980-83	72	65-101	.644
Linda Gray	1978-82	82	123-197	.624
Rose Harper	1977-81	111	101-163	.620
Laine Lasseter	1978-82	86	184-301	.611

## Games Played

Name	Years	Games
Glenda Stokes	1979-83	130
Rose Harper	1977-81	111
Cherry Rivers	1976-80	103
Sue Galkantas	1980-83	92
LeeVayn Oliver	1980-83	91
Laine Lasseter	1978-82	86
Lynn Marnie	1980-83	86
Lisa Foglio	1980-83	82
Linda Gray	1978-82	82
Sunnie O'Neal	1980-83	72

## Florida State Single Game Highs

### Points

37 Sue Galkantas vs. Florida, 1980
34 Sue Galkantas vs. Tulane, 1983
34 Sue Galkantas vs. Florida A&M, 1981
34 Laine Lasseter vs. S.E. Louisiana, 1980
33 Laine Lasseter vs. Mercer, 1981
33 Sue Galkantas vs. Georgia State, 1980
33 Sue Galkantas vs. Virginia Tech, 1982
32 Sue Galkantas vs. South Alabama, 1981
32 Sue Galkantas vs. Miami, 1980
32 Laine Lasseter vs. Florida, 1979
31 Laine Lasseter vs. Alabama, 1978
30 Cherry Rivers vs. Miami, 1980
30 Sue Galkantas vs. Kent State, 1982
30 Lisa Foglio vs. Miami (Ohio), 1982
30 Sue Galkantas vs. Memphis State, 1982
30 Sue Galkantas vs. Tulane, 1982

### Rebounds

23 Laine Lasseter vs. South Florida, 1978
21 Glenda Stokes vs. Virginia Tech, 1982
19 Chris Brokas vs. Troy State, 1979
19 LeeVayn Oliver vs. Cincinnati, 1981
17 Laine Lasseter vs. Florida, 1979
17 Sue Galkantas vs. Florida, 1980
17 Brenda Cliette vs. Montclair State, 1983
16 Sue Galkantas vs. Georgia Tech, 1980
16 Cherry Rivers vs. Miami, 1981
16 Laine Lasseter vs. Alabama-Birmingham, 1978
16 Cherry Rivers vs. Louisville, 1979
16 Laine Lasseter vs. Appalachian State, 1979

# SINGLE GAME TEAM RECORDS

## Two Team Combined Records

**Most Points**—195, FSU 101, Florida 94 (1/24/79)  
**Fewest Points**—73, FSU 47, Florida A&M 26 (2/2/75)  
**Most Foul Shots Attempted**—78, Virginia Tech 42, FSU 36 (1/16/82)  
**Most Foul Shots Made**—57, Virginia Tech 30, FSU 27 (1/16/82)  
**Most Foul Shots Missed**—27, FSU 18, South Florida 9 (1/8/82)  
**Turnovers**—76, Lewis 42, FSU 34 (1/2/82)

## Single Season Records

**Wins**—28 (1981-82)  
**Fewest Wins**—7 (1973-74)  
**Most Points**—2883 (1981-82)  
**Fewest Points**—488 (1973-74)  
**Percentage**—.800, 24-6 (1982-83)  
**Consecutive Wins**—11 (1981-82)  
**Consecutive Losses**—6 (1981-82)  
**Most Points Allowed**—2770 (1979-80)  
**Fewest Points Allowed**—413 (1973-74)  
**Highest Scoring Average**—77.9 (1981-82)  
**Lowest Scoring Average**—48.8 (1973-74)



## Series Record vs. All Opponents

Opponent	First Meeting	Last Meeting	Florida State Won	Lost
Alabama	1980	1983	2	2
Alabama-Birmingham	1978	1983	0	5
Alabama State	1976	1979	0	2
Albany State	1975	1983	2	6
Appalachian State	1979	1979	0	1
Army	1983	1983	1	0
Auburn	1975	1983	0	2
Barry College	1973	1973	1	0
Belhaven	1980	1980	1	0
Brigham Young	1982	1982	1	0
Central Florida	1976	1981	3	0
Central Missouri	1980	1980	0	1
Cincinnati	1978	1983	2	1
Clemson	1980	1980	0	1
College of Charleston	1976	1976	0	1
Dayton	1976	1976	1	0
Delta State	1977	1982	1	2
Denver	1980	1980	1	0
East Carolina	1980	1981	0	2
Flagler	1973	1975	3	4
Florida	1974	1983	19	15
Florida A&M	1975	1983	10	4
Florida International	1976	1983	4	0
Florida Southern	1980	1980	1	0
Fort Valley	1975	1975	0	1
Georgia Southern	1975	1982	0	4
Georgia State	1980	1980	0	1
Georgia Tech	1974	1980	1	1
Indiana	1980	1980	0	1
John Abbott	1976	1977	2	0
Judson College	1981	1981	1	0
Kent State	1981	1981	1	0
Lewis State	1982	1982	1	0
Louisville	1978	1983	0	6
McNeese State	1981	1981	1	0
Memphis State	1977	1983	2	3
Mercer	1974	1981	0	6
Miami	1975	1982	12	1
Miami (Ohio)	1982	1982	1	0
Miami Dade CC-Downtown	1976	1976	1	0
Miami Dade CC-North	1975	1975	1	0
Miami Dade CC-South	1974	1976	1	1

Opponent	First Meeting	Last Meeting	Florida State Won	Lost
Mississippi	1980	1983	1	2
Mississippi College	1979	1982	1	1
Mississippi State	1978	1979	0	2
Mississippi-Women	1980	1982	2	0
Mississippi Valley	1982	1982	0	1
Montclair State	1983	1983	1	0
Nebraska	1983	1983	1	0
New Orleans	1978	1978	2	0
North Carolina	1982	1982	2	0
Northeast Missouri	1978	1978	1	0
Northwest Louisiana	1980	1980	1	0
Old Dominion	1982	1982	0	1
Oklahoma State	1983	1983	1	0
Oral Roberts	1979	1979	0	1
Oregon State	1982	1982	0	1
Pensacola JC	1973	1977	2	0
Penn State	1982	1982	0	1
Pepperdine	1982	1982	1	0
Purdue	1981	1981	1	0
Rollins College	1975	1979	4	0
St. Joseph's	1983	1983	1	0
St. Louis	1981	1982	2	0
Savannah State	1974	1974	0	1
Shorter College	1974	1975	0	4
South Alabama	1976	1982	4	1
South Carolina	1977	1982	0	4
Southeast Louisiana	1980	1981	1	1
Southern Mississippi	1979	1982	0	3
South Florida	1974	1983	19	2
Stetson	1976	1983	6	1
Talladega College	1975	1975	0	1
Tampa	1975	1982	4	0
Temple	1983	1983	1	0
Tift	1974	1974	1	0
Tennessee-Chattanooga	1982	1982	1	0
Troy State	1977	1979	1	1
Tulane	1978	1983	3	4
Valdosta State	1975	1981	1	9
Virginia Tech	1980	1982	2	1
West Florida	1975	1975	1	0
West Georgia College	1975	1979	1	2
Winthrop College	1979	1979	0	1

# SINGLE GAME RECORDS

## Florida State

**Points**—104, vs. Dayton (1/12/71)  
**Fewest Points**—32, vs. Valdosta State (1/22/76)  
**Most Points (Half)**—60, vs. West Florida (1/23/76)  
**Field Goals Attempted**—97, vs. Florida (12/4/78)  
**Field Goals Made**—47, vs. Daytona (1/21/77)  
**Fewest Field Goals**—13, vs. Valdosta State (1/22/76)  
**Field Goal Percentage**—79.3% (23-29) vs. Denver (12/15/80)  
**Free Throws Attempted**—41, three times, latest vs. Tulane (2/5/83)  
**Fewest Free Throws Attempted**—3, vs. South Carolina (1/27/82)  
**Free Throws Made**—33, vs. Tulane (2/5/83)  
**Fewest Free Throws Made**—2, vs. S.E. Louisiana (2/13/80)  
**Most Free Throws Missed**—18, vs. South Florida (12/2/78)  
**Free Throw Percentage** (10. min.)—91.7% (11-12) vs. Alabama-Birmingham (11/25/80)  
**Personal Fouls**—36, vs. South Florida (1/8/82)  
**Fewest Fouls**—13, vs. North Carolina (1/27/82)  
**Rebounds**—71, vs. Stetson (11/29/78)  
**Assists**—29, vs. Florida A&M (1/20/82)  
**Steals**—31, vs. South Florida (1/16/81)  
**Blocked Shots**—12, vs. Mercer (11/17/78)  
**Turnovers**—42, vs. St. Louis (2/7/81)

## Opponents

**Points**—115, South Carolina (1/12/77)  
**Fewest Points**—16, West Florida (1/23/76)  
**Most Points (Half)**—60, Southern Mississippi (1/6/80)  
**Field Goals Attempted**—91, Georgia Tech (1/20/80)  
**Field Goals Made**—52, Southern Mississippi (1/6/80)  
**Fewest Field Goals**—7, West Florida (1/23/76)  
**Field Goal Percentage**—66.2% (45-68) Alabama-Birmingham (12/31/78)  
**Free Throws Attempted**—43, South Florida (12/2/78)  
**Fewest Free Throws Attempted**—0, Tampa (1/23/76)  
**Free Throws Made**—36, South Florida (12/2/78)  
**Fewest Free Throws Made**—0, Tampa (1/23/76) and Albany State (12/1/82)  
**Most Free Throws Missed**—18, South Florida (1/8/82)  
**Free Throw Percentage (10 min.)**—91.7% (18-19), Florida (2/23/80)  
**Personal Fouls**—31, Florida A&M (11/17/78)  
**Fewest Fouls**—11, Purdue (12/5/81)  
**Rebounds**—74, Florida (12/4/78)  
**Assists**—33, South Florida (2/28/80)  
**Steals**—20, Three Times, latest by Southern Mississippi (1/30/82)  
**Blocked Shots**—10, Old Dominion (1/17/82)  
**Turnovers**—46, South Florida (1/8/82)

# ALL-TIME LETTERWINNERS

### A-B-C

Joanne Abraham 1971-72-73  
 Vicki Alexander 1977  
 Deb Allen 1972-73-74  
 Jackie Arnold 1978-79  
 Jan Bailey 1974-75-76  
 Jill Baker 1981-82-83  
 Karen Barineau 1978-79  
 Judy Battles 1975-76-77  
 Diane Blaydes 1979-80  
 Cindy Boehmer 1973-74-75-76  
 Chris Brokas 1976-77  
 Susan Brown 1974-75-76  
 Terry Brown 1971-72-73  
 Ruthann Burgun 1981  
 Joye Burroughs 1982  
 MaryAnne Cannon 1973-74-75-76  
 Brenda Cliette 1983  
 Ann Collins 1977-78  
 Emma Colquitt 1973-74-75-76

### D-E-F

Melissa Davis 1978  
 Vicki Davis 1971-72-73  
 Tizza Drew 1977  
 Debbie Edwards 1970-71-72  
 Denise Eilbacher 1977-78  
 Meg Fahey 1982  
 Cindy Frank 1971-72-73  
 Lisa Foglio 1981-82-83

### G-H-I

Becky Gailey 1978  
 Nancy Galkantas 1982-83  
 Sue Galkantas 1981-82-83  
 Scooby Golden 1979-80  
 Jan Gomez 1970-71  
 Clara Gonzalez 1975-76-77  
 Marlene Graham 1973-74-75-76  
 Joan Gray 1970-71-72  
 Linda Gray 1979-80-81  
 Gina Harden 1979-80  
 Rose Harper 1978-79-80-81  
 Peggy Harstvedt 1976-77-78  
 Brauna Hatzell 1978  
 Candi Houston 1970-71  
 Rita Ivy 1970-71-72

### J-K-L

Francene Kocsis 1975-76  
 Barb Koontz 1974-75-76  
 Martha Lappe 1978-79  
 Charlene Lain 1970-71-72  
 June Lasseter 1980  
 Laine Lasseter 1979-80-81-82

### M-N-O-P

Stacy Macon 1977  
 Lynn Marnie 1980-81-82-83  
 Lynn Dee McDonald 1980-81  
 Yvette McKinney 1973-74-75  
 Val Nelson 1977  
 LeeVayn Oliver 1981-82-83  
 Sunnie O'Neal 1980-81-82  
 Anne Owen 1970-71  
 Karyn Palgut 1982  
 Barb Parr 1974-75-76  
 Patti Pink 1976-77  
 Kris Podulka 1979-80-81  
 Gayle Preston 1975-76  
 Debbie Putzi 1981

### Q-R-S

Kim Richardson 1977  
 Cherry Rivers 1977-78-79-80  
 Cathy Roberts 1970-71-72  
 Sandra Ruffo 1978  
 Meg Schuler 1979  
 Susan Seamon 1971-72-73  
 Darlene Shannon 1978-79  
 Joanne Sharpe 1970-71-72  
 Jode Shaw 1975  
 Dawn Shields 1980  
 Vicki Sperring 1971-72  
 Shirley Silsby 1976-77-78  
 Glenda Stokes 1980-81-82-83

### T-U-V

Terri Thomas 1978  
 Susie Thrapp 1981  
 Teresa Tinsley 1979-80  
 Debbie Tippins 1977

### W-X-Y-Z

Cheryl Weigand 1976-77-78  
 Lahna Wood 1983  
 Diane Wright 1971-72  
 Monica Wright 1970-71-72



# YEAR BY YEAR RESULTS

Florida	39	L	49
Barry College	50	W	33
Florida	52	W	36
Flagler	53	W	35
Florida	32	W	31
Mercer	45	L	64
Flagler	31	L	41
South Florida	62	W	41
Flagler	76	W	38
Florida	48	W	45

## 1974-75 (15-17) FSU OPP

Albany State	62	W	55
Valdosta State	42	L	53
Florida A&M	77	W	34
Shorter College	52	L	65
Shorter College	63	L	78
Savannah State	48	L	70
South Florida	68	W	40
Miami Dade South	59	W	41
Rollins College	61	W	48
Florida	44	L	67
Flagler College	51	L	60
Florida	53	W	47
Georgia Tech	58	W	22
Shorter College	36	L	54
Tift	58	W	47
Valdosta State	32	L	49
Shorter College	35	L	69
Georgia Southern	53	L	65
Valdosta State	50	L	54
Albany State	43	L	61
Florida A&M	47	W	26
Florida	41	L	49
Tampa	48	W	36
Flagler	52	L	59
Miami	59	W	45
South Florida	70	W	53
Florida	44	W	28
Flagler	59	W	55
Flagler	45	L	53
Miami Dade North	59	W	40
Auburn	51	L	64
Fort Valley	43	L	58

## 1975-76 (12-12) FSU OPP

Rollins	56	W	43
Albany State	50	L	71
West Florida	100	W	16
South Florida	57	W	41
Tampa	66	W	48
Rollins	64	W	56
Valdosta State	44	L	91
Tampa	82	W	50
West Georgia College	61	L	88
Talladega College	55	L	100
College of Charleston	61	L	93
Albany State	44	L	73
Miami Dade-South	67	L	70
Florida International	58	W	35
Pensacola J.C.	73	W	51
Florida	65	W	59
Georgia Southern	54	L	83
Florida	45	L	64
Miami Dade Downtown	73	W	51
Florida International	81	W	44
Florida	45	L	68
Valdosta State	50	L	101
Florida	39	L	55

Albany State	38	L	87
Mercer	53	L	96
Florida	54	L	80
Valdosta State	65	L	104
John Abbott College	62	W	60
Stetson	78	W	29
Florida	65	L	67
Rollins	87	W	52
Central Florida	77	W	63
Dayton	104	W	33
South Alabama	87	W	66
Albany State	73	L	80
Albany State	73	L	80
West Georgia	54	L	79
Judson College	97	W	79
Stetson	72	W	57
Pensacola J.C.	86	W	40
Valdosta State	60	L	92
South Florida	69	W	46
Florida	67	L	72
Florida	60	L	72
Delta State	60	L	106

## 1977-78 (8-8) FSU OPP

Valdosta State	57	L	92
Florida	93	W	66
Troy State	71	W	61
South Florida	72	W	58
Memphis State	69	L	91
South Carolina (N)	52	L	115
Georgia Southern	71	L	79
John Abbot College	71	W	67
Florida A&M	84	W	59
Florida	63	L	102
Albany State	86	L	94
Florida	100	W	80
South Florida (OT)	84	W	76
*South Florida	65	L	70
*South Florida	86	W	61
*South Florida	59	L	61
*State Tournament			

## 1978-79 (18-15) FSU OPP

Mississippi State	60	L	64
South Alabama	76	W	43
Mercer	73	L	83
N.E. Missouri	87	W	67
Stetson	61	W	63
South Florida	89	W	80
Florida	88	W	79
New Orleans	101	W	66
Tulane	65	L	78
Louisville	60	L	94
Cincinnati	61	W	57
Alabama-Birmingham	85	L	87
Memphis State	78	L	101
South Florida	73	W	56
Florida	91	W	72
Miami	79	W	53
New Orleans	101	W	66
Florida A&M (H)	79	L	84
Louisville	73	L	77
West Georgia College	73	W	59
Alabama State	73	L	95
Alabama-Birmingham	79	L	95
Miami	79	W	72
Appalachian State	83	L	89
Winthrop College	63	L	71
Stetson	59	L	61
Florida A&M (A)	61	L	77
Stetson	89	W	56
South Florida	90	W	56
Miami	83	W	57
Florida	89	W	85
Florida	101	W	94
Delta State	64	L	93

Mississippi State	61	L	73
Alabama-Birmingham	85	L	95
South Carolina	68	L	93
South Florida	87	W	58
Florida A&M (H)	74	W	61
Southern Miss.	65	L	107
Troy State	78	L	92
Belhaven	81	W	75
Miami	82	W	64
Oral Roberts	68	L	74
Virginia Tech	67	W	57
Louisville	67	L	86
Tulane	74	L	95
Mississippi College	50	L	90
Alabama	61	L	88
Alabama-Birmingham	82	L	96
Florida	92	W	77
Miami	93	W	74
East Carolina	61	L	69
Mississippi	52	L	80
Louisville	60	L	77
Mercer	86	L	100
Northwest Louisiana	85	W	81
Florida	88	W	84
Florida Southern	97	W	58
Virginia Tech	54	L	77
Southeast Louisiana	70	L	73
Tulane	65	L	75
Florida A&M (A)	60	L	67
South Florida	100	W	88
Florida	67	L	78
Miami	72	W	61
Florida	84	W	76
Florida	71	L	84
Mercer	75	L	84

## 1980-81 (14-15) FSU OPP

Georgia Tech (A)	84	L	97
Georgia Alabama (A)	79	L	96
South Alabama (A)	79	L	82
Valdosta	*58	L	62
Alabama (N)	*77	W	76
Florida (H)	90	W	48
Miami (H)	87	W	73
Central Florida (H)	92	W	75
Denver (H)	93	W	41
Mississippi-Women (A)	**73	W	70
Central Missouri (N)	**60	L	69
Clemson (N)	**59	L	78
Indiana (H)	76	L	79
East Carolina (H)	67	L	78
Cincinnati (A)	65	L	91
Florida A&M (H)	76	W	64
South Florida (H)	79	W	41
Southeast Louisiana (A)	94	W	68
Southern Miss. (A)	69	L	73
Mercer (H)	76	L	80
South Carolina (A)	57	L	69
Miami (A)	62	W	55
Tulane (A)	+60	L	70
St. Louis (N)	+78	W	56
Florida (A)	81	L	83
South Florida (A)	71	W	61
Florida A&M (A)	76	W	61
South Alabama (H)	80	W	67
Miami (N)	++70	L	79

\*Lady Sunshine Classic  
 \*\*MUW Christmas Tournament  
 +Metro Conference Tournament  
 ++FAIAW State Tournament

Stetson (H)	81	W	54
McNeese State (N)	*69	W	62
Valdosta State (N)	*82	W	69
Central Florida (H)	75	W	65
Kent State (N)	**80	W	66
Purdue (A)	**65	W	39
Florida (H)	60	L	63
Florida International (A)	74	W	64
Miami (A)	77	W	74
South Alabama (H)	99	W	44
Lewis University (N)	+94	W	46
Miami (Ohio) (N)	+89	W	68
North Carolina (N)	+77	W	68
South Florida (A)	80	W	60
Mississippi U. for Women (H)	76	W	54
Florida (A)	86	W	79
Virginia Tech (A)	92	W	82
Old Dominion (A)	65	L	100
Florida A&M (A)	86	L	87
Memphis State (H)	90	L	104
South Carolina (H)	81	L	82
Southern Miss. (H)	84	L	94
Louisiana (A)	73	L	89
Tulane (H)	89	W	70
Florida A&M (H)	59	W	58
Miami (H)	66	W	52
Mississippi (H)	63	W	61
Tampa (H)	90	W	50
South Florida (H)	77	W	49
Miami (N)	++84	W	80
Florida A&M (N)	++76	W	65
Mississippi College (H)	@71	W	69
Georgia Southern (H)	@78	L	81
Mississippi Valley (H)	@83	L	95
Pepperdine (N)	&76	W	63
Brigham Young (N)	&75	W	71
Oregon State (N)	&60	L	76

\*Lady Sunshine Classic  
 \*\*Boilermaker Premiere  
 +Hurricane New Year's Classic  
 ++FAIAW State Tournament  
 @AIAW Region III Tournament  
 & NWIT  
 Includes forfeit win over St. Louis

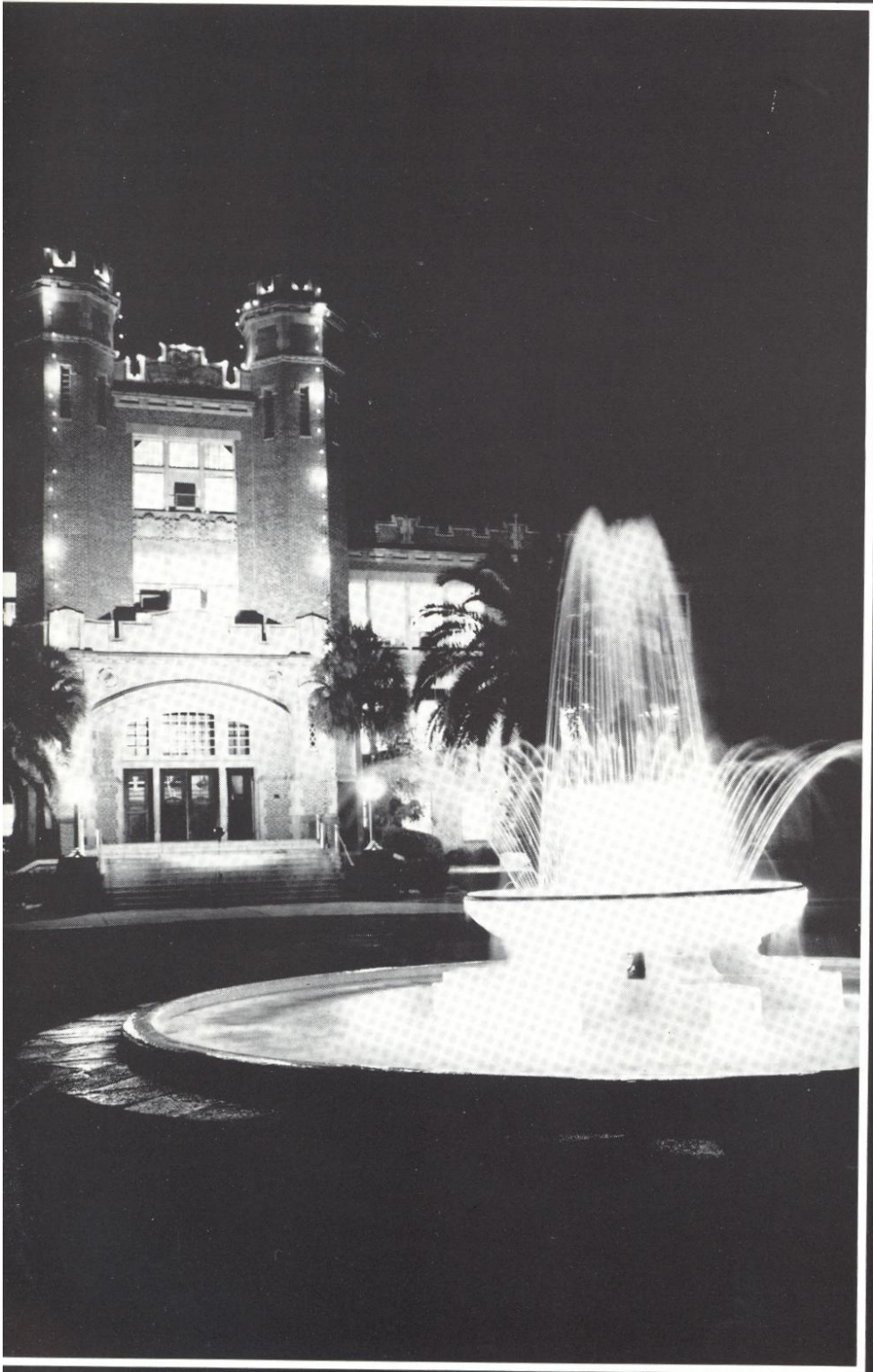
## 1982-83 (24-6) FSU Opp

Tennessee-Chat. (N)*	94	W	77
North Carolina (N)*	75	W	74
Albany State (H)	94	W	52
Stetson (H)	102	W	42
Alabama (A)	73	W	64
Penn State (N)**	84	L	86
Delta State (N)**	75	W	67
Nebraska (N)##	100	W	84
Army (N)##	69	W	60
Oklahoma State (N)##	72	W	52
Temple (A)	74	W	69
St. Joseph's (A)	59	W	55
Montclair State (H) OT	89	W	81
Tulane (H)	81	W	56
Memphis State (H) OT	89	W	81
Tulane (H)	81	W	56
Memphis State (H)	90	W	82
Florida A&M (A)	66	W	60
Alabama-Birmingham (A)	73	L	75
Auburn (A)	43	L	73
Florida	68	W	63
Stetson (A)	77	W	64
South Florida	71	W	52
Tulane (A)	91	W	65
Florida A&M (H)	82	W	65
Florida International (H)	77	W	65
Alabama (H)	61	L	65
Florida (H)*	89	W	67
Memphis State (A)	68	W	66
Louisville (A)##	56	L	67
Cincinnati (N)##	84	W	61
Mississippi (A)+	76	L	86

\*Lady Sunshine Classic  
 \*\*Mid-American Classic  
 ##Hurricane Christmas Classic  
 #Metro Conference Tournament  
 +First Round NCAA Playoffs

## Coaching Records

Year	Head Coach	Record	Pct.
1973-74	Millie Usher	7-3	.700
1974-75	Millie Usher	15-17	.469
1975-76	Diane Murphy	12-12	.500
1976-77	Diane Murphy	10-12	.455
1977-78	Diane Murphy	8-8	.500
1978-79	Diane Murphy	18-15	.545
1979-80	Janice Dykehouse	13-22	.371
1980-81	Janice Dykehouse	14-15	.483
1981-82	Janice Dykehouse	28-10	.737
1982-83	Janice Dykehouse	24-6	.800



## THE UNIVERSITY

---

**T**ucked in the Florida Panhandle just shy of the state's northern border lies Florida State University. At home in the capital city of Tallahassee, Florida State is a co-educational university and is the senior member of the nine universities in the state system.

A beautiful campus of some 345 acres is wrapped in greenery that combines the blossoms of camellias, azaleas and dogwoods with palm trees and moss-hung oaks. Over 150 buildings from old gothic structures to the newer contemporary designs dot the rolling campus, housing some 22,000 students, and nearly 4,000 faculty and staff.

Academic excellence is found in 14 colleges and schools offering courses of study in 18 major disciplines. There are over 90 choices of bachelor's degrees, 95 choices of master's degrees and doctorate degrees offered in 66 areas.

Students at FSU listen and learn from a distinguished faculty that includes six National Academy of Science members and a Nobel Prize winner. Although native Floridians make up the largest percentage of the student body, Florida State's students come from every state in the nation and another 115 foreign countries.

---

# THIS IS FLORIDA STATE

---

---

But it all began Jan. 1, 1857, in one building on 10 acres, when the governor of Florida, James E. Broome, signed a bill locating in Tallahassee the Seminary West of the Suwannee—the first of several names of the institution.

By 1860, the school, not yet a college, boasted an enrollment of 250 and in 1887, the president of the seminary organized the school into a four-year liberal arts college. At its first commencement in June 1891, degrees were conferred on two women and five men. Ten years later the institution was renamed Florida State College. In 1905, it became Florida Female College and in 1909 the name was changed to Florida State College for Women. Dr. Edward Conradi was named president, a post he would hold until 1941.

In 1945, FSCW assumed a dual identity. GIs stationed nearby already were attending classes at the women's school, but as men they couldn't legally enroll. Therefore, FSCW took on the additional title, Tallahassee Branch of the University of Florida (TBUF).

In 1947, Governor Millard Caldwell signed a bill making both the University of Florida and FSCW co-educational. FSCW became Florida State University.

As a university, Florida State has had six chief executives: Doak Campbell (1941-57), Robert M. Strozier (1957-60), Gordon W. Blackwell (1960-65), John Champion (1965-69), J. Stanley Marshall (1969-76) and Bernard F. Sliger, who has been president since 1976.

Since 1947, enrollment has nearly quadrupled. Today, its 14 schools and colleges offer students the opportunity to choose from more than 100 career options in arts and sciences, business, communication, criminology, education, home economics, law, library and information studies, music, nursing, social sciences, social work, theatre and visual arts. There also is a joint engineering program in cooperation with Florida A&M University.

Florida State's location in the state capital affords excellent study, research and internship opportunities in the areas of government, social sciences and political sciences.

In the natural science areas, FSU excels as a basic research university. The nuclear physics laboratory is ranked by the National Science Foundation as one of the top four in the nation. FSU also maintains a large marine laboratory on the nearby coast of the Gulf of Mexico.

Overseas study programs in fields ranging from law to hotel and restaurant administration are offered in Florence, Italy; Oxford and London, England; Switzerland, Yugoslavia and the Panama Canal Zone.

Among its faculty, FSU counts some members of the National Academy of Sciences, including Paul Dirac, Nobel Prize winner in physics.

Kurt Waldheim, former secretary general of the United Nations, recently joined the Florida State faculty as a distinguished visiting lecturer in international relations and law.





The FSU School of Music, with approximately 800 students majoring in its various disciplines, is one of the largest in the south. The world-renowned Florida State University Marching Chiefs always add to the excitement when they take the field at halftime during Seminole home football games.

Near the Marching Chiefs' practice field is the circus lot, home of the Flying High Circus, the only all-collegiate circus in the United States.

The School of Theatre is one of the best of its kind in the nation. Burt Reynolds, acclaimed for his work with aspiring theatre professionals at the Reynolds Institute for Theatre Training in Jupiter, Florida, is an adjunct professor on the theatre faculty.

Fine entertainment also is provided each year by the FSU Artist Series, which has brought the Dave Brubeck Quartet, "A Chorus Line," the Pennsylvania Ballet and others to Tallahassee.

On campus, the Union Program Office presents concerts, movies, lectures, flea markets and other activities throughout the year. The intramural office offers year-round sports activities available to students and faculty.

When it comes to intercollegiate athletics, Florida State University has established a winning tradition. Both the men's and women's athletic programs are among the best in the nation.

But, it's not just good programs that make a university great. As President Bernard Sliger proclaims, it is the people who make Florida State the successful monument to learning that it is. And he takes special pride in the people - students, faculty, administrators and staff - who are Florida State University.





Sports Information Office  
Florida State University  
Post Office Box 2195  
Tallahassee, FL 32316  
(904) 644-1060