

FOOTBALL

★ ★ ★ PROGRAM ★ ★ ★

**FLORIDA
STATE
UNIVERSITY**
(SEMINOLES)

vs.

**TROY
STATE**

PRICE 15 CENTS



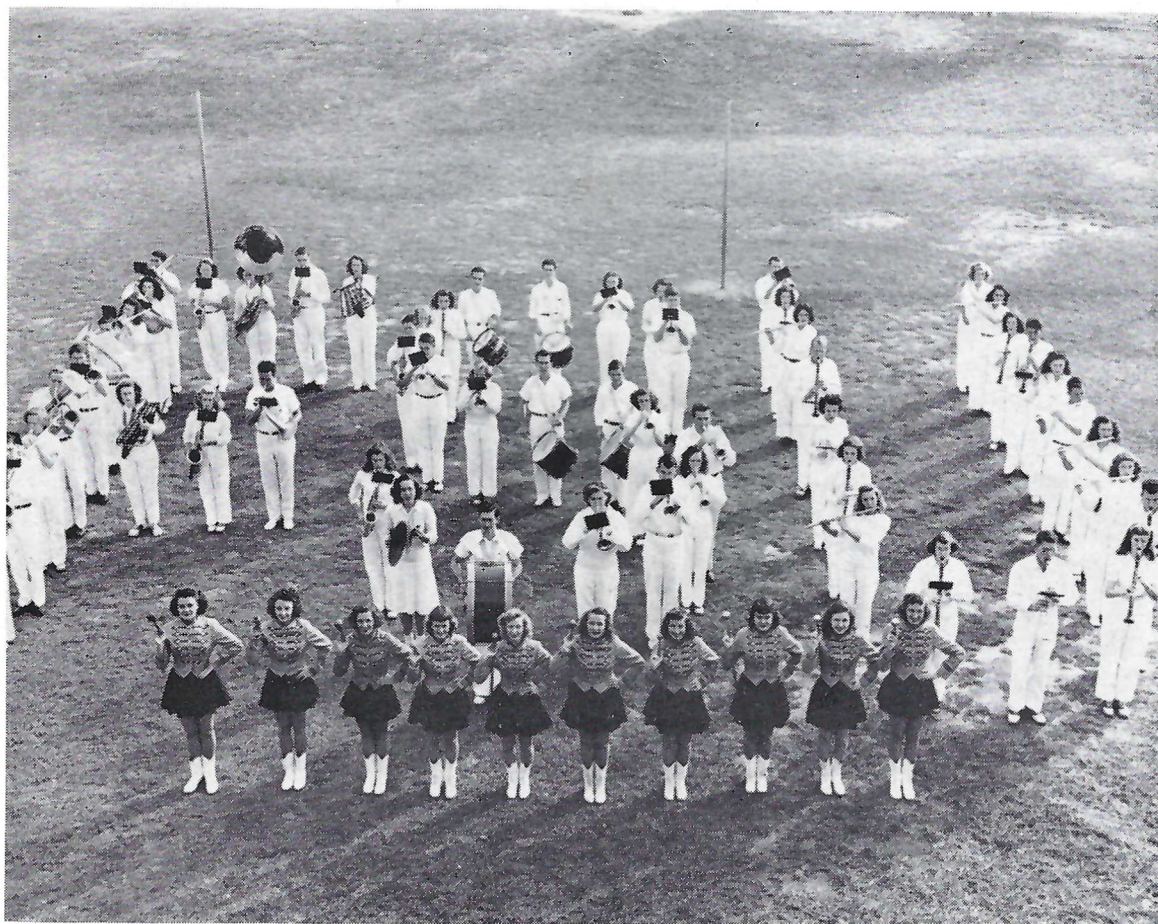
KICK-OFF
2:30 P.M.

CENTENNIAL FIELD
TALLAHASSEE, FLORIDA

THURSDAY
NOV. 27
1947

SEMINOLES, the name by which Florida State University athletic teams will be known, was chosen by the student body after almost three weeks of balloting. Credit for proposing "Seminole" cannot go to any one student, since a number of

students submitted that suggestion in the recent contest. Borrowed from the tribe of Indians who still inhabit the Florida Everglades, the name Seminole is distinctive of the State and is a fitting nickname for FSU teams.



F. S. U. BAND

TROY STATE TEACHERS PROBABLE STARTING LINE-UP

| | | | | |
|---------------------|--------------------|----------------------|-----------------------|-------------------|
| | FB Norman 28 | LHB Carlton 2 | RHB Franklin 16 | |
| | QB Bowden 7 | LE Scott 34 | RE Joiner 22 | |
| LT Bassett 27 | LG Davis 30 | C Underwood 19 | RG Long 11 | RT Green 25 |



TROY STATE'S COACHES

HEAD COACH AND ATHLETIC DIRECTOR FRED "BUDDY" McCOLLUM came to Troy State Teachers College from Livingston State Teachers where he turned out winning teams in all three major sports. His football team at Livingston won 6 and lost three; his cagers were victorious in 15 of 28 contests; and his baseball squad captured 15 wins against 4 losses in some stiff competition.

Before going to Livingston, he spent four years in the U. S. Army with airborne troops in the European Theater of Operation. He was discharged in 1946 with the rank of Lt. Col after receiving the Bronze Star and Purple Heart medals.

ASSISTANT COACH BERT TRAPANI graduated from Auburn last May and reported to McCollum in August soon after drills commenced. Trapani played football at end for Auburn in 1941 and 1942, transferred to Duke University

under Navy V-12 auspices in 1943, and then went on duty with the U. S. Marine Corps as recreation officer in the Pacific. He was discharged from the service with the rank of first lieutenant and returned to Auburn last season where he held down a flank post until becoming injured late in the season. Trapani hails from Savannah, Ga., where he received high renown in his high school football career.

ASSISTANT COACH SAM SMITH played football at Auburn in 1941 before going on duty with the Navy in the Pacific. His flank play at the Plains was rated outstanding and previously he was an All-State end from Dothan High School, and one of the best grid prospects ever to emerge from the Wiregrass section. "Sambo" as he is known on the campus was an assistant coach at Dothan High School for Rip Hewes for a time, and he's handling the tackle and guard play for the Teachers.

TROY STATE TEACHERS ROSTER

Coach: F. G. "Buddy" McCollum, Auburn

Assistants: Bert Trapani (Auburn), Sam Smith (Auburn)

Colors: Crimson and Black

Enrollment 800

| No. | CENTERS | CLASS | HT. | WT. | HOMETOWN |
|-----------------|-----------------|-----------|------|-----|-------------------|
| 17 | Ed Causey | Freshman | 5-10 | 170 | Montgomery, Ala. |
| 19 | Tommy Underwood | Freshman | 6- | 179 | Dothan, Ala. |
| 29 | Ivan Jones | Freshman | 6- | 160 | Jackson, Ala. |
| GUARDS | | | | | |
| 5 | Max Lane | Freshman | 5-11 | 170 | Graceville, Fla. |
| 11 | Bruce Long | Junior | 5-11 | 169 | Brewton, Ala. |
| 21 | James Sullivan | Freshman | 5-11 | 165 | Hartford, Ala. |
| 23 | Bill Screws | Junior | 6- 2 | 190 | Columbus, Ga. |
| 30 | Spencer Davis | Sophomore | 5-11 | 172 | Panama City, Fla. |
| 35 | Nolan Terry | Sophomore | 6- | 202 | Birmingham, Ala. |
| TACKLES | | | | | |
| 25 | Tay Green | Freshman | 6- 2 | 202 | Opp, Ala. |
| 26 | Harold Blanton | Freshman | 6- 1 | 209 | Troy, Ala. |
| 27 | Carlos Bassett | Freshman | 5-10 | 185 | Roanoke, Ala. |
| 36 | Ottis Johnson | Sophomore | 6- | 206 | Evergreen, Ala. |
| 31 | Frank Pelham | Sophomore | 6- 1 | 188 | Graceville, Fla. |
| ENDS | | | | | |
| 3 | Wilbur Johnson | Freshman | 6- 1 | 162 | Dothan, Ala. |
| 9 | John B. Golden | Sophomore | 6- 1 | 158 | Tallassee, Ala. |
| 14 | Johnny Kreis | Freshman | 6- 4 | 165 | Troy, Ala. |
| 22 | Wallace Joiner | Sophomore | 6- | 175 | Ashford, Ala. |
| 24 | C. L. Pierson | Freshman | 5-11 | 168 | Columbus, Ga. |
| 34 | Herman Scott | Sophomore | 5-10 | 180 | Prattville, Ala. |
| | Neal Moseley | Sophomore | 6- | 175 | Luverne, Ala. |
| BACKS | | | | | |
| 2 | Marvin Carlton | Sophomore | 5- 6 | 134 | Tallassee, Ala. |
| 4 | Ersell Beck | Freshman | 6- | 156 | Sweetwater, Ala. |
| 6 | Mack Rooks | Freshman | 5- 9 | 160 | Marianna, Fla. |
| 7 | Lamar Bowden | Freshman | 5- 7 | 150 | Troy, Ala. |
| 10 | Sonny Queen | Freshman | 5- 5 | 158 | Montgomery, Ala. |
| 13 | Johnny Rice | Freshman | 5-10 | 156 | Dothan, Ala. |
| 15 | Bill Trussell | Sophomore | 6- | 170 | Tallassee, Ala. |
| 16 | Ted Franklin | Freshman | 5-10 | 165 | Birmingham, Ala. |
| 18 | Shelby Searcy | Freshman | 5- 8 | 152 | Andalusia, Ala. |
| 28 | Gene Norman | Junior | 5-11 | 180 | Luverne, Ala. |
| 32 | Robert Riley | Freshman | 5-10 | 166 | Pensacola, Fla. |
| 33 | Billy Ezell | Freshman | 6- 1 | 160 | Troy, Ala. |
| Tom Towey | | | | | Mobile, Ala. |
| Gerald McDade | | | | | Montgomery, Ala. |
| Student Manager | | | | | |
| Trainer | | | | | |

FLORIDA STATE UNIVERSITY PROBABLE STARTING LINE-UP

LE
Costello
48

LT
Gilberg
59

LG
Quigley
53

C
Bryant
32

RG
Tulley
31

RT
Middlebrooks
54

RE
Banakas
50

QB
J. McMillan
17

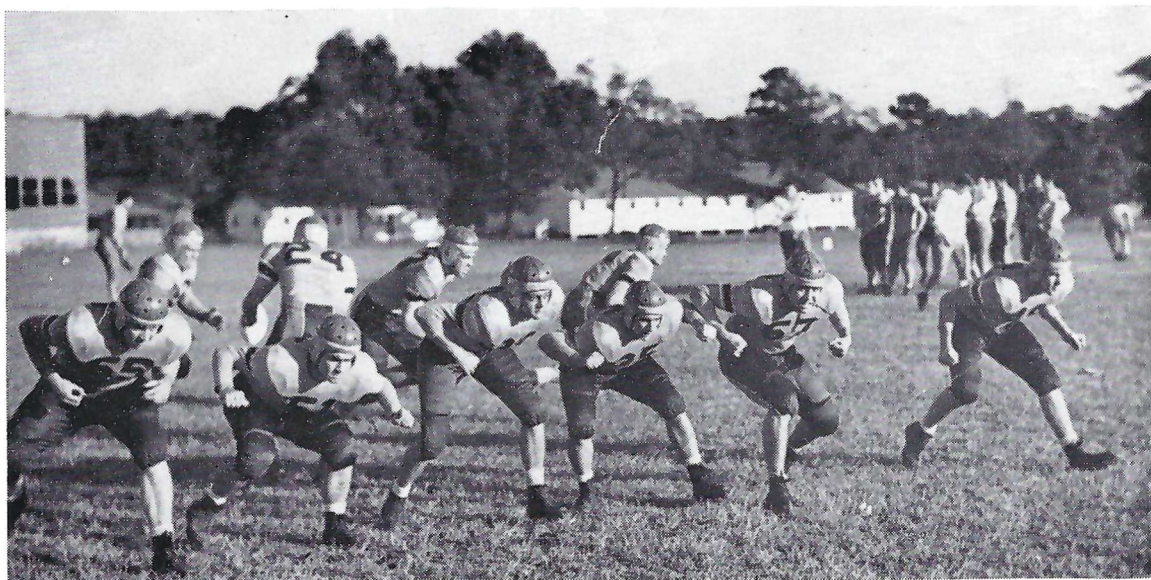
LH
Carter
21

FB
Watson
26

RH
Melton
19



SEMINOLES IN ACTION



FLORIDA STATE UNIVERSITY FOOTBALL ROSTER 1947

| No. | NAME | POS. | WT. | HT. | AGE | HOMETOWN | CLASSIFICATION |
|-----|--------------------|------|-----|------|-----|-------------------|----------------|
| 11 | Ted Payne | LHB | 163 | 5-10 | 20 | Tallahassee | 2 |
| 12 | Billy O'Steen | RHB | 172 | 5-10 | 20 | Melbourne | 2 |
| 13 | Gerald Manuel | FB | 182 | 5- 7 | 21 | Newberry | 2 |
| 14 | Donald Grant | QB | 170 | 5-10 | 24 | Perry | 2 |
| 15 | Philip Roundtree | LHB | 160 | 5- 8 | 24 | Chipley | 3 |
| 16 | Ralph Chaudron | LHB | 160 | 5-10 | 20 | Pensacola | 1 |
| 17 | Jack McMillan | QB | 165 | 6- | 21 | Quincy | 4 |
| 18 | Billy Parker | LHB | 170 | 5-10 | 20 | Clearwater | 1 |
| 19 | Leonard Melton | RHB | 160 | 6- | 18 | Tallahassee | 1 |
| 20 | Wendell Barnes | QB | 170 | 5-10 | 18 | Lake City | 1 |
| 21 | Wesley Carter | RHB | 175 | 5- 8 | 24 | Tallahassee | 2 |
| 22 | Harry Hughey | RHB | 155 | 5- 8 | 23 | Pensacola | 2 |
| 23 | Clyde Standland | T | 185 | 6- | 23 | Quincy | 2 |
| 24 | Tillman Burks | FB | 180 | 6- | 20 | Pensacola | 2 |
| 25 | Billy Bishop | FB | 175 | 5- 8 | 24 | Quincy | 2 |
| 26 | John Watson | FB | 178 | 5- 8 | 22 | Pensacola | 2 |
| 27 | Harold Conard | QB | 165 | 5- 9 | 20 | Panama City | 2 |
| 28 | Addison Meade | FB | 170 | 5-11 | 21 | Pensacola | 2 |
| 29 | James De Cosmo | LHB | 180 | 6- | 22 | Apalachicola | 2 |
| 30 | Wyatt Parrish | RHB | 170 | 5-10 | 19 | Chipley | 1 |
| 31 | Jack Tully | G | 185 | 6- | 21 | Tallahassee | 1 |
| 32 | Ed Quigley | G | 175 | 5- 9 | 22 | Panama City | 1 |
| 33 | Buddy Bryant | C | 180 | 6- 3 | 19 | Perry | 1 |
| 34 | J. P. Love | E | 185 | 6- | 20 | Tallahassee | 1 |
| 35 | Bob Fergers | G | 170 | 5- 9 | 19 | Hallandale | 1 |
| 36 | Joe Crona | C | 160 | 5- 9 | 20 | Pensacola | 1 |
| 37 | Bill Fannin | E | 175 | 6- 1 | 21 | Tallahassee | 1 |
| 38 | Joe Castara | G | 160 | 5- 8 | 22 | Tampa | 2 |
| 39 | Truby Shaw | E | 170 | 6- | 21 | Panama City | 2 |
| 40 | Bob Lanigan | E | 177 | 6- 1 | 21 | Coral Gables | 2 |
| 41 | Craig Eckermire | E | 175 | 5-11 | 22 | Tallahassee | 2 |
| 42 | Dan McClure | T | 197 | 6- | 21 | Stuart | 1 |
| 43 | Kenneth MacLean | FB | 195 | 6- | 20 | Quincy | 2 |
| 44 | Bill Benz | T | 203 | 5-10 | 21 | Jacksonville | 1 |
| 45 | Fred Schneider | E | 170 | 6- 1 | 18 | Winter Park | 2 |
| 46 | Chris Kalfas | G | 210 | 5- 9 | 18 | Tallahassee | 1 |
| 47 | Al Tharpe | T | 210 | 6- | 21 | Tallahassee | 1 |
| 48 | Jim Costellos | E | 194 | 6- 3 | 21 | Miami | 2 |
| 49 | Charles McMillan | E | 203 | 6- 1 | 19 | Quincy | 2 |
| 50 | Chris Banakas | E | 181 | 5-11 | 23 | Pensacola | 2 |
| 51 | Ed Dilsaver | G | 175 | 5- 9 | 22 | St. Augustine | 2 |
| 52 | Bill Kratzert | E | 180 | 6- 1 | 20 | Tallahassee | 1 |
| 53 | Jim Quigley | G | 190 | 5- 9 | 20 | Panama City | 1 |
| 54 | David Middlebrooks | T | 203 | 6- 1 | 20 | Pensacola | 2 |
| 55 | Bob Browning | T | 215 | 6- 3 | 19 | Madison | 1 |
| 56 | Frederick Boris | T | 212 | 6- 2 | 24 | Key West | 2 |
| 57 | Dick Williams | T | 220 | 6- 2 | 20 | Orlando | 2 |
| 58 | C. N. Procter | C | 196 | 6- 3 | 20 | Altamonte Springs | 3 |
| 59 | Leonard Gilberg | T | 230 | 6- | 20 | Tallahassee | 3 |
| 60 | Clice Yancey | T | 215 | 6- | 27 | Tallahassee | 2 |

SEMINOLE BACKS



COMMON PENALTIES

LOSS OF 5 YARDS: Violation of scrimmage positions, kickoff formation, neutral zone, attempt to draw opponents off side, illegal tackling, illegal lateral pass, illegal use of hands and arms on defense, crawling, running into kicker, offsides, delaying game, interference before ball is put into play, out of bounds when ball put in play, crawling.

LOSS OF 15 YARDS: Clipping, tackling out of bounds, tripping, hurdling, illegal shift, forward pass beyond line of scrimmage touched by an ineligible player, illegal interference by passing team, interfering with attempt to make fair catch, roughing kicker, tackling player who has made fair catch, interlocked interference, illegal use of hands or arms by offensive team, piling on, running or diving into player obviously out of play, unsportsmanlike conduct, illegally going on field, kneeling, intentionally grounding a pass, slugging.

LOSS OF A DOWN: Illegal lateral pass, illegal forward pass, intentionally grounding a pass (also carries 15 yard penalty), illegal interference by passing team (also carries 15 yard penalty), incomplete forward pass.

LOSS OF BALL: Failure to advance 10 yards in four downs, illegal interference on pass by team on defense, batting free ball forward, kicking free ball, offensive player on kickoff going out of bounds recovering ball.

LOSS OF HALF DISTANCE: Foul inside one yard line.

DISQUALIFICATION: Flagrant unsportsmanlike conduct, slugging, kicking, kneeling, striking on head, neck or face with the heel or back or side of hand, wrist or forearm, flagrant roughing of kicker.



REMAINING GAME OF SEMINOLES

Dec. 6: Alabama State Teachers (Night Game)
