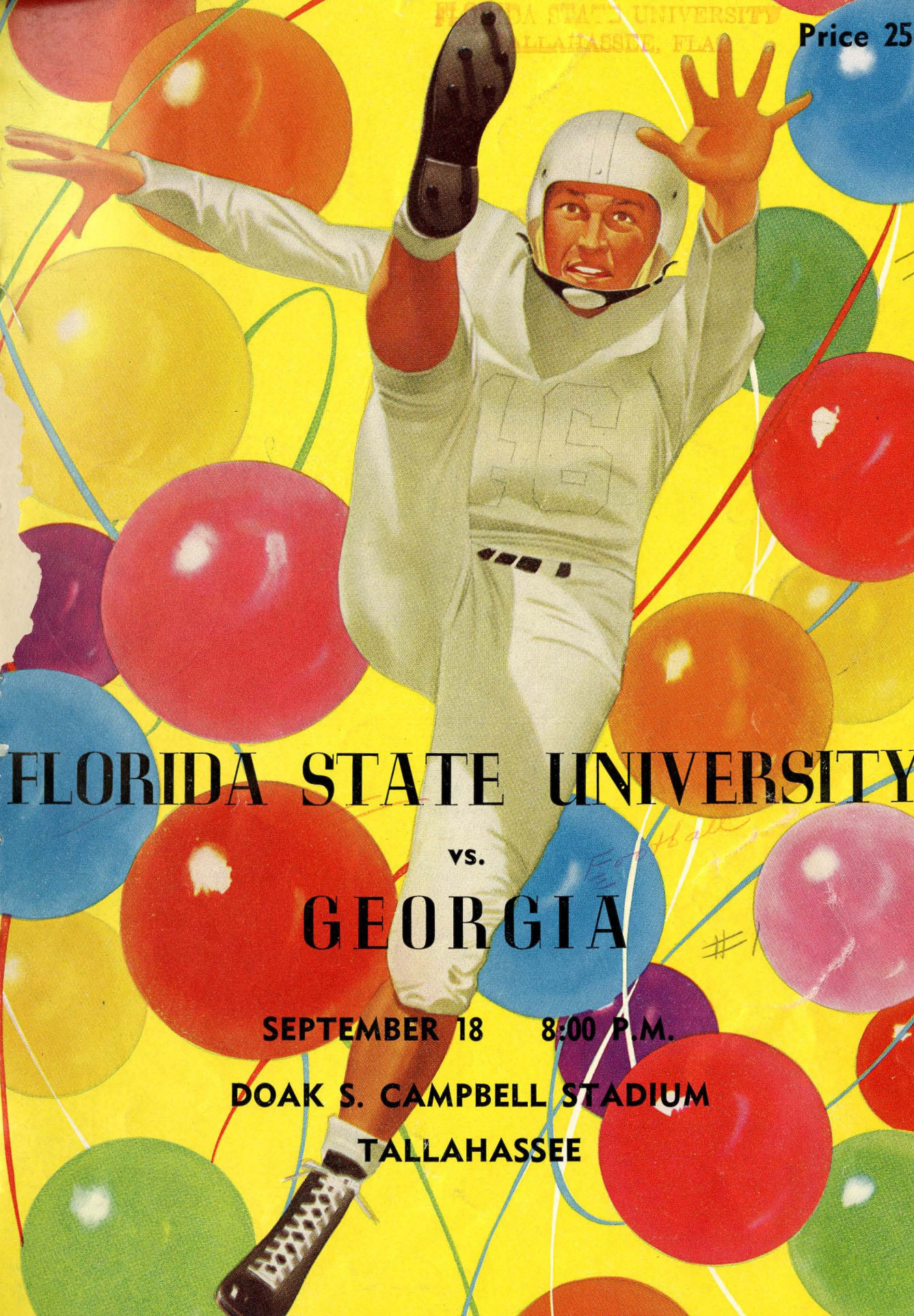


FLORIDA STATE UNIVERSITY  
TALLAHASSEE, FLA.

Price 25c



# FLORIDA STATE UNIVERSITY

vs.

# GEORGIA

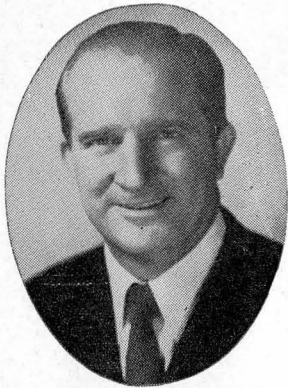
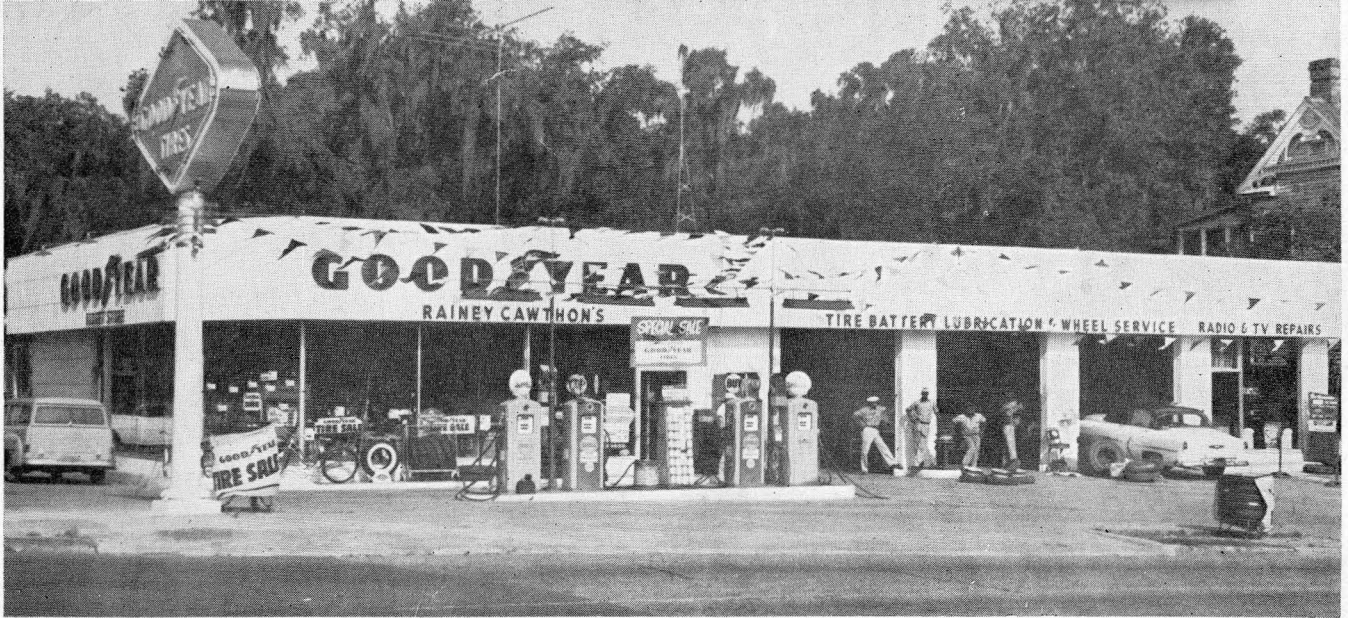
SEPTEMBER 18 8:00 P.M.

DOAK S. CAMPBELL STADIUM  
TALLAHASSEE

1951

#1

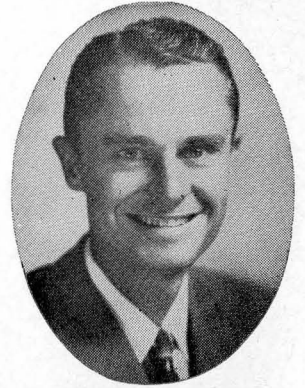
1000



RAINEY CAWTHON

# Rainey Cawthon's

- ★ RCA TELEVISION and RADIO
- ★ SHELL PRODUCTS ★ GOODYEAR TIRES
- "WE SERVICE WHAT WE SELL"
- ROAD SERVICE ● PHONE 2-1865 ●



FRED PIERSON

Compliments of

**TALLAHASSEE**

## **AUTOMOBILE DEALERS ASSOCIATION**

**Alford Chevrolet Co.**

**John Manthey, Inc.**

**Capital Lincoln-Mercury, Inc.**

**Mayo-Mingledorff Motors, Inc.**

**Cordell Motors**

**Proctor & Proctor**

**Dean Motors**

**Ivey Motors, Inc.**

**Drake Motors, Inc.**

**Tallahassee Motors, Inc.**

# Welcome



**DR. DOAK S. CAMPBELL**  
*President*

We are pleased to begin our 1954 schedule of activities with the University of Georgia as our guests. This institution, chartered in the year 1785, has a long record of educational service to the people of Georgia and the Southeast. Many citizens of the state of Florida have received their education at our sister institution in Athens.

We take this occasion to express our appreciation to the friends and supporters of the Florida State University. You have been most generous with your help as we are endeavoring to build here in Tallahassee a university that is worthy of the citizens and the young people of our great state.

A handwritten signature in cursive script that reads "Doak S. Campbell".

*President*  
*Florida State University*



**DR. A. B. MARTIN**  
*Vice President*



**EDWARD H. CUBBON**  
*Athletic Business Manager*



**DR. HOWARD DANFORD**  
*Athletic Director*

PHONE 2-2502

WHOLESALE AND RETAIL

## **FOSTER-MOYE, INC.,** **Athletic Equipment**

DISTRIBUTORS: }

**RAWLINGS MFG. CO.**  
**A. G. SPALDING BROS.**  
**SPOT-BILT SHOES**

117 E. Lafayette Street

Tampa 2, Florida



**Whatever the Sport**  
**We Furnish**  
**The Equipment**

Finkelstein's has served Florida schools and universities for nearly half a century. Our sports experts are always anxious to advise you on any problem regarding sports equipment.

We feature such outstanding sports equipment as:

- ★ SPALDING
- ★ SPOTBILT

- ★ RAWLINGS
- ★ WRIGHT & DITSON



**HARRY FINKELSTEIN CO.**  
 633 W. Bay, Cor. Jefferson

**WON'T YOU**

**HAV-A-TAMPA**  
**CIGAR**

**Eli Witt Tobacco & Candy Company**  
 TALLAHASSEE, FLORIDA

**THE LAUNDROMAT**

CLOTHES - RUGS - BLANKETS

Washed Clean — Fluff Dried and Folded  
*"Your Satisfaction Is Our Goal"*

PHONE  
 3-1789

115 W. Tennessee — 1005 N. Monroe

PHONE  
 2-3792

SHIRT FINISHING  
 DRY CLEANING  
 TINTEXING

---

---

# Tallahassee Banking Association

**Industrial Bank of Tallahassee**

**Tallahassee State Bank & Trust Co.**

**Capital City National Bank**

**Lewis State Bank**

All Banks Are Members of  
**FEDERAL DEPOSIT INSURANCE CORPORATION**

---

---

Owned and Operated by  
Frank and James Chase

## Skyline Restaurant

U. S. Highways 90 and 20  
1 Mile West of City Limits

TALLAHASSEE, FLORIDA

Telephone 2-9144

"Serving Good Food for Fine People"

## Buddy's Hardware and Sporting Goods

A Complete Line of  
**RAWLINGS EQUIPMENT**

203 S. Monroe

**We're Always for The Seminoles**

**WIN, LOSE or DRAW**

## State Office Supply

207 S. Adams Phone 2-2607

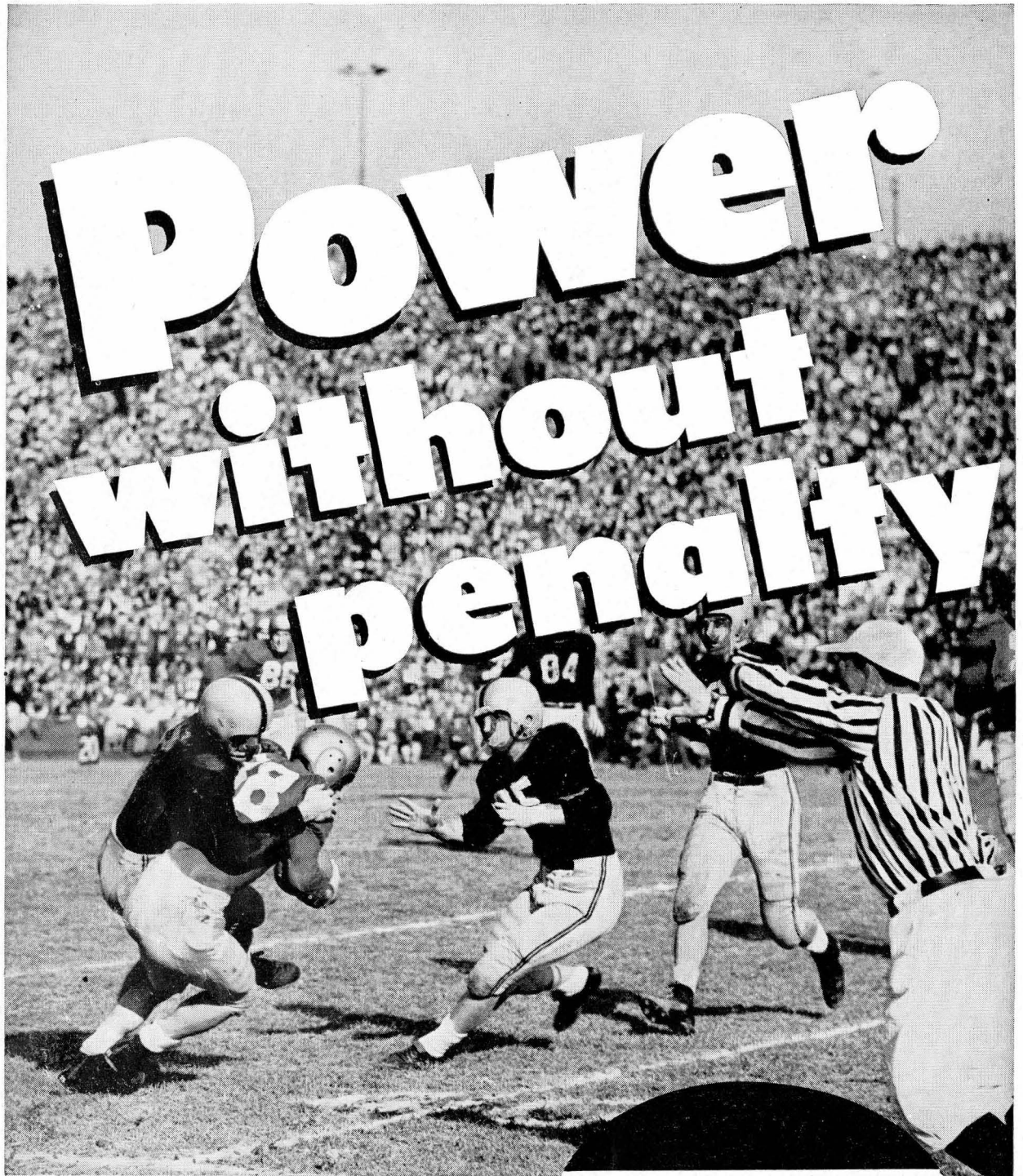
**SCALP 'EM SEMINOLES**

## Brown's Men's Wear

Monroe at Park

---

---



In a football game, the power of the whole team can be wasted by penalties.

So, too, in motor fuels. An additive in a premium gasoline can cause a harmful metallic deposit—can make your car pay a penalty in lost power.

Amoco-Gas *has* no additive because it needs none. It's *pure* petroleum. It delivers power without penalty. Just *test* it!



AMERICAN OIL COMPANY

## FSU'S HEAD FOOTBALL COACH TOM NUGENT

Tom Nugent, originator of the "I" formation, the type-writer huddle, the double quarterback, and recognized as one of the nation's most imaginative young football coaches, picks up the reins this fall for his second campaign as headmaster of Florida State University football fortunes.

Nugent came to State last year from a highly-successful four-year tenure as boss man of VMI's colorful Keydets of the Southern Conference. In four seasons at the Lexington, Va., institution, Nugent injected new life into the VMI eleven. His record there was a respectable 19-18-2.

Nugent took over the Seminoles in 1953 and did the near-impossible. Starting with only 13 holdovers and an entirely new system, Nugent built a team that won half of its 10 games, the last three in a row.

Nugent's coaching record dates back to his college days. After starring on the Ithaca College eleven three seasons and graduating in 1936, Nugent coached the Ithaca frosh while doing graduate work.

A native of Lawrence, Mass., Tom became head coach of football, basketball, and baseball at Essex Training School in his hometown. Three seasons produced two undefeated teams.

The Air Force summoned Nugent in 1941. But Tom and football soon joined forces again. He was named head coach of the Rosecrans (Mo.) Air Base Flyers. Other duties included writing, directing, and presenting shows for the entertainment of troops. Nugent was then—and still is—quite a song and dance man. He's a showman, as his formations and style of play of his teams attest.

After his discharge in 1946, Nugent was appointed head coach at Williamsburg, Va., High, coached four undefeated athletic teams there in '46, then moved to Hopewell, Va., High. Three years of high school coaching produced a record of 24 wins, 4 losses for Nugent.

Then came Nugent's big chance—head coach at VMI. Armed with the same optimistic outlook and that "Nugent



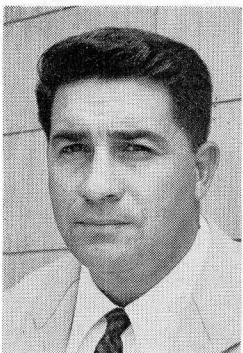
**TOM NUGENT**

*Head Coach of FSU*

Golden Touch," Tom stepped into the VMI job. It wasn't long before VMI hit the headlines, sharing the Southern Conference title with Maryland in 1951, when the Keydets won seven and lost three.

Tom and Mrs. Nugent (Peg) have six children: Tommy 11, Kerry 10, Peggy 8, Terrance Daniel 5, Pattie 4, and Timothy David, four months.

### F. S. U. ASSISTANT COACHES



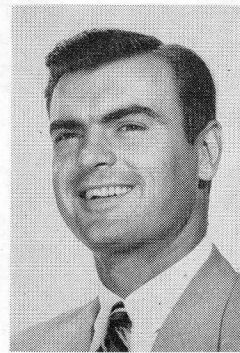
**VAUGHN MANCHA**



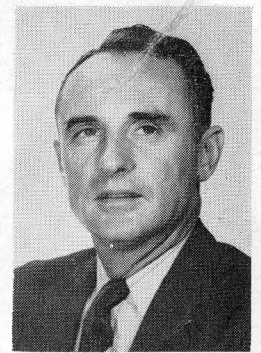
**BOB HARBISON**



**"WIN" SIEGFREID**



**VINCE RAGUNAS**



**MIKE LONG**

*Coaches Not Shown: Frank Toomey, Owen Hale, Steve Kalenich, Jimmy Messines*



**"SAVE  
WITH  
SAFETY"**

—at—

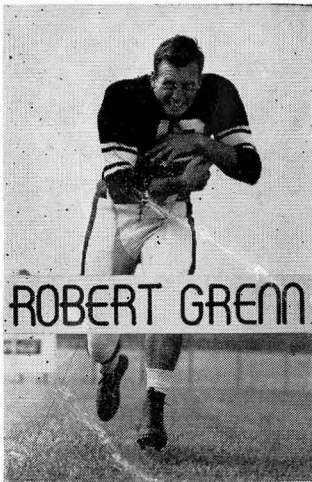


# LEON FEDERAL

Savings and Loan Association

Monroe at Park

Tallahassee



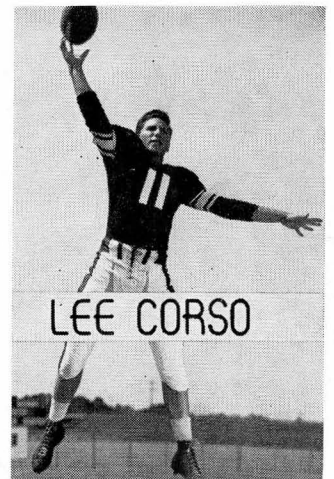
Meet Me at the

# MECCA

**111 South Copeland St.**

and Enjoy the Fine

**Food and Friendly Atmosphere**





This Page of  
F.S.U. Seminoles  
Compliments of  
**THE CORRAL**

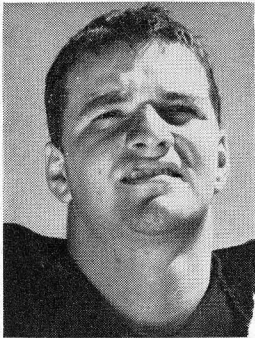
*Y'all Come to---*

# THE CORRAL

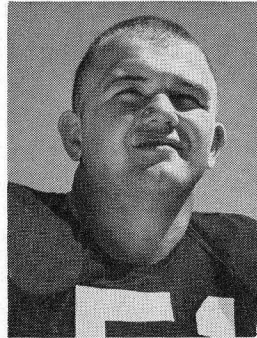
1620 South Monroe

Telephone 2-8208

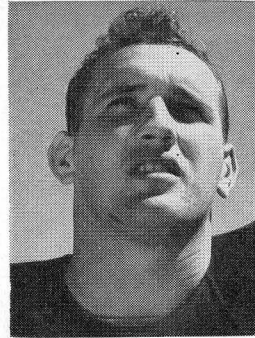
JOE HARRINGTON, Owner



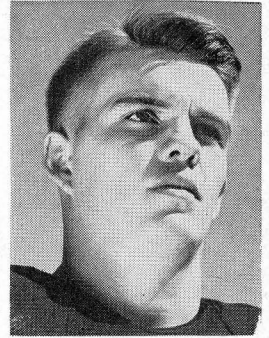
Joe Holt—FB



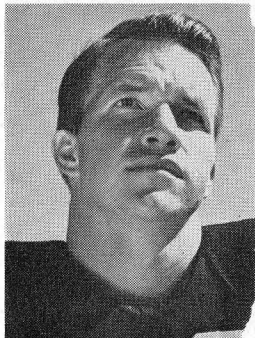
Don Powell—RT



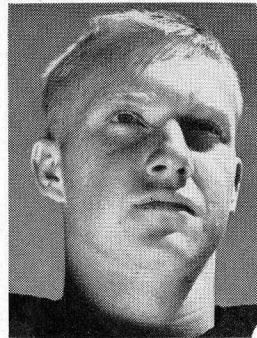
Al Makowiecki—LT



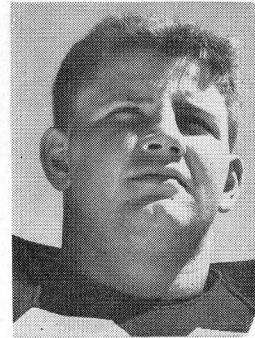
John Griner—FB



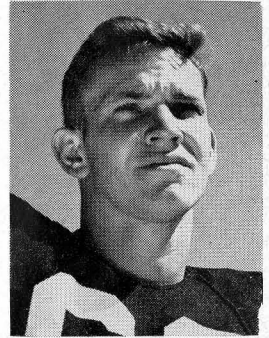
Carl Grenn—RH



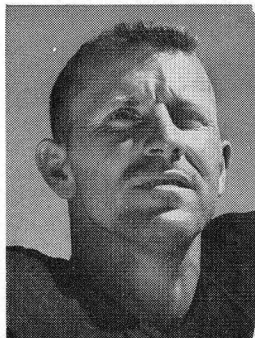
Billy Odom—RH



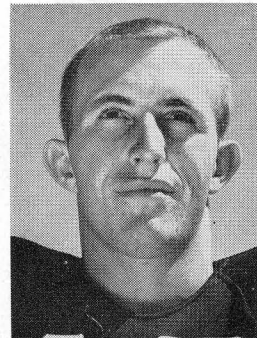
Jim Olsen—LT



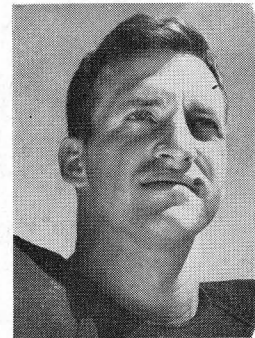
Jimmy Trado—LE



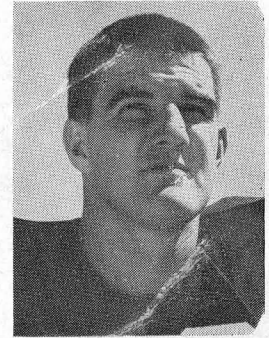
Billy Graham—RH



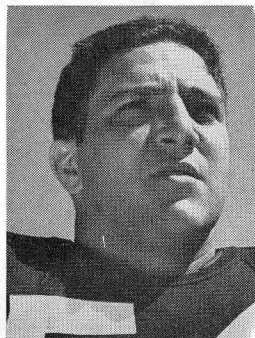
Buck Metts—LH



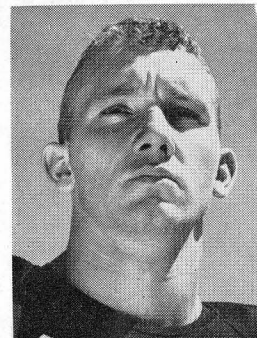
Robert Grenn—RE



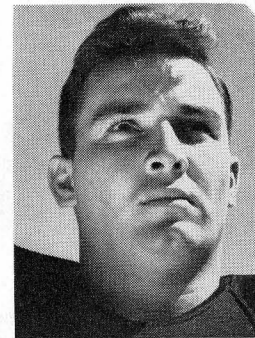
Tom Feamster—RE



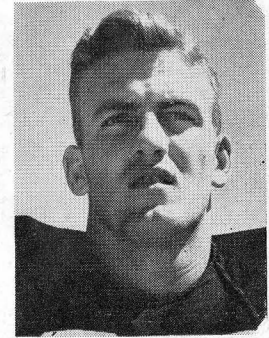
Al Pacifico—RG



Ray Staab—RT



Jimmy L. Taylor—LE



Harry Massey—QB

---

# SINCLAIR DEALERS

15 SERVICE STATIONS FOR YOUR CONVENIENCE

## *YELL—Scalp'em Seminoles!*

### POWER UP WITH POWER-X!

—at—

#### AUBREY BARROW'S

Thomasville Rd. at Glenview Drive

#### ELI ROBERTS

1 BLOCK FROM FSU

Tennessee and Copeland Sts.

#### R & R

SERVICE STATION

Tennessee and Duval Sts.

#### BURNS AUTO SERVICE

Top of Hill S. Monroe St.

#### SHOPPING CENTER

North Monroe at 4th Avenue

#### RALPH HADLEY

811 West Brevard Street

#### BIG OAK

SERVICE STATION

Old Quincy Highway

#### BRADFORDVILLE

SERVICE STATION

Thomasville Highway

#### AMONIA STORE

Thomasville Highway

#### JOT-EM-DOWN

SERVICE STATION

Woodville, Florida

#### ROBINSON

South Adams Street

#### CAPITAL CITY ICE

South Adams St. at Railroad

#### MOODY

GROCERY & SERVICE

New Crawfordville Highway

#### GILLIAM

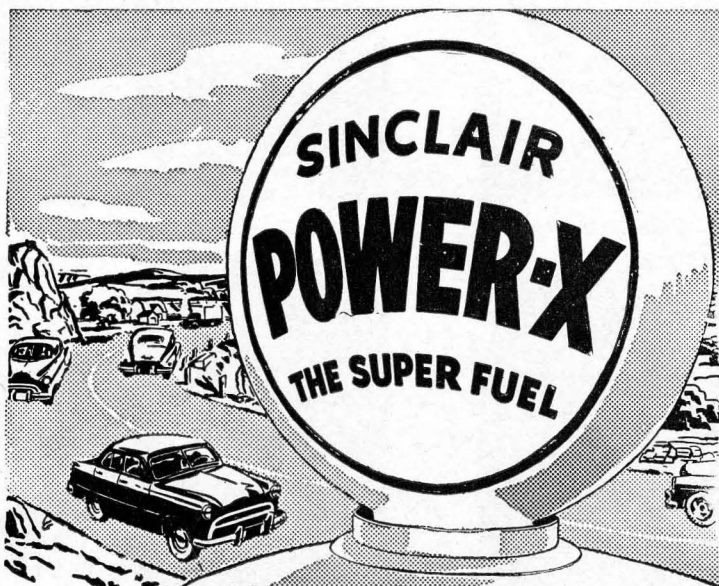
GROCERY & SERVICE

W. Brevard Street

#### BARWICK

SERVICE STATION

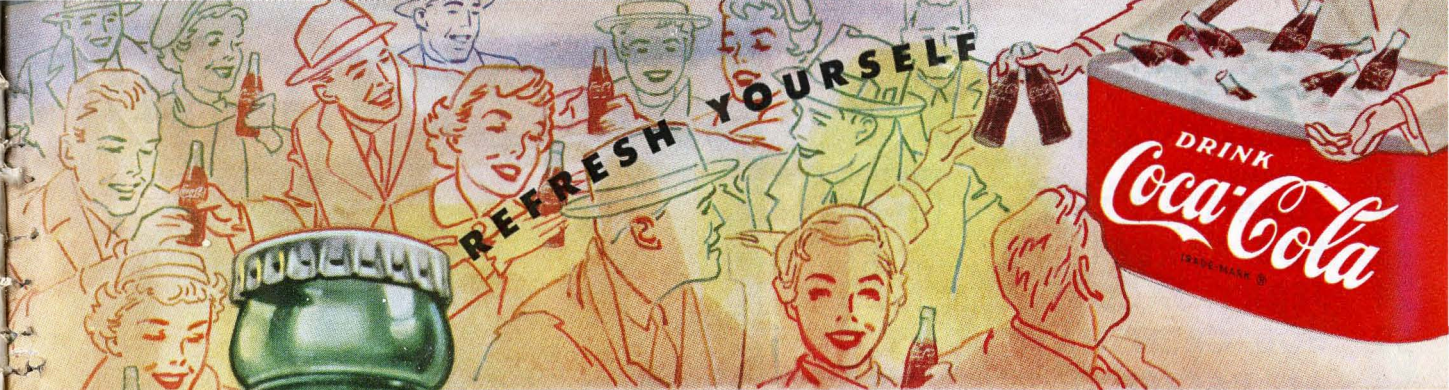
Panacea, Florida



## 2 to 18% MORE KNOCK-FREE POWER

**RALPH D. NEWMAN OILS, Inc.**  
MARKETER OF SINCLAIR PRODUCTS

---



ENJOY THE GAME... PAUSE AND



**REFEREES' SIGNALS**

- 1. Offside
- 2. Illegal procedure or position
- 3. Illegal motion
- 4. Illegal shift
- 5. Illegal substitution
- 6. Delay of game
- 7. Personal foul
- 8. Roughness and piling on
- 9. Clipping
- 10. Roughing the kicker
- 11. Unsportsmanlike conduct
- 12. Defensive holding
- 13. Illegal use of hands and arms
- 14. Intentional grounding
- 15. Illegally passing or handing ball forward
- 16. Forward pass or kick catching interference
- 17. Ineligible receiver down field on pass
- 18. Ball illegally touched, kicked or batted
- 19. Incomplete forward pass, penalty declined, no play or no score
- 20. Crawling, helping the runner or interlocked interference
- 21. Ball dead; if hand is moved from side to side: touchback
- 22. Touchdown or field goal
- 23. Safety
- 24. Time-out
- 25. First down
- 26. Ball ready-for-play
- 27. Start the clock or no more time-outs allowed

COPYRIGHT 1954, THE COCA-COLA COMPANY

TALLAHASSEE COCA-COLA BOTTLING COMPANY, TALLAHASSEE, FLORIDA

## FLORIDA STATE

### PROBABLE STARTING LINEUP

NO.	NAME	POSITION
31	JIMMY LEE TAYLOR (c)	LE
43	BOB BARBER . . . . .	LT
24	JERRY JACOBS . . . . .	LG
59	BOB CRENSHAW . . . . .	C
54	AL PACIFICO . . . . .	RG
62	AL MAKOWIECKI . .	RT
56	TOM FEAMSTER . . . .	RE
37	HARRY MASSEY . . .	QB
18	BUCK METTS . . . . .	LH
27	BILLY GRAHAM . . .	RH
25	JOE HOLT . . . . .	FB

### FLORIDA STATE SQUAD

10	Odom, RH	37	Massey, QB
11	Corso, LH	40	Gibson, RG
12	McCormick, LH	41	Versprille, QB
16	Weaver, RH	42	Ward, RG
18	Metts, LH	43	Barber, LT
17	Whittington, FB	44	Leonard, C
19	R. Grenn, RE	45	Morris, RG
21	Griner, FB	46	Reynolds, LH
22	C. Grenn, RH	48	Swantic, QB
23	Bisbee, RE	49	Bryant, RG
24	J. Jacobs, LG	50	Baggett, LG
25	Holt, FB	51	Powell, RT
26	C. Jacobs, LG	52	Cullom, C
27	Graham, RH	54	Pacifico, RG
29	Swilley, LE	56	Feamster, RE
30	Ackerman, C	57	King, FB
31	Taylor, LE	59	Crenshaw, C
32	Rodrigue, QB	60	J. Olsen, LT (c)
33	Cox, FB	61	Thompson, FB
34	Schomburger, RE	62	Makowiecki, RT
35	Bouchlas, C	63	Trado, LE
36	Brown, LT	64	Staab, RT

## CHESTERFIELD

AMERICA'S MOST POPULAR  
2-WAY CIGARETTE

*Either  
Way*

# THE QUALITY YOU WANT!



JEAN ANJOAN  
THE CORBETT TWINS

# CHESTERFIELD BEST FOR YOU

## GEORGIA

### PROBABLE STARTING LINEUP

NO.	NAME	POSITION
55	RAY WILKINS . . . . .	LE
86	JERRY GRIFFIN . . . . .	LT
78	LEN SPADAFINO . . . .	LG
65	HAROLD DEAN COOK .	C
76	DON SHEA . . . . .	RG
87	JIMMY BROWN . . . . .	RT
53	JOE O'MALLEY (c) . .	RE
11	JIMMY HARPER . . . .	QB
25	JOHN BELL . . . . .	LH
39	CHARLIE MADISON . .	RH
45	BOB CLEMENS . . . . .	FB

### GEORGIA SQUAD

11	Harper, QB	58	Monti, E
12	Powell, QB	59	Clark, E
14	Armistead, QB	65	Cook, C
15	Young, QB	67	Nutt, C
20	Farleton, HB	68	Kotes, C
23	Garrard, FB	69	Saye, C
25	Bell, HB	70	Schopen, G
26	Ruark, HB	71	Cushenberry, G
28	Campagna, HB	72	Graff, G
31	Harris, HB	73	Dye, G
32	Burkhalter, HB	74	Fowler, G
33	Williams, HB	75	MacDonald, G
34	Powell, HB	76	Shea, G
35	Culpepper, FB	77	Carrollton, C
36	Pilgrim, HB	78	Spadafino, G
39	Madison, HB	79	Mitchell, G
41	McClelland, FB	80	Mosteller, T
45	Clemens, FB	81	Reese, G
46	Kelly, FB	83	VanBuren, T
50	Bell, E	84	Galbreath, T
52	Arthur, E	85	Fruehauf, T
53	O'Malley, E	86	Griffin, T
54	Roberts, E	87	Brown, T
55	Wilkins, E	88	Luck, T
57	Grubbs, C	89	White, T

## CHESTERFIELD

LARGEST SELLING CIGARETTE  
IN AMERICA'S COLLEGES

FOR TASTE AND MILDNESS...THEY SATISFY MILLIONS!



## PENALTIES

### LOSS OF FIVE YARDS

1. Taking more than five times out during either half (except for replacement of injured player).
2. Illegal delay of game.
3. Failure to complete substitution before play starts.
4. Violation of kickoff formation.
5. Player out of bounds when scrimmage begins.
6. Putting ball in play before Referee signals "Ready-for-play".
7. Failure to maintain proper alignment of offensive team when ball is snapped. Also, backfield man illegally in motion.
8. Offside by either team or encroachment on neutral zone.
9. Attempt to draw opponents offside.
10. Crawling by runner.
11. Illegal forward pass (includes intentional grounding of forward pass). Also loss of down.
12. Taking more than two steps after Fair Catch is made.
13. Player on line receiving snap.
14. Any violation of the scrimmage formation.

### LOSS OF FIFTEEN YARDS

15. Team not ready to play at scheduled time.
16. Violation of rules during intermission.
17. Illegal return of suspended player.
18. Interference by member of offensive team with defensive player making pass interception. (Also loss of down.)
19. Interference with opportunity of player of receiving team to catch a kick.
20. Illegal use of hands or arms by offensive player.
21. Tackling or blocking defensive player who has made fair catch.
22. Roughing the kicker.
23. Piling up, hurdling, clipping.
24. Tackling player out of bounds, or running into player obviously out of play.
25. Coaching from sidelines.
26. Failure to stop one full second following shift.
27. Defensive holding.
28. Invalid Signal for Fair Catch.

### OTHER PENALTIES

29. Striking an opponent with fist, forearm, elbow or locked hands, kicking or kneeling — Mandatory disqualification of offending player plus loss of fifteen yards.
30. Foul within the one yard line—half the distance to the goal.
31. Interference by defensive team on forward pass—passing team's ball at spot of foul.
32. Forward pass being touched by ineligible receiver beyond the line of scrimmage—loss of fifteen yards from spot of preceding down and loss of a down.
33. Illegal touching of kicked ball within opponent's ten yard line — touchback.
34. Flagrantly rough play or unsportsmanlike conduct — Mandatory disqualification plus loss of fifteen yards.
35. Eligible pass receiver who goes out of bounds and later touches a forward pass — loss of down.



REFRESHING WITH COKE

# GEORGIA ROSTER

No.	Name	Pos.	Wt.	Year	Hometown
11	Jimmy Harper*	QB	175	3	Thomasville, Ga.
12	Tommy Powell	QB	190	2	Arlington, Ga.
14	Billy Armistead	QB	170	2	Clarkston, Ga.
15	Richard Young	QB	175	3	Pensacola, Fla.
20	Wendell Tarelton	LH	175	2	Atlanta, Ga.
23	Bobby Garrard*	FB	180	3	Atlanta, Ga.
25	John Bell*	LH	175	3	Columbus, Ga.
26	Bobby Ruark	LH	190	2	Columbus, Ga.
28	Jimmy Campagna*	LH	175	4	Rochester, N. Y.
31	Charles Harris	RH	200	2	Goodwater, Ala.
32	Ed Burkhalter	RH	175	2	Augusta, Ga.
33	Jimmy Williams*	RH	170	3	Athens, Ga.
34	James (Bud) Powell	RH	170	2	Decatur, Ga.
35	Knox Culpepper	FB	185	2	Columbus, Ga.
36	Harold Pilgrim	LH	170	2	Gainesville, Ga.
39	Charlie Madison*	RH	173	4	Atmore, Ala.
41	Jimmy McClelland	FB	175	2	Waycross, Ga.
45	Bob Clemens*	FB	201	4	Scottsboro, Ala.
46	Howard Kelly*	FB	195	4	Tarrytown, N. Y.
50	Joe Bell	RE	192	2	College Park, Ga.
52	Matthew Arthur*	LE	182	3	Fitzgerald, Ga.
53	Joe O'Malley*	RE	198	4	Scranton, Pa.
54	Laneair Roberts	LE	185	2	Fitzgerald, Ga.
55	Ray Wilkins*	LE	200	2	Dalton, Ga.
57	Clayton Grubbs	C	192	2	Bradenton, Fla.
58	Angelo Monti	LE	180	2	Tarrytown, N. Y.
59	Cleve Clark*	RE	199	3	Albany, Ga.
65	Harold Dean Cook*	C	190	3	Albany, Ga.
67	Fred Nutt*	C	188	3	Atlanta, Ga.
68	Harry Kotes	C	185	4	Tarrytown, N. Y.
69	Bill Saye*	C	196	3	Athens, Ga.
70	Joe Schopen	RG	198	3	Evanston, Ill.
71	Tony Cushenberry	LG	200	2	Albany, Ga.
72	Joe Graff*	LG	202	3	Tarnetum, Pa.
73	Wayne Dye	RG	185	2	Augusta, Ga.
74	Willie Fowler	RG	181	3	Athens, Ga.
75	Alex MacDonald	RG	215	2	Ligonier, Pa.
76	Don Shea*	RG	205	3	Philadelphia, Pa.
77	Billy Carrollton	C	190	2	Monroe, Ga.
78	Len Spadafino	LG	185	3	Jersey City, N. J.
79	George Mitchell	RG	190	2	Dalton, Ga.
80	James Mosteller	LT	215	2	Conover, N. C.
81	Hal Reese	LG	192	2	Atlanta, Ga.
83	Bob Van Buren	RT	215	2	Lorain, Ohio
84	Ruel Galbreath	RT	210	2	Dania, Fla.
85	Ben Fruehauf*	LT	198	3	Sarasota, Fla.
86	Jerry Griffin*	LT	210	3	Atlanta, Ga.
87	Jimmy Brown	RT	210	2	Monroe, Ga.
88	John Luch	LT	215	2	Cuddy, Pa.
89	Walter White*	RT	205	3	Toccoa, Ga.

\*—denotes lettermen

# FLORIDA STATE ROSTER

No.	Name	Pos.	Wt.	Year	Hometown
10	Billy Odom	RH	165	2	Mt. Dora
11	Lee Corso*	LH	165	2	Miami
12	Don McCormick	LH	176	1	Panama City
16	Bill Weaver	RH	168	1	Miami
17	Dick Whittington	FB	167	1	Jacksonville
18	Buck Metts*	LH	173	2	Sanford
19	Robert Grenn	RE	179	4	Brookhaven, Miss.
21	John Griner*	FB	170	3	Jacksonville
22	Carl Grenn*	RH	165	4	Brookhaven, Miss.
23	Hamilton Bisbee	RE	171	1	Sanford
24	Jerry Jacobs*	LG	208	3	South Bend, Ind.
25	Joe Holt*	FB	181	2	Graham, N. C.
26	Charles Jacobs	G	185	3	Miami
27	Billy Graham*	RH	178	4	Bogalusa, La.
29	William Swilley	LE	172	1	Albany, Ga.
30	Hubert Ackerman	C	190	1	Hopewell, Va.
31	Jimmy Lee Taylor*	LE	190	4	Jacksonville
32	Ted Rodrigue	QB	192	1	Lynn, Mass.
33	Gene Cox	FB	184	3	Lake City
34	Ronnie Schomburger	RE	190	1	Pittsburgh, Pa.
35	Tommy Bouchlas	C	190	1	West Palm Beach
36	Bill Brown	LT	191	1	Orlando
37	Harry Massey*	QB	185	4	Canton, Miss.
40	Vince Gibson	G	186	3	Birmingham, Ala.
41	Patrick Versprille	QB	176	1	Norfolk, Va.
42	Rod Ward	G	209	1	Fairfield, Ala.
43	Bob Barber*	LT	212	2	Belle Glade
44	Bud Leonard*	C	196	2	Ocala
45	Bob Morris	RG	202	1	Panama City
46	Buddy Reynolds	LH	171	1	West Palm Beach
48	Len Swantic*	QB	175	2	Columbus, Ga.
49	Leon Bryant	RG	196	1	So. Norfolk, Va.
50	Leo Baggett	LG	203	1	Panama City
51	Don Powell*	RT	215	3	Birmingham, Ala.
52	Bill Cullom	C	190	1	Huntsville, Ala.
54	Al Pacifico*	RG	206	2	Altoona, Pa.
56	Tom Feamster	RE	249	3	Warwick, Va.
57	Ronnie King*	FB	217	4	Daytona Beach
59	Bob Crenshaw*	C	178	3	Miami
60	Jim Olsen*	LT	225	4	Tallahassee
61	Tommy Thompson	FB	220	1	Springfield, Mass.
62	Al Mackowiecki*	RT	215	4	Monaca, Pa.
63	Jimmy Trado	LE	182	1	Henderson, N. C.
64	Ray Staab*	RT	203	2	Charleston, W. Va.

\*—denotes lettermen

Scalp 'em  
Seminoles

**FLORIDA  
THEATRE**

Now Showing



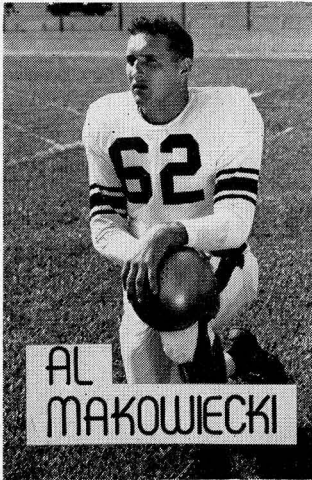
A LUSTY, ROUSING MUSICAL!



Color by ANSCO

Jane  
**POWELL**

Howard  
**KEEL**  
M-G-M PICTURE



## DOUBLE YOUR SAVINGS

Higher than average dividends  
increase your savings income.

## DOUBLE YOUR PROTECTION

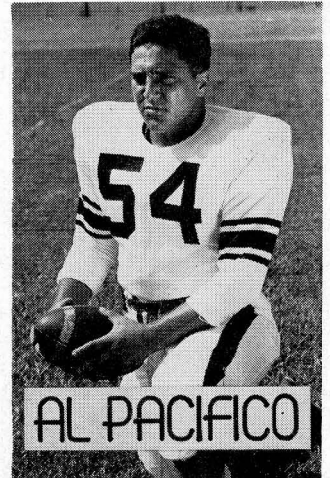
Savings Now Insured To  
\$10,000.00

By

Federal Savings & Loan Insurance Corp.

## Tallahassee Federal Savings & Loan Association

115 East Park Avenue



## BENNETT'S DRUG STORE

- Prescriptions
- Cameras
- Sundries
- Gifts
- Fountair
- Cafe
- Cosmetics
- Drugs

MEET AT BENNETT'S BEFORE AND AFTER THE GAME!

Corner Monroe and College Streets

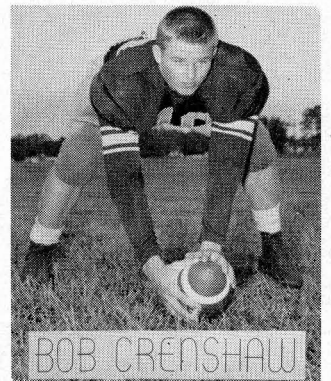
PHONES 2-8980 — 2-4450

## D. T. O'HARA, JR.

PRODUCE ● POULTRY ● FROZEN FOODS

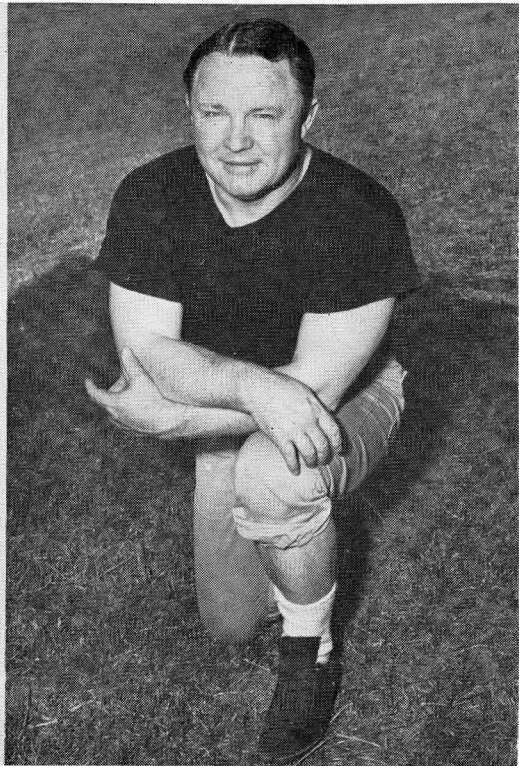
Phone 2-2128 ● 717 W. Gaines St.

TALLAHASSEE, FLORIDA





**JOE O'MALLEY, End**  
*Georgia Captain*



**"WALLY" BUTTS**  
*Head Coach of Georgia*

## ABOUT THE BULLDOGS

The University of Georgia's 1954 football team is the sixty-first fielded at the nation's oldest state chartered institution of learning. It is a young team, predominately sophomore. The varsity roster shows 27 sophomores, 16 juniors, and seven seniors.

Coach Wallace Butts, dean of Southeastern Conference head football mentors in his sixteenth season at the Bulldogs' helm, believes the 1954 club will be considerably improved over the 1953 outfit which compiled a 3-8 record. Coach Butts expects every position to be improved except end and quarterback where graduation took two All-American performers, Captain Zeke Bratkowski at T-QB and John Carson, the nation's leading passer, at end.

The Bulldogs are led by Captain Joe O'Malley at right end. He rates as one of the Bulldogs' greatest ends and is expected to provide Georgia with an all-conference end for the fourth straight

year, following in the footsteps of Harry Babcock (1951-52) and John Carson (1953).

Georgia's alternate-captain is Bob (Fots) Clemens at fullback. The husky Alabamian has led Georgia's rushers the past two years and is one of the most powerful fullbacks in the land.

The Florida State game will be sort of a homecoming for the south Georgians and Floridians on Georgia's varsity squad. The list shows four Floridians: tackles Ben Fruehauf of Sarasota and Ruel Galbreath of Dania, center Clayton Grubbs of Bradenton, and quarterback Richard Young of Pensacola.

South Georgians on Georgia's roster are ends Matthew Arthur and Laneair Roberts of Fitzgerald, and Cleve Clark of Albany; guard Tony Cushenberry of Albany; center Harold Deen Cook of Albany; quarterbacks Jimmy Harper of Thomsville and Tommy Powell of Arlington, and fullback Jimmy McClelland of Waycross.

---

---



---

---

# Gilberg's

*"The House Of 1000 Fabrics"*

108 East Jefferson Street  
TALLAHASSEE, FLA.

220 Broad Avenue  
ALBANY, GA.

26 North Palafox Street  
PENSACOLA, FLA.

---

---

*Ready Made*  
BEDSPREADS  
DRAPERIES  
UPHOLSTERY FABRICS  
SLIPCOVER FABRICS  
DRAPERY FABRICS  
DRESS FABRICS  
PATTERNS • BUTTONS  
SEWING NOTIONS

---

---

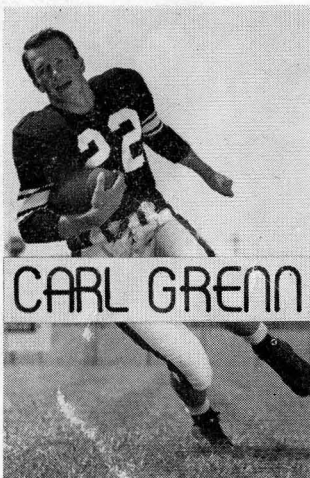
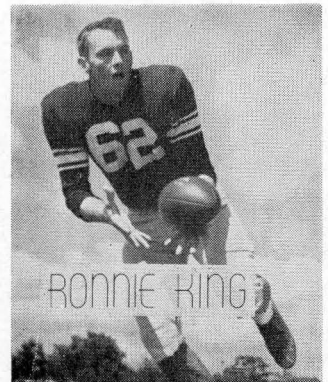
## HOLLAND'S RESTAURANT

Facing the Capitol at 106 E. Pensacola Street  
TALLAHASSEE, FLORIDA

Serving Our Own Blend of Coffee  
Famous for Home-made Pies and Hot Biscuits  
U. S. Prime and U. S. Choice Steaks

*Air Conditioned and Ultra Modern*

N. T. HOLLAND, Owner and Manager



---

---

## ROYAL SANDWICH COMPANY

P. O. Box 641

• Phone 2-0699

—WHOLESALE DISTRIBUTORS OF SANDWICHES—

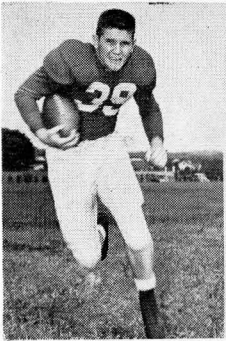
Salted Peanuts • Peanut Butter Sandwiches • Potato Chips

Pop Corn • Cookies • Candy

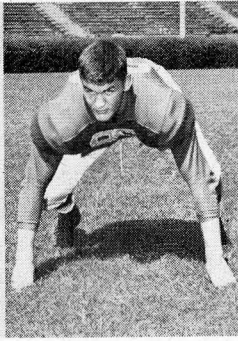
"FRESH AS A DAISY"

---

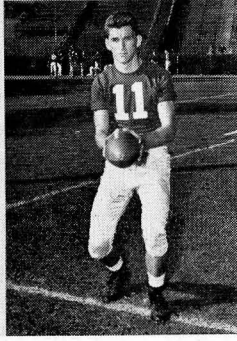
---



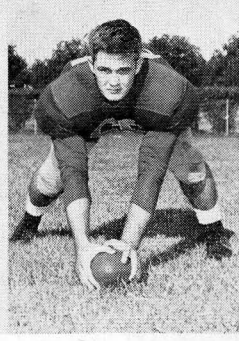
Charlie Madison—RH



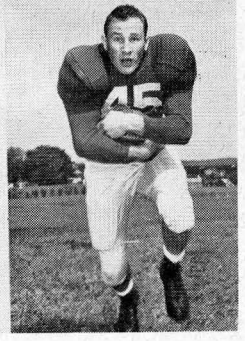
Jerry Griffin—LT-RT



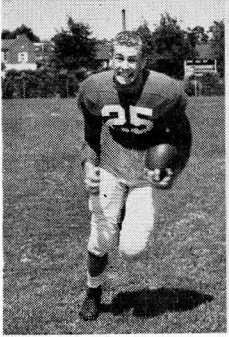
Jimmy Harper—QB



Harold Cook—C



Bob Clemens—FB

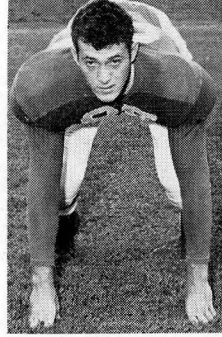


John Bell—LH

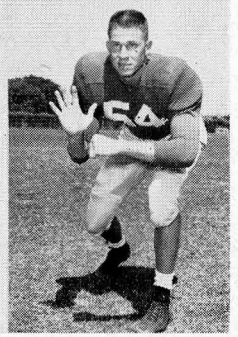


Tony Cushenberry—LE

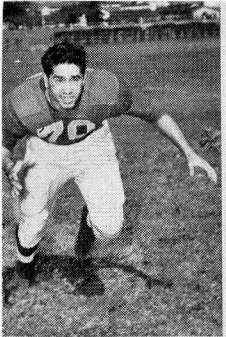
# Georgia Bulldogs



Ben Fruehauf—LT



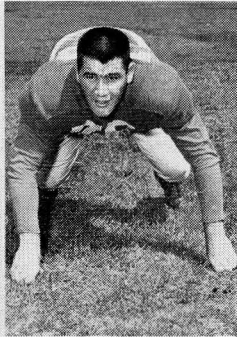
Laneair Roberts—LE



Len Spadafino—LG



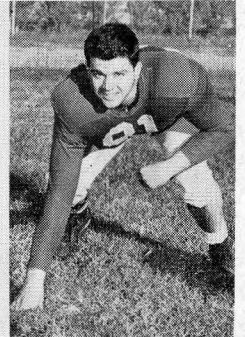
Roy Wilkins—LE



Don Shea—RG



Bobby Garrard—FB



Alex MacDonald—RG

# Seven Seas

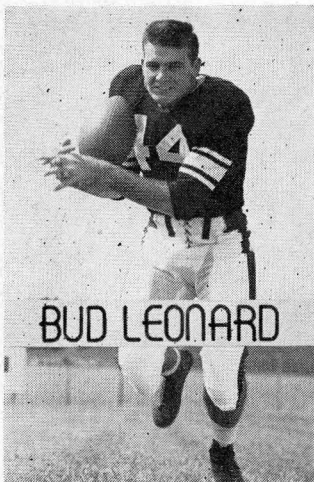
Corner Monroe and Pensacola—Next to the Capitol

Recommended by AAA

# Tallahassee's Finest

WILL BE HAPPY TO SERVE YOU AFTER THE GAME!

*Air Conditioned*



# *The Sweet Shop*

GOOD FOOD

DELICIOUS SODAS

**DRUG SUNDRIES**

Meet Your Friends Here Before and  
After the Game!

**FOLLOW THE SEMINOLES!**

---

---

**Scalp 'Em Seminoles**

*"Everything for the Students"*

We Buy and Sell

**USED BOOKS**

**UNIVERSITY**



**BOOKSTORE**

IN THE STUDENT CENTER

---

---

---

---

# *Velda* Ice Cream

*"Floridas Own"*

---

---

**SCALP 'EM SEMINOLES**

Meet Your Friends at

**The Amber House**

— for —

**FOOD THAT'S FINE  
Before and After the Game**

Across the Street from University on Corner of Copeland and Park

---

---

MILK and ICE CREAM



**Foremost**

**International Dairies**

**Faiver's Drive In  
and Restaurant**

Two to Serve You

1312 West Tennessee

1804 South Monroe

The Last Word in Fine Food

---

---

**P. W. Wilson**

Fashions for Men, Women, Children

Telephone 2-2310

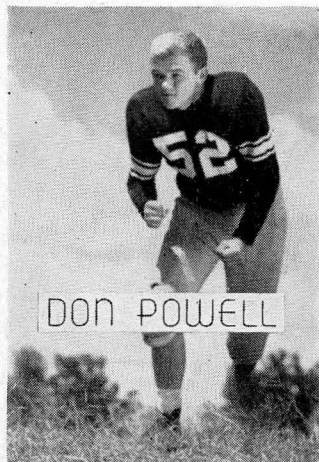
TALLAHASSEE, FLORIDA

---

---

W E L C O M E

# Graddy Bros. Gulf Station



DON POWELL

"WE LIKE EVERYBODY"

Full Line

**GULF PRODUCTS**

**LUBRICATION SPECIALIST**

**ROAD SERVICE**

**1458 SOUTH MONROE**

**Phone 3-0077**

**640 WEST TENNESSEE**

**Phone 2-3584**

After the Ball Game

**Drive Carefully, You May Hit One of Our Customers**

Good Luck Seminoles

## Malone's Book Store

**Books, School Supplies  
and Sundries**

## HOTEL FLORIDAN

The Community Host to Traveling America

You'll Enjoy Dining in

**THE GREEN ROOM**

—For FINE FOOD Visit—

Tallahassee's Most Exclusive Dining Room

## The SILVER SLIPPER

Try Our Famous Charcoal Broiled Steaks

10% Discount to Faculty and Students

Facilities for **South Monroe St.**

Weddings-Parties-Banquets **Dial 2-4961**

James Kalfas—Owner-Manager

## Gandy Motor Hotel

Tallahassee's Outstanding Court

**SKYLINE RESTAURANT ADJOINING  
U.S. 90 WEST**

•

Rest Assured  
in  
Tallahassee



WE STRIVE for our customers' goodwill  
and we are creating it every day. We do  
so by giving complete satisfaction with  
our service, and by combining excellent  
facilities and skilled craftsmanship to  
produce fine printing at a fair price.

**Rose** PRINTING COMPANY, INC.  
ROSE BUILDING • TALLAHASSEE, FLORIDA  
*A complete printing service*

What makes  
a Lucky  
taste better?

**"IT'S TOASTED"**  
to taste better!

**LUCKIES TASTE BETTER**

CLEANER,  
FRESHER,  
SMOOTHER!

COPR., THE AMERICAN TOBACCO COMPANY

