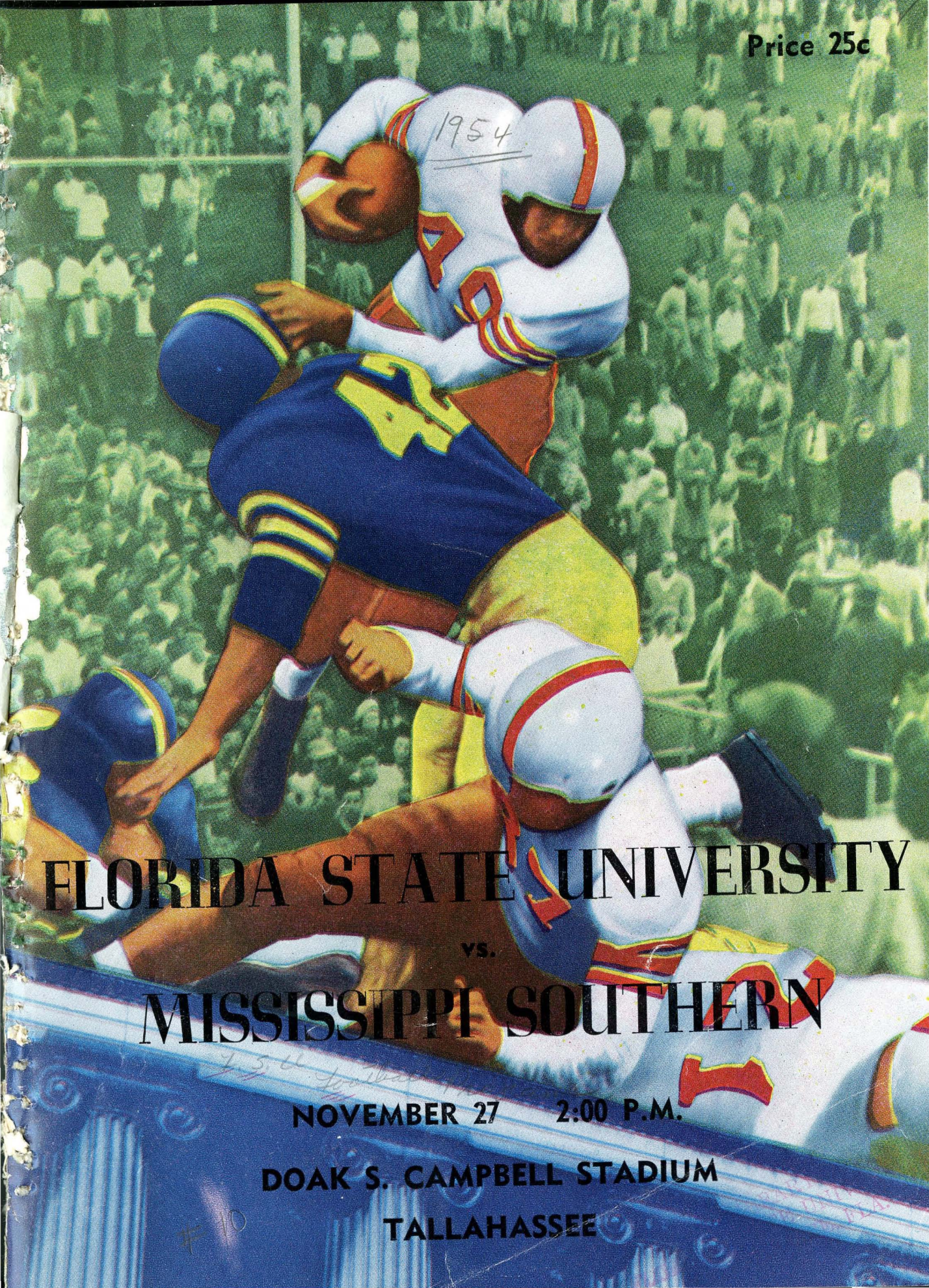


Price 25c



1954

# FLORIDA STATE UNIVERSITY

vs.

# MISSISSIPPI SOUTHERN

NOVEMBER 27 2:00 P.M.

DOAK S. CAMPBELL STADIUM

TALLAHASSEE

*F.S.U. Football*

#10





RAINEY CAWTHON

# Rainey Cawthon's

- ★ RCA TELEVISION and RADIO
- ★ SHELL PRODUCTS ★ GOODYEAR TIRES

"WE SERVICE WHAT WE SELL"

- ROAD SERVICE ● PHONE 2-1865 ●



FRED PIERSON

Compliments of

**TALLAHASSEE**

**AUTOMOBILE DEALERS ASSOCIATION**

Alford Chevrolet Co.

John Manthey, Inc.

Capital Lincoln-Mercury, Inc.

Mayo-Mingledorff Motors, Inc.

Cordell Motors

Proctor & Proctor

Dean Motors

Ivey Motors, Inc.

Drake Motors, Inc.

Tallahassee Motors, Inc.



---

---

## OLYMPIC FUNDS NEEDED

Dear Friend of Athletics:

If the United States is to be represented at the next Olympic and Pan-American Games, \$1,100,000 must be raised within the next two years.



DR. DANFORD

Although the teams of many countries are state-controlled and their expenses are paid by their government, in our Democracy the Olympic movement has always been supported by the generosity and pride of the sports-loving public.

The Pan-American Games will be held at Mexico City next year, with the Winter Olympic Games at Cortina D'Ampezzo, Italy, and the Olympic Games at Melbourne, Australia in 1956. In all probability 90 per cent

of the United States teams that go to these games will again be made up of college-trained athletes, and we are all particularly anxious to see that no deserving athlete is left at home through lack of funds.

We are grateful for your generous support of the NCAA's Olympic Fund drives in the past. If you have not had an opportunity to contribute to the fund for the 1956 Olympic Games, we invite you at this time to place your contributions in the containers as they are circulated throughout the stadium by members of the Tallahassee Junior Chamber of Commerce.

Or, if you prefer, write a check in the amount you wish, payable to the NCAA Olympic Fund, and mail it to the undersigned.

Sincerely,

DR. HOWARD G. DANFORD  
FSU Director of Athletics

---

---

**Don't miss FSU's Olympic performers Don Holder and Rafeal Lecuona in the 1954 Gymkana production "Toyland Capers," November 29 - December 4.**

---

---

# Seven Seas

Corner Monroe and Pensacola—Next to the Capitol

Recommended by AAA

## Tallahassee's Finest

WILL BE HAPPY TO SERVE YOU AFTER THE GAME!

*Air Conditioned*

LIBRARY  
FLORIDA STATE UNIVERSITY  
TALLAHASSEE, FLA.

---

---





**Whatever the Sport**

**We Furnish  
The Equipment**

Finkelstein's has served Florida schools and universities for nearly half a century. Our sports experts are always anxious to advise you on any problem regarding sports equipment.

We feature such outstanding sports equipment as:

★ SPALDING

★ RAWLINGS

★ SPOTBILT

★ WRIGHT & DITSON

**HARRY FINKELSTEIN CO.**

633 W. Bay, Cor. Jefferson



**WON'T YOU**

**HAV-A-TAMPA  
CIGAR**

**Eli Witt Tobacco & Candy Company**

TALLAHASSEE, FLORIDA

**THE LAUNDROMAT**

CLOTHES - RUGS - BLANKETS

Washed Clean — Fluff Dried and Folded

*"Your Satisfaction Is Our Goal"*

PHONE

3-1789

115 W. Tennessee — 1005 N. Monroe

PHONE

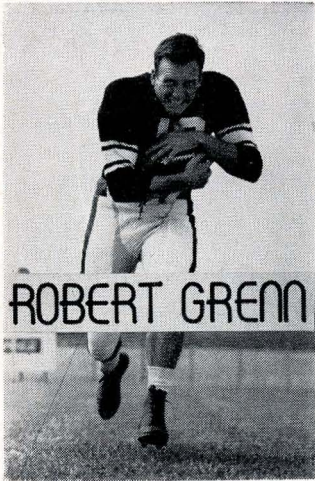
2-3792

SHIRT FINISHING

DRY CLEANING

TINTEXING





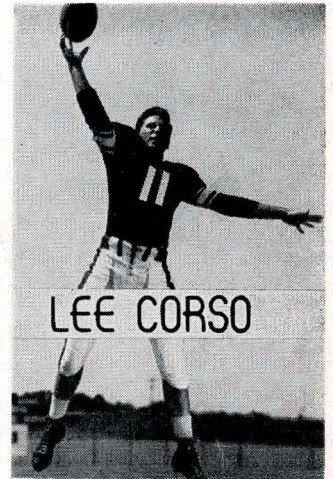
Meet Me at the

# MECCA

111 South Copeland St.

and Enjoy the Fine

**Food and Friendly Atmosphere**



# NIC'S TOGGERY

**Scalp 'Em  
Seminoles!**

MILK and ICE CREAM



**Foremost  
International Dairies**

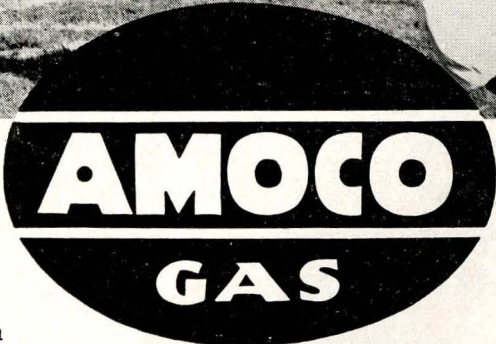
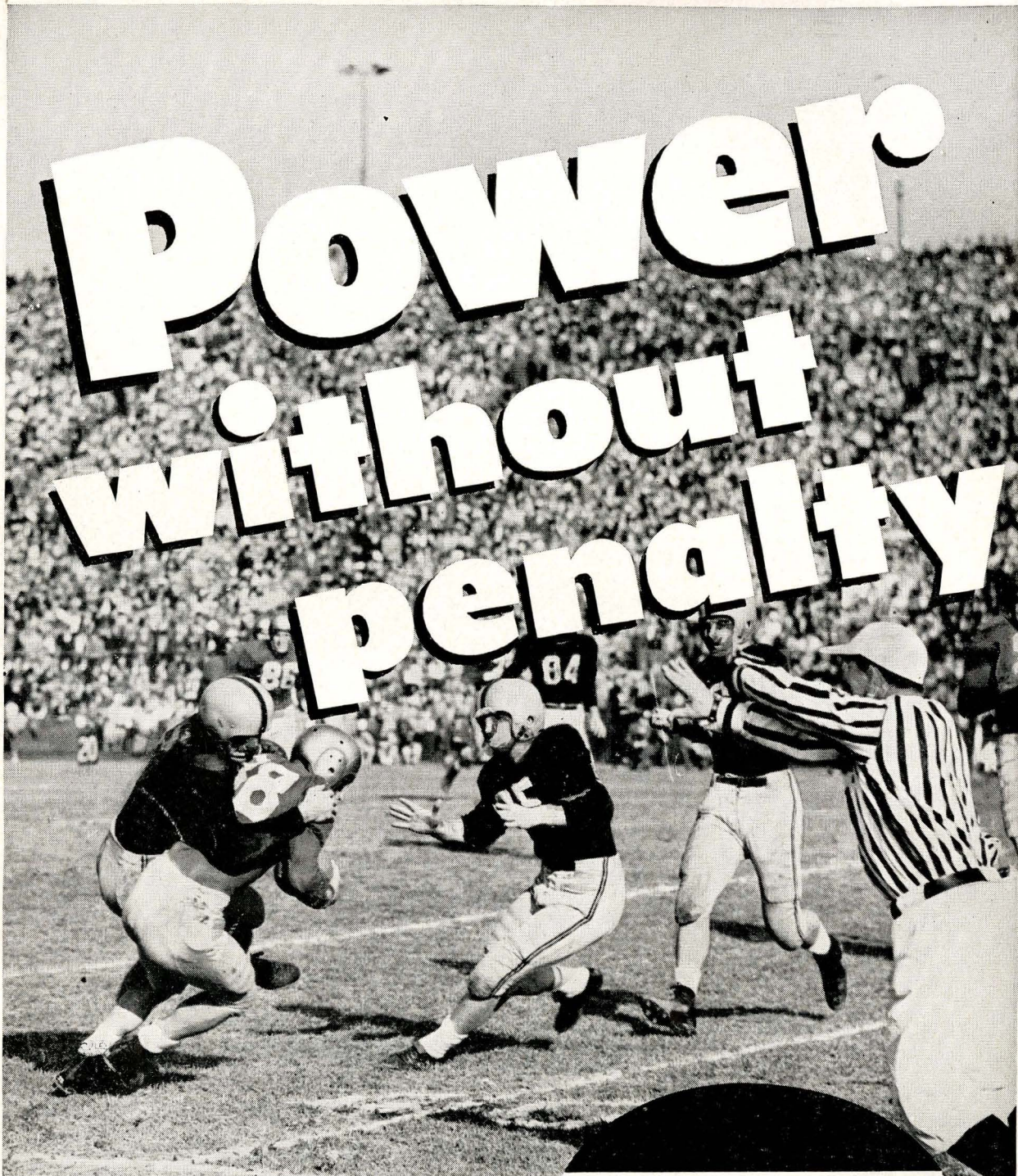
**Faiver's Drive In  
and Restaurant**

Two to Serve You  
1312 West Tennessee  
1804 South Monroe

The Last Word in Fine Food



# Power without penalty



In a football game, the power of the whole team can be wasted by penalties.

So, too, in motor fuels. An additive in a premium gasoline can cause a harmful metallic deposit—can make your car pay a penalty in lost power.

Amoco-Gas *has* no additive because it needs none. It's *pure* petroleum. It delivers power without penalty. Just *test* it!

AMERICAN OIL COMPANY



## FSU'S HEAD FOOTBALL COACH TOM NUGENT

Tom Nugent, originator of the "I" formation, the typewriter huddle, the double quarterback, and recognized as one of the nations most imaginative young football coaches, is in his second year as headmaster of the Florida State University football team.

Nugent came to FSU last year from a highly-successful four-year tenure as boss man of VMI's Keydets of the Southern Conference. His four-year record at the Lexington, Virginia institution was a respectable 19-18-2.

Nugent took over the Seminoles in 1953 and did the near-impossible. Starting with only 13 holdovers and an entirely new system, Nugent built a team that won half of its ten games, the last three in a row.

Nugent's coaching record dates back to his college days. After starting on the Ithica College eleven three seasons and graduating in 1936, Nugent coached the Ithica frosh while doing graduate work.

A native of Lawrence, Mass., Tom became head coach of football, basketball, and baseball at Essex Training School in his hometown. Three seasons produced two undefeated teams.

After his discharge from the Air Force in 1946, Nugent was appointed head coach at Williamsburg, Virginia, High, coached four undefeated athletic teams there in '46, then moved to Hopewell, Virginia, High. There his record was 24 won and 4 lost.

Then came the big chance — head coach at VMI. It wasn't long before VMI hit the headlines, sharing the Southern Conference title with Maryland in 1951, when the Keydets won seven and lost three.

Tom and Mrs. Nugent (Peg) have six children: Tommy 11, Kerry 10, Peggy 8, Terrance Daniel 5, Pattie 4, and Timothy David, four months.

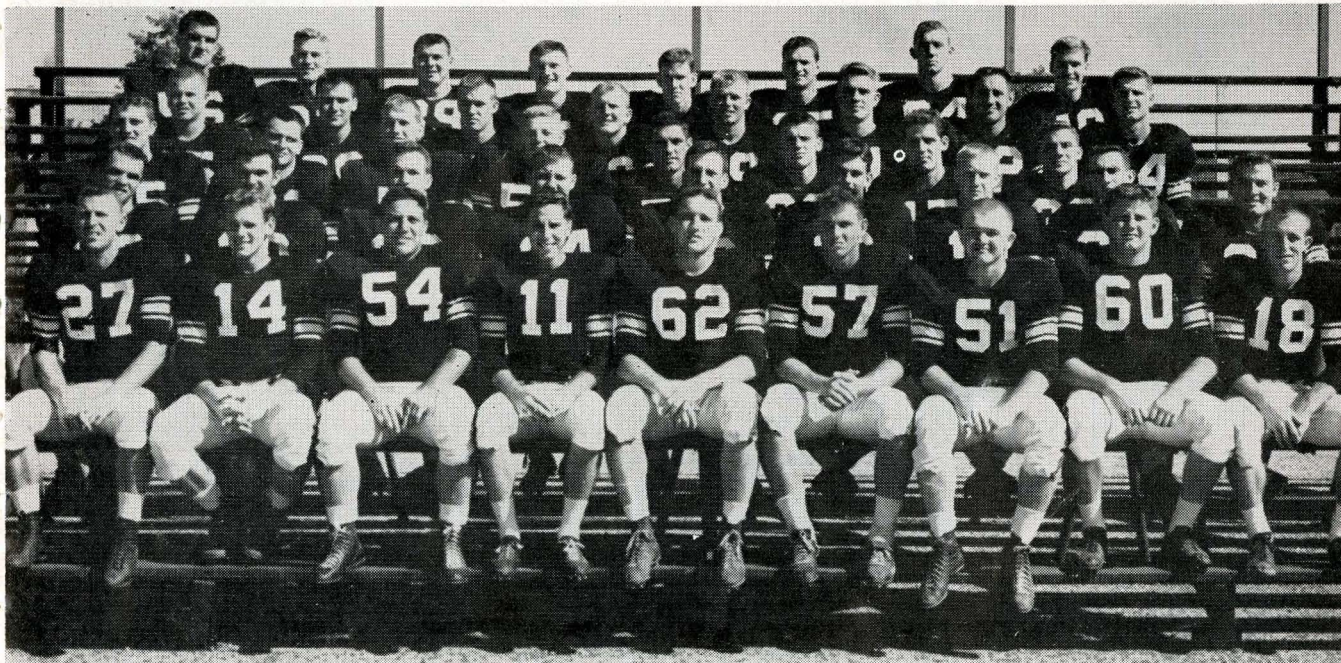
Nugent's assistant coaches are Vaughn Mancha, Bob Harbison, "Win" Siegfried, Vince Ragunas, Mike Long, Frank Toomey, Owen Hale, Steve Kalenich and Jimmy Messines.



**TOM NUGENT**

*Head Coach of FSU*

## Florida State University Football Squad



Front row, left to right: Billy Graham, Bill Brown, Al Pacifico, Lee Corso, Al Makowiecki, Ronnie King, Don Powell, Jim Olsen, Buck Metts. Second row: Buddy Reynolds, Hubert Ackerman, Carl Grenn, Jerry Jacobs, Robert Grenn, Bill Weaver, Bill Odom, Hamilton Bisbee, Jimmy Lee Taylor. Third row: Tommy Bouchlas, Tommy Thompson, Bill Swilley, Bill Cullom, Ronnie Schomburger, Norman Olson, Mike Norman, Gene Cox. Fourth row: Bob Morris, Leon Bryant, Don McCormick, Bob Barber, Bob Crenshaw, John Griner, Ted Rodrigue, Bud Leonard. Fifth row: Tom Feamster, Harry Massey, Pat Versprille, Jimmy Trado, Joe Holt, Ray Staab, Len Swantic.



---

---

# SINCLAIR DEALERS

15 SERVICE STATIONS FOR YOUR CONVENIENCE

## *YELL—Scalp'em Seminoles!*

### POWER UP WITH POWER-X!

—at—

#### AUBREY BARROW'S

Thomasville Rd. at Glenview Drive

#### ELI ROBERTS

1 BLOCK FROM FSU

Tennessee and Copeland Sts.

#### R & R

SERVICE STATION

Tennessee and Duval Sts.

#### BURNS AUTO SERVICE

Top of Hill S. Monroe St.

#### SHOPPING CENTER

North Monroe at 4th Avenue

#### RALPH HADLEY

811 West Brevard Street

#### BIG OAK

SERVICE STATION

Old Quincy Highway

#### BRADFORDVILLE

SERVICE STATION

Thomasville Highway

#### AMONIA STORE

Thomasville Highway

#### JOT-EM-DOWN

SERVICE STATION

Woodville, Florida

#### ROBINSON

South Adams Street

#### CAPITAL CITY ICE

South Adams St. at Railroad

#### MOODY

GROCERY & SERVICE

New Crawfordville Highway

#### GILLIAM

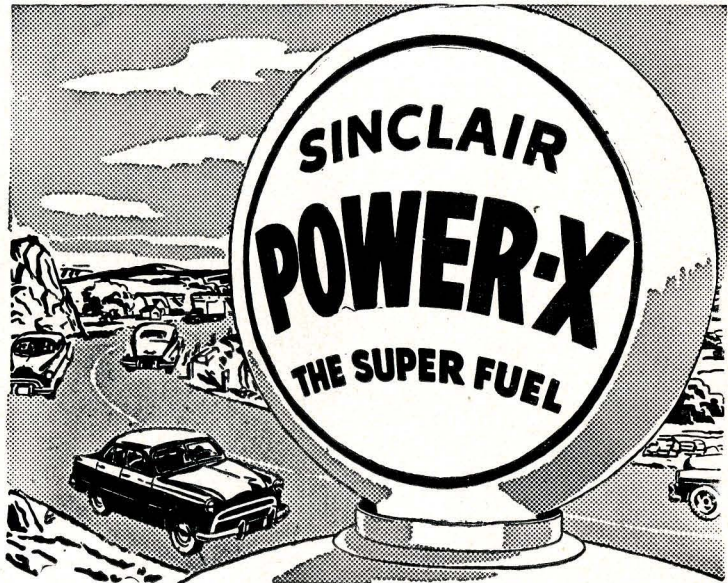
GROCERY & SERVICE

W. Brevard Street

#### BARWICK

SERVICE STATION

Panacea, Florida



## 2 to 18% MORE

## KNOCK-FREE POWER

---

---

**RALPH D. NEWMAN OILS, Inc.**  
MARKETER OF SINCLAIR PRODUCTS



This Page of  
F.S.U. Seminoles  
Compliments of  
**THE CORRAL**

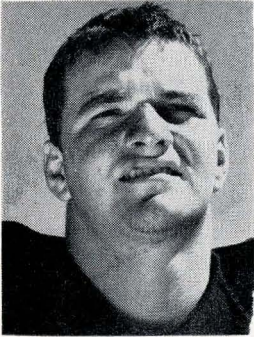
*Y'all Come to---*

# THE CORRAL

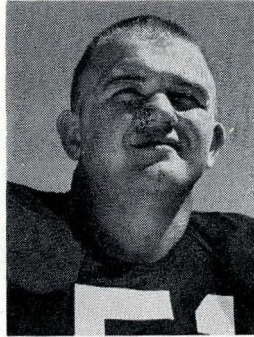
1620 South Monroe

Telephone 2-8208

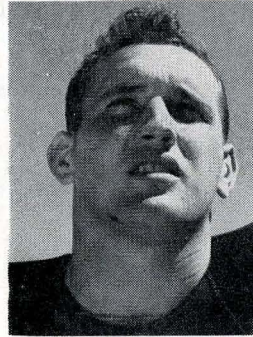
JOE HARRINGTON, Owner



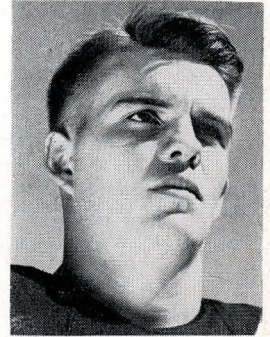
Joe Holt—FB



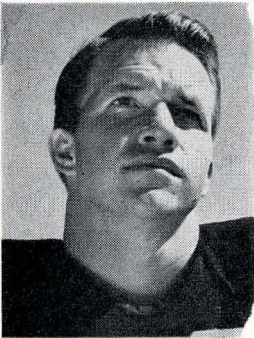
Don Powell—RT



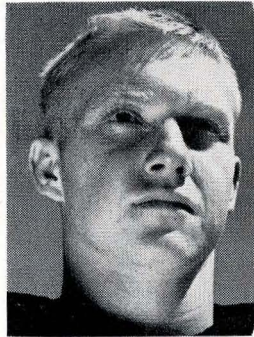
Al Makowiecki—LT



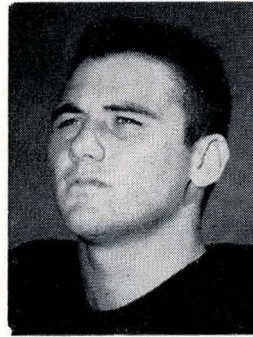
John Griner—FB



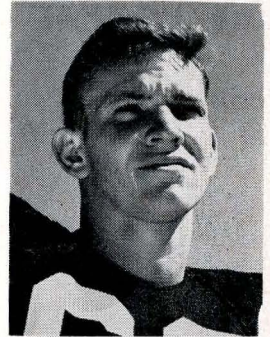
Carl Grenn—RH



Billy Odom—RH



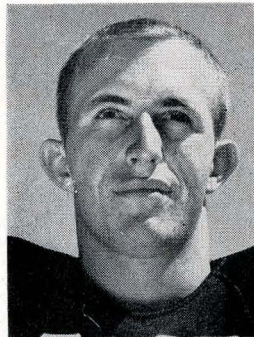
Leon Bryant—G



Jimmy Trado—LE



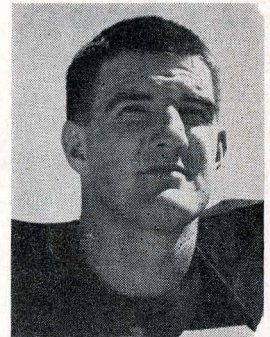
Billy Graham—RH



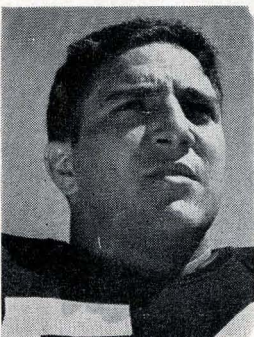
Buck Metts—LH



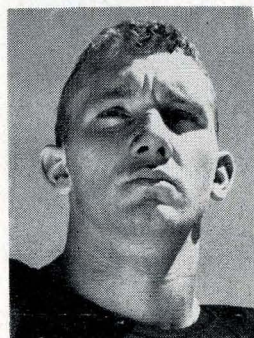
Robert Grenn—RE



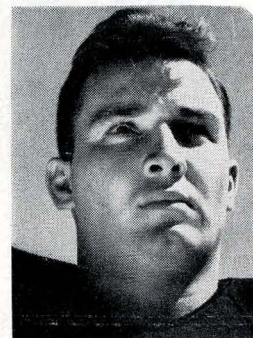
Tom Feamster—RE



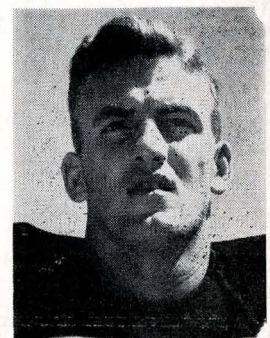
Al Pacifico—RG



Ray Staab—RT



Jimmy L. Taylor—LE



Harry Massey—QB



---

---

# *The Sweet Shop*

GOOD FOOD

DELICIOUS SODAS

**DRUG SUNDRIES**

Meet Your Friends Here Before and  
After the Game!

**FOLLOW THE SEMINOLES!**

---

---

**Scalp 'Em Seminoles**

*"Everything for the Students"*

We Buy and Sell

**USED BOOKS**

**UNIVERSITY**



**BOOKSTORE**

IN THE STUDENT CENTER

---

---





ENJOY THE GAME... PAUSE AND



**REFEREES' SIGNALS**

- 1. Offside
- 2. Illegal procedure or position
- 3. Illegal motion
- 4. Illegal shift
- 5. Illegal substitution
- 6. Delay of game
- 7. Personal foul
- 8. Roughness and piling on
- 9. Clipping
- 10. Roughing the kicker
- 11. Unsportsmanlike conduct
- 12. Defensive holding
- 13. Illegal use of hands and arms
- 14. Intentional grounding
- 15. Illegally passing or handing ball forward
- 16. Forward pass or kick catching interference
- 17. Ineligible receiver down field on pass
- 18. Ball illegally touched, kicked or batted
- 19. Incomplete forward pass, penalty declined, no play or no score
- 20. Crawling, helping the runner or interlocked interference
- 21. Ball dead; if hand is moved from side to side: touchback
- 22. Touchdown or field goal
- 23. Safety
- 24. Time-out
- 25. First down
- 26. Ball ready-for-play
- 27. Start the clock or no more time-outs allowed

COPYRIGHT 1954, THE COCA-COLA COMPANY

TALLAHASSEE COCA-COLA BOTTLING COMPANY, TALLAHASSEE, FLORIDA



## FLORIDA STATE

### PROBABLE STARTING LINEUP

NO.	NAME	POSITION
34	RON SCHOMBURGER	LE
62	AL MAKOWIECKI	LT
24	JERRY JACOBS	LG
59	BOB CRENSHAW	C
54	AL PACIFICO	RG
43	BOB BARBER	RT
56	TOM FEAMSTER	RE
37	HARRY MASSEY	QB
11	LEE CORSO	LH
27	BILLY GRAHAM	RH
21	JOHN GRINER	FB

### FLORIDA STATE SQUAD

10	Odom, RH	37	Massey, QB
11	Corso, LH	40	Gibson, RG
12	McCormick, LH	41	Versprille, QB
16	Weaver, RH	42	Ward, RG
18	Metts, LH	43	Barber, LT
17	Whittington, FB	44	Leonard, LE
19	R. Grenn, RE	45	Morris, RG
21	Griner, FB	46	Reynolds, LH
22	C. Grenn, RH	47	Gardner, RT
23	Bisbee, RE	48	Swantic, QB
24	J. Jacobs, LG	49	Bryant, RG
25	Holt, FB	50	Baggett, LG
26	C. Jacobs, LG	51	Powell, RT
27	Graham, RH	52	Cullom, C
29	Swilley, LE	54	Pacifico, RG
30	Ackerman, C	56	Feamster, RE
31	Taylor, LE	57	King, FB
32	Rodrigue, QB	59	Crenshaw, C
33	Cox, FB	61	Thompson, FB
34	Schomburger, RE	62	Makowiecki, LT
35	Prinzi, QB	63	Trado, LE
36	Brown, LT	64	Staab, RT

## CHESTERFIELD

AMERICA'S MOST POPULAR  
2-WAY CIGARETTE

*Either  
Way*

THE QUALITY YOU WANT!



JEAN ANON  
THE CORBETWINS

**CHESTERFIELD**  
**BEST FOR YOU**

## MISSISSIPPI SOUTHERN

### PROBABLE STARTING LINEUP

NO.	NAME	POSITION
87	HUB WATERS	LE
78	DON OWENS	LT
66	P. W. UNDERWOOD	LG
54	LESLIE CLARK	C
68	HAMP COOK	RG
76	BUZZY CLARK	RT
81	LEONARD WILLIAMS	RE
13	JIM DAVENPORT	QB
45	CARL BOLT	LH
31	BROOKS TISDALE	RH
11	FRED SMALLWOOD	FB

### MISSISSIPPI SOUTHERN SQUAD

10	Herring, QB	61	Bethea, G
11	Smallwood, FB	62	Russell, G
12	Mason, HB	63	Rich, G
13	Davenport, QB	64	Orphan, G
15	McHenry, QB	65	Fitzgerald, G
20	Whitfield, HB	66	Underwood, G
21	Jones, HB	67	Tregle, G
22	Trenton, HB	68	Cook, G
24	Howard, HB	69	Herrmann, G
25	Cardenas, FB	70	Bishop, T
26	Meeks, FB	71	Brumfield, T
31	Tisdale, HB	72	Del Vaccario, T
33	Kilpatrick, HB	73	Mitchell, T
34	Kennedy, HB	74	Eidt, T
35	Bourland, FB	75	Taylor, T
41	Arban, HB	76	Clark, T
45	Bolt, HB	77	Sideris, T
45	Grantham, FB	78	Owens, T
47	May, FB	79	Russell, T
48	Barfield, QB	80	Taylor, E
49	Speights, HB	81	Williams, E
51	Beattie, C	82	Yencho, E
53	Davis, T	83	Juneau, E
54	Clark, C	84	Linton, E
55	Speracino, C	87	Waters, E
56	Husser, C	89	Boling, E

## CHESTERFIELD

LARGEST SELLING CIGARETTE  
IN AMERICA'S COLLEGES

FOR TASTE AND MILDNESS...THEY SATISFY MILLIONS!





## PENALTIES

### LOSS OF FIVE YARDS

1. Taking more than five times out during either half (except for replacement of injured player).
2. Illegal delay of game.
3. Failure to complete substitution before play starts.
4. Violation of kickoff formation.
5. Player out of bounds when scrimmage begins.
6. Putting ball in play before Referee signals "Ready-for-play".
7. Failure to maintain proper alignment of offensive team when ball is snapped. Also, backfield man illegally in motion.
8. Offside by either team or encroachment on neutral zone.
9. Attempt to draw opponents offside.
10. Crawling by runner.
11. Illegal forward pass (includes intentional grounding of forward pass). Also loss of down.
12. Taking more than two steps after Fair Catch is made.
13. Player on line receiving snap.
14. Any violation of the scrimmage formation.

### LOSS OF FIFTEEN YARDS

15. Team not ready to play at scheduled time.
16. Violation of rules during intermission.
17. Illegal return of suspended player.
18. Interference by member of offensive team with defensive player making pass interception. (Also loss of down.)
19. Interference with opportunity of player of receiving team to catch a kick.
20. Illegal use of hands or arms by offensive player.
21. Tackling or blocking defensive player who has made fair catch.
22. Roughing the kicker.
23. Piling up, hurdling, clipping.
24. Tackling player out of bounds, or running into player obviously out of play.
25. Coaching from sidelines.
26. Failure to stop one full second following shift.
27. Defensive holding.
28. Invalid Signal for Fair Catch.

### OTHER PENALTIES

29. Striking an opponent with fist, forearm, elbow or locked hands, kicking or kneeling — Mandatory disqualification of offending player plus loss of fifteen yards.
30. Foul within the one yard line—half the distance to the goal.
31. Interference by defensive team on forward pass—passing team's ball at spot of foul.
32. Forward pass being touched by ineligible receiver beyond the line of scrimmage—loss of fifteen yards from spot of preceding down and loss of a down.
33. Illegal touching of kicked ball within opponent's ten yard line — touchback.
34. Flagrantly rough play or unsportsmanlike conduct — Mandatory disqualification plus loss of fifteen yards.
35. Eligible pass receiver who goes out of bounds and later touches a forward pass — loss of down.





## MISS. SOUTHERN ROSTER

No.	Name	Pos.	Wt.	Year	Hometown
10	Herring, George	QB	191	3	Hokes Bluff, Ala.
11	Smallwood, Fred	FB	166	3	Laurel
12	Mason, Brick	HB	160	4	Columbia
13	Davenport, Jim	QB	163	3	Siluria, Ala.
15	McHenry, Leemon	QB	164	4	Lucedale
20	Whitfield, Dallas	HB	168	2	Picayune
21	Jones, Baxter	HB	171	1	Gulfport
22	Trenton, Ted	HB	178	3	Griffin, Ga.
24	Howard, Jackie	HB	173	4	Purvis
25	Cardenas, Eddie	FB	194	2	Pensacola, Fla.
26	Meeks, Lawrence	FB	186	1	Kossuth
31	Tisdale, Brooks	HB	183	4	Moselle
33	Kilpatrick, Jim	HB	166	1	Alex. City, Ala.
34	Kennedy, James	HB	161	1	Atmore, Ala.
35	Bourland, Tuffy	FB	202	2	Aberdeen
41	Arban, J. C.	HB	172	1	Athens, Ala.
45	Bolt, Carl	HB	177	4	Dublin, Va.
45	Grantham, Steve	FB	191	1	Crystal Springs
47	May, Jim	FB	196	1	Pascagoula
48	Barfield, Doug	QB	172	2	Grove Hill, Ala.
49	Speights, Son	HB	159	1	Prentiss
51	Beattie, Jack	C	174	1	Gulfport
53	Davis, Jim	T	234	3	Ellijay, Ga.
54	Clark, Leslie	C	202	3	Belzoni
55	Speracino, Jack	C	189	4	Monassen, Pa.
56	Husser, Huey	C	204	2	Franklinton, La.
61	Bethea, Carl	G	184	1	Memphis, Tenn.
62	Russell, Roy	G	196	1	Meridian
63	Rich, Larry	G	193	2	Pell City, Ala.
64	Orphan, Dino	G	182	3	Montgomery, Ala.
65	Fitzgerald, Dave	G	194	2	McKeesport, Pa.
66	Underwood, P. W.	G	228	2	Cordova, Ala.
67	Tregle, Al	G	201	2	New Orleans, La.
68	Cook, Hamp	G	188	4	Georgiana, Ala.
69	Herrmann, Leo	G	202	4	Mobile, Ala.
70	Bishop, Bill	T	217	2	Memphis, Tenn.
71	Brumfield, Denman	T	203	2	Franklinton, La.
72	Del Vaccario, Pat	T	214	3	Brooklyn, N. Y.
73	Mitchell, J. Hugh	T	221	3	Picayune
74	Eidt, James	T	201	1	Natchez
75	Taylor, Jimmy	T	197	1	Biloxi
76	Clark, Buzzy	T	251	3	Belzoni
77	Sideris, John	T	212	3	Long Island, N.Y.
78	Owens, Don	T	248	2	St. Louis, Mo.
79	Russell, John	T	208	1	Monticello
80	Taylor, Jerry	E	178	2	Columbia
81	Williams, Leonard	E	201	3	Jacksonville, Fla.
82	Yencho, Bob	E	186	1	McKeesport, Pa.
83	Juneau, Curry	E	193	1	New Orleans, La.
84	Linton, Lloyd	E	189	2	Hattiesburg
87	Waters, Hub	E	192	4	Benton
89	Boling, Bill	E	197	4	Aliceville, Ala.

## FLORIDA STATE ROSTER

No.	Name	Pos.	Wt.	Year	Hometown
10	Billy Odom	RH	165	2	Mt. Dora
11	Lee Corso*	LH	165	2	Miami
12	Don McCormick	LH	176	1	Panama City
18	Buck Metts*	LH	173	2	Sanford
19	Robert Grenn	RE	179	4	Brookhaven, Miss.
21	John Griner*	FB	170	3	Jacksonville
22	Carl Grenn*	RH	165	4	Brookhaven, Miss.
23	Hamilton Bisbee	RE	171	1	Sanford
24	Jerry Jacobs*	LG	208	3	South Bend, Ind.
25	Joe Holt*	FB	181	2	Graham, N. C.
26	Charles Jacobs	G	185	3	Miami
27	Billy Graham*	RH	178	4	Bogalusa, La.
29	William Swilley	LE	172	1	Albany, Ga.
30	Hubert Ackerman	C	190	1	Hopewell, Va.
31	Jimmy Lee Taylor*	LE	190	4	Jacksonville
32	Ted Rodrigue	QB	192	1	Lynn, Mass.
33	Gene Cox	FB	184	3	Lake City
34	Ronnie Schomburger	RE	190	1	Pittsburgh, Pa.
35	Vick Prinzi	QB	175	1	Waverly, N. Y.
36	Bill Brown	LT	191	1	Orlando
37	Harry Massey*	QB	185	4	Canton, Miss.
39	Jere Daniels	RG	190	1	Gainesville, Fla.
40	Vince Gibson	G	186	3	Birmingham, Ala.
41	Patrick Versprille	QB	176	1	Norfolk, Va.
42	Rod Ward	G	209	1	Fairfield, Ala.
43	Bob Barber*	LT	212	2	Belle Glade
44	Bud Leonard*	C	196	2	Ocala
45	Bob Morris	RG	202	1	Panama City
46	Buddy Reynolds	LH	171	1	West Palm Beach
47	Willie Gardner	RT	205	1	Tampa, Florida
48	Len Swantic*	QB	175	2	Columbus, Ga.
49	Leon Bryant	RG	196	1	So. Norfolk, Va.
50	Leo Baggett	LG	203	1	Panama City
51	Don Powell*	RT	215	3	Birmingham, Ala.
52	Bill Cullom	C	190	1	Huntsville, Ala.
54	Al Pacifico*	RG	206	2	Altoona, Pa.
56	Tom Feamster	RE	249	3	Warwick, Va.
57	Ronnie King*	FB	217	4	Daytona Beach
59	Bob Crenshaw*	C	178	3	Miami
61	Tommy Thompson	FB	220	1	Springfield, Mass.
62	Al Mackowiecki*	RT	215	4	Monaca, Pa.
63	Jimmy Trado	LE	182	1	Henderson, N. C.
64	Ray Staab*	RT	203	2	Charleston, W.Va.

\*—denotes lettermen

*Scalp 'em*

*Seminoles*

**FLORIDA  
THEATRE**

*Now Showing*

Gene Kelly

Van Johnson

Cyd Charisse

in

**BRIGADOON**

In Cinemascope



---

---

# Tallahassee Banking Association

**Industrial Bank of Tallahassee**

**Tallahassee State Bank & Trust Co.**

**Capital City National Bank**

**Lewis State Bank**

All Banks Are Members of  
**FEDERAL DEPOSIT INSURANCE CORPORATION**

---

---

Owned and Operated by  
Frank and James Chase

## **Skyline Restaurant**

U. S. Highways 90 and 20  
1 Mile West of City Limits

TALLAHASSEE, FLORIDA  
Telephone 2-9144

"Serving Good Food for Fine People"

## **Buddy's Hardware and Sporting Goods**

A Complete Line of  
**RAWLINGS EQUIPMENT**

203 S. Monroe

**We're Always for The Seminoles**

**WIN, LOSE or DRAW**

## **State Office Supply**

207 S. Adams      Phone 2-2607

**SCALP 'EM SEMINOLES**

## **Brown's Men's Wear**

Monroe at Park

---

---



---

---

# Gilberg's

*"The House Of 1000 Fabrics"*

108 East Jefferson Street  
TALLAHASSEE, FLA.

220 Broad Avenue  
ALBANY, GA.

26 North Palafox Street  
PENSACOLA, FLA.

---

---

*Ready Made*  
BEDSPREADS  
DRAPERIES  
UPHOLSTERY FABRICS  
SLIPCOVER FABRICS  
DRAPERY FABRICS  
DRESS FABRICS  
PATTERNS • BUTTONS  
SEWING NOTIONS

---

---

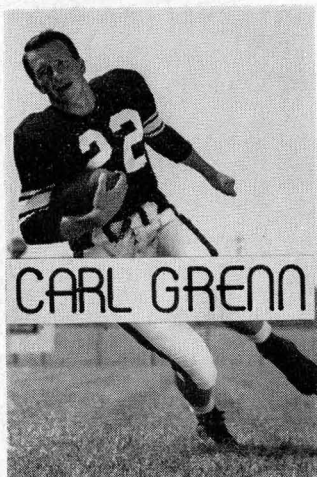
## HOLLAND'S RESTAURANT

Facing the Capitol at 106 E. Pensacola Street  
TALLAHASSEE, FLORIDA

Serving Our Own Blend of Coffee  
Famous for Home-made Pies and Hot Biscuits  
U. S. Prime and U. S. Choice Steaks

*Air Conditioned and Ultra Modern*

N. T. HOLLAND, Owner and Manager



---

---

## ROYAL SANDWICH COMPANY

P. O. Box 641

• Phone 2-0699

—WHOLESALE DISTRIBUTORS OF SANDWICHES—

Salted Peanuts • Peanut Butter Sandwiches • Potato Chips

Pop Corn • Cookies • Candy

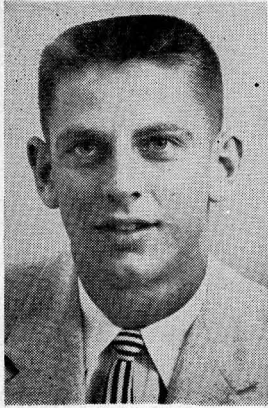
"FRESH AS A DAISY"

---

---



# THE SOUTHERNERS



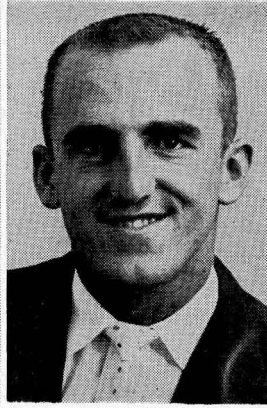
**BARFIELD**  
Quarterback



**UNDERWOOD**  
Guard



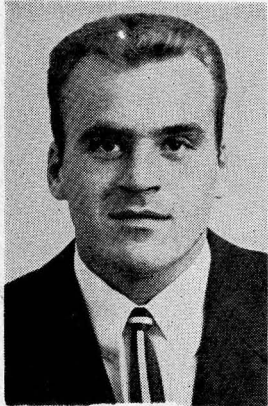
**MASON**  
Halfback



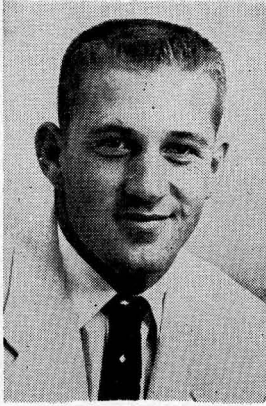
**JUNEAU**  
End



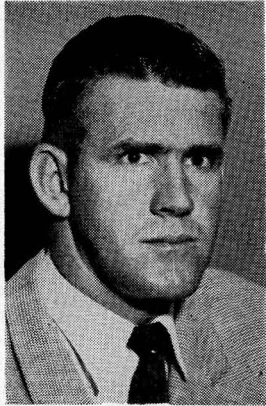
**TAYLOR**  
Tackle



**OWENS**  
Tackle



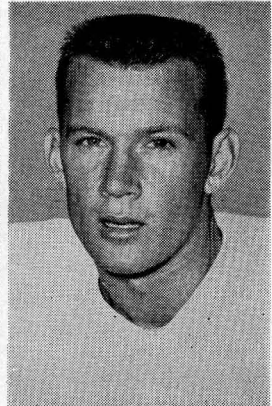
**WHITFIELD**  
Halfback



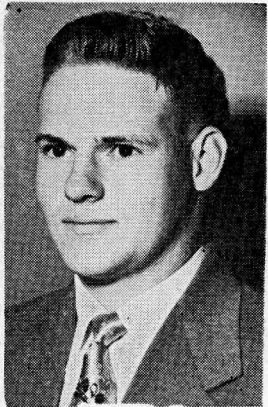
**DAVIS**  
Tackle



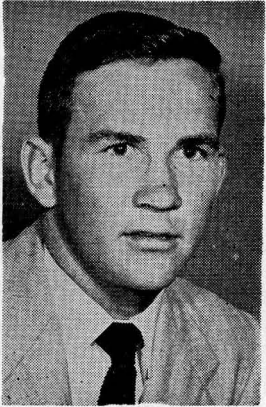
**CLARK, W.**  
Tackle



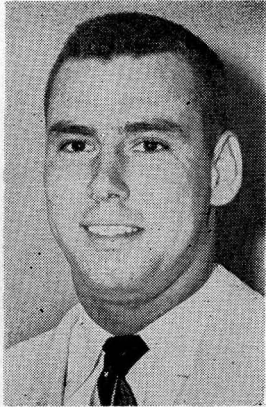
**BOLT**  
Halfback



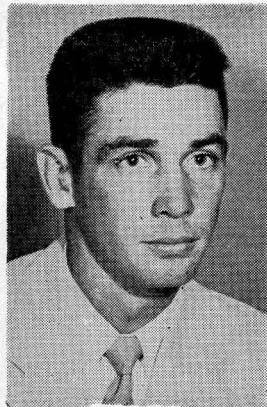
**CLARK, L.**  
Center



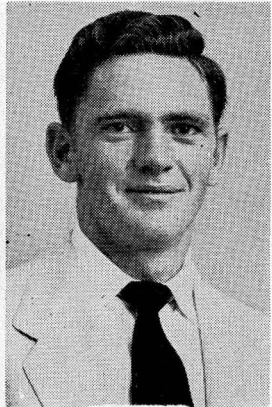
**COOK**  
Guard



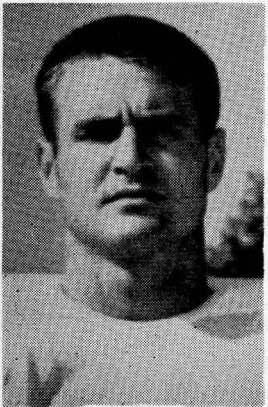
**WILLIAMS**  
End



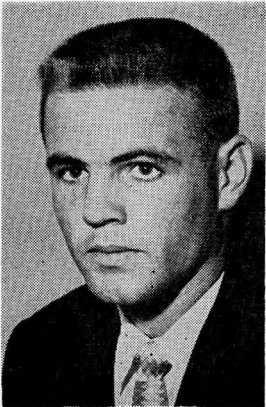
**TISDALE**  
Halfback



**HERRING**  
Quarterback



**TRENTON**  
Halfback



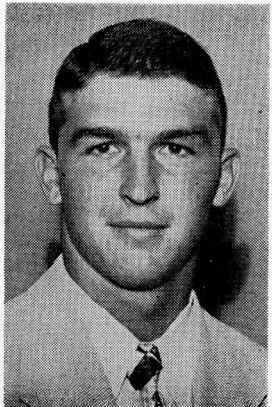
**SMALLWOOD**  
Fullback



**DAVENPORT**  
Quarterback



**SPERACINO**  
Center



**WATERS**  
End



---

---

## ABOUT THE SOUTHERN TEAM

By **JIMMIE McDOWELL**

Athletic Publicity Director, Mississippi Southern

Mississippi Southern, a team that can rise to the occasion, defeating such grid Goliaths as Alabama (twice), Georgia and Villanova during the past two seasons, for the first time in three seasons has suffered its share of heartbreak defeat.

The Southerners, winning 19 of 21 games in 1952 and 1953, have dropped decisions to North Texas State (15-7), Southeastern Louisiana (13-7), and Dayton University (20-7), yet each of these opponents had an open date before they played their respective game with the Mississippians — were piously pointing towards their battle with the conquerors of Alabama.

The Mississippians have been spasmodic this season, beating the defending SEC champion Crimson Tide 7-2 in one of the great defensive duels of the 1954 campaign. They drilled a good Louisiana Tech team, 28-0, assaulted a previously unbeaten Abilene Christian club, 22-7, lowered the boom on troublesome Chattanooga, 14-6, and shut the door on Villanova, 27-0. Last week the Southerners trimmed a strong Memphis State team.

Sandwiched between these victories were the narrow decisions to the foes from Texas, Louisiana and Ohio — games that actually could have gone either way. For the first time in three seasons, luck ran out on Pie Vann as far as key injuries were concerned. He lost his greatest lineman, guard Leo Herrmann, after the Alabama game. Top quarterback Jim Davenport injured his shoul-

der in the first of the North Texas State tilt, and only against Chattanooga and Villanova did he show the form that made him the top field general on the cinderella team.

Mississippi Southern and Florida State each need to win today's game. Both nurse the same ambitions of big-time football and the series is growing into one of great rivalry. The Seminoles certainly were the most improved opponent the Magnolia Staters played last year, and they're a young club improving with each game this fall and will be double tough to beat in their own backyard Turkey Saturday.

Key men to watch for the Southerners include: Davenport, the fine field general; the giant linemen, Don (T), P. W. (The Undertaker) Underwood (G), Jim (Coon Dog) Davis (T), and Buzzy Clark (T), who weigh 248, 232, 234 and 251; the play-sniffing linebackers, Les Clark (C) and Hamp Cook (G), who average better than 50 minutes of play per game; running backs Fred Smallwood, Carl Bolt and Brooks Tisdale; Florida-born Leonard Williams, a sterling end from Jacksonville, and power runner Eddie Cardenas of Pensacola.

The Florida State-Mississippi Southern series is developing into one of the very best, as it should, for two of the South's most progressive institutions of higher learning, not to overlook new athletic powers on the Dixie football horizon.

---

---



**"SAVE  
WITH  
SAFETY"**

—at—



# LEON FEDERAL

Savings and Loan Association

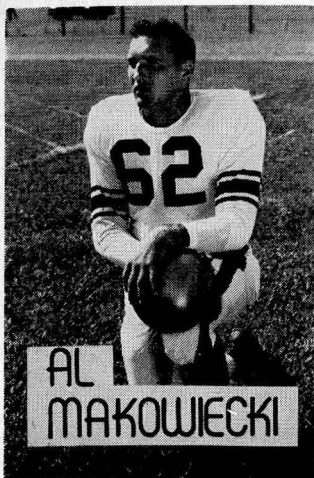
Monroe at Park

Tallahassee

---

---





AL  
MAKOWIECKI

## DOUBLE YOUR SAVINGS

Higher than average dividends  
increase your savings income.

## DOUBLE YOUR PROTECTION

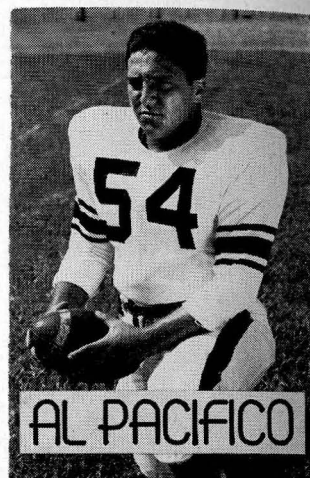
Savings Now Insured To  
\$10,000.00

By

Federal Savings & Loan Insurance Corp.

## Tallahassee Federal Savings & Loan Association

115 East Park Avenue



AL PACIFICO

## BENNETT'S DRUG STORE

- Prescriptions
- Cameras
- Sundries
- Gifts
- Fountair
- Cafe
- Cosmetics
- Drugs

MEET AT BENNETT'S BEFORE AND AFTER THE GAME!

Corner Monroe and College Streets

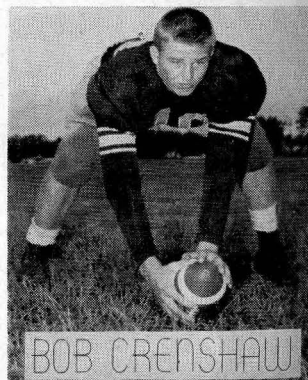
PHONES 2-8980 — 2-4450

## D. T. O'HARA, JR.

PRODUCE ● POULTRY ● FROZEN FOODS

Phone 2-2128 ● 717 W. Gaines St.

TALLAHASSEE, FLORIDA



BOB CRENSHAW



---

---

# *Velda* Ice Cream

*"Florida's Own"*

---

---

**SCALP 'EM SEMINOLES**

Meet Your Friends at

**The Amber House**

— for —

**FOOD THAT'S FINE**

**Before and After the Game**

Across the Street from University on Corner of Copeland and Park

---

---

PHONE 2-2502

WHOLESALE AND RETAIL

**FOSTER-MOYE, INC.,**

**Athletic Equipment**

DISTRIBUTORS: }

RAWLINGS MFG. CO.

A. G. SPALDING BROS.

SPOT-BILT SHOES

117 E. Lafayette Street

Tampa 2, Florida

Represented for National Advertising by DON SPENCER COMPANY, INC., 271 Madison Ave., New York City

---

---

**P. W. Wilson**

Fashions for Men, Women, Children

Telephone 2-2310

TALLAHASSEE, FLORIDA

---

---

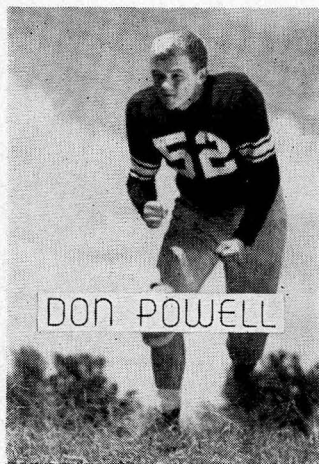


---

---

W E L C O M E

# Graddy Bros. Gulf Stations



"WE LIKE EVERYBODY"

Full Line

**GULF PRODUCTS**

**LUBRICATION SPECIALIST**

**ROAD SERVICE**

1458 SOUTH MONROE

Phone 3-0077

640 WEST TENNESSEE

Phone 2-3584

After the Ball Game

**Drive Carefully, You May Hit One of Our Customers**

---

---

Good Luck Seminoles

## **Malone's Book Store**

**Books, School Supplies  
and Sundries**

## **HOTEL FLORIDAN**

The Community Host to Traveling America

You'll Enjoy Dining in

**THE GREEN ROOM**

---

---

—For FINE FOOD Visit—

Tallahassee's Most Exclusive Dining Room

## **The SILVER SLIPPER**

**Try Our Famous Charcoal Broiled Steaks**

10% Discount to Faculty and Students

**Facilities for** South Monroe St.

**Weddings-Parties-Banquets** Dial 2-4961

James Kalfas—Owner-Manager

## **Gandy Motor Hotel**

Tallahassee's Outstanding Court

**SKYLINE RESTAURANT ADJOINING  
U.S. 90 WEST**

●  
Rest Assured  
in  
Tallahassee





WE STRIVE for our customers' goodwill  
and we are creating it every day. We do  
so by giving complete satisfaction with  
our service, and by combining excellent  
facilities and skilled craftsmanship to  
produce fine printing at a fair price.

**Rose** PRINTING COMPANY, INC.  
ROSE BUILDING • TALLAHASSEE, FLORIDA  
*A complete printing service*



What makes  
a Lucky  
taste better?

"IT'S TOASTED"  
to taste better!

LUCKIES TASTE BETTER

CLEANER,  
FRESHER,  
SMOOTHER!

COPR., THE AMERICAN TOBACCO COMPANY

