



*Light up a Lucky—
it's light-up time!*

**LUCKIES
TASTE BETTER**

Cleaner, Fresher, Smoother!



*"IT'S
TOASTED"
to taste
better!*

© A. T. Co. PRODUCT OF The American Tobacco Company AMERICA'S LEADING MANUFACTURER OF CIGARETTES



FLORIDA STATE *Game*

GRANT FIELD.. OCTOBER 22, 1955
GEORGIA TECH OFFICIAL PROGRAM - 50¢

OPEN FROM 11 A.M. TO 11 P.M.

AIR CONDITIONED

"You will like our food, drinks and atmosphere"

Fearless Fosdick, Mgr.

before and after the game



VISIT
dale's CELLAR RESTAURANT

PEACHTREE AT IVY STREETS

LAmar 5226

ATLANTA, GEORGIA

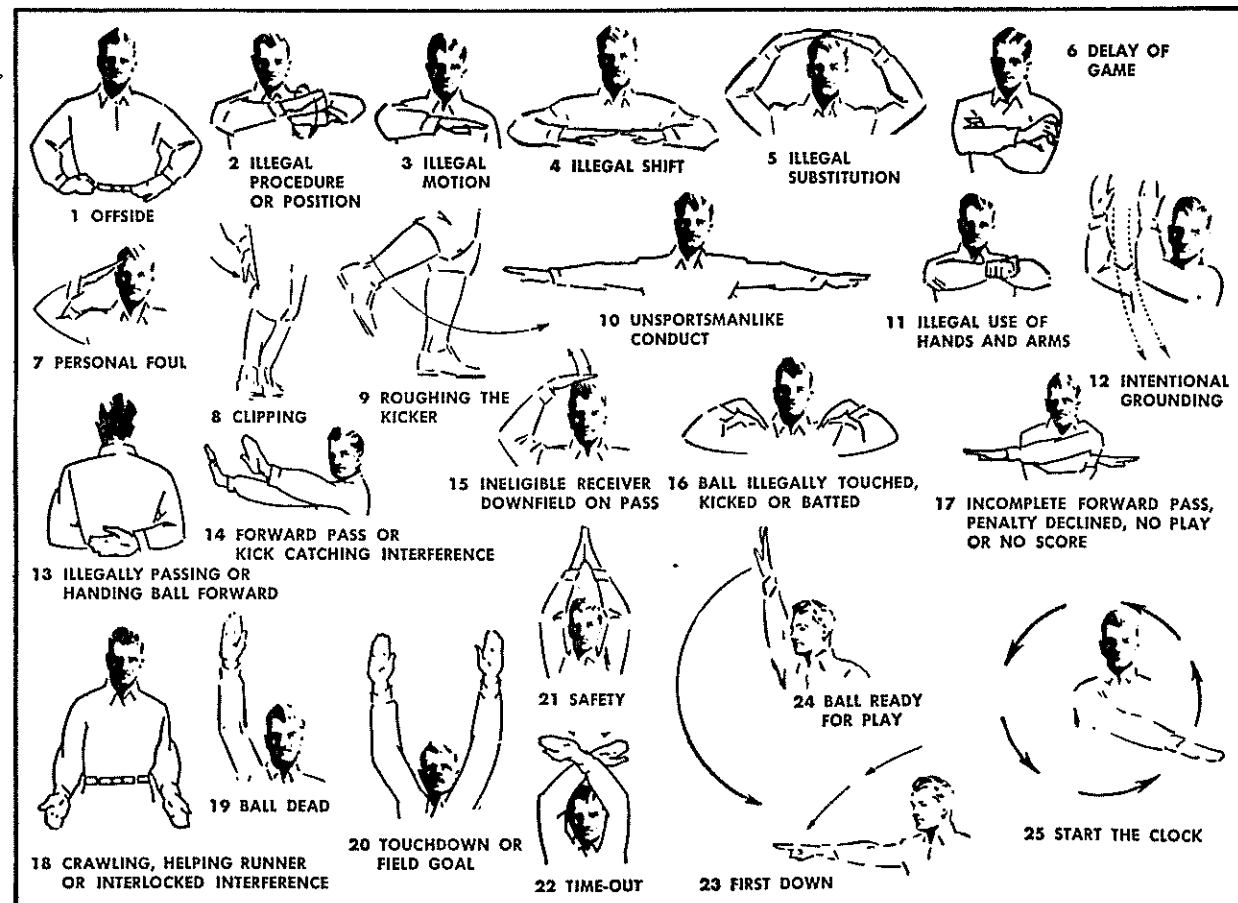
When in Birmingham visit

When in Montgomery visit

dale's

CELLAR RESTAURANT, 1927 - 7th Avenue North

PENTHOUSE RESTAURANT, Atop Walter Bragg Smith Apartments



THE OFFICIAL 1955 GEORGIA TECH PROGRAM

NED WEST, Program Editor

CONTENTS

BEN MASSEY, Program Manager

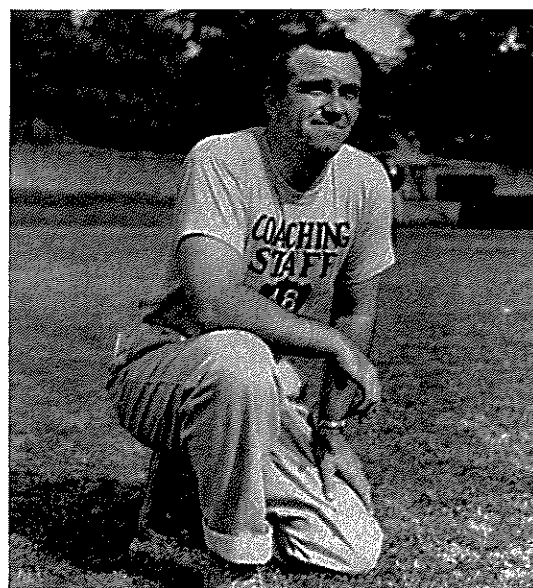
A Game to Remember	10
Officials' Signals	Inside Front Cover
S.E.C. Schedule	26
Team Captains	9
Team Rosters	19-22
Tech Coaches	5, 12, 13, 15
Tech Officials	5
Tech Players	34, 35, 38, 39
Today's Game	6
Visiting Officials	7
Visiting Players	31, 32

CONCESSIONS PRICES

Cigarettes	35¢	Peanuts	10¢
Cushion Rental	25¢	Sun Visors	25¢
Hot Dogs	25¢	Raincoats	\$1.00
Official Programs	50¢	Soft Drinks	10¢

OFFICIAL PROGRAM

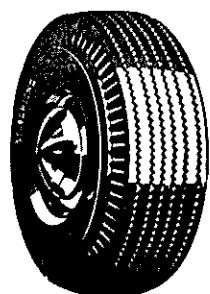
After the Game



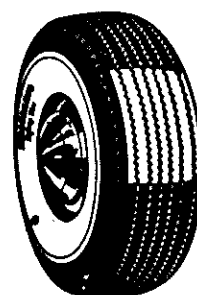
Enjoy

"THE RAY GRAVES SHOW"

Each Saturday over WAGA-TV
6 p. m.



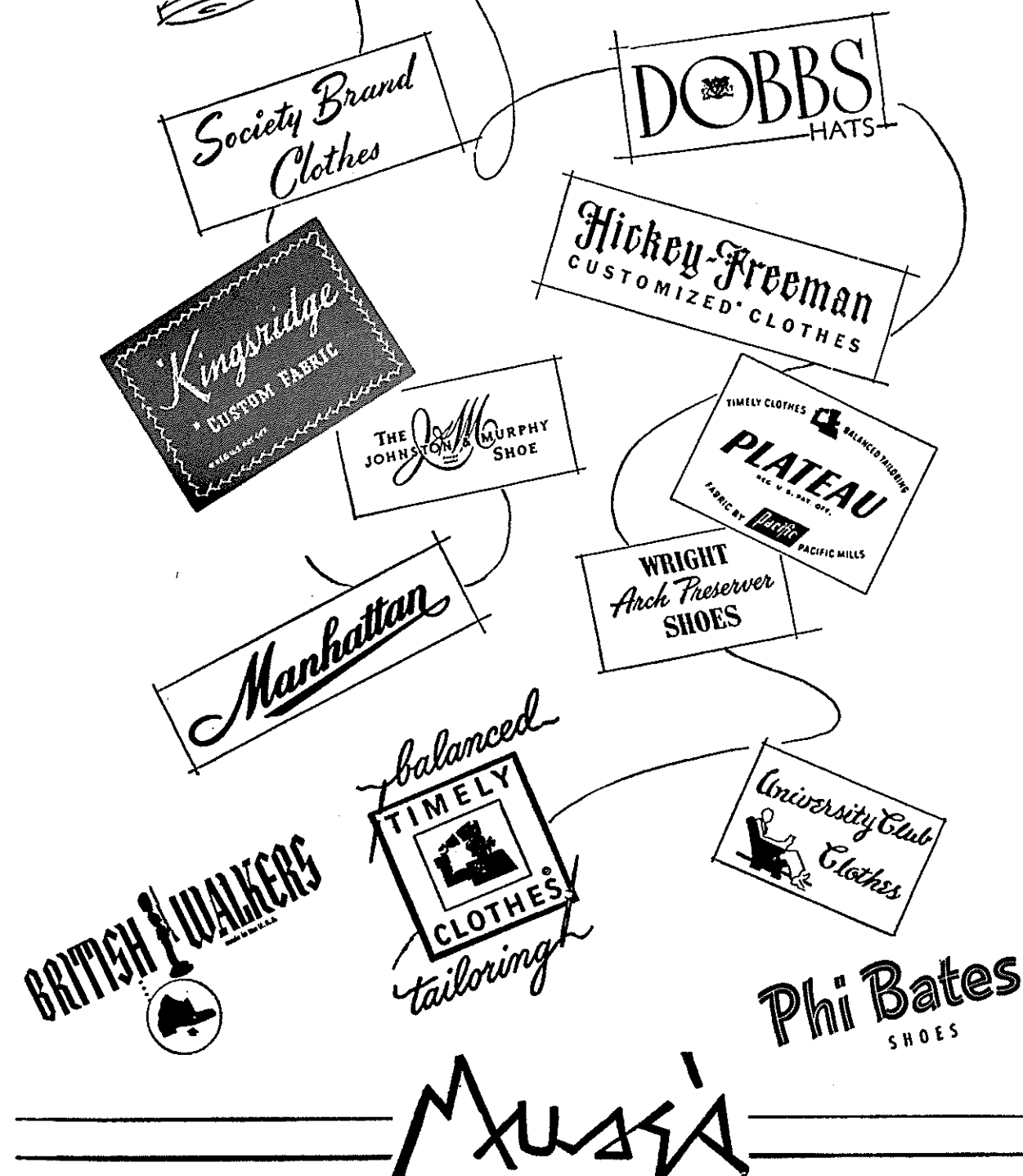
**SEIBERLING
TIRES**



BRADFORD TIRE COMPANY

269 LUCKIE STREET, N. W.
ATLANTA, GEORGIA

*"Labels That Hang by
More Than a Thread"*



The Style Center of the South — PEACHTREE, WALTON & BROAD STS.

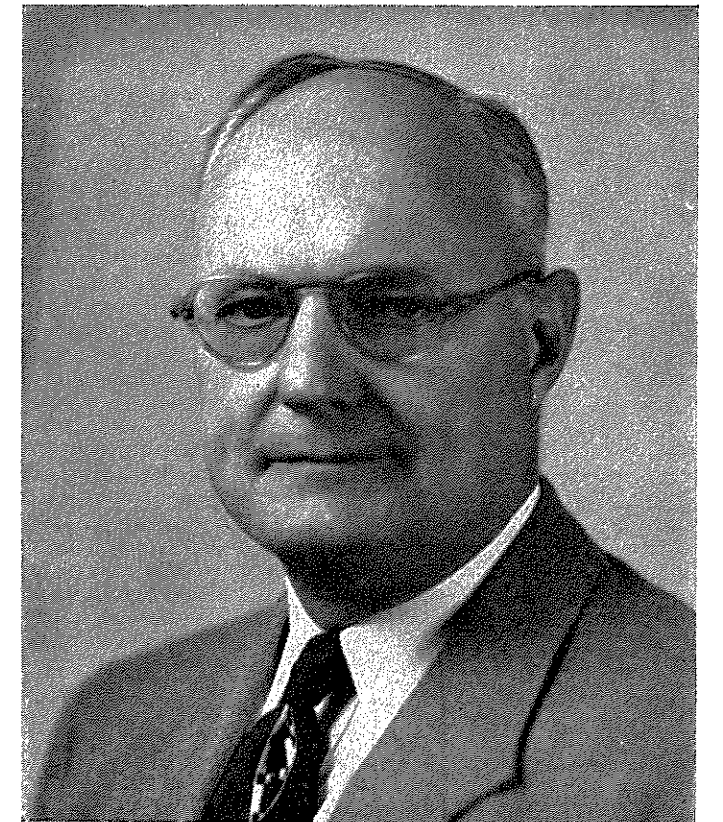


**To a great Tech
squad and a
great Coach,
we extend
sincere wishes
for another great
Tech Season**



DR. BLAKE R. VAN LEER

*President
Georgia Tech*



ROBERT LEE (BOBBY) DODD

*Head Coach and Athletic Director
Georgia Tech*



October 22, 1955 **GEORGIA TECH vs FLORIDA STATE** *Grant Field, Atlanta*

The Georgia Tech Yellow Jackets will meet the Florida State University Seminoles here this afternoon in what may prove to be one of the season's most colorful football games. Tech is expected to concentrate on improving its offensive play with special attention to its passing game. The visiting Seminoles paced the nation's "small college" field in passing last season and are reported to be even stronger in this department for 1955. The ingredients are there for touchdowns to be popping up all over the place today.

Florida State has moved into the "major college" ranks this season for the first time and has found the going pretty rough to date. The Seminoles opened their season with a fine 7-0 victory over North Carolina State, but since that time have suffered losses to Miami 0-34, Virginia Tech 20-24 and University of Georgia 14-47. They have looked like a very good ball club at times and a very bad one at other

times. Coach Tom Nugent is hoping he can keep them going at their best for a full ball game here in Atlanta, and if he can they'll be tough to handle.

The Georgia Tech Yellow Jackets will come on the field today hoping to get back into the win column after dropping a real battle 12-14 to the Auburn Tigers here last Saturday afternoon. This loss was only Tech's sixth since late in the 1950 season as the Jackets have compiled one of the finest records in college football the past four and a half years.

Georgia Tech and Florida State first met on the gridiron in 1903 when the Jackets won 17-0. In 1904 Tech again was the winner 35-0, and then Florida State became a girls school for over 40 years, and of course there wasn't any game. Tech and Florida State played here again in 1952 and the Seminoles gained much praise in holding the championship Yellow Jackets to a 30-0 score.

Tharpe & Brooks

INCORPORATED

MORTGAGE LOANS — GENERAL INSURANCE

CYPRESS 6611
TRUST COMPANY OF GEORGIA BUILDING
ATLANTA, GEORGIA

(FORMERLY THARPE & COMPANY)

ROBERT THARPE '34

J. L. BROOKS '39

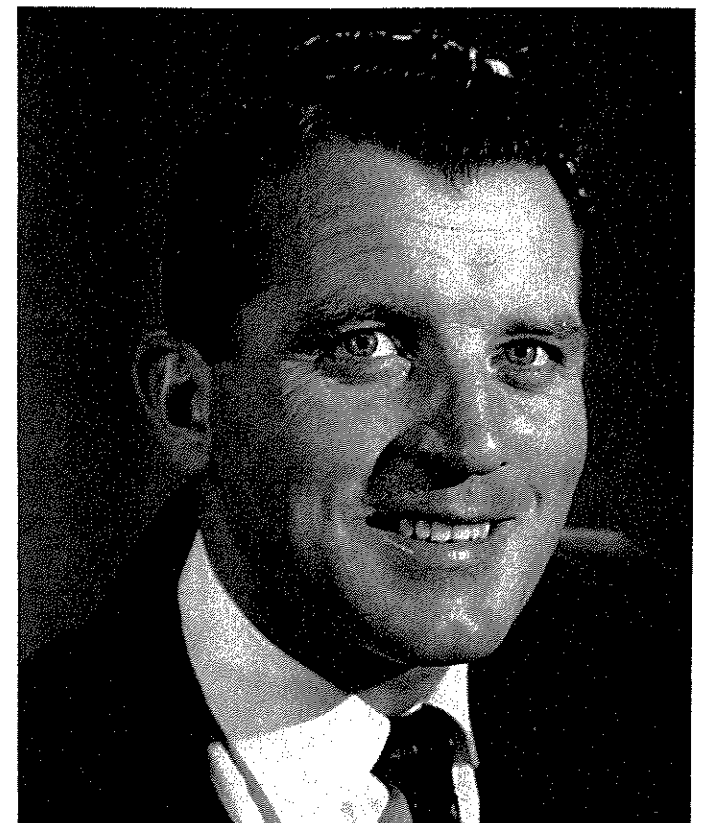
DR. DOAK SHERIDAN CAMPBELL

President
Florida State University



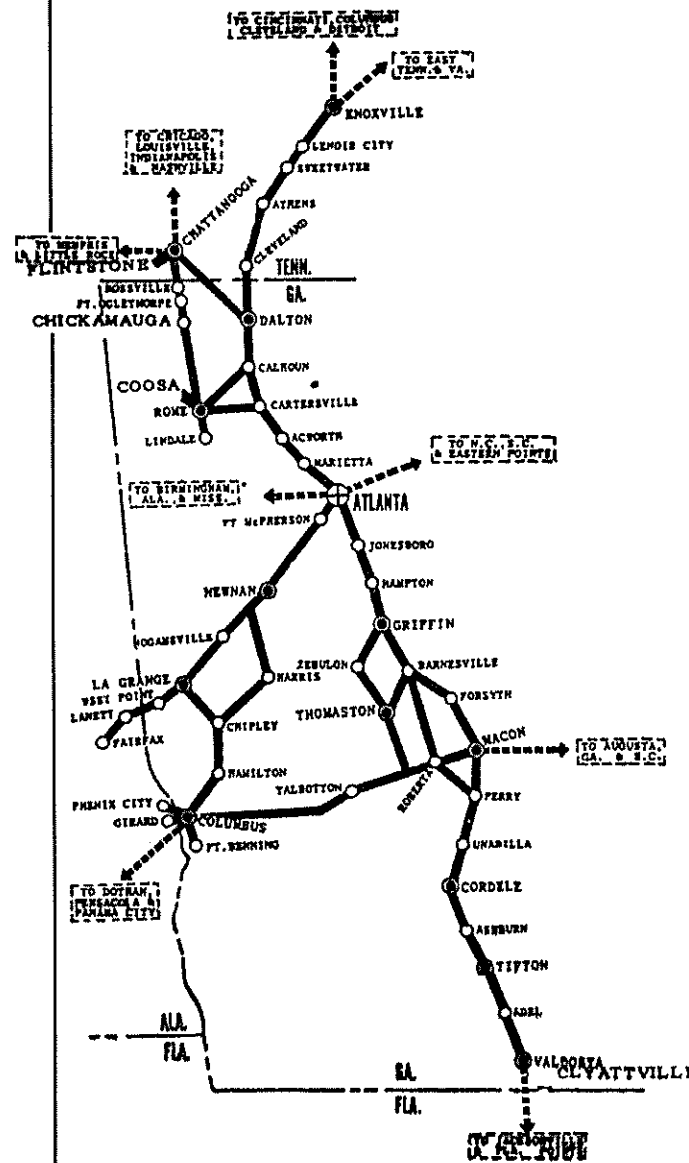
TOM NUGENT

Head Coach
Florida State University



Georgia Highway Express, Inc.

"Dependable Motor Express
Service"



General Traffic Office and Atlanta Terminals
2090 Jonesboro Rd., S. E.
Phones Dixie 7371 — Dixie 7331
ATLANTA, GEORGIA

For the best
in sporting supplies

See

TOM SLATE
ATHLETIC EQUIPMENT
CO.

592 Peachtree St., N.E.



Before—
During—
After—
the Game

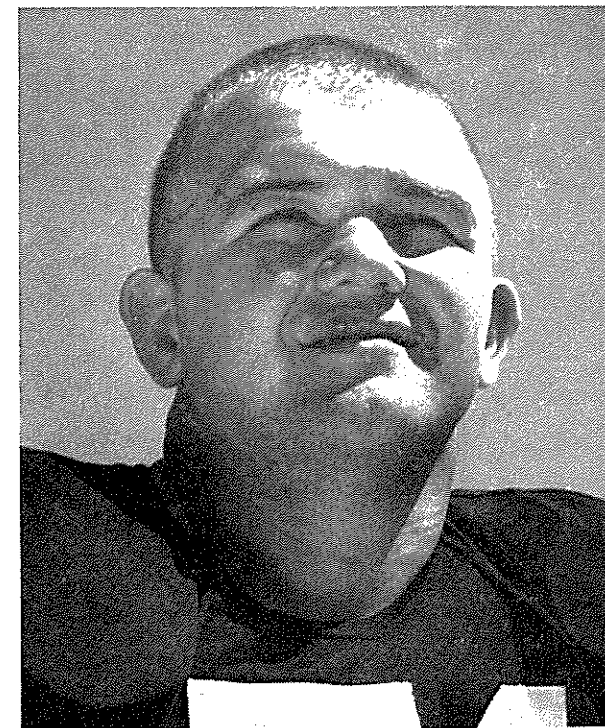
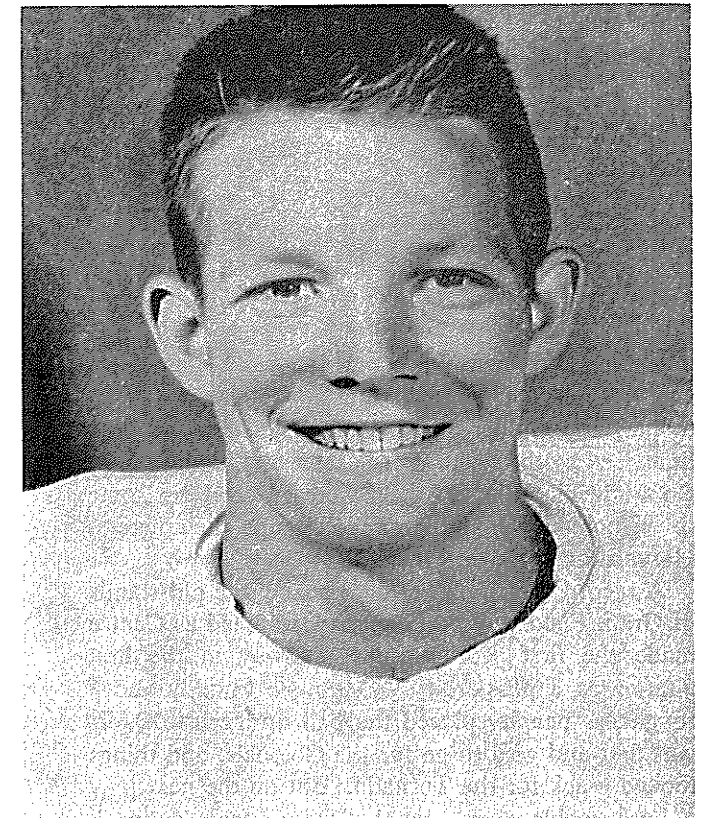
**Red Rock
Golden
Ginger Ale**

Available throughout the stands

CAPTAIN JIMMY MORRIS

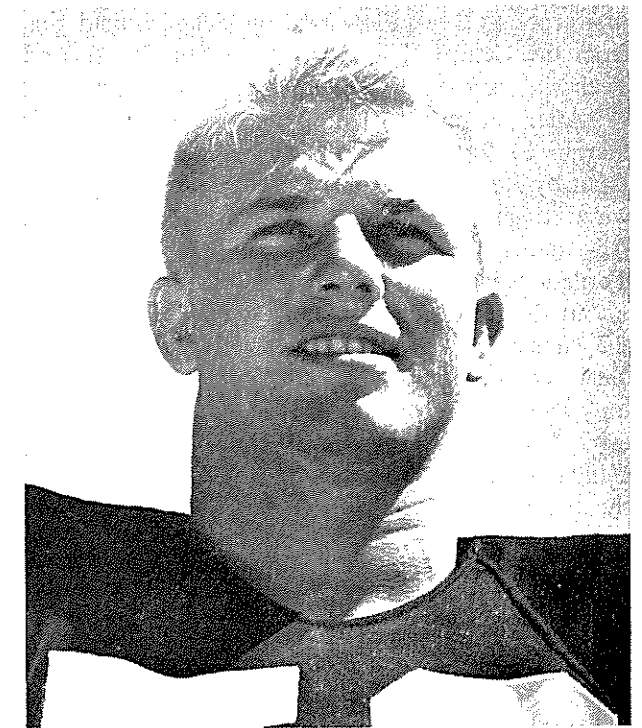
Center, Georgia Tech

JAMES MARTIN (JIMMY, JIM) MORRIS, Georgia Tech's 1955 football captain, is 21 years old, 6 feet 2 inches tall, 194 pounds and a two-year letterman from Carr Central High of Vicksburg, Mississippi. Jimmy is married, his wife's name is Ann, and they have a lovely little daughter, Marti, who is 2½ years old. As captain of the Georgia Tech football team Jimmy picks up a lot of fine tradition. His older brother, George Morris, was Co-Captain of one of Tech's greatest teams in 1952, and also was a center. Jimmy is sure to follow in George's footsteps as a good leader, but a knee injury and subsequent operation last Spring will hinder his chances of reaching the All-America recognition given to his brother. Last season Jimmy was a fine reserve center behind All-America Larry Morris (no relation), and although he saw limited service, he placed fourth on the Tech squad in number of tackles made, with 47.



CO-CAPTAIN DON POWELL

Tackle, F. S. U.



CO-CAPTAIN BOB CRENSHAW

Center, F. S. U.

Third in a Series

THE DAY THE PRAYING COLONELS CRIED

THE FAMED PRAYING COLONELS of Kentucky's Centre College came to Atlanta on October 30, 1920 to play the Golden Tornado for the first and only time. Led by the magnificent passer and field general, Bo McMillin, the Colonels were favored by some seven points over the Tornado despite their loss to Harvard on October 23rd.

A record crowd of 20,000, packing the old stands of Grant Field way past capacity, watched as Centre made the first scoring move midway in the first quarter as a pass from McMillin to Snoddy and a roughness penalty placed the ball on Tech's 10. It was first and goal to go for the Colonels, and things looked black for the Tornado. But on the next play a hard tackle shook the ball loose from fullback Armstrong, and end George Ratterman fell on the ball for Tech.

Near the end of the same period, Tech got its first score as Buck Flowers drop-kicked a field goal from the Centre 30. At the end of the first period Tech was holding on to that slim 3-0 margin.

After an exchange of punts, Tech upped their margin to 9-0 on a sparkling 57-yard off-tackle jaunt by Red Barron, playing that day with his jaws wired together because of an early-season injury. All-America Bill Fincher added the point and the Tornado went out at halftime leading 10-0.

In the third quarter, the Colonels started to feel the effects of Tech's terrific line play and took exclusively to the air. McMillin started going for that long one and Frank Ferst, Tech's quarterback, intercepted one and ran 55 yards through the entire Centre team for another score. Fincher again added the point, and Tech led 17-0 as the final period started.

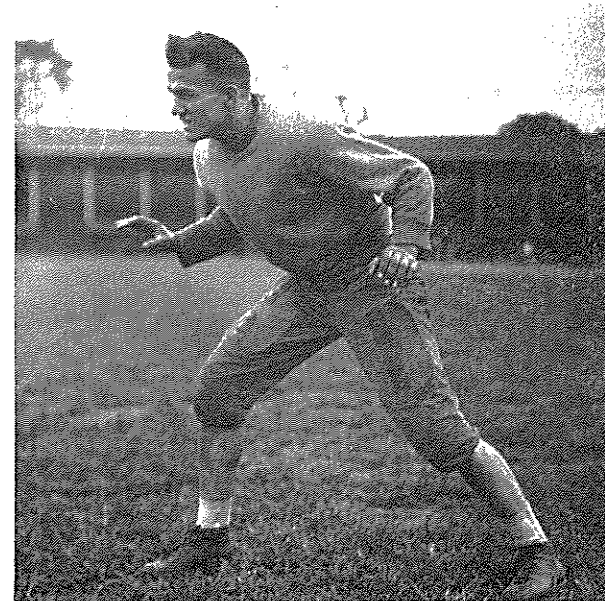
Playing opposite Bill Fincher had so tired Centre's famed Sully Montgomery (later a professional fighter) that the Tornado began moving the ball over him. Red Barron and Judy Harlan teamed up to move the ball to the Centre 2 where in one quick burst Harlan scored. Again Fincher came through with a perfect placement. That ended the scoring for the afternoon as Tech won it 24-0. But the postgame fireworks from the Kentucky press were

almost as interesting as the game. Led by Bruce Dudley, the Kentuckians carried loud and long that they were robbed. This moved the Atlanta Journal's Morgan Blake to pen the following verses:

*The shades of night were falling fast
When thru the Danville village passed
Bruce Dudley, who, with weak steps bore
A banner with this awful score*

*"Tech 24, Centre 0"
"They treated us so bad," he said;
"They threw McMillin on his head—
They are so very mean and rough,
They stole Montgomery's powder puff,
And Weaver's kerchief from his cuff.
Bill Fincher is an awful tough,
And in our eyes he threw some snuff,
And used brass knucks and iron hooks—
You never saw such awful crooks!
Good gracious, they are mean galoots,
Rowdy boys, those horrid brutes!
They beat us but, oh, hear our cry:
They could not steal our alibi."*

Bill Fincher—He Wore Out the Colonels



GEORGIA TECH

MAMMY'S SHANTY



RESTAURANT

A BIT OF THE OLD SOUTH
Recommended by Duncan Hines
PLANTATION LOUNGE

OPEN TILL 1:00 A. M.
1480 PEACHTREE — ELGIN 2944
"Where the Peachtrees Meet"

AIR CONDITIONED
Free Parking — Private Rooms
Affiliated Johnston's Coffee Shop
Daytona Beach, Florida
Wedgewood Inn—St. Petersburg, Fla.

WORLD'S BEST APPLE PIE



PAPPY'S PLANTATION LOUNGE

1480 Peachtree, N. W.

Open till 1 A. M.

EL. 2944

Your Favorite Beverage as You Like It

ORGAN MUSIC — OFF-STREET PARKING

7:30 P. M. till 12:30 A. M.

THE PICKANINNY

OPERATED BY
MAMMY'S SHANTY

COFFEE SHOP

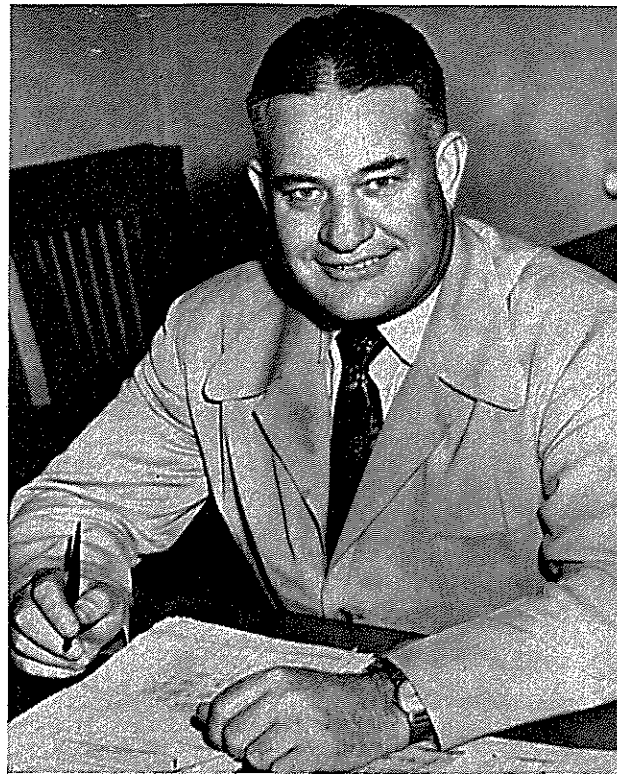
1490 PEACHTREE ST.
FREE PARKING

OPEN 24 HOURS A DAY EVERY DAY

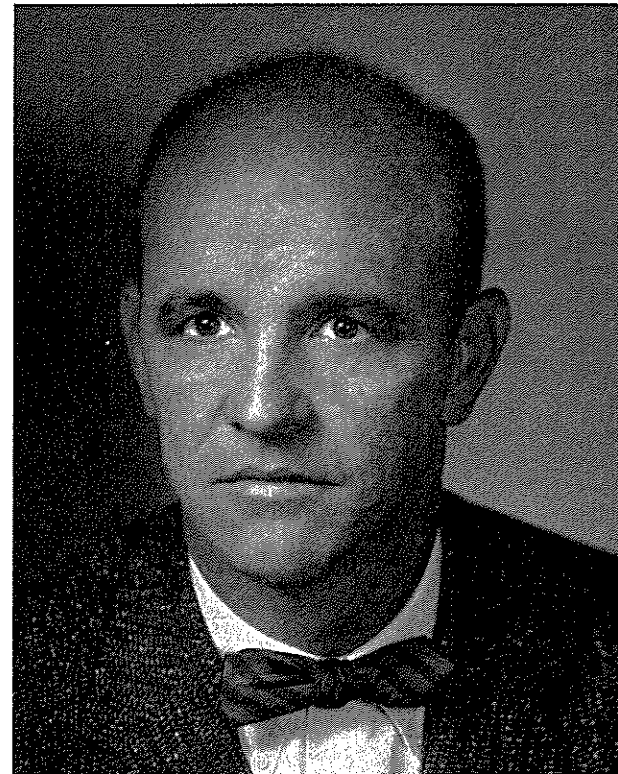
CHOICE MEATS
SHORT ORDERS
FAST SERVICE

AND OUR FAMOUS WORLD'S BEST APPLE PIE
AIR-CONDITIONED





ARTHUR M. (TONTO) COLEMAN
Assistant Athletic Director
Georgia Tech



HOWARD ECTOR
Business Manager of Athletics
Georgia Tech

STROTHER-BARGE COMPANY

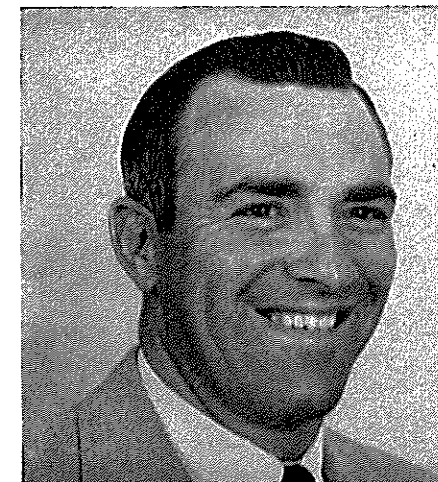
CONTRACTORS



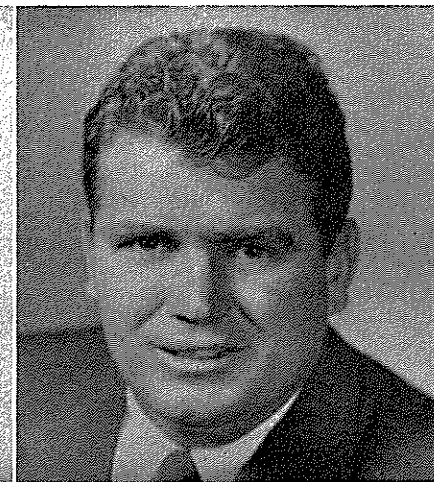
ENGINEERS

Industrial - Commercial - Residential
Construction and Alteration

CYPRESS 6421
189 Cain Street, N. E.
ATLANTA, GEORGIA



RAY GRAVES
Assistant Coach



LEWIS WOODRUFF
Assistant Coach



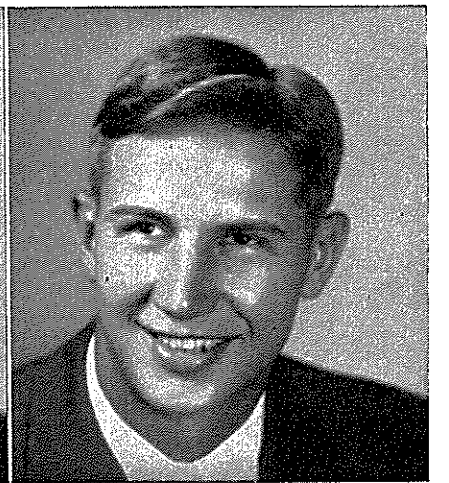
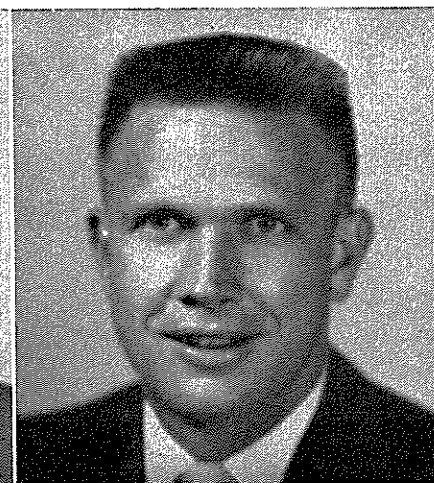
FRANK BROYLES
Assistant Coach



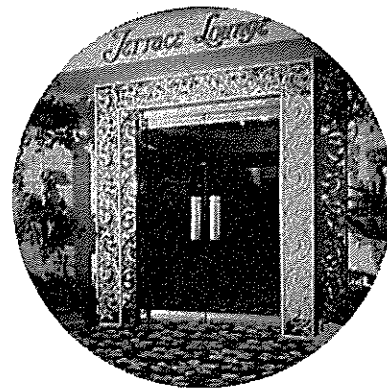
WHITEY URBAN
Assistant Coach

JACK GRIFFIN
Assistant Coach

BOB BOSSONS
Assistant Coach



Cheers!
after the game...
meet your friends at the
Terrace Lounge



open 4 PM 'til Midnight
at the
piedmont hotel
in the heart of atlanta



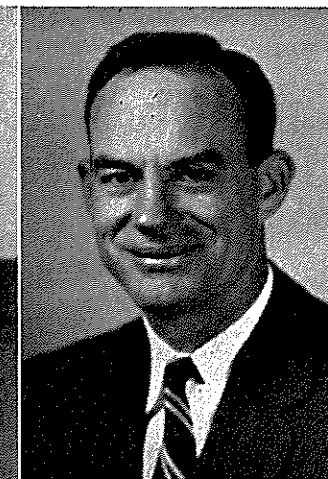
MION CONSTRUCTION CO., INC.

Building  Contractors

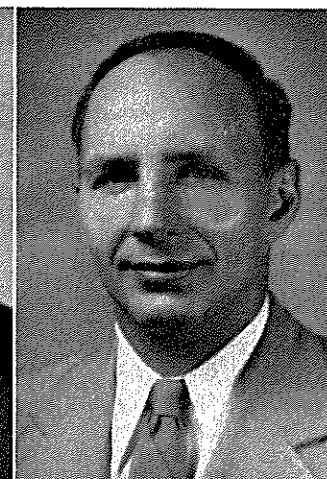
ATLANTA, GEORGIA



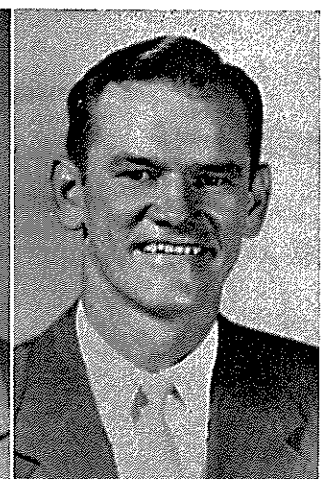
JOE PITTARD
Assistant Coach



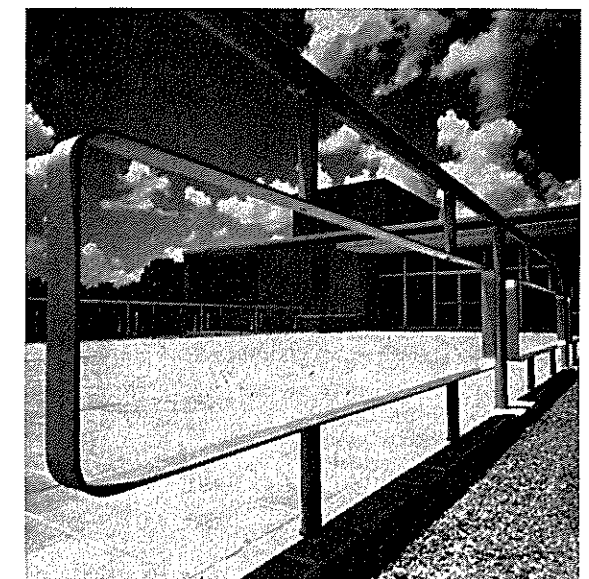
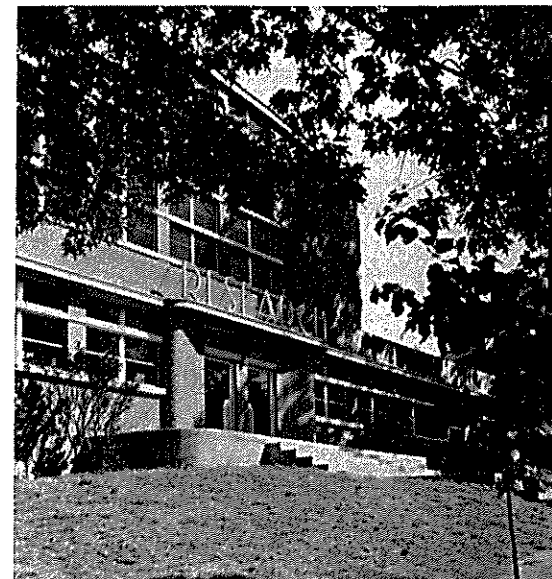
JOHN BELL
Assistant Coach



BOB MILLER
Assistant Coach



BUCK ANEL
Trainer

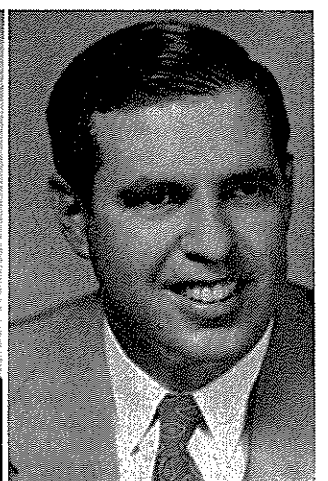
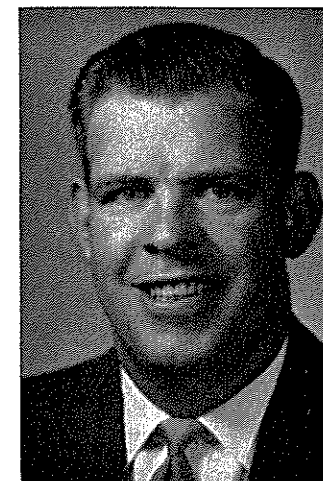


JIM LUCK
Assistant Coach

MRS. R. L. WILLIAMSON
Ticket Manager

DR. D. M. SMITH
Academic Adviser

NED WEST
Director of Sports Information



take a **GREYHOUND** FOOTBALL EXCURSION



GA. vs. AUBURN

NOVEMBER 12th
AT COLUMBUS, GA.
ALL EXPENSE
\$1295

GA. TECH VERSUS ALABAMA

NOVEMBER 12th
AT BIRMINGHAM, ALA.
ALL EXPENSE
\$1475

GA. TECH VERSUS TENNESSEE

NOVEMBER 5th
AT KNOXVILLE, TENN.
ALL EXPENSE
\$1675

FARE INCLUDES

- Round Trip Transportation
- Ticket to Game
- Meals en route

Call Your Greyhound
Agent for Details

GREYHOUND BUS DEPOT

81 Cain St., N. W. ● WALnut 6300
ATLANTA, GEORGIA



CAPITOL OFFICE SUPPLY COMPANY

Steel Office Equipment



Filing Systems

Jim Hammond '40
Owner-General Manager

CYpress 7856
Atlanta, Georgia

Adair Realty & Loan Co.

"We Sell Lots"

Jack Adair '33
President

Healey Bldg.
WA. 0100

*Atlantans
like to
eat*

The Hurried Crowd
enjoys prompt service and
wide varieties at
**DAVIS BROS.
CAFETERIA**
LUNCH • DINNER
820 W. Peachtree St.
Across from the Biltmore
Hotel

Delight in a Famous
KING-SIZE
Sandwich
at the
SPORTSMAN
STEAK HOUSE
Open 'til 2 a.m.
101 Forsyth St., N.E.
Across from the Ansley
Hotel

Meet Your Friends for
Kountry-Kitchen Cooking
Quick Service 24 Hours a Day
DAVIS BROS.
104 Luckie St., N.E.

When
in Albany
TRY DAVIS BROS.
SUBURBAN RESTAURANT
Corner Slappey Drive and Broad Street
ALBANY

**TOWN
HOUSE**
Cafeteria
LUNCH - DINNER
Private Dining Rooms
101 Forsyth St., N.W.

Other Famous Davis Bros.
Restaurants and Cafeterias
236 Pine St.
Albany

A black and white illustration of three men in 1930s-style clothing. The man on the left wears a dark suit and a fedora, carrying a patterned overcoat. The man in the center wears a light-colored trench coat over a suit and a fedora, holding a dark scarf. The man on the right wears a dark suit and a fedora, holding a light-colored overcoat. They are standing on a sidewalk with a building and flags in the background. A briefcase sits on the ground in the foreground.

Rogers Peet Company of New York has one of the finest reputations in the whole world of Men's Clothes. . . . Famous for the Quality of Superb Materials from both here and abroad. Famous for a kind of Designing and Cutting that is in the very best of Lasting Goods Taste. Famous for Standards of Tailoring that are recognized as the highest in the industry. . . . Together with them, we share a mutual pride in our association here in Georgia and extend a most cordial invitation to visit us and inspect our current stocks of Rogers Peet Suits, Sport Jackets and Topcoats.

PARKS-CHAMBERS
ESTABLISHED 1896

GEORGIA TECH

Delicious and Refreshing

No.	Name	Pos.	Age	Ht.	Wt.	Class	Let.	Hometown
10	Johnny Menger	RH-LH-QB	20	5-10	156	Jr.	2	Augusta, Ga.
11	Wade Mitchell	QB	20	6-4	197	Jr.	2	Atlanta, Ga.
12	Bill Linginfelter	QB	21	5-11	170	Sr.	0	Alcoa, Tenn.
13	Burton Grant	QB	21	5-11	190	Sr.	2	Wilmington, N. C.
14	Stan Cochran	QB-LH	20	5-10	177	Sr.	0	Atlanta, Ga.
16	Tippy Vann	QB	19	5-11	184	Jr.	0	Rossville, Ga.
21	Paul Rotenberry	LH	20	5-8	178	Jr.	1	Roanoke, Va.
22	Joe DeLany	RH	19	6-0	184	Soph.	0	Atlanta, Ga.
23	Jimmy Noe	LH	19	5-10	167	Soph.	0	Jefferson City, Tenn.
24	George Volkert	RH	21	5-10	184	Jr.	2	Nashville, Tenn.
25	Bobby Dover	RH	21	5-8	171	Soph.	0	Alcoa, Tenn.
26	Freddie Teague	LH	21	5-10	170	Soph.	0	Soddy, Tenn.
28	Jimmy Thompson	RH	20	5-6	148	Jr.	1	Bessemer, Ala.
33	Stan Flowers	LH	18	6-0	198	Soph.	0	Memphis, Tenn.
40	Ken Owen	FB	20	5-11	186	Jr.	1	Salisbury, N. C.
41	Dickie Mattison	FB	20	6-2½	204	Jr.	1	Charlotte, N. C.
42	Johnny Thomason	FB	19	5-9	182	Soph.	0	Thomasville, N. C.
45	Charlie Bryant	FB	20	5-11	173	Jr.	0	Miami, Fla.
46	Dick Gookin	FB	20	5-8	171	Jr.	1	Nashville, Tenn.
50	Don Stephenson	C	19	6-0	187	Soph.	0	Bessemer, Ala.
51	Jimmy Morris (Capt.)	C	21	6-2	194	Sr.	2	Vicksburg, Miss.
52	Buck Wiley	C	21	6-0	195	Jr.	0	Spring Hill, Tenn.
53	Jimmy Johnson	C	23	5-9	190	Jr.	1	Knoxville, Tenn.
54	Jim Summer	C	22	6-0	175	Sr.	2	Oak Ridge, Tenn.
55	Dick Beard	C	21	6-1	193	Jr.	0	Moultrie, Ga.
60	Franklin Brooks	LG	21	6-0	192	Sr.	3	Atlanta, Ga.
61	Phillip Baum	LG	19	6-1	202	Soph.	0	Memphis, Tenn.
62	Bill Fulcher	LG	21	5-11	181	Sr.	2	Augusta, Ga.
63	Don Miller	RG	21	6-2	206	Jr.	1	Kingsport, Tenn.
64	Allen Ecker	RG	19	6-0	197	Jr.	1	Atlanta, Ga.
65	Harold Greer	LG	20	5-8	181	Soph.	0	Lebanon, Tenn.
66	Waldo Dodd	RG	21	5-9	177	Sr.	0	Rome, Ga.
67	Don Hinton	RG	21	6-0	206	Sr.	0	Gaffney, S. C.
68	W. A. Glazier	RG	20	5-10	217	Soph.	0	Newnan, Ga.
69	Tommy Gossage	LG	21	6-2	204	Sr.	2	Nashville, Tenn.
70	Bob Woolf	LT	22	6-1	212	Jr.	0	Alcoa, Tenn.
71	Ken Thrash	RT	20	6-4	196	Jr.	0	Atlanta, Ga.
73	Ormand Anderson	RT	25	6-1	214	Jr.	1	Chattanooga, Tenn.
74	Don Denning	RT	20	5-11	206	Soph.	0	Durham, N. C.
75	Leon Askew	RT	19	6-1	208	Soph.	0	Atlanta, Ga.
76	Carl Vereen	LT	19	6-6	224	Jr.	2	Miami, Fla.
77	Frank Christy	LT	20	6-1	198	Jr.	2	Bessemer, Ala.
80	Tommy Rose	LE	19	6-0	185	Soph.	0	Anniston, Ala.
82	Wesley Gibbs	LE	19	6-1	197	Soph.	0	Memphis, Tenn.
83	Lamar Carson	LE	26	5-11	170	Jr.	0	Atlanta, Ga.
84	Charlie Huff	LE	22	6-0	166	Sr.	1	Decatur, Ga.
85	Danny Bagwell	RE	21	6-0	192	Sr.	0	Greenville, S. C.
86	Ted Smith	RE	19	6-1	193	Soph.	0	Cleveland, Tenn.
87	Jerry Nabors	LE	19	6-1	197	Soph.	0	Talladega, Ala.
88	Paul Vickers	RE	19	6-3	181	Soph.	0	Atlanta, Ga.
89	Don Ellis	RE	20	6-1	202	Jr.	1	Dalton, Ga.

Referee: J. J. Lynch (Holy Cross)
Umpire: Marion P. Talley (Auburn)
Linesman: James C. Armistead (Vanderbilt)
Field Judge: W. K. DeViese (Newberry)
Back Judge: Ned Searcy (Wake Forest)
Electric Clock Operator: Lea Richards (Georgia)

ATLANTA COCA-COLA BOTTLING COMPANY, ATLANTA, GA.

GEORGIA TECH

PROBABLE STARTING LINEUP

No.	Name	Position
80	TOMMY ROSE	LE
76	CARL VEREEN	LT
60	FRANKLIN BROOKS	LG
51	JIMMY MORRIS (Capt)	C
64	ALLEN ECKER	RG
71	KEN THRASH	RT
89	DON ELLIS	RE
11	WADE MITCHELL	QB
33	STAN FLOWERS	LH
24	GEORGE VOLKERT	RH
40	KEN OWEN	FB

THE YELLOW JACKET SQUAD

10 Menger, QB, LH, RH	61 Baum, LG
11 Mitchell, QB	62 Fulcher, LG
12 Linginfelter, QB	63 Miller, RG
13 Grant, QB	64 Ecker, RG
14 Cochran, QB, LH	65 Greer, LG
16 Vann, QB	66 Dodd, RG
21 Rotenberry, LH	67 Hinton, RG
22 DeLany, RH	68 Glazier, RG
23 Noe, LH	69 Gossage, LG
24 Volkert, RH	70 Woolf, LT
25 Dover, RH	71 Thrash, RT
26 Teague, LH	73 Anderson, RT
28 Thompson, RH	74 Denning, RT
33 Flowers, LH	75 Askew, RT
40 Owen, FB	76 Vereen, LT
41 Mattison, FB	77 Christy, LT
42 Thomason, FB	80 T. Rose, LE
45 Bryant, FB	82 Gibbs, LE
46 Gookin, FB	83 Carson, LE
50 Stephenson, C	84 Huff, LE
51 Morris, C	85 Bagwell, RE
52 Wiley, C	86 Smith, RE
53 J. Johnson, C	87 Nabors, LE
54 Summer, C	88 P. Vickers, RE
55 Beard, C	89 Ellis, RE
60 Brooks, LG	

FLORIDA STATE

PROBABLE STARTING LINEUP

No.	Name	Position
80	RONNIE SCHOMBURGER	LE
70	DON POWELL	LT
61	JERRY JACOBS	LG
50	BOB CRENSHAW	C
65	VINCE GIBSON	RG
75	BOB BARBER	RT
85	TOM FEAMSTER	RE
12	LEN SWANTIC	QB
20	LEE CORSO	LH
22	BUCK METTS	RH
41	JOE HOLT	FB

THE SEMINOLE SQUAD

10 Prinzi, B	61 Jacobs, G
11 Rodrique, B	64 Thomas, G
12 Swantic, B	65 Gibson, G
13 Versprille, B	66 Pacifico, G
15 Norman, B	67 Elliott, G
20 Corso, B	70 Powell, T
21 Odom, B	71 Kicklighter, T
22 Metts, B	73 Musselman, T
23 Henderson, B	74 Gardner, T
25 Reynolds, B	75 Barber, T
26 Weaver, B	76 Staab, T
27 Cox, B	77 Proctor, T
28 Dean, B	78 Craig, T
29 Battaglia, B	80 Schomburger, E
41 Holt, B	81 Bisbee, E
42 Griner, B	82 Overton, E
43 Abood, B	83 Fountain, E
44 Leonard, B	84 Keene, E
50 Crenshaw, C	85 Feamster, E
51 Ackerman, C	86 Olson, E
52 Barnes, C	87 Swiley, E
53 Philion, C	88 Curry, E
54 Little, C	89 Douglas, E
60 Baggett, G	



America's Best

Only Chesterfield is Made the Modern Way—with *AccuRay*

Today—discover for yourself what modern science can do to increase your cigarette enjoyment! Try Chesterfield—the cigarette made the modern way...measurably smoother...cooler...best for you!

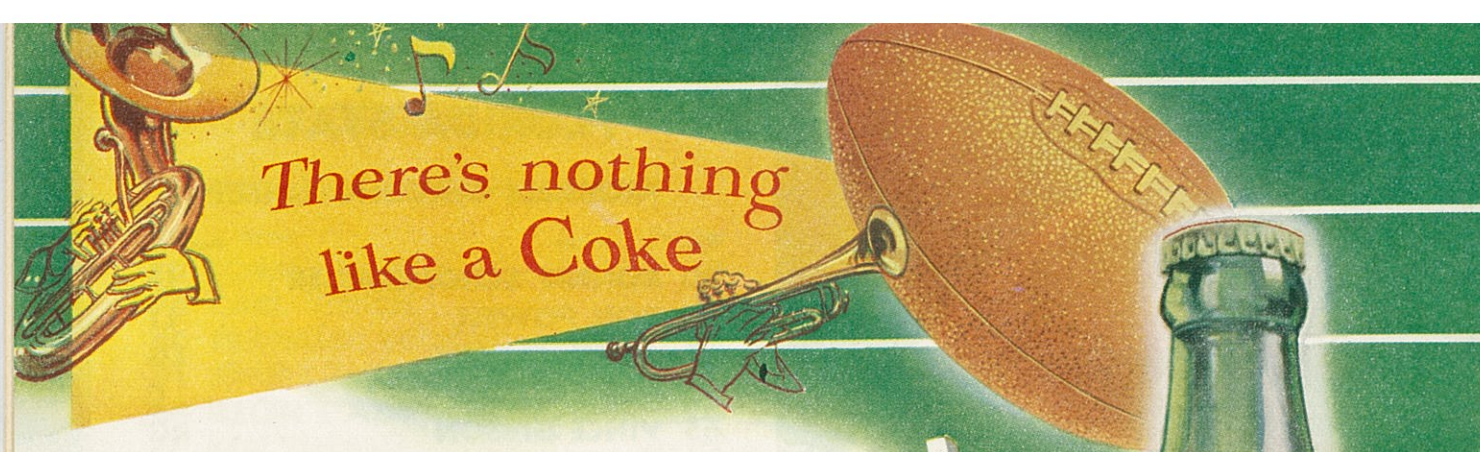


THIS IS IT! L&M has the purest and best filter your lips ever touched... the pure, white Miracle Tip. What's more, L&M gives you a rich, good tasting, and fully satisfying smoke. No wonder smokers everywhere say, "L&M's got everything!"

L&M—America's *Best* Filter Cigarette!

PURE WHITE





FLORIDA STATE SEMINOLES

No.	Name	Pos.	Age	Ht.	Wt.	Class	Hometown
10	Victor Prinzi	QB	19	6-0	175	Soph.	Waverly, N. Y.
11	Ted Rodrigue	QB	24	5-11	187	Soph.	Lynn, Mass.
12	Len Swantic	QB	23	5-11	180	Jr.	Columbus, Ga.
13	Pat Verspille	QB	20	6-2	190	Soph.	Norfolk, Va.
15	George Norman	QB	24	5-10	185	Jr.	Tallahassee, Fla.
20	Lee Corso	HB	20	5-11	170	Jr.	Miami, Fla.
21	William Odom	HB	20	5-8	165	Jr.	Mt. Dora, Fla.
22	Talmadge Metts	HB	19	5-10	175	Jr.	Sanford, Fla.
23	Jerry Henderson	HB	19	5-11	160	Soph.	Pensacola, Fla.
25	Byron Reynolds	HB	19	5-10	180	Soph.	West Palm Beach, Fla.
26	William Weaver	HB	18	6-0	180	Soph.	Miami, Fla.
27	Gene Cox	HB	21	5-10	175	Sr.	Lake City, Fla.
28	Stephen Dean	HB	19	5-10	173	Soph.	Oxford, N. C.
29	Carmen Battaglia	HB	20	5-8	180	Soph.	Niagara Falls, N. Y.
41	Joseph Holt	FB	20	5-10	180	Soph.	Graham, N. C.
42	John Griner	FB	22	5-10	175	Sr.	Jacksonville, Fla.
43	Emil Aboud	FB	19	5-9	170	Soph.	Jacksonville, Fla.
44	William Leonard	FB	21	5-11	200	Jr.	Ocala, Fla.
50	Bob Crenshaw	C	21	5-9	175	Sr.	Miami, Fla.
51	Hobo Ackerman	C	20	5-11	190	Soph.	Hopewell, Va.
52	Troy Barnes	C	22	6-2	206	Soph.	Chickasaw, Ala.
53	Leonard Phillion	C	22	5-11	176	Fr.	Highland Park, Mich.
54	Lester Little	C	17	6-3	203	Fr.	Nitro, W. Va.
60	Paul Baggett	G	19	5-9	195	Soph.	Panama City, Fla.
61	Jerry Jacobs	G	21	6-1	205	Sr.	South Bend, Ind.
64	Robert Thomas	G	17	6-0	180	Fr.	Mansfield, Mass.
66	Harold Gibson	G	22	5-10	185	Sr.	Birmingham, Ala.
66	Al Pacifico	G	24	5-7	203	Jr.	Altoona, Pa.
67	Robert Elliot	G	21	5-11	185	Jr.	St. Petersburg, Fla.
70	Don Powell	T	21	6-0	207	Sr.	Birmingham, Ala.
71	Charles Kicklighter	T	24	6-1	211	Sr.	Savannah, Ga.
73	William Musselman	T	19	5-11	210	Soph.	Lynchburg, Va.
74	Willie Gardner	T	19	6-0	220	Soph.	Tampa, Fla.
75	Robert Barber	T	20	5-11	210	Jr.	Belle Glade, Fla.
76	Raymond Staab	T	21	5-11	205	Jr.	Charleston, W. Va.
77	William Proctor	T	22	6-4	235	Sr.	Winter Park, Fla.
78	John Craig	T	18	6-1	200	Soph.	Orlando, Fla.
80	Ronald Schomburger	E	22	6-1	190	Soph.	Pittsburgh, Pa.
81	Hamilton Bisbee	E	19	6-1	175	Soph.	Sanford, Fla.
82	Jonah Overton	E	20	6-1	180	Jr.	Chicago, Ill.
83	Robert Fountain	E	17	6-2	190	Fr.	Crestview, Fla.
84	David Keene	E	17	6-3	200	Fr.	Bethlehem, Pa.
85	Thomas Feamster	E	24	6-7	250	Sr.	Warwick, Va.
86	Norman Olson	E	20	5-7	171	Jr.	Chicago, Ill.
87	William Swilley	E	19	6-1	185	Soph.	Albany, Ga.
88	Peter Curry	E	20	6-1	185	Fr.	Medford, Mass.
89	Robert Douglas	E	17	6-1	196	Fr.	Dayton, Ohio

OFFICIALS

Referee: J. J. Lynch (Holy Cross)
 Umpire: Marion P. Talley (Auburn)
 Linesman: James C. Armistead (Vanderbilt)
 Field Judge: W. K. DeViese (Newberry)
 Back Judge: Ned Searcy (Wake Forest)
 Electric Clock Operator: Lea Richards (Georgia)

ATLANTA COCA-COLA BOTTLING COMPANY, ATLANTA, GA.



Fall Dark

and Handsome



BEAUTIFUL NEW
 CHAR TONE SUITS BY
 HART SCHAFFNER
 & MARX...IMPORTANT
 MAINSTAYS OF A
 CAREFULLY PLANNED
 WARDROBE!

\$69.50 to \$135

HART

SCHAFFNER

& MARX



ZACHRY

85-87 PEACHTREE STREET

OFFICIAL PROGRAM

A TECH TRADITION



no food over 12 hours old

ADAMS, HOLMES & THARPE, Inc.

TRUST COMPANY OF GEORGIA BUILDING

ATLANTA 3, GEORGIA

INSURANCE BROKERS AND
CONSULTING ACTUARIES

A
Good
"Team Builder"
!

ARISTOCRAT
Delicious Ice Cream
ARISTOCRAT DAIRY PRODUCTS CO.

BERMAN-LIPTON CO.

PRINTERS
STATIONERS

Exclusive Distributors

YAWMAN AND ERBE MFG. CO.



STEEL OFFICE FURNITURE
Filing Systems and Supplies

Phone ELgin 2666

Office and Showroom

666 Parkway Drive, N. E.

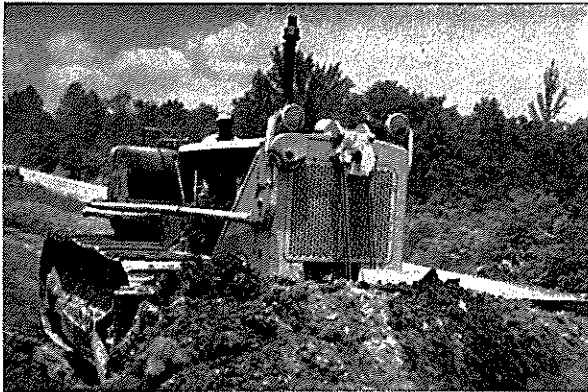
1955 SOUTHEASTERN CONFERENCE FOOTBALL SCHEDULE											
	Sept. 17	Sept. 24	Oct. 1	Oct. 8	Oct. 15	Oct. 22	Oct. 29	Nov. 5	Nov. 12	Nov. 19	Nov. 26
Alabama		Rice Houston	Vanderbilt Nashville	T. C. U. Tuscaloosa	Tennessee Birmingham	Miss. State Tuscaloosa	Georgia Athens	Tulane Mobile	Ga. Tech Birmingham	Miami Miami	Auburn Birmingham
Auburn		Chattanooga Auburn	Florida Auburn	Kentucky Birmingham	Ga. Tech Atlanta	Furman Auburn	Tulane New Orleans	Miss. State Auburn	Georgia Columbus	Clemson Mobile	Alabama Birmingham
Florida		Ga. Tech Gainesville	Auburn Auburn	Geo. Wash. Univ. Jacksonville	L. S. U. Gainesville	Kentucky Lexington		Georgia Jacksonville	Tennessee Gainesville	Vanderbilt Nashville	Miami Miami
Georgia		Vanderbilt Athens	Clemson Clemson	N. Carolina Athens	Fla. State Tallahassee	Tulane Athens	Alabama Athens	Florida Jacksonville	Auburn Columbus		Ga. Tech Atlanta
Ga. Tech		Florida Gainesville	S. M. U. Atlanta	L. S. U. Baton Rouge	Auburn Atlanta	Fla. State Atlanta	Duke Atlanta	Tennessee Knoxville	Alabama Birmingham		Georgia Atlanta
Kentucky		Mississippi Lexington	Villanova Philadelphia	Auburn Birmingham	Miss. State Lexington	Florida Lexington	Rice Lexington	Vanderbilt Nashville	Memphis State Lexington	Tennessee Lexington	
L.S.U.		Texas A. & M. Dallas	Rice Houston	Ga. Tech Baton Rouge	Florida Gainesville		Mississippi Baton Rouge	Maryland College Park	Miss. State Baton Rouge	Arkansas Little Rock	Tulane Baton Rouge
Miss. State		Tennessee Knoxville	Memphis State Starkville	Tulane Starkville	Kentucky Lexington	Alabama Tuscaloosa	N. Texas State Starkville	Auburn Auburn	L. S. U. Baton Rouge		Mississippi Starkville
Mississippi		Kentucky Lexington	N. Texas State Oxford	Vanderbilt Memphis	Tulane New Orleans	Arkansas Oxford	L. S. U. Baton Rouge	Memphis State Memphis	Houston Jackson		Miss. State Starkville
Tennessee		Miss. State Knoxville	Duke Knoxville	Chattanooga Knoxville	Alabama Birmingham	Dayton Knoxville	N. Carolina Chapel Hill	Ga. Tech Knoxville	Florida Gainesville	Kentucky Lexington	Vanderbilt Knoxville
Tulane		Texas Austin	Northwestern New Orleans	Miss. State Starkville	Mississippi New Orleans	Georgia Athens	Auburn New Orleans	Alabama Mobile	Vanderbilt New Orleans		L. S. U. Baton Rouge
Vanderbilt		Georgia Athens	Alabama Nashville	Mississippi Memphis	Chattanooga Chattanooga	Mid. Tennessee Nashville	Virginia Nashville	Kentucky Nashville	Tulane New Orleans	Florida Nashville	Tennessee Knoxville

MASSACHUSETTS MUTUAL LIFE INSURANCE COMPANY

1030 Citizens and Southern Bank Building

"BILLY" GIBSON '39


HARRY I. DAVIS, Assoc. General Agent



Building BETTER Roads . . .

Dependable Caterpillar
earthmoving machines from . . .

Yancey Bros.
CO.


Sales
Service
Repairs

Phone EL-3741
1540 Northside Drive
ATLANTA, GA.

Phone 3-2241
1781 Fifteenth St.
AUGUSTA, GA.

FOR THE BEST IN ROASTED,
SALTED AND RAW PEANUTS

ASK FOR
NANCY FANCY OR JIMBO'S JUMBOS

JIMBO'S JUMBOS, INC.

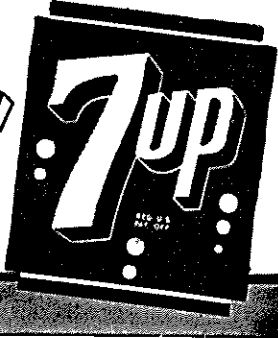
EDENTON, N.C.

In Atlanta Call or Contact

AUBREY BOTTOMS
BROKERAGE CO.

479 Stephens St., S.W.
Tel. LAmAR 4868

"fresh up"
with



McINTOSH PAVING CO., INC.

382 TRABERT AVE., N.W.,
ATLANTA, GEORGIA
ELgin 4838

ALL TYPES OF ASPHALT PAVING
ROADS • STREETS • DRIVEWAYS • PARKING LOTS

JOE SINGER '27

JOHN RAINE '38

Singer-Raine Co.

INSURANCE • BONDS • REAL ESTATE

1145 Peachtree Street, N. E. — Atlanta, Georgia — VERNON 7701

J. A. JONES CONSTRUCTION COMPANY

CONTRACTORS



ENGINEERS

Atlanta

Charlotte

"Otto" The Orkin Man Says



**"Put me in, Coach--
Let me tackle
those termites!"**

**'All American'
in the field of
Pest Control**



Since

ORKIN

1901

Orkin Exterminating Company, Inc.

World's Largest Pest Control Company

'Coast to Coast'

Home Office: 713 W. Peachtree St., Atlanta

EM. 4541

New Orleans
Atmosphere



Shrimp
Spaghetti
Steaks



HANK & JERRY'S HIDAWAY

1002 PEACHTREE ST., N. E. RES. VE. 8084
CHAMPAGNE HOURS—5 P. M. TILL 8:30 P. M.

Dine — Dance



All Beverages

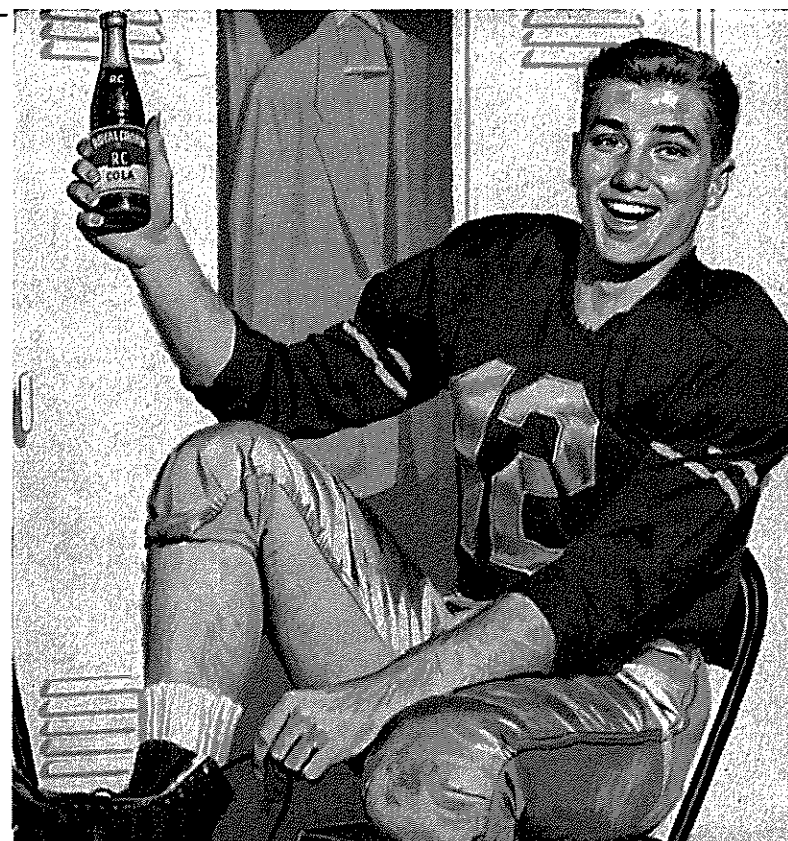


From 9 p.m.

RC makes you feel like NEW!

Why do so many folks choose RC? They've compared Royal Crown Cola with the other leading colas and found that RC is best by taste-test! Try it yourself. We think you'll agree!

Remember, you get 2 full glasses in the king-size bottle.



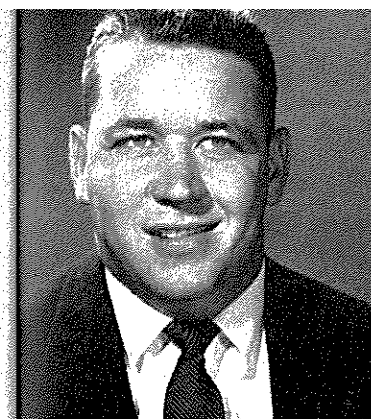
Pionite is only one of the thousands of items for the home
at your nearest Munford Store.



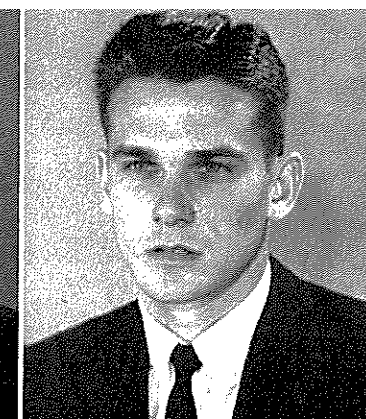
When little Willie, strong and able
Practiced handsprings on the table,
Mother said, "Oh, that's all right.
The top is made of Pionite."



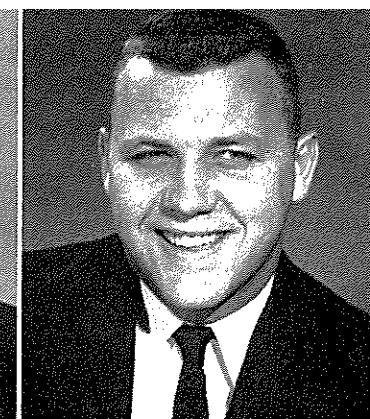
Throughout the South
General Offices: Atlanta, Georgia



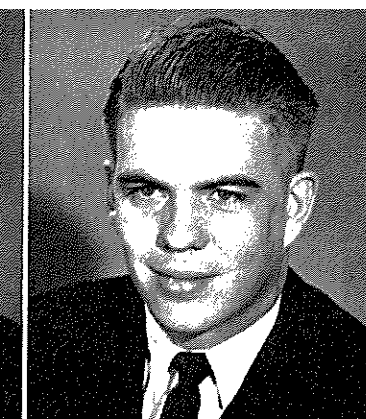
JIM YOUNG
Albany, Ga.



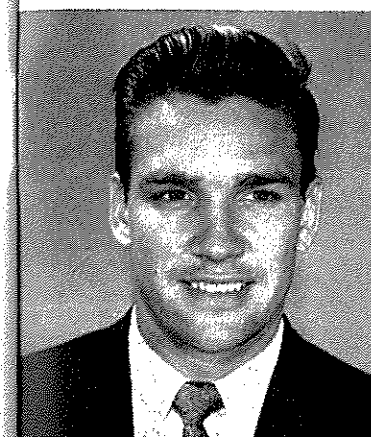
BILLY WEAVER
Miami, Fla.



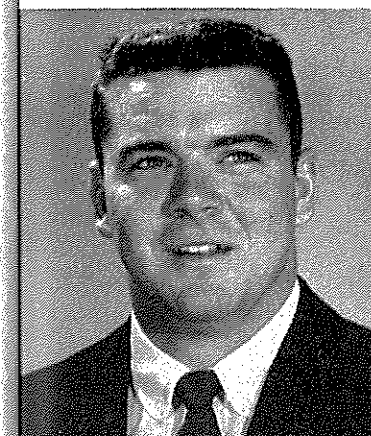
JERRY JACOBS
South Bend, Ind.



JOHN GRINER
Jacksonville, Fla.

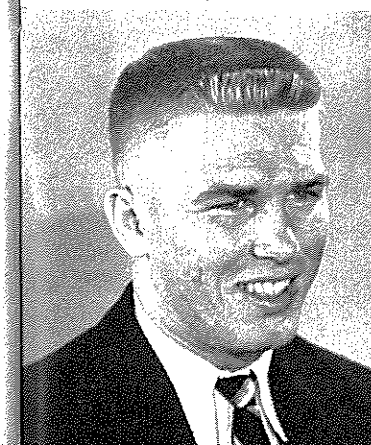


VIC PRINZI
Waverly, N. Y.

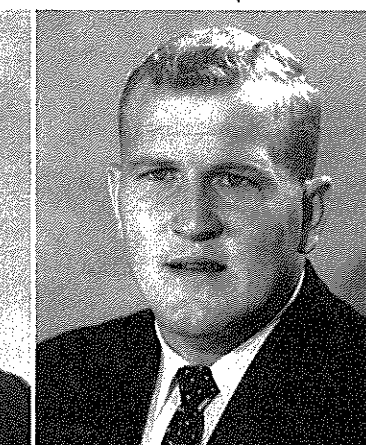


LEO BAGGETT
Panama City, Fla.

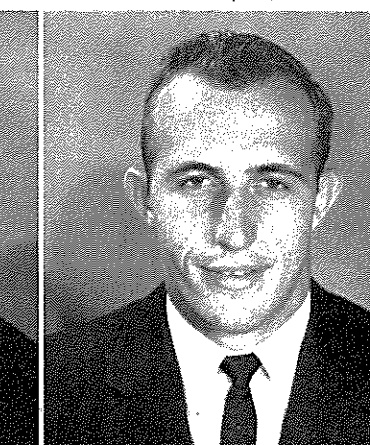
BOB CRENSHAW
Miami, Fla.



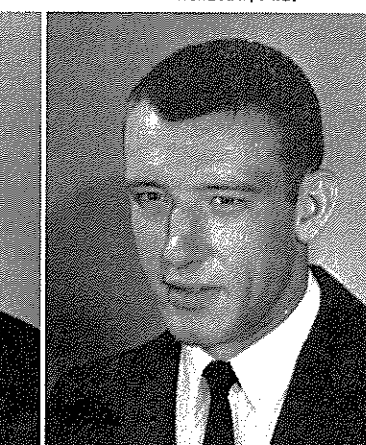
BOB BARBER
Belle Glade, Fla.



BUCK METTS
Sanford, Fla.



TROY BARNES
Chickasaw, Ala.



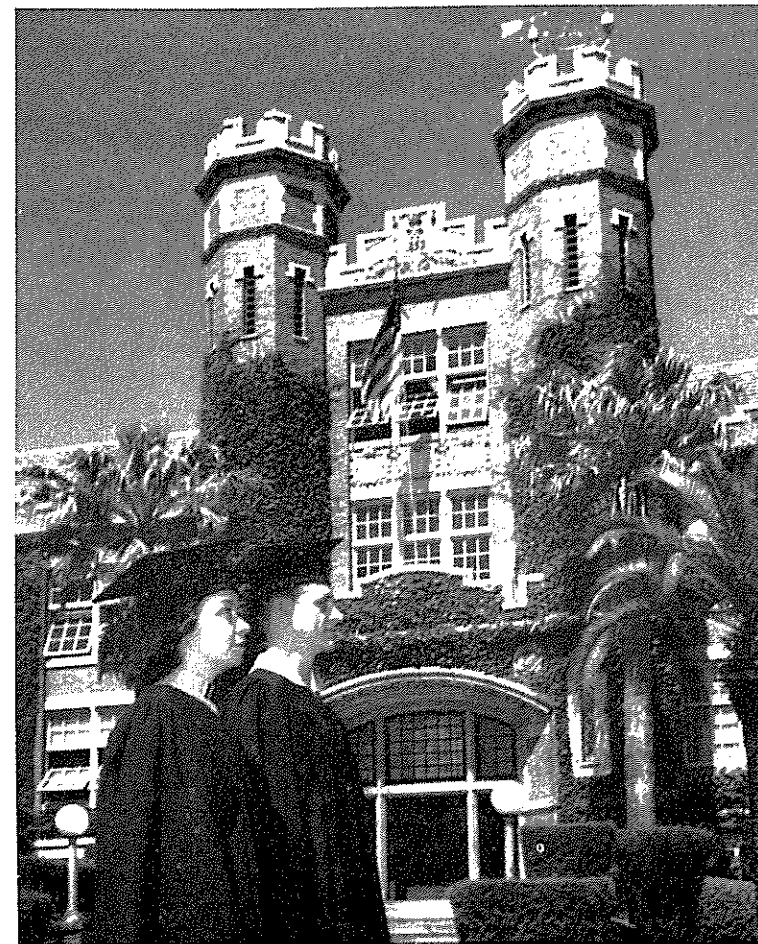


VINCE GIBSON
Birmingham, Ala.

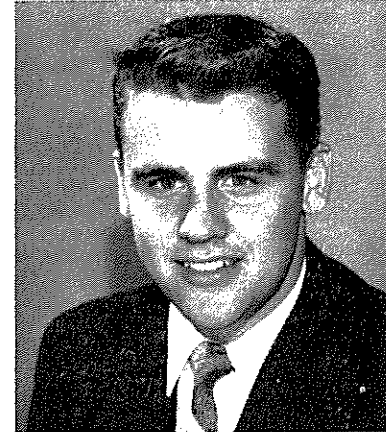
RONNIE SCHOMBURGER
Pittsburgh, Pa.

DON POWELL
Birmingham, Ala.

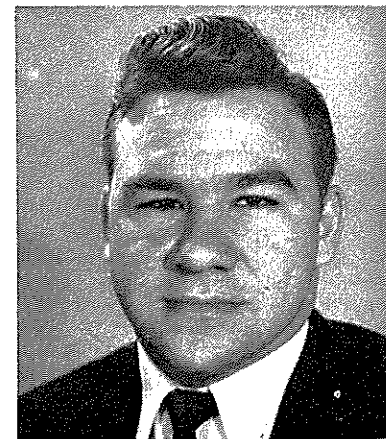
RON WETHERINGTON
Valdosta, Ga.



**FLA-
STATE**



NORMAN OLSON
Chicago, Ill.



GENE COX
Lake City, Fla.

LEE CORSO
Miami, Fla.

AL PACIFICO
Altoona, Pa.

ED KERCHER
Bradenton, Fla.

BUDDY REYNOLDS
West Palm Beach, Fla.



487 DIFFERENT ITEMS

LARGEST VARIETY OF FOODS IN THE WORLD

"A Most Unusual Place"

Pigalley was designed for your enjoyment with shops and streets that welcome you to Paris in Atlanta. Leb's singing waiters and strolling musicians speak, and sing, in French, Greek, Italian, Spanish, Hungarian—20 languages in all. Musical entertainment is continuous and accords the perfect atmosphere for the gourmet.

**FROM
A SANDWICH**

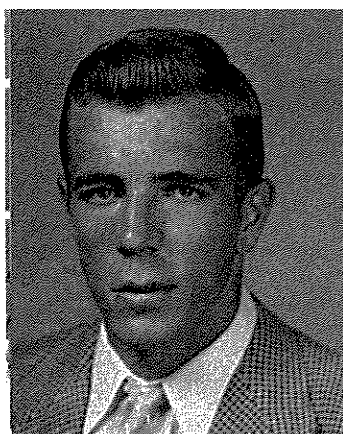


**TO A COMPLETE
DINNER**

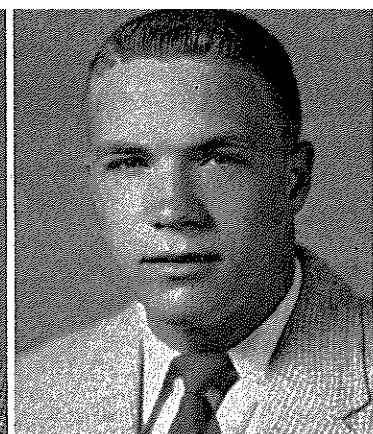
Enjoy such taste treats as cheese cake, pastrami, steaks and corned beef. Try our "Steak Thumbits" for a real taste thrill. These bite-size morsels of tender, delicious beef are served with garlic gravy, French fried onions and all the trimmings. Eat them with your fingers. Everybody does! Or, if you prefer, order barbecued spare ribs, prepared in Leb's special way.

LUCKIE AND FORSYTH STS.

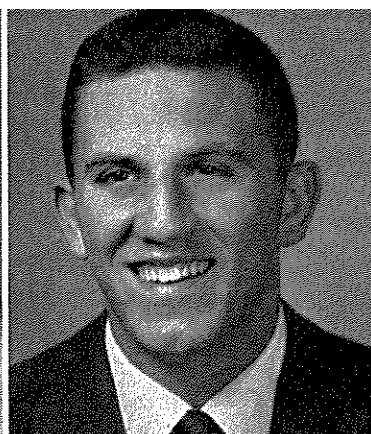
LEB'S PIGALLEY (DOWNSTAIRS) OPENS AT 5 P.M.



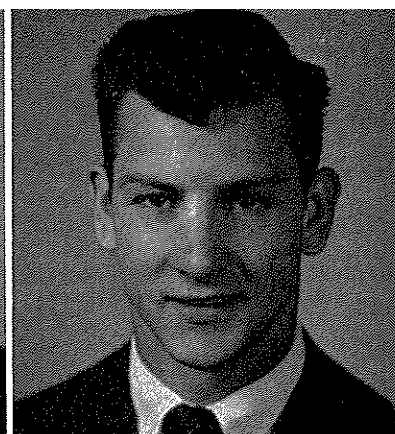
FRANKLIN BROOKS
Atlanta, Ga.



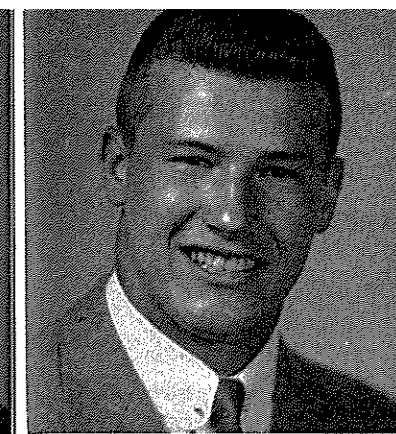
LEON ASKEW
Atlanta, Ga.



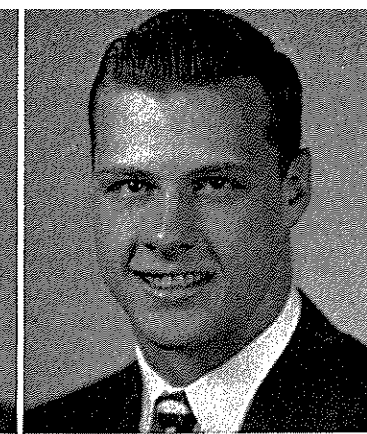
PHILIP BAUM
Memphis, Tenn.



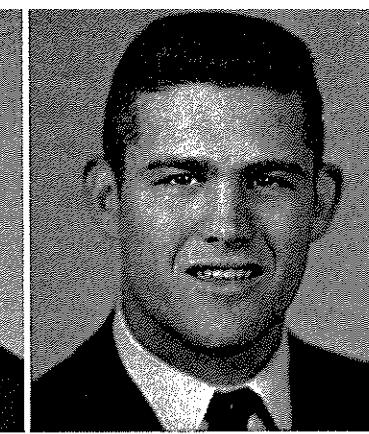
DON STEPHENSON
Bessemer, Ala.



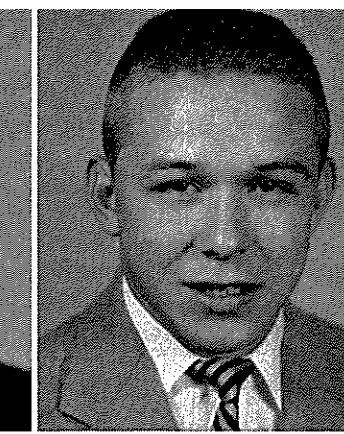
DON DENNING
Durham, N. C.



DON MILLER
Kingsport, Tenn.



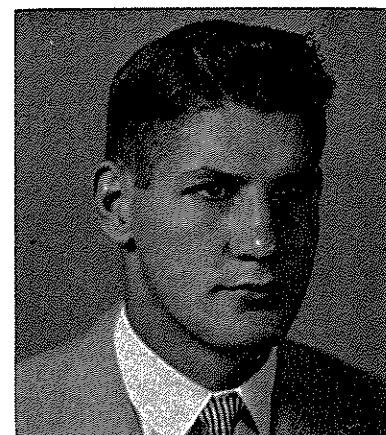
JOHNNY MENGER
Augusta, Ga.



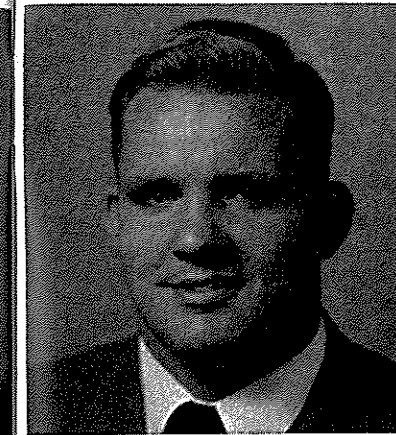
JIMMY THOMPSON
Bessemer, Ala.



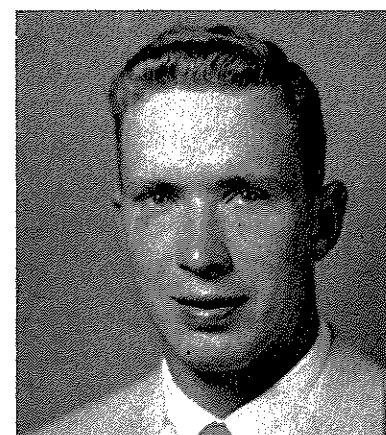
**G
A
T
E
C
H**



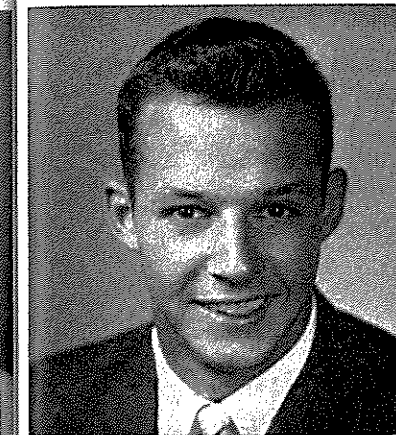
DON ELLIS
Dalton, Ga.



W. A. GLAZIER
Newnan, Ga.

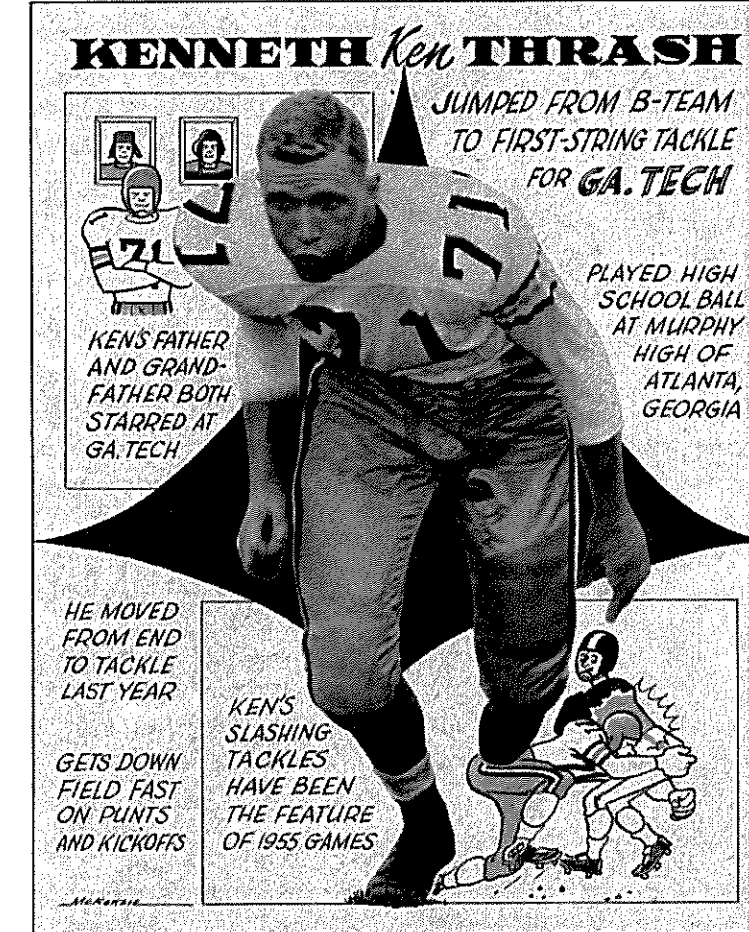


KEN THRASH
Atlanta, Ga.



DICKIE MATTISON
Charlotte, N. C.

**G
A
T
E
C
H**



WADE MITCHELL
Atlanta, Ga.

CAPT. JIMMY MORRIS
Vicksburg, Miss.

JIMMY JOHNSON
Knoxville, Tenn.

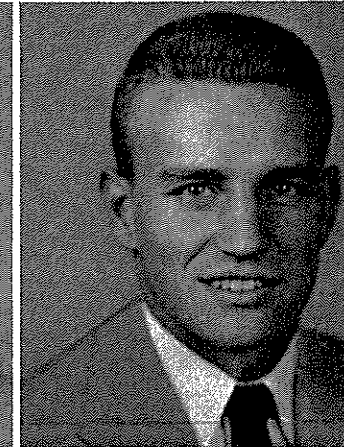
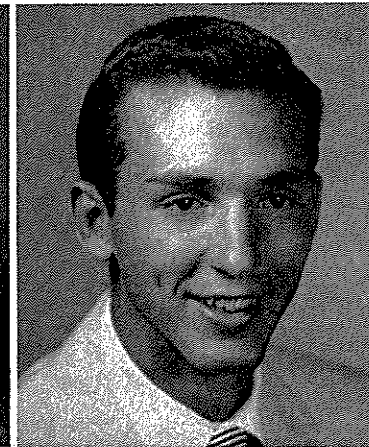
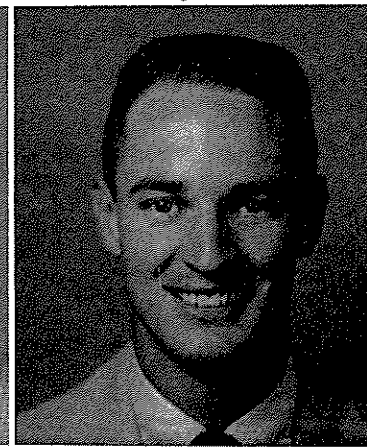
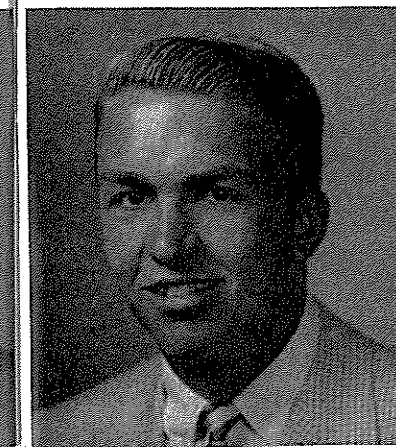
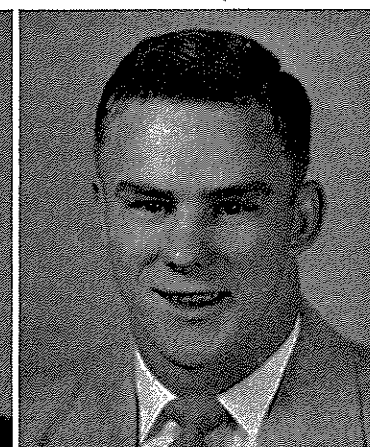
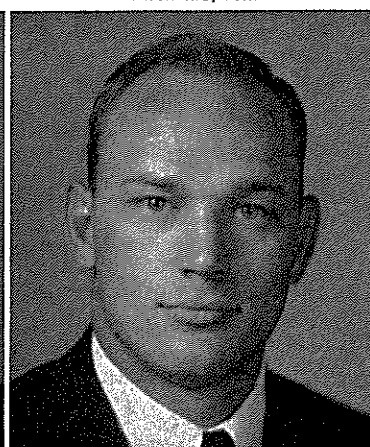
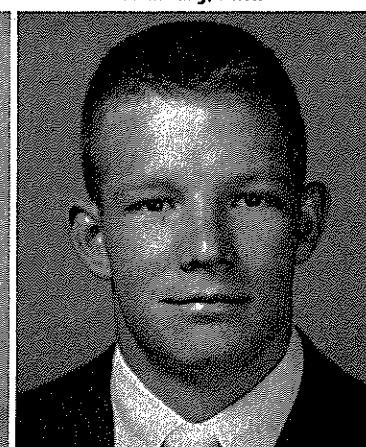
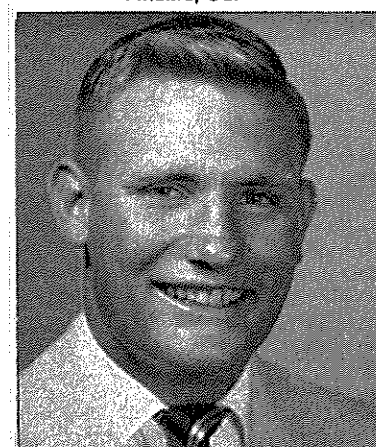
PAUL ROTENBERRY
Roanoke, Va.

DICK GOOKIN
Nashville, Tenn.

BURTON GRANT
Wilmington, N. C.

CHARLIE HUFF
Decatur, Ga.

GEORGE VOLKERT
Nashville, Tenn.



"Steel by Calvert"

PLaza 3-5121

G. BONNER SPEARMAN, President

MATHEW SPEARMAN, Vice-President

GEORGIA BLUE PRINT COMPANY

BLUE PRINTS — DIRECT LINE PRINTS — PHOTOSTAT PRINTS

Reproductions on Transparent Paper and Cloth
Photo Murals — Photo Enlargements and Reductions

ENGINEERING EQUIPMENT — DRAWING SUPPLIES
TECHNICAL REFERENCE BOOKS

Dealer for
W. & L. E. Gurley — Eugene Diezgen — Fred Post Co.
Lufkin Rule Co. — Hamilton Manufacturing Co.
Charles Bruning Co. — Peck & Harvey

LAmar 8881

119 Luckie Street, N. W.

Atlanta, Georgia

BLALOCK MACHINERY & EQUIPMENT COMPANY



CONSTRUCTION EQUIPMENT



225 Forsyth Street, S. W., Atlanta, Georgia

BRANCHES

105 S. Slappey Drive
Albany, Georgia

1515 Albany Avenue
Waycross, Georgia

ATLANTA'S COMPLETE STORE FOR SPORTSMEN

FISHING TACKLE
GOLF EQUIPMENT
SPORTSWEAR
ARCHERY
HUNTING
TROPHYS
TENNIS
UNIFORMS and TEAM EQUIPMENT
WE HAVE THE LARGEST COMPLETE
STOCK OF SPORTING GOODS
IN THE SOUTH

"TOM"

"CLIFF"

Reader & McLaughley

"Specialists in Sports"

Broad and Walton Streets Atlanta 3, Ga.

"WE SHIP ANYWHERE"

"The best
of them all"



In the "handy" bottle...for thirst and pleasure

D. I. MacINTYRE, JR. '08

D. I. MacINTYRE III '40

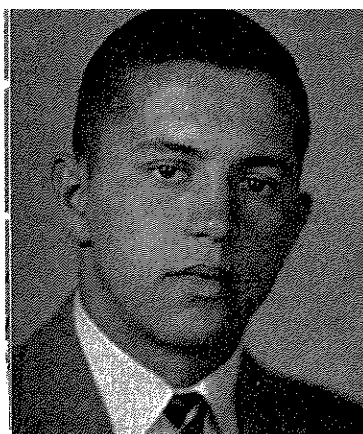
MACINTYRE AND COMPANY

GENERAL INSURANCE

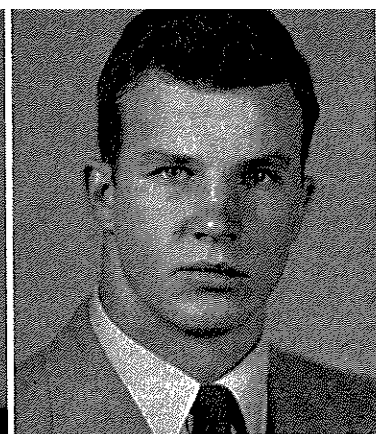
Since 1895

609 Whitehead Building

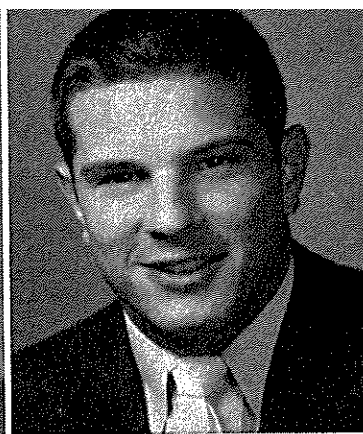
Atlanta, Georgia



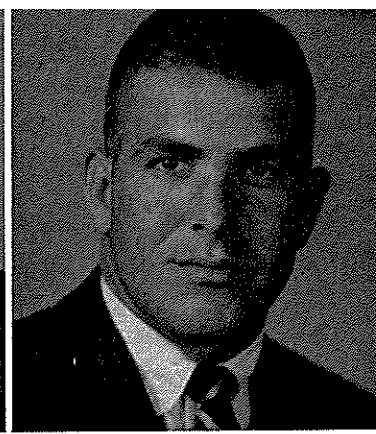
TOPPY VANN
Rossville, Ga.



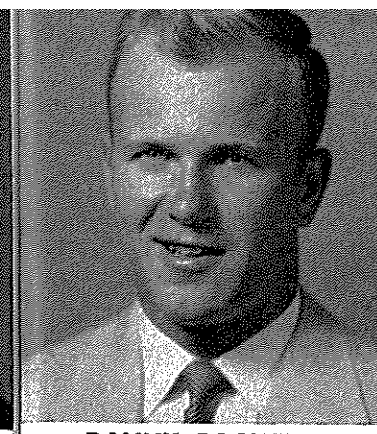
CARL VEREEN
Miami, Fla.



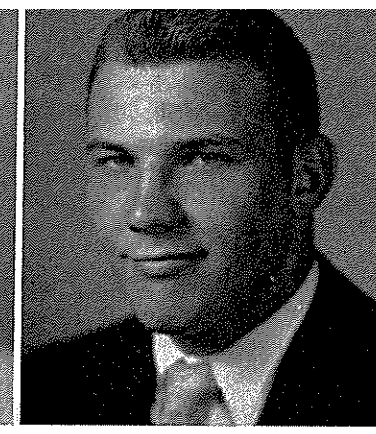
STAN FLOWERS
Memphis, Tenn.



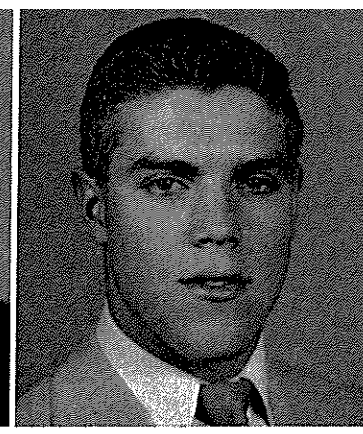
TED SMITH
Cleveland, Tenn.



DANNY BAGWELL
Greenville, S. C.



TOMMY ROSE
Anniston, Ala.



KEN OWEN
Salisbury, N. C.



RONNIE KYLE, Mgr.
Atlanta, Ga.

RICHARD *Dickie* **MATTISON**

ONE-YEAR LETTERMAN
PLAYING FULLBACK FOR
THE **ENGINEERS**

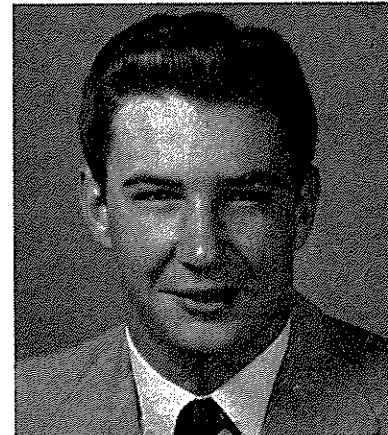
HE STARTED AT
CENTRAL HIGH
OF CHARLOTTE,
NORTH CAROLINA
BEFORE DECIDING
ON A CAREER
AT GA. TECH.

DICKIE
HAS SIZE,
HE'S 6'2"
AND WEIGHS
207 LBS.

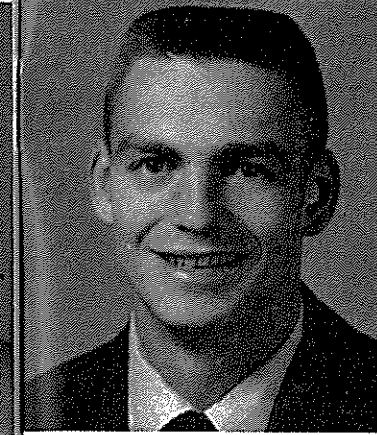
HE WAS GOING
GREAT GUNS
UNTIL SLOWED
BY A KNEE INJURY
EARLY THIS YEAR.
HE SHOULD BE
READY FOR GAME
ACTION SOON.

EXPERT AT GOING
UP AND OVER AT
THE GOAL LINE.

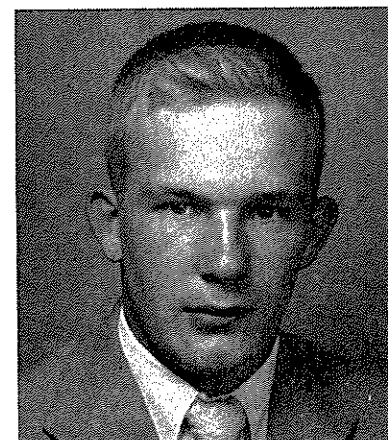
**G
A
T
E
C
H**



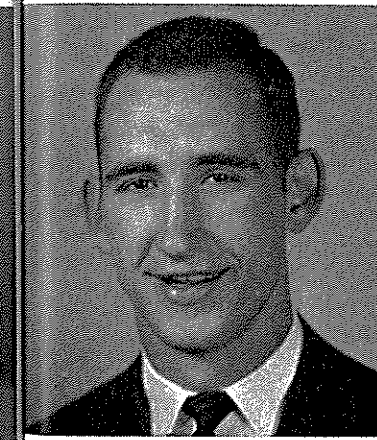
STAN COCHRAN
Atlanta, Ga.



JOE DELANEY
Atlanta, Ga.



JIMMY NOE
Jefferson City, Tenn.
ORMAND ANDERSON
Chattanooga, Tenn.



JIM SUMMER
Oak Ridge, Tenn.

**G
A
T
E
C
H**

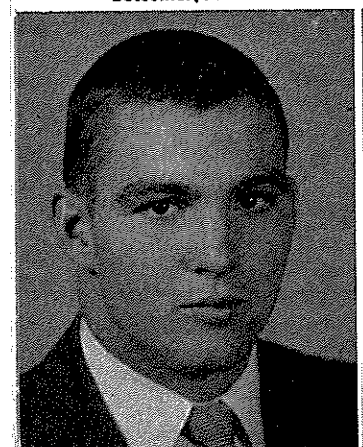
RONALD *Toppy* **VANN**

THE OFFENSE-MINDED
QUARTERBACK OF
THE **YELLOW
JACKETS**

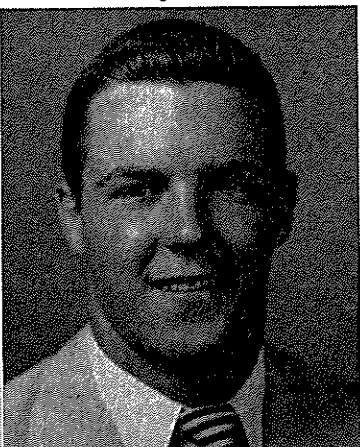
HE HAILS FROM
ROSSVILLE HIGH
SCHOOL, GA.
HE'S ADEPT AT
'GETTING THE
JOB DONE'

RUNS THE TEAM
WITH POISE

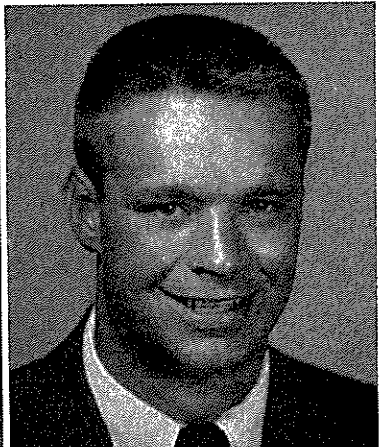
TOPPY IS A STRONG
RUNNER AND A
GOOD SIGNAL CALLER.
HE THROWS STRIKES
WHEN HE PASSES



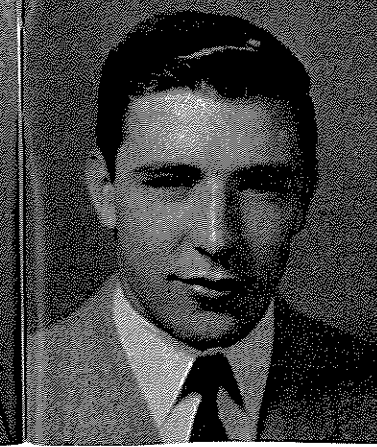
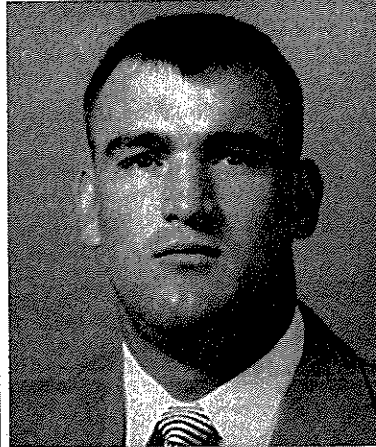
FRANK CHRISTY
Bessemer, Ala.



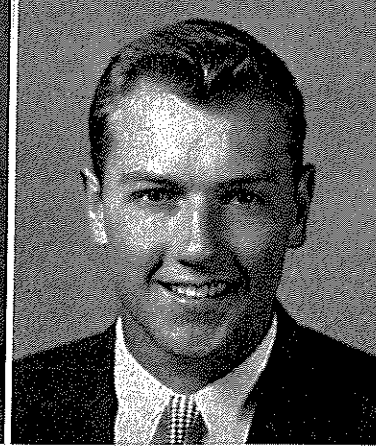
BILL FULCHER
Augusta, Ga.



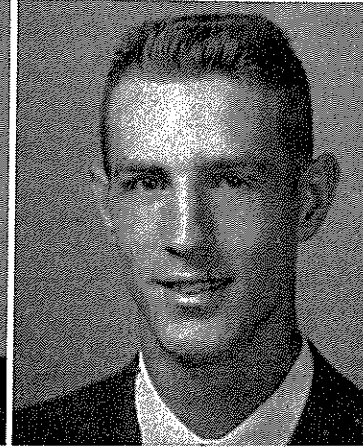
TOMMY GOSSAGE
Nashville, Tenn.



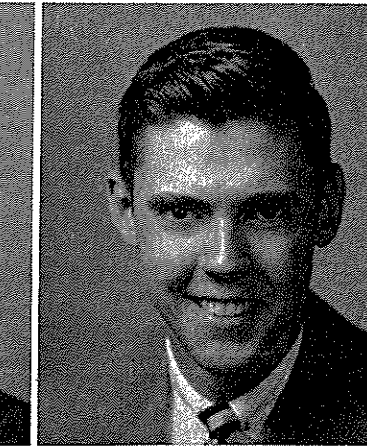
ALLEN ECKER
Atlanta, Ga.



BILL LINGINFELTER
Alcoa, Tenn.

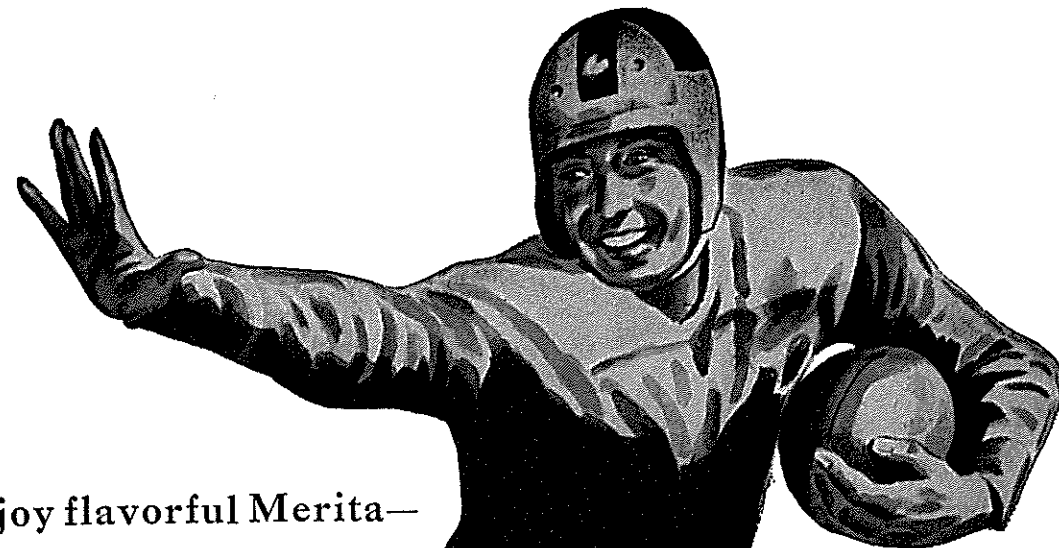


PAUL VICKERS
Atlanta, Ga.



OLIVER SALES, Mgr.
Atlanta, Ga.

Strength... Stamina



Enjoy flavorful Merita—
it's rich in energy
and body-building
food values

*Builds
Glowing
Health*



All
Merita
BREAD
is
"TENDER-BLENDED"
and
VITAMIN ENRICHED

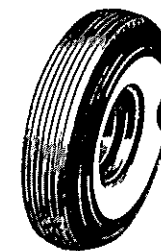
AMERICAN BAKERIES COMPANY

GORDY EXPRESS TREADS

To save up to 50% on tire costs, get Gordy Express-Treads. They look and ride like new... wear even longer than some new tires. A written guarantee protects you completely for a full year of passenger car use.

Dayton Thorobreds

New tires of all types and sizes, including premium quality tubeless tires and expert tubeless tire service. Dayton Thorobreds offer safer Electroni-Cord bodies... Skid Arrestor Treads... higher recap potential. All new tires backed by Gordy's famous "Double Guarantee"—the warranty of the maker plus Gordy's own guarantee of complete satisfaction.



For Complete Tire Service Call ATwood 7531

GORDY TIRE CO.

14th St., N. W., at the EXPRESSWAY, Atlanta

"If you can't see your tread... see Gordy!"