

PRICE 35c

ALMA MATER

High o'er the towering pines
our voices swell,
Praising these gothic spires, we
love so well!
Here sons and daughters stand,
faithful and true,
Praising our Alma Mater,
FSU.

FIGHT SONG

You got to FIGHT, FIGHT, FIGHT, for FSU
You got to SCALP 'EM SEMINOLES
You got to WIN, WIN, WIN, WIN this game,
And roll on down and make those goals.
For FSU is on the war path now,
And at the battle's end she's great;
So FIGHT, FIGHT, FIGHT, FIGHT, to victory,
Our Seminoles of Florida State!

HOME COMING

FLORIDA STATE UNIVERSITY

VERSUS

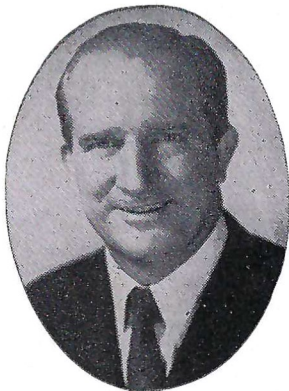
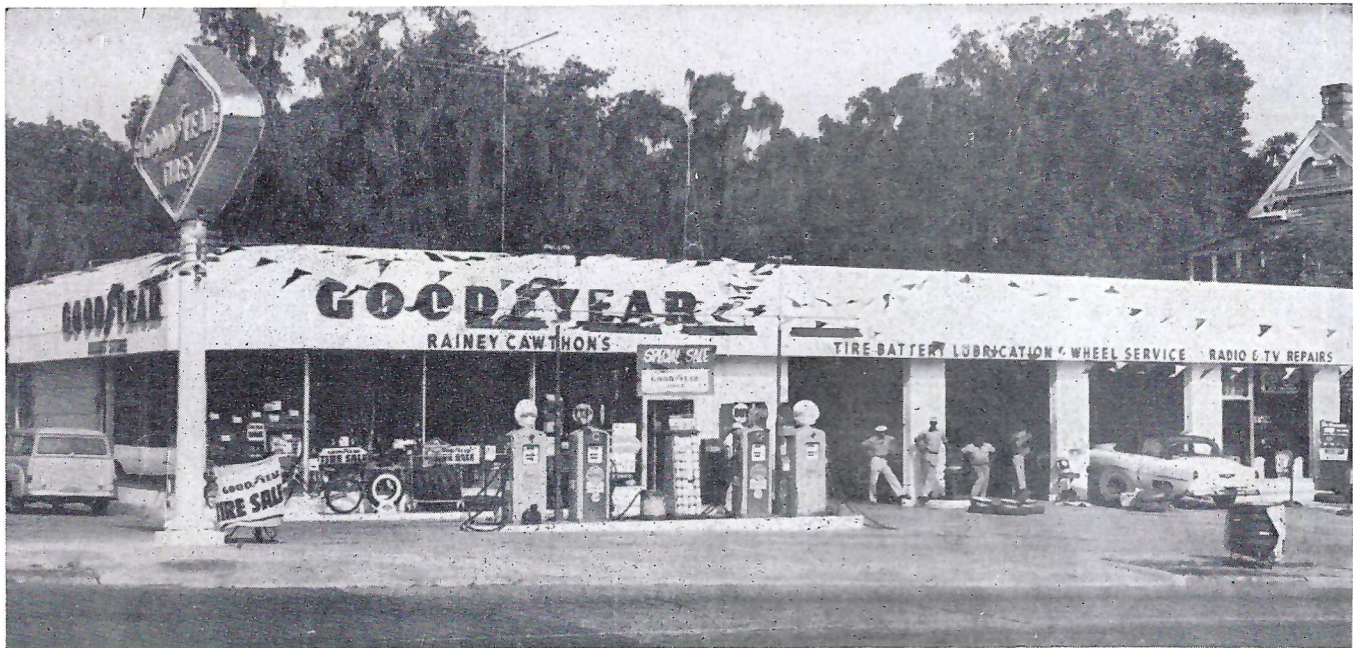
WAKE FOREST

SATURDAY, OCTOBER 20

2:30 P. M.

DOAK S. CAMPBELL STADIUM





RAINEY CAWTHON

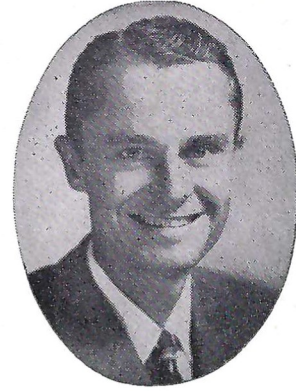
Rainey Cawthon's

★ RCA TELEVISION and RADIO

★ SHELL PRODUCTS ★ GOODYEAR TIRES

"WE SERVICE WHAT WE SELL"

● ROAD SERVICE ● PHONE 2-1865 ●



FRED PIERSON

See Us For All Your Photo Needs

"TALLAHASSEE'S FRIENDLIEST"

THE SHUTTER SHOP

310 N. Monroe Street ● Phone 2-4894

Tallahassee, Florida

Expert Photo Finishing — Same Day Service

WELCOME



President Campbell

For the 1956 Homecoming game the Florida State University "Seminoles" are pleased to be host to the Wake Forest College "Deacons" from Winston-Salem, North Carolina.

Founded in 1834, Wake Forest College has achieved a distinguished record. A monumental achievement has been the removal of the institution from its original campus to a new campus at Winston-Salem.

On behalf of the alumni, the students, and the faculty of the University we extend cordial greetings to our friends from Wake Forest.

A handwritten signature in cursive script, reading "Frank Stamps". The signature is written in dark ink on a light background.

Florida State University
President



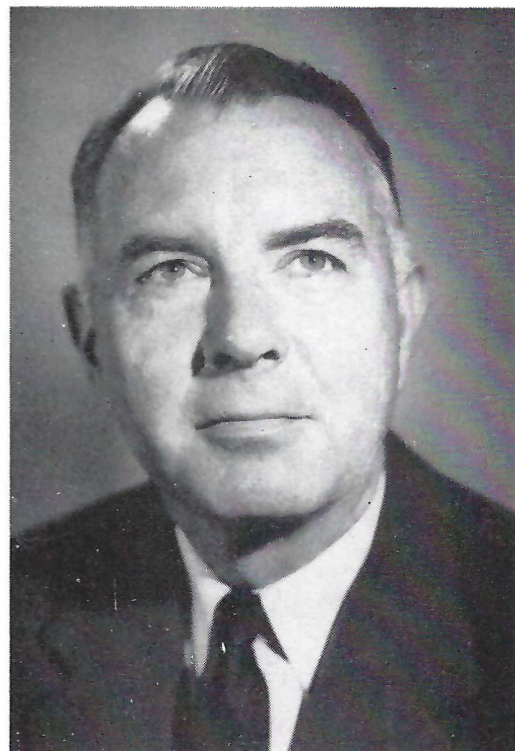
PAUL J. AMEN
Head Football Coach, Wake Forest



WILLIAM H. GIBSON
Wake Forest Athletic Director



TOM NUGENT
FSU Head Coach



DR. H. G. DANFORD
FSU Athletic Director

Florida State Host to Wake Forest

By PIERCE LEHMBECK

TABLE OF CONTENTS

Tom Nugent's "I" Formation	3
University Officials	4
Seminole Athletic News	5
FSU Cheerleaders	6
Football Network	6
Seminole Profiles	8, 9, 10, 11, 12, 13
The FSU Coaches	14
Probable Starting Line-Ups	16-17
About Wake Forest	27
FSU Roster	21
Wake Forest Coaches	27
Wake Forest Players	28, 29
Wake Forest Roster	30

Fed by the desire to keep a perfect homecoming record alive, Florida State is host to a rugged Wake Forest Demon Deacon football squad today before an estimated 20,000 fans.

The Seminoles haven't lost a homecoming game since taking up football in 1947. And with one of their finest teams in years, they hope to continue the streak today.

Wake Forest, a newcomer to the FSU football slate, is fresh from a 17-0 drubbing at the hands of Clemson's Tigers. But the Deacs will be on the rebound and they're an always rough ACC competitor.

Head Coach Tom Nugent said early this past week the Seminoles should enter today's game in their finest physical condition since the season opener against Ohio University.

Bobby Renn, the star left half who was injured in the Georgia game three weeks ago, is back in the starting lineup today and should be at near top form. And rugged Bob Elliot, a top defensive guard who sat out last week's 14-0 triumph over N. C. State, is back for this one.

Fired by the festive spirit of a Seminole homecoming, Florida State enters this game a slight favorite. But with Wake Forest's Demon Deacons the opponents, it could be another long afternoon.

We'll know in a couple of hours.



FLORIDA STATE UNIVERSITY CHEERLEADERS, from left to right: Boys—Jim Julian, "Sticks" Steinberg and Charlie Johnson. Girls—Nancy Fowler, Donna Huggins and Judy Deikle.

THE SEMINOLE FOOTBALL NETWORK

Florida State University's football contests are carried to every part of the state this year by the ever-growing voice of the Seminole Football Network.

Entering its fourth year, the network now boasts a total of 12 stations located throughout Florida. (See the listings below.)

Again, the veteran trio of Bill Snyder, Ben Letson and Jim Kirk are handling the mikeside duties for the network. They've been greatly responsible for the growth and success of the broadcasts.

Snyder, of WPDQ in Jacksonville, is the play-by-play man. He began his professional career by working the games of the old professional baseball club, the St. Louis Browns.

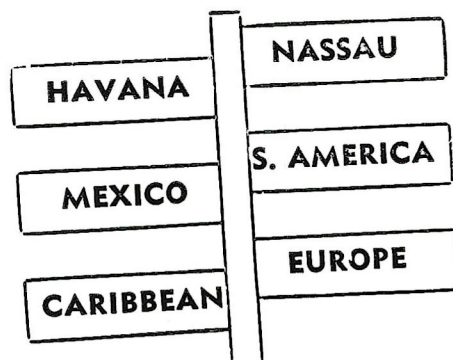
Kirk does the color. As sports director of station WMOP in Ocala, he's been with the network from its beginning.

Letson, owner and manager of WCNH in Quincy, engineers the broadcasts.

The Seminole Network stations:

Quincy	WCNH
Ocala	WMOP
Gainesville	WGGG
Tallahassee	WTNT
Jacksonville	WMBR
Clearwater	WTAN
Sanford	WTRR
Bradenton	WTRL
Lake Wales	WIPC
Panama City	WPCF
Ft. Walton Beach	WFBS
Pensacola	WBSP

**"How,
and
where
in
the
world
are
you
going"**



FOR COMPLETE AND ACCURATE TRAVEL INFORMATION, CALL

GENERAL TRAVEL SERVICE

109 E. Call St., Tallahassee

Next to Chamber of Commerce

Phone 3-4567

Whether by . . .

AIR - BOAT - BUS or RAIL

Let GENERAL TRAVEL plan
your trip . . .

**There Is No Charge
For Our Service**

GO SEMINOLES — GO SEMINOLES

AT Home and Away

We're Pulling for YOU

HOLLAND'S RESTAURANT

Facing the Capitol at 106 E. Pensacola Street

TALLAHASSEE, FLORIDA

Serving Our Own Blend of Coffee

Famous for Home-made Pies and Hot Biscuits

U. S. Prime and U. S. Choice Steaks

Air Conditioned and Ultra Modern

N. T. HOLLAND, Owner and Manager

Gilberg's

"The House of 1000 Fabrics"

108 East Jefferson Street

TALLAHASSEE, FLA.

220 Broad Avenue

ALBANY, GA.

109 W. University Ave.

GAINESVILLE, FLA.

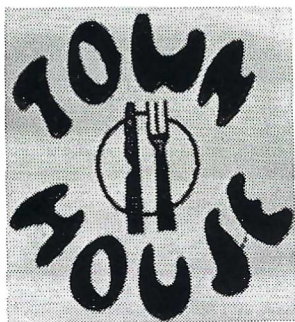
26 North Palafox Street

PENSACOLA, FLA.

535 Harrison Ave.

Panama City, Fla.

Fabrics from All Over the World



COFFEE SHOP

CHARCOAL BROILED
STEAKS
TRAVELING
DESSERT TRAYS

•
DUVAL HOTEL

TALLAHASSEE MUSIC COMPANY

"Service Built This Company"

Phone 3-1246

225 W. Carolina St.

TALLAHASSEE, FLORIDA

SEMINOLE



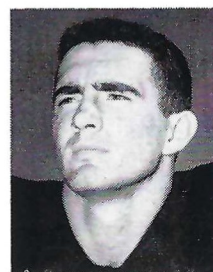
JIM ARNOLD, end. Junior from Bainbridge, Ga. . . . 5' 8", 170 pounds. Ex-serviceman . . . honorable mention All-Florida in 1950 . . . Tough competitor, good tackler. Very strong defensively, needs work offensively. Should develop into top-flight competitor.

TROY BARNES, center. Junior from Chickasaw, Ala. . . . 6' 2", 198 pounds. No. 1 center . . . has good size and excellent speed . . . he's an outstanding pursuit man. Was the best linebacker on the squad during the spring drills.



CARMEN BATTAGLIA, fullback. Junior from Niagara Falls, N. Y. Good, driving type of runner. Moves well in close . . . Fair defensively . . . develop his defensive game and he'll see a lot of action . . . point after touchdown kicker.

HAM BISBEE, end. Junior from Sanford. 6', 175 pounds. Has good speed . . . better than average defensively . . . good blocker . . . Has the needed game experience. In contention for a starting post . . . averaged 23.6 yards on five passes received in 1955.



GEORGE BOYER, tackle. Junior from Jacksonville. 6', 225 pounds. He's a service returnee . . . honorable mention All-Army in 1955. Number one performer as a center at FSU as a freshman and sophomore . . . Fundamentally sound . . . has good speed along with his size.

LEO BAGGETT, guard. Junior from Panama City. 5' 8", 209 pounds. Starting right guard . . . excellent speed. Strong man, fine blocker . . . sharp tackler. Needs only game experience to become great. Watch him.



PROFILES



LEE CORSO, quarterback. Senior from Miami. 5' 10", 170 pounds. Switched from halfback where he was a sensation for two years. Flashy . . . outstanding runner . . . top defensive player. Death on enemy aerials . . . Top ground gainer in 1955.

JOHN CRAIG, tackle. Junior from Orlando. 6', 215 pounds. Hard, conscientious worker . . . showed much improvement during spring. You'll see a lot of him as the season goes on . . . Needs only game experience.



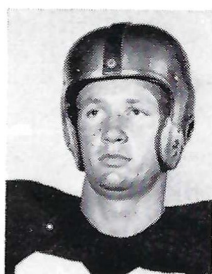
STAN DOBOSZ, halfback. Junior from East Chicago, Ind. 5' 8", 185 pounds. Service returnee . . . the Seminoles' No. 1 ground-gainer in 1952 . . . a regular in 1953. Excellent speed and power . . . watch him come back.



BOB ELLIOTT, tackle. Junior from St. Petersburg. Big surprise in the spring . . . fastest lineman on the squad. Should see much service . . . they call him "Red". Was president of Student Council at St. Paul High.

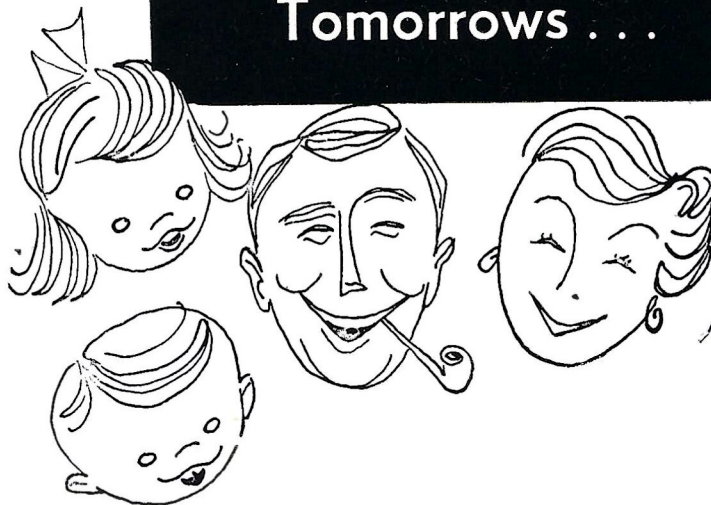


BOB FOUNTAIN, end. Sophomore from Crestview. 5' 11", 190 pounds. He's a "comer" . . . knocking on the door at the starting right end position. Good blocker . . . very fine offensively. Needs only game experience.



JERRY HENDERSON, halfback. Junior from Pensacola. 5' 11", 175 pounds. Started as a quarterback . . . switched when needed. He's a good thrower . . . kicks nice with his left foot. Fair speed . . . good defensively.

For Brighter
Tomorrows . . .



TALLAHASSEE FEDERAL SAVINGS AND LOAN ASSOCIATION



Compliments of

TALLAHASSEE

AUTOMOBILE

DEALERS

ASSOCIATION

Alford Chevrolet Co.

Capital Lincoln-Mercury, Inc.

Carr Buick

Dean Motors

Drake Motors

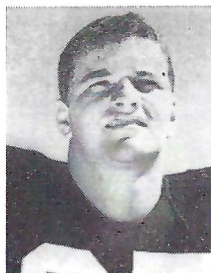
Mayo-Mingledorff Motors, Inc.

John Manthey, Inc.

Proctor & Proctor

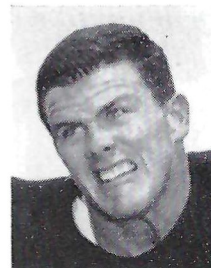
Tallahassee Motors, Inc.

SEMINOLE



JOE HOLT, fullback. Senior from Graham, N. C. 5' 10", 183 pounds. Number one fullback for past two years . . . Joltin' Joe, they call him . . . Good blocker and pass receiver . . . fair ball carrier . . . has the needed experience.

EDDIE JOHNSON, fullback. Junior from Charleston, W. Va. 5' 10", 205 pounds. Excellent speed . . . he's trying to move into the No. 1 spot. He's good defensively, is an excellent blocker. Played regularly as a soph . . . a service returnee.



BILL KIMBER, end. Sophomore from Winter Park. 6' 1", 185 pounds. An injured knee just before the opening game set him back . . . good speed, better than average receiver. Stronger than average defensively . . . needs work offensively.

BUD LEONARD, center. Senior from Ocala. 5' 11", 192 pounds. He's a converted fullback . . . good linebacker. Excellent speed . . . a strong man. Has plenty of game experience . . . should make this final season a big one for himself.



BUCK METTS, halfback. Senior from Sanford. 5' 9", 180 pounds. Starter at right halfback . . . a top punter, excellent runner and tough defensively. Good pass receiver . . . leading scorer last season.

BILL MUSSELMAN, tackle. Junior from Lynchburg, Va. 5' 11", 215 pounds. He's quick for his size . . . no excess heavy stuff. Well named . . . plenty strong. Labeled as a dark-horse for honors this fall. Starting left tackle.

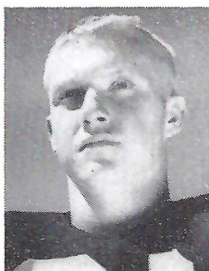


PROFILES



BOB NELLUMS, end. Junior from Pensacola. Junior college grad . . . plenty of experience. Big surprise during the practice sessions . . . top contender for starting left end post. Labeled by coaches as having "top potential."

BILLY ODOM, halfback. Senior from Mt. Dora. 5' 8", 165 pounds. Offensive standout . . . tremendous break-away runner. Averaged 27.5 yards on 13 kickoff returns to rank sixth in nation last season. Needs only defensive improvement.



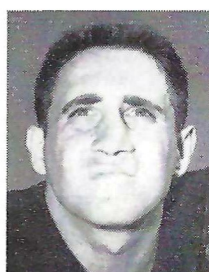
AL PACIFICO, guard. Senior from Altoona, Pa. 5' 7", 209 pounds. Begins his fourth year as an FSU starter . . . 'nuff said. He's solid fundamentally . . . tough competitor. Has everything that points to a great season.

VIC PRINZI, quarterback. Junior from Waverly, N. Y. 6', 180 pounds. Experienced . . . strong arm. Fair speed . . . can play a top notch defensive game. Late start this year . . . may develop fast and move into a possible starting position.



BOBBY RENN, halfback. Sophomore from Henderson, N. C. 5' 11", 170 pounds. Transfer from Davidson where he intercepted 14 passes as a freshman. Has top flight defensive ability . . . good speed. Top all-around player.

TED RODRIQUE, quarterback. Junior from Lynn, Mass. 5' 11", 180 pounds. Good kicker and passer. Needs to develop defensively . . . has experience. May surprise at any time . . . was All-Army in Japan in 1953.



GANDY MOTOR HOTEL

WEST ON U. S. 90 and 20

Private Phones

An Alsonett Motor Hotel

Fine Restaurant Adjoining

TALLAHASSEE, FLA.

SCALP 'EM SEMINOLES

BROWN'S MEN'S WEAR

Monroe at Park

F & T RESTAURANT

For Good Food and Quick Service

113 S. Monroe

Phone 2-8917

Air Conditioned

Arnold's★

The Young Man's Shop

Formerly
Troxler's

105 S. MONROE



Everything for the Young Man

FROM SIZE 6
TO
STUDENT SIZE 40

WON'T YOU ...

HAV-A-TAMPA

...CIGAR

Eli Witt Tobacco & Candy Co.

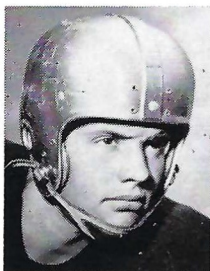
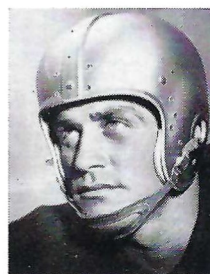
TALLAHASSEE, FLA.

The Players —



LEN SWANTIC, quarterback. Senior from Columbus, Ga. 5' 10", 176 pounds. Most experienced quarterback . . . good passer. A little slow, but a smart runner. Ranked fourth in the nation last year with 37 pass completions.

RONNIE SCHOMBURGER, end. Junior from Pittsburgh, Pa. 6' 1", 195 pounds. Top performer at left end . . . best all-round end during the spring. Fine receiver . . . tops defensively. This should be his year.



BOB THOMAS, tackle. Sophomore from Mansfield, Ohio. 5' 11", 198 pounds. Top defensive lineman . . . lags a little offensively. Should develop into an outstanding player within a year. Could break into starting lineup at any point.

PAT VERSPRILLE, halfback. Junior from Norfolk, Va. 6' 2", 190 pounds. Top halfback during the spring drills. But an injury during the fall session threatens to set him back for the whole season. Has outstanding potential.

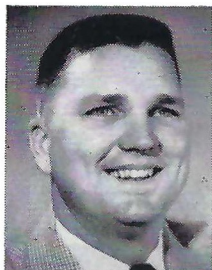


BILLY WEAVER, halfback. Junior from Miami. 5' 10", 175 pounds. Hard, driving type of runner. Good speed . . . solid tackler. Great competitor . . . this should be a big season for him.

HENRY WETHERINGTON, end. Sophomore from Valdosta, Ga. 6', 196 pounds. Didn't participate during the spring, but is expected to rise fast as the season goes on. Very fast . . . slowed by recent knee operation.



The Coaches —



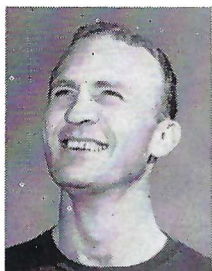
HUGH ADAMS. Little All-America tackle on FSU's 1949 team. First year as a full assistant . . . was a graduate last season. A Punta Gorda native . . . coached at Leon High School in 1950.

BOB HARBISON. The dean of the FSU coaching staff . . . begins his ninth season as a line coach. Played under the late Bo McMillan at Indiana University . . . a native of Evansville, Ind.



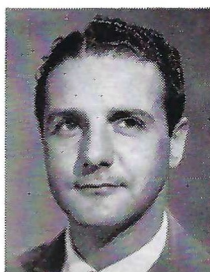
VAUGHAN MANCHA. One of the University of Alabama's greatest centers . . . starts his fifth season as an FSU assistant coach. Made the first team SEC and All-America squads in 1947. Works with the line . . . played a year with the old Boston Yanks in pro ball.

PAUL ODOM. New full assistant basketball coach. Mount Dora . . . brother of FSU halfback Billy . . . He was a tackle for Rollins in his playing days, later switched to Stetson where he was team captain in 1950.



HUGH "BONES" TAYLOR. Begins his first year as an FSU great. If you've followed football you've heard of him . . . one of professional football's all-time great ends. A star with the Washington Redskins for many years.

FRANK TOOMEY. Begins his third season as an FSU assistant coach. A graduate of Ithaca College in New York, he lettered in all sports during his competitive days. Coached at Ithaca after graduation for a while.



BRINKLEY BROS.

HOMER A. BRINKLEY

ROBERT T. BRINKLEY

REALTORS • INSURANCE

MORTGAGE LOANS

"A Brinkley Buy Is a Better Buy"

BRINKLEY BLDG. — 306 N. MONROE ST.

TELEPHONE 3-0918

Tallahassee, Fla.

Developers of beautiful Waverly Hills

Co-developers of St. George Island

"Serving Good Food for Fine People"

Stege's Cafeteria

Adams at Pensacola

2-1286

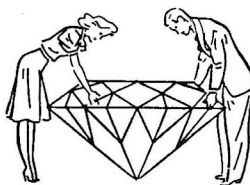
Plantation Restaurant

U. S. Highway 27

1324 Perry Highway

Telephone 2-9092

Tallahassee, Fla.



In Diamonds, Cutting, Color, Clarity, and Carat-Weight Determine Their Value. May Our Gemologist Explain This to You?

"Our Terms Will Please You"

Moon's
REGISTERED JEWELERS —
American Gem Society

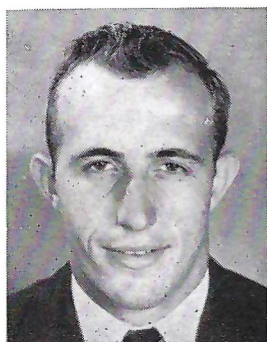
THE FSU COACHING STAFF



HEAD COACH Tom Nugent, center. Surrounding him, left to right, assistant coaches Frank Toomey, Hugh Adams, Paul Odom, Hugh Taylor, Bob Harbison, and Vaughan Mancha.

W E L C O M E

GRADDY BROS. GULF STATIONS



BUCK METTS

"WE LIKE EVERYBODY"

Full Line

GULF PRODUCTS

LUBRICATION SPECIALIST

ROAD SERVICE

1458 SOUTH MONROE

Phone 3-0077

640 WEST TENNESSEE

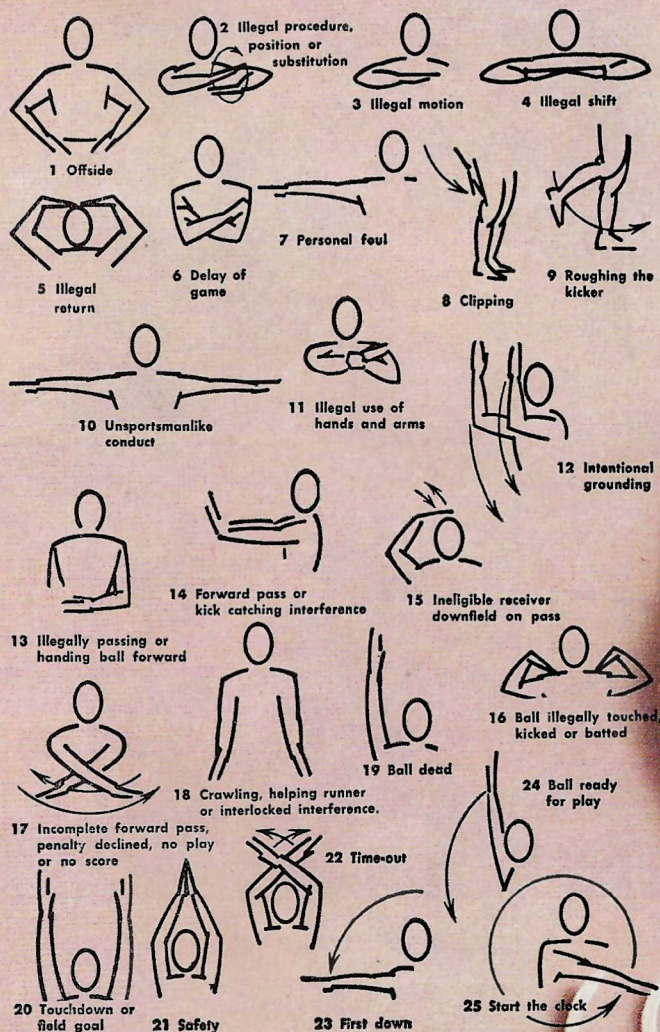
Phone 2-3584

After the Ball Game

Drive Carefully, You May Hit One of Our Customers

REFRESH

DRINK
Coca-Cola



TALLAHASSEE COCA-COLA BOTTLING COMPANY
TALLAHASSEE, FLORIDA

Live Modern, Boy...Smoke L&M!



FLORIDA STATE

PROBABLE STARTING LINEUP

NO.	NAME	POS.
80	RONNIE SCHOMBURGER	LE
73	BILL MUSSELMAN	LT
60	LEO BAGGETT	LG
52	TROY BARNES	C
66	AL PACIFICO	RG
77	GEORGE BOYER	RT
85	BOB NELLUMS	RE
20	LEE CORSO	QB
15	BOBBY RENN	LH
41	JOE HOLT	FB
22	BUCK METTS	RH

THE FLORIDA STATE SQUAD

10	Prinzi, b	60	Baggett, g
11	Rodrique, b	61	McGee, g
12	Swantic, b	64	Leonard, c
14	Henderson, b	66	Pacifico, g
15	Renn, b	67	Elliot, t
20	Corso, b	68	Williams, g
21	Odom, b	70	Thomas, t
22	Metts, b	71	Holton, t
25	Versprille, b	73	Musselman, t
26	Weaver, b	74	Gardner, t
27	Dobosz, b	76	Keys, t
28	Minton, b	77	Boyer, t
29	Battaglia, b	78	Craig, t
	Griffen, b	79	Graham, t
41	Holt, b	80	Schomburger, e
43	Abood, b	81	Bisbee, e
44	Johnson, b	83	Fountain, e
50	Davis, c	84	Kimber, e
51	Pope, c	85	Nellums, e
52	Barnes, c	86	Arnold, e
53	Keith, c	89	Philp, e

My Chesterfields *Satisfy* the Most!



WAKE FOREST

PROBABLE STARTING LINEUP

NO.	NAME	POS.
81	DAVID LEE	LE
75	FRANK THOMPSON	LT
64	HUGHIE LEWIS	LG
53	EDDIE MOORE	C
68	BO CLAXTON	RG
74	GEORGE JOHNSON	RT
82	RALPH BREWSTER	RE
17	CHARLIE CARPENTER	QB
44	JIM DALRYMPLE	LH
26	DICK DANIELS	RH
33	BILL BARNES	FB

THE WAKE FOREST SQUAD

11	Barham, b	64	Lewis, g
12	Lee, b	65	Smathers, g
13	Toothman, b	66	Spach, t
17	Carpenter, b	67	Butler, t
22	Pegram, b	68	Claxton, g
24	Ledford, b	69	Chiapetta, g
25	Revis, b	70	Herring, t
26	Daniels, b	72	DeSimone, t
33	Barnes, b	74	Johnson, t
34	Caesar, b	75	Thompson, t
35	Hillenbrand, b	76	Ladd, t
42	White, b	77	Swatzel, t
43	Brooks, b	78	Horn, t
44	Dalrymple, b	79	McLean, t
50	Daniels, (Mack), c	81	Lee, e
51	Munn, c	82	Brewster, e
53	Moore, c	83	Martin, e
61	Orr, g	84	Ladner, e
62	Dennis, g	85	Hines, e
63	Rollins, g	86	Lewis, e

PAUSE



LOSS OF FIVE YARDS

- 1—Taking more than five times out during either half (except for replacement of injured player).
- 2—Illegal delay of game.
- 3—Failure to complete substitution before play starts.
- 4—Violation of kickoff formation.
- 5—Player out of bounds when scrimmage begins.
- 6—Putting ball in play before Referee signals "Ready-for-play".
- 7—Failure to maintain proper alignment of offensive team when ball is snapped. Also, backfield man illegally in motion.
- 8—Offside by either team or encroachment on neutral zone.
- 9—Attempt to draw opponents offside.
- 10—Crawling by runner.
- 11—Illegal forward pass (includes intentional grounding of forward pass). Also loss of down.
- 12—Taking more than two steps after Fair Catch is made.
- 13—Player on line receiving snap.
- 14—Any violation of the scrimmage formation.

LOSS OF FIFTEEN YARDS

- 15—Team not ready to play at scheduled time.
- 16—Violation of rules during intermission.
- 17—Illegal return of suspended player.
- 18—Interference by member of offensive team with defensive player making pass interception. (Also loss of down).
- 19—Interfering with the opportunity of a player of the receiving

PENALTIES

- team to catch a kick.
- 20—Illegal use of hands or arms by offensive player.
 - 21—Tackling or blocking defensive player who has made fair catch.
 - 22—Roughing the kicker.
 - 23—Piling up, hurdling, clipping.
 - 24—Tackling player out of bounds, or running into player obviously out of play.
 - 25—Coaching from sidelines.
 - 26—Failure to stop one full second following shift.
 - 27—Defensive holding.
 - 28—Invalid Signal for Fair Catch.

OTHER PENALTIES

- 29—Striking an opponent with fist, forearm, elbow or locked hands, kicking or kneeing — Mandatory disqualification of offending player plus loss of fifteen yards.
- 30—Foul within the one yard line — half the distance to the goal.
- 31—Interference by defensive team on forward pass — passing team's ball at spot of foul.
- 32—Forward pass being touched by ineligible receiver beyond the line of scrimmage — loss of fifteen yards from spot of preceding down and loss of a down.
- 33—Illegal touching of kicked ball within opponent's ten yard line — touchback.
- 34—Flagrantly rough play or unsportsmanlike conduct — Mandatory disqualification plus loss of fifteen yards.
- 35—Eligible pass receiver who goes out of bounds and later touches a forward pass — loss of down.

DRINK

Coca-Cola

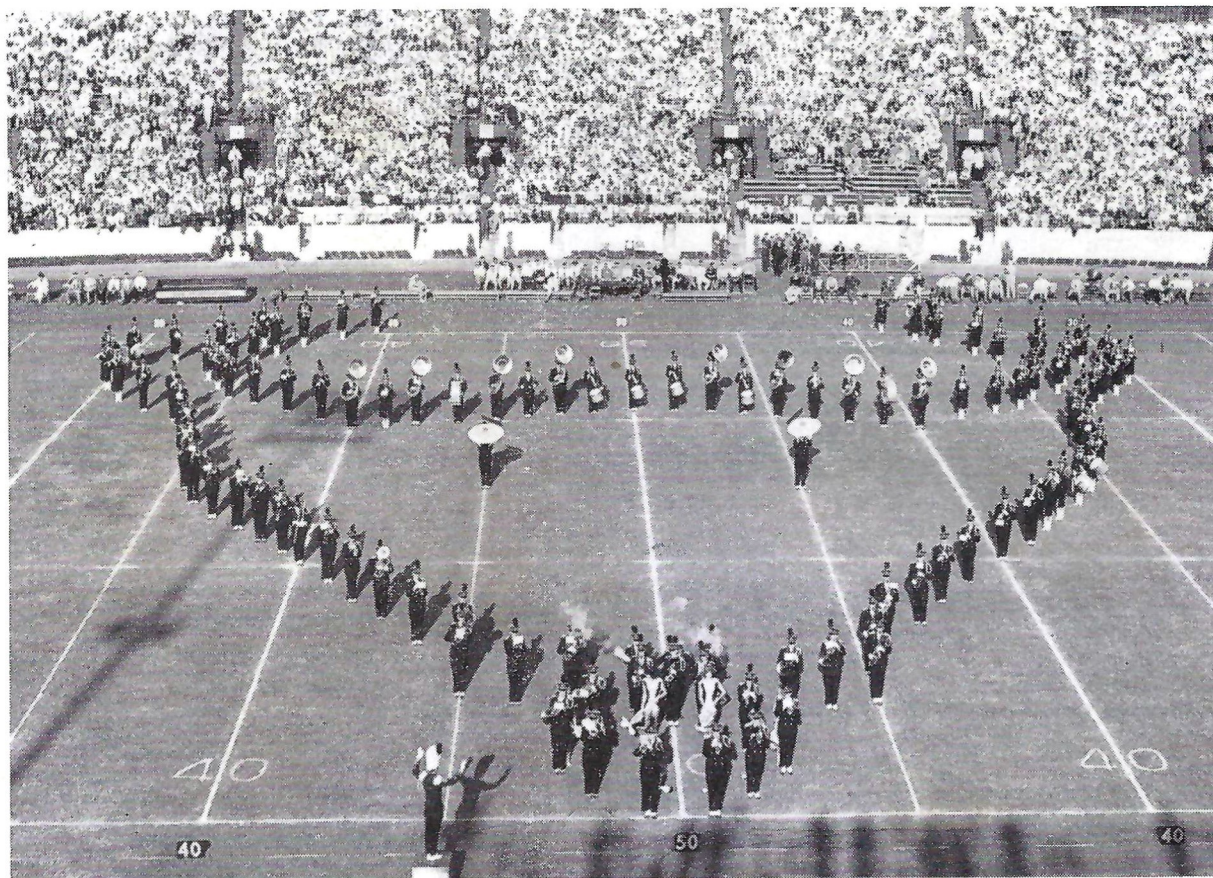
REG. U.S. PAT. OFF.

COPYRIGHT 1956, THE COCA-COLA COMPANY

TALLAHASSEE COCA-COLA BOTTLING COMPANY

TALLAHASSEE, FLORIDA

THE MARCHING CHIEFS



HOMEcoming, 1955

Manley Whitcomb will direct Florida State's Marching Chiefs, hailed by Atlanta newspapers as the best university marching group in the south, in at least seven halftime performances this year.

Shows are planned for all home games—Ohio University, Virginia Tech, Wake Forest, Furman and Mississippi Southern—and it's likely the band will perform at Philadelphia October 27 and Miami November 2.

FSU has in Whitcomb one of the nation's foremost masters of band music. He came to Florida State in 1953 following a record 17 years at Ohio State where he led the famous Buckeye band to national recognition.

Since coming to FSU Whitcomb has developed the 128-piece Marching Chiefs into one of the most outstanding musical organizations of its kind in the nation.

At Ohio State he directed the university band in its famous westward jaunt to the Rose Bowl in 1950. Whitcomb has appeared as lecturer, guest conductor, clinician and adjudicator in 12 states. He saw service as a combat infantryman in World War II and

was twice awarded the Bronze Star for meritorious service in combat in France.

The Marching Chiefs, which includes 180 personnel, is truly an all-southern band due to its appearances throughout the south and its predominantly all-southern personnel. The Marching Chiefs have appeared in Alabama, Florida, Georgia, Mississippi and Texas with a possibility of adding Pennsylvania to the list this year.

Whitcomb, also a music professor, received Bachelor of Music and Masters degrees from Northwestern University. He's a native of Mellon, Wisconsin.

Band Day at Florida State, planned October 6 this year, is one of the highlights of the Marching Chiefs' spectacular shows because it brings together some of the finest high school bands in Florida, Georgia and Alabama.

Band Day was first inaugurated at FSU in 1951 and it has grown from some 13 bands to over 30. This will be the sixth annual edition of the event and promises to top all the rest.

ALFORD BROTHERS

FINE WEARABLES FOR MEN

CAMPUS-TOGS CLOTHES

McGREGOR SPORTSWEAR

212 SOUTH MONROE ST.



"Two Points that put you out in front!"

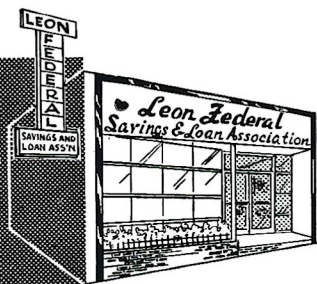
Insured Savings

Above Average Dividends"

—Davy Dividend

LEON FEDERAL SAVINGS
and Loan Association

MONROE AT PARK AVENUE — PHONE 2-0827



SAVINGS AND INVESTMENTS INSURED

Up to \$10,000 by Federal Savings and Loan Insurance Corporation

1956 FLORIDA STATE UNIVERSITY FOOTBALL ROSTER

ENDS						
NO.	NAME	AGE	HT.	WT.	CLASS	HOMETOWN
86	JIM ARNOLD	25	5-8	170	Jr.	Bainbridge, Ga.
81	HAM BISBEE	20	6-0	172	Jr.	Sanford
83	BOB FOUNTAIN	19	5-11	187	So.	Crestview
84	BILL KIMBER	20	6-0	185	So.	Winter Park
85	BOB NELLUMS	24	6-1	201	Jr.	Pensacola
89	GERALD PHILP	23	5-11	188	Jr.	Royal Oak, Mich.
80	RONNIE SCHOMBURGER	22	6-2	192	Jr.	Pittsburgh, Pa.
TACKLES						
74	WILLIE GARDNER	19	6-0	217	Jr.	Tampa
77	GEORGE BOYER	21	6-0	223	Jr.	Jacksonville
78	JOHN CRAIG	19	6-0	217	Jr.	Orlando
76	BOBBY KEYS	20	5-9	172	Jr.	Ringgold, Ga.
73	BILL MUSSELMAN	20	5-11	215	Jr.	Lynchburg, Va.
70	BOB THOMAS	18	5-11	198	So.	Mansfield, Ohio
71	STEVE HOLTON	22	6-1	205	Jr.	Perry
79	JERRY GRAHAM	20	6-0	217	Jr.	Tampa
GUARDS						
60	LEO BAGGETT	20	5-8	209	Jr.	Panama City
67	BOB ELLIOTT	21	6-1	195	Jr.	St. Petersburg
64	BUD LEONARD	22	5-11	192	Sr.	Ocala
66	AL PACIFICO	24	5-7	205	Sr.	Altoona, Pa.
68	TED WILLIAMS	23	5-9	180	So.	Tallahassee
61	JOE McGEE	20	5-8	191	So.	Raleigh, N. C.
CENTERS						
52	TROY BARNES	24	6-2	198	Jr.	Chickasaw, Ala.
50	MILLARD DAVIS	20	6-1	195	Jr.	Atlanta, Ga.
53	STUART KEITH	19	5-11	188	So.	Panama City
51	MELVIN POPE	23	6-1	216	So.	Tallahassee
QUARTERBACKS						
20	LEE CORSO	21	5-10	166	Sr.	Miami
14	JERRY HENDERSON	20	5-11	175	Jr.	Pensacola
10	VIC PRINZI	20	6-0	178	Jr.	Waverly, N. Y.
11	TED RODRIQUE	26	5-11	180	Jr.	Lynn, Mass.
12	LEN SWANTIC	25	5-10	180	Sr.	Columbus, Ga.
HALFBACKS						
29	CARMEN BATTAGLIA	21	5-8	178	Jr.	Niagara Falls, N. Y.
27	STAN DOBOSZ	21	5-8	185	Jr.	E. Chicago, Ind.
22	BUCK METTS	20	5-9	180	Sr.	Sanford
21	BILLY ODOM	21	5-8	164	Sr.	Mt. Dora
15	BOBBY RENN	22	5-11	170	So.	Henderson, N. C.
25	PAT VERSPRILLE	21	6-2	190	Jr.	Norfolk, Va.
26	BILLY WEAVER	20	5-10	175	Jr.	Miami
28	WES MINTON	22	6-0	180	So.	Jacksonville Beach
	GENE GRIFFIN	19	5-8	150	So.	Augusta, Ga.
FULLBACKS						
43	EMIL ABOOD	20	5-10	182	Jr.	Jacksonville
41	JOE HOLT	21	5-10	183	Sr.	Graham, N. C.
44	EDDIE JOHNSON	21	5-10	205	Jr.	Charleston, W. Va.

Eat at

TALLAHASSEE DINING ROOM

ON U. S. 27 — ONE MILE NORTH



Recommended by Duncan Hines

STUDENT SAVING CENTER

- School Supplies
- Art Supplies
- Drafting Equipment
- Pennants and Novelties
- Greeting Cards
- Pen Repair Service
- Gifts
- Stationery
- Sundries
- Camera Supplies & Developing Service

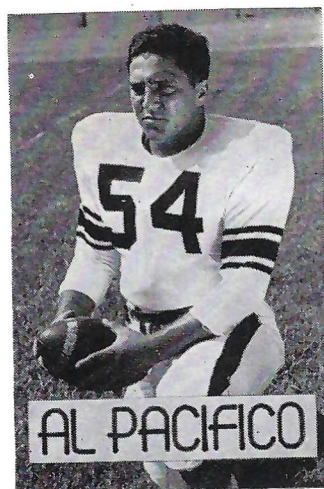
We Buy and Sell Books

NEW and USED

UNIVERSITY BOOKSTORE

In the Student Center

ROYAL SANDWICH COMPANY



P. O. Box 641

• Phone 2-0699

— WHOLESALE DISTRIBUTORS OF SANDWICHES —

Salted Peanuts • Peanut Butter Sandwiches • Potato Chips

Pop Corn • Cookies • Candy

"FRESH AS A DAISY"

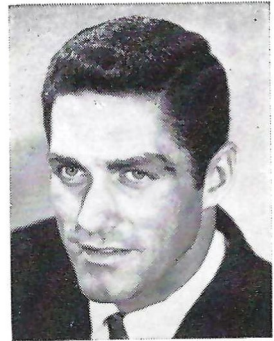
OWNED AND OPERATED BY FRANK AND JAMES CHASE

Skyline Restaurant

U. S. Highways 90 and 20

1 Mile West of City Limits

TALLAHASSEE, FLORIDA



RONALD SCHOMBURGER

"Serving Good Food for Fine People"

BENNETT'S DRUG STORE

- Prescriptions
- Cameras
- Sundries
- Gifts
- Fountain
- Cafe
- Cosmetics
- Drugs

MEET AT BENNETT'S
BEFORE AND AFTER THE GAME!

Corner Monroe and College Streets

Phones 2-8980 — 2-4450

The Vogue

TALLAHASSEE
FLORIDA

Meet Me at the

MECCA

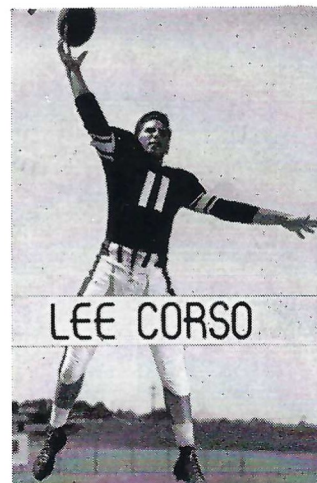
111 South Copeland St.

and Enjoy the Fine

Food and Friendly Atmosphere

The Master Chef

Floyd Whiddon Insurance Agency



D. T. O'HARA, JR.

PRODUCE • POULTRY • FROZEN FOODS

Phone 2-2128 • 717 W. Gaines St.

TALLAHASSEE, FLORIDA

THE LAUNDROMATS

115 W. Tennessee — 1005 N. Monroe

Phone 3-1789

Phone 2-3792

CLOTHES — RUGS — BLANKETS

Washed Clean — Fluff Dried and Folded

SHIRT FINISHING

DRY CLEANING • TINTEXING

"Your Satisfaction Is Our Goal"

BILL'S BOOK STORE

BOOKS

SUPPLIES

SUNDRIES

PRIVATELY OWNED AND OPERATED

LITTLE FOLKS STORE

INC.

133 North Monroe Street

CHILDREN'S FURNITURE • TOYS

NOVELTIES • GIFTS • HOBBIES

"The Capital's Major for Minors"

Phone 2-1146

TALLAHASSEE, FLORIDA

THE SWEET SHOP

GOOD FOOD

DELICIOUS SODAS

DRUG SUNDRIES

Meet Your Friends Here Before
and After the Game!

Follow the Seminoles!

GOOD LUCK SEMINOLES!

SEVEN SEAS

Corner Monroe and Pensacola

Next to the Capitol

Tallahassee's Finest

Will be Happy to Serve You After the Game!

EVERY SUNDAY AFTERNOON

We Feature a Special Smorgasbord Table

Buddy's Hardware and Sporting Goods

We Have the Leading Lines!

If It's Sports — We Have It!

203 S. Monroe

BUDDY BRANDT, Owner

DANLEY FURNITURE COMPANY

611 N. MONROE ST.

All Types of Furnishings

for Your Home

S H A W ' S

Furnishings for Your Home

COLLEGE AVE. at DUVAL ST.

"Good Taste Costs No More"

It's Fun...

to be nice to people

M & N CAFE

Fine Food Since 1925

The Best Place in Town to Eat

FAIVER'S

For Chicken

Pizza Pie

•

Half-Fry Chicken

Italian Spaghetti

Sandwiches—All Types

•

1312 WEST TENNESSEE STREET

TALLAHASSEE, FLORIDA

AUBREY

BARROW

SERVICE STATION

1853

THOMASVILLE

ROAD

Phone 2-5224

MIDYETTE-MOOR

Insurance Agency

"Ask Those We Serve"

Complete Insurance and Bond Service

PHONE 2-3456

MIDYETTE-MOOR BUILDING

TALLAHASSEE, FLORIDA

—SAYS—

Scalp 'em Seminoles!



PAYNE H. MIDYETTE

FRANK D. MOOR

EDWIN M. CLARK

A. WINSLOW SULLIVAN

ROBT. M. DICKINSON

PAUL L. LEWIS

PAYNE H. MIDYETTE, JR.

WM. L. MOOR

WAKE FOREST COACHING STAFF



Wake Forest Coaching Staff: (l. to r.)—Ken Wable, Gene Gibson, Elmer Barbour, Head Coach Paul Amen, Billy Hildebrand, Jim Hietikko and Trainer Warren Ariail.

ABOUT WAKE FOREST

By **RUSSELL BRANTLEY**
News Bureau Director

One hundred and twenty-two-year-old Wake Forest College is in a spanking new home and is now working out its "shakedown" cruise.

Ten years of planning and working and praying came to a climax this spring. The College held an early commencement and hundreds of alumni roamed the old campus in the "Forest of Wake." But while the last diplomas were being handed out, huge moving vans were rumbling away.

In the short period between May 21 and June 18 over 95 per cent of the moving was done. Books, equipment and faculty possessions were installed in shiny new buildings on a \$20 million campus at Reynolda, just outside the City of Winston-Salem.

And now the administration, faculty and students are about the job of re-planting traditions, the intangibles that couldn't be packed and hauled 110 miles. With them lies the job of maintaining and improving the personality of a very personable college.

Residence buildings include four U-shaped dormitories for men and two for women. There also are a power plant and maintenance building.

The College was founded in 1834 by the Baptist State Convention of North Carolina. For five years Wake Forest operated exclusively as a manual labor school. In 1838 the institution was re-chartered as a college. From then until 1894, Wake Forest operated exclusively as a liberal arts college. The School of Law was established in 1894, and the School of Medicine (moved to Winston-Salem as the Bowman Gray School of Medicine of Wake Forest in 1941) in 1902. The School of Business Administration was organized

in 1949.

Wake Forest was a boys' school until 1942 when coeds were admitted.

In 1946 the Z. Smith Reynolds Foundation agreed to pay Wake Forest up to \$350,000 a year in perpetuity if friends of the College would provide necessary buildings to house the College on a new campus in or near Winston-Salem. Mr. Charles H. Babcock and the late Mrs. Babcock gave the campus site. The Baptists of North Carolina accepted the proposal and an intensive fund-raising and construction program resulted.

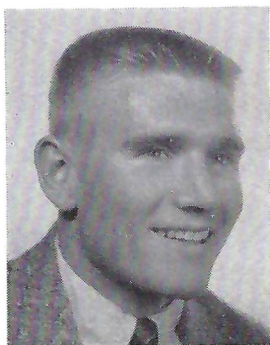
Enrollment during the last academic year totaled 1,753. There were 1,326 liberal arts students, 208 in the School of Medicine, 130 in the School of Business Administration and 89 in the School of Law.

During its history Wake Forest has been headed by 10 presidents. A complete list with dates of their administration, follows:

Samuel Wait, 1834-45; William Hooper, 1845-59; John Brown White, 1849-54; Washington Manly Wingate, 1854-79; Thomas Henderson Pritchard, 1879-82; Charles Elisha Taylor, 1884-1905; William Louis Poteat, 1905-27; Francis Pendleton Gaines, 1927-30; Thurman D. Kitchin, 1930-50; Harold Wayland Tribble, 1950 to the present.

Wake Forest is governed by a Board of Trustees which is elected by the North Carolina Baptist Convention. The Board has 36 members who serve four-year terms, with nine being chosen each year at the annual convention.

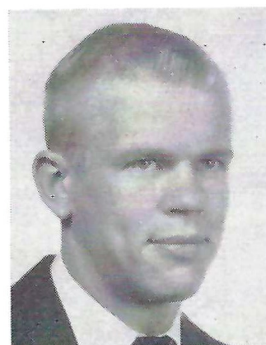
Wake Forest has contributed many ministers, teachers, physicians, lawyers, scientists, and journalists to the everyday life of man. It is particularly interesting to note the large number of its graduates who plow themselves back into the life of North Carolina.



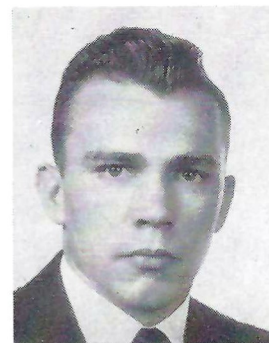
PETE BARHAM



BILL BARNES



RALPH BREWSTER

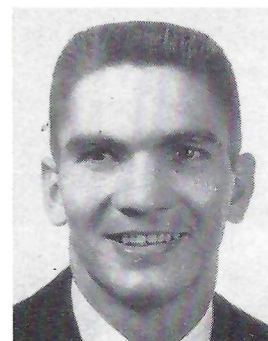
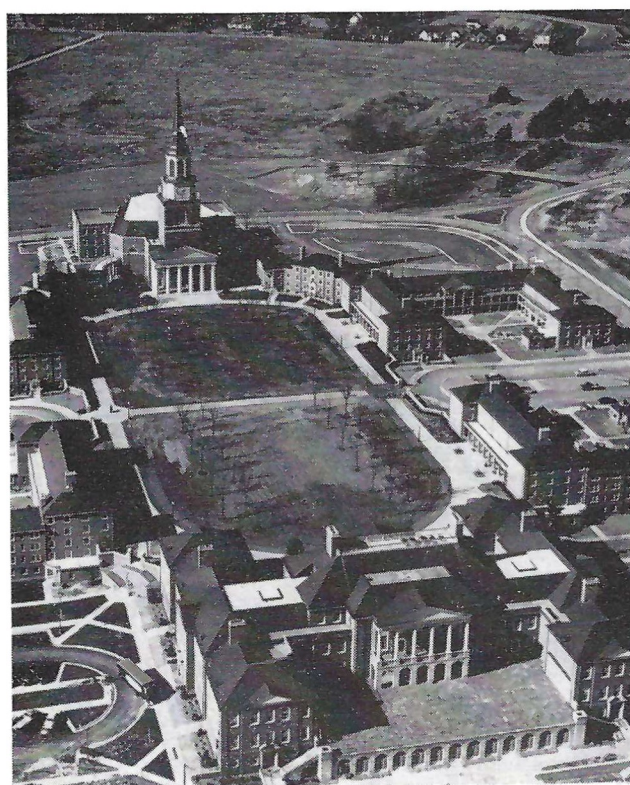


LARRY BROOKS



BOB CAESAR

WAKE FOREST CAMPUS



CHARLIE CARPENTER



BO CLAXTON



JIM DALRYMPLE



DICK DANIELS



DEANE HILLENBRAND



BARRY HINES



JIM HORN



GEORGE JOHNSON



EDDIE LADD



JACK LADNER

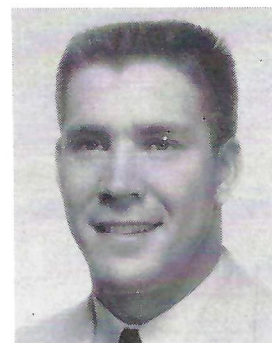


ROY LEDFORD



DAVE LEE

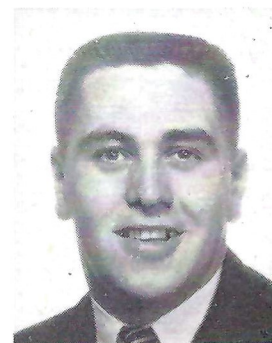
WAKE FOREST GYM



HUGHIE LEWIS



HENRY MARTIN



EDDIE MOORE



KARL MUNN



BRUCE SMATHERS



TOM SWATZEL



FRANK THOMPSON

WAKE FOREST FOOTBALL ROSTER

NO.	NAME	POS.	HGT.	WGT.	AGE	CLASS	HOMETOWN
85	BARRY HINES	LE	6-0	187	19	So.	Charleston, W. Va.
81	DAVID LEE*	LE	6-2	200	22	Sr.	Albany, N. Y.
83	HENRY MARTIN	LE	6-3	185	20	So.	Goldsboro, N. C.
87	JACK PALEY	LE	5-11	179	19	So.	Goldsboro, N. C.
82	RALPH BREWSTER*	RE	6-1	174	21	Jr.	Nashville, Tenn.
84	JACK LADNER*	RE	6-0	200	22	Sr.	Brentwood, Pa.
86	LEON LEWIS	RE	6-2	189	19	So.	Gastonia, N. C.
71	WILLIAM HERRING	LT	6-2	195	23	So.	Rocky Mount, N. C.
78	JIM HORN*	LT	6-1	200	21	Jr.	Shelby, N. C.
66	THURMAN SPACH	LT	6-0	189	20	So.	Winston-Salem, N. C.
75	FRANK THOMPSON	LT	6-3	205	20	So.	Chadbourn, N. C.
72	ANGELO DeSIMONE	RT	6-2	220	18	So.	Staten Island, N. Y.
74	GEORGE JOHNSON*	RT	6-1	235	21	Jr.	Wilmington, N. C.
76	EDDIE LADD	RT	6-3	210	20	So.	Durham, N. C.
79	BILL McLEAN	RT	6-2	220	22	So.	Rockingham, N. C.
77	TOM SWATZEL	RT	6-4	250	23	Jr.	Hickory, N. C.
67	SAM BUTLER	LG	5-11	183	20	So.	Morganton, N. C.
69	FRANK CHIAPETTA	LG	6-0	185	19	So.	Clairton, Pa.
64	HUGHIE LEWIS	LG	6-0	197	21	So.	Warsaw, N. C.
65	BRUCE SMATHERS	LG	5-11	185	20	So.	Canton, N. C.
68	BO CLAXTON*	RG	5-10	209	21	Sr.	Dublin, Ga.
62	DARRELL DENNIS	RG	5-11	208	19	So.	Asheville, N. C.
61	HARRY ORR	RG	6-0	200	18	So.	Pompton Plains, N. J.
63	TED ROLLINS	RG	6-2	195	21	Jr.	Selma, N. C.
50	MACK DANIELS	C	6-0	194	19	So.	Chester, Va.
53	EDDIE MOORE*	C	5-11	193	20	Jr.	Charlotte, N. C.
51	KARL MUNN	C	5-10	175	19	So.	Rock Hill, S. C.
11	PETE BARHAM*	QB	5-10	165	20	Jr.	Leaksville, N. C.
17	CHARLIE CARPENTER*	QB	6-2	158	21	Jr.	Canton, N. C.
12	DONALD LEE	QB	6-0	178	19	So.	Hopewell, Va.
13	DAVID TOOTHMAN	QB	6-0	158	19	So.	Front Royal, Va.
43	LARRY BROOKS	LH	5-9	165	20	So.	Danville, Va.
44	JIM DALRYMPLE	LH	6-0	160	22	So.	Phillipsburg, Pa.
42	JOE WHITE	LH	6-1	180	21	Jr.	LaGrange, Ga.
26	DICK DANIELS*	RH	6-0	163	23	Sr.	S. Portland, Me.
24	ROY LEDFORD	RH	5-9	165	20	So.	Shelby, N. C.
22	BILL PEGRAM	RH	5-9	163	21	So.	Winston-Salem, N. C.
25	TOMMY REVIS	RH	5-11	173	20	So.	Asheville, N. C.
33	BILL BARNES*	FB	5-11	187	20	Sr.	Landis, N. C.
34	BOB CAESAR*	FB	5-9	180	22	Sr.	Philadelphia, Pa.
35	DEANE HILLENBRAND*	FB	5-7	170	22	Sr.	Arlington, Va.

*Denotes Lettermen.

a.
c.
N. C.
c.
l. Y.
c.
c.
c.
c.
c.
s, N. J.
c.
c.
c.
/a.
Pa.
l.
Me.
em, N. C.
c.
Pa.
a.

Rose PRINTING CO., INC.



*Always
the Finest
Printing*



ROSE BUILDING

PHONE 2-0230

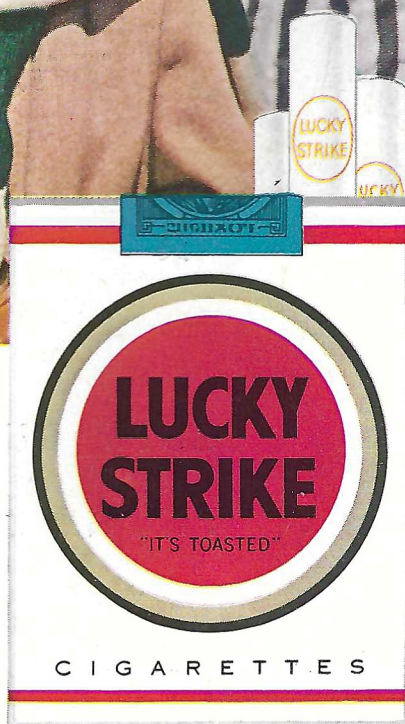
T A L L A H A S S E E, F L O R I D A

Light up a Lucky—
it's light-up time!



Luckies
Taste Better

Cleaner, Fresher, Smoother!



**"IT'S
TOASTED"**
to taste
better!

©A. T. Co. PRODUCT OF *The American Tobacco Company* AMERICA'S LEADING MANUFACTURER OF CIGARETTES