



## *Heart of Atlanta*

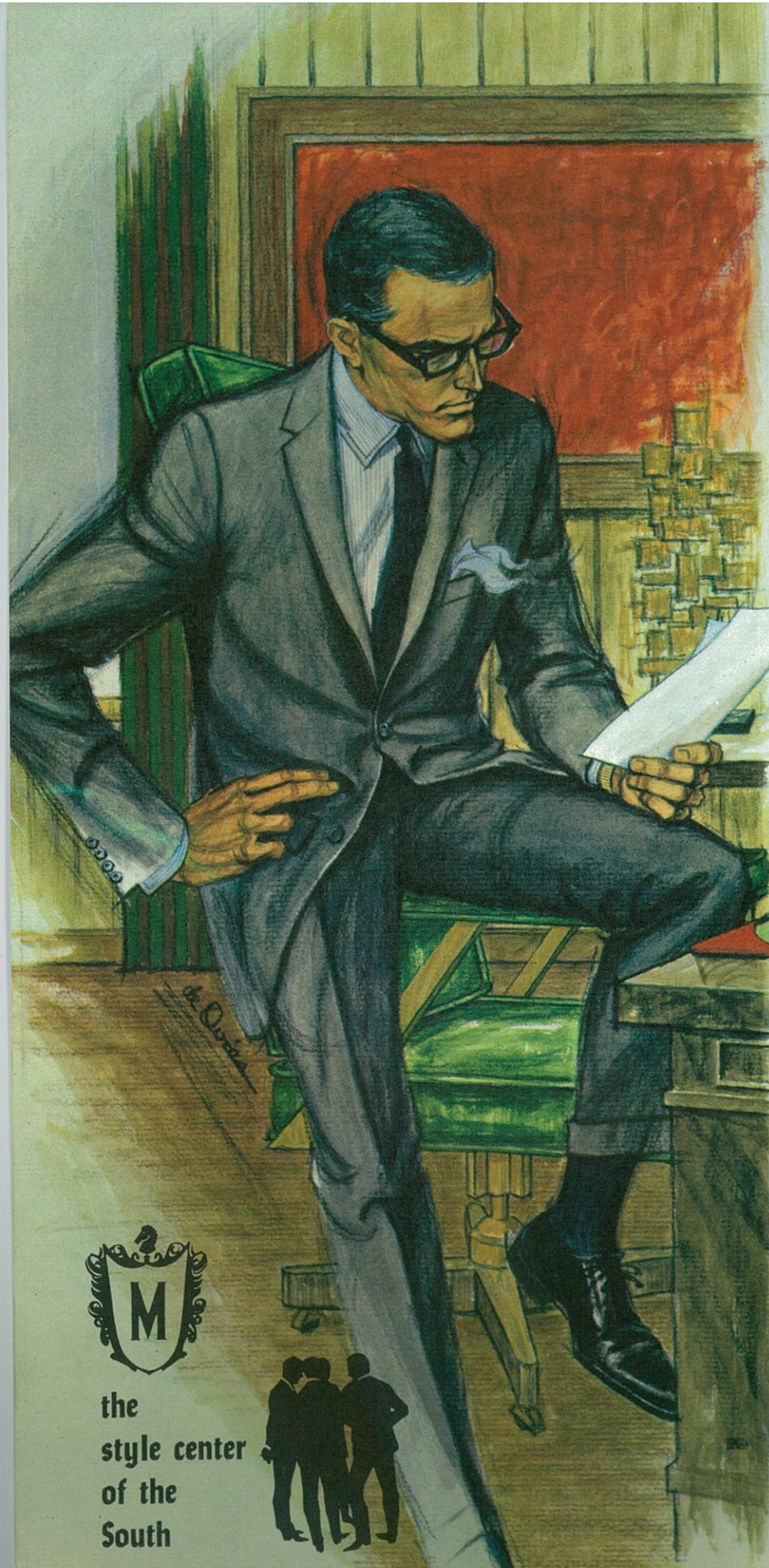
### **RESORT MOTEL**

2 blocks from downtown Peachtree St.  
MU 8-1682 • TWX AT 104



# **TECH vs. F.S.U.**

Grant Field / November 9, 1963 / Souvenir Program 50¢



the  
style center  
of the  
South



and  
success  
go together

Good taste is  
the common language  
of men who  
have learned to know  
the best things in  
life.  
They speak it in  
their homes  
... in their interests,  
in the clothes they wear.  
Such men have an  
instinctive predilection  
for clothes  
by Hickey-Freeman

... there is  
only one  
Hickey-Freeman,  
and in Atlanta  
you'll find  
it at



and nowhere else!

## The Official 1963 Georgia Tech Football Program

### TABLE OF CONTENTS

See Tearout PRESS CARD, A New Program Feature, Between pages 48 and 49

Athletic Board of Georgia Tech.....	5	Officials' Signals .....	28, 29
Basketball Information .....	24 & 25	Rosters (Both Teams).....	Press Card
Captain for Today's Game (Tech).....	7	Schedules of Tech's Opponents.....	26
Cheer Leaders (Tech).....	36	Songs (Tech) .....	53
Coach R. L. "Bobby" Dodd.....	7	Sportswriters and Sportscasters.....	33
Depth Charts (Both Teams).....	Press Card	Starting Lineups (Both Teams).....	Press Card
Feature Pages .....	3 & 44	Student Managers (Tech).....	40
Football Staff Pictures (Tech).....	17, 19, 21, 23	Tech Players' Pictures.....	35, 50, 51, 55
Grant Field .....	14	Today's Game .....	11
History of Georgia Tech.....	31	Visiting Team's Officials.....	9
Officials for Today's Game.....	11	Visiting Team's Players' Pictures.....	46, 47, 48

E. P. (Ned) West, Program Editor

R. E. (Bob) Eskew, Program Advertising

### CONCESSIONS

Cigarettes . . . . .	35c	Peanuts . . . . .	10c	Snow Cones . . . . .	20c
Cushion Rental . . . . .	25 & 50c	Candy . . . . .	10c	Soft Drinks . . . . .	15c
Hot Dogs . . . . .	25c	Popcorn . . . . .	25c	Sun Visors . . . . .	25c
Official Programs . . . . .	50c	Raincoats . . . . .	\$1.50	Ice Cream . . . . .	15c

Represented for National Advertising by SPENCER ADVERTISING COMPANY, INC., 271 Madison Ave., New York City

## FOLLOW TECH ON THE STANDARD OIL NETWORK



### 1963 SCHEDULE

Sept. 14	Florida	Atlanta
Sept. 28	Clemson	Atlanta
Oct. 5*	L.S.U.	Baton Rouge
Oct. 12	Tennessee	Knoxville
Oct. 19	Auburn	Atlanta
Oct. 26	Tulane	New Orleans
Nov. 2†	Duke	Atlanta
Nov. 9	F.S.U.	Atlanta
Nov. 16	Alabama	Birmingham
Nov. 30	Georgia	Atlanta

\*Night Game †Homecoming



WGST	WALG	WDAK	WNEX	WGAC	WTOC
Atlanta	Albany	Columbus	Macon	Augusta	Savannah

OFFICIAL PROGRAM

# WGST

Atlanta's top sport's station invites you to follow the Georgia Tech Yellow Jackets over the Standard Oil-Georgia Tech football network. Hear all of the action of a thrill-packed season! At home and on the road the thrill-a-minute Jackets will be delivered to you in your living room, in your car, or wherever you may be . . . . . Yours for the dialing!

**STANDARD  
OIL**

*WGST puts it on the air—if it has Quality . . . in Music, from Metropolitan Opera to the best from the latest Broadway hits—the tried and proven, the old, the new if it meets our standards.*

*News . . . without fear or favor, wherever and whenever it breaks, by a news staff second to none in alertness and training. Quality in athletics, from Georgia Tech's Yellow Jackets to Indianapolis Automobile Races . . . local, national/network . . .*

AND — WGST is the winner of the ONLY TWO Associated Press Awards known as "SUPERIOR AWARD IN SUPERIOR PUBLIC SERVICE" ever given in Georgia!



Radio 920

# WGST

Atlanta

165 Eighth St., N. E. • Telephone TRinity 5-8441

. . . ABC Radio in Atlanta . . .

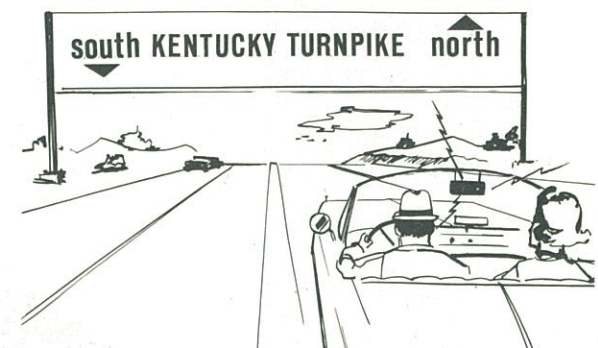
## Backseat Drivers and Research

ELECTRONIC "backseat drivers" rode with motorists on a stretch of the Kentucky Turnpike in a Georgia Tech research project aimed at helping to improve highway travel of the future.

Selected drivers traveling north on the toll road were given clamp-on portable radio receivers. They then received instructions, warnings, and information about road conditions ahead which were broadcast by six transmitting stations located along the turnpike.

Project director Dr. Donald O. Covault, professor of civil engineering at Tech, said that approximately 4,000 drivers were asked to cooperate in the tests during the two-to-three week Kentucky survey.

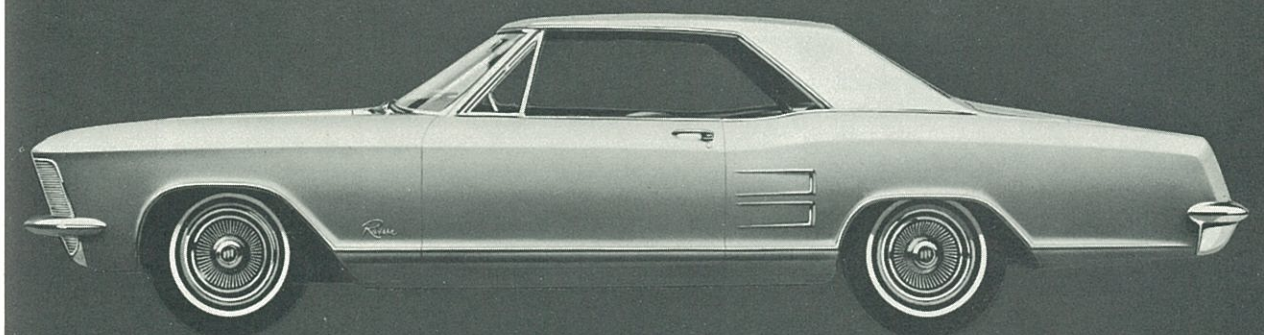
The project, conducted for the U. S. Bureau of Public Roads, will run about four years and will test all types of highways and drivers, ranging from rural Interstate Routes to urban free-



ways and arterial streets. The Kentucky experiment represents the rural Interstate portion of the survey and was completed in August. Other survey sites have not been selected.

Covault explained that only half of the 4,000 Kentucky Turnpike motorists used the radio receivers. The remaining half were told, however, (Continued on page 54)

*Riviera* BY BUICK

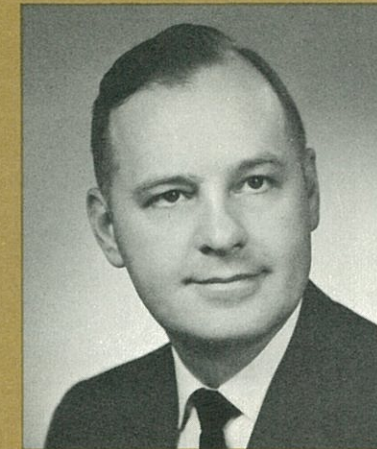
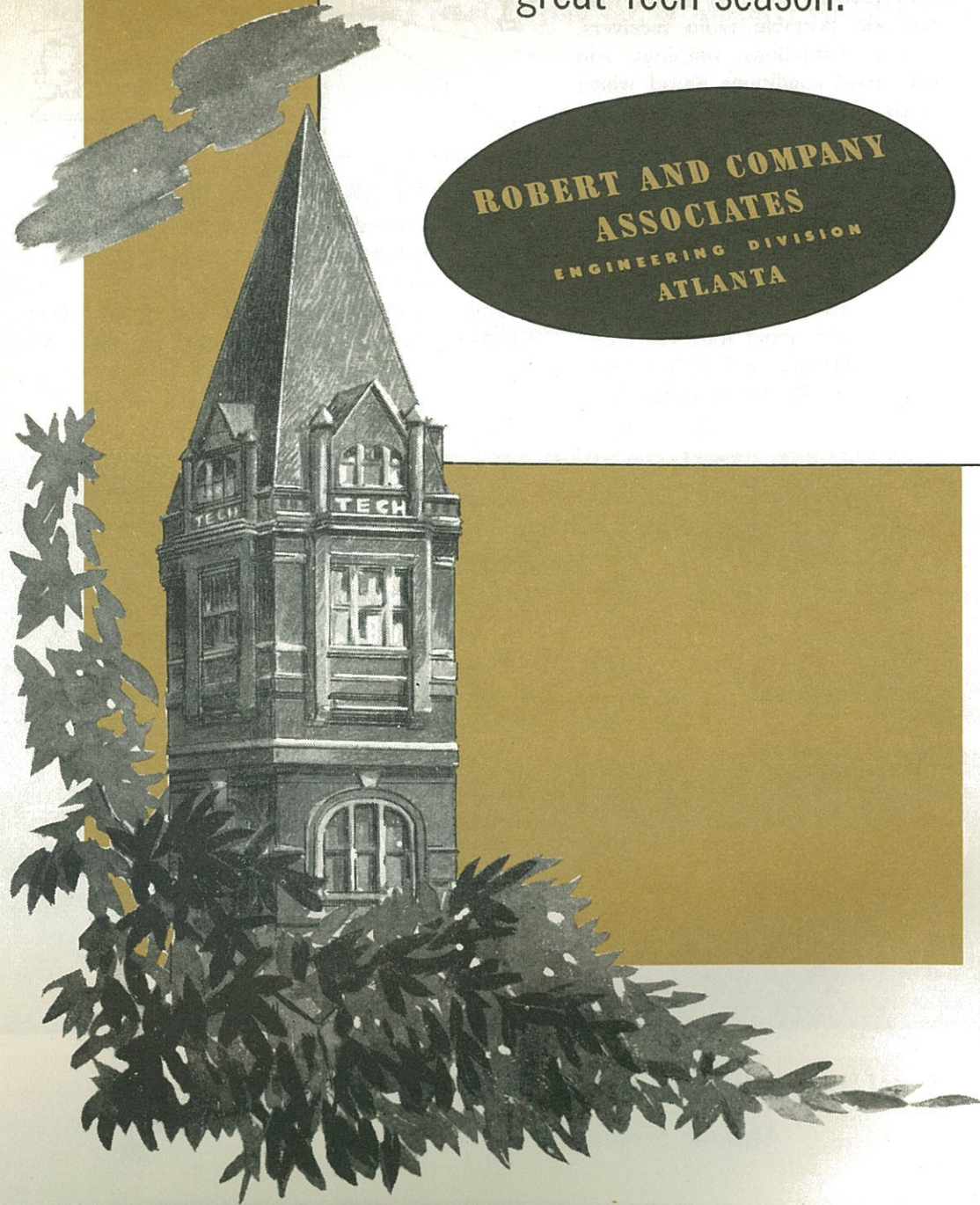


**THE BUICK CENTER—HIX GREEN BUICK CO.**

41 North Avenue, between the Peachtrees

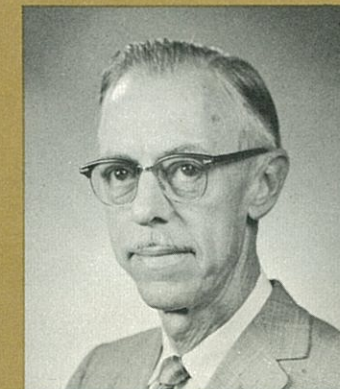
We extend sincere  
wishes for another  
great Tech season.

**ROBERT AND COMPANY  
ASSOCIATES**  
ENGINEERING DIVISION  
ATLANTA

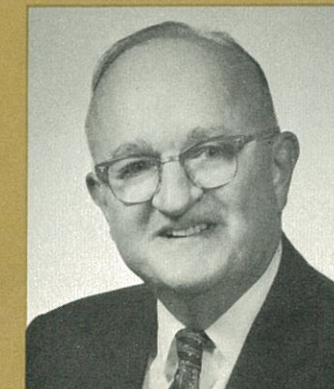


**DR. EDWIN D. HARRISON**  
President of Georgia Institute of Technology  
CHAIRMAN

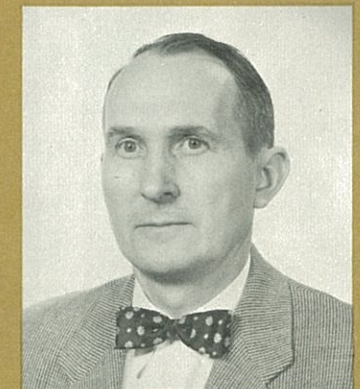
## GEORGIA TECH ATHLETIC BOARD



**DR. PAUL WEBER**  
Dean of Faculties  
VICE-CHAIRMAN



**DR. JESSE W. MASON**  
Dean of Engineering  
FACULTY CHAIRMAN



**DR. WALDEMAR T. ZIEGLER**  
Regents Professor,  
Chemical Engineering  
SECRETARY

## BOARD MEMBERS

**COACH ROBERT L. DODD**  
Director of Athletics

**MR. PAUL A. DUKE**  
Alumnus

**MR. JOHN HAYES**  
President of the Student Body

**MR. WILLIAM L. CARMICHAEL**  
Faculty Representative

**MR. W. C. WARDLAW, JR.**  
Alumnus

**MR. GWINN LEVERETT**  
Editor of the Technique

**MR. JAMIE R. ANTHONY**  
Faculty Representative

**MR. EWELL G. POPE, JR.**  
Alumnus

**MR. ARTHUR M. COLEMAN**  
Assistant Athletic Director

**DR. VERNON CRAWFORD**  
Faculty Representative

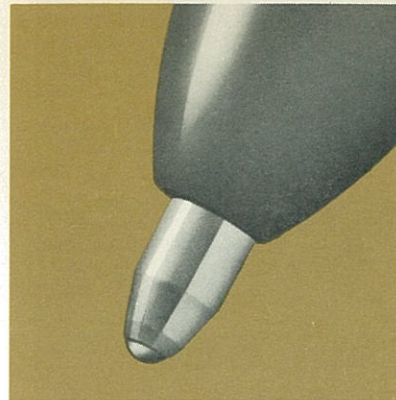
**MR. LAWRENCE W. ROBERT, JR.**  
Honorary

**FOOTBALL CAPTAIN**  
To be elected at end of season

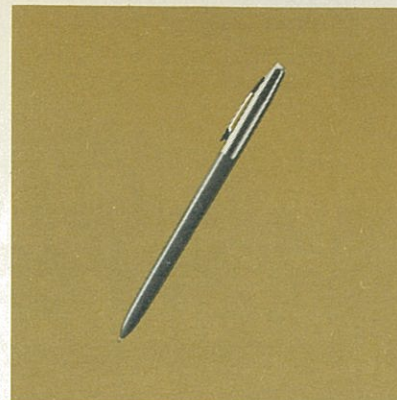
**MR. G. ARTHUR HOWELL**  
Attorney

**MR. ROBERT E. ESKEW**  
Business Manager-Treasurer

## A message to people who write a lot:



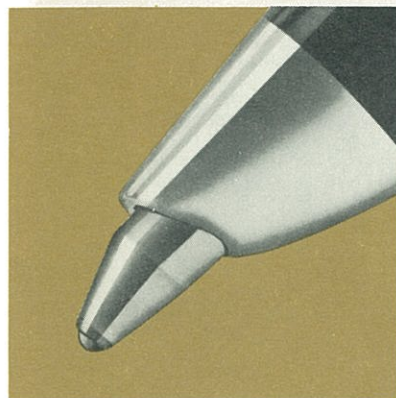
Because the tip of an ordinary ball pen is straight



you have to hold the pen more or less upright



so your hand tends to tire when you write a lot.



Because Scripto TILT-TIP® has an angled point



the pen leans back at a more comfortable angle



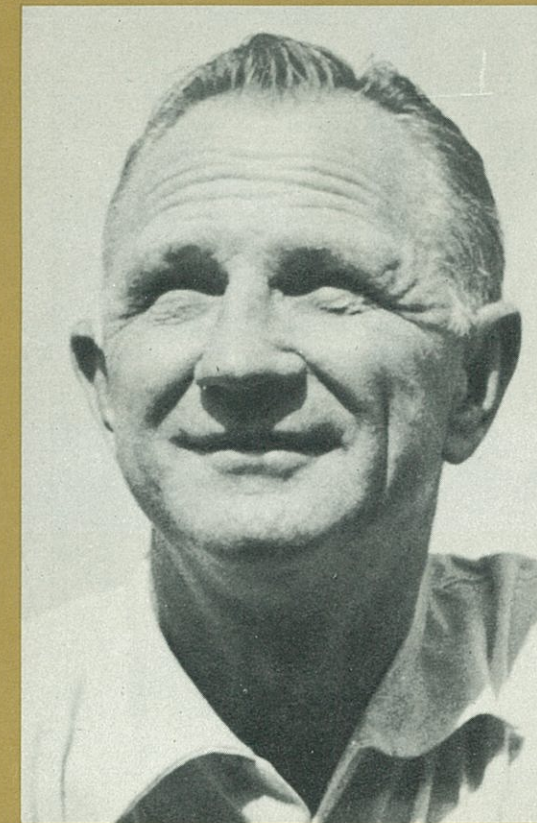
so your hand stays relaxed instead of cramping.

### It's as simple as that.



Other features: a big, visible ink supply; a skip-proof tungsten carbide ball; a guarantee that if you don't like TILT-TIP® you can send it back and we'll refund your money right away; a very reasonable price—**\$1.98**.

**Scripto**  
M. R.

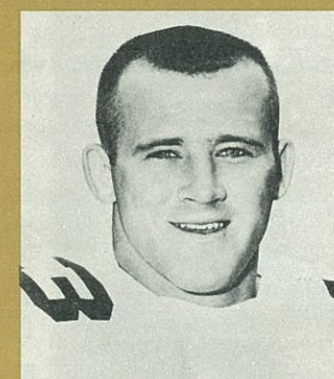


**ROBERT LEE "BOBBY" DODD**  
Head Coach and Director of Athletics

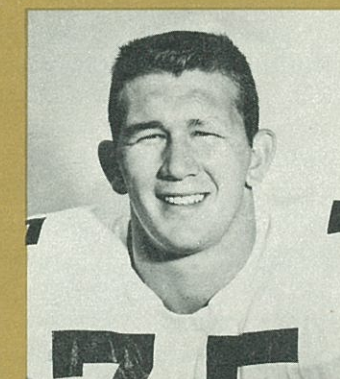
**BOBBY DODD**, only the third man employed as a head football coach in Georgia Tech's history, has completed his 18th season at the Tech football helm. Coach Dodd's great record against major competition for those 18 years includes 135 wins, just 53 defeats and 7 ties. Eleven of Dodd's teams have been invited to play in post-season bowl games and they won 8 of the 11 games played. By winning in the 1952 Orange Bowl; the 1953, 1954 and 1956 Sugar Bowl; the 1955 Cotton Bowl; and the 1956 Gator Bowl, Georgia Tech under Dodd became the first school and only school to win in 6 major bowl games in successive years. Georgia Tech has won more bowl games than any college, 11 and is tied with Southern California for the most consecutive bowl games won, 8. The Jackets were the first school to win in each of the five major bowls and the only team to own four Sugar Bowl titles. Also since Dodd became the head coach, Georgia Tech has played in 16 nationally televised games, winning all but four.

In his 18 years as Tech Burgomaster, Bobby Dodd has received many national and sectional honors. His 1951 and 1952 teams were Southeastern Conference Champions. He was selected as head coach of the College All-Stars for their game with the national professional champions in 1952 and 1953, making a good showing both years. In the fall of 1950 he directed the South squad to victory in the Shrine North-South game at Miami, and his South team lost a real thriller at the same site in 1957. After the 1951 season Dodd was named "Southeastern Conference Coach of the Year" by his colleagues. At the close of the Jackets' great 1952 season he was designated, following a nation-wide poll, as "College Coach of the Year" by the New York Daily News. Seventeen Georgia Tech players have been honored by selection to "recognized" All-America teams since Dodd has been the bossman. Coach Dodd himself is listed in the players' division of The National Football Hall of Fame.

## GEORGIA TECH'S CO-CAPTAINS FOR TODAY'S GAME



**CLB JON MARTIN**  
Washington, Georgia



**TACKLE JOE CHAPMAN**  
Pensacola, Florida



**HALFBACK JOE AUER**  
Coral Gables, Florida

# Opportunity for Scientists and Engineers

Join the Newest  
Expansion in Our

## DESIGN for PEACE

Lockheed-Georgia Company is known for its aircraft production. In the span of a short dozen years, its bombers, cargo transports, corporate jetliners and skill at modification to up-date aircraft have won a world-wide reputation for quality workmanship and reliable products.

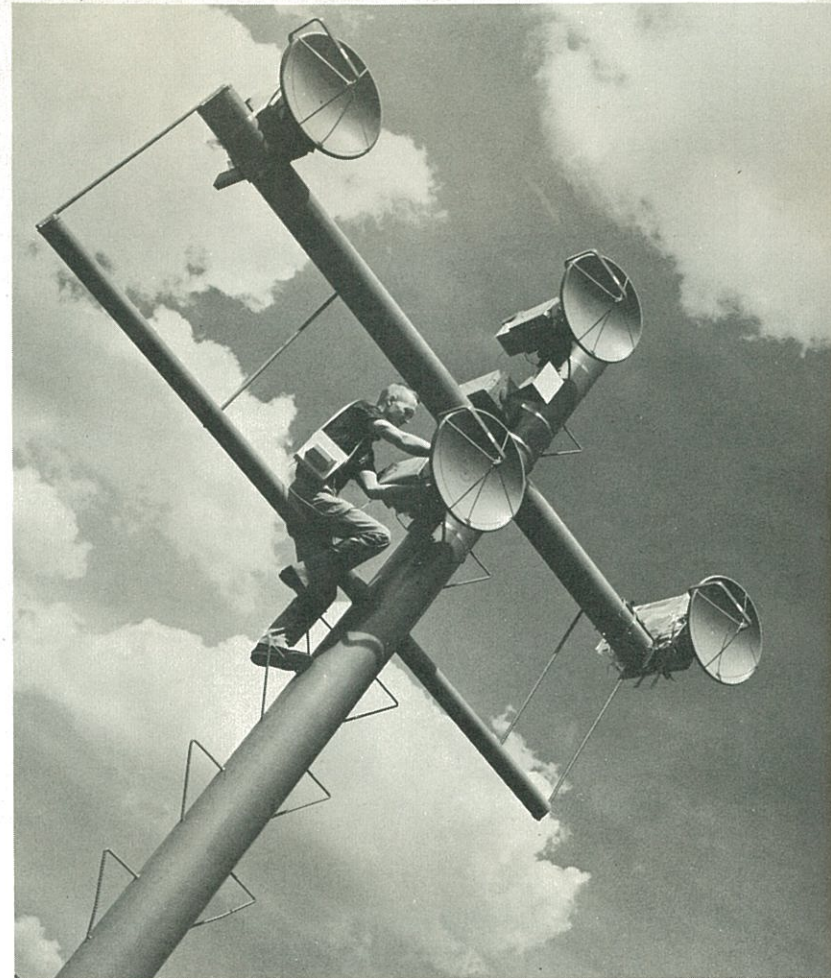
But almost as if they didn't want anyone to know—this same Lockheed-Georgia Company has been building quietly a *Research Community* right here on the expanses of the world's largest Aircraft facility.

And this Research activity is expanding and growing.

Founded with a vision of flexibility, Research at Lockheed-Georgia is divided into four areas:

**Physical Sciences:** This is the basic research. Lockheed-Georgia research "cut its teeth" on nuclear physics. In work currently is research on generation of electrical power by use of isotopes; thermodynamic research in cryogenics, solid physics, fluid dynamics, investigation of advanced principles of nuclear and ionic propulsion.

**Material Sciences:** Metallurgical investigation is paramount in this



area today, seeking to fathom sensitivity and fatigue problems in the super strength metals.

**Mathematical Research:** With the most modern computers at their beck and call, researchers at Lockheed-Georgia seek to reduce the cost of trial and error attempts of optimization with mathematical simulation of system components. They practice intellectual model making which Max Planck described as "the secret of scientific progress."

**Systems Research:** Navigation, communications at hypersonic speeds, and Human Factors are areas in which Lockheed-Georgia has a recognized ability. Life sciences and human engineering are other fields.

Yes, it's quite a nice Research

Community at work at Lockheed-Georgia here in the focal point of the Southern Crescent of aerospace activities. A new frontier for Science and Technology in a land where the living itself provides inspiration and relaxation for a man with ideas about Tomorrow.

The new 45-acre Research Center is scheduled for occupancy by mid-year.

Phone or write to: Thomas I. Thrasher, Professional Employment Manager, Lockheed-Georgia Company, 834 West Peachtree Street, Atlanta 8, Ga.

**Lockheed-Georgia Company**  
A Division of Lockheed Corporation  
*An Equal Opportunity Employer*

GEORGIA TECH

DRINK  
Coca-Cola

things go  
better  
with  
Coke

DRINK  
Coca-Cola

things go  
better  
with  
Coke

DRINK  
Coca-Cola

things go  
better  
with  
Coke

DRINK  
Coca-Cola

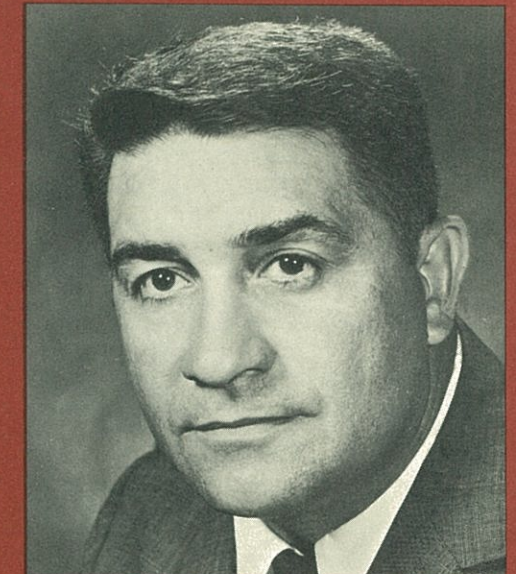
things go  
better  
with  
Coke

TEAR HERE TO  
REMOVE HANDY  
PRESS BOX  
FLIP CARD

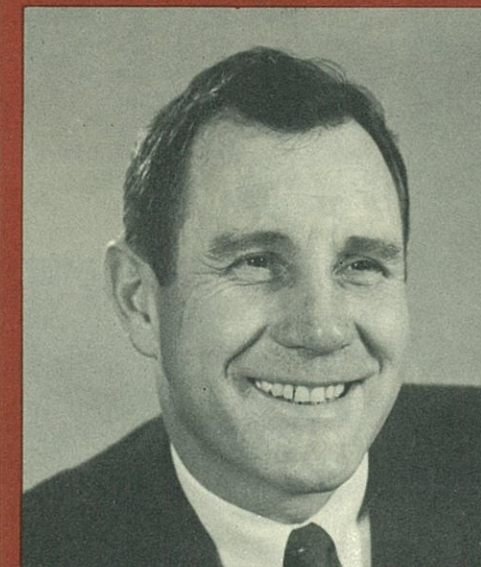
F.S.U.



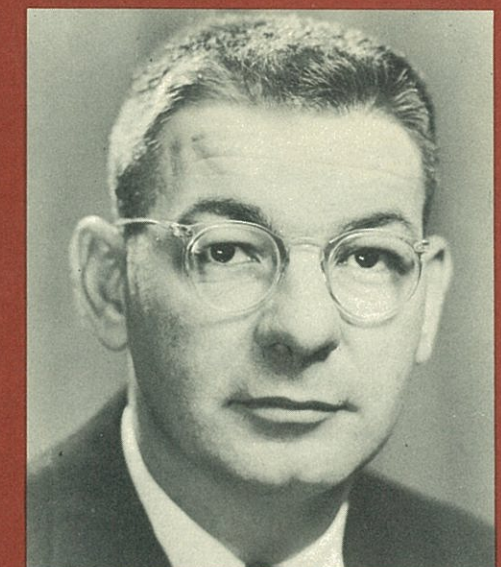
**DR. GORDON W. BLACKWELL**  
President



**VAUGHN MANCHA**  
Director of Athletics



**BILL PETERSON**  
Head Football Coach



**RONALD MELTON**  
Business Manager of Athletics

PROGRAM



**Robt. Burns**

*Cigarillos*

Smooth Smoke

FOR A CHANGE OF PACE SMOKE

Let your next match start you on a change of pace.

**You'll be striking up a lasting friendship, too.** You'll discover Robt. Burns Cigarillos are just different enough to provide a stimulating change of pace. Size it up. The Cigarillo is not so long you need a lunch hour to enjoy it. Not too long. Not too short. Just the right

size. Just the right mildness, too. Cigarillo's fine blend of tobaccos sees to that. It's mild but full of flavor—the kind of flavor you don't have to inhale to enjoy. Change of pace. Peace of mind. Only 5¢ each. Remember, if it's not a Robt. Burns, it's not the Cigarillo.

**Robt. Burns Cigarillos are on sale at this stadium.**

This afternoon on Grant Field the Georgia Tech Yellow Jackets will face the fastest growing football power in college athletics, the Florida State University Seminoles of Tallahassee, Florida. Just seventeen years ago Florida State was a women's college serving 2,500 students. The current enrollment is over 10,500 and Seminole athletic teams are feared and respected throughout the south.

Georgia Tech and Florida State first met on the gridiron in 1903 and 1904, when the Sunshine State school was co-educational, Tech winning 17-0 and 35-0. After 42 years as a women's college the school was reorganized in 1947 as a co-educational institution. Tech and FSU met again in 1955 and 1958 with the Jackets winning 34-0 and 17-3, then last season a good Seminole team surprised the Yellow Jacket squad and followers with an impressive 14-14 tie. So the Georgia Tech-Florida State series stands at five wins for Tech and a tie as the two teams take the field this afternoon.

So far this season Georgia Tech has won five of its seven games played, losing only to Auburn and Louisiana State. Florida State has another one of its good football teams and comes into today's game with three wins, two defeats and a tie.

In last year's Georgia Tech-Florida State game here in Atlanta the Jackets were favored by two touchdowns and made those odds look good when FB Mike McNames

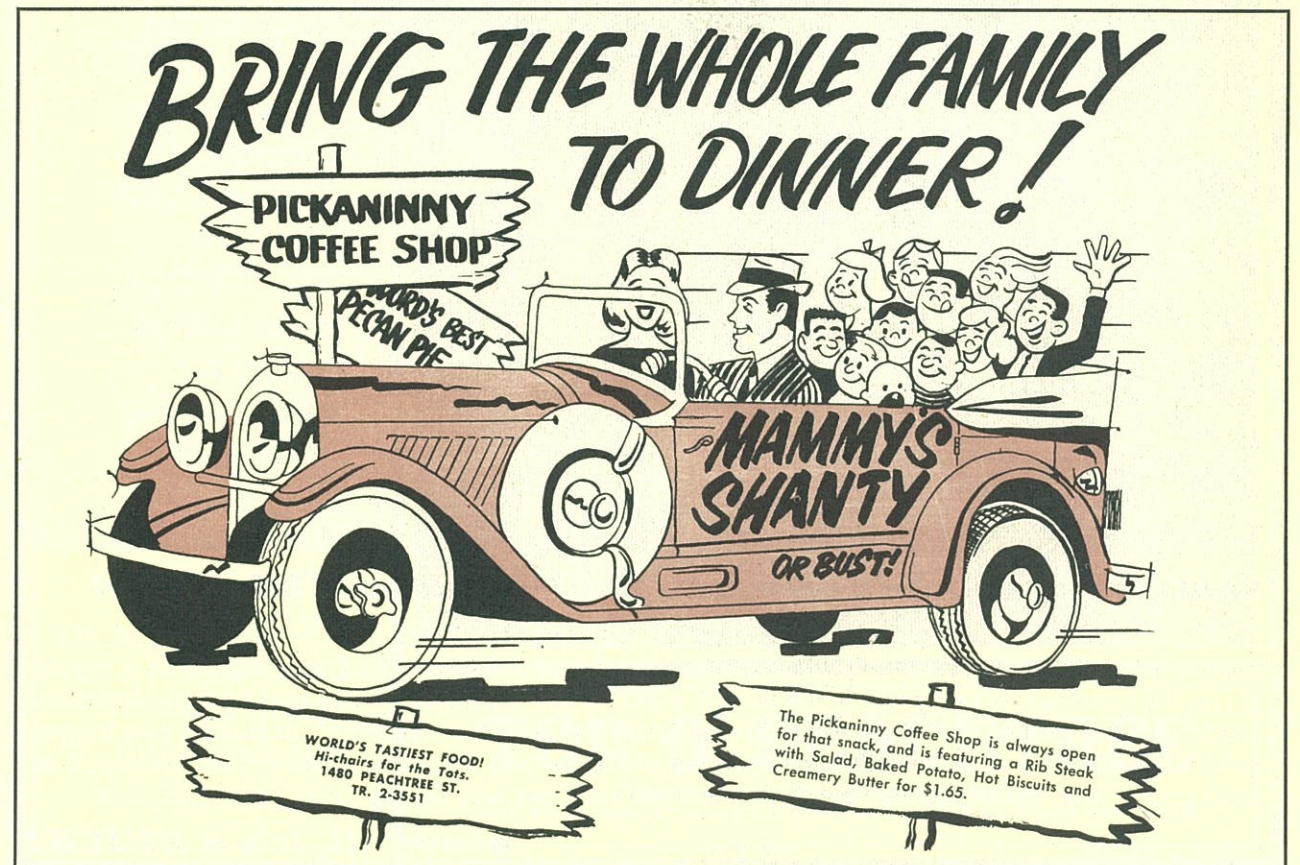
intercepted a wobbly pass by heavily rushed FSU QB Eddie Feely and returned it 25 yards for a touchdown. The game was only 4:57 old when QB Billy Lothridge kicked the extra point to make it 7-0 Tech, but for the next two quarters the explosive Seminoles furnished all the fireworks.

Tech managed to stave off repeated Florida State threats in the second period but the Seminoles scored twice within four minutes' time in the third quarter. FB Dave Snyder climaxed a short march with a brilliant 22-yard touchdown run for the initial marker and before the Seminole boosters had hardly settled in their seats QB Steve Tensi hit End Fred Biletnikoff down the middle for a 66-yard pass and run score. Both of Doug Messer's PAT tries were successful and Florida State led 14-7.

Georgia Tech came back scrapping in the fourth quarter to tie the score on McNames' one-yard plunge and Lothridge's pressure packed conversion kick with six and a half minutes still on the clock. The Jackets threatened again in the closing seconds but were unable to break the tie.

Coach Bill Peterson, in his fourth year at the Tallahassee school, will bring another fine Seminole football team to Grant Field today which includes all four of the men who supplied last year's Seminole scoring—Snyder, Tensi, Biletnikoff and Messer. Another exciting football game seems to be in store for the fans.

**OFFICIALS:** Referee, Pete Williams, Miami, Fla. Umpire, Bo Russell, Birmingham, Ala. Linesman, David Scobey, Nashville, Tenn. Field Judge, Jack Griffith, Newnan, Ga. Back Judge, Johnny Grace, Jackson, Miss. Electric Clock, Gordon Pettus, Tuscaloosa, Ala.



**BRING THE WHOLE FAMILY TO DINNER!**

**PICKANINNY COFFEE SHOP**

**MAMMY'S SHANTY OR BUST!**

**WORLD'S TASTIEST FOOD!**  
Hi-chairs for the Tots.  
1480 PEACHTREE ST.  
TR. 2-3551

The Pickaninny Coffee Shop is always open for that snack, and is featuring a Rib Steak with Salad, Baked Potato, Hot Biscuits and Creamery Butter for \$1.65.



***Sports lovers of the world, unite... let's all go Wildcat-ing!***

Face it—if you're the rocking chair, watch-it-on-TV type, forget the wild, wild '64 Buick Wildcat. But if you like your action furious and first-hand, Wildcat is for you! You can bark your signals to a regular 325 hp V-8 formation, or really take to the air with a 340\* or 360\* hp passer. Three scat-back transmissions add to your fun: 3-speed synchromesh; 4-speed synchro stick shift on the floor\*, or Buick's new trigger-quick Super Turbine 400 automatic\* (very sparing with gas, too!). Four new models: 4-dr. hardtop; 2-dr. sport coupe; 4-dr. sedan; convertible. Give one a workout; see why we say ...

\*Optional at extra cost.

Buick Motor Division

***above all, it's a BUICK!***

***the  
south's  
most  
breathtaking  
view***

.... the most  
exciting way to  
see beautiful  
Atlanta is from  
the fabulous  
**TOP 'O PEACHTREE.**

Dining and dancing  
"near the stars",  
luncheon, cocktails  
... you name it!

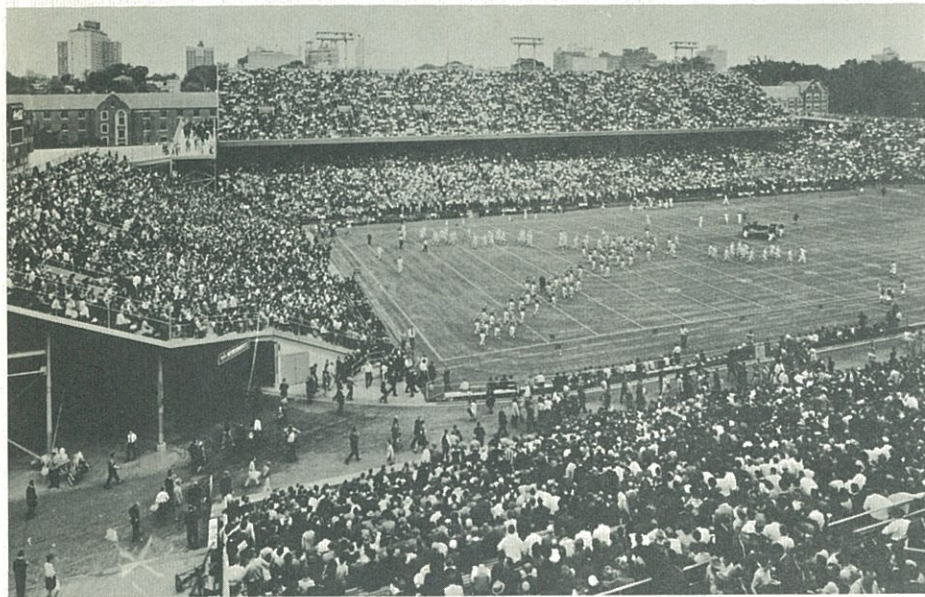
The glassed-in  
penthouse on the  
30th floor of  
Atlanta's tallest  
building affords  
a thrilling  
panoramic view,  
the excellence  
of which is only  
exceeded by  
the fine cuisine,  
delightful  
entertainment  
and elegant  
furnishings that  
will surround you.



**TOP O' PEACHTREE**

RESTAURANT AND LOOKOUT LOUNGE  
30th Floor, Bank of Georgia Building at Five Points • Phone 688-2475

## GRANT FIELD – Home of the YELLOW JACKETS



GRANT FIELD, Georgia Tech's famous football stadium, is right on the Tech campus. It was named Hugh Inman Grant Field in 1924 at the request of John W. Grant, member of the Board of Trustees and a well known Atlanta merchant. Grant gave \$50,000 to start a stadium enlargement building fund in memory of his son who had died.

The original concrete West Stands seated 5,600. In 1924 the concrete East Stands were completed and the stadium became known as Grant Field. A year later the "U" shaped South Stands were finished, bringing the cost of the stadium at that time to \$300,000 and seating approximately 30,000.

In 1948 the West Stands were rebuilt and a new press box added to raise capacity to 40,000. The all-steel North Stands were constructed in 1958 to make the seating limit of 44,015. Double decking of the East Stands was completed in August, 1962, bringing the stadium capacity to 52,300.

You Can't Top It...



For Quality and Good Taste

A  
Good  
"Team Builder"



ARISTOCRAT  
Delicious Ice Cream

ARISTOCRAT DAIRY PRODUCTS CO.



## Which is the crispest, crunchiest of all?

Have your own private contest in the stands. Buy one Sophie Mae Peanut Brittle bar—crisp, crunchy, full of peanuts, made from a famous heirloom recipe. At the same time, buy one bag of Sophie Mae Sugar Toasted Peanuts — slow roasted, golden brown peanuts covered in a thin,

crisp sugar shell. Take a bite of one ... then the other. Then YOU decide. Of the two crispest, crunchiest candies in the world, which is THE crunchier, the cracklier, the crispier, the more delicious?

We'd love to hear your vote.

*Look for these two tasty teammates at the game...and in vending machines wherever you go.*

SOPHIE ♥ MAE CANDIES  
of Atlanta, Ga.

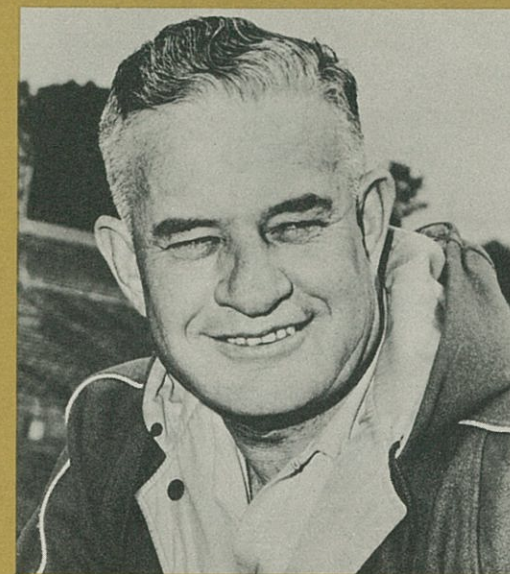


**with Year 'Round GAS Air Conditioning**

Winter, summer, or those "in-between-seasons", live in maximum comfort at minimum cost—with natural gas.

*Serviced and Guaranteed by*

**ATLANTA GAS LIGHT COMPANY**



**ARTHUR M. "TONTO" COLEMAN**

Assistant Athletic Director and Advisory Coach "Tonto," as he is affectionately known by his legion of friends, is one of the most popular figures in the nation's college administrative and coaching circles. He came to Georgia Tech from University of Florida in 1952 and since that time has served as Assistant Athletic Director. He is also an advisory coach on the football staff.

Coach Coleman attended Abilene Christian College where he was outstanding in basketball, baseball and football. He received his B.A. degree from Abilene Christian in 1928 and his Masters degree in Administration Education from Hardin-Simmons College in 1949.

**FROM THEN**  
1918



**TO NOW**  
1963



**SERVING THE CONSTRUCTION INDUSTRY OF GEORGIA**

The **FINEST** in the field  
**CATERPILLAR**  
ROAD BUILDING MACHINERY

**Yancey Bros.**  
CO.

**ATLANTA**  
1540 Northside Drive, N.W. — Phone 876-3741

**AUGUSTA**  
1781 Fifteenth Street  
Phone 733-2241

**MACON**  
4660 Broadway  
Phone 788-1773

CATERPILLAR AND CAT ARE REGISTERED TRADEMARKS OF CATERPILLAR TRACTOR CO.



## JUST LIKE THE YELLOW JACKETS

Boys' football uniforms, authentic in every detail . . . Real protective equipment . . . IDEAL CHRISTMAS GIFTS . . . ORDER YOURS TODAY . . . Sold in complete uniforms or separate pieces.

TO: REEDER & MCGAUGHEY, INC. — 52 Broad Street, N.W. — Atlanta 3, Georgia

Please ship the following GEORGIA TECH football uniforms for boys:

JERSEYS: White with Navy and Gold Sleeve Stripes, Navy Numbers.  
Sizes: S (26), M (30), L (34), XL (36) . . . . . \$4.95 ea.  
PANTS: Gold with Navy and White Stripe down sides, Built-in Hip, Thigh and Knee Pads.  
Waist Sizes: 22, 24, 26, 28, 30 . . . . . 6.95 pr.  
HELMETS: Gold with double face bar attached. Sizes: S, M, L . . . . . 5.95 ea.  
SHOULDER PADS: SRN Cantilever Pad . . . Real Protection . . . . . 4.45 ea.

I enclose \$\_\_\_\_\_ (check or money order.) Please include 3% state sales tax plus 35c for postage and handling.

Name \_\_\_\_\_ Street Number \_\_\_\_\_

City \_\_\_\_\_ State \_\_\_\_\_

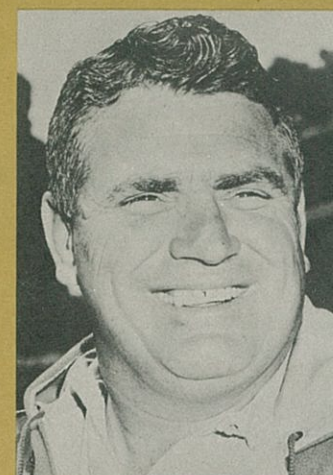
*Reeder & McGaughey, Inc.* "Specialists in Sports"  
52 Broad Street, N.W.  
Atlanta, Georgia



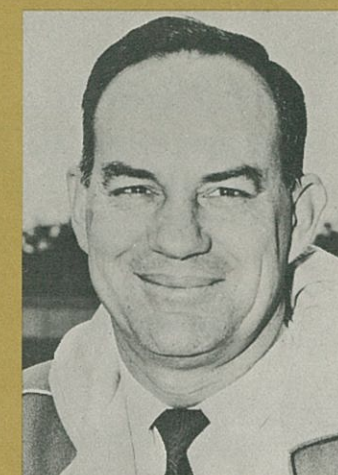
**NEHI** flavor  
scores again!

Call for Nehi . . .  
your biggest flavor buy

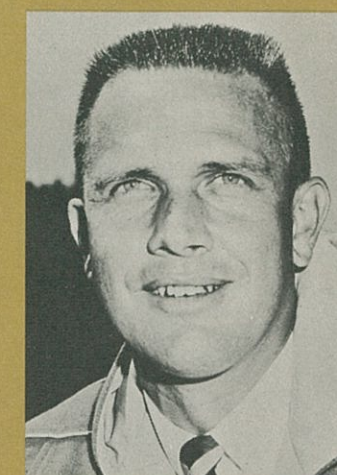
## GEORGIA TECH



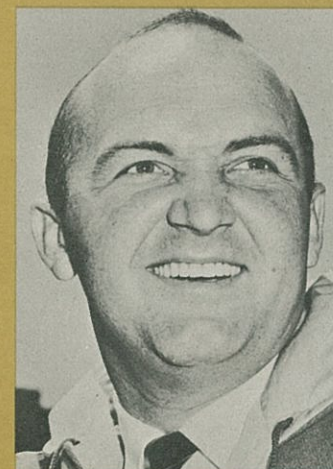
**LEWIS WOODRUFF**  
Assistant Coach



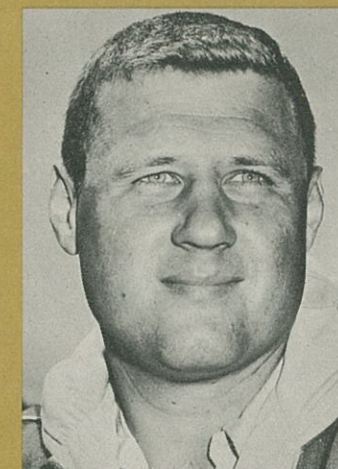
**JOHN ROBERT BELL**  
Assistant Coach



**JACK GRIFFIN**  
Assistant Coach



**DICK INMAN**  
Assistant Coach



**JIM CARLEN**  
Assistant Coach



**CHARLIE TATE**  
Assistant Coach

## GEORGIA'S FIRST REAL ESTATE COMPANY

Established 1865



### ADAIR REALTY AND LOAN COMPANY

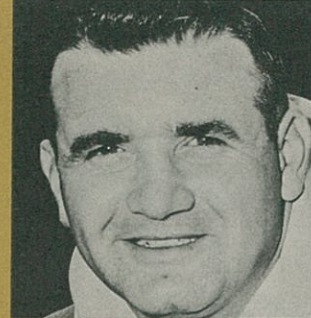



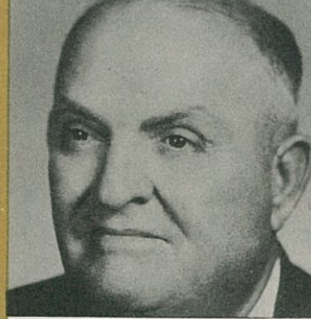
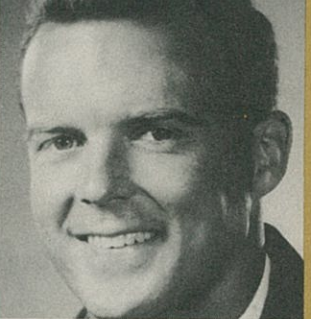

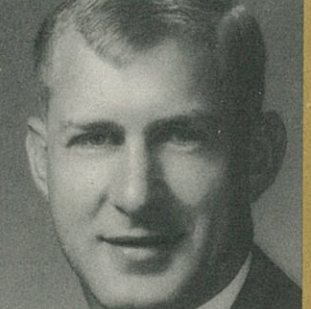
Realtors • 56 Peachtree St., N.W., Atlanta • 521-0100

Jack Adair, President, '33; Noel Turner, Executive Vice President, '47;  
James M. Crawford, Vice President, '35



**Merita**  
VITAMIN-ENRICHED  
BREAD

For Real  
Bread Flavor

<b>JESSE BERRY</b> Assistant Coach and Scout			<b>JIM LUCK</b> Assistant Coach and Scout
<b>GEORGIA</b>			<b>TECH</b>
<b>BILLY GOODLOE</b> Assistant Coach and Recruiter			<b>SPEC LANDRUM</b> Assistant Coach and Chief Recruiter
<b>JOE PITTARD</b> Assistant Coach working with Freshmen			<b>BILL FULCHER</b> Head Freshman Coach
<b>BUCK ANDEL</b> Head Trainer			<b>BUDDY BENNETT</b> Assistant Freshman Coach

## BROOKS-ALLISON COMPANY

ELECTRICAL

CONTRACTORS . . . ENGINEERS

Atlanta

J. W. Brooks '32

•

R. W. Allison '39

•

M. L. Berry '40

•

H. F. Smith '50



ICEMAGIC® ICE MAKERS...EXCLUSIVE WITH

**Whirlpool**

**REFRIGERATOR-FREEZERS**



Model EKT-14 NM

**AUTOMATICALLY MAKES AND STORES  
ALL THE ICE CUBES YOU NEED!**

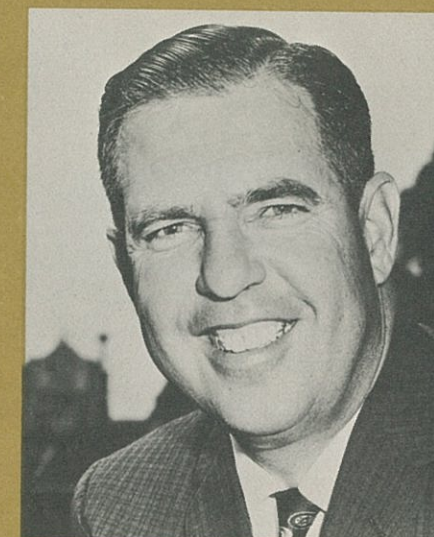
Open the freezer door... reach in and take a few ice crescents. Take more, if you like. There's enough for a party. Then, like magic, Ice Magic replaces every "cube" you use... all automatically! No trays to fill or ice cubes to pry loose. You'll also enjoy the fan-cooled refrigerator and the big "zero degree" freezer that never need defrosting.

**SEE ANY RCA WHIRLPOOL DEALER**

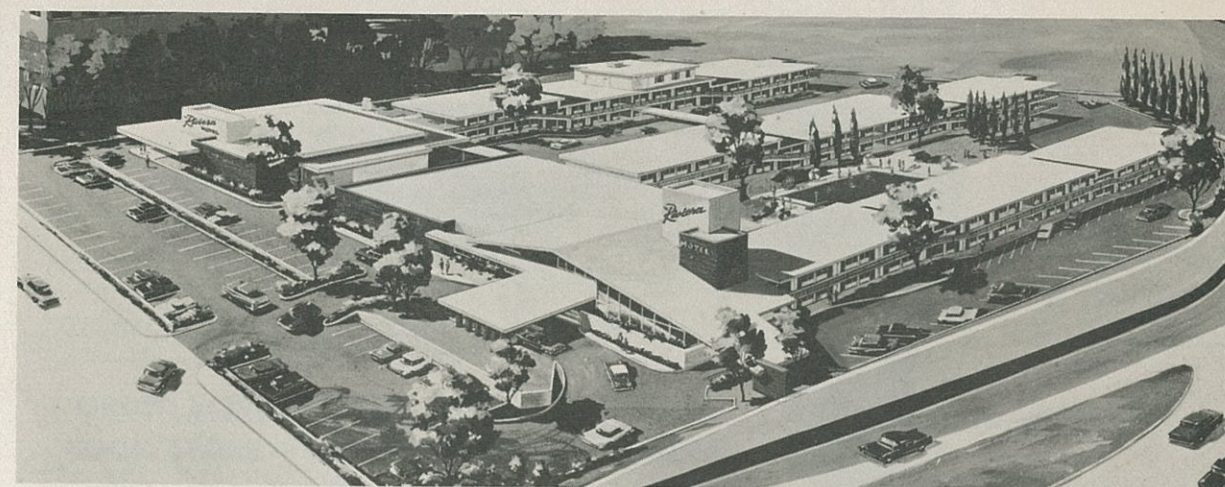
RCA VICTOR DISTRIBUTING CORP. • ATLANTA  
WHOLESALE DISTRIBUTORS



**ROBERT E. "BOB" ESKEW**  
Business Manager of Athletics



**E. P. "NED" WEST**  
Director of Sports Information



### **For The Discriminating . . .**

Enjoy the charm of gracious living and the warmth of Southern hospitality in a background of casual informality.

350 air-conditioned rooms with T.V., radio and hi-fi music. Ample parking adjacent to your room. Excellent food served in two restaurants with entertainment nightly in the Monte Carlo lounge. Resort luxury on eight beautifully landscaped acres located on Peachtree Street close to major business and shopping.

**1630 Peachtree Street, N.W. • Phone TR. 5-9711**

THE *Riviera*  
OF ATLANTA  
**MOTOR HOTEL**

# GEORGIA TECH BASKETBALL



All Home Games Will Begin at 8:00 P.M. EST in Georgia Tech's Alexander Memorial Coliseum

## 1963-64 BASKETBALL SCHEDULE

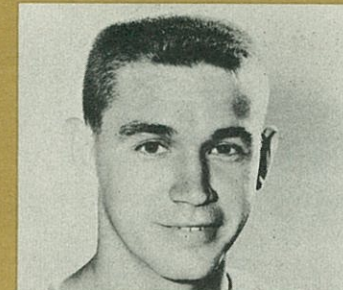
Date	Opponent	Site of Game	Date	Opponent	Site of Game
Mon. Dec. 2	Georgia	Atlanta, Ga.	Tue. Jan. 21	Georgia	Atlanta, Ga.
Wed. Dec. 4	Furman	Atlanta, Ga.	Sat. Jan. 25	Kentucky	Lexington, Ky.
Mon. Dec. 16	Rice	Houston, Texas	Mon. Jan. 27	Tennessee	Knoxville, Tenn.
Tue. Dec. 17	Southern Methodist	Dallas, Texas	Sat. Feb. 1	Alabama	Tuscaloosa, Ala.
Sat. Dec. 21	Georgetown	Atlanta, Ga.	Mon. Feb. 3	Auburn	Auburn, Ala.
Fri. Dec. 27	†Marquette	Milwaukee, Wis.	Fri. Feb. 7	Louisiana State	Atlanta, Ga.
Sat. Dec. 28	†	Milwaukee, Wis.	Sat. Feb. 8	Tulane	Atlanta, Ga.
Tue. Dec. 31	Naval Academy	Atlanta, Ga.	Wed. Feb. 12	Vanderbilt	Atlanta, Ga.
Sat. Jan. 4	Kentucky	Atlanta, Ga.	Sat. Feb. 15	Florida State	Atlanta, Ga.
Wed. Jan. 8	South Carolina	Atlanta, Ga.	Tue. Feb. 18	Tennessee	Atlanta, Ga.
Sat. Jan. 11	Mississippi	Atlanta, Ga.	Sat. Feb. 22	Georgia	Athens, Ga.
Mon. Jan. 13	Mississippi State	Atlanta, Ga.	Mon. Feb. 24	Florida	Gainesville, Fla.
Sat. Jan. 18	Louisville	Louisville, Ky.	Sat. Feb. 29	Vanderbilt	Nashville, Tenn.

†Milwaukee Classic Tournament with Georgia Tech facing Marquette and Wisconsin meeting Dartmouth in first round—winners in finals and losers in consolation next night.

# 1963-1964 SEASON



COACH JOHN C. (WHACK) HYDER



CAPTAIN R. D. CRADDOCK

**TECH CAGE FACTS** • Head Coach: John C. (Whack) Hyder; Assistant Coach: Byron Gilbreath; Frosh Coach: Joe Helms. **1962-1963 Season Record:** All games, 21-5; Southeastern Conference, 10-4 (tie 2nd); 1962 Gator Bowl Champions.

## TICKET INFORMATION 14 Home Games

All seats for all home games will be reserved. A season ticket includes all 14 home games. Season tickets in the chair seats will be \$35.00 each, the bench seat sections will be \$28.00 each. Applications for season tickets will be given preference over applications for individual game tickets. There is no limit to the number of season tickets an individual may purchase unless the demand exceeds the supply before October 28th priority deadline.

Unsold individual game tickets to all home games will be available at the Georgia Tech Athletic Office after mid-November, and at the gate each night. Chair seats will be sold as season tickets only. Individual game bench seats will be \$2.00 each.

Basketball fans who did not receive ticket applications last year and would like to have them should write Basketball Tickets, Georgia Tech A.A., 190 Third Street, N.W., Atlanta, Georgia 30332.

## VARSITY BASKETBALL ROSTER

No.	Name	Pos.	Age	Ht.	Wt.	Class	Lt	Hometown
20	John Herbert	G	21	5-9	161	Sr.	2	Washington, D. C.
22	Bill Nigg	F-G	21	6-1½	192	Sr.	2	Logansport, Ind.
23	Bill Eidson	G	22	6-1	181	Sr.	2	Columbia, S. C.
24	R. D. Craddock (C)	G	19	5-11	176	Jr.	1	Canmer, Ky.
25	Mick Stenftenagel	F-G	19	6-1	182	Soph.	0	Jasper, Ind.
30	Charles Kenney	G	19	6-1	171	Soph.	0	Atlanta, Ga.
34	Tommy Roberts	G-F	20	6-2	181	Jr.	0	Atlanta, Ga.
40	Chas. Spooner (AC)	F	22	6-2	181	Sr.	1	Don's n'v'le, Ga.
42	Pres Judy	G-F	19	6-2½	194	Soph.	0	Lexington, Ky.
44	Ron Scharf	G-F	20	6-3½	228	Jr.	1	Litchfield, Ill.
52	Jim Caldwell	C	20	6-9	233	Jr.	1	Lawburg, Ind.
53	Jimmy Tumlin	F-C	20	6-7	224	Jr.	1	College Park, Ga.
54	Jerry Priestley	F	20	6-2	188	Jr.	0	N. Augusta, S. C.

Varsity Student Manager—Richard Baxter.



Home of Rogers Peet, Kuppenheimer, Varsity-Town, Duo-Wear Clothes  
B & B Natural Shoulder Clothing for Men  
Miss B & B Sportswear for Ladies

## PARKS-CHAMBERS

ESTABLISHED 1896

43 PEACHTREE ST. • LENOX SQUARE • 1258 W. PACES FERRY RD.

## Metal Automobile Tags... School or College

GEORGIA  
BULLDOGS

ALABAMA  
CRIMSON TIDE



OGLETHORPE  
UNIVERSITY

AUBURN

ORDER YOUR SCHOOL TAGS FROM YOUR  
BOOK STORE — OR USE THIS ORDER BLANK

Please send me the following tags at \$1.00 ea.

Georgia Tech ☐ Georgia Bulldogs ☐

Alabama Crimson Tide ☐ Auburn ☐

Oglethorpe University ☐

Name \_\_\_\_\_

Address \_\_\_\_\_

City & State \_\_\_\_\_



P.O. Box 972  
Atlanta 1, Ga.

## SCHEDULES OF GEORGIA TECH'S OPPONENTS



this signal means "FULL TEAM SUPPORT"

**THE GO SIGNAL!** Go places, do things, live life fully!

Build care-freedom sooner, move ahead faster in life's financial game with the full team support of the Trust Company of Georgia. Here, all family money matters get strong line-backing. Here, under one roof, financial services cover everything from Checking, Savings and Installment Loans to Factoring, Trust/Estates, and Foreign Trade. Isn't this the full team support you need to reach your financial goals? Then sign up with us next week.

# TRUST COMPANY OF GEORGIA

Where Banking is a Pleasure

ATLANTA • JA 2-6000

Downtown, Main Office, Edgewood at Pryor;  
Motor Bank, opposite Hurt Bldg. / Buckhead  
East Atlanta / Lenox Square / Northeast  
Freeway / West End / West Peachtree  
Member FDIC



## OFFICIAL SIGNALS

- 1 OFFSIDE
- 2 ILLEGAL PROCEDURE OR POSITION
- 3 ILLEGAL MOTION
- 4 ILLEGAL SHIFT
- 5 ILLEGAL SUBSTITUTION
- 6 DELAY OF GAME
- 7 PERSONAL FOUL
- 8 CLIPPING
- 9 ROUGHING THE KICKER
- 10 UNSPORTSMANLIKE CONDUCT
- 11 ILLEGAL USE OF HANDS AND ARMS
- 12 INTENTIONAL GROUNDING
- 13 ILLEGALLY PASSING OR HANDING BALL FORWARD
- 14 FORWARD PASS OR KICK CATCHING INTERFERENCE
- 15 INELIGIBLE RECEIVER DOWNFIELD ON PASS
- 16 BALL ILLEGALLY TOUCHED, KICKED OR BATTED
- 17 INCOMPLETE FORWARD PASS, PENALTY DECLINED, NO PLAY OR NO SCORE
- 18 CRAWLING, HELPING RUNNER OR INTERLOCKED INTERFERENCE
- 19 BALL DEAD
- 20 TOUCHDOWN OR FIELD GOAL
- 21 SAFETY
- 22 TIME-OUT
- 23 FIRST DOWN
- 24 BALL READY FOR PLAY
- 25 START THE CLOCK

To shop **ALL YOU NEED**  
is a cup of coffee, a telephone,  
and a **SEARS** catalog!



Pick up at 11 convenient locations  
in Metropolitan Atlanta.

**TRinity 3-2311**

Call anytime — day or night!

**Sears Catalog Telephone Shopping**



**TECH ALUMNI**  
JAMES T. MILLS  
CHARLES ALLEN  
HERMAN SWINT  
BILL WALDEN  
JOHN R. HOWARD, JR.

*Complete and Competent Life Insurance  
for Personal Protection  
Business Insurance  
Estate Conservation and Taxation  
Pension and Profit Sharing Plans*

**The BEALY SMITH Agency**

**Fulton Federal Building**  
Atlanta 3, Georgia JA. 2-5455

**Connecticut Mutual Life**  
INSURANCE COMPANY

## Georgia Institute of Technology—The First 75 Years

IN EARLY MAY OF 1882, a conversation between two Confederate veterans marked the beginnings of the drive to open a technological school in Georgia. The two men were Major J. F. Hanson, a manufacturer who became president of a great Southern railroad, and N. E. Harris, a Macon attorney who eventually became Governor of the State. Hanson had the vision for the need for such a school, and Harris immediately took to the idea and ran for the State Legislature on the issue of this need. He was successful and during the next three years all of his efforts were directed toward getting a bill creating such a school passed by the Legislature. After repeated failures, the bill was finally passed by the narrowest of margins in the summer of 1885.

In April, 1888, Dr. Isaac Hopkins, a rare combination of physicist and theologian, was chosen Tech's first president by the Board of Trustees headed by Harris.

In October of 1888, the new school opened its doors to the first class of 85 embryonic mechanical engineers. At that time the campus consisted of nine acres of land and a physical plant of two buildings. Both of these original buildings are still in daily use as part of today's 81-building physical plant which sprawls over 143 acres of land.

This fall, over 6,100 students are pursuing undergraduate or graduate degrees in the 18 engineering, architectural, scientific and management schools that make up Georgia Tech.

Today's Georgia Tech draws its students from almost every state and from over 50 foreign countries. Its graduates are scattered over every state in the union and in over 60 foreign nations.

In addition to its regular day school, Tech operates a large Engineering Extension Division as a

campus and off-campus education service to the people of Georgia. Last year, the Extension Division served over 20,000 Georgians through its various branches.

Dr. Edwin D. Harrison, who came to Tech in 1957 as its sixth president, is a strong believer in the theory that the close correlation of teaching, graduate study, and research is essential to the effective operation of any institution of higher learning. Tech's research program with an annual budget of over \$4,000,000 reflects this philosophy. Its programs, scattered among all of the teaching departments and in the Engineering Experiment Station, make the Institute the largest engineering and industrial research organization among universities in the entire South. This integrated program of fundamental and applied research uses teachers, special research personnel, graduate students, and undergraduate students to insure that the projects the Institute undertakes will carry out Tech's basic responsibilities of providing strong educational programs as well as projects that will help furnish industrial, defense, and basic research leadership for the State and the Nation.

One of the factors in Tech's growing national reputation is the Price Gilbert Memorial Library dedicated in 1953. This library, primarily for the use of students and members of the Georgia Tech faculty, numbers almost 280,000 items and approximately 100,000 unbound documents and pamphlets in its collection. The library has been selected as one of the country's 12 regional federal report centers.

The new master's level program in information science—first of its type in the nation—which began this fall at Tech came about because of the reputation of the Tech library and the exceptional computer facilities available on the campus.

**Announcing the publication of *Dress Her in White and Gold*,  
a new history of the first 75 years in the  
life of Georgia Tech...by Robert B. Wallace, Jr.**

**Order your copy Now!**

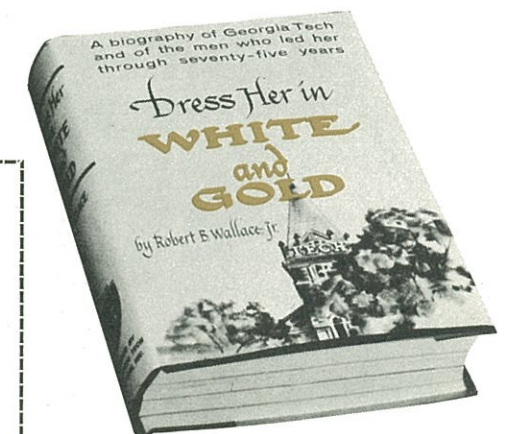
Please send me a copy of *Dress Her in White and Gold* and bill me after I receive the book (\$5.00 includes postage and sales tax).

Name \_\_\_\_\_

Address \_\_\_\_\_

City and State \_\_\_\_\_

Fill out and return to: The Georgia Tech Foundation, Inc.  
Georgia Tech, Atlanta 13.



What does a Scotsman  
wear over his kilt?

A Heatherrr Tweed Sport Coat  
by Hart Schaffner & Marx

Brawny tweed, but heather-soft. Light on the shoulders, but with tweed's typical brushed look and fleecy feel. Brawny new patterns and down-to-earth Field Colors: Heather, Blue Grass, Scotch Barley, Fieldstone Gray. See them now at Zachry.

**ZACHRY**

DOWNTOWN • LENOX SQUARE



"I'd even go North for SOUTHERN Tender-Mix Bread"



BAKED FRESH  
HOURLY AT 20 MODERN  
PLANTS THROUGHOUT THE SOUTH -  
FAST DELIVERY BY OVER 800 TRUCKS  
SERVING 50,000 OUTLETS DAILY

**NO HOLES! NO STREAKS!**

**NO LEAKS!**

Follow the Jackets in Print and on the Air with...



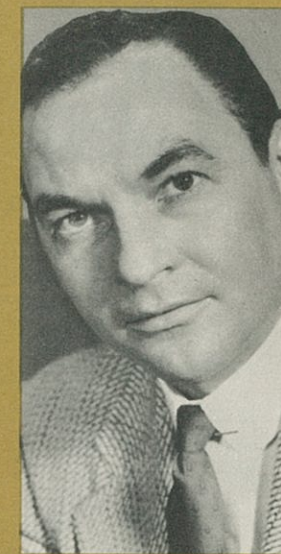
**AL CIRALDO**  
Sports Director, WGST  
Color Announcer of  
Football Games,  
Play-by-play of  
Tech Basketball Games



**JESSE OUTLAR**  
Sports Editor  
Atlanta Constitution



**JACK HURST**  
Program Manager, WGST  
Play-by-play Announcer of  
Tech Football Games



**FURMAN BISHER**  
Sports Editor  
Atlanta Journal

**EZ**  
food  
shop  
OPEN TIL  
10

**munford**  
DO-IT-YOURSELF  
STORES

*Signs of Convenience!*

JOHN M. RAINE, Class of '38

*Raine & Company*

Insurance • Bonds



*Yachts and Boats Insurance  
A Specialty*

TRinity 5-2791  
81 Peachtree Place, N.E.  
Atlanta 9, Georgia

*Berman-Lipton  
Company*



- WOOD AND METAL OFFICE FURNITURE
- COMPLETE DECORATING SERVICE
- OFFICE SUPPLIES AND PRINTING



666 Parkway Drive, N.E.  
Atlanta 8, Georgia

## ATHLETIC OUTFITTERS

*Headquarters for*

SCHOOLS • TEAMS • INDIVIDUALS

*Tech Jackets by Hatcher's*



*Team Equipment by*

Rawlings  
Pennsylvania  
Table Tennis Corp.  
Beconta

Riddell  
Sportcraft  
Voit  
U. S. Rubber Co.

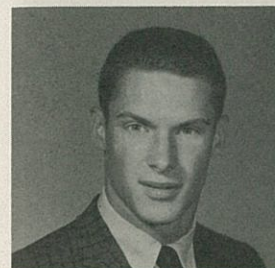
Spalding  
Cramer  
Seamless  
Wayne Watson  
Dunlop

Russell - Southern  
B. F. Goodrich Co.  
Worth  
Dodge Trophies

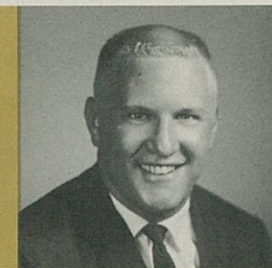
TED ZUBER • TOM GROOVER • ROLAND HESMONDHALGH  
Representatives

*It Pays to Play*

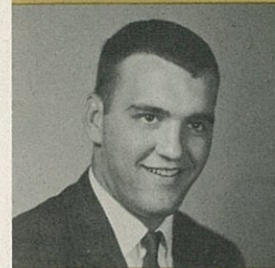
**GA. TECH**



DEF. SPEC. ED WEINMAN  
Steubenville, Ohio



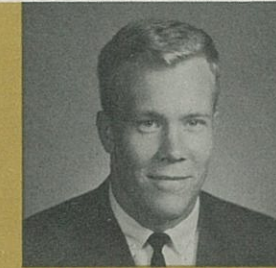
CENTER JOHN MATLOCK  
Norfolk, Va.



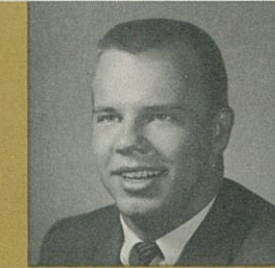
GUARD JIMMY SEWARD  
Macon, Ga.



GUARD BRAD YATES  
Amityville, N. Y.



TACKLE TOM BALLARD  
Homestead, Fla.



TACKLE BILL PASCHAL  
Atlanta, Ga.



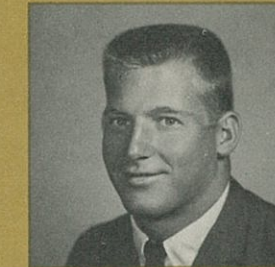
FULLBACK RAY MENDHEIM  
Dothan, Ala.



END BILLY MARTIN  
Gainesville, Ga.



END TED DAVIS  
Memphis, Tenn.



FULLBACK JIMMY BARBER  
Waycross, Ga.



QB BILLY LOTHRIE  
Gainesville, Ga.



HB JOHNNY GRESHAM  
Washington, Ga.

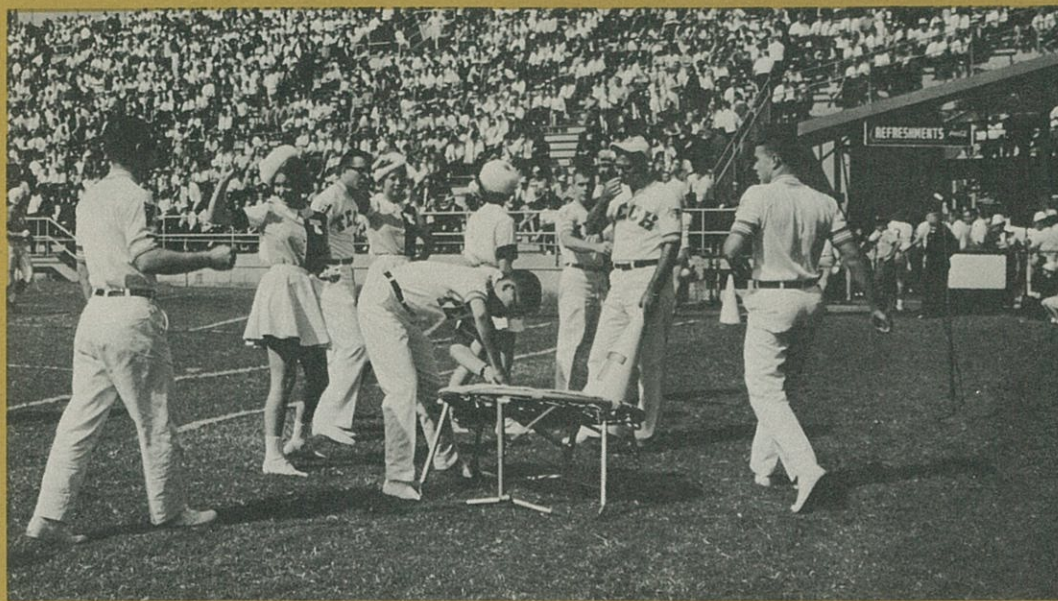


HB JOE AUER  
Coral Gables, Fla.



HB DOUG COOPER  
Atlanta, Ga.

## GEORGIA TECH CHEERLEADERS IN ACTION



GEORGIA TECH'S 1963-1964 CHEERLEADERS: Captain Ed McCabe, Lee Burton, Sharon Carter, Val Coerver, John Donaldson, Jo Anne Freeman, Steve Innes, Jim Jones, Susan Salter and Hector Torres.

*Koffee Kup, Inc.*

*A Complete Automatic  
Vending Service*



560 MONROE PLACE, N.E.

TRinity 6-8201

**McIntosh Paving Co., Inc.**

382 Trabert Avenue, N.W.

Atlanta, Georgia

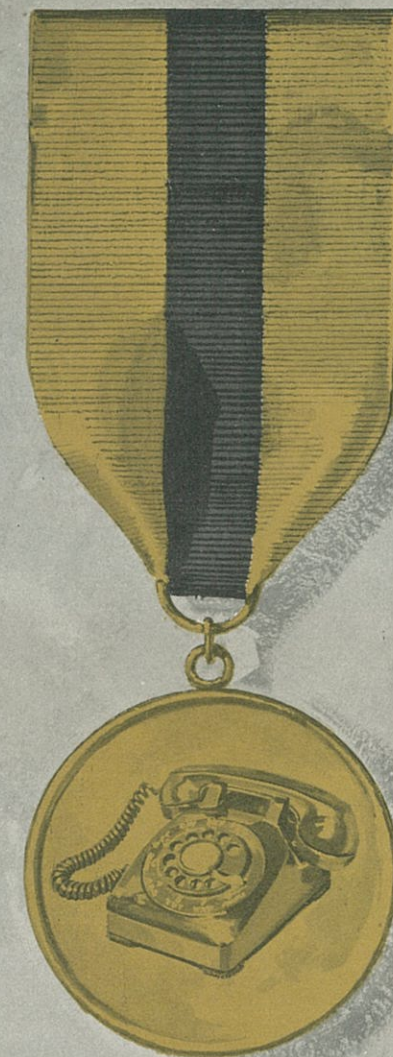
TRinity 6-4838



**All Types of Asphalt Paving**

Roads • Streets

Driveways • Parking Lots



# MVP

(Most Valuable Phone)

The Most Valuable Phone in the world is your phone. It runs errands; keeps you in touch with family and friends; helps you pass the time of day. It's on guard to protect you day and night; lets you signal help in an emergency. Your phone does all this...and it almost never calls time out.



**Southern Bell**

ENJOY THE GAME MORE!  
Treat yourself to **m&m's** Candies



ON SALE AT THIS STADIUM NOW!

**PIEDMONT**

**DRIVE-IN THEATRE**

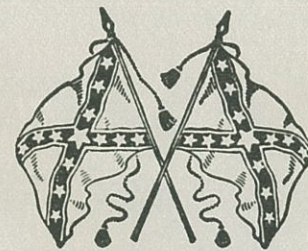
PIEDMONT & LINDBERGH



**STEWART**

**DRIVE-IN THEATRE**

STEWART & CLEVELAND AVE.



Operated by

**DIXIE DRIVE-IN THEATRES**

"Strictly a Southern Institution"

## Georgia Tech Coaches



NORRIS DEAN  
Track



JIM LUCK  
Baseball



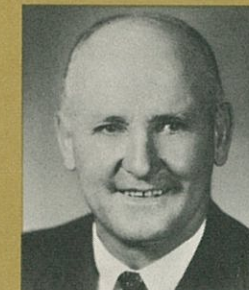
JACK RODGERS  
Tennis



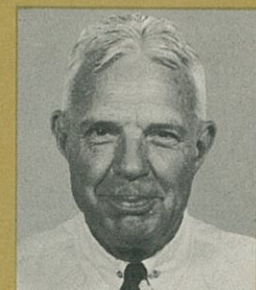
LYLE WELSER  
Gymnastics



TOMMY PLAXICO  
Golf

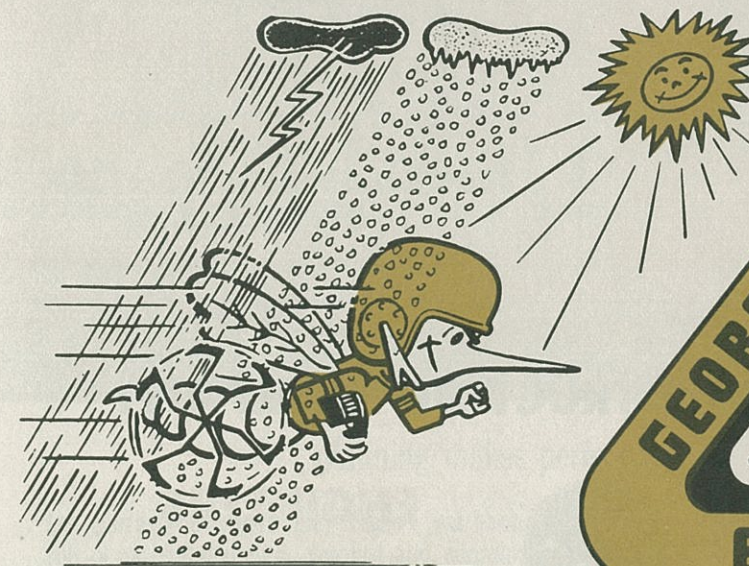


FRED LANOUE  
Swimming



GEORGE GRIFFIN  
Cross Country

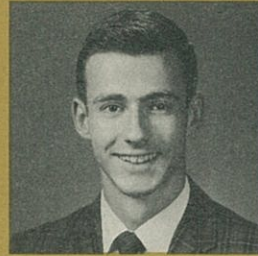
## TOUCHDOWN SERVICE!



**Dependable Motor Express Service**



WAYNE RICHIE  
Student Manager



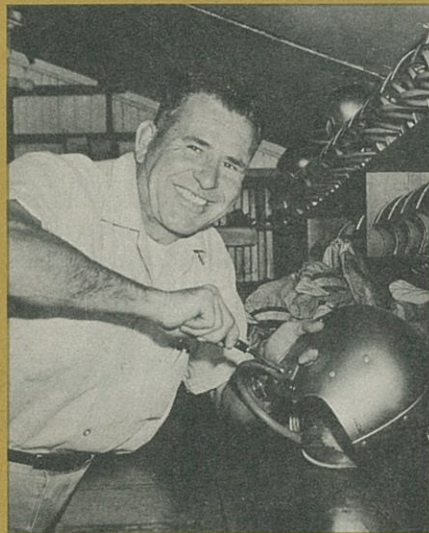
FREDDIE BRIGGS  
Student Trainer



TOMMY HENDRICKS  
Student Manager



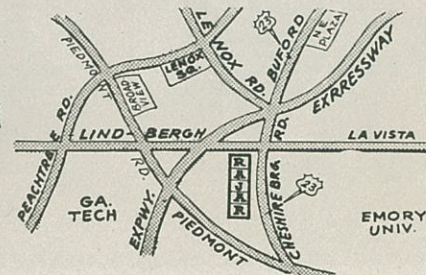
## GEORGIA TECH WORKERS



SGT. EDGAR HODGES  
Equipment Manager

# RAJAR

We're happy to bring you every Saturday Al Ciraldo's **Press-Box** Previews on WGST-920 on your dial.



DELIGHTFUL FOOD  
Courteous Service  
Conveniently Located

**DRIVE-IN RESTAURANT**  
1085 Lindbergh Drive, N.E.  
CE. 7-6533

## J. A. JONES CONSTRUCTION COMPANY

**CONTRACTORS**  
**Atlanta**



**ENGINEERS**  
**Charlotte**



Painting by Joel Reeves

planning makes perfect. . .

The perfectly executed play doesn't just happen. It's the result of careful planning, practice and coordination by a variety of specialists.

The modern business office offers a parallel. It requires the efforts of practiced specialists to develop a well-planned, well-coordinated result.

Years of practicing the art of office planning and design have magnified the skills, talent and creativity of the **ivan allen** staff. You can count on them to score for you. Huddle with them soon.

representatives for: Herman Miller, Inc. / Kittinger Co., Inc.  
Art Metal, Inc. / Knoll Associates / B. L. Marble Furniture, Inc.

**ivan**  
OFFICE PLANNING & DESIGN  
**allen**

DESIGN SHOWROOM 221 IVY STREET, N.E.  
RETAIL SALES 60 PEACHTREE STREET, N.W.



What does this Medallion mean to you?

To the homeowners who display it,  
the Gold Medallion means a goal achieved  
and the joy of total-electric living.

PICK YOURSELF A WINNER!

For comfort and convenience, total-electric  
living can't be beat.

YOU LIVE BETTER ELECTRICALLY • **GEORGIA POWER COMPANY**

# ATTENTION REBELS!

## FOLLOW ME TO

The world's best charcoal broiled steaks and hamburgers. Confederate Fried Chicken would taste good after the game, wouldn't it? Cha-Cha Jackson plays your favorite college songs tonight and every night at Johnny Reb's Dixieland. Meet your friends there—or one of the three other Johnny Reb's—TONIGHT.

**JOHNNY REB'S**

- DIXIELAND** • Marietta Hwy.
- KITCHEN** • College Park
- CANTEEN** • 101 Forsyth
- BROILER** • 857 W. P'tree



## FARM FRESH VEGETABLES. WE MAKE OUR OWN DESSERTS.

Davis Bros.' West Peachtree Cafeteria is within walking distance of Grant Field. Why not have a delicious supper before going home? Or try one of Davis Bros.' other fine restaurants or cafeterias. 104 Luckie Street is open all night tonight and every night.

**Davis Bros.**

820 W. Peachtree  
642 Lee Street, West End • 104 Luckie  
State Farmers Market  
Belvedere Plaza • Highway 41 South  
Marietta • Highway 41 North

# Bobby Dodd, Pioneer of the Flying Yellow Jackets

**Tech Squads Fly Delta Jets to Meet  
Both Gridiron and Academic Schedules**



QB Wade Mitchell, Coach Bobby Dodd Off to '56 Gator Bowl Welcomed by Delta Stewardess Mary Jane Jarrett.

no doubt drawing a mental comparison with the days 30 years ago when he was an All-American back at the University of Tennessee.

"First," he said, "are the kids. The players like to fly. They're fresh and relaxed when they arrive at their hotel the night before the ball game. And that puts them in a good mental frame of mind to think about the game."

"Another great advantage to flying is being able to practice on your home field until the last minute, avoiding a lot of the confusion and fanfare that so often goes with a big football game on the road. We take our final workout right here at Tech, then go to the airport, have a good meal on the airplane and still get the boys in bed early for a good night's rest."

Absence from the campus is another big consideration, Dodd said.

"And it's a mighty big one, especially at an engineering school like Georgia Tech where a boy has to handle a big classroom load in order to stay eligible for football," Dodd said. "Because of being able to fly, our players seldom miss a full day of classroom work during an entire season."

Dodd pointed out that flying also offers the opportunity of returning home quicker, usually only two or three hours after the game's last whistle.

That accounts for many of the Tech players seen in church on Sunday morning after playing the previous afternoon or evening in New Orleans, Houston, Lexington or some other point a thousand or more miles away.

Bobby Dodd is a pioneer in air transportation — of college football teams.

Dodd had long recognized the advantages of air transportation for athletic teams. Soon after he moved up from his position of assistant coach to assume the head reins at Georgia Tech in 1945 his Yellow Jackets became airborne.

"There's nothing like it — and I wouldn't think of our team making the long trips any other way," Dodd said as he discussed charter plans for the 1963 season with Delta Air Lines, Tech's official air carrier for almost two decades.

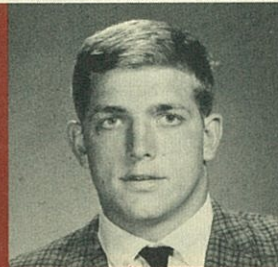
He cited a long list of advantages to flying his football teams to Saturday engagements on the road,



Delta's Giant DC-8 Fan-Jets Make Football Safaris Easy for Tech Teams



**CENTER JACK EDWARDS**  
Tampa, Fla.



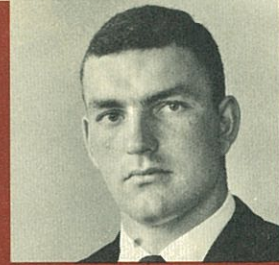
**TACKLE FRANK PENNIE**  
Hollywood, Fla.



**GUARD BILL McDOWELL**  
Tallahassee, Fla.



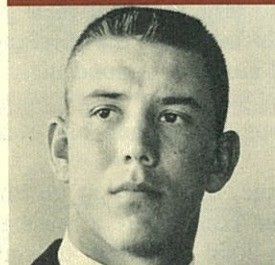
**GUARD JOE PARRISH**  
Auburndale, Fla.



**CENTER BILL DALY**  
Jacksonville, Fla.



**HB FRED BILETNIKOFF**  
Erie, Pa.



**HB WINFRED BAILEY**  
Atlanta, Ga.



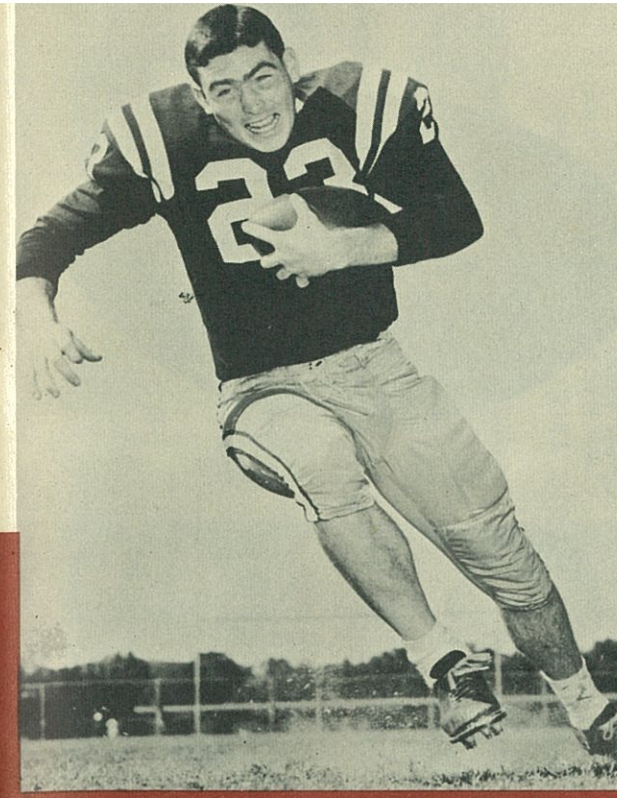
**CENTER JAY MacMATTHEWS**  
Chieftland, Fla.



**CENTER JOE AVEZZANO**  
Jacksonville, Fla.



**CENTER FERRELL HENRY**  
Colquitt, Ga.



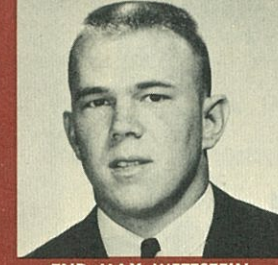
**HALFBACK DAVE SNYDER**



**HB DAVE SNYDER**  
Jacksonville, Fla.



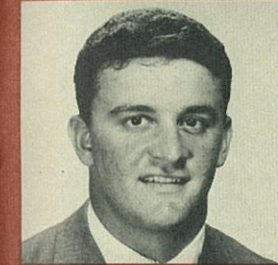
**TACKLE BOB MANGAN**  
Atlanta, Ga.



**END MAX WETTSTEIN**  
Leesburg, Fla.



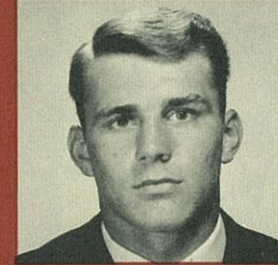
**QB JIM MASSEY**  
Cairo, Ga.



**QB TONY GERO**  
Madison, N. J.



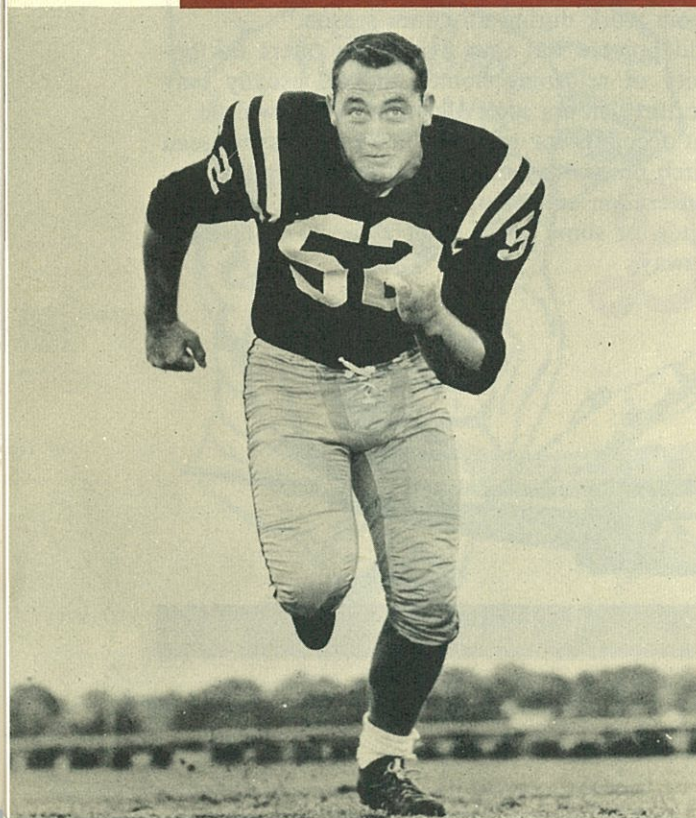
**END GEORGE D'ALLESSANDRO**  
Ft. Myers, Fla.



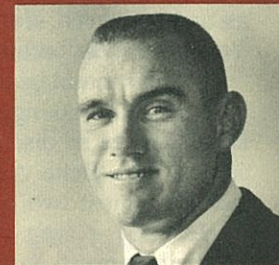
**HB JOE PETKO**  
Shaker Heights, Ohio



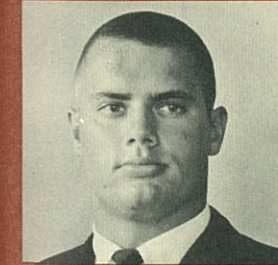
**END DALE TWITCHELL**  
Floralda, Ala.



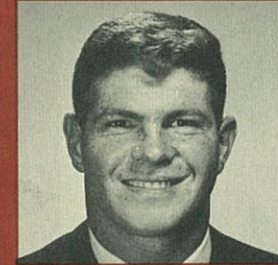
**GUARD CHUCK ROBINSON**  
East Palestine, Ohio



**HB JIM LOFTIN**  
Pensacola, Fla.



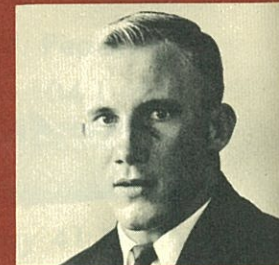
**TACKLE DALE MacKENZIE**  
Clearwater, Fla.



**GUARD JERRY WOOTEN**  
Geneva, Ala.



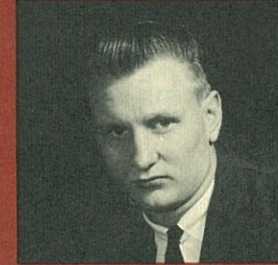
**TACKLE DARRELL WILLETT**  
Tifton, Ga.



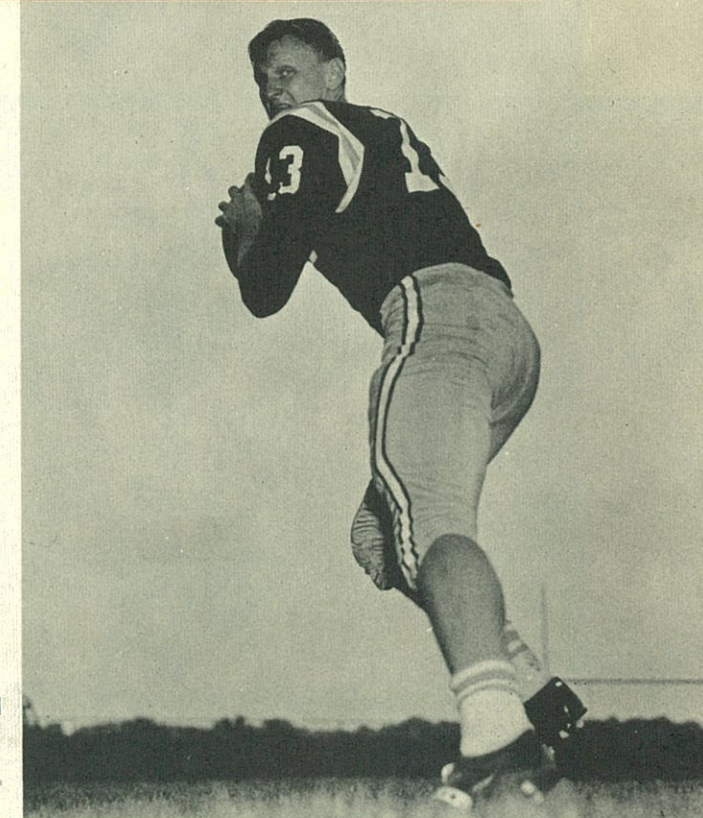
**GUARD DICK HERMANN**  
Marianna, Fla.



**QB ED PRITCHETT**  
Decatur, Ga.



**QB STEVE TENSI**  
Cincinnati, Ohio

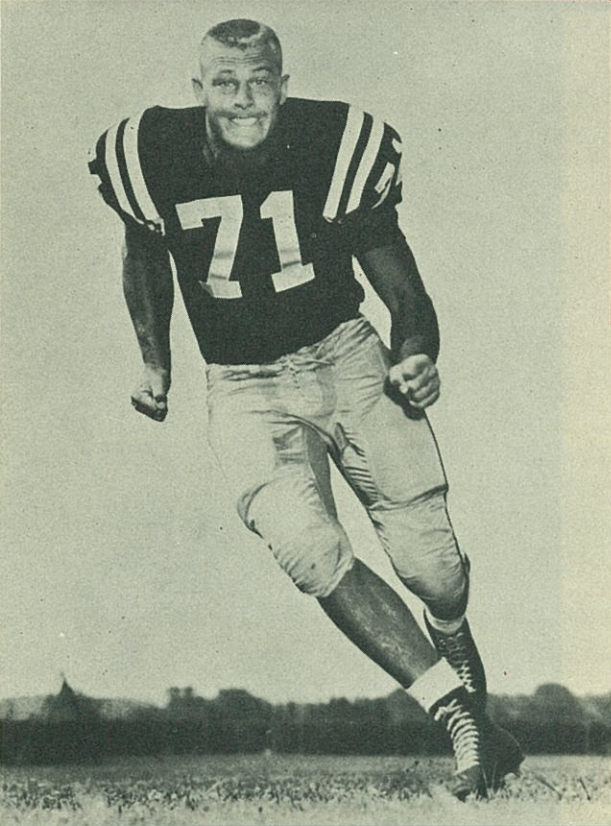


**GUARD CHUCK ROBINSON**

**GEORGIA TECH**

**OFFICIAL PROGRAM**

**QUARTERBACK STEVE TENSI**



TACKLE AVERY SUMNER



END JOHN WACHTEL  
Massillon, Ohio



HB DOUG MESSER  
LaGrange, Ga.



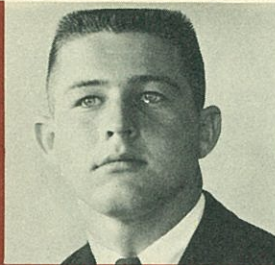
END BILL DAWSON  
Valdosta, Ga.



HB MAURY BIBENT  
Cincinnati, Ohio



FB LARRY BRINKLEY  
Willoughby, Ohio



QB CHARLIE CALHOUN  
Tallahassee, Fla.



QB ELTON REVELL  
Tallahassee, Fla.



TACKLE TOM WEST  
Headland, Ala.



END DON FLOYD  
Madison, Fla.



TACKLE AVERY SUMNER  
Adele, Ga.



GUARD JACK SHINHOLSER  
Tampa, Fla.



TACKLE JERRY BRUNER  
Evansville, Ind.



GEORGIA TECH

LEFT ENDS

81 FRANK SEXTON  
87 DAVE AUSTIN  
84 BOBBY COLE  
90 JIM HARRIS

LEFT TACKLES

79 TOM BALLARD  
77 BILL FARRINGTON  
76 JOHN TAYLOR

LEFT GUARDS

69 BRAD YATES  
65 GARY LEE  
60 JOE COLVIN

CENTERS

53 DAVE SIMMONS  
50 BILL CURRY  
55 JOHN MATLOCK  
54 GARY BURKHOLDER

RIGHT GUARDS

62 JIMMY SEWARD  
73 JOHN BATTLE  
78 RANDY WATKINS  
66 FRANK SELLINGER

RIGHT TACKLES

75 JOE CHAPMAN  
73 BILL PASCHAL  
68 BUBBA SHELL

RIGHT ENDS

88 BILLY MARTIN  
89 GARY WILLIAMS  
85 DAVE SEWELL  
83 TOMMY MURPHY

CORNER

ED WEINMAN  
17 JIMMY SUDDERTH  
12 CORKY ROGERS  
10 TOMMY BLEICK

QUARTERBACKS

18 BILLY LOTHBRIDGE  
16 JERRY PRIESTLEY  
14 BRUCE FISCHER

LEFT HALFBACKS

23 GERRY BUSSELL  
22 JOE AUER  
31 DOUG COOPER  
35 DANNY FAULK

RIGHT HALFBACKS

30 JOHNNY GRESHAM  
21 TERRY HADDOK  
26 TOMMY JACKSON

FULLBACKS

41 RAY MENDHEIM  
29 JIMMY BARBER  
43 JON MARTIN  
34 JOHNNY NIX

QUARTERBACKS

13 STEVE TENSI  
11 CHARLIE CALHOUN  
16 ED PRITCHETT  
14 JIM MASSEY

LEFT HALFBACKS

20 DAVE SNYDER  
22 MAURY BIBENT  
29 JOE PETKO

RIGHT HALFBACKS

28 WINFRED BAILEY  
25 FRED BILENIKOFF  
23 JIM LOFTIN

FULLBACKS

21 LARRY BRINKLEY  
44 MARION ROBERTS  
43 HOWARD EHLE

LEFT ENDS

81 DON FLOYD  
82 JIM CAUSEY  
89 MAX WETTSTEIN

LEFT TACKLES

77 BOB MANGAN  
79 FRANK PENNIE  
76 TOM WEST

LEFT GUARDS

66 DICK HERMANN  
68 JOE PARRISH  
65 JERRY WOOTEN

CENTERS

55 JACK EDWARDS  
53 BILL DALY  
51 JOE AVEZZANO

RIGHT GUARDS

52 CHUCK ROBINSON  
63 BILL MCDOWELL  
75 DALE MACKENZIE

RIGHT TACKLES

73 AVERY SUMNER  
60 FERRELL HENRY  
61 JACK SHINHOLSER  
67 JERRY BRUNER

RIGHT ENDS

83 BILL DAWSON  
84 GEORGE D'ALESSANDRO  
80 JOHN WACHTEL

GEORGIA TECH SPECIALISTS

PUNTERS: 18 Billy Lothridge, 16 Jerry Priestley  
PLACE-KICKERS: 18 Billy Lothridge, 11 Bunky Henry  
HOLDERS: 14 Fisher, 16 Priestley, 22 Auer, 23 Bussell  
KICKOFFS: 18 Billy Lothridge, 11 Bunky Henry,  
34 Johnny Nix  
PASSERS: Quarterbacks

GEORGIA TECH'S STATISTICAL LEADERS

Rushing		Att'd	Net Yds. Gained	Avg.	Long Run
Ray Mendheim		63	326	5.2	51
Joe Auer		42	202	4.8	22
Johnny Gresham		27	167	6.2	38
Billy Lothridge		72	116	1.6	20
Jimmy Barber		35	100	2.9	7
Gerry Bussell		23	61	2.7	11
Terry Haddock		10	55	5.5	15
Passing		Att'd	Com- pleted	Had Intc'd	Net Yds. Gained
Billy Lothridge		83	38	4	604
Pass Receiving		Rec'd	Net Yds. Gained	For TD	
Joe Auer		7	80	0	
Ted Davis		6	135	2	
Johnny Gresham		5	81	1	
Billy Martin		5	69	1	
Dave Austin		5	57	1	
Punting		No.	Avg.	Long Punt	
Billy Lothridge		33	42.0	61	

FLORIDA STATE SPECIALISTS

PUNTERS: 11 Charlie Calhoun, 21 Larry Brinkley  
PAT's FG's: 42 Les Murdock, 40 Doug Messer  
HOLDERS: Quarterbacks  
KICKOFFS: 42 Les Murdock, 40 Doug Messer  
PASSERS: Quarterbacks

FLORIDA STATE'S STATISTICAL LEADERS

Rushing				
	Att'd	Net Yds. Gained	Avg.	
Dave Snyder	73	357	4.9	
Larry Brinkley	35	257	7.3	
Marion Roberts	34	117	3.5	
Howard Ehler	15	72	4.8	
Maury Bibent	21	61	2.9	
Ed Pritchett	10	56	5.6	
Passing				
	Att'd	Com- pleted	Had Int'cd	Net Yds. Gained
Steve Tensi	112	59	6	797
				8
Pass Receiving				
	Rec'd	Net Yds. Gained	For TD	
Fred Bilemikoff	14	257	4	
Max Wettstein	12	114	2	
Bill Dawson	9	132	0	
Winfred Bailey	5	58	1	
Don Floyd	5	51	0	
Punting				
	No.	Avg.		
Charlie Calhoun	32	37.9		





# Shop Atlanta's No. 1 Team ... COLONIAL First in Food Sales!

When it comes to food folks, the number one team is in action week in and week out at your number one food store in Atlanta and throughout Georgia. Number one—because of friendly, courteous service in the traditional Southern manner. Number one—because of the experience and know-how gained from serving more customers. Join the crowds ... GO COLONIAL!

Get more gifts *Faster* with **GOLD BOND** Stamps



**ALUMINUM BUILDING PRODUCTS COMPANY**  
ALCOA SIDING (10 COLORS)  
ALCOA COLORIB ROOFING  
ALCOA GUTTERS AND COVERS  
ALCOA SOFFIT AND FASCIAS  
ALCOA SHUTTERS (5 COLORS)  
ALCOA SCREEN DOORS  
ALCOA PANEL DOORS  
ALCOA NAILS AND FASTENERS  
ALCOA GRAVEL STOPS  
ALCOA ORNAMENTAL RAILING  
ALCOA COLORED COILED SHEETS  
ALLIED ALUMINUM PRODUCTS

**ANDERSON ALUMINUM TUBING and EXTRUSIONS**  
AUTHORIZED DISTRIBUTORS  
**ALCOA BUILDING PRODUCTS**  
1391 CHATTAHOOCHEE AVENUE, N.W.  
355-1460  
BILL WILLIS, ME '52 (4.0)

FOR THE BEST IN ROASTED,  
SALTED AND RAW PEANUTS  
ASK FOR  
**NANCY FANCY OR JIMBO'S JUMBOS**  
**JIMBO'S JUMBOS, INC.**  
EDENTON, N. C.  
In Atlanta Call or Contact  
**JACK BOWEN CO.**  
113 Courtland Street, S.E.  
Atlanta 3, Georgia  
Telephone JA. 5-2429

OFFICIAL PROGRAM

## GEORGIA TECH YELLOW JACKETS

No.	Name	Pos.	Age	Ht.	Wt.	Class	Lt.	Hometown	High/Prep School
10	Tommy Black	QB	20	6-2	189	Jr.	0	Tallahassee, Ala.	Valdosta
11	Bucky Henry	PK	19	6-3	189	Jr.	0	Valdosta, Ga.	Valdosta
12	Corby Rogers	QB	19	6-3	190	Jr.	0	Jacksonville, Fla.	R. E. Lee
14	Brice Fischer	QB	20	6-3	197	Jr.	0	Corral Gables, Fla.	Corral Gables
16	Eddie Jordan	QB	20	6-2	191	Jr.	0	Atlanta, Ga.	Brown
17	Jerry Priestley	QB	20	6-2	196	Jr.	0	N. Augusta, S. C.	N. Augusta
18	Jimmy Studdert	QB	20	6-1	181	Jr.	0	Gainesville, Ga.	N. Fulton
21	Terry Haddock	RH	21	6-11	178	Jr.	0	Florence, Ala.	Gainesville
22	Joe Auer	RH	22	6-1	198	Jr.	0	Corral Gables, Fla.	Coffee Co.
23	Gerry Russell	LH	20	6-0	184	Jr.	1	Jacksonville, Fla.	Corral Gables
26	Tommy Jackson	RH	21	6-11	190	Jr.	1	Miami, Fla.	Englewood
27	Jim Cavan	LH	20	6-0	172	Jr.	0	Thomasville, Ga.	Jackson
28	Kenny Allen	LH	20	6-8	149	Jr.	0	Lexington, Ky.	R. E. Lee
30	Johnny Gresham	RH	22	6-9 1/2	182	Jr.	1	Waycross, Ga.	Waycross
31	Doug Cooper	LH	22	6-8	164	Jr.	2	Washington, Ga.	Wash.-Wilkes
34	Johnny Nix	RH	21	6-10	178	Jr.	2	Atlanta, Ga.	Sylvan Hills
35	Danny Faulk	LH	21	6-0	184	Jr.	0	Bay Minette, Ala.	Baldwin Co.
40	Ed Weinman	QB	21	6-11	188	Jr.	2	Stebenville, O.	Stebenville
41	Ray Monheim	RB	21	6-0	198	Jr.	2	Dothan, Ala.	Dothan
43	Jon Martin	FB	23	6-10	184	Jr.	2	Washington, Ga.	Baylor Prep
46	Forest Inglett	FB	19	6-1	183	Soph.	2	Augusta, Ga.	Rich. Academy
50	Bill Curry	C	20	6-2	221	Jr.	1	College Park, Ga.	College Park
51	Jim Hawkins	C	20	6-0	208	Jr.	1	Charlottesville, N. C.	Handing
53	Dave Simmons	C	20	6-3	228	Jr.	1	Tampa, Fla.	S. E. Austin
54	John Burkholder	C	19	6-11	206	Soph.	0	Memphis, Tenn.	Chattanooga
55	John Trappell	LG	21	6-3	206	Soph.	0	Metairie, La.	Woodbury Forest
57	John Matlock	C	22	6-0	219	Sr.	2	Norfolk, Va.	Norfolk
60	Joe Colvin	LG-RG	20	6-11	201	Jr.	1	Jacksonville, Fla.	Blount
62	Jimmy Seward	RG	20	6-2	217	Jr.	1	Macon, Ga.	Lanier
66	Frank Lee	LG	21	6-9	210	Jr.	1	Charleston, W. Va.	Charleston
68	Frank Sellinger	RG	20	6-11	209	Soph.	1	Louisville, Ky.	Flager
69	Bruce Shell	LG	20	6-0	221	Jr.	1	Newnan, Ga.	Newnan
72	John Battle	RG-RT	19	6-11	234	Soph.	0	Miami, Fla.	Greenville
73	Bill Paschal	RT	21	6-1	231	Jr.	1	Atlanta, Ga.	Miami Senior
74	Joe Moore	RT	18	6-3	220	Soph.	0	Atlanta, Ala.	Sylvan Hills
76	John Chapman	RT	23	6-1	225	Jr.	2	Pensacola, Fla.	Eutaw
77	John Taylor	RT	21	6-1	229	Jr.	0	Memphis, Tenn.	Columbia M.A.
78	Randy Watkins	RT	24	6-3	215	Jr.	2	Fairfield, Ala.	West Rome
79	Tom Ballard	LT	19	6-0	215	Jr.	1	Rome, Ga.	South Rome
80	Dick Emerson	RE	20	6-2	203	Jr.	0	Miami, Fla.	Miami Senior
81	Mike Fortner	RE	21	6-1	191	Jr.	2	Knoxville, Tenn.	Central
82	Tommy Murphy	RE	19	6-5	191	Soph.	0	Miami, Fla.	Miami Senior
83	Bobby Cole	RE	21	6-0	181	Jr.	0	Thomasville, Ga.	R. E. Lee
84	Dave Sewell	RE-RE	21	6-3	210	Jr.	0	Atlanta, Ga.	Marist
85	Dave Austin	RE	20	6-3	215	Jr.	0	Ft. Lauderdale, Fla.	Roosevelt
87	Bill Martin	RE	20	6-4 1/2	236	Jr.	0	Gainesville, Fla.	Stranahan
88	Bill Martin	RE	20	6-1	195	Jr.	0	Charlotte, N. C.	Gainesville
89	Jim Harris	RE	19	5-9	189	Jr.	0	Bessemer, Ala.	Harding
90	Jim Harris	RE	19	5-9	189	Jr.	0	Bessemer, Ala.	Bessemer

Student Managers: Tommy Hendricks and Wayne Richie. Student Trainer: Fred Briggs.  
CLB corner line backer. PK place kicking specialist.

## F.S.U. SEMINOLES

No.	Name	Pos.	Age	Ht.	Wt.	Class	Lt.	Hometown
11	Charlie Calhoun	QB	20	5-10	171	Jr.	2	Tallahassee
12	Tony Gero	QB	19	5-10	183	Soph.	0	Madison, N. J.
13	Steve Tensi	QB	20	6-5	203	Jr.	1	Chickamauga, O.
14	Jim Massey	QB	20	6-11	176	Soph.	0	Cairo, Ga.
15	Krus Fischer	QB	20	6-1	184	Soph.	0	Melbourne
16	Ed Fritchett	QB	22	6-2	177	Soph.	0	Deatur, Ga.
20	Dave Snyder	HB	21	5-10	184	Jr.	2	Jacksonville
21	Larry Binkley	HB	21	6-0	190	Soph.	2	Willoughby, O.
22	Mauri Bhent	HB	20	6-0	186	Soph.	0	Wilmington, O.
23	Jim Loftin	HB	20	6-1	181	Jr.	1	Pensacola
24	Mario Delbert	HB	19	5-9	184	Jr.	0	Haverhill, Pa.
25	Fred Bliemhoff	HB	20	6-1	186	Jr.	1	Drift, Pa.
26	Bill Hammond	HB	20	6-1	186	Jr.	0	Kidron, Ga.
28	Whitford Bailey	HB	21	6-0	186	Jr.	1	Meador, Ga.
29	Joe Peltro	HB	19	5-9	185	Soph.	0	Shaker Heights, O.
40	Doug Messer	HB	21	6-1	188	Jr.	2	LaGrange, Ga.
42	Les Murock	FB	21	6-2	213	Jr.	0	Hollywood
43	Howard Ehler	FB	19	6-1	190	Soph.	0	Tavares
44	Marion Roberts	FB	20	6-0	197	Jr.	2	Ocella, Ga.
51	Joe Avezzano	C	20	6-1	223	Soph.	0	Miami
52	Chuck Robinson	C	21	6-1	218	Jr.	2	East Palestine, O.
53	Bill Daly	C	20	6-1	209	Jr.	0	Jacksonville
55	Jay Matthews	C	19	6-1	216	Soph.	1	Chiefland
56	Jack Edwards	C	20	6-1	221	Jr.	0	Tampa
60	Ferrill Henry	T-G	21	6-1	212	Jr.	2	Colquitt, Ga.
61	Jack Shinhiser	T-G	21	6-1	200	Soph.	0	Tampa
62	Gene Parish	T-G	21	6-3	206	Soph.	0	Headland, Ala.
63	Bill McDowell	T-G	19	6-1	191	Soph.	0	Tallahassee
64	David Pitts	G	19	6-1	211	Soph.	0	Blountstown
65	Dick Hermann	G	21	6-0	196	Soph.	0	Geneva, Ala.
66	Jerry Wooten	G	21	6-1	200	Jr.	1	Marianna
67	Jerry Brunner	G	21	6-1	232	Jr.	2	Evansville, Ind.
68	Joe Parrish	G	20	5-10	198	Soph.	0	Abundant
70	Larry Strobel	T	19	6-11	227	Soph.	0	Massillon, O.
71	Darrell Willett	T	20	6-2	231	Jr.	1	Massillon, O.
73	Avery Sumner	T	21	6-2	216	Jr.	1	Atlet, Ga.
75	Dale Mackenzie	T	20	6-2	227	Jr.	1	Olewater
76	Tom West	T	20	6-4	222	Jr.	1	Headland, Ala.
77	Bob Mangum	T	21	6-1	231	Soph.	0	Atlanta, Ga.
78	Max Andrews	T	21	6-1	203	Soph.	0	Rehobeth, Ala.
79	Frank Pennie	T	20	6-4	242	Soph.	0	Hollywood
80	John Wachtel	T	21	6-1	193	Jr.	1	Massillon, O.
81	Don Floyd	T	21	6-1	197	Jr.	1	Madison
82	Jim Gansy	T	22	6-1	209	Jr.	1	Miami
83	Bill Dawson	T	22	6-3	231	Jr.	1	Valdosta, Ga.
84	George D'Allesandro	T	20	6-3	231	Jr.	1	Fort Myers
85	Dale Twichell	T	20	6-1	205	Soph.	0	Florida, Ala.
86	Buddy Blankenship	T	19	6-3	200	Soph.	0	Atlanta
88	John Roberts	T	21	6-0	190	Soph.	0	Orlando
89	Max Wetstein	T	19	6-3	203	Soph.	0	Leesburg

things go  
better  
with  
**COKE**



The Atlanta Coca-Cola Bottling Co.  
864 Spring Street, N.W.

# GA. TECH



FB FOREST INGLET  
Augusta, Ga.



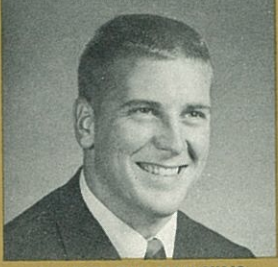
END DAVE AUSTIN  
Ft. Lauderdale, Fla.



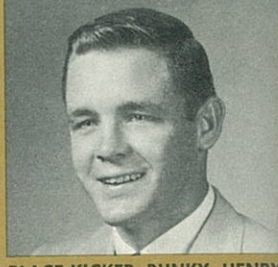
HB JOHNNY NIX  
Bay Minette, Ala.



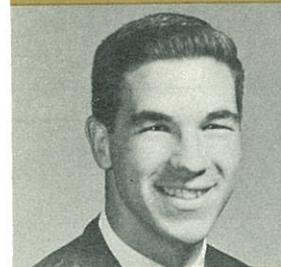
END DICK EMERSON  
Miami, Fla.



CENTER JIM HAWKINS  
Charlotte, N. C.



PLACE-KICKER BUNKY HENRY  
Valdosta, Ga.



DEF. SPEC. JIM SUDDERTH  
Atlanta, Ga.



HB DANNY FAULK  
Dothan, Ala.



CENTER GARY BURKHOLDER  
Tampa, Fla.



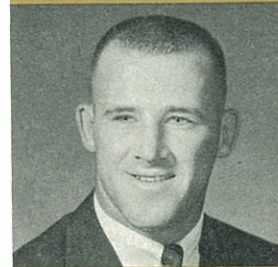
TACKLE BILL MOOROR  
Eufaula, Ala.



QB BRUCE FISCHER  
Coral Gables, Fla.



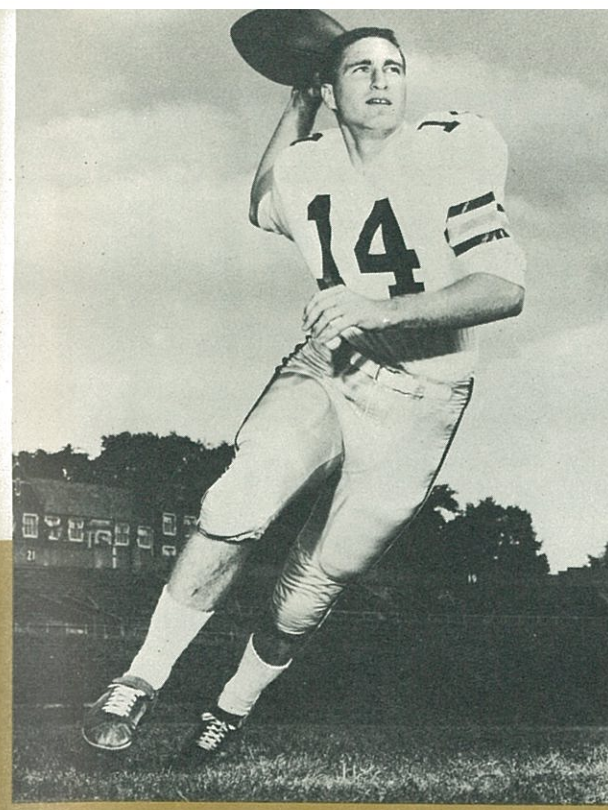
HALFBACK TERRY HADDOCK  
Florence, Ala.



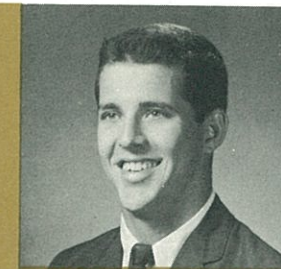
FB JON MARTIN  
Washington, Ga.



HALFBACK JIM CAVAN  
Thomaston, Ga.



QUARTERBACK BRUCE FISCHER



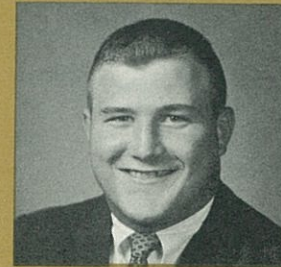
Def. Spec. CORKY ROGERS  
Jacksonville, Fla.



TACKLE JOE CHAPMAN  
Pensacola, Fla.



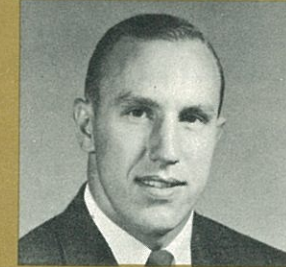
TACKLE JOHN BATTLE  
Miami, Fla.



GUARD GARY LEE  
Charleston, W. Va.



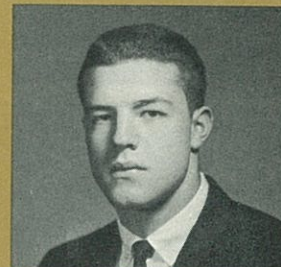
END DAVE SEWELL  
Atlanta, Ga.



END BOBBY COLE  
Marietta, Ga.



QB EDDIE JORDAN  
Atlanta, Ga.



TACKLE JOHN TAYLOR  
Memphis, Tenn.



CENTER BILL CURRY  
College Park, Ga.



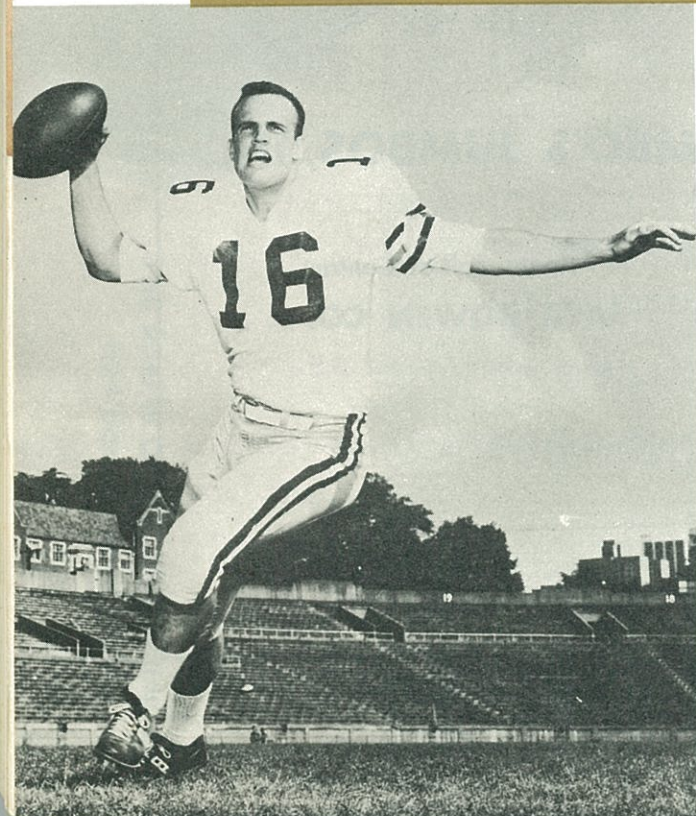
GUARD FRANK SELLINGER  
Louisville, Ky.



DEF. SPEC. DAVE SIMMONS  
El Paso, Texas



HB GERRY BUSSELL  
Jacksonville, Fla.

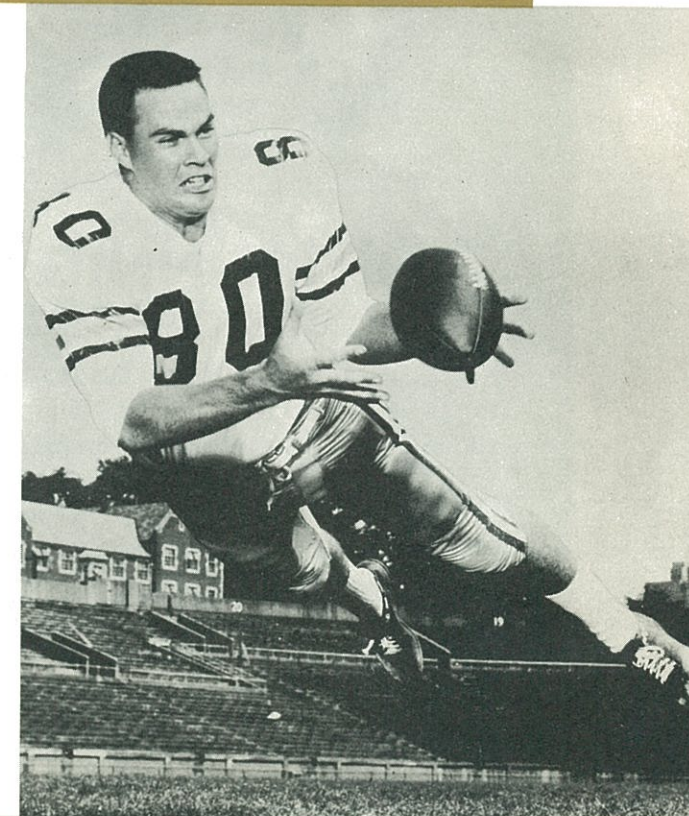


QUARTERBACK JERRY PRIESTLEY

GEORGIA TECH

OFFICIAL PROGRAM

END DICK EMERSON



# SHAPES FROM BOILER PLATES SINCE 1888!



tanks  
storage heaters  
pressure vessels  
heaters

The Finnigan Company will soon celebrate a Diamond Jubilee! Yes, after 75 years the primary code of this old established Atlanta manufacturer still remains the same... *up-to-date design and fabrication of steel and alloys into the highest-quality boilers and tanks.*

Industrial vessels *must* serve through the years. Materials alone do not make these products but consistent Finnigan craftsmanship does! Why? Because from raw materials to final test, every step of Finnigan production is executed with *lasting* performance in mind!

Synonymous with storage, heating and tank fabrication, the Finnigan name on any product guarantees it to meet or exceed ASME, API and Government Specifications. When you specify Finnigan... you specify *quality!* Let our trained engineering staff assist you soon with *your* next job.

W. J. McAlpin,  
President, '27

F. P. DeKoning,  
Secretary, '48

W. J. McAlpin, Jr.  
Class of '57

## J. J. FINNIGAN COMPANY, INC.

722 MARIETTA STREET, N. W. □ ATLANTA 18, GEORGIA

REPRESENTATION FROM COAST TO COAST • Birmingham 5, Alabama, P. O. Box 3285A • Dallas 19, Texas, P. O. Box 6597 • Houston 6, Texas, P. O. Box 66099 • Jacksonville 3, Florida, P. O. Box 2527 • Denver 22, Colorado, P. O. Box 22121 • Kansas City 41, Missouri, P. O. Box 462 • Little Rock, Arkansas, 4108 C Street • Memphis 11, Tennessee, 3683 Southern Ave. • New Orleans 25, Louisiana, Box 13214 • Richmond 28, Va., 8506 Ridgeview Dr. • Tucson, Arizona, 2020 East 13th Street • El Paso, Texas, 2137 Mills Avenue • San Antonio, Texas, 5108 Broadway • Jackson, Miss., 5044 North State St. • Miami 34, Florida, 581 SW 47th Ave. • Tampa 9, Florida, P. O. Box 10613 • Mobile, Alabama, P. O. Box 6163



GEORGIA TECH

## Ga. Tech Songs

### UP WITH THE WHITE AND GOLD

Just one big yell for White and Gold  
And then we'll raise that banner bold,  
A battle flag that can't be beat.  
For (Georgia's) team it means defeat.  
We'll fight like hell for victory!  
Pull me down the (Red) and (Black) you see.  
For Georgia Tech will win today  
We are all glad to say:

### Chorus

Oh well, it's up with the White and Gold,  
Down with the (red) and (black).  
Georgia Tech is out for victory,  
We'll drop our battle axe on (Georgia's) head,  
When we meet her our team is sure to beat her.  
Down on the old farm there'll be no sound  
Till our bow-wows rip through the air;  
When the battle is over (Georgia's) team will be  
found  
With the Yellow Jackets swarming 'round.

### THE RAMBLING WRECK

I'm a rambling wreck from Georgia Tech  
And a hell of an engineer—  
A helluva, helluva, helluva,  
helluva, hell of an engineer.  
Like all the jolly good fellows,  
I'll drink my whiskey clear,  
I'm a rambling wreck from Georgia Tech  
And a hell of an engineer.

Oh! If I had a daughter, sir,  
I'd dress her in White and Gold  
And put her on the campus  
To cheer the Brave and Bold.  
But if I had a son, sir,  
I'll tell you what he'd do,  
He would yell: "To hell with Georgia."  
Like his daddy used to do.

Oh! I wish I had a barrel of rum,  
And sugar three thousand pounds,  
A college bell to put it in,  
And a clapper to stir it 'round  
I'd drink to all good fellows  
Who come from far and near.  
I'm a rambling, gambling,  
Hell of an engineer.

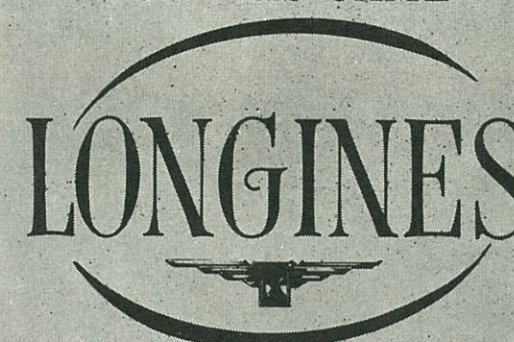


### GEORGIA TECH ALMA MATER

Oh, sons of Tech, arise, behold!  
The banner as it reigns supreme,  
For from on high the White and Gold  
Waves in its triumphant gleam.  
The spirit of the cheering throng  
Resounds with joy revealing  
A brotherhood in praise and song,  
In memory of the days gone by.  
Oh, Scion of the Southland,  
In our hearts you shall forever fly.

We cherish thoughts so dear for thee,  
Oh, Alma Mater, in our prayer,  
We plead for you in victory,  
And in the victory we share!  
But when the battle seems in vain  
Our spirit never falters,  
We're ever one in joy or pain,  
And our union is a lasting bond.  
Oh! may we be united  
Till the victory of life is won.

## THE OFFICIAL WATCH FOR THIS GAME



The World's Most Honored Watch

- \* Winner of 10 World's Fair Grand Prizes
- \* 28 World's Fair Gold Medals
- \* Highest Observatory Honors for Accuracy

Premier Product of

Longines-Wittnauer  
WATCH COMPANY

For Almost 100 Years, Maker of Watches  
of the Highest Character



Throughout the world, no other  
name on a watch means so much as

## LONGINES

The World's Most Honored Watch  
OFFICIAL WATCH

1960 OLYMPIC WINTER GAMES • 1959 PAN AMERICAN  
GAMES • 1960 U. S. OLYMPIC TRIALS • MAJOR  
NATIONAL AND WORLD CHAMPIONSHIPS IN ALL  
FIELDS BOTH HERE AND ABROAD

At Authorized

Longines-Wittnauer  
JEWELERS

OFFICIAL PROGRAM

## SCIENCE (Continued from page 3)

that the survey was conducted in order to place them in the proper frame of mind and cancel any bias which might have occurred in the experiments. The test route, Interstate 65, runs from Shepherdsville to Louisville. Motorists taking part were stopped at the end of the test run where they turned in their portable radios and answered questions in a short interview to evaluate their reaction to the use of the equipment.

Specific aims of the program were to determine the feasibility of using such radio communications for traffic control; the acceptance and compliance by drivers; costs, and the best methods for operating such a system.

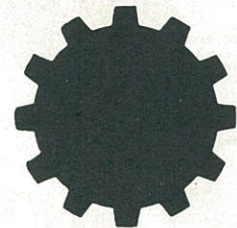
The roadside transmitters had a limited broadcasting range and conveyed pre-recorded messages only when the automobile was within a "trigger zone," about 2,000 feet long. The receivers in the

cars remained silent at all other times. This short transmitting range meant that signals could be received only by cars traveling in a specific direction. Thus, the drivers for whom the information was intended were the only ones to hear it.

Typical messages warned of an accident ahead, or of icing conditions and fog, and instructed the driver to slow down to a given speed.

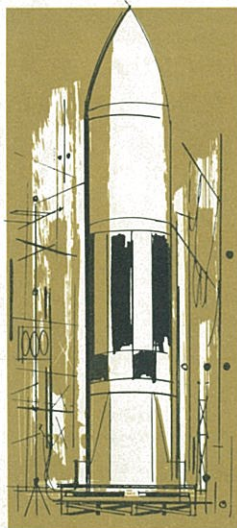
The transmitters and 100 portable receivers were developed by Delco Radio Division of General Motors. The system is known as "Hy-Com."

Covault said that traffic flow measurements were also being made while the experiments were in progress. Assisting Covault from Georgia Tech were Robert W. Bowes, candidate for the master's degree in civil engineering, and Johnny Freeman, seeking the civil engineering undergraduate degree, and three observers from the Bureau of Public Roads. The Kentucky Highway Department and the Kentucky State Police cooperated in the project.



GEORGIA BLUE PRINT CO. ESTABLISHED 1910

SPROCKETS to ROCKETS • they all start from



# BLUEPRINTS

WE CAN PROVIDE THE LATEST TECHNOLOGY  
IN EQUIPMENT and PROCESSING TO FULFILL  
YOUR REPRODUCTION REQUIREMENTS

## GEORGIA BLUE PRINT CO.

Phone JA. 4-8881-2-3-4

119 LUCKIE STREET, N.W. • ATLANTA, GEORGIA

DEALER FOR

Eugene Dietzgen Co. • Lufkin Rule Co. • W. & L. E. Gurley Co. •  
Hamilton Manufacturing Co. • Fredrick Post Co. • Clearprint  
Tracing Papers • Chart-Pak Tapes  
KODAK TYPE -C- COLOR PHOTOGRAPHY

# GA. TECH



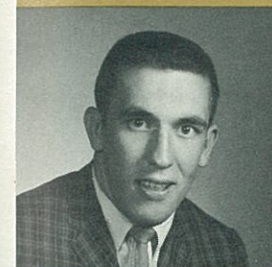
GUARD-TACKLE JOHN BATTLE



GUARD JOE COLVIN  
Jacksonville, Fla.



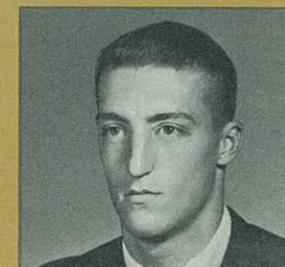
GUARD JIM TRAPNELL  
Metter, Ga.



TACKLE RANDY WATKINS  
Rome, Ga.



END GARY WILLIAMS  
Charlotte, N. C.



DEF. SPEC. TOMMY BLEICK  
Talladega, Ala.



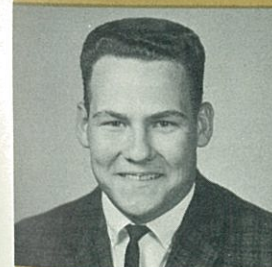
END FRANK SEXTON  
Knoxville, Tenn.



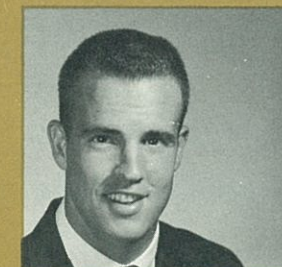
HB TOMMY JACKSON  
Miami, Fla.



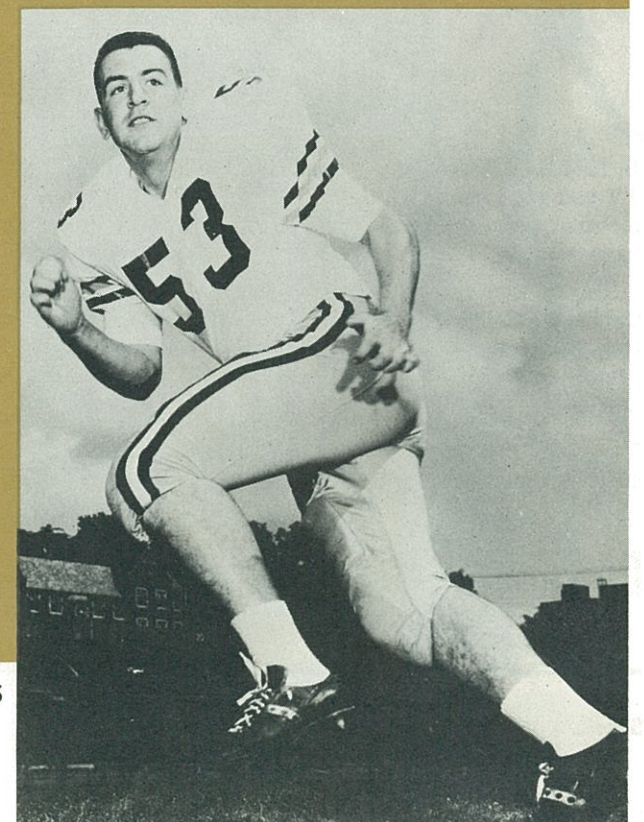
TACKLE BILL FARRINGTON  
Fairfield, Ala.



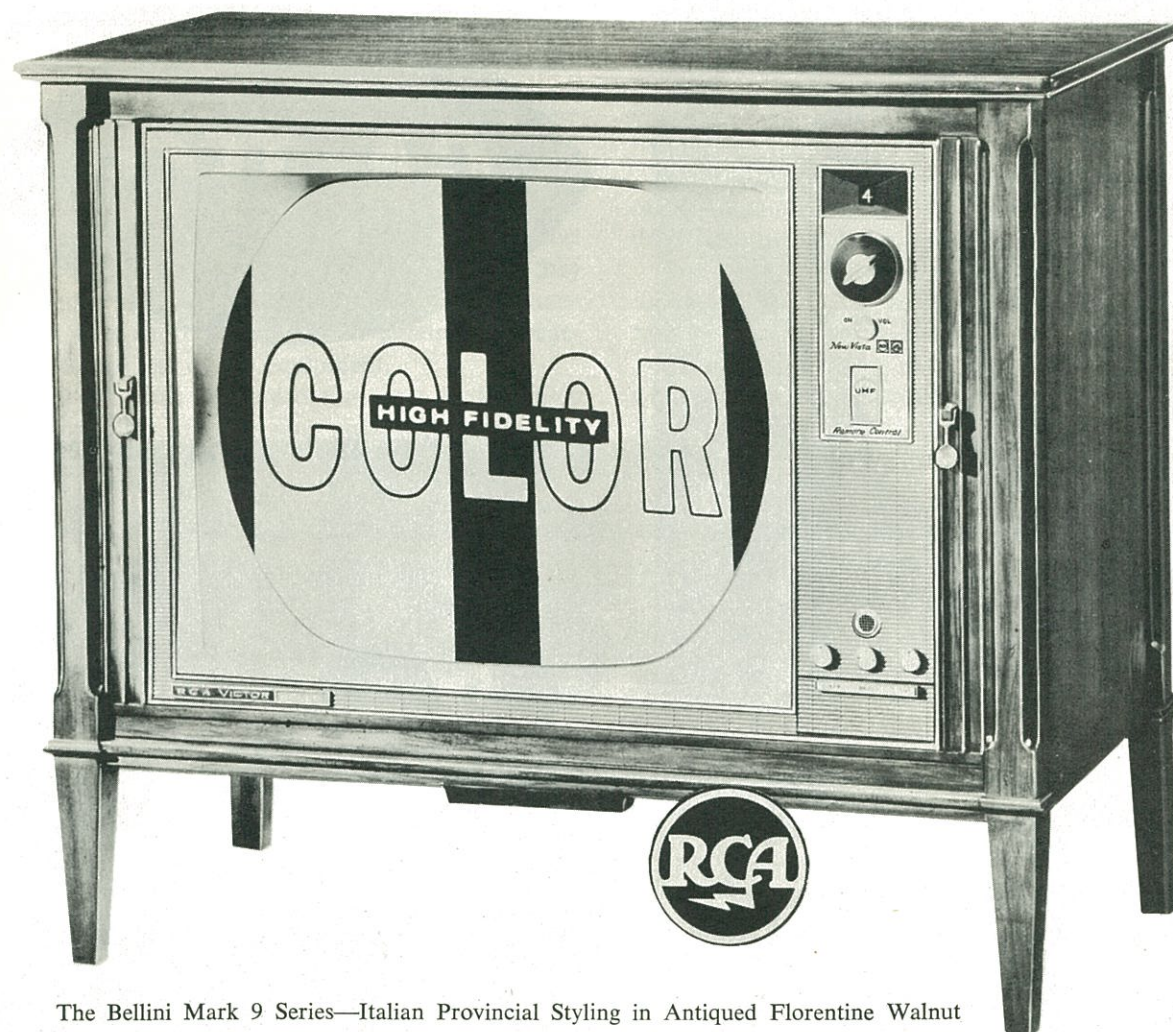
GUARD BUBBA SHELL  
Newnan, Ga.



QB JERRY PRIESTLEY  
North Augusta, S. C.



CENTER DAVE SIMMONS



The Bellini Mark 9 Series—Italian Provincial Styling in Antiqued Florentine Walnut

## RCA Victor New Vista® Color TV gives you unsurpassed natural color, brighter than ever before!

In 1964 RCA Victor New Vista Color TV you get a sharper, brighter color picture . . . so sharp and bright you have to see it to believe it!

Three years ago RCA introduced the High Fidelity Color Picture Tube to make color up to 50% brighter than previous color tubes. Now RCA engineering advances bring you an even

better, even brighter color picture. And it's the most *dependable* Color TV in RCA Victor's history, with all the modern advantages of Space Age Sealed Circuitry.

The UHF emblem on New Vista Color TV means you're buying the set for tomorrow *today*. All-channel UHF tuning can be added easily to

all models. Most models of RCA Victor New Vista Color TV also can be ordered with UHF tuners already built in as an optional extra.

Be sure to see New Vista Color TV for yourself.



The Most Trusted Name in Television

Tmk(s)®

MORE PEOPLE OWN RCA VICTOR TELEVISION THAN ANY OTHER KIND . . . BLACK AND WHITE OR COLOR.

Distributed by: **RCA VICTOR** Distributing Corporation, Atlanta

your passport to driving pleasure



## Your Gulf Credit Card

will be honored throughout the United States and Canada for purchasing the world's finest petroleum products, tires, batteries and accessories.



GULF OIL CORPORATION