

Official Program
50c

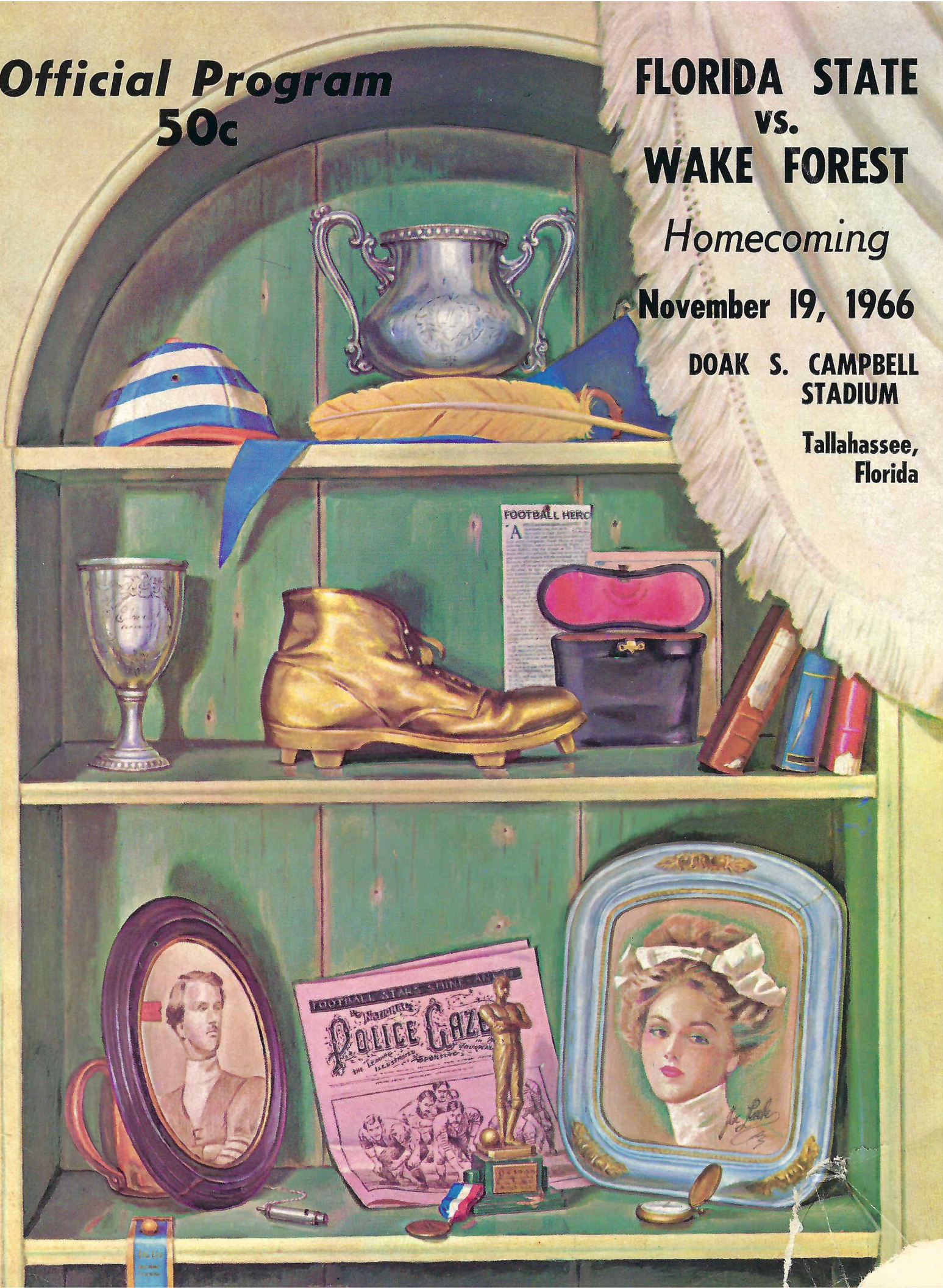
FLORIDA STATE
vs.
WAKE FOREST

Homecoming

November 19, 1966

DOAK S. CAMPBELL
STADIUM

Tallahassee,
Florida



AFTER THE GAME GO...

Jerry's



*Beautiful
Dining Room*



*Convenient
Curb Service*



*Prompt Carry-Out
Orders*



**445 W. Tennessee St.
Tallahassee
224-5104**

STRAWBERRY
PIE

CHAMP

J-BOY



Florida State University . . .

In This Issue . . .

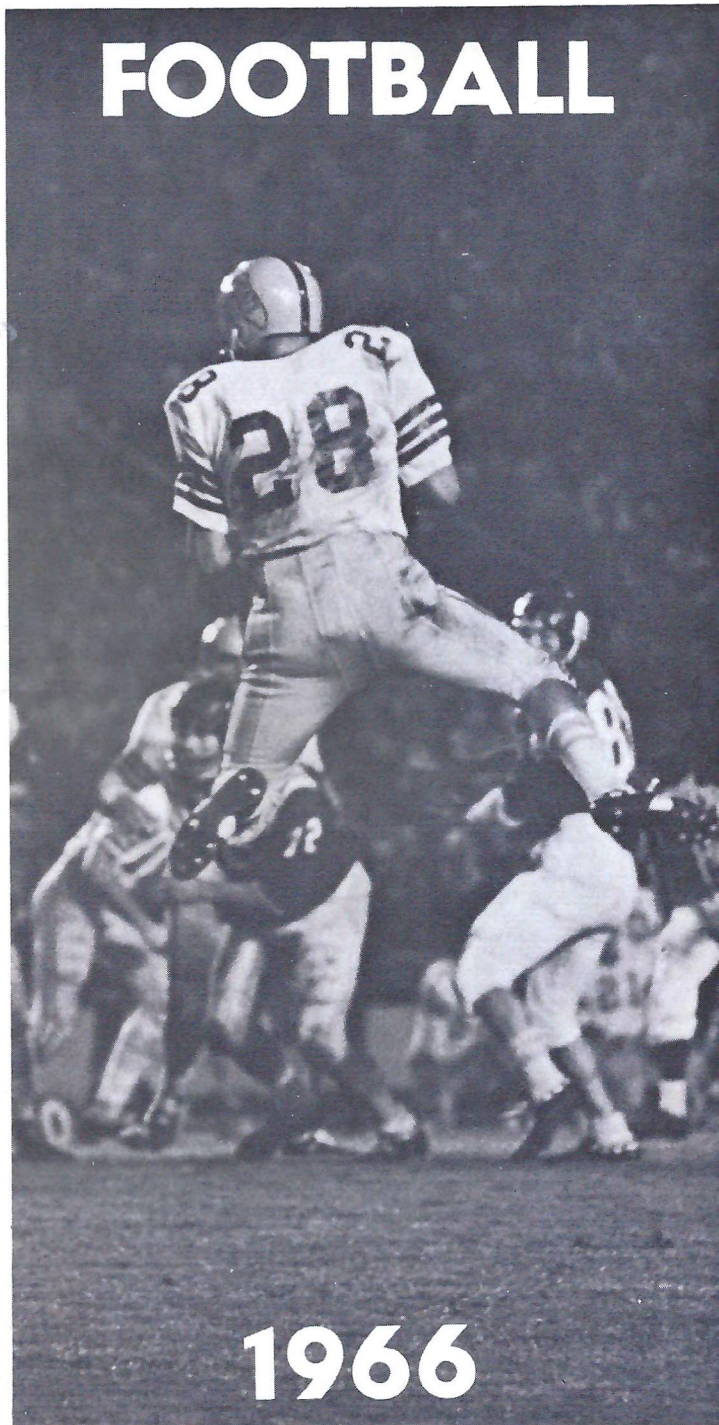
Today's Game	4
University Features	5
Guest Column	8
Seminole Football Family	9
Statistics	10
FSU All Time Records	11
Athletic Committee	12
The Four P's of College Football	13
FSU News Briefs	14
State Officials	15
FSU Player Photos	17
Officials' Signals	22
Starting Lineups	25
Penalties	27
Seminole Boosters, Inc.	28
Freshman Squad, Roster	31
Cheerleaders	33
Seminole Radio Network	35
Tensi and Biletznikoff—A Victory Combination	36
FSU Basketball	38
Stadium Information	39
Tonite's Opponents	41
The Marching Chiefs	44
Rosters, Depth Charts	45

SEMINOLES ON THE WARPATH

Date	Opponent	Site	Time
Sept. 17	Houston	Tallahassee	8:00 p.m. EST
Sept. 24	Miami	Miami	8:00 p.m. EST
Oct. 1	Open Date		
Oct. 8	Florida	Tallahassee	2:00 p.m. EST
Oct. 15	Texas Tech	Lubbock	7:30 p.m. CST
Oct. 22	Mississippi State	Tallahassee	8:00 p.m. EST
Oct. 29	Virginia Tech	Blacksburg	2:00 p.m. EST
Nov. 5	South Carolina	Columbia	2:00 p.m. EST
Nov. 12	Syracuse	Syracuse	1:30 p.m. EST
*Nov. 19	Wake Forest	Tallahassee	2:00 p.m. EST
Nov. 26	Maryland	Tallahassee	8:00 p.m. EST

*(Homecoming)

FOOTBALL



1966

*Compliments and
Best Wishes from*



**YOUR APPLIANCE
HEADQUARTERS**
611 N. Monroe St.

OFFICIAL WATCH FOR THIS GAME

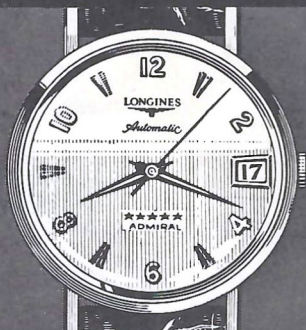


LONGINES THE WORLD'S MOST HONORED WATCH

10 WORLD'S FAIR
GRAND PRIZES
28 GOLD MEDALS



Longines watches are
recognized as OFFICIAL
for timing world
championships and Olympic
sports in all fields
throughout the world.



Longines 5-Star Admiral Automatic with Calendar,
All-Proof®, sweep-second, 14K gold strap-\$185.00

The Longines Credo

Every Longines watch,
whatever its type, for whatever
its use, today, as for almost
a century, is manufactured to
be the finest of its kind and
worthy in every respect to be called
The World's Most Honored Watch

LONGINES-WITTMANER WATCH CO.
MONTREAL • NEW YORK • GENEVA
Maker of Watches of the Highest Character Since 1867

Today's Game

By **LONNIE BURT**

Sports Information Director
Florida State University



Wake Forest Coach Bill Tate says now that his club has jelled he would "like to start the season all over again."

In their first two games, the Deacons were whipped 24-10 by Virginia and 34-7 by Maryland. They dropped their next two contests by a total of 11 points.

Tate figures his squad began to come around when sophomore quarterback Ken Erickson went to work under the center.

Last Saturday's 21-7 victory over Memphis State shows just how far the Deacons have progressed since the start of the campaign.

Today's Campbell Stadium game shapes up as a contest between Wake Forest's fine rushing game against Florida State's passing attack. In tailback Andy Heck, the Deacs have one of the Atlantic Coast Conference's best runners.

The 5-9 senior is second in the ACC in total rushing yardage but his 4.9 average is the conference's best. Erickson's combined total of 789 yards rushing and passing makes him fourth in league figures.

Two of Wake Forest's top defenders are tackles Robert Grant and Bill Overton. Both had outstanding games last week against Memphis State, as did cornerback Butch Baker. Tallahassee won't be a strange spot for Baker and Grant since they're both Jacksonville natives.

In Gary Pajcic and Kim Hammond, Florida State Coach Bill Peterson thinks he has as good a one-two quarterback combination as there is in the country.

Hammond relieved Pajcic during the third period in last week's Syracuse game and hit 11 of 16 passes for 131 yards. He tossed for one touchdown and his aerals helped set up another. Pajcic, who has completed 108 of 201 passes for 1,292 yards this season, had pitched for one TD before turning things over to Hammond.

If Ron Sellers' shoulder has healed enough so that he can play today, Florida State grads will see one of the top young receivers in the nation. The lanky Jacksonville native is within shouting distance of the great Fred Biletnikoff's season reception record of 57. "Jangle Joints" has 47 catches for 671 yards and he got only three against Syracuse before leaving with a separated shoulder.

This will be the seventh meeting between Wake Forest and Florida State with the Seminoles owning a 4-1-1 edge. In the last two meetings (1963 and 1965), the Seminoles won by identical 35-0 scores.

1966

FLORIDA STATE UNIVERSITY

National

ALUMNI ASSOCIATION

Officers

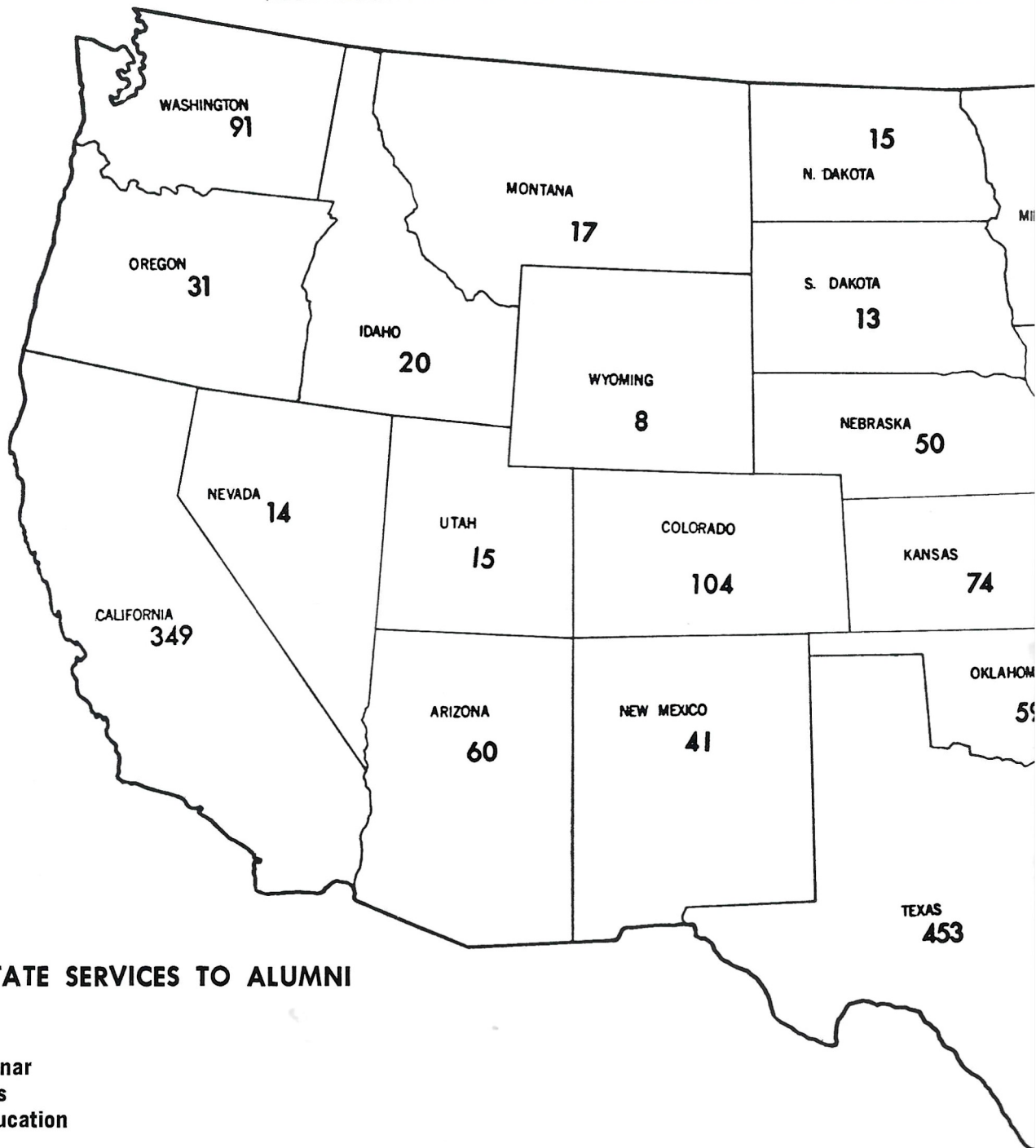


OFFICERS—left to right—Gordon D. Gaster, Daytona Beach, Treasurer; Thomas A. Waits, Tallahassee, Executive Director; Mallory E. Horne, Tallahassee, President-Elect; Mrs. Carroll F. Brown, Ocala, Secretary; Harry W. Massey, Palm Beach, President; and Charles F. Mixon, Jr., Tampa, Immediate Past President.

Board of Directors

BOARD OF DIRECTORS: Arthur E. Hempel, Jr., St. Petersburg, District I; Robert F. Waits, Jacksonville, District II; James R. Crabtree, Pensacola, District III; Judge Donald E. Stone, Coral Gables, District IV; H. Radford Bishop, Holly Hill, District V; Robert P. Foley, West Palm Beach, District VI; Frederick L. Mansfield, Sarasota, District VII; Mrs. James E. Clayton, Gainesville, District VIII; Melvin E. Pope, Jr., Tallahassee, District IX; William R. McKemie, Lakeland, District X; Floyd D. Jordan, Jr., Decatur, Ga., District XI (out of state); David T. Kennedy, Miami, Director-at-large; and Mrs. Randall Chase II, Sanford, Director-at-large.

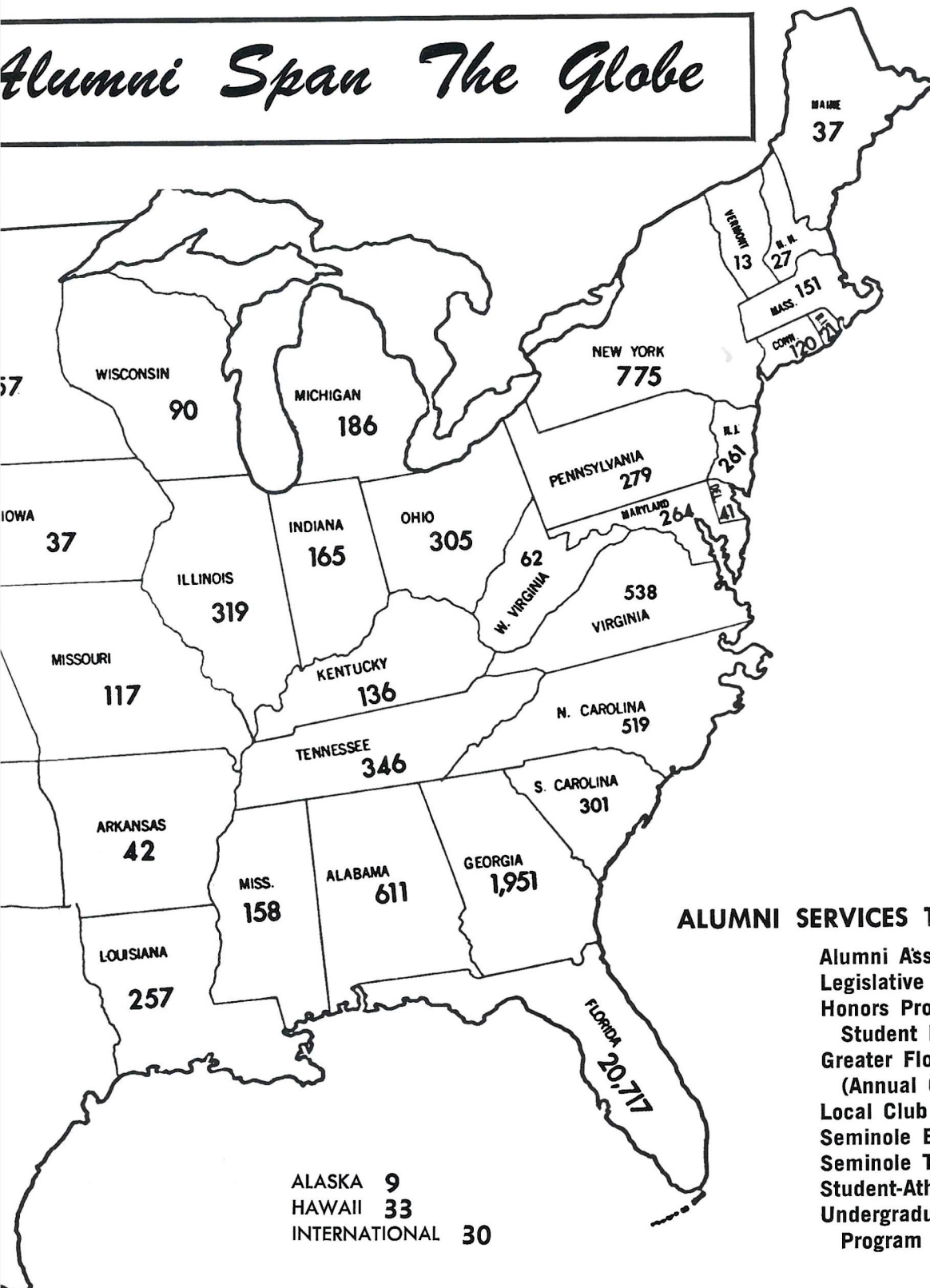
32,000 Florida State



FLORIDA STATE SERVICES TO ALUMNI

Publications
Homecoming
Alumnae Seminar
Class Reunions
Continuing Education
Employment
Use of University Facilities
Ticket Priorities

Alumni Span The Globe



ALUMNI SERVICES TO FLORIDA STATE

- Alumni Association
- Legislative Program
- Honors Program and Superior Student Recruiting
- Greater Florida State Fund (Annual Giving Program)
- Local Club Projects
- Seminole Boosters, Inc.
- Seminole Tip-off Club
- Student-Athletic Recruiting
- Undergraduate Alumni-Student Program

Champions of the Future

By JIM SELMAN

Tampa Tribune Assistant Sports Editor



You're sitting among more than 30,000 others in Doak Campbell Stadium today and you're part of a growing football program at Florida State University.

Look around. Remember when 5,000, 10,000, 15,000 came to homecoming?

Soon now, another 10,000 seats may be added to this stadium. Then, crowds of 55,000 will see the big games here and there will be more of the big ones because the increased attendance will bring them.

Florida State has been playing football only 20 years, 15 in the major ranks.

Few schools have climbed this fast. Not so long ago the Seminole defense was among the best in the country, then came a Gator Bowl win. This year the offense is nationally ranked and there aren't many football teams playing this exciting pro-type offense as well as Florida State.

Today, the Seminoles try to win their fifth game and assure at least a break-even season, if not 6-4 which is far superior to what had been expected of this sophomore-dotted team.

But this is a brash, saucy, upstart bunch of Seminoles who have emerged fairly well without much given to them.

To come back at all from the disappointing finish with Florida required a lot of courage, but it was done overwhelmingly well.

One of the young Seminole coaches, charged mostly with producing freshmen, told me a year ago, "we're building a national champion here."

He may not be far from wrong because 21 of the 47 who have done most of the playing this year are sophomores and another 10 are juniors.

But Florida State football is not going to continue to flourish without you.

Recruiting the new talent is difficult in the face of the competition.

The FSU alumni ranks are comparatively thin, though growing steadily. You need to make more noise in your home area.

With quarterback Gary Pajcic passing, flankerback Ron Sellers catching, halfbacks Bill Moreman and Larry Green running and guard Del Williams blocking, you've got an explosive, exciting football team.

With Mike Blatt at linebacker, Frank Pennie at tackle, Larry Pendleton at middle guard and Marty Kolbus at safety, you've got a tough team.

So enjoy it today, 1966 homecoming.

And support it tomorrow for a better 1967.



Have astronauts made pilots old hat?

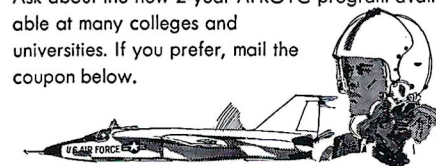
Sure, the boys who go off the "pads" get the big, bold headlines. But if you want to fly, the big opportunities are still with the aircraft that take off and land on several thousand feet of runway.

Who needs pilots? TAC does. And MAC. And SAC. And ADC.

There's a real future in Air Force flying. In years to come aircraft may fly higher, faster, and further than we dare dream of. But they'll be flying, with men who've had Air Force flight training at the controls. Of course the Air Force also has plenty of jobs for those who won't be flying. As one of the world's largest and most advanced research and development organizations, we have a continuing need for scientists and engineers.

Young college graduates in these fields will find that they'll have the opportunity to do work that is both interesting and important. The fact is, nowhere will you have greater latitude or responsibility *right from the start* than on the Aerospace Team—the U.S. Air Force!

Interested? The place to find out more is at the office of the Professor of Aerospace Studies, if there is an Air Force ROTC unit on your campus. Ask about the new 2-year AFROTC program available at many colleges and universities. If you prefer, mail the coupon below.



Air Force ROTC		14
Maxwell Air Force Base, Ala. 36112		
Name _____ Please Print		
College _____ Class of 19 _____		
Address _____		
City _____ State _____ Zip _____		

UNITED STATES AIR FORCE

BILL CRUTCHFIELD
First Assistant
Offensive Chief



DON POWELL
Offensive Line



DON BREAUX
Receivers



KEN MacLEAN
Head Recruiter



BOB HARBISON
Defensive Chief



NEIL SCHMIDT
Defensive Backs



GARY WYANT
Linebackers



BOBBY JACKSON
Defensive Ends



BILL PETERSON
Head Football Coach



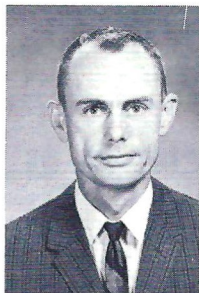
GENE McDOWELL
Freshmen

THE SEMINOLE FOOTBALL FAMILY

JEFF SAVAGE
Academic
Advisor



CLAUDE THIGPEN
Ticket Manager



LONNIE BURT
Sports
Information



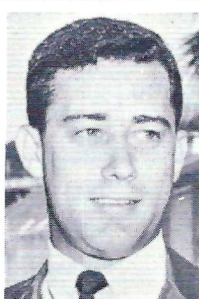
VAUGHN MANCHA
Director of Athletics



H. WINTER GRIFFITH
Team Physician



DON FAULS
Head Trainer



ROY DON WILSON
Trainer



TILLMAN DIXON
Equipment
Manager



W. H. Davis (left), Alcoa's General Manager—Industrial Relations, says: "We've found that Army ROTC graduates with active duty experience as officers possess better than average initiative, foresight, and responsibility. These are qualities we rate very highly, and we gladly pay a premium to get them."

Why did Alcoa hire Rod Wilson?

Because Alcoa needs men to fill key positions—men capable of moving to the top; men who seek and measure up to responsibility. Rod Wilson is that kind of man. An Army ROTC Distinguished Military Graduate at Colorado State University, Rod won an officer's commission in the Regular Army along with his degree. Forty-four months of active duty, including 16 months overseas as an artillery commander, earned Rod Wilson 24-carat credentials as a leader, a man schooled in the demanding disciplines of command, the kind of man Alcoa looks for.

If you're this kind of man, prove it to yourself, and to the companies like Alcoa who are looking for you. How? Get in Army ROTC. Stay with Army ROTC, all the way to success.

ARMY ROTC

TODAY'S TEAMS

1966 Statistics

FLORIDA STATE		
13	Houston	21
23	Miami	20
19	Florida	22
42	Texas Tech	33
10	Miss. State	0
21	Virginia Tech	23
33	South Carolina	10
21	Syracuse	37

WAKE FOREST		
10	Virginia	24
7	Maryland	34
12	N.C. State	15
6	Auburn	14
10	South Carolina	6
3	N. Carolina	0
21	Clemson	23
0	Virginia Tech	11
21	Memphis State	7

TEAM STATISTICS

159	First Downs	106
1023	Yards Rushing	1281
1919	Yards Passing	891
2942	Total Offense	2172
291	Passes Attempted	144
153	Passes Completed	65
13	Passes Had Intercepted	9
4	Fumbles Lost	12
41	Punts	65
36.6	Punting Average	38.2

INDIVIDUAL LEADERS

Rushing

Name	Att.	Yds.	Avg.	Name	Att.	Yds.	Avg.
Mankins	95	389	4.1	Heck	118	576	4.9
Moreman	106	405	3.8	Johnson	94	373	4.0
Green	28	124	4.4	Hauswald	59	153	2.6

Passing

Name	Att.	Comp.	Yds.	TD	Name	Att.	Comp.	Yds.	TD
Pajcic	201	108	1292	6	Erickson	107	52	728	3
Hammond	79	38	491	3	Arrington	25	10	100	1

Pass Receiving

Name	Cgt.	Yds.	TD	Name	Cgt.	Yds.	TD
Sellers	47	671	2	Henry	14	222	2
Taylor	23	317	2	Hauswald	13	244	0
Cox	12	172	0	Decker	13	181	0
Mankins	21	162	2				
Wetherell	13	151	0				

Scoring

Name	TD	FG	PAT	TP	Name	TD	FG	PAT	TP
Mankins	8	0	0	48	George	0	5	7	22
Moreman	6	0	0	36	Hauswald	2	0	2	14
Roberts	0	4	14	26	Henry	2	0	0	12
Green	3	0	0	18	Arrington	2	0	0	12
Sellers	2	0	0	12	Erickson	2	0	0	12
Taylor	2	0	0	12	Heck	2	0	0	12

The Vogue

TALLAHASSEE, FLORIDA

TRAVELING
DESSERT TRAYS

FAMOUS
TOWN HOUSE
ROAST
PRIME RIB
OF BEEF



LE ROC



DUVAL

HOTEL • TALLAHASSEE, FLORIDA

ALL TIME FLORIDA STATE RECORDS

SINGLE GAME

Individual

TOUCHDOWNS SCORED—4 by Fred Biletnikoff vs. Oklahoma Gator Bowl, 1965; and Jim Mankins vs. Texas Tech, 1966

LONGEST TOUCHDOWN RUN FROM SCRIMMAGE—81 yards by Fred Pickard vs. Virginia Tech, 1957

LONGEST TOUCHDOWN PASS—80 yards, Nelson Italiano to Eddie Gray vs. Newberry, 1950

LONGEST TOUCHDOWN RUN ANY SITUATION—99 yards by Ted Hewitt vs. Stetson, 1948 and Fred Biletnikoff vs. Miami, 1963 (interception return)

LONGEST TOUCHDOWN PLAY—100 yards by Bill Moreman and T. K. Wetherell (lateral on kickoff return) vs. Kentucky, 1965

LONGEST RUN FROM SCRIMMAGE WITHOUT SCORING—76 yards by Roy Thompson vs. Stetson, 1951

LONGEST INTERCEPTION RETURN—99 yards by Ted Hewitt vs. Stetson, 1948 and Fred Biletnikoff vs. Miami, 1963

LONGEST PUNT RETURN—80 yards by Billy Odom vs. Stetson, 1954

LONGEST KICKOFF RETURN—89 yards by Billy Odom vs. Va. Tech, 1955

LONGEST PUNT—84 yards by Tommy Brown vs. Tampa, 1950

LONGEST FIELD GOAL—44 yards by Les Murdock vs. Virginia Tech, 1963

TIMES RUSHING—29 by Fred Pickard vs. Georgia, 1949

YARDS RUSHING—161 by Buddy Strauss vs. Mississippi College, 1949

PASSES ATTEMPTED—53 by Gary Pajcic vs. Virginia Tech, 1966

PASSES COMPLETED—28 by Gary Pajcic vs. Virginia Tech, 1966

YARDS PASSING—313 by Joe Majors vs. Tampa, 1959

TOUCHDOWN PASSES—5 by Steve Tensi vs. Oklahoma, Gator Bowl, 1965

TOTAL OFFENSE—369 yards by Joe Majors vs. Tampa, 1959 (56 rush, 313 pass)

PASSES CAUGHT—13 by Fred Biletnikoff vs. Oklahoma, Gator Bowl, 1965, and Ron Sellers vs. Virginia Tech, 1966

YARDS RECEIVING PASSES—192 by Fred Biletnikoff vs. Oklahoma, Gator Bowl, 1965

TOUCHDOWN PASSES CAUGHT—4 by Fred Biletnikoff vs. Oklahoma, Gator Bowl, 1965

PASSES INTERCEPTED—3 by Tommy Brown vs. Stetson, 1950; and Georgia Tech, 1952; Lee Corso vs. Georgia, 1954; and Bud Whitehead vs. Virginia Tech, 1959

FIELD GOALS—3 by Les Murdock vs. Florida, 1964.

PUNTS—11 by John Hosack vs. Baylor, 1965 (40.8 average)

TEAM

POINTS SCORED—74 vs. Whiting Field, 1949

MARGIN OF VICTORY—74-0 vs. Whiting Field, 1949

MARGIN OF DEFEAT—0-42 vs. Georgia, 1959

YARDS RUSHING—383 vs. Abilene Christian, 1957

YARDS PASSING—355 vs. Villanova, 1954

TOTAL OFFENSE—526 vs. Furman, 1962 (277 rush, 239 pass)

PASSES ATTEMPTED—56 vs. Virginia Tech, 1966

PASSES COMPLETED—29 vs. Virginia Tech, 1966

PASSES INTERCEPTED—7 vs. Virginia Tech, 1959

PUNTS—11 vs. Baylor, 1965

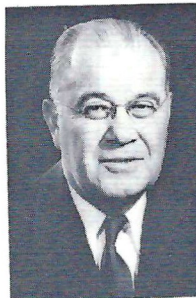
FLORIDA STATE'S ATHLETIC COMMITTEE



Robert Earnest
Chairman
Professor, Business



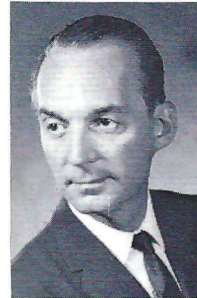
Mode L. Stone
Dean, School of
Education



Coyle E. Moore
Dean, School of
Social Welfare



Claude Flory
Professor, English



Thomas Wright
Professor, Music



Elston Roady
Professor,
Government



J. M. Plant
Assoc. Professor
Engineering Science



Mary Alexander
Assoc. Professor
Physical Education
and Recreation



Mason Ladd
Dean, College
of Law



John Carey
Dean of Students

MIDYETTE-MOOR Insurance Agency

"Ask Those We Serve"

Complete Insurance and Bond Service

PHONE 222-3456



MIDYETTE-MOOR BUILDING
TALLAHASSEE, FLORIDA

—SAYS—

SCALP 'EM SEMINOLES!



Payne Midyette
Frank Moor
Ed Clark
Winslow Sullivan
Bob Dickinson
Paul Lewis
Payne Midyette, Jr.

Bill Moor
Bill Franklin
Glenn Sears
Dick Wall
Don Northcut
Rex Sikes
Mike Lee

BENNETT'S DISCOUNT DRUG STORE

- Prescriptions
- Cameras
- Sundries
- Gifts
- Fountain
- Cafe
- Cosmetics
- Drugs

MEET ME AT BENNETT'S

BEFORE AND AFTER THE GAME!

Corner Monroe and College Streets

Phone 222-8980 — 222-4450

The Four P's of College Football

by ARNIE BURDICK

Sports Editor, Syracuse (N.Y.) Herald-Journal

President, Football Writers Association of America

WHEN North-western spoiled "Hurry-Up" Yost's unbeaten Michigan season of 1925, 3-2, more than one writer inquired, "Who pitched?"

Last fall, after West Virginia out-touchdowned Pitt, 63-48, one disbelieving editor wired back, "Get that Western Union operator off the bottle and give me the correct score!"

A great many changes have been taking place in college football over the years, and those two divergent results certainly point it up.

'Way back in the Depression Days of the '30's, money was not the only hard thing to come by. Touchdowns were mighty scarce, too. Now, they often come in bunches.

How come?

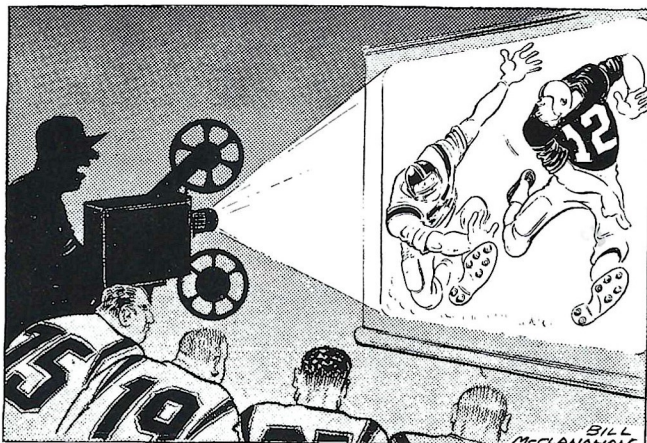
There are several theories, but most of the nation's finest football brains agree that the old "Punt-Pass-and-Prayer" era has given way to four new "P's."

"Passing, Platoons and Pictures," they say, "add up to Points!"

West Virginia and Pitt were not the only college teams busy scoring last fall. The National Collegiate Athletic Bureau reveals that a 32.1 points-per-game average was posted in major contests during 1965. That's better than two and a half touchdowns per team.

Paul (Bear) Bryant, who's been cranking out championship teams with regularity at Alabama was always known as "Mr. Defense" until recently when Joe Namath and Steve Sloan began authoring a bushful of touchdown passes. 'Bama's 39-28 conquest of Nebraska in the last Orange Bowl game emphasizes this dramatic turn of events.

"The past couple of years," Bear feels, "we have scored a lot but haven't played much defense. Probably because we have used our best



"Films have helped us, too."

football players on offense and have had great quarterbacks.

"Two-platoon football definitely should make it a higher scoring game, since the offensive specialists should be further advanced than the defensive men most of the time."

Syracuse's Benny Schwartzwalder believes that scores have gone up "because quarterbacks have become so good. They come to us from the high schools today better prepared. There are so many good passers. They're so skilled, so accurate. And they're throwing to more skillful receivers.

"As a result they've simply opened up the game. It's sideline to sideline now, and this puts the offense ahead of the defense. You can't defend from one sideline to the other. And remember," says the veteran Orange mentor who's been reluctant to throw the ball, "excellence in the passing game helps the running game. The defense just can't crowd you . . . Films have helped us, too."

"A few years ago," observed Texas' Darrell Royal, "it was nothing unusual at all to see a tight formation with no backfield men flanked. Most all of us now are using at least one flanked receiver. Not only does this added passing and loosened-up formation give more striking power, but it also is dangerous in that the ball may be intercepted, which in turn gives up an easy touchdown. In most cases you find the better ath-

letes playing offensively, rather than defensively. It is plain to see how this works to the advantage of the offense."

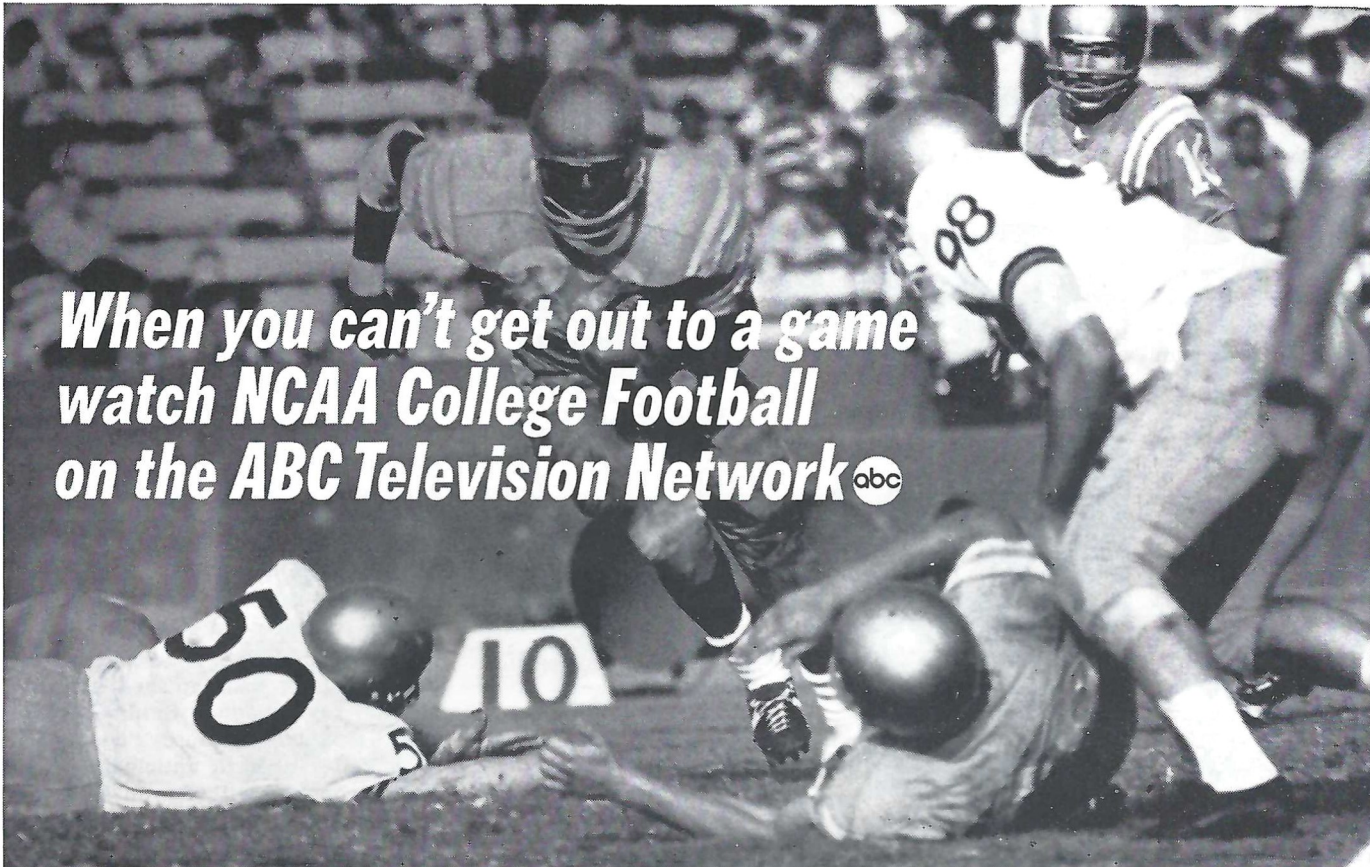
Notre Dame's Ara Parseghian feels strongly about the effect the return of platoon football has had on scoring. "The players have more time to specialize in their skills," observes Ara, "and a coach can utilize completely the individual ability of his players. And we also have more players today, due to the increase in population. The players today are bigger, stronger and faster."


Dartmouth's Bob Blackman, who has had such distinguished success in the Ivy League, thinks scores have mounted because "we have been better able to anticipate what our opponents will do on defense than on offense. Most teams will stem from one basic defense. On the other hand, it is very easy for a team on offense to run from several different formations from which they had run the previous week, and to also put in several completely new plays that they haven't shown before. Coaches also feel freer to make a change in offense than on defense, on the theory that if you make a mistake on offense, you may lose five yards, but if you make a mistake on defense it may give your opponent six points."

Ohio State's Woody Hayes, master of the "Three-Yards-and-a-Cloud-of-Dust" school recognizes "that defensive trends have taken a great deal of our offensive initiative away from us. We are no longer able to grind it out on the ground; thus the need for a passing game arises, and the increased use of the passing game has made for more scoring. Also, we have gotten more plays per game by mixing it up more which in turn gives us more opportunities to score."

Dad may have courted Mom back when a buck was a buck and when one touchdown won a ball game, but no more. "We used to think 14 points," the coaches chorused, "would win a game, but now we know we need 21. And 28 to be sure."

Sounds like a good many Western Union operators may be accused of drinking before this season is history.



***When you can't get out to a game
watch NCAA College Football
on the ABC Television Network*** 

See Florida State vs. Virginia Tech from Blacksburg, Va. over the ABC television network, Oct. 29, 1966

Campus Headlines and Coming Events

A WORD FROM ALUMNI PRESIDENT HARRY MASSEY . . .

The thousands gathered in Campbell Stadium for the 1966 Homecoming football game represent far more to Florida State University than just a group of excited gridiron fans. They are visual evidence of the growing body of sons and daughters of the University. Each year the number of alumni who return to campus for Homecoming grows by fantastic proportions. Ten to twelve thousand of those present this weekend come from the University's alumni family. With such support and interest, we are assured of continued fulfillment of the mission of your Alumni Association to serve higher education and our Alma Mater.

In the midst of this fine weekend, I pause to express the appreciation of the alumni to the faculty, staff, and students for the hard work and diligent effort they have put forth to make this occasion truly a Homecoming to remember for all of us. To President Champion, I renew our pledge of continued support. Under his outstanding leadership, the future cannot help but provide a champion year every year at Florida State.



1966 HOMECOMING COURT

THE QUEEN AND HER COURT—One of these five lovely Florida State coeds was crowned as FSU's 1966 Homecoming Queen at exactly 9:20 p.m. last night during the annual POW-WOW ceremonies in Campbell Stadium. Left to right, are the Misses Diana Teghtmeyer of Cocoa Beach, Toni Beals of St. Augustine, Jackie Fain of Atlanta, Barbara Huntress of Miami and Janet Dunn of Daytona Beach.



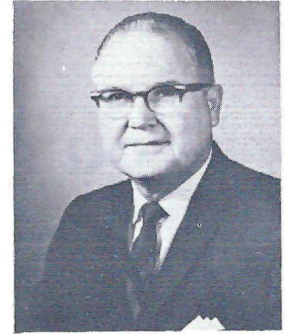
Haydon Burns*
Governor



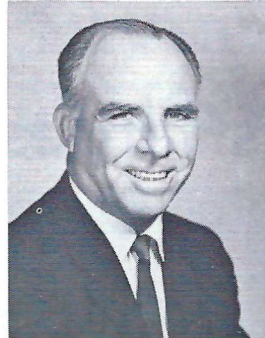
Tom Adams*
Secretary of State



Earl Faircloth*
Attorney General



Broward Williams*
Treasurer



Floyd T. Christian*
Supt. of Public Instr.



Doyle Conner
Comm. of Agriculture



Fred O. Dickinson, Jr.
Comptroller

State Officials

*Indicates membership on the
State Board of Education.



BOARD OF REGENTS—STATE UNIVERSITY SYSTEM

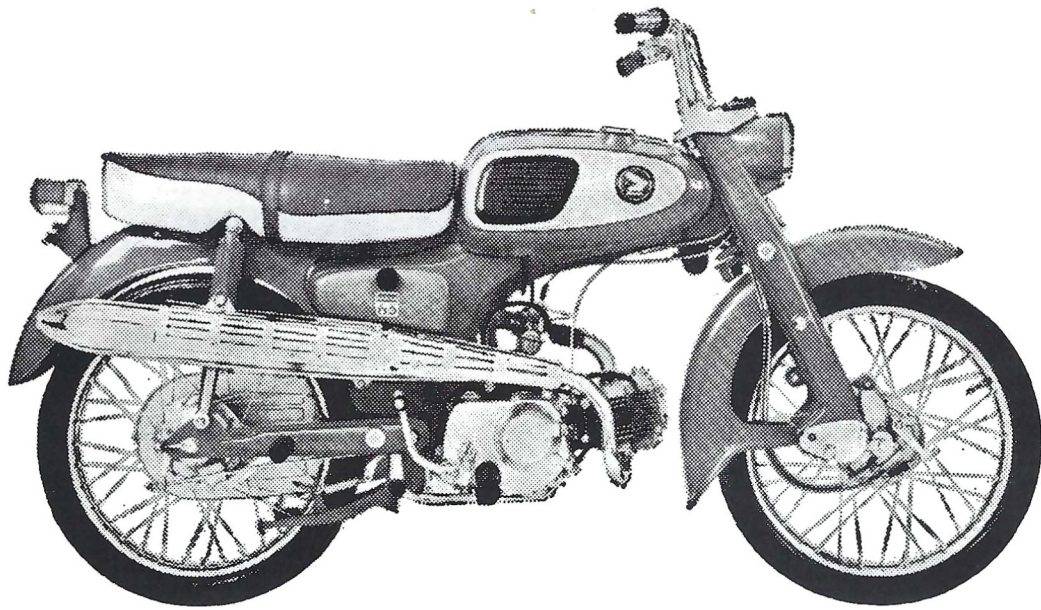
Left to right, front row: Wayne C. McCall, D.D.S., vice chairman, Ocala; Chester H. Ferguson, chairman, Tampa; Mrs. E. D. Pearce, Coral Gables; and John C. Pace, Pensacola. **Left to right, back row:** Clifton G. Dyson, W.

Palm Beach; Woodrow J. Darden, Titusville; Louis C. Murray, M.D., Orlando; Clarence L. Menser, D. Litt., Vero Beach; Henry Kramer, Jacksonville; and J. Broward Culpepper, Ed.D.

"You meet the nicest people on a

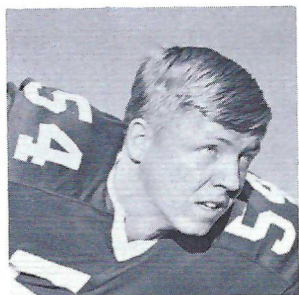
H O N D A

World's largest seller"

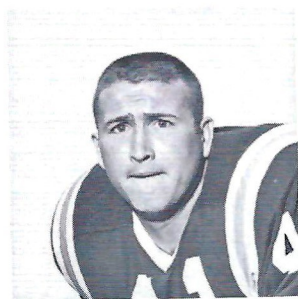


HONDA OF TALLAHASSEE

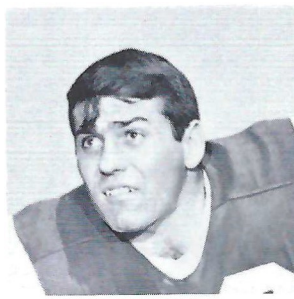
At the Underpass on West Tennessee



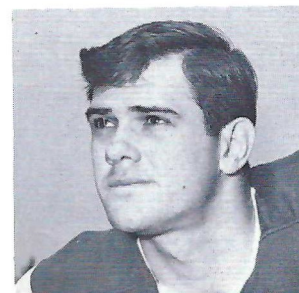
John Stephens



Bob Menendez



Wayne Giardino



John Hosack

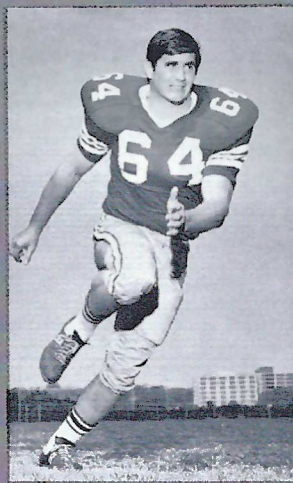
FLORIDA STATE UNIVERSITY 66 SEMINOLES



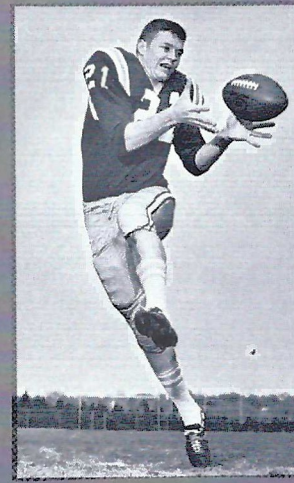
Bill Campbell



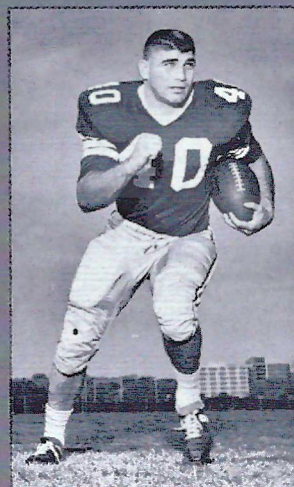
Gary Pajcic



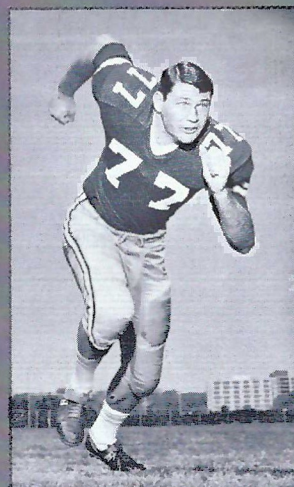
David Braggins



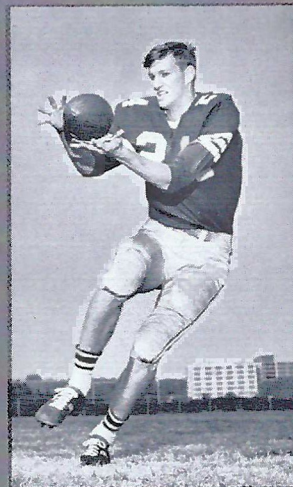
Bill Cox



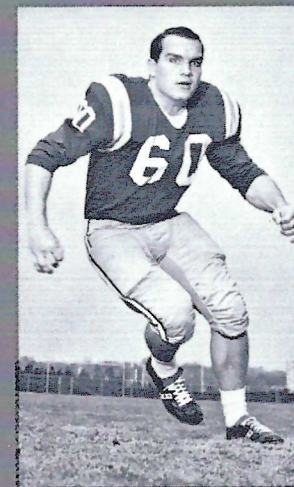
Mike Blatt



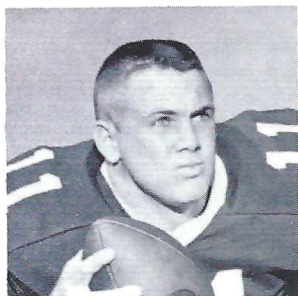
Jeff Curchin



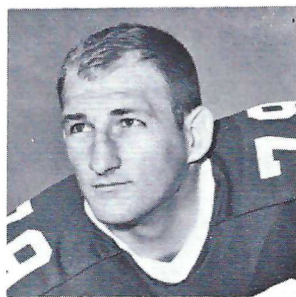
Ron Sellers



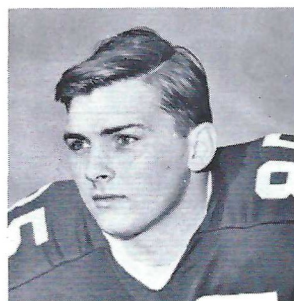
Larry Williamson



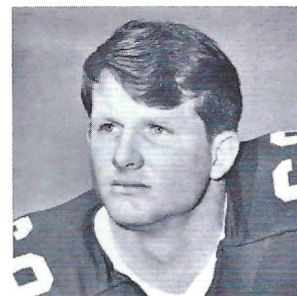
Kim Hammond



Frank Vohun

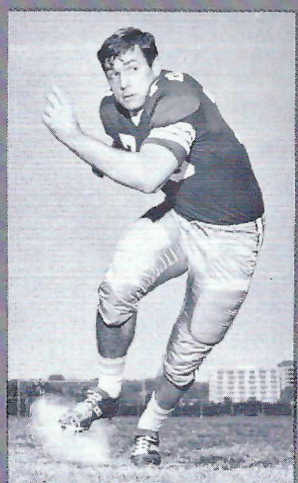


Doug Gurr

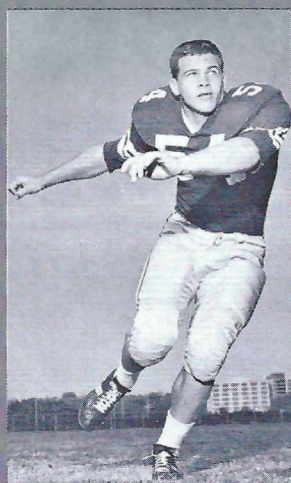


Jeff Chapman

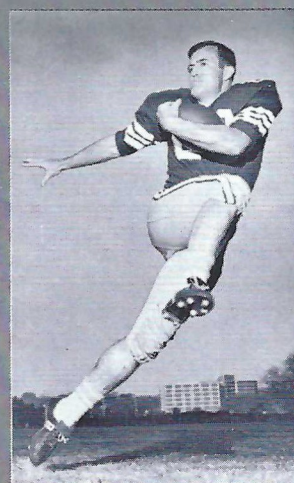
the FLORIDA STATE UNIV



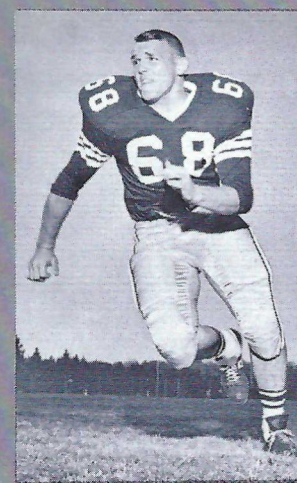
Charles Pennie



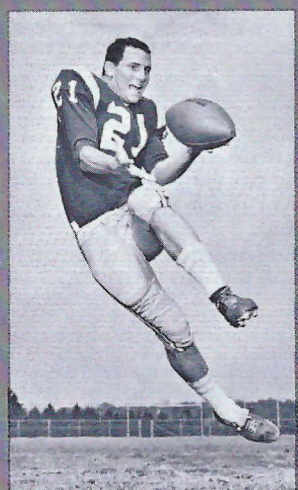
Billy Joe Janes



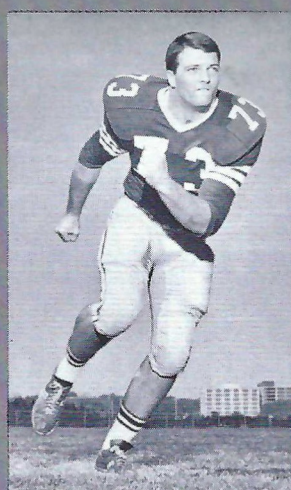
Larry Green



Larry Pendleton



Donovan Jones



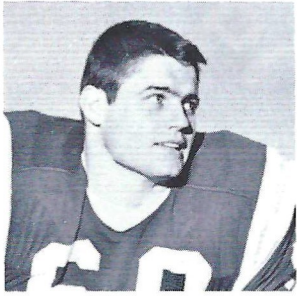
Larry Kissam



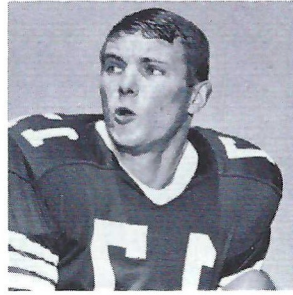
James Riser



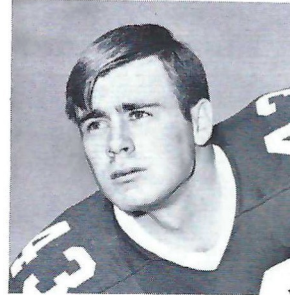
Chip Glass



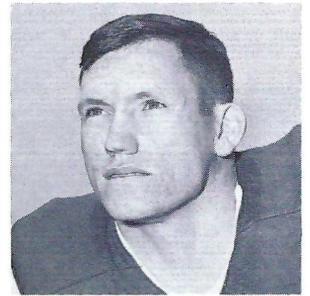
Edwin Pope



Marty Kolbus

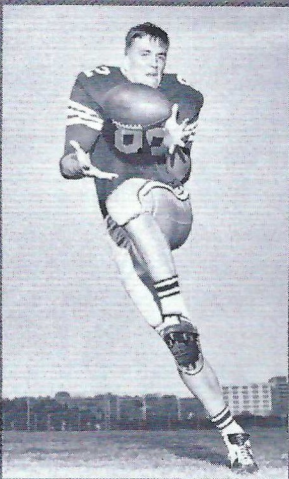


Howell Montgomery



H. T. Waller

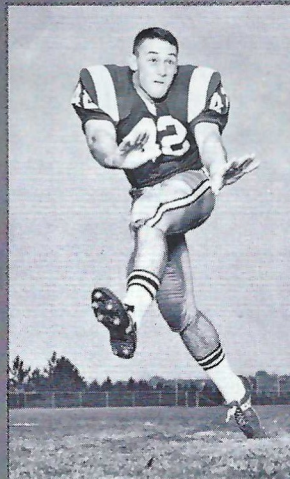
UNIVERSITY 1966 SEMINOLES



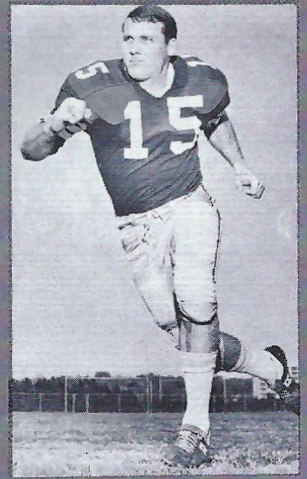
Lane Fenner



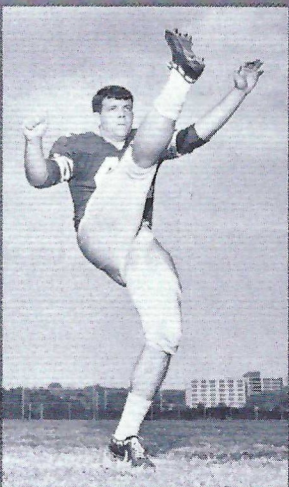
Bill Cappleman



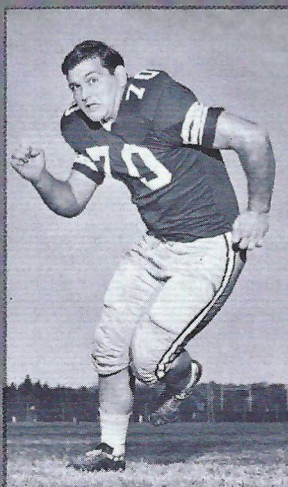
Bill Richardson



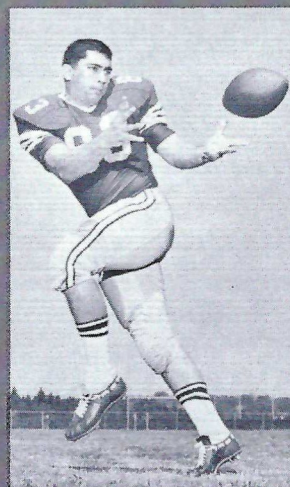
Pat Conway



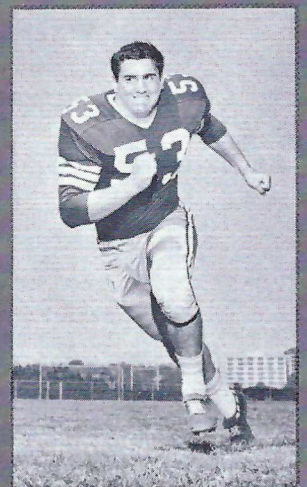
Pete Roberts



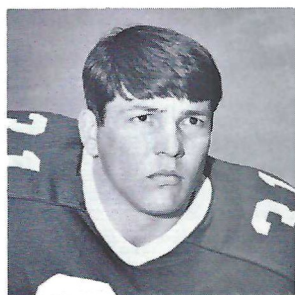
Del Williams



Thurston Taylor



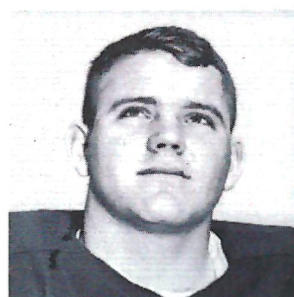
Harvey Zion



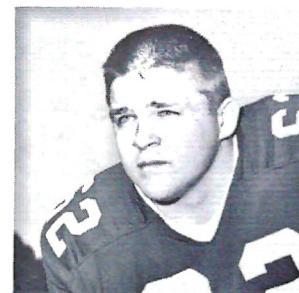
John Hurst



Ken Hart

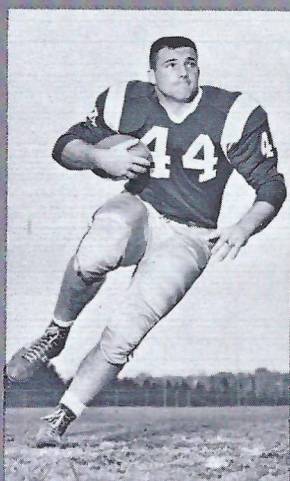


Jerry Jones



Dan Douglas

FLORIDA STATE UNIVERSITY 66 SEMINOLES



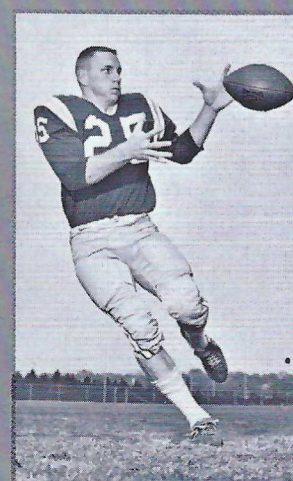
Jim Mankins



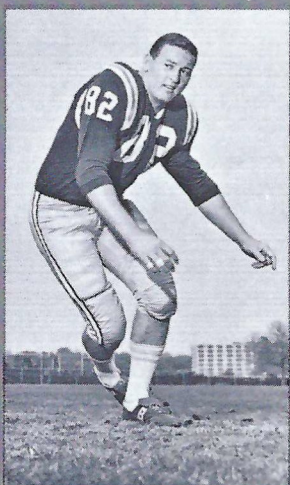
Jay Mac Matthews



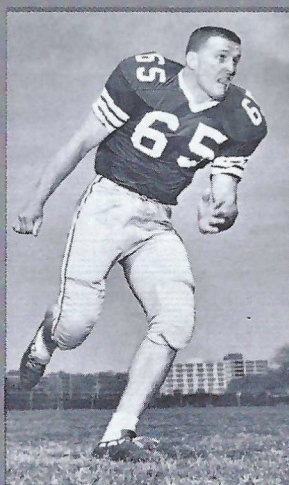
Billy Rhodes



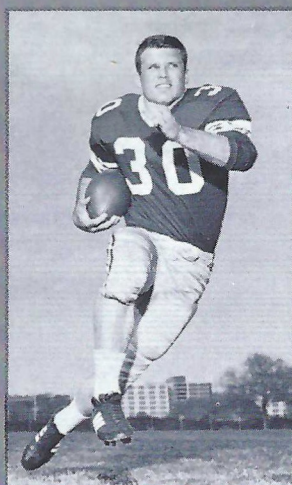
T. K. Wetherell



Wayne McDuffie



Dale McCullers

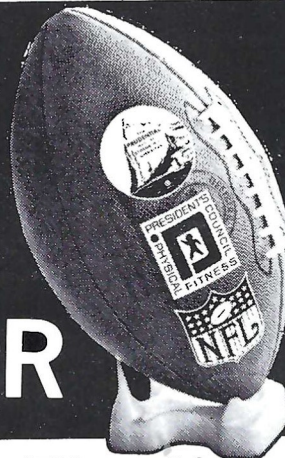


Bill Moreman



Jack Fenwick

"POISED FOR ACTION"



Football and Fitness Film Now Available!

This brand-new, exciting 28-minute color film captures the thrills of professional football. It shows 13 N.F.L. stars in action, in some of their biggest moments of play last year. In addition, the 16 mm. sound film depicts these same players in "how-we-do-it" demonstrations of these plays, as well as their own favorite methods of staying in peak physical shape.

The film and an accompanying 36-page booklet outlines football-oriented plays, exercises, fundamentals and skills.

The film, sponsored by Prudential in cooperation with the President's Council on Physical Fitness and the National Football League, is available for free loan. It will make a terrific program for your civic club, youth group or physical education class.

For information, contact your local Prudential office. Or write Public Relations Dept., The Prudential Insurance Co. of America, P. O. Box 4579, Jacksonville, Florida 32201.



THE PRUDENTIAL INSURANCE COMPANY OF AMERICA
SOUTH-CENTRAL HOME OFFICE • JACKSONVILLE, FLORIDA

Collins furniture co.
INCORPORATED

1117 THOMASVILLE ROAD
PH. 222-1415

TALQUIN INN

West Tennessee Street

Open Daily 5:00 p.m.

Closed Sundays

Learn to Fly at

G. C. Shuler

Seminole Flying Service, Inc.

Municipal Airport

Phone 222-3121

Tallahassee, Fla.

- STUDENT CLUBS
- AIRPLANE RIDES
- FLIGHT INSTRUCTION
- AERIAL PHOTOGRAPHY
- CHARTER FLIGHTS
- AIRCRAFT RENTAL

FLY the best—A New Cessna

"Look up—a new CESSNA will be overhead"

Go Seminoles

OWNED AND OPERATED BY FRANK, RICHARD & RAYMOND CHASE

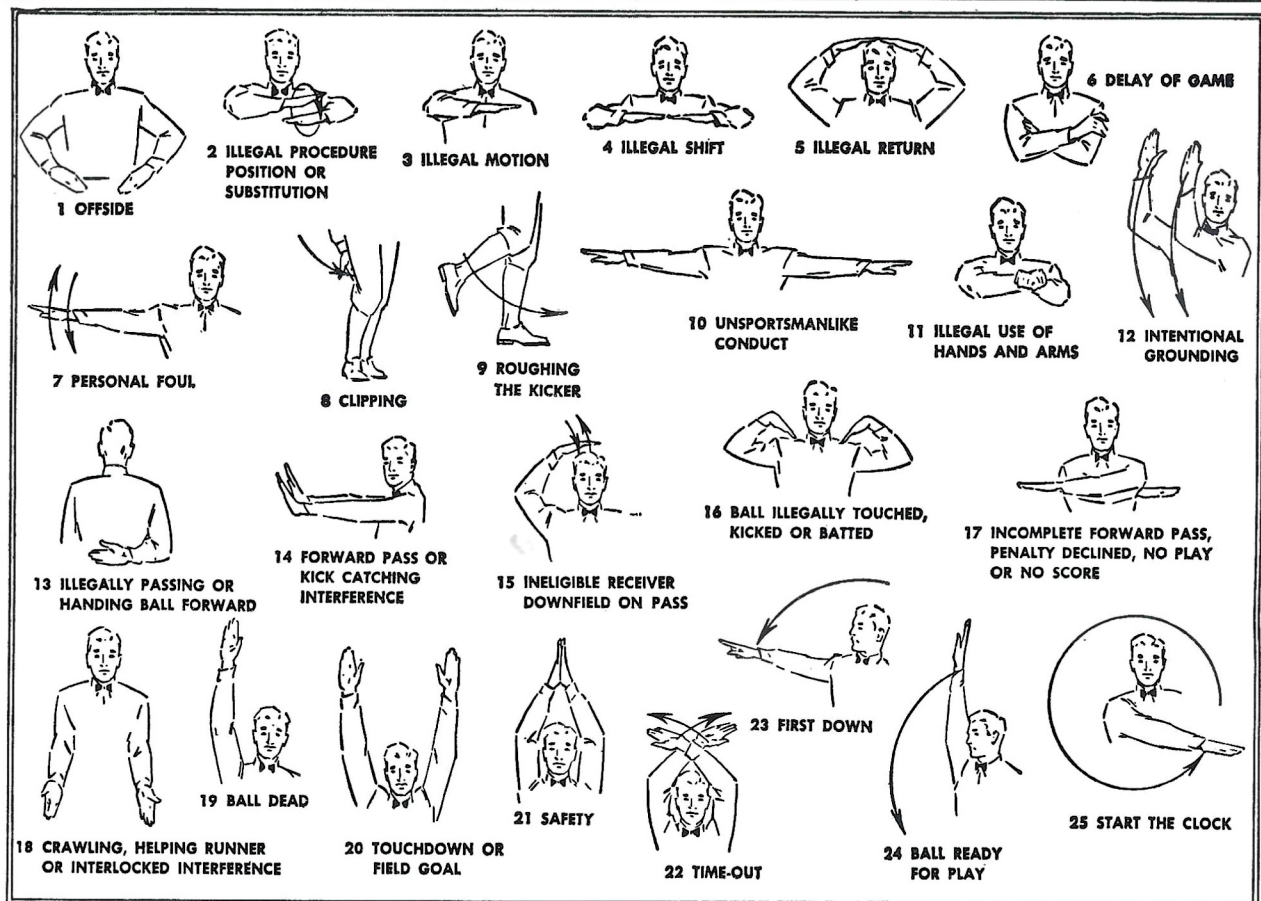


2220 W. TENNESSEE ST.
TALLAHASSEE, FLORIDA

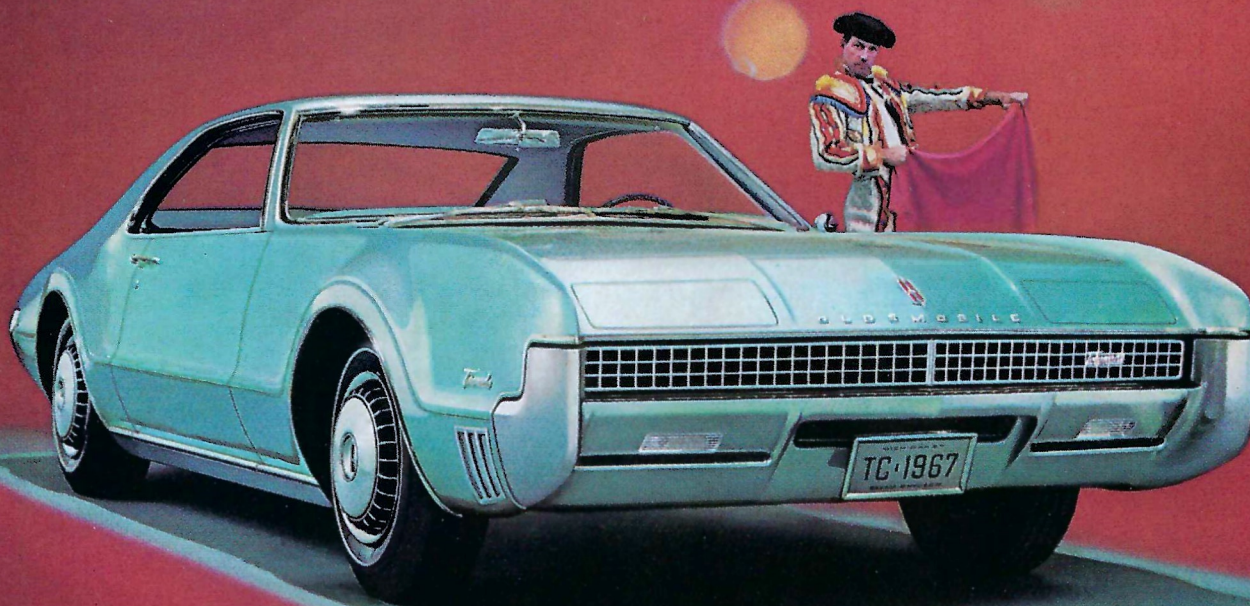
"Serving Good Food for Fine People"

Private Rooms and Banquet Facilities

FOR RESERVATIONS CALL: 599-9460 — 224-9546



The Rocket Action Cars are out front again!



**After you've walked off with all the honors,
what do you do for an encore?**

Meet Olds Toronado—'67 edition.

Awards for this. Awards for that. Awards for just about everything. But rest on its laurels? Not Toronado. Swinging new look outside. Posh new detailing inside. Doors with torsion-bar spring assists that open easier than ever to the flat-floored, room-for-six interior. Even that fabulous front-wheel-drive ride is smoother and quieter for '67. And front disc brakes and radial ply tires are available. Trend-setting Toronado: Proved and applauded by tens of thousands of satisfied owners. Greater than ever the second time around!

**OBEY
LAWS
DRIVE
SAFELY**

Olds thinks of your safety, too, with the GM-developed energy-absorbing steering column that can compress on severe impact up to 8¼ inches; with four-way hazard warning flasher; outside rearview mirror; dual master cylinder brake system, plus many other safety features—all standard for '67.

Engineered for excitement . . . Toronado-style!
'67 OLDSMOBILE





things go
better
with
Coke
TRADE-MARK ®

FOR THE TASTE

OFFENSE

80	KEN HENRY	WE
76	BILL SCHEIB	LT
66	DON McMURRY	LG
51	BOB OPLINGER	C
61	DON HENSLEY	RG
75	LYNN NESBITT	RT
83	RICK DECKER	SE
9	KEN ERICKSON	QB
41	EDDIE ARRINGTON	FLK
42	ANDY HECK	I-B
30	KEN HAUSWALD	FB

WAKE FOREST

DEFENSE

86	RAY SLONE	LE
77	ROBERT GRANT	LT
70	JOHN SNOW	LG
60	JOHN McQUEENEY	RG
88	BILL OVERTON	RT
85	TOM STUETZER	RE
53	JIMMY CLACK	LLB
50	BO WILLIAMS	RLB
40	DIGIT LAUGHRIDGE	LC
12	BUTCH BAKER	RC
11	ANDY HARPER	SFT

THE DEACON SQUAD

3	Atkinson, DB	66	McMurry, G
5	Cheatwood, QB	67	Stanback, G
7	Wilson, QB	68	Brown, G
9	Erickson, QB	69	Vosters, G
10	J. Arrington, QB	70	Snow, T
11	Harper, DB	71	Halvorson, DG
12	Baker, DB	72	Ferezan, T
14	Brookshire, DB	74	Graves, T
22	Johnson, HB	75	Nesbitt, T
24	Dixon, HB	76	Scheib, T
30	Houswald, FB	77	Grant, T
34	George, BI	78	Hames, T
35	D. Smith, FB	79	Freedlund, G
36	I. Smith, HB	80	Henry, E
40	Laughridge, DB	81	D. White, DB
41	E. Arrington, HB	82	Sepic, E
42	Heck, HB	83	Decker, E
44	Walt, DB	84	R. White, E
50	Williams, IB	85	Stuetzer, E
51	Oplinger, C	86	Slone, E
52	Penn, C	87	Brenner, E
53	Clack, C	88	Overton, DT
54	Anderson, C	89	Wiest, E
56	Sasser, G		
57	Sklutas, T		
60	McQueeney, G		
61	Hensley, G		
62	Perretz, G		
63	Blasiolo, IB		
65	Hessler, G		

GAME OFFICIALS:

Referee	R. P. (Pete) Williams, Miami
Umpire	Charles Ellinger, Lutherville, Md.
Linesman	A. C. Williams, Jr., Memphis, Tenn.

DEFENSE

87	WAYNE McDUFFIE	LE
78	CHARLES PENNIE	LT
23	WAYNE GIARDINO	LB
68	LARRY PENDLETON	MG
40	MIKE BLATT	LB
57	JOE KINNAN	RT
89	BOB MENENDEZ	RE
33	BUTCH RISER	CB
22	CHUCK EASON	CB
17	MARTY KOLBUS	S
24	WALTER SUMNER	S

FSU

OFFENSE

28	T. K. WETHERELL	SE
76	JACK FENWICK	LT
69	EDWIN POPE	LG
54	JOHN STEPHENS	C
70	DEL WILLIAMS	RG
73	LARRY KISSAM	RT
83	THURSTON TAYLOR	TE
16	GARY PAJCIC	QB
30	BILL MOREMAN	LH
44	JIM MANKINS	FB
34	RON SELLERS	FL

FLORIDA STATE SQUAD

11	Hammond, QB	52	Zion, MG
12	Burkhardt, QB	54	Stephens, C
14	Cappleman, QB	55	Mosley, C
15	Conway, DB	57	Kinnan, DT
16	Pajcic, QB	59	Loner, MG
17	Kolbus, DB	60	Williamson, OG
18	Burton, DB	61	Elliott, OG
19	Roberts, K	62	Douglas, OG
20	Green, HB	64	Braggins, DT
21	Jones, FL	65	McCullers, LB
22	Eason, DB	66	Hart, OG
23	Giardino, LB	68	Pendleton, MG
24	Sumner, DB	69	Pope, OG
26	Campbell, DB	70	Williams, OG
27	Cox, OE	71	Albritton, C
28	Wetherell, OE	73	Kissam, OT
29	Hurst, HB	74	Matthews, DT
30	Moreman, HB	75	Rhodes, OT
31	Gunter, HB	76	Fenwick, OT
32	Richardson, DB	77	Curchin, OT
33	Riser, DB	78	Pennie, DT
34	Sellers, FL	79	Vohun, DT
35	Hosack, K	80	Gurr, DE
40	Blatt, FB	81	Waller, DE
41	Crowe, FL	82	Fenner, SE
43	Montgomery, DB	83	Taylor, OE
44	Mankins, FB	84	Glass, OE
47	Benson, LB	87	McDuffie, DE
50	Janes, MG	88	Jones, LB
51	Richardson, C	89	Menendez, DE

Field Judge	O. V. Player, Sumter, S. C.
Back Judge	Dick Pace, Maitland
ECO	C. E. Schroll, Montgomery, Ala.

"COCA-COLA" AND "COKE" ARE REGISTERED TRADE-MARKS WHICH IDENTIFY ONLY THE PRODUCT OF THE COCA-COLA COMPANY. PRINTED IN U.S.A.



YOU NEVER GET TIRED OF





IN '67 BUICK

Get in with the In Crowd in a GS-400



BUICK MOTOR DIVISION

PENALTIES

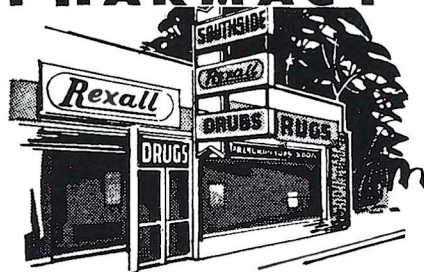
1. **OFFSIDE** by either team; Violation of scrimmage or free kick formation; Encroachment on neutral zone—Loss of Five Yards.
2. **ILLEGAL PROCEDURE, POSITION OR SUBSTITUTION**—Putting ball in play before Referee signals "Ready-for-play"; Failure to complete substitution before play starts; Player out of bounds when scrimmage begins; Failure to maintain proper alignment of offensive team when ball is snapped; False start or simulating start of a play; Taking more than two steps after Fair Catch is made; Player on line receiving snap—Loss of Five Yards.
3. **ILLEGAL MOTION**—Offensive player illegally in motion when ball is snapped—Loss of Five Yards.
4. **ILLEGAL SHIFT**—Failure to stop one full second following shift—Loss of Fifteen Yards.
5. **ILLEGAL RETURN** of substitute not previously disqualified—Loss of Fifteen Yards.
6. **ILLEGAL DELAY OF GAME**; Taking more than four times out during either half (except for replacement of injured player)—Loss of Five Yards. Team not ready to play at start of either half—Loss of Fifteen Yards.
7. **PERSONAL FOUL** — Tackling or blocking defensive player who has made fair catch; Piling on; Hurdling; Grasping face mask of opponent; Tackling player out of bounds, or running into player obviously out of play; Striking an opponent with fist, forearm, elbow or locked hands; Kicking or kneeing—Loss of Fifteen Yards (Flagrant offenders will be disqualified.)
8. **CLIPPING**—Loss of Fifteen Yards.
9. **ROUGHING THE KICKER** or holder—Loss of Fifteen Yards.
10. **UNSPORTSMANLIKE CONDUCT**—Violation of rules during intermission; Illegal return of suspended player; Coaching from sidelines; Invalid signal for Fair Catch; Persons illegally on field—Loss of Fifteen Yards. (Flagrant offenders will be disqualified.)
11. **ILLEGAL USE OF HANDS AND ARMS** by offensive or defensive player; Defensive holding—Loss of Fifteen Yards.
12. **INTENTIONAL GROUNDING** of forward pass—Loss of Five Yards Plus Loss of Down.
13. **ILLEGALLY PASSING OR HANDING BALL FORWARD**—Loss of Five Yards Plus Loss of Down.
14. **FORWARD PASS OR KICK CATCHING INTERFERENCE**—Interference with opportunity of player of receiving team to catch a kick—Loss of Fifteen Yards. Interference by member of offensive team with defensive player making pass interception—Loss of Fifteen Yards Plus Loss of Down. Interference by defensive team on forward pass—Passing Team's Ball at Spot of Foul and First Down.
15. **INELIGIBLE RECEIVER DOWNFIELD ON PASS**—Loss of Fifteen Yards.
16. **BALL ILLEGALLY TOUCHED, KICKED OR BATTED**—Forward pass being touched by ineligible receiver beyond the line of scrimmage—Loss of Fifteen Yards from Spot of Preceding Down and Loss of a Down. Eligible pass receiver who goes out of bounds and later touches a forward pass—Loss of Down. Illegal touching of kicked ball within opponent's ten yard line—Touchback.
17. **PENALTY DECLINED**; Incomplete forward pass; No play or no score.
18. **CRAWLING** by runner—Loss of Five Yards. Interlocked Interference—Loss of Fifteen Yards.

PRESCRIPTIONS

- COSMETICS
- GREETING CARDS
- TOYS
- FILMS & CAMERAS

224-9031

SOUTHSIDE
Rexall
PHARMACY



1549 S. MONROE



"BUDDY STEWART"
WE BILL THE BANK
"WORKING FOR BETTER
COMMUNITY HEALTH"
HAVE YOUR DOCTOR CALL US

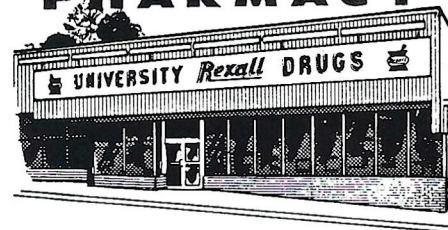
NO CHARGE FOR
DELIVERY SERVICE

CITY WIDE AND
SURROUNDING AREAS

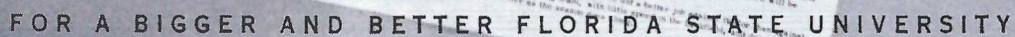
- VITAMINS
- CANDY
- GIFTS
- HOSPITAL SUPPLIES

224-5011

UNIVERSITY
Rexall
PHARMACY



W. TENN & HIGH RD.





SEMINOLE BOOSTERS, INC. BOARD OF DIRECTORS 1966

Seated, left to right: Weldon G. Starry, Director; Hank Mannheimer, Secretary; W. S. "Bill" Lee, President; Herschel Williams, Treasurer; and Dr. Ed Haskell, Jr., Immediate Past President.

Standing, left to right: Rainey Cawthon, Director; Louis Hill, Director; Tom Feamster, Jr., Director; Godfrey Smith, Director; J. T. Williams, Jr., Director; Theo Proctor, Jr., Director; William I. DuBey, Director; Wayne Cook, Director; Dr. Laurence Chalmers, Director; and Dan Wright, Director.

Not present when picture was taken were: T. A. Waits, Executive Director; J. Edwin White, President-Elect; Guy McKenzie, Director; Dr. Francis H. Watt, Director; F. W. "Bill" Carraway, Jr., Director; and Robert B. Drake, Director.

Seminole Boosters, Inc. is an organization devoted entirely to the support of the Florida State University athletic program with emphasis on football.

Membership in the Boosters—the group numbers approximately 1,400—is open to anyone with a sincere interest in the University's athletic progress. Minimum contribution for an individual membership is \$15. A business membership costs \$30.

Contributions are administered in accordance with NCAA regulations and in conjunction with the Florida State Department of Intercollegiate Athletics.

Boosters receive a colorful automobile license plate which can be used for admission to special reserved parking lot at the stadium, a membership card, a weekly fall publication, "The Grandstand Coach," and certain priorities on season and single game football tickets.

SEMINOLE BOOSTERS, INCORPORATED FLORIDA STATE UNIVERSITY TALLAHASSEE, FLORIDA 32306

My 1966 gift is:

- ☐ Check attached for \$ _____
- ☐ Pledge to pay \$ _____ Bill me for \$ _____ (TOTAL AMT.) (PAYMENTS) ☐ MONTHLY ☐ QUARTERLY ☐ OTHER _____ (SPECIFY)

MEMBERSHIP: Individual - \$15 minimum
Business - \$30 minimum



ARE YOU AN F.S.U. ALUMNUS? Yes ☐ No ☐

Make check payable to Seminole Boosters, Inc.
Mail To: 114 Longmire Alumni Bldg., FSU
TALLAHASSEE, Florida 32306



(PLEASE CORRECT ANY ERRORS IN YOUR ADDRESS)

NAME

ADDRESS

CITY, STATE

ZIP _____

SOLICITOR'S SIGNATURE _____ CONTRIBUTOR'S SIGNATURE _____ DATE _____



WHERE YOU
WILL FIND
YOUR FRIENDS

701 W. JEFFERSON
South Gate F.S.U.

QUALITY CLEANERS

215 W. COLLEGE AVE.—DIAL 222-5097

ONE DAY SERVICE

PICK-UP and DELIVERY

Quality Laundry Work

Fluff Dry Service

EXPERT TAILORING and ALTERATIONS

ZIPPERS REPAIRED



SPURGEON CAMP

*"Let's Be
#1
In 1966"*



*
*The cigar for men
that ladies love*

**HAV-A-TAMPA
JEWELS**

WITH EXCLUSIVE BIRCHWOOD TIP

2 for 15c

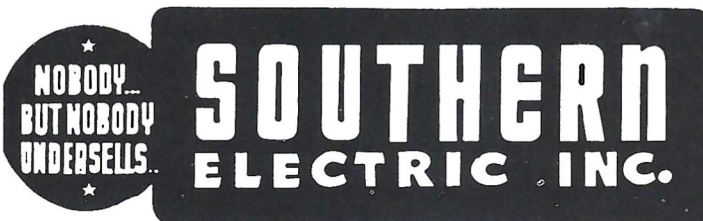
or new Push-Pak of five 36c
(Plus state and local taxes, if any)



FROM HAVATAMPA—TAMPA'S LARGEST MANUFACTURER OF FINE CIGARS

Distributed by **Eli Witt Tobacco & Candy Co.**

Tallahassee, Florida



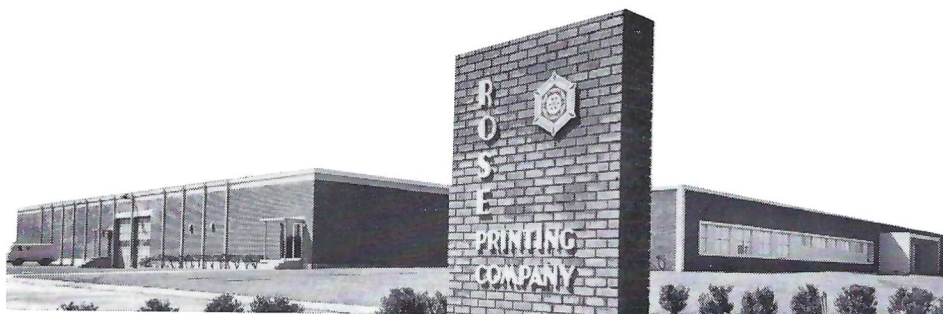


FLORIDA STATE'S 1966 FRESHMAN SQUAD

No.	Name	Pos.	Ht.	Wt.	Hometown	No.	Name	Pos.	Ht.	Wt.	Hometown
14	Doug Mitchell	QB	6-0	185	Williston	70	Terry Fisher	T	6-3	235	North Miami
15	Bobby Burt	E	6-0	185	Cairo, Ga.	71	Bill Lee	C	6-3	220	Chipley
16	Tommy Warren	QB	5-11	175	Coral Gables	73	Keith Kleinbach	T	6-3	230	Green Lane, Pa.
20	Phil Abaira	FL	6-0	180	Ft. Lauderdale	75	Tom White	T	6-1	240	West Palm Beach
21	Randy Hodges	HB	5-10	170	Tallahassee	78	Floyd Ratliff	FB	6-4	195	Jesup, Ga.
22	Mike Gray	E	6-3	180	Sanford	79	Duke Johnston	T	6-1	210	Ft. Lauderdale
27	Barry Wenhold	HB	5-10	190	Souderton, Pa.	80	Bob Eschelman	E	6-2	215	Coral Gables
28	Bill Donohoe	HB	6-0	180	North Miami	81	Jimmy Tyson	E	5-11	187	Pahokee
29	Bob Flynn	QB	6-0	190	Akron, O.	82	Jim Rust	T	6-3	200	Ft. Lauderdale
40	Ed Gibson	FB	5-10	195	Orlando	88	Lamar Munroe	HB	6-1	175	Quincy
41	Bill Cheshire	QB	6-0	180	Jesup, Ga.	89	Rick Anderson	QB	6-3	190	Winter Haven
42	Ron Montford	FB	6-0	195	Blountstown		Robert Webb	QB	6-1	185	St. Augustine
43	Bay Gruber	QB	6-1	175	Ft. Myers		Cecil Presnell	C	5-10	180	Miami
44	Mike Page	HB	5-10	170	Winter Haven		Skipper Babb	DB	5-11	165	Umatilla
52	Bill Hughes	C	6-1	205	Cocoa		Jimmy Bird	DB	5-10	155	Bronson
54	Pete Rupp	FL	5-10	180	Evansville, Ind.						
55	Ed Chereskhoff	HB	5-10	180	Pembroke Pine						
60	Barry Rice	HB	6-1	185	Fernandina Beach						
63	David Worral	LB	5-10	160	Fort Walton Beach						
64	Stan Walker	T	6-2	205	Tallahassee						
65	Dick Johnson	G	6-1	180	Miami Springs						
67	Paul Fuder	C	6-2	190	Marianna						
68	Jim Bracken	T	6-2	215	Canton, O.						
69	Beryl Rice	HB	6-0	180	Fernandina Beach						

1966 FRESHMAN FOOTBALL SCHEDULE

DATE	OPPONENT	SITE	TIME
Sept. 24	Miami	Sarasota	8:15 p.m.
Oct. 15	Florida	Gainesville	2:00 p.m.
Oct. 29	Southern Mississippi	Tallahassee	8:00 p.m.
Nov. 12	Georgia Tech	Moultrie, Georgia	8:00 p.m.



ROSE PRINTING COMPANY, INC.

TALLAHASSEE, WASHINGTON, NEW YORK AND CHICAGO

Your University Union....



*is more than a beautiful complex of buildings — it is an organization of a Union Board — Committees comprised of over 200 students — a professional staff — and **YOU!** It is an organization designed to serve you — the students, faculty, staff and members of the Alumni Association — with*

PROGRAMS ★ SERVICES ★ FACILITIES

Beginning its third year and already an FSU campus tradition

***Activities Night — Union Birthday Party — President's Ball
Madrigal Christmas Dinners***

Operated entirely without the use of any state tax funds

FOR ALL CAMPUS INFORMATION

CALL THE UNION

599-3317



SEMINOLE CHEERLEADERS

Left to right: Dixie Wilcoxin, Jacksonville; Bruce Turner, Jacksonville; Judy Holman, Albany, Ga.; Doug Traxler, Boca Raton; Head Cheerleader Toni Beals, Sumter, S. C.; John Mullins, Tallahassee; Peggy Thompson, Ormond Beach; Bill Abney, Jacksonville; Doreen Brown, Manassas Park, Va.; Dave Deutsch, Palatka.

THE ALMA MATER

High o'er the towering pines our
voices swell
Praising these Gothic spires we love
so well;
Here sons and daughters stand . . .
Faithful and True, Hailing our Alma
Mater
F . . . S . . . U . . .

FSU FIGHT SONG*

We're going to FIGHT, FIGHT,
FIGHT for FSU
We're going to scalp 'em Seminoles.
We're going to WIN, WIN, WIN,
WIN, WIN this game . . . and
roll on down and make those
goals!
For FSU is on the warpath now, and
and at the battle's end she's
great . . .
So FIGHT, FIGHT, FIGHT, FIGHT
for victory
Our Seminoles of Florida State . . .
F-L-O-R-I-D-A S-T-A-T-E
FLORIDA STATE (3 times)

THE FLORIDA STATE VICTORY MARCH*

Onward to victory, Seminoles, GO! FORWARD MARCH, we must move
out together and . . . FORWARD MARCH, it's always marching weather
when thousands strong, we swing along. All in step for VIC . . . TO . . . RY.
Our F-S-U and all our loyal Seminoles, ON-WARD GO . . . To conquer all
our savage foes . . . won't be long . . . we can't go wrong . . . we will crush
the EN . . . E . . . MY . . . So SCALP'EM . . . SCALP'EM . . . SCALP'EM
. . . it's a case of do or die . . .
Strike the fatal thrust, we'll be victorious; with terrible tenacity we can,
we will, we must!

FORWARD MARCH, we'll ride the swelling battle tide
FORWARD MARCH, we'll face the future side by side
With our might, we'll FIGHT, FIGHT, FIGHT!
. . . For Florida State University.

*Written by Thomas G. Wright,
Professor of Music at Florida State University.

YOUNG HO! GO CHEVRON!

Follow the SEMINOLES in '66

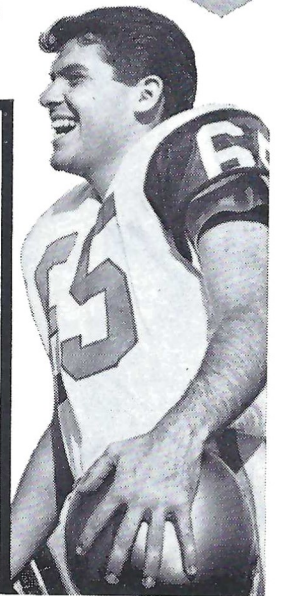


ON
THE

**STANDARD
OIL**

RADIO
NETWORK

WTNT Tallahassee	WJAX Jacksonville
WGBS Miami	WKIS Orlando
WCOA Pensacola	WDAE Tampa



**Enjoy a Treat
after the Game!**



Frisch's
BIG BOY

RESTAURANT
1175 WEST TENNESSEE STREET
TALLAHASSEE

•
OPEN 7a.m. To 12 Midnight
'TIL 2 a.m. Friday & Saturday

•
Diningroom & In-Car Service
Plenty of Easy Parking

•
For CARRY-OUT Orders Telephone 224-1246

THE SEMINOLE FOOTBALL NETWORK

Popular Bo Mitchell returns to the Seminole microphone for the fourth straight season, bringing play-by-play action to every corner of the Sunshine State.

The energetic Mitchell, an ex-naval aviator with more than 17 years broadcasting experience, is vice-president and station manager of station WCOA, Pensacola.

His partner at the mike this season will be Bud Kaatz, a native of Ohio who was formerly color man for the University of Michigan Football Network and play by play announcer for Ohio University and Marietta College. Kaatz will handle pre-game, halftime and time out commentary on the Seminoles.

Originating station for the Seminole Network is WTNT, Tallahassee. The network consisted of 29 stations in Georgia and Florida.



Bo Mitchell



Bud Kaatz

THE SEMINOLE NETWORK

WCOA Pensacola	WPCF Panama City
WTNT Tallahassee	WROD Daytona Beach
WJAX Jacksonville	WSPB Sarasota
WKIS Orlando	WTOT Marianna
WDAE Tampa	WZET Defuniak Springs
WGBS Miami	WTTB Vero Beach
WARN Ft. Pierce	WPAX Thomasville, Ga.
WDSR Lake City	WINK Ft. Myers
WEBY Milton	WTRR Sanford
WFOY St. Augustine	WPRY Perry
WGGG Gainesville	WFTW Ft. Walton Beach
WTRK West Palm Beach	WMAF Madison
WLAK Lakeland	WMGA Moultrie, Ga.
WLCO Eustis	WSIR Winter Haven
WMOP Ocala	WCNH Quincy

BOWLING'S GREAT

the Perfect date

**AFTER THE GAME
MEET YOUR FRIENDS**

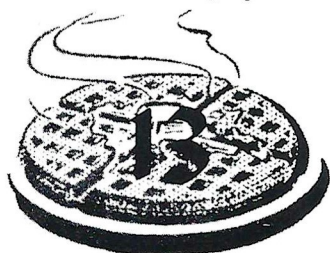
AT THE

Parkway Bowl

COFFEE SHOP

1230 Apalachee Parkway
TALLAHASSEE, FLORIDA

And Enjoy



WAFFLE VARIETIES

**With Your Favorite Beverage
or Rich Creamy Hot Chocolate**

GOOD LUCK SEMINOLES!

VARSITY THEATRE

1833 W. Tennessee

Phone 224-8636

PLEASE!

**CONSUMPTION OF ALCOHOLIC
BEVERAGES IS PROHIBITED
ON UNIVERSITY PROPERTY**

University regulations, and those of the State Board of Regents prohibit the consumption of alcoholic beverages on any part of the campus of Florida State University.

Please cooperate and abide by these regulations. Enjoy the game in the true spirit under which collegiate athletic contests are held, and be mindful of the rights of others.

Tensi and Biletnikoff—A Victory Combination



Bill Bunker

By BILL BUNKER
Former Sports Information Director

It was one of those times when dreams come true, and the very memory of it still stirs the blood. It was the year of excitement, color, and success—a year to remember when the others have been relegated to hard type in the record book.

Although 1964 is only two years gone, it is already an unalterable part of the legend and tradition that is football at Florida State University.

For this was the year it happened, the year the hopes and aspirations of the underdog became a force to be

regarded with awe. The overall story has been well-recorded—the 9-1-1 record, a first victory over Florida, a triumph in the Gator Bowl. Within the patina of success, however, are the smaller individual triumphs that supply the building blocks of a deeper than obvious satisfaction.

The focal point of that season was one of the most devastating passing combination ever produced by a southern football team. Steve Tensi and Fred Biletnikoff left the Gator Bowl turf arm in arm and walked into the Florida State record books. They were, and always will be, an entity in the minds of Seminole fans, as indivisible as apple pie and vanilla ice cream.

Neither was a ready-made star, and few realize the long hours of practice these two spent in making the difficult look easy. Tensi in particular had a rough way to go that year. Public sentiment was divided as to the big fellow's ability, and though he broke

Florida State's all time total offense record on his first pass completion of 1964, he had to prove himself to a lot of people during his senior year.

Prove it he did—to 11 opponents, the Gator Bowl selection committee, professional football, and finally to the Florida State fans.

Tensi was found by accident when a Florida State recruiter went to Cincinnati, Ohio to look at another quarterback, Roger Staubach by name. The two were opponents that day and the Seminole coach came away with the utmost respect for Tensi, who incidentally turned down some 70 offers to attend Florida State.

Biletnikoff was another story. Considered too small for college football, he was given a scholarship to Florida State after being passed over by most of the big colleges in his home area of Erie, Pa. It was a chance, but one which gave Florida State its first All American.

Outside of their obvious physical ability, the thing that set Tensi and Biletnikoff apart was the feeling on the part of the observer that each knew what the other was about to do. Florida State fans came to sense "the bomb" when Tensi took the ball from center. Was there any doubt in anyone's mind that a touchdown was on its way when Tensi dropped back into the pocket that first time against Florida?

More than the actual performance of the two, it seems that the anticipation of what could happen caused a large part of the excitement generated by the 1964 Seminoles. An example of this came in the Houston game, when Biletnikoff was sidelined with a painful charley horse. Tensi's passing was as good as usual and split end Don Floyd did a magnificent job taking up the slack, but somehow the electricity was missing, and it was just another ball game.

As is the case many times, the personalities of the two were totally different. Tensi reminded one of an overgrown kid, friendly, outgoing, easy to talk to. Biletnikoff was the more intense type. You could almost feel the energy coiled inside, looking for an outlet. Modest to a fault, both seemed embarrassed at the attention he received.

If Tensi and Biletnikoff received most of the attention and credit for Seminole success, there were other elements in 1964 which made Florida State one of the nation's most colorful teams.



Biletnikoff and Tensi Share MVP Gator Bowl Award

"The Seven Magnificents" they called themselves, and a brasher bunch of upstarts never lived. Laughter and scoffing was the reaction when tackle Avery Sumner first promoted shaved heads for the Seminole defensive line, but by the third game Florida State was the only major college football team in the country which hadn't allowed a point on the scoreboard.

Pride was their byword, and they lived fiercely on Saturday. The first touchdown scored against the Seminoles in 1964 brought tears to the eyes of the "Seven," though the score at the time was 48-0 in favor of Florida State.

Tensi and Biletnikoff broke almost every record the Gator Bowl had on that banner afternoon against Oklahoma, but who can forget the goal line stand by the Seminoles in the final moments? Oklahoma was on the short end of the final 36-19 score, and another touchdown would have made no difference one way or the other. The

Sooners wanted it to save face before a national TV audience, but they were denied by one final display of the pride which characterized the "Seven Magnificents" throughout the 1964 season.

Also taking a secondary role were the members of an offensive line which allowed Tensi to be thrown for a loss while passing only six times the entire season. This is the group which told Steve he could wear a tuxedo before the Florida game. In typical Tensi fashion, the FSU quarterback's first words following the game were:

"I could have worn a tux, that's how good my protection was."

Though some will deplore reminiscence as backward thinking, it's good to reach back for past success occasionally if for no other reason than to regain confidence in the fact that what has happened once can happen again.

It happened in 1964.

1966-1967 BASKETBALL SCHEDULE

DATE	OPPONENT	SITE
Dec. 1 (Thurs.)	Valdosta	Tallahassee
Dec. 5 (Mon.)	Rice University	Tallahassee
Dec. 7 (Wed.)	University of Florida	Gainesville
Dec. 9 (Fri.)	SUNFLOWER CLASSIC—Kansas State U.	Manhattan, Kan.
Dec. 10 (Sat.)	SUNFLOWER CLASSIC—Univ. of Kansas	Lawrence, Kan.
Dec. 16 (Fri.)	V.P.I. TOURNAMENT	Blacksburg, Va.
Dec. 17 (Sat.)	V.P.I. TOURNAMENT	Blacksburg, Va.
Dec. 19 (Mon.)	TAMPA INVITATIONAL	Tampa
Dec. 20 (Tues.)	TAMPA INVITATIONAL (Columbia, North Carolina & The Citadel)	Tampa
Dec. 27 (Tues.)	MOBILE INVITATIONAL	Mobile, Ala.
Dec. 28 (Wed.)	MOBILE INVITATIONAL (Auburn, Alabama & T.C.U.)	Mobile, Ala.
Jan. 7 (Sat.)	University of Miami	Tallahassee
Jan. 14 (Sat.)	Tulane University	New Orleans, La.
Jan. 16 (Mon.)	Memphis State	Memphis, Tenn.
Jan. 23 (Mon.)	Jacksonville University	Tallahassee
Jan. 25 (Wed.)	Marshall University	Tallahassee
Jan. 28 (Sat.)	Georgia Tech	Tallahassee
Jan. 30 (Mon.)	Tampa	Tallahassee
Feb. 4 (Sat.)	Memphis State	Tallahassee
Feb. 8 (Wed.)	Jacksonville University	Jacksonville
Feb. 11 (Sat.)	Tulane University	Tallahassee
Feb. 18 (Sat.)	Florida Southern	Lakeland
Feb. 22 (Wed.)	University of Florida	Tallahassee
Feb. 25 (Sat.)	Georgia Tech	Atlanta, Ga.
Feb. 27 (Mon.)	Tampa	Tampa
March 1 (Wed.)	University of Miami	Miami



Photo By W. G. Shaver

1966 Florida State Varsity Basketball Team

First Row (left to right): Bill Glenn, Dave Ross, Don Biggs, Dick Danford, Ken Doyle, Russ Forkey, Don Hilsmier; Second Row: Ian Morrison, Darrel Stewart, Brian Murphy, Jeff Hogan, Lenny Hall. In front: Hugh Durham, Head Coach, and Bill Clendinen, Ass't.

COMPLIMENTS OF TALLAHASSEE AUTOMOBILE DEALERS ASSOCIATION

ALFORD CHEVROLET COMPANY

KINNEBREW MOTORS, INC.

CAPITAL LINCOLN & MERCURY, INC.

MINGLEDORFF MOTORS, INC.

CAPITAL PLYMOUTH, INC.

PALMER-HARRELL BUICK COMPANY

COURTESY OLDSMOBILE, INC.

PROCTOR & PROCTOR, INC.

BOB DRAKE DODGE, INC.

TALLAHASSEE MOTORS, INC.

STADIUM INFORMATION

Rest Rooms—Located on concourse and on ground level on both east and west sides.

First Aid—Located in southwest corner of stadium. Registered nurse on duty.

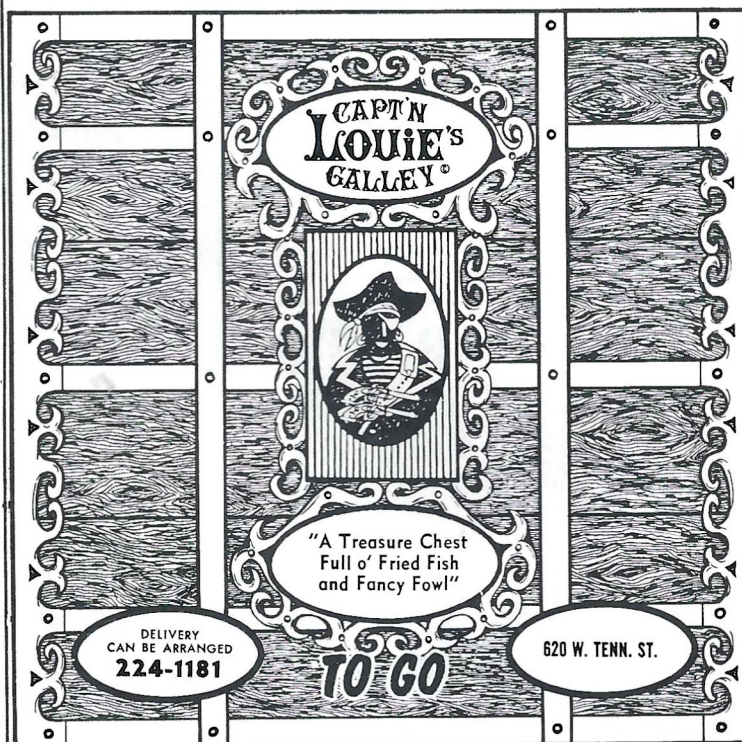
Lost and Found: Items may be claimed or turned in at the ticket booth next to the press box elevator, west side.

Public Telephones: Located ground level, west side.

Public Address: No special announcements are made over the stadium public address system except in cases of emergency.

Field Regulations: No spectators are allowed on the field, either during or after the game. Please leave the stadium by ramp and section exits rather than field level exits.

Drive Carefully—Your cooperation with law enforcement officers will help speed the flow of traffic away from the stadium.



Patronize Stadium

CONCESSIONS

Located beneath the stands on each side of stadium

COLD DRINKS small 15¢ large 25¢

HOT COFFEE 15¢

SANDWICHES 30¢

HOT DOGS 25¢

PEANUTS 25¢

POP CORN 15¢

CIGARETTES 40¢

SOUVENIR ITEMS - PENNANTS - BADGES

SUN VISORS - ASPIRIN

Please pay no more than

ESTABLISHED PRICES

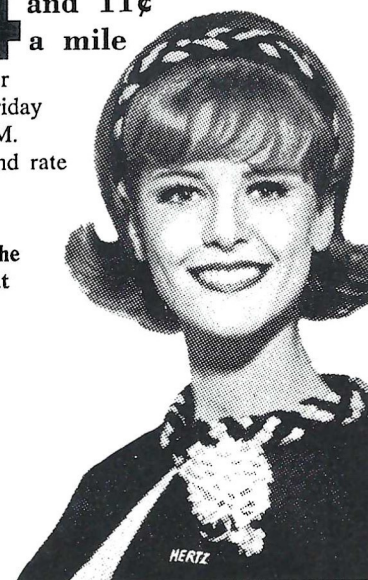
Drive a bargain with Hertz this weekend.

Only \$ 14⁹⁵ and 11¢
a mile

rents a Ford Galaxie or similar sedan from Friday noon to Monday 9 A.M. (And this low weekend rate includes insurance, gas, and oil.)

Let Hertz put you in the driver's seat. (Isn't that where you belong?)

For details, call:
222-1686



**WHEN YOU GET HUNGRY WHY NOT TRY SOME
COLONEL SANDERS RECIPE KENTUCKY FRIED CHICKEN ©**

three sizes to choose from:

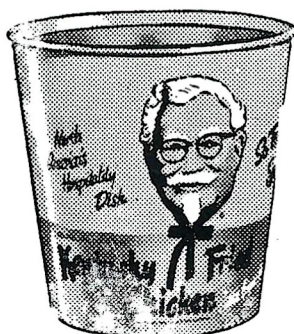
Individual Box
3 Big Pieces of Chicken,
Cole Slaw, French Fries,
Rolls, Gravy
\$1.10

Family Bucket
Serves 5 to 7
\$3.75

Barrel O' Chicken
Serves 8 to 10
\$5.00
Gravy & Rolls 5.40

Bar-B-Q Chicken Sandwich
French Fries — Jumbo Shake

60c



or if you prefer!

- Jumbo Shrimp Boxes
- Chicken Gizzard Boxes
- Filet of Fish Boxes
- Famous Home-Made Pies
- Chicken Liver Boxes

Holland's Drive In

TWO LOCATIONS TO SERVE YOU

Drive in No. 1
1002 N. Monroe—224-1645

Drive in No. 2
1603 W. Tenn. St.—224-4313

Tenn. St. Location Open 'Til 11 P.M.

Home Owned and Operated by Mr. & Mrs. N. T. Holland

**The
Association
of
Tallahassee Banks**

Lewis State Bank
The Peoples Bank
Industrial Savings Bank
Parkway National Bank
The Tallahassee Bank & Trust Co.
Capital City First National Bank

All Members of F.D.I.C.

Go Injun's

Pike's Studio

CHICK-N-TREAT
Fried Chicken Takeout

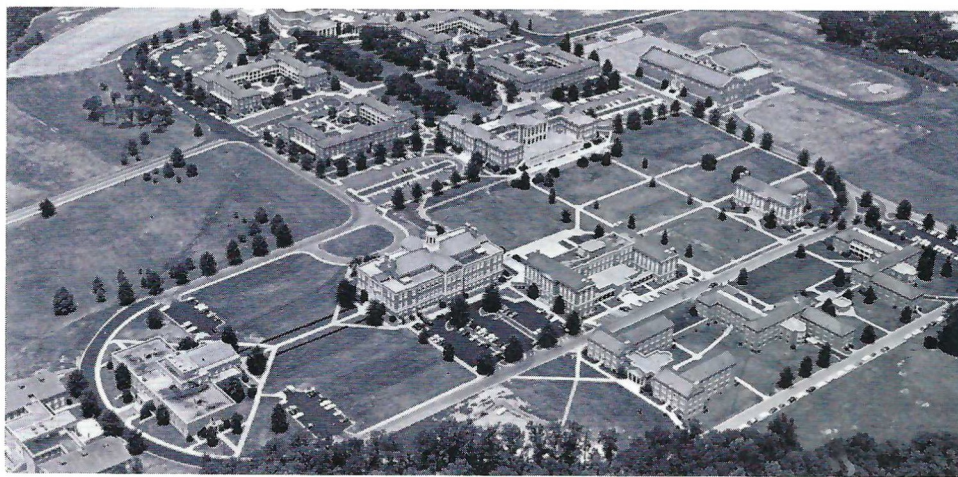
- 3 Pieces Chicken
- French Fries
- Cole Slaw
- Hot Rolls — Honey

\$1.00

LOCATED TWO BLOCKS FROM STADIUM

1342 Jackson Bluff Road
Phone 224-4425

Go Seminoles! Go!



AERIAL VIEW OF WAKE FOREST COLLEGE CAMPUS

WAKE FOREST COLLEGE

At a time when education has claimed its rightfully important place in this country, Wake Forest College has staked out its own claim to extraordinary accomplishment and excellence, particularly in the last decade.

An institution with the usual rich trappings of tradition, Wake Forest has made unusual strides in recent years. It has had, as have other colleges, the impetus provided by Russia's sputnik and the subsequent wave of public interest in education.

Additionally, it has had the unusual experience of moving 110 miles from its original site to its present new campus at Winston-Salem, N. C. The move and the growing interest in education stimulated a chain reaction which has made Wake Forest one of the outstanding institutions in the South.

Wake Forest was founded in 1834 by the Baptist State Convention of North Carolina in a grove of trees sixteen miles north of Raleigh, the state capital. Enrollment that first semester was 16 but the college grew and prospered.

In 1946 the college encountered a new opportunity when the Z. Smith Reynolds Foundation offered to pay Wake Forest \$350,000 annually if the friends of the college would provide necessary buildings at a site in Winston-Salem. The grant was increased to \$500,000 annually in 1956. Ten years later the college made the historic move and now occupies a new campus valued at more than \$25 million. The Bowman Gray School of Medicine of the college had been moved to Winston-Salem in 1941 when it received the resources of the Bowman Gray Foundation.

Wake Forest consists of the following divisions: the School of Arts and Sciences, the School of Law, the Bowman Gray School of Medicine, the School of Business Administration and the Division of Graduate Studies. The College and its schools are approved by the standard accrediting agencies. The College has chapters of the principal national social fraternities, professional fraternities and honor societies, including Phi Beta Kappa.

The College believes that its emphasis on the basic liberal arts is the avenue to training for successful living whatever the graduate plans to do. One of the attractions Wake Forest offers to the exceptional student is an honors program which has two phases. One crosses departmental lines and consists of such courses as Approaches to Human Experience, Darwinism and the Modern World, The Ideal Society, Romanticism and the Comic View. The second phase of the honors program is departmental and is reserved for highly qualified majors who undertake research projects and are given a comprehensive oral examination.

Each year the college attracts outstanding speakers and entertainers. It also offers a number of art exhibits and a series of the world's best movies.

The college, which now has an enrollment of about 3,000, distributes over \$250,000 in the form of scholarships. In the School of Arts and Sciences, the School of Business Administration and the School of Law they range up to \$1,500 annually and in the School of Medicine up to \$4,800 annually.

Wake Forest participates in all major intercollegiate sports. As a member of the Atlantic Coast Conference, it competes with some of the best teams in the country. Its 1961-62 basketball team ranked third in the NCAA finals. An extensive intramural program is offered for all men and women.

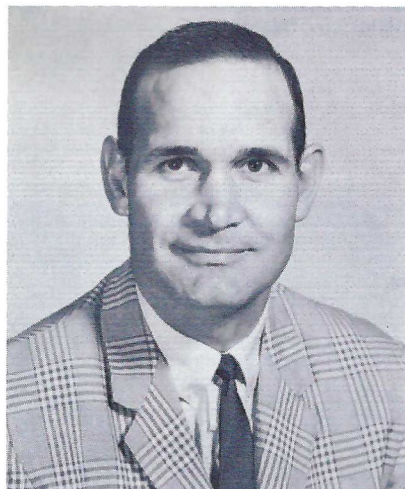
Wake Forest's current president is Dr. Harold W. Tribble who is the 10th man to lead the institution since it was founded.



DR. HAROLD W. TRIBBLE
Wake Forest President

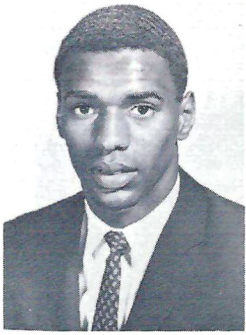


DR. GENE HOOKS
Wake Forest Athletic Director

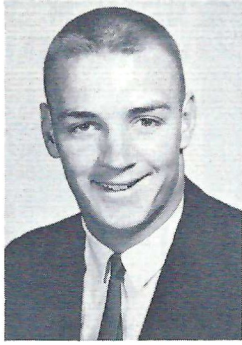


COACH BILL TATE

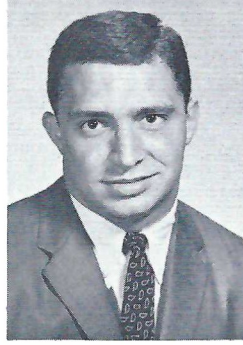
KEN HENRY



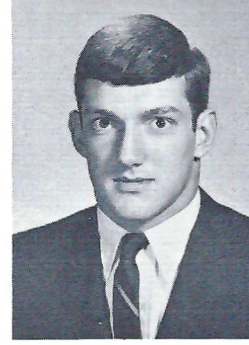
DICK HESSLER



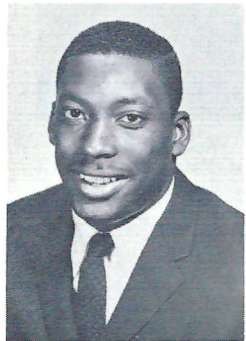
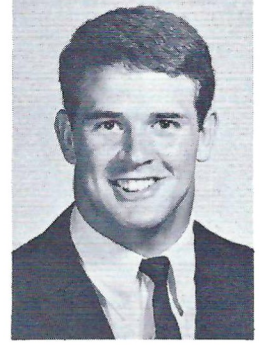
LARRY HAMBRICK



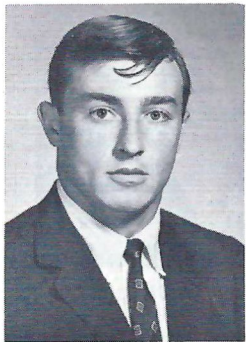
JIMMY CLACK



DON HENSLEY



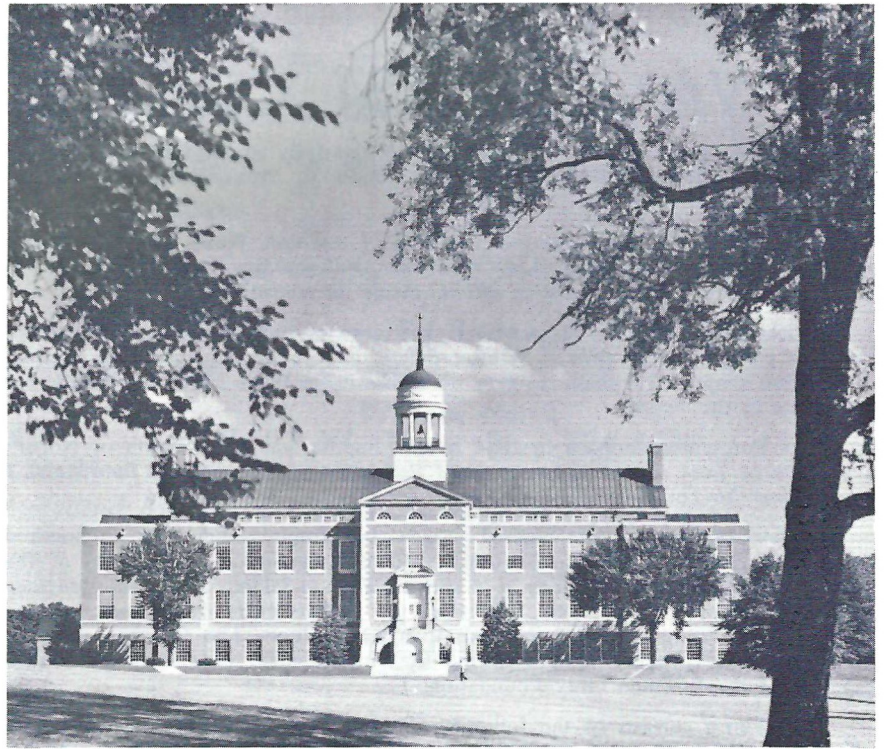
JIMMY JOHNSON



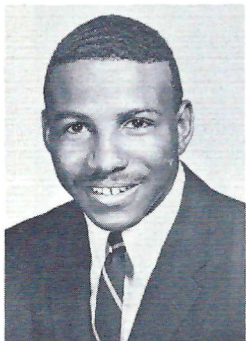
JOHN McQUEENEY

**W
A
K
E

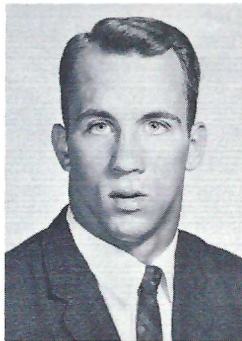
F
O
R
E
S
T**



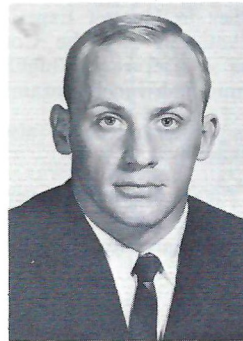
Z. SMITH REYNOLDS LIBRARY



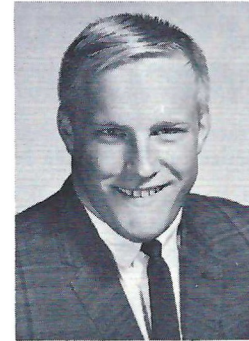
ROBERT GRANT



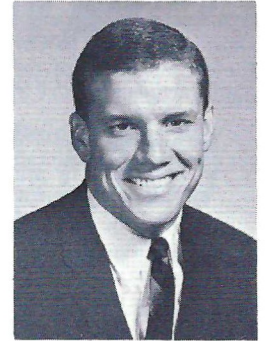
KENNY HAUSWALD



ANDY HECK

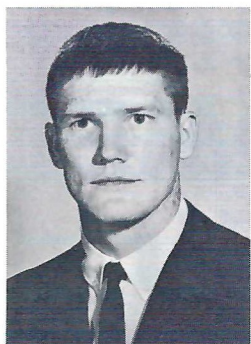


RUNO ANDERSON



BOB BRENNER

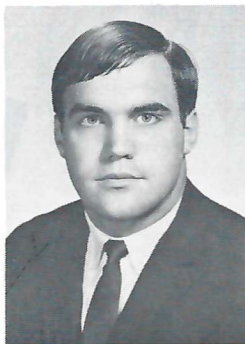
JIMMY DIXON



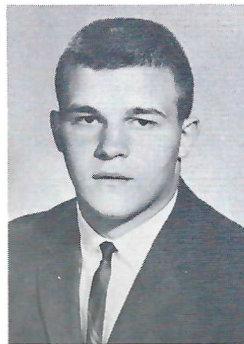
ANDY HARPER



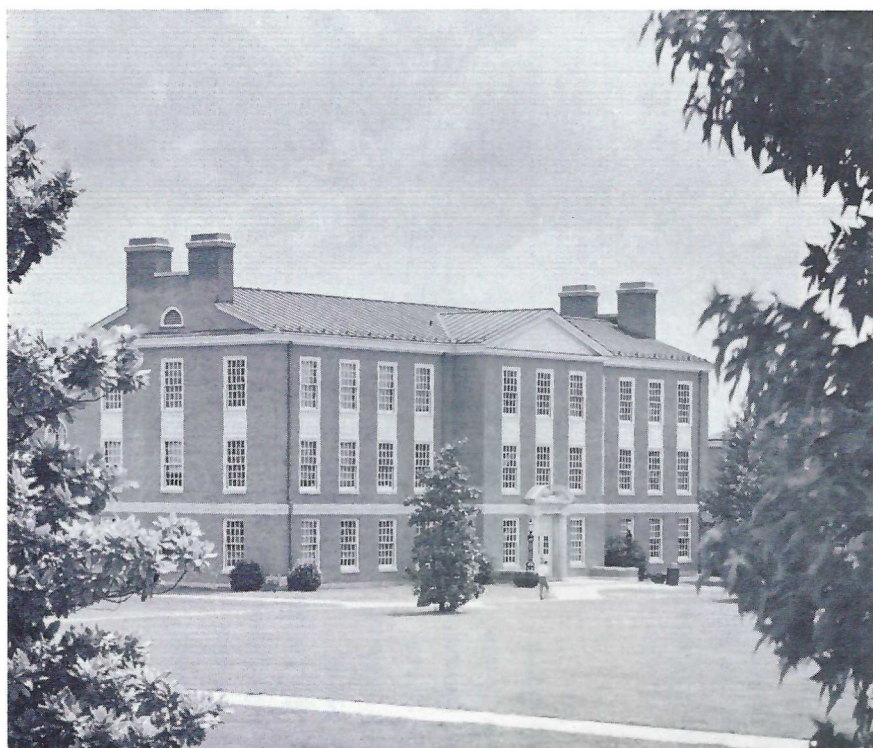
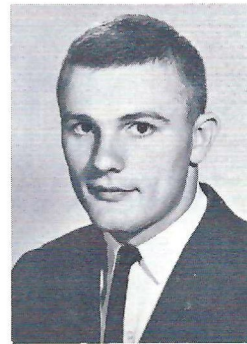
DICK CRITZ



DAN FEREZAN



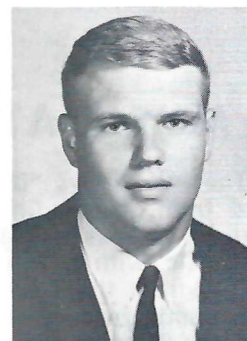
JOE SEPIC



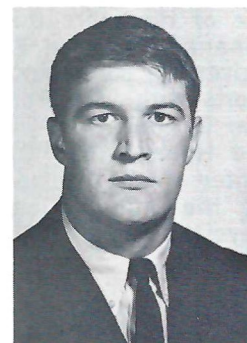
LAW BUILDING

**W
A
K
E

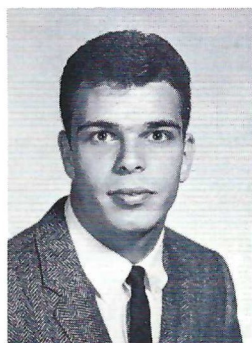
F
O
R
E
S
T**



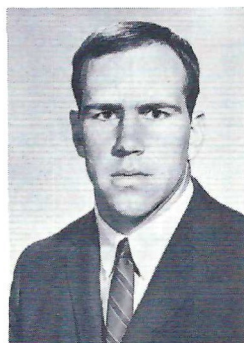
DICK PENN



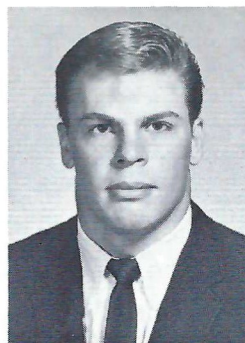
RICHARD DECKER



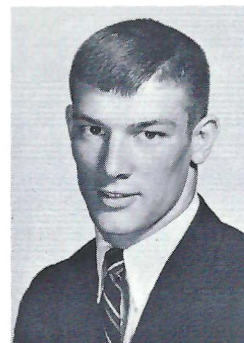
KEN ERICKSON



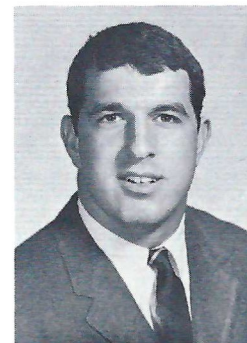
JAMES HOBBS



LLOYD HALVORSON

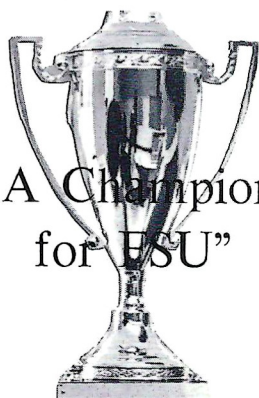


EDDIE ARRINGTON



CHICK GEORGE

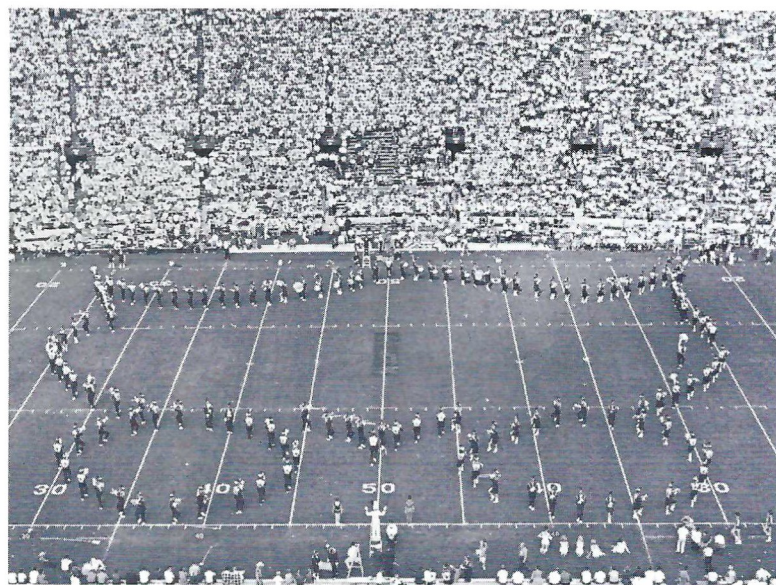
"1966: A Champion Year
for FSU"



WELCOME ALUMNI

MUSIC AT HALF-TIME

The band plays "Dixie" to welcome back alumni and friends. The Chiefs salute Dr. Karl O. Kuersteiner, professor and former dean of the School of Music, with the march from "Carmen" and excerpts from the New World Symphony by Dvorak. The band presents concert versions of music from Bach to Stravinski to honor Dr. Manley R. Whitcomb, founder of the current Marching Chiefs. For Dr. Ross R. Oglesby the band plays "Blue and White," one of the more than 100 songs he has written. Honoring Dr. John E. Champion, President of the University, the band salutes a "Champion" year in sports with "Mr. Touchdown," and a "Champion" year in education, with "Pomp and Circumstance." The Homecoming Queen and her court are presented to the music of "Queens Fanfare." Honoring the students and faculty of FSU, the band plays the school's Fight Song and Alma Mater.



FSU Majorettes



THE MARCHING CHIEFS

Robert T. Braunagel, Director
James Moody, Assistant Director
Charles Carter, Assistant Director
and Arranger
Camp Kirkland, Drum Major
Seminole Twins, Bookie Reynolds
and Jerry Williams

FLORIDA STATE

OFFENSE

SE	28 T. K. Wetherell	82 Lane Fenner
LT	76 Jack Fenwick	75 Billy Rhodes
LG	69 Edwin Pope	60 Larry Williamson
C	54 John Stephens	51 John Richardson
RG	70 Del Williams	66 Ken Hart
RT	73 Larry Kissam	79 Frank Vohun
TE	83 Thurston Taylor	84 Chip Glass
QB	16 Gary Pajcic	11 Kim Hammond
LH	30 Bill Moreman	20 Larry Green
FB	44 Jim Mankins	29 John Hurst
FL	34 Ron Sellers	27 Bill Cox

DEFENSE

LE	88 Jerry Jones	87 Wayne McDuffie
LT	78 Charles Pennie	64 David Braggins
LB	23 Wayne Giardino	61 Chuck Elliott
MG	68 Larry Pendleton	52 Harvey Zion
LB	40 Mike Blatt	65 Dale McCullers
RT	57 Joe Kinnan	74 Jay Mac Matthews
RE	89 Bob Menendez	81 H. T. Waller
CB	33 Butch Riser	18 Clint Burton
CB	22 Chuck Eason	18 Clint Burton
S	17 Marty Kolbus	41 John Crowe
S	24 Walter Sumner	41 John Crowe

CAPTAINS All Seniors SPECIALISTS

Punters: 35 John Hosack, 83 Thurston Taylor
Placements: 59 Frank Loner
Holder: 14 Bill Burkhardt

WAKE FOREST

OFFENSE

WE	80 Ken Henry	87 Bob Brenner
LT	76 Bill Scheib	70 John Snow
LG	66 Don McMurry	67 Howard Stanback
C	51 Bob Oplinger	53 Jimmy Clack
RG	61 Don Hensley	65 Dick Hessler
RT	75 Lynn Nesbitt	72 Dan Ferezan
SE	83 Rick Decker	84 Rick White
QB	9 Ken Erickson	10 Jimmy Arrington
FLK	41 Eddie Arrington	36 Ivey Smith
FB	30 Ken Hauswald	35 David Smith
I-B	42 Andy Heck	22 Jimmy Johnson

DEFENSE

LE	86 Ray Slone	82 Joe Sepic
LT	77 Robert Grant	61 Don Hensley
LG	70 John Snow	71 Lloyd Halvorson
RG	60 John McQueeney	75 Lynn Nesbitt
RT	88 Bill Overton	66 Don McMurry
RE	85 Tom Stuetzer	84 Rick White
LLB	53 Jimmy Clack	63 Mike Blasiole
RLB	50 Bo Williams	34 Chick George
LC	40 Digit Laughridge	12 Butch Baker
S	11 Andy Harper	12 Butch Baker
RC	12 Butch Baker	3 Ed Atkinson

WAKE FOREST SPECIALISTS

Punters: 40 Digit Laughridge, 34 Chick George
Place-Kickers: 34 Chick George, 65 Dick Hessler
Holders: Quarterbacks
Kickoffs: 34 Chick George, 65 Dick Hessler



TALLAHASSEE FEDERAL
SAVINGS & LOAN
ASSOCIATION

FLORIDA STATE'S 1966 VARSITY FOOTBALL ROSTER

No.	Name	Pos.	Class	Age	Ht.	Wt.	Hometown
11	Kim Hammond	QB	Jr.	22	6-1	185	Melbourne
12	Bill Burkhardt	QB	Soph.	20	6-1	194	Rocky River, O.
14	Bill Cappleman	QB	Soph.	19	6-3	204	Dunedin
15	Pat Conway**	DB	Sr.	21	5-10	176	Miami
16	Gary Pajic	QB	Soph.	19	6-2	192	Jacksonville
17	Marty Kolbus	DB	Soph.	20	6-2	186	E. Chicago, Ind.
18	Clint Burton	DB	Soph.	19	6-2	175	Atlanta, Ga.
19	Pete Roberts*	K	Jr.	21	5-11	205	Gainesville
20	Larry Green	HB	Jr.	21	5-10	180	Cairo, Ga.
21	Donovan Jones	FL	Sr.	21	6-1	206	Lakeland
22	Chuck Eason	DB	Soph.	19	5-10	187	Tallahassee
23	Wayne Giardino**	LB	Sr.	23	5-10	195	West Palm Beach
24	Walter Sumner	DB	Soph.	19	6-1	179	Ocala, Ga.
26	Bill Campbell*	DB	Sr.	21	5-9	188	Tampa
27	Bill Cox	OE	Soph.	20	6-1	180	Atlanta, Ga.
28	T. K. Wetherell*	OE	Jr.	20	5-10	183	Daytona Beach
29	John Hurst	HB	Soph.	19	6-0	200	Live Oak
30	Bill Moreman*	HB	Jr.	21	5-11	188	Daytona Beach
31	Bill Gunter	HB	Soph.	19	6-0	172	Dothan, Ala.
32	Billy Richardson	DB	Jr.	19	6-0	189	Jesup, Ga.
33	Butch Riser	DB	Jr.	21	6-0	186	Sanford
34	Ron Sellers	FL	Soph.	19	6-4	186	Jacksonville
35	John Hosack*	K	Jr.	21	5-10	195	Miami
40	Mike Blatt*	FB	Jr.	20	5-11	203	Key West
41	John Crowe	FL	Soph.	19	6-2	168	St. Cloud
43	Howell Montgomery	DB	Soph.	19	5-11	183	Blountstown
44	Jim Mankins*	FB	Sr.	22	6-2	220	King City, Calif.
47	Joe Benson	LB	Soph.	20	5-10	197	Birmingham, Ala.
50	Billy Joe Jones	C	Soph.	19	6-1	215	Live Oak
51	John Richardson	C	Soph.	19	6-0	199	Jacksonville
52	Harvey Zion	MG	Soph.	19	5-11	195	Atlanta, Ga.
54	John Stephens**	C	Sr.	21	6-1	201	Tallahassee
55	Ted Mosley	C	Soph.	19	6-2	202	Tampa
57	Joe Kinnan	T	Jr.	21	6-0	206	Bradenton
59	Frank Loner	MG	Soph.	20	6-0	196	Atlanta, Ga.
60	Larry Williamson*	OG	Sr.	21	5-11	202	Macon, Ga.
61	Chuck Elliott	OG	Soph.	20	6-0	194	Troy, O.
62	Dan Douglas	OG	Soph.	19	6-0	207	Hialeah
63	Richard McLean	G	Soph.	20	6-0	187	Daytona Beach
64	David Braggins*	DT	Sr.	21	6-2	224	Lake Wales
65	Dale McCullers	LB	Soph.	19	6-2	203	Live Oak
66	Ken Hart	OG	Soph.	20	6-3	219	Groveland
68	Larry Pendleton	MG	Soph.	20	6-0	206	Winter Garden
69	Edwin Pope	OG	Sr.	21	6-1	206	Waycross, Ga.
70	Del Williams**	OG	Sr.	21	6-2	240	Live Oak
71	Keith Albritton	C	Soph.	18	6-3	210	Avon Park
73	Larry Kissam*	OT	Sr.	21	6-0	221	Inglewood, Calif.
74	Jay Mac Matthews*	DT	Sr.	22	6-1	217	Chiefland
75	Billy Rhodes	OT	Soph.	19	6-2	230	Eustis
76	Jack Fenwick	OT	Soph.	20	6-4	214	Cincinnati, O.
77	Jeff Curchin	OT	Soph.	18	6-6	238	Ocala
78	Charles Pennie*	DT	Sr.	21	6-4	242	Hollywood
79	Frank Vohun	DT	Soph.	19	6-3	212	Brooksville
80	Doug Gurr	DE	Soph.	19	6-1	210	Albany, Ga.
81	H. T. Waller	DE	Jr.	21	6-1	191	Vernon
82	Lane Fenner	OE	Jr.	21	6-5	202	Evansville, Ind.
83	Thurston Taylor*	OE	Jr.	20	6-2	215	College Park, Ga.
84	Chip Glass	OE	Soph.	19	6-4	218	Tampa
87	Wayne McDuffie*	DE	Jr.	22	6-2	215	Hawkinsville, Ga.
88	Jerry Jones*	LB	Jr.	21	6-1	193	Jessup, Ga.
89	Bob Menendez	DE	Sr.	21	5-10	189	Key West

*Denotes letters won.

1966 WAKE FOREST FOOTBALL ROSTER

No.	Name	Pos.	Class	Age	Ht.	Wt.	Hometown
3	Ed Atkinson	DB	Soph.	19	6-1	182	Charlotte
5	Phil Cheatwood	QB	Soph.	20	6-2	186	Charlotte
7	Jon Wilson*	QB	Sr.	21	6-1	192	S. Milwaukee, Wis.
9	Ken Erickson	QB	Soph.	19	6-1	200	Park Forest, Ill.
10	Jimmy Arrington	QB	Soph.	19	5-9	180	Rocky Mount
11	Andy Harper**	DB	Sr.	21	5-10	187	Hialeah, Fla.
12	Carlton Baker*	DB	Jr.	20	5-11	174	Jacksonville, Fla.
14	Homer Brookshire	DB	Soph.	20	6-4	197	N. Wilkesboro
22	Jimmy Johnson	HB	Soph.	19	5-11	188	Lynchburg, Va.
24	Jimmy Dixon	HB	Jr.	21	6-1	195	Warsaw
30	Ken Hauswald*	FB	Sr.	20	6-1	195	Clark, N. J.
34	Chick George	LB	Soph.	19	6-0	201	Brunswick, Ga.
35	David Smith	FB	Jr.	19	6-0	206	Atlanta, Ga.
36	Ivey Smith	FB	Soph.	19	6-1	205	Fountain
40	Digit Laughride	HB	Soph.	19	5-10	187	Rocky Mount
41	Eddie Arrington	HB	Jr.	20	5-10	161	Winston-Salem
42	Andy Heck*	HB	Sr.	22	5-9	186	North Bergen, N. J.
44	Larry Walt	HB	Soph.	19	6-1	207	Alexandria, Va.
50	Bo Williams*	LB	Jr.	20	5-10	180	Perrine, Fla.
51	Bob Oplinger**	C	Sr.	21	6-1	225	Northampton, Pa.
52	Dick Penn*	C	Sr.	21	6-2	210	Miami, Fla.
53	Jimmy Clack	C	Soph.	19	6-4	210	Rocky Mount
54	Runo Anderson	C	Soph.	20	6-0	214	LaGrange, Ill.
56	Mike Sasser	LG	Soph.	19	5-10	194	Goldsboro
57	Tom Sklutas	LT	Soph.	19	5-11	197	Manchester, N. H.
60	John McQueeney	RG	Soph.	19	6-0	200	Rosindale, Mass.
61	Don Hensley*	RG	Jr.	19	5-11	200	Winston-Salem
62	Bob Perretz	RG	Jr.	20	5-11	203	Park Forest, Ill.
63	Mike Blasiole	LG	Soph.	18	6-0	204	Roanoke, Va.
65	Dick Hessler	RG	Jr.	19	5-11	190	Ft. Lauderdale, Fla.
66	Don McMurry**	LG	Sr.	20	6-3	189	Jefferson City, Mo.
67	Howard Stanback	LG	Soph.	19	6-0	221	Durham
68	Bill Brown	LG	Soph.	19	6-1	209	Murfreesboro
69	Jim Vosters	RG	Soph.	19	6-0	212	Miami, Fla.
70	John Snow**	LT	Sr.	20	6-4	224	Murphy
71	Lloyd Halvorson	RT	Soph.	19	6-0	222	McLean, Va.
72	Dan Ferezan	LT	Sr.	20	6-3	226	Aliquippa, Pa.
74	Bill Graves	LT	Soph.	19	6-2	220	Murphy
75	Lynn Nesbitt**	RT	Sr.	21	6-0	236	Berkeley Heights, N.J.
76	Bill Scheib	RT	Soph.	19	6-3	238	Leetsdale, Pa.
77	Robert Grant*	LT	Jr.	19	6-2	218	Jacksonville
78	Harry Hames	LT	Soph.	19	6-1	210	Marietta, Ga.
79	Lowell Freedlund	LG	Soph.	19	6-1	214	Rockton, Ill.
80	Kenneth Henry*	WE	Jr.	19	6-2	189	Greensboro
81	Dan White	DB	Soph.	19	6-0	180	Charlotte
82	Joe Sepic**	WE	Sr.	21	6-1	204	York Run, Pa.
83	Richard Decker*	SE	Jr.	20	6-2	217	Atlanta, Ga.
84	Rick White	SE	Soph.	19	6-4	210	Naperville, Ill.
85	Tom Stuetzer*	SE	Jr.	21	5-11	186	Wakefield, Mass.
86	Ray Stone**	WE	Sr.	23	6-0	200	Roanoke, Va.
87	Bob Brenner	WE	Soph.	19	6-3	200	Ft. Lauderdale, Fla.
88	Bill Overton	DT	Jr.	19	6-2	205	Boston, Mass.
89	Forest Wiest	WE	Sr.	20	5-11	193	Shippensburg, Pa.

*Denotes letters won.

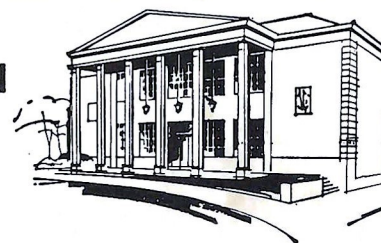
Tallahassee Federal

440 N. Monroe Street ★ Tallahassee, Florida

HOURS: Monday-Thursday, 8:30 a.m. to 3 p.m.—Friday, 8:30 a.m. to 6 p.m.

SAVINGS AND LOAN ASSOCIATION

TELEPHONE 224-2161





Your local *McDonald's* which has sold over 6 million Hamburgers has three new products . . .

- • • Double Hamburgers 29¢
- • • Fish Sandwich 29¢
- • • Hot Apple Pie 15¢

McDONALD'S 1701 W. TENNESSEE ST.



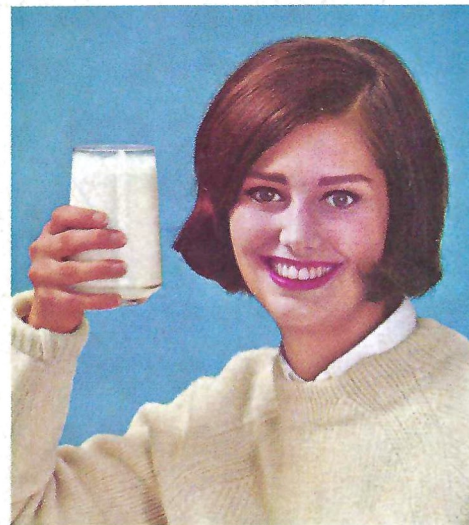
FOR ALL YOUR PHOTO
NEEDS FOCUS ON

TALLAHASSEE CAMERA CENTER, INC.

117 North Monroe
Across From The Florida Theatre

- CAMERAS
- FILM
- BINOCULARS
- FAST PHOTO FINISHING
- RENTALS

A Complete Line of Equipment and Supplies for the Amateur & Professional



CHEER FOR MILK'S VITALITY

Put Vitality on your team... drink milk! A glass of cool, refreshing milk with meals and snacks helps see you through the busiest fall schedule. No other beverage helps you get the lasting energy found only in nature's Vitality drink... Milk. You'll cheer for milk's Vitality.

a message from dairy farmer members of



american
dairy
association