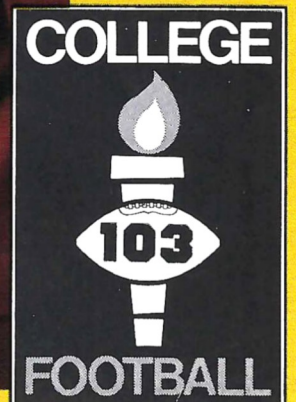


# FLORIDA STATE

---

## KANSAS



FOOTBALL MAGAZINE

September 25, 1971

\$1.00

# Holiday Inn®



## Two Inns To Serve You In Tallahassee

316 West Tennessee Street  
222-8000

1302 Apalachee Parkway  
877-3141

Banquet Rooms, Meeting and Conference Rooms with Complete Facilities, Dining Rooms and Lounges.



Seated around the silver cup are, (first row) Weldon Mullen, C.W. Peters, Dan Williams, F.W. Bucholz, J.K. Johnston, (second row) Ed Watson, David Cook, Fred McMullen, Moses Liddell, Vincent Green, (third row standing) Frank Gammon, Manager, Charles Puleston, Church Whitner, Guyte McCord, and H.H. Wells

## “...the finest article of football ever seen on the local gridiron.”

That's what the Lake City Florida Index newspaper had to say about the 1904 State Intercollegiate Champions, Florida State College. FSC won all four of their games to sweep the competition.

The Index writes, during the game between the University of Florida and Florida State College on October 28, 1904:

“On the part of the State College team, we can say, aside from fumbling, which they did on many occasions, and their off-side plays, they put up the finest article of football ever seen on the local gridiron.”

The final score was FSC 23, UF 0, in an uncompleted game. “Owing to darkness, the game was called with the ball in Florida's possession on her own 26 yard line,” added the Index.

In 1905, FSC became Florida State College for Women, thus terminating college football in Tallahassee, until 1947, when Florida State University fielded its first football team.

In 1904, the Lewis State Bank was forty-eight years old, and had been offering professional financial guidance to friends in Tallahassee that long. The Lewis State Bank is your family bank. Use it. People have for over a century.

### **The Lewis State Bank**

**When you've been in the banking business for over a century, you learn a lot.  
215 South Monroe Street**



**The Library And The Labs Are Busy Night And Day . . .**

Florida State's vast complex of science and research buildings is quite a contrast to the scientific facilities used on the campus back in the 1850s. Back then, they boasted of a microscope that could magnify a drop of vinegar "to 20 feet in diameter."

The University's student enrollment has had an equally phenomenal growth since its early (1857) Seminary days of 130 pupils. Today, its 10 schools and colleges are filled with more than 17,000 students who live, study and learn in classrooms, laboratories, dormitories and campus facilities valued at \$100 million. Students may pursue careers ranging from drama to zoology in colleges of arts and sciences, law and education, as well as the schools of nursing, social welfare, business, engineering science, home economics, music and library science.

I am gratified that so many of Florida State's loyal supporters in athletics are with us in Campbell Stadium for this exciting Seminole football season. Speaking for the entire University, I extend a warm welcome to all of our fans in the stands today. We hope that your stay on our campus will be enjoyable.

We have every reason to be proud of our athletic teams which, year after year, have established outstanding records in intercollegiate athletics. Florida State University might be said to have just entered Phase Three of its program of development in intercollegiate athletics. Phase One extended from the University's birth as a full-fledged university in 1947, to about 1960. Those were the years in which the foundation was laid for a sound program of athletics all across the board, as Florida State's name was carried throughout the region as an institution that would make its mark in athletics as it was doing in the academic arena.

Phase Two extended from about 1960 to the present. It was a period when Florida State joined the major competition, the time when we ceased to be "a breather," even for the best, and a time, incidentally, when scheduling the good teams became more difficult.

Phase Three has begun. It began on the first of January, 1971, when Larry Jones accepted our offer to become the University's sixth head coach of football. Another giant step was taken in April when Clay Stapleton agreed to become our Director of Athletics. This is the period when membership in the big leagues will pay off . . . when our acceptance as a member in full standing with other major universities engaged in athletics will bring the University and the Tallahassee community added recognition and stature and support in countless ways that go beyond the playing field.

Our success in athletics is due as well to the remarkable response of Seminole fans, whose enthusiastic support has never failed to inspire our coaches and players to demonstrate the best in sportsmanship and skill on the playing field.

Let me say a further word about community support. Your presence here today indicates that we have it in significant measure, and for that we are deeply grateful. We shall continue to solicit the support of this community and, indeed, all of Florida and beyond, for it is an essential ingredient in the recruiting of athletes, in scheduling, and in the all-important area of financial support. You may be certain that those of us at the University will do everything we can to merit the continued support and loyalty of all.

—STANLEY MARSHALL  
PRESIDENT  
FLORIDA STATE UNIVERSITY

**WELCOME To the South's**

**Friendliest Campus . . .**



**From One  
Seminole Fan  
To Another . . .**



**Dr. Stanley Marshall**

"Sure  
I've got  
a piece of  
the Rock."

Prudential.  
The Rock.  
Gibraltar.

And this new father has a piece of it.

Because a Prudential agent  
showed him how our Family Policy  
protects his whole family.

And every new member.

Within weeks after arrival.

Without increased expense.

And when you buy Prudential life insurance,  
you get a piece of The Rock.

Owning a piece of The Rock means that

Prudential's investments are working for you.

Investments that strengthen the economy.

And can help pay dividends on your policy, too.

If you're concerned about protection for  
your entire family, talk to a Prudential agent soon.

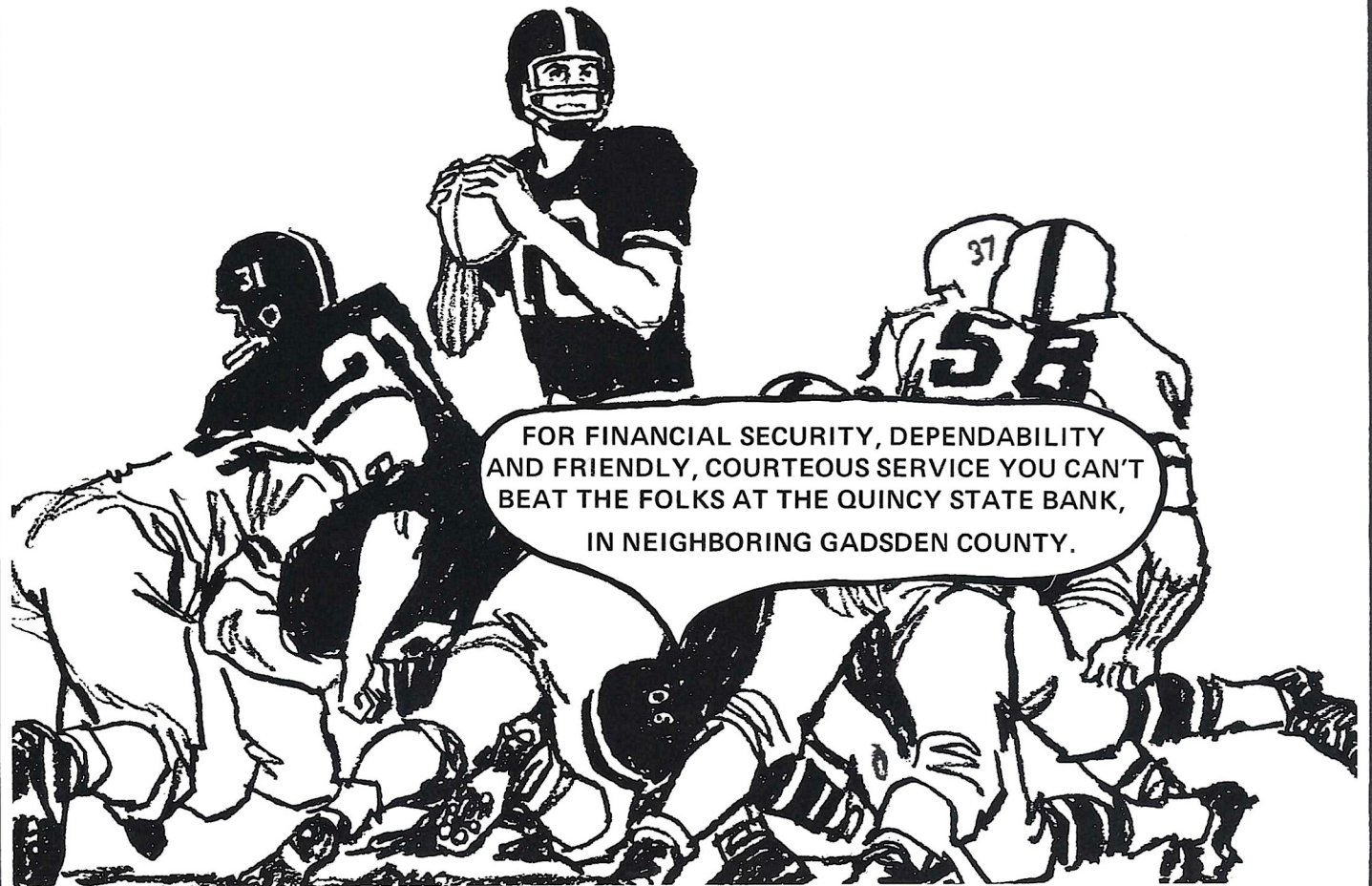
Own a piece of The Rock.



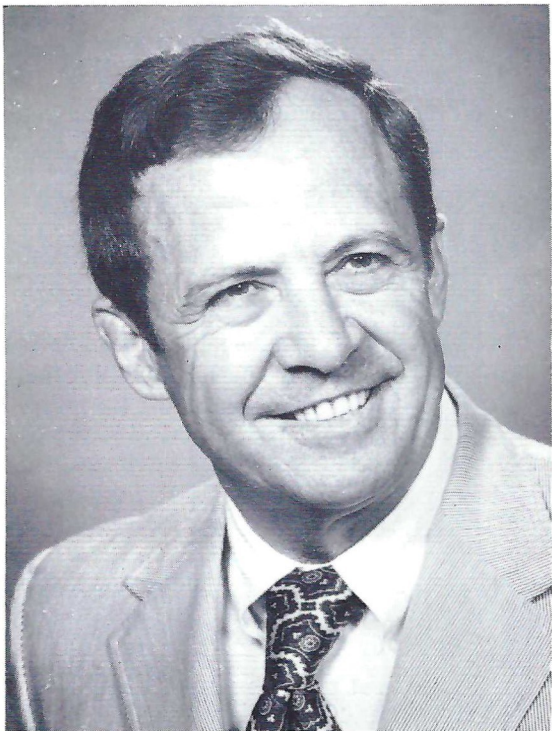
**Prudential**

South-Central Home Office, Jacksonville, Florida

the **Q**UINCY **S**TATE **B**ANK  
Quincy, Florida



FOR FINANCIAL SECURITY, DEPENDABILITY  
AND FRIENDLY, COURTEOUS SERVICE YOU CAN'T  
BEAT THE FOLKS AT THE QUINCY STATE BANK,  
IN NEIGHBORING GADSDEN COUNTY.



Athletic Director Clay Stapleton



Assistant AD  
RAY BICKERSTAFF

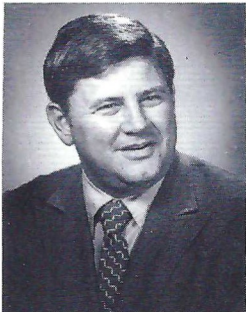


Business Manager  
DOUG MESSER

# ATHLETIC FAMILY



## ADMINISTRATIVE STAFF



JIM OLSEN  
Seminole Club



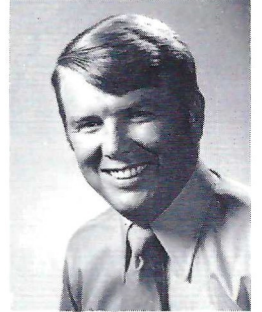
CLAUDE THIGPEN  
Ticket Manager



LONNIE BURT  
Sports Info Director

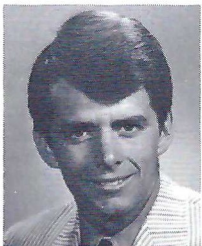


HANK SCHOMBER  
Ass't. SID

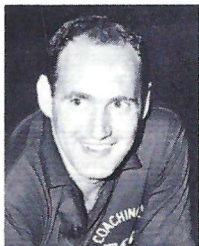


DAVE WAGNER  
Academic Advisor

## HEAD COACHES



SCOTT BRISTOL  
Tennis



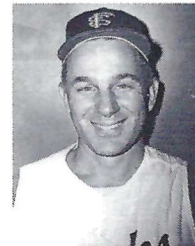
HUGH DURHAM  
Basketball



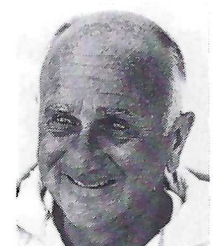
SCOTT FLETCHER  
Golf



MIKE LONG  
Track

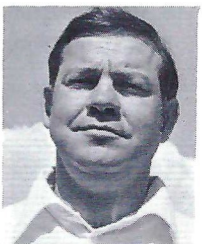


JACK STALLINGS  
Baseball

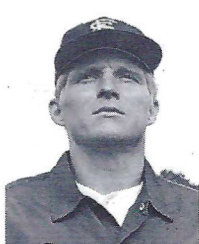


BIM STULTS  
Swimming

## ASSISTANT COACHES



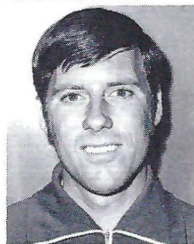
BILL BOLTON  
Basketball



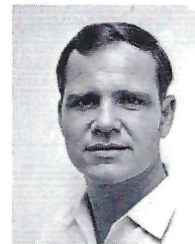
PAUL DIRKS  
Baseball



MORRIS McHONE  
Basketball



DICK ROBERTS  
Track



COREY VAN FLEET  
Swimming



CHARLIE DURBIN  
Cinematographer

# NUMBER

# 1



**in  
sports  
coverage**

*the complete newspapers*

**Orlando Sentinel . . . Orlando Evening Star**



# Florida STATE / KANSAS

Football Magazine

Vol. XXV

September 25, 1971

No. 1

With new athletic administrative officials and a new head coach, the Seminole Uprising is a brand new ball game. Pictured on the front cover of this week's Football Magazine are the three men dedicated to placing not only the athletic program, but also the entire University among the best in the nation. From the left, Head Coach Larry Jones, President Stanley Marshall and Athletic Director Clay Stapleton. (Cover Photo by Gil Lawhon, University Photo Lab)

## IN THIS ISSUE ...

### BEHIND THE TV SCENES ..... 15 and 52

Last week the Seminoles appeared on regional TV. The stories in this week's magazine give an indication of what went on behind the scenes to get those plays and replays into your home.

### THE 1971 SEMINOLES ..... 17

A photo feature of the members of the Florida State squad with background information on each player.

### SEMINOLE COACHES ..... 23

The Seminoles have a new coaching staff this year. Who are the men making the decisions? This profile and photo feature will fill you in on their background.

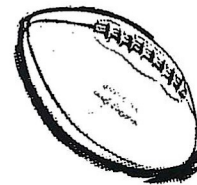
### FLIPCARD ..... 33-34

"You can't tell the players without a scorecard." And this feature is just that — full rosters and the depth chart.

### FOOTBALL GLOSSARY ..... 37

Lost in a sea of football terminology? Perhaps this feature will bail you out.

The University	4	Football Glossary	37
The Athletic Department	7	National Seminole Club	38
Seminole Club, Donors	10-13	Board Of Regents	40
Sportsmanship	14	Squad Picture	41
The Seminoles	17-20	ABC-TV Schedule	42
Football Coaching Staff	21	Stadium Information	44
Head Coach Larry Jones	23	University of Kansas	45-48
Assistant Coaches	24-25	Seminole Radio Network	49
Tonight's Game	27	The National Anthem	50
Tonight's Stats	28	Tonight's Halftime	51
Starting Lineups	31	Seminole Car Dealers	54
Depth Chart	33	Seminole Cheerleaders	56
Rosters	34	Seminole Basketball	57



Go  
Seminoles!



**Sears**

**Tallahassee's Complete  
Department Store**

• Everything You Need  
For Your Home  
Family or Car!

OPEN 9:30 a.m. 'til 9:30 p.m.  
Monday thru Saturday

SHOP AT SEARS  
AND SAVE

**Sears**

SEARS, ROEBUCK AND CO.



The Florida State Football Magazine is published by the Florida State University Department of Intercollegiate Athletics. Editor — Hank Schomber. Program Manager — Lonnie Burt. Business Manager — Doug Messer. Sales Coordinator — Jack Ibach. Local advertising is contracted by the Florida State Athletic Department. National Advertising representative is Spencer Marketing Services, New York. The 1971 Florida State Football Magazine was printed in Daytona Beach by The News-Journal.

# NATIONAL SEMINOLE CLUB

## FULL SCHOLARSHIP DONORS

*The following have donated \$1000 or more to the  
National Seminole Club*

★ ★ ★ ★ ★

**Capital City First  
National Bank**

Tallahassee, Florida

★ ★ ★ ★ ★

**Bill Cartee**

Tallahassee, Florida

★ ★ ★ ★ ★

**Ralph Collins**

Tallahassee, Florida

★ ★ ★ ★ ★

**Commonwealth Corp.**

Tallahassee, Florida

★ ★ ★ ★ ★

**Manuel Corral**

Tampa, Florida

★ ★ ★ ★ ★

★ ★ ★ ★ ★

**Compliments of a Friend**

★ ★ ★ ★ ★

★ ★ ★ ★ ★

**Tallahassee Bank  
and Trust Co.**

Tallahassee, Florida

★ ★ ★ ★ ★

**Dr. Coyle E. Moore**

Tallahassee, Florida

★ ★ ★ ★ ★

**Tallahassee Bank & Trust**

Tallahassee, Florida

★ ★ ★ ★ ★

**Lewis State Bank**

Tallahassee, Florida

★ ★ ★ ★ ★

**John Maurer**

Tampa, Florida

★ ★ ★ ★ ★

# NATIONAL SEMINOLE CLUB

## HALF SCHOLARSHIP DONORS

*The following have contributed \$500 or more*

<b>Mrs. Mary G. Carter</b> Perry, Florida	<b>Mr. James Hardesty</b> Tampa, Florida	<b>Mr. Wendell Jarrard</b> Maitland, Florida
<b>Rainey Cawthon, Inc.</b> Tallahassee, Florida	<b>Mr. Tony Nanos</b> St. Petersburg, Florida	<b>Mobile Home Industries, Inc.</b> Tallahassee, Florida
<b>Mr. Thomas W. Donovan</b> Jacksonville, Florida	<b>Spanish Park Restaurant</b> Tampa, Florida	<b>Moon's Jewelry Co.</b> Tallahassee, Florida
<b>Elberta Crate and Box Co.</b> Tallahassee, Florida	<b>Compliments of a Friend</b>	<b>The Tallahassee Democrat</b> Tallahassee, Florida
<b>Hammons Asphalt Paving, Inc.</b> Tallahassee, Florida		<b>Mr. Dennet Rainey</b> Tallahassee, Florida

## QUARTER SCHOLARSHIP DONORS

*The following have contributed \$250 or more*

<b>Alford Chevrolet Co.</b> Tallahassee, Florida	<b>Mr. Tim Harris</b> Jacksonville, Florida	<b>The Silver Slipper</b> Tallahassee, Florida
<b>Allbritton-Williams, Inc.</b> Tallahassee, Florida	<b>Mr. J. D. "Jim" Hawkins</b> Tallahassee, Florida	<b>Southern Bell Tele. &amp; Tell. Co.</b> Tallahassee, Florida
<b>Asphalt Contractors Assn. of Florida</b> Altamonte Springs, Florida	<b>Mr. W. S. Lee</b> Tallahassee, Florida	<b>Southern Wires, Inc.</b> Quincy, Fla.
<b>Ausley, Ausley, McMullen, McGhee and Carothers</b> Tallahassee, Florida	<b>McGowan Electric Supply Co.</b> Tallahassee, Florida	<b>Sunshine State Dairyman's Corp.</b> Tallahassee, Florida
<b>Bertha Cooke, Inc.</b> Tallahassee, Florida	<b>Maples Concrete Products, Co., Inc.</b> Tallahassee, Florida	<b>Symon, Tully &amp; Ryals</b> Tallahassee, Florida
<b>Buddy's Hardware</b> Tallahassee, Florida	<b>Mr. W. L. Montague</b> Quincy, Florida	<b>Tallahassee Builders</b> Tallahassee, Florida
<b>Cities Transit</b> Tallahassee, Florida	<b>Mr. Julius F. Parker, Jr.</b> Tallahassee, Florida	<b>Van Brunt and Yon</b> Tallahassee, Florida
<b>Mr. Fred O. Drake, Jr.</b> Tallahassee, Florida	<b>Perry Auto Supply, Inc.</b> Perry, Florida	<b>Julian Smith</b> Tallahassee, Florida
<b>Mr. Clark Durrance</b> Tallahassee, Florida	<b>Proctor and Proctor</b> Tallahassee, Florida	<b>The Peoples Bank</b> Tallahassee, Florida
<b>Florida Road Builders Assoc., Inc.</b> Tallahassee, Florida	<b>Ro-Mac Lumber and Supply</b> Tallahassee, Florida	<b>Mr. Ted Rodrique</b> Tallahassee, Florida
<b>Hanson, Wood and Hoel Ind., Inc.</b> Tallahassee, Florida		<b>Sport-Craft, Inc.</b> Perry, Florida

**SEMINOLE FANS!**



**YOU  
ARE  
THERE!**

**COMPLETE  
FOOTBALL  
COVERAGE**

**IN THE**

**TAMPA  
TRIBUNE**

**READ TRIBUNE  
CORRESPONDENT**

**MONROE  
ADAMS**

**AND**

**JIM  
SELMAN,**

**ASS'T. SPORTS EDITOR  
EVERY  
MORNING**

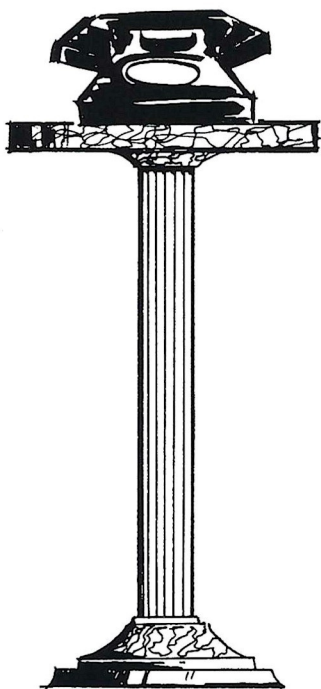


# **NATIONAL SEMINOLE CLUB CENTURY CLUB DONORS**

*The following have contributed \$100 or more*

- Alford Brothers, Inc.**  
Tallahassee, Florida
- American Distributors Co.**  
Tallahassee, Florida
- Mr. Steve Andris**  
Monticello, Florida
- Associated Industries of Florida**  
Tallahassee, Florida
- Mr. Ben Bailey, III**  
Vero Beach, Florida
- Baker-Alford**  
Tallahassee, Florida
- Mr. Larry P. Barnett**  
Tallahassee, Florida
- Dr. Mark Barrera**  
Tallahassee, Florida
- Mr. William Bellflower**  
Tallahassee, Florida
- Bill's Bookstore**  
Tallahassee, Florida
- Mr. Haldane Boykin**  
Chattahoochee, Florida
- Mr. John L. Boyles**  
Tallahassee, Florida
- Mr. Joe Bradley**  
Chattahoochee, Florida
- Mr. Ruel Bradley, Jr.**  
Tallahassee, Florida
- Phil Brimer, Associated Contractors**  
Marianna, Florida
- Brinkley Bros.**  
Tallahassee, Florida
- Mr. Larry S. Brock**  
Tallahassee, Florida
- Brooks County Packing Co.**  
Quitman, Ga.
- Mr. Wayne H. Brown**  
Tallahassee, Florida
- Mr. J. P. Burgess**  
Tallahassee, Florida
- Mr. J. A. Burke**  
Orange Park, Florida
- Mr. I. M. "Ike" Butler**  
Atlantic Beach, Florida
- Mr. R. V. Cantey**  
Quincy, Florida
- Capital City Second National Bank**  
Tallahassee, Florida
- Capital Paper Company**  
Tallahassee, Florida
- The Carriage Shop**  
Tallahassee, Florida
- Central Heating Consultants**  
Tallahassee, Florida
- Mr. Al C. Church**  
Tallahassee, Florida
- Citizens State Bank**  
Marianna, Florida
- Coca-Cola Bottling Co.**  
Tallahassee, Florida
- Cotton, Shivers, Gwynn, and Daniel**  
Tallahassee, Florida
- Mr. Irvin B. Cox**  
Quincy, Florida
- Mr. Bob Crisp**  
St. Petersburg, Florida
- Mr. Leo Crutchfield**  
Tallahassee, Florida
- J. A. Culley and Sons**  
Tallahassee, Florida
- Bruce Culpepper**  
Tallahassee, Florida
- Mrs. Emaly L. Culpepper**  
Camilla, Georgia
- Mr. H. B. Culpepper**  
Tallahassee, Florida
- Mr. J. B. Davis, Jr.**  
Madison, Florida
- Mr. T. W. Dean**  
Tallahassee, Florida
- Mr. Fred E. Deeb**  
Tallahassee, Florida
- Mr. Fred C. Dillman**  
Tallahassee, Florida
- Mr. H. D. Dodson**  
Thomasville, Ga.
- Mr. W. Dexter Douglas**  
Tallahassee, Florida
- J. H. Dowling**  
Tallahassee, Florida
- Mr. J. M. Edwards**  
Tallahassee, Florida
- Mr. Otho W. Edwards, Jr.**  
Quincy, Florida
- Eli Witt Tobacco and Candy**  
Tallahassee, Florida
- Mr. Robert M. Ervin**  
Tallahassee, Florida
- Everhart Construction Co.**  
Tallahassee, Florida
- Mr. J. M. Feinberg**  
Tallahassee, Florida
- Mr. Peter Fenn**  
Crawfordville, Florida
- First Federal Savings and Loan Assoc.**  
Perry, Florida
- The First National Bank at Orlando**  
Orlando, Florida
- Dr. T. Bert Fletcher**  
Tallahassee, Florida
- Flowers Baking Co.**  
Thomasville, Ga.
- Dr. G. H. Garmany**  
Tallahassee, Florida
- General Telephone Co. of Florida**  
Tallahassee, Florida
- Dr. Harold G. Gregg**  
Marianna, Florida
- Mr. H. O. Hammelman**  
Tallahassee, Florida
- Mr. Kenneth A. Harpe**  
Tallahassee, Florida
- Harrison Auto Parts**  
Tallahassee, Florida
- Mr. Emmett C. Harrison**  
Tallahassee, Florida
- Mr. J. C. Red Hartsfield**  
Orlando, Florida
- Henderson and Buchanan**  
Tallahassee, Florida
- Herron Steel Co., Inc.**  
Tallahassee, Florida
- Mr. E. Canty Higdon**  
Quincy, Florida
- Dr. Francis T. Holland**  
Tallahassee, Florida
- Mr. James D. A. Holley**  
Tallahassee, Florida
- Mr. Robert G. Holt**  
Tallahassee, Florida
- Mr. Prentiss Huddleston**  
Tallahassee, Florida
- Independent Life and Acc. Ins. Co.**  
Tallahassee, Florida
- Industrial National Bank**  
Tallahassee, Florida
- Jackson-Cook, Inc.**  
Tallahassee, Florida
- Mr. Jack S. Jennings**  
Tallahassee, Florida
- Mr. Robert S. Jett, Jr.**  
Tallahassee, Florida
- Jaanos, Parsons and Hayes, PA.**  
Tallahassee, Florida
- Mr. J. P. Johnson**  
Madison, Florida
- Mr. Odis A. Johnson**  
Thomasville, Ga.
- Mr. Wilbur Jones**  
Tallahassee, Florida
- Mr. W. R. Keenan**  
Albany, Georgia
- Mr. J. J. Koelemij**  
Tallahassee, Florida
- Mr. Glen L. Krause**  
Tallahassee, Florida
- Mr. Bill Langley**  
Tallahassee, Florida
- Mr. W. T. Laslie**  
Quincy, Florida
- Mr. Ryals E. Lee**  
Tallahassee, Florida
- Mr. Tom K. LeGette**  
Cairo, Georgia
- Mr. A. J. Livingston**  
Tallahassee, Florida
- McDonald Hamburgers**  
Tallahassee, Florida
- McKenzie Tank Lines**  
Tallahassee, Florida
- Mr. Finley L. McMillan**  
Panacea, Florida
- Mr. Norman McMillan**  
Quincy, Florida
- Mr. Jimmy Mahaffey**  
Quincy, Florida
- Mangham Construction Co., Inc.**  
Tallahassee, Florida
- Mr. Hugh Martin**  
Tallahassee, Florida
- Mr. Charles T. Maultsby**  
Madison, Florida
- Mr. John Maultsby**  
Madison, Florida
- Mr. Harry Middlebrooks**  
Tallahassee, Florida
- W. B. Miller and Son**  
Attapulgus, Georgia
- Mr. J. O. Milligan, Jr.**  
Tallahassee, Florida
- Mr. W. A. Mixon**  
Cairo, Georgia
- Lewis E. Moates**  
Tallahassee, Florida
- Dr. James B. Morris**  
Palm Harbor, Florida
- Mr. Everett Morrow**  
Quincy, Florida
- Mr. B. L. Mullis**  
Oklawaha, Florida
- Municipal Code Corporation**  
Tallahassee, Florida
- Mr. F. Joseph Nahoom**  
Tallahassee, Florida
- Nelson Builders**  
Tallahassee, Florida
- Mr. Herbert Nelson, Jr.**  
Thomasville, Georgia
- Nic's Toggery**  
Tallahassee, Florida
- Mr. Mike Norman**  
Tallahassee, Florida
- Mr. A. Frank O'Kelley**  
Tallahassee, Florida
- Mr. B. O. Padgett**  
Perry, Florida
- Dr. Glenn E. Padgett**  
Marianna, Florida
- Palmer-Harrell Buick**  
Tallahassee, Florida
- Mr. Jess C. Palmer**  
Tallahassee, Florida
- Mr. William M. Parker**  
Clearwater, Florida
- Parkway National Bank**  
Tallahassee, Florida 32302
- Mr. M. C. Patterson**  
Tallahassee, Florida
- Mr. Grady Peacock**  
Quincy, Florida
- Dr. W. H. Peacock**  
Perry, Florida
- J. Marion Pickard**  
Tallahassee, Florida
- Pirates Cove**  
Lobster House
- Mr. Frank Pope**  
Gainesville, Florida
- Mr. J. Richard Porter**  
Cairo, Georgia

## CENTURY CLUB DONORS – Cont.



# Indispensable



southeastern telephone company

**Maxey and Jean Powell**  
 Thomasville, Georgia  
**Mina Jo Powell**  
 Thomasville, Georgia  
**Proctor and Proctor**  
 Tallahassee, Florida  
**George L. Rankin**  
 Tallahassee, Florida  
**Mr. Sidney Rayborn**  
 Tallahassee, Florida  
**Dr. Hilliard Reddick**  
 Quincy, Florida  
**Mr. W. B. Reddoch**  
 Marianna, Florida  
**Mr. Jim Reichert**  
 Tallahassee, Florida  
**Mr. Walter L. Revell**  
 Hialeah, Florida  
**Mr. R. A. Riedel**  
 Tallahassee, Florida  
**Mr. Dixon G. Robinson**  
 Tallahassee, Florida  
**Mr. F. W. Roddenberry**  
 Cairo, Georgia  
**Mr. J. B. Roddenberry**  
 Cairo, Georgia  
**Rose Printing Company**  
 Tallahassee, Florida  
**Mr. H. S. Rozar**  
 Tallahassee, Florida  
**Mr. A. O. Shelfer**  
 Hayanna, Florida  
**Mr. W. P. Shelley, Jr.**  
 Tallahassee, Florida  
**Mr. Norman M. Shenk**  
 Tampa, Florida  
**Mr. Joseph Simone**  
 Tallahassee, Florida  
**Mr. Bill Smith**  
 Tallahassee, Florida  
**W. Lawshe Smith**  
 Jacksonville, Florida  
**Mr. J. Block Smith**  
 Tallahassee, Florida  
**Mr. James C. Smith**  
 Tallahassee, Florida  
**Mr. William Curt Smith**  
 Tallahassee, Florida  
**Mr. S. H. Solomon**  
 Quincy, Florida  
**Southeastern Telephone Co.**  
 Tallahassee, Florida  
**Southern Electric**  
 Tallahassee, Florida  
**Mr. W. B. Sparkman III**  
 Temple Terrace, Florida  
**Standard Distributors Co.**  
 Pensacola, Florida  
**F. E. Steinmeyer, III**  
 Tallahassee, Florida  
**Mr. J. Allen Stiles**  
 Tallahassee, Florida  
**Dick Suber**  
 Quincy, Florida  
**Supreme Ice Cream Co.**  
 Tallahassee, Florida  
**The Sweet Shop**  
 Tallahassee, Florida  
**Tallahassee Auto Parts, Inc.**  
 Tallahassee, Florida  
**Mr. Roy E. (Gene) Taylor**  
 Perry, Florida  
**Mr. H. C. Terry**  
 Tallahassee, Florida  
**Mr. Broady Timm**  
 Tallahassee, Florida  
**Turner's**  
 Tallahassee, Florida  
**Mr. W. C. Vereen, Jr.**  
 Moultrie, Georgia  
**Mr. Fred R. Wagner, Jr.**  
 Tallahassee, Florida  
**Walter, Walker and Barineau**  
 Tallahassee, Florida  
**WCTV-TV**  
 Tallahassee, Florida  
**West Florida Const. Co., Inc.**  
 Tallahassee, Florida  
**Mr. T. J. Wetherell**  
 Port Orange, Florida  
**Wheeler Builders Supply**  
 Tallahassee, Florida  
**Wholesale Foods, Inc.**  
 Tallahassee, Florida  
**Mr. J. T. Williams, Jr.**  
 Tallahassee, Florida  
**Mr. Ben C. Willis**  
 Tallahassee, Florida  
**Winchester Construction Co.**  
 Tallahassee, Florida  
**Mr. T. L. Wollschlager**  
 Tallahassee, Florida  
**Mrs. Bud Wright**  
 Thomasville, Georgia  
**Mr. J. D. Wright, Jr.**  
 Tallahassee, Florida  
**Dr. John F. Bembry**  
 Tallahassee, Florida  
**Mr. DeWitt Miller**  
 Tallahassee, Florida  
**Mr. Nat Polak**  
 Tallahassee, Florida  
**Mr. Mickey Priester**  
 Tallahassee, Florida  
**Clay Stapleton**  
 Tallahassee, Florida  
**G. H. Kelly**  
 Jacksonville, Florida  
**Coach Larry Jones**  
 Tallahassee, Florida  
**John W. McBride**  
 Perry, Florida  
**Jimmy Christo**  
 Panama City, Florida  
**Cobb and Burton, Inc.**  
 Tallahassee, Florida  
**Mr. Harold V. Cummins**  
 Tallahassee, Florida  
**Mr. Fred Chester**  
 Tallahassee, Florida  
**Mr. E. L. Chastain**  
 Cairo, Georgia  
**Mr. Bill Dubey**  
 Tallahassee, Florida  
**Dr. E. G. Haskell**  
 Tallahassee, Florida  
**Mr. William J. Moore**  
 Jacksonville, Florida  
**Mr. Carl Neal**  
 Marianna, Florida  
**The Southernaire Motel, Inc.**  
 Tallahassee, Florida  
**The Skyline Motor Lodge, Inc.**  
 Tallahassee, Florida

## Southern's sporting proposition will save you money!

Southern has two special fare deals that are ideal for you avid sports fans. Either one lets you fly in style to those important "away" games anywhere on Southern's system and save 2/3 of your return air fare.

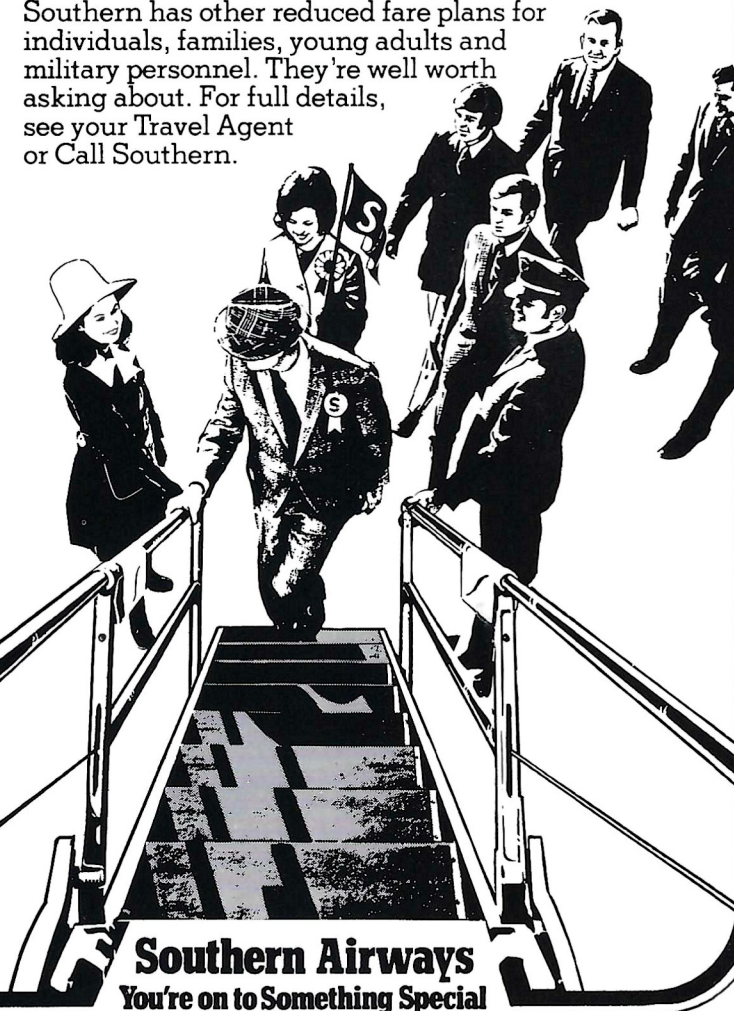
### LONG WEEKEND FARE

If you can leave on Saturday and return on Monday, you'll save 2/3 on the return air fare. (This same savings is offered if you leave on Monday and return on Saturday.)

### GROUP 10 FARE

Great for parties of ten or more people. Everyone saves 2/3 of their return air fare providing they all depart on the same flight. Coming back though, each member of your group may return separately. Group 10 Fares are good anytime.

Southern has other reduced fare plans for individuals, families, young adults and military personnel. They're well worth asking about. For full details, see your Travel Agent or Call Southern.



**Southern Airways**  
You're on to Something Special

## SPORTSMANSHIP

STUDENTS, SPECTATORS!

Make **Sportsmanship** a Part of Your Game Equipment

**NOISE** is a serious problem at many intercollegiate football games, and on some occasions in the past has prevented the Quarterback's signals from being heard. Such a situation may be interpreted as "interference" with the conduct of the game, and penalized. We seek your assistance in preventing excessive noise, which could cause a penalty against your team. Should unusual noise develop, the referee will call "Time-Out" and instruct the Defensive Captain to request **QUIET**, which he will do by moving toward the noise area with both arms and hands raised. If necessary, the Offensive Captain will make the same request on the opposite side of the field. We shall appreciate your respect for Sportsmanship in remaining **quiet** at this time.

In all games the Referee is authorized to inflict a penalty based on noise developments. Please cooperate. Don't help to draw a penalty against your team.

**CHEER TO HELP. NOT TO HURT**

# TELEVISION'S *Instant Replay*

The most delightful innovation of televised sports is, without question, "instant replay"—that right now second look at what just happened.

From fall's first kickoff to the final gun at the Super Bowl, "instant replay" is again increasing the viewing enjoyment of the nation's armchair quarterbacks. It provides television fans with a bonus not even available to holders of 50-yard line tickets—an immediate closeup of significant action, in color and often in slow and stop motion.

Now entering its fifth football season, "instant replay" is probably the most appreciated and least understood feature of televised sports coverage.

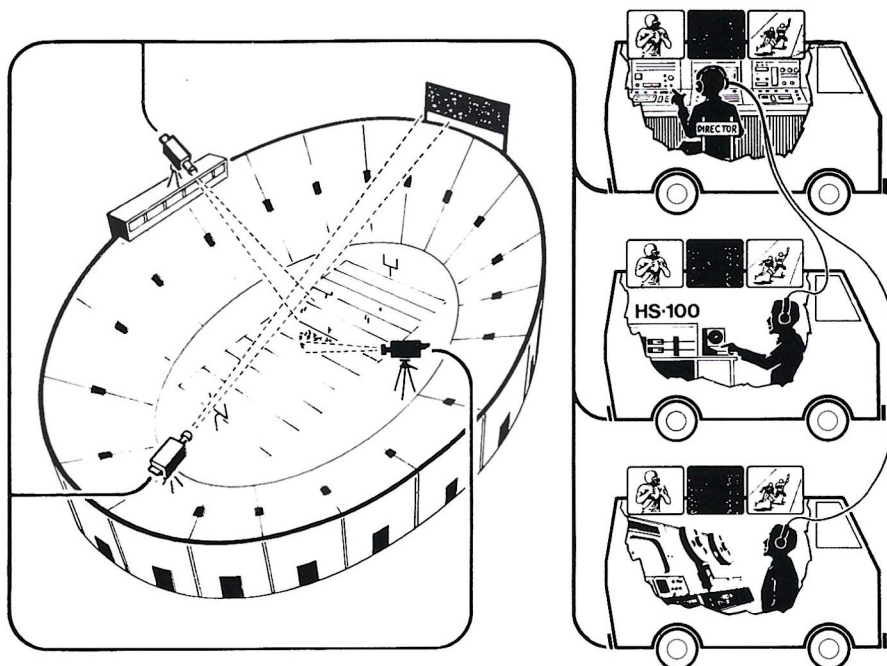
## Developed in 1967

Special "instant replay" recorders were developed by Ampex Corporation in 1967 for immediate playback of sports action—in color and in slow motion, fast motion or reverse motion. These recorders use highly polished disks for recording surfaces instead of reels of tape used on conventional videotape recorders. The disks permit variable speed playback, plus stop motion, not easily possible with tape recorders. And access to recorded pictures can be accomplished much more quickly and accurately, as there is no rewind process as with tape.

Here is a brief description of the effort and equipment that go into bringing "instant replay" to the home screen.

In an important game, two or three cameras are assigned to feed action pictures to "instant replay" machines. The "iso" camera, located in the end zone, generally focuses on the wide receiver or split-end and follows his maneuvering against the defensive back. This often provides the most exciting "instant replay" action as the wide receiver is a frequent target for the quarterback's passes.

**A second camera assigned to the offensive team, and a third to the defensive team, are also favorites for "instant replay" recording. In this way, fans are treated to a slow motion replay of key blocks by the interior linemen to spring a running back, or they watch again as the linebacker pours**



At least three television cameras and several mobile television vans are used to provide television coverage of a football game. All decisions about what is to be aired are made by the director (top truck). He may route the pictures from one or several of the cameras to Ampex HS-100 recorders (center truck) for "instant replay" showing to TV fans. Game action complete with "instant replays" can be directly transmitted over the air, recorded for later broadcast (bottom truck), or both.

**through to sack the quarterback.**

In addition to these cameras, as many as five other cameras are beaming live pictures into a bank of small television monitors in one of the television vans located outside the stadium. Recorders, transmission equipment and key television people are located in the vans. All decisions as to what is broadcast are made in the vans by people who never see a live play during the game.

From this wealth of material, the director of the telecast determines what goes on the air. He is able to communicate by intercom with all of the cameramen, the operators of the "instant replay" recorders, and the technical director manning the control board who presses the buttons that select the camera output to be shown on the air . . . and also what camera feeds "iso" recorders.

A special bank of television sets shows the director what is available for "instant replay." He may select the "iso" camera to repeat a sideline pattern by the flanker that resulted in a long gain. Or he may wish to show the tremendous pressure being put on the quarterback by the defensive line.

## Replayed on the Air

A word to the "instant replay" operator and the technical director and the action is placed on the air—in slow motion if requested.

In addition to the "instant replay" recorders, a conventional videotape recorder may be used to record every

play of the game as it is broadcast. Routine plays are erased immediately, and the most exciting plays are retained for a "highlights" tape.

Even with all these camera choices and the seasoned guesswork of the director and his crew, occasionally a key play or a favorable angle is missed. The game continues to have its surprises. Because of this announcers are cautioned not to tell the audience that an "instant replay" will be forthcoming until they are certain that the play has been recorded.

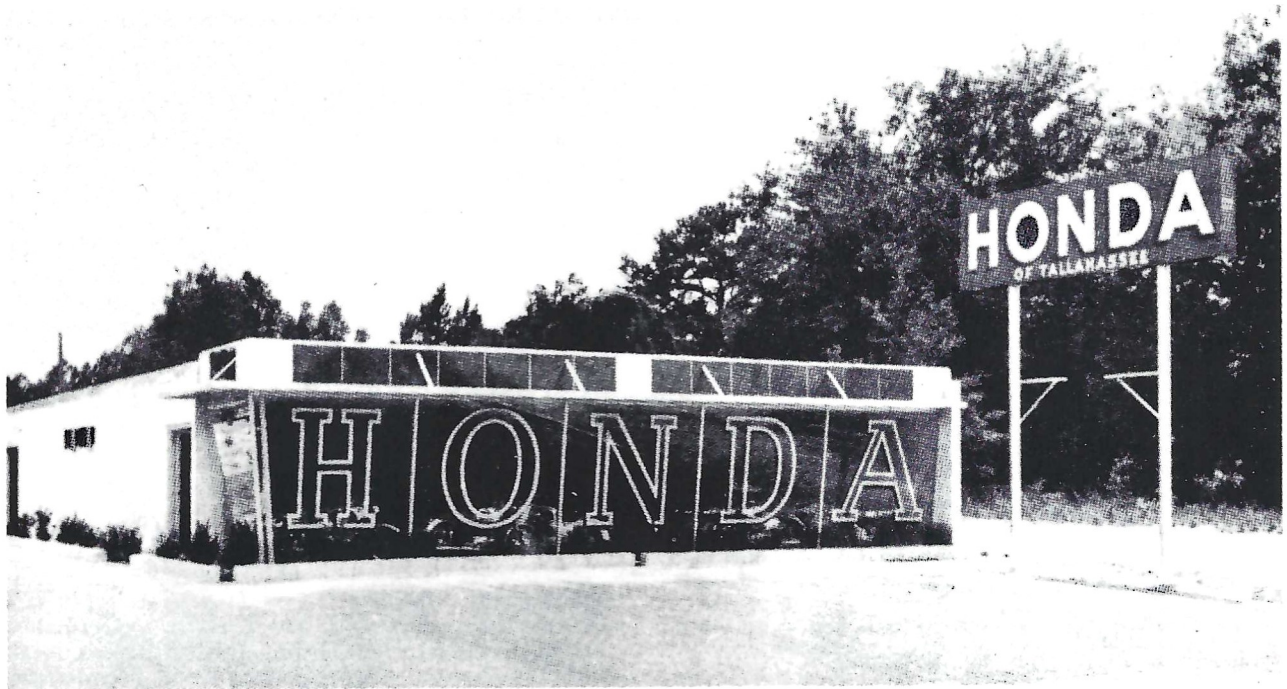
**"Instant replay" began as a keep-your-fingers crossed gimmick in the early 1960s using conventional videotape recorders. Today it is a precise, easily controlled electronic recording function using Ampex magnetic disk recorders specifically designed for this purpose. First used by ABC Sports during the U. S. Skiing championship in March 1967, the "instant replay" machine is widely used today on most major network sportscasts, including such top features as the World Series, college and professional football and the Olympic Games.**

For the more technically inclined, the HS-100 records up to 30 seconds of action on highly polished and plated metal disks. The operator can cue up any portion of the 30 second recording in just four seconds for immediate playback on the air. The recorded action can be played as many times as necessary, and can be played in variable slow motion down to stop action in both forward and reverse.

"You meet the nicest people on a

# HONDA

World's largest seller"

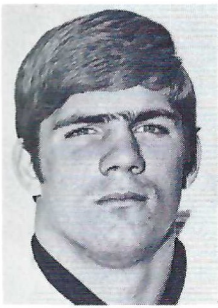


## HONDA OF TALLAHASSEE

At the Underpass on West Tennessee

Phone 576-1020

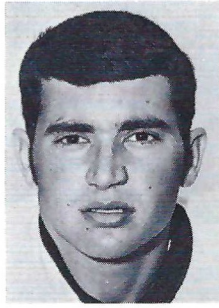




**RICHARD AMMAN — DT**  
Cocoa Beach — Business



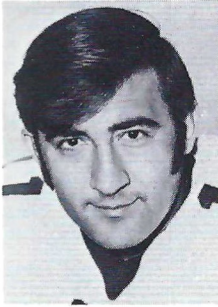
**ROBERT ASHMORE — DB**  
Tallahassee — Pre-Med



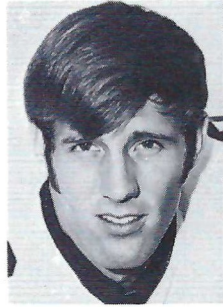
**DUANE CARRELL — Punt**  
Washington, D.C. — Marketing



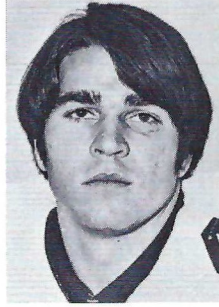
**RHETT DAWSON — WR**  
Valdosta, Ga. — Criminology



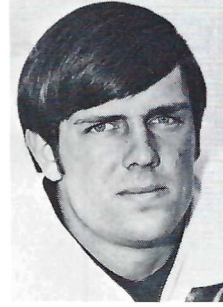
**FRANK FONTES — PK**  
Perth Amboy, N.J. — Phys. Ed.



**KENT GAYDOS — WR**  
Dallas, Tex. — Public Relations



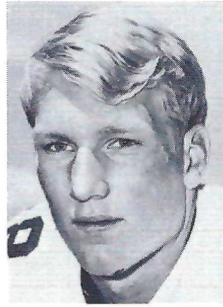
**GUY GLISSON — LB**  
Tampa — International Affairs



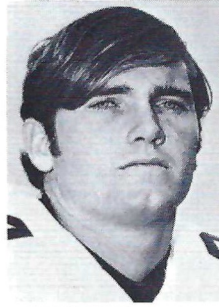
**BUDDY GRIDLEY — TE**  
Tallahassee — Pre-Med



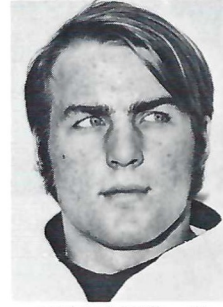
**BILL HENSON — DT**  
Hyattsville, Md. — Phys. Ed.



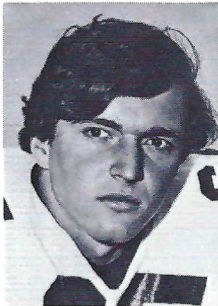
**JAMES JARRETT — RB**  
Elizabethton, Tenn. — Business



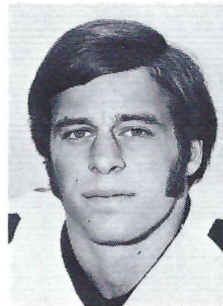
**JOHN LANAHAN — DB**  
Jacksonville — Management



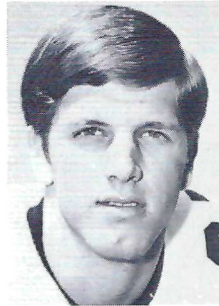
**PAUL MAGALSKI — RB**  
Garfield Heights, Ohio —  
Criminology



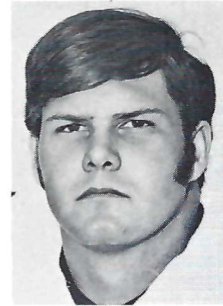
**J. W. MCKINNIE — OG**  
Macon, Ga. — Management



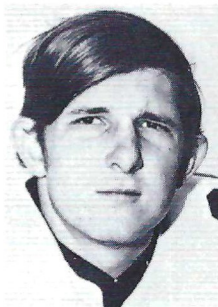
**JOHN MONTGOMERY — DB**  
Jacksonville — Business



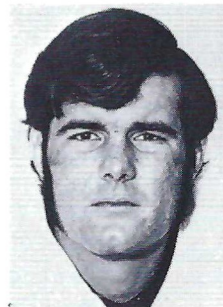
**ARTHUR MONROE — RB**  
Quincy — Pre-Med



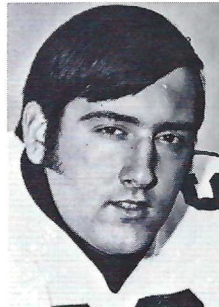
**BILL RIMBY — OT**  
St. Petersburg — Marketing



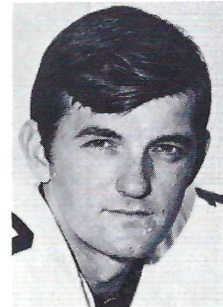
**BILL SHAW — OT**  
Marietta, Ga. — Recreation



**JAY STOKES — OG**  
Sanford — Management



**JOE STRICKLER — OT**  
Avon Park — Math



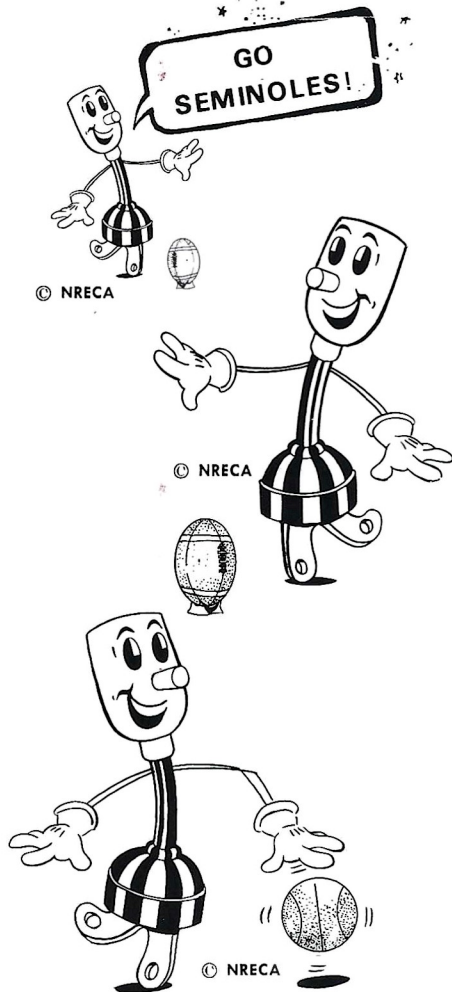
**FRANK WHIGHAM — QB**  
Sanford — Pre-Law

# Seminole Seniors

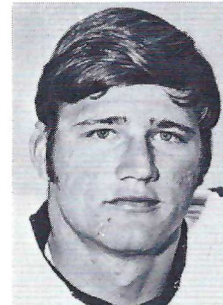
**TEC**  
**TALQUIN**  
**ELECTRIC**  
**COOPERATIVE, INC.**

"OWNED BY THOSE WE SERVE"

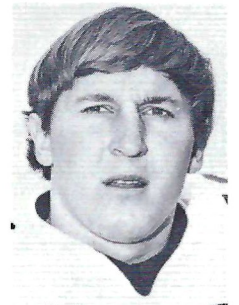
IN  
 GADSDEN, LEON, LIBERTY  
 AND WAKULLA COUNTIES



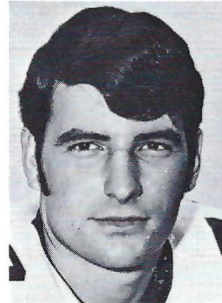
**LIVE BETTER ...**  
**ELECTRICALLY**



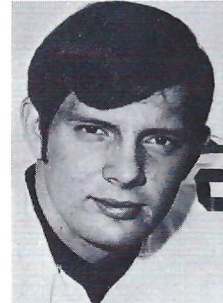
**ALLEN DEES — C**  
 Lakeland — Criminology



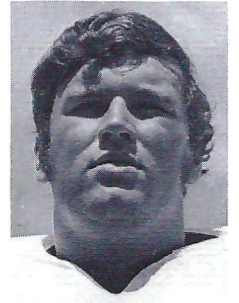
**JIM DUNDALA — LB**  
 Morrisville, Pa. —  
 Social Science Ed.



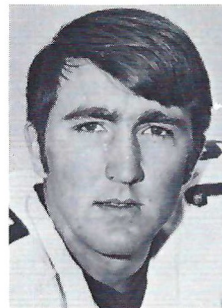
**SHANE GIBBS — OG**  
 Bay Minette, Ala. —  
 Business Admin.



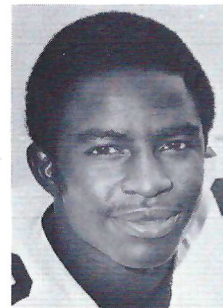
**MIKE GLASS — TE**  
 Tampa — Business



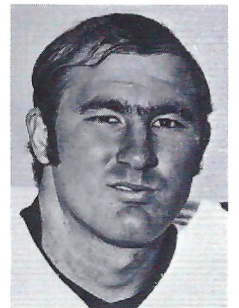
**DAN DANIELS — OT**  
 Pensacola — Business Admin.



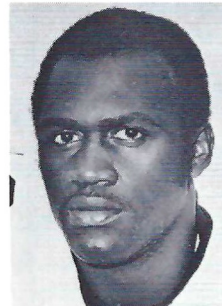
**GARY HUFF — QB**  
 Tampa — Accounting



**CHARLIE HUNT — DE**  
 Jacksonville — Elementary Ed.



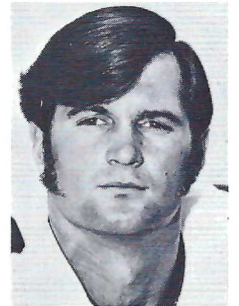
**HOWARD JACOBI — DT**  
 Vero Beach — Phys. Ed.



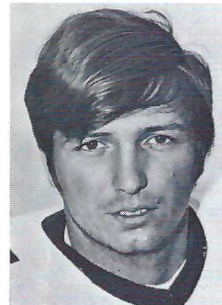
**EDDIE MCMILLAN — DB**  
 Tampa — Criminology



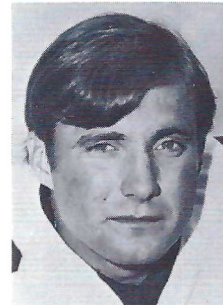
**ROGER MINOR — OT**  
 Delray Beach — Business Admin.



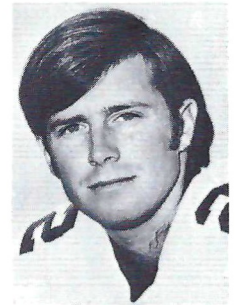
**CLINT PARKER — LB**  
 Daytona Beach — Business Admin.



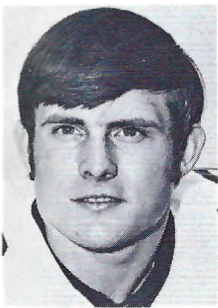
**GARY PARRIS — TE**  
 Vero Beach — Recreation



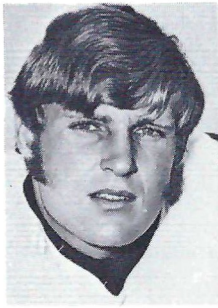
**RON RATLIFF — DB**  
 West Palm Beach —  
 Hotel & Restaurant Mgt.



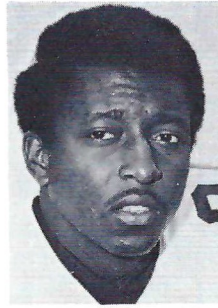
**BARRY SMITH — WR**  
 Miami — Social Studies Ed.



DAVID SNELL — DB  
Slocomb, Ala. — Business Admin.



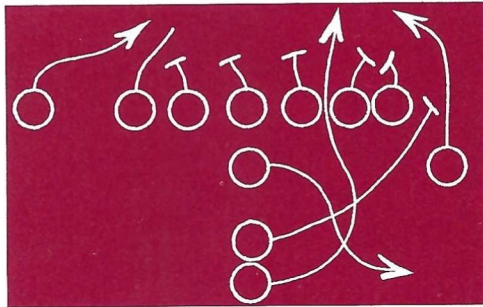
LARRY STRICKLAND — LB  
Tallahassee — Accounting



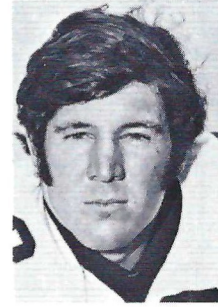
JAMES THOMAS — DB  
Macon, Ga. — Business Admin.



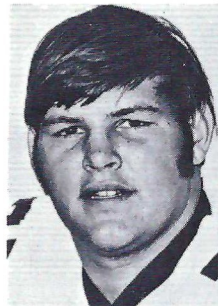
DAN WHITEHURST — LB  
Adel, Ga. — Criminology



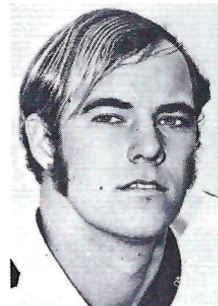
ROBERT ANDERSON — DT  
Tifton, Ga. — Business



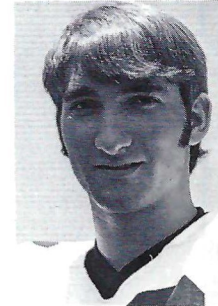
PHIL ARNOLD — OG  
Hollywood — Business Admin.



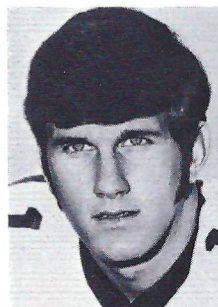
KENT CORRAL — DE  
Tampa — Architecture



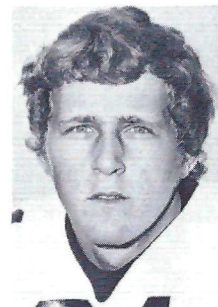
ED DAVIS — WR  
Lakeland — Business Admin.



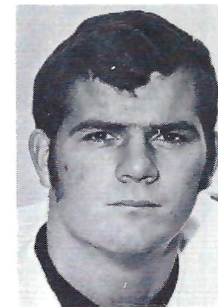
DANO FIORE — WR  
Chattahoochee — Pre-Med



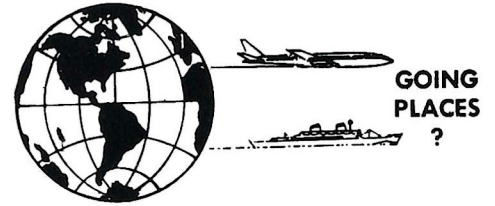
FRED GEISLER — QB  
Orlando — Business



JOE GOLDSMITH — WR  
Lakeland — Business



STEVE HARDIN — RB  
Boynton Beach — Phys. Ed.



ATHENS, GEORGIA?

ATHENS, GREECE?

NEW YORK? NASSAU? NEPAL?



No Charge For Our Services



Tickets - Reservations  
At Printed Rates



TRAVEL IS OUR PROFESSION



MARION HAY, PRESIDENT  
TOM LYLE

TALLAHASSEE TRAVEL  
AND TOURS, INC.

Formerly Hay Travel Service  
Established 1930

CALHOUN AT CALL STREET  
TELEPHONE 224-4161

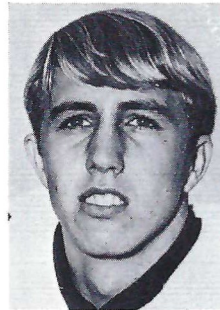
# Go Seminoles

**We'll help all we can**

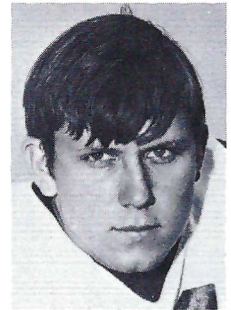
## **Tallahassee Automobile Dealers Association**

**ALFORD CHEVROLET CO.  
PROCTOR & PROCTOR, INC.  
CAPITAL LINCOLN-MERCURY, INC.  
BOB DRAKE DODGE, INC.  
PALMER-HARRELL BUICK CO.  
CAPITAL CHRYSLER-PLYMOUTH, INC.  
TALLAHASSEE MOTORS, INC.  
KINNEBREW MOTORS, INC.  
MINGLEDORFF MOTORS, INC.**

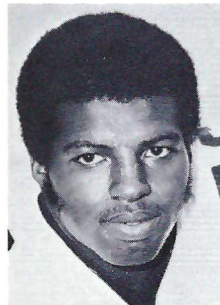
*Associate Members:* Capital City First National Bank; Tallahassee Bank and Trust; Lewis State Bank; Peoples Bank; Parkway National Bank; Tallahassee Democrat.



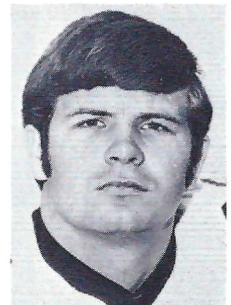
**BUZZY LEWIS — DB**  
Bristol — Math



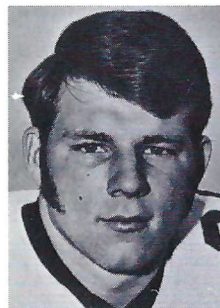
**DAVID MILES — LB**  
Tallahassee — Business



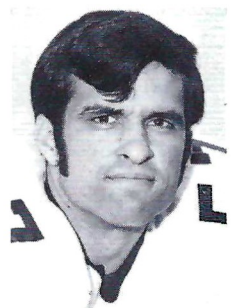
**JOHN MURPHY — LB**  
Albany, Ga. — Business



**BRENT NORRIS — RB**  
Thomaston, Ga. — Industrial Arts



**RICK OREAIR — RB**  
Jacksonville — Business Admin.



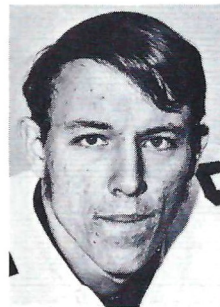
**STEVE BRATTON — LB**  
Oviedo — Phys. Ed.



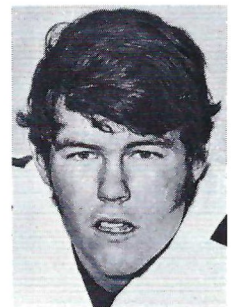
**OSCAR ROBERTS — RB**  
Ocilla, Ga. — Business Admin.



**ANDY SCHMIDT — LB**  
Brandon — Criminology



**RANDY SHIVELY — DB**  
St. Petersburg — Business



**DON SPARKMAN — OT**  
Jacksonville — Business

# THE FOOTBALL STAFF



Front Row (left to right): Doug May, Ass't. Trainer; Bill Canty, Bob Harbison, Head Coach Larry Jones, Steve Sloan, Don Fauls, Head Trainer. Back Row (left to right): Frank DeBord, Equipment Manager; Gene Henderson, Bill Parcells, Mike Pope, John Devlin, Pat Hodgson.

IN NORTHWOOD MALL  
LOWER LEVEL

## Carriage House

RESTAURANT & LOUNGE

TALLAHASSEE  
PHONE 385-7612

Drive  
right in.

# The Underground Bank

DRIVE-IN HOURS: 9 AM - 5 PM Monday thru Thursday  
9 AM - 6:30 PM Friday

**The Tallahassee Bank & Trust Company**  
A Barnett Bank

**Barnett  
Bank**

## HEAD COACH LARRY JONES



Larry Jones is the sixth man to lead Florida State's modern football fortunes and has already shown himself to be the most energetic of all Tribe coaches.

The youthful Jones had no sooner accepted his appointment from President Stanley Marshall, than he was out firming up his first two signees. He has been on the go ever since.

The first task was to set up a coaching staff and Coach Jones accomplished that with outstanding success. He has brought to Florida State some of the most talented young coaches in the country.

A native of Arkansas, Jones played his college ball at LSU. He joined Coach Paul Dietzel's coaching staff the day he graduated and went with him to Army and South Carolina. In 1970 he took a position with Bill Battle at Tennessee and developed the Sugar Bowl Champion's fine defense.

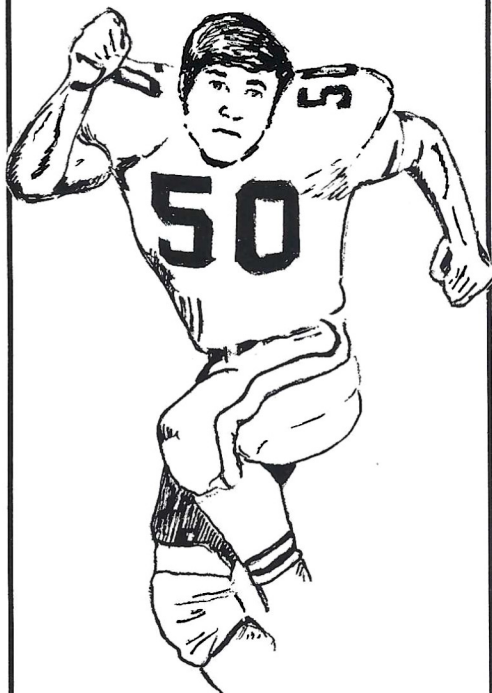
Larry and his wife, Judy, have three children, Bruce 9, Kevin 7, and Laura 5.

## FLORIDA STATE SENIORS

Front Row (left to right): Arthur Munroe, Buddy Gridley, Paul Magalski, Frank Fontes, Duane Carrell, Robert Ashmore. Second Row: Frank Whigham, James Jarrett, John Montgomery, John Lanahan, Bill Henson, Bill Shaw, J.W. McKinnie. Third Row: Head Coach Larry Jones, Joe Strickler, Kent Gaydos, Richard Amman, Jay Stokes, Bill Rimby, Guy Glisson. Not pictured: Rhett Dawson.



**GOOD LUCK  
THIS SEASON**



**FROM THE NATION'S  
LARGEST RETAILER  
of**

**MOBILE HOMES**



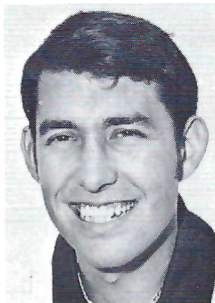
**154 SALES CENTERS  
in  
10 STATES  
and GROWING**

LISTED ON AMERICAN STOCK EXCHANGE

# FLORIDA STATE

## STEVE SLOAN

First Assistant and Head of Offense



Considered one of the brightest young offensive coaches in the business, Steve came to Florida State after three years under Bear Bryant at his Alma Mater, Alabama. He is Coach Larry Jones, chief assistant and in charge of the offense. On the field, his duties have him working with the quarterbacks and running backs.

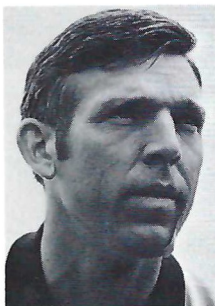
An All-America at Alabama, Sloan led the Crimson Tide to bowl games in 1963, '64 and '65. In the latter two seasons, the Tide was National Champion. After two seasons in the National Football

League (Atlanta), he returned to 'Bama to work with Bryant.

A native of Cleveland, Tenn., he is married to the former Brenda Fan, also of Cleveland. They have one son.

## BILL CANTY

Freshman Coach



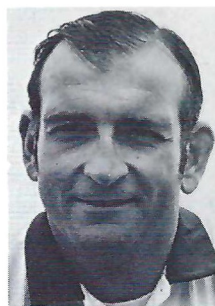
Bill comes to the Seminoles after eight years as an assistant at his Alma Mater, Furman. The Pascagoula, Miss., native joined the Paladin staff after graduating in 1962.

At Florida State his primary responsibility will be to head the freshman unit. Unlike recent years, when the freshmen have been used mainly as a "scout squad" for the varsity, the frosh, this season, are on their own. Canty's big chore will be to familiarize the newcomers to the Seminoles' system and develop a winning spirit among them.

Bill is the older brother of Bob Canty, who captained the Seminole baseball team in 1968. Bill is married to the former Ann Lockridge of Delta City, Miss. They have two children.

## JOHN DEVLIN

Defensive Ends and Tackles



Seminole fans are well acquainted with John's coaching abilities, even though this will be the Norristown, Pa., native's first season in Tallahassee. He comes to the Tribe from Virginia Tech where he helped mold the Gobbler defenses which caused the Seminoles so much trouble.

John will head up the Seminoles' defensive "front wall." It is actually the second time that the Former West Chester State College standout has worked with Coach Larry Jones. Both

were assistants under Paul Dietzel at the U.S. Military Academy in the mid-Sixties.

A former Army staff sergeant, John married Irma Kleeman of Regensburg, Germany. They have four children.

## BOB HARBISON

Interior Offensive Line



Coach Larry Jones calls Harbie "Mr. Florida State." The former Indiana star has spent his entire coaching career at Florida State and that 23-year period includes all but the first season of the Seminoles' modern football history.

This year Bob switches from defense to offense where he will be in charge of the offensive line. But his value does not stop on the playing field. His general knowledge of the game and outstanding recruiting ability have been an invaluable asset to the

five head coaches he has worked under.

Bob and his wife, the former Jane McEntee of Washington, D.C., have four children.



# ASSISTANT COACHES

## GENE HENDERSON

Head of Defense, Defensive Backs

Like Steve Sloan, Gene learned to play football under Bear Bryant. After two seasons of junior college ball, the Sonora, Tex., native transferred to Texas A & M where he was a member of the 1954 squad which survived the infamous early fall workouts at Junction, Texas.

His collegiate coaching experience includes stints at Texas Tech and TCU. He headed the TCU defense last year, before coming to Florida State.

Gene and his wife, the former Sue Wyatt of Sonora, have four children.



## PAT HODGSON

Wide Receivers and Tight Ends

An All-SEC receiver at Georgia, Pat is perhaps best remembered for sparking the Bulldogs to an 18-17 win over defending National Champion Alabama on National TV in 1965. A key figure (he threw the pass) in the memorable "Flea-flicker" play which closed the gap to 17-16, Pat then caught the two-point conversion pass for the win.

After two years in the pros, he returned to Georgia as an assistant coach, heading up the freshman offense last year.

The Columbus, Ga., native was All-SEC in 1964 and '65 and led the conference in receiving in 1963.

Pat is married to the former Nancy Williams of Athens, Ga. They have two children.



## BILL PARCELLS

Linebackers

This is Bill's second season with the Seminoles, as he is one of two holdovers from last year's staff (the other being Bob Harbison).

The Oradell, N.J., native came to the Tribe last year after four years at Army where he developed some of the Cadets' finest linebacking corps. He has also had coaching experience at his Alma Mater, Wichita State and Hastings College.

At Wichita, Bill was twice an All-Missouri Valley Conference selection, playing guard, tackle and linebacker. Following his graduation he was a fourth round pro-draft choice.

Bill is married to the former Judy Goss of Wichita. They have three children.



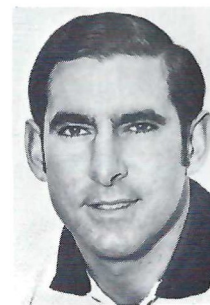
## MIKE POPE

Director of High School Relations

Mike's duties keep him off the field and "on-the-go," but his task is a crucial one as he heads up the Seminole recruiting operation.

The Monroe, N.C., native stepped into the position this year, after serving a season as a graduate assistant for the Tribe last year. Mike played his college ball at Lenior Rhyne, where he was a quarterback and fullback in the Bear's single wing backfield. He had several highly successful seasons as a high school coach before coming to Florida State in 1970.

Mike is married to the former Lee Lambie of Arlington, Va.



Textbooks  
\*  
Art and  
School Supplies

\*  
**FSU**

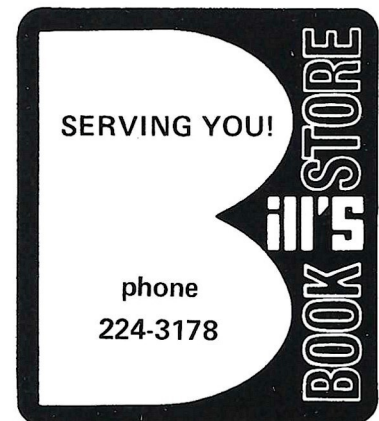
Sweatshirts  
T Shirts

Glassware  
Mugs

\*  
**Seminole  
Uprising**



SUPPORTED BY



WHEN YOU THINK OF BOOKS, THINK OF BILL'S  
107 SOUTH COPELAND ST.  
TALLAHASSEE-FLA. 32304



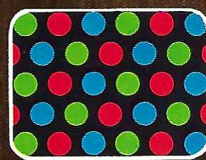
The Peale, Model C3722W  
Simulated TV Picture

Zenith  
introduces  
a portable that  
...outcolors  
...outbrightens  
...outdetails, and  
...outperforms  
every other  
color TV  
its size.

Now famous Zenith Chromacolor comes in a new 16-inch (diagonal) portable that goes anywhere in the house.

Its totally advanced Chromacolor system features Zenith's dependable Handcrafted chassis and patented Chromacolor picture tube—the first tube to fully illuminate every color dot on a jet-black background. To bring you a color picture so good, you really have to see it, to see why it's become the standard of excellence.

Visit a Zenith dealer and see Zenith's new 16-inch (diagonal) portable. Newest member of the Chromacolor family of screen sizes. At Zenith, *the quality goes in before the name goes on.*<sup>®</sup>



**ZENITH**<sup>®</sup> PORTABLE  
**CHROMACOLOR**<sup>®</sup>

ONLY ZENITH HAS IT

# TONIGHT'S GAME

**By Lonnie Burt**  
Sports Information Director

## SEMINOLE CAPTAINS

Florida State draws a tough assignment for its opening home game tonight when undefeated, unscored on Kansas comes to town.

Opponents haven't crossed the Jayhawks' goal line as they registered a 34-0 victory over Washington State and a 22-0 decision over Baylor.

The Seminoles are also 2-0, downing Southern Mississippi 24-9 and Miami 20-17.

Kansas' defense has been so tough that its two opponents have managed only 165 yards on the ground and 254 yards in the air. Last Saturday, Baylor had a first and goal at the three yard line and couldn't score.

Kansas' surprisingly tough defense is led by defensive tackle Phil Basler, a 6-2, 225-pound senior. This Independence, Mo., native played quarterback as a sophomore and linebacker last season. He was named the Big Eight Conference's Lineman of the Week following his team's victory over Washington State and has made 19 tackles in the first two games.

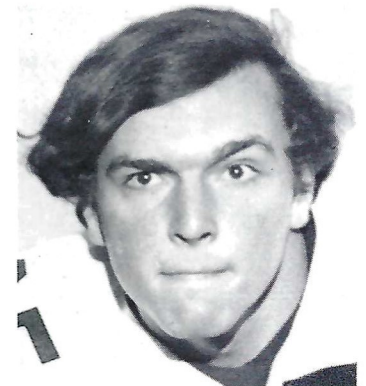
Defensive end Eddie Sheats, 6-3, 200, is another key defender. Against Baylor he forced one interception and one fumble and had three tackles behind the line of scrimmage. Linebacker Kenny Page has also had two fine games.

Offensively, the Jayhawks are directed by senior quarterback Dan Heck. Kansas has three outstanding running backs in Jerome Nelloms (140 yards), Delvin Williams (117 yards) and Steve Conley (98 yards). Nelloms and Williams alternate at tailback while Conley is a 220-pound fullback.

In Bobby Childs, Kansas has the biggest man on the field. The Atlanta, Ga., native stands 6-4 and weighs 260 pounds.



John Lanahan



J. W. McKinnie

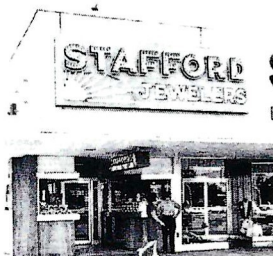
*The Florida State University Athletic Department is proud to honor area newspaper carriers as its guests for tonight's game.*

*Carriers from the Tallahassee Democrat, Valdosta Times, Moultrie Observer and Thomasville Enterprise are seated in a special section and will be acknowledged at halftime.*

## OUR TEAM SAYS . . . . . "LET'S GO SEMINOLES"



**DOWNTOWN**  
VERNON STEVENS  
Manager



**PARKWAY**  
AMOS STEVENS  
Manager



**THOMASVILLE**  
ED HORTON  
Manager



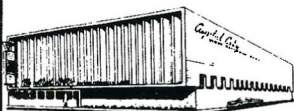
**NORTHWOOD MALL**  
NATHAN BRASWELL  
Manager

## STAFFORD QUALITY JEWELERS

# Be on the FIRST Team!



We extend our warmest welcome to the Students and Faculty of FSU, TCC and FAMU... When it comes to Banking... Depend on a Solid Favorite... a PRO Team of Bankers and Financial Coaches that can help you with any Banking Need. So when GOOD Banking is what YOU want... Be on the FIRST TEAM at FIRST NATIONAL.



*Capital City*  
FIRST NATIONAL BANK

# STATISTICS

## 1971 FLORIDA STATE SCHEDULE

24	So. Mississippi	9
	(at Mobile)	
20	at Miami	17
Sept. 25	Kansas	
Oct. 2	at Virginia Tech	
Oct. 9	Mississippi State (HC)	
Oct. 16	at Florida	
Oct. 23	South Carolina	
Oct. 30	at Houston	
Nov. 13	at Georgia Tech	
Nov. 20	Tulsa	
Nov. 27	Pittsburgh	

## 1971 KANSAS SCHEDULE

34	Washington State	0
22	Baylor	0
Sept. 25	at Florida State	
Oct. 2	at Minnesota	
Oct. 9	Kansas State	
Oct. 16	at Nebraska	
Oct. 23	at Iowa State	
Oct. 30	Oklahoma State	
Nov. 6	Colorado	
Nov. 13	Oklahoma	
Nov. 20	Missouri	

<b>FSU (2-0)</b>	<b>OPP</b>
44	26
22.0	13.0
33	31
244/3.2	353/3.5
48/29/3	38/20/1
352	269
596/298.0	622/311.0
5/4	6/2
8/40.5	13/36.6

<b>1971 TEAM STATS</b>
Total Points
Points Per Game
First Downs
Rushing Yards/Avg. Per Play
Passes Att./Comp./Hd. Int.
Passing Yardage
Total Yards/Yards Per Game
Fumbles/Lost
Punts/Avg. Yards

<b>KANSAS (2-0)</b>	<b>OPP</b>
56	0
28.0	0.0
42	28
457/4.0	165/1.8
34/18/0	57/17/6
196	250
653/326.5	415/207.5
11/7	11/4
12/32.7	15/35.5

## INDIVIDUAL LEADERS FLORIDA STATE

<b>Passing</b>	<b>Att.</b>	<b>Comp.</b>	<b>Int.</b>	<b>Yards</b>	<b>TD</b>	<b>Long</b>
Gary Huff	48	29	3	352	2	34
<b>Receiving</b>	<b>No.</b>	<b>Yards</b>	<b>Avg.</b>	<b>TD</b>	<b>Long</b>	
Rhett Dawson	13	143	11.0	2	25	
Barry Smith	6	71	11.8	0	16	
Kent Gaydos	2	29	14.5	0	16	
James Jarrett	2	28	14.0	0	27	
Paul Magalski	2	13	6.5	0	11	
Gary Parris	2	12	6.0	0	7	
<b>Rushing</b>	<b>TC</b>	<b>Net</b>	<b>Avg.</b>	<b>TD</b>	<b>Long</b>	
Arthur Munroe	24	151	6.3	1	58	
Paul Magalski	20	62	3.1	1	17	
Rick Oreair	3	28	9.3	0	18	
James Jarrett	7	21	3.0	0	11	
<b>Scoring</b>	<b>TD</b>	<b>FGA/M</b>	<b>XPA/M</b>	<b>TP</b>		
Frank Fontes	0	4-3	5-5	14		
Rhett Dawson	2	0-0	0-0	12		
Paul Magalski	1	0-0	0-0	6		
Arthur Munroe	1	0-0	0-0	6		
Eddie McMillan	1	0-0	0-0	6		

## KANSAS

<b>Passing</b>	<b>Att.</b>	<b>Comp.</b>	<b>Int.</b>	<b>Yards</b>	<b>TD</b>	<b>Long</b>
Dan Heck	23	12	0	129	2	23
David Jaynes	11	6	0	67	0	25
<b>Receiving</b>	<b>No.</b>	<b>Yards</b>	<b>Avg.</b>	<b>TD</b>	<b>Long</b>	
John Schroll	7	63	9.0	0	13	
Lucius Turner	5	60	12.0	0	17	
Mike Cerne	3	50	16.7	1	25	
<b>Rushing</b>	<b>TC</b>	<b>Net</b>	<b>Avg.</b>	<b>TD</b>	<b>Long</b>	
Jerome Nelloms	28	140	5.0	2	20	
Delvin Williams	23	117	5.1	1	12	
Steve Conley	28	98	3.5	1	19	
<b>Scoring</b>	<b>TD</b>	<b>FGA/M</b>	<b>XPA/M</b>	<b>Points</b>		
Steve Conley	2	0-0	0-0	12		
Jerome Nelloms	2	0-0	0-0	12		
Bob Helmbacher	0	2-2	6-7	12		

# A GREAT RUNNER.

You expect a little car to be a good sprinter. Nimble, light on its feet, fine for short runs around town.

Vega is all that.

But what sets Vega apart is that it's one little car that's good on long runs too.

One reason is its relatively large 140-cubic-inch overhead cam engine. It can cruise comfortably at turnpike speeds without straining, and with power to spare.

Vega is built low to the ground, and wide, so it takes curves without a lot of lean and hangs onto a windy highway like it weighed a whole lot more.

The steering is easy. Yet firm and reassuring on straight stretches.

What we're saying is, for an economy car, Vega sure feels a lot like a sports car.

Get into one soon and see. It'll give you a good run for your money.

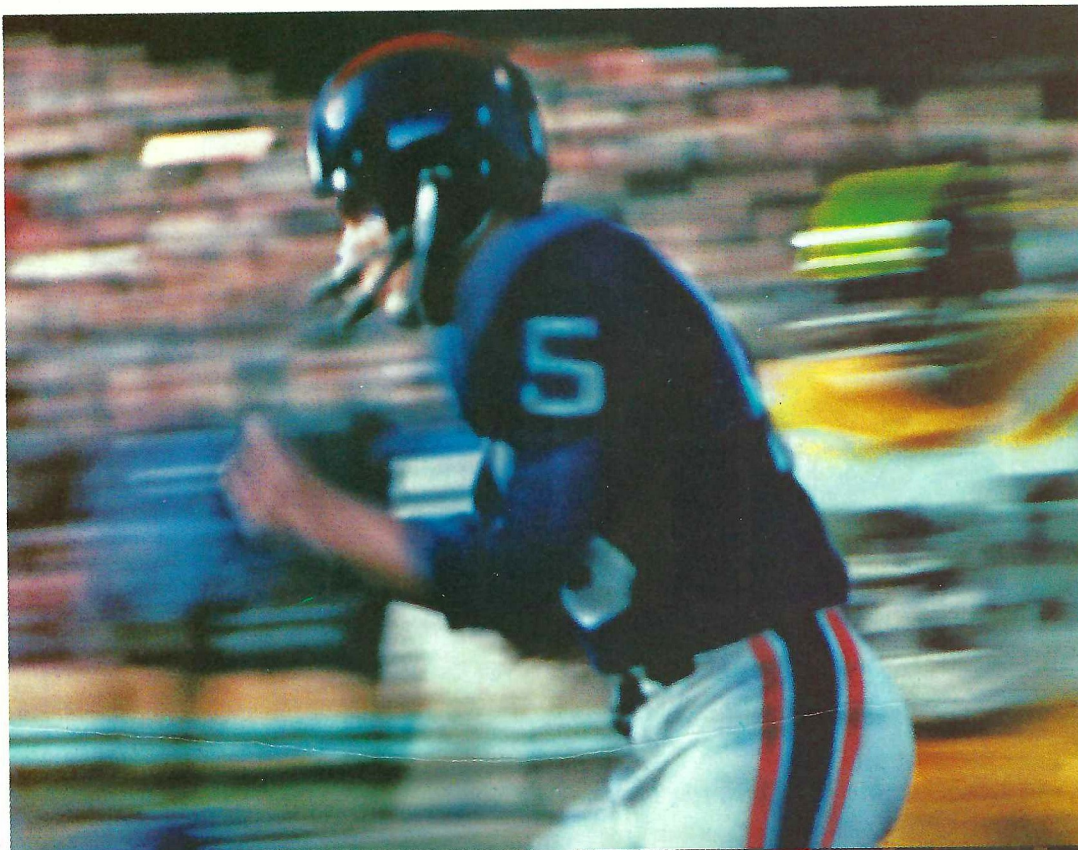


Great runner meets great runner. Former Heisman Trophy winner O.J. Simpson behind the wheel of a Vega Hatchback Coupe.



Buckle your seat and shoulder belts.  
It's an idea you can live with.



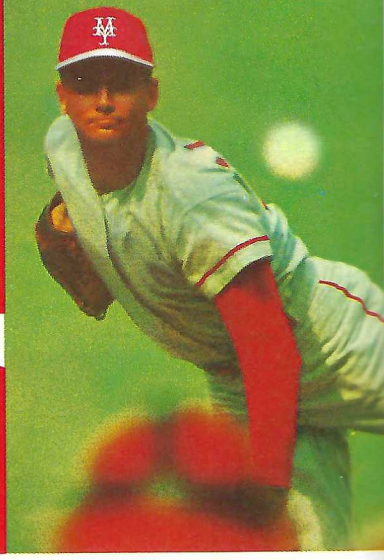


"Coca-Cola" and "Coke" are registered trade marks which identify the same product of The Coca-Cola Company

Enjoy  
**Coke**  
Trade-mark ®



Enjoy  
**Coca-Cola**  
Trade-mark ®



## SEMINOLES

### OFFENSE

82 Rhett Dawson ..... SE  
 74 Don Sparkman ..... WT  
 65 J.W. McKinnie ..... WG  
 55 Allen Dees ..... C  
 76 Bill Rimby ..... SG  
 66 Joe Strickler ..... ST  
 86 Mike Glass ..... TE  
 19 Gary Huff ..... QB  
 48 James Jarrett ..... FB  
 31 Paul Magalski ..... TB  
 22 Barry Smith ..... FL

## SEMINOLES

### DEFENSE

85 Bill Shaw ..... LE  
 70 Bill Henson ..... LT  
 60 Clint Parker ..... SAM  
 59 Larry Strickland ..... MIKE  
 50 Dan Whitehurst ..... WILL  
 75 Richard Amman ..... LT  
 80 Charlie Hunt ..... RE  
 40 Eddie McMillan ..... LC  
 26 James Thomas ..... RC  
 24 John Lanahan ..... ROV  
 28 Robert Ashmore ..... SAF

### THE SEMINOLE SQUAD

1 Fontes, PK	49 Glisson, LB
3 Carrell, Punt	50 Whitehurst, LB
11 Geisler, QB	52 Rainey, LB
12 Whigham, QB	53 Stokes, OG
14 Deming, QB	54 Dundala, C
18 Gaydos, WR	55 Dees, C
19 Huff, QB	57 Bratton, LB
20 Snell, DB	58 Schmidt, LB
21 Goldsmith, WR	59 Strickland, LB
22 Smith, WR	60 Parker, LB
23 Eddy, WR	61 Arnold, LB
24 Lanahan, DB	62 Miles, LB
26 James Thomas, DB	65 McKinnie, OG
27 Munroe, TB	66 Strickler, OT
28 Ashmere, DB	69 Anderson, DT
29 Fiore, WR	70 Henson, DT
30 Norris, FB	72 Gibbs, OG
31 Magalski, FB	73 Daniels, OT
32 Davis, WR	74 Sparkman, OT
33 Hardin, FB	75 Amman, DT
35 Shively, DE	76 Rimby, OG
36 Oreair, RB	77 Minor, OT
37 Roberts, RB	79 Jacobi, DT
38 Lewis, DB	80 Hunt, DE
40 McMillan, DB	82 Dawson, WR
42 Ratliff, DB	83 Cooper, DE
43 Montgomery, DB	84 Gary Parris, TE
44 Gridley, LB	85 Shaw, DE
46 Bengtson, PK	86 Glass, TE
47 McNish, LB	87 Castleberry, DE
48 Jarrett, FB	89 Corral, DE

### OFFICIALS -

Referee ..... Johnny Cook, Rome, Ga.  
 Umpire ..... Clifford L. Squires, Lincoln, Nebr. (Big 8)  
 Linesman ..... Jack P. Jordan, Atlanta, Ga.

## JAYHAWKS

### DEFENSE

57 Pat Ryan ..... TE  
 53 Phil Basler ..... LT  
 36 Tommy Oakson ..... MG  
 75 Gary Palmer ..... RT  
 84 Eddie Sheats ..... QE  
 50 Kenny Page ..... LB  
 51 Steve Roach ..... LB  
 41 Lee Hawkins ..... LHB  
 20 Mike Burton ..... RHB  
 27 Mark Geraghty ..... HAWK  
 18 Gary Adams ..... SAF

## JAYHAWKS

### OFFENSE

24 Lucius Turner ..... SE  
 73 Tom Gaughan ..... ST  
 63 Gary Cooper ..... SG  
 55 Mike McCoy ..... C  
 77 Bobby Childs ..... TG  
 74 John Bryant ..... TT  
 80 John Schroll ..... TE  
 14 Dan Heck ..... QB  
 38 Jerome Nelloms ..... TB  
 37 Steve Conley ..... FB  
 22 Mike Cerne ..... WB

### THE JAYHAWK SQUAD

11 Bruegging, TE	55 McCoy, C
12 Jaynes, QB	56 Gorbett, OT
14 Heck, QB	57 Ryan, DE
15 Jones, QB	58 King, DE
16 Martin, FL	61 Sullivan, DG
17 Evans, DHB	62 Rola, OG
18 Adams, SAF	63 Cooper, OG
19 Bron, DHB	65 Bernhardt, OG
20 Burton, DHB	67 Perkins, DG
21 Hertel, DHB	68 Goode, DT
22 Cerne, WB	69 Schumm, OG
23 Mercer, LB	70 Gosa, T
24 Turner, FL	71 Vrooman, DE
26 Bowman, DHB	73 Gaughan, OT
27 Geraghty, DHB	74 Bryant, OT
29 Riggins, RB	75 Palmer, DT
31 Schmidt, WB	76 Mitchell, OT
36 Oakson, LB	77 Childs, OG
37 Conley, RB	79 Skepnek, DT
38 Nelloms, RB	80 Schroll, TE
40 Williams, RB	81 Dinkel, DE
41 Hawkins, DHB	82 Henderson, DE
43 Harris, P	84 Sheats, DE
44 White, TE	85 Shannon, DE
47 Harris, LB	86 Schmitz, DE
49 Heimbacker, PK	88 Foster, FL
50 Page, LB	
51 Roach, LB	
53 Basler, DT	
54 McDaniel, C	

Field Judge ..... William D. Haffey, Omaha, Nebr. (Big 8)  
 Back Judge ..... John M. Raine, Atlanta, Ga.  
 ECO ..... Richard A. Allen, Dunwoody, Ga.

### TALLAHASSEE COCA-COLA BOTTLING CO.

"COCA-COLA" AND "COKE" ARE REGISTERED TRADE-MARKS OF THE COCA-COLA COMPANY.



# It's the real thing. Coke.

Trade-mark ®

**The All-American choice  
for gasolines and  
motor oil.**



Today's All-American team for top engine protection, better performance, and cleaner air: Texaco's great gasolines and Havoline Super Premium All Temperature Motor Oil. So for products you can trust...

**Trust your car to the  
man who wears the Texaco star.**



# FLORIDA STATE

## Seminoles

### Offense

**SE** 82 Rhatt Dawson  
32 Ed Davis  
21 Joe Goldsmith  
**WT** 74 Don Sparkman  
77 Roger Minor  
**WG** 65 J.W. McKinnie  
72 Shane Gibbs  
**C** 55 Allen Dees  
53 Jay Stokes  
54 Jim Dundala  
**SG** 76 Bill Rimby  
53 Jay Stokes  
**ST** 66 Joe Strickler  
73 Dan Daniels  
**TE** 86 Mike Glass  
84 Gary Parris  
**QB** 19 Gary Huff  
12 Frank Whigham  
11 Fred Geisler  
**TB** 31 Paul Magalski  
36 Rick Oreair  
**FB** 48 James Jarrett  
31 Paul Magalski  
30 Brent Norris  
**FL** 22 Barry Smith  
18 Kent Gaydos

### Defense

**LE** 85 Bill Shaw  
89 Kent Corral  
**LT** 70 Bill Henson  
79 Howard Jacobi  
**SAM** 60 Clint Parker  
44 Guy Glisson  
**MIKE** 59 Larry Strickland  
62 David Miles  
**WILL** 50 Dan Whitehurst  
44 Buddy Gridley  
**RT** 75 Richard Amman  
69 Bobby Anderson  
**RE** 80 Charlie Hunt  
57 Steve Bratton  
**RC** 26 James Thomas  
20 David Snell  
**LC** 40 Eddie McMillan  
38 Buzzy Lewis  
**ROV** 24 John Lanahan  
42 Ron Ratliff  
35 Randy Shively  
**SAF** 28 Robert Ashmore  
43 John Montgomery

**PLACEMENTS** — 1 Frank Fontes, 46 Brian Bengtson

**PUNTS** — 3 Duane Carrell, 12 Frank Whigham

**RETURN SPECIALISTS** — 20 David Snell, 40 Eddie McMillan, 38 Buzzy Lewis

# KANSAS

## Jayhawks

### Offense

**SE** 24 Lucius Turner  
88 Marvin Foster  
16 Bob Martin  
**ST** 73 Tom Gaughan  
56 Mike Gorbett  
67 Don Perkins  
**SG** 63 Gary Cooper  
69 Jim Schumm  
**C** 55 Mike McCoy  
54 Mike McDaniel  
**TG** 77 Bobby Childs  
65 Roger Bernhardt  
**TT** 74 John Bryant  
76 Bruce Mitchell  
70 Bill Gosa  
**TE** 80 John Schroll  
11 Bob Bruegging  
**QB** 14 Dan Heck  
12 David Jaynes  
15 Rich Jones  
**TB** 38 Jerome Nelloms  
40 Delvin Williams  
**FB** 37 Steve Conley  
31 Chuck Schmidt  
29 Bill Riggins  
**WB** 22 Mike Cerne  
31 Chuck Schmidt

### Defense

**TE** 57 Pat Ryan  
58 Geary King  
**LT** 53 Phil Basler  
68 Don Goode  
**MG** 36 Tommy Oakson  
61 Mike Sullivan  
**RT** 75 Gery Palmer  
70 Bill Skepnek  
**QE** 84 Eddie Sheats  
85 Joe Shannon  
81 Bill Dinkel  
**LB** 50 Kenny Page  
23 Chris Mercer  
**LB** 51 Steve Roach  
67 Don Perkins  
82 Pat Henderson  
**LH** 41 Lee Hawkins  
21 Dick Hertel  
26 James Bowman  
**RH** 20 Mike Burton  
19 Rocky Bron  
**HAWK** 27 Mark Geraghty  
86 Galen Schmitz  
**SAF** 18 Gary Adams  
17 Jerry Evans  
43 Marc Harris

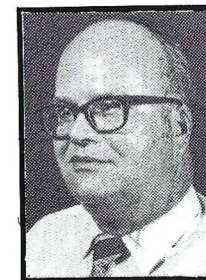
**PLACEMENTS** — 49 Bob Helmbacher

**KO RETURNS** — 37 Steve Conley, 38 Jerome Nelloms, 40 Delvin Williams

**PUNT RETURNS** — 40 Delvin Williams, 18 Gary Adams

**PUNTS** — 43 Marc Harris, 11 Bob Bruegging, 14 Dan Heck

For the Best Coverage  
Of Today's Game See Tomorrow's  
**Tallahassee Democrat**



With Florida's Prize-Winningest Sports Editor Bill McGrotha

# FLORIDA STATE

NO.	NAME	POS.	HT.	WT.	AGE	CLASS	HOMETOWN
75	AMMAN, RICHARD	DT	6-5	232	21	Sr.	Cocoa Beach
69	ANDERSON, BOBBY	DT	5-10	217	20	Soph.	Tifton, Ga.
61	ARNOLD, PHIL	LB	6-0	211	19	Soph.	Hollywood
28	ASHMORE, ROBERT	DB	6-1	181	22	Sr.	Tallahassee
46	BENGTSON, BRIAN	PK	6-3	205	21	Jr.	Green Bay, Wisc.
57	BRATTON, STEVE	LB	6-0	200	20	Soph.	Oviedo
3	CARRELL, DUANE	P	5-10	176	22	Sr.	Washington, D.C.
87	CASTLEBERRY, RUSSELL	DE	6-0	201	18	Soph.	Palatka
83	COOPER, BERT	DE	6-1	218	19	Soph.	Tallahassee
89	CORRAL, KENT	DE	5-11	199	20	Soph.	Tampa
73	DANIELS, DAN	OT	6-4	250	21	Jr.	Pensacola
32	DAVIS, ED	WR	6-1	195	20	Soph.	Lakeland
82	DAWSON, RHETT	WR	6-2	186	22	Sr.	Valdosta, Ga.
55	DEES, ALLEN	C	6-2	190	21	Jr.	Lakeland
14	DEMING, FRANK	QB	6-1	160	20	Soph.	Valdosta, Ga.
54	DUNDALA, JIM	CB	6-0	204	20	Jr.	Morrisville, Pa.
23	EDDY, DAVID	WR	5-11	173	19	Soph.	Miami
29	FIORE, DANO	WR	6-0	178	20	Jr.	Chattahoochee
1	FONTES, FRANK	PK	5-6	155	22	Sr.	Perth Amboy, N.J.
18	GAYDOS, KENT	WR	6-6	212	22	Sr.	Dallas, Tex.
11	GEISLER, FRED	QB	6-0	189	19	Soph.	Orlando
72	GIBBS, SHANE	OG	6-3	220	20	Jr.	Bay Minette, Ala.
86	GLASS, MIKE	TE	6-3	210	21	Jr.	Tampa
49	GLISSON, GUY	LB	6-0	194	21	Sr.	Tampa
21	GOLDSMITH, JOE	WR	6-0	172	19	Soph.	Lakeland
44	GRIDLEY, BUDDY	LB	6-0	209	21	Sr.	Tallahassee
33	HARDIN, STEVE	FB	6-1	206	20	Soph.	Boynton Beach
70	HENSON, BILL	DT	6-0	223	21	Sr.	Hyattsville, Md.
19	HUFF, GARY	QB	6-1	185	20	Jr.	Tampa
80	HUNT, CHARLIE	DE	6-3	202	20	Jr.	Jacksonville
79	JACOBI, HOWARD	DT	6-2	242	21	Jr.	Vero Beach
48	JARRETT, JAMES	FB	6-1	208	22	Sr.	Elizabethhton, Tenn.
24	LANAHAN, JOHN	DB	6-0	202	22	Sr.	Jacksonville
38	LEWIS, BUZZY	DB	6-0	180	19	Soph.	Bristol
31	MAGALSKI, PAUL	FB	5-11	210	21	Sr.	Garfield Hts., Ohio
65	MCKINNIE, J. W.	OG	6-1	207	21	Sr.	Macon, Ga.
40	MCILLAN, EDDIE	DB	6-2	175	20	Jr.	Tampa
47	MCNISH, DAVID	LB	6-0	215	20	Jr.	Eustis
62	MILES, DAVID	LB	5-10	185	19	Soph.	Tallahassee
77	MINOR, ROGER	OT	6-3	233	21	Jr.	Delray Beach
43	MONTGOMERY, JOHN	DB	6-0	182	21	Sr.	Jacksonville
27	MUNROE, ARTHUR	TB	6-0	192	22	Sr.	Quincy
30	NORRIS, BRENT	FB	6-0	199	20	Soph.	Thomaston, Ga.
36	OREAIR, RICK	TB	6-0	187	20	Soph.	Jacksonville
60	PARKER, CLINT	LB	6-0	193	20	Jr.	Daytona Beach
84	PARRIS, GARY	TE	6-2	210	21	Jr.	Vero Beach
52	RAINEY, REESE	LB	6-1	192	21	Jr.	Greenville, Ala.
42	RATLIFF, RON	DB	5-11	182	21	Jr.	West Palm Beach
76	RIMBY, BILL	OG	6-3	235	22	Sr.	St. Petersburg
37	ROBERTS, OSCAR	TB	5-11	184	21	Soph.	Ocilla, Ga.
58	SCHMIDT, ANDY	LB	5-11	192	19	Soph.	Brandon
85	SHAW, BILL	DE	6-1	218	21	Sr.	Marietta, Ga.
35	SHIVELY, RANDY	DE	6-0	170	20	Soph.	St. Petersburg
22	SMITH, BARRY	WR	6-1	186	20	Jr.	Miami
20	SNELL, DAVID	DB	5-7	172	20	Jr.	Slocomb, Ala.
74	SPARKMAN, DON	OT	6-5	249	19	Soph.	Jacksonville
53	STOKES, JAY	OG	6-3	220	22	Sr.	Sanford
59	STRICKLAND, LARRY	LB	6-1	205	21	Jr.	Tallahassee
66	STRICKLER, JOE	OT	6-2	235	22	Sr.	Avon Park
26	THOMAS, JAMES	DB	6-1	196	20	Jr.	Macon, Ga.
12	WHIGHAM, FRANK	QB	6-0	189	22	Sr.	Sanford
50	WHITEHURST, DAN	LB	6-3	214	21	Jr.	Adel, Ga.

## Tallahassee Democrat

### Prize Winning Sports Coverage

#### NATIONAL NEWSPAPER ASSOCIATION

- 1st—Best Sports Columnist, 1971
- 1st—Best Sports Section, 1970
- 3rd—Best Sports Picture, 1970

#### FLORIDA SPORTS WRITERS ASSOCIATION

- 1st—Best Sports Columnist, 1971
- 1st—General Writing Excellence, 1971
- 1st—General Section Excellence, 1970
- 2nd—Overall General Excellence, 1971
- 3rd—Sports Section Make-Up, 1971
- 4th—Overall Writing Excellence, 1970

#### ASSOCIATED PRESS OF FLORIDA

- 1st—Best Sports Color Picture, 1970

For the best coverage of today's games see tomorrow's

Tallahassee Democrat

# KANSAS

NO.	NAME	POS.	HT.	WT.	AGE	CLASS	HOMETOWN
18	ADAMS, GARY	DB	6-1	185	20	Jr.	Bartlesville, Okla.
53	BASLER, PHIL	DT	6-3	225	21	Sr.	Independence, Mo.
65	BERNHARDT, ROGER	OG	6-4	225	21	Jr.	Lyons, N.Y.
26	BOWMAN, JAMES	DHB	6-0	175	20	Soph.	Kansas City, Mo.
19	BRON, ROCKY	DHB	5-10	175	19	Soph.	Kansas City, Mo.
11	BRUEGGING, BOB	TE	6-3	215	19	Soph.	Kansas City, Mo.
74	BRYANT, JOHN	OT	6-5	218	18	Soph.	Arkansas City, Kan.
20	BURTON, MIKE	DHB	5-10	170	20	Jr.	Kansas City, Kan.
22	CERNE, MIKE	WB	6-0	184	20	Jr.	Lawrence, Kan.
77	CHILDS, BOB	OG	6-4	260	21	Sr.	Smyrna, Ga.
37	CONLEY, STEVE	RB	6-3	220	22	Sr.	Arlington Heights, Ill.
63	COOPER, GARY	OG	6-2	220	21	Sr.	Spring Valley, Calif.
81	DINKEL, BILL	DE	6-3	220	20	Jr.	Topeka, Kan.
17	EVANS, JERRY	DHB	6-0	182	20	Jr.	Kansas City, Mo.
88	FOSTER, MARVIN	FL	6-3	170	20	Jr.	Kansas City, Mo.
73	GAUGHAN, TOM	OT	6-2	237	22	Sr.	Chicago, Ill.
27	GERAGHTY, MARK	DHB	5-9	174	20	Sr.	Shawnee Mission, Kan.
68	GOODE, DON	OT	6-2	225	20	Soph.	Houston, Texas
56	GORBETT, MIKE	OT	6-3	242	21	Jr.	Cleveland, Ohio
70	GOSA, BILL	OT	6-6	235	22	Sr.	East St. Louis, Ill.
47	HARRIS, JOHN	LB	5-11	193	22	Jr.	Chicago, Ill.
43	HARRIS, MARC	P	6-2	170	19	Soph.	Lawrence, Kan.
41	HAWKINS, LEE	DHB	5-11	180	20	Sr.	Detroit, Mich.
14	HECK, DAN	QB	6-1	183	21	Sr.	Hawthorne, Calif.
49	HELMBACHER, BOB	PK	5-10	152	20	Jr.	St. Louis, Mo.
82	HENDERSON, PAT	DE	6-2	205	19	Soph.	Kansas City, Mo.
21	HERTEL, DICK	DHB	6-1	180	20	Sr.	Shawnee Mission, Kan.
12	JAYNES, DAVID	QB	6-2	200	18	Soph.	Bonner Springs, Kan.
15	JONES, RICH	QB	6-1	176	20	Jr.	Columbus, Kan.
58	KING, GEARY	DE	6-3	218	20	Jr.	Lawrence, Kan.
16	MARTIN, BOB	FL	6-3	189	20	Soph.	Ulysses, Kan.
55	MCCOY, MIKE	C	6-3	220	22	Sr.	Hiawatha, Kan.
23	MERCER, CHRIS	LB	6-1	205	19	Soph.	Shawnee Mission, Kan.
76	MITCHELL, BRUCE	OT	6-6	270	22	Sr.	Hyattsville, Md.
38	NELLOMS, JEROME	RB	5-9	185	21	Jr.	Atlanta, Ga.
36	OAKSON, TOM	LB	5-8	181	20	Jr.	Lawrence, Kan.
50	PAGE, KENNY	LB	6-3	219	21	Sr.	Dodge City, Kan.
75	PALMER, GERY	DT	6-4	245	20	Jr.	Kansas City, Mo.
67	PERKINS, DON	DG	6-1	223	20	Jr.	Topeka, Kan.
29	RIGGINS, BILLY	RB	5-11	190	19	Soph.	Centralia, Kan.
51	ROACH, STEVE	LB	6-2	211	21	Sr.	Raytown, Mo.
62	ROLA, DAVE	OG	6-3	212	19	Soph.	Afton, Mo.
57	RYAN, PAT	DE	6-1	191	20	Jr.	Kansas City, Mo.
31	SCHMIDT, CHUCK	WB	6-0	196	21	Sr.	Hays, Kan.
86	SCHMITZ, GALEN	DE	6-2	185	19	Soph.	Salina, Kan.
80	SCHROLL, JOHN	TE	6-4	215	20	Jr.	Hutchinson, Kan.
69	SCHUMM, JIM	OG	6-2	216	20	Jr.	Shawnee Mission, Kan.
85	SHANNON, JOE	DE	6-2	210	21	Jr.	Southampton, N.Y.
84	SHEATS, EDDIE	DE	6-3	200	20	Jr.	Atlanta, Ga.
79	SKEPNEK, BILL	DT	6-2	225	18	Soph.	Olympia Fields, Ill.
61	SULLIVAN, MIKE	DG	6-1	222	22	Sr.	Elmwood Park, Ill.
24	TURNER, LUCIUS	FL	5-11	165	22	Sr.	South Bend, Ind.
71	VROOMAN, DOUG	DE	6-6	225	20	Soph.	Oklahoma City, Okla.
44	WHITE, XERK	TE	6-2	201	22	Sr.	Taipei, Taiwan
40	WILLIAMS, DELVIN	RB	6-2	190	20	Soph.	Houston, Texas



**MISS CHERE BELLOTTO**  
Florida Cattlemen's Association  
1971-72 Sweetheart

## **COED SAYS:**

When you celebrate your team's victory, treat yourself to tender, tasty...

# **BEEF**

*As Delicious as it is Nutritious!*

---

## **FLORIDA BEEF COUNCIL**

---

A COMMITTEE OF THE FLORIDA CATTLEMEN'S ASSOCIATION



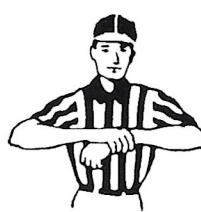
Touchdown or Field Goal



Safety



Offside (Infraction of scrimmage or free kick formation)



Illegal use of Hands and Arms



Illegal Procedure or Position



Ineligible Receiver Down Field on Pass



Delay of Game



Clipping



Illegal Motion



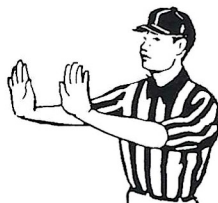
Roughing the Kicker



Illegal Shift



Time out; Referee's Discretionary or Excess Time Out followed with tapping hands on chest.



Forward Pass or Kick Catching Interference



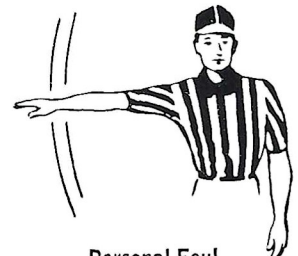
Intentional Grounding



Loss of Down



Ball Ready for Play



Personal Foul



# RAGANS and ROBERTS TIRE COMPANY



## Big Bends Largest Goodyear & BP Oil Dealer

James W. Ragans — OWNERS — Eli P. Roberts

Complete Service Department Including:  
Front End and Brake Rebuilding  
Tires · Batteries · Accessories

Fuel Oils For Home, Business and Farm

for AUTOMOTIVE SERVICE call  
224-8156

609 W. Tennessee Street

for FUEL OIL call  
576-3145

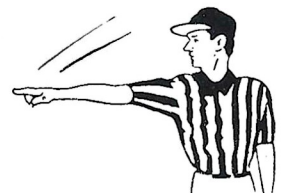
### BP SETS THE PACE



Start the Clock



Substitution Infractions



First Down

# FOOTBALL GLOSSARY

**Audible** — A vocal signal by the quarterback changing the play called in the huddle. Also called Check Off.

**Blitz** — Commitment by defensive backs and/or linebackers to rush the passer.

**Blocking** — Legally hindering the progress of an opponent by contacting him with any part of the blocker's body.

**Bomb** — A long pass attempt for a touchdown.

**Buttonhook** — A pass pattern in which the receiver goes downfield and U-turns back sharply to receive the ball.

**Clipping** — Running or diving into the back of an opponent, or throwing the body across the back of the leg or legs of an opponent other than the ball carrier.

**Dive-Tackle Play** — A quick-handoff running play over tackle.

**Draw-Play** — Quarterback drops back as if to pass but instead hands ball to running back, after quarterback's teammates have assumed pass-blocking positions.

**Fair Catch** — The opportunity for a player of the receiving team to catch a kicked ball that has crossed the scrimmage line, without being tackled or blocked by an opponent, after signaling his intention by completely extending one arm above his head.

**Kickoff** — A free kick with which each half is opened, and which is employed also following each try-for-point or Field Goal. A kickoff must be either a Placekick or a Dropkick.

**Lateral Pass** — A live ball thrown toward or parallel with the passer's own goal line.

**Linebacker** — A defensive player operating immediately behind his line where he can either aid linemen in stopping a running play or cover an opponent's receiver if a pass develops.

**Look-In Pass** — Receiver runs straight pattern and looks for the ball immediately over his inside shoulder.

**Man-To-Man Coverage** — Pass defense plan wherein defensive backs cover receivers wherever they go, rather than field areas.

**Mike** — Middle linebacker, so designated because he usually lines up opposite middle of the offensive line.

**Monster** — A roving linebacker who may position himself on either side of his team's defensive formation.

**Neutral Zone** — The space between the scrimmage lines of the offense and defense, approximating 11 inches (the length of the football).

**Onside Kick** — A kickoff that travels 10 yards or more is anybody's ball. The so-called "onside kick" is an effort by the kicking team to kick the ball barely beyond 10 yards and recover it before the receiving team can do so.

**Pocket** — Area of protection for the passer, formed by blockers. Passer drops straight back from scrimmage behind the blocking shield into what resembles a "cup" or pocket.

**Post** — A pass pattern in which the receiver goes downfield to pre-determined depth then cuts at an angle toward the goalposts.

**Prevent Defense** — A strategem replacing linebackers with additional backfield pass defenders, sacrificing strength against short gainers in order to prevent a long pass completion. Most often employed by a team protecting a lead late in either half.

**Pulling Guard** — Guard who pulls out behind scrimmage line for a trap block or to lead sweep blocking for ball carrier.

**Reverse Play** — A running play with backfield action suggesting one direction while ball carrier goes in opposite direction.

**Roll-Out pass** — Quarterback runs laterally with blockers before throwing, instead of dropping straight back to pass.

**Sam** — Strong linebacker, so designated because he usually lines up opposite the "strong side" of the offensive line.

**Screen Pass** — Pass to a receiver behind a wall of blockers, who have permitted defenders to penetrate.

**Scrimmage Line** — The yard line (marked or unmarked) that passes through point of the ball nearest a team's own goal line.

**Slot Back** — Back stationed in slot between interior linemen and end. Must be one yard behind the line of scrimmage.

**Snap** — A quick, continuous motion by which the ball is handed or snapped back with the ball leaving the hands of the snapper on the motion. The snap normally is made by the center.

**Strong Side** — Overbalance of offensive or defensive linemen to either side of the Center.

**Stunting** — Defensive players changing positions as the ball is snapped, to confuse offensive strategy.

**Sweep** — End run with wave of blockers leading the ball carrier.

**Spearing** — Illegal use of the head and helmet to ram an opponent after his momentum has stopped.

**Tackling** — Grasping or encircling an opponent with hands or arms.

**Tight End** — Offensive end who lines up in close formation (as opposed to Split End's wide set) where he can either block for a ball carrier or be employed as a pass receiver.

**Widereceiver** — A lineman and/or a back who is set wide for pass receiving purposes. Also called Split End, Flanker or Wideout.

**Willie** — Weak linebacker, so designated because he usually lines up opposite the "Weak side" of the offensive line.

**Zone Coverage** — Plan of pass defense wherein areas are covered rather than individual receivers Opposite of Man-To-Man.

## BILL PEACOCK CHEVROLET, INC.

300 West Washington St.  
MONTICELLO, FLORIDA

The reason people pass one door  
To patronize another store,  
Is not because the busier place  
Has better silks, or gloves, or lace,  
Or special prices, but it lies  
In pleasant words and smiling eyes;  
The only difference, we believe  
Is in the treatment folks receive!



*Growing With  
the Seminoles!*

TALLAHASSEE  
Phone 224-8827

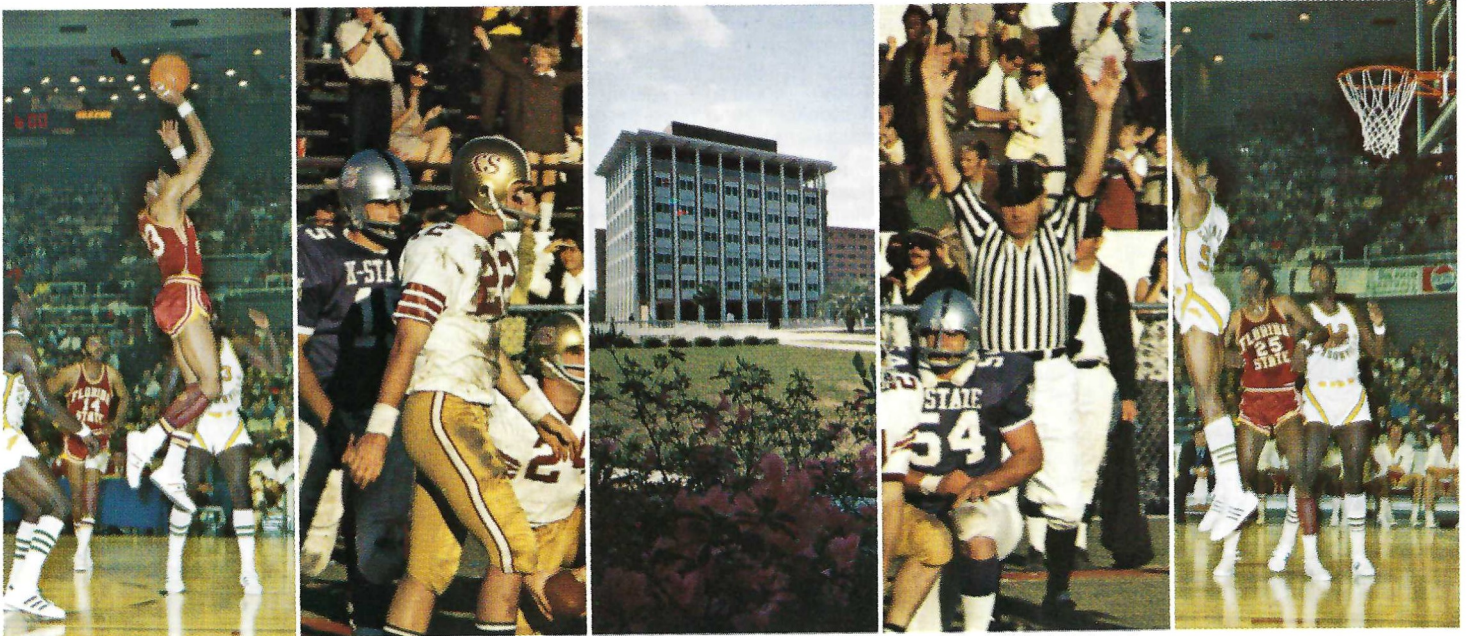
MONTICELLO  
Phone 997-2513

# JOIN THE UPRISING support FLORIDA STATE UNIVERSITY

"In my opinion the importance of intercollegiate athletics to a university has not diminished one whit . . . I suspect we need a high quality, strong athletic program now more than ever" — President Stanley Marshall, June, 1971.

"Athletics at Florida State University is moving into a new era . . . an era in which the fans and friends of Florida State will play an unprecedented role with their support. The object of the National Seminole Club is to organize this support and direct it into one of the most meaningful and personally rewarding areas within the scope of our program . . ."

— Director of Intercollegiate Athletics, Clay Stapleton

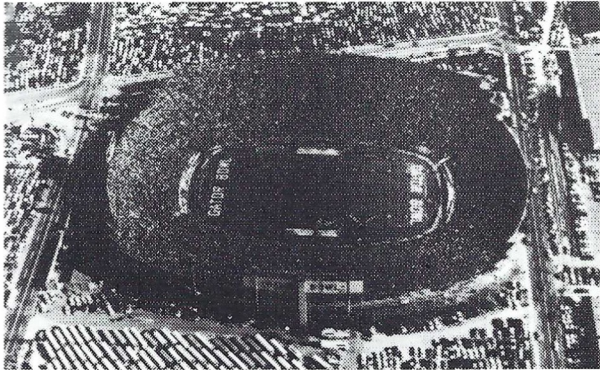


## the NATIONAL SEMINOLE CLUB



for more information  
write  
Jim Olsen, Executive Director  
Tully Gym  
Florida State University  
Tallahassee, Florida 32306  
Phone  
AC 904 — 599-2790

# WHERE THE ACTION IS... JACKSONVILLE'S GATOR BOWL, AUDITORIUM AND COLISEUM!



## GATOR BOWL

<b>SEPT. 11</b>	Baltimore Colts vs. Oakland Raiders	8:00 p.m.
<b>OCT. 20-30</b>	Greater Jacksonville Fair	
<b>NOV. 6</b>	Florida vs. Georgia	1:45 p.m.
<b>NOV. 25</b>	Wolfson vs. Englewood ) Lee vs. Jackson ) Thanksgiving Day Stanton vs. Raines )	10:30 a.m. 2:30 p.m. 8:00 p.m.
<b>DEC. 31</b>	Gator Bowl Game	2:00 p.m.



## AUDITORIUM

### SEPTEMBER

- 16 A Date With Eve
- 23 F.J.C. Presents  
Julian Bond
- 25 Gospel Sing

### OCTOBER

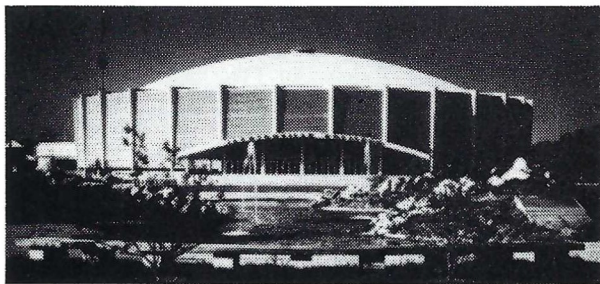
- 7 The Lettermen
- 7 F.J.C.-Phillips  
and Renzulli
- 14 F.J.C.-Music from  
Jesus Christ Super Star
- 30 The Wizard of Oz

### NOVEMBER

- 3 The Last of the  
Red Hot Lovers
- 3 F.J.C.-William Brown
- 16 Symphony
- 21 Ballet

### DECEMBER

- 7 Symphony
- 24 Ballet
- 25 Rock Show



## COLISEUM

### SEPTEMBER

- 4 Motorcycle Races
- 5 Allman Brothers
- 9,16,23,30 Wrestling
- 22 Symphony October Festival
- 24 Atlanta Hawks vs.  
Philadelphia 76'ers
- 25 Gladys Knight and the Pips

- 12-14 Boat Show
- 17 The Carpenters
- 26-28 Loretta Lynn Rodeo

### DECEMBER

- 1 Jacksonville University  
Biscayne
- 2,9,16,23,30 Wrestling
- 3,4,5,8,10,14 Hockey
- 19,24,25,31
- 6-7 J.U. Basketball Tournament
- 11 J.U. - Georgia Southern
- 18 J.U. - William & Mary
- 20 Gator Bowl President's Ball
- 28-29 Gator Bowl Basketball  
Tournament

### OCTOBER

- 1 Grand Funk Railroad
- 7,14 Wrestling
- 8-10 Shrine Circus
- 13,15,16 Hockey

### NOVEMBER

- 2,3,5 Hockey
- 6 Florida-Georgia Bar-B-Q

### PUBLIC ICE SKATING

Week days 2-4:00	8:00-10 p.m.
Saturday 2-4:00 p.m.	
Sunday 2-4:00 p.m.	7:00-9:00 p.m.

Note: When special events are held at Coliseum, Public Skating will be cancelled during the above times.

### fortickets:

civic auditorium - 354-2041  
memorial coliseum - 354-2041

gator bowl rental information call  
Danny Bridges — 354-5678



## CITY OF JACKSONVILLE

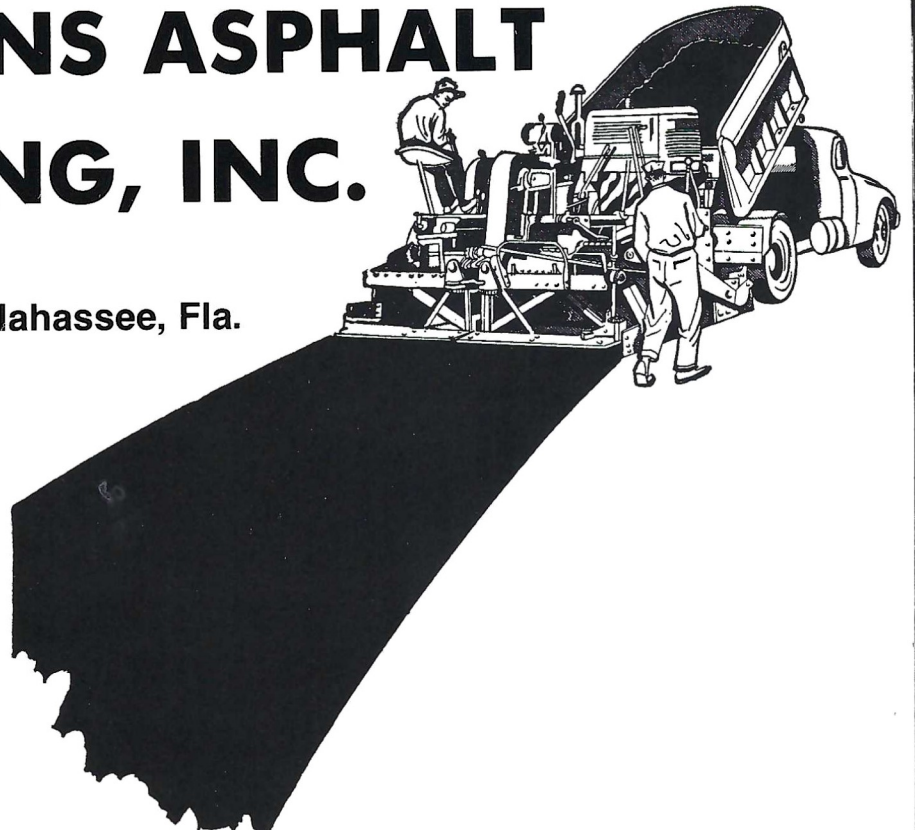
## FLORIDA BOARD OF REGENTS AND CHANCELLOR



Members of the Florida Board of Regents shown here are: Front Row, left to right, Miss Elizabeth A. Kovachevich, St. Petersburg; Dr. Louis C. Murray, Orlando, Vice Chairman; D. Burke Kibler, III, Lakeland, Chairman; Julius F. Parker, Jr., Tallahassee; Back Row, left to right, E. W. Hopkins, Jr., Pensacola; Dr. Robert B. Mautz, Chancellor; J. J. Daniel, Jacksonville; and Marshall M. Criser, Palm Beach. Shown in the inserts are Regents Chester H. Ferguson, Tampa, and Mrs. E. D. Pearce, Miami.

# HAMMONS ASPHALT PAVING, INC.

Tallahassee, Fla.



Contributor: Florida State University Athletic Scholarship Fund



# THE 1971 SEMINOLES

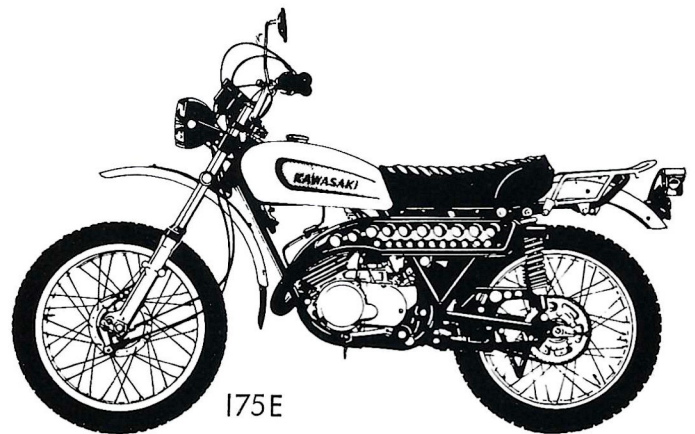


FIRST ROW – Left to Right: Coach Sloan, Ajhar, Anderson, Carrell, Drews, Eddy, Fontes, Howton, Jones, Magalski, McGowan, Miles, Murphy, Ratliff, Roberts, Schmidt, M. Smith, Snell, Joe Thomas, Head Coach Larry Jones. SECOND ROW – Coach Harbison, Bratton, Burgess, Castleberry, Corral, Cowart, Dowey, Downey, Dundala, Fiore, Geisler, Glisson, Goldsmith, Gridley, Henson, Howell, Lanahan, Lewis, McNish, Montgomery, Munroe, Norris, Orear, Coach Hodgson. THIRD ROW – Coach Pope, Arnold, Abbott, Ashmore, Cooper, Davis, Dees, Deming, Doyle, Gould, Hardin, Hopkins, Huff, Jacobi, Jarrett, Macaulay, McKinnie, Ottman, Parker, Rainey, Sargent, Shaw, Shively, B. Smith, Strickland, James Thomas, Whigham, Coach Henderson. FOURTH ROW – Coach Canty, Coach Devlin, Amman, Bengtson, Daniels, DeMaria, Gaydos, Gibbs, Glass, Hensley, Howard, Hunt, Lee, Lindsey, Loucks, McMillan, Minor, Musser, Parris, Rimby, Sparkman, Stephens, Stokes, Strickler, Walter, Whitehurst, Coach Parcells.

TALLAHASSEE'S SPORT CYCLE  
HEADQUARTERS



SALES & SERVICE ON MOST MAKES



175E



W. M.  
POGGIE  
owner

**576-6326**

Just Past Tallahassee Jr. College W. Pensacola



**Frisch's**

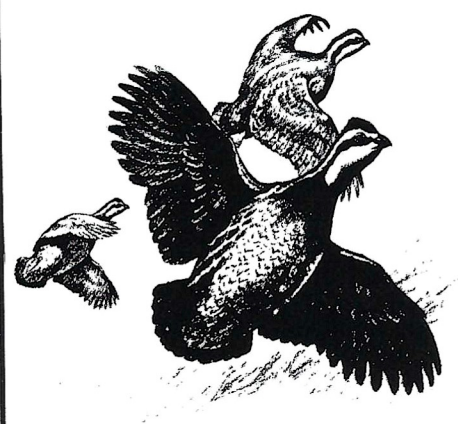
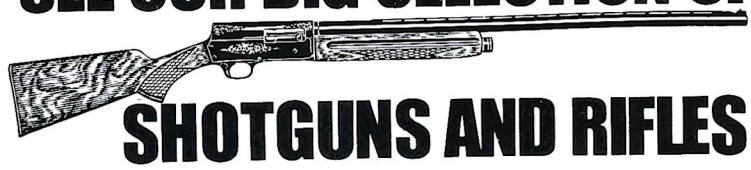
THE ORIGINAL  
**BIG BOY**  
**RESTAURANT**

GREAT PLACE FOR POW WOWS  
 AND GOOD FOOD

SERVING:  
 • Breakfast • Lunch • Dinner • Snacks

Open 7 A.M. to Midnight  
 'Til 2 A.M. Fridays and Saturdays  
 1775 W. Tennessee Street  
 TALLAHASSEE — TELEPHONE 224-1246  
 TRY FRISCH'S CARRY-OUT

**SEE OUR BIG SELECTION OF**



*America's Finest Sports Equipment*  
**BROWNING**  
 AUTHORIZED DEALER

**Jackson Gun Shop, Inc.**  
 452 West Tennessee St. • Phone 224-6934  
 TALLAHASSEE, FLORIDA 32301

**1971 NCAA**  
**Football**  
**Television**  
**Schedule**

Date	Game
Sept. 11	Grambling-Morgan State (New York City) (Night)
Sept. 18	Texas at UCLA Purdue at Washington Missouri at Air Force Florida State at Miami
Sept. 25	Auburn at Tennessee Penn State at Iowa Oregon at Stanford Kent State at Ohio University
Oct. 2	Michigan State at Notre Dame Texas Tech at Arizona North Carolina at North Carolina State Colorado State at Wyoming
Oct. 9	Michigan at Michigan State
Oct. 16	Texas at Arkansas
Oct. 23	Wisconsin at Ohio State Georgia Tech at Tulane Texas Tech at SMU Wake Forest at North Carolina
Oct. 30	Colorado at Nebraska
Nov. 6	Minnesota at Northwestern Georgia at Florida Boston College at Syracuse Washington at California
Nov. 13	Regional Choice Weekend
Nov. 20	USC-UCLA
Nov. 20	Notre Dame at LSU (Night)
Nov. 25	Nebraska at Oklahoma (Day)
Nov. 25	Georgia at Georgia Tech (Night)
Nov. 27	Army-Navy
Nov. 27	Auburn-Alabama
Dec. 4	Penn State at Tennessee
Dec. 11	College Division Bowl Games

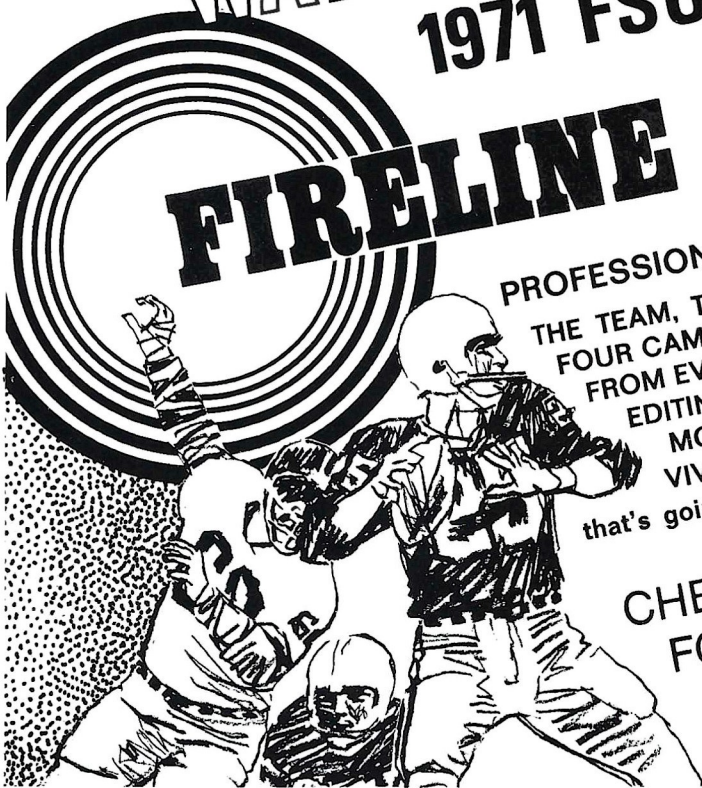
See NCAA Football on WCTV, Ch. 6, Tallahassee

WATCH

# 1971 FSU FOOTBALL HI-LITES

## FIRELINE

STARTING SEPTEMBER 11, 1971



PROFESSIONAL FILM TEAM—NEW FORMAT  
THE TEAM, THE COACH AND A MODERATOR WITH BITE!  
FOUR CAMERAS CATCH THE ACTION  
FROM EVERY ANGLE. THE SOUTHEAST'S BEST  
EDITING TEAM WILL MAKE THE  
MOMENTS SPECTACULAR! IT'S A  
VIVID ENTERTAINMENT EXPERIENCE . . .  
that's going to be talked about by Florida's football fans.

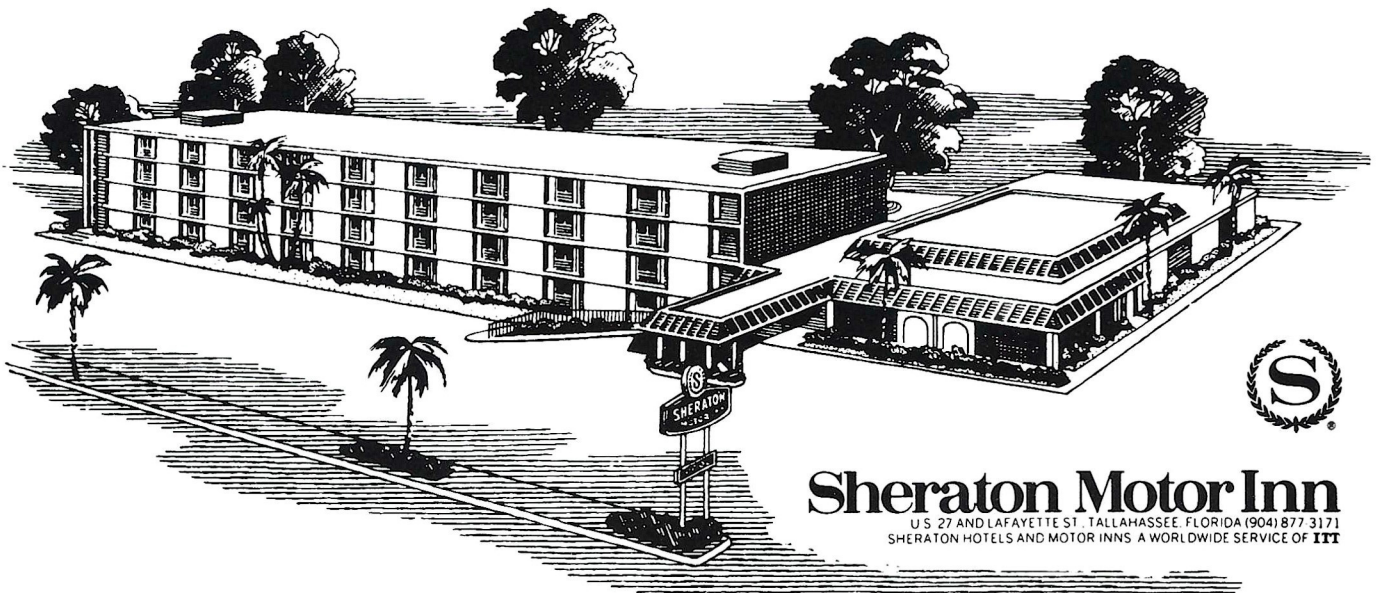
CHECK YOUR LOCAL LISTINGS  
FOR TIME AND CHANNEL

## Sheraton in Tallahassee

Commercial and Family Rates, Children Free

Located just one mile from the business district and close to the capitol, the Sheraton Motor Inn is completely air-conditioned. All 151 rooms with color TV. Swimming pool.

Banquet and meeting facilities available for any group, up to 250. Restaurant and Lounge in the Motor Inn. For further information, call 877-3171.



### Sheraton Motor Inn

U.S. 27 AND LAFAYETTE ST., TALLAHASSEE, FLORIDA (904) 877-3171  
SHERATON HOTELS AND MOTOR INNS A WORLDWIDE SERVICE OF IIT



Your Memories  
Live Forever  
When Recorded  
On Film!

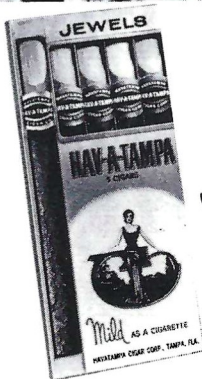
TAKE YOUR  
CAMERA  
ALONG!!

FOR NORTH FLORIDA'S LARGEST SELECTION OF PHOTO  
EQUIPMENT & SUPPLIES SEE THE FRIENDLY FOLKS AT

## Tallahassee Camera Center

117 NORTH MONROE

"Across from the Florida Theater"



## HAV-A-TAMPA JEWELS

*The Cigar for Men . . .  
that Ladies Love —*

**WELCOME ANYWHERE**

for their man-size flavor and gentle aroma

Distributed by **Eli Witt Tobacco & Candy Company**  
Tallahassee, Florida

## STADIUM INFORMATION

**REST ROOMS** are located on concourse and ground levels of both the east and west stands.

**FIRST AID** station is located at the southwest corner of the stadium opposite gate five. A registered nurse is on duty at all times. Ambulance Service courtesy of Bevis Funeral Homes.

**PUBLIC TELEPHONES** are located on the ground levels of the east and west stands.

**PUBLIC ADDRESS** will make special announcements in cases of emergency only.

**DOCTORS** receiving calls will be paged by number.

**LOST AND FOUND** items may be turned in and claimed at the ticket-booth at gate three under the west stands by the press box elevator.

**ALCOHOLIC BEVERAGES** are prohibited. Your cooperation is appreciated.

**FIELD REGULATIONS** prohibit unauthorized persons on the field during or after the game. Please leave the Stadium by the ramp and section exits.

**REFRESHMENTS** are available in the stands and at locations on the concourse and ground levels of the east and west stands.

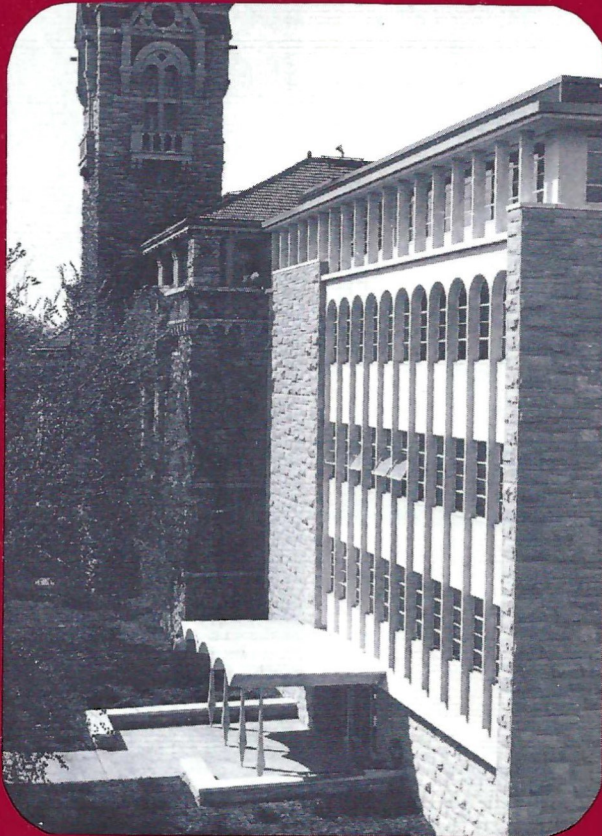
COLD DRINKS .....	25c
HOT COFFEE .....	25c
SANDWICHES .....	50c
HOT DOGS .....	25c
PEANUTS .....	25c
POP CORN .....	25c
CIGARETTES .....	60c

SOUVENIR ITEMS - PENNANTS -  
BADGES - SUN VISORS - ASPIRIN

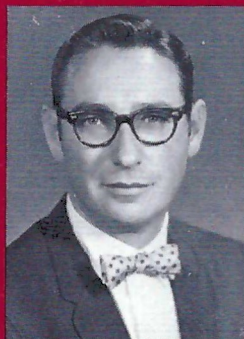
Please pay no more than  
**ESTABLISHED PRICES**

Tonight's Opponent . . .  
the UNIVERSITY of

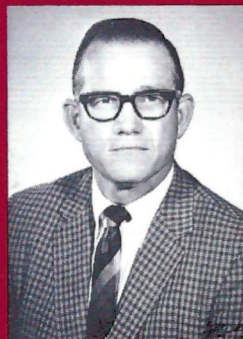
**KANSAS**



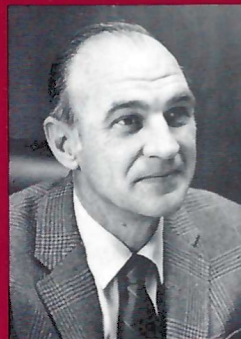
**DYCHE HALL – Museum of Natural History**



**Dr. E. Laurance Chalmers**  
Chancellor



**Wade Stinson**  
Athletic Director



**Don Fambrough**  
Head Coach

**HOWARD JOHNSON'S  
MOTOR LODGE**

W. Tennessee St.

AT THE UNIVERSITY

---

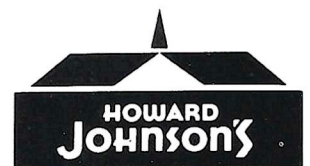
**HOWARD JOHNSON'S  
MOTOR LODGE**

Apalachee Parkway  
NEAREST THE CAPITOL

---

Featuring the  
**TIGER BAY LOUNGE**  
Entertainment Nightly

---



Accommodations

*motor  
lodges*

One Of Tallahassee's Most Exclusive Steak Houses

# the Silver Slipper



## RESTAURANT

☆ COCKTAILS SERVED ☆

DELICIOUS CHARCOAL BROILED STEAKS

SEA FOODS CHICKEN

25 PRIVATE DINING ROOMS — BANQUET ROOM SEATING 100

CALL JIMMIE OR CHRIS  
KALFAS FOR RESERVATIONS

### 224-1265

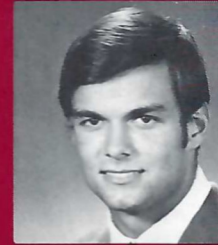
FOR PRIVATE PARTIES  
AND BANQUETS

OPEN 5 P.M. TILL 11:30  
OPEN 7 DAYS A WEEK

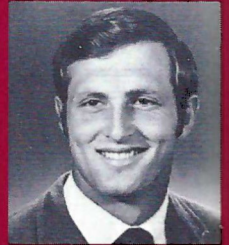
2000 S. MONROE • One Mile From Capitol On So. Monroe St. U.S. 319 S.  
BEHIND S.&S. PACKAGE STORE



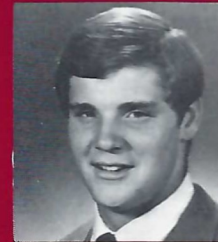
# K U



Gary Adams



Phil Basler



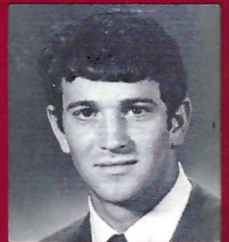
Bob Bruegging



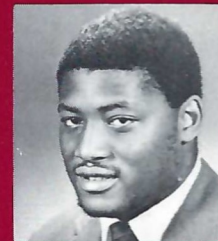
John Bryant



Mike Burton



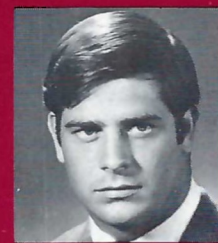
Mike Cerne



Bob Childs



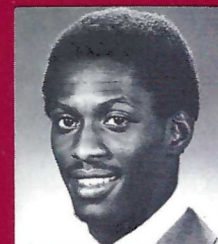
Steve Conley



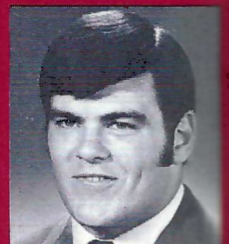
Gary Cooper



Jerry Evans

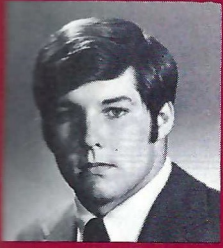


Marvin Foster

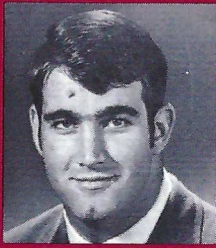


Tom Gaugham

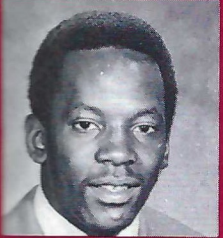
# Jayhawks



Mark Geraghty



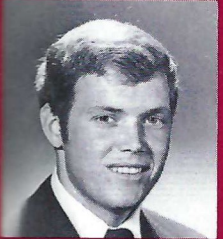
Mike Gorbett



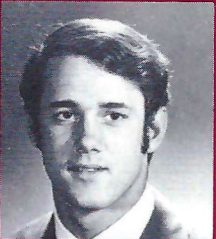
Lee Hawkins



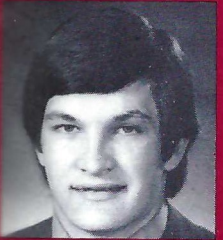
Dan Heck



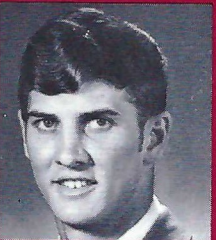
Bob Helmbacher



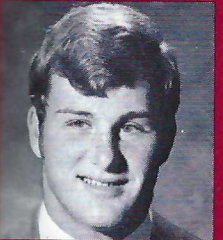
Dick Hertel



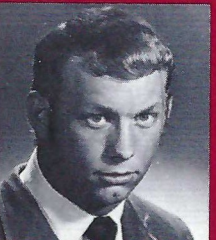
David Jaynes



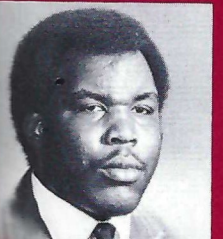
Rich Jones



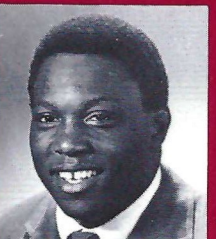
Geary King



Mike McCoy



Bruce Mitchell



Jerome Nelloms

## We Play Up Uprosings!



When the Seminoles go into battle, Times Sports is in the thick of it, covering their hundred-yard warpath from one end to the other. For the best, most colorfully complete coverage of every Florida State game, see Florida's Best Newspaper.

**St. Petersburg Times**  
FLORIDA'S BEST NEWSPAPER

*Miller*  
**CHEVROLET COMPANY**

**Havana, Florida**

**539-6376**

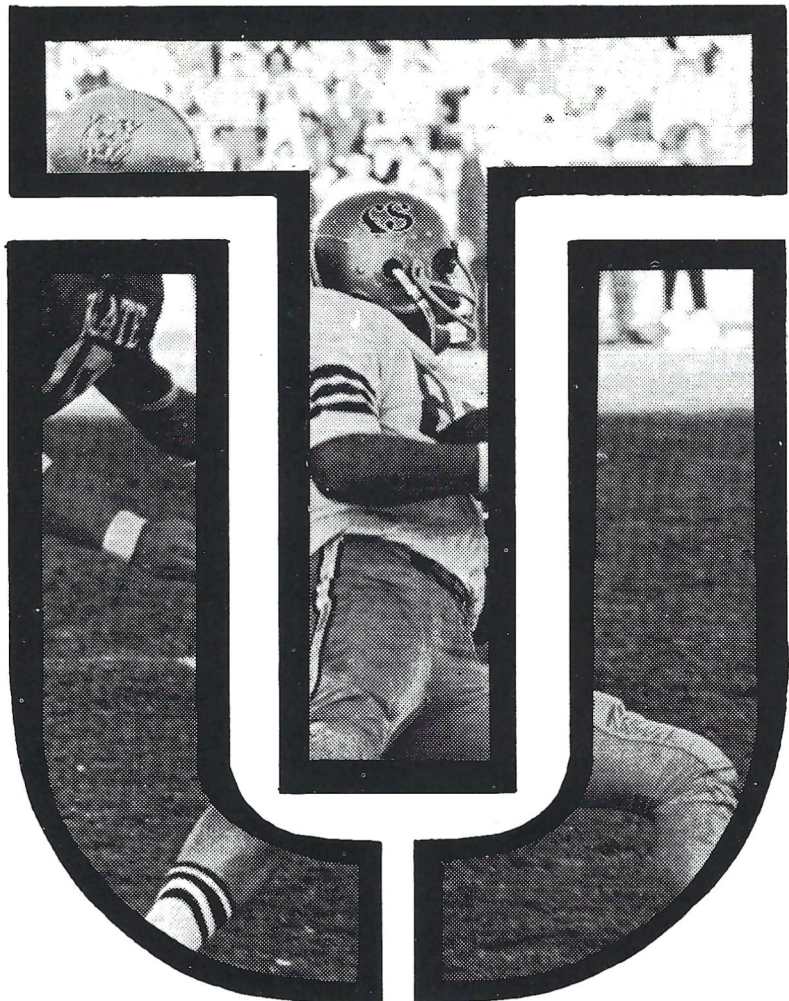
**15 Miles North of Tallahassee**

**on U. S. 27**

**Phone Toll Free**

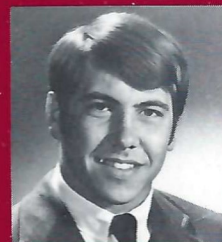
**224-1317**

# More Jayhawks

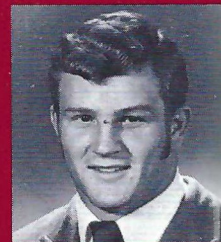


Complete on-the-scene coverage begins the moment the big team takes to the field. From the opening kickoff to the final whistle, the thrills, excitement and action are recorded by TU-J staffers who know what's happening in the world of football. The colorful play by play accounts and stirring action photographs let you relive each exciting moment of the game as you follow your team through the pages of. . .

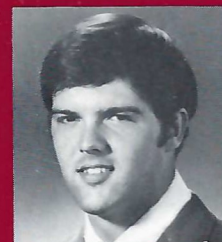
**U** The Florida Times-Union  
Jacksonville Journal



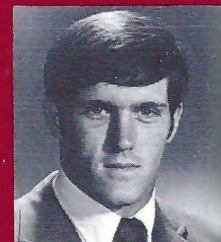
Tom Oakson



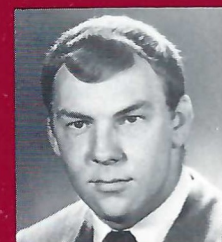
Kenny Page



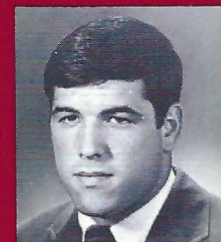
Gery Palmer



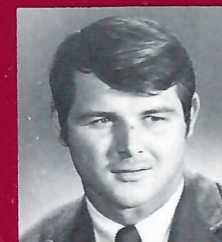
Don Perkins



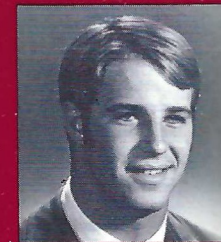
Steve Roach



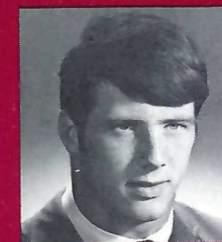
Pat Ryan



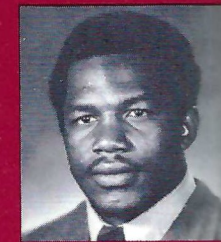
Chuck Schmidt



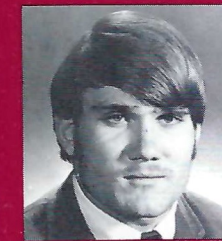
John Schroll



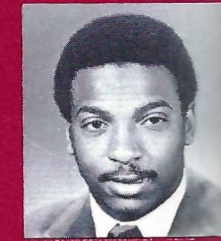
Jim Schumm



Eddie Sheats



Mike Sullivan



Lucius Turner



**STATION   CITY**

WKAT - Miami  
WVOG - Boca Raton - Palm Beach  
WJAX - Jacksonville  
WSUN - St. Petersburg - Tampa  
WCOA - Pensacola  
WPCF - Panama City  
WTNT - Tallahassee  
WLAK - Lakeland  
WWQS - Windemere - Orlando  
WSIR - Winter Haven  
WROD - Daytona Beach  
WINK - Ft. Myers

**STATION   CITY**

WTRL - Bradenton  
WGBC - Chipley  
WCNH - Quincy  
WDSR - Lake City  
WTRR - Sanford  
WRUF - Gainesville  
WSRA - Milton  
WTTB - Vero Beach  
WMOP - Ocala  
WTYS - Marianna  
WFSH - Valpariso



**TOMMY WARREN      BO MITCHELL**

Florida State's football games, whether played at home or away, will be heard throughout "Seminole Territory" on the Seminole Football Network.

With Tallahassee's WTNT acting as the originating station, 30 stations will carry every play to Seminole fans in Florida, South Georgia and South Alabama. In addition, several Florida State games will be heard from time to time as "Pick of Dixie" games.

Heading up the Seminole Network broadcast team once again will be Bo Mitchell. A veteran of more than 20 years broadcasting, Mitchell will be in his ninth season as the Seminoles' play-by-play man. In addition to Seminole games, Mitchell has also done play-by-play for the AFL All Star game, Senior and Tangerine Bowl games.

Joining the former Florida Sportscaster of the Year and station manager of WTRL in Bradenton will be former Seminole quarterback Tommy Warren. The Miami native moves from the playing field to the broadcast booth after directing the Tribe to a 7-4 season last year. Now enrolled in Florida State's Law School, Warren will serve as color man.

# SEMINOLE FOOTBALL NETWORK

**Follow The Seminoles**

**ON WTNT 1270 ON YOUR DIAL**

Brought to you by



**AND YOUR NEIGHBORHOOD TEXACO DEALER**

and by

**GOLDEN FLAKES POTATO CHIPS**

**THE TALLAHASSEE BANK AND TRUST COMPANY**

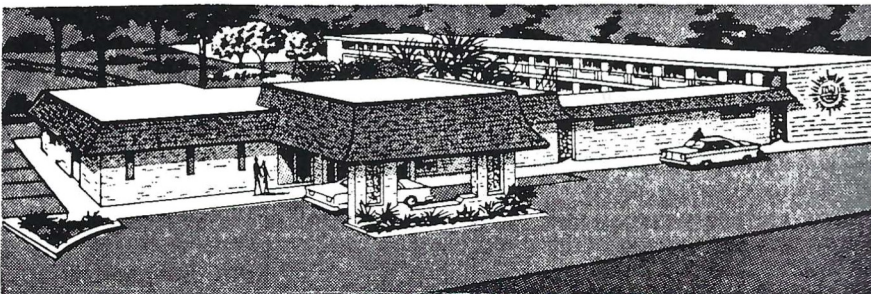
# *The Star Spangled Banner*

O, say! can you see, by the dawn's early light,  
What so proudly we hailed at the twilight's last  
gleaming?  
Whose broad stripes and bright stars, thro' the perilous  
fight,  
O'er the ramparts we watch'd, were so gallantly  
streaming?  
And the rockets' red glare, the bombs bursting in air,  
Gave proof thro' the night that our flag was still there.  
Oh, say, does that Star-spangled Banner yet wave  
O'er the land of the free and home of the brave?



## QUALITY MOTEL

*The Chez Napoleon Room  
Complete Banquet and Meeting Facilities  
Cocktail Lounge - Bonaparte's Retreat*



**COLOR TV**

"We Cater to  
Commercial Men"

Phone 877-6171

*On the Parkway...* 1027 APALACHEE PKWY. US 27 So.

# TONIGHT AT HALFTIME

The School of Music — Dean Wiley L. Housewright — presents . . .

## THE MARCHING CHIEFS

Richard D. Mayo, Director  
Charles Carter, Arranger, Assistant Director

William Higgins, Assistant Director  
William Hinkle, Graduate Assistant

Tom Drick, Drum Major  
Mary Lynn Hendrickson, Head Majorette  
Mike Moore, Feature Twirler

The Marching Chiefs present a show entitled "Innovations in Sound" featuring the distinctive sounds made popular by famous musicians and famous musical groups.

Music	Formation
Wagner Fanfare Down in the Country Moonlight Serenade Elinor Rigby Sempre Fideles	<b>Drill Sequence</b> — Opening with a Wagner Fanfare the Chiefs present the sounds of Don Ellis with "Down in the Country"; Glen Miller's "Moonlight Serenade"; the Beatles "Elinor Rigby"; and John Phillip Sousa's march "Sempre Fideles".
Way Down Yonder in New Orleans When the Saints Go Marching In	<b>Steamboat</b> — The late great Louis Armstrong introduced many sound innovations with such songs as "Way Down Yonder In New Orleans" and "When the Saints Go Marching In".
Hi-De-Ho	<b>Concert Formation</b> — A group representing the newest sound innovations of today is Blood, Sweat and Tears.
Hymn to the Garnet and the Gold	The Chiefs present FSU's own sounds of Mr Charles Carter with the Hymn to the Garnet and the Gold.

Also appearing tonight, Florida A&M's Marching "100". The Rattlers' exciting band are the guests of the Seminoles and will be representing Kansas. The combined shows promise to bring you a halftime as exciting as any ever seen in Campbell Stadium.

## Nic's Toggery

115 SOUTH MONROE STREET  
PHONE 222-0687  
TALLAHASSEE, FLORIDA - 32301

Official Seminole Blazer.  
Gold or Garnet Color, in  
Double Knit . . . **\$65<sup>00</sup>**



Official FSU Ties, **\$4.50**  
Tie One On! Garnet Back-  
ground with Seminole Mono-  
gram. 100% Dacron.



**Seminole Clock \$25.00**  
(Battery Operated)

Also available, All Major Colleges  
in their own Logo.

MAIL ORDER

NAME \_\_\_\_\_  
ADD. \_\_\_\_\_  
PHONE \_\_\_\_\_  
ITEM \_\_\_\_\_  
COAT SIZE \_\_\_\_\_

# TV FOOTBALL . . . of Rules, Rain and Ratings

by BEANO COOK, ABC-TV Sports



ROONE ARLEDGE

President and Executive Producer  
of ABC Sports

On the 28th floor of ABC Television's office in New York, there is a saying which goes, "If you think the network did a good job in picking this season's college football schedule for television, send all congratulatory mail to Chuck Howard, vice-president of program production, and Jim Spence, vice-president of program planning. If you don't like the schedule, blame Roone Arledge, President of ABC Sports."

See, my friend, it really boils down to one person, Arledge. He makes the final decision. Take the 1969 schedule. When he talked to Darrell Royal of Texas and Frank Broyles of Arkansas about playing the first Saturday in December instead of the middle of October, Royal asked, "Why?"

"It will be for the national championship," replied Arledge casually.

"What about Ohio State?" said Royal. In 1968, the Buckeyes swept to the national title and nearly every key player was returning.

"They will lose," said Arledge. "Don't worry about that. Your game will be for No. 1."

Everybody thought Arledge was nuts, including all the pre-season experts who saw no way Ohio State could lose. Well, as the season progressed, it seemed as if Arledge had been wrong and the game between

Texas and Arkansas would be just for No. 2 and for the Southwest Conference title. After Ohio State walloped Purdue on national television, only Michigan remained for the Buckeyes, who were called by some, "the greatest team ever." A reporter asked Arledge what he thought.

"Look, Ohio State plays at Michigan and 100,000 screaming fans will mean the difference."

As Arledge watched the Ohio State-Michigan game on television, he really didn't believe what he saw. "Look, I thought Ohio State would lose, but when it came down to just one game, I had my doubts."

Arledge, Spence and Howard picked the 1971 television schedule for ABC. The National Collegiate Athletic Association Television Committee only verifies that the schedule meets the criteria of the television plan as voted by the members of the NCAA.

In the early fifties, the NCAA wisely formed a Television Committee, which has closely watched the effect live television has on attendance. Many critics, especially sportswriters, criticize the NCAA for not allowing the network to pick any game. Yet, when television was not controlled, attendance declined. The press blames television for killing boxing, but also criticizes the NCAA when it tries to supervise the televising of college games so the live gate won't decline rapidly.

In recent years, the Television Committee has given ABC more flexibility, especially for late-season games. Sometimes Arledge feels frustrated. When he thinks he has the schedule completed, he notices that a team isn't eligible because of previous appearances on the schedule.

"I remember when we called California to request an earlier start for a certain game," recalled Arledge. "After the call, somebody noticed that California already was on the schedule the maximum number of times permitted. Anyway, we were saved when California called back and said it couldn't accommodate our request. I was quite happy over the refusal."

The general public becomes confused over the various rules, but as a guideline, here are some basic ones to remember. The rules start in the even

years. No team can now appear more than four times in two years, or more than three times in one year. No team can appear on national television more than two times in one year. There are no blackouts. There are a few remifications to these rules, such as a team can benefit just once in two years from the wildcard game.

Since this year's schedule came in the odd year, Arledge, Howard and Spence had to check the previous year's schedule to be positive that no team would exceed the limit of appearances for a two-year period. When this trio made the schedule, the national dates were completed first. (There are 12 national games and six regional weekends. Each station receives a total of 18 games.)

Then came the 24 games for the regional weekends. "You run into problems but none as rough as having universities move dates, although sometimes you can't blame an athletic director for not switching a date," said Arledge. "However, on some occasions, we are against the wall and must ask institutions to cooperate. In most cases, the athletic directors have been great."

Via the regional weekend games, ABC fulfilled many of the obligations of the contract, such as including at least 12 independent teams on the schedule, and ensuring the required appearances for each major conference for the two-year period.

"I would rate this year's schedule the most difficult one to make in six years because of the problems we faced late in the season," said Arledge. "Yet, I think we will do well ratings-wise, and will provide games of considerable interest and attractiveness regularly."

Under Arledge's brilliant leadership, viewership of NCAA football reached new peaks in 1970.

"If the large cities could have a snowstorm on two straight Saturdays in September, it would help. And if the national games are closer than they were last year, I think 1971 could be a super year. We are the only people who pray for rain for the entire country every Saturday, except at the site of the TV game.

"When it rains on Saturday, several million more fans watch college football on television, and that's good for ABC, the advertisers and college football."

# HAVE MORE FUN !

# BE NO. 1 !

Add a new dimension to your enjoyment of the game with college football's MODERN RECORD BOOK. This 109-page goldmine of information and history is the only book with all of college football's national records.

Say your favorite player or team is having a really big day. Only the MODERN RECORD BOOK tells you how big nationally. Be the first to know.

At the same time, you can stump your friends and even become an expert, all for just \$2. For instance, did you know:

- What coach was one short of 200 victories entering 1971?
- What national records are held by Jim Plunkett, O.J. Simpson, Steve Owens and Don Meredith?
- What are the winningest teams over the last five regular seasons?
- What national titles were won by Terry Bradshaw and Ollie Matson?

For these answers--and thousands more--get the MODERN RECORD BOOK today. Included are 24 pages of game, season, and career records for both major-college and college-division players and teams, PLUS:

- Photos of 69 top players and coaches
- Annual player and team champions
- Heisman/Outland Trophy winners
- Consensus All-Americans
- Academic All-Americans
- Single-game highs
- Major bowl scores
- National poll champions
- Undefeated-Untied Teams
- All-Time winningest coaches
- Longest plays/streaks
- Statistics trends

## College Football's MODERN RECORD BOOK... only \$2

NCAA, BOX 757, GRAND CENTRAL STATION, NEW YORK, N.Y. 10017

\*\*\*Alan Ameche\*Gary Beban\*\*  
\*\*\*\*Bobby Bell\*\*Jim Brown\*\*\*  
\*\*Dick Butkus\*\*Billy Cannon\*\*  
\*\*\*Virgil Carter\*\*Greg Cook\*\*\*  
\*\*Ernie Davis\*\*\*Glenn Davis\*\*\*  
\*Mike Garrett\*Chris Gilbert\*\*\*\*  
\*\*\*\*Red Grange\*\*\*Leon Hart\*\*  
\*\*Chuck Hixson\*Paul Hornung\*  
\*Ron Johnson\*Dick Kazmaier\*\*  
\*Leroy Keyes\*Archie Manning\*  
\*Don McCauley\*Tommy Nobis\*  
\*\*\*Jerry Rhome\*\*Gale Sayers\*\*  
\*Ron Sellers\*\*\*Dennis Shaw\*\*\*  
\*\*Joe Theismann\*Doak Walker\*  
\*Byron White \*\*Elmo Wright\*\*\*



MAIL TODAY to...

NCAA, Box 757, Grand Central Station  
New York, N.Y. 10017

Enclosed is \$\_\_\_\_\_ for \_\_\_\_\_ copies at \$2 each

Name \_\_\_\_\_

Address \_\_\_\_\_

City \_\_\_\_\_ State \_\_\_\_\_ Zip \_\_\_\_\_

## MIDYETTE-MOOR Insurance Agency

"Ask Those We Serve"

Complete Insurance and Bond Service

PHONE 222-3456



MIDYETTE-MOOR BUILDING  
TALLAHASSEE, FLORIDA

SAYS

### SCALP 'EM SEMINOLES!



Payne Midyette  
Frank Moor  
Ed Clark  
Winslow Sullivan  
Paul Lewis  
Payne Midyette, Jr.  
Bill Moor  
Bill Franklin

Jim Woods  
Gordon Henkel  
Glenn Sears  
Moffett Warren  
Chick Prosser  
Dave McKinnon  
Rex Sikes  
John Wymess

# SEMINOLE

The individuals and dealerships pictured on these pages play a vital part in Florida State's overall athletic program. The importance of the Seminoles' courtesy car program cannot be overemphasized and without the cooperation of these gentlemen it would never reach the degree of success it has. We salute each and everyone of these community minded men.



**Shaw Peacock**  
Peacock Chevrolet-Olds  
Perry, Fla.



**Tom Kinnebrew**  
Kinnebrew Motors  
Tallahassee

## WAKULLA SPRINGS

14 MILES SOUTH OF TALLAHASSEE



*Glass Bottom Boats*

WORLD'S LARGEST AND DEEPEST SPRING

# AUTO DEALERS



**Theo and Julian Proctor**  
Proctor and Proctor  
Pontiac/Cadillac  
Tallahassee



**Bill Peacock**  
Peacock Chevrolet  
Monticello



**Charles Alford**  
Alford Chevrolet  
Tallahassee



**Bob and Bill Miller**  
Miller Chevrolet  
Havana



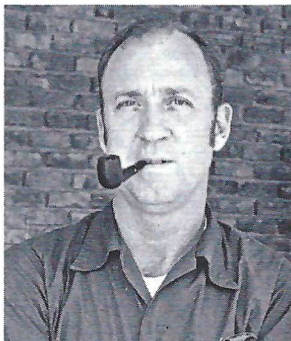
**Ed Richardson and Fred Shaw**  
Tallahassee (Ford) Motors  
Tallahassee



**Manning Taylor**  
Taylor Chevrolet-Buick  
Quincy



**Sam Shovlain**  
Courtesy Oldsmobile  
Tallahassee

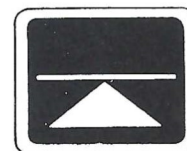


**Joe Ball**  
Havana (Ford) Motors  
Havana



**J. Ed Bell**  
Bell Chevrolet  
Cairo, Ga.

## GOOD LUCK SEMINOLES!



TM

### DōLIME MINERALS COMPANY

P.O. BOX 1441  
BARTOW, FLORIDA 33830

*Best Wishes for a successful  
season, and we are proud  
to have had a part in  
furnishing the  
football equipment  
for the Seminoles*

## OWENS Inc.

*Sporting Goods — Hardware*  
ALBANY, GEORGIA

# 1971 CHEERLEADERS



Wayne Tate      Roger Russell      Will Law (Capt.)      Bill Allison      Bob McDaris  
 Diamme Avery      Hally Stein      Ginger DeLong      Daine Laseta      Mary Webb Ellis

# PRESCRIPTIONS

- COSMETICS
- GREETING CARDS
- TOYS
- FILMS & CAMERAS



"BUDDY STEWART"  
 "WORKING FOR BETTER  
 COMMUNITY HEALTH"  
 HAVE YOUR DOCTOR CALL US

- VITAMINS
- CANDY
- GIFTS
- HOSPITAL SUPPLIES

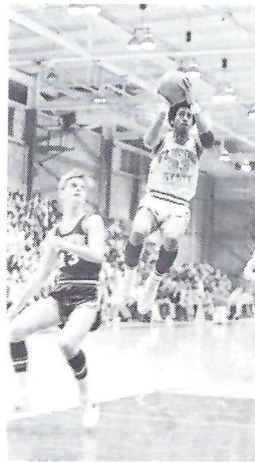
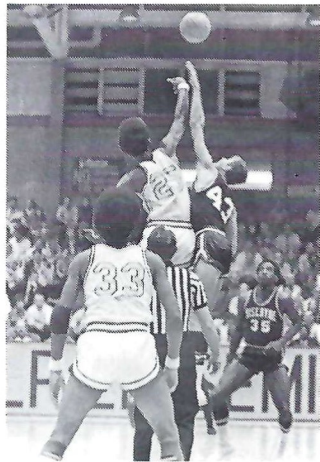
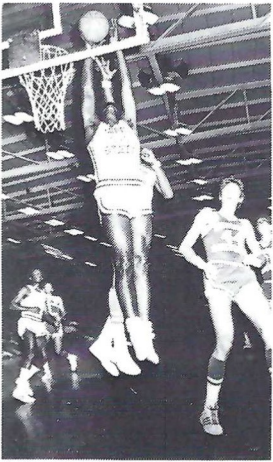
224-5011

NO CHARGE FOR  
 DELIVERY SERVICE

UNIVERSITY  
*Rexall*  
 PHARMACY  
 W. Tenn. & High Road

CITY WIDE AND  
 SURROUNDING AREAS





# SEMINOLE BASKETBALL

The 1971-72 Schedule

<u>DATE</u>	<u>OPPONENT</u>	<u>DATE</u>	<u>OPPONENT</u>
Dec. 1	OGLETHORPE	Jan. 26	JACKSONVILLE
Dec. 4	EASTERN KENTUCKY	Jan. 29	FLORIDA SOUTHERN
Dec. 6-7	SUNSHINE CLASSIC	Jan. 31	PAN AMERICAN
Dec. 11	VALDOSTA STATE	Feb. 5	at HOUSTON
Dec. 8-22	at HAWAII	Dec. 18	at SOUTH ALABAMA
Dec. 27-30	FAR WEST CLASSIC	Feb. 12	TULANE
Jan. 3-4	SENIOR BOWL	Feb. 19	GEORGIA TECH
Jan. 8	EAST TENNESSEE	Feb. 23	at JACKSONVILLE
Jan. 11	MERCER	Feb. 26	at STETSON
Jan. 16	HOUSTON	Feb. 28	at BISCAYNE
Jan. 19	SOUTH ALABAMA	March 4	at CINCINNATI
Jan. 22	at GEORGIA TECH		

Florida State's 1971-72 Basketball Team promises to be one of the Seminoles' most exciting ever. Three of the top four scorers return, four starters are back, plus some top-notch sophomores coming up from the freshman ranks. Among those returning to COACH HUGH DURHAM'S club this season are RON KING, who broke the Seminole single game scoring record with a 46-point effort; also big REGGIE ROYALS, one of the nation's top rebounders, although only a sophomore last year. And don't forget other exciting players like 5-7 passing whiz OTTO PETTY, leaping ROWLAND GARRETT and slick GREG SAMUEL.

The Seminoles will play 12 big games at home and season tickets can now be ordered. Don't be left out — Tully Gym's limited capacity puts a premium on seats. Order your season ticket now by sending your order with a check for \$20, payable to Florida State University, to:

Athletic Ticket Office  
 Room 100, Tully Gym  
 Florida State University  
 Tallahassee, Fla. 32306  
 or phone:  
 AC 904 — 599-4625

## Southernair MOTEL

Across from F.S.U.  
 Tallahassee, Florida 32304



and

## Skyline

Motor Lodge

U. S. 90 West

Quality Courts  
 for Quality People

## Electrical Contractors

- INDUSTRIAL
- COMMERCIAL

Licensed & Bonded

J. B. CLARK,  
 President

LEE H. TOWNSEND,  
 Vice President

222 - 5494  
 IF NO ANSWER DIAL 385-4030

# CLARK

ELECTRIC CO.  
 OF FLORIDA

702 West Madison Street  
 TALLAHASSEE, FLORIDA

# Concrete Products Co., Inc.

READY MIXED CONCRETE

CEMENT

SAND

GRAVEL

Phones: Plant 222-3367

Office 222-4472

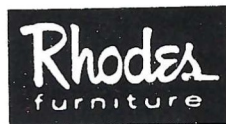
P. O. Box 1122

GAINES AND WOODWARD STREETS

TALLAHASSEE, FLORIDA

The Advertisers in this magazine play an integral part in supporting Florida State's Intercollegiate Athletic Program. Their support is gratefully acknowledged and we sincerely urge you to patronize their businesses and use their products.

The Editors



SERVING THE SOUTH

SINCE 1875

Nationally Famous Furniture, Appliances, Carpet,  
Accessories — 63-Store Buying Power Savings!—  
3 Convenient, Rhodes-Financed Payment Plans—  
Take Up to 24 Months to Pay!

*"WHERE TO BUY IT"*

1122 Thomasville Road Phone 224-1128



The Smart Place  
To Go  
For Good Things  
To Eat



*NEW LOCATION  
COMING SOON*

Apalachee Parkway ( US 27 S )



Northwood Mall ( US 27 N )



1701 West Tennessee St. ( US 90 W )



**FSU**

**UPRISING**

# FLORIDA STATE UNIVERSITY ARMY ROTC



for information, write:  
Professor of Military Science, Florida State University, Tallahassee, Florida 32306  
phone (904) 599-2488 or 3003