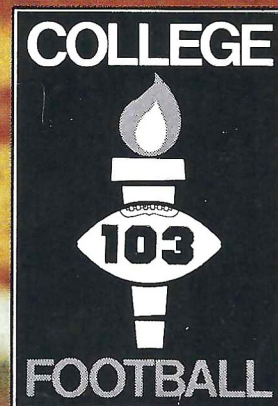


FLORIDA STATE

MISSISSIPPI STATE



Holiday Inn®



Two Inns To Serve You In Tallahassee

316 West Tennessee Street
222-8000

1302 Apalachee Parkway
877-3141

Banquet Rooms, Meeting and Conference Rooms with Complete Facilities, Dining Rooms and Lounges.



Seated around the silver cup are, (first row) Weldon Mullen, C.W. Peters, Dan Williams, F.W. Bucholz, J.K. Johnston, (second row) Ed Watson, David Cook, Fred McMullen, Moses Liddell, Vincent Green, (third row standing) Frank Gammon, Manager, Charles Puleston, Church Whitner, Guyte McCord, and H.H. Wells

“...the finest article of football ever seen on the local gridiron.”

That’s what the Lake City Florida Index newspaper had to say about the 1904 State Inter-collegiate Champions, Florida State College. FSC won all four of their games to sweep the competition.

The Index writes, during the game between the University of Florida and Florida State College on October 28, 1904:

“On the part of the State College team, we can say, aside from fumbling, which they did on many occasions, and their off-side plays, they put up the finest article of football ever seen on the local gridiron.”

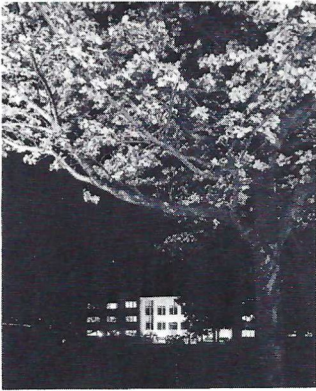
The final score was FSC 23, UF 0, in an uncompleted game. “Owing to darkness, the game was called with the ball in Florida’s possession on her own 26 yard line,” added the Index.

In 1905, FSC became Florida State College for Women, thus terminating college football in Tallahassee, until 1947, when Florida State University fielded its first football team.

In 1904, the Lewis State Bank was forty-eight years old, and had been offering professional financial guidance to friends in Tallahassee that long. The Lewis State Bank is your family bank. Use it. People have for over a century.

The Lewis State Bank

**When you’ve been in the banking business for over a century, you learn a lot.
215 South Monroe Street**



The Library And The Labs Are Busy Night And Day . . .

Florida State's vast complex of science and research buildings is quite a contrast to the scientific facilities used on the campus back in the 1850s. Back then, they boasted of a microscope that could magnify a drop of vinegar "to 20 feet in diameter."

The University's student enrollment has had an equally phenomenal growth since its early (1857) Seminary days of 130 pupils. Today, its 10 schools and colleges are filled with more than 17,000 students who live, study and learn in classrooms, laboratories, dormitories and campus facilities valued at \$100 million. Students may pursue careers ranging from drama to zoology in colleges of arts and sciences, law and education, as well as the schools of nursing, social welfare, business, engineering science, home economics, music and library science.

WELCOME

To the South's

Friendliest Campus . . .



**From One
Seminole Fan
To Another . . .**

I am gratified that so many of Florida State's loyal supporters in athletics are with us in Campbell Stadium for this exciting Seminole football season. Speaking for the entire University, I extend a warm welcome to all of our fans in the stands today. We hope that your stay on our campus will be enjoyable.

We have every reason to be proud of our athletic teams which, year after year, have established outstanding records in intercollegiate athletics. Florida State University might be said to have just entered Phase Three of its program of development in intercollegiate athletics. Phase One extended from the University's birth as a full-fledged university in 1947, to about 1960. Those were the years in which the foundation was laid for a sound program of athletics all across the board, as Florida State's name was carried throughout the region as an institution that would make its mark in athletics as it was doing in the academic arena.

Phase Two extended from about 1960 to the present. It was a period when Florida State joined the major competition, the time when we ceased to be "a breather," even for the best, and a time, incidentally, when scheduling the good teams became more difficult.

Phase Three has begun. It began on the first of January, 1971, when Larry Jones accepted our offer to become the University's sixth head coach of football. Another giant step was taken in April when Clay Stapleton agreed to become our Director of Athletics. This is the period when membership in the big leagues will pay off . . . when our acceptance as a member in full standing with other major universities engaged in athletics will bring the University and the Tallahassee community added recognition and stature and support in countless ways that go beyond the playing field.

Our success in athletics is due as well to the remarkable response of Seminole fans, whose enthusiastic support has never failed to inspire our coaches and players to demonstrate the best in sportsmanship and skill on the playing field.

Let me say a further word about community support. Your presence here today indicates that we have it in significant measure, and for that we are deeply grateful. We shall continue to solicit the support of this community and, indeed, all of Florida and beyond, for it is an essential ingredient in the recruiting of athletes, in scheduling, and in the all-important area of financial support. You may be certain that those of us at the University will do everything we can to merit the continued support and loyalty of all.

—STANLEY MARSHALL
PRESIDENT
FLORIDA STATE UNIVERSITY



Dr. Stanley Marshall

"Sure
I've got
a piece of
the Rock."

Prudential.
The Rock.
Gibraltar.

And this new father has a piece of it.

Because a Prudential agent
showed him how our Family Policy
protects his whole family.

And every new member.
Within weeks after arrival.
Without increased expense.

And when you buy Prudential life insurance,
you get a piece of The Rock.

Owning a piece of The Rock means that
Prudential's investments are working for you.
Investments that strengthen the economy.
And can help pay dividends on your policy, too.

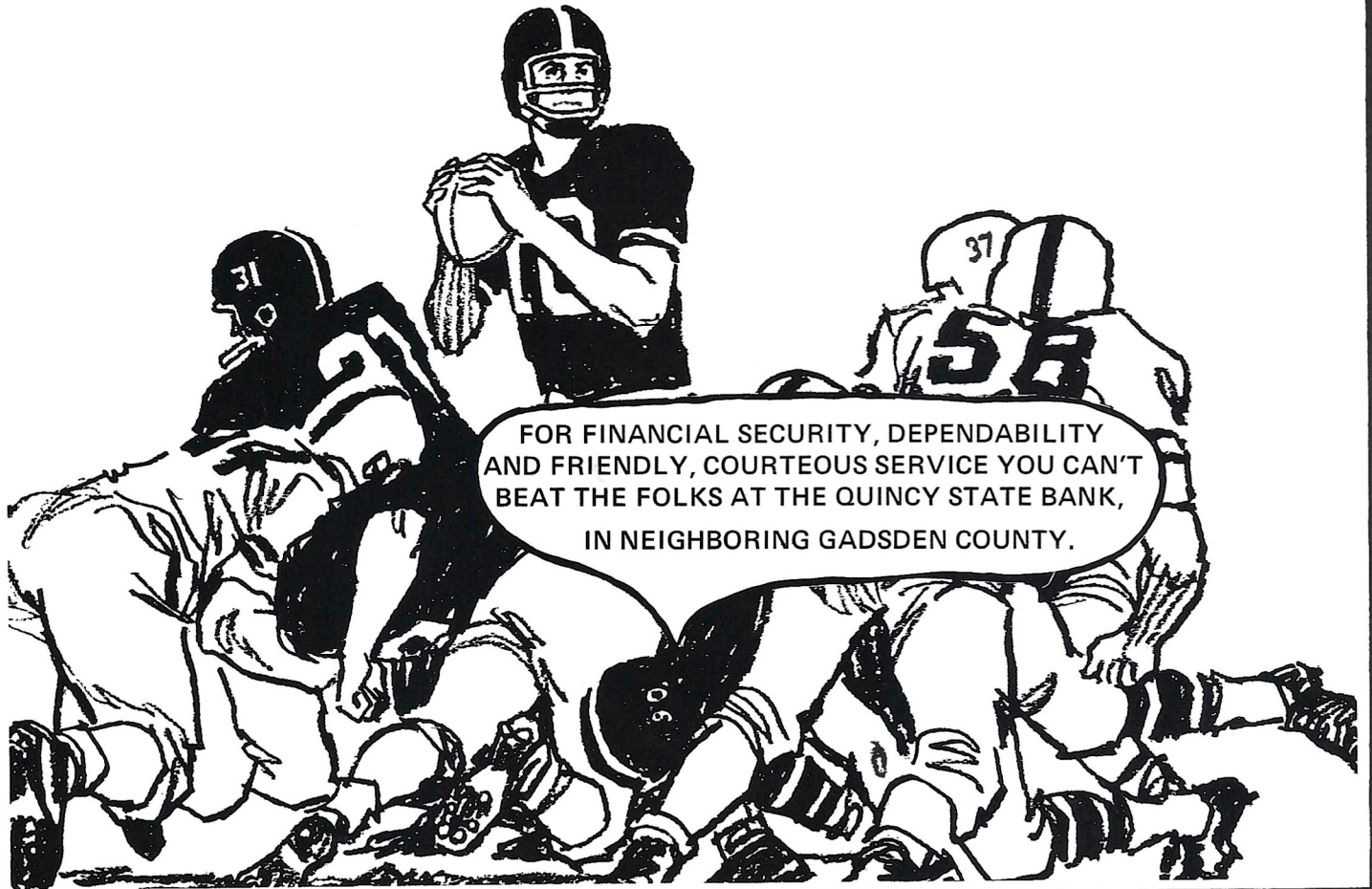
If you're concerned about protection for
your entire family, talk to a Prudential agent soon.
Own a piece of The Rock.



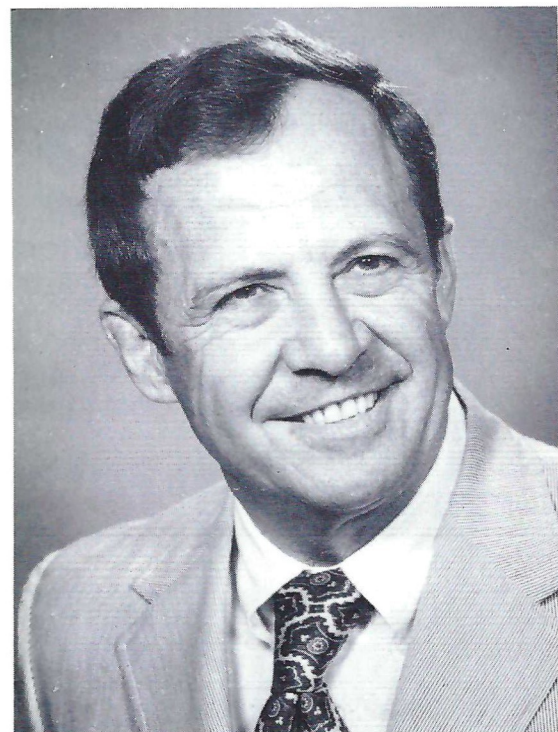
Prudential

South-Central Home Office, Jacksonville, Florida

the **Q**UINCY **S**TATE **B**ANK
Quincy, Florida



FOR FINANCIAL SECURITY, DEPENDABILITY
AND FRIENDLY, COURTEOUS SERVICE YOU CAN'T
BEAT THE FOLKS AT THE QUINCY STATE BANK,
IN NEIGHBORING GADSDEN COUNTY.



Athletic Director **Clay Stapleton**



Assistant AD
RAY BICKERSTAFF

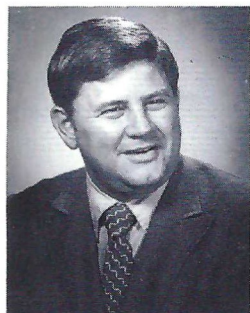


Business Manager
DOUG MESSER

ATHLETIC FAMILY



ADMINISTRATIVE STAFF



JIM OLSEN
Seminole Club



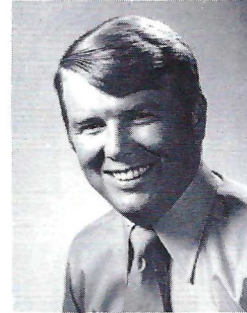
CLAUDE THIGPEN
Ticket Manager



LONNIE BURT
Sports Info Director

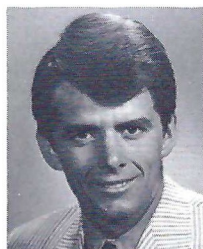


HANK SCHOMBER
Ass't. SID

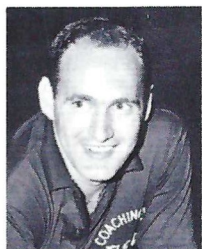


DAVE WAGNER
Academic Advisor

HEAD COACHES



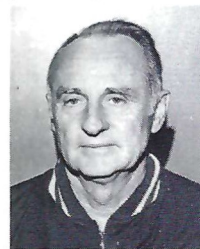
SCOTT BRISTOL
Tennis



HUGH DURHAM
Basketball



SCOTT FLETCHER
Golf



MIKE LONG
Track

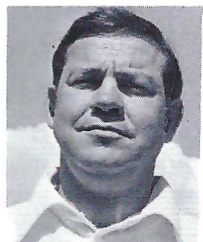


JACK STALLINGS
Baseball



BIM STULTS
Swimming

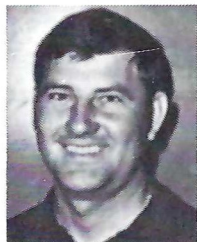
ASSISTANT COACHES



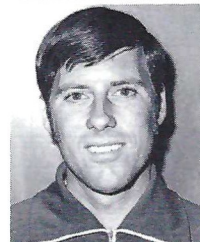
BILL BOLTON
Basketball



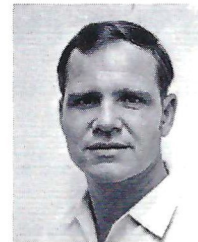
PAUL DIRKS
Baseball



MORRIS McHONE
Basketball



DICK ROBERTS
Track



COREY VAN FLEET
Swimming



CHARLIE DURBIN
Cinematographer

NUMBER

1



**in
sports
coverage**

the complete newspapers

Orlando Sentinel . . . Orlando Evening Star

Florida STATE / MISSISSIPPI STATE

Football Magazine

Vol. XXV

October 9, 1971

No. 2

THE COVER: Photographer Barry Mittan's photo catches the color, beauty and excitement that is HOMECOMING.

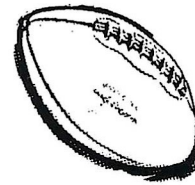
IN THIS ISSUE ...

MR. JAKE	15
He is a legend around the country, but Tallahasseeans know him best. Bill McGrotha's article catches the warmth of the former coach and Athletic Director of the Seminoles cross-town neighbor, Florida A&M — Jake Gaither.	
TODAY'S GAME	27
Sports Information Director Lonnie Burt takes a look at how this week's Homecoming battle should shape up.	
TODAY'S OPPONENT	45
A quick look at Mississippi State University and the Bulldog players.	
FOOTBALL STAFF	51
Three men without whom, the Seminoles would find it difficult to even get on the field.	
ALUMNI ASSOCIATION	52
Florida State University's Alumni Association and its officers.	

The University	4	Football Glossary	37
The Athletic Department	7	National Seminole Club	38
Seminole Club Donors	10-13	Board Of Regents	40
Sportsmanship	14	Squad Picture	41
The Seminoles	17-20	ABC-TV Schedule	42
Football Coaching Staff	21	Stadium Information	44
Head Coach Larry Jones	23	Mississippi State	45-48
Assistant Coaches	24-25	Seminole Radio Network	49
Today's Game	27	The National Anthem	50
Today's Stats	28	Football Staff	51
Starting Lineups	31	Seminole Car Dealers	54
Depth Chart	33	Seminole Cheerleaders	56
Rosters	34	Seminole Basketball	57



The Florida State Football Magazine is published by the Florida State University Department of Intercollegiate Athletics. Editor — Hank Schomber. Program Manager — Lonnie Burt. Business Manager — Doug Messer. Sales Coordinator — Jack Ibach. Local advertising is contracted by the Florida State Athletic Department. National Advertising representative is Spencer Marketing Services, New York. The 1971 Florida State Football Magazine was printed in Daytona Beach by The News-Journal.



Go Seminoles!



Sears

Tallahassee's Complete Department Store

• Everything You Need For Your Home Family or Car!

OPEN 9:30 a.m. 'til 9:30 p.m. Monday thru Saturday

SHOP AT SEARS AND SAVE

Sears

SEARS, ROEBUCK AND CO.

NATIONAL SEMINOLE CLUB

FULL SCHOLARSHIP DONORS

The following have donated \$1000 or more to the
National Seminole Club



Bill Cartee
Tallahassee, Florida



Dr. Coyle E. Moore
Tallahassee, Florida



**Capital City First
National Bank**
Tallahassee, Florida



John Maurer
Tampa, Florida



Tallahassee Bank & Trust
Tallahassee, Florida



**Collins Brothers'
Construction Co.**
Tallahassee, Florida



Commonwealth Corp.
Tallahassee, Florida



Lewis State Bank
Tallahassee, Florida



**Tallahassee Bank
and Trust Co.**
Tallahassee, Florida



Manuel Corral
Tampa, Florida



Compliments of a Friend



NATIONAL SEMINOLE CLUB

HALF SCHOLARSHIP DONORS

The following have contributed \$500 or more

Mrs. Mary G. Carter Perry, Florida	Mr. James Hardesty Tampa, Florida	Mr. Wendell Jarrard Maitland, Florida
Rainey Cawthon, Inc. Tallahassee, Florida	Mr. Tony Nanos St. Petersburg, Florida	Mobile Home Industries, Inc. Tallahassee, Florida
Mr. Thomas W. Donovan Jacksonville, Florida	Spanish Park Restaurant Tampa, Florida	Moon's Jewelry Co. Tallahassee, Florida
Elberta Crate and Box Co. Tallahassee, Florida	Compliments of a Friend	The Tallahassee Democrat Tallahassee, Florida
Hammons Asphalt Paving, Inc. Tallahassee, Florida	Doyle Pope Quincy, Florida	Mr. Dennet Rainey Tallahassee, Florida

QUARTER SCHOLARSHIP DONORS

The following have contributed \$250 or more

Alford Chevrolet Co. Tallahassee, Florida	Bill DuBey Tallahassee, Florida	Ro-Mac Lumber and Supply Tallahassee, Florida
Allbritton-Williams, Inc. Tallahassee, Florida	Florida Power and Light Co. Tallahassee, Florida	Richard F. Strickland Tallahassee, Florida
Asphalt Contractors Assn. of Florida Altamonte Springs, Florida	Hanson, Wood and Hoel Ind., Inc. Tallahassee, Florida	The Silver Slipper Tallahassee, Florida
Ausley, Ausley, McMullen, McGhee and Carothers Tallahassee, Florida	Mr. Tim Harris Jacksonville, Florida	Southern Bell Tele. & Tell. Co. Tallahassee, Florida
Barret, Daffin and Figg Tallahassee, Florida	Mr. J. D. "Jim" Hawkins Tallahassee, Florida	Southern Wires, Inc. Quincy, Fla.
C. H. Belvin Tallahassee, Florida	Mr. W. S. Lee Tallahassee, Florida	Sunshine State Dairyman's Corp. Tallahassee, Florida
Bertha Cooke, Inc. Tallahassee, Florida	McGowan Electric Supply Co. Tallahassee, Florida	Symon, Tully & Ryals Tallahassee, Florida
Buddy's Hardware Tallahassee, Florida	Maples Concrete Products, Co., Inc. Tallahassee, Florida	Tallahassee Builders Tallahassee, Florida
Cities Transit Tallahassee, Florida	Mr. W. L. Montague Quincy, Florida	Van Brunt and Yon Tallahassee, Florida
Mr. Fred O. Drake, Jr. Tallahassee, Florida	Mr. Julius F. Parker, Jr. Tallahassee, Florida	Julian Smith Tallahassee, Florida
Mr. Clark Durrance Tallahassee, Florida	Perry Auto Supply, Inc. Perry, Florida	The Peoples Bank Tallahassee, Florida
Florida Road Builders Assoc., Inc. Tallahassee, Florida	Proctor and Proctor Tallahassee, Florida	Mr. Ted Rodrigue Tallahassee, Florida
	Nat Polak Tallahassee, Florida	Sport-Craft, Inc. Perry, Florida

SEMINOLE FANS!



**YOU
ARE
THERE!**

**COMPLETE
FOOTBALL
COVERAGE**

IN THE

**TAMPA
TRIBUNE**

**READ TRIBUNE
CORRESPONDENT**

**MONROE
ADAMS**

AND

**JIM
SELMAN,**

**ASS'T. SPORTS EDITOR
EVERY
MORNING**

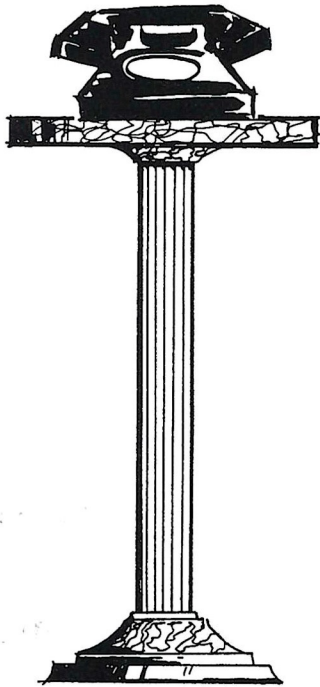


NATIONAL SEMINOLE CLUB CENTURY CLUB DONORS

The following have contributed \$100 or more

- Alford Brothers, Inc.**
Tallahassee, Florida
- American Distributors Co.**
Tallahassee, Florida
- Mr. Steve Andris**
Monticello, Florida
- Associated Industries of Florida**
Tallahassee, Florida
- Mr. Ben Bailey, III**
Vero Beach, Florida
- Baker-Alford**
Tallahassee, Florida
- Mr. Larry P. Barnett**
Tallahassee, Florida
- Dr. Mark Barrera**
Tallahassee, Florida
- Mr. William Bellflower**
Tallahassee, Florida
- Bill's Bookstore**
Tallahassee, Florida
- Mr. Haldane Boykin**
Chattahoochee, Florida
- Mr. John L. Boyles**
Tallahassee, Florida
- Mr. Joe Bradley**
Chattahoochee, Florida
- Mr. Ruel Bradley, Jr.**
Tallahassee, Florida
- Phil Brimer, Associated Contractors**
Marianna, Florida
- Brinkley Bros.**
Tallahassee, Florida
- Mr. Larry S. Brock**
Tallahassee, Florida
- Brooks County Packing Co.**
Quitman, Ga.
- Mr. Wayne H. Brown**
Tallahassee, Florida
- Mr. J. P. Burgess**
Tallahassee, Florida
- Mr. J. A. Burke**
Orange Park, Florida
- Mr. I. M. "Ike" Butler**
Atlantic Beach, Florida
- Mr. R. V. Cantey**
Quincy, Florida
- Capital City Second National Bank**
Tallahassee, Florida
- Capital Paper Company**
Tallahassee, Florida
- The Carriage Shop**
Tallahassee, Florida
- Central Heating Consultants**
Tallahassee, Florida
- Mr. Al C. Church**
Tallahassee, Florida
- Citizens State Bank**
Marianna, Florida
- Coca-Cola Bottling Co.**
Tallahassee, Florida
- Cotton, Shivers, Gwynn, and Daniel**
Tallahassee, Florida
- Mr. Irvin B. Cox**
Quincy, Florida
- Mr. Bob Crisp**
St. Petersburg, Florida
- Mr. Leo Crutchfield**
Tallahassee, Florida
- J. A. Culley and Sons**
Tallahassee, Florida
- Bruce Culpepper**
Tallahassee, Florida
- Mrs. Emaly L. Culpepper**
Camilla, Georgia
- Mr. H. B. Culpepper**
Tallahassee, Florida
- Mr. J. B. Davis, Jr.**
Madison, Florida
- Mr. T. W. Dean**
Tallahassee, Florida
- Mr. Fred E. Deeb**
Tallahassee, Florida
- Mr. Fred C. Dillman**
Tallahassee, Florida
- Mr. H. D. Dodson**
Thomasville, Ga.
- Mr. W. Dexter Douglas**
Tallahassee, Florida
- J. H. Dowling**
Tallahassee, Florida
- Mr. J. M. Edwards**
Tallahassee, Florida
- Mr. Otha W. Edwards, Jr.**
Quincy, Florida
- Eli Witt Tobacco and Candy**
Tallahassee, Florida
- Mr. Robert M. Ervin**
Tallahassee, Florida
- Everhart Construction Co.**
Tallahassee, Florida
- Mr. J. M. Feinberg**
Tallahassee, Florida
- Mr. Peter Fenn**
Crawfordville, Florida
- First Federal Savings and Loan Assoc.**
Perry, Florida
- The First National Bank at Orlando**
Orlando, Florida
- Dr. T. Bert Fletcher**
Tallahassee, Florida
- Flowers Baking Co.**
Thomasville, Ga.
- Dr. G. H. Garmany**
Tallahassee, Florida
- General Telephone Co. of Florida**
Tallahassee, Florida
- Dr. Harold G. Gregg**
Marianna, Florida
- Mr. H. O. Hammelman**
Tallahassee, Florida
- Mr. Kenneth A. Harpe**
Tallahassee, Florida
- Harrison Auto Parts**
Tallahassee, Florida
- Mr. Emmett C. Harrison**
Tallahassee, Florida
- Mr. J. C. Red Hartsfield**
Orlando, Florida
- Henderson and Buchanan**
Tallahassee, Florida
- Herron Steel Co., Inc.**
Tallahassee, Florida
- Mr. E. Canty Higdon**
Quincy, Florida
- Dr. Francis T. Holland**
Tallahassee, Florida
- Mr. James D. A. Holley**
Tallahassee, Florida
- Mr. Robert G. Holt**
Tallahassee, Florida
- Mr. Prentiss Huddleston**
Tallahassee, Florida
- Independent Life and Acc. Ins. Co.**
Tallahassee, Florida
- Industrial National Bank**
Tallahassee, Florida
- Jackson-Cook, Inc.**
Tallahassee, Florida
- Mr. Jack S. Jennings**
Tallahassee, Florida
- Mr. Robert S. Jett, Jr.**
Tallahassee, Florida
- Jaanos, Parsons and Hayes, PA.**
Tallahassee, Florida
- Mr. J. P. Johnson**
Madison, Florida
- Mr. Odis A. Johnson**
Thomasville, Ga.
- Mr. Wilbur Jones**
Tallahassee, Florida
- Mr. W. R. Keenan**
Albany, Georgia
- Mr. J. J. Koelemij**
Tallahassee, Florida
- Mr. Glen L. Krause**
Tallahassee, Florida
- Mr. Bill Langley**
Tallahassee, Florida
- Mr. W. T. Laslie**
Quincy, Florida
- Mr. Ryals E. Lee**
Tallahassee, Florida
- Mr. Tom K. LeGette**
Cairo, Georgia
- Mr. A. J. Livingston**
Tallahassee, Florida
- McDonald Hamburgers**
Tallahassee, Florida
- McKenzie Tank Lines**
Tallahassee, Florida
- Mr. Finley L. McMillan**
Panacea, Florida
- Mr. Norman McMillan**
Quincy, Florida
- Mr. Jimmy Mahaffey**
Quincy, Florida
- Mangham Construction Co., Inc.**
Tallahassee, Florida
- Mr. Hugh Martin**
Tallahassee, Florida
- Mr. Charles T. Maulsby**
Madison, Florida
- Mr. John Maulsby**
Madison, Florida
- Mr. Harry Middlebrooks**
Tallahassee, Florida
- W. B. Miller and Son**
Attapulgus, Georgia
- Mr. J. O. Milligan, Jr.**
Tallahassee, Florida
- Mr. W. A. Mixon**
Cairo, Georgia
- Lewis E. Moates**
Tallahassee, Florida
- Dr. James B. Morris**
Palm Harbor, Florida
- Mr. Everett Morrow**
Quincy, Florida
- Mr. B. L. Mullis**
Oklawaha, Florida
- Municipal Code Corporation**
Tallahassee, Florida
- Mr. F. Joseph Nahoom**
Tallahassee, Florida
- Nelson Builders**
Tallahassee, Florida
- Mr. Herbert Nelson, Jr.**
Thomasville, Georgia
- Nic's Toggery**
Tallahassee, Florida
- Mr. Mike Norman**
Tallahassee, Florida
- Mr. A. Frank O'Kelley**
Tallahassee, Florida
- Mr. B. O. Padgett**
Perry, Florida
- Dr. Glenn E. Padgett**
Marianna, Florida
- Palmer-Harrell Buick**
Tallahassee, Florida
- Mr. Jess C. Palmer**
Tallahassee, Florida
- Mr. William M. Parker**
Clearwater, Florida
- Parkway National Bank**
Tallahassee, Florida 32302
- Mr. M. C. Patterson**
Tallahassee, Florida
- Mr. Grady Peacock**
Quincy, Florida
- Dr. W. H. Peacock**
Perry, Florida
- J. Marion Pichard**
Tallahassee, Florida
- Pirates Cove**
Tallahassee, Florida
- Lobster House**
Tallahassee, Florida
- Mr. Frank Pope**
Gainesville, Florida
- Mr. J. Richard Porter**
Cairo, Georgia

CENTURY CLUB DONORS – Cont.



Indispensable



southeastern telephone company

Maxey and Jean Powell
Thomasville, Georgia

Mina Jo Powell
Thomasville, Georgia

Proctor and Proctor
Tallahassee, Florida

George L. Rankin
Tallahassee, Florida

Mr. Sidney Rayborn
Tallahassee, Florida

Dr. Hilliard Reddick
Quincy, Florida

Mr. W. B. Reddoch
Marianna, Florida

Mr. Jim Reichert
Tallahassee, Florida

Mr. Walter L. Revell
Hialeah, Florida

Mr. R. A. Riedel
Tallahassee, Florida

Mr. Dixon G. Robinson
Tallahassee, Florida

Mr. F. W. Roddenberry
Cairo, Georgia

Mr. J. B. Roddenberry
Cairo, Georgia

Rose Printing Company
Tallahassee, Florida

Mr. H. S. Rozar
Tallahassee, Florida

Mr. A. O. Shelfer
Havana, Florida

Mr. W. P. Shelley, Jr.
Tallahassee, Florida

Mr. Norman M. Shenk
Tampa, Florida

Mr. Joseph Simone
Tallahassee, Florida

Mr. Bill Smith
Tallahassee, Florida

W. Lawshe Smith
Jacksonville, Florida

Mr. J. Block Smith
Tallahassee, Florida

Mr. James C. Smith
Tallahassee, Florida

Mr. William Curt Smith
Tallahassee, Florida

Mr. S. H. Solomon
Quincy, Florida

Southeastern Telephone Co.
Tallahassee, Florida

Southern Electric
Tallahassee, Florida

Mr. W. B. Sparkman III
Temple Terrace, Florida

Standard Distributors Co.
Pensacola, Florida

F. E. Steinmeyer, III
Tallahassee, Florida

Mr. J. Allen Stiles
Tallahassee, Florida

Dick Suber
Quincy, Florida

Supreme Ice Cream Co.
Tallahassee, Florida

The Sweet Shop
Tallahassee, Florida

Tallahassee Auto Parts, Inc.
Tallahassee, Florida

Mr. Roy E. (Gene) Taylor
Perry, Florida

Mr. H. C. Terry
Tallahassee, Florida

Mr. Broady Timm
Tallahassee, Florida

Turner's
Tallahassee, Florida

Mr. W. C. Vereen, Jr.
Moultrie, Georgia

Mr. Fred R. Wagner, Jr.
Tallahassee, Florida

Walter, Walker and Barineau
Tallahassee, Florida

WCTV-TV
Tallahassee, Florida

West Florida Const. Co., Inc.
Tallahassee, Florida

Mr. T. J. Wetherell
Port Orange, Florida

Wheeler Builders Supply
Tallahassee, Florida

Wholesale Foods, Inc.
Tallahassee, Florida

Mr. J. T. Williams, Jr.
Tallahassee, Florida

Mr. Ben C. Willis
Tallahassee, Florida

Winchester Construction Co.
Tallahassee, Florida

Mr. T. L. Wollschlager
Tallahassee, Florida

Mrs. Bud Wright
Thomasville, Georgia

Mr. J. D. Wright, Jr.
Tallahassee, Florida

Dr. John F. Bemby
Tallahassee, Florida

Mr. DeWitt Miller
Tallahassee, Florida

Mr. Mickey Priester
Tallahassee, Florida

Clay Stapleton
Tallahassee, Florida

G. H. Kelly
Jacksonville, Florida

Coach Larry Jones
Tallahassee, Florida

John W. McBride
Perry, Florida

Jimmy Christo
Panama City, Florida

Cobb and Burton, Inc.
Tallahassee, Florida

Mr. Harold V. Cummins
Tallahassee, Florida

Mr. Fred Chester
Tallahassee, Florida

Mr. E. L. Chastain
Cairo, Georgia

Dr. E. G. Haskell
Tallahassee, Florida

Mr. William J. Moore
Jacksonville, Florida

Mr. Carl Neal
Marianna, Florida

The Southern Motel, Inc.
Tallahassee, Florida

The Skyline Motor Lodge, Inc.
Tallahassee, Florida

Southern's sporting proposition will save you money!

Southern has two special fare deals that are ideal for you avid sports fans. Either one lets you fly in style to those important "away" games anywhere on Southern's system and save 2/3 of your return air fare.

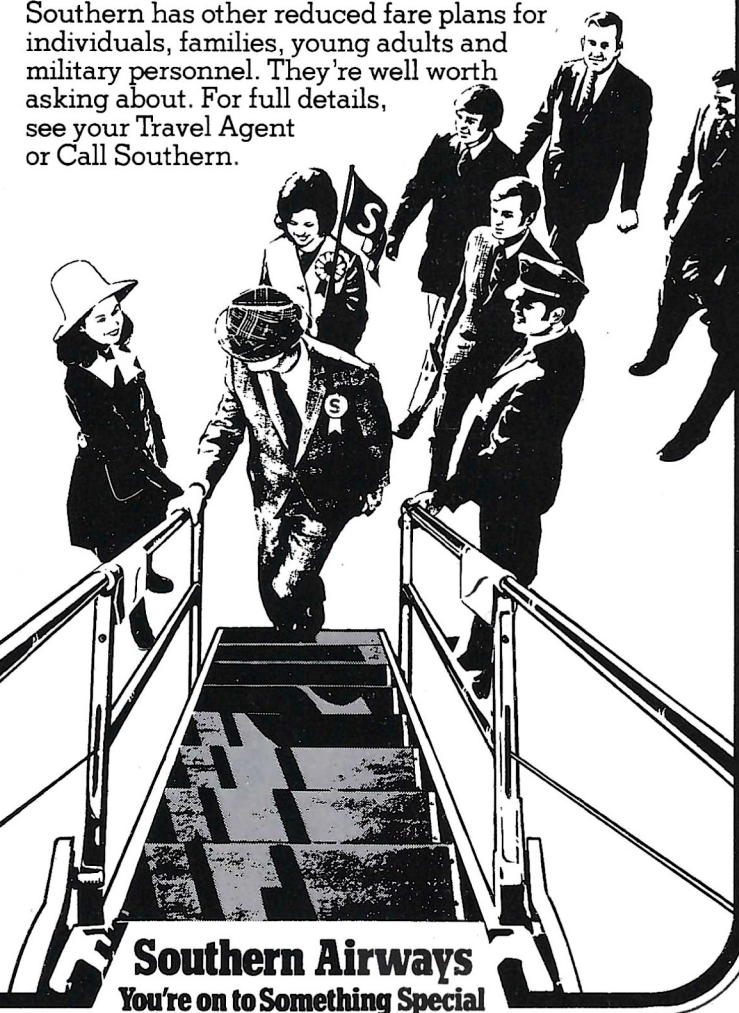
LONG WEEKEND FARE

If you can leave on Saturday and return on Monday, you'll save 2/3 on the return air fare. (This same savings is offered if you leave on Monday and return on Saturday.)

GROUP 10 FARE

Great for parties of ten or more people. Everyone saves 2/3 of their return air fare providing they all depart on the same flight. Coming back though, each member of your group may return separately. Group 10 Fares are good anytime.

Southern has other reduced fare plans for individuals, families, young adults and military personnel. They're well worth asking about. For full details, see your Travel Agent or Call Southern.



Southern Airways
You're on to Something Special

CENTURY CLUB DONORS - Cont.

Mr. J.O. Cook Jr.
Greenville, Florida

Mr. Charles Barwick
Crawfordville, Florida

Continental Properties
Tallahassee, Florida

Mr. Clyde Spencer
Tallahassee, Florida

Mr. Slater Wight
Perry, Florida

Mr. Floyd Whiddon
Tallahassee, Florida

Mr. Steak Restaurant
Tallahassee, Florida

Mr. Tom Adams
Tallahassee, Florida

Mr. James W. Howard
Jacksonville, Florida

Mr. Phillip A. Browning
Atlanta, Georgia

Mr. John Harlee
Bradenton, Florida



**SUPPORT
THE
SEMINOLES**



**JOIN
THE
NATIONAL
SEMINOLE
CLUB**

42 Seasons, 203 Victories, Teaching Character

by BILL McGROTHA, Tallahassee Democrat

Up a steep drive at 212 Young Street in Tallahassee sits the house with the pine tree in the furthest room.

All around the pine tree at the base are white rocks and mostly-beige seashells. Covering the circular rim of the whole is a woven piece done in the bright orange and bright green of Florida A&M.

On the walls of the room are dozens of plaques and pictures. There seems no space for more. One picture shows the man of the house with Lyndon Johnson.

But the most striking part of the picture-plaque alignment is squarely in the center of the furthest wall in the furthest room.

At the bottom of that central display is a picture of a woman. Just above it is a picture of a man. And just above that is a little teddy bear . . .

It is obvious that this is the most special part of the room.

The woman is Jake Gaither's wife, Sadie. The man is Jake Gaither's father, a 6-foot-6 Tennessee preacher in his day.

And the teddy bear?

It came from George (Papa Bear) Halas, the owner-coach of the Chicago Bears, when Gaither lay long in bed with a severe foot ailment three years ago. Halas sent flowers, and in the middle was the teddy bear.

203-36-4

After 42 years of coaching football, after an extraordinary record of 203-36-4 through 25 seasons as head coach of the storied Florida A&M Rattlers, Jake Gaither retired from the game in January of 1970.

He remains with the Rattlers as director of athletics.

"Just say," says Gaither, "that I am 65, because somebody has already printed that I was. Say also that I am going to stay 65 for a very long time."

It was Sadie who built the trophy room, not long ago. Jake shakes his head over it: "Cost a lot of money."

Sadie smiles and says: "It didn't cost you anything." . . . She cashed in an endowment insurance policy on herself to build the room.

She built it where there had been a concrete patio. The pine tree was already there. "Just build around it," said Jake. So she built around it, and sometimes the tree—70 feet tall—gets wet inside. Nobody worries about it.

Football Every Day

While Gaither has retired from coaching the game, the game won't retire from him. Every day is still football.

The phone rings and it's a head coach of a big Eastern university wanting Gaither to recommend "one of your players" as an assistant coach.

The phone rings and it is Bob Hayes wanting Jake's advice on this or that.

The phone rings and it is the White House or the NCAA wanting Gaither to serve on a committee.

The phone rings and it's somebody wanting him to make a speech.

A gifted orator, Gaither is extremely active with the Fellowship of Christian Athletes "and they're working me to death." He is on the President's Committee for Physical Fitness, and is on the NCAA Television and American Football Coaches Association committees.

Never far removed from Gaither's thoughts are "my boys," the former A&M players now in the pros, the ones in coaching, the ones who have become doctors, lawyers and business men.

Childless himself, he worries about some of his boys, thinking he has a greater feeling for particular ones.

"Some boys," he says, "just tug at your heartstrings more than others. It's just that way."

Sadie teaches freshman English at A&M. She has taught there since 1942.

The A&M gymnasium is named after Gaither. So is a city golf course—though he doesn't play golf—and a city street.

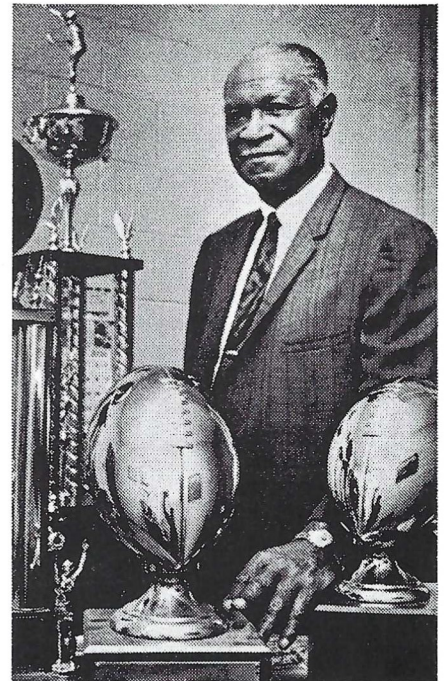
M-A-H

Once he declared that he liked his football players "mo-bile, a-gile and hos-tile." He also likes his players to get their degrees, to be notably aware—for all the merit of the game—that there is much more in life.

To a player once complaining about the practice-field heat, Gaither replied: "Yes, baby, that sun is hot. I've been trying to think of a way to put an umbrella over that sun just for you. But I want you to know one thing, baby—if you can practice and play under this Florida sun, you can play under any sun."

Invariably calling his players, "baby," making his points with occasional humor and rare sarcasm, Gaither tells how life is as he sees it.

"Baby, you ain't gonna dream any



JAKE GAITHER

Florida A&M Director of Athletics

number," he said once, "you ain't gonna win any Irish Sweepstakes. You're gonna have to work for everything you get."

"Give me a boy on a football field, and I'll strip his soul. I'll tell you everything about that boy."

"You teach more character winning than losing."

"It is fourth down and goal to go at the two. We are going to run off tackle. I want that defensive tackle double-teamed. I want that halfback to take out the cornerback. And I want my fullback to take that football and charge with his knees high—up under his chin—and I want him to run up that linebacker's stomach and leave him flat."

"Now, you tell me you're gonna talk about character to that poor linebacker!"

. . . Traditionally, after every A&M home football game, the crowd gets together at 212 Young Street.

They wade through the food that Sadie was preparing all day Friday and most of Saturday. They fill every nook of the house.

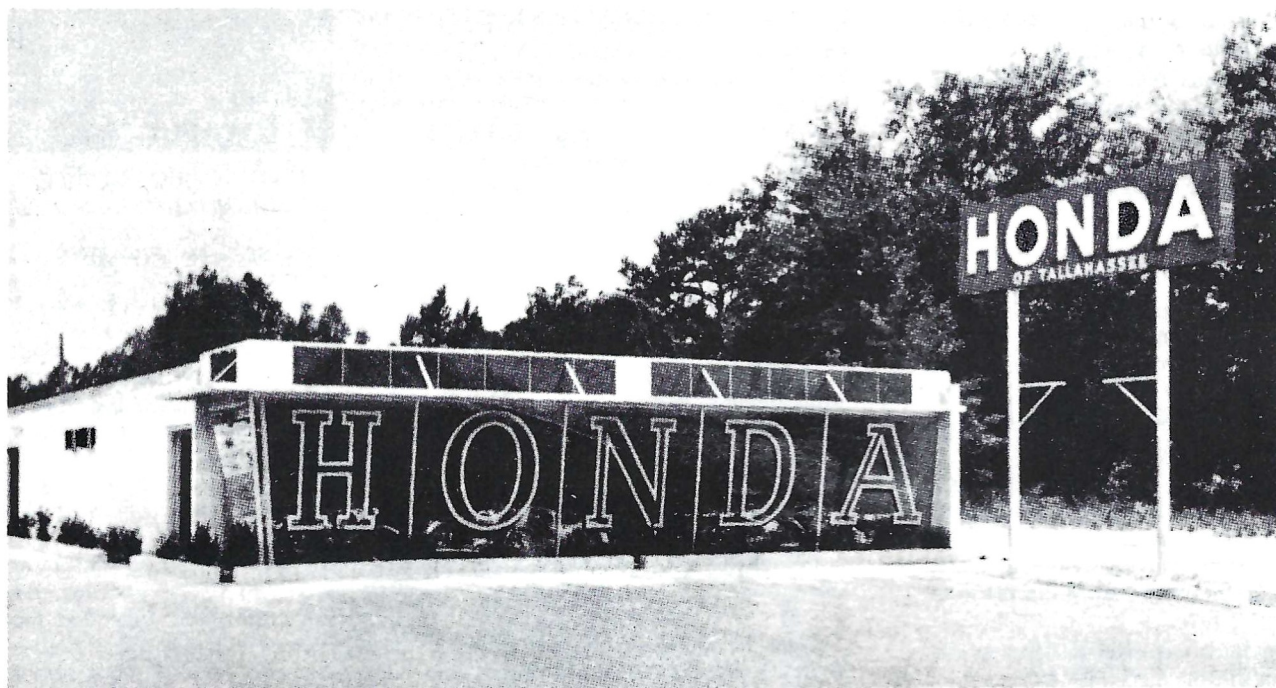
Eventually, they'll make their way back to that furthest room with the pine tree where a smiling Jake Gaither holds forth on the sofa.

And, chances are, somebody will ask him about the teddy bear.

"You meet the nicest people on a

H O N D A

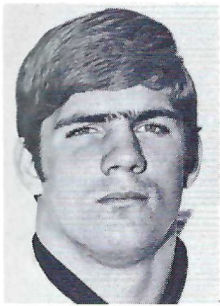
World's largest seller"



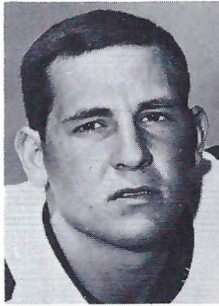
HONDA OF TALLAHASSEE

At the Underpass on West Tennessee

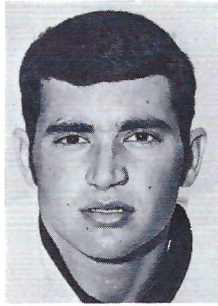
Phone 576-1020



RICHARD AMMAN — DT
Cocoa Beach — Business



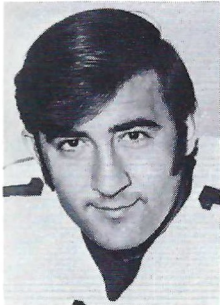
ROBERT ASHMORE — DB
Tallahassee — Pre-Med



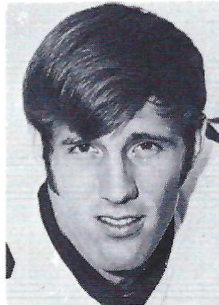
DUANE CARRELL — Punt
Washington, D.C. — Marketing



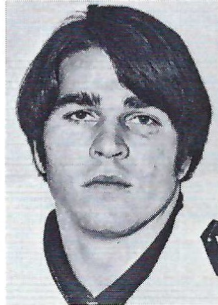
RHETT DAWSON — WR
Valdosta, Ga. — Criminology



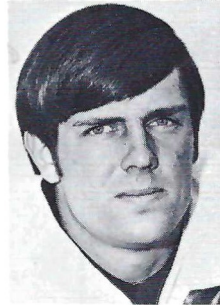
FRANK FONTES — PK
Perth Amboy, N.J. — Phys. Ed.



KENT GAYDOS — WR
Dallas, Tex. — Public Relations



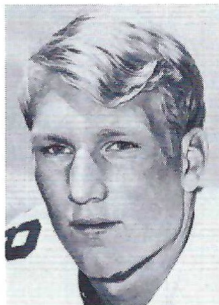
GUY GLISSON — LB
Tampa — International Affairs



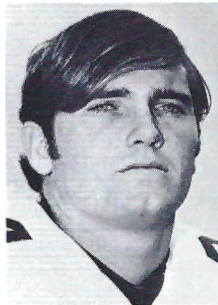
BUDDY GRIDLEY — TE
Tallahassee — Pre-Med



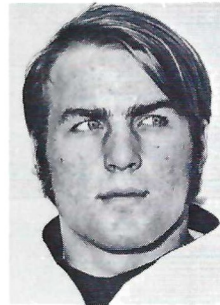
BILL HENSON — DT
Hyattsville, Md. — Phys. Ed.



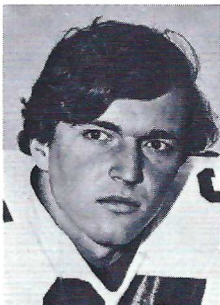
JAMES JARRETT — RB
Elizabethton, Tenn. — Business



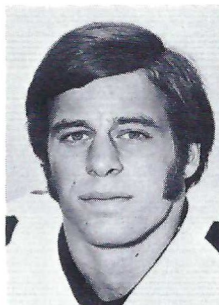
JOHN LANAHAN — DB
Jacksonville — Management



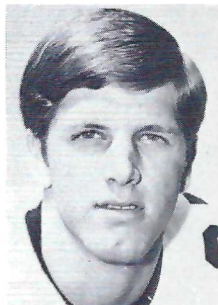
PAUL MAGALSKI — RB
Garfield Heights, Ohio — Criminology



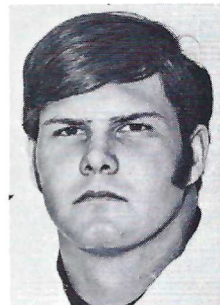
J. W. MCKINNIE — OG
Macon, Ga. — Management



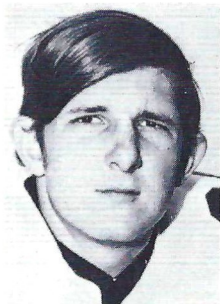
JOHN MONTGOMERY — DB
Jacksonville — Business



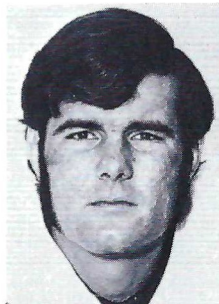
ARTHUR MONROE — RB
Quincy — Pre-Med



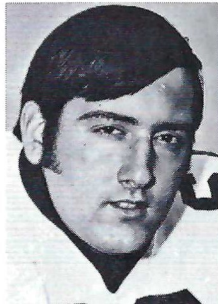
BILL RIMBY — OT
St. Petersburg — Marketing



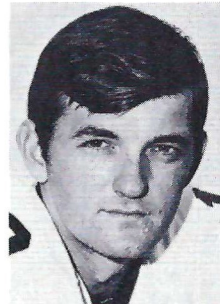
BILL SHAW — OT
Marietta, Ga. — Recreation



JAY STOKES — OG
Sanford — Management



JOE STRICKLER — OT
Avon Park — Math



FRANK WHIGHAM — QB
Sanford — Pre-Law

Seminole Seniors

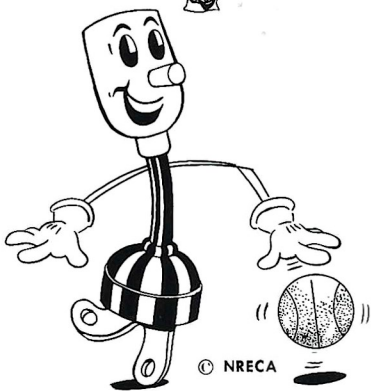
TEC
TALQUIN
ELECTRIC

COOPERATIVE, INC.

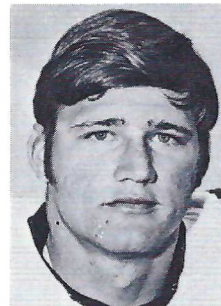
"OWNED BY THOSE WE SERVE"

IN

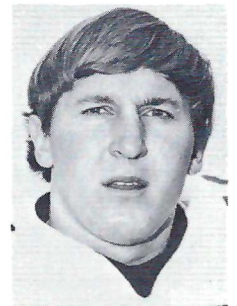
GADSDEN, LEON, LIBERTY
 AND WAKULLA COUNTIES



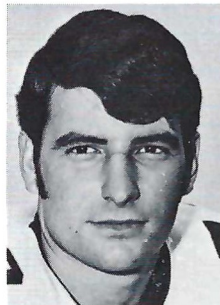
LIVE BETTER ...
ELECTRICALLY



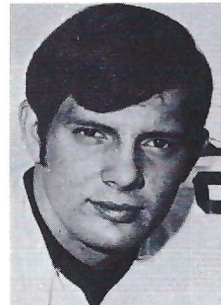
ALLEN DEES — C
 Lakeland — Criminology



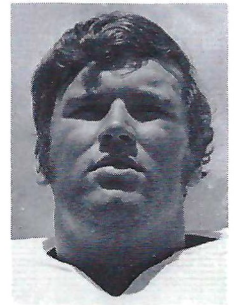
JIM DUNDALA — LB
 Morrisville, Pa. —
 Social Science Ed.



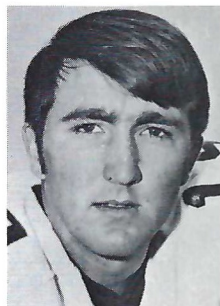
SHANE GIBBS — OG
 Bay Minette, Ala. —
 Business Admin.



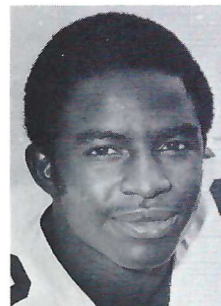
MIKE GLASS — TE
 Tampa — Business



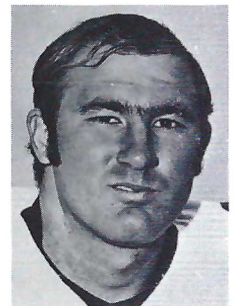
DAN DANIELS — OT
 Pensacola — Business Admin.



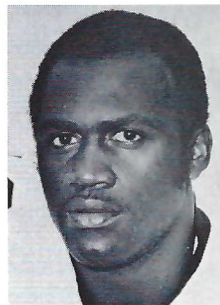
GARY HUFF — QB
 Tampa — Accounting



CHARLIE HUNT — DE
 Jacksonville — Elementary Ed.



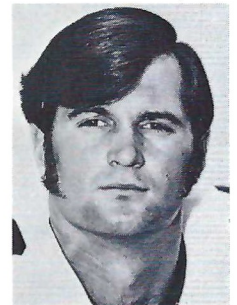
HOWARD JACOBI — DT
 Vero Beach — Phys. Ed.



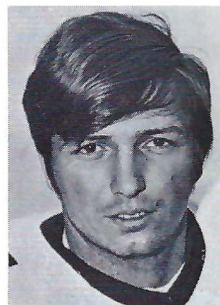
EDDIE McMILLAN — DB
 Tampa — Criminology



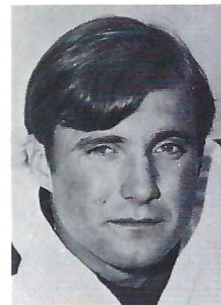
ROGER MINOR — OT
 Delray Beach — Business Admin.



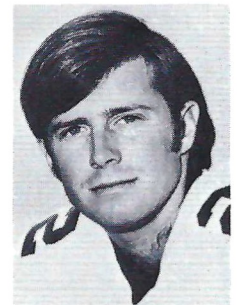
CLINT PARKER — LB
 Daytona Beach — Business Admin.



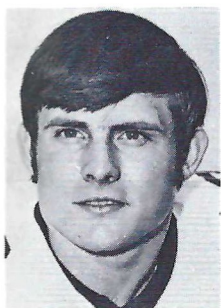
GARY PARRIS — TE
 Vero Beach — Recreation



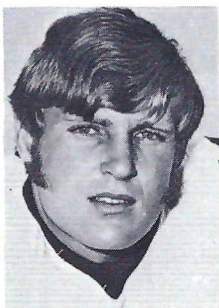
RON RATLIFF — DB
 West Palm Beach —
 Hotel & Restaurant Mgt.



BARRY SMITH — WR
 Miami — Social Studies Ed.



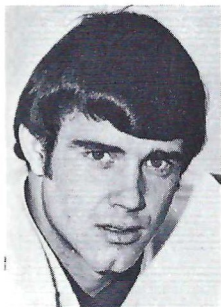
DAVID SNELL — DB
Slocomb, Ala. — Business Admin.



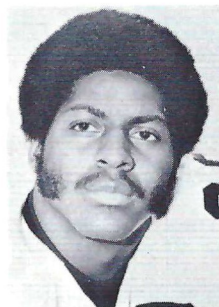
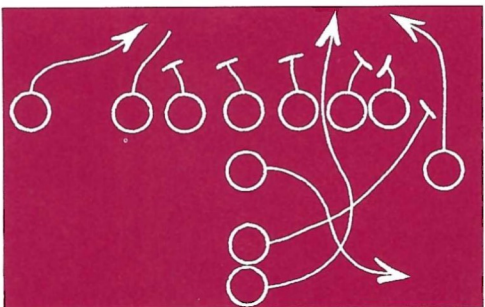
LARRY STRICKLAND — LB
Tallahassee — Accounting



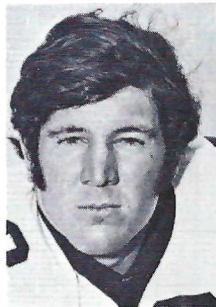
JAMES THOMAS — DB
Macon, Ga. — Business Admin.



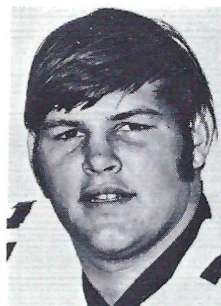
DAN WHITEHURST — LB
Adel, Ga. — Criminology



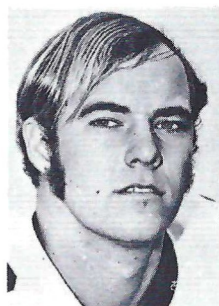
ROBERT ANDERSON — DT
Tifton, Ga. — Business



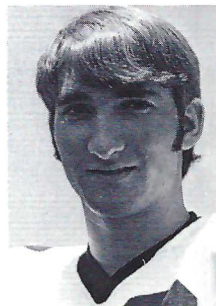
PHIL ARNOLD — OG
Hollywood — Business Admin.



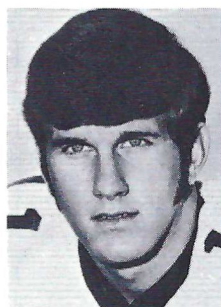
KENT CORRAL — DE
Tampa — Architecture



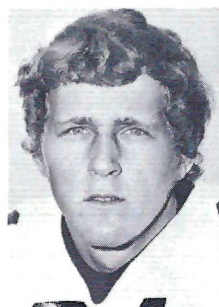
ED DAVIS — WR
Lakeland — Business Admin.



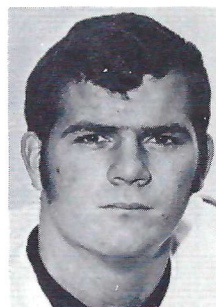
DANO FIORE — WR
Chattahoochee — Pre-Med



FRED GEISLER — QB
Orlando — Business



JOE GOLDSMITH — WR
Lakeland — Business



STEVE HARDIN — RB
Boynton Beach — Phys. Ed.



**GOING
PLACES
?**

ATHENS, GEORGIA?

ATHENS, GREECE?

NEW YORK? NASSAU? NEPAL?



No Charge For Our Services



**Tickets - Reservations
At Printed Rates**



TRAVEL IS OUR PROFESSION



**MARION HAY, PRESIDENT
TOM LYLE**

**TALLAHASSEE TRAVEL
AND TOURS, INC.**

**Formerly Hay Travel Service
Established 1930**

**CALHOUN AT CALL STREET
TELEPHONE 224-4161**

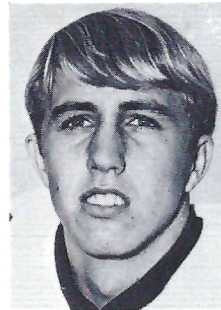
Go Seminoles

We'll help all we can

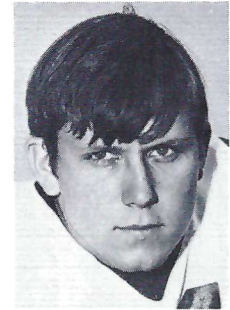
Tallahassee Automobile Dealers Association

ALFORD CHEVROLET CO.
 PROCTOR & PROCTOR, INC.
 CAPITAL LINCOLN-MERCURY, INC.
 BOB DRAKE DODGE, INC.
 PALMER-HARRELL BUICK CO.
 CAPITAL CHRYSLER-PLYMOUTH, INC.
 TALLAHASSEE MOTORS, INC.
 KINNEBREW MOTORS, INC.
 MINGLEDORFF MOTORS, INC.

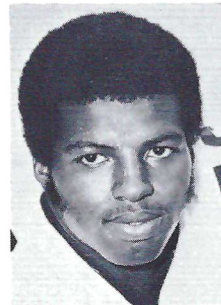
Associate Members: Capital City First National Bank; Tallahassee Bank and Trust; Lewis State Bank; Peoples Bank; Parkway National Bank; Tallahassee Democrat.



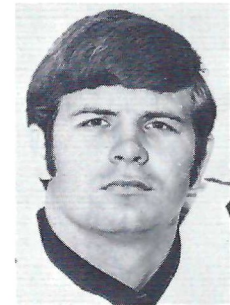
BUZZY LEWIS — DB
Bristol — Math



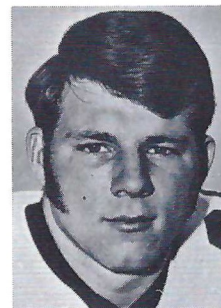
DAVID MILES — LB
Tallahassee — Business



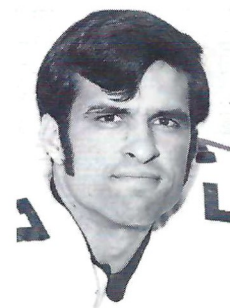
JOHN MURPHY — LB
Albany, Ga. — Business



BRENT NORRIS — RB
Thomaston, Ga. — Industrial Arts



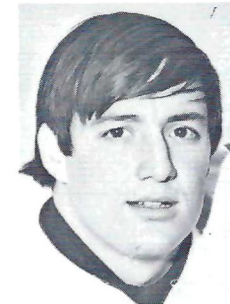
RICK O'FAIR — RB
Jacksonville — Business Admin.



STEVE BRATTON — LB
Oviedo — Phys. Ed.



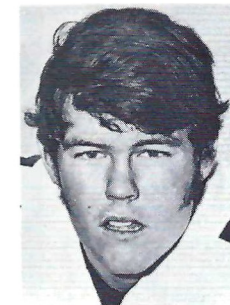
OSCAR ROBERTS — RB
Ocilla, Ga. — Business Admin.



ANDY SCHMIDT — LB
Brandon — Criminology



RANDY SHIVELY — DB
St. Petersburg — Business



DON SPARKMAN — OT
Jacksonville — Business

THE FOOTBALL STAFF



Front Row (left to right): Doug May, Ass't. Trainer; Bill Canty, Bob Harbison, Head Coach Larry Jones, Steve Sloan, Don Fauls, Head Trainer. Back Row (left to right): Frank DeBord, Equipment Manager; Gene Henderson, Bill Parcels, Mike Pope, John Devlin, Pat Hodgson.

IN NORTHWOOD MALL
LOWER LEVEL

Carriage House

RESTAURANT & LOUNGE

TALLAHASSEE
PHONE 385-7612

Drive
right in.

The Underground Bank

DRIVE-IN HOURS: 9 AM - 5 PM Monday thru Thursday
9 AM - 6:30 PM Friday

The Tallahassee Bank & Trust Company
A Barnett Bank



HEAD COACH LARRY JONES



Larry Jones is the sixth man to lead Florida State's modern football fortunes and has already shown himself to be the most energetic of all Tribe coaches.

The youthful Jones had no sooner accepted his appointment from President Stanley Marshall, than he was out firming up his first two signees. He has been on the go ever since.

The first task was to set up a coaching staff and Coach Jones accomplished that with outstanding success. He has brought to Florida State some of the most talented young coaches in the country.

A native of Arkansas, Jones played his college ball at LSU. He joined Coach Paul Dietzel's coaching staff the day he graduated and went with him to Army and South Carolina. In 1970 he took a position with Bill Battle at Tennessee and developed the Sugar Bowl Champion's fine defense.

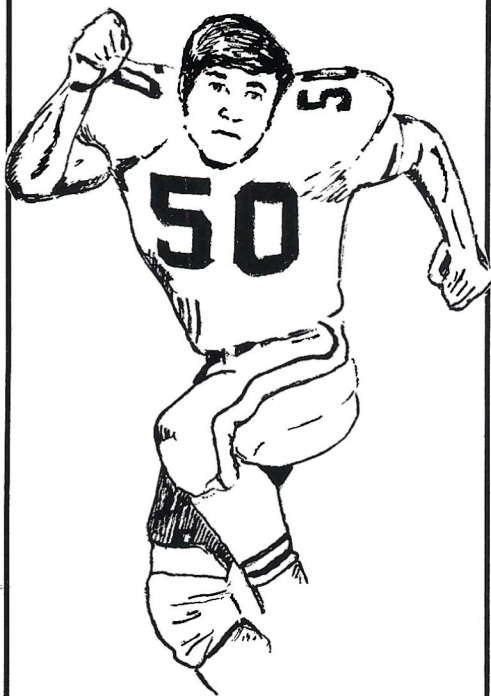
Larry and his wife, Judy, have three children, Bruce 9, Kevin 7, and Laura 5.

FLORIDA STATE SENIORS

Front Row (left to right): Arthur Munroe, Buddy Gridley, Paul Magalski, Frank Fontes, Duane Carrell, Robert Ashmore. Second Row: Frank Whigham, James Jarrett, John Montgomery, John Lanahan, Bill Henson, Bill Shaw, J.W. McKinnie. Third Row: Head Coach Larry Jones, Joe Strickler, Kent Gaydos, Richard Amman, Jay Stokes, Bill Rimby, Guy Glisson. Not pictured: Rhett Dawson.



**GOOD LUCK
THIS SEASON**



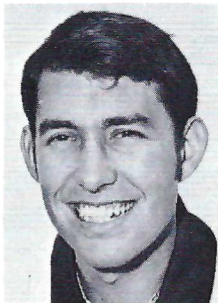
**FROM THE NATION'S
LARGEST RETAILER
of
MOBILE HOMES**



**154 SALES CENTERS
in
10 STATES
and GROWING**

LISTED ON AMERICAN STOCK EXCHANGE

FLORIDA STATE



STEVE SLOAN

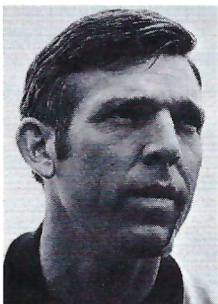
First Assistant and Head of Offense

Considered one of the brightest young offensive coaches in the business, Steve came to Florida State after three years under Bear Bryant at his Alma Mater, Alabama. He is Coach Larry Jones, chief assistant and in charge of the offense. On the field, his duties have him working with the quarterbacks and running backs.

An All-America at Alabama, Sloan led the Crimson Tide to bowl games in 1963, '64 and '65. In the latter two seasons, the Tide was National Champion. After two seasons in the National Football

League (Atlanta), he returned to 'Bama to work with Bryant.

A native of Cleveland, Tenn., he is married to the former Brenda Fan, also of Cleveland. They have one son.



BILL CANTY

Freshman Coach

Bill comes to the Seminoles after eight years as an assistant at his Alma Mater, Furman. The Pascagoula, Miss., native joined the Paladin staff after graduating in 1962.

At Florida State his primary responsibility will be to head the freshman unit. Unlike recent years, when the freshmen have been used mainly as a "scout squad" for the varsity, the frosh, this season, are on their own. Canty's big chore will be to familiarize the newcomers to the Seminoles' system and develop a winning spirit among them.

Bill is the older brother of Bob Canty, who captained the Seminole baseball team in 1968. Bill is married to the former Ann Lockridge of Delta City, Miss. They have two children.



JOHN DEVLIN

Defensive Ends and Tackles

Seminole fans are well acquainted with John's coaching abilities, even though this will be the Norristown, Pa., native's first season in Tallahassee. He comes to the Tribe from Virginia Tech where he helped mold the Gobbler defenses which caused the Seminoles so much trouble.

John will head up the Seminoles' defensive "front wall." It is actually the second time that the Former West Chester State College standout has worked with Coach Larry Jones. Both

were assistants under Paul Dietzel at the U.S. Military Academy in the mid-Sixties.

A former Army staff sergeant, John married Irma Kleeman of Regensburg, Germany. They have four children.



BOB HARBISON

Interior Offensive Line

Coach Larry Jones calls Harbie "Mr. Florida State." The former Indiana star has spent his entire coaching career at Florida State and that 23-year period includes all but the first season of the Seminoles' modern football history.

This year Bob switches from defense to offense where he will be in charge of the offensive line. But his value does not stop on the playing field. His general knowledge of the game and outstanding recruiting ability have been an invaluable asset to the

five head coaches he has worked under.

Bob and his wife, the former Jane McEntee of Washington, D.C., have four children.

ASSISTANT COACHES

GENE HENDERSON

Head of Defense, Defensive Backs

Like Steve Sloan, Gene learned to play football under Bear Bryant. After two seasons of junior college ball, the Sonora, Tex., native transferred to Texas A & M where he was a member of the 1954 squad which survived the infamous early fall workouts at Junction, Texas.

His collegiate coaching experience includes stints at Texas Tech and TCU. He headed the TCU defense last year, before coming to Florida State.

Gene and his wife, the former Sue Wyatt of Sonora, have four children.



PAT HODGSON

Wide Receivers and Tight Ends

An All-SEC receiver at Georgia, Pat is perhaps best remembered for sparking the Bulldogs to an 18-17 win over defending National Champion Alabama on National TV in 1965. A key figure (he threw the pass) in the memorable "Flea-flicker" play which closed the gap to 17-16, Pat then caught the two-point conversion pass for the win.

After two years in the pros, he returned to Georgia as an assistant coach, heading up the freshman offense last year.

The Columbus, Ga., native was All-SEC in 1964 and '65 and led the conference in receiving in 1963.

Pat is married to the former Nancy Williams of Athens, Ga. They have two children.



BILL PARCELLS

Linebackers

This is Bill's second season with the Seminoles, as he is one of two holdovers from last year's staff (the other being Bob Harbison).

The Oradell, N.J., native came to the Tribe last year after four years at Army where he developed some of the Cadets' finest linebacking corps. He has also had coaching experience at his Alma Mater, Wichita State and Hastings College.

At Wichita, Bill was twice an All-Missouri Valley Conference selection, playing guard, tackle and linebacker. Following his graduation he was a fourth round pro-draft choice.

Bill is married to the former Judy Goss of Wichita. They have three children.



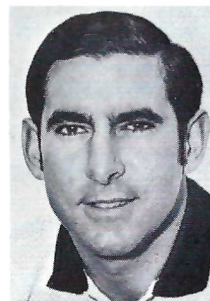
MIKE POPE

Director of High School Relations

Mike's duties keep him off the field and "on-the-go," but his task is a crucial one as he heads up the Seminole recruiting operation.

The Monroe, N.C., native stepped into the position this year, after serving a season as a graduate assistant for the Tribe last year. Mike played his college ball at Lenior Rhyne, where he was a quarterback and fullback in the Bear's single wing backfield. He had several highly successful seasons as a high school coach before coming to Florida State in 1970.

Mike is married to the former Lee Lambie of Arlington, Va.



Textbooks
*
Art and
School Supplies

*
FSU

Sweatshirts
T Shirts

Glassware
Mugs

*
**Seminole
Uprising**



SUPPORTED BY



WHEN YOU THINK OF BOOKS, THINK OF BILL'S
107 SOUTH COPELAND ST.
TALLAHASSEE-FLA. 32304

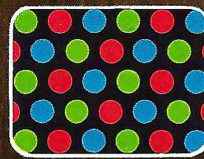


The Peale, Model C3722W
Simulated TV Picture

Zenith
introduces
a portable that
...outcolors
...outbrightens
...outdetails, and
...outperforms
every other
color TV
its size.

Now famous Zenith Chromacolor comes in a new 16-inch (diagonal) portable that goes anywhere in the house.

Its totally advanced Chromacolor system features Zenith's dependable Handcrafted chassis and patented Chromacolor picture tube—the first tube to fully illuminate every color dot on a jet-black background. To bring you a color picture so good, you really have to see it, to see why it's become the standard of excellence.



Visit a Zenith dealer and see Zenith's new 16-inch (diagonal) portable. Newest member of the Chromacolor family of screen sizes. At Zenith, *the quality goes in before the name goes on.*[®]

ZENITH[®] PORTABLE
CHROMACOLOR[®]

ONLY ZENITH HAS IT

TODAY'S GAMES

By Lonnie Burt

Sports Information Director

This will be the fifth meeting between Florida State and Mississippi State with the Seminoles having won the previous four.

However, each contest has been a battle with Florida State coming from behind for a 20-17 victory in 1969.

The Southeastern Conference Bulldogs are 1-3 so far this season with their lone win a 13-10 triumph over Florida. They bowed to Oklahoma State 26-7, Vanderbilt 49-19 and to Georgia last Saturday afternoon 35-7.

Mississippi State has all 11 defensive starters returning from a 1970 club which went 6-5, including victories over Georgia, Ole Miss and Texas Tech.

The Bulldog secondary is considered one of the SEC's best. Juniors Frank Dowsing and Kent Phares are speedsters. Dowsing runs the 100 in 9.6 and Phares in 9.9.

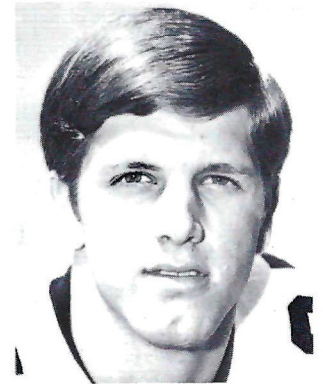
However, the Mississippi State offense has had its problems although the Bulldogs ground game was the most effective weapon against Florida. Tailback Louis Grubbs is State's top rusher. Junior college quarterback Hal Chealander directs the Bulldog attack.

The undefeated Seminoles are riding a four-game winning streak with victories over Southern Mississippi, Miami, Kansas and Virginia Tech. Florida State hadn't won its first four games since the 1964 season.

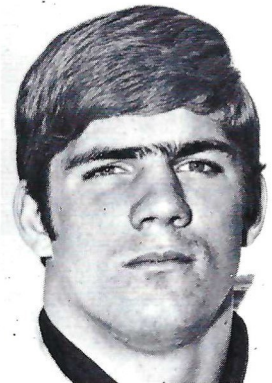
Rhett Dawson needs five more catches to move ahead of Fred Biletnikoff as Florida State's second all-time pass receiver. The Valdosta, Ga., senior goes into this game with 96 career receptions.

The Seminole defensive has given up an average of 9 points per game and hasn't had a touchdown scored on it during the second half.

SEMINOLE CAPTAINS



Arthur Munroe

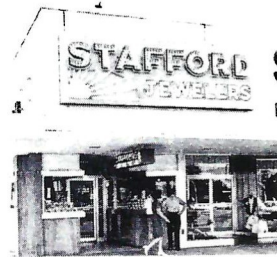


Richard Amman

OUR TEAM SAYS "LET'S GO SEMINOLES"



DOWNTOWN
VERNON STEVENS
Manager



PARKWAY
AMOS STEVENS
Manager



THOMASVILLE
ED HORTON
Manager



NORTHWOOD MALL
NATHAN BRASWELL
Manager

STAFFORD QUALITY JEWELERS

Be on the FIRST Team!



We extend our warmest welcome to the Students and Faculty of FSU, TCC and FAMU... When it comes to Banking... Depend on a Solid Favorite... a PRO Team of Bankers and Financial Coaches that can help you with any Banking Need. So when GOOD Banking is what YOU want... Be on the FIRST TEAM at FIRST NATIONAL.



Capital City
FIRST NATIONAL BANK

STATISTICS

1971 Florida State Schedule

24	So. Mississippi	9
	(at Mobile)	
20	at Miami	17
30	Kansas	7
17	Virginia Tech	3
Oct. 9	Mississippi State (HC)	
Oct. 16	at Florida	
Oct. 23	South Carolina	
Oct. 30	at Houston	
Nov. 13	at Georgia Tech	
Nov. 20	Tulsa	
Nov. 27	Pittsburgh	

1971 Mississippi State Schedule

7	at Oklahoma State	26
13	Florida	10
19	Vanderbilt	49
7	at Georgia	35
Oct. 9	at Florida State	
Oct. 16	Lamar Tech	
Oct. 23	Tennessee	
Oct. 30	Alabama	
Nov. 6	Auburn	
Nov. 13	LSU	
Nov. 25	Mississippi	

FSU (4-0)	OPP.	1971 TEAM STATS	MISS. STATE (1-3)	OPP.
91	36	Total Points	46	120
22.8	9.0	Points Per Game	11.5	30.0
72	76	First Downs	49	109
405/2.7	563/3.2	Rushing Yards/Avg. Per Play	528/3.2	893/3.9
113/68/8	93/47/8	Passes Att./Comp./Hd. Int.	83/35/8	87/37/6
1032	550	Passing Yardage	437	486
1437/376.8	1113/278.3	Total Yards/Yards Per Game	965/241.3	1379/344.8
11/7	9/3	Fumbles/Lost	15/7	13/5
17/39.1	28/37.3	Punts/Avg. Yards	25/38.3	19/41-5

INDIVIDUAL LEADERS FLORIDA STATE

Passing	Att.	Comp.	Int.	Yards	TD
Gary Huff	107	67	7	1026	7
Receiving	No.	Yards	Avg.	TD	
Rhett Dawson	30	369	12.3	3	
Barry Smith	13	256	19.9	2	
Kent Gaydos	5	135	27.0	2	
Gary Parris	5	62	12.4	0	
James Jarrett	5	55	11.0	0	
Rushing	TC	Net	Avg.	TD	
Arthur Munroe	26	166	6.4	1	
James Jarrett	20	72	3.6	0	
Paul Magalski	21	70	3.4	1	
Rick Oreair	24	63	2.6	0	
Oscar Roberts	17	48	3.4	0	
Scoring	TD	FGA/M	XPA/M	TP	
Frank Fontes	0	7/10	10/10	31	
Rhett Dawson	3	0/0	0/0	18	
Barry Smith	2	0/0	0/0	12	
Kent Gaydos	2	0/0	0/0	12	

MISSISSIPPI STATE

Passing	Att.	Comp	Int.	Yards	TD
Hal Chealander	63	29	6	377	1
Billy Baker	19	6	1	60	0
Receiving	No.	Yards	Avg.	TD	
Eric Hoggatt	13	145	11.2	0	
Tommy Strahan	9	104	11.6	1	
Jay Hughes	5	57	11.4	0	
Bill Buckley	5	104	20.8	0	
Rushing	TC	Net	Avg.	TD	
Lewis Grubbs	62	217	3.5	2	
Wayne Jones	26	147	5.6	3	
Bill Baker	26	75	2.8	0	
Scoring	TD	FGA/M	XPA/M	Points	
Wayne Jones	3	0-0	0-0	18	
Lewis Grubbs	2	0-0	0-0	12	
Glenn Ellis	0	2-4	4-5	10	

A GREAT RUNNER.

You expect a little car to be a good sprinter. Nimble, light on its feet, fine for short runs around town.

Vega is all that.

But what sets Vega apart is that it's one little car that's good on long runs too.

One reason is its relatively large 140-cubic-inch overhead cam engine. It can cruise comfortably at turnpike speeds without straining, and with power to spare.

Vega is built low to the ground, and wide, so it takes curves without a lot of lean and hangs onto a windy highway like it weighed a whole lot more.

The steering is easy. Yet firm and reassuring on straight stretches.

What we're saying is, for an economy car, Vega sure feels a lot like a sports car.

Get into one soon and see. It'll give you a good run for your money.

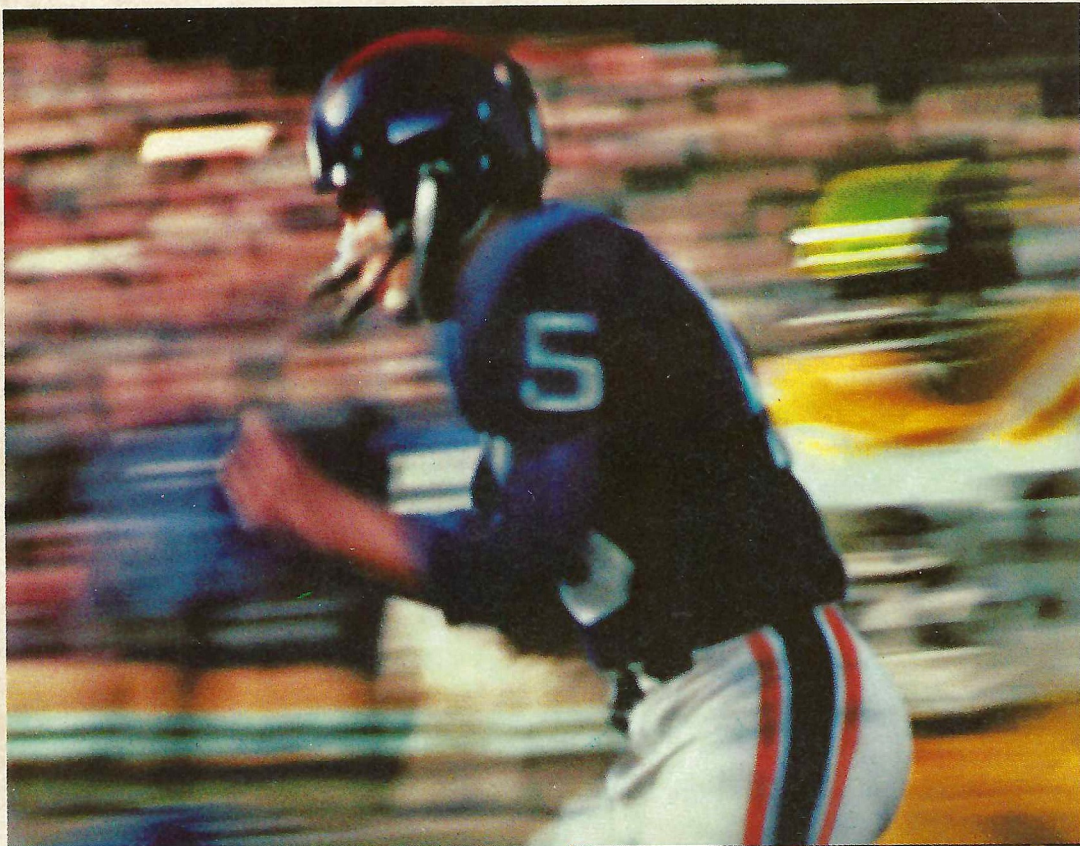


Great runner meets great runner. Former Heisman Trophy winner O.J. Simpson behind the wheel of a Vega Hatchback Coupe.



Buckle your seat and shoulder belts.
It's an idea you can live with.



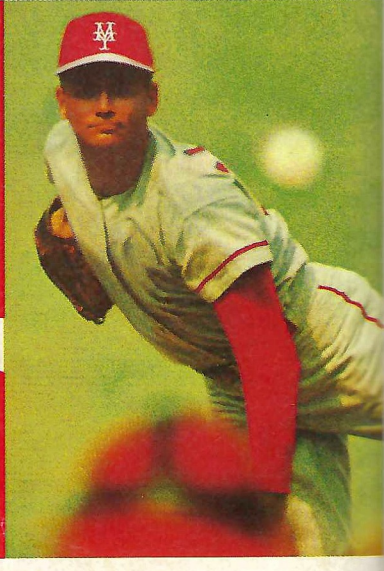


"Coca-Cola" and "Coke" are registered trademarks which identify the same product of The Coca-Cola Company

Enjoy
Coke
Trade-mark ®



Enjoy
Coca-Cola
Trade-mark ®



SEMINOLES

OFFENSE

82 Rhett Dawson SE
 74 Don Sparkman WT
 65 J.W. McKinnie WG
 55 Allen Dees C
 53 Jay Stokes SG
 66 Joe Strickler ST
 84 Gary Parris TE
 19 Gary Huff QB
 48 James Jarrett FB
 27 Arthur Munroe TB
 18 Kent Gaydos FL

SEMINOLES

DEFENSE

85 Bill Shaw LE
 70 Bill Henson LT
 60 Clint Parker SAM
 59 Larry Strickland MIKE
 50 Dan Whitehurst WILL
 75 Richard Amman LT
 80 Charlie Hunt RE
 40 Eddie McMillan LC
 26 James Thomas RC
 24 John Lanahan ROV
 28 Robert Ashmore SAF

THE SEMINOLE SQUAD

1 Fontes, PK	49 Glisson, LB
3 Carrell, Punt	50 Whitehurst, LB
11 Geisler, QB	52 Rainey, LB
12 Whigham, QB	53 Stokes, OG
14 Deming, QB	54 Dundala, C
18 Gaydos, WR	55 Dees, C
19 Huff, QB	57 Bratton, LB
20 Snell, DB	58 Schmidt, LB
21 Goldsmith, WR	59 Strickland, LB
22 Smith, WR	60 Parker, LB
23 Eddy, WR	61 Arnold, LB
24 Lanahan, DB	62 Miles, LB
26 James Thomas, DB	65 McKinnie, OG
27 Munroe, TB	66 Strickler, OT
28 Ashmore, DB	69 Anderson, DT
29 Fiore, WR	70 Henson, DT
30 Norris, FB	72 Gibbs, OG
31 Magalski, FB	73 Daniels, OT
32 Davis, WR	74 Sparkman, OT
33 Hardin, FB	75 Amman, DT
35 Shively, DE	76 Rimby, OG
36 Oreair, RB	77 Minor, OT
37 Roberts, RB	79 Jacobi, DT
38 Lewis, DB	80 Hunt, DE
40 McMillan, DB	82 Dawson, WR
42 Ratliff, DB	83 Cooper, DE
43 Montgomery, DB	84 Gary Parris, TE
44 Gridley, LB	85 Shaw, DE
46 Bengtson, PK	86 Glass, TE
47 McNish, LB	87 Castleberry, DE
48 Jarrett, FB	89 Corral, DE

OFFICIALS -

Referee Pat McHugh, Chattanooga, Tenn.
 Umpire Pete T. Williams, Huntsville, Ala.
 Linesman D. L. Claborn, Atlanta, Ga.

BULLDOGS

DEFENSE

84 Jack Hall LE
 72 Jerry Conrad LT
 86 Mike Eaton RT
 93 Robby Armstrong RE
 48 Joel Holliman LOLB
 53 Chuck Dees LLB
 68 Chick King RLB
 43 Billy Southward ROLB
 36 Ken Phares LHB
 40 Frank Dowsing RHB
 31 Emile Petro SAF

BULLDOGS

OFFENSE

87 Tommy Strahan SE
 71 Joe Edwards QT
 62 Danny West QG
 51 Eugene Wardlaw C
 65 Butch Yarbrough SG
 77 Preston Payne ST
 89 Eric Hoggatt TE
 16 Hall Chealander QB
 41 Lewis Grubbs TB
 38 Dick McElroy FB
 14 Jay Hughes FL

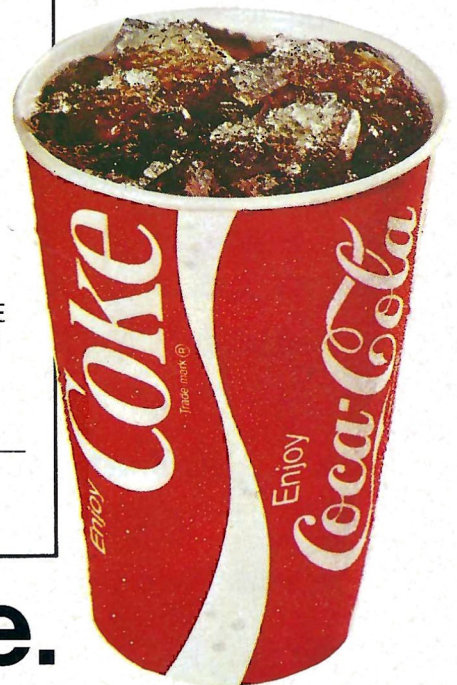
THE BULLDOG SQUAD

5 Walker, S	56 Wray, C
6 Sheffield, DB	57 Pillow, DE
7 Everett, QB	58 Ellis, OT
10 Baker, QB	60 Greenlee, G
12 Natale, OE	61 Archer, G
14 Hughes, WB	62 West, G
16 Chealander, QB	63 Brislin, G
17 Straus, QB	65 Yarbrough, G
21 Boatner, DB	66 Rhea, G
23 McElroy, TB	67 Enis, G
24 Buckley, WB	68 King, LB
28 Patridge, S	69 Rogers, OT
30 Bruce, LB	70 Webb, DT
31 Petro, S	71 Edwards, OT
32 Jones, TB	72 Conrad, DT
33 Stoots, FB	73 Jordan, DT
36 Phares, DB	74 McKnight, OT
37 Peterson, FB	75 Bell, DT
38 McElroy, FB	76 Johnston, OT
40 Dowsing, DB	77 Payne, OT
41 Grubbs, TB	78 Fountain, DT
42 Jones, TB	79 Cook, OT
43 Southward, LB	80 Rushing, OE
44 Whaley, FB	81 McAlpin, DE
45 Magee, LB	83 Anger, OE
46 Powers, LB	84 Hall, DE
48 Holliman, LB	85 Bozeman, OE
50 Calhoun, LB	86 Eaton, DT
51 Wardlaw, C	87 Strahan, OE
52 Brabham, C	89 Hoggatt, OE
53 Dees, LB	90 Kimbrough, DE
55 Nelson, LB	93 Armstrong, DE

Field Judge A. C. (Butch) Lambert, Tupelo, Miss.
 Back Judge Richard A. Allen, Dunwoody, Ga.
 ECO John N. Buoni, Memphis, Tenn.

TALLAHASSEE COCA-COLA BOTTLING CO.

"COCA-COLA" AND "COKE" ARE REGISTERED TRADE-MARKS OF THE COCA-COLA COMPANY.



It's the real thing. Coke.

Trade-mark ®

**The All-American choice
for gasolines and
motor oil.**



Today's All-American team for top engine protection, better performance, and cleaner air: Texaco's great gasolines and Havoline Super Premium All Temperature Motor Oil. So for products you can trust...

**Trust your car to the
man who wears the Texaco star.**

FLORIDA STATE

Seminoles

Offense

SE 82	Rhett Dawson
32	Ed Davis
21	Joe Goldsmith
WT 74	Don Sparkman
77	Roger Minor
WG 65	J.W. McKinnie
72	Shane Gibbs
C 55	Allen Dees
53	Jay Stokes
54	Jim Dundala
SG 53	Jay Stokes
61	Phil Arnold
ST 66	Joe Strickler
73	Dan Daniels
TE 84	Gary Parris
86	Mike Glass
QB 19	Gary Huff
12	Frank Whigham
11	Fred Geisler
TB 27	Arthur Munroe
31	Paul Magalski
36	Rick Oreair
FB 48	James Jarrett
31	Paul Magalski
FL 18	Kent Gaydos
22	Barry Smith

Defense

LE 85	Bill Shaw
83	Bert Cooper
89	Kent Corral
LT 70	Bill Henson
79	Howard Jacobi
SAM 60	Clint Parker
44	Guy Glisson
MIKE 59	Larry Strickland
62	David Miles
WILL 50	Dan Whitehurst
44	Buddy Gridley
RT 75	Richard Amman
69	Bobby Anderson
RE 80	Charlie Hunt
57	Steve Bratton
RC 26	James Thomas
20	David Snell
LC 40	Eddie McMillan
38	Buzzy Lewis
ROV 24	John Lanahan
42	Ron Ratliff
35	Randy Shively
SAF 28	Robert Ashmore
43	John Montgomery

PLACEMENTS — 1 Frank Fontes, 46 Brian Bengtson

PUNTS — 3 Duane Carrell, 12 Frank Whigham

RETURN SPECIALISTS — 20 David Snell, 40 Eddie McMillan, 38 Buzzy Lewis

MISSISSIPPI STATE

Bulldogs

Offense

SE 87	Tommy Strahan
12	Steve Natale
QT 71	Joe Edwards
79	Roger Cook
QG 62	Danny West
66	Rube Rhea
C 51	Gene Wardlaw
61	Ray Archer
SG 65	Butch Yarbrough
60	Larry Greenlee
ST 77	Preston Payne
74	Larry McKnight
TE 89	Eric Hoggatt
80	Dennis Rushing
QB 16	Hal Chealander
10	Bill Baker
7	Ronnie Everett
TB 41	Lewis Grubbs
32	Wayne Jones
42	Ronnie Jones
FB 38	Dick McElroy
44	Steve Whaley
33	Steve Stoots
FL 14	Jay Hughes
24	Bill Buckley
26	John Male

Defense

LE 81	Jim McAlpin
90	Bob Kimbrough
LT 72	Jerry Conrad
78	Greg Fountain
73	Chuck Jordan
RT 86	Mike Eaton
70	Jimmy Rogers Webb
75	Robert Bell
RE 93	Robby Armstrong
84	Jack Hall
LOLB 48	Joel Holliman
50	John David Calhoun
LLB 53	Chuck Dees
45	Don Magee
46	Frank Power
RLB 68	Chick King
55	Jim Nelson
ROLB 43	Billy Southward
30	Johnny Bruce
LHB 36	Ken Phares
21	Buster Boatner
RHB 40	Frank Dowsing
5	Anthony Walker
SAF 31	Emile Petro
28	Jimmy Patridge

PUNTS — 6 Lanny Sheffield, 10 Billy Baker

PLACEMENTS — 58 Glen Ellis, 73 Chuck Jordan

PUNT RETURNS — 36 Ken Phares, 40 Frank Dowsing

KO RETURNS — 41 Lewis Grubbs, 24 Bill Buckley

For the Best Coverage
of Today's Game See Tomorrow's
Tallahassee Democrat



With Florida's Prize-Winningest Sports Editor Bill McGrotha

FLORIDA STATE

NO.	NAME	POS.	HT.	WT.	AGE	CLASS	HOMETOWN
75	AMMAN, RICHARD	DT	6-5	232	21	Sr.	Cocoa Beach
69	ANDERSON, BOBBY	DT	5-10	217	20	Soph.	Tifton, Ga.
61	ARNOLD, PHIL	LB	6-0	211	19	Soph.	Hollywood
28	ASHMORE, ROBERT	DB	6-1	181	22	Sr.	Tallahassee
46	BENGTON, BRIAN	PK	6-3	205	21	Jr.	Green Bay, Wisc.
57	BRATTON, STEVE	LB	6-0	200	20	Soph.	Oviedo
3	CARRELL, DUANE	P	5-10	176	22	Sr.	Washington, D.C.
87	CASTLEBERRY, RUSSELL	DE	6-0	201	18	Soph.	Palatka
83	COOPER, BERT	DE	6-1	218	19	Soph.	Tallahassee
89	CORRAL, KENT	DE	5-11	199	20	Soph.	Tampa
73	DANIELS, DAN	OT	6-4	250	21	Jr.	Pensacola
32	DAVIS, ED	WR	6-1	195	20	Soph.	Lakeland
82	DAWSON, RHETT	WR	6-2	186	22	Sr.	Valdosta, Ga.
55	DEES, ALLEN	C	6-2	190	21	Jr.	Lakeland
14	DEMING, FRANK	QB	6-1	160	20	Soph.	Valdosta, Ga.
54	DUNDALA, JIM	C	6-0	204	20	Jr.	Morrisville, Pa.
23	EDDY, DAVID	WR	5-11	173	19	Soph.	Miami
29	FIGLIO, DANO	WR	6-0	178	20	Jr.	Chattahoochee
1	FONTES, FRANK	PK	5-6	155	22	Sr.	Perth Amboy, N.J.
18	GAYDOS, KENT	WR	6-6	212	22	Sr.	Dallas, Tex.
11	GEISLER, FRED	QB	6-0	189	19	Soph.	Orlando
72	GIBBS, SHANE	OG	6-3	220	20	Jr.	Bay Minette, Ala.
86	GLASS, MIKE	TE	6-3	210	21	Jr.	Tampa
49	GLISSON, GUY	LB	6-0	194	21	Sr.	Tampa
21	GOLDSMITH, JOE	WR	6-0	172	19	Soph.	Lakeland
44	GRIDLEY, BUDDY	LB	6-0	209	21	Sr.	Tallahassee
33	HARDIN, STEVE	FB	6-1	206	20	Soph.	Boynton Beach
70	HENSON, BILL	DT	6-0	223	21	Sr.	Hyattsville, Md.
19	HUFF, GARY	QB	6-1	185	20	Jr.	Tampa
80	HUNT, CHARLIE	DE	6-3	202	20	Jr.	Jacksonville
79	JACOBI, HOWARD	DT	6-2	242	21	Jr.	Vero Beach
48	JARRETT, JAMES	FB	6-1	208	22	Sr.	Elizabethton, Tenn.
24	LANAHAN, JOHN	DB	6-0	202	22	Sr.	Jacksonville
38	LEWIS, BUZZY	DB	6-0	180	19	Soph.	Bristol
31	MAGALSKI, PAUL	FB	5-11	210	21	Sr.	Garfield Hts., Ohio
65	MCKINNIE, J. W.	OG	6-1	207	21	Sr.	Macon, Ga.
40	MCMILLAN, EDDIE	DB	6-2	175	20	Jr.	Tampa
47	MCNISH, DAVID	LB	6-0	215	20	Jr.	Eustis
62	MILES, DAVID	LB	5-10	185	19	Soph.	Tallahassee
77	MINOR, ROGER	OT	6-3	233	21	Jr.	Delray Beach
43	MONTGOMERY, JOHN	DB	6-0	182	21	Sr.	Jacksonville
27	MUNROE, ARTHUR	TE	6-0	192	22	Sr.	Quincy
30	NORRIS, BRENT	FB	6-0	199	20	Soph.	Thomaston, Ga.
36	OREAIR, RICK	TB	6-0	187	20	Soph.	Jacksonville
60	PARKER, CLINT	LB	6-0	193	20	Jr.	Daytona Beach
84	PARRIS, GARY	TE	6-2	210	21	Jr.	Vero Beach
52	RAINEY, REESE	LB	6-1	192	21	Jr.	Greenville, Ala.
42	RATLIFF, RON	DB	5-11	182	21	Jr.	West Palm Beach
76	RIMBY, BILL	OG	6-3	235	22	Sr.	St. Petersburg
37	ROBERTS, OSCAR	TB	5-11	184	21	Soph.	Ocala, Ga.
58	SCHMIDT, ANDY	LB	5-11	192	19	Soph.	Brandon
85	SHAW, BILL	DE	6-1	218	21	Sr.	Marietta, Ga.
35	SHIVELY, RANDY	DE	6-0	170	20	Soph.	St. Petersburg
22	SMITH, BARRY	WR	6-1	186	20	Jr.	Miami
20	SNELL, DAVID	DB	5-7	172	20	Jr.	Slocomb, Ala.
74	SPARKMAN, DON	OT	6-5	249	19	Soph.	Jacksonville
53	STOKES, JAY	OG	6-3	220	22	Sr.	Sanford
59	STRICKLAND, LARRY	LB	6-1	205	21	Jr.	Tallahassee
66	STRICKLER, JOE	OT	6-2	235	22	Sr.	Avon Park
26	THOMAS, JAMES	DB	6-1	196	20	Jr.	Macon, Ga.
12	WHIGHAM, FRANK	QB	6-0	189	22	Sr.	Sanford
50	WHITEHURST, DAN	LB	6-3	214	21	Jr.	Adel, Ga.

Tallahassee Democrat

Prize Winning Sports Coverage

NATIONAL NEWSPAPER ASSOCIATION

- 1st—Best Sports Columnist, 1971
- 1st—Best Sports Section, 1970
- 3rd—Best Sports Picture, 1970

FLORIDA SPORTS WRITERS ASSOCIATION

- 1st—Best Sports Columnist, 1971
- 1st—General Writing Excellence, 1971
- 1st—General Section Excellence, 1970
- 2nd—Overall General Excellence, 1971
- 3rd—Sports Section Make-Up, 1971
- 4th—Overall Writing Excellence, 1970

ASSOCIATED PRESS OF FLORIDA

- 1st—Best Sport Color Picture, 1970

For the best coverage of today's game see tomorrow's

Tallahassee Democrat

MISSISSIPPI STATE

NO.	NAME	POS.	HT.	WT.	AGE	CLASS	HOMETOWN
5	WALKER, ANTHONY	S	5-9	169	21	Sr.	Mineral Wells, Tex.
6	SHEFFIELD, LANNY	DHB	6-2	179	20	Soph.	Fulton
7	EVERETT, RONNIE	QB	6-0	180	19	Soph.	High Springs, Fla.
10	BAKER, BILLY	QB	6-1	175	21	Jr.	Pearl
12	NATALE, STEVE	OE	5-10	167	21	Jr.	Madison, N. J.
14	HUGHES, JAY	WB	5-10	171	22	Sr.	Clarksdale
16	CHEALANDER, HAL	QB	6-4	203	21	Jr.	Cypress, Calif.
17	STRAUS, DAVID	QB	5-10	193	20	Soph.	Meridian
21	BOATNER, BUSTER	DHB	6-1	175	20	Soph.	Meridian
23	McELROY, TOM	TB	5-10	178	21	Sr.	Baldwin
24	BUCKLEY, BILL	WB	6-0	169	19	Soph.	Starkville
28	PATRIDGE, JIMMY	S	5-10	185	22	Sr.	Sidon
30	BRUCE, JOHNNY	LB	6-0	196	19	Soph.	Saltillo
31	PETRO, EMILE	S	6-0	172	20	Jr.	Leland
32	JONES, WAYNE	TB	5-10	202	19	Soph.	Kosciusko
33	STOOTS, STEVE	FB	5-10	209	20	Jr.	Brownsville, Tenn.
36	PHARES, KEN	DHB	6-1	190	20	Jr.	Clinton, La.
37	PETERSON, GLENN	FB	6-1	205	22	Sr.	Roswell, Ga.
38	McELROY, DICK	FB	5-11	185	20	Jr.	Baldwin
40	DOWSING, FRANK	DHB	5-10	187	20	Jr.	Tupelo
41	GRUBBS, LEWIS	TB	5-10	183	20	Jr.	Prentiss
42	JONES, RONNIE	TB	6-0	185	20	Jr.	Forest
43	SOUTHWARD, BILLY	LB	6-1	205	20	Jr.	Tishomingo
44	WHALEY, STEVE	FB	5-11	202	22	Sr.	Pompano Beach, Fla.
45	MAGEE, DON	LB	5-10	194	20	Jr.	Tylertown
46	POWERS, FRANK	LB	6-0	195	19	Soph.	Greenwood
48	HOLLIMAN, JOEL	LB	5-11	197	21	Sr.	Millport, Ala.
50	CALHOUN, JOHN DAVID	LB	6-1	190	19	Soph.	Forest
51	WARDLAW, GENE	C	6-2	230	20	Soph.	Whitehaven, Tenn.
52	BRABHAM, JOE	C	6-1	231	20	Jr.	McComb
53	DEES, CHUCK	LB	6-0	225	21	Sr.	New Orleans, La.
55	NELSON, JIM	LB	5-11	200	21	Sr.	Jackson
56	WRAY, JIM	C	6-3	228	19	Soph.	Tiptonville, Tenn.
57	PILLOW, WATSON	DE	6-0	198	21	Sr.	Greenwood
58	ELLIS, GLENN	OT	6-0	225	20	Jr.	Biloxi
60	GREENLEE, LARRY	OG	5-11	225	19	Soph.	Kilmichael
61	ARCHER, RAY	OG	6-0	211	20	Jr.	Jackson
62	WEST, DANNY	OG	6-0	221	19	Soph.	Jackson
63	BRISLIN, ANDY	OG	5-11	203	20	Soph.	Columbus
65	YARBROUGH, BUTCH	OG	6-1	220	22	Sr.	Bainbridge, Ga.
66	RHEA, RUBE	OG	6-0	204	21	Sr.	Somerville, Tenn.
67	ENIS, BILL	OG	6-0	212	20	Jr.	Baldwin
68	KING, CHICK	LB	6-1	206	21	Sr.	Yazoo City
69	ROGERS, KENNY	OT	6-1	224	19	Soph.	Bay Springs
70	WEBB, JIMMY ROGERS	DT	6-4	225	19	Soph.	Florence
71	EDWARDS, JOE	OT	6-4	251	21	Sr.	Louisville
72	CONRAD, JERRY	DT	6-1	225	22	Sr.	Parsons, Tenn.
73	JORDAN, CHUCK	DT	5-11	220	21	Sr.	Decatur
74	McKNIGHT, LARRY	OT	6-4	228	20	Soph.	Bessemer, Ala.
75	BELL, ROBERT	DT	5-10	240	20	Jr.	Meridian
76	JOHNSTON, JERRY	OT	6-6	217	20	Soph.	Bay St. Louis
77	PAYNE, PRESTON	OT	6-2	255	22	Sr.	Donna, Tex.
78	FOUNTAIN, GREG	DT	6-3	220	20	Soph.	Ocean Springs
79	COOK, ROGER	OT	6-1	233	19	Soph.	Canton
80	RUSHING, DENNIS	OE	6-1	183	21	Sr.	Dallas, Tex.
81	McALPIN, JIM	DE	6-2	228	22	Sr.	Magee
83	ANGER, BOB	OE	5-11	175	21	Jr.	Jackson
84	HALL, JACK	DE	6-2	200	20	Jr.	Clinton, La.
85	BOZEMAN, BOB	OE	6-6	190	19	Soph.	Hazlehurst
86	EATON, MIKE	DT	6-2	220	21	Sr.	Ripley
87	STRAHAN, TOMMY	OE	5-11	170	20	Soph.	Morton
89	HOGGATT, ERIC	OE	6-2	195	21	Sr.	Wisner, La.
90	KIMBROUGH, BOB	DE	6-1	200	21	Jr.	Lexington
93	ARMSTRONG, ROBBY	DE	6-1	215	20	Jr.	Meridian



MISS CHERE BELLOTTO
Florida Cattlemen's Association
1971-72 Sweetheart

COED SAYS:

When you celebrate your team's victory, treat yourself to tender, tasty...

BEEF

As Delicious as it is Nutritious!

FLORIDA BEEF COUNCIL

A COMMITTEE OF THE FLORIDA CATTLEMEN'S ASSOCIATION



Touchdown or Field Goal



Safety



Offside (Infraction of scrimmage or free kick formation)



Illegal use of Hands and Arms



Illegal Procedure or Position



Ineligible Receiver Down Field on Pass



Delay of Game



Clipping



Illegal Motion



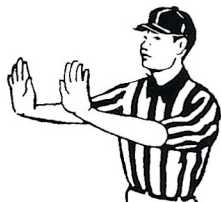
Roughing the Kicker



Illegal Shift



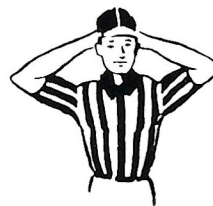
Time out; Referee's Discretionary or Excess Time Out followed with tapping hands on chest.



Forward Pass or Kick Catching Interference



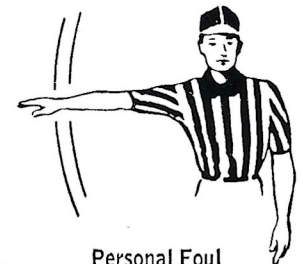
Intentional Grounding



Loss of Down



Ball Ready for Play



Personal Foul



RAGANS and ROBERTS TIRE COMPANY



Big Bends Largest Goodyear & BP Oil Dealer

James W. Ragans — OWNERS — Eli P. Roberts

Complete Service Department Including:
Front End and Brake Rebuilding
Tires · Batteries · Accessories

Fuel Oils For Home, Business and Farm

for AUTOMOTIVE SERVICE call
224-8156

for FUEL OIL call
576-3145

609 W. Tennessee Street

BP SETS THE PACE



Ball Dead; If Hand is Moved from Side to Side: Touchback



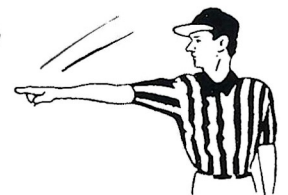
Incomplete Forward Pass, Penalty Declined, No Play, or No Score



Start the Clock



Substitution Infractions



First Down

FOOTBALL GLOSSARY

- Audible** — A vocal signal by the quarterback changing the play called in the huddle. Also called Check Off.
- Blitz** — Commitment by defensive backs and/or linebackers to rush the passer.
- Blocking** — Legally hindering the progress of an opponent by contacting him with any part of the blocker's body.
- Bomb** — A long pass attempt for a touchdown.
- Buttonhook** — A pass pattern in which the receiver goes downfield and U-turns back sharply to receive the ball.
- Clipping** — Running or diving into the back of an opponent, or throwing the body across the back of the leg or legs of an opponent other than the ball carrier.
- Dive-Tackle Play** — A quick-handoff running play over tackle.
- Draw-Play** — Quarterback drops back as if to pass but instead hands ball to running back, after quarterback's teammates have assumed pass-blocking positions.
- Fair Catch** — The opportunity for a player of the receiving team to catch a kicked ball that has crossed the scrimmage line, without being tackled or blocked by an opponent, after signaling his intention by completely extending one arm above his head.
- Kickoff** — A free kick with which each half is opened, and which is employed also following each try-for-point or Field Goal. A kickoff must be either a Placekick or a Dropkick.
- Lateral Pass** — A live ball thrown toward or parallel with the passer's own goal line.
- Linebacker** — A defensive player operating immediately behind his line where he can either aid linemen in stopping a running play or cover an opponent's receiver if a pass develops.
- Look-In Pass** — Receiver runs straight pattern and looks for the ball immediately over his inside shoulder.
- Man-To-Man Coverage** — Pass defense plan wherein defensive backs cover receivers wherever they go, rather than field areas.
- Mike** — Middle linebacker, so designated because he usually lines up opposite middle of the offensive line.
- Monster** — A roving linebacker who may position himself on either side of his team's defensive formation.
- Neutral Zone** — The space between the scrimmage lines of the offense and defense, approximating 11 inches (the length of the football).
- Onside Kick** — A kickoff that travels 10 yards or more is anybody's ball. The so-called "onside kick" is an effort by the kicking team to kick the ball barely beyond 10 yards and recover it before the receiving team can do so.
- Pocket** — Area of protection for the passer, formed by blockers. Passer drops straight back from scrimmage behind the blocking shield into what resembles a "cup" or pocket.
- Post** — A pass pattern in which the receiver goes downfield to pre-determined depth then cuts at an angle toward the goalposts.
- Prevent Defense** — A strategem replacing linebackers with additional backfield pass defenders, sacrificing strength against short gainers in order to prevent a long pass completion. Most often employed by a team protecting a lead late in either half.
- Pulling Guard** — Guard who pulls out behind scrimmage line for a trap block or to lead sweep blocking for ball carrier.
- Reverse Play** — A running play with backfield action suggesting one direction while ball carrier goes in opposite direction.
- Roll-Out pass** — Quarterback runs laterally with blockers before throwing, instead of dropping straight back to pass.
- Sam** — Strong linebacker, so designated because he usually lines up opposite the "strong side" of the offensive line.
- Screen Pass** — Pass to a receiver behind a wall of blockers, who have permitted defenders to penetrate.
- Scrimmage Line** — The yard line (marked or unmarked) that passes through point of the ball nearest a team's own goal line.
- Slot Back** — Back stationed in slot between interior linemen and end. Must be one yard behind the line of scrimmage.
- Snap** — A quick, continuous motion by which the ball is handed or snapped back with the ball leaving the hands of the snapper on the motion. The snap normally is made by the center.
- Strong Side** — Overbalance of offensive or defensive linemen to either side of the Center.
- Stunting** — Defensive players changing positions as the ball is snapped, to confuse offensive strategy.
- Sweep** — End run with wave of blockers leading the ball carrier.
- Spearing** — Illegal use of the head and helmet to ram an opponent after his momentum has stopped.
- Tackling** — Grasping or encircling an opponent with hands or arms.
- Tight End** — Offensive end who lines up in close formation (as opposed to Split End's wide set) where he can either block for a ball carrier or be employed as a pass receiver.
- Widereceiver** — A lineman and/or a back who is set wide for pass receiving purposes. Also called Split End, Flanker or Wideout.
- Willie** — Weak linebacker, so designated because he usually lines up opposite the "Weak side" of the offensive line.
- Zone Coverage** — Plan of pass defense wherein areas are covered rather than individual receivers Opposite of Man-To-Man.

BILL PEACOCK CHEVROLET, INC.

300 West Washington St.
MONTICELLO, FLORIDA

The reason people pass one door
To patronize another store,
Is not because the busier place
Has better silks, or gloves, or lace,
Or special prices, but it lies
In pleasant words and smiling eyes;
The only difference, we believe
Is in the treatment folks receive!



*Growing With
the Seminoles!*

TALLAHASSEE
Phone 224-8827

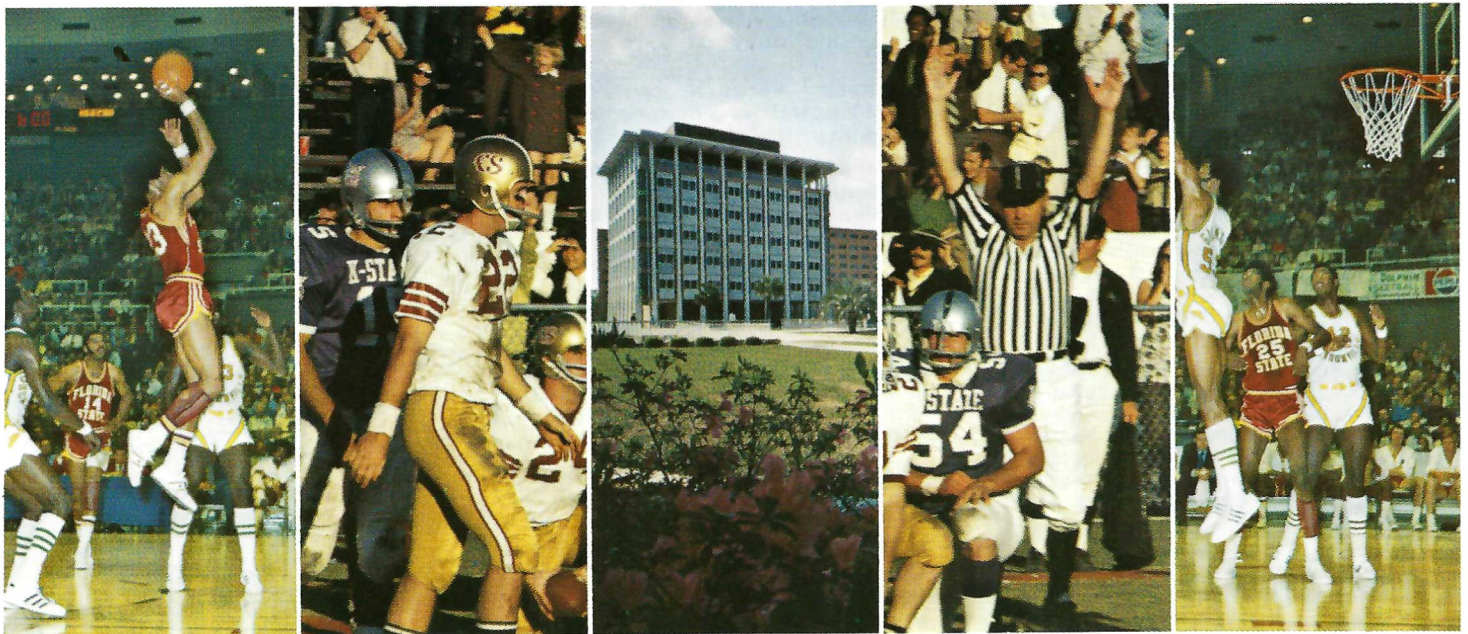
MONTICELLO
Phone 997-2513

JOIN THE UPRISING support FLORIDA STATE UNIVERSITY

"In my opinion the importance of intercollegiate athletics to a university has not diminished one whit . . . I suspect we need a high quality, strong athletic program now more than ever" — President Stanley Marshall, June, 1971.

"Athletics at Florida State University is moving into a new era . . . an era in which the fans and friends of Florida State will play an unprecedented role with their support. The object of the National Seminole Club is to organize this support and direct it into one of the most meaningful and personally rewarding areas within the scope of our program . . ."

— Director of Intercollegiate Athletics, Clay Stapleton

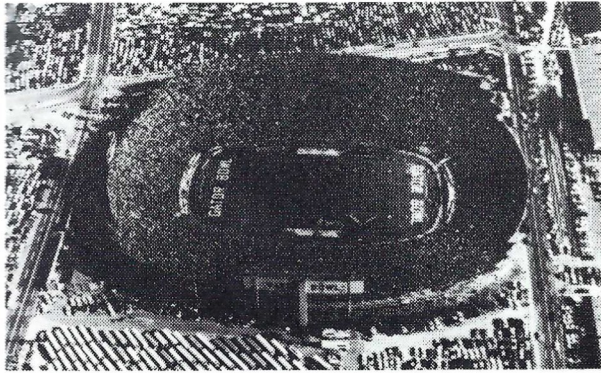


the NATIONAL SEMINOLE CLUB



for more information
write
Jim Olsen, Executive Director
Tully Gym
Florida State University
Tallahassee, Florida 32306
Phone
AC 904 — 599-2790

WHERE THE ACTION IS... JACKSONVILLE'S GATOR BOWL, AUDITORIUM AND COLISEUM!



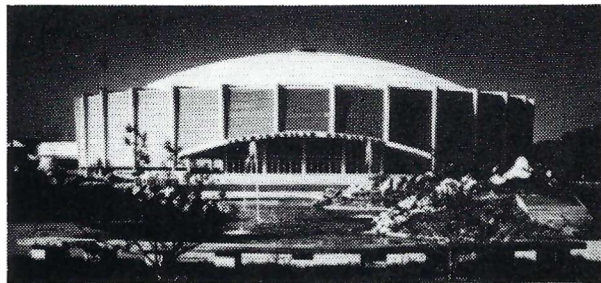
GATOR BOWL

SEPT. 11	Baltimore Colts vs. Oakland Raiders	8:00 p.m.
OCT. 20-30	Greater Jacksonville Fair	
NOV. 6	Florida vs. Georgia	1:45 p.m.
NOV. 25	Wolfson vs. Englewood) Lee vs. Jackson) Thanksgiving Day Stanton vs. Raines)	10:30 a.m. 2:30 p.m. 8:00 p.m.
DEC. 31	Gator Bowl Game	2:00 p.m.



AUDITORIUM

SEPTEMBER	NOVEMBER
16 A Date With Eve	3 The Last of the Red Hot Lovers
23 F.J.C. Presents Julian Bond	3 F.J.C.-William Brown
25 Gospel Sing	16 Symphony
OCTOBER	21 Ballet
7 The Lettermen	DECEMBER
7 F.J.C.-Phillips and Renzulli	7 Symphony
14 F.J.C.-Music from Jesus Christ Super Star	24 Ballet
30 The Wizard of Oz	25 Rock Show



COLISEUM

SEPTEMBER	12-14 Boat Show
4 Motorcycle Races	17 The Carpenters
5 Allman Brothers	26-28 Loretta Lynn Rodeo
9,16,23,30 Wrestling	DECEMBER
22 Symphony October Festival	1 Jacksonville University Biscayne
24 Atlanta Hawks vs. Philadelphia 76'ers	2,9,16,23,30 Wrestling
25 Gladys Knight and the Pips	3,4,5,8,10,14 Hockey
OCTOBER	19,24,25,31
1 Grand Funk Railroad	6-7 J.U. Basketball Tournament
7,14 Wrestling	11 J.U. - Georgia Southern
8-10 Shrine Circus	18 J.U. - William & Mary
13,15,16 Hockey	20 Gator Bowl President's Ball
NOVEMBER	28-29 Gator Bowl Basketball Tournament
2,3,5 Hockey	
6 Florida-Georgia Bar-B-Q	

PUBLIC ICE SKATING

Week days 2-4:00 8:00-10 p.m.
Saturday 2-4:00 p.m.
Sunday 2-4:00 p.m. 7:00-9:00 p.m.

Note: When special events are held at Coliseum, Public Skating will be cancelled during the above times.

for tickets:

civic auditorium - 354-2041
memorial coliseum - 354-2041

gator bowl rental information call
Danny Bridges — 354-5678



CITY OF JACKSONVILLE

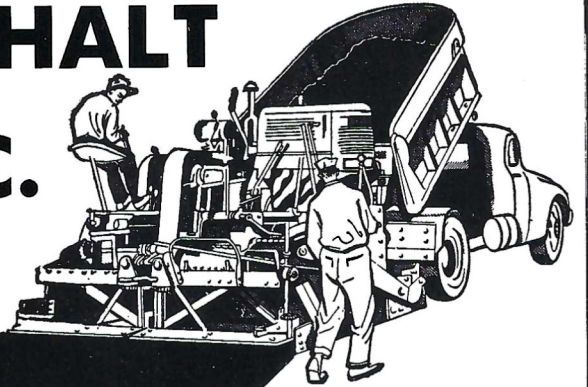
FLORIDA BOARD OF REGENTS AND CHANCELLOR



Members of the Florida Board of Regents shown here are: Front Row, left to right, Miss Elizabeth A. Kovachevich, St. Petersburg; Dr. Louis C. Murray, Orlando, Vice Chairman; D. Burke Kibler, III, Lakeland, Chairman; Julius F. Parker, Jr., Tallahassee; Back Row, left to right, E. W. Hopkins, Jr., Pensacola; Dr. Robert B. Mautz, Chancellor; J. J. Daniel, Jacksonville; and Marshall M. Criser, Palm Beach. Shown in the inserts are Regents Chester H. Ferguson, Tampa, and Mrs. E. D. Pearce, Miami.

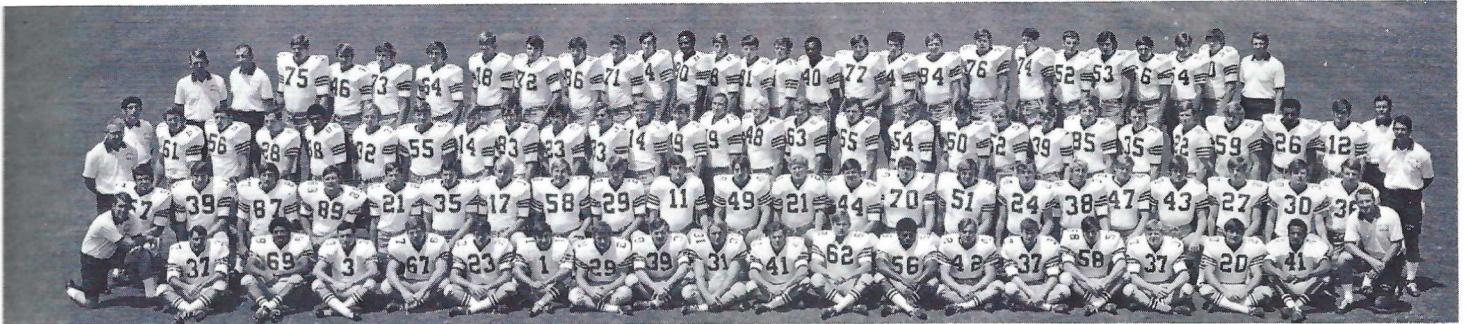
HAMMONS ASPHALT PAVING, INC.

Tallahassee, Fla.



Contributor: Florida State University Athletic Scholarship Fund

THE 1971 SEMINOLES

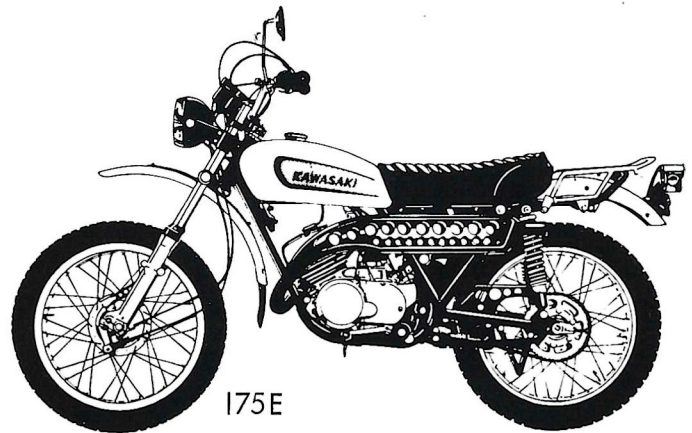


FIRST ROW – Left to Right: Coach Sloan, Ajhar, Anderson, Carrell, Drews, Eddy, Fontes, Howton, Jones, Magalski, McGowan, Miles, Murphy, Ratliff, Roberts, Schmidt, M. Smith, Snell, Joe Thomas, Head Coach Larry Jones. SECOND ROW – Coach Harbison, Bratton, Burgess, Castleberry, Corral, Cowart, Doney, Downey, Dundala, Fiore, Geisler, Glisson, Goldsmith, Gridley, Henson, Howell, Lanahan, Lewis, McNish, Montgomery, Munroe, Norris, Oreair, Coach Hodgson. THIRD ROW – Coach Pope, Arnold, Abbott, Ashmore, Cooper, Davis, Dees, Deming, Doyle, Gould, Hardin, Hopkins, Huff, Jacobi, Jarrett, Macaulay, McKinnie, Ottman, Parker, Rainey, Sargent, Shaw, Shively, B. Smith, Strickland, James Thomas, Whigham, Coach Henderson. FOURTH ROW – Coach Canty, Coach Devlin, Amman, Bengtson, Daniels, DeMaria, Gaydos, Gibbs, Glass, Hensley, Howard, Hunt, Lee, Lindsey, Loucks, McMillan, Minor, Musser, Parris, Rimby, Sparkman, Stephens, Stokes, Strickler, Walter, Whitehurst, Coach Parcells.

TALLAHASSEE'S SPORT CYCLE
HEADQUARTERS



SALES & SERVICE ON MOST MAKES



W. M.
POGGIE
owner

576-6326

Just Past Tallahassee Jr. College W. Pensacola



Frisch's

THE ORIGINAL

BIG BOY RESTAURANT

GREAT PLACE FOR POW WOWS AND GOOD FOOD

SERVING:

- Breakfast
- Lunch
- Dinner
- Snacks

Open 7 A.M. to Midnight
'Til 2 A.M. Fridays and Saturdays

1775 W. Tennessee Street

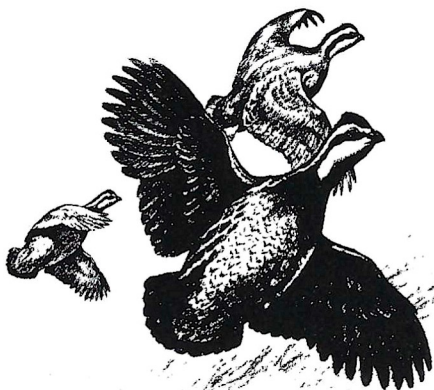
TALLAHASSEE — TELEPHONE 224-1246

TRY FRISCH'S CARRY-OUT

SEE OUR BIG SELECTION OF



SHOTGUNS AND RIFLES



America's Finest Sports Equipment

BROWNING

AUTHORIZED DEALER

Jackson Gun Shop, Inc.

452 West Tennessee St. • Phone 224-6934
TALLAHASSEE, FLORIDA 32301

1971 NCAA Football Television Schedule

Date	Game
Sept. 11	Grambling-Morgan State (New York City) (Night)
Sept. 18	Texas at UCLA Purdue at Washington Missouri at Air Force Florida State at Miami
Sept. 25	Auburn at Tennessee Penn State at Iowa Oregon at Stanford Kent State at Ohio University
Oct. 2	Michigan State at Notre Dame Texas Tech at Arizona North Carolina at North Carolina State Colorado State at Wyoming
Oct. 9	Michigan at Michigan State
Oct. 16	Texas at Arkansas
Oct. 23	Wisconsin at Ohio State Georgia Tech at Tulane Texas Tech at SMU Wake Forest at North Carolina
Oct. 30	Colorado at Nebraska
Nov. 6	Minnesota at Northwestern Georgia at Florida Boston College at Syracuse Washington at California
Nov. 13	Regional Choice Weekend
Nov. 20	USC-UCLA
Nov. 20	Notre Dame at LSU (Night)
Nov. 25	Nebraska at Oklahoma (Day)
Nov. 25	Georgia at Georgia Tech (Night)
Nov. 27	Army-Navy
Nov. 27	Auburn-Alabama
Dec. 4	Penn State at Tennessee
Dec. 11	College Division Bowl Games

See NCAA Football on WCTV, Ch. 6, Tallahassee

WATCH

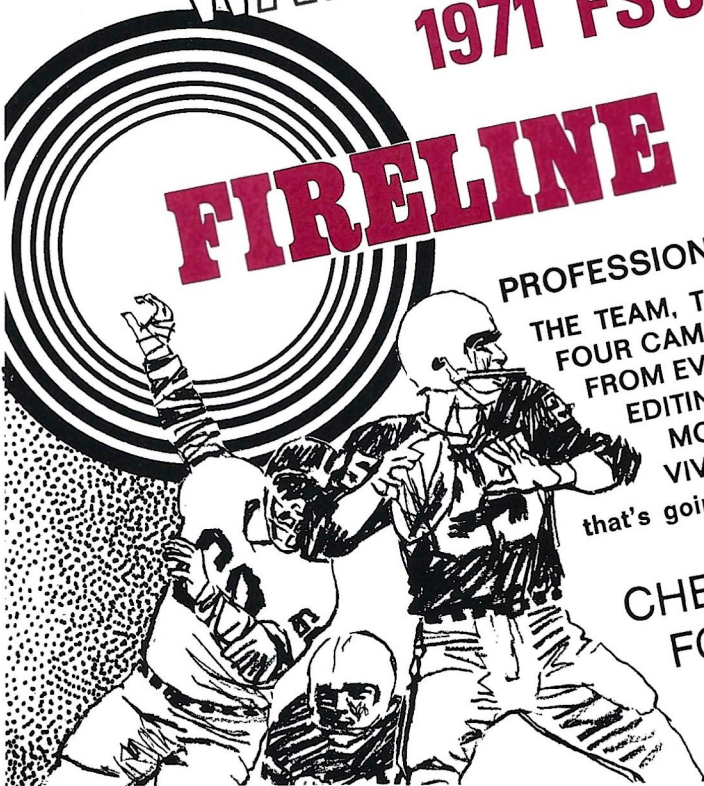
1971 FSU FOOTBALL HI-LITES

FIRELINE

STARTING SEPTEMBER 11, 1971

PROFESSIONAL FILM TEAM—NEW FORMAT
THE TEAM, THE COACH AND A MODERATOR WITH BITE!
FOUR CAMERAS CATCH THE ACTION
FROM EVERY ANGLE. THE SOUTHEAST'S BEST
EDITING TEAM WILL MAKE THE
MOMENTS SPECTACULAR! IT'S A
VIVID ENTERTAINMENT EXPERIENCE . . .
that's going to be talked about by Florida's football fans.

CHECK YOUR LOCAL LISTINGS
FOR TIME AND CHANNEL



Sheraton in Tallahassee

Commercial and Family Rates, Children Free

Located just one mile from the business district and close to the capitol, the Sheraton Motor Inn is completely air-conditioned. All 151 rooms with color TV. Swimming pool.

Banquet and meeting facilities available for any group, up to 250. Restaurant and Lounge in the Motor Inn. For further information, call 877-3171.



Sheraton Motor Inn

U.S. 27 AND LAFAYETTE ST. TALLAHASSEE, FLORIDA (904) 877-3171
SHERATON HOTELS AND MOTOR INNS A WORLDWIDE SERVICE OF I.T.T.



Your Memories
Live Forever
When Recorded
On Film!

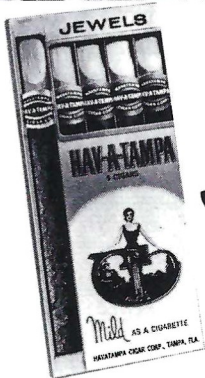
TAKE YOUR
CAMERA
ALONG!!

FOR NORTH FLORIDA'S LARGEST SELECTION OF PHOTO
EQUIPMENT & SUPPLIES SEE THE FRIENDLY FOLKS AT

Tallahassee Camera Center

117 NORTH MONROE

"Across from the Florida Theater"



HAV-A-TAMPA JEWELS

*The Cigar for Men ...
that Ladies Love —*

WELCOME ANYWHERE

for their man-size flavor and gentle aroma

Distributed by **Eli Witt Tobacco & Candy Company**
Tallahassee, Florida

STADIUM INFORMATION

REST ROOMS are located on concourse and ground levels of both the east and west stands.

FIRST AID station is located at the southwest corner of the stadium opposite gate five. A registered nurse is on duty at all times. Ambulance Service courtesy of Bevis Funeral Homes.

PUBLIC TELEPHONES are located on the ground levels of the east and west stands.

PUBLIC ADDRESS will make special announcements in cases of emergency only.

DOCTORS receiving calls will be paged by number.

LOST AND FOUND items may be turned in and claimed at the ticket-booth at gate three under the west stands by the press box elevator.

ALCOHOLIC BEVERAGES are prohibited. Your cooperation is appreciated.

FIELD REGULATIONS prohibit unauthorized persons on the field during or after the game. Please leave the Stadium by the ramp and section exits.

REFRESHMENTS are available in the stands and at locations on the concourse and ground levels of the east and west stands.

COLD DRINKS	25c
HOT COFFEE	25c
SANDWICHES	50c
HOT DOGS	25c
PEANUTS	25c
POP CORN	25c
CIGARETTES	60c

SOUVENIR ITEMS - PENNANTS -
BADGES - SUN VISORS - ASPIRIN

Please pay no more than
ESTABLISHED PRICES

Today's Opponent . . .

**MISSISSIPPI
STATE
University**



HAMLIN HALL — Boys Dormitory



Dr. W.L. Giles
President



Charles Shira
Athletic Director
and
Head Football Coach



**HOWARD JOHNSON'S
MOTOR LODGE**

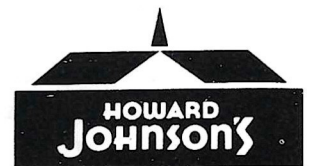
W. Tennessee St.

AT THE UNIVERSITY

**HOWARD JOHNSON'S
MOTOR LODGE**

Apalachee Parkway
NEAREST THE CAPITOL

Featuring the
TIGER BAY LOUNGE
Entertainment Nightly



Accommodations

*motor
lodges*

One Of Tallahassee's Most Exclusive Steak Houses

the Silver Slipper



RESTAURANT

☆ COCKTAILS SERVED ☆

DELICIOUS CHARCOAL BROILED STEAKS

SEA FOODS CHICKEN

25 PRIVATE DINING ROOMS — BANQUET ROOM SEATING 100

CALL JIMMIE OR CHRIS
KALFAS FOR RESERVATIONS

224-1265

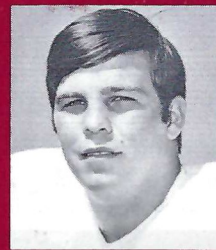
FOR PRIVATE PARTIES
AND BANQUETS

OPEN 5 P.M. TILL 11:30
OPEN 7 DAYS A WEEK

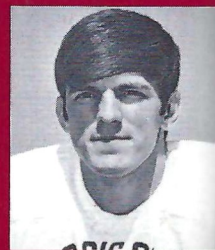
2000 S. MONROE • One Mile From Capitol On So. Monroe St. U.S. 319 S.
BEHIND S.&S. PACKAGE STORE



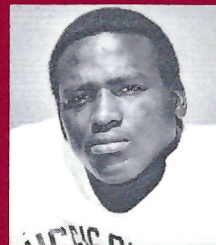
MSU



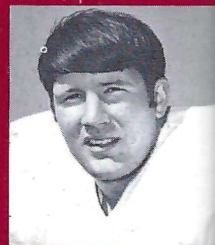
Robby Armstrong



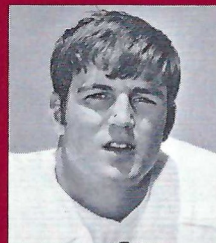
Billy Baker



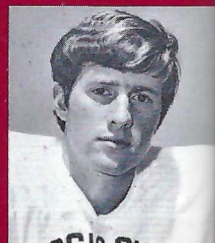
Robert Bell



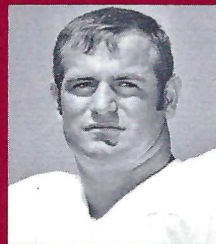
Andy Brislin



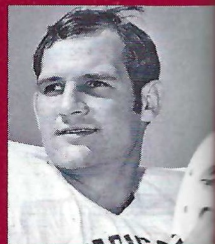
Johnny Bruce



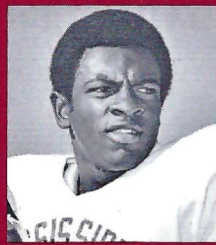
Bill Buckley



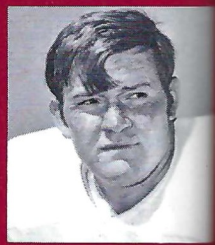
Jerry Conrad



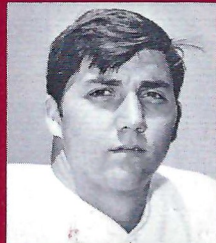
Chuck Dees



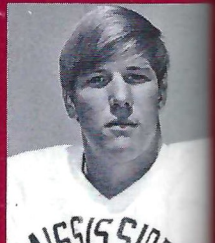
Frank Dowsing



Joe Edwards

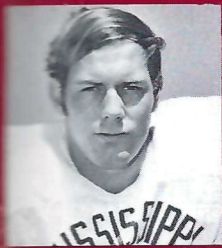


Glenn Ellis

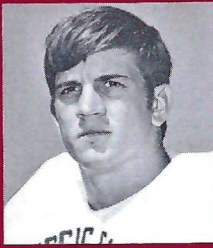


Ronnie Everett

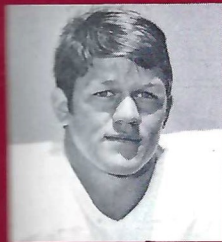
BULLDOGS



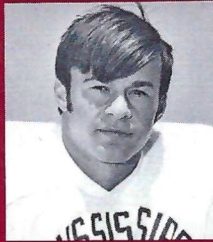
Lewis Grubbs



Jack Hall



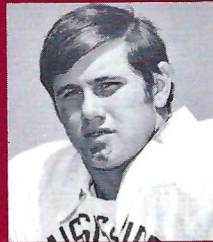
Eric Hoggatt



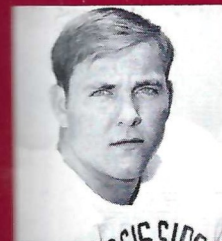
Joel Holliman



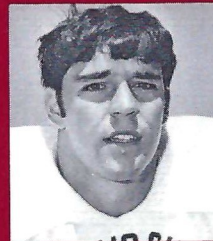
Jay Hughes



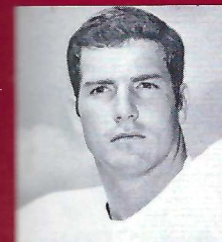
Wayne Jones



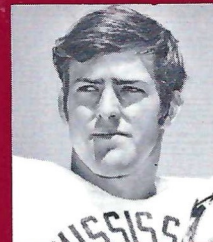
Chuck Jordan



Bob Kimbrough



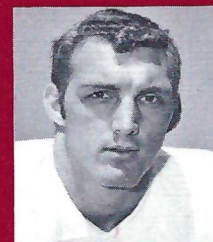
Chick King



Dick McElroy

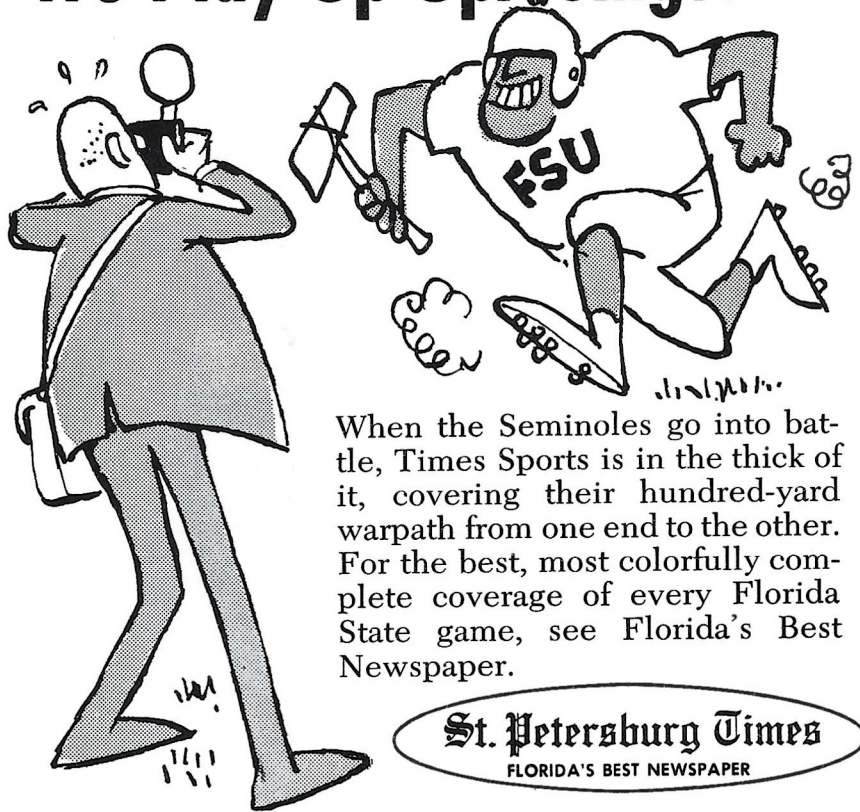


Steve Natale



Jim Nelson

We Play Up Uproisings!



When the Seminoles go into battle, Times Sports is in the thick of it, covering their hundred-yard warpath from one end to the other. For the best, most colorfully complete coverage of every Florida State game, see Florida's Best Newspaper.

St. Petersburg Times
FLORIDA'S BEST NEWSPAPER

Miller
CHEVROLET COMPANY

Havana, Florida

539-6376

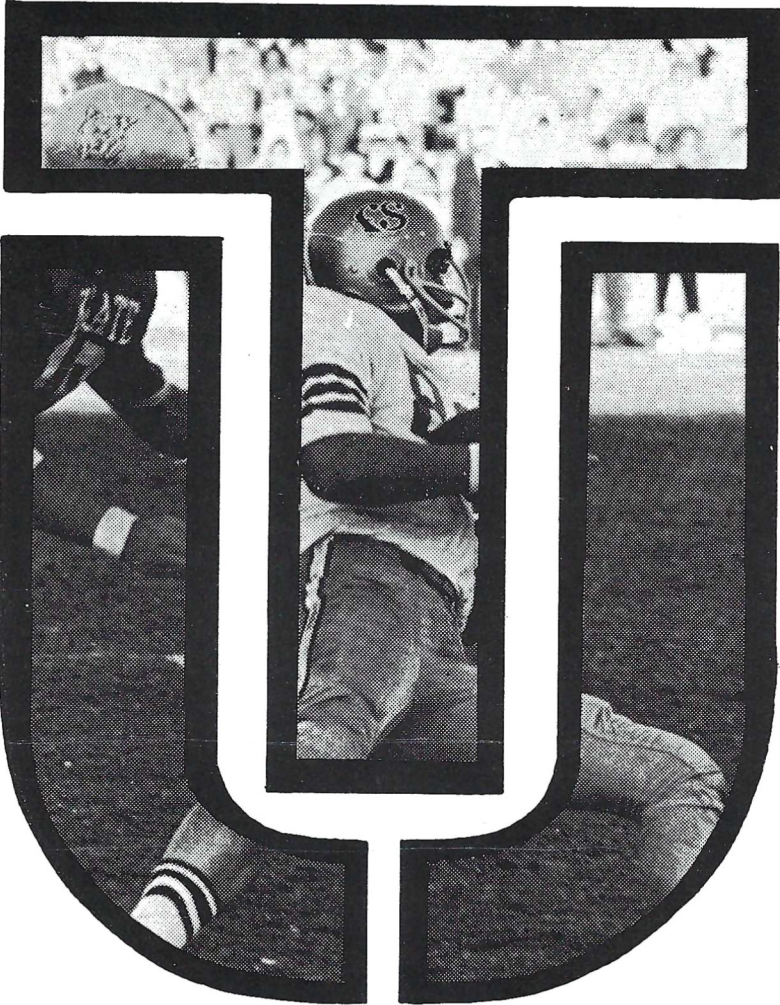
15 Miles North of Tallahassee

on U. S. 27

Phone Toll Free

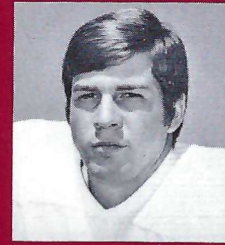
224-1317

MORE BULLDOGS

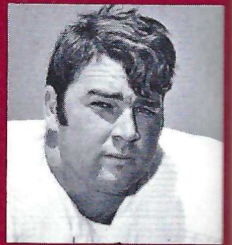


Complete on-the-scene coverage begins the moment the big team takes to the field. From the opening kickoff to the final whistle, the thrills, excitement and action are recorded by TU-J staffers who know what's happening in the world of football. The colorful play by play accounts and stirring action photographs let you relive each exciting moment of the game as you follow your team through the pages of. . .

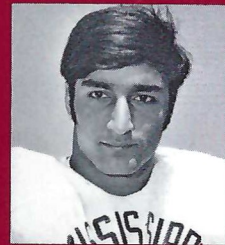
U The Florida Times-Union
 Jacksonville Journal



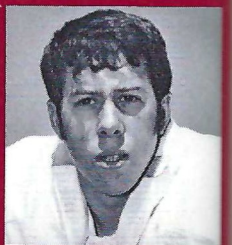
Jimmy Patridge



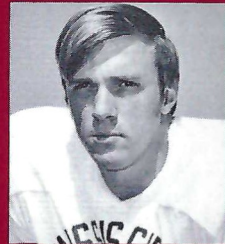
Preston Payne



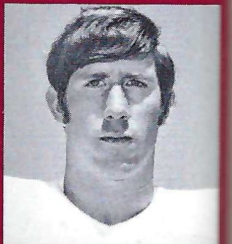
Emile Petro



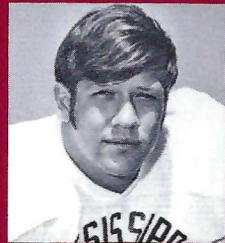
Ken Phares



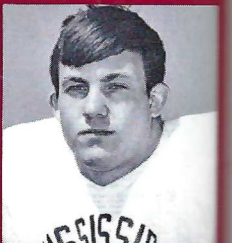
Dennis Rushing



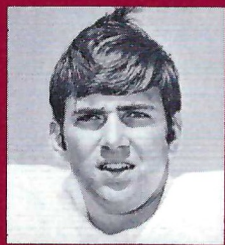
Billy Southward



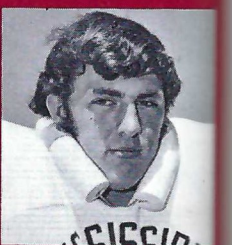
Steve Stoots



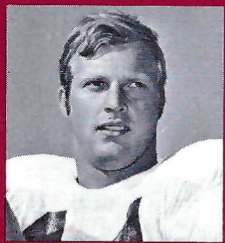
Tommy Strahan



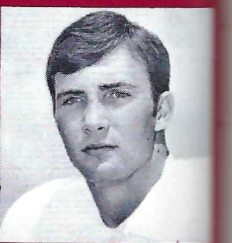
Gene Wardlaw



Danny West



Steve Whaley



Butch Yarbrough

STATION CITY

WKAT - Miami
WWOG - Boca Raton - Palm Beach
WJAX - Jacksonville
WSUN - St. Petersburg - Tampa
WCOA - Pensacola
WPCF - Panama City
WTNT - Tallahassee
WLAK - Lakeland
WWQS - Windemere - Orlando
WSIR - Winter Haven
WROD - Daytona Beach
WINK - Ft. Myers

STATION CITY

WTRL - Bradenton
WGBC - Chipley
WCNH - Quincy
WDSR - Lake City
WTRR - Sanford
WRUF - Gainesville
WSRA - Milton
WTTB - Vero Beach
WMOP - Ocala
WTYS - Marianna
WFSH - Valpariso



TOMMY WARREN BO MITCHELL

Florida State's football games, whether played at home or away, will be heard throughout "Seminole Territory" on the Seminole Football Network.

With Tallahassee's WTNT acting as the originating station, 30 stations will carry every play to Seminole fans in Florida, South Georgia and South Alabama. In addition, several Florida State games will be heard from time to time as "Pick of Dixie" games.

Heading up the Seminole Network broadcast team once again will be Bo Mitchell. A veteran of more than 20 years broadcasting, Mitchell will be in his ninth season as the Seminoles' play-by-play man. In addition to Seminole games, Mitchell has also done play-by-play for the AFL All Star game, Senior and Tangerine Bowl games.

Joining the former Florida Sportscaster of the Year and station manager of WTRL in Bradenton will be former Seminole quarterback Tommy Warren. The Miami native moves from the playing field to the broadcast booth after directing the Tribe to a 7-4 season last year. Now enrolled in Florida State's Law School, Warren will serve as color man.

SEMINOLE FOOTBALL NETWORK

Follow The Seminoles

ON WTNT 1270 ON YOUR DIAL

Brought to you by



AND YOUR NEIGHBORHOOD TEXACO DEALER

and by

GOLDEN FLAKES POTATO CHIPS

THE TALLAHASSEE BANK AND TRUST COMPANY

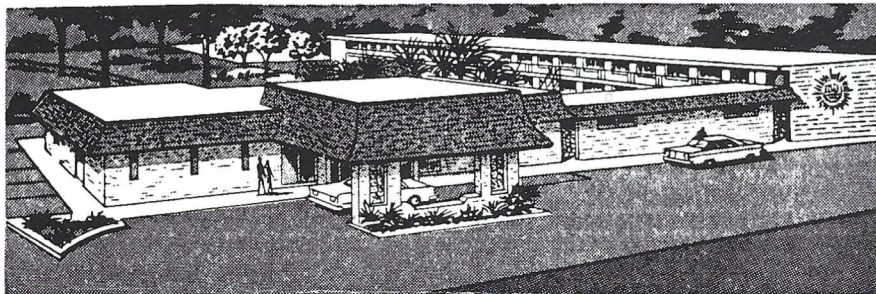
The Star Spangled Banner

O, say! can you see, by the dawn's early light,
What so proudly we hailed at the twilight's last
gleaming?
Whose broad stripes and bright stars, thro' the perilous
fight,
O'er the ramparts we watch'd, were so gallantly
streaming?
And the rockets' red glare, the bombs bursting in air,
Gave proof thro' the night that our flag was still there.
Oh, say, does that Star-spangled Banner yet wave
O'er the land of the free and home of the brave?



QUALITY MOTEL

*The Chez Napoleon Room
Complete Banquet and Meeting Facilities
Cocktail Lounge - Bonaparte's Retreat*



COLOR TV

"We Cater to
Commercial Men"

Phone 877-6171

On the Parkway... 1027 APALACHEE PKWY. US 27 So.

FOOTBALL STAFF



FRANK DEBORD

Equipment Manager

This will be Frank's second season as the Seminoles' equipment chief after serving three years as the assistant.

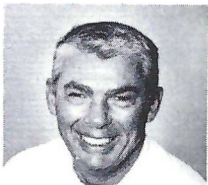
A native of Marion, Va., the Quincy resident attended Virginia Tech where he lettered in football and wrestling before receiving his B.S. degree in 1942.

Frank was an assistant football coach at Franklin, Va., High School and also

played two season with Norfolk in the Continental League.

He is not only in charge of all the Seminoles' grid equipment, but also he directs the practice field's upkeep as well.

Frank and his wife, the former Marian Bradshaw of Franklin, Va., have three children. A fourth, David, was a member of the Marshall football team killed in last fall's tragic air crash.



DON FAULS

Head Trainer

"Rooster," as he is affectionately known by present and former Seminoles alike, will be starting his 18th season at Florida State this fall.

The Ithaca, N.Y., native started his training career in the St. Louis Cardinals' minor league system, working with the Greensboro, N.C., team in 1950-51 and with the Omaha, Neb., club from 1952-54.

Don was honored by being named head trainer for the United States Pan-Am Games team in 1963 and is currently on the Olympic Trainers' Selection Committee.

He lettered in baseball and basketball while attending Ithaca College in his hometown.

Don's success can be underscored by the large number of his former assistants who have gone on to head jobs at other institutions.

Don and his wife, the former Marguerite Morgan of Naples, N.Y., have three children.



DOUG MAY

Assistant Trainer

This will be this Meridian, Miss., native's second season as Don Fauls' assistant.

Since coming to Florida State, Doug has traveled with the Seminole basketball and baseball teams.

A graduate of Ole Miss, he served as a student trainer while attending college, handling the Rebels' freshman football

team along with the varsity basketball and baseball clubs.

Doug is married to the former Cissy Knott of Yazoo City, Miss.

Nic's Toggery

115 SOUTH MONROE STREET

PHONE 222-0687

TALLAHASSEE, FLORIDA . 32301

Official Seminole Blazer.
Gold or Garnet Color, in
Double Knit . . . \$65⁰⁰



Official FSU Ties, \$4.50

Tie One On! Garnet Back-
ground with Seminole Mono-
gram. 100% Dacron.



Seminole Clock \$25.00

(Battery Operated)

Also available, All Major Colleges
in their own Logo.

MAIL ORDER

NAME _____

ADD. _____

PHONE _____

ITEM _____

COAT SIZE _____

Welcome Alumni

President
Donald E. Stone
(Coral Gables)



President-Elect
Arthur E. Hempel, Jr.
(St. Petersburg)



Secretary
Janet Wells
(Tallahassee)

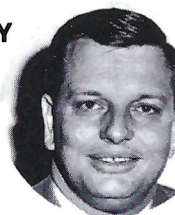


FLORIDA STATE UNIVERSITY

BOARD OF DIRECTORS

ALUMNI ASSOCIATION

Treasurer
Hans W. Tews
(Fort Pierce)



Immediate
Past President
James E. Joanos
(Tallahassee)



Executive Director
Thomas A. Waits
(Tallahassee)



DISTRICT VICE PRESIDENTS

Nelson A. Italiano
Tampa
District I

George A. Pierce, Jr.
Jacksonville
District II

Johnny A. Fortune
Ft. Walton Beach
District III

Walter Leon Revell
Hialeah
District IV

E. Tracy Harrison
Winter Park
District V

Benjamin F. Bailey, III
Vero Beach
District VI

Edward J. Kercher
Bradenton
District VII

William T. Swigert
Ocala
District VIII

Carmelo Battaglia
Tucker, Georgia
Out Of State

Ronald Schomburger
Tallahassee
District IX

Thomas L. Clarke, Jr.
Lakeland
District X

James W. Apthorp, Jr.
Tallahassee
At Large

Floyd D. Jordan
Tequesta
At Large

CLASS REUNIONS

Honor Class
1921

Mildred Hall Sharpe
Miami, Florida

1926 – **Martha Page Parkhill**
Cashiers, North Carolina

1931 – **Mary B. Settle**
Arlington, Virginia

1936 – **Kitty Blood Hoffman**
Tallahassee, Florida

1941 – **Betty Nickinson Chitty**
Sewanee, Tennessee

1946 – **Martha Jane Brown Rutland**
Clearwater, Florida

1951 – **Jean Sayer Wright**
Savannah, New York

1956 – **James E. Joanos**
Tallahassee, Florida

1961 – **Carl H. Butler, III**

1966 – **R. Thomas Farrar**
Cambridge, England

HAVE MORE FUN !

BE NO. 1 !

Add a new dimension to your enjoyment of the game with college football's MODERN RECORD BOOK. This 109-page goldmine of information and history is the only book with all of college football's national records.

Say your favorite player or team is having a really big day. Only the MODERN RECORD BOOK tells you how big nationally. Be the first to know.

At the same time, you can stump your friends and even become an expert, all for just \$2. For instance, did you know:

- What coach was one short of 200 victories entering 1971?
- What national records are held by Jim Plunkett, O.J. Simpson, Steve Owens and Don Meredith?
- What are the winningest teams over the last five regular seasons?
- What national titles were won by Terry Bradshaw and Ollie Matson?

For these answers--and thousands more--get the MODERN RECORD BOOK today. Included are 24 pages of game, season, and career records for both major-college and college-division players and teams, PLUS:

- Photos of 69 top players and coaches
- Annual player and team champions
- Heisman/Outland Trophy winners
- Consensus All-Americans
- Academic All-Americans
- Single-game highs
- Major bowl scores
- National poll champions
- Undefeated-Untied Teams
- All-Time winningest coaches
- Longest plays/streaks
- Statistics trends

College Football's MODERN RECORD BOOK... only \$2

NCAA, BOX 757, GRAND CENTRAL STATION, NEW YORK, N.Y. 10017

***Alan Ameche*Gary Beban**
****Bobby Bell**Jim Brown***
Dick ButkusBilly Cannon**
Virgil Carter**Greg Cook
*Ernie Davis***Glenn Davis***
*Mike Garrett*Chris Gilbert****
****Red Grange**Leon Hart**
**Chuck Hixson*Paul Hornung*
*Ron Johnson*Dick Kazmaier**
*Leroy Keyes*Archie Manning*
*Don McCauley*Tommy Nobis*
***Jerry Rhome**Gale Sayers**
*Ron Sellers***Dennis Shaw***
**Joe Theismann*Doak Walker*
*Byron White**Elmo Wright***



MAIL TODAY to...

NCAA, Box 757, Grand Central Station
New York, N.Y. 10017

Enclosed is \$ _____ for _____ copies at \$2 each

Name _____

Address _____

City _____ State _____ Zip _____

MIDYETTE-MOOR Insurance Agency

"Ask Those We Serve"

Complete Insurance and Bond Service

PHONE 222-3456



MIDYETTE-MOOR BUILDING
TALLAHASSEE, FLORIDA

SAYS

SCALP 'EM SEMINOLES!



Payne Midyette
Frank Moor
Ed Clark
Winslow Sullivan
Paul Lewis
Payne Midyette, Jr.
Bill Moor
Bill Franklin

Jim Woods
Gordon Henkel
Glemm Sears
Moffett Warren
Chick Prosser
Dave McKinnon
Rex Sikes
John Wymess

SEMINOLE

The individuals and dealerships pictured on these pages play a vital part in Florida State's overall athletic program. The importance of the Seminoles' courtesy car program cannot be overemphasized and without the cooperation of these gentlemen it would never reach the degree of success it has. We salute each and everyone of these community minded men.



Shaw Peacock
Peacock Chevrolet-Olds
Perry, Fla.



Tom Kinnebrew
Kinnebrew Motors
Tallahassee

WAKULLA SPRINGS

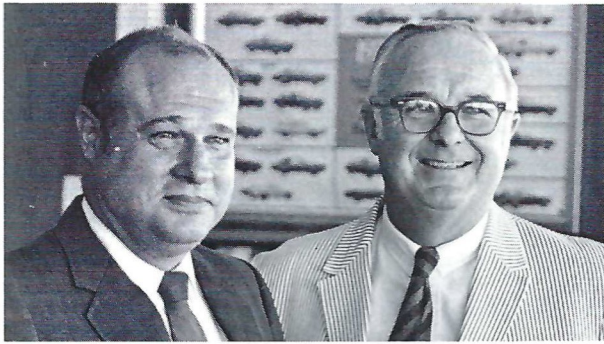
14 MILES SOUTH OF TALLAHASSEE



Glass Bottom Boats

WORLD'S LARGEST AND DEEPEST SPRING

AUTO DEALERS



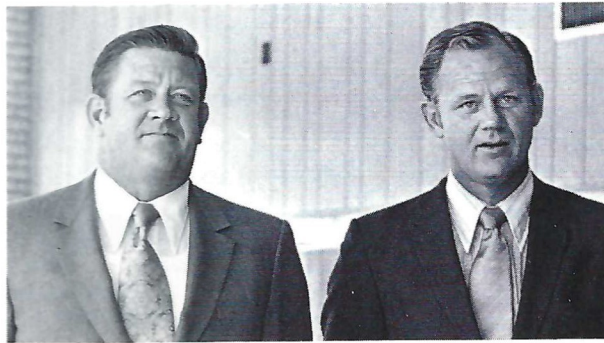
Theo and Julian Proctor
Proctor and Proctor
Pontiac/Cadillac
Tallahassee



Bill Peacock
Peacock Chevrolet
Monticello



Charles Alford
Alford Chevrolet
Tallahassee



Bob and Bill Miller
Miller Chevrolet
Havana



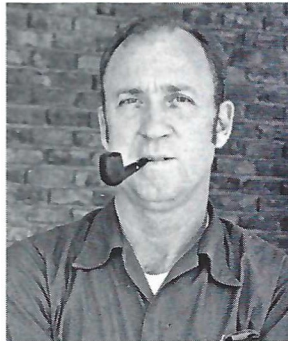
Ed Richardson and Fred Shaw
Tallahassee (Ford) Motors
Tallahassee



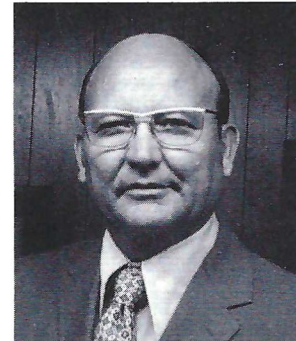
Manning Taylor
Taylor Chevrolet-Buick
Quincy



Sam Shovlain
Courtesy Oldsmobile
Tallahassee

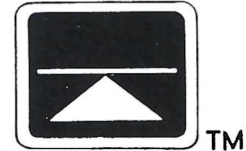


Joe Ball
Havana (Ford) Motors
Havana



J. Ed Bell
Bell Chevrolet
Cairo, Ga.

GOOD LUCK SEMINOLES!



DōLIME MINERALS COMPANY

P.O. BOX 1441
BARTOW, FLORIDA 33830

*Best Wishes for a successful
season, and we are proud
to have had a part in
furnishing the
football equipment
for the Seminoles*

OWENS Inc.

Sporting Goods — Hardware
ALBANY, GEORGIA

1971 CHEERLEADERS



Wayne Tate Roger Russell Will Law (Capt.) Bill Allison Bob McDaris
 Diane Avery
 Hally Stein Ginger DeLong Diane Lasota
 Mary Webb Ellis

PRESCRIPTIONS

- COSMETICS
- GREETING CARDS
- TOYS
- FILMS & CAMERAS



"BUDDY STEWART"
 "WORKING FOR BETTER
 COMMUNITY HEALTH"
 HAVE YOUR DOCTOR CALL US

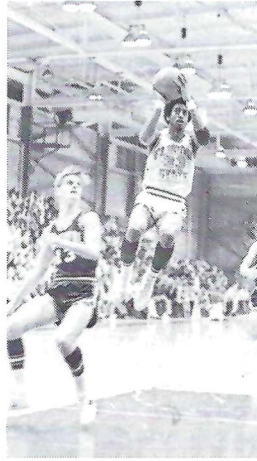
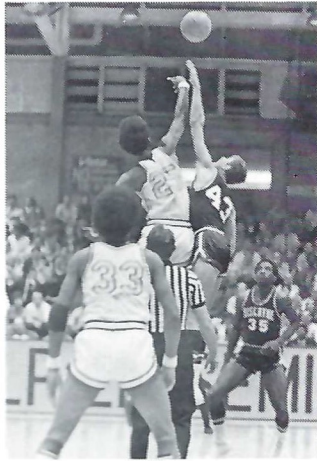
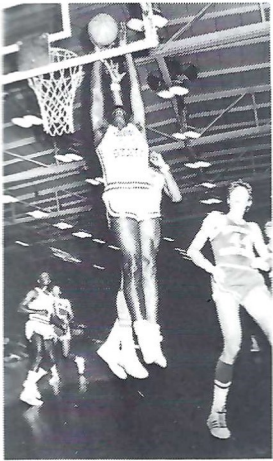
- VITAMINS
- CANDY
- GIFTS
- HOSPITAL SUPPLIES

224-5011

NO CHARGE FOR
 DELIVERY SERVICE

UNIVERSITY
Rexall
 PHARMACY
 W. Tenn. & High Road

CITY WIDE AND
 SURROUNDING AREAS



SEMINOLE BASKETBALL

The 1971-72 Schedule

<u>DATE</u>	<u>OPPONENT</u>	<u>DATE</u>	<u>OPPONENT</u>
Dec. 1	OGLETHORPE	Jan. 26	JACKSONVILLE
Dec. 4	EASTERN KENTUCKY	Jan. 29	FLORIDA SOUTHERN
Dec. 6-7	SUNSHINE CLASSIC	Jan. 31	PAN AMERICAN
Dec. 11	VALDOSTA STATE	Feb. 5	at HOUSTON
Dec. 18	at HAWAII	Feb. 7	at SOUTH ALABAMA
Dec. 27-30	FAR WEST CLASSIC	Feb. 12	TULANE
Jan. 3-4	SENIOR BOWL	Feb. 19	GEORGIA TECH
Jan. 8	EAST TENNESSEE	Feb. 23	at JACKSONVILLE
Jan. 11	MERCER	Feb. 26	at STETSON
Jan. 16	HOUSTON	Feb. 28	at BISCAYNE
Jan. 19	SOUTH ALABAMA	March 4	at CINCINNATI
Jan. 22	at GEORGIA TECH		

Florida State's 1971-72 Basketball Team promises to be one of the Seminoles' most exciting ever. Three of the top four scorers return, four starters are back, plus some top-notch sophomores coming up from the freshman ranks. Among those returning to COACH HUGH DURHAM'S club this season are RON KING, who broke the Seminole single game scoring record with a 45-point effort; also big REGGIE ROYALS, one of the nation's top rebounders, although only a sophomore last year. And don't forget other exciting players like 5-7 passing whiz OTTO PETTY, leaping ROWLAND GARRETT and slick GREG SAMUEL.

The Seminoles will play 12 big games at home and season tickets can now be ordered. Don't be left out — Tully Gym's limited capacity puts a premium on seats. Order your season ticket now by sending your order with a check for \$20, payable to Florida State University, to:

Athletic Ticket Office
 Room 100, Tully Gym
 Florida State University
 Tallahassee, Fla. 32306
 or phone:
 AC 904 — 589-4625

Southernaire MOTEL

Across from F.S.U.
 Tallahassee, Florida 32304



and

Skyline

Motor Lodge

U. S. 90 West

Quality Courts
 for Quality People

Electrical Contractors

- INDUSTRIAL
- COMMERCIAL

Licensed & Bonded

J. B. CLARK,
 President

LEE H. TOWNSEND,
 Vice President

222-5494

IF NO ANSWER DIAL 385-4030

CLARK

ELECTRIC CO.
 OF FLORIDA

702 West Madison Street
 TALLAHASSEE, FLORIDA

Concrete Products Co., Inc.

READY MIXED CONCRETE

CEMENT

SAND

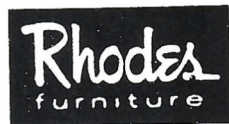
GRAVEL

Phones: Plant 222-3367
Office 222-4472
P. O. Box 1122

GAINES AND WOODWARD STREETS
TALLAHASSEE, FLORIDA

The Advertisers in this magazine play an integral part in supporting Florida State's Intercollegiate Athletic Program. Their support is gratefully acknowledged and we sincerely urge you to patronize their businesses and use their products.

The Editors



SERVING THE SOUTH
SINCE 1875

Nationally Famous Furniture, Appliances, Carpet,
Accessories — 63-Store Buying Power Savings!—
3 Convenient, Rhodes-Financed Payment Plans—
Take Up to 24 Months to Pay!

"WHERE TO BUY IT"

1122 Thomasville Road Phone 224-1128



The Smart Place
To Go
For Good Things
To Eat



**NEW LOCATION
COMING SOON**

Apalachee Parkway (US 27 S)



Northwood Mall (US 27 N)



1701 West Tennessee St. (US 90 W)

McDonald's
FSU
UPRISING

FLORIDA STATE UNIVERSITY ARMY ROTC



for information, write:
Professor of Military Science, Florida State University, Tallahassee, Florida 32306
phone (904) 599-2488 or 3003