



Heart of Atlanta

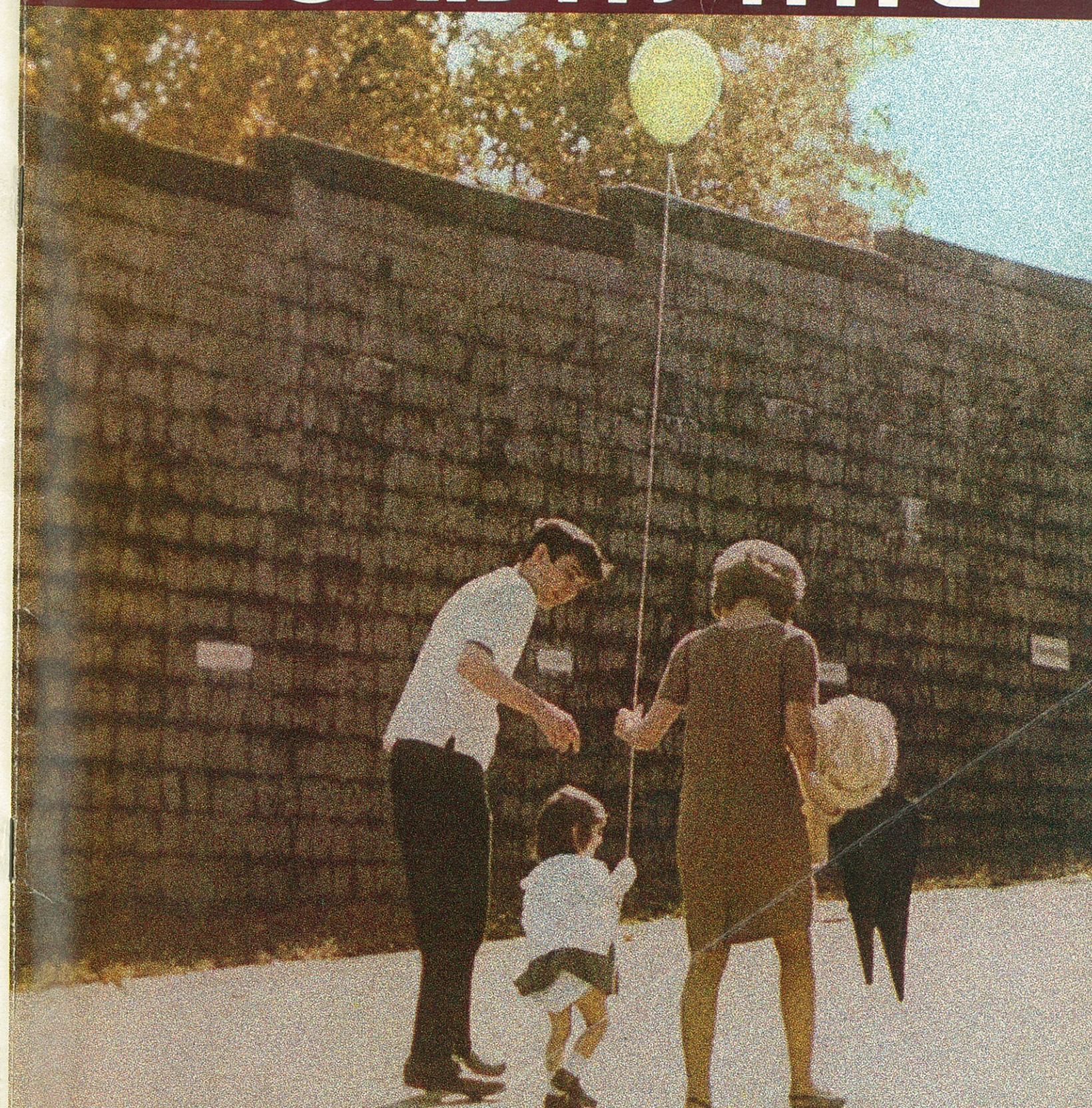
RESORT MOTEL

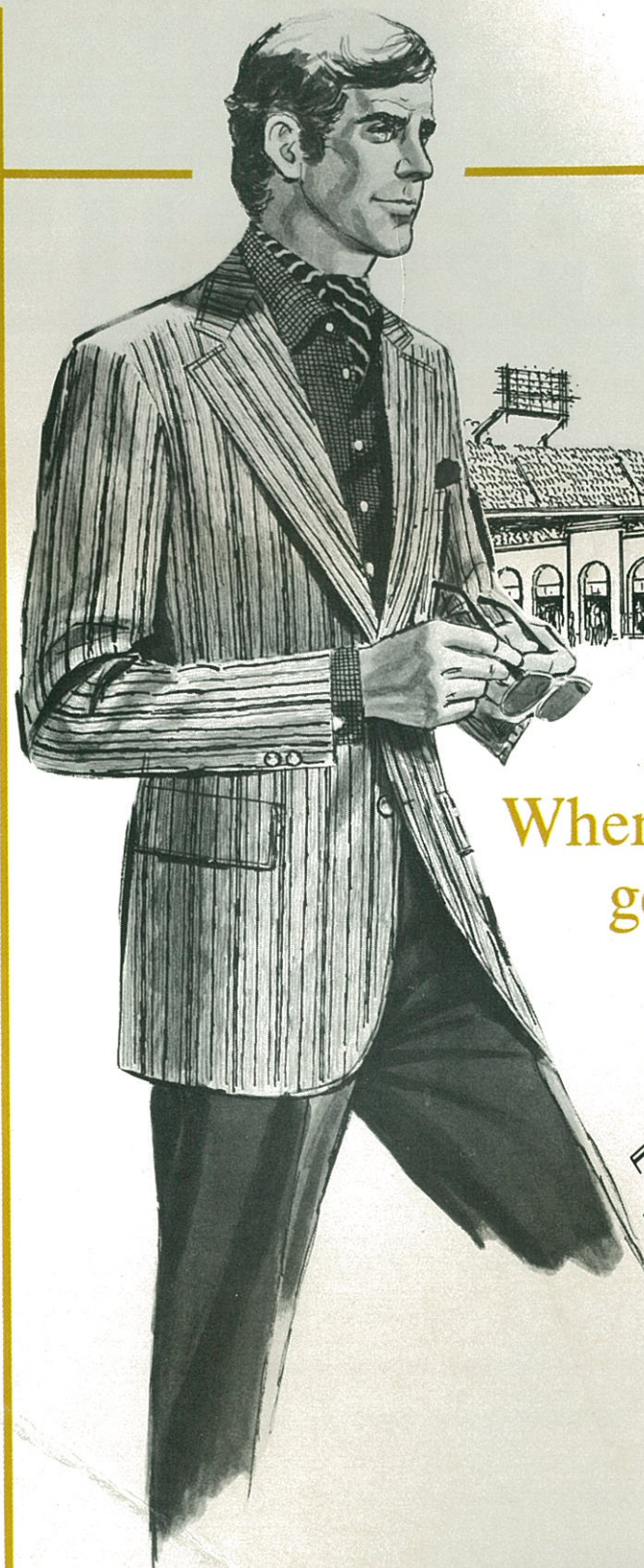
2 blocks from downtown Peachtree St.
404/659-2323

GEORGIA TECH

NOVEMBER 13, 1971 • GRANT FIELD • SOUVENIR PROGRAM \$1.00

FLORIDA STATE





When old friends
get together . . .

. . . the man in a Hickey-Freeman is often
the quiet one. Because he brings the look of
success with him through the door.

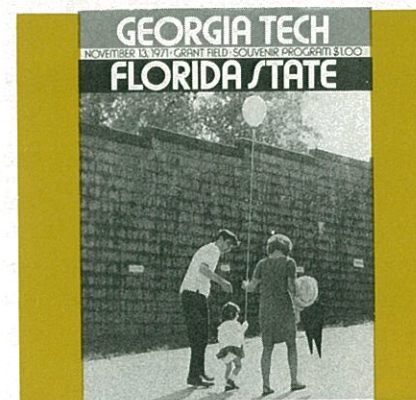
Hickey-Freeman
FINE CUSTOMIZED CLOTHES

Muskie

downtown • lenox square • greenbriar
perimeter mall • northlake in october

. . . since 1879, the Style Center of the South

This Week's Cover



Happiness, for this little girl on her way to a Georgia Tech football game, is a balloon, a balloon on the end of a long string. Mom, with her sweater and umbrella, is prepared for unfavorable weather, but we're sure her daughter won't mind a few rain drops if the Yellow Jackets, her favorite team, win another game. (Photo by Deloye Burrell)

CONTENTS

Athletic Board	2
Today's Game	4
Athletic Association	6
Community Story	8
Coach Carson	10
Tech Athletic Staff	12
Drug Abuse	14
Tech Squad	16, 17
Dr. Joseph Pettit	18
Tech Squad—Cont.	20, 21
The National Anthem	22
Songs of Georgia Tech	26
Today's Squads	28
Tech Football Schedules	30
Starting Lineups	33
The Visiting School	36
Visiting Squad	37
Football Terminology	38
Visiting Squad—Cont.	40, 41
Officials Signals	44
Tech Basketball Schedule	47
Great Moments in Tech History	53
So You Think You Know	57
Stadium Information	58
Out of the Past	61
Summary of Penalties	65
Where Are They Now?	68

EDITORIAL STAFF

NED WEST and JIM SCHULTZ, editors /
JOHN WRIGLEY, JR., design and print
consultant / JOHN O'NEILL, advertising
/ FOOTBALL PUBLICATIONS, 669 Lake
Avenue, Greenwich, Conn. 06830, Na-
tional Representative.

OFFICIAL PROGRAM

Southern's sporting proposition will save you money!

Southern has two special fare deals that are ideal for you avid sports fans. Either one lets you fly in style to those important "away" games anywhere on Southern's system and save 2/3 of your return air fare.

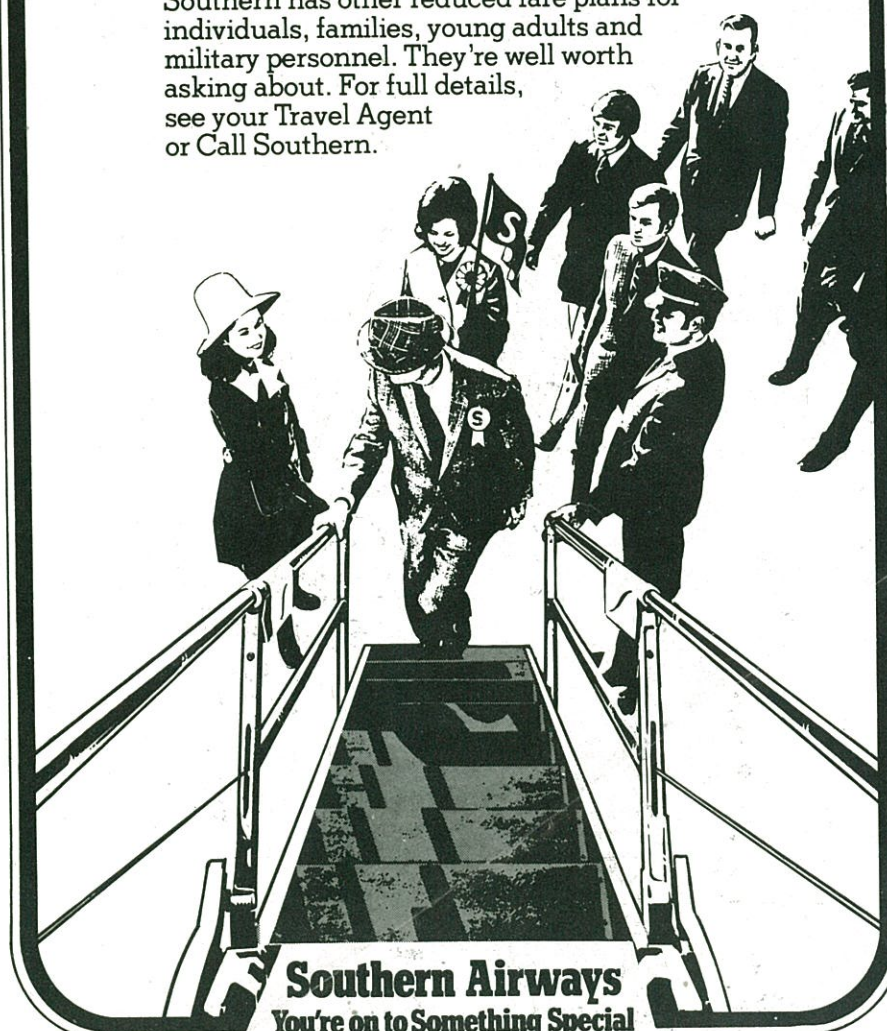
LONG WEEKEND FARE

If you can leave on Saturday and return on Monday, you'll save 2/3 on the return air fare. (This same savings is offered if you leave on Monday and return on Saturday.)

GROUP 10 FARE

Great for parties of ten or more people. Everyone saves 2/3 of their return air fare providing they all depart on the same flight. Coming back though, each member of your group may return separately. Group 10 Fares are good anytime.

Southern has other reduced fare plans for individuals, families, young adults and military personnel. They're well worth asking about. For full details, see your Travel Agent or Call Southern.

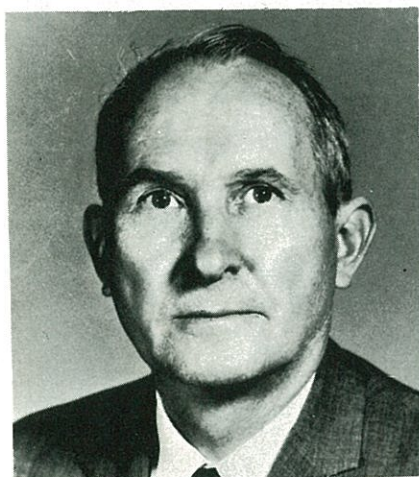


Southern Airways
You're on to Something Special

The Georgia Tech Athletic Board



DR. JAMES E. BOYD
Acting President
CHAIRMAN



DR. WALDEMAR T. ZIEGLER
Regents' Professor
VICE CHAIRMAN



DR. JESSE W. MASON
Regents' Professor
FACULTY CHAIRMAN

SINCE 1904 when John Heisman arrived on the Tech scene as the first full-time paid football coach, the Georgia Tech Athletic Board has been the guiding force behind the athletic program. And from the early beginnings, this group has been faculty-controlled—a philosophy strongly endorsed by every Tech president who has held office during the ensuing 65 years. Of the voting members on today's Board, seven are faculty members, three are alumni, and three are students. The Board's aims are to secure cooperation of the faculty and students in maintaining a high standard of sportsmanship in athletic affairs and to create adequate facilities to give every student an opportunity to take part in some athletic activity. How well this group has done these jobs is reflected in the high number of Tech students in some form of exercise and in the fact that since 1906 every facility for athletics on the Tech campus has been built without the use of any State funds. The stadium, including all additions, Rose Bowl Field, the Alexander Memorial Coliseum, the tennis courts, the intramural fields, the old gymnasium, and many other facilities on the Tech campus are all the result of this policy that has been perpetuated by the Athletic Boards at Georgia Tech.

THE BOARD MEMBERS

ROBERT L. DODD
Director of Athletics

W. CARL BIVEN
Faculty Representative—Secretary

JOHN O'NEILL
Business Manager—Treasurer

VERNON CRAWFORD
Faculty Representative

GLENN RAINEY
Faculty Representative

WILLIAM SANGSTER
Faculty Representative

CHARLES R. YATES
Alumnus

LARRY MORRIS
Alumnus

GEORGE A. MORRIS, JR.
Alumnus

LAWRENCE W. ROBERT, JR.
Honorary

ROBERT H. THARPE
Honorary

SMYLIE GEBHART
Football Team Representative

CHRIS BAGBY
Student Body President

RUSH SMITH
Technique Editor

Advisory Members:

DR. PAUL WEBER
Vice President Emeritus

JOHN McKENNA
Assistant Athletic Director

L. H. CARSON
Head Football Coach

E. I. BARNES
Vice President, Business-Finance

G. ARTHUR HOWELL
Attorney

tough turf!

New this season, the artificial turf you see below puts a fast field underfoot for the Jackets. A durable surface with uniform good looks, too. And all consulting engineering on the installation is by

**ROBERT AND COMPANY
ASSOCIATES**
ENGINEERING DIVISION
ATLANTA

About Today's Game



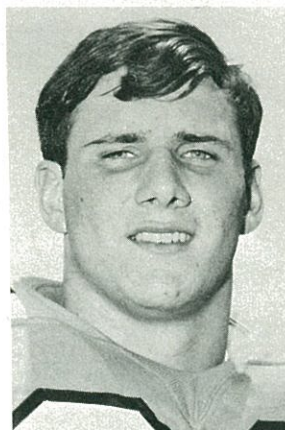
Today's Tech Captains



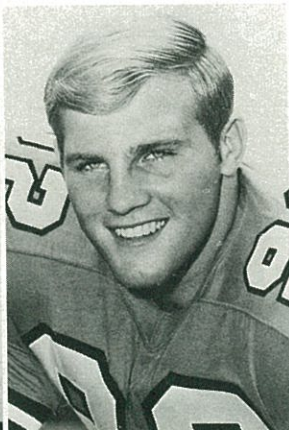
JOHN CALLAN
Center



EDDIE McASHAN
Quarterback



STAN BEAVERS
Stinger



SMYLIE GEBHART
Defensive End

Grant Field fans will get a chance to watch one of the nation's finest passing teams this afternoon as Georgia Tech strives to stretch its recent success against Florida State.

The Seminoles, who rested last Saturday, have compiled a 6-2 record mainly on the strength of an aerial attack built around junior quarterback Gary Huff (19) and split end Rhett Dawson (82). FSU won its first five games before being upset by Florida, then clobbered South Carolina, 49-18, before losing to Houston in its most recent outings.

The Yellow Jackets, on the other hand, have won three consecutive contests by combining a revitalized offense with their always stinging defense to go 5-4 on the season. Last week Tech rolled over Navy, 34-21, without the services of injured first string backs Rob Healy and Greg Horne. The issue never really was in doubt as the Engineers maneuvered to a 27-0 lead before nearly everyone got in the game.

Quarterback Eddie McAshan gained 165 total yards (114 passing on nine of 16 completions, 51 rushing on several nifty runs) to become only the second Jacket in history to crack the 1,000-yard mark in two straight seasons. He now has 1,075 yards to join all-America Billy Lothridge, who accomplished the feat in 1962-63, in that select club. Sterling defensive back Jeff Ford added some more lines bearing his name to the Tech record book by intercepting a pass and returning it 28 yards for a touchdown and also returning five punts for 63 yards. The interception gave Ford a career mark of 14, while the punt returns and yards established new season standards of 30 and 336, respectively.

Against the Middies Cunningham snared a nine-yard touchdown pass from McAshan, Cam Bonifay kicked field goals of 27 and 22 yards, Ford scored on his steal on the second half's first play and sophomore Tom Lang dived across the goal line from the one and then caught a two-point toss from Eddie before Navy scored. Alan Hennessey's six-yard run and Bobby Thigpen's conversion finished Tech's scoring.

Huff and Dawson are the dramatic reasons Florida State, under new coach Larry Jones, ranks so highly in national passing statistics. Huff, who has completed 143 of 240 passes (59.6%) for 2,019 yards and 16 touchdowns, is near the top in all aerial categories. Valdosta's Dawson has 48 receptions for 615 yards. But there are more Seminoles. Running backs Art Munroe (27), Paul Magalski (31) and James Jarrett (48) all are averaging better than four yards a carry. Defensive ringleaders include cornerbacks James Thomas (26) of Macon and Eddie McMillan (40), linebackers Larry Strickland (59) and Dan Whitehurst (50) of Adel, and ends Bill Shaw (85) of Marietta and Charlie Hunt (80).

The Jackets, who lead the FSU series, 7-0-1, conclude the regular season against Georgia here Thanksgiving night.

Officials for Florida State Game:

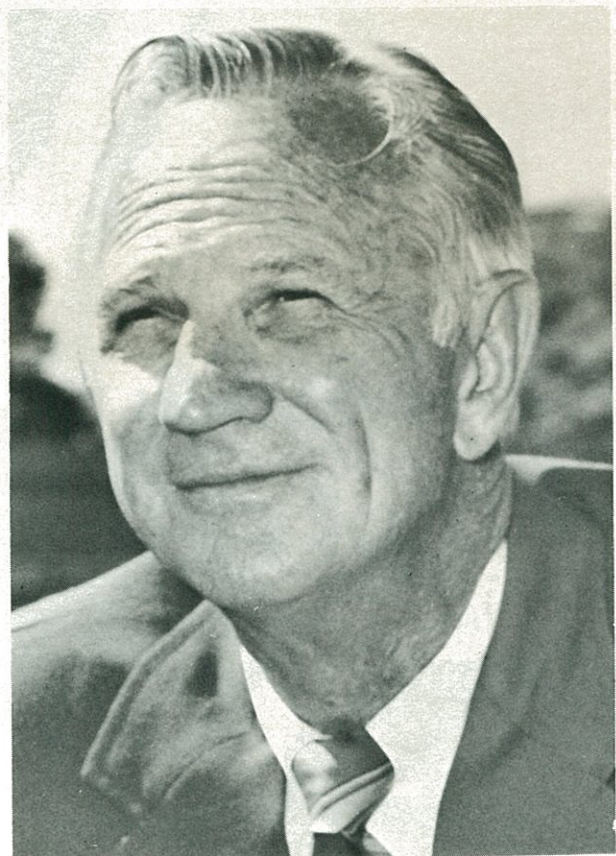
TECH vs. FLORIDA STATE • November 13, 1971

Referee—James Harper, Atlanta, Ga. Umpire—Cliff Norvell, Memphis, Tenn. Head Linesman—Ed Copeland, Norcross, Ga. Field Judge—Bill Bryson, Athens, Ga. Back Judge—Richard Allen, Dunwoody, Ga. Electric Clock Operator—William Stanton, Chillicothe, Ohio.

Fri. Sept. 10
(Night) Alabama—Southern California
Sat. Sept. 11
(Day) Clemson—Kentucky
Sat. Sept. 18
(Night) Mississippi State—Florida
Sat. Sept. 25
(Night) FSU—Kansas
Fri. Oct. 1
(Night) Miami—Baylor
Sat. Oct. 2
(Night) Tennessee—Florida
Sat. Oct. 9
(Night) Alabama—Vanderbilt
Fri. Oct. 15
(Night) Miami—Navy
Sat. Oct. 16
(Night) Tulane—Pittsburgh
Sat. Oct. 23
(Night) FSU—South Carolina
Fri. Oct. 29
(Night) Miami—Army
Sat. Oct. 30
(Night) Alabama—Mississippi State
Fri. Nov. 5
(Night) Miami—N.C. State
Sat. Nov. 6
(Night) LSU—Alabama
Sat. Nov. 13
(Night) Mississippi State—LSU
Sat. Nov. 20
(Day) Tennessee—Kentucky
Sat. Nov. 20
(Night) LSU—Notre Dame
Sat. Nov. 27
(Day) Alabama—Auburn
Sat. Nov. 27
(Night) LSU—Tulane
And of course all Georgia Tech games.
With Al Ciraldo.

Keep your ear
on the bouncing ball.
WGST RADIO 92
The Sports Voice of Atlanta

Georgia Tech Athletic Association



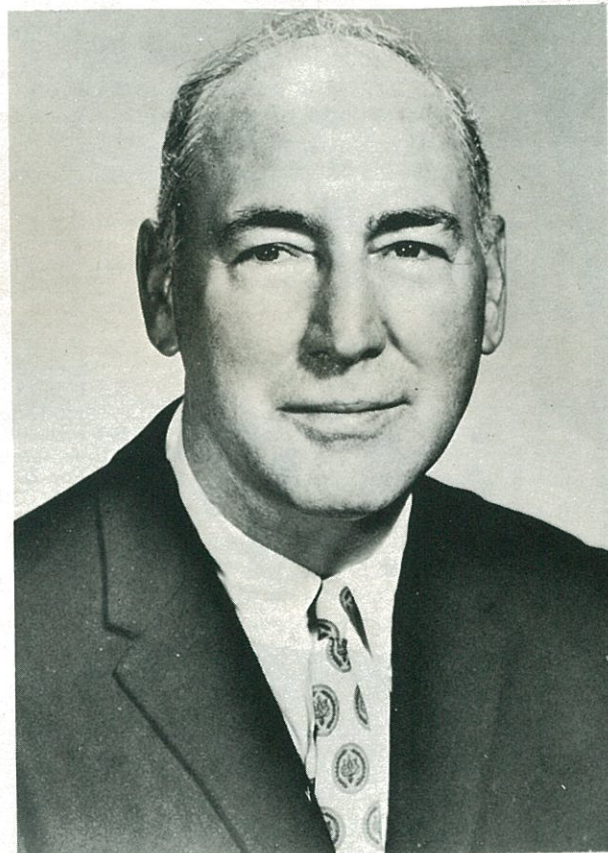
ROBERT LEE DODD
Director of Athletics

BOBBY DODD, named "National Collegiate Coach of the Year, 1966" in August, 1967, by the Football Writers of America, is as well-known for his administrative ability in his profession as he is for his coaching exploits.

Dodd served 22 years as head football coach at Tech before retiring on February 6, 1967, because of his health. Since April, 1950, when he succeeded the late W. A. Alexander as athletic director, he has carried a double load with dignity and courage. During his coaching career, Dodd's teams won 165 games, lost but 64, and tied eight while always playing a typically tough Tech schedule. Thirteen of his teams went to bowls and nine of them came home winners. And he produced 22 All-America first-team players while he was head coach.

Dodd, an All-America quarterback himself at Tennessee (1930), joined the Tech staff as back-field coach at the end of his final season. He was named to the National Football Hall of Fame as a player in 1961.

Dodd's record as an administrator has enabled Tech's athletic program to gain the distinction of being one of the best managed, most respected in the nation.



JOHN McKENNA
Assistant Athletic Director

JOHN McKENNA, the popular former head coach at VMI, wears more hats than practically anybody on any college campus. He joined the Tech staff in February, 1966, and currently is the assistant athletic director, head of the physical training department, director of intramural programs, and an advisory football coach.

At VMI, McKenna established a reputation for doing the impossible by his 62-60-8 record with a very limited scholarship program. His teams won four Southern Conference championships, one of them with an undefeated season. He was Conference "Coach of the Year" three times in his VMI days.

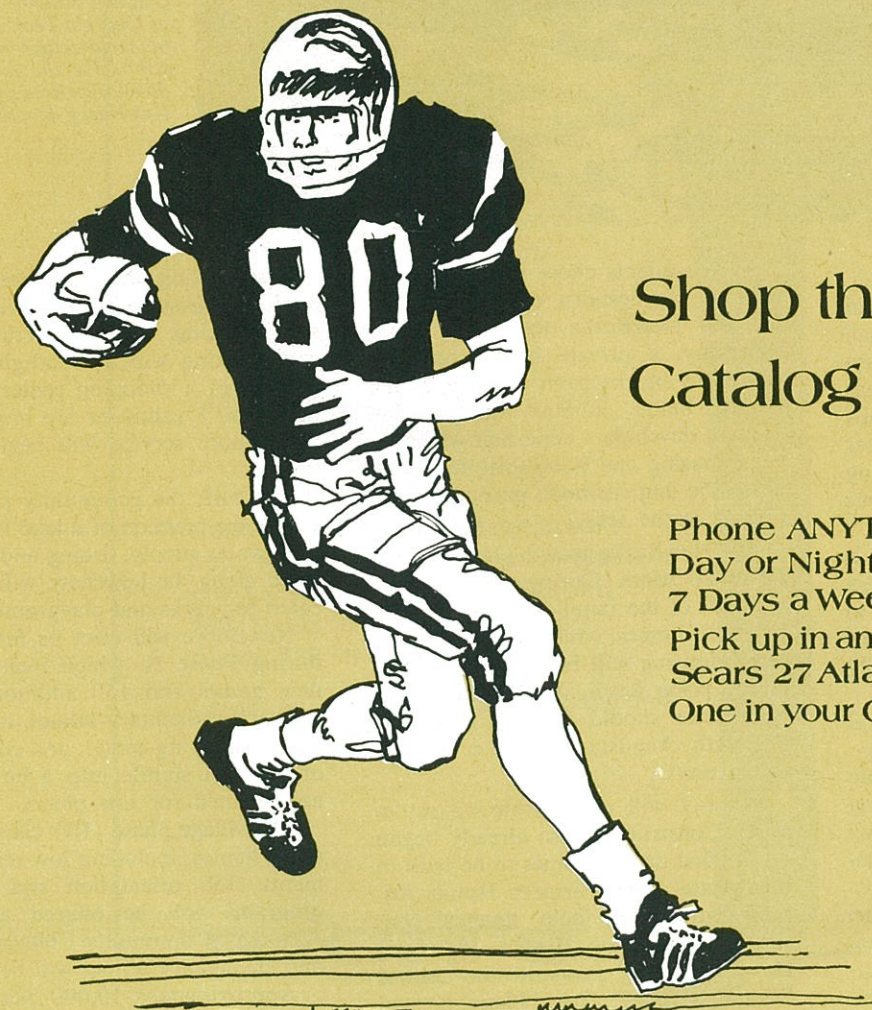
A graduate of Villanova, McKenna lettered three years in football and was an honorable mention All-America lineman.



Sears

873-2311

Break Away From The Crowds



Shop the Catalog Way

Phone ANYTIME...
Day or Night- 24 Hours a Day
7 Days a Week
Pick up in any one of
Sears 27 Atlanta Locations.
One in your Community.

Tech Develops Planned Community



Professor Pat Connell and graduate student James Ku of Georgia Tech's School of Architecture look over a model of the proposed downtown area of the NewBurke development.

By KAREN TESKE

Imagine a planned community of 2,000 modern homes arranged in small neighborhoods centered around playgrounds and ringed by grassy areas and trees. Footpaths and bike trails join the neighborhoods, which cluster around a town center, a shopping plaza, a lake and the expanded campus of a community college.

A developer's dream? Yes, but it is also a working plan which Georgia Tech graduate students designed to hold together and reshape one of Georgia's most beautiful and potentially productive county areas.

Burke County, in eastern central Georgia, is the state's largest county, but also one of the poorest. Graduate students in Architecture and Planning at Tech named their project "NewBurke" and outlined a complete development plan for the area.

Burke has traditionally relied on cotton, corn and soybeans for income. Fewer working farms and new equipment have eliminated jobs for residents. Most adults between 18 and 45 have left the area to find work. Those who stay make minimal salaries.

Tech students chose a site 10 miles west of Waynesboro, the county seat, for the NewBurke township. Boggs Academy, a private high school attended by blacks from all parts of the United States, adjoins the townsite. Student developers hope that when decent housing and good jobs are available, the high school graduates will remain in the area.

The NewBurke growth plan will span 12 to 20 years. During this time, 80 per cent of the families will be able to buy their homes, while 20 per cent will rent. Housing will be available at different price levels. Within 20 years, NewBurke should develop economic ties with Augusta and other nearby urban units.

Phase I will concentrate on settlement. Construction has already begun on the first of 250 homes to be built in this phase. The Farmers Home Administration will help finance construction. Georgia Tech's Industrial Development Division and the Central Savannah River Area Planning and Development Commission are working now to make 100 jobs available for residents.

Also during the settlement phase, agriculture-supportive businesses of seed packing, vegetable crating and crate-making will be spotlighted. The nucleus of a shopping center will appear, and a volunteer fire brigade and taxi/shuttle service will begin operation.

Phase II, the community phase, includes the creation of a lake for irrigation, water supply, fishing and boating. Land along the lakeshore will be allocated for parks and playgrounds.

NewBurke will elect its first mayor during Phase II, which includes 250 new homes and 150 additional jobs. The first elementary school, expansion of the shopping center, and conversion of the taxi/shuttle into a bus system are planned for this phase.

The village phase (III) calls for 500 more homes, including low-rent apartments. Job orientation and training programs will be offered at Boggs Academy/Community College. A second elementary school will be built.

Approximately 10,000 people will live in the area when the town phase (IV) begins. Four elementary schools,

Continued on Page 56

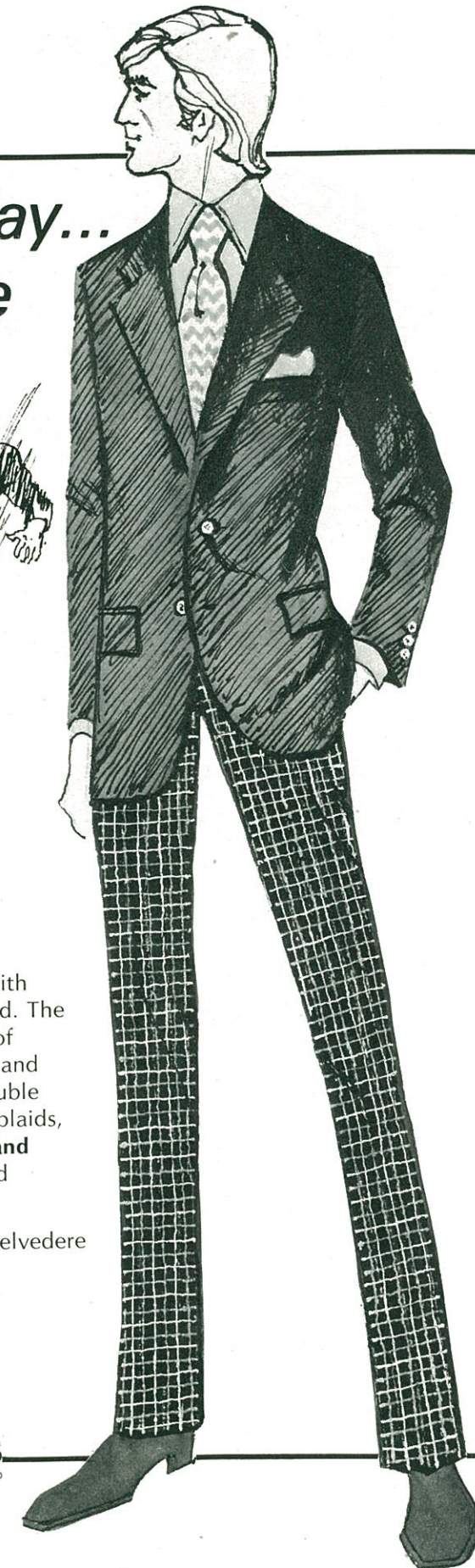
Izod
makes a
grandstand play...
everytime



Grandstand play for sure, but with the finesse you expect from Izod. The play is a winning combination of Izod's styling, plus the comfort and shape-retention of polyester double knit. Single breasted jackets in plaids, checks, stripes and solids, \$85 and \$90. Slacks in solids, checks and plaids, \$32.50 to \$40.

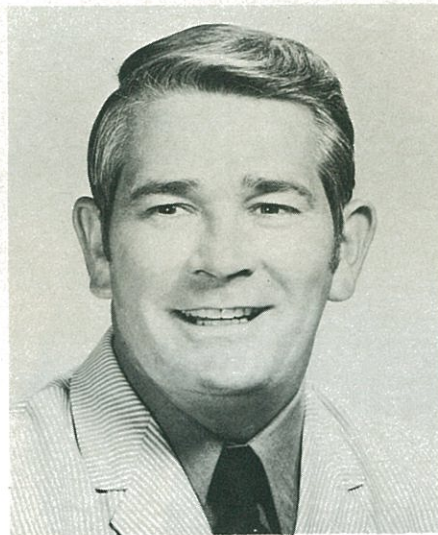
Career Shop, all stores except Belvedere

RICH'S
ATLANTA BORN ... ATLANTA OWNED ... ATLANTA MANAGED



Coach Carson

L. H. "BUD" CARSON
Head Football Coach



BUD CARSON is in his fifth season as Georgia Tech's fourth fulltime head football coach and it should be a good one. The Yellow Jackets literally turned the corner last year and hope for more of the same success this fall.

In 1970 Carson guided the Engineers to their best record (9-3 including a Sun Bowl triumph over Texas Tech) since his imaginative "Tech Wrecker" defense had sparked the Jackets to a surprising 9-2 campaign four years earlier. The momentum gained by playing Notre Dame on nearly equal terms, beating Georgia and winning the Sun Bowl should carry over to this season.

Carson so impressed Tech coaches, players, faculty and fans during his one year as chief defensive assistant that he was named coach just four days after Bobby Dodd retired in February of 1967. He was the only assistant coach in the country considered for the job.

An outstanding all-around athlete at Freeport (Pa.) High School, Carson later starred at North Carolina in the "bowl years" of the early 1950s and was an all-Southern defensive back as a senior.

After service as a Marine officer, Carson coached two years at Scottdale (Pa.) High School where he turned a team with a losing complex into a winner with a 16-2-1 record. He directed the North Carolina freshmen to a 5-0 season and then worked six years there as an offensive and defensive varsity assistant. He came to Tech after one year as South Carolina's top defensive aide.

Injuries contributed heavily to Carson's first two 4-6 records on The Flats, but then a stunning 6-0 victory over Georgia capped the same mark a third time and set the stage for last season. Carson said he would stand by his 1970 record and he's more than willing to do the same in 1971.



Our First Goal: smart fashion ideas for Atlanta men

First pick from Zachry! suits and sport coats with scalloped pockets, inverted back-pleats, stitched-down or loose belt and deep center vent. Tailored in interesting new fabrics, including double-knits in all-wool and 100% polyester fabrics . . . that give with every move you make, bounce back into great shape. They travel well on long road trips and will look good the whole season.

Atlanta's favorite men's store



Downtown • Lenox • North DeKalb
Greenbriar • South DeKalb • Northlake

Hart Schaffner & Marx and Walter-Morton Clothes

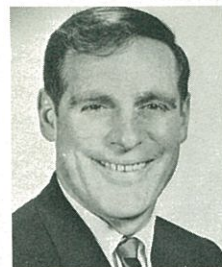
The All-American choice for gasolines and motor oil.



Today's All-American team for top engine protection, better performance, and cleaner air: Texaco's great gasolines and Havoline Super Premium All Temperature Motor Oil. So for products you can trust...

**Trust your car to the
man who wears the Texaco star.**

The Georgia Tech Athletic Staff



DICK BESTWICK
Assistant Head Coach



JACK GRIFFIN
Assistant Coach



CHRIS CARPENTER
Assistant Coach



TOM MOORE
Assistant Coach



JOHN O'NEILL, JR.
Business Manager



LAMAR LEACHMAN
Defensive Coordinator



JERRY GLANVILLE
Assistant Coach



BILLY WILLIAMSON
Assistant Coach



BILL LEWIS
Assistant Coach



GEORGE SLAYTON
Academic Counselor



JIM LUCK
Assistant Coach



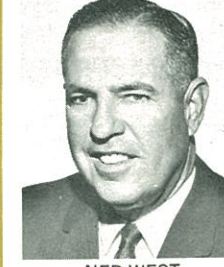
JOE POPP
Assistant Coach



JACK THOMPSON
Assistant Coach



GILES SMITH
Assistant Coach



NED WEST
Director of Sports
Information and
Public Relations



PAT DYER
Head Trainer



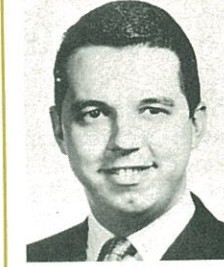
DON SHARPE
Assistant Trainer



SGT. EDGAR HODGES
Equipment Manager



JOE PITTARD
Honorary
Assistant Coach



JIM SCHULTZ
Associate Sports
Information Director



DR. LAMONT HENRY
Team Physician



DR. FRED ALLMAN
Team Physician



DR. AARON KING
Team Dentist

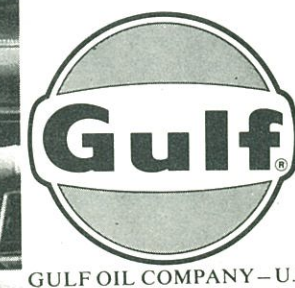
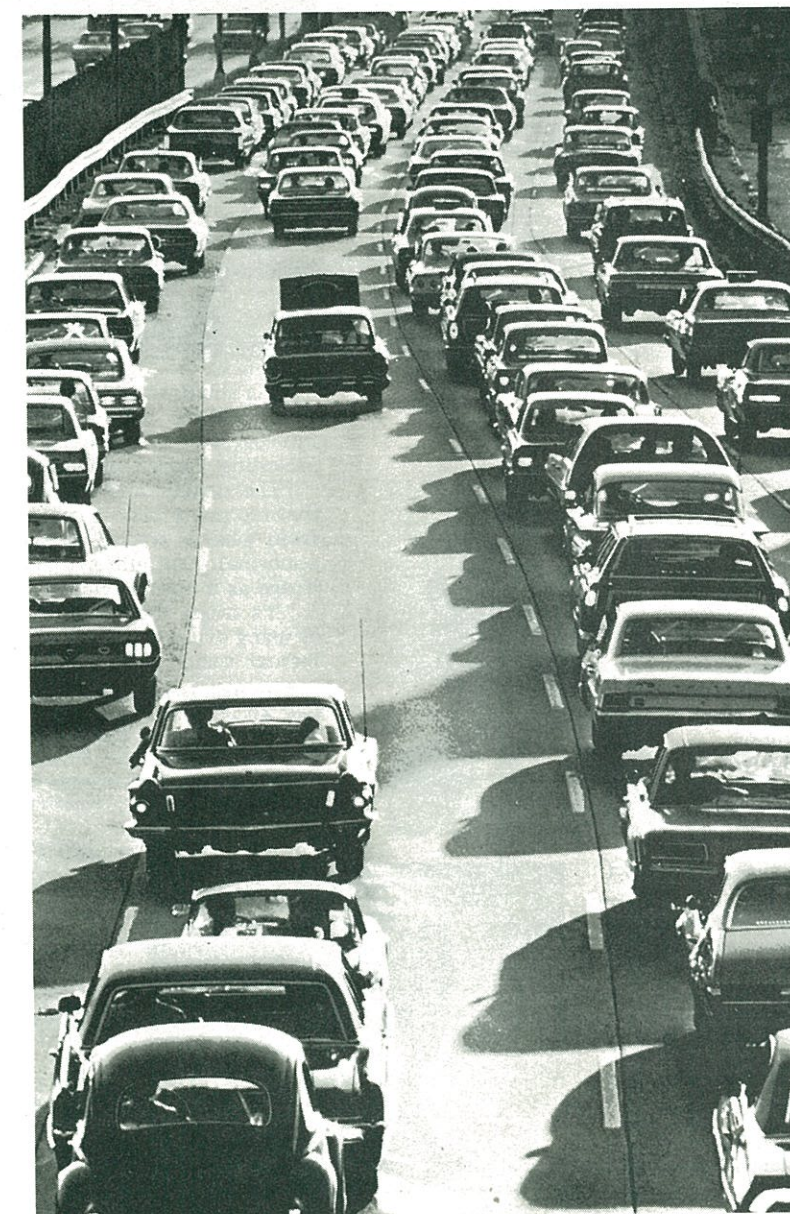


RICHARD SHEPHERD
Academic Counselor

WE THINK YOU DO ENOUGH WAITING AROUND.

You have to wait for nearly everything.
The red light. Dial tones. Your wife.
Traffic jams. The mail. Too many things.
When you drive into Gulf stations,

we'll greet you promptly. It's all part of
our commitment to better service.
We think you do enough waiting around.
And we'd like to wait on you for a change.





PETER ROBES
University of Wyoming

"We are brought into this life with a wonderful body. We can accomplish many things with it, but only if it is used, not abused. Our bodies, if destroyed by excesses of any kind, will be of no use to us or anyone else. There are enough activities for today's young person . . . or older one, for that matter . . . to occupy his time. If sports can be built as a life-time ideal, then all of us would have something to turn to besides drugs, or other harmful activities."

Peter Robes, junior skier, Etna, N. H. Physical education major, minor in biological sciences; plans to teach and coach skiing on college level; won NCAA ski jumping title and All-America honors, 1968; third in nationals in 1969 and 1971; second in U. S. Ski Jumping Championships, 1970, participated with U. S. Ski Team on European tour.

DAVE RIEHL
Ithaca College

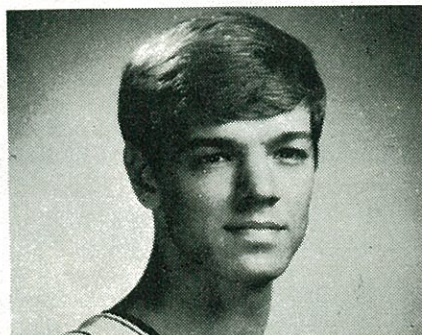
"Drugs, just like many other things, become harmful when misused.

"Some drugs have been proven to be dangerous if used at all—this case speaks for itself.

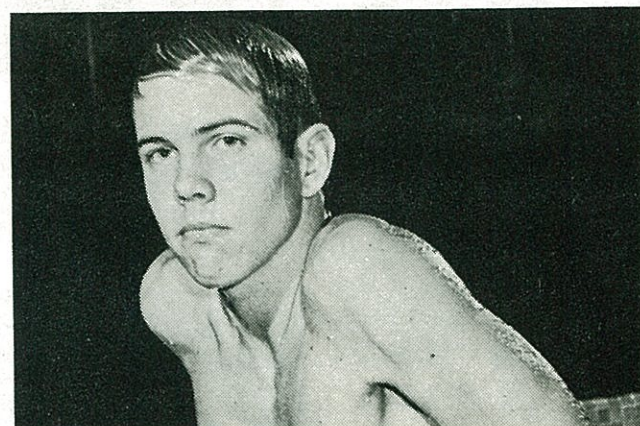
"With regard to the 'soft drugs,' I feel that a certain caution should be used when dealing with an unknown — both by the people who would use them and by the people who would use strong measures to ban their use.

"One should broaden one's physical and mental facilities as much as possible in a lifetime; but to use drugs (and, for that matter, one's athletic abilities) as crutches to cover up one's inadequacies in other aspects of life is both foolish and dangerous."

Dave Riehl, junior soccer goalie, Colton, N.Y. Started every game as a sophomore, posting 1.10 goals against scoring average. Accounted for three shutouts. Named to six all-opponent teams. Rated by Coach Forbes Keith as best goaltender in 20 years at Ithaca. Physics major with 3.96 grade-point average.



Drugs Have No Part in Sports or Life *Say Prominent College Athletes and Coaches*



GARY HALL
Indiana University

"Perhaps the best way to approach the problem of drugs in our society is to look for changes which may have caused the problem. Only after solving the problems leading to drug problems can the drug problem, itself, really be solved.

"One of the biggest challenges this country faces is a declining standard of morals. Many media, such as magazines, books and the cinema, influencing our society have become infested with vile material. By accepting this 'smut' we are accepting lower moral standards.

"The danger and consequence of changing standards is that too many people can no longer determine what is right from what is wrong, or even what is normal from what is abnormal. And, unfortunately, far too many have accepted drugs as a normal way of living.

"It's tragic that such an unnatural and dangerous thing as using drugs could ever become accepted in such an 'intellectual' society."

Gary Hall, junior swimmer, Garden Grove, Calif. Helm's North American Athlete-of-the-Year, 1970. World Swimmer-of-the-Year, 1969 and 1970. World record holder 200 butterfly, 400 individual medley and 800 freestyle relay. Won three NCAA titles, 1971. Has won total of 13 national titles and an Olympic silver medal. Recent transfer from honors program in physics to pre-medicine with 3.81 g.p.a.

JOHN BROWN
University of Missouri

"Sports have been good to me—and for me. The drug scene is only for losers and dropouts from the world."

John Brown, junior basketball player, Dixon, Mo. Missed first eight games as sophomore with injury. Came back to score 14 points against NCAA champion UCLA. Team's second leading scorer. Colorado All-America Cliff Meely was only other player besides Brown who ranked in four offensive categories in the Big Eight. Averaged 54.6 per cent from the field and 74.8 from the free throw line.

Continued on Page 54

IT'S A WHOLE NEW BALL GAME!



SIMULATED TV RECEPTION

Announcing XL-100 RCA 100% Solid State AccuColor!

All of which makes XL-100 not only the most advanced but also the easiest-to-service color set we've ever built. The exclusive plug-in AccuCircuits control most set functions. So not only can most repairs be done in your home, but also done more quickly and easily.



The brightest, sharpest color in RCA history.

Every XL-100 console and table model has RCA's black matrix picture tube for vivid, lifelike color. You get color that won't shift or fade, even after hours of continuous viewing.



The tuning's a snap.

Our tuning system makes color tuning virtually fool-proof. It features AccuMatic, RCA's automatic color monitor that locks color within a normal range. So even if the kids twiddle with the color dials, you just press the ACM button and beautiful color snaps back. And to pinpoint the best picture signal, there's Automatic Fine Tuning.



A wide variety of models to choose from.

RCA offers more 100% Solid State color models than any other manufacturer—from consoles to compacts. There's an XL-100 model that's right for your place. And your budget.

XL-100 is made to last. All chassis tubes are out. We've replaced them with solid state circuitry designed to perform longer with fewer repairs.

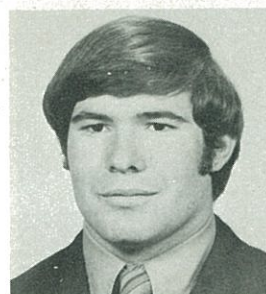
Here's color you can count on season after season. Each set is built with 12 exclusive plug-in AccuCircuit modules—including 3 lunar age ceramic modules—another major advance from the company that's made more color sets than anyone else.

We've eliminated all chassis tubes—prime reasons for service calls. In their place we've added solid state devices, the most stable, most reliable, most long-lived components used in television today.

See your RCA dealer! Wholesale Distributors, RCA Distributing Corp., Atlanta



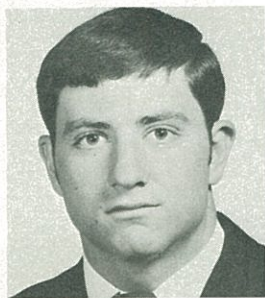
YELLOW JACKETS



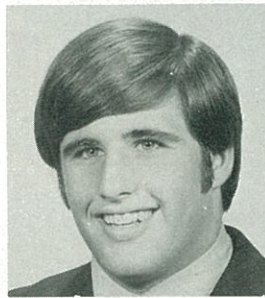
PROCTOR ALLEN
Cordele, Georgia



STAN BEAVERS
Hapeville, Georgia



DAVE BEAVIN
Atlanta, Georgia



TOMMY BECK
Cedartown, Georgia



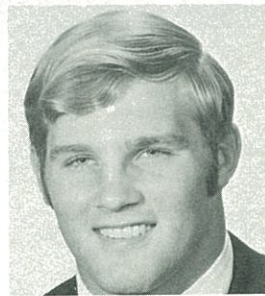
BRAD BOURNE
Atlanta, Georgia



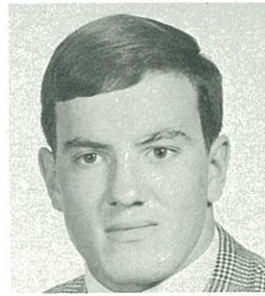
JEFF FORD
Satellite Beach, Florida



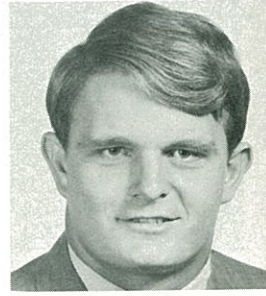
JOE GASTON
Thomasville, Georgia



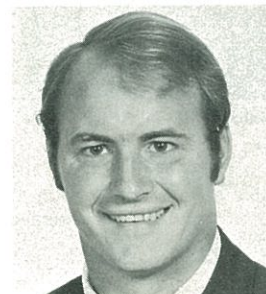
SMYLIE GEBHART
Meridian, Mississippi



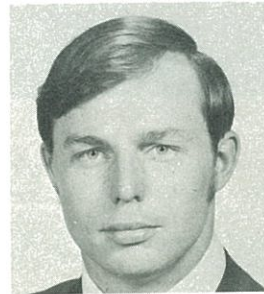
EDDIE HUGHES
Auburndale, Florida



WAYNE LAIRCEY
Statesboro, Georgia



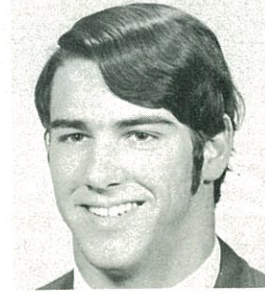
STEVE TIMMONS
Memphis, Tennessee



GARY WINGO
Lindale, Georgia



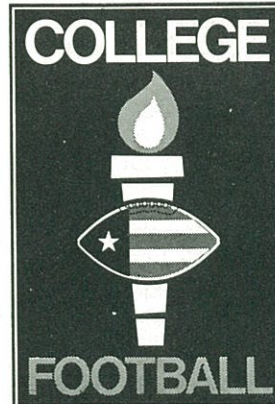
FRANK McCLOSKEY
Chamblee, Ga.



BOBBY DAFFER
Knoxville, Tennessee



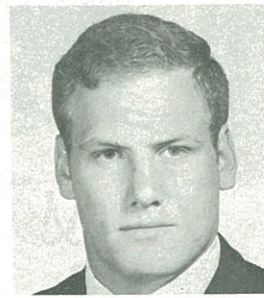
JOE WOLF
Louisville, Kentucky



YELLOW JACKETS



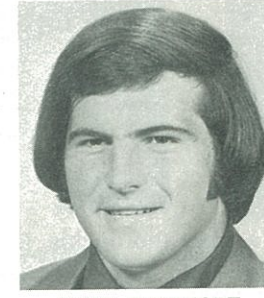
GARY CARDEN
Rome, Georgia



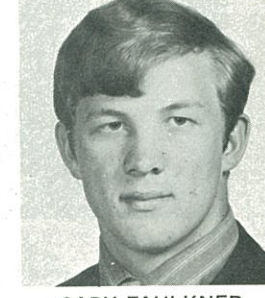
RANDY DUCKWORTH
Charleston, S. C.



BRUCE ELLIOTT
Durham, N. C.



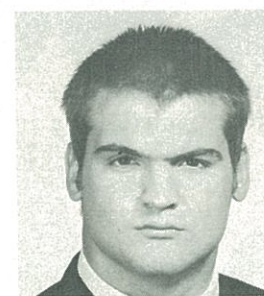
CHIP EVERHART
Titusville, Florida



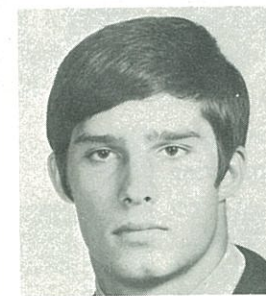
GARY FAULKNER
Gray, Georgia



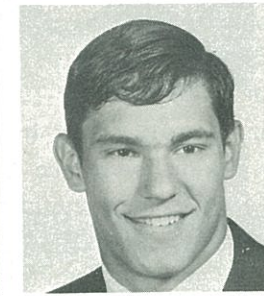
MIKE MCKENZIE
Pittsburg, Pennsylvania



GEORGE NOVAK
Munhall, Pa.



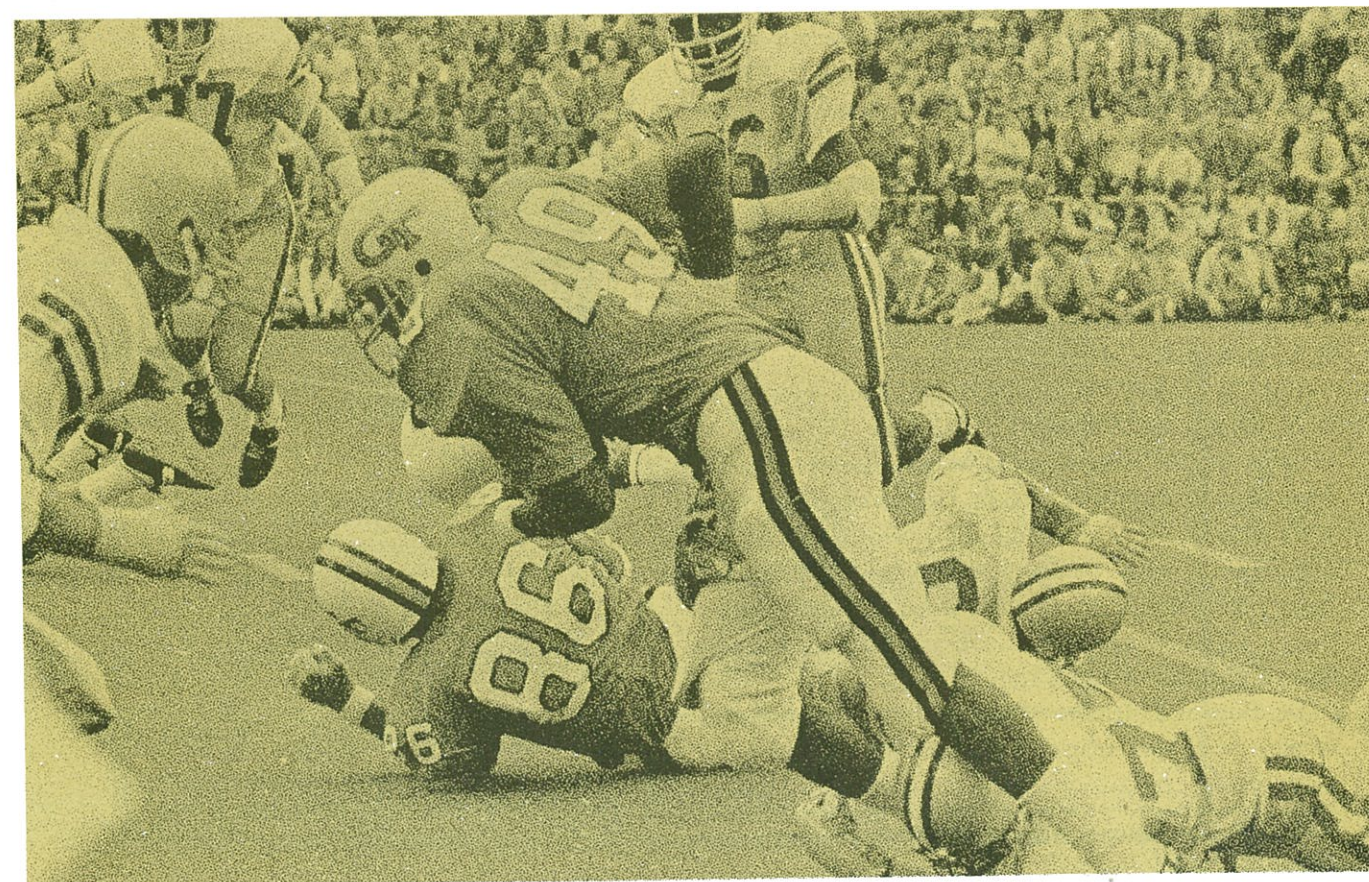
STEVE PUTNAL
Macon, Georgia



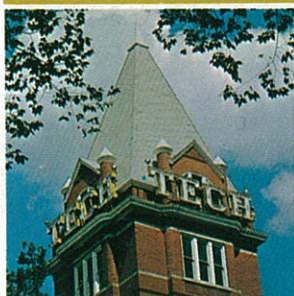
BRUCE RUTHERFORD
Mt. Vernon, Illinois



WITT WISMAN
Louisville, Kentucky



Dr. James E. Boyd



DR. JAMES E. BOYD, a man thoroughly familiar with Georgia Tech in particular and education in general, has been the school's acting president since last May.

His new position is the latest in a distinguished academic career, much of which has been directly connected with Tech. Dr. Boyd had been associated with the Institute for a period of 26 years (1935-1961), except for the time he served in the Navy (1942-46), as a professor of physics and as director of the Engineering Experiment Station before becoming president of West Georgia College in Carrollton.

West Georgia grew in size and stature during Dr. Boyd's tenure. Enrollment increased from 847 in 1960 to 5,056 a decade later. New construction authorized by the Board of Regents exceeded \$22 million in the 1960s and West Georgia initiated its first graduate programs in 1967.

In December of 1970 Dr. Boyd was selected by the State University System Board of Regents to fill the newly created post of Vice Chancellor-Academic Development. He left West Georgia to assume his new duties in the Regents Office and subsequently was named Tech's acting president while faculty, alumni and student committees search for a permanent replacement for Dr. Arthur Hansen. Dr. Boyd is wearing two highly responsible hats at the same time, as he's also continuing to serve as a vice chancellor.

Born in Tignall, Ga., in 1906, Dr. Boyd received an A.B. Degree in mathematics from the University of Georgia in 1927. He earned a Masters Degree in math from Duke in 1928 and a Ph.D. Degree in physics from Yale in 1933. He is the author of several research publications, primarily in the fields of radar, electronics, X-rays and nuclear science. Dr. Boyd is married to the former Elizabeth Reynolds Cobb and they are the parents of a daughter and a son.

Dr. Boyd is a member of numerous professional, academic, social, and religious organizations.

EDITOR'S NOTE: Dr. Joseph Mayo Pettit, dean of the School of Engineering at Stanford University, has been appointed Georgia Tech's eighth president and will assume his duties sometime after the first of the year.



Miss the crucial play?

Catch it Monday's 7:30-8:00 p.m. with Coach Carson and Art Collier.

TV5
waga5



STONE MOUNTAIN IN COUROC

Any tray can serve a drink. Only Couroc can start a conversation. Oblong. 12½" by 18". Ours exclusively. \$17.50. Others available, oblong 9¾" by 12¾", \$11. Round 10½", \$8.

Mail orders add state sales tax plus \$1 postage and handling.

Bailey Banks & Biddle

World Renowned Jewelers Since 1832

181 Peachtree Street NE • Atlanta
Greenbriar • South DeKalb

The Season Ticket.

WSB AM 750						WSB FM 98.5					
DAY	DATE	TIME	PARTICIPANTS			DAY	DATE	TIME	PARTICIPANTS		
Sat.	9/11	1:35 PM	Georgia vs. Oregon State			Sat.	9/11	2:05 PM	Oklahoma vs. Miss State		
Sat.	9/18	1:35 PM	Georgia vs. Tulane			Sat.	9/11	7:35 PM	Florida vs. Duke		
Sat.	9/25	1:05 PM	Georgia vs. Clemson			Sat.	9/18	2:05 PM	Alabama vs. Southern Miss		
Sat.	10/2	1:35 PM	Georgia vs. Miss State			Sat.	9/18	8:05 PM	Ole Miss vs. Memphis State		
Sat.	10/2	8:05 PM	L.S.U. vs. Rice			Sat.	9/25	3:35 PM	Florida vs. Alabama		
Sat.	10/9	2:05 PM	Georgia vs. Ole Miss			Sat.	9/25	7:05 PM	South Carolina vs. N.C. State		
Sat.	10/9	8:05 PM	L.S.U. vs. Florida			Sat.	10/2	2:05 PM	Auburn vs. Kentucky		
Sat.	10/16	2:05 PM	Alabama vs. Tennessee			Sat.	10/2	7:05 PM	South Carolina vs. Memphis State		
Sat.	10/16	8:05 PM	Georgia vs. Vanderbilt			Sat.	10/9	2:05 PM	Auburn vs. Southern Miss		
Sat.	10/23	1:35 PM	Georgia vs. Kentucky			Sat.	10/9	7:05 PM	South Carolina vs. Virginia		
Sat.	10/23	8:05 PM	Memphis State vs. Southern Miss			Sat.	10/16	1:35 PM	Florida vs. Florida State		
Sat.	10/30	2:05 PM	Florida vs. Auburn			Sat.	10/16	7:35 PM	L.S.U. vs. Kentucky		
Sat.	10/30	7:05 PM	Georgia vs. South Carolina			Sat.	10/23	2:05 PM	Auburn vs. Clemson		
Sat.	11/6	1:35 PM	Georgia vs. Florida			Sat.	10/30	2:05 PM	L.S.U. vs. Ole Miss		
Sat.	11/6	7:35 PM	Tampa vs. Ole Miss			Sat.	10/30	8:05 PM	Houston vs. Florida State		
Sat.	11/13	1:35 PM	Georgia vs. Auburn			Sat.	11/6	2:05 PM	Auburn vs. Miss State		
Sat.	11/20	1:05 PM	Duke vs. North Carolina			Sat.	11/6	8:05 PM	Tulane vs. Ohio University		
Sat.	11/20	7:05 PM	Florida State vs. Tulsa			Sat.	11/13	2:05 PM	Alabama vs. Miami		
Thurs.	11/25	2:05 PM	Ole Miss vs. Miss State			Sat.	11/20	7:05 PM	South Carolina vs. Wake Forest		
Thurs.	11/25	7:35 PM	Georgia vs. Georgia Tech			Thurs.	11/25	1:35 PM	Georgia Freshmen vs. Ga. Tech Fresh.		
Sat.	11/27	2:05 PM	Tennessee vs. Vanderbilt			Sat.	11/27	1:05 PM	South Carolina vs. Clemson		
Sat.	11/27	7:35 PM	Florida vs. Miami			Sat.	11/27	7:05 PM	Florida State vs. Pittsburgh		
Sat.	12/4	1:05 PM	Tennessee vs. Penn State								
Sat.	12/4	7:35 PM	Miami vs. Syracuse								

WSB Radio



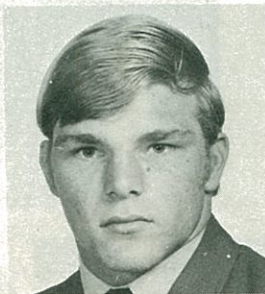
YELLOW JACKETS



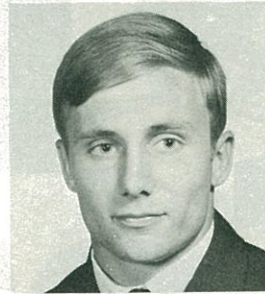
JOHN CALLAN
Augusta, Georgia



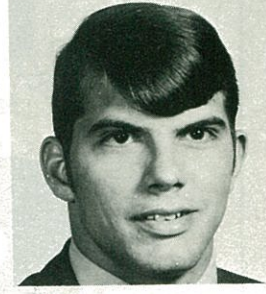
PETE CORDREY
Vicksburg, Mississippi



GLENN COSTELLO
Vicksburg, Mississippi



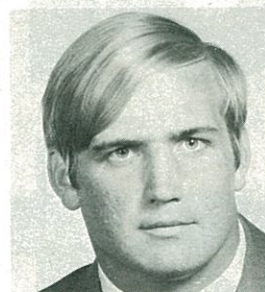
BRENT CUNNINGHAM
Eatonton, Georgia



RON ENZWEILER
Atlanta, Georgia



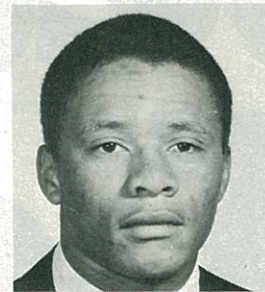
TOM LANG
Belleville, Illinois



RICK LANTZ
Savannah, Georgia



TIM MACY
Atlanta, Georgia



EDDIE McASHAN
Gainesville, Florida



JACK O'NEILL
Savannah, Georgia



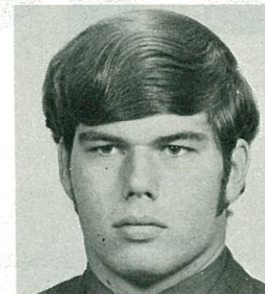
ROB HEALY
Lookout Mountain, Tenn.



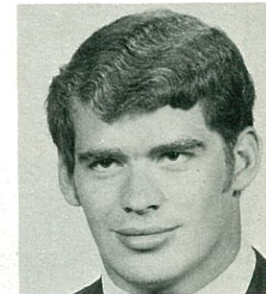
GREG HORNE
Atlanta, Georgia



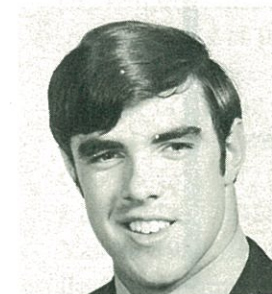
AL HUTKO
Youngstown, Ohio



VERNON JACKSON
Jacksonville, Florida



TOMMY JONES
Cornelius, N. C.



MIKE OVEN
Tallahassee, Fla.



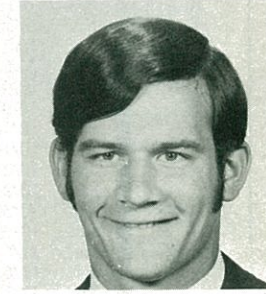
JIM OWINGS
Falls Church, Va.



MIKE MILO
Jacksonville, Florida



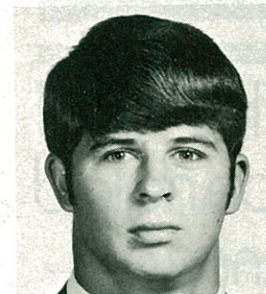
LARRY STUDDARD
Columbus, Mississippi



TOMMY TURRENTINE
Durham, N. C.



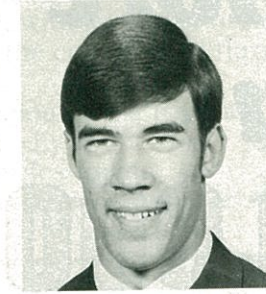
YELLOW JACKETS



DICK BOWLEY
Brookville, Pennsylvania



BOBBY THIGPEN
Warrenton, Georgia



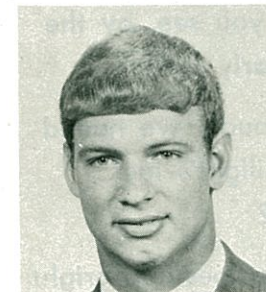
CAM BONIFAY
Macon, Georgia



BOB JOBSON
Wilmington, Delaware



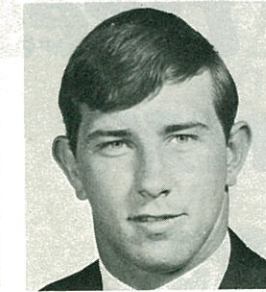
RANDY CAMPBELL
Atlanta, Georgia



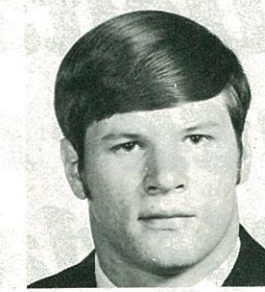
MARK FIELDS
Ft. Lauderdale, Florida



ROBERT STEVENSON
Fayetteville, N. C.



ANDY MAYTON
Gainesville, Florida



ALAN HENNESSEY
Louisville, Kentucky



DON ROBINSON
Macon, Georgia



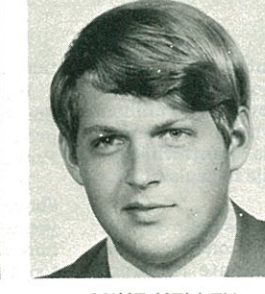
KEVIN McNAMARA
Ft. Lauderdale, Florida



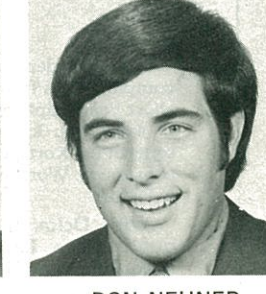
TED WEST
(Student Trainer)
Atlanta, Georgia



STEVE TAYLOR
(Student Manager)
Miami, Florida



MIKE KELLEY
(Student Trainer)
Lithonia, Ga.



DON NEUNER
(Student Manager)
Barnesville, Ga.



Motorists will spend more than \$120,000,000 for Delta tires in the next 365 days

When an independent tire marketing company rises from nowhere and in 10 short years captures over \$100 million in sales, you know that it is offering something worthwhile. Worthwhile to consumers. Worthwhile to dealers. This is Delta.

With Delta, the consumer gets a quality tire he has confidence in. Unique design. Up-to-date construc-

tion. Outstanding performance.

With Delta, the dealer gets a quality line he can make money on. Unique promotion. On-its-toes marketing. Proven reputation.

In 1971, Delta sales will soar far above previous heights. We would like you to share in our success story. Learn how Delta can really pay off for you, too, by writing for information.

The figures prove... **Delta** is the **NUMBER-ONE** independent by far!



RIDDICK
TIRE AND SALES COMPANY

1030 MARIETTA ST., N.W. — ATLANTA, GA. 30318

©High tensile, super-strength rayon cord



The Star Spangled Banner

Oh, say! can you see, by the
dawn's early light,

What so proudly we hailed
at the twilight's last
gleaming?

Whose broad stripes and bright
stars, thro' the perilous
fight,

O'er the ramparts we
watch'd, were so gallantly
streaming.

And the rockets' red glare, the
bombs bursting in air,

Gave proof thro' the night that
our flag was still there.

Oh, say, does that Star-
spangled Banner yet wave

O'er the land of the free and
home of the brave?

Francis Scott Key

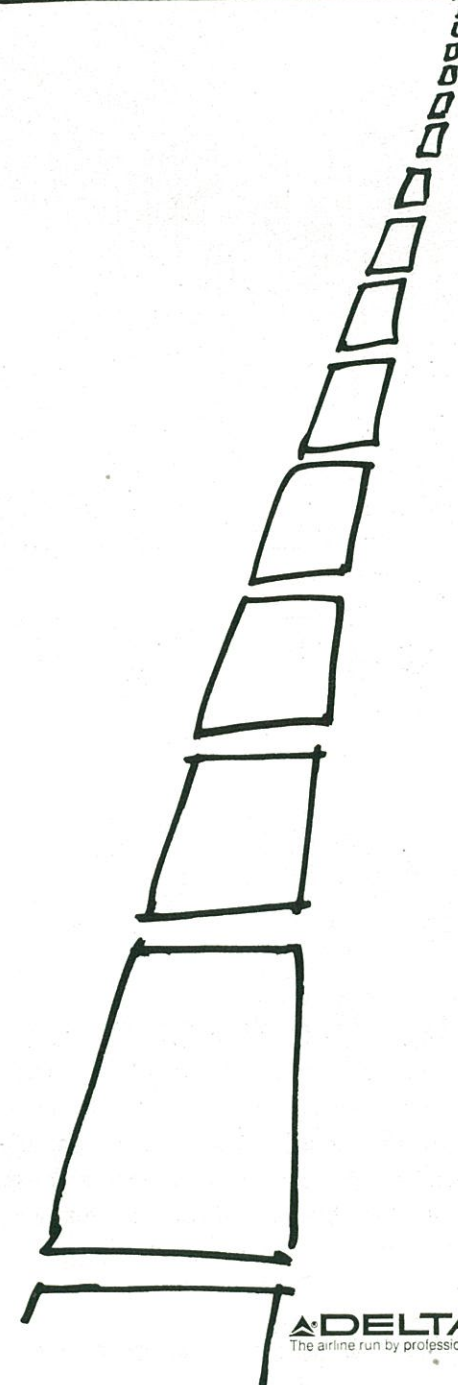
Delta makes a "bee line" for Tech's away games.

Georgia Tech's away-game plan features Delta Air Lines again in '71. This makes the 24th straight season the Yellow Jackets have flown Delta to all the road games—including the Sun Bowl Game last year in El Paso.

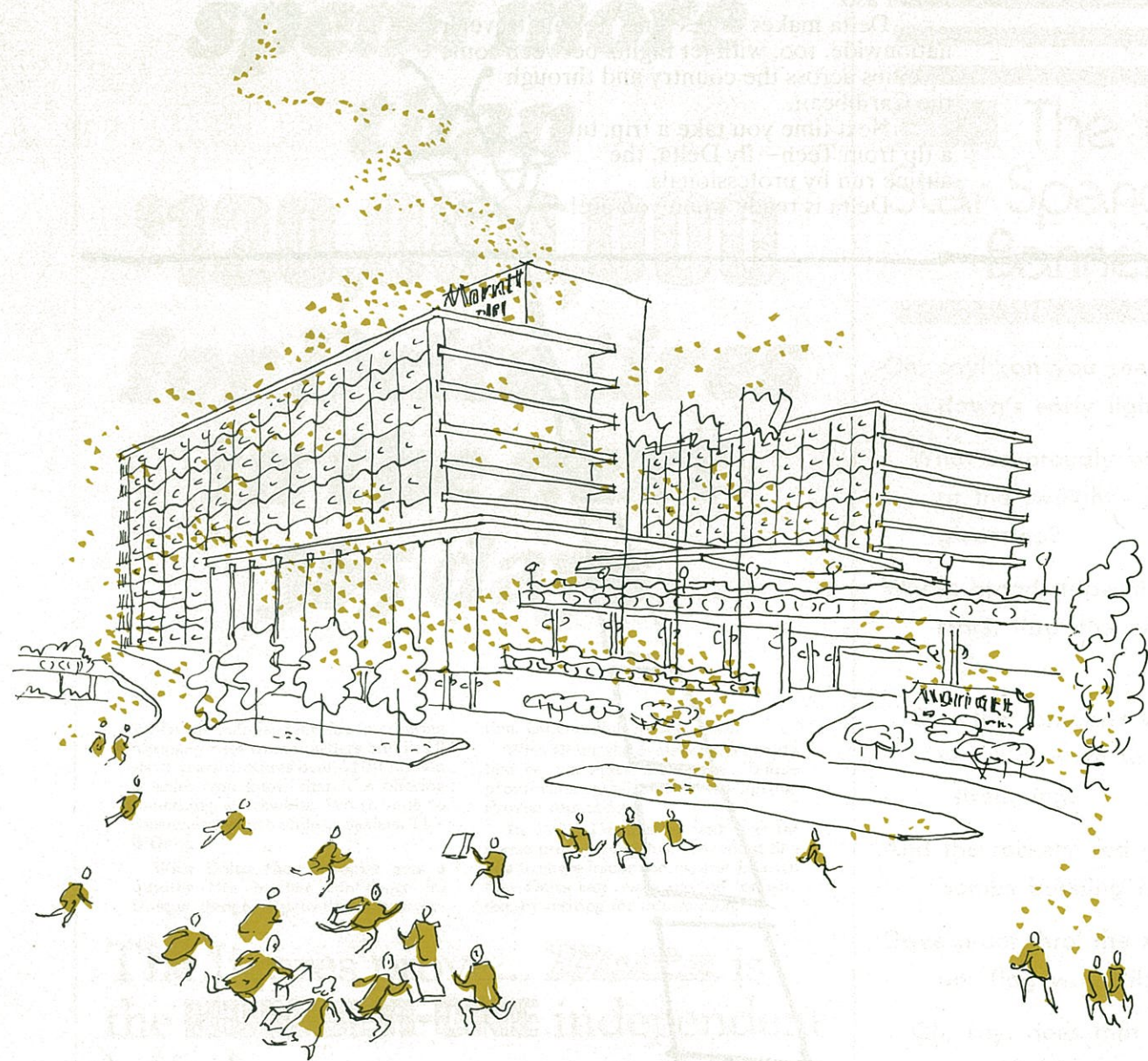
Delta makes a "bee line" for air travelers nationwide, too, with jet flights between some 75 cities across the country and through the Caribbean.

Next time you take a trip, take a tip from Tech—fly Delta, the airline run by professionals.

Delta is ready when you are!



DELTA
The airline run by professionals.



ramble down for the weekend!

Meet you at the corner of Courtland and Cain, where the 800-room Atlanta Marriott Motor Hotel is adding new meaning to the words "Southern hospitality." There's a warm welcome waiting on deck at The Harbour House — with Atlanta's finest seafood selection waiting for you to pick your entree. The Sirloin & Saddle Restaurant, the Fairfield Inn, Club Car, Cove and Windjammer Lounges are waiting to fill your family and friends with fun, food and excitement. The pampering is continuous, the menus sumptuous, and the rest glorious. Don't blame us if you can't tear yourself away for the game. Call in your reservations now and beat the yellow jacket swarm.

This is living...this is **Marriott** MOTOR HOTEL
Courtland & Cain Streets, Atlanta, Ga. (Phone 659-6500)

Chamblee Chrysler-Plymouth, Inc.
5525 Peachtree Industrial Blvd.
Chamblee

DeKalb Chrysler-Plymouth, Inc.
1744 Scott Blvd.
Decatur

Kelly Chrysler-Plymouth, Inc.
789 South Four Lane Highway
Marietta



Plymouth Fury

Westbrook Motors
2665 Main Street
East Point

Rogers Farmer Metro
Chrysler-Plymouth, Inc.
360 Spring Street, N.W.
Atlanta

Bob Maddox Chrysler-Plymouth, Inc.
330 West Georgia Avenue
Forest Park

Buckhead Chrysler-Plymouth, Inc.
3126 Piedmont Road, N.E.
Atlanta

"THE BIG 7"

COMING THROUGH '72

Your Atlanta Metro Chrysler-Plymouth Dealers

PAA/CIDAA

AUTHORIZED DEALERS



OFFICIAL PROGRAM

The Songs of Georgia Tech

GEORGIA TECH ALMA MATER

Oh, sons of Tech, arise, behold!
The banner as it reigns supreme,
For from on high the White and Gold
Waves in its triumphant gleam.
The spirit of the cheering throng
Resounds with joy revealing
A brotherhood in praise and song,
In memory of days gone by.
Oh, Scion of the Southland,
In our hearts you shall forever fly.

We cherish thoughts so dear for thee,
Oh, Alma Mater, in our prayer,
We plead for you in victory,
And in the victory we share!
But when the battle seems in vain
Our spirit never falters,
We're ever one in joy or pain,
And our union is a lasting bond.
Oh! may we be united
Till the victory of life is won.

UP WITH THE WHITE AND GOLD

Oh well, it's up with the White and Gold,
Down with the (Red) and (Black).
Georgia Tech is out for victory.
We'll drop our battle axe on (Georgia's)
head,
When we meet her our team is sure
to beat her.
Down on the old farm there'll be no
sound
Till our bow-wows rip through the air;
When the battle is over (Georgia's)
team will be found
With the Yellow Jackets swarming
'round.



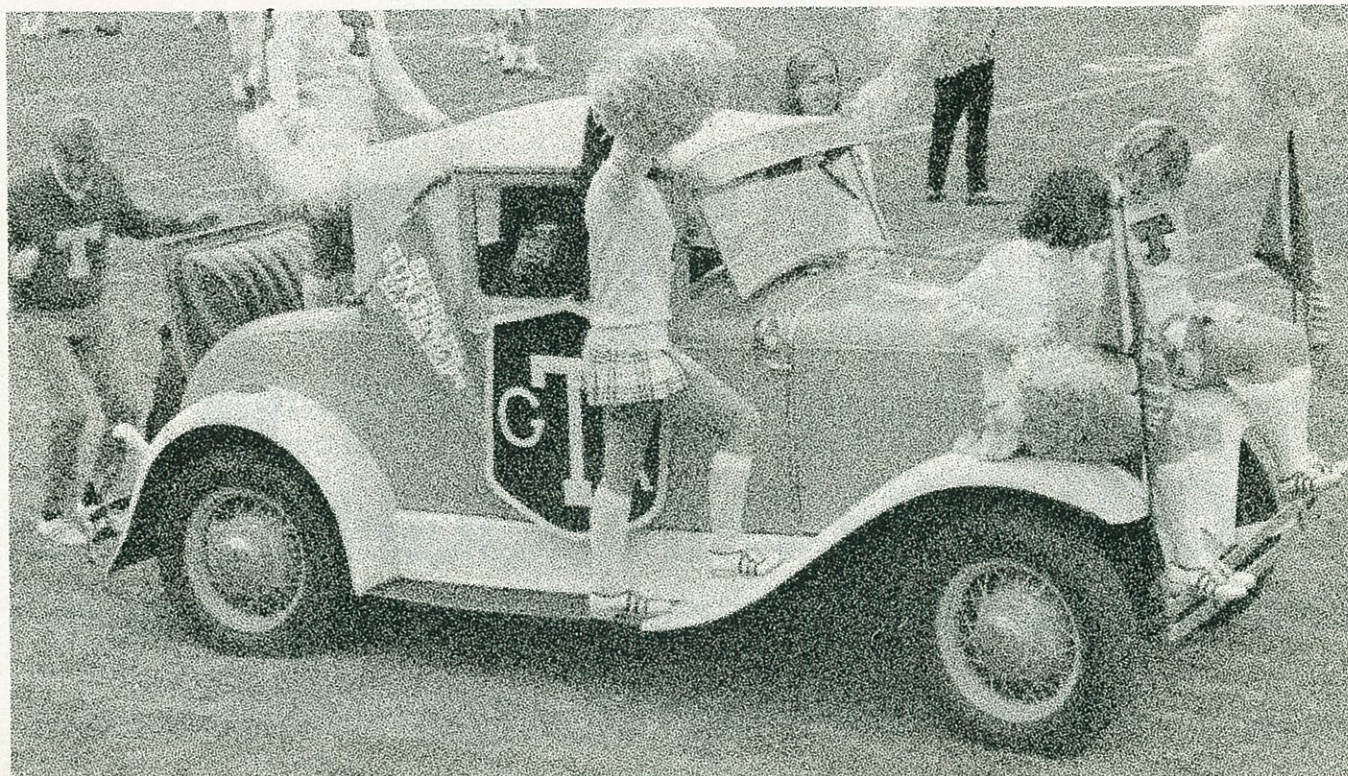
RAMBLING WRECK FROM GEORGIA TECH

I'm a rambling wreck from Georgia Tech
And a hell of an engineer—
A helluva, helluva, helluva,
helluva, hell of an engineer.
Like all the jolly good fellows,
I'll drink my whiskey clear,
I'm a rambling wreck from Georgia Tech
And a hell of an engineer.

Oh! If I had a daughter, sir,
I'd dress her in White and Gold
And put her on the campus
To cheer the Brave and Bold.

But if I had a son, sir,
I'll tell you what he'd do,
He would yell: "To Hell with Georgia,"
Like his daddy used to do.

Oh! I wish I had a barrel of rum,
And sugar three thousand pounds,
A college bell to put it in,
And a clapper to stir it 'round
I'd drink to all good fellows
Who come from far and near.
I'm a rambling, gambling,
Hell of an engineer.



GEORGIA TECH



The Peale, Model C3722W
Simulated TV Picture

Zenith
introduces
a portable that
...outcolors
...outbrightens
...outdetails, and
...outperforms
every other
color TV
its size.

Now famous Zenith Chromacolor comes in a new 16-inch (diagonal) portable that goes anywhere in the house.

Its totally advanced Chromacolor system features Zenith's dependable Handcrafted chassis and patented Chromacolor picture tube—the first tube to fully illuminate every color dot on a jet-black background. To bring you a color picture so good, you really have to see it, to see why it's become the standard of excellence.

Visit a Zenith dealer and see Zenith's new 16-inch (diagonal) portable. Newest member of the Chromacolor family of screen sizes. At Zenith, the quality goes in before the name goes on.®



ZENITH PORTABLE
CHROMACOLOR®

ONLY ZENITH HAS IT

Wherever you live in Georgia, there's a Zenith dealer near you.

ROSTERS FOR TODAY'S GAME

Georgia Tech

No.	Name	Pos.	Ht.	Wt.	Class	Ltr.	Hometown
1	Eddie McAshan	QB	6-2	180	Jr.	1	Gainesville, Fla.
4	Bobby Thigpen	PK	5-10	193	Jr.	1	Warrenton, Ga.
5	Cam Bonifay	PK	6-0	167	Soph.	0	Macon, Ga.
6	Bud Bonnewell	P-SE	5-11	177	Jr.	0	Chatsworth, Cal.
8	Bob Jobson	PK-P	5-11	171	Jr.	0	Wilmington, Del.
15	Dick Bowley	P-QB	6-4	210	Soph.	0	Brookville, Pa.
16	Tommy Turrentine	QB	6-5	187	Soph.	0	Durham, N.C.
18	Jack O'Neill	QB	6-3	204	Jr.	1	Savannah, Ga.
20	Eddie Hughes	WR	5-10	182	Sr.	2	Auburndale, Fla.
21	Charles Copeland	DH	5-10	178	Soph.	0	Warner Robins, Ga.
22	Joe Wolf	S-SE	6-1	159	Soph.	0	Louisville, Ky.
23	Dexter Hoffman	QB	6-0	178	Jr.	1	Wilkesboro, N.C.
25	Jimmy Murray	TB	5-10	178	Soph.	0	Tucker, Ga.
27	Robert Stevenson	FL	6-1	188	Soph.	0	Fayetteville, N.C.
28	Gary Faulkner	S-DH	5-11	187	Soph.	0	Gray, Ga.
29	Kevin McNamara	TB-FB	6-1	200	Jr.	1	Ft. Lauderdale, Fla.
30	Jeff Ford	DH	5-11	177	Sr.	2	Satellite Bch., Fla.
31	Gary Wingo	DH-S	5-11	176	Jr.	0	Lindale, Ga.
32	Gary Carden	LB	6-2	215	Jr.	1	Rome, Ga.
33	Larry Studdard	FL	5-11	169	Sr.	2	Columbus, Miss.
34	John Skalko	WR	6-1	175	Soph.	0	Macon, Ga.
35	Steve Putnal	ST	6-2	205	Soph.	0	Macon, Ga.
36	Dave Beavin	WR	6-1	190	Sr.	2	Atlanta, Ga.
37	Witt Wisman	S	6-0	183	Soph.	0	Louisville, Ky.
38	Stan Beavers	ST	6-1	210	Sr.	2	Hapeville, Ga.
40	Jeff Baker	FB	5-8	215	Jr.	0	Gate City, Va.
42	Rob Healy	FB	6-1	192	Jr.	1	Lookout Mt., Tenn.
43	Mike McKenzie	DH	6-1	182	Soph.	0	Pittsburgh, Pa.
44	Brent Cunningham	TB	5-7	170	Sr.	2	Eatonton, Ga.
45	Tim Macy	FB	6-1	210	Jr.	1	Atlanta, Ga.
47	Tom Lang	FL	5-11	181	Soph.	0	Belleville, Ill.
48	Alan Hennessey	FB-TB	6-0	200	Soph.	0	Louisville, Ky.
49	Greg Horne	TB	6-1	200	Soph.	0	Atlanta, Ga.
50	Steve Timmons	LB	5-10	200	Sr.	0	Memphis, Tenn.
51	Andy Mayton	C	6-2	218	Sr.	2	Gainesville, Fla.
53	Rowland Bradford	C	6-2	204	Soph.	0	Decatur, Ga.
54	Leavitt Sanders	LB	5-11	197	Soph.	0	Tucker, Ga.
55	Pete Cordrey	OG-OT	6-3	240	Sr.	2	Vicksburg, Miss.
56	John Callan	C	6-5	235	Sr.	2	Augusta, Ga.
57	Proctor Allen	LB	5-10	195	Soph.	0	Cordele, Ga.
59	Mike Milo	OT-OG	6-3	215	Soph.	0	Jacksonville, Fla.
60	Bruce Elliott	LB	5-11	210	Soph.	0	Durham, N.C.
62	Randy Campbell	OG	6-1	215	Jr.	0	Atlanta, Ga.
64	Don Robinson	OT-OG	6-4	206	Soph.	0	Macon, Ga.
65	Vernon Jackson	OG	6-3	220	Soph.	0	Jacksonville, Fla.
67	George Novak	LB	6-1	203	Jr.	0	Munhall, Pa.
68	Frank McCloskey	OG	6-1	201	Sr.	1	Chamblee, Ga.
70	Glenn Costello	OT	5-11	216	Jr.	1	Vicksburg, Miss.
71	Tommy Jones	OG-OT	6-2	221	Soph.	0	Cornelius, N.C.
72	Wayne Laircey	DT	6-1	203	Sr.	2	Statesboro, Ga.
73	Chip Everhart	DT	6-3	225	Soph.	0	Titusville, Fla.
74	Rick Lantz	OT	6-3	240	Jr.	1	Savannah, Ga.
75	John Westendorf	OT	6-2	236	Soph.	0	Freeport, Pa.
78	Joe Gaston	DT	6-2	218	Soph.	0	Thomasville, Ga.
79	Al Hutko	OT	6-2	230	Sr.	2	Youngstown, Ohio
80	Mark Fields	TE	6-3	200	Soph.	0	Ft. Lauderdale, Fla.
82	Dan Karlo	TE	6-1	208	Jr.	0	Creighton, Pa.
83	Herman Lam	SE	5-10	155	Jr.	1	Augusta, Ga.
84	Ron Enzweiler	TE	6-2	187	Jr.	1	Atlanta, Ga.
86	Mike Oven	TE	6-5	222	Jr.	1	Tallahassee, Fla.
87	Wes Sherrill	SE	6-1	186	Soph.	0	Orlando, Fla.
89	Jim Owings	SE	6-4	200	Soph.	0	Falls Church, Va.
91	Bruce Rutherford	DE	6-2	195	Sr.	1	Mt. Vernon, Ill.
92	Smylie Gebhart	DE	6-1	210	Sr.	2	Meridian, Miss.
94	Bobby Daffer	DE	6-4	211	Soph.	0	Knoxville, Tenn.
96	Tommy Beck	DE	6-2	230	Soph.	0	Cedartown, Ga.
97	Brad Bourne	DT	6-3	245	Jr.	1	Atlanta, Ga.
99	Randy Duckworth	DE	6-2	230	Sr.	2	Charleston, S.C.

Varsity Student Managers: Steve Taylor, Garry Jackson and Keith Henderson.
Varsity Student Trainers: Ted West, Jim Purvis and Mike Kelley.

EXPLANATION OF GEORGIA TECH SYMBOLS: P Punter, PK Placekicker, TB Offensive Tailback, DH Defensive Halfback, TE Tight End, SE Split End, LB Linebacker (Inside Linebacker), ST Stinger (Outside Linebacker), WR Wrecker (Outside Linebacker), S Safetyman, OG Offensive Guard, DE Defensive End, OT or DT Offensive or Defensive Tackle, FL Flanker.

Florida State University

No.	Name	Pos.	Ht.	Wt.	Class	Ltr.	Hometown
1	Frank Fontes	PK	5-6	155	Sr.	1	Perth Amboy, N.J.
3	Duane Carrell	P	5-10	176	Sr.	2	Washington, D.C.
11	Fred Geisler	QB	6-0	189	Soph.	0	Orlando, Fla.
12	Frank Whigham	QB	6-0	189	Sr.	1	Sanford, Fla.
14	Frank Deming	QB	6-1	160	Soph.	0	Valdosta, Ga.
18	Kent Gaydos	WR	6-6	212	Sr.	2	Dallas, Tex.
19	Gary Huff	QB	6-1	185	Jr.	1	Tampa, Fla.
20	David Snell	DB	5-7	172	Jr.	1	Slocumb, Ala.
21	Joe Goldsmith	WR	6-0	172	Soph.	0	Lakeland, Fla.
22	Barry Smith	WR	6-1	186	Jr.	1	Miami, Fla.
23	David Eddy	WR	5-11	173	Soph.	0	Miami, Fla.
24	John Lanahan	DB	6-0	202	Sr.	2	Jacksonville, Fla.
26	James Thomas	DB	6-1	196	Jr.	1	Macon, Ga.
27	Arthur Munroe	RB	6-0	192	Sr.	2	Quincy, Fla.
28	Robert Ashmore	DB	6-1	181	Sr.	2	Tallahassee, Fla.
29	Dano Fiore	WR	6-0	178	Jr.	0	Chattahoochee, Fla.
30	Brent Norris	FB	6-0	190	Soph.	0	Thomaston, Ga.
31	Paul Magalski	RB	5-11	210	Sr.	2	Garfield Hgts., Ohio
32	Ed Davis	WR	6-1	195	Soph.	0	Lakeland, Fla.
33	Steve Hardin	FB	6-1	206	Soph.	0	Boyton Beach, Fla.
35	Randy Shively	DE	6-0	170	Soph.	0	St. Petersburg, Fla.
36	Rich Oreair	RB	6-0	187	Soph.	0	Jacksonville, Fla.
37	Oscar Roberts	RB	5-11	184	Soph.	0	Ocilla, Ga.
38	Buzzy Lewis	DB	6-0	180	Soph.	0	Bristol, Fla.
40	Eddie McMillan	DB	6-2	175	Jr.	1	Tampa, Fla.
42	Ron Ratliff	DB	5-11	182	Jr.	1	W. Palm Beach, Fla.
43	John Montgomery	DB	6-0	182	Sr.	2	Jacksonville, Fla.
44	Buddy Gridley	LB	6-0	209	Sr.	2	Tallahassee, Fla.
47	David McNish	LB	6-0	215	Jr.	0	Eustis, Fla.
48	James Jarrett	FB	6-1	208	Sr.	2	Elizabethton, Tenn.
49	Guy Glisson	LB	6-0	194	Sr.	2	Tampa, Fla.
50	Dan Whitehurst	LB	6-3	214	Jr.	1	Adel, Ga.
52	Reese Rainey	LB	6-1	192	Jr.	0	Greenville, Ala.
53	Jay Stokes	OG	6-3	220	Sr.	2	Sanford, Fla.
54	Jim Dundala	C	6-0	212	Jr.	0	Morrisville, Pa.
55	Allen Dees	C	6-2	190	Jr.	1	Lakeland, Fla.
57	Steve Bratton	DE	6-0	200	Soph.	0	Oviedo, Fla.
58	Andy Schmidt	LB	5-11	192	Soph.	0	Brandon, Fla.
59	Larry Strickland	LB	6-1	205	Jr.	1	Tallahassee, Fla.
60	Clint Parker	LB	6-0	193	Jr.	1	Daytona Beach, Fla.
61	Phil Arnold	OG	6-0	211	Soph.	0	Hollywood, Fla.
62	David Miles	LB	5-10	185	Soph.	0	Tallahassee, Fla.
65	J. W. McKinnie	OG	6-1	207	Sr.	2	Macon, Ga.
66	Joe Strickler	OT	6-2	235	Sr.	2	Avon Park, Fla.
69	Robert Anderson	DT	5-10	217	Soph.	0	Tifton, Ga.
70	Bill Henson	DT	6-0	223	Sr.	1	Hyattsville, Md.
72	Shane Gibbs	OT-OG	6-3	215	Jr.	1	Bay Minette, Ala.
73	Dan Daniels	OT	6-4	250	Jr.	0	Pensacola, Fla.
75	Richard Amman	DT	6-5	232	Sr.	2	Cocoa Beach, Fla.
76	Bill Rimby	OT	6-3	235	Sr.	2	St. Petersburg, Fla.
77	Roger Minor	OG	6-3	233	Jr.	1	Delray Beach, Fla.
78	Jimbo Hensley	OT	6-3	225	Soph.	0	Orlando, Fla.
79	Howard Jacobi	DT	6-2	242	Jr.	0	Vero Beach, Fla.
80	Charlie Hunt	DE	6-3	202	Jr.	1	Jacksonville, Fla.
82	Rhett Dawson	WR	6-2	186	Sr.	2	Valdosta, Ga.
84	Gary Parris	TE	6-2	210	Jr.	1	Vero Beach, Fla.
85	Bill Shaw	DE	6-1	218	Sr.	1	Marietta, Ga.
86	Mike Glass	TE	6-3	210	Jr.	1	Tampa, Fla.
87	Russell Castleberry	DE	6-0	201	Soph.	0	Palatka, Fla.
89	Kent Corral	DE	5-11	199	Soph.	0	Tampa, Fla.

FLORIDA STATE SYMBOLS DIFFERENT THAN GEORGIA TECH'S:
DB Defensive Back, RB Running Back, WR Wide Receiver.

Our '72 wagon tailgates go up, down, sideways, slideways and one even disappears.

We've got five different kinds of wagons. One for every kind of wagon buyer.

Wagons with different kinds of tailgates especially designed for convenience. Including one that vanishes—the window into the roof, the gate under the floor. Out of sight. Out of your way.

Wagons that seat four, six, eight, nine or as

many as twelve. If you like, our Sportvan can even be converted to sleep up to six. We're serious when we say we want your 1972 Chevrolet wagon to be the very best wagon you ever owned.

Chevrolet

Pictured at Crown Point near Portland, Oregon are (clockwise) our Sportvan, Suburban, Vega, Chevrolet wagon and Chevelle wagon.



Chevrolet. Building a better way to see the U.S.A.



Yellow Jackets Football Schedules

FOOTBALL SCHEDULE FOR THE NEXT FOUR YEARS

1972 Football

Sept. 10 S. Carolina at Atlanta, Ga.
Sept. 23 Mich. State at E. Lansing, Mich.
Sept. 30 Rice at Atlanta, Ga.
Oct. 7 Clemson at Atlanta, Ga.
Oct. 14 Tennessee at Atlanta, Ga.
Oct. 21 Auburn at Auburn, Ala.
Oct. 28 Tulane at Atlanta, Ga.
Nov. 4 Duke at Durham, N. C.
Nov. 11 Boston College at Atlanta, Ga.
Nov. 18 Navy at Atlanta, Ga.
Dec. 2 Georgia at Athens, Ga.

Seven Home Games

1973 Football

Sept. 15 S. Carolina at Columbia, S. C.
Sept. 22 So. California at Atlanta, Ga.
Sept. 29 Clemson at Atlanta, Ga.
Oct. 6 Army at Atlanta, Ga.
Oct. 13 Tennessee at Knoxville, Tenn.
Oct. 20 Auburn at Atlanta, Ga.
Oct. 27 Tulane at New Orleans, La.
Nov. 3 Duke at Atlanta, Ga.
Nov. 10 V.M.I. at Atlanta, Ga.
Nov. 17 Navy (Site Undecided)
Dec. 1 Georgia at Atlanta, Ga.

Seven home games

1974 Football

Sept. 14 Game to be named
Sept. 21 Pittsburgh at Atlanta, Ga.
Sept. 28 Clemson at Atlanta, Ga.
Oct. 5 Virginia at Atlanta, Ga.
Oct. 12 North Carolina at Atlanta, Ga.
Oct. 19 Auburn at Auburn, Ala.
Oct. 26 Tulane at Atlanta, Ga.
Nov. 2 Duke at Durham, N.C.
Nov. 9 Notre Dame at Atlanta, Ga.
Nov. 16 Navy at Atlanta, Ga.
Nov. 30 Georgia at Athens, Ga.

Six home games

1975 Football

Sept. 20 Miami at Atlanta, Ga.
Sept. 27 Clemson at Atlanta, Ga.
Oct. 4 F.S.U. at Atlanta, Ga.
Oct. 11 V.M.I. at Atlanta, Ga.
Oct. 18 Auburn at Atlanta, Ga.
Oct. 25 Tulane at New Orleans, La.
Nov. 1 Duke at Atlanta, Ga.
Nov. 8 Notre Dame at S. Bend, Ind.
Nov. 15 Navy (Site undecided)
Nov. 27 Georgia at Atlanta, Ga.

Seven home games

GEORGIA TECH--1971

S. Carolina	Sep. 11	Columbia	7:30
Mich. State	Sep. 18	Atlanta	2:00
Army	Sep. 25	Atlanta	2:00
Clemson	Oct. 2	Atlanta	2:00
Tennessee	Oct. 9	Knoxville	2:00
Auburn	Oct. 16	Atlanta	2:00
† Tulane	Oct. 23	N. Orleans	12:50
Duke (H.C.)	Oct. 30	Atlanta	2:00
Navy	Nov. 6	Atlanta	2:00
Fla. State	Nov. 13	Atlanta	2:00
* Georgia	Nov. 25	Atlanta	8:05

† REGIONALLY TELEVISED BY ABC-TV SPORTS

* NATIONALLY TELEVISED BY ABC-TV SPORTS

1971 FRESHMAN SCHEDULE

Fla. State	Oct. 2	Warner Robins	8:00
Clemson	Oct. 11	Clemson	2:00
Tennessee	Oct. 22	Atlanta	8:00
S. Carolina	Nov. 5	Columbia	8:00
G.M.C.	Nov. 12	Barnesville	7:30
Georgia	Nov. 25	Atlanta	2:30

GEORGIA TECH

Imagine the hush, plush beauty of thick pile carpeted walls! The luxury of color TV. It's your own private world to enjoy in comfort That's the good living at all eight close-to-everything Atlanta Mark Inn motels on interstate highways... away from downtown congestion. Complete sales meeting and convention facilities. Great food. Intimate cocktail lounges. Swimming pools. Free airport transportation. Reasonable cost (compare!), and local ownership. Mark Inn motels are smaller. The service is faster, more personal. Considered Mark Inn lately? You should! Our Guest Relations Director would welcome your collect call now at 404/349-2662.

Atlanta's most luxurious guest rooms

MARK INN
ATLANTA
EXECUTIVE OFFICES: 4745 Bakers Ferry Road, S.W.
Atlanta, Georgia 30336

YOUR HOST
James A. Shugart, Jr.
TECH CLASS OF '52
President, Mark Inns of America

FLYING? Park your car at AIRPORT MARK INN—Interstate 85 at Sylvan Road exit—\$1.50 a day—free shuttle bus!

Wouldn't an ice cold Coke
taste good right now?



YELLOW JACKETS

OFFENSE

- 89 Jim Owings Split End
70 Glenn Costello Left Tackle
79 Al Hutko Left Guard
56 John Callan Center
71 Tommy Jones Right Guard
74 Rick Lantz Right Tackle
86 Mike Oven Tight End
1 Eddie McAshan Quarterback
42 Rob Healy Fullback
49 Greg Horne Tailback
44 Brent Cunningham Flanker

DEFENSE

- 99 Randy Duckworth Left End
78 Joe Gaston Left Tackle
97 Brad Bourne Right Tackle
92 Smylie Gebhart Right End
38 Stan Beavers Stinger
36 Dave Beavin Wrecker
32 Gary Carden Linebacker
60 Bruce Elliott Linebacker
43 Mike McKenzie Left Halfback
30 Jeff Ford Right Halfback
28 Gary Faulkner Safetyman

- | | |
|---------------------|--------------------|
| 1 McAshan, QB | 51 Mayton, C |
| 4 Thigpen, PK | 53 Bradford, C |
| 5 Bonifay, PK | 54 Sanders, LB |
| 6 Bonnewell, P-SE | 55 Cordrey, OG |
| 8 Jobson, PK-P | 56 Callan, C |
| 15 Bowley, P-QB | 57 Allen, LB |
| 16 Turrentine, QB | 59 Milo, OT-OG |
| 18 O'Neill, QB | 60 Elliott, LB |
| 20 Hughes, WR | 62 Campbell, OG |
| 21 Copeland, DH | 64 Robinson, OG-OT |
| 22 Wolf, S-SE | 65 Jackson, OG |
| 23 Hoffman, QB | 67 Novak, LB |
| 25 Murray, TB | 68 McCloskey, OG |
| 27 Stevenson, FL | 70 Costello, OT |
| 28 Faulkner, S-DH | 71 Jones, OG-OT |
| 29 McNamara, TB-FB | 72 Laircey, DT |
| 30 Ford, DH | 73 Everhart, DT |
| 31 Wingo, DH-S | 74 Lantz, OT |
| 32 Carden, LB | 75 Westendorf, OT |
| 33 Studdard, FL-SE | 78 Gaston, DT |
| 34 Skalko, WR | 79 Hutko, OT |
| 35 Putnal, ST | 80 Fields, TE |
| 36 Beavin, WR | 82 Karlo, TE |
| 37 Wisman, S | 83 Lam, SE |
| 38 Beavers, ST | 84 Enzweiler, TE |
| 40 Baker, FB | 86 Oven, TE |
| 42 Healy, FB | 89 Owings, SE |
| 43 McKenzie, DH | 91 Rutherford, DE |
| 44 Cunningham, TB | 92 Gebhart, DE |
| 45 Macy, FB | 94 Daffer, DE |
| 47 Lang, FL-TB | 96 Beck, DE |
| 48 Hennessey, FB-TB | 97 Bourne, DT |
| 49 Horne, TB | 99 Duckworth, DE |
| 50 Timmons, LB | |

SEMINOLES

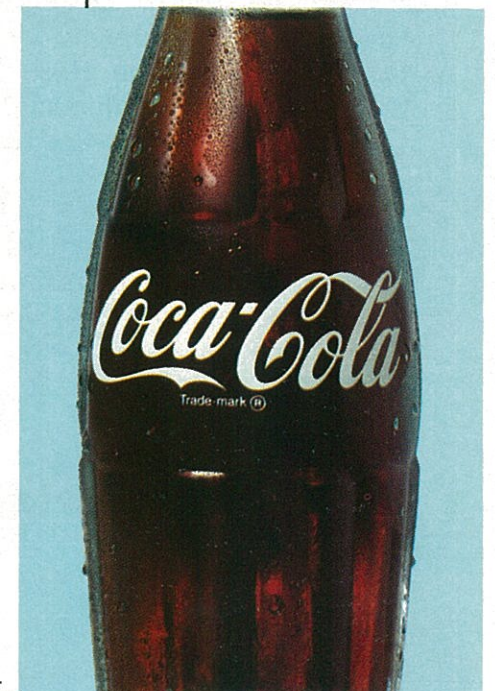
OFFENSE

- 82 Rhett Dawson Split End
72 Shane Gibbs Weak Tackle
65 J. W. McKinnie Weak Guard
55 Allen Dees Center
53 Jay Stokes Strong Guard
66 Joe Strickler Strong Tackle
84 Gary Parris Tight End
19 Gary Huff Quarterback
48 James Jarrett Fullback
27 Arthur Munroe Tailback
18 Kent Gaydos Flanker

DEFENSE

- 85 Bill Shaw Left End
70 Bill Henson Left Tackle
75 Richard Amman Right Tackle
80 Charlie Hunt Right End
60 Clint Parker Sam Linebacker
59 Larry Strickland .. Mike Linebacker
50 Dan Whitehurst Will Linebacker
40 Eddie McMillan ... Left Cornerback
24 John Lanahan Rover Back
28 Robert Ashmore Safetyman
26 James Thomas ... Right Cornerback

- | | |
|-------------------|--------------------|
| 1 Fontes, PK | 49 Glisson, LB |
| 3 Carrell, P | 50 Whitehurst, LB |
| 11 Geisler, QB | 52 Rainey, LB |
| 12 Whigham, QB | 53 Stokes, OG-C |
| 14 Deming, QB | 54 Dundala, OG-C |
| 18 Gaydos, WR | 55 Dees, C |
| 19 Huff, QB | 57 Bratton, DE |
| 20 Shell, DB | 58 Schmidt, LB |
| 21 Goldsmith, WR | 59 Strickland, LB |
| 22 Smith, WR | 60 Parker, LB |
| 23 Eddy, WR | 61 Arnold, OG |
| 24 Lanahan, DB | 62 Miles, LB |
| 26 Thomas, DB | 65 McKinnie, OG |
| 27 Munroe, RB | 66 Strickler, OT |
| 28 Ashmore, DB | 69 Anderson, DT |
| 29 Fiore, WR | 70 Henson, DT |
| 30 Norris, FB | 72 Gibbs, OT-OG |
| 31 Magalski, RB | 73 Daniels, OT |
| 32 Davis, WR | 75 Amman, DT |
| 33 Hardin, FB | 76 Rimby, OT |
| 35 Shively, DE | 77 Minor, OT-OG |
| 36 Oreair, RB | 78 Hensley, OT |
| 37 Roberts, RB | 79 Jacobi, DT |
| 38 Lewis, DB | 80 Hunt, DE |
| 40 McMillan, DB | 82 Dawson, WR |
| 42 Ratliff, DB | 84 Parris, TE |
| 43 Montgomery, DB | 85 Shaw, DE |
| 44 Gridley, LB | 86 Glass, TE |
| 47 McNish, LB | 87 Castleberry, DE |
| 48 Jarrett, FB | 89 Corral, DE |



"COCA-COLA" AND "COKE" ARE REGISTERED TRADE-MARKS OF THE COCA-COLA COMPANY.

It's the real thing. Coke.

Trade-mark ®

Games like the Rose Bowl of 1929 are rare.

Even rarer are values like electricity.

In 1928 the Yellow Jackets had a perfect season with nine straight wins. Then came New Year's Day, the Rose Bowl and the wrong-way run by California's Roy Riegels. It gave Tech a 2-0 lead. And the winning margin for a final score of 8-7.

Football's changed since then. But electricity was a value in 1928, and it's an even bigger value today. If you're keeping score on

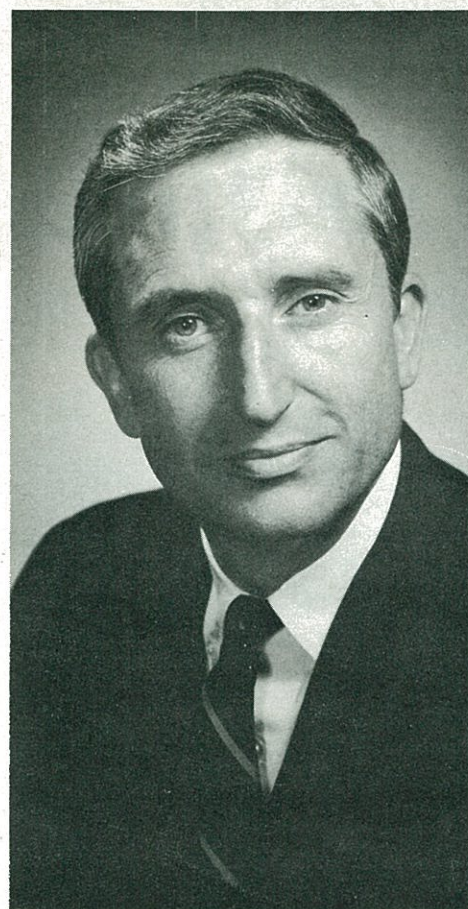
rising prices, this should make our point: Georgia Power's average price per residential kilowatt-hour dropped from 7.3 cents in 1928 to 1.6 cents in 1970. And that was 21 percent below the national average.

Measure the value you get against the price you pay. We think you'll agree. Electricity is still the biggest bargain in your family budget. By far.

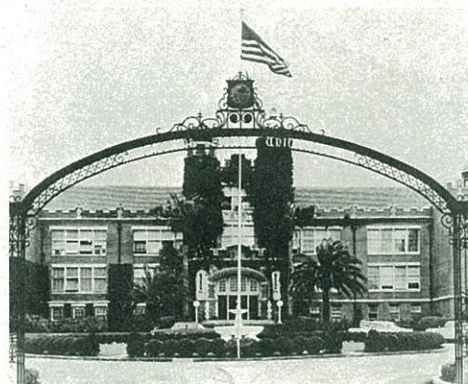
Georgia Power Company
A citizen wherever we serve®



Today's Visitors...



DR. J. STANLEY MARSHALL
President



Main Administration Building, FLORIDA
STATE UNIVERSITY, Tallahassee, Fla.

Florida State University

Florida State University's 10 schools and colleges are the several academic homes of more than 17,000 students in 1971—students who hail from the four corners of the world as well as the home state.

This public coeducational institution of higher learning is one of nine in the State University System of Florida. Founded in 1857, it is the second oldest university in the public system and a senior leader in graduate education and research programs.

Although Seminole football can be traced back to the first decade of the 20th Century, the University's history includes a number of years when it was known as the Florida State College for Women (1902-47). The dynamic growth of intercollegiate athletics, since coeducation and the university status came to the campus in 1947, has paralleled the phenomenal physical and enrollment growth of the institution in the last two and one-half decades.

Academically and athletically, Florida State is a contender for top ranking among the nation's leading universities. Earlier this year, the American Council on Education rated eight Florida State graduate programs in the physical, biological and social science areas among the better programs in the nation, giving chemistry the highest rating of "strong and distinguished." In athletics, the last seven years have seen the Seminole football team earn four major bowl appearances and several bona fide All-America titles. In academics, the same period of time has seen two Nobel Laureates added to the faculty roster—one on a full-time, the other on an annual winter quarter basis.

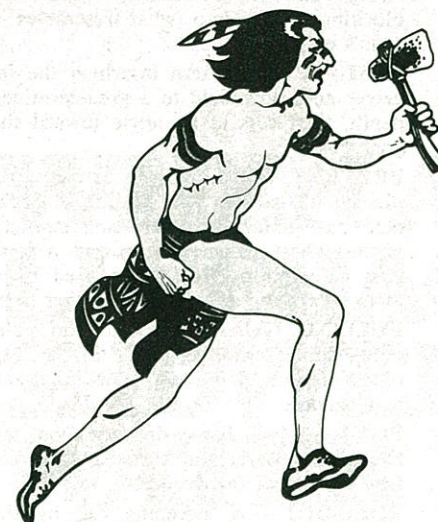
One of the only 24 institutions in the country which confers more than 100 Ph.D. degrees each year, Florida State is now graduating an average of 5,000 students annually from its Colleges of Arts and Sciences, Education and Law, and from its Schools of Home Economics, Music, Library Science, Social Welfare, Business, Nursing and Engineering Science.

At the undergraduate level, Florida State students have a choice of more than 95 different baccalaureate fields of study, and at the graduate level, a choice of more than 85 master's degree areas and more than 55 doctoral programs.

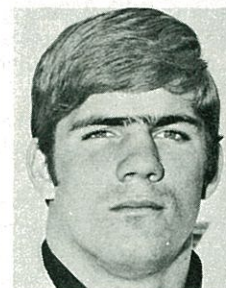
Balancing its prestige in the sciences with academic achievements in the arts and humanities as well, Florida State is the home base for the State Theater, State Opera and State Symphony of Florida. Its role as an artistic and cultural pacesetter is long-standing and international in scope in art, music and theater.

A pioneer in the field of oceanography for many years, Florida State is making marine studies one of its strong points of emphasis in the decade ahead. Facilities for oceanographic research are located both on the campus and in the Ed Ball Marine Laboratories on the Gulf of Mexico, south of Tallahassee.

Rounding out the University's research resources are two nuclear accelerators, a million-book library and special research facilities in geophysical fluid dynamics, educational technology, molecular biophysics, social research, political research, psychology and psychology.



SEMINOLES



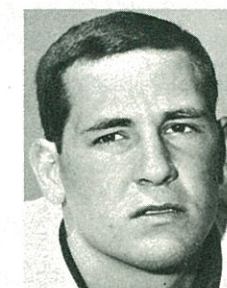
RICHARD AMMAN
Cocoa Beach, Florida



BOBBY ANDERSON
Tifton, Georgia



PHIL ARNOLD
Hollywood, Florida



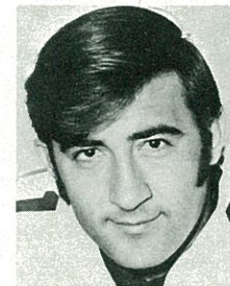
ROBERT ASHMORE
Tallahassee, Florida



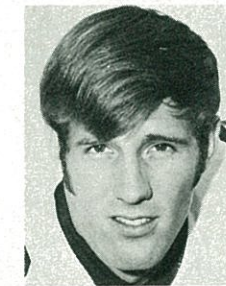
DUANE CARRELL
Washington, D.C.



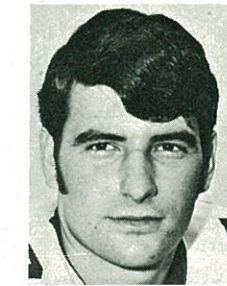
ALLEN DEES
Lakeland, Florida



FRANK FONTES
Perth Amboy, N. J.



KENT GAYDOS
Dallas, Texas



SHANE GIBBS
Bay Minette, Alabama



MIKE GLASS
Tampa, Florida



CLAY STAPLETON
Athletic Director



LARRY JONES
Head Football Coach

Football Terminology

AUDIBLE—A vocal signal by the quarterback at the line of scrimmage that changes the play called in the huddle. A key phrase, word or number inserted into the starting commands, called when the quarterback feels the defense is stacked against the first play or is vulnerable in some area. Also called check off or automatic.

BALL CONTROL—An offensive technique of retaining possession of the ball by making a sustained series of first downs, rather than attempting long-gain plays.

BLITZ—Commitment by defensive backs and/or linebackers to rush the passer. The defensive player tries to crash through the offensive line into the rival backfield before the play has a chance to develop. Also called Red Dog or shooting the gap.

BLOCKING—Legally hindering the progress of an opponent by contacting him with any part of the blocker's body.

BOMB—A long pass attempt for a touchdown.

BOOTLEG—A sneak sweep by the quarterback, who fakes a handoff, then takes off around end alone with the ball concealed against his hip.

BUTTONHOOK—A pass pattern in which the receiver goes downfield and U-turns back sharply to face the passer and receive the ball.

CLIPPING—An illegal block in which the player runs or dives into the back of an opponent, or throws his body across the back of the leg or legs of an opponent other than the ball carrier.

DIVE-TACKLE PLAY—A quick hand-off running play over tackle.

DOWN—A single play by the team in possession of the ball. It starts with a snap from center or a free kick and ends when the ball next becomes dead.

DRAW PLAY—A trap play in which the quarterback lures in defensive linemen by dropping back apparently to pass the ball. When the linemen are screened to the outside, the quarterback or another ball carrier takes the ball up the gap cleared by the onrushing defenders.

DROP KICK—A rare technique in which a player drops the ball and kicks it just before it touches the ground or as it rises from the ground.

FAIR CATCH—An intent by a player, signalled by raising his arm above his head, not to advance a free kick. The player then cannot run with the ball, nor can he be blocked or tackled by an opponent.

FLANKER—A back stationed wide to either side, used primarily as a pass receiver.

FLIP-FLOP—The practice on offense of moving players from one side of the center to the other.

FREE KICK—A kick made with each team restricted from advancing beyond a fixed restraining line until the ball is kicked.

FRONT FOUR—Four-man defensive line, the tackles and the ends.

HUDDLE—The players grouped together after the ball is ready for play, usually to receive instructions from either the offensive or defensive signal-caller concerning the ensuing play.

"I" FORMATION—An offensive formation in which all four backs line up in a straight line behind the center. Usually one back will move out to a slot or wing position. This gives a balanced attack to either side with minimum advance notice to the defense.

KICKOFF—A free kick that opens each half and is used after each Try-for-Point or field goal. Must be either a place kick or drop kick.

LINEBACKER—A defensive player operating immediately behind his line where he can either aid linemen in stopping a running play or cover a receiver if a pass develops.

LONG COUNT—Quarterback calls several numbers to slow action as much as is legally possible.

MAN-TO-MAN DEFENSE—Plan of pass defense wherein defensive backs cover receivers wherever they go, rather than field areas.

MONSTER—A floating'linebacker, positioned either in or out of the line, on either side, or in any spot. His purpose is to confuse the offense, varying his tactics from play to play.

NAKED REVERSE—A late-starting change-of-direction play where, after large-scale initial flow of action in one direction, the ball winds up in possession of a back who goes the other way without blockers or interference.

NEUTRAL ZONE—The space between the scrimmage lines of the offense and defense, about 11 inches (the length of the football).

ONSIDE KICK—An effort by a team to kick the ball barely beyond ten yards and recover it before the receiving team can do so.

PLACE KICK—The technique most often used to kick off and on field goal and try-for-point attempts. The ball, which may be held in position by any member of the kicking team, is kicked from a fixed position either on the ground or on a tee.

PLAY ACTION PASS—A forward pass thrown from an offensive formation simulating a running play.

POCKET—Area of protection for the

passer formed by blockers. Passer drops straight back from scrimmage behind the blocking shield into what resembles a "cup" or pocket.

POST—A pass pattern in which the receiver goes downfield to a predetermined depth, then cuts at an angle toward the goal posts.

PREVENT DEFENSE—A strategy replacing linebackers with additional backfield pass defenders, sacrificing strength against short gainers to prevent a long pass completion. Most often used by a team protecting a lead late in either half.

PULLING GUARD—Guard who pulls out behind scrimmage line for a trap block or to lead a sweep blocking for a ball carrier.

PUNT—A ball that is dropped from the hands of a player and kicked by him before it touches the ground.

ROLL-OUT—A sweeping run by the quarterback who, instead of dropping straight back on getting the ball, swings out in a wide arc to one side or another, ready to run or pass as the situation demands.

SCREEN PASS—Pass to a receiver behind a wall of blockers, who have allowed defenders to penetrate.

SHOTGUN—A spread-type attacking formation in which the quarterback lines up deep instead of under center, and the other backs are widely dispersed. It's an effective passing set-up, and disconcerting on running plays when the defense isn't prepared.

SLOT—The gap left when an end is moved out from the tackle on his side. A back stationed in this space is called a slot back. When the back is stationed outside the end he is called a wingback.

SPLIT END—A lineman, who, like the flanker, is set wide for pass receiving purposes.

STINGER—One of the key defensive players in Georgia Tech's defensive alignment. An outside linebacker who lines up on the tight end side of the formation. Responsible for stopping both running and pass plays.

STRONG SIDE—Overbalance of either offensive or defensive linemen to either side of the center.

STUNTING—Defensive players changing positions as the ball is snapped to confuse offensive strategy.

SWEEP—End run with a wave of blockers leading the ball carrier.

TIGHT END—Offensive player who lines up in close formation where he can either block or be used as a receiver.

TRAP—A play permitting a defender to penetrate quickly, only to be blocked from the side by pulling guard or tackle.

WRECKER—Georgia Tech's other outside linebacker, along with the Stinger. Lines up on the split end side of the formation and also responsible for both running and passing plays.

ZONE DEFENSE—Plan of pass defense wherein areas are covered rather than individual receivers. Opposite of man-to-man.

WHEN A 240 POUND LINEBACKER HITS THE SHOWERS, THE HOT WATER HAD BETTER BE HEATED BY GAS.



Win or lose, no football team should have to worry about running out of hot water after the game.

That's why so many colleges and universities insist on Gas water heating. Natural Gas heats water twice as fast for a fraction of the cost of most competitive fuels.

If you don't have a Gas water heater in your home, talk to your Plumber, Contractor or Gas Company about installing one. Right after the game.

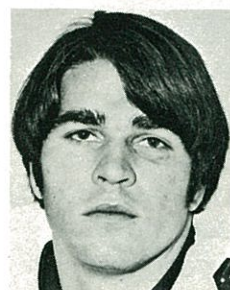
Have the last word. Insist on a Gas water heater.



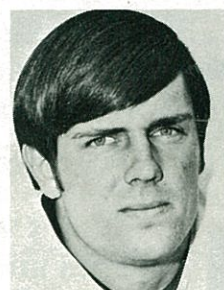
Atlanta Gas Light Company
Georgia Natural Gas Company
Savannah Gas Company



SEMINOLES



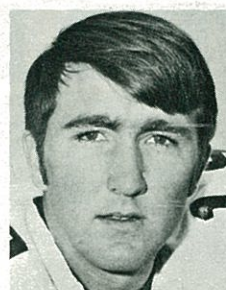
GUY GLISSON
Tampa, Florida



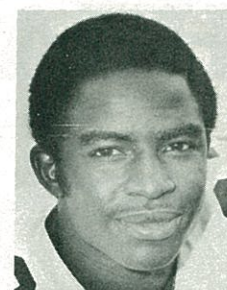
BUDDY GRIDLEY
Tallahassee, Florida



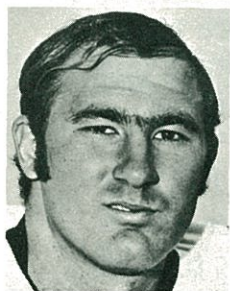
BILL HENSON
Hyattsville, Maryland



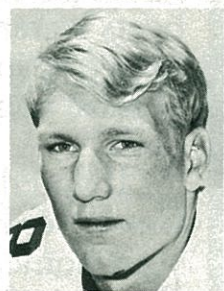
GARY HUFF
Tampa, Florida



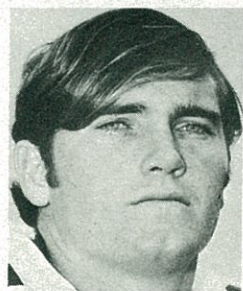
CHARLEY HUNT
Jacksonville, Florida



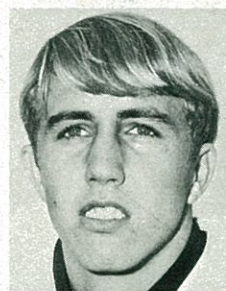
HOWARD JACOBI
Vero Beach, Florida



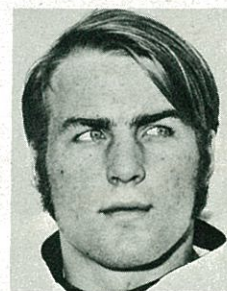
JAMES JARRETT
Elizabethton, Tennessee



JOHN LANAHAN
Jacksonville, Florida



BUZZY LEWIS
Bristol, Florida



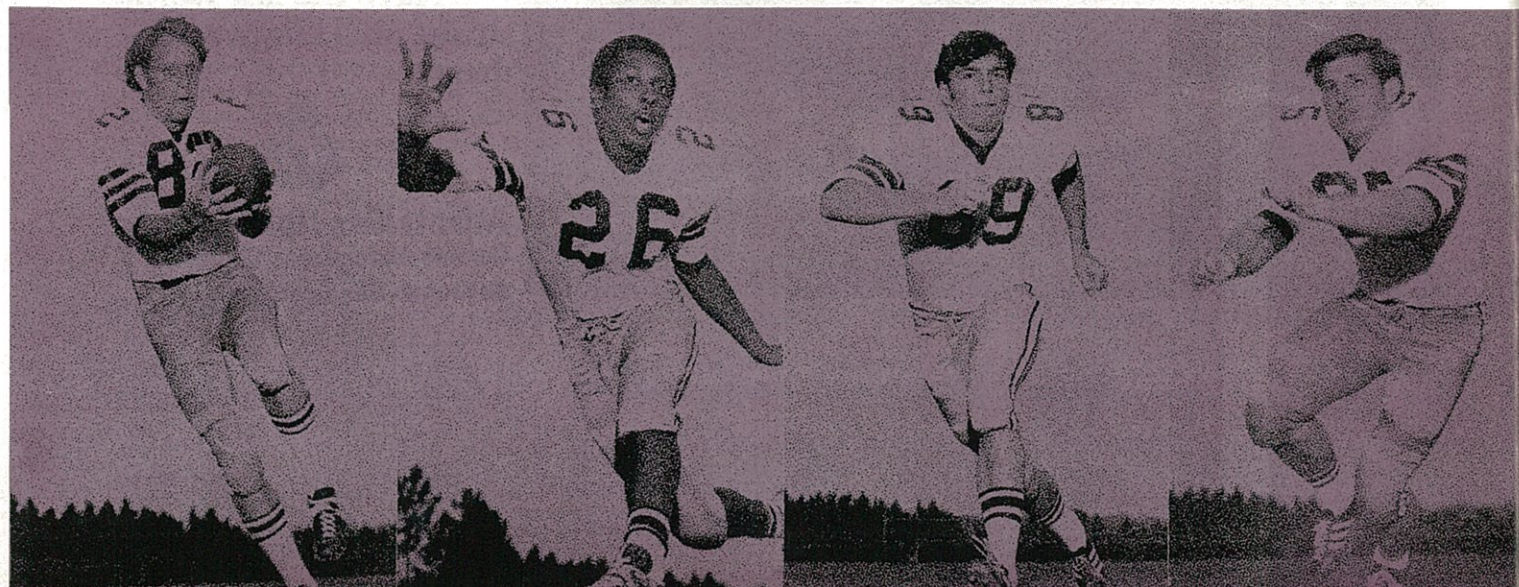
PAUL MAGALSKI
Garfield Hts., Ohio

RHETT DAWSON

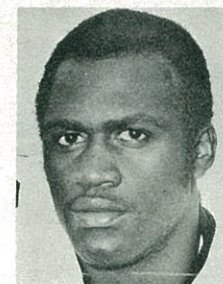
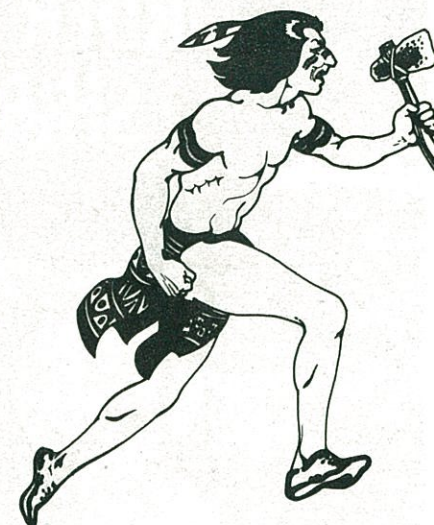
JAMES THOMAS

J. W. McKINNIE

BILL SHAW



SEMINOLES



EDDIE McMILLAN
Tampa, Florida



ROGER MINOR
Delray Beach, Florida



JOHN MONTGOMERY
Jacksonville, Florida



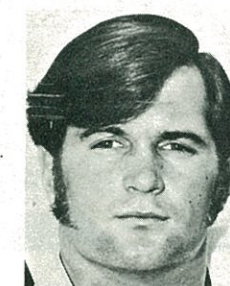
ARTHUR MUNROE
Quincy, Florida



BRENT NORRIS
Thomaston, Georgia



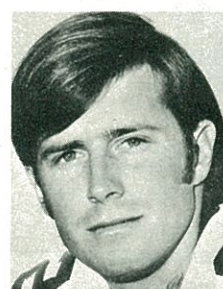
RICK OREAR
Jacksonville, Florida



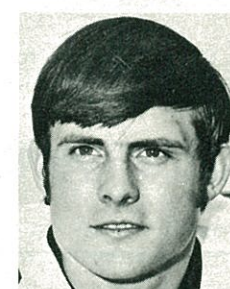
CLINT PARKER
Dayton Beach, Florida



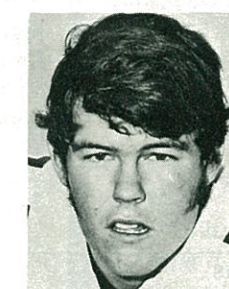
GARY PARRIS
Vero Beach, Florida



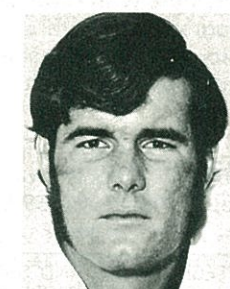
BARRY SMITH
Miami, Florida



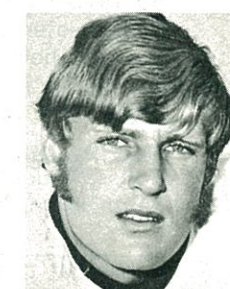
DAVID SNELL
Slocomb, Alabama



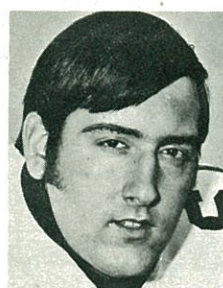
DON SPARKMAN
Jacksonville, Florida



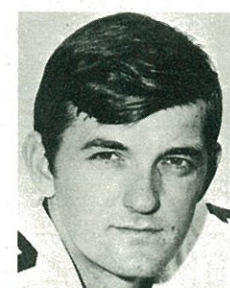
JAY STOKES
Sanford, Florida



LARRY STRICKLAND
Tallahassee, Florida



JOE STRICKLER
Avon Park, Florida



FRANK WHIGHAM
Sanford, Florida



DAN WHITEHURST
Adel, Georgia

ORDER YOUR GEORGIA TECH SHIRTS AND SWEATERS



The same shirts and sweaters the coaches and players wear are now available. The shirts are 50% Dacron, 50% Cotton wash and wear. The sweater is 50% Alpaca, 50% Wool in cardigan style with full golf cuff. Each shirt and sweater is monogrammed with an exact replica of the team helmet. Colors available in shirts and sweaters are white, navy, red, gold, light blue, burnt orange, orange and purple.

Style A:
Collar Model, four button placket available small, medium, large, X-large, XX-large . . . **\$9.95**

Style B:
Mock Turtle Neck: available children's size 8, 10, 12, 14, 16, 18 and men's small, medium, large, X-large, XX-large . . . **\$7.00**

Style C:
Cardigan Golf Sweater: full sleeves, available men's small, medium, large, X-large . . . **\$22.00**

Style D:
Women's Cardigan (not shown); same as men's in women's sizes: 34, 36, 38, 40. In colors listed above . . . **\$22.00**

OFFICIAL GEORGIA TECH SHIRTS AND SWEATERS

Name _____ Address _____ City _____ State _____

Send Check or Money Order to:
Logo 7, Inc. • P. O. Box 19425 • Indianapolis, Indiana 46219

Please include 50¢ delivery cost per item.

MEN'S & BOYS				
Quantity	Style	Size	Color	Amount

Available at the Ga. Tech Book Store and all *Musica* Stores

GEORGIA TECH



VERSATILITY PLUS —
EVERY MODERN FEATURE

Hamilton®

Pedestal Tables

The ideal table for a multitude of uses. Perfect for those installations where a reference desk is unnecessary fills the bill for everybody from architects to engineers draftsmen to supervisors. Features include famous Stratasteel drawing board, six board sizes, counterbalance tilt control to adjust board angle, and available in five decorator finishes.

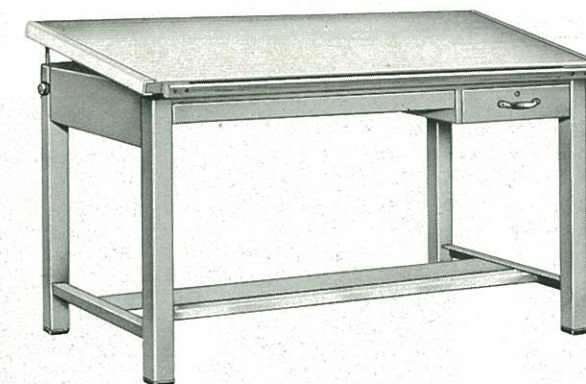
SOLUTION FOR FILING
THAT TAKES TOO MUCH
SPACE AND TIME



Hamilton®
UnitSystem Files

A complete line of interlocking steel drawer units that combine to form a total tailored filing system. Frequently used drawings are stored in shallow drawer units featuring the Hamilton exclusive Tracing Lifter for maximum protection and easy sheet removal. There are deeper drawer sections for less frequently used drawings, as well as special sections for vertical storage of small drawings and rolled drawings, too. We can explain all the advantages of Hamilton UnitSystem.

LOOKING FOR A
TOP PERFORMING
LOW DOLLAR DRAFTING TABLE ?



Hamilton®
4 - Post Series

Hamilton 4-Post drafting tables, in steel or wood, offer maximum economy without sacrificing utility or quality. Designed for years of faithful service, Hamilton 4-Post tables provide a warp-free hollow-core drawing surface, adjustable top angle and a complete selection of drawer arrangements to suit every need. Steel reinforcing end cleats hold the board true and accurate. Let us explain the dollar saving advantages of Hamilton drafting tables.

GEORGIA BLUEPRINT COMPANY

119 Luckie Street, N.W. Atlanta, Georgia 30303 Telephone 404 524-8881

Code of Officials Signals

Non-contact Fouls

Offside (Infraction of scrimmage or free kick formation)	Illegal Procedure or Position	Loss of Down	Substitution Infractions	Clipping	Roughing the Kicker	Illegally Passing or Handling Ball Forward	Forward Pass or Kick Catching Interference	Start the Clock
Illegal Motion	Illegal Shift	Ineligible Receiver Down Field on Pass	Ball Illegally Touched, Kicked, or Batted	Incomplete Forward Pass, Penalty Declined, No Play, or No Score	Ball Dead; If Hand is Moved from Side to Side: Touchback	Delay of Game	Ball Ready for Play	Personal Foul
Touchdown or Field Goal	Safety	Time out; Referee's Discretionary or Excess Time Out followed with tapping hands on chest.	Helping the Runner, or Interlocked Interference	Illegal use of Hands and Arms	Grasping Face Mask	First Down	Player Disqualified	Intentional Grounding

Illustrations courtesy Collegiate Commissioners Association

another
joy of
southern
living



Luscious Hickory Smoked
Barbecue, Pork, and Beef
plus Brunswick Stew, Steaks,
Ribs, and Chick-Fil-A
There's a Location Near You

ATLANTA / CHATTANOOGA

To reach your savings goal fast

With complete safety

Take time out to open a savings account

At any of our convenient offices. Start now!

Interest compounded daily.
Accounts insured to \$20,000.

ATLANTA FEDERAL SAVINGS
Offices All Around Town
Main Office: Marietta at Broad

Before and After the Game

EAT IN — TAKE OUT

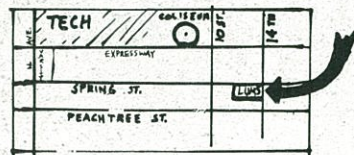
LUMS

- WORLD FAMOUS HOT DOGS
- SUPER JACKS
- ROAST BEEF
- FISH & CHIPS
- GOURMET SANDWICHES
- DRAFT BEER

ONE FREE 30¢ DRAFT

(with this ad)

OPEN MON.-SAT. — 11 A.M. TILL 1 A.M.



1145 SPRING STREET

872-3215

A
Good
"Team Builder"

ENJOY

Aristocrat

ICE CREAM

"ALL THE NAME IMPLIES"
ATLANTA, GA.

1971-72 Tech Basketball

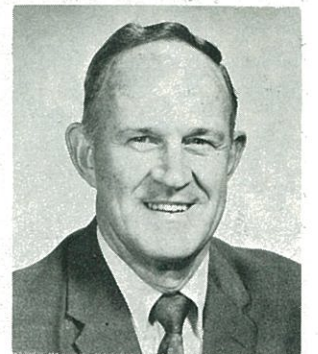
WITH FOUR three-year lettermen gone and a schedule that includes five post-season tournament teams of a year ago, 1971-72 should be a challenging season for Georgia Tech basketball coach Whack Hyder and assistants Byron Gilbreath and Butch Clifton.

But a couple of proven veterans plus some potentially very valuable newcomers will provide Hyder, entering his 21st campaign on The Flats, with a nucleus to continue his most recent success (two straight trips to the NIT).

Starters Robert (Peanut) Murphy, 6-2, and 6-1 guard Frank Samoylo will be back to help offset the loss through graduation of all-star center Rich Yunkus, team leader Jim Thorne, and forwards Tommy Wilson and Howard Thompson. Murphy, an exciting all-around athlete who averaged 10.9 points while playing mostly in the front court as a sophomore last year, probably will be used at guard this winter. Samoylo came into his own a season ago with a 7.5 average.

The other three starting berths are up for grabs. Transfer Karl Binns, whose 17.8 rebound average placed him third among the nation's junior college players, will battle letterman Clyde Fore, holdout Bruce Brown and sophomore Jim Gallman for center. Promising sophomore Steve Post (20.1 points on 57% shooting as a freshman) and redshirt Bob Schmidt will duel lettermen George Small and Tommy Hyder at forward. Other returning letter winners include guards John Hoggle and Tommy Taylor, while Terry Farrell and Bill Vinton also could enter the picture.

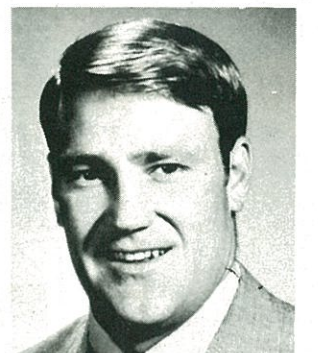
The Yellow Jacket home schedule lists dates with Georgia, Auburn, Alabama, Clemson, Florida State, Tulane, Ohio State and Notre Dame. Ticket information may be obtained by writing: Basketball tickets, Georgia Tech Athletic Assn., 190 Third Street, N.W., Atlanta, Ga. 30332.



JOHN "WHACK" HYDER
Head Basketball Coach



BYRON GILBREATH
Assistant Coach



BUTCH CLIFTON
Assistant Coach



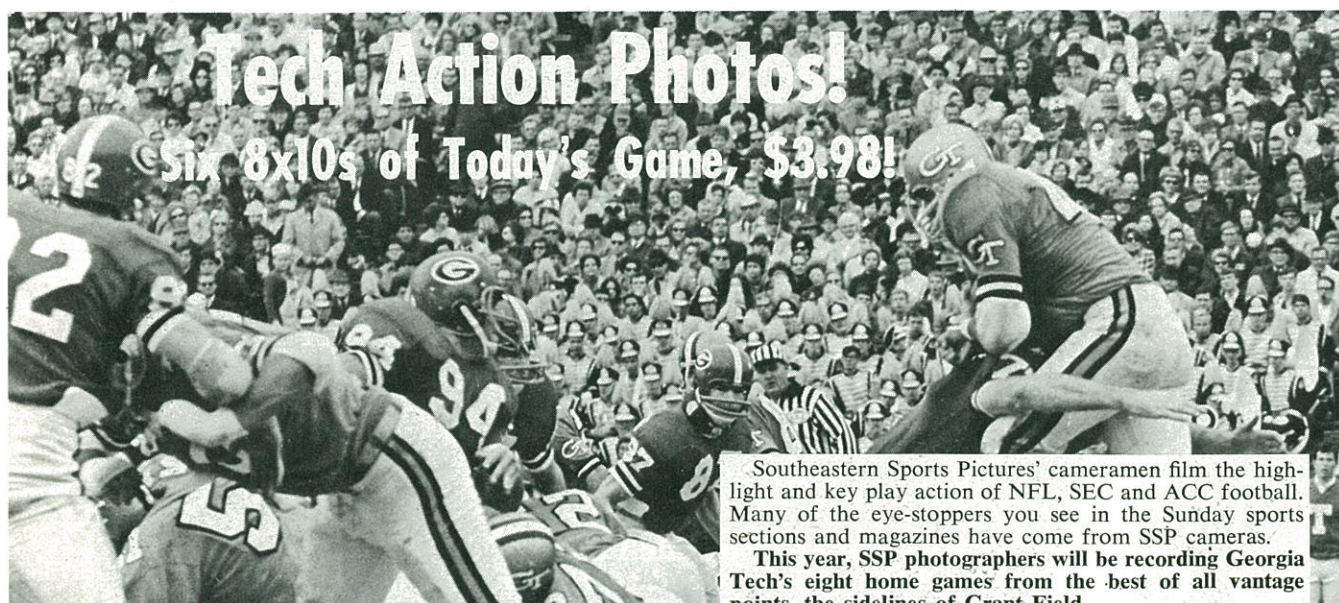
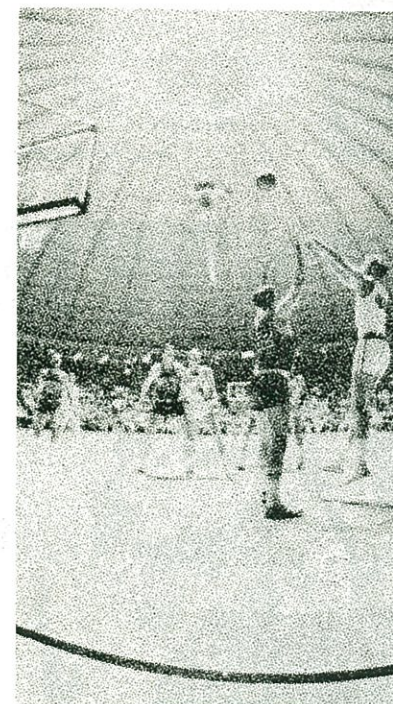
GEORGIA TECH'S 1971-72 BASKETBALL SCHEDULE

Tues.	Nov. 23	†Mexican Olympic Team	ATLANTA
Wed.	Dec. 1	Ohio State	ATLANTA
Sat.	Dec. 11	Auburn	ATLANTA
Sat.	Dec. 18	Southern Methodist	Dallas
Mon.	Dec. 20	William and Mary	ATLANTA
Wed.	Dec. 22	Furman	ATLANTA
Wed.	Dec. 29	*Charlotte Invitational	Charlotte
Thur.	Dec. 30	Tournament	Charlotte
Wed.	Jan. 5	Clemson	ATLANTA
Sat.	Jan. 8	Alabama	ATLANTA
Wed.	Jan. 12	Rice	Houston
Mon.	Jan. 17	Notre Dame	ATLANTA
Thur.	Jan. 20	Tulane	ATLANTA
Sat.	Jan. 22	Florida State	ATLANTA
Tue.	Jan. 25	Alabama	Tuscaloosa
Sat.	Jan. 29	Clemson	Clemson
Wed.	Feb. 2	Georgia	ATLANTA
Sat.	Feb. 5	Air Force	Colorado Springs
Mon.	Feb. 7	Kansas	Lawrence
Fri.	Feb. 11	†North Carolina State	Charlotte
Sat.	Feb. 12	†North Carolina	Charlotte
Tue.	Feb. 15	Auburn	Auburn
Sat.	Feb. 19	Florida State	Tallahassee
Wed.	Feb. 23	North Carolina	Chapel Hill
Sat.	Feb. 26	Randolph-Macon	ATLANTA
Mon.	Feb. 28	Tulane	New Orleans
Thur.	Mar. 2	‡Campus Crusade for Christ	ATLANTA
Tue.	Mar. 7	Georgia	Athens

*Davidson, Rutgers, Virginia Tech.

†North-South Doubleheader.

‡Does not count as NCAA game.



Tech Action Photos!

©Six 8x10s of Today's Game, \$3.98!

Southeastern Sports Pictures' cameramen film the high-light and key play action of NFL, SEC and ACC football. Many of the eye-stoppers you see in the Sunday sports sections and magazines have come from SSP cameras.

This year, SSP photographers will be recording Georgia Tech's eight home games from the best of all vantage points, the sidelines of Grant Field.

Following each game, SSP will accept orders for its packaged selection of six (6) glossy black & white 8x10 top action game photos for only \$3.98 per package. Mail the coupon (below) today with your check or money order and allow one week for delivery.

Southeastern Sports Pictures
P. O. Box 195, Pine Lake, Georgia 30072

Richard Kolb, Managing Editor

Southeastern Sports Pictures
P.O. Box 195, Pine Lake, Georgia 30072

Send me _____ of the SSP Six-Photo packages of today's game @ \$3.98 per package. I enclose my check (or money order) for \$ _____.

Name _____

Street _____

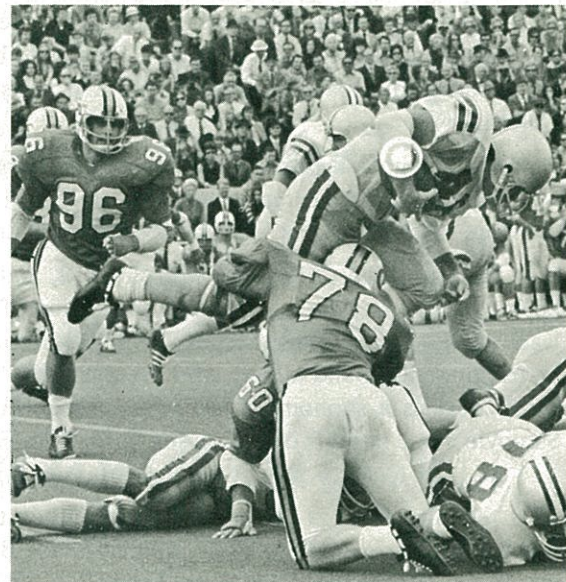
City _____ State _____ Zip _____

Yellow Jackets in Action



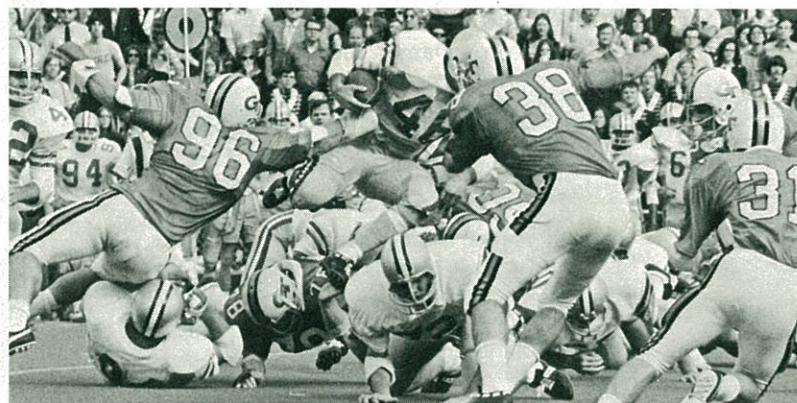
Sophomore Dick Bowley has developed into a very effective punter for the Yellow Jackets. He was hampered early in the season by injuries.

Photo by Deloye Burrell



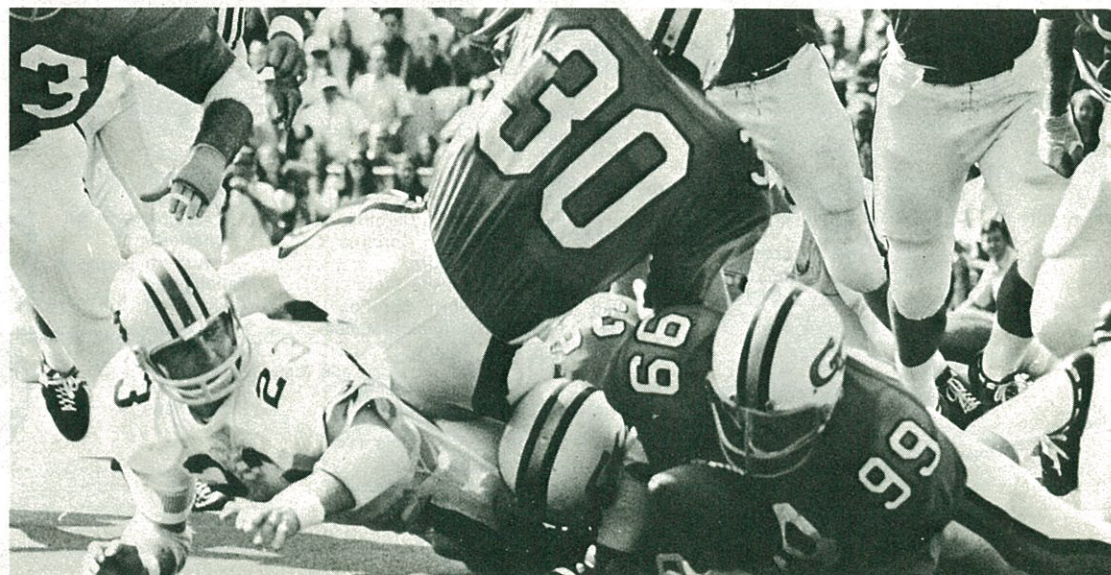
Tackle Joe Gaston (78) puts the hit to Duke's Steve Jones. Tommy Beck (96) comes up from the side.

Photo by Dick Kolb



End Tommy Beck (96), Stinger Stan Beavers (38) and defensive back Gary Wingo (31) close in on Duke's Steve Jones (46).

Photo by Dick Kolb



When you play Georgia Tech you know you've been in a football game. Here Randy Duckworth (99) recovers a fumble as Jeff Ford (30) assists in a tackle against Auburn.

Photo by Deloye Burrell

Sheraton's Football Weekend Package.

Our winning strategy: luxurious room with color TV, swimming pool, a cocktail in the Wine Cellar and breakfast in the Pavilion Coffee House—all for as little as \$16.80. (One person one night.)

Only \$23.25 for two persons. Two nights as low as \$31.20 one person, \$41.80 for two persons. Enjoy large, comfortable rooms. Old World luxury and elegance. Attentive personal service. Entertainment in the Wine Cellar. Wining and dining by candlelight in The Pavilion. You'll spend a winning weekend at the Sheraton-Biltmore Hotel. For reservations call (404) 875-3461. Or your Travel Agent.



Sheraton-Biltmore Hotel

WEST PEACHTREE STREET, PHONE: 875-3461
SHERATON HOTELS AND MOTOR INNS, A WORLDWIDE SERVICE OF IIT

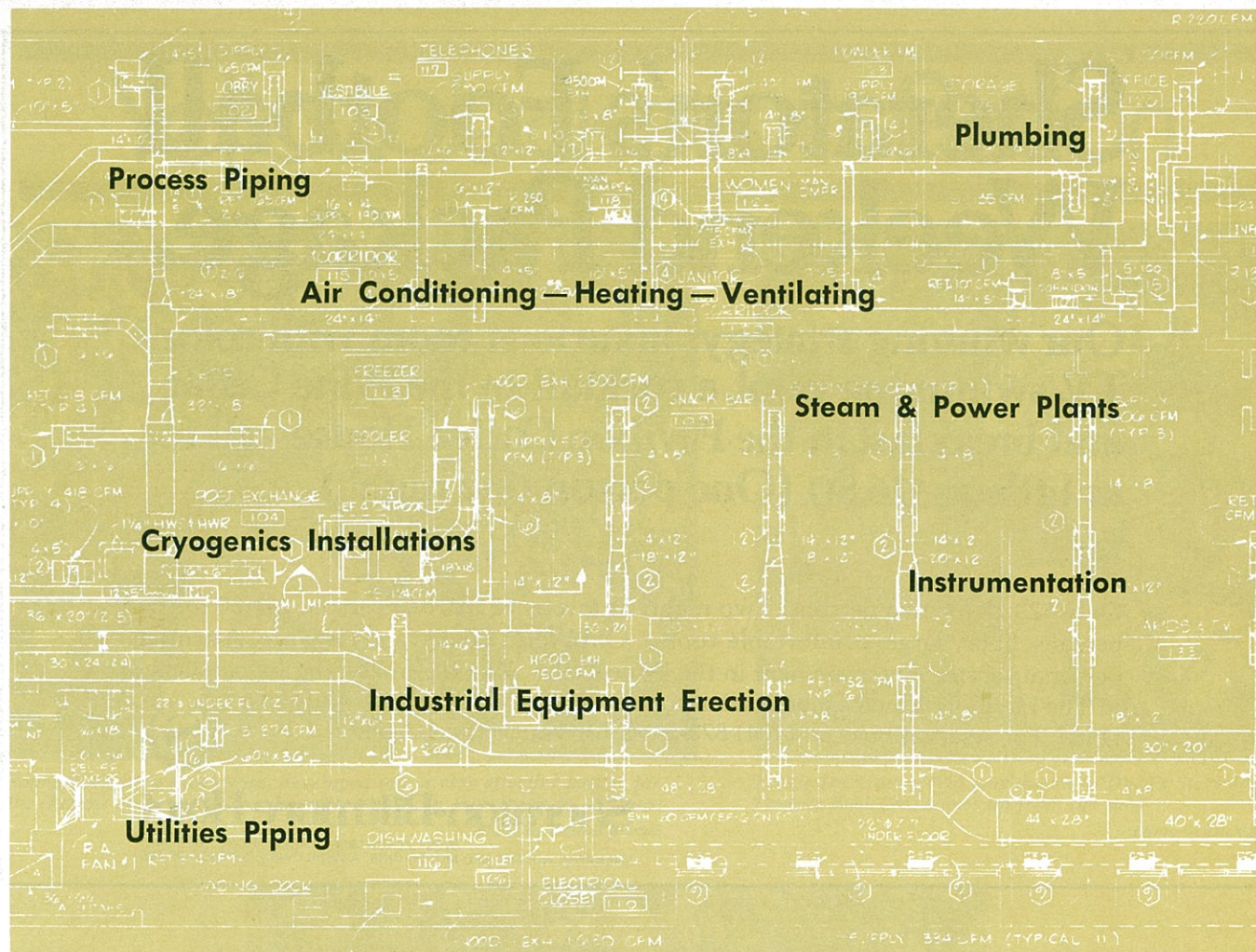
**WHEN TRAVELING
IN GEORGIA ENJOY
DAVIS BROS. CAFETERIAS
AND MOTELS**

At every Davis Bros. motel we treat all our guests as if they're on vacation! We make sure that there are always plenty of towels... the ice machine is never empty... the color television that's in every room always works. And the rooms are kept spotless. A Davis Bros. Cafeteria or Restaurant is always nearby with delicious food. FOR SPECIAL GROUPS, PARTIES OR BUSLOADS, CALL ANY DAVIS BROS. CAFETERIA OR CALL TOLL FREE 1-800-342-9340

Davis Bros.

Your Host Throughout the South!



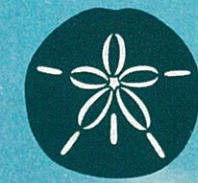


**CLIENT PROJECTS COMPLETED
OR IN PROGRESS**

AMERICAN CRYOGENICS
San Francisco, California
AIR PRODUCTS AND CHEMICALS INC.
Allentown, Pennsylvania
ALLIED CHEMICAL CO.
Columbia, South Carolina
ALTERMAN FOODS
Atlanta, Georgia
ATLANTA GAS LIGHT CO.
LIQUID NATURAL GAS
Atlanta, Georgia
HOBART MANUFACTURING CO.
Columbia, South Carolina
CENTRAL HEATING &
REFRIGERATION PLANT
Fort Jackson, South Carolina
HIGH TEMPERATURE WATER SYSTEM
Fort Jackson, South Carolina
EASTMAN KODAK CO. EXPANSION
Atlanta, Georgia


***We Extend
Our Best Wishes
To Coach Carson
and the 1971
Yellow Jackets!***

E. E. HUFF & CO.
MECHANICAL CONTRACTORS
424 ARMOUR CIRCLE, N.E.
ATLANTA, GEORGIA 30324
(404) 874-2214



The Sand Dollar APARTMENT MOTEL JEKYLL ISLAND, GEORGIA
OPENING SPRING 1972

LARRY MORRIS, DEVELOPER ONE DUNWOODY PARK SUITE 209 ATLANTA, GEORGIA 30341 (404) 458-4461



IT IS TRUE!
Ben Hyman's
diamond
buyers get
into the
most remote
places—just to
guarantee you
the best
diamond values
anywhere. It's a
fact—our diamonds
increase in value year
after year—buy wise—
head for . . .

BEN HYMAN
& CO., INC.

DIRECT FACTORY DISTRIBUTORS • JEWELERS

715 West Peachtree St., N.E.
Atlanta, Ga. 30308 / Tel. 875-9115

**Don't
Punt**

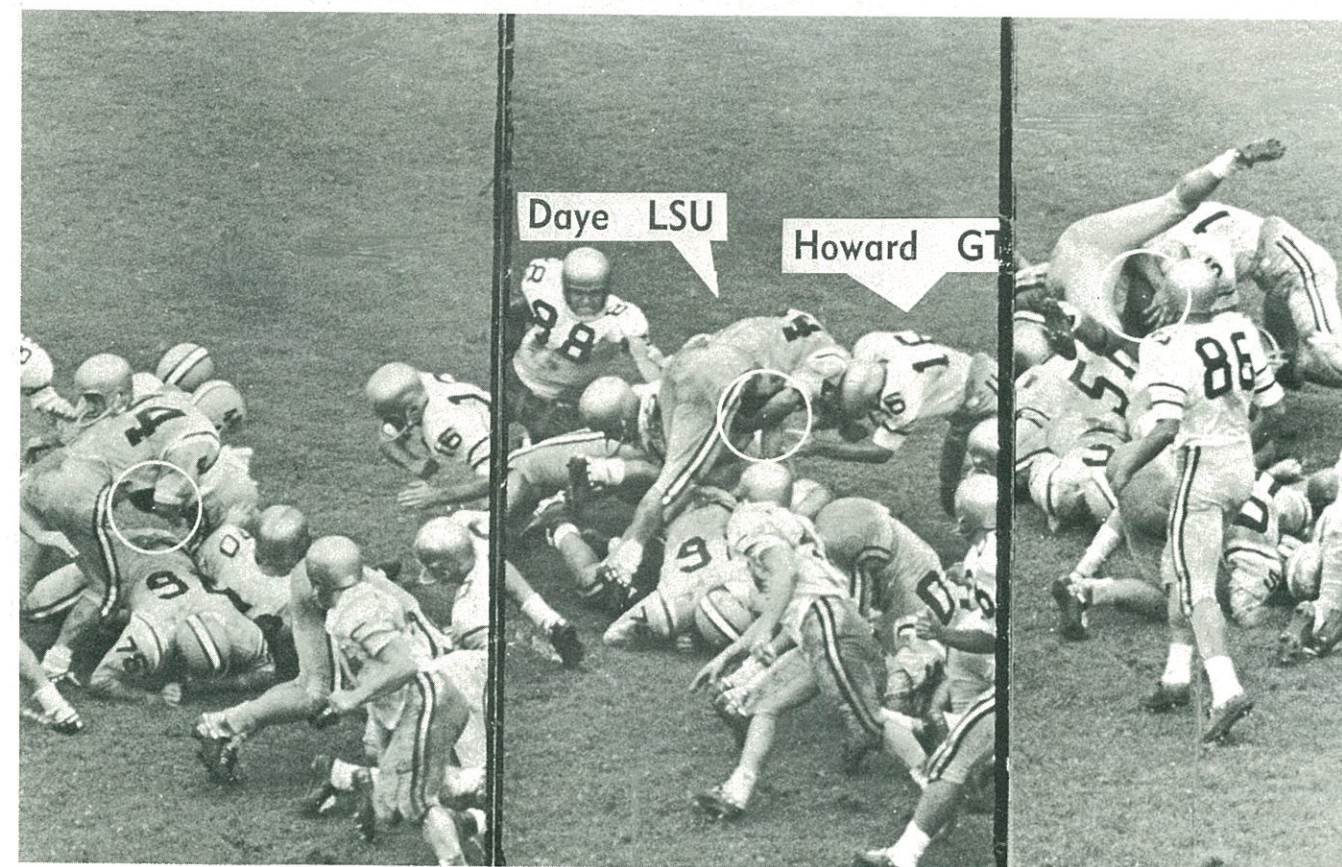
Your Dollars
Can Pick Up
Yardage At

PEOPLES AMERICAN BANK

Great Moments in



Sports History



Georgia Tech quarterback-safetyman Walter Howard makes a great tackle practically on the goal line to stop Louisiana State's fullback Donnie Daye and preserve a 6-2 Tech victory. The game was played at Grant Field, Atlanta, 1960. This play was the final one of the first half with Tech leading at the time 3-0. Louisiana State had driven the ball 51 yards to the Georgia Tech one where it was fourth down, goal to go and about 25 seconds to play. L.S.U. quarterback Jimmy Field handed off to Daye who, with good blocking on the line of scrimmage, seemed headed for a sure touch-down—until Howard came up from his safetyman position to meet him head-on right at the line of scrimmage and turn him upside down with the force of his tackle.

OFFICIAL PROGRAM

FOR THE BEST IN ROASTED, SALTED AND RAW PEANUTS
ASK FOR
NANCY FANCY OR JIMBO'S JUMBOS

Jimbo's Jumbos, Inc.
EDENTON, N. C.

In Atlanta Call or Contact

DANIEL MORDECAI COMPANY

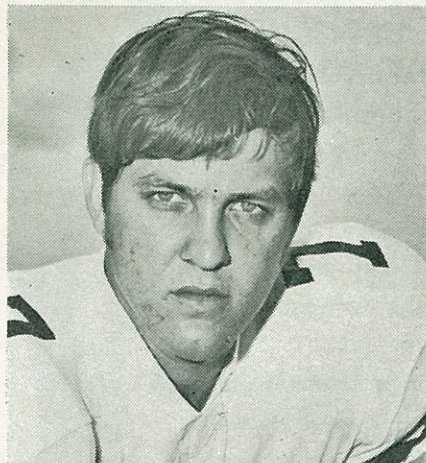
20 Executive Park—West, N. E. • Atlanta, Georgia 30329 • Telephone 636-7546



CLIMATE ENGINEERED BY  **CHRYSLER**
CORPORATION

HUBERT VEAL
CHEROKEE Heating COMPANY
HEATING . . . AIR CONDITIONING

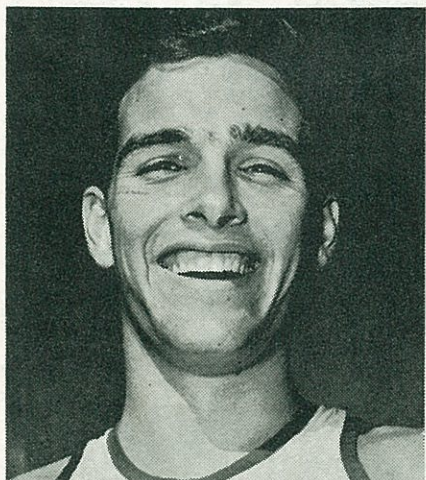
2000 Will Ross Court
458-2201 Chamblee, Ga. 30341



JOHN REAVES
University of Florida

"Drugs only keep you from facing reality. If you want to make something of yourself, to do your own thing as an individual, you have to face everything as it comes in order to gain confidence in yourself as a person. This is not possible when drugs are involved."

John Reaves, senior quarterback, Tampa, Florida. Holder of 11 Southeastern Conference passing records. Passed for 37 TD's in two seasons. Frequent speaker at youth functions. Was one of two Florida players to trek 20 miles for March of Dimes Walkathon. Majoring in marketing.



DAVE MORTON
University of Texas, Austin

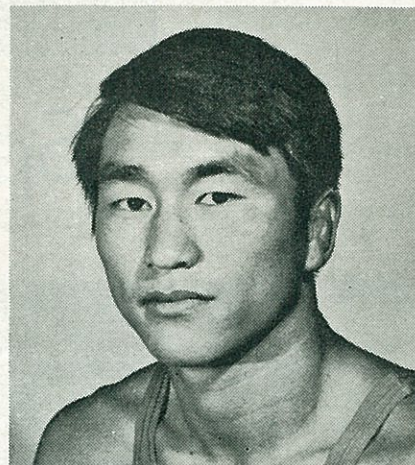
"I think that when you use drugs, you are coping out on yourself. You are admitting that you don't have the courage, or the imagination, to face reality. I would rather meet problems head-on and try to solve them than to run away and hide in the surreal world of drugs."

Dave Morton, senior trackman, Spring Branch, Texas. Team co-captain. Southwest Conference record-holder in 440 with time of 44.5. Anchor man on record SWC mile relay team, clocked at 3:07. SWC 880 champion last year. Anchor man on conference mile relay championship team three years in a row.

YOSHIRO FUJITA
Oklahoma State University

"Competitive athletics have permitted me to lead an active and healthy life. It has given me the strength to meet other challenges. It would be foolish to destroy all of this with narcotics. The same goes for smoking."

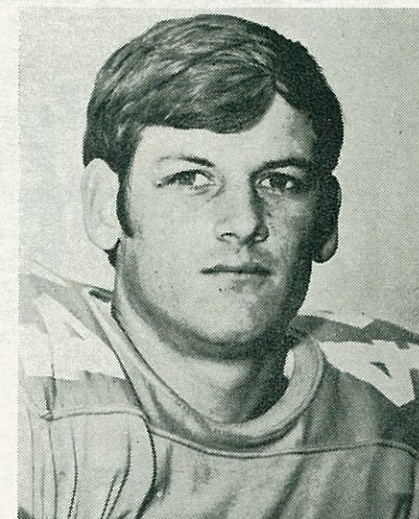
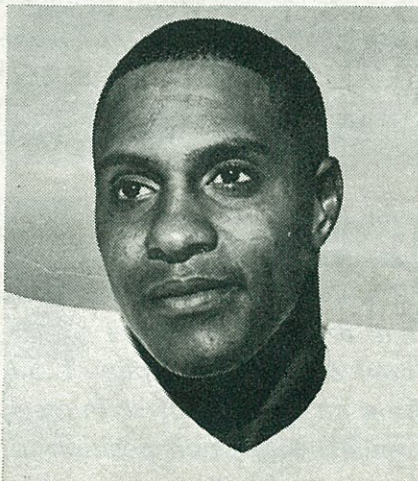
Yoshiro Fujita, senior wrestler, Hachinohe, Japan. Won NCAA title at 126 pounds in 1971, completing an undefeated (28-0) season. Closest match in the championship was an 11-2 decision. Attended Japan's Senshu University for one year before coming to Oklahoma State. Majoring in education.



JOE PEYTON
University of Puget Sound

"Statistics on drugs give evidence that the user is not in a complete state of physical, mental or social well being. An athlete, striving to perform at his best, which should be the aim of every athlete, never should consider anything which might impair his performance."

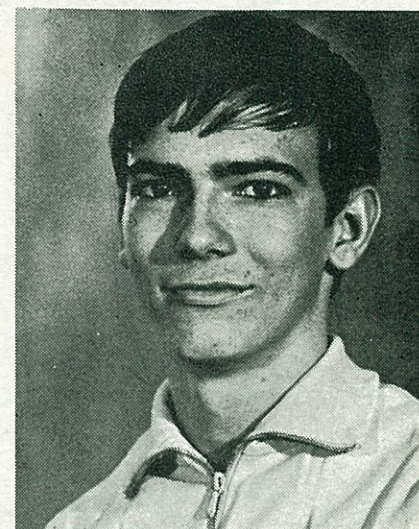
Joe Peyton, head track coach. Won 11 letters at University of Puget Sound from 1963-66. Only season he didn't receive a letter was during one basketball season which he sat out due to a broken leg suffered in football. Little All-America football selection. Set school records in high jump and long jump. A former Green Beret sergeant. Earned B.A. and M.A. in Physical Education from UPS.



BOBBY MAJORS
University of Tennessee

"The use of drugs, very common today, is something we must face up to. The man who can do without drugs is much better off than the man who uses them. Drugs are harmful to the body and may damage the brain. Be a better man and don't take a chance with drugs."

Bobby Majors, senior defensive back, Sewanee, Tenn. Led nation in pass interceptions with 10 in 1970. Helped Tennessee establish Southeastern Conference record with 36 aerial thefts. Both kicks and returns punts. Older brothers John, now coach at Iowa State, and Bill, also starred for Vol eleven. Majoring in education.



CARL WALLIN
University of Iowa

"As a gymnast, I've flipped over lots of things, but I've always maintained a strong posture against drugs. Drugs and athletics do not mix."

Carl Wallin, sophomore gymnast, Hinsdale, Illinois. One of Iowa's outstanding performers as a freshman. Specialized in high bar. Runner-up in that event at Big Ten Invitational meet. 3.25 grade-point average. Majoring in mathematics.



Tech steps out in style

Tech's Yellow Jackets get the gold carpet treatment from a couple of loyal Joes—Joe K. McCutchen, Sr., '32 and Joe Jr., '62 shown here with Coach Bud Carson. Universal's *Venezia* now covers the floors of locker, dressing and shower rooms. Deep-piled and plush, this new indoor-outdoor carpet is seen in the very best places—country clubs, luxury apartments and executive offices. But for all its elegance, *Venezia*, made with Enjay® yarns, is tough, durable, stain-resistant and absorbs a minimum of moisture—stands up to the kind of wear it's sure to get from a swarm of Yellow Jackets!

UC universal
carpets inc.
Ellijay, Georgia

Joe K. McCutchen, Sr., Chairman of the Board
Joe K. McCutchen, Jr., President

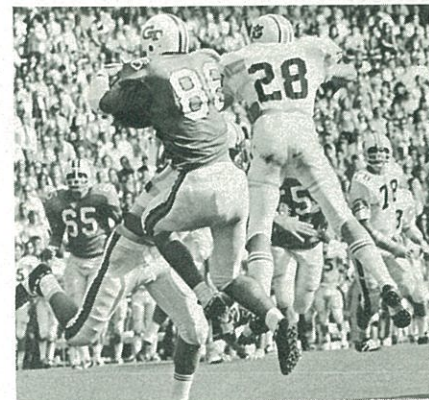
You're only 4,400 yards from Underground Atlanta.

Come on down after the game.
Hunter Street and Central Avenue.

Continued from Page 8

a library, municipal sports park and possibly a high school will be built in this final phase of development.

NewBurke planners are now seeking land bankers or industrially interested investors. Investors can buy the land cheaply now, hold it for the people of NewBurke, and eventually sell it back to residents for development of their town. Individuals interested in this low-risk tax shelter can write to P.O. Box 562, Atlanta, Georgia 30301.



Tight end Mike Oven (86), Georgia Tech's leading receiver, goes high to catch a pass against Auburn. Other identifiable Yellow Jacket is guard Vernon Jackson (65).

So You Think You Know the Rules

So you think you know collegiate football rules. Here's a brief quiz to test your knowledge of the game.

1. Team A is attempting to punt. A team B player blocks the kick and a teammate knocks down the kicker. A roughing the kicker penalty will be assessed against Team B.
True or False?
2. When team A is trying to kick an extra point, the holder is tackled by team B.
What is the ruling?
3. Team A's punt fails to cross the neutral zone. A team B player pushes a team A player in trying to reach the ball.
A. Team B is penalized for a personal foul.
B. The play is blown dead and team A is allowed to punt again.
C. The play is blown dead and team B, if it was a fourth-down punt, takes over the ball at the original line of scrimmage.
D. The ball is free and all players are eligible to touch, recover or even advance the ball. Therefore, the play is legal.
4. Team A's end runs a hook route and winds up facing his quarterback just over the goal line. He catches the pass, but the ball does not cross the goal line. He is tackled from behind by team B and pushed back out to the one.
Touchdown, Yes or No.
5. On the last timed down of either half, team A scores a touchdown. But team A is guilty of holding, while team B is offsides.
A. The penalties are offsetting and the down is replayed.
B. The touchdown counts, but team A is not allowed to try a conversion.
C. The half is ended and the touchdown does not count.
D. The touchdown counts because team B was offsides before team A held.

RULE QUIZ ANSWERS

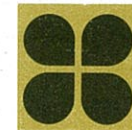
1. True. Only the player who blocks the
2. It is a legitimate play. The holder is
3. D.
4. There is no touchdown. The ball must
5. C. The half is ended. When the time

Crow, Pope & Land Enterprises now offers complete real estate development services.

- CROW, POPE & LAND MANAGEMENT COMPANY
- CROW, POPE & LAND CONSTRUCTION COMPANY
- ENTERPRISE REALTY & MORTGAGE COMPANY

GEORGIA TECH GRADUATES

Ewell G. Pope	Partner	CPL Enterprises	1950
A. J. Land, Jr.	President	CPL Enterprises	1960
William W. Ranck	Managing Partner	CPL Enterprises	1961
Guy G. Carmichael, Jr.	Managing Partner	CPL Miami Office	1961
Thomas K. Winingder	Managing Partner	CPL Enterprises	1963
Ruben M. Cansler	Project Engineer	CPL Construction	1964
W. Jack Hamilton	Vice President	CPL Management	1966



CROW, POPE & LAND ENTERPRISES, INC.

1100 Spring Street, N.W., Atlanta, Georgia 30309 / 875-7431

Looking For A



Business Home?

Looking for a warehouse with class? Want to locate or relocate in Atlanta? Contact Johnny Hunsinger and Walter Boden, hardworking commercial real estate entrepreneurs who can find what you're looking for in a Business Home with Space. "A Warehouse Wall by a Waterfall, Where the Railroads Call!" 351-6813.



JOHN HUNSINGER & COMPANY

Industrial and Commercial Real Estate

1819 Peachtree Road N.E.

Atlanta, 30309

Telephone 351-6813



The JAMES T. MILLS Agency

General Agent for Georgia

P. L. Bealy Smith, CLU—General Agent Emeritus
705 Fulton Federal Bldg. Atlanta, Georgia

CONNECTICUT MUTUAL LIFE

INSURANCE COMPANY

The Blue Chip Company

ASSOCIATES WHO ARE TECH ALUMNI



CHARLES E. ALLEN, CLU



JOHN R. HOWARD, JR.
CLU



JAMES T. MILLS
CLU



JOHN J. McHUGH, III



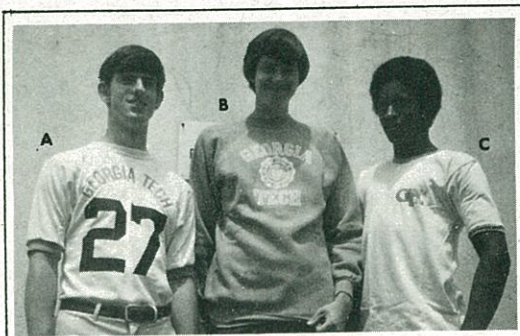
WILLIAM C. WALDEN

A wide-angle photograph of the University of Michigan Stadium, taken from an elevated position behind the end zone. The green football field is in the foreground, with white yard lines and the yellow goalposts visible. The stadium's seating bowl is filled with rows of grey seats, curving around the field. In the background, the city of Ann Arbor is visible, including the prominent Spalding Tower and other urban buildings under a clear sky.

RCA STEREO

A detailed black and white line drawing of a large, ornate wooden cabinet or hutch. The cabinet features multiple doors with decorative panels and shutters. On top of the cabinet, there are two tall, thin vases or candles, a small clock, and other decorative items. A potted plant is visible on the left side of the cabinet.

GEORGIA TECH



GEORGIA TECH SOUVENIRS

CIRCLE SIZE — ENTER AMOUNT

- | | | | |
|---------------------------------------|---------------------|--------------|-------|
| (A) Men's Football Jersey | S M L XL | (\$5.95) | _____ |
| (B) Men's Long Sleeve Gold Sweatshirt | S M L XL | (\$3.65) | _____ |
| Child's Long Sleeve Gold Sweatshirt | 2 4 6 8 10 12 14 16 | (\$2.95) | _____ |
| (C) Men's Gold Trim Tee Shirt | S M L XL | (\$1.95) | _____ |
| Child's Gold Trim Tee Shirt | 2 4 6 8 10 12 14 16 | (\$1.75) | _____ |
| Enclose Check | Postage & Handling | .50 | _____ |
| | | TOTAL | _____ |

ENGINEER'S BOOK STORE

252 NORTH AVE., N.W. • ATLANTA 30313 • PHONE 404/873-1660

Hendricks Novelty Company



BANNERS — FLAGS — PENNANTS
NEW YEAR PARTY FAVORS

CARNIVAL GOODS	HULA SKIRTS
CIRCUS GOODS	LEIS
PLUSH ANIMALS	STEM BARWARE
BALLOONS	NOVELTY HATS
POLYETHYLENE ICE CHESTS	

DISTRIBUTORS OF SIX PACK THERMO COASTERS

WHOLESALE ONLY

622-6486

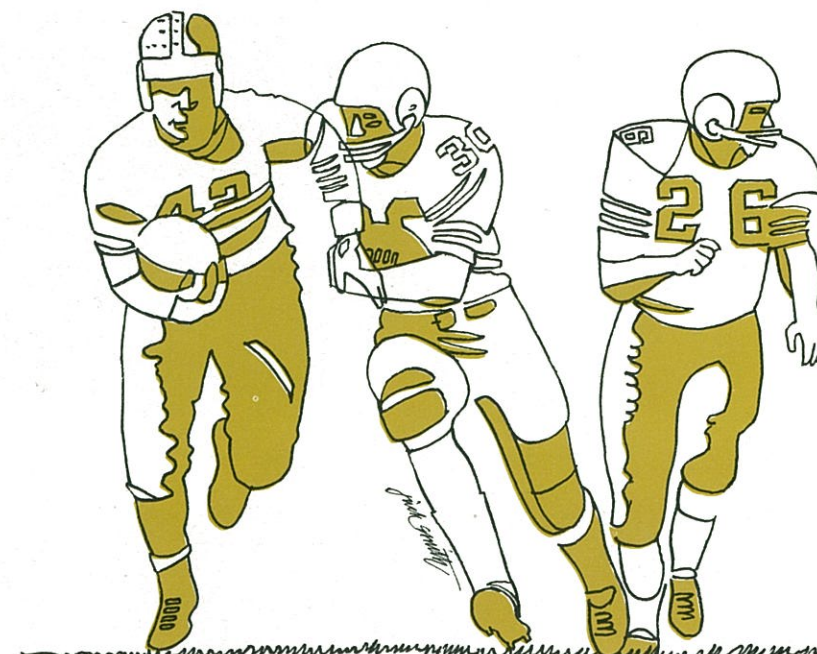
537 GRESHAM AVE., S.E. — ATLANTA, GA. 30316



dial **457-6339**

BOX 80468, CHAMBLEE, GA.

Out of the Past



44 YEARS AGO ... Nov. 13, 1927 ... Golden Tornado relaxing after surprisingly easy 23-0 win over Louisiana State day before ... Coach Alex starts nearly entire second unit against LSU (and next two games against Oglethorpe and Auburn) as regulars concentrate on season-ending date with Georgia ... Bob Randolph, Bob Parnham (who also intercepts two passes) and 17-year-old Harold Faisst score against Louisiana State ... following Saturday Tech regains city championship by beating Petrels, 19-7 ... Warner Mizell rushes for 121 yards and scores two fourth-quarter touchdowns ... Tornado strategy works as previously unbeaten Georgia falls, 12-0 ... key win had come in third game of season, 13-0, over Alabama ... Tech wins Southern Conference title with 7-0-1 record, finishes 8-1-1 overall ... back Stumpy Thomason, center Peter Pund, tackle Frank Speer and end Ed Crowley make all-conference.

19 YEARS AGO ... Nov. 13, 1952 ... Yellow Jackets prepare to meet Alabama two days later ... Tide provides stiff test, but Tech pulls out 7-3 victory in classic struggle ... game nationally televised from Grant Field ... live crowd of more than 40,000 ... Leon Hardeman sits out with injured ankle, but Bill Teas and Glenn Turner take up slack with 115 rushing yards each ... Jackets spot Alabama first-period field goal, then Dick Pretz scores on nine-yard sweep in second quarter ... Jake Randolph makes game-saving tackle to stop one Tide threat ... INS names 11-0 Tech national champion, A.P. and U.P. rate Jackets second ... six Jackets make all-America: tackle Hal Miller, Hardeman, linebacker George Morris, defensive back Bobby Moorhead, center Pete Brown and end Buck Martin ... Tech beats Mississippi, 24-7, in 1953 Sugar Bowl.

2 YEARS AGO ... Nov. 13, 1969 ... Georgia Tech winds up serious workouts for upcoming Notre Dame battle ... Jackets established as severe underdog against Orange-Bowl-bound Irish ... Grant Field night game nationally-televised ... Jacket mistakes contribute to 38-20 Notre Dame win as Irish jump to 21-0 first-quarter bulge ... but final three periods mark turning point for Gold and White ... Jeff Ford scores on intercepted pass from Tech end zone, Herman Lam on 28-yard pass from Dexter Hoffman, and Ken Bounds on one-yard run ... Jackets maintain pace by upsetting Georgia, 6-0, in season finale ... quarterback Jack Williams directs 80-yard second-quarter touchdown drive in 13 plays and scores himself on one-yard plunge ... Tech defense stops Bulldogs at every turn ... Bubba Hoats intercepts three passes ... shutout gives Jackets 4-6 season record.

BLALOCK MACHINERY & EQUIPMENT COMPANY, INC.

SMALL ENGINE DIVISION

DISTRIBUTOR FOR



675 West Whitehall Street, S.W., Atlanta, Georgia • BRANCH: 848 Oglethorpe Street, Albany, Georgia



before/after the game... stay in the Georgia Tech neighborhood

Eliminate congestion.
We're glamorous, convenient,
have a good cook and a fine
bartender... and we're just
across the freeway from the
Tech campus.
Walking Distance Tech Stadium
FREE INDOOR PARKING

QUALITY HOTEL CENTRAL

10th St. Exit at Freeway
875-7222
COPPERFIELD LOUNGE
COVENTRY RESTAURANT

Headquarters For:

PUMA NO. 145 ALL PURPOSE SHOES
Great for Soccer, Football,
L.L. Baseball
sizes 1-14 at only \$9.95

GA. TECH JERSEYS
boys' sizes S, M, L \$5.95
men's sizes S (34-36), M (38-40),
L (42-44) \$7.95

GA. TECH HELMETS
white, with stripes & (G.T.) decal
boys' sizes S, M, L \$9.95

YOUTH STRETCH FOOTBALL PANTS
snap-in hip pads, removable thigh
pads & knee pads \$8.95

GA. TECH CLOCKS
Battery powered, mascot face.
Hangs attractively anywhere. \$24.95



PLEASE SEND ME...

MAIL YOUR ORDER IN TODAY

NAME

ADDRESS

() C.O.D. () CHECK ENCLOSED CITY STATE ZIP

Add 3% sales tax plus \$1.50 for postage and handling.

REEDER & MCGAUGHEY



SPECIALISTS IN SPORTS SINCE 1936

Downtown: 522-8757
52 Broad Street, N.W.
Atlanta, Georgia 30303

North DeKalb Center: 633-6322
2024 Lawrenceville Highway
Decatur, Georgia 30030



Commercial and Industrial Real Estate

Johnny Gresham Jerry Priestley

1819 Peachtree St.
Suite 302
Atlanta, Ga. 30309
404-351-6128

**GRESHAM
REALTY CO.**

THE PRO WAY TO GO



Wherever you're headed—hunting, fishing,
camping—go with a pro. Go with the
tough BIG 6 TOYOTA LAND CRUISER.

- **POWERFUL:** 6-cylinder, 145 hp engine
- **FAST:** Cruises the highway at 85 MPH
- **CONVENIENT:** Shifts into 4-wheel drive without stopping
- **AGILE:** Climbs 71% grades
- **VERSATILE:** 9 forward, 3 reverse gear combinations
- **RUGGED:** Heavy duty chassis... tank-tough construction throughout
- **COMFORTABLE:** Foam cushion seats... carries 7 men and their gear

TOYOTA LAND CRUISER
4-WHEEL DRIVE

Hardtop • Vinyl Top • Newly Restyled Station Wagon
Parts / Service available Coast to Coast.



WW Tires
Tinted Glass
Undercoating
Wheel Covers
Standard Equip.

102 HP
\$1918

TOYOTA

Get Your Hands On A Toyota
and You'll Never Let Go

DOWNTOWN Toyota, Inc.

SERVICE CENTER
370 PEACHTREE
PHONE 523-6262

SALES OFFICE
560 W. PEACHTREE ST., N.W.
PHONE 875-0007 — ATLANTA, GA.

Builder and Do-It-Yourself Headquarters for:

INTERIOR & EXTERIOR PLYWOOD • CARPETING
PREFINISHED PANELING • CEDAR SIDINGS
SHAKES • SUSPENDED CEILING MATERIALS
SPLIT RAIL FENCING • INSULATION

PLY MART

2717 E. Ponce de Leon Ave.
Decatur, Ga.
Phone 373-2595

1581 Connally Dr.
East Point, Ga.
Phone 762-5535

1060 N. 4-Lane Hwy.
Marietta, Ga.
Phone 427-7335

Moving red clay and rock... to shape a better Georgia.

We're in a down-to-earth business. Laying the ground work for a better Georgia. Schools. Highways. Buildings. Natural resources. For more than 50 years. Buy with confidence from the nation's oldest Caterpillar dealer.



YANCEY BROS. CO.
ATLANTA • AUGUSTA • MACON
Caterpillar, Cat and  are Trademarks of Caterpillar Tractor Co.



Summary of Penalties

(Includes Only Most Common Penalties)

LOSS OF DOWN—Forward pass illegally touched • *Illegal forward pass by offense • *Intentionally grounding forward pass • **Offensive pass interference

LOSS OF 5 YARDS—Delay of game • Exceeding 25-second count • Excess time out • Failure to pause full second in shift • False start • Free kick out of bounds • Illegal forward pass • Infraction of substitution rules • Interference with opponents or ball preceding snap • Offense illegally in motion at snap • Offside • Snapper's position and ball adjustment • Taking more than 2 steps after fair catch • Infraction of scrimmage formation

LOSS OF 15 YARDS—Delay of game at start of half • Butting with helmet or head • Clipping • Defense disconcerting signals • Failure to return ball to official after score • Grasping face mask of opponent • Illegal use of hands • Ineligible receiver downfield • Piling on • Roughing the kicker or holder • Tackling or blocking fair catcher • Tackling out of bounds after ball is dead • Unsportsmanlike conduct (non-contact foul) • Unnecessary roughness (kicking, kneeling, tripping, etc.)

LOSS OF HALF DISTANCE TO GOAL LINE—If penalty exceeds half the distance to goal

OFFENSE FIRST DOWN ON 1-YARD LINE—Defensive pass interference in end zone • Defensive foul behind goal line on running play.

PLAYER DISQUALIFIED—Striking with a fist, extended forearm, elbow or locked hands • Flagrant player fouls

*Plus 5 yards
**Plus 15 yards

OFFENDED TEAM'S BALL AT SPOT OF FOUL—Defensive pass interference • Illegally batting or kicking free ball • Player fouls when ball is free

VIOLATION, BUT NO PENALTY (Does not offset penalty by opponent)—First touching of free kick by kicking team before ball travels 10 yards • First touching of scrimmage kick by kicking team beyond the neutral zone



You Can't Beat a Shuttle Bus to the Tech Games

Service begins 1½ hours before each game, continuing till after its conclusion. Transfers honored from and to other Transit System lines.

DATE	OPPONENT	KICKOFF
Sept. 18	Mich. State	2:00 PM
Sept. 25	Army	2:00 PM
Oct. 2	Clemson	2:00 PM
Oct. 16	Auburn	2:00 PM
Oct. 30	Duke (H.C.)	2:00 PM
Nov. 6	Navy	2:00 PM
Nov. 13	F.S.U.	2:00 PM
Nov. 25	Georgia (Frosh)	2:30 PM
Nov. 25	Georgia (Nat'l TV)	8:05 PM



AMERICAN SIGHTSEEING TOURS—

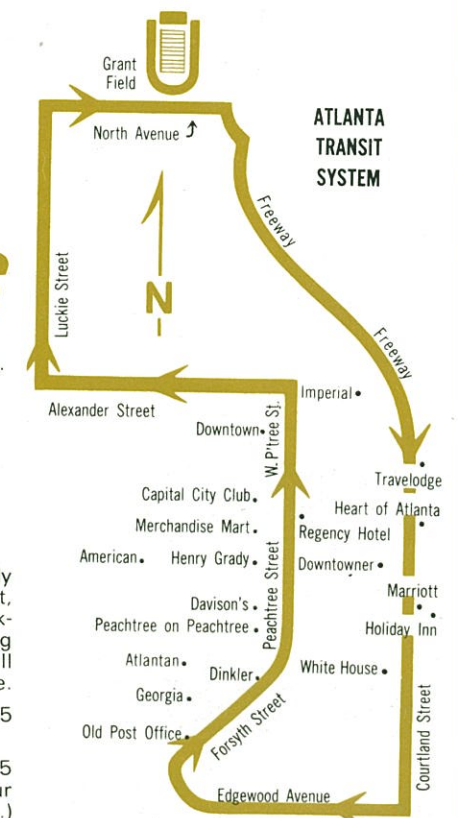
leave Peachtree & Broad Street daily covering over 100 points of interest, including the Cyclorama. Earlier pickups, by reservation only, at leading downtown hotels and motels. Call 524-7176 at least one hour in advance.

TOUR #1—5 hours / 55 miles / \$5.75
Departs at 10:00 a.m.

TOUR #2—3 hours / 35 miles / \$4.75
Departs at 1:30 p.m. (Identical to Tour #1 except it excludes Stone Mountain.)

For Chartered Buses and Custom Service: Call 524-2492

ATLANTA TRANSIT SYSTEM



EXACT-FARE ONLY—40¢ CASH OR TOKEN

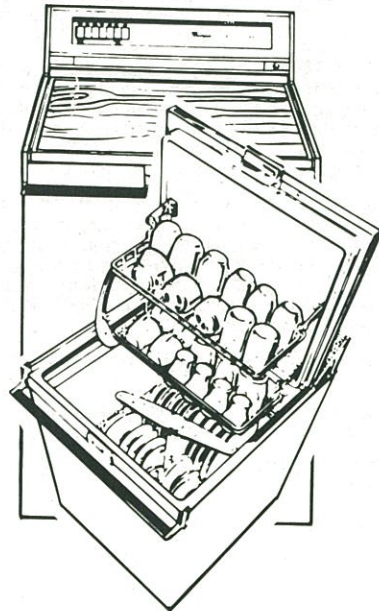
DELIGHT IN THE COMFORT OF A Whirlpool HOME!



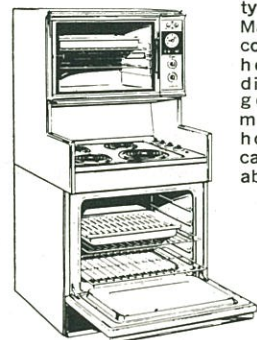
Whirlpool offers you revolutionary refrigerators...never need defrosting...makes ice automatically...there's a model and a color that will enhance the attractiveness of your kitchen and offer you unprecedented flexibility in your kitchen.



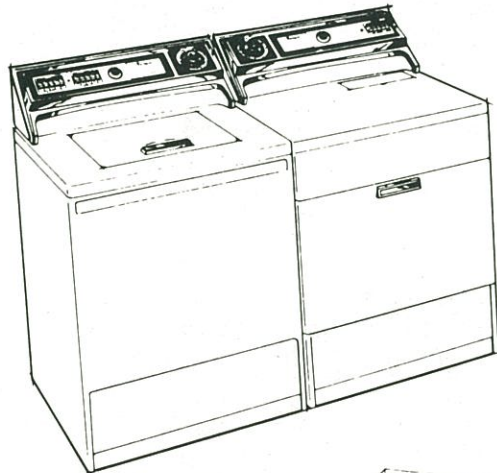
that make life easier for the queen of the house...



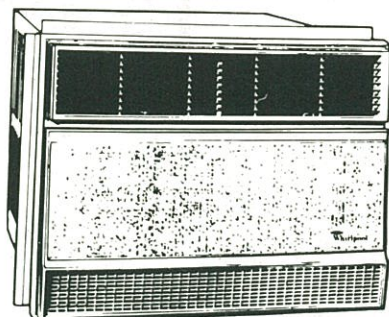
End dishwashing drudgery once and for all with a new Whirlpool dishwasher...jet action, super-wash cycle. Choose from 5 decorator colors to blend with your kitchen decor. And in top or front loading models.



Connoisseur ranges add dramatic beauty to your kitchen. Marvelous cooking conveniences that help you create dishes fit for a gourmet...matching vent hoods and base cabinets are available.



This washer-dryer pair does just about everything but sort your laundry for you. The washer offers ten automatic washing cycles. The three speeds let you wash dainty things...small hand wash loads...and washable woolens. The style-matching 2 speed dryer has the automatic MOISTURE MINDER® control that shuts off the dryer at the touch of dryness you like. Gas or electric models available.



The temperature you set is the temperature you get with a WHIRLPOOL "Kitchen-Quiet" air conditioner. Exclusive COMFORT GUARD control anticipates temperature change and compensates for it.



Whatever the size of your family, there's a Whirlpool upright or chest freezer that'll keep plenty of their favorite foods right at hand in "zero-degree" cold. Select a No-Frost model that never needs defrosting.

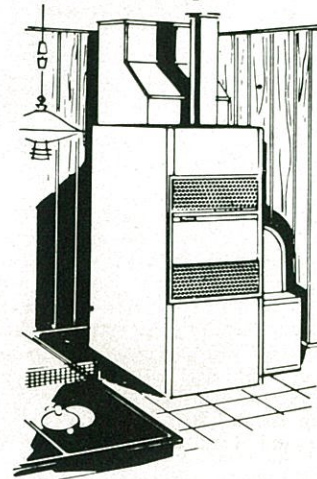
WE'VE GOT THE MODEL, SIZE AND PRICE TO SUIT YOU!

Whirlpool

423 ARMOUR CIRCLE-ATLANTA

THERE'S A Whirlpool APPLIANCE FOR EVERY HOME NEED!

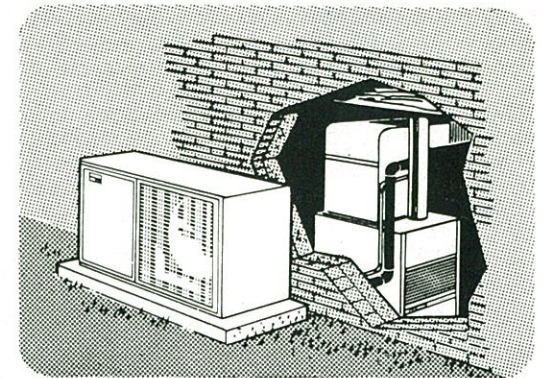
a style and size that's ideal for your home.



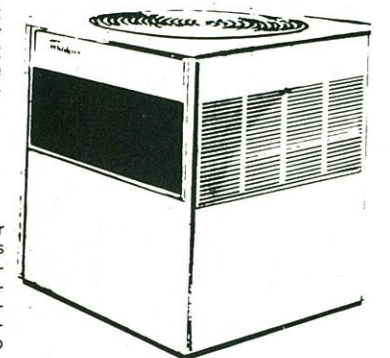
A Whirlpool Jack-Vac Central vacuum system is a must for any home...easily installed in existing homes as well as new homes.

Whirlpool has a full line of central oil and gas-fired warm air heating systems...all designed to provide you with the ultimate in heating comfort as well as the minimum in installation service and cost.

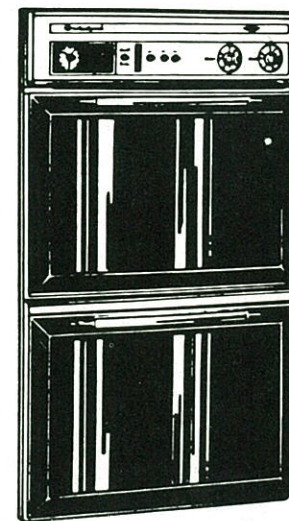
And, with a Whirlpool furnace, you get both modern cabinet design and colors—two-tone grey with contrasting coral panel. With its handsome appearance, there's no need to "hide" it away.



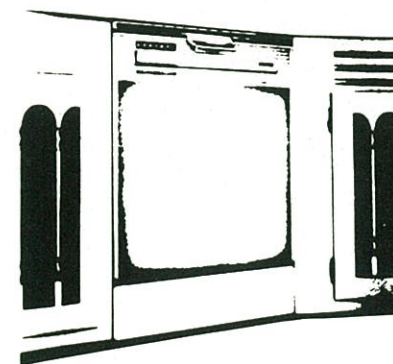
Whirlpool central air conditioning equipment is designed in a wide range of models and capacities to fit your home...be it large or small. Add it to an existing warm air system, or make it part of a brand new heating-cooling installation.



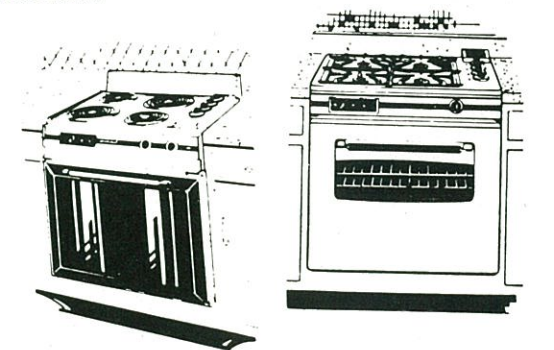
This Gas central air conditioner assures you of efficient cooling, dependable service and is newly redesigned to be an attractive accessory to your outside decor.



Design your own range? You do just about that when you choose a Whirlpool built-in oven. There are many convenience features...so many "quick clean" features, too. Gas or Electric available.



A built-in Whirlpool dishwasher combines extreme attractiveness with exceptional cleaning. Matching any decor...this is a must convenience for your home.



The attractiveness and utility of a Whirlpool built-in range makes oven and surface cooking convenient and sure. Easy to clean features and appropriate control keeps you in complete charge of your cooking. Makes a good cook even better. Gas or electric available.



Add a small but mighty and modern appliance to your kitchen...a Whirlpool food waste disposer. It handles all types of food wastes, quickly and quietly.

SEE YOUR FAVORITE DEALER or
CALL 873-6881

Whirlpool

Where are they now?

By R. DAN DAVIS, Assistant Executive Secretary,
Georgia Tech National Alumni Association



Ray M. Beck—Class of 1953. Ray Beck is certainly known for his outstanding play as a guard on the 1951 Yellow Jacket team. Finishing a great season Ray was selected on several all-America teams and was named on the all-SEC team. He is a member of the Tech All-Time Football Team under Coach Dodd.

An active student at Tech, Ray was a member of Phi Delta Theta fraternity, the "T" Club, ROTC and was selected to Who's Who in American Colleges and

Universities.

After graduation in 1953 Ray continued to use his ability as a football player and his knowledge of Industrial Management. He served in the Army for two years as a First Lieutenant and during that time he received all-Army and all-Service football honors while at Fort Jackson. After the service Ray played four years of professional football with the New York Giants. He is now president of the Cedartown-Atlanta Freight Lines, Inc. in Cedartown.

Ray's interest in Georgia Tech has continued through his service on the Board of Trustees of the National Alumni Association and in his membership in the Friends of Georgia.

Civic accomplishments include past president of the Cedartown Chamber of Commerce, trustee of Polk General Hospital, director of the Liberty National Bank, vice president of the Georgia Motor Trucking Association and member of Cedartown Development Authority. In 1959 Ray was selected as "Young Man of the Year" in Cedartown. Ray is also a member of the Masons and Shriners and attends the First Baptist Church in Cedartown.

He is married to the former Claire McKay of Etowah, Tennessee. They have three children. Tommy, who is a member of this year's Tech football team, Mike, and Kyle. Ray and Claire reside in Cedartown.



William H. Jordan—Class of 1938. Bill came to Georgia Tech by way of Anniston High School in Anniston, Alabama and McCallie School in Chattanooga. In an age of outstanding athletes he was a classmate of Tech players such as Ed Jones, Jack Chivington, Jack Nixon, Harry Appleby, Dutch Konemann and Fletcher Sims.

An all-round athlete Bill lettered in football, basketball and baseball at Georgia Tech. In football he played left end and was unanimously selected on the all-Southeastern Conference team in 1937. Bill is a member of the Tech Football Hall of Fame and also is on the Tech All-Time Football Team under Coach Alexander. Not only talented in football Bill will be long remembered for his superb ball-handling in basketball. He was an all-SEC pick in basketball in 1937-38 and that same year the Yellow Jackets became the first Tech team to win the league basketball championship.

A member of the Alpha Tau Omega fraternity, vice president of the "T" Club, honorary letterman society, and Second Battalion commander in ROTC. Bill graduated in Industrial Management with the class of 1938.

After graduation Bill served as a major in an anti-aircraft battalion in World War II in Africa, Sicily and Italy. His four brothers, Bob, Ed, Lamar, and Tom also fought in World War II.

Bill helped organize and was the first president of the Kingsport, Tennessee Tech Alumni Club.

He is presently a partner in Toohey and Jordan Insurance and Real Estate Firm in Kingsport, Tennessee.



Home of Regency and Greico Clothes for Men

Frank Brothers' Shoes

Our Famous B & B Shop for Young Men

Miss B & B Sportswear for Ladies

PARKS-CHAMBERS

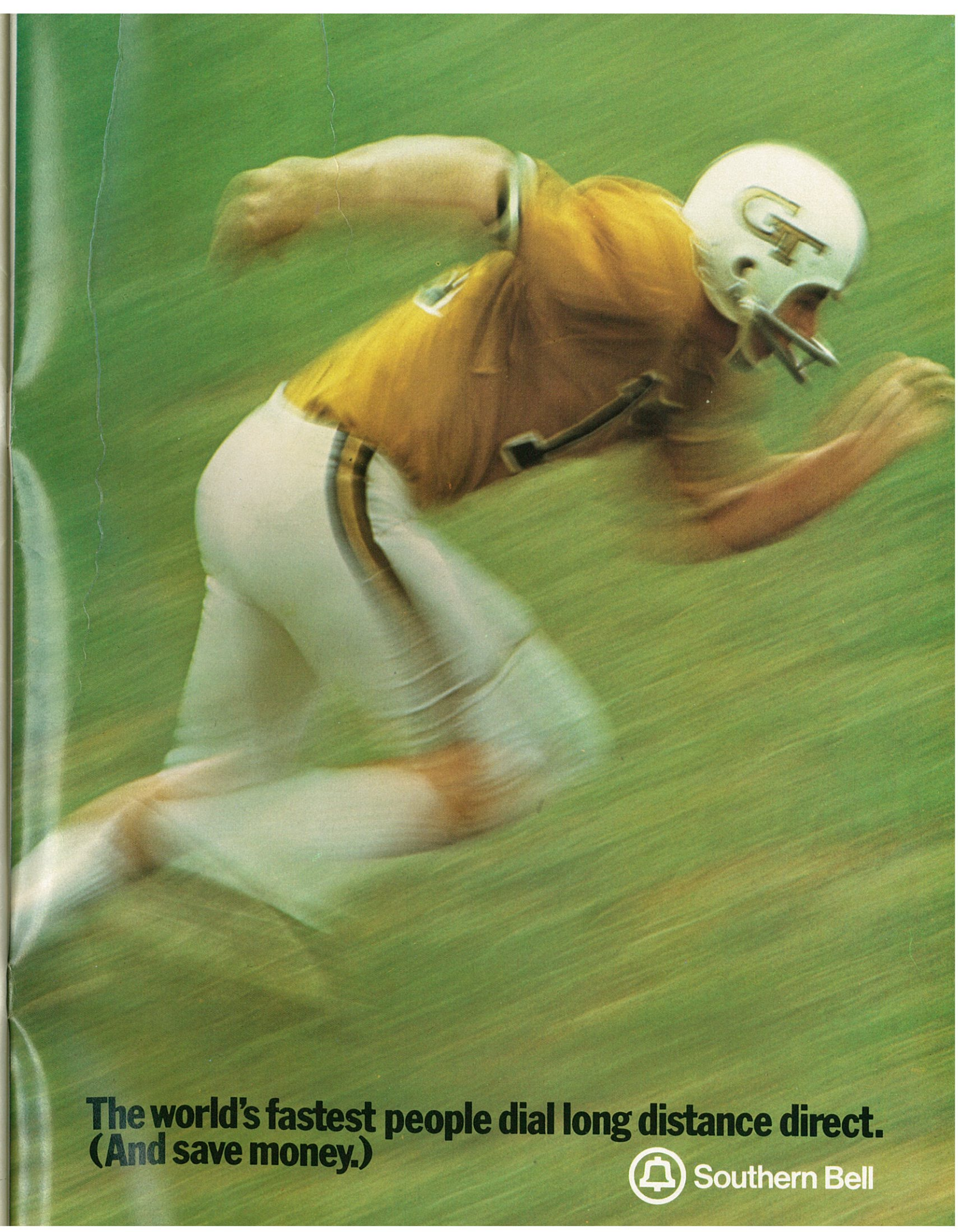
ESTABLISHED 1896

84 Broad St., N.W.
at Peachtree

Lenox Square
on the Mall

1258 W. Paces Ferry Rd.

Perimeter Mall
I-285 at Ashford-Dunwoody Rd



**The world's fastest people dial long distance direct.
(And save money.)**

