

Florida State/Florida

FOOTBALL MAGAZINE · October 7, 1972

\$1.00



Holiday Inn®



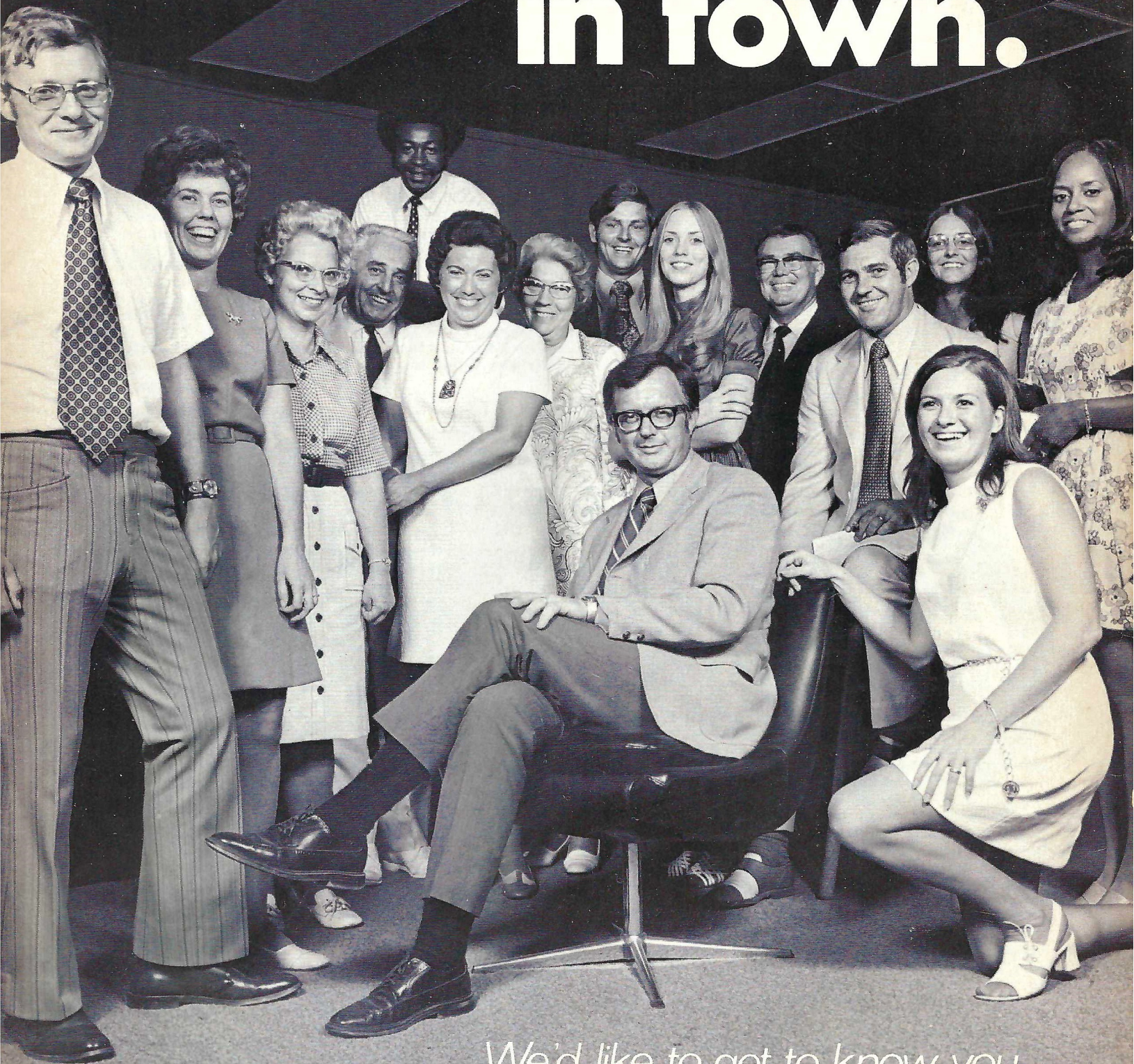
Two Inns To Serve You In Tallahassee

316 West Tennessee Street
222-8000

1302 Apalachee Parkway
877-3141

Banquet Rooms, Meeting and Conference Rooms with Complete Facilities, Dining Rooms and Lounges.

Friendliest team in town.



We'd like to get to know you.

The Lewis State Bank

204 South Monroe Street • Tallahassee, Florida • Member Federal Deposit Insurance Corporation



Florida State University

From One Seminole Fan To Another...

It's going to be a great season in Doak Campbell Stadium this fall!

There's never been a finer combination of coaching and teamwork than you'll see displayed on the field this afternoon. Like everything else about Florida State, you'll find the Seminoles provide more than an average amount of excitement and play a better than average brand of football. Their claim to national attention in athletics is well-founded as are the University's academic achievements. Twenty-five years of effort have gone into the pursuit of such stature, and both teams—faculty and football—can take great pride in their programs.

They play the kind of football that merits the full support of the cities surrounding (and including) Tallahassee; and your presence here in the stands has had, and will continue to have, a great influence on the past and future seasons of our dynamic teams. Membership in the National Seminole Club has made significant strides in the past year; and its continued growth and development will help to guarantee Florida State's future as a football contender for top national honors.

We hope to have a full house of homefolks, alumni and Florida State fans from all points at every game this year—the kind of audience that rates All America in the Seminole record books. On behalf of the Seminole team I'd like to thank each of you for being here today, and express their keen hope that you'll be in the stands for every game ahead.



Dr. Marshall

Sincerely,
Stanley Marshall
President

- 25 Years Young - 115 Years Old -

Welcome To The South's Friendliest Campus...

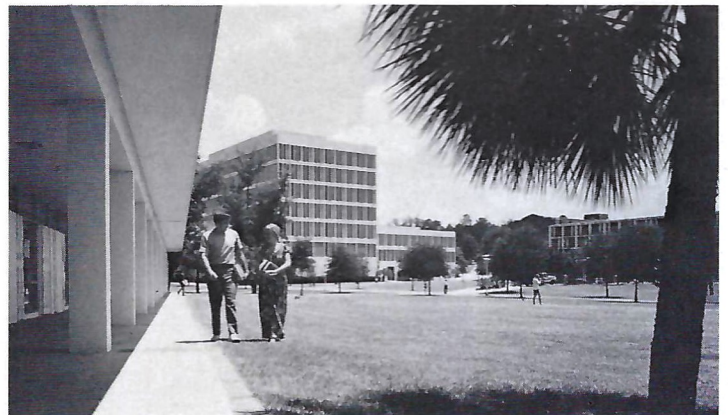
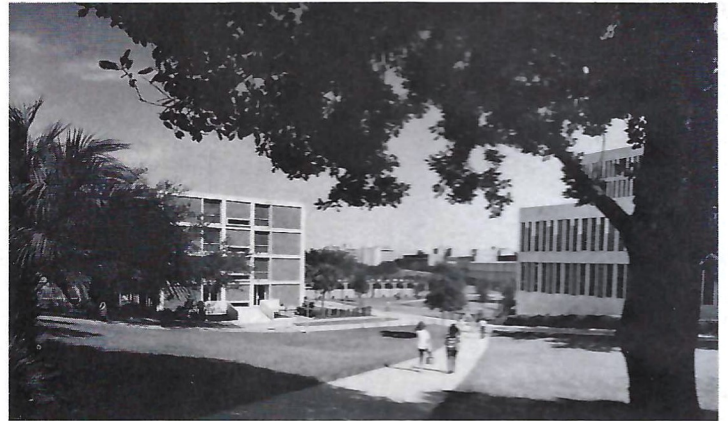
The year 1972 is a special one at Florida State University, which celebrates its 115th birthday as an institution of higher learning and its 25th anniversary as a full-fledged coeducational university this fall.

Founded in 1857 as the Seminary West of the Suwannee, the University's most phenomenal stage of development has occurred since its transition in 1947 from the Florida State College for Women to Florida State University.

Its transformation—from a small, excellent, liberal arts college to its present status as a senior member of the State University System and a nationally competitive pacesetter in graduate research and instruction—has taken place in the relatively short span of 25 years. The spring enrollment in 1947 totaled 3,428 students, and the fall enrollment this year is in the neighborhood of 19,000 students. One in five of today's students are seeking graduate degrees, compared with a total graduate enrollment of 19 students in 1946-47.

Currently graduating more than 5,000 students each year, Florida State's nine schools and colleges—Arts and Sciences, Business, Education, Home Economics, Law, Library Science, Music, Nursing and Social Welfare—offer programs of study leading to the doctoral degree in 58 fields (there were only 3 in 1948), to the master's degree in 85 areas and to the baccalaureate in 87 fields of study.

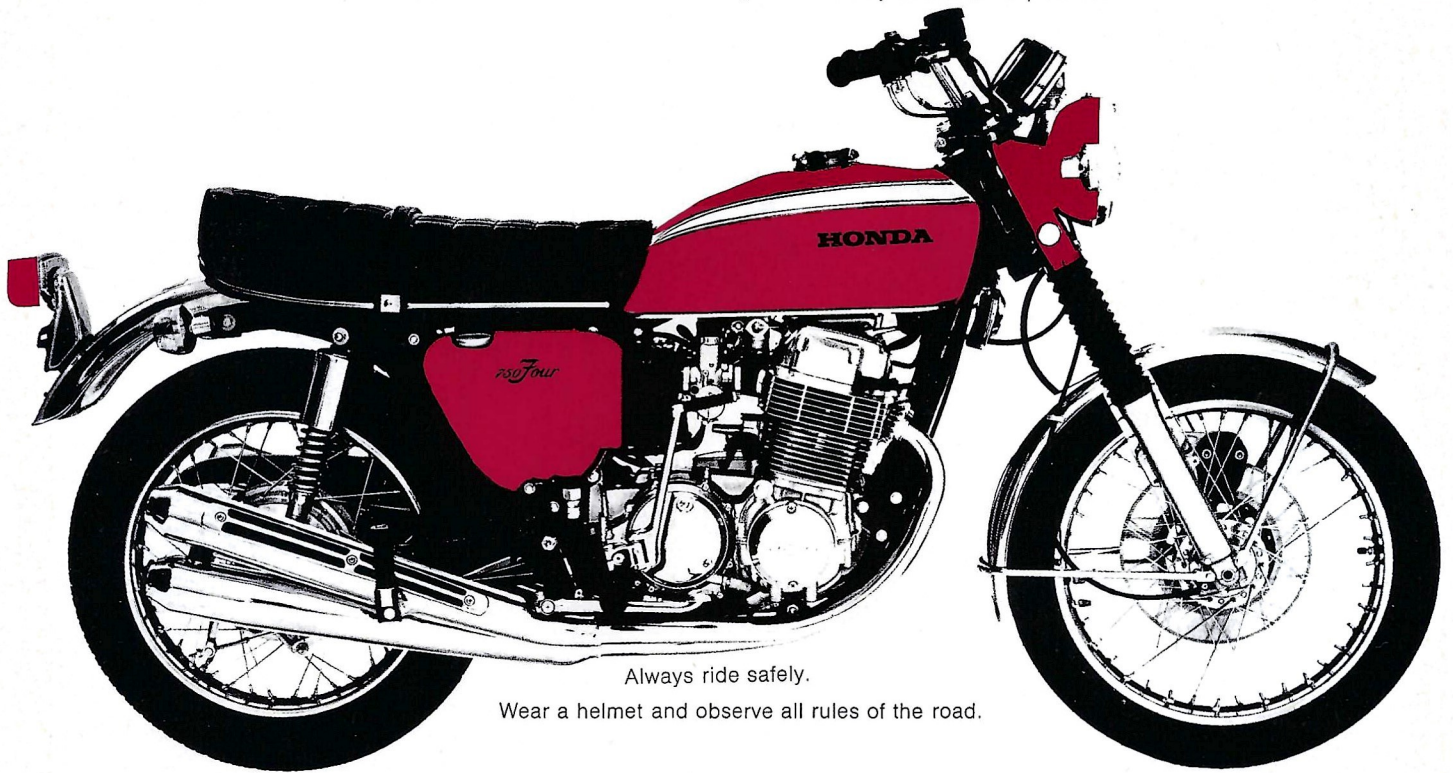
Florida State now receives more than \$17 million a year in research funds from sources other than the State of Florida, and is the site of National Science Foundation—sponsored centers of excellence in physics, statistics, chemistry and psychobiology. A pioneer in nuclear research, molecular biophysics and oceanography, the University balances its prestige in the sciences with outstanding programs in the arts and humanities, and serves as the home of the State of Florida's Theater, Opera and Symphony.



The Mighty 750 Four.

This is Honda's big one. Top cycle mags have called it the "ultimate road bike." For good reason. Its OHC in-line, transversely-mounted, four-cylinder engine packs incredible power. 67 horses at 8,000 rpm. That means it's capable of speeds over 120 mph. And will whip you through the quarter super quick. No wonder this baby won the Daytona 200 National Championship the first time it was entered. And now Honda engineers have improved on the "ultimate." There were always four carbs and four tuned pipes to go with the four cylinders, but now those carbs are going to make history. They are the first racing-type positive-control carburetors on any production bike,

utilizing a dual-cable throttle system. Easier to maintain. Better for performance. There's a new chain lubrication system for miles and miles of trouble-free riding. And the new speedometer and tach now have the numbers lit from behind. A cinch to read when you're on the road at night. The big 750 shifts smoothly through all five gears. And when it comes time to stop, there's no better brake on any bike than the rugged hydraulic disc brake up front. As for styling, just look. Rich new candy colors. Distinctive striping and emblems. And hand-polished aluminum alloy on the engine! What more could you ask from any machine? Just take a test ride . . . if you're ready to assume power.



Always ride safely.

Wear a helmet and observe all rules of the road.

HONDA

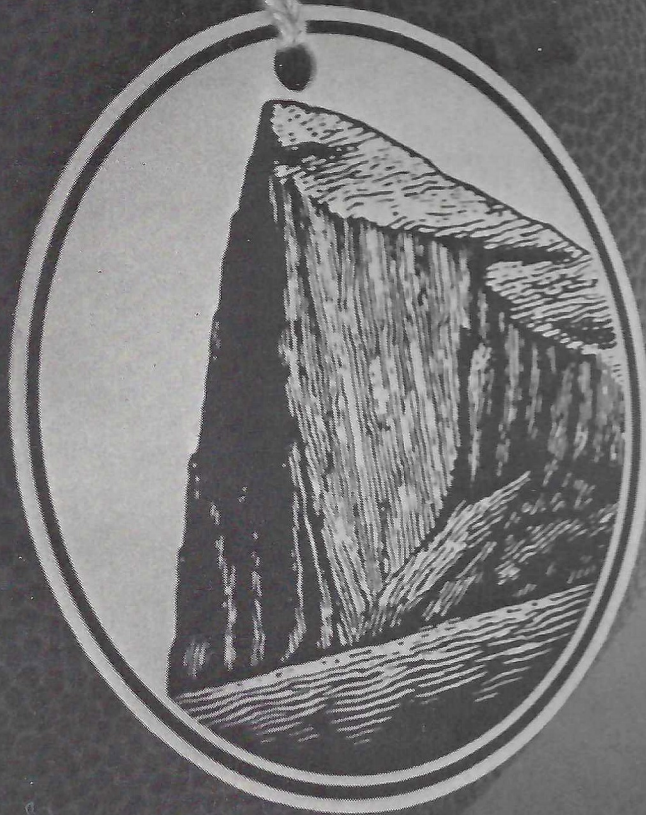
of

Tallahassee

2765 W. Tenn.

Phone 576-1020

"Own
a piece of
the Rock."



Prudential

South Central Home Office | Jacksonville, Florida

Florida STATE / FLORIDA Football Magazine

VOL. XXVI

October 7, 1972

No. 2

IN THIS ISSUE . . .

HEAD COACH LARRY JONES	14-15
A colorful look at the Seminole Chief and his family.	
ROSTERS AND LINE-UPS	33-36
SEMINOLE FOOTBALL STAFF	39-42
"Without a good coaching staff you can't have a winner," says Head Coach Larry Jones. Here are the men who help mold the Seminoles.	
INSTITUTE FOR SOCIAL RESEARCH	44-45
Five centers dedicated to research, graduate training and public service.	
OFFICIAL SIGNALS AND FOOTBALL GLOSSARY	56-57
Keep up with the play with these two handy features on adjoining pages.	
SEMINOLE SONGS	59
Won't you join in? Here are the words to Florida State's most popular songs as well as the National Anthem.	

TODAY'S COVER: Action from last year's Georgia Tech game catches the Seminoles going up and over the top. (Cover photo by Dick McGiffin)

The University	4	Board of Regents	46
Athletic Department	9	Today's Opponents	47-50
NCAA Feature	10	Seminole Auto Dealers	52
National Seminole Club Donors	11-21	Seminole Radio Network	53
Head Coach Larry Jones	14-15	Gary Huff	54-55
Head Coaches	18	Official Signals	56
1972 Seminoles	23-27	Football Glossary	57
Today's Game	29	State Board of Education	58
Today's Stats	30	Seminole Songs	59
Starting Line-ups	33	Team Physician	60
Rosters and Depth Charts	35-36	Seminole Basketball	61
Assistant Football Coaches	39-42	Advertisers Directory	62
Stadium Information	43	1972 Seminole Squad Picture	63
University Feature	44-45		



Sears

**Tallahassee's Complete
Department Store**

• **Everything You Need
For Your Home
Family or Car!**

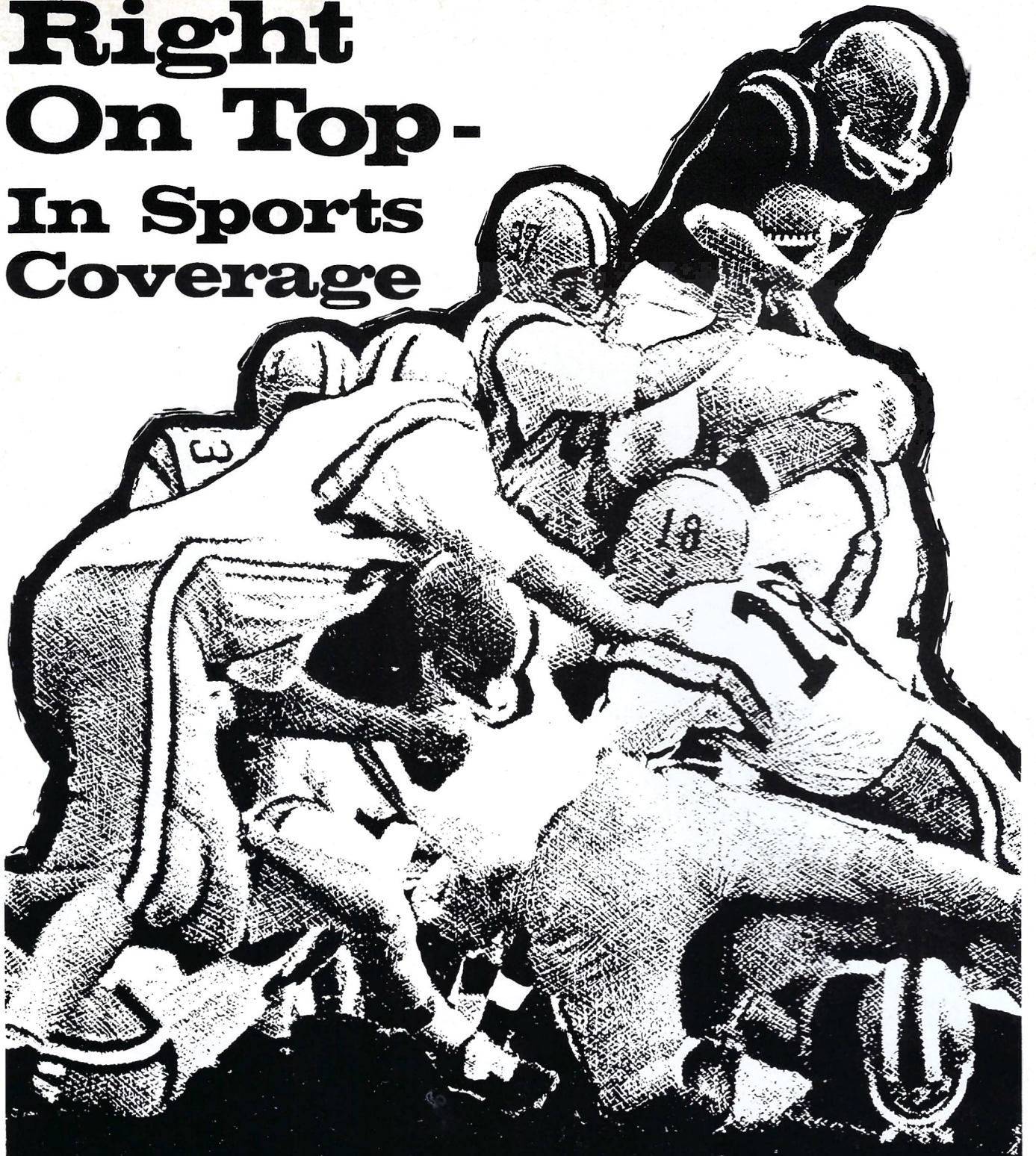
**OPEN 9:30 a.m. 'til 9:30 p.m.
Monday thru Saturday**

**SHOP AT SEARS
AND SAVE** **Sears**
SEARS, ROEBUCK AND CO.



The Florida State Football Magazine is published by the Florida State University Department of Intercollegiate Athletics. Editor—Hank Schomber. Program Manager—Lonnie Burt. Business Manager—Doug Messer. Sales Coordinator—Jack Ibach. Local advertising is contracted by the Florida State University Department of Intercollegiate Athletics. National Advertising representative is Spencer Marketing Services, New York. The 1972 Florida State Football Magazine is printed by Dye Printing Company, Tallahassee.

Right On Top- In Sports Coverage



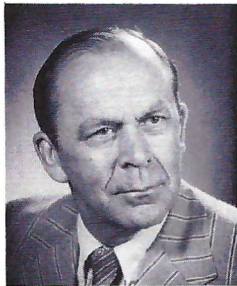
Orlando Sentinel · Orlando Evening Star

Florida's Most Interesting Newspapers



Clay Stapleton
Athletic Director

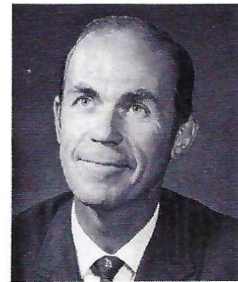
Intercollegiate Athletics Administration and Staff



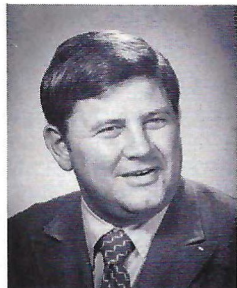
C.R. Bickerstaff
Assistant A.D.



Doug Messer
Athletic Business Manager



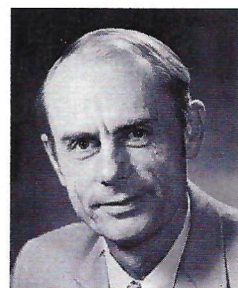
Dr. Richard Baker
Chairman, Athletic Board



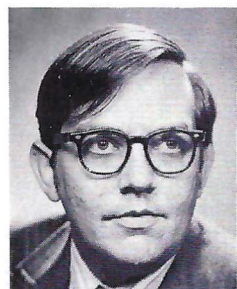
Jim Olsen
Director, National Seminole Club



Lonnie Burt
Sports Information Director



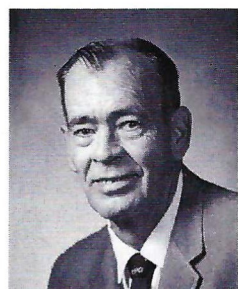
Claude Thigpen
Athletic Ticket Manager



Hank Schomber
Assistant SID



Charlie Durbin
Cinematographer



Woody Saucier
Varsity Equipment Manager

Football Writers Good 'Story Tellers'

The following stories have appeared in *Fifth Down*, the official publication of the Football Writers Association of America. Bert McGrane, *Fifth Down* editor, selected these excerpts from the many submitted by the football writers from throughout the country.

Tampa's Sam Bailey was discussing recruiting prospects: "There's this interior lineman. He's as big as a gorilla and as strong as a gorilla. If he was as smart as a gorilla, he'd be fine."

* * *

Ron Sellers of Florida State was quizzing a couple of teammates on game situations. "You're in your seven yard line with a minute to play. You're leading by two points and it's fourth down and a yard to go. Do you punt or go for the yardage?"

"I guess I'd punt," answered a mate. "Wrong," yelled Sellers. "You can't even have fourth and one on your seven yard line."

* * *

Fred Cassotti, Colorado sports information director, discussing a trip to Europe with his wife. "We'd had seven wonderful years together. Not bad when you've been married 13 years."

* * *

"We've got to learn to play on a wet field anyway," said Michigan State's Duffy Daugherty, as he spilled a cup of coffee while diagraming plays on a tablecloth.

* * *

There are 26 alphabet letters
A fact that each of us knows
Then how come so many fine coaches
Use only the X's and O's?

* * *

Unidentified M.C. was introducing the athletic director at a football banquet. "An athletic director," he explained, "is like a tom cat that has been spayed. He still makes calls but only as a consultant."

* * *

"It's getting tougher to talk to the men at halftime," said Coach Bob Devaney of Nebraska. "Heck, sometimes they don't believe my aunt really is ill."

* * *

Coach of an inept team gave out his pre-game instructions. "Men, if we receive the kickoff, I want you to try to recover the fumble. If we kick off, try to block the extra point."

* * *

Dan Miranda, veteran official of the Rocky Mountain area, socked a player 15 yards for holding. As the player walked away Dan heard him mumble something about Dan's ancestry. Dan stuck him another 15 yards.

"I didn't call you that. I called him one," grumbled the player, pointing to a mate.

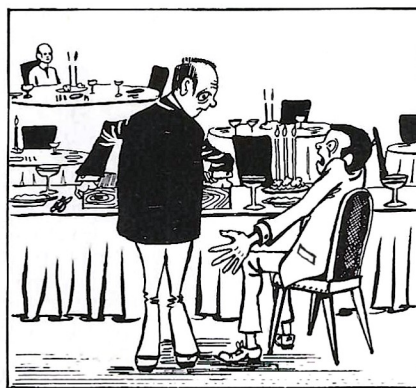
"Go ahead, Ref," said the mate. "Penalize him for calling me one."

Out came the coach, as Dan stepped off the yardage. Dan explained. "Hell," snapped the coach. "Give him 15 more for being so stupid."

* * *

Coach: "Didn't you get my letter?"

Player: "Sure, Coach. I read it inside and out. On the inside it said: Your grant-in-aid is terminated because of your low grades. On the outside it said: Return in Five days so here I am."



Small turnout at banquet for losing team led M. C. to apologize to the speaker for the lack of attendance. "We could have used a speaker of less talent than you, Coach," he said, "but we couldn't find one."

* * *

Former coach Bones McKinney told this one at a Fellowship of Christian Athletes gathering. Wake Forest, a Baptist school, tried hard to recruit a certain boy but lost him to Duke. Reason he didn't go to Wake Forest, Bones said, was because of his answer to a religious question.

"They asked him what was the vision of Paul on the road to Damascus and he answered: '20-20.'"

* * *

When Pepper Rodgers coached Kansas he was asked if he ever thought of using record-holder Jim Ryun as a pass receiver. "Yeh, quite a bit," he answered. "We could have used him in those third-down-and-a-mile-to go situations."

* * *

First Coach: "I want to get something for my wife, but I can't get any one to make an offer."

Second Coach: "I take my wife out every night, but she keeps finding her way home."

*The Ref is a gent of puzzling intent
He whistles and marches and measures*

*He'll go either way to cancel a play
It's one of his innocent pleasures.*

* * *

When Charlie Tate, former Miami coach, was holding a press conference, a writer asked: "Do you think it will hurt the team, with the two best backs, Jim Acuff and Vince Opalski, getting married?"

While Tate pondered the question another writer blurted: "Gee, I didn't even know they were going together."

* * *

*Of all the birds and flying things
I'd rather be a bee
I'd file my stinger razor sharp
and jab the referee.*

* * *

Report from Bob Cahill, Notre Dame ticket manager: "Our sales have been so good I sold out an open date."

* * *

Writer went deer hunting. Heard a rustling in the brush and figured a deer was approaching. "I saw the prettiest buck I've ever seen," he said. "I jumped up, took two quick shots and before I could replace the cork in the bottle, the deer was gone."

* * *

Young son of a prominent pro player stood accused of wetting in the Country Club swimming pool. Informed of the charge, the pro retorted: "Oh come now. There must be other small boys who wet in the swimming pool."

"From the high board?" inquired his accuser.

* * *

Frustrated motorist tried in vain to find a place to park and in desperation parked in a restricted area. Obeying his conscience he left a note on his windshield: "I've circled this block for 20 minutes. I'm late for an appointment and if I don't park here I'll lose my job. Forgive us our trespasses."

When he returned the familiar parking ticket awaited him, with explanatory note: "I've circled this block for 10 years and if I don't do this I'll lose my job. Lead us not into temptation."

* * *

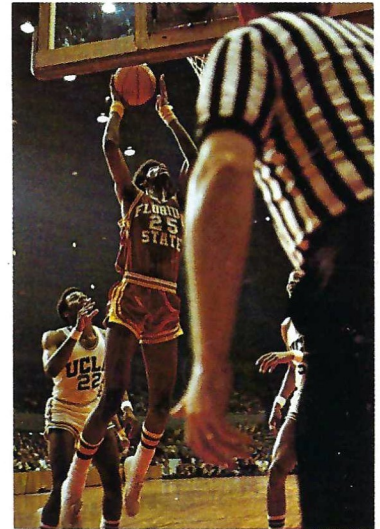
Phone rang in a maternity ward and an assistant coach blurted: "This is Harold Smith. I'm bringing in my wife. She's going to have a baby."

"Is this her first baby?" inquired the attendant.

"No," the excited voice explained. "This is her husband."

GET ON THE WARPATH

support
**FLORIDA
STATE
UNIVERSITY**



"In my opinion the importance of intercollegiate athletics to a university has not diminished one whit... I suspect we need a high quality, strong athletic program now more than ever"

—President Stanley Marshall, June, 1971

"Athletics at Florida State University is moving into a new era... an era in which the fans and friends of Florida State will play an unprecedented role with their support. The object of the National Seminole Club is to organize this support and direct it into one of the most meaningful and personally rewarding areas within the scope of our program..."

—Director of Intercollegiate Athletics, Clay Stapleton



for more information
write
Jim Olsen, Executive Director
Tully Gym
Florida State University
Tallahassee, Florida 32306
Phone
AC 904 — 599-2790





FULL SCHOLARSHIP DONORS

Mr. Winfred L. Bailey
Atlanta, Georgia

Dr. John F. Bembry
Tallahassee, Florida

**Capital City
1st Natl. Bank**
Tallahassee, Florida

Mr. Bill Cartee
Tallahassee, Florida

Collins Brothers
Tallahassee, Florida

**The
Commonwealth Corp.**
Tallahassee, Florida

**Commonwealth
Capital Corp.**
Tallahassee, Florida

Mr. Manuel Corral
Tampa, Florida

Compliments of a Friend

**Hammons Asphalt
Paving, Inc.**
Tallahassee, Florida

**Hilton Hotel
of Tallahassee**
Tallahassee, Florida

Leon Realty, Inc.
Tallahassee, Florida

The Lewis State Bank
Tallahassee, Florida

Mr. John W. Maurer
Tampa, Florida

Midyette-Moor
Tallahassee, Florida

Dr. Coyle E. Moore
Tallahassee, Florida

Mr. Walter L. Revell
Miami, Florida

The Silver Slipper
Tallahassee, Florida

**Tallahassee
Bank & Trust Co.**
Tallahassee, Florida

**Tallahassee Federal
Savings & Loan Assoc.**
Tallahassee, Florida

Van Brunt & Yon, Inc.
Tallahassee, Florida

Mr. Ed Voyles
Smyrna, Georgia

Compliments of a Friend



HALF SCHOLARSHIP DONORS

Albritton-Williams, Inc.
Tallahassee, Florida

**Barrett, Daffin,
& Figg**
Tallahassee, Florida

Mr. C.H. Belvin
Tallahassee, Florida

Bertha Cooke, Inc.
Tallahassee, Florida

Compliments of a Friend

The Carpet Shop
Tallahassee, Florida

Mr. C.L. Carter
Tallahassee, Florida

Mrs. Mary G. Carter
Perry, Florida

Mr. Rainey Cawthon
Tallahassee, Florida

**Clemons Heating
& Air Conditioning**
Tallahassee, Florida

Mr. Thomas W. Donovan
Jacksonville, Florida

**Elberta Crate
& Box Company**
Tallahassee, Florida

Equity Resources, Inc.
Tallahassee, Florida

Mr. William H. Gardner
Tallahassee, Florida

Mr. Donald E. Grant
Perry, Florida

**Hanson, Wood
& Hoel Ind., Inc.**
Tallahassee, Florida

Mr. James S. Hardesty
Tampa, Florida

Compliments of a Friend

Mr. Tim Harris
Jacksonville, Florida

Mr. Jim Hawkins
Tallahassee, Florida

Mr. William L. Henley
Tallahassee, Florida

**Holiday Inn
of Thomasville**
Thomasville, Georgia

Mr. Wendell Jarrard
Maitland, Florida

Kinnebrew Motors
Tallahassee, Florida

Mr. John J. Koelemij
Tallahassee, Florida

Mr. Carroll Lance
Tallahassee, Florida

Compliments of a Friend

McDonalds Hamburgers
Tallahassee, Florida



HEAD COACH – LARRY JONES



QUARTER SCHOLARSHIP DONORS

- Alford Chevrolet Co.**
 Tallahassee, Florida
Central Groves Corp.
 Vero Beach, Florida
Baker-Alford
 Tallahassee, Florida
Mr. William Bellflower
 Tallahassee, Florida
Mr. Russ Bevis
 Tallahassee, Florida
Mr. Haldane Boykin
 Chattahoochee, Florida
Mr. John L. Boyles
 Tallahassee, Florida
Mr. Robert J. Braun
 Tallahassee, Florida
Mr. Phil Brimer
 Marianna, Florida
Mr. Philip A. Browning
 Atlanta, Georgia
Buddy Brandt
 Tallahassee, Florida
Capital City 2nd National Bank
 Tallahassee, Florida
Capital City Sporting Goods Co., Inc.
 Tallahassee, Florida
Mrs. Dollie M. Carroll
 Quincy, Florida
Mr. Jimmy Christo
 Panama City, Florida
Mr. Al C. Church
 Tallahassee, Florida
Edwin C. Cluster
 Ocala, Florida
Mr. Fred D. Drake, Jr.
 Tallahassee, Florida
B.R. Draughon Construction Co.
 Tallahassee, Florida
Mr. Clark Durrance
 Tallahassee, Florida
Mr. Otho W. Edwards, Jr.
 Quincy, Florida
Mr. Peter Fenn
 Crawfordville, Florida
Flint River Mills, Inc.
 Tallahassee, Florida
General Telephone Co. of Florida
 Tallahassee, Florida
Mr. Louis Gibbs
 Tallahassee, Florida
Mr. Jimmy Greene
 Perry, Florida
Dr. Harold C. Gregg
 Marianna, Florida
Harrell-Morgan Advertising, Inc.
 Jacksonville, Florida
Mr. Emmett C. Harrison
 Tallahassee, Florida
Mr. William C. Herrell
 Tallahassee, Florida
Holiday Inn—Downtown
 Tallahassee, Florida
Francis T. Holland, M.D.
 Tallahassee, Florida
Mr. James D.A. Holley
 Tallahassee, Florida
Jackson-Cook, Inc.
 Tallahassee, Florida
Robert S. Jett, Jr.
 Tallahassee, Florida
Keen O'Kelley & Spitz
 Tallahassee, Florida
Kent Theatres
 Tallahassee, Florida
Mr. Jim Kirk
 Ocala, Florida
Mr. Glenn Krause
 Tallahassee, Florida
Dr. Richard P. Lamb
 Tallahassee, Florida
Mr. W.S. (Bill) Lee
 Tallahassee, Florida
Leon Federal Savings & Loan
 Tallahassee, Florida
W. W. Mangham
 Tallahassee, Florida
Mr. W. L. Montague
 Quincy, Florida
Mr. Ralph W. Morang
 Quincy, Florida
Municipal Code Corporation
 Tallahassee, Florida
Nelson Builders, Inc.
 Tallahassee, Florida
Millard J. Noblin Realty, Inc.
 Tallahassee, Florida
Mr. Jesse C. Palmer
 Tallahassee, Florida
William Parker
 Oldsmar, Florida
Mr. John Partin
 Tallahassee, Florida
Peacock Moving & Storage
 Tallahassee, Florida
Tom Peavy
 Tallahassee, Florida
People's Bank
 Tallahassee, Florida
Proctor & Proctor
 Tallahassee, Florida
Mr. Ronald R. Richmond
 New Port Richey, Florida
Mr. Robert A. Riedel
 Tallahassee, Florida
Mr. Lawrence Roberts
 Tallahassee, Florida
Mr. Fred W. Roddenberry
 Cairo, Georgia
Mr. J. B. Roddenberry
 Cairo, Georgia
Mr. Ted Rodrigue
 Tallahassee, Florida
RO-MAC Lumber & Supply
 Tallahassee, Florida
Rose Printing Company, Inc.
 Tallahassee, Florida
Ryals Lee Sales Company
 Tallahassee, Florida
Silver Ridge Development, Inc.
 Tallahassee, Florida
William Curt Smith
 Tallahassee, Florida
Southern Electric
 Tallahassee, Florida
Sport-Craft, Inc.
 Perry, Florida
Mr. Erroll T. Stafford
 Tallahassee, Florida
Sunshine State Dairymen's Co-op
 Tallahassee, Florida
Tallahassee Coca-Cola Bottling Co.
 Tallahassee, Florida
Tallahassee Grocery Co.
 Tallahassee, Florida
Tallahassee News
 Tallahassee, Florida
Tallahassee Travel & Tours
 Tallahassee, Florida
Mr. Roger M. Walker
 Tallahassee, Florida
Wholesale Foods, Inc.
 Tallahassee, Florida
Williams Concrete Construction, Inc.
 Tallahassee, Florida
Mr. J. C. Willis
 Quitman, Georgia
Mr. Joseph H. Woodward
 Quincy, Florida

Electrical Contractors

- INDUSTRIAL
- COMMERCIAL

Licensed & Bonded

222-5494

CLARK

ELECTRIC CO.
OF FLORIDA

702 West Madison Street
TALLAHASSEE, FLORIDA

Southernair MOTEL

Across from F.S.U.
Tallahassee, Florida 32304



and

Skyline

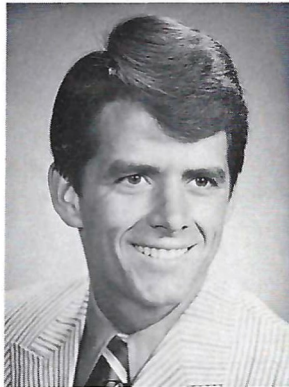
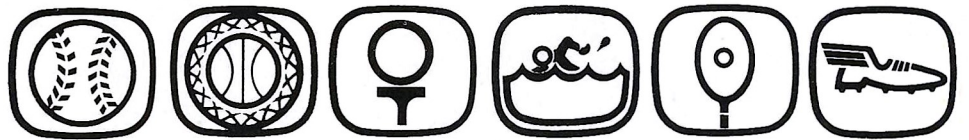
Motor Lodge

U. S. 90 West

Quality Inns

for Quality People

Seminole Head Coaches



SCOTT BRISTOL
Tennis



HUGH DURHAM
Basketball



SCOTT FLETCHER
Golf



MIKE LONG
Track



JACK STALLINGS
Baseball



BIM STULTS
Swimming

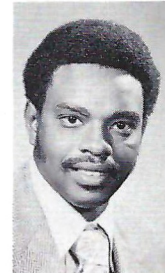
Assistants



BILL BOLTON
Basketball



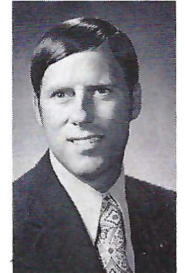
PAUL DIRKS
Baseball



AL LAWSON
Basketball



MORRIS McHONE
Basketball



DICK ROBERTS
Track



**Center your banking
at the
Barnett Banks of Tallahassee.**

Downtown and on North Monroe between the malls



Members FDIC

NATIONAL SEMINOLE CLUB

CENTURY CLUB DONORS

The following have contributed \$100 or more

Brunswick, Georgia

Coastal Trucking Co.

Jacksonville, Florida

Duval Spirits, Inc.
Mr. Louis Fischer

Blountstown, Florida

Mr. Sonny Bailey
Mr. Julian A. Parrish

Cairo, Georgia

Mr. Robert Johnson

ChIPLEY, Florida

Mr. W. E. Johnson

Pensacola, Florida

Mr. Ronald Swaine

Palm Beach, Florida

Mr. Harry Massey

Albany, Georgia

Mr. William Z. Steck, Jr.

Apalachicola, Florida

Mr. Roger R. Newton

Crawfordville, Florida

Mr. Charles Barwick

Tallahassee, Florida

A B Dick Products Company
Mr. Benjamin B. Adams
Mr. Michael S. Alderman
Mr. Donald R. Alexander
Alford Brothers, Inc.
Dr. Donald D. Alford
Alice's on Campus
Mr. Donald G. Allen, CPA
Richard O. Amdahl
American Distributing Co.
Mr. Kenneth Ayers
Mr. Clarence Babbitt
Earl Bacon Agency, Inc.
Dr. Richard Baker
Mr. James Ball
Lt. Col and Mrs.
Richard O. Bandlow
Mr. James Barineau
Bear Construction
Barnaby's-Belmont, Inc.
Mr. John W. Barr
M.H. Barrera, D.D.S.
Charles H. Becker
Marvin J. Becker
Mr. George C. Bedell
Mr. Bill H. Bell
Gene Berkowitz
Mr. Robert D. Bickel
Dr. C.R. Bickerstaff
Mr. Radford Bishop
Mr. William M. Bishop
Mr. Homer A. Black

Mr. Chester F. Blakemore

Mrs. L. G. Blount
Mrs. Eugene Borda
Herb Brinkley
Brinkley Brothers
Mr. Larry S. Brock
Mr. Gene D. Brown
Mr. John P. Brown
Mr. Larry Brown
Mr. James P. Burgess
Mr. Cliff Burns
Mr. C. Bob Butler
Mr. Cliff M. Cail
Dr. Emory T. Cain
Capital Paper Company
Carriage Manor
The Carriage Shop
Carter's Sporting Goods
Robert E. Carter
Central Heating Consultants
Dr. John E. Champion
Mr. Herbert Chandler
Dr. W. Judd Chapman
Mr. Fred Chester
Mr. Kenneth Clark
The Clayton Company
Mr. Merritt R. Clements
The Clothes Hanger, Inc.
Mr. Larry Cobb
Mr. Charles S. Coble
Raymond Cochran
Mr. Jack R. Coleman
Dr. James K. Conn
Mr. Gary J. Codey
Collins Furniture Co.
Leslie C. Crabtree
Mr. Donald Creedman
Mr. Willie Crooms
Mr. W.C. Culp
Mr. Bruce Culpepper
H.B. Culpepper
Harold V. Cummins
Mr. Dan C. Davis
Mr. Preston T. Davis
Mr. Fred E. Deeb
Mr. Syde P. Deeb
Mr. Milton H. Dennis
Mr. Fred C. Dillman
Mr. R.E. Dixon
Mr. Ellis E. Dorch
Mr. W. Dexter Douglass
Mr. Jep H. Dove
Mr. Robert F. Dove
J.H. Dowling, Inc.
Dr. Laurie L. Dozier, Jr.
Mr. Royal C. Dunn
Mr. Hugh N. Durham
Mr. R. L. Duval
Mr. Walter Eason
Eastern Airlines
Eli Witt Tobacco & Candy Div.
Dr. Robert E. Elmann
Dr. Merton L. Ekwall
Engineering & Equipment Co.
Mr. J. Colin English, Jr.
Mr. William M. Ervin
Mr. Robert M. Ervin

Mr. Henry Estes

Joseph Evans
Everhart Construction Co.
Executive Office Supply Co.
Mr. J.M. Feinberg
Dr. T. Bert Fletcher
Dr. Claude R. Flory
Mr. M.C. Flynn
Dr. Herman Frick
Sen. Elmer O. Friday
Dr. George H. Garmany
Mr. B. Kenneth Gatlin
Arthur C. Gay
Gordon J. Gluesenkamp
Mr. Frank Gray
Mr. Mallory E. Green
Mr. S. Curtis Green
Mr. William E. Greene
Mr. Haywood C. Greer
Dr. Howard Griner
Mr. William A. Grow, Jr.
Mr. Charles D. Hall
Mr. Michael W. Halloran
Mr. Dave Hamrick
Mr. Kenneth Harpe
Harrison Auto Parts, Inc.
Harrison & Ellis
Mr. M.C. Hartsfield
Dr. E.G. Haskell
Mr. Cyrus B. Hayner
Mr. Charles G. Hays
Haverty Furniture Co., Inc.
Dr. A.J. Henry
Herron Steel Co., Inc.
Mr. R.G. Higgins
Mr. William N. Hightower III
Mr. Willie Hinely
Dick Hollahan
Holley, Inc.
Robert G. Holt
Mr. William D. Hopkins
Mr. Wade Hopping
Sen. Mallory E. Horne
Morton Horne
Mr. Joe E. Hosford
House of Steaks, Inc.
Mr. Prentiss Huddleston
Hudson Aircraft Service
Dr. Joe R. Hughes III
Mr. Robert A. Hugli
Mr. John E. Hunt
Dr. William J. Hutchinson
IBM Corporation
Industrial National Bank
Mr. Richard F. Ingram
Jackson Gun Shop, Inc.
Mr. R.V. Jackson, M.D.
Mr. George D. Jacobs
Mr. Jack Jennings
Mr. James E. Joanos
Mr. Milton Johnson
Mr. Ernest E. Johnston
Mr. Felix A. Johnston, Jr.
Mr. Clinton Jones
Larry B. Jones
Wilbur Jones
Keenan Auto Parts

Kelly Sheet Metal, Inc.

Mr. William N. Kelley
Mr. Thomas A. Knight
Mr. George W. Koucky
Dr. Nelson H. Kraeft
Mr. William Carroll Lamb
Mr. Charles P. Lamm
Mr. Gary Landrum
Mr. Fenton Langston
Mr. Richard M. Lee
Mr. Harold Leslie
Mr. Cecil Lett
Mr. Alfred L. Lewis Jr., M.D.
Mr. William H. Lindsey
Mr. John Mercer Lively
Mr. A.J. Livingston
Lone Starr Industries
Mr. William Long
Mr. J.H. Louchheim III
Mr. Benny M. Lovel
Judge Guyte P. McCord Jr.
Mr. W. G. McCue
Mr. E. Martin McGehee
Mr. Hoe N. McLendon
Mr. Charles K. Madsen
Mr. Hank Mannheim
Mr. Eugene Maples
Mr. Raymond L. Marky II
Mrs. E.L. Marsh
Mr. W. D. Marshall
Mr. Crill Merryday
Mr. C. Douglas Messer
Mr. John W. Mettler Jr.
Mr. Peter W. Mettler
Dr. Fred W. Metzke
Mr. Harry L. Michaels
Judge D.L. Middlebrooks
Mr. Harry Middlebrooks
Dr. Robert W. Miles
Mr. F. DeWitt Miller, Jr.
Mr. Ned Miller
Mr. Thomas F. Miller
Mr. J.O. Milligan, Jr.
Mission Road
Nursery & Kindergarten
Mr. Lewie E. Moates
Mr. William G. Moon
Moore Concrete Products Co.
Mr. John H. Moore
Mr. William M. Morgan
Mr. F. Joseph Nahoom
Mr. Norman J. Nahoom
Mr. A. Nelson
Robert B. Newell
Nic Gavalas
Mr. Mike Norman
Miss Mary Lou Norwood
F. Perry Odom
James J. Olsen
Mr. John S. Olson
Don O'Neal
William D. Owens
Mr. Robert G. Paige
Mr. George E. Palmer
Palmer-Harrell Buick, Inc.
Dr. W. H. Palmer
Mr. F.N. Parham

Dr. Daisy Parker
Mr. M. L. Patterson
Mr. J. K. Peddie
Mr. J. Marion Pichard
Louis Polatty
Mr. Stanley Poole
Mr. Melvin L. Pope, Jr.
Mr. Stanley B. Powell
PPG Industries
Dr. William E. Price
Mr. James M. Priestner
Dr. James E. Pumphrey
Quality Court on the Pkwy.
Mr. George L. Rankin, Sr.
Mr. Sidney Rayborn
Mr. James W. Reichert
Raymond L. Revell
Elwyn Rhodes
Rhodes & Stephens
Dr. Charles H. Ritter
Col. W.W. Roberts
Mr. Dixon Robinson
Mr. L. P. Robinson
Louis Rocco
Mr. Karl Roesch, Jr.
Mrs. Bette C. Rogers
Mr. Louis A. Roskovich
H.S. Rozar
Mr. Ron Schomberger
Sears, Roebuck and Co.
Mr. Horace Sellers
Seminole Distributors, Inc.
Seminole Rock Products
Mr. W.P. Shelley, Jr.
Dr. Zack H. Shelley
Dr. James B. Shuler
Miss Anna Mae Sikes
Mr. Joseph Simone
Mr. John T. Simpson, Jr.
Mr. Carson F. Sinclair
Mrs. Pauline C. Singer
Dr. E. F. Slosek
Block Smith
Mr. James C. Smith
Jean T. Smith
Dr. J. Orson Smith, Jr.
Mr. Joseph D. Smith
Julian V. Smith
Mr. William F. Smith, Jr.
Mr. Robert M. Snider, M.D.
Mr. William C. Snuggs
Southernaire Motel, Inc.
Julian J. Spradlin
The Squaw Shop, Inc.
Mr. Clay Stapleton
Mr. F. E. Steinmeyer III
Mr. Albert H. Stephens
Alban Stewart
Mr. Harold L. Stewart
Mr. Dallas Strickland
L. M. Strickland, Jr.
Dr. John W. Sullenberger
John W. Sullivan
Supreme Ice Cream Co., Inc.
Mr. J. Baxter Swing
University Rexall Pharmacy
Dr. Earl E. Wilkinson

NATIONAL SEMINOLE CLUB

CENTURY CLUB DONORS - Cont.

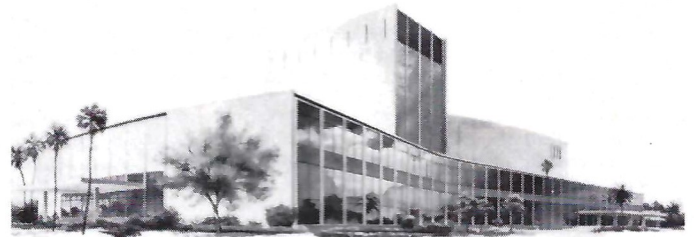
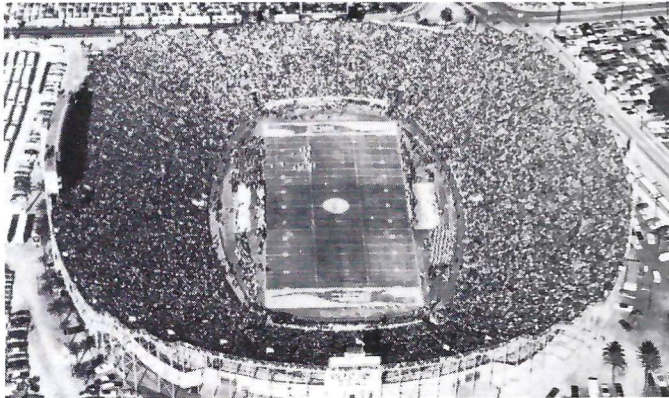
- Mr. Louis Sutton
Mary L. Sutton
Tallahassee Auto Parts, Inc.
Tallahassee Bank North
Tallahassee Music Co.
Tanglewood Realty
Mr. H. C. Terry
Bill Terrell's Package Store
Mr. B. F. Thomas
Mr. S. D. Thompson
Mr. Doug Tienan
William M. Tindall
Toyota of Tallahassee
Mr. Donald L. Tucker
Mr. John E. Turner
Mr. H. B. Upchurch
Ira S. Valentine Jr.
Mr. Wilfred C. Varn
Dr. Robert L. Vogt
WGLF Gulf Radio
WCTV
Thomas Waddell
Mr. Fred R. Wagner Jr.
Thomas A. Waits
Drs. Walker & Taylor
E. M. Watkins & Company
Dr. F. Hansell Watt
Mr. Larry C. Watts
Mr. W. S. Webb
Mr. Robert C. Webster
Mr. William L. Weeks
Dr. John M. Wells Jr.
West Fla. Construction Co., Inc.
Mr. Otto Wettstein III
Mr. Raney Whaley
Mr. Donald T. Whiddon
Floyd Whiddon
Mr. Hulon Whitton
Mr. Hal Wilkins
Williams Oil Company
Mr. Fred H. Williams
Mr. J. T. Williams, Jr.
Mr. & Mrs. M. Williams, Jr.
Mr. Bud Williamson
Mr. Jerry D. Williamson, Jr.
Mr. Ben C. Willis
Winchester Construction Co.
Robert B. and Barbara S. Wither
Mr. Richard W. Wolfe
Dr. C. Phil Wollschlager
Mr. George A. Womble
Shirley Jayleen Woods
Mr. William F. Woodward
Mr. J. D. Wright Jr.
Miss Nelle B. Wright
Yaeger, Inc.
Mr. L. Everett Yarbrough Jr.
Mr. Roy C. Young
- Jacksonville, Florida**
Mr. J. Bart Abstein
Mr. Allen R. Booth
Mr. Michael C. Copps
Mr. A. E. Green
L. Wayne Koger
Mr. Barry A. Whilden
John Griner
- Quincy, Florida**
Mr. Adrian L. Anderson
Mr. C. H. Bentley
Mr. Robert V. Cantey
Mr. M. F. Craig
Mr. Calvin H. Curry
First Federal Savings & Loan
Mr. Gerald A. Gay, Jr.
Dr. Taylor Griffin
Mr. Jack A. Harnett
Mr. Edward Canteig Higdon
- Mr. John B. Higdon, Jr.
Mr. W. T. Laslie
Mr. Hack D. McMillan
Mr. Norman McMillan
Mr. Jimmy Mahaffey
Mr. W. W. Mahaffey
Mr. Daniel W. Miller
Mr. Everett Morrow
Mr. Grady Peacock
I. Burton Price, M.D.
Quincy State Bank
Dr. Hilliard Reddick
Mr. Phil Spears
Mr. H. S. Vanlandingham
Hentz Fletcher
- Monticello, Florida**
Mr. Steve Andris
Mr. W. W. Bassett, Jr.
Mr. J. C. Whatley
- Marianna, Florida**
Mr. Robert N. Asbell
Citizens State Bank
Mr. Larkin Hundley
Neal Funeral Home
Mr. Glenn E. Padgett, M.D.
Mr. C. P. Pylant
Mr. W. B. Reddoch
- Lakeland, Florida**
Mr. Franklin T. Barnett
Mr. Thomas W. Osborne
- Perry, Florida**
Mr. James C. Bassett
Mr. Ted Baumgardner
Mr. Edward I. Bennett, O.D.
Mr. Conrad C. Bishop, Jr.
Mr. Boyd W. Close
First Federal Savings & Loan
Mr. John W. McBride
Mr. Joseph H. McClellan
Mr. Hal Marsh
Mr. Harold V. Martin
Mr. Tom J. Moore
Mr. Barney D. Padgett
Mr. Wilburn H. Peacock
Mr. Roy E. Taylor
Mr. T. Conrad Williams
- Panama City, Florida**
Bay National Bank & Trust Co.
Mr. Larry Bodiford
Mr. J. E. Carter
Mr. Clay Cogburn
Mr. E. L. Dukate
Mr. Sam C. Fleming
Gulf Cafeteria
Dr. David I. Hallmon
Mrs. Bessie C. Laird
Mr. Jimmy T. Patronis
Mr. W. B. Quigley
Mr. Ralph H. Segrest
Mr. John W. Silcox
Dr. Tim Smith
Mr. Marvin A. Urquhart, Jr.
Mr. Don Willis
- Cairo, Georgia**
Harrison & Ellis
Mr. Tom Legette
Mr. William A. Mixon
Mr. J. Richard Porter, III
Mr. H. E. Strickland
Slater Wight
- Orlando, Florida**
Mr. Rodney D. Bennett
- Dr. James D. Booth
Dr. James V. Ferdinand
Dr. Robert L. Ferdinand
The 1st National Bank of Orlando
Mr. J. C. Hartsfield
Robert Weaver
Gene Strickland
Orange Co. Alumni Assn.
Panacea, Florida
Mr. Finley L. McMillan
- Winter Haven, Florida**
Mr. Ewell P. Moore
- Orange Park, Florida**
Mr. J.A. Burke
- Titusville, Florida**
Mr. Theodore R. Ruta
- Satellite Beach, Florida**
Mr. Paul W. Capps
- Opa-Locka, Florida**
Mr. A. C. Cash, Jr.
- Lake City, Florida**
Mr. James M. Bones Thomas
Jack Espenship Construction Co.
- Port St. Joe, Florida**
Mr. Ashley M. Costin
James E. Costin
- Camilla, Georgia**
Mrs. Emaly L. Culpepper
- Bristol, Florida**
Mr. E. N. Dekle
- Ocala, Florida**
Mr. George Heubeck
Mr. Dan Hicks
- Bradenton, Florida**
Mr. James M. Doss
Mr. Henry H. Raines
- Greensboro, Florida**
Mrs. Adrian C. Fletcher
Mr. E. H. Fletcher
Mr. Charley Macon
- Washington, D.C.**
Hon. Don Fuqua
- Moultrie, Georgia**
Mr. W.C. Vereen
- ChIPLEY, Florida**
Mr. Griff Godfrey
Mr. Roger L. Laney
Mr. & Mrs. Ed W. Wood, Sr.
- Havana, Florida**
Ervin B. Gregory
Mr. A.D. Shelfer, Jr.
Mr. J. Frank Smith
- Thomasville, Georgia**
Mr. J. W. Blanton
Country Villa
Franklin Rudolph Fletcher
Mr. Frank L. Forester
Mr. Thomas McComb Hines
Mr. Robert D. Morgan
Mr. Herbert Nelson, Jr.
Thomasville Motor Corp., Inc.
- St. Cloud, Florida**
Mr. William L. Beck
- Pelham, Georgia**
Mr. Walter C. Bernier
Mr. James C. Brim
- Atlantic Beach, Florida**
Mr. I. M. Butler
- Clearwater, Florida**
Mr. James Lee McKeown
Mr. W. A. Waters, Jr.
- Palm Beach, Florida**
Mr. Everett B. Nowlen
- Winter Park, Florida**
Mrs. Frances M. Brookby
Mr. Thomas M. Woodruff
- Lake Wales, Florida**
Carter-Watsey & Associates, Inc.
Mr. Howard S. Nilson
- Nashville, Tennessee**
C. Wayne Edwards
- Fort Myers, Florida**
Mr. Walter Grace, Jr.
Dr. Walter Grace
Mr. James E. Kinsey
Walter Jardine
- Marietta, Georgia**
Custom Kitchens
- Albany, Georgia**
Mr. W. R. Keenan
Mr. E. Marshall Munde
Mr. Herbert O. Ricord
- Fern Park, Florida**
Mr. Ted M. Helms
- Madison, Florida**
Mr. J. D. Cook, Jr.
Mr. W. C. Copeland, III
Mr. J. B. Davis, Jr.
Mr. J. P. Johnson
Mr. Charles T. Maultsby
Mr. John Maultsby, Jr.
Miss Mildred Parrish
Francis M. Phillips
Mr. Robert R. Toomey, Jr.
- St. Petersburg, Florida**
Mr. Arthur E. Hempel, Jr.
Mr. R. Clark Robinson
Mr. James D. Williams
- North St. Petersburg, Florida**
Bob Crisp
- Bainbridge, Georgia**
G. R. Pirrung
- Gainesville, Florida**
Frank H. Pope
- Mt. Dora, Florida**
Huett Paving Company
- Atlanta, Georgia**
Mr. Michael E. Pou
Mr. James S. Tate
- Chiefland, Florida**
Mr. G. Luther Drummond
- Chattahoochee, Florida**
Mr. Ben J. Dudley
- Fort Meade, Florida**
Mr. James H. Prine
- Brooksville, Florida**
Mr. Max Register
Mr. Robert D. Whittier
- Lilburn, Georgia**
Mr. Mark Hillis
- Seminole, Florida**
Mr. Stan Lewis
- Tampa, Florida**
Mr. Raymond D. Didier
Dr. C. W. Gleaton
Mr. Jo Robert Lane
Mr. W. A. McCollour
Mr. Charles F. Mixon, Jr.
- Blountstown, Florida**
Mr. David H. Simpson
Mrs. Idas B. White
- Largo, Florida**
Mr. Dick Farrell
- Ft. Lauderdale, Florida**
Mr. Lon Fellenz
- Homerville, Georgia**
Mr. Jerry W. Fortner
- Carrabelle, Florida**
Dr. George L. Sands, Jr.
- Homestead, Florida**
Mr. N. W. Lewis
- Naples, Florida**
Mr. John R. Smith
- Lloyd, Florida**
Mr. William R. Bishop
- Miami Springs, Florida**
Miss Jane Jo Hood
- Mayo, Florida**
Judge Foye W. Osteen
- Crawfordville, Florida**
Mr. Lester Lewis
- Jay, Florida**
Mr. Thomas A. Boyd
- Apalachicola, Florida**
Mr. George Patrenos
- Defuniak Springs, Florida**
Ms. Mary F. Bonner
Mr. Ronald Wise
- Vero Beach, Florida**
Mr. Gordon B. Johnston
Willard W. Siebert, Jr.
- Pensacola, Florida**
Mr. James J. Reeves
Mr. John M. Sansom
Standard Distributing Co.
- Brandon, Florida**
Mr. M.M. Bowers

AWESOME TRIPLE OPTION...

**Jacksonville's
Entertainment
Team!**



**GATOR BOWL
AUDITORIUM
COLISEUM**



GATOR BOWL

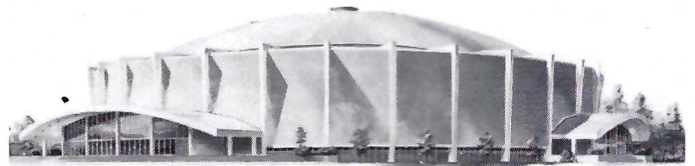
Sept. 8	High School Jamboree (Gateway Conference)	7:30 p.m.
Sept. 29 - Oct. 1	Shrine Circus	
Oct. 18-28	Greater Jacksonville Fair	
Nov. 7	Clyde Beatty Circus	
Nov. 11	Georgia vs. Florida	2:15 p.m.
Nov. 23	Englewood vs. Wolfson Jackson vs. Lee	10:30 a.m. 2:30 p.m.
	Raines vs. Stanton	7:30 p.m.
Dec. 2	Meninak Charity Game	8:00 p.m.
Dec. 9	University of Florida vs University of North Carolina	2:00 p.m.
Dec. 30	Gator Bowl Game	4:00 p.m.

AUDITORIUM

SEPTEMBER		NOVEMBER	
22	Jose Feliciano	9	Kiss Me Kate
23	It's a Beautiful Day	11	Junior Miss Pageant
30	Gospel Sing	14	Carol Rosenburger - Pianist
OCTOBER		16	F.J.C. Chorale
13-15	Rod & Custom Auto Show	24, 25	Black Heritage Music Fair; Jazz & Blues Festival
14	Tommy	30	Barefoot In The Park
14	Grand Ole Oprey For Children	DECEMBER	
20	Army Band Concert	1, 2	Barefoot In The Park
27	Search For Dracula	9	Gospel Sing
		16	Nutcracker Suite
		23	Gospel Sing

COLISEUM

SEPTEMBER		NOVEMBER	
15	WOBS Rock Concert	4	WVOJ Country Music
16	Joe Simon	5	Jethro Tull
17	"Yes"	11	WOBS Rock Concert
30	Shrine Circus	12	Grand Funk Railroad
OCTOBER		14	Chet Atkins
1	Shrine Circus	DECEMBER	
6	Buddy Miles & Ginger Baker	3	Stand Up for America
7	Roberta Flack	5	Basketball; J.U. vs. Fla. Tech.
13	Ten Years After	8	WQIK Country Music
14	WQIK Country Music		
18-28	Greater Jacksonville Fair		



15, 16, 17	The World of Wheels
23	Basketball; J.U. vs. Furman
26, 27	Gator Bowl Basketball Tourney
29	Rock Concert
30	WQIK Country Music



for tickets:

civic auditorium - 354-2041 memorial coliseum - 354-2041 gator bowl - 354-5678

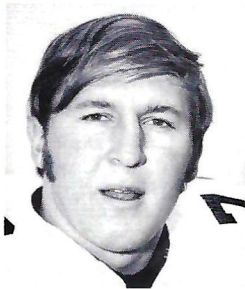
CITY OF JACKSONVILLE



Seminole Seniors



ALLEN DEES - C
Lakeland - Criminology



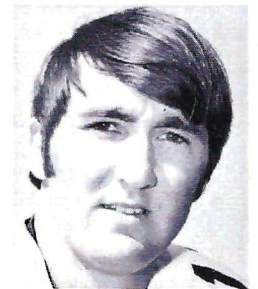
JIM DUNDALA - LB
Morrisville, Pa. - Social
Science Ed.



SHANE GIBBS - OG
Bay Minette, Ala. - Bus. Adm.



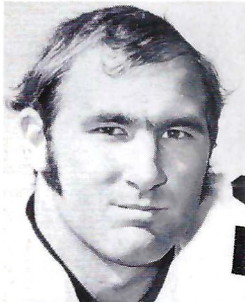
MIKE GLASS - OT
Tampa - Business Admin.



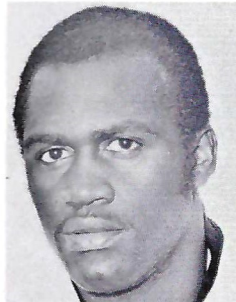
GARY HUFF - QB
Tampa - Accounting



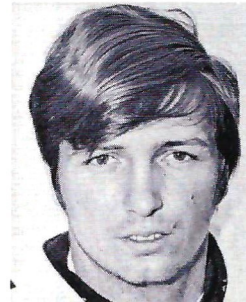
CHARLIE HUNT - DE
Jacksonville - Elem. Ed.



HOWARD JACOBI - DT
Vero Beach - Phys. Ed.



EDDIE McMILLAN - DB
Tampa - Criminology

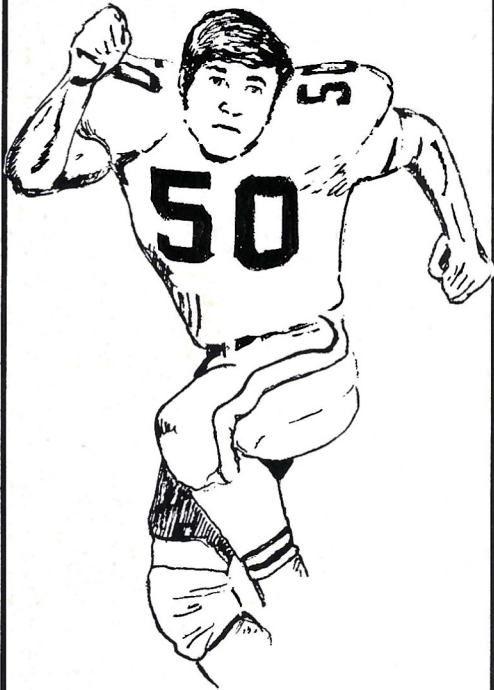


GARY PARRIS - TE
Vero Beach - Recreation



RON RATLIFF - DB
W. Palm Bch. - Bus. Admin.

GOOD LUCK
THIS SEASON



FROM THE NATION'S
LARGEST RETAILER
of
MOBILE HOMES

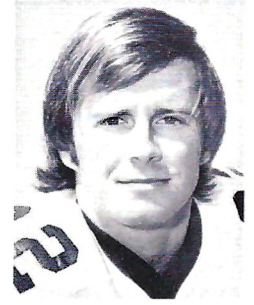


202 SALES CENTERS
in
11 STATES
and GROWING

Listed On American Stock Exchange



OSCAR ROBERTS - RB
Ocilla, Ga. - Bus. Admin.



BARRY SMITH - WR
Miami - Social Studies Ed.



DAVID SNELL - DB
Slocomb, Ala. - Bus. Admin.



LARRY STRICKLAND - LB
Tallahassee - Accounting



JAMES THOMAS - DB
Macon, Ga. - Business Admin.



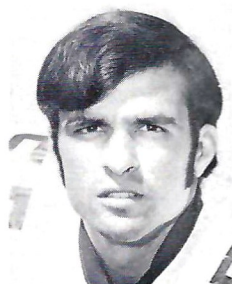
DAN WHITEHURST - LB
Adel, Ga. - Criminology



BOBBY ANDERSON - DT
Tifton, Ga. - Business Admin.



PHIL ARNOLD - OG
Hollywood - Business Admin.



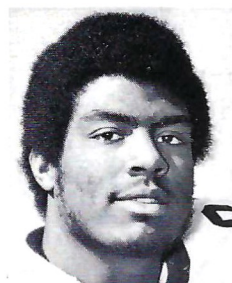
STEVE BRATTON - DE
Oviedo - Phys. Ed.



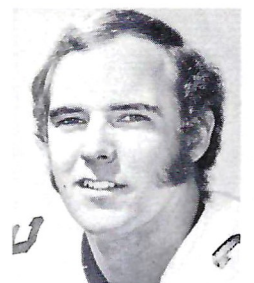
MACK BROWN - RB
Cookeville, Tenn. - Recreation



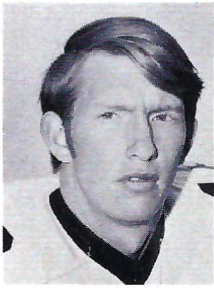
MIKE CADWELL - QB
St. Louis Park, Minn. -
Management



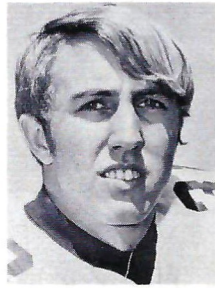
BERT COOPER - DE
Tallahassee - Pre-Med



ED DAVIS - WR
Lakeland - Business Admin.



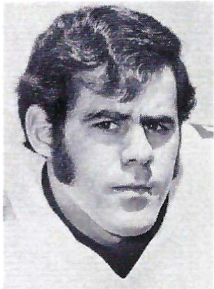
FRANK DEMING - QB
Valdosta, Ga. - Pre-Med.



BUZZY LEWIS - DB
Bristol - Math



JIM MALKIEWICZ - DT
Perth Amboy, N.J. - Phys. Ed.



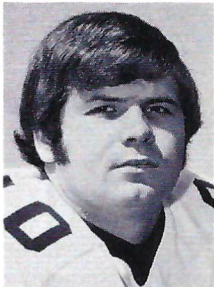
MIKE MCGOWAN - DB
Norfolk, Va. - Phys. Ed.



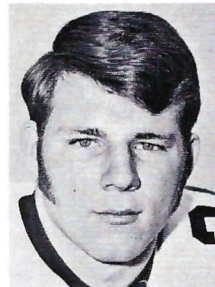
DAVID MILES - LB
Tallahassee - Recreation



HODGES MITCHELL - RB
Dallas, Tex. - Social Welfare



BRENT NORRIS - RB
Thomaston, Ga. - Ind. Arts



RICK O'LEARY - RB
Jacksonville - Bus. Admin.



JOHN PALERMO - TE
Newburg, N.Y. - Ind. Arts



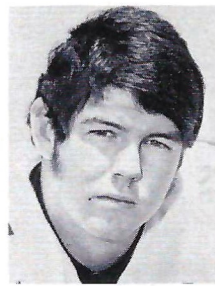
EARL PASSWATERS - DE
Bridgeville, Del. - Phys. Ed.



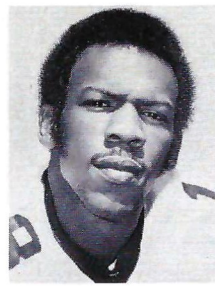
ROCKY SALDANA - C
Dallas, Tex. - Management



RANDY SHIVELY - DB
St. Petersburg - Bus. Admin.



DON SPARKMAN - OT
Jacksonville - Business Admin.



JOE THOMAS - WR
Tallahassee - Elementary Ed.

HOUSE OF STEAKS

WESTERN BEEF
AT PRICES
YOU WILL ENJOY

Our Specials Are Fighting
INFLATION

"Try A Little Tenderness"

79¢ UP

for Take-Out Service

Call... **222-3374**

11:30 AM 'til 10:00 PM
EVERY DAY

**LUNCHEONS & DINNERS
PARTIES, MEETINGS, ETC.**

HOUSE OF STEAKS

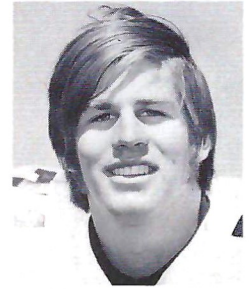
410 WEST TENNESSEE ST.
TALLAHASSEE, FLORIDA



GOING
PLACES?
?



MIKE ALLEN - WR
Willoughby, Ohio - Bus. Admin.



BOB ANDERSON - OT
Rockledge - Basic Studies

ATHENS, GEORGIA?

ATHENS, GREECE?

NEW YORK? NASSAU? NEPAL?



No Charge For Our Services



Tickets - Reservations
At Printed Rates



TRAVEL IS OUR PROFESSION

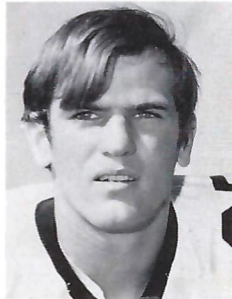


MARION HAY, PRESIDENT
TOM LYLE

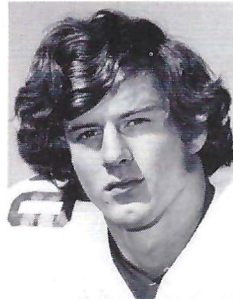
TALLAHASSEE TRAVEL
AND TOURS, INC.

Formerly Hay Travel Service
Established 1930

CALHOUN AT CALL STREET
TELEPHONE 224-4161



PHIL CAHOON - WR
Mobile, Ala. - Basic Studies



JEFF CHESNUT - RB
Stone Mountain, Ga. -
Basic Studies



MIKE DAVIDSON - RB
Bradenton - Basic Studies



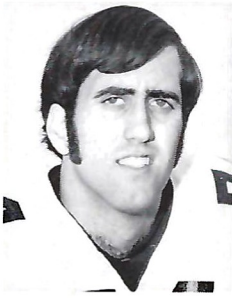
JOE DOWNEY - P
Mobile, Ala. - Bus. Admin.



JOE GOLDSMITH - WR
Lakeland - Basic Studies



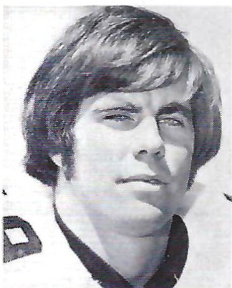
DICK HOPKINS - TE
W. Palm Bch. - Basic Studies



JAMES HOWARD - DT
Jacksonville - Basic Studies



EARL HUMES - DB
Miami - Basic Studies



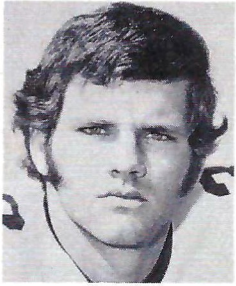
BILL JOHNSON - LB
Cocoa Beach - Basic Studies



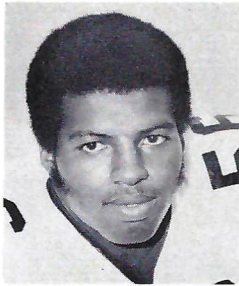
VIC JOHNSON - OT
Lake City - Humanities



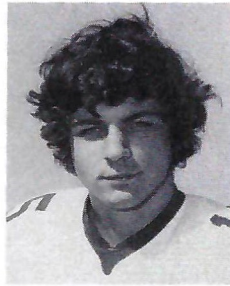
BOB JONES - OG
Lighthouse Point - Recreation



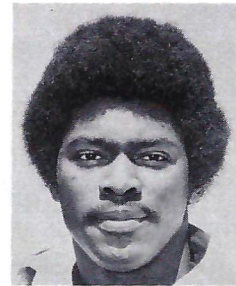
GARY LOUCKS - P
Merritt Island - Bus. Admin.



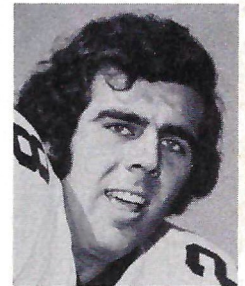
JOHN MURPHY - LB
Albany, Ga. - Business Admin.



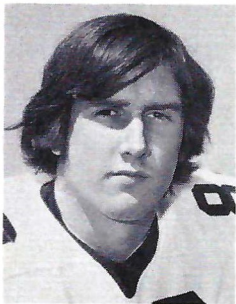
MARK ORLANDO - QB
Westfield, N.Y. - Basic Studies



LESTER PAYTON - RB
Orlando - Basic Studies



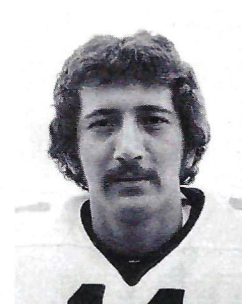
RALPH PETRILLO - DB
Newburg, N.Y. - Basic Studies



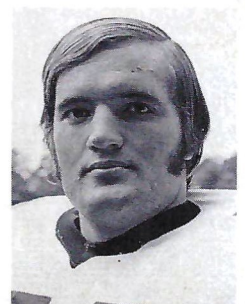
TOM PRESSWOOD - DT
Chattanooga, Tenn. -
Basic Studies



JIM WELCH - C
Jacksonville - Basic Studies



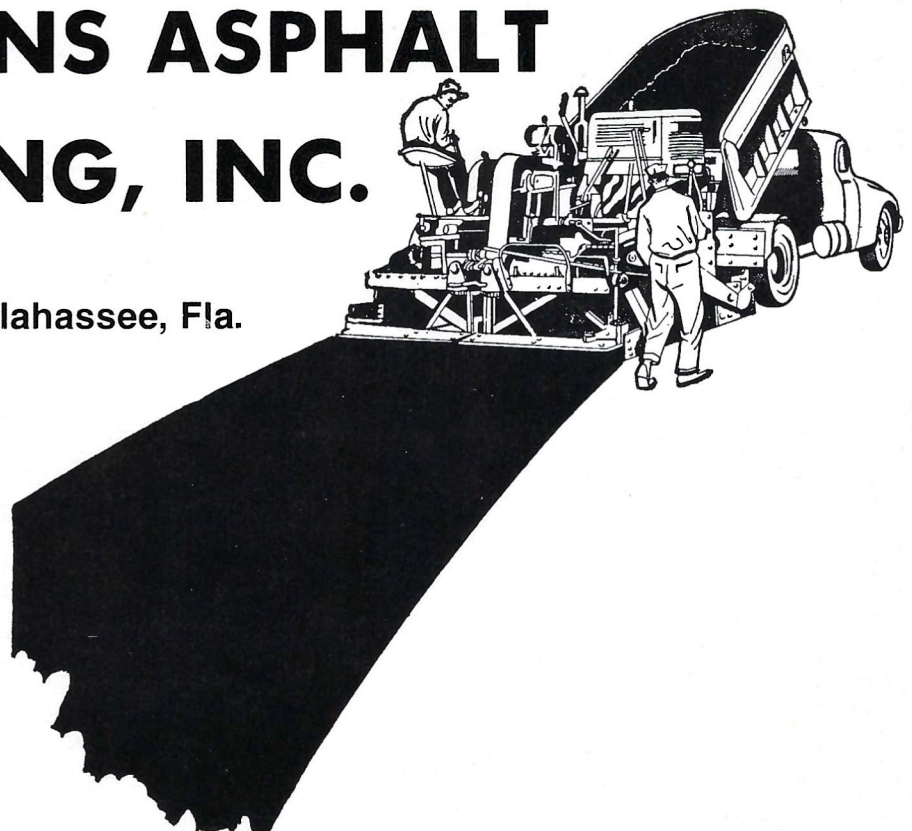
AHMET ASKIN - PK
Tallahassee - Math



GREG POUNDS - LB
Daytona Beach - Phys. Ed.

HAMMONS ASPHALT PAVING, INC.

Tallahassee, Fla.



Contributor: Florida State University Athletic Scholarship Fund

Zenith introduces the complete color TV.

Complete with a new
Super Chromacolor picture
tube, even brighter and
sharper than famous
Chromacolor.

Complete with
a new 100%
solid-state chassis.

Complete with
one-button color tuning.

Complete with
one of color TV's
strongest warranties.



Model shown, the Avanti I,
D4760X. Also available in a
wide range of fine-furniture styles.
Simulated TV Picture

ZENITH
SUPER CHROMACOLOR®

At Zenith, the quality goes in before the name goes on®

TODAY'S GAME

by **LONNIE BURT**
Sports Information Director

In the Sunshine State, THE GAME is Florida-Florida State and today's contest is the 15th meeting between these intense rivals.

The Gators own a 11-2-1 edge with one of Florida State's wins coming in Campbell Stadium in 1964 when the Seminoles gained a 16-7 triumph. The only other Seminole victory was registered at Gainesville in 1967 with the Tribe winning 21-16. The 3-3 tie occurred on Florida Field in 1961.

The first meeting came in 1958 with the Gators winning 21-7 after the late Bobby Renn took the opening kickoff deep into Florida territory before he was tackled by Jimmy Dunn, current member of the Gator coaching staff.

There have been some thrillers in this series. The 3-3 deadlock in 1961 was a shocker and the year before Florida managed a 3-0 triumph. In 1965, the Seminoles led late in the fourth quarter only to have Steve Spurrier toss a touchdown pass to Charles Casey to give the Gators their go ahead margin.

The 1968 game here was scheduled to be an offensive duel before a regionally televised audience. However, it turned out to be all defense as the Gators stopped Florida State four times inside their five and gained a 9-3 verdict.

Today, the Gators come into this one with a 1-1 record and fresh off a 28-13 win over Mississippi State. Florida State is 4-0 with victories over Pitt, Miami, Virginia Tech, and a 44-22 triumph over Kansas last Saturday in Lawrence.

Florida showed a pair of outstanding runners against the Bulldogs in sophomore Nat Moore and junior Vince Kendrick, a 224 pounder from Miami. Kendrick registered 113 yards in 14 carries including a 52-yard touchdown jaunt while Moore stepped off scoring dashes of 8 and 26 yards.

The Seminoles also have more rushing ability this season than in the immediate past. Junior Hodges Mitchell is averaging 105.5 yards per contest.

Heisman trophy candidate Gary Huff is having another banner season. The Tampa senior is among the leaders in passing and total offense. He needs just 14 yards to replace Bill Cappleman and become the Seminoles' career total offense leader.

OUTSTANDING PLAYERS AWARD

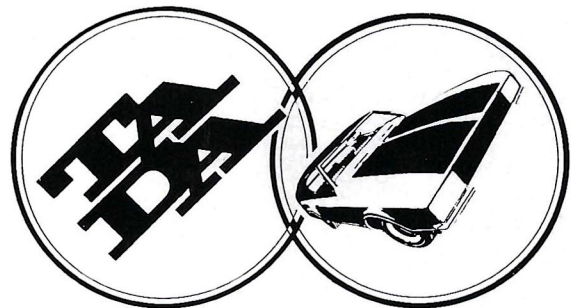
Following today's game two players from each team will be honored as the outstanding offensive and defensive players of the game. They will be chosen by a vote of the members of the press covering the contest. In honor of these players' accomplishments, Tallahassee Federal Savings and Loan Association and the First Federal Savings and Loan Association of Gainesville have agreed to present the school in their community a donation of \$1,000 for Athletic Scholarships. The athletic departments of both Florida State University and the University of Florida would like to thank Mr. J. Edwin White of Tallahassee Federal and Mr. Bob Hester of First Federal for their interest in establishing these scholarship awards. LISTEN FOR THE ANNOUNCEMENT OF THE GAME'S OUTSTANDING PLAYERS NEAR THE CONCLUSION OF THE FOURTH QUARTER!

Go

Seminoles

We'll help all we can

Tallahassee Automobile Dealers Association



ALFORD CHEVROLET CO.
PROCTOR & PROCTOR, INC.
CAPITAL LINCOLN-MERCURY, INC.
BOB DRAKE DODGE, INC.
PALMER-HARRELL BUICK CO.
CAPITAL CHRYSLER-PLYMOUTH, INC.
TALLAHASSEE MOTORS, INC.
KINNEBREW MOTORS, INC.
CONTINENTAL CARS

Associate Members: Capital City First National Bank; Tallahassee Bank and Trust; Peoples Bank; Tallahassee Democrat.

Textbooks
*
Art and
School Supplies

FSU

Sweatshirts
T Shirts

Glassware
Mugs

*
**Seminole
Uprising**



SUPPORTED BY

SERVING YOU!

phone
224-3178

Bill's STORE
BOOK & STORE

WHEN YOU THINK OF BOOKS, THINK OF BILL'S
107 SOUTH COPELAND ST.
TALLAHASSEE-FLA. 32304

FLORIDA STATE'S

Best Single Game Performances

TOTAL OFFENSE

490 yards by Bill Cappleman vs Memphis State, 1969 (minus 18 rush, 508 pass)
431 yards by Bill Cappleman vs South Carolina, 1968 (minus 6 rush, 437 pass)
384 yards by Tommy Warren vs Virginia Tech, 1970 (99 rush, 285 pass)
369 yards by Gary Huff vs South Carolina, 1971 (3 rush, 366 pass)
369 yards by Joe Majors vs Tampa, 1959 (56 rush, 313 pass)
367 yards by Bill Cappleman vs Wake Forest, 1968 (2 rush, 365 pass)
357 yards by Gary Huff vs Virginia Tech, 1971 (minus 17 rush, 374 pass)
355 yards by Bill Cappleman vs Tulsa (minus 17 rush, 372 pass)
353 yards by Kim Hammond vs Penn State (Gator Bowl, 1967) (minus 9 rush, 362 pass)
349 yards by Kim Hammond vs Mississippi State, 1967 (minus 20 rush, 369 pass)
346 yards by Gary Pajcic vs Virginia Tech, 1966 (34 rush, 312 pass)

YARDS GAINED PASSING

508 yards by Bill Cappleman vs Memphis State, 1969
437 yards by Bill Cappleman vs South Carolina, 1968
374 yards by Gary Huff vs Virginia Tech, 1971
372 yards by Bill Cappleman vs Tulsa, 1969
369 yards by Kim Hammond vs Mississippi State, 1967
366 yards by Gary Huff vs South Carolina, 1971
365 yards by Bill Cappleman vs Wake Forest, 1968
362 yards by Kim Hammond vs Penn State (Gator Bowl, 1967)
347 yards by Gary Huff vs Arizona State (Fiesta Bowl, 1971)

PASSES ATTEMPTED

53 by Kim Hammond vs Penn State (Gator Bowl, 1967) (completed 37)
53 by Gary Pajcic vs Virginia Tech, 1966 (completed 28)
50 by Bill Cappleman vs Memphis State (completed 31)
46 by Gary Huff vs Arizona State (Fiesta Bowl, 1971) (completed 25)
42 by Bill Cappleman vs South Carolina, 1968 (completed 25)
42 by Bill Cappleman vs Florida, 1969 (completed 20)
42 by Gary Huff vs Kansas, 1972 (completed 26)
41 by Gary Huff vs Georgia Tech, 1971 (completed 20)
41 by Gary Huff vs South Carolina, 1971 (completed 26)
41 by Bill Cappleman vs LSU (Peach Bowl, 1968) (completed 21)

PASSES COMPLETED

37 by Kim Hammond vs Penn State (Gator Bowl, 1967) (attempted 53)
31 by Bill Cappleman vs Memphis State, 1969 (attempted 50)
28 by Gary Pajcic vs Virginia Tech, 1966 (attempted 53)
26 by Gary Huff vs South Carolina, 1971 (attempted 41)
26 by Gary Huff vs Kansas, 1972 (attempted 42)
25 by Gary Huff vs Arizona State (Fiesta Bowl, 1971) (attempted 46)
25 by Bill Cappleman vs South Carolina, 1968 (attempted 42)
24 by Kim Hammond vs Memphis State, 1967 (attempted 34)
24 by Bill Cappleman vs Miami, 1969 (attempted 38)
23 by Steve Tensi vs Oklahoma (Gator Bowl, 1965) (attempted 36)
23 by Kim Hammond vs Alabama, 1967 (attempted 40)

PASSES CAUGHT

16 by Ron Sellers vs South Carolina, 1968 (259 yards)
14 by Ron Sellers vs Wake Forest, 1968 (260 yards)
14 by Ron Sellers vs Penn State (Gator Bowl, 1967) (145 yards)
13 by Kent Gaydos vs Houston, 1969 (126 yards)
13 by Ron Sellers vs Memphis State, 1968 (218 yards)
13 by Ron Sellers vs Virginia Tech, 1966 (135 yards)
13 by Fred Biletnikoff vs Oklahoma (Gator Bowl, 1965) (192 yards)
12 by Bill Moreman vs Penn State (Gator Bowl, 1967) (106 yards)

YARDS RECEIVING PASSES

260 yards by Ron Sellers vs Wake Forest, 1968 (14 receptions)
259 yards by Ron Sellers vs South Carolina, 1968 (16 receptions)
229 yards by Ron Sellers vs Virginia Tech, 1967 (8 receptions)
218 yards by Ron Sellers vs Memphis State, 1968 (13 receptions)
192 yards by Fred Biletnikoff vs Oklahoma (Gator Bowl, 1965) (13 receptions)
182 yards by Fred Biletnikoff vs Virginia Tech, 1964 (11 receptions)

YARDS GAINED RUSHING

161 yards by Buddy Strauss vs Mississippi College, 1949
152 yards by Mike Sellers vs Sul Ross, 1951
150 yards by Bobby Renn vs Abilene Christian, 1957
142 yards by Keith Kinderman vs Richmond, 1961
142 yards by Phil Spooner vs Houston, 1965
141 yards by Bobby Fiveash vs Tampa, 1953

Chevrolet. Building a better way to see the NCAA



Laguna Colonnade Hardtop Coupe

The new 1973 Chevelle Laguna. Good news, Chevelle fans. Now you can move up to more car without leaving the make you love most. You can move up to the new 1973 Laguna.

Laguna is a new kind of Chevelle, the top of the line. It has a special front, a special rear and a special interior.

The distinctive front is made mostly of a material called urethane that resists dents and dings. Styled right into the front end is the new improved front bumper system that retracts on minor impact and helps cushion the shock.

Inside there are rich-looking fabrics, wood-grain vinyl accents, a soft-rim color-coordinated steering wheel, map pockets and other luxurious appointments.

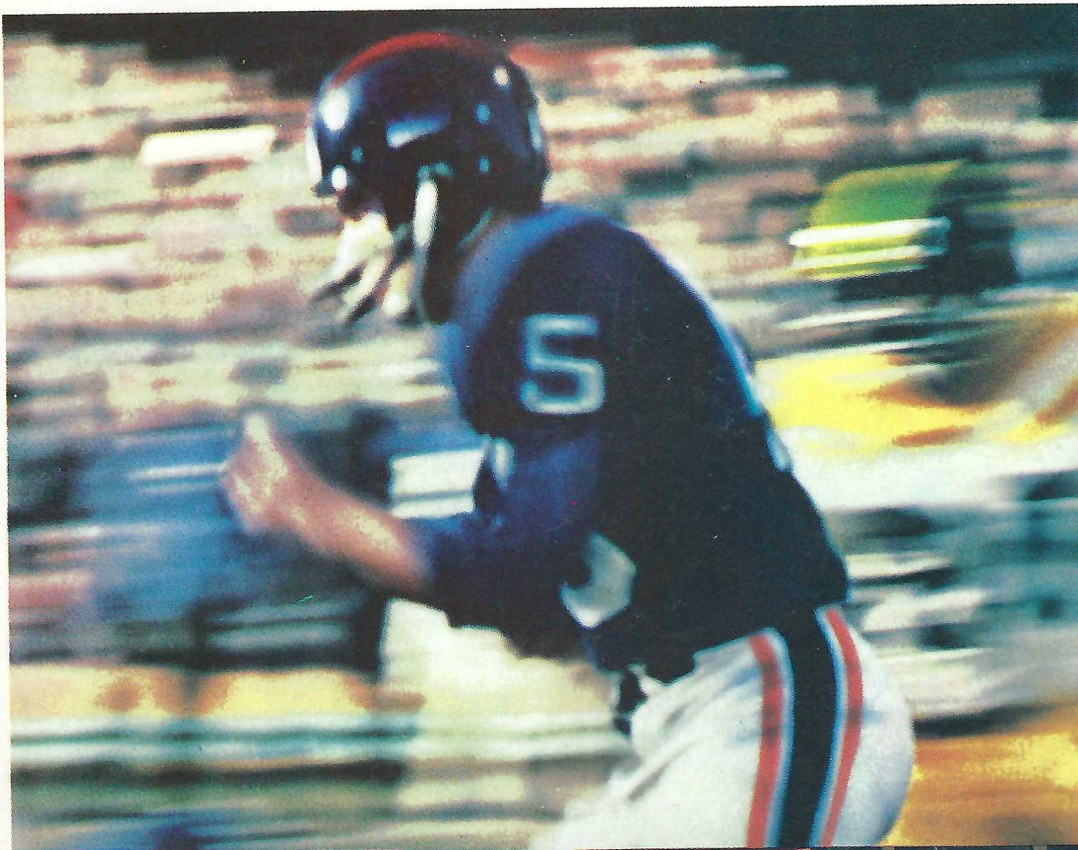
Laguna, like other '73 Chevelles, has the new Colonnade hardtop roof design, power flow-through ventilation, front disc brakes, and more rear seat leg room than ever before.

The 1973 Laguna. A new and better way to see the NCAA.

Chevrolet. Building a better way to see the U.S.A.

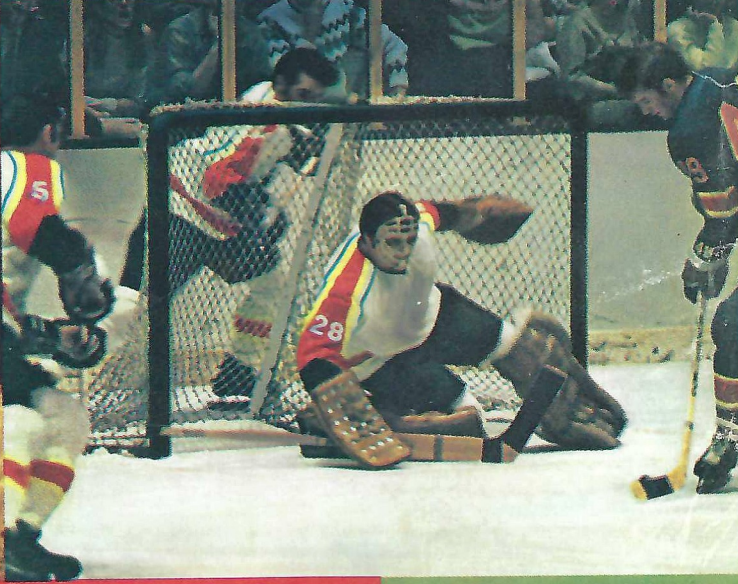
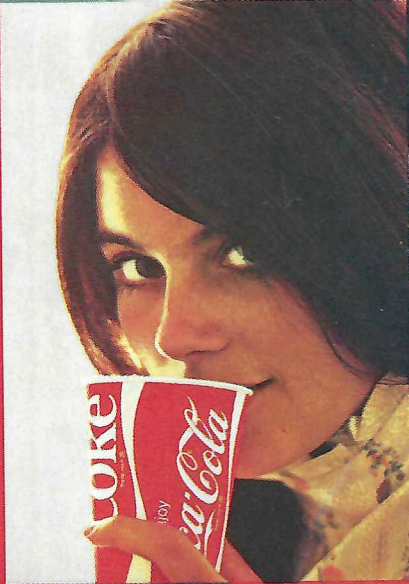
Chevrolet

Enjoy the game. And remember to buckle up on the way home.

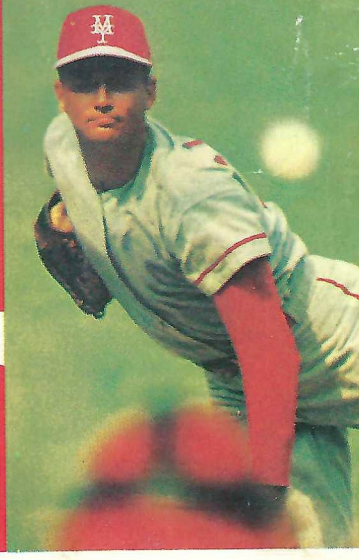


"Coca-Cola" and "Coke" are registered trade marks which identify the same product of The Coca-Cola Company.

Enjoy
Coke
Trade-mark ®



Enjoy
Coca-Cola
Trade-mark ®



OFFENSE

- 22 BARRY SMITH WR
- 75 MIKE GLASS WT
- 61 PHIL ARNOLD WG
- 55 ALLEN DEES C
- 62 BOB JONES SG
- 74 DON SPARKMAN ST
- 84 GARY PARRIS TE
- 19 GARY HUFF QB
- 44 HODGES MITCHELL TB
- 33 MACK BROWN FB
- 21 JOE GOLDSMITH WR

SEMINOLES

DEFENSE

- 57 STEVE BRATTON LE
- 70 JAMES MALKIEWICZ LT
- 46 DAVID MILES SLB
- 59 LARRY STRICKLAND MLB
- 56 JOHN MURPHY WLB
- 69 BOBBY ANDERSON RT
- 83 BERT COOPER RE
- 26 JAMES THOMAS ROV
- 42 RON RATLIFF LC
- 40 EDDIE MCMILLAN RC
- 20 DAVID SNELL SAF

THE SEMINOLE SQUAD

- | | |
|------------------|--------------------|
| 3 Downey, P | 49 Johnson, LB |
| 11 Askin, PK | 50 Whitehurst, LB |
| 12 Cadwell, QB | 52 Saldana, C |
| 14 Deming, QB | 53 Welch, C |
| 17 Loucks, P | 54 Dundala, OG |
| 18 Orlando, QB | 55 Dees, C |
| 19 Huff, QB | 56 Murphy, LB |
| 20 Snell, DB | 57 Bratton, DE |
| 21 Goldsmith, WR | 58 Pounds, LB |
| 22 Smith, WR | 59 Strickland, LB |
| 23 Payton, RB | 61 Arnold, OG |
| 24 Stockton, WR | 62 Jones, OG |
| 26 Thomas, DB | 65 Presswood, DT |
| 27 McGowan, DB | 66 Johnson, OT |
| 28 Davison, RB | 69 Anderson, DT |
| 29 Miller, RB | 70 Malkiewicz, DT |
| 30 Norris, RB | 71 Anderson, OT |
| 31 Chesnut, RB | 72 Gibbs, OG |
| 32 Davis, WR | 73 Oglesby, OG |
| 33 Brown, RB | 74 Sparkman, OT |
| 35 Shively, DB | 75 Glass, OT |
| 36 Oream, RB | 77 Howard, DT |
| 37 Roberts, RB | 79 Jacobi, DT |
| 38 Lewis, DB | 80 Hunt, DE |
| 40 McMillan, DB | 82 Allen, WR |
| 42 Ratliff, DB | 83 Cooper, DE |
| 43 Humes, DB | 84 Parris, TE |
| 44 Mitchell, RB | 85 Passwaters, DE |
| 46 Miles, LB | 87 Palermo, TE |
| 48 Huzzie, LB | 89 Castleberry, DE |
| | 90 Hopkins, TE |

OFFICIALS—

- Referee Morris Harrison, Decatur, Ga.
- Umpire Harvey Hardy, Lakeland, Fla.
- Linesman Jack Jordan, Atlanta, Ga.

DEFENSE

- 50 RICKY BROWNE LE
- 60 JOHN LACER LT
- 55 RALPH ORTEGA SLB
- 68 FRED ABBOTT MLB
- 57 DAVID POFF WLB
- 78 CLINT GRIFFITH RT
- 85 MIKE MOORE RE
- 21 TYSON SEVER LC
- 23 LEONARD GEORGE RC
- 38 ALVIN BUTLER MON
- 30 JIM REVELS SAF

GATORS

OFFENSE

- 22 WILLIE JACKSON SE
- 76 PAUL PARKER QT
- 64 BURTON LAWLESS QG
- 62 JOE SHEPPARD C
- 77 MIKE STANFIELD SG
- 74 KRIS ANDERSOB ST
- 81 HANK FOLDBERG TE
- 5 DAVID BOWDEN QB
- 36 LENNY LUCAS TB
- 20 VINCE KENDRICK FB
- 89 HOLLIS BOARDMAN FL

THE GATOR SQUAD

- | | |
|-----------------|-------------------|
| 5 Bowden, QB | 54 Harlow, C |
| 8 Gaffney, QB | 55 Ortega, LB |
| 9 Morrison, KS | 56 Kynes, C |
| 10 Gailey, QB | 57 Poff, LB |
| 12 Aust, KS | 58 Doll, OG |
| 17 Clifford, QB | 59 Boedy, LB |
| 18 Williams, KS | 60 Lacer, DT |
| 20 Kendrick, RB | 61 Green, LB |
| 21 Sever, DB | 62 Sheppard, C |
| 22 Jackson, SE | 63 Williams, OG |
| 23 George, DB | 64 Lawless, OG |
| 24 Fields, DB | 65 Iannarelli, OG |
| 25 McGriff, FL | 66 Hitchcock, DT |
| 26 Dorminy, DB | 67 Krick, OG |
| 27 Luce, RB | 68 Abbott, LB |
| 28 Talbot, DB | 69 Kruse, OG |
| 29 Ball, DB | 70 Padgett, OT |
| 30 Revels, DB | 71 Martin, OT |
| 31 Eastman, FL | 72 Nicholas, DT |
| 32 Summers, RB | 73 Hackney, OG |
| 34 Clifford, DB | 74 Anderson, OT |
| 35 DuBose, RB | 75 Starkey, DT |
| 36 Lucas, RB | 76 Parker, OT |
| 37 Geiger, RB | 77 Stanfield, OT |
| 38 Butler, DB | 78 Griffith, DT |
| 39 Moore, RB | 79 Wunderly, DT |
| 40 Sirmons, SE | 80 Anderson, SE |
| 43 Cameron, LB | 81 Foldberg, TE |
| 44 Parker, SE | 83 Nugent, TE |
| 48 Allen, LB | 85 Moore, DE |
| 50 Browne, DE | 87 Miller, TE |
| 52 Gowland, DE | 89 Boardman, FL |
| 53 Morris, C | 90 Kendrick, DE |

- Field Judge J.W. (Bill) Bryson, Athens, Ga.
- Back Judge Johnny Grace, Jackson, Miss.
- ECO John Wilson, Birmingham, Ala.

TALLAHASSEE COCA-COLA BOTTLING CO.



It's the real thing. Coke.

Trade-mark ®

Trust Texaco
for a great motor oil



and the right gasolines for you.

FLORIDA STATE

Seminoles

Offense

WR	22	Barry Smith
	32	Ed Davis
WT	75	Mike Glass
	71	Bob Anderson
WG	61	Phil Arnold
	72	Shane Gibbs
C	55	Allen Dees
	52	Rocky Saldana
SG	62	Bob Jones
	73	Paul Oglesby
ST	74	Don Sparkman
	66	Vic Johnson
TE	84	Gary Parris
	87	John Palermo
QB	19	Gary Huff
	12	Mike Cadwell
TB	44	Hodges Mitchell
	37	Oscar Roberts
FB	33	Mack Brown
	30	Brent Norris
WR	21	Joe Goldsmith
	82	Mike Allen

Defense

LE	57	Steve Bratton
	85	Earl Passwaters
LT	70	James Malkiewicz
	77	James Howard
SLB	46	David Miles
	49	Bill Johnson
MLB	59	Larry Strickland
	58	Greg Pounds
WLB	56	John Murphy
	50	Dan Whitehurst
RT	69	Bobby Anderson
	79	Howard Jacobi
RE	83	Bert Cooper
	89	Rusty Castleberry
ROV	26	James Thomas
	35	Randy Shively
LC	42	Ron Ratliff
	38	Buzzy Lewis
RC	40	Eddie McMillan
	43	Earl Humes
SAF	20	David Snell
	27	Mike McGowan

FLORIDA

Gators

Offense

SE	22	Willie Jackson
	44	Joel Parker
QT	76	Paul Parker
	70	Gary Padgett
QG	64	Burton Lawless
	63	Mike Williams
C	62	Joe Sheppard
	56	Jim Kynes
SG	77	Mike Stanfiled
	65	Ron Iannerelli
ST	74	Kris Anderson
	73	Bob Hackney
TE	81	Hank Foldberg
	83	Scott Nugent
QB	5	David Bowden
	10	Chan Gailey
FL	89	Hollis Boardman
	25	Lee McGriff
TB	36	Lenny Lucas
	39	Nat Moore
FB	20	Vince Kendrick
	37	Carey Geiger

Defense

LE	50	Ricky Browne
	90	Preston Kendrick
LT	60	John Lacer
	72	George Nicholas
SLB	55	Ralph Ortega
	59	Rick Boedy
MLB	68	Fred Abbott
	61	Sammy Green
WLB	57	David Poff
	43	Glenn Cameron
RT	78	Clint Griffith
	66	David Hitchcock
RE	85	Mike Moore
	52	Jan Gowland
LC	21	Tyson Sever
	28	Randy Talbot
RC	23	Leonard George
	26	Al Dorminy
M	38	Alvin Butler
	24	Wayne Fields
S	30	Jim Revels
	34	John Clifford

PLACEMENT AND KO –
11-Ahmet Askin

PUNTERS –
17-Gary Loucks, 3-Joe Downey

RETURN SPECIALISTS –
20-David Snell, 40-Eddie McMillan

*for in depth coverage
of today's game . . . see tomorrow's*

Tallahassee Democrat

featuring Florida's prize winningest sports editor . . . Bill McGrotha



PLACEMENTS –
12-Elwood Aust, 18-John Williams

PUNTS –
9-Buster Morrison

KO RETURNS –
39-Nat Moore, 22-Willie Jackson

PUNT RETURNS –
30-Jim Revels, 21-Tyson Sever

FLORIDA STATE

NO.	NAME	POS.	HT.	WT.	AGE	CL.	HOMETOWN
82	MIKE ALLEN	WR	6-4	180	19	Soph.	Willoughby, Ohio
71	BOB ANDERSON	OT	6-2	218	19	Soph.	Rockledge
69	BOBBY ANDERSON	DT	5-10	210	21	Jr.	Tifton, Ga.
61	PHIL ARNOLD	OG	6-0	220	20	Jr.	Hollywood
11	AHMET ASKIN	PK	6-0	175	18	Fr.	Tallahassee
57	STEVE BRATTON	DE	6-0	210	21	Jr.	Oviedo
33	MACK BROWN	RB	6-0	195	22	Jr.	Cookville, Tenn.
12	MIKE CADWELL	QB	6-1	190	21	Jr.	St. Louis Park, Minn.
89	RUSS CASTLEBERRY	DE	6-0	205	19	Soph.	Palatka
31	JEFF CHESNUT	RB	6-0	180	19	Soph.	Stone Mountain, Ga.
83	BERT COOPER	DE	6-1	220	20	Jr.	Tallahassee
32	ED DAVIS	WR	6-1	190	21	Jr.	Lakeland
28	MIKE DAVISON	RB	5-11	200	19	Soph.	Bradenton
55	ALLEN DEES	C	6-2	202	22	Sr.	Lakeland
14	FRANK DEMING	QB	6-0	170	21	Jr.	Valdosta, Ga.
3	JOE DOWNEY	P	5-11	204	20	Soph.	Mobile, Ala.
54	JIM DUNDALA	OG	5-11	205	21	Sr.	Morrisville, Pa.
72	SHANE GIBBS	OG	6-3	216	21	Sr.	Bay Minette, Ala.
75	MIKE GLASS	OT	6-3	214	22	Sr.	Tampa
21	JOE GOLDSMITH	WR	6-0	175	20	Soph.	Lakeland
90	DICK HOPKINS	TE	6-2	202	20	Soph.	West Palm Beach
77	JAMES HOWARD	DT	6-5	230	20	Soph.	Jacksonville
19	GARY HUFF	QB	6-1	190	21	Sr.	Tampa
43	EARL HUMES	DB	5-11	174	19	Fr.	Miami
80	CHARLIE HUNT	DE	6-3	210	21	Sr.	Jacksonville
48	DON HUZZIE	LB	5-11	190	21	Soph.	Miami
79	HOWARD JACOBI	DT	6-3	240	22	Sr.	Vero Beach
49	BILL JOHNSON	LB	6-0	205	19	Soph.	Cocoa Beach
66	VIC JOHNSON	OT	6-3	225	19	Soph.	Lake City
62	BOB JONES	OG	6-3	225	20	Soph.	Lighthouse Point
38	BUZZY LEWIS	DB	6-1	185	20	Jr.	Bristol
17	GARY LOUCKS	P	6-3	195	20	Soph.	Meritt Island
70	JIM MALKIEWICZ	DT	6-3	225	22	Jr.	Perth Amboy, N.J.
27	MIKE MCGOWAN	DB	5-8	169	22	Jr.	Norfolk, Va.
40	EDDIE McMILLAN	DB	6-2	180	21	Sr.	Tampa
46	DAVID MILLER	LB	5-11	210	20	Jr.	Tallahassee
29	FRED MILLER	RB	6-0	210	18	Jr.	Jacksonville
44	HODGES MITCHELL	RB	5-10	185	21	Jr.	Dallas, Tex.
56	JOHN MURPHY	LB	5-9	211	20	Soph.	Albany, Ga.
30	BRENT NORRIS	RB	6-0	190	21	Jr.	Thomaston, Ga.
73	PAUL OGLESBY	OG	6-2	229	19	Soph.	Jacksonville
36	RICK OREAIR	RB	6-1	200	21	Jr.	Jacksonville
18	MARK ORLANDO	QB	6-1	185	19	Soph.	Westfield, N.Y.
87	JOHN PALERMO	TE	6-4	220	20	Jr.	Newburg, N.Y.
84	GARY PARRIS	TE	6-2	210	22	Sr.	Vero Beach
85	EARL PASSWATERS	DE	6-3	215	20	Jr.	Bridgeville, Del.
23	LESTER PAYTON	RB	6-0	190	19	Soph.	Orlando
58	GREG POUNDS	LB	6-3	200	18	Fr.	Daytona Beach
65	TOM PRESSWOOD	DT	6-4	220	19	Soph.	Chattanooga, Tenn.
42	RON RATLIFF	DB	6-0	187	22	Sr.	West Palm Beach
37	OSCAR ROBERTS	RB	5-11	180	22	Sr.	Ocala, Ga.
52	ROCKY SALDANA	C	6-1	223	20	Jr.	Dallas, Tex.
35	RANDY SHIVELY	DB	6-0	173	21	Jr.	St. Petersburg
22	BARRY SMITH	WR	6-1	185	21	Sr.	Miami
20	DAVID SNELL	DB	5-8	175	21	Sr.	Slocomb, Ala.
74	DON SPARKMAN	OT	6-4	233	20	Jr.	Jacksonville
24	ANDY STOCKTON	WR	6-0	175	18	Fr.	St. Petersburg
59	LARRY STRICKLAND	LB	6-1	220	22	Sr.	Tallahassee
26	JAMES THOMAS	DB	6-1	190	21	Sr.	Macon, Ga.
53	JIM WELCH	C	6-2	214	23	Soph.	Jacksonville
50	DAN WHITEHURST	LB	6-3	225	22	Sr.	Adel, Ga.

FLORIDA

NO.	NAME	POS.	HGT.	WGT.	AGE	CLASS	HOMETOWN
5	David Bowden	QB	5-11	165	19	So.	Lakeland
8	Don Gaffney	QB	5-11	160	18	Fr.	Jacksonville
9	Buster Morrison	KS	6-1	186	19	So.	Orlando
10	Chan Gailey	QB	5-11	190	20	Jr.	Americus, Ga.
12	Elwood Aust	KS	5-10	188	20	Jr.	Clearwater
13	Tom Dolfi	KS	6-2	195	19	So.	Carnegie, Pa.
17	Thom Clifford	QB	6-2	199	20	So.	Coral Gables
18	John Williams	KS	5-10	184	19	Fr.	Cross City
20	Vince Kendrick	RB	6-1	225	20	Jr.	Miami
21	Tyson Sever	DB	5-10	184	20	So.	Clearwater
22	Willie Jackson	SE	6-1	194	22	Sr.	Sarasota
23	Leonard George	DB	5-10	173	21	Sr.	Tampa
24	Wayne Fields	DB	6-0	195	19	Fr.	Gainesville
25	Lee McGriff	FL	5-9	160	18	So.	Tampa
26	Al Dorminy	DB	5-10	180	20	So.	Ocala, Ga.
27	Richard Luce	RB	6-0	203	19	So.	Daytona Beach
28	Randy Talbot	DB	5-11	162	20	So.	Coral Gables
29	Robby Ball	DB	6-1	173	18	Fr.	Eustis
30	Jim Revels	DB	6-0	185	20	Jr.	Merritt Island
31	Ward Eastman	FL	6-3	207	19	So.	Peoria, Ill.
32	Andy Summers	RB	5-10	186	19	So.	Macon, Ga.
34	John Clifford	DB	6-2	175	21	Sr.	Coral Gables
35	Jimmy DuBose	RB	5-11	189	19	Fr.	Sarasota
36	Lenny Lucas	RB	6-1	191	19	Jr.	Daytona Beach
37	Carey Geiger	RB	6-1	197	20	Jr.	Savannah, Ga.
38	Alvin Butler	DB	5-10	177	20	So.	Gainesville
39	Nat Moore	RB	5-10	176	20	So.	Miami
40	Eddie Sirmons	SE	6-1	194	18	Fr.	Titusville
43	Glenn Cameron	LB	6-1	210	19	So.	Coral Gables
44	Joel Parker	SE	6-5	222	20	Jr.	Clearwater
48	Joe Allen	LB	6-0	202	18	Fr.	Troy, Ohio
49	Chris McCoun	LB	6-1	203	20	Jr.	Decatur, Ga.
50	Ricky Browne	DE	6-1	224	20	Jr.	Longwood
52	Jan Gowland	DE	5-11	219	21	Sr.	Winter Garden
53	Larry Morris	C	6-1	205	21	Sr.	Pensacola
54	Greg Harlow	C	6-0	215	21	Sr.	Tampa
55	Ralph Ortega	LB	6-2	218	19	So.	Coral Gables
56	Jim Kynes	C	6-0	207	19	So.	Tampa
57	David Poff	LB	6-0	194	20	Sr.	Titusville
58	Ron Doll	OG	6-1	202	21	Jr.	Riviera Beach
59	Rick Boedy	LB	6-0	203	20	So.	Jacksonville
60	John Lacer	DT	6-1	218	20	Jr.	Brandon
61	Sammy Green	LB	6-1	221	19	Fr.	Fort Meade
62	Joe Sheppard	C	6-0	219	20	Jr.	Orlando
63	Mike Williams	OG	6-3	231	18	Fr.	Orlando
64	Burton Lawless	OG	6-4	229	19	So.	Punta Gorda
65	Ron Iannarelli	OG	5-10	233	21	Jr.	Hialeah
66	David Hitchcock	DT	5-8	210	20	Jr.	Winter Haven
67	Bob Krick	G	6-0	204	19	So.	Decatur, Ga.
68	Fred Abbott	LB	6-3	228	22	Sr.	Brooksville
69	Kim Kruse	OG	6-2	206	21	Jr.	Fort Lauderdale
70	Gary Padgett	OT	6-3	232	19	Jr.	Jacksonville
71	John Martin	OT	6-4	237	19	So.	Delray Beach
72	George Nicholas	DT	6-2	219	19	So.	Tarpon Springs
73	Bob Hackney	OG	6-3	239	21	Jr.	Jacksonville
74	Kris Anderson	OT	6-2	233	20	Jr.	Orlando
75	David Starkey	DT	6-6	249	18	Fr.	Troy, Ohio
76	Paul Parker	OT	6-3	232	19	So.	Clearwater
77	Mike Stanfield	OT	6-1	251	20	So.	Pensacola
78	Clint Griffith	DT	6-6	236	20	So.	Baker
79	Joe Wunderly	DT	6-3	243	21	Jr.	Fort Scott, Kan.
80	Tony Anderson	SE	6-2	195	19	So.	Bristol
81	Hank Foldberg	TE	6-6	231	20	Jr.	Atlanta, Ga.
83	Scott Nugent	TE	6-2	203	20	So.	Coral Gables
85	Mike Moore	DE	6-1	214	20	Jr.	Fort Lauderdale
87	Jerry Miller	TE	6-4	213	19	So.	Jacksonville
89	Hollis Boardman	FL	6-3	204	20	Jr.	Orlando
90	Preston Kendrick	DE	6-1	222	19	So.	Miami
94	Ray Brown	DE	6-1	206	20	So.	Marlboro, N.J.

Tallahassee Democrat

Prize Winning Sports Coverage

NATIONAL NEWSPAPER ASSOCIATION

- 1st — Best Sports Section, 1972
- 1st — Best Sports Columnist, 1971
- 1st — Best Sports Section, 1970
- 3rd — Best Sports Picture, 1970

FLORIDA SPORTS WRITERS ASSOCIATION

- 1st — Best Sports Columnist, 1971
- 1st — General Writing Excellence, 1971
- 1st — General Section Excellence, 1970
- 2nd — Overall General Excellence, 1971
- 3rd — Sports Section Make-Up, 1971
- 4th — Overall Writing Excellence, 1970

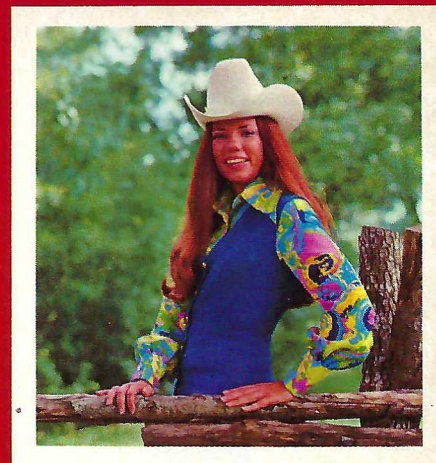
ASSOCIATED PRESS OF FLORIDA

- 1st — Best Sport Color Picture, 1970

For the best coverage of today's game see tomorrow's

Tallahassee Democrat

"Your BEST Neighbor In Town!"



Miss Debbie Floyd
Florida Cattlemen's Association
1972-73 Sweetheart

When you
Celebrate today's
Victory,
Treat yourself
To
Tender, Tasty...

BEEF

As Delicious as it is Nutritious!

FLORIDA BEEF COUNCIL

A Committee of The Florida Cattlemen's Association

**the
cycle
shop**
TALLAHASSEE
FLORIDA



®  **Kawasaki**

W. M.
POGGIE
owner

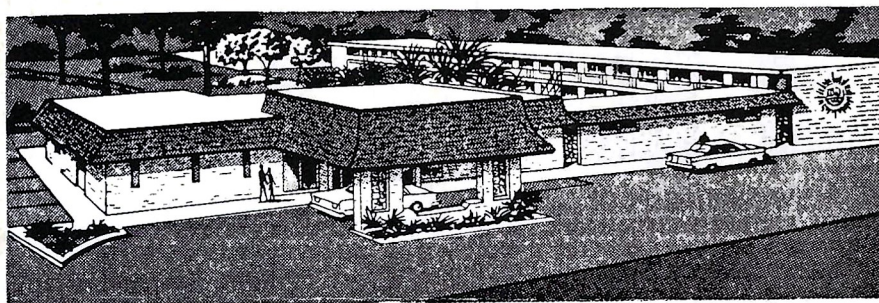
576-6326

4003 W. PENSACOLA ST.



**QUALITY
MOTEL**

*The Chez Napoleon Room
Complete Banquet and Meeting Facilities
Cocktail Lounge - Bonaparte's Retreat*



COLOR TV

"We Cater to
Commercial Men"

Phone 877-6171

On the Parkway... 1027 APALACHEE PKWY. US 27 So.

The Football Staff

"Without a good coaching staff, you can't have a winner."

— — Coach Larry Jones



BILL CANTY
Offensive Coordinator, Quarterbacks

Originally, Canty was named by Coach Jones to direct the Seminole freshmen. However, Bill worked primarily with the varsity running backs last fall and was elevated to offensive coordinator when Steve Sloan departed.

Bill came to Florida State from Furman his alma mater, where he headed the Paladins' offense. He was an assistant there for eight seasons following his graduation in 1962.

The former Furman quarterback was born in Pascagoula, Miss., and attended high school there before being recruited by Furman.

He captained the Paladins as a junior and played in the Senior Bowl following his final season of eligibility.

Bill's younger brother, Bobby, was a Florida State baseball standout who graduated in 1967.

Bill and his wife, the former Ann Lochridge of Delta City, Miss., have a son and daughter.

GENE HENDERSON
Defensive Coordinator, Defensive Backs

A native Texan, Gene played his college football under Bear Bryant at A&M after transferring from San Angelo Junior College.

Coming to Texas A&M in 1954, Gene was a member of the famous Aggie team which "survived" the fall practice at Junction, Texas.

Born in Sonora, Texas, Gene was also a track performer in junior college and at A&M.

Following graduation in 1955, he spent six years as a prep assistant before getting the head job at Nederland High School. In 1967 he went to Texas Tech as an assistant, taking over as defensive coordinator in '68.

He headed up the defense at TCU in 1970 before joining the Florida State staff in 1971.

Gene and his wife, the former Sue Wyatt of Sonora, have four children.



FRANK DEBORD
Equipment Manager

Frank not only is in charge of Florida State's football gear, but also oversees the upkeep of the Seminoles' practice fields.

Now in his third season as the Seminoles' football equipment chief, he has been with the program for six years. A native of Virginia, he currently resides in Quincy.

A graduate of Virginia Tech where he lettered in football and wrestling, Frank served as an assist football coach at Franklin, Va., High School and also played two seasons for Norfolk in the Continental League.

Frank and his wife, the former Marian Bradshaw of Franklin, Va., have three children.



HOWARD JOHNSON'S MOTOR LODGE

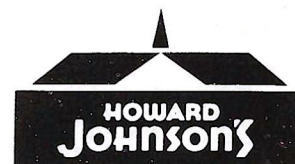
1350 W. Tennessee St.
(904) 222-3219
AT THE UNIVERSITY

HOWARD JOHNSON'S MOTOR LODGE

722 Apalachee Parkway
Nearest the Capitol
(904) 224-2181

Featuring the TIGER BAY LOUNGE

Entertainment Nightly



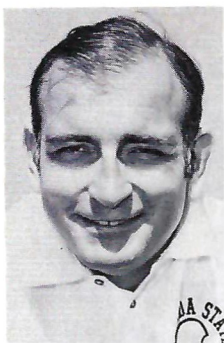
Accommodations

*motor
lodges*

Football Staff

JOHN DEVLIN

Defensive Ends and Tackles



A former Army staff sergeant, John came to Florida State in 1971 from Virginia Tech, one of the Seminoles' arch rivals.

An avid paddleball player, this native of Norristown, Pa., played tackle at West Chester State where he was called the "best ever" by 25-year coaching veteran W. Glenn Killinger.

After receiving his degree in 1959, John became the line coach at Waynesboro, Pa., High School. In 1961 and '62 he was an assistant with the Fourth Armored Division football team in Ulm, Germany. From 1963-65 he served along with Larry Jones as an assistant under Paul Dietzel at the U.S. Military Academy. In 1965 he joined Jerry Claiborne's staff at Virginia Tech.

John and his wife, the former Irma Kleemann of Regensburg, Germany, have three sons and a daughter.

JIM DONNAN

Running Backs



Jim is one of the newest additions to the Seminole staff, coming to Florida State from the University of North Carolina.

Prior to joining the Tarheels, Donnan was an assistant at his alma mater, North Carolina State.

During his playing days Jim was the second-leading passer in Wolfpack history. He was named the Most Valuable Player in the 1967 Liberty Bowl and was voted the ACC Player of the Year the same season. He was also No. 1 singles player on the N.C. State tennis team.

The 1968 graduate was named the Wolfpack's most outstanding student-athlete in 1967. Following graduation he joined State's staff as an assistant.

A Burlington, N.C., native, Jim is married to the former Mary Wright of Burlington and they have two daughters.

BOB HARBISON

Interior Offensive Line



This will be "Harbie's" 25th season at Florida State, meaning that only one Seminole team, the first, hasn't benefited by Bob's coaching ability.

Bob has coached both offensive and defensive linemen during his long career at Florida State. He returned to offense last season after a number of years guiding the interior defensive linemen. His "Magnificent Seven" of 1964 is considered one of the Seminoles' better defensive lines.

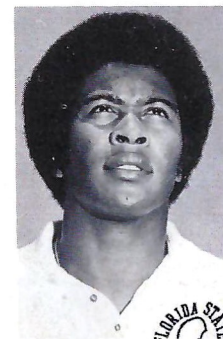
A native of Evansville, Ind., Harbie played his college football at the University of Indiana under the late Bo McMillin. Following his senior season he performed in the Blue-Gray All-Star game in Montgomery, Ala.

Larry Jones is the fifth Seminole head coach Harbie has worked with. He also served under Don Veller, Tom Nugent, Perry Moss and Bill Peterson.

Bob and his wife, the former Jane McEntee of Washington, D.C., have four children.

LARRY HOLTON

Defensive Backs, Scout Squad



Another first year Florida State assistant, Larry comes to the Seminoles from Iowa State where he served two seasons as a graduate assistant.

At Florida State he will assist Gene Henderson with the defensive backs and also direct the scout squad.

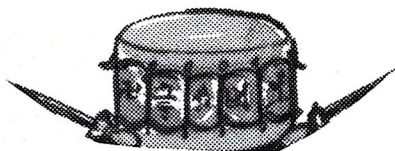
A native of Keokuk, Iowa, Larry was a three-sport letterman at Keokuk High before gaining a football scholarship to Iowa State. As a senior he was named All-Big 8 Conference as a defensive back before earning his B.S. in Physical Education the next year.

Larry joined the Florida State staff this summer. He is single.

Tom
McEntee
Jim
Selman
on
Sports



**THE TAMPA
TRIBUNE**
every morning!



Football Staff



DICK MILDER
Trainer

For the first time in nearly two decades Florida State will have a new athletic trainer as personable Dick Milder takes over for Don Fauls who retired last spring.

A graduate of Iowa State University where he served as student trainer under C.R. Bickerstaff, Dick has a Certificate of Physical Therapy from Iowa and a Master's Degree from Purdue. His training experience includes two years at West Point, a year at Iowa and two years at Purdue where he was located before joining the Seminoles. The Army veteran also has served as an assistant trainer for the St. Louis Football Cardinals.

Dick is married to the former Linda Lee Van Wechel.

BILL PARCELLS
Linebackers

This will be Bill's third season as director of Florida State's linebacking corps. He and Bob Harbison were the only two holdovers from the Bill Peterson staff.

Parcells has been associated with outstanding linebackers during his entire coaching career and he ranks this year's group among the best he's coached.

The Oradell, N.J., native came to Florida State after four seasons at the U.S. Military Academy.

Bill played his college football at Wichita where he performed at guard, tackle and linebacker. He was All-Missouri Valley Conference twice and upon graduation was a fourth-round draft choice by the Detroit Lions.

His first coaching assignment was at Hastings College for one year. He then returned to his alma mater for another season before moving to Army.

Bill and his wife, the former Judy Goss of Wichita, have three daughters.



JIM PHILLIPS
Receivers

Jim comes to Florida State from the pro ranks, having coached the San Diego Charger receivers since 1969.

Following an outstanding college career at Auburn where he was an All-America end, he was a first round draft choice by the Los Angeles Rams. He played seven seasons with the Rams and three more with the Minnesota Vikings before joining the Chargers as an assistant. He graduated from Auburn in 1958.

Jim ranks 15th on the all-time list of pro receivers with 401 catches for 6,044 yards.

A native of Alexander City, Ala., he and his wife, the former Mickey Kennedy of Phenix City, Ala., have three children.



MIKE POPE
Director of High School Relations

This will be Mike's second season in the important role of directing Florida State's recruiting. His first was called one of the best recruiting years in Seminole history.

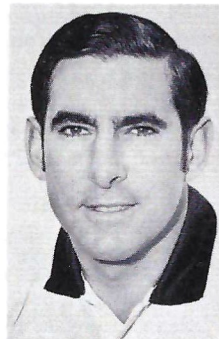
Mike moved into his present job after spending the 1970 season working as a graduate assistant helping with the freshman squad.

The North Carolina native was born in Monroe and played his college ball at Lenoir Rhyne where he performed at both quarterback and fullback in the Bears' single wing attack.

After three years as head coach in North Carolina high schools, he went to Jacksonville where he was offensive coordinator at Wolfson High. He became head coach and athletic director at Lake Wales High School in 1968 before coming to Florida State.

In college, Mike was the Lenoir Rhyne captain in 1963 and voted the team's most valuable player.

He is married to the former Lee Lambie of Arlington, Va.



New in 1972
and already a
TRADITION



Dance to Our
Live Entertainment
Nightly



After the Game
Toast the
Seminoles at
the "In" Place



Jefferson at Calhoun
Tallahassee
222-6836

Graduate Assistant Coaches



Front Row (left to right)—Jon Conlin, Bobby Howell and Paul Stein. Back Row—Bill Shaw, Hank Small, Wayne McDuffie and Bob Sanders.

PRESCRIPTIONS

- COSMETICS
- GREETING CARDS
- TOYS
- FILMS & CAMERAS



"BUDDY STEWART"
 "WORKING FOR BETTER
 COMMUNITY HEALTH"
 HAVE YOUR DOCTOR CALL US

- VITAMINS
- CANDY
- GIFTS
- HOSPITAL SUPPLIES

224-5011

NO CHARGE FOR
 DELIVERY SERVICE

UNIVERSITY
Rexall
 PHARMACY

W. Tenn. & High Road

CITY WIDE AND
 SURROUNDING AREAS

STADIUM INFORMATION

REST ROOMS are located on concourse and ground levels of both the east and west stands.

FIRST AID station is located at the southwest corner of the stadium opposite gate five. A registered nurse is on duty at all times.

PUBLIC TELEPHONES are located on the ground levels of the east and west stands.

PUBLIC ADDRESS will make special announcements in cases of emergency only.

DOCTORS receiving calls will be paged by number.

LOST AND FOUND items may be turned in and claimed at the ticket-booth at gate three under the west stands by the press box elevator.

ALCOHOLIC BEVERAGES are prohibited. Your cooperation is appreciated.

FIELD REGULATIONS prohibit unauthorized persons on the field during or after the game. Please leave the Stadium by the ramp and section exits.

REFRESHMENTS are available in the stands and at locations on the concourse and ground levels of the east and west stands.

COLD DRINKS: Regular	25¢
Large	50¢
HOT COFFEE	25¢
SANDWICHES	50¢
JUMBO HOT DOGS	50¢
PEANUTS	25¢
POP CORN	25¢
CIGARETTES	75¢

**SOUVENIER ITEMS — PENNANTS —
BADGES — SUNVISORS — ASPIRIN**

Please pay no more than **ESTABLISHED
PRICES**

Double Coverage



That's the name of our game and we'd like to tell you about two of the writers on our sports team who make it work so well for us.

Bill Kastelz — a brilliant analyst. You can count on him for thorough and perceptive examination of the sports world — its triumphs and excitement as well as its controversies and disappointments. If it's worth reading, Kastelz will be writing about it every morning in the Florida Times-Union.

Rex Edmondson — Our whimsical, ingenious Monday afternoon quarterback. Arch foe of the second-bests and also-rans. He'll dazzle you with his refreshing insight and imaginative sports coverage. Follow him in the sports pages of the Jacksonville Journal. He's the one with the big cigar.

Keeping you informed, that's what great sports coverage is all about and we do it twice a day.

The Florida Times-Union · Jacksonville Journal

The Athletic Department Salutes...



Florida State University's Institute for Social Research is a component of the College of Arts and Sciences dedicated to research, graduate training and public service.

Established in 1958, the Institute consists of five centers: the Survey Data Center, Center for the Study of Education, Community Mental Health Research Center, the Urban Research Center and the Population and Manpower Research Center.

According to Institute Director Charles M. Grigg, "The focus of the Institute is reflected in the titles of our centers, but Institute research actually covers a wide area of problems in government and society ranging from local expansion problems to national policies in education."

In addition to large-scale research programs, the Institute also supports research of local faculty members. Graduate students also participate as interns, or as research assistants and associates.

"Each center has a director and professional staff," Dr. Grigg said. "Faculty members from various social science departments join the centers on a rotating basis for periods of one to three years." He added that the staff includes some 15 faculty, 33 graduate assistants, 12 undergraduate assistants, and 9 secretarial and administrative personnel.

The University, through the Institute and various teaching departments, provides the basic operating funds for the centers, and these funds are supplemented with grants from federal agencies and private foundations.

Most of the Institute's research carried out in recent years has been published in three Institute publications: "Research Reports in Social Science" (semiannually), "Government Research Bulletin" (five times a year) and "Urban Research Monograph Series" (periodic).

The Institute provides a wide range of consultation services. Staff members respond to requests for information from government officials, citizens groups, other educational institutes and individuals. Consultation has been provided for such groups as the United Nations Economic and Social Council, U.S. Bureau of the Census, U.S. Office of Education and the U.S. House of Representatives Committee on Education and labor.

"We also have quite a bit of local activity," Dr. Grigg said. "The Institute consults with local mental health directors and conducts surveys for local government and non-profit organizations." He added that the Institute also provides speakers for education groups.

Dr. Grigg said there is a growing demand for the services of the various centers.

Survey Data Center

The Survey Data Center, created in 1969, conducts sample surveys throughout Florida, as well as serving research needs of the University community.

Research assistance is offered in conducting personal interviews, telephone interviews and mail questionnaire studies

throughout Florida. The Center also assists in forming proposals for research funding.

"In the course of several surveys," Grigg said, "the center has developed a master sample for Florida, as well as a state-wide fieldwork staff of supervisors and interviewers."

The Survey Data Center also organizes special workshops on survey methods, offers advice on all phases of survey research and provides training opportunities to students and faculty.

Education Studies

The Center for the Study of Education concentrates on research pertaining to education in relation to society as a whole. The talents of a number of scholars in the social science field provides leadership for the program.

Major research now underway includes a study of the organizational properties of schools, colleges and universities as open social systems.

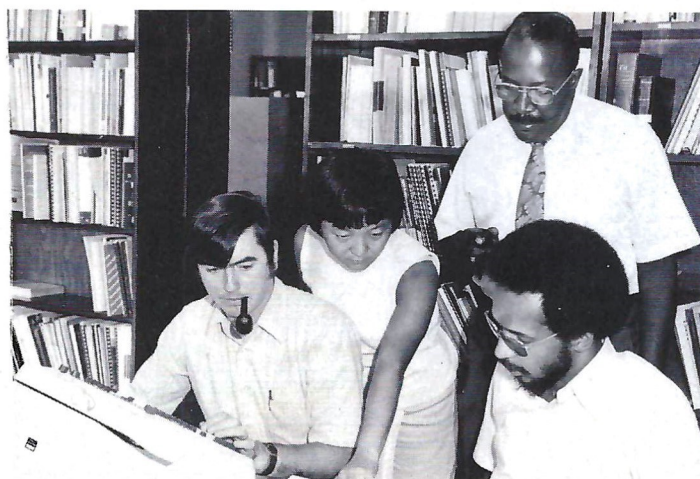
The Center provides research internships and graduate assistantships.

Mental Health Research

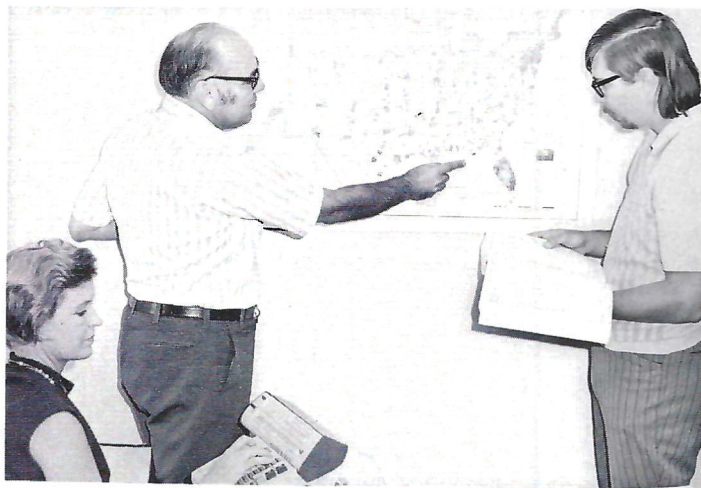
The Community Mental Health Research Center is broadly concerned with mental health and social deviance; branches of research, training and service are also maintained.

The Center is particularly concerned with evaluation of the effects of mental health service programs. Closely related to its research activities, the center has a training program to prepare doctoral students in sociology and psychology for research careers in the community mental health field.

"In addition to formal course work, these students participate in research and consultation," Dr. Grigg said. He added that the center provides consultation services with national, regional, and state agencies.



POPULATION STUDY—Members of Florida State University's Population Human Resources Center study a map of Florida indicating population characteristics. The Center, one of five components of the University's Institute for Social Research, concentrates on the study of demography, human ecology, and urban planning. Left to right are Mrs. Betty Sue Kurth, Dr. Charles Nam (director of the Center) and graduate student James Spitler.



URBAN RESEARCH CENTER—Workers in Florida State University's Urban Research Center analyze computer readout. The main objective of the Center is conducting research on the problems of man in his contemporary urban setting. The Center is a component of the University's Institute for Social Research. Left to right are Jim Sheffield, Marylyn Feaver, Dr. Paul Puryear and Joe Braddock.

Urban Research

The main objective of the Urban Research Center is research on the increasing problems of man in his contemporary urban setting. The research is conducted by a staff of social scientists and graduate students drawn on a rotating basis from the departments of government, sociology, economics and urban planning.

Dr. Grigg said the immediate interest of the Urban Center's staff is focused almost exclusively on the role of black urban populations. Current research projects include a study on interracial contact and the incidence of racial hostility in desegregated public housing.

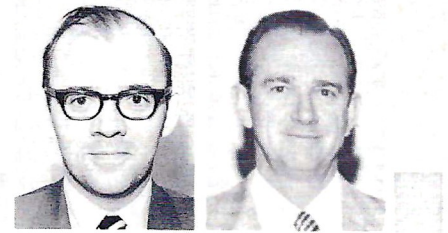
Population and Manpower

The basic purpose of the Population and Manpower Research Center is to study demography, human ecology and human resources. "Sociologists, economists and other social scientists are involved in studying issues relating to local, state, national and world problems," Dr. Grigg said.

The Center cooperates with the departments of economics and sociology in providing training opportunities for graduate and undergraduate students through research assistantships. A related Population Studies Program, which helps train students for master's and doctoral degrees, is located in the Department of Sociology.

"Through these five centers, the Institute is doing some very vital work," Dr. Grigg said. "And the need for these various types of research is definitely on the increase."

Florida Board of Regents and Chancellor



Members of the current Board of Regents are shown here with Chancellor Robert B. Mautz of the State University System. They are: Back, left to right, Chester H. Ferguson, Tampa; James J. Gardener, Fort Lauderdale; Chancellor Mautz and Dr. Louis C. Murray, Orlando; front row, left to right, D. Burke Kibler, III, Lakeland; J.J. Daniel, Jacksonville, Chairman; Marshall M. Criser, Palm Beach, Vice Chairman; and Mrs. E.D. Pearce, Miami. Other Regents shown in insets, are Julius F. Parker, Jr., Tallahassee, and E.W. Hopkins, Jr., Pensacola.



HAV-A-TAMPA JEWELS

*The Cigar for Men . . .
that Ladies Love —*

WELCOME ANYWHERE

for their man-size flavor and gentle aroma

Distributed by **Eli Witt Tobacco & Candy Company**
Tallahassee, Florida

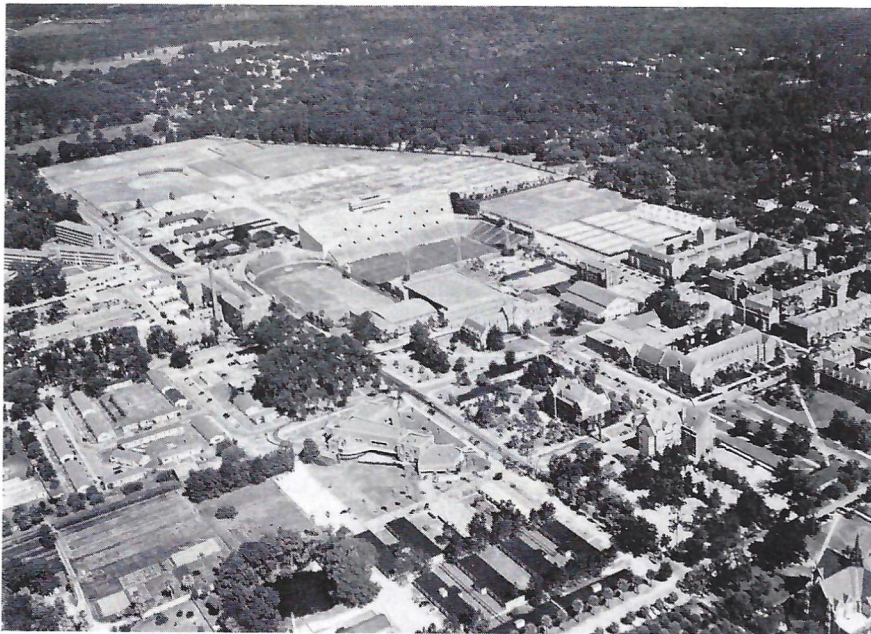
OWENS, INC.

SPORTING
GOODS

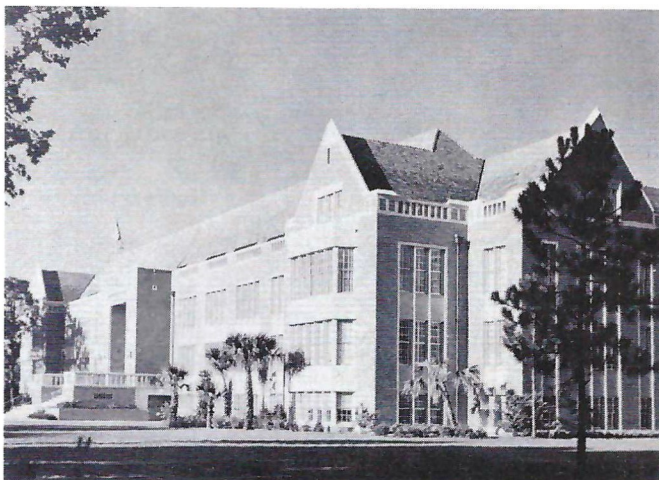
HARDWARE

202 W. Broad Ave. — 435-5628
In Downtown Albany, Ga.

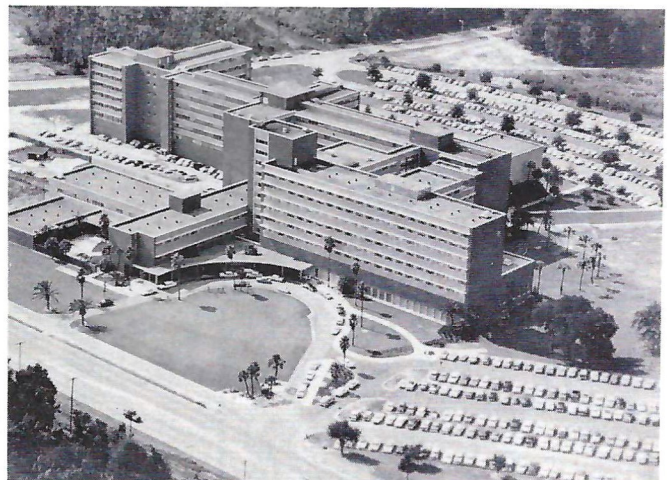
FLORIDA



Air View Campus



Administration Building



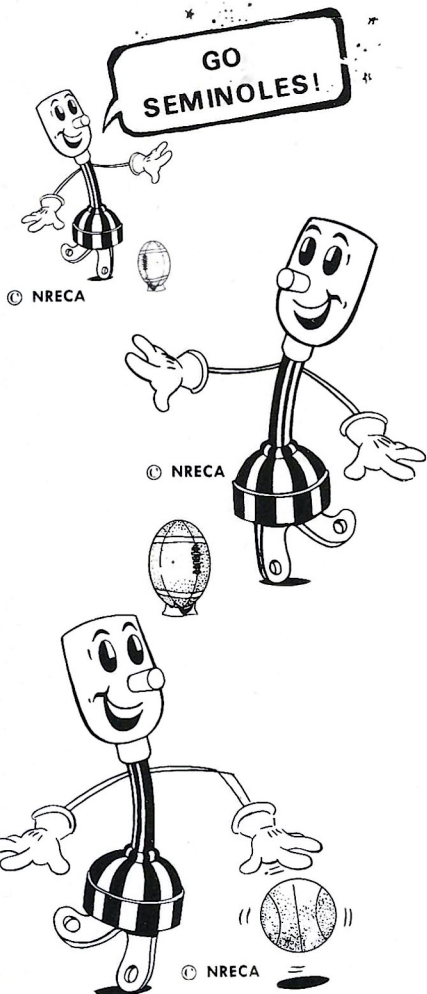
Medical Center

TALQUIN
ELECTRIC
Cooperative Inc.

"OWNED BY THOSE WE SERVE"

IN

GADSDEN, LEON, LIBERTY
AND WAKULLA COUNTIES

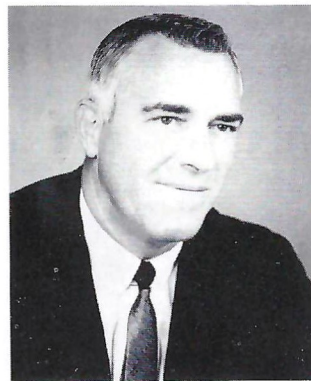


*Live Better...
Electrically*

FLORIDA



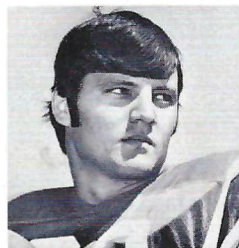
DR. STEPHEN C. O'CONNELL
President



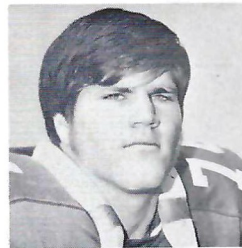
RAY GRAVES
Athletic Director



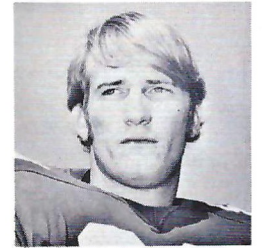
DOUG DICKEY
Head Coach



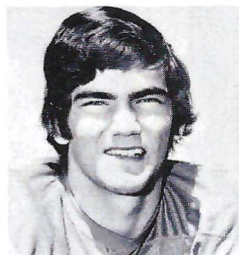
Fred Abbott



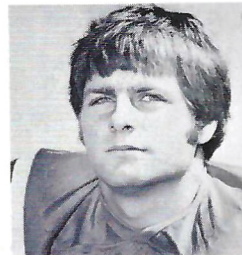
Kris Anderson



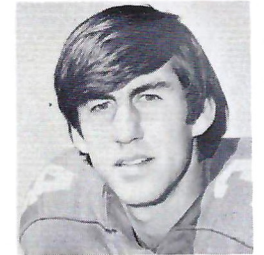
Hollis Boardman



David Bowden



Ricky Browne



John Clifford

MORE GATORS



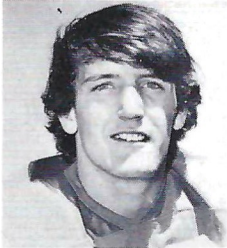
Hank Foldberg



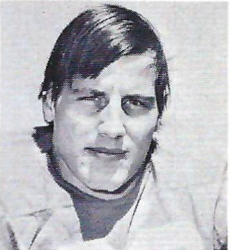
Chan Gailey



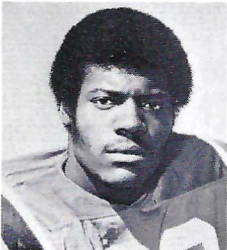
Leonard George



Clint Griffith



David Hitchcock



Willie Jackson



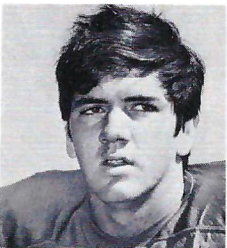
Vince Kendrick



Mark King



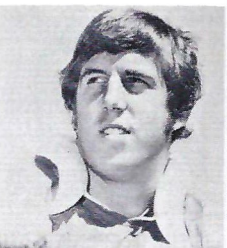
John Lacer



Burton Lawless



Lenny Lucas



Chris McCoun

WAKULLA SPRINGS



OPEN THE
YEAR ROUND

- Glass-bottom boat tours over the World's largest and deepest spring. See beautiful depth of 185 feet. Featuring "Henry" the pole vaulting fish.
- Jungle Boat tours down the Wakulla River. See wildlife – alligators, turtles, limpkins, anhingas, ducks, and many, many others - all in their natural setting.
- Situated in the heart of 4,500 acre Wildlife Sanctuary.
- Hotel - 25 clean, comfortable rooms. Massive lobby has long been a showplace of this area. Central heating and air conditioning.
- Excellent Dining Room, Coffee and Gift Shop
- Reasonable prices ● Swimming - in season ● Bring your camera

"Florida's Finest Natural Attraction"

15 MILES SOUTH OF TALLAHASSEE

WAKULLA SPRINGS, FLORIDA 32305



Your Memories
Live Forever
When Recorded
On Film!

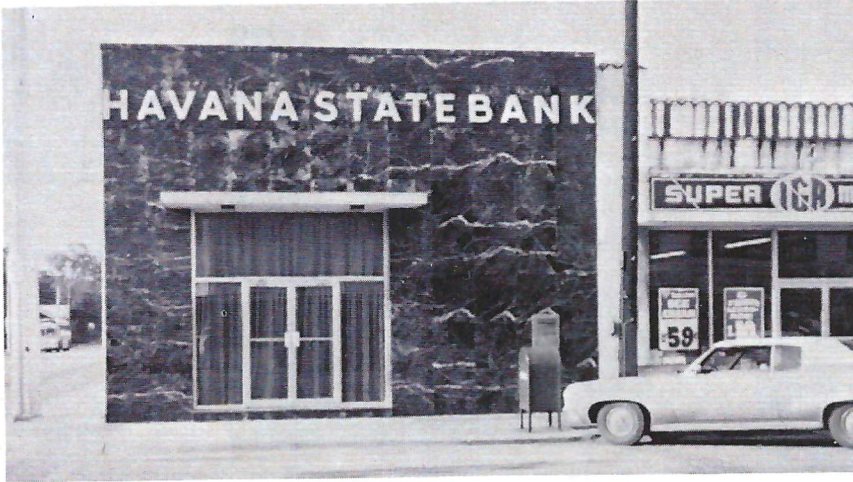
TAKE YOUR
CAMERA
ALONG!!

FOR NORTH FLORIDA'S LARGEST SELECTION OF PHOTO
EQUIPMENT & SUPPLIES SEE THE FRIENDLY FOLKS AT

Tallahassee Camera Center

117 NORTH MONROE

"Across from the Florida Theater"



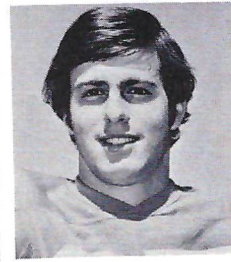
HAVANA STATE BANK

U.S. Highway 27
 Havana, Florida 32303
 President: H.W. Slappy – Member of F.D.I.C.

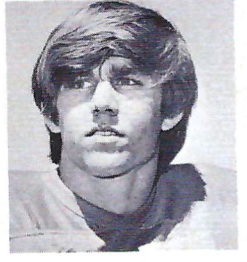


471 W. Tennessee Street
 and
 N. Monroe across from the Mall
eating at Jerry's is a family affair!

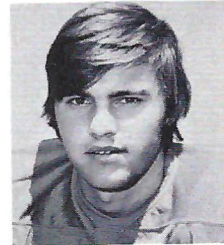
MORE GATORS



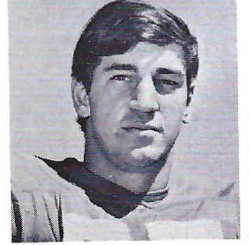
Lee McGriff



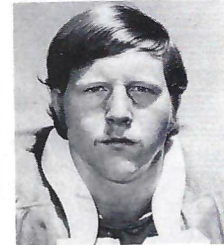
Mike Moore



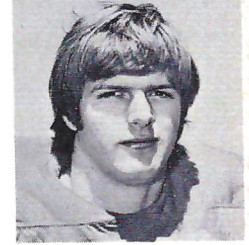
Buster Morrison



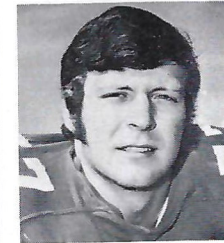
Ralph Ortega



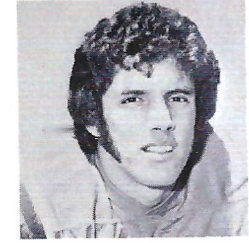
Gary Padgett



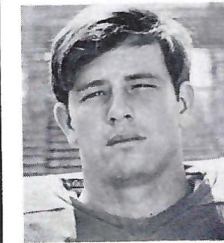
Paul Parker



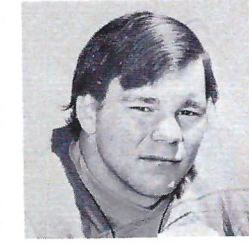
David Poff



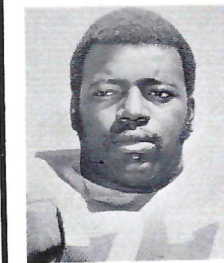
Jim Revels



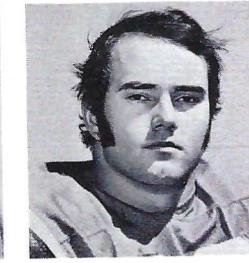
Tyson Sever



Joe Sheppard



Mike Stanfield



Andy Summers



Official Seminole Sportswear



LADIES AND MEN'S KNIT SHIRTS

100% cotton lisle shirts available in white, gold or red with contrasting Seminole emblem. Full fashion collar. Button placket.

- 6800 Men's Sizes: S-M-L-XL-XXL \$ 11
 4050 Women's cuffed short sleeve: Sizes 32-40 \$ 11
 4055 Women's sleeveless shell: Sizes 32-40 \$ 11

100% Orlon Cardigan Sweaters

Links-N-Links Classic Button front cardigan sweaters. Cut extra full for added comfort. Wash and wear. White, Berry Red and Gold, with colorful Seminole emblem.

- 8100 Men's Sweater \$ 20
 Sizes S-M-L-XL
 1825 Women's Sweater \$ 20
 Sizes 34-36-38-40

CHAMPION NYLINE LINED COACHING JACKET

Full cut 100% nylon water repellent outer shell. Pole Lining with quilted nylon sleeve lining. Hood concealed in unique compartment inside the lining. Slashed pockets and elasticized cuffs. Completely washable. Order in Maroon or Old Gold, with contrasting Seminole emblem.

M/Jac Sizes S-M-L-XL-XXL \$ 20

MEN'S Dacron/Cotton WASH-AND-WEAR SHIRT

50% Dacron 50% Cotton Four button Continental Placket shirt with full fashion collar. Order in three colors, white, gold and red with Seminole emblem.

7028 Sizes S-M-L-XL \$11

CHAMPION B/COACH JACKET for the kids

Just like the warm-up jackets worn by Seminole athletes. 100% single ply taffeta nylon shell jacket with Byron collars. Color matched gripper-snap front. Set in sleeves with elasticized cuffs. Drawstring bottom. Comes in Gold only with contrasting Seminole emblem.

B/Coach Sizes: XS (2- 4) \$ 8
 S (6- 8)
 M (10-12)
 L (14-16)

Item No. and Description	Quantity	Color	Size	Price	Total
4050 Women's shortsleeve				\$ 11	
4055 Women's shell				\$ 11	
6800 Men's cotton shirt				\$ 11	
7028 Men's Dac-Cot shirt				\$ 11	
8100 Men's Cardigan				\$ 20	
1825 Women's Cardigan				\$ 20	
Lined Jacket				\$ 20	
Child's Jacket				\$ 8	
			SUB-TOTAL:		
Four percent Florida Sales Tax:					
			TOTAL:		

Make Check payable to:

FLORIDA STATE UNIVERSITY

Mail Order To:

NATIONAL SEMINOLE CLUB
 Room 100 Tully Gym
 Florida State University
 Tallahassee, Florida 32306
 ATTN: Scott Fletcher

Seminole Auto Dealers

These are the men who help keep Florida State's Athletic Program "on the go" in a very real sense. The importance of the Seminoles' courtesy car program cannot be overemphasized and without the cooperation of these gentlemen, it would never reach the degree of success it has. We salute each and every one of these community minded men.



Theo and Julian Proctor
Proctor and Proctor
Pontiac/Cadillac
Tallahassee



Neil Palmer and E.K. Harrell
Palmer-Harrell Buick Co.
Tallahassee



J. Ed Bell
Bell Chevrolet
Cairo, Ga.



Tom Kinnebrew
Kinnebrew Motors
Tallahassee



Joe Ball
Havana (Ford) Motors
Havana



Sam Shovlain
Courtesy Oldsmobile
Tallahassee



Bill Peacock
Peacock Chevrolet
Monticello



Manning Taylor
Taylor Chevrolet-Buick
Quincy



Charles Alford
Alford Chevrolet Co.
Tallahassee



Bob and Bill Miller
Miller Chevrolet
Havana



Ed Richardson and Frank Shaw
Tallahassee (Ford) Motors
Tallahassee

STATION CITY

- WJAX — Jacksonville
- WGKR — Perry
- WTNT — Tallahassee
- WCNH — Quincy
- WTYS — Marianna
- WPCF — Panama City
- WCOA — Pensacola
- WFOY — St. Augustine
- WDNJ — Daytona
- WRUF — Gainesville
- WMOP — Ocala
- WMMB — Melbourne
- WWQS — Windemere/Orlando
- WTRR — Sanford
- WSIR — Winter Haven
- WSUN — St. Petersburg
- WTRL — Bradenton
- WTTB — Vero Beach
- WARN — Ft. Pierce
- WSTU — Stuart
- WKAT — Miami
- WINK — Ft. Myers
- WCCF — Punta Gorda
- WCKS — Cocoa Beach



Bill Owens



Bo Mitchell

Seminole Radio Network

Follow Florida State "on the Warpath" over the Seminole Network throughout the State of Florida and south Georgia and Alabama.

More than two dozen stations will be carrying every play of the Seminoles' 1972 season with several more broadcasting selected games. In addition many Florida State games will be heard as a part of the "Pick of Dixie" broadcasts. Originating station for the network is WTNT in Tallahassee.

Bo Mitchell will be the "Voice of the Seminoles" for the 10th consecutive year. The veteran announcer is a former winner of the Florida Sportscaster of the Year award and has done the play-by-play for the Senior, Tangerine and Fiesta Bowl world-wide networks. Mitchell has 25 years experience in broadcasting and is President of WTRL in Bradenton and a partner in three other Florida stations.

Working with Mitchell this year will be Bill Owens. Another veteran of sports broadcasting, Owens has handled the play-by-play for Florida State's basketball team the last three years and has also been the "voice of Florida State baseball." He returns to the football mike as color man after a year's leave of absence last fall.

Follow The Seminoles

ON WTNT 1270 ON YOUR DIAL

Brought to you by

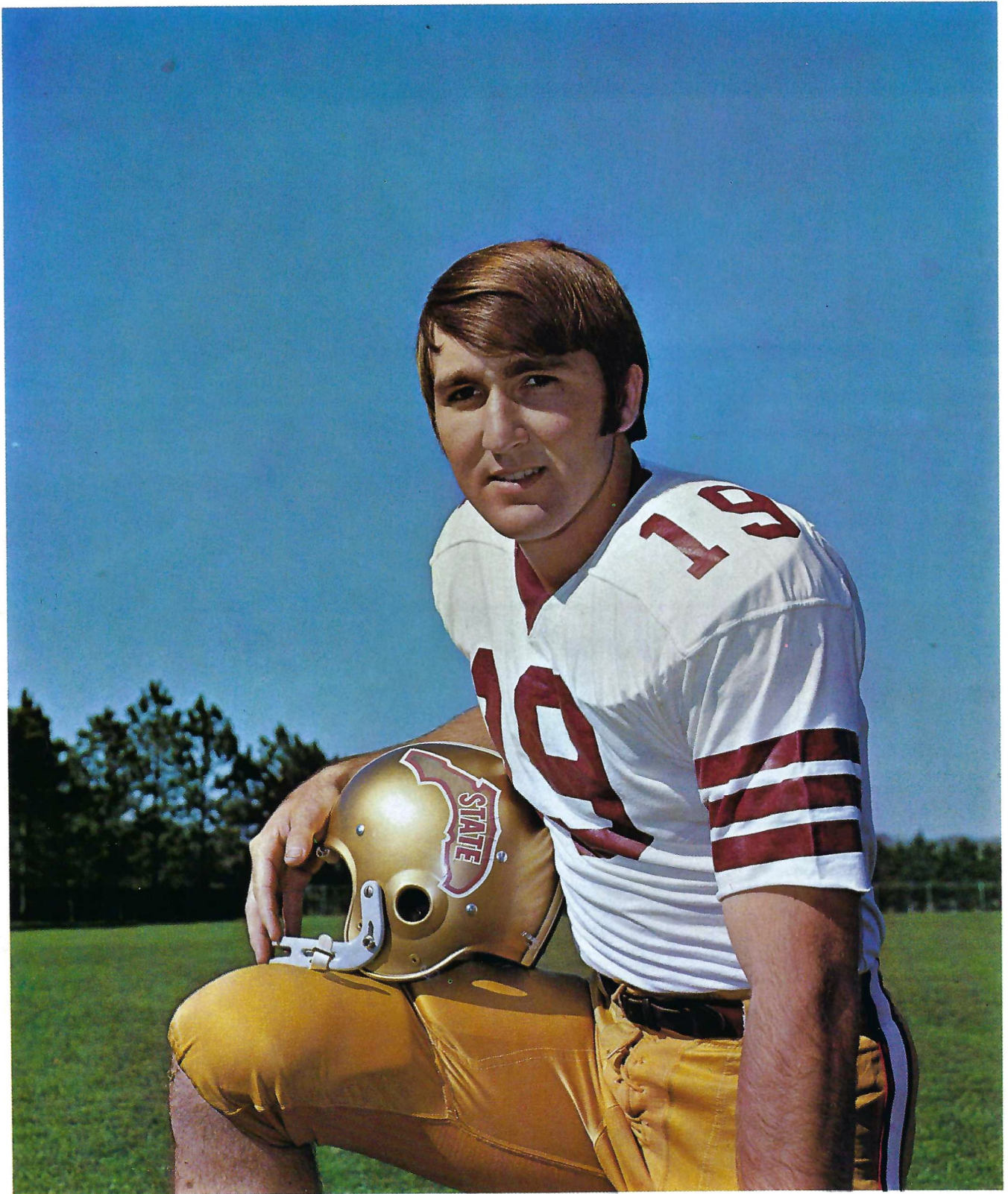


AND YOUR NEIGHBORHOOD TEXACO DEALER

and by

GOLDEN FLAKES POTATO CHIPS

THE TALLAHASSEE BANK AND TRUST COMPANY



QUARTERBACK – GARY HUFF

Gary Huff's Assault on the Record Book

(NOTE: Florida State career records include bowl game participation and should not be compared to NCAA National records which do not include bowl games.)

YEAR	ATT.	COMP.	TD	YARDS
1970 Totals	81	46	4	749
1971 Totals	327	184	23	2,736
Arizona State (Fiesta Bowl)	46	25	2	347
1972 Totals				
Pittsburgh	24	11	2	242
Miami	34	22	4	329
Virginia Tech	39	19	1	253
Kansas	42	26	4	295
Career Totals	593	333	40	4,951

TOUCHDOWN PASSES THROWN

42 by Bill Cappleman, 1967-69
40 by Gary Huff, 1970-72
33 by Steve Tensi, 1962-64
22 by Kim Hammond, 1965-67

PASSES ATTEMPTED

639 by Bill Cappleman, 1967-69
593 by Gary Huff, 1970-72
508 by Steve Tensi, 1962-64
419 by Kim Hammond, 1965-67

PASSES COMPLETED

349 by Bill Cappleman, 1967-69
333 by Gary Huff, 1970-72
275 by Steve Tensi, 1962-64
242 by Kim Hammond, 1965-67

YARDS GAINED PASSING

5135 by Bill Cappleman, 1967-69
4951 by Gary Huff, 1970-72
3697 by Steve Tensi, 1962-64
3344 by Kim Hammond, 1965-67

TOTAL OFFENSE

4713 by Bill Cappleman, 1967-69
4700 by Gary Huff, 1970-72
3609 by Steve Tensi, 1962-64
3451 by Kim Hammond, 1965-67

On Southern Airways, when you pocket the savings offered by our "Fare Deals" you'll wish we flew everywhere.



LONG WEEKEND FARES

Perfect for anyone wanting to attend those away games. Leave or return on Saturday or Monday and save 2/3 of your return air fare.



GROUP 10 FARES

Alumni groups like this one. When 10 or more people fly together to the same destination every group member saves 2/3 of the return air fare. And members can return separately. Good any time.



YOUTH FARES

Something for the students. Anyone 12 through 21 with a valid Youth Fare ID card from any domestic airline can fly in a reserved seat and save 25% of the regular fare. Good any time except from 2:00 pm to midnight on Fridays and Sundays.



FAMILY PLAN

Good for husband and wife, husband, wife and children from 12 through 21, or other parent and children 18 through 21. Head of family pays full fare, spouse (or first child if only one parent accompanies) pays 75%. Children 12 through 21 pay 2/3 and those 2 through 11 pay 50%. Fares are good during the same periods as Youth Fares. (Percentages are approximate.)



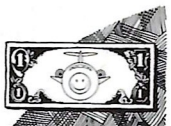
MILITARY FARES

Military personnel can fly in reserved seats and save 1/3 of the regular fare. Or they can fly "stand-by" and save 50%. Reserved seat fares are good during the same periods as Youth or Family Plan Fares. "Stand-by" fares are good any time.



DISCOVER AMERICA

Those who stay at their destination at least seven days but not more than 30 days can save up to 20% of the regular round trip fare. Good any time except from 2:00 pm to midnight on Fridays and Sundays.



DOLLAR STOPOVER PLAN

If you'd like to stopover in Orlando to see Walt Disney World, or visit the Florida or Mississippi Gulf Coast, ask about our "Dollar Stopover Plan."

For full information and any special conditions on these fares, call Southern or see your Travel Agent.

Southern Airways

We serve the nicest sports fans
the very nicest way we know.



Touchdown or Field Goal



Helping the Runner, or Interlocked Interference



Ball Ready for Play



Grasping Face Mask



Delay of Game



Roughing the Kicker



Ball Dead; If Hand is Moved from Side to Side: Touchback



Illegal Procedure or Position

RAGANS and ROBERTS TIRE COMPANY

Big Bend's Largest Goodyear & BP Oil Dealer

James W. Ragans — OWNERS — Eli P. Roberts

Complete Service Department Including:

Front End and Brake Rebuilding

Tires · Batteries · Accessories

Fuel Oils For Home, Business and Farm

for AUTOMOTIVE SERVICE call

224-8156

for FUEL OIL call

576-3145

609 W. Tennessee Street



Clipping



Offside (Infraction of scrimmage or free kick formation)



Illegally Passing or Handling Ball Forward



Loss of Down



Illegal Shift



Illegal Motion



BP Sets the Pace



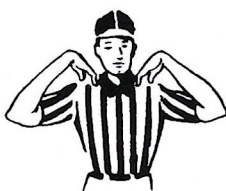
Safety



Personal Foul



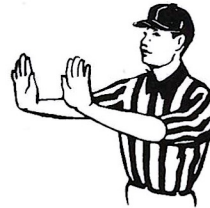
Ineligible Receiver Down Field on Pass



Ball Illegally Touched, Kicked, or Batted



Time out; Referee's Discretionary or Excess Time Out followed with tapping hands on chest.



Forward Pass or Kick Catching Interference



Start the Clock



Intentional Grounding

FOOTBALL GLOSSARY

- Audible** — A vocal signal by the quarterback changing the play called in the huddle. Also called Check Off.
- Blitz** — Commitment by defensive backs and/or linebackers to rush the passer.
- Blocking** — Legally hindering the progress of an opponent by contacting him with any part of the blocker's body.
- Bomb** — A long pass attempt for a touchdown.
- Buttonhook** — A pass pattern in which the receiver goes downfield and U-turns back sharply to receive the ball.
- Clipping** — Running or diving into the back of an opponent, or throwing the body across the back of the leg or legs of an opponent other than the ball carrier.
- Dive-Tackle Play** — A quick-handoff running play over tackle.
- Draw-Play** — Quarterback drops back as if to pass but instead hands ball to running back, after quarterback's teammates have assumed pass-blocking positions.
- Fair Catch** — The opportunity for a player of the receiving team to catch a kicked ball that has crossed the scrimmage line, without being tackled or blocked by an opponent, after signaling his intention by completely extending one arm above his head.
- Kickoff** — A free kick with which each half is opened, and which is employed also following each try-for-point or Field Goal. A kickoff must be either a Placekick or a Dropkick.
- Lateral Pass** — A live ball thrown toward or parallel with the passer's own goal line.
- Linebacker** — A defensive player operating immediately behind his line where he can either aid linemen in stopping a running play or cover an opponent's receiver if a pass develops.
- Look-In Pass** — Receiver runs straight pattern and looks for the ball immediately over his inside shoulder.
- Man-To-Man Coverage** — Pass defense plan wherein defensive backs cover receivers wherever they go, rather than field areas.
- Mike** — Middle linebacker, so designated because he usually lines up opposite middle of the offensive line.
- Monster** — A roving linebacker who may position himself on either side of his team's defensive formation.
- Neutral Zone** — The space between the scrimmage lines of the offense and defense, approximating 11 inches (the length of the football).
- Onside Kick** — A kickoff that travels 10 yards or more is anybody's ball. The so-called "onside kick" is an effort by the kicking team to kick the ball barely beyond 10 yards and recover it before the receiving team can do so.
- Pocket** — Area of protection for the passer, formed by blockers. Passer drops straight back from scrimmage behind the blocking shield into what resembles a "cup" or pocket.
- Post** — A pass pattern in which the receiver goes downfield to pre-determined depth then cuts at an angle toward the goalposts.
- Prevent Defense** — A strategem replacing linebackers with additional backfield pass defenders, sacrificing strength against short gainers in order to prevent a long pass completion. Most often employed by a team protecting a lead late in either half.
- Pulling Guard** — Guard who pulls out behind scrimmage line for a trap block or to lead sweep blocking for ball carrier.
- Reverse Play** — A running play with backfield action suggesting one direction while ball carrier goes in opposite direction.
- Roll-Out pass** — Quarterback runs laterally with blockers before throwing, instead of dropping straight back to pass.
- Sam** — Strong linebacker, so designated because he usually lines up opposite the "strong side" of the offensive line.
- Screen Pass** — Pass to a receiver behind a wall of blockers, who have permitted defenders to penetrate.
- Scrimmage Line** — The yard line (marked or unmarked) that passes through point of the ball nearest a team's own goal line.
- Slot Back** — Back stationed in slot between interior linemen and end. Must be one yard behind the line of scrimmage.
- Snap** — A quick, continuous motion by which the ball is handed or snapped back with the ball leaving the hands of the snapper on the motion. The snap normally is made by the center.
- Strong Side** — Overbalance of offensive or defensive linemen to either side of the Center.
- Stunting** — Defensive players changing positions as the ball is snapped, to confuse offensive strategy.
- Sweep** — End run with wave of blockers leading the ball carrier.
- Spearing** — Illegal use of the head and helmet to ram an opponent after his momentum has stopped.
- Tackling** — Grasping or encircling an opponent with hands or arms.
- Tight End** — Offensive end who lines up in close formation (as opposed to Split End's wide set) where he can either block for a ball carrier or be employed as a pass receiver.
- Wide Receiver** — A lineman and/or a back who is set wide for pass receiving purposes. Also called Split End, Flanker or Wideout.
- Willie** — Weak linebacker, so designated because he usually lines up opposite the "Weak side" of the offensive line.
- Zone Coverage** — Plan of pass defense wherein areas are covered rather than individual receivers Opposite of Man-To-Man.

BILL PEACOCK CHEVROLET, INC.

300 West Washington St.
MONTICELLO, FLORIDA

The reason people pass one door
To patronize another store,
Is not because the busier place
Has better silks, or gloves, or lace,
Or special prices, but it lies
In pleasant words and smiling eyes;
The only difference, we believe
Is in the treatment folks receive!



*Growing With
the Seminoles!*

TALLAHASSEE
Phone 224-8827

MONTICELLO
Phone 997-2513

Centel System is...

- (A). The telephone operations of Central Telephone & Utilities Corporation
- (B). The fourth largest independent telephone system in America
- (C). Over 1,000,000 telephones strong
- (D). Serving in 10 states
- (E). Helping us to serve you better
- (F). All of the above

(F), All of the above

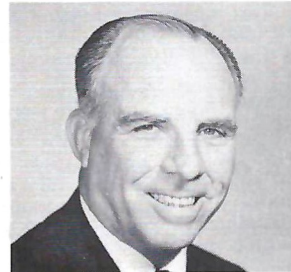


southeastern telephone company

STATE BOARD OF EDUCATION



Reubin O'D. Askew
Governor



Floyd T. Christian
Commissioner of Education



Tom O'Malley
Treasurer



Richard Stone
Secretary of State



Fred O. Dickinson, Jr.
Comptroller



Robert Shevin
Attorney General



Doyle Conner
Commissioner of Agriculture

The Star Spangled Banner

O, say! can you see, by the dawn's early light,
What so proudly we hailed at the twilight's last gleaming?
Whose broad stripes and bright stars, thro' the perilous fight,
O'er the ramparts we watch'd, were so gallantly streaming?
And the rockets' red glare, the bombs bursting in air,
Gave proof thro' the night that our flag was still there.
Oh, say, does that Star-spangled Banner yet wave
O'er the land of the free and home of the brave?

Seminole Songs

ALMA MATER

High o'er the towering pines our
voices swell,
Praising those Gothic spires we
love so well;
Here sons and daughters stand,
faithful and true.
Hailing our ALMA MATER,
F . . . S . . . U . . .

HYMN TO THE GARNET AND GOLD

Here's a hymn to the garnet and the gold,
Ringing to the sky.
Here's a song for our men and women bold,
Sing with heads held high.
Striving ere to seek to know fight for victory.
Alma Mater, this our song to you,
Echoes, F . . . S . . . U . . .

FSU FIGHT SONG

You got to fight, fight, fight for FSU.
You got to scalp 'em Seminoles.
You got to win, win, win, win, win this game
and roll on down and make those goals.
For FSU is on the war path now, and at the
battle's end she's great:
So fight, fight, fight, fight, to victory,
our Seminoles from Florida State.

FLORIDA STATE VICTORY SONG

We are on the warpath tonight.
Onward, Florida State.
Show all the world the spirit and might
that the Seminoles create.
Stand up for the Garnet and Gold.
Ever loyal we shall be.
We are proud to shout,
"The Warriors are out." And they will
lead us to victory.

Team Physician



Dr. Robert P. Johnson

The Athletic Department is most appreciative for Dr. Johnson's unselfish services to all the athletes at Florida State.



Frisch's

THE ORIGINAL

BIG BOY RESTAURANT

GREAT PLACE FOR POW WOWS AND GOOD FOOD

SERVING:

- Breakfast
- Lunch
- Dinner
- Snacks

Open 7 A.M. to Midnight
'Til 2 A.M. Fridays and Saturdays

1775 W. Tennessee Street

TALLAHASSEE — TELEPHONE 224-1246

TRY FRISCH'S CARRY-OUT

Enjoy football more with the Official NCAA Football Guide

Containing . . .

- Schedules of more than 400 teams
- Sectional previews by prominent writers
- 1971 statistics and scores
- Read-easy rules
- Bowl game review

\$2.00

Send check or money order to:
College Athletics Publishing Service
349 East Thomas Road
Phoenix, Arizona 85012

For a listing of all NCAA publications, write NCAA, 1221 Baltimore, Kansas City, Mo. 64105.

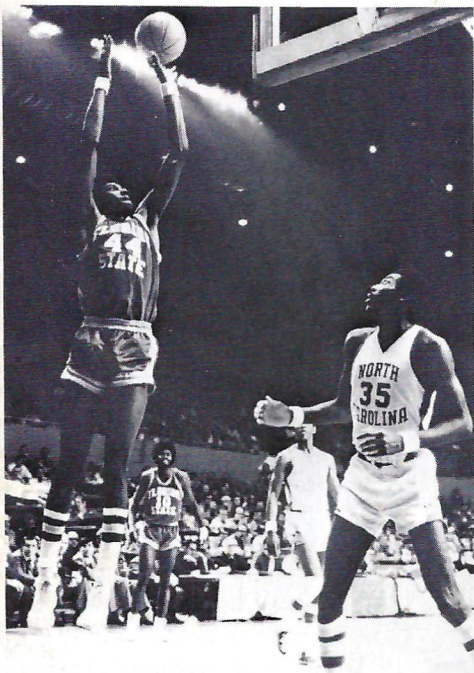
Many Braves Come This Way!



Always with an ear to the ground and an eye on the ball, Times Sports gives you all the inside scoop as well as play-by-play of every Seminole battle. For the best, most colorfully complete coverage of Florida State, read Florida's Best.

St. Petersburg Times
FLORIDA'S BEST NEWSPAPER

Seminole Basketball



Shooting For No.1

When you have come closer than any finalist in the last five year's to winning the national championship there is only one way to look and that is up. That is exactly what Florida State's basketball team will be doing this season—looking up to that coveted number one position, held for almost the entire last decade by UCLA. A strong nucleus, headed by such Tribe favorites Ron King, Reggie Royals and Otto Petty, together with some of the nation's most talented newcomers to the college scene, makes it entirely possible this could be "The Year". Three tournaments spice the schedule and home games are on tap with such powers as Marshall, Cincinnati and Jacksonville.

Season tickets are now on sale at the athletic ticket office. All season books are \$21 plus 50 cents per order for handling. If early interest is any indication, season tickets may be the only way to get into Tully Gym on game night. Order your tickets now by sending your order with a check payable to Florida State University to:

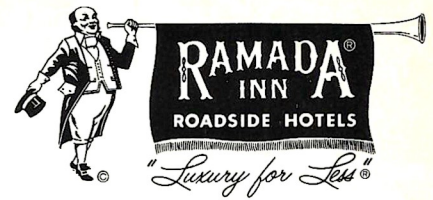
Athletic Ticket Office
100 Tully Gym
Florida State University
Tallahassee, Fla. 32306
or phone
904/599-4625

Schedule

DATE	OPPONENT
Dec. 1	Georgia Southern
Dec. 4	Eastern Kentucky at Louisville
Dec. 9	Biscayne
Dec. 15-16	Marshall Invitational
Dec. 22-23	Dayton Invitational
Dec. 27-30	All-College Tournament
Jan. 6	Connecticut
Jan. 8	Georgetown University
Jan. 13	Cincinnati
Jan. 17	Stetson
Jan. 20	at Jacksonville
Jan. 25	at Samford
Jan. 27	Southern Illinois
Jan. 29	University of South Florida
Feb. 1	at Virginia Tech
Feb. 3	Seton Hall at Madison Square Garden
Feb. 10	at Cincinnati
Feb. 14	Jacksonville
Feb. 17	University of North Carolina at Madison Square Garden
Feb. 23	South Alabama
Feb. 26	Marshall
Mar. 3	Mercer

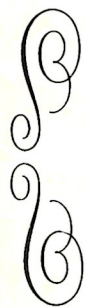
Advertisers' Directory

Advertiser	Page	Advertiser	Page
Army ROTC	64	Peacock Chevrolet	57
Bill's Bookstore	30	Prudential Insurance Co.	6
Capital City First National Bank	15	Quality Motel	38
Chevrolet	31	Ragans & Roberts Tire Co.	56
Clark Electric Co.	18	Ramada Inn	62
Coca-Cola	32-33	St. Petersburg Times	60
Cycle Shop	38	Sears Roebuck, Inc.	7
Eli Witt Tobacco & Candy Co.	46	Southeastern Telephone Co.	58
Florida Beef Council	37	Southern Airways	55
Florida Publishing Co.	43	Southernair Motel	18
Frisch's Restaurants	60	Southern Inns	39
Hammon's Asphalt Paving, Inc.	27	Tallahassee Auto Dealers	29
Havana State Bank	50	Tallahassee Camera Center	49
Holiday Inns	2	Tallahassee Bank and Trust Co.	19
Honda of Tallahassee	5	Tallahassee Democrat	35-36
House of Steaks	25	Tallahassee Travel and Tours, Inc.	27
Inn Below	41	Talquin Electric Cooperative Inc.	47
Jacksonville, City of	22	Tampa Tribune	40
Jerry's Restaurant	50	Texaco	34
Lewis State Bank	3	University Rexall	42
Miller Chevrolet	62	WTNT Radio	53
Mobile Home Industry	24	Wakulla Springs Hotel	49
Orlando Sentinel Star	8	Winn Dixie Stores, Inc.	62
Owens, Inc.	46	Zenith	28



Ramada Inn of Tallahassee is an ideal gathering place for meetings and banquets. The King's Banquet Room offers every convenience, and accommodates up to 128 persons for dining. Divisible meeting rooms are available for smaller groups. For leisure hours, there are golfing privileges at fine nearby courses. Just four hours drive brings you to the wondrous kingdom of Walt Disney World. Innumerable famous Florida attractions are within driving distance. Come for business . . . stay an extra day for pleasure. You're welcome at Ramada Inn of Tallahassee.

2121 West Tennessee Street
Tallahassee, Florida 32304
Phone 904/576-6121
Gen. Mgr. Herb Chandler



Miller

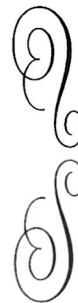
CHEVROLET COMPANY

Havana, Florida

539-6376

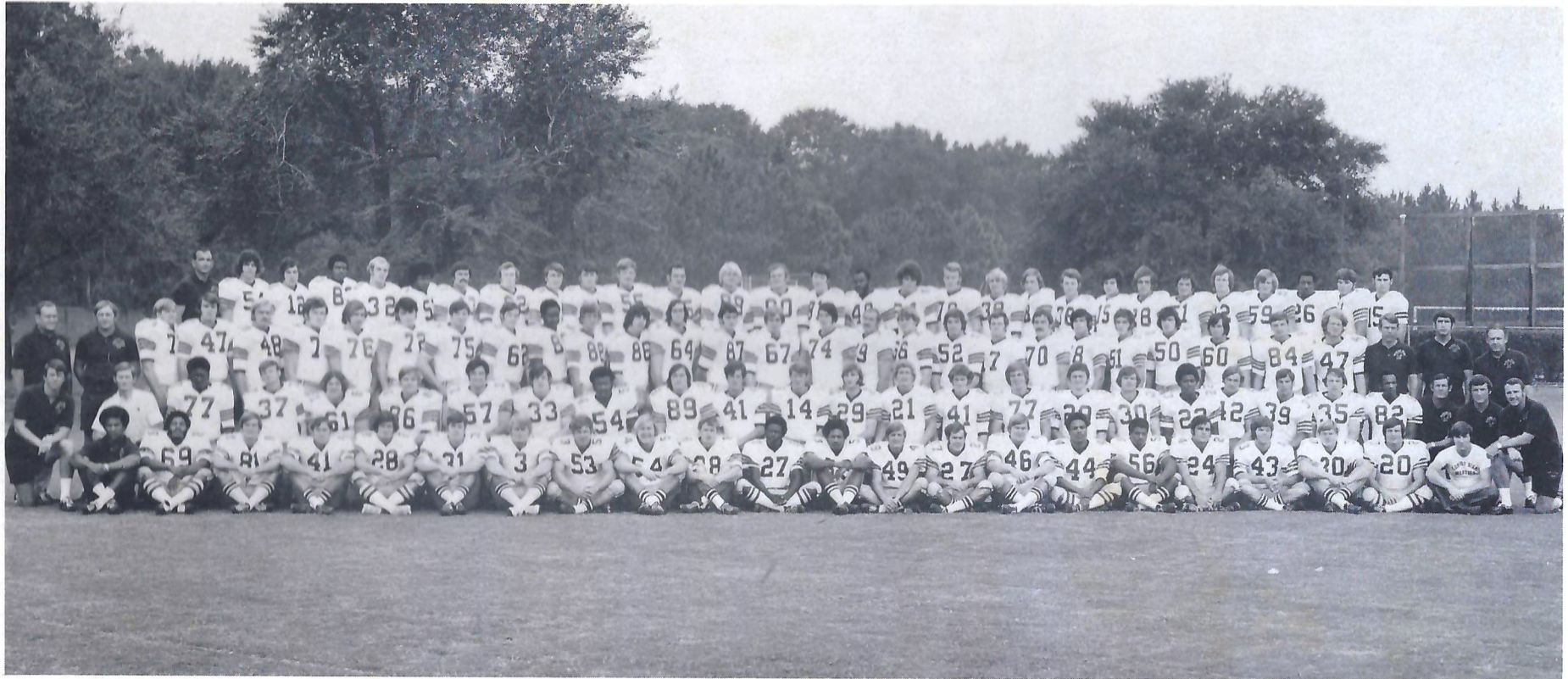
15 Miles North of Tallahassee on U.S. 27

Phone Toll Free
224-1317



The Smart Place
To Go
For Good Things
To Eat

The 1972 Seminoles



FIRST ROW (Left to right)—Coach Larry Holton, Bobby Anderson, Phil Cahoon, Sam Cowart, Mike Davison, Mark Dowey, Joe Downey, John Drews, Jim Dundala, Donnie Holley, Earl Humes, Don Huzzie, Randy Kaiser, Mike McGowan, David Miles, Hodges Mitchell, John Murphy, Mike Norman, Mark Reeves, Mark Smith, David Snell, Manager Clay Caldwell, Head Coach Larry Jones. **SECOND ROW**—Coach Bill Parcels, Head Trainer Dick Milder, Melvin Scruggs, Oscar Roberts, Phil Arnold, Dan Batchelor, Steve Bratton, Mack Brown, Brooks Burroughs, Russ Castleberry, Jeff Chesnut, Frank Deming, Dano Fiore, Joe Goldsmith, Darrell Howton, Bill Johnson, Ralph Jones, Brent Norris, Lester Payton, Ron Ratliff, Lewis Risk, Randy Shively, Joe Thomas, Coach Gene Henderson, Coach Jim Donnan. **THIRD ROW**—Equipment Manager Frank DeBord, Coach Jim Phillips, Bob Anderson, Brian Bengtson, Randy Coffield, Dan Daniels, John DeMaria, Shane Gibbs, Mike Glass, Jimbo Hensley, Charlie Hunt, Mike Allen, Mike Deley, James Howard, John Palermo, Tom Presswood, Don Sparkman, Howard Jacobi, Vic Johnson, Bob Jones, Gary Loucks, Jim Malkiewicz, Earl Passwaters, Roy Stephens, Dan Whitehurst, Clint Parker, Gary Parris, Jim Welch, Coach Bill Canty, Coach Mike Pope, Coach Bob Harbison. **FOURTH ROW**—Coach John Devlin, Paul Baker, Mike Cadwell, Bert Cooper, Ed Davis, John Henry Davis, George Gould, William Hogue, Gary Huff, Ricky Blythe, Allen Dees, Bobby Elam, Jeff Gunby, Dick Hopkins, Walt Lindsey, Eddie McMillan, Charlie Musser, Paul Oglesby, Buzzy Lewis, Scott Meseroll, Rick Oreair, Mark Orlando, Ralph Petrillo, Rocky Saldana, Barry Smith, Larry Strickland, James Thomas, David Fleming, Jerry Sanders.



Army ROTC at Florida State

One of the ten chosen nation wide to enroll women this fall.

