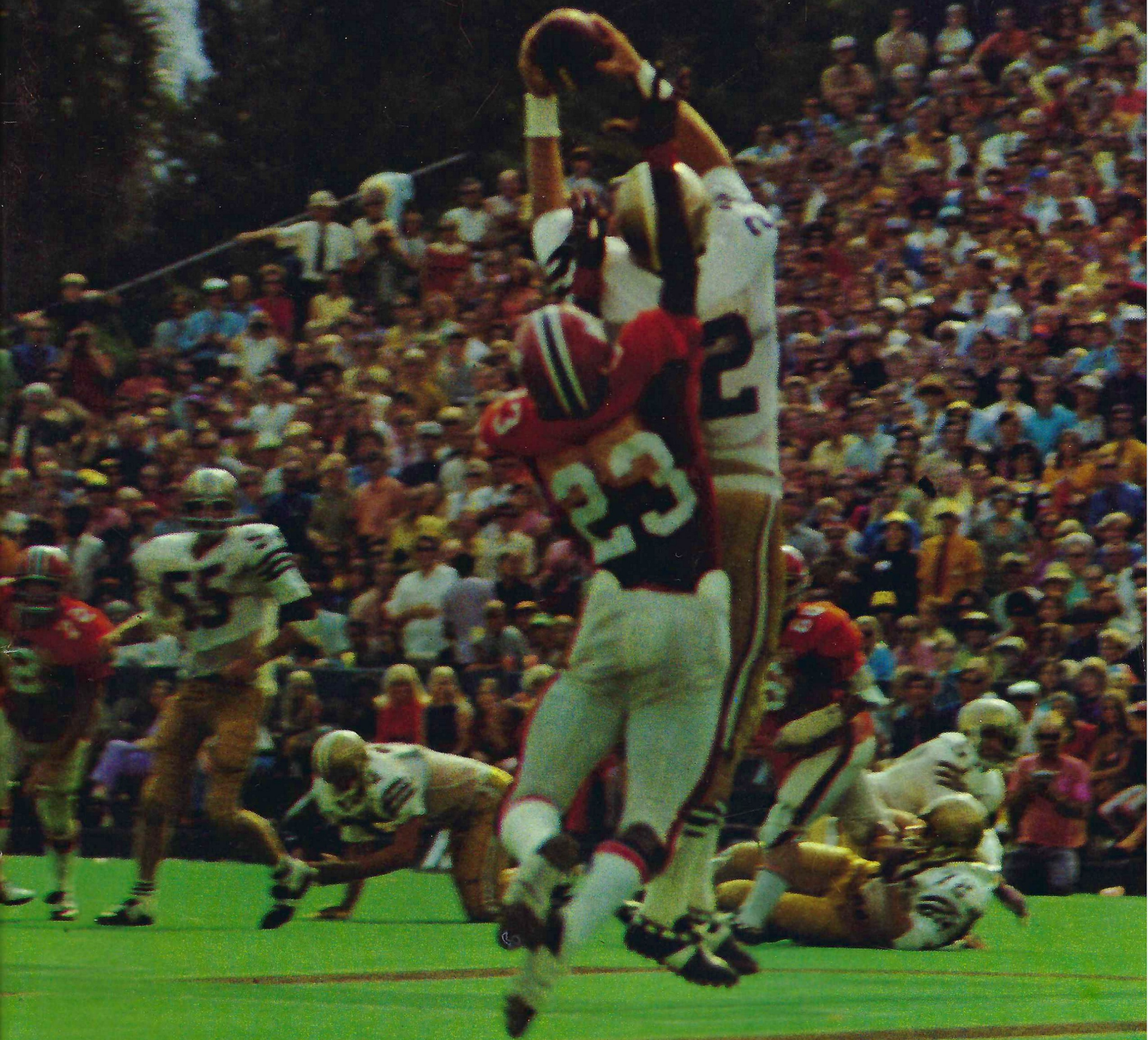


Florida State/Colorado State



HOMECOMING 1972

Football Magazine, October 21, 1972

\$1.00

Holiday Inn®



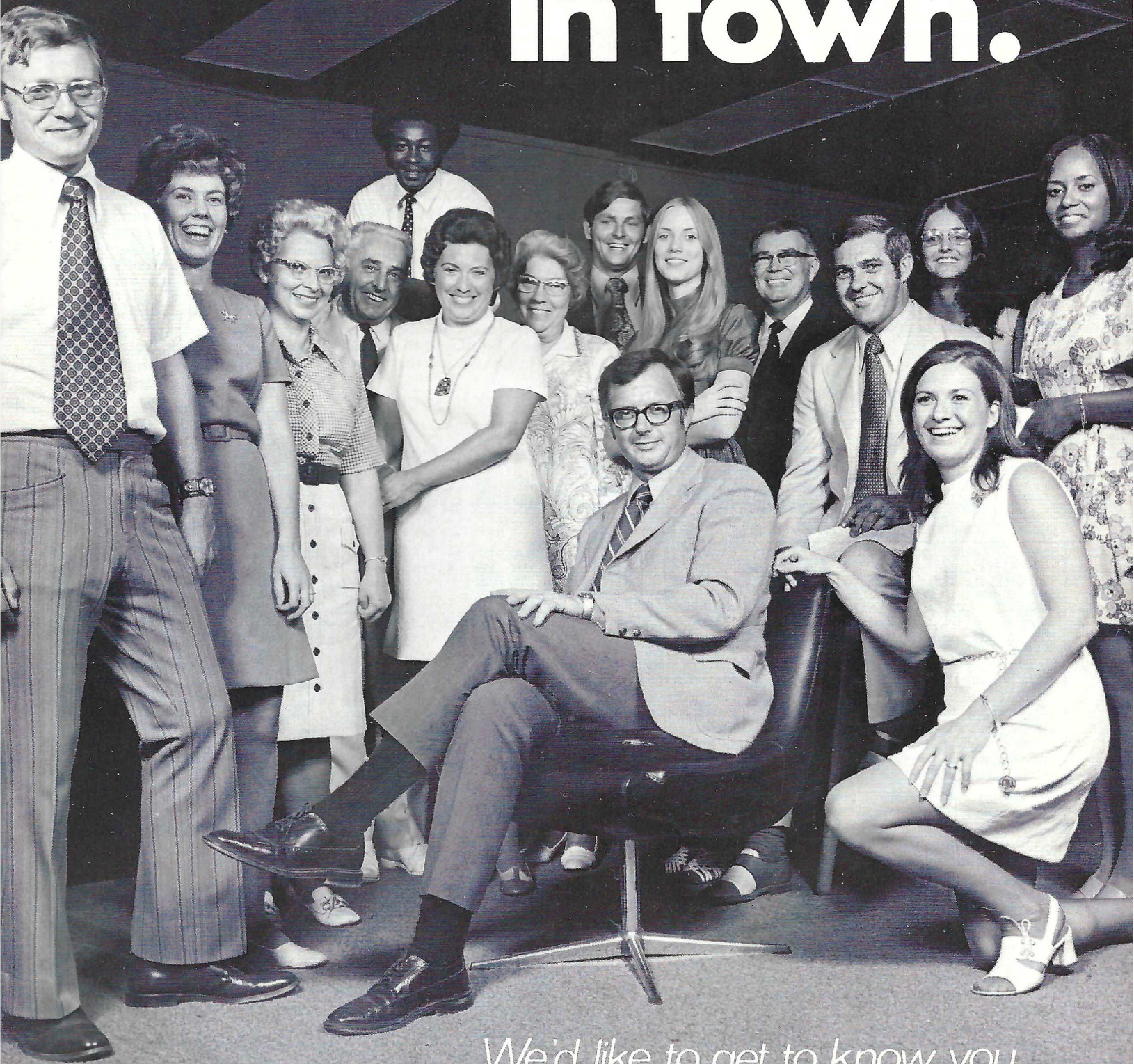
Two Inns To Serve You In Tallahassee

316 West Tennessee Street
222-8000

1302 Apalachee Parkway
877-3141

Banquet Rooms, Meeting and Conference Rooms with Complete Facilities, Dining Rooms and Lounges.

Friendliest team in town.



We'd like to get to know you.

The Lewis State Bank

204 South Monroe Street • Tallahassee, Florida • Member Federal Deposit Insurance Corporation



Florida State University

From One Seminole Fan To Another...

It's going to be a great season in Doak Campbell Stadium this fall!

There's never been a finer combination of coaching and teamwork than you'll see displayed on the field this afternoon. Like everything else about Florida State, you'll find the Seminoles provide more than an average amount of excitement and play a better than average brand of football. Their claim to national attention in athletics is well-founded as are the University's academic achievements. Twenty-five years of effort have gone into the pursuit of such stature, and both teams—faculty and football—can take great pride in their programs.

They play the kind of football that merits the full support of the cities surrounding (and including) Tallahassee; and your presence here in the stands has had, and will continue to have, a great influence on the past and future seasons of our dynamic teams. Membership in the National Seminole Club has made significant strides in the past year; and its continued growth and development will help to guarantee Florida State's future as a football contender for top national honors.

We hope to have a full house of homefolks, alumni and Florida State fans from all points at every game this year—the kind of audience that rates All America in the Seminole record books. On behalf of the Seminole team I'd like to thank each of you for being here today, and express their keen hope that you'll be in the stands for every game ahead.



Dr. Marshall

Sincerely,
Stanley Marshall
President

- 25 Years Young - 115 Years Old -

Welcome To The South's Friendliest Campus...

The year 1972 is a special one at Florida State University, which celebrates its 115th birthday as an institution of higher learning and its 25th anniversary as a full-fledged coeducational university this fall.

Founded in 1857 as the Seminary West of the Suwannee, the University's most phenomenal stage of development has occurred since its transition in 1947 from the Florida State College for Women to Florida State University.

Its transformation—from a small, excellent, liberal arts college to its present status as a senior member of the State University System and a nationally competitive pacesetter in graduate research and instruction—has taken place in the relatively short span of 25 years. The spring enrollment in 1947 totaled 3,428 students, and the fall enrollment this year is in the neighborhood of 19,000 students. One in five of today's students are seeking graduate degrees, compared with a total graduate enrollment of 19 students in 1946-47.

Currently graduating more than 5,000 students each year, Florida State's nine schools and colleges—Arts and Sciences, Business, Education, Home Economics, Law, Library Science, Music, Nursing and Social Welfare—offer programs of study leading to the doctoral degree in 58 fields (there were only 3 in 1948), to the master's degree in 85 areas and to the baccalaureate in 87 fields of study.

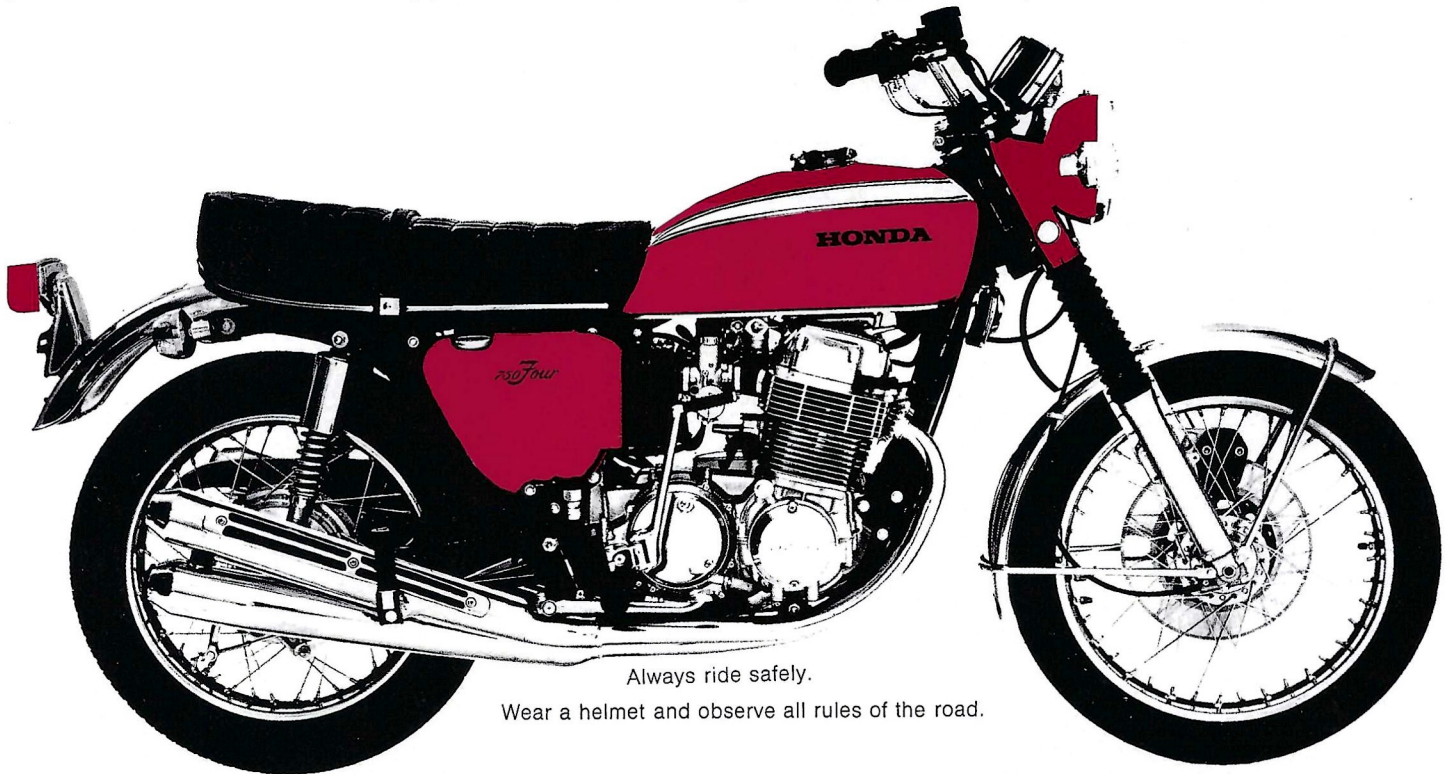
Florida State now receives more than \$17 million a year in research funds from sources other than the State of Florida, and is the site of National Science Foundation—sponsored centers of excellence in physics, statistics, chemistry and psychobiology. A pioneer in nuclear research, molecular biophysics and oceanography, the University balances its prestige in the sciences with outstanding programs in the arts and humanities, and serves as the home of the State of Florida's Theater, Opera and Symphony.



The Mighty 750 Four.

This is Honda's big one. Top cycle mags have called it the "ultimate road bike." For good reason. Its OHC in-line, transversely-mounted, four-cylinder engine packs incredible power. 67 horses at 8,000 rpm. That means it's capable of speeds over 120 mph. And will whip you through the quarter super quick. No wonder this baby won the Daytona 200 National Championship the first time it was entered. And now Honda engineers have improved on the "ultimate." There were always four carbs and four tuned pipes to go with the four cylinders, but now those carbs are going to make history. They are the first racing-type positive-control carburetors on any production bike,

utilizing a dual-cable throttle system. Easier to maintain. Better for performance. There's a new chain lubrication system for miles and miles of trouble-free riding. And the new speedometer and tach now have the numbers lit from behind. A cinch to read when you're on the road at night. The big 750 shifts smoothly through all five gears. And when it comes time to stop, there's no better brake on any bike than the rugged hydraulic disc brake up front. As for styling, just look. Rich new candy colors. Distinctive striping and emblems. And hand-polished aluminum alloy on the engine! What more could you ask from any machine? Just take a test ride . . . if you're ready to assume power.



Always ride safely.

Wear a helmet and observe all rules of the road.

HONDA

of

Tallahassee

2765 W. Tenn.

Phone 576-1020

"Own
a piece of
the Rock."



Prudential

South Central Home Office | Jacksonville, Florida

Florida STATE / COLORADO STATE Football Magazine

VOL. XXVI

October 21, 1972

No. 3

IN THIS ISSUE . . .

GOLDEN RECORDS ON A SILVER ANNIVERSARY 10
Florida State's Athletic History. Records of every season for each sport.

1972 SEMINOLES 23-27
A pictorial look at the 1972 Seminoles with brief biographical information on each.

FSU THEN AND NOW 44-45
It's Homecoming and Florida State is celebrating its Silver Anniversary. Here we take a look at FSU, "Then and Now."

GARY HUFF'S ASSAULT ON THE RECORD BOOK 54-55
He has already broken every career record and now is working on the season marks.

SEMINOLE BASKETBALL 61
Last year the Seminoles were number two; now they are trying harder. Practice opened this week and season tickets are now on sale.

TODAY'S COVER depicts one of the fiercest battles within the overall game—that between receiver and defensive back (Photo by Dick McGiffin).

The University	4	Board of Regents	46
Athletic Department	9	Today's Opponents	47-50
All Sports Records	10	Seminole Auto Dealers	52
National Seminole Club Donors	11-21	Seminole Radio Network	53
Head Coach Larry Jones	14-15	Gary Huff	54-55
Head Coaches	18	Official Signals	56
1972 Seminoles	23-27	Football Glossary	57
Today's Game	29	State Board of Education	58
Single Game Records	30	Seminole Songs	59
Starting Line-ups	33	Team Physician	60
Rosters and Depth Charts	35-36	Seminole Basketball	61
Assistant Football Coaches	39-42	Advertisers Directory	62
Stadium Information	43	1972 Seminole Squad Picture	63
University Feature	44-45		

Go
Seminoles!



Sears

Tallahassee's Complete Department Store




● Everything You Need
For Your Home
Family or Car!

OPEN 9:30 a.m. 'til 9:30 p.m.
Monday thru Saturday

SHOP AT SEARS
AND SAVE

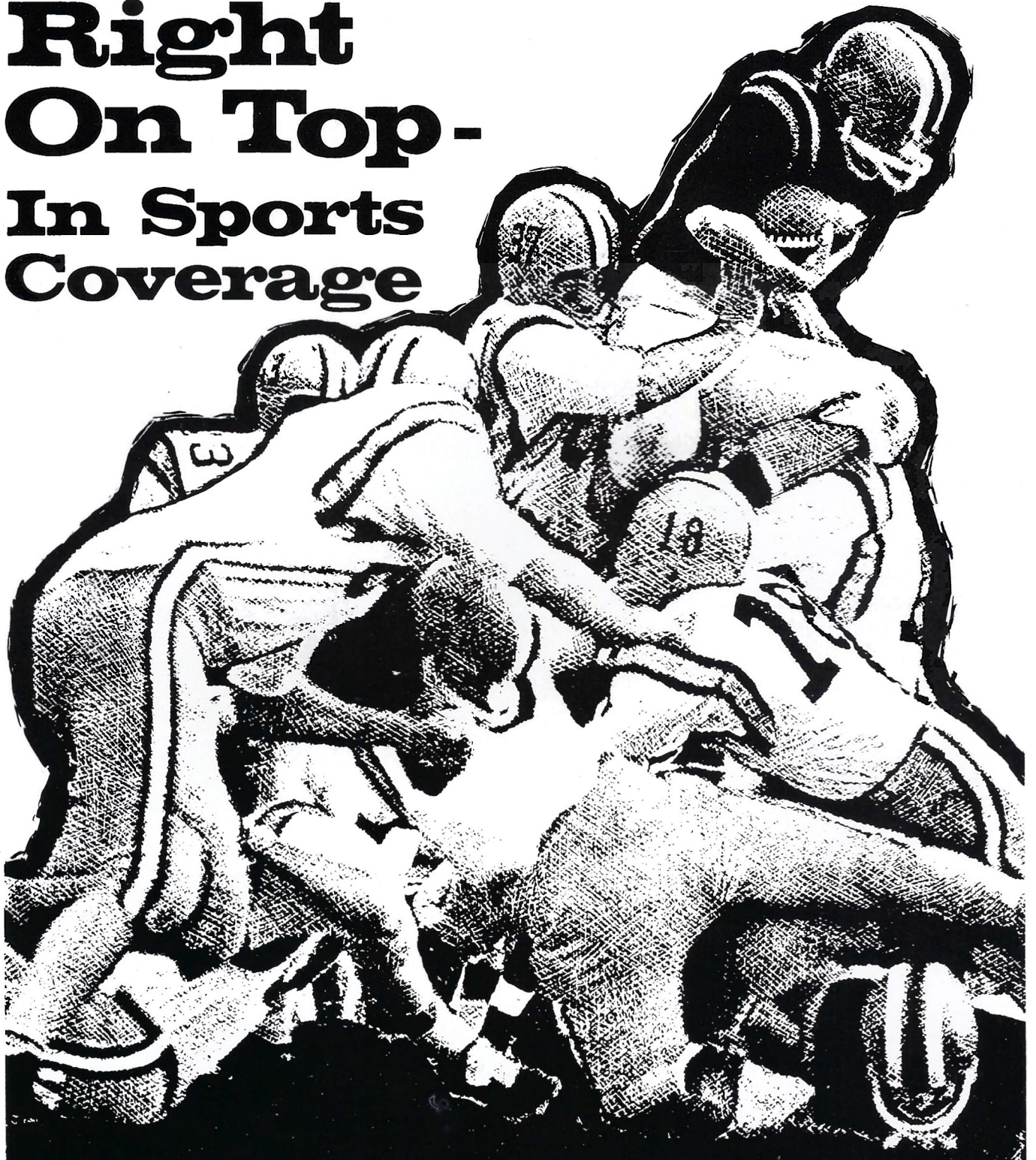
Sears

SEARS, ROEBUCK AND CO.

The Florida State Football Magazine is published by the Florida State University Department of Intercollegiate Athletics. Editor—Hank Schomber. Program Manager—Lonnie Burt. Business Manager—Doug Messer. Sales Coordinator—Jack Ibach. Local advertising is contracted by the Florida State University Department of Intercollegiate Athletics. National Advertising representative is Spencer Marketing Services, New York. The 1972 Florida State Football Magazine is printed by Dye Printing Company, Tallahassee.

Right On Top - In Sports Coverage



Orlando Sentinel · Orlando Evening Star

Florida's Most Interesting Newspapers



Clay Stapleton
Athletic Director

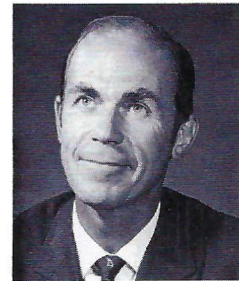
Intercollegiate Athletics Administration and Staff



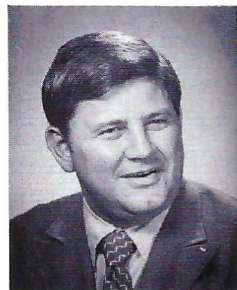
C.R. Bickerstaff
Assistant A.D.



Doug Messer
Athletic Business Manager



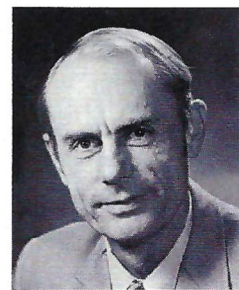
Dr. Richard Baker
Chairman, Athletic Board



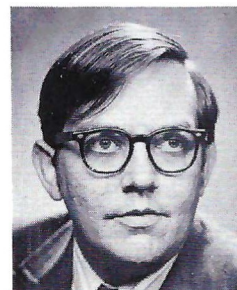
Jim Olsen
Director, National Seminole Club



Lonnie Burt
Sports Information Director



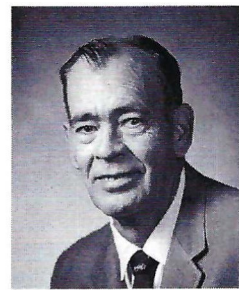
Claude Thigpen
Athletic Ticket Manager



Hank Schomber
Assistant SID



Charlie Durbin
Cinematographer



Woody Saucier
Varsity Equipment Manager

Golden Records On A Silver Anniversary

Florida State's Athletic Program joins the entire University in this year's Silver Anniversary celebration, proud of its accomplishments in the last 25 years and excitedly looking ahead to the next 25.

Perhaps never in the history of Intercollegiate Athletics has a program come so far, in so short a period after starting with so little.

Athletics at Florida State began in 1947, the same year the University received full coeducational status. It has fought its way to the top and now ranks among the nation's better programs. The overall success that Florida State's program has enjoyed is envied by schools two and three times as old.

Florida State currently participates in eight intercollegiate sports at the NCAA level. They have a winning percentage of 67.3, for the last 25 years. Since 1960 that percentage stands at 70.5 and has been chalked up against some of the nation's toughest competition.

The best single athletic season came in 1969-70 when the Seminoles won 118 of 148 events for a winning percentage of 80.4. Only once, the very first season in 1947-48, have they

fallen below the 50 percent mark.

The Tribe baseball team with 608 victories, is the biggest winner (basketball is second with 358), but the best winning percentage is held by the swimming team which has won 81.2 percent of its 234 meets. Golf has won 75.6 percent of its matches, while baseball has a winning mark of 70.8.

In addition to the eight sports still competing, Florida State was also represented by Gymnastics and Volleyball teams until scheduling problems forced their disbandment. The Gymnastics team had a phenomenal 42-4-1 record for its 11 seasons. It was unbeaten in nine of those years, and brought two NCAA and three AAU National Championship Trophies home.

The volleyball team also had an outstanding record, winning 72.8 percent of its matches and one national championship in nine seasons.

A complete table of Florida State's athletic history in current sports is listed below. In addition to the year-by-year breakdowns there are totals for the first 13 years (1947/48 - 1959/60), the last 12 seasons (1960/61 - 1971/72) and the full 25-year totals.

FLORIDA STATE UNIVERSITY ATHLETIC WON-LOSS RECORDS, 1947-48 Through 1971-72

Year/Sport	Baseball	Basketball	Cross Country	Football	Golf	Swimming	Tennis	Track	Overall
1947-48	9-8	5-13	#	0-5	3-7	3-5	9-4	—	29-42 (40.8%)
1948-49	11-8	12-12	#	7-1	8-1	7-2	11-2	0-3	56-29 (65.9%)
1949-50	11-7	15-10	#	9-1	6-2-2	7-0	9-7	5-1	62-28-2 (68.5%)
1950-51	12-6	18-9	#	8-0	8-3-1	5-2	7-8	5-1	63-29-1 (68.3%)
1951-52	17-4	5-20	#	6-2	6-7	7-1	9-5	6-1	56-40 (58.3%)
1952-53	13-10	11-11	#	1-8-1	5-4	9-0	15-2	3-3	57-38-1 (60.0%)
1953-54	13-8	13-7	#	5-5	8-2	6-0	13-5	1-6	59-33 (64.1%)
1954-55	17-6	22-4	#	8-4	10-1	9-2	10-6	5-1	81-24 (77.1%)
1955-56	24-5	16-9	#	5-5	11-0	9-3	8-7	7-1	80-30 (72.7%)
1956-57	22-9	9-17	#	5-4-1	9-1	10-1	5-11	4-1	64-44-1 (59.2%)
1957-58	20-7	9-16	#	4-6	10-7	8-1	9-7	4-0	64-44 (59.3%)
1958-59	22-11	8-15	#	7-4	8-5-1	10-0	14-6	3-1	72-42-1 (63.1%)
1959-60	13-9	10-15	#	4-6	9-4-2	9-1	11-8	4-0	60-43-2 (58.1%)
13 YEAR	204-98	153-158	#	69-51-2	101-44-6	99-18	130-78	47-19	803-466-8 (63.2%)
TOTALS	(67.6%)	(49.2%)		(57.4%)	(68.9%)	(84.6%)	(62.6%)	(71.2%)	
1960-61	21-7	14-10	#	3-6-1	15-3	9-1	16-5	4-1	82-33-1 (71.1%)
1961-62	23-14	15-8	#	4-5-1	14-3	11-1	11-8	5-0	83-39-1 (67.9%)
1962-63	26-13	15-10	0-4	4-3-3	18-4	6-3	18-5	3-2	90-44-3 (66.8%)
1963-64	23-13	14-14	2-3	4-5-1	12-0	7-0	12-11	5-0	79-46-1 (63.1%)
1964-65	32-11-1	16-10	5-0	9-1-1	8-0	9-0	15-9	5-0	99-31-2 (75.8%)
1965-66	39-13	15-11	4-1-1	4-5-1	8-1-1	7-1	16-9	4-4	97-45-3 (67.9%)
1966-67	32-14	11-15	4-2	6-5	8-1	9-2	16-7	4-8	90-54-0 (62.2%)
1967-68	35-6	19-8	4-2	7-2-2	3-3	4-4	19-3	7-4	98-32-2 (75.0%)
1968-69	38-13-1	18-8	4-2	8-3	6-1	8-2	23-5-1	7-3	112-37-2 (74.8%)
1969-70	49-9-1	23-3	4-1	6-3-1	*	8-3	17-7	11-2	118-28-2 (80.4%)
1970-71	41-16	18-8	3-0	7-4	*	8-3	19-3	6-5	102-39-0 (72.3%)
1971-72	45-23	27-6	0-3	8-4	*	5-6	19-4	2-5	106-51-0 (67.5%)
12 YEAR	404-152-3	205-111	30-18-1	70-46-11	92-16-1	91-26	201-76-1	63-34	1156-479-17 (70.5%)
TOTALS	(72.5%)	(64.9%)	(62.2%)	(59.5%)	(84.9%)	(77.8%)	(72.2%)	(64.9%)	

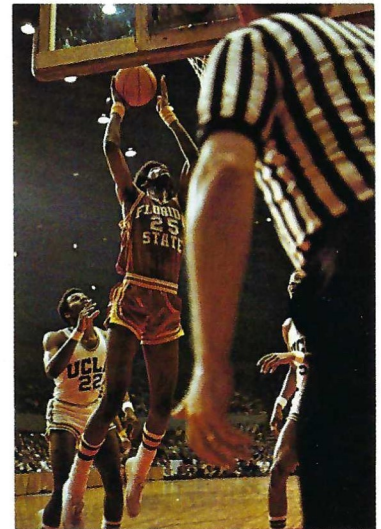
No Cross Country team until 1962

* No dual golf matches played

	Baseball	Basketball	Cross Country	Football	Golf	Swimming	Tennis	Track	Overall
25 YEAR	608-250-3	358-269	30-18-1	139-97-13	193-60-7	190-44	331-154-1	110-53	1959-946-25 (67.3%)
TOTALS	(70.8%)	(57.0%)	(62.2%)	(58.9%)	(75.6%)	(81.2%)	(68.2%)	(67.5%)	

GET ON THE WARPATH

support
**FLORIDA
STATE
UNIVERSITY**



"In my opinion the importance of intercollegiate athletics to a university has not diminished one whit... I suspect we need a high quality, strong athletic program now more than ever"

—President Stanley Marshall, June, 1971

"Athletics at Florida State University is moving into a new era... an era in which the fans and friends of Florida State will play an unprecedented role with their support. The object of the National Seminole Club is to organize this support and direct it into one of the most meaningful and personally rewarding areas within the scope of our program..."

—Director of Intercollegiate Athletics, Clay Stapleton



for more information
write
Jim Olsen, Executive Director
Tully Gym
Florida State University
Tallahassee, Florida 32306
Phone
AC 904 — 599-2790





FULL SCHOLARSHIP DONORS

Mr. Winfred L. Bailey
Atlanta, Georgia

Dr. John F. Bembry
Tallahassee, Florida

**Capital City
1st Natl. Bank**
Tallahassee, Florida

Mr. Bill Cartee
Tallahassee, Florida

Collins Brothers
Tallahassee, Florida

**The
Commonwealth Corp.**
Tallahassee, Florida

**Commonwealth
Capital Corp.**
Tallahassee, Florida

Mr. Manuel Corral
Tampa, Florida

Compliments of a Friend

**Hammons Asphalt
Paving, Inc.**
Tallahassee, Florida

**Hilton Hotel
of Tallahassee**
Tallahassee, Florida

Leon Realty, Inc.
Tallahassee, Florida

The Lewis State Bank
Tallahassee, Florida

Mr. John W. Maurer
Tampa, Florida

Midyette-Moor
Tallahassee, Florida

Dr. Coyle E. Moore
Tallahassee, Florida

Mr. Walter L. Revell
Miami, Florida

The Silver Slipper
Tallahassee, Florida

**Tallahassee
Bank & Trust Co.**
Tallahassee, Florida

**Tallahassee Federal
Savings & Loan Assoc.**
Tallahassee, Florida

Van Brunt & Yon, Inc.
Tallahassee, Florida

Mr. Ed Voyles
Smyrna, Georgia

Compliments of a Friend



HALF SCHOLARSHIP DONORS

Albritton-Williams, Inc.
Tallahassee, Florida

**Barrett, Daffin,
& Figg**
Tallahassee, Florida

Mr. C.H. Belvin
Tallahassee, Florida

Bertha Cooke, Inc.
Tallahassee, Florida

Compliments of a Friend

The Carpet Shop
Tallahassee, Florida

Mr. C.L. Carter
Tallahassee, Florida

Mrs. Mary G. Carter
Perry, Florida

Mr. Rainey Cawthon
Tallahassee, Florida

**Clemons Heating
& Air Conditioning**
Tallahassee, Florida

Mr. Thomas W. Donovan
Jacksonville, Florida

**Elberta Crate
& Box Company**
Tallahassee, Florida

Equity Resources, Inc.
Tallahassee, Florida

Mr. William H. Gardner
Tallahassee, Florida

Mr. Donald E. Grant
Perry, Florida

**Hanson, Wood
& Hoel Ind., Inc.**
Tallahassee, Florida

Mr. James S. Hardesty
Tampa, Florida

Compliments of a Friend

Mr. Tim Harris
Jacksonville, Florida

Mr. Jim Hawkins
Tallahassee, Florida

Mr. William L. Henley
Tallahassee, Florida

**Holiday Inn
of Thomasville**
Thomasville, Georgia

Mr. Wendell Jarrard
Maitland, Florida

Kinnebrew Motors
Tallahassee, Florida

Mr. John J. Koelemij
Tallahassee, Florida

Mr. Carroll Lance
Tallahassee, Florida

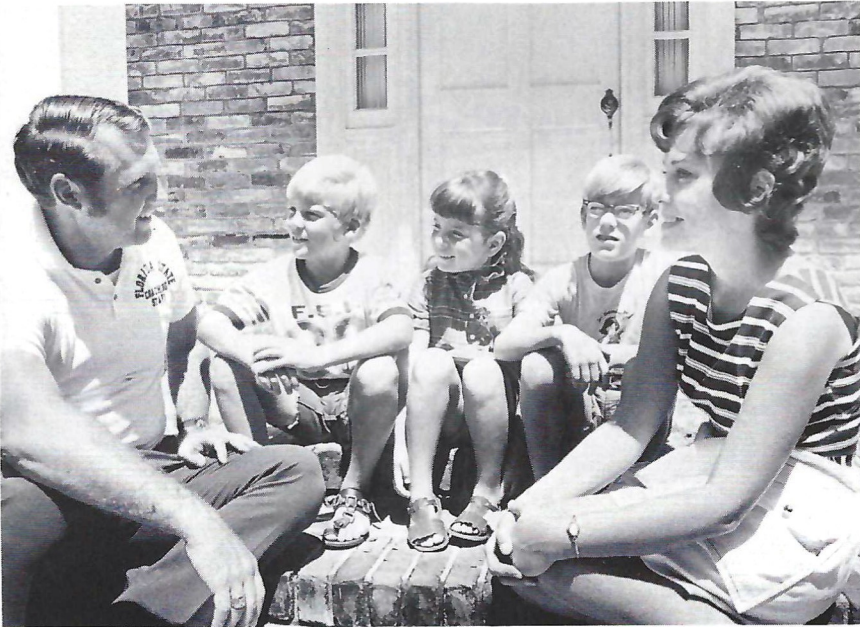
Compliments of a Friend

McDonalds Hamburgers
Tallahassee, Florida



HEAD COACH – LARRY JONES

Head Coach Larry Jones



Coach Jones and Judy with their three children.

Larry Jones has been the Seminoles "Man on the go" since his arrival on the Tallahassee campus a year and a half ago.

The personable young Seminole coach surrounded himself with a hard working staff that has been a whirlwind of activity. Jones barely gave the new staff time to get to Tallahassee before he had them off to every part of the state on recruiting tours. Their endeavors paid off handsomely as the Seminoles enjoyed one of their best recruiting years last winter.

The hard work and long hours don't stop with recruiting. Jones' staff, which he says is "the best in the nation" prepared the Seminole squad into a tight knit, spirited group that ran up an 8-3 record and trip to the Fiesta Bowl in his first season.

The Seminole team was marked with a strong comradeship. Every man appeared willing to pay the price, not only for himself, but also for his teammates. And it was this factor, more than any other — more than their victories, more than the outstanding defensive play, more than the brilliant passing game — that pleased Larry Jones. Jones summed up his feelings in these words, "I was most impressed with the love and respect our players had for one another."

That unity would seem to be the key to Jones' coaching style — proving you can still believe in "humility," "teamwork," and "paying the price" while communicating with one another.

A native of Little Rock, Ark., where he was a three sport star in high school, Jones came to Florida State from Tennessee where he was chief assistant under Bill Battle for a year. Prior to that he was an assistant with Paul Dietzel at LSU, Army and South Carolina from 1958 through 1969.

Jones was a center-linebacker at LSU from 1951-54 and then joined the Tiger coaching staff as a graduate assistant. After two years in the Air Force he rejoined Deitzel's staff in 1958.

Larry and his wife, the former Judy Bianchi of Dallas, Texas, have three children, Bruce, 14; Kevin, 8; and Laura, 7.

Be on the FIRST Team!



We extend our warmest welcome to the Students and Faculty of FSU, TCC and FAMU . . . When it comes to Banking . . . Depend on a Solid Favorite . . . a PRO Team of Bankers and Financial Coaches that can help you with any Banking Need. So when GOOD Banking is what YOU want . . . Be on the FIRST TEAM at FIRST NATIONAL .



Capital City
FIRST NATIONAL BANK



HALF SCHOLARSHIP DONORS

**McGowan
Electric Supply Co.**
Tallahassee, Florida

McKenzie Tank Lines
Tallahassee, Florida

**Maples Concrete
Products Co.**
Tallahassee, Florida

Mr. Hugh A. Martin
Tallahassee, Florida

Mobile Home Industries
Tallahassee, Florida

**Moon Jewelry
Company, Inc.**
Tallahassee, Florida

Nat Polak Insurance
Tallahassee, Florida

Dr. Eugene Nichols
Tallahassee, Florida

Mr. Julius F. Parker, Jr.
Tallahassee, Florida

Parkway Natl. Bank
Tallahassee, Florida

**Gladys Brown's
Parkway Suburban Salon**
Tallahassee

Mr. Doyle Pope
Quincy, Florida

James C. Smith
Tallahassee, Florida

Mr. Dennett I. Rainey
Tallahassee, Florida

Niagra Wires, Inc.
Quincy, Florida

**Spanish Park
Restaurant**
Tampa, Florida

Mr. Sparky Sparkman
Temple Terrace, Fla.

Mr. J. Allen Stiles
Tallahassee, Florida

**Stockton
Whatley Davin & Co.**
Tallahassee, Florida

Mr. Carlos F. Stone
Tallahassee, Florida

**Carolyn Brown's
Suburban Hair Fashions, Inc.**
Tallahassee

**Symon Tully
& Ryals, Inc.**
Tallahassee, Florida

Tallahassee Builders
Tallahassee, Florida

Tallahassee Democrat
Tallahassee, Florida

Turners, Inc.
Tallahassee, Florida

**Wheeler Builders
Supply**
Tallahassee, Florida

Dr. Eugene C. Alver
St. Petersburg, Florida

Compliments of a Friend



QUARTER SCHOLARSHIP DONORS

- Alford Chevrolet Co.**
 Tallahassee, Florida
Central Groves Corp.
 Vero Beach, Florida
Baker-Alford
 Tallahassee, Florida
Mr. William Bellflower
 Tallahassee, Florida
Mr. Russ Bevis
 Tallahassee, Florida
Mr. Haldane Boykin
 Chattahoochee, Florida
Mr. John L. Boyles
 Tallahassee, Florida
Mr. Robert J. Braun
 Tallahassee, Florida
Mr. Phil Brimer
 Marianna, Florida
Mr. Philip A. Browning
 Atlanta, Georgia
Buddy Brandt
 Tallahassee, Florida
Capital City 2nd National Bank
 Tallahassee, Florida
Capital City Sporting Goods Co., Inc.
 Tallahassee, Florida
Mrs. Dollie M. Carroll
 Quincy, Florida
Mr. Jimmy Christo
 Panama City, Florida
Mr. Al C. Church
 Tallahassee, Florida
Edwin C. Cluster
 Ocala, Florida
Mr. Fred D. Drake, Jr.
 Tallahassee, Florida
B.R. Draughon Construction Co.
 Tallahassee, Florida
Mr. Clark Durrance
 Tallahassee, Florida
Mr. Otho W. Edwards, Jr.
 Quincy, Florida
Mr. Peter Fenn
 Crawfordville, Florida
Flint River Mills, Inc.
 Tallahassee, Florida
General Telephone Co. of Florida
 Tallahassee, Florida
Mr. Louis Gibbs
 Tallahassee, Florida
Mr. Jimmy Greene
 Perry, Florida
Paul L. Baggett
 Tampa, Florida
The Insurance Center
 Quincy, Florida
Dr. Harold C. Gregg
 Marianna, Florida
Harrell-Morgan Advertising, Inc.
 Jacksonville, Florida
Mr. Emmett C. Harrison
 Tallahassee, Florida
Mr. William C. Herrell
 Tallahassee, Florida
Holiday Inn—Downtown
 Tallahassee, Florida
Francis T. Holland, M.D.
 Tallahassee, Florida
Mr. James D.A. Holley
 Tallahassee, Florida
Jackson-Cook, Inc.
 Tallahassee, Florida
Robert S. Jett, Jr.
 Tallahassee, Florida
Keen O'Kelley & Spitz
 Tallahassee, Florida
Kent Theatres
 Tallahassee, Florida
Mr. Jim Kirk
 Ocala, Florida
Mr. Glenn Krause
 Tallahassee, Florida
Dr. Richard P. Lamb
 Tallahassee, Florida
Mr. W.S. (Bill) Lee
 Tallahassee, Florida
Leon Federal Savings & Loan
 Tallahassee, Florida
W. W. Mangham
 Tallahassee, Florida
Mr. W. L. Montague
 Quincy, Florida
Mr. Ralph W. Morang
 Quincy, Florida
Municipal Code Corporation
 Tallahassee, Florida
Nelson Builders, Inc.
 Tallahassee, Florida
Millard J. Noblin Realty, Inc.
 Tallahassee, Florida
Mr. Jesse C. Palmer
 Tallahassee, Florida
William Parker
 Oldsmar, Florida
Mr. John Partin
 Tallahassee, Florida
Peacock Moving & Storage
 Tallahassee, Florida
James C. Fisher
 Altamonte Springs, Florida
Edward J. Kercher
 Bradenton, Florida
Tom Peavy
 Tallahassee, Florida
People's Bank
 Tallahassee, Florida
Proctor & Proctor
 Tallahassee, Florida
Mr. Ronald R. Richmond
 New Port Richey, Florida
Mr. Robert A. Riedel
 Tallahassee, Florida
Mr. Lawrence Roberts
 Tallahassee, Florida
Mr. Fred W. Roddenberry
 Cairo, Georgia
Mr. J. B. Roddenberry
 Cairo, Georgia
Mr. Ted Rodrique
 Tallahassee, Florida
RO-MAC Lumber & Supply
 Tallahassee, Florida
Rose Printing Company, Inc.
 Tallahassee, Florida
Ryals Lee Sales Company
 Tallahassee, Florida
Silver Ridge Development, Inc.
 Tallahassee, Florida
William Curt Smith
 Tallahassee, Florida
Southern Electric
 Tallahassee, Florida
Sport-Craft, Inc.
 Perry, Florida
Mr. Erroll T. Stafford
 Tallahassee, Florida
Sunshine State Dairymen's Co-op
 Tallahassee, Florida
Tallahassee Coca-Cola Bottling Co.
 Tallahassee, Florida
Tallahassee Grocery Co.
 Tallahassee, Florida
Tallahassee News
 Tallahassee, Florida
Tallahassee Travel & Tours
 Tallahassee, Florida
Mr. Roger M. Walker
 Tallahassee, Florida
Wholesale Foods, Inc.
 Tallahassee, Florida
Williams Concrete Construction, Inc.
 Tallahassee, Florida
Mr. J. C. Willis
 Quitman, Georgia
Mr. Joseph H. Woodward
 Quincy, Florida

*Electrical
Contractors*

- INDUSTRIAL
- COMMERCIAL

Licensed & Bonded

222-5494

CLARK

ELECTRIC CO.
OF FLORIDA

702 West Madison Street
TALLAHASSEE, FLORIDA

Southernair
MOTEL

Across from F.S.U.
Tallahassee, Florida 32304



and

Skyline

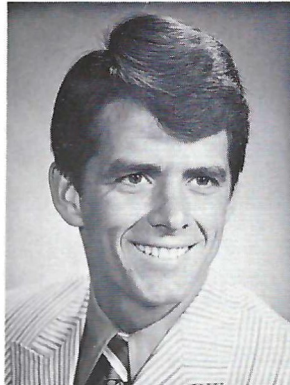
Motor Lodge

U. S. 90 West

Quality Inns

for Quality People

Seminole Head Coaches



SCOTT BRISTOL
Tennis



HUGH DURHAM
Basketball



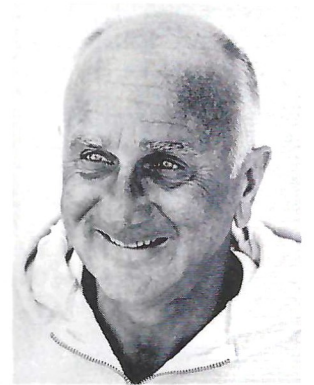
SCOTT FLETCHER
Golf



MIKE LONG
Track



JACK STALLINGS
Baseball



BIM STULTS
Swimming

Assistants



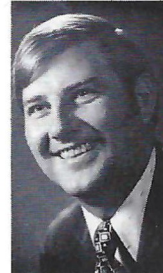
BILL BOLTON
Basketball



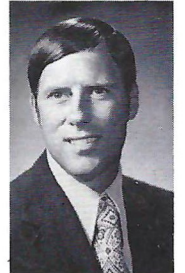
PAUL DIRKS
Baseball



AL LAWSON
Basketball



MORRIS McHONE
Basketball



DICK ROBERTS
Track



**Center your banking
at the
Barnett Banks of Tallahassee.**

Downtown and on North Monroe between the malls



Members FDIC

NATIONAL SEMINOLE CLUB

CENTURY CLUB DONORS

The following have contributed \$100 or more

Brunswick, Georgia Coastal Trucking Co.

Jacksonville, Florida Duval Spirits, Inc. Mr. Louis Fischer

Blountstown, Florida Mr. Sonny Bailey Mr. Julian A. Parrish

Cairo, Georgia Mr. Robert Johnson

Chipley, Florida Mr. W. E. Johnson

Pensacola, Florida Mr. Ronald Swaine

Palm Beach, Florida Mr. Harry Massey

Albany, Georgia Mr. William Z. Steck, Jr.

Apalachicola, Florida Mr. Roger R. Newton

Crawfordville, Florida Mr. Charles Barwick

Dallas, Texas F. R. "Bill" Baker

Tallahassee, Florida
A B Dick Products Company
Mr. Benjamin B. Adams
Mr. Michael S. Alderman
Mr. Donald R. Alexander
Alford Brothers, Inc.
Dr. Donald D. Alford
Alice's on Campus
Mr. Donald G. Allen, CPA
Richard O. Amdahl
American Distributing Co.
Governor Reubin O'D. Askew
Mr. Kenneth Ayers
Mr. Clarence Babbitt
Earl Bacon Agency, Inc.
Dr. Richard Baker
Mr. James Ball
Lt. Col and Mrs.
Richard O. Bandlow
Mr. James Barineau
Bear Construction
Barnaby's-Belmont, Inc.
Mr. John W. Barr
M.H. Barrera, D.D.S.
Charles H. Becker
Marvin J. Becker

Mr. George C. Bedell
Charlie A. Bell
Mr. Bill H. Bell
Gene Berkowitz
Mr. Robert D. Bickel
Dr. C.R. Bickerstaff
Bill's Book Store
Mr. Radford Bishop
Mr. William M. Bishop
Mr. Homer A. Black
Mr. Chester F. Blakemore
Mrs. L. G. Blount
Mrs. Eugene Borda
Herb Brinkley
Brinkley Brothers
Mr. Larry S. Brock
Mr. Gene D. Brown
Mr. John P. Brown
Mr. Larry Brown
Mr. James P. Burgess
Mr. Cliff Burns
Mr. C. Bob Butler
Mr. Cliff M. Cail
Dr. Emory T. Cain
Capital Paper Company
Carriage Manor
The Carriage Shop
Carter's Sporting Goods
Robert E. Carter
Central Heating Consultants
Dr. John E. Champion
Mr. Herbert Chandler
Dr. W. Judd Chapman
Mr. Fred Chester
Mr. Kenneth Clark
The Clayton Company
Mr. Merritt R. Clements
The Clothes Hanger, Inc.
Mr. Larry Cobb
Mr. Charles S. Coble
Raymond Cochran
Mr. Jack R. Coleman
Dr. James K. Conn
Mr. Gary J. Codey
Collins Furniture Co.
Leslie C. Crabtree
Mr. Donald Creedman
Mr. Willie Crooms
Mr. W.C. Culp
Mr. Bruce Culpepper
H.B. Culpepper
Harold V. Cummins
Mr. Dan C. Davis
Mr. Preston T. Davis
T. H. Dean
Mr. Fred E. Deeb
Mr. Syde P. Deeb
Mr. Milton H. Dennis
Mr. Fred C. Dillman
Mr. R.E. Dixon
Mr. Ellis E. Dorch
Mr. W. Dexter Douglass
Mr. Jep H. Dove
Mr. Robert F. Dove
J.H. Dowling, Inc.
Dr. Laurie L. Dozier, Jr.
Mr. Royal C. Dunn
Mr. Hugh N. Durham
Mr. R. L. Duval
Mr. Walter Eason
Eastern Airlines

Eli Witt Tobacco & Candy Div.
Dr. Robert E. Elmann
Dr. Merton L. Ekwall
Engineering & Equipment Co.
Mr. J. Colin English, Jr.
Mr. James M. Ervin
Mr. Robert M. Ervin
Mr. Henry Estes
Joseph Evans
Everhart Construction Co.
Executive Office Supply Co.
Mr. J.M. Feinberg
Dr. T. Bert Fletcher
Dr. Claude R. Flory
Mr. M.C. Flynn
Dr. Herman Frick
Sen. Elmer O. Friday
Dr. George H. Garmany
Mr. B. Kenneth Gatlin
Arthur C. Gay
Gordon J. Gluesenkamp
Mr. Frank Gray
Mr. Mallory E. Green
Mr. S. Curtis Green
Mr. William E. Greene
Mr. Haywood C. Greer
Dr. Howard Griner
Mr. William A. Grow, Jr.
Mr. Charles D. Hall
Mr. Michael W. Halloran
Mr. Dave Hamrick
Mr. Kenneth Harpe
Harrison Auto Parts, Inc.
Harrison & Ellis
Mr. M.C. Hartsfield
Dr. E.G. Haskell
Mr. Cyrus B. Hayner
Mr. Charles G. Hays
Haverty Furniture Co., Inc.
Dr. A.J. Henry
Herron Steel Co., Inc.
Mr. R.G. Higgins
Mr. William N. Hightower III
Mr. Willie Hinely
Dick Hollahan
Holley, Inc.
Robert G. Holt
Mr. William D. Hopkins
Mr. Wade Hopping
Sen. Mallory E. Horne
Morton Horn
Mr. Joe E. Hosford
House of Steaks, Inc.
Mr. Prentiss Huddleston
Hudson Aircraft Service
Dr. Joe R. Hughes III
Mr. Robert A. Hugli
Mr. John E. Hunt
Dr. William J. Hutchinson
IBM Corporation
Industrial National Bank
Mr. Richard F. Ingram
Jackson Gun Shop, Inc.
Mr. R.V. Jackson, M.D.
Mr. George D. Jacobs
Mr. Jack Jennings
Mr. James E. Joanos
Mr. Milton Johnson
Mr. Ernest E. Johnston
Mr. Felix A. Johnston, Jr.
Mr. Clinton Jones

Larry B. Jones
Wilbur Jones
Keenan Auto Parts
Kelly Sheet Metal, Inc.
Mr. William N. Kelley
Mr. Thomas A. Knight
Mr. George W. Koucky
Dr. Nelson H. Draeft
Mr. William Carroll Lamb
Mr. Charles P. Lamm
Mr. Gary Landrum
Mr. Fenton Langston
Mr. Richard M. Lee
Mr. Harold Leslie
Mr. Cecil Lett
Mr. Alfred L. Lewis Jr., M.D.
Mr. William H. Lindsey
Mr. John Mercer Lively
Mr. A.J. Livingston
Lone Starr Industries
Mr. William Long
Mr. J.H. Louchheim III
Mr. Benny M. Lovel
Judge Guyte P. McCord Jr.
Mr. W. G. McCue
Mr. E. Martin McGehee
Mr. Hoe N. McLendon
Mr. Charles K. Madsen
Mr. Hank Mannheimer
Mr. Eugene Maples
Mr. Raymond L. Marky II
Mrs. E.L. Marsh
Dr. Stanley Marshall
Mr. W. D. Marshall
Rian D. Martin
Mr. Crill Merryday
Mr. C. Douglas Messer
Mr. John W. Mettler Jr.
Dr. Peter W. Mettler
Dr. Fred W. Metzke
Mr. Harry L. Michaels
Judge D.L. Middlebrooks
Mr. Harry Middlebrooks
Dr. Robert W. Miles
Mr. F. DeWitt Miller, Jr.
Mr. Ned Miller
Mr. Thomas F. Miller
Mr. J.O. Milligan, Jr.
Mission Road
Nursery & Kindergarten
Mr. Lewie E. Moates
Mr. William G. Moon
Moore Concrete Products Co.
Mr. John H. Moore
Mr. William M. Morgan
Harvell L. Moulton
Mr. F. Joseph Nahoom
Mr. Norman J. Nahoom
Mr. A. Nelson
Robert B. Newell
Nic Gavalas
Mr. Mike Norman
Miss Mary Lou Norwood
F. Perry Odom
James J. Olsen
Mr. John S. Olson
Don O'Neal
William D. Owens
Mr. Robert G. Paige
Mr. George E. Palmer
Palmer-Harrell Buick, Inc.

Dr. W. H. Palmer
Mr. F.N. Parham
Dr. Daisy Parker
Mr. M. L. Patterson
Mr. J. K. Peddie
Mr. J. Marion Pichard
Louis Polatty
Mr. Stanley Poole
Mr. Melvin L. Pope, Jr.
Mr. Stanley B. Powell
PPG Industries
Dr. William E. Price
Mr. James M. Priester
Dr. James E. Pumphrey
Quality Court on the Pkwy.
Mr. George L. Rankin, Sr.
Mr. Sidney Rayborn
Mr. James W. Reichert
Raymond L. Revell
Elwyn Rhodes
Rhodes & Stephens
Dr. Charles H. Ritter
Col. W.W. Roberts
Mr. Dixon Robinson
Mr. L. P. Robinson
Louis Rocco
Mr. Karl Roesch, Jr.
Mrs. Bette C. Rogers
Mr. Louis A. Roskovich
H.S. Rozar
Mr. Ron Schomberger
Sears, Roebuck and Co.
Mr. Horace Sellars
Seminole Distributors, Inc.
Seminole Rock Products
Sheffield Auto & Truck Serv., Inc.
Mr. W.P. Shelley, Jr.
Mr. Zack H. Shelley
Dr. James B. Shuler
MISS Anna Mae Sikes
Mr. Joseph Simone
Mr. John T. Simpson, Jr.
Mr. Carson F. Sinclair
Mrs. Pauline C. Singer
Dr. E. F. Slosek
Block Smith
Jean T. Smith
Dr. J. Orson Smith, Jr.
Mr. Joseph D. Smith
Julian V. Smith
Mr. William E. Smith, Jr.
Mr. Robert M. Snider, M.D.
Mr. William C. Snuggs
Southernaire Motel, Inc.
Julian J. Spradlin
The Squaw Shop, Inc.
Mr. Clay Stapleton
Mr. F. E. Steinmeyer III
Mr. Albert H. Stephens
Alban Stewart
Mr. Harold L. Stewart
Mr. Dallas Strickland
Dick Strickland
L. M. Strickland, Jr.
Dr. John W. Sullenberger
John W. Sullivan
Supreme Ice Cream Co., Inc.
Mr. J. Baxter Swing
James C. Truett
University Rexall Pharmacy
Dr. Earl E. Wilkinson

NATIONAL SEMINOLE CLUB

CENTURY CLUB DONORS - Cont.

Mr. Louis Sutton
Mary L. Sutton
Tallahassee Auto Parts, Inc.
Tallahassee Bank North
Tallahassee Music Co.
Tanglewood Realty
Mr. H. C. Terry
Bill Terrell's Package Store
Mr. B. F. Thomas
Mr. S. D. Thompson
Mr. Doug Tienan
William M. Tindall
Toyota of Tallahassee
Mr. Donald L. Tucker
Mr. John E. Turner
Mr. H. B. Upchurch
Ira S. Valentine Jr.
Mr. Wilfred C. Varn
Dr. Robert L. Vogt
WGLF Gulf Radio
WCTV

Thomas Waddell
Mr. Fred R. Wagner Jr.
Thomas A. Waits
Drs. Walker & Taylor
E. M. Watkins & Company
Dr. F. Hansell Watt
Mr. Larry C. Watts
Mr. W. S. Webb
Mr. Robert C. Webster
Mr. William L. Weeks
Dr. John M. Wells Jr.
West Fla. Construction Co., Inc.
Mr. Otto Wettstein III
Mr. Raney Whaley
Mr. Donald T. Whiddon
Floyd Whiddon
Mr. Hulon Whitton
Mr. Hal Wilkins
Williams Oil Company
Mr. Fred H. Williams
Mr. J. T. Williams, Jr.
Mr. & Mrs. M. Williams, Jr.
Mr. Bud Williamson
Mr. Jerry D. Williamson, Jr.
Mr. Ben C. Willis
Winchester Construction Co.
Robert B. and Barbara S. Wither
Mr. Richard W. Wolfe
Dr. C. Phil Wolschlagler
Mr. George A. Womble
Shirley Jayleen Woods
Mr. William F. Woodward
Mr. J. D. Wright Jr.
Miss Nelle B. Wright
Yaeger, Inc.
Mr. L. Everett Yarbrough Jr.
Mr. Roy C. Young

Jacksonville, Florida
Mr. J. Bart Abstein
Mr. Allen R. Booth
Mr. Michael C. Copps
Mr. A. E. Green
L. Wayne Koger
Mr. Barry A. Whilden
John Griner

Quincy, Florida
Mr. Adrian L. Anderson
Mr. C. H. Bentley
B&H Construction Co.
Mr. Robert V. Cantey
Mr. M. F. Craig
Mr. Calvin H. Curry
First Federal Savings & Loan
Mr. Gerald A. Gay, Jr.
Dr. Taylor Griffin
Mr. Jack A. Harnett
Mr. Edward Cantey Higdon

Mr. John B. Higdon, Jr.
Mr. W. T. Laslie
Mr. Hack D. McMillan
Mr. Norman McMillan
Mr. Jimmy Mahaffey
Mr. W. W. Mahaffey
Mr. Daniel W. Miller
Mr. Everett Morrow
Mr. Grady Peacock
I. Burton Price, M.D.
Quincy State Bank
Dr. Hilliard Reddick
Mr. Phil Spears
Mr. H. S. Vanlandingham
Hentz Fletcher

Monticello, Florida
Mr. Steve Andris
Mr. W. W. Bassett, Jr.
Mr. J. C. Whatley

Marianna, Florida
Mr. Robert N. Asbell
Citizens State Bank
Mr. Larkin Hundley
Neal Funeral Home
Mr. Glenn E. Padgett, M.D.
Mr. C. P. Pylant
Mr. W. B. Reddoch

Lakeland, Florida
Mr. Franklin T. Barnett
Mr. Thomas W. Osborne

Perry, Florida
Mr. James C. Bassett
Mr. Ted Baumgardner
Mr. Edward I. Bennett, O.D.
Mr. Conrad C. Bishop, Jr.
Mr. Boyd W. Close
First Federal Savings & Loan
Mr. John W. McBride
Mr. Joseph H. McClellan
Mr. Hal Marsh
Mr. Harold V. Martin
Mr. Tom J. Moore
Mr. Barney D. Padgett
Mr. Wilburn H. Peacock
Mr. Roy E. Taylor
C. Taylor Taylor
Mr. T. Conrad Williams

Panama City, Florida
Bay National Bank & Trust Co.
Mr. Larry Bodiford
Mr. J. E. Carter
Mr. Clay Cogburn
Mr. E. L. Dukate
Mr. Sam C. Fleming
Gulf Cafeteria
Dr. David I. Hallmon
Mrs. Bessie C. Laird
Mr. Jimmy T. Patronis
Mr. W. B. Quigley
Mr. Ralph H. Segrest
Mr. John W. Silcox
Dr. Tim Smith
Mr. Marvin A. Urquhart, Jr.
Mr. Don Willis

Cairo, Georgia
Harrison & Ellis
Mr. Tom Legette
Mr. William A. Mixon
Mr. J. Richard Porter, III
Mr. H. E. Strickland
Slater Wight

Orlando, Florida
Mr. Rodney D. Bennett

Dr. James D. Booth
Dr. James V. Ferdinand
Dr. Robert L. Ferdinand
The 1st National Bank of Orlando
Mr. J.C. Hartsfield
Robert Weaver
Gene Strickland
Orange Co. Alumni Assn.

Panacea, Florida
Mr. Finley L. McMillan

Winter Haven, Florida
Mr. Ewell P. Moore

Orange Park, Florida
Mr. J.A. Burke

Titusville, Florida
Mr. Theodore R. Ruta

Satellite Beach, Florida
Mr. Paul W. Capps

Opa-Locka, Florida
Mr. A. C. Cash, Jr.

Lake City, Florida
Mr. James M. Bones Thomas
Jack Espenship Construction Co.

Port St. Joe, Florida
Mr. Ashley M. Costin
James E. Costin

Camilla, Georgia
Mrs. Emaly L. Culpepper

Bristol, Florida
Mr. E. N. Dekle

Ocala, Florida
Mr. George Heubeck
Mr. Dan Hicks

Bradenton, Florida
Mr. James M. Doss
Mr. Henry H. Raines

Greensboro, Florida
Mrs. Adrian C. Fletcher
Mr. E. H. Fletcher
Mr. Charley Macon

Washington, D.C.
Hon. Don Fuqua

Moultrie, Georgia
Mr. W.C. Vereen

ChIPLEY, Florida
Mr. Griff Godfrey
Mr. Roger L. Laney
Mr. & Mrs. Ed W. Wood, Sr.

Havana, Florida
Ervin B. Gregory
Mr. A.D. Shelfer, Jr.
Mr. J. Frank Smith

Thomasville, Georgia
Mr. J. W. Blanton
Country Villa
Franklin Rudolph Fletcher
Mr. Frank L. Forester
Mr. Thomas McComb Hines
Mr. Robert D. Morgan
Mr. Herbert Nelson, Jr.
Thomasville Motor Corp., Inc.

St. Cloud, Florida
Mr. William L. Beck

Pelham, Georgia
Mr. Walter C. Bernier
Mr. James C. Brim

Atlantic Beach, Florida
Mr. I. M. Butler

Clearwater, Florida
Mr. James Lee McKeown
Mr. W. A. Waters, Jr.

Palm Beach, Florida
Mr. Everett B. Nowlen

Winter Park, Florida
Mrs. Frances M. Brookby
Mr. Thomas M. Woodruff

Lake Wales, Florida
Carter-Watsey & Associates, Inc.
Mr. Howard S. Nilson

Nashville, Tennessee
C. Wayne Edwards

Fort Myers, Florida
Mr. Walter Grace, Jr.
Dr. Walter Grace
Mr. James E. Kinsey
Walter Jardine

Marietta, Georgia
Custom Kitchens

Albany, Georgia
Mr. W. R. Keenan
Mr. E. Marshall Munde
Mr. Herbert O. Ricord

Fern Park, Florida
Mr. Ted M. Helms

Madison, Florida
Mr. J. D. Cook, Jr.
Mr. W. C. Copeland, III
Mr. J. B. Davis, Jr.
Mr. J. P. Johnson
Mr. Charles T. Maultsby
Mr. John Maultsby, Jr.
Miss Mildred Parrish
Francis M. Phillips
Mr. Robert R. Toomey, Jr.

St. Petersburg, Florida
Mr. Arthur E. Hempel, Jr.
Mr. R. Clark Robinson
Mr. James D. Williams

North St. Petersburg, Florida
Bob Crisp

Bainbridge, Georgia
G. R. Pirrung

Gainesville, Florida
Frank H. Pope

Mt. Dora, Florida
Huett Paving Company

Atlanta, Georgia
Mr. Michael E. Pou
Mr. James S. Tate

Chiefland, Florida
Mr. G. Luther Drummond

Chattahoochee, Florida
Mr. Ben J. Dudley

Fort Meade, Florida
Mr. James H. Prine

Brooksville, Florida
Mr. Max Register
Mr. Robert D. Whittier

Lilburn, Georgia
Mr. Mark Hillis

Seminole, Florida
Mr. Stan Lewis

Tampa, Florida
Mr. Raymond D. Didier
Dr. C. W. Gleaton
Mr. Jo Robert Lane
Mr. W. A. McCollour
Mr. Charles F. Mixon, Jr.
Ronald W. Moore

Blountstown, Florida
Mr. David H. Simpson
Mrs. Idas B. White

Largo, Florida
Mr. Dick Farrell

Ft. Lauderdale, Florida
Mr. Lon Fellenz

Homerville, Georgia
Mr. Jerry W. Fortner

Carrabelle, Florida
Dr. George L. Sands, Jr.

Homestead, Florida
Mr. N. W. Lewis

Naples, Florida
Mr. John R. Smith

Lloyd, Florida
Mr. William R. Bishop

Miami Springs, Florida
Miss Jane Jo Hood

Mayo, Florida
Judge Foye W. Osteen

Crawfordville, Florida
Mr. Lester Lewis

Jay, Florida
Mr. Thomas A. Boyd

Apalachicola, Florida
Mr. George Patrenos

Defuniak Springs, Florida
Ms. Mary F. Bonner
Mr. Ronald Wise

Vero Beach, Florida
Mr. Gordon B. Johnston
Willard W. Siebert, Jr.

Pensacola, Florida
Mr. James J. Reeves
Mr. John M. Sansom
Standard Distributing Co.

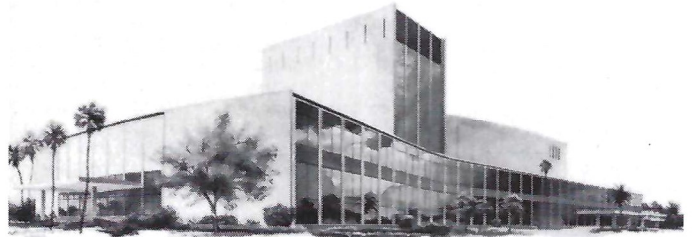
Brandon, Florida
Mr. M.M. Bowers

AWESOME TRIPLE OPTION...

Jacksonville's
Entertainment
Team!



GATOR BOWL
AUDITORIUM
COLISEUM



GATOR BOWL

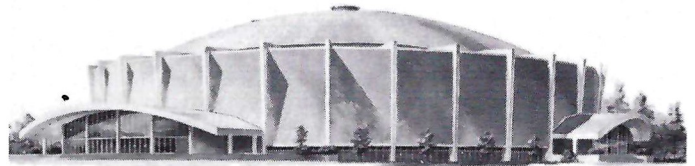
Sept. 8	High School Jamboree (Gateway Conference)	7:30 p.m.
Sept. 29 - Oct. 1	Shrine Circus	
Oct. 18-28	Greater Jacksonville Fair	
Nov. 7	Clyde Beatty Circus	
Nov. 11	Georgia vs. Florida	2:15 p.m.
Nov. 23	Englewood vs. Wolfson	10:30 a.m.
	Jackson vs. Lee	2:30 p.m.
	Raines vs. Stanton	7:30 p.m.
Dec. 2	Meninak Charity Game	8:00 p.m.
Dec. 9	University of Florida vs University of North Carolina	2:00 p.m.
Dec. 30	Gator Bowl Game	4:00 p.m.

AUDITORIUM

SEPTEMBER		NOVEMBER	
22	Jose Feliciano	9	Kiss Me Kate
23	It's a Beautiful Day	11	Junior Miss Pageant
30	Gospel Sing	14	Carol Rosenburger - Pianist
OCTOBER		16	F.J.C. Chorale
13-15	Rod & Custom Auto Show	24, 25	Black Heritage Music Fair; Jazz & Blues Festival
14	Tommy	30	Barefoot In The Park
14	Grand Ole Oprey For Children	DECEMBER	
20	Army Band Concert	1, 2	Barefoot In The Park
27	Search For Dracula	9	Gospel Sing
		16	Nutcracker Suite
		23	Gospel Sing

COLISEUM

SEPTEMBER		NOVEMBER	
15	WOBS Rock Concert	4	WVOJ Country Music
16	Joe Simon	5	Jethró Tull
17	"Yes"	11	WOBS Rock Concert
30	Shrine Circus	12	Grand Funk Railroad
		14	Chet Atkins
OCTOBER		DECEMBER	
1	Shrine Circus	3	Stand Up for America
6	Buddy Miles & Ginger Baker	5	Basketball; J.U. vs. Fla. Tech.
7	Roberta Flack	8	WQIK Country Music
13	Ten Years After		
14	WQIK Country Music		
18-28	Greater Jacksonville Fair		



15, 16, 17	The World of Wheels
23	Basketball; J.U. vs. Furman
26, 27	Gator Bowl Basketball Tourney
29	Rock Concert
30	WQIK Country Music



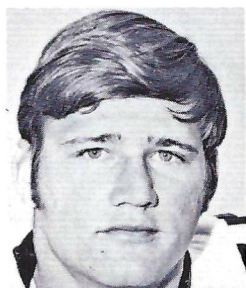
for tickets:

civic auditorium - 354-2041 memorial coliseum - 354-2041 gator bowl - 354-5678

CITY OF JACKSONVILLE



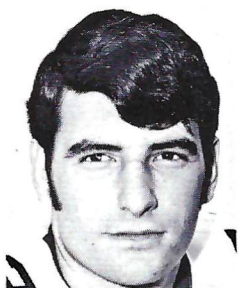
Seminole Seniors



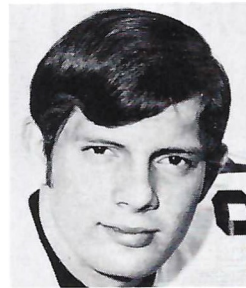
ALLEN DEES - C
Lakeland - Criminology



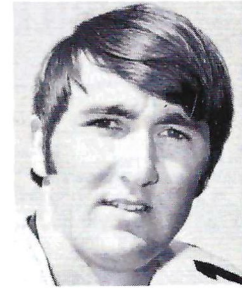
JIM DUNDALA - LB
Morrisville, Pa. - Social
Science Ed.



SHANE GIBBS - OG
Bay Minette, Ala. - Bus. Adm.



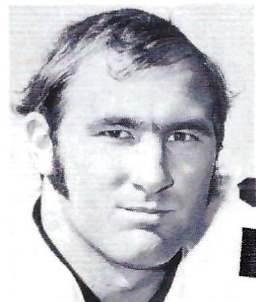
MIKE GLASS - OT
Tampa - Business Admin.



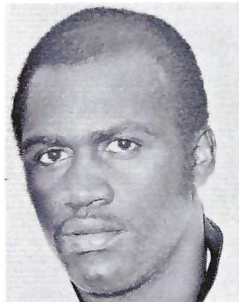
GARY HUFF - QB
Tampa - Accounting



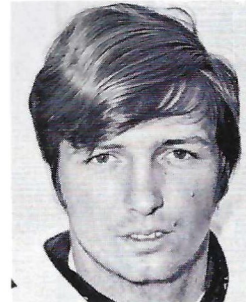
CHARLIE HUNT - DE
Jacksonville - Elem. Ed.



HOWARD JACOBI - DT
Vero Beach - Phys. Ed.



EDDIE McMILLAN - DB
Tampa - Criminology



GARY PARRIS - TE
Vero Beach - Recreation



RON RATLIFF - DB
W. Palm Bch. - Bus. Admin.

GOOD LUCK
THIS SEASON



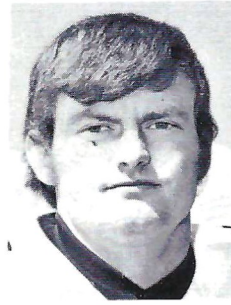
FROM THE NATION'S
LARGEST RETAILER
of
MOBILE HOMES



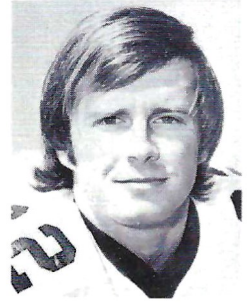
202 SALES CENTERS
in
11 STATES
and GROWING

Listed On American Stock Exchange

Sr.



OSCAR ROBERTS - RB
Ocilla, Ga. - Bus. Admin.



BARRY SMITH - WR
Miami - Social Studies Ed.



DAVID SNELL - DB
Stocomb, Ala. - Bus. Admin.



LARRY STRICKLAND - LB
Tallahassee - Accounting



JAMES THOMAS - DB
Macon, Ga. - Business Admin.



DAN WHITEHURST - LB
Adel, Ga. - Criminology

Jr.



BOBBY ANDERSON - DT
Tifton, Ga. - Business Admin.



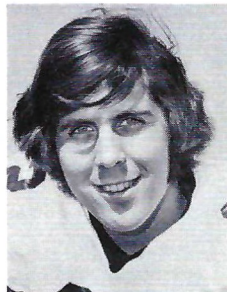
PHIL ARNOLD - OG
Hollywood - Business Admin.



STEVE BRATTON - DE
Oviedo - Phys. Ed.



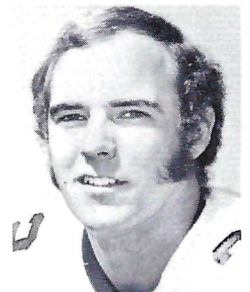
MACK BROWN - RB
Cookeville, Tenn. - Recreation



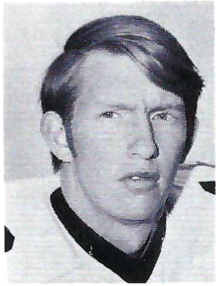
MIKE CADWELL - QB
St. Louis Park, Minn. -
Management



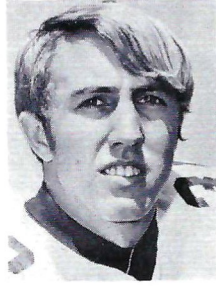
BERT COOPER - DE
Tallahassee - Pre-Med



ED DAVIS - WR
Lakeland - Business Admin.



FRANK DEMING - QB
Valdosta, Ga. - Pre-Med.



BUZZY LEWIS - DB
Bristol - Math



JIM MALKIEWICZ - DT
Perth Amboy, N.J. - Phys. Ed.



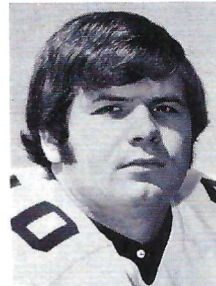
MIKE MCGOWAN - DB
Norfolk, Va. - Phys. Ed.



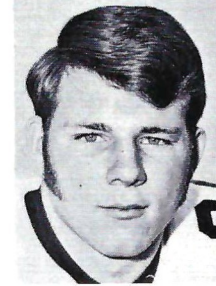
DAVID MILES - LB
Tallahassee - Recreation



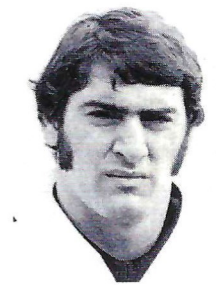
HODGES MITCHELL - RB
Dallas, Tex. - Social Welfare



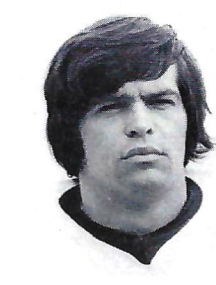
BRENT NORRIS - RB
Thomaston, Ga. - Ind. Arts



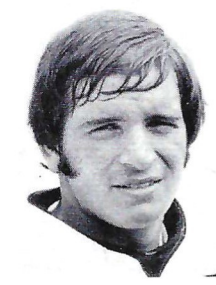
RICK OREAIR - RB
Jacksonville - Bus. Admin.



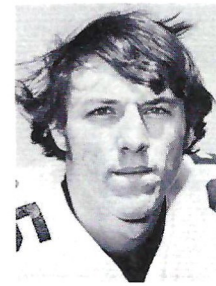
JOHN PALERMO - TE
Newburg, N.Y. - Ind. Arts



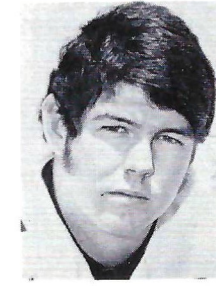
EARL PASSWATERS - DE
Bridgeville, Del. - Phys. Ed.



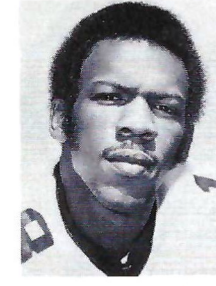
ROCKY SALDANA - C
Dallas, Tex. - Management



RANDY SHIVELY - DB
St. Petersburg - Bus. Admin.



DON SPARKMAN - OT
Jacksonville - Business Admin.



JOE THOMAS - WR
Tallahassee - Elementary Ed.

HOUSE OF STEAKS

WESTERN BEEF
AT PRICES
YOU WILL ENJOY

Our Specials Are Fighting
INFLATION

"Try A Little Tenderness"

79¢ UP

for Take-Out Service

Call... **222-3374**

11:30 AM 'til 10:00 PM
EVERY DAY

**LUNCHEONS & DINNERS
PARTIES, MEETINGS, ETC.**

HOUSE OF STEAKS

410 WEST TENNESSEE ST.
TALLAHASSEE, FLORIDA



GOING
PLACES?
?

ATHENS, GEORGIA?

ATHENS, GREECE?

NEW YORK? NASSAU? NEPAL?



No Charge For Our Services



*Tickets - Reservations
At Printed Rates*



TRAVEL IS OUR PROFESSION

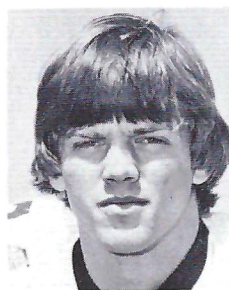


**MARION HAY, PRESIDENT
TOM LYLE**

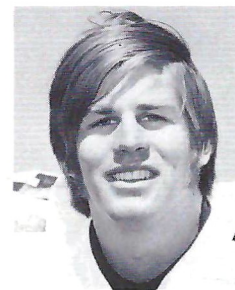
**TALLAHASSEE TRAVEL
AND TOURS, INC.**

*Formerly Hay Travel Service
Established 1930*

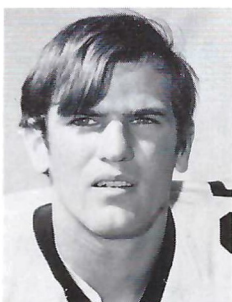
**CALHOUN AT CALL STREET
TELEPHONE 224-4161**



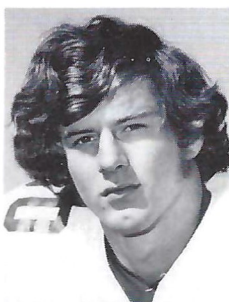
MIKE ALLEN - WR
Willoughby, Ohio - Bus. Admin.



BOB ANDERSON - OT
Rockledge - Basic Studies



PHIL CAHOON - WR
Mobile, Ala. - Basic Studies



JEFF CHESNUT - RB
Stone Mountain, Ga. -
Basic Studies



MIKE DAVIDSON - RB
Bradenton - Basic Studies



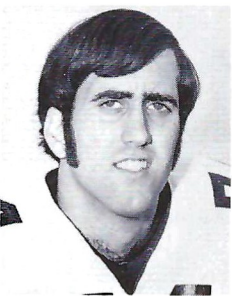
JOE DOWNEY - P
Mobile, Ala. - Bus. Admin.



JOE GOLDSMITH - WR
Lakeland - Basic Studies



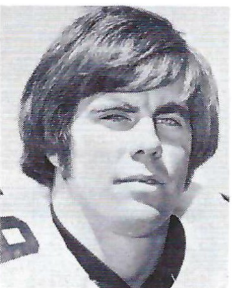
DICK HOPKINS - TE
W. Palm Bch. - Basic Studies



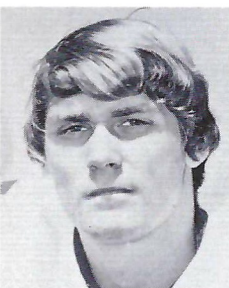
JAMES HOWARD - DT
Jacksonville - Basic Studies



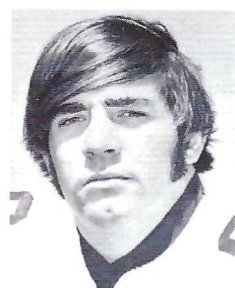
EARL HUMES - DB
Miami - Basic Studies



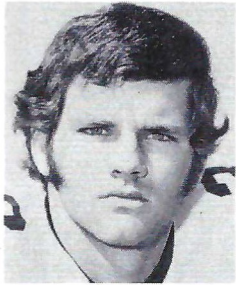
BILL JOHNSON - LB
Cocoa Beach - Basic Studies



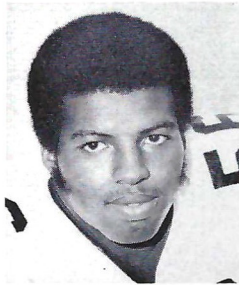
VIC JOHNSON - OT
Lake City - Humanities



BOB JONES - OG
Lighthouse Point - Recreation



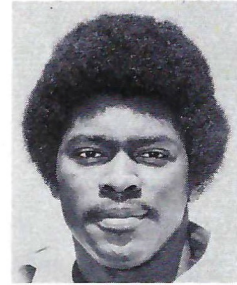
GARY LOUCKS - P
Merritt Island - Bus. Admin.



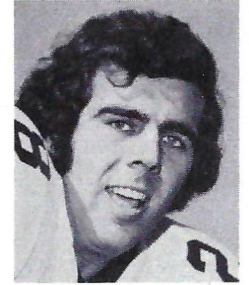
JOHN MURPHY - LB
Albany, Ga. - Business Admin.



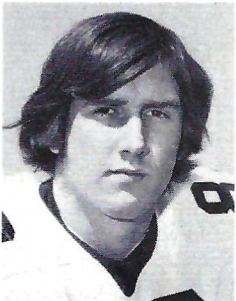
MARK ORLANDO - QB
Westfield, N.Y. - Basic Studies



LESTER PAYTON - RB
Orlando - Basic Studies



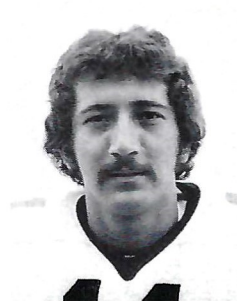
RALPH PETRILLO - DB
Newburg, N.Y. - Basic Studies



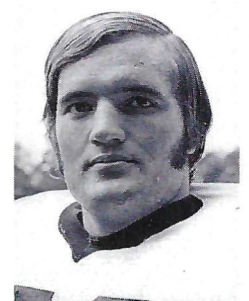
TOM PRESSWOOD - DT
Chattanooga, Tenn. -
Basic Studies



JIM WELCH - C
Jacksonville - Basic Studies



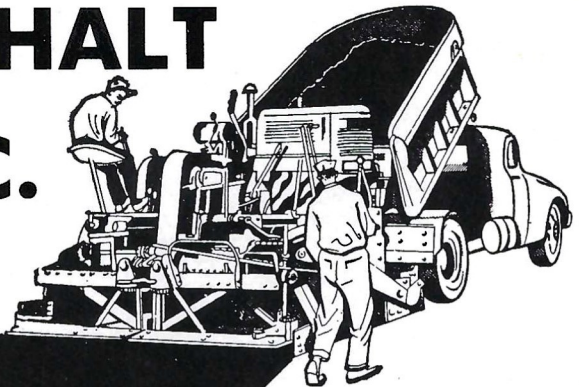
AHMET ASKIN - PK
Tallahassee - Math



GREG POUNDS - LB
Daytona Beach - Phys. Ed.

HAMMONS ASPHALT PAVING, INC.

Tallahassee, Fla.



Contributor: Florida State University Athletic Scholarship Fund

Zenith introduces the complete color TV.

Complete with a new
Super Chromacolor picture
tube, even brighter and
sharper than famous
Chromacolor.

Complete with
a new 100%
solid-state chassis.

Complete with
one-button color tuning.

Complete with
one of color TV's
strongest warranties.



Model shown, the Avanti I,
D4760X. Also available in a
wide range of fine-furniture styles.
Simulated TV Picture

ZENITH
SUPER CHROMACOLOR

At Zenith, the quality goes in before the name goes on.

TODAY'S GAME

by LONNIE BURT
Sports Information Director

Colorado State, the Seminoles' opponents this afternoon, has only three seniors on its squad and only two of these get much playing time.

The Rams, members of the Western Athletic Conference, come into the contest winless, having lost to Arizona (17-0), Iowa State (41-0), West Texas State (41-14), Utah State (21-0), Air Force (52-13) and Wyoming (28-9).

Colorado State's main problems have been inexperience both offensively and defensively. The Rams lost their top defensive player, safety Paul Duda, for the season with a broken leg.

Offensive turnovers have been extremely costly for the WAC team. The young Rams offense has turned the ball over 27 times in six games and most of these errors have come at inopportune moments. In the Wyoming game, Colorado State was inside the enemy 15 five times, turning the ball over four times and scoring once.

Sophomore quarterback Mark Driscoll missed last week's Wyoming contest but should be healthy today. The 175 pounder from LaJunta, Colo., averaged 18 completions in the two games before he was injured. His 19 completions against Utah State tied a school record.

Another sophomore, Willie Miller, is the Rams' leading receiver with 21 catches for 330 yards. Top rusher is Reggie Leonard, 177-pound speedster from Cincinnati, Ohio, who has gained 243 yards while scoring two touchdowns.

Seminole defenders will be facing one of the biggest offensive lines they have looked at all season since tackle Al Simpson tips the scales at 275 and guard Charles Montgomery weighs in at 255.

The battered and bruised Seminoles snapped back last week for a 25-21 victory over Mississippi State. With the Florida State defense physically beat up, the Seminoles went to a ground game with the objective being to use up the clock.

It was successful since the Seminoles went into the fourth quarter with a 17-7 lead and hung on against an aerial attack which produced two late Bulldog scores.

Heisman Trophy candidate Gary Huff threw two touchdown passes to Barry Smith and became the Seminoles' all-time TD passer with 43, one better than Bill Cappleman.

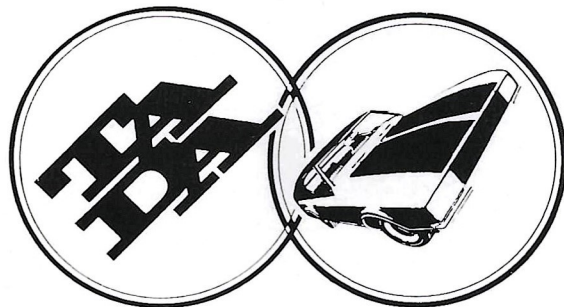
This is the 25th Florida State homecoming game and the Seminoles sport an 18-5-1 record before the old grads.

Go

Seminoles

We'll help all we can

Tallahassee Automobile Dealers Association



ALFORD CHEVROLET CO.
PROCTOR & PROCTOR, INC.
CAPITAL LINCOLN-MERCURY, INC.
BOB DRAKE DODGE, INC.
PALMER-HARRELL BUICK CO.
CAPITAL CHRYSLER-PLYMOUTH, INC.
TALLAHASSEE MOTORS, INC.
KINNEBREW MOTORS, INC.
CONTINENTAL CARS

Associate Members: Capital City First National Bank; Tallahassee Bank and Trust; Peoples Bank; Tallahassee Democrat.

Textbooks
*
Art and
School Supplies

FSU

Sweatshirts
T Shirts

Glassware
Mugs

*
**Seminole
Uprising**



SUPPORTED BY

SERVING YOU!

phone
224-3178

Bill's STORE
BOOK STORE

WHEN YOU THINK OF BOOKS, THINK OF BILL'S
107 SOUTH COPELAND ST.
TALLAHASSEE-FLA. 32304

FLORIDA STATE'S

Best Single Game Performances

TOTAL OFFENSE

- 490 yards by Bill Cappleman vs Memphis State, 1969 (minus 18 rush, 508 pass)
- 431 yards by Bill Cappleman vs South Carolina, 1968 (minus 6 rush, 437 pass)
- 384 yards by Tommy Warren vs Virginia Tech, 1970 (99 rush, 285 pass)
- 369 yards by Gary Huff vs South Carolina, 1971 (3 rush, 366 pass)
- 369 yards by Joe Majors vs Tampa, 1959 (56 rush, 313 pass)
- 367 yards by Bill Cappleman vs Wake Forest, 1968 (2 rush, 365 pass)
- 357 yards by Gary Huff vs Virginia Tech, 1971 (minus 17 rush, 374 pass)
- 355 yards by Bill Cappleman vs Tulsa (minus 17 rush, 372 pass)
- 353 yards by Kim Hammond vs Penn State (Gator Bowl, 1967) (minus 9 rush, 362 pass)
- 349 yards by Kim Hammond vs Mississippi State, 1967 (minus 20 rush, 369 pass)
- 346 yards by Gary Pajcic vs Virginia Tech, 1966 (34 rush, 312 pass)

YARDS GAINED PASSING

- 508 yards by Bill Cappleman vs Memphis State, 1969
- 437 yards by Bill Cappleman vs South Carolina, 1968
- 374 yards by Gary Huff vs Virginia Tech, 1971
- 372 yards by Bill Cappleman vs Tulsa, 1969
- 369 yards by Kim Hammond vs Mississippi State, 1967
- 366 yards by Gary Huff vs South Carolina, 1971
- 365 yards by Bill Cappleman vs Wake Forest, 1968
- 362 yards by Kim Hammond vs Penn State (Gator Bowl, 1967)
- 347 yards by Gary Huff vs Arizona State (Fiesta Bowl, 1971)

PASSES ATTEMPTED

- 58 by Gary Huff vs Florida, 1972 (completed 27)
- 53 by Kim Hammond vs Penn State (Gator Bowl, 1967) (completed 37)
- 53 by Gary Pajcic vs Virginia Tech, 1966 (completed 28)
- 50 by Bill Cappleman vs Memphis State (completed 31)
- 46 by Gary Huff vs Arizona State (Fiesta Bowl, 1971) (completed 25)
- 42 by Bill Cappleman vs South Carolina, 1968 (completed 25)
- 42 by Bill Cappleman vs Florida, 1969 (completed 20)
- 42 by Gary Huff vs Kansas, 1972 (completed 26)
- 41 by Gary Huff vs Georgia Tech, 1971 (completed 20)
- 41 by Gary Huff vs South Carolina, 1971 (completed 26)
- 41 by Bill Cappleman vs LSU (Peach Bowl, 1968) (completed 21)

PASSES COMPLETED

- 27 by Gary Huff vs Florida, 1972 (attempted 58)
- 37 by Kim Hammond vs Penn State (Gator Bowl, 1967) (attempted 53)
- 31 by Bill Cappleman vs Memphis State, 1969 (attempted 50)
- 28 by Gary Pajcic vs Virginia Tech, 1966 (attempted 53)
- 26 by Gary Huff vs South Carolina, 1971 (attempted 41)
- 26 by Gary Huff vs Kansas, 1972 (attempted 42)
- 25 by Gary Huff vs Arizona State (Fiesta Bowl, 1971) (attempted 46)
- 25 by Bill Cappleman vs South Carolina, 1968 (attempted 42)
- 24 by Kim Hammond vs Memphis State, 1967 (attempted 34)
- 24 by Bill Cappleman vs Miami, 1969 (attempted 38)
- 23 by Steve Tensi vs Oklahoma (Gator Bowl, 1965) (attempted 36)
- 23 by Kim Hammond vs Alabama, 1967 (attempted 40)

PASSES CAUGHT

- 16 by Ron Sellers vs South Carolina, 1968 (259 yards)
- 14 by Ron Sellers vs Wake Forest, 1968 (260 yards)
- 14 by Ron Sellers vs Penn State (Gator Bowl, 1967) (145 yards)
- 13 by Kent Gaydos vs Houston, 1969 (126 yards)
- 13 by Ron Sellers vs Memphis State, 1968 (218 yards)
- 13 by Ron Sellers vs Virginia Tech, 1966 (135 yards)
- 13 by Fred Biletnikoff vs Oklahoma (Gator Bowl, 1965) (192 yards)
- 12 by Bill Moreman vs Penn State (Gator Bowl, 1967) (106 yards)

YARDS RECEIVING PASSES

- 260 yards by Ron Sellers vs Wake Forest, 1968 (14 receptions)
- 259 yards by Ron Sellers vs South Carolina, 1968 (16 receptions)
- 229 yards by Ron Sellers vs Virginia Tech, 1967 (8 receptions)
- 218 yards by Ron Sellers vs Memphis State, 1968 (13 receptions)
- 192 yards by Fred Biletnikoff vs Oklahoma (Gator Bowl, 1965) (13 receptions)
- 182 yards by Fred Biletnikoff vs Virginia Tech, 1964 (11 receptions)

YARDS GAINED RUSHING

- 161 yards by Buddy Strauss vs Mississippi College, 1949
- 152 yards by Mike Sellers vs Sul Ross, 1951
- 150 yards by Bobby Renn vs Abilene Christian, 1957
- 142 yards by Keith Kinderman vs Richmond, 1961
- 142 yards by Phil Spooner vs Houston, 1965
- 141 yards by Bobby Fiveash vs Tampa, 1953

Chevrolet. Building a better way to see the NCAA



The 1973 Monte Carlo. A personal luxury car of the first rank. With elegance, silence, comfort and the confident handling you find in much more expensive cars.

Monte Carlo has been redesigned and re-engineered to the extent that we think you'll find it one of the finest riding, most precise handling cars you've ever driven.

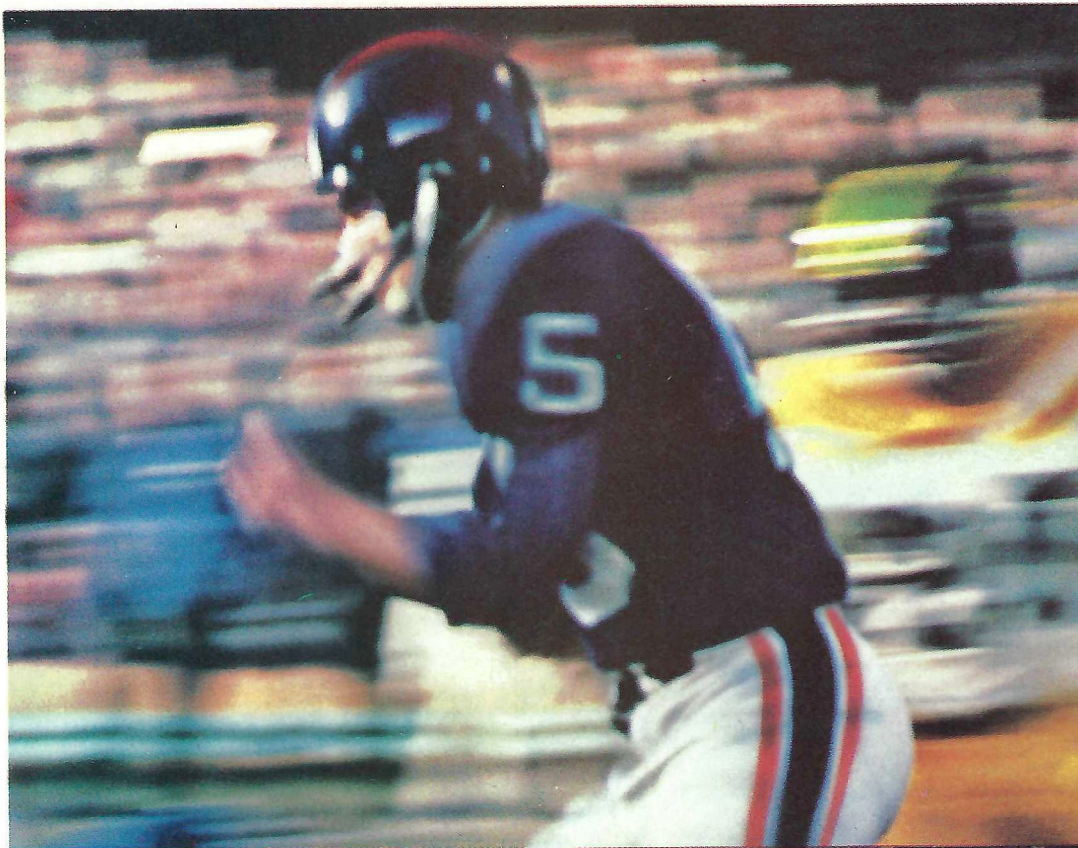
Chevrolet engineers have succeeded in combining this excellent ride and handling with a new body design that reflects the sophistication of these mechanical refinements. Right down to the rear seat opera windows.

And added to these qualities, our engineers have created a quietness that strikes everyone who drives the car. And quietness is one sure mark of a luxury automobile.

The 1973 Monte Carlo. A new and better way to see the NCAA. Even if you follow your favorite team coast to coast. **Chevrolet. Building a better way to see the U.S.A.**

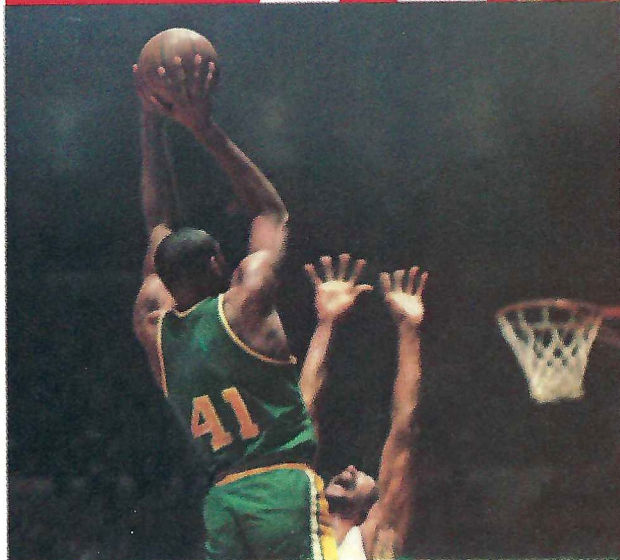
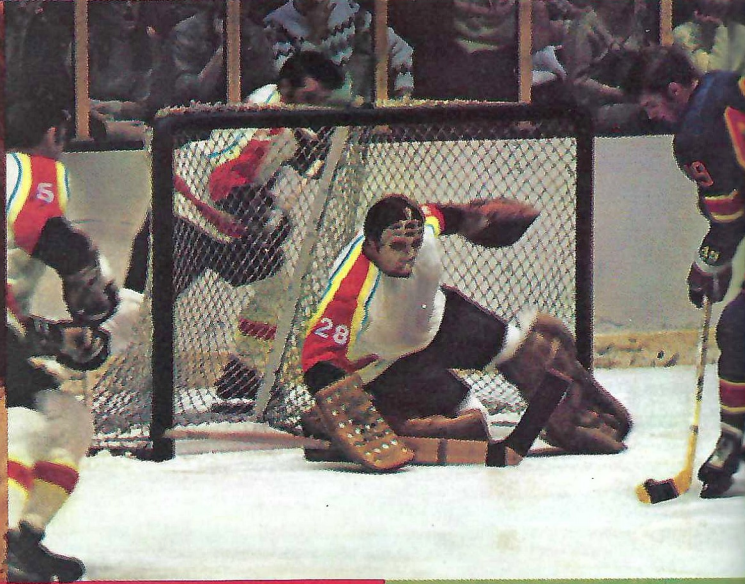
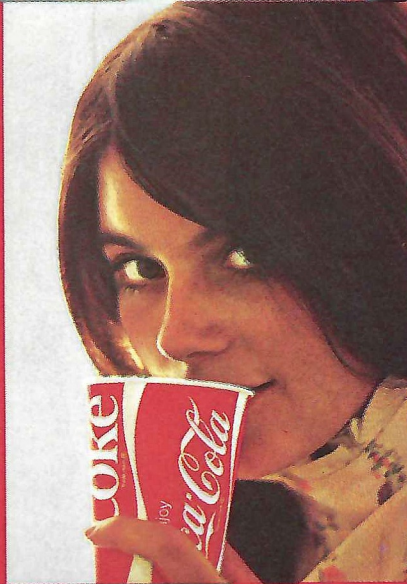
Chevrolet

Enjoy the game. And remember to buckle up on your way home.

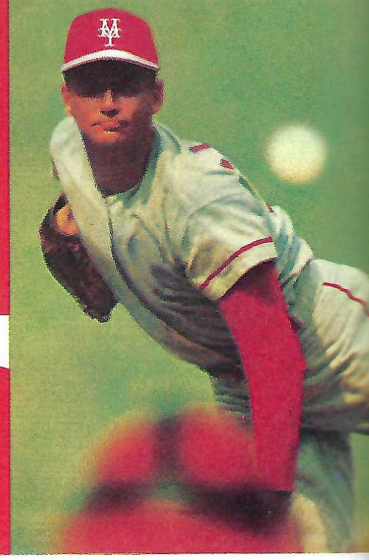


Coca-Cola and Coke are registered trademarks which identify the same product of The Coca-Cola Company.

Enjoy
Coke
Trade-mark (R)



Enjoy
Coca-Cola
Trade-mark (R)



OFFENSE

- 22 BARRY SMITH WR
- 71 BOB ANDERSON WT
- 61 PHIL ARNOLD WG
- 55 ALLEN DEES C
- 62 BOB JONES SG
- 74 DON SPARKMAN ST
- 84 GARY PARRIS TE
- 19 GARY HUFF QB
- 44 HODGES MITCHELL TB
- 28 MIKE DAVISON FB
- 21 JOE GOLDSMITH WR

SEMINOLES

DEFENSE

- 83 BERT COOPER LE
- 79 HOWARD JACOBI LT
- 46 DAVID MILES SLB
- 59 LARRY STRICKLAND MLB
- 50 DAN WHITEHURST WLB
- 70 JAMES MALKIEWICZ RT
- 57 STEVE BRATTON RE
- 42 RON RATLIFF ROV
- 40 EDDIE McMILLAN LC
- 38 BUZZY LEWIS RC
- 20 DAVID SNELL SAF

THE SEMINOLES SQUAD

- | | |
|--------------------|--------------------|
| 3 Downey, P | 52 Saldana, C |
| 11 Askin, PK | 53 Bell, LB |
| 12 Cadwell, QB | 54 Dundala, OG |
| 14 Deming, QB | 55 Dees, C |
| 17 Loucks, P | 56 Murphy, LB |
| 18 Orlando, QB | 57 Bratton, DE |
| 19 Huff, QB | 58 Pounds, LB |
| 20 Snell, DB | 59 Strickland, LB |
| 21 Goldsmith, WR | 61 Arnold, OG |
| 22 Smith, WR | 62 Jones, OG |
| 23 Griffin, DB | 65 Prestwood, DT |
| 24 Stockton, WR | 66 Johnson, OT |
| 26 Thomas, Ja., DB | 69 Anderson, DT |
| 27 McGowan, DB | 70 Malkiewicz, DT |
| 28 Davison, RB | 71 Anderson, OT |
| 29 Miller, RB | 72 Gibbs, OG |
| 32 Davis, WR | 73 Oglesby, OG |
| 33 Brown, RB | 74 Sparkman, OT |
| 35 Shively, DB | 75 Glass, OT |
| 36 Oreair, RB | 77 Howard, DT |
| 37 Roberts, RB | 78 Slagle, OG |
| 38 Lewis, DB | 79 Jacobi, DT |
| 40 McMillan, DB | 80 Hunt, DE |
| 42 Ratliff, DB | 82 Allen, WR |
| 43 Humes, DB | 83 Cooper, DE |
| 44 Mitchell, RB | 84 Parris, TE |
| 46 Miles, LB | 85 Passwaters, DE |
| 48 Huzzie, LB | 86 Thomas, Joe, WR |
| 49 Johnson, LB | 87 Palermo, TE |
| 50 Whitehurst, LB | 90 Hopkins, TE |

OFFICIALS--

- Referee Patrick Flood, Phoenix, Ariz.
- Umpire Oscar Edmonds, Memphis, Tenn.
- Linesman Gordon Overstreet, Tucson, Ariz.

DEFENSE

- 85 JIM OPPERMAN SSE
- 95 GERALD CASWELL LT
- 70 MANSON PETTY RT
- 86 RON GATHERRIGHT WSE
- 58 TERRY KIRK MLB
- 55 WES CERVENY SWG. BKR
- 42 JOHN MURRAY ROV
- 46 GREG BATTLE BACKER
- 25 MIKE WILSON SAF
- 18 GUY STEWART SC
- 12 PERRY SMITH WC

GOLDEN RAMS

OFFENSE

- 84 JIM KENNEDY TE
- 72 AL SIMPSON LT
- 68 GREG KUHN LG
- 59 ANDY LANG C
- 63 CHARLES MONTGOMERY RG
- 78 JIM CRAIG RT
- 13 WILLIE MILLER SE
- 8 MARK DRISCOLL QB
- 28 REGGIE LEONARD RHB
- 9 PAT JULIANA LHB
- 36 TOM WALLACE FB

THE GOLDEN RAMS SQUAD

- | | |
|---------------------|-------------------|
| 80 Babich, TE | 13 Miller, SE |
| 46 Battle, LB | 63 Montgomery, OG |
| 75 Behrens, OT | 19 Moss, FB |
| 71 Beyhl, DT | 77 Mullaney, DT |
| 5 Blackford, HB-P | 42 Murray, R |
| 73 Brandt, OT | 96 Newland, DT |
| 95 Caswell, DT | 85 Opperman, DE |
| 55 Cerveney, LB | 22 O'Rourke, HB |
| 90 Chearno, DE | 14 Palmer, HB |
| 89 Clark, TE | 23 Peters, HB |
| 78 Craig, OT | 70 Petty, DT |
| 45 DiFrancescea, LB | 50 Pfeiffer, OT |
| 8 Driscoll, QB | 60 Rohwer, LB |
| 67 Dubishar, OG | 72 Simpson, OT |
| 82 Duncan, DE | 12 Smith, CB |
| 54 Fenech, C | 3 Smylie, K |
| 76 Finnerty, OT | 27 Square, HB |
| 86 Gatherright, DE | 87 St. Clair, R |
| 6 Hainlen, P | 18 Stewart, CB |
| 9 Juliana, QB | 66 Tracey, C |
| 84 Kennedy, TE | 17 Turner, S |
| 58 Kirk, LB | 81 Turner, DE |
| 68 Kuhn, OG | 56 Walker, MLB |
| 59 Lang, C | 36 Wallace, FB |
| 79 Larson, OG | 25 Wilson, DB |
| 69 Lasse, OT | |
| 28 Leonard, HB | |
| 32 Liss, HB | |
| 39 Lunde, FB | |
| 64 McCue, OG | |

- Field Judge . Paul Sprayberry, Baton Rouge, La.
- Back Judge . . Ted Thomas, Chattanooga, Tenn.
- ECO John Wilson, Birmingham, Ala.

TALLAHASSEE COCA-COLA BOTTLING CO.



It's the real thing. Coke.

Trade-mark ®

Trust Texaco
for a great motor oil

HAVOLINE
SUPER PREMIUM
ALL TEMPERATURE MOTOR OIL



and the right gasolines for you.

FLORIDA STATE

Seminoles

Offense

WR	22	Barry Smith
	86	Joe Thomas
WT	71	Bob Anderson
	75	Mike Glass
WG	61	Phil Arnold
	72	Shane Gibbs
C	55	Allen Dees
	52	Rocky Saldana
SG	62	Bob Jones
	73	Paul Oglesby
ST	74	Don Sparkman
	66	Vic Johnson
TE	84	Gary Parris
	87	John Palermo
QB	19	Gary Huff
	12	Mike Cadwell
TB	44	Hodges Mitchell
	37	Oscar Roberts
FB	28	Mike Davison
	33	Mack Brown
WR	21	Joe Goldsmith
	82	Mike Allen

Defense

LE	83	Bert Cooper
	85	Earl Passwaters
LT	79	Howard Jacobi
	69	Bobby Anderson
SLB	46	David Miles
	49	Bill Johnson
MLB	59	Larry Strickland
	58	Greg Pounds
WLB	50	Dan Whitehurst
	53	Bruce Bell
RT	70	James Malkiewicz
	77	James Howard
RE	57	Steve Bratton
	80	Charlie Hunt
LC	42	Ron Ratliff
	23	Chris Griffin
RC	40	Eddie McMillan
	43	Earl Humes
ROV	38	Buzzy Lewis
	27	Mike McGowan
SAF	20	David Snell
	27	Mike McGowan

COLORADO STATE

Golden Rams

Offense

TE	84	Jim Kennedy
	80	Fred Babich
LT	72	Al Simpson
	75	Ken Behrens
LG	68	Greg Kuhn
	73	Ed Brandt
C	59	Andy Lang
	54	Mike Fenech
RG	63	Charles Montgomery
	66	Jim Tracy
RT	78	Jim Craig
	69	Joe Lasse
SE	13	Willie Miller
	14	Noah Palmer
QB	8	Mark Driscoll
	9	Pat Juliana
LHB	28	Reggie Leonard
	19	Jesse Moss
RHB	9	Pat Juliana
	27	Johnny Square
FB	36	Tom Wallace
	39	Stan Lunde

Defense

SSE	85	Jim Opperman
	82	Dave Duncan
LT	95	Gerald Caswell
	83	Steve Malyszko
RT	70	Manson Petty
	77	Mark Mulhaney
WSE	86	Ron Gatherright
	82	Dave Duncan
MLB	58	Terry Kirk
	56	Louie Walker
Swing	55	Wes Cerveny
Backer	60	Rick Rohwer
Backer	46	Greg Battle
	55	Wes Cerveny
ROV	42	John Murray
	87	Steve St. Clair
SAF	25	Mike Wilson
	23	Mike Peters
SC	18	Guy Stewart
	32	Stan Liss
WC	12	Perry Smith
	32	Stan Liss

PLACEMENT AND KO –
11-Ahmet Askin

PUNTERS –
17-Gary Loucks, 3-Joe Downey

RETURN SPECIALISTS –
20-David Snell, 40-Eddie
McMillan

*for in depth coverage
of today's game . . . see tomorrow's*

Tallahassee Democrat

featuring Florida's prize winningest sports editor . . . Bill McGrotha



PLACEMENTS AND KO–
3-Wade Smylie

PUNTERS–
6-Norm Hainten

PUNT RETURNS–
14-Noah Palmer

KO RETURNS–
13-Willie Miller

FLORIDA STATE

NO.	NAME	POS.	HT.	WT.	AGE	CL.	HOMETOWN
82	MIKE ALLEN	WR	6-4	180	19	Soph.	Willoughby, Ohio
71	BOB ANDERSON	OT	6-2	218	19	Soph.	Rockledge
69	BOBBY ANDERSON	DT	5-10	210	21	Jr.	Tifton, Ga.
61	PHIL ARNOLD	OG	6-0	220	20	Jr.	Hollywood
11	AHMET ASKIN	PK	6-0	175	18	Fr.	Tallahassee
53	BRUCE BELL	LB	6-0	195	20	Soph.	Doraville, Ga.
57	STEVE BRATTON	DE	6-0	210	21	Jr.	Oviedo
33	MACK BROWN	RB	6-0	195	22	Jr.	Cookville, Tenn.
12	MIKE CADWELL	QB	6-1	190	21	Jr.	St. Louis Park, Minn.
83	BERT COOPER	DE	6-1	220	20	Jr.	Tallahassee
32	ED DAVIS	WR	6-1	190	21	Jr.	Lakeland
28	MIKE DAVISON	RB	5-11	200	19	Soph.	Bradenton
55	ALLEN DEES	C	6-2	202	22	Sr.	Lakeland
14	FRANK DEMING	QB	6-0	170	21	Jr.	Valdosta, Ga.
3	JOE DOWNEY	P	5-11	204	20	Soph.	Mobile, Ala.
54	JIM DUNDALA	OG	5-11	205	21	Sr.	Morrisville, Pa.
72	SHANE GIBBS	OG	6-3	216	21	Sr.	Bay Minette, Ala.
75	MIKE GLASS	OT	6-3	214	22	Sr.	Tampa
21	JOE GOLDSMITH	WR	6-0	175	20	Soph.	Lakeland
23	CHRIS GRIFFIN	DB	5-11	160	18	Fr.	Tampa
90	DICK HOPKINS	TE	6-2	202	20	Soph.	West Palm Beach
77	JAMES HOWARD	DT	6-5	230	20	Soph.	Jacksonville
19	GARY HUFF	QB	6-1	190	21	Sr.	Tampa
43	EARL HUMES	DB	5-11	174	19	Fr.	Miami
80	CHARLIE HUNT	DE	6-3	210	21	Sr.	Jacksonville
48	DON HUZZIE	LB	5-11	190	21	Soph.	Miami
79	HOWARD JACOBI	DT	6-3	240	22	Sr.	Vero Beach
49	BILL JOHNSON	LB	6-0	205	19	Soph.	Cocoa Beach
66	VIC JOHNSON	OT	6-3	225	19	Soph.	Lake City
62	BOB JONES	OG	6-3	225	20	Soph.	Lighthouse Point
38	BUZZY LEWIS	DB	6-1	185	20	Jr.	Bristol
17	GARY LOUCKS	P	6-3	195	20	Soph.	Merritt Island
70	JIM MALKIEWICZ	DT	6-3	225	22	Jr.	Perth Amboy, N.J.
27	MIKE MCGOWAN	DB	5-8	169	22	Jr.	Norfolk, Va.
40	EDDIE McMILLAN	DB	6-2	180	21	Sr.	Tampa
46	DAVID MILES	LB	5-11	210	20	Jr.	Tallahassee
29	FRED MILLER	RB	6-0	210	18	Fr.	Jacksonville
44	HODGES MITCHELL	RB	5-10	185	21	Jr.	Dallas, Tex.
56	JOHN MURPHY	LB	5-9	211	20	Soph.	Albany, Ga.
73	PAUL OGLESBY	OG	6-2	229	19	Soph.	Jacksonville
36	RICK OREAIR	RB	6-1	200	21	Jr.	Jacksonville
18	MARK ORLANDO	QB	6-1	185	19	Soph.	Westfield, N.Y.
87	JOHN PALERMO	TE	6-4	220	20	Jr.	Newburg, N.Y.
84	GARY PARRIS	TE	6-2	210	22	Sr.	Vero Beach
85	EARL PASSWATERS	DE	6-3	215	20	Jr.	Bridgeville, Del.
23	LESTER PAYTON	RB	6-0	190	19	Soph.	Orlando
58	GREG POUNDS	LB	6-3	200	18	Fr.	Daytona Beach
65	TOM PRESTWOOD	DT	6-4	220	19	Soph.	Chattanooga, Tenn.
42	RON RATLIFF	DB	6-0	187	22	Sr.	West Palm Beach
37	OSCAR ROBERTS	RB	5-11	180	22	Sr.	Ocala, Fla.
52	ROCKY SALDANA	C	6-1	223	20	Jr.	Dallas, Tex.
53	MELVIN SCRUGGS	DT	5-11	221	19	Soph.	Dixie, Ga.
35	RANDY SHIVELY	DB	6-0	173	21	Jr.	St. Petersburg
78	HARRY SLAGLE	OG	6-4	205	18	Fr.	Phenix City, Ala.
22	BARRY SMITH	WR	6-1	185	21	Sr.	Miami
20	DAVID SNELL	DB	5-8	175	21	Sr.	Slocomb, Ala.
74	DON SPARKMAN	OT	6-4	233	20	Jr.	Jacksonville
24	ANDY STOCKTON	WR	6-0	175	18	Fr.	St. Petersburg
59	LARRY STRICKLAND	LB	6-1	220	22	Sr.	Tallahassee
26	JAMES THOMAS	DB	6-1	190	21	Sr.	Macon, Ga.
86	JOE THOMAS	WR	6-0	180	20	Jr.	Tallahassee
50	DAN WHITEHURST	LB	6-3	225	22	Sr.	Adel, Ga.

COLO. STATE

NO.	NAME	POS.	HT.	WT.	CL.	EXP.	HOMETOWN
80	FRED BABICH	TE	6-4	220	So.	Fr.	Mt. Clemens, Michigan
46	GREG BATTLE	LB	6-0	195	Jr.	1V	Cincinnati, Ohio
75	KEN BEHRENS	OT	6-2	234	Sr.	1V	Peoria, Illinois
71	RANDY BEYHL	DT	6-3	247	So.	Fr.	East Moline, Illinois
5	ROD BLACKFORD	HB-P	5-10	183	Jr.	1V	Ft. Collins, Colorado
73	ED BRANDT	OT	6-3	230	Jr.	Fr.	Oakland, California
95	GERALD CASWELL	DT	6-4	240	Sr.	2V	Meadow, Texas
55	WES CERVENY	LB	6-1	211	So.	RS	Fairfax, Iowa
90	RICH CHEARNO	DE	6-3	225	Jr.	Sq.	Youngstown, Ohio
89	PETE CLARK	TE	6-4	230	Jr.	JC	Bountiful, Utah
78	JIM CRAIG	OT	6-2	232	So.	Fr.	Livonia, Michigan
45	CHUCK DIFRANCESCEA	LB	6-2	206	Jr.	JC	Waukesha, Wisconsin
8	MARK DRISCOLL	QB	6-1	175	So.	Fr.	La Junta, Colorado
67	DAN DUBISHAR	OG	6-1	221	So.	Fr.	Amana, Iowa
82	DAVE DUNCAN	DE	6-4	207	So.	Fr.	Littleton, Colorado
54	MIKE FENECH	C	6-0	199	Jr.	Sq.	Detroit, Michigan
76	TIM FINNERTY	OT	6-3	230	So.	Fr.	Youngstown, Ohio
86	RON GATHERIGHT	DE	5-11	224	So.	Fr.	Mt. Clemens, Michigan
6	NORM HAINLEN	P	6-3	205	Jr.	Sq.	Denver, Colorado
9	PAT JULIANA	QB	6-0	180	Jr.	JC	Rockville, Maryland
84	JIM KENNEDY	TE	6-2	223	Jr.	1V	Sandusky, Ohio
58	TERRY KIRK	LB	6-2	213	Jr.	1V	Aspen, Colorado
68	GREG KUHN	OG	6-2	225	Jr.	1V	Cuyahoga Falls, Ohio
59	ANDY LANG	C	6-2	232	Jr.	1V	Nashua, New Hampshire
79	BOB LARSON	OG	6-0	223	Jr.	JC	Wichita, Kansas
69	JOE LASSE	OT	6-2	242	So.	Sq.	Chicago, Illinois
28	REGGIE LEONARD	HB	6-1	177	Jr.	Sq.	Cincinnati, Ohio
32	STAN LISS	HB	5-11	181	So.	Fr.	Columbus, Nebraska
39	STAN LUNDE	FB	6-1	202	So.	Fr.	Vancouver, Washington
64	MIKE McCUE	OG	6-1	215	So.	Tr.	Cedar Rapids, Iowa
13	WILLIE MILLER	SE	5-9	168	So.	Fr.	New Castle, Alabama
63	CHARLES MONTGOMERY	OG	6-4	255	Jr.	JC	Oakland, California
19	JESSE MOSS	FB	6-1	190	Fr.	HS	New Castle, Penn.
77	MARK MULLANEY	DT	6-5	216	So.	Fr.	Denver, Colorado
42	JOHN MURRAY	R	6-0	187	Jr.	1V	Pueblo, Colorado
96	ED NEWLAND	DT	6-7	270	Jr.	JC	Larian, Ohio
85	JIM OPPERMAN	DE	6-2	211	So.	Fr.	Lakewood, Colorado
22	DAN O'ROURKE	HB	6-0	190	Fr.	HS	Worthington, Ohio
14	NOAH PALMER	HB	5-8	163	Jr.	JC	Eufaula, Oklahoma
23	MIKE PETERS	HB	6-2	190	So.	Fr.	Los Angeles, California
70	MANSON PETTY	DT	6-5	235	Jr.	1V	San Antonio, Texas
50	BOB PFEIFFER	OT	6-3	230	Jr.	JC	Denver, Colorado
60	RICK ROHWER	LB	6-0	216	Jr.	1V	Evergreen, Colorado
72	AL SIMPSON	OT	6-6	275	So.	Tr.	Pittsburgh, Penn.
12	PERRY SMITH	CB	6-1	194	Sr.	1V	Froggy Bottom, So. Car.
3	WADE SMYLLIE	K	5-10	215	So.	Fr.	Wellington, Colorado
27	JOHNNY SQUARE	HB	5-10	170	Fr.	HS	Houston, Texas
87	STEVE ST. CLAIR	R	6-3	195	Jr.	1V	Denver, Colorado
18	GUY STEWART	CB	5-11	170	Jr.	JC	Fairbury, Nebraska
66	JIM TRACEY	C	6-1	223	So.	Fr.	Pontiac, Michigan
17	CARL TURNER	S	6-0	196	So.	Fr.	Pueblo, Colorado
81	JACK TURNER	DE	6-0	197	Jr.	JC	Palm Beach, Florida
56	LOUIE WALKER	MLB	6-3	207	Jr.	JC	Los Angeles, California
36	TOM WALLACE	FB	6-2	209	Jr.	Sq.	Denver, Colorado
25	MIKE WILSON	DB	6-0	197	Jr.	JC	Greencastle, Indiana

Tallahassee Democrat

Prize Winning Sports Coverage

NATIONAL NEWSPAPER ASSOCIATION

- 1st — Best Sports Section, 1972
- 1st — Best Sports Columnist, 1971
- 1st — Best Sports Section, 1970
- 3rd — Best Sports Picture, 1970

FLORIDA SPORTS WRITERS ASSOCIATION

- 1st — Best Sports Columnist, 1971
- 1st — General Writing Excellence, 1971
- 1st — General Section Excellence, 1970
- 2nd — Overall General Excellence, 1971
- 3rd — Sports Section Make-Up, 1971
- 4th — Overall Writing Excellence, 1970

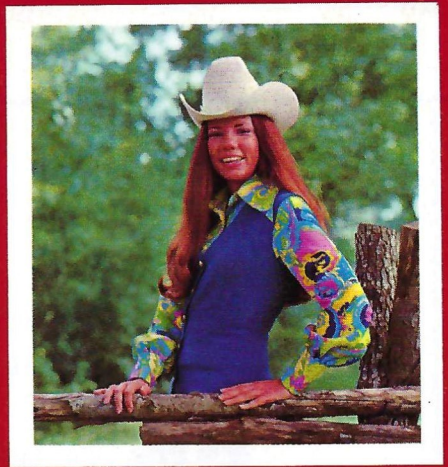
ASSOCIATED PRESS OF FLORIDA

- 1st — Best Sport Color Picture, 1970

For the best coverage of today's game see tomorrow's

Tallahassee Democrat

"Your BEST Neighbor In Town!"



Miss Debbie Floyd
Florida Cattlemen's Association
1972-73 Sweetheart

**When you
Celebrate today's
Victory,
Treat yourself
To
*Tender, Tasty...***

BEEF

As Delicious as it is Nutritious!

FLORIDA BEEF COUNCIL

A Committee of The Florida Cattlemen's Association

the cycle shop

TALLAHASSEE
FLORIDA



®  **Kawasaki**

W. M.
POGGIE
owner

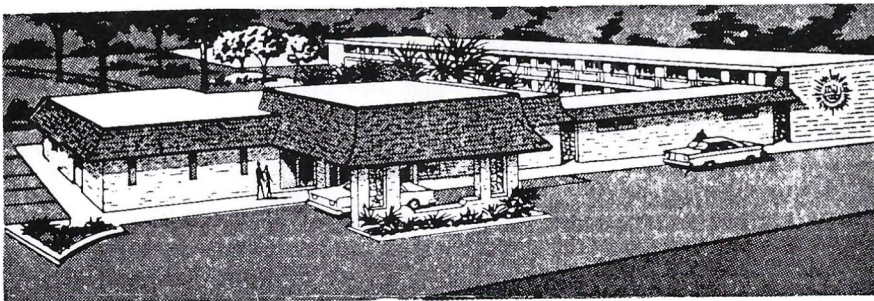
576-6326

4003 W. PENSACOLA ST.



QUALITY MOTEL

*The Chez Napoleon Room
Complete Banquet and Meeting Facilities
Cocktail Lounge - Bonaparte's Retreat*



COLOR TV

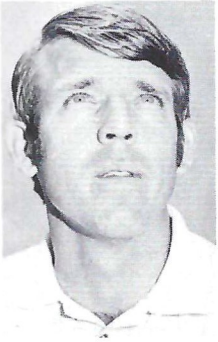
"We Cater to
Commercial Men"

Phone 877-6171

On the Parkway... 1027 APALACHEE PKWY. US 27 So.

The Football Staff

"Without a good coaching staff, you can't have a winner."
 — — Coach Larry Jones



BILL CANTY
 Offensive Coordinator, Quarterbacks

Originally, Canty was named by Coach Jones to direct the Seminole freshmen. However, Bill worked primarily with the varsity running backs last fall and was elevated to offensive coordinator when Steve Sloan departed.

Bill came to Florida State from Furman his alma mater, where he headed the Paladins' offense. He was an assistant there for eight seasons following his graduation in 1962.

The former Furman quarterback was born in Pascagoula, Miss., and attended high school there before being recruited by Furman. He captained the Paladins as a junior and played in the Senior Bowl following his final season of eligibility.

Bill's younger brother, Bobby, was a Florida State baseball standout who graduated in 1967.

Bill and his wife, the former Ann Lochridge of Delta City, Miss., have a son and daughter.

GENE HENDERSON
 Defensive Coordinator, Defensive Backs

A native Texan, Gene played his college football under Bear Bryant at A&M after transferring from San Angelo Junior College.

Coming to Texas A&M in 1954, Gene was a member of the famous Aggie team which "survived" the fall practice at Junction, Texas.

Born in Sonora, Texas, Gene was also a track performer in junior college and at A&M.

Following graduation in 1955, he spent six years as a prep assistant before getting the head job at Nederland High School. In 1967 he went to Texas Tech as an assistant, taking over as defensive coordinator in '68.

He headed up the defense at TCU in 1970 before joining the Florida State staff in 1971.

Gene and his wife, the former Sue Wyatt of Sonora, have four children.



FRANK DEBORD
 Equipment Manager

Frank not only is in charge of Florida State's football gear, but also oversees the upkeep of the Seminoles' practice fields.

Now in his third season as the Seminoles' football equipment chief, he has been with the program for six years. A native of Virginia, he currently resides in Quincy.

A graduate of Virginia Tech where he lettered in football and wrestling, Frank served as an assist football coach at Franklin, Va., High School and also played two seasons for Norfolk in the Continental League.

Frank and his wife, the former Marian Bradshaw of Franklin, Va., have three children.



HOWARD JOHNSON'S MOTOR LODGE

1350 W. Tennessee St.
 (904) 222-3219
 AT THE UNIVERSITY

HOWARD JOHNSON'S MOTOR LODGE

722 Apalachee Parkway
 Nearest the Capitol
 (904) 224-2181

Featuring the
TIGER BAY LOUNGE
 Entertainment Nightly

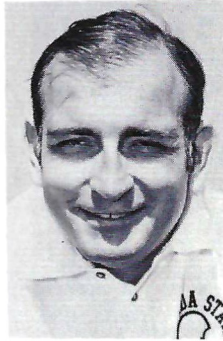


Accommodations

*motor
 lodges*

Football Staff

JOHN DEVLIN Defensive Ends and Tackles



A former Army staff sergeant, John came to Florida State in 1971 from Virginia Tech, one of the Seminoles' arch rivals.

An avid paddleball player, this native of Norristown, Pa., played tackle at West Chester State where he was called the "best ever" by 25-year coaching veteran W. Glenn Killinger.

After receiving his degree in 1959, John became the line coach at Waynesboro, Pa., High School. In 1961 and '62 he was an assistant with the Fourth Armored Division football team in Ulm, Germany. From 1963-65 he served along with Larry Jones as an assistant under Paul Dietzel at the U.S. Military Academy. In 1965 he joined Jerry Claiborne's staff at Virginia Tech.

John and his wife, the former Irma Kleemann of Regensburg, Germany, have three sons and a daughter.

JIM DONNAN Running Backs



Jim is one of the newest additions to the Seminole staff, coming to Florida State from the University of North Carolina.

Prior to joining the Tarheels, Donnan was an assistant at his alma mater, North Carolina State.

During his playing days Jim was the second-leading passer in Wolfpack history. He was named the Most Valuable Player in the 1967 Liberty Bowl and was voted the ACC Player of the Year the same season. He was also No. 1 singles player on the N.C. State tennis team.

The 1968 graduate was named the Wolfpack's most outstanding student-athlete in 1967. Following graduation he joined State's staff as an assistant.

A Burlington, N.C., native, Jim is married to the former Mary Wright of Burlington and they have two daughters.

BOB HARBISON Interior Offensive Line



This will be "Harbie's" 25th season at Florida State, meaning that only one Seminole team, the first, hasn't benefited by Bob's coaching ability.

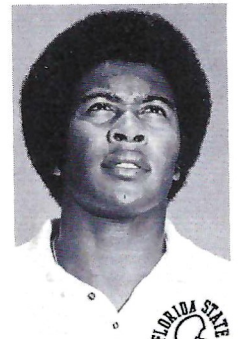
Bob has coached both offensive and defensive linemen during his long career at Florida State. He returned to offense last season after a number of years guiding the interior defensive linemen. His "Magnificent Seven" of 1964 is considered one of the Seminoles' better defensive lines.

A native of Evansville, Ind., Harbie played his college football at the University of Indiana under the late Bo McMillin. Following his senior season he performed in the Blue-Gray All-Star game in Montgomery, Ala.

Larry Jones is the fifth Seminole head coach Harbie has worked with. He also served under Don Veller, Tom Nugent, Perry Moss and Bill Peterson.

Bob and his wife, the former Jane McEntee of Washington, D.C., have four children.

LARRY HOLTON Defensive Backs, Scout Squad



Another first year Florida State assistant, Larry comes to the Seminoles from Iowa State where he served two seasons as a graduate assistant.

At Florida State he will assist Gene Henderson with the defensive backs and also direct the scout squad.

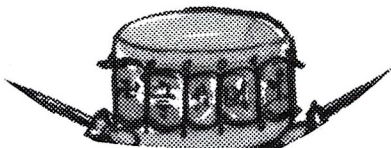
A native of Keokuk, Iowa, Larry was a three-sport letterman at Keokuk High before gaining a football scholarship to Iowa State. As a senior he was named All-Big 8 Conference as a defensive back before earning his B.S. in Physical Education the next year.

Larry joined the Florida State staff this summer. He is single.

Tom McEwen
Jim Seaman
on Sports



THE TAMPA
TRIBUNE
every morning!



Football Staff



DICK MILDER
Trainer

For the first time in nearly two decades Florida State will have a new athletic trainer as personable Dick Milder takes over for Don Fauls who retired last spring.

A graduate of Iowa State University where he served as student trainer under C.R. Bickerstaff, Dick has a Certificate of Physical Therapy from Iowa and a Master's Degree from Purdue. His training experience includes two years at West Point, a year at Iowa and two years at Purdue where he was located before joining the Seminoles. The Army veteran also has served as an assistant trainer for the St. Louis Football Cardinals.

Dick is married to the former Linda Lee Van Wechel.

BILL PARCELLS
Linebackers

This will be Bill's third season as director of Florida State's linebacking corps. He and Bob Harbison were the only two holdovers from the Bill Peterson staff.

Parcells has been associated with outstanding linebackers during his entire coaching career and he ranks this year's group among the best he's coached.

The Oradell, N.J., native came to Florida State after four seasons at the U.S. Military Academy.

Bill played his college football at Wichita where he performed at guard, tackle and linebacker. He was All-Missouri Valley Conference twice and upon graduation was a fourth-round draft choice by the Detroit Lions.

His first coaching assignment was at Hastings College for one year. He then returned to his alma mater for another season before moving to Army.

Bill and his wife, the former Judy Goss of Wichita, have three daughters.



JIM PHILLIPS
Receivers

Jim comes to Florida State from the pro ranks, having coached the San Diego Charger receivers since 1969.

Following an outstanding college career at Auburn where he was an All-America end, he was a first round draft choice by the Los Angeles Rams. He played seven seasons with the Rams and three more with the Minnesota Vikings before joining the Chargers as an assistant. He graduated from Auburn in 1958.

Jim ranks 15th on the all-time list of pro receivers with 401 catches for 6,044 yards.

A native of Alexander City, Ala., he and his wife, the former Mickey Kennedy of Phenix City, Ala., have three children.



MIKE POPE
Director of High School Relations

This will be Mike's second season in the important role of directing Florida State's recruiting. His first was called one of the best recruiting years in Seminole history.

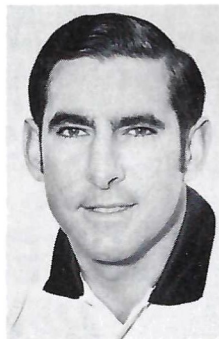
Mike moved into his present job after spending the 1970 season working as a graduate assistant helping with the freshman squad.

The North Carolina native was born in Monroe and played his college ball at Lenoir Rhyne where he performed at both quarterback and fullback in the Bears' single wing attack.

After three years as head coach in North Carolina high schools, he went to Jacksonville where he was offensive coordinator at Wolfson High. He became head coach and athletic director at Lake Wales High School in 1968 before coming to Florida State.

In college, Mike was the Lenoir Rhyne captain in 1963 and voted the team's most valuable player.

He is married to the former Lee Lambie of Arlington, Va.



New in 1972
and already a
TRADITION



Dance to Our
Live Entertainment
Nightly



After the Game
Toast the
Seminoles at
the "In" Place



Jefferson at Calhoun
Tallahassee
222-6836

Graduate Assistant Coaches



Front Row (left to right)—Jon Conlin, Bobby Howell and Paul Stein. Back Row—Bill Shaw, Hank Small, Wayne McDuffie and Bob Sanders.

PRESCRIPTIONS

- COSMETICS
- GREETING CARDS
- TOYS
- FILMS & CAMERAS



"BUDDY STEWART"
 "WORKING FOR BETTER
 COMMUNITY HEALTH"
 HAVE YOUR DOCTOR CALL US

- VITAMINS
- CANDY
- GIFTS
- HOSPITAL SUPPLIES

224-5011

NO CHARGE FOR
 DELIVERY SERVICE

UNIVERSITY
Rexall
 PHARMACY

W. Tenn. & High Road

CITY WIDE AND
 SURROUNDING AREAS

STADIUM INFORMATION

REST ROOMS are located on concourse and ground levels of both the east and west stands.

FIRST AID station is located at the southwest corner of the stadium opposite gate five. A registered nurse is on duty at all times.

PUBLIC TELEPHONES are located on the ground levels of the east and west stands.

PUBLIC ADDRESS will make special announcements in cases of emergency only.

DOCTORS receiving calls will be paged by number.

LOST AND FOUND items may be turned in and claimed at the ticket-booth at gate three under the west stands by the press box elevator.

ALCOHOLIC BEVERAGES are prohibited. Your cooperation is appreciated.

FIELD REGULATIONS prohibit unauthorized persons on the field during or after the game. Please leave the Stadium by the ramp and section exits.

REFRESHMENTS are available in the stands and at locations on the concourse and ground levels of the east and west stands.

COLD DRINKS: Regular	25¢
Large	50¢
HOT COFFEE	25¢
SANDWICHES	50¢
JUMBO HOT DOGS	50¢
PEANUTS	25¢
POP CORN	25¢
CIGARETTES	75¢

**SOUVENIER ITEMS — PENNANTS —
BADGES — SUNVISORS — ASPIRIN**

Please pay no more than **ESTABLISHED
PRICES**

Double Coverage



That's the name of our game and we'd like to tell you about two of the writers on our sports team who make it work so well for us.

Bill Kastelz — a brilliant analyst. You can count on him for thorough and perceptive examination of the sports world — its triumphs and excitement as well as its controversies and disappointments. If it's worth reading, Kastelz will be writing about it every morning in the Florida Times-Union.

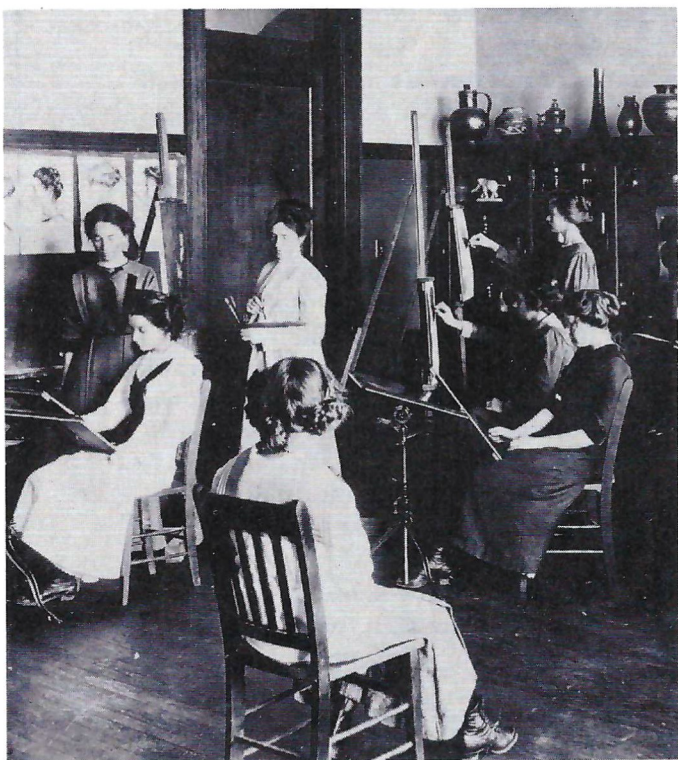
Rex Edmondson — Our whimsical, ingenious Monday afternoon quarterback. Arch foe of the second-bests and also-rans. He'll dazzle you with his refreshing insight and imaginative sports coverage. Follow him in the sports pages of the Jacksonville Journal. He's the one with the big cigar.

Keeping you informed, that's what great sports coverage is all about and we do it twice a day.

The Florida Times-Union · Jacksonville Journal



Florida STATE Then & Now



When Florida State University opened its doors in 1857, the school was known as the West Florida Seminary and consisted of 10 acres of land, a \$6,172 building and 120 students.

Today, the multi-million-dollar University sprawls across 343 acres (main campus), has nine colleges and schools, and has a student enrollment in excess of 19,000.

This year, Florida State celebrated its 25th anniversary as a coeducational university and its 115th birthday as an institution of higher learning.

The University actually had its beginning on Jan. 24, 1851, when the legislature passed a law establishing two Seminaries—one east and one west of the Suwannee River—but it wasn't until 1857 that the school received its first student and at that time it was known as the West Florida Seminary.

The institution progressed through a series of historical eras and changes in its educational missions, being known at various points in the latter half of the nineteenth century as the "West Florida Seminary," and as "Florida University;" and in the first half of the twentieth century, as "Florida State College," "Florida Female College," and the "Florida State College for Women" (1909-1947).

During the Civil War years the Seminary had hard times; its part in the battle of Natural Bridge is now legend. On March 6,

1865, cadets from the Seminary took part in the battle near Woodville and, according to historian William G. Dodd, they "took a proud part, and by their bravery and gallant behavior they won the plaudits not only of the townspeople but of the older and more seasoned fighters as well."

The Seminary found itself in financial straits during the early 1870s and again in 1879. It was suggested that the Seminary buildings and land be sold and that it merge with the Female Academy. This plan envisioned the coeducation of the sexes and, "for this reform the community was as yet unprepared," reported Dodd in his "History of West Florida Seminary," published in 1952.

A turning point in the history of the Seminary came in 1887 when Judge James D. Westcott died and gave it a legacy which yielded approximately \$2,000 annually. The University is still receiving funds from the Westcott Estate; and its main administration building, now being repaired and remodeled, is named after him.

Another milestone came in 1901 when the institution became a college and its name was changed to Florida State College. During its first year, the student body of 252 came from 5 other states and 32 Florida counties. This increase in enrollment resulted in an increase in faculty—from 6 to 7.

Interestingly, Florida State's new nationally known School of Music was born in 1902, as a department with two teachers. A year later, a library was added with authorization to spend \$3,500 for books.

By 1903 the College had a glee club, dramatic club, baseball team and football team which played an inter-collegiate schedule.

In 1905, the legislature passed the Buckman Act which replaced a multiplicity of small state schools with a university for men and a college for women under the management of a special Board of Control.

In the act, the women's school was designated the Florida Female College, a name which was distasteful to many friends of the school. After 1909, the name was changed to Florida State College for Women, a name it retained until 1947 when it became Florida State University.

In the years since, the University has experienced a four-fold increase in its student enrollment and a rapid expansion of its graduate programs of research and study.

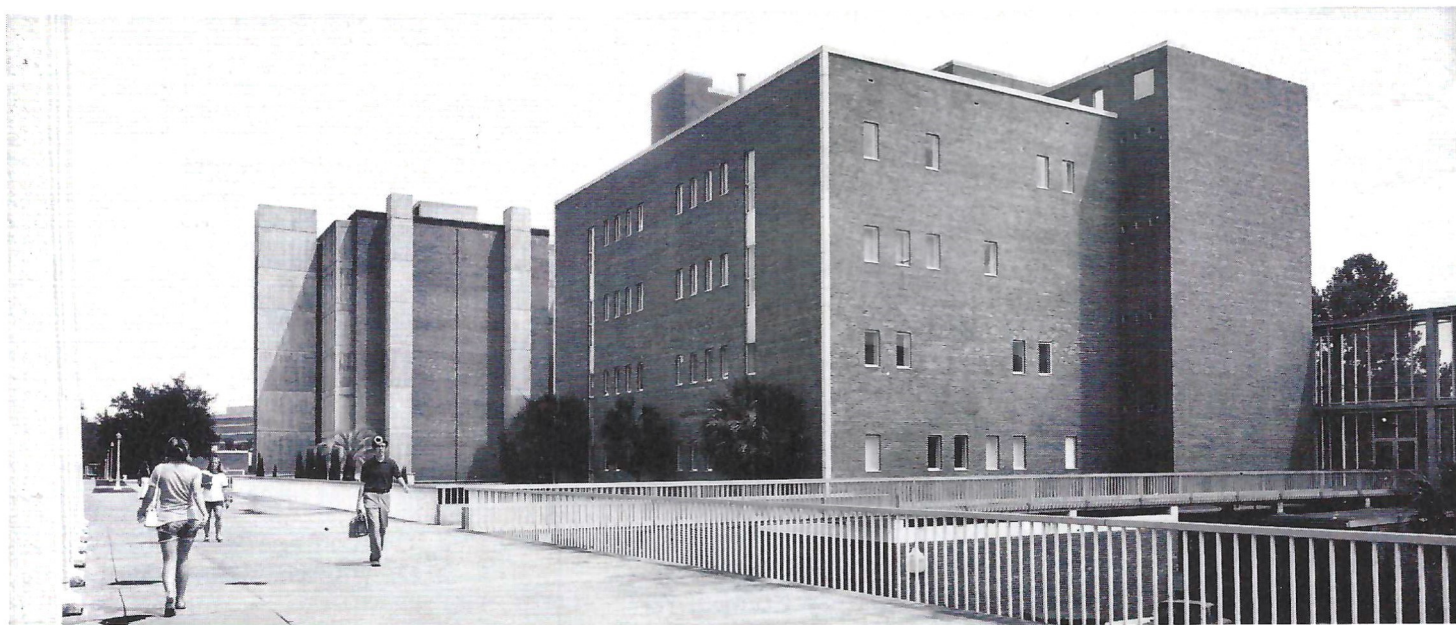
Florida State University's progress, since it became co-educational in 1947, has been termed by some educators as "a modern miracle." The University did not award a doctoral degree until 1952. In the past few years it has reached the high level of distinction accorded only to those two dozen public institutions in this country which produce more than one hundred Doctor of Philosophy degree graduates each year. At the end of the 1970-71 year, the University had awarded a total of 2,082 doctoral degrees.

The academic organization of the University offers courses of study leading to the baccalaureate degree in 96 fields of study; to the master's degree, in 87 fields; and to the doctorate, in 58 fields of study.

As one of the three oldest universities and the second largest university in the State System, Florida State University has been designated by the Board of Regents for continuing leadership at the graduate levels of education. In 1947, there was practically no graduate program; ten years later there were 888 students working toward graduate degrees. This number of graduate students had increased in 1971 to 3,515.

Twenty years ago the University had practically no support in contract and grant funds. Today the University receives some \$15 million each year from local, state, and national agencies, foundations, and industries. Nearly all academic divisions of the University are actively engaged in graduate research and graduate degree programs, with a majority of the research being conducted within the separate schools and colleges under the supervision and coordination of the University's Director for Research and Graduate Dean.

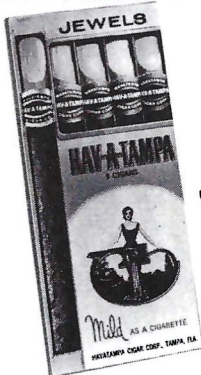
In addition to research conducted in the various academic divisions of the University, a number of facilities and institutes are devoted to specific research interests. Additional University faculty engage in research in the field of education and in many areas of the fine arts—from language and literature to music and drama.



Florida Board of Regents and Chancellor



Members of the current Board of Regents are shown here with Chancellor Robert B. Mautz of the State University System. They are: Back, left to right, Chester H. Ferguson, Tampa; James J. Gardener, Fort Lauderdale; Chancellor Mautz and Dr. Louis C. Murray, Orlando; front row, left to right, D. Burke Kibler, III, Lakeland; J.J. Daniel, Jacksonville, Chairman; Marshall M. Criser, Palm Beach, Vice Chairman; and Mrs. E.D. Pearce, Miami. Other Regents shown in insets, are Julius F. Parker, Jr., Tallahassee, and E.W. Hopkins, Jr., Pensacola.



HAV-A-TAMPA JEWELS

*The Cigar for Men . . .
that Ladies Love —*

WELCOME ANYWHERE

for their man-size flavor and gentle aroma

Distributed by **Eli Witt Tobacco & Candy Company**
Tallahassee, Florida

OWENS, INC.

SPORTING
GOODS

HARDWARE

202 W. Broad Ave. — 435-5628
In Downtown Albany, Ga.

COLORADO STATE UNIVERSITY



High-rise Dormitories Durward & Westphal Towers



Dr. A. R. Chamberlain
President



Perry Moore
Athletic Director



Jerry Wampfler
Head Coach



Administration Building

Colorado State University, located in the Cache La Poudre River valley 5,000 feet above sea level, is the land-grant educational institution of Colorado. The first official action to establish CSU was taken in 1870, six years before Colorado became a state.

Nearly 100 years later the enrollment at CSU has reached 16,800 students distributed among eight colleges—Agriculture, Business, Engineering, Forestry and Natural Resources, Home Economics, Humanities and Social Sciences, Natural Sciences, and Veterinary Medicine and Biomedical Sciences.

The enrollment at CSU, like many other schools in the nation, has gone through drastic change. In the past 10 years, registrations have nearly tripled. CSU's Graduate School enrollment has risen from slightly more than 300 students 10 years ago to some 2,400 today. CSU maintains a student body representative of Colorado with approximately 73 per cent of the registrants composed of residents of the state.

The beautifully landscaped main campus covers 507 acres, with a Foothills Campus located two miles west at the base of the front range of the Rockies.

The Foothills Campus is a 2,200-acre tract used primarily for graduate education and research of various types, particularly in the biological and engineering sciences. The facilities accommodate CSU, federal and private industrial research laboratories. The university's new football stadium also is located in this area.

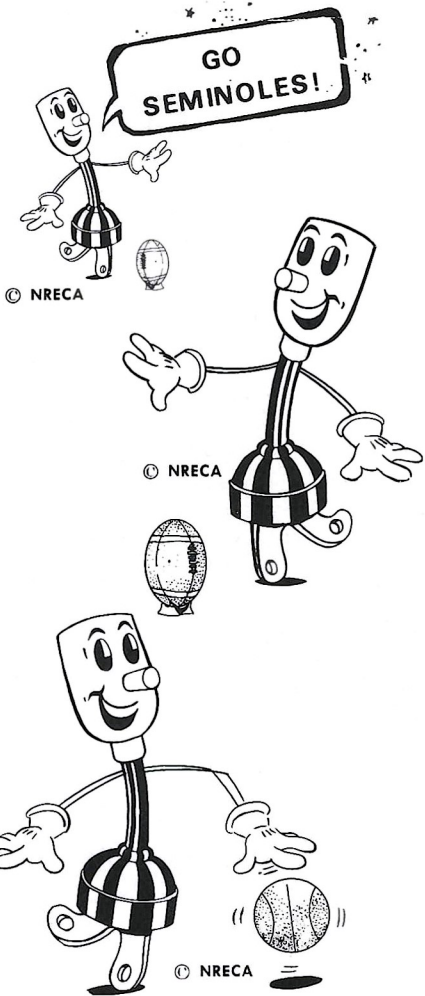
A third campus is at Pingree Park, 45 miles west of Fort Collins on university-owned subalpine forest land near the headwaters of the Little South Poudre River. The area serves as a high-altitude training and research center for diverse subjects ranging from basic science institutes and research to many of the natural resources disciplines.

TALQUIN
ELECTRIC
Cooperative Inc.

"OWNED BY THOSE WE SERVE"

IN

GADSDEN, LEON, LIBERTY
AND WAKULLA COUNTIES



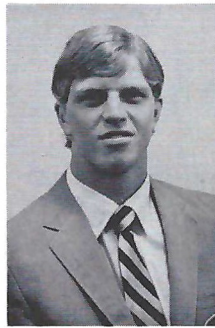
Live Better...

Electrically

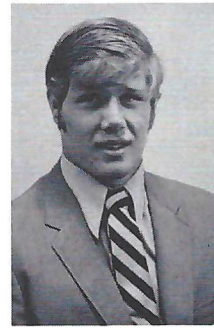
COLORADO STATE UNIVERSITY



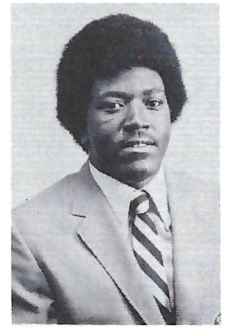
GOLDEN RAMS



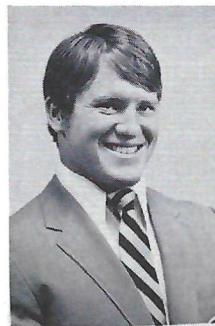
John Murray



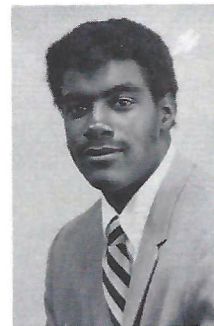
Jim Opperman



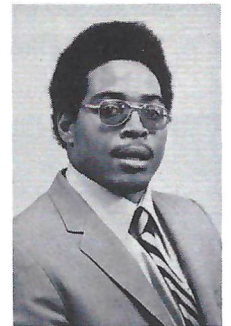
Manson Petty



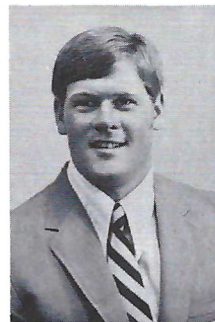
Rick Rohwer



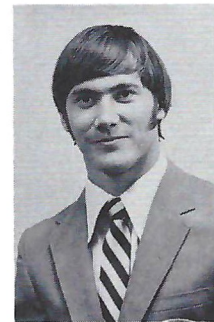
Perry Smith



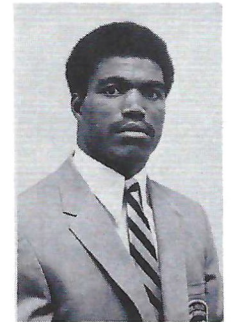
Al Simpson



Wade Smylie

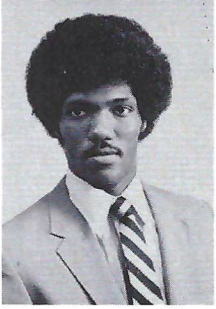


Guy Stewart

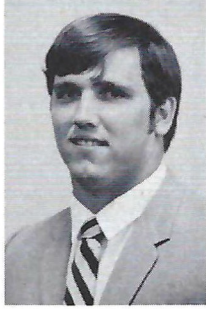


Tom Wallace

CSU RAMS



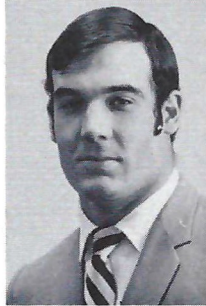
Louie Walker



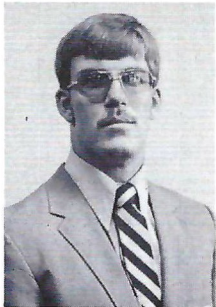
Ken Behrens



Fred Babich



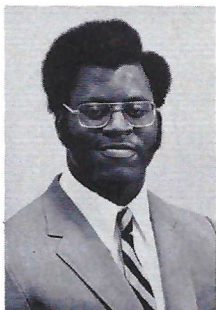
Gerald Caswell



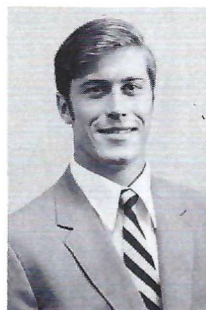
Dave Duncan



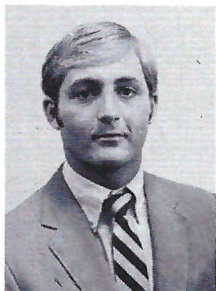
Rod Blackford



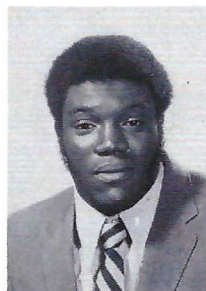
Ron Gatheright



Norm Hainlen

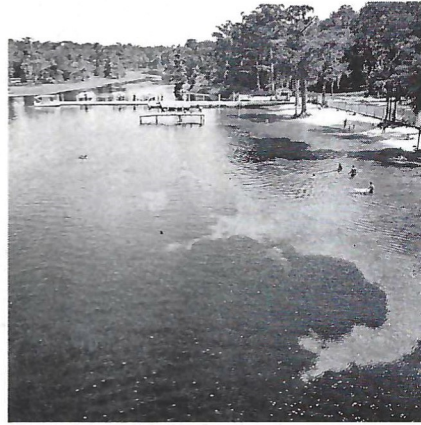


Pat Juliana



Jim Kennedy

WAKULLA SPRINGS



OPEN THE YEAR ROUND

- Glass-bottom boat tours over the World's largest and deepest spring. See beautiful depth of 185 feet. Featuring "Henry" the pole vaulting fish.
- Jungle Boat tours down the Wakulla River. See wildlife — alligators, turtles, limpkins, anhingas, ducks, and many, many others - all in their natural setting.
- Situated in the heart of 4,500 acre Wildlife Sanctuary.
- Hotel - 25 clean, comfortable rooms. Massive lobby has long been a showplace of this area. Central heating and air conditioning.
- Excellent Dining Room, Coffee and Gift Shop
- Reasonable prices ● Swimming - in season ● Bring your camera

"Florida's Finest Natural Attraction"

15 MILES SOUTH OF TALLAHASSEE

WAKULLA SPRINGS, FLORIDA 32305



Your Memories
Live Forever
When Recorded
On Film!

TAKE YOUR
CAMERA
ALONG!!

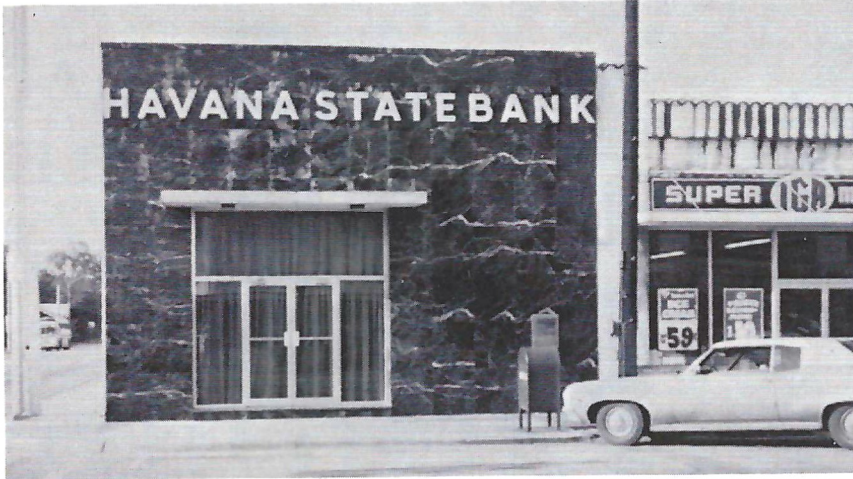
FOR NORTH FLORIDA'S LARGEST SELECTION OF PHOTO EQUIPMENT & SUPPLIES SEE THE FRIENDLY FOLKS AT

Tallahassee Camera Center

117 NORTH MONROE

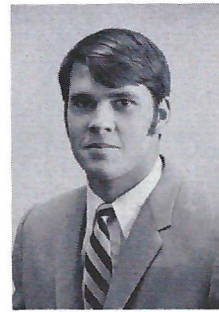
"Across from the Florida Theater"

MORE RAMS

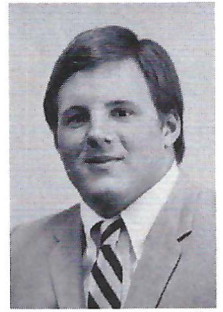


HAVANA STATE BANK

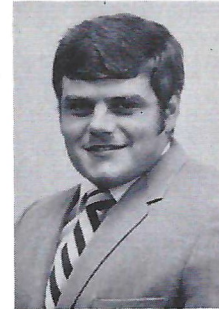
U.S. Highway 27
 Havana, Florida 32303
 President: H.W. Slappy — Member of F.D.I.C.



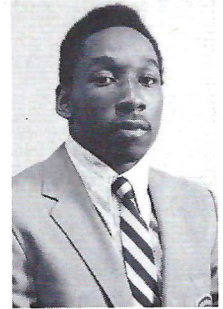
Terry Kirk



Greg Kuhn



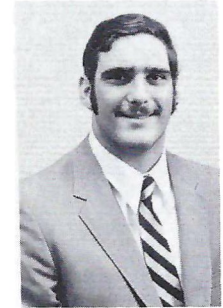
Andy Lang



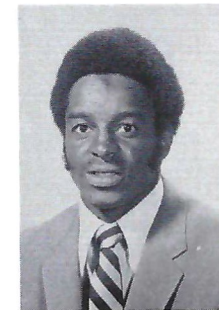
Greg Battle



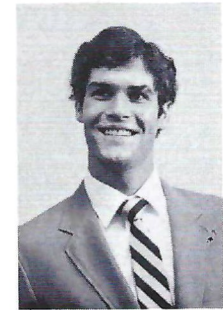
Wes Cerveny



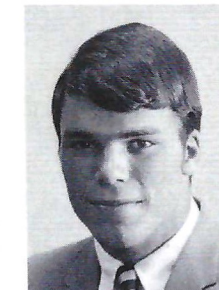
Jim Craig



Reggie Leonard



Mark Driscoll



Paul Duda



Willie Miller

After the game...
**MEET ME
 AT JERRY'S**

Jerry's
 RESTAURANTS

471 W. Tennessee Street
 and
 N. Monroe across from the Mall
eating at Jerry's is a family affair!



Official Seminole Sportswear



LADIES AND MEN'S KNIT SHIRTS

100% cotton lisle shirts available in white, gold or red with contrasting Seminole emblem. Full fashion collar. Button placket.

6800	Men's Sizes: S-M-L-XL-XXL	\$ 11
4050	Women's cuffed short sleeve: Sizes 32-40	\$ 11
4055	Women's sleeveless shell: Sizes 32-40	\$ 11

100% Orlon Cardigan Sweaters

Links-N-Links Classic Button front cardigan sweaters. Cut extra full for added comfort. Wash and wear. White, Berry Red and Gold, with colorful Seminole emblem.

8100	Men's Sweater Sizes S-M-L-XL	\$ 20
1825	Women's Sweater Sizes 34-36-38-40	\$ 20

CHAMPION NYLINE LINED COACHING JACKET

Full cut 100% nylon water repellent outer shell. Pole Lining with quilted nylon sleeve lining. Hood concealed in unique compartment inside the lining. Slashed pockets and elasticized cuffs. Completely washable.
Order in Maroon or Old Gold, with contrasting Seminole emblem.

M/Jac Sizes S-M-L-XL-XXL \$ 20

MEN'S Dacron/Cotton WASH-AND-WEAR SHIRT

50% Dacron 50% Cotton Four button Continental Placket shirt with full fashion collar. Order in three colors, white, gold and red with Seminole emblem.

7028 Sizes S-M-L-XL \$11

CHAMPION B/COACH JACKET for the kids

Just like the warm-up jackets worn by Seminole athletes. 100% single ply taffeta nylon shell jacket with Byron collars. Color matched gripper-snap front. Set in sleeves with elasticized cuffs. Drawstring bottom. Comes in Gold only with contrasting Seminole emblem.

B/Coach Sizes:	XS (2- 4)	\$ 8
	S (6- 8)	
	M (10-12)	
	L (14-16)	

Item No. and Description	Quantity	Color	Size	Price	Total
4050 Women's shortsleeve				\$ 11	
4055 Women's shell				\$ 11	
6800 Men's cotton shirt				\$ 11	
7028 Men's Dac-Cot shirt				\$ 11	
8100 Men's Cardigan				\$ 20	
1825 Women's Cardigan				\$ 20	
Lined Jacket				\$ 20	
Child's Jacket				\$ 8	
			SUB-TOTAL:		
Four percent Florida Sales Tax:					
			TOTAL:		

Make Check payable to:

FLORIDA STATE UNIVERSITY

Mail Order To:

NATIONAL SEMINOLE CLUB
Room 100 Tully Gym
Florida State University
Tallahassee, Florida 32306
ATTN: Scott Fletcher

Seminole Auto Dealers

These are the men who help keep Florida State's Athletic Program "on the go" in a very real sense. The importance of the Seminoles' courtesy car program cannot be overemphasized and without the cooperation of these gentlemen, it would never reach the degree of success it has. We salute each and every one of these community minded men.



Theo and Julian Proctor
Proctor and Proctor
Pontiac/Cadillac
Tallahassee



Neil Palmer and E.K. Harrell
Palmer-Harrell Buick Co.
Tallahassee



J. Ed Bell
Bell Chevrolet
Cairo, Ga.



Tom Kinnebrew
Kinnebrew Motors
Tallahassee



Joe Ball
Havana (Ford) Motors
Havana



Sam Shovlain
Courtesy Oldsmobile
Tallahassee



Bill Peacock
Peacock Chevrolet
Monticello



Manning Taylor
Taylor Chevrolet-Buick
Quincy



Charles Alford
Alford Chevrolet Co.
Tallahassee



Bob and Bill Miller
Miller Chevrolet
Havana



Ed Richardson and Frank Shaw
Tallahassee (Ford) Motors
Tallahassee

STATION CITY

WJAX — Jacksonville
WGKR — Perry
WTNT — Tallahassee
WCNH — Quincy
WTYS — Marianna
WPCF — Panama City
WCOA — Pensacola
WFOY — St. Augustine
WDNJ — Daytona
WRUF — Gainesville
WMOP — Ocala
WMMB — Melbourne
WWQS — Windemere/Orlando
WTRR — Sanford
WSIR — Winter Haven
WSUN — St. Petersburg
WTRL — Bradenton
WTTB — Vero Beach
WARN — Ft. Pierce
WSTU — Stuart
WKAT — Miami
WINK — Ft. Myers
WCCF — Punta Gorda
WCKS — Cocoa Beach



Bill Owens



Bo Mitchell

Seminole Radio Network

Follow Florida State "on the Warpath" over the Seminole Network throughout the State of Florida and south Georgia and Alabama.

More than two dozen stations will be carrying every play of the Seminoles' 1972 season with several more broadcasting selected games. In addition many Florida State games will be heard as a part of the "Pick of Dixie" broadcasts. Originating station for the network is WTNT in Tallahassee.

Bo Mitchell will be the "Voice of the Seminoles" for the 10th consecutive year. The veteran announcer is a former winner of the Florida Sportscaster of the Year award and has done the play-by-play for the Senior, Tangerine and Fiesta Bowl world-wide networks. Mitchell has 25 years experience in broadcasting and is President of WTRL in Bradenton and a partner in three other Florida stations.

Working with Mitchell this year will be Bill Owens. Another veteran of sports broadcasting, Owens has handled the play-by-play for Florida State's basketball team the last three years and has also been the "voice of Florida State baseball." He returns to the football mike as color man after a year's leave of absence last fall.

Follow The Seminoles

ON WTNT 1270 ON YOUR DIAL

Brought to you by

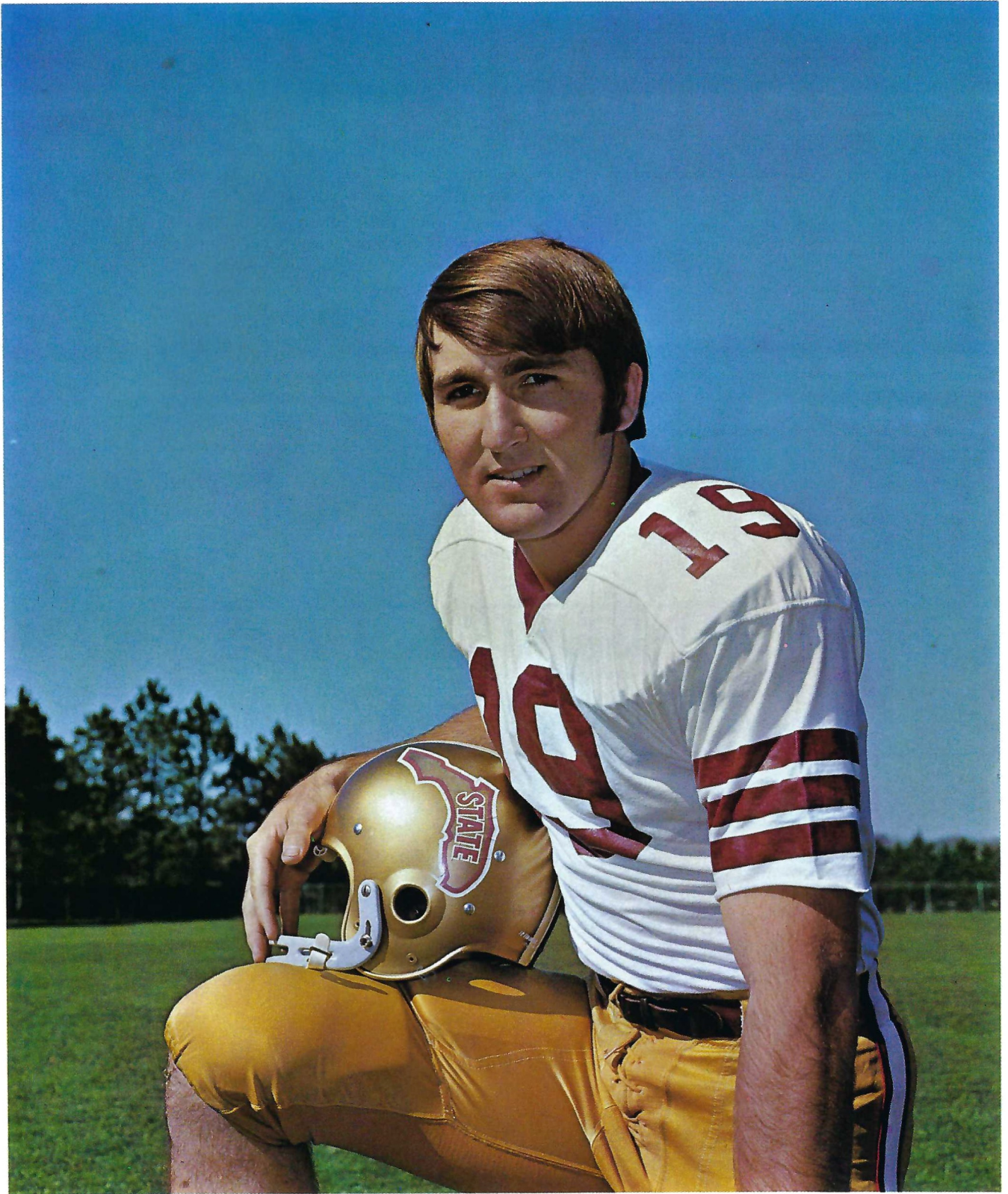


AND YOUR NEIGHBORHOOD TEXACO DEALER

and by

GOLDEN FLAKES POTATO CHIPS

THE TALLAHASSEE BANK AND TRUST COMPANY



QUARTERBACK – GARY HUFF

Gary Huff's Assault on the Record Book

Florida State's Heisman Trophy candidate, Quarterback Gary Huff, has already broken the Seminoles all-time career passing records and will keep adding to his own marks in each of the last five games. He is also closing in on several Seminole season records and his progress in this department will be followed each home game through the end of the season.

PASSES ATTEMPTED

344 by Bill Cappleman, 1969
327 by Gary Huff, 1971
287 by Bill Cappleman, 1968
247 by Ed Pritchett, 1965
241 by Kim Hammond, 1967
233 by Gary Pajcic, 1966
213 by GARY HUFF, 1972

PASSES COMPLETED

184 by Gary Huff, 1971
183 by Bill Cappleman, 1969
162 by Bill Cappleman, 1968
140 by Kim Hammond, 1967
125 by Gary Pajcic, 1966
121 by Steve Tensi, 1964
115 by GARY HUFF, 1972

YARDS PASSING

2736 by Gary Huff, 1971
2467 by Bill Cappleman, 1969
2410 by Bill Cappleman, 1968
1991 by Kim Hammond, 1967
1683 by Steve Tensi, 1964
1656 by GARY HUFF, 1972

TOUCHDOWN PASSES THROWN

25 by Bill Cappleman, 1969
23 by Gary Huff, 1971
15 by Kim Hammond, 1967
14 by GARY HUFF, 1972

TOTAL OFFENSE

2653 by Gary Huff, 1971
2342 by Bill Cappleman, 1968
2135 by Bill Cappleman, 1969
2074 by Kim Hammond, 1967
1777 by Tommy Warren, 1970
1735 by Gary Pajcic
1637 by Steve Tensi, 1964
1596 by GARY HUFF, 1972

YEAR	ATT.	COMP.	TD	YARDS
1970 Totals	81	46	4	749
1971 Totals	327	184	23	2,736
Fiesta Bowl	46	25	2	347
1972 Totals				
Pittsburgh	24	11	2	242
Miami	34	22	4	329
Virginia Tech	39	19	1	253
Kansas	42	26	4	295
Florida	58	27	1	325
Mississippi St.	18	10	2	212
Career Totals*	669	370	43	5,488

*All are FSU Career Records

On Southern Airways, when you pocket the savings offered by our "Fare Deals" you'll wish we flew everywhere.



LONG WEEKEND FARES

Perfect for anyone wanting to attend those away games. Leave or return on Saturday or Monday and save 2/3 of your return air fare.



GROUP 10 FARES

Alumni groups like this one. When 10 or more people fly together to the same destination every group member saves 2/3 of the return air fare. And members can return separately. Good any time.



YOUTH FARES

Something for the students. Anyone 12 through 21 with a valid Youth Fare ID card from any domestic airline can fly in a reserved seat and save 25% of the regular fare. Good any time except from 2:00 pm to midnight on Fridays and Sundays.



FAMILY PLAN

Good for husband and wife, husband, wife and children from 12 through 21, or other parent and children 18 through 21. Head of family pays full fare, spouse (or first child if only one parent accompanies) pays 75%. Children 12 through 21 pay 2/3 and those 2 through 11 pay 50%. Fares are good during the same periods as Youth Fares. (Percentages are approximate.)



MILITARY FARES

Military personnel can fly in reserved seats and save 1/3 of the regular fare. Or they can fly "stand-by" and save 50%. Reserved seat fares are good during the same periods as Youth or Family Plan Fares. "Stand-by" fares are good any time.



DISCOVER AMERICA

Those who stay at their destination at least seven days but not more than 30 days can save up to 20% of the regular round trip fare. Good any time except from 2:00 pm to midnight on Fridays and Sundays.



DOLLAR STOPOVER PLAN

If you'd like to stopover in Orlando to see Walt Disney World, or visit the Florida or Mississippi Gulf Coast, ask about our "Dollar Stopover Plan."

For full information and any special conditions on these fares, call Southern or see your Travel Agent.

Southern Airways

We serve the nicest sports fans
the very nicest way we know.



Touchdown or Field Goal



Helping the Runner, or Interlocked Interference



Ball Ready for Play



Grasping Face Mask



Delay of Game



Roughing the Kicker



Ball Dead; If Hand is Moved from Side to Side: Touchback



Illegal Procedure or Position

RAGANS and ROBERTS TIRE COMPANY

Big Bend's Largest Goodyear & BP Oil Dealer

James W. Ragans — OWNERS — Eli P. Roberts

Complete Service Department Including:

Front End and Brake Rebuilding

Tires · Batteries · Accessories

Fuel Oils For Home, Business and Farm

for AUTOMOTIVE SERVICE call

224-8156

for FUEL OIL call

576-3145

609 W. Tennessee Street



Clipping



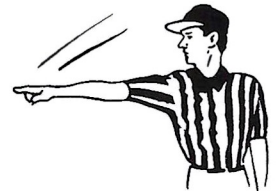
Illegally Passing or Handling Ball Forward



Offside (Infraction of scrimmage or free kick formation)



Loss of Down



First Down



Illegal Shift



Illegal Motion



BP Sets the Pace



Safety



Personal Foul



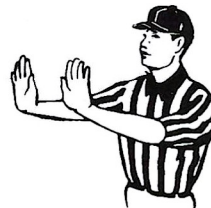
Ineligible Receiver Down Field on Pass



Ball Illegally Touched, Kicked, or Batted



Time out; Referee's Discretionary or Excess Time Out followed with tapping hands on chest.



Forward Pass or Kick Catching Interference



Start the Clock



Intentional Grounding

FOOTBALL GLOSSARY

- Audible** — A vocal signal by the quarterback changing the play called in the huddle. Also called Check Off.
- Blitz** — Commitment by defensive backs and/or linebackers to rush the passer.
- Blocking** — Legally hindering the progress of an opponent by contacting him with any part of the blocker's body.
- Bomb** — A long pass attempt for a touchdown.
- Buttonhook** — A pass pattern in which the receiver goes downfield and U-turns back sharply to receive the ball.
- Clipping** — Running or diving into the back of an opponent, or throwing the body across the back of the leg or legs of an opponent other than the ball carrier.
- Dive-Tackle Play** — A quick-handoff running play over tackle.
- Draw-Play** — Quarterback drops back as if to pass but instead hands ball to running back, after quarterback's teammates have assumed pass-blocking positions.
- Fair Catch** — The opportunity for a player of the receiving team to catch a kicked ball that has crossed the scrimmage line, without being tackled or blocked by an opponent, after signaling his intention by completely extending one arm above his head.
- Kickoff** — A free kick with which each half is opened, and which is employed also following each try-for-point or Field Goal. A kickoff must be either a Placekick or a Dropkick.
- Lateral Pass** — A live ball thrown toward or parallel with the passer's own goal line.
- Linebacker** — A defensive player operating immediately behind his line where he can either aid linemen in stopping a running play or cover an opponent's receiver if a pass develops.
- Look-In Pass** — Receiver runs straight pattern and looks for the ball immediately over his inside shoulder.
- Man-To-Man Coverage** — Pass defense plan wherein defensive backs cover receivers wherever they go, rather than field areas.
- Mike** — Middle linebacker, so designated because he usually lines up opposite middle of the offensive line.
- Monster** — A roving linebacker who may position himself on either side of his team's defensive formation.
- Neutral Zone** — The space between the scrimmage lines of the offense and defense, approximating 11 inches (the length of the football).
- Onside Kick** — A kickoff that travels 10 yards or more is anybody's ball. The so-called "onside kick" is an effort by the kicking team to kick the ball barely beyond 10 yards and recover it before the receiving team can do so.
- Pocket** — Area of protection for the passer, formed by blockers. Passer drops straight back from scrimmage behind the blocking shield into what resembles a "cup" or pocket.
- Post** — A pass pattern in which the receiver goes downfield to pre-determined depth then cuts at an angle toward the goalposts.
- Prevent Defense** — A strategem replacing linebackers with additional backfield pass defenders, sacrificing strength against short gainers in order to prevent a long pass completion. Most often employed by a team protecting a lead late in either half.
- Pulling Guard** — Guard who pulls out behind scrimmage line for a trap block or to lead sweep blocking for ball carrier.
- Reverse Play** — A running play with backfield action suggesting one direction while ball carrier goes in opposite direction.
- Roll-Out pass** — Quarterback runs laterally with blockers before throwing, instead of dropping straight back to pass.
- Sam** — Strong linebacker, so designated because he usually lines up opposite the "strong side" of the offensive line.
- Screen Pass** — Pass to a receiver behind a wall of blockers, who have permitted defenders to penetrate.
- Scrimmage Line** — The yard line (marked or unmarked) that passes through point of the ball nearest a team's own goal line.
- Slot Back** — Back stationed in slot between interior linemen and end. Must be one yard behind the line of scrimmage.
- Snap** — A quick, continuous motion by which the ball is handed or snapped back with the ball leaving the hands of the snapper on the motion. The snap normally is made by the center.
- Strong Side** — Overbalance of offensive or defensive linemen to either side of the Center.
- Stunting** — Defensive players changing positions as the ball is snapped, to confuse offensive strategy.
- Sweep** — End run with wave of blockers leading the ball carrier.
- Spearing** — Illegal use of the head and helmet to ram an opponent after his momentum has stopped.
- Tackling** — Grasping or encircling an opponent with hands or arms.
- Tight End** — Offensive end who lines up in close formation (as opposed to Split End's wide set) where he can either block for a ball carrier or be employed as a pass receiver.
- Wide Receiver** — A lineman and/or a back who is set wide for pass receiving purposes. Also called Split End, Flanker or Wideout.
- Willie** — Weak linebacker, so designated because he usually lines up opposite the "Weak side" of the offensive line.
- Zone Coverage** — Plan of pass defense wherein areas are covered rather than individual receivers Opposite of Man-To-Man.

BILL PEACOCK CHEVROLET, INC.

300 West Washington St.
MONTICELLO, FLORIDA

The reason people pass one door
To patronize another store,
Is not because the busier place
Has better silks, or gloves, or lace,
Or special prices, but it lies
In pleasant words and smiling eyes;
The only difference, we believe
Is in the treatment folks receive!



*Growing With
the Seminoles!*

TALLAHASSEE
Phone 224-8827

MONTICELLO
Phone 997-2513

Centel System is...

- (A). The telephone operations of Central Telephone & Utilities Corporation
- (B). The fourth largest independent telephone system in America
- (C). Over 1,000,000 telephones strong
- (D). Serving in 10 states
- (E). Helping us to serve you better
- (F). All of the above

(F), All of the above

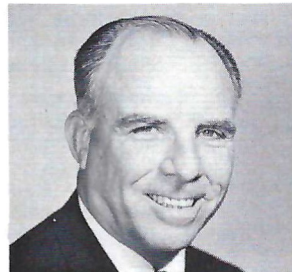


southeastern telephone company

STATE BOARD OF EDUCATION



Reubin O'D. Askew
Governor



Floyd T. Christian
Commissioner of Education



Tom O'Malley
Treasurer



Richard Stone
Secretary of State



Fred O. Dickinson, Jr.
Comptroller



Robert Shevin
Attorney General



Doyle Conner
Commissioner of Agriculture

The Star Spangled Banner

O, say! can you see, by the dawn's early light,
What so proudly we hailed at the twilight's last gleaming?
Whose broad stripes and bright stars, thro' the perilous fight,
O'er the ramparts we watch'd, were so gallantly streaming?
And the rockets' red glare, the bombs bursting in air,
Gave proof thro' the night that our flag was still there.
Oh, say, does that Star-spangled Banner yet wave
O'er the land of the free and home of the brave?

Seminole Songs

ALMA MATER

High o'er the towering pines our
voices swell,
Praising those Gothic spires we
love so well;
Here sons and daughters stand,
faithful and true.
Hailing our ALMA MATER,
F . . . S . . . U . . .

HYMN TO THE GARNET AND GOLD

Here's a hymn to the garnet and the gold,
Ringing to the sky.
Here's a song for our men and women bold,
Sing with heads held high.
Striving ere to seek to know fight for victory.
Alma Mater, this our song to you,
Echoes, F . . . S . . . U . . .

FSU FIGHT SONG

You got to fight, fight, fight for FSU.
You got to scalp 'em Seminoles.
You got to win, win, win, win, win this game
and roll on down and make those goals.
For FSU is on the war path now, and at the
battle's end she's great:
So fight, fight, fight, fight, to victory,
our Seminoles from Florida State.

FLORIDA STATE VICTORY SONG

We are on the warpath tonight.
Onward, Florida State.
Show all the world the spirit and might
that the Seminoles create.
Stand up for the Garnet and Gold.
Ever loyal we shall be.
We are proud to shout,
"The Warriors are out." And they will
lead us to victory.

Team Physician



Dr. Robert P. Johnson

The Athletic Department is most appreciative for Dr. Johnson's unselfish services to all the athletes at Florida State.



Frisch's

THE ORIGINAL

BIG BOY RESTAURANT

GREAT PLACE FOR POW WOWS AND GOOD FOOD

SERVING:

• Breakfast

• Lunch

• Dinner

• Snacks

Open 7 A.M. to Midnight
'Til 2 A.M. Fridays and Saturdays

1775 W. Tennessee Street

TALLAHASSEE — TELEPHONE 224-1246

TRY FRISCH'S CARRY-OUT

Enjoy football more with the Official NCAA Football Guide

Containing . . .

- Schedules of more than 400 teams
- Sectional previews by prominent writers
- 1971 statistics and scores
- Read-easy rules
- Bowl game review

\$2.00

Send check or money order to:
College Athletics Publishing Service
349 East Thomas Road
Phoenix, Arizona 85012

For a listing of all NCAA publications, write NCAA, 1221 Baltimore, Kansas City, Mo. 64105.

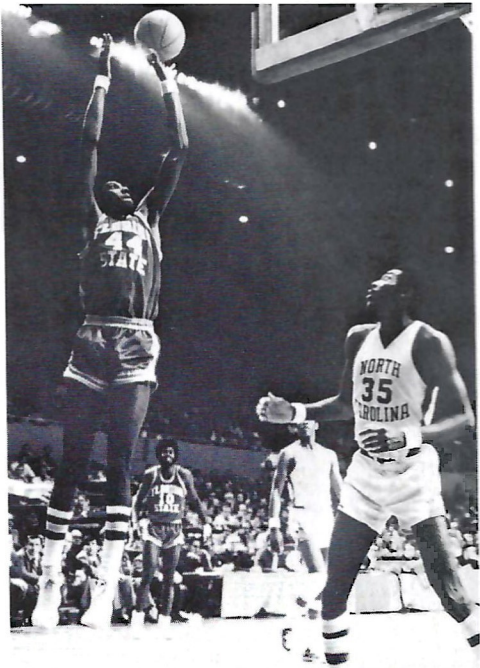
Many Braves Come This Way!



Always with an ear to the ground and an eye on the ball, Times Sports gives you all the inside scoop as well as play-by-play of every Seminole battle. For the best, most colorfully complete coverage of Florida State, read Florida's Best.

St. Petersburg Times
FLORIDA'S BEST NEWSPAPER

Seminole Basketball



Shooting For No.1

When you have come closer than any finalist in the last five year's to winning the national championship there is only one way to look and that is up. That is exactly what Florida State's basketball team will be doing this season—looking up to that coveted number one position, held for almost the entire last decade by UCLA. A strong nucleus, headed by such Tribe favorites Ron King, Reggie Royals and Otto Petty, together with some of the nation's most talented newcomers to the college scene, makes it entirely possible this could be "The Year". Three tournaments spice the schedule and home games are on tap with such powers as Marshall, Cincinnati and Jacksonville.

Season tickets are now on sale at the athletic ticket office. All season books are \$21 plus 50 cents per order for handling. If early interest is any indication, season tickets may be the only way to get into Tully Gym on game night. Order your tickets now by sending your order with a check payable to Florida State University to:

Athletic Ticket Office
100 Tully Gym
Florida State University
Tallahassee, Fla. 32306
or phone
904/599-4625

Schedule

DATE	OPPONENT
Dec. 1	Georgia Southern
Dec. 4	Eastern Kentucky at Louisville
Dec. 9	Biscayne
Dec. 15-16	Marshall Invitational
Dec. 22-23	Dayton Invitational
Dec. 27-30	All-College Tournament
Jan. 6	Connecticut
Jan. 8	Georgetown University
Jan. 13	Cincinnati
Jan. 17	Stetson
Jan. 20	at Jacksonville
Jan. 25	at Samford
Jan. 27	Southern Illinois
Jan. 29	University of South Florida
Feb. 1	at Virginia Tech
Feb. 3	Seton Hall at Madison Square Garden
Feb. 10	at Cincinnati
Feb. 14	Jacksonville
Feb. 17	University of North Carolina at Madison Square Garden
Feb. 23	South Alabama
Feb. 26	Marshall
Mar. 3	Mercer

Advertisers' Directory

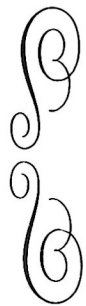
Advertiser	Page	Advertiser	Page
Army ROTC	64	Peacock Chevrolet	57
Bill's Bookstore	30	Prudential Insurance Co.	6
Capital City First National Bank	15	Quality Motel	38
Chevrolet	31	Ragans & Roberts Tire Co.	56
Clark Electric Co.	18	Ramada Inn	62
Coca-Cola	32-33	St. Petersburg Times	60
Cycle Shop	38	Sears Roebuck, Inc.	7
Eli Witt Tobacco & Candy Co.	46	Southeastern Telephone Co.	58
Florida Beef Council	37	Southern Airways	55
Florida Publishing Co.	43	Southernaire Motel	18
Frisch's Restaurants	60	Southern Inns	39
Hammon's Asphalt Paving, Inc.	27	Tallahassee Auto Dealers	29
Havana State Bank	50	Tallahassee Camera Center	49
Holiday Inns	2	Tallahassee Bank and Trust Co.	19
Honda of Tallahassee	5	Tallahassee Democrat	35-36
House of Steaks	25	Tallahassee Travel and Tours, Inc.	27
Inn Below	41	Talquin Electric Cooperative Inc.	47
Jacksonville, City of	22	Tampa Tribune	40
Jerry's Restaurant	50	Texaco	34
Lewis State Bank	3	University Rexall	42
Miller Chevrolet	62	WTNT Radio	53
Mobile Home Industry	24	Wakulla Springs Hotel	49
Orlando Sentinel Star	8	Winn Dixie Stores, Inc.	62
Owens, Inc.	46	Zenith	28



Ramada Inn of Tallahassee is an ideal gathering place for meetings and banquets. The King's Banquet Room offers every convenience, and accommodates up to 128 persons for dining. Divisible meeting rooms are available for smaller groups. For leisure hours, there are golfing privileges at fine nearby courses. Just four hours drive brings you to the wondrous kingdom of Walt Disney World. Innumerable famous Florida attractions are within driving distance. Come for business . . . stay an extra day for pleasure. You're welcome at Ramada Inn of Tallahassee.

2121 West Tennessee Street
Tallahassee, Florida 32304
Phone 904/576-6121

Gen. Mgr. Herb Chandler



Miller

CHEVROLET COMPANY

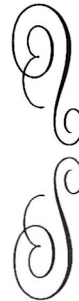
Havana, Florida

539-6376

15 Miles North of Tallahassee on U.S. 27

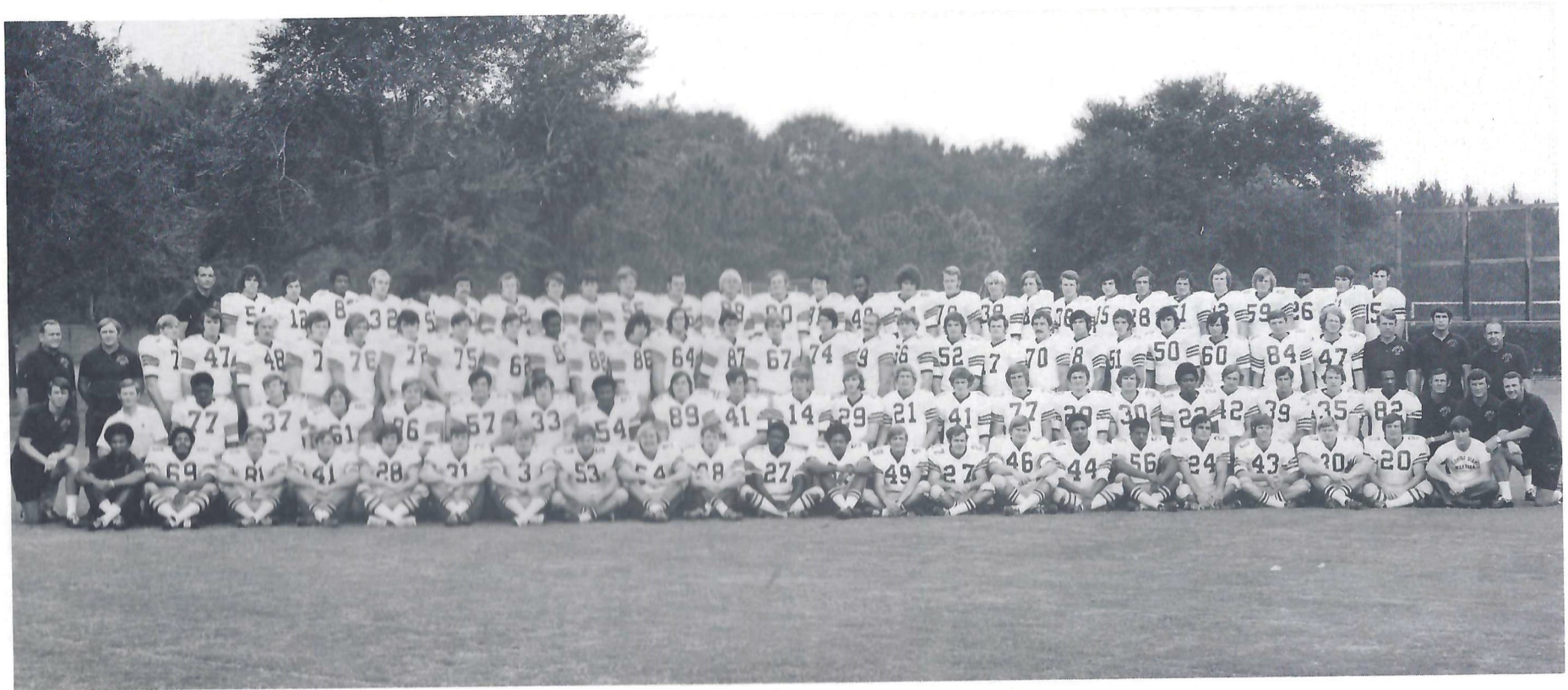
Phone Toll Free

224-1317



The Smart Place
To Go
For Good Things
To Eat

The 1972 Seminoles



FIRST ROW (Left to right)—Coach Larry Holton, Bobby Anderson, Phil Cahoon, Sam Cowart, Mike Davison, Mark Dowey, Joe Downey, John Drews, Jim Dundala, Donnie Holley, Earl Humes, Don Huzzie, Randy Kaiser, Mike McGowan, David Miles, Hodges Mitchell, John Murphy, Mike Norman, Mark Reeves, Mark Smith, David Snell, Manager Clay Caldwell, Head Coach Larry Jones. SECOND ROW—Coach Bill Parcells, Head Trainer Dick Milder, Melvin Scruggs, Oscar Roberts, Phil Arnold, Dan Batchelor, Steve Bratton, Mack Brown, Brooks Burroughs, Russ Castleberry, Jeff Chesnut, Frank Deming, Dano Fiore, Joe Goldsmith, Darrell Howton, Bill Johnson, Ralph Jones, Brent Norris, Lester Payton, Ron Ratliff, Lewis Risk, Randy Shively, Joe Thomas, Coach Gene Henderson, Coach Jim Donnan. THIRD ROW—Equipment Manager Frank DeBord, Coach Jim Phillips, Bob Anderson, Brian Bengtson, Randy Coffield, Dan Daniels, John DeMaria, Shane Gibbs, Mike Glass, Jimbo Hensley, Charlie Hunt, Mike Allen, Mike Deley, James Howard, John Palermo, Tom Presswood, Don Sparkman, Howard Jacobi, Vic Johnson, Bob Jones, Gary Loucks, Jim Malkiewicz, Earl Passwaters, Roy Stephens, Dan Whitehurst, Clint Parker, Gary Parris, Jim Welch, Coach Bill Canty, Coach Mike Pope, Coach Bob Harbison. FOURTH ROW—Coach John Devlin, Paul Baker, Mike Cadwell, Bert Cooper, Ed Davis, John Henry Davis, George Gould, William Hogue, Gary Huff, Ricky Blythe, Allen Dees, Bobby Elam, Jeff Gunby, Dick Hopkins, Walt Lindsey, Eddie McMillan, Charlie Musser, Paul Oglesby, Buzzy Lewis, Scott Meseroll, Rick Oreair, Mark Orlando, Ralph Petrillo, Rocky Saldana, Barry Smith, Larry Strickland, James Thomas, David Fleming, Jerry Sanders.



Army ROTC at Florida State
One of the ten chosen nation wide to enroll women this fall.

