

IN THE COMPLEX WORLD OF
LONG-DISTANCE TELECOMMUNICATIONS
YOUR CHOICE IS SUDDENLY SIMPLER



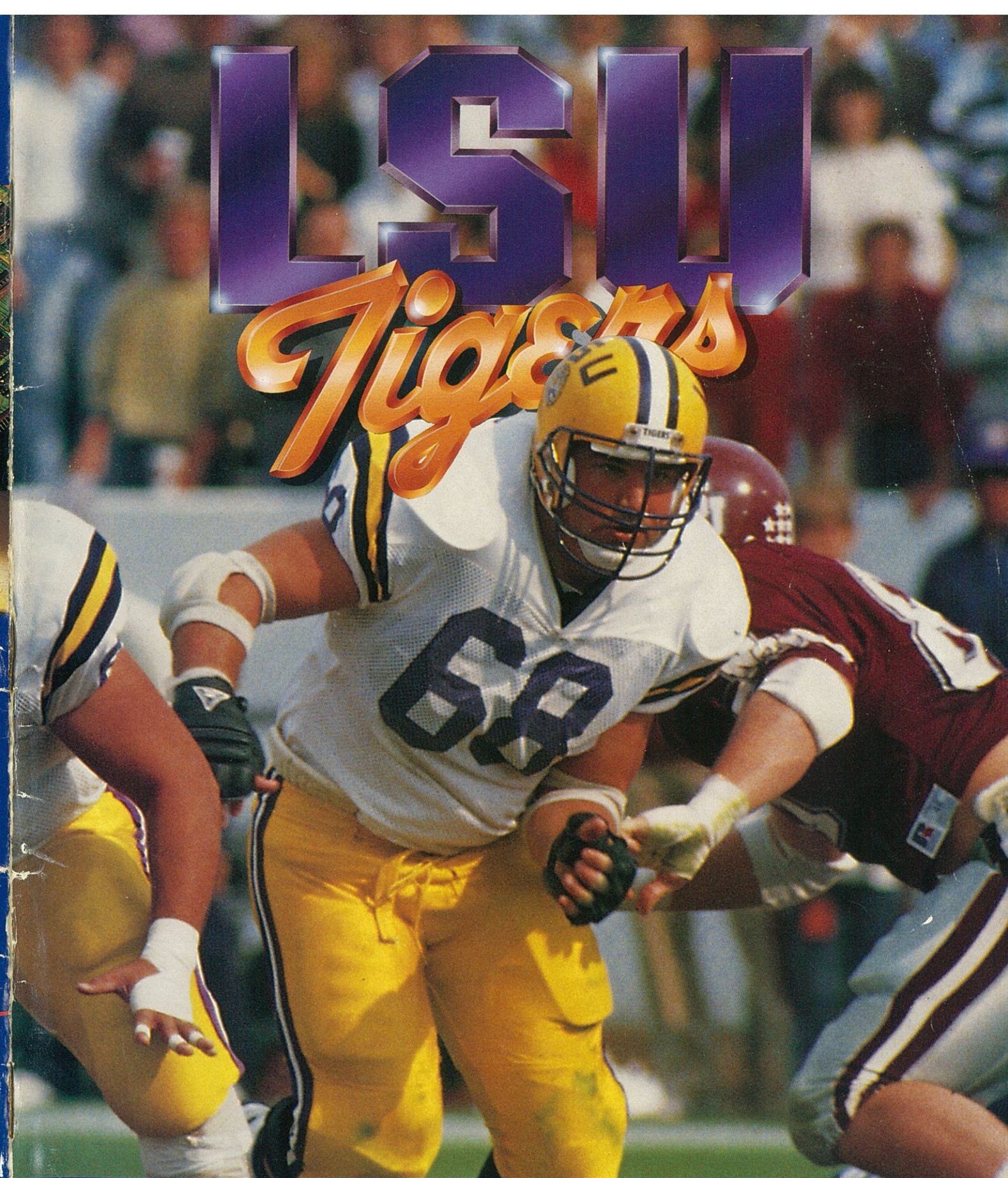
COMTEL-TMC
YOU'RE GOING TO COMMUNICATE MORE CLEARLY.
FOR LESS.

*Our service is better.
Our rates are lower.
Your decision is good for business.*

COMTEL-TMC
TeleCommunications Services

call 1-(800) 627-5005

The last long-distance company you'll ever need.



LSU
Tigers

LSU VS. FLORIDA STATE

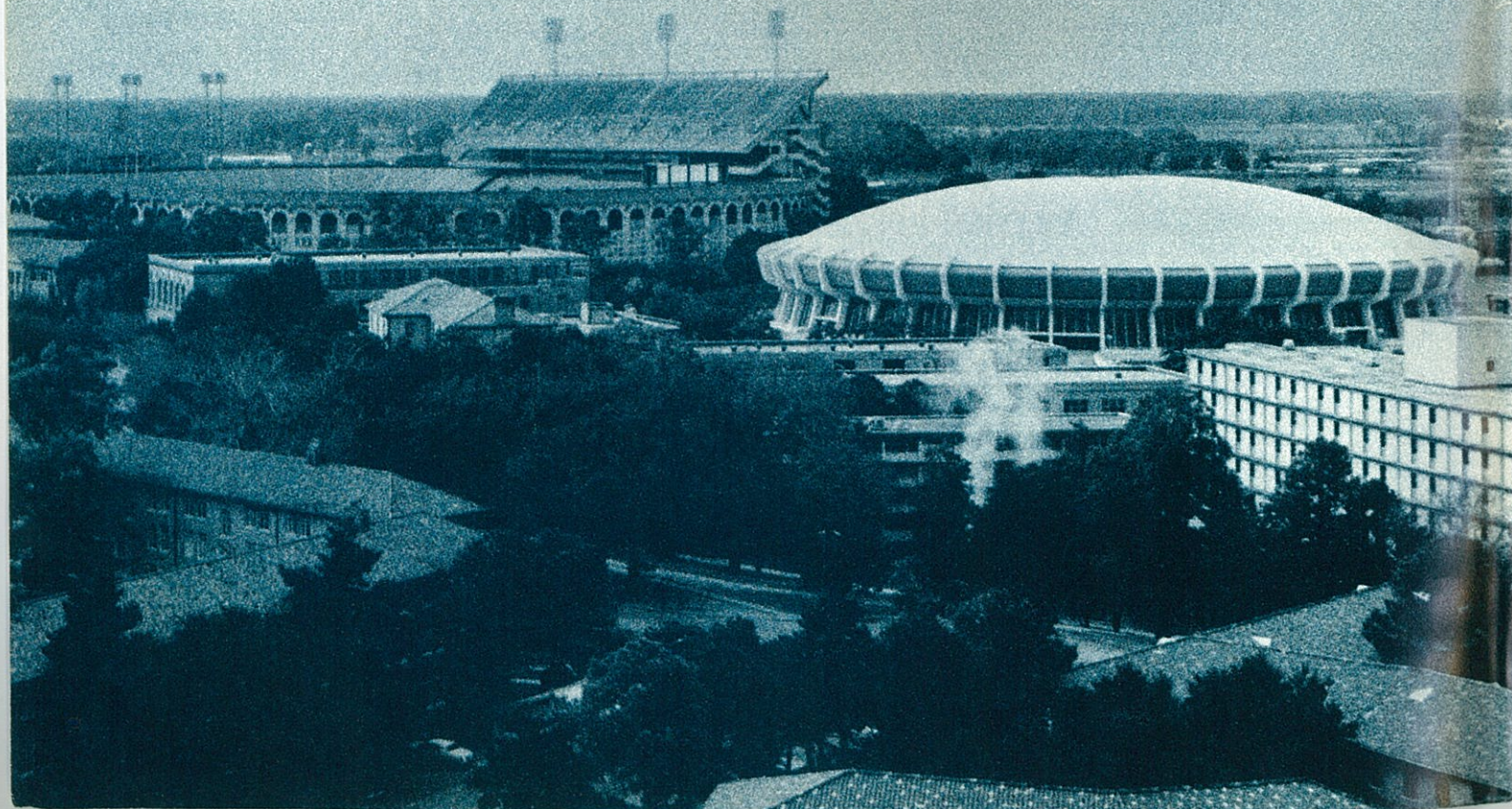
September 16, 1989 • Tiger Stadium • Baton Rouge, Louisiana \$2.00

Our Future Together Looks Healthy.

Tiger spirit brings the entire Baton Rouge community together. That same community spirit makes Gulf South Health Plans a vital part of our city's well-being. Gulf South is a locally owned company, dedicated to bringing quality health care to as many of our citizens as possible. Toward that end, we've developed a family of health care products that can be tailored to meet the needs of local employer benefit programs. Just like the Tigers, we're working together to make all of us winners.



GULF
SOUTH
HEALTH
PLANS



ON THE COVER: Ruffin Rodrigue, a second generation Fighting Tiger, epitomizes the fierce spirit of LSU Football. Regarded as undersized in comparison to most behemoth offensive linemen, the senior from Thibodaux has owned the starting left guard slot for three seasons. The strongest player on the LSU squad, Rodrigue uses his compact physique to gain leverage on opposing defenders. For more on Rodrigue and the Fighting Tiger front wall, turn to page 2.

LSU TIGERS vs. FLORIDA STATE SEMINOLES

Saturday, September 16, 1989
6:30 p.m. - Tiger Stadium Baton Rouge, La.

THIS WEEK'S FEATURE: The Linemen	2-3
Tonight's Game	5
Game Report: LSU vs. Florida State	7
Head Coach Mike Archer	9
Louisiana State University	11
This is LSU Football	13-17
Tiger Stadium	18
Band, Cheerleaders, Golden Girls	19-20
Meet the Tigers	25-31
Assistant Coaches	32-34
Support Personnel	37
Stadium Information	38
SEC Schedules and Scores	43
University Chancellor	47
LSU ROSTER	48
STARTING LINEUPS	50-51
FLORIDA STATE ROSTER	53
OFF THE FIELD: Athletic Facilities	55
Meet the Florida State Seminoles	57
Tiger Volleyball	58
Tigers in the Classroom	60
Tiger Athletic Foundation	62-65
TigerVision	66
LSU Sports Network	68
LSU All-Americans	69
Coaches on Campus	70
Athletic Staff	72-74
Athletic Director Joe Dean	78
LSU Foundation	80
LSU Alumni Association	83
Basketball Preview	86
The Southeastern Conference	93
Ladies of LSU	97
LSU Public Relations	100

LSU Tigers . . . the LSU Football Magazine

Publishers: LSU Athletic Department and Southern States Network

Editor: Bill Franques, Asst. Sports Information Director

Advertising Managers: Eddie Martiny, Michelle Salomone - WJBO Sports Marketing

Photo Contributors: Brad Messina, Buff Daniel, Mike Hebert, Jim Zietz

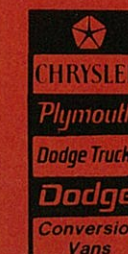
Production: Kaminer & Welch of LA and Kontrol Prepress Production, Baton Rouge

Printing: W.A. Krueger Company, Senatobia, Miss.



Winners of Chrysler's Highest Honor, the "Award for Excellence".

Jess Henderson and Ralph Sellers invite you to visit their dealership where shopping for your next vehicle will be a pleasant experience.



**HENDERSON
SELLERS** MOTOR
COMPANY

GONZALES, LA.

124 S. AIRLINE HWY.

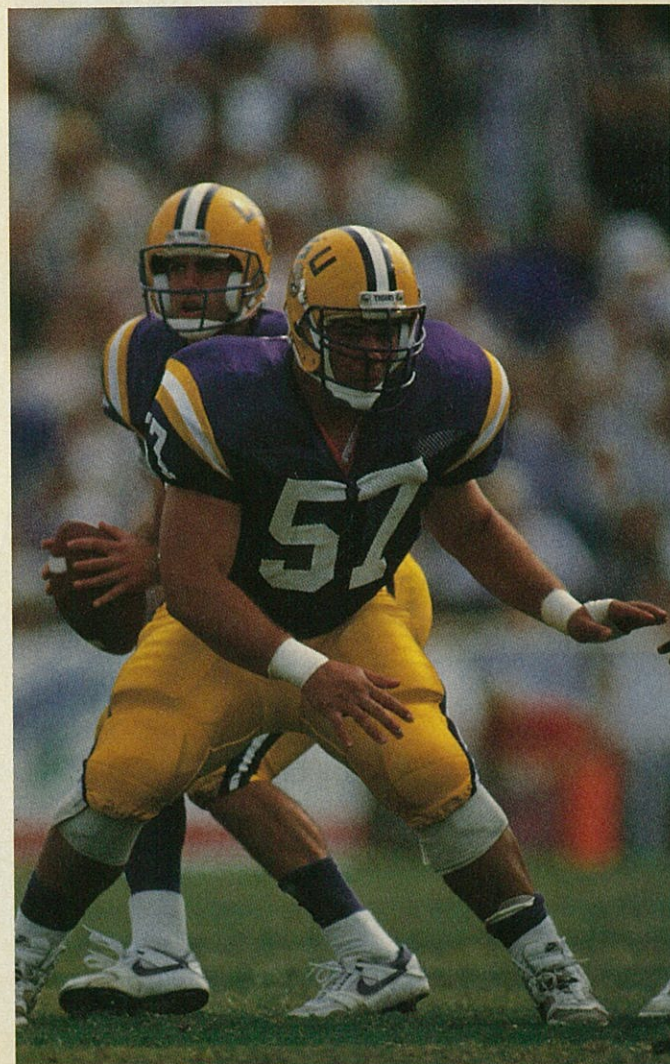
388-9875
644-7542

"Old School" Values Depict LSU Offensive Line

by Bill Franques

The solution, says Ruffin Rodrigue, is elementary. The problem presented before Rodrigue and his fellow linemen is reviving LSU's sometimes inefficient offensive attack of last season.

"We've got to be able to run the football this year," Rodrigue said, "and it's up to the offensive line to get it going. We need to concentrate on the running game. Last year, we couldn't run the ball and it put us into too many passing situations."



Center Blake Miller, a junior from Alexandria, provides protection for Tommy Hodson.

The proliferation of passing downs put undue pressure on quarterback Tommy Hodson, who labored through the least successful season of his stellar career.

Hodson believes a change in outlook among the offensive linemen will translate into increased rushing yardage.

"You've got to have an attitude," Hodson said. "Our new offensive line coach, Kenny Ferro, is from the old school. He's really a hard-nosed guy and the linemen are much more physical, much more aggressive this year. That will be a plus for us. We are running the ball that much better and I think we'll pass the ball better because of that."

"Coach Ferro loves to run the football," said Rodrigue, the Tigers' senior left guard from Thibodaux. "Our line coach last year, Coach (Marty) Galbraith, was more of a pro-type guy who concentrated on the passing game. You'll see the offensive line firing out lower this year, establishing a new line of scrimmage for our backs."

The LSU backfield - bolstered by the return of mercurial tailback Harvey Williams - features outstanding depth, an attribute missing in 1988 when injuries crippled the Tiger's ground game. Eddie Fuller, who earned All-SEC honors in Williams' absence last season, and Calvin Windom return at tailback, while veteran fullbacks Jay Egloff and Victor Jones are devastating blockers who should carry the ball more this season.

Williams says the LSU offense will surpass its output of 1987, when the Tigers, with a line including consensus All-America Nacho Albergamo and current NFL player Eric Andolsek, amassed a school-record 4,843 yards.

"This is the best offensive line we've had since I've been here, and we're ready to roll," Williams said. "The line is balanced on both sides, and they give us the chance to break a game open at any time. A lot of records will fall this year."

Experience abounds on the Tigers' front wall as seniors Rodrigue, right guard Jim Hubicz, and left tackle Robert Packnett are three-year starters. Blake Miller, a junior who played in seven games last season - he graded out best among the LSU

linemen in a starting assignment at Florida - assumes a full-time role at center, while massive (6-7, 296) sophomore Roger Hutchinson takes over at right tackle.

Promising reserves Raymond Smoot, Darron Landry, Frank Godfrey, Chris Truax and Andy Martin combine with the first-team players to form what amounts to a 10-lineman rotation.

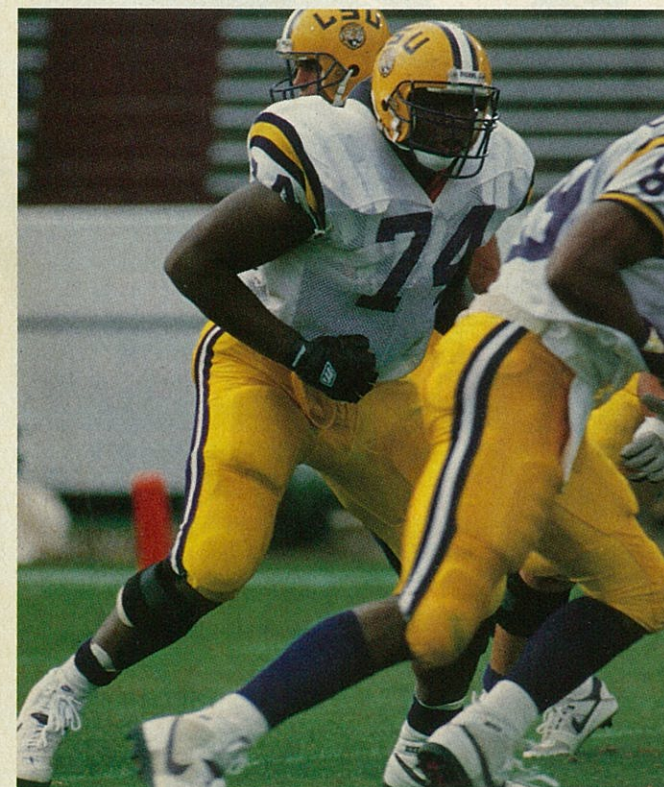
"For the first time in our five years here we've got good depth in the offensive line," said head coach Mike Archer. "We plan on playing a lot of people in the game at all positions."

Rodrigue is the group's acknowledged leader, a fierce competitor who has developed into one of the best linemen in the Southeastern Conference, his relatively modest stature (6-1, 262) notwithstanding.

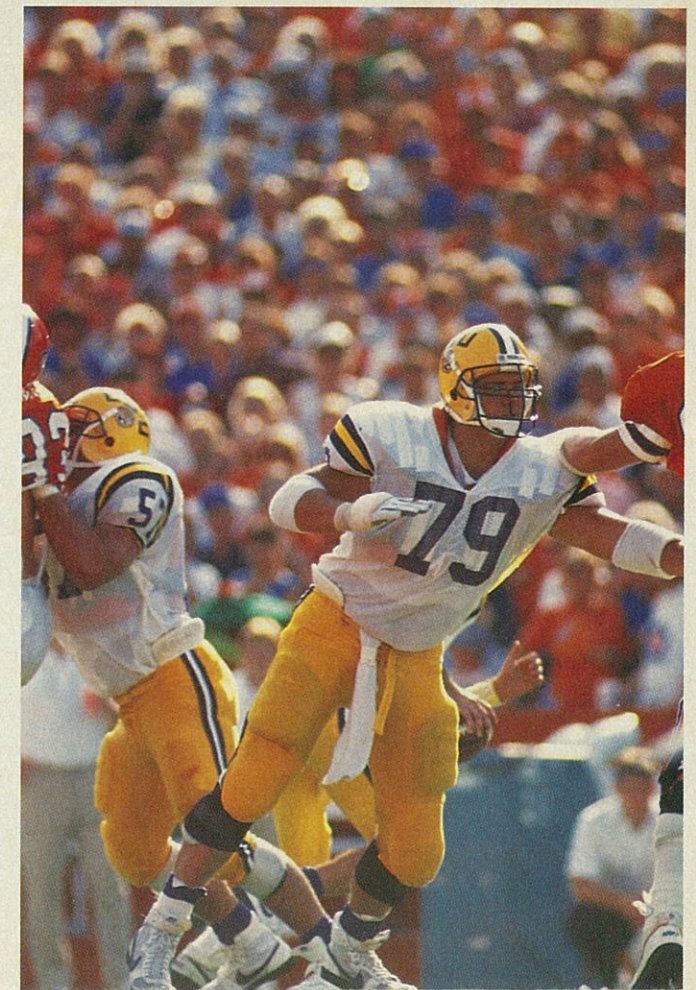
"People say I'm small, but I say I'm just short," he explained. "John Hannah, probably the best offensive lineman of all time, was only 6-1. Terry Long of the Pittsburgh Steelers is 5-10. I feel I'm one of the strongest linemen in the SEC."

"Hey, I could be on steroids and weigh 295 pounds," he said candidly. "But, what you see on me is natural. I wouldn't do that to my body or to my future family. If taking steroids is what it takes to play pro football ... I'm sorry, I'll do something else."

Rodrigue, who shares an acute interest in politics with Hodson, does not include reticence in his list of personal traits. At times, however, his effusive nature can be misunderstood as it was



Robert Packnett is currently in his third season as a regular on the LSU offensive line.

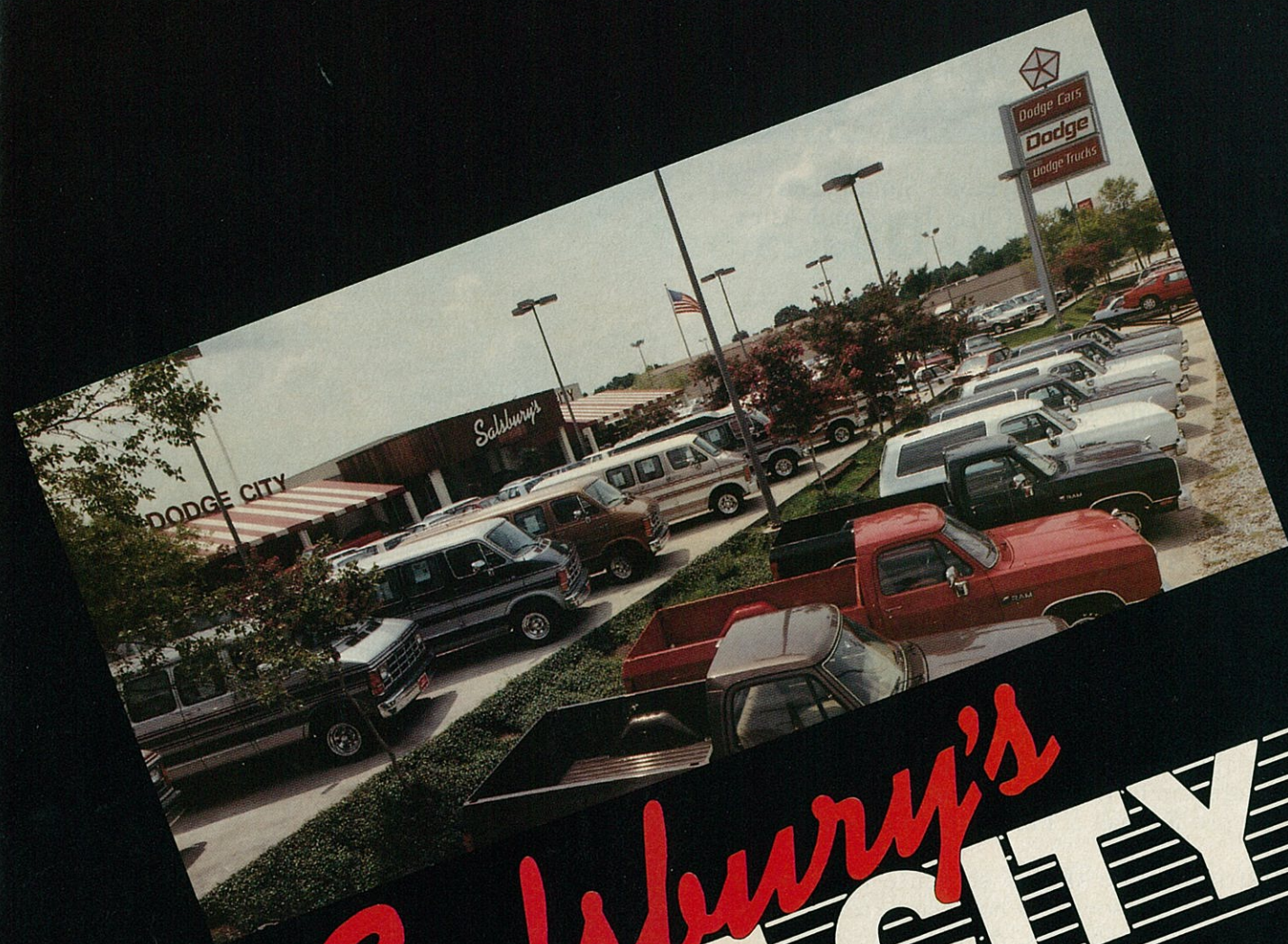


Versatile Jim Hubicz has been a starter at both guard and tackle during his career.

during the summer, when his disparaging remarks about the minority of fans who boo in Tiger Stadium were misconstrued to encompass all LSU supporters.

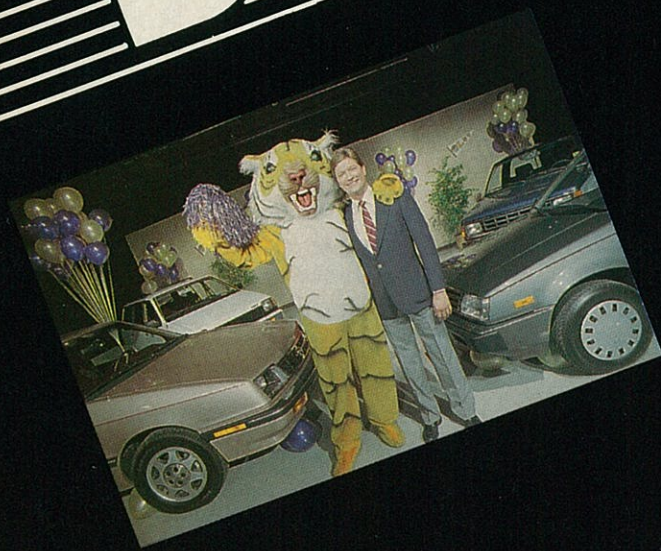
"Those comments were just meant for the boosers," said Rodrigue, whose father, Ruffin, Sr., lettered as a center at LSU in 1962-63-64. "I'm out there doing something I've worked for all my life and I'm sorry, I'm not going to be embarrassed in front of my family by people booing at me. But, that's just a few of the fans ... I love the fans; I've been an LSU fan all of my life."

Even the most discerning Fighting Tiger devotees will be appeased should Rodrigue and his colleagues along the offensive line provide the impetus for another record-breaking year.

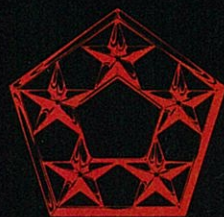


Salsbury's
DODGE CITY

#1 Dodge Dealer in Louisiana



1989 FIVE-STAR DEALER
2nd YEAR IN A ROW
Chrysler's Highest Award for Service and Customer Satisfaction



9550 Airline Hwy. • Baton Rouge • (New) 926-5211 (Used) 926-8343

*According to Chrysler Corp. New Orleans zone office.



Tonight's Game

Saturday Night, Tiger Stadium...Enjoy

By Herb Vincent

Tonight the Tigers raise the curtain on their 96th home opener and 66th year in Tiger Stadium. While a crowd of over 80,000 fills the arena tonight, millions more will tune in the national telecast of two Southern football powers doing battle in, what The Sporting News this year called, the best place to attend a college football game.

Let us enjoy the spectacle that awaits here tonight. Too often, we take for granted the time we live in, not realizing the greatness of the moment or the history-in-the-making before our own eyes.

For only 10 more games can Tiger fans revel in the exploits of quarterback Tommy Hodson, soon to become the most prolific passer in Southeastern Conference history. Pause just a moment and think of the quarterbacks who have passed through this league.

Harry Gilmer. Babe Parilli. Zeke Bratkowski. Fran Tarkenton. Joe Namath. Steve Spurrier. Kenny Stabler. Archie Manning. Pat Sullivan. Bert Jones. Richard Todd.

By season's end, Hodson will have thrown for more yards and more touchdowns than any of these legends.

Football pundits across the Southeast have haggled over the debate recently about the SEC's "Team of the '80s." Is it Georgia, by virtue of the Herschel Walker years and a national championship, or Auburn for its three conference titles and brush with national superiority?

Yet it is LSU which has posted the best record in the Southeastern Conference over the last half-decade. Tiger fans should celebrate that steady rise back to prominence. No longer is Alabama the definition of SEC football, just as Kentucky is no longer the definition of SEC basketball.

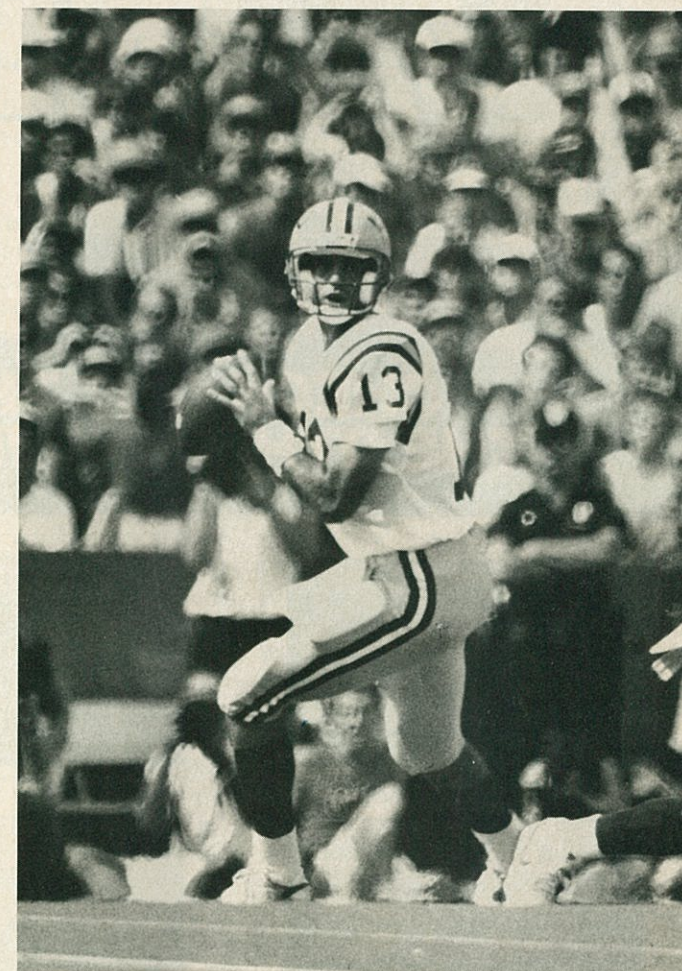
Not until a program digresses, it seems, are we inclined to look back and realize we lived in "the Golden Years." SEC football is at an all-time high, but what would an Alabama fan give to go back to the Bear Bryant years? How much does an Ole Miss fan yearn to see Archie Manning throw another pass?

As time passes we will look back on last year's Auburn game as one of Tiger lore. How quickly legendary moments occur, then disappear. An errant Tommy Hodson pass on fourth and 10 with 1:41 to play, and 6-0 would have been just another loss in the LSU record book.

But that one pass turned the contest into a magical game. We could look back on the stubbornness of the Tiger defense or the tenacity of the offense when faced with two fourth down plays on the final drive.

Little did we realize when Hodson released the football that night, with 1:41 to play in the game, that he would complete a pass to destiny. The excitement of the moment was reflected by the outburst of the crowd, so intense that it registered on a seismograph meter in the campus' geology building.

Little did we realize that one high school senior was sitting in his home, in the midst of his final prep season and deciding where to pursue his college career, when he



Tommy Hodson should soon become the SEC's all-time leading passer.

saw that outburst.

"Why did you decide to come to LSU?" that player was asked this fall by a local writer. Such is the question that every freshman faces.

"I liked the stadium," he replied.

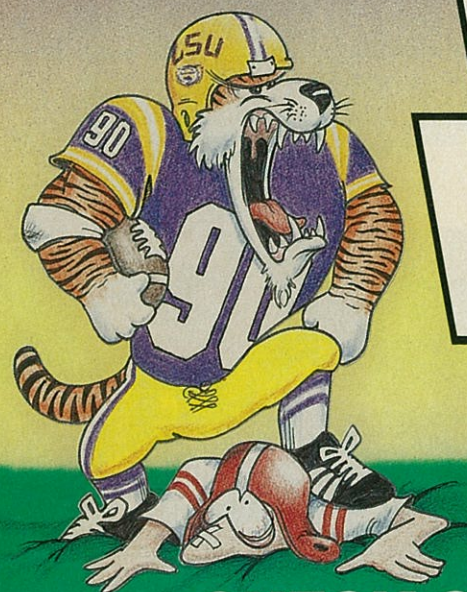
"Which game did you come to?"

"It wasn't a game I came to. I saw it on television. It was great. I knew then this is where I wanted to play."

Maybe that freshman will spend his time on this campus as just another in the long list of lettermen who practice and play, then move on to other things. But then, maybe he will be the one to surpass Tommy Hodson in the all-time passing chart. The cycle will continue.

We often recall the greatness of the past or wait for the promise of the future. Tonight, as LSU meets Florida State on the floor of Death Valley, let's enjoy the present.

This is football at its finest.



WE'VE GOT THE WINNING DRIVE!

**CHECK OUT THE LINE-UP AT
THE OTHER UNIVERSITY IN TOWN.**



FORD FESTIVA



FORD TEMPO



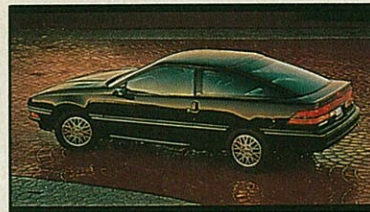
FORD F-150 PICKUP



FORD MUSTANG



FORD TAURUS



FORD PROBE



FORD RANGER



FORD THUNDERBIRD



FORD CROWN VICTORIA

**IT'S GOTTA BE
UNIVERSITY**

7787 FLORIDA BOULEVARD
Between Cortana & Bon Marche **OPEN MON-FRI TIL 8PM SAT TIL 6PM**



927-5555



Game Report

Tigers Play Host to 0-2 Seminoles

The LSU Tigers return to action after an open date with the 1989 home opener against Florida State. The game, televised by ESPN, pits two of the Southeast's most successful football programs in their first meeting since 1983. Both teams suffered season-opening upsets on September 2, as the Tigers dropped a 28-16 decision to Texas A&M at College Station and the Seminoles fell to Southern Mississippi, 30-26. Florida State enters tonight's game with a 0-2 mark after last week's 34-23 loss to Clemson.

The Series

Florida State leads this series, 4-2. The first meeting was in the inaugural Peach Bowl in Atlanta on Dec. 30, 1968, with LSU winning 31-27. The Seminoles won the last meeting, 40-35, in the Tigers' 1983 season opener in Tiger Stadium on national television. LSU's last victory over the Seminoles was in 1982 as quarterback Alan Risher led the Bayou Bengals to a 55-21 win which sent the Tigers to the Orange Bowl. Florida State won three straight games from 1979-81 and leads the series at Baton Rouge, 4-1. These teams play again in Tallahassee in 1990 and 1992 and in Baton Rouge in 1991.

The Coaches

LSU coach Mike Archer, 36, is in his third year at the helm of the Fighting Tiger program. Archer, who has a career mark of 18-6-1 (.740), posted a 10-1-1 record in 1987, the best by a first-year coach in LSU history. Archer faces Florida State for the first time tonight; however, he has seen the Seminoles on the field as a player and assistant coach for the University of Miami, recording a 7-4 mark versus FSU.

Bobby Bowden, in his 14th season as the head coach at Florida State, has a record of 112-40-3 (.732) at FSU. Bowden, who has also served as head coach at Samford (1959-62) and West Virginia (1970-75), has an overall career mark of 185-72-3. The third winningest active college coach, he has led the Seminoles to 10 bowls

in 13 years, including the last seven seasons. Bowden is 4-1 against LSU, with all five games coming during his Florida State tenure.

Tiger Notes

*Three-time All-SEC quarterback Tommy Hodson needs just 294 yards to become the all-time career yardage passer in LSU history. Hodson enters the FSU game with 6,628 yards in a career that began in 1986. Jeff Wickersham threw for 6,921 yards in his career from 1982-85. Hodson needs only 372 yards to become the first 7,000-yard passer in LSU history and the fourth in SEC history.

*LSU is 6-1 in games played after an open date the last five years. The last time the Tigers lost after an open date was in 1985 when they fell to Florida two weeks after playing Colorado State. The Texas A&M loss two weeks ago was the first defeat before an open date since Miami (Ohio) beat the Tigers in 1986. The last time the Tigers lost both the game before and after an open date was the final two games of the 1981 season. LSU lost to Miss. State on Nov. 14, then fell to Tulane two

weeks later in the Superdome.

*LSU defensive backs coach Joe Wessel is a Florida State graduate and a former Seminole great. Wessel played in the FSU secondary, lettering from 1981-84, but was best known for his performance on special teams. Wessel holds the school record for most blocked kicks in a season with five in 1984. He scored three touchdowns off blocked kicks that season, including two in one game versus Arizona State.

*Karl Dunbar and Corey Raymond were selected as LSU's defensive players of the game at Texas A&M. Dunbar, the Tigers' left tackle, finished with 11 stops on the day and Raymond, LSU's right cornerback, recorded three tackles with one pass breakup. Punter Brian Griffith was named special teams player of the week for his incredible four punts inside the A&M 10-yard line. No offensive player of the game was selected.

Game Statistics

LSU						INDIVIDUAL						FLORIDA STATE					
Rushing						Rushing						Rushing					
Att.	Yds.	Avg.	TD	LG		Att.	Yds.	Avg.	TD	LG		Att.	Yds.	Avg.	TD	LG	
Harvey Williams	13	32	2.5	0	9	Dexter Carter	25	133	5.3	3	25						
Jay Egloff	7	11	1.6	0	4	Chris Parker	10	62	6.2	0	11						
Eddie Fuller	7	10	1.4	0	9	Paul Moore	7	35	5.0	1	20						
Passing						Passing						Passing					
Att.	Comp.	Yds.	Pct.	Int.	TD	Att.	Comp.	Yds.	Pct.	Int.	TD	Att.	Comp.	Yds.	Pct.	Int.	TD
Tommy Hodson	32	17	168	.531	1	2	Peter T. Willis	80	47	511	.588	1	1				
Receiving						Receiving						Receiving					
No.	Yds.	Avg.	TD	LG		No.	Yds.	Avg.	TD	LG		No.	Yds.	Avg.	TD	LG	
Tony Moss	7	53	7.6	0	17	Lawrence Dawsey	9	151	16.8	1	24						
Alvin Lee	4	46	11.5	0	16	Terry Anthony	7	68	9.7	0	20						
						Ronald Lewis	6	101	16.8	0	24						
						Dave Roberts	6	57	9.5	0	21						
Punting						Punting						Punting					
No.	Yds.	Avg.	Bkd.	LG		No.	Yds.	Avg.	Bkd.	LG		No.	Yds.	Avg.	Bkd.	LG	
Rene' Bourgeois	3	141	47.0	0	53	Charlie Ward	8	324	40.5	0	54						
Brian Griffith	4	165	41.3	0	49												

LSU		Opp.		TEAM		Florida St.		Opp.	
36.0	199.0	143.5	200.0	Avg. Rush Yds./Game		143.5	200.0		
168.0	145.0	270.5	208.0	Avg. Pass Yds./Game		270.5	208.0		
204.0	344.0	414.0	408.0	Avg. Total Yds./Game		414.0	408.0		
17-32-1	9-12-0	49-86-1	29-49-2	Pass Comp./Att./Int.		49-86-1	29-49-2		
4-1	2-0	5-4	3-3	Fumbles/Lost		5-4	3-3		



NO PENALTY FOR PILING ON.

Extra pickles, extra lettuce, extra tomato...calls like these would put you on the sidelines at most places, but not at Burger King. From onion rings to shakes, our wide open line-up lets you make the call. So come on in and pile it on.



©1989 BURGER KING CORPORATION



Head Coach Mike Archer

In just two short years, Mike Archer has proven himself as one of the bright young minds in collegiate football. And there was no better proving ground for his ability than the 1988 season.

Archer took a team that lost six offensive starters and six defensive starters from the season before to a co-championship in the rugged Southeastern Conference.

Last year's team, time and time again, dispelled jinxes and overcame seemingly impossible odds en route to the top of the SEC.

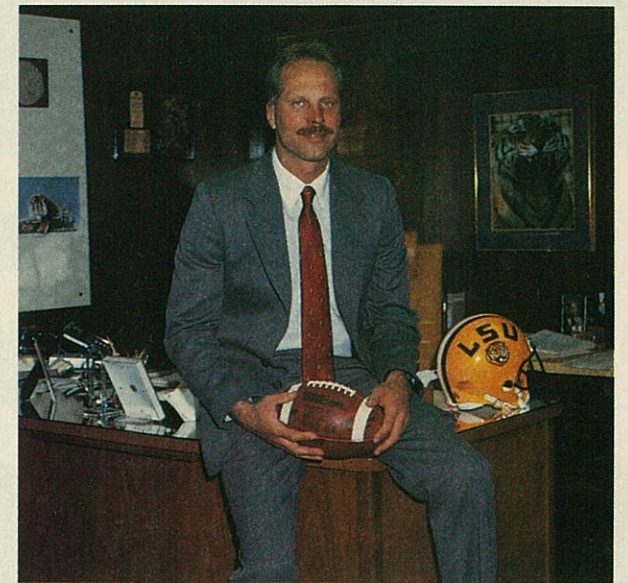
The 1988 Tigers were the first LSU team to ever win at Knoxville, Tenn., the first to win at Tuscaloosa, Ala., since 1902, and the first to beat Alabama, Ole Miss, and Mississippi State all in the same season in 16 years.

And though the SEC is considered, top-to-bottom, to be the strongest football league in the nation, it has taken the 36-year-old Archer just two seasons to defeat every SEC team he has faced. Only Vanderbilt has not played LSU over the last two years.

Archer led the Tigers to a 10-1-1 record in 1987, his inaugural season, the best first-year record by an LSU head coach in school history. He was, at the time, the youngest head coach in Division I-A football. In making his mark as a rookie head coach, Archer became only the third coach in LSU history to win nine games in his first season at the program's helm.

Last year, the loss of All-Americans Wendell Davis and Nacho Albergamo to graduation and stellar tailback Harvey Williams to injury led to projections of a lower division finish in the SEC by some observers. Yet those predictions of doom only served to inspire Archer's troops to its second SEC title in the last three years.

Archer spent three seasons as a member of Bill Arnsparger's coaching staff, including two years (1985-86) as defensive coordinator, before being elevated to head coach. Since Archer joined the staff as an assistant in 1984, LSU has the best record in the SEC (both league games and overall). In regular season games since 1984, LSU is 24-5-2 (.806) in



Mike Archer, head coach of the Fighting Tigers.

the SEC and 43-9-3 (.809) overall.

Hired by Arnsparger in December of 1983, Archer had spent the previous eight years as an assistant at the University of Miami. In 1983, just 14 days before his hiring at LSU, he helped Miami to a 31-30 Orange Bowl win over Nebraska and a subsequent national championship.

As the supervisor of LSU's nationally renowned defense, Archer was an integral part of the Tigers' 26-8-2 record during the period from 1983-86, and in 1985 his defense ranked third nationally against scoring and eighth against rushing.

During Archer's tenure as an assistant coach, LSU appeared in the Liberty Bowl (1985) and two Sugar Bowls (1985, 1987), won the 1986 SEC Championship and finished 10th in the final Associated Press poll. Also in 1986, Archer's defensive backfield led the SEC in interceptions and tied the school record (27) for most interceptions in a season.

Following his playing career at Miami, Archer joined the Hurricane coaching staff as a graduate assistant in 1976, working with the special teams and serving as defensive coordinator for the freshman team. After spending the 1977 season in the same position, he was named administrative assistant to the head coach for the 1978 season, and in 1979 was elevated to the full-time coaching staff by head coach Howard Schnellenberger.

Archer coached defensive backs from 1979 to 1983 as the Hurricanes played in two bowl games.

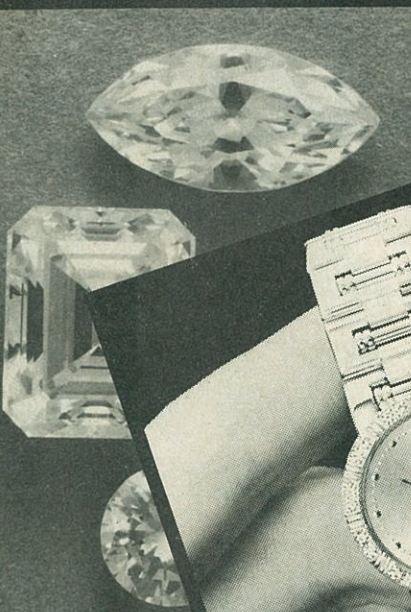
A native of State College, Pa., Archer was a three-year letterman at Miami who started two seasons at free safety and also punted. In 1975 he was named the University's Football Scholar Athlete of the Year and earned his bachelor's degree in education that year as he was named the School of Education's Outstanding Senior.

In 1977 he earned a Master of Education degree in Health and Physical Education from Miami and was a member of the Omicron Delta Kappa national honor fraternity, the second highest ranking academic fraternity in America.

Archer is married to the former Barbara Pollak of Kansas City, Mo., and the couple has two children - Jeffrey Matthew, 7, and Betsy, 4.



Barbara and Mike Archer with their children, Jeffrey Matthew and Betsy.



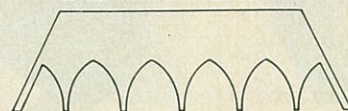
World's Finest Diamonds
Priced With You In Mind

Exclusive Designs
With The Alessi Touch



A Name You Can Trust

ALESSI



8700 Florida At Airline 927-0000



Meet the Tigers



13 Tommy Hodson
Quarterback



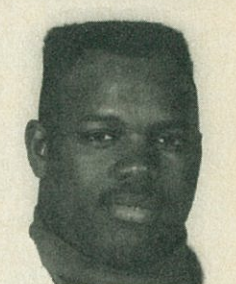
14 Tony Houston
Weak Safety



79 Jim Hubicz
Offensive Tackle



71 Roger Hutchinson
Offensive Tackle



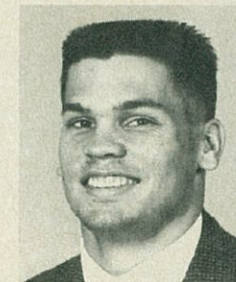
70 Clint James
Defensive End



88 Brian Jenkins
Tight End



34 Victor Jones
Fullback



49 Todd Kinchen
Split End/Flanker



76 Darron Landry
Offensive Guard



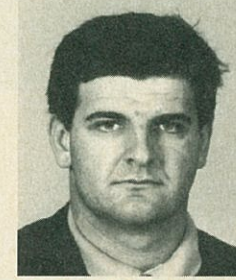
99 Oliver Lawrence
Outside Linebacker



26 Alvin Lee
Split End



25 Derriel McCorvey
Strong Safety



69 Andy Martin
Offensive Tackle



8 Joe Mero
Cornerback



50 Eric Middleton
Inside Linebacker



57 Blake Miller
Center



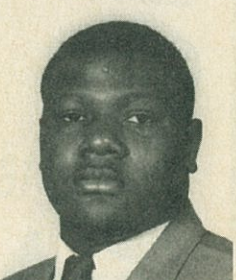
7 Chris Moock
Quarterback



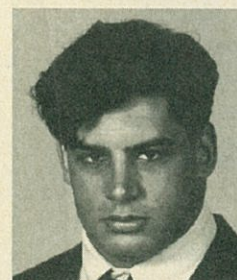
90 John Morgan
Offensive Lineman



6 Tony Moss
Flanker



59 Clayton Mouton
Defensive End



93 Mike Murla
Inside Linebacker



43 Fred Norfleet
Fullback



97 Craig Norris
Defensive End



74 Robert Packnett
Offensive Tackle



73 Chris Pettaway
Offensive Guard



Meet the Tigers



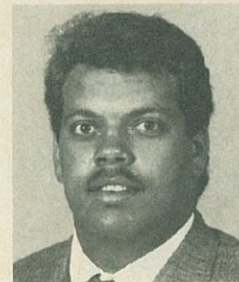
44 Torrin Polk
Tailback



38 Derek Pope
Fullback



19 Corey Raymond
Strong Safety



67 Steve Reading
Offensive Guard



68 Ruffin Rodrigue
Offensive Guard



29 Sammy Seamster
Tailback



61 Raymond Smoot
Offensive Tackle



24 Mike Stepteau
Cornerback



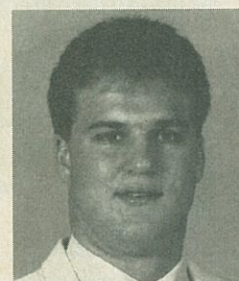
84 Tyke Tolbert
Flanker



66 Chris Truax
Offensive Guard



53 Nigel Ventress
Outside Linebacker



85 David Walkup
Inside Linebacker



64 Scott Wharton
Noseguard



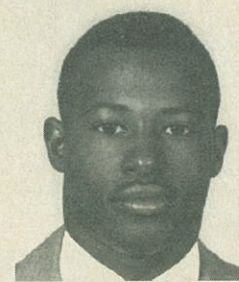
48 Anthony Williams
Inside Linebacker



32 Darrell Williams
Fullback



22 Harvey Williams
Tailback



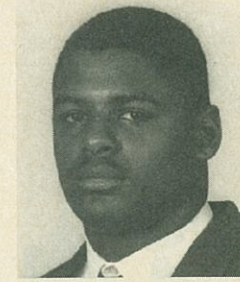
23 Wayne Williams
Cornerback



81 Willie Williams
Tight End



80 Jerry Wilson
Split End



3 Calvin Windom
Tailback



5 Jimmy Young
Cornerback

Be Our Guest at Pleasant Hall

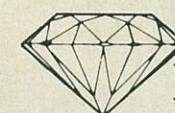


- Comfortable, spacious guest rooms, completely redecorated
- Conveniently located in the heart of the LSU campus; easy access to I-10, I-12, and downtown
- Complimentary concierge attention; continental breakfast and evening beverage service
- Conference facilities professionally coordinated by the Continuing Education Center

The next time you visit LSU, make your stay a pleasant one!

For reservations, write or call

Pleasant Hall
LSU
Baton Rouge, LA 70803
(504) 388-3255 or
1-800-CALL-LSU



DIAMOND ETERNITY RING

EXCEPTIONAL
Quality, Price, Selection

No matter what the reason for giving
it might be, nothing quite says as
much, nor means as much, as the
diamond eternity ring.

Diamonds set in 14kt. gold.

NOW from \$187.50

JAMES-LAIRD
Jewelers

924-5051
690 Oak Villa, Near Cortana Mall



TIGER GRR-REETINGS

*We Carry the Largest
Selection of LSU Items!*

OPEN 7 DAYS A WEEK

University
Shopping Center
160 W. State St.

**We Ship
387-2299**

CAN'T BEAT A FAJITA!

Airline At Florida.

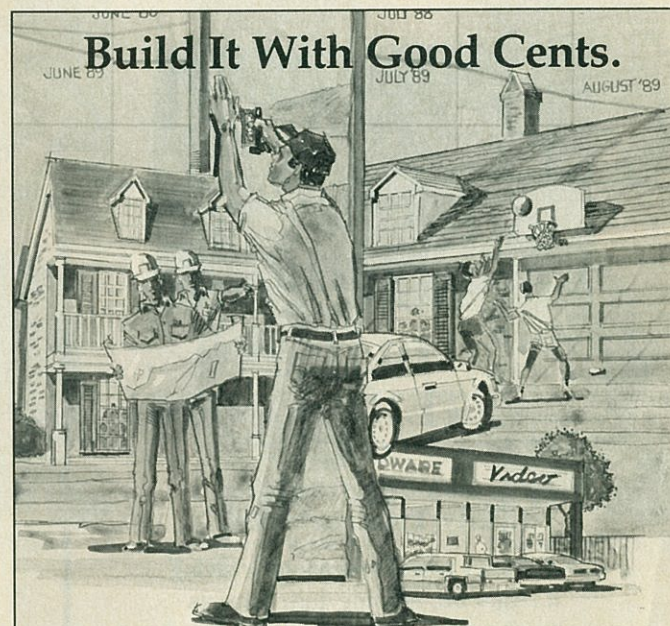


The Baton Rouge Holidome
"The Better Place to Be"

Indoor/Outdoor Swimming Pools
Jacuzzi - Fully Equipped Exercise Room
Rafferty's Restaurant and Lounge
Two Concierge Floors
334 Beautiful Guest Rooms
Meeting and Banquet Rooms
for 6 to 450 people

Holiday Inn Baton Rouge - South

at the intersection of 1-12 and La. 61
(504) 924-7021



Whether building a major commercial development, or your first home, make sure you build it with Good Cents. The Good Cents program is your guarantee of energy efficiency and lower utility costs. The professionals at DEMCO can show you how to use this popular program to improve the value and comfort of any project you undertake. So when you're planning to build, make sure you and your builder use Good Cents, call DEMCO at 261-1221.



Incoming Freshmen



30 Leo Abel



86 Harold Bishop



72 Jeff Cancienne



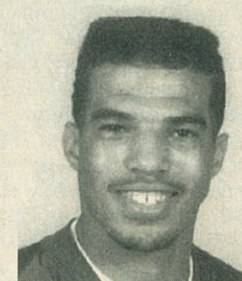
1 Marcus Carter



15 Jesse Daigle



45 Mike Hewitt



9 Wes Jacob



78 Craig Johnston



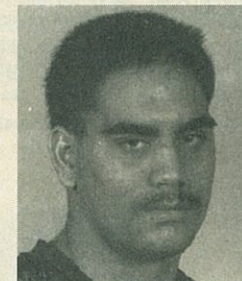
83 Steve Logsdon



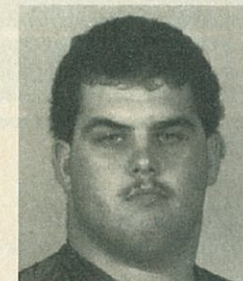
16 Chad Loup



40 Anthony Marshall



52 Kevin Mawae



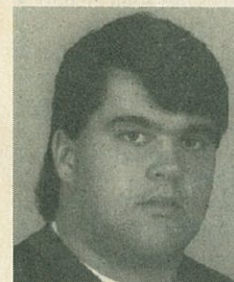
92 Shannon Nevedomsky



39 Scott Ray



65 Ross Setters



62 Ronnie Simnicht



60 Sonny Smoak



10 Brad Strohm



35 Roovelroe Swan



54 Corey White

Graduate Assistants



Dan Casterline
Graduate Assistant



Mike Hebert
Graduate Assistant



Mickey Mays
Graduate Assistant



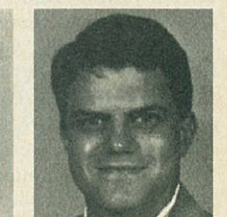
Tucker Peavey
Graduate Assistant



Jay Thomas
Graduate Assistant



Dave Ditthardt
Volunteer Coach



Chris Landry
G.A. - Recruiting



Assistant Coaches



Ed Zaunbrecher
Offensive Coordinator/
Quarterbacks

Ed Zaunbrecher is in his sixth season at LSU's offensive helm after working the previous four years as the offensive coordinator at Wake Forest.

The architect of LSU's record-setting offenses in 1986 (4,544 yards) and 1987 (4,843 yards), Zaunbrecher has molded perhaps the finest quarterback in the land in Tommy Hodson, a three-time Coaches' All-SEC selection. Under Zaunbrecher's tutelage, Hodson and Jeff Wickersham have virtually rewritten the school's total offense and passing records.

Zaunbrecher was a center and middle linebacker at Middle Tennessee State (1969-72) before becoming a graduate assistant offensive line coach at Arizona in 1973-74. He was elevated to full-time status at Arizona before moving to Purdue in December of 1976. He arrived in 1980 at Wake Forest, where he worked for four seasons.

Zaunbrecher's cousin, Godfrey Zaunbrecher, was a star center at LSU from 1967-69.

A native of Rayne, La., the 39-year-old Zaunbrecher is married to the former Bobbi McKinney of Paris, Ill., and the couple has three children - Ann Lindsey, Emily Jane, and Bryan Zachary.



Pete Jenkins
Defensive Coordinator/
Defensive Line

The veteran of the LSU coaching staff, Pete Jenkins was named defensive coordinator in 1987, adding to his responsibilities as the Tigers' defensive line coach, which he has handled since coming to Baton Rouge in 1980.

Jenkins has tutored some of the Tigers' most outstanding defensive players, including Leonard Marshall of the 1986 World Champion New York Giants, Henry Thomas of the Minnesota Vikings, Roland Barbay of the Seattle Seahawks, and 1988 All-SEC noseguard Darrell Phillips.

Jenkins joined the LSU staff from the University of Florida, where he served during the 1979 season. He was defensive line coach at Oklahoma State in 1977 and '78, defensive coordinator at Southern Mississippi from 1975-77, defensive ends coach at South Carolina from 1973-75 and defensive coordinator at Troy State from 1968-72.

He received a junior college diploma at Gordon Military Academy before graduating in 1964 from Western Carolina, where he played linebacker.

Jenkins was born August 27, 1941, in Macon, Ga., and graduated from Hawkins High School. He is married to the former Donna Reece of Montgomery, Ala., and they have two children - Jennifer and Jeff.



Jessie Daigle
Running Backs

One of Louisiana's finest high school coaches during his stay at John Ehret in New Orleans, Jessie Daigle is responsible for the running backs at LSU. He was named to the Tiger coaching staff in January of 1984 after seven years as head coach at John Ehret, where he compiled a 66-17 record, including the 1980 AAAA State Championship.

In 1987, LSU tailback Harvey Williams became one of six SEC backs to gain more than 1,000 yards during the season. Last year, tailback Eddie Fuller was selected to the Coaches' All-SEC team under Daigle's tutelage.

A native of Harvey, La., and a product of West Jefferson High School, Daigle attended Southeastern Louisiana, where he graduated in 1968. He was a two-year letterman as an offensive guard and earned three letters as a third baseman at SLU.

The 44-year-old Daigle began his coaching career as an assistant at West Jefferson, serving eight years. He left his prep alma mater in 1977 to become John Ehret's first football coach.

Daigle and his wife Danis have two children - Christe and Jesse.



Kenny Ferro
Offensive Line/Centers
and Guards

Kenny Ferro, who came to LSU last season after serving one year as the offensive line coach at Nicholls State, is responsible for coaching the Tigers' centers and guards. Last year he tutored the Tiger tight ends and was offensive line assistant to Marty Galbraith.

A New Orleans native, the 42-year-old Ferro earned his bachelor's degree in physical education from Northwestern State in 1970. He was a four-year letterman at NSU and a member of the 1966 Northwestern State NAIA national championship team.

After graduating from NSU, he spent five years in the field of special education before beginning his coaching career in the Jefferson Parish junior high school ranks. He was named offensive coordinator in 1977 at John Ehret High School, where he remained until the conclusion of the 1986 season. During his tenure there, the Patriots won two state championships (1980, 1985).

Ferro is married to the former Karen Vernaci and the couple has three children - Stacy, Kyle, and Kellie.



John Fontes
Inside Linebackers

John Fontes becomes the LSU inside linebacker coach this season after tutoring the Tiger defensive backs for the past two years. Fontes, 40, Mike Archer's last appointment to his 1987 coaching staff, came to LSU from Miami (Fla.), where in 1986 he was the outside linebackers coach.

Last season, LSU allowed the least number of passing touchdowns in the SEC (5). As the secondary coach, he tutored the likes of All-SEC selections Kevin Guidry, Chris Carrier, and last year's national leader in interception return yards, Greg Jackson.

During the 1985 season, Fontes was the defensive backfield coach at Northwestern University of the Big Ten Conference. Prior to that, he worked for Levi Strauss & Co. from 1980-84. He was an assistant coach at Oregon State from 1976-79, coaching wide receivers for one season and linebackers for three seasons.

A 1973 graduate of the University of Iowa, where he played three seasons and served as a graduate assistant, Fontes spent 1973-75 as a coach and teacher at Long Beach (Cal.) Polytechnic High School.

The Canton, Ohio, native and his wife, Theresa, are the parents of a son, Johnny, and a daughter, Ashlee.



John Hendrick
Offensive Line/Tackles
and Tight Ends

The newcomer to the LSU staff, John Hendrick is responsible for coaching the Tiger tackles and tight ends. Hendrick, who worked as a volunteer/part-time coach at Texas A&M in 1987-88, replaces Marty Galbraith, who left LSU last spring to become offensive coordinator at Wake Forest.

The 29-year-old Hendrick, a native of Camden, N.J., is a former three-year letterman and two-time All-East defensive end at Pittsburgh, where he graduated in 1982. He served one year as a graduate assistant at Pitt, one year as outside linebackers coach at Delaware State, two years as offensive line coach at Pitt, and one year as offensive line coach at Southern University.

Hendrick, who signed with the Denver Broncos out of college, earned a master's degree in business from Pittsburgh this past summer. He and his wife, Katherine, had their first child, Amber, in June.

SPORTS UNLIMITED

Be sure to visit
Louisiana's #1 Sports "Super Store"
for name brand equipment, activewear,
& shoes at **Discount Prices** for all
the sports enthusiasts in your family.

-Hunting	-Fishing	-Scuba Diving
-Boating	-Team Sports	-Tennis
-Golf	-Exercise	-Camping
-Cycling Gear	-Bowling Gear	-Shoes
-Water Skiing	-Racquetball	-Canoeing

LET OUR SPORTS EXPERTS ASSIST YOU!

2084 S. Sherwood Forest Blvd.
2 Blocks N. of I-12

STORE HOURS:
M-F 10-9
SAT. 9-9
SUN 11-5

275-3939

RALPH & KACOO'S™

Open Before and After
All LSU Home Games

• Seafood Platters • Charbroiled Fish • Steaks

Bluebonnet at I-10
766-2113

7110 Airline Hwy.
356-2361

CAMPUS FEDERAL'S ALL STAR LINE-UP

- ★ Free Checking*
- ★ Mortgage, Signature & Automobile Loans
- ★ FREE Telephone Banking Service
- ★ VISA Card with \$10.00 Annual Fee

* A \$2.00 fee is charged if the balance of all your accounts added together (savings + checking + IRA, etc.) do not equal \$100.00.

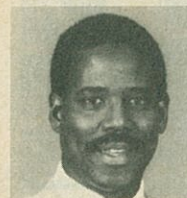
It's Something To Cheer About!

CAMPUS FEDERAL

388-8841 • Nicholson Extension



Assistant Coaches



John Mitchell
Outside Linebackers

John Mitchell enters his third year as LSU's outside linebackers coach after having coached defensive ends at Temple during the 1986 season. He helped mold the careers of All-SEC performers Eric Hill and Ron Sancho over the last two years, and his background includes stops which have seen him serve on the staffs of the legendary Paul "Bear" Bryant at Alabama and Lou Holtz at Arkansas.

Before moving to Temple in 1986, the 38-year-old Mitchell was the linebackers coach for the USFL's Birmingham Stallions from 1983 to '85. He was defensive line coach under Holtz at Arkansas from 1977 to '82, prior to which he held a similar position for four years on Bryant's staff at Alabama, including the Crimson Tide's 1973 national championship season.

Mitchell, a Mobile, Ala., native, played two years (1971-72) at Alabama and was a consensus All-America defensive end his senior season. Prior to transferring to Alabama, he played two years (1969-70) at Eastern Arizona Junior College, where he was a two-time JUCO All-America.

Mitchell earned his bachelor's degree from Alabama in 1972. His wife's name is Joyce.



Sam Nader
Recruiting Coordinator

The senior member of the staff, Sam Nader joined LSU as a graduate assistant in 1975 and was hired by head coach Charles McClendon as a full-time assistant in 1977. He was assigned to his present position in 1980 by head coach Jerry Stovall.

Nader has spearheaded the recruiting efforts of five of LSU's top 10 career rushers, six of LSU's top 10 career passers, and eight of LSU's top 10 career total offense leaders.

The 44-year-old Nader is a former quarterback at Auburn from 1963-67. He received his bachelor's degree in 1967 and his master's degree in 1969 from Auburn. In 1982, he earned a Ph.D. from LSU. From 1968-69 he served as assistant coach at Jordan High School in Columbus, Ga., and was promoted to head coach and athletic director in 1970. He served in that capacity until 1974.

Nader, a Many, La., native, served two tours in Vietnam and was awarded the Soldier's Medal and the Silver Star. He is married to the former Ann Gardner of Montgomery, Ala., and the couple has three children - Breaux, Lauren, and John Ryan.



Jerry Sullivan
Receivers

Jerry Sullivan joined the LSU staff in January of 1984 after serving one year as receivers coach at Indiana University under present Cincinnati Bengals head coach Sam Wyche.

Sullivan coached perhaps the finest receiver in LSU's history. Split end Wendell Davis, with whom Sullivan worked for four years, was named first-team All-America in 1986 and consensus All-America in 1987. Last season, flanker Tony Moss was selected consensus All-SEC.

A Miami, Fla., native, Sullivan, 44, graduated from Jackson High School and played quarterback at Florida State for two years before transferring to Delta State, where he earned a bachelor's degree in 1968 and a master's degree in 1969.

In 1968, Sullivan was named graduate assistant coach at Delta State before taking the head coaching position at Vicksburg (Miss.) High School. He moved to Kansas State in 1971, serving as a graduate assistant and then a full-time assistant for two years.

Sullivan coached tight ends and freshman players at Texas Tech from 1973-75 before serving as receivers coach at South Carolina from 1976-82. He coached receivers on Wyche's staff at Indiana in 1983 before arriving at LSU.

Sullivan has one son, Jon Eric.



Milton Williams
Strength & Conditioning Coordinator

In his fourth year as strength and conditioning coordinator, Milton Williams supervises all LSU athletes in the proper skills and development procedures of those competition necessities. He works primarily with the Tiger football team, but also assists the other sports with their strength and conditioning programs.

Williams, 32, a native of Cabot, Ark., is a 1980 graduate of the University of Arkansas at Monticello. He earned a master's degree in 1984 from Northeast Louisiana.

A former NAIA All-America shot putter, Williams competed in the event at the 1984 U.S. Olympic Trials.

Williams and his wife, Donna, are the parents of three children - John, Jesse, and Kaci.



Joe Wessel
Defensive Backs/
Special Teams

Joe Wessel coaches the LSU defensive backs this season after teaching the inside linebackers for two seasons, and directs the special teams as well. After serving as a graduate assistant for one year and a volunteer coach during the 1986 season, Wessel was promoted to the full-time coaching staff by Mike Archer in January of 1987.

The 27-year-old Wessel, a native of Miami, Fla., assisted Archer in coaching the defensive backs during the '85 and '86 seasons while also working with the special teams.

Wessel was a stellar special teams player at Florida State, where in 1984 he was named All-America special teams player of the year by several publications. During the '84 season, he set an NCAA record for the most blocked punts returned for touchdowns in a game (two vs. Arizona State) and in a season (four). He was a member of three bowl teams ('81 Orange, '82 Gator, '84 Florida Citrus) and has coached in four bowls at LSU.

Wessel, a 1979 graduate of Miami's Pace High School, spent the 1979-80 academic year at Fork Union (Va.) Military Academy, where he starred in football and baseball.



Pat Mitchell
Assistant Strength & Conditioning Coordinator

Pat Mitchell was promoted to fulltime assistant this year after serving as a graduate assistant in the strength program since August of 1988. Mitchell assists Milton Williams in all phases of strength and conditioning for LSU athletes.

Mitchell, 28, was a three-year football letterman (1979-81) at Northeast Louisiana, where he was selected to the Academic All-Southland Conference team in 1982. He was a graduate assistant weight training instructor at NLU, where he also earned a master's degree, before moving on to assistant coaching stints at DeRidder High School (1983) and Woodlawn High School (1984-85).

Mitchell served as head football coach at Winnfield High School in 1986 and 1987, leading both teams to the AAA state playoffs.

Mitchell, a Shreveport, La., native, and his wife, Catherine, are the parents of a daughter - Emily Lauren.



Oray J. "Ray" Domingue



Frank C. "Chip" Etier



Louis Farmer



Dan Faulk



John F. Wemple



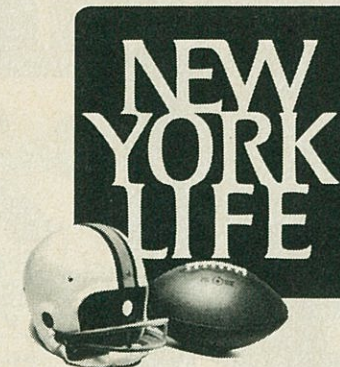
Stuart H. Glasco



Terry J. Gomez



Joe Bourgeois



Get the most out of life.®

YOU NEED A FINANCIAL GAME PLAN TO GET THE MOST OUT OF LIFE.

We know the kind of goals you're aiming for. Financial security for your family and business. Protection against the high cost of illness. Money that can grow for college or a more comfortable retirement.

We're New York Life Agents and we'll help you draw up a realistic game plan — a plan designed to help you reach your financial goals . . . and get the most out of life.

Call one of us today. Helping you stay ahead of the game is our full-time career.

These are some of the many New York Life Agents in this area — all good people to know.

BATON ROUGE GENERAL OFFICE:

Chris G. Delahoussaye, Gen. Mgr.
8440 Jefferson Hwy., Suite 300
Baton Rouge, LA 70809
(504) 922-9211



Georgia H. Ford,
CLU, ChFC



Jack O. Sanders,
CLU, ChFC



Charles F. Spera



Scott M. Russo



George R. Neck



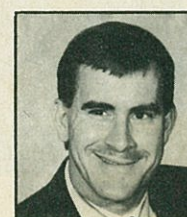
Vincent Webb
Miranda, Sr.



Louis "Boo"
LeBlanc, CLU



Hugo A. Marrero, Jr.



Logan Hardie



Chuck Kirk



Robert J. Krieg, CLU



Denny Langley

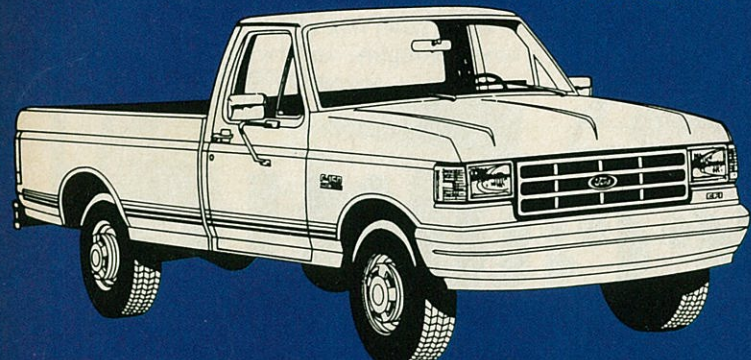
ALL STAR

FORD
LINCOLN
MERCURY

FORD
MERCURY
LINCOLN

ALL UNDER ONE ROOF

1990 FORD
F - 150 PICK-UP



COME JOIN THE ALL STAR TEAM

ON AIRLINE IN GONZALES JUST MINUTES
FROM SHERWOOD FOREST BLVD.
PHONE 647-2121
(BR) 343-2888

1989 LSU Tigers

No.	Name	Pos.	Ht.	Wt.	Class	Exp.	Hometown
1	Marcus Carter	WR	6-1	190	Fr.	HS	Mansfield, La.
3	Calvin Windom	TB	5-11	202	Jr.	1VL	Orlando, Fla.
4	David Browndyke	PK	6-2	185	Sr.	3VL	Dallas, Texas
5	Jimmy Young	CB	5-10	180	Sr.	2VL	San Antonio, Texas
6	Tony Moss	FL	5-8	172	Sr.	3VL	Bossier City, La.
7	Chris Mook	QB	6-1	185	So.	1VL	Greenwell Springs, La.
8	Joe Mero	CB	5-11	184	So.	1VL	New Orleans, La.
9	Wes Jacob	WR	6-1	185	Fr.	HS	Crowley, La.
10	Brad Strohm	QB	6-2	190	Fr.	HS	Ft. Lauderdale, Fla.
11	Sol Graves	QB	6-5	194	Jr.	1VL	Monroe, La.
12	Mike Garrett	FB	5-11	203	Fr.	RS	The Woodlands, Texas
13	Tommy Hodson	QB	6-3	201	Sr.	3VL	Mathews, La.
14	Tony Houston	SS	6-2	200	Jr.	2VL	Ruston, La.
15	Jesse Daigle	QB	6-0	180	Fr.	HS	Baton Rouge, La.
16	Chad Loup	QB	6-2	205	Fr.	HS	Baton Rouge, La.
17	Rene' Bourgeois	P	6-1	172	Sr.	1VL	Baton Rouge, La.
18	Pedro Suarez	PK	5-10	170	Fr.	HS	Hialeah, Fla.
19	Corey Raymond	CB	5-11	185	So.	1VL	New Iberia, La.
21	Raefel Adams	CB	6-0	164	Fr.	RS	Jasper, Texas
22	Harvey Williams	TB	6-3	208	Jr.	2VL	Hempstead, Texas
23	Wayne Williams	CB	5-8	173	So.	1VL	Brazoria, Texas
24	Mike Steptean	CB	5-11	182	Fr.	RS	San Antonio, Texas
25	Derriel McCorvey	SS	6-1	194	Fr.	RS	Pensacola, Fla.
26	Alvin Lee	SE	5-10	188	Sr.	3VL	Beaumont, Texas
27	Vincent Fuller	CB	5-10	178	So.	1VL	Leesville, La.
28	Robby Green	WS	6-0	182	Fr.	RS	Gretna, La.
29	Sammy Seamster	FB	5-10	210	So.	HS	Minden, La.
30	Leo Abel	RB	6-2	205	Fr.	HS	Baton Rouge, La.
32	Andy Lofton	WR	6-1	170	Sr.	1VL	Hammond, La.
33	Eddie Fuller	TB	5-10	199	Sr.	3VL	Leesville, La.
34	Victor Jones	FB	5-9	205	Sr.	3VL	Zachary, La.
35	Roovelroe Swan	LB	6-3	210	Fr.	HS	Shreveport, La.
36	Jay Egloff	FB	6-0	221	Sr.	3VL	Hanover, Pa.
37	Dominique Artis	SS	6-1	189	Fr.	RS	Dallas, Texas
38	Derek Pope	FB	6-1	218	So.	SQ	New Orleans, La.
39	Scott Ray	WR	6-3	195	Fr.	HS	Baton Rouge, La.
40	Anthony Marshall	DB	6-2	180	Fr.	HS	Mobile, Ala.
41	Marshall Frank	OLB	6-2	226	So.	SQ	Ville Platte, La.
42	Tommy Fabacher	VS	5-7	180	Jr.	1VL	River Ridge, La.
43	Fred Norfleet	FB	6-0	250	Fr.	RS	Memphis, Tenn.
44	Torrin Polk	TB	5-10	189	Fr.	RS	Houston, Texas
45	Mike Hewitt	LB	6-3	210	Fr.	HS	Slidell, La.
46	Troy LeBlanc	RB	5-9	180	Sr.	SQ	Lafayette, La.
47	Shannon Cornelius	OLB	6-1	243	Fr.	RS	Minden, La.
48	Anthony Williams	ILB	6-2	231	Fr.	RS	Monroe, La.
49	Todd Kinchen	SE/FL	6-0	192	So.	RS	Baton Rouge, La.
50	Eric Middleton	ILB	6-3	246	So.	1VL	Corsicana, Texas
52	Kevin Mawae	C	6-6	240	Fr.	HS	Leesville, La.
53	Nigel Ventress	OLB	6-1	223	Fr.	RS	Port Arthur, Texas
54	Corey White	LB	6-3	240	Fr.	HS	Shreveport, La.
55	Frank Godfrey	C	6-4	251	Fr.	RS	Pascagoula, Miss.
57	Blake Miller	C	6-2	267	Jr.	2VL	Alexandria, La.
58	Juan Cendoya	ILB	6-3	231	Fr.	RS	Miami, Fla.
59	Clayton Mouton	DE	6-2	264	Fr.	RS	Beaumont, Texas
60	Sonny Smoak	OL	6-3	280	Fr.	HS	Thibodaux, La.
61	Raymond Smoot	OT	6-4	275	Fr.	RS	Leesville, La.
62	Ronnie Simmich	DL	6-5	260	Fr.	HS	Ocean Springs, Miss.
63	Karl Durbar	DE	6-4	274	Sr.	3VL	Opelousas, La.
64	Scott Wharton	NG	6-1	254	So.	1VL	Baton Rouge, La.
65	Ross Setters	OL	6-6	260	Fr.	HS	Memphis, Mo.
66	Chris Truax	OG	6-3	292	So.	1VL	Richardson, Texas
67	Steve Reading	OG	6-2	249	Jr.	SQ	Belle Chase, La.
68	Ruffin Rodrigue	OG	6-1	262	Sr.	3VL	Thibodaux, La.
69	Andy Martin	OT	6-5	275	So.	1VL	DeRidder, La.
70	Clint James	DE	6-6	269	Sr.	3VL	New Orleans, La.
71	Roger Hutchinson	OT	6-7	296	So.	1VL	Gonzales, La.
72	Jeff Cancienne	OL	6-5	265	Fr.	HS	River Ridge, La.
73	Chris Pettaway	OG	6-4	268	Sr.	SQ	Miami, Fla.
74	Robert Packnett	OT	6-5	278	Sr.	2VL	New Orleans, La.
75	Mike Duplantis	OT	6-4	259	Fr.	RS	Mathews, La.
76	Darron Landry	OG	6-3	260	Fr.	RS	Ponchatoula, La.
77	Kenny Davidson	DE	6-6	270	Sr.	2VL	Shreveport, La.
78	Craig Johnston	OT	6-3	300	Fr.	HS	Crosby, Texas
79	Jim Hubicz	OT	6-5	268	Sr.	3VL	Sharon, Pa.
80	Jerry Wilson	SE	5-9	177	Fr.	RS	Mansfield, La.
81	Willie Williams	TE	6-6	249	Sr.	2VL	Houston, Texas
82	Carlton Buckels	FL	5-9	164	Fr.	RS	Amité, La.
83	Steve Logsdon	WR	6-2	180	Fr.	HS	Conroe, Texas
84	Tyke Tolbert	FL	5-11	164	Jr.	1VL	Conroe, Texas
85	David Walkup	ILB	6-1	222	Fr.	RS	The Woodlands, Texas
86	Harold Bishop	TE	6-6	230	Fr.	HS	Tuscaloosa, Ala.
87	Brian Griffith	P	6-2	195	So.	1VL	Memphis, Tenn.
88	Brian Jenkins	TE	6-6	228	Fr.	RS	Palestine, Texas
89	Ronnie Haliburton	TE	6-5	227	Sr.	3VL	Port Arthur, Texas
90	John Morgan	DE	6-5	247	Fr.	RS	Rayne, La.
91	Leonard Harris	DE	6-6	279	Fr.	RS	Baton Rouge, La.
92	Shannon Nevedomsky	DL	6-3	270	Fr.	HS	Humble, Texas
93	Mike Murla	ILB	6-3	227	Sr.	3VL	New Orleans, La.
95	Marc Boutte	NG	6-4	260	So.	1VL	Lake Charles, La.
96	Paul Ernst	TE	6-3	233	Jr.	SQ	Slidell, La.
97	Craig Norris	DE	6-3	250	So.	1VL	Cicero, N.Y.
98	Verge Ausberry	ILB	6-0	229	Sr.	3VL	New Iberia, La.
99	Oliver Lawrence	OLB	6-2	242	Sr.	3VL	Monroe, La.



Everybody's All Americans.

FRESH. A&P. SAV-A-CENTER

SUPER



**Super Parties Begin
With Super Fresh Savings!**



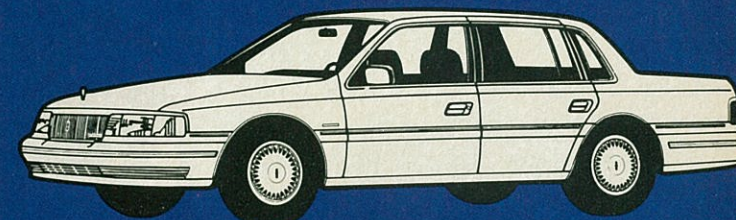
**FORD
MERCURY
LINCOLN**
**ALL UNDER ONE
ROOF**

ALL STAR
FORD
LINCOLN
MERCURY

1989 Florida State Seminoles

No.	Name	Pos.	Ht.	Wt.	Class	Hometown
1	Shannon Baker	WR	5-10	180	Fr.	Lakeland, Fla.
2	Grady Ross	DB	6-0	194	Sr.	Jacksonville, Fla.
3	Leon Fowler	FS	6-2	196	Fr.	Ft. Myers, Fla.
4	Peter Tom Willis	QB	6-3	202	Sr.	Morris, Ala.
5	Kenny Felder	QB	6-3	215	Fr.	Niceville, Fla.
6	LeRoy Butler	CB	6-0	194	Sr.	Jacksonville, Fla.
7	Ronald Lewis	WR	6-0	179	Sr.	Jacksonville, Fla.
8	Terry Anthony	WR	6-0	195	Sr.	Daytona Beach, Fla.
9	Richie Andrews	KS	5-11	165	Jr.	Ft. Lauderdale, Fla.
10	Corian Freeman	CB	6-4	221	Jr.	Jacksonville, Fla.
11	Casey Weldon	QB	6-1	194	So.	Tallahassee, Fla.
12	Matt Frier	WR	5-10	175	Fr.	Live Oak, Fla.
13	Dexter Carter	TB	5-9	172	Sr.	Baxley, Ga.
14	Brad Johnson	QB	6-6	205	So.	Black Mountain, N.C.
15	Bill Ragans	SS	6-2	206	Jr.	Live Oak, Fla.
17	Charlie Ward	QB	6-1	175	Fr.	Thomasville, Ga.
18	John Davis	DB	6-2	205	Fr.	Pahokee, Fla.
20	Clyde Allen	RB	5-11	185	Fr.	Ft. Myers, Fla.
21	Maurice Pinckney	RB	6-0	200	Fr.	Ft. Lauderdale, Fla.
22	Edgar Bennett	FB	6-1	222	So.	Jacksonville, Fla.
23	Bryce Abbott	SS	6-1	208	Fr.	Tifton, Ga.
26	Errol McCorvey	CB	6-0	175	So.	Pensacola, Fla.
27	Terrell Buckley	CB	5-10	175	Fr.	Pascagoula, Miss.
28	Dedrick Dodge	FS	6-2	180	Jr.	Mulberry, Fla.
29	Lawrence Dawsey	WR	6-1	195	Jr.	Dothan, Ala.
30	Tommy Henry	CB	6-0	170	So.	DeSoto, Fla.
31	Lavon Brown	FS	5-11	197	Fr.	Moore Haven, Fla.
32	Paul Moore	FB	6-1	245	So.	Miami, Fla.
35	Chris Parker	TB	6-0	215	So.	Jacksonville, Fla.
36	Kelvin Smith	ILB	6-0	235	Jr.	Jacksonville, Fla.
38	David Bassett	SS	5-10	194	Jr.	Roswell, Ga.
39	Ed Clark	ILB	6-3	222	Fr.	Melbourne, Fla.
40	David Stallworth	ILB	6-2	230	Fr.	Summerdale, Ala.
41	Chris Hall	CB	6-1	194	Fr.	Cocoa, Fla.
42	Amp Lee	RB	6-0	185	Fr.	Chipley, Fla.
43	Bill Mason	KS	5-10	155	Jr.	Tallahassee, Fla.
44	John Wyche	SS	6-2	198	Jr.	Thomasville, Ga.
45	Kirk Carruthers	LB	6-2	208	So.	East Lansing, Mich.
47	Kevin Grant	OLB	6-3	224	Sr.	Ocala, Fla.
48	Willie Pauldo	LB	6-2	211	Fr.	Oviedo, Fla.
49	Jason Peirce	LB	6-3	220	Fr.	Satellite Beach, Fla.
50	John Brown	OG	6-4	287	Sr.	Deland, Fla.
51	Robbie Baker	C	6-5	248	Fr.	Ft. Myers, Fla.
52	Robert Stevenson	OG	6-3	268	Fr.	Pensacola, Fla.
53	Odell Haggins	NG	6-2	268	Sr.	Bartow, Fla.
54	Phil Ferrell	LB	6-0	224	Fr.	Pell City, Ala.
55	Sterling Palmer	LB	6-7	250	Fr.	Ft. Lauderdale, Fla.
57	Chris Keen	DB	5-10	175	So.	Jefferson, Ga.
58	Nick Ekonomou	OT	6-2	263	Sr.	Melbourne, Fla.
59	Keith Carter	ILB	6-3	231	Sr.	Miami, Fla.
60	Mike Morris	OG	6-2	277	So.	Miami, Fla.
61	Eric Gibbs	OT	6-5	295	Fr.	Atlanta, Ga.
62	Troy Sanders	NG	6-2	266	Fr.	Elba, Ala.
63	Jason Dillaberry	OT	6-5	260	Fr.	Orange Park, Fla.
64	Pete Prinzi	DB	6-0	175	Fr.	Tampa, Fla.
65	Hayward Haynes	OG	6-3	275	Jr.	Bartow, Fla.
67	Kevin Mancini	OT	6-4	265	So.	Brandon, Fla.
68	Michael Tanks	C	6-1	254	Sr.	Decatur, Ga.
69	Mack Knight	DB	6-1	180	Fr.	Woodbine, Ga.
70	Tony Yeomans	OG	6-2	252	Sr.	Jessup, Ga.
71	Todd McIntosh	DL	6-3	225	Fr.	Richardson, Texas
72	Steve Allen	DL	6-6	275	Fr.	Jacksonville, Fla.
73	Reggie Dixon	OG	6-2	274	So.	Jacksonville, Fla.
74	Henry Ostaszewski	DT	6-3	260	So.	Boynton Beach, Fla.
75	Joe Ostaszewski	DT	6-3	262	So.	Boynton Beach, Fla.
76	Eric McGill	TE	6-5	230	Fr.	Walterboro, S.C.
77	Eric Luallen	C	6-3	276	Jr.	Tampa, Fla.
78	Eric Hayes	DT	6-3	288	Sr.	Tampa, Fla.
79	Gene Houpe	DS	6-3	275	So.	Statesville, N.C.
80	Reggie Johnson	TE	6-2	242	Jr.	Pensacola, Fla.
81	Kevin Knox	WR	6-4	190	Fr.	Niceville, Fla.
82	Brad Lundstrom	OLB	6-5	228	Fr.	Naples, Fla.
83	Dave Roberts	TE	6-4	238	Jr.	Griffin, Ga.
84	Warren Hart	TE	6-2	245	Fr.	Jacksonville, Fla.
85	Johnny Clower	TE	6-4	243	Jr.	Dade City, Fla.
87	Tommy Fagan	DE/TE	6-5	215	Fr.	Lamont, Fla.
88	Bruce LaSane	WR	6-4	210	Sr.	Wildwood, Fla.
89	Howard Dinkins	OLB	6-1	198	So.	Jacksonville, Fla.
90	Scottie McLaren	P	6-2	197	So.	Griffin, Ga.
91	Deondri Clark	DT	6-3	250	Fr.	Winter Garden, Fla.
92	Marvin Ferrell	TE	6-6	255	Fr.	Jacksonville, Fla.
93	Shelton Thompson	OLB	6-3	248	Sr.	Lakeland, Fla.
94	John Flath	DT	6-5	242	Fr.	Orlando, Fla.
95	Carl Simpson	TE	6-3	253	Fr.	Baxley, Ga.
96	James Chaney	NG	6-0	250	So.	North Ft. Myers, Fla.
97	Reggie Freeman	OLB	6-3	236	Fr.	Clewiston, Fla.
98	Oliver Strickland	DT	6-3	267	Fr.	Philadelphia, Pa.
99	Anthony Moss	OLB	6-4	230	Jr.	Miami, Fla.

1990
CONTINENTAL



**COME
JOIN THE
ALL STAR
TEAM**

ON AIRLINE IN GONZALES JUST MINUTES
FROM SHERWOOD FOREST BLVD.
PHONE 647-2121
(BR) 343-2888

This Ticket Stub Is Worth More Than You Think!

Your ticket stub will earn you a 10% discount on copier or facsimile supplies, and a 15% discount on the purchase of a new Konica Copier, Konica Facsimile or Xerox Memorywriter from Uni-copy.

Offer valid for 60 days from date of game.

COPIER
FACSIMILE
ELECTRONIC TYPEWRITERS
COMPETITIVE SUPPLIES

UNI-COPY



Opponent Information

Florida State Facts:

Location: Tallahassee, Fla.
Founded: 1857
Enrollment: 26,000
School Colors: Garnet & Gold
Conference: Independent
Stadium: Doak S. Campbell (60,519)

Lettermen Returning/Lost: 42/26
Starters Returning: (O) 4, (D) 5
All-Time Record vs. LSU: 4-2
At Baton Rouge: 4-1

Last Meeting: Sept. 10, 1983, at Baton Rouge (Florida St. 40, LSU 35)

Head Coach: Bobby Bowden (Samford, 1953)

Overall Record: 185-70-3 (23 years)

FSU Record: 112-38-3 (13 years)

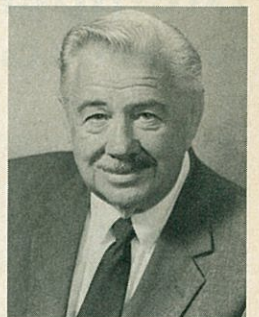
Assistant Coaches: Chuck Amato (Asst. Head Coach/Def. Line), Mickey Andrews (Def. Coordinator/Def. Backs), Wally Burnham (Inside Linebackers), John Eason (Receivers), Jim Gladden (Outside Linebackers), Jimmy Heggins (Noseguards), Wayne McDuffie (Off. Coordinator/Off. Line), Brad Scott (Tight Ends), Billy Sexton (Running Backs).



Bobby Bowden
Head Coach



Hootie Ingram
Athletic Director

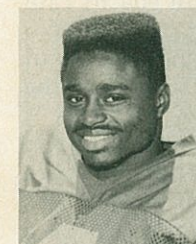


Dr. Bernard F. Sliger
President

1989 Seminole Schedule

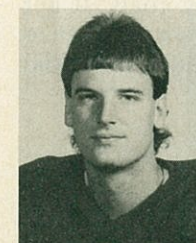
Sept. 2	SOUTHERN MISS.....L	26-30
Sept. 9	CLEMSON.....L	23-34
Sept. 16	at LSU	
Sept. 23	TULANE.....	
Oct. 7	at Syracuse	
Oct. 14	at Virginia Tech.....	
Oct. 21	AUBURN.....	
Oct. 28	MIAMI(FLA.)	
Nov. 4	SOUTH CAROLINA.....	
Nov. 18	MEMPHIS STATE.....	
Dec. 2	at Florida.....	

Players to Watch



13 Dexter Carter, TB, 5-9, 172, Sr., Baxley, Ga., (Appling County HS) - FSU's top threat on the ground, Carter is a shifty, speedy runner who has a 4.34 time in the 40-yard dash ... career rushing totals entering the '89 season included 1,104 yards and nine TDs ... played behind all-star tailback Sammie Smith last season, rushing 58 times for 330 yards (1 TD), while catching 19 passes for 195 yards (2 TDs) ... also serves as FSU's top kickoff returner.

53 Odell Haggins, NG, 6-2, 268, Sr., Bartow, Fla., (Bartow HS) - A pre-season All-America selection, Haggins is a former linebacker considered to be the most dominating Seminole noseguard since two-time All-America selection Ron Simmons in 1979-80 ... career totals entering the '89 season include 11 sacks and 178 tackles ... collected three sacks and 68 tackles last season, earning second-team All-America honors ... credited with 16 tackles against South Carolina in his top performance of '88.



4 Peter Tom Willis, QB, 6-3, 202, Sr., Morris, Ala., (Mortimer Jordan HS) - A back-up quarterback for three seasons, Willis assumes a full-time starting role in '89 ... in his only starting assignment of the '88 season he completed 17 of 20 passes for 271 and four touchdowns in a 59-0 rout at South Carolina ... the yardage and touchdown totals in that game were season highs for FSU quarterbacks ... played in seven games last season, completing 48 of 85 passes for 637 yards and nine TDs.