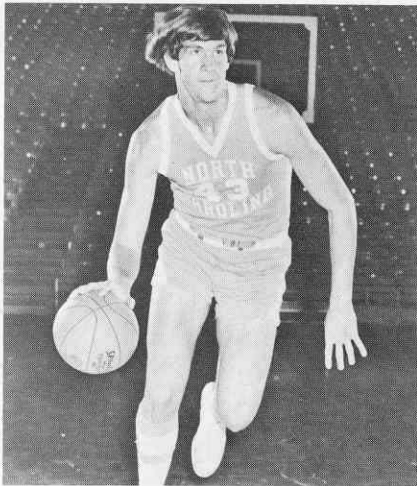
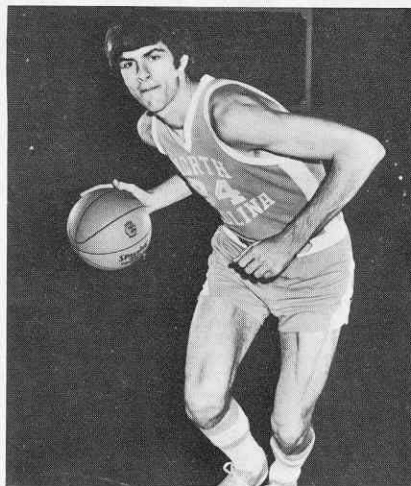


Tar Heels Tough To Handle



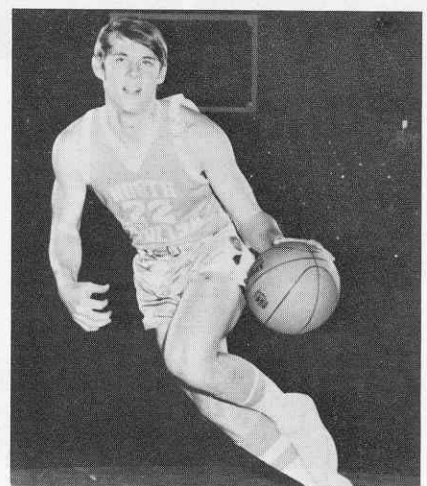
ED STAHL

Shows promise of developing into a fine frontcourt player . . . ranked second in scoring with freshman team last year, averaging 18.1 points a game . . . was team's leading rebounder with 177 in 15 games . . . showed tremendous improvement over last season . . . has good shooting touch . . . hit .524 percent of his field goal attempts . . . coaches think he has fine potential as a defensive player.



BOBBY JONES

Only a part time starter last year as a sophomore . . . still managed to average 10.2 points a game . . . set Carolina and ACC records by hitting .668 percent of his field goal attempts . . . made 13 consecutive shots in one stretch for another mark . . . played on the U.S. Olympic team . . . exceptionally quick and a great leaper . . . grabbed 195 rebounds last season . . . starred on freshman team with an average of 22.4 per game.



GEORGE KARL

Scrappy backcourt player . . . averaged 11.7 points a game last year as a junior and handed out 124 assists . . . scored at a 12.3 norm as a junior, hitting .524 of his attempts from the field . . . spends much of his time scrambling for loose balls on the court . . . excellent free throw shooter . . . hit .788 a year ago . . . has really developed into a defensive player while at Carolina.

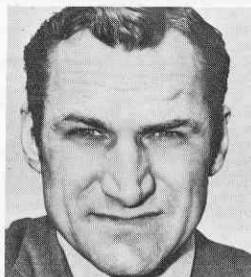
DONALD WASHINGTON

Was just rounding into top form after missing much of the season with injuries . . . rebroke his ankle several games back . . . was leading scorer during the first few games . . . strong forward . . . second in rebounding last season with the frosh with 156 in 15 games . . . leading scorer, hitting 21.1 points per game . . . connected on .549 percent of his field attempts . . . a prep All-American in Washington, D.C.

DONN JOHNSTON

One of the team leaders . . . appeared in all of Carolina's 34 games last season, averaging only 2.5 points, but grabbing 48 rebounds and playing sparkling defense . . . was very effective as a key reserve in many of the team's biggest wins . . . a good percentage shooter and a fine rebounder . . . sees plenty of action at the forward position . . . one of only two seniors on the team.

THE COACH



DEAN SMITH

In his 12th season as head coach at North Carolina . . . has a record of 220-82 . . . teams have reached the final of the NCAA tournament four times . . . has captured four of the last six ACC championships . . . team won the 1971 National Invitation Basketball Tournament . . . was runner-up as Coach of the Year last season . . . played basketball at Kansas . . . served as an assistant coach at the Air Force Academy . . . brought to N.C. by Frank McGuire . . . has brought innovations to the game including the four corner all purpose delay, run and jump defense and team huddles at the foul line.

RAY HITE

Was chief backup to George Karl at the "quarterback" spot last season, appearing in 29 games . . . has been given a prominent role this year . . . a steady performer and an excellent ballhandler . . . averaged a little more than a point a game . . . scored at an 8.3 norm with the frosh two seasons ago . . . brother, Billy, is a tailback with the Tar Heel football team.

JOHN O'DONNELL

Saw action as a member of the Blue reserve team last season . . . seeing plenty of action this time around . . . has a good scoring touch around the basket . . . a smart player and an excellent passer . . . added weight in the off-season which has helped with his rebounding . . . had an outstanding freshman season two years ago, averaging 23.9 points and hitting .539 per cent of his field goal attempts.

Cutty Sark

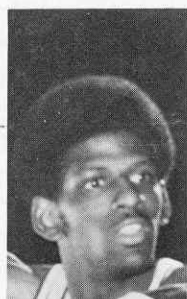
The only one of its kind.



THE BUCKINGHAM CORPORATION, IMPORTERS • NEW YORK, N.Y., AND NEWARK, N.J. • DISTILLED AND BOTTLED IN SCOTLAND • BLENDED 86 PROOF

Seminoles Have Awesome Talent

REGGIE ROYALS



Top rebounder and No. 2 scorer last season . . . made three all-tournament teams . . . was MVP in the Senior Bowl Classic . . . scored in double figures in 29 of 32 games . . . averaged 15.7 points . . . hit for 18.1 as a sophomore . . . grabbed 390 rebounds as a sophomore and 351 last season . . . has exceptional quickness and good hands . . . excellent outside shooter . . . gets ball off backboards decisively and keys Seminoles' fast break.

OTTO PETTY

Following NCAA tournament, he was acclaimed as one of the nation's best little men . . . only 5-7 . . . was used mainly as a sparkplug . . . non-starter most of the season . . . averaged 6.4 points a game . . . has 16 assists against South Alabama last year for a school record . . . handed out 227 assists as a sophomore and 173 in 1791-72 . . . teammate of Ron King in high school.

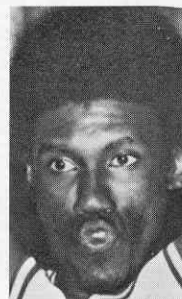
DENNIS BURKE

Outstanding sophomore prospect . . . usually alternates at the point position . . . led freshmen in assists last season . . . good ball-handler and passer . . . very accurate long range shooter . . . usually called on to break up the press . . . native of Brooklyn, N.Y. . . . played at St. John's Prep.

OTIS COLE

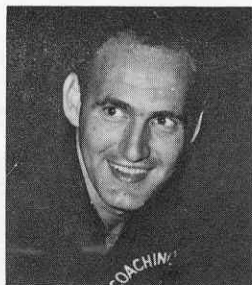
Counted on to do much of the outside shooting since the loss of standout Ron King . . . has excellent range . . . will challenge an opponent both offensively and defensively . . . very aggressive . . . outstanding leaping ability . . . played every game last season scoring in double figures eight times . . . averaged 5.3 points for the year . . . two years ago averaged 23.3 points with the frosh . . . plays either a wing or point position.

LAWRENCE McCRAY



Starter at one of the post positions . . . was No. 3 rebounder last with 8.2 clip . . . started last season still recovering from a broken finger . . . still managed to average 12 points per game . . . best game came against Houston, scoring 24 points . . . a soft shot from 15 feet increases his scoring threat . . . shot .554 from the floor.

THE COACH



HUGH DURHAM

In his seventh season as coach of the Seminoles . . . took his team to the NCAA finals a year ago before losing to UCLA . . . entered this season with a 115-49 mark . . . a Florida State graduate . . . still considered one of the school's top guards . . . served as freshman coach at FSU and later as a full time assistant . . . took over in 1966 following coach Bud Kennedy's death . . . also served as golf coach . . . teams won 48 of 54 matches . . . has recorded two 20-victory seasons as a cage coach.

GREG GRADY

Called by one scouting service as the best schoolboy defensive intimidator since Kareem Abdul-Jabbar . . . a prep All-American last year at Eastern District H.S. in New York . . . averaged 25 points and 23 rebounds . . . has been seeing more playing time as the season has progressed.

LARRY GAY

Has blossomed this season after spending the last two years mainly on the bench . . . averaged only 3.5 points, and 2.1 points respectively, coming into this season . . . has good strength inside against bigger men . . . still needs work on moving with the ball . . . blessed an excellent variety of moves . . . can play either wing or one of the post positions.

TODAY'S ROSTERS

St. Peter's College

H	A	Player	Class	Ht.	Wt.	Hometown
42	43	Tom Abrahamson	'74	6-10	225	Bergenfield, N.J.
30	31	Harry Anderson	'73	6-4	205	Weehawken, N.J.
32	33	Cornelius Barker	'75	6-5	185	Jersey City, N.J.
54	55	Walter Burch	'76	6-2	185	Elmont, N.Y.
12	13	Ed Cierski	'73	6-2	185	Bayonne, N.J.
40	41	Richie Fuller	'73	6-6	210	Nutley, N.J.
44	45	Juan Jiminez	'75	6-11	260	Union City, N.J.
50	51	Stan Klos	'76	6-8	210	Old Bridge, N. J.
34	35	Ken Markowski	'75	6-2	190	Bayonne, N.J.
20	21	John Sarto	'75	6-0	175	Spring Valley, N.Y.
22	23	Albio Sires	'74	6-4	195	West New York, N.J.
14	15	Tom Wise	'76	5-11	175	Bayonne, N.J.
COACH—Bernie Ockene			CO-CAPTAINS—Harry Anderson & Ed Cierski			

Duquesne

H	A	Player	Class	Ht.	Wt.	Hometown
52	53	Lionel Billings	'74	6-9	215	New York, N.Y.
32	33	Bryan Devine	'73	6-3	175	Pittsburgh, Pa.
30	31	Dave Harrington	'74	6-8	185	Avalon, Pa.
12	15	Oscar Jackson	'75	6-2	180	Beaver Falls, Pa.
40	21	Don McLane	'75	6-6	200	Steubenville, Ohio
10	51	Ruben Montanez	'73	6-2	205	San Juan, Puerto Rico
44	11	Bernie O'Keefe	'75	6-4	182	Pittsburgh, Pa.
34	41	Dave Pavlick	'75	6-5	190	Johnstown, Pa.
20	25	Dan Slater	'74	6-4	190	Monaca, Pa.
42	43	Jack Wojdowski	'73	6-4	200	Pittsburgh, Pa.
22	35	Jack Yun	'75	6-4	170	Canton, Ohio
COACH—Red Manning						

Florida State

No.	Player	Class	Ht.	Wt.	Hometown
3	David Brownyard	'75	6-2	160	Winter Haven, Fla.
10	Dennis Burke	'75	5-9	165	Brooklyn, N.Y.
22	Otis Cole	'74	6-2	175	Kings Mt., N.C.
21	Larry Gay	'73	6-5	195	Winchester, Ky.
13	Greg Grady	'76	6-9	195	New York, N.Y.
54	Otis Johnson	'74	6-8	200	Stuart, Fla.
44	Lawrence McCray	'74	6-11	210	Pensacola, Fla.
23	Zach Perkins	'76	6-6	180	Crestview, Fla.
11	Otto Petty	'73	5-7	150	Louisville, Ky.
25	Reggie Royals	'73	6-10	200	Whiteville, N.C.
COACH—Hugh Durham					

North Carolina

No.	Player	Class	Ht.	Wgt.	Hometown
31	Mickey Bell	'75	6-5	192	Goldsboro, N.C.
32	Darrell Elston	'74	6-4	204	Tipton, Ind.
20	Ray Harrison	'75	6-2	180	Greensboro, N.C.
12	Ray Hite	'74	6-0	170	Hyattsville, Md.
13	Brad Hoffman	'75	5-10	152	Columbus, Ohio
40	Donn Johnston	'73	6-8	206	Jamestown, N.Y.
34	Bobby Jones	'74	6-9	209	Charlotte, N.C.
22	George Karl	'73	6-3	190	Penn Hills, Pa.
30	John O'Donnell	'74	6-6	202	New York, N.Y.
43	Ed Stahl	'75	6-10	225	Columbus, Ohio
21	Mitch Kupchak	'76	6-9	230	Brentwood, N.Y.
COACH—Dean Smith					



NOW THRU SUN., FEB. 25

IT'S LAVISH! IT'S LILTING! IT'S LIVE!

YOUR YOUNGSTER'S FAVORITE
TV CHARACTERS COME TO LIFE IN
A SUPER **LIVE** EXTRAVAGANZA!

MADISON SQUARE GARDEN PRODUCTIONS
PRESENTS
**THE WORLD OF
SID & MARTY KROFFT**

the H.R. Pufnstuf Show

PERFORMANCE SCHEDULE
MONS., SATS. AND WED., FEB. 21 THRU FRI., FEB. 23 AT 10:30 A.M., 1 & 3:30 P.M.;
TUES., FEB. 13 THRU FRI., FEB. 16 AT 10:30 A.M. AND 2 P.M.; SUNS. AT 1 & 3:30 P.M.
NO PERFS. TUES., FEB. 20

FOR GROUP SALES, CALL (212) 594-6600 OR YOUR THEATER PARTY AGENT

TICKETS ALSO AT OVER 150 TICKETRON OUTLETS. CALL (212) 644-4400 FOR LOCATION NEAR YOU

BOX OFFICE
NOW OPEN



**PUFNSTUF
HOO DOO
WITCHIEPOO
AND OVER 40
WONDERFUL
CHARACTERS
FROM
PUFNSTUF
LIDSVILLE
AND THE
BUGALOOS**

**PRICES:
\$4.00, 3.00**



the felt forum

MADISON SQUARE GARDEN CENTER
8th AVE. BET. 31st & 33rd STS.
For information call (212) 564-4400

FINAL

MADISON SQUARE GARDEN
COLLEGE BASKETBALL STATISTICS
OFFICIAL SCORER'S REPORT

FINAL

FLORIDA STATE		FGM	FGA	FTM	FTA	REB	AST	PF	PTS
25	ROYALS	11	16	7	7	8	3	5	29
54	JOHNSON	2	4	0	1	1	1	0	4
44	MCCRAY	4	8	0	0	3	0	4	8
10	BURKE	0	0	0	0	1	1	1	0
22	COLE	14	19	1	3	5	5	2	29
11	PETTY	1	3	1	2	2	9	5	3
21	GAU	2	3	0	0	1	4	3	4
13	GRADY	0	4	2	2	2	0	0	2
Team Rebounds: 3 Total		34	57	11	15	23	23	20	79

FG% .596

FT% .733

NORTH CAROLINA		FGM	FGA	FTM	FTA	REB	AST	PF	PTS
34	JONES	3	10	2	3	11	5	1	8
40	JOHNSTON	2	6	1	1	2	2	2	5
43	STAHL	12	16	2	2	8	0	3	26
22	KARL	8	15	9	9	3	1	1	25
32	ELSTON	5	10	0	0	2	6	1	10
13	HOFFMAN	2	5	3	3	0	2	0	7
30	O'DONNELL	1	4	0	0	2	1	4	2
21	KUPCHAK	3	5	2	2	5	1	3	8
12	HITE	0	0	0	0	0	0	0	0
31	BELL	0	0	0	0	1	0	0	0
35	WADDELL	0	0	0	0	0	0	0	0
Team Rebounds: 3 Total		36	71	19	20	34	18	15	91

FG% .507

FT% .950

Date FEB. 17, 1973

Place

MSG

Attendance 6347

Refs.

BILL SAAR

JOHN BELLANTI

Score by periods

1

2

OT

OT

TOT

FLORIDA STATE	38	41			79
NORTH CAROLINA	42	49			91

REMARKS:

TURNOVERS: F.S.U. — 21

N.C. — 19