



SPORTS INFORMATION

113 WILDWOOD • TALLAHASSEE FL 32306 • 904-644-4038

LOUISVILLE (11-6/4-2)

vs.

FLORIDA STATE (9-9/3-2)

Saturday, January 30, 1982, 1:00 P.M.

Tallahassee Leon County Civic Center

RENEWING AN OLD ACQUAINTANCE: Today Metro Conference foes Louisville (11-6/4-2) and Florida State (9-9/3-2) will meet for the second time this season.

SITE: Tallahassee Leon County Civic Center (12,500)

TIPOFF: 1:00 P.M.

EXPECTED ATTENDANCE: Over 3,500 advance tickets have already been sold. A crowd of between 6,000 and 7,000 is expected.

TV: NBC-TV will be covering this game as part of its regional doubleheader. The game will be seen throughout the South.

RADIO: Florida State will air the game along its flagship station WGLF. Gene Deckerhoff will do play-by-play and Ned Smith will provide the color commentary.

Louisville will broadcast the game on its flagship station WHAS. Van Vance and Jack Tennant will call the action.

THE SERIES: Today's game will mark the 18th meeting between these two schools dating back to 1968-69. This season on January 4, Louisville defeated FSU, 79-57 at Freedom Hall. FSU trailed at one point 53-51 with 9:25 remaining in the game, but the Cardinals went on to outscore the visitors 26-6 down the stretch. High point man for Louisville was Derek Smith with 22 points. FSU guard Mitchell Wiggins led all scorers with 31. With the win, Louisville increased its series advantage to 14-3, having won the last nine straight encounters. FSU last defeated the Cardinals February 17, 1978, when they recorded an 81-70 win at Tallahassee.

LATELY: FSU last played Wednesday at Jacksonville losing to the Dolphins, 80-79 in overtime. The loss snapped a five game Florida State win streak--its longest in two seasons. Louisville is also coming off a loss having dropped three straight games coming into today's contest. The Cardinals have lost to Missouri 69-55, Virginia Tech 78-76 and most recently Virginia 74-56. The last U of L win was January 16, defeating Cincinnati 74-58.

WHAT DO YOU THINK OF THE PLACE? This will be Louisville's first visit to the Tallahassee Leon County Civic Center. Last season at retired Tully Gym, the Cardinals won 82-73 in overtime.

-over-

SEPARATING THE MEN FROM THE BOYS: While the oldest player on the FSU roster is junior guard Mitchell Wiggins, Louisville starts two seniors, two juniors and one sophomore. In contrast, the Tribe lines up with one freshman, three sophomores and Wiggins. There are no seniors on the team.

AN EVEN DOZEN: After 12 games, FSU guard Mitchell Wiggins is still going strong. Since gaining eligibility in the seventh game of the year, Wiggins has been nearly unstoppable. He leads the team and the Metro with a 26.5 scoring average and tops the team in rebounding with a 10.2 mark. He has been held under 20 points just once, and has scored 37 twice--ninth best FSU single game. For his work, he has been selected the Metro Conference Player of the Week twice and the Honeywell Player of the Game in a regionally televised broadcast.

NOT A ONE MAN SHOW: While Wiggins has been the star of the show, he has had a great supporting cast. Every starter in the Seminole lineup is averaging double figures. Guard Tony William tops the team in assists (88) and steals (43) and is second on the team in scoring (13.4). Freshman David Speights is second on the team in rebounding (5.8) and forward Michael Johnson is second on the squad in assists (62).

RETURN ENGAGEMENT: Starting forward and third leading scorer (11.2) Oren Gilmore will play in his 46th consecutive game since joining the team his freshman year last season. Gilmore played a reserve role last year but has started every game in 1981-82.

MEETING OF THE METRO: When Louisville's Jerry Eaves and Mitchell Wiggins meet on the floor today, there will be two Metro Conference Players of the Week. Wiggins has earned the distinction twice this season. Last year, Eaves and teammate Derek Smith were All-Metro First Team and Smith was Co-Player of the Year.

THE COACHES: The Tribe is led by fourth year coach Joe Williams (SMU '56) who is 67-39 in three plus seasons with FSU. Williams' previous coaching stints have been at Jacksonville (1965-70; 92-61) where he led the team to the NCAA finals in 1970 and Furman (1970-78; 142-87) where he is still listed as the winningest coach in the school's history. Williams recorded win No. 300 vs. St. Louis last Saturday. Louisville is guided by 11th year coach Denny Crum. In his only coaching assignment, Crum is 251-70 in 10 plus seasons. In 1980, Crum led the Cardinals to the NCAA crown.

THE LINEUPS:

Florida State

32	Michael Johnson	F	(6-5, So., 10.2/ 5.2)
50	David Speights	F	(6-6, Fr., 10.7/ 5.8)
35	Oren Gilmore	C	(6-9, So., 11.2/ 5.2)
23	Tony William	G	(6-1, So., 13.4/ 2.7)
22	Mitchell Wiggins	G	(6-4, Jr., 26.5/10.2)

Louisville

43	Derek Smith	F	(6-7, Sr., 15.7/ 6.0)
22	Rodney McCray	F	(6-7, Jr., 7.9/ 7.2)
21	Scooter McCray	C	(6-9, Jr., 5.0/ 4.9)
4	Lancaster Gordon	G	(6-3, So., 11.6/ 2.5)
5	Jerry Eaves	G	(6-4, Sr., 11.8/ 2.8)

NEXT: Florida State will have only one day of rest before journeying to New Orleans to face Conference foe Tulane, Monday. Louisville will face Tulane Wednesday at Freedom Hall.

OFFICIALS: Referee - John Moreau; Umpires - Bob Olah and Willie Brown.

FILE COPY — DO NOT REMOVE

OFFICIAL METRO CONFERENCE
BASKETBALL BOX SCORE

Date Jan. 30, 1982 Site Jail. Leon County Civic Center
Attendance 5777

No. <u>FLORIDA STATE UNIVERSITY</u>		FG	FGA	FT	FTA	REB			PF	TP	A	TO	BLK	S	MIN
						O	D	T							
22	Mitchell Higgins	5	11	2	2	1	5	6	4	12	4	4	0	3	37
23	Tony Williams	9	12	4	6	2	0	2	1	22	1	7	0	5	40
32	Michael Johnson	4	7	8	8	1	5	6	2	16	0	2	0	0	33
35	Oren Gilmore	2	5	2	2	1	0	1	4	6	0	1	0	2	18
50	David Speights	2	4	0	0	0	2	2	2	4	0	4	1	1	33
24	Maurice Murck	3	3	0	0	1	0	1	1	6	0	2	0	1	10
11	Ronnie Watson	4		6	6				4	8					0
55	Raphael Phillip	1	1	0	0	1	0	1	1	2	0	0	0	0	6
33	Bobby Miles	0	0	3	4	0	1	1	2	3	0	0	0	0	23
21	Scott Wilkes														
14	Booney Crawford														
44	Jeff Coleman														

TEAM REBOUNDS (Included in Totals)

2 2 4

TOTALS

26 43 19 22

9 15 24

17 71

5 20 1 12

200

Game FG 63% FT 86%

3 Deadball Rebounds

PERCENTAGES:

1st Half FG 75% FT 83%

2nd Half FG FT

No. <u>Univ. of Louisville</u>		FG	FGA	FT	FTA	REB			PF	TP	A	TO	BLK	S	MIN
						O	D	T							
4	Lancaster Gordon	1	4	0	0	1	1	2	0	2	0	3	0	2	19
5	Jerry Eaves	7	12	4	4	1	2	3	3	18	0	3	0	3	40
21	Scotter McCray	1	3	0	0	1	1	2	3	2	0	2	0	1	7
22	Rodney McCray	6	9	1	2	4	3	7	1	13	0	4	1	3	35
43	Derek Smith	2	8	1	1	0	0	0	3	5	0	3	0	1	20
44	Pancho Wright	0	2	0	0	0	0	0	1	0	0	0	0	0	6
41	Wiley Brown	5	11	1	2	2	2	4	5	11	2	0	0	1	24
33	Charles Jones	1	2	0	0	2	0	2	2	2	1	3	0	1	11
20	Milt Warner	0	0	0	0	0	0	0	0	0	0	1	0	0	6
30	Manuel Forrest	5	7	1	2	3	1	4	3	11	0	0	0	0	17
12	Kent Jones														
15	Greg Deuser	0	1	1	2	0	0	0	1	1	1	0	0	1	15
25	James Jeter														
45	MARTY WILLIAMS														
46	DANIEL MITCHELL														

TEAM REBOUNDS (Included in Totals)

2 0 2

TOTALS

28 59 9 13

16 10 26

22 65

4 19 1 13

200

Game FG 47% FT 69%

1 Deadball Rebounds

PERCENTAGES:

1st Half FG 12% FT 100%

2nd Half FG FT

OFFICIALS: Morgan; Rouse; Quinn

Technical Fouls:

Notes:

SCORE BY PERIODS 1st H. 2nd H. OT OT FINAL

Florida State U.	35	36			71
Univ. of Louisville	28	37			65

FLORIDA STATE UNIVERSITY VS. LOUISVILLE UNIVERSITY

January 30, 1982

1:00 p.m.

Tallahassee, Florida

FOR FSU: WIGGINS, WILLIAM, JOHNSON, GILMORE, SPEIGHTS

FOR LU: CORDON, EAVES, S. MCCRAY, R. MCCRAY, SMITH

FIRST HALF

TIME	FLORIDA STATE	SCORE	LOUISVILLE
19:44		0 0	Smith pfl
19:20	Gilmore 15 ft. jumper	2 0	
19:03		2 2	Smith 5 ft. jumper
18:32	Gilmore jumper	4 2	
17:17		4 4	S. McCray jumper
17:09	Wiggins jumper	6 4	
16:48		6 4	S. McCray pfl
16:43	William 15 ft. jumper	8 4	
16:33		8 6	Gordon layup
16:20	William 20 ft. jumper	10 6	
16:11	TIME OUT (TV)	10 8	Eaves layup
15:11		10 10	R. McCray layup
14:50		10 10	S. McCray pf2
14:50	Johnson makes 2 of 2	12 10	
14:28	Gilmore pfl	12 10	
13:38	Gilmore pf2	12 10	
12:23		12 12	Jones 5 ft. jumper
12:10	William layup	14 12	TIME OUT (TV)
11:08		14 14	Eaves 20 ft. jumper
10:54	Speights jumper	16 14	
10:13	Speights 10 ft. jumper	18 14	
9:49	William pfl	18 14	
9:21		18 16	Brown 10 ft. jumper
8:44	Wiggins jumper	20 16	
8:29	Wiggins jumper and pfl	22 16	TIME OUT (TV)
7:43		22 18	Brown dunk
7:11	Johnson tip in	24 18	
6:22	William 20 ft. jumper	26 18	
5:58	Wiggins pf2	26 18	
5:36	Miles pfl	26 18	
5:18		26 18	Brown pfl
5:06		26 18	Jones pfl
5:06	Miles makes 2 of 2	28 18	
4:44	Miles pf2	28 18	
4:44		28 20	Eaves makes 2 (1+)
4:19	Johnson layup	30 20	
3:53		30 22	R. McCray dunk
3:37	TIME OUT (TV)	30 22	Jones pf2
3:18	Myrick 10 ft. jumper	32 22	
3:00		32 24	Eaves 10 ft. jumper
2:18		32 24	S. McCray pf3
1:57	Myrick jumper	34 24	
1:24		34 24	Wright pfl
1:24	Miles makes 1 of 2	35 24	
:48		35 26	Eaves layup
:22	Myrick pfl	35 26	
:22		35 28	Eaves makes 2 of 2
:15	Wiggins pf3	35 28	
	FLORIDA STATE	35 28	LOUISVILLE

END OF FIRST HALF

OFFICIAL METRO CONFERENCE
BASKETBALL BOX SCORE

Date 1/30/82 Site Tall. Leon County Civic Center
Attendance _____

No.	FLORIDA STATE	FG	FGA	FT	FTA	REB			PF	TP	A	TO	BLK	S	MIN
						O	D	T							
22	M. WIGGINS	3	4	0	0			4	3	6					
23	T. WILLIAM	4	4	0	0			1	1	8					
32	M. JOHNSON	2	4	2	2			2	0	6					
35	O. GILMORE	2	2	0	0			0	2	4					
50	D. SPEIGHTS	2	4	0	0			1	0	4					
24	M. MYRICK	2	2	0	0			0	1	4					
11	R. WATSON														
55	R. PHILLIP														
33	B. MILES	0	0	3	4			0	2	3					
21	S. WILKES														
14	B. Crawford														
44	J. COLEMAN														
TEAM REBOUNDS (Included In Totals)								2							
TOTALS		15	20	5	6			10	9	35	4	14	1	8	
PERCENTAGES:		Game FG		FT											
		1st Half FG	75%	FT	83%										
		2nd Half FG		FT											

No.	LOUISVILLE	FG	FGA	FT	FTA	REB			PF	TP	A	TO	BLK	S	MIN
						O	D	T							
4	L. Gordon	1	4	0	0			2	0	2					
5	J. Eaves	4	6	4	4			0	0	12					
21	S. McCray	1	3	0	0			2	1	2					
22	R. McCray	2	2	0	0			1	2	4					
43	D. SMITH	1	6	0	0			0	1	2					
44	P. WRIGHT	0	2	0	0			0	1	0					
41	W. BROWN	2	3	0	0			0	1	4					
33	C. Jones	1	2	0	0			2	2	2					
20	M. Weaver	0	0	0	0			0	0	0					
30	M. Forrest														
12	K. Jones														
15	G. Deuser														
25	J. Jeter														
40	M. Pulliam														
TEAM REBOUNDS (Included In Totals)								3							
TOTALS		12	28	4	4			10	8	28	1	11	0	8	
PERCENTAGES:		Game FG		FT											
		1st Half FG	43%	FT	100%										
		2nd Half FG		FT											

OFFICIALS:	<u>Mareau - Olah - Brown</u>	SCORE BY PERIODS	1st H.	2nd H.	OT	OT	FINAL
Technical Fouls:		FLORIDA STATE	25				
Notes:		LOUISVILLE	28				

SECOND HALF

TIME	FLORIDA STATE	SCORE	LOUISVILLE
19:49		35 30	Eaves 10 ft. jumper
19:36		35 30	Eaves pf1
19:25	Gilmore pf3	36 32	Forrest jumper
19:15		36 32	Forrest misses 1 of 1
18:56	William tip in	37 32	
18:00		37 32	Forrest pf1
18:00	Wiggins makes 2 of 2	39 32	
17:27	Gilmore pf4	39 34	R. McCray pf jumper
17:27		39 35	R. McCray makes 1 of 1
17:03		39 35	Eaves pf2
16:43		39 37	Forrest jumper
16:23	TIME OUT (TV)	39 39	Brown dunk
15:42	William 10 ft. jumper	41 39	
15:33		41 41	Brown jumper
16:16	William 20 ft. jumper	43 41	
15:04	Speights pf1	43 41	
15:04		43 42	Brown makes 1 of 2
13:56	Johnson pf1	43 44	R. McCray jumper
13:56		43 44	R. McCray misses 1 of 1
13:35	Phillip jumper	45 44	
12:43	Phillip 1	45 46	Forrest jumper
12:43		45 47	Forrest makes 1 of 1
12:05		45 49	Eaves (goal tending) by Speights)
11:48	Myrick tip in	47 49	
11:37		47 49	Brown pf2
11:13	Wiggins (goal tending)	49 49	
10:46		49 51	Forrest tip in
10:34		49 51	Brown pf3
10:03	Speights pf2	49 51	
9:53		49 53	Forrest tip in
9:40		49 53	R. McCray pf1
8:45		49 55	Brown jumper
8:10	Wiggins jumper	51 55	Brown pf4
8:10	Wiggins misses 1+	51 55	TIME OUT (TV)
5:51	William 20 ft. jumper	53 55	TIME OUT
4:58	Wiggins pf4	53 57	Smith jumper
4:58		53 58	Smith makes 1 of 1
4:44	Wiggins jumper	55 58	
3:47	Johnson 10 ft. jumper	57 58	
2:47	Johnson tip in	59 58	
2:30		59 58	Smith pf2
2:30	Johnson makes 2 (1+)	61 58	TIME OUT
1:57		61 58	Forrest pf2
1:57	Johnson makes 2 (1+)	63 58	
1:31		63 60	Eaves jumper
1:08		63 50	Eaves pf3
1:08	William misses 1+	63 60	
:47	Johnson pf2	63 60	
:47	TIME OUT	63 61	Deuser makes 1 shot (1+)
:46		63 61	Brown pf5
:46	Johnson makes 2 (1+)	65 61	TIME OUT
:26		65 63	R. McCray jumper
:21		65 63	Deuser pf1
:21	William makes 2 (1+)	67 63	
:12		67 63	Forrest pf3
:12	Gilmore makes 2 (1+)	69 63	
:05		69 65	R. McCray tip in
:03		69 65	Smith pf3
:03	William makes 2 (1+)	71 65	
	FLORIDA STATE	71 65	LOUISVILLE

END OF GAME

National Collegiate Athletic Association

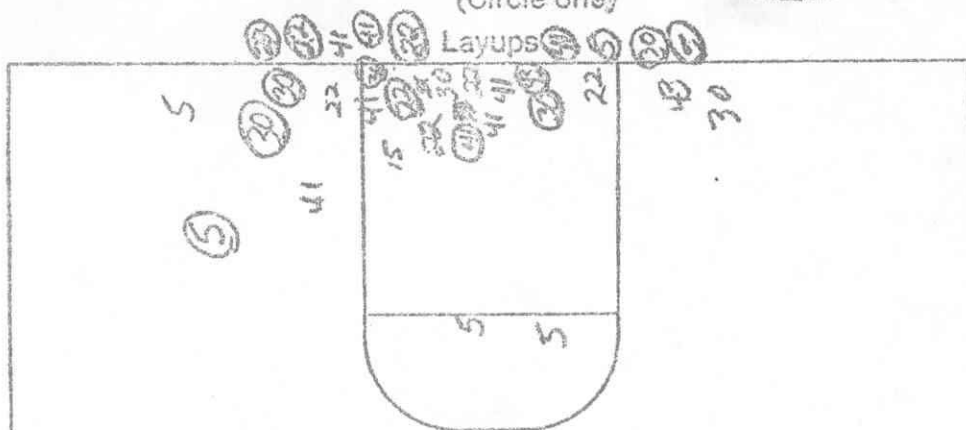
BASKETBALL SHOT CHART

First Half

Second Half

(Circle one)

Layups!

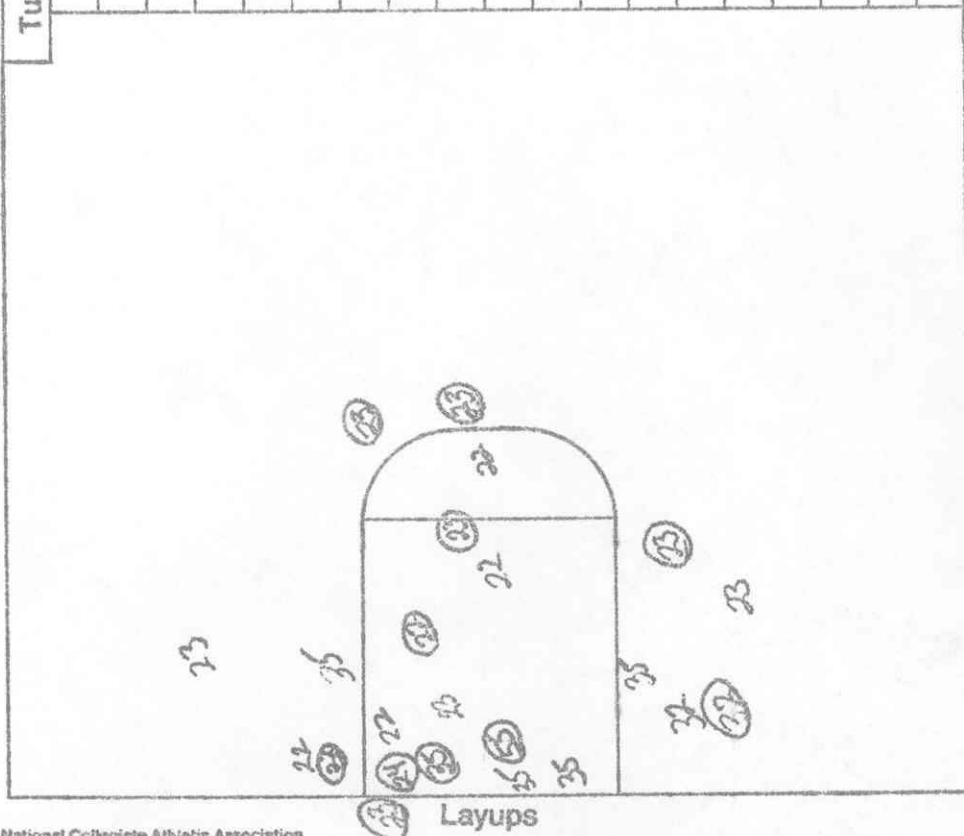
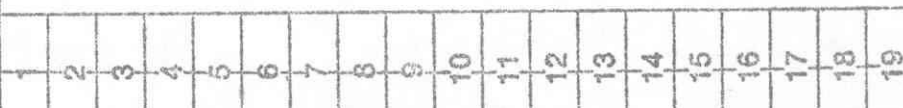


Attempted 31

Made 16

Percentage 52%

Turnovers



Attempted 23

Made 11

Percentage 58%