

## **Final Statistics**

### ***NCAA Southeast First Round***

**Southern California Trojans**

**VS.**

**Florida State Seminoles**



**March 14, 1991**

***Freedom Hall***  
**Louisville, Kentucky**

OFFICIAL NCAA BASKETBALL BOX SCORE Date 3/14/91 Site Freedom Hall/Louisville, KY  
VISITORS (Last name, first) (Indicate starters with an asterisk)

Date 3/14/91 Site Freedom Hall/Louisville, KY

**VISITORS (Last name, first) (Indicate starters with an asterisk)**

No.	Southern California	Total FG		3-point		FT	FTA	Rebounds			PF	TP	A	TO	BLK	S	MIN
		FG	FGA	FG	FGA			Off.	Def.	Tot.							
34	Banks, Calvin	1	3	0	0	0	0	1	2	3	1	2	0	1	0	0	11
24	Coleman, Ronnie	6	14	0	0	3	7	4	4	8	5	15	0	2	0	1	31
12	Cooper, Duane	2	4	2	4	0	0	2	3	5	2	6	4	2	0	1	34
23	Miner, Harold	7	27	2	12	0	0	2	4	6	3	16	1	3	0	1	39
20	Pack, Robert	6	9	0	0	8	8	0	1	1	5	20	4	4	0	0	29
33	Boyd, Mark	0	0	0	0	2	2	2	1	3	4	2	0	2	0	0	18
00	Chatman, Rodney	0	1	0	1	0	0	0	1	1	3	0	4	1	0	1	15
42	Sanders, Yamen	4	5	0	0	3	4	2	5	7	4	11	0	1	0	1	20
11	Glenn, Phil	0	0	0	0	0	0	0	0	0	0	0	0	0	0	1	3
	TEAM REBOUNDS (included in Totals)							1	1	2							
	TOTALS	26	63	4	17	16	21	14	22	36	27	72	13	16	0	6	200

TOTAL FG%: 1st half	<u>15/35</u>	<u>42.9%</u>	2nd half	<u>11/28</u>	<u>39.3%</u>	Game	<u>26/63</u>	<u>41.3%</u>
3-Pt. FG%: 1st half	<u>2/8</u>	<u>25.0%</u>	2nd half	<u>2/ 9</u>	<u>22.2%</u>	Game	<u>4/17</u>	<u>23.5%</u>
FT%: 1st half	<u>6/7</u>	<u>85.7%</u>	2nd half	<u>10/14</u>	<u>71.4%</u>	Game	<u>16/21</u>	<u>76.2%</u>

Deadball  
rebounds 2

HOME (Last name, first) (Indicate starters with an asterisk)

No.	Florida State	Total FG		3-point		FT	FTA	Rebounds			PF	TP	A	TO	BLK	S	MIN
		FG	FGA	FG	FGA			Off.	Def.	Tot.							
32	Edwards, Douglas	9	13	0	0	6	10	2	7	9	4	24	2	2	0	3	35
45	Polite, Michael	4	10	0	0	3	5	1	5	6	0	11	0	2	0	1	35
34	Dobard, Rodney	2	3	0	0	2	4	1	7	8	4	6	2	2	2	1	31
12	Ward, Charlie	3	5	2	3	3	4	1	3	4	2	11	5	2	0	3	37
20	Boyd, Aubry	2	10	0	5	8	12	2	1	3	3	12	2	4	0	0	30
04	Graham, Chuck	4	8	1	2	0	0	2	2	4	2	9	2	3	0	0	18
22	Myers, Derrick	0	0	0	0	0	0	0	0	0	0	0	0	0	0	0	2
21	Salters, Jesse	0	1	0	0	0	0	0	0	0	1	0	0	1	0	0	3
44	Reid, Andre	0	0	0	0	0	0	0	0	0	1	0	0	0	0	0	1
31	White, David	1	1	0	0	0	0	0	1	1	0	2	0	0	0	0	8
	TEAM REBOUNDS (included in Totals)							1		1							
	TOTALS	25	51	3	10	22	35	10	26	36	17	75	13	16	2	8	200

TOTAL FG%: 1st half	<u>15/32</u>	46.9%	2nd half	<u>10/19</u>	52.6%	Game	<u>25/51</u>	49.0%
3-Pt. FG%: 1st half	<u>1/5</u>	20.0%	2nd half	<u>2/ 5</u>	40.0%	Game	<u>3/10</u>	30.0%
FT%: 1st half	<u>7/12</u>	58.3%	2nd half	<u>15/23</u>	65.2%	Game	<u>22/35</u>	62.9%

Deadball  
rebounds 7

Technical fouls: \_\_\_\_\_

Attendance: \_\_\_\_\_

Officials: Tim Higgins, John Bonder

Rick Hartzell

SCORE BY PERIODS	1st H.	2nd H.	OT	OT	FINAL
------------------	--------	--------	----	----	-------

Sou. Cal.	38	34			72
Florida St.	38	37			75

Player	Team	Florida State	Time	Score	Southern California	Player	Team
EDWARDS, Douglas, POLITE, Michael, DOBARD, Rodney, WARD, Charlie, BOYD, Aubry		Ball to Seminoles			BANKS, Calvin, COLEMAN, Ronni, COOPER, Duane, MINER, Harold, PACK, Robert		
1-1 100% 1-1 100% 16 ft Left Base Line Jumper by BOYD, Aubry			1 19:58	42-0			
1-1 100% 2-2 100% Driving Layup by POLITE, Michael		Assist by WARD, Charlie	1 19:29	44-0			
2-2 100% 2-2 100% BOYD, Aubry, 2 Free Throws made both			1 18:48		Foul on PACK, Robert	1	1
2-2 100% 3-4 75.0% Layup Off Fast Break by BOYD, Aubry		Assist by WARD, Charlie	1 18:48	46-0			
			1 17:37	48-0			
			1 17:28	8-2*	7 ft Left Side Turnaround by COLEMAN, Ronni	1-1 100% 1-4 25.0%	
			1 16:49	8-4*	Assist by COOPER, Duane	1 1 100% 2-6 33.3%	
			1 16:16		Driving Layup by PACK, Robert	1 1 100% 2-6 33.3%	
			1 16:16	49-4	Foul on COOPER, Duane	1 1 100% 3-7 42.8%	
			1 16:06	9-7*	3 at 21 ft Right Angle Jumper by COOPER, Duane		
			1 15:42	41-7			
			1 15:04				
			1 15:04	11-9*	PACK, Robert, 2 Free Throws made both	2-2 100% 2-2 100%	

REB: 5 A: 3 BLK: 1 TO: 1 PF: 1  
S: 2 FT: 3-4 75.0% FB: 4-8 50.0%

OFFICIALS TIME - OUT

REB: 6 A: 1 BLK: 0 TO: 4 PF: 2  
S: 0 FT: 2-2 100% FB: 3-9 33.3%

3-5 68.0% 5-10 50.0% Follow		Layup by POLITE, Michael	1 14:41	43-9			
1-1 100% 6-11 54.5%		3 at 21 ft Right Side Jumper by WARD, Charlie	1 14:13	13-11*	Follow by BANKS, Calvin	1-2 50.0% 4-11 36.3%	
		Assist by DOBARD, Rodney	1 13:57	46-11			
		Foul on BOYD, Aubry	1 13:39		Sub In: BOYD, Mark Out: BANKS, Calvin		
		Sub In: GRAHAM, Chuck Out: BOYD, Aubry	1 13:25				
1-1 100% 7-13 53.8%		14 ft Right Base Line Jumper by GRAHAM, Chuck	1 13:25	16-13*	13 ft Right Side Bank by PACK, Robert	2-2 100% 5-13 38.4%	
		Sub In: MYERS, Derrick Out: WARD, Charlie	1 12:59	16-15*	7 ft Lane Jumper by PACK, Robert	3-3 100% 6-14 42.8%	
			1 12:31	48-15			
			1 11:57		Sub In: CHATMAN, Rodney Out: COOPER, Duane		

REB: 8 A: 4 BLK: 1 TO: 3 PF: 2  
S: 2 FT: 3-4 75.0% FB: 7-13 53.8%

OFFICIALS TIME - OUT

REB: 8 A: 1 BLK: 0 TO: 4 PF: 2  
S: 0 FT: 2-2 100% FB: 6-15 40.0%

1-3 33.3% 8-14 57.1%		7 ft Lane Bank by EDWARDS, Douglas	1 11:41	18-18*	3 at 21 ft Left Angle Jumper by MINER, Harold	1-5 20.0% 7-16 43.7%	
			1 11:24	20-18	Assist by PACK, Robert	1 1 20.0% 7-16 43.7%	
2-4 50.0% 9-15 60.0%		18 ft Left Side Jumper by EDWARDS, Douglas	1 11:14	20-20*	Follow by COLEMAN, Ronni	2-5 40.0% 8-18 44.4%	
		Assist by GRAHAM, Chuck	1 10:48	22-20			
		Sub In: SALTERS, Jesse Out: DOBARD, Rodney	1 10:36		Foul on COLEMAN, Ronni	1 1 3	
		Sub In: WARD, Charlie Out: MYERS, Derrick	1 9:48				
		Sub In: BOYD, Aubry Out: POLITE, Michael	1 9:48		Sub In: COOPER, Duane Out: PACK, Robert		

1st Half Play by Play (continued)

Player	Team	Florida State	Time	Score	Southern California	Player	Team
2-2 100% 10-17 58.8%		Follow Layup by GRAHAM, Chuck	1 9:48	22-22*	14 ft Right Angle Jumper by MINER, Harold	2-7 20.0% 9-21 42.8%	
			1 9:15	24-22	Assist by CHATMAN, Rodney	1 1 20.0% 9-21 42.8%	
3-5 68.0% 11-18 51.1%		12 ft Left Side Turnaround by EDWARDS, Douglas	1 9:00	26-22	Sub In: BANKS, Calvin Out: BOYD, Mark		
		Assist by WARD, Charlie					
3-3 100% 12-20 60.0%		Follow Tipin by GRAHAM, Chuck	1 8:15	28-22			
			1 7:54	28-24*	6 ft Left Side Bank by COLEMAN, Ronni	3-7 42.8% 10-24 41.6%	
			1 7:27	28-26*	Layup by COLEMAN, Ronni	4-8 50.0% 11-25 44.0%	
					Assist by CHATMAN, Rodney		
4-6 66.6% 13-21 61.9%		15 ft Lane Jumper by EDWARDS, Douglas	1 7:10	30-26			
		Foul on SALTERS, Jesse	1 6:52		Sub In: PACK, Robert Out: MINER, Harold		
		Sub In: POLITE, Michael Out: SALTERS, Jesse	1 6:52		Sub In: COLEMAN, Ronni, 2 Free Throws missed 1st made 2nd	1-2 50.0% 3-4 75.0%	
			1 6:52	30-27*	Sub In: BOYD, Mark Out: COLEMAN, Ronni		

REB: 13 A: 5 BLK: 1 TO: 6 PF: 3  
S: 2 FT: 3-4 75.0% FB: 13-21 61.9%

OFFICIALS TIME - OUT

REB: 11 A: 5 BLK: 0 TO: 5 PF: 3  
S: 2 FT: 3-4 75.0% FB: 11-26 42.3%

1-2 50.0% 4-6 66.6%		POLITE, Michael, 2 Free Throws missed 1st made 2nd	1 6:39		Foul on CHATMAN, Rodney	1 1 4	
			1 6:39	31-27	Sub In: MINER, Harold Out: CHATMAN, Rodney		
			1 6:39		Sub In: COLEMAN, Ronni Out: BANKS, Calvin	2 1 5	
			1 6:07		Foul on PACK, Robert		
			1 6:07		Sub In: SANDERS, Yamen Out: BOYD, Mark	3-10 30.0% 12-28 42.8%	
			1 5:54	31-29*	Driving Flop by MINER, Harold	2 1 6	
					Assist by PACK, Robert		
			1 5:32		Foul on MINER, Harold	1 1 6	
			1 5:26				
			1 4:54	31-31*	Follow Layup by MINER, Harold	4-12 33.3% 13-31 41.9%	
			1 4:34	31-33*	Dunk Off Fast Break by SANDERS, Yamen	1-1 100% 14-32 43.7%	
					Assist by PACK, Robert	3 1 7	
			1 4:34		Sub In: CHATMAN, Rodney Out: PACK, Robert		
			1 4:34		Sub In: SANDERS, Yamen, 1 Free Throw made	1-1 100% 4-5 80.0%	
			1 4:34	31-34*	Layup by COLEMAN, Ronni	5-10 50.0% 15-33 45.4%	
			1 4:02	31-36*	Assist by CHATMAN, Rodney	4 1 8	
5-9 55.5% 14-27 51.8%		14 ft Right Base Line Turnaround by EDWARDS, Douglas	1 3:42	33-36		1 1 7	
			1 3:19		Foul on SANDERS, Yamen		

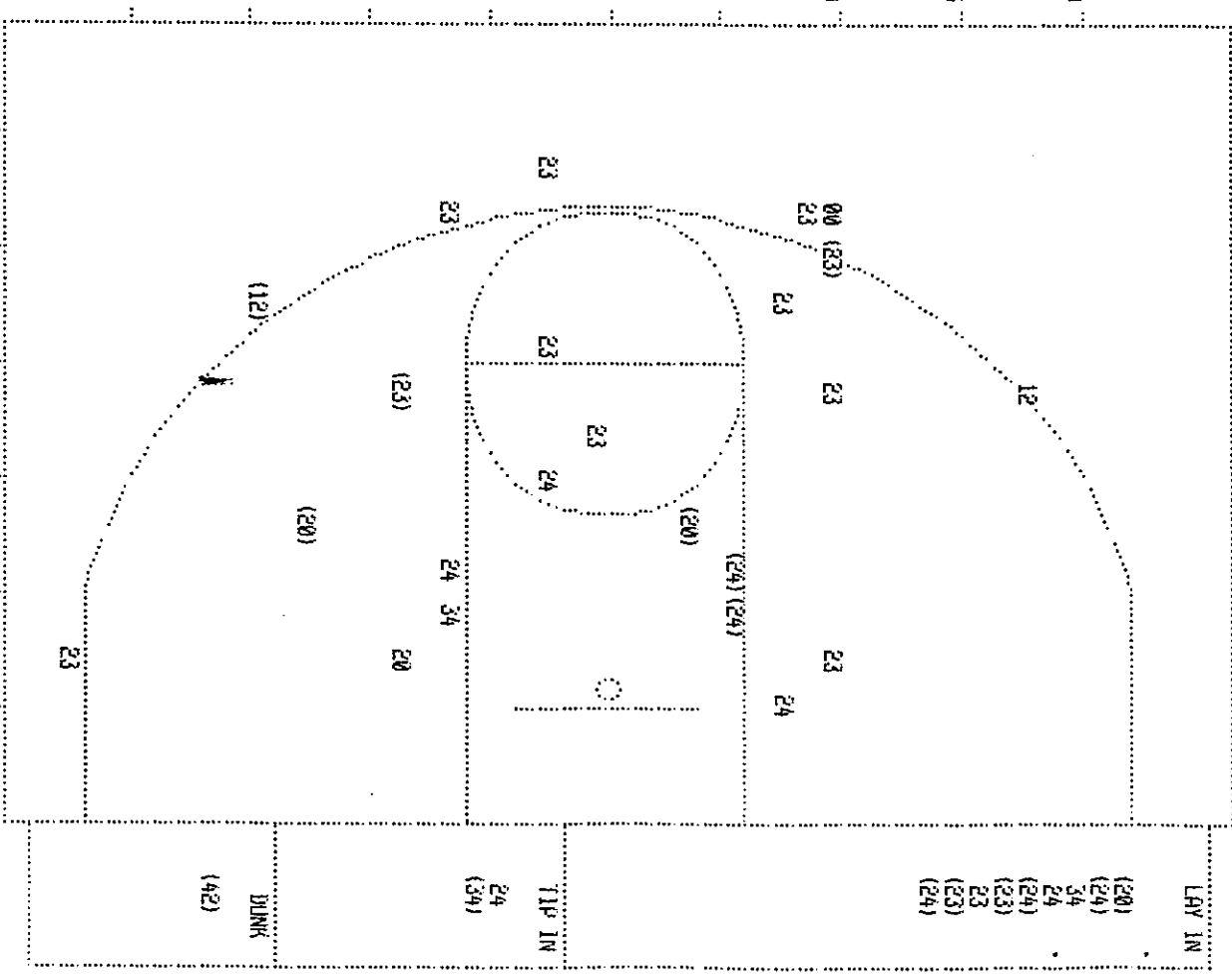
REB: 14 A: 6 BLK: 1 TO: 6 PF: 5  
S: 4 FT: 4-8 50.0% FB: 14-27 51.8%

OFFICIALS TIME - OUT

REB: 19 A: 8 BLK: 0 TO: 7 PF: 7  
S: 2 FT: 4-5 80.0% FB: 15-33 45.4%

Player	Team	Florida State	Time	Score	Southern California	Player	Team
2-2 100% 6-10 60.0%		Sub In: BOYD, Aubry Out: GRAHAM, Chuck	1 2:30		Foul on COLEMAN, Ronni	2 1 8	
		DOBARD, Rodney, 1 & Bonus made both	1 2:30	35-36	Sub In: BOYD, Mark Out: COLEMAN, Ronni		
		Sub In: REID, Andre Out: DOBARD, Rodney	1 2:30			1 1 9	
			1 1:38		Foul on BOYD, Mark		
3-4 75.0% 7-12 58.3%		Sub In: WHITE, David Out: EDWARDS, Douglas	1 1:38	36-36			
		BOYD, Aubry, 2 Free Throws missed 1st made 2nd	1 0:43		Sub In: GLENN, Phil Out: CHATMAN, Rodney		
		Foul on REID, Andre	1 0:43				
		Sub In: EDWARDS, Douglas Out: REID, Andre	1 0:43				
			1 0:43	36-38*	SANDERS, Yamen, 2 Free Throws made both	3-3 100% 6-7 85.7%	

12 of 15



Player	Southern California				Player
00 - CHITMAN, R	W/ 1	0.0%	34 - BARKIS, Cal	1/ 3	33.3%
12 - CUGGER, Du	1/ 2	50.0%	42 - SANDERS, Y	1/ 1	100.0%
20 - PACH, Robe	3/ 4	75.0%			
23 - MINER, Har	4/14	28.5%			
24 - COLEMAN, R	5/10	50.0%			
Layuds	1-9 Ft	10-15 Ft	Over 15 Ft	3 Pointers	Total
0 / 12	3 / 8	2 / 5	0 / 2	2 / 8	15 / 35
66.7%	37.5%	40.0%	0.0%	25.0%	42.9%

VISITORS (Last Name, First)														
1	1	Tot	FG	3-POINT	1	Rebounds	1	1	1	1	1	1	1	1
IND.	Southern California	FG	FGA	FG	FGA	FT	FTA	OFF	DEF	TOT	PF	TP	1	A TO BLK 5 MIN
134	BANKS, Calvin	1	3	0	0	0	1	2	3	0	2	1	0	1
124	COLEMAN, Ronnie	1	5	1	0	1	2	4	2	6	2	1	1	0
112	COOPER, Duane	1	1	2	1	2	0	0	3	3	1	3	1	1
123	MINER, Harold	1	4	1	1	5	0	0	2	2	4	1	9	1
120	PACK, Robert	1	3	4	0	0	2	2	0	1	1	2	8	1
133	BOYD, Mark	1	0	0	0	0	0	1	0	1	1	0	0	1
100	CHAITMAN, Rodney	1	0	1	0	1	0	0	1	1	1	0	1	1
142	SANDERS, Yamen	1	1	1	0	0	3	0	3	3	1	5	1	0
111	GLENN, Phil	1	0	0	0	0	0	0	0	0	0	0	0	0
1	TEAM REBOUNDS (INCLUDED IN TOTALS)	1	15	35	21	0	6	7	0	14	22	9	38	1
1	TOTALS	1	15	35	21	0	6	7	0	14	22	9	38	1
1	TOTAL FG	1st HALF	15/35	42.9%	2nd HALF	0/0	0/0	0.0%	GAME	15/35	42.9%	DEADBLL	1	
1	3-POINT FG	1st HALF	2/8	25.0%	2nd HALF	0/0	0/0	0.0%	GAME	2/8	25.0%	REBOUNDS	1	
1	FREE THROWS	1st HALF	6/7	85.7%	2nd HALF	0/0	0/0	0.0%	GAME	6/7	85.7%			

HOME (Last Name, First)														
1	1	Tot	FG	3-POINT	1	Rebounds	1	1	1	1	1	1	1	1
IND.	Florida State	FG	FGA	FG	FGA	FT	FTA	OFF	DEF	TOT	PF	TP	1	A TO BLK 5 MIN
132	EDWARDS, Douglas	1	5	1	0	0	2	1	4	5	0	1	0	1
145	POLITE, Michael	1	3	7	0	0	1	2	1	3	0	7	1	1
134	DOBARD, Rodney	1	0	0	0	2	2	0	3	3	0	2	1	1
112	WARD, Charlie	1	1	1	1	1	2	0	2	2	1	4	1	1
120	BOYD, Aubrey	1	2	7	0	3	3	4	1	0	1	2	7	1
104	GRAHAM, Chuck	1	3	6	0	1	0	0	2	1	3	1	6	1
122	MYERS, Derrick	1	0	0	0	0	0	0	0	0	0	0	0	1
121	SALTERS, Jesse	1	0	1	0	0	0	0	0	0	1	0	1	1
144	REID, Andre	1	0	0	0	0	0	0	0	0	1	0	1	1
131	WHITE, David	1	1	1	0	0	0	0	0	0	0	2	1	1
1	TEAM REBOUNDS (INCLUDED IN TOTALS)	1	15	32	11	5	7	12	5	12	17	6	38	1
1	TOTALS	1	15	32	11	5	7	12	5	12	17	6	38	1
1	TOTAL FG	1st HALF	15/32	46.9%	2nd HALF	0/0	0/0	0.0%	GAME	15/32	46.9%	DEADBLL	3	
1	3-POINT FG	1st HALF	1/5	20.0%	2nd HALF	0/0	0/0	0.0%	GAME	1/5	20.0%	REBOUNDS	3	
1	FREE THROWS	1st HALF	7/12	58.3%	2nd HALF	0/0	0/0	0.0%	GAME	7/12	58.3%			

OFFICIALS: Tim Higgins, John Border, Rick Hartzell  
Technicals: None  
SCORE BY PERIODS  
Southern California 38 = 38  
Florida State 38 = 38

Attendance: 1  
COMMENTS: POINTS OFF TURNOVERS 1  
Southern California 9 Florida State 6  
Produced by the University of Louisville Stat Crew with FIML III - a Product of LEXIDM SPORTSMAN  
SECOND CHANCE POINTS 7  
7

southern California "Trojans" vs Florida State "Seminoles"  
 nd Half Play by Play  
 conducted by the University of Louisville Stat Crew with FINEA, III - a Product of LEXINGTON SPORTS™

PAGE : 1  
 Tid off at 7:40 PM on 03/14/91 at Freedom Hall, Louisville

Player	Team	Florida State	Time	Score	Southern California	Player	Team
JORD, Rodney	EDWARDS, Douglas, POLITE, Michael, WARD, Charlie, BOYD, Aubry						
-10	60.0% 16-33 48.4% 10 ft Left Side Bank by EDWARDS, Douglas		2 19:48	38-40*	PACK, Robert, MINER, Harold, COOPER, Duane, COLEMAN, Romi, BARKS, Calvin	4-5	60.0% 16-36 44.4%
1	8 Assist by BOYD, Aubry		2 19:13	*40-40	Ball to Trojans		
-3	33.3% 8-13 61.5% EDWARDS, Douglas, 1 Free Throw made		2 19:13	*41-40	16 ft Right Angle Jumper by PACK, Robert		
-11	63.6% 17-35 48.5% Follow		2 18:42	*43-40		1	1
	Layup by EDWARDS, Douglas		2 18:42	*44-40	Foul on BARKS, Calvin		
-4	50.0% 9-14 64.2% EDWARDS, Douglas, 1 Free Throw made		2 18:42	*44-40		3	2
-2	100% 18-36 50.0% Layup Off Fast Break by WARD, Charlie		2 18:16	*46-40	Foul on COLEMAN, Romi		
2	9 Assist by DODDARD, Rodney						
	REB: 19 A: 9 BLK: 1 TO: 6 PF: 0		2 18:11				
	S: 5 FT: 9-14 64.2% FG: 18-36 50.0%		T I M E - 0 0 1		REB: 22 A: 8 BLK: 0 TO: 11 PF: 2		
					S: 2 FT: 6-7 85.7% FG: 16-37 43.2%		
1	1 Foul on EDWARDS, Douglas		2 18:11				
-1	100% 19-37 51.3% Alley Oop Layup by DODDARD, Rodney		2 17:54		Sub In: SPUDERS, Yamen Out: BARKS, Calvin	1-4	23.0% 6-9 66.6%
4	10 Assist by WARD, Charlie		2 17:54				
-2	100% 28-38 52.6% Dunk Off Fast Break by DODDARD, Rodney		2 17:35	*48-40	COLEMAN, Romi, 2 Free Throws missed both		
2	11 Assist by BOYD, Aubry		2 17:04	*50-40		2-2	100% 17-33 43.5%
2	2 Foul on WARD, Charlie		2 16:44	50-42* Follow	Dunk by		
-3	100% 21-40 52.5% 3 pt 21 ft Right Angle Follow		2 16:44		SPUDERS, Yamen	3-4	73.0% 6-10 60.0%
	by WARD, Charlie		2 16:24	*53-42			
-8	50.0% 22-41 53.6% 9 ft Right Side Bank by POLITE, Michael		2 15:41	53-44*	Dunk Off Fast Break by PACK, Robert	5-6	83.3% 18-40 45.0%
			2 15:29	*55-44	Assist by COOPER, Duane	2	9
-3	33.3% 9-15 60.0% POLITE, Michael, 1 Free Throw missed		2 15:26		Foul on COLEMAN, Romi	4	3
1	3 Foul on DODDARD, Rodney		2 15:26		Sub In: CHATMAN, Rodney Out: COOPER, Duane		
2	4 Foul on EDWARDS, Douglas		2 15:26		Sub In: BOYD, Mark Out: COLEMAN, Romi		
3	5 Foul on EDWARDS, Douglas		2 15:07			4-4	100% 8-12 66.6%
2	6 Sub In: WHITE, David Out: EDWARDS, Douglas		2 14:57	55-46*	PACK, Robert, 2 Free Throws made both	6-6	100% 18-14 71.4%
	Player Control Foul on DODDARD, Rodney		2 14:57				
			2 14:46				
			2 13:55	55-50* Follow	Layup by	3-3	100% 19-43 44.1%
			2 13:51		SPUDERS, Yamen		
			2 13:31		Sub In: COOPER, Duane Out: CHATMAN, Rodney	2	4
			2 13:05		Foul on BOYD, Mark		
2	7 Player Control Foul on BARKMAN, Chuck		2 12:51	55-52*	14 ft Lane Jumper by MINER, Harold	5-10	27.7% 20-44 45.4%
			2 12:27		Assist by COOPER, Duane	3	10







### THIRD GAME

MARCH 14, 1991

SOUTHERN CALIFORNIA

#### PLAYERS QUOTES

Harold Miner: I came out and played hard, the shots just didn't fall and that is something I'll just have to accept. I felt like I had quality shots tonight. I'm pretty much used to seeing every defense known, but the shots just didn't fall, and that is the way it goes sometimes.

Ronnie Coleman: We came out a little sluggish in the second half. A lot of the rebounds bounced long and we couldn't pick them up. We couldn't keep Edwards off the defensive boards and I think that hurt us. I started playing a bit tentative because of my fouls, I wanted to take some charges, but I was tentative.

#### COACH QUOTES

Coach Ravling: Florida State played an outstanding basketball game. They are a very talented team and Edwards is one of the outstanding players in the country today. I thought that we got a lot of quality shots, shots that we made during the season. But, they didn't fall tonight, we just didn't have it.

(Comments on Harold Miner) He has a couple of games during the season similar to this. I felt bad for him from the standpoint that people did not get to see the real Harold Miner, but those are the type of shots that put us into the tournament. I think that over the course of four years people will realize that he is one of the top players in the country, but one game doesn't make a season, a player or a career. I had told Harold before the game that the worst thing you can do in life is to try to live up to someone else's expectations-and he understands that. (Florida State Defense) We came into the game realizing that they would throw a variety of defenses at us and they did. I think they changed defenses every two possessions, but we did not see anything that we have not seen before.

### THIRD GAME

### COACH QUOTES

### FLORIDA STATE

MARCH 14, 1991

Coach Kennedy: I think that our kids had done such a great job in this stretch coming down the road of these tough basketball games. They came in here and beat a very good Southern Cal team. Southern Cal is one of the better defensive teams that we've played. They're extremely physical, they looked like Louisville did at the end of the year. I think that the three big keys of the game were Aubry stopping Harold Miner, that was a very big key. But we knew if he got off on us that he would beat us. We played a triangle and two almost the whole game and Aubry did just a great job on him. Charles did an excellent job on controlling the ball when we needed it, DOuglas answered when we went to him inside. Take those three aspect of the game as it moved down and we did a great job.

### THIRD GAME

MARCH 14, 1991

### FLORIDA STATE UNIVERSITY

### PLAYERS QUOTES

Douglas Edwards: (What was the difference in tonights ball game?) I think in the second half we came back and were more aggressive because they were banging us so we wanted to bang them back in the second half. They were real strong but they were pushing, but we just had to come back and get more aggressive and push back with them. (What was the team's defensive strategy against Harold Miner?) The thing about Harold, we just wanted to contain him. We knew he was going to get his points. We just wanted to contain him. (Can you describe your offensive game?) I just wanted to come out and play real hard and not force action. I wanted the action to come to me.

Aubry Boyd: (Talking about his points). I was following behind the picks, I watched his hands and I followed the picks. I figured if I watched his moves I would know where to go and make the shots. (Anticipation of Indiana). We faired well and I don't look at them any different than I did Syracuse or any other team. (About offensive start). We figured they would make a run so we had to step it up at the foul shots and make all the rest.