

Final Statistics

NCAA Southeast Second Round

**Florida State Seminoles
vs.
Indiana Hoosiers**



March 16, 1991

Freedom Hall
Louisville, Kentucky

VISITORS (Last name, first) (Indicate starters with an asterisk)

No.	Florida State Univ.	Total FG		3-point		FT	FTA	Rebounds			PF	TP	A	TO	BLK	S	MIN
		FG	FGA	FG	FGA			Off.	Def.	Tot.							
32	Edwards, Douglas	8	16	1	1	1	3	6	8	14	3	18	0	3	2	0	39
45	Polite, Michael	5	13	0	0	2	5	5	4	9	2	12	1	1	0	0	36
34	Dobard, Rodney	2	3	0	0	1	2	2	1	3	5	5	0	2	1	1	21
12	Ward, Charlie	3	9	0	1	2	2	2	2	4	5	8	4	3	0	5	28
20	Boyd, Aubry	2	8	0	3	2	2	0	0	0	3	6	2	0	0	0	28
04	Graham, Chuck	3	8	1	4	1	1	0	2	2	4	8	0	1	0	0	21
44	Reid, Andre	0	2	0	0	0	0	0	0	0	1	0	0	0	1	0	6
22	Myers, Derrick	1	2	1	2	0	0	1	0	1	0	3	1	0	0	0	13
31	White, David	0	2	0	1	0	0	1	0	1	0	0	0	1	0	0	5
21	Salters, Jesse	0	2	0	0	0	0	0	0	0	0	0	0	0	0	0	3
		4	16	2	7	1	1	2	2	4		11	1	8	1	0	48
	TEAM REBOUNDS (included in Totals)							1	2	3							
	TOTALS	24	65	3	12	9	15	18	19	37	23	60	8	11	4	6	200

TOTAL FG%: 1st half 15/38 39.5% 2nd half 9/27 33.3% Game 24/65 36.9%
 3-Pt. FG%: 1st half 1/6 16.7% 2nd half 2/6 33.3% Game 3/12 25.0%
 FT%: 1st half 7/10 70.0% 2nd half 2/5 40.0% Game 9/15 60.0%

Deadball
rebounds 4

HOME (Last name, first) (Indicate starters with an asterisk)

No.	Indiana University	Total FG		3-point		FT	FTA	Rebounds			PF	TP	A	TO	BLK	S	MIN
		FG	FGA	FG	FGA			Off.	Def.	Tot.							
32	Anderson, Eric	4	11	0	0	5	8	2	5	7	2	13	2	4	0	1	32
40	Cheaney, Calbert	11	14	2	3	0	0	2	8	10	4	24	3	1	0	1	37
24	Nover, Matt	1	1	0	0	0	1	0	0	0	2	2	0	0	0	0	12
20	Graham, Greg	5	8	1	3	3	5	0	2	2	2	14	3	0	0	2	32
23	Meeks, Jamal	2	3	0	1	0	0	0	1	1	1	4	4	1	0	1	21
22	Bailey, Damon	3	6	1	2	5	9	1	4	5	3	12	3	0	0	0	31
21	Reynolds, Chris	0	0	0	0	0	0	0	0	0	0	0	0	1	0	0	2
33	Graham, Pat	4	6	3	3	2	2	1	3	4	1	13	6	0	0	0	21
54	Lawson, Chris	0	2	0	0	0	0	1	0	1	0	0	0	1	1	0	5
04	Jones, Lyndon	0	1	0	1	0	0	0	0	0	0	0	3	0	0	0	7
		7	15	4	8	7	11	3	7	10		25	12	2	1	0	66
	TEAM REBOUNDS (included in Totals)							2	2	4							
	TOTALS	30	52	7	13	15	25	9	25	34	15	82	24	8	1	5	200

TOTAL FG%: 1st half 12/24 50.0% 2nd half 18/28 64.3% Game 30/52 57.7%
 3-Pt. FG%: 1st half 3/9 33.3% 2nd half 4/4 100.0% Game 7/13 53.8%
 FT%: 1st half 5/10 50.0% 2nd half 10/15 66.7% Game 15/25 60.0%

Deadball
rebounds 4

Technical fouls:

Attendance: 18,946

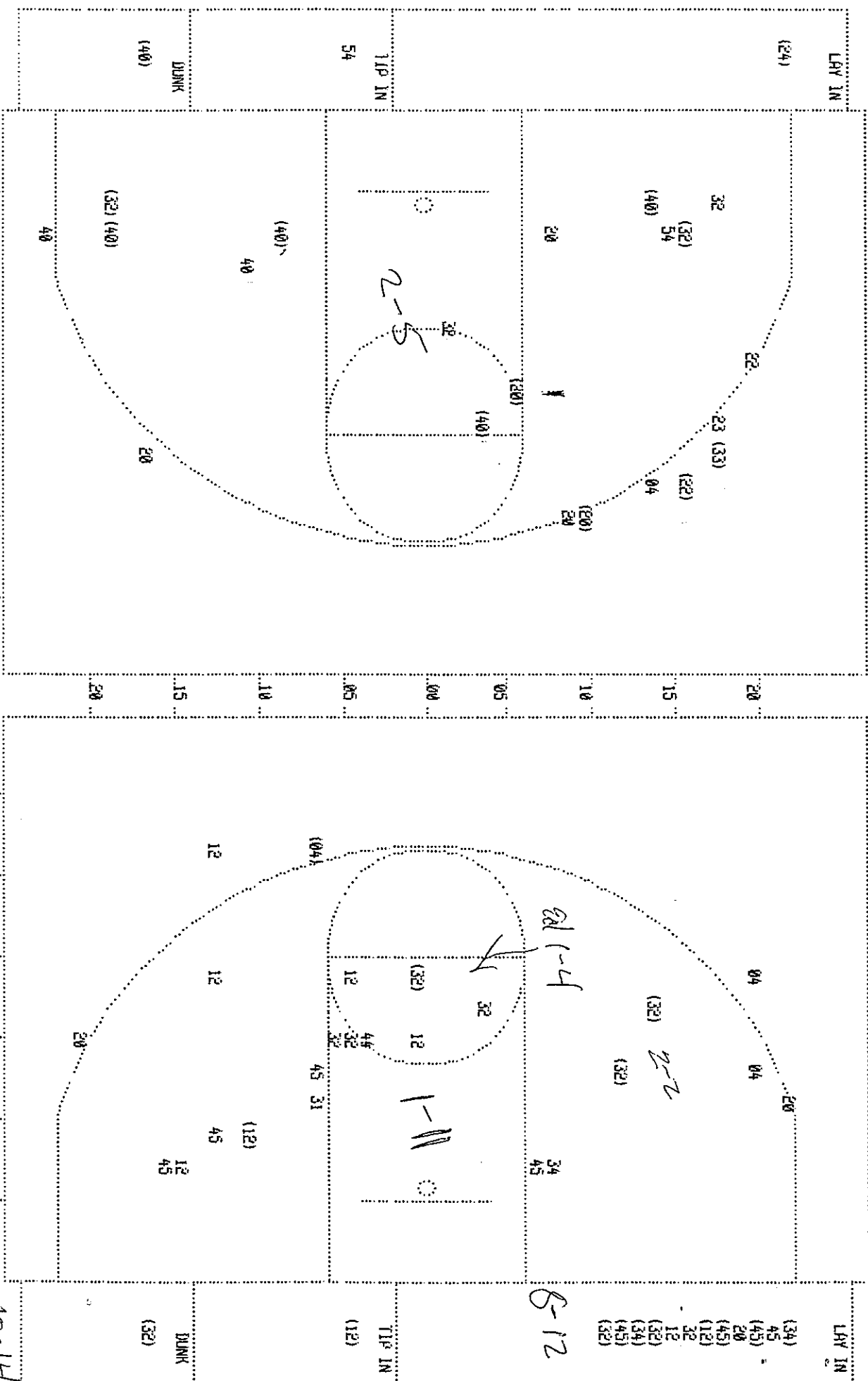
Officials: Tim Higgins, Ron Zetcher

Bill Kennedy

SCORE BY PERIODS		1st H.	2nd H.	OT	OT	FINAL
Florida State		38	22			60
Indiana		32	50			82

Player	Team	Indiana	Time	Score	Florida State	Player	Team
ANDERSON, Eric, CHEANEY, Calbert, MUVER, Matt, GRAHAM, Greg, MEEKS, Jamal			EDWARDS, Douglas, POLITE, Michael, DUBARD, Rodney, WARD, Charlie, BOYD, Aubry				
1	1	Foul on MUVER, Matt	1 19:15	0-2*	Follow Layup by DUBARD, Rodney	1-1	100% 1-3 33.3%
1	2	Foul on ANDERSON, Eric	1 18:53	0-4*	WARD, Charlie, 2 Free Throws made both	2-2	100% 2-2 100%
1-3	33.3%	1-4 25.0%	1 18:24		POLITE, Michael, 2 Free Throws missed both	0-2	00.0% 2-4 50.0%
2-4	50.0%	2-5 40.0%	1 18:15	*2-4	Foul on BOYD, Aubry	1	1
1	1	14 ft Right Base Line Jumper by CHEANEY, Calbert Assist by MEEKS, Jamal	1 17:38	*4-4			
2	2	Foul on ANDERSON, Eric	1 17:24				
1-2	50.0%	3-6 50.0%	1 16:53	4-6*	BOYD, Aubry, 2 Free Throws made both	2-2	100% 4-6 66.6%
2	2	3 pt 21 ft Right Angle Jumper by GRAHAM, Greg Assist by MEEKS, Jamal	1 16:59	*7-6			
2	4	Foul on MUVER, Matt	1 16:45				
		REB: 5 A: 2 BLK: 0 TO: 2 PF: 4	1 16:23		Foul on DUBARD, Rodney	1	2
		S: 0 FT: 0-0 00.0% FG: 3-6 50.0%	1 16:03				
OFFICIALS			TIME-OUT				
1-1	100%	4-7 57.1%	1 15:40	7-8*	Follow Layup by POLITE, Michael	1-3	33.3% 2-9 22.2%
3	3	Layup by MUVER, Matt Assist by MEEKS, Jamal	1 15:30				
		Sub In: BAILEY, Damon Out: GRAHAM, Greg	1 15:05	*9-8			
1	5	Foul on MEEKS, Jamal	1 14:26		Foul on WARD, Charlie	1	3
			1 14:26				
			1 14:02	9-10*	17 ft Left Side Jumper by EDWARDS, Douglas	1-3	33.3% 3-12 25.0%
			1 13:42		Foul on BOYD, Aubry	2	4
			1 13:23				
1-1	100%	5-8 62.5%	1 13:23	9-11*	Sub In: GRAHAM, Chuck Out: BOYD, Aubry	1-2	50.0% 5-8 62.5%
1	4	16 ft Right Base Line Jumper by ANDERSON, Eric Assist by CHEANEY, Calbert	1 13:23		DUBARD, Rodney, 2 Free Throws missed 1st made 2nd		
			1 12:48	*11-11			
			1 11:50	11-13*	Follow Layup by POLITE, Michael	2-4	50.0% 4-15 26.6%
			1 11:35		Foul on DUBARD, Rodney	2	5
			1 11:35		Sub In: REID, Andre Out: DUBARD, Rodney		
1-2	50.0%	1-2 50.0%	1 11:35	*12-13			
		Sub In: REYNOLDS, Chris Out: MEEKS, Jamal	1 11:35				
		ANDERSON, Eric, 2 Free Throws missed 1st made 2nd					
		Sub In: GRAHAM, Pat Out: CHEANEY, Calbert					
		REB: 5 A: 4 BLK: 0 TO: 5 PF: 5	1 11:35				
		S: 0 FT: 1-2 50.0% FG: 5-8 62.5%	1 11:35				
OFFICIALS			TIME-OUT				
2-2	100%	6-9 66.6%	1 11:24	12-15*	Driving Layup by WARD, Charlie	1-4	25.0% 5-16 31.2%
1	5	18 ft Left Base Line Jumper by ANDERSON, Eric Assist by GRAHAM, Pat	1 11:07	*14-15			
			1 10:49	14-17*	12 ft Lane Jumper by EDWARDS, Douglas	2-4	50.0% 6-17 35.2%
			1 10:11		Foul on REID, Andre	1	6
			1 10:11				
		Sub In: LAWSON, Chris Out: ANDERSON, Eric					
Player	Team	Indiana	Time	Score	Florida State	Player	Team
1	6	Foul on BAILEY, Damon	1 9:53	14-19*	Dunk Off Fast Break by EDWARDS, Douglas Assist by WARD, Charlie	3-5	50.0% 7-19 36.8%
		Sub In: MEEKS, Jamal Out: REYNOLDS, Chris	1 9:41			1	1
0-1	00.0%	1-3 33.3%	1 9:41		Foul on POLITE, Michael	1	7
		MUVER, Matt, 1 & Bonus missed 1st	1 9:25				
0-1	00.0%	1-4 25.0%	1 9:25		Foul on GRAHAM, Chuck	1	8
		Sub In: CHEANEY, Calbert Out: MUVER, Matt	1 9:00				
		BAILEY, Damon, 1 & Bonus missed 1st	1 9:00				
			1 8:37		Foul on GRAHAM, Chuck	2	9
2-3	66.6%	3-6 50.0%	1 8:37		Sub In: DUBARD, Rodney Out: REID, Andre		
		BAILEY, Damon, 2 Free Throws made both	1 8:37	*16-19	Sub In: BOYD, Aubry Out: GRAHAM, Chuck		
		Sub In: GRAHAM, Greg Out: BAILEY, Damon	1 8:37				
			1 7:26	16-21*	Driving Corkscrew by EDWARDS, Douglas	4-7	57.1% 8-26 30.7%
			1 6:59	16-23*	Scoop Assist by BOYD, Aubry	1	2
					DUBARD, Rodney	2-3	66.6% 9-27 33.3%
					Assist by WARD, Charlie	2	3
		REB: 12 A: 5 BLK: 1 TO: 7 PF: 6	1 6:38				
		S: 0 FT: 3-6 50.0% FG: 6-15 40.0%	1 6:38				
OFFICIALS			TIME-OUT				
		Sub In: ANDERSON, Eric Out: LAWSON, Chris	1 6:38				
			1 6:38		Sub In: MYERS, Derrick Out: WARD, Charlie		
		Sub In: JONES, Lyndon Out: MEEKS, Jamal	1 6:38	15-25*	13 ft Left Side Jumper by EDWARDS, Douglas	5-8	62.5% 10-28 35.7%
2-4	50.0%	7-16 43.7%	1 5:51	*18-25	Assist by BOYD, Aubry	2	4
3-5	60.0%	8-17 47.0%	1 5:30	*20-25			
2	6	12 ft Lane Jumper by GRAHAM, Greg	1 5:03	20-27*	Driving Flop by POLITE, Michael	3-7	42.8% 11-29 37.9%
		Dunk by CHEANEY, Calbert	1 5:01				
		Assist by GRAHAM, Pat	1 5:01				
1	7	Foul on GRAHAM, Pat	1 5:01		Sub In: WARD, Charlie Out: MYERS, Derrick	1-3	33.3% 6-9 66.6%
		Sub In: BAILEY, Damon Out: GRAHAM, Pat	1 5:01		POLITE, Michael, 1 Free Throw made		
			1 5:01		Sub In: GRAHAM, Chuck Out: POLITE, Michael	1	10
2-4	50.0%	4-8 50.0%	1 4:50		Foul on EDWARDS, Douglas		
		ANDERSON, Eric, 2 Free Throws missed 1st made 2nd	1 4:37	*21-28		1-3	33.3% 12-30 40.0%
4-6	66.6%	9-20 45.0%	1 4:37	21-31*	3 pt 21 ft Circle Jumper by GRAHAM, Chuck	3	5
1	7	13 ft Lane Turnaround by CHEANEY, Calbert	1 4:18	*23-31	Assist by WARD, Charlie		
		Assist by JONES, Lyndon					
		REB: 13 A: 7 BLK: 1 TO: 7 PF: 7	1 3:56				
		S: 1 FT: 4-8 50.0% FG: 9-20 45.0%	1 3:44				
OFFICIALS			TIME-OUT				
5-7	71.4%	10-21 47.6%	1 3:44	23-33*	Sub In: POLITE, Michael Out: BOYD, Aubry	2-6	33.3% 13-31 41.9%
1	8	18 ft Left Base Line Jumper by CHEANEY, Calbert	1 3:44	*25-33	10 ft Right Side Bank by WARD, Charlie		
		Assist by BAILEY, Damon	1 2:58				
		Sub In: MUVER, Matt Out: ANDERSON, Eric	1 2:32		Sub In: WHITE, David Out: POLITE, Michael		
Player	Team	Indiana	Time	Score	Florida State	Player	Team
1	8	Foul on CHEANEY, Calbert	1 2:16				
1-1	100%	11-23 47.8%	1 2:16	23-33*	Follow Layup by EDWARDS, Douglas	6-9	66.6% 14-34 41.1%
2	9	3 pt 23 ft Right Side Jumper by GRAHAM, Pat	1 1:41			1-1	100% 7-10 70.0%
		Assist by JONES, Lyndon	1 1:41	25-36*	EDWARDS, Douglas, 1 Free Throw made		
			1 1:32	*28-36			
		Sub In: LAWSON, Chris Out: MUVER, Matt	1 1:09		Foul on EDWARDS, Douglas	2	11
3-5	60.0%	5-10 50.0%	1 1:09		Sub In: WHITE, David Out: EDWARDS, Douglas		
		BAILEY, Damon, 2 Free Throws made 1st missed 2nd	1 1:09	*29-36			
1-2	50.0%	12-24 50.0%	1 0:28	29-38*	Follow Tripin by WARD, Charlie	3-9	33.3% 15-30 39.4%
3	10	3 pt 23 ft Right Angle Jumper by BAILEY, Damon	1 0:16	*32-38			
		Assist by JONES, Lyndon					

3rd



1. THE CHAIRMAN -

Player	Team	Indiana
--------	------	---------

1000

Time Score Florida

Player	Team	Indiana	Time	Score	Florida State	Player	Team
GRAHAM, Pat, BAILEY, Damon,	ANDERSON, Eric, GRAHAM, Greg, CHEANEY, Calbert				EDWARDS, Douglas, DOWARD, Rodney, POLITE, Michael, WARD, Charlie, BUD, Aubry		
6-8	75.0% 13-25 50.0%	3 at 22 ft Right Side Jumper by CHEANEY, Calbert	2 19:23	*35-38			
3	11	Assist by GRAHAM, Pat	2 18:58				
1	1	Foul on GRAHAM, Greg	2 18:40				
2-2	100% 14-27 51.8%	3 at 22 ft Left Side Jumper by GRAHAM, Pat	2 18:41	*38-38	Foul on WARD, Charlie	2	1
2	12	Assist by BAILEY, Damon					
		RED: 15 At 12 BLK: 1 TD: 8 PF: 1	2 18:31		RED: 24 At 5 BLK: 1 TD: 7 PF: 1		
		S: 2 FT: 5-19 50.0% FG: 14-27 51.8%	U T	Florida State No. 1	S: 6 FT: 7-10 70.0% FG: 15-38 39.4%		
3-6	50.0% 6-12 50.0%	ANDERSON, Eric, 2 Free Throws made 1st missed 2nd	2 17:55		Foul on DOWARD, Rodney	3	2
3-3	100% 15-20 53.5%	3 at 22 ft Left Side Jumper by GRAHAM, Pat	2 17:55	*39-38			
1	13	Assist by ANDERSON, Eric	2 17:40	39-40	Driving Layup by BUD, Aubry	1-4	25.0% 16-41 39.0%
7-9	77.7% 16-29 55.1%	3 at 22 ft Right Base Line Jumper by CHEANEY, Calbert	2 17:26	*42-40			
4	14	Assist by GRAHAM, Pat	2 16:43	*45-40			
4-5	80.0% 17-31 54.8%	Dunk Off Fast Break by GRAHAM, Pat	2 15:45		Foul on POLITE, Michael	2	3
2	15	Assist by CHEANEY, Calbert	2 15:37		Foul on DOWARD, Rodney	4	4
2	2	Foul on CHEANEY, Calbert	2 15:37		Sub In: KEID, Andre Out: DOWARD, Rodney		
3	3	Foul on CHEANEY, Calbert	2 15:09	*47-40			
3-6	50.0% 18-33 54.5%	14 ft Right Ankle Jumper by ANDERSON, Eric	2 14:48		Sub In: GRAHAM, Chuck Out: BUD, Aubry		
		RED: 19 At 15 BLK: 1 TD: 8 PF: 3	2 14:31				
		S: 4 FT: 6-12 50.0% FG: 18-33 54.5%	2 14:20		EDWARDS, Douglas, 2 Free Throws missed both	1-3	33.3% 7-12 58.3%
			2 13:57	*49-40			
3-6	50.0% 19-34 55.0%	Dunk Off Fast Break by GRAHAM, Greg	2 13:48		RED: 28 At 5 BLK: 2 TD: 9 PF: 4		
5	16	Assist by GRAHAM, Pat	U T	Florida State No. 2	S: 6 FT: 7-12 58.3% FG: 16-43 37.2%		
8-1	90.0% 6-13 46.1%	GRAHAM, Greg, 1 Free Throw missed	2 13:20	*51-40			
3-7	42.0% 6-15 40.0%	BAILEY, Damon, 2 Free Throws missed both	2 13:18		Foul on WARD, Charlie	3	5
			2 13:18		Sub In: DOWARD, Rodney Out: KEID, Andre		
5-9	55.5% 8-17 47.0%	BAILEY, Damon, 2 Free Throws made both	2 13:06		Foul on DOWARD, Rodney	5	6
2	4	Foul on BAILEY, Damon	2 13:06		Sub In: SAUTERS, Jesse Out: DOWARD, Rodney		
4-7	57.1% 20-36 55.5%	Layup by GRAHAM, Greg	2 12:49		Foul on GRAHAM, Chuck	3	7
6	17	Assist by GRAHAM, Pat	2 12:49				
			2 12:07		Foul on WARD, Charlie	4	8
			2 12:07		Sub In: BUD, Aubry Out: POLITE, Michael		
			2 12:07		Sub In: MYERS, Derrick Out: WARD, Charlie		
			2 11:49	*53-40			
			2 11:48	53-42*	11 ft Left Side Bank by GRAHAM, Chuck	2-5	40.0% 17-46 36.9%
			2 11:48	53-43*	GRAHAM, Chuck, 1 Free Throw made	1-1	100% 8-13 61.5%
			2 11:20	*55-43			
			2 10:57	55-45*	10 ft Left Side Jumper by EDWARDS, Douglas	7-12	58.3% 18-40 37.5%

2nd Half Play by Play (continued)

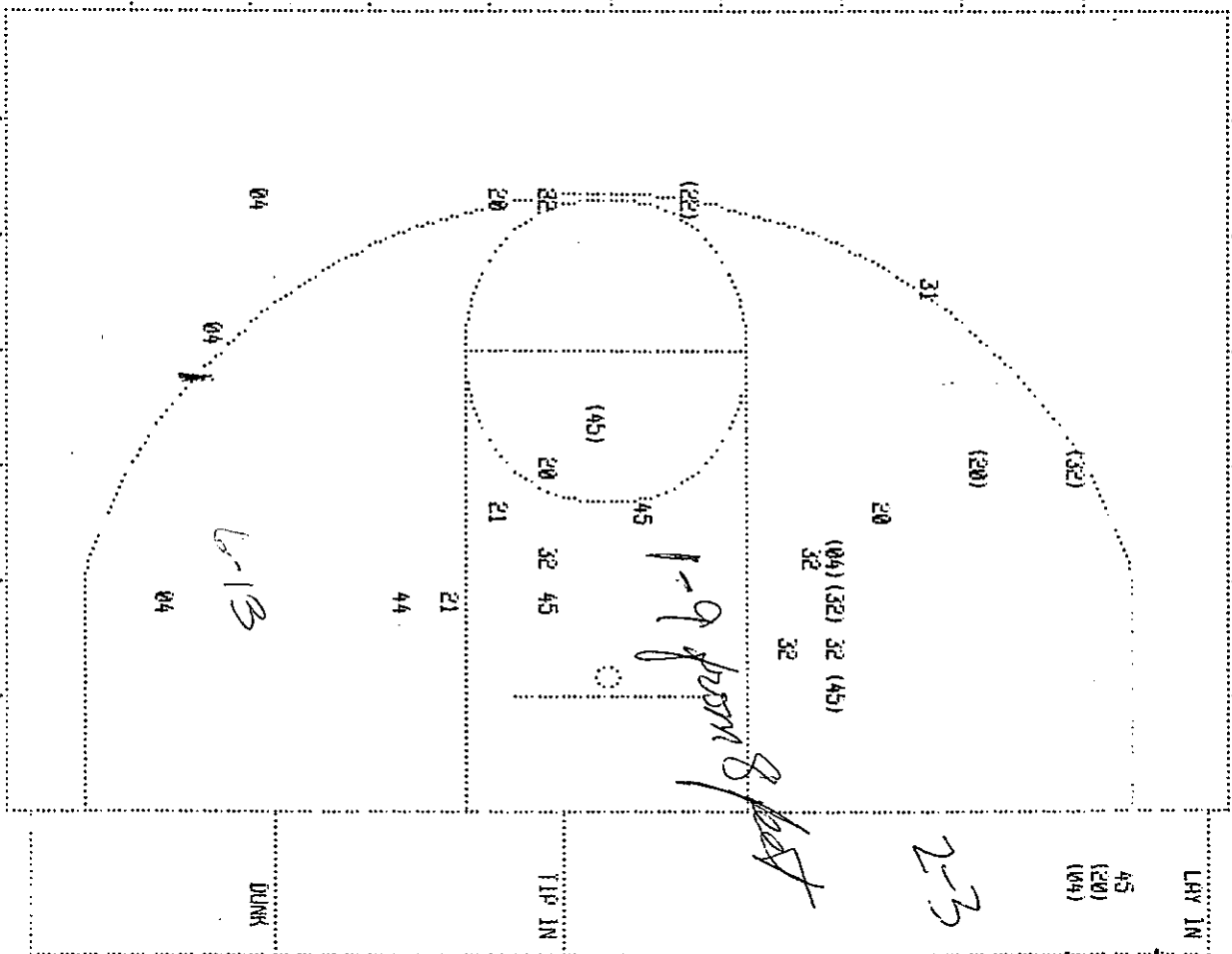
PAGE : 2

Player	Team	Indiana	Time	Score	Florida State	Player	Team
3	5	Foul on BAILEY, Damon	2 10:35				
0-10	80.0%	21-39 53.8%	18 ft Lane Jumper by CHERNEY, Calbert	2 10:15	Sub In: POLITE, Michael Out: WALTERS, Jesse	3-5	50.0%
1	18	Assist by GRAHAM, Greg	2 10:15	Sub In: WARD, Charlie Out: MYERS, Derrick	2 10:15	Layup by GRAHAM, Chuck	19-50 38.8%
			2 10:03	55-47#	Layup by GRAHAM, Chuck	4	5
					Assist by WARD, Charlie		
			2 9:51	47-47			
2-2	100%	10-19 52.6%	2 9:16	Foul on WARD, Charlie	2 9:16		5
		GRAHAM, Pat, 1 & Bonus made both	2 9:16	Sub In: MYERS, Derrick Out: WARD, Charlie	2 9:16		9
1-2	50.0%	22-42 52.3%	2 9:16	47-47			
5	19	16 ft Circle Jumper by MEEKS, Jamal	2 9:16	47-47			
		Assist by GRAHAM, Greg	2 8:21	46-47			
5-8	62.5%	12-21 57.1%	2 7:56	Foul on BOLD, Aubry	2 7:56		3
		ANDERSON, Eric, 2 Free Throws made both	2 7:56	46-47			10
		REB: 28 At 19 BLK: 1 TO: 8 PF: 5	2 7:56		REB: 33 At 6 BLK: 3 TO: 10 PF: 10		
		St: 4 FT: 12-21 57.1% FG: 22-42 52.3%	OFFICIALS	TIME - OUT	St: 6 FT: 8-13 61.5% FG: 19-53 35.8%		
2-3	40.0%	23-43 53.4%	2 7:31	45-47			
4	6	Foul on CHERNEY, Calbert	2 7:08	65-49#	10 ft Left Base Line Jumper by POLITE, Michael	4-11	36.3%
			2 7:05			20-55 36.3%	
3-6	50.0%	24-45 53.3%	2 7:05	65-50#	POLITE, Michael, 1 Free Throw made	2-4	50.0%
		Driving Layup by BAILEY, Damon	2 6:59	47-50		9-14	64.2%
			2 6:12	47-52#	18 ft Left Side Jumper by BOLD, Aubry	2-7	28.5%
					Assist by POLITE, Michael	21-56 37.5%	
1-3	33.3%	13-23 56.5%	2 5:42	46-52	Foul on EDWARDS, Douglas	1	7
2-3	66.6%	25-46 54.3%	2 5:42	46-52		3	11
	20	Layup Off Fast Break by MEEKS, Jamal	2 5:22	47-52			
3	7	Assist by CHERNEY, Calbert	2 5:15				
		Foul on GRAHAM, Greg	2 5:15	POLITE, Michael, 1 & Bonus missed 1st	2-5	40.0%	
			2 5:05	Foul on GRAHAM, Chuck	4	9-15 60.0%	
						12	
		REB: 31 At 20 BLK: 1 TO: 8 PF: 7	TIME - OUT	Florida State No. 3	REB: 35 At 7 BLK: 3 TO: 11 PF: 12		
		St: 5 FT: 13-23 56.5% FG: 25-46 54.3%			St: 6 FT: 9-15 60.0% FG: 21-57 36.8%		
3-5	60.0%	15-25 60.0%	2 5:05	47-52			
9-12	75.0%	26-47 55.3%	2 4:27	47-52			
3	21	12 ft Lane Jumper by CHERNEY, Calbert	2 4:13	74-54#	10 ft Lane Jumper by POLITE, Michael	5-12	41.6%
		Assist by BAILEY, Damon	2 3:59	47-54		22-59 37.2%	
10-13	76.9%	27-40 56.2%	2 3:19		Sub In: WHITE, David Out: GRAHAM, Chuck		
3	22	Driving Layup by CHERNEY, Calbert	2 2:54	47-54			
		Assist by GRAHAM, Greg					
5-8	62.5%	28-49 57.1%	2 2:46	70-57#	3 pt 22 ft Left Side Jumper by EDWARDS, Douglas	8-15	53.3%
2	23	6 ft Lane Turnaround by GRAHAM, Greg			Assist by MYERS, Derrick	1	23-62 37.0%
		Assist by ANDERSON, Eric	2 2:17	48-57		8	
4-10	40.0%	29-50 58.0%	2 2:05	60-60#	3 pt 20 ft Circle Jumper by MYERS, Derrick	1-2	50.0%
4	24	Turnaround Flop by ANDERSON, Eric				24-63 38.0%	
		Assist by MEEKS, Jamal	2 1:29				
		REB: 33 At 24 BLK: 1 TO: 8 PF: 7	No. 1 Indiana	TIME - OUT	REB: 37 At 8 BLK: 4 TO: 11 PF: 12		
		St: 5 FT: 15-25 60.0% FG: 29-51 56.8%			St: 6 FT: 9-15 60.0% FG: 24-64 37.5%		

2nd Half Play by Play (continued)

PAGE 13

Player	Team	Indiana	Time	Score	Florida State	Player	Team
11-14	78-54	30-52 57.6%	Sub Ins	6:00 AM, Pat Out: ANDERSON, Eric	2	1:29	
			Driving Layup by CHERNEY, Calbert	2	1:29	342-60	



Player	Player	Player
W4 - GRAHAM, Ch 2/ 5 40.0%	32 - EDWARDS, Do 2/ 6 33.3%	

20 - ELLYD, Andr	2/ 5	40.0%	44 - KELD, Andr	0/ 1	0.0%
21 - SHLETS, J	0/ 2	0.0%	45 - POLITE, Mi	2/ 5	40.0%

~~22 - MYERS, Der 1/2 50.0%~~


51 - WHITE, Day 8/1) 0.0%

Layer	1-4 ft	10-15
1		
2		
3		
4		
5		
6		
7		
8		
9		
10		
11		
12		
13		
14		
15		
16		
17		
18		
19		
20		
21		
22		
23		
24		
25		
26		
27		
28		
29		
30		
31		
32		
33		
34		
35		
36		
37		
38		
39		
40		
41		
42		
43		
44		
45		
46		
47		
48		
49		
50		
51		
52		
53		
54		
55		
56		
57		
58		
59		
60		
61		
62		
63		
64		
65		
66		
67		
68		
69		
70		
71		
72		
73		
74		
75		
76		
77		
78		
79		
80		
81		
82		
83		
84		
85		
86		
87		
88		
89		
90		
91		
92		
93		
94		
95		
96		
97		
98		
99		
100		

213 / 018 41
E674 / 067 571

MARCH 16, 1991
FLORIDA STATE UNIVERSITY
COACH'S QUOTES

Pat Kennedy

 We knew that zones were things they struggled with all year. We needed the type first half that we had, although they shot 50%, they didn't hurt us that much from the perimeter. At halftime we told our guys that Indiana was an outstanding second half team. We had that in our game notes. We were unsure whether or not we wanted to go man-to-man in the second half, but the way they heated up with the threes, we decided to abandon our zone defense. Their outside shooting helped Indiana get their crowd back into the game.

In the first half I thought we controlled the backboards very well. But their outstanding defense in the second half got us out of total sync. Indiana deserves great credit for the job they did in the second half. They played well on both ends of the floor. But I was still very, very proud of our team.

On Preparing for IU

We only had one day to prepare and that's very difficult against a team like IU. No team in our league runs the motion offense the way they do and that makes it very difficult to prepare when you haven't seen that type of offense.

Early Minutes of Second Half

We played so hard physically in the first half that we were really tired in the first five minutes of the second half. I've never seen us that tired in a game before. In the second half when IU came out and started from the outside, we had to come out and play them. That's when they started working on us inside.

On the Prospects of Kansas vs IU


Both teams run the motion offense extremely well. It should be a very exciting game for people to watch.


On IU & Their Style of Play

If IU plays Arkansas, they could do very well. If IU keeps the game in a half-court game and controls the half-court tempo, they could do extremely well against Arkansas.

PLAYER QUOTES

FLORIDA STATE

 Douglas Edwards: In the second half we got down and they kept attacking us, they were very aggressive and they hit all their open shots.

 Michael Polite: We came out well at the beginning of the game, we were hot and we hit our open shots. Then in the second half I looked up and the score was tied, they poured it on from then.

Charlie Ward: (Their guards) Came out in the second half, got it to the middle and then dished it to the outside where they were hitting the jumpers. (Fouling out) It hurts to foul out, it was just one of those things where some calls went against us.

March 16, 1991
Indiana
Coach's Quotes
Bob Knight

We thought starting out that they were going to come out tough. They were very aggressive and confident in the first half. We didn't have anybody play real well in the first half, but we had some good plays. Lyndon Jones got three assists. That really doesn't sound like anything, but it really helped out.

We talked at halftime about coming out and having three good possessions. Our starting out well, I was a bit reluctant to substitute. We were doing well and I really didn't want to change things and maneuver around.

Bobby Knight: On the starting line up for the second half:] I thought our zero turnover factor surprised me in the second half. What we tried to do was get our three best penetrating shooters in the ballgame. We used a smaller lineup to be more effective on the defensive end to combat their quickness. They were beating us on the boards in the first half, so we figure it couldn't get much worse in the second half. The smaller lineup paid dividends offensively.

Greg Graham did an outstanding job on the perimeter. In the second half, although we were a smaller team, we were a stonger team, and we wound up being a fairly good unit both defensively and offensively.

40-11 run: Florida State missed some easy shots during the run. I thought we played well though. It had to hurt them when they missed three or four inside shots to start the second half. What I was concerned about was the fact that they made a 40-13 run of their own against Louisville in their conference tournament. I had that thought in the back of my own mind. But once we got the lead above 15, I knew we would be alright.

Two things that helped Indiana win: THE FIRST thing was we knew we couldn't allow them to get out on the fast break and the second thing was we couldn't allow them to rebound off the fast break.

(Talking about Bailey) I thought Bailey's biggest contribution tonight, was his playing on top of the zone in the second half. Because he really hasn't done that it's always been Meeks or Jones or Reynolds. But we went with it in the second half because of his penetration.

We really bailed ourselves out with the two 3-point shots at the end of the first half. We really had a lot of bearing on the outcome of this game. (Coming into the tournament what did you think the outcome would be) Our objective is to get to the Regional. I want to see us play well in December, but what I really want to for us to play well in the Big Ten. Then if we get into the Tournament and we make it to the regional it's what ever happens, happens. I feel good from a team standpoint that we got there

MARCH 16, 1991

PLAYERS QUOTES

INDIANA

Pat Graham: (What was the coach's mood at halftime) He didn't want us to get down. We were really getting beat bad on the boards and he thought that if we could keep them off the boards we could win the second half and that's what we did. (Talking about his three points) When I hit the first one it went in and out for me and ended up in the hole so it kinda built up my confidence in the second half. (What did the coach say at halftime) He just really stressed the board play. (Do your teammates ever get on you about getting out early on the break) Oh every once in a while, that's one thing we thought we could do a little bit. They send so many people to the board, they send five guys to the board a lot, we thought maybe we could get a couple guys off and that helped us out alot. (Did you think Florida State would fold like they did) I think when I hit three and we got a couple other quick baskets and we were down six and caught up real quick, I think that helped us a lot. That's so of broke their rhythm, they had a great rhythm going in at halftime. When we sorta popped their back there, I think we sorta took control.

(Thoughts about Kansas) Kansas is a great team, they're a very fundamental team. We really haven't looked at them a whole lot, we'll watch tapes this week, but they wouldn't be here if they weren't a great team.

Calbert Cheaney: I think we came out and played well throughout. Pat Graham and Greg Graham played well and Damon covered well. We didn't board well in the first half. Coach just told me to block out. We as a team rebounded well in the second half.

Eric Anderson: (Feelings at the end of half) In the first half we felt to be down by 6. We were getting killed on the boards. In the second half, we were determined to do a lot better on the boards. WE had to get back in the game mentally.