

1992 NCAA WEST REGIONAL SEMI-FINAL

Game No. 1

INDIANA vs. FLORIDA STATE

Mar. 26, 1992

The Pit

Albuquerque, New Mexico

NCAA WEST REGIONAL SEMIFINAL

OFFICIAL NCAA BASKETBALL BOX SCORE

Date 3/26/92 Site ALBUQUERQUE, NM

VISITORS (Last name, first) (Indicate starters with an asterisk)

No.	FLORIDA STATE (22-10)	Total FG		3-point		FT	FTA	Rebounds			PF	TP	A	TO	BLK	S	MIN
		FG	FGA	FG	FGA			Off.	Def.	Tot.							
3	SURA, BOB *	3	9	1	6	2	2	0	1	1	4	9	5	1	0	2	36
4	GRAHAM, CHUCK *	5	12	1	4	3	3	2	3	5	4	14	0	2	0	1	26
5	DONALD, RAY																
10	CASSELL, SAM *	8	14	3	6	0	0	0	4	4	5	19	4	1	0	0	32
12	WARD, CHARLIE	1	4	0	2	1	2	0	0	0	4	3	3	1	0	0	26
20	PORTER, SCOTT																
21	GRUHL, STEPHEN																
32	EDWARDS, DOUG *	7	16	2	3	4	5	4	5	9	4	20	2	1	2	1	40
33	WELLS, BYRON	2	3	1	2	0	0	0	1	1	1	5	0	0	0	0	9
34	DOBARD, RODNEY *	1	2			0	2	2	2	4	3	2	0	3	0	0	20
44	REID, ANDRE	1	2			0	3	1	5	6	3	2	0	2	0	0	11
	TEAM REBOUNDS (Included in Totals)							1	2	3							
	TOTALS	28	62	8	23	10	17	10	23	33	28	74	14	11	2	4	200

TOTAL FG%: 1st half 16-31: 51.6% 2nd half 12-31: 38.7% Game 45.1%
 3-Pt. FG%: 1st half 4-10: 40.0% 2nd half 4-13: 30.7% Game 34.7%
 FT%: 1st half 2-5: 40.0% 2nd half 8-12: 66.7% Game 58.8%

Deadball
rebounds 3

HOME (Last name, first) (Indicate starters with an asterisk)

No.	INDIANA (26-6)	Total FG		3-point		FT	FTA	Rebounds			PF	TP	A	TO	BLK	S	MIN
		FG	FGA	FG	FGA			Off.	Def.	Tot.							
20	GRAHAM, GREG	6	14	2	7	5	8	2	5	7	1	19	2	3	0	2	36
21	REYNOLDS, CHRIS *	0	1			2	4	0	1	1	0	2	1	2	0	0	14
22	BAILEY, DAMON *	3	8	0	3	4	7	0	4	4	1	10	2	3	0	0	35
23	MECKS, JAMAL	1	2	1	2	0	0	1	1	2	3	3	9	1	0	0	27
24	NOVER, MATT *	0	0			2	2	0	1	1	0	2	0	0	0	0	10
25	KNIGHT, PAT	DID NOT SUIT															
30	LEARY, TODD																
32	ANDERSON, ERIC	8	12	2	3	6	7	3	1	4	3	24	1	0	0	1	31
33	GRAHAM, PAT	DID NOT SUIT															
34	EVANS, BRIAN	DID NOT SUIT															
40	CHEANEY, CALBERT *	6	11	1	3	4	4	2	9	11	2	17	4	0	0	1	34
44	HENDERSON, ALAN *	3	6			2	2	1	2	3	4	8	0	0	0	0	13
50	LINDEMAN, TODD																
	TEAM REBOUNDS (included in Totals)							0	4	4							
	TOTALS	27	54	6	18	25	34	9	28	37	14	85	19	9	0	4	200

TOTAL FG%: 1st half 13-25: 52.0% 2nd half 14-29: 48.2% Game 50.0%
 3-Pt. FG%: 1st half 3-9: 33.3% 2nd half 3-9: 33.3% Game 33.3%
 FT%: 1st half 11-16: 68.8% 2nd half 14-18: 77.7% Game 73.5%

Technical fouls: _____
 Attendance: 15,914
 Officials: TOM HARRINGTON, FRANK BOSANE, LYNN SHORTNAGE

SCORE BY PERIODS		1st H.	2nd H.	OT	OT	FINAL
FLORIDA STATE		38	36			74
INDIANA		40	45			85

MARCH 26, 1992 UNIVERSITY OF NEW MEXICO ALBUQUERQUE, NEW MEXICO USA

UNIVERSITY ARENA "THE PIT"

NCAA DIVISION I WEST REGIONAL

SEMI-FINAL GAME

INDIANA UNIVERSITY "HOOSIERS" (25-6) VS FLORIDA STATE UNIVERSITY "SEMINOLES" (22-9)

FIRST HALF

<u>TIME</u>	<u>ACTION</u>	<u>IU</u>	<u>FSU</u>
	IU--Reynolds, Bailey, Cheaney, Henderson, Nover		
	FSU--Sura, Graham, Cassell, Edwards, Dobard		
	OFFICIALS--Tom Harrington (R) Frank Bosone/Lynn Shortnacy (U)		
	Jim Danner (Standby)		
6:03 MST			
19:59	Nover/Dobard jump center FSU controls backcourt Cassell		
19:41	Nover(Dobard-1) 1st T (Harrington) over the back tip-in doesn't		
19:34	Reynolds, double dribble count		
19:10	Henderson, J corner 16ft assist Cheaney	2	
18:51	Cassell, J perimeter Trifecta def. goaltending Cheaney		3
18:26	Graham, break layin assist Edwards		5
18:15	Reynolds, traveling viol.		
17:52	Cassell, J side 14ft		7
17:16	Sura, break layin		9
17:09	Reynolds(Cassell-1) 2nd T (Harrington)		
17:02	Graham/Meeks for Bailey/Reynolds		
16:34	Ewards(Henderson-1) 1st T (Shortnacy)		
"	Edwards for Cheaney		
15:52	Dobard(Meeks-1) 2nd T (Shortnacy)		
"	Media Timeout-1		
"	FSU 4/9 44.4%		
"	IU 1/5 20%		
15:29	Anderson, J perimeter 15ft assist Meeks	4	2
15:12	Edwards, backdoor slam		11
14:54	Anderson, J perimeter Trifecta assist Meeks	7	4
14:33	Graham, J perimeter Trifecta assist Sura		14
14:23	IU Timeout-1 Meeks to avoid 5sec. viol.		
"	FSU 6/12 50.0%		
"	IU 3/7 42.9%		
14:14	Graham, J perimter Trifecta Meeks assist	10	
13:41	Anderson(Sura-1) 3nrd T (Bosone)		
"	Cheaney for Nover		
"	Ward/Reid for Graham/Wells		
13:30	Henderson, slam off backdoor assist Graham	12	
13:08	Reid, throws pass out of bounds base-line		
12:40	Cheaney, hook base-line 8ft	14	
12:18	Reid, turnaround J lane 4ft assist Cassell		16
11:48	Anderson, J top key window 17ft	16	6
11:23	Sura, J top key Trifecta assit Ward		19
11:09	Edwards(Henderson-2) 3rd T (Harrington)		
"	Bailey for Cheaney		

MAR. 26, 1992
NCAA WEST REG.
IU VS FSU

FIRST HALF CONT'D.

<u>TIME</u>	<u>ACTION</u>	<u>IU</u>	<u>FSU</u>
10:56	Cassell, J base-line 10ft		21
10:43	4 Anderson, backdoor slam assist Meeks	18	8
10:24	Reid, traveling viol.		
"	Graham for Sura		
10:07	6 Anderson, J side 17ft assist Meeks	20	16
9:49	Reid(Meeks-2) 4th T (Shortnacy) 2 0 0 Graham		
9:47	Edwards, traveling viol.		
"	Dobard for Reid		
9:36	Henderson(Dobard-2) 4th T (Harrington) 2 @ @	22	
9:17	Dobard(Anderson-1) 5th T (Harrington)		
"	Sura for Ward		
9:08	Graham(Dobard-3) 5th T (Shortnacy) 2 @ @	24	
"	Wells for Dobard		
8:49	Edwards(Henderson-3) 6th T (Harrington) 2 @ @		23
"	Cheaney for Henderson		
8:18	Cheaney looses bad pass from Meeks out of bounds side-line		
7:51	Bailey, break layin assist Meeks	26	
7:42	Media Timeout-2		
"	FSU 9/17 52.9%		
"	IU 10/16 62.5%		
7:11	Bailey(Cassell-2) 6th T (Bosone)		
6:36	Wells, reverse layin assist Edwards		25
6:04	Cheaney, stop and pop base-line 12ft	28	
5:12	Sura, stop and pop base-line 11ft		27
4:54	4 Anderson(Wells-1) 7th T (Bosone) 1-1 @ @	30	12
"	Reynolds for Meeks		
"	Ward for Cassell		
4:19	6 Anderson, J corner Trifecta pass Reynolds	33	15
3:54	Graham(Sura-2) 8th T (Shortnacy) 1-1 0 Reid		
"	Reid for Wells		
3:39	Reid(Anderson-2) 7th T (Harrington) 1-1 0 Edwards		
"	Cassell for Sura		
3:37	Edwards, layin		29
3:03	6 Anderson(Reid-1) 9th T (Bosone) def. reb. attempt 1-1 @ 0 Cassell 34 17	34	17
2:49	Bailey(Cassell-3) 10th T (Shortnacy) 2 @ 0 Reid	35	
"	Graham for Anderson		
"	Sura for Cassell		
2:25	Graham, J top key 17ft		31
2:14	Nover(Reid-2) 1-1th T (Harrington) 2 @ @	37	
"	Media Timeout-3		
"	FSU 13/26 50.0%		
"	IU 12/23 52.2%		
2:02	Graham, J base-line 14ft		33
1:34	Bailey, layin assist Graham	39	
"	Bailey(Graham-1) 12th T (Bosone) @	40	

MAR. 26, 1992
NCAA WEST REG.
IU VS FSU

FIRST HALF CONT'D.

<u>TIME</u>	<u>ACTION</u>	<u>IU</u>	<u>FSU</u>
		40	33
1:19	Reynolds(Reid-3) 13th T (Harrington) 2 0 0 Reid		
1:02	Edwards, layin off rebound		35
0:45.8	Reynolds(Graham-2) 14th T (Harrington) offensive off reb. attempt		
"	Wells for Reid		
0:08.7	Nover steps on base-line		
0:02.8	Wells, J side Trifecta		38
		<u>40</u>	<u>38</u>

Ties: 3

Lead Changes: 2

Points in the Paint: IU-8 FSU-16

Largest Lead: IU-7 40/33 FSU-7 9/2

Points off turnovers: IU-8 FSU-7

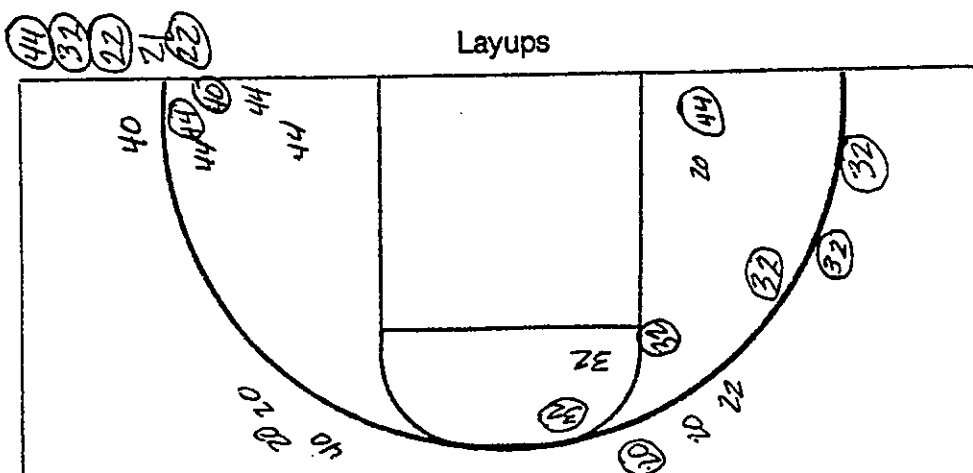
NCAA BASKETBALL SHOT CHART

First Half

Second Half

(Circle one)

Layups



2 Point

10 of 16

% 62.5

3 Point

3 of 9

% 33,3

Attempted 25

Made 13

Percentage 52

2 Point

12 of 21

% 57.1

3 Point

4 of 10

% 46

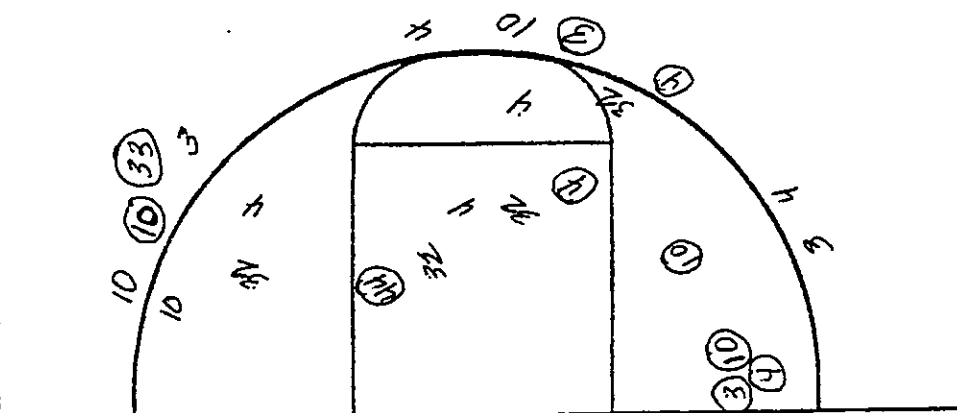
Attempted 3/

Made 16

Percentage 51.6

Turnovers

Layups



OFFICIAL BASKETBALL BOX SCORE -- F I R S T H A L F
 Florida State Semino vs Indiana Hoosiers
 03/26/92 6:07 PM MST at "The Pit", Albuquerque, NM

VISITORS: Florida State Semino

No.	N A M E	TOT-FG		3-PT				REBOUNDS			PF	TP	A	TO	BLK	S	MIN
		FG	FGA	FG	FGA	FT	FTA	OF	DE	TOT							
03	Sura, Bob	f	3	5	1	3	0	0	0	0	0	2	7	1	1	0	17
32	Edwards, Doug	f	3	8	0	0	2	2	3	2	5	0	8	2	1	1	20
34	Dobard, Rodney	c	0	0	0	0	0	0	1	0	1	3	0	0	0	0	7
04	Graham, Chuck	g	4	9	1	3	0	0	1	1	2	2	9	0	2	0	17
10	Cassell, Sam	g	3	6	1	3	0	0	0	3	3	3	7	3	0	0	16
12	Ward, Charlie		0	0	0	0	0	0	0	0	0	0	0	2	0	0	9
33	Wells, Byron		2	2	1	1	0	0	0	1	1	1	5	0	0	0	6
44	Reid, Andre		1	1	0	0	0	3	0	3	3	3	2	0	2	0	7
TEAM REBOUNDS.....									1	1	2						
TOTALS			16	31	4	10	2	5	6	11	17	14	38	8	6	1	100

TOTAL FG% 1st Half: 16-31 .516 2nd Half: 0-0 .000 Game: .516 DEADBALL
 3-Pt. FG% 1st Half: 4-10 .400 2nd Half: 0-0 .000 Game: .400 REBOUNDS
 F Throw % 1st Half: 2-5 .400 2nd Half: 0-0 .000 Game: .400 1

HOME TEAM: Indiana Hoosiers

No.	N A M E	TOT-FG		3-PT				REBOUNDS			PF	TP	A	TO	BLK	S	MIN
		FG	FGA	FG	FGA	FT	FTA	OF	DE	TOT							
40	Cheaney, Calbert	f	1	3	0	2	0	0	0	3	3	0	2	1	0	0	16
44	Henderson, Alan	f	3	6	0	0	2	2	1	1	2	3	8	0	0	0	8
24	Nover, Matt	c	0	0	0	0	2	2	0	1	1	0	2	0	0	0	10
21	Reynolds, Chris	g	0	1	0	0	0	2	0	0	0	0	0	1	2	0	8
22	Bailey, Damon	g	2	3	0	1	2	3	0	1	1	0	6	0	1	0	15
20	Graham, Greg		1	5	1	4	2	3	1	1	2	0	5	1	1	0	17
23	Meeks, Jamal		0	0	0	0	0	0	1	1	2	2	0	6	1	0	12
32	Anderson, Eric		6	7	2	2	3	4	2	0	2	2	17	1	0	0	14
TEAM REBOUNDS.....									0	3	3						
TOTALS			13	25	3	9	11	16	5	11	16	7	40	10	5	0	101

TOTAL FG% 1st Half: 13-25 .520 2nd Half: 0-0 .000 Game: .520 DEADBALL
 3-Pt. FG% 1st Half: 3-9 .333 2nd Half: 0-0 .000 Game: .333 REBOUNDS
 F Throw % 1st Half: 11-16 .688 2nd Half: 0-0 .000 Game: .688 1

OFFICIALS: Tom Harrington, Frank Bosone, Lynn Shortnacy

TECHNICAL FOULS:

Florida State Semino- none

Indiana Hoosiers - none

ATTENDANCE:

SCORE BY PERIODS:	1st	2nd	OT1	OT2	OT3	OT4	TOTAL
Florida State Semino	38	0	0	0	0	0	38
Indiana Hoosiers	40	0	0	0	0	0	40

COMMENTS: First Game of the NCAA West Regional
 Florida State (22-9), Indiana (25-6)

MARCH 26, 1992
NCAA WEST REGIONAL
IU VS FSU

SECOND HALF

<u>TIME</u>	<u>ACTION</u>	<u>IU</u>	<u>FSU</u>
	IU--Graham for Reynolds, Meeks for Nover, Anderson for Henderson FSU--same as 1st half		
		40	38
19:59	IU--possession		
19:34	Edwards, looses break pass from Cassell out of bounds base-line		
19:04	Cheaney, rebound layin Anderson missed J corner	42	
18:32	Dobard(Bailey-1) 1st T (Shortnacy) attempt break layin 2 0 0 Anderson		
18:07	Meeks, J perimeter Trifecta assist Graham	45	
17:14	Graham, J side Trifecta assist Meeks	48	
17:08	FSU Timeout-1/1 Graham		
"	IU 3/8 37.5%		
"	FSU 0/1 00.0%		
16:48	Cheaney(Graham-3) 1st T (Bosone) def. rebound		
"	Ward for Graham		
16:07	Bailey(Ward-1) 2nd T (Harrington)		
15:53	Cheaney, J perimeter 11ft after short drive side	50	
15:36	Cassell, J perimeter Trifecta		41
15:24	Anderson, layin	52	
15:05	Cassell, stop and pop base-line 10ft		43
14:43	Graham(Edwards-1) 3rd T (Shortnacy) 2 0 0	54	
14:08	Dobard, looses ball out of bounds base-line		
13:52	Bailey pass to Graham out bounds side-line		
"	Wells for Dobard		
13:27	Graham, indiv steal/break pow-er slam stole from Edwards	56	
13:08	Cassell(Graham-1) 2nd T (Bosone)		
12:54	Meeks(Ward-2) 4th T (Harrington) offensive chg. base-line		
12:38	Cheaney, J window 16ft	58	
12:24	Edwards, J perimeter 14ft		46
12:12	Anderson(Sura-1) 5th T (Shortnacy) 0	60	
"	Anderson, layin	61	
12:03	Cassell, layin		48
"	Anderson(Cassell-4) 6th T (Shortnacy)		
"	Graham for Ward		
11:46	Graham, J window 16ft	63	
11:36	Ward(Meeks-3) 3rd T (Bosone) 2 0 0		49
"	Reynolds for Meeks FSU Ward for Sura		
"	Media Timeout-1/4		
"	IU 9/16 56.3%		
"	FSU 4/10 40.0%		
"	Dobard for Reid		
11:07	Bailey, J 5ft lane	65	
10:50	Edwards, layin		51
"	Edwards(Anderson-3) 4th T 0 Graham		
10:36	Cheaney, J corner 17ft	67	
10:21	FSU Timeout-1/2 Ward		
"	IU 11/19 57.9%		
"	FSU 5/12 41.7%		

MAR. 26, 1992
NCAA WEST REG.
IU VS FSU .

SECOND HALF CONT'D.

<u>TIME</u>	<u>ACTION</u>	<u>IU</u>	<u>FSU</u>
		67	51
10:15	Edwards(Cheaney-1) 5th T (Harrington) 2 Q Q		53
8:59	Graham, break layin	69	
"	Graham(Graham-4) 7th T (Shortnacy) 0 Graham		
8:41	Reynolds(Ward-3) 8th T (Shortnacy) 1-1 Q Q	18 71	
"	Reid/Cassell for Dobard/Graham		
"	Henderson for Cheaney		
8:24	Cassell, stop and pop fallaway J base-line 15ft		55
7:36	Edwards,J perimeter Trifecta NBA range		58
6:54	Sura(Henderson-4) 6th T (Bosone) 2 Q Q		60
"	Meeks/Cheaney for Anderson/Reynolds		
5:52	Cheaney, J top key Trifecta Graham assist	74	
5:17	Edwards, break layin assist Sura		62
4:55	Cheaney(Edwards-2) 9th T (Shortnacy) 1-1 Q Q	76	
"	Dobard/Graham for Reid/Sura		
"	Anderson for Graham		
4:41	Graham(Cheaney-2) 7th T (Harrington) 3 Q Q Q		65
"	Reynolds for Anderson		
"	Sura for Cassell after 3rd freethrow		
4:00	Dobard, turnaround J lane 7ft	11 77	67
3:36	Bailey(Sura-4) 10th T (Bosone) 2 0 Q		
"	Anderson/Graham for Cheaney/Reynolds		
"	Cassell for Graham		
"	Media Timeout-2/5		
"	IU 13/27 48.2%		
"	FSU 9/20 45.0%		
3:26	Cassell, layin Trifecta assist Dobard		70
2:17	Edwards/Graham jump ball FSU--possession		
2:16	Wards, J side 15ft off inbound pass		72
1:49	Cheaney(Edwards-3) 11th T (Bosone) 2 Q Q	79	
"	Graham for Sura		
1:27	Sura for Cassell		
1:20	Bailey(Ward-4) 12th T (Shortnacy) 2 0 Q	80	
"	Cassell for Graham		
0:37.4	Graham(Edwards-4) 13th T (Harrington) 2 Q Q	81	
"	Wells/Graham for Dobard/Sura		
"	IU Timeout-1/2 Meeks after 2nd freethrow		
"	IU 13/28 46.4%		
"	FSU 11/26 42.3%		
0:26.7%	Cheaney(Cassell-5) 14th T (Bosone) def. reb. 2 Q Q	83	
"	Sura for Cassell		
0:14.9	Graham, break slam assist Cheaney full court pass after reb.	85	
0:04.7	Graham, rebound layin of Wells missed J		74
		85	74

Attendance: 15,914

Points in paint 2nd half: IU-20 FSU-10

Points off turnovers for game: IU-17 FSU-9

Largest lead for game: IU-18 71/53 FSU-7 9/2

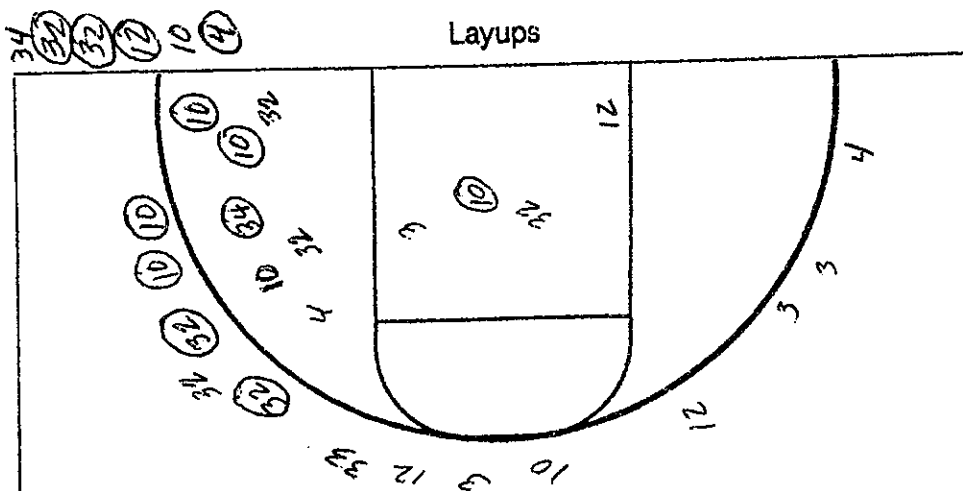
NCAA® BASKETBALL SHOT CHART

First Half

Second Half

(Circle one)

Layups



2 Point

8 of 17

% 47, ¹

3 Point

4 of 13

% 30.8

Attempted 30

Made 12

Percentage 40

2 Point

11 of 20

55

3 Point

3 of 9

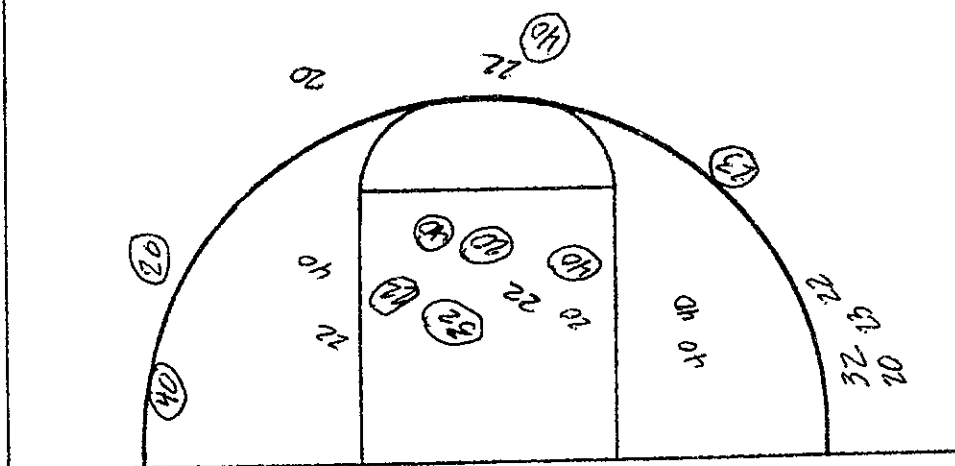
% 33.3

Attempted 29

Made 14

Percentage 48.3

Layups



NSF

Team

LV

Team



"QUOTES • GAME NO. 1 WINNING COACH • Wednesday, March 26"

Bob Knight -

"We had some real ups and downs in the game. The start was certainly one. Then we came back and got back in the game. We had a terrible three possessions at the end of the half. That really bothered me when we went off at the half. I really believe the start of the second half and our play during the second half was as good a period as we've had during the year."

"Anderson was very, very good in the first half. In the second half, we got in a better flow. We had better contribution from everyone."

"At the half, everyone took off their uniforms. We didn't really talk to the players. We just all stood around in a cold shower. I'd say philosophy probably did more for us in this game than anything else."

On Jamal Meeks coming into the game:

"Meeks went in, but WE played better. We picked up things a little bit. I don't ever think one substitution gets the team turned around unless the guy who comes in is just hotter than hell and scores. Anderson started to score from the time we put him in."

How much was tonight's game like last year's game with Florida State?

"I think this game was a lot like last year's. We played better in last year's though. Last year, we went from 27 up to 19. This year, we went from 18 up down to 7."

What areas has your team improved the most in since the UCLA game earlier this season?

"I don't know. It's hard to tell. At time this season, we haven't been very good. At other times, we've been decent."



"QUOTES • GAME NO. 1 WINNING PLAYERS • Wednesday, March 26"

Indiana Players

Eric Anderson EA

Jamal Meeks (JM)

Q: Talk about your personal slump late in the season

EA: Towards the end of the season I wasn't shooting the ball well, I lost a little confidence. Coming into the tournament I just wanted to come out shooting well and hit some jumpers.

Q: You've never advanced this far before, How does it feel?

JM: We've talked about this before - We made a goal to come out and work hard and advance to the next round.

Q: Who do you want to play next (UCLA/NMSU)?

EA: We are just happy to be in the next round, it doesn't matter who we play. We just want to go as far as we can.

Q: Is there between sitting on the bench to begin the game and your play?

EA: I don't know, but if that is the case I don't mind sitting on the bench. There's no big difference we always have 8 or 9 people play and it doesn't matter who's in the game.

Q: Did FSU frustrate you with its defence?

JM: They were getting us frustrated with their defence, but we knew we had to push the ball through this press and make good passes.

Q: Why is Indiana playing so well now?

EA: Towards the end of the season we played bad. We came out with no emotion and were tentative. Once the tournament started we came out to win.



"QUOTES • GAME NO. 1 LOSING COACH • Wednesday, March 26"

Florida State Head Coach Pat Kennedy on the similarities with last year's game with IU

"When we made the three pointer to take us into halftime, we felt real good. At the halftime of the Georgetown game, we were down by 11 and we made our run and came back. When we came out (tonite) in the second half, we really thought the zone would slow them up. But they banged in key shots and built the lead right back up. "

"Indiana is a very difficult team to beat from behind...I thought we had some really good runs but we were not able to sustain long enough. Indiana is an excellent team. They are very good shooters and they execute well. They are playing as well as I've seen them play. "

(On the three things Kennedy felt FSU needed to win --get ball inside, get running game going and three play good defense.)

"We did a good job of getting the ball inside but they (IU) made us change our shots and they took away our inside game. I didn't think they would do it as well as they obviously did. They were more consistent and got back to stop our running game. On the defensive end, we didn't feel we could stay in one defense long enough and we felt changing our defenses would get them off balance. Indiana is a great balanced team."

"They got their shots if we manned, got them if we zoned, they got their shots if we trapped."

(On his team's shot selection)

"I thought in the second half, we sustained better shot selection than we had in the first half. They did a very good job of defending some of our offenses and we didn't react as well as I would have liked to their pressure."

(On FSU's early run)

"Indiana always tends to start slow. They get in the groove of the game and that's when their balance takes over. We made the early run and I felt good about that but I also knew they would come back and get consistency."

(On the rumor of Kennedy going to UNLV as new head coach)

"First of all the stories about Pat Kennedy being offered the UNLV job are totally false. Officials at UNLV have contacted me, I have told them that they must contact Florida State University and upon that contact I would take a look at the situation"



"QUOTES • GAME NO. 1 LOSING PLAYERS • Wednesday, March 26"

ON ERIC ANDERSON'S SHOOTING:

Rodney Dobard: "He shot the ball real well...After the first couple of times, we shouldn't have let him get open. But we did and he burned us."

ON INDIANA'S SECOND HALF RUN:

Sam Cassell: "Our game plan was to come out with full court defense and get some easy baskets. But they hit some consecutive shots and I think it broke our backs."

ON THE OFFICIATING:

Rodney Dobard: The officiating was tight, "especially in the first half. When I got three fouls in the first half, that told you what kind of game it was going to be."

DIFFERENCE BETWEEN THE ACC:

Rodney Dobard: Usually in the ACC, they let you play rough."

ON PLAYING AT HIGH ELEVATION:

Rodney Dobard: "Playing at this altitude was a lot different than playing down south."

ON THE FLOW OF THE GAME:

Sam Cassell: "The whole game we didn't put together a run."

ON INDIANA COACH BOBBY KNIGHT:

Sam Cassell: "He's one great coach. I wish them the best of luck in the rest of the tournament."

ON RUMORS FLORIDA STATE PAT KENNEDY MIGHT LEAVE:

Rodney Dobard: I think Florida State is a great place to be. Our program is on the rise."