

FOOTBALL

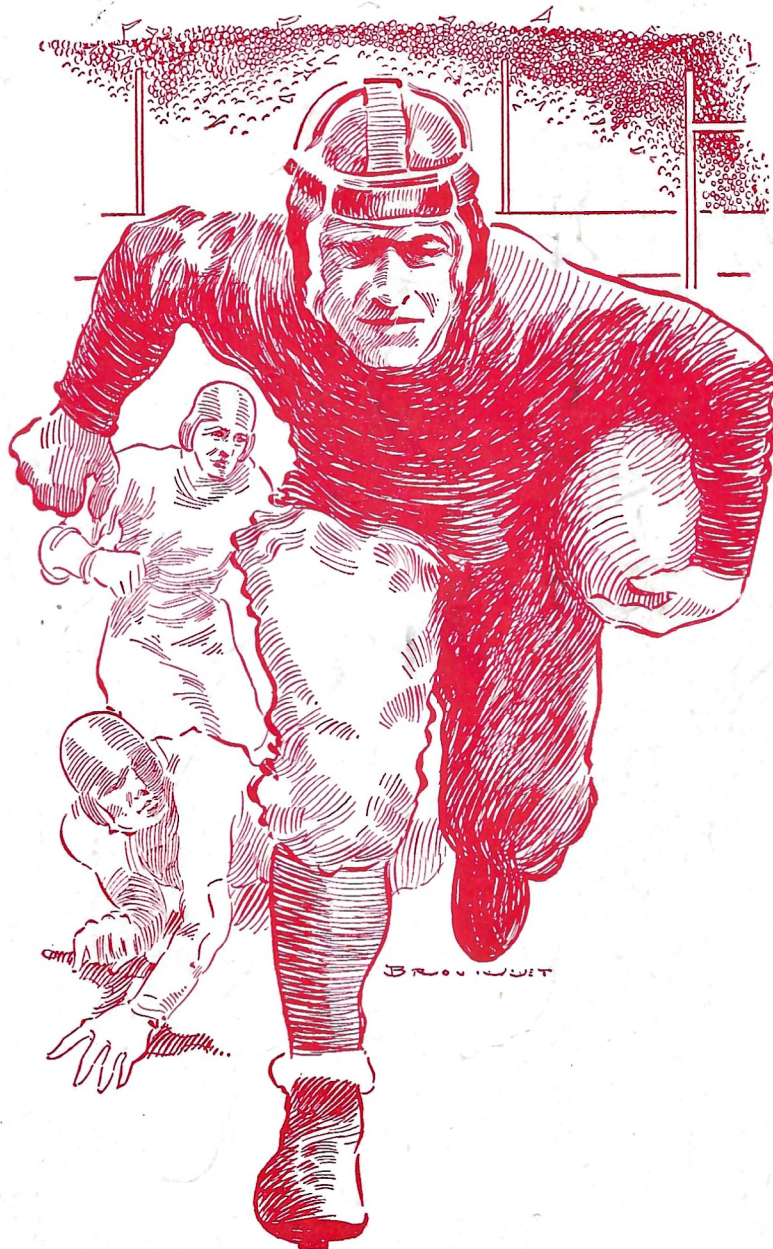
★ ★ ★ PROGRAM ★ ★ ★

**FLORIDA
STATE
UNIVERSITY**
(SEMINOLES)

vs.

**TROY
STATE**

PRICE 15 CENTS



KICK-OFF
2:30 P.M.

CENTENNIAL FIELD
TALLAHASSEE, FLORIDA

THURSDAY
NOV. 27
1947

TROY STATE TEACHERS PROBABLE STARTING LINE-UP

	FB Norman 28	LHB Carlton 2	RHB Franklin 16	
	QB Bowden 7	LE Scott 34	RE Joiner 22	
LT Bassett 27	LG Davis 30	C Underwood 19	RG Long 11	RT Green 25



TROY STATE'S COACHES

HEAD COACH AND ATHLETIC DIRECTOR FRED "BUDDY" McCOLLUM came to Troy State Teachers College from Livingston State Teachers where he turned out winning teams in all three major sports. His football team at Livingston won 6 and lost three; his cagers were victorious in 15 of 28 contests; and his baseball squad captured 15 wins against 4 losses in some stiff competition.

Before going to Livingston, he spent four years in the U. S. Army with airborne troops in the European Theater of Operation. He was discharged in 1946 with the rank of Lt. Col after receiving the Bronze Star and Purple Heart medals.

ASSISTANT COACH BERT TRAPANI graduated from Auburn last May and reported to McCollum in August soon after drills commenced. Trapani played football at end for Auburn in 1941 and 1942, transferred to Duke University

under Navy V-12 auspices in 1943, and then went on duty with the U. S. Marine Corps as recreation officer in the Pacific. He was discharged from the service with the rank of first lieutenant and returned to Auburn last season where he held down a flank post until becoming injured late in the season. Trapani hails from Savannah, Ga., where he received high renown in his high school football career.

ASSISTANT COACH SAM SMITH played football at Auburn in 1941 before going on duty with the Navy in the Pacific. His flank play at the Plains was rated outstanding and previously he was an All-State end from Dothan High School, and one of the best grid prospects ever to emerge from the Wiregrass section. "Sambo" as he is known on the campus was an assistant coach at Dothan High School for Rip Hewes for a time, and he's handling the tackle and guard play for the Teachers.

TROY STATE TEACHERS ROSTER

Coach: F. G. "Buddy" McCollum, Auburn

Assistants: Bert Trapani (Auburn), Sam Smith (Auburn)

Colors: Crimson and Black

Enrollment 800

No.	CENTERS	CLASS	HT.	WT.	HOMETOWN
17	Ed Causey	Freshman	5-10	170	Montgomery, Ala.
19	Tommy Underwood	Freshman	6-	179	Dothan, Ala.
29	Ivan Jones	Freshman	6-	160	Jackson, Ala.
GUARDS					
5	Max Lane	Freshman	5-11	170	Graceville, Fla.
11	Bruce Long	Junior	5-11	169	Brewton, Ala.
21	James Sullivan	Freshman	5-11	165	Hartford, Ala.
23	Bill Screws	Junior	6- 2	190	Columbus, Ga.
30	Spencer Davis	Sophomore	5-11	172	Panama City, Fla.
35	Nolan Terry	Sophomore	6-	202	Birmingham, Ala.
TACKLES					
25	Tay Green	Freshman	6- 2	202	Opp, Ala.
26	Harold Blanton	Freshman	6- 1	209	Troy, Ala.
27	Carlos Bassett	Freshman	5-10	185	Roanoke, Ala.
36	Ottis Johnson	Sophomore	6-	206	Evergreen, Ala.
31	Frank Pelham	Sophomore	6- 1	188	Graceville, Fla.
ENDS					
3	Wilbur Johnson	Freshman	6- 1	162	Dothan, Ala.
9	John B. Golden	Sophomore	6- 1	158	Tallassee, Ala.
14	Johnny Kreis	Freshman	6- 4	165	Troy, Ala.
22	Wallace Joiner	Sophomore	6-	175	Ashford, Ala.
24	C. L. Pierson	Freshman	5-11	168	Columbus, Ga.
34	Herman Scott	Sophomore	5-10	180	Prattville, Ala.
	Neal Moseley	Sophomore	6-	175	Luverne, Ala.
BACKS					
2	Marvin Carlton	Sophomore	5- 6	134	Tallassee, Ala.
4	Ersell Beck	Freshman	6-	156	Sweetwater, Ala.
6	Mack Rooks	Freshman	5- 9	160	Marianna, Fla.
7	Lamar Bowden	Freshman	5- 7	150	Troy, Ala.
10	Sonny Queen	Freshman	5- 5	158	Montgomery, Ala.
13	Johnny Rice	Freshman	5-10	156	Dothan, Ala.
15	Bill Trussell	Sophomore	6-	170	Tallassee, Ala.
16	Ted Franklin	Freshman	5-10	165	Birmingham, Ala.
18	Shelby Searcy	Freshman	5- 8	152	Andalusia, Ala.
28	Gene Norman	Junior	5-11	180	Luverne, Ala.
32	Robert Riley	Freshman	5-10	166	Pensacola, Fla.
33	Billy Ezell	Freshman	6- 1	160	Troy, Ala.
Tom Towey					Mobile, Ala.
Gerald McDade					Montgomery, Ala.
Student Manager					
Trainer					

FLORIDA STATE UNIVERSITY PROBABLE STARTING LINE-UP

LE
Costello
48

LT
Gilberg
59

LG
Quigley
53

C
Bryant
32

RG
Tulley
31

RT
Middlebrooks
54

RE
Banakas
50

QB
J. McMillan
17

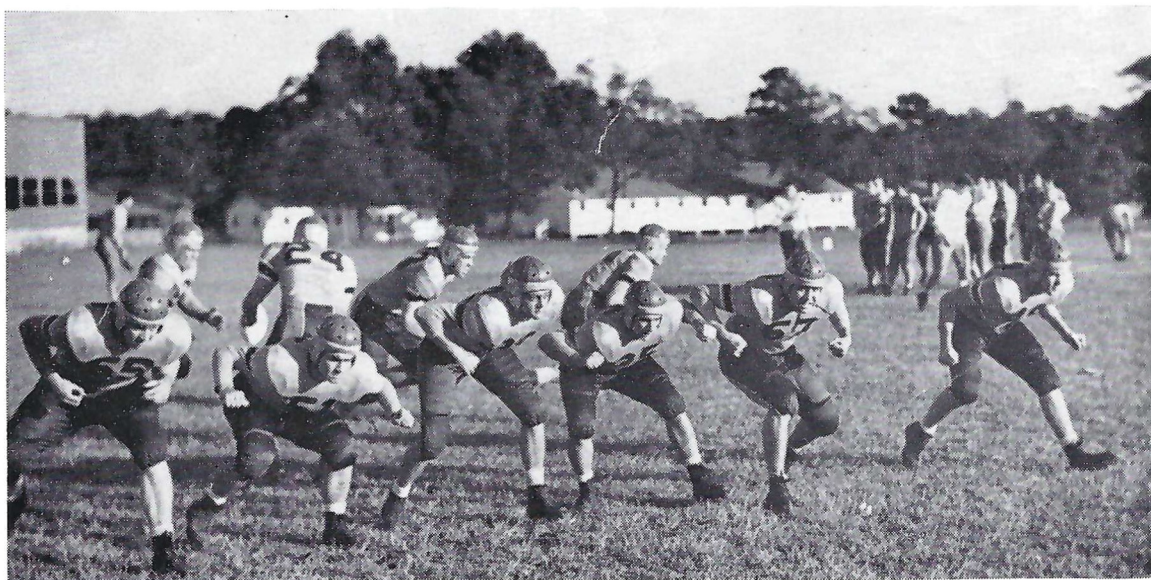
LH
Carter
21

FB
Watson
26

RH
Melton
19



SEMINOLES IN ACTION



FLORIDA STATE UNIVERSITY FOOTBALL ROSTER 1947

No.	NAME	POS.	WT.	HT.	AGE	HOMETOWN	CLASSIFICATION
11	Ted Payne	LHB	163	5-10	20	Tallahassee	2
12	Billy O'Steen	RHB	172	5-10	20	Melbourne	2
13	Gerald Manuel	FB	182	5- 7	21	Newberry	2
14	Donald Grant	QB	170	5-10	24	Perry	2
15	Philip Roundtree	LHB	160	5- 8	24	Chipley	3
16	Ralph Chaudron	LHB	160	5-10	20	Pensacola	1
17	Jack McMillan	QB	165	6-	21	Quincy	4
18	Billy Parker	LHB	170	5-10	20	Clearwater	1
19	Leonard Melton	RHB	160	6-	18	Tallahassee	1
20	Wendell Barnes	QB	170	5-10	18	Lake City	1
21	Wesley Carter	RHB	175	5- 8	24	Tallahassee	2
22	Harry Hughey	RHB	155	5- 8	23	Pensacola	2
23	Clyde Standland	T	185	6-	23	Quincy	2
24	Tillman Burks	FB	180	6-	20	Pensacola	2
25	Billy Bishop	FB	175	5- 8	24	Quincy	2
26	John Watson	FB	178	5- 8	22	Pensacola	2
27	Harold Conard	QB	165	5- 9	20	Panama City	2
28	Addison Meade	FB	170	5-11	21	Pensacola	2
29	James De Cosmo	LHB	180	6-	22	Apalachicola	2
30	Wyatt Parrish	RHB	170	5-10	19	Chipley	1
31	Jack Tully	G	185	6-	21	Tallahassee	1
32	Ed Quigley	G	175	5- 9	22	Panama City	1
33	Buddy Bryant	C	180	6- 3	19	Perry	1
34	J. P. Love	E	185	6-	20	Tallahassee	1
35	Bob Fergers	G	170	5- 9	19	Hallandale	1
36	Joe Crona	C	160	5- 9	20	Pensacola	1
37	Bill Fannin	E	175	6- 1	21	Tallahassee	1
38	Joe Castara	G	160	5- 8	22	Tampa	2
39	Truby Shaw	E	170	6-	21	Panama City	2
40	Bob Lanigan	E	177	6- 1	21	Coral Gables	2
41	Craig Eckermire	E	175	5-11	22	Tallahassee	2
42	Dan McClure	T	197	6-	21	Stuart	1
43	Kenneth MacLean	FB	195	6-	20	Quincy	2
44	Bill Benz	T	203	5-10	21	Jacksonville	1
45	Fred Schneider	E	170	6- 1	18	Winter Park	2
46	Chris Kalfas	G	210	5- 9	18	Tallahassee	1
47	Al Tharpe	T	210	6-	21	Tallahassee	1
48	Jim Costellos	E	194	6- 3	21	Miami	2
49	Charles McMillan	E	203	6- 1	19	Quincy	2
50	Chris Banakas	E	181	5-11	23	Pensacola	2
51	Ed Dilsaver	G	175	5- 9	22	St. Augustine	2
52	Bill Kratzert	E	180	6- 1	20	Tallahassee	1
53	Jim Quigley	G	190	5- 9	20	Panama City	1
54	David Middlebrooks	T	203	6- 1	20	Pensacola	2
55	Bob Browning	T	215	6- 3	19	Madison	1
56	Frederick Boris	T	212	6- 2	24	Key West	2
57	Dick Williams	T	220	6- 2	20	Orlando	2
58	C. N. Procter	C	196	6- 3	20	Altamonte Springs	3
59	Leonard Gilberg	T	230	6-	20	Tallahassee	3
60	Clice Yancey	T	215	6-	27	Tallahassee	2

Troy's Red Wave Rolls Over Over Seminoles 36 to 6

EARLY SCORES STUN INDIANS

Melton Tallies In Third Period

A light and lightning-like eleven from Troy State Teachers college rolled over a bewildered band of Florida State University Seminoles by a 36-6 count in Centennial field yesterday afternoon before a Thanksgiving day crowd of 3,000 grid fans.

The alert Alabama gridgers, striking with startling suddenness, jumped off to an early lead with a three touchdown attack in the first period that left the Seminoles stunned and beaten.

Trailing 24-0 at halftime FSU battled back during the third period to dominate the play and punched their lone score across. But the Red Wave regained its momentum in the final frame and hurried another pair of tallies over.

Pony Backs

The Wave, unleashing a fleet of pony backs whose sudden spirits and accurate passes baffled the garnet and gold defenders, passed for a pair of scores, turned two FSU tosses into touchdowns, and plunged into paydirt for brace of six pointers.

Leonard Melton cracked right guard for the lone FSU score in the final minutes of the third quarter.

Bill Trussell, a sophomore passing ace, Billy Queen, pint size breakaway star, Billy Ezzell, another airways expert and Erjell Back, running star, all operated the Wave attack that kept the lanky Seminoles' backed to the wall.

Gene Norman, stocky junior, and Ted Franklin and Johnny Rice, hard hitting freshmen, added to the Seminole woes by grabbing passes thrown by both teams, and running and plunging for gains.

The Seminoles' famed aerial attack clicked spasmodically to spearhead their overshadowed and outclassed offense.

Wendell Barnes, Ralph Chaudron and Ken MacLean all connected for nice gains, and MacLean ripped off the game's longest run

when he broke through center and sped 48 yards deep into Wave territory in the third period Seminole rally.

McLean also turned in a top-flight defensive game, as he joined Buddy Bryant in manning the overwhelmed Seminole defenses.

FSU, after threatening throughout the period, finally reached paydirt late in the third frame.

Jack McMillan, rangy quarterback, put the Indians on the warpath when he snatched a Wave pass out of the air on the Troy 44 and raced back to the 25-yard line.

McLean Passes

On the first running play McLean nailed big Chris Banakas with a needle sharp aerial on the 13-yard line and the big flankman fought his way to the 8 before being dragged down.

Jim DeCosmo, Apalachicola, then connected with Melton and the former Lion star went to the one-foot line before Franklin dropped him.

Melton then found an opening at the right guard spot and slid over for the score.

Leonard Gilberg's attempted placement was blocked and the FSU scoring was over.

Troy's attack clicked for a score the first time they got their hands on the ball.

Troy kicked off to the Seminoles' 20, where Billy Bishop took the ball and came back to his own 30.

After three running plays had moved the ball to the 38, the Seminoles punted to Troy's 31 yard line, and the Red Wave swept to a score from that point.

Sonny Queen slipped off right tackle for 7 and Rice moved to a first down at midfield.

Carlton clicked for 7 and a penalty gave the Wave another first down on the FSU 36.

After Rice and Carlton failed to gain in two running plays the Wave took to the airways for a score with Trussell passing to Rice who was all alone on the 4.

The Wave missed the first of four straight conversions and led 6-0.

Unable to advance with the Wave kickoff, the Indians quick-kicked to the Troy 42.

The Wave moved up to the FSU 15, but bogged down and the Indians took over.

Queen Races Back

After one running play Gilberg punted to his own 46, and when Queen raced it back 10 yards the Wave was on the march again.

Trussell hit Franklin with a 15 yard toss, and Franklin took a lat-

The Seminoles stopped one second period scoring drive on their one-yard line, but late in the same quarter, the Wave pushed its fourth score across when Ted Rankin intercepted a McLean pass on the FSU 36 and ran it back for a score.

Apparently fired up during the intermission FSU bounded back to dominate the entire third quarter.

Midway in the fourth period the Wave rolled to its fifth score when Billy Ezzell sparked a drive that

carried to the 1-yard line and set up a scoring plunge by Norman.

Ersell Beck, the day's leading ground gainer, personally accounted for the final touchdown.

Moving the ball 58 yards in a 65-yard march, Beck climaxed the drive by driving across from one yard out after his 40-yard dash had been nipped short of a score by Banakas tackle on the one-yard line.

STATISTICS

	FSU	TROY
Total first downs	5	17
First downs rushing	1	12
First downs passing	4	4
First downs penalties	0	1
Passes attempted	25	21
Passes completed	10	10
Passes intercepted by	2	4
Yards gained passing	132	148
Yards gained rushing	46	243
Yards lost rushing	36	36
Net gain rushing	30	207
Total gain, rush and pass	162	355
Total No offensive plays	55	81
No of punts	7	3
Av distance of punts	33.7	36.4
Punt return yardage	24	43
No of kickoffs	2	7
Av distance kickoffs	53.5	36.0
Kickoff return yardage	34	36
No of penalties	5	7
Yards lost penalties	25	55
Fumbles	4	3
Own fumbles recovered	1	2
Score by periods:		
Troy	18	6 0 12-36
FSU	0	0 6 0-6

Scoring touchdowns: Troy State—Rice (2), Norman (2), Franklin, Beck, FSU—Melton.

Leading ground gainers: Troy State—Beck, 91 yards in 8 carries; Queen, 32 in 11; Franklin, 22 in 6; Carlton, 21 in 3. FSU—McLean, 42 in 5 carries; Parrish, 11 in 4; Melton, 9 in 4.

eral and advanced 11 more to the FSU 9.

After a penalty had rocked the Wave back five yards Ezzell shot a third down pass to Norman in the end zone for the second score.

Late in the opening period Rice intercepted Barnes' toss on the Seminole 32 and raced over for the third score.