

OFFICIAL PROGRAM • FIFTY CENTS

**Florida State**

**Wake Forest**

SEPTEMBER 19 • 1959 • CAMPBELL STADIUM

## The President . . .

### DR. ROBERT M. STROZIER

Now in his third year at Florida State University, President Robert M. Strozier has seen a rapid growth in its size and, more important to his educational philosophy, in the "university spirit" pervading the institution.

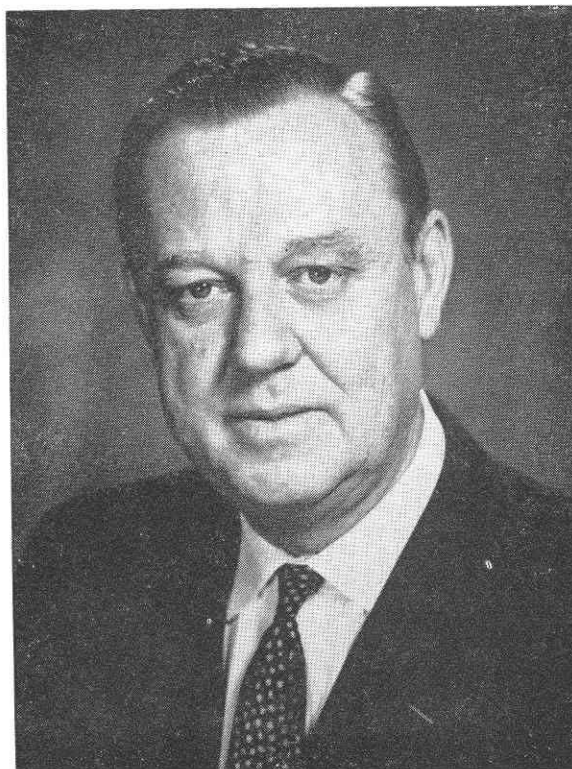
An evidence of the increasing importance of the University in only one field, graduate study, is the fact that FSU has been awarded the second largest number of fellowships for graduate study under the new National Defense Education Act, which provides for 1,000 nationally. FSU will have 20 of these, held by students starting out their doctoral studies in history, mathematics, and humanities.

Another evidence is the increased outside financial support for graduate study and research. At the last commencement Dr. Strozier reported gifts and grants to the University totaling \$3,230,000 since the beginning of the academic year 1957.

Dr. Strozier assumed his duties as president of FSU on Sept. 3, 1957, coming here from the University of Chicago. He was at Chicago 12 years, most of the time as dean of students and professor of romance languages. The president is a 53-year-old native of McRae, Ga., and before joining the Chicago faculty he served on the faculties of Georgia State College for Men, West Georgia College and the University of Georgia.

A teacher of French throughout his professional career, he continues to direct an occasional seminar in addition to carrying on the administrative duties of the University. The University of Miami recently recognized his scholarly contributions by awarding him the honorary degree of Doctor of Letters.

The son of a college president, Strozier was born July 20, 1906, and the family lived at various times in McRae, Vienna, and Moultrie, Ga. He went to Emory University where he earned the bachelor's degree in 1929 and the master's degree in 1930. Later he received the Ph.D. degree from Chicago.



## The Athletic Director and Head Coach . . .

### PERRY MOSS

Before and since he pitched a surprise 44-yard pass to Julie Rykovich on the opening play of the 1947 Rose Bowl game, thereby starting a Big Ten domination at Pasadena, Athletic Director Perry Moss has been making headlines.

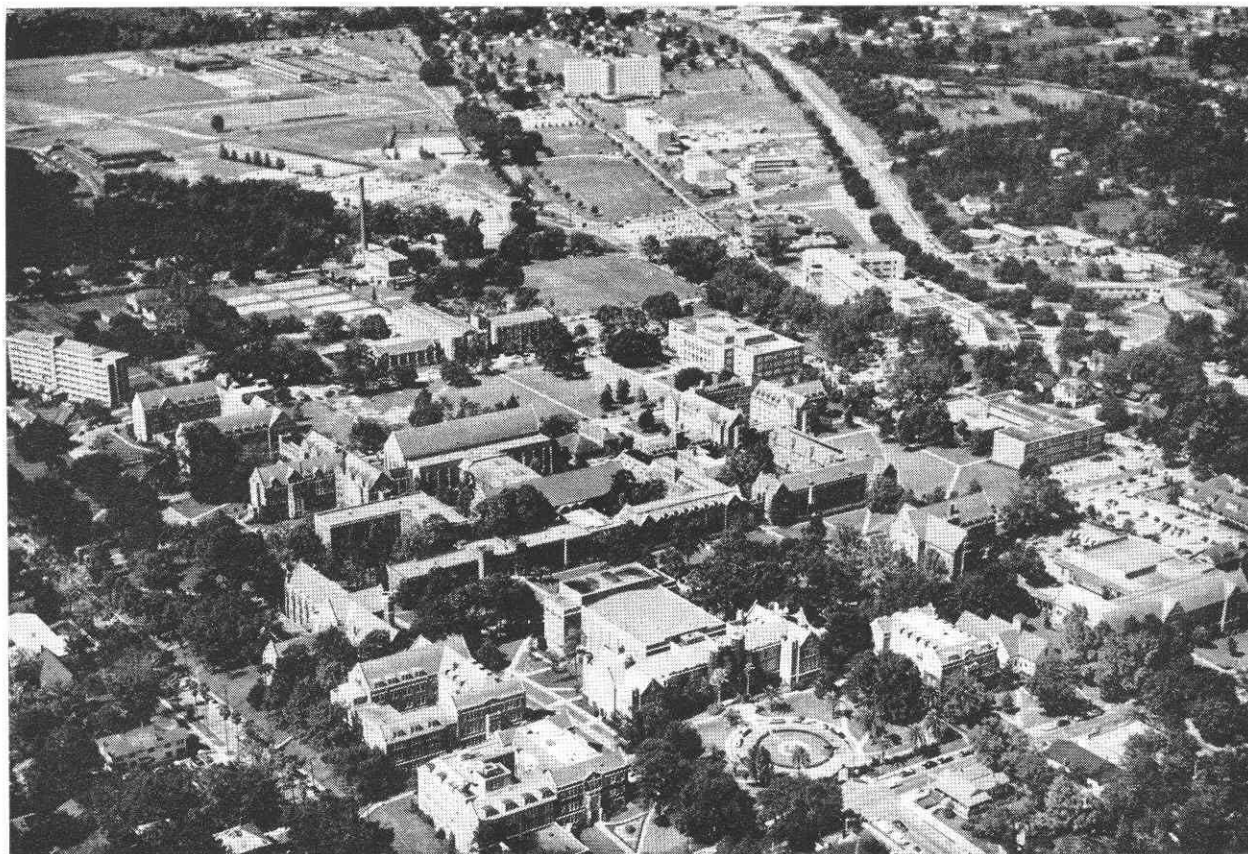
A tireless worker who was a unanimous selection to become head coach at Florida State last January, Moss has enjoyed a varied career as a player and as a coach. And, not unlike the mythical King Midas, just about everything Moss has touched has turned to success.

Moss, a native of Tulsa, Okla., played one semester of football at Tulsa University in 1944, playing in the Orange Bowl. After two years in the Air Force, he quarterbacked Illinois to a Big Ten championship in 1946, playing a vital part in the 45-14 trouncing Illinois handed UCLA in the inaugural (1947) Rose Bowl game between the Big Ten and Pacific Coast Conferences.

While at Illinois, he was an All-Big Ten quarterback for the 1946 and 1947 seasons. He won honorable mention on various All-America teams in 1944, 1946, and 1947. In 1947, Moss became the first recipient of the Nelson Award for Sportsmanship.

After his collegiate career, Moss played one season with the professional Green Bay Packers. His coaching experience dates from 1949, when he was freshman coach at Illinois. In 1950 and 1951 he was backfield coach at the University of Washington (Seattle) and served in the same capacity at LSU (1952-53), Miami (1954-56) and Wisconsin (1957-58).

An optimist, Moss has a wide reputation for his ingenuity on offense. The Seminoles this fall are using Perry's own "Finesse Drive" attack, a composite of several types of offenses. Perry holds a B. S. degree from Illinois and a Master's Degree from Washington.



## ABOUT FLORIDA STATE UNIVERSITY

Located in Tallahassee, Florida State University is one of the fastest growing universities in the country. Already it is bursting at its seams with a present enrollment of approximately 8,000 students.

The main campus of 300 acres, stretching for a half-mile along Highway 90, includes a cluster of older buildings of Tudor Gothic architecture, with many newer buildings of functional design to the west of these. There is an 11-story dormitory for men and work is being completed on a second 11-story dormitory to house 563 more men students. A new eight-story women's dormitory housing 270 is being put into use this year.

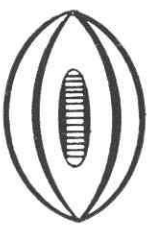
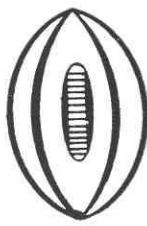
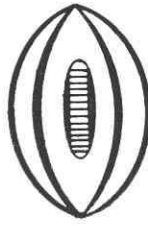
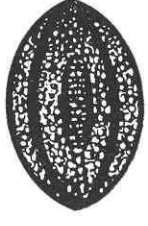


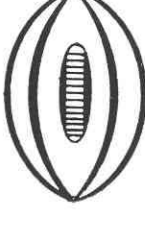
There is a new library and School of Education and School of Business buildings, along with a new million-dollar physical education building, Tully Gymnasium.

Among the newer structures are underground vaults with thick concrete walls which are housing two nuclear accelerators the university is installing this year. The larger of the accelerators is the third of its type to be installed on this continent and scientists, already with more than a million dollars in contracts for nuclear research, are planning to use these and other new tools in a bold program of basic research.

Authorized by the 1851 Legislature, the institution was first established as the "Seminary West of the Suwannee," and was changed to "Florida State College" in 1901 and the school remained co-educational until 1905. Then it became the "Florida Female College" and was renamed in 1909, "The Florida State College for Women."

By act of the 1947 Legislature, the institution again became co-educational as The Florida State University.

# WHEN FSU HAS THE BALL

LEFT END	LEFT TACKLE	LEFT GUARD	CENTER	RIGHT GUARD	RIGHT TACKLE	RIGHT END
						
85 Grimes 86 Daniel 89 Alvarez 84 Ehlers	73 Klesius 78 Verbinski 71 Swoszowski	62 Ulmer 64 Lamb 68 Bigbie	53 Rogers 54 Hardy 50 Brown 51 Worthington 52 Sellers	63 Moran 60 DeFrancesco 66 Kestner	77 Spivey 75 Donatelli 70 Morrow	80 Romeo 82 Slaton 81 Tyre

## QUARTERBACK



13 Majors  
15 Bickford  
12 McCormick

## LEFT HALFBACK



26 B. Whitehead  
20 W. Whitehead  
28 Hooks  
21 Mustain

## R. HALFBACK



43 Pickard  
29 Hinson  
41 Schou  
24 Cone

## FULLBACK



27 Espenship  
42 Andrews  
44 Calhoon



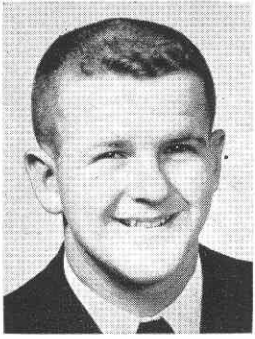
**MEMBER**

**Federal Home Loan Bank System**

**Federal Savings and Loan Insurance Corporation**

**WHERE you save DOES make a difference !**

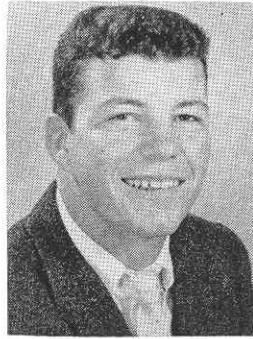
# FLORIDA STATE



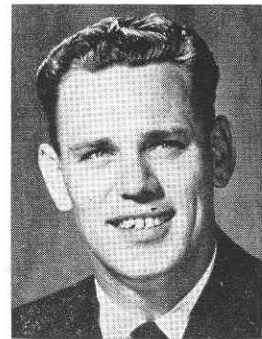
Paul Andrews—FB



Abner Bigbie—G



Roy Bickford—QB



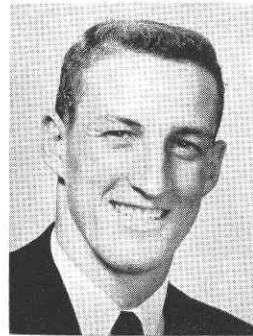
Bill Brown—C



Jim Calhoon—FB



Ken Cone—HB



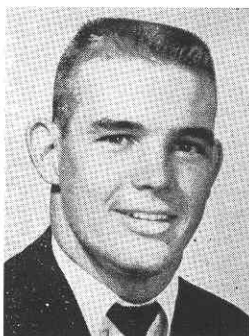
Jim Daniel—E



Frank DeFrancesco—G



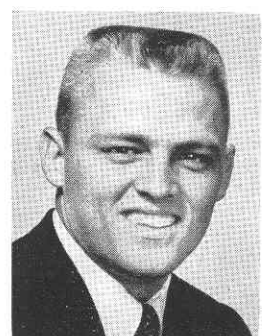
Don Donatelli—T



Jack Espenship—FB



Fred Grimes—E

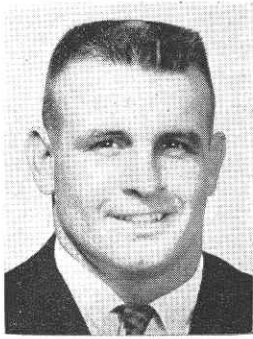


Jack Hardy—C

# PLAYERS



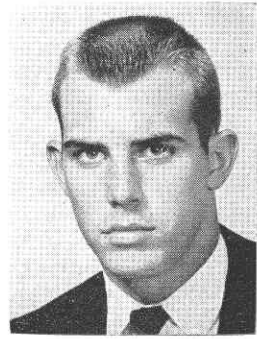
Ron Hinson—HB



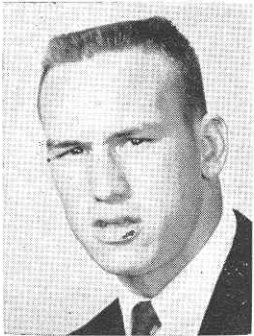
Jim Hooks—HB



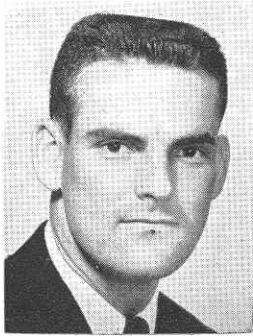
Ken Kestner—G



Steve Klesius—T



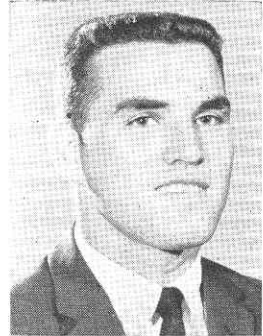
Ray Lamb—G



Gene McCormick—QB



Joe Majors—QB



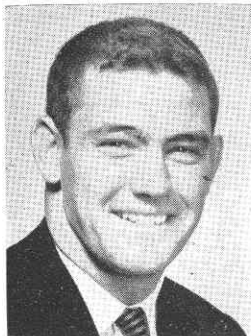
Terry Moran—G



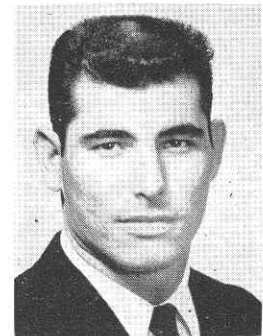
Fred Pickard—HB



Don Sellers—C



Ramon Rogers—C



Tony Romeo—E

# FLORIDA STATE UNIVERSITY

## 1959 FOOTBALL ROSTER

NO.	NAME	POS.	AGE	HT.	WT.	YR.	HOMETOWN
12	*GENE McCORMICK	QB	23	5-9	150	Jr.	Miami
13	**JOE MAJORS	QB	22	6-0	171	Sr.	Huntland, Tenn.
15	ROY BICKFORD	QB	19	5-11	177	So.	Miami
20	WILLIE WHITEHEAD	HB	18	5-10	165	So.	Marianna
21	DON MUSTAIN	HB	19	6-0	168	Jr.	Miami, Okla.
24	KEN CONE	HB	20	6-1	180	Jr.	Lakeland
26	*BUD WHITEHEAD	HB	20	5-11	178	Jr.	Marianna
27	*JACK ESPENSHIP	FB	20	6-3	195	Jr.	Lake City
28	**JIM HOOKS	HB	24	5-8	175	Sr.	West Palm Beach
29	*RON HINSON	HB	21	6-0	191	Jr.	Waycross, Ga.
41	DENNY SCHOU	HB	20	5-9	180	So.	Fort Lauderdale
42	PAUL ANDREWS	FB	18	5-10	186	So.	Greenville
43	**FRED PICKARD	HB	21	5-9	165	Sr.	Columbia, Tenn.
44	JIM CALHOON	FB	25	6-1	188	Jr.	Winslow, Ariz.
50	*BILL BROWN	C	24	6-0	215	Sr.	Orlando
51	JIM WORTHINGTON	C	21	6-2	198	So.	Oak Ridge, Tenn.
52	DON SELLERS	C	25	6-2	198	Jr.	Barberton, O.
53	*RAMON ROGERS	C	21	5-11	187	Sr.	Pensacola
54	*JACK HARDY	C	20	5-10	192	Jr.	Miami
60	FRANK DEFRANCESCO	G	19	5-10	200	So.	Miami
62	**AL ULMER	G	20	5-10	178	Sr.	Clearwater
63	*TERRY MORAN	G	19	5-9	186	Jr.	New Orleans, La.
64	*RAY LAMB	G	21	6-0	180	Jr.	Atlanta, Ga.
66	*KEN KESTNER	G	21	5-10	190	Jr.	Cleveland, O.
68	*ABNER BIGBIE	G	21	5-10	185	Jr.	West Palm Beach
70	BOB MORROW	T	23	5-10	194	So.	Miami
71	*BOB SWOSZOWSKI	T	19	6-3	196	Jr.	Orlando
73	STEVE KLESIOUS	T	18	6-1	210	So.	St. Petersburg
75	DON DONATELLI	T	18	6-2	210	So.	Pittsburgh, Pa.
77	*JOHN SPIVEY	T	22	6-2	208	Sr.	Panama City
78	JOE VERBINSKI	T	21	6-1	210	So.	Willow Grove, Pa.
80	*TONY ROMEO	E	21	6-1	200	Jr.	Tampa
81	BILL TYRE	E	19	6-1	198	So.	Sanford
82	JOHN SLATON	E	20	6-1	188	So.	Miami
84	GEORGE EHLERS	E	21	6-2	190	Jr.	Moss Point, Miss.
85	FRED GRIMES	E	19	6-1	184	So.	Hialeah
86	JIM DANIEL	E	20	6-4	185	So.	Atlanta, Ga.
89	JIM ALVAREZ	E	20	6-1	195	Jr.	Jacksonville

\*—Denotes lettermen.

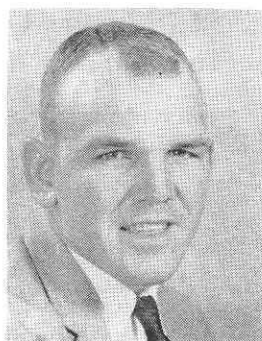


1818 W. Tennessee

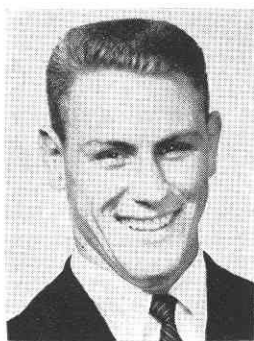
Howdy Podner . . . Me and the boys jest want to notafy  
 everbody that we are serven them Notorious and Dillicious charcoal-  
 broiled Steerbrugers and Steak Samwiches at our hantsome new Drive-In  
 Resterant, jest 2 passes & a fumball offen the campus on West Tennes-  
 see where Call St. comes in.

Yours truly,  
 OLE TEX.

# FSU PLAYERS



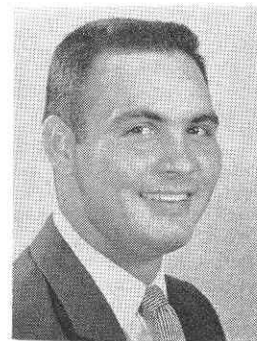
Bob Morrow—T



Denny Schou—HB



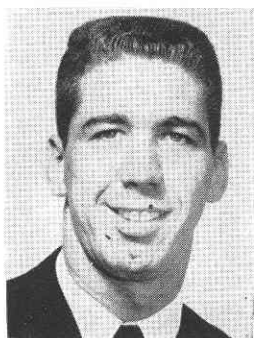
John Slaton—E



Jim Alvarez—E



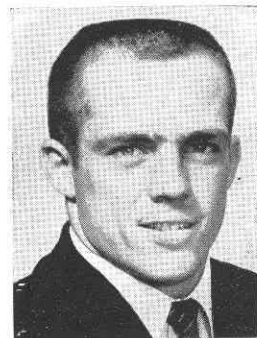
John Spivey—T



Bob Swoszowski—T



Bill Tyre—E



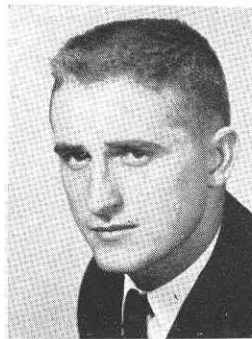
Al Ulmer—G



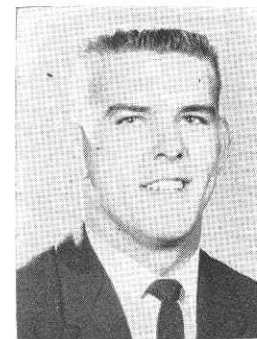
Joe Verbinski—T



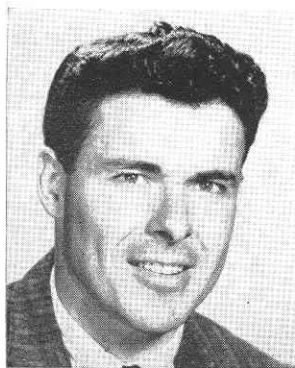
Bud Whitehead—HB



Willie Whitehead—HB



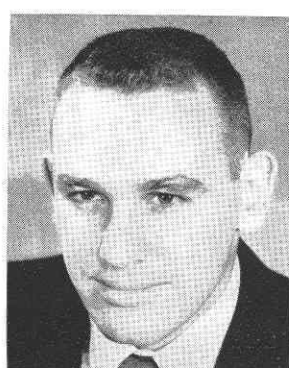
Jim Worthington—C



COATTA



FLOWERS



GIBSON



HARBISON

## THE FSU COACHING STAFF

**DICK FLOWERS**, a native of Mobile, Ala., is in his first season as one of Coach Perry Moss's right-hand men. A graduate of Alabama, where he was a first-team tackle from 1945-48, Flowers played in the 1945 Rose Bowl and 1947 Sugar Bowl games.

Flowers was an assistant coach at Alabama in 1949-50 and at LSU in 1951-52. He coached one year at Live Oak, Fla., High School (1953) and was out of coaching in 1954 before taking over as head coach and athletic director at Gainesville, Fla., High School.

**BOB HARBISON**, in terms of longevity, is the real veteran of the Seminole coaching staff. Harbison is in his 12th full season. In his playing days, Bob was an outstanding guard for the late Bo McMillin at Indiana University from 1945-47. A native of Evansville, Ind., Harbison came to Florida State in 1948. He is credited with developing Little All-Americans Bill Dawkins in 1951 and former Seminole coach Hugh Adams, in 1949.

**JOHN COATTA**, one of the sharpest passing quarterbacks in Big Ten history, came to Florida State this year from Wisconsin. He had been an assistant coach with the Badgers for the past four years. A native of Dearborn, Mich., Coatta was a passing whiz for Coach Ivy Williamson at Wisconsin from 1949-51. In 1950, John set an all-time Big Ten pass completion record with a percentage of .642. He was named to the All-Big Ten and All Mid-West honor teams following the 1951 season.

**DON JAMES** has packed a lot of football experience into his 26 years. The Massillon, O. native came to Florida State this year from Southwest High School in Miami where he was backfield coach for the past two years. Don was an outstanding high school quarterback at Massillon, O. He played quarterback for the University of Miami, lettering in 1952 and 1953.

**KENNETH SHIPP**, erstwhile halfback standout at Middle Tennessee State, came to Florida State this year after two campaigns as backfield coach at Trinity University. Shipp grew up at Murfreesboro, Tenn., and attended Baylor Prep School at Chattanooga, Tenn. From 1946-49, Ken was at Middle Tennessee State. In 1950, Shipp was assistant coach at Gallatin, Tenn., High School. From 1951 to 1953, he was head coach at Fayetteville, Tenn., High School, then returned to his alma mater as backfield coach from 1954-56.

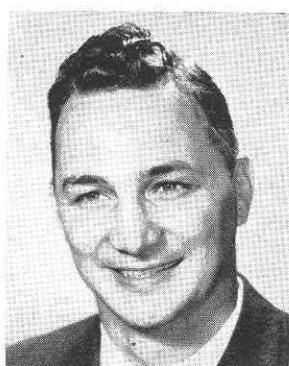
**BUBBA MCGOWAN** has the distinction of being the first person to have coached football at both the University of Florida and Florida State University. A former left halfback at Florida, McGowan was Florida's freshman backfield coach in 1952. The Dothan, Ala. native in 1953-54 was coach at Fort Jackson, S. C. More recently, McGowan has been track coach and football assistant to fellow coach Dick Flowers at Gainesville High School.

**VINCE GIBSON**, one of the toughest guards in Florida State's relatively brief football background, will assist Charlie LaPradd with the freshman team this year. Following his graduation from Florida State in 1955, Vince became line coach and basketball and track coach at South Georgia College. The Birmingham, Ala. native produced some outstanding results during the past three seasons at South Georgia.

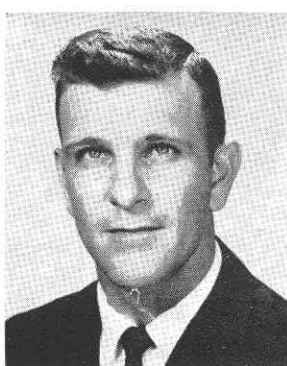
**CHARLIE LAPRADD**, All-America tackle at the University of Florida, is the second oldest FSU coaching staff member—in terms of service. A native of St. Augustine, Charlie was graduated from Florida in 1953 before serving in the Air Force. He was a graduate assistant at Florida State in 1956 and became a full member of the staff in 1957. A keen student, LaPradd will be head coach of the freshman team this season while working toward his doctorate degree.



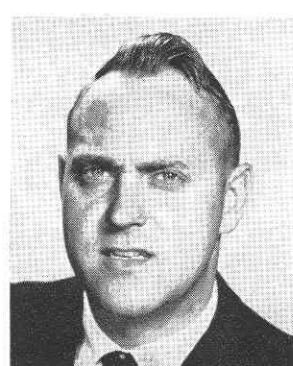
JAMES



LaPRADD



McGOWAN



SHIPP

They said it couldn't be done...

They said nobody could do it...

but **L&M** is

**L**ow  
in tar

## FLORIDA STATE

### PROBABLE STARTING LINEUP

No.	Name	Pos.
85	FRED GRIMES	LE
73	STEVE KLESIOUS	LT
62	AL ULMER	LG
53	RAMON ROGERS	C
63	TERRY MORAN	RG
77	JOHN SPIVEY	RT
80	TONY ROMEO	RE
13	JOE MAJORS	QB
26	BUD WHITEHEAD	LH
43	FRED PICKARD	RH
27	JACK ESPENSHIP	FB

### THE FLORIDA STATE SQUAD

12 McCormick, b	44 Calhoon, b	71 Swoszowski, t
13 Majors, b	50 Brown, c	73 Klesius, t
15 Bickford, b	51 Worthington, c	75 Donatelli, t
20 W. Whitehead, b	52 Sellers, c	77 Spivey, t
21 Mustain, b	53 Rogers, c	78 Verbinski, t
24 Cone, b	54 Hardy, c	80 Romeo, e
26 B. Whitehead, b	60 DeFrancesco, g	81 Tyre, e
27 Espenship, b	62 Ulmer, g	82 Slaton, e
28 Hooks, b	63 Moran, g	84 Ehlers, e
29 Hinson, b	64 Lamb, g	85 Grimes, e
41 Schou, b	66 Kestner, g	86 Daniel, e
42 Andrews, b	68 Bigbie, g	89 Alvarez, e
43 Pickard, b	70 Morrow, t	

**L&M**...**KINDEST** TO YOUR TASTE!

## "MISS FSU FOOTBALL"



**LINDA GORMLEY**  
Tallahassee

Linda Gormley, 19-year-old Florida State University sophomore from Tallahassee, was named "Miss FSU Football" for 1959 at halftime ceremonies of the Seminoles' annual Garnet and Gold intrasquad game last spring. She was crowned by 1959 Seminole co-captains John Spivey and Al Ulmer. A Seminole cheerleader and a former girl's state high school and junior Olympic diving champion, Miss Gormley was sponsored by the Kappa Alpha Theta sorority. Twenty-one Florida State coeds competed in a student election for the title of "Miss FSU Football." Making up the "Miss FSU Football" court are Carolyn Ann Reeves, Panama City sophomore; Willou Copeland, junior from Brunswick, Ga.; Barbara Nichols, Coral Gables sophomore; Karen Ekman, Fort Lauderdale sophomore, and June Vaughn, sophomore from Tampa.

# BAY-SEMINOLE NETWORK

Florida State University's football games will be carried over a two-state network for the next three years by Bay Petroleum Company. Entering its seventh year, the network will be known for the first time this season as the Bay-Seminole Network.

The Bay-Seminole Network covers thousands of square miles in Florida and South Georgia. Broadcast of the games are produced by the Galen E. Broyles Company of Denver, Colo.

Handling the broadcasts are Charlie Harville, Sports Director of Station WFMY-TV, Greensboro, N. C., and Ken Brown, General Manager of Station WHYS, Ocala. Harville will do the play-by-play and Brown the color commentary.

A native of High Point, N. C., Harville broadcast play-by-play accounts of the University of Virginia games for four years and has done color for the Washington Redskins Network and regional television in the Atlantic Coast Conference area.

Brown is thoroughly familiar with football in Florida. For the past 10 years he has broadcast high school football. More recently, he has done play-by-play for University of Florida freshman games and for the Florida High School All-Star games.



Charlie Harville



Ken Brown

## THE NETWORK STATIONS

WTAL	Tallahassee	WFLA	Tampa
WPCF	Panama City	WKIS	Orlando
WCNH	Quincy	WMET	Miami Beach
WTYS	Marianna	WSIR	Winter Haven
WJAX	Jacksonville	WPAX	Thomasville, Ga.
WFOY	St. Augustine	WMGA	Moultrie, Ga.
WTMC	Ocala	WVLD	Valdosta, Ga.

FLORIDA STATE VS. WAKE FOREST

Sept. 19, 1959--Season opener. The Weather--Skies clear, temperature--77, wind from the east at 7 mph.

Florida State captains--Al Ulmer and John Spivey. WF captains--Neil MacLean and Buck Jolly. Florida State won the toss and will receive. WF will kick and defend the South goal.

Skippon kicks off for WF to FSU 19. Espenship returns to 28yd. line.

FSU

~~Kajm~~

1-10 F--28 Majors keeps for 1.  
2-9 F--29 Espenship carries for two yards.  
3-7 F--31 Majors to Pickard incomplete.  
4-7 F--31 Whitehead punts WF 44. 25 yard punt.

WF

1-10 WF--44 Robinson goes to FSU 47.  
2-2 F--47 MacLean stopped by Klesius for 1 yd. loss.  
3-3 F--48 Snead to MacLean no gain.  
4-3 F--48 MacLean punts to F 23.

FSU

1-10 F--23 Pickard on handoff around 1e to 34.  
1-10 F--34 Whitehead gains four.  
2-6 F--38 Pickard goes to 43  
3-2 F--43 Espenship through middle for 1st down.  
1-10 F--45 Majors pitches out to Pickard to WF 49.  
2-4 WF--49 Espenship takes pitchout gains two.  
3-2 WF--47 Pickard stopped by Jolly.  
4-1 WF--46 Espenship on right side for 1st down.  
1-10 WF--44 Whitehead losses two.  
2-12 WF--46 Majors passes to Pickard for touchdown. called back for 1/2 illegal receiver down field.  
2-27 F--40 Whitehead back to punt. Ball goes to Espenship who goes around 1e for 28 yards.  
1-10 WF--32 Hinson for two yds.  
2-8 WF--30 Majors up middle to the 26 for 4 yd. gain.  
3-4 WF--26 Espenship off tackle for 1st down.  
1-10 WF--20 Whitehead up the middle for 3.  
2-7 WF--17 Majors passes to Whitehead complete to the 14.  
3-4 WF--14 Pickard climbs over middle to 11.  
4-1 WF--11 Espenship hits into line but is short.

WF

1-10 WF--10 Futch around 1e for ~~fourxxxx~~ two yds.  
2-7 WF--14 Skippon from Snead around ~~1e~~ to 15.  
3-6 WF--15 Reilly back to kick--roughing the kicker.  
1-10 WF--30 Bonecutter takes handoff for 1 yd.  
2-9 WF--31 Futch around 1e for five.  
3-4 WF--36 Futch around 1e on pitchout to FSU 46--18 yds.  
1-10 F--46 Bonecutter on draw play up middle for 23 yds.  
~~1-10xxxxxx23~~

WF

- 1-10 F--23 Snead passes to Robinson complete to 15--gain of 8.
- 2-2 F--15 Snead pass incomplete
- 3-2 F--15 ~~RM~~ Ball picks up 1st down. gains 5.
- 1-10 F--10 MacLean stopped for no gain up middle.
- 2-10 F--10 Snead ~~thru~~ throw for six yd. loss by Daniel.
- 3-16 F--16 Snead pass incomplete, blocked by Daniel.
- 4-16 F--16 Patella attempts fg. kick is short.

FSU

- 1-10 F--20 Majors handsoff to Pickard--no gain.
- 2-10 F--20 Whitehead for one--penalty clipping against FSU sets ball back to 11.
- 2-20 F--11 Whitehead punts to F 48. ~~xx~~ Tesch returns to F-43.

WF

- 1-10 F--43 Futch around le ~~le~~ for 4.
- 2-6 F--39 Bonecutter up middle to F-36.
- 3-3 F--36 Parker keeps for 1st down--gain of 5.
- 1-10 F--31 Skippon up middle for 3.
- 2-7 F--28 Parker pitches out to Futch fumbles out of bounds at F-22.
- 3-1 F--22 Illegal procedure against WF.
- 3-6 F--28 Snead passes incomplete.
- 4-6 F--28 Bonecutter on draw play for 1st down.
- 1-10 F--10 Bonecutter up middle for 1. holding
- 2-9 F--9 Robinson around re to the 7. ~~clipping~~ penalty against WF. Ball back to 25.
- 2-25 F--25 Snead passes incomplete.
- 3-25 F--25 Snead passes to Manning complete to the 13.
- 4-13 F--13 Patella kicks field from 19. 29 yard field goal.

7:35 WF--3 FSU--0

~~M~~ MacLean kicks off to Hinson at goal returns to the 30.

FSU

- 1-10 F--30 Bickford keeps for six.
- 2-4 F--36 Andrews over tackle for 3.
- 3-1 F--39 Hinson for no gain.
- 4-1 F--39 Andrews punts to the 27. 35 yd. punt. Ball returns

WF

- 1-10 WF--37 MacLean over G for 1.
- 2-9 WF--38 Grimes spills Snead for ~~8~~7yd. loss.
- 3-16 WF--31 Snead passes incomplete.
- 4-16 WF--31 Reiley punts to FSU 30. Hinson returns to 39. Clipping penalty sets ball at 24.

FSU

- 1-10 F--24 Pickard takes handoff for 3.
- 2-7 F--27 Majors around re on keeper for 1st down to the 39.
- 1-10 F--39 Pickard around le to the 43.
- 2-6 F--43 Majors passes to Romeo complete for gain of 5.

~~xxxxxxxxxxxx~~

FSU  
 3-1 F--48 Majors handsoff to Espenship for 6 and 1st down  
 1-10 WF--46 Majors passes complete to Pickard for 6.  
 2-4 WF--40 Majors ~~xxxx~~ thrown for 6 yd. loss.  
 3-10 WF--46 Majors passes complete to Espenship for 6.  
 4-4 WF--40 Majors passes incomplete. WF takes over on  
 downs.

WF  
 1-10 WF--40 Bonecutter off tackle to FSU 45. gain of 15.  
 1-10 F--45 Pass interference 34 yard penalt.  
 1-10 F--11 Sneed passes complete to Bill Hull for score.  
 Extra point try run White no good.

0:18 WF--9 FSU 0

Reiley kicks off to FSU 30 Daniel returns to  
 35.

HALFTIME SCORE WF 9 FSU 0

# FLORIDA STATE VS. WAKE FOREST

## HALF-TIME STATISTICS

	WAKE FOREST	FSU
FIRST DOWNS	<u>8</u>	<u>7</u>
RUSHING YARDAGE	<u>114</u>	<u>106</u>
PASSING YARDAGE	<u>31</u>	<u>27</u>
PASSING	<u>3-8</u>	<u>5-7</u>
PASSES INTERCEPTED BY	<u>0</u>	<u>0</u>
PUNTS	<u>2-32</u>	<u>3-32.3</u>
FUMBLES LOST	<u>0</u>	<u>0</u>
YARDS PENALIZED	<u>20</u>	<u>90</u>

## LEADING RUSHERS

WAKE FOREST					FSU				
PLAYER	CAR.	GAIN	LOSS	NET.	PLAYER	CAR.	GAIN	LOSS	NET.
BONECUTTER	6	61	0	61	Espanship	8	49	0	49
FUTCH	6	37	0	37	Pickard	8	33	0	33

## LEADING PASSERS

PLAYER	ATT.	COM.	INT.	GAIN.	PLAYER	ATT.	COM.	INT.	GAIN
SNEAD	8	3	0	31	MAJORS	7	5	0	27

Attendance--19,300 largest opening game ~~around~~ crowd.

Bill Brown kicks off for FSU to WF 25. Allen returns to WF ~~to~~ 36. Penalty back to 21.

WF

1-10 WF--21 MacLean to the 25.  
2-6 WF--25 MacLean carries for ~~maxgain~~ gain of one  
3-~~8~~ 5 WF--25 Pickard ~~xxx~~ intercepts pass of Sneed to Robinson at WF 30. Returns for touchdown. at 13:42. Extra point made by Brown.

13:42 WF 9 FSU 7

Bill Brown kicks off to WF 21; MacLean returns to 36.

WF

1-10 WF--36 Espenship and Ulmer trip up Robinson in gain of one.  
2-9 WF--37 Robinson losses one.  
3-10 WF--36 Sneed passes to Manning incomplete.  
4-10 WF--36 MacLean punts to FSU 28. Whitehead returns seven yds.

FSU

1-10 F--35 Majors passes complete to Whitehead for 6.  
2-4 F--41 Espenship up middle for 1st down. gain of 4.  
1-10 F--45 Illegal ~~procedures against FSU~~ use of hands against FSU.  
1-25 F--30 Majors picks up 4 on keeper.  
2-21 F--34 Majors passes complete to Daniel at WF 48 gain of 19.  
3-4 EF--48 Majors passes incomplete.  
4-4 WF--48 Whitehead punts to WF 16. Returns to 26.

WF

1-10 WF--25 MacLean for 4.  
2-6 WF--29 MacLean for no gain.  
3-6 WF--29 Sneed passes complete. ~~xxx~~ holding penalty sends ball back to 13.  
3-25 WF--13 Reiley punts to WF 48. Hinson fair catch. Illegal procedure Wake.  
3-30 WF--8 Reiley punts to 43. Hinson returns to 40.

FSU

1-10 WF--40 Bickford passes complete~~x~~ to Grimes. for 9.  
2-1 WF--31 Bickford on keep gains 3 and 1st down.  
1-10 WF--28 Bickford passes incomplete.  
2-10 WF--28 Bickford keeps around re gains 2.  
3-8 WF--26 Bickford keeps up middle for 1st down gains ~~xx~~ 17 yards.  
1-~~10~~ 9 WF--9 Bickford passes incomplete.  
1-9 WF--9 Bickford fumbles on handoff. WF recovers--Ruby.

"5"

WF

1-10 WF--17 Bonecutter 1 yd.  
2-9 WF--18 Penalty backfield in motion.  
2-14 WF--13 Futch runs out of bounds after gaining two.  
3-12 WF--15 Reiley punts to FSU 49. Hinson returns to 42.

FSU

1-10 WF--42 Reiley intercepts Bickford pass at 18.

WF

1-10 WF--18 Bonecutter gains 12.  
1-10 WF--30 Bonecutter off tackle for 14.  
1-10 WF--44 Bonecutter picks up one.  
2-9 WF--45 white around 1e gains 11.  
1-10 WF--44 Reiley keeps for ~~xxxxxxx~~ yd. loss.  
~~2-10 WF--44~~

third quarter ends

WF 9 FSU 7

WF

2-10 F--45 Robinson carries around re for 9.  
3-2 F--37 Robinson gains 9.  
1-10 F--29 MacLean to the 25.  
2-6 F--25 Robinson around re for 3.  
3-3 F--22 Offensive holding.  
3-15 F--34 Whitehead intercepts Snead pass intended for Manning. Returns 81 yds. for touchdown. Extra point try. Majors stopped.

12:46 FSU 13 WF 9

Brown kicks off to the WF 5. Futch returns to the 26.

WF

1-10 WF--25 Skippon tripped by Z Grimes for loss of six yds.  
2-16 WF--19 Bonecutter up middle for 5.  
3-11 WF--24 Futch picks up one.  
4-10 WF--25 Reiley's kick blocked by Spivey.

FSU

1-10 WF--17 Whitehead gains two.  
2-8 WF--15 Majors passes complete to Daniel for touchdown 15 yards. 8:40  
Brown kicks extra point.

8:40 FSU 20 WF 9

Bill Brown kicks off WF 14. Manning returns to WF 30.  
clipping penalty puts ball at 33.

WF

1-10 WF--17 Robinson picks up six.  
2-4 WF--23 Snead passes complete to Ball--12 yds.  
1-10 WF--35 Snead passes ~~is~~ incomplete.  
2-10 WF--35 ~~Mxxkx~~ MacLean on draw play for 9 yds.  
3-1 WF--44 MacLean gains 2 up middle for 1st down.  
1-10 WF--47 Snead passes incomplete.  
2-10 WF--47 Snead passes complete to Manning--37 yds.  
1-10 F--10 Snead ~~xxxxxxxxxxxxxxxxxxxx~~ losses nine.  
2-10 F--20 Snead passes incomplete  
3-10 F--20 Snead passes to Allen for touchdown--20 yds.  
5:19  
MacLean kicks--no good.  
5:19 FSU 20 WF 15

MacLean kicks off to FSU 12. Pickard returns to 31.

FSU

1-10 F--31 Pickard on hanf off gains four.  
2-6 F--35 Majors keeps for four.  
3-2 F--39 Pickard dives through left side for first down.  
1-10 F--41 ~~Rikxx~~ fumbles, Martineau recovers  
Whitehead

WF

1-10 F--40 MacLean on draw no gain.  
2-10 F--40 Snead passes incomplete.  
3-10 F--40 Snead to Allen for 35 yds.  
1-10 F--5 Robinson scores around ~~xx~~ right end.  
at 1:56.  
MacLean kicks good.  
WF 22 FSU ~~2x~~ 20

MacLean kicks off to FSU 17. Hinson returns to 31,  
Penalty to FSU 21.

FSU

1-10 F--21 Majors passes to Daniel complete--14 yds.  
1-10 F--34 Majors passes complete to Grimes. 12 yds.  
1-10 F--45 Majors passes incomplete.  
2-10 F--45 Majors passes incomplete. Illegal use of hands.  
~~3-10 F--45~~  
3-25 F--30 Majors passes incomplete.  
3-25 F--30 Majors passes incomplete.  
3-25 F--30 Majors passes complete to Daniel. at 45.  
fumble WF recovers.

WF

1-10 WF--47 ~~xxxxxxxx~~ penalty.  
1-15 WF--42 Reily gains 3.  
2-12 WF--45 No gain, Reiley.  
3-12 WF--45 Reiley no gain.  
4-12 WF--45 Delay of game.  
4-17 WF--40

FINAL SCORE WF ~~xx~~ 22 FSU 20

QUOTES FROM COACH PERRY MOSS:

"WAKE FOREST IS AWFULLY STRONG. THEY ARE DANGEROUS BECAUSE THAT SNEAD CAN HIT ONE ON YOU AT ANY TIME. WE WERE LUCKY TO STAY IN THE GAME, I THINK.

"WE SIMPLY MADE TOO MANY MISTAKES ON PASS DEFENSE. WITH A PASSER LIKE SNEAD AND THOSE GOOD RECEIVERS, YOU JUST CAN'T MAKE THE MISTAKES WE DID.

WE DIDN'T TAKE ADVANTAGE OF OUR OPPORTUNITIES. WE WERE HURT DEFENSIVELY WHEN WE LOST ROMEO (END TONY WHO SUFFERED A SPRAIED KNEE IN FIRST QUARTER).

#####

QUOTES FROM COACH PAUL AMEN:

"IT'S THE GREAYEST THING IN SPORTS WHEN A TEAM APPARENTLY BEATEN CAN PULL ITS SELF TOGETHER AND COME FROM BEHIND WHEN EVERYONE HAD GIVEN UP BUT THE BOYS THEMSELVES."

"IT'S THE GREATEST THING THAT HAS HAPPENED TO ME SINCE I'VE BEEN AT WAKE FOREST AND WAS MORE GRATIFYING THAN THE 34-0 WIN OVER MARYLAND IN THE OPENER LAST YEAR.

~~xxx~~ "IN SOME CASES WE? WERE SPECTACULARLY GOOD AND IN OTHER CASES WE WERE SPECTATULARLY BAD." "I WAS ESPECIALLY PLEA ED WITH THE PLAY OF OUR SECOND UNIT. THE NO. 1 UNIT DID NOT LOOK GOOD UNTIL THE LAST EIGHT MINUTES."

FLORIDA STATE VS. WAKE FOREST

FINAL INDIVIDUAL STATISTICS

WAKE FOREST--INDIVIDUAL RUSHING					PASS RECEIVING				
PLAYER	CAR.	GAIN	LOSS	NET	PLAYER	CAUGHT	YDS.	TDs	
Snead	<del>2</del> 3	<del>0</del> 0	<del>22</del> -21	-21	Robinson	1	8		
Skippon	2	3	0	3	Manning	2	49		
Ball	3	12	0	12	Hull	2	23	1	
MacLean	13	25	7	18	Allen	3	57	1	
Robinson	8	33	1	32					
Futch	8	40	0	40					
Reiley	4	3	0	3					
Bonecutter	12	97	0	97					
Parker	1	5	0	5					
WHITE	1	11	0	11					
TOTALS	55	229	29	200	TOTALS	8	137	2	

INDIVIDUAL PASSING

PLAYER	ATT.	COMP.	INT.	YDS.
SNEAD	20	<del>13</del> 7	<del>4</del>	137
		8	2	
		8	2	
TOTALS	20	<del>13</del>	<del>4</del>	137

FLORIDA STATE VS. WAKE FOREST

FINAL INDIVIDUAL STATISTICS

FSU--Individual Rushing					FSU-PASS RECEIVING			
PLAYER	CAR.	GAIN	LOSS	NET	PLAYER	CAUGHT	YDS.	TDs
MAJORS	6	24	6	18	WHITEHEAD	2	10	
B. WHITEHEAD	4	5	2	3	ROMEO	1	5	
Pickard	10	39	0	39	ESPENSHIP	3	16	
Espenship	9	53	0	53	PICKARD	1	6	
Hinson	2	2	0	2	DANIELS	4	78	1
Bickford	5	28	8	20	GRIMES	2	21	
<del>W. WHITEHEAD</del>								
Andrews	1	3	0	3				
TOTALS	37	154	16	138	TOTALS	13	136	1

INDIVIDUAL PASSING--FSU

PLAYER	ATT.	COMP.	INT.	YDS.
MAJORS	20	12	1	127
Bickford	3	1	0	9
TOTALS	23	13	1	136

# FLORIDA STATE VS. WAKE FOREST

42  
1-29

	FINAL STATISTICS	
	WAKE FOREST	FSU
FIRST DOWNS	<u>13</u>	<u>13</u>
YARDS RUSHING	<u>200</u>	<u>138</u>
YARDS PASSING	<u>127</u>	<u>127</u>
PASSING	<u>8-20</u>	<u>13-23</u>
PASSES INTERCEPTED BY	<u>1</u>	<u>2</u>
PUNTS	<u>6-28.3</u>	<u>4-33.2</u>
FUMBLES LOST	<u>1</u>	<u>1</u>
YARDS PENALIZED	<u>92</u>	<u>135</u>

SCORE BY PERIODS:	1	2	3	4	Final
FLORIDA STATE	0	0	7	13	20
WAKE FOREST	0	9	0	13	22

FLORIDA STATE SCORING: PICKARD, 30, interception return (BROWN, Kick);  
B. Whitehead, 81, interception return (run failed);  
DANIEL, 15, pass from MAJORS (BROWN, Kick)

WAKE FOREST SCORING: PATELLA, 29, field goal; B. Hull, 11, pass  
from SNEAD (run failed); Allen, 19, pass from  
Snead (kick failed); Robinson, 5, run (Machean, Kick)

SUMMARY OF FOOTBALL GAME STATISTICS — Home Team

Home Team FLORIDA STATE First Downs: (Rush) 8 (Pass) 5 (Pen.) 0 Total 13 Penalties Against: (No.) 1 (Yards) 13 Own Fumbles: (No.) 2 (Lost) 2

(Don't Use) NCAB CODE	PLAYER	RUSHING				FORWARD PASSING					TOTAL OFFENSE		RECEIVING			INT. RETURNS		PUNTING			PUNT RETURNS		K.O. RETURNS		SCORING									
		Times Carried	Yards Gain	Yards Loss	Net Gain	No. Att.	No. Comp.	Had Int.	Net Gain	Scoring		Total Plays	Net Gain	No. Caught	Yards Gain	TD's	No. Inter.	Yards Return	Times Kicked	Yards Kicked	Blkd.	Number Returns	Yards Return	Number Returns	Yards Return	Touch-downs	Conv. Atts.		Conv. Made			Fld. Gls.	Points	
										TD's	Conv.																Throw	Run	Kick	Catch	Run			Kick
	MATORS	A	6	24	6	18	B	16	10	0	102	C	22	120	D		E		F			G		H		S	0	1						
	andritchard	A	4	5	2	3	B					C	9	3	D	2	10	E	1	81	F	3	98	G	1	7	H		S	1				6
	Pickard	A	10	39	0	39	B					C	10	39	D	1	6	E	1	30	F			G		H	1	17	S	1				6
	Expendip	A	9	53	0	53	B					C	9	53	D	3	16	E			F			G		H		S						
	Hinson	A	2	2	0	2	B					C	2	2	D			E			F			G	3	19	H	1	9	S				
	Bickford	A	5	20	8	20	B	4	1	1	9	C	9	29	D			E			F			G	2	12	H	2	11	S				
		A					B					C			D			E			F			G		H		S						
	Andrews	A	1	3	0	3	B					C	1	3	D			E			F	1	35	G		H		S						
	Rones	A					B					C			D	4	63	E			F			G		H		S						
	DANIEL	A					B					C			D	4	33	E			F			G		H	1	7	S	1				6
	GRIMES	A					B					C			D	2	21	E			F			G		H		S						
	SPIVEY	A					B					C			D			E			<del>F</del>	<del>X</del>		G	1	9	H		S					
	BROWN	A					B					C			D			E			F			G		H		S				2	0	2
		A					B					C			D			E			F			G		H		S						
		A					B					C			D			E			F			G		H		S						
		A					B					C			D			E			F			G		H		S						
		A					B					C			D			E			F			G		H		S						
		A					B					C			D			E			F			G		H		S						
		A					B					C			D			E			F			G		H		S						
		A					B					C			D			E			F			G		H		S						
		A					B					C			D			E			F			G		H		S						
		A					B					C			D			E			F			G		H		S						
		A					B					C			D			E			F			G		H		S						
		A					B					C			D			E			F			G		H		S						
		A					B					C			D			E			F			G		H		S						
		A					B					C			D			E			F			G		H		S						
		A					B					C			D			E			F			G		H		S						
		A					B					C			D			E			F			G		H		S						
		A					B					C			D			E			F			G		H		S						
		A					B					C			D			E			F			G		H		S						
		A					B					C			D			E			F			G		H		S						
		A					B					C			D			E			F			G		H		S						
		A					B					C			D			E			F			G		H		S						
		A					B					C			D			E			F			G		H		S						
		A					B					C			D			E			F			G		H		S						
		A					B					C			D			E			F			G		H		S						
		A					B					C			D			E			F			G		H		S						
		A					B					C			D			E			F			G		H		S						
		A					B					C			D			E			F			G		H		S						
		A					B					C			D			E			F			G		H		S						
		A					B					C			D			E			F			G		H		S						
		A					B					C			D			E			F			G		H		S						
		A					B					C			D			E			F			G		H		S						
		A					B					C			D			E			F			G		H		S						
		A					B					C			D			E			F			G		H		S						
		A					B					C			D			E			F			G		H		S						
		A					B					C			D			E			F			G		H		S						
		A					B					C			D			E			F			G		H		S						
		A					B					C			D			E			F			G		H		S						
		A					B					C			D			E			F			G		H		S						
		A					B					C			D			E			F			G		H		S						
		A					B					C			D			E			F			G		H		S						
		A					B					C			D			E			F			G		H		S						
		A					B					C			D			E			F			G		H		S						
		A					B					C			D			E			F			G		H		S						
		A					B					C			D			E			F			G		H		S						
		A					B					C			D			E			F			G		H		S						
		A					B					C			D			E			F			G		H		S						
		A					B					C			D			E			F			G		H		S						
		A					B					C			D			E			F			G		H		S						
		A					B					C			D			E			F			G		H		S						
		A					B					C			D			E			F			G		H		S						
		A					B					C			D			E			F			G		H		S						
		A					B					C			D			E			F			G		H		S						
		A					B					C			D			E			F			G		H		S						
		A					B					C			D			E			F			G		H		S						
		A					B					C			D			E			F			G		H		S						
		A					B					C			D			E			F			G		H		S						
		A					B					C			D			E			F			G		H		S						
		A					B					C			D			E			F			G		H		S						
		A					B					C			D			E			F			G		H		S						
		A					B					C			D			E			F			G		H		S						
		A					B					C			D			E			F			G		H		S						
		A					B					C			D			E			F			G		H		S						
		A					B					C			D			E			F			G		H		S						
		A					B					C			D			E			F			G		H		S						
		A					B					C			D			E			F			G		H		S						
		A					B					C			D			E			F			G		H		S						

Opponents FLORIDA STATE First Downs: (Rush) 9 (Pass) 2 (Pen.) 2 Total 13 Penalties Against: (No.) 10 (Yards) 102 Own Fumbles: (No.) 1 (Lost) 0

Enter Here Team Totals From Visiting Team Summary	RUSHING				FORWARD PASSING					TOTAL OFFENSE		RECEIVING			INT. RETURNS		PUNTING			PUNT RETURNS		K.O. RETURNS		SCORING										
	Times Carried	Yards Gain	Yards Loss	Net Gain	No. Att.	No. Comp.	Had Int.	Net Gain	Scoring TD's	Conv.	Total Plays	Net Gain	No. Caught	Yards Gain	TD's	No. Inter.	Yards Return	Times Kicked	Yards Kicked	Blkd.	Number Returns	Yards Return	Number Returns	Yards Return	Touch-downs	Conv. Throw	Atts. Run	Kick	Conv. Made Catch	Run	Kick	Fld. Gls.	Points	
VISITING TEAM TOTALS	A 35	229	39	200	B 20	9	2	137	2		C 75	337	D 8	137	2	E 1	0	F 6	171	1		G 3	26	H 4	62	S 3	0	1	2	0	0	1	1	22

Date of Game Sept. 19, 1959 Where Played Tallahassee Authenticated by Chas. H. Smith and \_\_\_\_\_

## ADDITIONAL STATISTICS

Official Attendance	19,300	Score by Quarters:	1st	2nd	3rd	4th	Total
Weather Conditions	FAIR	F.S.U.	0	0	13	13	20
		WAKE Forest	0	9	0	13	22

## PRINCIPAL INDIVIDUAL PLAYS

List **all** scoring plays; also non-scoring plays (including punts) gaining 50 yards or more, and all **missed field goal attempts**.

Under "type of play" indicate rush, pass, int. runback, punt runback, kickoff runback, punt or field goal. List tries-for-points as P.A.T. kick, P.A.T. rush or P.A.T. pass

On pass play, give passer first, then receiver, and combined yardage of pass and run. Measure runbacks from goal line, if started in end zone. Measure field goal attempts from point of kick. All other plays are measured from line of scrimmage.

Type of Play	Player or Players	Team	Yards	Scored?
Pass Interception	Pickard	F.S.U.	30	yes
Pass Interception	B. WHITEHEAD	F.S.U.	81	yes
Pass	MAJORS to DANIEL	F.S.U.	15	yes
P.A.T. Kick	BROWN (2)	F.S.U.		
<del>PATTELLA</del>				
Field Goal	PATELLA	Wake Forest		NO
Field Goal	PATELLA	Wake Forest	29	yes
PASS	SNEAD to HALL	Wake Forest	11	yes
PASS	SNEAD to ALLAMIAN	Wake Forest	19	yes
RUN	ROBINSON	Wake Forest	5	yes

## CONDENSED RULES FOR RECORDING FOOTBALL STATISTICS\*

(Originated by the N.C.A.A. Football Rules Committee's Sub-committee on Football Statistics)

(Continued from back of form 347-A)

### SECTION 6—PUNTS.

**Article 1:** Punts are measured from the line of scrimmage to the point of ultimate advance, if the ball remains in the field of play or goes out of bounds. (Note — "Ultimate advance" is the point where ball goes out of bounds, is downed, or is recovered by the defense.

(Note — "Ultimate advance" of the punt shall be construed to include also any distance which a receiver of the punt may retreat toward his own goal before attempting to return up field. This interpretation gives greatest benefit to both the punter and the receiver, since excellence of the punt normally is responsible for retreat by the receiver. Thus "minus yards" should NOT be recorded under "punt returns.")

**Article 2:** When a punt goes over the goal line (a touchback), distance of the punt is measured from the line of scrimmage to the 20-yard line only, since this is the limit of the punt's value to the kicking team.

**Article 3:** If a receiver muffs a punt and the ball continues toward his goal line, the punt is measured to the point of recovery or ultimate advance, as defined above. If a receiver muffs a punt and the ball bounds back toward the kicker's goal, the punt is measured to the point of the muff (the point of ultimate advance), and the receiver is credited with a punt return and with the yards from the point of the muff to the point of recovery, regardless of which team recovers.

**Article 4:** A blocked punt is recorded as a "team" entry, and not charged against the individual kicker. Thus, in the case of a blocked punt which does not pass the line of scrimmage, enter the word "team" in lieu of kicker's name and charge one punt for NO yards, so the blocked punt is included under "Times Kicked" in team totals.

If the ball travels toward the kicker's goal and is recovered by the blocking team, the yardage is treated as a punt return by the player who blocked the kick. If the ball travels toward the kicker's goal and is recovered by the kicking team, the yardage is treated as a punt return by the player who blocked the kick—and the blocking team is charged with a fumble lost, except on fourth down.

### SECTION 7 — KICK RETURNS.

**Article 1:** Only the number of punts and kickoffs which the receiving team actually attempts to return are included under kick returns. (Exception — Blocked kicks which travel toward the kicker's goal. See Article 4 of Section 6.)

**Article 2:** The return will be measured from the point where the returning player actually gains control of the ball to the point where the ball is declared dead, or is lost by fumble. There are no "minus yards" under kick returns (see note under Article 1 of Section 6).

**Article 3:** The return of an attempted field goal, which falls short and is returned by the defending team, is treated as a punt return.

### SECTION 8 — FREE KICKS.

Free kicks are recorded as kickoffs if made from placement, and as punts if the ball is punted. The receiving player is credited with a kickoff return, or a punt return, respectively.

### SECTION 9—GOALS FROM THE FIELD.

Successful goals from the field are measured from the point where the ball is kicked to the goal posts (to the goal line plus ten yards, since the goal posts are ten yards behind the goal line).

The distance of such kicks is recorded on form 347 only under "principal individual plays". If kick is unsuccessful, show yard line from which kicked, in lieu of distance.

### SECTION 10—POINTS AFTER TOUCHDOWN.

**Article 1:** A player attempting a try-for-point-after-touchdown by kicking is **not** charged with an attempt when a bad pass from center or a fumble by the ball holder, precludes an opportunity to kick. Such an unsuccessful attempt is charged to the "team," rather than to any individual player. However, if the ball is momentarily fumbled and then kicked, an attempt is charged to the individual kicker, regardless of the success or failure of the effort.

**Article 2:** The try-for-point-after-touchdown is made while time is out and is **not** recorded as a play from scrimmage (rush, pass or kick).

When a try-for-point-after-touchdown is by forward passing, the passer is charged (under SCORING) with the attempt. If successful, the receiver is credited under SCORING with the conversion and points scored, and the passer is credited with a conversion under FORWARD PASSING.

### SECTION 11 — SAFETIES.

No individual credit is recorded for any player on either team when a safety is scored. The team benefitting from the score is credited.

### SECTION 12 — FUMBLES.

On any play **terminated** by a fumble, the yards involved to the point of recovery are credited or charged to the player who fumbled, regardless of which team recovers the fumble.

(Approved Ruling — On rushing play, ball carrier of Team A fumbles at the line of scrimmage and the ball travels 5 yards toward Team B goal line, before it is recovered by Team B. Player of Team A who fumbled is credited with rushing gain of 5 yards and Team A is charged with a fumble lost.)

\* See the OFFICIAL FOOTBALL STATISTICIANS' MANUAL for complete rulings and interpretations.

SUMMARY OF FOOTBALL GAME STATISTICS – Visiting Team

Visiting Team Wake Forest First Downs: (Rush) 9 (Pass) 2 (Pen.) 2 Total 13 Penalties Against: (No.) 10 (Yards) 102 Own Fumbles: (No.) 1 (Lost) 1

(Don't Use) NCAB CODE	PLAYER	RUSHING				FORWARD PASSING					TOTAL OFFENSE		RECEIVING			INT. RETURNS		PUNTING			PUNT RETURNS		K.O. RETURNS		SCORING									
		Times Carried	Yards Gain	Yards Loss	Net Gain	No. Att.	No. Comp.	Had Int.	Net Gain	Scoring		Total Plays	Net Gain	No. Caught	Yards Gain	TD's	No. Inter.	Yards Return	Times Kicked	Yards Kicked	Blkd.	Number Returns	Yards Return	Number Returns	Yards Return	Touch-downs	Conv. Atts.			Conv. Made			Fld. Gls.	Points
										TD's	Conv.																Throw	Run	Kick	Catch	Run	Kick		
	Snyder	A 3	0	31	(21)	B 10	8	2	137	2	0	C 23	146	D			E		F			G		H		S								
	Skippine	A 2	3	0	3	B						C 2	3	D			E		F			G		H		S								
	Gall	A 3	12	0	12	B						C 3	12	D 1	12	0	E		F			G		H		S								
	Hallman	A 13	23	7	18	B						C 13	18	D			E		F 2	14		G		H		S							1	
	Robinson	A 9	38	1	32	B						C 8	32	D 1	8	0	E		F			G		H		S							6	
	Kozak	A 9	40		40	B						C 7	40	D			E		F			G		H		S								
	Kozak	A 4	3		3	B						C 4	3	D			E		F 3	11		G		H		S								
	Skippine	A 12	97		97	B						C 12	97	D			E		F			G		H		S								
	Parker	A 1	0	0	0	B						C 1	0	D			E		F			G		H		S								
	White	A 1	0	0	0	B						C 1	0	D			E		F			G		H		S								
	White	A 1	0	0	0	B						C		D			E		F			G		H		S								
	White	A				B						C		D 2	57	1	E		F			G		H		S								
	White	A				B						C		D 1	11	1	E		F			G		H		S								
	White	A				B						C		D 2	49		E		F			G		H		S								
	White	A				B						C		D			E		F			G		H		S								
	White	A				B						C		D			E		F			G		H		S								
	White	A				B						C		D			E		F			G		H		S								
	White	A				B						C		D			E		F			G		H		S								
	White	A				B						C		D			E		F			G		H		S								
	White	A				B						C		D			E		F			G		H		S								
	White	A				B						C		D			E		F			G		H		S								
	White	A				B						C		D			E		F			G		H		S								
	White	A				B						C		D			E		F			G		H		S								
	White	A				B						C		D			E		F			G		H		S								
	White	A				B						C		D			E		F			G		H		S								
	White	A				B						C		D			E		F			G		H		S								
	White	A				B						C		D			E		F			G		H		S								
	White	A				B						C		D			E		F			G		H		S								
	White	A				B						C		D			E		F			G		H		S								
	White	A				B						C		D			E		F			G		H		S								
	White	A				B						C		D			E		F			G		H		S								
	White	A				B						C		D			E		F			G		H		S								
	White	A				B						C		D			E		F			G		H		S								
	White	A				B						C		D			E		F			G		H		S								
	White	A				B						C		D			E		F			G		H		S								
	White	A				B						C		D			E		F			G		H		S								
	White	A				B						C		D			E		F			G		H		S								
	White	A				B						C		D			E		F			G		H		S								
	White	A				B						C		D			E		F			G		H		S								
	White	A				B						C		D			E		F			G		H		S								
	White	A				B						C		D			E		F			G		H		S								
	White	A				B						C		D			E		F			G		H		S								
	White	A				B						C		D			E		F			G		H		S								
	White	A				B						C		D			E		F			G		H		S								
	White	A				B						C		D			E		F			G		H		S								
	White	A				B						C		D			E		F			G		H		S								
	White	A				B						C		D			E		F			G		H		S								
	White	A				B						C		D			E		F			G		H		S								
	White	A				B						C		D			E		F			G		H		S								
	White	A				B						C		D			E		F			G		H		S								
	White	A				B						C		D			E		F			G		H		S								
	White	A				B						C		D			E		F			G		H		S								
	White	A				B						C		D			E		F			G		H		S								
	White	A				B						C		D			E		F			G		H		S								
	White	A				B						C		D			E		F			G		H		S								
	White	A				B						C		D			E		F			G		H		S								
	White	A				B						C		D			E		F			G		H		S								
	White	A				B						C		D			E		F			G		H		S								
	White	A				B						C		D			E		F			G		H		S								
	White	A				B						C		D			E		F			G		H		S								
	White	A				B						C		D			E		F			G		H		S								
	White	A				B						C		D			E		F			G		H		S								
	White	A				B						C		D			E		F			G		H		S								
	White	A				B						C		D			E		F															