

SUMMARY OF FOOTBALL GAME STATISTICS – Home Team

Home Team FLORIDA STATE First Downs: (Rush) 16 (Pass) 6 (Pen.) 2 Total 24 Penalties Against: (No.) 9 (Yards) 105 Own Fumbles: (No.) 1 (Lost) 0

(Don't Use) NCAB CODE	PLAYER	RUSHING				FORWARD PASSING					TOTAL OFFENSE		RECEIVING			INT. RETURNS		PUNTING			PUNT RETURNS		K.O. RETURNS		SCORING									
		Times Carried	Yards Gain	Yards Loss	Net Gain	No. Att.	No. Comp.	Had Int.	Net Gain	Scoring		Total Plays	Net Gain	No. Caught	Yards Gain	TD's	No. Inter.	Yards Return	Times Kicked	Yards Kicked	Blkd.	Number Returns	Yards Return	Number Returns	Yards Return	Touch-downs	Conv. Atts.			Conv. Made			Fld. Gls.	Points
	SNYDER	A 8	101	0	101	B						C 8	101	D			E		F			G		H		S 1	0	0	0	0	0	0	6	
	BRINKLEY	A 16	83	0	83	B						C 16	83	D			E		F			G		H		S 3	0	1	0	0	1	0	20	
	BRITNIBTT	A 6	45	8	37	B 3	1	0	12	0	0	C 9	49	D			E		F			G		H		S								
	ENLER	A 7	37	0	37	B						C 7	37	D			E		F			G		H		S 1	0	0	0	0	0	0	6	
	ROBERTS, M.	A 7	32	0	32	B						C 7	32	D 1	14	1	E 1	0	F			G		H		S 1	0	0	0	0	0	0	6	
	TENSI	A 3	19	3	16	B 4	5	0	98	2	0	C 11	114	D			E		F			G		H		S								
	PETKO	A 3	16	0	16	B						C 3	16	D			E		F			G		H		S								
	BIBENT	A 6	18	6	12	B						C 6	12	D			E		F			G		H		S								
	CALHOUN	A 2	0	15	-15	B						C 2	-15	D			E		F 3	99	0	G		H		S								
	BILCHNIKOFF	A				B						C		D 2	54	1	E		F			G 1	8	H		S 1	0	0	0	0	0	0	6	
	D'ALLESANDRO	A				B						C		D 1	17	0	E		F			G		H		S								
	DAWSON	A				B						C		D 1	13	0	E		F			G		H		S								
	WACHTEL	A				B						C		D 1	12	0	E		F			G		H		S								
	McDONNELL	A				B						C		D			E 1	0	F			G		H		S								
	MASSEY	A				B						C		D			E		F			G 1	10	H		S								
	MESSER	A				B						C		D			E		F			G		H		S 0	0	0	6	0	0	5	0	5
		A				B						C		D			E		F			G		H		S								
		A				B						C		D			E		F			G		H		S								
		A				B						C		D			E		F			G		H		S								
		A				B						C		D			E		F			G		H		S								
		A				B						C		D			E		F			G		H		S								
	TEAM TOTALS	A 57	351	32	319	B 12	6	0	110	2	0	C 69	429	D 6	110	2	E 2	0	F 3	99	0	G 2	18	H		S 7	0	1	6	0	1	5	0	49

Opponents FURMAN First Downs: (Rush) 3 (Pass) 4 (Pen.) 3 Total 10 Penalties Against: (No.) 5 (Yards) 53 Own Fumbles: (No.) 3 (Lost) 1

Enter Here Team Totals From Visiting Team Summary	RUSHING				FORWARD PASSING						TOTAL OFFENSE		RECEIVING			INT. RETURNS		PUNTING			PUNT RETURNS		K.O. RETURNS		SCORING								
	Times Carried	Yards Gain	Yards Loss	Net Gain	No. Att.	No. Comp.	Had Int.	Net Gain	Scoring		Total Plays	Net Gain	No. Caught	Yards Gain	TD's	No. Inter.	Yards Return	Times Kicked	Yards Kicked	Blkd.	Number Returns	Yards Return	Number Returns	Yards Return	Touch- downs	Conv. Atts.			Conv. Made			Fld. Gls.	Points
									TD's	Conv.																Throw	Run	Kick	Catch	Run	Kick		
VISITING TEAM TOTALS	A 35	91	38	53	B 15	6	2	107	1	0	C 50	160	D 6	107	1	E		F 8	313	0	G		H 8	144	S 1	1	0	0	0	0	0	0	6

Date of Game 11-2-63

Where Played TALLAHASSEE, FLA

Authenticated by Donald Louche

and W. C. Clark

ADDITIONAL STATISTICS

	Score by Quarters:	1st	2nd	3rd	4th	Total
Official Attendance <u>12,000</u>	FLORIDA STATE	6	8	14	21	49
Weather Conditions <u>CLEAR, WINDY, COLD</u>	FURMAN	0	0	0	6	6

PRINCIPAL INDIVIDUAL PLAYS

List **all** scoring plays; also non-scoring plays (including punts) gaining 50 yards or more, and all **missed field goal attempts**.

Under "type of play" indicate rush, pass, int. runback, punt runback, kickoff runback, punt or field goal. List tries-for-points as P.A.T. kick, P.A.T. rush or P.A.T. pass.

On pass play, give passer first, then receiver, and combined yardage of pass and run. Measure runbacks from goal line, if started in end zone. Measure field goal attempts from point of kick. All other plays are measured from line of scrimmage.

Type of Play	Player or Players	Team	Yards	Scored?
RUSH	BRINKLEY	FSU	3	YES
P.A.T. KICKS (5)	MESSER	FSU	(5)	YES
RUSH	SNYDER	FSU	66	YES
P.A.T. RUSH	BRINKLEY	FSU		YES
RUSH	BRINKLEY	FSU	1	YES
PASS	TENSI-M. ROBERTS	FSU	14	YES
RUSH	BRINKLEY	FSU	3	YES
PASS	TENSI-BILETNIKOFF	FSU	43	YES
RUSH	EHLER	FSU	5	YES
FIELD GOAL	CORDELL	FURMAN	50	No
PASS	DONOVAN-PICKENS	FURMAN	60	YES
PUNT	KERR	FURMAN	50	No
PUNT	CHASTAIN	FURMAN	50	No

CONDENSED RULES FOR RECORDING FOOTBALL STATISTICS*

(Originated by the N.C.A.A. Football Rules Committee's Sub-committee on Football Statistics)

SECTION 1 — FIRST DOWNS.

A first down shall be recorded whenever the yardsticks are ordered forward by the officials, and when a touchdown is scored from scrimmage (by rushing or passing) within a series of downs starting 10 yards or more from the goal line. A first down is **not** recorded on a touchdown runback, regardless of the distance of the scoring run.

SECTION 2 — RUSHING.

Article 1: All offensive running plays are to be classified as rushing plays, **not** as "plays from scrimmage," since any play begun with a snapback from center actually is a play from scrimmage.

Article 2: Rushing yardage is measured from the line of scrimmage to the point where the ball is declared dead, or is recovered by opponents in the case of a fumble.

Article 3: The rushing total is a **net** figure. All rushing losses must be recorded so as to account for the net figure.

Article 4: All gains on lateral passes which originated or grew out of a rushing play are included in rushing yardage. (See Article 1 of Section 4.)

SECTION 3 — FORWARD PASSING.

Article 1: Forward passing gains or losses are measured from the scrimmage line to the point where the ball is declared dead (or is recovered by opponents in the case of a fumble), so as to include both length of pass and running advance after completion. All yards gained or lost on each completed pass play are credited to **both** the passer and the receiver.

Article 2: Loss from a completed forward pass which did not advance the ball to the scrimmage line is a yardage charge against passing gain.

Article 3: Any loss by a player apparently intending to pass, but thrown behind the line of scrimmage, is recorded as a **loss by rushing**. He is **not** a passer until he has thrown the ball, and he retains at all times the option of running.

Article 4: Interception returns are measured from the point of interception to the point where the ball is declared dead (or is recovered by opponents in the case of a fumble).

Article 5: There is **no** pass completed by penalty. A gain through interference on a passing play is a penalty against the defending team. The passer is **not** charged with a pass attempt, nor credited with a pass completed or yards gained; nor is the intended receiver (or the player interfered with) credited with a pass caught. The passing team

is credited only with a first down by penalty. The defensive (offending) team is charged with a penalty, and the distance from the line of scrimmage to the spot of the penalty under "yards penalized."

Article 6: The forward passer is charged with a forward pass attempt when a forward pass is ruled intentionally grounded.

SECTION 4 — LATERAL PASSING.

Article 1: A lateral pass is always a component part of the ultimate play, whether it precedes or follows that play, since the lateral is merely an extension of the original or ultimate play, in effect.

(Approved Ruling — Player A receives a forward pass for a gain of 10 yards, then throws a lateral pass to Player B, who gains an additional 5 yards. Player A is credited with one pass caught and 10 yards under "receiving." Player B is credited with NO pass caught and with 5 yards under "receiving." Player who threw the forward pass is credited with 15 yards under "forward passing.")

(Approved Ruling — Player A catches punt and returns 10 yards before throwing a lateral pass to Player B, who returns another 5 yards. Player A is credited with one return and 10 yards under "punt returns." Player B is credited with NO return and with 5 yards under "punt returns.")

Article 2: Incomplete lateral passes are scored as fumbles, and yards lost are charged against the player who, in the scorer's opinion, was responsible for the failure of the pass.

Article 3: Intercepted lateral passes are scored as fumbles, the offensive team being charged with a fumble lost.

Article 4: The official scorer rules on whether a completed pass to a flanker or man-in-motion is a forward or a lateral pass. If the latter, the play is recorded under "rushing." If the pass is incomplete, the subsequent action of the officials reveals whether the pass was a forward or a lateral.

SECTION 5 — TOTAL OFFENSE.

Article 1: Total offense is the combined result of rushing and forward passing **only**, since these two are the only methods by which legal advance can be initiated while retaining possession of the ball.

Article 2: Total offense yardage is the total of **net** gain by rushing and net gain by forward passing. "Receiving" yards gained are **not** included in total offense.

WILD PASS FROM CENTER.

Any loss resulting from an **obvious** wild pass from center is charged to "center pass," and not to any individual player.

(Continued on back of Form 347-B)

*See the OFFICIAL FOOTBALL STATISTICIANS' MANUAL for complete rulings and interpretations.

SUMMARY OF FOOTBALL GAME STATISTICS – Visiting Team

Visiting Team FURMAN First Downs: (Rush) 3 (Pass) 4 (Pen.) 3 Total 10 Penalties Against: (No.) 5 (Yards) 53 Own Fumbles: (No.) 3 (Lost) 1

(Don't Use) NCAB CODE	PLAYER	RUSHING				FORWARD PASSING					TOTAL OFFENSE		RECEIVING			INT. RETURNS		PUNTING			PUNT RETURNS		K.O. RETURNS		SCORING									
		Times Carried	Yards Gain	Yards Loss	Net Gain	No. Att.	No. Comp.	Had Int.	Net Gain	Scoring		Total Plays	Net Gain	No. Caught	Yards Gain	TD's	No. Inter.	Yards Return	Times Kicked	Yards Kicked	Blkd.	Number Returns	Yards Return	Number Returns	Yards Return	Touch- downs	Conv. Atts.			Conv. Made			Fld. Gls.	Points
										TD's	Conv.																Throw	Run	Kick	Catch	Run	Kick		
	MICKENS	A 9	41	2	39	B					C 9	39	D 1	60	1	E		F			G		H		S 1	0	0	0	0	0	0	6		
	TURNER	A 4	13	0	13	B					C 4	13	D 1	50		E		F			G		H		S									
	ZUGERER	A 4	12	0	12	B					C 4	12	D 1	60		E		F			G		H		S									
	CHASTAIN	A 4	7	0	7	B					C 4	7	D			E		F 4	185	0	G		H 1	23	S									
	MC TEER	A 1	3	0	3	B					C 1	3	D			E		F			G		H		S									
	BURRELL	A 1	1	0	1	B					C 1	1	D			E		F			G		H		S									
	COOK	A 1	0	0	0	B					C 1	0	D 1	80		E		F			G		H 1	17	S									
	KERR	A 1	0	3	-3	B					C 1	-3	D			E		F 4	128	0	G		H 4	13	S									
	DONOVAN	A 5	7	14	-7	B 11	4	2	80	1 0	C 16	75	D			E		F			G		H		S 0	1	0	6	0	0	0	0		
	WYCHE	A 5	7	19	-12	B 4	2	0	27	0 0	C 9	15	D			E		F			G		H		S									
	CRAWFORD	A				B					C		D 1	22	0	E		F			G		H 1	12	S									
	HAYES	A				B					C		D 1	60		E		F			G		H		S									
	HALEY	A				B					C		D			E		F			G		H 1	9	S									
		A				B					C		D			E		F			G		H		S									
		A				B					C		D			E		F			G		H		S									
		A				B					C		D			E		F			G		H		S									
		A				B					C		D			E		F			G		H		S									
		A				B					C		D			E		F			G		H		S									
		A				B					C		D			E		F			G		H		S									
		A				B					C		D			E		F			G		H		S									
	TEAM TOTALS	A 35	91	38	53	B 15	6	2	107	1 0	C 50	160	D 6	107	1	E		F 8	313	0	G		H 8	144	S 1	1	0	0	0	0	0	0	6	

Opponents FLORIDA STATE First Downs: (Rush) 16 (Pass) 6 (Pen.) 2 Total 24 Penalties Against: (No.) 9 (Yards) 105 Own Fumbles: (No.) 1 (Lost) 0

Enter Here Team Totals From Home Team Summary	RUSHING				FORWARD PASSING					TOTAL OFFENSE		RECEIVING			INT. RETURNS		PUNTING			PUNT RETURNS		K.O. RETURNS		SCORING									
	Times Carried	Yards Gain	Yards Loss	Net Gain	No. Att.	No. Comp.	Had Int.	Net Gain	Scoring		Total Plays	Net Gain	No. Caught	Yards Gain	TD's	No. Inter.	Yards Return	Times Kicked	Yards Kicked	Blkd.	Number Returns	Yards Return	Number Returns	Yards Return	Touch- downs	Conv. Atts.		Conv. Made			Fld. Gls.	Points	
									TD's	Conv.																Throw	Run	Kick	Catch	Run			Kick
HOME TEAM TOTALS	A 57	351	32	319	B 12	6	0	110	2	0	C 69	429	D 6	110	2	E 2	0	F 3	99	0	G 2	18	H		S 1	0	1	6	0	1	5	0	49

FSU 49, Furman 6

The Tribe turned from its passing ways and used Dave Snyder, Larry Brinkley, and newly-found quarterback Ed Pritchett to ground up Furman 49-6. FSU led 21-0 before throwing a single pass, and that was with six minutes gone in the second half.

Larry Brinkley scored three times, firmly establishing himself (with Snyder) as the second half of a fine running duo. Brinkley, earning his third FSU letter, cracked the Furman line for three and one yard scoring runs and took in a 15 yard Steve Tensi pass for a third TD.

But Snyder thrilled the crowd of 12,000 on Band Day when he raced 66 yards off right guard and through three Furman Paladins to score. Fred Biletnikoff took in a scoring pass from Tensi that carried 43 yards, and sophomore fullback Howard Ehler scored from five yards out.

The Tribe ran up 319 yards on the ground and added 110 when Tensi and Pritchett finally got around to passing.

Furman, meanwhile, surprised the Seminole second unit with a 60 yard pass play in the fourth period, from QB Danny Donovan to Sammy Pickens.

And Campbell Stadium stood and cheered when Steve Tensi did ~~a~~ roll to his left and continued ~~/~~ onward for 19 full yards, a first down.

FLORIDA STATE UNIVERSITY VS FURMAN

Dock S. Campbell Stadium Tallahassee, Fla. Nov. 2, 1963

Temperature 58 Wind North, 17 mph Clear, Sunny skies

FSU Co-Captains Calhoun, Robinson and Messer; Furman's Capt. Doug Stacks

FSU won the toss and took the North goal to get wind advantage.

Les Mardock kicked to FSU 1; Chastain returned to FSU 24. Robinson, Daly

FURMAN BALL

FUR24 1-10 Pickens at LE gets 6. Messer.
 FUR30 2-4 Pickens ondelay up middle for 4. Pennie FIRST DOWN
 FUR34 1-10 Chastain at RE loses 1. Bailey.
 FUR33 2-11 Donovan's pass to Chastain over his head.
 FUR33 2-11 Chastain quick kicks to FS 33. No return.

FSU BALL

FS23 1-10 Fencl on keeper loses 3. Hays
 FS20 2-13 Snyder up middle gets 5. Stacks, Owens.
 FS25 3-8 Brinkley at LE gets 9. Stacks FIRST DOWN
 FS4 1-10 Brinkley at LT gets 13. Kerr. FIRST DOWN
 FS7 1-10 Snyder up middle gets 3. Owens.
 FS0 2-7 Brinkley on quick opener gets 10. Chastain FIRST DOWN
 FS34 1-10 Brinkley gets 5. Kerr
 FS29 2-5 Snyder up middle gets 6. Kerr FIRST DOWN
 FS23 1-10 Brinkley at LT gets 1. Hays
 FS22 2-9 Brinkley up middle gets 3. Owens, Gettys
 FS19 3-0 Brinkley at LT gets 3. Stacks
 FS18 1-5 Brinkley at LE gets 8. Kerr, Owens FIRST DOWN
 FS 1-4 Snyder drives up middle for 6. Stacks
 FS3 2-0 Brinkley goes over RG for the TD. (4:06 left) FS 6 FUR 0

Messer's kick is wide. No good. (His first miss of year)

Mardock kicks to FSU; Kerr returns to FSU 26, fumbles. Shinholser recovers for FSU but referee said whistle had blown.

FURMAN BALL

FUR28 1-10 Turner ~~gets~~ 2. Parrish.
 FUR30 2-8 Donovan passes complete to Shaw for NG. BUT FSU LOSES 15 FOR HOLDING. FIRST DOWN
 FUR45 1-10 Donovan fumbles, recovers for loss of 3. Edwards, Causey
 FUR2 2-13 McTeer at LE gets 2. Parrish.
 FUR4 3-11 Donovan's long pass out of bounds.
 FUR4 4-11 Kerr punt rolls dead on FSU 25. (1:17 left in quarter)

FSU Ball

FS25 1-10 M. Roberts gets 1.
 FS26 2-4 Dittent at RE gets 9. BUT FSU LOSES 15 FOR HOLDING.
 FS1 2-24 Calhoun punts. At back to punt, low snap, dropped at FSU4.

FIRST QUARTER ENDS FSU 6 FURMAN 0

P4 3-32 Calhoun punts to FSU 36, out of bounds.
 FURMAN BALL
 P31 1-10 Chastain at RT gets 2. Robinson
 P30 2-8 Donovan passes incomplete.
 P30 3-8 Donovan's pass knocked down by Hermann, Massey.
 P30 4-8 Cordell's Field Goal attempt is short.
 FSU'S BALL
 P20 1-16 Snyder up middle for 3. Kerr, Owens.
 P23 2-7 Brinkley at RG gets 3. Stacks.
 P26 3-4 Brinkley at LT gets 8. FIRST DOWN
 P34 1-10 Snyder up the middle breaks loose for 66. (12:30 left)
 FSU 12 FURMAN 0
 Brinkley at LT goes in for two-pointer. FSU 14 FURMAN 0
 Mudcock kicks to FU 10, Cook returns to FS 27. M. Roberts, Mudcock.
 FURMAN BALL
 FU27 1-10 Zuberer up middle gets 3. McDowell, Shinholser.
 FU30 2-7 Pickens at LB gets 4. Calhoun, Edwards. BUT FURMAN LOSES
 FIVE FOR ILLEGAL PROCEDURE.
 FU25 2-12 Chastain at RG gets 1. Edwards, Shinholser.
 FU26 3-11 Calhoun almost intercepts Donovan's pass. Incomplete.
 FU26 4-11 Kerr punts to FS 24, Miletnikoff returns to 32. Williams.
 FSU'S BALL (Ed Pritchett quarterbacking 10 minutes left)
 P32 1-10 Bibent at RT gets 5. Carnes.
 P37 2-5 Pritchett at RE gets 9. FIRST DOWN
 P44 1-10 Petko up middle gets 3. Stacks.
 P49 2-7 Ehler at RT gets 9. Pickens FIRST DOWN
 FU42 1-10 Ehler at RT gets 3. Luongo.
 FU39 2-7 Fumble on the snap. BUT FSU LOSES FIVE FOR OFFSIDES
 FU44 2-12 Pritchett loses 4. Owens. (Penalty declined, illegal motion)
 FU48 3-16 Pritchett back to pass, runs, loses 5. Carnes.
 P48 4-20 Calhoun ~~passes~~ gets low snap, runs, loses 8.
 FURMAN BALL Zuberer (6:03 left)
 P46 1-10 ~~Kerr~~ up middle gets 4. Mackenzie.
 P36 2-6 Zuberer up middle gets 3. Pennie, Parrish.
 P34 3-3 Pickens at LT gets 2.
 P32 4-1 Zuberer up middle gets 1. FIRST DOWN
 P30 1-10 Cook at LT gets nothing. Causey.
 P30 2-10 Zuberer at RT gets 2. D'Allesandro, McDowell, Shinholser.
 P27 3-7 Donovan at RE gets 2. M. Roberts
 P25 4-5 Donovan passes to Hays complete for 7. Miletnikoff. FIRST DOWN
 P18 1-10 Donovan passes complete to Cook for 8. Bibent
 P10 2-2 Donovan's pass intercepted by M. Roberts at F6.
 FSU'S BALL
 P6 1-10 M. Roberts up middle gets 7. Owens, Carnes.
 P13 2-3 Bibent up middle gets 4. FIRST DOWN
 P17 1-10 Bibent up middle gets 2. Stacks.
 P19 2-8 Bibent loses 6 1/2. Gettys.

END OF FIRST QUARTER

FSU 14 FURMAN 0

PASS RECEIVING			
Player	No.	Yds.	TD
Haye	1	6	0
Cook	1	8	0

FLORIDA STATE VS FURMAN

THIRD QUARTER

Murdock kicks off to the Furman end zone, out of field.

FURMAN BALL

FU20 1-10 Pickett at LE gets 3. Hermann, Robinson.
 FU23 2-7 Pickett at RE gets 1. Brinkley, Robinson.
 FU24 3-6 Donovan back to pass, rushed hard, no gain. BUT FURMAN
 LOSES 15 FOR CLIPPING.

FU7 3-21 Kerr punts out of bounds on the FU 20. (a 13 yarder)

FSU BALL

FU20 1-10 Brinkley at LT gets 8. Hays.
 FU12 2-2 Snyder at RT gets 8. Carnes FIRST DOWN

FU5 1-6 Snyder gets 4. Owens.

FU1 2-6 Brinkley dives in just inches short of goal.

FU1 3-6 Brinkley dives in for the TD. (Time: 11:33 left) FSU 20 FU 0
 Messer's kick is good. FSU 21 FU 0

Messer kicks 3 yard deep in end zone, Kerr return to FU 20.

FURMAN BALL

Pennie and McDowell tackling.

FU20 1-10 Chastain up middle gets 4. Bailey, Pennie.

FU24 2-6 Pickens at LE loses 1. Parrish, Causey.

FU23 3-7 Chastain quick kicks, ball rolls dead on FSU 29. (49 yarder)
 (Pritchett quarterbacking (9:42 left))

FSU BALL

FU29 1-10 M. Roberts up middle gets 2. Stacks.

F31 2-8 Pritchett's pass to Wettstein complete to Wettstein for 5.
 BUT FURMAN PENALIZED 15 FOR PERSONAL FOUL. FIRST DOWN

FU2 1-10 Ehler at LT gets 5. Owens. BUT FSU LOSES 15, PSNL FOUL.

F32 2-20 Pritchett pass to Ehler incomplete. Luongo.

F32 3-20 Pritchett's pass to Wehtel is low, incomplete.

F32 4-20 Calhoun punts to Furman 20, blows dead. (47 yarder)

FURMAN BALL

FU20 1-10 Pickens breaks up middle for 20. Bibent, Bailey. FIRST DOWN

FU40 1-10 ~~Turner~~ up middle gets 3. McDowell.

FU43 2-7 Donovan on keep gets 4. Shinholser.

FU47 3-3 Daly hits Donovan as he passes, McDowell grabbed ball in air.

FSU BALL

FU42 1-10 Tensi passes complete to Biletchokoff for 17. FURMAN FIRST DOWN
 LOSES 15 for Personal Foul. FIRST DOWN

FU127 1p10 Bibent up middle gets 3. Owens.

FU14 2-7 Tensi passes incomplete. (Motion penalty refused by FU)

FU14 3-7 Tensi passes short to Roberts and he runs into end zone for TD.
 Time: 5:39 left FSU 27 Furman 0

Messer kick is good! FSU 28 Furman 0

Murdock kicks off to FU 1, Kerr returns to FU22. /

FURMAN BALL

FU22 1-10 Turner at LT gets 2. Causey, Bailey, Parrish.

FU24 2-8 Donovan's pass incomplete but INTERFERENCE ON M. ROBERTS
 at FU40. FIRST DOWN

FU40 1-10 Turner up middle gets 6. Parrish, Massey.

FU46 2-4 Kerr at RE gets 3. Biletchokoff, M. Roberts.

FU44 3-7 Donovan back to pass thrown by Daly for loss of 11.

F U33 4-18 Kerr punts to FSU 33, Massey returns to FSU 43.

FSU'S BALL 2:43 left --Tensi quarterbacking

FU3 1-10 Bibent up middle gets 3. Walton.

FU6 2-7 Tensi pass to Loftin low, incomplete.

FU6 3-7 Tensi, can't pass, runs for 19. FIRST DOWN

FU35 1-10 Patko at LG gets 1. McEwen.

FU34 2-9 Tensi's pass to Roberts is incomplete.

FU34 3-9 Tensi jump pass complete to D'Allesandro for 17. FIRST DOWN

FU17 1-10

QUARTER ENDS

FSU 2822

FURMAN 0

FSU'S BALL

FU17 1-10 Tensi's pass to Bailey dropped at FU7.
 FU17 2-10 Brinkley at LE gets 1. Shaw, Owens.
 FUM6 3-9 Tensi passes complete to Dawson for 13. FIRST DOWN
 FU3 1-0 Brinkley drives over LT for the TD. (13:32 left) FSU 34--FU0
 Messer's kick is perfect. FSU 35--FU0
 Murdock kicks off to Furman 10, Kerr Returns to FU29. Sumner.

FURMAN BALL

FU29 1-10 Pickens up middle gets 5. Sumner.
 FU34 2-5 Donovan's pass to Shaw is over his head, incomplete. Bailey
 FU34 3-5 Donovan to Zuberer screen pass for 6. Sumner, Pennie. FIRST DOWN
 FU40 1-10 Donovan passes complete to Pickens who was wide open for TD.
 (A 60 yard pass play.) TIME 11:49 FSU 35 FU 6
 Donovan's pass for two points is incomplete. FSU 35 FU 6
 Cordell kicks off to FSU46 (attempted onside kick) out of bounds.

FSU BALL

FU6 1-10 M. Roberts at LE goes for 11. FIRST DOWN
 FU43 1-10 Tensi passes to Biletnokoff who goes all the way for TD.
 Time: 11:34 left FSU 41 FU 6
 Messer's kick is good. FSU 42 FU 6
 Murdock kicks to Furman 19, Haley fumbles, returns to FU28.

FURMAN BALL

FU28 1-10 Wyche dropped for loss of 7 1/2. Causey, Shinkholser.
 FUE21 2-17 Wyche pass incomplete but INTERFERENCE ON BAILEY FIRST DOWN
 FU30 1-10 Wyche's pass is incomplete. Almost intercepted by Bailey.
 FU30 2-10 Wyche on keeper gets 5. Parrish, M. Roberts.
 FU35 3-5 Barrell at LE gets 2. Causey.
 FU37 4-3 Chastain punts to FSU end zone. a 43 yard punt.
 FSU'S BALL (Pritchett quarterbacking 9:15 left)
 F20 1-10 Roberts up middle gets 8.
 F28 2-2 Pritchett runs for 7. Green. FSU LOSES 5. Illegal Motion.
 F23 2-7 Pritchett pass complete to Wachtel for 12. Crosby. FIRST DOWN
 F34 1-10 Ehler at LT gets 5. Gilstrap.
 F39 2-5 Pritchett fumbles, grabs it in air, then runs for 29. FIRST DOWN
 FU32 1-10 Patko up middle gets 12. Rhodes, Crawford. FIRST DOWN
 FU20 1-10 Ehler up middle gets 7. Rhodes.
 FU13 2-3 Pritchett on keeper gets 4. McTeer. FIRST DOWN
 FU9 1-0 Ehler up middle gets 4.
 FU5 2-0 Ehler drives over RT for the TD. (5:07 left) FSU 48 FU 6
 Messer's kick is good. FSU 49 FU 6
 Murdock kicks off to the Furman 29, Crawford back to FU41.

FURMAN BALL

FU41 1-10 Wyche smothered for loss of 4. Mangam.
 FU38 2-14 Wyche pass incomplete. FSU REFUSES OFFSIDES PENALTY
 FU38 3-14 Nixon at QB fumbles but FU LOSES 5, ILLEGAL PROCEDURE
 FU33 3-19 Nixon passes incomplete. BUT FSU LOSES 15. pass. foul Y28
 FU34 4-3 Wyche passes incomplete. Edwards.
 FU48 4-3 Chastain punts to FSU 2. (50 yarder) McTeer downed it.
 FSU'S BALL Pritchett quarterbacking 3:17 left)
 F2 1-10 Roberts at RG for NG. Crawford.
 F2 2-10 Roberts moves up middle for 3. Walton.
 F5 3-7 Calhoun punts to FSU 25.

FURMAN BALL

(1:55 left)
 F25 1-10 Wyche pass to Crawford Incomplete BUT FU LOSES 15. HOLDING.
 F40 1-25 Wyche passes complete to Crawford for 22. FIRST DOWN
 F18 2-3 Shinkholser, Avezzano drop Wyche for loss of 9.
 F27 3-12 Wyche passes complete to Crawford FSU LOSES 15. PSWL FOUL.
 F17 3-2 Wyche trapped, gets 2 yards.
 F15 4-1 Wyche to Turner Complete for 5, Roberts steals ball.

FSU BALL F12 1-10 Pritchett gets 4. F16 2-?

END OF GAME

FINAL SCORE

FSU 49 Furman 6

FLORIDA STATE vs. FUKMAN

NOV. 2, 1963

FINAL TEAM FOOTBALL STATISTICS

	<u>Fsu</u>	<u>FUKMAN</u>
First Downs Rushing	16	3
First Downs Passing	6	4
First Downs by Penalties	2	3
TOTAL FIRST DOWNS	24	10
Number Attempts Rushing	57	35
Yards Gained Rushing	351	91
Yards Lost Rushing	32	38
NET YARDS GAINED RUSHING	319	53
Number Passes Attempted	12	15
Number Passes Completed	6	6
Number Passes Had Intercepted	0	2
NET YARDS GAINED PASSING	110	107
Number Plays Rushing and Passing	79	50
TOTAL OFFENSE YARDAGE	429	160
Number Opponents Passes Intercepted	2	0
NET YARDS INTERCEPTIONS RETURNED	0	0
Number Times Punted	3	8
Number Punts Had Blocked	0	0
PUNTING AVERAGE, YARDS	33.0	39.1
Number Punts Returned	2	0
NET YARDS PUNTS RETURNED	18	0
Number Kickoffs Returned	0	8
NET YARDS KICKOFFS RETURNED	0	144
Number Times Penalized	9	5
TOTAL YARDS PENALIZED	105	53
Number Times Fumbled	1	3
NUMBER OWN FUMBLES LOST	0	1

Attendance 12,000

Weather

Clear, Cold, Windy

FINAL INDIVIDUAL FOOTBALL STATISTICS

Florida State

RUSHING

Player	Att.	Gain	Loss	Net
Snyder	8	101	0	101
Brinkley	16	83	0	83
Pritchett	6	45	8	37
Ehler	7	37	0	37
Roberts	7	32	0	32
Tensi	2	19	3	16
Petko	3	16	0	16
Bibent	6	18	6	12
Calhoun	2	0	15	-15

PASSING

Player	Att.	Compl.	Ints.	Yds.	TD
Tensi	9	5	0	98	2
Pritchett	3	1	0	12	0

PASS RECEIVING

Player	No.	Yds.	TD
Biletznikoff	2	54	1
D'Allesandro	1	17	0
Roberts	1	14	1
Dawson	1	13	0
Wachtel	1	12	0

PUNTING

Player	No.	Avg.
Calhoun	3	33.0

KICKOFF RETURNS

Player	No.	Yds.
--------	-----	------

PUNT RETURNS

Player	No.	Yds.
Bilet.	1	8
Massey	1	10

PASS INTERC.

Player	No.	Yds.
Roberts	1	0
McDowell	1	0

Furman

RUSHING

Player	Att.	Gain	Loss	Net
Pickens	9	41	2	39
Turner	4	13	0	13
Zuberer	4	12	0	12
Chastain	4	7	0	7
McTeer	1	3	0	3
Barrell	1	1	0	1
Cook	1	0	0	0
Kerr	1	0	3	-3
Donovan	5	7	14	-7
Whyce	5	7	19	-12

PASSING

Player	Att.	Compl.	Ints.	Yds.
Donovan	11	4	2	80
Whyce	4	2	0	27

PASS RECEIVING

Player	No.	Yds.	TD
Pickens	1	60	1
Crawford	1	22	0
Cook	1	8	0
Hayes	1	6	0
Zuberer	1	6	0
Turner	1	5	0

PUNTING

Player	No.	Avg.
Chastain	4	46.2
Kerr	4	32.0

KICKOFF RETURNS

Player	No.	Yds.
Chastain	1	23
Kerr	4	83

Cook	1	17
Hayes	1	9
Crawford	1	12

PUNT RETURNS

Player	No.	Yds.
--------	-----	------

PASS INTERC.

Player	No.	Yds.
--------	-----	------

THE LINEUPS

FLORIDA STATE

L.E. FLOYD, CAUSEY, WETSTEIN.
L.T. MANGAN, PENNIE, WEST.
L.G. HERMANN, PARRISH, WOOTEN.
C. DARY, EDWARDS, MATTHEWS.
R.G. ROBINSON, McDOWELL, MACKENZIE
R.T. SUMNER, SHINHOLSER, ALEZZANO
R.E. DAWSON, D'ALLESSANDRO, WACHTEL
Q.B. TENSI, CALHOUN, PRITCHETT, MASSEY,
L.H. SNYDER, BIBENT, PETKO, MESSER
F.B. BRINKLEY, ROBERTI, EHLE, MURDOCK
R.H. BAILEY, BILETNIKOFF, LOFTIN

FURMAN

L.E. LUONGO, CRAWFORD, KIMBEIL
L.T. FLOYD, JEPSON, HARPER
L.G. CARNES, GREENE, HOLLOWAY
C. STACKS, GWENS, MCEWEN
R.G. CORDELL, PRESTON, WALTON, WITHERS.
R.T. GETTYS, WILLIAMS, GEDDIE
R.E. HAYS, SHAW, GILSTRAP
Q.B. DONOVAN, WYCHE, RHOADS, MIXON
L.H. CROSBY, COOK, KERR, CHASTAIN
F.B. ZUBERER, TURNER, BUZZELL
R.H. HALEY, PICKENS, MCTEER, BURRELL



QUOTES FROM FURMAN HEAD COACH BOB KING

"They were too big, too fast, and there were too many of them. I was pleased with the efforts of our players. They were a little tired in the second half, but not physically beaten out.

"Sammy Wyche (2nd team QB) showed us a little something. He's a sophomore and we'll be needing him next year.

"I didn't think they would be able to run as fast like that. We knew they could pass. I was surprised at our not being able to run on them any better."

QUOTES FROM PSU HEAD COACH BILL PETERSON

"We still made mistakes on our kicking game. A good team would beat us with these. We've got to have a center.

"I was proud of our team, the way we came back after losing last week.

"Furman had a good defense, but we moved the ball real well. Our ground game was good."

Coach Peterson will come to the Press Box shortly.

LEFT END	LEFT TACKLE	LEFT GUARD	CENTER	RIGHT GUARD	RIGHT TACKLE	RIGHT END
81 Don FLOYD	77 Bob MANGAN	66 Dick HERMANN	53 Bill DALY	52 Chuck ROBINSON	73 Avery SUMNER	83 Bill DAWSON
82 Jim CAUSEY	79 Frank PENNIE	68 Joe PARRISH	55 Jack EDWARDS	63 Bill McDOWELL	61 J. SHINHOLSER	84 G. D'ALLESSANDRO
89 Max WETTSTEIN	76 Tom WEST	65 Jerry WOOTEN	54 Jay MATTHEWS	75 Dale MacKENZIE	51 J. AVEZZANO	80 John WACHTEL

FLA. STATE	QUARTERBACK	LEFT HALFBACK	FULLBACK	RIGHT HALFBACK	SEMINOLES
	13 Steve TENSI	20 Dave SNYDER	21 Larry BRINKLEY	28 Winfred BAILEY	
	11 Charlie CALHOUN	22 Maury BIBENT	44 Marion ROBERTS	25 Fred BILETNIKOFF	
	16 Ed PRITCHETT	29 Joe PETKO	43 Howard DEHLER	23 Jim LOFTIN	

LEFT END	LEFT TACKLE	LEFT GUARD	CENTER	RIGHT GUARD	RIGHT TACKLE	RIGHT END
81 Pete LUONGO	74 Charles FLOYD	64 Julian CARNES	51 Doug STACKS	66 Walter PRESTON	77 John GETTYS	82 Hayden HAYS
80 Tim CRAWFORD	75 Dennis JEPSON	65 Tommy GREENE	50 Gerry OWENS	60 Dan WALTON	78 James WILLIAMS	84 Doug SHAW
86 Walker KIMBELL	76 Richard HARPER	67 Charles HOLLOWAY	54 Tappy McEWEN	62 Robert WITHERS	71 Gray GEDDIE	83 Rick GILSTRAP

FURMAN	QUARTERBACK	LEFT HALFBACK	FULLBACK	RIGHT HALFBACK	PALADINS
	10 Danny DONOVAN	25 John COOK	30 Ernest ZUBERER	22 Sammy PICKENS	
	15 Sammy WYCHE	20 Jimmy KERR	31 Billy TURNER	43 Everett McTEER	
	12 Tommy RHOADS	24 Bill CHASTAIN	34 Robert BUZZELL	41 Johnny BURRELL	

FLORIDA STATE SPECIALISTS

Punters --- 11 Calhoun, 21 Brinkley, 16 Pritchett
PAT's FG's --- 42 Murdock, 40 Messer
Holders --- Quarterbacks
Kickoffs --- 42 Murdock, 40 Messer
Passers --- Quarterbacks

FACTS ABOUT FLORIDA STATE

Location Tallahassee, Florida
President Gordon W. Blackwell
Nickname Seminoles
Colors Garnet and Gold
Conference Independent
Head Coach Bill Peterson
Athletic Director Vaughn Mancha
Sports Publicist Bill Bunker

FLIP CARD

FURMAN SPECIALISTS

Punters---20 Kerr, 24 Chastain, 81 Luongo
PAT'S FG'S---63 Cordell
Holders---Quarterbacks
Kickoffs---63 Cordell
Passers---10 Donovan, 15 Wyche, 12 Rhoads

FACTS ABOUT FURMAN

Location..... Greenville, S.C.
President..... Dr. John L. Plyler
Nickname Purple Paladins
Colors..... Purple and White
Conference..... Southern
Head Coach Bob King
Athletic Director..... Lyles Alley
Sport Publicist..... Fletcher Allen

FLORIDA STATE SEMINOLES

No.	Name	Pos.	Ht.	Wt.	Age	Class	Hometown
11	*CALHOUN, Charlie	QB	5-10	171	20	Sr.	Tallahassee
12	GERO, Tony	QB	5-10	183	19	So.	Madison, N.J.
13	*TENSI, Steve	QB	6-5	201	20	Jr.	Cincinnati, O.
14	MASSEY, Jim	QB	5-11	176	20	So.	Cairo, Ga.
15	FISCHER, Russ	QB	6-1	184	20	So.	Melbourne
16	PRITCHETT, Ed	QB	6-2	177	22	So.	Decatur, Ga.
20	*SNYDER, Dave	HB	5-10	184	21	Sr.	Jacksonville
21	*BRINKLEY, Larry	FB	5-11	190	21	Sr.	Willoughby, O.
22	BIBENT, Maury	HB	6-0	186	20	So.	Cincinnati, O.
23	*LOFTIN, Jim	HB	6-1	181	20	Jr.	Pensacola
24	DeLIBERTY, Mario	HB	5-9	184	19	So.	Havertown, Pa.
25	*BILETNIKOFF, Fred	HB	6-1	186	20	Jr.	Erie, Pa.
26	HAMMOND, Bill	HB	5-11	181	21	So.	Melbourne
28	*BAILEY, Winfred	HB	6-0	186	21	Jr.	Atlanta, Ga.
29	PETKO, Joe	HB	5-9	185	19	So.	Shaker Heights, O.
40	*MESSER, Doug	HB	6-1	188	21	Sr.	LaGrange, Ga.
42	MURDOCK, Les	FB	6-2	213	21	Jr.	Hollywood
43	EHLE, Howard	FB	6-1	190	19	So.	Tavares
44	*ROBERTS, Marion	FB	6-0	197	20	Sr.	Ocala, Ga.
51	AVEZZANO, Joe	C	6-1	223	20	So.	Miami
52	*ROBINSON, Chuck	G	5-11	218	21	Sr.	E. Palestine, O.
53	*DALY, Bill	C	6-1	209	20	Sr.	Jacksonville
54	MATTHEWS, Jay Mac	C	6-1	216	19	So.	Chiefland
55	*EDWARDS, Jack	C	6-1	221	20	Jr.	Tampa
60	*HENRY, Ferrell	C	6-1	212	21	Sr.	Colquitt, Ga.
61	SHINHOLSER, Jack	G	6-1	200	21	So.	Tampa
62	PARISH, Gene	G	6-3	196	21	So.	Headland, Ala.
63	McDOWELL, Bill	G	6-1	191	19	So.	Tallahassee
64	PITTS, David	G	5-9	211	19	So.	Blountstown
65	WOOTEN, Jerry	G	6-1	195	19	So.	Geneva, Ala.
66	*HERMANN, Dick	G	6-0	200	21	Jr.	Marianna
67	*BRUNER, Jerry	T	5-10	232	21	Sr.	Evansville, Ind.
68	PARRISH, Joe	G	6-1	193	20	So.	Auburndale
70	STROBEL, Larry	T	5-11	227	19	So.	Massilon, O.
71	WILLETT, Darrell	T	6-1	231	20	So.	Tifton, Ga.
73	*SUMNER, Avery	T	6-2	216	21	Jr.	Adel, Ga.
75	*MacKENZIE, Dale	T	6-2	227	20	Jr.	Clearwater
76	*WEST, Tom	T	6-4	222	20	Jr.	Headland, Ala.
77	MANGAN, Bob	T	6-1	231	21	So.	Atlanta, Ga.
78	ANDREWS, Max	T	6-1	203	21	So.	Rehobeth, Ala.
79	PENNIE, Frank	T	6-4	242	20	So.	Hollywood
80	*WACHTEL, John	E	6-1	193	21	Jr.	Massilon, O.
81	*FLOYD, Don	E	6-1	197	21	Jr.	Madison
82	*CAUSEY, Jim	E	6-1	209	22	Jr.	Miami
83	*DAWSON, Bill	E	6-3	231	20	Jr.	Valdosta, Ga.
84	D'ALLESSANDRO, G.	E	5-10	205	20	So.	Fort Myers
85	TWITCHELL, Dale	E	6-1	205	20	So.	Florida, Ala.
86	BLANKENSHIP, Buddy	E	6-3	200	19	So.	Atlanta, Ga.
87	GARVIN, Terry	E	5-11	206	20	So.	Pensacola
88	ROBERTS, John	E	6-0	190	21	So.	Orlando
89	WETTSTEIN, Max	E	6-3	203	19	So.	Leesburg

*--Denotes Letters Won

FLORIDA STATE 1963 SCHEDULE

	FSU	Opp.
Sept. 21 Miami at Miami	24	0
Sept. 28 T.C.U. at Tallahassee	0	13
Oct. 12 Wake Forest at Tallahassee	35	0
Oct. 19 Southern Mississippi at Mobile, Ala.	0	0
Oct. 26 V.P.I. at Tallahassee	23	31
Nov. 2 Furman at Tallahassee		
Nov. 9 Georgia Tech at Atlanta, Ga.		
Nov. 16 N.C. State at Tallahassee		
Nov. 23 Auburn at Auburn, Ala.		
Nov. 30 Florida at Gainesville		

TEAM ROSTERS

FURMAN PALADINS

No.	Name	Pos.	Ht.	Wt.	Age	Class	Hometown
10	*DONOVAN, Danny	QB	5-9	165	22	Sr.	Easley, S.C.
11	MIXON, Jimmy	QB	6-1	160	18	So.	Ocala, Ga.
12	RHOADS, Tommy	QB	6-0	175	20	Sr.	Henderson, Ky.
15	WYCHE, Sammy	QB	6-3	195	18	So.	Atlanta, Ga.
20	KERR, Jimmy	HB	5-11	171	18	So.	Woodruff, S.C.
21	*CROSBY, Walter	HB	5-11	165	21	Sr.	Ridgeland, S.C.
22	*PICKENS, Sammy	HB	6-2	185	21	Sr.	Greenwood, S.C.
24	CHASTAIN, Bill	HB	6-0	175	21	Sr.	Taylors, S.C.
25	*COOK, John	HB	6-0	175	21	Sr.	Florence, S.C.
30	*ZUBERER, Ernest	FB	6-0	195	20	Sr.	Patterson, N.J.
31	TURNER, Billy	FB	6-0	187	18	So.	Jackson, Ga.
34	BUZZELL, Robert	FB	6-1	195	18	So.	Malden, Mass.
35	HALEY, Ingram	FB	5-11	180	18	So.	Pinewood, S.C.
41	BURRELL, Johnny	HB	6-1	185	18	So.	Silver Springs, Md.
43	*McTEER, Everett	HB	5-11	180	21	Jr.	Haines City, Florida
45	LEWIS, Wayne	HB	6-1	198	20	Jr.	Greenwood, S.C.
50	*OWENS, Gerry	C	6-0	195	20	Jr.	Pichens, S.C.
51	*STACKS, Doug	C	6-0	195	21	Sr.	Decatur, Ga.
54	McEWEN, Tappy	C	6-0	195	19	Jr.	Sumter, S.C.
55	DEVANEY, Pat	C	5-11	175	18	So.	Sumter, S.C.
60	WALTON, Dan	G	5-11	205	18	So.	Atlanta, Ga.
61	BOYD, Dale	G	6-2	200	18	So.	Greenwood, S.C.
62	WITHERS, Robert	G	6-0	230	18	So.	Newark, N.J.
63	CORDELL, Brownie	G	6-1	215	20	Jr.	Greenville, S.C.
64	*CARNES, Julian	G	6-1	215	20	Jr.	Jonesboro, Ga.
65	GREENE, Tommy	G	6-1	190	18	So.	Savannah, Ga.
66	*PRESTON, Walter	G	5-10	195	20	Jr.	Atlanta, Ga.
67	HOLLOWAY, Charles	G	5-9	199	20	Jr.	Atlanta, Ga.
71	GEDDIE, Gray	T	6-2	200	18	So.	Mount Olive, N.C.
74	*FLOYD, Charles	T	6-3	218	22	Sr.	Loris, S.C.
75	*JEPSON, Dennis	T	6-1	215	20	Jr.	Ashtabula, Ohio
76	HARPER, Richard	T	6-0	220	18	So.	Jesup, Ga.
77	*GETTYS, John	T	6-2	205	21	Sr.	Union, S.C.
78	WILLIAM, James	T	6-4	197	18	So.	Milledgeville, Ga.
80	CRAWFORD, Tim	E	6-0	190	18	So.	Pacolet, S.C.
81	*LUONGO, Pete	E	6-1	210	21	Sr.	Teaneck, N.J.
82	*HAYS, Hayden	E	6-2	210	21	Sr.	Decatur, Ga.
83	GILSTRAP, Rick	E	6-1	181	18	So.	Charleston, S.C.
84	*SHAW, Doug	E	6-2	205	21	Sr.	Winnboro, S.C.
86	KIMBELL, Walker	E	6-1	185	18	So.	Clayton, Ga.
89	GODSEY, Richard	E	5-10	175	18	So.	Palmer Park, Md.

*Denotes Letters Won

FURMAN 1963 SCHEDULE

	Furman	Opp.
Sept. 14 Davidson at Greenville	17	0
Sept. 21 Vanderbilt at Nashville, Tenn.	14	13
Sept. 28 Geo. Washington at Greenville	29	14
Oct. 5 William & Mary at Greenville	17	27
Oct. 12 Wofford at Spartansburg	21	19
Oct. 19 Mississippi College at Greenville	41	13
Oct. 26 Citadel at Charleston	34	25
Nov. 2 Florida State at Tallahassee		
Nov. 9 Presbyterian at Greenville		
Nov. 23 West Virginia at Morgantown, W. Va.		

OFFICIALS

Referee
Joe Hicks

Umpire
K. H. Yarborough

Linesman
Robert Gantt

Field Judge
J. H. W. Roper

Back Judge
Morris Katz

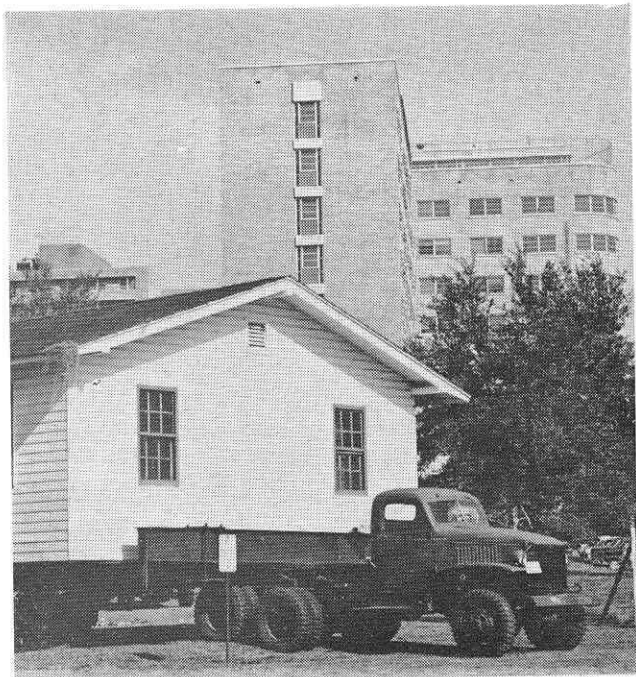
Electric Clock
L. C. Fleming



FLORIDA STATE
COMPLIMENTARY vs
FURMAN

Official Program **50c**

NOVEMBER 2, 1963
DOAK S. CAMPBELL STADIUM
BAND DAY



Rolling . . . Rolling . . . Rolling . . .

An architectural motif which might be called "domestic Gothic" has literally been rolling across the Florida State University campus where it contrasts with the "college Gothic" of the older buildings and the modern architecture of the new.

The motif is supplied by 23 white frame cottages which have been cleared from a portion of the 101-unit Mabry Heights village for married students on the edge of the campus to make room for a new dormitory which will take care of 540 students.

Since the first of the year FSU has been hoisting the small white clapboard houses on wheels and hauling them by truck to "temporary" locations over the campus to take care of a pressing need for laboratory, classroom, research and storage space.

President Gordon W. Blackwell called the attention of legislators to the units when they were on campus during Legislative Recognition Day and stressed that the term "temporary" was relative—they might be there for quite a spell.

FSU's student population has been shooting skyward even faster than Florida's population—there are 711 more students this year than last; research programs have been expanding in dozens of fields; and the space provided by permanent buildings has simply not kept up with growth.

A CAMPUS ON THE MOVE!

With approval of the College Building Amendment to be voted on by Florida citizens Tuesday, Nov. 5, FSU would receive some \$9.6 million for urgently-needed expansion in this biennium.



. . . End of Journey: A Classroom

Gentleman From Missouri

A gentleman from Missouri who as president was responsible for some of the most momentous decisions this country has ever taken in periods of crisis will be the Homecoming Banquet speaker at FSU on Nov. 15.



... HOMECOMING BANQUET SPEAKER

HARRY S. TRUMAN'S use of the power and prestige of the presidency to institute the Truman Doctrine and Marshall Plan to establish the North Atlantic Treaty Alliance, to carry out the Berlin Airlift and to oppose aggression in Korea led Winston Churchill to tell him in 1952:

"You, more than any other man, have saved Western Civilization."

A lifetime of reading history and biography probably gave Mr. Truman his keen awareness of the uses of the presidency and 30 years of political experience before becoming president provided him with another earmark—political loyalty.

Some expected Mr. Truman to desert his old ally, Tom Pendergast, after Pendergast's downfall, but Truman said "when Tom Pendergast was down and out, a convicted man, people wanted me to denounce him. I refused. I wouldn't kick a friend." In 1945, six days after Truman became vice-president, Pendergast died and Truman attended his funeral in Kansas City.

At 79, Mr. Truman is more active than many much younger men. Only recently, as "politician in residence" at Grinnell University, he jibed at newsmen and others trying to keep up with him on a walk: "I don't like to poke along. If you guys can't keep up, then drop out."

Truman will be the speaker at the Homecoming Banquet at 6 p.m. Friday, Nov. 15—first day of Homecoming.



ONE OF THESE SIX COEDS will be crowned 1963 Homecoming Queen Nov. 15. Homecoming court finalists are, from left, Patty Warren of Jacksonville, Clyda Stokes of Jacksonville, Jackie Mathis of Tampa, Carolyn Duyck of Plant City, Ley Hulsey of Tampa, and Carolyn Wronske of Miami.

Homecoming Tickets!

Reservations for FSU Homecoming activities Nov. 15-16 will be accepted on a first-come, first-serve basis, according to Thomas A. Waits, director of alumni affairs.

Checks must accompany all requests for tickets. Make checks payable to the FSU Alumni Association and mail to 114 Longmire Building, FSU, Tallahassee. Requests for tickets to be mailed must be accompanied by a self-addressed envelope. Otherwise, tickets will be held at the Alumni Registration Desk for distribution during scheduled registration hours.

Homecoming Schedule

Friday, November 15

- 9:00 a.m. ALUMNI REGISTRATION OPENS—Longmire Alumni Building.
- 12:00 noon CLASSES DISMISSED.
- 3:30 p.m. PARADE—Begins at Westcott Gate.
- 6:00 p.m. BANQUET — Suwannee Room—Tickets \$2.50 each.
- 8:30 p.m. POW WOW — Campbell Stadium.
- 9:30 p.m. INFORMAL DANCE — Tully Gym—Tickets \$2 a couple.

Saturday, November 16

- 8:00 a.m. ALUMNI BREAKFAST—Suwannee Room — Tickets \$1 each.
- 9:00 a.m. ALUMNI BUSINESS MEETING — Suwannee Room.
- 10:30 a.m. FACULTY - ALUMNI COFFEE AND LECTURE —Longmire Alumni Building.
- 12:00 noon BARBECUE—Tully Gym —Tickets \$1.75 each.
- 2:00 p.m. FSU vs. N.C. STATE—Campbell Stadium—Tickets \$4 each.
- 5:00 p.m. OPEN HOUSE—Fraternalities, Sororities, Residence Halls.
- 6:00 p.m. LEON COUNTY ALUMNI CLUB SOCIAL—Holiday Inn—Tickets \$1.50 at door.
- 7:00 p.m. WESTCOTT SHOW—Hollywood Hootenanny—Tickets \$2.50 (Specify performance).
- 9:00 p.m. SEMIFORMAL DANCE—Suwannee Room — Tickets \$1 a couple.

NOTE: Classes scheduled for reunions are 1913, 1921, 1922, 1923, 1924, 1940, 1941, 1942, 1943, 1959, 1960, 1961, 1962 and 1963.



Alumna Nancy Culp of CBS-TV
Toastmistress for Homecoming Banquet

The View From Above



By **BILL BUNKER**
Sports Publicity Director
Florida State University

A big question rests uneasily in the minds of Florida State coaches and fans this week. That question: Will the Seminoles be able to forget early-season disappointments and come back to win against some of the toughest opposition in the country?

The question sought an answer last week, but Florida State's best offensive effort of the season was not enough to overcome mistakes which presented a strong Virginia Tech team four touchdowns, a field goal, and a 31-23 victory.

Last Saturday's dismal, if spectacular, loss lends added emphasis to today's game with Furman's Purple Paladins. Florida State should be favored, but then predictions have been with the Seminoles since their stunning 24-0 defeat of Miami in the season opener.

Furman is unusually strong this year. The Paladins have won six times, losing only to William and Mary, 27-17, in their fourth game. The South Carolinians play only two games after this one, so beating the Seminoles would be highly desirable, and this has to be considered a big game on their schedule.

This means that Florida State will meet a fired-up team for the fourth consecutive week. The Miami victory and the lighter schedule played by several Seminole opponents make FSU a team to beat—as proved by the Southern Mississippi and Virginia Tech games.

Last year, Florida State humiliated Furman, 42-0, in the third game of the season. This time around, the Paladins are more impressive, and will no doubt be out for revenge.

The Seminoles have demonstrated occasional brilliance during the first half of a frustrating season. On other occasions, however, mistakes have forced them to fight uphill against stubborn opponents.

Shake up everything in one basket, and it comes out this way: A key game for the Seminoles—possibly the first step in a long trek back to the top; an equally important game for the Paladins—a victory will increase their prestige and protect a fine season record.

These components nearly always produce exciting football.

FSU Records

SINGLE GAME

INDIVIDUAL

LONGEST TOUCHDOWN RUN FROM SCRIMMAGE—80 yards by Fred Pickard vs. Virginia Tech, 1957.

LONGEST TOUCHDOWN PASS—80 yards, Nelson Italiano to Eddie Gray vs. Newberry, 1950.

LONGEST TOUCHDOWN RUN ANY SITUATION—99 yards by Ted Hewitt vs. Stetson, 1949, and by Fred Biletnikoff vs. Miami, 1963.

LONGEST RUN FROM SCRIMMAGE WITHOUT SCORING—76 yards by Roy Thompson vs. Stetson, 1951.

LONGEST INTERCEPTION RETURN—99 yards by Ted Hewitt vs. Stetson, 1949, and by Fred Biletnikoff vs. Miami, 1963.

LONGEST PUNT RETURN—80 yards by Billy Odom vs. Stetson, 1954.

LONGEST KICKOFF RETURN—89 yards by Odom vs. Virginia Tech, 1955.

MOST TIMES RUSHING—29 by Pickard vs. Georgia, 1959.

MOST YARDS RUSHING—161 by Buddy Strauss vs. Mississippi College, 1949.

MOST YARDS PASSING—355 vs. Villanova, 1954, 1949.

MOST TOTAL OFFENSE—369 yards (56 rushing, 313 passing) by Majors vs. Tampa, 1959.

MOST PASSES ATTEMPTED—32 by Joe Majors vs. Tampa, 1959.

MOST PASSES COMPLETED—20 by Majors vs. Tampa, 1959.

MOST PASSES CAUGHT—9 by Bud Whitehead vs. Tampa, 1959.

MOST YARDS RECEIVING PASSES—123 by Harry Bringger vs. Mississippi College, 1950.

MOST PASSES INTERCEPTED—3 by Tommy Brown vs. Stetson, 1950 and vs. Georgia Tech, 1952; Lee Corso vs. Georgia 1954; Whitehead vs. Virginia Tech, 1959.

LONGEST PUNT—84 yards by Brown vs. Tampa, 1950.

LONGEST FIELD GOAL—44 yards by Les Murdock vs. V.P.I., 1963.

TEAM

MOST POINTS—74 vs. Whiting Field 0, 1949.

GREATEST MARGIN OF VICTORY—74-0 vs. Whiting Field, 1949.

GREATEST MARGIN OF DEFEAT—0-42 vs. Georgia, 1959.

MOST YARDS RUSHING—383 vs. Abilene Christian, 1957.

MOST YARDS PASSING—355 vs. Villanova, 1954.

MOST TOTAL OFFENSE—514 yards vs. The Citadel, 1959 (307 rushing, 207 passing).

MOST PASSES ATTEMPTED—34 vs. Tampa, 1959 (completed 20).

MOST PASSES COMPLETED—20 vs. Tampa, 1959 (attempted 34).

MOST PASSES INTERCEPTED—7 vs. Virginia Tech, 1959.

MOST PUNTS—10 vs. Stetson and Georgia Tech, 1955.

BE A SEMINOLE BOOSTER

"The Seminole Boosters provide the margin of difference between a good team and a great team."

Thus Florida State's Bill Peterson sums up his feelings toward the Seminole Boosters, Inc., an organization devoted to the support of FSU athletics with emphasis on the football program.

Membership in the Boosters—the group numbers approximately 1200 now—is open to anyone with a sincere interest in the University's athletic welfare. Minimum contribution for an individual membership is \$10, for a business membership, \$25.

Contributions are administered in accordance with NCAA regulations and in conjunction with the FSU Department of Intercollegiate Athletics.

Boosters receive a colorful automobile license plate which provides reserved parking at the stadium, a membership card, a weekly fall publication called "The Grandstand Coach," and certain priorities on season and individual football tickets.

Serving his initial term as president of Seminole Boosters, Inc., is F. Wilson (Bill) Carraway, Jr., Secretary and Manager of the Coca-Cola Bottling Co., Tallahassee. Hardworking executive secretary of the organization is Thomas A. Waits, Director of FSU Alumni Affairs.



Tom Waits and Bill Carraway

GOOD LUCK SEMINOLES!

LOUIS' Seafare

"A BANQUET IN A BOX"

featuring Seafood & Chicken

With over 18 different items to carry out in over 50 different sizes.

620 W. Tennessee St.

Ph. 224-1181

Be sure and visit our other location in Gainesville, Fla.
309 N. W. 13th St.

We also have an air conditioned area if you so desire.

FOREMOST

ICE CREAM

PHONE • 224-7136

SUNSHINE STATE DAIRYMEN'S COOP.

PHONE • 222-5303

THE FLORIDA STATE FOOTBALL NETWORK

... Follow the Seminoles at Home and Away



Bo Mitchell

"Good afternoon, ladies and gentlemen, this is Bo Mitchell and John Hoy bringing you Florida State University football. . . ."

The voices are new, but the play-by-play thrill brought to FSU fans at home over the Seminole Football Network for the past three years remain the same.

Energetic new "voice" of the Seminoles is Bo Mitchell of Pensacola. His partner at the FSU microphone is Tallahassee's John Hoy who does pre-game, halftime and "time out" color commentary.

Mitchell is vice-president and station manager of radio station WCOA, Pensacola. The ex-naval aviator brings 15 years of sportscasting experience to the growing Seminole Network which carries Florida State Football to thousands of listeners in Georgia and Florida.



John Hoy

In addition to his network chores, Hoy, who is sports director of Tallahassee's WCTV, is host to the "Bill Peterson Show" every Sunday afternoon, and has a daily sports program.

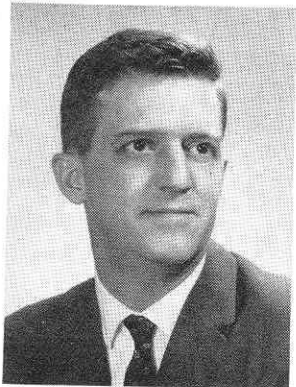
Completing the team is Art Deters, chief engineer and organizer of this year's network. Deters is station manager of radio station WTAL, Tallahassee.

During the 1963 season the Seminole Network will be carried by 18 Florida stations.

You can follow the Seminoles this year over WKIS, Orlando; WALT, Tampa; WOOO, DeLand; WCNH, Quincy; WPCF, Panama City; WMOP, Ocala; WSRA, Milton; WIOD, Miami; WCOA, Pensacola; WMYR, Fort Myers; WGRO, Lake City; WTOT, Marianna; WTAL, Tallahassee; WNSN, Valparaiso; WROD, Daytona Beach; WAVP, Avon Park; WPAX, Thomasville; WJAX, Jacksonville; WMAF, Madison; and WWPF, Palatka.

WFSU-TV—THE SEMINOLE STATION

There's more football action than ever over WFSU-TV this fall.

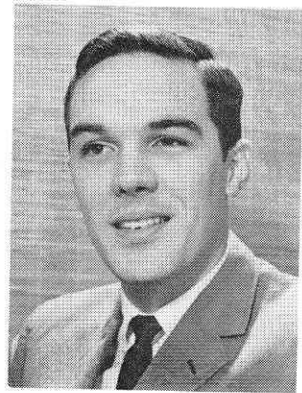


Mike Shaara

Florida State's educational television station (Channel 11) is keeping pace with the increased interest in the Seminoles with feature programs which give the armchair fan a close look at games upcoming and past, plus reports on future FSU opponents.

Leading off every football week this year will be a complete showing of the previous Saturday's game on Monday nights at 10. WCTV's Roy Weissinger does the play-by-play and Mike Shaara of the FSU English Department brings a wide sports background into his color commentary.

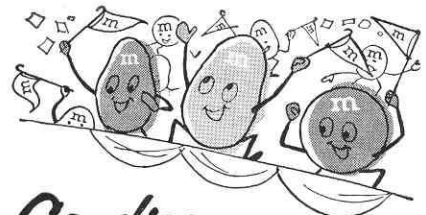
At 8 p.m. on Thursday is John Hoy's football preview show, "63 Seminoles." This hour-long program presents FSU's "Scout of the Week" with information on the coming Saturday's foe. Members of the Seminole squad and other outstanding guests will also be presented.



Roy Weissinger

ENJOY THE GAME MORE!

Treat yourself to **m&m's** *Candies*



ON SALE AT THIS STADIUM NOW!

THE ATHLETIC COMMITTEE



Mode L. Stone

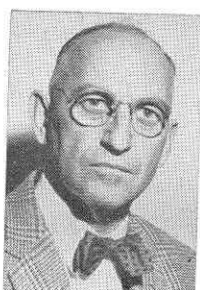
The Athletic Committee, appointed by the President, is the governing body of intercollegiate athletics at Florida State University.

The Committee has the responsibility of seeing that athletics are conducted primarily in the interests of the students, but with due regard for a proper, continuing and healthy interest of the alumni and the citizens of Florida, as well as the athletic heritage and prestige of the University.

Mode L. Stone, Dean of the School of Education is the Committee chairman. Members are Mary V. Alexander, Claude Flory, Coyle Moore, J. M. Plant, Elston Roady and Thomas Wright. Ex-officio non-voting members are Vaughn Mancha, the FSU Alumni President, the Seminole Booster President and the President of the Student Body.



Thomas Wright



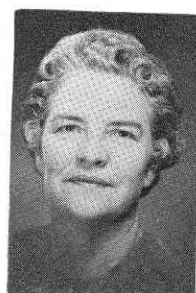
J. M. Plant



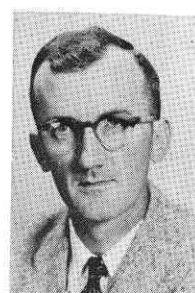
Claude Flory



Coyle Moore



Mary Alexander



Elston Roady

TODAY'S TEAMS—HOW THEY RATE

Results

FLORIDA STATE (2-2-1)

Miami	24-0
Texas Christian	0-13
Wake Forest	35-0
Southern Mississippi	0-0
Virginia Tech	31-23

FURMAN (6-1)

Davidson	17-0
Vanderbilt	14-13
George Washington	29-14
William and Mary	17-27
Wofford	21-19
Mississippi College	41-13
Citadel	34-25

Individual Leaders

FLORIDA STATE

Player	Att.	Yds.	Avg.
Snyder	65	256	3.9
Brinkley	19	174	9.1
M. Roberts	27	85	3.5
Bibent	15	49	3.3

FURMAN

Player	Att.	Yds.	Avg.
Zuberer	94	409	4.3
Donovan	75	279	3.7
Cook	32	160	5.0
Pickens	34	167	4.9

PASSING

Player	Att.	Comp.	Yds.	TD
Tensi	103	54	699	6

Player	Att.	Comp.	Yds.	TD
Donovan	68	34	519	4

RECEIVING

Player	Ct.	Yds.	TD
Biletnikoff	12	193	3
Wettstein	12	114	2
Dawson	8	119	0
Bailey	5	58	1
Floyd	5	51	0

Player	Ct.	Yds.	TD
Pickens	4	55	0
Chastain	6	123	1
Kerr	6	64	0

SCORING

Player	TD	Kick	P-R	FG	Pts.
Biletnikoff	4	0-0	0-0	0	24
Messer	0	10-10	0-0	1	13
Snyder	2	0-0	0-0	0	12
Wettstein	2	0-0	0-0	0	12

Player	TD	Kick	P-R	FG	Pts.
Zuberer	5	0-0	0-1	0	32
Pickens	4	0-0	1-0	0	26
Cordell	0	20-19	0-0	0	19
Donovan	3	0-0	0-0	0	18