

SUMMARY OF FOOTBALL GAME STATISTICS — Home Team

Home Team FLORIDA STATE First Downs: (Rush) 9 (Pass) 9 (Pen.) 1 Total 19 Penalties Against: (No.) 9 (Yards) 108 Own Fumbles: (No.) 1 (Lost) 1

(Don't Use) NCAB CODE	PLAYER	RUSHING				FORWARD PASSING					TOTAL OFFENSE		RECEIVING			INT. RETURNS		PUNTING			PUNT RETURNS		K.O. RETURNS		SCORING									
		Times Carried	Yards Gain	Yards Loss	Net Gain	No. Att.	No. Comp.	Had Int.	Net Gain	Scoring		Total Plays	Net Gain	No. Caught	Yards Gain	TD's	No. Inter.	Yards Return	Times Kicked	Yards Kicked	Blkd.	Number Returns	Yards Return	Number Returns	Yards Return	Touch- downs	X Pts. Kick		Other X Pts.		Field Goals		Points	
										TD's	Conv.																Att.	Made	Att.	Made	Att.	Made		
	SPoonER	A 11	45	3	42	B						C 11	42	D 1	17	1	E		F			G 1	0	H		S 1								6
	GREEN	A 4	35	5	30	B						C 4	30	D			E		F			G		H		S 1								6
	PRITCHETT	A 3	22	4	18	B 6	4	0	102	1		C 9	120	D			E		F 3	115	0	G		H 1	24	S			2	1				2
	PETKO	A 4	16	0	16	B						C 4	16	D			E		F			G		H		S								
	GIARDINO	A 5	13	1	12	B						C 5	12	D			E		F			G		H		S								
	NARRAMORE	A 3	12	0	12	B						C 3	12	D			E		F			G		H		S								
	BILETNIKOFF	A 1	0	4	-4	B						C 1	-4	D 10	170	1	E		F			G		H		S 1							6	
	TENSI	A 2	2	14	-12	B 17	13	0	165	2		C 11	153	D			E		F			G		H		S 1							6	
	GERO	A 2	0	27	-27	B 2	1	0	16	0		C 4	-11	D			E		F			G		H		S								
	FLOYD	A				B						C		D 2	43	0	E		F			G		H		S								
	DAWSON	A				B						C		D 2	17	1	E		F			G		H		S 1							6	
	REVELL	A				B						C		D 3	36	0	E		F			G 1	0	H		S								
	BAILEY	A				B						C		D			E 1	16	F			G 1	5	H		S								
	CAMPBELL	A				B						C		D			E		F			G 1	15	H		S								
	MURDOCK	A				B						C		D			E		F			G		H		S	3	2			1			2
		A				B						C		D			E		F			G		H		S								
		A				B						C		D			E		F			G		H		S								
		A				B						C		D			E		F			G		H		S								
		A				B						C		D			E		F			G		H		S								
	TEAM TOTALS	A 35	145	58	87	B 25	18	0	283	3	0	C 61	370	D 18	283	3	E 1	16	F 3	115	0	G 4	20	H 1	24	S 5	3	2	2	1	1	0	34	

Opponents SOUTHERN MISS. First Downs: (Rush) 1 (Pass) 3 (Pen.) 2 Total 6 Penalties Against: (No.) 8 (Yards) 92 Own Fumbles: (No.) 5 (Lost) 1

Enter Here Team Totals From Visiting Team Summary	RUSHING				FORWARD PASSING					TOTAL OFFENSE		RECEIVING			INT. RETURNS		PUNTING			PUNT RETURNS		K.O. RETURNS		SCORING								
	Times Carried	Yards Gain	Yards Loss	Net Gain	No. Att.	No. Comp.	Had Int.	Net Gain	Scoring		Total Plays	Net Gain	No. Caught	Yards Gain	TD's	No. Inter.	Yards Return	Times Kicked	Yards Kicked	Blkd.	Number Returns	Yards Return	Number Returns	Yards Return	Touch- downs	X Pts. Kick		Other X Pts.		Field Goals		Points
									TD's	Conv.																Att.	Made	Att.	Made	Att.	Made	
VISITING TEAM TOTALS	A 33	60	55	5	B 20	7	1	83	0	0	C 53	48	D 7	83	0	E 0	0	F 9	320	1	G 1	20	H 6	73	S 0	0	0	0	0	0	0	0

Date of Game OCT. 31, 1964 Where Played TALLAHASSEE Authenticated by Tom Bennett and _____
 NCAB Form No. 347-A (Copyright, 1964, The National Collegiate Athletic Bureau, Box 757, Grand Central Station, New York, N. Y.) (For Home Team) (For Opponents) (OVER)

ADDITIONAL STATISTICS

Official Attendance	Score by Quarters:	1st	2nd	3rd	4th	Total
26,132	FLA STATE	12	7	15	0	34
Weather Conditions FAIR, COOL	SOU MISS	0	0	0	0	0

PRINCIPAL INDIVIDUAL PLAYS

List all scoring plays; also non-scoring plays (including punts) gaining 50 yards or more, and all missed field goal attempts.

Under "type of play" indicate rush, pass, int. runback, punt runback, kickoff runback, punt or field goal. List tries-for-points as P.A.T. kick, P.A.T. rush or P.A.T. pass.

On pass play, give passer first, then receiver, and combined yardage of pass and run. Measure runbacks from goal line, if started in end zone. Measure field goal attempts from point of kick. All other plays are measured from line of scrimmage.

Type of Play	Player or Players	Team	Yards	Scored?
pass	TENSI-SPoonER	FSU	17	Yes
rush	TENSI	FSU	2	Yes
rush	GREEN	FSU	28	Yes
P.A.T. Kick	MURDOCK	FSU		Yes
pass	TENSI-DAWSON	FSU	6	Yes
P.A.T. Rush	PRITCHETT	FSU		Yes
pass	PRITCHETT-BILETNIKOFF	FSU	39	Yes
P.A.T. Kick	MURDOCK	FSU		Yes
Field goal	MURDOCK	FSU	40	NO

CONDENSED RULES FOR RECORDING FOOTBALL STATISTICS*

(Originated by the N.C.A.A. Football Rules Committee's Sub-committee on Football Statistics)

SECTION 1 — FIRST DOWNS.

A first down shall be recorded whenever the yardsticks are ordered forward by the officials, and when a touchdown is scored from scrimmage (by rushing or passing) within a series of downs starting 10 yards or more from the goal line. A first down is not recorded on a touchdown runback, regardless of the distance of the scoring run.

SECTION 2 — RUSHING.

Article 1: All offensive running plays are to be classified as rushing plays, not as "plays from scrimmage," since any play begun with a snapback from center actually is a play from scrimmage.

Article 2: Rushing yardage is measured from the line of scrimmage to the point where the ball is declared dead, or is recovered by opponents in the case of a fumble.

Article 3: The rushing total is a net figure. All rushing losses must be recorded so as to account for the net figure.

Article 4: All gains on lateral passes which originated or grew out of a rushing play are included in rushing yardage. (See Article 1 of Section 4.)

SECTION 3 — FORWARD PASSING.

Article 1: Forward passing gains or losses are measured from the scrimmage line to the point where the ball is declared dead (or is recovered by opponents in the case of a fumble), so as to include both length of pass and running advance after completion. All yards gained or lost on each completed pass play are credited to both the passer and the receiver.

Article 2: Loss from a completed forward pass which did not advance the ball to the scrimmage line is a yardage charge against passing gain.

Article 3: Any loss by a player apparently intending to pass, but thrown behind the line of scrimmage, is recorded as a **loss by rushing**. He is not a passer until he has thrown the ball, and he retains at all times the option of running.

Article 4: Interception returns are measured from the point of interception to the point where the ball is declared dead (or is recovered by opponents in the case of a fumble).

Article 5: There is no pass completed by penalty. A gain through interference on a passing play is a penalty against the defending team. The passer is not charged with a pass attempt, nor credited with a pass completed or yards gained; nor is the intended receiver (or the player interfered with) credited with a pass caught. The passing team

is credited only with a first down by penalty. The defensive (offending) team is charged with a penalty, and the distance from the line of scrimmage to the spot of the penalty under "yards penalized."

Article 6: The forward passer is charged with a forward pass attempt when a forward pass is ruled intentionally grounded.

SECTION 4 — LATERAL PASSING.

Article 1: A lateral pass is always a component part of the ultimate play, whether it precedes or follows that play, since the lateral is merely an extension of the original or ultimate play, in effect.

(Approved Ruling — Player A receives a forward pass for a gain of 10 yards, then throws a lateral pass to Player B, who gains an additional 5 yards. Player A is credited with one pass caught and 10 yards under "receiving." Player B is credited with NO pass caught and with 5 yards under "receiving." Player who threw the forward pass is credited with 15 yards under "forward passing.")

(Approved Ruling — Player A catches punt and returns 10 yards before throwing a lateral pass to Player B, who returns another 5 yards. Player A is credited with one return and 10 yards under "punt returns." Player B is credited with NO return and with 5 yards under "punt returns.")

Article 2: Incomplete lateral passes are scored as fumbles, and yards lost are charged against the player who, in the scorer's opinion, was responsible for the failure of the pass.

Article 3: Intercepted lateral passes are scored as fumbles, the offensive team being charged with a fumble lost.

Article 4: The official scorer rules on whether a completed pass to a flanker or man-in-motion is a forward or a lateral pass. If the latter, the play is recorded under "rushing." If the pass is incomplete, the subsequent action of the officials reveals whether the pass was a forward or a lateral.

SECTION 5 — TOTAL OFFENSE.

Article 1: Total offense is the combined result of rushing and forward passing **only**, since these two are the only methods by which legal advance can be initiated while retaining possession of the ball.

Article 2: Total offense yardage is the total of net gain by rushing and net gain by forward passing. "Receiving" yards gained are not included in total offense.

WILD PASS FROM CENTER.

Any loss resulting from an **obvious** wild pass from center is charged to "center pass," and not to any individual player.

(Continued on back of Form 347-B)

*See the OFFICIAL FOOTBALL STATISTICIANS' MANUAL for complete rulings and interpretations.

SUMMARY OF FOOTBALL GAME STATISTICS – Visiting Team

Visiting Team SOUTHERN MISS First Downs: (Rush) 1 (Pass) 3 (Pen.) 2 Total 6 Penalties Against: (No.) 8 (Yards) 92 Own Fumbles: (No.) 5 (Lost) 1

(Don't Use) NCAB CODE	PLAYER	RUSHING				FORWARD PASSING					TOTAL OFFENSE		RECEIVING			INT. RETURNS		PUNTING			PUNT RETURNS		K.O. RETURNS		SCORING								
		Times Carried	Yards Gain	Yards Loss	Net Gain	No. Att.	No. Comp.	Had Int.	Net Gain	Scoring		Total Plays	Net Gain	No. Caught	Yards Gain	TD's	No. Inter.	Yards Return	Times Kicked	Yards Kicked	Blkd.	Number Returns	Yards Return	Number Returns	Yards Return	Touch- downs	X Pts.	Kick	Other X Pts.	Field Goals	Points		
										TD's	Conv.																Att.	Made	Att.	Made		Att.	Made
	PURVIS	A 11	21	11	10	B 10	4	1	37			C 21	47	D			E		F			G		H		S							
	DOWD	A 5	7	1	6	B						C 5	6	D 1	6	0	E		F			G		H 1	9	S							
	FRY	A 4	5	0	5	B						C 4	5	D			E		F			G		H		S							
	BRANNON	A 2	5	0	5	B						C 2	5	D			E		F			G		H 3	37	S							
	LETORT	A 1	3	0	3	B						C 1	3	D 1	18		E		F			G		H		S							
	NALL	A 2	4	2	2	B						C 2	2	D			E		F			G 1	26	H		S							
	BROWN	A 1	0	4	-4	B						C 1	4	D 2	18	0	E		F			G		H 2	21	S							
	McLELLAN	A 7	15	37	-22	B 10	3	0	46			C 17	24	D			E		F			G		H		S							
	GORNEY	A				B						C		D 2	23	0	E		F			G		H		S							
	CRAFT	A				B						C		D 1	18	0	E		F			G		H		S							
	LAIRD	A				B						C		D			E		F 9	320	1	G		H		S							
		A				B						C		D			E		F			G		H		S							
		A				B						C		D			E		F			G		H		S							
		A				B						C		D			E		F			G		H		S							
		A				B						C		D			E		F			G		H		S							
		A				B						C		D			E		F			G		H		S							
		A				B						C		D			E		F			G		H		S							
		A				B						C		D			E		F			G		H		S							
		A				B						C		D			E		F			G		H		S							
		A				B						C		D			E		F			G		H		S							
	TEAM TOTALS	A 33	60	55	5	B 20	7	1	83	0	0	C 53	88	D 7	83	0	E 0	0	F 9	320	1	G 1	26	H 6	73	S 0	0	0	0	0	0	0	0

Opponents FLORIDA STATE First Downs: (Rush) 9 (Pass) 9 (Pen.) 1 Total 19 Penalties Against: (No.) 9 (Yards) 108 Own Fumbles: (No.) 1 (Lost) 1

Enter Here Team Totals From Home Team Summary	RUSHING				FORWARD PASSING					TOTAL OFFENSE		RECEIVING			INT. RETURNS		PUNTING			PUNT RETURNS		K.O. RETURNS		SCORING								
	Times Carried	Yards Gain	Yards Loss	Net Gain	No. Att.	No. Comp.	Had Int.	Net Gain	Scoring		Total Plays	Net Gain	No. Caught	Yards Gain	TD's	No. Inter.	Yards Return	Times Kicked	Yards Kicked	Blkd.	Number Returns	Yards Return	Number Returns	Yards Return	Touch- downs	X Pts.	Kick	Other X Pts.	Field Goals	Points		
									TD's	Conv.																Att.	Made	Att.	Made		Att.	Made
HOME TEAM TOTALS	A 35	145	58	87	B 25	18	0	283	3	0	C 61	370	D 18	283	3	E 1	16	F 3	115	0	G 4	20	H 1	24	S 5	3	2	2	1	1	0	34

Date of Game OCT 31, 1964 Where Played TALLAHASSEE Authenticated by Tom Bennett and _____

FLORIDA STATE'S 1964 SCHEDULE (5-1)

Sept. 19 Miami at Miami—14-0
 Sept. 26 TCU at Ft. Worth—10-0
 Oct. 3 New Mexico State—36-0
 Oct. 10 Kentucky—48-6
 Oct. 17 Georgia at Athens—17-14
 Oct. 24 VPI at Blacksburg—11-20
 Oct. 31 Southern Mississippi
 Nov. 7 Houston at Houston
 Nov. 14 N. C. State
 Nov. 21 Florida

OFFICIALS: Referee: Pete Williams, Miami, Fla.
 Head Linesman: George Morris, Columbus, Ga.

FSU SPECIALISTS: Punters: 16 Pritchett, 85 Hosack. Kickoffs: 42 Murdock. Placements: 42 Murdock

FSU CO-CAPTAINS: 25 Fred Biletnikoff, 83 Bill Dawson

SO. MISS. SPECIALISTS: Punters: 51 Laird, 45 Youmans. Kickoffs: 51 Laird, 41 Sumrall. Placements: 51 Laird, 41 Sumrall.

SO. MISS. CAPTAINS: Game Captains



TALLAHASSEE FEDERAL
 SAVINGS & LOAN
 ASSOCIATION

SOUTHERN MISSISSIPPI 1964 SCHEDULE (3-2)

Sept. 26 S.W. Louisiana—30-0
 Oct. 3 Richmond—14-9
 Oct. 10 Memphis State—20-14
 Oct. 17 Mississippi State—7-48
 Oct. 24 Auburn—7-14
 Oct. 31 Florida State at Tallahassee
 Nov. 7 Chattanooga at Hattiesburg
 Nov. 14 Louisiana Tech at Hattiesburg
 Nov. 21 Memphis State at Jackson, Miss.

Backfield Judge: John O'Neill, Atlanta, Ga.
 Electric Clock Operator: Bill Conway, Mobile, Ala.

37

LEFT END	LEFT TACKLE	LEFT GUARD	CENTER	RIGHT GUARD	RIGHT TACKLE	RIGHT END
81 Don Floyd	70 Del Williams	51 Joe Avezzano	55 Jack Edwards	75 Dale MacKenzie	76 Tom West	83 Bill Dawson
84 George D'Allessandro	79 Frank Pennie	66 Dick Hermann	61 Jack Shinholser	63 Bill McDowell	73 Avery Sumner	87 Terry Garvin
88 Cliff Gunter	64 David Braggins	60 Larry Williamson	54 John Stephens	69 Ed Pope	77 Bob Mangan	80 John Wachtel

FLORIDA STATE

QUARTERBACK

13 Steve Tensi
 14 Jim Massey
 16 Ed Pritchett

LEFT HALFBACK

27 Phil Spooner
 22 Maury Bibent
 20 Larry Green

FULLBACK

40 Lee Narramore
 43 Howard Ehler
 29 Joe Petko

RIGHT HALFBACK

25 Fred Biletnikoff
 28 Winfred Bailey
 24 Elton Revell

SEMINOLES

NOTE: First listed are offensive starters; second, defensive; third, number two offensive

LEFT END	LEFT TACKLE	LEFT GUARD	CENTER	RIGHT GUARD	RIGHT TACKLE	RIGHT END
81 Troy Kraft	79 John Melton	67 Doug Satcher	56 Larry Ecuyer	62 Jim King	77 Art Gill	80 Bill Gorney
89 George Rodman	73 John Mangum	76 Tommy Melton	58 Ken Avery	64 Poochie Stringfellow	75 Paul Swindoll	82 Jesse Brown
85 Chuck Hinton	74 John Kirke	66 Mike Mahoney	59 James Wright	72 Will Willoughby	72 Will Willoughby	84 Terry Wright

SOUTHERN MISSISSIPPI

QUARTERBACK

15 Vic Purvis
 16 Mike McLellan
 14 Jimmy Barger

LEFT HALFBACK

40 Herman Nall
 32 Hank Letort
 25 Clyde Dowd

FULLBACK

28 Harmon Brannon
 26 Rusty Fry
 43 Tommy Brennan

RIGHT HALFBACK

42 Rabbit Brown
 45 Tommy Youmans
 33 Billy Devrow

SOUTHERNERS

FLORIDA STATE'S 1964 VARSITY FOOTBALL ROSTER

No.	Name	Pos.	Class	Age	Ht.	Wt.	Hometown
12	Tony Gero	QB	Soph	20	5-10	183	Madison, N. J.
13	Steve Tensi	QB	Sr.	21	6-5	194	Cincinnati, O.
14	Jim Massey	QB	Jr.	21	5-11	181	Cairo, Ga.
15	Pat Conway	HB	Soph	19	5-10	186	Miami
16	Ed Pritchett	QB	Jr.	23	6-2	185	Decatur, Ga.
20	Larry Green	HB	Soph	19	5-10	181	Cairo, Ga.
21	Donovan Jones	HB	Soph	19	6-1	193	Lakeland
22	Maury Bibent	HB	Jr.	21	6-0	188	Cincinnati, O.
23	Wayne Giardino	FB	Soph	20	5-10	190	W. Palm Beach
24	Elton Revell	HB	Soph	20	6-0	176	Tallahassee
25	Fred Biletnikoff	HB	Sr.	21	6-1	192	Erie, Pa.
26	Bill Campbell	HB	Soph	19	5-9	180	Tampa
27	Phil Spooner	HB	Jr.	20	5-11	182	Fort Myers
28	Winfred Bailey	HB	Sr.	22	6-0	183	Atlanta
29	Joe Petko	HB	Jr.	21	5-9	185	Cincinnati, O.
40	Lee Narramore	FB	Soph	19	5-10	209	Pensacola
41	Bob Menendez	HB	Soph	19	5-10	185	Key West
42	Les Murdock	FB	Sr.	23	6-2	233	Hollywood
43	Howard Ehler	FB	Jr.	20	5-10	195	Tavares
44	Jim Mankins	FB	Jr.	20	6-2	228	King City, Calif.
51	Joe Avezano	G	Jr.	20	6-2	228	Miami
53	David Pitts	C	Soph	20	5-9	223	Blountstown
54	John Stephens	C	Soph	18	6-1	198	Tallahassee
55	Jack Edwards	C	Sr.	21	6-1	217	Tampa
60	Larry Williamson	G	Soph	19	5-11	200	Macon
61	Jack Shinholser	C	Jr.	22	6-1	212	Tampa
62	Howard Lurie	G	Jr.	20	6-0	205	Northridge, Calif.
63	Bill McDowell	G	Jr.	20	6-1	201	Tallahassee
64	David Braggins	T	Soph	19	6-2	226	Lake Wales
66	Dick Hermann	G	Sr.	22	6-0	200	Marianna
68	Joe Parrish	G	Jr.	21	6-1	194	Auburndale
69	Ed Pope	G	Soph	20	6-1	196	Waycross, Ga.
70	Del Williams	T	Soph	18	6-2	213	Live Oak
73	Avery Sumner	T	Sr.	22	6-2	219	Adel, Ga.
74	Jay Mac Matthews	T	Soph	20	6-1	219	Chiefland
75	Dale MacKenzie	G	Sr.	21	6-2	218	Clearwater
76	Tom West	T	Sr.	21	6-4	216	Headland, Ala.
77	Bob Mangan	T	Jr.	22	6-1	222	Atlanta, Ga.
78	Charles Pennie	T	Soph	19	6-4	221	Hollywood
79	Frank Pennie	T	Jr.	21	6-4	242	Hollywood
80	John Wachtel	E	Sr.	22	6-1	203	Massilon, O.
81	Don Floyd	E	Sr.	22	6-1	195	Madison
82	Wayne McDuffie	E	Soph	19	6-2	198	Hawkinsville, Ga.
83	Bill Dawson	E	Sr.	21	6-3	220	Valdosta, Ga.
84	George D'Allessandro	E	Jr.	21	5-10	195	Fort Myers
85	John Hosack	HB	Soph	19	5-11	192	Miami
86	Bud Blankenship	E	Soph	20	6-3	200	Atlanta, Ga.
87	Terry Garvin	E	Jr.	21	5-11	190	Pensacola
88	Cliff Gunter	E	Sr.	22	6-3	187	Dothan, Ala.
89	Max Wettstein	E	Jr.	20	6-3	206	Leesburg

UNIVERSITY OF SOUTHERN MISSISSIPPI FOOTBALL ROSTER

No.	Name	Pos.	Ht.	Wt.	Class	Hometown
10	Glen Bynum	QB	5-9	180	Soph.	Baker, La.
12	Sid Atkins	QB	5-11	192	Jr.	Columbus, Miss.
14	Jimmy Barger	QB	5-10	181	Soph.	Memphis, Tenn.
15	Victor Purvis	QB	5-11	181	Jr.	Puckett, Miss.
16	Mike McLellan	QB	6-0	190	Jr.	Heidelberg, Miss.
21	Jimmy Lovette	TB	5-8	175	Soph.	Red Bay, Ala.
25	Clyde Dowd	TB-FB	6-1	195	Soph.	Shelby, N. C.
26	Rusty Fry	FB	5-9	195	Soph.	Lake Charles, La.
28	Harmon Brannan	FB	5-11	195	Jr.	Rocky Creek, Miss.
30	Dooney Lippincott	FB	5-9	170	Jr.	Hattiesburg, Miss.
31	Steve Ward	WB	5-10	178	Soph.	Mobile, Ala.
32	Henry Letort	TB	6-0	190	Jr.	Biloxi, Miss.
33	Billy Devrow	WB	6-1	175	Soph.	Hattiesburg, Miss.
35	Chuck Wilkes	TB	5-10	170	Soph.	Biloxi, Miss.
40	Herman Nall	TB	5-10	190	Sr.	Alexandria, La.
41	George Sumrall	FB	5-10	175	Soph.	Biloxi, Miss.
42	Rabbit Brown	WB	5-11	190	Jr.	Pensacola, Fla.
43	Tommy Brennan	WB	5-10	195	Soph.	Savannah, Ga.
44	Chico Usher	WB	5-11	160	Soph.	Meridian, Miss.
45	Tommy Youmans	WB	5-11	175	Jr.	Quitman, Ga.
51	John Laird	C	6-0	185	Sr.	Smithdale, Miss.
52	Joe Fareri	C	6-0	212	Soph.	Ozone Park, N. Y.
56	Larry Ecuyer	C	6-0	210	Sr.	New Orleans, La.
58	Ken Avery	C	6-0	205	Soph.	Miami, Fla.
59	James Wright	C	6-0	215	Jr.	Oxford, Miss.
60	Elbert Trone	G	5-11	195	Soph.	Biloxi, Miss.
61	Andy Armstrong	G	5-11	212	Soph.	Meridian, Miss.
62	Jim King	G	6-0	205	Sr.	Adamsville, Ala.
63	Sidney Malone	G	5-11	191	Jr.	Hattiesburg, Miss.
64	Poochie Stringfellow	G	5-9	200	Soph.	Lucedale, Miss.
66	Mike Mahoney	G	6-0	230	Jr.	Vicksburg, Miss.
67	Doug Satcher	G	5-11	212	Jr.	Sandersville, Miss.
69	Buddy Hunter	G	5-11	220	Soph.	Pensacola, Fla.
71	Harry Huelsbeck	T	6-0	206	Soph.	Pensacola, Fla.
72	Will Willoughby	T	6-1	215	Jr.	Liberty, Miss.
73	John Mangum	T	6-3	250	Jr.	Magee, Miss.
74	John Kirke	T	6-2	209	Jr.	Picayune, Miss.
75	Paul Swindoll	T	6-2	238	Jr.	Winona, Miss.
76	Tommy Melton	T	6-1	200	Jr.	Pascagoula, Miss.
77	Arthur Gill	T	6-0	222	Soph.	Biloxi, Miss.
78	Chuck Armond	T	6-1	235	Jr.	Chalmette, La.
79	John Melton	T	6-2	236	Jr.	Baker, Fla.
80	Bill Gorney	E	6-1	197	Jr.	Orland Park, Ill.
81	Troy Craft	E	6-1	192	Soph.	Biloxi, Miss.
82	Jesse Brown	E	5-11	189	Jr.	Georgiana, Ala.
83	Bill Hodges	E	6-2	185	Soph.	Biloxi, Miss.
84	Larry Wright	E	6-0	184	Soph.	Homestead, Fla.
85	Chuck Hinton	E	6-1	200	Jr.	Hattiesburg, Miss.
86	James Favre	E	6-0	200	Jr.	Gulfport, Miss.
87	Harold Hitt	E	5-11	200	Sr.	Mobile, Ala.
88	Don MacDonald	E	6-1	205	Soph.	Memphis, Tenn.
89	George Rodman	E	6-2	215	Jr.	Levittown, Pa.

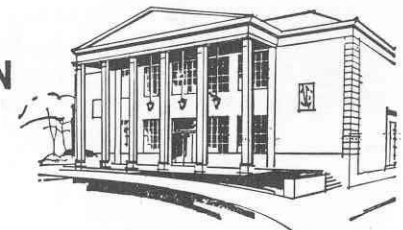
Tallahassee Federal

440 N. Monroe Street ★ Tallahassee, Florida

HOURS: Monday-Thursday, 8:30 a.m. to 3 p.m.—Friday, 8:30 a.m. to 6 p.m.

SAVINGS AND LOAN ASSOCIATION

TELEPHONE 224-2161



FLORIDA STATE UNIVERSITY
VS

SOUTHERN MISSISSIPPI

Oct. 31, 1964 Doak S. Campbell Stadium Tallahassee, Fla.
Weather: Clear in low 60s. Light NE wind, 5-10 knots.

FSU Co Captains Fred Biletznikoff, Red Dawson and Don Floyd
met MS Co Captains Larry Echuier and Herman Nall. FSU won toss and
will receive. Miss will kick and defend south goal.

John Laird kicks to F13, Pritchett returns to F39.

FSU BALL

F39 1-10 Tensi hands off to Pritchett who ~~xx~~ passes to Biletznikoff
for 43 yards. FIRST DOWN

M19 1-10 Spooner at LT gets 2.

M17 2-8 Narramore at RE gets 7.

M11 3-1 Narramore up middle gets 4. Barger FIRST DOWN

M7 1-G Spooner at LG gets 4. Barger.

M3 2-G Narramore up middle for 1 BUT FSU LOSES 15, HOLDING

M18 2-G Tensi pass to Biletznikoff is too long.

M18 3-G Tensi hits Spooner with screen pass and he scores. (11:18)

F 6 M 0

F 6 M 0

Murdock's kick is no good.

Murdock kicks off to M16, Brannan~~xxxxx~~ returns to M18. Bibent.

MISS BALL

M18 1-10 Brannan at LT for 3. Massey.

M21 2-7 Purvis pass incomplete. Intd. for Gorney.

M21 3-7 Purvis passes incomplete. Intd. for Nall.

FSU refuses offside penalty.

M21 4-7 Laird Punts to F46. No returns.

FSU BALL 9:30 left)

F46 1-10 Spooner at lt gets 5. Avery

M49 2-5 Narramore up middle for 4. Barger

M45 3-1 Spooner up middle gets 10. Satcher FIRST DOWN

M36 1-10 Tensi pass to Biletznikoff off his fingertips.

M36 2-10 Spooner on draw goes for 12. Mangam FIRST DOWN

M25 1-10 Spooner at RE gets 2. Rodman

M23 2-8 Tensi passes complete to Biletznikoff for 18. FIRST DOWN

M5 1-G Giardino at LT loses 1. Satcher.

M6 2-G Giardino up middle for 4. Barger, Dorney

M2 3-G Tensi rolls out and scores standing up. (4:24) F 12 M 0

FSU penalized 5 for delay.

Pritchett trying for 2 points is short on run. F 12 M 0

Murdock kicks to M 10, Brannan returns to M25.

MISS BALL

M25 1-10 Miss jumps offsides.

M20 1-15 Letort up middle gets 4. Herman

M21 2-11 Dowd hits for 1. Shinholser.

M25 3-10 Purvis pass intercepted by Masses at M40,

returns to M21. BUT FSU IS PENALIZED 15

FOR HOLDING.

FIRST DOWN

M38 1-10 Brannan at LE gets 1. Herman.

M39 2-9 Purvis pass incomplete. Bailey.

~~M39xxx~~ BUT MISS SO LOSES 15, PSNL FOUL

M25 3-23 Dowd thron for loss of 1 by Sumner, D'Alesandro

M23 4-25 Laird punts to F39, Bailey returns to F43.

FSU BALL (0:44 left)

F43 1-10 FSU LOSES FIVE YARDS FOR DELAY

F39 1-15 Spooner at LG gets 2. Milloughby

F41 2-13

END OF FIRST QUARTER FSU 12 Miss 0

SECOND QUARTER FSU vs Miss So.

FSU Ball

F41 2-13 Tensi passes complete to Biletnikoff for 12.
M47 3-1 Giardino hits middle for 3. Gill FIRST DOWN
M44 1-10 Tensi pass complete to Biletnikoff for 5.
BUT FSU LOSES 15 FOR ILEGAL USE OF HANDS
F41 2-25 Green on statue of liberty gets 7. Gill
F48 3-18 Tensi's long pass just of Biletnikof's fingertips.
F48 4-18 Pritchett punts to M 7 where FSU downs it. Dalsandro.
MISS SO BALL 12:50 left
M7 1-10 Purvis on keeper gets 3. McDowell, Sumner
M10 2-7 Fry carries for no gain. Dalesandro:
M10 3-7 Purvis on keeper gets 2. Garvin
M12 4-5 Laird punts to F47, rol's dead.

FSU BALL (10:42 left)

F47 1-10 Giardino on draw gets nothing. King.
F47 2-10 Tensi pass to Biletnikoff incomplete. Brown.
F47 3-10 Biletnikoff on double reverse loses 4. Devrow
F43 4-14 Pritchett delays to get timeout. FSU LOSES FIVE YAR S
F38 4-19 PRITCHETT punts to M26, Mall returns to F48.
SO MISS BALL 8:38 left
F48 1-10 Mall on draw gets 4 McDowell, Sumner
F44 2-6 Dowd gets 4. McDowell
F40 3-2 Purvis fumbles, recovers, loss of 4. Dalasandro
F44 4-6 MISS LOSES FIVE FOR DELAY
F49 4-11 Laird punts over goal.

FSU BALL 6:59 left in half

F20 1-10 Tensi passes complete to Biletnoioff for 7. Devrow
F27 2-3 Tensi again hits Biletnikoff for 14. FIRST DOWN
F41 1-10 Spooner up middle gets 4. Gill.
F45 2-56 Tensi hits Biletnikoff for 9. FIRST DOWN
M46 1-10 Spooner at LT gets 4. Gill.
M42 2-6 Tensi passes complete to Biletnikof for 14 Devr w. FIRST DOWN
M28 1-10 Larry Green burts through for TOUCHDOWN FIRST DOWN
3:11 left in half FSU 18 Miss 0

Murdock's kick is good FSU 19 Miss 0

~~Murdock's kick is good~~

Murdock kicks to M end zone, Brannan returns to 20. Lurie.

SO MISS BALL 2:55 left

M20 1-10 Purvis on rollout gets 8 MISS LOSES HALF FISTANCE
FOR CLIPPING.
M12 1-17 McClelland passes complete to Brown for 10.
M22 2-8 McClelland passes complete to Letort, 18. FIRST DOWN
M40 1-10 McClelland pass is too long.
M40 2-10 Dowd on dragw gets 1. McDowell
M41 3-9 McClelland passes incomplete. Hermann (0:35 left)
M41 4-9 Laird's kick block d by Shinholser, it goes out
of bounds at M47. BUT FSU LOSES 15, ROUGHING KICKER
FIRST DOWN
F44 1-10 McClelland's pass is too long.
F44 2-8 McClelland pass incomplete BUT SOUTHERN PENALIZED
FIFTEEN FOR HOLDING.
M41 2-25 McClelland is dropped for loss of 7. Pennie.
M34 3-33 McClelland passes incomplete

HALF ENDS FSU 19 MISS SO 0

FLASH FOOTBALL STATS

Quick Halftime and After Game Reports of Vital Team Statistics and Individual Leaders

HALFTIME

Circle One

FINAL

TEAM STATISTICS

	FSU	USM
First Downs	11	2
Rushing Yardage (Net)	96	16
Passing Yardage (Net)	139	28
Passes (Completions-Attempts)	9-13	2-8
Passes Intercepted by	0	0
Punts (Number-Average)	2-40.5	4-36.3
Fumbles Lost	0	0
Yards Penalized	73	48

INDIVIDUAL LEADERS

FSU

USM

RUSHING	Att'd	Net Yards	Avg.
Spooner	9	45	5.0
Green	2	35	17.5
Narramore	3	12	4.0

RUSHING	Att'd	Net Yards	Avg.
Dowd	4	6	1.5
Brannon	2	5	2.5
Purvis	4	5	1.3

PASSING	Att'd	Compl.	Had Int'd	Net Yards
Tensi	12	8	0	86
Pritchett	1	1	0	43

PASSING	Att'd	Compl.	Had Int'd	Net Yards
McLellan	6	2	0	28
Purvis	2	0	0	0

PASS RECEIVING	No. Rec'd	Net Yards	For TD
Biletnikoff	8	122	0
Spooner	1	17	0

PASS RECEIVING	No. Rec'd	Net Yards	For TD
Letort	1	18	0
Brown	1	10	0

FSU--MISS SOUTHERN

THIRD QUARTER

Murdock kicks to M end zone, Brown returns to M18. Lurie.

MISS SO BALL

M18 1-10 Purvis fumbled and recovered for 1 loss.

M17 2-11 Brown dropped by Hermann for loss of 4.

M13 3-15 Larid punts to M44, out bounds.

FSU BALL 13:03 left

M44 1-10 Spooner at RE no gain. Ecuyer.

M44 2-10 Petko gets 5. Barger.

M39 3-5 Tensi passes to Floyd for 26. to M 13.

FIRST DOWN

SOUTHERN LOSES HALF DISTANCE FOR PSNL FOUL

M7 1-26 Petko hits RT for 3. King

M4 2-1 Petko with pitchout gets nothing. Mall

FSU LOSES 5' FOR BACKFIELD IN MOTION

M9 2-6 Tensi is thrown for loss of 14.

M23 3-20 Tensi passes complete to Floyd for 17 yards

M6 4-3 Tensi passes complete to Dawson for TOUCHDOWN (9:49 Left)

FSU 25 MISS 0

Pritchett on w/rollout gets two points

FSU 27 Miss 0

Murcock kicks to M 7, Dowd returns to M15.

MISS SO BALL 9:24 left

M15 1-10 Downd on draw gets Nothing. Simner, McDowell

M15 2-10 Purvis fell and lost 5. Pennie.

M10 3-15 Purvis passes complete to Dowd for 7; Ehler

M16 4-9 Laird punts to M45. Fair Catch Bailley

FSU BALL 7:18 left

F45 1-10 Tensi passes to Biletchnikoff for 9. Devrow.

F36 2-1 Giardino up middle for 6. Bre nnan

FIRST DOWN

F31 1-10 Tensi pass to Dawson complete, he fumbles as he's hit and Ecuyer recovers for Miss at M21.

MISS BALL 5:59 left

M20 1-10 Fry gets 2. Lurie.

M22 2-8 McClelland passes complete to Craft for

18 yards. Conway

FIRST DOWN

M41 1-10 McClelland runs for 11

FIRST DOWN

F47 1-10 Fry gets 3. Don Jones.

F44 2-7 McClelland passes incomplete.

F44 3-7 McClelland at RE gets 4 BUT FSU LOSES 15

FOR PILING ON.

FIRST DOWN

F25 1-10 Dowd dropped by Shinholser for 2 loss.

F27 2-12 McLelland pass is incomplete.

F27 2-12 McLelland dropped by Hermann, loss of 13.

F41 3-25 McDowell knocks ball out of McLelland's hand

and recovers for FSU at the midfield stripe.

FSU BALL 1:46 left (Second offensive unit in)

-50 1-10 Pritchett passes to Revell for 11.

FIRST DOWN

M39 1-10 Pritchett passes complete to Biletchnikoff for TOUCHDOWN

SENSATIONAL CATCH OVER HEAD

FIRST DOWN

Murdock's kick is good.

FSU 33 M 0

FSU 34 M 0

Murdock kicks to M goal line, Brown returns to

M 9. Mendez on tackle.

~~MISS SO BALL 0:27 left~~

M9 1-10 Purvis gets 1. Lurie

~~END OF~~

END OF THIRD QUARTER

FOURTH QUARTER FSU Miss So.

MISS SO BALL

M10 2-9 Purvis pass is way long. Incomplete
 M10 3-9 Purvis pass complete to Brown for 8.
 M18 4-1 Laird punts to F40, Bill Campbell returns to M45, fumbles and
 Miss Southern recovers at M 46.

MISS SO BALL 13:34 left

M46 1-10 Purvis runs RE for
 F46 2-2 Fry gets nothing at middle.
 F46 3-2 Purvis passes complete to Gorney. 10 FIRST DOWN
 F36 1-10 Purvis passes incomplete.
 F36 2-10 Purvis passes incomplete. D'Alesandro
 F36 3-10 Purvis pass hits Nall, bounces into Gorney's
 hands complete for 13. FIRST DOWN
 F23 1-10 Purvis dropped ~~for~~ after 1 gain.
 F22 2-9 Purvis pass intercepted by Bailey, runs back
 to ~~M46~~ F32. Swendel

FSU BALL 9:52 left.

F32 1-10 Petko up middle for 2. King
 F34 2-8 Pritchett's pass to Wachtel incomplete. BUT MISS LOSES
 FIFTEEN YARDS, PERSONAL FOUL FIRST DOWN
 F49 1-10 Green gets @. Gorney
 F49 2-10 Pritchett keeps, runs for 14. Devrow FIRST DOWN
 M37 1-10 Petko up middle for 7. Gorney
 M30 2-3 Pritchett loses 3. Hinton.
 M33 3-6 Pritchett's pass dropped by Revell.
 M33 4-6 Murdock's field goal attempt is wide.

MISS BALL 6:41 left

M20 1-10 Purvis on keeper gets 2. Hermann
 M22 2-8 Purvis smacked for 1 loss by Pennie.
 M21 3-9 Purvis pass to Brown is short. Conway
 M21 4-9 Laird punts to F 42, Revell hit immediately.

FSU BALL 5:03 left Second unit in

F42 1-10 Pritchett passes to Revell for 9 Devrow.
 M48 2-1 Pritchett keeps for 8 Hinton. BUT FSU FIRST DOWN
 PENALIZED 15 FOR PSNL FOUL
 F45 1-25 Pritchett long pass to Revell incomplete. Nall
 F45 2-25 Spooner on draw loses 3. Craft.
 F42 3-28 Green at LE loses 5. King
 F37 4-33 Pritchett punts to M 29. Fair Catch.

MISS SO BALL 2:38 left

M29 1-10 McLelland loses 5. McDuffie.
 M24 2-15 McLelland fumbles, recovers loss of 2.
 M22 3-17 McLelland passes incomplete. Parrish.
 M22 4-17 Laird punts out bounds at M 48.

FSU BALL 0:47 left Gero at QB

M48 1-10 Gero passes to Revell no good but pass interference
 called at MS 25. FIRST DOWN
 M25 1-10 Gero stumbles and loses 11.
 M36 2-21 Gero passes incomplete.
 M36 3-21 Gero dropped for loss of 16.
 F48 4-37 Gero passes complete to Revell for 16.

END OF GAME FSU 34 Miss So. 0

##

FSU-MISS SO.
SCORING SUMMARY

FIRST QUARTER:

Spooner scored with an 18-yard pass from Tensi after a 61-yard-⁸-play drive the first time the Seminoles had the ball. A Pritchett to Tensi pass for 43 yards on the first play started things. Murdock's kick was wide

The next time they got the ball, FSU went 54 yards in 10 plays with Tensi getting the last 2 on a rollout. This was his first TD of the season. Big plays were a 10-yarder by Spooner and an 18-yard catch by Fred Biletnikoff from Tensi. Pritchett's ~~pass~~ rollout ~~for~~ for a two-pointer failed.

SECOND QUARTER

With 3:11 left in the half, Larry Green ran for 28 yards for the third FSU touchdown. It ended an 80-yard drive. Biletnikoff caught four passes during the drive for 7, 14, 9 and 14 yards. 7 Plays in Drive Murdock kicked his first extra point.

HALF ENDS FSU 19 Miss So. 0

THIRD QUARTER

Red Dawson took a Tensi pass for 6 yards and a touchdown ending a 44 yard drive in 8 plays. Two Tensi to Floyd ~~pass~~ passes for 26 and 17 yards were key plays in drive. Pritchett on rollout got the two point conversion.

Late in the third quarter, FSU recovered a fumble at midfield and scored in two plays. Pritchett passes to R. vell for 11 and then threw a long one to Biletnikoff ~~for~~ for the touchdown. 39 yards Murdock's kick was good.

NO SCORING IN FOURTH QUARTER

FINAL SCORE FSU 34 Miss 0

SCORING SUMMARY:

Spooner (18-yard pass);
~~Biletnikoff (14-yard pass);~~
Green (28 yard ~~pass~~ run);
Dawson (6-yard pass)
Biletnikoff (39 pass)
Tensi (2-yard run)
Pritchett (run extra point)
Murdock (2-kicks)

##

FLA. STATE vs. SOUTHERN MISSISSIPPI Oct. 31, 1964

FINAL TEAM FOOTBALL STATISTICS

	FSU	USM
First Downs Rushing	9	1
First Downs Passing	9	3
First Downs by Penalties	1	2
TOTAL FIRST DOWNS	19	6
Number Attempts Rushing	35	33
Yards Gained Rushing	145	60
Yards Lost Rushing	58	55
NET YARDS GAINED RUSHING	87	5
Number Passes Attempted	25	20
Number Passes Completed	18	7
Number Passes Had Intercepted	0	1
NET YARDS GAINED PASSING	283	83
Number Plays Rushing and Passing	60	53
TOTAL OFFENSE YARDAGE	370	88
Number Opponents Passes Intercepted	1	0
NET YARDS INTERCEPTIONS RETURNED	16	0
Number Times Punted	3	9
Number Punts Had Blocked	0	1
PUNTING AVERAGE, YARDS	38.3	35.5
Number Punts Returned	4	1
NET YARDS PUNTS RETURNED	20	26
Number Kickoffs Returned	1	6
NET YARDS KICKOFFS RETURNED	24	73
Number Times Penalized	9	8
TOTAL YARDS PENALIZED	108	92
Number Times Fumbled	1	5
NUMBER OWN FUMBLES LOST	1	1
FLA. STATE	12	7
SOU. MISS	0	0

Scoring: Spooner 17 pass from Tensi; Kick failed; Tensi 2 run; run failed; Green 28 run; Murdock kick; Dawson 6 pass from Tensi; Pritchett run; Biletnikoff 39 pass from Pritchett; Murdock kick.

Attendance: 26,132 Weather: Fair and cool

FINAL INDIVIDUAL FOOTBALL STATISTICS

FSU

RUSHING

Player	Att.	Gain	Loss	Net
Spooner	11	45	3	42
Narramore	3	12	0	12
Green	4	35	5	30
Giardino	5	13	1	12
Petko	4	16	0	16
Pritchett	3	22	4	18
Biletnikoff	1	0	4	-4
Tensi	2	2	14	-12
Gero	2	0	27	-27

PASSING

Player	Att.	Comp.	Int.	Yds.
Tensi	17	13	0	165
Pritchett	6	4	0	118
Gero	2	1	0	16

PASS RECEIVING

Player	No.	Yds.	TD
Biletnikoff	10	170	1
Floyd	2	43	0
Dawson	2	17	0
Revell	3	36	0
Spooner	1	17	0

PUNTING

Player	No.	Avg.
Pritchett	3	38.3

KICKOFF RETURNS

Player	No.	Yds.
Pritchett	1	24

PUNT RETURNS

Player	No.	Yds.
Campbell	1	15
Bailey	1	5
Spooner	1	0
Revell	1	0

PASS INTERC.

Player	No.	Yds.
Bailey	1	16

USM

RUSHING

Player	Att.	Gain	Loss	Net
Dowd	5	7	1	6
Fry	4	5	0	5
NALL	2	4	2	2
Letort	1	3	0	3
Brannon	2	5	0	5
Brown	1	0	4	-4
Purvis	11	21	11	10
McLellan	7	15	37	-22

PASSING

Player	Att.	Comp.	Int.	Yds.
Purvis	10	4	1	37
McLellan	10	3	0	46

PASS RECEIVING

Player	No.	Yds.	TD
Gorney	2	23	0
Brown	2	18	0
Crast	1	18	0
Dowd	1	6	0

PUNTING

Player	No.	Avg.
Laird	9	35.4

KICKOFF RETURNS

Player	No.	Yds.
Brannon	3	37
Brown	2	27
Dowd	1	9

PUNT RETURNS

Player	No.	Yds.
NALL	1	25

PASS INTERC.

Tommy
Bennett

TACKLES - Mississippi Southern Game

	<u>Tackles</u>	<u>Assists</u>	<u>M.T.</u>
9290 — Hermann	7	4	
D'Alessandro	5	5	1
McDowell	5	2	
Lurie	5	2	
Euler	4		
Summer	3	7	1
Wettstein	3	0	
McDuffie	3	0	
Shinholser	2	4	
Pennie	2	2	
Conway	2	2	
Jones	2	0	
Menendez	1	3	
858 — Garvin	1	3	
Bibent	1	2	
C. Pennie	1	1	
Bailey	1	0	
Massey	1	0	
Campbell	1	0	
Petko	1	0	
Parrish	0	2	
9290 — Pitts	0	2	

45/28
9 4
55/32
✓
87
00 GEB

18 vs
Auburn last yr
153 in 2 years
84 last year

TCH — 10%

Official Program 50c

**OCTOBER 31st,
1964**

8:00 p. m.



Florida State
vs.

U. of Southern Mississippi

DOAK S. CAMPBELL STADIUM

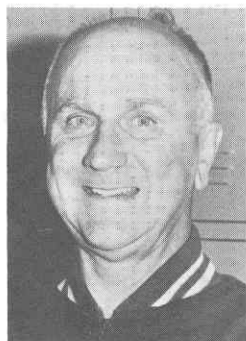
Band Day

ATHLETICS AT FLORIDA STATE

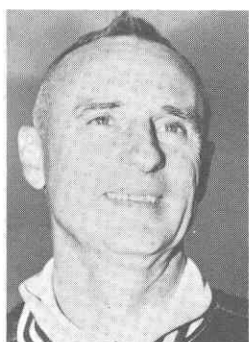
A COMPLETE PROGRAM



J. K. "BUD" KENNEDY
Basketball Coach
1963-64: W 14, L 14



N. B. "BIM" STULTS
Swimming Coach
1964: W 7, L 0



MIKE LONG
Track Coach
1964: W 5, L 0



FRED HATFIELD
Baseball Coach
1964: W 23, L 13



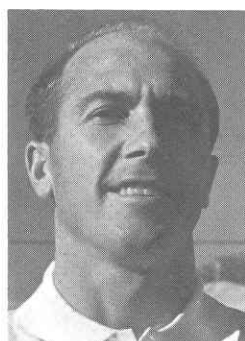
Tully Gym



10-Meter Diving Tower
Rises Above FSU's New Olympic Pool



HUGH DURHAM
Golf Coach
1964: W 12, L 0



LEX WOOD
Tennis Coach
1964: W 11, L 10

FSU FOOTBALL 1964...



IN THIS ISSUE:

University Features	6, 7, 8
Guest Column	9
FSU All-Time Records	9
Athletic Committee	10
Comparing Today's Teams	10
Seminole Football Family	11
The 1964 Seminoles	12, 13, 14, 15
Officials' Signals	17
FSU's '64 Freshman Team	18
Starting Lineup, FSU	20
Starting Lineup, Opponent	21
Seminole Boosters, Inc.	25
WFSU-TV Football Schedule	26
Seminole Radio Network	27
Penalties	29
Seminole Songs and Cheers	30
The Marching Chiefs	36
Depth Charts, Rosters, Officials	Flip Card
FSU Basketball, 1964-65	39

SEMINOLES ON THE WARPATH

Sept. 19 Miami	Miami 8:00 p.m. EST
Sept. 26 Texas Christian	Fort Worth 7:30 p.m. CST
Oct. 3 New Mexico State	Tallahassee 8:00 p.m. EST
Oct. 10 Kentucky (Homecoming)	Tallahassee 2:30 p.m. EST
Oct. 17 Georgia	Athens 2:00 p.m. EST
Oct. 24 Virginia Tech	Blacksburg 2:00 p.m. EST
Oct. 31 So. Mississippi	Tallahassee 8:00 p.m. EST
Nov. 7 Houston	Houston 2:00 p.m. CST
Nov. 14 N. C. State	Tallahassee 8:00 p.m. EST
Nov. 21 Florida	Tallahassee 2:00 p.m. EST

*Compliments and
Best Wishes from*



**YOUR APPLIANCE
HEADQUARTERS**
611 N. Monroe St.

FSU	FSU	FSU	FSU	FSU	FSU	FSU
97 1/2	97 5/8	97 7/8	98 1/4	98 3/4	98 7/8	99 1/4

Florida State—The Best Stock on Today's Educational Market



Now Providing
Preferred Education
For 12,137 Futures

FSU	FSU	FSU	FSU
105 1/8	105 7/8	106 1/4	106 1/2

The Shareholders

The list of those who hold "shares" in Florida State University's future is growing longer than the state's coastline and wider than its tax rolls. For investments in higher education — above and beyond appropriations — are fast being recognized by private citizens and perceptive businessmen as the best means of increasing Florida's progress and profits in the years ahead.

Contributions of private support to the state's universities provide the vital margin needed for excellence — the elbowroom for quality in education. It has been estimated that Florida will have 360,000 residents of college age in 1965, all "shareholders" in the future of higher education.



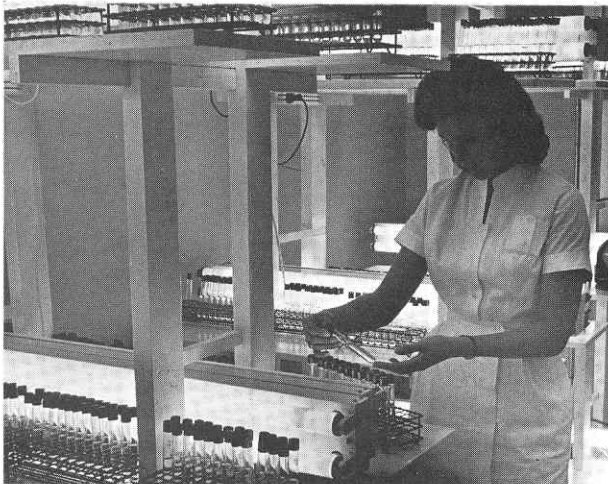
	FSU	FSU	FSU	FSU	FSU	FSU	FSU
1/2	99 3/4	100 1/2	100 7/8	101 1/2	102 1/8	102 7/8	103 1/4

The Dividends

Knowledge is and always will be its own dividend. But the application of knowledge to technological and cultural advancement is the keystone of this state's progress.

There are no greater profits to be held and shared by all, than those which guarantee the best leadership for tomorrow and the highest humanitarian uses of today's discoveries and resources.

Now offering doctoral degrees in 35 fields and having launched successfully six major research institutes, Florida State is dedicated to the quest for dividends of discovery. Exploring problems like cancer and red tide, solving nuclear and molecular biophysical mysteries and studying industrial and human reactions to space-age urbanization, the University's sphere of profit-sharing is limitless.



Economic And Social Progress Through Research
Each Ph.D. Between 200 & 250 New Jobs
College Graduates Needed for Space-Age Industries
Cultural and Scientific Development of Florida
Quality Education And Service To The State

	FSU	FSU	FSU	FSU	FSU	FSU	FSU
3/4	107 1/2	107 7/8	108 1/2	110	111 1/8	112 7/8	113 3/4

Investment Opportunities

The Florida State University Foundation, Inc., established in 1960 and recently re-organized, is the non-profit corporation through which all private contributions to the University are administered.

There are many ways and means of assisting Florida State and adding to its margin of excellence. The Foundation welcomes all contributions, tangible and intangible in value, and seeks to strengthen not only the monetary latitude of the University, but its permanent collections of historic and academic treasures as well. Information on tax-deductible gifts to education may be obtained at the University's Office of Development, Westcott Building, FSU.



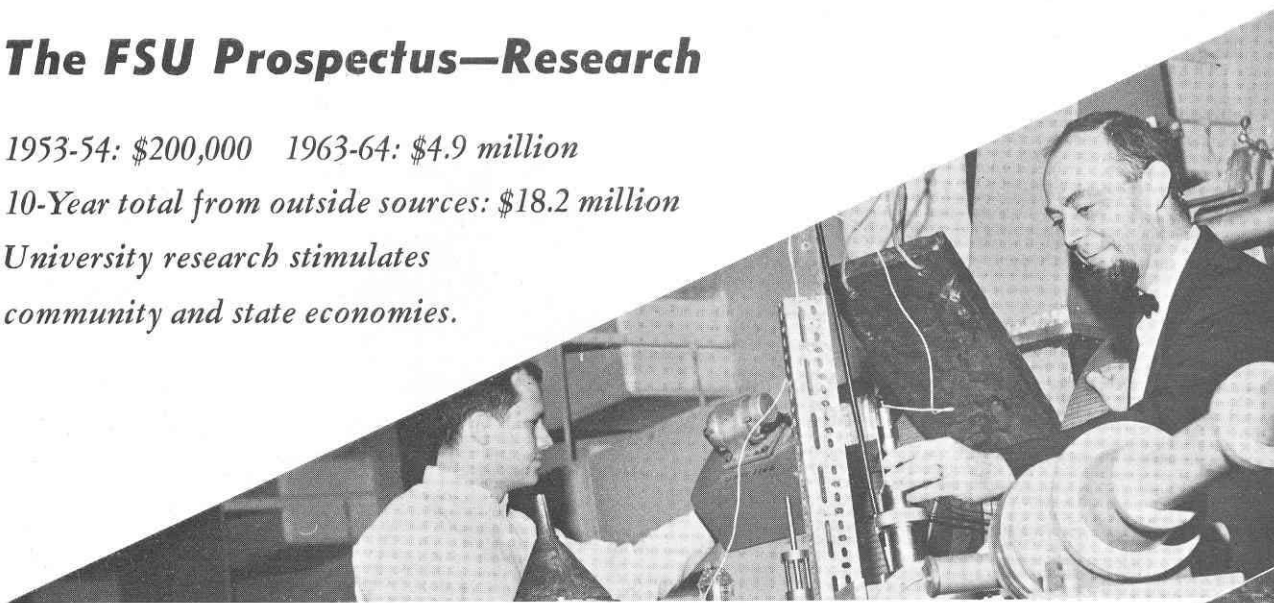
Scholarships And Professorships
Library, Art And Rare Book Collections
University Expansion, Educational "Extras"

The FSU Prospectus—Research

1953-54: \$200,000 1963-64: \$4.9 million

10-Year total from outside sources: \$18.2 million

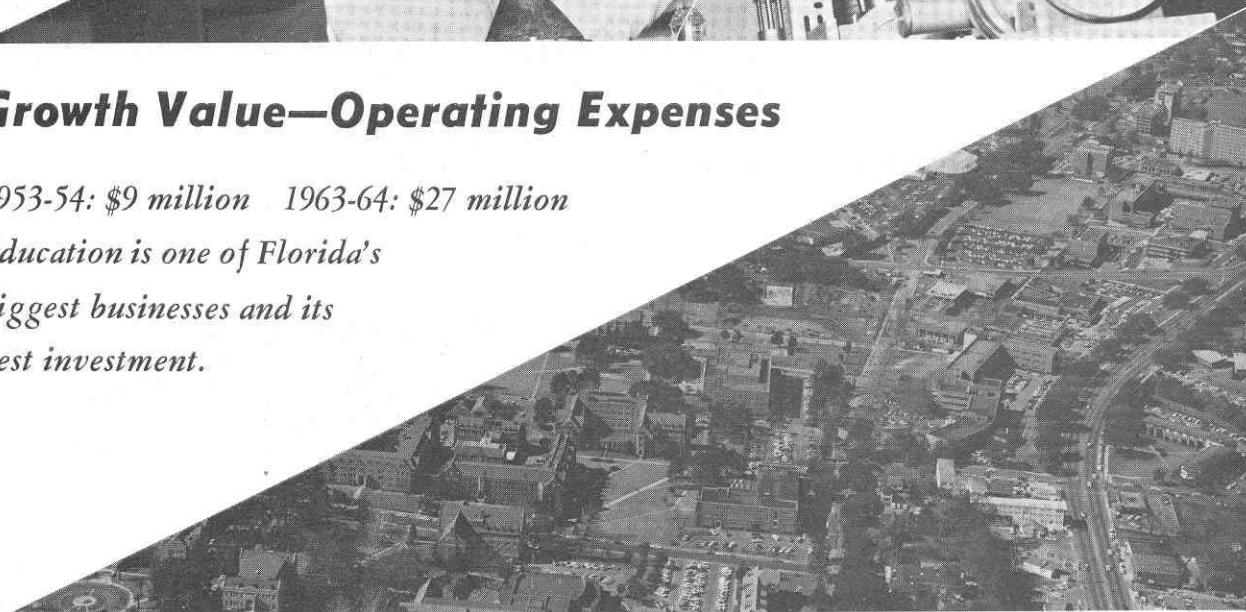
*University research stimulates
community and state economies.*



Growth Value—Operating Expenses

1953-54: \$9 million 1963-64: \$27 million

*Education is one of Florida's
biggest businesses and its
best investment.*

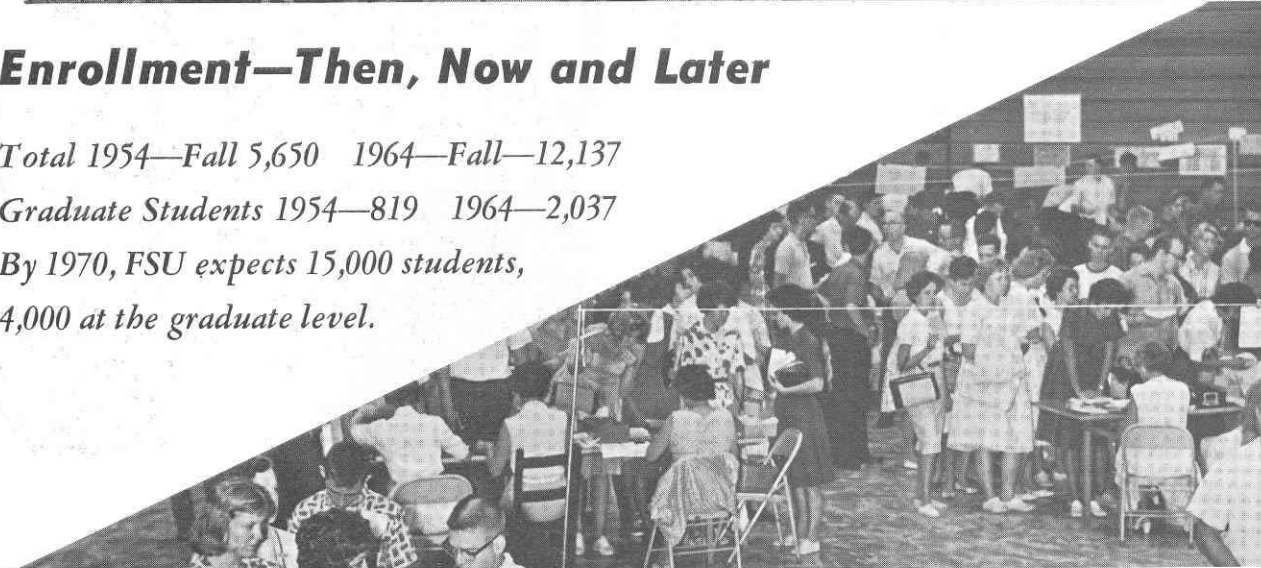


Enrollment—Then, Now and Later

Total 1954—Fall 5,650 1964—Fall—12,137

Graduate Students 1954—819 1964—2,037

*By 1970, FSU expects 15,000 students,
4,000 at the graduate level.*



The View From Above

By **BILL BUNKER**
Sports Publicity Director
Florida State University

Southern Mississippi, perennially one of the sharpest thorns in the Seminoles' side, comes to Doak Campbell Stadium tonight in the wake of Florida State's first defeat of the season.

For Coach Bill Peterson and the Seminoles, the Southerners represent an opportunity to recover ground lost in last week's 20-11 defeat at the hands of VPI in Blacksburg, Va.

Standing in the path of the temporarily sidetracked Seminoles is Coach Thad "Pie" Vann with a career record of 113 victories, 39 defeats and two ties in 15 years at one of the South's most powerful—if least publicized—football schools.

Florida State has defeated Southern Mississippi only twice in nine meetings. Both of these victories were by one point. The single tie in the series came last year when the teams fought to a scoreless decision in Mobile's Ladd Stadium.

The Southerners, like the Seminoles, are on the rebound tonight. After rolling up impressive victories in their first three games, Vann's crew was defeated by Mississippi State, 48-7, and Auburn, 14-7 in the last two outings. Southern's victims have been Southwest Louisiana, Richmond and highly-regarded Memphis State.

Florida State has one of the nation's top offensive teams, headed by brilliant Steve Tensi-Fred Biletnikoff passing combination. Before running into Mississippi State, Southern was leading the nation in total defense.

The Seminole passing pair had one of their greatest days in defeat last week, personally breaking four single game records. Tensi threw 39 passes, completed 21. Both were records. Biletnikoff hauled in 11 for 182 yards, breaking two of his own marks.

Tensi has now rolled up 1,002 yards passing, including nine touchdowns. Biletnikoff has caught 38 for 639 yards and seven touchdowns.

In addition to a tenacious defense, Southern brings to town essentially the same backfield which gave FSU so much trouble in last year's scoreless tie.

Quarterback Vic Purvis is a roll-out operator who has 777 yards in total offense this season. Fullback Harmon Brannan and halfback Herman Nall are both powerful runners, weighing in at over 190 pounds. Center Larry Ecuyer was one of the outstanding defensive men to play against the Seminoles last season.

It's one of Florida State's longest rivalries, and one of the most exciting down through the years.

FSU Records

SINGLE GAME

INDIVIDUAL

LONGEST TOUCHDOWN RUN FROM SCRIMMAGE—80 yards by Fred Pickard vs. Virginia Tech, 1957.

LONGEST TOUCHDOWN PASS—80 yards, Nelson Italiano to Eddie Gray vs. Newberry, 1950.

LONGEST TOUCHDOWN RUN ANY SITUATION—99 yards by Ted Hewitt vs. Stetson, 1949, and by Fred Biletnikoff vs. Miami, 1963.

LONGEST RUN FROM SCRIMMAGE WITHOUT SCORING—76 yards by Roy Thompson vs. Stetson, 1951.

LONGEST INTERCEPTION RETURN—99 yards by Ted Hewitt vs. Stetson, 1949, and by Fred Biletnikoff vs. Miami, 1963.

LONGEST PUNT RETURN—80 yards by Billy Odom vs. Stetson, 1954.

LONGEST KICKOFF RETURN—89 yards by Odom vs. Virginia Tech, 1955.

MOST TIMES RUSHING—29 by Pickard vs. Georgia, 1959.

MOST YARDS RUSHING—161 by Buddy Strauss vs. Mississippi College, 1949.

MOST YARDS PASSING—355 vs. Villanova, 1954. 1949.

MOST TOTAL OFFENSE—369 yards (56 rushing, 313 passing) by Majors vs. Tampa, 1959.

MOST PASSES ATTEMPTED: 39 by Steve Tensi vs. Virginia Tech, 1964.

MOST PASSES COMPLETED: 21 by Steve Tensi vs. Virginia Tech, 1964.

MOST PASSES CAUGHT: 11 by Fred Biletnikoff vs. Virginia Tech, 1964.

MOST YARDS RECEIVING PASSES: 182 by Fred Biletnikoff vs. Virginia Tech, 1964.

MOST PASSES INTERCEPTED—3 by Tommy Brown vs. Stetson, 1950 and vs. Georgia Tech, 1952; Lee Corso vs. Georgia 1954; Whitehead vs. Virginia Tech, 1959.

LONGEST PUNT—84 yards by Brown vs. Tampa, 1950.

LONGEST FIELD GOAL—44 yards by Les Murdock vs. VPI, 1963.

TEAM

MOST POINTS—74 vs. Whiting Field O, 1949.

GREATEST MARGIN OF VICTORY—74-0 vs. Whiting Field, 1949.

GREATEST MARGIN OF DEFEAT—0-42 vs. Georgia, 1959.

MOST YARDS RUSHING—383 vs. Abilene Christian, 1957.

MOST YARDS PASSING—355 vs. Villanova, 1954.

MOST TOTAL OFFENSE—514 yards vs. The Citadel, 1959 (307 rushing, 207 passing).

MOST PASSES ATTEMPTED: 40 vs. Virginia Tech, 1964 (Completed 22)

MOST PASSES COMPLETED: 22 vs. Virginia Tech, 1964 (Attempted 39)

MOST PASSES INTERCEPTED—7 vs. Virginia Tech, 1959.

MOST PUNTS—10 vs. Stetson and Georgia Tech, 1955.

FIRST AID

For your convenience and safety First Aid facilities are located at the South end of the stadium. A Registered nurse is on duty throughout the game.

TODAY'S TEAMS — HOW THEY RATE

Results

FLORIDA STATE (5-1)			SOUTHERN MISSISSIPPI (3-2)		
Miami	14-0		S.W. Louisiana	30-0	
Texas Christian	10-0		Richmond	14-9	
New Mexico State	36-0		Memphis State	20-14	
Kentucky	48-6		Mississippi State	7-48	
Georgia	17-14		Auburn	7-14	
Virginia Tech	11-20				

Individual Leaders

FLORIDA STATE				RUSHING			SOUTHERN MISSISSIPPI				
Player	Att.	Yards	Avg.	Player	Att.	Yards	Avg.				
Spooner	71	285	4.0	Purvis	67	347	5.2				
Narramore	68	250	3.7	Brannan	46	188	4.3				
Green	32	135	4.2	Nall	25	118	4.7				
PASSING											
Player	Att.	Comp.	Yds.	TD	Player	Att.	Comp.	Yds.	TD		
Tensi	118	71	1,002	9	Purvis	59	30	430	2		
Pritchett	23	15	171	0	McLellan	20	10	98	0		
RECEIVING											
Player	Caught	Yds.	TD	Player	Caught	Yds.	TD				
Biletnikoff	38	639	7	Gorney	9	187	1				
Floyd	19	257	1	J. Brown	8	81	0				
Spooner	9	69	0								
SCORING											
Player	TD	PAT Kick	PAT Run-Pass	FG	Pts.	Player	TD	PAT Kick	PAT Run-Pass	FG	Pts.
Biletnikoff	7		1		44	Purvis	3				18
Murdock		14-17		4	26	Brannan	3				18
Spooner	4				24	Nall	3				18

THE ATHLETIC COMMITTEE

The Athletic Committee, appointed by the President, is the governing body of inter-collegiate athletics at Florida State University.

The Committee has the responsibility of seeing that athletics are conducted primarily in the interests of the students, but with due regard for a proper, continuing and healthy interest of the alumni and the citizens of Florida, as well as the athletic heritage and prestige of the University.

Mode L. Stone, Dean of the School of Education is the Committee chairman. Members are Robert C. Earnest, Mary V. Alexander, Claude Flory, Coyle Moore, J. M. Plant, Elston Roady and Thomas Wright, Ex-officio non-voting members are Vaughn Mancha, the FSU Alumni President, the Seminole Booster President and the President of the Student Body.



Mode L. Stone



Robert C. Earnest



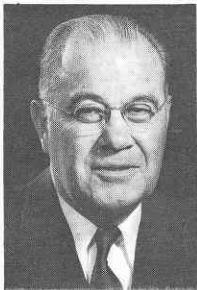
Thomas Wright



J. M. Plant



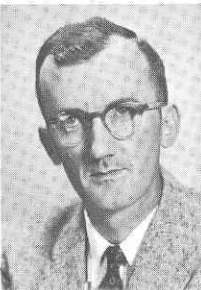
Claude Flory



Coyle Moore



Mary Alexander



Elston Roady



BILL PETERSON
Head Football Coach

The Seminole Football Family



VAUGHN MANCHA
Athletic Director



DON JAMES
First Assistant
Defensive Chief



BILL CRUTCHFIELD
Offensive Chief



BOB HARBISON
Defensive Line



BOBBY BOWDEN
Receivers



JOHN COATTA
Defensive Ends,
Linebackers



DON POWELL
Offensive Line



KEN MacLEAN
Head Recruiter



BILL PROCTOR
Freshman Coach



DON FAULS
Head Trainer



CHRIS PATRICK
Trainer



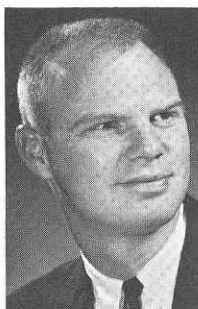
RONALD MELTON
Athletic Business
Manager



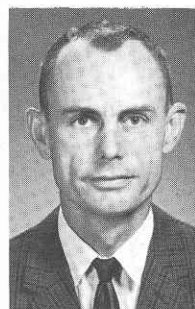
JEFF SAVAGE
Academic Advisor



DR. R. P. JOHNSON
Team Physician



BILL BUNKER
Sports Publicity
Director



CLAUDE THIGPEN
Ticket Manager



TILLMAN DIXON
Equipment Custodian

Bob Mangan



Joe Parrish

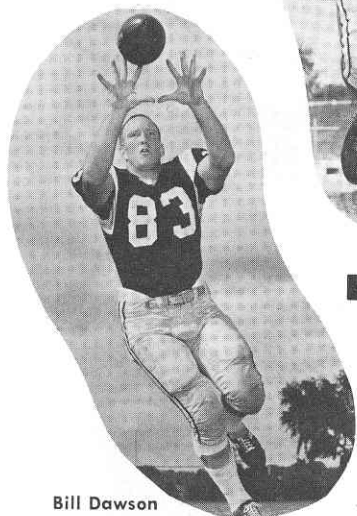


John Hosack



THE 1964

Bill Dawson



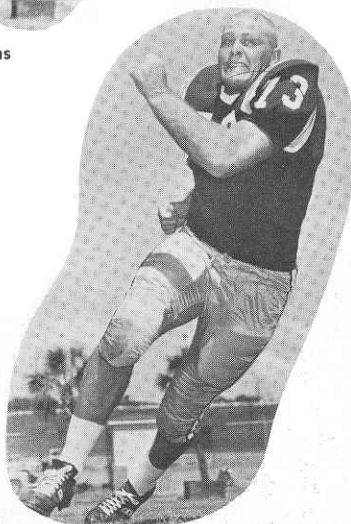
Del Williams



Jack Edwards



Elton Revell



Avery Sumner



Dick Hermann



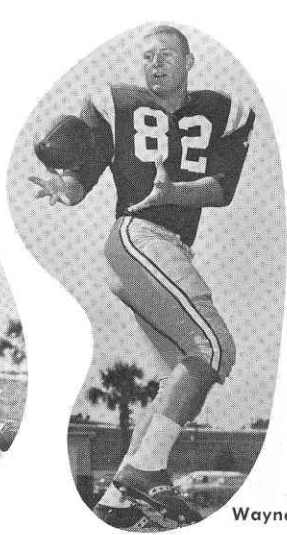
Ed Pritchett



Charles Pennie



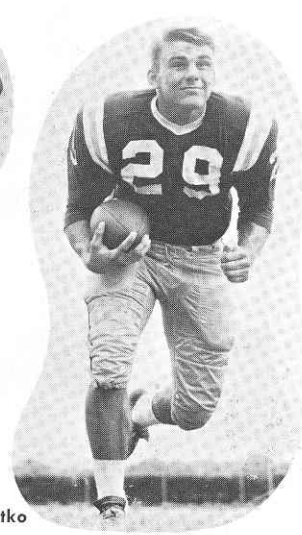
Joe Avezzano



Wayne McDuffie



Tom West



Joe Petko

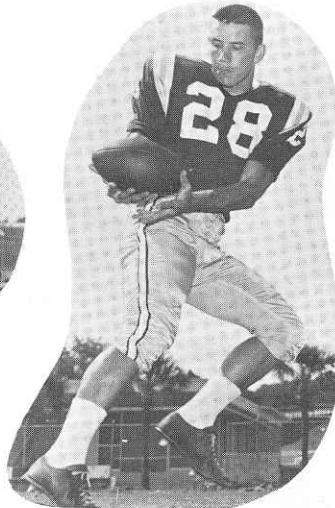
SEMINOLES



Bill McDowell



Steve Tensi



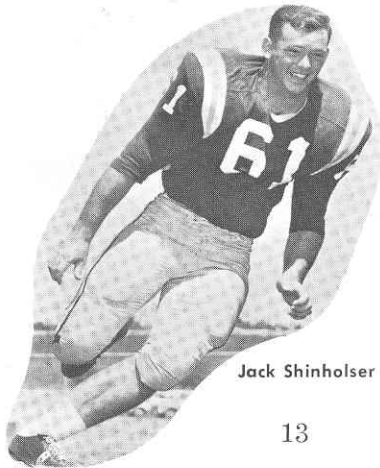
Winfred Bailey



Les Murdock



Howard Ehler



Jack Shinholser



Lee Narramore



Jim Massey



David Braggins

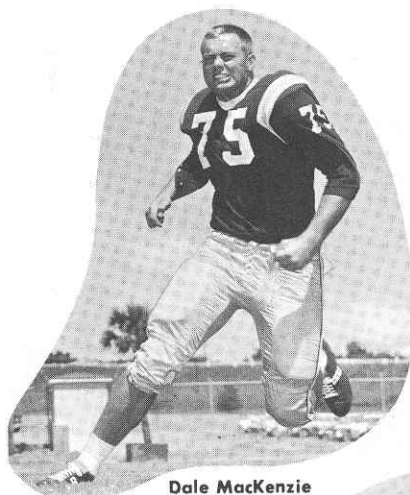


John Stephens

THE 1964



Larry Williamson



Dale MacKenzie



Terry Garvin



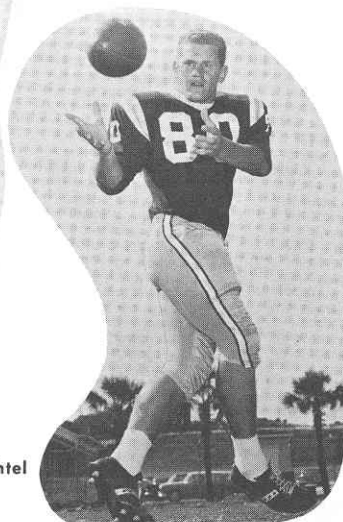
David Pitts



Howard Lurie



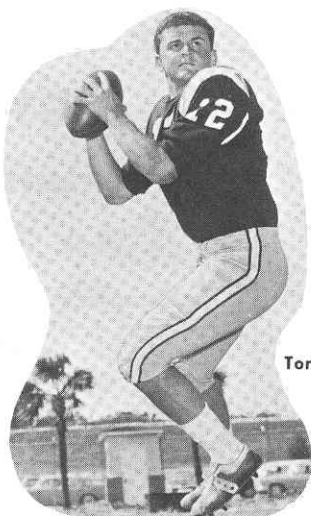
Max Wettstein



John Wachtel



Phil Spooner



Tony Gero



Jay Mac Matthews

SEMINOLES



Maury Bibent



Don Floyd



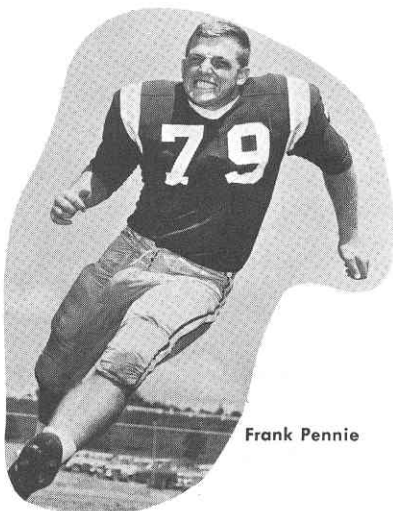
Cliff Gunter



Fred Biletnikoff



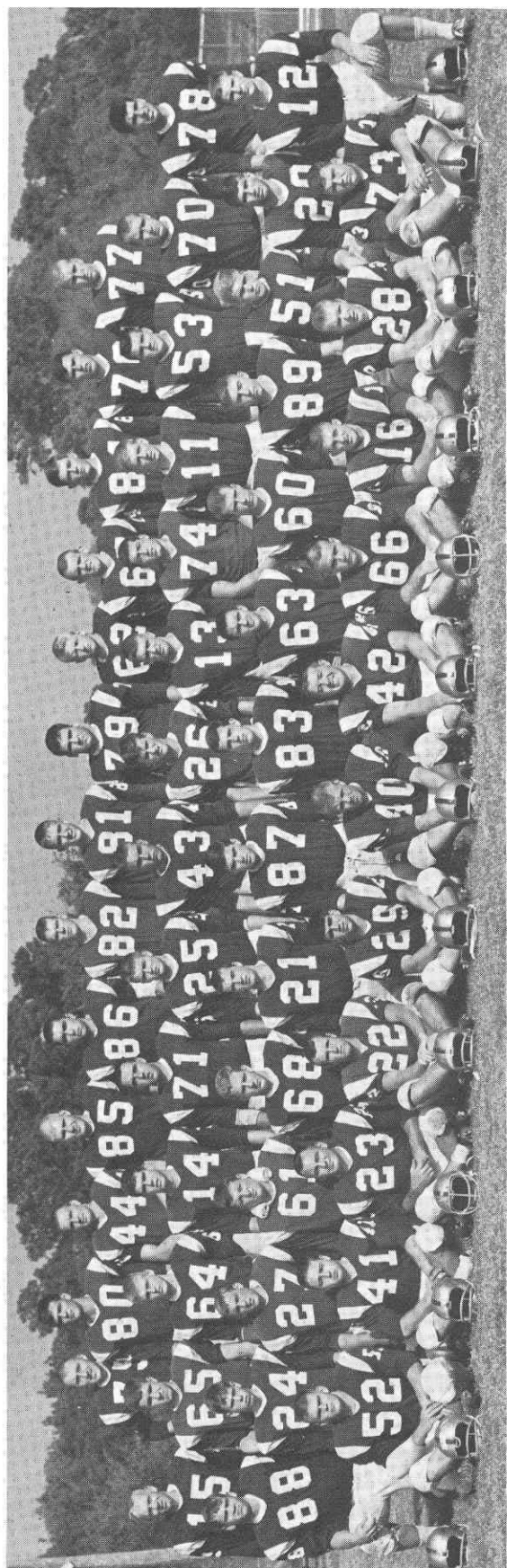
Larry Green



Frank Pennie



George D'Allessandro



FLORIDA STATE FRESHMEN 1964

No.	Pos.	Name	Ht.	Wt.	Hometown
11	QB	Burkart, William	6'1"	175	Rocky River, Ohio
12	QB	Kolbus, Martin	6'2"	184	E. Chicago, Ind.
13	QB	Lewis, Dale	6'1"	180	Middletown, Ohio
14	QB	Roylance, Steve	6'0"	170	Miami, Florida
15	QB	Sabo, Bob	6'0"	170	Maynard, Ohio
16	QB	Pickens, Chuck	5'8"	165	Athens, Tennessee
20	LHB	Blatt, Mike	5'11"	183	Key West, Florida
21	LHB	Gunter, Bill	6'0"	165	Dothan, Alabama
22	LHB	Knowlton, Cabot	5'10"	160	Pompano Beach, Fla.
23	LHB	Mercer, Ron	5'11"	180	Dinsmore, Florida
24	RHB	Bailey, James	6'1"	175	Wilmington, Ohio
25	RHB	Cox, Bill	6'1"	170	Atlanta, Georgia
26	RHB	Doyle, Dennis	6'2"	185	Jacksonville, Fla.
27	RHB	Elliott, Chuck	6'0"	190	Troy, Ohio
28	RHB	Manning, Bud	5'11"	170	Gainesville, Fla.
29	RHB	Turbow, Brent	5'8"	160	Jacksonville, Fla.
40	FB	Benson, Joe	5'11"	185	Birmingham, Ala.
41	FB	Culliton, Tom	5'11"	185	Dade City, Fla.
42	FB	Flores, Chuck	5'11"	185	Perry, Fla.
43	FB	Gielow, Russ	6'2"	188	Vero Beach, Fla.
68	FB	Paulson, Andy	5'11"	170	Waukesha, Wisc.
44	FB	Skinner, Sherril	6'1"	185	Live Oak, Fla.
51	C	East, Dick	6'1"	190	Bessemer, Ala.
52	C	Walther, Wayne	6'0"	190	Cantonment, Fla.
53	C	Wilcox, Newt	6'1"	205	College Park, Ga.
60	G	Bugar, Mike	6'1"	190	Youngstown, Ohio
61	G	Donohue, Mike	6'2"	190	Youngstown, Ohio
62	G	Holloway, Sherman	6'2"	197	Homewood, Ala.
63	G	Lenker, Mark	6'0"	185	Jacksonville, Fla.
64	G	McLean, Richard	6'0"	180	Holly Hill, Fla.
65	G	McNeil, Carlie	5'11"	185	Macon, Georgia
66	G	Sauls, Tim	5'10"	185	Tallahassee, Fla.
67	G	Pendleton, Larry	6'0"	188	Winter Garden, Fla.
70	T	Bizik, Dan	6'2"	205	E. Chicago, Ind.
71	T	Ellers, Don	6'2"	206	Marietta, Ga.
74	T	Kramer, Jim	6'2"	210	Dayton, Ohio
75	T	LeMont, Byron	6'0"	200	Eau Gallie, Fla.
76	T	Mills, Ken	6'1"	200	Tampa, Florida
77	T	Murphy, Jerry	6'1"	205	Jacksonville, Fla.
78	T	Panza, Tom	6'2"	210	Miami, Florida
79	T	Vistart, Romney	6'3"	245	Colquitt, Ga.
80	E	Broxson, Tim	6'4"	185	Milton, Florida
81	E	Fenner, Lane	6'5"	190	Evansville, Ind.
82	E	Fenwick, Jack	6'4"	195	Cincinnati, Ohio
83	E	Frazier, James	6'2"	180	Atlanta, Georgia
84	E	Hart, Ken	6'3"	190	Groveland, Fla.
85	E	Krebs, Ed	6'3"	190	Marietta, Ga.
86	E	Taylor, Thurston	6'2"	210	College Park, Ga.
87	E	Urich, Bob	6'2"	190	Toronto, Ohio
88	E	Yavelak, Bill	6'3"	190	St. Clairsville, Ohio
89		Loney, Bill	5'10"	160	Thomasville, Ga.

Coaches: Bill Proctor — Head Coach
 Jerry Bruner — Line Coach
 Ken Russom — Defensive Backfield Coach
 Doug Messer — Offensive Backfield Coach
 Dave Snyder — End Coach
 Manager: Mike Mullins

SEMINOLE BOOSTERS, INC.

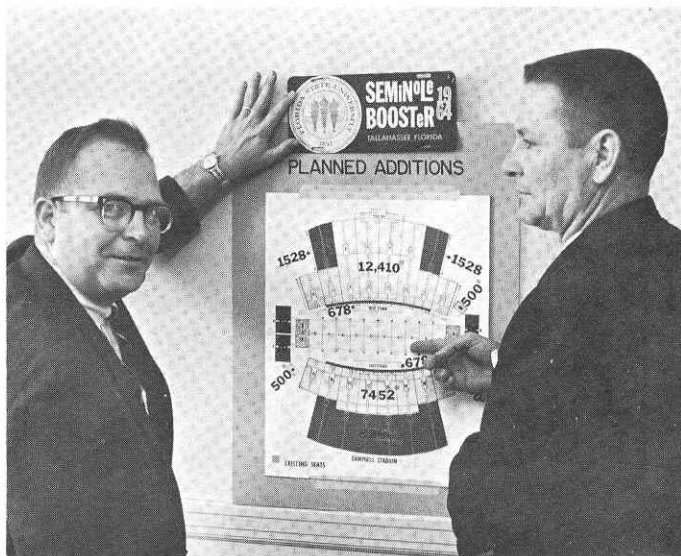
Seminole Boosters, Inc. is an organization devoted entirely to the support of the Florida State University athletic program with emphasis on football.

Membership in the Boosters—the group numbers approximately 1200—is open to anyone with a sincere interest in the University's athletic welfare. Minimum contribution for an individual membership is \$10. A business membership costs \$25.

Contributions are administered in accordance with NCAA regulations and in conjunction with the FSU Department of Intercollegiate Athletics.

Boosters receive a colorful automobile license plate which provides reserved parking at the stadium, a membership card, a weekly fall publication called "The Grandstand Coach," and certain priorities on season and individual football tickets.

President of the group for 1964 is Louis Hill, president of the People's Bank of Tallahassee. Hardworking executive secretary of the organization is Thomas A. Waits, Director of Alumni Affairs at Florida State University.



Tom Waits

Louis Hill

Boosters receive special seating and parking privileges

GOOD LUCK SEMINOLES!

LOUIS Seafare

"A BANQUET IN A BOX"

featuring Seafood & Chicken

With over 18 different items to
carry out in over 50 different sizes.

620 W. Tennessee St.

Ph. 224-1181

Be sure and visit our other
location in Gainesville, Fla.
309 N. W. 13th St.

FOREMOST

ICE CREAM

PHONE • 224-7136

SUNSHINE STATE DAIRYMEN'S COOP.

PHONE • 222-5303



1818 W. Tennessee

Howdy Podner . . . Me and the boys jest want to notafy everbody that we are still serven them Notorious and Dillicious charcoal-broiled Steerbrugers and Steak Samwiches at our fine Drive-In Resterant, jest 2 passes & a fumball offen the campus on West Tennessee where Call St. comes in. See you at the Seven Steers.

Yours truly,
OLE TEX.

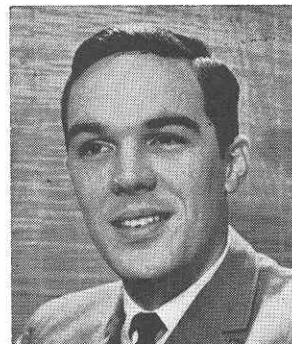
WFSU-TV -- THE SEMINOLE STATION

Roy Weissinger brings play-by-play action to the Tallahassee area every Monday night during the season over WFSU-TV, Channel 11.

All Seminole home games are video-taped at the stadium for later showing, and game films of all away games are shown and narrated.

In addition, the Seminole games may be seen on WTHS in Miami on Wednesday nights, and WEDU in Tampa on Thursday nights.

Air time in Tallahassee is 10 p.m.



HAV-A-TAMPA JEWEL

The s-m-o-o-t-h cigar with the built-in mouthpiece

ALL NATURAL-LEAF FINE TOBACCO . . . TOPS IN TASTE AND SMOKING PLEASURE

Ask for the Brand Name

HAV-A-TAMPA CIGAR

Distributed by **Eli Witt Tobacco & Candy Co.**
Tallahassee, Florida

**ARE YOU GOOD ENOUGH
TO BE AN ARMY OFFICER?
IF YOU ARE, DON'T SETTLE
FOR LESS!**



**STAY
IN
ARMY R.O.T.C.**

THE FLORIDA STATE FOOTBALL NETWORK



Follow the Seminoles at home and away with Bo Mitchell and John Haughee on the Seminole Network.

Back at the Seminole microphone for the second season are Bo Mitchell and John Haughee, bringing Florida State football to thousands of listeners throughout Georgia and Florida.

The energetic Mitchell, an ex-naval aviator with over 15 years of broadcasting experience, calls the play-by-play action for all Seminole games at home and away. Mitchell is vice-president and station manager of radio station WCOA, Pensacola.

Haughee, his partner at the mike, is sports director of WCTV for Tallahassee. An Indiana native who adopted Florida as his home over ten years ago. Haughee does the pre-game, half-time and time-out color commentary for the Seminoles.

Originating station for Florida State football games is WTNT, Tallahassee.

You can hear the entire Seminole schedule over the following stations this year: WCOA, Pensacola; WSRA, Milton; WNSM, Valparaiso; WPCF, Panama City; WTNT, Tallahassee; WDSR, Lake City; WJAX, Jacksonville; WROD, Daytona Beach; WGGG, Gainesville; WMOP, Ocala; WLBE, Leesburg; WKIS, Orlando; WDAE, Tampa.

(Stations carrying a partial schedule are WMYR, Fort Myers; WTOT, Marianna; WPAX, Thomasville, Ga.; WOOO, Deland; WCNH, Quincy; and WPRY, Perry.



SEMINOLE CHEERLEADERS—Kneeling are John Sweets, Chattanooga, Tennessee; and David Deutsch, Palatka. Standing with them, left to right, are Dee Weber, West Palm Beach; Toni Beals, Sumpter, South Carolina; Head Cheerleader Kay Lewis, Arcadia; Peggy Thompson, Ormond Beach; and Susan Reinhart, Cocoa Beach.

SONGS AND YELLS

ALMA MATER

High O'er the Towering Pines our voices swell
Praising these Gothic spires we love so well
Here sons and daughters stand, faithful and true
Hailing our Alma Mater—FSU.

FIGHT SONG

We're going to fight, fight, fight, for FSU
We're going to scalp 'em, Seminoles,
We're going to win, win, win, win, win this game
And roll on down and make those goals!
For FSU is on the warpath now,
And at the Battle's end she's great;
So fight, fight, fight, fight for victory
Our Seminoles of Florida State
F-L-O-R-I-D-A S-T-A-T-E!
Florida State! Florida State! Florida State!

—Written by Dr. Thomas Wright,
Associate Professor of Music

FSU CLAP CHEER

(Stomp clap, stomp clap,
stomp clap-clap-clap-clap-clap)
Repeat 3 times, then:
F (clap, stomp clap, stomp clap-clap-clap-clap)
S (clap, stomp clap, stomp clap-clap-clap-clap)
U (clap, stomp clap, stomp clap-clap-clap-clap)
F (clap) S (clap) U (clap-clap-clap-clap)
Go!!

THREE GARNETS

Give me a Garnet, Garnet, Garnet, Garnet, Garnet
Give me a Gold, Gold, Gold Gold Gold
Garnet, Gold
Garnet, Gold
Go Seminoles Go!

GO FLORIDA STATE

G-o-o-o-o-o-o-o-o-o-o, Florida!
G-o-o-o-o-o-o-o-o-o-o, State!
Go! Go!
Florida State!

IS EVERYBODY HAPPY!

Is everybody happy?
AUD: Hell, yes!
Is anybody low?
AUD: Hell, no!
Let's railroad Seminoles
And take it slow!
(Spell Seminoles 3 times)
Go, Seminoles!

VICTORY

With a V, With an I,
With a C, T, O, R, Y!
With a V, With an I,
With a C, T, O, R, Y!
With a V I C T O R Y!
VICTORY!!

FLORIDA STATE BASKETBALL

1964-65



Head Coach J. K. "Bud" Kennedy

Coach Bud Kennedy has eight lettermen, four of them starters, returning from last year's team to build his 16th team at Florida State. Six-foot-six center Gary Schull, leading scorer and rebounder as a sophomore, returns and will team at forward with 6-4 soph Ron Malmen, who led the frosh team in scoring with a 21.3 per game average.

The Seminoles play in two nationally-known tournaments, the Vanderbilt Invitational and the Oklahoma City All-College, then return home to encounter a home schedule that includes Florida, Miami, Memphis State, Georgia Tech, Auburn, and Alabama.

ORDER TICKETS FROM:

ATHLETIC TICKET OFFICE
FLORIDA STATE UNIVERSITY
TALLAHASSEE, FLORIDA 32306

Season Ticket* \$15.00

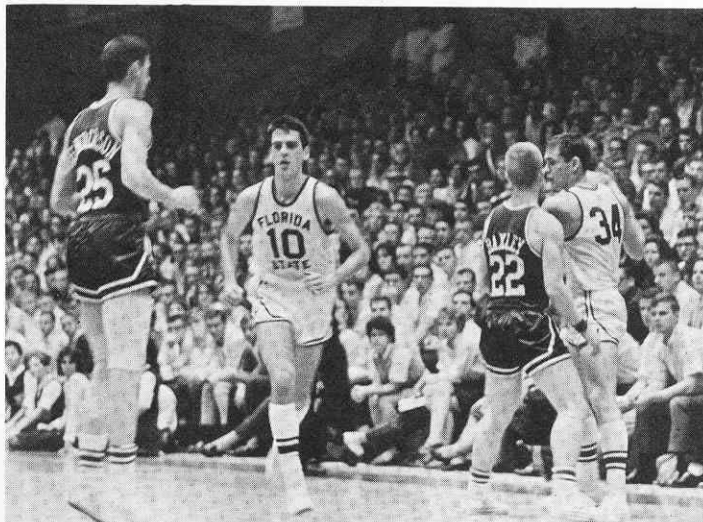
Individual Game Tickets \$ 2.00

*10 home games

HOME GAMES BEGIN 7:45 P.M. EST
ROBERT TULLY GYMNASIUM

1964-65 FSU BASKETBALL SCHEDULE

Dec. 1	Valdosta State	Tallahassee
Dec. 3	V.M.I.	Tallahassee
Dec. 5	Auburn	Auburn, Ala.
Dec. 7	Alabama	Tuscaloosa, Ala.
Dec. 9	Florida	Tallahassee
Dec. 18, 19	VANDERBILT INVITATIONAL TOURNEY	Nashville, Tenn.
Dec. 22	Tennessee	Memphis, Tenn.
Dec. 26	Tulsa	Tulsa, Okla.
Dec. 28, 29, 30	ALL-COLLEGE TOURNAMENT	Oklahoma City, Okla.
Jan. 7	Georgia	Athens, Ga.
Jan. 9	Miami	Tallahassee
Jan. 16	Memphis State	Tallahassee
Jan. 20	Georgia Tech	Tallahassee
Jan. 25	Auburn	Tallahassee
Jan. 30	Alabama	Tallahassee
Feb. 4	Duquesne	Baltimore, Md.
Feb. 6	Memphis State	Memphis, Tenn.
Feb. 10	Jacksonville	Tallahassee
Feb. 15	Georgia Tech	Atlanta, Ga.
Feb. 20	Tampa	Tampa
Feb. 23	Florida	Gainesville
Mar. 1	Miami	Miami
Mar. 6	Georgia	Tallahassee



Florida State vs. Florida, January 1964. FSU's Pete Gonzalez (10) and Bob Lovell (34) move against UF's Henderson (25) and Baxley (22).